

# THE UNIVERSITY OF NEW MEXICO WOMEN'S BASKETBALL

NOVEMBER 24 | vs GONZAGA | THE PIT

## 2024-25 SCHEDULE

OVERALL: 3-2 • MW: 0-0 • H: 3-1 • A: 0-1 • N: 0-0

DATE	OPPONENT	TIME/SCORE
10/20	New Mexico Highlands (Exh.)	W, 93-67
10/26	Western Colorado (Exh.)	W, 78-54
11/4	Northern Arizona	L, 80-78
11/7	Morehead State	W, 66-56
11/12	at Texas Tech	L, 75-68
11/15	Western New Mexico	W, 85-56
11/20	South Carolina State	W, 80-38
11/24	Gonzaga	1 p.m.
11/27	UC Irvine	7 p.m.
12/1	North Texas	1 p.m.
12/6	New Mexico State	7 p.m.
12/8	at New Mexico State	2 p.m.
12/15	Pepperdine	2 p.m.
12/19	Sacramento State	7 p.m.
12/21	Abilene Christian	1 p.m.
12/29	at Air Force*	1 p.m.
1/1	Nevada*	2 p.m.
1/4	at San Diego State*	2 p.m.
1/8	Wyoming*	7 p.m.
1/11	UNLV*	2 p.m.
1/18	at Colorado State*	1 p.m.
1/22	at Utah State*	6 p.m.
1/25	Fresno State*	2 p.m.
1/28	at Boise State*	6:30 p.m.
2/1	San Diego State*	2 p.m.
2/4	Colorado State*	8:30 p.m.
2/8	at UNLV*	3 p.m.
2/13	Boise State*	7 p.m.
2/19	at San José State*	8 p.m.
2/22	Utah State*	2 p.m.
2/26	at Wyoming*	6:30 p.m.
3/1	at Fresno State*	2 p.m.
3/4	Air Force*	7 p.m.
3/9-3/12 MW Tournament		

**BOLD:** Home \* : Mountain West  
All times are Mountain Time

### QUICK POINTS BY THE NUMBERS

- 3 Lobos scored in double figures in the first game (Cumber, Hargrove and Hooks), in the second game (Cumber, Joaquim, Hargrove) and in the third game (Hooks, Hargrove, Cumber)
- 4 Lobos scored in double figures vs. WNMU (Cumber, Joaquim, Hargrove, Hooks) & vs. SCSU (Joaquim, Hooks, Cumber, Moreland)
- Cumber scored in double figures in all 5 games
- Hooks has led team in scoring in 3 games
- 3x a Lobo has scored 20+ points in a game
- UNM recorded 8 steals and 5 blocks vs. NAU, had 8 steals and 10 blocks vs. MSU, 13 steals and 6 blocks vs. WNMU, 13 steals and 7 blocks vs. SCSU
- UNM finished with 48 rebounds in 2 games (outrebounded NAU 48-36 & MSU 48-32)
- UNM is 1st in MW in: Assists/Game (16.6), FG % (45.3), Rebounding Margin (+8.2)
- UNM is 2nd in MW in: PPG (75.4), 3PT FG% (34.5), Rebounds/Game (41.8), 3-Pt/Game (8.0), Blocks/Game (6.2), Rebounding Defense (33.6)
- 10 newcomers and 4 returners
- 8 underclassmen and 6 upperclassmen
- 22 home games on the schedule
- Picked 6th in the MW Preseason Poll
- 14-4 at home last season



**New Mexico Lobos**  
3-2, 0-0 MW  
Head Coach: Mike Bradbury  
Record at UNM: 165-91 (9th year)  
Career Record: 343-208 (18th year)

#### Series History

Overall: Tied 1-1  
Home Record: UNM leads 1-0  
Current Streak: L1  
Last Meeting: 12/22/23 (L, 67-56)

#### Broadcast Information

TV: Mountain West Network  
Radio: KNML  
Live Stats: GoLobos.com/wbbstats



**Gonzaga Bulldogs**  
3-2, 0-0 WCC  
Head Coach: Lisa Fortier  
Record at GU: 268-65 (11th year)  
Career Record: Same

### PROJECTED STARTERS (BASED ON LAST GAME)

#	NAME	POS.	HT.	YR.	NOTE
3	Destinee Hooks	G	5-9	So.	2 games with 20-plus pts; 3x leading team in scoring
4	Alyssa Hargrove	G	5-8	Sr.	Multiple steals in 4 games; avg. 8.6 ppg, 2.4 spg
13	Joana Magalhães	G	5-5	Fr.	8 points, 5 assists and 3 steals in last game
14	Hulda Joaquim	F	6-1	Gr.	1st career double-double vs. MSU (12 pts, 10 reb.); 2 on the season
33	Viané Cumber	G	5-11	Sr.	23 pts, 12 reb vs MSU w/ 7 3-pointers; avg. 14.6 ppg

### LOBO NOTES

#### SERIES HISTORY

Sunday will be the third meeting between the Lobos and Bulldogs with the last meeting in Spokane last year. Gonzaga won 67-56 with two ties and three lead changes in the game and UNM leading for 4:59. The Lobos outrebounded the Bulldogs 35-30 with Viané Cumber tying for the team high with seven rebounds. Cumber led the Lobos in scoring with 17 points behind five three-pointers and Paris Lauro had three three-pointers to finish with nine points.

UNM played Gonzaga at home in 2004, a 76-54 Lobo win.

#### BASKETBALL IS A WORLD GAME

Between UNM and Gonzaga, there are 11 international countries represented and 12 when counting the United States. UNM has players from six international countries in Germany, Democratic Republic of Congo, Spain, Mozambique, Finland and Portugal, while Gonzaga has players from seven in England, the Netherlands, Portugal, New Zealand, Turkey, Spain and Canada.

Gonzaga has eight international players with UNM having six. Both teams have players from Portugal and Spain.

#### 4-FOR-4 DEAL

The Lobos had a season-high four players score in double figures in the last two games: against Western New Mexico, the Lobos were led by 15 from Destinee Hooks, 13 from Viané Cumber, 12 from Hulda Joaquim and 10 from Hargrove, and against South Carolina State, Joaquim led with a career-high 14 points, followed by 13 from Cumber and Hooks and a season-high 12 from Amhyia Moreland.

#### GOOD THINGS COME IN THREES

UNM has had a player score 20-plus points in three of the games this season. Destinee Hooks has scored 20-plus points twice (21 vs. Northern Arizona and 28 at Texas Tech) and Viané Cumber scored 23 against Morehead State.

In addition, the Lobos have had three different players lead the team in scoring in a game this season, with Hooks leading the team in three (NAU, Texas Tech and Western New Mexico), Cumber in one (Morehead State) and Hulda Joaquim (South Carolina State). UNM has also had three different players lead the team in rebounds this season with Cumber (NAU and Morehead State) and Joaquim (Western New Mexico and South Carolina State) doing it twice and Amhyia Moreland leading in rebounds once (at Texas Tech).

#### BLOCK IT UP

Blocks have been a prevalent statistic in all five games this season with the Lobos, finishing with five or more blocks in four of the five games.

In the last game against South Carolina State, Amhyia Moreland finished with a career-high six blocks, with the Lobo matching her career high of four by halftime. Of note, she is the first Lobo to record six blocks in a game since Antonia Anderson did it against UC Riverside on Nov. 5, 2019 and one of 12 Lobos to record six or more blocks in a game dating back to 2002. While Carol Moreland holds the program record of most blocks in a game, done twice in 1978, Nike McClure holds the most recent record of blocks in a game with nine, done in 2018 against Oklahoma.

The Lobos finished with 10 blocks against Morehead State, the most in a game since 2021, when UNM had 11 against Houston Baptist on Nov. 23. Seven different Lobos had at least one block with Hulda Joaquim, Destinee Hooks and Alyssa Hargrove leading with two apiece. Lara Langermann recorded her first career block, with Lydie Mwamba, Moreland and Reza Po all contributing one.

UNM has 31 blocks this season with Moreland with 10, Hargrove with five, Joaquim with four and Hooks, Po and Mwamba with two. As a team, UNM is 14th in the NCAA in blocks per game (6.2) and second in the Mountain West. Moreland is tied for fourth in the MW in blocks per game at 2.0 and 38th in the NCAA.

#### QUITE THE STEAL

The Lobos have created six or more steals in each of the games this season, including 13 in each of the last two games, averaging 9.6 steals per game.



» Eight NCAA Tournament Appearances | 1998, 2002, 2003, 2004, 2005, 2006, 2007, 2008 «  
» Five Mountain West Tournament Championships | 2003, 2004, 2005, 2007, 2008 «

## THE UNIVERSITY OF NEW MEXICO

Location.....Albuquerque, N.M.  
 Founded.....1889 by Territorial Legislature  
 Enrollment.....22,225  
 Nickname.....Lobos  
 Colors.....Cherry (PMS 200) & Silver (PMS Cool Gray 6)  
 Conference.....Mountain West Conference  
 National Affiliation.....NCAA Division I  
 President.....Dr. Garnett Stokes  
 Interim Director of Athletics.....David Williams  
 Interim Deputy AD.....Jalen Dominguez  
 Deputy Title IX Coordinator/SWA.....Amy Beggin  
 Faculty Representative.....Karen Gaudreault, Ph.D

## FACILITY INFORMATION

Facility.....The Pit  
 Capacity.....15,411  
 Age.....Built in 1966 (Renovated in 2009-10)  
 All-Time Home Record.....479-225 (.680)

## PROGRAM HISTORY

First Season.....1974-75  
 Overall Record.....762-600 (.559)  
 Overall MW Record.....270-176 (.605)  
 Postseason Tournament Appearances.....20  
 NCAA Tournament Appearances.....8  
 Last NCAA Postseason Appearance.....2022-23 (WNIT)  
 Last NCAA Postseason Opponent.....Washington  
 Last NCAA Postseason Result.....L, 67-56  
 MW Regular Season Championships.....3  
 .....(2003-04, 2004-05, 2020-21)  
 MW Tournament Championships.....5  
 .....(2002-03, 2003-04, 2004-05, 2006-07, 2007-08)

## TEAM INFORMATION

2023-24 Overall Record.....21-11  
 2023-24 Mountain West Record.....12-6  
 2023-24 Mountain West Season Finish.....2nd  
 2023-24 MW Tournament Finish.....Quarterfinal  
 Letterwinners Returning | Lost.....4 | 8  
 Starters Returning | Lost.....1 | 4

- » Three Mountain West Regular-Season Championships
- » Five Mountain West Tournament Championships
- » Seven NCAA Tournament Appearances Since 2001-02
- » Mountain West Attendance Leader 21 Seasons in a Row
- » WBCA Academic Top 25 Eight Times Since 2004-05

## COACHING STAFF

Head Coach: Mike Bradbury (Chattanooga, 1993)  
 Record at UNM (Years): 165-91 (9th season)  
 Career Record (Years): 343-208 (18th season)  
 Associate H.C.: Keith Freeman (3rd season)  
 Alma Mater: Huntington College, 1986  
 Assistant Coach: Nike McClure (3rd season)  
 Alma Mater: New Mexico, 2019  
 Assistant Coach: Mackenzie Novak (2nd season)  
 Alma Mater: Bethel University, 2021  
 Graduate Assistant: Jaisa Nunn (2nd season)  
 Dir. of Operations: Hanna Hudson (3rd season)  
 Dir. of Player Development: Isaiah Fernandez (3rd season)  
 Athletic Trainer: Lexi Smith (4th season)  
 Strength Coach: Emily Meinert (1st season)

## MISCELLANEOUS INFORMATION

2023-24 Total Attendance.....90,187  
 2023-24 Average Attendance.....5,010  
 2023-24 NCAA Attendance Rank.....24th  
 2023-24 Mountain West Attendance Rank.....1st

## MULTIMEDIA INFORMATION

Athletics Website.....www.GoLobos.com  
 Main University Web Site.....www.unm.edu  
 Conference Web Site.....www.TheMW.com  
 Facebook.....www.facebook.com/NewMexicoLobos  
 Twitter.....@UNMLobos

## MEDIA RELATIONS

Women's Basketball Contact.....Allison Weiss  
 Cell Phone (Preferred).....661-313-5402  
 Email.....allisonweiss@unm.edu

### INTERVIEW REQUESTS

All interviews with UNM student-athletes and coaches should be coordinated through the athletics communications office. Interviews may be arranged by contacting Allison Weiss in the athletics communications office (allisonweiss@unm.edu). All interview requests should be made at least 24 hours in advance.

The University of New Mexico Athletics  
 1155 University Drive  
 Albuquerque, N.M. 87106

## GAME 6: NEW MEXICO vs GONZAGA

Alyssa Hargrove leads the team in steals with 12 (2.4 per game), with four against Western New Mexico and three against South Carolina State. She's recorded multiple steals in four of the five games. Hargrove led the team in steals against NAU, TTU and WNMU and tied for the team lead against South Carolina State.

### MOUNTAIN OF STATS

Among the Mountain West teams, the Lobos rank in the top-two in nine categories, leading the conference in three.

UNM leads the conference in assists per game (16.6), field goal percentage (.453) and rebounding margin (+8.2). UNM is second in points per game (75.4), three-point field goal percentage (.345), rebounds per game (41.8), three-pointers per game (8.0), rebounding defense (33.6) and blocks per game (6.2).

UNM has two of the top-three highest assists in a game this season with a conference-best 24 against South Carolina State and tied for second with 21 assists in the game against Morehead State. The 10 blocks are tied for the second most in a game this season.

On an individual level, Viané Cumber leads the conference in three-pointers per game (3.0) with a conference-best 15 made three-pointers and her three-point percentage (.429) is second in the MW. Cumber's seven three-pointers against Morehead State is the most made by a MW player this season with her 12 attempts in the game also the most.

Destinee Hooks' 28 points at Texas Tech is tied for the most points scored by a MW player this season, with her 11 made field goals in the game the most by a MW player. Hooks is tied for fifth in the conference in points per game at 16.6 with Cumber ninth at 14.6. Hooks is also fourth in field goal percentage (.586) with Cumber 10th (.446). Joana Magalhães is tied for second in the conference in assists (18) and assists per game (3.6) with Alyssa Hargrove tied for ninth in assists (14) and assists per game (2.8) and Reza Po tied for 11th in assists (13) and assists per game (2.6).

### KEEP IT BELOW 10

The Lobos have held an opponent below 10 points in a quarter four times this season, doing it twice in a game twice, with both occurring in the second and third quarters.

UNM held Morehead State to eight points in the second quarter and seven points in the third quarter and held South Carolina State to nine points in the second quarter and five points in the third.

### STARTING STRONG, NEED TO FINISH STRONG

UNM has entered the fourth quarter with the lead in four games (NAU, Morehead State, Western New Mexico and South Carolina State). In those four games, UNM is outscoring opponents 79-59 in the first quarter and 74-44 in the second quarter (153-103 in the first 20 minutes), 68-46 in the third quarter and 88-81 in the fourth (156-127 in the last 20 minutes). UNM is 3-1 this season when taking a lead into the final quarter.

The Lobos led for the majority of the game in the three games, leading 34:12 and by as many as 13 against NAU but lost the lead and the game late. Against Morehead State, the Lobos led 39:33 and by as many as 24 in the fourth, but the lead was cut down to 10 in the 66-56 final. They only trailed for 3:47 (3:30 vs. NAU, 0:17 vs. MSU) in the first two games of the season. Against Western New Mexico, UNM led by as many as 29 and for 36:38.

On the season, UNM is outscoring its opponents 102-77 in the first quarter for the greatest point differential of +25. The Lobos are outscoring opponents by an identical margin of 85-63 in the second and third quarters (+22), and by 105-102 in the fourth. UNM holds a 377-305 edge in overall points.

In addition, the Lobos have led for a total of 162:43 this season, leading after the first quarter in all five games, and trailed for a total of 31:45, with the largest time coming at Texas Tech at 25:17. UNM never trailed in the game against South Carolina State, the first time that has happened this season.

### FIRST IMPRESSIONS

Alyssa Hargrove reached double digits in four official games as a Lobo, averaging 8.6 ppg on the season. Additionally, she is averaging 2.8 rpg, 2.8 apg, 2.4 spg and 1.0 bpg in 26.6 mpg, while shooting 41.0% from the floor and 46.2% from three with two three-pointers in two games. Hargrove led the Lobos with four assists and a game-high two steals in the season opener, and had two steals, two blocks, two assists and three rebounds at Texas Tech. In the game against Western New Mexico, Hargrove had a game-high four steals and 10 points, nine of which she scored in the first quarter to pace the Lobos. In the game against South Carolina State, she had three steals, three assists and four rebounds.

Hargrove currently leads the team in steals (12) and is second in blocks (five) with a steal in all five games and a block in three. She is also second in assists with 14 and in made three-pointers with six and fourth in points per game.

Destinee Hooks scored a game-high 21 points in the season opener, including 12 points at the half on 5-7 shooting. Hooks scored five consecutive points for UNM in the fourth quarter, including a game-tying three-pointer with 49 seconds left to tie the game at 75. She later made a free throw with 2.4 seconds left that tied the game at 78. Hooks followed that up with her second 20-point performance at Texas Tech, scoring a game-high 28 points for the second time leading the Lobos in scoring. Hooks led the Lobos in scoring for the third time with 15 against Western New Mexico.

Hooks currently leads the Lobos in scoring at 16.6 ppg, as well as in made free throws (11) and attempts (21), and is third in three-pointers (four). Additionally, she is fifth in the MW in scoring and fourth in field goal percentage (.586) and currently 49th in the NCAA in field goal percentage and in field goals (34) and 99th in points (83).

Off the bench, freshman Reza Po also had a strong first game as a Lobo with five points, two assists, a steal and a block and went 4-4 from the free-throw line with three assists and a block in the game against Morehead State. In the game at Texas Tech, Po had a season-best four rebounds to go with a steal and four points in 23 minutes. In the last game against South Carolina State, she scored a season-high six points on two three-pointers. Po is third on the team in assists with 13.

### FAST-BREAK POINTS

On the season, UNM has scored 66 fast-break points, while limiting opponents to 39. The Lobos held NAU to five fast-break points, Western New Mexico to four and South Carolina State to two.

The Lobos have had the edge in fast-break points in four of the five games.

### PAINT POINTS

While a small sample size, the Lobos trend of prioritizing the paint points has continued from last season with UNM scoring 196 of its 377 points in the paint, accounting for 52.0% of the points and an average of 39.2 points per game. The Lobos are outscoring opponents 196-138 (+58) in the paint and have outscored opponents in the paint in three games (2-1 in those games).

In the season opener, UNM scored 42 of its 78 points in the paint, accounting for 53.8%. UNM outscored NAU 42-34 in the paint, with 14 points in both the first and second quarters coming in the paint to account for 28 of UNM's 42 points at the half. UNM had a season-best 56 paint points in the game against Western New Mexico, accounting for a season-high 65.9% of the total points. In the last game against South Carolina State, UNM outscored the Lady Bulldogs 48-18 in the paint, scoring 60.0% of the total points in the paint.

Last season, UNM outscored opponents in the paint in 24 games and by a 978-810 (+168) margin. UNM scored 47.2% of its points (978 of 2071) in the paint last season, averaging 30.6 points per game with 14 games scoring 50% or more of its total points in the paint.

### CONSISTENT V

Viané Cumber has scored in double figures in all five games this season, the only Lobo to do so. She scored a season-high 23 points against Morehead State to lead the team in scoring, had 14 in the season opener against Northern Arizona, 10 at Texas Tech and 13 in each of the last two games against Western New Mexico and South Carolina State.

She picked up right where she left off in the season opener, scoring 14 points with two three-pointers and nearly tallied a double-double with a team-high eight rebounds. She also played a team-high 32:13 without recording a turnover.

She took over in the game against Morehead State, scoring a game-high 23 points and a game-high 12 rebounds for her first double-double of the season, hitting seven three-pointers. It was one point and one three-pointer shy of matching her career highs in both categories. Cumber went 4-4 from three-point range in the fourth quarter and went 5-5 in the final two quarters while bringing down five rebounds.

The Lobo senior recorded her third double-digit game of the season at Texas Tech with 10 points behind two three-pointers and repeated it against Western New Mexico with 13 points, which she matched that total against South Carolina State.

In the first week of the season, Cumber led the Lobos with an average of 18.5 ppg and 10.0 rpg, shooting 48.0% from the floor and 56.3% from behind the arc with nine three-pointers.

She is currently averaging 14.6 points per game, 5.6 rebounds per game, 1.8 assists per game and shooting 44.6% from the floor and 42.9% from three-point range. Cumber is second on the team in points per game and third in rebounds per game and steals per game (1.0).

Last season, the New Mexico native scored in double figures in 17 games with four games of 20-plus points, leading the Lobos in scoring six times. The Lobo also registered three double-doubles, with 14 points and a career-high 14 rebounds against Eastern Illinois, 21 points and 11 rebounds against Utah State and 11 rebounds and 10 points at San Diego State.

Further, Cumber has scored in double figures 41 times and 20 or more points seven times in her career.

### THREES IN VIANÉ'S DNA

The easiest way to know how to pronounce Viané's name is VNA, like DNA but VNA. And three-pointers are in Viané's DNA.

In her career, she has made a three in 63 games with 48 games with multiple threes, three or more three-pointers in 26 career games and 10 career games with five or more three-pointers. She has made at least one three-pointer in 37 of the last 40 games she's played in.

Among one of the best three-point shooters in the conference, she made three or more three-pointers 10 times last season.

This season, she's made 15 with multiple three-pointers in four: seven against

## GAME 6: NEW MEXICO vs GONZAGA

Morehead State, three against South Carolina State and two against both Northern Arizona and Texas Tech. Her seven are tied for the eighth most made three-pointers in a game this season in the NCAA and tied for the eighth most in a game by a Lobo in program history.

She currently leads the Mountain West in made three-pointers and in three-pointers per game (3.0), while second in three-point field-goal percentage (.429). Nationally, she is 24th in the NCAA in three-pointers and 34th in three-pointers per game, while 41st in three-point attempts (35).

Cumber is on the verge of a couple of reachable milestones with 762 points (225 away from 1,000) and 173 three-pointers, seventh all-time in program history. She is 66 from tying the program record of 239 set by LaTascya Duff and would have to average roughly two to three three-pointers per game.

### DOUBLE TIME

The Lobos had two double-doubles in the win against Morehead State behind a 23-point and 12-rebound performance from Viané Cumber that included seven three-pointers and a 12-point and 10-rebound performance from Hulda Joaquim. It was Cumber's fourth double-double, as well as the fourth time with 10-plus rebounds and seventh time scoring 20-plus points in her career. For Joaquim, it was her career high in points and the third time with double-digit rebounds as a Lobo, recording her first career double-double.

UNM has three double-doubles on the season with Joaquim accounting for two (14 points, 10 rebounds vs. South Carolina State).

### A WHOLE NEW TEAM

The 2024-25 Lobos has a different look than a season ago, with 10 newcomers on the roster. Of the 10, four are freshmen and six are transfers.

UNM returns one starter from a season ago in Viané Cumber, who averaged 11.4 points per game, 6.0 rebounds per game, both career bests, as well as had a career-best 39 assists, 22 steals and five blocks last season. Entering their sophomore seasons, Lara Langermann and Paris Lauro return after making 32 appearances with six starts and 22 appearances, respectively. Hulda Joaquim begins her third year with the Lobos and played in 31 games last year for a combined 44 games during her Lobo career.

Joining the Lobos in the offseason were freshmen Reza Po, Joana Magalhães, Nayli Padilla and Lilli Hakkarainen. The Lobos are a relatively young team with eight of the 14 underclassmen, however, of the 14, eight also bring Division I collegiate experience with the addition of transfers Drew Jordon (Wagner), Clarissa Craig (Cincinnati), Amhyia Moreland (San José State) and Alyssa Hargrove (Austin Peay) to compliment the four Lobo returners.

### ROSTER BREAKDOWN

The roster breaks down to 4 freshmen (28.6%), 4 sophomores (28.6%), 1 junior (7.1%), 4 seniors (28.6%) and 1 graduate student (7.1%). Eight of the 14 are underclassmen (57.1%) with six upperclassmen (42.9%).

### AROUND THE WORLD

The roster breaks down further to span across the globe with seven countries represented and seven U.S. states with 12 different languages spoken. UNM has players from six international countries in Germany, Republic Democratic of Congo, Spain, Portugal, Mozambique, Finland as well as a greater U.S. footprint with Washington DC, North Carolina, Ohio, California, Texas, Indiana and New Mexico.

### SUMMER ABROAD

Two Lobos spent their summer with their respective national teams, playing in the FIBA U20 Women's EuroBasket in Klaipeda and Vilnius, Lithuania.

Lara Langermann played for the German National Team, finishing in fourth place after losing to France in the semifinals and Italy in the third-place game. Lilli Hakkarainen played for the Finnish National Team.

Langermann and Hakkarainen faced each other in the round of 16 with Germany winning 90-60. Langermann scored 11 points on 4-5 shooting, 3-4 from three-point range, while Hakkarainen finished with five points and three rebounds.

Hakkarainen finished the tournament averaging 6.1 ppg, 4.0 rpg, 1.9 apg and 0.7 spg while playing 24.4 mpg. Langermann finished averaging 4.4 ppg, 1.3 rpg, 1.6 apg, 0.7 spg in 14.3 mpg.

### POINT OF EMPHASIS

UNM entered the season having to replace its point guard from a season ago in Aniyah Augmon. The Lobos have options in freshmen Reza Po and Joana Magalhães, returning sophomore Lara Langermann and senior Alyssa Hargrove.

All four have been the one in games this season. Magalhães leads the team in assists with 18 (3.6 per game), followed by Hargrove at 14 (2.8) and Po at 13 (2.6).

Augmon led the Lobos with 109 assists and averaged 33.7 minutes per game last season, with two games with 10 assists. Not only was she a leader on the court, she was also a consistent scorer, scoring in double figures in 26 games and 20-plus points in three games, finishing with three double-doubles.

### FROM 0-60

A pattern emerged last season centered around the No. 60. 60 was the magic number for the Lobos as UNM was 19-1 when scoring 60 or more points and 14-2 when allowing fewer than 60 points. In conference games, UNM was 11-1 when scoring 60 or more and 7-1 when allowing fewer than 60 points.

This season, the Lobos are 3-0 when both occur. The win against Morehead State followed suit, scoring 66 points and allowed 56, as did the win against Western New Mexico, scoring 85 and allowing 56 and against South Carolina State where UNM scored 80 and allowed a season-low 38.

UNM is 3-2 when scoring 60 or more points this season.

### HELLO FROM THE OTHER SIDE

Amhyia Moreland spent the last two seasons at MW opponent San José State.

Against the Lobos, Moreland scored 19 points on 8-13 shooting with four rebounds and two steals at The Pit on Feb. 14 and scored eight points on the other two occasions she played her future team (both were in San Jose). Moreland averaged 11.6 ppg and 5.9 rpg last season with the Spartans.

### MAKE YOURSELF AT HOME

The Lobos have a total of 22 home games on the schedule with two exhibitions, 11 non-conference and nine MW games.

In the opening month, UNM has six home games with two separate three-game homestands broken up by a trip to Texas Tech. UNM has five home games in December with one road trip to Las Cruces and New Mexico State.

UNM has four home games in both January and February and close the MW schedule at home against Air Force on March 4.

The Lobos went 14-4 at home last season and 45-8 (85%) at home in the last three years.

### 20/10 AGAIN

The Lobos are coming off a 21-11 overall record, 12-6 record in the MW to finish second in the standings. It marked the fourth consecutive year with at least 10 conference wins and the seventh time in Coach Mike Bradbury's eight years at UNM. The Lobos reached 20 wins for the third consecutive year and the fifth time under Bradbury.

Only UNM, CSU and UNLV have reached the 20-win mark in each of the last three years. In addition, only UNM and UNLV have won 10 or more MW games in each of the last four years.

### DÉJÀ VU

UNM was picked to finish sixth in the MW preseason poll for the second-straight season.

UNM received 172 points, with the Lobos receiving 168 points in last year's preseason poll before finishing second in the final standings. The Lobos were picked ahead of Nevada (125 points), Air Force (116 points), Fresno State (109 points), San José State (60 points) and Utah State (41 points), with San Diego State above them in fifth (218 points).

UNLV was picked as the preseason favorite with 21 first-place votes and 298 points, followed by Wyoming (three first-place votes, 251 points), Colorado State (four first-place votes, 248 points), Boise State (221 points) and the aforementioned San Diego State.

### STILL THE ONE

The lone returning starter from a season ago, Viané Cumber was selected to the Preseason All-Mountain West Team. Cumber was one of 10 players selected to the preseason team, marking the first conference selection of her career. Entering her fourth year at UNM, the Albuquerque native has appeared in 80 games with 45 starts, including starting all 29 games she played in last season.

Cumber is coming off a season in which she averaged 11.4 points per game, 6.0 rebounds per game, both career bests, as well as had a career-best 39 assists, 22 steals and five blocks. A three-point threat, the Lobo guard made 70 last season, bringing her career total to 158 and her career three-point percentage to 36.0.

Against MW opponents, Cumber averaged 11.4 points per game, 6.7 rebounds per game, and finished in double figures in 12 games with two games with 20-plus points. She registered two double-doubles against Utah State (21 points, 11 rebounds) and at San Diego State (10 points, 11 rebounds) and made at least one three-pointer in all but two conference games. She made multiple three-pointers in 13 MW games and five or more in three, including six three-pointers at UNLV with the sixth one the game winner to give her 22 points.

She led the Lobos in scoring in six games and tied for the team high in one, and led the team in rebounds in seven games while tied for the team high in four.



## LAST TIME IT HAPPENED (UNM)

### As A Team

Scored 100 Points:	111 - vs. Utah State (2-25-23)
Scored 90 Points:	98 - at Utah State (1-28-23)
Scored Fewer Than 50 Points:	40 - vs Southern Utah (12-7-23)
Scored Fewer Than 40 Points:	38 - at Colorado St. (1-3-15)
Won by 50 Points:	+56 (W, 111-55) - vs. Utah State (2-25-23)
Won by 40 Points:	+42 (W, 80-38) - vs. South Carolina State (11-20-24)
Won By 30 Points:	+38 (W, 98-60) - at Utah State (1-28-23)
Lost By 30 Points:	-37 (L, 47-84) - at (RV) Arizona St. (12-14-19)
Lost By 40 Points:	-42 (L, 63-105) - at Oklahoma (12-16-17)
Shot 60% or Better:	61.2% - vs. Pacific (11-9-01)
Shot Less Than 30%:	27.3% (15-55) - vs Southern Utah (12-7-23)
Shot 60% 3FG or Better:	64.0% (16-25) - at Fresno State (2-28-23)
Shot Less Than 20% 3FG:	17.6% (3-17) - vs San Diego State (3-11-24)
Made 15 3-Pointers:	16 - at Fresno State (2-28-23)
Shot 90% on FTs (10 or more):	91.7 (11-12) - vs. Texas Southern (11-6-23)
Shot Less Than 40% On FTs:	33.3% (4-12) - vs UNLV (2-3-24)
Had 50 Rebounds:	52 - at Air Force (1-27-24)
Had 20 Offensive Rebounds:	21 - vs. Northern N.M. (11-12-21)
Had 25 Assists:	25 - vs. Utah State (2-25-23)
Had 20 Turnovers:	24 - vs. Morehead State (11-7-24)
Had Less Than 10 Turnovers:	8 - vs. San Jose State (2-14-24)
Had 10 Steals:	13 - vs. South Carolina State (11-20-24)
Had 10 Blocks:	10 - vs. Morehead State (11-7-24)
Had Two 20-Point Scorers:	vs. Fresno State (1-24-24)
	Nyah Wilson (24) and Paula Reus (20)
Had Three 20-Point Scorers:	vs. Grand Canyon (3-16-22)
	LaTascya Duff (27), Jaedyn De La Cerda (22) and Shaiquel McGruder (20)
Had 7 Double-Digit Scorers:	vs. Utah State (2-25-23)
Had 6 Double-Digit Scorers:	at Arkansas-Pine Bluff (12-17-20)
Had 5 Double-Digit Scorers:	vs. Nevada (3-2-24)
Had No Double-Digit Scorers:	vs. (RV) Arizona St. (12-14-19)
Had Two 10+ Rebounders:	vs. Morehead State (11-7-24)
	Vianè Cumber (12) and Hulda Joaquim (10)
Scored 50-60 Points In 1st Half:	51 - vs. Nevada (3-2-24)
Scored 50-60 Points In 2nd Half:	50 - vs. South Carolina State (11-20-24)
Scored 60+ Points in a 2nd Half:	62 - vs. Utah State (2-25-23)
Scored 20 Or Fewer Points In 1st Half:	20 - vs UNLV (2-3-24)
Scored 20 Or Fewer Points In 2nd Half:	19 - vs Southern Utah (12-7-23)
Scored Less Than 10 Points in a Quarter:	9 - vs. Morehead State (11-7-24)
Failed To Make a 3FG:	at (RV) Arizona St. (12-14-19)
Defeated a Ranked Team:	W, 69-66 vs. No. 25 UNLV (1-20-24)
Lost To a Ranked Team:	L, 67-56 at No. 20 Gonzaga (12-22-23)
Won an OT Game:	W, 81-78 vs. Eastern Illinois (11-28-23)
Lost an OT Game:	L, 83-77 vs Arizona State (11-20-22)
Won a 2OT Game:	W, 89-85 at Houston (11-24-18)
Lost a 2OT Game:	L, 69-65 vs. Fresno St. (1-2-16)

### As An Individual

Had a Triple-Double:	Aisia Robertson (28 pts, 11 rebs, 11 assists)
	at Houston (11-24-18)
Had a Double-Double (Pts/Reb):	vs. South Carolina State (11-20-24)
	Hulda Joaquim (14 pts, 10 reb.)
Had a Double-Double (Pts/Asst):	Aniyah Augmon (15 pts & 10 assists)
	vs. Nevada (3-2-24)
Had a Double-Double (Reb/Asst):	Cherise Beynon (13 reb, 10 assists)
	vs. Fairleigh Dickinson (11-12-16)
Scored 20+ Pts with 10+ Rebs:	Vianè Cumber (23 pts, 12 reb.)
	vs. Morehead State (11-7-24)
Scored 30 Points:	Nyah Wilson (33 pts) at Fresno State (3-5-24)
Scored 40 Points:	Cherise Beynon (41) at SDSU (1-20-18)
Scored 30 Points (MW Only):	Nyah Wilson (33 pts) at Fresno State (3-5-24)
Scored 40 points (MW Only):	Cherise Beynon (41)
	at San Diego St. (1-20-18)
Had 20+ Rebounds:	Charlotte Kohl (20) vs. Mississippi Valley State (12-4-23)
Had 15+ Rebounds:	Aniyah Augmon (16) vs. Colorado State (2-10-24)
Had 15+ Assists:	Aisia Robertson (16) vs. Oklahoma (11-28-18)
Had 5+ Steals:	Aniyah Augmon (5) vs. Wyoming (1-17-24)
Had 5+ Blocks:	Amyhia Moreland (6) vs. South Carolina State (11-20-24)

## LAST TIME IT HAPPENED (OPP)

### As A Team

Scored 100 Points:	105 - Oklahoma (12-16-17)
Scored 90 Points:	93 - UNLV (2-2-23)
Scored Less Than 50 Points:	46 - Colorado State (2-10-24)
Scored Less Than 40 Points:	38 - South Carolina State (11-20-24)
Shot 50% Or Better:	51.8% (29-56) - Montana State (11-23-23)
Shot Less Than 30%:	29.4% (15-51) - South Carolina State (11-20-24)
Shot 50% 3FG Or Better:	52.9% (9-17) - Gonzaga (12-22-23)
Shot Less Than 20% 3FG:	14.3% (2-14) - San Diego State (2-28-24)
Made 15 3-Pointers:	15 - San José St. (1-22-20)
Shot 90% On FTs (10 or more):	91.7% (11-12) - San Diego State (2-28-24)
Shot Less Than 50% On FTs:	33.3% (3-9) - Mississippi Valley State (12-4-23)
Had 50 Rebounds:	53 - Mississippi State (12-21-22)
Had 20 Offensive Rebounds:	24 - Houston (11-12-22)
Had 25 Assists:	26 - Houston (11-20-21)
Had 20 Turnovers:	22 - South Carolina State (11-20-24)
Had 30 Turnovers:	30 - Northern NM (11-15-17)
Had Less Than 10 Turnovers:	9 - Nevada (3-2-24)
Had 10 Steals:	13 - Morehead State (11-7-24)
Had 10 Blocks:	11 - Boise State (2-21-24)
Had Two 20-Point Scorers:	UNLV (1-14-23)
	Desi-Rae Young (22) and Alyssa Durazo-Frescas (20)
Had 6 Double-Digit Scorers:	San Diego State (3-6-23)
Had 5 Double-Digit Scorers:	UNLV (2-2-23)
Had No Double-Digit Scorers:	South Carolina State (11-20-24)
Had Two 10+ Rebounders:	UNLV (2-3-24)
	Desi-Rae Young (10) and Alyssa Brown (11)
Scored 50+ Points In 1st Half:	54 - San José St. (1-22-20)
Scored 50+ Points In 2nd Half:	50 - Colorado State (3-8-22)
Scored 20 Or Less Points In 1st Half:	18 - Wyoming (2-24-24)
Scored 20 Or Less In 2nd Half:	18 - South Carolina State (11-20-24)
Scored Less Than 10 Points in Quarter:	9 (2nd) & 5 (3rd) - vs. South Carolina St. (11-20-24)
Failed To Make a 3FG:	0-1 by San Diego State (2-18-15)

### As An Individual

Had a Double-Double (Pts/Reb):	Kim Villalobos (12 pts, 14 reb)
	San Diego State (3-11-24)
Had a Double-Double (Pts/Asst):	Miah Monahan (16 pts, 10 asts.)
	Eastern Illinois (11-28-23)
Had a Double-Double (Pts/Steals):	Jasmyne Harris (28 pts & 10 steals)
	Houston (11-28-18)
Had 20+ Points & 10+ Rebounds:	Desi-Rae Young (27 pts, 10 reb)
	UNLV (2-3-24)
Scored 30 Points:	Essence Booker (31) - UNLV (1-27-22)
Scored 30 Points (MW Only):	Essence Booker (31) - UNLV (1-27-22)
Had 20+ Rebounds:	Kaylee Johnson (22) - No. 1 Stanford (11-24-14)
Had 15+ Rebounds:	Andjela Bigovic (16) - Tarleton State (11-12-23)
Had 10+ Assists:	Miah Monahan (10) - Eastern Illinois (11-28-23)
Had 5+ Steals:	Jo Huntimer (6) - Air Force (2-23-23)
Had 5+ Blocks:	Gracie Johnson (5) - Utah State (1-10-24)

GAME 6: NEW MEXICO vs GONZAGA

STATS

STAT COMPARISON

GU		UNM
67.8	Points Per Game	75.4
44.0	FG%	45.3
42.1	3FG%	34.5
69.4	FT%	65.3
8.0	Made 3-pt PG	8.0
37.2	Rebounds PG	41.8
17.2	Turnovers PG	16.6
12.4	Assists PG	16.6
1.6	Blocks PG	6.2
5.4	Steals PG	9.6
72.8	Scoring Defense	61.0
45.8	FG% Defense	38.3
38.7	3FG% Defense	31.3
+8.4	Rebound Margin	+8.2

UNM WHEN HOME/AWAY/NEUTRAL

STAT	HOME (4)	AWAY (1)	NEUTRAL
PPG	77.3	68.0	
Opp PPG	57.5	75.0	
FG %	44.9	47.1	
3FG%	34.7	33.3	
3 FG MPG	8.8	5.0	
FT%	66.7	62.5	
Opp FG%	38.0	39.4	
Opp 3FG%	32.2	28.0	
RPG	44.3	32.0	
Opp RPG	31.8	41.0	
APG	19.3	6.0	
SPG	10.5	6.0	
TOV	16.5	17.0	

UNM STARTING LINEUPS (GAME)

Game	G	G	G	G	F
Northern Arizona	Hooks	Hargrove	Magalhães	Cumber	Joaquim
Morehead State	Hooks	Hargrove	Magalhães	Cumber	Joaquim
Texas Tech	Hooks	Hargrove	Magalhães	Cumber	Joaquim
Western New Mexico	Hooks	Hargrove	Langermann	Cumber	Joaquim
South Carolina State	Hooks	Hargrove	Magalhães	Cumber	Joaquim
Gonzaga					
UC Irvine					
North Texas					
New Mexico State					
New Mexico State					
Pepperdine					
Sacramento State					
Abilene Christian					
Air Force					
Nevada					
San Diego State					
Wyoming					
UNLV					
Colorado State					
Utah State					
Fresno State					
Boise State					
San Diego State					
Colorado State					
UNLV					
Boise State					
San José State					
Utah State					
Wyoming					
Fresno State					
Air Force					

UNM STARTING LINEUPS (RECORD)

Joaquim, Hooks, Hargrove, Magalhães Cumber	2-2
Hooks, Hargrove, Langermann, Cumber, Joaquim	1-0

DOUBLE-DOUBLE TRACKER

Viané Cumber	23 pts, 12 reb	Morehead State (11/7)
Hulda Joaquim	12 pts, 10 reb	Morehead State (11/7)
Hulda Joaquim	14 pts, 10 reb	South Carolina State (11/20)

CAREER DOUBLE-DOUBLES

	2024-25	Career
Viané Cumber	1	4
Hulda Joaquim	2	2

20-POINT TRACKER

Destinee Hooks	21 pts	NAU (11/4)
Viané Cumber	23 pts	Morehead State (11/7)
Destinee Hooks	28 pts	Texas Tech (11/12)

SPECIALTY STAT COMPARISON

(UNM/Opp.)

Opp.	Paint	Off TO	2nd Chance	Fast Break	Bench
Northern Arizona	42/34	17/17	11/11	14/5	21/18
Morehead State	20/26	11/11	2/5	18/15	14/24
Texas Tech	30/32	12/22	11/20	3/13	18/25
Western New Mexico	56/28	29/9	21/2	13/4	35/25
South Carolina State	48/18	33/9	17/2	18/2	32/19
Gonzaga					
UC Irvine					
North Texas					
New Mexico State					
New Mexico State					
Pepperdine					
Sacramento State					
Abilene Christian					
Air Force					
Nevada					
San Diego State					
Wyoming					
UNLV					
Colorado State					
Utah State					
Fresno State					
Boise State					
San Diego State					
Colorado State					
UNLV					
Boise State					
San José State					
Utah State					
Wyoming					
Fresno State					
Air Force					

GAME 6: NEW MEXICO vs GONZAGA

	CONFERENCE						OVERALL							
Team (AP/Coaches)	W	L	Pct.	Home	Away	Neutral	W	L	Pct.	Home	Away	Neutral	Last 10	Strk
Boise State	0	0	.000	0-0	0-0	0-0	5	0	1.000	4-0	0-0	1-0	7-3	W5
San Diego State	0	0	.000	0-0	0-0	0-0	5	0	1.000	3-0	2-0	0-0	9-1	W5
Air Force	0	0	.000	0-0	0-0	0-0	4	1	.800	3-0	1-1	0-0	7-3	W1
Colorado State	0	0	.000	0-0	0-0	0-0	4	1	.800	4-0	0-1	0-0	7-3	W2
Fresno State	0	0	.000	0-0	0-0	0-0	4	1	.800	3-0	1-1	0-0	5-5	W3
UNLV	0	0	.000	0-0	0-0	0-0	4	1	.800	4-0	0-1	0-0	8-2	W2
New Mexico	0	0	.000	0-0	0-0	0-0	3	2	.600	3-1	0-1	0-0	6-4	W2
San José State	0	0	.000	0-0	0-0	0-0	3	2	.600	2-1	1-1	0-0	4-6	W1
Nevada	0	0	.000	0-0	0-0	0-0	2	2	.500	1-0	1-1	0-1	4-6	W1
Wyoming	0	0	.000	0-0	0-0	0-0	1	3	.250	1-1	0-2	0-0	4-6	L1
Utah State	0	0	.000	0-0	0-0	0-0	1	4	.200	1-2	0-2	0-0	2-8	L2

^ MW Regular Season Champions

% MW Tournament Champion

MOUNTAIN WEST STATISTICS

TEAM	All	Conference
Assists per Game	16.6 (1st)	
Rebounding Margin	+8.2 (1st)	
FG %	.453 (1st)	
Scoring	75.4 (2nd)	
3-PT FG %	.345 (2nd)	
Blocks per Game	6.2 (2nd)	
3-Pt FG Made	8.0 (2nd)	
Rebounds/Game	41.8 (2nd)	
Def. Rebounds/Game	29.0 (3rd)	
Off. Rebounds/Game	12.8 (3rd)	
Assist/Turnover Ratio	1.0 (3rd)	
Scoring Margin	+14.4 (4th)	
FG % Defense	.383 (5th)	
Steals per Game	9.6 (5th)	
Scoring Defense	61.0 (T-5th)	
Free Throw %	.653 (8th)	
3-Pt FG % Defense	.313 (8th)	
INDIVIDUAL	All	Conference
Scoring		
Destinee Hooks	16.6 (T-5th)	
Vianè Cumber	14.6 (9th)	
Rebounding		
Hulda Joaquim	8.2 (4th)	
Amhyia Moreland	5.8 (T-12th)	
Vianè Cumber	5.6 (14th)	
FG%		
Destinee Hooks	.586 (4th)	
Vianè Cumber	.446 (10th)	
3-Point FG%		
Vianè Cumber	.429 (2nd)	
3-Point FG Made		
Vianè Cumber	3.0 (1st)	
Assists		
Joana Magalhães	3.6 (T-2nd)	
Alyssa Hargrove	2.8 (T-9th)	
Reza Po	2.6 (T-11th)	
Blocks		
Amhyia Moreland	2.0 (T-4th)	
Alyssa Hargrove	1.0 (T-10th)	
Hulda Joaquim	0.8 (T-14th)	
Steals		
Alyssa Hargrove	2.4 (7th)	

2024-25 MW PLAYERS OF THE WEEK

PLAYER OF THE WEEK

FRESHMAN OF THE WEEK

NCAA STATISTICS

TEAM	
Blocks Per Game	14th (6.2)
Fouls Per Game	22nd (13.4)
Defensive Rebounds Per Game	50th (29.0)
Assists Per Game	65th (16.6)
Rebounding Margin	69th (8.2)
Three-Pointers Per Game	69th (8.0)
Rebounds Per Game	71st (41.8)
FG %	78th (45.3)
Three-Point Attempts Per Game	81st (23.2)
Scoring Offense	85th (75.4)
Assist/Turnover Ratio	86th (1.0)
Scoring Margin	90th (14.4)
Three-Point %	92nd (34.5)
INDIVIDUAL	
Vianè Cumber	
3-Pointers	24th (15)
3-Pointers Per Game	34th (3.0)
3-Point Attempts	41st (35)
Destinee Hooks	
Field Goal %	49th (58.6)
Field Goals	49th (34)
Points	99th (83)
Hulda Joaquim	
Double-Doubles	25th (2)
Amhyia Moreland	
Blocks	38th (10)
Blocks Per Game	41st (2.0)

## UNM'S RECORD WHEN...

	Overall	In MW
Overall	3-2	
At home	3-1	
On the road	0-1	
At neutral sites		
After a win	1-1	
After a loss	2-0	
In overtime		
vs. ranked opponents		
Games decided by 1-4 points	0-1	
Games decided by 5-9 points	0-1	
Games decided by 10-19 points	1-0	
Games decided by 20+ points	2-0	
Leading after Q1	3-2	
Trailing after Q1		
Tied after Q1		
Leading at half	3-1	
Trailing at half	0-1	
Tied at half		
Leading after Q3	3-1	
Trailing after Q3	0-1	
Tied after Q3		
Shooting 50% or better	1-0	
Shooting between 40-49.9%	1-2	
Shooting less than 40%	1-0	
Opponent shoots 50% or better		
Opponent shoots b/w 40-49.9%	1-1	
Opponent shoots b/w 30-39.9%	1-1	
Opponent shoots less than 30%	1-0	
UNM higher FG%	2-2	
Opponent higher FG%	1-0	
FG% Tied		
UNM outrebounds	3-1	
Opponent outrebounds	0-1	
Rebounds tied		
UNM more made free throws	3-1	
Opponent more made free throws	0-1	
Made free throws tied		
UNM 3FG% higher	2-2	
Opponent 3FG% higher	1-0	
3FG% tied		
UNM has more fouls	0-1	
Opponent has more fouls	3-1	
Fouls are tied		
UNM more turnovers	1-2	
Opponent more turnovers	2-0	
Turnovers tied		
Scoring less than 50 points		
Scoring 50-59 points		
Scoring 60-69 points	1-1	
Scoring 70-79 points	0-1	
Scoring 80-89 points	2-0	
Scoring 90-99 points		
Scoring 100+ points		
Allowing 40 points or less	1-0	
Allowing 41-49 points		
Allowing 50-59 points	2-0	
Allowing 60-69 points		
Allowing 70-79 points	0-1	
Allowing 80-89 points	0-1	
Allowing 90+ points		
In November	3-2	
In December		
In January		
In February		
In March		

## SERIES HISTORY

### GONZAGA (1-1)

H: 1-0; A: 0-1; N: 0-0

11/27/04	W	76-54	H
12/22/23	L	67-56	A

## STARTER/ BENCH COMPARISON | LEADS (UNM/OPP.)

Opp.	Points	S/B	%	TIME LED	BIGGEST LEAD
Northern Arizona	78	57/21	73.1/26.9	34:12/3:30	13/3
Morehead State	66	52/14	78.8/21.2	39:33/0:17	24/2
Texas Tech	68	50/18	73.5/26.5	12:43/25:17	6/12
Western New Mexico	85	50/35	58.8/41.2	36:38/2:41	29/4
South Carolina State	80	48/32	60.0/40.0	39:37/0:00	43/0
Gonzaga					
UC Irvine					
North Texas					
New Mexico State					
New Mexico State					
Pepperdine					
Sacramento State					
Abilene Christian					
Air Force					
Nevada					
San Diego State					
Wyoming					
UNLV					
Colorado State					
Utah State					
Fresno State					
Boise State					
San Diego State					
Colorado State					
UNLV					
Boise State					
San José State					
Utah State					
Wyoming					
Fresno State					
Air Force					





**1**  
Lydie Mwamba  
G | 5-11 | JR.  
Republic Democratic of  
Congo



**3**  
Destinee Hooks  
G | 5-9 | SO.  
Indianapolis, Ind.



**4**  
Alyssa Hargrove  
G | 5-9 | SR.  
Dayton, Ohio



**5**  
Lara Langermann  
G | 5-7 | SO.  
Breckerfeld, Germany



**10**  
Paris Lauro  
F | 6-1 | SO.  
Dallas, Texas



**11**  
Nayli Padilla  
G | 5-11 | FR.  
Barrio de La Salud, Spain



**13**  
Joana Magalhães  
G | 5-5 | FR.  
Lisbon, Portugal



**14**  
Hulda Joaquim  
F | 6-1 | GR.  
Maputo, Mozambique



**15**  
Drew Jordan  
G | 5-11 | SO.  
Washington, DC



**21**  
Reza Po  
G | 5-3 | FR.  
San Bruno, Calif.



**24**  
Amhyia Moreland  
F | 6-1 | SR.  
Charlotte, N.C.



**33**  
Vianè Cumber  
G | 5-10 | SR.  
Albuquerque, N.M.



**40**  
Clarissa Craig  
F/C | 6-3 | SR.  
Cincinnati, Ohio



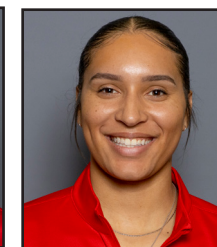
**45**  
Lilli Hakkarainen  
G | 5-7 | FR.  
Kotka, Finland



**Mike Bradbury**  
Head Coach



**Keith Freeman**  
Assoc. Head Coach



**Nike McClure**  
Assistant Coach



**Mackenzie Novak**  
Assistant Coach



**Jaisa Nunn**  
Graduate Assistant



**Hanna Hudson**  
Director of Operations



**Isaiah Fernandez**  
Director of Player Development

GAME 6: NEW MEXICO vs GONZAGA

NUMERICAL

#	Name	Pos	Ht	Yr	Hometown (Previous School)
1	Lydie Mwamba	G	5-9	Jr.	Republic Democratic of Congo (Trinity Valley CC)
3	Destinee Hooks	G	5-9	So.	Indianapolis, Ind. (Vincennes)
4	Alyssa Hargrove	G	5-8	Sr.	Dayton, Ohio (Austin Peay State)
5	Lara Langermann	G	5-7	So.	Breckerfeld, Germany (Theodor-Heuss-Gymnasium Hagen)
10	Paris Lauro	F	6-0	So.	Dallas, Texas (Highland Park HS)
11	Nayli Padilla	G	5-9	Fr.	Barrio de La Salud, Spain (IES Tarahales)
13	Joana Magalhães	G	5-5	Fr.	Lisbon, Portugal (Quinta Do Marquês)
14	Hulda Joaquim	F	6-1	Gr.	Maputo, Mozambique (Seward County CC)
15	Drew Jordon	G	5-11	So.	Washington, DC (Wagner)
21	Reza Po	G	5-2	Fr.	San Bruno, Calif. (Sacred Heart Cathedral)
24	Amhyia Moreland	F	6-1	Sr.	Charlotte, N.C. (San José State)
33	Vianè Cumber	G	5-11	Sr.	Albuquerque, N.M. (Sandia HS)
40	Clarissa Craig	F/C	6-3	Sr.	Cincinnati, Ohio (Cincinnati)
45	Lilli Hakkarainen	G	5-7	Fr.	Kotka, Finland (Mäkelänrinne Upper Secondary School)

ALPHABETICAL

#	Name	Pos	Ht	Yr	Hometown (Previous School)
40	Clarissa Craig	F/C	6-3	Sr.	Cincinnati, Ohio (Cincinnati)
33	Vianè Cumber	G	5-11	Sr.	Albuquerque, N.M. (Sandia HS)
45	Lilli Hakkarainen	G	5-7	Fr.	Kotka, Finland (Mäkelänrinne Upper Secondary School)
4	Alyssa Hargrove	G	5-8	Sr.	Dayton, Ohio (Austin Peay State)
3	Destinee Hooks	G	5-9	So.	Indianapolis, Ind. (Vincennes)
14	Hulda Joaquim	F	6-1	Gr.	Maputo, Mozambique (Seward County CC)
15	Drew Jordon	G	5-11	So.	Washington, DC (Wagner)
5	Lara Langermann	G	5-7	So.	Breckerfeld, Germany (Theodor-Heuss-Gymnasium Hagen)
10	Paris Lauro	F	6-0	So.	Dallas, Texas (Highland Park HS)
13	Joana Magalhães	G	5-5	Fr.	Lisbon, Portugal (Quinta Do Marquês)
24	Amhyia Moreland	F	6-1	Sr.	Charlotte, N.C. (San José State)
1	Lydie Mwamba	G	5-9	Jr.	Republic Democratic of Congo (Trinity Valley CC)
11	Nayli Padilla	G	5-9	Fr.	Barrio de La Salud, Spain (IES Tarahales)
21	Reza Po	G	5-2	Fr.	San Bruno, Calif. (Sacred Heart Cathedral)

STAFF

Mike Bradbury	Head Coach
Keith Freeman	Associate Head Coach
Nike McClure	Assistant Coach
Mackenzie Novak	Assistant Coach
Jaissa Nunn	Graduate Assistant
Hanna Hudson	Director of Operations
Isaiah Fernandez	Director of Player Development
Lexi Smith	Associate Athletic Trainer (WBB)
Emily Meinert	Assistant Director of Athletic Performance (WBB)

by eligibility

Grad Student (1)	
14 Hulda Joaquim	F
Seniors (4)	
4 Alyssa Hargrove	G
24 Amhyia Moreland	F
33 Vianè Cumber	G
40 Clarissa Craig	F/C

Juniors (1)	
1 Lydie Mwamba	G

Sophomores (4)	
3 Destinee Hooks	G
5 Lara Langermann	G
10 Paris Lauro	F
15 Drew Jordon	G

Freshmen (4)	
11 Nayli Padilla	G
13 Joana Magalhães	G
21 Reza Po	G
45 Lilli Hakkarainen	G

home state

California (1)	
21 Reza Po	G

Indiana (1)	
3 Destinee Hooks	G

North Carolina (1)	
24 Amhyia Moreland	F

New Mexico (1)	
33 Vianè Cumber	G

Ohio (2)	
4 Alyssa Hargrove	G
40 Clarissa Craig	F/C

Texas (1)	
10 Paris Lauro	F

Washington DC (1)	
15 Drew Jordon	G

international

1 Lydie Mwamba (Republic Democratic of Congo)
5 Lara Langermann (Germany)
11 Nayli Padilla (Spain)
13 Joana Magalhães (Portugal)
14 Hulda Joaquim (Mozambique)
45 Lilli Hakkarainen (Finland)

PRONUNCIATIONS

Audio pronunciations are also available on their roster bios online

LARA LANGERMANN	La-Rah Lane-GRR-man
Paris LAURO	Loro (rhymes with Zorro)
NAYLI PADILLA	Nay-LEE PA-dee-ya
Joana MAGALHAES	Ma-ga-LANE-SHH
HULDA JOAQUIM	UI-da JOY-key-m
VIANE Cumber	V-UH-nay (like DNA but VNA)
Lilli HAKKARAINEN	HAWK-KERR-rine-in



*Lobos*



LANGUAGES SPOKEN :  
 PORTUGUESE, GERMAN, SPANISH, FINNISH, SWEDISH, CHINESE, FRENCH, ENGLISH,  
 LINGALA, SWAHILI, TSHILUBA, CHANGANA

AROUND THE WORLD  
**LOBOWOMEN'S**  
*Basketball*



## MIKE BRADBURY

### RECORD AT UNM: 165-91 (9TH SEASON)

### CAREER RECORD: 343-208 (18TH SEASON)

#### NOTEWORTHY:

- Named the sixth head coach in program history on March 31, 2016
- 26 wins in 2021-22 tied for most wins in program history
- Led UNM to 25 wins in 2017-18; tied for second-most wins in program history
- Led UNM to 20+ wins in five seasons, and .500 or better in seven
- Earned his 100th win at UNM on Nov. 30, 2021; only the second coach in program history to reach 100. Earned his 300th career win on Nov. 22, 2022 against Western N.M.

Mike Bradbury enters his ninth season as head coach for The University of New Mexico women's basketball team. In his previous eight seasons at the helm, Bradbury has guided the Lobos to a 162-89 (.645) and 89-51 (.636) in conference and became just the second coach in UNM history to win 100 games with a win over Grambling on Nov. 30, 2021.

Five times in his tenure (2017-18, 2018-19, 2021-22, 2022-23, 2023-24) the Lobos eclipsed the 20-win mark, with the Lobos tying the program record for most wins in a single season with 26 in 2021-22. Further, the 25 wins in 2017-18 were tied for the second-most wins in program history. The consecutive 20-plus win seasons under Bradbury in 2017-18 and 2018-19 were the first for the program since the 2007-08 – 2008-09 seasons.

Further, the last time the Lobos finished with 20-plus wins in three consecutive seasons was 2006-07, 2007-08 and 2008-09.

Of note, there are only three Mountain West teams that have won 20 games in each of the last three years (UNM, UNLV and CSU), and in the last four years, only two MW teams that have won 10 or more conference games all four years (UNM and UNLV).

The Lobos have sustained success under Bradbury as historically, UNM has finished either first or second in the conference in scoring offense in six of the last seven years (four times first). In Bradbury's time at UNM, the Lobos have finished with 15 or made three-pointers 11 times and hold the top-five spots in three-pointers per game in program history.

During the most recent season, the Lobos were among the most consistent defensive teams in the country, ranking 14th in defensive rebounds per game and 10th in the fewest fouls per game. On an individual level, the Lobos garnered several awards with five Mountain West Player of the Week selections, the most since the 2018-19 season, as well as earning MW Newcomer of the Year (Nyah Wilson), MW Defensive Player of the Year (Aniyah Augmon), two All-Mountain West Team selections in Augmon and Wilson, an All-Defensive Team selection for Augmon and a MW Coach of the Year selection for Bradbury.

Wilson became the seventh Lobo to earn Newcomer of the Year and the fourth under Bradbury, with the last one back in 2018-19. Augmon became only the second Lobo to win Defensive Player of the Year, joining Porche Torrance who won in 2011-12. The

selection marked the first Coach of the Year award for Bradbury and the third for a New Mexico coach.

In his time at UNM, Bradbury has coached 19 All-Mountain West performers, six on the All-Defensive Team and three on the All-Newcomer/Freshman Team.

In terms of major individual awards, Bradbury coached the league's Newcomer of the Year each of his first three seasons in charge of the Lobos with Richelle van der Keijl earning the award in 2016-17, Tesha Buck in 2017-18 and Aisia Robertson in 2018-19. Additionally, Bradbury has coached the MW Player of the Year in Jaisa Nunn (2018-19) and the Freshman of the Year in Jayla Everett (2018-19) as well as Sixth Person of the Year in LaTascya Duff (2020-21).

Further, a Lobo has been named Mountain West Player of the Week 20 times during his tenure, with four named Freshman of the Week.

In the 2022-23 season, UNM finished 15th in the NCAA in made three-pointers per game at 8.5 per game, with 12 games with double-digit three-pointers. Of the 12 games, UNM made 18 (against South Carolina State) and three games with 16 (twice against Utah State and at Fresno State).

During the 2021-22 season, the program established several program records. UNM set the program record in made three-pointers (346), a program-best 171 made three-pointers in conference season, as well as a program-record 596 assists on the season and 292 in conference games. In addition, the Lobos made a program-high 523 field goals in conference and scored the most points in conference in program history with 1,413 points. On Jan. 6 at Utah State, the Lobos set the program record and the MW record in made three-pointers in a game with 21, and three games later made 19 three-pointers for the second most in a game in program history. The Lobos also went on a nine-game win streak, the second longest in program history.

New Mexico ranked in the top 10 in the NCAA in made three-pointers (third), made three-pointers per game (fifth, 9.6 per game) and in assists (10th). In total, UNM ranked in the top 30 in nine categories, including scoring offense (14th, 76.7 points per game), assists per game (16th, 16.6 per game), assist/turnover ratio (18th, 1.21), field-goal percentage (19th, 45.1 percent), blocked shots (25th, 147) and three-point field-goal percentage (30th, 35.1 percent).





UNM added six postseason Mountain West honors with a conference-high three all-conference players in Antonia Anderson, Shaiquel McGruder and Jaedyn De La Cerda, an honorable mention in LaTora Duff, an all-defensive player in McGruder and an all-freshman in Paula Reus. The Lobos have had 12 conference selections in the last two seasons.

Further, five Lobos finished the 2021-22 season averaging double figures in points per game.

In the 2020-21 season, Bradbury led the Lobos to a Mountain West regular season championship, the first outright in program history and the first regular season title since the 2004-05 season. In addition, the Lobos were selected for the WNIT for the third time in four years.

The Lobos produced one of the most prolific offenses not only in the conference, but in the country, finishing among the top 25 in several categories. Among them, UNM finished fourth in the NCAA in made three-pointers per game (10.2), sixth in assist-turnover ratio (1.40), ninth in scoring offense (81.2 points per game), 14th in fewest turnovers per game (12.0) and assists per game (16.8) and 22nd in scoring margin (12.7). The Lobos led the Mountain West in scoring offense, scoring margin, assists per game, turnover margin, assist-turnover ratio and made three-pointers as well as second in field-goal percentage and steals per game.

UNM set a program record in scoring with 120 points against Arkansas-Pine Bluff on Dec. 17, 2020 and in the process, made 17 three-pointers, falling just one short of tying the program record. Further, the Lobos registered 90-plus points in five games and 80-plus points in 11 of the 20 games on the season.

Four Lobos finished the 2020-21 season averaging double figures in points per game with six players finishing in double figures in scoring in two games (the only times it has been accomplished in program history), five players in five games and four in seven games.

As a result of UNM's successful season, five players were named to the All-Mountain West Team with LaTascya Duff also earning the superlative of Sixth Person of the Year. Duff was just the second Lobo to win the sixth person award. Making the all-conference team for the first time were Duff, Jaedyn De La Cerda and Antonia Anderson, as well as Shaiquel McGruder earning all-defensive and Ahlise Hurst earning the honorable mention distinction.

In his third year at the helm, Bradbury continued to put his mark on the program while also continuing to bring Lobo women's basketball back to national prominence. Overall, Bradbury's 2018-19 team went 24-7 and earned a bid to the WNIT for a second-straight season. It marked the first time since the 2008-09 – 2009-10 seasons that the program made consecutive trips to the postseason.

Prior to coming to Albuquerque, Bradbury built a successful nine year run as a Division-I head coach with stops at Morehead State (Morehead, Ky.) and Wright State (Dayton, Ohio). Most recently with the Raiders, Bradbury led his squad to five 20-win seasons, including each of his final three seasons. During that time, Wright State has amassed a 75-28 record, the best amongst the 13 Division I programs in the state of Ohio.

Overall at Wright State, Bradbury had five winning seasons, all of which were 20-plus win seasons, in six years – a feat made all the more remarkable as Wright State had just one winning season in the previous 22 before his arrival. In the previous 37 seasons of women's basketball at Wright State, the Raider program had tallied 20 wins just once before Bradbury led the team to 20 wins in five of his six seasons.

His most prominent three-year run at Wright State started in 2013-14, when the Raiders won a school-record 26 games on the way to a 26-9 season and the program's first-ever appearance in the NCAA Tournament. That season saw the Raiders finish second in the Horizon League and win its first Horizon League Tournament. It also featured the program's first road win at perennial league power Wisconsin-Green Bay. Kim Demmings was named the Horizon League Player of the Year and Tournament MVP, and it marked the first time in school history the program had a pair of first team All-Conference selections.

He followed up that by earning Horizon League Coach of the Year in 2014-15 after a 25-9 season that saw his squad lose its Horizon League Preseason Player of the Year less than two minutes into the season opener. The Raiders just missed a second straight NCAA Tournament appearance, falling in overtime in the conference championship game. The team did make its first appearance in the Women's NIT as the league's automatic qualifier, and in 2015-16, the team made it back-to-back WNIT appearances after a 24-11 season, earning the program's first at-large bid.

Those three seasons are the three winningest seasons in the history of Wright State women's basketball.

In his first two seasons at Wright State, he led the team to a 20-13 campaign and a 21-13 mark and berths in the Women's Basketball Invitational, the first NCAA Division I postseason berths for the program. Overall, Bradbury has coached three Horizon League Players of the Year (all in his last three seasons), six first-team All-Horizon League players, three second-team members and four All-Freshman team members.

Prior to his time at Wright State, Bradbury was the head coach at Morehead State where he led the Division I program to a 50-44 mark in three seasons, including a watershed 22-11 season, which was the second-most wins in Morehead State history and the most wins by the Eagles in the previous 38 years.

At Morehead State he coached one Ohio Valley Conference Player of the Year, along with one first-team All-OVC pick (two seasons) and three second-team All-OVC picks.

Bradbury also spent time as an assistant coach at Xavier (2002-06), Cincinnati (1996-02), VCU (1995-96), East Tennessee State (1994-95) and Chattanooga (1991-94). In his 30 seasons as an assistant and as a head coach, Bradbury's teams have finished below .500 only three times.



## CAREER HEAD COACHING YEAR-BY-YEAR

2007-08	11-19 (9-11)	Morehead State
2008-09	17-14 (11-7)	Morehead State
2009-10	22-11 (14-4)	Morehead State
2010-11	20-13 (11-7)	Wright State
2011-12	21-13 (12-6)	Wright State
2012-13	12-18 (6-10)	Wright State
2013-14	26-9 (12-4)	Wright State
2014-15	25-9 (12-4)	Wright State
2015-16	24-11 (12-6)	Wright State
2016-17	15-15 (10-8)	New Mexico
2017-18	25-11 (10-8)	New Mexico
2018-19	24-7 (14-4)	New Mexico
2019-20	15-17 (6-12)	New Mexico
2020-21	15-5 (11-3)	New Mexico
2021-22	26-10 (14-4)	New Mexico
2022-23	21-13 (12-6)	New Mexico
2023-24	21-11 (12-6)	New Mexico
2024-25	3-2 (0-0)	New Mexico
Total	343-208 (165-91, 89-51 at UNM)	

## EDUCATION

UT-Chattanooga - B.S. Recreation (1993)

## COACHING EXPERIENCE

1991-93	Student Assistant	Chattanooga
1993-94	Assistant Coach	Chattanooga
1994-95	Assistant Coach	East Tennessee
1995-96	Assistant Coach	VCU
1996-02	Assistant Coach	Cincinnati
2002-07	Assistant Coach	Xavier
2007-10	Head Coach	Morehead State
2010-16	Head Coach	Wright State
2016-pres.	Head Coach	New Mexico

## HEAD COACHING RECORD

2007-10	Morehead State	50-44 (.532)
2010-16	Wright State	128-73 (.637)
2016-pres.	New Mexico	165-91 (.645)
18 years		343-208 (.623)

### RANKED OPPONENTS

#16 Marquette	11/13/17	W, 88-87
#23 West Virginia	11/29/19	L, 73-60
#6 Arizona	12/12/21	L, 77-60
#14 Arizona	12/4/22	L, 77-60
#20 Gonzaga	12/22/23	L, 67-56
#25 UNLV	1/20/24	W, 69-66

### ALL-TIME SERIES UNDER COACH BRADBURY AT UNM

OPPONENT	Series	H	A	N
Abilene Christian	1-0	1-0		
Air Force	11-2	5-1	5-1	1-0
Arizona	0-2	0-1	0-1	
Arkansas-Pine Bluff	1-0		1-0	
Arizona State	0-2	0-1	0-1	
Auburn	0-1	0-1		
Ball State	0-1	0-1		
Boise State	5-9	4-2	1-6	0-1
California Baptist	0-1			0-1
Colorado State	10-6	8-1	2-4	0-1
Denver	0-1	0-1		
Eastern Illinois	1-0	1-0		
Fairleigh Dickinson	1-0	1-0		
Fresno State	10-6	5-1	4-3	1-2
Georgia Tech	0-1			0-1
Gonzaga	0-1		0-1	
Grambling State	1-0	1-0		
Grand Canyon	1-0	1-0		
Hampton	1-0	1-0		
Hartford	1-0	1-0		
Houston	3-1	2-0	1-1	
Houston Baptist	1-0	1-0		
Illinois	1-0	1-0		
Lamar	2-0	2-0		
Louisiana-Monroe	1-0			1-0
Loyola Marymount	0-1	0-1		
Marquette	1-1	1-0	0-1	
Midwestern State	1-0		1-0	
Minnesota	0-1	0-1		
Mississippi State	0-1			0-1
Mississippi Valley State	1-0	1-0		
Missouri	1-0			1-0
Montana State	0-1			0-1
Morehead State	1-0	1-0		
Navy	1-0	1-0		
Nevada	11-4	5-1	6-2	0-1
New Mexico State	11-2	7-0	4-2	
Nicholls	1-0		1-0	
Northern Arizona	3-1	2-1	1-0	
Northern New Mexico	4-0	4-0		
Oklahoma	1-1	1-0	0-1	
Old Dominion	1-0			1-0
Oregon State	0-1		0-1	
Pepperdine	1-0		1-0	
Prairie View A&M	1-0	1-0		
Providence	1-0	1-0		
Rice	1-0	1-0		
Sacramento State	1-0	1-0		
Saint Mary's	1-0	1-0		
Sam Houston State	1-0		1-0	
San Diego	1-0	1-0		
San Diego State	9-10	5-1	3-6	1-3
San Jose State	10-3	5-1	4-2	1-0
SMU	1-0	1-0		
South Carolina State	2-0	2-0		
Southern Utah	0-2	0-1	0-1	
St. Joseph's	0-1	0-1		
Stephen F. Austin	1-1	1-0		0-1
Tarleton State	1-0	1-0		
TCU	0-1	0-1		
Texas A&M-Commerce	2-0	1-0	1-0	
Texas State	1-0	1-0		
Texas Southern	1-0	1-0		
Texas Tech	1-3	1-0	0-2	0-1
Tulsa	0-1	0-1		
UC Irvine	1-0	1-0		
UC Riverside	1-0	1-0		
UNLV	5-11	2-5	3-6	
Utah State	14-0	6-0	8-0	
UTEP	5-0	4-0	1-0	
Washington	0-1		0-1	
West Virginia	0-1			0-1
Western Michigan	1-0	1-0		
Western New Mexico	3-0	2-0		
Wichita State	1-0	1-0		
Wyoming	7-8	3-4	4-3	0-1
	165-91	105-29	53-46	7-16



LYDIE MWAMBA

G | 5-9 | JR | Republic Democratic of Congo (Trinity Valley CC)



PPG	FG %	3PT %	FT %	RPG	APG	SPG	BPG	MPG
5.0	.500	.600	1.000	3.3	0.7	1.3	0.7	10.2

NOTEWORTHY

- Played the past 2 seasons at Trinity Valley Community College
- Named NJCAA Second Team All-American and Second Team All-Conference
- Averaged 4.7 points per game, shooting 44.4% from the floor and averaged 12.1 minutes per game in 34 games with 10 starts her freshman season
- in all 33 games, and averaged 16.9 points per game, shot 47.9% and improved her rebounding to 6.8 boards a game from 2.2 her freshman season, going from 76 to 225 total rebounds as a sophomore
- Majoring in liberal arts and integrative studies
- Speaks five languages: French, English, Lingala, Swahili and Tshiluba

GAME-BY-GAME STATISTICS

Opponent	Date	GS	MIN	Total		3-Pointers		Free throws		Rebounds											
				FG-FGA	PCT	3FG-3FGA	PCT	FT-FTA	PCT	OFF	DEF	TOT	AVG	PF	A	TO	BLK	STL	PTS	AVG	
Morehead St.	11/07/2024		08:01	2-3	.667	2-2	1.000	2-2	1.000	1	1	2	2.0	0	1	0	1	0	8	8.0	
Western N.M.	11/15/2024		11:34	3-6	.500	1-2	.500	0-0	.000	1	1	2	2.0	0	0	0	0	1	7	7.5	
South Carolina St.	11/20/2024		11:07	0-1	.000	0-1	.000	0-0	.000	2	4	6	3.3	0	1	0	1	3	0	5.0	
Totals		0	30:42	5-10	.500	3-5	.600	2-2	1.000	4	6	10	3.3	0	2	0	2	4	15	5.0	

TOP PERFORMANCES

Points	Season	8, Morehead St. (11/7)
	MW	
FGM	Season	3, Western N.M. (11/15)
	MW	
FGA	Season	6, Western N.M. (11/15)
	MW	
3PT FGM	Season	2, Morehead St. (11/7)
	MW	
3PT FGA	Season	2, 2x, last:WNMU (11/15)
	MW	
FTM	Season	2, Morehead St. (11/7)
	MW	
FTA	Season	2, Morehead St. (11/7)
	MW	
Reb.	Season	6, South Carolina St. (11/20)
	MW	
Asts.	Season	1, 2x, last: SCSU (11/20)
	MW	
Blocks	Season	1, 2x, last: SCSU (11/20)
	MW	
Steals	Season	3, South Carolina St. (11/20)
	MW	
TO	Season	0, 3x, last: SCSU (11/20)
	MW	
Min.	Season	11, 2x, last: SCSU (11/20)
	MW	

PRODUCTION TRACKER

2024-25 Career

- Double-Double
- Scored 10+ pts
- Scored 20+ pts
- 10+ reb
- 3+ 3-pt

CAREER STATISTICS

				Field Goals		3-Point		F-Throws		Rebounds										Scoring	
SEASON	TEAM	GP-GS	MIN/AVG	FG-FGA	FG%	3FG-3FGA	3FG%	FT-FTA	FT%	OFF	DEF	TOT	AVG	PF-FO	A	TO	BLK	STL	PTS	AVG	
2024-25	UNM	3-0	31/10.2	5-10	.500	3-5	.600	2-2	1.000	4	6	10	3.3	0-0	2	0	2	4	15	5.0	
TOTAL		3-0	31/10.2	5-10	.500	3-5	.600	2-2	1.000	4	6	10	3.3	0-0	2	0	2	4	15	5.0	

3

DESTINEE HOOKS

G | 5-9 | SO | Indianapolis, Ind. (Vincennes)



PPG	FG %	3PT %	FT %	RPG	APG	SPG	BPG	MPG
16.6	.586	.286	.524	3.4	1.8	0.6	0.4	25.3

NOTEWORTHY

- Has led the team in scoring in 3 games this season
- Averaged 21.1 points per game, 6.5 rebounds per game, 5.0 assists per game, 2.9 steals per game and 1.1 blocks per game as a freshman
- Points per game ranked sixth in the NJCAA, was 17th in assists per game and 28th in steals per game
- Freshman of the Year, Player of the Year and Region 24 Player of the Year
- Scored in double figures 19 times with 11 games with 20-plus points and four games scoring 30-plus points
- Majoring in liberal arts and integrative studies

GAME-BY-GAME STATISTICS

Opponent	Date	GS	MIN	Total		3-Pointers		Free throws		Rebounds				PF		A	TO	BLK	STL	PTS	AVG
				FG-FGA	PCT	3FG-3FGA	PCT	FT-FTA	PCT	OFF	DEF	TOT	AVG	F	A						
Northern Ariz.	11/04/2024	*	23:35	8-12	.667	2-4	.500	3-6	.500	2	4	6	6.0	4	2	3	0	1	21	21.0	
Morehead St.	11/07/2024	*	26:06	3-12	.250	0-3	.000	0-0	.000	1	3	4	5.0	0	2	3	2	0	6	13.5	
at Texas Tech	11/12/2024	*	34:05	11-18	.611	1-4	.250	5-8	.625	0	3	3	4.3	3	0	6	0	1	28	18.3	
Western N.M.	11/15/2024	*	19:14	6-9	.667	1-3	.333	2-5	.400	1	2	3	4.0	0	2	3	0	0	15	17.5	
South Carolina St.	11/20/2024	*	23:39	6-7	.857	0-0	.000	1-2	.500	0	1	1	3.4	0	3	2	0	1	13	16.6	
Totals		5	126:39	34-58	.586	4-14	.286	11-21	.524	4	13	17	3.4	7	9	17	2	3	83	16.6	

TOP PERFORMANCES

Points	Season	28, Texas Tech (11/12)
	MW	
	Career	28, Texas Tech (11/12)
FGM	Season	11, Texas Tech (11/12)
	MW	
	Career	11, Texas Tech (11/12)
FGA	Season	18, Texas Tech (11/12)
	MW	
	Career	18, Texas Tech (11/12)
3PT FGM	Season	2, NAU (11/4)
	MW	
	Career	2, NAU (11/4)
3PT FGA	Season	4, 2x, last: TTU (11/12)
	MW	
	Career	4, 2x, last: TTU (11/12)
FTM	Season	5, Texas Tech (11/12)
	MW	
	Career	5, Texas Tech (11/12)
FTA	Season	8, Texas Tech (11/12)
	MW	
	Career	8, Texas Tech (11/12)
Reb.	Season	6, NAU (11/4)
	MW	
	Career	6, NAU (11/4)
Asts.	Season	3, South Carolina St. (11/20)
	MW	
	Career	3, South Carolina St. (11/20)
Blocks	Season	2, Morehead St. (11/7)
	MW	
	Career	2, Morehead St. (11/7)
Steals	Season	1, 3x, last: SCSU (11/20)
	MW	
	Career	1, 3x, last: SCSU (11/20)
TO	Season	2, South Carolina St. (11/20)
	MW	
	Career	2, South Carolina St. (11/20)
Min.	Season	34, Texas Tech (11/12)
	MW	
	Career	34, Texas Tech (11/12)

PRODUCTION TRACKER

	2024-25	Career
Double-Double		
Scored 10+ pts	4	4
Scored 20+ pts	2	2
10+ reb		
3+ 3-pt		

CAREER STATISTICS

				Field Goals		3-Point		F-Throws		Rebounds				Scoring							
SEASON	TEAM	GP-GS	MIN/AVG	FG-FGA	FG%	3FG-3FGA	3FG%	FT-FTA	FT%	OFF	DEF	TOT	AVG	PF	FO	A	TO	BLK	STL	PTS	AVG
2024-25	UNM	5-5	127/25.3	34-58	.586	4-14	.286	11-21	.524	4	13	17	3.4	7	0	9	17	2	3	83	16.6
TOTAL		5-5	127/25.3	34-58	.586	4-14	.286	11-21	.524	4	13	17	3.4	7	0	9	17	2	3	83	16.6

4

ALYSSA HARGROVE  
G | 5-8 | SR | Dayton, Ohio (Austin Peay State University)



PPG	FG %	3PT %	FT %	RPG	APG	SPG	BPG	MPG
8.6	.410	.462	.625	2.8	2.8	2.4	1.0	26.6

- NOTEWORTHY**
- Led team in steals against NAU, TTU and WNMU
  - Has had at least 1 steal in each of 5 games, multiple steals in 4
  - Leads team in steals, second in assists, blocks and 3-pointers, fourth in scoring
  - Spent last season at Austin Peay State after playing 2 seasons at Stetson
  - Appeared in 32 games and averaged 20.0 minutes per game, 4.3 points per game, 2.3 rebounds per game, 1.0 steal per game and 1.5 assists per game at APSU last year
  - Credited with a steal in 18 games with consecutive games with 5 steals and multiple steals in 8 games last season
  - Scored an average of 10.6 points per game, 2.3 assists per game and 2.6 rebounds per game as a sophomore at Stetson
  - Majoring in liberal arts and integrative studies

GAME-BY-GAME STATISTICS

Opponent	Date	GS	MIN	Total		3-Pointers		Free throws		Rebounds											
				FG-FGA	PCT	3FG-3FGA	PCT	FT-FTA	PCT	OFF	DEF	TOT	AVG	PF	A	TO	BLK	STL	PTS	AVG	
Northern Ariz.	11/04/2024	*	31:54	5-12	.417	2-4	.500	0-0	.000	2	4	6	6.0	1	4	3	0	2	12	12.0	
Morehead St.	11/07/2024	*	27:00	3-6	.500	2-4	.500	3-4	.750	0	1	1	3.5	3	3	4	2	1	11	11.5	
at Texas Tech	11/12/2024	*	30:30	4-9	.444	1-1	1.000	1-2	.500	1	2	3	3.3	5	2	2	2	2	10	11.0	
Western N.M.	11/15/2024	*	20:28	4-8	.500	1-3	.333	1-2	.500	0	0	0	2.5	1	2	1	1	4	10	10.8	
South Carolina St.	11/20/2024	*	22:59	0-4	.000	0-1	.000	0-0	.000	0	4	4	2.8	0	3	3	0	3	0	8.6	
Totals		5	132:51	16-39	.410	6-13	.462	5-8	.625	3	11	14	2.8	10	14	13	5	12	43	8.6	

TOP PERFORMANCES

Points	Season	12, NAU (11/4)
	MW	
	Career	25, Furman (11/19/22)
FGM	Season	5, NAU (11/4)
	MW	
	Career	10, 2x, last: Furman (11/19/22)
FGA	Season	12, NAU (11/4)
	MW	
	Career	16, Furman (11/19/22)
3PT FGM	Season	2, 2x, last: MSU (11/7)
	MW	
	Career	3, 3x, last:UCSD (11/26/22)
3PT FGA	Season	4, 2x, last: MSU (11/7)
	MW	
	Career	8, UCSD (11/26/22)
FTM	Season	3, Morehead St. (11/7)
	MW	
	Career	6, La. Tech (11/25/22)
FTA	Season	4, Morehead St. (11/7)
	MW	
	Career	9, La., Tech (11/25/22)
Reb.	Season	6, NAU (11/4)
	MW	
	Career	8, 2x, last: North Fla. (2/26/22)
Asts.	Season	4, NAU (11/4)
	MW	
	Career	6, Albany (11/27/22)
Blocks	Season	2, 2x, last: TTU (11/12)
	MW	
	Career	2, 5x, last: TTU (11/12)
Steals	Season	4, Western N.M. (11/15)
	MW	
	Career	6, Johnson (FL) (11/9/21)
TO	Season	1, Western N.M. (11/15)
	MW	
	Career	0, 4x
Min.	Season	31, NAU (11/4)
	MW	
	Career	38, 2x, last: FGCU (3/9/22)

PRODUCTION TRACKER

2024-25 Career

Double-Double		
Scored 10+ pts	4	21
Scored 20+ pts		2
10+ reb		
3+ 3-pt		3

CAREER STATISTICS

				Field Goals		3-Point		F-Throws		Rebounds												Scoring	
SEASON	TEAM	GP-GS	MIN/AVG	FG-FGA	FG%	3FG-3FGA	3FG%	FT-FTA	FT%	OFF	DEF	TOT	AVG	PF-FO	A	TO	BLK	STL	PTS	AVG			
2021-22	Stet	31-15	850/27.4	89-221	.403	18-78	.231	52-69	.754	21	98	119	3.8	65-1	47	66	10	44	248	8.0			
2022-23	Stet	9-6	229/25.4	35-82	.427	9-31	.290	16-26	.615	7	16	23	2.6	25-1	21	26	2	10	95	10.6			
2023-24	APSU	32-0	638/19.9	46-115	.400	15-46	.326	29-42	.690	11	62	73	2.3	80-2	35	60	11	32	136	4.3			
2024-25	UNM	5-5	133/26.6	16-39	.410	6-13	.462	5-8	.625	3	11	14	2.8	10-1	14	13	5	12	43	8.6			
TOTAL FOR UNM		5-5	133/26.6	16-39	.410	6-13	.462	5-8	.625	3	11	14	2.8	10-1	14	13	5	12	43	8.6			
TOTAL		77-26	1850/24.0	186-457	.407	48-168	.286	102-145	.703	42	187	229	3.0	180-5	117	165	28	98	522	6.8			



5
LARA LANGERMANN
G | 5-7 | SO | Breckerfeld, Germany (Theodor-Heuss-Gymnasium Hagen)

PPG	FG %	3PT %	FT %	RPG	APG	SPG	BPG	MPG
4.2	.219	.167	1.000	2.2	1.2	0.8	0.4	21.9

**NOTEWORTHY**

- Played for the U18 and U20 German National Team
- Played for VfI Viactiv AstroLadies Bochum, a Division 2 team in the Damen Basketballbundesliga, the BasketGirls Ruhr in the Weibliche Nachwuchsbundesliga (WNBL), a first German under 18 league, and for VfI Viactiv AstroLadies Bochum in the Damen Basketballbundesliga, as well as Herner TC.
- Majoring in exercise science

GAME-BY-GAME STATISTICS

			Total		3-Pointers		Free throws		Rebounds											
Opponent	Date	GS	MIN	FG-FGA	PCT	3FG-3FGA	PCT	FT-FTA	PCT	OFF	DEF	TOT	AVG	PF	A	TO	BLK	STL	PTS	AVG
Northern Ariz.	11/04/2024		16:38	2-6	.333	1-3	.333	2-2	1.000	0	2	2	2.0	3	2	4	0	1	7	7.0
Morehead St.	11/07/2024		26:45	1-11	.091	0-7	.000	0-0	.000	2	0	2	2.0	2	1	0	1	2	2	4.5
at Texas Tech	11/12/2024		29:25	2-7	.286	1-3	.333	2-2	1.000	1	2	3	2.3	1	2	2	0	1	7	5.3
Western N.M.	11/15/2024	*	19:51	0-3	.000	0-2	.000	0-0	.000	1	1	2	2.3	0	1	1	1	0	0	4.0
South Carolina St.	11/20/2024		17:03	2-5	.400	1-3	.333	0-0	.000	1	1	2	2.2	1	0	0	0	0	5	4.2
Totals		1	109:42	7-32	.219	3-18	.167	4-4	1.000	5	6	11	2.2	7	6	7	2	4	21	4.2

TOP PERFORMANCES

Points	Season	7, 2x, last: TTU (11/12)
	MW	13, San José St. (1/31/24)
	Career	13, San José St. (1/31/24)
FGM	Season	2, 3x, last: SCSU (11/20)
	MW	4, 2x
	Career	4, 2x
FGA	Season	11, Morehead St. (11/7)
	MW	7, Wyoming (2/24/24)
	Career	11, Morehead St. (11/7)
3PT FGM	Season	1, 3x, last: SCSU (11/20)
	MW	3, 2x
	Career	3, 2x
3PT FGA	Season	7, Morehead St. (11/7)
	MW	5, Wyoming (2/24/24)
	Career	7, Morehead St. (11/7)
FTM	Season	2, 2x, last: TTU (11/12)
	MW	3, San Diego St. (2/28/24)
	Career	3, San Diego St. (2/28/24)
FTA	Season	2, 2x, last: TTU (11/12)
	MW	3, San Diego St. (2/28/24)
	Career	3, 2x
Reb.	Season	3, Texas Tech (11/12)
	MW	5, Wyoming (2/24/24)
	Career	5, Wyoming (2/24/24)
Asts.	Season	2, 2x, last: TTU (11/12)
	MW	2, 3x
	Career	3, Mississippi Valley (12/4/23)
Blocks	Season	1, 2x, last: WNMU (11/15)
	MW	
	Career	1, 2x, last: WNMU (11/15)
Steals	Season	2, Morehead St. (11/7)
	MW	2, San Diego St. (2/7/24)
	Career	2, 2x, last: MSU (11/7)
TO	Season	0, 2x, last: SCSU (11/20)
	MW	0, 7x
	Career	0, 15x
Min.	Season	29, Texas Tech (11/12)
	MW	34, Boise St. (2/21/24)
	Career	34, Boise St. (2/21/24)

PRODUCTION TRACKER

	2024-25	Career
Double-Double		
Scored 10+ pts		2
Scored 20+ pts		
10+ reb		
3+ 3-pt		2

CAREER STATISTICS

				Field Goals		3-Point		F-Throws		Rebounds										Scoring	
SEASON	TEAM	GP-GS	MIN/AVG	FG-FGA	FG%	3FG-3FGA	3FG%	FT-FTA	FT%	OFF	DEF	TOT	AVG	PF-FO	A	TO	BLK	STL	PTS	AVG	
2023-24	UNM	32-6	645/20.2	31-97	.320	20-69	.290	15-21	.714	4	41	45	1.4	44-0	26	33	0	11	97	3.0	
2024-25	UNM	5-1	110/21.9	7-32	.219	3-18	.167	4-4	1.000	5	6	11	2.2	7-0	6	7	2	4	21	4.2	
TOTAL		37-7	755/20.4	38-129	.295	23-87	.264	19-25	.760	9	47	56	1.5	51-0	32	40	2	15	118	3.2	





# PARIS LAURO

F | 6-0 | SO | Dallas, Texas (Highland Park HS)



PPG	FG %	3PT %	FT %	RPG	APG	SPG	BPG	MPG
2.4	.313	.222	--	2.2	0.8	0.0	0.2	11.8

## NOTEWORTHY

- Named MW Freshman of the Week on Dec. 26 last season
- Averaged 17.3 ppg, 8.3 rpg, 2.0 bpg her junior season and 23.6 ppg, 8.0 rpg and 1.8 bpg and was named the District 7-6A Most Valuable Player her senior season.
- Named to the TABC 5A All-Region Team, named Offensive Player of the Year for District 13-5A and earned academic all-district her junior year
- Majoring in exercise science

## GAME-BY-GAME STATISTICS

Opponent	Date	GS	MIN	Total		3-Pointers		Free throws		Rebounds											
				FG-FGA	PCT	3FG-3FGA	PCT	FT-FTA	PCT	OFF	DEF	TOT	AVG	PF	A	TO	BLK	STL	PTS	AVG	
Northern Ariz.	11/04/2024		13:30	0-2	.000	0-2	.000	0-0	.000	0	2	2	2.0	0	1	0	0	0	0	0.0	
Morehead St.	11/07/2024		09:45	0-2	.000	0-1	.000	0-0	.000	0	1	1	1.5	1	1	1	0	0	0	0.0	
at Texas Tech	11/12/2024		04:34	1-1	1.000	0-0	.000	0-0	.000	0	1	1	1.3	0	0	0	0	0	2	0.7	
Western N.M.	11/15/2024		14:00	3-7	.429	1-4	.250	0-0	.000	1	3	4	2.0	0	1	0	1	0	7	2.3	
South Carolina St.	11/20/2024		17:01	1-4	.250	1-2	.500	0-0	.000	1	2	3	2.2	1	1	0	0	0	3	2.4	
Totals		0	58:50	5-16	.313	2-9	.222	0-0	.000	2	9	11	2.2	2	4	1	1	0	12	2.4	

## TOP PERFORMANCES

Points	Season	7, Western N.M. (11/15)
	MW	7, Nevada (12/30/23)
	Career	14, Western N.M. (12/17/23)
FGM	Season	3, Western N.M. (11/15)
	MW	3, Nevada (12/30/23)
	Career	5, Western N.M. (12/17/23)
FGA	Season	7, Western N.M. (11/15)
	MW	7, Utah State (1/10/24)
	Career	8, Gonzaga (12/22/23)
3PT FGM	Season	1, 2x, last: SCSU (11/20)
	MW	1, 3x
	Career	4, Western N.M. (12/17/23)
3PT FGA	Season	4, Western N.M. (11/15)
	MW	3, 2x
	Career	8, Gonzaga (12/22/23)
FTM	Season	
	MW	1, Nevada (3/2/24)
	Career	1, 2x
FTA	Season	
	MW	1, Nevada (3/2/24)
	Career	2, Hampton (12/10/23)
Reb.	Season	4, Western N.M. (11/15)
	MW	6, Utah State (1/10/24)
	Career	6, Utah State (12/10/24)
Asts.	Season	1, 4x, last: SCSU (11/20)
	MW	1, 2x
	Career	1, 7x
Blocks	Season	1, Western N.M. (11/15)
	MW	1, 2x
	Career	1, 5x
Steals	Season	
	MW	
	Career	1, 2x
TO	Season	0, 4x, last: SCSU (11/20)
	MW	0, 10x
	Career	0, 21x
Min.	Season	17, South Carolina St. (11/20)
	MW	19, Nevada (12/30/23)
	Career	21, Gonzaga (12/22/23)

## PRODUCTION TRACKER

2024-25 Career

Double-Double	
Scored 10+ pts	1
Scored 20+ pts	
10+ reb	
3+ 3-pt	2

## CAREER STATISTICS

				Field Goals		3-Point		F-Throws		Rebounds										Scoring	
SEASON	TEAM	GP-GS	MIN/AVG	FG-FGA	FG%	3FG-3FGA	3FG%	FT-FTA	FT%	OFF	DEF	TOT	AVG	PF-FO	A	TO	BLK	STL	PTS	AVG	
2023-24	UNM	22-0	152/6.9	19-47	.404	10-27	.370	2-3	.667	6	22	28	1.3	9-0	3	6	4	2	50	2.3	
2024-25	UNM	5-0	59/11.8	5-16	.313	2-9	.222	0-0	.000	2	9	11	2.2	2-0	4	1	1	0	12	2.4	
TOTAL		27-0	211/7.8	24-63	.381	12-36	.333	2-3	.667	8	31	39	1.4	11-0	7	7	5	2	62	2.3	



NAYLI PADILLA

G | 5-9 | FR | Barrio de La Salud, Spain (IES Tarahales)



PPG	FG %	3PT %	FT %	RPG	APG	SPG	BPG	MPG
1.5	.250	.333	.750	1.3	1.0	0.8	0.3	6.1

NOTEWORTHY

- Played for Tenerife Central, CB Santa Cruz, Spar Gran Canaria in Spain
- Majoring in business administration

GAME-BY-GAME STATISTICS

Opponent	Date	GS	MIN	Total		3-Pointers		Free throws		Rebounds										
				FG-FGA	PCT	3FG-3FGA	PCT	FT-FTA	PCT	OFF	DEF	TOT	AVG	PF	A	TO	BLK	STL	PTS	AVG
Northern Ariz.	11/04/2024		08:52	0-0	.000	0-0	.000	0-0	.000	0	3	3	3.0	1	2	0	1	0	0	0.0
Morehead St.	11/07/2024		00:31	0-0	.000	0-0	.000	0-0	.000	0	1	1	2.0	0	0	0	0	0	0	0.0
Western N.M.	11/15/2024		09:54	1-3	.333	1-2	.500	1-2	.500	0	0	0	1.3	0	0	0	0	2	4	1.3
South Carolina St.	11/20/2024		05:14	0-1	.000	0-1	.000	2-2	1.000	0	1	1	1.3	0	2	0	0	1	2	1.5
Totals		0	24:31	1-4	.250	1-3	.333	3-4	.750	0	5	5	1.3	1	4	0	1	3	6	1.5

TOP PERFORMANCES

Points	Season	4, Western N.M. (11/15)
	MW	
	Career	4, Western N.M. (11/15)
FGM	Season	1, Western N.M. (11/15)
	MW	
	Career	1, Western N.M. (11/15)
FGA	Season	3, Western N.M. (11/15)
	MW	
	Career	3, Western N.M. (11/15)
3PT FGM	Season	1, Western N.M. (11/15)
	MW	
	Career	1, Western N.M. (11/15)
3PT FGA	Season	2, Western N.M. (11/15)
	MW	
	Career	2, Western N.M. (11/15)
FTM	Season	2, South Carolina St. (11/20)
	MW	
	Career	2, South Carolina St. (11/20)
FTA	Season	2, 2x, last: SCSU (11/20)
	MW	
	Career	2, 2x, last: SCSU (11/20)
Reb.	Season	3, NAU (11/4)
	MW	
	Career	3, NAU (11/4)
Asts.	Season	2, 2x, last: SCSU (11/20)
	MW	
	Career	2, 2x, last: SCSU (11/20)
Blocks	Season	1, NAU (11/4)
	MW	
	Career	1, NAU (11/4)
Steals	Season	2, Western N.M. (11/15)
	MW	
	Career	2, Western N.M. (11/15)
TO	Season	0, 4x, last: SCSU (11/20)
	MW	
	Career	0, 4x, last: SCSU (11/20)
Min.	Season	9, Western N.M. (11/15)
	MW	
	Career	9, Western N.M. (11/15)

PRODUCTION TRACKER

2024-25 Career

- Double-Double
- Scored 10+ pts
- Scored 20+ pts
- 10+ reb
- 3+ 3-pt

CAREER STATISTICS

				Field Goals		3-Point		F-Throws		Rebounds										Scoring	
SEASON	TEAM	GP-GS	MIN/AVG	FG-FGA	FG%	3FG-3FGA	3FG%	FT-FTA	FT%	OFF	DEF	TOT	AVG	PF-FO	A	TO	BLK	STL	PTS	AVG	
2024-25	UNM	4-0	25/6.1	1-4	.250	1-3	.333	3-4	.750	0	5	5	1.3	1-0	4	0	1	3	6	1.5	
TOTAL		4-0	25/6.1	1-4	.250	1-3	.333	3-4	.750	0	5	5	1.3	1-0	4	0	1	3	6	1.5	

13

JOANA MAGALHÃES

G | 5-5 | FR | Lisbon, Portugal (Quinta Do Marquês)



PPG	FG %	3PT %	FT %	RPG	APG	SPG	BPG	MPG
3.4	.412	.250	.500	1.6	3.6	1.4	0.0	14.8

NOTEWORTHY

- Played for CRC Quinta Dos Lombos and won the national championship in 2023-24. Also won a championship while at Quinta Do Marquês in 2021-22.
- Majoring in business administration

TOP PERFORMANCES

Points	Season	8, South Carolina St. (11/20)
	MW	
	Career	8, South Carolina St. (11/20)
FGM	Season	3, 2x, last: SCSU (11/20)
	MW	
	Career	3, 2x, last: SCSU (11/20)
FGA	Season	6, NAU (11/4)
	MW	
	Career	6, NAU (11/4)
3PT FGM	Season	1, South Carolina St. (11/20)
	MW	
	Career	1, South Carolina St. (11/20)
3PT FGA	Season	2, Western N.M. (11/15)
	MW	
	Career	2, Western N.M. (11/15)
FTM	Season	1, 2x, last: SCSU (11/20)
	MW	
	Career	1, 2x, last: SCSU (11/20)
FTA	Season	2, 2x, last: SCSU (11/20)
	MW	
	Career	2, 2x, last: SCSU (11/20)
Reb.	Season	3, Morehead St. (11/7)
	MW	
	Career	3, Morehead St. (11/7)
Asts.	Season	6, Morehead St. (11/7)
	MW	
	Career	6, Morehead St. (11/7)
Blocks	Season	
	MW	
	Career	
Steals	Season	3, South Carolina St. (11/20)
	MW	
	Career	3, South Carolina St. (11/20)
TO	Season	0, South Carolina St. (11/20)
	MW	
	Career	0, South Carolina St. (11/20)
Min.	Season	18, 2x, last: WNMU (11/15)
	MW	
	Career	18, 2x, last: WNMU (11/15)

GAME-BY-GAME STATISTICS

Opponent	Date	GS	MIN	Total		3-Pointers		Free throws		Rebounds								PTS	AVG
				FG-FGA	PCT	3FG-3FGA	PCT	FT-FTA	PCT	OFF	DEF	TOT	AVG	PF	A	TO	BLK	STL	
Northern Ariz.	11/04/2024	*	18:05	3-6	.500	0-0	.000	0-0	.000	0	2	2	2.0	4	2	6	0	1	6
Morehead St.	11/07/2024	*	17:43	0-2	.000	0-1	.000	0-0	.000	0	3	3	2.5	1	6	3	0	2	3.0
at Texas Tech	11/12/2024	*	02:34	0-0	.000	0-0	.000	0-0	.000	0	0	0	1.7	2	0	3	0	0	2.0
Western N.M.	11/15/2024		18:03	1-5	.200	0-2	.000	1-2	.500	0	2	2	1.8	1	5	1	0	1	2.3
South Carolina St.	11/20/2024	*	17:43	3-4	.750	1-1	1.000	1-2	.500	0	1	1	1.6	1	5	0	0	3	3.4
Totals			4 74:08	7-17	.412	1-4	.250	2-4	.500	0	8	8	1.6	9	18	13	0	7	3.4

PRODUCTION TRACKER

2024-25 Career

- Double-Double
- Scored 10+ pts
- Scored 20+ pts
- 10+ reb
- 3+ 3-pt

CAREER STATISTICS

				Field Goals		3-Point		F-Throws		Rebounds				Scoring					
SEASON	TEAM	GP-GS	MIN/AVG	FG-FGA	FG%	3FG-3FGA	3FG%	FT-FTA	FT%	OFF	DEF	TOT	AVG	PF-FO	A	TO	BLK	STL	PTS
2024-25	UNM	5-4	74/14.8	7-17	.412	1-4	.250	2-4	.500	0	8	8	1.6	9-0	18	13	0	7	17
TOTAL		5-4	74/14.8	7-17	.412	1-4	.250	2-4	.500	0	8	8	1.6	9-0	18	13	0	7	17

14

HULDA JOAQUIM

F | 6-1 | GR | Maputo, Mozambique (Seward County CC)



PPG	FG %	3PT %	FT %	RPG	APG	SPG	BPG	MPG
8.8	.600	--	.500	8.2	0.4	0.8	0.8	22.3

NOTEWORTHY

- Third season with the Lobos
- Leads team in rebounds, second in FG %, third in scoring and blocks
- First double-double came against Morehead State, where she also set career high in made field goals and tied career high in blocks. Had second against South Carolina State with career-high 14 points. Led team in rebounds and points in the game.
- Played in 31 games, averaging 15.4 minutes per game, 2.3 points per game, 4.2 rebounds per game, 0.7 assists per game, 0.4 steals per game and 0.3 blocks per game last season
- Working on her master's in project management after graduating with a degree in business administration with a minor in economics

GAME-BY-GAME STATISTICS

Opponent	Date	GS	MIN	Total		3-Pointers		Free throws		Rebounds								PTS	AVG
				FG-FGA	PCT	3FG-3FGA	PCT	FT-FTA	PCT	OFF	DEF	TOT	AVG	PF	A	TO	BLK	STL	
Northern Ariz.	11/04/2024	*	22:19	1-4	.250	0-0	.000	2-2	1.000	3	4	7	7.0	0	0	0	1	1	4
Morehead St.	11/07/2024	*	28:01	6-12	.500	0-0	.000	0-0	.000	3	7	10	8.5	1	1	3	2	1	12
at Texas Tech	11/12/2024	*	24:13	1-2	.500	0-0	.000	0-0	.000	1	4	5	7.3	2	0	0	0	0	6
Western N.M.	11/15/2024	*	18:08	6-7	.857	0-0	.000	0-0	.000	3	6	9	7.8	1	0	2	1	2	12
South Carolina St.	11/20/2024	*	18:48	7-10	.700	0-0	.000	0-2	.000	7	3	10	8.2	1	1	2	0	0	14
Totals		5	111:29	21-35	.600	0-0	.000	2-4	.500	17	24	41	8.2	5	2	7	4	4	44

TOP PERFORMANCES

Points	Season	14, South Carolina St. (11/20)
	MW	8, UNLV (1/20/24)
	Career	14, South Carolina St. (11/20)
FGM	Season	7, South Carolina St. (11/20)
	MW	4, San Diego St. (3/11/24)
	Career	7, South Carolina St. (11/20)
FGA	Season	12, Morehead St. (11/7)
	MW	5, 2x
	Career	12, Morehead St. (11/7)
3PT FGM	Season	
	MW	2, UNLV (1/20/24)
	Career	2, UNLV (1/20/24)
3PT FGA	Season	
	MW	3, UNLV (1/20/24)
	Career	3, UNLV (1/20/24)
FTM	Season	2, NAU (11/4)
	MW	4, San Diego St. (2/28/24)
	Career	4, San Diego St. (2/28/24)
FTA	Season	2, 2x, last: SCSU (11/20)
	MW	4, San Diego St. (2/28/24)
	Career	4, San Diego St. (2/28/24)
Reb.	Season	10, 2x, last: SCSU (11/20)
	MW	12, Colorado St. (2/10/24)
	Career	12, Colorado St. (2/10/24)
Asts.	Season	1, 2x, last: SCSU (11/20)
	MW	2, Nevada (3/2/24)
	Career	4, Western N.M. (12/17/24)
Blocks	Season	2, Morehead St. (11/7)
	MW	2, Utah State (2/25/23)
	Career	3, 2x
Steals	Season	2, Western N.M. (11/15)
	MW	2, 3x
	Career	3, Western N.M. (11/22/22)
TO	Season	0, 2x, last: TTU (11/12)
	MW	0, 17x
	Career	0, 33x
Min.	Season	28, Morehead St. (11/7)
	MW	30, Colorado St. (2/10/24)
	Career	30, Colorado St. (2/10/24)

PRODUCTION TRACKER

	2024-25	Career
Double-Double	2	2
Scored 10+ pts	3	3
Scored 20+ pts		
10+ reb	2	4
3+ 3-pt		

CAREER STATISTICS

				Field Goals		3-Point		F-Throws		Rebounds										Scoring	
SEASON	TEAM	GP-GS	MIN/AVG	FG-FGA	FG%	3FG-3FGA	3FG%	FT-FTA	FT%	OFF	DEF	TOT	AVG	PF-FO	A	TO	BLK	STL	PTS	AVG	
2022-23	UNM	13-0	80/6.2	11-26	.423	2-6	.333	4-6	.667	9	9	18	1.4	2-0	3	3	6	4	28	2.2	
2023-24	UNM	31-0	478/15.4	30-74	.405	3-10	.300	9-14	.643	52	78	130	4.2	41-1	21	13	8	11	72	2.3	
2024-25	UNM	5-5	111/22.3	21-35	.600	0-0	.000	2-4	.500	17	24	41	8.2	5-0	2	7	4	4	44	8.8	
TOTAL		49-5	670/13.7	62-135	.459	5-16	.313	15-24	.625	78	111	189	3.9	48-1	26	23	18	19	144	2.9	

15

DREW JORDON

G | 5-11 | SO | Washington, DC (Wagner)



PPG	FG %	3PT %	FT %	RPG	APG	SPG	BPG	MPG
1.8	1.000	--	.500	1.0	0.2	0.2	0.2	4.3

NOTEWORTHY

- Appeared in all 28 games and made one start against Sacred Heart last season
- Averaged 6.0 points per game, shooting 40.9% from the floor, and averaged 1.9 rebounds per game, while playing 16.3 minutes per game as a freshman
- Led Wagner with 54 made free throws, going 54-69 from the line to lead the Seahawks in free-throw percentage
- Finished in double figures in 4 games, recorded a steal in 14 games with 3 games with 3 steals and 5 games with multiple steals, as well as 10 games with a block
- Majoring in psychology

GAME-BY-GAME STATISTICS

Opponent	Date	GS	MIN	Total		3-Pointers		Free throws		Rebounds				Points			
				FG-FGA	PCT	3FG-3FGA	PCT	FT-FTA	PCT	OFF	DEF	TOT	AVG	PF	A	TO	BLK
Northern Ariz.	11/04/2024		04:32	2-2	1.000	0-0	.000	0-0	.000	0	0	0	0.0	1	0	1	0
Morehead St.	11/07/2024		03:47	0-0	.000	0-0	.000	0-0	.000	1	0	1	0.5	0	0	0	0
at Texas Tech	11/12/2024		00:32	0-0	.000	0-0	.000	0-0	.000	0	0	0	0.3	0	0	1	0
Western N.M.	11/15/2024		07:30	2-2	1.000	0-0	.000	0-0	.000	0	3	3	1.0	1	0	1	0
South Carolina St.	11/20/2024		05:14	0-0	.000	0-0	.000	1-2	.500	1	0	1	1.0	0	1	0	0
Totals		0	21:35	4-4	1.000	0-0	.000	1-2	.500	2	3	5	1.0	2	1	3	1

TOP PERFORMANCES

Points	Season MW	4, 2x, last: WNMU (11/15)
	Career	17, LIU (2/24/24)
FGM	Season MW	2, 2x, last: WNMU (11/15)
	Career	7, LIU (2/24/24)
FGA	Season MW	2, 2x, last: WNMU (11/15)
	Career	12, Saint Elizabeth (12/30/23)
3PT FGM	Season MW	
	Career	1, 3x, last: Sacred Heart (2/17/24)
3PT FGA	Season MW	
	Career	3, Saint Elizabeth (12/30/23)
FTM	Season MW	1, South Carolina St. (11/20)
	Career	7, 2x, last: Sacred Heart (1/21/24)
FTA	Season MW	2, South Carolina St. (11/20)
	Career	11, Sacred Heart (1/21/24)
Reb.	Season MW	3, Western N.M. (11/15)
	Career	6, Saint Peter's (12/6/23)
Asts.	Season MW	1, South Carolina St. (11/20)
	Career	3, 3x, last: FDU (3/2/24)
Blocks	Season MW	1, NAU (11/4)
	Career	2, Stonehill (2/3/24)
Steals	Season MW	1, Western N.M. (11/15)
	Career	3, 3x, last: FDU (3/2/24)
TO	Season MW	0, 2x, last: SCSU (11/20)
	Career	0, 8x
Min.	Season MW	7, Western N.M. (11/15)
	Career	27, 2x, last: Saint Peter's (12/6/23)

PRODUCTION TRACKER

2024-25 Career

Double-Double	
Scored 10+ pts	4
Scored 20+ pts	
10+ reb	
3+ 3-pt	

CAREER STATISTICS

				Field Goals		3-Point		F-Throws		Rebounds				Scoring			
SEASON	TEAM	GP-GS	MIN/AVG	FG-FGA	FG%	3FG-3FGA	3FG%	FT-FTA	FT%	OFF	DEF	TOT	AVG	PF	FO	A	TO
2023-24	WC	28-1	462/16.5	56-137	.409	3-18	.167	54-69	.783	16	38	54	1.9	61-1	23	48	11
2024-25	UNM	5-0	22/4.3	4-4	1.000	0-0	.000	1-2	.500	2	3	5	1.0	2-0	1	3	1
TOTAL FOR UNM		5-0	22/4.3	4-4	1.000	0-0	.000	1-2	.500	2	3	5	1.0	2-0	1	3	1
TOTAL		33-1	483/14.7	60-141	.426	3-18	.167	55-71	.775	18	41	59	1.8	63-1	24	51	12



21

REZA PO

G | 5-2 | FR | San Bruno, Calif. (Sacred Heart Cathedral)



PPG	FG %	3PT %	FT %	RPG	APG	SPG	BPG	MPG
4.8	.333	.364	.667	2.0	2.6	0.4	0.4	17.3

NOTEWORTHY

- Named West Coast Athletic League honorable mention her sophomore season and following her junior season, was named to the West Coast Athletic League first team and the San Francisco Chronicle Women's Basketball Player of the Year
- Averaged 12.2 points per game, 4.0 rebounds per game, 3.8 assists per game, 1.6 steals per game, while drawing 0.4 charges per game as a junior
- Majoring in criminology

TOP PERFORMANCES

Points	Season	6, South Carolina St. (11/20)
	MW	
FGM	Season	2, 3x, last: SCSU (11/20)
	MW	
FGA	Season	6, 2x, last: SCSU (11/20)
	MW	
3PT FGM	Season	2, South Carolina St. (11/20)
	MW	
3PT FGA	Season	5, South Carolina St. (11/20)
	MW	
FTM	Season	4, Morehead St. (11/7)
	MW	
FTA	Season	5, Texas Tech (11/12)
	MW	
Reb.	Season	4, Texas Tech (11/12)
	MW	
Asts.	Season	5, Western N.M. (11/15)
	MW	
Blocks	Season	1, 2x, last: MSU (11/7)
	MW	
Steals	Season	1, 2x, last: TTU (11/12)
	MW	
TO	Season	0, 2x, last: WNMU (11/15)
	MW	
Min.	Season	23, Texas Tech (11/12)
	MW	

GAME-BY-GAME STATISTICS

Opponent	Date	GS	MIN	Total		3-Pointers		Free throws		Rebounds				PF	A	TO	BLK	STL	PTS	AVG
				FG-FGA	PCT	3FG-3FGA	PCT	FT-FTA	PCT	OFF	DEF	TOT	AVG							
Northern Ariz.	11/04/2024		15:13	2-5	.400	1-2	.500	0-0	.000	0	1	1	1.0	1	2	0	1	1	5	5.0
Morehead St.	11/07/2024		13:45	0-1	.000	0-0	.000	4-4	1.000	0	1	1	1.0	2	3	1	1	0	4	4.5
at Texas Tech	11/12/2024		23:10	1-3	.333	0-0	.000	2-5	.400	0	4	4	2.0	0	0	1	0	1	4	4.3
Western N.M.	11/15/2024		17:26	2-6	.333	1-4	.250	0-0	.000	0	2	2	2.0	0	5	0	0	0	5	4.5
South Carolina St.	11/20/2024		17:01	2-6	.333	2-5	.400	0-0	.000	0	2	2	2.0	0	3	1	0	0	6	4.8
Totals		0	86:35	7-21	.333	4-11	.364	6-9	.667	0	10	10	2.0	3	13	3	2	2	24	4.8

PRODUCTION TRACKER

2024-25 Career

- Double-Double
- Scored 10+ pts
- Scored 20+ pts
- 10+ reb
- 3+ 3-pt

CAREER STATISTICS

				Field Goals		3-Point		F-Throws		Rebounds				Scoring						
SEASON	TEAM	GP-GS	MIN/AVG	FG-FGA	FG%	3FG-3FGA	3FG%	FT-FTA	FT%	OFF	DEF	TOT	AVG	PF-FO	A	TO	BLK	STL	PTS	AVG
2024-25	UNM	5-0	87/17.3	7-21	.333	4-11	.364	6-9	.667	0	10	10	2.0	3-0	13	3	2	2	24	4.8
TOTAL		5-0	87/17.3	7-21	.333	4-11	.364	6-9	.667	0	10	10	2.0	3-0	13	3	2	2	24	4.8

24

AMHYIA MORELAND

F | 6-1 | SR | Charlotte, N.C. (San José State)



PPG	FG %	3PT %	FT %	RPG	APG	SPG	BPG	MPG
5.4	.500	.000	.625	5.8	0.2	0.6	2.0	14.4

NOTEWORTHY

- First Lobo to have 6 blocks in a game since 2019
- Played the last 2 seasons at San José State and 1 year at Old Dominion
- Started in 25 games while playing in 30 last season
- Averaged 11.6 points per game, shooting 54.0% from the floor and 42.9% from behind the arc
- Made a team-high 148 field goals and scored a team-high 347 points
- Produced 20 double-digit games with a season-high 26 points against Bethesda on 13-17 shooting
- Majoring in psychology

GAME-BY-GAME STATISTICS

Opponent	Date	GS	MIN	Total		3-Pointers		Free throws		Rebounds										
				FG-FGA	PCT	3FG-3FGA	3FG%	FT-FTA	PCT	OFF	DEF	TOT	AVG	PF	A	TO	BLK	STL	PTS	AVG
Northern Ariz.	11/04/2024		13:09	2-6	.333	0-0	.000	1-1	1.000	4	3	7	7.0	3	0	1	1	0	5	5.0
Morehead St.	11/07/2024		08:12	0-1	.000	0-0	.000	0-0	.000	1	3	4	5.5	3	0	3	1	0	0	2.5
at Texas Tech	11/12/2024		15:31	1-2	.500	0-1	.000	3-5	.600	3	5	8	6.3	5	0	0	0	1	5	3.3
Western N.M.	11/15/2024		17:23	2-6	.333	0-0	.000	1-2	.500	3	1	4	5.8	1	0	1	2	1	5	3.8
South Carolina St.	11/20/2024		17:48	6-7	.857	0-0	.000	0-0	.000	1	5	6	5.8	2	1	0	6	1	12	5.4
Totals		0	72:03	11-22	.500	0-1	.000	5-8	.625	12	17	29	5.8	14	1	5	10	3	27	5.4

TOP PERFORMANCES

Points	Season	12, South Carolina St. (11/20)
	MW	19, New Mexico (2/14/24)
	Career	26, Bethesda (CA) (11/27/23)
FGM	Season	2, 2x, last: WNMU (11/15)
	MW	8, 3x, last: Utah St. (2/21/24)
	Career	13, Bethesda (CA) (11/27/23)
FGA	Season	6, 2x, last: WNMU (11/15)
	MW	18, Utah St. (2/21/24)
	Career	18, Utah St. (2/21/24)
3PT FGM	Season	
	MW	1, 3x
	Career	1, 4x
3PT FGA	Season	1, Texas Tech (11/12)
	MW	2, Wyoming (2/282/24)
	Career	2, Wyoming (2/282/24)
FTM	Season	3, Texas Tech (11/12)
	MW	6, Nevada (1/26/23)
	Career	6, Nevada (1/26/23)
FTA	Season	5, Texas Tech (11/12)
	MW	8, Nevada (1/26/23)
	Career	8, Nevada (1/26/23)
Reb.	Season	8, Texas Tech (11/12)
	MW	13, Colorado St. (1/2/24)
	Career	13, Colorado St. (1/2/24)
Asts.	Season	
	MW	5, Colorado St. (3/2/24)
	Career	5, Colorado St. (3/2/24)
Blocks	Season	6, South Carolina St. (11/20)
	MW	4, San Diego St. (1/20/24)
	Career	6, South Carolina St. (11/20)
Steals	Season	1, 3x, last: SCSU (11/20)
	MW	3, San Diego St. (1/20/24)
	Career	3, 2x: last San Diego St. (1/20/24)
TO	Season	0, 2x, last: SCSU (11/20)
	MW	0, 5x
	Career	0, 20x
Min.	Season	17, 2x, last: SCSU (11/20)
	MW	38, Fresno St. (1/3/24)
	Career	38, Fresno St. (1/3/24)

PRODUCTION TRACKER

2024-25   Career

Double-Double	3
Scored 10+ pts	24
Scored 20+ pts	1
10+ reb	3
3+ 3-pt	

CAREER STATISTICS

				Field Goals		3-Point		F-Throws		Rebounds									Scoring	
SEASON	TEAM	GP-GS	MIN/AVG	FG-FGA	FG%	3FG-3FGA	3FG%	FT-FTA	FT%	OFF	DEF	TOT	AVG	PF-FO	A	TO	BLK	STL	PTS	AVG
2021-22	ODU	19-0	117/6.1	10-26	.385	0-0	.000	7-15	.467	16	21	37	1.9	27-0	3	18	10	5	27	1.4
2022-23	SJSU	30-10	509/17.0	59-144	.410	1-1	1.000	40-58	.690	52	62	114	3.8	109-6	7	55	24	22	159	5.3
2023-24	SJSU	30-25	645/21.5	148-274	.540	3-7	.429	48-77	.623	86	91	177	5.9	102-3	24	63	42	25	347	11.6
2024-25	UNM	5-0	72/14.4	11-22	.500	0-1	.000	5-8	.625	12	17	29	5.8	14-1	1	5	10	3	27	5.4
TOTAL FOR UNM		5-0	72/14.4	11-22	.500	0-1	.000	5-8	.625	12	17	29	5.8	14-1	1	5	10	3	27	5.4
TOTAL		84-35	1342/16.0	228-466	.489	4-9	.444	100-158	.633	166	191	357	4.3	252-10	35	141	86	55	560	6.7

33

VIANÈ CUMBER  
G | 5-11 | SR | Albuquerque, N.M. (Sandia HS)



PPG	FG %	3PT %	FT %	RPG	APG	SPG	BPG	MPG
14.6	.446	.429	.889	5.6	1.8	1.0	0.2	28.1

NOTEWORTHY

- Selected to the Preseason MW Team
- MW Freshman of the Week Nov. 15, 2021
- Scored in double figures in 17 games, 4x with 20+ points last season
- Averaged 11.4 ppg, 33.6 mpg, 6.0 rpg, 2.4 3FG last season
- 8 three-pointers against Montana State tied for the third-most in a game in program history and was the seventh time a player historically has made eight or more three-pointers in a game.
- At least 1 three-pointer in 37 of the last 40 games she's played in.
- Averaged 22.9 minutes per game, 9.2 points per game, 2.9 rebounds per game, 0.9 assists per game, 0.5 steals per game her sophomore season
- Shot 40.6% from three-point range with 21 games with multiple three-pointers. Includes two games with 6 three-pointers, 10 games with four or more three-pointers
- 2019-20 and 2020-21 New Mexico Gatorade Girls Basketball Player of the Year
- Twice named MaxPreps New Mexico High School Girls Basketball Player of the Year
- Named the best high school basketball player in New Mexico by MaxPreps
- Averaged 26.5 points, 9.3 rebounds, 2.2 assists and 1.5 steals her senior season and 22.4 points, 10.6 rebounds, 2.5 assists and 3.3 steals as a junior
- Led her team to a pair of district championships in 2018 and 2019
- Majoring in psychology

GAME-BY-GAME STATISTICS

Opponent	Date	GS	MIN	Total		3-Pointers		Free throws		Rebounds													
				FG-FGA	PCT	3FG-3FGA	PCT	FT-FTA	PCT	OFF	DEF	TOT	AVG	PF	A	TO	BLK	STL	PTS	AVG			
Northern Ariz.	11/04/2024	*	32:13	4-10	.400	2-4	.500	4-5	.800	0	8	8	8.0	2	0	0	0	1	14	14.0			
Morehead St.	11/07/2024	*	30:23	8-15	.533	7-12	.583	0-0	.000	2	10	12	10.0	0	3	3	0	2	23	18.5			
at Texas Tech	11/12/2024	*	35:26	3-9	.333	2-6	.333	2-2	1.000	0	3	3	7.7	3	2	2	1	0	10	15.7			
Western N.M.	11/15/2024	*	21:30	5-9	.556	1-4	.250	2-2	1.000	1	1	2	6.3	0	1	0	0	1	13	15.0			
South Carolina St.	11/20/2024	*	21:09	5-13	.385	3-9	.333	0-0	.000	1	2	3	5.6	2	3	3	0	1	13	14.6			
Totals		5	140:41	25-56	.446	15-35	.429	8-9	.889	4	24	28	5.6	7	9	8	1	5	73	14.6			

TOP PERFORMANCES

Points	Season	23, Morehead St. (11/7)
	MW	22, UNLV (1/20)
	Career	24, Montana State (11/23)
FGM	Season	8, Morehead St. (11/7)
	MW	8, 2x
	Career	9, Texas Southern (11/6)
FGA	Season	15, Morehead St. (11/7)
	MW	22, Utah State (1/10)
	Career	22, Utah State (1/10)
3PT FGM	Season	7, Morehead St. (11/7)
	MW	6, UNLV (1/20)
	Career	8, Montana State (11/23)
3PT FGA	Season	12, Morehead St. (11/7)
	MW	12, 2x
	Career	15, Montana State (11/23)
FTM	Season	4, NAU (11/4)
	MW	4, 2x
	Career	4, 3x
FTA	Season	5, NAU (11/4)
	MW	5, 2x
	Career	5, 3x
Reb.	Season	12, Morehead St. (11/7)
	MW	11, 2x
	Career	14, Eastern Illinois (11/28)
Asts.	Season	3, 2x, last: SCSU (11/20)
	MW	5, Fresno State (1/24)
	Career	5, 2x
Blocks	Season	1, Texas Tech (11/12)
	MW	1, 7x
	Career	1, 10x
Steals	Season	2, Morehead St. (11/7)
	MW	2, 3x
	Career	4, Western N.M. (11/22/22)
TO	Season	0, 2x, last: WNMU (11/15)
	MW	0, 21x
	Career	0, 36x
Min.	Season	35, Texas Tech (11/12)
	MW	40, Boise St. (2/21)
	Career	43, Eastern Illinois (11/28)

PRODUCTION TRACKER

	2024-25	Career
Double-Double	1	4
Scored 10+ pts	5	41
Scored 20+ pts	1	7
10+ reb	1	4
3+ 3-pt	2	26

CAREER STATISTICS

			Field Goals		3-Point		F-Throws		Rebounds												Scoring	
SEASON	TEAM	GP-GS	MIN/AVG	FG-FGA	FG%	3FG-3FGA	3FG%	FT-FTA	FT%	OFF	DEF	TOT	AVG	PF-FO	A	TO	BLK	STL	PTS	AVG		
2021-22	UNM	18-1	198/11.0	25-62	.403	15-45	.333	2-2	1.000	4	25	29	1.6	6-0	5	10	1	5	67	3.7		
2022-23	UNM	33-15	757/22.9	107-249	.430	73-180	.406	18-22	.818	5	90	95	2.9	39-0	30	32	3	17	305	9.2		
2023-24	UNM	29-29	975/33.6	119-331	.360	70-214	.327	22-30	.733	18	157	175	6.0	48-0	39	35	5	22	330	11.4		
2024-25	UNM	5-5	141/28.1	25-56	.446	15-35	.429	8-9	.889	4	24	28	5.6	7-0	9	8	1	5	73	14.6		
TOTAL		85-50	2070/24.4	276-698	.395	173-474	.365	50-63	.794	31	296	327	3.8	100-0	83	85	10	49	775	9.1		

40

CLARISSA CRAIG

F/C | 6-3 | SR | Cincinnati, Ohio (Cincinnati)



PPG	FG %	3PT %	FT %	RPG	APG	SPG	BPG	MPG
--	--	--	--	--	--	--	--	--

NOTEWORTHY

- Played the last 3 seasons at Cincinnati
- Averaged 4.5 points and 2.2 rebounds per game while averaging 12.7 minutes per game last season
- Finished in double figures in three games, twice against Big 12 opponents with 13 points at Oklahoma behind 5-7 shooting and again with 12 points at UCF that included 4-4 shooting from the floor
- Majoring in liberal arts and integrative studies

GAME-BY-GAME STATISTICS

TOP PERFORMANCES

Points	Season MW Career	16, Temple (2/11/23)
FGM	Season MW Career	7, Temple (2/11/23)
FGA	Season MW Career	9, 4x
3PT FGM	Season MW Career	
3PT FGA	Season MW Career	1, 3x, last: Texas Tech (2/3/24)
FTM	Season MW Career	8, East Carolina (1/16/22)
FTA	Season MW Career	10, East Carolina (1/16/22)
Reb.	Season MW Career	10, IUC (12/4/22)
Asts.	Season MW Career	4, Temple (2/11/23)
Blocks	Season MW Career	2, 4x
Steals	Season MW Career	3, UTA (11/25/22)
TO	Season MW Career	0, 2x
Min.	Season MW Career	36, Temple (2/11/23)

PRODUCTION TRACKER

2024-25 Career

Double-Double	1
Scored 10+ pts	13
Scored 20+ pts	
10+ reb	1
3+ 3-pt	

CAREER STATISTICS

				Field Goals		3-Point		F-Throws		Rebounds														Scoring	
SEASON	TEAM	GP-GS	MIN/AVG	FG-FGA	FG%	3FG-3FGA	3FG%	FT-FTA	FT%	OFF	DEF	TOT	AVG	PF-FO	A	TO	BLK	STL	PTS	AVG					
2021-22	UC	28-1	332/11.9	35-88	.398	0-0	.000	20-29	.690	18	24	42	1.5	52-0	5	30	5	6	90	3.2					
2022-23	UC	28-17	573/20.5	69-122	.566	0-2	.000	50-65	.769	46	51	97	3.5	79-4	8	48	15	11	188	6.7					
2023-24	UC	21-0	267/12.7	30-60	.500	0-1	.000	35-45	.778	17	30	47	2.2	48-0	4	24	2	8	95	4.5					
TOTAL FOR UNM		0-0	0/0.0	0-0	.000	0-0	.000	0-0	.000	0	0	0	0.0	0-0	0	0	0	0	0	0.0					
TOTAL		77-18	1172/15.2	134-270	.496	0-3	.000	105-139	.755	81	105	186	2.4	179-4	17	102	22	25	373	4.8					

45

LILLI HAKKARAINEN

G | 5-7 | FR | Kotka, Finland (Mäkelänrinne Upper Secondary School)



PPG	FG %	3PT %	FT %	RPG	APG	SPG	BPG	MPG
1.5	.250	.333	--	0.5	0.0	0.0	0.0	5.1

NOTEWORTHY

- Played on the Finland National Team at the FIBA U20 Women's EuroBasket over the summer
- Spent past two seasons with HBA-Märsky (Helsinki Basketball Academy) in the Naisten Korisliiga, the highest tier league in Finland
- In the 2022-2023 season, was a vice-captain in 2022-23 and captain in 2023-24
- Averaged 11.0 ppg, 5.2 rpg and 1.8 apg and 25:41 minutes per game...
- Won the women's Finnish Championship and the Finnish Cup with Peli-Karhut in 2021-22
- Played 37 games with the Youth Finnish National Team
- Majoring in pharmacy
- Speaks Finnish and Swedish

GAME-BY-GAME STATISTICS

			Total		3-Pointers		Free throws		Rebounds											
Opponent	Date	GS	MIN	FG-FGA	PCT	3FG-3FGA	PCT	FT-FTA	PCT	OFF	DEF	TOT	AVG	PF	A	TO	BLK	STL	PTS	AVG
Western N.M.	11/15/2024		04:59	0-1	.000	0-0	.000	0-0	.000	0	0	0	0.0	0	0	0	0	0	0	0.0
South Carolina St.	11/20/2024		05:14	1-3	.333	1-3	.333	0-0	.000	1	0	1	0.5	0	0	0	0	0	3	1.5
Totals		0	10:13	1-4	.250	1-3	.333	0-0	.000	1	0	1	0.5	0	0	0	0	0	3	1.5

TOP PERFORMANCES

Points	Season	3, South Carolina St. (11/20)
	MW	
FGM	Season	1, South Carolina St. (11/20)
	MW	
FGA	Season	3, South Carolina St. (11/20)
	MW	
3PT FGM	Season	1, South Carolina St. (11/20)
	MW	
3PT FGA	Season	3, South Carolina St. (11/20)
	MW	
FTM	Season	
	MW	
FTA	Season	
	MW	
Reb.	Season	1, South Carolina St. (11/20)
	MW	
Asts.	Season	
	MW	
Blocks	Season	
	MW	
Steals	Season	
	MW	
TO	Season	0, 2x, last: SCSU (11/20)
	MW	
Min.	Season	5, South Carolina St. (11/20)
	MW	

PRODUCTION TRACKER

2024-25 Career

- Double-Double
- Scored 10+ pts
- Scored 20+ pts
- 10+ reb
- 3+ 3-pt

CAREER STATISTICS

				Field Goals		3-Point		F-Throws		Rebounds				Scoring							
SEASON	TEAM	GP-GS	MIN/AVG	FG-FGA	FG%	3FG-3FGA	3FG%	FT-FTA	FT%	OFF	DEF	TOT	AVG	PF	FO	A	TO	BLK	STL	PTS	AVG
2024-25	UNM	2-0	10/5.1	1-4	.250	1-3	.333	0-0	.000	1	0	1	0.5	0-0	0	0	0	0	0	3	1.5
TOTAL		2-0	10/5.1	1-4	.250	1-3	.333	0-0	.000	1	0	1	0.5	0-0	0	0	0	0	0	3	1.5



## SEASON STATS

### Game Records

Record	Overall	Home	Away	Neutral
ALL GAMES	3-2	3-1	0-1	0-0
CONFERENCE	0-0	0-0	0-0	0-0
NON-CONFERENCE	3-2	3-1	0-1	0-0

### Score by Periods

Team	1st	2nd	3rd	4th	OT	TOT
New Mexico	102	85	85	105	0	377
Opponents	77	63	63	102	0	305

### Team Box Score

No.	Player				Total		3-Point		F-Throw		Rebounds														
		GP-GS	MIN	AVG	FG-FGA	FG%	3FG-3FGA	3FG%	FT-FTA	FT%	OFF	DEF	TOT	AVG	PF	DQ	A	TO	BLK	STL	PTS	AVG			
3	HOOKS, Destinee	5-5	126:39	25.3	34-58	.586	4-14	.286	11-21	.524	4	13	17	3.4	7	0	9	17	2	3	83	16.6			
33	CUMBER, Vianè	5-5	140:41	28.1	25-56	.446	15-35	.429	8-9	.889	4	24	28	5.6	7	0	9	8	1	5	73	14.6			
14	JOAQUIM, Hulda	5-5	111:29	22.3	21-35	.600	0-0	.000	2-4	.500	17	24	41	8.2	5	0	2	7	4	4	44	8.8			
4	HARGROVE, Alyssa	5-5	132:51	26.6	16-39	.410	6-13	.462	5-8	.625	3	11	14	2.8	10	1	14	13	5	12	43	8.6			
24	MORELAND, Amhyia	5-0	72:03	14.4	11-22	.500	0-1	.000	5-8	.625	12	17	29	5.8	14	1	1	5	10	3	27	5.4			
1	MWAMBA, Lydie	3-0	30:42	10.2	5-10	.500	3-5	.600	2-2	1.000	4	6	10	3.3	0	0	2	0	2	4	15	5.0			
21	PO, Reza	5-0	86:35	17.3	7-21	.333	4-11	.364	6-9	.667	0	10	10	2.0	3	0	13	3	2	2	24	4.8			
5	LANGERMANN, Lara	5-1	109:42	21.9	7-32	.219	3-18	.167	4-4	1.000	5	6	11	2.2	7	0	6	7	2	4	21	4.2			
13	MAGALHÃES, Joana	5-4	74:08	14.8	7-17	.412	1-4	.250	2-4	.500	0	8	8	1.6	9	0	18	13	0	7	17	3.4			
10	LAURO, Paris	5-0	58:50	11.8	5-16	.313	2-9	.222	0-0	.000	2	9	11	2.2	2	0	4	1	1	0	12	2.4			
15	JORDON, Drew	5-0	21:35	4.3	4-4	1.000	0-0	.000	1-2	.500	2	3	5	1.0	2	0	1	3	1	1	9	1.8			
11	PADILLA, Nayli	4-0	24:31	6.1	1-4	.250	1-3	.333	3-4	.750	0	5	5	1.3	1	0	4	0	1	3	6	1.5			
45	HAKKARAINEN, Lilli	2-0	10:13	5.1	1-4	.250	1-3	.333	0-0	.000	1	0	1	0.5	0	0	0	0	0	0	3	1.5			
Team											10	9	19					6							
Total		5	1000		144-318	.453	40-116	.345	49-75	.653	64	145	209	41.8	67	2	83	83	31	48	377	75.4			
Opponents		5	1000		116-303	.383	35-112	.313	38-58	.655	49	119	168	33.6	90	4	72	92	22	41	305	61.0			

### Team Statistics

	UNM	OPP
<b>Scoring</b>	<b>377</b>	<b>305</b>
Points per game	75.4	61.0
Scoring margin	+14.4	-
<b>Field goals-att</b>	<b>144-318</b>	<b>116-303</b>
Field goal pct	.453	.383
<b>3 point fg-att</b>	<b>40-116</b>	<b>35-112</b>
3-point FG pct	.345	.313
3-pt FG made per game	8.0	7.0
<b>Free throws-att</b>	<b>49-75</b>	<b>38-58</b>
Free throw pct	.653	.655
F-Throws made per game	9.8	7.6
<b>Rebounds</b>	<b>209</b>	<b>168</b>
Rebounds per game	41.8	33.6
Rebounding margin	+8.2	-
<b>Assists</b>	<b>83</b>	<b>72</b>
Assists per game	16.6	14.4
<b>Turnovers</b>	<b>83</b>	<b>92</b>
Turnovers per game	16.6	18.4
Turnover margin	+1.8	-
Assist/turnover ratio	1.0	0.8
<b>Steals</b>	<b>48</b>	<b>41</b>
Steals per game	9.6	8.2
<b>Blocks</b>	<b>31</b>	<b>22</b>
Blocks per game	6.2	4.4
<b>Winning streak</b>	<b>2</b>	<b>-</b>
Home win streak	3	-
<b>Attendance</b>	<b>18430</b>	<b>3690</b>
Home games-Avg/Game	4-4608	1-3690
Neutral site-Avg/Game	-	0-0

### Team Results

Date	Opponent		Score	Att.
11/04/2024	Northern Ariz.	L	78-80	5114
11/07/2024	Morehead St.	W	66-56	4372
11/12/2024	at Texas Tech	L	68-75	3690
11/15/2024	Western N.M.	W	85-56	4521
11/20/2024	South Carolina St.	W	80-38	4423

LAST WEEK STATS

Game Records					Score by Periods						
Record	Overall	Home	Away	Neutral	Team	1st	2nd	3rd	4th	OT	TOT
ALL GAMES	1-1	1-0	0-1	0-0	New Mexico	44	34	38	37	0	153
CONFERENCE	0-0	0-0	0-0	0-0	Opponents	32	31	36	32	0	131
NON-CONFERENCE	1-1	1-0	0-1	0-0							

Team Box Score																						
No.	Player				Total		3-Point		F-Throw		Rebounds											
		GP-GS	MIN	AVG	FG-FGA	FG%	3FG-3FGA	3FG%	FT-FTA	FT%	OFF	DEF	TOT	AVG	PF	DQ	A	TO	BLK	STL	PTS	AVG
3	HOOKS, Destinee	2-2	53:19	26.7	17-27	.630	2-7	.286	7-13	.538	1	5	6	3.0	3	0	2	9	0	1	43	21.5
33	CUMBER, Vianè	2-2	56:56	28.5	8-18	.444	3-10	.300	4-4	1.000	1	4	5	2.5	3	0	3	2	1	1	23	11.5
4	HARGROVE, Alyssa	2-2	50:58	25.5	8-17	.471	2-4	.500	2-4	.500	1	2	3	1.5	6	1	4	3	3	6	20	10.0
14	JOAQUIM, Hulda	2-2	42:21	21.2	7-9	.778	0-0	.000	0-0	.000	4	10	14	7.0	3	0	0	2	1	2	14	7.0
1	MWAMBA, Lydie	1-0	11:34	11.6	3-6	.500	1-2	.500	0-0	.000	1	1	2	2.0	0	0	0	0	0	1	7	7.0
24	MORELAND, Amhyia	2-0	32:54	16.4	3-8	.375	0-1	.000	4-7	.571	6	6	12	6.0	6	1	0	1	2	2	10	5.0
10	LAURO, Paris	2-0	18:34	9.3	4-8	.500	1-4	.250	0-0	.000	1	4	5	2.5	0	0	1	0	1	0	9	4.5
21	PO, Reza	2-0	40:36	20.3	3-9	.333	1-4	.250	2-5	.400	0	6	6	3.0	0	0	5	1	0	1	9	4.5
11	PADILLA, Nayli	1-0	09:54	9.9	1-3	.333	1-2	.500	1-2	.500	0	0	0	0.0	0	0	0	0	0	2	4	4.0
5	LANGERMANN, Lara	2-1	49:16	24.6	2-10	.200	1-5	.200	2-2	1.000	2	3	5	2.5	1	0	3	3	1	1	7	3.5
15	JORDON, Drew	2-0	08:02	4.0	2-2	1.000	0-0	.000	0-0	.000	0	3	3	1.5	1	0	0	2	0	1	4	2.0
13	MAGALHÃES, Joana	2-1	20:37	10.3	1-5	.200	0-2	.000	1-2	.500	0	2	2	1.0	3	0	5	4	0	1	3	1.5
45	HAKKARAINEN, Lilli	1-0	04:59	5.0	0-1	.000	0-0	.000	0-0	.000	0	0	0	0.0	0	0	0	0	0	0	0	0.0
Team											5	2	7									
Total		2	400		59-123	.480	12-41	.293	23-39	.590	22	48	70	35.0	26	2	23	27	9	19	153	76.5
Opponents		2	400		50-119	.420	13-41	.317	18-25	.720	22	51	73	36.5	42	0	30	37	12	15	131	65.5

Team Statistics			UNM	OPP
Scoring			153	131
Points per game			76.5	65.5
Scoring margin			+11.0	-
Field goals-att			59-123	50-119
Field goal pct			.480	.420
3 point fg-att			12-41	13-41
3-point FG pct			.293	.317
3-pt FG made per game			6.0	6.5
Free throws-att			23-39	18-25
Free throw pct			.590	.720
F-Throws made per game			11.5	9.0
Rebounds			70	73
Rebounds per game			35.0	36.5
Rebounding margin			-1.5	-
Assists			23	30
Assists per game			11.5	15.0
Turnovers			27	37
Turnovers per game			13.5	18.5
Turnover margin			+5.0	-
Assist/turnover ratio			0.9	0.8
Steals			19	15
Steals per game			9.5	7.5
Blocks			9	12
Blocks per game			4.5	6.0
Winning streak			1	-
Home win streak			1	-
Attendance			4521	3690
Home games-Avg/Game			1-4521	1-3690
Neutral site-Avg/Game			-	0-0

Team Results				
Date	Opponent		Score	Att.
11/12/2024	at Texas Tech	L	68-75	3690
11/15/2024	Western N.M.	W	85-56	4521

## NEW MEXICO GAME-BY-GAME LEADERS

Date	Opponent		Score	Att.	High Points	High Rebounds
11/04/2024	Northern Ariz.	L	78-80	5114	(21) HOOKS, Destinee	(8) CUMBER, Vianè
11/07/2024	Morehead St.	W	66-56	4372	(23) CUMBER, Vianè	(12) CUMBER, Vianè
11/12/2024	at Texas Tech	L	68-75	3690	(28) HOOKS, Destinee	(8) MORELAND, Amhyia
11/15/2024	Western N.M.	W	85-56	4521	(15) HOOKS, Destinee	(9) JOAQUIM, Hulda
11/20/2024	South Carolina St.	W	80-38	4423	(14) JOAQUIM, Hulda	(10) JOAQUIM, Hulda

NEW MEXICO GAME-BY-GAME POINTS-REBOUNDS-ASSISTS

Opponent	Date	Score		1	3	4	5	10	11	13	14	15	21	24
				MWAMBA,LYD	HOOKS,DEST	HARGROVE,A	LANGERMANN	LAURO,PARI	PADILLA,NA	MAGALHÃES,	JOAQUIM,HU	JORDON,DRE	PO,REZA	MORELAND,A
Northern Ariz.	11/04/2024	78-80	L	DNP	21-6-2	12-6-4	7-2-2	0-2-1	0-3-2	6-2-2	4-7-0	4-0-0	5-1-2	5-7-0
Morehead St.	11/07/2024	66-56	W	8-2-1	6-4-2	11-1-3	2-2-1	0-1-1	0-1-0	0-3-6	12-10-1	0-1-0	4-1-3	0-4-0
at Texas Tech	11/12/2024	68-75	L	DNP	28-3-0	10-3-2	7-3-2	2-1-0	DNP	0-0-0	2-5-0	0-0-0	4-4-0	5-8-0
Western N.M.	11/15/2024	85-56	W	7-2-0	15-3-2	10-0-2	0-2-1	7-4-1	4-0-0	3-2-5	12-9-0	4-3-0	5-2-5	5-4-0
South Carolina St.	11/20/2024	80-38	W	0-6-1	13-1-3	0-4-3	5-2-0	3-3-1	2-1-2	8-1-5	14-10-1	1-1-1	6-2-3	12-6-1
Opponent	Date	Score		33	45									
				CUMBER,VIA	HAKKARAINÉ									
Northern Ariz.	11/04/2024	78-80	L	14-8-0	DNP									
Morehead St.	11/07/2024	66-56	W	23-12-3	DNP									
at Texas Tech	11/12/2024	68-75	L	10-3-2	DNP									
Western N.M.	11/15/2024	85-56	W	13-2-1	0-0-0									
South Carolina St.	11/20/2024	80-38	W	13-3-3	3-1-0									

## NEW MEXICO GAME-BY-GAME

				Total		3-Pointers		Free throws		Rebounds											
Opponent	Date	Score		FG-FGA	PCT	3FG-3FGA	PCT	FT-FTA	PCT	OFF	DEF	TOT	AVG	PF	A	TO	BLK	STL	PTS	AVG	
Northern Ariz.	11/04/2024	78-80	L	29-65	.446	8-19	.421	12-16	.750	12	36	48	48.0	20	15	18	5	8	78	78.0	
Morehead St.	11/07/2024	66-56	W	23-65	.354	11-30	.367	9-10	.900	14	34	48	48.0	13	21	24	10	8	66	72.0	
at Texas Tech	11/12/2024	68-75	L	24-51	.471	5-15	.333	15-24	.625	7	25	32	42.7	21	6	17	3	6	68	70.7	
Western N.M.	11/15/2024	85-56	W	35-72	.486	7-26	.269	8-15	.533	15	23	38	41.5	5	17	10	6	13	85	74.3	
South Carolina St.	11/20/2024	80-38	W	33-65	.508	9-26	.346	5-10	.500	16	27	43	41.8	8	24	14	7	13	80	75.4	
Total		377		144-318	.453	40-116	.345	49-75	.653	64	145	209	41.8	67	83	83	31	48	377	75.4	
Opponents		305		116-303	.383	35-112	.313	38-58	.655	49	119	168	33.6	90	72	92	22	41	305	61.0	

## OPPONENT GAME-BY-GAME

				Total		3-Pointers		Free throws		Rebounds											
Opponent	Date	Score		FG-FGA	PCT	3FG-3FGA	PCT	FT-FTA	PCT	OFF	DEF	TOT	AVG	PF	A	TO	BLK	STL	PTS	AVG	
Northern Ariz.	11/04/2024	78-80	L	29-72	.403	11-35	.314	11-18	.611	12	24	36	36.0	17	20	14	4	5	80	80.0	
Morehead St.	11/07/2024	66-56	W	22-61	.361	7-22	.318	5-7	.714	6	26	32	34.0	20	12	19	5	13	56	68.0	
at Texas Tech	11/12/2024	68-75	L	26-66	.394	7-25	.280	16-20	.800	16	25	41	36.3	23	15	13	6	8	75	70.3	
Western N.M.	11/15/2024	85-56	W	24-53	.453	6-16	.375	2-5	.400	6	26	32	35.3	19	15	24	6	7	56	66.8	
South Carolina St.	11/20/2024	80-38	W	15-51	.294	4-14	.286	4-8	.500	9	18	27	33.6	11	10	22	1	8	38	61.0	
Total		305		116-303	.383	35-112	.313	38-58	.655	49	119	168	33.6	90	72	92	22	41	305	61.0	
New Mexico		377		144-318	.453	40-116	.345	49-75	.653	64	145	209	41.8	67	83	83	31	48	377	75.4	



## NEW MEXICO INDIVIDUAL GAME HIGHS

<b>POINTS</b>	28		Destinee Hooks at Texas Tech (11/12/2024)
	23		Vianè Cumber vs Morehead St. (11/07/2024)
	21		Destinee Hooks vs Northern Ariz. (11/04/2024)
	15		Destinee Hooks vs Western N.M. (11/15/2024)
	14		Hulda Joaquim vs South Carolina St. (11/20/2024)
	14		Vianè Cumber vs Northern Ariz. (11/04/2024)
<b>FIELD GOALS MADE</b>	11		Destinee Hooks at Texas Tech (11/12/2024)
	8		Vianè Cumber vs Morehead St. (11/07/2024)
	8		Destinee Hooks vs Northern Ariz. (11/04/2024)
<b>FIELD GOAL ATTEMPTS</b>	18		Destinee Hooks at Texas Tech (11/12/2024)
	15		Vianè Cumber vs Morehead St. (11/07/2024)
<b>FIELD GOAL PERCENTAGE (min 5 made)</b>	.857	(6-7)	Amhyia Moreland vs South Carolina St. (11/20/2024)
	.857	(6-7)	Destinee Hooks vs South Carolina St. (11/20/2024)
	.857	(6-7)	Hulda Joaquim vs Western N.M. (11/15/2024)
<b>3 PT FG MADE</b>	7		Vianè Cumber vs Morehead St. (11/07/2024)
	3		Vianè Cumber vs South Carolina St. (11/20/2024)
<b>3 PT FG ATTEMPTS</b>	12		Vianè Cumber vs Morehead St. (11/07/2024)
	9		Vianè Cumber vs South Carolina St. (11/20/2024)
<b>3 PT FG PERCENTAGE (min 2 made)</b>	1.000	(2-2)	Lydie Mwamba vs Morehead St. (11/07/2024)
	.583	(7-12)	Vianè Cumber vs Morehead St. (11/07/2024)
<b>FREE THROWS MADE</b>	5		Destinee Hooks at Texas Tech (11/12/2024)
	4		Reza Po vs Morehead St. (11/07/2024)
	4		Vianè Cumber vs Northern Ariz. (11/04/2024)
<b>FREE THROW ATTEMPTS</b>	8		Destinee Hooks at Texas Tech (11/12/2024)
	6		Destinee Hooks vs Northern Ariz. (11/04/2024)
<b>FREE THROW PERCENTAGE (min 3 made)</b>	1.000	(4-4)	Reza Po vs Morehead St. (11/07/2024)
	.800	(4-5)	Vianè Cumber vs Northern Ariz. (11/04/2024)
<b>REBOUNDS</b>	12		Vianè Cumber vs Morehead St. (11/07/2024)
	10		Hulda Joaquim vs South Carolina St. (11/20/2024)
	10		Hulda Joaquim vs Morehead St. (11/07/2024)
<b>ASSISTS</b>	6		Joana Magalhães vs Morehead St. (11/07/2024)
	5		Joana Magalhães vs South Carolina St. (11/20/2024)
	5		Reza Po vs Western N.M. (11/15/2024)
	5		Joana Magalhães vs Western N.M. (11/15/2024)
<b>STEALS</b>	4		Alyssa Hargrove vs Western N.M. (11/15/2024)
	3		Alyssa Hargrove vs South Carolina St. (11/20/2024)
	3		Lydie Mwamba vs South Carolina St. (11/20/2024)
	3		Joana Magalhães vs South Carolina St. (11/20/2024)
<b>BLOCKED SHOTS</b>	6		Amhyia Moreland vs South Carolina St. (11/20/2024)
	2		Amhyia Moreland vs Western N.M. (11/15/2024)
	2		Alyssa Hargrove at Texas Tech (11/12/2024)
	2		Alyssa Hargrove vs Morehead St. (11/07/2024)
	2		Hulda Joaquim vs Morehead St. (11/07/2024)
	2		Destinee Hooks vs Morehead St. (11/07/2024)
<b>TURNOVERS</b>	6		Destinee Hooks at Texas Tech (11/12/2024)
	6		Joana Magalhães vs Northern Ariz. (11/04/2024)
<b>FOULS</b>	5		Amhyia Moreland at Texas Tech (11/12/2024)
	5		Alyssa Hargrove at Texas Tech (11/12/2024)

## NEW MEXICO TEAM GAME HIGHS

<b>POINTS</b>	85		Western N.M. (11/15/2024)
	80		South Carolina St. (11/20/2024)
	78		Northern Ariz. (11/04/2024)
	68		at Texas Tech (11/12/2024)
	66		Morehead St. (11/07/2024)
<b>FIELD GOALS MADE</b>	35		Western N.M. (11/15/2024)
	33		South Carolina St. (11/20/2024)
<b>FIELD GOAL ATTEMPTS</b>	72		Western N.M. (11/15/2024)
	65		South Carolina St. (11/20/2024)
	65		Morehead St. (11/07/2024)
	65		Northern Ariz. (11/04/2024)
<b>FIELD GOAL PERCENTAGE</b>	.508	(33-65)	South Carolina St. (11/20/2024)
	.486	(35-72)	Western N.M. (11/15/2024)
<b>3 PT FG MADE</b>	11		Morehead St. (11/07/2024)
	9		South Carolina St. (11/20/2024)
<b>3 PT FG ATTEMPTS</b>	30		Morehead St. (11/07/2024)
	26		South Carolina St. (11/20/2024)
	26		Western N.M. (11/15/2024)
<b>3 PT FG PERCENTAGE</b>	.421	(8-19)	Northern Ariz. (11/04/2024)
	.367	(11-30)	Morehead St. (11/07/2024)
<b>FREE THROWS MADE</b>	15		at Texas Tech (11/12/2024)
	12		Northern Ariz. (11/04/2024)
<b>FREE THROW ATTEMPTS</b>	24		at Texas Tech (11/12/2024)
	16		Northern Ariz. (11/04/2024)
<b>FREE THROW PERCENTAGE</b>	.900	(9-10)	Morehead St. (11/07/2024)
	.750	(12-16)	Northern Ariz. (11/04/2024)
<b>REBOUNDS</b>	48		Morehead St. (11/07/2024)
	48		Northern Ariz. (11/04/2024)
<b>ASSISTS</b>	24		South Carolina St. (11/20/2024)
	21		Morehead St. (11/07/2024)
<b>STEALS</b>	13		South Carolina St. (11/20/2024)
	13		Western N.M. (11/15/2024)
<b>BLOCKED SHOTS</b>	10		Morehead St. (11/07/2024)
	7		South Carolina St. (11/20/2024)
<b>TURNOVERS</b>	24		Morehead St. (11/07/2024)
	18		Northern Ariz. (11/04/2024)
<b>FOULS</b>	21		at Texas Tech (11/12/2024)
	20		Northern Ariz. (11/04/2024)

## NEW MEXICO LEADERBOARD

## Points

##	Player	G	Pts	Pts/G
3	Hooks, Destinee	5	83	16.6
33	Cumber, Vianè	5	73	14.6
14	Joaquim, Hulda	5	44	8.8
4	Hargrove, Alyssa	5	43	8.6
24	Moreland, Amhyia	5	27	5.4
21	Po, Reza	5	24	4.8
5	Langermann, Lara	5	21	4.2
13	Magalhães, Joana	5	17	3.4
1	Mwamba, Lydie	3	15	5.0
10	Lauro, Paris	5	12	2.4
15	Jordon, Drew	5	9	1.8
11	Padilla, Nayli	4	6	1.5
45	Hakkarainen, Lilli	2	3	1.5

## Field Goal Percentage

##	Player	FG	Att	Pct
15	Jordon, Drew	4	4	1.000
14	Joaquim, Hulda	21	35	.600
3	Hooks, Destinee	34	58	.586
24	Moreland, Amhyia	11	22	.500
1	Mwamba, Lydie	5	10	.500
33	Cumber, Vianè	25	56	.446
13	Magalhães, Joana	7	17	.412
4	Hargrove, Alyssa	16	39	.410
21	Po, Reza	7	21	.333
10	Lauro, Paris	5	16	.313
11	Padilla, Nayli	1	4	.250
45	Hakkarainen, Lilli	1	4	.250
5	Langermann, Lara	7	32	.219

## Scoring Average

##	Player	G	Pts	Pts/G
3	Hooks, Destinee	5	83	16.6
33	Cumber, Vianè	5	73	14.6
14	Joaquim, Hulda	5	44	8.8
4	Hargrove, Alyssa	5	43	8.6
24	Moreland, Amhyia	5	27	5.4
1	Mwamba, Lydie	3	15	5.0
21	Po, Reza	5	24	4.8
5	Langermann, Lara	5	21	4.2
13	Magalhães, Joana	5	17	3.4
10	Lauro, Paris	5	12	2.4
15	Jordon, Drew	5	9	1.8
11	Padilla, Nayli	4	6	1.5
45	Hakkarainen, Lilli	2	3	1.5

## Field Goal Attempts

##	Player	G	Att	Att/G
3	Hooks, Destinee	5	58	11.6
33	Cumber, Vianè	5	56	11.2
4	Hargrove, Alyssa	5	39	7.8
14	Joaquim, Hulda	5	35	7.0
5	Langermann, Lara	5	32	6.4

## Field Goals Made

##	Player	G	Made	Made/G
3	Hooks, Destinee	5	34	6.8
33	Cumber, Vianè	5	25	5.0
14	Joaquim, Hulda	5	21	4.2
4	Hargrove, Alyssa	5	16	3.2
24	Moreland, Amhyia	5	11	2.2

## NEW MEXICO LEADERBOARD

## 3-Point FG Percentage

##	Player	3FG	Att	Pct
1	Mwamba, Lydie	3	5	.600
4	Hargrove, Alyssa	6	13	.462
33	Cumber, Vianè	15	35	.429
21	Po, Reza	4	11	.364
11	Padilla, Nayli	1	3	.333
45	Hakkarainen, Lilli	1	3	.333
3	Hooks, Destinee	4	14	.286
13	Magalhães, Joana	1	4	.250
10	Lauro, Paris	2	9	.222
5	Langermann, Lara	3	18	.167

## 3-Point FG Attempts

##	Player	G	Att	Att/G
33	Cumber, Vianè	5	35	7.0
5	Langermann, Lara	5	18	3.6
3	Hooks, Destinee	5	14	2.8
4	Hargrove, Alyssa	5	13	2.6
21	Po, Reza	5	11	2.2

## 3-Point FG Made

##	Player	G	Made	Made/G
33	Cumber, Vianè	5	15	3.0
4	Hargrove, Alyssa	5	6	1.2
3	Hooks, Destinee	5	4	0.8
21	Po, Reza	5	4	0.8
1	Mwamba, Lydie	3	3	1.0

## Free Throw Percentage

##	Player	Made	Att	Pct
1	Mwamba, Lydie	2	2	1.000
5	Langermann, Lara	4	4	1.000
33	Cumber, Vianè	8	9	.889
11	Padilla, Nayli	3	4	.750
21	Po, Reza	6	9	.667
4	Hargrove, Alyssa	5	8	.625
24	Moreland, Amhyia	5	8	.625
3	Hooks, Destinee	11	21	.524
14	Joaquim, Hulda	2	4	.500
13	Magalhães, Joana	2	4	.500
15	Jordon, Drew	1	2	.500

## Free Throw Attempts

##	Player	G	Att	Att/G
3	Hooks, Destinee	5	21	4.2
33	Cumber, Vianè	5	9	1.8
21	Po, Reza	5	9	1.8
4	Hargrove, Alyssa	5	8	1.6
24	Moreland, Amhyia	5	8	1.6

## Free Throws Made

##	Player	G	Made	Made/G
3	Hooks, Destinee	5	11	2.2
33	Cumber, Vianè	5	8	1.6
21	Po, Reza	5	6	1.2
4	Hargrove, Alyssa	5	5	1.0
24	Moreland, Amhyia	5	5	1.0

## Rebounds

##	Player	G	Reb	Reb/G
14	Joaquim, Hulda	5	41	8.2
24	Moreland, Amhyia	5	29	5.8
33	Cumber, Vianè	5	28	5.6
3	Hooks, Destinee	5	17	3.4
4	Hargrove, Alyssa	5	14	2.8

## Assists

##	Player	G	Ast	Ast/G
13	Magalhães, Joana	5	18	3.6
4	Hargrove, Alyssa	5	14	2.8
21	Po, Reza	5	13	2.6
3	Hooks, Destinee	5	9	1.8
33	Cumber, Vianè	5	9	1.8

## Rebounds Average

##	Player	G	Reb	Reb/G
14	Joaquim, Hulda	5	41	8.2
24	Moreland, Amhyia	5	29	5.8
33	Cumber, Vianè	5	28	5.6
3	Hooks, Destinee	5	17	3.4
1	Mwamba, Lydie	3	10	3.3

## Steals

##	Player	G	Stl	Stl/G
4	Hargrove, Alyssa	5	12	2.4
13	Magalhães, Joana	5	7	1.4
33	Cumber, Vianè	5	5	1.0
14	Joaquim, Hulda	5	4	0.8
1	Mwamba, Lydie	3	4	1.3

## NEW MEXICO LEADERBOARD

### Offensive Rebounds

##	Player	G	OReb	OReb/G
14	Joaquim, Hulda	5	17	3.4
24	Moreland, Amhyia	5	12	2.4
5	Langermann, Lara	5	5	1.0
3	Hooks, Destinee	5	4	0.8
33	Cumber, Vianè	5	4	0.8

### Defensive Rebounds

##	Player	G	DReb	DReb/G
33	Cumber, Vianè	5	24	4.8
14	Joaquim, Hulda	5	24	4.8
24	Moreland, Amhyia	5	17	3.4
3	Hooks, Destinee	5	13	2.6
4	Hargrove, Alyssa	5	11	2.2

### Fouls

##	Player	G	PF	PF/G
24	Moreland, Amhyia	5	14	2.8
4	Hargrove, Alyssa	5	10	2.0
13	Magalhães, Joana	5	9	1.8
3	Hooks, Destinee	5	7	1.4
33	Cumber, Vianè	5	7	1.4

### Foul Outs

##	Player	G	FO
4	Hargrove, Alyssa	5	1
24	Moreland, Amhyia	5	1

### Blocked Shots

##	Player	G	Blk	Blk/G
24	Moreland, Amhyia	5	10	2.0
4	Hargrove, Alyssa	5	5	1.0
14	Joaquim, Hulda	5	4	0.8
3	Hooks, Destinee	5	2	0.4
1	Mwamba, Lydie	3	2	0.7

### Minutes

##	Player	G	Min	Min/G
33	Cumber, Vianè	5	141	28:08
4	Hargrove, Alyssa	5	133	26:34
3	Hooks, Destinee	5	127	25:20
14	Joaquim, Hulda	5	111	22:18
5	Langermann, Lara	5	110	21:56

### Turnovers

##	Player	G	TO	TO/G
3	Hooks, Destinee	5	17	3.4
4	Hargrove, Alyssa	5	13	2.6
13	Magalhães, Joana	5	13	2.6
33	Cumber, Vianè	5	8	1.6
14	Joaquim, Hulda	5	7	1.4