



STANFORD SOFTBALL



@STANFORDSOFTBALL

@STANFORDSBALL

CONTACT: Tyler Geivett > 650.313.9338 > tgeivett@stanford.edu

2020 SCHEDULE

ALL: 0-0 | PAC-12: 0-0 | HM: 0-0 | RD: 0-0 | NEU: 0-0

Date	Opponent	Location	Time/Result
Feb. 6	at Grand Canyon !	Phoenix, Ariz.	5 p.m.
Feb. 7	vs. New Mexico !	Phoenix, Ariz.	1 p.m.
	at Grand Canyon !	Phoenix, Ariz.	5:30 p.m.
Feb. 8	vs. New Mexico !	Phoenix, Ariz.	9:30 a.m.
	vs. Weber State !	Phoenix, Ariz.	12 p.m.
Feb. 9	vs. Weber State !	Phoenix, Ariz.	9 a.m.
Feb. 13	Seattle	Stanford, Calif.	4 p.m.
	Seattle	Stanford, Calif.	6 p.m.
Feb. 14	Hofstra #	Stanford, Calif.	5 p.m.
Feb. 15	Hofstra #	Stanford, Calif.	12:30 p.m.
	Drake #	Stanford, Calif.	3 p.m.
Feb. 16	Drake #	Stanford, Calif.	11:30 a.m.
Feb. 18	Fresno State	Stanford, Calif.	5:30 p.m.
Feb. 22	Nevada	Stanford, Calif.	1 p.m.
	Nevada	Stanford, Calif.	3 p.m.
Feb. 23	Nevada	Stanford, Calif.	1 p.m.
Feb. 28	Pacific \$	Stanford, Calif.	4 p.m.
	Saint Francis \$	Stanford, Calif.	6:30 p.m.
Feb. 29	Saint Francis \$	Stanford, Calif.	3 p.m.
	Rhode Island \$	Stanford, Calif.	5:30 p.m.
Mar. 1	Rhode Island \$	Stanford, Calif.	12:30 p.m.
Mar. 6	vs. Toledo ^	Knoxville, Tenn.	9:30 a.m.
	at Tennessee ^	Knoxville, Tenn.	2:30 p.m.
Mar. 7	vs. ETSU ^	Knoxville, Tenn.	7 a.m.
	vs. TBD ^	Knoxville, Tenn.	12 or 2:30 p.m.
Mar. 8	vs. TBD ^	Knoxville, Tenn.	6:30 or 9 a.m.
Mar. 21	at Oregon *	Eugene, Ore.	6 p.m.
Mar. 22	at Oregon *	Eugene, Ore.	4 p.m.
Mar. 23	at Oregon *	Eugene, Ore.	1 p.m.
Mar. 25	at St. Mary's	Moraga, Calif.	1 p.m.
	at St. Mary's	Moraga, Calif.	3 p.m.
Mar. 27	California *	Stanford, Calif.	5 p.m.
Mar. 28	California *	Stanford, Calif.	4 p.m.
Mar. 29	California *	Stanford, Calif.	12 p.m.
Apr. 3	Arizona *	Stanford, Calif.	6 p.m.
Apr. 4	Arizona *	Stanford, Calif.	2 p.m.
Apr. 5	Arizona *	Stanford, Calif.	12 p.m.
Apr. 9	at UCLA *	Los Angeles, Calif.	5 p.m.
Apr. 10	at UCLA *	Los Angeles, Calif.	7 p.m.
Apr. 11	at UCLA *	Los Angeles, Calif.	1 p.m.
Apr. 14	at Sacramento State	Sacramento, Calif.	2 p.m.
	at Sacramento State	Sacramento, Calif.	4 p.m.
Apr. 17	Washington *	Stanford, Calif.	5 p.m.
Apr. 18	Washington *	Stanford, Calif.	5 p.m.
Apr. 19	Washington *	Stanford, Calif.	12 p.m.
Apr. 21	Santa Clara	Stanford, Calif.	6 p.m.
Apr. 24	at Utah *	Salt Lake City, Utah	4 p.m.
Apr. 25	at Utah *	Salt Lake City, Utah	4 p.m.
Apr. 26	at Utah *	Salt Lake City, Utah	11 a.m.
Apr. 27	at BYU	Provo, Utah	1 p.m.
May 1	Oregon State *	Stanford, Calif.	6 p.m.
May 2	Oregon State *	Stanford, Calif.	2 p.m.
May 3	Oregon State *	Stanford, Calif.	1 p.m.
May 7	at Arizona State *	Tempe, Ariz.	7 p.m.
May 8	at Arizona State *	Tempe, Ariz.	7 p.m.
May 9	at Arizona State *	Tempe, Ariz.	12 p.m.
May 14-17	NCAA Regionals	TBD	TBD
May 21-24	NCAA Super Regionals	TBD	TBD
May 28-Jun. 3	NCAA WCWS	Oklahoma City, Okla.	TBD

Home games in bold | All times Pacific

! GCU Kickoff Tournament

Stanford Invitational

\$ DeMarini Invitational

^ Tennessee Invitational

* Pac-12 Conference game

Pac-12 Networks

SIX GAMES IN FOUR DAYS TO START 2020

Stanford will play a pair of games against GCU, Nex Mexico and Weber State at the GCU Kickoff

QUICK HITS

» **STANFORD** made its first NCAA regional appearance since 2013 (17th overall) last season ... finished the year receiving votes in the ESPN.com/USA Softball poll, and begins the 2020 season receiving votes in the USA Today/NFCA and ESPN.com/USA Softball polls ... recorded two wins over a top-seven opponent last year, as the Cardinal defeated then-No. 7 LSU on the road on February 21 and knocked off No. 2 UCLA at home on May 3 ... opened the 2019 season with a 30-7 record to post the best start since 2010 (30-7) ... 33 wins were the most in a season since 2013 (39-21) ... eight Pac-12 wins were more than the previous four years combined (7) ... had 21 games decided by two or fewer runs last year (17-4), including going 13-3 in one-run contests ... delivered 88 two-out RBI, including 11 against Santa Clara on April 9, and batted .267 (119x446) with two out ... led the Pac-12 in triples (25) and was second in the nation in triples per game (.47) a year ago ... 25 triples were a Stanford single-season record ... scored first in 27 of the 53 games last year, and was 24-3 when scoring first ... outscored opponents 42-22 in the first inning last year, and 73-39 in the first two frames ... ranked fifth in the Pac-12 in ERA (3.29) ... was 3-8 against ranked opponents ... went 19-5 when hitting a home run ... was 23-1 when scoring five or more runs in a game (10-19 when scoring less than five).

» **JESSICA ALLISTER** enters her third season at her alma mater ... was named 2019 Pac-12 Coach of the Year.

» **TEAGHAN COWLES** led the team and was 12th in the Pac-12 in average (.374) last season ... collected a team-best 20 multi-hit games ... had a 12-game hit streak snapped on April 12 vs. Utah (.619, 26x42, 8 R, 5 2B, 2 3B, HR, 7 RBI), but hit safely in 40 of 53 games a year ago, including 34 of the last 43 overall ... finished second in the Pac-12 in triples (5) last year ... hit .343 in Pac-12 play.

» **MONTANA DIXON** reached in 46 of 53 games last year, including 41 of the last 44 overall, and 17 straight from March 9 - April 14 ... hit by 11 pitches last year to rank second in the Pac-12.

» **HANNAH HOWELL** reached safely in 33 of her 45 games played a year ago ... collected 10 multi-hit games ... hit a team-best .344 in Pac-12 play.

» **KRISTINA INOUE** was team leader in RBI (31) and amassed eight multi-RBI games last year ... finished second on team with 13 multi-hit games.

» **KIANA PANCINO** was 7-0 with eight saves and a 2.49 ERA over 29 appearances (one start) last year ... led the Pac-12 and was fourth in the nation in saves (8).

» **EMILY SCHULTZ** ranked third on the team in average (.304) and was second in SLG (.569) and OB% (.419) a year ago ... went 5-for-6 with three doubles, a home run and seven RBI over a doubleheader against Saint Mary's on March 27 ... launched a two-run homer to provide all the run support Stanford would need in a 2-1 win over #2 UCLA on May 3 ... saw 17 of her 31 hits go for extra bases (10 2B, four 3B, three HR ... amassed nine multi-hit games and six multi-RBI games).

» **EMILY YOUNG** reached in 11 straight games from March 27 - April 14 last season ... connected for a two-out inside-the-park grand slam in the bottom of the third against Seattle University on February 9 ... ranked second in the Pac-12 in triples (5) ... was named Pac-12 Freshman of the Week on March 5.

THIS WEEK

The Cardinal opens the 2020 season this weekend at the GCU Kickoff Tournament in Phoenix, Ariz. Stanford will play two games against Grand Canyon University, New Mexico and Weber State, beginning with Thursday's 5 p.m. opener against the host Lopes.

A LOOK BACK

Stanford went 33-20 overall in 2019, including an 8-13 mark in the Pac-12 Conference, to reach its first NCAA Tournament since 2013. The Cardinal's 33 wins, two of which came over top-10 opponents, were the most in a season since 2013, and the winning record was the first for the Card since 2014. In addition, Stanford's eight Pac-12 wins were more than the previous four years combined (7), and the Cardinal registered a national ranking (#22 according to Softball America) on March 5 for the first time since April 1, 2014. A 12-game win streak, starting with a victory over No. 7 LSU on February 21, provided another highlight for the year, and marked the longest such streak since the 2014 squad began the season 13-0. Statistically speaking, 2019 saw the Cardinal register the most triples in program history, as Stanford managed 25 to lead the Conference and rank second in the nation.

CARD PICKED SIXTH IN PRESEASON POLL

Stanford was chosen by the conference coaches to finish sixth in the stacked Pac-12 Conference this season. Washington, one of three league teams in the 2019 Women's College World Series, garnered 69 points and six first-place votes to sit atop the poll. UCLA, the reigning NCAA National Champion, was selected to finish a close second with 65 points and two first-place votes. Arizona received the last remaining first place vote and was picked to finish third with 61 points. Arizona State was selected fourth with 49 points, followed by fifth place Oregon with 40 points. The Cardinal tallied 38 points to rank sixth, Oregon State placed seventh with 34 points and California and Utah rounded out the poll, tying for eighth place, with 20 points each.

CARDINAL VS. THE KICKOFF FIELD

The Cardinal is 1-1 against Grand Canyon University, including posting a 5-0 victory over the Lopes in the most recent meeting on February 17, 2018. Stanford has amassed a 2-1 record against New Mexico, most recently dropping an 8-4 decision on February 13, 2016. The Cardinal boasts a 2-1 mark against Weber State, including a 2-1 setback in eight innings last year on February 10 from the Kajikawa Classic.



**2019 Stanford Softball
Overall Statistics for Stanford (as of Dec 06, 2019)
(All games Sorted by Batting avg)**



Record: 33-20 Home: 18-11 Away: 6-6 Neutral: 9-3 Pac-12: 8-13

Player	avg	gp-gs	ab	r	h	2b	3b	hr	rbi	tb	slg%	bb	hp	so	gdp	ob%	sf	sh	sb-att	po	a	e	fld%	
23 Cowles, Teaghan	.374	53-53	174	35	65	10	5	6	20	103	.592	19	3	12	1	.442	1	1	10-11	31	5	1	.973	
20 Inouye, Kristina	.309	53-53	152	20	47	3	4	3	31	67	.441	18	4	16	3	.392	2	0	0-0	50	102	9	.944	
13 Schultz, Emily	.304	47-39	102	17	31	10	4	3	25	58	.569	20	1	19	0	.419	1	1	1-2	32	1	1	.971	
3 Horeczko, Alyssa	.300	35-32	80	13	24	0	0	0	11	24	.300	3	0	10	0	.325	0	5	9-9	67	5	0	1.000	
11 Howell, Hannah	.294	45-45	136	24	40	6	1	0	8	48	.353	12	1	11	0	.356	0	0	3-5	85	1	0	1.000	
12 Dixon, Montana	.285	53-53	137	26	39	10	2	5	27	68	.496	21	11	29	3	.415	2	2	0-0	252	18	5	.982	
2 Young, Emily	.284	53-53	141	35	40	8	5	3	18	67	.475	13	3	16	0	.350	3	4	4-4	96	100	16	.925	
34 Klingaman, Emily	.233	53-53	150	24	35	9	2	1	19	51	.340	19	3	30	0	.328	2	4	3-4	102	66	9	.949	
33 Burks, Whitney	.211	49-48	123	24	26	6	1	7	31	55	.447	28	6	38	0	.380	1	1	1-2	271	5	7	.975	

10 Matteson, Hannah	.500	14-0	2	5	1	0	0	0	0	1	.500	0	0	0	0	.500	0	0	2-3	0	0	0	.000	
18 Fowkes, Molly	.194	24-9	36	1	7	1	1	0	4	10	.278	4	0	7	0	.275	0	0	0-0	0	0	0	.000	
25 Gindlesperger, T.	.167	42-33	78	13	13	0	0	1	10	16	.205	6	2	10	0	.244	0	1	6-7	41	2	3	.935	
22 Cressey, Kate	.042	17-6	24	5	1	0	0	0	3	1	.042	2	1	10	0	.148	0	0	0-0	1	3	1	.800	
42 Jackson, Maya	.000	3-0	2	0	0	0	0	0	0	0	.000	0	0	2	0	.000	0	0	0-0	1	0	0	1.000	
5 Frost, Lauren	.000	24-0	1	5	0	0	0	0	0	0	.000	0	0	0	0	.000	0	0	2-2	0	0	0	.000	
Totals	.276	53	1338	247	369	63	25	29	207	569	.425	165	35	210	7	.367	12	19	41-49	1041	374	55	.963	
Opponents	.261	53	1350	208	352	53	6	39	193	534	.396	121	33	220	10	.334	13	31	10-16	996	360	59	.958	

LOB - Team (328), Opp (301). DPs turned - Team (19), Opp (17). CI - Team (1), Dixon, M. 1, Opp (1). IBB - Team (4), Cowles, T. 4, Opp (2).

(All games Sorted by Earned run avg)

Player	era	w-l	app	gs	cg	sho	sv	ip	h	r	er	bb	so	2b	3b	hr	b/avg	wp	hp	bk	sfa	sha
95 Dwyer, Maddy	3.12	12-6	22	18	4	0/5	1	92.0	92	50	41	33	52	13	1	8	.259	2	8	0	0	10
7 Lee, Carolyn	3.34	12-10	32	30	8	0/2	1	157.1	156	94	75	44	108	28	1	19	.253	5	15	0	7	14

19 Pancino, Kiana	2.49	7-0	29	1	0	0/3	8	50.2	38	24	18	22	42	3	4	7	.213	3	6	0	4	6
9 Bauer, Nikki	3.99	2-1	13	1	0	0/2	0	26.1	39	25	15	13	8	5	0	3	.339	0	2	0	2	0
8 Millar, Molly	4.74	0-3	9	3	0	0/1	0	20.2	27	15	14	9	10	4	0	2	.314	1	2	0	0	1
Totals	3.29	33-20	53	53	12	6/6	10	347.0	352	208	163	121	220	53	6	39	.261	11	33	0	13	31
Opponents	4.05	20-33	53	53	19	7/2	5	332.0	369	247	192	165	210	63	25	29	.276	35	35	0	12	19

PB - Team (3), Dixon, M. 3, Opp (6). Pickoffs - Team (1), Dixon, M. 1. SBA/ATT - Dixon, M. (10-16), Dwyer, M. (3-6), Lee, C. (3-5), Pancino, K. (3-3), Bauer, N. (1-2).



**2019 Stanford Softball
Game Results for Stanford (as of Dec 06, 2019)
(All games)**



Date	Opponent	Score	Inns	Overall	Pac-12	Pitcher of record	Attend	Time
Feb 08, 2019	vs Bradley	w 12-5	7	1-0-0	0-0-0	Pancino, K. (W 1-0)	336	2:44
Feb 08, 2019	vs Kansas	w 12-3	5	2-0-0	0-0-0	Dwyer, M. (W 1-0)	695	1:57
Feb 09, 2019	vs Western Michigan	w 5-1	7	3-0-0	0-0-0	Lee, C. (W 1-0)	150	1:30
Feb 09, 2019	vs Seattle University	w 6-4	7	4-0-0	0-0-0	Dwyer, M. (W 2-0)	134	2:08
Feb 10, 2019	vs Weber State	L 1-2	(8)	4-1-0	0-0-0	Lee, C. (L 1-1)	397	1:45
Feb 14, 2019	PACIFIC	w 6-1	7	5-1-0	0-0-0	Dwyer, M. (W 3-0)	118	1:57
Feb 16, 2019	IOWA STATE	w 2-1	(8)	6-1-0	0-0-0	Pancino, K. (W 2-0)	142	2:06
Feb 16, 2019	COLORADO STATE	L 0-5	7	6-2-0	0-0-0	Dwyer, M. (L 3-1)	160	2:06
@Feb 21, 2019	at #7 LSU	w 7-5	7	7-2-0	0-0-0	Bauer, N. (W 1-0)	1152	2:30
Feb 22, 2019	vs CSUN	w 2-0	7	8-2-0	0-0-0	Dwyer, M. (W 4-1)	0	2:00
Feb 22, 2019	vs Michigan	w 7-1	7	9-2-0	0-0-0	Pancino, K. (W 3-0)	0	2:03
Feb 23, 2019	vs Memphis	w 5-1	7	10-2-0	0-0-0	Dwyer, M. (W 5-1)	0	2:20
Feb 24, 2019	vs CSUN	w 3-2	7	11-2-0	0-0-0	Lee, C. (W 2-1)	0	1:47
Mar 01, 2019	#23 NORTHWESTERN	w 1-0	7	12-2-0	0-0-0	Lee, C. (W 3-1)	384	1:41
Mar 01, 2019	MONTANA	w 7-3	7	13-2-0	0-0-0	Dwyer, M. (W 6-1)	384	1:58
Mar 02, 2019	MONTANA	w 8-0	5	14-2-0	0-0-0	Bauer, N. (W 2-0)	374	1:20
Mar 03, 2019	NORTH DAKOTA STATE	w 3-2	7	15-2-0	0-0-0	Pancino, K. (W 4-0)	565	1:58
Mar 03, 2019	CAL POLY	w 13-5	6	16-2-0	0-0-0	Pancino, K. (W 5-0)	565	2:11
Mar 08, 2019	BUCKNELL	w 2-1	7	17-2-0	0-0-0	Lee, C. (W 4-1)	225	1:40
Mar 08, 2019	UMASS LOWELL	w 7-6	7	18-2-0	0-0-0	Pancino, K. (W 6-0)	225	2:01
Mar 09, 2019	UNLV	L 0-1	7	18-3-0	0-0-0	Dwyer, M. (L 6-2)	240	1:30
Mar 09, 2019	UMASS LOWELL	w 4-3	7	19-3-0	0-0-0	Lee, C. (W 5-1)	240	1:45
Mar 10, 2019	UNLV	L 1-4	6	19-4-0	0-0-0	Lee, C. (L 5-2)	198	1:56
* Mar 23, 2019	at California	w 9-3	7	20-4-0	1-0-0	Lee, C. (W 6-2)	444	2:36
* Mar 24, 2019	at California	w 11-10	7	21-4-0	2-0-0	Lee, C. (W 7-2)	716	2:43
Mar 27, 2019	SAINT MARY'S-1	w 8-0	5	22-4-0	2-0-0	Dwyer, M. (W 7-2)	435	1:19
Mar 27, 2019	SAINT MARY'S-2	w 8-0	6	23-4-0	2-0-0	Dwyer, M. (W 8-2)	435	1:53
* Mar 29, 2019	OREGON	w 8-6	7	24-4-0	3-0-0	Lee, C. (W 8-2)	810	2:24
* Mar 30, 2019	OREGON	L 2-7	7	24-5-0	3-1-0	Dwyer, M. (L 8-3)	573	2:21
* Mar 31, 2019	OREGON	w 7-6	7	25-5-0	4-1-0	Pancino, K. (W 7-0)	872	2:21
Apr 02, 2019	SACRAMENTO STATE-1	w 8-7	7	26-5-0	4-1-0	Dwyer, M. (W 9-3)	120	2:43
Apr 02, 2019	SACRAMENTO STATE-2	L 2-5	7	26-6-0	4-1-0	Dwyer, M. (L 9-4)	120	2:02
* Apr 05, 2019	at Oregon State	w 3-2	7	27-6-0	5-1-0	Lee, C. (W 9-3)	398	2:06
Apr 09, 2019	at Santa Clara	w 13-0	5	28-6-0	5-1-0	Dwyer, M. (W 10-4)	100	1:42
* Apr 12, 2019	UTAH	L 1-2	7	28-7-0	5-2-0	Lee, C. (L 9-3)	363	1:39
* Apr 13, 2019	UTAH	w 6-3	7	29-7-0	6-2-0	Dwyer, M. (W 11-4)	517	1:46
* Apr 14, 2019	UTAH	w 6-2	7	30-7-0	7-2-0	Lee, C. (W 10-3)	592	1:51
* Apr 18, 2019	at #7 Arizona	L 0-7	7	30-8-0	7-3-0	Dwyer, M. (L 11-5)	2643	1:42
* Apr 19, 2019	at #7 Arizona	L 1-9	5	30-9-0	7-4-0	Lee, C. (L 10-4)	2841	1:35
* Apr 20, 2019	at #7 Arizona	L 2-13	5	30-10-0	7-5-0	Dwyer, M. (L 11-6)	2737	1:41
Apr 23, 2019	at Fresno State	w 3-2	7	31-10-0	7-5-0	Dwyer, M. (W 12-6)	914	2:17
* Apr 26, 2019	ARIZONA STATE	L 4-10	7	31-11-0	7-6-0	Lee, C. (L 10-5)	412	2:13
* Apr 27, 2019	ARIZONA STATE	L 4-7	7	31-12-0	7-7-0	Bauer, N. (L 2-1)	610	2:35
* Apr 28, 2019	ARIZONA STATE	L 5-10	7	31-13-0	7-8-0	Lee, C. (L 10-6)	537	2:25
* May 03, 2019	#2 UCLA	w 2-1	7	32-13-0	8-8-0	Lee, C. (W 11-6)	801	1:47
* May 04, 2019	#2 UCLA	L 4-7	7	32-14-0	8-9-0	Millar, M. (L 0-1)	1078	2:10
* May 05, 2019	#2 UCLA	L 0-4	7	32-15-0	8-10-0	Lee, C. (L 11-7)	1079	1:47
* May 09, 2019	at #2 Washington	L 2-5	7	32-16-0	8-11-0	Lee, C. (L 11-8)	1400	1:45
* May 10, 2019	at #2 Washington	L 0-8	5	32-17-0	8-12-0	Millar, M. (L 0-2)	1713	1:35
* May 11, 2019	at #2 Washington	L 0-3	7	32-18-0	8-13-0	Lee, C. (L 11-9)	1876	1:52
May 17, 2019	vs Boise State	L 1-9	7	32-19-0	8-13-0	Lee, C. (L 11-10)	1436	2:40
May 18, 2019	vs Boston University	w 13-2	5	33-19-0	8-13-0	Lee, C. (W 12-10)	1924	1:46
May 18, 2019	vs Boise State	L 0-2	7	33-20-0	8-13-0	Millar, M. (L 0-3)	1924	2:07

() extra inning game

THE LAST TIME IT HAPPENED

INDIVIDUAL HITTING

4+ Hits	4, Whitney Burks, 3/3/19 vs. Cal Poly
5+ Hits	5, Lauren Bertoy, 2/11/17 vs. Purdue
5+ RBI	5, Taylor Gindlesperger, 4/9/19 at Santa Clara
6+ RBI	6, Kristina Inouye, 2/8/19 vs. Kansas
7+ RBI	7, Sarah Beeson, 4/25/00 vs. Sacramento State
4+ Runs	4, Teaghan Cowles, 3/3/19 vs. Cal Poly
5+ Runs	5, Sarah Hassman, 2/18/11 vs. Utah State
3+ Walks	3, Kristina Inouye, 4/23/19 at Fresno State
4+ Walks	4, Whitney Burks, 3/27/19 vs. Saint Mary's (2)
3+ Hit-by-Pitch	3, Arden Pettit, 3/10/18 vs. CSU Bakersfield
3+ Stolen Bases	3, Alyssa Horeczko, 2/24/18
2+ Home Runs	2, Whitney Burks, 2/8/19 vs. Bradley
3+ Home Runs	None Since At Least 1999
Leadoff Home Run	Teaghan Cowles, 3/8/19 vs. Bucknell
Grand Slam	Taylor Gindlesperger, 4/9/19 at Santa Clara (T4)
Pinch-Hit Home Run	Montana Dixon, 4/29/17 vs. UCLA
Inside-the-Park Home Run	Emily Young, 2/9/19 vs. Seattle U
Inside-the-Park Grand Slam	Emily Young, 2/9/19 vs. Seattle U
Walk-Off Home Run	Victoria Molina, 2-run HR, 4-2 (9), 5/3/15 vs. Arizona State
Walk-Off Grand Slam	None Since At Least 2008
9+ Total Bases	9, Kylie Sorenson, 3/4/16
10+ Total Bases	10, Ashley Hansen, 4/10/12 at UCLA
6+ At Bats	6, Teaghan Cowles/Kristina Inouye, 4/23/17 at Oregon State
7+ At Bats	7, Danielle Miller, 4/8/11 at UCLA
Two Hits in Inning	Whitney Burks, 3/11/18 vs. CSUB (B3)

INDIVIDUAL PITCHING

Complete Game	Carolyn Lee, 5/9/19 at #2 Washington
Complete Game Win	Carolyn Lee, 5/3/19 vs. #2 UCLA
Shutout	Maddy Dwyer (5 IP), 3/10/18 vs. Wagner
Shutout (7+ IP)	Kiana Pancino, 3/9/18 vs. Wagner
Perfect Game	Kelsey Stevens, 2/23/13 vs. Virginia
No-Hitter	Kiana Pancino (5 IP), 2/18/18 vs. Army
No-Hitter (7+ IP)	Kelsey Stevens, 2/23/13 vs. Virginia
One-Hitter	Maddy Dwyer (5 IP), 3/10/18 vs. Wagner
One-Hitter (7+ IP)	Kiana Pancino, 5/6/17 at #7 Washington
Two-Hitter	Maddy Dwyer, 2/17/18 vs. Grand Canyon
14+ Strikeouts	14, Teagan Gerhart, 5/6/11 at Oregon
15+ Strikeouts	19, Missy Penna, 3/23/09 vs. Cal Poly
16+ Strikeouts	19, Missy Penna, 3/23/09 vs. Cal Poly
17+ Strikeouts	19, Missy Penna, 3/23/09 vs. Cal Poly
18+ Strikeouts	19, Missy Penna, 3/23/09 vs. Cal Poly
19+ Strikeouts	19, Missy Penna, 3/23/09 vs. Cal Poly
9+ Innings Pitched	10.0, Carolyn Lee, 4/3/16 vs. Oregon State
10+ Innings Pitched	10.0, Carolyn Lee, 4/3/16 vs. Oregon State
11+ Innings Pitched	13.0, Teagan Gerhart, 4/8/11 at UCLA
12+ Innings Pitched	13.0, Teagan Gerhart, 4/8/11 at UCLA
13+ Innings Pitched	13.0, Teagan Gerhart, 4/8/11 at UCLA

TEAM HITTING

15+ Runs	17, 3/11/18 vs. CSU Bakersfield
16+ Runs	17, 3/11/18 vs. CSU Bakersfield
17+ Runs	17, 3/11/18 vs. CSU Bakersfield
18+ Runs	18, 2/18/11 vs. Utah State
17+ Hits	17, 3/3/19 vs. Cal Poly
18+ Hits	21, 2/11/17 vs. Purdue
19+ Hits	21, 2/11/17 vs. Purdue
20+ Hits	21, 2/11/17 vs. Purdue
21+ Hits	21, 2/11/17 vs. Purdue
6+ Doubles	8, 3/27 vs. Saint Mary's (1)
7+ Doubles	8, 3/27 vs. Saint Mary's (1)
8+ Doubles	8, 3/27 vs. Saint Mary's (1)
2+ Triples	2, 4/9/19 at Santa Clara
3+ Triples	3, 2/9/18 vs. Seattle U
4+ Triples	4, 2/16/13 vs. CSU Bakersfield

2+ Home Runs	2, 4/13/19 vs. Utah
3+ Home Runs	3, 3/5/16 at Hawai'i
4+ Home Runs	4, 4/28/13 vs. Utah
2+ Home Runs in Inning	2, Kristina Inouye/Montana Dixon, 4/13/19 vs. Utah (B1)
3+ Home Runs in Inning	3, Victoria Molina/Lauren Frost/Kylie Sorenson, 2/28/16 vs. San Diego State (B4)
Back-to-Back Home Runs	Kristina Inouye/Montana Dixon, 4/13/19 vs. Utah (B1)
Three Consecutive Home Runs	None Since At Least 2008

11+ Walks	14, 2/27/16 vs. NC State
12+ Walks	14, 2/27/16 vs. NC State
13+ Walks	14, 2/27/16 vs. NC State
14+ Walks	14, 2/27/16 vs. NC State
5+ Hit Batters	6, 3/10/18 vs. CSU Bakersfield
6+ Hit Batters	6, 3/10/18 vs. CSU Bakersfield
5+ Stolen Bases	6, 4/11/18 vs. Saint Mary's
6+ Stolen Bases	6, 4/11/18 vs. Saint Mary's
7+ Stolen Bases	7, 4/16/11 vs. Oregon State
10+ Runs in Inning	12, 2/18/17 vs. UC Santa Barbara (B2)

TEAM PITCHING

15+ Strikeouts	19, 3/23/09 vs. Cal Poly
16+ Strikeouts	19, 3/23/09 vs. Cal Poly
17+ Strikeouts	19, 3/23/09 vs. Cal Poly
18+ Strikeouts	19, 3/23/09 vs. Cal Poly
19+ Strikeouts	19, 3/23/09 vs. Cal Poly
Shutout	13-0 (5), 4/9/19 at Santa Clara
Consecutive Shutouts (2+)	2, 3/27/19
Consecutive Shutouts (3+)	3, 3/9/18-3/10/18
No-Hitter	Kiana Pancino (5 IP), 2/18/18 vs. Army
No-Hitter (7+ IP)	Kelsey Stevens, 2/23/13 vs. Virginia
One-Hitter	Maddy Dwyer (2 IP)/Nikki Bauer (4 IP)/Kiana Pancino (IP), 3/11/18 vs. Wagner
Two-Hitter	Carolyn Lee (2.1 IP)/Maddy Dwyer (1.2 IP)/Molly Millar (IP), 4/9/19 at Santa Clara

TEAM MISCELLANEOUS

1-0 Victory	3/1/19 vs. #23 Northwestern
1-0 Loss	3/9/19 vs. UNLV
Walk-Off Win	8-0 (6), 3/27/19 vs. Saint Mary's (2)
Walk-Off Loss	2-1 (8), 2/10/19 vs. Weber State
Turned 3+ Double Plays	3, 2/22/13 vs. Georgia
Turned Triple Play	8-4-6-3, 5/13/16 vs. #13 Washington (T7)
Played 10+ Innings	10, 4/3/16 vs. Oregon State
Played 11+ Innings	14, 4/8/11 at UCLA
Played 12+ Innings	14, 4/8/11 at UCLA
Played 13+ Innings	14, 4/8/11 at UCLA
Played 14+ Innings	14, 4/8/11 at UCLA
Won a Pac-12 Series	2-1, 4/12 - 4/14/19 vs. Utah
Won a Pac-12 road series	2-0, 3/23 - 3/25/19 at Cal
Swept a Pac-12 series	2-0, 3/23 - 3/25/19 at Cal
Swept a Pac-12 road series	2-0, 3/23 - 3/25/19 at Cal
Won by run-rule	13-2 (5), 5/18/19 vs. Boston University
Lost by run-rule	8-0 (5), 5/10/19 at #2 Washington
Won in extra innings	2-1 (8), 2/16/19 vs. Iowa State
Lost in extra innings	2-1 (8), 2/10/19 vs. Weber State
Won a one-run game	2-1, 5/3/19 vs. #2 UCLA
Lost a one-run game	2-1, 4/12/19 vs. Utah
Beat a ranked opponent	2-1, 5/3/19 vs. #2 UCLA
Beat a ranked opponent on the road	7-5, 2/21/19 at #7 LSU
Beat a top-5 opponent	2-1, 5/3/19 vs. #2 UCLA
Beat a top-5 opponent on the road	4-1, 4/8/18 at #3 UCLA

MILESTONES AND STREAKS

PERFECT GAMES

Kelsey Stevens.....	2/23/13 vs. Virginia
Ashley Chinn.....	3/27/11 vs. Coastal Carolina
Teagan Gerhart.....	3/19/10 vs. Santa Clara
Ashley Chinn.....	3/22/08 vs. Princeton
Dana Sorensen.....	3/28/04 vs. Hawaii
Dana Sorensen.....	3/24/01 vs. Portland State
Maureen LeCocq.....	2/17/01 vs. Long Beach State
Marcy Crouch.....	3/23/99 vs. Portland State
Marcy Crouch.....	3/5/99 vs. Auburn
Marcy Crouch.....	3/1/99 vs. South Carolina

NO-HITTERS

Kiana Pancino.....	2/18/18 vs. Army
Madi Schreyer/Nyree White.....	2/8/14 vs. Western Michigan
Kelsey Stevens.....	2/23/13 vs. Virginia
Ashley Chinn.....	3/27/11 vs. Coastal Carolina
Teagan Gerhart.....	3/20/10 vs. Saint Mary's
Teagan Gerhart.....	3/20/10 vs. Princeton
Teagan Gerhart.....	3/19/10 vs. Santa Clara
Ashley Chinn.....	4/22/09 vs. San Jose State
Missy Penna.....	2/7/09 vs. Kansas
Missy Penna.....	5/18/08 at Massachusetts
Ashley Chinn.....	4/15/08 vs. Santa Clara
Ashley Chinn.....	3/22/08 vs. Princeton
Missy Penna.....	2/8/08 at San Diego
Missy Penna.....	4/11/07 vs. Saint Mary's
Missy Penna.....	3/26/06 vs. UC Davis
Dana Sorensen.....	3/28/04 vs. Hawaii
Dana Sorensen.....	3/30/03 vs. Washington
Dana Sorensen.....	2/28/03 vs. Georgia
Dana Sorensen.....	3/24/01 vs. Portland State
Dana Sorensen.....	2/25/01 vs. South Carolina
Maureen LeCocq.....	2/17/01 vs. Long Beach State
Marcy Crouch.....	3/23/99 vs. Portland State
Becky Blevins.....	3/7/99 vs. Portland State
Marcy Crouch.....	3/5/99 vs. Auburn
Marcy Crouch.....	3/1/99 vs. South Carolina
Becky Blevins.....	3/24/98 vs. Harvard
Becky Blevins.....	2/12/97 vs. Saint Mary's

HIT FOR THE CYCLE

None Since At Least 2008

LONGEST GAMES

L, 5-3 (15).....	5/6/01 vs. Arizona
L, 6-5 (14).....	4/8/11 at #6 UCLA
L, 3-0 (13).....	3/30/08 vs. #1 Arizona State
W, 1-0 (12).....	4/1/10 vs. #14 California
W, 1-0 (11).....	3/28/09 vs. #2 Washington

TEAM SEASON RECORDS

BATTING AVERAGE

1. 2012	.318
2. 2014	.316
3. 2011	.300
2013	.300
5. 2010	.297
6. 2006	.296
7. 2009	.294
8. 2005	.293
9. 1999	.281
10. 2000	.279

HITS

1. 2012	502
2. 2013	496
3. 2004	481
4. 2011	473
5. 1999	472
6. 2014	470
7. 2001	467
8. 2006	466
9. 2000	463
10. 2005	459
2009	459

DOUBLES

1. 2001	102
2. 2009	101
3. 2014	88
4. 2002	87
5. 2008	86
6. 2010	82
7. 2012	79
8. 2003	76
2004	76
10. 2000	74
2005	74

TRIPLES

1. 2019	25
2. 2012	20
3. 2013	19
4. 2014	17
2018	17
6. 2009	16
7. 2005	14
2006	14
9. 2004	13
10. 2015	11

HOME RUNS

1. 2005	67
2. 2008	53
3. 2002	46
4. 2011	45
2013	45
6. 2001	44
7. 2009	40
8. 2015	39
2016	39
10. 2010	36

RUNS BATTED IN

1. 2014	302
2. 2012	298
3. 2013	295
4. 2005	290
5. 2009	277
6. 2002	275
7. 2008	274
8. 2001	266
2011	266
10. 2015	259

SLUGGING %

1. 2005	.487
2. 2009	.456
2014	.456
4. 2012	.454
5. 2010	.445
6. 2013	.444
7. 2011	.442
8. 2008	.434
9. 2019	.425
10. 2015	.422
-- 2002	.416

RUNS

1. 2012	337
2. 2014	331
3. 2013	330
4. 2005	319
5. 2009	308
6. 2002	305
7. 2008	301
8. 1999	296
9. 2011	295
10. 2001	293

STOLEN BASES

1. 2011	91
2. 2010	82
3. 2001	80
4. 2002	63
2004	63
2009	63
7. 2013	62
8. 2008	60
9. 2000	58
10. 2014	55
2018	55

WALKS

1. 2008	248
2. 2011	214
3. 2014	205
4. 2009	201
2013	201
6. 2002	198
2015	198
8. 1999	179
9. 2010	176
10. 2001	173

AT BATS

1. 2001	1,814
2. 2004	1,783
3. 2003	1,692
4. 1999	1,680
5. 2002	1,677
6. 2000	1,662
7. 2013	1,654
8. 2008	1,629
9. 2012	1,581
10. 1997	1,578
2011	1,578

FIELDING %

1. 2005	.979
2006	.979
3. 2004	.974
2010	.974
2018	.974
5. 2001	.973
2011	.973
2013	.973
8. 2003	.972
2008	.972
10. 2002	.971
2007	.971
2009	.971

EARNED RUN AVERAGE

1. 2001	1.20
2. 1998	1.30
3. 2008	1.37
4. 2000	1.48
5. 2005	1.62
6. 1999	1.68
7. 2004	1.75
8. 2009	1.80
9. 2003	1.81
10. 2002	1.93

WINS

1. 2001	54
2. 2004	49
2008	49
4. 2009	48
5. 2000	45
6. 2002	44
7. 2005	43
8. 2006	42
2011	42
10. 1998	41
2003	41

STRIKEOUTS

1. 2008	513
2. 2003	512
3. 2004	484
4. 2001	483
5. 2009	465
6. 2007	382
7. 2011	367
8. 2013	346
9. 2000	313
10. 2010	307

SHUTOUTS

1. 2001	34
2. 1998	25
3. 2004	24
4. 2008	23
2009	23
6. 1999	22
7. 2003	20
8. 2010	19
2012	19
10. 2006	18

INNINGS PITCHED

1. 2001	477.1
2. 2004	467.0
3. 2003	456.0
4. 2000	441.1
5. 2008	434.0
6. 1999	426.0
7. 2002	425.0
8. 1998	420.2
9. 1997	402.0
10. 2006	399.0

CAREER RECORDS

BATTING AVERAGE

1. Jessica Mendoza	1999-2002	.416
2. Alissa Haber	2007-2010	.407
3. Ashley Hansen	2009-2012	.402
4. Hanna Winter	2012-2015	.374
5. Kayla Bonstrom	2013-2016	.372
6. Sarah Beeson	1999-2002	.350
7. Jackie Rinehart	2004-2007	.341
8. Teaghan Cowles	2017-2019	.338
9. Lauren Lappin	2003-2006	.337
10. Catalina Morris	2003-2006	.336
Leah White	2012-2015	.336

HITS

1. Jessica Mendoza	1999-2002	327
2. Alissa Haber	2007-2010	309
3. Ashley Hansen	2009-2012	301
4. Hanna Winter	2012-2015	271
5. Catalina Morris	2003-2006	261
6. Sarah Beeson	1999-2002	259
7. Jackie Rinehart	2004-2007	255
8. Lauren Lappin	2003-2006	247
9. Jenna Rich	2010-2013	246
10. Robin Walker	1999-2002	243

DOUBLES

1. Ashley Hansen	2009-2012	81
2. Alissa Haber	2007-2010	72
3. Jessica Mendoza	1999-2002	70
4. Sarah Beeson	1999-2002	66
5. Kayla Bonstrom	2013-2016	55
6. Jessica Allister	2001-2004	47
Maddy Coon	2006-2009	47
8. Robin Walker	1999-2002	46
9. Catalina Morris	2003-2006	45
10. Kira Ching	2000-2003	44

TRIPLES

1. Ashley Hansen	2009-2012	18
2. Catalina Morris	2003-2006	17
3. Teaghan Cowles	2017-2019	15
4. Cassandra Roulund	2012-2015	11
5. Kira Ching	2000-2003	10
Jenna Rich	2010-2013	10
7. Jessica Mendoza	1999-2002	9
Alissa Haber	2007-2010	9
Hanna Winter	2012-2015	9
10. Michelle Schneider	1996-1999	8
Lauren Lappin	2003-2006	8
Anna Beardman	2005-2008	8
Shannon Koplitz	2007-2010	8
Leah White	2012-2015	8

HOME RUNS

1. Jessica Mendoza	1999-2002	50
2. Jenna Rich	2010-2013	45
3. Michelle Smith	2005-2008	40
4. Rosey Neill	2007-2010	39
5. Catalina Morris	2003-2006	34
6. Jessica Allister	2001-2004	32
7. Kayla Bonstrom	2013-2016	30
8. Sarah Beeson	1999-2002	28
Maddy Coon	2006-2009	28
10. Kira Ching	2000-2003	24
Alissa Haber	2007-2010	24

RUNS BATTED IN

1. Jenna Rich	2010-2013	214
2. Sarah Beeson	1999-2002	201
3. Jessica Mendoza	1999-2002	188
4. Ashley Hansen	2009-2012	179
5. Michelle Smith	2005-2008	177
Kayla Bonstrom	2013-2016	177
6. Jessica Allister	2001-2004	162
8. Kira Ching	2000-2003	152
9. Rosey Neill	2007-2010	146
10. Maddy Coon	2006-2009	142

SLUGGING PERCENTAGE (MIN. 200 AB)

1. Jessica Mendoza	1999-2002	.719
2. Ashley Hansen	2009-2012	.643
3. Kayla Bonstrom	2013-2016	.622
4. Alissa Haber	2007-2010	.619
5. Jenna Rich	2010-2013	.587
6. Catalina Morris	2003-2006	.570
7. Sarah Beeson	1999-2002	.556
8. Maddy Coon	2006-2009	.529
Kylie Sorenson	2014-2017	.529
10. Rosey Neill	2007-2010	.513

RUNS SCORED

1. Jessica Mendoza	1999-2002	230
2. Alissa Haber	2007-2010	200
3. Ashley Hansen	2009-2012	192
4. Catalina Morris	2003-2006	174
5. Sarah Hassman	2009-2013	169
6. Lauren Lappin	2003-2006	168
Jenna Rich	2010-2013	168
8. Leah White	2012-2015	162
9. Hanna Winter	2012-2015	161
10. Robin Walker	1999-2002	160

STOLEN BASES

1. Sarah Hassman	2009-2013	99
2. Jessica Mendoza	1999-2002	86
3. Hanna Winter	2012-2015	57
4. Alissa Haber	2007-2010	56
5. Catalina Morris	2003-2006	43
6. Kira Ching	2000-2003	39
7. Teaghan Cowles	2017-2019	31
Lauren Lappin	2003-2006	31
9. Tylyn Wells	2012-2015	30
10. Teagan Gerhart	2010-2013	28

WALKS

1. Maddy Coon	2006-2009	139
2. Rosey Neill	2007-2010	123
3. Sarah Beeson	1999-2002	115
4. Bessie Noll	2014-2017	105
5. Alissa Haber	2007-2010	104
6. Kylie Sorenson	2014-2017	96
7. Shannon Koplitz	2007-2010	93
8. Ashley Hansen	2009-2012	92
9. Jessica Mendoza	1999-2002	90
10. Erin Howe	2005-2008	89

AT BATS

1. Robin Walker	1999-2002	820
2. Jessica Mendoza	1999-2002	786
3. Catalina Morris	2003-2006	776
4. Jessica Allister	2001-2004	765
5. Kellie Wiginton	1997-2000	761
6. Alissa Haber	2007-2010	760
7. Jenna Rich	2010-2013	753
8. Jackie Rinehart	2004-2007	748
Ashley Hansen	2009-2012	748
10. Sarah Beeson	1999-2002	739

GAMES PLAYED

1. Jessica Allister	2001-2004	266
2. Robin Walker	1999-2002	263
3. Cassi Brangham	2000-2003	262
4. Sarah Beeson	1999-2002	261
5. Jessica Mendoza	1999-2002	259
6. Lauren Lappin	2003-2006	248
7. Catalina Morris	2003-2006	247
8. Kellie Wiginton	1997-2000	246
9. Sarah Hassman	2009-2013	245
10. Jackie Rinehart	2004-2007	240
Michelle Smith	2005-2008	240

FIELDING PERCENTAGE (MIN. 300 TC)

1. Jessica Plaza	2013-2016	.997
2. Jessica Allister	2001-2004	.994
3. Rosey Neill	2007-2010	.993
4. Kellie Wiginton	1997-2000	.990
Maya Burns	2009-2012	.990
6. Melissa Koutz	2008-2011	.989
7. Sarah Beeson	1999-2002	.986
Erin Howe	2005-2008	.986
9. Marcy Crouch	1996-1999	.984
Jenna Becerra	2009-2012	.984
Sarah Hassman	2009-2013	.984

PUTOUPS

1. Sarah Beeson	1999-2002	1957
2. Rosey Neill	2007-2010	1690
3. Kayla Bonstrom	2013-2016	1255
4. Kellie Wiginton	1997-2000	1140
5. Jessica Allister	2001-2004	1103
6. Summer Lee	1994-1997	978
7. Melissa Koutz	2008-2011	963
8. Erin Howe	2005-2008	876
9. Jenni Shideler	1998-2001	709
10. Jessica Plaza	2013-2015	692

ASSISTS

1. Michelle Schneider	1996-1999	616
2. Robin Walker	1999-2002	587
3. Lauren Lappin	2003-2006	511
4. Michelle Smith	2005-2008	445
5. Hanna Winter	2012-2015	439
6. Kylie Sorenson	2014-2017	405
7. Ashley Hansen	2009-2012	372
8. Amanda Renteria	1994-1997	363
9. Jennie Foyle	1996-1999	334
10. Kira Ching	2000-2003	320

EARNED RUN AVG.

1. Dana Sorensen	2000-2004	1.05
2. Becky Blevins	1996-1999	1.59
3. Jessica Schulman	1995-1998	1.72
4. Tori Nyberg	2000-2003	1.74
5. Missy Penna	2006-2009	1.82
6. Maureen LeCocq	2000-2003	1.84
7. Lauren Nydam	2005-2007	1.87
8. Marcy Crouch	1996-1999	1.92
9. Jaime Forman-Lau	2000-2001	2.11
10. Teagan Gerhart	2010-2013	2.24

VICTORIES

1. Missy Penna	2006-2009	119
2. Dana Sorensen	2000-2004	105
3. Teagan Gerhart	2010-2013	101
4. Becky Blevins	1996-1999	70
5. Marcy Crouch	1996-1999	59
6. Tori Nyberg	2000-2003	53
7. Ashley Chinn	2008-2011	52
8. Laura Severson	2003-2006	43
9. Maureen LeCocq	2000-2003	42
Becky McCullough	2005-2008	42

STRIKEOUTS

1. Missy Penna	2006-2009	1,267
2. Dana Sorensen	2000-2004	1,154
3. Teagan Gerhart	2010-2013	782
4. Becky Blevins	1996-1999	595
5. Tori Nyberg	2000-2003	440
6. Ashley Chinn	2008-2011	427
7. Carolyn Lee	2016-2019	333
8. Becky McCullough	2005-2008	293
9. Laura Severson	2003-2006	280
10. Marcy Crouch	1996-1999	264

SHUTOUTS

1. Missy Penna	2006-2009	50
2. Becky Blevins	1996-1999	35
3. Dana Sorensen	2000-2004	32
4. Teagan Gerhart	2010-2013	29
5. Marcy Crouch	1996-1999	22
6. Ashley Chinn	2008-2011	15
7. Tori Nyberg	2000-2003	14
8. Maureen LeCocq	2000-2003	10
Laura Severson	2003-2006	10
10. Jessica Schulman	1995-1998	8

INNINGS PITCHED

1. Missy Penna	2006-2009	1,086.1
2. Dana Sorensen	2000-2004	946.2
3. Teagan Gerhart	2010-2013	927.0
4. Becky Blevins	1996-1999	874.2
5. Marcy Crouch	1996-1999	671.1
6. Carolyn Lee	2016-2019	558.2
7. Tori Nyberg	2000-2003	551.0
8. Ashley Chinn	2008-2011	456.2
9. Becky McCullough	2005-2008	433.1
10. Maureen LeCocq	2000-2002	407.2

SEASON RECORDS

BATTING AVERAGE

1. Ashley Hansen	2011	.495
2. Jessica Mendoza	2000	.475
3. Alissa Haber	2010	.446
4. Alissa Haber	2009	.443
5. Kayla Bonstrom	2015	.439
6. Hanna Winter	2012	.428
7. Jessica Mendoza	1999	.415
8. Jessica Mendoza	2001	.405
9. Kayla Bonstrom	2013	.404
10. Ashley Hansen	2009	.400

HITS

1. Ashley Hansen	2011	95
2. Jessica Mendoza	2000	94
3. Alissa Haber	2009	89
Hanna Winter	2012	89
5. Ashley Hansen	2009	84
6. Jessica Mendoza	2001	83
7. Jessica Mendoza	1999	81
8. Jackie Rinehart	2004	80
9. Sarah Beeson	2001	79
10. Alissa Haber	2010	78

DOUBLES

1. Alissa Haber	2009	26
2. Ashley Hansen	2011	25
3. Ashley Hansen	2009	24
4. Sarah Beeson	2001	23
5. Jessica Mendoza	2000	20
Jessica Mendoza	2001	20
Jessica Allister	2004	20
8. Robin Walker	2002	18
Ashley Hansen	2010	18
10. Sarah Beeson	2000	17
Jessica Mendoza	2002	17

TRIPLES

1. Ashley Hansen	2012	8
2. Catalina Morris	2004	6
Cassandra Roulund	2013	6
Teaghan Cowles	2018	6
5. Anna Beardman	2006	5
Catalina Morris	2006	5
Ashley Hansen	2009	5
Teaghan Cowles	2019	5
Emily Young	2019	5
10. Kelly Yablonski	1996	4
Kira Ching	2003	4
Lauren Lappin	2004	4
Catalina Morris	2005	4
Shannon Koplitz	2009	4
Jenna Rich	2012	4
Hanna Winter	2013	4
Cassandra Roulund	2014	4
Leah White	2015	4
Teaghan Cowles	2017	4
Kristina Inouye	2019	4
Emily Schultz	2019	4

HOME RUNS

1. Michelle Smith	2005	19
Rosey Neill	2008	19
3. Jessica Mendoza	2001	14
Jessica Mendoza	2002	14
5. Jessica Mendoza	2000	13
Catalina Morris	2004	13
Catalina Morris	2005	13
Kayla Bonstrom	2015	13
9. Sarah Beeson	2001	12
Jessica Allister	2004	12
Jenna Rich	2010	12
Jenna Rich	2013	12

RUNS BATTED IN

1. Sarah Beeson	2001	66
Jenna Rich	2012	66
3. Jessica Mendoza	1999	57
4. Jessica Allister	2004	55
Ashley Hansen	2009	55
Kayla Bonstrom	2013	55
7. Michelle Smith	2005	54
Kayla Bonstrom	2015	54
9. Sarah Beeson	2000	53
Rosey Neill	2008	53

SLUGGING PERCENTAGE (MIN. 100 AB)

1. Kayla Bonstrom	2015	.806
2. Ashley Hansen	2011	.797
3. Jessica Mendoza	2000	.783
4. Jessica Mendoza	2001	.737
5. Michelle Smith	2005	.724
6. Alissa Haber	2009	.721
7. Jessica Mendoza	2002	.713
Rosey Neill	2008	.713
9. Sarah Beeson	2001	.686
10. Catalina Morris	2005	.670

RUNS SCORED

1. Jessica Mendoza	2001	70
2. Jessica Mendoza	2002	65
3. Alissa Haber	2009	61
4. Sarah Hassman	2011	60
5. Jessica Mendoza	2000	57
6. Leah White	2012	54
7. Ashley Hansen	2012	53
Jenna Rich	2012	53
9. Lauren Lappin	2005	52
10. Robin Walker	2002	51
Catalina Morris	2004	51
Ashley Hansen	2011	51

STOLEN BASES

1. Sarah Hassman	2011	35
2. Jessica Mendoza	2001	31
3. Jessica Mendoza	2002	29
4. Alissa Haber	2010	23
Sarah Hassman	2010	23
Teagan Gerhart	2011	23
7. Jessica Mendoza	2000	20
8. Sarah Hassman	2009	19
9. Katherine Hoffman	2004	18
Alissa Haber	2009	18
Teaghan Cowles	2018	18

WALKS

1. Maddy Coon	2008	47
2. Bessie Noll	2017	40
3. Erin Howe	2008	38
4. Rosey Neill	2009	37
Kylie Sorenson	2014	37
6. Maddy Coon	2009	34
Ashley Hansen	2012	34
8. Sarah Beeson	2002	33
9. Sarah Beeson	2001	32
Jessica Mendoza	2001	32
Maddy Coon	2006	32
Alissa Haber	2008	32

AT BATS

1. Jackie Rinehart	2004	225
2. Robin Walker	2001	224
3. Kira Ching	2001	223
4. Robin Walker	2002	217
5. Ashley Hansen	2009	210
6. Hanna Winter	2012	208
Hanna Winter	2013	208
8. Catalina Morris	2004	206
Alissa Haber	2008	206
10. Jessica Mendoza	2001	205

GAMES PLAYED

1. Sarah Beeson	2001	71
Kira Ching	2001	71
Jessica Mendoza	2001	71
Robin Walker	2001	71
5. Cassi Brangham	2001	69
6. Jessica Allister	2004	68
Katherine Hoffman	2004	68
Lauren Lappin	2004	68
Catalina Morris	2004	68
Jackie Rinehart	2004	68

FIELDING PERCENTAGE (MIN. 100 TC)

1. Elizabeth Bendig	2005	1.000
Jessica Plaza	2014	1.000
Jessica Plaza	2015	1.000
Jessica Plaza	2016	1.000
3. Jessica Allister	2002	.997
Leah Nelson	2005	.997
Melisa Koutz	2008	.997
7. Jessica Allister	2003	.996
Maya Burns	2012	.996
Arden Pettit	2018	.996
9. Jenni Shideler	1998	.995
10. Rosey Neill	2010	.994
Kelsey Gerhart	2011	.994

PUTOUPS

1. Jenni Shideler	1998	575
2. Sarah Beeson	1999	568
3. Jessica Allister	2003	534
4. Summer Lee	1997	524
5. Rosey Neill	2008	520
6. Jessica Allister	2004	505
7. Sarah Beeson	2000	500
8. Sarah Beeson	2001	469
9. Rosey Neill	2009	467
10. Sarah Beeson	2002	420

ASSISTS

1. Amanda Renteria	1997	167
2. Michelle Schneider	1998	165
3. Michelle Schneider	1997	164
4. Robin Walker	2000	162
5. Lauren Lappin	2005	160
6. Michelle Schneider	1999	153
7. Michelle Smith	2005	150
8. Robin Walker	2002	148
9. Elizabeth Bendig	2003	145
10. Robin Walker	2001	144

EARNED RUN AVERAGE

1. Dana Sorensen	2001	0.64
2. Dana Sorensen	2000	1.06
3. Dana Sorensen	2003	1.09
4. Missy Penna	2008	1.17
5. Maureen LeCocq	2001	1.20
6. Becky Blevins	1998	1.24
7. Jessica Schulman	1995	1.28
8. Marcy Crouch	1998	1.35
9. Dana Sorensen	2004	1.41
10. Tori Nyberg	2002	1.51

WINS

1. Missy Penna	2008	37
2. Missy Penna	2009	35
3. Dana Sorensen	2004	34
4. Teagan Gerhart	2012	32
5. Dana Sorensen	2001	27
6. Tori Nyberg	2002	26
Teagan Gerhart	2011	26
8. Missy Penna	2007	25
9. Becky Blevins	1998	24
10. Dana Sorensen	2000	22
Missy Penna	2006	22
Teagan Gerhart	2010	22
Madi Schreyer	2014	22

STRIKEOUTS

1. Missy Penna	2008	416
2. Missy Penna	2009	364
3. Dana Sorensen	2004	358
4. Dana Sorensen	2003	332
5. Missy Penna	2007	308
6. Dana Sorensen	2001	295
7. Teagan Gerhart	2011	250
8. Teagan Gerhart	2012	205
9. Tori Nyberg	2002	203
10. Becky Blevins	1999	186

SHUTOUTS

1. Missy Penna	2009	18
2. Missy Penna	2008	15
3. Dana Sorensen	2001	13
Dana Sorensen	2004	13
5. Missy Penna	2007	12
6. Becky Blevins	1999	11
Teagan Gerhart	2010	11
8. Becky Blevins	1998	9
Teagan Gerhart	2012	9
10. Becky Blevins	1996	8
Marcy Crouch	1999	8

INNINGS PITCHED

1. Missy Penna	2008	335.0
2. Dana Sorensen	2004	303.0
3. Missy Penna	2009	294.1
4. Teagan Gerhart	2012	261.2
5. Missy Penna	2007	260.1
6. Teagan Gerhart	2011	257.2
7. Madi Schreyer	2014	242.1
8. Tori Nyberg	2002	240.1
9. Angela Webb	1995	226.2
10. Dana Sorensen	2003	218.1



2020 Stanford Softball Roster

<u>No.</u>	<u>Name</u>	<u>Pos.</u>	<u>Ht.</u>	<u>Yr.</u>	<u>B/T</u>	<u>Hometown/Last School</u>
1	Sydnee Huff	INF	5-2	Fr.	L/R	Yucaipa, Calif. / Yucaipa
2	Emily Young	UT	5-6	So.	R/R	Mason, Ohio / Ursuline Academy
3	Alyssa Horeczko	OF	5-9	Sr.	L/R	Huntington Beach, Calif. / Huntington Beach
7	Tatum Boyd	P/UT	5-5	Fr.	R/R	Plano, Texas / Plano West
8	Molly Millar	P	5-9	So.	R/R	Clovis, Calif. / Buchanan
9	Nikki Bauer	P	5-11	Sr.	R/R	Sebewaing, Mich. / Unionville-Sebewaing Area
10	Hannah Matteson	OF	5-3	So.	L/R	San Diego, Calif. / Scripps Ranch
11	Hannah Howell	OF	5-7	Sr.	L/R	Corona, Calif. / Santiago
12	Montana Dixon	C/INF	5-10	Sr.	R/R	Lakewood, Calif. / Lakewood
13	Emily Schultz	1B/OF	6-0	So.	L/L	Aurora, Ill. / Oswego East
14	Gabi Peters	P/UT	6-0	Fr.	R/R	Eagle, Idaho / Eagle
15	Alana Vawter	P	6-0	Fr.	R/R	Kansas City, Mo. / Staley
19	Kiana Pancino	P	5-8	Sr.	R/R	Huntington Beach, Calif. / Edison
20	Kristina Inouye	INF	5-5	Sr.	R/R	Huntington Beach, Calif. / Huntington Beach
21	Kaitlyn Lim	OF	5-5	Fr.	L/L	Irvine, Calif. / Woodbridge
22	Kate Cressey	UT	5-7	So.	R/R	Arlington, Va. / Yorktown
23	Teaghan Cowles	UT	5-3	Sr.	R/R	Ridgefield, Wash. / Columbia River
25	Taylor Gindlesperger	OF	5-8	So.	L/R	Chandler, Ariz. / Hamilton
32	Sydney Steele	INF	5-5	Fr.	R/R	Poway, Calif. / Poway
34	Emily Klingaman	UT	5-5	So.	L/R	Vienna, Va. / James Madison
95	Maddy Dwyer	P	5-8	Jr.	R/R	Orange, Calif. / Orange Lutheran

Head Coach: Jessica Allister (Third year, Stanford '04)

Associate Head Coach: Jessica Merchant (Third year, Michigan '05)

Assistant Coach: Tori Nyberg (Third year, Stanford '02)

Volunteer Assistant Coach: Karissa Hovinga (Second year, Oregon '15)

Director of Operations: Branden Enstrom (Third year, Oregon '15)

Teaghan Cowles – TEE-GAN COW-ULS

Taylor Gindlesperger – GIN-DULLS-PER-GER

Alyssa Horeczko – HOR-ESH-KOH

Karissa Hovinga – HOVE-IN-GAY

Kristina Inouye – E-NO-WAY

Hannah Matteson – MATT-UH-SON

Molly Millar – MILL-ARE

Tori Nyberg – NYE-BERG

Kiana Pancino – KEY-ON-UH PAN-SCENE-OH

Alana Vawter – UH-LANE-UH VAW-TER



1

SYDNEE HUFF
FR | INF | 5-2 | L/R
YUCAIPA, CALIF.



2

EMILY YOUNG
SO | UTL | 5-6 | R/R
MASON, OHIO



3

ALYSSA HORECZKO
SR | OF | 5-9 | L/R
HUNTINGTON BEACH, CALIF.



7

TATUM BOYD
FR | P/UTL | 5-5 | R/R
PLANO, TEXAS



8

MOLLY MILLAR
SO | P | 5-9 | R/R
CLOVIS, CALIF.



9

NIKKI BAUER
SR | P | 5-11 | R/R
SEBEWAING, MICH.



10

HANNAH MATTESON
SO | OF | 5-3 | L/R
SAN DIEGO, CALIF.



11

HANNAH HOWELL
SR | OF | 5-7 | L/R
CORONA, CALIF.



12

MONTANA DIXON
SR | C/INF | 5-10 | R/R
LAKEWOOD, CALIF.



13

EMILY SCHULTZ
SO | 1B/OF | 6-0 | L/L
AURORA, ILL.



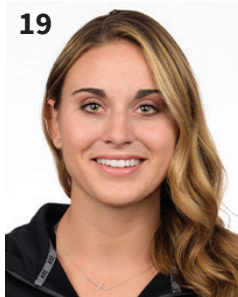
14

GABI PETERS
FR | P/UTL | 6-0 | R/R
EAGLE, IDAHO



15

ALANA VAWTER
FR | P | 6-0 | R/R
KANSAS CITY, MO.



19

KIANA PANCINO
SR | P | 5-8 | R/R
HUNTINGTON BEACH, CALIF.



20

KRISTINA INOUYE
SR | INF | 5-5 | R/R
HUNTINGTON BEACH, CALIF.



21

KAITLYN LIM
FR | OF | 5-5 | L/L
IRVINE, CALIF.



22

KATE CRESSEY
SO | UTL | 5-7 | R/R
ARLINGTON, VA.



23

TEAGHAN COWLES
SR | UTL | 5-3 | R/R
RIDGEFIELD, WASH.



25

TAYLOR GINDLESPERGER
SO | OF | 5-8 | L/R
CHANDLER, ARIZ.



32

SYDNEY STEELE
FR | INF | 5-5 | R/R
POWAY, CALIF.



34

EMILY KLINGAMAN
SO | UTL | 5-5 | L/R
VIENNA, VA.



95

MADDY DWYER
JR | P | 5-8 | R/R
ORANGE, CALIF.



JESSICA ALLISTER
HEAD COACH
THIRD SEASON



JESSICA MERCHANT
ASSOCIATE HEAD COACH
THIRD SEASON



TORI NYBERG
ASSISTANT COACH
THIRD SEASON



KARISSA HOVINGA
VOLUNTEER ASSISTANT COACH
SECOND SEASON



BRANDEN ENSTROM
DIRECTOR OF OPERATIONS
THIRD SEASON