

THE UNIVERSITY OF NEW MEXICO SOFTBALL



2019 SOFTBALL NOTES | WEEK 6

@UNMLoboSB

www.GoLOBOS.com

#GoLOBOS

Allison Weiss, Assistant Director of Athletic Communications - Softball Contact | Email: allisonweiss@unm.edu | Cell: (661) 313-5402

2019 SCHEDULE

OVERALL: 7-16 • MW: 0-0 • H: 0-0 • A: 1-6 • N: 6-10

Date	Opponent	Time/Score
<i>NM State Invitational</i>		
2/8	UTEP	W, 15-6
2/9	Creighton	W, 8-0 (5)
2/9	at NMSU	L, 9-8
2/14	at #9 Arizona	Cancelled (Rain)
<i>Hillenbrand Invitational</i>		
2/15	#7 Alabama	L, 1-0
2/15	RV CSUF	L, 6-2
2/16	at #9 Arizona	L, 15-1 (5)
2/16	UIC	W, 13-5 (6)
2/17	South Florida	L, 2-1 (8)
2/20	at Hawaii	L, 2-1
<i>Hawaii Invitational</i>		
2/21	DePaul	L, 9-5
2/22	Canisius	W, 10-0 (5)
2/22	at Hawaii	L, 2-3
2/23	at Hawaii	W, 3-2
2/23	DePaul	L, 4-2
<i>Judi Garman Classic</i>		
2/28	#3 Florida	L, 1-0 (8)
3/1	LMU	L, 4-2
3/1	#7 Tennessee	L, 15-1 (5)
3/3	UConn	L, 2-1
3/3	at CSUF	L, 19-1 (5)
<i>LMU Tournament</i>		
3/8	Oregon State	W, 6-5
3/8	Western Carolina	W, 10-0 (5)
3/9	Oregon State	L, 5-3
3/10	LMU	L, 6-2
3/15	at San Diego State *	7 p.m.
3/16	at San Diego State *	7 p.m.
3/17	at San Diego State *	1 p.m.
3/22	Colorado State *	6 p.m.
3/23	Colorado State *	4 p.m.
3/24	Colorado State *	12 p.m.
3/26	North Dakota	11 a.m.
3/26	North Dakota	1:30 p.m.
3/29	Nevada *	6 p.m.
3/30	Nevada *	4 p.m.
3/31	Nevada *	12 p.m.
4/2	at New Mexico State	4 p.m.
4/2	at New Mexico State	6 p.m.
4/5	at Utah State *	4 p.m.
4/6	at Utah State *	4 p.m.
4/7	at Utah State *	12 p.m.
4/9	UTEP	3 p.m.
4/18	Boise State *	6 p.m.
4/19	Boise State *	4 p.m.
4/20	Boise State *	12 p.m.
4/23	New Mexico State	5:30 p.m.
4/26	at Fresno State *	7 p.m.
4/27	at Fresno State *	4 p.m.
4/28	at Fresno State *	1 p.m.
5/3	San José State *	6 p.m.
5/4	San José State *	4 p.m.
5/5	San José State *	12 p.m.
5/9	at UNLV *	7 p.m.
5/10	at UNLV *	5 p.m.
5/11	at UNLV *	1 p.m.

Bold denotes home games
 * denotes Mountain West game
italics denote tournament
 All times listed are Mountain Time
 Game times are subject to change

UNM AT SDSU



NEW MEXICO Lobos

Record 7-16, 0-0 MW
 Conference Mountain West
 Head Coach Paula Congleton
 Record at UNM 21-55 (Second Season)
 Career Record 54-132 (Fourth Season)



SAN DIEGO STATE Aztecs

Record 12-13, 0-0 MW
 Conference Mountain West
 Head Coach Kathy Van Wyk
 Record at San Diego St. 796-586-1 (25th Season)
 Career Record Same

ABOUT THE MATCHUP

- The Lobos open Mountain West competition at San Diego State for a three-game series starting on Friday.
- Last season, the Lobos won two of three against the Aztecs at home to clinch their first conference series of the season.
- In the three-game series, D'Andra DeFlora and Cameryn O'Grady each hit .375 with three hits, including two home runs apiece. O'Grady also had a triple in the series. DeFlora finished the weekend with three RBI and a slugging percentage of 1.125, while O'Grady finished with two RBI, 11 total bases and a slugging percentage of 1.375. Both had an on-base percentage of .444.
- UNM outscored SDSU 12-10 in last year's series, however, SDSU outhit UNM 33-18. Of those 18 hits, seven of them were home runs, compared to just one home run for SDSU.
- Both teams enter the weekend with similar season stats in runs allowed with SDSU giving up 127 runs and UNM 121. Both had been tied at 121 prior to SDSU's 6-0 loss on Wednesday.
- The Lobos hold the advantage in on-base percentage (.355 to .320), slugging percentage (.385 to .308). UNM has hit four times as many triples and home runs as SDSU. UNM has 16 home runs this season compared to just four for SDSU, and four triples compared to just one for the Aztecs.

Media Information

Location:.....SDSU Softball Stadium (San Diego, Calif.)

Date/Time:
 Friday, March 15 - 7 p.m.
 Saturday, March 16 - 7 p.m.
 Sunday, March 17 - 1 p.m.

Live Video:.....Mountain West Network
Live Stats:..... <https://golobos.com/schedule.aspx?path=softball>
Social Media: @UNMLoboSB

Notes last updated: March 14, 2019

Series History

US. SAN DIEGO STATE

Overall: 31-73
 Last Five: 2-3
 Last 10: 3-7
 Last Meeting: 5/6/18 (W, 4-1)
 Last Win: 5/6/18 (4-1)
 Series Trend: W1
 Last Loss: 5/5/18 (7-3)
 Last Road Win: 4/25/15 (8-6)
 Last Road Loss: 4/15/17 (8-0 / 6)
 Last Season Sweep: 1993
 Last Season Swept: 2017
 Last Shutout Win: 4/27/07 (4-0)
 Last Shutout Loss: 4/15/17 (8-0 / 6)
 Longest win streak: 8 (3/5/92-5/2/93)
 Longest losing streak: 14 (4/24/09-3/22/14)

NEWS and NOTES

CONFERENCE OPENERS

- The Lobos are 6-12 in Mountain West conference openers, but have won their last two openers.
- In 2018, UNM won 5-2 and in 2017 the Lobos won 3-2, both over UNLV.
- The last time the Lobos won a series to open conference play was in 2017, taking two of three games over UNLV in Las Vegas.
- In the last five years, UNM has won three series 2-1, including three-straight years from 2015 to 2017.
- This weekend marks the seventh time that UNM opens conference play against SDSU (previous years: 2003, 2010, 2011, 2012, 2013, 2014).

LAST TIME OUT

- The Lobos split the weekend with wins over Oregon State and Western Carolina and losing a second matchup with Oregon State and a game against host LMU at the LMU Tournament.
- UNM started off the tournament with an epic come-from-behind victory over Oregon State, scoring six runs in the final two innings to win 6-5. The Lobos scored five runs in the bottom of the seventh, walking off on a hit by Lauren Wilmert to score D'Andra DeFlora from third. Andrea Howard hit a two-run home run to cut the deficit to two after Daryn Haslam led off with a single to right field. Kasey Halleen singled up the middle to keep the momentum going and Sydney Townes doubled to center to advance Halleen to third. DeFlora singled to score Townes and Halleen to tie the game, moving all the way to third, leading to Wilmert's game-winning single.
- Cameryn O'Grady led the Lobos with five hits, including two doubles, and recorded seven total bases and two RBI. She had a team-high batting average of .417. Howard had four hits and three RBI, a team-high

GENERAL INFORMATION

Name of School.....	University of New Mexico
City/Zip.....	Albuquerque, N.M. 87106
Founded.....	1889 by Territorial Legislature
Enrollment.....	25,015
Nickname.....	Lobos
School Colors.....	Cherry & Silver
Conference.....	Mountain West
Affiliation.....	NCAA Division I
President.....	Dr. Garnett Stokes
Athletic Director.....	Eddie Nuñez

PROGRAM HISTORY

First Year of Softball.....	1978
All-Time Record.....	989-1091-3
Mountain West Record.....	120-269-1
NCAA Tournament Appearances.....	3
1980 (AIAW), 1981 (AIAW) and 1983 (NCAA)	
Last NCAA Postseason Opponent.....	Cal State Fullerton
Last NCAA Postseason Result.....	CSUF won series 2-1
Conference Championships.....	3
1980 (Intermountain), 1981 (Intermountain) and 1983 (High Country)	

TEAM INFORMATION

2018 Overall Record.....	14-39
2018 MW Record.....	7-17 (T-8th)
Letterwinners Returning/Lost.....	10/9
Pitchers Returning/Lost.....	0/4
Starters Returning/Lost.....	8/1
Newcomers.....	9

SOFTBALL STAFF

Head Coach.....	Dr. Paula Congleton (New Mexico, 1984)
Year at UNM..... Second season	
Record at UNM (Pct.).....	21-55 (.276)
MW Record at UNM (Pct.).....	7-17 (.292)
Career Record (Years).....	54-132 (4 years)
Assistant Coach.....	Tyler Heil (San José State, 2009)
Year at UNM..... Second season	
Assistant Coach.....	Breanna Macha (Arizona State, 2018)
Year at UNM..... First season	
Strength Coach.....	Jeremy Golden
Academic Advisor.....	Andrea Pierson
Head Athletic Trainer.....	Bob Waller
Athletic Trainer.....	Madison Foust

COMMUNICATIONS

Softball Contact/Asst. Director of Comm.....	Allison Weiss
Email.....	allisonweiss@unm.edu
Cell Phone (Preferred).....	(661) 313-5402
Communications Office.....	(505) 925-5520

DIGITAL MEDIA

Athletics Website.....	GoLobos.com
Main University Web Site.....	unm.edu
Conference Website.....	TheMW.com
Twitter.....	@UNMLoboSB
Instagram.....	@UNMLoboSB
Facebook.....	@NewMexicoLoboSoftball

FACILITIES

Venue.....	Lobo Field
Dimensions.....	205-225-205
Capacity.....	1,500

11 total bases as well as a slugging percentage of 1.100 with two doubles, a triple and a home run, while also drawing four walks. The sophomore led the team with an on-base percentage of .571. Wilmert had a team-high seven RBI with four hits, including a double and a grand slam, and a slugging percentage of .571.

- Against WCU, Wilmert went 2-for-3 at the plate with a grand slam and a double for five RBI in the game. Halleen was 1-for-2 with two RBI
- In the circle, RHP Kennedy Ferguson earned her first win in a two-hit shutout against Western Carolina, pitching 5.0 innings in a 10-0 win. Kennedy pitched a complete game with three strikeouts and zero walks.

MIXING IT UP

- The Lobos have used 19 different lineups to date, only having duplicated their lineup four times. UNM used the same lineup in the Arizona and Alabama game, the same lineup in the Cal State Fullerton and UTEP game, the same lineup against Hawai'i on Feb. 22 and DePaul on Feb. 23 and the same lineup against Tennessee and UConn.
- UNM has had five different players in the leadoff spot in the lineup.
- Cameryn O'Grady moved into the leadoff hitter spot in the game against Canisius and has played six games at the No. 1 spot in the batting order. Andrea Howard led off the lineup in 10 games and moved down to the No. 2 spot for eight games and the seventh spot in five games. Bailey Klitzke hit in the leadoff spot in three games, D'Andra DeFlora led off in three games and Sydney Townes hit first in one. Maggie Buckholz has batted second in two games, DeFlora in 12 games and Aleyah Wilbon hit second versus Cal State Fullerton.
- Four Lobos (Cameryn O'Grady, D'Andra DeFlora, Andrea Howard and Lauren Wilmert) have started all 23 games this season, while Monica Salas has started in all but one.
- UNM started four freshmen against New Mexico State, with Kennedy Ferguson, Daryn Haslam, Mackenzie Peterson and Leslie Romero each getting their first collegiate starts.
- Freshman Emma Steltzer made her Lobo debut in the circle in the last game of the Judi Garman Classic versus Cal State Fullerton, retiring both batters she faced.

HOLDING THEIR OWN

- In the Lobos' first game of the Judi Garman Classic, UNM went to extra innings with the No. 3 Florida Gators, holding the Gators scoreless for seven innings.
- It was the second time in the last 13 days that UNM held a top-10, and a SEC, team scoreless through at least six innings.
- Kennedy Ferguson threw a complete game with 109 pitches, 66 of them going for strikes. The freshman right-hander held her own in the matchup, allowing just five hits and one walk, while striking out five batters. It is the third game this season that Ferguson has allowed just one walk, but the first time that she did so while pitching a complete game.
- The five hits posted by Florida was the second-fewest hits in a game for the Gators this year, only second to Arizona who limited the Gators to four on Feb. 9, but the Wildcats also gave up three runs in the game.
- In addition, it is just the second time this season that the Gators have been held to one run in a game, with the other instance being in Wednesday night's game versus No. 2 UCLA in which the Gators lost 7-1. Entering the Judi Garman Classic, and prior to its loss to UCLA, Florida was outscoring its opponents 127-18.
- The Lobos held No.7 Alabama scoreless for six innings, allowing only six hits total in the game.
- Entering the Hillenbrand Invitational, the Crimson Tide was third in the NCAA in scoring, averaging 10.60 runs, and had averaged 10.2 hits a game and 2.60 doubles a game (tied for 10th in the NCAA). Alabama hit .261 in the game, below the .378 batting average that the team entered with, which was 16th in the nation. Spencer kept Alabama's leading hitter Kaylee Tow, who ranked eighth in the NCAA in batting average and seventh in on-base percentage, without a hit.
- UNM is the only team to hold Alabama to just one run in the 10 games the Crimson Tide have played so far this year.
- In two games, the Lobos have shutout their opponents and twice have gone six innings without giving up a run. UNM shutout Creighton on Feb. 9 and shutout Canisius on Feb. 22, while going six scoreless innings against Alabama on Feb. 15 and again on Feb. 17 versus South Florida.

EVEN INNING MAGIC

- To date, UNM is outscoring its opponents 55-39 in the even innings, including a 23-12 advantage in the fourth inning.
- Last weekend against Western Carolina, UNM scored seven runs in the fourth inning on three hits and two walks. Back-to-back walks by Magie Buckholz and Monica Salas to lead off the inning and a single by Daryn Haslam loaded the bases. Kasey Halleen singled through the right side to score two followed by an error by the pitcher that allowed Haslam to score. D'Andra DeFlora reached on a hit-by-pitch to load the bases and Lauren Wilmert hit a two-out grand slam to make it 10-0.
- In the first two games of the season, the second inning belonged to the Lobos, with UNM scoring five runs against UTEP and against Creighton.
- In the season opener versus the Miners, the Lobos scored five runs on two hits and drew five walks, leading to three runs on consecutive walks alone.
- Against the Bluejays, the Lobos scored five runs on three hits, a single by Monica Salas, a double by D'Andra DeFlora that scored three after Andrea Howard was intentionally walked to load the bases and a two-run home run by Cameryn O'Grady.

HOT STARTS

- The Lobos have scored first in 12 games this season.
- UNM has scored in the first inning eight times, with a season-high four runs scored in the first inning on Feb. 16 against Illinois-Chicago and again on Feb. 22 against Canisius.
- Against WCU on March 8, the Lobos scored three runs in the first inning on a walk by Andrea Howard, back-to-back doubles by Lauren Wilmert and Maggie Buckholz and a single by Monica Salas that scored Buckholz.
- Five of UNM's wins this season have come via run-rule (15-6 vs. UTEP, 8-0 vs. Creighton, 13-5 vs.

Illinois-Chicago, 10-0 vs. Canisius, 10-0 vs. WCU).

- D'Andra DeFlora and Cameryn O'Grady started the season on a nine-game hitting streak.

LATE NIGHT LOBOS

- UNM has played five games this season that have started later than 8 p.m. MT, with the lone win coming in a rule-rule game against Illinois Chicago.
- In the last meeting against CSUF at the Hillenbrand Invitational, the Lobos didn't start the game until 9:50 p.m.
- Against UIC the following day, the first pitch wasn't thrown until 9:40 p.m. After the final run crossed the plate to give the Lobos the 13-5 run-rule victory over UIC early Sunday morning, the Lobos then turned around for a 9 a.m. MT game against South Florida, where they went eight innings.

NEWCOMERS NO MORE

- Freshman Daryn Haslam led the Lobos at the Hawai'i Invitational with a slugging percentage of .846 and on-base percentage of .467, while hitting the first two home runs of her collegiate career. Three of her RBI on the weekend came with two outs
- Fellow freshman Maggie Buckholz hit a three-run home run that proved to be the difference in UNM's 3-2 win over host Hawai'i to advance the Lobos to the championship game. On the weekend, Buckholz had a team-high six RBI and drew three walks.
- The freshmen have accounted for 24 hits, 16 runs scored and 23 RBI on the season, while hitting five of the team's 14 home runs.
- Maggie Buckholz leads the Lobos in walks (17), RBI (17), is one of four players with a triple and is third in on-base percentage (.441). Daryn Haslam is tied for the team lead in home runs (3) and is third in batting average (.303), second in slugging percentage (.576) and fourth in on-base percentage (.395).
- Pitcher Kiana Spencer has pitched six complete games this season and tallied a season-high six strikeouts in her appearance against Hawai'i on Feb. 23. The LHP has recorded two shutouts, both coming in run-rule games (vs. Creighton, vs. Canisius).
- In her first start with the Lobos, junior left-handed pitcher Kiana Spencer threw a complete game shutout, limiting the BIG EAST preseason favorite Creighton to just three hits in five innings of work. The junior didn't allow any extra-base hits in the 24 batters she faced. She threw 91 pitches in the outing, 42 of them going for strikes.
- Spencer also earned the start against Alabama, pitching another complete game, going 7.0 innings and allowing just one run and six hits, only one of which went for extra bases, and allowing just three walks on 29 batters faced.
- Freshman Kennedy Ferguson has pitched in a team-high 16 games with 10 starts and six complete games, holding a team-best ERA of 3.35 and 71.0 innings pitched. Ferguson has struck out 45 batters and walked 29 and has recorded at least one strikeout in 13 games, but at least one in appearances that she's pitched more than one inning. Ferguson earned her first collegiate win in a two-hit shutout over Western Carolina on March 8, striking out three and not issuing a walk.

WALK IT OUT

- UNM leads the MW in walks drawn through the first four weekends with 96, 22 more than the second-highest team (UNLV).
- In the season opener against UTEP, UNM drew 16 walks alone for a season high.
- Against the Miners, eight different players drew a walk, with Andrea Howard reaching base four times via a walk. Cameryn O'Grady and Lauren Wilmert each drew three walks, Maggie Buckholz two and Monica Salas, Taylor Jones, Kasey Halleen and Daryn Haslam each had one.
- Versus Cal State Fullerton on Feb. 15, the Lobos nearly reached double digits with nine walks.
- Maggie Buckholz leads the team with 17 walks, followed by Cameryn O'Grady with 14 and Andrea Howard with 13.

LET'S GIVE THEM SOMETHING TO TALK ABOUT

- After five weekends of competition for the MW teams, the Lobos lead the conference in one category, second in two, and fourth in two.
- The Lobos are first in the conference in walks (96) and second in caught stealing by (7) and home runs with 16. UNM is fourth in batters struck out (93) and fourth in put outs (413).
- As a team, UNM has at least one player listed in the top 10 in the conference in eight hitting categories and four pitching categories.
- Through the first four weekends, Cameryn O'Grady is in the top-10 statistically in the MW in four categories offensively. The junior is in the top 10 in on-base percentage, hits, doubles and walks. Lauren Wilmert is third in caught stealing by (4) and Kennedy Ferguson is fourth in batters struck out (45) and second in innings pitched (70.2). D'Andra DeFlora ranks in the top 10 in runs scored, Bailey Klitzke is ranked in batting average and sacrifice flies, Maggie Buckholz in RBI and second in walks, Monica Salas and Daryn Haslam in home runs and Andrea Howard in walks.

NATIONALLY KNOWN

- Bailey Klitzke and Lauren Wilmert are tied for 40th in the NCAA in sacrifice flies with two and Maggie Buckholz is tied for 23rd in the country in walks (0.77), which also leads the Mountain West.

IT'S ALL O'GRADY

- Junior shortstop Cameryn O'Grady leads the team in slugging percentage (.591), on-base percentage (.481), hits (24), total bases (39), doubles (7) and tied for the team high in triples (1). The California native is second in batting average (.364), walks (14), runs scored (14) and third in RBI (13).
- With two outs, O'Grady is 6-for-14, the second-highest success rate on the team, with four RBI coming with two outs. When it comes to success advancing runners during an at-bat, O'Grady is second on the team at 24-for-41 (.585). O'Grady is also 9-for-17 (.529) as the leadoff batter in an inning which leads the team.
- O'Grady was nearly unstoppable in the first three games of the season, going 7-for-9 at the plate (.778 batting average), registering one double, a triple and two home runs as well as a team-high seven RBI. O'Grady tallied 16 total bases, drew three walks and posted a slugging percentage of 1.778 and an on-base percentage of .833.
- The junior was 2-for-2 as the leadoff hitter in an inning, 4-for-5 with runners in scoring position and 2-for-2 batting with two outs, in which she recorded two of her seven runs-batted-in. During her at-bats, O'Grady was 6-for-8 in successfully advancing runners and 5-for-7 in getting a hit with runners on base.
- O'Grady was a perfect 3-for-3 against Creighton, finishing just a double shy of hitting for the cycle.
- In the LMU Tournament, O'Grady was a team-best .500 in batting with runners on (4-for-8), 2-for-2 as the leadoff hitter in an inning, 3-for-6 with runners in scoring position and 1-for-2 with runners on third and less than two outs as well as with two outs. The shortstop was 4-for-9 with success in advancing runners.
- Last season, O'Grady led the Lobos in triples (four), doubles (12), walks (32), on-base percentage (.444) and runs scored (31) last season. She was second on the team with 43 hits, 75 total bases and 26 RBIs, and third in batting average (.301) and slugging percentage (.524).
- O'Grady hit just four home runs last season, which the junior reached half that in the first three games this season.

NOT JUST A PITCHER

- Bailey Klitzke got the ball to start the season against UTEP, but has played in 17 games either in the circle or as the DP, starting in 16.
- Klitzke leads the team in batting average (.390), is tied for second in hits (16), second in on-base percentage (.460), and is third in slugging percentage (.512).
- At the Judi Garman Classic, Klitzke was 2-for-2 with runners in scoring position, with two outs and with runners on third and less than two outs in the inning. The junior was 3-for-5 in success in advancing runners and 2-for-5 as the leadoff hitter in an inning. She also had a team-high four hits and three RBI in the five-game tournament, hitting .364 with a slugging percentage of .455 and on-base percentage of .467.
- At the plate on the season, Klitzke is a team-best 3-for-4 with bases loaded. She is 4-for-6 with a runner on third with less than 2 outs, 5-for-10 with runners in scoring position, 7-for-12 with 2 outs in the inning and four of her RBI on the season came with two outs. Klitzke is 12-for-19 in successfully advancing runners in her at-bat.
- However, in the circle, the LHP earned her first win of the season in her first appearance in a Lobo uniform, pitching 5.0 innings and giving up five hits and five earned runs. Klitzke struck out eight batters and finished the weekend with nine total in 6.0 innings pitched. She threw for 146 pitches, 120 of which came in the first game against UTEP.
- Klitzke matched her strikeout count against Illinois-Chicago and pitched her first complete game with 6.0 innings pitched to move to 2-1 on the season.

LET'S SEE HOW FAR WE'VE COME

- In just her second year at UNM, the Lobos have seen improvement in several categories from year one to year two under head coach Paula Congleton.
- Comparing where the Lobos were a year ago heading into MW competition to this year's team heading into MW play, the Lobos have performed better offensively, in the circle and in the field.
- Even though UNM has played two less games in 2019 than in 2018 prior to conference starting, the Lobos have scored 11 more runs (97-86) and walks (96-85), had three more doubles, two more home runs, improved their slugging percentage (.385-.366) and on-base percentage (.355-.343).
- The pitchers have combined for a better team ERA, lowering the average by 1.93 (6.70-4.77), has 18 more strikeouts (93-75) and allowed 60 fewer runs (181-121). Opponent batting average is also lower (.297-.338) as is the number of hits (171-233), doubles, triples and home runs allowed.
- Behind the plate, the catchers are having more success as well, throwing out seven runners to date, compared to just two at this point last year. Runners are just 18-25 this year (.720) compared to 26-28 in 2018 (.929). In the field, the Lobos have a fielding percentage of .952 this year to .939 last year.
- Coincidentally, the Lobos have had 221 total bases and a .240 batting average in both years.

GOING HOME

- The Lobos have a team-high six players from California.
- From the Golden State are junior Cameryn O'Grady (Orange), seniors Kasey Helleen (Torrance), Monica Salas (Goleta), Sydney Townes (Lompoc) and Aleyah Wilbon (Fontana) and freshman Leslie Romero (Gonzales).

PLEASE ALLOW ME TO INTRODUCE MYSELF

- The 2019 UNM Lobos will have a different look than last season as there are nine newcomers on the roster.
- In the offseason, the Lobos added seven freshmen (Maggie Buckholz, Kennedy Ferguson, Daryn Haslam, Skylar Jenkins, MacKenzie Peterson, Leslie Romero and Emma Steltzer) as well as two transfer left-handed pitchers in Bailey Klitzke (junior, Wichita State) and Kiana Spencer (junior, Yavapai College).
- UNM debuted an entirely new pitching staff, including a new pitching coach. Joining the above mentioned addition of Klitzke and Spencer will be Ferguson, a right-hander from Camas, Wash. Overseeing the group will be Breanna Macha, who joins the Lobos after pitching at Arizona State from 2015-18.

PUTTING THE PIECES OF THE PUZZLE TOGETHER

- The roster underwent a major renovation after 2018 with the departure of nine letterwinners, which included all four pitchers on the roster.
- The Lobos also have 10 underclassmen on the roster, with a team-high seven freshmen who will experience their first glimpse of collegiate softball this season.
- Of the nine, the Lobos lost a key piece of their offense due to graduation in Chelsea Johnson. The infielder, who served as the DP her senior season, led the team in batting average (.342), at bats (155), hits (53), homeruns (10), RBIs (40), total bases (92) and slugging percentage (.594). Johnson started 51 of the 52 games, but played in 52.
- In the circle, the Lobos will have to find their ace after losing Jensen Main, who pitched almost half of the innings (162.2 of 326 innings) during the season and set the UNM single-season record for batters faced with 848.
- Luckily, the Lobos retain eight mainstays in the lineup, including now-sophomore Andrea Howard who was selected Second Team All-Mountain West in her rookie season.

LONG TIME GONE

- The Lobos begin the season with five non-conference tournaments on the road, spanning from Las Cruces to Tucson, Ariz., to Honolulu, Hawaii to two trips to Southern California, followed by a conference series at San Diego State.
- UNM's home opener isn't scheduled until March 22 against MW opponent Colorado State, the latest home opener in at least 15 years.
- In the first six weeks of the season, the Lobos will have traveled over 10,900 miles roundtrip (5451 miles each way) and played 26 games before their first pitch at Lobo Softball Field.

TO BE THE BEST...

- The non-conference schedule will test the Lobos from the first weekend, as the Cherry and Silver face 10 teams that made the 2018 NCAA Tournament, four that advanced to the Super Regionals and one team (Florida) that competed in the Women's College World Series.
- Four of the teams on UNM's schedule (Florida, Tennessee, Arizona, Alabama) ranked in the top 10 in the USA Today/ NFCA Coaches preseason rankings and four additional teams were receiving votes. Florida was the highest ranked at fifth, with Tennessee seventh, Arizona eighth and Alabama tied for ninth.
- In the ESPN.com / USA Softball Collegiate Top 25 Preseason Poll, four teams on the Lobos' schedule were ranked with four more receiving votes. Florida was the highest-ranked opponent at No. 5 followed by Arizona at six, Tennessee at eight and Alabama at 11. Receiving votes were Oregon State, Cal State Fullerton, South Florida and Fresno State.

STARTING OFF STRONG

- UNM is now 26-16 in season openers, including 4-1 in the last five years after Friday's win versus UTEP.
- The nine-run differential was the largest margin of victory for UNM in a season opener since 2011, when the Lobos defeated Utah Valley 10-2.
- Against UTEP, the leadoff hitter reached base six times.
- UNM didn't give up its first run until the fourth inning in the game against UTEP and starting pitcher Bailey Klitzke didn't give up a hit until the bottom of the fourth.
- D'Andra DeFlora and Cameryn O'Grady registered at least one hit in the first nine games of the season.

SCOUTING SAN DIEGO STATE

- The Aztecs enter conference 12-13 overall and 5-4 at home after losing to UC Riverside on Wednesday night.
- SDSU shares three common opponents with UNM: UIC, LMU and Cal State Fullerton. The Aztecs lost to Cal State Fullerton 5-1 and LMU 2-1, but defeated UIC 13-8.
- San Diego State has been shutout eight times this season and has shutout its opponents twice.
- The Aztecs are being outscored by their opponents 127-82 and outhit 187-159 and .287 to .249. Of their 159 hits, 21 have been doubles and four have gone for home runs.
- San Diego State returns 12 letterwinners from 2018, including six starters and two pitchers. They have eight newcomers.
- Last season, the Aztecs went 20-31 overall, 11-13 in the MW.
- Kiera Wright has 23 hits lead the team, with a team-high 17 runs and the lone triple on the team. Kelsey Munoz leads with 13 RBI, 34 total bases, a .453 slugging percentage and three of the team's four home runs. Wright is also a perfect 13-for-13 in stolen bases this season. Shelby Thompson leads with 11 walks and Maddi Ayers leads in on-base percentage (.415) and batting average (.359).
- As a team, SDSU is 28-for-29 in stolen bases, while its opponents are 26-for-34.
- San Diego State pitchers have an ERA of 4.40, allowing 187 hits on the season and 127 runs (100 earned). As a unit, they have struck out 89 batters while walking 88. Opponents are hitting .287 against the SDSU pitchers.
- SDSU has used four pitchers this season, with Marissa Moreno pitching a team-high 56.2 innings. The junior has a 5-3 record, making 16 appearances and eight starts with three complete games, two shutouts and one save. With an ERA of 3.83, Moreno has allowed 58 hits, 40 runs (31 earned), 50 strikeouts and 27 walks. Slightly behind her is MJ James, who has appeared in 15 games, making 11 starts, and is 3-5 on the year after pitching 55.0 innings. James has thrown two complete games and has a 5.35 ERA. On the season, the redshirt-freshman has given up 81 hits, 54 runs (42 earned), 31 walks and 16 strikeouts. Alicia Garcia has appeared in 16 games, starting six, with one complete game and 45.1 innings pitched. With an ERA of 4.32, the junior has given up 48 hits, 33 runs (28 earned), 28 walks and 21 strikeouts. Kelsey Munoz has pitched in two games and pitched 2.0 innings, with two walks and two strikeouts.
- Shelby Thompson is tied for 40th in the NCAA with two sacrifice flies and Kiera Wright is 61st in stolen bases per game with 0.50.

STAT COMPARISON

		UNM ENTERING MW PLAY	
UNM	SDSU	2018	2019
BA	.240	.240	.240
R	97	82	97
H	138	159	138
2B	27	23	27
3B	4	1	4
HR	16	4	16
RBI	90	63	90
BB	96	56	96
SO	177	88	177
ERA	4.77	4.40	4.77
SO	93	89	93
BB	93	88	93
H	171	187	171
R	121	127	121
ER	95	100	95
DP	3	19	3
FLD%	.952	.957	.952

MOUNTAIN WEST INFORMATION

PRESEASON MOUNTAIN WEST POLL

Rk.	Team (1st-Place Votes)	Points
1.	Boise State (8)	64
2.	Fresno State (1)	57
3.	San José State	50
4.	UNLV	35
5.	San Diego State	31
6.	Nevada	29
7.	Colorado State	26
8.	Utah State	21
9.	New Mexico	11

MOUNTAIN WEST PLAYERS OF THE WEEK

2019 MW Softball Player of the Week
 Feb. 12 – Lauren Tycksen, Jr., CF, UNLV
 Feb. 19 – Jessica McKay, Jr., OF, Boise State
 Feb. 26 – Ashley Ruiz, Jr., 1B, Colorado State
 March 5 – Lauren Buchanan, Sr., C, Colorado State
 March 12 – Amber Nelson, Sr., C, Colorado State

2019 MW Softball Pitcher of the Week
 Feb. 12 – Hailey Dolcini, So., RHP, Fresno State
 Feb. 19 – Gianna Mancha, So., RHP, Boise State
 Feb. 26 – Jessica Jarecki, Jr., RHP, Colorado State
 March 5 – Danielle Lung, Fr., RHP, Fresno State
 March 12 – Jenny Bressler, Fr., RHP, UNLV

ESPN.COM/USA SOFTBALL COLLEGIATE TOP 25

WEEK 5 • MARCH 12

Rk.	Team (1st Votes)	Pts.	Rec	Prev.
1.	UCLA (16)	22-1	494	2
2.	Oklahoma (1)	20-2	458	3
3.	Florida State	25-2	457	1
4.	Alabama (3)	25-0	450	5
5.	Tennessee	18-3	411	7
6.	Washington	22-3	394	6
7.	Florida	22-4	379	4
8.	LSU	21-5	342	9
9.	Georgia	23-3	337	8
10.	Texas Tech	24-1	288	14
11.	Louisiana	18-3	282	12
12.	Arizona	18-7	273	13
13.	Texas	21-5	265	10
14.	Oklahoma State	18-5	192	18
15.	Indiana	21-3	171	16
16.	Auburn	22-4	169	19
17.	Arkansas	19-4	165	15
18.	Kentucky	15-7	152	22
19.	Arizona State	19-7	149	17
20.	South Carolina	18-5	140	11
21.	Minnesota	15-7	121	RV
22.	Wisconsin	21-3	103	20
23.	James Madison	11-5	85	21
24.	Michigan	12-10	57	23
25.	Virginia Tech	18-4	39	RV

Dropped Out: Oregon (24), Northwestern (25)
 New to Poll: Minnesota (RV), Virginia Tech (RV)

Others receiving votes: Boise State (20), Northwestern (17), Illinois (16), Oregon State (16), Stanford (13), Oregon (12), California (11), Mississippi State (5), Ole Miss (5), Houston (4), Ohio State (3), Cal State Fullerton (2), Texas A&M (2), Wichita State (2), South Florida (1)

USA TODAY/ NFCA COACHES TOP 25 POLL

WEEK 5 • MARCH 12

Rk.	Team (1st Votes)	Pts.	Rec	Prev.
1	UCLA (27)	795	22-1	2
2	Oklahoma	745	20-2	3
3	Florida State (3)	738	25-2	1
4	Alabama (2)	712	25-0	5
5	Washington	662	22-3	6
6	Tennessee	649	18-3	7
7	Florida	612	22-4	4
8	Georgia	551	23-3	8
9	LSU	498	21-5	10
10	Louisiana	488	18-3	11
11	Texas	474	21-5	9
12	Arizona	442	17-7	12
13	Texas Tech	389	24-1	15
14	Arkansas	362	19-4	14
15	Kentucky	323	15-7	18
16	South Carolina	294	18-5	13
17	Arizona State	271	19-7	16
18	Oklahoma State	255	18-5	19
19	Indiana	233	21-3	17
20	Auburn	219	22-4	20
21	Minnesota	190	15-7	22
22	James Madison	162	11-5	21
23	Wisconsin	118	21-3	23
24	Boise State	46	18-2	RV
25	Michigan	27	12-10	25

New to Poll: No. 24 Boise State
 Dropped Out: No. 24 Oregon

Receiving Votes: Northwestern (20), Illinois (19), Oregon State (19), Virginia Tech (18), Stanford (15), Mississippi State (12), Oregon (12), Notre Dame (8), Colorado State (6), Baylor (5), Texas A&M (4), Ohio State (3), North Carolina (2), Ole Miss (1), USC Upstate (1).

BY THE NUMBERS

Statistic	All Games	MW	MW Games	N/A
Batting Average:	.240	9th	N/A	N/A
Slugging Percentage:	.385	7th	N/A	N/A
On Base Percentage:	.355	6th	N/A	N/A
Runs Scored:	97	6th	N/A	N/A
Hits:	138	8th	N/A	N/A
RBI:	90	T-5th	N/A	N/A
HRs:	16	2nd	N/A	N/A
Total Bases:	221	5th	N/A	N/A
Walks:	96	1st	N/A	N/A
ERA:	4.77	8th	N/A	N/A
Opp. Batting Avg.:	.297	T-8th	N/A	N/A
Batters Struck Out:	93	4th	N/A	N/A
Hits Allowed:	171	8th	N/A	N/A
Runs Allowed:	121	T-8th	N/A	N/A
Earned Runs Allowed:	95	8th	N/A	N/A
Walks Allowed:	93	9th	N/A	N/A
Home Runs Allowed:	29	9th	N/A	N/A
Fielding Percentage:	.952	8th	N/A	N/A
Putouts:	418	3rd	N/A	N/A
Fielding Double Plays:	3	8th	N/A	N/A
Caught Stealing By:	7	2nd	N/A	N/A

MOUNTAIN WEST STANDINGS

School	Conf.	Conf. %	Overall	Overall %	Streak
Boise State	0-0	0.000	18-2	0.900	W17
Colorado State	0-0	0.000	17-4	0.810	W8
UNLV	0-0	0.000	19-5	0.792	W3
Fresno State	0-0	0.000	14-6	0.700	W8
San José State	0-0	0.000	10-6	0.625	W1
Nevada	0-0	0.000	13-8	0.619	W2
San Diego State	0-0	0.000	12-13	0.480	L1
Utah State	0-0	0.000	8-11	0.421	L2
New Mexico	0-0	0.000	7-16	0.304	L2

THE 2019 NEW MEXICO LOBOS

NUMERICAL ROSTER

#	NAME	POS	HT	YR	B/T	HOMETOWN (PREVIOUS SCHOOL)
00	Andrea Howard	OF	5-6	So.	L/L	Albuquerque, N.M. (La Cueva HS)
2	Maggie Buckholz	UT	5-7	Fr.	L/R	Silverton, Ore. (Silverton HS)
3	Taylor Jones	IF	5-7	So.	R/R	Albuquerque, N.M. (La Cueva HS)
4	D'Andra DeFlora	OF	5-2	Sr.	R/R	Fresno, Texas (L.V. Hightower HS)
5	Sydney Broderick	C	5-4	So.	R/R	Mesa, Ariz. (Desert Ridge HS)
7	MacKenzie Peterson	OF	5-9	Fr.	R/R	Gilbert, Ariz. (Phoenix College)
8	Bailey Klitzke	P/1B	5-8	Jr.	L/L	Apache Junction, Ariz. (Wichita State)
9	Kasey Halleen	IF	5-6	Sr.	R/R	Torrance, Calif. (Palos Verdes HS)
10	Cameryn O'Grady	SS	5-6	Jr.	L/R	Orange, Calif. (El Modena HS)
12	Daryn Haslam	IF	5-4	Fr.	R/R	Cedar Park, Texas (Vista Ridge HS)
13	Kennedy Ferguson	P	5-6	Fr.	R/R	Camas, Wash. (Camas HS)
16	Leslie Romero	OF	5-4	Fr.	R/R	Gonzales, Calif. (Salinas HS)
22	Monica Salas	IF	5-3	Sr.	R/R	Goleta, Calif. (Santa Barbara CC)
23	Emma Steltzer	OF	5-6	Fr.	R/R	Manchester, Mo. (Parkway South HS)
24	Skylar Jenkins	OF	5-5	Fr.	R/R	Lawrenceville, Ga. (Buford HS)
32	Lauren Wilmert	C/1B	5-10	Jr.	R/R	Albuquerque, N.M. (Volcano Vista HS)
44	Aleyah Wilbon	OF	5-2	Sr.	L/R	Fontana, Calif. (Mt. San Antonio College)
66	Sydney Townes	OF	5-6	Sr.	L/R	Lompoc, Calif. (Cabrillo HS)
99	Kiana Spencer	P	5-6	Jr.	L/L	Gallup, N.M. (Yavapai College)

ALPHABETICAL ROSTER

#	NAME	POS	HT	YR	B/T	HOMETOWN (PREVIOUS SCHOOL)
5	Sydney Broderick	C	5-4	So.	R/R	Mesa, Ariz. (Desert Ridge HS)
2	Maggie Buckholz	UT	5-7	Fr.	L/R	Silverton, Ore. (Silverton HS)
4	D'Andra DeFlora	OF	5-2	Sr.	R/R	Fresno, Texas (L.V. Hightower HS)
13	Kennedy Ferguson	P	5-6	Fr.	R/R	Camas, Wash. (Camas HS)
9	Kasey Halleen	IF	5-6	Sr.	R/R	Torrance, Calif. (Palos Verdes HS)
12	Daryn Haslam	IF	5-4	Fr.	R/R	Cedar Park, Texas (Vista Ridge HS)
00	Andrea Howard	OF	5-6	So.	L/L	Albuquerque, N.M. (La Cueva HS)
24	Skylar Jenkins	OF	5-5	Fr.	R/R	Lawrenceville, Ga. (Buford HS)
3	Taylor Jones	IF	5-7	So.	R/R	Albuquerque, N.M. (La Cueva HS)
8	Bailey Klitzke	P/1B	5-8	Jr.	L/L	Apache Junction, Ariz. (Wichita State)
10	Cameryn O'Grady	SS	5-6	Jr.	L/R	Orange, Calif. (El Modena HS)
7	MacKenzie Peterson	OF	5-9	Fr.	R/R	Gilbert, Ariz. (Phoenix College)
16	Leslie Romero	OF	5-4	Fr.	R/R	Gonzales, Calif. (Salinas HS)
22	Monica Salas	IF	5-3	Sr.	R/R	Goleta, Calif. (Santa Barbara CC)
99	Kiana Spencer	P	5-6	Jr.	L/L	Gallup, N.M. (Yavapai College)
23	Emma Steltzer	OF	5-6	Fr.	R/R	Manchester, Mo. (Parkway South HS)
66	Sydney Townes	OF	5-6	Sr.	L/R	Lompoc, Calif. (Cabrillo HS)
44	Aleyah Wilbon	OF	5-3	Sr.	L/R	Fontana, Calif. (Mt. San Antonio College)
32	Lauren Wilmert	C/1B	5-10	Jr.	R/R	Albuquerque, N.M. (Volcano Vista HS)

RETURNERS (10) - 2018 SEASON STATS

No.	Name	Pos.	Cl.	Avg.	GP-GS	AB	R	H	2B	3B	HR	RBI	SLG%	FLD%
00	Andrea Howard	UT	Fr.	.313	51-50	131	20	41	6	1	7	18	.534	.987
3	Taylor Jones	IF	Fr.	.216	24-11	37	6	8	3	0	1	4	.378	.875
4	D'Andra DeFlora	OF	Jr.	.214	53-53	145	22	31	3	0	7	21	.379	.969
5	Sydney Briderick	C	So.	.230	42-36	87	6	20	2	0	0	5	.253	.956
9	Kasey Halleen	IF	Jr.	.189	49-49	127	13	24	5	0	0	10	.228	.920
10	Cameryn O'Grady	SS	So.	.301	53-52	143	31	43	12	4	4	26	.524	.924
22	Monica Salas	IF	Jr.	.238	45-35	101	9	24	3	0	2	15	.327	.919
32	Lauren Wilmert	C	So.	.180	32-20	61	5	11	1	0	1	11	.246	.961
44	Aleyah Wilbon	OF	Jr.	.222	38-25	63	13	14	1	0	0	2	.238	.964
66	Sydney Townes	OF	Jr.	.186	45-44	102	16	19	2	1	0	4	.225	.938

KEY PLAYERS LOST (3) - 2018 SEASON STATS

No.	Name	Pos.	Avg.	GP-GS	AB	R	H	2B	3B	HR	RBI	SLG%	FLD%
34	Chelsea Johnson	IF	.342	52-51	155	22	53	7	1	10	40	.594	.000
6	Sam Oliver	OF	.191	36-22	47	9	9	1	0	0	2	.213	.953
8	Kristyn Whitley	IF	.188	28-21	48	3	9	3	0	0	4	.250	.941

PITCHERS LOST (4) - 2018 SEASON STATS

No.	Name	Cl.	ERA	W-L	APP	GS	CG	SHO	SV	IP	SO	BF
16	Jensen Main	So.	4.73	8-20	37	29	13	0/0	0	162.2	74	848
23	Krissy Fortner	Sr.	6.05	3-9	27	7	2	0/0	2	78.2	44	395
24	Alexis Ruel	Fr.	9.60	2-7	19	13	5	0/0	0	62.0	14	361
35	Marissa Bethke	R-Jr.	11.12	1-3	12	4	1	0/0	0	22.2	9	123

NEWCOMERS (9)

No.	Name	Cl.
2	Maggie Buckholz	Fr.
7	MacKenzie Peterson	Fr.
8	Bailey Klitzke	Jr.
12	Daryn Haslam	Fr.
13	Kennedy Ferguson	Fr.
16	Leslie Romero	Fr.
23	Emma Steltzer	Fr.

PRONUNCIATION GUIDE

00	ANDREA Howard	on-DRAY-uh
4	D'ANDRA DEFLORA	dee-ON-druh Duh-FLOOR-uh
22	Monica SALAS	SAHL-us
44	ALEYAH WILBON	uh-LEE-uh Will-BAHN
66	Sydney TOWNES	TOWNS
	Paula CONGLETON	CONGLE-ton
	Tyler HEIL	HIGHL

BY ELIGIBILITY

Seniors (5)

4	D'Andra DeFlora	OF
9	Kasey Halleen	IF
22	Monica Salas	IF
44	Aleyah Wilbon	OF
66	Sydney Townes	OF

Juniors (4)

8	Bailey Klitzke	P/1B
10	Cameryn O'Grady	SS
99	Kiana Spencer	P
32	Lauren Wilmert	C/1B

Sophomores (3)

00	Andrea Howard	OF
3	Taylor Jones	IF
5	Sydney Broderick	C

Freshmen (7)

2	Maggie Buckholz	UT
13	Kennedy Ferguson	P
12	Daryn Haslam	IF
24	Skylar Jenkins	OF
7	MacKenzie Peterson	OF
16	Leslie Romero	OF
23	Emma Steltzer	OF

HOME STATE

Arizona (3)

5	Sydney Broderick	C
8	Bailey Klitzke	P
7	MacKenzie Peterson	OF

California (6)

9	Kasey Halleen	IF
10	Cameryn O'Grady	SS
16	Leslie Romero	OF
22	Monica Salas	IF
44	Aleyah Wilbon	OF
66	Sydney Townes	OF

Georgia (1)

24	Skylar Jenkins	OF
----	----------------	----

Missouri (1)

23	Emma Steltzer	OF
----	---------------	----

New Mexico (4)

00	Andrea Howard	OF
3	Taylor Jones	IF
99	Kiana Spencer	P
32	Lauren Wilmert	C/1B

Oregon (1)

2	Maggie Buckholz	UT
---	-----------------	----

Texas (2)

4	D'Andra DeFlora	OF
12	Daryn Haslam	IF

Washington (1)

13	Kennedy Ferguson	P
----	------------------	---



Paula Congleton

5th Head Coach in UNM Program History
Record at UNM: 21-55

NOTEWORTHY :

- Named the fifth head coach in program history on June 20, 2017
- Enters her second season at her alma mater
- Earned her 300th career victory on April 17, 2014
- Earned her 350th career victory on April 22, 2017
- Earned her 400th career victory on May 4, 2018
- Earned her first win at UNM against St. Mary's on Feb. 9, 2018 (4-1)

MORE NOTES ON COACH CONGLETON

- Spent 19 seasons at Santa Barbara City College with the Vaqueros molding the program into one of the elite programs in the WSC
- Three-time WSC Gold Division Coach of the Year
- 2011 Southern Cal Coaching Staff of the Year
- 2011 NFCA National Coaching Staff of the Year
- Led the Vaqueros to four Southern Cal Regional appearances and one trip to the Southern Cal Super Regional
- Guided the Vaqueros to their greatest success of the program, winning a Southern Cal Regional series and advancing to the Super Regional for the first time ever in 2016
- Led the 2016 SBCC squad to the second-most games in program history (30-14)
- The 2016 team finished third WSC Gold Division
- In 2011, led the Vaqueros to a program-record 31 wins (31-7 overall), leading the team to a WSC title and the Southern Cal Regional
- Four-time Scholar Athlete first baseman for the Lobos (3.89 GPA)
- Three-time All-American at New Mexico
- Received her Doctorate in educational administration in 2009
- Served as a full-time professor at SBCC teaching health, weight training and kinesiology
- Served as Associate Athletic Director and Coordinator of the Academic Achievement Zone for student-athletes at SBCC

COACHING EXPERIENCE

Head Coach:

2017-Present - New Mexico (21-55)
1998-2017 - Santa Barbara City Coll. (Calif.) (354-322)
1996-1998 - Cal. State University Eastbay (33-77)

Graduate Assistant:

1986-1988 - New Mexico

Overall NCAA DI record (Second Season): 21-55
Overall NCAA record (Fourth Season): 54-132
Overall record (23 years): 408-454 (.473)

ALMA MATER

New Mexico (1984)

TWITTER

Follow @CoachCongleton



2019 NEW MEXICO OVERALL STATISTICS

Record: 7-16 Home: 0-0 Away: 1-6 Neutral: 6-10 MW: 0-0

Player	avg	gp-gs	ab	r	h	2b	3b	hr	rbi	tb	slg%	bb	hp	so	gdp	ob%	sf	sh	sb-att	po	a	e	fld%
8 KLITZKE, Bailey	.390	17-16	41	4	16	3	1	0	10	21	.512	7	0	4	1	.460	2	0	2-2	1	3	0	1.000
10 O'GRADY, Cameryn	.364	23-23	66	14	24	7	1	2	13	39	.591	14	1	11	0	.481	0	0	0-0	26	26	8	.867
12 HASLAM, Daryn	.303	16-10	33	5	10	0	0	3	6	19	.576	5	0	11	0	.395	0	0	0-0	11	17	2	.933
44 WILBON, Aleyah	.300	18-2	10	5	3	0	0	0	0	3	.300	1	0	5	0	.364	0	0	0-1	1	0	0	1.000
4 DeFLORA, D'Andra	.277	23-23	65	17	18	3	0	1	8	24	.369	7	3	23	1	.373	0	0	0-0	33	1	0	1.000
2 BUCKHOLZ, Maggie	.240	22-21	50	9	12	1	1	2	17	21	.420	17	1	23	0	.441	0	0	0-1	23	0	1	.958
22 SALAS, Monica	.230	22-22	61	9	14	1	0	3	11	24	.393	7	0	18	3	.309	0	0	0-0	15	22	4	.902
32 WILMERT, Lauren	.215	23-23	65	12	14	5	0	3	15	28	.431	7	1	17	1	.293	2	0	0-0	116	12	6	.955
0 HOWARD, Andrea	.197	23-23	61	11	12	5	1	2	7	25	.410	13	1	21	0	.347	0	1	1-1	49	3	0	1.000
9 HALLEEN, Kasey	.179	14-13	28	3	5	1	0	0	2	6	.214	3	0	10	0	.258	0	0	0-0	20	16	2	.947
66 TOWNES, Sydney	.176	15-4	17	2	3	1	0	0	0	4	.235	2	0	8	0	.263	0	0	1-1	2	0	1	.667
3 JONES, Taylor	.133	18-11	30	3	4	0	0	0	1	4	.133	6	0	12	0	.278	0	0	0-0	45	12	1	.983
7 PETERSON, MacKenzie	.111	12-6	18	2	2	0	0	0	0	2	.111	5	1	4	0	.333	0	0	0-0	44	1	1	.978
5 BRODERICK, Sydney	.048	12-9	21	1	1	0	0	0	0	1	.048	1	0	9	1	.091	0	0	0-0	28	8	0	1.000
16 ROMERO, Leslie	.000	5-1	6	0	0	0	0	0	0	0	.000	0	0	1	0	.000	0	0	0-0	2	0	0	1.000
23 STELTZER, Emma	.000	3-0	2	0	0	0	0	0	0	0	.000	1	0	0	0	.333	0	0	0-0	0	0	0	.000
99 SPENCER, Kiana	.000	0-0	0	0	0	0	0	0	0	0	.000	0	0	0	0	.000	0	0	0-0	0	6	1	.857
13 FERGUSON, Kennedy	.000	4-4	0	0	0	0	0	0	0	0	.000	0	0	0	0	.000	0	0	0-0	2	11	1	.929
Totals	.240	23	574	97	138	27	4	16	90	221	.385	96	8	177	7	.355	4	1	4-6	418	138	28	.952
Opponents	.297	23	576	121	171	23	4	29	113	289	.502	93	12	93	0	.404	3	13	18-25	444	113	22	.962

LOB - Team (144), Opp (160). DPs turned - Team (3), Opp (9). IBB - Team (2), HOWARD 1, O'GRADY 1.

(All games Sorted by Earned run avg)

Player	era	w-l	app	gs	cg	sho	sv	ip	h	r	er	bb	so	2b	3b	hr	b/avg	wp	hp	bk	sfa	sha
23 STELTZER, Emma	0.00	0-0	1	0	0	0/0	0	0.2	0	0	0	0	0	0	0	0	.000	0	0	0	0	0
13 FERGUSON, Kennedy	3.35	1-8	16	10	7	1/0	0	71.0	88	53	34	29	45	7	1	13	.295	2	5	0	2	6
99 SPENCER, Kiana	4.67	4-6	13	10	6	2/0	0	51.0	60	37	34	33	26	11	1	12	.294	1	5	0	1	6
8 KLITZKE, Bailey	11.34	2-2	8	3	1	0/0	0	16.2	23	31	27	31	22	5	2	4	.319	10	2	0	0	1
Totals	4.77	7-16	23	23	14	3/0	0	139.1	171	121	95	93	93	23	4	29	.297	13	12	0	3	13
Opponents	4.11	16-7	23	23	4	2/2	3	148.0	138	97	87	96	177	27	4	16	.240	15	8	0	4	1

PB - Team (7), WILMERT 4, BRODERICK 3, Opp (7). SBA/ATT - WILMERT (13-17), FERGUSON (8-12), BRODERICK (5-8), KLITZKE (6-8), SPENCER (4-5).

2018 NEW MEXICO MOUNTAIN WEST STATISTICS

Record: 7-17 Home: 5-7 Away: 2-10 MW: 7-17

Player	avg	gp-gs	ab	r	h	2b	3b	hr	rbi	tb	slg%	bb	hp	so	gdp	ob%	sf	sh	sb-att	po	a	e	fld%	
0 HOWARD, Andrea	.368	24-23	57	10	21	3	0	3	7	33	.579	12	1	14	0	.479	1	1	0-0	132	4	2	.986	
34 JOHNSON, Chelsea	.352	23-23	71	9	25	4	0	5	18	44	.620	6	0	19	0	.403	0	0	0-0	0	0	0	.000	
10 O'GRADY, Cameryn	.281	24-24	64	13	18	5	2	3	17	36	.563	16	2	19	0	.439	0	1	1-1	47	64	6	.949	
22 SALAS, Monica	.250	21-19	52	3	13	2	0	0	7	15	.288	3	0	14	2	.286	1	0	0-0	13	28	1	.976	
44 WILBON, Aleyah	.250	18-16	32	7	8	0	0	0	1	8	.250	12	0	10	0	.455	0	2	2-4	13	0	0	1.000	
9 HALLEEN, Kasey	.240	20-20	50	6	12	2	0	0	3	14	.280	4	1	16	0	.304	1	0	0-0	35	37	7	.911	
4 DeFLORA, D'Andra	.206	24-24	68	8	14	0	0	3	7	23	.338	4	2	23	3	.270	0	1	1-1	41	5	2	.958	
66 TOWNES, Sydney	.161	23-23	56	8	9	0	0	0	0	9	.161	11	1	24	0	.309	0	2	2-2	45	2	2	.959	
5 BRODERICK, Sydney	.130	20-19	46	3	6	1	0	0	2	7	.152	4	0	8	2	.196	1	0	0-0	56	5	2	.968	

8 WHITLEY, Kristyn	.333	8-5	12	1	4	1	0	0	2	5	.417	4	0	3	0	.500	0	0	0-0	9	10	1	.950	
16 MAIN, Jensen	.333	1-1	3	0	1	0	0	0	0	1	.333	0	0	2	0	.333	0	0	0-0	1	19	2	.909	
3 JONES, Taylor	.235	9-5	17	3	4	1	0	1	1	8	.471	0	0	5	0	.235	0	1	0-0	2	6	1	.889	
6 OLIVER, Sam	.182	16-5	11	3	2	0	0	0	2	2	.182	6	0	2	0	.471	0	2	1-2	11	1	1	.923	
32 WILMERT, Lauren	.080	14-8	25	1	2	1	0	0	3	3	.120	2	0	9	0	.148	0	1	0-0	32	2	2	.944	
99 JOHNSON, DayMian	.000	5-1	6	0	0	0	0	0	0	0	.000	1	0	1	0	.143	0	0	0-0	2	0	0	1.000	
Totals	.244	24	570	75	139	20	2	15	70	208	.365	85	7	169	7	.347	4	11	7-10	442	194	30	.955	
Opponents	.346	24	641	165	222	32	4	26	150	340	.530	107	13	53	6	.445	8	10	21-28	453	152	16	.974	

LOB - Team (149), Opp (172). DPs turned - Team (10), Opp (11).

(MW games only Sorted by Earned run avg)

Player	era	w-l	app	gs	cg	sho	sv	ip	h	r	er	bb	so	2b	3b	hr	b/avg	wp	hp	bk	sfa	sha
16 MAIN, Jensen	4.99	4-9	18	13	8	0/0	0	81.1	125	73	58	50	28	19	2	7	.350	5	10	0	3	8
23 FORTNER, Krissy	6.42	2-5	11	5	2	0/0	2	28.1	36	28	26	14	18	3	0	10	.298	1	1	0	1	0
24 RUEL, Alexis	7.74	1-2	8	5	2	0/0	0	31.2	48	46	35	32	6	9	2	5	.361	6	2	0	4	2

35 BETHKE, Marissa	21.00	0-1	4	1	0	0/0	0	6.0	13	18	18	11	1	1	0	4	.433	1	0	0	0	0
Totals	6.51	7-17	24	24	12	0/0	2	147.1	222	165	137	107	53	32	4	26	.346	13	13	0	8	10
Opponents	2.97	17-7	24	24	16	5/0	0	151.0	139	75	64	85	169	20	2	15	.244	6	7	1	4	11

PB - Team (3), BRODERICK 3, Opp (2). Pickoffs - Team (1), WILMERT 1. SBA/ATT - BRODERICK (17-22), MAIN (15-18), FORTNER (4-6), WILMERT (4-5), RUEL (2-3), BETHKE (0-1).

2019 NEW MEXICO GAME-BY-GAME STATISTICS

Date	Opponent	ab	r	h	rbi	2b	3b	hr	tb	bb	ibb	sb	cs	hbp	sac	sf	gdp	k	po	a	e	lob	avg
Feb 08	vs UTEP	26	15	9	15	0	0	1	12	16	0	0	1	2	0	0	2	7	21	8	0	8	.346
Feb 09	vs Creighton	20	8	9	8	1	1	1	15	4	1	0	0	0	0	0	1	8	15	2	0	4	.391
Feb 09	at New Mexico State	29	8	10	7	3	0	2	19	3	0	0	0	0	0	2	0	8	18	3	2	5	.373
Feb 15	vs Alabama	24	0	4	0	1	0	0	5	2	0	0	0	1	0	0	0	4	21	10	0	6	.323
Feb 15	vs Cal State Fullerton	26	2	5	2	2	0	0	7	9	0	0	0	0	0	0	0	10	18	7	3	12	.296
Feb 16	at Arizona	22	1	4	0	0	0	0	4	1	0	0	0	0	0	0	0	7	12	3	2	7	.279
Feb 16	vs Illinois-Chicago	27	13	11	11	2	1	1	18	8	0	0	0	0	0	0	0	2	18	9	2	5	.299
Feb 17	vs South Florida	28	1	4	1	1	0	0	5	4	0	0	0	0	0	0	0	12	22	15	2	8	.277
Feb 20	at Hawaii	25	1	3	1	0	0	0	3	1	0	0	0	1	0	0	1	9	18	3	1	5	.260
Feb 21	vs DePaul	25	5	5	5	0	0	3	14	4	0	0	0	0	0	0	1	8	21	7	2	3	.254
Feb 22	vs Canisius	26	10	11	9	1	1	2	20	5	0	1	0	0	0	0	0	2	15	6	0	6	.270
Feb 22	at Hawaii	27	2	7	2	2	0	1	12	2	0	0	0	0	0	0	1	4	18	6	3	6	.269
Feb 23	at Hawaii	22	3	3	3	2	0	1	8	3	0	0	1	0	1	0	0	4	21	2	0	2	.260
Feb 23	vs DePaul	26	2	4	1	2	0	0	6	5	0	0	0	0	0	0	0	5	18	7	1	8	.252
Feb 28	vs Florida	27	0	4	0	1	0	0	5	2	1	0	0	0	0	0	1	16	21	7	0	6	.245
Mar 01	vs Loyola Marymount	26	2	5	2	1	0	0	6	3	0	1	0	1	0	0	0	10	21	3	0	7	.241
Mar 01	vs Tennessee	19	1	4	1	0	0	1	7	2	0	0	0	0	0	0	0	9	15	4	1	5	.240
Mar 03	vs UCONN	26	1	6	1	1	0	0	7	4	0	0	0	0	0	1	0	9	18	6	0	9	.239
Mar 03	at Cal State Fullerton	16	1	1	1	0	0	1	4	2	0	0	0	0	0	0	0	7	12	5	2	2	.233
Mar 08	vs Oregon State	29	6	10	6	2	0	1	15	2	0	0	0	0	0	0	0	12	21	9	1	6	.240
Mar 08	vs Western Carolina	21	10	7	9	2	0	1	12	4	0	1	0	1	0	0	0	2	15	1	3	1	.244
Mar 09	vs Oregon State	29	3	6	3	2	1	0	10	6	0	0	0	1	0	0	0	11	21	6	2	12	.242
Mar 10	at Loyola Marymount	28	2	6	2	1	0	0	7	4	0	1	0	1	0	1	0	11	18	9	1	11	.240
Totals		574	97	138	90	27	4	16	221	96	2	4	2	8	1	4	7	177	418	138	28	144	.240

2019 NEW MEXICO GAME-BY-GAME STATISTICS

Date	Opponent	ip	h	r	er	bb	so	2b	3b	hr	wp	bk	hbp	dp	ibb	score	w-l	sv	era
Feb 08	vs UTEP	7.0	7	6	6	7	10	2	0	2	2	0	1	0	0	15-6	1-0	0	6.00
Feb 09	vs Creighton	5.0	3	0	0	5	2	0	0	0	0	0	1	0	0	8-0	2-0	0	3.50
Feb 09	at New Mexico State	6.0	7	9	7	4	6	1	0	4	3	0	2	0	0	8-9	2-1	0	5.06
Feb 15	vs Alabama	7.0	6	1	1	3	0	1	0	0	0	0	0	0	0	0-1	2-2	0	3.92
Feb 15	vs Cal State Fullerton	6.0	9	6	4	2	3	1	0	2	1	0	1	0	0	2-6	2-3	0	4.06
Feb 16	at Arizona	4.0	14	15	14	5	1	3	0	5	0	0	1	0	0	1-15	2-4	0	6.40
Feb 16	vs Illinois-Chicago	6.0	7	5	4	5	8	1	2	0	2	0	1	0	0	13-5	3-4	0	6.15
Feb 17	vs South Florida	7.1	6	2	0	2	6	0	0	0	0	0	0	1	0	1-2	3-5	0	5.21
Feb 20	at Hawaii	6.0	5	2	1	0	4	1	0	1	0	0	1	0	0	1-2	3-6	0	4.77
Feb 21	vs DePaul	7.0	12	9	7	9	3	1	0	1	2	0	1	0	0	5-9	3-7	0	5.02
Feb 22	vs Canisius	5.0	4	0	0	1	4	0	0	0	0	0	1	0	0	10-0	4-7	0	4.64
Feb 22	at Hawaii	6.0	4	3	2	2	3	1	0	0	0	0	1	0	0	2-3	4-8	0	4.45
Feb 23	at Hawaii	7.0	4	2	2	4	6	0	0	1	0	0	0	0	0	3-2	5-8	0	4.24
Feb 23	vs DePaul	6.0	8	4	4	3	3	3	0	1	0	0	0	1	0	2-4	5-9	0	4.27
Feb 28	vs Florida	7.0	5	1	0	1	5	1	0	0	0	0	0	0	0	0-1	5-10	0	3.94
Mar 01	vs Loyola Marymount	7.0	7	4	4	8	7	0	1	0	0	0	0	0	0	2-4	5-11	0	3.95
Mar 01	vs Tennessee	5.0	18	15	11	9	1	2	0	4	0	0	0	0	0	1-15	5-12	0	4.50
Mar 03	vs UCONN	6.0	8	2	2	1	6	0	0	1	0	0	0	0	0	1-2	5-13	0	4.38
Mar 03	at Cal State Fullerton	4.0	13	19	14	10	2	1	0	5	1	0	0	0	0	1-19	5-14	0	5.08
Mar 08	vs Oregon State	7.0	9	5	3	4	2	3	1	0	0	0	0	0	0	6-5	6-14	0	4.96
Mar 08	vs Western Carolina	5.0	2	0	0	0	3	0	0	0	0	0	0	1	0	10-0	7-14	0	4.77
Mar 09	vs Oregon State	7.0	8	5	3	1	3	0	0	1	1	0	0	0	0	3-5	7-15	0	4.67
Mar 10	at Loyola Marymount	6.0	5	6	6	7	5	1	0	1	1	0	1	0	0	2-6	7-16	0	4.77
Totals		139.1	171	121	95	93	93	23	4	29	13	0	12	3	0	97-121	7-16	0	4.77

2019 NEW MEXICO RECORD AND INNING BREAKDOWN

Score by innings	1	2	3	4	5	6	7	8	Total
NEW MEXICO	19	15	7	23	5	17	11	0	97
Opponents	21	9	31	12	23	18	5	2	121

Record when ...

Overall	7-16	After 4 leading	5-3
Conference	0-0 trailing	2-8
Non-Conference	7-16 tied	0-5
Home games	0-0	After 5 leading	3-1
Away games	1-6 trailing	1-7
Neutral site	6-10 tied	0-5
Day games	6-11	After 6 leading	2-1
Night games	1-5 trailing	1-10
vs Left starter	0-1 tied	0-2
vs Right starter	7-15		
1-Run games	2-7	Hit 0 home runs	0-11
2-Run games	0-3	... 1 home run	6-3
5+Run games	5-3	... 2+ home runs	1-2
Extra innings	0-2		
Shutouts	3-2	Opponent 0 home runs	5-5
	 1 home run	1-6
	 2+ HRs	1-5
Scoring 0-2 runs	0-13		
..... 3-5 runs	1-2		
..... 6-9 runs	2-1	Made 0 errors	4-4
..... 10+ runs	4-0	... 1 error	1-4
		... 2+ errors	2-8
Opponent 0-2 runs	4-5		
..... 3-5 runs	2-4	Opp. made 0 errors	1-9
..... 6-9 runs	1-4 1 error	4-3
..... 10+ runs	0-3 2+ errors	2-4
Scored in 1st inning	4-4		
Opp. scored in 1st	1-8	Out-hit opponent	6-3
Scores first	5-7	Out-hit by opponent	1-13
Opp. scores first	2-9	Hits are tied	0-0

Record when team scores:

Runs	0	1	2	3	4	5	6	7	8	9	10+
W-L	0-2	0-6	0-5	1-1	0-0	0-1	1-0	0-0	1-1	0-0	4-0

Record when opponent scores:

Runs	0	1	2	3	4	5	6	7	8	9	10+
W-L	3-0	0-2	1-3	0-1	0-2	2-1	1-2	0-0	0-0	0-2	0-3

Record when leading after:

Inn.	1	2	3	4	5	6
W-L	4-1	6-2	5-3	5-3	3-1	2-1

Record when trailing after:

Inn.	1	2	3	4	5	6
W-L	0-7	1-8	2-10	2-8	1-7	1-10

Record when tied after:

Inn.	1	2	3	4	5	6
W-L	3-8	0-6	0-3	0-5	0-5	0-2

Current losing streak: 2
 Longest winning streak: 2
 Longest losing streak: 6

Home attendance : 0 (0 dates avg = 0)
 Away attendance : 13231 (23 dates avg = 575)
 Total attendance: 13231 (23 dates avg = 575)

2019 NEW MEXICO SITUATIONAL BREAKDOWN

Player	vs left			vs right			w/runners			w/bases empty			w/bases loaded			as leadoff			fly	gnd	fly/
	h	ab	avg	h	ab	avg	h	ab	avg	h	ab	avg	h	ab	avg	rch	ops	pct	out	out	gnd
5 BRODERICK, Sydney	0	2	.000	1	19	.053	0	12	.000	1	9	.111	0	0	---	1	3	.333	7	3	2.3
2 BUCKHOLZ, Maggie	3	6	.500	9	44	.205	10	28	.357	2	22	.091	2	4	.500	6	13	.462	7	7	1.0
4 DeFLORA, D'Andra	1	4	.250	17	61	.279	7	24	.292	11	41	.268	1	2	.500	8	18	.444	13	11	1.2
9 HALLEEN, Kasey	0	0	---	5	28	.179	4	15	.267	1	13	.077	1	1	1.000	1	8	.125	6	6	1.0
12 HASLAM, Daryn	2	3	.667	8	30	.267	5	19	.263	5	14	.357	0	1	.000	4	10	.400	6	5	1.2
0 HOWARD, Andrea	1	5	.200	11	56	.196	6	28	.214	6	33	.182	0	5	.000	7	20	.350	26	3	8.7
3 JONES, Taylor	2	3	.667	2	27	.074	3	16	.188	1	14	.071	0	2	.000	3	8	.375	10	3	3.3
8 KLITZKE, Bailey	0	3	.000	16	38	.421	6	15	.400	10	26	.385	3	4	.750	4	13	.308	15	8	1.9
10 O'GRADY, Cameryn	1	5	.200	23	61	.377	15	37	.405	9	29	.310	0	4	.000	9	17	.529	20	9	2.2
7 PETERSON, MacKenZ	0	3	.000	2	15	.133	0	11	.000	2	7	.286	0	1	.000	2	5	.400	4	7	0.6
16 ROMERO, Leslie	0	1	.000	0	5	.000	0	1	.000	0	5	.000	0	0	---	0	0	---	1	4	0.2
22 SALAS, Monica	3	4	.750	11	57	.193	7	33	.212	7	28	.250	1	2	.500	3	14	.214	10	19	0.5
23 STELTZER, Emma	0	1	.000	0	1	.000	0	0	---	0	2	.000	0	0	---	0	1	.000	1	1	1.0
66 TOWNES, Sydney	0	1	.000	3	16	.188	1	7	.143	2	10	.200	0	0	---	1	6	.167	4	1	4.0
44 WILBON, Aleyah	0	1	.000	3	9	.333	0	5	.000	3	5	.600	0	1	.000	1	2	.500	0	1	0.0
32 WILMERT, Lauren	2	5	.400	12	60	.200	10	45	.222	4	20	.200	1	3	.333	3	10	.300	22	12	1.8
Totals	15	47	.319	123	527	.233	74	296	.250	64	278	.230	9	30	.300	53	148	.358	152	100	1.5
Opponents	83	276	.301	88	300	.293	90	312	.288	81	264	.307	7	28	.250	63	139	.453	176	130	1.4

Player	pinch hitting			w/runners in scoring pos			w/runner on 3rd and LT 2 out			with 2 outs			success adv runners			2- rnrns		rch	rch	kl	
	h	ab	avg	h	ab	avg	rbi	ops	pct	h	ab	avg	adv	ops	pct	rbi	w/out	lob	err	fc	kl
5 BRODERICK, Sydney	0	3	.000	0	5	.000	0	2	.000	0	9	.000	1	13	.077	0	0	4	1	0	5
2 BUCKHOLZ, Maggie	0	0	---	8	23	.348	4	7	.571	5	17	.294	18	35	.514	7	0	11	1	1	11
4 DeFLORA, D'Andra	0	0	---	5	14	.357	2	4	.500	2	19	.105	14	29	.483	3	3	10	1	0	1
9 HALLEEN, Kasey	0	0	---	1	5	.200	1	1	1.000	0	8	.000	6	16	.375	0	0	7	1	1	3
12 HASLAM, Daryn	0	4	.000	4	14	.286	0	0	---	4	13	.308	10	21	.476	5	2	13	1	1	2
0 HOWARD, Andrea	0	0	---	3	15	.200	0	3	.000	5	22	.227	7	29	.241	3	1	24	0	0	10
3 JONES, Taylor	1	3	.333	1	9	.111	0	3	.000	2	11	.182	7	18	.389	1	1	10	1	0	6
8 KLITZKE, Bailey	0	1	.000	5	10	.500	4	6	.667	7	12	.583	12	19	.632	4	4	4	0	1	2
10 O'GRADY, Cameryn	0	0	---	8	19	.421	3	6	.500	6	14	.429	24	41	.585	4	4	3	2	4	1
7 PETERSON, MacKenZ	0	3	.000	0	10	.000	0	4	.000	1	4	.250	4	12	.333	0	2	2	1	1	2
16 ROMERO, Leslie	0	1	.000	0	0	---	0	0	---	0	4	.000	0	1	.000	0	0	0	0	0	1
22 SALAS, Monica	0	0	---	6	22	.273	2	3	.667	3	18	.167	13	36	.361	4	5	18	0	3	6
23 STELTZER, Emma	0	1	.000	0	0	---	0	0	---	0	0	---	0	0	---	0	0	0	0	0	0
66 TOWNES, Sydney	0	3	.000	0	4	.000	0	0	---	1	4	.250	4	8	.500	0	1	2	1	0	3
44 WILBON, Aleyah	2	4	.500	0	2	.000	0	1	.000	1	4	.250	2	6	.333	0	1	3	1	0	1
32 WILMERT, Lauren	0	0	---	5	28	.179	6	12	.500	3	23	.130	24	53	.453	5	7	24	2	1	4
Totals	3	23	.130	46	180	.256	22	52	.423	40	182	.220	146	337	.433	36	31	144	13	13	58
Opponents	7	22	.318	53	196	.270	28	49	.571	53	193	.275	178	362	.492	37	51	160	20	12	23

Success Advancing Runners = percentage of times the batter advanced at least one runner during a plate appearance
 #Rnrns Adv w/Out = TOTAL number of runners advanced when the player made an out



00 ANDREA HOWARD

OF • 5-6 • 50.

ALBUQUERQUE, N.M. • LA CUEVA HS

SINGLE-GAME HIGHS

Hits: 3, 2x, Last at Nevada, 3-24-18
 Doubles: 1, 11x, Last at LMU, 3-10-19
 Triples: 1, 2x, Last vs. Oregon State, 3-9-19
 Home runs: 1, 9x, Last vs. Oregon State, 3-8-19
 Total bases: 7, at Nevada, 3-24-18
 RBI: 4, at Nevada, 3-24-18
 Runs scored: 3, 3x, Last vs UTEP, 2-8-19
 Walks: 4, UTEP, 2-8-19
 Hit by pitch: 1, 2x, Last vs. Alabama, 2-15-19

Struck out: 3, 3x, Last vs. Florida, 2-28-19
 Sac flies: 1, 2x, at Colorado State, 4-8-18
 Sac bunts: 1, 3x, Last at Hawai'i, 2-23-19
 At bats: 5, at Colorado State, 4-7-18
 Stolen bases: 1, 4x, Last vs. WCU, 3-8-19
 Putouts: 13, at UTEP, 4-16-18
 Assists: 1, 8x, Last vs. Oregon State, 3-8-19

Named All-Mountain West Second Team in 2018

CAREER STATS (AT UNM)

Year	avg	gp-gs	ab	r	h	2b	3b	hr	rbi	tb	slg%	bb	hbp	so	gdp	ob%	sf	sh	sb-att	po	a	e	fld%
2018	.313	51-50	131	20	41	6	1	7	18	70	.534	23	1	39	1	.414	2	2	3-4	296	5	4	.987
2019	.197	23-23	61	11	12	5	1	2	7	25	.410	13	1	21	0	.347	0	1	1-1	49	3	0	1.000
TOTAL	.276	74-73	192	31	53	11	2	9	25	95	.495	36	2	60	1	.392	2	3	4-5	345	8	4	.989

2019 GAME-BY-GAME

Date	Opponent	Pos	AB	R	H	RBI	2B	3B	HR	BB	SB	CS	HBP	SAC	SF	GDP	K	PO	A	E	Avg
Feb 08	vs UTEP	*of	1	3	0	0	0	0	0	4	0	0	0	0	0	0	1	1	0	0	.000
Feb 09	vs Creighton	*of	2	2	1	0	0	0	0	1	0	0	0	0	0	0	0	4	0	0	.333
Feb 09	at New Mexico State	*of	4	2	2	3	1	0	1	0	0	0	0	0	0	0	2	5	0	0	.429
Feb 15	vs Alabama	*of	2	0	0	0	0	0	0	0	0	0	1	0	0	0	0	1	1	0	.333
Feb 15	vs Cal State Fullerton	*of	4	0	0	0	0	0	0	0	0	0	0	0	0	0	1	1	0	0	.231
Feb 16	at Arizona	*of	1	0	0	0	0	0	0	1	0	0	0	0	0	0	1	2	0	0	.214
Feb 16	vs Illinois-Chicago	*of	4	1	2	1	1	0	0	0	0	0	0	0	0	0	1	0	0	0	.278
Feb 17	vs South Florida	*of	3	0	0	0	0	0	0	1	0	0	0	0	0	0	1	1	0	0	.238
Feb 20	at Hawaii	*of	3	0	0	0	0	0	0	0	0	0	0	0	0	0	2	3	0	0	.208
Feb 21	vs DePaul	*of	3	0	0	0	0	0	0	1	0	0	0	0	0	0	0	4	0	0	.185
Feb 22	vs Canisius	*of	4	0	0	0	0	0	0	0	0	0	0	0	0	0	0	1	0	0	.161
Feb 22	at Hawaii	*of	4	0	2	0	1	0	0	0	0	0	0	0	0	0	0	4	0	0	.200
Feb 23	at Hawaii	*of	2	0	0	0	0	0	0	0	0	0	0	1	0	0	0	6	0	0	.189
Feb 23	vs DePaul	*of	3	0	0	0	0	0	0	0	0	0	0	0	0	0	1	0	0	0	.175
Feb 28	vs Florida	*of	3	0	0	0	0	0	0	0	0	0	0	0	0	0	3	0	0	0	.163
Mar 01	vs Loyola Marymount	*of	3	0	1	0	0	0	0	0	0	0	0	0	0	0	1	4	0	0	.174
Mar 01	vs Tennessee	*of	1	0	0	0	0	0	0	1	0	0	0	0	0	0	1	2	1	0	.170
Mar 03	vs UCONN	*of	3	0	0	0	0	0	0	0	0	0	0	0	0	0	2	2	0	0	.160
Mar 03	at Cal State Fullerton	*of	1	0	0	0	0	0	0	0	0	0	0	0	0	0	0	2	0	0	.157
Mar 08	vs Oregon State	*of	3	1	1	2	0	0	1	0	0	0	0	0	0	0	2	1	1	0	.167
Mar 08	vs Western Carolina	*of	1	1	0	0	0	0	0	2	1	0	0	0	0	0	0	1	0	0	.164
Mar 09	vs Oregon State	*of	3	1	2	1	1	1	0	1	0	0	0	0	0	0	1	2	0	0	.190
Mar 10	at Loyola Marymount	*of	3	0	1	0	1	0	0	1	0	0	0	0	0	0	1	2	0	0	.197
Totals		23gs	61	11	12	7	5	1	2	13	1	0	1	1	0	0	21	49	3	0	.197

On base pct. .347 • Slugging pct. .410



2 MAGGIE BUCKHOLZ *UT • 5-7 • FR.*
SILVERTON, ORE. • SILVERTON HS

SINGLE-GAME HIGHS

Hits: 3, Illinois-Chicago, 2-16-19
 Doubles: 1, Western Carolina, 3-8-19
 Triples: 1, Illinois-Chicago, 2-16-19
 Home runs: 1, 2x, Last at Hawai'i, 2-23-19
 Total bases: 8, Illinois-Chicago, 2-16-19
 Runs scored: 2, 2x, Last vs. WCU, 3-8-19
 RBI: 7, Illinois-Chicago, 2-16-19
 Walks: 3, Cal State Fullerton, 2-15-19
 Hit by pitch: 1, at LMU, 3-10-19

Struck out: 3, UConn, 3-3-19
 Sac bunts:
 At bats: 4, Illinois-Chicago, 2-16-19
 Caught Stealing: 1, UTEP, 2-8-19
 Putouts: 4, 2x, Last vs. Florida, 2-28-19
 Assists: 1, Alabama, 2-15-19

CAREER STATS (AT UNM)

Year	avg	gp-gs	ab	r	h	2b	3b	hr	rbi	tb	slg%	bb	hbp	so	gdp	ob%	sf	sh	sb-att	po	a	e	fld%
2019	.240	22-21	50	9	12	1	1	2	17	21	.420	17	1	23	0	.441	0	0	0-1	23	0	1	.958
TOTAL	.240	22-21	50	9	12	1	1	2	17	21	.420	17	1	23	0	.441	0	0	0-1	23	0	1	.958

2019 GAME-BY-GAME

Date	Opponent	Pos	AB	R	H	RBI	2B	3B	HR	BB	SB	CS	HBP	SAC	SF	GDP	K	PO	A	E	Avg
Feb 08	vs UTEP	*of	3	1	1	3	0	0	0	2	0	1	0	0	0	0	0	1	0	0	.333
Feb 09	vs Creighton	*of	2	0	0	0	0	0	0	0	0	0	0	0	0	0	1	1	0	0	.200
Feb 09	at New Mexico State	ph	0	1	0	0	0	0	0	1	0	0	0	0	0	0	0	0	0	0	.200
Feb 15	vs Alabama	*of	2	0	0	0	0	0	0	1	0	0	0	0	0	0	2	2	0	0	.143
Feb 15	vs Cal State Fullerton	*of	1	0	0	0	0	0	0	3	0	0	0	0	0	0	1	4	0	0	.125
Feb 16	at Arizona	*of	2	0	0	0	0	0	0	0	0	0	0	0	0	0	1	1	0	0	.100
Feb 16	vs Illinois-Chicago	*dh	4	2	3	7	0	1	1	0	0	0	0	0	0	0	0	0	0	0	.286
Feb 17	vs South Florida	*dh	2	0	1	0	0	0	0	1	0	0	0	0	0	0	1	0	0	0	.312
Feb 20	at Hawaii	*of	3	0	0	0	0	0	0	0	0	0	0	0	0	0	2	1	0	1	.263
Feb 21	vs DePaul	*dh	2	1	0	0	0	0	0	1	0	0	0	0	0	0	1	0	0	0	.238
Feb 22	vs Canisius	*of	2	0	2	2	0	0	0	1	0	0	0	0	0	0	0	1	0	0	.304
Feb 22	at Hawaii	*of	3	0	1	1	0	0	0	0	0	0	0	0	0	0	0	0	0	0	.308
Feb 23	at Hawaii	*of	3	1	1	3	0	0	1	0	0	0	0	0	0	0	0	1	0	0	.310
Feb 23	vs DePaul	*of	2	0	0	0	0	0	0	1	0	0	0	0	0	0	1	0	0	0	.290
Feb 28	vs Florida	*of	3	0	1	0	0	0	0	0	0	0	0	0	0	0	2	4	0	0	.294
Mar 01	vs Loyola Marymount	*of	2	1	1	0	0	0	0	2	0	0	0	0	0	0	1	2	0	0	.306
Mar 01	vs Tennessee	*of	3	0	0	0	0	0	0	0	0	0	0	0	0	0	2	2	0	0	.282
Mar 03	vs UCONN	*of	3	0	0	0	0	0	0	1	0	0	0	0	0	0	3	1	0	0	.262
Mar 08	vs Oregon State	*dh	2	0	0	0	0	0	0	1	0	0	0	0	0	0	1	0	0	0	.250
Mar 08	vs Western Carolina	*of	2	2	1	1	1	0	0	1	0	0	0	0	0	0	0	1	0	0	.261
Mar 09	vs Oregon State	*of	2	0	0	0	0	0	0	0	0	0	0	0	0	0	2	1	0	0	.250
Mar 10	at Loyola Marymount	*dh	2	0	0	0	0	0	0	1	0	0	1	0	0	0	2	0	0	0	.240
Totals			21gs	50	9	12	17	1	1	2	17	0	1	1	0	0	23	23	0	1	.240

On base pct. .441 • Slugging pct. .420



3 TAYLOR JONES

IF • 5-7 • 50.

ALBUQUERQUE, N.M. • LA CUEVA HS

SINGLE-GAME HIGHS

Hits: 2, at Boise State, 5-12-18
 Doubles: 1, 3x, Last at Boise State, 5-12-18
 Home runs: 1, at Boise State, 5-12-18
 Total bases: 6, at Boise State, 5-12-18
 RBI: 3, Howard, 3-10-18
 Runs scored: 2, at Boise State, 5-12-18
 Walks: 1, 6x, Last vs. DePaul, 2-23-19
 Struck out: 2, 8x, Last vs. Florida, 2-28-19
 Sac flies: 1, Howard, 3-10-18

Sac bunts: 1, 2x, Last at Nevada, 3-24-18
 At bats: 4, UTEP, 2-8-19
 Stolen bases: 1, Howard, 3-10-18
 Putouts: 9, Oregon State, 3-8-19
 Assists: 5, South Florida, 2-17-19

CAREER STATS (AT UNM)

Year	avg	gp-gs	ab	r	h	2b	3b	hr	rbi	tb	slg%	bb	hbp	so	gdp	ob%	sf	sh	sb-att	po	a	e	fld%
2018	.216	24-11	37	6	8	3	0	1	4	14	.378	0	0	13	0	.211	1	2	1-1	8	6	2	.875
2019	.133	18-11	30	3	4	0	0	0	1	4	.133	6	0	12	0	.278	0	0	0-0	45	12	1	.983
TOTAL	.179	42-22	67	9	12	3	0	1	5	18	.269	6	0	25	0	.243	1	2	1-1	53	18	3	.959

2019 GAME-BY-GAME

Date	Opponent	Pos	AB	R	H	RBI	2B	3B	HR	BB	SB	CS	HBP	SAC	SF	GDP	K	PO	A	E	Avg
Feb 08	vs UTEP	*1b	4	0	0	0	0	0	0	1	0	0	0	0	0	0	2	6	0	0	.000
Feb 09	vs Creighton	*2b	2	0	0	0	0	0	0	0	0	0	0	0	0	0	2	2	1	0	.000
Feb 15	vs Alabama	ph	1	0	0	0	0	0	0	0	0	0	0	0	0	0	0	0	0	0	.000
Feb 15	vs Cal State Fullerton	*1b	2	0	0	0	0	0	0	1	0	0	0	0	0	0	1	5	0	1	.000
Feb 16	at Arizona	ss	1	0	1	0	0	0	0	0	0	0	0	0	0	0	0	0	0	0	.100
Feb 16	vs Illinois-Chicago	*2b	3	1	1	1	0	0	0	1	0	0	0	0	0	0	0	1	3	0	.154
Feb 17	vs South Florida	*2b	2	0	0	0	0	0	0	1	0	0	0	0	0	0	2	3	5	0	.133
Feb 20	at Hawaii	ph	1	0	0	0	0	0	0	0	0	0	0	0	0	0	0	0	0	0	.125
Feb 21	vs DePaul	ph	0	0	0	0	0	0	0	1	0	0	0	0	0	0	0	0	0	0	.125
Feb 22	vs Canisius	*1b	2	0	0	0	0	0	0	0	0	0	0	0	0	0	0	4	0	0	.111
Feb 22	at Hawaii	pr	0	0	0	0	0	0	0	0	0	0	0	0	0	0	0	0	0	0	.111
Feb 23	vs DePaul	ph	0	0	0	0	0	0	0	1	0	0	0	0	0	0	0	0	0	0	.111
Feb 28	vs Florida	*1b	2	0	0	0	0	0	0	0	0	0	0	0	0	0	2	8	0	0	.100
Mar 01	vs Loyola Marymount	*1b	2	0	0	0	0	0	0	0	0	0	0	0	0	0	1	2	0	0	.091
Mar 03	at Cal State Fullerton	*1b/ss	2	0	0	0	0	0	0	0	0	0	0	0	0	0	1	2	2	0	.083
Mar 08	vs Oregon State	*1b	3	1	1	0	0	0	0	0	0	0	0	0	0	0	1	9	1	0	.111
Mar 08	vs Western Carolina	*1b	2	1	0	0	0	0	0	0	0	0	0	0	0	0	0	3	0	0	.103
Mar 10	at Loyola Marymount	1b/ph	1	0	1	0	0	0	0	0	0	0	0	0	0	0	0	0	0	0	.133
Totals		11gs	30	3	4	1	0	0	0	6	0	0	0	0	0	0	12	45	12	1	.133

On base pct. .278 • Slugging pct. .133



4 D'ANDRA DeFLORA

OF • 5-1 • SR.

FRESNO, TEXAS • L.V. HIGHTOWER HS

SINGLE-GAME HIGHS

Hits: 4, Howard, 3-10-18
 Doubles: 2, 2x, Last vs Northern Colo., 3-4-17
 Triples: 1, vs Stephen F. Austin, 2-17-17
 Home runs: 2, at Utah State, 4-22-17
 Total bases: 8, at Utah State, 4-22-17
 RBI: 5, at Utah State, 4-22-17
 Runs scored: 3, 3x, Last vs Canisius, 2-22-19
 Walks: 3, vs George Washington, 2-23-18
 Hit by pitch: 3, NMSU, 3-21-18

Struck out: 3, 2x, Last at Colorado State, 4-7-18
 Sac flies: 1, at UTEP, 3-15-16
 Sac bunts: 1, 16x, Last vs Fresno State, 3-29-18
 At bats: 5, 4x, Last at Colorado State, 4-7-18
 Stolen bases: 3, Santa Clara, 3-11-17
 Caught stealing: 1, 5x, Last vs. Bowling Green, 3-3-18
 Putouts: 5, 4x, Last vs. DePaul, 2-23-19
 Assists: 2, Nevada, 4-8-17

CAREER STATS (AT UNM)

Year	avg	gp-gs	ab	r	h	2b	3b	hr	rbi	tb	slg%	bb	hbp	so	gdp	ob%	sf	sh	sb-att	po	a	e	fld%
2016	.224	30-25	76	10	17	2	0	0	4	19	.250	4	2	10	0	.277	1	3	1-1	17	1	2	.900
2017	.247	49-49	146	29	36	9	1	5	23	62	.425	7	6	16	0	.308	0	9	6-7	85	13	3	.970
2018	.214	53-53	145	22	31	3	0	7	21	55	.379	11	9	41	3	.309	0	4	2-6	88	7	3	.969
2019	.277	23-23	65	17	18	3	0	1	8	24	.369	7	3	23	1	.373	0	0	0-0	33	1	0	1.000
TOTAL	.236	155-150	432	78	102	17	1	13	56	160	.370	29	20	90	4	.313	1	16	9-14	223	22	8	.968

2019 GAME-BY-GAME

Date	Opponent	Pos	AB	R	H	RBI	2B	3B	HR	BB	SB	CS	HBP	SAC	SF	GDP	K	PO	A	E	Avg	
Feb 08	vs UTEP	*of	3	2	1	0	0	0	0	0	0	0	0	1	0	0	0	0	0	0	0	.333
Feb 09	vs Creighton	*of	2	2	1	3	1	0	0	1	0	0	0	0	0	0	1	1	0	0	0	.400
Feb 09	at New Mexico State	*of	4	2	3	1	1	0	0	0	0	0	0	0	0	0	0	2	0	0	0	.556
Feb 15	vs Alabama	*of	3	0	1	0	0	0	0	0	0	0	0	0	0	0	2	1	0	0	0	.500
Feb 15	vs Cal State Fullerton	*of	3	1	1	0	0	0	0	1	0	0	0	0	0	0	1	0	1	0	0	.467
Feb 16	at Arizona	*of	2	0	1	0	0	0	0	0	0	0	0	0	0	0	1	0	0	0	0	.471
Feb 16	vs Illinois-Chicago	*of	3	1	1	0	0	0	0	1	0	0	0	0	0	0	0	0	0	0	0	.450
Feb 17	vs South Florida	*of	3	1	1	0	0	0	0	1	0	0	0	0	0	0	1	0	0	0	0	.435
Feb 20	at Hawaii	*of	2	1	1	0	0	0	0	0	0	0	1	0	0	0	1	5	0	0	0	.440
Feb 21	vs DePaul	*of	4	0	0	0	0	0	0	0	0	0	0	0	0	0	1	2	2	0	0	.379
Feb 22	vs Canisius	*of	2	3	1	0	0	0	0	1	0	0	0	0	0	0	0	2	0	0	0	.387
Feb 22	at Hawaii	*of	3	0	0	0	0	0	0	0	0	0	0	0	0	0	1	2	0	0	0	.353
Feb 23	at Hawaii	*of	3	0	0	0	0	0	0	0	0	0	0	0	0	0	1	0	0	0	0	.324
Feb 23	vs DePaul	*of	4	0	1	0	1	0	0	0	0	0	0	0	0	0	2	4	0	0	0	.317
Feb 28	vs Florida	*of	3	0	0	0	0	0	0	0	0	0	0	0	0	0	2	1	0	0	0	.295
Mar 01	vs Loyola Marymount	*of	4	0	1	0	0	0	0	0	0	0	0	0	0	0	2	2	0	0	0	.292
Mar 01	vs Tennessee	*of	2	1	2	1	0	0	1	0	0	0	0	0	0	0	0	3	0	0	0	.320
Mar 03	vs UCONN	*of	2	0	0	0	0	0	0	1	0	0	0	0	0	0	0	0	0	0	0	.308
Mar 03	at Cal State Fullerton	*of	1	0	0	0	0	0	0	0	0	0	0	0	0	0	1	1	0	0	0	.302
Mar 08	vs Oregon State	*of	4	1	2	3	0	0	0	0	0	0	0	0	0	0	1	4	0	0	0	.316
Mar 08	vs Western Carolina	*of	2	1	0	0	0	0	0	0	0	0	1	0	0	0	0	1	0	0	0	.305
Mar 09	vs Oregon State	*of	3	1	0	0	0	0	0	1	0	0	0	0	0	0	1	2	0	0	0	.290
Mar 10	at Loyola Marymount	*of	3	0	0	0	0	0	0	0	0	0	0	0	0	0	3	0	0	0	0	.277
Totals		23gs	65	17	18	8	3	0	1	7	0	0	3	0	0	1	23	33	1	0	0	.277

On base pct. .373 • Slugging pct. .369



5 SYDNEY BRODERICK

C • 5-4 • SO.

MESA, ARIZ. • DESERT RIDGE HS

SINGLE-GAME HIGHS

Hits: 3, St. Mary's, 3-10-18
 Doubles: 1, 2x, Last vs. Fresno State, 3-29-18
 Total bases: 4, St. Mary's, 3-10-18
 RBI: 2, Howard, 3-10-18
 Runs scored: 1, 7x, Last vs. DePaul, 2-21-19
 Walks: 1, 7x, Last vs. DePaul, 2-21-19
 Hit by pitch: 1, vs Oregon, 2-11-18
 Struck out: 3, at Colorado State, 4-8-18
 Sac flies: 1, at Nevada, 3-24-18

Sac bunts: 1, 2x, Last vs UTSA, 3-2-18
 At bats: 4, 3x, Last at Colorado State, 4-7-18
 Putouts: 10, at Colorado State, 4-7-18
 Assists: 3, at UTEP, 4-16-18
 Runners CS: 2, Utah State, 4-21-18

CAREER STATS (AT UNM)

Year	avg	gp-gs	ab	r	h	2b	3b	hr	rbi	tb	slg%	bb	hbp	so	gdp	ob%	sf	sh	sb-att	po	a	e	fld%
2018	.230	42-36	87	6	20	2	0	0	5	22	.253	6	1	12	2	.284	1	2	0-0	118	12	6	.956
2019	.048	12-9	21	1	1	0	0	0	0	1	.048	1	0	9	1	.091	0	0	0-0	28	8	0	1.000
TOTAL	.194	54-45	108	7	21	2	0	0	5	23	.213	7	1	21	3	.248	1	2	0-0	146	20	6	.965

2019 GAME-BY-GAME

Date	Opponent	Pos	AB	R	H	RBI	2B	3B	HR	BB	SB	CS	HBP	SAC	SF	GDP	K	PO	A	E	Avg
Feb 08	vs UTEP	ph	1	0	0	0	0	0	0	0	0	0	0	0	0	1	0	0	0	0	.000
Feb 09	vs Creighton	*c	2	0	0	0	0	0	0	0	0	0	0	0	0	0	2	2	0	0	.000
Feb 15	vs Alabama	*c	3	0	0	0	0	0	0	0	0	0	0	0	0	0	0	1	0	0	.000
Feb 16	at Arizona	*c	2	0	0	0	0	0	0	0	0	0	0	0	0	0	2	1	1	0	.000
Feb 17	vs South Florida	*c	2	0	0	0	0	0	0	0	0	0	0	0	0	0	1	5	2	0	.000
Feb 20	at Hawaii	*c	2	0	0	0	0	0	0	0	0	0	0	0	0	0	0	3	1	0	.000
Feb 21	vs DePaul	*c	1	1	0	0	0	0	0	1	0	0	0	0	0	0	1	3	1	0	.000
Feb 22	vs Canisius	ph	1	0	0	0	0	0	0	0	0	0	0	0	0	0	0	0	0	0	.000
Feb 23	at Hawaii	*c	2	0	0	0	0	0	0	0	0	0	0	0	0	0	1	7	0	0	.000
Mar 01	vs Loyola Marymount	ph	1	0	0	0	0	0	0	0	0	0	0	0	0	0	1	0	0	0	.000
Mar 01	vs Tennessee	*c	2	0	0	0	0	0	0	0	0	0	0	0	0	0	1	1	1	0	.000
Mar 03	vs UCONN	*c	2	0	1	0	0	0	0	0	0	0	0	0	0	0	0	5	2	0	.048
Totals		9gs	21	1	1	0	0	0	0	1	0	0	0	0	0	1	9	28	8	0	.048

On base pct. .091 • Slugging pct. .048



7 MacKENZIE PETERSON

OF • 5-9 • FR.
GILBERT, ARIZ. • PHOENIX COLLEGE

SINGLE-GAME HIGHS

Hits: 1, 2x, Last vs. Illinois-Chicago, 2-16-19
 Doubles:
 Total bases: 1, 2x, Last vs. Illinois-Chicago, 2-16-19
 RBI:
 Runs scored: 1, 2x, Last vs. Oregon St., 3-9-19
 Walks: 2, 2x, Last vs. Oregon St., 3-9-19
 Hit by Pitch: 1, Oregon St., 3-9-19
 Struck out: 1, 4x, Last vs. Oregon St., 3-9-19

Sac bunts:
 At bats: 4, Illinois-Chicago, 2-16-19
 Stolen bases:
 Caught stealing:
 Putouts: 10, Oregon State, 3-9-19
 Assists: 1, Illinois-Chicago, 2-16-19

CAREER STATS (AT UNM)

Year	avg	gp-gs	ab	r	h	2b	3b	hr	rbi	tb	slg%	bb	hbp	so	gdp	ob%	sf	sh	sb-att	po	a	e	fld%
2019	.111	12-6	18	2	2	0	0	0	0	2	.111	5	1	4	0	.333	0	0	0-0	44	1	1	.978
TOTAL	.111	12-6	18	2	2	0	0	0	0	2	.111	5	1	4	0	.333	0	0	0-0	44	1	1	.978

2019 GAME-BY-GAME

Date	Opponent	Pos	AB	R	H	RBI	2B	3B	HR	BB	SB	CS	HBP	SAC	SF	GDP	K	PO	A	E	Avg
Feb 09	at New Mexico State	*1b	3	0	1	0	0	0	0	0	0	0	0	0	0	0	0	2	0	0	.333
Feb 16	at Arizona	1b	1	0	0	0	0	0	0	0	0	0	0	0	0	0	0	1	0	0	.250
Feb 16	vs Illinois-Chicago	*1b	4	0	1	0	0	0	0	0	0	0	0	0	0	0	0	7	1	1	.250
Feb 17	vs South Florida	ph/1b	1	0	0	0	0	0	0	0	0	0	0	0	0	0	0	1	0	0	.222
Feb 22	vs Canisius	ph/1b	1	0	0	0	0	0	0	0	0	0	0	0	0	0	0	2	0	0	.200
Feb 22	at Hawaii	*1b	2	0	0	0	0	0	0	1	0	0	0	0	0	0	0	6	0	0	.167
Feb 23	vs DePaul	*1b	1	1	0	0	0	0	0	2	0	0	0	0	0	0	0	6	0	0	.154
Feb 28	vs Florida	ph	1	0	0	0	0	0	0	0	0	0	0	0	0	0	0	1	0	0	.143
Mar 03	at Cal State Fullerton	1b	1	0	0	0	0	0	0	0	0	0	0	0	0	0	0	1	1	0	.133
Mar 08	vs Western Carolina	1b	0	0	0	0	0	0	0	0	0	0	0	0	0	0	0	3	0	0	.133
Mar 09	vs Oregon State	*1b	1	1	0	0	0	0	0	2	0	0	1	0	0	0	1	10	0	0	.125
Mar 10	at Loyola Marymount	*1b	2	0	0	0	0	0	0	0	0	0	0	0	0	0	0	6	0	0	.111
Totals		6gs	18	2	2	0	0	0	0	5	0	0	1	0	0	0	4	44	1	1	.111

On base pct. .333 • Slugging pct. .111



8 BAILEY KLITZKE

P/1B • 5-8 • JR.
APACHE JUNCTION, ARIZ. • WICHITA ST.

SINGLE-GAME HIGHS

Hits: 4, UTEP, 2-8-19
 Doubles: 1, 3x, Last vs. LMU, 3-1-19
 Triples: 1, Canisius, 2-22-19
 Total bases: 4, 2x, Last vs. Canisius, 2-22-19
 RBI: 4, UTEP, 2-8-19
 Runs scored: 2, Canisius, 2-22-19
 Walks: 1, 7x, Last at Hawai'i, 2-23-19
 Struck out: 1, 4x, Last at Hawai'i, 2-22-19
 Sac bunts: 1, at Texas, 2-23-18 (at WSU)
 Sac fly: 1, 2x, Last vs. UConn, 3-3-19

At bats: 5, UTEP, 2-8-19
 Stolen bases: 1, 2x, Last vs. UConn, 3-3-19
 Innings pitched: 6.0, Illinois-Chicago, 2-16-19
 Walks allowed: 7, 2x, Last at CSUF, 3-3-19
 Strikeouts: 8, 2x, Last vs. Illinois-Chicago, 2-16-19
 Batters faced: 32, Illinois-Chicago, 2-16-19
 Putouts: 1, 2x, Last at Arizona, 2-16-19
 Assists: 3, at Okla. St., 3-27-18 (at WSU)
 Runners CS: 1, 6x, Last at NMSU, 2-9-19
 Fewest hits allowed (3.0 IP min.): 5, UTEP, 2-8-19

CAREER STATS (AT UNM)

Year	avg	qp-gs	ab	r	h	2b	3b	hr	rbi	tb	slq%	bb	hbp	so	gdp	ob%	sf	sh	sb-att	po	a	e	fld%
2019	.390	17-16	41	4	16	3	1	0	10	21	.512	7	0	4	1	.460	2	0	2-2	1	3	0	1.000
TOTAL	.390	17-16	41	4	16	3	1	0	10	21	.512	7	0	4	1	.460	2	0	2-2	1	3	0	1.000

Year	era	w-l	app	gs	cq	sho	sv	ip	h	r	er	bb	so	2b	3b	hr	bf	bavq	wp	hbp	bk	sfa	sha
2019	11.34	2-2	8	3	1	0/0	0	16.2	23	31	27	31	22	5	2	4	106	.319	10	2	0	0	1
TOTAL	11.34	2-2	8	3	1	0/0	0	16.2	23	31	27	31	22	5	2	4	106	.319	10	2	0	0	1

2019 GAME-BY-GAME

Date	Opponent	Pos	AB	R	H	RBI	2B	3B	HR	BB	SB	CS	HBP	SAC	SF	GDP	K	PO	A	E	Avg
Feb 08	vs UTEP	*p/dh	5	0	4	4	0	0	0	0	0	0	0	0	0	0	0	0	1	0	.800
Feb 09	vs Creighton	*dh	1	1	1	0	0	0	0	1	0	0	0	0	0	0	0	0	0	0	.833
Feb 09	at New Mexico State	*dh/p	2	0	0	1	0	0	0	1	0	0	0	0	1	0	0	0	0	0	.625
Feb 15	vs Alabama	*dh	3	0	1	0	0	0	0	0	0	0	0	0	0	0	0	0	0	0	.545
Feb 15	vs Cal State Fullerton	*p/dh	3	0	1	0	1	0	0	1	0	0	0	0	0	0	1	0	0	0	.500
Feb 16	at Arizona	*dh/p	2	0	0	0	0	0	0	0	0	0	0	0	0	0	1	1	0	0	.438
Feb 16	vs Illinois-Chicago	*p	0	0	0	0	0	0	0	0	0	0	0	0	0	0	0	0	2	0	.438
Feb 17	vs South Florida	ph	1	0	0	0	0	0	0	0	0	0	0	0	0	0	0	0	0	0	.412
Feb 20	at Hawaii	*dh	3	0	1	0	0	0	0	0	0	0	0	0	0	0	0	0	0	0	.400
Feb 22	vs Canisius	*dh	2	2	2	2	0	1	0	0	1	0	0	0	0	0	0	0	0	0	.455
Feb 22	at Hawaii	*dh	3	0	0	0	0	0	0	0	0	0	0	0	0	0	1	0	0	0	.400
Feb 23	at Hawaii	*dh	2	1	1	0	1	0	0	1	0	0	0	0	0	0	0	0	0	0	.407
Feb 23	vs DePaul	*dh	3	0	1	0	0	0	0	0	0	0	0	0	0	0	0	0	0	0	.400
Feb 28	vs Florida	*dh	3	0	2	0	0	0	0	0	0	0	0	0	0	1	0	0	0	0	.424
Mar 01	vs Loyola Marymount	*dh/p	3	0	1	2	1	0	0	0	1	0	0	0	0	0	0	0	0	0	.417
Mar 01	vs Tennessee	*dh	2	0	0	0	0	0	0	1	0	0	0	0	0	0	1	0	0	0	.395
Mar 03	vs UCONN	*dh	2	0	1	1	0	0	0	1	0	0	0	0	1	0	0	0	0	0	.400
Mar 03	at Cal State Fullerton	*dh/p	1	0	0	0	0	0	0	1	0	0	0	0	0	0	0	0	0	0	.390
Totals			17gs	41	4	16	10	3	1	0	7	2	0	0	2	1	4	1	3	0	.390

On base pct. .460 • Slugging pct. .512

#8 KLITZKE, Bailey - 8 appearances (All games)

Date	Opponent	GS	IP	H	R	ER	BB	SO	2B	3B	HR	WP	BK	HBP	IBB	Score	W-L	Sv	ERA	NP
Feb 08	vs UTEP	*	5.0	5	5	5	7	8	2	0	1	2	0	1	0	15-6	1-0	0	7.00	120
Feb 09	at New Mexico State		1.0	3	4	2	2	1	1	0	1	3	0	0	0	8-9	1-1	0	8.17	26
Feb 15	vs Cal State Fullerton	*	0.0	1	2	2	1	0	0	0	1	1	0	0	0	2-6	1-1	0	10.50	12
Feb 16	at Arizona		2.0	3	2	1	1	1	1	0	1	0	0	0	0	1-15	1-1	0	8.75	29
Feb 16	vs Illinois-Chicago	*	6.0	7	5	4	5	8	1	2	0	2	0	1	0	13-5	2-1	0	7.00	131
Feb 21	vs DePaul		0.2	2	4	4	2	1	0	0	0	1	0	0	0	5-9	2-1	0	8.59	24
Mar 01	vs Loyola Marymount		1.2	1	3	3	6	2	0	0	0	0	0	0	0	2-4	2-2	0	9.00	54
Mar 03	at Cal State Fullerton		0.1	1	6	6	7	1	0	0	0	1	0	0	0	1-19	2-2	0	11.34	41
Totals		3	16.2	23	31	27	31	22	5	2	4	10	0	2	0	47-73	2-2	0	11.34	-



9 KASEY HALLEEN

IF • 5-6 • SR.

TORRANCE, CALIF. • PALOS VERDES HS

SINGLE-GAME HIGHS

Hits: 2, 3x, Last vs. UConn, 3-3-19
 Doubles: 1, 7x, Last vs. UConn, 3-3-19
 Total bases: 3, 2x, Last vs. UConn, 3-3-19
 RBI: 2, 4x, Last vs. WCU, 3-8-19
 Runs scored: 1, 22x, Last vs. WCU, 3-8-19
 Walks: 1, 18x, Last at Cal State Fullerton, 3-3-19
 Hit by pitch: 1, 2x, Last at Fresno State, 3-29-18
 Struck out: 2, 11x, Last vs. Oregon State, 3-9-19
 Sac flies: 1, 2x, Last at Nevada, 3-24-18

Sac bunts: 1, 3x, Last vs DePaul, 3-19-16
 At bats: 5, at Colorado State, 4-7-18
 Stolen bases: 1, George Washington, 2-23-18
 Putouts: 14, at UC Davis, 2-28-16
 Assists: 8, Boise State, 5-11-17

CAREER STATS (AT UNM)

Year	avg	gp-gs	ab	r	h	2b	3b	hr	rbi	tb	slg%	bb	hbp	so	gdp	ob%	sf	sh	sb-att	po	a	e	fld%
2016	.171	24-13	41	4	7	0	0	0	3	7	.171	4	0	13	0	.244	0	1	0-0	71	14	3	.966
2017	.136	22-19	44	3	6	1	0	0	0	7	.159	1	0	7	0	.156	0	2	0-0	40	48	6	.936
2018	.189	49-49	127	13	24	5	0	0	10	29	.228	10	2	32	0	.255	2	0	1-1	75	87	14	.920
2019	.179	14-13	28	3	5	1	0	0	2	6	.214	3	0	10	0	.258	0	0	0-0	20	16	2	.947
TOTAL	.175	109-94	240	23	42	7	0	0	15	49	.204	18	2	62	0	.237	2	3	1-1	206	165	25	.937

2019 GAME-BY-GAME

Date	Opponent	Pos	AB	R	H	RBI	2B	3B	HR	BB	SB	CS	HBP	SAC	SF	GDP	K	PO	A	E	Avg
Feb 08	vs UTEP	*2b	1	1	0	0	0	0	0	1	0	0	0	0	0	0	0	1	0	0	.000
Feb 09	at New Mexico State	2b	1	0	0	0	0	0	0	0	0	0	0	0	0	0	1	0	0	0	.000
Feb 15	vs Alabama	*2b	2	0	0	0	0	0	0	0	0	0	0	0	0	0	0	3	2	0	.000
Feb 15	vs Cal State Fullerton	*2b	2	0	1	0	0	0	0	1	0	0	0	0	0	0	1	3	2	0	.167
Feb 16	at Arizona	*2b	1	0	0	0	0	0	0	0	0	0	0	0	0	0	1	0	0	0	.143
Feb 20	at Hawaii	*2b	2	0	0	0	0	0	0	0	0	0	0	0	0	0	1	0	1	0	.111
Feb 28	vs Florida	*2b	3	0	0	0	0	0	0	0	0	0	0	0	0	0	1	0	3	0	.083
Mar 01	vs Loyola Marymount	*2b	2	0	0	0	0	0	0	0	0	0	0	0	0	0	0	2	1	0	.071
Mar 01	vs Tennessee	*2b	2	0	0	0	0	0	0	0	0	0	0	0	0	0	1	0	1	0	.062
Mar 03	vs UCONN	*2b	3	0	2	0	1	0	0	0	0	0	0	0	0	0	0	4	1	0	.158
Mar 03	at Cal State Fullerton	*2b	1	0	0	0	0	0	0	1	0	0	0	0	0	0	0	4	3	0	.150
Mar 08	vs Oregon State	*2b	3	1	1	0	0	0	0	0	0	0	0	0	0	0	1	1	1	0	.174
Mar 08	vs Western Carolina	*2b	2	1	1	2	0	0	0	0	0	0	0	0	0	0	1	1	0	1	.200
Mar 09	vs Oregon State	*2b	3	0	0	0	0	0	0	0	0	0	0	0	0	0	2	1	1	1	.179
Totals		13gs	28	3	5	2	1	0	0	3	0	0	0	0	0	0	10	20	16	2	.179

On base pct. .258 • Slugging pct. .214



10 CAMERYN O'GRADY

55 • 5-6 • JR.

ORANGE, CALIF. • EL MODENA HS

SINGLE-GAME HIGHS

Hits: 4, at Texas Tech, 3-2-18
 Doubles: 2, UTSA, 3-2-18
 Triples: 1, 5x, Last vs. Creighton, 2-9-19
 Home runs: 1, 6x, Last at New Mexico St., 2-9-19
 Total bases: 8, Creighton, 2-9-19
 RBI: 4, Creighton, 2-9-19
 Runs scored: 4, at Texas Tech, 3-2-18
 Walks: 3, 3x, Last vs UTEP, 2-8-19
 Hit by pitch: 1, 6x, Last vs. LMU, 3-1-19

Struck out: 3, 5x, Last at Arizona, 4-25-18
 Sac bunts: 1, 3x, Last Utah State, 4-22-18
 At bats: 5, 2x, Last at Nevada, 3-24-18
 Stolen bases: 2, vs George Washington, 2-23-18
 Putouts: 5, 4x, Last at Boise State, 5-12-18
 Assists: 8, at San Jose State, 4-27-18

CAREER STATS (AT UNM)

Year	avg	gp-gs	ab	r	h	2b	3b	hr	rbi	tb	slg%	bb	hbp	so	gdp	ob%	sf	sh	sb-att	po	a	e	fld%
2017	.109	26-19	46	1	5	0	0	0	3	5	.109	3	0	12	0	.163	0	0	0-0	38	39	10	.885
2018	.301	53-52	143	31	43	12	4	4	26	75	.524	32	5	50	0	.444	0	3	4-4	101	118	18	.924
2019	.364	23-23	66	14	24	7	1	2	13	39	.591	14	1	11	0	.481	0	0	0-0	26	26	8	.867
TOTAL	.282	102-94	255	46	72	19	5	6	42	119	.467	49	6	73	0	.410	0	3	4-4	165	183	36	.906

2019 GAME-BY-GAME

Date	Opponent	Pos	AB	R	H	RBI	2B	3B	HR	BB	SB	CS	HBP	SAC	SF	GDP	K	PO	A	E	Avg
Feb 08	vs UTEP	*ss	2	3	1	2	0	0	0	3	0	0	0	0	0	0	1	1	2	0	.500
Feb 09	vs Creighton	*ss	3	2	3	4	0	1	1	0	0	0	0	0	0	0	0	2	1	0	.800
Feb 09	at New Mexico State	*ss	4	1	3	1	1	0	1	0	0	0	0	0	0	0	1	1	1	1	.778
Feb 15	vs Alabama	*ss	3	0	1	0	0	0	0	0	0	0	0	0	0	0	0	2	3	0	.667
Feb 15	vs Cal State Fullerton	*ss	2	1	1	0	0	0	0	2	0	0	0	0	0	0	0	1	1	1	.643
Feb 16	at Arizona	*ss	2	0	1	0	0	0	0	0	0	0	0	0	0	0	0	1	2	0	.625
Feb 16	vs Illinois-Chicago	*ss	3	3	1	2	1	0	0	1	0	0	0	0	0	0	0	1	2	0	.579
Feb 17	vs South Florida	*ss	4	0	1	1	1	0	0	0	0	0	0	0	0	0	1	0	2	1	.522
Feb 20	at Hawaii	*ss	2	0	1	0	0	0	0	1	0	0	0	0	0	0	0	1	2	0	.520
Feb 21	vs DePaul	*ss	3	0	0	0	0	0	0	0	0	0	0	0	0	0	0	2	2	0	.464
Feb 22	vs Canisius	*ss	4	1	1	0	0	0	0	0	0	0	0	0	0	0	1	0	1	0	.438
Feb 22	at Hawaii	*ss	4	0	0	0	0	0	0	0	0	0	0	0	0	0	1	0	0	1	.389
Feb 23	at Hawaii	*ss	2	0	0	0	0	0	0	1	0	0	0	0	0	0	0	1	0	0	.368
Feb 23	vs DePaul	*ss	3	1	2	1	1	0	0	1	0	0	0	0	0	0	0	1	2	0	.390
Feb 28	vs Florida	*ss	3	0	1	0	1	0	0	1	0	0	0	0	0	0	0	2	2	0	.386
Mar 01	vs Loyola Marymount	*ss	3	0	0	0	0	0	0	0	0	0	0	1	0	0	2	1	0	0	.362
Mar 01	vs Tennessee	*ss	3	0	2	0	0	0	0	0	0	0	0	0	0	0	0	2	0	1	.380
Mar 03	vs UCONN	*ss	3	0	0	0	0	0	0	1	0	0	0	0	0	0	1	0	1	0	.358
Mar 03	at Cal State Fullerton	*ss	1	0	0	0	0	0	0	0	0	0	0	0	0	0	0	0	0	1	.352
Mar 08	vs Oregon State	*ss	3	0	2	0	1	0	0	1	0	0	0	0	0	0	0	0	2	0	.368
Mar 08	vs Western Carolina	*ss	3	0	1	0	0	0	0	0	0	0	0	0	0	0	0	1	1	0	.367
Mar 09	vs Oregon State	*ss	4	0	2	2	1	0	0	0	0	0	0	0	0	0	0	3	1	0	.375
Mar 10	at Loyola Marymount	*ss	2	2	0	0	0	0	0	2	0	0	0	0	0	0	1	2	1	1	.364
Totals		23gs	66	14	24	13	7	1	2	14	0	0	1	0	0	0	11	26	26	8	.364

On base pct. .481 • Slugging pct. .591



12 DARYN HASLAM

IF • 5-4 • FR.

CEDAR PARK, TEXAS • VISTA RIDGE HS

SINGLE-GAME HIGHS

Hits: 2, 2x, Last at LMU, 3-10-19
 Doubles:
 Triples:
 Home runs: 1, 3x, Last at CSUF, 3-3-19
 Total bases: 5, DePaul, 2-21-19
 RBI: 3, DePaul, 2-21-19
 Runs scored: 1, 4x, Last at CSUF, 3-3-19
 Walks: 2, Oregon State, 3-9-19
 Hit by pitch:

Struck out: 2, 2x, Last vs. Oregon St., 3-8-19
 Sac flies:
 Sac bunts:
 At bats: 4, LMU, 3-10-19
 Stolen bases:
 Caught stealing:
 Putouts: 5, DePaul, 2-23-19
 Assists: 5, LMU, 3-10-19

CAREER STATS (AT UNM)

Year	avg	gp-gs	ab	r	h	2b	3b	hr	rbi	tb	slg%	bb	hbp	so	gdp	ob%	sf	sh	sb-att	po	a	e	fld%
2019	.303	16-10	33	5	10	0	0	3	6	19	.576	5	0	11	0	.395	0	0	0-0	11	17	2	.933
TOTAL	.303	16-10	33	5	10	0	0	3	6	19	.576	5	0	11	0	.395	0	0	0-0	11	17	2	.933

2019 GAME-BY-GAME

Date	Opponent	Pos	AB	R	H	RBI	2B	3B	HR	BB	SB	CS	HBP	SAC	SF	GDP	K	PO	A	E	Avg
Feb 08	vs UTEP	ph/2b	1	1	0	0	0	0	0	1	0	0	0	0	0	0	1	0	1	0	.000
Feb 09	at New Mexico State	*2b	2	0	0	0	0	0	0	0	0	0	0	0	0	0	1	1	0	0	.000
Feb 15	vs Cal State Fullerton	ph	1	0	0	0	0	0	0	0	0	0	0	0	0	0	0	0	0	0	.000
Feb 16	at Arizona	3b	1	0	0	0	0	0	0	0	0	0	0	0	0	0	0	0	0	0	.000
Feb 21	vs DePaul	*2b	3	1	2	3	0	0	1	0	0	0	0	0	0	0	0	1	1	1	.250
Feb 22	vs Canisius	*2b	2	0	2	0	0	0	0	1	0	0	0	0	0	0	0	1	2	0	.400
Feb 22	at Hawaii	*2b	2	1	1	1	0	0	1	1	0	0	0	0	0	0	1	2	3	0	.417
Feb 23	at Hawaii	*2b	3	0	0	0	0	0	0	0	0	0	0	0	0	0	2	1	1	0	.333
Feb 23	vs DePaul	*2b	3	0	0	0	0	0	0	0	0	0	0	0	0	0	0	5	2	0	.278
Feb 28	vs Florida	ph	1	0	0	0	0	0	0	0	0	0	0	0	0	0	1	0	0	0	.263
Mar 01	vs Loyola Marymount	ph/3b	2	0	0	0	0	0	0	0	0	0	0	0	0	0	1	0	1	0	.238
Mar 03	at Cal State Fullerton	3b	1	1	1	1	0	0	1	0	0	0	0	0	0	0	0	0	0	0	.273
Mar 08	vs Oregon State	*3b	3	0	1	0	0	0	0	0	0	0	0	0	0	0	2	0	1	1	.280
Mar 08	vs Western Carolina	*dh	2	1	1	0	0	0	0	0	0	0	0	0	0	0	0	0	0	0	.296
Mar 09	vs Oregon State	*dh	2	0	0	0	0	0	0	2	0	0	0	0	0	0	1	0	0	0	.276
Mar 10	at Loyola Marymount	*2b	4	0	2	1	0	0	0	0	0	0	0	0	0	0	1	0	5	0	.303
Totals		10gs	33	5	10	6	0	0	3	5	0	0	0	0	0	0	11	11	17	2	.303

On base pct. .395 • Slugging pct. .576



13 KENNEDY FERGUSON

P • 5-6 • FR.
CAMAS, WASH. • CAMAS HS

SINGLE-GAME HIGHS

Innings pitched: 7.1, South Florida, 2-17-19
 Walks allowed: 7, Tennessee, 3-1-19
 Strikeouts: 6, 2x, Last vs. UConn, 3-3-19
 Batters faced: 32, DePaul, 2-21-19
 Assists: 3, South Florida, 2-17-19
 Runners CS: 1, 4x, Last vs. UConn, 3-3-19
 Putouts: 1, Hawai'i, 2-22-19
 Fewest hits allowed (3.0 IP min.): 2, Western Carolina, 3-9-19
 Fewest BB allowed (3.0 IP min.): 0, Western Carolina, 3-9-19

CAREER STATS (AT UNM)

Year	avg	gp-gs	ab	r	h	2b	3b	hr	rbi	tb	slg%	bb	hbp	so	qdp	ob%	sf	sh	sb-att	po	a	e	fld%
2019	.000	4-4	0	0	0	0	0	0	0	0	.000	0	0	0	0	.000	0	0	0-0	2	11	1	.929
TOTAL	.000	4-4	0	0	0	0	0	0	0	0	.000	0	0	0	0	.000	0	0	0-0	2	11	1	.929

Year	era	w-l	app	gs	cq	sho	sv	ip	h	r	er	bb	so	2b	3b	hr	bf	bavq	wp	hbp	bk	sfa	sha
2019	3.35	1-8	16	10	7	1/0	0	71.0	88	53	34	29	45	7	1	13	340	.295	2	5	0	2	6
TOTAL	3.35	1-8	16	10	7	1/0	0	71.0	88	53	34	29	45	7	1	13	340	.295	2	5	0	2	6

2019 GAME-BY-GAME

Date	Opponent	Pos	AB	R	H	RBI	2B	3B	HR	BB	SB	CS	HBP	SAC	SF	GDP	K	PO	A	E	Avg
Feb 08	vs UTEP	*dh/p	0	0	0	0	0	0	0	0	0	0	0	0	0	0	0	0	0	0	.000
Feb 09	at New Mexico State	*p/dh	0	0	0	0	0	0	0	0	0	0	0	0	0	0	0	0	0	0	.000
Feb 15	vs Cal State Fullerton	*dh/p	0	0	0	0	0	0	0	0	0	0	0	0	0	0	0	0	1	0	.000
Feb 17	vs South Florida	*p	0	0	0	0	0	0	0	0	0	0	0	0	0	0	0	0	3	0	.000
Feb 21	vs DePaul	*p	0	0	0	0	0	0	0	0	0	0	0	0	0	0	0	0	1	0	.000
Feb 22	at Hawaii	*p	0	0	0	0	0	0	0	0	0	0	0	0	0	0	0	1	1	0	.000
Feb 23	vs DePaul	*p	0	0	0	0	0	0	0	0	0	0	0	0	0	0	0	0	1	0	.000
Feb 28	vs Florida	*p	0	0	0	0	0	0	0	0	0	0	0	0	0	0	0	0	1	0	.000
Mar 01	vs Loyola Marymount	*p/dh	0	0	0	0	0	0	0	0	0	0	0	0	0	0	0	0	0	0	.000
Mar 08	vs Western Carolina	*p	0	0	0	0	0	0	0	0	0	0	0	0	0	0	0	1	1	1	.000
Mar 09	vs Oregon State	*p	0	0	0	0	0	0	0	0	0	0	0	0	0	0	0	0	2	0	.000
Totals			11gs	0	0	0	0	0	0	0	0	0	0	0	0	0	0	2	11	1	.000

On base pct. .000 • Slugging pct. .000

#13 FERGUSON, Kennedy - 16 appearances (All games)

Date	Opponent	GS	IP	H	R	ER	BB	SO	2B	3B	HR	WP	BK	HBP	IBB	Score	W-L	Sv	ERA	NP	
Feb 08	vs UTEP		2.0	2	1	1	0	2	0	0	1	0	0	0	0	15-6	0-0	0	3.50	31	
Feb 09	at New Mexico State	*	4.0	3	4	4	2	3	0	0	2	0	0	2	0	8-9	0-0	0	5.83	80	
Feb 15	vs Cal State Fullerton		5.1	8	4	2	1	3	1	0	1	0	0	1	0	2-6	0-1	0	4.32	96	
Feb 16	at Arizona		0.2	5	6	6	1	0	0	0	2	0	0	1	0	1-15	0-1	0	7.58	29	
Feb 17	vs South Florida	*	7.1	6	2	0	2	6	0	0	0	0	0	0	0	1-2	0-2	0	4.71	98	
Feb 21	vs DePaul	*	5.2	10	5	3	5	2	1	0	1	1	0	0	0	5-9	0-3	0	4.48	125	
Feb 22	at Hawaii	*	6.0	4	3	2	2	3	1	0	0	0	0	1	0	2-3	0-4	0	4.06	91	
Feb 23	vs DePaul	*	6.0	8	4	4	3	3	3	0	1	0	0	0	0	2-4	0-5	0	4.16	104	
Feb 28	vs Florida	*	7.0	5	1	0	1	5	1	0	0	0	0	0	0	0-1	0-6	0	3.50	109	
Mar 01	vs Loyola Marymount	*	5.1	6	1	1	2	5	0	1	0	0	0	0	0	2-4	0-6	0	3.26	87	
Mar 01	vs Tennessee		3.0	10	10	6	7	1	0	0	2	0	0	0	0	1-15	0-6	0	3.88	105	
Mar 03	vs UCONN	*	6.0	8	2	2	1	6	0	0	1	0	0	0	0	1-2	0-7	0	3.72	104	
Mar 03	at Cal State Fullerton		0.1	3	5	0	1	0	0	0	1	0	0	0	0	1-19	0-7	0	3.70	38	
Mar 08	vs Western Carolina	*	5.0	2	0	0	0	3	0	0	0	0	0	0	0	10-0	1-7	0	3.41	67	
Mar 09	vs Oregon State	*	7.0	8	5	3	1	3	0	0	1	1	0	0	0	3-5	1-8	0	3.37	103	
Mar 10	at Loyola Marymount		0.1	0	0	0	0	0	0	0	0	0	0	0	0	2-6	1-8	0	3.35	2	
Totals			10	71.0	88	53	34	29	45	7	1	13	2	0	5	0	56-106	1-8	0	3.35	-



16 LESLIE ROMERO

OF • 5-4 • FR.
GONZALES, CALIF. • SALINAS HS

SINGLE-GAME HIGHS

Hits:
 Doubles:
 Home runs:
 Total bases:
 RBI:
 Runs scored:
 Walks:
 Struck out: 1, CSUF, 3-3-19
 Sac bunts:

Sac flies:
 At bats: 2, at New Mexico State, 2-9-19
 Stolen bases:
 Putouts: 1, 2x, Last at Arizona, 2-16-19
 Assists:

CAREER STATS (AT UNM)

Year	avg	gp-gs	ab	r	h	2b	3b	hr	rbi	tb	slg%	bb	hbp	so	gdp	ob%	sf	sh	sb-att	po	a	e	fld%
2019	.000	5-1	6	0	0	0	0	0	0	0	.000	0	0	1	0	.000	0	0	0-0	2	0	0	1.000
TOTAL	.000	5-1	6	0	0	0	0	0	0	0	.000	0	0	1	0	.000	0	0	0-0	2	0	0	1.000

2019 GAME-BY-GAME

Date	Opponent	Pos	AB	R	H	RBI	2B	3B	HR	BB	SB	CS	HBP	SAC	SF	GDP	K	PO	A	E	Avg
Feb 09	at New Mexico State	*of	2	0	0	0	0	0	0	0	0	0	0	0	0	0	0	1	0	0	.000
Feb 16	at Arizona	of	1	0	0	0	0	0	0	0	0	0	0	0	0	0	0	1	0	0	.000
Feb 20	at Hawaii	ph	1	0	0	0	0	0	0	0	0	0	0	0	0	0	0	0	0	0	.000
Mar 03	at Cal State Fullerton	of	1	0	0	0	0	0	0	0	0	0	0	0	0	0	1	0	0	0	.000
Mar 08	vs Western Carolina	2b	1	0	0	0	0	0	0	0	0	0	0	0	0	0	0	0	0	0	.000
Totals		1gs	6	0	0	0	0	0	0	0	0	0	0	0	0	0	1	2	0	0	.000

On base pct. .000 • Slugging pct. .000



22 MONICA SALAS

IF • 5-3 • SR.

GOLETA, CALIF. • SANTA BARBARA CITY COLL.

SINGLE-GAME HIGHS

Hits: 3, Howard, 3-10-18
 Doubles: 1, 4x, Last vs Cal State Fullerton, 2-15-19
 Home runs: 1, 5x, Last vs. Canisius, 2-22-19
 Total bases: 5, 2x, Last vs. UTEP, 2-8-19
 RBI: 4, UTEP, 2-8-19
 Runs scored: 2, 4x, Last vs. Canisius, 2-22-19
 Walks: 3, Illinois-Chicago, 2-16-19

Struck out: 2, 18x, Last vs. Oregon St., 3-9-19
 Sac flies: 1, at Nevada, 3-25-18
 At bats: 4, 13x, Last at LMU, 3-10-19
 Stolen bases: 2, Howard, 3-10-18
 Putouts: 5, St. Mary's, 3-9-18
 Assists: 5, at UTEP, 4-16-18

CAREER STATS (AT UNM)

Year	avg	gp-gs	ab	r	h	2b	3b	hr	rbi	tb	slg%	bb	hbp	so	gdp	ob%	sf	sh	sb-att	po	a	e	fld%
2018	.238	45-35	101	9	24	3	0	2	15	33	.327	6	0	34	2	.278	1	0	2-2	35	44	7	.919
2019	.230	22-22	61	9	14	1	0	3	11	24	.393	7	0	18	3	.309	0	0	0-0	15	22	4	.902
TOTAL	.235	67-57	162	18	38	4	0	5	26	57	.352	13	0	52	5	.290	1	0	2-2	50	66	11	.913

2019 GAME-BY-GAME

Date	Opponent	Pos	AB	R	H	RBI	2B	3B	HR	BB	SB	CS	HBP	SAC	SF	GDP	K	PO	A	E	Avg
Feb 08	vs UTEP	*3b	4	1	2	4	0	0	1	1	0	0	0	0	0	1	1	1	2	0	.500
Feb 09	vs Creighton	*3b	3	1	2	0	0	0	0	0	0	0	0	0	0	1	0	1	0	0	.571
Feb 09	at New Mexico State	*3b	4	1	1	0	0	0	0	0	0	0	0	0	0	0	1	0	1	0	.455
Feb 15	vs Alabama	*3b	3	0	0	0	0	0	0	0	0	0	0	0	0	0	0	4	2	0	.357
Feb 15	vs Cal State Fullerton	*3b	4	0	1	2	1	0	0	0	0	0	0	0	0	0	2	1	1	1	.333
Feb 16	at Arizona	*3b	2	0	1	0	0	0	0	0	0	0	0	0	0	0	0	0	0	1	.350
Feb 16	vs Illinois-Chicago	*3b	1	2	0	0	0	0	0	3	0	0	0	0	0	0	0	0	1	1	.333
Feb 17	vs South Florida	*3b	4	0	1	0	0	0	0	0	0	0	0	0	0	0	2	2	2	0	.320
Feb 20	at Hawaii	*3b	3	0	0	1	0	0	0	0	0	0	0	0	0	0	2	0	1	0	.286
Feb 21	vs DePaul	*3b	3	1	1	1	0	0	1	0	0	0	0	0	0	0	1	1	2	0	.290
Feb 22	vs Canisius	*3b	2	2	1	2	0	0	1	1	0	0	0	0	0	0	0	0	3	0	.303
Feb 22	at Hawaii	*3b	3	0	1	0	0	0	0	0	0	0	0	0	0	1	0	0	2	1	.306
Feb 23	at Hawaii	*3b	2	0	0	0	0	0	0	1	0	0	0	0	0	0	0	2	0	0	.289
Feb 23	vs DePaul	*3b	3	0	0	0	0	0	0	0	0	0	0	0	0	0	0	0	0	0	.268
Feb 28	vs Florida	*3b	3	0	0	0	0	0	0	0	0	0	0	0	0	0	2	0	1	0	.250
Mar 01	vs Loyola Marymount	*3b	1	0	0	0	0	0	0	0	0	0	0	0	0	0	1	0	0	0	.244
Mar 01	vs Tennessee	*3b	2	0	0	0	0	0	0	0	0	0	0	0	0	0	2	1	1	0	.234
Mar 03	vs UCONN	*3b	3	0	1	0	0	0	0	0	0	0	0	0	0	0	1	1	2	0	.240
Mar 03	at Cal State Fullerton	*3b	1	0	0	0	0	0	0	0	0	0	0	0	0	0	0	0	0	0	.235
Mar 08	vs Western Carolina	*3b	2	1	1	1	0	0	1	0	0	0	0	0	0	0	0	0	0	0	.245
Mar 09	vs Oregon State	*3b	4	0	0	0	0	0	0	0	0	0	0	0	0	0	2	0	0	0	.228
Mar 10	at Loyola Marymount	*3b	4	0	1	0	0	0	0	0	0	0	0	0	0	0	1	1	1	0	.230
Totals			22gs	61	9	14	11	1	0	3	7	0	0	0	0	3	18	15	22	4	.230

On base pct. .309 • Slugging pct. .393



23 EMMA STELTZER *OF • 5-6 • FR.*
MANCHESTER, MO. • PARKWAY SOUTH HS

SINGLE-GAME HIGHS

Hits:
 Doubles:
 Home runs:
 Total bases:
 RBI:
 Runs scored:
 Walks: 1, Canisius, 2-22-19
 Struck out:
 Sac bunts:

Sac flies:
 At bats: 1, 2x, Last vs. WCU, 3-8-19
 Stolen bases:
 Putouts:
 Assists:
 Innings Pitched: 0.2, CSUF, 3-3-19
 Batters Faced: 2, CSUF, 3-3-19

CAREER STATS (AT UNM)

Year	avg	qp-qs	ab	r	h	2b	3b	hr	rbi	tb	slg%	bb	hbp	so	qdp	ob%	sf	sh	sb-att	po	a	e	fld%
2019	.000	3-0	2	0	0	0	0	0	0	0	.000	1	0	0	0	.333	0	0	0-0	0	0	0	.000
TOTAL	.000	3-0	2	0	0	0	0	0	0	0	.000	1	0	0	0	.333	0	0	0-0	0	0	0	.000

Year	era	w-l	app	qs	cq	sho	sv	ip	h	r	er	bb	so	2b	3b	hr	bf	bavq	wp	hbp	bk	sfa	sha
2019	0.00	0-0	1	0	0	0/0	0	0.2	0	0	0	0	0	0	0	0	2	.000	0	0	0	0	0
TOTAL	0.00	0-0	1	0	0	0/0	0	0.2	0	0	0	0	0	0	0	0	2	.000	0	0	0	0	0

2019 GAME-BY-GAME

Date	Opponent	Pos	AB	R	H	RBI	2B	3B	HR	BB	SB	CS	HBP	SAC	SF	GDP	K	PO	A	E	Av	
Feb 16	at Arizona	ph	1	0	0	0	0	0	0	0	0	0	0	0	0	0	0	0	0	0	0	.00
Feb 22	vs Canisius	ph	0	0	0	0	0	0	0	1	0	0	0	0	0	0	0	0	0	0	0	.00
Mar 08	vs Western Carolina	dh	1	0	0	0	0	0	0	0	0	0	0	0	0	0	0	0	0	0	0	.00
Totals		Ogs	2	0	0	0	0	0	0	1	0	0	0	0	0	0	0	0	0	0	0	.00

On base pct. .333 • Slugging pct. .000

#23 STELTZER, Emma - 1 appearance (All games)

Date	Opponent	GS	IP	H	R	ER	BB	SO	2B	3B	HR	WP	BK	HBP	IBB	Score	W-L	Sv	ERA	N
Mar 03	at Cal State Fullerton		0.2	0	0	0	0	0	0	0	0	0	0	0	0	1-19	0-0	0	0.00	
Totals		0	0.2	0	0	0	0	0	0	0	0	0	0	0	0	1-19	0-0	0	0.00	



24 SKYLAR JENKINS

OF • 5-5 • FR.

LAWRENCEVILLE, GA. • BUFORD HS

SINGLE-GAME HIGHS

Hits:

Doubles:

Home runs:

Total bases:

RBI:

Runs scored:

Walks:

Struck out:

Sac bunts:

Sac flies:

At bats:

Stolen bases:

Putouts:

Assists:

CAREER STATS (AT UNM)

2019 GAME-BY-GAME



32 LAUREN WILMERT C/1B • 5-10 • JR.
ALBUQUERQUE, N.M. • VOLCANO VISTA HS

SINGLE-GAME HIGHS

Hits: 2, 4x, Last vs. WCU, 3-8-19
 Doubles: 1, 8x, Last at Hawai'i, 2-23-19
 Home runs: 1, 5x, Last vs. WCU, 3-8-19
 Total bases: 6, 2x, Last vs. WCU, 3-8-19
 RBI: 5, 2x, Last vs. WCU, 3-8-19
 Runs scored: 3, UTEP, 2-8-19
 Walks: 3, UTEP, 2-8-19
 Hit by pitch: 1, 2x, Last vs. UTEP, 2-8-19
 Struck out: 3, George Washington, 2-23-18

Sac flies: 1, 3x, Last at LMU, 3-10-19
 Sac bunts: 1, 3x, Last vs. Utah State, 4-22-18
 At bats: 4, 11x, Last vs. Oregon St., 3-9-19
 Stolen bases: 1, vs Western Michigan, 2-11-17
 Putouts: 11, South Florida, 2-17-19
 Assists: 2, 6x, Last vs. Oregon St., 3-9-19
 Runners CS: 1, 9x, Last vs. LMU, 3-1-19

CAREER STATS (AT UNM)

Year	avg	gp-gs	ab	r	h	2b	3b	hr	rbi	tb	slg%	bb	hbp	so	gdp	ob%	sf	sh	sb-att	po	a	e	fld%
2017	.242	34-23	62	5	15	3	0	1	6	21	.339	6	0	15	1	.304	1	2	1-1	67	6	3	.961
2018	.180	32-20	61	5	11	1	0	1	11	15	.246	7	1	23	0	.275	0	1	0-0	87	11	4	.961
2019	.196	19-19	51	10	10	4	0	2	8	20	.392	7	1	14	1	.300	1	0	0-0	100	8	6	.947
TOTAL	.207	85-62	174	20	36	8	0	4	25	56	.322	20	2	52	2	.293	2	3	1-1	254	25	13	.955

2019 GAME-BY-GAME

Date	Opponent	Pos	AB	R	H	RBI	2B	3B	HR	BB	SB	CS	HBP	SAC	SF	GDP	K	PO	A	E	Avg
Feb 08	vs UTEP	*c	0	3	0	2	0	0	0	3	0	0	1	0	0	0	0	10	2	0	.000
Feb 09	vs Creighton	*1b	2	0	1	1	0	0	0	1	0	0	0	0	0	0	1	2	0	0	.500
Feb 09	at New Mexico State	*c	3	0	0	1	0	0	0	0	0	0	0	0	1	0	2	6	1	1	.200
Feb 15	vs Alabama	*1b	2	0	1	0	1	0	0	1	0	0	0	0	0	0	0	7	0	0	.286
Feb 15	vs Cal State Fullerton	*c	4	0	0	0	0	0	0	0	0	0	0	0	0	0	2	3	1	0	.182
Feb 16	at Arizona	*1b	2	0	0	0	0	0	0	0	0	0	0	0	0	0	0	4	0	1	.154
Feb 16	vs Illinois-Chicago	*c	4	1	2	0	0	0	0	0	0	0	0	0	0	0	1	9	0	0	.235
Feb 17	vs South Florida	*1b	3	0	0	0	0	0	0	0	0	0	0	0	0	0	0	11	1	1	.200
Feb 20	at Hawaii	*1b	3	0	0	0	0	0	0	0	0	0	0	0	0	1	0	4	0	0	.174
Feb 21	vs DePaul	*1b	3	1	1	1	0	0	1	0	0	0	0	0	0	0	2	7	0	1	.192
Feb 22	vs Canisius	*c	3	2	2	3	1	0	1	0	0	0	0	0	0	0	0	4	0	0	.241
Feb 22	at Hawaii	*c	3	1	2	0	1	0	0	0	0	0	0	0	0	0	0	3	0	1	.281
Feb 23	at Hawaii	*1b	3	1	1	0	1	0	0	0	0	0	0	0	0	0	0	3	0	0	.286
Feb 23	vs DePaul	*c	4	0	0	0	0	0	0	0	0	0	0	0	0	0	1	2	2	1	.256
Feb 28	vs Florida	*c	2	0	0	0	0	0	0	1	0	0	0	0	0	0	2	6	0	0	.244
Mar 01	vs Loyola Marymount	*c	2	1	0	0	0	0	0	1	0	0	0	0	0	0	0	8	1	0	.233
Mar 01	vs Tennessee	*1b	2	0	0	0	0	0	0	0	0	0	0	0	0	0	1	4	0	0	.222
Mar 03	vs UCONN	*1b	4	0	0	0	0	0	0	0	0	0	0	0	0	0	2	5	0	0	.204
Mar 03	at Cal State Fullerton	*c	2	0	0	0	0	0	0	0	0	0	0	0	0	0	0	2	0	0	.196
Mar 08	vs Oregon State	*c	4	0	1	1	0	0	0	0	0	0	0	0	0	0	2	5	1	0	.200
Mar 08	vs Western Carolina	*c	3	2	2	5	1	0	1	0	0	0	0	0	0	0	0	3	0	0	.224
Mar 09	vs Oregon State	*c	4	0	1	0	0	0	0	0	0	0	0	0	0	0	0	2	2	0	.226
Mar 10	at Loyola Marymount	*c	3	0	0	1	0	0	0	0	0	0	0	0	1	0	1	6	1	0	.215
Totals			23gs	65	12	14	15	5	0	3	7	0	1	0	2	1	17	116	12	6	.215

On base pct. .293 • Slugging pct. .431



44 ALEYAH WILBON

OF • 5-3 • SR.

FONTANA, CALIF. • SUMMIT HS

SINGLE-GAME HIGHS

Hits: 2, Utah State, 4-20-18
 Doubles: 1, Howard, 3-10-18
 Total bases: 2, 2x, Last vs. Utah State, 4-20-18
 RBI: 1, 2x, Last at Nevada, 3-25-18
 Runs scored: 2, 2x, Last vs. Utah State, 4-21-18
 Walks: 3, Sac. State, 3-11-18
 Hit by pitch: 1, vs St. Mary's, 2-9-18
 Struck out: 2, 7x, Last at CSUF, 3-3-19
 At bats: 4, 2x, Last at Arizona, 4-25-18

Stolen bases: 1, 5x, Last vs. Utah State, 4-21-18
 Caught stealing: 1, 4x, Last at Hawai'i, 2-23-19
 Putouts: 3, Utah State, 4-22-18
 Assists: 1, at New Mexico State, 4-3-18

CAREER STATS (AT UNM)

Year	avg	gp-gs	ab	r	h	2b	3b	hr	rbi	tb	slg%	bb	hbp	so	gdp	ob%	sf	sh	sb-att	po	a	e	fld%
2018	.222	38-25	63	13	14	1	0	0	2	15	.238	16	1	24	0	.388	0	2	5-8	26	1	1	.964
2019	.300	18-2	10	5	3	0	0	0	0	3	.300	1	0	5	0	.364	0	0	0-1	1	0	0	1.000
TOTAL	.233	56-27	73	18	17	1	0	0	2	18	.247	17	1	29	0	.385	0	2	5-9	27	1	1	.966

2019 GAME-BY-GAME

Date	Opponent	Pos	AB	R	H	RBI	2B	3B	HR	BB	SB	CS	HBP	SAC	SF	GDP	K	PO	A	E	Avg
Feb 09	at New Mexico State	of	0	1	0	0	0	0	0	1	0	0	0	0	0	0	0	0	0	0	.000
Feb 15	vs Alabama	pr	0	0	0	0	0	0	0	0	0	0	0	0	0	0	0	0	0	0	.000
Feb 15	vs Cal State Fullerton	pr	0	0	0	0	0	0	0	0	0	0	0	0	0	0	0	0	0	0	.000
Feb 16	at Arizona	of	1	1	0	0	0	0	0	0	0	0	0	0	0	0	0	0	0	0	.000
Feb 16	vs Illinois-Chicago	pr	0	1	0	0	0	0	0	0	0	0	0	0	0	0	0	0	0	0	.000
Feb 20	at Hawaii	pr	0	0	0	0	0	0	0	0	0	0	0	0	0	0	0	0	0	0	.000
Feb 21	vs DePaul	*of	3	0	1	0	0	0	0	0	0	0	0	0	0	0	1	1	0	0	.250
Feb 22	at Hawaii	pr	0	0	0	0	0	0	0	0	0	0	0	0	0	0	0	0	0	0	.250
Feb 23	at Hawaii	pr	0	0	0	0	0	0	0	0	0	1	0	0	0	0	0	0	0	0	.250
Feb 23	vs DePaul	pr	0	0	0	0	0	0	0	0	0	0	0	0	0	0	0	0	0	0	.250
Feb 28	vs Florida	pr	0	0	0	0	0	0	0	0	0	0	0	0	0	0	0	0	0	0	.250
Mar 01	vs Loyola Marymount	ph	1	0	1	0	0	0	0	0	0	0	0	0	0	0	0	0	0	0	.400
Mar 03	vs UCONN	ph	1	1	1	0	0	0	0	0	0	0	0	0	0	0	0	0	0	0	.500
Mar 03	at Cal State Fullerton	*of	2	0	0	0	0	0	0	0	0	0	0	0	0	0	2	0	0	0	.375
Mar 08	vs Oregon State	pr	0	1	0	0	0	0	0	0	0	0	0	0	0	0	0	0	0	0	.375
Mar 08	vs Western Carolina	of	0	0	0	0	0	0	0	0	0	0	0	0	0	0	0	0	0	0	.375
Mar 09	vs Oregon State	ph	1	0	0	0	0	0	0	0	0	0	0	0	0	0	1	0	0	0	.333
Mar 10	at Loyola Marymount	ph	1	0	0	0	0	0	0	0	0	0	0	0	0	0	1	0	0	0	.300
Totals		2gs	10	5	3	0	0	0	0	1	0	1	0	0	0	0	5	1	0	0	.300

On base pct. .364 • Slugging pct. .300



66 SYDNEY TOWNES *OF • 5-6 • SR.*
LOMPOC, CALIF. • SANTA BARBARA CITY COLL.

SINGLE-GAME HIGHS

Hits: 2, 4x, Last vs. UNLV, 3-26-18
 Doubles: 1, 3x, Last vs. Oregon St., 3-8-19
 Triples: 1, George Washington, 2-25-18
 Total bases: 4, George Washington, 2-25-18
 RBI: 1, 4x, Last vs. New Mexico State, 3-21-18
 Runs scored: 2, 3x, Last vs. Utah State, 4-21-18
 Walks: 2, 4x, Last vs. Illinois-Chicago, 2-16-19
 Hit by pitch: 1, 4x, Last vs. Utah State, 4-21-18
 Struck out: 2, 11x, Last vs. Oregon St., 3-8-19

Sac bunts: 1, 2x, Last at San Jose St., 4-29-18
 At bats: 5, at Nevada, 3-24-18
 Stolen bases: 1, 7x, Last at LMU, 3-10-19
 Putouts: 5, UNLV, 3-18-18
 Assists: 1, 2x, Last vs. UNLV, 3-18-18

CAREER STATS (AT UNM)

Year	avg	gp-gs	ab	r	h	2b	3b	hr	rbi	tb	slg%	bb	hbp	so	gdp	ob%	sf	sh	sb-att	po	a	e	fld%
2018	.186	45-44	102	16	19	2	1	0	4	23	.225	23	4	40	0	.357	0	2	6-6	59	2	4	.938
2019	.176	15-4	17	2	3	1	0	0	0	4	.235	2	0	8	0	.263	0	0	1-1	2	0	1	.667
TOTAL	.185	60-48	119	18	22	3	1	0	4	27	.227	25	4	48	0	.345	0	2	7-7	61	2	5	.926

2019 GAME-BY-GAME

Date	Opponent	Pos	AB	R	H	RBI	2B	3B	HR	BB	SB	CS	HBP	SAC	SF	GDP	K	PO	A	E	Avg
Feb 08	vs UTEP	ph/of	1	0	0	0	0	0	0	0	0	0	0	0	0	0	1	0	0	0	.000
Feb 09	vs Creighton	ph/of	1	0	0	0	0	0	0	0	0	0	0	0	0	0	1	0	0	0	.000
Feb 09	at New Mexico State	pr	0	0	0	0	0	0	0	0	0	0	0	0	0	0	0	0	0	0	.000
Feb 16	at Arizona	of	0	0	0	0	0	0	0	0	0	0	0	0	0	0	0	0	0	0	.000
Feb 16	vs Illinois-Chicago	*of	1	1	0	0	0	0	0	2	0	0	0	0	0	0	0	0	0	0	.000
Feb 17	vs South Florida	*of	3	0	0	0	0	0	0	0	0	0	0	0	0	0	2	0	0	0	.000
Feb 22	vs Canisius	ph	1	0	0	0	0	0	0	0	0	0	0	0	0	0	1	0	0	0	.000
Feb 22	at Hawaii	pr	0	0	0	0	0	0	0	0	0	0	0	0	0	0	0	0	0	0	.000
Feb 28	vs Florida	pr	0	0	0	0	0	0	0	0	0	0	0	0	0	0	0	0	0	0	.000
Mar 01	vs Loyola Marymount	of	0	0	0	0	0	0	0	0	0	0	0	0	0	0	0	0	0	0	.000
Mar 03	vs UCONN	pr	0	0	0	0	0	0	0	0	0	0	0	0	0	0	0	0	0	0	.000
Mar 03	at Cal State Fullerton	of	1	0	0	0	0	0	0	0	0	0	0	0	0	0	1	0	0	0	.000
Mar 08	vs Oregon State	*of	4	1	1	0	1	0	0	0	0	0	0	0	0	0	2	1	0	0	.083
Mar 09	vs Oregon State	of	2	0	1	0	0	0	0	0	0	0	0	0	0	0	0	0	0	1	.143
Mar 10	at Loyola Marymount	*of	3	0	1	0	0	0	0	0	1	0	0	0	0	0	0	1	0	0	.176
Totals		4gs	17	2	3	0	1	0	0	2	1	0	0	0	0	0	8	2	0	1	.176

On base pct. .263 • Slugging pct. .235



99 KIANA SPENCER

P • 5-6 • JR.
GALLUP, N.M. • YAVAPAI COLLEGE

SINGLE-GAME HIGHS

Innings pitched: 7.0, 3x, Last vs. Oregon St., 3-8-19
 Walks allowed: 7, LMU, 3-10-19
 Strikeouts: 6, Hawai'i, 2-23-19
 Batters faced: 32, Oregon State, 3-8-19
 Field chances: 2, 2x, Last vs. Oregon St., 3-8-19
 Assists: 2, 2x, Last vs. Oregon St., 3-8-19
 Runners CS: 1, Tennessee, 3-1-19
 Fewest hits allowed (Min. 3.0 IP): 3, Creighton, 2-9-19
 Fewest Walks Allowed (Min. 3.0 IP): 3, Alabama, 2-15-19

CAREER STATS (AT UNM)

Year	avg	qp-gs	ab	r	h	2b	3b	hr	rbi	tb	slg%	bb	hbp	so	qdp	ob%	sf	sh	sb-att	po	a	e	fld%
2019	.000	0-0	0	0	0	0	0	0	0	0	.000	0	0	0	0	.000	0	0	0-0	0	6	1	.857
TOTAL	.000	0-0	0	0	0	0	0	0	0	0	.000	0	0	0	0	.000	0	0	0-0	0	6	1	.857

Year	era	w-l	app	qs	cq	sho	sv	ip	h	r	er	bb	so	2b	3b	hr	bf	bavq	wp	hbp	bk	sfa	sha
2019	4.67	4-6	13	10	6	2/0	0	51.0	60	37	34	33	26	11	1	12	249	294	1	5	0	1	6

2019 GAME-BY-GAME

Date	Opponent	Pos	AB	R	H	RBI	2B	3B	HR	BB	SB	CS	HBP	SAC	SF	GDP	K	PO	A	E	Avg	
Feb 15	vs Alabama	*p	0	0	0	0	0	0	0	0	0	0	0	0	0	0	0	0	2	0	0	.000
Feb 23	at Hawaii	*p	0	0	0	0	0	0	0	0	0	0	0	0	0	0	0	0	1	0	0	.000
Mar 03	at Cal State Fullerton	*p	0	0	0	0	0	0	0	0	0	0	0	0	0	0	0	0	0	0	1	.000
Mar 08	vs Oregon State	*p	0	0	0	0	0	0	0	0	0	0	0	0	0	0	0	0	2	0	0	.000
Mar 10	at Loyola Marymount	*p	0	0	0	0	0	0	0	0	0	0	0	0	0	0	0	0	1	0	0	.000
Totals		5gs	0	0	0	0	0	0	0	0	0	0	0	0	0	0	0	0	6	1	0	.000

On base pct. .000 • Slugging pct. .000

#99 SPENCER, Kiana - 13 appearances (All games)

Date	Opponent	GS	IP	H	R	ER	BB	SO	2B	3B	HR	WP	BK	HBP	IBB	Score	W-L	Sv	ERA	NP
Feb 09	vs Creighton	*	5.0	3	0	0	5	2	0	0	0	0	0	1	0	8-0	1-0	0	0.00	91
Feb 09	at New Mexico State		1.0	1	1	1	0	2	0	0	1	0	0	0	0	8-9	1-0	0	1.17	21
Feb 15	vs Alabama	*	7.0	6	1	1	3	0	1	0	0	0	0	0	0	0-1	1-1	0	1.08	102
Feb 15	vs Cal State Fullerton		0.2	0	0	0	0	0	0	0	0	0	0	0	0	2-6	1-1	0	1.02	5
Feb 16	at Arizona	*	1.1	6	7	7	3	0	2	0	2	0	0	0	0	1-15	1-2	0	4.20	50
Feb 20	at Hawaii	*	6.0	5	2	1	0	4	1	0	1	0	0	1	0	1-2	1-3	0	3.33	88
Feb 21	vs DePaul		0.2	0	0	0	2	0	0	0	0	0	0	1	0	5-9	1-3	0	3.23	24
Feb 22	vs Canisius	*	5.0	4	0	0	1	4	0	0	0	0	0	1	0	10-0	2-3	0	2.62	81
Feb 23	at Hawaii	*	7.0	4	2	2	4	6	0	0	1	0	0	0	0	3-2	3-3	0	2.50	107
Mar 01	vs Tennessee	*	2.0	8	5	5	2	0	2	0	2	0	0	0	0	1-15	3-4	0	3.34	48
Mar 03	at Cal State Fullerton	*	2.2	9	8	8	2	1	1	0	4	0	0	0	0	1-19	3-5	0	4.57	63
Mar 08	vs Oregon State	*	7.0	9	5	3	4	2	3	1	0	0	0	0	0	6-5	4-5	0	4.32	123
Mar 10	at Loyola Marymount	*	5.2	5	6	6	7	5	1	0	1	1	0	1	0	2-6	4-6	0	4.67	132
Totals		10	51.0	60	37	34	33	26	11	1	12	1	0	5	0	48-89	4-6	0	4.67	-

THE 2019 LOBO SOFTBALL RADIO/TV ROSTER

PLAYERS



00
Andrea Howard
OF | 5-6 | So.
Albuquerque, N.M.



2
Maggie Buckholz
UT | 5-7 | Fr.
Silverton, Ore.



3
Taylor Jones
IF | 5-7 | So.
Albuquerque, N.M.



4
D'Andra DeFlora
OF | 5-2 | Sr.
Fresno, Texas



5
Sydney Broderick
C | 5-4 | So.
Mesa, Ariz.



7
MacKenzie Peterson
OF | 5-9 | Fr.
Gilbert, Ariz.



8
Bailey Klitzke
P/1B | 5-8 | Jr.
Apache Junction, Ariz.



9
Kasey Halleen
IF | 5-6 | Sr.
Torrance, Calif.



10
Cameryn O'Grady
SS | 5-6 | So.
Orange, Calif.



12
Daryn Haslam
IF | 5-4 | Fr.
Cedar Park, Texas



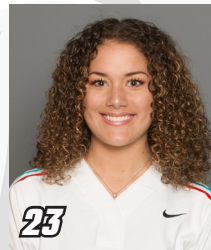
13
Kennedy Ferguson
P | 5-6 | Fr.
Camas, Wash.



16
Leslie Romero
OF | 5-4 | Fr.
Gonzales, Calif.



22
Monica Salas
IF | 5-3 | Jr.
Goleta, Calif.



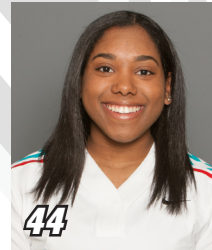
23
Emma Steltzer
OF | 5-6 | Fr.
Manchester, Mo.



24
Skylar Jenkins
OF | 5-5 | Fr.
Lawrenceville, Ga.



32
Lauren Wilmert
C/1B | 5-10 | Jr.
Albuquerque, N.M.



44
Aleyah Wilbon
OF | 5-2 | Sr.
Fontana, Calif.



66
Sydney Townes
OF | 5-6 | Sr.
Lompoc, Calif.



99
Kiana Spencer
P | 5-6 | Jr.
Gallup, N.M.

STAFF



Paula Congleton
Head Coach



Tyler Heil
Assistant Coach



Breanna Macha
Assistant Coach



Madison Foust
Athletic Trainer



Jeremy Golden
Strength and Cond.