

FIGHTING ILLINI

WOMEN'S BASKETBALL GAME NOTES

Athletics Communication // 1700 South Fourth Street // Champaign, IL 61820
WBB Contact: Jenny Dewar // Office: 217-300-1148 // Cell: 847-567-2487 // jdewar2@illinois.edu // fightingillini.com

F FIGHTINGILLINI.com  @IlliniWBB  @IlliniWBB  @IlliniWBBasketball



NEW MEXICO THANKSGIVING TOURNAMENT

Nov. 24-26, 2017 // Albuquerque, New Mexico // Dreamstyle Arena - The Pit (15,411)

GAME 1: Illinois (3-2) vs. UC Irvine (2-2) | Fri., Nov. 24 - 5:30 PM CT

Live Stream (vs New Mexico only): <http://www.golobos.com/>

GAME 2: Illinois (3-2) vs. Wichita State (0-4) | Sat., Nov. 25 - 1 PM CT

Live Stats: <http://www.statbroadcast.com/>

GAME 3: Illinois (3-2) at New Mexico (4-0) | Sun., Nov. 26 - 3:30 PM CT

Live Audio: <http://www.fightingillini.com/watch>

Radio: Illini Sports Network (WDWS-AM 1400) — Mike Koon & Scott Beatty



2017-18 SCHEDULE & RESULTS

3-2 Overall, 0-0 Big Ten

Home: 3-1; Away: 0-1; Neutral: 0-0

DATE	OPPONENT	TIME/SCORE
Nov. 10	Fort Wayne	W, 64-50
Nov. 12	Florida Gulf Coast	L, 85-61
Nov. 15	Chicago State	W, 66-56
Nov. 18	Bradley	W, 74-62
Nov. 21	Western Illinois	L, 67-77
Nov. 24	UC Irvine &	5:30 PM
Nov. 25	Wichita State &	1 PM
Nov. 26	New Mexico &	3:30 PM
Nov. 30	Virginia Tech ^	7 PM
Dec. 3	Memphis	2 PM
Dec. 7	Indiana State	7 PM
Dec. 10	Detroit Mercy	2 PM
Dec. 16	Austin Peay	2 PM
Dec. 22	Missouri	12 PM
Dec. 28	Maryland *	5 PM
Dec. 31	Northwestern *	2 PM
Jan. 3	Rutgers *	6 PM
Jan. 7	Iowa *	1 PM
Jan. 10	Nebraska *	7 PM
Jan. 16	Michigan State *	8 PM
Jan. 20	Michigan *	5 PM
Jan. 23	Penn State *	6 PM
Jan. 28	Wisconsin *	3 PM
Feb. 1	Nebraska *	7 PM
Feb. 4	Purdue *	1 PM
Feb. 8	Indiana *	6 PM
Feb. 13	Ohio State *	7 PM
Feb. 18	Northwestern *	2 PM
Feb. 21	Purdue *	6 PM
Feb. 25	Minnesota *	2 PM
Feb. 28-Mar. 4	Big Ten Championship	TBD

& New Mexico Thanksgiving Tournament
^ ACC/Big Ten Challenge
* Big Ten Conference game
& Big Ten Network
Home games in **BOLD**
All times Central and subject to change

PROBABLE STARTERS

Pos.	No.	Name	Ht.	Yr.	GP/GS	PPG	RPG	Other	Notes/Highlights
G	1	Brandi Beasley	5-7	So.	5 / 5	11.6	4.2	19 AST	2017 Big Ten All-Freshman Team
G	23	Jaelyne Kirkpatrick	5-7	Jr.	5 / 4	3.4	1.6	13 AST	Dished 80 assists last season
G	25	Kennedy Cattenhead	5-10	R-Sr.	5 / 5	7.4	3.6	4 STL	Season-high 18 points vs. Western Illinois
F	35	Alex Wittinger	6-1	Jr.	5 / 5	14.8	10.2	9 BLK	Two double-doubles this season
F	50	Ali Andrews	6-2	So.	5 / 5	8.2	4.4	6 BLK	Career-high five blocks vs. Chicago State

OFF THE BENCH

Pos.	No.	Name	Ht.	Yr.	GP/GS	PPG	RPG	Other	Notes/Highlights
F	2	Lyric Robins	5-11	Fr.	4 / 0	1.8	0.8	2 AST	Posted four points vs. Chicago State
F	3	Alli Ball	6-1	Sr.	5 / 0	3.6	1.4	3 BLK	Led Illinois with 13 points vs. Fort Wayne
G	5	Cierra Rice	5-9	R-So.	3 / 0	3.3	3.0	2 STL	Led Illinois with 7 rebounds against Fort Wayne
F	11	Cyndee Kinslow	6-2	R-So.	1 / 0	0.0	0.0	1 STL	Transferred from Pepperdine
G	13	Petra Holešinská	5-9	So.	5 / 1	7.0	5.2	4 AST	Led Illinois in 3-point shooting last season
G	14	Addaya Moore	5-11	Fr.	2 / 0	1.0	2.5	2 BLK	2016 First-Team All-Southwestern Conference
F	21	Nancy Panagiotopoulou	6-3	Fr.	0 / 0	--	--	--	Greek National Team member
F	24	Jnaya Walker	6-1	Fr.	3 / 0	3.0	2.3	7-10 FT	2017 McDonalds All-American Nominee
G	30	Courtney Joens	5-10	So.	5 / 0	4.8	2.4	3 AST	Six double-figure scoring games last year
G	33	Meagan McNicholas	5-10	So.	0 / 0	--	--	--	Walked on last season & received scholarship this year

THE COACH

ILLINOIS: Nancy Fahey // 3-2 at Illinois (1st year) // 740-134 overall (32nd year)

SERIES NOTES VS. UC IRVINE

Series Record: First Meeting

Last Meeting: First Meeting

Series Streak: First Meeting

Series in Champaign: 0-0

Series in Irvine: 0-0

SERIES NOTES VS. WICHITA STATE

Series Record: Tied, 1-1

Last Meeting: 12-10-1983

WSU 66, ILL 64 | Wichita, Kan.

Series Streak: L-1

Series in Champaign: 0-0

Series in Wichita: Illinois trails, 0-1

SERIES NOTES VS. NEW MEXICO

Series Record: Illinois leads, 2-0

Last Meeting: 1-9-1981

ILL 84, NM 61 | Wichita, Kan.

Series Streak: W-2

Series in Champaign: 0-0

Series in Albuquerque: Illinois leads, 1-0

ILLINOIS IS...

...3-2 on the season and in the Nancy Fahey era

...set to play three games in three days

...matching up against UC Irvine for the first time in program history

...facing Wichita State & New Mexico for the first time since the 1980s

...averaging 9.2 steals per game

...led in scoring by Alex Wittinger & Brandi Beasley

QUICK HITS

• **TOURNAMENT TIME:** Illinois is set to play three games in three days, beginning the New Mexico Thanksgiving Tournament on Nov. 24 against UC Irvine. The Illini will match up against Wichita State on Nov. 25 and face the home team, New Mexico, on Nov. 26.

• **COMING UP:** The Orange and Blue return to Champaign for the Big Ten Challenge on Nov. 30. The matchup is set for 7 p.m., and will mark the first Three-Point Thursday, with free foam fingers for fans. It will also mark the first day of Illinois' canned food drive benefitting the Eastern Illinois Food Bank.

• **LAST TIME OUT:** Four Illini scored in double-figures for the second consecutive game on Tuesday night, led by redshirt senior Kennedy Cattenhead who posted 18 points on 7-of-8 shooting inside State Farm Center. The Western Illinois Leathernecks, however, capitalized from the three-point line and took a 77-67 victory back to Macomb. Junior Alex Wittinger carded her second double-double of the season with 10 points and 12 rebounds, while sophomores Brandi Beasley and Petra Holešinská also scored in double digits.

• **SCOUTING THE TOURNAMENT FIELD:** UC Irvine enters the New Mexico Thanksgiving Tournament with a 2-2 record, coming off of a win over Idaho State. The Anteaters are led by Jordan Sanders, who is averaging nine points per game, while four additional players are averaging between eight and nine points per game. Wichita State is 0-4 on the year and coming off of a 68-56 loss to Tennessee. Two players are averaging double-figure scoring numbers, led by Rangie Bessard (15.0 ppg). New Mexico is 4-0 this season, with wins over Western Michigan, Marquette, Northern New Mexico and New Mexico State.

QUICK FACTS

UNIVERSITY INFORMATION

Location Urbana-Champaign, Ill.
 Enrollment 44,880
 Nickname Fighting Illini
 Founded 1867
 Colors Orange and Blue
 Affiliation NCAA Division I
 Conference Big Ten
 Home Court (capacity) State Farm Center (15,544)
 President Timothy L. Killeen
 Chancellor Robert J. Jones
 Athletic Director Josh Whitman
 Senior Woman Administrator (SWA) Maria Ochoa Woods
 Ticket Office 217-333-3470

TEAM HISTORY

First Year 1974-75
 Overall Record 607-643 (43 years)
 Big Ten Record 236-390 (34 years)
 State Farm Center Record 265-179 (31 years)
 Years in NCAA (8) '82, '86, '87, '97, '98, '99, '00, '03
 Years in WNIT (8) '2001, '02, '05, '06, '07, '08, '10, '13
 Big Ten Titles (1) 1997

2016-17 AT A GLANCE

2016-17 Overall Record 9-22
 2016-17 Big Ten Record/Place 3-13/T11th
 2016-17 Postseason None

2017-18 AT A GLANCE

Starters Returning/Lost 5/0
 Letterwinners Returning/Lost 9/2
 Newcomers in 2016-17 5

COACHING STAFF

Head Coach Nancy Fahey (Wisconsin '81)
 Career Record 740-135 (31 seasons)
 Record at Illinois 3-2 (1st season)
 Associate Head Coach LaKale Malone (Indiana '99)
 Assistant Coach Tianna Kirkland (Ferris State '02)
 Assistant Coach Steve Cochran (Missouri-St. Louis '90)
 Video Coordinator Mark Uitermarkt (3rd Season)
 Athletic Trainer Sam Laingen (5th Season)
 Strength & Conditioning Kilee Taflinger (1st Season)
 Basketball Office Phone 217-333-8612

ATHLETICS COMMUNICATION

Women's Basketball SID Jenny Dewar
 Office Phone / Cell Phone 217-300-1148 / 847-567-2487
 Email jdewar2@illinois.edu
 Asst. Women's Basketball SID Grace Duggan
 Office Phone 217-300-1569
 Email gracead@illinois.edu
 Press Row Phone 217-333-1227
 Mailing Address Bielfeldt Athletic Building
 1700 South Fourth Street, Champaign, IL 61820
 Website www.fightingillini.com
 Twitter @IlliniWBB
 Facebook www.facebook.com/IlliniWBBasketball
 Instagram
 IlliniWBB

RADIO INFORMATION

Flagship Station WDWS-AM 1400
 Play-By-Play Dave Loane
 Analyst Mike Koon

ILLINI WOMEN'S HOOPS BY THE NUMBERS

- 3** International players on the roster in Jaelyne Kirkpatrick, Petra Holešinská and Nancy Panagiotopoulou
- 5** Newcomers this season in Alli Ball, Addaya Moore, Lyric Robins, Nancy Panagiotopoulou and Jnaya Walker
- 10** Career 20+ point games by Alex Wittinger
- 19** Assists from Brandi Beasley this season
- 75** Illinois' free throw shooting percentage so far this season
- 97** Percent of Illinois' scoring returns from last season including scoring leaders Alex Wittinger and Brandi Beasley
- 740** Career victories by head coach Nancy Fahey

A NEW ERA

Illinois opened the Nancy Fahey era of women's basketball on November 10 with a victory over the Fort Wayne Mastodons. A four-time hall of fame inductee, Fahey boasts 740 career victories and led Washington University to five Division III National Championship titles. Fahey was hired as the ninth head women's basketball coach in Illinois history on March 22, 2017.

WITTINGER IN THE RECORD BOOKS

In her junior season, Alex Wittinger has already had quite the career for the Illini. In her two years on the court, the Delano, Minnesota, native racked up 124 blocks and climbed to the No. 6 spot on Illinois' all-time career blocks list. She carded 74 rejections last season to rank second all-time at Illinois and she led the Big Ten with her 2.6 blocked shots per game. Wittinger became just the eighth player in Illinois history to record 100 career blocks on Thursday, Jan. 26, and also set a new single-game record with her eight rejections against Wright State. She has nine rejections through five games this season.

Illinois Career Blocked Shots List

1.	271	Karisma Penn	2009-13
2.	231	Jenna Smith	2006-10
3.	163	Lacey Simpson	2005-10
4.	156	Kendra Gantt	1981-85
5.	135	Jonelle Polk	1983-87
6	133	Alex Wittinger	2016-

2017-18 ILLINOIS BASKETBALL ROSTER

No.	Player	Pos.	Ht.	Elig.	Hometown/High School/Prev. College	Pronunciation
1	Brandi Beasley	G	5-7	So.	Memphis, Tenn./Ridgeway	
2	Lyric Robins	F	5-11	Fr.	Plano, Texas/Plano West	Lyric, like words to a song
3	Alli Ball	F	6-1	Sr.	St. Louis, Mo./Principia Upper School/Akron	
5	Cierra Rice	G	5-9	r-So.	Grosse Pointe, Mich./Grosse Point	SEE-air-uh
11	Cyndee Kinslow	F	6-2	r-So.	Oakley, Calif./Freedom/Pepperdine	sid-knee
13	Petra Holešinská	G	5-9	So.	Vracov, Czech Republic/ Sportovní Ludvika Danka	Pet-RUH HOLE-eh-SHIN-ska
14	Addaya Moore	G	5-11	Fr.	Granite City, Illinois/Granite City	Uh-DAY-uh
21	Nancy Panagiotopoulou	F	6-3	Fr.	Athens, Greece/American Community Schools of Athens	PA-na-yo-toe-poo-lou
23	Jaelyne Kirkpatrick	G	5-7	Jr.	Oakville, Ontario/St. Ignatius of Loyola	JAY-lynn
24	Jnaya Walker	F	6-1	Fr.	Bolingbrook, Ill./Bolingbrook	juh-NAY-uh
25	Kennedy Cattenhead	G	5-10	r-Sr.	Bolingbrook, Ill./Bolingbrook	
30	Courtney Joens	G	5-10	So.	Iowa City, Iowa/City High	Jones
33	Meagan McNicholas	G	5-10	So.	Rochester, Ill./Rochester	
35	Alex Wittinger	F	6-1	Jr.	Delano, Minn./Delano	Witt-in-grr
50	Ali Andrews	F	6-2	So.	Lake in the Hills, Ill./Huntley	

Head Coach:	Nancy Fahey (first season)
Associate Head Coach:	LaKale Malone (sixth season)
Assistant Coach:	Tianna Kirkland (sixth season)
Assistant Coach:	Steve Cochran (first season)
Director of Operations:	Dianna Pasley (first season)
Director of Player Personnel:	John Patterson (first season)
Video Coordinator:	Mark Uitermarkt (third season)
Graduate Assistant:	Jenn Dynis (first season)

FIGHTING ILLINI WOMEN'S BASKETBALL NOTES

ILLINI IN THE LEAGUE

Illini sophomore Brandi Beasley was tops among players in the country for her minutes played last season, and she is continuing that trend this year. Beasley ranks seventh in the league for her 34.8 minutes played per game this year. Junior Alex Wittinger ranks third in the Big Ten for her 4.4 offensive boards per game and seventh in the league for her 1.8 blocked shots per game. Wittinger leads the Illini, averaging 10.2 total rebounds per game, which checks in at seventh in the Big Ten. The Delano, Minnesota, native, has netted 34 field goals this season, putting herself at No. 5 in the Big Ten and No. 16 in the country. Sophomore Ali Andrews has netted 7-of-15 from distance this season, and her 46.7-percent three-point shooting checks in at No. 7 in the Big Ten.

MOVING UP THE BOARDS

Junior Alex Wittinger is marking her place in history in more than one category, as she is just eight rebounds away from moving into the top-10 on Illinois' career rebounds list. Wittinger leads Illinois with her 74 boards this season, and has racked up 771 in her career so far. That number puts her 11th all-time at Illinois, just behind Illini great, Ashley Berggren (1995-98) who tallied 779. Wittinger needs 32 more rebounds to catch up with Kendra Gantt (1981-85) in the No. 9 spot. Jenna Smith (2006-10) is Illinois' all-time leading rebounder with 1,217 career boards.

HOME COURT ADVANTAGE

Illinois is 3-1 at home this season, with wins over Fort Wayne, Chicago State and Bradley. The Illini are outscoring opponents by 6.5 points per game inside the State Farm Center, with two players averaging double-digit scoring numbers. Alex Wittinger leads the Illini, averaging 13.5 points per game in Champaign, while Brandi Beasley is averaging 12.5 points per home contest. Wittinger is averaging a double-double at home, also grabbing 10.5 boards per game. The Orange and Blue are shooting 79-percent from the free throw line on Lou Henson Court, highlighted by 92-percent shooting against Western Illinois, and averaging 10 steals per game. Illinois also forces 16 opponent turnovers at home, averaging more than 18 points per game off of those turnovers.

PETRA OFF THE PINE

Sophomore Petra Holešinská leads the Illini off the bench this season, averaging 6.0 points and 4.0 boards per game. She's racked up three steals and knocked down five three-pointers. Sophomore Courtney Joens is also an important contributor off the bench for Illinois as she is averaging almost five points per game on 41-percent shooting. The Illini bench accounts for 19 points per game and averages more than 14 rebounds per contest.

WHAT A RUN

- After starting off to an early deficit against Western Illinois on Tuesday night, the Illini hit back with a 19-0 run in the second quarter to earn the advantage in the game. Redshirt senior Kennedy Cattenhead contributed 10 straight points during that run, and the Orange and Blue held the Leathernecks without a point for 5:30 in the period.

- Cattenhead was strong in the first half for the second consecutive game. She was 5-for-5 from the field and 1-for-1 from the free throw line against Bradley, and went 6-for-6 in the first half against WIU.

- Four Illini scored in double digits for the second straight game, led by Cattenhead (18).

2017-18 STARTING LINEUPS

Opponent	G	G	G	F	F	Record
Fort Wayne	Beasley	Kirkpatrick	Cattenhead	Andrews	Wittinger	1-0
Florida Gulf Coast	Beasley	Kirkpatrick	Cattenhead	Andrews	Wittinger	1-1
Chicago State	Beasley	Kirkpatrick	Cattenhead	Andrews	Wittinger	2-1
Bradley	Beasley	Holešinská	Cattenhead	Andrews	Wittinger	1-0
Western Illinois	Beasley	Kirkpatrick	Cattenhead	Andrews	Wittinger	2-2
UC Irvine						
Wichita State						
New Mexico						
Virginia Tech						
Memphis						
Indiana State						
Detroit Mercy						
Austin Peay						
Missouri						
Maryland						
Northwestern						
Rutgers						
Iowa						
Nebraska						
Michigan State						
Michigan						
Penn State						
Wisconsin						
Nebraska						
Purdue						
Indiana						
Ohio State						
Northwestern						
Purdue						
Minnesota						

2017-18 BIG TEN STANDINGS

Pl.	Team	Big Ten	Pct.	Overall	Pct.
	Penn State	0-0	.000	5-0	1.000
	Iowa	0-0	.000	4-0	1.000
	Michigan State	0-0	.000	4-0	1.000
	Minnesota	0-0	.000	4-0	1.000
	Rutgers	0-0	.000	4-0	1.000
	Northwestern	0-0	.000	3-0	1.000
	Ohio State	0-0	.000	4-1	.800
	Indiana	0-0	.000	3-1	.750
	Nebraska	0-0	.000	3-1	.750
	Purdue	0-0	.000	3-1	.750
	Michigan	0-0	.000	2-1	.667
	Wisconsin	0-0	.000	2-1	.667
	Illinois	0-0	.000	3-2	.600
	Maryland	0-0	.000	3-2	.600

THIS WEEK IN THE BIG TEN

THURSDAY, NOV. 23

Syracuse at Wisconsin, 10 AM
Iowa at Charlotte, 11 AM
Buffalo at Nebraska, 3:15 PM
Memphis at Ohio State, 5 PM

FRIDAY, NOV. 24

Wisconsin at George Washington, 9 AM
Rutgers at South Carolina, 9:30 AM
Coastal Carolina at Nebraska, 10 AM
UAB at Indiana, 11 AM
Northwestern at Chattanooga, 2 PM
UC Irvine vs. Illinois, 5:30 PM
Louisiana Tech at Penn State, 4:45 PM
USC at Purdue, 5 PM
TBA at Ohio State, 8 PM

SATURDAY, NOV. 25

Vanderbilt at Wisconsin, 9 AM
Wichita State at Illinois, 10 AM
Michigan at Ohio, 10 AM
UConn at Michigan State, 11 AM
Elon at Iowa, 1 PM
Indiana at Saint Mary's, 1 PM
Auburn at Northwestern, 2 PM
Penn State at Kansas State, 4:45 PM
Purdue at Hawaii, 7:30 PM

SUNDAY, NOV. 26

Georgetown at Northwestern, 11 AM
Illinois at New Mexico, 3:30 PM
Marist at Purdue, 4:30 PM

WEDNESDAY, NOV. 29

Minnesota at North Carolina, 11:30 AM
Notre Dame at Michigan, 2 PM
Wisconsin at Pittsburgh, 3 PM
Maryland at Virginia, 3 PM
Florida State at Iowa, 4 PM

All times Central

FIGHTING ILLINI WOMEN'S BASKETBALL NOTES

ASSOCIATED PRESS POLL (Nov. 20)

No.	School	Record	Pts	Prev
1	Connecticut	3-0	800	1
2	Texas	3-0	740	2
3	South Carolina	4-0	712	4
4	Louisville	5-0	696	5
5	UCLA	3-0	672	8
6	Notre Dame	3-0	647	6
7	Mississippi State	3-0	617	7
8	Baylor	3-1	580	3
9	Ohio State	4-1	571	9
10	Oregon	3-1	478	10
11	West Virginia	3-0	439	12
12	Tennessee	2-0	416	13
13	Florida State	4-0	375	17
14	Stanford	2-2	361	14
15	Maryland	2-2	314	15
16	Duke	2-1	310	11
17	South Florida	3-0	265	22
18	Oregon State	2-1	255	18
19	Texas A&M	2-1	183	19
20	Marquette	1-1	155	16
21	California	2-1	151	20
22	Kentucky	4-0	144	25
23	Missouri	3-1	135	23
24	Arizona State	4-0	106	NR
25	Michigan	2-1	93	24

Others receiving votes: Oklahoma 64, Villanova 26, Michigan St 22, DePaul 15, Green Bay 14, New Mexico 8, Iowa 5, Oklahoma St. 4, Southern Cal 4, Alabama 4, Georgia 3, Northern Colorado 3, Purdue 3, Rutgers 3, Western Kentucky 2, Georgia Tech 2, Princeton 2, Dayton 1.

USA TODAY COACHES POLL (Nov. 21)

No.	School	Record	Pts
1.	Connecticut	(3-0)	800
2.	South Carolina	(4-0)	758
3.	Mississippi State	(3-0)	678
4.	(Tie) Texas	(3-0)	668
4.	(Tie) UCLA	(3-0)	668
6.	Notre Dame	(3-0)	665
7.	Louisville	(5-0)	652
8.	Ohio State	(4-1)	561
9.	Baylor	(3-1)	560
10.	Oregon	(3-1)	464
11.	Florida State	(4-0)	440
12.	Stanford	(2-2)	412
13.	West Virginia	(3-0)	405
14.	Tennessee	(3-0)	358
15.	Maryland	(2-2)	355
16.	South Florida	(4-0)	280
17.	Duke	(2-1)	261
18.	Oregon State	(2-1)	252
19.	Missouri	(3-1)	142
20.	Marquette	(1-1)	115
21.	DePaul	(3-1)	100
22.	Michigan	(2-1)	90
23.	(Tie) NC State	(5-0)	81
23.	(Tie) California	(2-1)	81
25.	Texas A&M	(2-1)	78

Others receiving votes: Oklahoma (2-1) 76; Kentucky (4-0) 75; Arizona State (4-0) 61; Villanova (3-0) 31; Syracuse (3-0) 28; Michigan State (3-0) 26; Virginia Tech (4-0) 26; Northern Colorado (4-0) 25; Wisconsin-Green Bay (3-0) 22; Dayton (4-0) 21; Georgia Tech (4-0) 21; Miami (Fla.) (2-1) 18; Florida Gulf Coast (5-0) 16; Iowa (4-0) 9; Middle Tennessee (3-0) 5; Texas-Arlington (4-0) 5; Kansas State (4-0) 3; Elon (3-0) 2; Indiana (3-1) 2; Rutgers (4-0) 2; Washington (1-2) 2.

BYE BYE BRADLEY

• Illinois improved to 3-1 on the season after a back-and-forth battle against the Bradley Braves. Illinois held Bradley to just nine fourth-quarter points, and held the Braves without a point for more than five minutes to close out the game, going on a 13-0 run during that span.

• Illinois scored a season-high 23 points off of Bradley turnovers

• Sophomore Petra Holešinská carded her first double-double of the season and the second in her career (11 pts, 10 rbs).

WIN NO. 2

• The Illini earned their second win of the season over Chicago State on Nov. 15, led by Alex Wittinger's double-double (19 pts, 14 rbs). The performance marked her 41st double-figure scoring game and her 15th career double-double.

• On her birthday, sophomore Ali Andrews notched a season-best 15 points and a career-high eight rebounds, four assists and five blocks. She was 6-for-6 from the floor after the first half, including 3-for-3 from distance.

• Sophomore Brandi Beasley matched her career-best with four steals in the first half.

FIGURES FROM FORT WAYNE

• Head coach Nancy Fahey earned her first victory at Illinois against Fort Wayne on Friday. She is now 28-4 all time in season-opening contests, and is the fifth coach to earn a win in her coaching debut with the Fighting Illini. Illini head coaches are 5-4 all-time in their coaching debuts in the Orange and Blue, and Fahey marks the fourth consecutive Illini head coach to earn a victory in the Illinois debut.

• Illinois swiped 13 steals in the contest, the most for the squad since recording 14 last season against Northwestern (2/19/17).

• With a team-leading 13 points against Fort Wayne, Brandi Beasley had knocked down double-digit scoring numbers in 13-straight games. Junior Alex Wittinger closed the contest with 12 points, good for her 39th-career double-figure scoring game.

• Ball-ing out. Senior Alli Ball led Illinois in scoring (13), rebounding (7) and blocked shots (2) in her Illini debut.

FOUNTAIN OF YOUTH

With five newcomers and 11 underclassmen on the roster this season, the Orange and Blue boast one of the youngest rosters in the Big Ten. The Illini are composed of 73-percent underclassmen on the court, meaning redshirt sophomore or younger, and only Purdue has a larger percentage of young players. The Boilermakers have 10 underclassmen on their 13-person roster (76-percent). The next-youngest squad in the league is Northwestern, who is 66-percent composed of underclassmen.

BEASLEY'S BREAKOUT YEAR

Sophomore Brandi Beasley returns for the Illini this year, looking to build on a breakout freshman campaign. A 2017 Big Ten All-Freshman Team honoree, Beasley was among team leaders for the 13.6 points per game last season and also checked in at second among all Big Ten freshmen. She dished 120 assists on the season, becoming one of just four freshmen in Illinois history to record 100 dimes in their rookie season. Beasley was among league and national leaders for her 36.2 minutes played per game. She played a full 40 minutes in six contests.

HOLEŠÍNSKÁ'S HOT SHOOTING

Sophomore Petra Holešinská returns this season after a hot-shooting freshman campaign. The Vracov, Czech Republic, native was among the top three-point shooters in the Big Ten during her freshman season, leading all the league's freshmen with her 45.6-percent three-point shooting in conference play. Holešinská netted 54 treys during 2016-17, a number that ranks third all-time among Illinois freshmen. She shot 35.5-percent from distance on the season, which ranks fifth all-time on Illinois' freshman records list.

SENIOR STORIES

The Illini are looking to redshirt senior Kennedy Cattenhead for direction this season as the Bolingbrook, Illinois, native, has appeared in 87 games for the Orange and Blue. Cattenhead has been a staple in the starting lineup for two seasons, and earned the start in all of Illinois' games this season. She will look to continue her leadership both on and off the court.

Senior Alli Ball also brings experience to Illinois' lineup as she transferred from Akron after spending three years playing for the Zips. She appeared in 90 games for Akron, earning 13 starts throughout her career. Ball had quite the debut for Illinois, leading the team with 13 points, seven rebounds and two blocks.

KIRKPATRICK IN CANADA

Junior Jaelyne Kirkpatrick spent her summer traveling the world as she represented her home country on the Canada Development Women's National Team. Kirkpatrick traveled to both Japan and Australia this August for the U24 Women Basketball League Four Nations 2017 Tournament and the Taipei 2017 29th Summer Universiade. Kirkpatrick played in nine games through the two tournaments, averaging 20 minutes per game. She dished 22 assists overall, and averaged four points per game.

WOMEN'S BASKETBALL MEDIA AVAILABILITY SCHEDULE

Date	Time	Location
Monday, Nov. 20	1:00 p.m.	State Farm Center
Tuesday, Nov. 28	2:00 p.m.	State Farm Center
Tuesday, Dec. 5	2:00 p.m.	State Farm Center

Fighting Illini Women's Basketball welcomes members of the media for interviews with players and head coach Nancy Fahey prior to practice on the days listed above.

Please player send interview requests to JDewar2@illinois.edu by 10 a.m. on the scheduled media day to ensure their availability.

FIGHTING ILLINI WOMEN'S BASKETBALL NOTES

INSIDE THE NUMBERS

	ILL	UCI	WSU	UNM
Points Per Game	66.4	69.0	58.0	92.2
Points Allowed Per Game	66.0	71.8	71.8	76.0
Scoring Margin	+0.4	-2.7	-13.8	+16.3
Field Goal %	.409	.385	.374	.431
3-pt Field Goals Made-Att.	28-94	27-85	17-67	13-91
3-pt Field Goal %	.298	.318	.254	.352
Free Throws Made-Att.	48-64	55-74	33-44	87-121
Free Throw %	.750	.743	.750	.719
Rebounds Per Game	40.4	36.2	35.3	45.0
Rebounding Margin	+5.0	-3.0	-0.2	+1.8
Fouls Per Game	18.2	21.0	21.0	14.25
Assists Per Game	10.8	12.4	11.5	16.5
Turnovers Per Game	15.8	18.0	16.3	10.0
Turnover Margin	-0.4	+1.5	+0.2	+7.3
Steals Per Game	9.2	7.8	7.8	9.8
Blocks Per Game	4.6	3.0	2.0	3.3

FAHEY SIGNS THREE FOR 2018-19

Head Coach Nancy Fahey announced her first recruiting class on Nov. 8, welcoming two top-100 recruits in Mackenzie Blazek and Arieal Scott, and a national team player in J-Naya Ephraim.

MACKENZIE BLAZEK | 6-3 | Forward | Franklin, Indiana | Whiteland Community High School

2017 IBCA Underclass All-State honoree...2016 IBCA Underclass Large School All-State honoree...Ranked No. 90 overall by ESPN Hoopgurlz...Daily Journal 2016-17 Player of the Year...Averaged 18 points and 13.4 rebounds per game for Whiteland last season

J-NAYA EPHRAIM | 5-9 | Guard | St. Croix, U.S. Virgin Islands | Southern Durham High School

Averaged 16.5 points and 10.8 rebounds per game for Southern Durham last season and tallied 16 double-doubles...Represented the Virgin Islands on both the U16 and U17 National Teams at the FIBA World University Games (2013-15)...NCBCA 2017 First Team All-District...2017 Big Eight Conference Player of the Year...Chose Illinois over Temple and James Madison

ARIEAL SCOTT | 5-9 | Guard | Urbana, Illinois | Urbana High School

2016 IBCA First Team 1A/2A All-State...No. 39-ranked recruit in the country according to Prospects Nation...Ranked among the top 100 players in the country by ESPN Hoopgurlz...Two-time News Gazette All-Area First Team honoree...Chose Illinois over Missouri, USC and Washington, among others

ILLINI WBB TICKETS

Illinois women's basketball season and single game tickets are on sale now and can be purchased online at FightingIllini.com, in person at the Illinois ticket office at State Farm Center or by phone at 1-866-ILLINI-1. General admission season tickets start at \$30 each, while reserved season tickets are available for \$75. Single game tickets can be purchased for \$5.

ILLINI ON THE NETWORK

Five of Illinois' contests this season will air live on the Big Ten Network, and the remaining conference games will be streamed on BTN Plus. Illinois will have four home games televised live on the network, beginning January 7 against Iowa. Illinois will also host Michigan State on BTN at 8 p.m. on January 16. The Illini will also appear on the Big Ten Network January 28 against Wisconsin and February 4 against Purdue at the State Farm Center. Illinois will also play one road game on BTN, at Michigan on January 20.

All BTN on-air games can be streamed via the web, smartphones, tablets and connected devices on BTN2Go, BTN's digital extension. More than 100 additional games also will be streamed on BTN Plus on BTN2Go, and many of those will air on delay on BTN as part of the Student U initiative.

FIGHTING ILLINI WOMEN'S BASKETBALL NOTES

2017-18 SEASON STATISTICS

RECORD:	OVERALL	HOME	AWAY	NEUTRAL
ALL GAMES	3-2	3-1	0-1	0-0
CONFERENCE	0-0	0-0	0-0	0-0
NON-CONFERENCE	3-2	3-1	0-1	0-0

#	Player	gp-gs	min	avg	Total		3-Point		F-Throw		Rebounds				pf	dq	a	to	blk	stl	pts	avg
					fg-fga	fg%	3fg-fga	3fg%	ft-fa	ft%	off	def	tot	avg								
35	Alex Wittinger	5-5	158	31.6	34-68	.500	1-1	1.000	5-7	.714	22	29	51	10.2	5	0	2	11	9	8	74	14.8
01	Brandi Beasley	5-5	174	34.8	22-58	.379	2-10	.200	12-15	.800	3	18	21	4.2	10	1	19	10	0	10	58	11.6
50	Ali Andrews	5-5	142	28.4	16-38	.421	7-15	.467	2-2	1.000	9	13	22	4.4	13	0	8	13	6	5	41	8.2
25	Kennedy Cattenhead	5-5	92	18.4	14-23	.609	2-4	.500	7-9	.778	3	15	18	3.6	8	0	1	10	0	4	37	7.4
13	Petra Holesinska	5-1	112	22.4	12-44	.273	6-27	.222	5-6	.833	5	21	26	5.2	13	0	4	7	2	3	35	7.0
30	Courtney Joens	5-0	57	11.4	9-22	.409	4-16	.250	2-2	1.000	3	9	12	2.4	9	0	3	4	0	2	24	4.8
03	Alli Ball	5-0	45	9.0	6-11	.545	3-4	.750	3-4	.750	4	3	7	1.4	3	0	0	4	3	1	18	3.6
23	Jaelyne Kirkpatrick	5-4	96	19.2	6-15	.400	3-8	.375	2-2	1.000	1	7	8	1.6	10	0	13	9	1	8	17	3.4
05	Cierra Rice	3-0	48	16.0	4-9	.444	0-3	.000	2-5	.400	2	7	9	3.0	5	0	2	0	0	2	10	3.3
24	Jnaya Walker	3-0	21	7.0	1-4	.250	0-0	.000	7-10	.700	4	3	7	2.3	2	0	0	4	0	0	9	3.0
02	Lyric Robins	4-0	34	8.5	3-15	.200	0-3	.000	1-2	.500	1	2	3	0.8	11	1	2	1	0	1	7	1.8
14	Addaya Moore	2-0	19	9.5	1-6	.167	0-3	.000	0-0	.000	0	5	5	2.5	0	0	0	3	2	1	2	1.0
11	Cyndee Kinslow	1-0	2	2.0	0-0	.000	0-0	.000	0-0	.000	0	0	0	0.0	2	0	0	0	0	1	0	0.0
Team											8	5	13				3					
Total.....		5	1000		128-313	.409	28-94	.298	48-64	.750	65	137	202	40.4	91	2	54	79	23	46	332	66.4
Opponents.....		5	1000		112-302	.371	48-128	.375	58-82	.707	56	121	177	35.4	73	-	71	77	9	35	330	66.0

TEAM STATISTICS

	ILL	OPP
SCORING	332	330
Points per game	66.4	66.0
Scoring margin	+0.4	-
FIELD GOALS-ATT	128-313	112-302
Field goal pct	.409	.371
3 POINT FG-ATT	28-94	48-128
3-point FG pct	.298	.375
3-pt FG made per game	5.6	9.6
FREE THROWS-ATT	48-64	58-82
Free throw pct	.750	.707
F-Throws made per game	9.6	11.6
REBOUNDS	202	177
Rebounds per game	40.4	35.4
Rebounding margin	+5.0	-
ASSISTS	54	71
Assists per game	10.8	14.2
TURNOVERS	79	77
Turnovers per game	15.8	15.4
Turnover margin	-0.4	-
Assist/turnover ratio	0.7	0.9
STEALS	46	35
Steals per game	9.2	7.0
BLOCKS	23	9
Blocks per game	4.6	1.8
ATTENDANCE	4419	2202
Home games-Avg/Game	4-1105	1-2202
Neutral site-Avg/Game	-	0-0

Date	Opponent		Score	Att.
11/10/17	FORT WAYNE	W	64-50	1148
11/12/17	at FGCU	L	61-85	2202
11/15/17	CHICAGO STATE	W	66-56	1056
11/18/17	BRADLEY	W	74-62	1135
11/21/17	WESTERN ILLINOIS	L	67-77	1080

* = Conference game

Score by Periods	1st	2nd	3rd	4th	Totals
Illinois	86	89	78	79	332
Opponents	84	72	90	84	330

2017-18 GAME-BY-GAME TEAM COMPARISON

Opponent	1st	2nd	3rd	4th	OT	Score	Margin	Tot. FG	FG%	3-PT FG	3-FG %	Free Throws	FT %	Rebs.	Assists	TO	Blocks	Steals	Fouls
Fort Wayne	16 / 17	17 / 10	16 / 8	15 / 15		64-50	+14	26-63 / 18-51	.413 / .353	5-16 / 9-21	.313 / .429	7-9 / 5-6	.778 / .833	34 / 33	8 / 10	10 / 21	4 / 2	13 / 6	12 / 10
FGCU	13 / 17	12 / 25	17 / 25	19 / 18		61-85	-24	24-58 / 28-61	.414 / .459	6-18 / 13-32	.333 / .406	7-12 / 16-21	.583 / .762	37 / 36	11 / 17	20 / 12	1 / 1	6 / 9	18 / 15
Chicago State	21 / 8	18 / 14	13 / 14	14 / 20		66-56	+10	25-66 / 23-62	.379 / .371	5-21 / 4-21	.238 / .190	11-16 / 6-13	.688 / .462	46 / 35	11 / 13	17 / 14	6 / 3	9 / 6	18 / 19
Bradley	22 / 22	18 / 12	14 / 19	20 / 9		74-62	+12	28-66 / 22-63	.424 / .349	6-21 / 8-19	.286 / .421	12-15 / 10-15	.800 / .667	43 / 37	11 / 13	14 / 16	7 / 3	11 / 2	20 / 18
Western Illinois	14 / 20	24 / 11	18 / 24	11 / 22		67-77	-10	25-60 / 21-65	.417 / .323	6-18 / 14-35	.333 / .400	11-12 / 21-27	.917 / .778	42 / 36	13 / 16	18 / 14	5 / 0	7 / 12	23 / 11

Rankings are AP/Coaches on date of game // Totals are displayed in the ILLINOIS / OPPONENT format

Double-Doubles	2017-18	Career
Alex Wittinger	2	16
Brandi Beasley		2
Alli Ball		2
Petra Holesinska	1	2
Double-Digit Scoring Games	2017-18	Career
Alex Wittinger	5	43
Brandi Beasley	3	26
Kennedy Cattenhead	2	21
Petra Holesinska	2	18
Cierra Rice		10
Ali Andrews	1	8
Courtney Joens		6
Jaelyne Kirkpatrick		4
Alli Ball	1	1
20+ Point Games	2017-18	Career
Alex Wittinger	1	8
Brandi Beasley		6
Petra Holesinska		3
Ali Andrews		1
Cierra Rice		2
Double-Digit Rebound Games	2017-18	Career
Alex Wittinger	2	19
Brandi Beasley		1
Petra Holesinska	1	2
Double-Digit Assist Games	2017-18	Career
Brandi Beasley		1

2017-18 ILLINOIS' RECORD WHEN...

Overall record	3-2	Illini out-rebound opponent	3-2
Big Ten record	0-0	Teams have equal number of rebounds	0-0
Record at home	3-1	Opponents out-rebound Illini	0-0
Record on road	0-1	Illini have fewer turnovers than opponent	2-0
Record in neutral-site games	0-0	Teams have same number of turnovers	0-0
Record vs. AP-ranked teams	0-0	Illini have more turnovers than opponent	1-2
Record when on TV	0-0	Wearing white uniforms	3-0
Coming off a win	1-2	Wearing gray uniforms	0-1
Coming off a loss	1-0	Wearing blue uniforms	0-1
Scoring 80+ points	0-0	Wearing orange uniforms	0-0
Scoring 70-79 points	1-0	Wearing pink uniforms	0-0
Scoring 60-69 points	2-2	When leading at halftime	3-1
Scoring less than 60 points	0-0	When tied at halftime	0-0
Giving up 80+ points	0-1	When trailing at halftime	0-1
Giving up 70-79 points	0-1	When Illini shoot more FTs than opponent	2-0
Giving up 60-69 points	1-0	When Illini shoot fewer FTs than opponent	0-2
Giving up 50-59 points	2-0	When teams shoot same number of FTs	1-0
Giving up less than 50 points	0-0	Game goes to overtime	0-0
Shooting 55% FGs or better	0-0	Margin is five points or less	0-0
Shooting 50-54% FGs	0-0	Margin is 6-10 points	1-1
Shooting 45-49% FGs	0-0	Margin is 11-15 points	1-0
Shooting 40-44% FGs	2-2	Margin is 16-20 points	1-0
Shooting 30-39% FGs	1-0	Margin is 21+ points	0-1
Shooting below 30% FGs	0-0	Playing in November	3-2
Opponents shoot 50% FGs or better	0-0	Playing in December	0-0
Opponents shoot 45-49% FGs	0-1	Playing in January	0-0
Opponents shoot 40-44% FGs	0-0	Playing in February	0-0
Opponents shoot 35-39% FGs	2-0	Playing in March	0-0
Opponents shoot under 35% FGs	1-1	In day games (start before 5 PM)	2-0
Shoots better than opponent	3-1	In night games (start 5 PM or later)	1-2
Shoots worse than opponent	0-1		

2017-18 EXPANDED SCHEDULE/RESULTS

DATE	OPPONENT	RESULT	SCORE	RECORD	BIG RECORD	ATTENDANCE	HIGH POINTS	HIGH REBOUNDS	HIGH ASSISTS
11/10	Fort Wayne	W	64-50	1-0	0-0	1148	Ball, Beasley (13)	Three Players (7)	Kirkpatrick (5)
11/12	at FGCU	L	61-85	1-1	0-0	2202	Wittinger (20)	Wittinger (9)	Beasley (4)
11/15	Chicago State	W	66-56	2-1	0-0	1056	Wittinger (19)	Wittinger (14)	Kirkpatrick (4)
11/18	Bradley	W	74-62	3-1	0-0	1135	Beasley (16)	Holesinska (10)	Beasley (7)
11/21	Western Illinois	L	67-77	3-2	0-0	1080	Cattenhead (18)	Wittinger (12)	Beasley (4)

Rankings are AP/Coaches on date of game

2017-18 SPECIALTY STATS

	OPPONENT	Pts in Paint (ILL-Opp.)	Pts off TO (ILL-Opp.)	2nd Chance Pts (ILL-Opp.)	Fast Break Pts (ILL-Opp.)	Bench Pts (ILL-Opp.)	Largest Lead	Largest Deficit	Lead Changes	Ties
11/10	Fort Wayne	34 - 14	20 - 11	15 - 8	4 - 0	22 - 10	15	6	3	3
11/12	at FGCU	16 - 30	15 - 24	15 - 17	0 - 0	20 - 25	1	30	2	0
11/15	Chicago State	20 - 20	12 - 9	12 - 13	4 - 4	18 - 8	18	N/A	0	0
11/18	Bradley	28 - 14	23 - 23	19 - 5	2 - 4	12 - 33	14	4	7	8
11/21	Western Illinois	18 - 14	17 - 15	10 - 8	2 - 8	22 - 32	13	10	10	7
Totals		116 - 92	87 - 82	71 - 51	12 - 16	94 - 108	18	30	10	8
Average		23.2 - 18.4	17.4 - 16.4	14.2 - 10.2	2.4 - 3.2	18.8 - 21.6				
Margin		+4.8	+1.0	+4.0	-0.8	-2.8				

THE LAST TIME...

Illinois scored 100 points or more	Nov. 17 2013 vs. Alcorn State (Illinois 112, Alcorn State 28)
Illinois scored 90 points or more	Nov. 24, 2015 vs. Tennessee State (Illinois 98, TSU 43)
Illinois scored 50 points or less	Feb. 24, 2016 vs. #20 Michigan State (Michigan State 71, Illinois 43)
Illinois scored 40 points or less	Jan. 12, 2009 vs. Ohio State (Ohio State 67, Illinois 35)
Illinois gave up 100 points or more	Feb. 21, 2016, 117, #5 Ohio State (Ohio State 117, Illinois 74)
Illinois gave up 90 points or more	Feb. 21, 2016, 117, #5 Ohio State (Ohio State 117, Illinois 74)
Illinois gave up 40 points or less	Dec. 2, 2016 vs. Fort Wayne (Illinois 56, Fort Wayne 33)
Illinois won by 40+ points	Nov. 24, 2015 vs. Tennessee State (Illinois 98, TSU 43)
Illinois won an overtime game	Jan. 26, 2012 at Michigan State (Illinois 71, Michigan State 62 [OT])
Illinois lost an overtime game	Nov. 29, 2014 vs. Oklahoma (Oklahoma 78, Illinois 76 [OT])
Illinois made 10 or more three-pointers	March 1, 2017, 14, vs. Nebraska (BIG Tournament) (Illinois 79, Nebraska 70)
An Illinois opponent made 10 or more three-pointers	Nov. 21, 2017, 14, vs. Western Illinois (Western Illinois 77, Illinois 67)
An Illinois player scored 30+ points	Feb. 7, 2016, Chatrice White, 35, at Michigan (Michigan 96, Illinois 83)
An Illinois player scored 40+ points	Jan 14, 1996, Ashley Berggren, 43 at Minnesota (Illinois 87, Minnesota 76)
An opposing player scored 30+ points	Feb. 21, 2016, 2 Players (39, 35) #5 Ohio State (Ohio State 117, Illinois 74)
An opposing player scored 40+ points	Dec. 16, 1989, Carol Owens, 41 at Northern Illinois (Northern Illinois 110, Illinois 93)
An Illinois player had a triple-double	Jan. 22, 1982, Kim Brombolich vs. Eastern Michigan, 13 p, 11 r, 15 a (Illinois 107, Eastern Michigan 73)
An opposing player had a triple-double	Dec. 2, 2006, Armintie Price, Ole Miss, 34 p, 15 r, 12 st (Ole Miss 75, Illinois 50)
No Illini scored double figures	March 2, 2007, vs. Penn State at Big Ten Tournament (Penn State 61, Illinois 49 - Rebecca Harris had 8)
No opposing player scored double figures	Nov. 25, 2011, vs. Arizona State (Arizona State 51, Illinois 50)
Two Illini players had a double-double in the same game	Nov. 30, 2016 vs. Wake Forest, Alex Wittinger 14 p, 10 r and Brandi Beasley 14 p, 11 r (Wake Forest 79, Illinois 70)
An Illini had 15+ rebounds	Nov. 22, 2016, Alex Wittinger, 1d6, vs. Mercer (Mercer 51, Illinois 33)
An Illini had 20+ rebounds	Feb. 7, 2010, Jenna Smith, 20, vs. Indiana (Indiana 67, Illinois 54)
An Illini had 25+ rebounds	Jan. 23, 1975, Betty Anderson, 30, vs. Eastern Illinois (Illinois 57, Eastern Illinois 51 [OT])
An opposing player had 15+ rebounds	Feb. 25 2017, Amanda Cahill, 15, vs. Indiana (Indiana 74, Illinois 60)
An opposing player had 20+ rebounds	Dec. 19, 2016, Reyna Frost, Central Michigan, 21 (Central Michigan 82, Illinois 51)
An opposing player had 25+ rebounds	Never
An Illini had 10+ assists	Jan. 15, 2017, Brandi Beasley, 10 vs. Nebraska (Illinois 79, Nebraska 59)
An Illini had 15+ assists	Jan. 15, 2006, Maggie Acuna, 16, at Wisconsin (Illinois 84, Wisconsin 54)
An opposing player had 10+ assists	Feb. 9, 2017, Destiny Slocum, 13, #3 Maryland (Maryland 84, Illinois 59)
An opposing player had 15+ assists	March 12, 1983, Debbie Hunter, 15, vs. Minnesota (Minnesota 89, Illinois 65)
An Illini player made 5+ three-pointers	March 1, 2017, 6, Ali Andrews, vs. Nebraska (BIG Tournament) (Illinois 79, Nebraska 70)
An Illini player made 8+ three-pointers	Nov. 29, 1997, Katie Coleman, 9, vs. Providence, at Puerto Rico (Illinois 106, Providence 74)
An Illini player made 10+ three-pointers	Never
An opposing player made 5+ threes	Nov. 21, 2017, Taylor Hanneman, 5, vs. Western Illinois (Western Illinois 77, Illinois 67)
An opposing player made 8+ threes	Feb. 21, 2016, K. Mitchell, 8, at #5 Ohio State (Ohio State 117, Illinois 74)
Illinois shot 60 pct. FG or better	Nov. 22, 2010, .616 (45-73) vs. Cal Poly (Illinois 104, Cal Poly 63)
Illinois shot 30 pct. FG or lower	Jan. 26, 2017, .290 (1-17) vs. #3 Maryland (#3 Maryland 94, Illinois 49)
An opponent shot 60 pct. FG or better	Feb. 21, 2016, .618 (42-68), at #5 Ohio State (Ohio State 117, Illinois 74)
An opponent shot 30 pct. FG or lower	Jan. 15, 2017, .292 (19-65) Nebraska (Illinois 79, Nebraska 59)
An opponent shot 25 pct. FG or lower	Nov. 21, 2013, .226 (14-62), Southern Illinois (SIU 43, Illinois 78)
An opponent shot 20 pct. FG or lower	Nov. 17, 2013, .152 (7-46), vs. Alcorn State (Illinois 112, Alcorn State 28)
Illinois forced 30 or more turnovers	Feb. 25, 2015, 34, Michigan State (Michigan State 67, Illinois 65)
Illinois committed 30 or more turnovers	Dec. 2, 2006, 34, at Ole Miss (Ole Miss 75, Illinois 50)
Illinois had 20 or more steals	Nov. 14, 2014, 21, vs. IPFW (Illinois 70, IPFW 63)
An Illinois opponent had 20 or more steals	Dec. 2, 2006, 26, at Ole Miss (Ole Miss 75, Illinois 50)
Illinois blocked 10 or more shots	Dec. 28, 2011, 10, vs. Alabama A&M (Illinois 83, Alabama A&M 65)
Illinois won 5+ games in a row	Nov. 14, 2014-Nov. 27, 2014, 5-game streak
Illinois won 10+ games in a row	Nov. 20, 1981-Jan. 2, 1982, 10-game streak
Illinois lost 5+ games in a row	Jan. 18, 2017-Feb. 25, 2017, 11-game streak
Illinois lost 10+ games in a row	Jan. 18, 2017-Feb. 25, 2017, 11-game streak
Illinois won 5+ in a row at home	Dec. 2, 2016-Jan.15, 2017, 6-game streak
Illinois won 10+ in a row at home	Dec. 20, 1997-Jan. 5, 1999, 18-game streak
Illinois won 15+ in a row at home	Dec. 20, 1997-Jan. 5, 1999, 18-game streak
Illinois lost 5+ in a row at home	Jan. 26, 2017-Feb. 25, 2017, 5-game streak
Illinois lost 10+ in a row at home	Never
Illinois won 5+ in a row away from home	Dec. 9, 2012-Feb. 3, 2013, 6-game streak
Illinois won 10+ in a row away from home	Never

FIGHTING ILLINI WOMEN'S BASKETBALL NOTES

2017-18 ILLINOIS TEAM HIGHS

Points	74	vs. Bradley (11/18/17)
Field Goals Made	28	vs. Bradley (11/18/17)
Field Goals Attempted	66	.2x, last vs. Bradley (11/18/17)
Field Goal %	.424 (28-66)	vs. Bradley (11/18/17)
3-Pt. Field Goals Made	6	.3x, last vs. Western Illinois (11/21/17)
3-Pt. Field Goals Attempted	21	.2x, last vs. Bradley (11/18/17)
3-Pt. Field Goal Percentage	.333 (6-18)	.2x, last vs. Western Illinois (11/21/17)
Free Throws Made	12	vs. Bradley (11/18/17)
Free Throws Attempted	16	vs. Chicago State (11/16/17)
Free Throw Percentage	.917 (11-12)	vs. Western Illinois (11/21/17)
Rebounds	46	vs. Chicago State (11/16/17)
Assists	13	vs. Western Illinois (11/21/17)
Steals	13	vs. Fort Wayne (11/10/17)
Blocked Shots	7	vs. Bradley (11/18/17)
Turnovers	20	.2x, last vs. Bradley (11/18/17)
Fouls	23	vs. Western Illinois (11/21/17)

2017-18 ILLINOIS TEAM LOWS

Points	61	at FGCU (11/12/17)
Field Goals Made	24	at FGCU (11/12/17)
Field Goals Attempted	58	at FGCU (11/12/17)
Field Goal %	.379 (25-66)	vs. Chicago State (11/16/17)
3-Pt. Field Goals Made	5	.2x, last vs. Chicago State (11/16/17)
3-Pt. Field Goals Attempted	16	vs. Fort Wayne (11/10/17)
3-Pt. Field Goal Percentage	.238 (5-21)	vs. Chicago State (11/16/17)
Free Throws Made	7	.2x, last at FGCU (11/12/17)
Free Throws Attempted	9	vs. Fort Wayne (11/10/17)
Free Throw Percentage	.583 (7-12)	at FGCU (11/12/17)
Rebounds	34	vs. Fort Wayne (11/10/17)
Assists	8	vs. Fort Wayne (11/10/17)
Steals	6	at FGCU (11/12/17)
Blocked Shots	1	at FGCU (11/12/17)
Turnovers	10	vs. Fort Wayne (11/10/17)
Fouls	12	vs. Fort Wayne (11/10/17)

2017-18 OPPONENT TEAM HIGHS

Points	85	FGCU (11/12/17)
Field Goals Made	28	FGCU (11/12/17)
Field Goals Attempted	65	Western Illinois (11/21/17)
Field Goal %	.459 (28-61)	FGCU (11/12/17)
3-Pt. Field Goals Made	14	Western Illinois (11/21/17)
3-Pt. Field Goals Attempted	35	Western Illinois (11/21/17)
3-Pt. Field Goal Percentage	.429 (9-21)	Fort Wayne (11/10/17)
Free Throws Made	21	Western Illinois (11/21/17)
Free Throws Attempted	27	Western Illinois (11/21/17)
Free Throw Percentage	.833 (5-6)	Fort Wayne (11/10/17)
Rebounds	37	Bradley (11/18/17)
Assists	17	FGCU (11/12/17)
Steals	12	Western Illinois (11/21/17)
Blocked Shots	2	FGCU (11/12/17)
Turnovers	21	Fort Wayne (11/10/17)
Fouls	19	Chicago State (11/16/17)

2017-18 OPPONENT TEAM LOWS

Points	50	Fort Wayne (11/10/17)
Field Goals Made	18	Fort Wayne (11/10/17)
Field Goals Attempted	51	Fort Wayne (11/10/17)
Field Goal %	.323 (21-65)	Western Illinois (11/21/17)
3-Pt. Field Goals Made	4	Chicago State (11/16/17)
3-Pt. Field Goals Attempted	21	.2x, last Chicago State (11/16/17)
3-Pt. Field Goal Percentage	.190 (4-21)	Chicago State (11/16/17)
Free Throws Made	5	Fort Wayne (11/10/17)
Free Throws Attempted	6	Fort Wayne (11/10/17)
Free Throw Percentage	.462 (6-13)	Chicago State (11/16/17)
Rebounds	33	Fort Wayne (11/10/17)
Assists	12	Fort Wayne (11/10/17)
Steals	2	Bradley (11/18/17)
Blocked Shots	0	Western Illinois (11/21/17)
Turnovers	12	FGCU (11/12/17)
Fouls	10	Fort Wayne (11/10/17)

2017-18 ILLINOIS INDIVIDUAL GAME HIGHS

Points	20	Alex Wittinger at FGCU (11/12/17)
Field Goals Made	9	.2x, last Alex Wittinger vs. Chicago State (11/15/17)
Field Goals Attempted	17	.2x, last B. Beasley vs. Bradley (11/18/17)
Field Goal % (Min. 5 made)	.692 (9-13)	Alex Wittinger at FGCU (11/12/17)
3-Pt. Field Goals Made	3	.2x, last P. Holesinska vs. Western Illinois (11/21/17)
3-Pt. Field Goals Attempted	9	Petra Holesinska vs. Western Illinois (11/21/17)
3-Pt. Field Goal % (Min. 3 made)	.750 (3-4)	Ali Andrews vs. Chicago State (11/15/17)
Free Throws Made	4	.3x, last K. Cattenhead vs. WIU (11/21/17)
Free Throws Attempted	4	.5x, last K. Cattenhead vs. WIU (11/21/17)
Free Throw % (Min. 5 made)		
Rebounds	14	Alex Wittinger vs. Chicago State (11/15/17)
Assists	7	Brandi Beasley vs. Bradley (11/18/17)
Steals	4	Brandi Beasley vs. Chicago State (11/15/17)
Blocked Shots	5	Ali Andrews vs. Chicago State (11/15/17)
Turnovers	5	Ali Andrews vs. Chicago State (11/15/17)
Fouls	5	.2x, last Brandi Beasley vs. Western Illinois (11/21/17)
Minutes	37	.2x, last B. Beasley vs. Bradley (11/18/17)

2017-18 OPPONENT INDIVIDUAL GAME HIGHS

Points	19	Taylor Hanneman, Western Illinois (11/21/17)
Field Goals Made	8	Taylor Higginbotham, Western Illinois (11/21/17)
Field Goals Attempted	18	Phylicia Johnson, Chicago State (11/15/17)
Field Goal % (Min. 5 made)	.500 (8-16)	.2x, last T. Higginbotham, Western Illinois (11/21/17)
3-Pt. Field Goals Made	5	.2x, last 2 players, Western Illinois (11/21/17)
3-Pt. Field Goals Attempted	11	Kierstyn Repp, Fort Wayne (11/10/17)
3-Pt. Field Goal % (Min. 3 made)	.833 (5-6)	T. Higginbotham, Western Illinois (11/21/17)
Free Throws Made	8	Emily Clemens, Western Illinois (11/21/17)
Free Throws Attempted	12	Emily Clemens, Western Illinois (11/21/17)
Free Throw % (Min. 5 made)	.667 (8-12)	Emily Clemens, Western Illinois (11/21/17)
Rebounds	11	T. Higginbotham, Western Illinois (11/21/17)
Assists	8	Emily Clemens, Western Illinois (11/21/17)
Steals	4	Emily Clemens, Western Illinois (11/21/17)
Blocked Shots	2	.2x, last Chelsea Brackmann, Bradley (11/18/17)
Turnovers	9	Anna Lappenkuper, Fort Wayne (11/10/17)
Fouls	5	Tyesha Bowers, Chicago State (11/15/17)
Minutes	40	Ines Mata Boix, Chicago State (11/15/17)

FIGHTING ILLINI WOMEN'S BASKETBALL NOTES

GAME 1: ILLINOIS 64, FORT WAYNE 50

November 10, 2017 | Champaign, Illinois

Fort Wayne 50 • 0-1

##	Player	Total		3-Ptr	FT-FTA	Rebounds			PF	TP	A TO Blk Stl				Min
		FG-FGA	FG-FGA			Off	Def	Tot			A	TO	Blk	Stl	
00	Jaelencia Williams	* 3-10	0-0	2-2	2	8	10	1	8	0	1	1	1	1	27
01	Hannah Albrecht	* 1-5	1-1	0-0	0	2	2	0	3	3	2	0	0	0	26
12	Anna Lappenküper	* 2-3	0-1	1-2	5	1	6	2	5	3	9	0	1	1	34
13	De'Jour Young	* 3-11	1-4	0-0	2	2	4	2	7	3	2	0	2	2	28
32	Kierstyn Repp	* 6-12	5-11	0-0	0	3	3	1	17	1	1	0	0	0	38
03	KeShyra McCarver	3-4	2-3	2-2	1	2	3	3	10	0	2	0	2	2	20
21	Emma Tuominen	0-0	0-0	0-0	0	0	0	0	0	0	0	0	0	0	1
23	Peyton Fallis	0-3	0-1	0-0	1	0	1	1	0	1	2	0	0	0	15
30	Diamond Williams	0-3	0-0	0-0	0	1	1	0	0	1	0	1	0	0	11
Team					0	3	3				2				
Totals		18-51	9-21	5-6	11	22	33	10	50	12	21	2	6	200	
1st - FG %:		6-13	46.2%	2nd: 2-13	15.4%	3rd: 4-10	40.0%	4th: 6-15	40.0%	Game: 18-51	35.3%	Deadball			
3FG %:		5-8	62.5%	1-4	25.0%	0-2	0.0%	3-7	42.9%	9-21	42.9%	Rebounds			
FT %:		0-0	0.0%	5-6	83.3%	0-0	0.0%	0-0	0.0%	5-6	83.3%	2,1			

Illinois 64 • 1-0

##	Player	Total		3-Ptr	FT-FTA	Rebounds			PF	TP	A TO Blk Stl				Min
		FG-FGA	FG-FGA			Off	Def	Tot			A	TO	Blk	Stl	
01	Brandi Beasley	* 5-10	0-1	3-3	0	3	3	0	13	2	2	0	1	3	32
23	Jaelyne Kirkpatrick	* 3-4	1-2	0-0	0	0	0	2	7	5	0	0	3	3	33
25	Kennedy Cattenhead	* 1-4	0-1	1-2	0	1	1	1	3	1	0	0	0	0	16
35	Alex Wittinger	* 6-14	0-0	0-0	4	3	7	2	12	0	0	1	3	3	31
50	Ali Andrews	* 3-9	1-3	0-0	3	1	4	2	7	0	1	1	1	1	25
03	Alli Ball	4-8	2-2	3-4	4	3	7	0	13	0	1	2	1	2	24
05	Cierra Rice	2-6	0-2	0-0	2	5	7	2	4	0	0	2	2	1	19
13	Petra Holesinska	0-4	0-2	0-0	0	0	0	1	0	0	1	0	2	14	
30	Courtney Joens	2-4	1-3	0-0	1	1	2	2	5	0	3	0	0	6	
Team					1	2	3				2				
Totals		26-63	5-16	7-9	15	19	34	12	64	8	10	4	13	200	
1st - FG %:		6-14	42.9%	2nd: 7-18	38.9%	3rd: 7-17	41.2%	4th: 6-14	42.9%	Game: 26-63	41.3%	Deadball			
3FG %:		1-2	50.0%	1-6	16.7%	2-5	40.0%	1-3	33.3%	5-16	31.3%	Rebounds			
FT %:		3-3	100.0%	2-2	100.0%	0-0	0.0%	2-4	50.0%	7-9	77.8%	1,2			

Officials: Barb Smith, Jeff Cross, Rod Creech
Technical fouls: Fort Wayne-None, Illinois-None.
Attendance: 1148

Score by periods	1st	2nd	3rd	4th	Total
Fort Wayne	17	10	8	15	50
Illinois	16	17	16	15	64

Last FG - FW 4th-00:23, ILL 4th-00:08.
Largest lead - FW by 6 1st-04:37, ILL by 15 4th-06:56.
FW led for 09:34, ILL led for 27:39. Game was tied for 02:47.

Score tied - 3 times.
Lead changed - 3 times.

GAME 2: FGCU 85, ILLINOIS 61

November 12, 2017 | Fort Myers, Florida

Illinois 61 • 1-1

##	Player	Total		3-Ptr	FT-FTA	Rebounds			PF	TP	A TO Blk Stl				Min
		FG-FGA	FG-FGA			Off	Def	Tot			A	TO	Blk	Stl	
35	Alex Wittinger	f 9-13	1-1	1-1	5	4	9	2	20	0	2	1	1	1	27
50	Ali Andrews	f 2-9	1-4	0-0	1	2	3	3	5	1	4	0	0	0	29
01	Brandi Beasley	g 3-11	1-3	1-2	2	5	7	2	8	4	3	0	1	3	33
23	Jaelyne Kirkpatrick	g 2-2	1-1	0-0	0	3	3	2	5	2	4	0	1	1	19
25	Kennedy Cattenhead	g 1-4	0-0	1-2	1	4	5	3	0	1	0	1	0	1	20
02	Lytic Robins	1-2	0-0	0-0	0	0	0	1	2	0	0	0	0	0	5
03	Alli Ball	1-1	0-0	0-0	0	0	0	1	2	0	2	0	0	0	8
05	Cierra Rice	2-2	0-0	2-3	0	1	1	0	6	1	0	0	0	0	18
11	Cyndee Kinslow	0-0	0-0	0-0	0	0	0	2	0	0	0	0	0	1	2
13	Petra Holesinska	3-11	2-7	0-0	1	3	4	2	8	2	2	2	0	1	23
14	Addaya Moore	0-2	0-1	0-0	0	0	0	0	0	0	1	0	0	0	5
24	Jnaya Walker	0-0	0-0	2-4	1	1	2	0	2	0	0	0	0	0	7
30	Courtney Joens	0-1	0-1	0-0	0	1	1	0	0	1	0	0	0	0	4
Team					2	0	2				1				
Totals		24-58	6-18	7-12	13	24	37	18	61	11	20	1	6	200	
1st - FG %:		5-14	35.7%	2nd: 6-12	50.0%	3rd: 7-16	43.8%	4th: 6-16	37.5%	Game: 24-58	41.4%	Deadball			
3FG %:		2-7	28.6%	0-2	0.0%	2-4	50.0%	2-5	40.0%	6-18	33.3%	Rebounds			
FT %:		1-2	50.0%	0-0	0.0%	1-1	100.0%	5-9	55.6%	7-12	58.3%	3			

FGCU 85 • 1-0

##	Player	Total		3-Ptr	FT-FTA	Rebounds			PF	TP	A TO Blk Stl				Min
		FG-FGA	FG-FGA			Off	Def	Tot			A	TO	Blk	Stl	
42	ADDERLY, Tytonia	f 3-7	1-3	0-0	5	4	9	4	7	1	2	0	3	28	
11	NELSON, Erica	g 3-7	0-2	3-3	0	5	5	2	9	4	2	1	2	2	26
24	GRADINJAN, Taylor	g 5-11	4-10	0-0	1	1	2	0	14	3	0	0	2	2	28
31	ULEL, Nasrin	g 6-7	4-5	1-1	1	1	2	2	17	2	1	0	0	21	
32	JULIEN, Rosemarie	g 3-4	3-3	4-6	1	1	2	2	13	0	1	0	1	13	
02	CATTANI, Jessica	1-5	0-3	0-0	1	1	2	1	2	1	0	0	1	15	
01	BLAIR, Alyssa	0-3	0-2	0-0	1	1	2	0	0	0	0	0	0	0	12
04	RYAN, Chandler	1-2	1-2	3-3	0	0	0	2	6	0	0	0	0	0	4
05	ZDERADICKA, Lisa	2-5	0-0	1-2	0	0	0	1	5	5	4	0	0	0	28
10	DOWLING, Sheahen	0-0	0-0	0-0	0	0	0	0	0	0	0	0	0	0	2
21	BROWN, Liberty	0-0	0-0	1-2	0	1	1	1	1	0	0	0	0	0	2
22	DOW, China	4-10	0-2	3-4	2	2	4	0	11	1	1	0	0	0	21
Team					1	6	7				1				
Totals		28-61	13-32	16-21	13	23	36	15	85	17	12	1	9	200	
1st - FG %:		6-14	42.9%	2nd: 9-16	56.3%	3rd: 8-17	47.1%	4th: 5-14	35.7%	Game: 28-61	45.9%	Deadball			
3FG %:		3-9	33.3%	5-8	62.5%	3-6	50.0%	2-9	22.2%	13-32	40.6%	Rebounds			
FT %:		2-2	100.0%	2-2	100.0%	6-9	66.7%	6-8	75.0%	16-21	76.2%	1			

Officials: Mark McClenney, Will Schreiber, Tasha Smith
Technical fouls: Illinois-None, FGCU-None.
Attendance: 2202

Score by periods	1st	2nd	3rd	4th	Total
Illinois	13	12	17	19	61
FGCU	17	25	25	18	85

Points In Off 2nd Fast
ILL Paint T/O Chance Break Bench
FGCU 16 15 15 0 20
30 24 17 0 25

GAME 3: ILLINOIS 66, CHICAGO STATE 56

November 16, 2017 | Champaign, Illinois

Chicago State 56 • 0-2

#	Player		Total		3-Ptr	Rebounds			PF	TP	A	TO	Blk	Stl	Min
			FG-FGA	FG-FGA	FT-FTA	Off	Def	Tot							
22	Mata Boix, Ines	f	5-8	0-0	3-4	4	6	10	4	13	2	1	2	3	40
01	Johnson, Phylcia	g	6-18	0-7	2-4	1	3	4	3	14	4	3	0	1	39
10	Bowers, Tyeshia	g	4-12	1-5	1-2	1	4	5	5	10	4	5	0	1	34
11	Harris, Konner		2-8	2-7	0-0	0	4	4	2	6	2	2	0	1	34
25	Harris, Destiny	g	2-3	1-1	0-0	1	1	2	2	5	1	2	0	0	17
04	Cliff, Alexandria		1-3	0-1	0-0	1	2	3	0	2	0	1	0	0	12
12	Thomas, Tiana		0-0	0-0	0-0	0	1	1	0	0	0	0	0	0	6
34	Olverson, Tamera		3-10	0-0	0-3	0	4	4	3	6	0	0	1	0	18
Team						1	1	2							
Totals			23-62	4-21	6-13	9	26	35	19	56	13	14	3	6	200
1st - FG %:			3-12	25.0%	2nd: 6-14	42.9%	3rd: 5-13	38.5%	4th: 9-23	39.1%	Game: 23-62			37.1%	Deadball
3FG %:			0-3	0.0%	0-5	0.0%	2-7	28.6%	2-6	33.3%	4-21			19.0%	Rebounds
50 %:			2-2	100.0%	2-2	100.0%	2-3	66.7%	1-1	100.0%	6-13			46.2%	

FIGHTING ILLINI WOMEN'S BASKETBALL NOTES

GAME 5: WESTERN ILLINOIS 77, ILLINOIS 67

November 21, 2017 | Champaign, Illinois

Western Illinois 77 • 4-1

#	Player		Total	3-Ptr	Rebounds			PF	TP	A	TO	Blk	Stl	Min
			FG-FGA	FG-FGA	FT-FTA	Off	Def							
02	Emily Clemens	*	1-10	1-6	8-12	0	1	1	0	11	8	3	0	4
03	Olivia Braun	*	0-1	0-0	0-0	1	5	6	3	0	3	4	0	0
12	Morgan Blumer	*	2-12	1-9	1-2	2	3	5	0	6	0	2	0	2
22	Michelle Farrow	*	2-7	0-3	0-0	0	1	1	1	4	1	1	0	1
24	Taylor Higginbotham	*	8-16	5-6	3-3	3	8	11	3	24	2	1	0	1
13	Olivia Kaufmann		3-9	2-3	5-6	1	2	3	2	13	1	1	0	2
14	Taylor Hanneman		5-8	5-8	4-4	0	2	2	0	19	1	1	0	2
21	Grace Gilmore		0-0	0-0	0-0	0	0	0	0	0	0	0	0	0+
23	Krishna Merriman		0-2	0-0	0-0	1	0	1	2	0	0	1	0	0
Team						4	2	6						
Totals			21-65	14-35	21-27	12	24	36	11	77	16	14	0	12
1st - FG %: 8-18 44.4% 2nd: 3-15 20.0% 3rd: 6-17 35.3% 4th: 4-15 26.7% Game: 21-65 32.3% Deadball														
3FG %: 4-7 57.1% 3-9 33.3% 5-11 45.5% 2-9 25.0% 14-35 40.0% Rebounds														
FT %: 0-0 0.0% 2-2 100.0% 7-8 87.5% 12-17 70.6% 21-27 77.8% 6,1														

Illinois 67 • 3-2

#	Player		Total	3-Ptr	Rebounds			PF	TP	A	TO	Blk	Stl	Min
			FG-FGA	FG-FGA	FT-FTA	Off	Def							
01	Brandi Beasley	*	5-12	0-1	2-2	0	1	1	5	12	4	2	0	1
23	Jaelyne Kirkpatrick	*	0-6	0-3	0-0	0	3	3	2	0	2	2	1	1
25	Kennedy Cattenhead	*	7-8	0-0	4-4	1	6	7	2	18	0	4	0	3
35	Alex Wittinger	*	4-12	0-0	2-2	3	9	12	1	10	1	4	4	0
50	Ali Andrews	*	2-5	1-1	0-0	2	1	3	3	5	3	3	0	1
02	Lytic Robins		0-0	0-0	0-0	0	0	0	2	0	0	0	0	0
03	Alli Ball		0-0	0-0	0-0	0	0	0	0	0	0	0	0	0
13	Petra Holesinska		4-10	3-9	0-0	0	6	6	4	11	1	1	0	0
24	Jnaya Walker		0-2	0-0	3-4	2	0	2	0	3	0	2	0	0
30	Courtney Joens		3-5	2-4	0-0	1	5	6	4	8	2	0	0	1
Team						1	1	2						
Totals			25-60	6-18	11-12	10	32	42	23	67	13	18	5	7
1st - FG %: 5-18 27.8% 2nd: 10-17 58.8% 3rd: 6-12 50.0% 4th: 4-13 30.8% Game: 25-60 41.7% Deadball														
3FG %: 1-6 16.7% 4-9 44.4% 0-1 0.0% 1-2 50.0% 6-18 33.3% Rebounds														
FT %: 3-4 75.0% 0-0 0.0% 6-6 100.0% 2-2 100.0% 11-12 91.7% 1														

Officials: Brian Hall, Metta Roberts, Dawn Marsh

Technical fouls: Western Illinois-None. Illinois-None.

Attendance: 1080

Illinois Unsportsmanlike Fouls on 01 - Brandi Beasley and 24 - Kennedy

Score by periods	1st	2nd	3rd	4th	Total
Western Illinois	20	11	24	22	77
Illinois	14	24	18	11	67

Points	In	Off	2nd	Fast	Bench
WIU	14	15	8	8	32
ILL	18	17	10	2	22

Last FG - WIU 4th-02:53, ILL 4th-01:10.

Largest lead - WIU by 10 4th-00:01, ILL by 13 2nd-01:52.

WIU led for 16:58. ILL led for 18:27. Game was tied for 04:08.

Score tied - 7 times.

Lead changed - 10 times.



NANCY FAHEY

HEAD COACH

FIRST SEASON AT ILLINOIS

32ND SEASON OVERALL

3-2 AT ILLINOIS

Nancy Fahey was named Illinois' head women's basketball coach on March 22, 2017. A member of the Women's Basketball Hall of Fame, Fahey spent 31 years at Washington University in St. Louis, where she guided the Bears to an NCAA record five Division III National Championships. Fahey becomes the ninth head women's basketball coach in Illinois history.

Fahey (pronounced: FAY) led the Washington University Bears to 737 victories during her tenure in St. Louis and is the only coach in NCAA Division III history to win five national championships. Fahey led the Bears to four-straight NCAA Division III titles from 1998-2001, with the most recent title coming in 2010. Her teams have advanced to the NCAA Tournament in 29 of her 31 years, and have won at least 19 games in each of the last 30 seasons, including two 30-win campaigns. Fahey guided WashU to an 81-game winning streak from the 1997-98 season to 2001, which stands as the second-longest winning streak in NCAA women's basketball history.

Under Fahey's direction, Washington University has garnered 23 University Athletic Association titles, including each of the last four seasons. Her squads have made 10 Final Four appearances, and finished as the NCAA Division III Runner-Up four times (1994, 2007, 2009 and 2011).

Fahey is the fastest coach in NCAA women's basketball history to reach 600 wins, doing so in her 706th game during the 2011-12 season, and she ranks sixth among all active NCAA coaches with an .847 (737-133) career winning percentage. Fahey has been named UAA Coach of the Year 20 times during her career and was recognized as the NCAA Division III Central Region Coach of the year 14 times. She has been named NCAA Division III National Coach of the Year four times.

Fahey's student-athletes have been successful not only on the court but also in the classroom. She has coached 20 All-Americans and 10 Academic All-Americans.

The first NCAA Division III representative to be inducted into the Women's Basketball Hall of Fame in Knoxville, Tennessee, Fahey was also inducted into the Washington University Sports Hall of Fame in 2012, the Missouri Sports Hall of Fame in 2014 and the St. Louis Sports Hall of Fame in 2016.

Fahey has served three assignments with USA Basketball, most recently working as the lead clinician for the 2016 USA Basketball Women's U17 World Championship Team Trials. Fahey was the lead clinician at the 2015 USA Women's U16 National Team Trials and an assistant coach for the 1995 U.S. Olympic Festival South Team.

At Washington University, Fahey also held the position of Assistant Director of Athletics, and she is a member of the Women's Basketball Hall of Fame Board of Directors.

Prior to her tenure at Washington University, Fahey coached at Johnsbury High School in McHenry, Illinois, where she guided the Skyhawks to two regional championships, a sectional final, two 20-win seasons and was named the 1986 coach-of-the-year by the Northwest Herald.

Fahey is a 1981 graduate from Wisconsin, where she was a four-year letterwinner. She started two years at point guard for the Badgers, and served as a captain her senior season. She graduated with honors

THE FAHEY FILE

Born: November 3, 1958

Hired: March 22, 2017

Hometown: Belleville, Wisconsin

EDUCATION

College: University of Wisconsin — B.S., education

COLLEGE COACHING EXPERIENCE

1986-2017 Washington University

HIGH SCHOOL COACHING EXPERIENCE

1982-1986 Johnsbury High School

COACHING HONORS

Washington University Sports Hall of Fame, Class of 2012
Women's Basketball Hall of Fame, Class of 2012
Missouri Sports Hall of Fame, Class of 2014
St. Louis Sports Hall of Fame, Class of 2016
20-time University Athletic Association Coach of the Year
14-time NCAA Division III Central Region Coach of the Year
Four-time NCAA Division III National Coach of the Year
Two-time WBCA National Division III Coach of the Year



BRANDI BEASLEY

1

5-7 // SOPHOMORE // GUARD

MEMPHIS, TENN.

RIDGEWAY

SEASON BESTS

Pts: 16 (vs. Bradley, 11/18/17)
Rebs: 7 (at FGCU, 11/12/17)
FGM: 6 (vs. Bradley, 11/18/17)
FGA: 17 (vs. Bradley, 11/18/17)
FTM: 3 (3x, last vs. Bradley, 11/18/17)
FTA: 4 (2x, last vs. Bradley, 11/18/17)
3FGM: 1 (2x, last vs. Bradley, 11/18/17)
3FGA: 3 (2x, last vs. Bradley, 11/18/17)
Asst: 7 (vs. Bradley, 11/18/17)
Blk: --
Stl: 4 (vs. Chicago State, 11/15/17)
Min: 37 (2x, last vs. Bradley, 11/18/17)

CAREER BESTS

Pts: 28 (at Penn State, 1/29/17)
Rebs: 11 (vs. Wake Forest, 11/30/16)
FGM: 10 (2x, last vs. Purdue, 2/5/17)
FGA: 21 (at Penn State, 1/29/17)
FTM: 7 (at Penn State, 1/29/17)
FTA: 7 (2x, last at Penn State, 1/29/17)
3FGM: 6 (at South Dakota, 12/7/16)
3FGA: 8 (at South Dakota, 12/7/16)
Asst: 10 (vs. Nebraska, 1/15/17)
Blk: 1 (2x, last at Ohio State, 1/22/17)
Stl: 4 (2x, last vs. Chicago State, 11/15/17)
Min: 40 (6x, last vs. Purdue, 3/2/17)

CAREER HONORS

2017 Big Ten All-Freshman Team
 2017 All-Big Ten Honorable Mention (media)

2017-18 SEASON HIGHLIGHTS

- Led Illinois against Fort Wayne with 13 points
- Matched her career-high with four steals against Chicago State
- Posted a season-high 16 points to lead Illinois against Bradley, also dishing a season-best seven assists in the contest

2016-17 - FRESHMAN

- Was among Illinois scoring leaders for her 13.6 points per game on the year and led Illinois in league play with her 15.3 points per game
- Ranked second among Big Ten freshmen for her scoring numbers
- Her 423 points on the season rank second all-time among Illinois freshmen, and her 53 steals rank sixth
- Dished 120 assists on the year, becoming one of just four freshmen in Illinois history to record 100 dimes in their rookie season. She ranks second all-time among Illinois freshmen
- Set an Illinois freshman record, netting six three-pointers (6-of-8) at South Dakota (Dec. 7)
- Was among league and national leaders for her 36.2 minutes played per game. She played a full 40 minutes in six contests

2017-18 GAME-BY-GAME STATISTICS

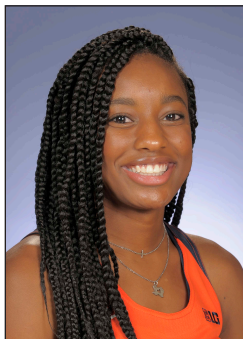
Date	Opponent	GS	MIN	FG-A	3P-A	FT-A	REB	PF	A	TO	BL	ST	PTS
11/10	Fort Wayne	*	32	5-10	0-1	3-3	3	0	2	2	0	1	13
11/12	at FGCU	*	33	3-11	1-3	1-2	7	2	4	3	0	1	8
11/15	Chicago State	*	37	3-8	0-2	3-4	5	1	2	2	0	4	9
11/18	Bradley	*	37	6-17	1-3	3-4	5	2	7	1	0	3	16
11/21	Western Illinois	*	35	5-12	0-1	2-2	1	5	4	2	0	1	12

BEASLEY'S CAREER STATISTICS

YEAR	G-GS	MIN/AVG	FGM-FGA/%	3PM-3PA/%	FTM-FTA/%	REB/AVG	PF/DQ	A	TO	B	ST	PTS/AVG
2016-17	31-31	1121 / 36.2	174-442 / .394	25-97 / .258	50-70 / .714	22-143-165 / 5.3	57 / 0	120	99	2	53	423 / 13.6
2017-18	5-5	174 / 34.8	22-58 / .379	2-10 / .200	12-15 / .800	3-18-21 / 4.2	10 / 1	19	10	0	10	58 / 11.6
TOTAL	36-36	1295 / 36.0	196-500 / .392	27-107 / .252	62-85 / .729	25-161-186 / 5.2	67 / 1	139	109	2	63	481 / 13.4

BEASLEY'S CAREER BIG TEN STATISTICS

YEAR	G-GS	MIN/AVG	FGM-FGA/%	3PM-3PA/%	FTM-FTA/%	REB/AVG	PF/DQ	A	TO	B	ST	PTS/AVG
2016-17	16-16	585 / 36.6	102-256 / .398	6-45 / .133	34-51 / .667	10-69-79 / 4.9	27 / 0	63	49	1	31	244 / 15.3
TOTAL	16-16	585 / 36.6	102-256 / .398	6-45 / .133	34-51 / .667	10-69-79 / 4.9	27 / 0	63	49	1	31	244 / 15.3



LYRIC ROBINS

2

5-11 // FRESHMAN // FORWARD

PLANO, TEXAS

PLANO WEST

SEASON BESTS

Pts: 4 (vs. Chicago State, 11/15/17)
Rebs: 3 (vs. Chicago State, 11/15/17)
FGM: 2 (vs. Chicago State, 11/15/17)
FGA: 7 (vs. Chicago State, 11/15/17)
FTM: 1 (vs. Bradley, 11/18/17)
FTA: 2 (vs. Bradley, 11/18/17)
3FGM: --
3FGA: 3 (vs. Bradley, 11/18/17)
Ast: 1 (2x, last vs. Bradley, 11/18/17)
Blk: --
Stl: 1 (vs. Bradley, 11/18/17)
Min: 15 (vs. Bradley, 11/18/17)

CAREER BESTS

Pts: 4 (vs. Chicago State, 11/15/17)
Rebs: 3 (vs. Chicago State, 11/15/17)
FGM: 2 (vs. Chicago State, 11/15/17)
FGA: 7 (vs. Chicago State, 11/15/17)
FTM: 1 (vs. Bradley, 11/18/17)
FTA: 2 (vs. Bradley, 11/18/17)
3FGM: --
3FGA: 3 (vs. Bradley, 11/18/17)
Ast: 1 (2x, last vs. Bradley, 11/18/17)
Blk: --
Stl: 1 (vs. Bradley, 11/18/17)
Min: 15 (vs. Bradley, 11/18/17)

2017-18 SEASON HIGHLIGHTS

- Made her first career appearance in the Orange and Blue at FGCU and tallied two points in the contest.

- Posted four points against Chicago State

HIGH SCHOOL

- 2017 McDonald's All-American Nominee
- Averaged 11.3 points and 7.0 rebounds per game for Plano West in her senior season
- Led Plano West to a 25-9 record this year
- 2016 and 2017 All-Conference Small Forward
- 2017 6-6A All-District First Team selection
- Also played in the Nike Elite Youth Basketball League for DFW Elite

PERSONAL

- Born February 18, 1999
- Daughter of George and Tanisha Robins
- Has three siblings, Sariah, Mykah and Ellyan
- Lists Kawhi Leonard as her favorite athlete

2017-18 GAME-BY-GAME STATISTICS

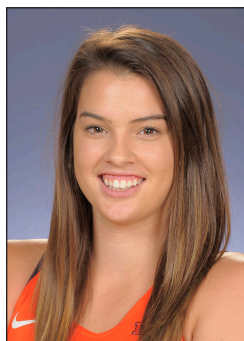
Date	Opponent	GS	MIN	FG-A	3P-A	FT-A	REB	PF	A	TO	BL	ST	PTS
11/10	Fort Wayne						DNP						
11/12	at FGCU	5	1-2	0-0	0-0	0	1	0	0	0	0	2	
11/15	Chicago State	13	2-7	0-0	0-0	3	3	1	0	0	0	4	
11/18	Bradley	15	0-6	0-3	1-2	0	5	1	1	0	1	1	
11/21	Western Illinois	1	0-0	0-0	0-0	0	2	0	0	0	0	0	

ROBINS' CAREER STATISTICS

YEAR	G-GS	MIN/AVG	FGM-FGA/%	3PM-3PA/%	FTM-FTA/%	REB/AVG	PF/DQ	A	TO	B	ST	PTS/AVG
2017-18	4-0	34 / 8.5	3-15 / .200	0-3 / .000	1-2 / .500	1-2-3 / 0.8	11 / 1	2	1	0	1	7 / 1.8
TOTAL	4-0	34 / 8.5	3-15 / .200	0-3 / .000	1-2 / .500	1-2-3 / 0.8	11 / 1	2	1	0	1	7 / 1.8

ROBINS' CAREER BIG TEN STATISTICS

YEAR	G-GS	MIN/AVG	FGM-FGA/%	3PM-3PA/%	FTM-FTA/%	REB/AVG	PF/DQ	A	TO	B	ST	PTS/AVG
2017-18	---	-- / --	--- / ---	--- / ---	--- / ---	--- / ---	- / -	--	--	--	--	-- / --
TOTAL	---	-- / --	--- / ---	--- / ---	--- / ---	--- / ---	- / -	--	--	--	--	-- / --



ALLI BALL

3

6-1 // SENIOR // FORWARD

ST. LOUIS, MISSOURI

PRINCIPIA UPPER SCHOOL / AKRON

SEASON BESTS

Pts: 13 (vs. Fort Wayne, 11/10/17)
Rebs: 7 (vs. Fort Wayne, 11/10/17)
FGM: 4 (vs. Fort Wayne, 11/10/17)
FGA: 8 (vs. Fort Wayne, 11/10/17)
FTM: 3 (vs. Fort Wayne, 11/10/17)
FTA: 4 (vs. Fort Wayne, 11/10/17)
3FGM: 2 (vs. Fort Wayne, 11/10/17)
3FGA: 2 (2x, last vs. Bradley, 11/18/17)
Ast: 1 (vs. Chicago State, 11/15/17)
Blk: 2 (vs. Fort Wayne, 11/10/17)
Stl: 1 (vs. Fort Wayne, 11/10/17)
Min: 24 (vs. Fort Wayne, 11/10/17)

CAREER BESTS

Pts: 15 (vs. Malone, 11/12/16)
Rebs: 11 (at Florida Atlantic, 11/13/15)
FGM: 6 (vs. Malone, 11/12/16)
FGA: 12 (vs. Malone, 11/12/16)
FTM: 4 (2x, last at Georgia State, 12/20/16)
FTA: 6 (at Georgia State, 12/20/16)
3FGM: 2 (4x, last vs. Fort Wayne, 11/10/17)
3FGA: 7 (vs. Duquesne, 12/17/16)
Ast: 6 (vs. Ohio Christian, 12/28/16)
Blk: 2 (4x, last vs. Fort Wayne, 11/10/17)
Stl: 2 (3x, last vs. Ohio (11/11/17)
Min: 29 (vs. Duquesne, 12/17/16)

2017-18 SEASON HIGHLIGHTS

• Posted a team-leading 13 points and seven rebounds in Illinois' season opener vs. Fort Wayne

AT AKRON

2016-17 – JUNIOR: Appeared in 30 games for the Zips, including 12 starts...Averaged 3.2 points and 3.0 rebounds per contest...Posted 1.7 points and 2.0 rebounds per tilt in league play...Established a career-high for scoring with a 15-point, eight-rebound effort in a 63-52 win over Malone (Nov. 12)...Posted five or more rebounds in eight games, including pulling down a season-best eight caroms versus Malone (Nov. 12), at Buffalo (Feb. 18) and versus Penn State (Nov. 16)...Registered career-best marks in assists (6) and blocks (2) in a 69-52 win over Ohio Christian (Dec. 28)...Recorded a career-high two steals versus Ohio (Jan. 11) and Georgia State (Dec. 20)...Led the Zips in rebounding on four occasions.

2015-16 – SOPHOMORE: Appeared in 30 games averaging 2.4 points and 2.5 rebounds per contest...Registered first career double-double with a career-high 13-point, 11-rebound performance on 5-of-7 shooting in season opener at Florida Atlantic (Nov. 13)...Recorded five games of five or more rebounds...A first-team Academic All-Mid-American Conference selection.

2014-15 – FRESHMAN: Appeared in 30 games, including making first career start at Bethune-Cookman...Averaged 1.2 points and 2.3 rebounds per contest, while connecting on more than 35 percent (.351) of her shots from the field...Played in all but one conference tilt registering 1.1 points and 1.6 rebounds per game...Turned in four games with five or more rebounds, including recording seven rebounds versus Northern Kentucky (Nov. 15) and at Northern Illinois (Feb. 7)...Scored three points and added four rebounds and a career-high two blocks in her initial collegiate start at Bethune-Cookman (Dec. 14).

2017-18 GAME-BY-GAME STATISTICS

Date	Opponent	GS	MIN	FG-A	3P-A	FT-A	REB	PF	A	TO	BL	ST	PTS
11/10	Fort Wayne		24	4-8	2-2	3-4	7	0	0	1	2	1	13
11/12	at FGCU		8	1-1	0-0	0-0	0	1	0	2	0	0	2
11/15	Chicago State		13	2-7	0-0	0-0	3	3	1	0	0	0	4
11/18	Bradley		6	1-2	1-2	0-0	0	2	0	1	1	0	3
11/21	Western Illinois		2	0-0	0-0	0-0	0	0	0	0	0	0	0

BALL'S CAREER STATISTICS AT ILLINOIS

YEAR	G-GS	MIN/AVG	FGM-FGA/%	3PM-3PA/%	FTM-FTA/%	REB/AVG	PF/DQ	A	TO	B	ST	PTS/AVG
2017-18	5-0	45 / 9.0	6-11 / .545	3-4 / .750	3-4 / .750	4-3-7 / 1.4	3 / 0	0	4	3	1	18 / 3.6
TOTAL	5-0	45 / 9.0	6-11 / .545	3-4 / .750	3-4 / .750	4-3-7 / 1.4	3 / 0	0	4	3	1	18 / 3.6

BALL'S CAREER STATISTICS AT AKRON

YEAR	G-GS	MIN/AVG	FGM-FGA/%	3PM-3PA/%	FTM-FTA/%	REB/AVG	PF/DQ	A	TO	B	ST	PTS/AVG
2014-15	30-1	267 / 8.9	13-37 / .351	4-17 / .235	7-9 / .778	20-48-68 / 2.3	29-0	10	13	8	1	37 / 1.2
2015-16	30-0	336 / 11.2	26-69 / .377	6-23 / .261	13-22 / .591	28-47-75 / 2.5	43-0	11	24	3	5	71 / 2.4
2016-17	30-12	420 / 14	32-108 / .296	7-43 / .163	25-43 / .581	28-63-91 / 3.0	48-0	24	32	11	9	96 / 3.2
TOTAL	90-13	1023 / 11.4	71-214 / .341	17-83 / .219	45-74 / .650	76-158-234 / 7.8	120-0	45	69	22	15	204 / 2.3

FIGHTING ILLINI WOMEN'S BASKETBALL NOTES



CIERRA RICE

5

5-9 // REDSHIRT SOPHOMORE // GUARD

GROSSE POINTE, MICH.

GROSSE POINT

SEASON BESTS

Pts: 6 (at FGCU, 11/12/17)
Rebs: 7 (vs. Fort Wayne, 11/10/17)
FGM: 2 (2x, last at FGCU, 11/12/17)
FGA: 6 (vs. Fort Wayne, 11/10/17)
FTM: 2 (at FGCU, 11/12/17)
FTA: 3 (at FGCU, 11/12/17)
3FGM: --
3FGA: 2 (vs. Fort Wayne, 11/10/17)
Ast: 1 (2x, last vs. Chicago State, 11/15/17)
Blk: --
Stl: 2 (vs. Fort Wayne, 11/10/17)
Min: 19 (vs. Fort Wayne, 11/10/17)

CAREER BESTS

Pts: 22 (at Miami, 12/2/15)
Rebs: 8 (vs. Tennessee State, 11/24/15)
FGM: 8 (at Miami, 12/2/15)
FGA: 14 (at Miami, 12/2/15)
FTM: 6 (vs. UT Martin, 11/21/15)
FTA: 9 (2x, last vs. Southern Illinois, 12/8/15)
3FGM: 3 (vs. UT Martin, 11/21/15)
3FGA: 6 (at Memphis, 12/19/15)
Ast: 5 (vs. UT Martin, 11/21/15)
Blk: 1 (3x, last vs. Memphis, 11/17/16)
Stl: 4 (vs. Chicago State, 11/13/15)
Min: 40 (vs. Marshall, 11/11/16)

2017-18 HIGHLIGHTS

- Grabbed a team-leading seven rebounds in Illinois' season opener vs. Fort Wayne
- Was sidelined by injury last season, and suffered a season-ending injury during her freshman campaign

2017-18 GAME-BY-GAME STATISTICS

Date	Opponent	GS	MIN	FG-A	3P-A	FT-A	REB	PF	A	TO	BL	ST	PTS
11/10	Fort Wayne	19	2-6	0-2	0-0	7	2	0	0	0	2	4	
11/12	at FGCU	18	2-2	0-0	2-3	1	0	1	0	0	0	6	
11/15	Chicago State	11	0-1	0-1	0-1	1	3	1	0	0	0	0	
11/18	Bradley						DNP						
11/21	Western Illinois						DNP						

RICE'S CAREER STATISTICS

YEAR	G-GS	MIN/AVG	FGM-FGA/%	3PM-3PA/%	FTM-FTA/%	REB/AVG	PF/DQ	A	TO	B	ST	PTS/AVG
2015-16	10-9	305 / 30.5	47-89 / .528	10-22 / .455	32-47 / .681	12-33-45 / 4.5	21 / 0	24	21	2	11	136 / 13.6
2016-17	3-3	79 / 26.3	6-28 / .214	1-11 / .091	5-5 / 1.000	2-6-8 / 4.0	6 / 0	4	7	1	1	18 / 6.0
2017-18	3-0	48 / 16.0	4-9 / .444	0-3 / .000	2-5 / .400	2-7-9 / 3.0	5 / 0	2	0	0	2	10 / 3.3
TOTAL	16-12	432 / 27.0	57-126 / .452	11-36 / .306	39-57 / .684	17-49-66 / 4.1	32 / 0	30	28	3	14	164 / 10.3

RICE'S CAREER BIG TEN STATISTICS

YEAR	G-GS	MIN/AVG	FGM-FGA/%	3PM-3PA/%	FTM-FTA/%	REB/AVG	PF/DQ	A	TO	B	ST	PTS/AVG
2015-16	---	-- / --	--- / ---	--- / ---	--- / ---	--- / ---	- / -	--	--	--	--	-- / --
2016-17	---	-- / --	--- / ---	--- / ---	--- / ---	--- / ---	- / -	--	--	--	--	-- / --
TOTAL	---	-- / --	--- / ---	--- / ---	--- / ---	--- / ---	- / -	--	--	--	--	-- / --



CYDNEE KINSLOW 11

6-2 // REDSHIRT SOPHOMORE // FORWARD

OAKLEY, CALIF.

FREEDOM HIGH SCHOOL // PEPPERDINE

SEASON BESTS

Pts: --
Rebs: --
FGM: --
FGA: --
FTM: --
FTA: --
3FGM: --
3FGA: --
Ast: --
Blk: --
Stl: 1 (at FGCU, 11/12/17)
Min: 2 (at FGCU, 11/12/17)

CAREER BESTS

Pts: --
Rebs: --
FGM: --
FGA: --
FTM: --
FTA: --
3FGM: --
3FGA: --
Ast: --
Blk: --
Stl: 1 (at FGCU, 11/12/17)
Min: 2 (at FGCU, 11/12/17)

2017-18 HIGHLIGHTS

- Made her first appearance in the Orange and Blue at FGCU, recording one steal in the game

AT PEPPERDINE

2015-16: Graduated high school early to attend Pepperdine for the spring semester...did not see any action.

HIGH SCHOOL

Four-year Team Captain at Freedom High School...helped her club team, the Cal Stars to a 56-1 record during her career...led the Cal Stars to a Nike National Championship...2014-15 Freedom Girls Basketball Player of the Year...averaged a triple-double every game for the Freedom through the 2014-15 season...Three-time team MVP...Twice named Second Team All-League...member of the National Honor Society...earned Principal's Honor Roll recognition...volunteered with Special Olympics helping to bring the Unified Sports program to the west coast...started a special needs basketball and bowling league in her school district

PERSONAL

Daughter of Rob and Rosalie Kinslow...Born Aug. 7, 1998...has two sisters, Chelbe and Cassidee...is studying in the College of Business...enjoys surfing in her spare time...aspires to work in the sports field after graduation

2017-18 GAME-BY-GAME STATISTICS

Date	Opponent	GS	MIN	FG-A	3P-A	FT-A	REB	PF	A	TO	BL	ST	PTS
11/10	Fort Wayne						DNP						
11/12	FGCU		2	0-0	0-0	0-0	0	2	0	0	0	1	0
11/15	Chicago State						DNP						
11/18	Bradley						DNP						
11/21	Western Illinois						DNP						

KINSLOW'S CAREER STATISTICS

YEAR	G-GS	MIN/AVG	FGM-FGA/%	3PM-3PA/%	FTM-FTA/%	REB/AVG	PF/DQ	A	TO	B	ST	PTS/AVG
2016-17	---	-- / --	--- / ---	--- / ---	--- / ---	--- / ---	- / -	--	--	--	--	-- / --
2017-18	1-0	2 / 2.0	0-0 / .000	0-0 / .000	0-0 / .000	0-0-0 / 0.0	2 / 0	0	0	0	1	0 / 0.0
TOTAL	1-0	2 / 2.0	0-0 / .000	0-0 / .000	0-0 / .000	0-0-0 / 0.0	2 / 0	0	0	0	1	0 / 0.0

KINSLOW'S CAREER BIG TEN STATISTICS

YEAR	G-GS	MIN/AVG	FGM-FGA/%	3PM-3PA/%	FTM-FTA/%	REB/AVG	PF/DQ	A	TO	B	ST	PTS/AVG
2016-17	---	-- / --	--- / ---	--- / ---	--- / ---	--- / ---	- / -	--	--	--	--	-- / --
TOTAL	---	-- / --	--- / ---	--- / ---	--- / ---	--- / ---	- / -	--	--	--	--	-- / --



PETRA HOLEŠÍNKOVÁ 13

5-9 // SOPHOMORE // GUARD

VRACOV, CZECH REPUBLIC

SPORTOVNI LUDVIKA DANKA

SEASON BESTS

Pts: 11 (2x, last vs. WIU, 11/21/17)
Rebs: 10 (vs. Bradley, 11/18/17)
FGM: 4 (2x, last vs. WIU, 11/21/17)
FGA: 11 (at FGCU, 11/12/17)
FTM: 3 (vs. Chicago State, 11/15/17)
FTA: 4 (vs. Chicago State, 11/15/17)
3FGM: 3 (vs. WIU, 11/21/17)
3FGA: 9 (vs. WIU, 11/21/17)
Ast: 2 (at FGCU, 11/12/17)
Blk: 2 (vs. Bradley, 11/18/17)
Stl: 2 (vs. Fort Wayne, 11/10/17)
Min: 29 (vs. Bradley, 11/18/17)

CAREER BESTS

Pts: 21 (3x, last vs. Nebraska, 3/1/17)
Rebs: 11 (vs. Wright State, 12/11/16)
FGM: 7 (3x, last vs. Purdue, 2/5/17)
FGA: 14 (4x, last vs. Purdue, 3/2/17)
FTM: 9 (vs. Nebraska, 3/1/17)
FTA: 12 (vs. Nebraska, 3/1/17)
3FGM: 5 (4x, last vs. Penn State, 2/14/17)
3FGA: 10 (vs. Nebraska, 3/1/17)
Ast: 4 (4x, last vs. Nebraska, 3/1/17)
Blk: 2 (3x, last vs. Bradley, 11/18/17)
Stl: 4 (vs. Memphis, 11/17/16)
Min: 38 (vs. Purdue, 2/5/17)

2017-18 SEASON HIGHLIGHTS

- Tallied eight points at FGCU, knocking down two three-pointers
- Carded her first double-double of the season against Bradley, also marking the second of her career

2016-17 SEASON HIGHLIGHTS

- Made her first career appearance for the Illini against Marshall, putting up six points and grabbing four rebounds and a block
- Earned her first start in the Orange and Blue against UAPB, finishing with two points and three rebounds
- Had a breakout game against Memphis, knocking down 6-of-12 shots from the field to score 18 points and grab four steals and three rebounds
- Led Illinois over Fort Wayne, knocking down five treys on 5-for-7 shooting from distance. Also tallied a career-best two rejections in the game
- Earned her first career double-double with 18 points and 11 rebounds against Wright State
- Dished a career-best four assists against Northwestern and again in Illinois' Big Ten Tournament win over Nebraska
- Matched her career-best with 21 points to lead the Illini against Purdue
- Matched her career-high for the third time with 21 points in Illinois' Big Ten Tournament victory over Nebraska
- Holesinska knocked down 54 three-pointers this season, which ranks third all-time among Illinois freshmen.
- Her 35.5-percent three-point shooting this season ranks fifth all-time among Illinois freshmen as well

2017-18 GAME-BY-GAME STATISTICS

Date	Opponent	GS	MIN	FG-A	3P-A	FT-A	REB	PF	A	TO	BL	ST	PTS
11/10	Fort Wayne	14	0-4	0-2	0-0	0	1	0	1	0	2	0	0
11/12	at FGCU	23	3-11	2-7	0-0	4	2	2	2	0	1	8	8
11/15	Chicago State	17	1-10	0-5	3-4	6	3	0	1	0	0	5	5
11/18	Bradley	*	29	4-9	1-4	2-2	10	3	1	2	2	0	11
11/21	Western Illinois	29	4-10	3-9	0-0	6	4	1	1	0	0	11	11

HOLEŠINSKA'S CAREER STATISTICS

YEAR	G-GS	MIN/AVG	FGM-FGA/%	3PM-3PA/%	FTM-FTA/%	REB/AVG	PF/DQ	A	TO	B	ST	PTS/AVG
2016-17	31-29	875 / 28.2	111-295 / .376	54-152 / .355	48-56 / .857	17-102-119 / 3.8	88 / 3	37	53	7	24	324 / 10.5
2017-18	5-1	112 / 22.4	12-44 / .273	6-27 / .222	5-6 / .833	5-21-26 / 5.2	13 / 0	4	7	2	3	35 / 7.0
TOTAL	36-30	987 / 27.4	123-339 / .363	60-179 / .335	53-62 / .855	22-123-145 / 4.0	101 / 3	41	60	9	27	359 / 10.0

HOLEŠINSKA'S CAREER BIG TEN STATISTICS

YEAR	G-GS	MIN/AVG	FGM-FGA/%	3PM-3PA/%	FTM-FTA/%	REB/AVG	PF/DQ	A	TO	B	ST	PTS/AVG
2016-17	16-16	497 / 31.1	66-163 / .405	36-79 / .456	19-20 / .950	10-58-68 / 4.3	48 / 1	24	35	1	11	187 / 11.7
TOTAL	16-16	497 / 31.1	66-163 / .405	36-79 / .456	19-20 / .950	10-58-68 / 4.3	48 / 1	24	35	1	11	187 / 11.7



ADDAYA MOORE

14

5-11 // FRESHMAN // GUARD

GRANITE CITY, ILLINOIS

GRANITE CITY

SEASON BESTS

Pts: --
Rebs: 5 (vs. Bradley, 11/18/17)
FGM: 1 (vs. Bradley, 11/18/17)
FGA: 4 (vs. Bradley, 11/18/17)
FTM: --
FTA: --
3FGM: --
3FGA: 2 (vs. Bradley, 11/18/17)
Ast: --
Blk: 2 (vs. Bradley, 11/18/17)
Stl: 1 (vs. Bradley, 11/18/17)
Min: 14 (vs. Bradley, 11/18/17)

CAREER BESTS

Pts: --
Rebs: 5 (vs. Bradley, 11/18/17)
FGM: 1 (vs. Bradley, 11/18/17)
FGA: 4 (vs. Bradley, 11/18/17)
FTM: --
FTA: --
3FGM: --
3FGA: 2 (vs. Bradley, 11/18/17)
Ast: --
Blk: 2 (vs. Bradley, 11/18/17)
Stl: 1 (vs. Bradley, 11/18/17)
Min: 14 (vs. Bradley, 11/18/17)

2017-18 SEASON HIGHLIGHTS

- Made her first career appearance for Illinois at FGCU
- Tallied her first career field goal, rebound, block and steal against Bradley

HIGH SCHOOL

- Averaged 25 points, 9.0 rebounds, 3.0 steals and 4.2 blocks per game in her senior year
- Led Granite City averaging 19 points, 6.8 rebounds and 2.7 blocks per game in her junior season
- 2016 First-Team All-Southwestern Conference honoree
- Earned all-tournament honors at Orchard Farm and Jerseyville
- Two-time Carrollton All-Tournament Team honoree
- Chose Illinois over Clemson, Columbia and Marquette, among others

PERSONAL

- Born January 22, 1999
- Daughter of Gerard and Crystal Moore
- Has three siblings, Zeke, Zidane and Azaria
- Father, Gerard, played basketball for Lou Henson at New Mexico State
- Brother, Zeke, plays basketball at Southwestern Illinois College
- Lists Kobe Bryant as her favorite athlete

2017-18 GAME-BY-GAME STATISTICS

Date	Opponent	GS	MIN	FG-A	3P-A	FT-A	REB	PF	A	TO	BL	ST	PTS
11/10	Fort Wayne						DNP						
11/12	at FGCU		5	0-2	0-1	0-0	0	0	0	1	0	0	0
11/15	Chicago State						DNP						
11/18	Bradley		14	1-4	0-2	0-0	5	0	0	2	2	1	2
11/21	Western Illinois						DNP						

MOORE'S CAREER STATISTICS

YEAR	G-GS	MIN/AVG	FGM-FGA/%	3PM-3PA/%	FTM-FTA/%	REB/AVG	PF/DQ	A	TO	B	ST	PTS/AVG
2017-18	2-0	19 / 9.5	1-6 / .167	0-3 / .000	0-0 / .000	0-5-5 / 2.5	0 / 0	0	3	2	1	2 / 1.0
TOTAL	2-0	19 / 9.5	1-6 / .167	0-3 / .000	0-0 / .000	0-5-5 / 2.5	0 / 0	0	3	2	1	2 / 1.0

MOORE'S CAREER BIG TEN STATISTICS

YEAR	G-GS	MIN/AVG	FGM-FGA/%	3PM-3PA/%	FTM-FTA/%	REB/AVG	PF/DQ	A	TO	B	ST	PTS/AVG
2017-18	---	-- / --	--- / ---	--- / ---	--- / ---	--- / ---	- / -	--	--	--	--	-- / --
TOTAL	---	-- / --	--- / ---	--- / ---	--- / ---	--- / ---	- / -	--	--	--	--	-- / --



NANCY

21

PANAGIOTOPOULOU

6-3 // FRESHMAN // FORWARD

ATHENS, GREECE

AMERICAN COMMUNITY SCHOOLS OF ATHENS

SEASON BESTS

Pts: --
Rebs: --
FGM: --
FGA: --
FTM: --
FTA: --
3FGM: --
3FGA: --
Ast: --
Blk: --
Stl: --
Min: --

CAREER BESTS

Pts: --
Rebs: --
FGM: --
FGA: --
FTM: --
FTA: --
3FGM: --
3FGA: --
Ast: --
Blk: --
Stl: --
Min: --

2017-18 SEASON HIGHLIGHTS

-

HIGH SCHOOL

- Appeared for the Greek National team in the 2015 FIBA U16 Women's European Championship
- Represented her native country of Greece in the 2016 FIBA U18 Women's European Championship
- Was named 2016 American Community Schools of Athens Player of the Year
- Played club basketball in Kallitheas, Greece for team Ikaros and for Kronos Agious Dimitriou
- Took Kronos to the Pan-hellenic Final Four twice
- Two-time Regional Champion with Kronos
- Helped her high school team earn first place in the International Tournament
- Was named her high school MVP in 2016
- Earned High Honor Roll and Honor Roll status in all semesters of high school

PERSONAL

- Full name is Athanasia Panagiotopoulou-Andritsopoulou

(Ah-tha-NA-see-uh Pa-na-yo-toe-pou-lou Ahn-dreet-so-pou-lou)

- Daughter of Athanasios Panagiotopoulos and Vasiliki Andritsopoulou
- Has a brother, Dimitris-Theodore
- Born February 9, 1999
- Enjoys reading in her spare time

2017-18 GAME-BY-GAME STATISTICS

Date	Opponent	GS	MIN	FG-A	3P-A	FT-A	REB	PF	A	TO	BL	ST	PTS
11/10	Fort Wayne						DNP						
11/12	at FGCU						DNP						
11/15	Chicago State						DNP						
11/18	Bradley						DNP						
11/21	Western Illinois						DNP						

PANAGIOTOPOULOU'S CAREER STATISTICS

YEAR	G-GS	MIN/AVG	FGM-FGA/%	3PM-3PA/%	FTM-FTA/%	REB/AVG	PF/DQ	A	TO	B	ST	PTS/AVG
2017-18	---	-- / --	--- / ---	--- / ---	--- / ---	--- / ---	- / -	--	--	--	--	-- / --
TOTAL	---	-- / --	--- / ---	--- / ---	--- / ---	--- / ---	- / -	--	--	--	--	-- / --

PANAGIOTOPOULOU'S CAREER BIG TEN STATISTICS

YEAR	G-GS	MIN/AVG	FGM-FGA/%	3PM-3PA/%	FTM-FTA/%	REB/AVG	PF/DQ	A	TO	B	ST	PTS/AVG
2017-18	---	-- / --	--- / ---	--- / ---	--- / ---	--- / ---	- / -	--	--	--	--	-- / --
TOTAL	---	-- / --	--- / ---	--- / ---	--- / ---	--- / ---	- / -	--	--	--	--	-- / --



JAELYNE KIRKPATRICK 23

5-7 // JUNIOR // GUARD

OAKVILLE, ONTARIO

ST. IGNATIUS OF LOYOLA

SEASON BESTS

Pts: 7 (vs. Fort Wayne, 11/10/17)
Rebs: 3 (2x, last vs. WIU, 11/21/17)
FGM: 3 (vs. Fort Wayne, 11/10/17)
FGA: 6 (vs. WIU, 11/21/17)
FTM: --
FTA: --
3FGM: 1 (3x, last vs. Chicago State, 11/15/17)
3FGA: 3 (vs. WIU, 11/21/17)
Ast: 5 (vs. Fort Wayne, 11/10/17)
Blk: --
Stl: 3 (2x, last vs. Chicago State, 11/15/17)
Min: 33 (vs. Fort Wayne, 11/10/17)

CAREER BESTS

Pts: 13 (2x, last at #3 Maryland, 2/9/17)
Rebs: 7 (2x, last at Michigan State, 1/1/17)
FGM: 5 (at #3 Maryland, 2/9/17)
FGA: 10 (5x, last at Michigan State, 1/1/17)
FTM: 4 (5x, last vs. Iowa, 12/28/16)
FTA: 5 (vs. #20 Michigan State, 2/24/16)
3FGM: 3 (3x, last at #3 Maryland, 2/9/17)
3FGA: 8 (vs. Mercer, 11/22/16)
Ast: 8 (2x, last vs. Nebraska, 3/1/17)
Blk: 1 (2x, last vs. Nebraska, 1/15/17)
Stl: 3 (8x, last vs. Chicago State, 11/15/17)
Min: 39 (Fort Wayne, 12/2/16)

2017-18 HIGHLIGHTS

- Matched her career high with three steals in Illinois' season opener vs. Fort Wayne

2016-17 HIGHLIGHTS

- Put up a career-high 13 points off the bench against UAPB
- Played a career-best 37 minutes against Mercer, knocking down two three-pointers, and totaling eight points
- Dished five of Illinois' 10 assists against Wake Forest
- Led Illinois with four assists at Michigan State, also grabbing seven rebounds and three steals
- Was perfect from the field against Nebraska, also adding three rebounds and three assists
- Knocked down a buzzer-beater three-pointer to give the Illini a first-half lead over Michigan
- Matched her career-high with 13 points at No. 3 Maryland, going 3-for-3 from three-point range
- Matched her career-best with eight assists in Illinois' Big Ten Tournament victory over Nebraska. She originally set her career-high in the 2016 Big Ten Tournament first round game against Penn State

2017-18 GAME-BY-GAME STATISTICS

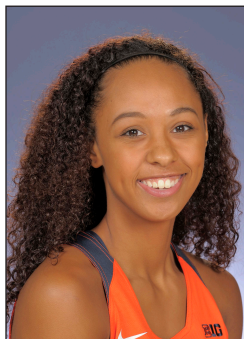
Date	Opponent	GS	MIN	FG-A	3P-A	FT-A	REB	PF	A	TO	BL	ST	PTS
11/10	Fort Wayne	*	33	3-4	1-2	0-0	0	2	5	0	0	3	7
11/12	at FGCU	*	19	2-2	1-1	0-0	3	2	2	4	0	1	5
11/15	Chicago State	*	18	1-2	1-2	2-2	2	4	4	3	0	3	5
11/18	Bradley		2	0-1	0-0	0-0	0	0	0	0	0	0	0
11/21	Western Illinois	*	24	0-6	0-3	0-0	3	2	2	2	1	1	0

KIRKPATRICK'S CAREER STATISTICS

YEAR	G-GS	MIN/AVG	FGM-FGA/%	3PM-3PA/%	FTM-FTA/%	REB/AVG	PF/DQ	A	TO	B	ST	PTS/AVG
2015-16	29-2	505 / 17.4	36-115 / .313	17-58 / .293	18-27 / .667	16-37-53 / 1.8	85 / 8	42	41	0	24	107 / 3.7
2016-17	31-28	953 / 30.7	49-161 / .304	19-72 / .264	29-35 / .829	18-72-90 / 2.9	83 / 3	80	68	3	32	146 / 4.7
2017-18	5-4	96 / 19.2	6-15 / .400	3-8 / .375	2-2 / 1.000	1-7-8 / 1.6	10 / 0	13	9	1	8	17 / 3.4
TOTAL	65-34	1554 / 23.9	91-291 / .313	39-138 / .283	49-64 / .766	35-116-151 / 2.3	178 / 11	135	118	4	64	270 / 4.2

KIRKPATRICK'S CAREER BIG TEN STATISTICS

YEAR	G-GS	MIN/AVG	FGM-FGA/%	3PM-3PA/%	FTM-FTA/%	REB/AVG	PF/DQ	A	TO	B	ST	PTS/AVG
2015-16	18-1	339 / 18.8	22-75 / .293	10-34 / .294	14-19 / .737	9-20-29/1.6	57/5	25	21	0	12	68/3.8
2016-17	16-15	472 / 29.5	25-76 / .329	10-31 / .323	7-7 / 1.000	10-38-48 / 3.0	41 / 2	33	38	1	12	67 / 4.2
TOTAL	34-16	811 / 23.9	47-151 / .311	20-65 / .308	21-26 / .808	19-58-77 / 2.3	98 / 7	58	59	1	24	135 / 4.0



JNAYA WALKER

24

6-1 // FRESHMAN // FORWARD

BOLINGBROOK, ILLINOIS

BOLINGBROOK

SEASON BESTS

Pts: 4 (vs. Bradley, 11/18/17)
Rebs: 3 vs. Bradley, 11/18/17
FGM: 1 (vs. Bradley, 11/18/17)
FGA: 2 (2x, last vs. WIU, 11/21/17)
FTM: 3 (vs. WIU, 11/21/17)
FTA: 4 (2x, last vs. WIU, 11/21/17)
3FGM: --
3FGA: --
Ast: --
Blk: --
Stl: --
Min: 8 (vs. Bradley, 11/18/17)

CAREER BESTS

Pts: 4 (vs. Bradley, 11/18/17)
Rebs: 3 vs. Bradley, 11/18/17
FGM: 1 (vs. Bradley, 11/18/17)
FGA: 2 (2x, last vs. WIU, 11/21/17)
FTM: 3 (vs. WIU, 11/21/17)
FTA: 4 (2x, last vs. WIU, 11/21/17)
3FGM: --
3FGA: --
Ast: --
Blk: --
Stl: --
Min: 8 (vs. Bradley, 11/18/17)

2017-18 SEASON HIGHLIGHTS

- Made her first career appearance for Illinois at FGCU, making two free throws in the game
- Netted her first career field goal against Bradley

HIGH SCHOOL

- 2017 McDonalds All-American Nominee
- No. 19 ranked forward by ESPN
- 2017 IBCA Second Team All-State honoree
- Selected to play in the 2017 Voyager All-Star Game
- 2016 IBCA 3A/4A All-State honoree
- Averaged almost 14 points per game and five rebounds for Bolingbrook in her junior year
- Netted a school-record 37 points in one game for Hill Middle School
- Chose Illinois over Nebraska, Indiana and Wisconsin, among others

PERSONAL

- 2017 McDonalds All-American Nominee
- No. 19 ranked forward by ESPN
- 2017 IBCA Second Team All-State honoree
- Selected to play in the 2017 Voyager All-Star Game
- 2016 IBCA 3A/4A All-State honoree
- Averaged almost 14 points per game and five rebounds for Bolingbrook in her junior year
- Netted a school-record 37 points in one game for Hill Middle School
- Chose Illinois over Nebraska, Indiana and Wisconsin, among others

2017-18 GAME-BY-GAME STATISTICS

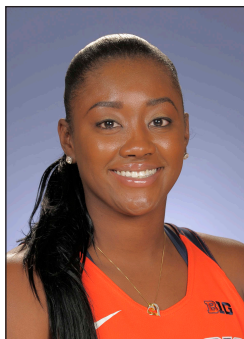
Date	Opponent	GS	MIN	FG-A	3P-A	FT-A	REB	PF	A	TO	BL	ST	PTS
11/10	Fort Wayne						DNP						
11/12	at FGCU		7	0-0	0-0	2-4	2	0	0	0	0	0	2
11/15	Chicago State						DNP						
11/18	Bradley		8	1-2	0-0	2-2	3	2	0	2	0	0	4
11/21	Western Illinois		6	0-2	0-0	3-4	2	0	0	2	0	0	3

WALKER'S CAREER STATISTICS

YEAR	G-GS	MIN/AVG	FGM-FGA/%	3PM-3PA/%	FTM-FTA/%	REB/AVG	PF/DQ	A	TO	B	ST	PTS/AVG
2017-18	3-0	21 / 7.0	1-4 / .230	0-0 / .000	7-10 / .700	4-3-7 / 2.3	2 / 0	0	4	0	0	9 / 3.0
TOTAL	3-0	21 / 7.0	1-4 / .230	0-0 / .000	7-10 / .700	4-3-7 / 2.3	2 / 0	0	4	0	0	9 / 3.0

WALKER'S CAREER BIG TEN STATISTICS

YEAR	G-GS	MIN/AVG	FGM-FGA/%	3PM-3PA/%	FTM-FTA/%	REB/AVG	PF/DQ	A	TO	B	ST	PTS/AVG
2017-18	---	-- / --	--- / ---	--- / ---	--- / ---	--- / ---	- / -	--	--	--	--	-- / --
TOTAL	---	-- / --	--- / ---	--- / ---	--- / ---	--- / ---	- / -	--	--	--	--	-- / --



KENNEDY CATTENHEAD 25

5-10 // REDSHIRT SENIOR // GUARD

BOLINGBROOK, ILL.

BOLINGBROOK H.S.

SEASON BESTS

Pts: 18 (vs. WIU, 11/21/17)
Rebs: 7 (vs. WIU, 11/21/17)
FGM: 7 (vs. WIU, 11/21/17)
FGA: 8 (vs. WIU, 11/21/17)
FTM: 4 (vs. WIU, 11/21/17)
FTA: 4 (vs. WIU, 11/21/17)
3FGM: 2 (vs. Bradley, 11/18/17)
3FGA: 3 (vs. Bradley, 11/18/17)
Ast: 1 (vs. Fort Wayne, 11/10/17)
Blk: --
Stl: 3 (vs. WIU, 11/21/17)
Min: 25 (vs. WIU, 11/21/17)

CAREER BESTS

Pts: 19 (FGCU, 12/17/16)
Rebs: 8 (4x, last at Northwestern, 2/19/17)
FGM: 7 (2x, last vs. WIU, 11/21/17)
FGA: 17 (at Nebraska, 1/10/16)
FTM: 8 (FGCU, 12/17/16)
FTA: 10 (FGCU, 12/17/16)
3FGM: 2 (4x, last vs. Bradley, 11/18/17)
3FGA: 7 (at Nebraska, 1/10/16)
Ast: 5 (2x, last at South Dakota, 12/7/16)
Blk: 1 (6x, last vs. Nebraska, 1/15/17)
Stl: 5 (vs. Nebraska, 3/5/15)
Min: 34 (2x, last at Wisconsin, 2/17/16)

CAREER HONORS

2015 Winter Academic Honor Roll

2017 Winter Academic Honor Roll

2017-18 SEASON HIGHLIGHTS

- Led Illinois with 13 first-half points against Bradley

- Was perfect from the field in the first half against Western Illinois for the second consecutive game and led the Illini with 18 total points

2016-17 SEASON HIGHLIGHTS

- Led Illinois off the bench with 10 points in the season opener against Marshall

- Grabbed a season-high seven rebounds against USC Upstate

- Led Illinois in scoring with 16 points against Wake Forest, also earning her first start of the season in the matchup

- Matched her career-best with a team-leading five assists at South Dakota

- Posted a career-high 19 points in Illinois' victory over FGCU

- Knocked down nine of her 12 points in the third quarter at Iowa to give the Illini a lift

- Shot 50-percent from the field against Michigan, knocking down 10 points for her eighth double-figure scoring game of the season

2017-18 GAME-BY-GAME STATISTICS

Date	Opponent	GS	MIN	FG-A	3P-A	FT-A	REB	PF	A	TO	BL	ST	PTS
11/10	Fort Wayne	*	16	1-4	0-1	1-2	1	1	1	0	0	0	3
11/12	at FGCU	*	20	1-4	0-0	1-2	5	3	0	1	0	1	3
11/15	Chicago State	*	11	0-1	0-0	0-0	0	0	0	2	0	0	0
11/18	Bradley	*	20	5-6	2-3	1-1	5	2	0	3	0	0	13
11/21	Western Illinois	*	25	7-8	0-0	4-4	7	2	0	4	0	3	18

CATTENHEAD'S CAREER STATISTICS

YEAR	G-GS	MIN/AVG	FGM-FGA/%	3PM-3PA/%	FTM-FTA/%	REB/AVG	PF/DQ	A	TO	B	ST	PTS/AVG
2014-15	22-0	129 / 5.9	9-27 / .333	2-7 / .286	4-10 / .400	7-16-23 / 1.0	8/0	7	15	1	9	24 / 1.1
2015-16	30-27	780 / 26.0	69-202 / .342	13-56 / .232	49-76 / .645	30-95-125 / 4.2	56/1	57	75	2	19	200 / 6.7
2016-17	30-25	706 / 23.5	70-179 / .391	11-47 / .234	45-70 / .643	30-80-110 / 3.7	68 / 1	35	65	4	22	196 / 6.5
2017-18	5-5	92 / 18.4	14-23 / .609	2-4 / .500	7-9 / .778	3-15-18 / 3.6	8 / 0	1	10	0	4	37 / 7.4
TOTAL	87-57	1707 / 19.6	162-431 / .376	28-114 / .246	105-165 / .636	70-206-276 / 3.2	140 / 2	100	165	7	54	457 / 5.3

CATTENHEAD'S CAREER BIG TEN STATISTICS

YEAR	G-GS	MIN/AVG	FGM-FGA/%	3PM-3PA/%	FTM-FTA/%	REB/AVG	PF/DQ	A	TO	B	ST	PTS/AVG
2014-15	10-0	27 / 2.7	3-6 / .500	0-1 / .000	0-0 / .000	6 / 0.6	1 / 0	2	6	0	0	6 / 0.6
2015-16	18-16	483/26.8	49-135 / .363	9-39 / .231	24-39 / .615	19-53-72 / 4.0	36 / 1	37	47	0	13	131 / 7.3
2016-17	15-15	334 / 22.3	26-80 / .325	3-18 / .167	21-32 / .656	11-36-47 / 3.1	35 / 1	20	28	1	11	76 / 5.1
TOTAL	43-31	844 / 19.6	78-221 / .353	12-58 / .207	45-71 / .634	32-93-125 / 2.9	72 / 2	59	81	1	24	213 / 5.0



COURTNEY JOENS

30

5-10 // SOPHOMORE // GUARD

IOWA CITY, IOWA

CITY HIGH

SEASON BESTS

Pts: 9 (vs. Chicago State, 11/15/17)
Rebs: 6 (vs. WIU, 11/21/17)
FGM: 3 (2x, last vs. WIU, 11/21/17)
FGA: 10 (vs. Chicago State, 11/15/17)
FTM: 2 (vs. Chicago State, 11/15/17)
FTA: 2 (vs. Chicago State, 11/15/17)
3FGM: 2 (vs. WIU, 11/21/17)
3FGA: 4 (vs. WIU, 11/21/17)
Ast: 2 (vs. WIU, 11/21/17)
Blk: --
Stl: 1 (2x, last vs. WIU, 11/21/17)
Min: 21 (vs. WIU, 11/21/17)

CAREER BESTS

Pts: 13 (at Ohio, 12/22/16)
Rebs: 8 (at Ohio, 12/22/16)
FGM: 4 (4x, last vs. Penn State, 2/14/17)
FGA: 10 (vs. Chicago State, 11/15/17)
FTM: 4 (2x, last at George Washington, 12/4/16)
FTA: 4 (vs. Wake Forest, 11/30/16)
3FGM: 3 (5x, last vs. Indiana, 2/25/17)
3FGA: 8 (vs. Penn State, 2/14/17)
Ast: 2 (3x, last vs. Indiana 2/25/17)
Blk: 1 (2x, last vs. Rutgers, 1/7/17)
Stl: 3 (vs. Purdue, 3/2/17)
Min: 25 (vs. Nebraska, 3/1/17)

2017-18 SEASON HIGHLIGHTS

- Tallied five points in just six minutes on the court vs. Fort Wayne
- Improved on her season-high with nine points against Chicago State

2016-17 SEASON HIGHLIGHTS

- Netted her first career field goal and a three-pointer for the Illini against Memphis to finish with five points total
- Had a career day against USC Upstate, going 3-for-6 from distance, good for 11 points
- Went to the foul line for the first time against Wake Forest, knocking down all four of her free throws
- Matched her career-best with 11 points at George Washington on 3-for-5 shooting from distance
- Improved on her career-high with 13 points at Ohio, also grabbing a career-best eight rebounds and swatting her first block
- Did not miss a shot against Nebraska, finishing with five points
- Put up double-digits at nationally-ranked Ohio State, as the freshman class contributed 50 of Illinois' 64 points
- Was a spark off the bench against Penn State, posting a team-leading 11 points in the first half

2017-18 GAME-BY-GAME STATISTICS

Date	Opponent	GS	MIN	FG-A	3P-A	FT-A	REB	PF	A	TO	BL	ST	PTS
11/10	Fort Wayne	6	2-4	1-3	0-0	2	2	0	3	0	0	0	5
11/12	at FGCU	4	0-1	0-1	0-0	1	0	1	0	0	0	0	0
11/15	Chicago State	16	3-10	1-7	2-2	3	2	0	1	0	0	0	9
11/18	Bradley	10	1-2	0-1	0-0	0	1	0	0	0	0	1	2
11/21	Western Illinois	21	3-5	2-4	0-0	6	4	2	0	0	0	1	8

JOENS' CAREER STATISTICS

YEAR	G-GS	MIN/AVG	FGM-FGA/%	3PM-3PA/%	FTM-FTA/%	REB/AVG	PF/DQ	A	TO	B	ST	PTS/AVG
2016-17	31-0	458 / 14.8	52-141 / .369	35-98 / .357	21-29 / .724	15-56-71 / 2.3	61 / 0	18	23	5	15	160 / 5.2
2017-18	5-0	57 / 11.4	9-22 / .409	4-16 / .250	2-2 / 1.000	3-9-12 / 2.4	9 / 0	3	4	0	2	24 / 4.8
TOTAL	36-0	515 / 14.3	61-163 / .374	39-114 / .342	23-31 / .742	18-65-83 / 2.3	70 / 0	21	27	5	17	184 / 5.1

JOENS' CAREER BIG TEN STATISTICS

YEAR	G-GS	MIN/AVG	FGM-FGA/%	3PM-3PA/%	FTM-FTA/%	REB/AVG	PF/DQ	A	TO	B	ST	PTS/AVG
2016-17	16-0	239 / 14.9	22-69 / .319	16-53 / .302	11-15 / .733	4-28-32 / 2.0	32 / 0	10	12	4	7	71 / 4.4
TOTAL	16-0	239 / 14.9	22-69 / .319	16-53 / .302	11-15 / .733	4-28-32 / 2.0	32 / 0	10	12	4	7	71 / 4.4



MEAGAN McNICHOLAS 33

5-10 // SOPHOMORE // GUARD

ROCHESTER, ILL.

ROCHESTER

SEASON BESTS

Pts: --
Rebs: --
FGM: --
FGA: --
FTM: --
FTA: --
3FGM: --
3FGA: --
Ast: --
Blk: --
Stl: --
Min: --

CAREER BESTS

Pts: --
Rebs: --
FGM: --
FGA: --
FTM: --
FTA: --
3FGM: --
3FGA: --
Ast: 1 (at Ohio, 12/22/16)
Blk: --
Stl: 1 (vs. Rutgers, 1/7/17)
Min: 3 (vs. Rutgers, 1/7/17)

2017-18 SEASON HIGHLIGHTS

-

2016-17 SEASON HIGHLIGHTS

- Walked on to the Illini squad in early December
- Suited up and entered her first game for the Illini against Fort Wayne
- Dished her first assist at Ohio in her third appearance in the Orange and Blue

2017-18 GAME-BY-GAME STATISTICS

Date	Opponent	GS	MIN	FG-A	3P-A	FT-A	REB	PF	A	TO	BL	ST	PTS
11/10	Fort Wayne						DNP						
11/12	at FGCU						DNP						
11/15	Chicago State						DNP						
11/18	Bradley						DNP						
11/21	Western Illinois						DNP						

McNICHOLAS' CAREER STATISTICS

YEAR	G-GS	MIN/AVG	FGM-FGA/%	3PM-3PA/%	FTM-FTA/%	REB/AVG	PF/DQ	A	TO	B	ST	PTS/AVG
2016-17	7-0	8 / 1.1	0-0 / .000	0-0 / .000	0-0 / .000	0-0-0 / 0.0	1 / 0	1	0	0	1	0 / 0.0
TOTAL	7-0	8 / 1.1	0-0 / .000	0-0 / .000	0-0 / .000	0-0-0 / 0.0	1 / 0	1	0	0	1	0 / 0.0

McNICHOLAS' CAREER BIG TEN STATISTICS

YEAR	G-GS	MIN/AVG	FGM-FGA/%	3PM-3PA/%	FTM-FTA/%	REB/AVG	PF/DQ	A	TO	B	ST	PTS/AVG
2016-17	4-0	6 / 1.5	0-0 / .000	0-0 / .000	0-0 / .000	0-0-0 / 0.0	1 / 0	0	0	0	1	0 / 0.0
TOTAL	4-0	6 / 1.5	0-0 / .000	0-0 / .000	0-0 / .000	0-0-0 / 0.0	1 / 0	0	0	0	1	0 / 0.0

FIGHTING ILLINI WOMEN'S BASKETBALL NOTES



ALEX WITTINGER 35

6-1 // JUNIOR // FORWARD

DELANO, MINN.

DELANO

SEASON BESTS

Pts: 20 (at FGCU, 11/12/17)
Rebs: 14 (vs. Chicago State, 11/15/17)
FGM: 9 (2x, last vs. Chicago State, 11/15/17)
FGA: 17 (vs. Chicago State, 11/15/17)
FTM: 2 (vs. WIU, 11/21/17)
FTA: 2 (3x, last vs. WIU, 11/21/17)
3FGM: 1 (at FGCU, 11/12/17)
3FGA: 1 (at FGCU, 11/12/17)
Ast: 1 (2x, last vs. WIU, 11/21/17)
Blk: 4 (vs. WIU, 11/21/17)
Stl: 3 (2x, last vs. Bradley, 11/18/17)
Min: 31 (vs. Fort Wayne, 11/10/17)

CAREER BESTS

Pts: 27 (at Minnesota, 1/26/16)
Rebs: 16 (vs. Mercer, 11/22/16)
FGM: 12 (at Minnesota, 1/26/16)
FGA: 23 (vs. #3 Maryland, 1/26/17)
FTM: 5 (4x, last at Penn State, 1/29/17)
FTA: 6 (4x, last at Minnesota, 1/18/17)
3FGM: 1 (4x, last vs. FGCU, 12/17/16)
3FGA: 3 (vs. #3 Maryland, 1/26/17)
Ast: 3 (vs. CMU, 12/12/16)
Blk: 8 (vs. Wright State, 12/11/16)
Stl: 6 (vs. Iowa, 12/28/16)
Min: 38 (3x, last vs UAPB, 11/13/16)

CAREER HONORS

2016 Big Ten All Freshman Team
 2017 All-Big Ten Honorable Mention

2017-18 SEASON HIGHLIGHTS

- Was among Illinois' scoring leaders with 12 points and seven rebounds against Fort Wayne
- Led Illinois with 20 points at FGCU, good for her eighth-career 20-point performance
- Posted her first double-double of the season against Chicago State with 19 points and 14 rebounds
- Earned her second double-double of the year against Western Illinois

2016-17 SEASON HIGHLIGHTS

- Led Illinois against Marshall with 15 points, eight rebounds, two blocks and three steals
- Earned her first double-double of the year in a 23-point, 12-rebound performance that led Illinois over UAPB
- Has recorded multiple blocks and steals in five of Illinois' games last season
- Posted five consecutive double-doubles in Illinois' first six games of the season
- Set a new school record and career-high with eight blocks against Wright State
- Led Illinois with 25 points at Ohio, knocking down a career-best 12 field goals
- Her 124 career blocks sit 6th all-time at Illinois, and her 74 blocks this season are 2nd all-time
- For the second consecutive season, recorded a season-high scoring number at Minnesota (25 points), also leading the Illini with eight rebounds, three steals and two blocks
- Earned her seventh double-double of the season at #16 Ohio State and her eighth against Michigan

2017-18 GAME-BY-GAME STATISTICS

Date	Opponent	GS	MIN	FG-A	3P-A	FT-A	REB	PF	A	TO	BL	ST	PTS
11/10	Fort Wayne	*	31	6-14	0-0	0-0	7	2	0	0	1	3	12
11/12	at FGCU	*	27	9-13	1-1	1-1	9	2	0	2	1	1	20
11/15	Chicago State	*	35	9-17	0-0	1-2	14	0	0	3	1	1	19
11/18	Bradley	*	34	6-12	0-0	1-2	9	0	1	2	2	3	13
11/21	Western Illinois	*	31	4-12	0-0	2-2	12	1	1	4	4	0	10

WITTINGER'S CAREER STATISTICS

YEAR	G-GS	MIN/AVG	FGM-FGA/%	3PM-3PA/%	FTM-FTA/%	REB/AVG	PF/DQ	A	TO	B	ST	PTS/AVG
2015-16	28-18	759 / 27.1	130-258 / .504	2-10 / .200	17-28 / .607	91-102-193 / 6.9	67 / 3	15	38	50	14	279 / 10.0
2016-17	29-29	919 / 31.7	183-395 / .463	7-24 / .292	45-55 / .818	95-157-252 / 8.7	71 / 2	23	52	74	36	418 / 14.4
2017-18	5-5	158 / 31.6	34-68 / .500	1-1 / 1.000	5-7 / .714	22-29-51 / 10.2	5 / 0	2	11	9	8	74 / 14.8
TOTAL	62-52	1836 / 29.6	347-721 / .481	10-35 / .286	67-90 / .744	208-288-496 / 8.0	143 / 5	40	101	133	58	771 / 12.4

WITTINGER'S CAREER BIG TEN STATISTICS

YEAR	G-GS	MIN/AVG	FGM-FGA/%	3PM-3PA/%	FTM-FTA/%	REB/AVG	PF/DQ	A	TO	B	ST	PTS/AVG
2015-16	16-16	499/31.2	81-161/.503	2-6/.333	14-22/.636	56-65-121/7.6	42/2	9	26	30	8	178 / 11.1
2016-17	16-16	508 / 31.8	96-220 / .436	5-19 / .263	28-32 / .875	44-89-133 / 8.3	42 / 1	13	26	39	25	225 / 14.1
TOTAL	32-32	1007 / 31.5	177-381 / .465	7-25 / .280	42-54 / .778	100-154-254 / 7.9	84 / 3	22	52	69	33	403 / 12.6



ALI ANDREWS 50

6-2 // SOPHOMORE // FORWARD

LAKE IN THE HILLS, ILLINOIS

HUNTLEY

SEASON BESTS

Pts: 15 (vs. Chicago State, 11/15/17)
Rebs: 8 (vs. Chicago State, 11/15/17)
FGM: 6 (vs. Chicago State, 11/15/17)
FGA: 10 (vs. Chicago State, 11/15/17)
FTM: 2 (vs. Bradley, 11/18/17)
FTA: 2 (vs. Bradley, 11/18/17)
3FGM: 3 (vs. Chicago State, 11/15/17)
3FGA: 4 (2x, last vs. Chicago State, 11/15/17)
Ast: 3 (2x, last vs. WIU, 11/21/17)
Blk: 5 (vs. Chicago State, 11/15/17)
Stl: 2 (vs. Bradley, 11/18/17)
Min: 37 (vs. Chicago State, 11/15/17)

CAREER BESTS

Pts: 24 (vs. Nebraska, 3/1/17)
Rebs: 8 (vs. Chicago State, 11/15/17)
FGM: 7 (vs. Nebraska, 3/1/17)
FGA: 14 (vs. Nebraska, 3/1/17)
FTM: 7 (vs. UAPB, 11/13/16)
FTA: 8 (vs. UAPB, 11/13/16)
3FGM: 6 (vs. Nebraska, 3/1/17)
3FGA: 10 (vs. Nebraska, 3/1/17)
Ast: 3 (2x, last vs. WIU, 11/21/17)
Blk: 5 (vs. Chicago State, 11/15/17)
Stl: 4 (vs. Nebraska, 3/1/17)
Min: 37 (vs. Chicago State, 11/15/17)

2017-18 SEASON HIGHLIGHTS

- Set new career-highs with eight rebounds, five blocks and 37 minutes played against Chicago State
- Dished a career-high three assists against both Chicago State and Western Illinois

2017-18 GAME-BY-GAME STATISTICS

Date	Opponent	GS	MIN	FG-A	3P-A	FT-A	REB	PF	A	TO	BL	ST	PTS
11/10	Fort Wayne	*	25	3-9	1-3	0-0	4	2	0	1	1	1	7
11/12	FGCU	*	29	2-9	1-4	0-0	3	3	1	4	0	0	5
11/15	Chicago State	*	37	6-10	3-4	0-0	8	2	3	5	5	1	15
11/18	Bradley	*	25	3-5	1-3	2-2	4	3	1	0	0	2	9
11/21	Western Illinois	*	26	2-5	1-1	0-0	3	3	3	3	0	1	5

2016-17 SEASON HIGHLIGHTS

- Earned the start in her first career appearance for the Illini against Marshall
- Put up nine points and grabbed six rebounds against Arkansas-Pine Bluff
- Led Illinois with a career-best 15 points against USC Upstate in a career-best 31 minutes on the court
- Dropped nine points in the fourth quarter against Nebraska to help Illinois win the annual Pack the House matchup
- Recorded her third double-digit scoring game of the season at #16 Ohio State, combining with Courtney Joens for 24 total bench points in the matchup
- Knocked down 4-of-5 shots from three-point range at #3 Maryland to earn her fifth double-figure scoring game of the year
- Had a breakout game at the Big Ten Tournament, netting a career-high 24 points on 6-of-10 shooting from three-point range

ANDREWS' CAREER STATISTICS

YEAR	G-GS	MIN/AVG	FGM-FGA/%	3PM-3PA/%	FTM-FTA/%	REB/AVG	PF/DQ	A	TO	B	ST	PTS/AVG
2016-17	31-8	627 / 20.2	59-179 / .330	37-93 / .398	40-44 / .909	32-46-78 / 2.5	88 / 2	16	33	12	17	195 / 6.3
2017-18	5-5	142 / 28.4	16-38 / .421	7-15 / .467	2-2 / 1.000	9-13-22 / 4.4	13 / 0	8	13	6	5	41 / 8.2
TOTAL	36-13	769 / 21.4	75-217 / .346	44-108 / .407	42-46 / .913	41-59-100 / 2.8	101 / 2	24	46	18	22	236 / 6.6

ANDREWS' CAREER BIG TEN STATISTICS

YEAR	G-GS	MIN/AVG	FGM-FGA/%	3PM-3PA/%	FTM-FTA/%	REB/AVG	PF/DQ	A	TO	B	ST	PTS/AVG
2016-17	16-1	327 / 20.4	34-94 / .362	24-57 / .421	9-9 / 1.000	12-18-30 / 1.9	52 / 2	6	19	3	7	101 / 6.3
TOTAL	16-1	327 / 20.4	34-94 / .362	24-57 / .421	9-9 / 1.000	12-18-30 / 1.9	52 / 2	6	19	3	7	101 / 6.3

2017-18 RADIO/TV ROSTER



1 **Brandi Beasley**
5-6 // So. // G



2 **Lyric Robins**
5-11 // Fr. // F



3 **Alli Ball**
6-1 // Sr. // F



5 **Cierra Rice**
5-9 // RSo. // G



11 **Cydnee Kinslow**
6-2 // RSo. // F



13 **Petra Holešinská**
5-9 // So. // G



14 **Addaya Moore**
5-11 // Fr. // G



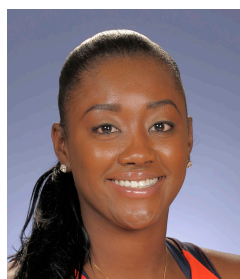
21 **Nancy Panagiotopoulou**
6-3 // Fr. // F



23 **Jaelyne Kirkpatrick**
5-7 // Jr. // G



24 **Jnaya Walker**
6-1 // Fr. // F



25 **Kennedy Cattenhead**
5-10 // RSr. // G



30 **Courtney Joens**
5-10 // Jr. // G



33 **Meagan McNicholas**
5-10 // So. // G



35 **Alex Wittinger**
6-1 // Jr. // F



50 **Ali Andrews**
6-2 // So. // F



Nancy Fahey
Head Coach



LaKale Malone
Associate Head Coach



Tianna Kirkland
Assistant Coach



Steve Cochran
Assistant Coach