



2016-17 UTEP BASKETBALL GAME NOTES

MINERS AT NEW MEXICO / DEC. 7, 2016 / WISEPIES ARENA THE PIT (ALBUQUERQUE, N.M.)

PROJECTED STARTERS (BASED ON PREVIOUS GAME)



41 MATT WILLMS
JUNIOR CENTER
7-1, 235
12.7 PPG / 5.0 RPG / 1.0 APG
.646 FG% / .519 FT%



22 PAUL THOMAS
SOPHOMORE FORWARD
6-8, 200
3.7 PPG / 7.0 RPG / 2.0 APG
.348 FG% / .500 FT%



11 JAKE FLAGGERT
JUNIOR FORWARD
6-7, 200
7.2 PPG / 2.7 RPG / 1.0 APG
.387 FG% / 1.000 FT%



21 TREY TOUCHET
SOPHOMORE GUARD
6-2, 180
5.5 PPG / 1.0 RPG / 1.0 APG
.550 FG% / 1.000 FT%



15 DOMINIC ARTIS
SENIOR GUARD
6-3, 190
15.7 PPG / 7.2 RPG / 7.2 APG
.432 FG% / .575 FT%

OPENING TIP

■ UTEP (2-4) renews its long-time rivalry with New Mexico (5-3) on Wednesday at WisePies Arena The Pit in Albuquerque. The game will be televised on ROOT Sports with a 7 p.m. tipoff.

■ UTEP and New Mexico inked a two-year contract, with the possibility of more games in the future, in August of 2015. The Miners will host the Lobos on Dec. 2, 2017.

■ UTEP and New Mexico last met on March 15, 2011 in the National Invitation Tournament, and haven't squared off in regular season play since Jan. 6, 2009. The last two games between the teams have taken place in Albuquerque, with the last El Paso matchup occurring on Jan. 2, 2008.

■ The storied programs have combined to make 32 NCAA Tournament appearances and capture 33 conference titles (21 regular season/12 tournament).

■ This is UTEP's road opener. The Miners are 25-42 in road games under coach **Tim Floyd**, and 2-13 in non-conference road games. The victories came at NM State on Nov. 30, 2010 (74-72) and at Washington State on Dec. 21, 2013 (64-51).

■ UTEP hasn't won its first road game of the season since 2010-11 with the 74-72 triumph at NMSU.

■ The last time UTEP played its first road game of the season at New Mexico was on Nov. 26, 2005. The Lobos won that one 76-72.

ABOUT NEW MEXICO

■ The Lobos dropped to 5-3 with a 79-74 loss at Illinois State on Saturday. New Mexico is 4-0 at The Pit, which is celebrating its 50th season, with victories over Idaho State (81-70), Houston Baptist (95-79), NM State (72-59) and Abilene Christian (64-55).

■ New Mexico has two players with double-figure scoring averages -- senior forward Tim Williams (19.0 ppg) and junior guard Elijah Brown (15.8 ppg). Junior guard/forward Sam Logwood chips in with 9.4 ppg.

■ Williams, a Samford transfer who was first team All-Mountain West by the media in 2015-16, also averages 6.9 rpg while shooting 62.7 percent from the field and 79.6 percent from the line.

GAME DETAIL

Arena: WisePies Arena The Pit (15,411)

Time: 7 p.m. MT

TV: ROOT Sports (Drew Goodman/Joe Cravens)

English Radio: KOFX 92.3 FM (English)
(Jon Teicher, Steve Yellen)

Spanish Radio: ESPN Deportes 1650 AM
(Omar Ropele)

Series: New Mexico leads 76-65

■ Williams is a career 58.8 percent shooter (657-for-1,118) from the field, including over 60 percent in each of his last three collegiate seasons. His career field goal percentage ranks eighth among active Division I players.

■ Brown was first team All-Mountain West in 2015-16 after averaging 21.7 points, 5.5 rebounds and 3.1 assists. It was his first season with the Lobos after transferring from Butler.

■ The Lobos are shooting 49.4 percent from the floor and 75.1 percent from the charity stripe. New Mexico ranks 29th nationally in field goal percentage. The Lobos have made more free throws (169) than their opponents have attempted (151), and they rate 19th in the country in free throws made and 22nd in attempts.

SERIES HISTORY

■ The Miners and the Lobos have played 141 games, with UNM holding a 76-65 edge in the series ledger.

■ The Lobos hold a 48-21 advantage in games played in Albuquerque, and a 26-10 edge in meetings at The Pit.

■ UTEP's last victory at The Pit came on Jan. 6, 2009, by the count of 73-60.

■ UTEP and New Mexico met 66 times as members of the Western Athletic Conference, with the Miners emerging victorious on 32 occasions.

■ UTEP is 4-3 against New Mexico since the Lobos left the Western Athletic Conference for the Mountain West.

FLOYD VS. NEW MEXICO

■ UTEP's **Tim Floyd** will be coaching against the Lobos for the third time on Wednesday.

■ Floyd is 0-2 versus UNM. His Idaho Vandals lost to the Lobos in Albuquerque, 74-70, during the 1986-87 season. His first UTEP team

2016-17 SCHEDULE

Nov. 12	Louisiana College	W 88-54
Nov. 17	vs. Wake Forest%	L 81-103
Nov. 18	vs. Western Michigan%	W 85-75
Nov. 20	vs. Mississippi State%	L 54-61
Nov. 23	Southeastern Louisiana	L 56-72
Dec. 3	Northwestern State	L 67-79
Dec. 7	at New Mexico	7 p.m.
Dec. 13	NM State	7 p.m.
Dec. 17	Northern Arizona	7 p.m.
Dec. 21	Maryland Eastern Shore+	7 p.m.
Dec. 22	Akron/UC Irvine+	TBA
Dec. 30	at NM State	7 p.m.
Jan. 1	at UTSA*	2 p.m.
Jan. 5	at LA Tech*	5:30 p.m.
Jan. 7	at Southern Miss*	3 p.m.
Jan. 12	FIU*	7 p.m.
Jan. 14	Florida Atlantic*	7 p.m.
Jan. 21	UTSA*	7 p.m.
Jan. 26	at WKU*	6 p.m.
Jan. 28	at Marshall*	5 p.m.
Feb. 2	UAB*	8 p.m.
Feb. 4	Middle Tennessee*	6 p.m.
Feb. 9	LA Tech*	7 p.m.
Feb. 11	Southern Miss*	7 p.m.
Feb. 16	at North Texas*	6 p.m.
Feb. 18	at Rice*	6 p.m.
Feb. 23	at Florida Atlantic*	5 p.m.
Feb. 25	at FIU*	5 p.m.
March 2	Old Dominion*	6 p.m.
March 4	Charlotte*	1 p.m.
March 8-11	vs. TBD#	TBD

Home games in bold

% Gildan Charleston Classic (Charleston, S.C.)

+ WestStar Bank Don Haskins Sun Bowl Invitational

* Conference USA game

Conference USA Championships (Birmingham, Ala.)

All times Mountain

WHO WE ARE ...



Please refer to us as UTEP. We are not the University of Texas at El Paso, UT-El Paso or Texas-El Paso.

MEDIA INFORMATION

UTEP Men's Basketball SID

Jeff Darby
e-mail: jdarby@utep.edu
Office: (915) 747-6652
Cell: (915) 204-0642

UTEP Athletics Website

www.utepathletics.com

Conference USA Website

www.conferenceusa.com

Practice Coverage

UTEP basketball practices are closed to the media. Coach Tim Floyd and players will be available for interviews before practice. Television crews are permitted to shoot the team's warmup prior to practice. Please contact Jeff Darby ahead of time for the status of practice and for clearance into practice.

Postgame Interview Policy

UTEP's locker room is open. Head Coach Tim Floyd will be available following the game in the team room (caddy corner to the visiting locker room) for home games or, for road games, in a location designated by the host institution.

Tim Floyd Radio and TV Show

2016-17 Schedule

(all shows from 7-8 p.m. on KOFX 92.3 FM)

Border City Ale House is located at 1506 North Lee Trevino. Ray's Backyard at Pershing Inn is located at 2909 Pershing Drive.

Wednesday, Dec. 14	Border City Ale House
Tuesday, Dec. 20	Pershing Inn
Thursday, Dec. 29	Border City Ale House
Wednesday, Jan. 11	Pershing Inn
Thursday, Jan. 19	Border City Ale House
Monday, Jan. 23	Pershing Inn
Wednesday, Feb. 1	Border City Ale House
Wednesday, Feb. 8	Pershing Inn
Monday, Feb. 13	Border City Ale House
Monday, Feb. 20	Pershing Inn
Wednesday, March 1	Border City Ale House
Sunday, March 5*	Pershing Inn

* Subject to change

STATISTICAL COMPARISON



MINERS
(2-4, 0-0 C-USA)



LOBOS
(5-3, 0-0 MWC)

	Category	
71.8	PPG	77.5
74.0	OPP PPG	73.4
-2.2	SCORING MARGIN	+4.1
.464	FG%	.494
.451	FG% DEF	.443
.342	3PT%	.287
.415	3PT% DEF	.379
.648	FT%	.751
.650	OPP FT%	.728
36.3	RPG	33.9
+1.5	RB MARGIN	+2.6
16.7	ASSISTS PG	14.6
16.0	TURNOVERS PG	12.9
3.8	BLOCKS PG	2.5
4.8	STEALS PG	6.1

(2010-11) ended a 25-win season with a 69-57 setback at The Pit in the NIT on March 15, 2011.

■ During Floyd's eight seasons (1978-86) as an assistant to the legendary **Don Haskins** at UTEP, the Miners went 14-3 versus New Mexico, including 6-2 in Albuquerque.

THE LAST MEETING

■ Drew Gordon and Kendall Williams scored 18 points apiece as New Mexico knocked off UTEP, 69-57, in the first round of the NIT on March 15, 2011 at The Pit.

■ The Lobos took their first lead of the night, 22-21, on a layup by A.J. Hardeman with 6:39 remaining in the first half. It was part of a 10-0 New Mexico run that turned a 21-17 deficit into a 27-21 lead.

■ UTEP trailed 34-30 at the half. The Lobos scored the first six points of the second half to surge ahead 40-30.

■ The Miners trailed by only four points (45-41) when **Isaac Gordon** scored on a fast break layup with 9:46 remaining, but New Mexico reinstated a 10-point lead (51-41) on back-to-back three pointers by Phillip McDonald with under eight minutes to go. UTEP couldn't get closer than seven the rest of the night.

■ **Randy Culpepper** led the Miners with 23 points.

■ UTEP was outrebounded 41-26.

LAST GAME: NORTHWESTERN STATE 79, UTEP 67

■ **Jake Flaggert** and **Trey Touchet** both established career-highs for scoring, but the depleted Miners dropped a 79-67 decision to Northwestern State on Saturday at the Haskins Center.

■ The Demons made a season-high 12 three-pointers, including nine in the first half. UTEP fell behind by 10 points early in the second half and couldn't recover.

■ The Miners were playing without no. 2 scorer **Omega Harris**, who was suspended for missing class.

■ Minus Harris, the Miners got some scoring from unexpected sources as Flaggert contributed 14 points and Touchet added 13. **Dominic Artis** had yet another near triple-double with 16 points, nine rebounds and seven assists.

■ The Miners had difficulties closing out on the Demons' three-point shooters as they finished 12-for-26 from beyond the arc, including 9-for-17 in the first half. Northwestern State shot 50.9 percent on the night, including a sizzling 56 percent in the second half.

■ Not only did the Miners play without Harris, but for the last 16 minutes they played without **Matt Willms**, who scored eight points on 4-of-7 shooting before leaving with a broken nose.

■ The Miners got off to a good start as they scored the first five points. But Northwestern State scored the next nine, all on three pointers. In fact, 15 of the Demons' first 17 points -- and 21 of their first 25 -- came via the triple.

■ A three-pointer by Touchet right before the halftime buzzer sent the Miners to the locker room trailing 39-34. Northwestern State scored 10 of the first 14 points to start the second half and built a 49-38 lead.

■ The Miners cut it to six three times, the last at 59-53 on a Flaggert layup with 6:15 remaining. Northwestern State answered with six consecutive points and was in command thereafter.

■ UTEP finished at 42.9 percent shooting from the field and struggled mightily at the foul line (11-for-21, 52.4 percent).

MINERS IN THE NCAA STATS

■ UTEP was ranked 40th nationally in assists per game (16.7) through the games of Dec 4.

■ Individually, **Dominic Artis** was seventh in assists (7.2 apg), 31st in minutes (35:8 avg.) and 43rd in steals (2.2 spg). **Matt Willms** was 20th in field goal percentage (.646).

■ **Dominic Artis'** 13 assists against Louisiana College (Nov. 12) are tied for the fourth-most by a Division I player in a game this season. Three players have compiled 14 in a contest.

UP & DOWN OFFENSE

■ In the first three games of the season, the Miners averaged 84.7 points and shot 55.4 percent from the field, 43.8 percent from three-point range and 73.1 percent from the line.

■ In three games since, UTEP has averaged 59 ppg with a field goal percentage of .376 (64-for-170), three-point percentage of .270 (17-for-63) and free throw percentage of .552 (32-for-58).

■ Prior to its recent scoring outage, UTEP had tallied 80+ points in 11 of its previous 14 outings dating back to the 2015-16 campaign.

SHOOTING GALLERY

■ UTEP is 2-0 when shooting a higher percentage than its opponent, and 0-4 when shooting a lesser percentage.

■ In their two wins the Miners have shot 56.5 percent (61-for-108) from the floor and 47.1 percent (16-for-34) from beyond the arc. In losses those numbers dip to 41.7 percent (95-for-228) from the field and 28.6 percent (22-for-77) from outside.

REBOUNDING ROUNDUP

■ UTEP is 2-1 when outrebounding opponents, 0-3 when getting outboarded.

■ The Miners enjoyed a slim advantage on the boards (38-37) the last time out against Northwestern State but came up on the short end of the scoreboard. That dropped UTEP to 74-13 under **Tim Floyd** when winning the battle of the boards.

■ The Miners have had a rebounding advantage just 14 times in their last 39 games since the start of the 2015-16 season, but are 12-2 in those contests.

GAINS ON "D"

■ After last year's height-challenged Miners yielded 74.9 points per game (77.6 in C-USA contests), UTEP has allowed 74.0 ppg in 2016-17.

■ Throw out the 103 points given up to Wake Forest on Nov. 17, however, and that number dips to 68.2 ppg.

■ Wake Forest shot 59.3 percent from the field against the Miners, but UTEP's other four opponents have shot 42.1 percent (120-for-285) collectively.

■ With the infusion of 7-1 **Matt Willms** and 6-11 **Kelvin Jones** to the lineup, UTEP has a positive rebound margin of +1.5 per game (last season featured a negative margin of -3.0 per contest).

TURNOVER TALLY

■ The Miners have steadily reduced their number of turnovers over the course of the season and posted a season-low 12 in two of the last three outings.

■ Interestingly, over the last three games 7-1 **Matt Willms** has turned the ball over once in a combined 76 minutes of court time. Freshman guard **Deon Barrett** is the only other Miner to play error-free basketball during that span (total of 48 minutes). Barrett also sports the team's top assist/turnover ratio of 2.75 (11-4) this season.

LOOKING FOR THE RIGHT COMBINATION

■ UTEP has used five different starting lineups in six games, a year after utilizing 14 groups in 33 contests.

■ **Dominic Artis** is the only player to start every game. Nine different Miners have made starts in 2016-17 after 12 players started last season.

■ UTEP's record when each player starts is as follows: Artis (2-4), **Deon Barrett** (0-1), **Jake Flaggert** (2-3), **Omega Harris** (2-3), **Kelvin Jones** (0-1), **Paul Thomas** (2-2), **Trey Touchet** (0-1) and **Matt Willms** (1-4). **Terry Winn** (no longer on the team) started two games and the Miners were 1-1.

LEAGUE LEADERS

■ UTEP is tops in C-USA in assists per game (16.7). The Miners have paced C-USA in the statistic just twice since joining the league for the 2005-06 season -- in 2006-07 (15.3 avg.) and 2010-11 (15.4 avg.).

■ **Dominic Artis** leads C-USA in assists (7.2 avg.) and steals (2.2 avg.). The last Miner to lead

UTEP'S RECORD WHEN ...

	2016-17 Season.....	Under Tim Floyd
Overall	2-4	124-81
Playing at home	1-2	86-26
Playing on the road	0-0	25-42
Playing on a neutral court	1-2	13-13
Playing during the day	1-2	30-15
Playing at night	1-2	94-66
Playing C-USA foes	0-0	70-43
Playing C-USA home games	0-0	43-12
Playing C-USA road games	0-0	23-28
Playing C-USA neutral games	0-0	4-3
Playing non-conference foes	2-4	54-38
Playing non-conference home games	1-2	43-14
Playing non-conference road games	0-0	2-13
Playing non-conference neutral games	1-2	9-11
Playing on Mondays	0-0	6-4
Playing on Tuesdays	0-0	8-4
Playing on Wednesdays	0-1	17-17
Playing on Thursdays	0-1	21-16
Playing on Fridays	1-0	8-10
Playing on Saturdays	1-1	50-25
Playing on Sundays	0-1	14-5
Playing in November	2-3	24-18
Playing in December	0-1	28-15
Playing in January	0-0	28-19
Playing in February	0-0	28-18
Playing in March	0-0	16-11
Playing in the Central time zone	0-0	22-26
Playing in the Eastern time zone	1-2	10-14
Playing in the Mountain time zone	1-2	87-36
Playing in the Pacific time zone	0-0	3-4
Playing in the Hawaii time zone	0-0	2-1
Shooting 50% or better	2-1	60-6
Shooting 40% or better	2-2	114-59
Shooting less than 40%	0-2	10-22
Opponent shoots 50% or better	0-2	3-16
Opponent shoots 40% or better	1-4	53-70
Opponent shoots less than 40%	1-0	71-11
Shooting better than opponent	2-0	113-27
Shooting equal or worse than opponent	0-4	11-54
Scoring first	1-2	79-37
Opponent scores first	1-2	45-44
Outrebounding opponents	2-1	74-13
Tied or outrebounded	0-3	50-68
Ahead at halftime	2-0	98-21
Behind at halftime	0-3	20-54
Tied at halftime	0-1	6-6
Ahead with 5:00 to play	2-0	106-8
Behind with 5:00 to play	0-4	15-68
Tied with 5:00 to play	0-0	3-5
Committing same or less turnovers	0-1	69-46
Committing more turnovers	2-3	55-35
Having 10 or more steals	0-1	12-5
Shooting better than 70% from the line	1-1	52-30
Scoring less than 70 points	0-3	50-64
Scoring between 70-79 points	0-0	38-13
Scoring between 80-89 points	2-1	30-3
Scoring between 90-99 points	0-0	5-1
Scoring 100 points or more	0-0	1-0
Games decided by five points or less	0-0	25-29
Games decided by 6-10 points	1-1	36-23
Games decided by 11-19 points	0-2	42-21
Games decided by 20+ points	1-1	21-8
Bench outscores opponent's bench	1-0	51-28
Bench is tied or outscored by opponent's	1-4	73-53



2016-17 STANDINGS (THROUGH GAMES OF 12/4)

	Conference W-L	Overall W-L
Middle Tennessee	0-0	8-1
Charlotte	0-0	6-2
Rice	0-0	6-2
Marshall	0-0	5-2
Old Dominion	0-0	5-2
LA Tech	0-0	4-3
North Texas	0-0	4-4
Southern Miss	0-0	3-3
UAB	0-0	4-4
WKU	0-0	3-5
FIU	0-0	3-6
UTEP	0-0	2-4
Florida Atlantic	0-0	2-5
UTSA	0-0	2-6

UTEP IN THE C-USA STATS

Category	Stat	Rank
Assists	16.7 apg	1
Assist/turnover ratio	1.0	7
Blocked shots	3.8 bpg	8
Field goal %	.464	4
Field goal % defense	.451	14
3-point field goal %	.342	7
3-point field goal % defense	.415	14
3-point field goal/game	6.3	6
Free throw %	.648	12
Rebounding margin	+1.5 rpg	9
Scoring offense	71.8 ppg	9
Scoring defense	74.0 ppg	11
Scoring margin	-2.2	10
Steals	4.8 spg	12
Turnover margin	-2.7	12

UTEP PLAYERS IN THE C-USA STATS

(top 15 only)

Player	Category	Stat	Rank
D. Artis	Assists	7.2	1
	Assist/TO ratio	1.6	10
	Minutes	35.8	2
	Rebounding	7.2	11
	Scoring	15.7	9
J. Flaggert	Steals	2.2	1
	3-point FG%	.370	10
	Field goal %	.482	15
O. Harris	Free throw %	.850	9
	Scoring	15.6	10
	Steals	1.4	10
K. Jones	Blocked shots	1.0	t13
P. Thomas	Rebounding	7.0	12
Matt Willms	Blocked shots	1.5	8
	Field goal %	.646	2

the league in assists was **Filiberto Rivera** in the WAC in 2004-05 (7.2 apg), and the last to lead the conference in steals was **Randy Culpepper** in 2010-11 (2.03 spg).

■ Since Conference USA's inception for the 1995-96 season, only one player has led the league in assists and steal average. That was LA Tech's Kenneth Smith in 2013-14.

ARTIS DOING IT ALL

■ UTEP's lone senior, **Dominic Artis**, leads the Miners in nearly every stat category -- scoring (15.7 ppg), rebounding (7.2 rpg), assists (7.2 apg), steals (2.2 spg) and minutes (35.8 mpg).

■ Artis is the only player in the country averaging 15 points, seven rebounds, seven assists and two steals.

■ He has career totals of 829 points, 320 rebounds, 358 assists and 116 steals in his fourth collegiate season (2012-14 at Oregon, 2015-present at UTEP). He has appeared in 92 games.

■ He has dished out 213 assists at UTEP including 170 last season, 10th-most in school history.

■ Artis has come close to posting only the second triple-double in school history on several occasions. Last season's close calls came versus Loyola (16 points/nine rebounds/eight assists), UTRGV (21 points/eight rebounds/eight assists), LA Tech (23 points/10 rebounds/nine assists) and Florida Atlantic (13 points/nine rebounds/nine assists). He had eight points/nine rebounds/13 assists in the opener against Louisiana College, 20 points/10 rebounds/nine assists versus Western Michigan. The only triple-double in Miner history was registered by **Jason Williams** versus Lipscomb (17 points, 11 rebounds, 10 assists) in the NIT on March 14, 2006.

■ Artis has scored in double figures in five consecutive games, matching his longest streak as a Miner. His career-long streak is six games at Oregon from Dec. 31, 2012 - Jan. 19, 2013.

SECOND COMING

■ 7'1" **Matt Willms** returned this season after missing most of 2015-16 with a foot injury that required a similar surgery as fellow big men Joel Embiid and Greg Oden.

■ Willms leads the Miners in field goal percentage (.646) while averaging 12.7 points, 5.0 rebounds and 1.5 blocks.

■ Willms has appeared in 69 games for the Miners, with 39 starts, and collected 404 points, 271 rebounds and 67 blocked shots. His career field goal percentage is .566 (155-for-274).

■ He ranks 12th in school history in blocked shots, behind **Marlon Maxey** (11th, 75 blocks).

JAKE DOES THE DIRTY WORK

■ **Jake Flaggert** led Conference USA in charges drawn (18) last season, and is back at it in 2016-17 with a team-leading four in six games.

■ Flaggert has 28 charges drawn in his Miner career (67 games).

■ Two of Flaggert's three career double-figure scoring games have come early this season, including a personal best 14 points the last time out against Northwestern State.

■ He is 9-for-9 from the line this season after entering the campaign as a career 64.3 percent foul shooter.

■ Flaggert, who had never played more than 29 minutes in a college game prior to the season, has averaged 30.8 minutes over the last four contests.

SOPHOMORES STEP UP

■ **Paul Thomas** and **Trey Touchet**, who both received valuable playing time as freshmen in 2015-16, have shown they're capable of making a greater impact this season.

■ Thomas is second on the team, averaging 7.0 rebounds. The 6-8 forward is also second on the squad with 12 assists (2.0 apg).

■ Thomas is averaging 12.7 rebounds per 40 minutes of action.

■ Thomas is the only Miner to collect at least five rebounds in every game and has had double-digit boards twice (11 versus Louisiana College, 10 against Northwestern State).

■ Thomas has started four games, matching his 2015-16 total for starts.

■ Touchet is coming off his first double-figure scoring game at UTEP (13 points) and also either set or tied career-highs for three-pointers (three), free throws (four), rebounds (three), assists (two) and minutes (30) against Northwestern State.

■ Touchet has made 11-of-20 shots (.550) on the young campaign, 7-of-15 from three-point territory (.467) and is third on the squad with three steals.

JONES' STORY

■ One of the freshmen UTEP is counting on this season -- 6-11 **Kelvin Jones** -- has had an amazing road to El Paso.

■ He grew up in Galeana, Chihuahua, Mexico, where his father was the mayor. He played soccer and volleyball.

■ In 2011, after cartel violence claimed two relatives, the family left in the middle of the night and moved to Bismarck, North Dakota.

■ Jones started playing basketball his freshman year in high school. He was 6-9 and the school didn't have a volleyball program.

■ He finished his prep career at Hobbs [N.M.] High School, where he averaged 14.7 points, 9.9 rebounds and 3.2 blocks for a 30-2, state championship team.

■ Jones put on 20 pounds in-between his junior and senior seasons.

■ He walked on his first year at UTEP and sold pesticides door-to-door in Houston so he could have enough money to pay for his college tuition.

■ Jones has posted 20 points, 14 rebounds and six blocks this season, and made his first career start against Southeastern Louisiana on Nov. 23.

STAFF ADDITIONS

■ UTEP has two new staff members for the 2016-17 season, including one who has spent time in El Paso previously. **Kris Baumann** is an assistant coach and **J.A. Anglin** is Director of Scouting and Player Personnel.

■ Baumann came to El Paso following four years as the head coach at Trinity Valley Com-

munity College, where he forged a 110-26 record. Baumann was a head coach at the junior college level for the last 13 years, including three seasons at Lamar Community College (2001-04) and six at Garden City Community College (2006-12). His career head coaching record is 280-146 with eight 20-win seasons.

■ Anglin spent the previous three years as an assistant coach at the University of Louisiana Monroe. He helped the Warhawks to 44 victories over the last two seasons. Earlier this year, Anglin was one of 30 assistant coaches across the country named to the Under Armour 30-under-30 Team. The team is composed of the nation's brightest assistant coaches under the age of 30. Anglin was Assistant Director of Basketball Operations at UTEP from 2011-13.

THE FLOYD ERA

■ UTEP has posted 124 wins under coach **Tim Floyd**, who is in his seventh season.

■ The Miners have fashioned a mark of 63-37 in Conference USA play under Floyd, with top-three finishes on three occasions (tied for second 2010-11, third 2012-13, tied for second 2014-15).

■ UTEP has registered double-digit C-USA victories in five of the six years, including in each of the last four.

MORE ON FLOYD

● **Tim Floyd** is in his seventh season on the UTEP bench with a career record of 452-261, including 124-81 with the Miners.

● He has the most wins among current C-USA coaches.

● Floyd ranks second in school history in victories behind the legendary **Don Haskins** (719) and has also coached the second-most games of any UTEP coach (205).

● Floyd has enjoyed 20 winning seasons in 22 years as a collegiate head coach. His teams have made eight NCAA Tournament appearances and five trips to the NIT.

● Floyd previously was the head coach at Idaho (1986-88), New Orleans (1988-94), Iowa State (1994-98) and USC (2005-09). He was also head coach of the Chicago Bulls (1998-2002) and the New Orleans Hornets (2003-04) in the NBA.

DEFENSE UNDER FLOYD

● UTEP has allowed less than 70 points 131 times under **Tim Floyd** (in 205 games), less than 60 points 73 times and less than 50 points on 17 occasions.

● The Miners have held 82 teams under 40 percent shooting, posting a 71-11 record.

UTEP Defense Under Floyd

Season	FG-FGA	Pct.	3FG-FGA	Pct.	Pts.	Avg.
2010-11	784-1958	.400	220-718	.306	2225	63.6
2011-12	718-1702	.422	188-565	.333	2019	63.1
2012-13	705-1689	.417	165-486	.340	1970	61.6
2013-14	738-1934	.382	201-681	.295	2152	63.3
2014-15	760-1832	.415	197-586	.336	2104	63.8
2015-16	853-2013	.424	268-796	.337	2471	74.9
2016-17	155-344	.451	54-130	.415	444	74.0
Totals	4713-11472	.411	1293-3962	.326	13385	65.3

PRESEASON C-USA POLL

■ UAB is favored to defend its C-USA regular season title of a year ago, according to a pre-season vote by league head coaches. The Blazers totaled 10 first-place votes.

■ Middle Tennessee was picked second (four first-place votes), followed by WKU, Marshall, Old Dominion, UTEP, LA Tech, Charlotte, Rice, North Texas, FIU, Florida Atlantic, Southern Miss and UTSA.

■ The preseason All-Conference USA team consisted of LA Tech senior forward Erik McCree, Marshall junior guard Jon Elmore, Marshall senior forward Ryan Taylor, Middle Tennessee junior guard Giddy Potts, Middle Tennessee senior forward Reggie Upshaw Jr., North Texas junior forward Jeremy Combs, Rice sophomore guard Marcus Evans, UAB junior forward Chris Cokley, UAB junior forward William Lee and WKU junior forward Justin Johnson.

UTEP CAREER GAMES PLAYED/ STARTED

Player	Games	Starts
Matt Willms	69	39
Jake Flaggert	67	9
Omega Harris	62	44
Dominic Artis	39	36
Trey Touchet	36	3
Paul Thomas	28	8
Ivan Venegas	12	0
Deon Barrett	6	1
Kelvin Jones	6	1
Chris Barnes	4	0
Tim Cameron	3	0
Jose Martinez	3	0
Hudson Urbanus	3	0

MINERS SIGNED UP FOR SAN JUAN

■ UTEP is one of eight teams participating in the 2017 Tire Pros Puerto Rico Tip-Off. The Miners will join Boise State, Florida State, Illinois State, Iowa State, South Carolina, Tulsa and Western Michigan in the event Nov. 16-19 at the Coliseo Roberto Clemente in San Juan. The tournament field was announced on Thursday by ESPN Events.

■ Iowa State and Tulsa participated in the 2016 NCAA Tournament, while Florida State and South Carolina earned bids to the NIT.

■ UTEP will be making its first appearance in the tournament, but Miner head coach **Tim Floyd** is no stranger to the event. His USC Trojans were invited to the 2008 Puerto Rico Tip-Off.

NOVEMBER SIGNEES

■ **Evan Gilyard**, **Kobe Magee**, **Tirus Smith** and **Roderick Williams** have signed national letters of intent to play basketball at UTEP beginning with the 2017-18 season, Miner head coach **Tim Floyd** announced in November.

■ Gilyard is a 5-9, 160-pound guard from Simeon Career Academy in Chicago, which has produced numerous NBA standouts including Milwaukee Bucks forward Jabari Parker and New York Knicks guard Derrick Rose. Gilyard is regarded as a three-star prospect by ESPN and the no. 13 player in Illinois. He averaged 13.5 points and 3.2 assists last season while shooting 49 percent from three-point range. He was

second team All-City, two-time All-Conference and honorable mention All-State. He scored 14 points in the fourth quarter of the city championship game as Simeon beat Kenwood 54-49. Gilyard, who has led Simeon Career Academy to a 96-7 record, continued to turn heads on the AAU circuit this summer while playing for the Meanstreets' 16- and 17-under teams.

■ Magee is a 6-0, 140-pound guard from Brandeis High School in San Antonio. He averaged 17.9 points as a junior with 79 three-pointers, helping Brandeis to a 31-2 mark and a top-10 state ranking. He has scored 1,281 points in 89 prep games (14.4 ppg) with 147 three-point field goals and owns a career .421 percentage from beyond the arc. A starter since his freshman year, Magee has garnered All-District honors twice and has been a part of three 20-win teams. He was appointed to the Northside NISD and San Antonio ISD All-Tournament teams on a pair of occasions.

■ Smith is a 6-8, 230-pound forward from Petal (Miss.) High School. Now in his third year as a varsity letterwinner, he was appointed to The Clarion-Ledger's "Dandy Dozen" as one of the 12 best players in the state of Mississippi for the 2016-17 campaign. He averaged 16 points, 11 rebounds and 2.5 blocks last season. Smith participated in the MAC/Mississippi Sports Medicine All-Star Classic as a member of the South team in March. Smith also played for the Elfrid Payton Elite AAU team.

■ Williams is a 6-7, 210-pound forward from Los Angeles, Calif. who is currently attending East Los Angeles College. He will have three years of eligibility with the Miners. Williams previously played at Price High School in L.A., where he was named the 2015 John R. Wooden High School Player of the Year for the CIF Los Angeles City Section (Division VI). He led Price in scoring in back-to-back years and to the semifinals at the 2015 California state playoffs. Regarded as a three-star recruit by ESPN.com and the no. 19 player in California, Williams averaged 16 points and seven rebounds as a prep senior. He was first team All-CIF.

■ The Miners' fall recruiting class also includes guards **Isiah Osborne** and **Trey Wade** who are currently with the program and sitting out the 2016-17 campaign. The 6-5, 190-pound Osborne averaged 15.0 points at the University of Windsor last year. He was named the CIS (Canadian Interuniversity Sport) Rookie of the Year as well as the OUA (Ontario University Athletics) Rookie of the Year. The 6-5, 180-pound Wade hails from South Cobb High School in Austell, Ga. He averaged 19.1 points and 7.5 rebounds as a senior in 2015-16, shooting 48 percent from the field.

UP NEXT

■ The Miners will play their second consecutive rivalry game when they host NM State on Tuesday, Dec. 13 at 7 p.m. UTEP will open a season-long tying four-game homestand versus the Aggies.

2016-17 UTEP BASKETBALL

2016-17 UTEP ALPHABETICAL ROSTER

No.	Name	Pos.	Ht.	Wt.	Cl.-Exp.	Hometown (High School/Previous School)
15	Dominic Artis	G	6-3	190	SR-1L	San Francisco, Calif. (Findlay Prep/Oregon)
5	Chris Barnes	G	6-4	190	FR-HS	Compton, Calif. (Compton HS)
23	Deon Barrett	G	5-10	150	FR-HS	Lancaster, Texas (Lancaster HS)
3	Tim Cameron	G	6-4	180	FR-HS	Norcross, Ga. (Hargrave Military Academy)
11	Jake Flaggert	F	6-7	200	JR-2L	Lucas, Texas (Lovejoy HS)
2	Omega Harris	G	6-3	165	JR-2L	Bethany, Okla. (Putnam City West HS)
54	Kelvin Jones	C	6-11	230	FR-HS	Chihuahua, Mexico (Hobbs [N.M.] HS)
20	Jose Martinez	F	6-7	225	FR-HS	Chihuahua, Mexico (Faith Christian Academy)
20	Isiah Osborne*	G	6-5	190	SO-TR	Windsor, Ontario, Canada (University of Windsor)
22	Paul Thomas	F	6-8	200	SO-1L	Humble, Texas (Summer Creek HS)
21	Trey Touchet	G	6-2	180	SO-1L	Lafayette, La. (Saint Thomas More HS)
24	Hudson Urbanus	G	6-0	160	FR-HS	Austin, Texas (James Bowie HS)
13	Ivan Venegas	F	6-8	220	SO-0L	Chihuahua, Mexico (Tecnologico de Monterrey Campus)
41	Matt Willms	C	7-1	235	JR-2L	Leamington, Ontario, Canada (Findlay Prep)

2016-17 UTEP NUMERICAL ROSTER

No.	Name	Pos.	Ht.	Wt.	Cl.-Exp.	Hometown (High School/Previous School)
2	Omega Harris	G	6-3	165	JR-2L	Bethany, Okla. (Putnam City West HS)
3	Tim Cameron	G	6-4	180	FR-HS	Norcross, Ga. (Hargrave Military Academy)
5	Chris Barnes	G	6-4	190	FR-HS	Compton, Calif. (Compton HS)
11	Jake Flaggert	F	6-7	200	JR-2L	Lucas, Texas (Lovejoy HS)
13	Ivan Venegas	F	6-8	220	SO-0L	Chihuahua, Mexico (Tecnologico de Monterrey Campus)
15	Dominic Artis	G	6-3	190	SR-1L	San Francisco, Calif. (Findlay Prep/Oregon)
20	Jose Martinez	F	6-7	225	FR-HS	Chihuahua, Mexico (Faith Christian Academy)
20	Isiah Osborne*	G	6-5	190	SO-TR	Windsor, Ontario, Canada (University of Windsor)
21	Trey Touchet	G	6-2	180	SO-1L	Lafayette, La. (Saint Thomas More HS)
22	Paul Thomas	F	6-8	200	SO-1L	Humble, Texas (Summer Creek HS)
23	Deon Barrett	G	5-10	150	FR-HS	Lancaster, Texas (Lancaster HS)
24	Hudson Urbanus	G	6-0	160	FR-HS	Austin, Texas (James Bowie HS)
41	Matt Willms	C	7-1	235	JR-2L	Leamington, Ontario, Canada (Findlay Prep)
54	Kelvin Jones	C	6-11	230	FR-HS	Chihuahua, Mexico (Hobbs [N.M.] HS)

* Sitting out the 2016-17 season per NCAA transfer rules

Head Coach: Tim Floyd (Louisiana Tech '77)

Assistant Coaches: Phil Johnson (East Central Oklahoma '81), Bobby Braswell (Cal State Northridge '85), Kris Baumann (Idaho '98)

Director of Scouting and Player Personnel: J.A. Anglin (LSU Shreveport '10)

Director of Basketball Operations: Evan Eustachy (Colorado State '16)

2016-17 UTEP BASKETBALL

TEAM GAME-BY-GAME LEADERS

Date	Opponent	Result	Attendance	High Points	High Rebounds	High Assists	High Steals	High Blocks
November (2-3)								
Nov. 12	Louisiana College	W 88-54	6,295	Harris (24)	Thomas (11)	Artis (13)	Artis (4)	Two players (1)
Nov. 17	vs. Wake Forest%	L 81-103	2,925	Artis (24)	Thomas (5)	Artis (6)	Harris (3)	Willms (5)
Nov. 18	vs. Western Michigan%	W 85-75	4,020	Willms (22)	Artis (10)	Artis (9)	Artis (2)	Willms (2)
Nov. 20	vs. Mississippi State%	L 54-61	1,293	Artis (15)	Willms (11)	Artis/Flaggert (3)	Artis (2)	Two players (1)
Nov. 23	Southeastern Louisiana	L 56-72	6,348	Harris (13)	Artis/Thomas (6)	Artis (5)	Artis (4)	Three players (1)
December (0-1)								
Dec. 3	Northwestern State	L 67-79	5,928	Artis (16)	Thomas (10)	Artis (7)	Three players (1)	Jones (2)
Dec. 7	at New Mexico							
Dec. 13	NM State							
Dec. 17	Northern Arizona							
Dec. 21	Maryland Eastern Shore+							
Dec. 22	Akron/UC Irvine+							
Dec. 30	at NM State							
January (0-0)								
Jan. 1	at UTSA*							
Jan. 5	at LA Tech*							
Jan. 7	at Southern Miss*							
Jan. 12	FIU*							
Jan. 14	Florida Atlantic*							
Jan. 21	UTSA*							
Jan. 26	at WKU*							
Jan. 28	at Marshall*							
February (0-0)								
Feb. 2	UAB*							
Feb. 4	Middle Tennessee*							
Feb. 9	LA Tech*							
Feb. 11	Southern Miss*							
Feb. 16	at North Texas*							
Feb. 18	at Rice*							
Feb. 23	at Florida Atlantic*							
Feb. 25	at FIU*							
March (0-0)								
March 2	Old Dominion*							
March 4	Charlotte*							
March 8	vs. TBD#							
March 9	vs. TBD#							
March 10	vs. TBD#							
March 11	vs. TBD#							

% Gildan Charleston Classic (Charleston, S.C.)

+ WestStar Bank Don Haskins Sun Bowl Invitational

* Conference USA game

Conference USA Championships (Birmingham, Ala.)

2016-17 UTEP BASKETBALL

LARGEST LEAD/LARGEST DEFICIT

Date	Opponent	Result	Largest Lead	Largest Deficit	Times Tied	Lead Changes
Nov. 12	Louisiana College	W 88-54	35 (88-53, 00:47 2nd)	2 (two times)	5	7
Nov. 17	vs. Wake Forest%	L 81-103	N/A	28 (102-74, 3:49 2nd)	2	0
Nov. 18	vs. Western Michigan%	W 85-75	13 (77-64, 2:15 2nd)	3 (6-3, 17:59 1st)	5	2
Nov. 20	vs. Mississippi State%	L 54-61	11 (15-4, 14:28 1st)	7 (61-54, 00:29 2nd)	8	8
Nov. 23	Southeastern Louisiana	L 56-72	7 (7-0, 17:37 1st)	17 (two times)	2	1
Dec. 3	Northwestern State	L 67-79	5 (5-0, 18:38 1st)	13 (three times)	1	1
Dec. 7	at New Mexico					
Dec. 13	NM State					
Dec. 17	Northern Arizona					
Dec. 21	Maryland Eastern Shore+					
Dec. 22	Akron/UC Irvine+					
Dec. 30	at NM State					
Jan. 1	at UTSA*					
Jan. 5	at LA Tech*					
Jan. 7	at Southern Miss*					
Jan. 12	FIU*					
Jan. 14	Florida Atlantic*					
Jan. 21	UTSA*					
Jan. 26	at WKU*					
Jan. 28	at Marshall*					
Feb. 2	UAB*					
Feb. 4	Middle Tennessee*					
Feb. 9	LA Tech*					
Feb. 11	Southern Miss*					
Feb. 16	at North Texas*					
Feb. 18	at Rice*					
Feb. 23	at Florida Atlantic*					
Feb. 25	at FIU*					
March 2	Old Dominion*					
March 4	Charlotte*					
March 8	vs. TBD#					
March 9	vs. TBD#					
March 10	vs. TBD#					
March 11	vs. TBD#					

% Gildan Charleston Classic (Charleston, S.C.)

+ WestStar Bank Don Haskins Sun Bowl Invitational

* Conference USA game

Conference USA Championships (Birmingham, Ala.)

TEAM GAME-BY-GAME STATISTICS

POINTS-REBOUNDS-ASSISTS

Opponent	ARTIS	BARNES	BARRETT	CAMERON	FLAGGERT	HARRIS	JONES	MARTINEZ
Louisiana College	8-9-13*	2-2-0	6-1-6	3-3-0	5-4-2*	24-2-2*	6-3-0	0-0-0
vs. Wake Forest	24-4-6*	2-1-0	8-0-2	DNP	2-1-0*	16-2-2*	4-1-2	0-0-0
vs. Western Michigan	20-10-9*	DNP	3-1-0	DNP	13-2-0*	17-3-4*	0-1-0	DNP
vs. Mississippi State	15-5-3*	DNP	0-0-0	DNP	3-4-3*	8-4-1*	4-1-0	DNP
Southeastern Louisiana	11-6-5*	0-0-0	0-1-1*	0-0-0	6-3-1	13-2-1*	4-5-0*	DNP
Northwestern State	16-9-7*	2-1-1	8-1-1	0-0-0	14-2-0*	DNP	2-3-0	0-1-0
at New Mexico								
NM State								
Northern Arizona								
Maryland Eastern Shore								
Akron/UC Irvine								
at NM State								
at UTSA								
at LA Tech								
at Southern Miss								
FIU								
Florida Atlantic								
UTSA								
at WKU								
at Marshall								
UAB								
Middle Tennessee								
LA Tech								
Southern Miss								
at North Texas								
at Rice								
at Florida Atlantic								
at FIU								
Old Dominion								
Charlotte								
vs. TBD								
vs. TBD								
vs. TBD								
vs. TBD								

Opponent	MOORE	THOMAS	TOUCHET	URBANUS	VENEGAS	WILLMS	WINN
Louisiana College	0-0-0	1-11-3*	9-2-2	DNP	0-1-0	9-4-0	15-8-1*
vs. Wake Forest	DNP	8-5-5	0-0-0	0-0-0	0-0-0	13-2-0*	4-4-1*
vs. Western Michigan	DNP	0-5-1*	0-0-0	DNP	DNP	22-7-2*	10-5-0
vs. Mississippi State	DNP	7-5-0*	5-1-1	DNP	DNP	12-11-2*	DNP
Southeastern Louisiana	DNP	4-6-1	6-0-1	0-0-0	0-1-0	12-3-2*	-
Northwestern State	-	2-10-2*	13-3-2*	0-1-1	2-0-0	8-3-0*	-
at New Mexico							
NM State							
Northern Arizona							
Maryland Eastern Shore							
Akron/UC Irvine							
at NM State							
at UTSA							
at LA Tech							
at Southern Miss							
FIU							
Florida Atlantic							
UTSA							
at WKU							
at Marshall							
UAB							
Middle Tennessee							
LA Tech							
Southern Miss							
at North Texas							
at Rice							
at Florida Atlantic							
at FIU							
Old Dominion							
Charlotte							
vs. TBD							
vs. TBD							
vs. TBD							
vs. TBD							

2016-17 UTEP BASKETBALL

HIGHS AND LOWS

- 2016-17 UTEP Highs -

1st Half Points	45 vs. LA College (11/12/16)
2nd Half Points	48 vs. Western Michigan (11/18/16)
Total Points	88 vs. LA College (11/12/16)
Field Goals	34 vs. LA College (11/12/16)
Field Goals Att.	63 vs. SE Louisiana (11/23/16)
Field Goal Pct.	.587 vs. Western Michigan (11/18/16)
3pt Field Goals	8 three times
3pt Field Goals Att.	25 vs. NW State (12/3/16)
3pt Field Goal Pct.	.533 vs. LA College (11/12/16)
Free Throws	23 vs. Western Michigan (11/18/16)
Free Throws Att.	30 vs. Western Michigan (11/18/16)
FT Pct.	.767 vs. Western Michigan (11/18/16)
Off. Rebounds	14 vs. SE Louisiana (11/23/16)
Def. Rebounds	42 vs. LA College (11/12/16)
Total Rebounds	52 vs. LA College (11/12/16)
Assists	29 vs. LA College (11/12/16)
Steals	10 vs. SE Louisiana (11/23/16)
Blocked Shots	7 vs. Wake Forest (11/17/16)
Turnovers	22 vs. LA College (11/12/16)
Fouls	27 vs. NM State (12/3/16)

- 2016-17 UTEP Lows -

1st Half Points	27 vs. SE Louisiana (11/23/16)
2nd Half Points	21 vs. Miss. State (11/20/16)
Total Points	54 vs. Miss. State (11/20/16)
Field Goals	19 vs. Miss. State (11/20/16)
Field Goals Att.	46 vs. Western Michigan (11/18/16)
Field Goal Pct.	.333 vs. SE Louisiana (11/23/16)
3pt Field Goals	4 vs. Miss. State (11/20/16)
3pt Field Goals Att.	14 vs. Wake Forest (11/17/16)
3pt Field Goal Pct.	.182 vs. Miss. State (11/20/16)
Free Throws	9 vs. SE Louisiana (11/23/16)
Free Throws Att.	17 vs. SE Louisiana (11/23/16)
FT Pct.	.524 vs. NW State (12/3/16)
Off. Rebounds	6 vs. Western Michigan (11/18/16)
Def. Rebounds	16 vs. Wake Forest (11/17/16)
Total Rebounds	24 vs. Wake Forest (11/17/16)
Assists	10 vs. Miss. State (11/20/16)
Steals	2 two times
Blocked Shots	2 two times
Turnovers	12 two times
Fouls	16 vs. SE Louisiana (11/23/16)

- 2016-17 Opponent Highs -

1st Half Points	63 by Wake Forest (11/17/16)
2nd Half Points	43 by Western Michigan (11/18/16)
Total Points	103 by Wake Forest (11/17/16)
Field Goals	35 by Wake Forest (11/17/16)
Field Goals Att.	62 by Western Michigan (11/18/16)
Field Goal Pct.	.593 by Wake Forest (11/17/16)
3pt Field Goals	13 by Wake Forest (11/17/16)
3pt Field Goals Att.	26 by NW State (12/3/16)
3pt Field Goal Pct.	.619 by Wake Forest (11/17/16)
Free Throws	20 by Wake Forest (11/17/16)
Free Throws Att.	27 by NW State (12/3/16)
FT Pct.	.857 by Miss. State (11/20/16)
Off. Rebounds	14 by SE Louisiana (11/23/16)
Def. Rebounds	33 by SE Louisiana (11/23/16)
Total Rebounds	47 by SE Louisiana (11/23/16)
Assists	22 by Wake Forest (11/17/16)
Steals	11 by LA College (11/12/16)
Blocked Shots	4 by SE Louisiana (11/23/16)
Turnovers	18 two times
Fouls	24 by Western Michigan (11/18/16)

- 2016-17 Opponent Lows -

1st Half Points	29 by LA College (11/12/16)
2nd Half Points	25 by LA College (11/12/16)
Total Points	54 by LA College (11/12/16)
Field Goals	18 by LA College (11/12/16)
Field Goals Att.	52 by Miss. State (11/20/16)
Field Goal Pct.	.300 by LA College (11/12/16)
3pt Field Goals	6 by SE Louisiana (11/23/16)
3pt Field Goals Att.	16 by SE Louisiana (11/23/16)
3pt Field Goal Pct.	.292 by LA College (11/12/16)
Free Throws	10 by SE Louisiana (11/23/16)
Free Throws Att.	14 by Miss. State (11/20/16)
FT Pct.	.481 by NW State (12/3/16)
Off. Rebounds	6 by LA College (11/12/16)
Def. Rebounds	18 by Western Michigan (11/18/16)
Total Rebounds	29 two times
Assists	11 by LA College (11/12/16)
Steals	5 two times
Blocked Shots	0 by Western Michigan (11/18/16)
Turnovers	8 by Miss. State (11/20/16)
Fouls	16 by SE Louisiana (11/23/16)

2016-17

MARGIN OF VICTORY/DEFEAT

Margin	Won By	Lost By	Record
1	-	-	-
2	-	-	-
3	-	-	-
4	-	-	-
5	-	-	-
6	-	-	-
7	-	1	0-1
8	-	-	-
9	-	-	-
10	1	-	1-0
11	-	-	-
12	-	1	0-1
13	-	-	-
14	-	-	-
15	-	-	-
16	-	1	0-1
17	-	-	-
18	-	-	-
19	-	-	-
20	-	-	-
21	-	-	-
22	-	1	0-1
23	-	-	-
24	-	-	-
25	-	-	-
26	-	-	-
27	-	-	-
28	-	-	-
29	-	-	-
30	-	-	-
34	1	-	1-0

Largest Home Win 34 (88-54) vs. LA College (11-12-16)

Largest Home Loss 16 (72-56) vs. SE La. (11-23-16)

Largest Road Win N/A

Largest Road Loss N/A

Largest Neutral Win 10 (85-75), Western Michigan (11-18-16)

Largest Neutral Loss 22 (103-81) vs. Wake Forest (11-17-16)

UTEP SCORING

	1st Half	2nd Half	OT	Total
UTEP	220	211	0	431
Opponents	238	206	0	444

SCORING AVERAGE

	1st Half	2nd Half	OT	Total
UTEP	36.7	35.2	0.0	71.8
Opponent	39.7	34.3	0.0	74.0

THE LAST TIME

Team

65 percent shooting by a team

UTEP: vs. Colorado State (.660, 31-47), 1-24-89

Opponent: at UCF (.702, 40-57), 1-23-08

60 percent shooting by a team

UTEP: vs. FIU (.610, 25-41), 3-12-15

Opponent: at Oregon State (.605, 26-43), 3-30-09

Less than 30 percent shooting by a team

UTEP: vs. SMU (.292, 21-72), 2-25-09

Opponent: North Texas (.258, 17-66), 3-2-14

60 percent three-point shooting by a team (minimum 10 attempts)

UTEP: vs. UTSA (.647, 11-17), 3-5-16

Opponent: Wake Forest (.619, 13-21), 11-17-16

100 percent free throw shooting by a team (minimum 10 attempts)

UTEP: at Boise State (10-10), 1-1-05

Opponent: Southern Illinois (9-9), 11-27-15

45 made field goals in a game

UTEP: vs. Illinois Tech (46), 12-22-79

60 rebounds in a game

UTEP: vs. Houston Baptist (61), 11-30-91

Opponent: Colorado State (73), 11-28-15

25 assists in a game

UTEP: vs. LA College (29), 11-12-16

Opponent: at UCF (25), 1-23-08

10 blocked shots in a game

UTEP: vs. FIU (10), 3-12-15

Opponent: Kansas (11), 11-30-13

15 steals in a game

UTEP: vs. Norfolk State (18), 12-28-09

Opponent: Vanderbilt (15), 11-25-12

25 turnovers in a game

UTEP: at New Mexico State (27), 12-9-06

Opponent: Western New Mexico (26), 12-28-10

+20 rebound margin

UTEP: vs. LA College (52-29), 11-12-16

Opponent: Old Dominion (51-26), 2-25-16

Scored 100 points

UTEP: vs. Marshall (112), 1-4-16

Opponent: Wake Forest (101), 11-17-16

Seven players in double figures

UTEP: vs. Arkansas-Pine Bluff, 12-22-03

Six players in double figures

UTEP: at Florida Atlantic, 2-13-16

Opponent: New Mexico, 1-2-08

Five starters in double figures

UTEP: vs. Marshall, 3-10-16

Opponent: LA Tech, 1-31-16

70 percent shooting in a half

UTEP: at Charlotte (.750, 21-28), first half, 2-27-16

Opponent: Wake Forest (.739, 17-23), 2nd half, 11-17-16

65 percent shooting in a half

UTEP: vs. Western Mich. (.667, 14-21), second half, 11-18-16

Opponent: Wake Forest (.739, 17-23), 2nd half, 11-17-16

70 points in a half

UTEP: vs. New Mexico Highlands (78),

2nd half, 12-30-00

60 points in a half

UTEP: vs. Marshall (65), second half, 1-4-16

Opponent: Wake Forest (63), first half, 11-17-16

Individual

40-point scorer

UTEP: Randy Culpepper vs. East Carolina (45), 2-13-10

Opponent: James Harden, Arizona State (40), 11-30-08

30-point scorer

UTEP: Lee Moore vs. FIU (30), 3-9-16

Opponent: Gian Clavell, Colorado State (35), 11-28-15

Three players with 20 points in a game

UTEP: vs. Fresno State (Roy Smallwood 25, Jarvis Mullahon 23, Brandon Wolfram 23), 2-12-00

Opponent: Marshall (James Kelly 26, Jon Elmore 21, Ryan Taylor 20), 1-4-16

A player made 15 field goals

UTEP: Antoine Gillespie at Hawaii (15), 2-17-94

Opponent: Trey Johnson, Jackson State (15), 12-22-06

A player made five three-point field goals

UTEP: Omega Harris at FIU (5), 2-11-16

Opponent: Austin Loop, Marshall (6), 3-10-16

A player made 15 free throws

UTEP: Stefan Jackson vs. Marshall (20), 2-14-09

Opponent: Jontae Sherrod, East Carolina (15), 2-23-11

A player had 20 rebounds

UTEP: JoJo Garcia vs. BYU (22), 2-1-97

Opponent: Pascal Siakam, NM State (23), 12-2-15

A player had 15 rebounds

UTEP: Vince Hunter vs. Kent State (16), 12-22-14

Opponent: Brandan Stith, Old Dominion (15), 2-25-16

Two players had double-doubles in a game

UTEP: Vince Hunter (17 points-12 rebounds) and Cedrick Lang (13 points-10 rebounds) vs.

Xavier, 11-28-14

Opponent: James Kelly (13 points-11 rebounds) and Ryan Taylor (21 points-14 rebounds), Marshall, 3-10-16

A player had a double-double (points-rebounds)

UTEP: Matt Willms vs. Mississippi State

(12 points-11 rebounds), 11-20-16

Opponent: Dominic Nelson, SE Louisiana (10 points-11 rebounds), 11-23-16

A player had a double-double (points-assists)

UTEP: Jacques Streeter vs. Houston

(13 points-12 assists), 3-14-13

Opponent: Cameron Payne, Murray State (14 points-10 assists), 3-17-15

A player had a triple-double (points-rebounds-assists)

UTEP: Jason Williams vs. Lipscomb (17 points-11 rebounds-10 assists), 3-14-06

A player had 10 assists in a game

UTEP: Dominic Artis vs. LA College (13), 11-12-16

Opponent: Cameron Payne, Murray State (10), 3-17-15

A player led the team in scoring, rebounding and assists in the same game

UTEP: Lee Moore vs. FIU

(30 points-seven rebounds-five assists), 3-9-16

Opponent: Tucker Haymond, Western Michigan (20 points-eight rebounds-six assists), 11-18-16

A player had five steals in a game

UTEP: Earvin Morris at North Texas (6), 1-2-15

Opponent: Cortez Edwards, Southern Miss (5), 2-18-16

A player had five blocked shots in a game

UTEP: Matt Willms vs. Wake Forest (5), 11-17-16

Opponent: William Lee, UAB (5), 1-9-16

2016-17 UTEP ATTENDANCE

Site	Games	Total	Avg./game
Home	3	18,571	6190.3
Away	0	0	0.0
Neutral	3	8,238	2746.0
Total	6	26,809	4468.2

UTEP BY THE NUMBERS

Total games	2,374 (1,361-1,013)
Seasons of men's basketball	96th
Conference championships	12 (last in 2010)
NCAA Tournament appearances	17 (last in 2010)
NIT appearances	11 (last in 2015)
20-win seasons	26 (last in 2015)
Overtime games	105 (61-44)
UTEP 100-point games	30 (28-2)

2016-17 UTEP BASKETBALL

CHARTING THE MINERS

Charges Drawn

Jake Flaggert	4
Omega Harris	2
Dominic Artis	1
Matt Willms	1
UTEP	8
Opponents	3

Consecutive Games Scored

Omega Harris	34
Dominic Artis	19
Jake Flaggert	6
Matt Willms	6
Kelvin Jones	3
Paul Thomas	3
Trey Touchet	3
Chris Barnes	1
Deon Barrett	1
Ivan Venegas	1

Consecutive Games Scoring In Double Figures

Dominic Artis	5
Jake Flaggert	1
Omega Harris	1
Trey Touchet	1

Consecutive Games With A 3-Pointer

Jake Flaggert	4
Omega Harris	3
Trey Touchet	3
Dominic Artis	1
Deon Barrett	1

Double Doubles

Player	Season	Career
Dominic Artis	1	4
Matt Willms	1	1

Triple Doubles

Player	Season	Career
None		

Double Figure Rebounding Games

Player	Season	Career
Paul Thomas	2	2
Dominic Artis	1	4
Matt Willms	1	1

Double Figure Scoring Games

Player	Season	Career
Dominic Artis	5	24
Omega Harris	4	30
Matt Willms	4	12
Jake Flaggert	2	3
Trey Touchet	1	1

Dunks

Player	Season	Career
Matt Willms	6	56
Jake Flaggert	1	3
Omega Harris	1	3
Kelvin Jones	1	1
Paul Thomas	0	2
UTEP	9	65
Opponents	16	-

Fast Break Points

Opponent	UTEP	Opp.	Margin
LA College	14	8	+6
vs. Wake Forest	2	8	-6
vs. Western Michigan	6	4	+2
vs. Mississippi State	6	6	Even
SE Louisiana	2	8	-6
Northwestern St.	2	2	Even
at New Mexico			
NM State			
Northern Arizona			
Maryland Eastern Shore			
TBD			
at NM State			
at UTSA			
at LA Tech			
at Southern Miss			
FIU			
Florida Atlantic			
UTSA			
at WKU			
at Marshall			
UAB			
Middle Tennessee			
LA Tech			
Southern Miss			
at North Texas			
at Rice			
at Florida Atlantic			
at FIU			
Old Dominion			
Charlotte			
Totals	32	36	-4

First Points For UTEP

Jake Flaggert	2
Matt Willms	2
Dominic Artis	1
Matt Willms	1

First Substitution For UTEP

Paul Thomas	2
Chris Barnes	1
Trey Touchet	1
Matt Willms	1

How UTEP Scored Its First Points

Three-pointer	2
Free throw	1
Hook shot	1
Layup	1
Tip-in	1
Dunk	0
Jumper	0
Runner	0

Jump Balls Forced

UTEP	0
Opponents	3

Opening Tip Controlled By ...

UTEP	5 (1-4)
Opponents	1 (1-0)

Points In The Paint

Opponent	UTEP	Opp.	Margin
LA College	52	18	+34
vs. Wake Forest	32	30	+2
vs. Western Michigan	32	18	+14
vs. Mississippi State	18	20	-2
SE Louisiana	22	32	-10
Northwestern St.	28	20	+8
at New Mexico			
NM State			
Northern Arizona			
Maryland Eastern Shore			
TBD			
at NM State			
at UTSA			
at LA Tech			
at Southern Miss			
FIU			
Florida Atlantic			
UTSA			
at WKU			
at Marshall			
UAB			
Middle Tennessee			
LA Tech			
Southern Miss			
at North Texas			
at Rice			
at Florida Atlantic			
at FIU			
Old Dominion			
Charlotte			
Totals	184	138	+46

Points Off Turnovers

Opponent	UTEP	Opp.	Margin
LA College	20	19	+1
vs. Wake Forest	20	24	-4
vs. Western Michigan	15	20	-5
vs. Mississippi State	5	10	-5
SE Louisiana	21	14	+7
Northwestern St.	8	16	-8
at New Mexico			
NM State			

2016-17 UTEP BASKETBALL

CHARTING THE MINERS

Northern Arizona			
Maryland Eastern Shore			
TBD			
at NM State			
at UTSA			
at LA Tech			
at Southern Miss			
FIU			
Florida Atlantic			
UTSA			
at WKU			
at Marshall			
UAB			
Middle Tennessee			
LA Tech			
Southern Miss			
at North Texas			
at Rice			
at Florida Atlantic			
at FIU			
Old Dominion			
Charlotte			
Totals	89	103	-14

Second Chance Points

Opponent	UTEP	Opp.	Margin
LA College	6	5	+1
vs. Wake Forest	8	14	-6
vs. Western Michigan	11	18	-7
vs. Mississippi State	8	8	Even
SE Louisiana	8	11	-3
Northwestern St.	7	9	-2
at New Mexico			
NM State			
Northern Arizona			
Maryland Eastern Shore			
TBD			
at NM State			
at UTSA			
at LA Tech			
at Southern Miss			
FIU			
Florida Atlantic			
UTSA			
at WKU			
at Marshall			
UAB			
Middle Tennessee			
LA Tech			
Southern Miss			
at North Texas			
at Rice			
at Florida Atlantic			
at FIU			
Old Dominion			
Charlotte			
Totals	48	65	-17

Three-Point Plays (FG+FT)

Dominic Artis	3
Omega Harris	3
Paul Thomas	1
Matt Willms	1
UTEP	8
Opponents	8

Four-Point Plays

UTEP	0
Opponents	1

Times Led UTEP In Assists

Player	Season	Career
Dominic Artis	6	28
Jake Flaggert	1	1
Omega Harris	0	7

Times Led UTEP In Rebounding

Player	Season	Career
Paul Thomas	4	5
Dominic Artis	2	11
Matt Willms	1	9
Jake Flaggert	0	1

Times Led UTEP In Scoring

Player	Season	Career
Dominic Artis	3	10
Omega Harris	2	7
Matt Willms	1	3

20-Point Games

Player	Season	Career
Dominic Artis	2	5
Omega Harris	1	3
Matt Willms	1	2

30-Point Games

Player	Season	Career
Dominic Artis	0	1

2016-17 UTEP BASKETBALL

Starting Lineups

Opponent	SG	PG	PF	SF	C
Louisiana College	Harris	Artis	Thomas	Flaggert	Winn^
vs. Wake Forest	Harris	Artis	Winn	Flaggert	Willms
vs. Western Michigan	Harris	Artis	Thomas	Flaggert	Willms
vs. Mississippi State	Harris	Artis	Thomas	Flaggert	Willms
Southeastern Louisiana	Harris	Artis	Jones	Barrett*	Willms
Northwestern State	Touchet	Artis	Thomas	Flaggert	Willms
at New Mexico					
NM State					
Northern Arizona					
Maryland Eastern Shore					
Akron/UC Irvine					
at NM State					
at UTSA					
at LA Tech					
at Southern Miss					
FIU					
Florida Atlantic					
UTSA					
at WKU					
at Marshall					
UAB					
Middle Tennessee					
LA Tech					
Southern Miss					
at North Texas					
at Rice					
at Florida Atlantic					
at FIU					
Old Dominion					
Charlotte					
vs. TBD					

Starting Lineup Records (sorted by win percentage)

Harris (g) - Artis (g) - Thomas (f) - Flaggert (f) - Winn (f)	1-0
Harris (g) - Artis (g) - Thomas (f) - Flaggert (f) - Willms (c)	1-1
Harris (g) - Artis (g) - Barrett (g) - Jones (f) - Willms (c)	0-1
Harris (g) - Artis (g) - Winn (f) - Flaggert (f) - Willms (c)	0-1
Touchet (g) - Artis (g) - Thomas (f) - Flaggert (f) - Willms (c)	0-1

^ Started as a third forward

* Started as a third guard

Started as a fourth guard

UTEP Point Production

Seniors	pts	rbs
Dominic Artis	94	43
Totals	94	43
Average	15.7	7.2
Percentage	21.8	21.9
Juniors	pts	rbs
Jake Flaggert	43	16
Omega Harris	78	13
Matt Willms	76	30
Totals	197	59
Average	32.8	9.8
Percentage	45.7	30.1

Sophomores

	pts	rbs
Paul Thomas	22	42
Trey Touchet	33	6
Ivan Venegas	2	2
Totals	86	67
Average	14.3	11.2
Percentage	20.0	34.2

Freshmen

	pts	rbs
Chris Barnes	6	4
Deon Barrett	25	4
Tim Cameron	3	3
Kelvin Jones	20	14
Jose Martinez	0	1
Hudson Urbanus	0	1
Totals	54	27
Average	9.0	4.5
Percentage	12.5	13.8

UTEP Bench Scoring

Player	Games Off Bench	Points Scored	Avg.
Terry Winn	1	10	10.0
Matt Willms	1	9	9.0
Paul Thomas	2	12	6.0
Jake Flaggert	1	6	6.0
Deon Barrett	5	25	5.0
Trey Touchet	5	20	4.0
Kelvin Jones	5	16	3.2
Chris Barnes	4	6	1.5
Tim Cameron	3	3	1.0
Ivan Venegas	4	2	0.5
Jose Martinez	3	0	0.0
Hudson Urbanus	3	0	0.0
Adrian Moore	1	0	0.0
Totals	6	109	18.2
Opponents	6	132	22.0

Crunch Time Free Throws

(Free throws shot in the final three minutes of regulation and overtime of games decided by less than 10 points)

Player	FT-FTA	PCT
Team	0-0	.000
Opponents	2-2	1.000

Miners In Double Figures

UTEP's record when each of the following players score in double figures:

Player	Record
Dominic Artis	1-4
Jake Flaggert	1-1
Omega Harris	2-2
Trey Touchet	0-1
Matt Willms	1-3

Record When . . .

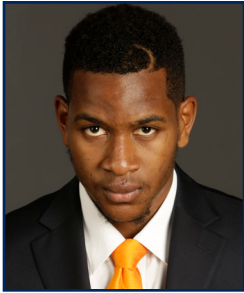
Seven players score in DF	0-0
Six players score in DF	0-0
Five players score in DF	1-0
Four players score in DF	0-0
Three players score in DF	0-3
Two players score in DF	1-1
One player scores in DF	0-0
No players score in DF	0-0

Scoring Breakdown

Player	1st	2nd	OT	Total
Dominic Artis	42	52	-	94
Chris Barnes	2	4	-	6
Deon Barrett	9	16	-	25
Tim Cameron	0	3	-	3
Jake Flaggert	26	17	-	43
Omega Harris	43	35	-	78
Kelvin Jones	8	12	-	20
Jose Martinez	0	0	-	0
Paul Thomas	12	10	-	22
Trey Touchet	19	14	-	33
Ivan Venegas	0	2	-	2
Matt Willms	45	31	-	76
Totals	220	211	-	431

15 DOMINIC ARTIS

GUARD • 6-3 • 190 • SR-1L • SAN FRANCISCO, CALIF. (FINDLAY PREP/OREGON)



2016-17 Notes: Career totals are 829 points, 320 rebounds, 358 assists and 116 steals ... leads the Miners in scoring (15.7 ppg), rebounding (7.2 rpg), assists (7.2 apg), steals (2.2 spg) and minutes (35.8 mpg) ... shooting 43.2 percent from the field, 28 percent from outside and 57.5 percent from the line ... posted a near-triple double in the opener versus Louisiana College with eight points, nine rebounds, 13 assists and four steals ... the 13 assists were a career high and tied for the third-top total in UTEP history ... led the Miners with 24 points (8-for-12 FGs, 3-for-5 3FGs, 5-for-8 FTs) along with six assists against Wake Forest ... came within one assist of a triple-double versus Western Michigan with 20 points, 10 rebounds, nine assists and two steals ... shot a career-high 14 free throws against the Broncos ... scored 15 points with two steals versus Mississippi State ... matched his season best with four steals against Southeastern Louisiana ... filled up the stat sheet once again versus Northwestern State (16 points, nine rebounds, seven assists).

SEASON & CAREER HIGHS

Field Goals

Season: 8, Wake Forest (11-17-16)
Career: 12, Marshall (2-4-16)

Field Goal Attempts

Season: 16, Southeastern Louisiana (11-23-16)
Career: 23, at UTEP (12-19-12)

Three-Point Field Goals

Season: 3, Wake Forest (11-17-16)
Career: 7, UTRGV (12-29-15)

Three-Point Field Goal Attempts

Season: 6, two times, last Mississippi State (11-20-16)
Career: 10, UTRGV (12-29-15)

Free Throws

Season: 10, Western Michigan (11-18-16)
Career: 10, Western Michigan (11-18-16)

Free Throw Attempts

Season: 14, Western Michigan (11-18-16)
Career: 14, Western Michigan (11-18-16)

Rebounds

Season: 10, Western Michigan (11-18-16)
Career: 12, Sam Houston State (12-22-15)

Assists

Season: 13, LA College (11-12-16)
Career: 13, LA College (11-12-16)

Blocks

Season: N/A
Career: 1, several times, last vs. FIU (3-9-16)

Steals

Season: 4, two times, last Southeastern Louisiana (11-23-16)
Career: 5, Arkansas-Pine Bluff (12-1-12)

Points

Season: 24, Wake Forest (11-17-16)
Career: 33, Marshall (2-4-16)

Minutes Played

Season: 39, Mississippi State (11-20-16)
Career: 45, at UTEP (12-19-12)

Miscellaneous Stats

Games with double figure points 42
Games with double figure rebounds 4
Double-doubles 4
Games playing 30+ minutes 36

2016-17 GAME-BY-GAME

Opponent	FG	Pct.	3FG	Pct.	FT	Pct.	O-D-R	PF	A	TO	B	S	PTS	MIN
N12 LA College [^]	3-8	.375	0-1	.000	2-2	1.000	2-7-9	5	13	5	0	4	8	28
N17 vs. Wake Forest ^{%^}	8-12	.667	3-5	.600	5-8	.625	0-4-4	1	6	6	0	0	24	35
N18 vs. Western Mich. ^{%^}	4-9	.444	2-6	.333	10-14	.714	0-10-10	3	9	4	0	2	20	38
N20 vs. Mississippi State ^{%^6-14}	4-29	.138	1-6	.167	2-3	.667	1-4-5	4	3	1	0	2	15	39
N23 SE Louisiana [^]	5-16	.313	0-2	.000	1-4	.250	2-4-6	2	5	4	0	4	11	38
D3 Northwestern St. [^]	6-15	.400	1-5	.200	3-9	.333	1-8-9	2	7	7	0	1	16	37
D7 at New Mexico														
D13 NM State														
D17 Northern Arizona														
D21 MD Eastern Shore ⁺														
D22 TBD ⁺														
D30 at NM State														
J1 at UTSA [*]														
J5 at LA Tech [*]														
J7 at Southern Miss [*]														
J12 FIU [*]														
J14 Florida Atlantic [*]														
J21 UTSA [*]														
J26 at WKU [*]														
J28 at Marshall [*]														
F2 UAB [*]														
F4 Middle Tennessee [*]														
F9 LA Tech [*]														
F11 Southern Miss [*]														
F16 at North Texas [*]														
F18 at Rice [*]														
F23 at Florida Atlantic [*]														
F25 at FIU [*]														
M2 Old Dominion [*]														
M4 Charlotte [*]														
M8 vs. TBD [#]														

[^] denotes starter | ^{*} Conference USA game | [%] Gildan Charleston Classic (Charleston, S.C.)

⁺ WestStar Bank Don Haskins Sun Bowl Invitational | [#] C-USA Championship (Birmingham, Ala.)

5 CHRIS BARNES

GUARD • 6-4 • 190 • FR-HS • COMPTON, CALIF. (COMPTON HS)



2016-17 Notes: Has appeared in four games with six points (1.5 ppg) and four rebounds (1.0 rpg) ... played 12 minutes in his Miner debut against Louisiana College, collecting two points and two rebounds ... scored two points in five minutes versus Wake Forest ... also put two points on the board against Northwestern State.

SEASON & CAREER HIGHS

Field Goals

Season: 1, three times, last Northwestern State (12-3-16)
 Career: 1, three times, last Northwestern State (12-3-16)

Field Goal Attempts

Season: 2, four times, last Northwestern State (12-3-16)
 Career: 2, four times, last Northwestern State (12-3-16)

Three-Point Field Goals

Season: N/A
 Career: N/A

Three-Point Field Goal Attempts

Season: 1, two times, last Northwestern State (12-3-16)
 Career: 1, two times, last Northwestern State (12-3-16)

Free Throws

Season: N/A
 Career: N/A

Free Throw Attempts

Season: N/A
 Career: N/A

Rebounds

Season: 2, LA College (11-12-16)
 Career: 2, LA College (11-12-16)

Assists

Season: 1, Northwestern State (12-3-16)
 Career: 1, Northwestern State (12-3-16)

Blocks

Season: N/A
 Career: N/A

Steals

Season: 1, Southeastern Louisiana (11-23-16)
 Career: 1, Southeastern Louisiana (11-23-16)

Points

Season: 2, three times, last Northwestern State (12-3-16)
 Career: 2, three times, last Northwestern State (12-3-16)

Minutes Played

Season: 12, LA College (11-12-16)
 Career: 12, LA College (11-12-16)

Miscellaneous Stats

Games with double figure points 0
 Games with double figure rebounds 0
 Double-doubles 0
 Games playing 30+ minutes 0

2016-17 GAME-BY-GAME

Opponent	FG	Pct.	3FG	Pct.	FT	Pct.	O-D-R	PF	A	TO	B	S	PTS	MIN
N12 LA College	1-2	.500	0-1	.000	0-1	.000	0-2-2	1	0	1	0	0	2	12
N17 vs. Wake Forest%	1-2	.000	0-0	.000	0-0	.000	1-0-1	0	0	1	0	0	2	5
N18 vs. Western Mich.%							-DNP-							
N20 vs. Mississippi State%							-DNP-							
N23 SE Louisiana	0-2	.000	0-0	.000	0-0	.000	0-0-0	0	0	0	0	1	0	3
D3 Northwestern St.	1-2	.500	0-1	.000	0-0	.000	0-1-1	3	1	1	0	0	2	11
D7 at New Mexico														
D13 NM State														
D17 Northern Arizona														
D21 MD Eastern Shore+														
D22 TBD+														
D30 at NM State														
J1 at UTSA*														
J5 at LA Tech*														
J7 at Southern Miss*														
J12 FIU*														
J14 Florida Atlantic*														
J21 UTSA*														
J26 at WKU*														
J28 at Marshall*														
F2 UAB*														
F4 Middle Tennessee*														
F9 LA Tech*														
F11 Southern Miss*														
F16 at North Texas*														
F18 at Rice*														
F23 at Florida Atlantic*														
F25 at FIU*														
M2 Old Dominion*														
M4 Charlotte*														
M8 vs. TBD#														

^ denotes starter | * Conference USA game | % Gildan Charleston Classic (Charleston, S.C.)

+ WestStar Bank Don Haskins Sun Bowl Invitational | # C-USA Championship (Birmingham, Ala.)

23 DEON BARRETT

GUARD • 5-10 • 150 • FR-HS • LANCASTER, TEXAS (LANCASTER HS)



2016-17 Notes: Has been a key rotation player as a freshman with 97 minutes (16.2 avg.) in six games ... averaging 4.2 points and 1.8 assists ... shooting 38.1 percent from the field, 40 percent from beyond the arc and 75 percent from the charity stripe ... assist/turnover ratio is 2.75 (11-4) ... dished out six assists with only one turnover and scored six points in his first game for UTEP against Louisiana College ... scored eight points in 24 minutes versus Wake Forest ... made his first career start against Southeastern Louisiana ... scored all eight of his points over 10 second-half minutes versus Northwestern State.

SEASON & CAREER HIGHS

Field Goals

Season: 3, two times, last Northwestern State (12-3-16)
 Career: 3, two times, last Northwestern State (12-3-16)

Field Goal Attempts

Season: 6, two times, last Northwestern State (12-3-16)
 Career: 6, two times, last Northwestern State (12-3-16)

Three-Point Field Goals

Season: 2, two times, last Northwestern State (12-3-16)
 Career: 2, two times, last Northwestern State (12-3-16)

Three-Point Field Goal Attempts

Season: 5, two times, last Northwestern State (12-3-16)
 Career: 5, two times, last Northwestern State (12-3-16)

Free Throws

Season: 3, LA College (11-12-16)
 Career: 3, LA College (11-12-16)

Free Throw Attempts

Season: 4, LA College (11-12-16)
 Career: 4, LA College (11-12-16)

Rebounds

Season: 1, four times, last Northwestern State (12-3-16)
 Career: 1, four times, last Northwestern State (12-3-16)

Assists

Season: 6, LA College (11-12-16)
 Career: 6, LA College (11-12-16)

Blocks

Season: N/A
 Career: N/A

Steals

Season: 1, LA College (11-12-16)
 Career: 1, LA College (11-12-16)

Points

Season: 8, two times, last Northwestern State (12-3-16)
 Career: 8, two times, last Northwestern State (12-3-16)

Minutes Played

Season: 24, Wake Forest (11-17-16)
 Career: 24, Wake Forest (11-17-16)

Miscellaneous Stats

Games with double figure points 0
 Games with double figure rebounds 0
 Double-doubles 0
 Games playing 30+ minutes 0

2016-17 GAME-BY-GAME

Opponent	FG	Pct.	3FG	Pct.	FT	Pct.	O-D-R	PF	A	TO	B	S	PTS	MIN
N12 LA College	1-3	.333	1-2	.500	3-4	.750	0-1-1	0	6	1	0	1	6	15
N17 vs. Wake Forest%	3-5	.600	2-4	.500	0-0	.000	0-0-0	1	2	1	0	0	8	24
N18 vs. Western Mich.%	1-4	.250	1-3	.333	0-0	.000	0-1-1	0	0	2	0	0	3	10
N20 vs. Mississippi State%	0-1	.000	0-1	.000	0-0	.000	0-0-0	0	0	0	0	0	0	16
N23 SE Louisiana^	0-2	.000	0-0	.000	0-0	.000	1-0-1	0	2	0	0	0	0	12
D3 Northwestern St.	3-6	.500	2-5	.400	0-0	.000	0-1-1	2	1	0	0	0	8	20
D7 at New Mexico														
D13 NM State														
D17 Northern Arizona														
D21 MD Eastern Shore+														
D22 TBD+														
D30 at NM State														
J1 at UTSA*														
J5 at LA Tech*														
J7 at Southern Miss*														
J12 FIU*														
J14 Florida Atlantic*														
J21 UTSA*														
J26 at WKU*														
J28 at Marshall*														
F2 UAB*														
F4 Middle Tennessee*														
F9 LA Tech*														
F11 Southern Miss*														
F16 at North Texas*														
F18 at Rice*														
F23 at Florida Atlantic*														
F25 at FIU*														
M2 Old Dominion*														
M4 Charlotte*														
M8 vs. TBD#														

^ denotes starter | * Conference USA game | % Gildan Charleston Classic (Charleston, S.C.)

+ WestStar Bank Don Haskins Sun Bowl Invitational | # C-USA Championship (Birmingham, Ala.)

3 TIM CAMERON

GUARD • 6-4 • 180 • FR-HS • NORCROSS, GA. (HARGRAVE MILITARY ACADEMY)



2016-17 Notes: Hit a three-pointer and pulled down three rebounds in six minutes versus Louisiana College ... also appeared in the Southeastern Louisiana and Northwestern State games.

SEASON & CAREER HIGHS

Field Goals

Season: 1, LA College (11-12-16)

Career: 1, LA College (11-12-16)

Field Goal Attempts

Season: 3, LA College (11-12-16)

Career: 3, LA College (11-12-16)

Three-Point Field Goals

Season: 1, LA College (11-12-16)

Career: 1, LA College (11-12-16)

Three-Point Field Goal Attempts

Season: 1, LA College (11-12-16)

Career: 1, LA College (11-12-16)

Free Throws

Season: N/A

Career: N/A

Free Throw Attempts

Season: N/A

Career: N/A

Rebounds

Season: 3, LA College (11-12-16)

Career: 3, LA College (11-12-16)

Assists

Season: N/A

Career: N/A

Blocks

Season: N/A

Career: N/A

Steals

Season: N/A

Career: N/A

Points

Season: 3, LA College (11-12-16)

Career: 3, LA College (11-12-16)

Minutes Played

Season: 6, LA College (11-12-16)

Career: 6, LA College (11-12-16)

Miscellaneous Stats

Games with double figure points 0

Games with double figure rebounds 0

Double-doubles 0

Games playing 30+ minutes 0

2016-17 GAME-BY-GAME

Opponent	FG	Pct.	3FG	Pct.	FT	Pct.	O-D-R	PF	A	TO	B	S	PTS	MIN
N12 LA College	1-3	.333	1-1	1.000	0-0	.000	1-2-3	1	0	1	0	0	3	6
N17 vs. Wake Forest%							-DNP-							
N18 vs. Western Mich.%							-DNP-							
N20 vs. Mississippi State%							-DNP-							
N23 SE Louisiana	0-0	.000	0-0	.000	0-0	.000	0-0-0	0	0	0	0	0	0	1
D3 Northwestern St.	0-0	.000	0-0	.000	0-0	.000	0-0-0	0	0	0	0	0	0	1
D7 at New Mexico														
D13 NM State														
D17 Northern Arizona														
D21 MD Eastern Shore+														
D22 TBD+														
D30 at NM State														
J1 at UTSA*														
J5 at LA Tech*														
J7 at Southern Miss*														
J12 FIU*														
J14 Florida Atlantic*														
J21 UTSA*														
J26 at WKU*														
J28 at Marshall*														
F2 UAB*														
F4 Middle Tennessee*														
F9 LA Tech*														
F11 Southern Miss*														
F16 at North Texas*														
F18 at Rice*														
F23 at Florida Atlantic*														
F25 at FIU*														
M2 Old Dominion*														
M4 Charlotte*														
M8 vs. TBD#														

^ denotes starter | * Conference USA game | % Gildan Charleston Classic (Charleston, S.C.)

+ WestStar Bank Don Haskins Sun Bowl Invitational | # C-USA Championship (Birmingham, Ala.)

11 JAKE FLAGGERT

FORWARD • 6-7 • 200 • JR-2L • LUCAS, TEXAS (LOVEJOY HS)



2016-17 Notes: Has taken a total of 28 charges in his career, including a Conference USA-leading 18 in 2015-16 ... leads the Miners once again with four charges drawn in 2016-17 ... has started five games, averaging 7.2 points and 2.7 rebounds ... shooting 38.7 percent from the floor, 37 percent from three-point territory and is perfect (9-for-9) from the line ... 27 of his 31 shot attempts have come from outside the three-point line ... made his fifth career start in the opener versus Louisiana College ... finished with five points, four rebounds, two assists, a block and three charges drawn ... broke out against Western Michigan with 13 points, making 4-of-5 three pointers ... played his career-most 35 minutes versus the Broncos ... saw 33 more minutes of court time against Mississippi State with three points, four rebounds and a career-high three assists ... came off the bench for the first time this season versus Southeastern Louisiana and hit a couple of three-pointers with three rebounds ... returned to the starting lineup and produced a career-high 14 points against Northwestern State.

SEASON & CAREER HIGHS

Field Goals

Season: 4, two times, last Northwestern State (12-3-16)
 Career: 4, two times, last Northwestern State (12-3-16)

Field Goal Attempts

Season: 9, Northwestern State (12-3-16)
 Career: 9, Northwestern State (12-3-16)

Three-Point Field Goals

Season: 4, Western Michigan (11-18-16)
 Career: 4, Western Michigan (11-18-16)

Three-Point Field Goal Attempts

Season: 8, Mississippi State (11-20-16)
 Career: 8, Mississippi State (11-20-16)

Free Throws

Season: 4, Northwestern State (12-3-16)
 Career: 4, Northwestern State (12-3-16)

Free Throw Attempts

Season: 4, Northwestern State (12-3-16)
 Career: 4, three times, last Northwestern State (12-3-16)

Rebounds

Season: 4, two times, last Mississippi State (11-20-16)
 Career: 5, two times, last at NM State (12-2-15)

Assists

Season: 3, Mississippi State (11-20-16)
 Career: 3, Mississippi State (11-20-16)

Blocks

Season: 1, three times, last Southeastern Louisiana (11-23-16)
 Career: 1, seven times, last Southeastern Louisiana (11-23-16)

Steals

Season: 1, two times, last Northwestern State (12-3-16)
 Career: 2, two times, last Loyola (11-14-15)

Points

Season: 14, Northwestern State (12-3-16)
 Career: 14, Northwestern State (12-3-16)

Minutes Played

Season: 35, Western Michigan (11-18-16)
 Career: 35, Western Michigan (11-18-16)

Miscellaneous Stats

Games with double figure points 3
 Games with double figure rebounds 0
 Double-doubles 0
 Games playing 30+ minutes 2

2016-17 GAME-BY-GAME

Opponent	FG	Pct.	3FG	Pct.	FT	Pct.	O-D-R	PF	A	TO	B	S	PTS	MIN
N12 LA College [^]	1-4	.250	1-3	.333	2-2	1.000	2-2-4	1	2	2	1	0	5	25
N17 vs. Wake Forest ^{%^}	0-0	.000	0-0	.000	2-2	1.000	1-0-1	4	0	0	0	0	2	16
N18 vs. Western Mich. ^{%^}	4-6	.667	4-5	.800	1-1	1.000	0-2-2	2	0	2	1	0	13	35
N20 vs. Mississippi State ^{%^1-8}	.125	1-8	.125	0-0	.000	2-2-4	3	3	3	0	0	0	3	33
N23 SE Louisiana	2-4	.500	2-4	.500	0-0	.000	0-3-3	5	1	0	1	1	6	28
D3 Northwestern St. [^]	4-9	.444	2-7	.286	4-4	1.000	0-2-2	5	0	0	0	1	14	27
D7 at New Mexico														
D13 NM State														
D17 Northern Arizona														
D21 MD Eastern Shore ⁺														
D22 TBD ⁺														
D30 at NM State														
J1 at UTSA [*]														
J5 at LA Tech [*]														
J7 at Southern Miss [*]														
J12 FIU [*]														
J14 Florida Atlantic [*]														
J21 UTSA [*]														
J26 at WKU [*]														
J28 at Marshall [*]														
F2 UAB [*]														
F4 Middle Tennessee [*]														
F9 LA Tech [*]														
F11 Southern Miss [*]														
F16 at North Texas [*]														
F18 at Rice [*]														
F23 at Florida Atlantic [*]														
F25 at FIU [*]														
M2 Old Dominion [*]														
M4 Charlotte [*]														
M8 vs. TBD [#]														

[^] denotes starter | ^{*} Conference USA game | [%] Gildan Charleston Classic (Charleston, S.C.)

⁺ WestStar Bank Don Haskins Sun Bowl Invitational | [#] C-USA Championship (Birmingham, Ala.)

2 OMEGA HARRIS

GUARD • 6-3 • 165 • JR-2L • BETHANY, OKLA. (PUTNAM CITY WEST HS)



2016-17 Notes: Second on the Miners in scoring (15.6 ppg) while also averaging 2.6 rebounds, 2.0 assists and 1.4 steals ... has a .482 field goal percentage, .318 three-point percentage and .850 free throw percentage ... established career-highs for field goals made (nine) and points (24) in the opener against Louisiana College ... made 9-of-14 shots and 4-of-6 threes in a team-high 29 minutes ... added 16 points (6-for-6 FTs) and three steals versus Wake Forest ... went 6-for-7 from the charity stripe, part of a 17-point, four-assist effort against Western Michigan ... recorded three steals versus Southeastern Louisiana ... suspended for the Northwestern State game.

SEASON & CAREER HIGHS

Field Goals

Season: 9, LA College (11-12-16)

Career: 9, LA College (11-12-16)

Field Goal Attempts

Season: 14, LA College (11-12-16)

Career: 14, two times, last LA College (11-12-16)

Three-Point Field Goals

Season: 4, LA College (11-12-16)

Career: 5, two times, last at FIU (2-11-16)

Three-Point Field Goal Attempts

Season: 6, LA College (11-12-16)

Career: 9, three times, last Southern Miss (2-18-16)

Free Throws

Season: 6, two times, last Western Michigan (11-18-16)

Career: 6, four times, last Western Michigan (11-18-16)

Free Throw Attempts

Season: 7, Western Michigan (11-18-16)

Career: 8, NM State (12-19-15)

Rebounds

Season: 4, Mississippi State (11-20-16)

Career: 6, two times, last at Florida Atlantic (2-13-16)

Assists

Season: 4, Western Michigan (11-18-16)

Career: 5, two times, last Sam Houston State (12-22-15)

Blocks

Season: 1, two times, last Southeastern Louisiana (11-23-16)

Career: 2, at Florida Atlantic (2-5-15)

Steals

Season: 3, two times, last Southeastern Louisiana (11-23-16)

Career: 4, two times, last at Florida Atlantic (2-5-15)

Points

Season: 24, LA College (11-12-16)

Career: 24, LA College (11-12-16)

Minutes Played

Season: 37, Western Michigan (11-18-16)

Career: 39, at Florida Atlantic (2-13-16)

Miscellaneous Stats

Games with double figure points 29

Games with double figure rebounds 0

Double-doubles 0

Games playing 30+ minutes 31

2016-17 GAME-BY-GAME

Opponent	FG	Pct.	3FG	Pct.	FT	Pct.	O-D-R	PF	A	TO	B	S	PTS	MIN
N12 LA College [^]	9-14	.643	4-6	.667	2-2	1.000	0-2-2	1	2	2	0	1	24	29
N17 vs. Wake Forest ^{%^}	5-12	.417	0-4	.000	6-6	1.000	0-2-2	2	2	3	0	3	16	32
N18 vs. Western Mich. ^{%^}	5-10	.500	1-5	.200	6-7	.857	0-3-3	4	4	1	1	0	17	37
N20 vs. Mississippi State ^{%^}	3-9	.333	1-4	.250	1-2	.500	1-3-4	2	1	2	0	0	8	30
N23 SE Louisiana [^]	5-11	.455	1-3	.333	2-3	.667	0-2-2	2	1	3	1	3	13	35
D3 Northwestern St.							-DNP-							
D7 at New Mexico														
D13 NM State														
D17 Northern Arizona														
D21 MD Eastern Shore+														
D22 TBD+														
D30 at NM State														
J1 at UTSA*														
J5 at LA Tech*														
J7 at Southern Miss*														
J12 FIU*														
J14 Florida Atlantic*														
J21 UTSA*														
J26 at WKU*														
J28 at Marshall*														
F2 UAB*														
F4 Middle Tennessee*														
F9 LA Tech*														
F11 Southern Miss*														
F16 at North Texas*														
F18 at Rice*														
F23 at Florida Atlantic*														
F25 at FIU*														
M2 Old Dominion*														
M4 Charlotte*														
M8 vs. TBD#														

[^] denotes starter | * Conference USA game | % Gildan Charleston Classic (Charleston, S.C.)

+ WestStar Bank Don Haskins Sun Bowl Invitational | # C-USA Championship (Birmingham, Ala.)

54 KELVIN JONES

CENTER • 6-11 • 230 • FR-HS • CHIHUAHUA, MEXICO (HOBBS [N.M.] HS)



2016-17 Notes: Has made six appearances and posted 20 points (3.3 ppg), 14 rebounds (2.3 rpg) and six blocks (1.0 bpg) ... shooting 50 percent from the field ... made his Miner debut in a reserve role versus Louisiana College with six points and three rebounds in 11 minutes ... collected four points, two assists and two blocks in 13 minutes against Wake Forest ... added four points versus Mississippi State ... started for the first time against Southeastern Louisiana and pulled down a season-high five rebounds ... blocked a couple of shots versus Northwestern State.

SEASON & CAREER HIGHS

Field Goals

Season: 3, LA College (11-12-16)

Career: 3, LA College (11-12-16)

Field Goal Attempts

Season: 7, LA College (11-12-16)

Career: 7, LA College (11-12-16)

Three-Point Field Goals

Season: N/A

Career: N/A

Three-Point Field Goal Attempts

Season: N/A

Career: N/A

Free Throws

Season: 2, Mississippi State (11-20-16)

Career: 2, Mississippi State (11-20-16)

Free Throw Attempts

Season: 2, Mississippi State (11-20-16)

Career: 2, Mississippi State (11-20-16)

Rebounds

Season: 5, Southeastern Louisiana (11-23-16)

Career: 5, Southeastern Louisiana (11-23-16)

Assists

Season: 2, Wake Forest (11-17-16)

Career: 2, Wake Forest (11-17-16)

Blocks

Season: 2, two times, last Northwestern State (12-3-16)

Career: 2, two times, last Northwestern State (12-3-16)

Steals

Season: N/A

Career: N/A

Points

Season: 6, LA College (11-12-16)

Career: 6, LA College (11-12-16)

Minutes Played

Season: 17, two times, last Northwestern State (12-3-16)

Career: 17, two times, last Northwestern State (12-3-16)

Miscellaneous Stats

Games with double figure points 0

Games with double figure rebounds 0

Double-doubles 0

Games playing 30+ minutes 0

2016-17 GAME-BY-GAME

Opponent	FG	Pct.	3FG	Pct.	FT	Pct.	O-D-R	PF	A	TO	B	S	PTS	MIN
N12 LA College	3-7	.429	0-0	.000	0-1	.000	1-2-3	4	0	1	0	0	6	11
N17 vs. Wake Forest%	2-3	.667	0-0	.000	0-0	.000	1-0-1	5	2	1	2	0	4	13
N18 vs. Western Mich.%	0-0	.000	0-0	.000	0-0	.000	1-0-1	1	0	0	1	0	0	7
N20 vs. Mississippi State%	1-1	1.000	0-0	.000	2-2	1.000	0-1-1	2	0	1	0	0	4	9
N23 SE Louisiana^	2-5	.400	0-0	.000	0-1	.000	5-0-5	3	0	2	1	0	4	17
D3 Northwestern St.	1-2	.500	0-0	.000	0-1	.000	2-1-3	5	0	2	2	0	2	17
D7 at New Mexico														
D13 NM State														
D17 Northern Arizona														
D21 MD Eastern Shore+														
D22 TBD+														
D30 at NM State														
J1 at UTSA*														
J5 at LA Tech*														
J7 at Southern Miss*														
J12 FIU*														
J14 Florida Atlantic*														
J21 UTSA*														
J26 at WKU*														
J28 at Marshall*														
F2 UAB*														
F4 Middle Tennessee*														
F9 LA Tech*														
F11 Southern Miss*														
F16 at North Texas*														
F18 at Rice*														
F23 at Florida Atlantic*														
F25 at FIU*														
M2 Old Dominion*														
M4 Charlotte*														
M8 vs. TBD#														

^ denotes starter | * Conference USA game | % Gildan Charleston Classic (Charleston, S.C.)

+ WestStar Bank Don Haskins Sun Bowl Invitational | # C-USA Championship (Birmingham, Ala.)

5 PAUL THOMAS

FORWARD • 6-8 • 200 • SO-1L • HUMBLE, TEXAS (SUMMER CREEK HS)



2016-17 Notes: Averaging 3.7 points and ranks second on the squad with 7.0 rebounds per game ... leads all UTEP big men with 12 assists ... is the only Miner to post at least five rebounds in every game ... has made four starts ... snared a UTEP-high 11 rebounds in only 14 minutes while making his fifth career start against Louisiana College ... led the Miners in rebounding for the second straight game versus Wake Forest with five ... added a career-high five assists and eight points (4-for-4 FGs) against the Demon Deacons ... battled foul trouble versus Western Michigan and tallied five rebounds in 12 minutes ... played 24 minutes against Mississippi State with seven points and five boards ... earned a career-high 28 minutes of court time versus Southeastern Louisiana ... pulled down 10 rebounds against Northwestern State.

SEASON & CAREER HIGHS

Field Goals

Season: 4, Wake Forest (11-17-16)

Career: 4, Wake Forest (11-17-16)

Field Goal Attempts

Season: 7, Mississippi State (11-20-16)

Career: 7, Mississippi State (11-20-16)

Three-Point Field Goals

Season: N/A

Career: N/A

Three-Point Field Goal Attempts

Season: 1, Northwestern State (12-3-16)

Career: 1, Northwestern State (12-3-16)

Free Throws

Season: 4, Southeastern Louisiana (11-23-16)

Career: 4, Southeastern Louisiana (11-23-16)

Free Throw Attempts

Season: 4, two times, last Southeastern Louisiana (11-23-16)

Career: 4, two times, last Southeastern Louisiana (11-23-16)

Rebounds

Season: 11, LA College (11-12-16)

Career: 11, LA College (11-12-16)

Assists

Season: 5, Wake Forest (11-17-16)

Career: 5, Wake Forest (11-17-16)

Blocks

Season: 1, Mississippi State (11-20-16)

Career: 3, Sam Houston State (12-22-15)

Steals

Season: 1, two times, last Southeastern Louisiana (11-23-16)

Career: 1, eight times, last Southeastern Louisiana (11-23-16)

Points

Season: 8, Wake Forest (11-17-16)

Career: 8, Wake Forest (11-17-16)

Minutes Played

Season: 28, two times, last Northwestern State (12-3-16)

Career: 28, two times, last Northwestern State (12-3-16)

Miscellaneous Stats

Games with double figure points 0

Games with double figure rebounds 2

Double-doubles 0

Games playing 30+ minutes 0

2016-17 GAME-BY-GAME

Opponent	FG	Pct.	3FG	Pct.	FT	Pct.	O-D-R	PF	A	TO	B	S	PTS	MIN
N12 LA College [^]	0-1	.000	0-0	.000	1-4	.250	0-11-11	2	3	2	0	1	1	14
N17 vs. Wake Forest%	4-4	1.000	0-0	.000	0-0	.000	2-3-5	1	5	0	0	0	8	26
N18 vs. Western Mich.% [^]	0-0	.000	0-0	.000	0-0	.000	1-4-5	5	1	1	0	0	0	12
N20 vs. Mississippi State% [^] 3-7		.429	0-0	.000	1-1	1.000	3-2-5	4	0	3	1	0	7	24
N23 SE Louisiana	0-5	.000	0-0	.000	4-4	1.000	3-3-6	2	1	2	0	1	4	28
D3 Northwestern St. [^]	1-6	.167	0-1	.000	0-3	.000	3-7-10	4	2	2	0	0	2	28
D7 at New Mexico														
D13 NM State														
D17 Northern Arizona														
D21 MD Eastern Shore+														
D22 TBD+														
D30 at NM State														
J1 at UTSA*														
J5 at LA Tech*														
J7 at Southern Miss*														
J12 FIU*														
J14 Florida Atlantic*														
J21 UTSA*														
J26 at WKU*														
J28 at Marshall*														
F2 UAB*														
F4 Middle Tennessee*														
F9 LA Tech*														
F11 Southern Miss*														
F16 at North Texas*														
F18 at Rice*														
F23 at Florida Atlantic*														
F25 at FIU*														
M2 Old Dominion*														
M4 Charlotte*														
M8 vs. TBD#														

[^] denotes starter | * Conference USA game | % Gildan Charleston Classic (Charleston, S.C.)

+ WestStar Bank Don Haskins Sun Bowl Invitational | # C-USA Championship (Birmingham, Ala.)

21 TREY TOUCHET

GUARD • 6-2 • 180 • SO-1L • LAFAYETTE, LA. (SAINT THOMAS MORE HS)



2016-17 Notes: Averaging 5.5 ppg ... shooting 55 percent from the field and 46.7 percent from outside ... was perfect from the field (4-for-4) and scored nine points versus Louisiana College ... matched his UTEP best with two steals against Wake Forest ... scored five points with an assist in 17 minutes versus Mississippi State ... made two three-pointers against Southeastern Louisiana ... started for the first time this season versus Northwestern State and either set or matched career-highs for three-point field goals (three), free throws (four), rebounds (three), points (13), assists (two) and minutes (30).

SEASON & CAREER HIGHS

Field Goals

Season: 4, LA College (11-12-16)

Career: 4, LA College (11-12-16)

Field Goal Attempts

Season: 7, Southeastern Louisiana (11-23-16)

Career: 7, two times, last Southeastern Louisiana (11-23-16)

Three-Point Field Goals

Season: 3, Northwestern State (12-3-16)

Career: 3, Northwestern State (12-3-16)

Three-Point Field Goal Attempts

Season: 7, Southeastern Louisiana (11-23-16)

Career: 7, Southeastern Louisiana (11-23-16)

Free Throws

Season: 4, Northwestern State (12-3-16)

Career: 4, two times, last Northwestern State (12-3-16)

Free Throw Attempts

Season: 4, Northwestern State (12-3-16)

Career: 4, two times, last Northwestern State (12-3-16)

Rebounds

Season: 3, Northwestern State (12-3-16)

Career: 3, three times, last Northwestern State (12-3-16)

Assists

Season: 2, two times, last Northwestern State (12-3-16)

Career: 2, seven times, last Northwestern State (12-3-16)

Blocks

Season: N/A

Career: 1, two times, last vs. Southern Illinois (11-27-15)

Steals

Season: 2, Wake Forest (11-17-16)

Career: 2, two times, last Wake Forest (11-17-16)

Points

Season: 13, Northwestern State (12-3-16)

Career: 13, Northwestern State (12-3-16)

Minutes Played

Season: 30, Northwestern State (12-3-16)

Career: 30, Northwestern State (12-3-16)

Miscellaneous Stats

Games with double figure points 1

Games with double figure rebounds 0

Double-doubles 0

Games playing 30+ minutes 1

2016-17 GAME-BY-GAME

Opponent	FG	Pct.	3FG	Pct.	FT	Pct.	O-D-R	PF	A	TO	B	S	PTS	MIN
N12 LA College	4-4	1.000	1-1	1.000	0-0	.000	0-2-2	3	2	4	0	0	9	18
N17 vs. Wake Forest%	0-1	.000	0-0	.000	0-0	.000	0-0-0	0	0	1	0	2	0	10
N18 vs. Western Mich.%	0-0	.000	0-0	.000	0-0	.000	0-0-0	0	0	1	0	0	0	3
N20 vs. Mississippi State%	2-4	.500	1-3	.333	0-0	.000	0-1-1	1	1	1	0	0	5	17
N23 SE Louisiana	2-7	.286	2-7	.286	0-0	.000	0-0-0	0	1	1	0	0	6	11
D3 Northwestern St.^	3-4	.750	3-4	.750	4-4	1.000	0-3-3	3	2	2	0	1	13	30
D7 at New Mexico														
D13 NM State														
D17 Northern Arizona														
D21 MD Eastern Shore+														
D22 TBD+														
D30 at NM State														
J1 at UTSA*														
J5 at LA Tech*														
J7 at Southern Miss*														
J12 FIU*														
J14 Florida Atlantic*														
J21 UTSA*														
J26 at WKU*														
J28 at Marshall*														
F2 UAB*														
F4 Middle Tennessee*														
F9 LA Tech*														
F11 Southern Miss*														
F16 at North Texas*														
F18 at Rice*														
F23 at Florida Atlantic*														
F25 at FIU*														
M2 Old Dominion*														
M4 Charlotte*														
M8 vs. TBD#														

^ denotes starter | * Conference USA game | % Gildan Charleston Classic (Charleston, S.C.)

+ WestStar Bank Don Haskins Sun Bowl Invitational | # C-USA Championship (Birmingham, Ala.)

13 IVAN VENEGAS

FORWARD • 6-8 • 220 • SO-OL • CHIHUAHUA, MEXICO (TECNOLOGICO DE MONTERREY)



2016-17 Notes: Played four minutes against Louisiana College, two versus Wake Forest, one against Southeastern Louisiana and two versus Northwestern State ... scored his first points of the season against Northwestern State.

SEASON & CAREER HIGHS

Field Goals

Season: 1, Northwestern State (12-3-16)

Career: 1, two times, last Northwestern State (12-3-16)

Field Goal Attempts

Season: 2, Wake Forest (11-17-16)

Career: 3, Loyola (11-14-15)

Three-Point Field Goals

Season: N/A

Career: N/A

Three-Point Field Goal Attempts

Season: N/A

Career: N/A

Free Throws

Season: N/A

Career: 2, Loyola (11-14-15)

Free Throw Attempts

Season: N/A

Career: 4, Loyola (11-14-15)

Rebounds

Season: 1, two times, last Southeastern Louisiana (11-23-16)

Career: 4, Loyola (11-14-15)

Assists

Season: N/A

Career: 1, at UAB (1-9-16)

Blocks

Season: N/A

Career: 1, UTRGV (12-29-15)

Steals

Season: N/A

Career: N/A

Points

Season: 2, Northwestern State (12-3-16)

Career: 4, Loyola (11-14-15)

Minutes Played

Season: 4, LA College (11-12-16)

Career: 4, three times, last LA College (11-12-16)

Miscellaneous Stats

Games with double figure points 0

Games with double figure rebounds 0

Double-doubles 0

Games playing 30+ minutes 0

2016-17 GAME-BY-GAME

Opponent	FG	Pct.	3FG	Pct.	FT	Pct.	O-D-R	PF	A	TO	B	S	PTS	MIN
N12 LA College	0-1	.000	0-0	.000	0-0	.000	0-1-1	1	0	1	0	0	0	4
N17 vs. Wake Forest%	0-2	.000	0-0	.000	0-0	.000	0-0-0	0	0	0	0	0	0	2
N18 vs. Western Mich.%							-DNP-							
N20 vs. Mississippi State%							-DNP-							
N23 SE Louisiana	0-0	.000	0-0	.000	0-0	.000	0-1-1	0	0	0	0	0	0	1
D3 Northwestern St.	1-1	1.000	0-0	.000	0-0	.000	0-0-0	0	0	0	0	0	2	2
D7 at New Mexico														
D13 NM State														
D17 Northern Arizona														
D21 MD Eastern Shore+														
D22 TBD+														
D30 at NM State														
J1 at UTSA*														
J5 at LA Tech*														
J7 at Southern Miss*														
J12 FIU*														
J14 Florida Atlantic*														
J21 UTSA*														
J26 at WKU*														
J28 at Marshall*														
F2 UAB*														
F4 Middle Tennessee*														
F9 LA Tech*														
F11 Southern Miss*														
F16 at North Texas*														
F18 at Rice*														
F23 at Florida Atlantic*														
F25 at FIU*														
M2 Old Dominion*														
M4 Charlotte*														
M8 vs. TBD#														

^ denotes starter | * Conference USA game | % Gildan Charleston Classic (Charleston, S.C.)

+ WestStar Bank Don Haskins Sun Bowl Invitational | # C-USA Championship (Birmingham, Ala.)

41 MATT WILLMS

CENTER • 7-1 • 235 • JR-2L • LEAMINGTON, ONTARIO, CANADA (FINDLAY PREP)



2016-17 Notes: Has 67 career blocks, ranking 12th in school history ... averaging 12.7 points, 5.0 rebounds and 1.5 blocks this season ... shooting a team-high 64.6 percent from the floor ... has started five games ... made a successful return to the court in the season opener versus Louisiana College, registering nine points (4-for-4 FGs) and four rebounds in 12 first-half minutes ... connected on 6-of-8 shots and scored 13 points with five blocks against Wake Forest ... established career-bests for field goals made (nine), points (22) and minutes (29) versus Western Michigan ... added seven rebounds, two assists and two blocks against the Broncos ... for the second straight game set a career-best for minutes (32) versus Mississippi State ... also achieved his first career double-double against the Bulldogs with 12 points and 11 rebounds ... went to the line a career-high 12 times versus Mississippi State ... scored 12 points against Southeastern Louisiana ... had a productive first half versus Northwestern State (eight points, 4-for-6 FGs), but missed most of the second half after breaking his nose.

SEASON & CAREER HIGHS

Field Goals

Season: 9, Western Michigan (11-18-16)

Career: 9, Western Michigan (11-18-16)

Field Goal Attempts

Season: 11, two times, last Southeastern Louisiana (11-23-16)

Career: 13, Loyola (11-9-13)

Three-Point Field Goals

Season: N/A

Career: N/A

Three-Point Field Goal Attempts

Season: N/A

Career: N/A

Free Throws

Season: 6, Mississippi State (11-20-16)

Career: 6, three times, last Mississippi State (11-20-16)

Free Throw Attempts

Season: 12, Mississippi State (11-20-16)

Career: 12, Mississippi State (11-20-16)

Rebounds

Season: 11, Mississippi State (11-20-16)

Career: 11, Mississippi State (11-20-16)

Assists

Season: 2, three times, last Southeastern Louisiana (11-23-16)

Career: 4, SE Louisiana (12-16-14)

Blocks

Season: 5, Wake Forest (11-17-16)

Career: 5, Wake Forest (11-17-16)

Steals

Season: N/A

Career: 4, Florida Atlantic (2-13-14)

Points

Season: 22, Western Michigan (11-18-16)

Career: 22, Western Michigan (11-18-16)

Minutes Played

Season: 32, Mississippi State (11-20-16)

Career: 32, Mississippi State (11-20-16)

Miscellaneous Stats

Games with double figure points 12

Games with double figure rebounds 1

Double-doubles 1

Games playing 30+ minutes 1

2016-17 GAME-BY-GAME

Opponent	FG	Pct.	3FG	Pct.	FT	Pct.	O-D-R	PF	A	TO	B	S	PTS	MIN
N12 LA College	4-4	1.000	0-0	.000	1-1	1.000	0-4-4	0	0	2	0	0	9	12
N17 vs. Wake Forest%^	6-8	.750	0-0	.000	1-3	.333	1-1-2	4	0	3	5	0	13	20
N18 vs. Western Mich.%^	9-11	.818	0-0	.000	4-6	.667	3-4-7	4	2	2	2	0	22	29
N20 vs. Mississippi State%^	3-7	.429	0-0	.000	6-12	.500	2-9-11	2	2	0	1	0	12	32
N23 SE Louisiana^	5-11	.455	0-0	.000	2-5	.400	1-2-3	2	2	0	0	0	12	25
D3 Northwestern St.^	4-7	.571	0-0	.000	0-0	.000	2-1-3	2	0	1	1	0	8	19
D7 at New Mexico														
D13 NM State														
D17 Northern Arizona														
D21 MD Eastern Shore+														
D22 TBD+														
D30 at NM State														
J1 at UTSA*														
J5 at LA Tech*														
J7 at Southern Miss*														
J12 FIU*														
J14 Florida Atlantic*														
J21 UTSA*														
J26 at WKU*														
J28 at Marshall*														
F2 UAB*														
F4 Middle Tennessee*														
F9 LA Tech*														
F11 Southern Miss*														
F16 at North Texas*														
F18 at Rice*														
F23 at Florida Atlantic*														
F25 at FIU*														
M2 Old Dominion*														
M4 Charlotte*														
M8 vs. TBD#														

^ denotes starter | * Conference USA game | % Gildan Charleston Classic (Charleston, S.C.)

+ WestStar Bank Don Haskins Sun Bowl Invitational | # C-USA Championship (Birmingham, Ala.)

2016-17 UTEP STATISTICS

RECORD:	OVERALL	HOME	AWAY	NEUTRAL
ALL GAMES	2-4	1-2	0-0	1-2
CONFERENCE	0-0	0-0	0-0	0-0
NON-CONFERENCE	2-4	1-2	0-0	1-2

#	Player	gp-gs	min	avg	Total		3-Point		F-Throw		Rebounds								a	to	blk	stl	pts	avg
					fg-fga	fg%	3fg-fga	3fg%	ft-fa	ft%	off	def	tot	avg	pf	dq								
15	ARTIS, Dominic	6-6	215	35.8	32-74	.432	7-25	.280	23-40	.575	6	37	43	7.2	17	1	43	27	0	13	94	15.7		
02	HARRIS, Omega	5-5	163	32.6	27-56	.482	7-22	.318	17-20	.850	1	12	13	2.6	11	0	10	11	2	7	78	15.6		
41	WILLMS, Matt	6-5	137	22.8	31-48	.646	0-0	.000	14-27	.519	9	21	30	5.0	14	0	6	8	9	0	76	12.7		
12	WINN, Terry	3-2	68	22.7	13-25	.520	0-0	.000	3-3	1.000	3	14	17	5.7	10	1	2	6	1	0	29	9.7		
11	FLAGGERT, Jake	6-5	164	27.3	12-31	.387	10-27	.370	9-9	1.000	5	11	16	2.7	20	2	6	7	3	2	43	7.2		
21	TOUCHET, Trey	6-1	89	14.8	11-20	.550	7-15	.467	4-4	1.000	0	6	6	1.0	7	0	6	10	0	3	33	5.5		
23	BARRETT, Deon	6-1	97	16.2	8-21	.381	6-15	.400	3-4	.750	1	3	4	0.7	3	0	11	4	0	1	25	4.2		
22	THOMAS, Paul	6-4	132	22.0	8-23	.348	0-1	.000	6-12	.500	12	30	42	7.0	18	1	12	10	1	2	22	3.7		
54	JONES, Kelvin	6-1	74	12.3	9-18	.500	0-0	.000	2-5	.400	10	4	14	2.3	20	2	2	7	6	0	20	3.3		
05	BARNES, Chris	4-0	31	7.8	3-8	.375	0-2	.000	0-1	.000	1	3	4	1.0	4	0	1	3	0	1	6	1.5		
03	CAMERON, Tim	3-0	8	2.7	1-3	.333	1-1	1.000	0-0	.000	1	2	3	1.0	1	0	0	1	0	0	3	1.0		
13	VENEGAS, Ivan	4-0	9	2.3	1-4	.250	0-0	.000	0-0	.000	0	2	2	0.5	1	0	0	1	0	0	2	0.5		
24	URBANUS, Hudson	3-0	10	3.3	0-4	.000	0-3	.000	0-0	.000	0	1	1	0.3	1	0	1	0	0	0	0	0.0		
04	MOORE, Adrian	1-0	1	1.0	0-0	.000	0-0	.000	0-0	.000	0	0	0	0.0	0	0	0	0	0	0	0	0.0		
20	MARTINEZ, Jose	3-0	2	0.7	0-1	.000	0-0	.000	0-0	.000	1	0	1	0.3	1	0	0	0	1	0	0	0.0		
	Team										6	16	22				1							
	Total.....	6	1200		156-336	.464	38-111	.342	81-125	.648	56	162	218	36.3	128	7	100	96	23	29	431	71.8		
	Opponents.....	6	1200		155-344	.451	54-130	.415	80-123	.650	56	153	209	34.8	123	-	92	80	12	43	444	74.0		

TEAM STATISTICS	UTEP	OPP
SCORING	431	444
Points per game	71.8	74.0
Scoring margin	-2.2	-
FIELD GOALS-ATT	156-336	155-344
Field goal pct	.464	.451
3 POINT FG-ATT	38-111	54-130
3-point FG pct	.342	.415
3-pt FG made per game	6.3	9.0
FREE THROWS-ATT	81-125	80-123
Free throw pct	.648	.650
F-Throws made per game	13.5	13.3
REBOUNDS	218	209
Rebounds per game	36.3	34.8
Rebounding margin	+1.5	-
ASSISTS	100	92
Assists per game	16.7	15.3
TURNOVERS	96	80
Turnovers per game	16.0	13.3
Turnover margin	-2.7	-
Assist/turnover ratio	1.0	1.2
STEALS	29	43
Steals per game	4.8	7.2
BLOCKS	23	12
Blocks per game	3.8	2.0
ATTENDANCE	18571	8238
Home games-Avg/Game	3-6190	0-0
Neutral site-Avg/Game	-	3-2746

Date	Opponent		Score	Att.
11/12/16	LOUISIANA COLLEGE	W	88-54	6295
@ 11/17/16	vs Wake Forest	L	81-103	2925
@ 11/18/16	vs Western Michigan	W	85-75	4020
@ 11/20/16	vs Mississippi State	L	54-61	1293
11/23/16	SOUTHEASTERN LOUISIANA	L	56-72	6348
12/3/16	NORTHWESTERN STATE	L	67-79	5928

* = Conference game

@ = Gildan Charleston Classic

Score by Periods	1st	2nd	Totals
UTEP	220	211	431
Opponents	238	206	444