

2020-21 NEW MEXICO WOMEN'S BASKETBALL

GAME NOTES

» Eight NCAA Tournament Appearances | 1998, 2002, 2003, 2004, 2005, 2006, 2007, 2008 «
 » Five Mountain West Tournament Championships | 2003, 2004, 2005, 2007, 2008 «

2019-20 | Schedule and Results

OVERALL RECORD:..... 15-17
 MW RECORD:..... 6-12
 HOME RECORD:..... 8-9
 ROAD RECORD:..... 6-6
 NEUTRAL RECORD:..... 1-2
 STREAK:..... L1

2020-21 | Schedule and Results

OVERALL RECORD:..... 9-2
 MW RECORD:..... 6-2
 HOME RECORD:..... 0-0
 ROAD RECORD:..... 8-1
 NEUTRAL RECORD:..... 1-1
 STREAK:..... W2

Date	Opponent	Time/Result
12/4	Midwestern State	W, 93-65
12/6	Sam Houston State	W, 98-89
12/17	Arkansas-Pine Bluff	W, 120-66
12/31	Nevada*	W, 88-69
1/2	Nevada*	W, 78-67
1/15	UNLV*	L, 78-60
1/17	UNLV*	W, 81-73
1/21	San José State*	Canceled
1/23	San José State*	Canceled
1/28	Fresno State*	W, 82-80
1/30	Fresno State*	L, 91-69
2/3	San Diego State*	W, 84-48
2/5	San Diego State*	W, 65-48
2/12	Colorado State*	1 p.m.
2/13	Colorado State*	1 p.m.
2/17	Wyoming*	6:30 p.m.
2/19	Wyoming*	6:30 p.m.
2/22	Air Force*	4 p.m.
2/24	Air Force*	4 p.m.
2/28	Utah State*	TBA
3/1	Utah State*	6 p.m.

* - Mountain West game

Bold - home game

Game dates & times are Mountain time and subject to change

THE MATCHUP



New Mexico Lobos

Record
9-2, 6-2 MW

Head Coach Mike Bradbury
 Alma Mater, Yr..... Chattanooga, 1993
 Record at UNM..... 88-52 (5th year)
 Career Record..... 266-169 (14th year)

Game Information

Game Number:..... Games 12 & 13
 Date:..... 2/12 & 2/13
 Location:..... Fort Collins, Colo.
 Venue:..... Moby Arena

Series History

Overall:..... UNM leads 44-38
 Current Streak:..... W4
 Last Meeting:..... W, 73-62 (1/15/20)

Broadcast Information

Radio:..... 610 AM KNML
 Play-By-Play:..... J.J. Buck
 Analyst:..... Nikki Heckroth-Lobato
 Live Stream:..... Mountain West Network
 Live Stats:..... GoLobos.com



Colorado St. Rams

Record
14-2, 10-2 MW

Head Coach Ryun Williams
 Alma Mater, Yr..... South Dakota, 1992
 Record at SDSU..... 170-100 (9th season)
 Career Record..... 428-253 (23rd season)

TIPPING OFF

The top two teams in the Mountain West standings meet this week, with Colorado State and UNM both having just two losses in the conference.

Further, both teams share the same two opponents for those losses - UNLV and Fresno State.

As expected, both the Lobos and the Rams have among the best stats in the conference in several categories and enter as the top-two scoring teams in the MW.

UNM enters the two-game series after a sweep of San Diego State on the road, in which the Lobos held the Aztecs to 48 points in both games and used the third quarter to take control of the games.

Ahlise Hurst led the Lobos in scoring in the series with 32 points with Antonia Anderson leading on the glass with 16 rebounds.

In each game, the Lobos had four players reach double figures in scoring.

In Friday's game, the bench contributions proved pivotal with Kath

van Bennekom bringing down a season-high seven rebounds and Autumn Watts posting her second nine rebound effort of the season.

On the other side of the court, Colorado State is 14-2 overall, 10-2 in conference. The Rams average 81.8 points per game and have the conference leader in assists (94) in McKenna Hofschild and three-pointers made in Tori Williams (43). Defensively, CSU is averaging 31.4 rebounds per game to lead the MW.

Overall, UNM leads the series 44-38 and has won the last four meetings.

Probable Starters (Based on last game)

#	Name	Pos.	Cls.	Ht.	PPG	RPG	APG	SPG	BPG
3	Ahlise Hurst	G	Jr.	5-9	13.0	2.2	2.7	1.5	0.3
5	LaTora Duff	G	Jr.	5-7	9.8	3.5	3.6	1.7	0.3
13	Shaiquel McGruder	F	Jr.	6-0	10.0	5.7	0.6	1.9	1.4
23	Jaedyn De La Cerda	G	Sr.	5-6	14.2	6.0	2.7	1.2	0.3
32	Antonia Anderson	F	Jr.	6-2	12.3	4.9	1.8	0.5	1.2

Off the Bench

#	Name	Pos.	Cls.	Ht.	PPG	RPG	APG	SPG	BPG
1	Corina Carter	PG	So.	5-6	6.0	1.2	2.7	1.2	0.1
4	LaTascya Duff	G	Jr.	5-7	13.2	3.4	1.7	0.4	0.1
10	Celine Dupont	F/C	R-Fr.	6-4	0.0	0.2	0.2	0.2	0.0
14	Azaria Robinson	F	So.	6-2	0.6	1.0	0.0	0.0	0.1
15	Kath van Bennekom	G	Fr.	5-9	2.3	2.3	0.3	0.0	0.0
24	Autumn Watts	F	So.	6-1	2.8	3.9	1.0	0.7	0.7
34	Nevaeh Parkinson	F/C	Fr.	6-3	1.0	0.8	0.0	0.0	0.2



THE UNIVERSITY OF NEW MEXICO 2020-21 WOMEN'S BASKETBALL



THE UNIVERSITY OF NEW MEXICO

Location.....Albuquerque, N.M.
 Founded.....1889 by Territorial Legislature
 Enrollment.....22,225
 Nickname.....Lobos
 Colors.....Cherry (PMS 200) & Silver (PMS Cool Gray 6)
 Conference.....Mountain West Conference
 National Affiliation.....NCAA Division I
 President.....Dr. Garnett Stokes
 Director of Athletics.....Eddie Nuñez
 Deputy A.D. for External Affairs.....David Williams
 Deputy A.D. for Internal Affairs/SWA.....Janice Ruggiero
 Faculty Representative.....Dr. Sara Nottingham

FACILITY INFORMATION

Facility.....The Pit
 Capacity.....15,411
 Age.....Built in 1966 (Renovated in 2009-10)
 All-Time Home Record.....429-216 (.665)

PROGRAM HISTORY

First Season.....1974-75
 Overall Record.....687-558 (.552) in 42 seasons
 Overall MW Record.....200-144 (.581) in 21 seasons
 Postseason Tournament Appearances.....17
 NCAA Tournament Appearances.....8
 Last NCAA Postseason Appearance.....2018-19 (WNIT)
 Last NCAA Postseason Opponent.....Denver
 Last NCAA Postseason Result.....L, 75-83
 MW Regular Season Championships.....2
(2003-04 & 2004-05)
 MW Tournament Championships.....5
(2002-03, 2003-04, 2004-05, 2006-07, 2007-08)

TEAM INFORMATION

2019-20 Overall Record.....15-17
 2019-20 Mountain West Record.....6-12
 2019-20 Mountain West Season Finish.....T-9th
 2019-20 MW Tournament Finish.....First Round
 Letterwinners Returning | Lost.....7 | 6
 Starters Returning | Lost.....2 | 3

COACHING STAFF

Head Coach.....Mike Bradbury (Chattanooga, 1993)
 Record at UNM (Years).....88-52 (5th season)
 Career Record (Years).....266-169 (14th season)
 Head Coach Phone.....505-925-5770
 Women's Basketball Fax.....505-925-5779
 Head Coach E-Mail.....mbradbury@unm.edu

Assistant Coach.....Valerie King (5th season)
 Alma Mater.....Cincinnati, 2004
 Assistant Coach.....Bill Ferrara (4th season)
 Alma Mater.....Florida, 2003
 Assistant Coach.....Symone Denham (3rd season)
 Alma Mater.....Wright State, 2016

Director of Operations..Kabrina Merriweather (1st season)
 Video Coordinator.....Ryan Freeman (2nd season)
 Athletic Trainer.....Andrea Quintana (10th season)
 Strength Coach.....Brett Nakashima (2nd season)
 Academic Adviser.....Joe DeBonis

MISCELLANEOUS INFORMATION

2019-20 Total Attendance.....82,854
 2019-20 Average Attendance.....4,874
 2019-20 NCAA Attendance Rank.....15th
 2019-20 Mountain West Attendance Rank.....1st

MULTIMEDIA INFORMATION

Athletics Website.....www.GoLobos.com
 Main University Web Site.....www.unm.edu
 Conference Web Site.....www.TheMW.com
 Facebook.....www.facebook.com/NewMexicoLobos
 Twitter.....@UNMLobos

MEDIA RELATIONS

Women's Basketball Contact.....Allison Weiss
 Cell Phone (Preferred).....661-313-5402
 Email.....allisonweiss@unm.edu
 Address:.....

The University of New Mexico Athletics
 1414 University Drive
 Albuquerque, N.M. 87106





THE UNIVERSITY OF NEW MEXICO

2020-21 WOMEN'S BASKETBALL



LAST TIME IT HAPPENED (UNM)

As A Team

Scored 100 Points:	120 - at Arkansas-Pine Bluff (12-17-20)
Scored 90 Points:	98 - at Sam Houston State (12-6-20)
Scored Fewer Than 50 Points:	42 - at UNLV (1-11-17)
Scored Fewer Than 40 Points:	38 - at Colorado St. (1-3-15)
Won by 50 Points:	+54 (W, 120-66) - at Arkansas-Pine Bluff (12-17-20)
Won by 40 Points:	+48 (W, 92-44) - vs. Northern NM (12-10-19)
Won By 30 Points:	+36 (W, 84-48) - at San Diego St. (2-3-21)
Lost By 30 Points:	-37 (L, 47-84) - at (RV) Arizona St. (12-14-19)
Lost By 40 Points:	-42 (L, 63-105) - at Oklahoma (12-16-17)
Shot 60% or Better:	61.2% - Pacific (11-9-01)
Shot Less Than 30%:	26.7% (16-60) - vs. UNLV (1-18-20)
Shot 60% 3FG or Better:	68.2% (15-22) - at NMSU (12-2-17)
Shot Less Than 20% 3FG:	13.79 (4-29) - vs. Nevada (3-1-20)
Made 15 3-Pointers:	17 - at Arkansas-Pine Bluff (12-17-20)
Shot 90% on FTs (10 or more):	94.12% (16-17) - vs. Nevada (3-1-20)
Shot Less Than 40% On FTs:	14.3% (1-7) - at UTEP (11-30-17)
Had 50 Rebounds:	53 - at Arkansas-Pine Bluff (12-17-20)
Had 20 Offensive Rebounds:	20 - vs. Nevada (3-1-20)
Had 25 Assists:	27 - at Arkansas-Pine Bluff (12-17-20)
Had 20 Turnovers:	21 - at Sam Houston State (12-6-20)
Had Less Than 10 Turnovers:	6 - vs. San Diego St. (2-3-21)
Had 10 Steals:	10 - vs. Fresno State (1-28-21)
Had 10 Blocks:	10 - vs. UNLV (1-18-20)
Had Two 20-Point Scorers:	at New Mexico St. (11-17-19)
Had Three 20-Point Scorers:	Jaedyn De La Cerda (26) and Ahlise Hurst (22) vs. San Jose St. (2-27-19)
	Tesha Buck (30), Jaisa Nunn (22) and Cherise Beynon (22)
Had 6 Double-Digit Scorers:	at Arkansas-Pine Bluff (12-17-20)
Had 5 Double-Digit Scorers:	vs. Fresno State (1-28-21)
Had No Double-Digit Scorers:	vs. (RV) Arizona St. (12-14-19)
Had Two 10+ Rebounders:	vs. Nevada (3-1-20)
	Shaiquel McGruder (17) and Antonia Anderson (10)
Scored 50 Points In 1st Half:	52 - at Nevada (12-31-20)
Scored 50 Points In 2nd Half:	58 - at San Diego St. (2-3-21)
Scored 60 Points in a 2nd Half:	63 - vs. New Mexico St. (12-16-19)
Scored 20 Or Fewer Points In 1st Half:	17 - at Colorado St. (2-22-17)
Scored 20 Or Fewer Points In 2nd Half:	17 - at UNLV (1-15-21)
Lowest Pts Scored in Quarter:	2 - vs. Tulsa (11-25-16)
Failed To Make a 3FG:	at (RV) Arizona St. (12-14-19)
Defeated a Ranked Team:	W, 88-87 vs. No. 16 Marquette (11-13-17)
Lost To a Ranked Team:	L, 60-73 vs. No. 23 West Virginia (11-29-19)
Won an OT Game:	W, 74-71 at Wyoming (2-8-20)
Lost an OT Game:	L, 78-86 at Nevada (2-19-20)
Won a 2OT Game:	W, 89-85 at Houston (11-24-18)
Lost a 2OT Game:	L, 69-65 vs. Fresno St. (1-2-16)

As An Individual

Had a Triple-Double:	Aisia Robertson (28 pts, 11 rebs, 11 assists) at Houston (11-24-18)
Had a Double-Double (Pts/Reb):	Jaedyn De La Cerda (13 pts, 11 reb) at Arkansas-Pine Bluff (12-17-20)
Had a Double-Double (Pts/Asst):	Aisia Robertson (14 pts & 12 asts) at San José St. (1-22-20)
Had a Double-Double (Reb/Asst):	vs. Fairleigh Dickinson (11-12-16)
	Cherise Beynon (13 reb, 10 asts)
Scored 20+ Pts with 10+ Rebs:	Jordan Hosey (25 pts, 13 reb) at Fresno St. (1-8-20)
Scored 30 Points:	Aisia Robertson (30) vs. Air Force (2-24-20)
Scored 40 Points:	Cherise Beynon (41) at SDSU (1-20-18)
Scored 30 Points (MW Only):	Aisia Robertson (30) vs. Air Force (2-24-20)
Scored 40 points (MW Only):	Cherise Beynon (41) at San Diego St. (1-20-18)
Had 20+ Rebounds:	Richelle van der Keijl (20) vs. New Mexico St. (11-15-16)
Had 15+ Rebounds:	Shaiquel McGruder (17) vs. Nevada (3-1-20)
Had 15+ Assists:	Aisia Robertson (16) vs. Oklahoma (11-28-18)
Had 5+ Steals:	Shaiquel McGruder (8) vs. No. 23 West Virginia (11-29-19)
Had 5+ Blocks:	Shaiquel McGruder (5) at Sam Houston State (12-6-20)

Balanced Attack

To date, five Lobos are averaging double figures in points per game.

Jaedyn De La Cerda leads the Lobos with 14.2 ppg, followed by LaTascya Duff (13.2), Ahlise Hurst (13.0), Antonia Anderson (12.3) and Shaiquel McGruder (10.0).

This season, the Lobos have had six players finish in double figures in scoring in two games (Arkansas-Pine Bluff and Sam Houston State), had five players in double digits in three games (Midwestern State, Nevada Dec. 31, Fresno State Jan. 28) and four in three games (Nevada Jan. 2, San Diego State Feb. 3 and 5).

On any given night, a different Lobo can step up to lead the team, as shown by Anderson's career-high 29 points at UNLV, LaTascya Duff's 28 points at Arkansas-Pine Bluff, or Hurst (20) and De La Cerda (21) posting team highs in the two games at Nevada.

Hurst led the team in scoring in the last series with 19 points on Wednesday and 13 points on Friday, with the junior either leading or tying for the team lead in points in four games.

Showing Range

On the season, the Lobos are averaging 10.4 made three-pointers per game, which is the second-most in the NCAA and leads the MW, and have attempted 348 three-point attempts with 114 makes (.328).

Six times this season, the Lobos have made 10-plus three-pointers in a game with a season high of 17.

In the Feb. 3 game at SDSU, the Lobos found their stride in the final two quarters, going 5-for-7 in the third quarter and 6-for-8 in the fourth quarter, with LaTascya Duff finishing 6-for-9 with five-straight made threes.

UNM hit 17 three-pointers at UAPB, one shy of tying the program record, with nine coming in the first two quarters. Seven different Lobos made a three-pointer, led by LaTascya Duff going 4-of-5 from behind the arc.

On Dec. 31, UNM hit 14 threes at Nevada with four Lobos hitting three, three-pointers (Hurst, both Duff sisters and De La Cerda).

The Lobos caught fire early on from behind the arc at Midwestern State to open the season, hitting eight three-pointers in the first two quarters. De La Cerda and Hurst accounted for three each, with Hurst going 3-for-4 from distance. While the Lobos cooled off in the second half, UNM finished with 13 three-pointers with five different players hitting at least one.

In the game against the Bearcats, UNM hit eight three-pointers with six different Lobos making a three. In the second quarter alone, UNM went 5-for-6 from distance to turn a deficit into a lead.

Double Trouble

The season so far has demonstrated that LaTora and LaTascya Duff will be trouble for opponents to account for.

To date, they have combined for 253 points, with LaTascya second on the team with 145 points, and filled the stat sheet with a combined 59 assists, 75 rebounds and 23 steals.

LaTascya is second on the team in points per game (13.2), three-pointers made (25) and free-throws made (32), with LaTora leading in assists (40) and is second in steals (19).

LaTascya entered the season being named the Mountain West Preseason Newcomer of the Year, and currently ranks third in the MW in



THE UNIVERSITY OF NEW MEXICO

2020-21 WOMEN'S BASKETBALL



three-pointers and sixth in the MW in free-throw percentage (.744).

LaTora is fourth in the MW in assist/turnover ratio (1.6) and seventh in the MW in steals per game.

On Dec. 21, LaTascya was named the MW Player of the Week for her performance at Arkansas-Pine Bluff, finishing with 28 points on 10-for-11 shooting from the floor and 4-for-5 from three-point range.

Among the Best

The Lobos have scored 90-plus points in three games this season, including a program-best 120 points at Arkansas-Pine Bluff on Dec. 17, and 80-plus points in seven games. The Lobos have scored 918 points through three games, an average of 83.5 points per game, which leads the MW and is ninth in the NCAA.

UNM is second in the NCAA in three-point field goals per game (10.4), 15th in assist/turnover ratio at 1.31 and are 20th in assists per game (17.1). The Lobos are 26th in fewest turnovers per game (13.0), 28th in turnover margin (+4.91) and 33rd in scoring margin (13.1) and field-goal percentage (.453).

In the MW, UNM leads the conference in assists per game (17.22), turnover margin (+4.44), scoring offense (85.44) and three-point field goals made (10.22). The Lobos are second in assist/turnover ratio (1.29), steals per game (9.22) and scoring margin (+10.11), and third in free-throw percentage (.745) and field-goal percentage (.452).

Fast Starts

The Lobos are outscoring their opponents in the every quarter, with the largest margin occurring in the first quarter with 56 (215-159) and the second-largest margin in the second quarter (236-185, 51). UNM is outscoring its opponents 451-344 (margin of 107 points) in the first two quarters.

In the first game of the UNLV series, the Lobos led 21-9, and in the second game led 21-13 through the first quarter.

In the first game of the Nevada series, the Lobos shot 60.0 percent from the floor (50.0% from three) to get out to a 28-8 first quarter lead, which turned into a 52-25 halftime score.

In the game at UAPB, UNM got out to a 17-0 lead en route to a 32-8 first quarter lead and a 63-27 halftime score.

In the first game at Midwestern State, the Lobos took a 25-6 lead into the second quarter that grew to a 49-25 halftime lead.

Except For That Third Quarter

While the Lobos have had fast starts, the series at SDSU provided the exception to the norm. The Lobos trailed the Aztecs at the end of the first and second quarters in both games, but the second half was all UNM, especially those third quarters.

UNM outscored SDSU 36-10 in the third quarter of Wednesday's game, going 14-of-17 (82.4%) from the floor and 5-for-7 (71.4%) from behind the arc. Ahlise Hurst single-handedly outscored SDSU in the quarter 13-10. In Friday's game, the Lobos outscored the Aztecs 22-9, shooting 7-of-11 (63.6%).

This season, the Lobos have scored 242 in the third quarter for their highest point production per quarter.

UNM is 9-0 this season when leading after the third quarter.

Hurst So Good

Ahlise Hurst has shown her range through her first three years as a Lobo, especially behind the arc. The Australian finished the 2019-20 season

with 92 three-pointers to rank second in Lobo program history for most threes in a single season and ended the season ranked ninth in the nation in 3-point field goals made (92) and 17th in three-point field goals made per game (2.88).

As previously mentioned, Hurst has led the team or has tied the team high in scoring in four games, including both games at SDSU. The junior scored 19 points in the first game, with 13 coming in the third quarter, and 13 in the second game. Hurst also recorded a career-high six assists in the second game against the Aztecs.

The junior sparked the Lobo offense in the Jan. 2 game at Nevada with three, three-pointers in the third quarter, including the first of the game for the Lobos.

In the season opener against Midwestern State, Hurst led the Lobos with 18 points and picked up right where she left off last season with five three-pointers in the game.

This season, Hurst is 27-for-88 from distance, leading the team with the most made and attempted threes and is second in the MW in three-point field goals made per game (2.45).

Pride of Roswell

The only New Mexican on the roster, Jaedyn De La Cerda is representing the Land of Enchantment well.

In her senior season, De La Cerda leads team in points (156) and rebounds (66) and posted a team-high 24 points against Sam Houston State and 21 points at Nevada (Dec. 31). She is averaging a team-best 14.2 ppg and 6.0 rpg.

Further, down the stretch in UNM's win over Fresno State, De La Cerda made a layup and four free-throws to tie, and later give UNM a two-point lead.

In the third quarter of the second game at UNLV on Jan. 17, De La Cerda was a force, going 5-for-5 from the floor with 4-for-4 from three, for 14 points.

In leading the Lobos at Nevada on Dec. 31, she nearly recorded a double-double with a game-high 21 points and a team-high nine rebounds while also dishing out five assists.

In the game at UAPB, De La Cerda was a stat stuffer, finishing with a career-high 11 rebounds, 13 points, a game-high six assists and game-high three steals.

In the fourth quarter of the game against Sam Houston State, De La Cerda stepped up to lead the Lobos to victory, tallying 13 of the team's 34 points and going a perfect 7-for-7 at the free-throw line. The senior also grabbed three offensive rebounds which led to six second-chance points.

Steal the Show

In five games this season, the Lobos have recorded 10-plus steals, with the Lobos 5-0 in those instances.

Led by four steals from LaTora Duff, the Lobos registered a to date season-high 13 steals in the season opener against Midwestern State. UNM turned those steals into nine fast-break points and finished the game with 27 points off of turnovers.

At UAPB, UNM scored 31 points off of 15 Golden Lion turnovers, including 10 steals, led by De La Cerda's three.

Senior Showcase



THE UNIVERSITY OF NEW MEXICO

2020-21 WOMEN'S BASKETBALL



In the game at UNLV on Jan. 17, seniors Antonia Anderson and Jaedyn De La Cerda put together a dominant performance in the Lobo win. Anderson started the game with 17 points in the first quarter, going 7-for-7 from the floor, 2-for-2 from distance and made her first eight shots and three-point attempts. She finished the half with a career-high 25 points before finishing with a game-high 29 points.

In addition to leading the Lobos in points, Anderson brought down a team-high eight rebounds and accounted for two assists and a block.

De La Cerda took over in the third quarter with perfect 5-for-5 shooting including four threes, and finished with 28 points in the contest. De La Cerda closed the game with seven points in the fourth behind 2-for-3 shooting and going 2-for-2 from the free-throw line, with Anderson putting up a final four points on 2-for-3 shooting.

To date, Anderson and De La Cerda are 1-2 in field goals made with Anderson making 54 shots and De La Cerda making 53.

Limit the Opponent

In the opening quarters in four of UNM's games, the Lobos have held their opponent below 10 points.

At UNLV on Jan. 15, the Lobos held the Lady Rebels to nine points in the opening quarter on 22.2% shooting from the floor and just one made three.

In UNM's first game at Nevada, the Lobos held the Wolf Pack to eight points on 3-of-13 shooting (23.1%) and two free throws.

In the first quarter against Midwestern State, the Lobos held the Mustangs to just six points, all coming from the free-throw line. The Mustangs went 0-for-7 from the floor and 0-for-2 from behind the arc. In addition, UNM didn't allow any offensive rebounds by Midwestern State in the first quarter, limiting the possession and any opportunities for MSU to get second-chance points.

UNM scored the first 17 points in the game at Arkansas-Pine Bluff to finish the first quarter ahead 32-8. UAPB went 4-for-17 from the floor and 0-for-3 from three.

In the third quarter of the last game at SDSU, UNM held SDSU to just nine points in the quarter and held the Aztecs to 10 in the third quarter of the first game.

Know Your Opponent

Colorado State enters the series 14-2 on the season, 10-2 in the MW, with its two losses coming to Fresno State (78-74) and UNLV (80-76). The Rams have won their last seven games and are 9-0 at home this season.

CSU is second in the conference in scoring offense, averaging 81.8 points per game, and made three-pointers per game (9.0), but leads the conference in scoring margin (+15.75), field goal percentage (.465), field goal percentage defense (.381), three-point field goal percentage (.404), assist/turnover ratio (1.45) and free-throw percentage (.785).

Nationally, CSU is third in three-point field goal percentage and turnovers per game, fifth in assist/turnover ratio, sixth in defensive rebounds per game (31.4), 13th in free-throw percentage and scoring offense, 19th in three-point field goals attempted and made per game and 20th in scoring margin.

The Rams are led in scoring by Lore Devos (14.4 ppg), with Devos leading in blocks (22) and tied for the team high in rebounds per game (7.6). Tori Williams leads with 29 steals and 43 made threes, and McKenna Hofschild leads with 94 assists. Hofschild is ninth in the NCAA in assists, 10th in assist/turnover ratio, and 14th in assists per game.

LAST TIME IT HAPPENED (OPP)

As A Team

Scored 100 Points:	105 - at Oklahoma (12-16-17)
Scored 90 Points:	91 - vs. Fresno St. (1-30-21)
Scored Less Than 50 Points:	48 - at San Diego St. (2-5-21)
Scored Less Than 40 Points:	33 - vs. Stephen F. Austin (12-20-18)
Shot 50% Or Better:	56.7% (34-60) - vs. Fresno St. (1-30-21)
Shot Less Than 30%:	26.9% (14-52) - vs. Northern NM (12-10-19)
Shot 50% 3FG Or Better:	53.3% (8-15) - vs. San Diego St. (2-12-20)
Shot Less Than 20% 3FG:	15.0% (3-20) - at Arkansas-Pine Bluff (12-17-20)
Made 15 3-Pointers:	15 - at San José St. (1-22-20)
Shot 90% On FTs (10 or more):	92.9% (13-14) - vs. Air Force (2-24-20)
Shot Less Than 50% On FTs:	31.3% (5-16) - at Air Force (1-11-20)
Had 50 Rebounds:	54 - at UNLV (1-15-21)
Had 20 Offensive Rebounds:	21 - at Utah St. (2-27-20)
Had 25 Assists:	26 - at San José St. (1-22-20)
Had 20 Turnovers:	21 - at San Diego State (2-5-21)
Had 30 Turnovers:	30 - vs. Northern NM (11-15-17)
Had Less Than 10 Turnovers:	7 - vs. Boise St. (2-22-20)
Had 10 Steals:	10 - at UNLV (1-15-21)
Had 10 Blocks:	10 - vs. Utah St. (2-10-16)
Had Two 20-Point Scorers:	at Sam Houston State (12-6-20) Amber Leggett (29) and Courtney Cleveland (26)
Had 6 Double-Digit Scorers:	Baylor (1-4-95)
Had 5 Double-Digit Scorers:	vs. Boise St. (2-22-20)
Had No Double-Digit Scorers:	Stephen F. Austin (12-20-18)
Had Two 10+ Rebounders:	vs. Air Force (2-24-20) Emily Conroe (13), Kaelin Immel (10)
Scored 50+ Points In 1st Half:	54 - at San José St. (1-22-20)
Scored 50+ Points In 2nd Half:	51 - vs. Fresno St. (1-30-21)
Scored 20 Or Less Points In 1st Half:	20 - vs. New Mexico St. (12-16-19)
Scored 20 Or Less In 2nd Half:	20 - vs. Wyoming (3-7-19)
Scored Less Than 10 Points in Quarter:	9 - at San Diego State (2-5-21)
Failed To Make a 3FG:	0-1 by San Diego State (2-18-15)

As An Individual

Had a Double-Double (Pts/Reb):	Haley Cavinder (21 pts, 14 reb) Fresno State (1-30-21)
Had a Double-Double (Pts/Asst):	Jayde Christopher (14 pts, 10 assts) Boise St. (2-22-20)
Had a Double-Double (Pts/Steals):	Jasmyne Harris (28 pts & 10 steals) at Houston (11-28-18)
Had 20+ Points & 10+ Rebounds:	Haley Cavinder (21 pts, 14 reb) Fresno State (1-30-21)
Scored 30 Points:	Riley Snyder (34) - vs. Air Force (2-24-20)
Scored 30 Points (MW Only):	Riley Snyder (34) - vs. Air Force (2-24-20)
Had 20+ Rebounds:	Kaylee Johnson (22) - No. 1 Stanford (11-24-14)
Had 15+ Rebounds:	Tyra Whitehead (16) - at San José St. (1-22-20)
Had 10+ Assists:	Jayde Christopher (10) - vs. Boise St. (2-22-20)
Had 5+ Steals:	Haley Cavinder (5) - vs. Fresno St. (2-1-20)
Had 5+ Blocks:	Mallory McGwire (5) - vs. Boise St. (2-22-20)



THE UNIVERSITY OF NEW MEXICO

2020-21 WOMEN'S BASKETBALL



LOBOS RECORD WHEN...

	Overall	In MW
Overall	9-2	6-2
At home	0-0	0-0
On the road	8-1	5-1
At neutral sites	1-1	1-1
After a win	6-2	3-2
After a loss	2-0	2-0
In overtime	0-0	0-0
vs. ranked opponents	0-0	0-0
Games decided by 1-4 points	1-0	1-0
Games decided by 5-9 points	2-0	1-0
Games decided by 10-19 points	3-1	3-1
Games decided by 20+ points	3-1	1-1
Leading after Q1	4-1	2-1
Trailing after Q1	5-1	4-1
Tied after Q1	0-0	0-0
Leading at half	6-1	3-1
Trailing at half	3-1	3-1
Tied at half	0-0	0-0
Leading after Q3	9-0	6-0
Trailing after Q3	0-2	0-2
Tied after Q3	0-0	0-0
Shooting 50% or better	3-0	2-0
Shooting between 40-49.9%	5-0	3-0
Shooting less than 40%	1-2	1-2
Opponent shoots 50% or better	0-1	0-1
Opponent shoots b/w 40-49.9%	4-0	3-0
Opponent shoots b/w 30-39.9%	5-1	3-1
Opponent shoots less than 30%	0-0	0-0
UNM higher FG%	9-0	6-0
Opponent higher FG%	0-2	0-2
FG% Tied	0-0	0-0
UNM outrebounds	4-0	2-0
Opponent outrebounds	4-2	3-2
Rebounds tied	1-0	1-0
UNM more made free throws	4-0	2-0
Opponent more made free throws	3-2	3-2
Made free throws tied	2-0	1-0
UNM 3FG% higher	6-0	4-0
Opponent 3FG% higher	3-2	2-2
3FG% tied	0-0	0-0
UNM has more fouls	3-2	1-2
Opponent has more fouls	3-0	2-0
Fouls are tied	3-0	3-0
UNM more turnovers	0-1	0-1
Opponent more turnovers	9-1	6-1
Turnovers tied	0-0	0-0
Scoring less than 50 points	0-0	0-0
Scoring 50-59 points	0-0	0-0
Scoring 60-69 points	1-2	1-2
Scoring 70-79 points	1-0	1-0
Scoring 80-89 points	4-0	4-0
Scoring 90-99 points	2-0	0-0
Scoring 100+ points	1-0	0-0
Allowing 40 points or less	0-0	0-0
Allowing 41-49 points	2-0	2-0
Allowing 50-59 points	0-0	0-0
Allowing 60-69 points	4-0	2-0
Allowing 70-79 points	1-1	1-1
Allowing 80-89 points	2-0	1-0
Allowing 90+ points	0-1	0-1
In December	4-0	1-0
In January	3-2	3-2
In February	2-0	2-0
In March	0-0	0-0

MOUNTAIN WEST STATISTICS

TEAM	All	Conference Only
Scoring	1st (83.5)	3rd (75.9)
Turnover Margin	1st (+4.9)	1st (+4.50)
Assists per game	1st (17.1)	1st (16.0)
3-Pt FG Made	1st (10.4)	1st (9.5)
Scoring Margin	2nd (+13.1)	3rd (+6.63)
Steals per game	2nd (9.0)	2nd (8.4)
Assist/Turnover Ratio	2nd (1.3)	2nd (1.3)
Field Goal %	3rd (.453)	2nd (.446)
Blocks per game	4th (4.5)	4th (4.3)
3-PT FG %	4th (.328)	4th (.309)

INDIVIDUAL	All	Conference Only
Scoring		
Jaedyn De La Cerda	8th (14.2)	15th (12.9)
LaTascya Duff	11th (13.2)	N/A
Ahlise Hurst	12th (13.0)	T-12th (13.3)
Antonia Anderson	15th (12.3)	16th (12.4)
Rebounding		
Jaedyn De La Cerda	13th (6.0)	18th (5.5)
Shaiquel McGruder	15th (5.7)	N/A
Antonia Anderson	N/A	20th (5.4)
Field Goal %		
Antonia Anderson	N/A	1st (.583)
Assists		
LaTora Duff	8th (3.6)	9th (3.3)
Jaedyn De La Cerda	T-13th (2.7)	N/A
Ahlise Hurst	T-13th (2.7)	11th (2.9)
Corina Carter	15th (2.7)	N/A
Steals		
Shaiquel McGruder	4th (1.9)	4th (1.8)
LaTora Duff	7th (1.7)	T-9th (1.6)
Ahlise Hurst	13th (1.5)	12th (1.4)
Blocked Shots		
Shaiquel McGruder	5th (1.4)	8th (1.3)
Antonia Anderson	7th (1.2)	6th (1.4)
Autumn Watts	N/A	14th (0.88)
Assist/Turnover Ratio		
LaTora Duff	4th (1.6)	4th (1.5)
3-Point FG Made		
Ahlise Hurst	2nd (2.5)	T-2nd (2.3)
LaTascya Duff	3rd (2.3)	4th (2.1)
Jaedyn De La Cerda	15th (1.5)	T-14th (1.5)

NCAA STATISTICS

Three-Point FG/ Game	2nd
Scoring	9th
Assist / Turnover Ratio	15th
Assists / Game	20th
Turnover Margin	28th
Fewest Turnovers	29th
FG %	33rd
Scoring Margin	33rd

2020-21 MW Players of the Week

Week 1 Sophia Ramos SDSU	11-30-20	Week 8 Haley Cavinder FS	1-19-21
Week 2 Haley Cavinder FS	12-7-20	Week 9 Haley Cavinder FS	1-25-21
Week 3 Lore Devos CSU	12-15-20	Week 10 Nia Johnson UNLV	2-2-21
Week 4 LaTascya Duff UNM	12-21-20	Week 11 Maddi Utti FS	2-8-21
Week 5 Delanyie Byrne UNLV	12-28-20		
Week 6 Jade Loville BSU	1-5-21		
Week 7 McKenna Hofschild CSU	1-11-21		



THE UNIVERSITY OF NEW MEXICO

2020-21 WOMEN'S BASKETBALL



SERIES HISTORY

H: 26-13 A: 12-23; N: 6-2 (UNM LEADS 44-38)

HISTORY UNDER COACH BRADBURY

H:	A:	UNM LEADS	4-3
1/14/17	L	78-63	H
2/22/17	L	58-55	A
1/27/18	L	74-71	A
2/27/18	W	54-48	H
1/12/19	W	70-58	H
3/2/19	W	79-56	A
1/15/20	W	73-62	H

STAT COMPARISON

CSU		UNM
81.8	Points Per Game	83.5
46.5	FG%	45.3
40.4	3FG%	32.8
78.5	FT%	72.4
9.0	Made 3-pt PG	10.4
40.3	Rebounds PG	37.4
10.4	Turnovers PG	13.0
15.1	Assists PG	17.1
4.8	Blocks PG	4.5
6.0	Steals PG	9.0
66.0	Scoring Defense	70.4
38.1	FG% Defense	41.1
29.1	3FG% Defense	31.2
+2.2	Rebound Margin	-2.6

TEAM LEADERS

Lore Devos (14.4)	POINTS	Jaedyn De La Cerda (14.2)
Lore Devos (6.0)	REBOUNDS	Jaedyn De La Cerda (6.0)
McKenna Hofschild (5.9)	ASSISTS	LaTora Duff (3.3)
Tori Williams (1.8)	STEALS	Shaiquel McGruder (1.9)
Lore Devos (1.4)	BLOCKS	Shaiquel McGruder (1.4)

UNM STARTING LINEUPS

Game	G	G	G	F	F
Midwestern State	Hurst	LaTora Duff	De La Cerda	Anderson	McGruder
Sam Houston State	Hurst	LaTora Duff	De La Cerda	Anderson	McGruder
Arkansas-Pine Bluff	Hurst	LaTora Duff	De La Cerda	Anderson	McGruder
Nevada	Hurst	LaTora Duff	De La Cerda	Anderson	McGruder
Nevada	Hurst	LaTora Duff	De La Cerda	Anderson	McGruder
UNLV	Hurst	LaTora Duff	De La Cerda	Anderson	McGruder
UNLV	Hurst	LaTora Duff	De La Cerda	Anderson	McGruder
Fresno State	Hurst	LaTora Duff	De La Cerda	Anderson	McGruder
Fresno State	Hurst	LaTora Duff	De La Cerda	Anderson	McGruder
San Diego State	Hurst	LaTora Duff	De La Cerda	Anderson	McGruder
San Diego State	Hurst	LaTora Duff	De La Cerda	Anderson	McGruder

UNM STARTING LINEUPS (RECORD)

Hurst, LaTora Duff, De La Cerda, Anderson, McGruder9-2

DOUBLE-DOUBLE TRACKER

1. Shaiquel McGruder 17 pts/13 rebs..... at SHSU (12-6-20)
2. Jaedyn De La Cerda 13 pts/11 rebs..... at UAPB (12-17-20)

20-POINT TRACKER

1. Jaedyn De La Cerda 28 pts at UNLV (1-17-21)
Jaedyn De La Cerda 21 pts at Nevada (12-31-20)
Jaedyn De La Cerda 24 pts at Sam Houston State (12-6-20)
2. Antonia Anderson 29 pts at UNLV (1-17-21)
3. LaTascya Duff 28 pts Ark.-Pine Bluff (12-17-20)
4. Ahlise Hurst 20 pts at Nevada (1-2-21)

MOUNTAIN WEST STANDINGS

Team (AP/Coaches)	CONFERENCE						OVERALL							
	W	L	Pct.	Home	Away	Neutral	W	L	Pct.	Home	Away	Neutral	Last 10	Strk
Colorado State	10	2	.833	6-0	4-2	0-0	14	2	.875	9-0	5-2	0-0	9-1	W7
New Mexico	6	2	.750	0-0	5-1	1-1	9	2	.818	0-0	8-1	1-1	8-2	W2
Fresno State	9	3	.750	5-1	3-1	1-1	11	6	.647	6-2	3-2	2-2	8-2	W3
UNLV	8	4	.667	4-4	4-0	0-0	10	7	.588	5-7	5-0	0-0	7-3	W2
Boise State	6	6	.500	5-3	1-3	0-0	9	6	.600	8-3	1-3	0-0	4-6	L1
Wyoming	6	8	.429	5-1	1-7	0-0	8	9	.471	6-2	2-7	0-0	4-6	L2
Nevada	5	7	.417	3-3	2-4	0-0	9	8	.529	5-3	4-5	0-0	5-5	W1
San José State%	1	2	.333	0-0	0-2	1-0	2	2	.500	0-0	1-2	1-0	6-4	L2
San Diego State	3	8	.273	2-3	1-5	0-0	5	12	.294	2-6	2-5	1-1	3-7	L5
Air Force	2	8	.200	1-3	1-5	0-0	4	11	.267	2-5	2-6	0-0	3-7	L2
Utah State	2	8	.200	2-4	0-3	0-1	4	11	.267	4-5	0-5	0-1	2-8	L7

% Opted out of the remainder of the 2020-21 season on Jan. 14.



THE UNIVERSITY OF NEW MEXICO

2020-21 WOMEN'S BASKETBALL



PRONUNCIATION GUIDE

3	AHLISE Hurst	AH-lease
4	LATASYA Duff	La-tay-see-uh
10	Celine DUPONT	Dew-pont
13	SHAIQUEL McGruder	Shy-kwell
14	AZARIA Robinson	Ah-Zar-Ree-Ah
23	JAEDYN De La Cerda	JAY-den
34	NEVAEH Parkinson	Nuh-vay-uh

BY ELIGIBILITY

Seniors (2)

23	Jaedyn De La Cerda	G
32	Antonia Anderson	G/F

Juniors (4)

3	Ahlise Hurst	G/F
4	LaTascya Duff	G
5	LaTora Duff	G
13	Shaiquel McGruder	F

Sophomores (3)

1	Corina Carter	PG
14	Azaria Robinson	F
24	Autumn Watts	F

Freshmen (3)

10	Celine Dupont	F/C
15	Kath van Bennekom	G
34	Nevaeh Parkinson	F/C

HOME STATE

Alabama (2)

4	LaTascya Duff	G
5	LaTora Duff	G

Alaska (1)

25	Azaria Robinson	F
----	-----------------	---

Colorado (1)

24	Autumn Watts	F
----	--------------	---

New Mexico (1)

23	Jaedyn De La Cerda	G
----	--------------------	---

Ohio (1)

13	Shaiquel McGruder	F
----	-------------------	---

Texas (3)

1	Corina Carter	PG
32	Antonia Anderson	G/F
34	Nevaeh Parkinson	F/C

INTERNATIONAL

3	Ahlise Hurst (Australia)	G/F
10	Celine Dupont (The Netherlands)	F/C
15	Kath van Bennekom (The Netherlands)	G

NUMERICAL ROSTER

#	NAME	POS	HT	YR	HOMETOWN / PREVIOUS SCHOOL
1	Corina Carter	PG	5-6	So.	San Antonio, Texas / Judson HS
3	Ahlise Hurst	G/F	5-9	Jr.	Bendigo, Australia / Bendigo Senior-Secondary
4	LaTascya Duff	G	5-7	Jr.	Samson, Ala. / Shelton State CC
5	LaTora Duff	G	5-7	Jr.	Samson, Ala. / Shelton State CC
10	Celine Dupont	F/C	6-4	R-Fr.	Almelo, The Netherlands / Parkendaal Lyceum
13	Shaiquel McGruder	F	6-0	Jr.	Trotwood, Ohio / Trotwood-Madison HS
14	Azaria Robinson	F	6-2	So.	Anchorage, Alaska / West HS
15	Kath van Bennekom	G	5-9	Fr.	Gorinchem, The Netherlands / Lyceum Oudehoven
23	Jaedyn De La Cerda	G	5-6	Sr.	Roswell, N.M. / Roswell HS
24	Autumn Watts	F	6-1	So.	Centennial, Colo. / Highlands Ranch HS
32	Antonia Anderson	G/F	6-2	Sr.	Cibolo, Texas / Byron P. Steele II HS
34	Nevaeh Parkinson	F/C	6-3	Fr.	Dallas, Texas / John Paul II HS

ALPHABETICAL ROSTER

#	NAME	POS	HT	YR	HOMETOWN / PREVIOUS SCHOOL
32	Antonia Anderson	G/F	6-2	Sr.	Cibolo, Texas / Byron P. Steele II HS
1	Corina Carter	PG	5-6	So.	San Antonio, Texas / Judson HS
23	Jaedyn De La Cerda	G	5-6	Sr.	Roswell, N.M. / Roswell HS
4	LaTascya Duff	G	5-7	Jr.	Samson, Ala. / Shelton State CC
5	LaTora Duff	G	5-7	Jr.	Samson, Ala. / Shelton State CC
10	Celine Dupont	F/C	6-4	R-Fr.	Almelo, The Netherlands / Parkendaal Lyceum
3	Ahlise Hurst	G/F	5-9	Jr.	Bendigo, Australia / Bendigo Senior-Secondary
13	Shaiquel McGruder	F	6-0	Jr.	Trotwood, Ohio / Trotwood-Madison HS
34	Nevaeh Parkinson	F/C	6-3	Fr.	Dallas, Texas / John Paul II HS
14	Azaria Robinson	F	6-2	So.	Anchorage, Alaska / West HS
15	Kath van Bennekom	G	5-9	Fr.	Gorinchem, The Netherlands / Lyceum Oudehoven
24	Autumn Watts	F	6-1	So.	Centennial, Colo. / Highlands Ranch HS

COACHING STAFF

Head Coach	Mike Bradbury
Assistant Coach	Val King
Assistant Coach	Bill Ferrara
Assistant Coach	Symone Denham
Director of Operations	Kabrina Merriweather
Video Coordinator	Ryan Freeman
Athletic Trainer	Andrea Quintana
Strength & Conditioning	Brett Nakashima

STARTERS RETURNING (2)

No.	Name	Pos.	Cls.	Pts.	Reb.	Ast.	FG%	FT%
3	Ahlise Hurst	G/F	Jr.	13.5	2.6	51	.362	.838
32	Antonia Anderson	F	Sr.	8.8	5.3	54	.418	.718

OTHER LETTERWINNERS RETURNING (5)

No.	Name	Pos.	Cls.	Pts.	Reb.	Ast.	FG%	FT%
23	Jaedyn De La Cerda	G	Sr.	11.0	2.8	60	.372	.813
13	Shaiquel McGruder	F	Jr.	6.9	5.6	8	.595	.741
1	Corina Carter	PG	So.	3.7	1.5	64	.350	.632
25	Azaria Robinson	F	So.	1.8	1.5	4	.700	.500
24	Autumn Watts	F	So.	1.5	1.9	4	.354	.250

STARTERS LOST (3)

No.	Name	Pos.	Cls.	Pts.	Reb.	Ast.	FG%	FT%
5	Jordan Hosey	F	Sr.	11.8	8.3	10	.579	.736
4	Jayla Everett	G	So.	11.5	3.0	65	.314	.750
15	Aisia Robertson	G	R-Sr.	8.9	3.3	144	.288	.593

OTHER LETTERWINNERS LOST (3)

No.	Name	Pos.	Cls.
0	Andriana Avent	G	So.
12	Bride Kennedy-Hopocate	F	R-Sr.
14	Najala Howell	G	R-Sr.

NEWCOMERS (5)

No.	Name	Pos.	Cls. (Exp.)
4	LaTascya Duff	G	Jr. (TR)
5	LaTora Duff	G	Jr. (TR)
10	Celine Dupont	F/C	R-Fr. (RS)
15	Kath van Bennekom	G	Fr. (HS)
34	Nevaeh Parkinson	F/C	Fr. (HS)



THE UNIVERSITY OF NEW MEXICO

2020-21 WOMEN'S BASKETBALL



MIKE BRADBURY | @COACHBRADBURY

RECORD AT UNM: 86-52 (5TH SEASON)

CAREER RECORD: 264-169 (14TH SEASON)

NOTEWORTHY :

- Named the sixth head coach in program history on March 31, 2016
- Led UNM to 25 wins in 2017-18; tied for second-most wins in program history
- Spent six years at Wright State (2010-16) and went 128-73 for the Raiders
- Most single-season wins in Wright State history (26)
- Five 20-win seasons at Wright State with five postseason appearances

Mike Bradbury enters his fifth season as head coach for The University of New Mexico women's basketball team. In his previous four seasons at the helm, Bradbury has guided the Lobos to a 79-50 overall record. Twice in his tenure, in 2017-18 and 2018-19, the Lobos eclipsed the 20-win mark and totaled 49 victories over that time. The consecutive 20-plus win seasons under Bradbury are the first for the program since the 2007-08 - 2008-09 seasons.

In his third year at the helm, Bradbury continued to put his mark on the program while also continuing to bring Lobo women's basketball back to national prominence. Overall, Bradbury's 2018-19 team went 24-7 and earned a bid to the WNIT for a second-straight season. It marked the first time since the 2008-09 - 2009-10 seasons that the program made consecutive trips to the postseason.

After dropping a one-possession game to Auburn in the pre-season WNIT, the 2018-19 Lobos ripped off 11-straight wins to tie the program record and were on the cusp of cracking the national top-25 rankings as well by receiving votes from the WBCA during that stretch.

Bradbury would also receive an individual plaudit from the WBCA last season as he was named as one of 13 finalists for the 2019 United States Marine Corps/WBCA National Coach of the Year Award. Impressively, Bradbury was the only coach from a non-Power 5 conference to be a finalist.

In his time at UNM, Bradbury has coached eight All-Mountain West performers with Cherise Beynon, Jayla Everett, Jaisa Nunn, Aisia Robertson and Richelle van der Keijl making the All-Mountain West Team. Tesha Buck, Mykiel Bureson and Nike McClure have also earned MW recognition with Buck being the 2017-18 Newcomer of the Year, Bureson being named to the All-Freshman team in 2016-17 and

McClure landing on the All-Defensive team in 2018-19.

In terms of major individual awards, Bradbury has coached the league's Newcomer of the Year each season in charge of the Lobos with van der Keijl earning the award in 2016-17, Buck in 2017-18 and Robertson in 2018-19. Additionally, Bradbury has coached the MW Player of the Year in Nunn (2018-19) and the Freshman of the Year in Everett (2018-19).

In year two under Bradbury the Lobos had a breakout season, especially offensively as they ended the 2017-18 season averaging 80.4 points per game while also posting an impressive +9.7 scoring margin. Both marks led the Mountain West and the point-per-game total was 16th-best in NCAA DI last season.

A significant reason for the jump in offensive production was the fact that the Lobos were one of the most potent three-point shooting threats in the country. For the season, the Lobos attempted the eighth-most overall trifectas in DI hoisting 932 long distance shots. Successful 34% of the time, the Lobos made the 11th most 3's burying 319.



Prior to coming to Albuquerque, Bradbury built a successful nine year run as a Division-I head coach with stops at Morehead State (Morehead, Ky.) and Wright State (Dayton, Ohio). Most recently with the Raiders, Bradbury led his squad to five 20-win seasons, including each of his final three seasons. During that time, Wright State has amassed a 75-28 record, the best amongst the 13 Division I programs in the state of Ohio.

Overall at Wright State, Bradbury had five winning seasons, all of which were 20-plus win seasons, in six years - a feat made all the more remarkable as Wright State had just one winning season in the previous 22 before his arrival. In the previous 37 seasons of women's basketball at Wright State, the Raider program had tallied 20 wins just



THE UNIVERSITY OF NEW MEXICO

2020-21 WOMEN'S BASKETBALL



once before Bradbury led the team to 20 wins in five of his six seasons.

His most prominent three-year run at Wright State started in 2013-14, when the Raiders won a school-record 26 games on the way to a 26-9 season and the program's first-ever appearance in the NCAA Tournament. That season saw the Raiders finish second in the Horizon League and win its first Horizon League Tournament. It also featured the program's first road win at perennial league power Wisconsin-Green Bay. Kim Demmings was named the Horizon League Player of the Year and Tournament MVP, and it marked the first time in school history the program had a pair of first team All-Conference selections.

He followed up that by earning Horizon League Coach of the Year in 2014-15 after a 25-9 season that saw his squad lose its Horizon League Preseason Player of the Year less than two minutes into the season opener. The Raiders just missed a second straight NCAA Tournament appearance, falling in overtime in the conference championship game. The team did make its first appearance in the Women's NIT as the league's automatic qualifier, and in 2015-16, the team made it back-to-back WNIT appearances after a 24-11 season, earning the program's first at-large bid.

Those three seasons are the three winningest seasons in the history of Wright State women's basketball.

In his first two seasons at Wright State, he led the team to a 20-13 campaign and a 21-13 mark and berths in the Women's Basketball Invitational, the first NCAA Division I postseason berths for the program. Overall, Bradbury has coached three Horizon League Players of the Year (all in his last three seasons), six first-team All-Horizon League players, three second-team members and four All-Freshman team members.

Prior to his time at Wright State, Bradbury was the head coach at Morehead State where he led the Division I program to a 50-44 mark in three seasons, including a watershed 22-11 season, which was the second-most wins in Morehead State history and the most wins by the Eagles in the previous 38 years.

At Morehead State he coached one Ohio Valley Conference Player of the Year, along with one first-team All-OVC pick (two seasons) and three second-team All-OVC picks.

Bradbury also spent time as an assistant coach at Xavier (2002-06), Cincinnati (1996-02), VCU (1995-96), East Tennessee State (1994-95) and Chattanooga (1991-94). In his 28 seasons as an assistant and as a head coach, Bradbury has had 26 winning seasons.

THE BRADBURY FILE

EDUCATION

UT-Chattanooga - B.S. Recreation (1993)

COACHING EXPERIENCE

1991-93	Student Assistant	Chattanooga
1993-94	Assistant Coach	Chattanooga
1994-95	Assistant Coach	East Tennessee
1995-96	Assistant Coach	VCU
1996-02	Assistant Coach	Cincinnati
2002-07	Assistant Coach	Xavier
2007-10	Head Coach	Morehead State
2010-16	Head Coach	Wright State
2016-pres.	Head Coach	New Mexico

HEAD COACHING RECORD

2007-10	Morehead State	50-44 (.532)
2010-16	Wright State	128-73 (.637)
2016-pres.	New Mexico	88-52 (.629)
14 years		266-169 (.611)

CAREER HEAD COACHING YEAR-BY-YEAR

2007-08	11-19 (9-11)	Morehead State
2008-09	17-14 (11-7)	Morehead State
2009-10	22-11 (14-4)	Morehead State
2010-11	20-13 (11-7)	Wright State
2011-12	21-13 (12-6)	Wright State
2012-13	12-18 (6-10)	Wright State
2013-14	26-9 (12-4)	Wright State
2014-15	25-9 (12-4)	Wright State
2015-16	24-11 (12-6)	Wright State
2016-17	15-15 (10-8)	New Mexico
2017-18	25-11 (10-8)	New Mexico
2018-19	24-7 (14-4)	New Mexico
2019-20	15-17 (6-12)	New Mexico
2020-21	9-2 (6-2)	New Mexico
Total	266-169 (145-93)	



THE UNIVERSITY OF NEW MEXICO 2020-21 WOMEN'S BASKETBALL



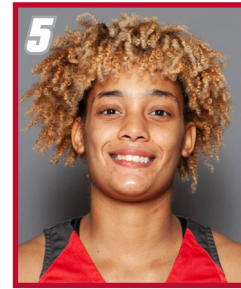
1
Corina Carter
PG | 5-6 | So.
San Antonio, Texas



3
Ahlise Hurst
G/F | 5-9 | Jr.
Bendigo, Australia



4
LaTascya Duff
G | 5-7 | Jr.
Samson, Ala.



5
LaTora Duff
G | 5-7 | Jr.
Samson, Ala.



10
Celine Dupont
F/C | 6-4 | R-Fr.
Almelo, The Netherlands



13
Shaiquel McGruder
F | 6-0 | Jr.
Trotwood, Ohio



14
Azaria Robinson
F | 6-2 | So.
Anchorage, Alaska



15
Kath van Bennekom
G | 5-9 | Fr.
Gorinchem, The Netherlands



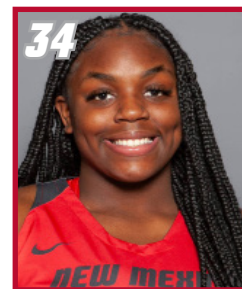
23
Jaedyn De La Cerda
G | 5-6 | Sr.
Roswell, N.M.



24
Autumn Watts
F | 6-1 | So.
Centennial, Colo.



32
Antonia Anderson
G/F | 6-2 | Sr.
Cibolo, Texas



34
Nevaeh Parkinson
F/C | 6-3 | Fr.
Dallas, Texas

COACHING STAFF



Mike Bradbury
Head Coach
Fifth Season



Valerie King
Assistant Coach
Fifth Season



Bill Ferrara
Assistant Coach
Fourth Season



Symone Denham
Assistant Coach
Third Season



Kabrina Merriweather
Dir. of Operations
First Season



Ryan Freeman
Video Coordinator
Second Season



THE UNIVERSITY OF NEW MEXICO 2020-21 WOMEN'S BASKETBALL



#1

CORINA CARTER

F | 5-6 | SO | San Antonio, Texas (Judson HS)



PPG	FG %	3PT %	FT %	RPG	APG	SPG	BPG	MPG
6.0	.389	.333	.615	1.2	2.7	1.2	0.1	16.2

NOTEWORTHY

- » Played at Judson HS for head coach Trivia Corrales
- » 4-star recruit and rated as the #16 point guard and #64 overall prospect in the 2019 class by ESPNW
- » Texas Girls Coaches Association All-Star and Texas Association of Basketball Coaches All-Region player
- » Helped lead HS team to Texas 6A State Championship as a senior; was named MVP of game
- » Named Offensive MVP and first team all-district as a senior
- » Also played club basketball for SA Finest and AD Elite

Carter's Top Performances

Points	Season	18 at Arkansas-PB (12/17/20)
	Career	same
FGM	Season	6 at Arkansas-PB (12/17/20)
	Career	same
FGA	Season	13 at Arkansas-PB (12/17/20)
	Career	same
3PT FGM	Season	3 at Arkansas-PB (12/17/20)
	Career	Same
3PT FGA	Season	8 at Arkansas-PB (12/17/20)
	Career	Same
FTM	Season	3 at Arkansas-PB (12/17/20)
	Career	5 vs. LMU (12/19/19)
FTA	Season	4 - done twice
	Career	6 vs. LMU (12/19/19)
Rebounds	Season	3 at Arkansas-PB (12/17/20)
	Career	5 - done twice
Assists	Season	6 at San Diego St. (2/3/21)
	Career	8 at UTEP (11/19/19)
Blocks	Season	1 vs. Fresno State (1/28/21)
	Career	Same
Steals	Season	3 vs. Fresno State (1/28/21)
	Career	Same
Turnovers	Season	3 at UNLV (1/15/21)
	Career	6 at UNLV (2/15/20)
Min. Played	Season	24 at Nevada (12/31/20)
	Career	28 vs. UNLV (1/18/20)

GAME-BY-GAME STATISTICS

Opponent	Date	GS	MIN	Total		3-Pointers		Free throws		Rebounds				PF	A	T/O	BLK	STL	PTS	AVG
				FG-FGA	PCT	3FG-3FGA	PCT	FT-FTA	PCT	OFF	DEF	TOT	AVG							
at Sam Houston	12/06/2020		20:42	3-10	.300	2-5	.400	2-4	.500	0	1	1	1.0	3	2	2	0	1	10	10.0
at Ark.-Pine Bluff	12/17/2020		21:46	6-13	.462	3-8	.375	3-4	.750	0	3	3	2.0	3	5	1	0	2	18	14.0
at Nevada	12/31/2020		23:12	4-5	.800	1-1	1.000	0-0	.000	0	2	2	2.0	1	4	1	0	0	9	12.3
at Nevada	01/02/2021		11:16	1-2	.500	0-1	.000	1-2	.500	0	0	0	1.5	2	1	2	0	2	3	10.0
at UNLV	01/15/2021		17:09	1-6	.167	0-4	.000	0-0	.000	0	0	0	1.2	1	3	3	0	1	2	8.4
at UNLV	01/17/2021		05:09	0-2	.000	0-1	.000	0-0	.000	0	0	0	1.0	1	0	1	0	1	0	7.0
vs Fresno St.	01/28/2021		13:14	2-4	.500	2-3	.667	0-0	.000	0	2	2	1.1	3	2	0	1	3	6	6.9
vs Fresno St.	01/30/2021		14:21	2-6	.333	1-4	.250	0-1	.000	0	1	1	1.1	0	1	1	0	0	5	6.6
at San Diego St.	02/03/2021		20:00	1-4	.250	0-2	.000	0-0	.000	0	2	2	1.2	1	6	1	0	1	2	6.1
at San Diego St.	02/05/2021		15:31	1-2	.500	1-1	1.000	2-2	1.000	0	1	1	1.2	1	3	1	0	1	5	6.0
Totals			0 162:20	21-54	.389	10-30	.333	8-13	.615	0	12	12	1.2	16	27	13	1	12	60	6.0

CAREER STATISTICS

SEASON	TEAM	GP-GS	MIN/AVG	Field Goals		3-Point		F-Throws		Rebounds				Scoring						
				FG-FGA	FG%	3FG-FGA	3FG%	FT-FTA	FT%	OFF	DEF	TOT	AVG	PF-FO	AST	TO	BLK	STL	PTS	AVG
2019-20	UNM	31-1	469/15.1	43-123	.350	6-38	.158	24-38	.632	9	37	46	1.5	40-0	64	46	0	23	116	3.7
2020-21	UNM	10-0	162/16.2	21-54	.389	10-30	.333	8-13	.615	0	12	12	1.2	16-0	27	13	1	12	60	6.0
TOTAL		41-1	631/15.4	64-177	.362	16-68	.235	32-51	.627	9	49	58	1.4	56-0	91	59	1	35	176	4.3



THE UNIVERSITY OF NEW MEXICO 2020-21 WOMEN'S BASKETBALL



#3

AHLISE HURST

G | 5-9 | JR | Bendigo, Australia (Bendigo Senior-Secondary)



PPG	FG %	3PT %	FT %	RPG	APG	SPG	BPG	MPG
13.0	.353	.307	.759	2.2	2.7	1.5	0.3	29.4

NOTEWORTHY

- » Played in 31 games and started 28 as a true freshman
- » Averaged 7.6 ppg to rank as the fifth-leading scorer on the team
- » Second on the team in made three-pointers with 49
- » Set freshman scoring record at UNM against Oklahoma with 39 points
- » International playing experience with Vic Country and the Bendigo Braves
- » Played as a development player for the Bendigo Spirit of the Australian Women's National Basketball League (WNBL)

Hurst's Top Performances

Points	Season	20 at Nevada (1/2/21)
	Career	39 vs. Oklahoma (11/28/18)
FGM	Season	7 at Nevada (1/2/21)
	Career	14 vs. Oklahoma (11/28/18)
FGA	Season	18 at UNLV (1/15/21)
	Career	24 vs. Oklahoma (11/28/18)
3PT FGM	Season	5 at Midwestern St. (12/4/20)
	Career	9 vs. Oklahoma (11/28/18)
3PT FGA	Season	13 at UNLV (1/15/21)
	Career	17 - done twice
FTM	Season	6 at San Diego St. (2/3/21)
	Career	6 - done twice
FTA	Season	8 at San Diego St. (2/3/21)
	Career	Same
Rebounds	Season	4 - done twice
	Career	7 - done twice
Assists	Season	6 at San Diego St. (2/5/21)
	Career	Same
Blocks	Season	1 - done three times
	Career	4 at San José St. (1/22/20)
Steals	Season	4 at UNLV (1/17/21)
	Career	5 vs. Houston (11/12/19)
Turnovers	Season	3 - done four times
	Career	5 at UNLV (1/9/19)
Min. Played	Season	37 at Nevada (1/2/21)
	Career	43 at Houston (11/24/18)

GAME-BY-GAME STATISTICS

Opponent	Date	GS	MIN	Total		3-Pointers		Free throws		Rebounds				PF	A	T/O	BLK	STL	PTS	AVG
				FG-FGA	PCT	3FG-3FGA	PCT	FT-FTA	PCT	OFF	DEF	TOT	AVG							
at Midwestern St.	12/04/2020	*	26:46	5-11	.455	5-10	.500	3-4	.750	0	1	1	1.0	2	2	3	0	3	18	18.0
at Sam Houston	12/06/2020	*	21:22	1-5	.200	1-2	.500	0-0	.000	0	2	2	1.5	5	1	2	1	2	3	10.5
at Ark.-Pine Bluff	12/17/2020	*	22:14	5-10	.500	3-8	.375	3-3	1.000	0	4	4	2.3	1	4	2	0	0	16	12.3
at Nevada	12/31/2020	*	30:44	4-12	.333	3-8	.375	2-2	1.000	0	1	1	2.0	1	1	1	0	1	13	12.5
at Nevada	01/02/2021	*	37:07	7-15	.467	3-6	.500	3-4	.750	0	2	2	2.0	2	0	1	0	3	20	14.0
at UNLV	01/15/2021	*	28:15	6-18	.333	4-13	.308	0-0	.000	0	2	2	2.0	3	1	3	0	1	16	14.3
at UNLV	01/17/2021	*	35:43	0-9	.000	0-7	.000	2-2	1.000	0	4	4	2.3	2	5	1	1	4	2	12.6
vs Fresno St.	01/28/2021	*	34:57	6-14	.429	3-10	.300	0-0	.000	0	3	3	2.4	1	5	0	0	1	15	12.9
vs Fresno St.	01/30/2021	*	24:39	3-13	.231	2-10	.200	0-0	.000	0	2	2	2.3	2	4	3	0	0	8	12.3
at San Diego St.	02/03/2021	*	28:03	6-12	.500	1-6	.167	6-8	.750	0	1	1	2.2	1	1	1	0	1	19	13.0
at San Diego St.	02/05/2021	*	34:01	4-14	.286	2-8	.250	3-6	.500	0	2	2	2.2	1	6	3	1	0	13	13.0
Totals		11	323:51	47-133	.353	27-88	.307	22-29	.759	0	24	24	2.2	21	30	20	3	16	143	13.0

CAREER STATISTICS

SEASON	TEAM	GP-GS	MIN/AVG	Field Goals		3-Point		F-Throws		Rebounds				Scoring						
				FG-FGA	FG%	3FG-FGA	3FG%	FT-FTA	FT%	OFF	DEF	TOT	AVG	PF-FO	AST	TO	BLK	STL	PTS	AVG
2018-19	UNM	31-28	918/29.6	85-258	.329	49-183	.268	16-27	.593	13	64	77	2.5	47-0	32	46	6	34	235	7.6
2019-20	UNM	32-31	1122/35.1	142-392	.362	92-263	.350	57-68	.838	6	77	83	2.6	55-0	51	41	11	58	433	13.5
2020-21	UNM	11-11	324/29.4	47-133	.353	27-88	.307	22-29	.759	0	24	24	2.2	21-1	30	20	3	16	143	13.0
TOTAL		74-70	2364/31.9	274-783	.350	168-534	.315	95-124	.766	19	165	184	2.5	123-1	113	107	20	108	811	11.0



THE UNIVERSITY OF NEW MEXICO 2020-21 WOMEN'S BASKETBALL



#4

LaTASYA DUFF

G | 5-7 | JR | Samson, Ala. (Shelton State CC)



PPG	FG %	3PT %	FT %	RPG	APG	SPG	BPG	MPG
13.2	.419	.347	.744	3.4	1.7	0.4	0.1	22.5

NOTEWORTHY

- » Named Mountain West Preseason Newcomer of the Year
- » Named a WBCA All-American at Shelton State after starting all 31 games and leading her team with 17.0 ppg her sophomore season
- » Averaged 4.6 rebounds, 3.1 assists, 1.7 steals and 0.5 blocks per game
- » Scored in double figures in all but two games on the season, including 25 games straight

Duff's Top Performances

Points	Season	28 at Arkansas-PB (12/17/20)
	Career	Same
FGM	Season	10 at Arkansas-PB (12/17/20)
	Career	Same
FGA	Season	13 at Midwestern St. (12/4/20)
	Career	Same
3PT FGM	Season	6 at San Diego St. (2/3/21)
	Career	Same
3PT FGA	Season	10 at Midwestern St. (12/4/20)
	Career	Same
FTM	Season	8 at SHSU (12/6/20)
	Career	Same
FTA	Season	10 at SHSU (12/6/20)
	Career	Same
Rebounds	Season	7 at Arkansas-PB (12/17/20)
	Career	Same
Assists	Season	6 at Midwestern St. (12/4/20)
	Career	Same
Blocks	Season	1 at Midwestern St. (12/4/20)
	Career	Same
Steals	Season	2 at Midwestern St. (12/4/20)
	Career	Same
Turnovers	Season	3 at SHSU (12/6/20)
	Career	Same
Min. Played	Season	31 at Midwestern St. (12/4/20)
	Career	Same

GAME-BY-GAME STATISTICS

Opponent	Date	GS	MIN	Total		3-Pointers		Free throws		Rebounds				PF	A	T/O	BLK	STL	PTS	AVG
				FG-FGA	PCT	3FG-3FGA	PCT	FT-FTA	PCT	OFF	DEF	TOT	AVG							
at Midwestern St.	12/04/2020		30:33	4-13	.308	3-10	.300	5-7	.714	3	2	5	5.0	4	6	0	1	2	16	16.0
at Sam Houston	12/06/2020		20:01	3-7	.429	1-4	.250	8-10	.800	0	0	0	2.5	2	0	3	0	0	15	15.5
at Ark.-Pine Bluff	12/17/2020		25:27	10-11	.909	4-5	.800	4-5	.800	1	6	7	4.0	1	3	1	0	0	28	19.7
at Nevada	12/31/2020		21:52	4-9	.444	3-7	.429	2-2	1.000	0	2	2	3.5	3	0	1	0	0	13	18.0
at Nevada	01/02/2021		22:22	4-10	.400	1-4	.250	1-3	.333	1	2	3	3.4	1	1	0	0	0	10	16.4
at UNLV	01/15/2021		24:50	5-10	.500	4-8	.500	3-3	1.000	0	4	4	3.5	2	2	0	0	1	17	16.5
at UNLV	01/17/2021		15:52	2-7	.286	0-4	.000	0-2	.000	3	3	6	3.9	0	4	1	0	1	4	14.7
vs Fresno St.	01/28/2021		20:43	3-11	.273	1-7	.143	6-7	.857	0	1	1	3.5	4	2	2	0	0	13	14.5
vs Fresno St.	01/30/2021		21:45	2-9	.222	1-6	.167	0-0	.000	2	2	4	3.6	1	1	1	0	0	5	13.4
at San Diego St.	02/03/2021		21:30	6-9	.667	6-9	.667	1-2	.500	0	2	2	3.4	3	0	0	0	0	19	14.0
at San Diego St.	02/05/2021		22:32	1-9	.111	1-8	.125	2-2	1.000	0	3	3	3.4	2	0	2	0	0	5	13.2
Totals		0	247:27	44-105	.419	25-72	.347	32-43	.744	10	27	37	3.4	23	19	11	1	4	145	13.2

CAREER STATISTICS (AT UNM)

SEASON	TEAM	GP-GS	MIN/AVG	Field Goals		3-Point		F-Throws		Rebounds				Scoring						
				FG-FGA	FG%	3FG-FGA	3FG%	FT-FTA	FT%	OFF	DEF	TOT	AVG	PF-FO	AST	TO	BLK	STL	PTS	AVG
2020-21	UNM	11-0	247/22.5	44-105	.419	25-72	.347	32-43	.744	10	27	37	3.4	23-0	19	11	1	4	145	13.2
TOTAL		11-0	247/22.5	44-105	.419	25-72	.347	32-43	.744	10	27	37	3.4	23-0	19	11	1	4	145	13.2



THE UNIVERSITY OF NEW MEXICO 2020-21 WOMEN'S BASKETBALL



#5

LaTORA DUFF

G | 5-7 | JR | Samson, Ala. (Shelton State CC)



PPG	FG %	3PT %	FT %	RPG	APG	SPG	BPG	MPG
9.8	.471	.378	.737	3.5	3.6	1.7	0.3	26.8

NOTEWORTHY

- » Competed and started in all 31 games at Shelton State as a sophomore
- » Named a WBCA All-American
- » Finished second on the team averaging 12.5 points per game, and averaged 4.9 rebounds, 3.8 assists and 2.4 steals per game
- » Scored a career-high 25 points on March 6 in the ACCC Tournament Championship against Wallace State

Duff's Top Performances

Points	Season	15 - done twice
	Career	Same
FGM	Season	6 at UNLV (1/17/21)
	Career	Same
FGA	Season	11 at UNLV (1/17/21)
	Career	Same
3PT FGM	Season	3 - done three times
	Career	Same
3PT FGA	Season	7 - done twice
	Career	Same
FTM	Season	6 at Midwestern St.(12/4/20)
	Career	Same
FTA	Season	9 at Midwestern St.(12/4/20)
	Career	Same
Rebounds	Season	7 - done twice
	Career	Same
Assists	Season	5 - done three times
	Career	Same
Blocks	Season	1 - done three times
	Career	Same
Steals	Season	4 at Midwestern St.(12/4/20)
	Career	Same
Turnovers	Season	8 at UNLV (1/17/21)
	Career	Same
Min. Played	Season	34 at Midwestern St.(12/4/20)
	Career	Same

GAME-BY-GAME STATISTICS

Opponent	Date	GS	MIN	Total		3-Pointers		Free throws		Rebounds				PF	A	T/O	BLK	STL	PTS	AVG
				FG-FGA	PCT	3FG-3FGA	PCT	FT-FTA	PCT	OFF	DEF	TOT	AVG							
at Midwestern St.	12/04/2020	*	33:50	4-8	.500	0-1	.000	6-9	.667	0	4	4	4.0	1	5	2	1	4	14	14.0
at Sam Houston	12/06/2020	*	26:45	5-10	.500	1-2	.500	4-6	.667	2	2	4	4.0	3	5	5	1	1	15	14.5
at Ark.-Pine Bluff	12/17/2020	*	25:06	4-9	.444	3-7	.429	2-2	1.000	1	3	4	4.0	1	4	1	0	1	13	14.0
at Nevada	12/31/2020	*	26:18	5-8	.625	3-5	.600	0-0	.000	1	0	1	3.3	4	5	1	1	0	13	13.8
at Nevada	01/02/2021	*	28:44	5-9	.556	0-0	.000	0-0	.000	0	7	7	4.0	2	4	3	0	1	10	13.0
at UNLV	01/15/2021	*	25:32	4-7	.571	1-3	.333	0-0	.000	1	2	3	3.8	1	2	2	0	1	9	12.3
at UNLV	01/17/2021	*	32:42	6-11	.545	3-7	.429	0-0	.000	0	3	3	3.7	0	3	8	0	3	15	12.7
vs Fresno St.	01/28/2021	*	22:46	2-8	.250	0-3	.000	0-0	.000	1	6	7	4.1	1	3	0	0	1	4	11.6
vs Fresno St.	01/30/2021	*	25:39	3-6	.500	1-3	.333	2-2	1.000	0	4	4	4.1	1	3	1	0	3	9	11.3
at San Diego St.	02/03/2021	*	22:04	1-4	.250	1-2	.500	0-0	.000	0	0	0	3.7	1	4	0	0	1	3	10.5
at San Diego St.	02/05/2021	*	25:13	1-5	.200	1-4	.250	0-0	.000	0	1	1	3.5	1	2	2	0	3	3	9.8
Totals		11	294:39	40-85	.471	14-37	.378	14-19	.737	6	32	38	3.5	16	40	25	3	19	108	9.8

CAREER STATISTICS (AT UNM)

SEASON	TEAM	GP-GS	MIN/AVG	Field Goals		3-Point		F-Throws		Rebounds				Scoring						
				FG-FGA	FG%	3FG-FGA	3FG%	FT-FTA	FT%	OFF	DEF	TOT	AVG	PF-FO	AST	TO	BLK	STL	PTS	AVG
2020-21	UNM	11-11	295/26.8	40-85	.471	14-37	.378	14-19	.737	6	32	38	3.5	16-0	40	25	3	19	108	9.8
TOTAL		11-11	295/26.8	40-85	.471	14-37	.378	14-19	.737	6	32	38	3.5	16-0	40	25	3	19	108	9.8



THE UNIVERSITY OF NEW MEXICO 2020-21 WOMEN'S BASKETBALL



#10

CELINE DUPONT

F/C | 6-4 | RS-FR | Almelo, The Netherlands (Parkendaal Lyce-



PPG	FG %	3PT %	FT %	RPG	APG	SPG	BPG	MPG
0.0	.000	.000	---	0.2	0.2	0.2	0.0	4.6

NOTEWORTHY

- » Extensive club and international playing experience
- » Played in Dutch National Women's U20 Basketball League where she averaged 14.6 points per game and 10.0 rebounds per game in 2019
- » Played in two FIBA European women's championships (U16 & U18)
- » Helped team win the U20 national cup in 2017 as a member of the Royal Eagles
- » Helped team win the national women's super-cup with her club team Binnenland in 2018
- » Helped Binnenland reach the national women's final four in 2019.

Dupont's Top Performances

Points	Season	
	Career	Same
FGM	Season	
	Career	Same
FGA	Season	3 at Midwestern St.(12/4/20)
	Career	Same
3PT FGM	Season	
	Career	Same
3PT FGA	Season	3 at Midwestern St.(12/4/20)
	Career	Same
FTM	Season	
	Career	Same
FTA	Season	
	Career	Same
Rebounds	Season	1 at Arkansas-PB (12/17/20)
	Career	Same
Assists	Season	1 vs Fresno State (1/30/21)
	Career	Same
Blocks	Season	
	Career	Same
Steals	Season	1 vs Fresno State (1/30/21)
	Career	Same
Turnovers	Season	1 at Arkansas-PB (12/17/20)
	Career	Same
Min. Played	Season	9 at Midwestern St.(12/4/20)
	Career	Same

GAME-BY-GAME STATISTICS

Opponent	Date	GS	MIN	Total		3-Pointers		Free throws		Rebounds				PF	A	T/O	BLK	STL	PTS	AVG
				FG-FGA	PCT	3FG-3FGA	PCT	FT-FTA	PCT	OFF	DEF	TOT	AVG							
at Midwestern St.	12/04/2020		08:46	0-3	.000	0-3	.000	0-0	.000	0	0	0	0.0	2	0	0	0	0	0	0.0
at Ark.-Pine Bluff	12/17/2020		06:35	0-0	.000	0-0	.000	0-0	.000	0	1	1	0.5	0	0	1	0	0	0	0.0
at Nevada	12/31/2020		05:25	0-1	.000	0-1	.000	0-0	.000	0	0	0	0.3	0	0	0	0	0	0	0.0
at UNLV	01/15/2021		01:58	0-1	.000	0-0	.000	0-0	.000	0	0	0	0.3	0	0	0	0	0	0	0.0
vs Fresno St.	01/30/2021		02:23	0-1	.000	0-1	.000	0-0	.000	0	0	0	0.2	0	1	0	0	1	0	0.0
at San Diego St.	02/03/2021		02:29	0-1	.000	0-0	.000	0-0	.000	0	0	0	0.2	1	0	0	0	0	0	0.0
Totals		0	27:36	0-7	.000	0-5	.000	0-0	.000	0	1	1	0.2	3	1	1	0	1	0	0.0

CAREER STATISTICS

SEASON	TEAM	GP-GS	MIN/AVG	Field Goals		3-Point		F-Throws		Rebounds				Scoring						
				FG-FGA	FG%	3FG-FGA	3FG%	FT-FTA	FT%	OFF	DEF	TOT	AVG	PF-FO	AST	TO	BLK	STL	PTS	AVG
2020-21	UNM	6-0	28/4.6	0-7	.000	0-5	.000	0-0	.000	0	1	1	0.2	3-0	1	1	0	1	0	0.0
TOTAL		6-0	28/4.6	0-7	.000	0-5	.000	0-0	.000	0	1	1	0.2	3-0	1	1	0	1	0	0.0



THE UNIVERSITY OF NEW MEXICO 2020-21 WOMEN'S BASKETBALL



#13

SHAIQUEL McGRUDER

F | 6-0 | JR | Trotwood, Ohio (Trotwood-Madison HS)



PPG	FG %	3PT %	FT %	RPG	APG	SPG	BPG	MPG
10.0	.681	.556	.636	5.7	0.6	1.9	1.4	24.0

NOTEWORTHY

- » Appeared in 31 games, with eight starts, for the Lobos in her sophomore season
- » Appeared in 26 games, all off the bench, for the Lobos in her true freshman campaign
- » Shot 57% overall from the floor (33-of-58) and averaged 2.8 points per game
- » Hauled in 71 total rebounds and averaged 2.7 rebounds per game
- » Finished her HS career at Trotwood-Madison HS after previously playing at Wayne Memorial HS
- » 3-star recruit and ranked as the #19 forward in the 2018 class by ESPNW

McGruder's Top Performances

Points	Season	17 at SHSU (12/6/20)
	Career	18 vs. Northern NM (12/10/19)
FGM	Season	7 - done four times
	Career	9 vs. Northern NM (12/10/19)
FGA	Season	11 at Nevada (12/31/20)
	Career	12 vs. San Diego St. (2/12/20)
3PT FGM	Season	2 at SHSU (12/6/20)
	Career	Same
3PT FGA	Season	3 at SHSU (12/6/20)
	Career	Same
FTM	Season	3 at Arkansas-PB (12/17/20)
	Career	same
FTA	Season	4 at Arkansas-PB (12/17/20)
	Career	4 - done twice
Rebounds	Season	13 at SHSU (12/6/20)
	Career	17 vs. Nevada (3/1/20)
Assists	Season	4 vs. Fresno State (1/28/21)
	Career	Same
Blocks	Season	5 at SHSU (12/6/20)
	Career	Same
Steals	Season	4 vs. Fresno State (1/28/21)
	Career	8 vs. West Virginia (11/29/19)
Turnovers	Season	5 at SHSU (12/6/20)
	Career	Same
Min. Played	Season	34 at SHSU (12/6/20)
	Career	Same

GAME-BY-GAME STATISTICS

Opponent	Date	GS	MIN	Total		3-Pointers		Free throws		Rebounds				PF	A	T/O	BLK	STL	PTS	AVG	
				FG-FGA	PCT	3FG-3FGA	PCT	FT-FTA	PCT	OFF	DEF	TOT	AVG								
at Midwestern St.	12/04/2020	*	09:49	1-2	.500	0-0	.000	0-0	.000	2	2	4	4.0	3	0	1	0	2	2	2.0	
at Sam Houston	12/06/2020	*	34:27	7-10	.700	2-3	.667	1-3	.333	4	9	13	8.5	3	0	5	5	3	17	9.5	
at Ark.-Pine Bluff	12/17/2020	*	17:03	3-7	.429	0-0	.000	3-4	.750	3	4	7	8.0	0	1	1	0	2	9	9.3	
at Nevada	12/31/2020	*	22:08	7-11	.636	1-2	.500	0-0	.000	2	4	6	7.5	3	0	0	0	3	15	10.8	
at Nevada	01/02/2021	*	27:11	4-6	.667	0-1	.000	0-0	.000	0	2	2	6.4	2	0	1	1	3	8	10.2	
at UNLV	01/15/2021	*	21:09	1-3	.333	0-1	.000	0-0	.000	0	4	4	6.0	2	0	1	4	1	2	8.8	
at UNLV	01/17/2021	*	28:23	1-3	.333	0-0	.000	1-2	.500	1	3	4	5.7	3	0	0	2	1	3	8.0	
vs Fresno St.	01/28/2021	*	32:43	7-9	.778	0-0	.000	0-0	.000	1	6	7	5.9	1	4	1	1	4	14	8.8	
vs Fresno St.	01/30/2021	*	30:45	7-8	.875	0-0	.000	0-0	.000	2	1	3	5.6	1	2	0	0	0	14	9.3	
at San Diego St.	02/03/2021	*	23:50	6-6	1.000	1-1	1.000	2-2	1.000	6	3	9	5.9	2	0	1	1	2	15	9.9	
at San Diego St.	02/05/2021	*	17:05	5-7	.714	1-1	1.000	0-0	.000	1	3	4	5.7	3	0	0	1	0	11	10.0	
Totals			11	264:33	49-72	.681	5-9	.556	7-11	.636	22	41	63	5.7	23	7	11	15	21	110	10.0

CAREER STATISTICS

SEASON	TEAM	GP-GS	MIN/AVG	Field Goals		3-Point		F-Throws		Rebounds				Scoring						
				FG-FGA	FG%	3FG-FGA	3FG%	FT-FTA	FT%	OFF	DEF	TOT	AVG	PF-FO	AST	TO	BLK	STL	PTS	AVG
2018-19	UNM	26-0	212/8.1	33-58	.569	0-0	.000	7-18	.389	32	39	71	2.7	17-0	3	7	14	24	73	2.8
2019-20	UNM	31-8	558/18.0	97-163	.595	1-10	.100	20-27	.741	66	108	174	5.6	44-0	8	29	26	38	215	6.9
2020-21	UNM	11-11	265/24.0	49-72	.681	5-9	.556	7-11	.636	22	41	63	5.7	23-0	7	11	15	21	110	10.0
TOTAL		68-19	1034/15.2	179-293	.611	6-19	.316	34-56	.607	120	188	308	4.5	84-0	18	47	55	83	398	5.9



THE UNIVERSITY OF NEW MEXICO 2020-21 WOMEN'S BASKETBALL



#14

AZARIA ROBINSON

F | 6-2 | SO | Anchorage, Alaska (West HS)



PPG	FG %	3PT %	FT %	RPG	APG	SPG	BPG	MPG
0.6	.500	---	---	1.0	0.0	0.0	0.1	4.9

NOTEWORTHY

- » Played at West Anchorage HS for head coach Charlie Ingle
- » 4-star recruit and rated as the #15 post and #90 overall prospect in the 2019 class by ESPNW
- » Named all-state three times with first team honors coming in 2018
- » Averaged 17 points, 18 rebounds and 3 blocks per game
- » Also played club basketball for the Alaska Stars

Robinson's Top Performances

Points	Season	2 - done twice
	Career	9 at Air Force (1/11/20)
FGM	Season	1 - done twice
	Career	4 at Air Force (1/11/20)
FGA	Season	3 at Midwestern St. (12/4/20)
	Career	5 at UNLV (2/15/20)
3PT FGM	Season	
	Career	
3PT FGA	Season	
	Career	
FTM	Season	
	Career	2 vs. UNLV (1/18/20)
FTA	Season	
	Career	2 - done three times
Rebounds	Season	4 at Midwestern St. (12/4/20)
	Career	5 - done twice
Assists	Season	
	Career	2 vs. Northern NM (12/10/19)
Blocks	Season	1 - at UNLV (1/17/21)
	Career	1 - done four times
Steals	Season	
	Career	2 vs. Northern NM (12/10/19)
Turnovers	Season	1 at UNLV (1/15/21)
	Career	1 - done three times
Min. Played	Season	9 at UNLV (1/15/21)
	Career	19 at UNLV (2/15/20)

GAME-BY-GAME STATISTICS

Opponent	Date	GS	MIN	Total		3-Pointers		Free throws		Rebounds				PF	A	T/O	BLK	STL	PTS	AVG
				FG-FGA	PCT	3FG-3FGA	PCT	FT-FTA	PCT	OFF	DEF	TOT	AVG							
at Midwestern St.	12/04/2020		08:08	1-3	.333	0-0	.000	0-0	.000	1	3	4	4.0	2	0	0	0	0	2	2.0
at Sam Houston	12/06/2020		01:12	0-0	.000	0-0	.000	0-0	.000	0	0	0	2.0	0	0	0	0	0	1.0	
at Ark.-Pine Bluff	12/17/2020		06:03	0-0	.000	0-0	.000	0-0	.000	0	0	0	1.3	3	0	0	0	0	0.7	
at Nevada	12/31/2020		02:29	0-0	.000	0-0	.000	0-0	.000	0	0	0	1.0	1	0	0	0	0	0.5	
at UNLV	01/15/2021		08:49	1-1	1.000	0-0	.000	0-0	.000	0	2	2	1.2	1	0	1	1	0	2	0.8
vs Fresno St.	01/30/2021		03:37	0-0	.000	0-0	.000	0-0	.000	0	1	1	1.2	2	0	0	0	0	0.7	
at San Diego St.	02/03/2021		04:00	0-0	.000	0-0	.000	0-0	.000	0	0	0	1.0	1	0	0	0	0	0.6	
Totals		0	34:18	2-4	.500	0-0	.000	0-0	.000	1	6	7	1.0	10	0	1	1	0	4	0.6

CAREER STATISTICS

SEASON	TEAM	GP-GS	MIN/AVG	Field Goals		3-Point		F-Throws		Rebounds				Scoring						
				FG-FGA	FG%	3FG-FGA	3FG%	FT-FTA	FT%	OFF	DEF	TOT	AVG	PF-FO	AST	T/O	BLK	STL	PTS	AVG
2019-20	UNM	17-0	99/5.8	14-20	.700	0-0	.000	3-6	.500	12	14	26	1.5	18-0	4	3	3	3	31	1.8
2020-21	UNM	7-0	34/4.9	2-4	.500	0-0	.000	0-0	.000	1	6	7	1.0	10-0	0	1	1	0	4	0.6
TOTAL		24-0	133/5.5	16-24	.667	0-0	.000	3-6	.500	13	20	33	1.4	28-0	4	4	4	3	35	1.5



THE UNIVERSITY OF NEW MEXICO 2020-21 WOMEN'S BASKETBALL



#15

KATH VAN BENNEKOM

G | 5-9 | FR | Gorinchem, The Netherlands



PPG	FG %	3PT %	FT %	RPG	APG	SPG	BPG	MPG
2.3	.250	.167	.786	2.3	0.3	0.0	0.0	8.8

NOTEWORTHY

- » Competed for Lyceum Oudehoven and also for the club team Binneland where she helped her team to the U16 Championship in 2016
- » Led her U20 team to the semi-finals and the Final Four in 2017, 2018, 2019 and 2020
- » Helped her team to the U20 Cup Finals twice (2017, 2020).

van Bennekom Top Performances

Points	Season	9 at Midwestern St.(12/4/20)
	Career	Same
FGM	Season	1 - done four times
	Career	Same
FGA	Season	5 at Midwestern St.(12/4/20)
	Career	Same
3PT FGM	Season	1 - done twice
	Career	Same
3PT FGA	Season	4 at Midwestern St.(12/4/20)
	Career	Same
FTM	Season	6 at Midwestern St.(12/4/20)
	Career	Same
FTA	Season	8 at Midwestern St.(12/4/20)
	Career	Same
Rebounds	Season	7 at San Diego St. (2/5/21)
	Career	Same
Assists	Season	1 - done three times
	Career	Same
Blocks	Season	
	Career	
Steals	Season	
	Career	
Turnovers	Season	1 - done twice
	Career	Same
Min. Played	Season	19 at Midwestern St.(12/4/20)
	Career	Same

GAME-BY-GAME STATISTICS

Opponent	Date	GS	MIN	Total		3-Pointers		Free throws		Rebounds				PF	A	T/O	BLK	STL	PTS	AVG
				FG-FGA	PCT	3FG-3FGA	PCT	FT-FTA	PCT	OFF	DEF	TOT	AVG							
at Midwestern St.	12/04/2020		19:21	1-5	.200	1-4	.250	6-8	.750	1	2	3	3.0	3	1	1	0	0	9	9.0
at Sam Houston	12/06/2020		13:45	0-2	.000	0-2	.000	2-2	1.000	1	2	3	3.0	2	0	0	0	0	2	5.5
at Ark.-Pine Bluff	12/17/2020		13:08	1-3	.333	0-2	.000	3-4	.750	3	2	5	3.7	3	0	0	0	0	5	5.3
at Nevada	12/31/2020		05:22	1-2	.500	0-1	.000	0-0	.000	0	1	1	3.0	0	0	0	0	0	2	4.5
at Nevada	01/02/2021		04:48	0-0	.000	0-0	.000	0-0	.000	0	0	0	2.4	0	0	0	0	0	0	3.6
at UNLV	01/15/2021		05:48	0-0	.000	0-0	.000	0-0	.000	0	1	1	2.2	1	1	1	0	0	0	3.0
vs Fresno St.	01/30/2021		03:16	0-1	.000	0-1	.000	0-0	.000	0	1	1	2.0	0	0	0	0	0	0	2.6
at San Diego St.	02/03/2021		04:00	1-1	1.000	1-1	1.000	0-0	.000	0	0	0	1.8	0	0	0	0	0	3	2.6
at San Diego St.	02/05/2021		09:51	0-2	.000	0-1	.000	0-0	.000	2	5	7	2.3	0	1	0	0	0	0	2.3
Totals		0	79:19	4-16	.250	2-12	.167	11-14	.786	7	14	21	2.3	9	3	2	0	0	21	2.3

CAREER STATISTICS

SEASON	TEAM	GP-GS	MIN/AVG	Field Goals		3-Point		F-Throws		Rebounds				Scoring						
				FG-FGA	FG%	3FG-FGA	3FG%	FT-FTA	FT%	OFF	DEF	TOT	AVG	PF-FO	AST	T/O	BLK	STL	PTS	AVG
2020-21	UNM	9-0	79/8.8	4-16	.250	2-12	.167	11-14	.786	7	14	21	2.3	9-0	3	2	0	0	21	2.3
TOTAL		9-0	79/8.8	4-16	.250	2-12	.167	11-14	.786	7	14	21	2.3	9-0	3	2	0	0	21	2.3



THE UNIVERSITY OF NEW MEXICO 2020-21 WOMEN'S BASKETBALL



#23

JAEDYN DE LA CERDA

G | 5-6 | SR | Roswell, N.M. (Roswell HS)



PPG	FG %	3PT %	FT %	RPG	APG	SPG	BPG	MPG
14.2	.414	.276	.850	6.0	2.7	1.2	0.3	28.4

NOTEWORTHY

- » Played in 31 contests with 14 starts as a junior
- » Scored in double figures 15 times including seven games in which she scored 20 points or more
- » A scoring catalyst off the bench, set a program record for points off the bench as she scored 31 points vs. San José State (2/27/19)
- » In HS, was named the 2016-17 New Mexico Gatorade Player of the Year in women's basketball
- » Led Roswell HS to the 2016 New Mexico 5A State Championship
- » Named as a 2016 All-State honoree as well as an Adidas All-American

De La Cerda's Top Performances

Points	Season	28 at UNLV (1/17/21)
	Career	31 vs. San Jose State (2/27/19)
FGM	Season	9 - done twice
	Career	12 vs. San Jose State (2/27/19)
FGA	Season	22 vs. Fresno State (1/30/21)
	Career	22 - done three times
3PT FGM	Season	5 at UNLV (1/17/21)
	Career	7 vs. San Jose State (2/27/19)
3PT FGA	Season	9 - done three times
	Career	13 - done twice
FTM	Season	14 at SHSU (12/6/20)
	Career	Same
FTA	Season	15 at SHSU (12/6/20)
	Career	Same
Rebounds	Season	11 at Arkansas-PB (12/17/20)
	Career	same
Assists	Season	6 at Arkansas-PB (12/17/20)
	Career	8 vs. NM State (11/17/19)
Blocks	Season	1 - done three times
	Career	1 - done six times
Steals	Season	3 - done twice
	Career	4 - done twice
Turnovers	Season	5 at UNLV (1/15/21)
	Career	3 - done nine times
Min. Played	Season	36 at SHSU (12/6/20)
	Career	44 vs. San Diego St. (3/11/19)

GAME-BY-GAME STATISTICS

Opponent	Date	GS	MIN	Total		3-Pointers		Free throws		Rebounds				PF	A	T/O	BLK	STL	PTS	AVG	
				FG-FGA	PCT	3FG-3FGA	PCT	FT-FTA	PCT	OFF	DEF	TOT	AVG								
at Midwestern St.	12/04/2020	*	24:45	5-12	.417	3-9	.333	3-4	.750	2	3	5	5.0	4	3	2	1	2	16	16.0	
at Sam Houston	12/06/2020	*	36:06	5-9	.556	0-3	.000	14-15	.933	5	1	6	5.5	2	5	2	1	1	24	20.0	
at Ark.-Pine Bluff	12/17/2020	*	24:38	5-15	.333	1-5	.200	2-2	1.000	6	5	11	7.3	2	6	0	0	3	13	17.7	
at Nevada	12/31/2020	*	29:10	9-13	.692	3-5	.600	0-2	.000	0	9	9	7.8	3	5	2	0	0	21	18.5	
at Nevada	01/02/2021	*	25:28	4-10	.400	0-3	.000	4-4	1.000	2	4	6	7.4	1	1	0	0	0	12	17.2	
at UNLV	01/15/2021	*	30:24	2-11	.182	0-4	.000	0-2	.000	2	6	8	7.5	2	4	5	0	1	4	15.0	
at UNLV	01/17/2021	*	30:45	9-13	.692	5-9	.556	5-5	1.000	1	4	5	7.1	0	0	3	1	2	28	16.9	
vs Fresno St.	01/28/2021	*	29:59	5-15	.333	0-5	.000	4-4	1.000	2	4	6	7.0	1	2	2	0	0	14	16.5	
vs Fresno St.	01/30/2021	*	34:26	6-22	.273	2-9	.222	0-0	.000	2	6	8	7.1	3	2	3	0	3	14	16.2	
at San Diego St.	02/03/2021	*	23:29	0-4	.000	0-3	.000	0-0	.000	1	1	2	6.6	1	2	1	0	0	0	14.6	
at San Diego St.	02/05/2021	*	22:43	3-4	.750	2-3	.667	2-2	1.000	0	0	0	6.0	1	0	4	0	1	10	14.2	
Totals			11	311:53	53-128	.414	16-58	.276	34-40	.850	23	43	66	6.0	20	30	24	3	13	156	14.2

CAREER STATISTICS

SEASON	TEAM	GP-GS	MIN/AVG	Field Goals		3-Point		F-Throws		Rebounds				Scoring						
				FG-FGA	FG%	3FG-FGA	3FG%	FT-FTA	FT%	OFF	DEF	TOT	AVG	PF-FO	AST	TO	BLK	STL	PTS	AVG
2017-18	UNM	13-0	35/2.7	8-20	.400	2-10	.200	5-6	.833	2	5	7	0.5	3-0	2	4	1	5	23	1.8
2018-19	UNM	30-5	557/18.6	82-221	.371	40-135	.296	25-32	.781	12	75	87	2.9	25-0	44	30	1	30	229	7.6
2019-20	UNM	31-14	814/26.3	121-325	.372	47-144	.326	52-64	.813	28	59	87	2.8	57-1	60	37	1	42	341	11.0
2020-21	UNM	11-11	312/28.4	53-128	.414	16-58	.276	34-40	.850	23	43	66	6.0	20-0	30	24	3	13	156	14.2
TOTAL		85-30	1718/20.2	264-694	.380	105-347	.303	116-142	.817	65	182	247	2.9	105-1	136	95	6	90	749	8.8



THE UNIVERSITY OF NEW MEXICO 2020-21 WOMEN'S BASKETBALL



#24

AUTUMN WATTS

F | 6-1 | SO | Centennial, Colo. (Highlands Ranch HS)



PPG	FG %	3PT %	FT %	RPG	APG	SPG	BPG	MPG
2.8	.438	.200	.333	3.9	1.0	0.7	0.7	16.5

NOTEWORTHY

- » Competed in 26 contests for the Lobos as a freshman
- » Played at Highlands Ranch HS for head coach Caryn Jarocki
- » 3-star recruit and rated as the #13 forward in the 2019 class by ESPNW
- » Three-time recipient of Continental League First Team honors
- » Also named Co-MVP during time in HS
- » Averaged 16.4 ppg and 9.9 rpg
- » Also played club basketball for Colorado Basketball Club

Watts' Top Performances

Points	Season	7 at Nevada (1/2/21)
	Career	17 vs. Northern NM (12/10/19)
FGM	Season	3 - done three times
	Career	7 vs. Northern NM (12/10/19)
FGA	Season	8 at Nevada (1/2/21)
	Career	12 vs. Northern NM (12/10/19)
3PT FGM	Season	1 - done twice
	Career	3 vs. Northern NM (12/10/19)
3PT FGA	Season	3 - done twice
	Career	5 vs. Northern NM (12/10/19)
FTM	Season	1 at Nevada (1/2/21)
	Career	1 - done twice
FTA	Season	2 at Nevada (1/2/21)
	Career	2 - done three times
Rebounds	Season	9 - done twice
	Career	same
Assists	Season	4 at San Diego St. (2/3/21)
	Career	same
Blocks	Season	2 - done twice
	Career	2 - done twice
Steals	Season	2 - done twice
	Career	same
Turnovers	Season	2 - done three times
	Career	same
Min. Played	Season	29 at Nevada (1/2/21)
	Career	Same

GAME-BY-GAME STATISTICS

Opponent	Date	GS	MIN	Total		3-Pointers		Free throws		Rebounds				PF	A	T/O	BLK	STL	PTS	AVG
				FG-FGA	PCT	3FG-3FGA	PCT	FT-FTA	PCT	OFF	DEF	TOT	AVG							
at Midwestern St.	12/04/2020		15:32	1-2	.500	1-2	.500	0-0	.000	2	2	4	4.0	5	0	1	0	0	3	3.0
at Sam Houston	12/06/2020		04:43	1-1	1.000	0-0	.000	0-0	.000	1	1	2	3.0	2	0	0	0	1	2	2.5
at Ark.-Pine Bluff	12/17/2020		12:09	0-1	.000	0-0	.000	0-0	.000	0	1	1	2.3	1	1	0	1	2	0	1.7
at Nevada	12/31/2020		17:04	1-4	.250	0-0	.000	0-0	.000	2	3	5	3.0	1	1	2	1	0	2	1.8
at Nevada	01/02/2021		28:40	3-8	.375	0-3	.000	1-2	.500	6	3	9	4.2	1	1	1	0	1	7	2.8
at UNLV	01/15/2021		24:09	0-4	.000	0-3	.000	0-0	.000	2	4	6	4.5	5	2	1	2	2	0	2.3
at UNLV	01/17/2021		15:54	0-2	.000	0-1	.000	0-0	.000	1	0	1	4.0	4	0	2	0	0	0	2.0
vs Fresno St.	01/28/2021		09:27	0-0	.000	0-0	.000	0-0	.000	1	1	2	3.8	0	2	0	1	1	0	1.8
vs Fresno St.	01/30/2021		12:32	3-3	1.000	0-0	.000	0-0	.000	0	0	0	3.3	0	0	2	0	0	6	2.2
at San Diego St.	02/03/2021		17:53	2-2	1.000	1-1	1.000	0-0	.000	0	4	4	3.4	1	4	1	2	1	5	2.5
at San Diego St.	02/05/2021		22:55	3-5	.600	0-0	.000	0-1	.000	5	4	9	3.9	2	0	1	1	0	6	2.8
Totals		0	180:57	14-32	.438	2-10	.200	1-3	.333	20	23	43	3.9	22	11	11	8	8	31	2.8

CAREER STATISTICS

SEASON	TEAM	GP-GS	MIN/AVG	Field Goals		3-Point		F-Throws		Rebounds				Scoring						
				FG-FGA	FG%	3FG-FGA	3FG%	FT-FTA	FT%	OFF	DEF	TOT	AVG	PF	FO	AST	TO	BLK	STL	PTS
2019-20	UNM	26-0	230/8.8	17-48	.354	4-17	.235	1-4	.250	20	29	49	1.9	22-0	4	6	7	5	39	1.5
2020-21	UNM	11-0	181/16.5	14-32	.438	2-10	.200	1-3	.333	20	23	43	3.9	22-2	11	11	8	8	31	2.8
TOTAL		37-0	411/11.1	31-80	.388	6-27	.222	2-7	.286	40	52	92	2.5	44-2	15	17	15	13	70	1.9



THE UNIVERSITY OF NEW MEXICO 2020-21 WOMEN'S BASKETBALL



#32

ANTONIA ANDERSON

G/F | 6-2 | SR | Cibolo, Texas (Byron P. Steele HS)



PPG	FG %	3PT %	FT %	RPG	APG	SPG	BPG	MPG
12.3	.607	.480	.600	4.9	1.8	0.5	1.2	23.3

NOTEWORTHY

- » Played in all 31 games for the Lobos as a sophomore
- » Averaged 17.9 minutes per game, and was a 46% shooter overall from the floor (65-of-141) and a 74% shooter from the free throw line (34-of-46)
- » Also averaged 5.6 points per game and 3.8 rebounds per game
- » In HS was a four-year starter and named back-to-back Defensive Player of the Year
- » Additional HS accolades included: All-State, All-District, All-Area, and All-Region

Anderson's Top Performances

Points	Season	29 at UNLV (1/17/21)
	Career	same
FGM	Season	12 at UNLV (1/17/21)
	Career	same
FGA	Season	17 at UNLV (1/17/21)
	Career	same
3PT FGM	Season	4 at UNLV (1/17/21)
	Career	same
3PT FGA	Season	6 at UNLV (1/17/21)
	Career	7 vs. Ball State (12/20/19)
FTM	Season	5 at SHSU (12/6/20)
	Career	5 - done twice
FTA	Season	6 at SHSU (12/6/20)
	Career	6 - done twice
Rebounds	Season	8 - done three times
	Career	11 - done twice
Assists	Season	4 - done three times
	Career	5 at San José St. (1/22/20)
Blocks	Season	4 vs. Fresno State (1/28/21)
	Career	6 vs. UC Riverside (11/5/19)
Steals	Season	3 at San Diego St. (2/3/21)
	Career	4 vs. Fresno St. (2/1/20)
Turnovers	Season	4 at San Diego St. (2/5/21)
	Career	6 vs. NM State (11/17/19)
Min. Played	Season	36 at UNLV (1/17/21)
	Career	38 at San José St. (1/22/20)

GAME-BY-GAME STATISTICS

Opponent	Date	GS	MIN	Total		3-Pointers		Free throws		Rebounds				PF	A	T/O	BLK	STL	PTS	AVG
				FG-FGA	PCT	3FG-3FGA	PCT	FT-FTA	PCT	OFF	DEF	TOT	AVG							
at Midwestern St.	12/04/2020	*	18:21	5-5	1.000	0-0	.000	3-4	.750	1	1	2	2.0	4	1	3	1	0	13	13.0
at Sam Houston	12/06/2020	*	20:59	2-6	.333	1-3	.333	5-6	.833	1	4	5	3.5	5	2	2	0	0	10	11.5
at Ark.-Pine Bluff	12/17/2020	*	18:45	5-6	.833	2-3	.667	1-2	.500	1	3	4	3.7	2	3	2	1	0	13	12.0
at Nevada	12/31/2020	*	15:40	0-2	.000	0-0	.000	0-0	.000	0	3	3	3.5	3	0	2	1	0	0	9.0
at Nevada	01/02/2021	*	14:24	3-5	.600	0-1	.000	2-2	1.000	0	2	2	3.2	5	0	0	0	0	8	8.8
at UNLV	01/15/2021	*	11:06	3-5	.600	2-4	.500	0-0	.000	1	3	4	3.3	5	0	1	0	0	8	8.7
at UNLV	01/17/2021	*	35:32	12-17	.706	4-6	.667	1-1	1.000	2	6	8	4.0	4	2	3	1	0	29	11.6
vs Fresno St.	01/28/2021	*	36:11	8-12	.667	0-2	.000	0-1	.000	0	5	5	4.1	1	4	2	4	0	16	12.1
vs Fresno St.	01/30/2021	*	25:17	4-7	.571	0-0	.000	0-0	.000	2	3	5	4.2	5	4	2	2	0	8	11.7
at San Diego St.	02/03/2021	*	30:17	8-16	.500	2-4	.500	0-3	.000	1	7	8	4.6	3	0	1	1	3	18	12.3
at San Diego St.	02/05/2021	*	30:09	4-8	.500	1-2	.500	3-6	.500	3	5	8	4.9	4	4	2	2	12	12.3	
Totals			11	256:40	.607	12-25	.480	15-25	.600	12	42	54	4.9	41	20	22	13	5	135	12.3

CAREER STATISTICS

SEASON	TEAM	GP-GS	MIN/AVG	Field Goals		3-Point		F-Throws		Rebounds				PF-FO	AST	TO	BLK	STL	Scoring	
				FG-FGA	FG%	3FG-FGA	3FG%	FT-FTA	FT%	OFF	DEF	TOT	AVG						PTS	AVG
2017-18	UNM	32-1	417/13.0	52-91	.571	2-10	.200	24-40	.600	31	65	96	3.0	50-0	5	17	34	13	130	4.1
2018-19	UNM	31-0	555/17.9	65-141	.461	10-33	.303	34-46	.739	45	72	117	3.8	64-2	19	36	27	24	174	5.6
2019-20	UNM	32-31	865/27.0	112-268	.418	29-92	.315	28-39	.718	35	136	171	5.3	91-5	54	64	43	39	281	8.8
2020-21	UNM	11-11	257/23.3	54-89	.607	12-25	.480	15-25	.600	12	42	54	4.9	41-4	20	22	13	5	135	12.3
TOTAL		106-43	2093/19.7	283-589	.480	53-160	.331	101-150	.673	123	315	438	4.1	246-11	98	139	117	81	720	6.8



THE UNIVERSITY OF NEW MEXICO 2020-21 WOMEN'S BASKETBALL



#34

NEVAEH PARKINSON

F/C | 6-3 | FR | Dallas, Texas (John Paul II HS)



PPG	FG %	3PT %	FT %	RPG	APG	SPG	BPG	MPG
1.0	.500	.500	.000	0.8	0.0	0.0	0.2	2.9

NOTEWORTHY

- » Played for Parish Episcopal School in Texas where she helped her team to the state championship in the 2017-18 season
- » Two-time First Team All-District and two-time First Team All-State honoree
- » Averaged 18.3 points, 10.1 rebounds and 1.4 blocks per game

Parkinson's Top Performances

Points	Season	5 at Arkansas-PB (12/17/20)
	Career	same
FGM	Season	2 at Arkansas-PB (12/17/20)
	Career	same
FGA	Season	2 at Arkansas-PB (12/17/20)
	Career	same
3PT FGM	Season	1 at Arkansas-PB (12/17/20)
	Career	same
3PT FGA	Season	1 - done twice
	Career	same
FTM	Season	
	Career	
FTA	Season	2 vs. Midwestern St. (12/4/20)
	Career	Same
Rebounds	Season	2 at Arkansas-PB (12/17/20)
	Career	same
Assists	Season	
	Career	
Blocks	Season	1 at Arkansas-PB (12/17/20)
	Career	same
Steals	Season	
	Career	
Turnovers	Season	1 at Arkansas-PB (12/17/20)
	Career	same
Min. Played	Season	7 at Arkansas-PB (12/17/20)
	Career	same

GAME-BY-GAME STATISTICS

Opponent	Date	GS	MIN	Total		3-Pointers		Free throws		Rebounds				PF	A	T/O	BLK	STL	PTS	AVG
				FG-FGA	PCT	3FG-3FGA	PCT	FT-FTA	PCT	OFF	DEF	TOT	AVG							
at Midwestern St.	12/04/2020		02:43	0-1	.000	0-0	.000	0-2	.000	0	1	1	1.0	0	0	0	0	0	0	0.0
at Ark.-Pine Bluff	12/17/2020		07:06	2-2	1.000	1-1	1.000	0-0	.000	0	2	2	1.5	4	0	1	1	0	5	2.5
at UNLV	01/15/2021		00:51	0-0	.000	0-0	.000	0-0	.000	0	0	0	1.0	0	0	0	0	0	0	1.7
vs Fresno St.	01/30/2021		01:20	0-0	.000	0-0	.000	0-0	.000	0	0	0	0.8	0	0	0	0	0	0	1.3
at San Diego St.	02/03/2021		02:25	0-1	.000	0-1	.000	0-0	.000	0	1	1	0.8	0	0	0	0	0	1.0	
Totals		0	14:25	2-4	.500	1-2	.500	0-2	.000	0	4	4	0.8	4	0	1	1	0	5	1.0

CAREER STATISTICS

SEASON	TEAM	GP-GS	MIN/AVG	Field Goals		3-Point		F-Throws		Rebounds				Scoring						
				FG-FGA	FG%	3FG-FGA	3FG%	FT-FTA	FT%	OFF	DEF	TOT	AVG	PF-FO	AST	TO	BLK	STL	PTS	AVG
2020-21	UNM	5-0	14/2.9	2-4	.500	1-2	.500	0-2	.000	0	4	4	0.8	4-0	0	1	1	0	5	1.0
TOTAL		5-0	14/2.9	2-4	.500	1-2	.500	0-2	.000	0	4	4	0.8	4-0	0	1	1	0	5	1.0



THE UNIVERSITY OF NEW MEXICO 2020-21 WOMEN'S BASKETBALL



NEW MEXICO STATISTICS

RECORD:	OVERALL	HOME	AWAY	NEUTRAL
ALL GAMES	9-2	0-0	8-1	1-1
CONFERENCE	6-2	0-0	5-1	1-1
NON-CONFERENCE	3-0	0-0	3-0	0-0

#	Player	gp-gs	min	avg	Total		3-Point		F-Throw		Rebounds					pts	avg					
					fg-fga	fg%	3fg-fga	3fg%	ft-fa	ft%	off	def	tot	avg	pf			dq	a	to	blk	stl
23	Jaedyn De La Cerda	11-11	312	28.4	53-128	.414	16-58	.276	34-40	.850	23	43	66	6.0	20	0	30	24	3	13	156	14.2
04	LaTascya Duff	11-0	248	22.5	44-105	.419	25-72	.347	32-43	.744	10	27	37	3.4	23	0	19	11	1	4	145	13.2
03	Ahlise Hurst	11-11	324	29.5	47-133	.353	27-88	.307	22-29	.759	0	24	24	2.2	21	1	30	20	3	16	143	13.0
32	Antonia Anderson	11-11	256	23.3	54-89	.607	12-25	.480	15-25	.600	12	42	54	4.9	41	4	20	22	13	5	135	12.3
13	Shaiquel McGruder	11-11	264	24.0	49-72	.681	5-9	.556	7-11	.636	22	41	63	5.7	23	0	7	11	15	21	110	10.0
05	LaTora Duff	11-11	296	26.9	40-85	.471	14-37	.378	14-19	.737	6	32	38	3.5	16	0	40	25	3	19	108	9.8
01	Corina Carter	10-0	162	16.2	21-54	.389	10-30	.333	8-13	.615	0	12	12	1.2	16	0	27	13	1	12	60	6.0
24	Autumn Watts	11-0	182	16.5	14-32	.438	2-10	.200	1-3	.333	20	23	43	3.9	22	2	11	11	8	8	31	2.8
15	Kath van Bennekom	9-0	80	8.9	4-16	.250	2-12	.167	11-14	.786	7	14	21	2.3	9	0	3	2	0	0	21	2.3
34	Nevaeh Parkinson	5-0	13	2.6	2-4	.500	1-2	.500	0-2	.000	0	4	4	0.8	4	0	0	1	1	0	5	1.0
14	Azaria Robinson	7-0	35	5.0	2-4	.500	0-0	.000	0-0	.000	1	6	7	1.0	10	0	0	1	1	0	4	0.6
00	Andriana Avent	1-0	1	1.0	0-0	.000	0-0	.000	0-0	.000	0	0	0	0.0	0	0	0	0	0	0	0	0.0
10	Celine Dupont	6-0	27	4.5	0-7	.000	0-5	.000	0-0	.000	0	1	1	0.2	3	0	1	1	0	1	0	0.0
Team											14	27	41				1					
Total.....		11	2200		330-729	.453	114-348	.328	144-199	.724	115	296	411	37.4	208	7	188	143	49	99	918	83.5
Opponents.....		11	2200		276-671	.411	63-202	.312	159-227	.700	132	308	440	40.0	184	-	150	197	21	78	774	70.4

TEAM STATISTICS	UNM	OPP	Date	Opponent	Score	Att.
SCORING	918	774	12/04/20	at Midwestern St.	w 93-65	55
Points per game	83.5	70.4	12/06/20	at Sam Houston St.	w 98-89	424
Scoring margin	+13.1	-	12/17/20	at Ark.-Pine Bluff	w 120-66	106
FIELD GOALS-ATT	330-729	276-671	* 12/31/20	at Nevada	w 88-69	50
Field goal pct	.453	.411	* 01/02/21	at Nevada	w 78-67	50
3 POINT FG-ATT	114-348	63-202	* 01/15/21	at UNLV	L 60-78	0
3-point FG pct	.328	.312	* 01/17/21	at UNLV	w 81-73	8
3-pt FG made per game	10.4	5.7	* 01/28/21	vs Fresno St.	w 82-80	15
FREE THROWS-ATT	144-199	159-227	* 01/30/21	vs Fresno St.	L 69-91	15
Free throw pct	.724	.700	* 02/03/21	at San Diego St.	w 84-48	0
F-Throws made per game	13.1	14.5	* 02/05/21	at San Diego St.	w 65-48	0
REBOUNDS	411	440	* - Conference game			
Rebounds per game	37.4	40.0				
Rebounding margin	-2.6	-				
ASSISTS	188	150				
Assists per game	17.1	13.6				
TURNOVERS	143	197				
Turnovers per game	13.0	17.9				
Turnover margin	+4.9	-				
Assist/turnover ratio	1.3	0.8				
STEALS	99	78				
Steals per game	9.0	7.1				
BLOCKS	49	21				
Blocks per game	4.5	1.9				
ATTENDANCE	0	723				
Home games-Avg/Game	0-0	9-77				
Neutral site-Avg/Game	-	2-15				

Score by Periods	1st	2nd	3rd	4th	Totals
New Mexico	215	236	242	225	918
Opponents	159	185	212	218	774



THE UNIVERSITY OF NEW MEXICO 2020-21 WOMEN'S BASKETBALL



COLORADO STATE STATISTICS

Overall Record: 14-2 Conf: 10-2 Home: 9-0 Away: 5-2 Neutral: 0-0

#	Player	GP-GS	MIN	AVG	FG		3PT		FT		Rebounds				PF	DQ	A	TO	BLK	STL	PTS	AVG
					FG-FGA	FG%	3FG-FGA	3FG%	FT-FTA	FT%	OFF	DEF	TOT	AVG								
35	Devos, Lore	16-15	493	30.8	91-201	.453	17-41	.415	32-35	.914	26	96	122	7.6	30	1	24	31	22	16	231	14.4
04	Hofschild, McKenna	16-16	490	30.6	79-173	.457	24-59	.407	43-55	.782	4	39	43	2.7	25	1	94	29	2	15	225	14.1
02	Williams, Tori	16-15	488	30.5	66-160	.413	43-109	.394	16-20	.800	4	82	86	5.4	35	0	43	22	1	29	191	11.9
42	Murphy, Karly	11-2	207	18.8	48-82	.585	0-0	.000	22-23	.957	35	49	84	7.6	26	1	3	14	3	7	118	10.7
24	Mech, Sydney	8-5	219	27.4	31-59	.525	6-14	.429	7-8	.875	12	19	31	3.9	19	0	18	5	16	4	75	9.4
12	Bonnarens, Jamie	16-0	258	16.1	47-92	.511	21-45	.467	10-13	.769	5	34	39	2.4	11	0	7	5	4	8	125	7.8
05	Boni, Ellie	14-12	354	25.3	39-85	.459	9-22	.409	13-15	.867	4	42	46	3.3	24	0	16	10	8	1	100	7.1
14	Clark, Cali	16-11	188	11.8	36-70	.514	1-6	.167	12-16	.750	22	51	73	4.6	20	1	9	18	5	3	85	5.3
11	Farkas, Petra	16-4	255	15.9	23-66	.348	15-41	.366	3-4	.750	4	33	37	2.3	12	0	7	11	2	3	64	4.0
34	Davis, Liah	5-0	32	6.4	6-10	.600	0-0	.000	1-2	.500	2	6	8	1.6	4	0	0	0	2	0	13	2.6
33	Alper, Bengisu	15-0	123	8.2	14-37	.378	3-6	.500	7-14	.500	0	15	15	1.0	10	0	11	9	1	1	38	2.5
01	Stamatelopoulos, Katia	8-0	42	5.3	4-6	.667	1-1	1.000	4-6	.667	0	3	3	0.4	1	0	4	5	1	4	13	1.6
32	Hemingway, Makayla	9-0	39	4.3	5-10	.500	2-5	.400	1-6	.167	1	6	7	0.8	4	0	2	1	5	2	13	1.4
44	Torres, Maria	7-0	32	4.6	5-10	.500	0-3	.000	0-0	.000	0	1	1	0.1	2	0	1	1	4	2	10	1.4
10	Eberhardt, Alexis	4-0	10	2.5	1-2	.500	1-1	1.000	1-2	.500	0	1	1	0.3	1	0	0	1	0	0	4	1.0
22	Brocke, Lauren	4-0	20	5.0	1-3	.333	1-3	.333	0-0	.000	0	1	1	0.3	4	0	2	2	0	1	3	0.8
Total		16	3250	203.1	496-1066	.465	144-356	.404	172-219	.785	139	505	644	40.3	228	4	241	166	76	96	1308	81.75
Opponents			3250	203.1	393-1031	.381	96-330	.291	174-249	.699	165	444	609	38.1	245	3	152	202	38	83	1056	66.00

Team Statistics	CSU	OPP
SCORING	1308	1056
Points Per Game	81.8	66.0
Scoring Margin	15.8	-
FIELD GOALS-ATT	496-1066	393-1031
Field Goal Pct	.465	.381
3 POINT FG-ATT	144-356	96-330
3PT FG Pct	.404	.291
3PT Made Per Game	9.0	6.0
FREE THROWS-ATT	172-219	174-249
FT Pct	.785	.699
FT Made Per Game	10.8	10.9
REBOUNDS	644	609
Rebounds Per Game	40.3	38.1
Rebounds Margin	2.2	-
ASSISTS	241	152
Assists Per Game	15.1	9.5
TURNOVERS	166	202
Turnovers Per Game	10.4	12.6
Turnovers Margin	2.2	-
Assist/Turnover Ratio	1.5	0.8
STEALS	96	83
Steals Per Game	6.0	5.2
BLOCKS	76	38
Blocks Per Game	4.8	2.4
ATTENDANCE	0	5
Dates/Avg Per Date	9-0	7-1
Neutral Site #/Avg	-	0-0

Conf	Date	Opponent	W/L	Score	Att.
	11/25/20	REGIS (CO)	W	111-64	0
	11/28/20	COLO. CHRISTIAN	W	96-54	0
*	12/03/20	at Fresno State	W	89-83	0
*	12/04/20	at Fresno State	L	74-78	0
*	12/08/20	SAN DIEGO ST.	W	86-77	0
*	12/10/20	SAN DIEGO ST.	W	84-77	0
	12/13/20	DENVER	W	85-62	0
	12/18/20	at Denver	W	79-61	0
*	01/07/21	at UNLV	L	76-80	5
*	01/09/21	at UNLV	W	67-58	0
*	01/20/21	UTAH ST.	W	90-59	0
*	01/22/21	UTAH ST.	W	88-73	0
*	01/27/21	at Boise St.	W	71-51	0
*	01/29/21	at Boise St.	W	75-53	0
*	02/04/21	WYOMING	W	69-61	0
*	02/06/21	WYOMING	W	68-65	0

* = Conference game

Score by Periods	1st	2nd	3rd	4th	OT	OT2	Total
Colorado State	318	320	338	308	7	17	1308
Opponents	253	238	268	280	7	10	1056



THE UNIVERSITY OF NEW MEXICO

2020-21 WOMEN'S BASKETBALL



NEW MEXICO CONFERENCE STATISTICS

RECORD:	OVERALL	HOME	AWAY	NEUTRAL
ALL GAMES	6-2	0-0	5-1	1-1
CONFERENCE	6-2	0-0	5-1	1-1
NON-CONFERENCE	0-0	0-0	0-0	0-0

#	Player	gp-gs	min	avg	Total		3-Point		F-Throw		Rebounds					pts	avg					
					fg-fga	fg%	3fg-fga	3fg%	ft-fga	ft%	off	def	tot	avg	pf			dq	a	to	blk	stl
03	Ahlise Hurst	8-8	253	31.6	36-107	.336	18-68	.265	16-22	.727	0	17	17	2.1	13	0	23	13	2	11	106	13.3
23	Jaedyn De La Cerda	8-8	227	28.4	38-92	.413	12-41	.293	15-19	.789	10	34	44	5.5	12	0	16	20	1	7	103	12.9
32	Antonia Anderson	8-8	198	24.8	42-72	.583	9-19	.474	6-13	.462	9	34	43	5.4	30	3	14	15	11	5	99	12.4
04	LaTascya Duff	8-0	172	21.5	27-74	.365	17-53	.321	15-21	.714	6	19	25	3.1	16	0	10	7	0	2	86	10.8
13	Shaiquel McGruder	8-8	203	25.4	38-53	.717	3-6	.500	3-4	.750	13	26	39	4.9	17	0	6	4	10	14	82	10.3
05	LaTora Duff	8-8	210	26.3	27-58	.466	10-27	.370	2-2	1.000	3	23	26	3.3	11	0	26	17	1	13	66	8.3
01	Corina Carter	8-0	119	14.9	12-31	.387	5-17	.294	3-5	.600	0	8	8	1.0	10	0	20	10	1	9	32	4.0
24	Autumn Watts	8-0	149	18.6	12-28	.429	1-8	.125	1-3	.333	17	19	36	4.5	14	1	10	10	7	5	26	3.3
15	Kath van Bennekom	6-0	34	5.7	2-6	.333	1-4	.250	0-0	.000	2	8	10	1.7	1	0	2	1	0	0	5	0.8
14	Azaria Robinson	4-0	20	5.0	1-1	1.000	0-0	.000	0-0	.000	0	3	3	0.8	5	0	0	1	1	0	2	0.5
34	Nevaeah Parkinson	3-0	4	1.3	0-1	.000	0-1	.000	0-0	.000	0	1	1	0.3	0	0	0	0	0	0	0	0.0
10	Celine Dupont	4-0	11	2.8	0-4	.000	0-2	.000	0-0	.000	0	0	0	0.0	1	0	1	0	0	1	0	0.0
Team											11	17	28					1				
Total.....		8	1600		235-527	.446	76-246	.309	61-89	.685	71	209	280	35.0	130	4	128	99	34	67	607	75.9
Opponents.....		8	1600		205-488	.420	52-157	.331	92-128	.719	92	231	323	40.4	107	-	112	135	10	56	554	69.2

TEAM STATISTICS	UNM	OPP	Date	Opponent	Score	Att.
SCORING	607	554	* 12/31/20	at Nevada	w 88-69	50
Points per game	75.9	69.2	* 01/02/21	at Nevada	w 78-67	50
Scoring margin	+6.6	-	* 01/15/21	at UNLV	L 60-78	0
FIELD GOALS-ATT	235-527	205-488	* 01/17/21	at UNLV	w 81-73	8
Field goal pct	.446	.420	* 01/28/21	vs Fresno St.	w 82-80	15
3 POINT FG-ATT	76-246	52-157	* 01/30/21	vs Fresno St.	L 69-91	15
3-point FG pct	.309	.331	* 02/03/21	at San Diego St.	w 84-48	0
3-pt FG made per game	9.5	6.5	* 02/05/21	at San Diego St.	w 65-48	0
FREE THROWS-ATT	61-89	92-128	* - Conference game			
Free throw pct	.685	.719				
F-Throws made per game	7.6	11.5				
REBOUNDS	280	323				
Rebounds per game	35.0	40.4				
Rebounding margin	-5.4	-				
ASSISTS	128	112				
Assists per game	16.0	14.0				
TURNOVERS	99	135				
Turnovers per game	12.4	16.9				
Turnover margin	+4.5	-				
Assist/turnover ratio	1.3	0.8				
STEALS	67	56				
Steals per game	8.4	7.0				
BLOCKS	34	10				
Blocks per game	4.3	1.3				
ATTENDANCE	0	138				
Home games-Avg/Game	0-0	6-18				
Neutral site-Avg/Game	-	2-15				

Score by Periods	1st	2nd	3rd	4th	Totals
New Mexico	146	150	170	141	607
Opponents	122	129	149	154	554



THE UNIVERSITY OF NEW MEXICO 2020-21 WOMEN'S BASKETBALL



COLORADO STATE CONFERENCE STATISTICS

Conf: 10-2 Home: 6-0 Away: 4-2 Neutral: 0-0

#	Player	GP-GS	MIN	AVG	FG		3PT		FT		Rebounds				PF	DQ	A	TO	BLK	STL	PTS	AVG
					FG-FGA	FG%	3FG-FGA	3FG%	FT-FTA	FT%	OFF	DEF	TOT	AVG								
35	Devos, Lore	12-11	410	34.2	73-162	.451	17-35	.486	24-27	.889	21	73	94	7.8	20	0	16	24	17	12	187	15.6
04	Hofschild, McKenna	12-12	406	33.8	62-145	.428	18-45	.400	38-47	.809	3	30	33	2.8	20	1	69	28	2	15	180	15.0
24	Mech, Sydney	4-3	143	35.8	22-40	.550	5-10	.500	7-8	.875	7	13	20	5.0	13	0	11	4	9	3	56	14.0
02	Williams, Tori	12-12	399	33.3	42-121	.347	27-82	.329	11-15	.733	3	70	73	6.1	26	0	34	19	0	24	122	10.2
42	Murphy, Karly	9-2	180	20.0	41-73	.562	0-0	.000	10-11	.909	26	44	70	7.8	23	1	11	3	6	92	10.2	
05	Boni, Ellie	12-10	319	26.6	35-79	.443	8-21	.381	10-12	.833	2	41	43	3.6	20	0	16	8	8	1	88	7.3
12	Bonnarens, Jamie	12-0	188	15.7	32-64	.500	15-31	.484	8-9	.889	3	28	31	2.6	9	0	6	3	3	4	87	7.3
14	Clark, Cali	12-8	136	11.3	23-55	.418	0-5	.000	9-10	.900	17	40	57	4.8	10	0	6	9	3	2	55	4.6
22	Brocke, Lauren	1-0	2	2.0	1-1	1.000	1-1	1.000	0-0	.000	0	0	0	0.0	1	0	0	0	0	0	3	3.0
10	Eberhardt, Alexis	1-0	1	1.0	1-1	1.000	1-1	1.000	0-0	.000	0	1	1	1.0	0	0	0	0	0	0	3	3.0
11	Farkas, Petra	12-2	164	13.7	13-43	.302	9-29	.310	0-0	.000	1	22	23	1.9	7	0	3	9	2	0	35	2.9
33	Alper, Bengisu	11-0	75	6.8	9-17	.529	1-2	.500	1-2	.500	0	8	8	0.7	8	0	5	7	0	0	20	1.8
34	Davis, Liah	2-0	5	2.5	1-3	.333	0-0	.000	1-2	.500	0	1	1	0.5	1	0	0	0	0	0	3	1.5
01	Stamatelopoulos, Katia	4-0	6	1.5	0-0	.000	0-0	.000	3-4	.750	0	0	0	0.0	1	0	2	1	0	1	3	0.8
32	Hemingway, Makayla	5-0	9	1.8	1-2	.500	1-1	1.000	0-0	.000	1	0	1	0.2	0	0	0	1	1	0	3	0.6
44	Torres, Maria	3-0	7	2.3	0-1	.000	0-1	.000	0-0	.000	0	1	1	0.3	1	0	1	0	1	1	0	0.0
Total		12	2450	204.2	356-807	.441	103-264	.390	122-147	.830	99	386	485	40.4	160	2	170	126	49	69	937	78.08
Opponents			2450	204.2	310-794	.390	71-231	.307	124-179	.693	124	358	482	40.2	178	3	122	143	32	69	815	67.92

Team Statistics	CSU	OPP	Date	Opponent	W/L	Score	Att.
SCORING	937	815	12/03/20	at Fresno State	W	89-83	0
Points Per Game	78.1	67.9	12/04/20	at Fresno State	L	74-78	0
Scoring Margin	10.2	-	12/08/20	SAN DIEGO ST.	W	86-77	0
FIELD GOALS-ATT	356-807	310-794	12/10/20	SAN DIEGO ST.	W	84-77	0
Field Goal Pct	.441	.390	01/07/21	at UNLV	L	76-80	5
3 POINT FG-ATT	103-264	71-231	01/09/21	at UNLV	W	67-58	0
3PT FG Pct	.390	.307	01/20/21	UTAH ST.	W	90-59	0
3PT Made Per Game	8.6	5.9	01/22/21	UTAH ST.	W	88-73	0
FREE THROWS-ATT	122-147	124-179	01/27/21	at Boise St.	W	71-51	0
FT Pct	.830	.693	01/29/21	at Boise St.	W	75-53	0
FT Made Per Game	10.2	10.3	02/04/21	WYOMING	W	69-61	0
REBOUNDS	485	482	02/06/21	WYOMING	W	68-65	0
Rebounds Per Game	40.4	40.2					
Rebounds Margin	0.2	-					
ASSISTS	170	122					
Assists Per Game	14.2	10.2					
TURNOVERS	126	143					
Turnovers Per Game	10.5	11.9					
Turnovers Margin	1.4	-					
Assist/Turnover Ratio	1.3	0.9					
STEALS	69	69					
Steals Per Game	5.8	5.8					
BLOCKS	49	32					
Blocks Per Game	4.1	2.7					
ATTENDANCE	0	5					
Dates-Avg Per Date	6-0	6-1					
Neutral Site #-Avg	-	0-0					

Score by Periods	1st	2nd	3rd	4th	OT	OT2	Total
Colorado State	217	218	234	244	7	17	937
Opponents	186	191	211	210	7	10	815



THE UNIVERSITY OF NEW MEXICO 2020-21 WOMEN'S BASKETBALL



NEW MEXICO OVERALL VS. CONFERENCE STATISTICS

Player	Overall Statistics										Conference Statistics									
	GP-GS	MIN/G	FG%	3FG%	FT%	R/G	A/G	STL	BLK	PTS/G	GP-GS	MIN/G	FG%	3FG%	FT%	R/G	A/G	STL	BLK	PTS/G
DE LA CERDA, Jaedyn	11-11	28.4	.414	.276	.850	6.0	2.7	13	3	14.2	8-8	28.3	.413	.293	.789	5.5	2.0	7	1	12.9
DUFF, LaTascya	11-0	22.5	.419	.347	.744	3.4	1.7	4	1	13.2	8-0	21.4	.365	.321	.714	3.1	1.3	2	0	10.8
HURST, Ahlise	11-11	29.4	.353	.307	.759	2.2	2.7	16	3	13.0	8-8	31.7	.336	.265	.727	2.1	2.9	11	2	13.3
ANDERSON, Antonia	11-11	23.3	.607	.480	.600	4.9	1.8	5	13	12.3	8-8	24.8	.583	.474	.462	5.4	1.8	5	11	12.4
MCGRUDER, Shaiquel	11-11	24.0	.681	.556	.636	5.7	0.6	21	15	10.0	8-8	25.4	.717	.500	.750	4.9	0.8	14	10	10.3
DUFF, LaTora	11-11	26.8	.471	.378	.737	3.5	3.6	19	3	9.8	8-8	26.1	.466	.370	1.000	3.3	3.3	13	1	8.3
CARTER, Corina	10-0	16.2	.389	.333	.615	1.2	2.7	12	1	6.0	8-0	15.0	.387	.294	.600	1.0	2.5	9	1	4.0
WATTS, Autumn	11-0	16.5	.438	.200	.333	3.9	1.0	8	8	2.8	8-0	18.6	.429	.125	.333	4.5	1.3	5	7	3.3
VAN BENNEKOM, Kath	9-0	8.8	.250	.167	.786	2.3	0.3	0	0	2.3	6-0	5.5	.333	.250	.000	1.7	0.3	0	0	0.8
PARKINSON, Nevaeh	5-0	2.9	.500	.500	.000	0.8	0.0	0	1	1.0	3-0	1.5	.000	.000	.000	0.3	0.0	0	0	0.0
ROBINSON, Azaria	7-0	4.9	.500	.000	.000	1.0	0.0	0	1	0.6	4-0	4.7	1.000	.000	.000	0.8	0.0	0	1	0.5
AVENT, Andriana	1-0	1.4	.000	.000	.000	0.0	0.0	0	0	0.0	0-0	0.0	.000	.000	.000	0.0	0.0	0	0	0.0
DUPONT, Celine	6-0	4.6	.000	.000	.000	0.2	0.2	1	0	0.0	4-0	3.1	.000	.000	.000	0.0	0.3	1	0	0.0
Totals	11		.453	.328	.724	37.4	17.1	99	49	83.5	8		.446	.309	.685	35.0	16.0	67	34	75.9
Opponent	11		.411	.312	.700	40.0	13.6	78	21	70.4	8		.420	.331	.719	40.4	14.0	56	10	69.3

Scoring

Player	Overall Statistics								Conference Statistics							
	FG-FGA	FG%	3FG-3FGA	3FG%	FT-FTA	FT%	PTS	PTS/G	FG-FGA	FG%	3FG-3FGA	3FG%	FT-FTA	FT%	PTS	PTS/G
DE LA CERDA, Jaedyn	53-128	.414	16-58	.276	34-40	.850	156	14.2	38-92	.413	12-41	.293	15-19	.789	103	12.9
DUFF, LaTascya	44-105	.419	25-72	.347	32-43	.744	145	13.2	27-74	.365	17-53	.321	15-21	.714	86	10.8
HURST, Ahlise	47-133	.353	27-88	.307	22-29	.759	143	13.0	36-107	.336	18-68	.265	16-22	.727	106	13.3
ANDERSON, Antonia	54-89	.607	12-25	.480	15-25	.600	135	12.3	42-72	.583	9-19	.474	6-13	.462	99	12.4
MCGRUDER, Shaiquel	49-72	.681	5-9	.556	7-11	.636	110	10.0	38-53	.717	3-6	.500	3-4	.750	82	10.3
DUFF, LaTora	40-85	.471	14-37	.378	14-19	.737	108	9.8	27-58	.466	10-27	.370	2-2	1.000	66	8.3
CARTER, Corina	21-54	.389	10-30	.333	8-13	.615	60	6.0	12-31	.387	5-17	.294	3-5	.600	32	4.0
WATTS, Autumn	14-32	.438	2-10	.200	1-3	.333	31	2.8	12-28	.429	1-8	.125	1-3	.333	26	3.3
VAN BENNEKOM, Kath	4-16	.250	2-12	.167	11-14	.786	21	2.3	2-6	.333	1-4	.250	0-0	.000	5	0.8
PARKINSON, Nevaeh	2-4	.500	1-2	.500	0-2	.000	5	1.0	0-1	.000	0-1	.000	0-0	.000	0	0.0
ROBINSON, Azaria	2-4	.500	0-0	.000	0-0	.000	4	0.6	1-1	1.000	0-0	.000	0-0	.000	2	0.5
AVENT, Andriana	0-0	.000	0-0	.000	0-0	.000	0	0.0	0-0	.000	0-0	.000	0-0	.000	0	0.0
DUPONT, Celine	0-7	.000	0-5	.000	0-0	.000	0	0.0	0-4	.000	0-2	.000	0-0	.000	0	0.0
Totals	330-729	.453	114-348	.328	144-199	.724	918	83.5	235-527	.446	76-246	.309	61-89	.685	607	75.9
Opponent	276-671	.411	63-202	.312	159-227	.700	774	70.4	205-488	.420	52-157	.331	92-128	.719	554	69.3

Totals

Player	Overall Statistics									Conference Statistics								
	O-REB	D-REB	TOTAL	PF	FO	A	TO	A/TO	HI PTS	O-REB	D-REB	TOTAL	PF	FO	A	TO	A/TO	HI PTS
DE LA CERDA, Jaedyn	23	43	66	20	0	30	24	1.3	28	10	34	44	12	0	16	20	0.8	28
DUFF, LaTascya	10	27	37	23	0	19	11	1.7	28	6	19	25	16	0	10	7	1.4	19
HURST, Ahlise	0	24	24	21	1	30	20	1.5	20	0	17	17	13	0	23	13	1.8	20
ANDERSON, Antonia	12	42	54	41	4	20	22	0.9	29	9	34	43	30	3	14	15	0.9	29
MCGRUDER, Shaiquel	22	41	63	23	0	7	11	0.6	17	13	26	39	17	0	6	4	1.5	15
DUFF, LaTora	6	32	38	16	0	40	25	1.6	15	3	23	26	11	0	26	17	1.5	15
CARTER, Corina	0	12	12	16	0	27	13	2.1	18	0	8	8	10	0	20	10	2.0	9
WATTS, Autumn	20	23	43	22	2	11	11	1.0	7	17	19	36	14	1	10	10	1.0	7
VAN BENNEKOM, Kath	7	14	21	9	0	3	2	1.5	9	2	8	10	1	0	2	1	2.0	3
PARKINSON, Nevaeh	0	4	4	4	0	0	1	0.0	5	0	1	1	0	0	0	0	0.0	0
ROBINSON, Azaria	1	6	7	10	0	0	1	0.0	2	0	3	3	5	0	0	1	0.0	2
AVENT, Andriana	0	0	0	0	0	0	0	0.0	0	0	0	0	0	0	0	0	0.0	0
DUPONT, Celine	0	1	1	3	0	1	1	1.0	0	0	0	0	1	0	1	0	1.0	0
Totals	115	296	411	208	7	188	143	1.3	120	71	209	280	130	4	128	99	1.3	88
Opponent	132	308	440	184	8	150	197	0.8	91	92	231	323	107	2	112	135	0.8	91



THE UNIVERSITY OF NEW MEXICO 2020-21 WOMEN'S BASKETBALL



NEW MEXICO GAME-BY-GAME

Opponent	Date	Score	W	Total		3-Pointers		Free throws		Rebounds				PF	A	TO	BLK	STL	PTS	AVG
				FG-FGA	PCT	3FG-FGA	PCT	FT-FTA	PCT	OFF	DEF	TOT	AVG							
at Midwestern St.	12/04/2020	93-65	W	27-65	.415	13-39	.333	26-38	.684	13	22	35	35.0	30	18	13	4	13	93	93.0
at Sam Houston	12/06/2020	98-89	W	27-60	.450	8-24	.333	36-46	.783	16	27	43	39.0	27	15	21	8	9	98	95.5
at Ark.-Pine Bluff	12/17/2020	120-66	W	41-77	.532	17-39	.436	21-26	.808	15	38	53	43.7	21	27	10	3	10	120	103.7
at Nevada	12/31/2020	88-69	W	35-67	.522	14-30	.467	4-6	.667	6	30	36	41.8	20	16	11	3	4	88	99.8
at Nevada	01/02/2021	78-67	W	31-65	.477	4-19	.211	12-17	.706	9	23	32	39.8	16	8	8	1	10	78	95.4
at UNLV	01/15/2021	60-78	L	23-66	.348	11-40	.275	3-5	.600	7	31	38	39.5	23	15	18	7	8	60	89.5
at UNLV	01/17/2021	81-73	W	30-64	.469	12-35	.343	9-12	.750	9	25	34	38.7	14	14	19	5	12	81	88.3
vs Fresno St.	01/28/2021	82-80	W	33-73	.452	6-30	.200	10-12	.833	6	29	35	38.3	12	24	7	7	10	82	87.5
vs Fresno St.	01/30/2021	69-91	L	30-76	.395	7-34	.206	2-3	.667	12	22	34	37.8	15	18	13	2	7	69	85.4
at San Diego St.	02/03/2021	84-48	W	31-60	.517	13-30	.433	9-15	.600	10	22	32	37.2	15	17	6	4	9	84	85.3
at San Diego St.	02/05/2021	65-48	W	22-56	.393	9-28	.321	12-19	.632	12	27	39	37.4	15	16	17	5	7	65	83.5
Total		918		330-729	.453	114-348	.328	144-199	.724	115	296	411	37.4	208	188	143	49	99	918	83.5
Opponents		774		276-671	.411	63-202	.312	159-227	.700	132	308	440	40.0	184	150	197	21	78	774	70.4

New Mexico Averages

Games Played	Points/game	FG Pct	3FG Pct	FT Pct	Rebounds/game	Assists/game	Turnovers/game	Assist/Turnover ratio	Steals/game	Blocks/game
11	83.5	45.3	32.8	72.4	37.4	17.1	13.0	1.3	9.0	4.5



THE UNIVERSITY OF NEW MEXICO

2020-21 WOMEN'S BASKETBALL



New Mexico - Game Highs

POINTS	120	at Ark.-Pine Bluff (12/17/2020)
	98	at Sam Houston (12/06/2020)
	93	at Midwestern St. (12/04/2020)
	88	at Nevada (12/31/2020)
	84	at San Diego St. (02/03/2021)
FIELD GOALS MADE	41	at Ark.-Pine Bluff (12/17/2020)
	35	at Nevada (12/31/2020)
FIELD GOAL ATTEMPTS	77	at Ark.-Pine Bluff (12/17/2020)
	76	vs Fresno St. (N) (01/30/2021)
FIELD GOAL PERCENTAGE	.532 (41-77)	at Ark.-Pine Bluff (12/17/2020)
	.522 (35-67)	at Nevada (12/31/2020)
3 PT FG MADE	17	at Ark.-Pine Bluff (12/17/2020)
	14	at Nevada (12/31/2020)
3 PT FG ATTEMPTS	40	at UNLV (01/15/2021)
	39	at Ark.-Pine Bluff (12/17/2020)
	39	at Midwestern St. (12/04/2020)
3 PT FG PERCENTAGE	.467 (14-30)	at Nevada (12/31/2020)
	.436 (17-39)	at Ark.-Pine Bluff (12/17/2020)
FREE THROWS MADE	36	at Sam Houston (12/06/2020)
	26	at Midwestern St. (12/04/2020)
FREE THROW ATTEMPTS	46	at Sam Houston (12/06/2020)
	38	at Midwestern St. (12/04/2020)
FREE THROW PERCENTAGE	.833 (10-12)	vs Fresno St. (N) (01/28/2021)
	.808 (21-26)	at Ark.-Pine Bluff (12/17/2020)
REBOUNDS	53	at Ark.-Pine Bluff (12/17/2020)
	43	at Sam Houston (12/06/2020)
ASSISTS	27	at Ark.-Pine Bluff (12/17/2020)
	24	vs Fresno St. (N) (01/28/2021)
STEALS	13	at Midwestern St. (12/04/2020)
	12	at UNLV (01/17/2021)
BLOCKED SHOTS	8	at Sam Houston (12/06/2020)
	7	vs Fresno St. (N) (01/28/2021)
	7	at UNLV (01/15/2021)
TURNOVERS	21	at Sam Houston (12/06/2020)
	19	at UNLV (01/17/2021)
FOULS	30	at Midwestern St. (12/04/2020)
	27	at Sam Houston (12/06/2020)



THE UNIVERSITY OF NEW MEXICO

2020-21 WOMEN'S BASKETBALL



New Mexico - Individual Game Highs

POINTS	29		Antonia Anderson at UNLV (01/17/2021)
	28		Jaedyn De La Cerda at UNLV (01/17/2021)
	28		LaTascya Duff at Ark.-Pine Bluff (12/17/2020)
	24		Jaedyn De La Cerda at Sam Houston (12/06/2020)
	21		Jaedyn De La Cerda at Nevada (12/31/2020)
FIELD GOALS MADE	12		Antonia Anderson at UNLV (01/17/2021)
	10		LaTascya Duff at Ark.-Pine Bluff (12/17/2020)
FIELD GOAL ATTEMPTS	22		Jaedyn De La Cerda vs Fresno St. (N) (01/30/2021)
	18		Ahlise Hurst at UNLV (01/15/2021)
FIELD GOAL PERCENTAGE (min 5 made)	1.000	(6-6)	Shaiquel McGruder at San Diego St. (02/03/2021)
	1.000	(5-5)	Antonia Anderson at Midwestern St. (12/04/2020)
3 PT FG MADE	6		LaTascya Duff at San Diego St. (02/03/2021)
	5		Jaedyn De La Cerda at UNLV (01/17/2021)
	5		Ahlise Hurst at Midwestern St. (12/04/2020)
3 PT FG ATTEMPTS	13		Ahlise Hurst at UNLV (01/15/2021)
	10		Ahlise Hurst vs Fresno St. (N) (01/30/2021)
	10		Ahlise Hurst vs Fresno St. (N) (01/28/2021)
	10		Ahlise Hurst at Midwestern St. (12/04/2020)
	10		LaTascya Duff at Midwestern St. (12/04/2020)
3 PT FG PERCENTAGE (min 2 made)	.800	(4-5)	LaTascya Duff at Ark.-Pine Bluff (12/17/2020)
	.667	(6-9)	LaTascya Duff at San Diego St. (02/03/2021)
	.667	(4-6)	Antonia Anderson at UNLV (01/17/2021)
	.667	(2-3)	Jaedyn De La Cerda at San Diego St. (02/05/2021)
	.667	(2-3)	Corina Carter vs Fresno St. (N) (01/28/2021)
	.667	(2-3)	Antonia Anderson at Ark.-Pine Bluff (12/17/2020)
	.667	(2-3)	Shaiquel McGruder at Sam Houston (12/06/2020)
FREE THROWS MADE	14		Jaedyn De La Cerda at Sam Houston (12/06/2020)
	8		LaTascya Duff at Sam Houston (12/06/2020)
FREE THROW ATTEMPTS	15		Jaedyn De La Cerda at Sam Houston (12/06/2020)
	10		LaTascya Duff at Sam Houston (12/06/2020)
FREE THROW PERCENTAGE (min 3 made)	1.000	(5-5)	Jaedyn De La Cerda at UNLV (01/17/2021)
	1.000	(4-4)	Jaedyn De La Cerda vs Fresno St. (N) (01/28/2021)
	1.000	(4-4)	Jaedyn De La Cerda at Nevada (01/02/2021)
	1.000	(3-3)	LaTascya Duff at UNLV (01/15/2021)
	1.000	(3-3)	Ahlise Hurst at Ark.-Pine Bluff (12/17/2020)
REBOUNDS	13		Shaiquel McGruder at Sam Houston (12/06/2020)
	11		Jaedyn De La Cerda at Ark.-Pine Bluff (12/17/2020)
ASSISTS	6		Ahlise Hurst at San Diego St. (02/05/2021)
	6		Corina Carter at San Diego St. (02/03/2021)
	6		Jaedyn De La Cerda at Ark.-Pine Bluff (12/17/2020)
	6		LaTascya Duff at Midwestern St. (12/04/2020)
STEALS	4		Shaiquel McGruder vs Fresno St. (N) (01/28/2021)
	4		Ahlise Hurst at UNLV (01/17/2021)
	4		LaTora Duff at Midwestern St. (12/04/2020)
BLOCKED SHOTS	5		Shaiquel McGruder at Sam Houston (12/06/2020)
	4		Antonia Anderson vs Fresno St. (N) (01/28/2021)
	4		Shaiquel McGruder at UNLV (01/15/2021)
TURNOVERS	8		LaTora Duff at UNLV (01/17/2021)
	5		Jaedyn De La Cerda at UNLV (01/15/2021)
	5		Shaiquel McGruder at Sam Houston (12/06/2020)
	5		LaTora Duff at Sam Houston (12/06/2020)



THE UNIVERSITY OF NEW MEXICO 2020-21 WOMEN'S BASKETBALL



Game 1 | New Mexico at Midwestern State

Dec. 4, 2020 | Wichita Falls, Texas

Game 2 | New Mexico at Sam Houston St.

Dec. 6, 2020 | Huntsville, Texas



Official Basketball Box Score - Final
New Mexico at Midwestern St.
12/04/20 D.L. Ligon Coliseum, Wichita Falls
2020-21 Women's Basketball

Game Time: 6:00 PM
Game Duration: 2:10
Attendance: 55

Officials: Bill Larnes, Charles Carroll, Chaney Muench

New Mexico - 93		Record: 1-0															
NO. Name	Min	FG	3P	FT	Rebounds	Fouls	TP	AS	TO	ST	Blocks	+/-					
		M/A	M/A	M/A	OR DR TOT	PF FD					BS BA						
13 Shaiquel McGruder	F 09:49	1-2	0-0	0-0	2	2	4	3	0	2	0	1	2	0	0	0	18
32 Antonia Anderson	F 18:21	5-5	0-0	0-0	3-4	1	1	2	4	2	13	1	3	0	1	0	5
3 Ahlise Hurst	G 26:46	5-11	5-10	3-4	0	1	1	2	3	18	2	3	3	0	0	0	18
5 LaTora Duff	G 33:50	4-8	0-1	6-9	0	4	4	1	18	14	5	2	4	1	1	1	17
23 Jaedyn De La Cerda	G 24:45	5-12	3-9	3-4	2	3	5	4	3	16	3	2	2	1	1	0	20
4 LaTascya Duff	G 30:33	4-13	3-10	5-7	0	2	4	5	4	16	6	0	2	1	0	0	30
24 Autumn Watts	15:32	1-2	1-2	0-0	2	2	4	5	0	3	0	1	0	0	0	0	16
15 Kath van Bennekom	19:21	1-5	1-4	6-8	1	2	3	3	4	9	1	1	0	0	0	0	17
10 Celine Dupont	08:46	0-3	0-3	0-0	0	0	0	0	2	0	0	0	0	0	0	0	7
14 Azaria Robinson	08:08	1-3	0-0	0-0	1	3	4	2	2	0	0	0	0	0	1	1	7
34 Nevaeh Parkinson	02:43	0-1	0-0	0-2	0	1	1	0	1	0	0	0	0	0	0	0	3
0 Andriana Avent	01:26	0-0	0-0	0-0	0	0	0	0	0	0	0	0	0	0	0	0	2
Totals		27-65	13-39	26-38	13	22	35	30	26	93	18	13	13	4	3	26	

Technical Fouls: NONE

Dead Ball Rebounds: 8, 1

Midwestern St. - 65		Record: 0-0															
NO. Name	Min	FG	3P	FT	Rebounds	Fouls	TP	AS	TO	ST	Blocks	+/-					
		M/A	M/A	M/A	OR DR TOT	PF FD					BS BA						
00 Shawnisay Millar	F 20:52	4-10	1-3	4-5	1	1	2	3	5	13	0	1	1	0	1	0	-18
15 Haevyn Wisley	F 21:24	3-4	0-0	0-0	3	3	6	1	3	6	3	7	0	1	0	0	-20
11 Hannah Reynolds	C 26:16	3-7	0-0	2-2	0	3	3	2	5	8	3	3	1	0	2	0	-20
24 Morgan King	G 12:07	2-4	1-1	2-2	0	2	2	5	1	7	2	2	1	0	1	0	-3
24 Morgan Lenahan	G 27:15	0-2	0-0	2-2	0	6	6	3	2	1	2	3	0	0	0	0	-28
1 Eternity Jackson	G 22:20	2-5	2-3	2-2	1	2	3	2	1	8	0	1	1	0	0	0	-12
3 Maya Kendall	11:32	0-1	0-1	0-0	1	2	3	4	0	0	4	0	0	0	0	0	-11
14 Kityana Diaz	21:43	2-5	0-1	2-8	0	2	2	4	5	6	3	0	1	1	0	0	-18
23 Mandy Withey	12:21	0-1	0-0	0-6	2	3	2	3	6	1	2	1	1	0	0	0	-6
13 Britney Fields	08:28	1-4	0-0	2-5	1	0	1	0	3	4	0	1	0	0	0	0	-7
2 Sheridan Bostic	12:46	1-3	1-3	2-2	0	3	3	1	2	5	0	1	0	0	0	0	-2
31 Mackenzie Taylor	02:56	0-0	0-0	0-0	0	0	0	0	0	0	0	0	0	0	0	0	1
Totals		18-46	5-12	24-34	10	29	39	27	30	65	13	25	9	3	4	-28	

Technical Fouls: King 4th 3:56

Dead Ball Rebounds: 5, 0

Biggest lead	33 (4 th 2:18)	0 (1 st 10:00)
Best Scoring Run	12 (1 st 1:12)	7 (2 nd 5:06)
Lead Changes	0	
Times Tied	0	
Time with Lead	39:45	00:00

Points from Turnovers	27	13
Paint	24	20
Second Chance	15	9
Fast Breaks	23	8
Bench	30	29

Period by Period Scoring	1st	2nd	3rd	4th	TOT
UNM	25	24	23	21	93
MSU	6	19	22	18	65



Official Basketball Box Score - Final
New Mexico at Sam Houston St.
12/06/20 Johnson Coliseum, Huntsville, Texas
2020-21 Women's Basketball

Game Time: 2:00 PM
Game Duration: 2:16
Attendance: 424

Officials: Jaclyn Watson, Christopher Saucedo, Tiffany Bridges

New Mexico - 98		Record: 2-0															
NO. Name	Min	FG	3P	FT	Rebounds	Fouls	TP	AS	TO	ST	Blocks	+/-					
		M/A	M/A	M/A	OR DR TOT	PF FD					BS BA						
13 Shaiquel McGruder	F 34:27	7-10	2-3	1-3	4	9	13	3	5	17	0	5	3	0	0	18	
32 Antonia Anderson	F 20:59	2-6	1-3	5-6	1	4	5	3	10	2	2	0	2	0	1	14	
3 Ahlise Hurst	G 21:22	1-5	1-2	0-0	0	2	2	5	3	1	2	2	1	0	1	12	
5 LaTora Duff	G 26:45	5-10	1-2	4-6	2	2	4	3	15	5	1	1	1	1	1	25	
23 Jaedyn De La Cerda	G 36:06	5-9	0-3	14-15	5	1	6	2	9	24	5	2	1	1	0	14	
24 Autumn Watts	04:43	1-1	0-0	0-0	1	1	2	2	0	2	0	0	1	0	0	-7	
1 Corina Carter	20:42	3-10	2-5	2-4	0	1	1	3	10	2	2	1	0	0	0	-11	
4 LaTascya Duff	20:00	3-7	1-4	8-10	0	0	0	2	15	0	3	0	0	0	0	-11	
15 Kath van Bennekom	13:44	0-2	0-2	2-2	1	2	3	2	2	0	0	0	0	0	0	-8	
14 Azaria Robinson	01:12	0-0	0-0	0-0	0	0	0	0	0	0	0	0	0	0	0	0	
Totals		27-60	8-24	36-46	16	27	43	27	34	98	15	21	9	8	2	9	

Technical Fouls: NONE

Dead Ball Rebounds: 4, 0

Sam Houston - 89		Record: 2-1															
NO. Name	Min	FG	3P	FT	Rebounds	Fouls	TP	AS	TO	ST	Blocks	+/-					
		M/A	M/A	M/A	OR DR TOT	PF FD					BS BA						
2 Amber Leggett	F 38:21	9-24	0-1	11-17	1	2	3	5	13	29	1	4	3	0	2	-9	
11 Courtney Cleveland	F 31:09	11-13	0-0	4-4	0	5	5	5	3	26	0	4	1	2	1	8	
21 Maddy Batista	F 25:06	4-7	0-0	3-3	5	5	10	5	2	11	1	1	0	0	0	2	
10 Faith Cook	G 38:29	3-11	1-7	2-2	1	3	4	4	5	9	6	4	1	0	1	-6	
13 Kaylee Jefferson	G 24:26	0-5	0-1	1-2	3	0	3	5	1	1	0	3	1	0	1	-21	
5 Jacquelyn Levay	13:48	0-2	0-0	1-2	0	2	2	2	2	1	1	4	0	0	0	-8	
1 Jolicia Williams	12:30	2-3	1-2	0-2	2	1	3	4	1	5	1	0	0	0	0	0	
0 Sydnee Kemp	02:24	0-1	0-0	0-0	0	0	0	0	2	0	0	1	0	0	0	-7	
4 Diamond Hunter	05:59	2-4	0-0	0-0	0	2	2	1	4	1	0	1	0	1	0	-6	
33 Alyvia Essex	05:48	1-2	1-2	0-0	0	1	1	1	0	3	0	0	0	0	0	-2	
30 Deondra Young	01:12	0-0	0-0	0-0	0	0	0	0	0	0	0	0	0	0	0	0	
3 Alyssa Osborne	00:48	0-0	0-0	0-0	0	0	0	0	0	0	0	0	0	0	0	-2	
Totals		32-72	3-13	22-32	18	23	41	35	27	89	11	22	7	2	8	-9	

Technical Fouls: Coach 2nd 3:36

Dead Ball Rebounds: 5, 0

Biggest lead	10 (4 th 0:34)	14 (1 st 0:34)
Best Scoring Run	18 (2 nd 3:36)	9 (1 st 5:27)
Lead Changes	3	
Times Tied	4	
Time with Lead	22:04	14:37

Points from Turnovers	21	25
Paint	34	52
Second Chance	16	13
Fast Breaks	14	20
Bench	29	13

Period by Period Scoring	1st	2nd	3rd	4th	TOT
NM	12	31	21	34	98
SHSU	23	18	22	26	89

Game 3 | New Mexico at Arkansas-Pine Bluff

Dec. 17, 2020 | Pine Bluff, Ark.

Game 4 | New Mexico at Nevada

Dec. 31, 2020 | Reno, Nev.



Official Basketball Box Score - Final
New Mexico at Ark-Pine Bluff
12/17/20 H.O. Clemons Arena, Pine Bluff
2020-21 Women's Basketball

Game Time: 2:00 PM
Game Duration: 1:59
Attendance: 105

Officials:

New Mexico - 120		Record: 3-0														
NO. Name	Min	FG	3P	FT	Rebounds	Fouls	TP	AS	TO	ST	Blocks	+/-				
		M/A	M/A	M/A	OR DR TOT	PF FD					BS BA					
13 Shaiquel McGruder	F 17:03	3-7	0-0	3-4	4	8	12	3	7	1	2	0	0	0	0	24
32 Antonia Anderson	F 18:45	5-6	2-3	1-2	1	3	4	2	13	3	2	0	1	0	0	35
3 Ahlise Hurst	G 22:14	5-10	3-8	3-3	0	4	4	1	3	16	4	2	0	0	0	41
5 LaTora Duff	G 25:06	4-9	3-7	2-2	1	3	4	1	12	13	4	1	1	0	2	35
23 Jaedyn De La Cerda	G 24:38	5-15	1-5	2-2	6	5	11	2	1	13	6	0	3	0	1	34
24 Autumn Watts	12:09	0-1	0-0	0-0	1	1	1	1	0	1	0	2	1	0	0	2



THE UNIVERSITY OF NEW MEXICO 2020-21 WOMEN'S BASKETBALL



Game 5 | New Mexico at Nevada

Jan. 20, 2021 | Reno, Nev.

Game 6 | New Mexico at UNLV

Jan. 15, 2021 | Las Vegas, Nev.



Official Basketball Box Score - Final
New Mexico at Nevada
01/20/21 Laxfor Events Center, Reno
2020-21 Women's Basketball

Game Time: 1:00 PM
Game Duration: 1:54
Attendance: 50

Officials: In'Fni Robinson, Cheryl Blue, Peter Contreras

NO. Name	Min	FG			FT			Rebounds		Fouls		TP	AS	TO	ST	Blocks			+/-
		M/A	M/A	M/A	M/A	M/A	M/A	OR	DR	PF	FF					BS	BA	BL	
13 Shaquell McGruder	F 27:11	4-6	0-1	0-0	2-2	2-2	2-0	8	0	1	3	1	0	0	0	0	0	0	5
32 Antonia Anderson	F 14:24	3-5	0-1	2-2	0-2	2-2	5-1	8	0	0	0	0	0	0	0	0	0	0	1
3 Ahlise Hurst	G 37:07	7-15	3-6	3-4	0-0	2-2	2-2	20	0	1	3	0	0	0	0	0	0	10	
5 LaTora Duff	G 28:44	5-9	0-0	0-0	0-7	7-7	2-3	10	4	3	1	0	0	0	0	0	0	15	
24 Jaedyn De La Cerda	G 25:28	4-10	0-3	4-4	2-4	6-6	1-3	12	1	0	0	0	0	0	0	0	0	15	
23 Autumn Watts	28:40	3-8	0-3	1-2	6-3	9-9	1-1	7	1	1	1	0	0	0	0	0	0	12	
1 Corina Carter	11:16	1-2	0-1	1-2	0-0	0-0	2-1	3	1	2	2	0	0	0	0	0	0	-4	
4 LaTascya Duff	22:22	4-10	1-4	1-3	1-2	3-3	1-6	10	1	0	0	0	0	0	0	0	0	5	
15 Kath van Bennekom	04:48	0-0	0-0	0-0	0-0	0-0	0-0	0	0	0	0	0	0	0	0	0	0	6	
Team					0	1	1												
Totals		31-65	4-19	12-17	9	23	32	16	78	8	8	10	1	1	1	1	1	1	11

Technical Fouls: NONE

Shooting By Period	
1st FG%	7-17 41.2%
3PT%	0-5 0.0%
FT%	2-4 50%
2nd FG%	6-16 37.5%
3PT%	0-5 0.0%
FT%	5-6 83.3%
3rd FG%	8-18 44.4%
3PT%	3-6 50%
FT%	3-4 75%
4th FG%	10-14 71.4%
3PT%	1-3 33.3%
FT%	2-3 66.7%
GM FG%	31-65 47.7%
3PT%	4-19 21.1%
FT%	12-17 70.6%

Dead Ball Rebounds: 4

Nevada - 67

Record: 4-3 (2-2)

NO. Name	Min	FG			FT			Rebounds		Fouls		TP	AS	TO	ST	Blocks			+/-
		M/A	M/A	M/A	M/A	M/A	M/A	OR	DR	PF	FF					BS	BA	BL	
40 Megan Ormiston	F 18:19	1-2	0-0	0-0	0-1	1-1	2-0	2	0	1	1	1	0	0	0	0	0	0	-11
4 LaPraisjah Johnson	G 29:18	4-7	1-1	8-8	0-7	7-7	1-5	17	3	7	1	0	0	0	0	0	0	0	10
20 Bethany Carstens	G 23:07	4-8	2-4	2-0	1-4	5-5	3-3	10	3	2	0	0	0	0	0	0	0	0	
22 Gabby Rones	G 22:37	1-4	0-2	2-2	1-1	0-1	0-1	4	0	1	0	0	0	0	0	0	0	0	-6
25 Nia Alexander	G 27:59	4-7	0-1	2-4	2-1	3-3	3-10	0	2	0	0	0	0	0	0	0	0	16	
34 Leta Otufai	20:39	7-9	1-2	1-2	2-3	2-2	0-2	16	2	3	0	0	0	0	0	0	0	2	
1 Andrea Jovicic	15:25	0-4	0-2	0-0	0-2	2-2	1-1	0	0	0	0	0	0	0	0	0	0	-1	
2 Da'Ja Hamilton	19:38	2-7	1-4	0-0	0-0	0-1	0-1	5	3	2	0	0	0	0	0	0	0	-8	
11 Kenna Holt	14:23	0-1	0-0	0-0	0-1	1-1	0-0	3	1	0	0	0	0	0	0	0	0	-8	
22 Lexie Givens	09:16	1-2	1-2	0-0	0-1	1-1	0-0	3	1	0	0	0	0	0	0	0	0	4	
44 Eliska Stebatkova	03:47	0-1	0-1	0-0	0-1	1-1	0-0	0	0	0	0	0	0	0	0	0	0	-1	
Team					0	4	4												
Totals		24-52	6-19	13-16	5	26	31	17	67	12	9	4	1	1	1	1	1	1	11

Technical Fouls: NONE

Shooting By Period	
1st FG%	7-16 43.8%
3PT%	3-6 50.0%
FT%	1-2 50%
2nd FG%	12-21 57.1%
3PT%	1-4 25.0%
FT%	5-6 83.3%
3rd FG%	5-9 55.6%
3PT%	1-2 50.0%
FT%	7-8 87.5%
4th FG%	7-15 46.7%
3PT%	1-7 14.3%
FT%	0-0 0%
GM FG%	24-52 46.2%
3PT%	6-19 31.6%
FT%	13-16 81.3%

Dead Ball Rebounds: 2

	UNM	NEV
Biggest lead	12 (4th 2:59)	4 (1st 4:17)
Best Scoring Run	10 (3rd 5:35)	6 (3rd 0:45)
Lead Changes	9	
Times Tied	11	
Time with Lead	20:54	12:04

Points from	UNM	NEV
Turnovers	17	4
Paint	46	32
Second Chance	12	10
Fast Breaks	15	15
Bench	20	24

Period by Period Scoring	UNM	NEV
1st	16	17
2nd	17	22
3rd	23	23
4th	7	8
TOT	63	78



Official Basketball Box Score - Final
New Mexico at UNLV
01/15/21 Cox Pavilion, Las Vegas
2020-21 Women's Basketball

Game Time: 2:00 PM
Game Duration: 1:54

Officials: Brenda Pantoja, Peter Contreras, Jack Jones

NO. Name	Min	FG			FT			Rebounds		Fouls		TP	AS	TO	ST	Blocks			+/-
		M/A	M/A	M/A	M/A	M/A	M/A	OR	DR	PF	FF					BS	BA	BL	
13 Shaquell McGruder	F 21:09	1-3	0-1	0-0	0-4	4-4	2-0	2	0	0	1	1	4	0	0	0	0	0	-14
32 Antonia Anderson	F 11:06	3-5	2-4	0-0	1-3	4-4	5-8	0	0	1	0	0	0	0	0	0	0	0	11
3 Ahlise Hurst	G 28:15	6-18	4-13	0-0	0-2	2-3	1-1	16	1	3	1	0	0	0	0	0	0	0	-10
5 LaTora Duff	G 25:32	4-7	1-3	0-0	1-2	3-3	1-1	9	2	2	1	0	0	0	0	0	0	0	15
24 Jaedyn De La Cerda	G 20:24	2-11	0-4	0-2	2-6	8-8	2-1	4	4	5	1	0	0	0	0	0	0	0	24
23 Autumn Watts	34:09	0-4	0-3	0-0	2-4	6-6	5-1	0	2	1	2	2	2	0	0	0	0	0	-6
1 Corina Carter	17:09	1-6	0-4	0-0	0-0	0-1	1-2	2	3	3	1	0	0	0	0	0	0	-4	
4 LaTascya Duff	24:50	5-10	4-8	3-3	0-4	4-4	2-2	17	2	0	1	0	0	0	0	0	0	-9	
14 Azaria Robinson	08:49	1-1	0-0	0-0	0-2	2-2	1-0	2	0	1	0	0	0	0	0	0	0	-11	
15 Kath van Bennekom	05:48	0-0	0-0	0-0	0-1	1-1	0-0	0	0	1	1	0	0	0	0	0	0	-4	
10 Coline Dupont	01:58	0-1	0-0	0-0	0-0	0-0	0-0	0	0	0	0	0	0	0	0	0	0	-2	
34 Nevaeh Parkinson	00:51	0-0	0-0	0-0	0-0	0-0	0-0	0	0	0	0	0	0	0	0	0	0	0	
Team					1	3	4												
Totals		23-66	11-40	3-5	7	31	38	23	7	60	15	18	8	7	2	18	18	18	

Technical Fouls: NONE

Shooting By Period	
1st FG%	7-21 33.3%
3PT%	4-15 26.7%
FT%	3-3 100%
2nd FG%	9-16 56.3%
3PT%	6-11 54.5%
FT%	0-0 0%
3rd FG%	6-16 37.5%
3PT%	1-7 14.3%
FT%	0-0 0%
4th FG%	2-13 15.4%
3PT%	0-7 0.0%
FT%	0-2 0%
GM FG%	23-66 34.8%
3PT%	11-40 27.5%
FT%	3-5 60.0%

Dead Ball Rebounds: 1

UNLV - 78

Record: 5-5 (3-2)

NO. Name	Min	FG			FT			Rebounds		Fouls		TP	AS	TO	ST	Blocks			+/-
		M/A	M/A	M/A	M/A	M/A	M/A	OR	DR	PF	FF					BS	BA	BL	
21 Delanyie Byrne	F 30:32	7-10	4-6	3-5	1-4	5-5	0-4	21	2	1	0	1	0	1	0	0	0	0	13
23 Desi-Rae Young	F 19:07	2-10	0-0	3-4	1-6	7-7	0-5	7	3	2	2	0	0	0	0	0	0	0	10
5 Jade Thomas	G 29:14	4-12	1-6	0-0	3-1	4-4	1-2	9	1	2	9	1	0	0	0	0	0	0	11
14 Bailey Thomas	G 35:25	3-9	1-5	1-2	3-3	6-6	1-1	8	4	2	1	0	0	0	0	0	0	0	16
30 Nia Johnson	G 27:07	3-12	1-3	0-0	2-5	7-7	2-1	7	3	1	3	0	0	0	0	0	0	0	11
2 Jasmine Singleton	16:57	1-3	0-0	1-2	0-3	3-3	0-3	1	1	3	0	0	0	0	0	0	0	0	14
15 Keyana Wilfred	21:12	4-7	0-0	4-4	3-4	7-7	1-2	12	3	2	1	0	0	0	0	0	0	0	14
10 Jacinta Buckley	11:17	1-4	0-1	0-0	2-6	8-8	1-2	1	1	0	0	0	0	0	0	0	0	0	11
12 Anna Blount	05:22	1-3	0-0	1-2	1-0	1-1	2-3	0	0	1	0	0	0	0	0	0	0	0	-2
22 Tianna Carter	03:47	2-2	0-0	2-3	0-1	1-1	0-2	6	0	0	0	0	0	0	0	0	0	0	1
Team																			



THE UNIVERSITY OF NEW MEXICO 2020-21 WOMEN'S BASKETBALL



Game 9 | Fresno State vs. New Mexico

Jan. 30, 2021 | Canyon, Texas

Game 10 | New Mexico at San Diego State

Feb. 3, 2021 | San Diego, Calif.



Official Basketball Box Score - Final

Fresno St. at New Mexico

01/30/21 First United Bank Center, Canyon

2020-21 Women's Basketball

Officials: Jack Jones, Robert Strong, Laura Rabe

Game Time: 12:00 PM

Game Duration: 1:28

Attendance: 15

Fresno St. - 91

Record: 9-6 (7-3)

NO. Name	Min	FG		3P		FT		Rebounds		Fouls		TP	AS	TO	ST	Blocks		+/-
		M-A	M-A	M-A	M-A	OR	DR	PF	FD	BS	BA							
11 Maddi Utti	29:16	5-9	1-3	1-2	1	4	5	0	2	12	3	2	2	0	0	0	1	20
24 Wytiatia Motta	09:18	1-2	0-0	1-2	1	2	3	2	2	3	0	1	0	0	0	0	1	0
0 Hanna Cavinder	32:07	5-10	0-1	3-4	0	4	4	2	4	13	5	4	3	0	1	0	1	14
1 Haley Cavinder	35:03	8-15	3-7	2-3	4	10	14	2	3	21	6	3	1	1	0	0	26	
22 Aly Gamez	17:28	2-4	0-2	0-0	0	0	0	1	0	4	2	0	0	0	1	0	2	
3 Kennedy Kinzer	26:12	3-7	3-7	0-0	0	1	1	0	0	9	2	0	0	0	0	0	17	
20 Broe Delaney	20:11	7-8	4-5	1-2	1	3	4	1	2	19	1	1	3	1	0	0	33	
15 Brooke Walling	10:52	2-2	0-0	0-0	1	1	2	0	0	4	0	2	0	0	0	0	2	
2 Keoly Brown	03:33	0-0	0-0	2-2	0	0	0	1	1	2	1	0	0	0	0	0	5	
30 Yanina Todorova	03:48	0-1	0-0	0-0	0	0	0	1	0	1	0	1	0	0	0	0	-1	
12 Genna Ogier	02:17	0-0	0-0	0-0	1	1	0	0	0	0	0	0	0	0	0	0	-3	
5 Daylee Dunn	03:16	0-0	0-0	0-0	1	1	1	0	0	0	0	0	0	0	0	0	-3	
10 Aunjona James	02:56	0-0	0-0	2-2	0	1	1	0	1	2	0	2	0	0	0	0	-4	
23 Charisse Fairley	02:23	1-2	0-1	0-0	0	0	0	0	0	2	0	0	0	0	0	0	-1	
42 Maria Guimaraes	01:20	0-0	0-0	0-0	0	0	0	0	0	0	0	0	0	0	0	0	-2	
Team					0	7	7			0	0							
Totals		34-60	11-26	12-17	8	35	43	10	15	91	20	16	9	3	2	22		

Shooting By Period	
1st FG%	9-18 50.0%
3PT%	2-6 33.3%
FT%	1-2 50%
2nd FG%	7-14 50.0%
3PT%	3-8 37.5%
FT%	2-2 100%
3rd FG%	9-14 64.3%
3PT%	3-6 50.0%
FT%	4-6 66.7%
4th FG%	9-14 64.3%
3PT%	3-6 50.0%
FT%	5-7 71.4%
GM FG%	34-60 56.7%
3PT%	11-26 42.3%
FT%	12-17 70.6%

Dead Ball Rebounds: 1, 0

Technical Fouls: NONE

New Mexico - 69

Record: 7-2 (4-2)

NO. Name	Min	FG		3P		FT		Rebounds		Fouls		TP	AS	TO	ST	Blocks		+/-
		M-A	M-A	M-A	M-A	OR	DR	PF	FD	BS	BA							
13 Shaquell McGruder	30:45	7-8	0-0	0-0	2	1	3	1	0	14	2	0	0	0	0	0	-13	
32 Antonia Anderson	25:17	4-7	0-0	0-0	2	3	5	5	0	8	4	2	2	0	0	0	-15	
3 Ahliss Hurst	24:39	3-13	2-10	0-0	2	2	2	2	2	8	4	3	0	0	0	0	-11	
5 LaTora Duff	25:39	3-6	1-3	2-2	0	4	4	1	4	9	3	1	3	0	0	0	-5	
23 Jaedyn De La Cerda	34:26	6-22	2-9	0-0	2	6	8	3	2	14	2	3	3	0	2	-14		
24 Autumn Watts	12:32	3-3	0-0	0-0	0	0	0	0	0	6	0	2	0	0	0	0	-15	
1 Corina Carter	14:21	2-6	1-4	0-1	0	1	1	0	1	5	1	1	0	0	0	0	-7	
4 LaTascya Duff	21:45	2-9	1-6	0-0	2	2	4	1	0	5	1	1	0	0	0	0	-23	
14 Azaria Robinson	03:37	0-0	0-0	0-0	1	1	2	0	0	0	0	0	0	0	0	0	1	
15 Kath van Bennekom	03:16	0-1	0-1	0-0	0	1	1	0	0	0	0	0	0	0	0	0	3	
10 Celine Dupont	02:23	0-1	0-1	0-0	0	0	0	0	0	0	1	0	1	0	0	0	1	
34 Nevaeh Parkinson	01:20	0-0	0-0	0-0	0	0	0	0	0	0	0	0	0	0	0	0	-2	
Team					4	5	0			0	0							
Totals		30-76	7-34	2-3	12	22	34	15	10	89	18	13	7	2	3	22		

Shooting By Period	
1st FG%	9-19 47.4%
3PT%	2-8 25.0%
FT%	0-0 0%
2nd FG%	6-21 28.6%
3PT%	2-9 22.2%
FT%	2-2 100%
3rd FG%	10-16 62.5%
3PT%	1-6 16.7%
FT%	0-0 0%
4th FG%	5-20 25.0%
3PT%	2-11 18.2%
FT%	0-1 0%
GM FG%	30-76 39.5%
3PT%	7-34 20.6%
FT%	2-3 66.7%

Dead Ball Rebounds: 0, 0

Technical Fouls: NONE

FSU		UNM	
Biggest lead	26 (4th 3:16)	6 (1st 3:29)	
Best Scoring Run	12 (4th 6:56)	7 (1st 4:46)	
Lead Changes	4	1	
Times Tied	1	0	
Time with Lead	32:40	06:11	

Points from Turnovers		FSU		UNM	
Turnovers	21	14			
Paint	38	40			
Second Chance	7	12			
Fast Breaks	6	2			
Bench	38	16			

Period by Period Scoring					
1st	21	14			
2nd	19	25	26	91	
3rd	20	16	21	12	69
4th	18	13	7	2	3



Official Basketball Box Score - Final

New Mexico at San Diego State

02/03/21 Steve Fisher Court at Vegas Arena, San Diego

2020-21 Women's Basketball

Game Time: 6:05 PM

Game Duration: 1:37

New Mexico - 84

Record: 8-2 (5-2)

NO. Name	Min	FG		3P		FT		Rebounds		Fouls		TP	AS	TO	ST	Blocks		+/-
		M-A	M-A	M-A	M-A	OR	DR	PF	FD	BS	BA							
13 Shaquell McGruder	23:50	6-6	1-1	2-2	6	3	9	2	2	15	0	1	2	1	0	0	26	
32 Antonia Anderson	30:17	8-16	2-4	0-3	11	7	8	3	2	18	0	1	3	1	0	0	16	
3 Ahliss Hurst	28:03	6-12	1-6	6-8	0	1	1	1	6	19	1	1	1	0	0	0	27	
5 LaTora Duff	22:04	1-4	1-2	0-0	0	0	0	1	1	3	4	0	1	0	0	0	27	
23 Jaedyn De La Cerda	33:29	0-4	0-3	0-0	1	1	2	1	0	0	2	1	0	0	0	0	13	
4 LaTascya Duff	21:30	6-9	6-9	1-2	0	2	2	3	3	19	0	0	0	0	0	0	28	
24 Autumn Watts	17:53	2-2	1-1	0-0	4	4	1	0	5	4	1	1	2	0	0	0	22	
1 Corina Carter	20:00	1-4	0-2	0-0	2	2	1	0	2	6	1	1	0	1	0	1	13	
14 Azaria Robinson	04:00	0-0	0-0	0-0	0	0	0	0	1	0	0	0	0	0	0	0	4	
15 Kath van Bennekom	04:00	1-1	1-1	0-0	0	0	0	0	0	3	0	0	0	0	0	0	4	
10 Celine Dupont	02:29	0-1	0-0	0-0	0	0	0	0	1	0	0	0	0	0	0	0	0	
34 Nevaeh Parkinson	02:25	0-1	0-1	0-0	0	1	1	0	1	0	0	0	0	0	0	0	0	
Team					2	1	3			0	0							
Totals		31-60	13-30	9-15	10	22	32	15	15	84	17	6	9	4	1	36		

Shooting By Period	
1st FG%	4-17 23.5%
3PT%	0-6 0.0%
FT%	3-6 50%
2nd FG%	5-14 35.7%
3PT%	2-9 22.2%
FT%	3-4 75%
3rd FG%	14-17 82.4%
3PT%	5-7 71.4%
FT%	3-5 60%
4th FG%	8-12 66.7%
3PT%	6-8 75.0%
FT%	0-0 0%
GM FG%	31-60 51.7%
3PT%	13-30 43.3%
FT%	9-15 60.0%

Dead Ball Rebounds: 2, 0

Technical Fouls: NONE

San Diego State - 48

Record: 5-11 (3-7)

NO. Name	Min	FG		3P		FT		Rebounds		Fouls		TP	AS	TO	ST	Blocks		+/-
		M-A	M-A	M-A	M-A	OR	DR	PF	FD	BS	BA							
24 Kiara Edwards	16:16	4-5	0-0	1-2	1	2	3	2	1	9	0	1	0	0	0	0	-17	
42 Kim Villalobos	20:21	4-5	0-0	2-4	1	3	4	2	3	10	3	3	2	0	0	0	-23	
10 Isabela Hernandez	30:36	1-4	1-2	0-0	2	2	2	0	0	3	2	1	0	1	0	0	-20	
12 Mercedes Staples	32:12	4-11	1-4	2-2	1	4	5	2	4	11	5	2	0	0	0	0	-24	
21 Alex Crain	28:06	2-6	1-2	0-0	2	2	2	1	2	5	1	1	0	0	0	0	-29	
3 Mallory Adams	18:47	1-4	1-3	0-0	2	3	5	1	0	3	0	2	0	0	0	0	-9	
4 Bailee Chynoweth	10:55	0-1	0-1	0-0	0	0	0	0	0	0	0	1	0	0	0	0	-12	
11 Kamaria Gipson	15:21	1-4	0-0	0-0	1	2	3	1	1	2	0	1	0	0	0	0	-13	
22 Flo Vinerite	08:23	0-5	0-0	0-0	0	3	1	0	0	0	0	1	1	0	0	0	-6	
13 Talia Sironi	06:14	0-0	0-0	0-0	0	0	0	0	0	1	0	0	1	0	0	0	-9	
30 Ivryana Murillo	12:49	1-2	0-0	3-4	2	0	2	1	4	5	1	1	0	0	1	-18		
Team					1	2	3			0	1							
Totals		18-47	4-12	8-12	9	23	32	15	15	48	12	16	3	1	4	38		

Shooting By Period	
1st FG%	7-14 50.0%
3PT%	0-2 0.0%
FT%	0-0 0%
2nd FG%	5-11 45.5%
3PT%	1-3 33.3%
FT%	2-2 100%
3rd FG%	2-10 20.0%
3PT%	