

# 2021-22 NEW MEXICO WOMEN'S BASKETBALL

## GAME NOTES

» Eight NCAA Tournament Appearances | 1998, 2002, 2003, 2004, 2005, 2006, 2007, 2008 «  
 » Five Mountain West Tournament Championships | 2003, 2004, 2005, 2007, 2008 «

### 2021-22 | Schedule and Results

OVERALL RECORD:.....	1-0
MW RECORD:.....	0-0
HOME RECORD:.....	1-0
ROAD RECORD:.....	0-0
NEUTRAL RECORD:.....	0-0
STREAK:.....	W1

Date	Opponent	Time/Result
10/31	Western Colorado (Exh.)	W, 94-53
11/4	Eastern New Mexico (Exh.)	W, 88-72
11/9	Lamar	W, 71-54
11/12	Northern New Mexico	7 p.m.
11/16	Prairie View A&M	7 p.m.
11/20	Houston	3 p.m.
11/23	Houston Baptist	7 p.m.
11/26	Stephen F. Austin%	5:30 p.m.
11/27	Louisiana Monroe%	5:30 p.m.
11/28	Texas Tech%	3 p.m.
11/30	Grambling State	7 p.m.
12/3	New Mexico State	7 p.m.
12/5	New Mexico State	2 p.m.
12/12	Arizona	2 p.m.
12/19	UTEP	6 p.m.
12/28	San José State*	TBA
12/31	Boise State*	2 p.m.
1/3	UNLV*	7 p.m.
1/6	Utah State*	6 p.m.
1/9	San Diego State*	2 p.m.
1/13	Wyoming*	6:30 p.m.
1/15	Colorado State*	1 p.m.
1/22	Fresno State*	2 p.m.
1/27	UNLV*	7 p.m.
1/29	San Diego State*	1 p.m.
2/2	Colorado State*	7 p.m.
2/5	Wyoming*	2 p.m.
2/9	Air Force*	7 p.m.
2/12	Nevada*	3 p.m.
2/16	Utah State*	7 p.m.
2/19	Boise State*	1 p.m.
2/23	Fresno State*	7 p.m.
2/25	San José State	12 p.m.
3/6-3/9	MW Tournament	TBA

**BOLD:** Home %:Van Chancellor Classic \* : Mountain West  
 All times are Mountain Time

### THE MATCHUP



## New Mexico Lobos

Record  
1-0, 0-0 MW

Head Coach .....Mike Bradbury  
 Alma Mater, Yr.....Chattanooga, 1993  
 Record at UNM.....95-55 (6th year)  
 Career Record.....273-172 (15th year)

#### Game Information

Game Number: Game 2  
 Date: Thursday, Nov. 11 at 7 p.m.  
 Location: Albuquerque, N.M.  
 The Pit

#### Series History

Overall: .....UNM leads 3-0  
 Current Streak: .....W3  
 Last Meeting:.....12/10/19 (W, 92-44)

#### Broadcast Information

Radio:.....610 AM KNML  
 Play-By-Play:.....J.J. Buck  
 Analyst:.....Nikki Heckroth-Lobato  
 Live Stream:.....MW Network  
 Live Stats: .....GoLobos.com/wbbstats



## Northern N.M. Lady Eagles

Record  
3-1, 0-0 CAC

Head Coach .....JR Giddens  
 Alma Mater, Yr.....New Mexico, 2008  
 Record at CBU.....3-1 (1st year)  
 Career Record .....Same

### TIPPING OFF

The Lobos opened the season on Tuesday night with a 17-point victory over Lamar in which New Mexico scored 18 points in three of the four quarters and 17 points in the first.

UNM finished with four scorers in double figures, led by Antonia Anderson's game-high 16 points, followed by Jaedyn De La Cerda and Shaiquel McGruder at 15 each and LaTora Duff with 10. Duff was one assist shy of a double-double, tying her career high with nine assists, and nearly matching Lamar's team total in assists as the Cardinals had 10 in the game. McGruder was a perfect 7-for-7 from the field, one of two Lobos to go perfect from the floor.

Freshman Aniyah Augmon and sophomore Kath van Bennekom provided the spark off of the bench, with Augmon recording a full stat sheet with eight points (3-for-3 shooting), six rebounds (tying the team high) and three steals (a team high), and van Bennekom going 2-for-3 and crashing the glass for three offensive rebounds.

De La Cerda found her shot in the third quarter, accounting for 14 of UNM's 18 points in the quarter on 5-of-9 shooting and going 3-for-3 from the free-throw line, while the defense held the Cardinals to nine points in the quarter.

On the other side of the court, Northern New Mexico has played four games this season, winning two games against Southwest and one against Embry-Riddle before losing to Benedictine Mesa in its last game.

The Lady Eagles are led by Chris'Allee Patterson, who averages 12.0 points per game, and Rachel Williams, who is averaging 6.0 rebounds per game.

### Probable Starters (Based on last game)

#	Name	Pos.	Cls.	Ht.	PPG	RPG	APG	SPG	BPG
5	LaTora Duff	G	Sr.	5-7	10.0	3.0	9.0	0.0	1.0
11	Zeyno Seren	F	Fr.	6-1	1.0	4.0	1.0	0.0	0.0
13	Shaiquel McGruder	F	Sr.	6-0	8.0	6.0	0.0	3.0	0.0
23	Jaedyn De La Cerda	G	Sr.	5-7	15.0	6.0	2.0	1.0	0.0
32	Antonia Anderson	F	Sr.	6-2	16.0	5.0	1.0	2.0	1.0

### Off the Bench

#	Name	Pos.	Cls.	Ht.	PPG	RPG	APG	SPG	BPG
1	Rebeka Renczes	PG	Fr.	5-7	--	--	--	--	--
4	LaTascya Duff	G	Sr.	5-7	--	--	--	--	--
10	Kath van Bennekom	G	So.	5-9	4.0	3.0	0.0	0.0	0.0
12	Aniyah Augmon	G	Fr.	5-8	8.0	6.0	0.0	3.0	0.0
21	Mackenzie Curtis	G	Fr.	5-9	--	--	--	--	--
30	Paula Reus	F	Fr.	6-1	--	--	--	--	--
33	Vianè Cumber	G	Fr.	5-10	2.0	4.0	0.0	1.0	0.0
34	Nevaeh Parkinson	F/C	So.	6-3	0.0	0.0	1.0	0.0	0.0



# THE UNIVERSITY OF NEW MEXICO 2021-22 WOMEN'S BASKETBALL



## THE UNIVERSITY OF NEW MEXICO

Location.....Albuquerque, N.M.  
 Founded.....1889 by Territorial Legislature  
 Enrollment.....22,225  
 Nickname.....Lobos  
 Colors.....Cherry (PMS 200) & Silver (PMS Cool Gray 6)  
 Conference.....Mountain West Conference  
 National Affiliation.....NCAA Division I  
 President.....Dr. Garnett Stokes  
 Director of Athletics.....Eddie Nuñez  
 Deputy A.D. for External Affairs.....David Williams  
 Deputy A.D. for Internal Affairs/SWA.....Janice Ruggiero  
 Faculty Representative.....Karen Gaudreault, Ph.D

## FACILITY INFORMATION

Facility.....The Pit  
 Capacity.....15,411  
 Age.....Built in 1966 (Renovated in 2009-10)  
 All-Time Home Record.....432-216 (.667)

## PROGRAM HISTORY

First Season.....1974-75  
 Overall Record.....694-561 (.553) in 42 seasons  
 Overall MW Record.....205-145 (.586) in 21 seasons  
 Postseason Tournament Appearances.....18  
 NCAA Tournament Appearances.....8  
 Last NCAA Postseason Appearance.....2020-21 (WNIT)  
 Last NCAA Postseason Opponent.....California Baptist  
 Last NCAA Postseason Result.....L, 90-85  
 MW Regular Season Championships.....3  
 (2003-04, 2004-05, 2020-21)  
 MW Tournament Championships.....5  
 (2002-03, 2003-04, 2004-05, 2006-07, 2007-08)

## TEAM INFORMATION

2020-21 Overall Record.....15-5  
 2020-21 Mountain West Record.....11-3  
 2020-21 Mountain West Season Finish.....1st  
 2020-21 MW Tournament Finish.....Semifinal  
 Letterwinners Returning | Lost.....7 | 5  
 Starters Returning | Lost.....4 | 1

## COACHING STAFF

Head Coach.....Mike Bradbury (Chattanooga, 1993)  
 Record at UNM (Years).....95-55 (6th season)  
 Career Record (Years).....273-172 (15th season)  
 Head Coach Phone.....505-925-5770  
 Women's Basketball Fax.....505-925-5779

Assistant Coach.....Valerie King (6th season)  
 Alma Mater.....Cincinnati, 2004  
 Assistant Coach.....Kabrina Merriweather (1st season)  
 Alma Mater.....Georgia Southwestern State, 2015  
 Assistant Coach.....Symone Denham (4th season)  
 Alma Mater.....Wright State, 2016

Spec. Asst. to H.C.....Ryan Freeman (1st season)  
 Dir. of Player Development.....Nike McClure (1st season)  
 Athletic Trainer.....Lexi Smith (1st season)  
 Strength Coach.....Brett Nakashima (3rd season)  
 Academic Adviser.....Joe DeBonis

## MISCELLANEOUS INFORMATION

2019-20 Total Attendance.....82,854  
 2019-20 Average Attendance.....4,874  
 2019-20 NCAA Attendance Rank.....15th  
 2019-20 Mountain West Attendance Rank.....1st

## MULTIMEDIA INFORMATION

Athletics Website.....www.GoLobos.com  
 Main University Web Site.....www.unm.edu  
 Conference Web Site.....www.TheMW.com  
 Facebook.....www.facebook.com/NewMexicoLobos  
 Twitter.....@UNMLobos

## MEDIA RELATIONS

Women's Basketball Contact.....Allison Weiss  
 Cell Phone (Preferred).....661-313-5402  
 Email.....allisonweiss@unm.edu  
 Address:.....

The University of New Mexico Athletics  
 1414 University Drive  
 Albuquerque, N.M. 87106



- » Two Mountain West Regular-Season Championships
- » Five Mountain West Tournament Championships
- » Seven NCAA Tournament Appearances Since 2001-02
- » Mountain West Attendance Leader 21 Seasons in a Row
- » WBCA Academic Top 25 Eight Times Since 2004-05





# THE UNIVERSITY OF NEW MEXICO

## 2021-22 WOMEN'S BASKETBALL



### Learn As You Grow

While the Lobos return stability in four starters from a year ago, the makeup of the roster is extreme, comprised of five seniors, two sophomores and six freshmen who will be getting a quick introduction to the college game.

All six freshmen played significant minutes in the two exhibitions against Western Colorado and Eastern New Mexico with contributions from all six to build upon.

Freshman Paula Reus got the starting nod in both exhibitions, while the other five contributed off of the bench.

Vianè Cumber finished with a perfect 4-for-4 outing from three-point range for 12 points against Western Colorado and added 11 points against Eastern New Mexico, while Aniyah Augmon provided energy off the bench, grabbing eight rebounds and scoring eight points against the Greyhounds. Zeyno Seren increased her scoring from game one to game two, going 2-for-3 from the floor and hit her only three-point attempt of the game for five points, while grabbing a rebound and creating a steal. Mackenzie Curtis led all scoring in the fourth quarter against the Mountaineers with seven points on 3-for-4 shooting, and Rebeka Renczes went 1-for-2 from three and hit both her free throws against Western Colorado while recording a steal and a block.

### Third Quarter Lockdown

After leading by seven at the half against Lamar, the Lobos shut the Cardinals down defensively, allowing just nine points in the quarter for the 53-37 (16 points) lead.

UNM held Lamar to 2-of-11 shooting from the floor (18.2%) and 1-of-7 (14.3%) from three.

On the offensive end, UNM shot 53.8% from the field in the third quarter to the Cardinals' 18.2%, with Jaedyn De La Cerda accounting for 14 of UNM's 18 points in the quarter.

### Balanced Attack

Much like their M.O. last season, the Lobos had balanced scoring in their first game of the season with four double-digit scorers.

UNM finished with four scorers in double figures, led by Antonia Anderson's game-high 16 points, followed by Jaedyn De La Cerda and Shaiquel McGruder at 15 each and LaTora Duff with 10. Duff was one assist shy of a double-double, tying her career high with nine assists, and nearly matching Lamar's team total in assists as the Cardinals had 10 in the game. McGruder was a perfect 7-for-7 from the field, one of two Lobos to go perfect from the floor.

As a team, the Lobos had balanced scoring, scoring 18 points in three of the four quarters and 17 points in the first.

### AA Battery

When the Cardinals answered with an 8-0 run of their own to tie the game, it was freshman Aniyah Augmon who stepped up to provide the spark off of the bench with a personal 5-0 Augmon run that entailed a fast-break layup, a steal and a three-pointer.

Augmon had a full stat sheet with eight points (3-for-3 shooting), six rebounds (tying the team high) and three steals (a team high).

### Perfect Start

Two Lobos shot perfect from the field in the first game against Lamar: Shaiquel McGruder (7-for-7, 15 points) and Aniyah Augmon (3-for-3, 8 points).

In addition, UNM is undefeated in regular season openers under Mike Bradbury (now 6-0) and has won nine consecutive home openers.

### How May I Assist You?

LaTora Duff tied her career high with nine assists against Lamar, with seven assists coming in the fourth quarter.

Duff also had nine assists in the win over Utah State on March 1, 2021.

### Managing Expectations

After winning the Mountain West regular season in 2020-21 for the first time since 2004-05, the Lobos were picked to finish second in the preseason MW poll with 251 points and seven first-place votes.

It is the second time in head coach Mike Bradbury's tenure that the Lobos have been picked to finish second, with the last time occurring in 2019-20 when the Lobos earned three first-place votes and 280 points.

New Mexico finished above UNLV with the Rebels at 232 points and three first-place votes, and fourth-place Colorado State with the Rams earning 207 points and one first-place vote.

State and Colorado State with one each, San Diego State with two, UNLV at three, UNM with seven and Fresno State the preseason favorite with 13 first-place votes and 269 points.

In addition, senior Antonia Anderson was selected to the MW preseason all-conference team, one of five players to earn the distinction. For Anderson, the Cibola, Texas native is coming off of a campaign in which she averaged 12.1 points per game, 6.2 rebounds per game, 1.9 assists per game, 1.0 steals per game and 1.0 blocks per game and scored 10-plus points in 13 games with a career-high 29 points in the victory over UNLV on Jan. 17. Anderson led the team in rebounds and rebounds per game, was second in made field goals and blocked shots and third in total points.

In MW contests, she averaged 12.6 points per game and a team-high 6.6 rebounds per game, as well as led the conference in field-goal percentage with 49 percent. Further, Anderson was eighth in blocks per game at 1.07 and ranked in the top 15 in scoring, rebounding, field-goal percentage, blocked shots and defensive rebounds, resulting in her first all-conference honor in being named to the Mountain West all-conference team.

### Pride of New Mexico

The Lobos have two New Mexico natives on the 2021-22 roster with freshman Vianè Cumber and senior Jaedyn De La Cerda. In addition to being from New Mexico, the duo has something else in common: New Mexico Gatorade Player of the Year distinctions.

Cumber was named the 2019-20 and 2021-21 New Mexico Gatorade Girls Basketball Player of the Year after averaging 26.5 points, 9.3 rebounds, 2.2 assists and 1.5 steals her senior season and 22.4 points, 10.6 rebounds, 2.5 assists and 3.3 steals as a junior at Sandia High School in Albuquerque. Out of Roswell, N.M. and Roswell High School, De La Cerda earned the 2016-17 New Mexico Gatorade Player of the Year.

### Know Your Opponent

Northern New Mexico enters the game with a 3-1 record with wins over Southwest (twice) and Embry-Riddle. The Lady Eagles lost their most recent game on Nov. 3 to Benedictine Mesa.

As a team, they are averaging 59.3 points per game, but allowing 66.3 points per game. Northern New Mexico is led in scoring by Chris' Alee Patterson, who is averaging 12 points per game and Kristen Davis, who is averaging 10 points per game.

Rachel Williams leads on the boards with 6.0 rebounds per game, but Davis leads in overall rebounds at 22. Jaidyn Fontenette is the assist and steals leader with 18 assists and seven steals and Rebecca Sorensen leads with four blocks.



# THE UNIVERSITY OF NEW MEXICO

## 2021-22 WOMEN'S BASKETBALL



### LAST TIME IT HAPPENED (UNM)

#### As A Team

**Scored 100 Points:** ..... 120 - at Arkansas-Pine Bluff (12-17-20)  
**Scored 90 Points:** ..... 97 - at Utah State (3-1-21)  
**Scored Fewer Than 50 Points:** ..... 42 - at UNLV (1-11-17)  
**Scored Fewer Than 40 Points:** ..... 38 - at Colorado St. (1-13-15)  
**Won by 50 Points:** ..... +54 (W, 120-66) - at Arkansas-Pine Bluff (12-17-20)  
**Won by 40 Points:** ..... +48 (W, 92-44) - vs. Northern NM (12-10-19)  
**Won By 30 Points:** ..... +32 (W, 97-65) - at Utah State (3-1-21)  
**Lost By 30 Points:** ..... -37 (L, 47-84) - at (RV) Arizona St. (12-14-19)  
**Lost By 40 Points:** ..... -42 (L, 63-105) - at Oklahoma (12-16-17)  
**Shot 60% or Better:** ..... 61.2% - Pacific (11-9-01)  
**Shot Less Than 30%:** ..... 26.7% (16-60) - vs. UNLV (1-18-20)  
**Shot 60% 3FG or Better:** ..... 68.2% (15-22) - at NMSU (12-2-17)  
**Shot Less Than 20% 3FG:** ..... 13.79 (4-29) - vs. Nevada (3-1-20)  
**Made 15 3-Pointers:** ..... 15 - at Utah State (2-28-21)  
**Shot 90% on FTs (10 or more):** ..... 94.12% (16-17) - vs. Nevada (3-1-20)  
**Shot Less Than 40% On FTs:** ..... 14.3% (1-7) - at UTEP (11-30-17)  
**Had 50 Rebounds:** ..... 53 - at Arkansas-Pine Bluff (12-17-20)  
**Had 20 Offensive Rebounds:** ..... 20 - vs. Nevada (3-1-20)  
**Had 25 Assists:** ..... 27 - at Arkansas-Pine Bluff (12-17-20)  
**Had 20 Turnovers:** ..... 21 - at Sam Houston State (12-6-20)  
**Had Less Than 10 Turnovers:** ..... 6 - California Baptist (3-19-21)  
**Had 10 Steals:** ..... 13 - California Baptist (3-19-21)  
**Had 10 Blocks:** ..... 10 - vs. UNLV (1-18-20)  
**Had Two 20-Point Scorers:** ..... California Baptist (3-19-21)  
**Had Three 20-Point Scorers:** ..... LaTascya Duff (20) and Jaedyn De La Cerda (28) vs. San Jose St. (2-27-19)  
**Had 6 Double-Digit Scorers:** ..... Tessa Buck (30), Jaisa Nunn (22) and Cherise Beynon (22) at Arkansas-Pine Bluff (12-17-20)  
**Had 5 Double-Digit Scorers:** ..... vs. Colorado State (3-4-21)  
**Had No Double-Digit Scorers:** ..... vs. (RV) Arizona St. (12-14-19)  
**Had Two 10+ Rebounders:** ..... vs. Nevada (3-1-20)  
**Scored 50 Points In 1st Half:** ..... Shaiquel McGruder (17) and Antonia Anderson (10) 53 - at Utah State (2-28-21)  
**Scored 50 Points In 2nd Half:** ..... 58 - at San Diego St. (2-3-21)  
**Scored 60 Points in a 2nd Half:** ..... 63 - vs. New Mexico St. (12-16-19)  
**Scored 20 Or Fewer Points In 1st Half:** ..... 17 - at Colorado St. (2-22-17)  
**Scored 20 Or Fewer Points In 2nd Half:** ..... 17 - at UNLV (1-15-21)  
**Lowest Pts Scored in Quarter:** ..... 2 - vs. Tulsa (11-25-16)  
**Failed To Make a 3FG:** ..... at (RV) Arizona St. (12-14-19)  
**Defeated a Ranked Team:** ..... W, 88-87 vs. No. 16 Marquette (11-13-17)  
**Lost To a Ranked Team:** ..... L, 60-73 vs. No. 23 West Virginia (11-29-19)  
**Won an OT Game:** ..... W, 74-71 at Wyoming (2-8-20)  
**Lost an OT Game:** ..... L, 78-86 at Nevada (2-19-20)  
**Won a 2OT Game:** ..... W, 89-85 at Houston (11-24-18)  
**Lost a 2OT Game:** ..... L, 69-65 vs. Fresno St. (1-2-16)

#### As An Individual

**Had a Triple-Double:** ..... Aisia Robertson (28 pts, 11 rebs, 11 assists) at Houston (11-24-18)  
**Had a Double-Double (Pts/Reb):** ..... Antonia Anderson (10 pts, 11 reb) vs. Colorado State (3-4-21)  
**Had a Double-Double (Pts/Asst):** ..... Aisia Robertson (14 pts & 12 asts) at San José St. (1-22-20)  
**Had a Double-Double (Reb/Asst):** ..... vs. Fairleigh Dickinson (11-12-16) Cherise Beynon (13 reb, 10 asts)  
**Scored 20+ Pts with 10+ Rebs:** ..... Jordan Hosey (25 pts, 13 reb) at Fresno St. (1-8-20)  
**Scored 30 Points:** ..... LaTascya Duff (31) at Air Force (2-23-21)  
**Scored 40 Points:** ..... Cherise Beynon (41) at SDSU (1-20-18)  
**Scored 30 Points (MW Only):** ..... LaTascya Duff (31) at Air Force (2-23-21)  
**Scored 40 points (MW Only):** ..... Cherise Beynon (41) at San Diego St. (1-20-18)  
**Had 20+ Rebounds:** ..... Richelle van der Keijl (20) vs. New Mexico St. (11-15-16)  
**Had 15+ Rebounds:** ..... Shaiquel McGruder (15) vs. Colorado State (3-5-21)  
**Had 15+ Assists:** ..... Aisia Robertson (16) vs. Oklahoma (11-28-18)  
**Had 5+ Steals:** ..... Autumn Watts (5) vs. California Baptist (3-19-21)  
**Had 5+ Blocks:** ..... Shaiquel McGruder (5) at Sam Houston State (12-6-20)

### LAST TIME IT HAPPENED (OPP)

#### As A Team

**Scored 100 Points:** ..... 105 - at Oklahoma (12-16-17)  
**Scored 90 Points:** ..... 90 - vs. California Baptist (3-19-21)  
**Scored Less Than 50 Points:** ..... 48 - at San Diego St. (2-5-21)  
**Scored Less Than 40 Points:** ..... 33 - vs. Stephen F. Austin (12-20-18)  
**Shot 50% Or Better:** ..... 53.7% (36-67) - vs. California Baptist (3-19-21)  
**Shot Less Than 30%:** ..... 29.9% (20-67) - vs. Colorado State (3-4-21)  
**Shot 50% 3FG Or Better:** ..... 53.3 (8-15) - vs. San Diego St. (2-12-20)  
**Shot Less Than 20% 3FG:** ..... 18.2% (2-11) - vs. Air Force (3-8-21)  
**Made 15 3-Pointers:** ..... 15 - at San José St. (1-22-20)  
**Shot 90% On FTs (10 or more):** ..... 90.0% (9-10) at Air Force (2-24-21)  
**Shot Less Than 50% On FTs:** ..... 47.8% (11-23) - Lamar (11/9/21)  
**Had 50 Rebounds:** ..... 54 - at UNLV (1-15-21)  
**Had 20 Offensive Rebounds:** ..... 21 - at Utah St. (2-27-20)  
**Had 25 Assists:** ..... 30 - California Baptist (3-19-21)  
**Had 20 Turnovers:** ..... 21 - at San Diego State (2-5-21)  
**Had 30 Turnovers:** ..... 30 - vs. Northern NM (11-15-17)  
**Had Less Than 10 Turnovers:** ..... 8 - vs. Colorado State (3-5-21)  
**Had 10 Steals:** ..... 10 - at UNLV (1-15-21)  
**Had 10 Blocks:** ..... 10 - vs. Utah St. (2-10-16)  
**Had Two 20-Point Scorers:** ..... California Baptist (3-19-21) Britney Thomas (22) and Caitlyn Harper (25)  
**Had 6 Double-Digit Scorers:** ..... Baylor (1-4-95)  
**Had 5 Double-Digit Scorers:** ..... vs. Boise St. (2-22-20)  
**Had No Double-Digit Scorers:** ..... Stephen F. Austin (12-20-18)  
**Had Two 10+ Rebounders:** ..... vs. Air Force. (2-24-20) Emily Conroe (13), Kaelin Immel (10)  
**Scored 50+ Points In 1st Half:** ..... 54 - at San José St. (1-22-20)  
**Scored 50+ Points In 2nd Half:** ..... 52 - California Baptist (3-19-21)  
**Scored 20 Or Less Points In 1st Half:** ..... 20 - vs. Colorado State (3-4-21)  
**Scored 20 Or Less In 2nd Half:** ..... 20 - vs. Wyoming (3-7-19)  
**Scored Less Than 10 Points in Quarter:** ..... 9 - Lamar (11/9/21)  
**Failed To Make a 3FG:** ..... 0-1 by San Diego State (2-18-15)

#### As An Individual

**Had a Double-Double (Pts/Reb):** ..... Britney Thomas (22 pts, 10 reb) California Baptist (3-19-21)  
**Had a Double-Double (Pts/Asst):** ..... Ane Olaeta (11 pts, 14 assists) California Baptist (3-19-21)  
**Had a Double-Double (Pts/Steals):** ..... Jasmyne Harris (28 pts & 10 steals) at Houston (11-28-18)  
**Had 20+ Points & 10+ Rebounds:** ..... Jessica Chatman (21 pts, 11 reb) Utah State (3-1-21)  
**Scored 30 Points:** ..... Shlya Latone (33) - at Utah State (3-1-21)  
**Scored 30 Points (MW Only):** ..... Shlya Latone (33) - at Utah State (3-1-21)  
**Had 20+ Rebounds:** ..... Kaylee Johnson (22) - No. 1 Stanford (11-24-14)  
**Had 15+ Rebounds:** ..... Tyra Whitehead (16) - at San José St. (1-22-20)  
**Had 10+ Assists:** ..... Ane Olaeta (14) - California Baptist (3-19-21)  
**Had 5+ Steals:** ..... Haley Cavinder (5) - vs. Fresno St. (2-1-20)  
**Had 5+ Blocks:** ..... Mallory McGwire (5) - vs. Boise St. (2-22-20)



# THE UNIVERSITY OF NEW MEXICO 2021-22 WOMEN'S BASKETBALL



## LOBOS RECORD WHEN...

	Overall	In MW
Overall .....	1-0	0-0
At home .....	1-0	0-0
On the road .....	0-0	0-0
At neutral sites .....	0-0	0-0
After a win .....	0-0	0-0
After a loss .....	0-0	0-0
In overtime .....	0-0	0-0
vs. ranked opponents .....	0-0	0-0
Games decided by 1-4 points .....	0-0	0-0
Games decided by 5-9 points .....	0-0	0-0
Games decided by 10-19 points .....	1-0	0-0
Games decided by 20+ points .....	0-0	0-0
Leading after Q1 .....	1-0	0-0
Trailing after Q1 .....	0-0	0-0
Tied after Q1 .....	0-0	0-0
Leading at half .....	1-0	0-0
Trailing at half .....	0-0	0-0
Tied at half .....	0-0	0-0
Leading after Q3 .....	1-0	0-0
Trailing after Q3 .....	0-0	0-0
Tied after Q3 .....	0-0	0-0
Shooting 50% or better .....	0-0	0-0
Shooting between 40-49.9% .....	1-0	0-0
Shooting less than 40% .....	0-0	0-0
Opponent shoots 50% or better .....	0-0	0-0
Opponent shoots b/w 40-49.9% .....	0-0	0-0
Opponent shoots b/w 30-39.9% .....	1-0	0-0
Opponent shoots less than 30% .....	0-0	0-0
UNM higher FG% .....	1-0	0-0
Opponent higher FG% .....	0-0	0-0
FG% Tied .....	0-0	0-0
UNM outrebounds .....	1-0	0-0
Opponent outrebounds .....	0-0	0-0
Rebounds tied .....	0-0	0-0
UNM more made free throws .....	1-0	0-0
Opponent more made free throws .....	0-0	0-0
Made free throws tied .....	0-0	0-0
UNM 3FG% higher .....	0-0	0-0
Opponent 3FG% higher .....	1-0	0-0
3FG% tied .....	0-0	0-0
UNM has more fouls .....	1-0	0-0
Opponent has more fouls .....	0-0	0-0
Fouls are tied .....	0-0	0-0
UNM more turnovers .....	0-0	0-0
Opponent more turnovers .....	1-0	0-0
Turnovers tied .....	0-0	0-0
Scoring less than 50 points .....	0-0	0-0
Scoring 50-59 points .....	0-0	0-0
Scoring 60-69 points .....	0-0	0-0
Scoring 70-79 points .....	1-0	0-0
Scoring 80-89 points .....	0-0	0-0
Scoring 90-99 points .....	0-0	0-0
Scoring 100+ points .....	0-0	0-0
Allowing 40 points or less .....	0-0	0-0
Allowing 41-49 points .....	0-0	0-0
Allowing 50-59 points .....	1-0	0-0
Allowing 60-69 points .....	0-0	0-0
Allowing 70-79 points .....	0-0	0-0
Allowing 80-89 points .....	0-0	0-0
Allowing 90+ points .....	0-0	0-0
In November .....	1-0	0-0
In December .....	0-0	0-0
In January .....	0-0	0-0
In February .....	0-0	0-0
In March .....	0-0	0-0

## MOUNTAIN WEST STATISTICS

### TEAM

	All	Conference Only
Scoring	6th (71.0)	
Turnover Margin	T-7th (+1.0)	
Assists per game	T-3rd (14.0)	
3-PT FG Made	T-4th (6.0)	
Scoring Margin	T-2nd (+17.0)	
Assist/Turnover Ratio	6th (0.93)	
Field Goal %	3rd (.456)	
Steals per game	4th (8.0)	
3-PT FG %	6th (.231)	
Blocks per game	T-3rd (2.0)	
Free throw %	3rd (.867)	
Rebounding Margin	3rd (+3.0)	
Scoring Defense	3rd (54.0)	

### INDIVIDUAL

	All	Conference Only
<b>Scoring</b>		
Antonia Anderson	6th (16.0)	
Jaedyn De La Cerda	9th (15.0)	
Shaiquell McGruder	9th (15.0)	
<b>Rebounding</b>		
Aniyah Augmon	6th (6.0)	
Jaedyn De La Cerda	6th (6.0)	
Antonia Anderson	13th (5.0)	
Shaiquell McGruder	13th (5.0)	
<b>Field Goal %</b>		
Shaiquell McGruder	1st (1.000)	
Antonia Anderson	8th (.556)	
<b>Assists</b>		
LaTora Duff	2nd (9.0)	
<b>Steals</b>		
Aniyah Augmon	3rd (3.0)	
Antonia Anderson	8th (2.0)	
<b>Blocked Shots</b>		
Antonia Anderson	4th (1.0)	
LaTora Duff	4th (1.0)	
<b>Assist/Turnover Ratio</b>		
<b>3-Point FG Made</b>		
LaTora Duff	6th (2.0)	
<b>3-Point FG %</b>		

## NCAA STATISTICS

## 2021-22 MW Players of the Week



# THE UNIVERSITY OF NEW MEXICO

## 2021-22 WOMEN'S BASKETBALL



### SERIES HISTORY

#### NORTHERN NEW MEXICO (3-0)

H: 3-0; A: 0-0; N: 0-0

1/29/17	W	87-47H
11/15/17	W	107-66H
12/10/19	W	92-44H

#### STAT COMPARISON

NNM		UNM
59.3	Points Per Game	<b>71.0</b>
33.6	FG%	<b>45.6</b>
21.4	3FG%	<b>23.1</b>
51.3	FT%	<b>86.7</b>
4.5	Made 3-pt PG	<b>6.0</b>
36.3	Rebounds PG	<b>38.0</b>
17.5	Turnovers PG	<b>15.0</b>
12.5	Assists PG	<b>14.0</b>
<b>2.3</b>	Blocks PG	2.0
<b>9.5</b>	Steals PG	8.0
66.3	Scoring Defense	<b>54.0</b>
40.6	FG% Defense	<b>34.6</b>
28.9	3FG% Defense	<b>28.0</b>
-4.2	Rebound Margin	<b>+3.0</b>

#### TEAM LEADERS

Chris'Allee Patterson (12.0)	<b>POINTS</b>	Antonia Anderson (16.0)
Rachel Williams (6.0)	<b>REBOUNDS</b>	Augmon/ De La Cerda (6)
Jaidyn Fontenette (4.5)	<b>ASSISTS</b>	LaTora Duff (9.0)
Jaidyn Fontenette (1.8)	<b>STEALS</b>	Aniyah Augmon (3.0)
Rebecca Sorensen (1.0)	<b>BLOCKS</b>	Anderson/ Duff (1.0)

### UNM STARTING LINEUPS

Game	G	G	G	F	F
Lamar	Tora Duff	De La Cerda	Seren	Anderson	McGruder

### UNM STARTING LINEUPS (RECORD)

Seren, LaTora Duff, De La Cerda, Anderson, McGruder .....1-0

### DOUBLE-DOUBLE TRACKER

### 20-POINT TRACKER

### CAREER DOUBLE-DOUBLES

	2021-22	Career
Antonia Anderson.....	0	3
Jaedyn De La Cerda .....	0	1
Shaiquel McGruder .....	0	1

### MOUNTAIN WEST STANDINGS

Team (AP/Coaches)	CONFERENCE						OVERALL							
	W	L	Pct.	Home	Away	Neutral	W	L	Pct.	Home	Away	Neutral	Last 10	Strk
Air Force	0	0	.000	0	0-0	0-0	1	0	1.000	1-0	0-0	0-0	5-5	W1
Colorado State	0	0	.000	0	0-0	0-0	1	0	1.000	1-0	0-0	0-0	6-4	W1
New Mexico	0	0	.000	0	0-0	0-0	1	0	1.000	1-0	0-0	0-0	7-3	W1
San Diego State	0	0	.000	0	0-0	0-0	1	0	1.000	1-0	0-0	0-0	2-8	W1
UNLV	0	0	.000	0	0-0	0-0	1	0	1.000	0-0	1-0	0-0	7-3	W1
Utah State	0	0	.000	0	0-0	0-0	0	0	1.000	1-0	0-0	0-0	1-9	W1
Wyoming	0	0	.000	0	0-0	0-0	1	0	1.000	1-0	0-0	0-0	7-3	W1
Boise State	0	0	.000	0	0-0	0-0	0	0	.000	0-0	0-0	0-0	6-4	L1
Fresno State	0	0	.000	0	0-0	0-0	0	0	.000	0-0	0-0	0-0	5-5	L1
Nevada	0	0	.000	0	0-0	0-0	0	1	.000	0-1	0-0	0-0	6-4	L2
San José State	0	0	.000	0	0-0	0-0	0	1	.000	0-0	0-1	0-0	2-3	L3



# THE UNIVERSITY OF NEW MEXICO

## 2021-22 WOMEN'S BASKETBALL



### NUMERICAL

#	NAME	POS	HT	YR	B/T	HOMETOWN (PREVIOUS SCHOOL)
1	Rebeka Renczes	PG	5-7	Fr.		Szekszard, Hungary/ Garay Janos Secondary School
4	LaTascya Duff	G	5-7	Sr.		Samson, Ala. / Shelton State CC
5	LaTora Duff	G	5-7	Sr.		Samson, Ala. / Shelton State CC
10	Kath van Bennekom	G	5-9	So.		Gorinchem, The Netherlands / Lyceum Oudehoven
11	Zeyno Şeren	G	5-10	Fr.		Ankara, Turkey/ TED Ankara College Private High School
12	Aniyah Augmon	G	5-8	Fr.		San José, Calif./ Woodside Priory School
13	Shaiquel McGruder	F	6-0	Sr.		Trotwood, Ohio / Trotwood-Madison HS
21	Mackenzie Curtis	G	5-9	Fr.		Lakeside, Calif. /El Capitan HS
23	Jaedyn De La Cerda	G	5-6	Sr.		Roswell, N.M. / Roswell HS
30	Paula Reus	F	6-1	Fr.		Palma de Mallorca, Spain/ IES Joaquim Blume
32	Antonia Anderson	G/F	6-2	Sr.		Cibolo, Texas / Byron P. Steele II HS
33	Vianè Cumber	G	5-10	Fr.		Albuquerque, N.M./ Sandia HS
34	Nevaeh Parkinson	F/C	6-3	So.		Dallas, Texas / John Paul II HS

### ALPHABETICAL

#	NAME	POS	HT	YR	B/T	HOMETOWN (PREVIOUS SCHOOL)
32	Antonia Anderson	G/F	6-2	Sr.		Cibolo, Texas / Byron P. Steele II HS
12	Aniyah Augmon	G	5-8	Fr.		San José, Calif./ Woodside Priory School
33	Vianè Cumber	G	5-10	Fr.		Albuquerque, N.M./ Sandia HS
21	Mackenzie Curtis	G	5-9	Fr.		Lakeside, Calif. /El Capitan HS
23	Jaedyn De La Cerda	G	5-6	Sr.		Roswell, N.M. / Roswell HS
4	LaTascya Duff	G	5-7	Sr.		Samson, Ala. / Shelton State CC
5	LaTora Duff	G	5-7	Sr.		Samson, Ala. / Shelton State CC
11	Zeyno Şeren	G	5-10	Fr.		Ankara, Turkey/ TED Ankara College Private High School
13	Shaiquel McGruder	F	6-0	Sr.		Trotwood, Ohio / Trotwood-Madison HS
34	Nevaeh Parkinson	F/C	6-3	So.		Dallas, Texas / John Paul II HS
1	Rebeka Renczes	PG	5-7	Fr.		Szekszard, Hungary/ Garay Janos Secondary School
30	Paula Reus	F	6-1	Fr.		Palma de Mallorca, Spain/ IES Joaquim Blume
10	Kath van Bennekom	G	5-9	So.		Gorinchem, The Netherlands / Lyceum Oudehoven

### STARTERS RETURNING (4)

No.	Name	Pos.	Cls.	Pts.	Reb.	Ast.	FG%	3FG%
5	LaTora Duff	G	Sr.	8.0	3.4	78	.445	.333
13	Shaiquel McGruder	F	Sr.	9.1	6.0	15	.606	.368
23	Jaedyn De La Cerda	G	Sr.	15.0	5.2	47	.437	.323
32	Antonia Anderson	F	Sr.	12.1	6.2	37	.490	.328

### OTHER LETTERWINNERS RETURNING (3)

No.	Name	Pos.	Cls.	Pts.	Reb.	Ast.	FG%	3FG%
4	LaTascya Duff	G	Sr.	14.9	3.0	39	.445	.400
10	Kath van Bennekom	G	So.	1.6	1.8	4	.250	.167
34	Nevaeh Parkinson	F/C	So.	0.6	0.8	0	.222	.200

### STARTERS LOST (1)

No.	Name	Pos.	Class	Pts.	Ast.	FG%	3-FG%	FT%
3	Ahlise Hurst	G/F	Jr.	12.4	49	.376	.338	.771

### OTHER LETTERWINNERS LOST (5)

No.	Name	Pos.	Class
1	Corina Carter	PG	So.
3	Ahlise Hurst	G/F	Jr.
10	Celine Dupont	F/C	R-Fr.
14	Azaria Robinson	F	So.
24	Autumn Watts	F	So.

### NEWCOMERS (6)

No.	Name	Pos.	Class
1	Rebeka Renczes	PG	Fr.
11	Zeyno Seren	G	Fr.
12	Aniyah Augmon	G	Fr.
21	Mackenzie Curtis	G	Fr.
30	Paula Reus	F	Fr.
33	Vianè Cumber	G	Fr.

### PRONUNCIATION GUIDE

1	Rebeka RENCZES	WREN-sesh
4	LATASCYA Duff	La-TAY-see-uh
10	Kath VAN BENNEKOM	van-ben-neck-um
11	ZEYNO SEREN	ZAY-no (like say no) SHA-wren
13	SHAIQUEL McGruder	Shy-kwell
23	JAEDYN De La Cerda	JAY-den
30	Paula REUS	Rey-OOSE
34	NEVAEH Parkinson	Nuh-VAY-uh

### BY ELIGIBILITY

#### Seniors (5)

4	LaTascya Duff	G
5	LaTora Duff	G
13	Shaiquel McGruder	F
23	Jaedyn De La Cerda	G
32	Antonia Anderson	G/F

#### Sophomores (2)

15	Kath van Bennekom	G
34	Nevaeh Parkinson	F/C

#### Freshmen (6)

1	Rebeka Renczes	PG
11	Zeyno Seren	G
12	Aniyah Augmon	G
21	Mackenzie Curtis	G
30	Paula Reus	F
33	Vianè Cumber	G

### HOME STATE

#### Alabama (2)

4	LaTascya Duff	G
5	LaTora Duff	G

#### California (2)

12	Aniyah Augmon	G
21	Mackenzie Curtis	G

#### New Mexico (2)

23	Jaedyn De La Cerda	G
33	Vianè Cumber	G

#### Ohio (1)

13	Shaiquel McGruder	F
----	-------------------	---

#### Texas (2)

32	Antonia Anderson	G/F
34	Nevaeh Parkinson	F/C

### INTERNATIONAL

1	Rebeka Renczes (Hungary)	PG
10	Kath van Bennekom (The Netherlands)	G
11	Zeyno Seren (Turkey)	G
30	Paula Reus (Spain)	F



# THE UNIVERSITY OF NEW MEXICO

## 2021-22 WOMEN'S BASKETBALL



### MIKE BRADBURY

**RECORD AT UNM: 95-55 (6TH SEASON)**

**CAREER RECORD: 273-172 (15TH SEASON)**

#### NOTEWORTHY :

- Named the sixth head coach in program history on March 31, 2016
- Led UNM to 25 wins in 2017-18; tied for second-most wins in program history
- Spent six years at Wright State (2010-16) and went 128-73 for the Raiders
- Most single-season wins in Wright State history (26)
- Five 20-win seasons at Wright State with five postseason appearances

Mike Bradbury enters his sixth season as head coach for The University of New Mexico women's basketball team. In his previous five seasons at the helm, Bradbury has guided the Lobos to a 94-55 (.631) overall record. Twice in his tenure, in 2017-18 and 2018-19, the Lobos eclipsed the 20-win mark and totaled 49 victories over that time. The consecutive 20-plus win seasons under Bradbury are the first for the program since the 2007-08 – 2008-09 seasons.

In his most recent season at the helm of the Lobos, Bradbury led the Lobos to a Mountain West regular season championship, the first outright in program history and the first regular season title since the 2004-05 season. In addition, the Lobos were selected for the WNIT for the third time in four years.

The Lobos produced one of the most prolific offenses not only in the conference, but in the country, finishing among the top 25 in several categories. Among them, UNM finished fourth in the NCAA in made three-pointers per game (10.2), sixth in assist-turnover ratio (1.40), ninth in scoring offense (81.2 points per game), 14th in fewest turnovers per game (12.0) and assists per game (16.8) and 22nd in scoring margin (12.7). The Lobos led the Mountain West in scoring offense, scoring margin, assists per game, turnover margin, assist-turnover ratio and made three-pointers as well as second in field-goal percentage and steals per game.

UNM set a program record in scoring with 120 points against Arkansas-Pine Bluff on Dec. 17, 2020 and in the process, made 17 three-pointers, falling just one short of tying the program record. Further, the Lobos registered 90-plus points in five games and 80-plus points in 11 of the 20 games on the season.

Four Lobos finished the 2020-21 season averaging double figures in points per game with six players finishing in double figures in scoring in two games (the only times it has been accomplished in program history), five players in five games and four in seven games.

As a result of UNM's successful season, five players were named to the All-Mountain West Team with LaTascya Duff also earning the superlative of Sixth Person of the Year. Duff was just the second Lobo to win the sixth person award. Making the all-conference team for the first time were Duff, Jaedyn De La Cerda and Antonia Anderson, as well as Shaiquel McGruder earning all-defensive and Ahlise Hurst earning the honorable mention distinction.

In his third year at the helm, Bradbury continued to put his mark on the program while also continuing to bring Lobo women's basketball back to national prominence. Overall, Bradbury's 2018-19 team went 24-7 and earned a bid to the WNIT for a second-straight season. It marked the first time since the 2008-09 – 2009-10 seasons that the program made consecutive trips to the postseason.

After dropping a one-possession game to Auburn in the preseason WNIT, the 2018-19 Lobos ripped off 11-straight wins to tie the program record and were on the cusp of cracking the national top-25 rankings as well by receiving votes from the WBCA during that stretch. Bradbury would also receive an individual plaudit from the WBCA last season as he was named as one of 13 finalists for the 2019 United States Marine Corps/WBCA National Coach of the Year Award. Impressively, Bradbury was the only coach from a non-Power 5 conference to be a finalist.

In his time at UNM, Bradbury has coached 13 All-Mountain West performers with Cherise Beynon, Jayla Everett, Jaisa Nunn, Aisia Robertson and Richelle van der Keijl joining De La Cerda, Duff, McGruder, Hurst and Anderson in making the All-Mountain West Team. Tesha Buck, Mykiel Burleson and Nike McClure have also earned MW recognition with Buck being the 2017-18 Newcomer of the Year, Burleson being named to the All-Freshman team in 2016-17 and McClure landing on the All-Defensive team in 2018-19.

In terms of major individual awards, Bradbury has coached the league's Newcomer of the Year each of his first three seasons in charge of the Lobos with van der Keijl earning the award in 2016-17, Buck in 2017-18 and Robertson in 2018-19. Additionally, Bradbury has coached the MW Player of the Year in Nunn (2018-19) and the Freshman of the Year in Everett (2018-19) as well as Sixth Person of the Year in Duff (2020-21).

Further, a Lobo has been named Mountain West Player of the Week 11 times during his tenure.

In year two under Bradbury the Lobos had a breakout season, especially offensively as they ended the 2017-18 season averaging 80.4 points per game while also posting an impressive +9.7 scoring margin. Both marks led the Mountain West and the point-per-game total was 16th-best in NCAA DI last season.

A significant reason for the jump in offensive production was the fact that the Lobos were one of the most potent three-point shooting threats in the country. For the season, the Lobos attempted the eighth-most overall trifectas in DI hoisting 932 long distance shots. Successful 34% of the time, the Lobos made the 11th most 3's burying 319.

Prior to coming to Albuquerque, Bradbury built a





# THE UNIVERSITY OF NEW MEXICO 2021-22 WOMEN'S BASKETBALL



successful nine year run as a Division-I head coach with stops at Morehead State (Morehead, Ky.) and Wright State (Dayton, Ohio). Most recently with the Raiders, Bradbury led his squad to five 20-win seasons, including each of his final three seasons. During that time, Wright State has amassed a 75-28 record, the best amongst the 13 Division I programs in the state of Ohio.

Overall at Wright State, Bradbury had five winning seasons, all of which were 20-plus win seasons, in six years- a feat made all the more remarkable as Wright State had just one winning season in the previous 22 before his arrival. In the previous 37 seasons of women's basketball at Wright State, the Raider program had tallied 20 wins just once before Bradbury led the team to 20 wins in five of his six seasons.

His most prominent three-year run at Wright State started in 2013-14, when the Raiders won a school-record 26 games on the way to a 26-9 season and the program's first-ever appearance in the NCAA Tournament. That season saw the Raiders finish second in the Horizon League and win its first Horizon League Tournament. It also featured the program's first road win at perennial league power Wisconsin-Green Bay. Kim Demmings was named the Horizon League Player of the Year and Tournament MVP, and it marked the first time in school history the program had a pair of first team All-Conference selections.

He followed up that by earning Horizon League Coach of the Year in 2014-15 after a 25-9 season that saw his squad lose its Horizon League Preseason Player of the Year less than two minutes into the season opener. The Raiders just missed a second straight NCAA Tournament appearance, falling in overtime in the conference championship game. The team did make its first appearance in the Women's NIT as the league's automatic qualifier, and in 2015-16, the team made

it back-to-back WNIT appearances after a 24-11 season, earning the program's first at-large bid.

Those three seasons are the three winningest seasons in the history of Wright State women's basketball.

In his first two seasons at Wright State, he led the team to a 20-13 campaign and a 21-13 mark and berths in the Women's Basketball Invitational, the first NCAA Division I postseason berths for the program. Overall, Bradbury has coached three Horizon League Players of the Year (all in his last three seasons), six first-team All-Horizon League players, three second-team members and four All-Freshman team members.

Prior to his time at Wright State, Bradbury was the head coach at Morehead State where he led the Division I program to a 50-44 mark in three seasons, including a watershed 22-11 season, which was the second-most wins in Morehead State history and the most wins by the Eagles in the previous 38 years. At Morehead State he coached one Ohio Valley Conference Player of the Year, along with one first-team All-OVC pick (two seasons) and three second-team All-OVC picks.

Bradbury also spent time as an assistant coach at Xavier (2002-06), Cincinnati (1996-02), VCU (1995-96), East Tennessee State (1994-95) and Chattanooga (1991-94). In his 29 seasons as an assistant and as a head coach, Bradbury has had 27 winning seasons.

## THE BRADBURY FILE

### EDUCATION

UT-Chattanooga - B.S. Recreation (1993)

### COACHING EXPERIENCE

1991-93	Student Assistant	Chattanooga
1993-94	Assistant Coach	Chattanooga
1994-95	Assistant Coach	East Tennessee
1995-96	Assistant Coach	VCU
1996-02	Assistant Coach	Cincinnati
2002-07	Assistant Coach	Xavier
2007-10	Head Coach	Morehead State
2010-16	Head Coach	Wright State
2016-pres.	Head Coach	New Mexico

### HEAD COACHING RECORD

2007-10	Morehead State	50-44 (.532)
2010-16	Wright State	128-73 (.637)
2016-pres.	New Mexico	95-55 (.633)
15 years		273-172 (.613)

### CAREER HEAD COACHING YEAR-BY-YEAR

2007-08	11-19 (9-11)	Morehead State
2008-09	17-14 (11-7)	Morehead State
2009-10	22-11 (14-4)	Morehead State
2010-11	20-13 (11-7)	Wright State
2011-12	21-13 (12-6)	Wright State
2012-13	12-18 (6-10)	Wright State
2013-14	26-9 (12-4)	Wright State
2014-15	25-9 (12-4)	Wright State
2015-16	24-11 (12-6)	Wright State
2016-17	15-15 (10-8)	New Mexico
2017-18	25-11 (10-8)	New Mexico
2018-19	24-7 (14-4)	New Mexico
2019-20	15-17 (6-12)	New Mexico
2020-21	15-5 (11-3)	New Mexico
2021-22	1-0 (0-0)	New Mexico
Total	273-172 (150-94)	



# THE UNIVERSITY OF NEW MEXICO

## 2021-22 WOMEN'S BASKETBALL



**1**  
Rebeka Renczes  
PG | 5-7 | FR.  
Szekszard, Hungary



**4**  
LaTascya Duff  
G | 5-7 | SR.  
Samson, Ala.



**5**  
LaTora Duff  
G | 5-7 | SR.  
Samson, Ala.



**10**  
Kath van Bennekom  
G | 5-9 | SO.  
Gorinchem, The Netherlands



**11**  
Zeyno Şeren  
G | 5-10 | FR.  
Ankara, Turkey



**12**  
Aniyah Augmon  
G | 5-8 | FR.  
San José, Calif.



**13**  
Shaiquel McGruder  
F | 6-0 | SR.  
Trotwood, Ohio



**21**  
Mackenzie Curtis  
G | 5-9 | FR.  
Lakeside, Calif.



**23**  
Jaedyn De La Cerda  
G | 5-7 | SR.  
Roswell, N.M.



**30**  
Paula Reus  
F | 6-1 | FR.  
Palma de Mallorca,  
Spain



**32**  
Antonia Anderson  
G/F | 6-2 | SR.  
Cibolo, Texas



**33**  
Vianè Cumber  
G | 5-10 | FR.  
Albuquerque, N.M.



**34**  
Nevaeh Parkinson  
F/C | 6-3 | SO.  
Dallas, Texas



Mike Bradbury  
Head Coach



Valerie King  
Assistant Coach



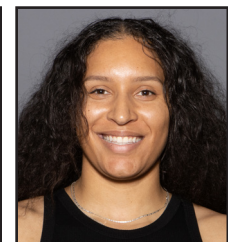
Symone Denham  
Assistant Coach



Kabrina Merriweather  
Assistant Coach



Ryan Freeman  
Special Assistant to the  
Head Coach



Nike McClure  
Director of Player  
Development



# THE UNIVERSITY OF NEW MEXICO 2021-22 WOMEN'S BASKETBALL



# #1

## REBEKA RENCZES

PG | 5-7 | FR | Szekszard, Hungary (Garay Janos Secondary)



PPG	FG %	3PT %	FT %	RPG	APG	SPG	BPG	MPG
0.0	.000	.000	.000	0.0	0.0	0.0	0.0	0.0

### NOTEWORTHY

- » Averaged 22.1 points, 9.0 assists and 6.3 steals during the 2019 season
- » Averaged 17.3 points, 6.1 assists and 2.9 steals during the 2021 season
- » Played on the U16 Hungary National Team and competed in the 2019 FIBA U16 Women's European Championship
- » Averaged 6.0 points, 2.9 assists, 2.3 rebounds, 1.1 steals while averaging 21.5 minutes with the national team

### Renczes' Top Performances

<b>Points</b>	Season _____ Career _____
<b>FGM</b>	Season _____ Career _____
<b>FGA</b>	Season _____ Career _____
<b>3PT FGM</b>	Season _____ Career _____
<b>3PT FGA</b>	Season _____ Career _____
<b>FTM</b>	Season _____ Career _____
<b>FTA</b>	Season _____ Career _____
<b>Rebounds</b>	Season _____ Career _____
<b>Assists</b>	Season _____ Career _____
<b>Blocks</b>	Season _____ Career _____
<b>Steals</b>	Season _____ Career _____
<b>Turnovers</b>	Season _____ Career _____
<b>Min. Played</b>	Season _____ Career _____

## GAME-BY-GAME STATISTICS

## CAREER STATISTICS



# THE UNIVERSITY OF NEW MEXICO 2021-22 WOMEN'S BASKETBALL



## #4

### LaTASCYA DUFF

G | 5-7 | SR | Samson, Ala. (Shelton State CC)



PPG	FG %	3PT %	FT %	RPG	APG	SPG	BPG	MPG
0.0	.000	.000	.000	0.0	0.0	0.0	0.0	0.0

### NOTEWORTHY

- » Named Mountain West Sixth Person of the Year
- » MW All-Conference Team
- » Named Mountain West Preseason Newcomer of the Year
- » Named Mountain West Player of the Week twice (Dec. 21 and March 2)
- » Second on the team in points, ppg, field-goal attempts, free-throw percentage
- » Led the Lobos in 3-point field-goal percentage, 3-point field-goal attempts and made 3-pointers, and free throws made

### Duff's Top Performances

<b>Points</b>	Season	
	Career	31 at Air Force (2/23/21)
<b>FGM</b>	Season	
	Career	11 at Air Force (2/23/21)
<b>FGA</b>	Season	
	Career	20 at Air Force (2/23/21)
<b>3PT FGM</b>	Season	
	Career	6 - done four times
<b>3PT FGA</b>	Season	
	Career	12 - done twice
<b>FTM</b>	Season	
	Career	8 - done twice
<b>FTA</b>	Season	
	Career	10 at SHSU (12/6/20)
<b>Rebounds</b>	Season	
	Career	7 - done twice
<b>Assists</b>	Season	
	Career	6 at Midwestern St. (12/4/20)
<b>Blocks</b>	Season	
	Career	2 vs. Colorado State (3/5/21)
<b>Steals</b>	Season	
	Career	5 at Air Force (2/23/21)
<b>Turnovers</b>	Season	
	Career	0 - done four times
<b>Min. Played</b>	Season	
	Career	38 at Air Force (2/23/21)

## GAME-BY-GAME STATISTICS

### CAREER STATISTICS (AT UNM)

SEASON	TEAM	GP-GS	MIN/AVG	Field Goals		3-Point		F-Throws		Rebounds				Scoring						
				FG-FGA	FG%	3FG-3FGA	3FG%	FT-FTA	FT%	OFF	DEF	TOT	AVG	PF-FO	A	TO	BLK	STL	PTS	AVG
2020-21	UNM	20-4	495/24.8	93-209	.445	52-130	.400	59-72	.819	13	47	60	3.0	37-0	39	22	4	17	297	14.9
<b>TOTAL</b>		<b>20-4</b>	<b>495/24.8</b>	<b>93-209</b>	<b>.445</b>	<b>52-130</b>	<b>.400</b>	<b>59-72</b>	<b>.819</b>	<b>13</b>	<b>47</b>	<b>60</b>	<b>3.0</b>	<b>37-0</b>	<b>39</b>	<b>22</b>	<b>4</b>	<b>17</b>	<b>297</b>	<b>14.9</b>



# THE UNIVERSITY OF NEW MEXICO 2021-22 WOMEN'S BASKETBALL



## #5

### LaTORA DUFF

G | 5-7 | SR | Samson, Ala. (Shelton State CC)



PPG	FG %	3PT %	FT %	RPG	APG	SPG	BPG	MPG
10.0	.273	.222	1.00	3.0	9.0	0.0	1.0	34.5

### NOTEWORTHY

- » Started in all 20 games for the Lobos last season
- » Led the Lobos in assists and third in steals
- » Top 5 in free throws made, rebounds, 3-pointers made and attempted

### Duff's Top Performances

<b>Points</b>	Season	
Career	15	- done twice
<b>FGM</b>	Season	
Career	6	at UNLV (1/17/21)
<b>FGA</b>	Season	
Career	11	- done twice
<b>3PT FGM</b>	Season	
Career	3	- done four times
<b>3PT FGA</b>	Season	9 vs Lamar (11/9/21)
Career	Same	
<b>FTM</b>	Season	
Career	6	at Midwestern St.(12/4/20)
<b>FTA</b>	Season	
Career	9	at Midwestern St.(12/4/20)
<b>Rebounds</b>	Season	
Career	7	- done twice
<b>Assists</b>	Season	9 vs Lamar (11/9/21)
Career	9	- done twice
<b>Blocks</b>	Season	1 vs Lamar (11/9/21)
Career	1	- done four times
<b>Steals</b>	Season	
Career	4	at Midwestern St.(12/4/20)
<b>Turnovers</b>	Season	1 vs Lamar (11/9/21)
Career	0	- done five times
<b>Min. Played</b>	Season	35 vs Lamar (11/9/21)
Career	37	vs. Fresno State (3/9/21)

## GAME-BY-GAME STATISTICS

Opponent	Date	GS	MIN	Total		3-Pointers		Free throws		Rebounds				PF	A	TO	BLK	STL	PTS	AVG
				FG-FGA	PCT	3FG-3FGA	PCT	FT-FTA	PCT	OFF	DEF	TOT	AVG							
Lamar University	11/09/2021	*	34:32	3-11	.273	2-9	.222	2-2	1.000	0	3	3	3.0	3	9	1	1	0	10	10.0
<b>Totals</b>		<b>1</b>	<b>34:32</b>	<b>3-11</b>	<b>.273</b>	<b>2-9</b>	<b>.222</b>	<b>2-2</b>	<b>1.000</b>	<b>0</b>	<b>3</b>	<b>3</b>	<b>3.0</b>	<b>3</b>	<b>9</b>	<b>1</b>	<b>1</b>	<b>0</b>	<b>10</b>	<b>10.0</b>

## CAREER STATISTICS (AT UNM)

SEASON	TEAM	GP-GS	MIN/AVG	Field Goals		3-Point		F-Throws		Rebounds				Scoring						
				FG-FGA	FG%	3FG-3FGA	3FG%	FT-FTA	FT%	OFF	DEF	TOT	AVG	PF-FO	A	TO	BLK	STL	PTS	AVG
2020-21	UNM	20-20	542/27.1	61-137	.445	22-66	.333	16-24	.667	6	62	68	3.4	27-0	78	39	3	25	160	8.0
2021-22	UNM	1-1	35/34.5	3-11	.273	2-9	.222	2-2	1.000	0	3	3	3.0	3-0	9	1	1	0	10	10.0
<b>TOTAL</b>		<b>21-21</b>	<b>576/27.4</b>	<b>64-148</b>	<b>.432</b>	<b>24-75</b>	<b>.320</b>	<b>18-26</b>	<b>.692</b>	<b>6</b>	<b>65</b>	<b>71</b>	<b>3.4</b>	<b>30-0</b>	<b>87</b>	<b>40</b>	<b>4</b>	<b>25</b>	<b>170</b>	<b>8.1</b>



# THE UNIVERSITY OF NEW MEXICO 2021-22 WOMEN'S BASKETBALL



## #10

### KATH VAN BENNEKOM

G | 5-9 | SO | Gorinchem, The Netherlands



PPG	FG %	3PT %	FT %	RPG	APG	SPG	BPG	MPG
4.0	.667	.000	.000	3.0	0.0	0.0	0.0	19.9

### NOTEWORTHY

- » Competed for Lyceum Oudehoven and also for the club team Binneland where she helped her team to the U16 Championship in 2016
- » Led her U20 team to the semi-finals and the Final Four in 2017, 2018, 2019 and 2020
- » Helped her team to the U20 Cup Finals twice (2017, 2020).

#### van Bennekom's Top Performances

<b>Points</b>	Season	4 vs Lamar (11/9/21)
	Career	9 at Midwestern St.(12/4/20)
<b>FGM</b>	Season	2 vs Lamar (11/9/21)
	Career	Same
<b>FGA</b>	Season	3 vs Lamar (11/9/21)
	Career	5 at Midwestern St.(12/4/20)
<b>3PT FGM</b>	Season	
	Career	1 - done twice
<b>3PT FGA</b>	Season	
	Career	4 at Midwestern St.(12/4/20)
<b>FTM</b>	Season	
	Career	6 at Midwestern St.(12/4/20)
<b>FTA</b>	Season	
	Career	8 at Midwestern St.(12/4/20)
<b>Rebounds</b>	Season	3 vs Lamar (11/9/21)
	Career	7 at San Diego St. (2/5/21)
<b>Assists</b>	Season	
	Career	1 - done four times
<b>Blocks</b>	Season	
	Career	
<b>Steals</b>	Season	
	Career	2 at Utah State (2/28/21)
<b>Turnovers</b>	Season	3 vs Lamar (11/9/21)
	Career	0 - done 12 times
<b>Min. Played</b>	Season	20 vs Lamar (11/9/21)
	Career	Same

## GAME-BY-GAME STATISTICS

Opponent	Date	GS	MIN	Total		3-Pointers		Free throws		Rebounds				PF	A	TO	BLK	STL	PTS	AVG
				FG-FGA	PCT	3FG-3FGA	PCT	FT-FTA	PCT	OFF	DEF	TOT	AVG							
Lamar University	11/09/2021		19:53	2-3	.667	0-0	.000	0-0	.000	3	0	3	3.0	4	0	3	0	0	4	4.0
<b>Totals</b>		<b>0</b>	<b>19:53</b>	<b>2-3</b>	<b>.667</b>	<b>0-0</b>	<b>.000</b>	<b>0-0</b>	<b>.000</b>	<b>3</b>	<b>0</b>	<b>3</b>	<b>3.0</b>	<b>4</b>	<b>0</b>	<b>3</b>	<b>0</b>	<b>0</b>	<b>4</b>	<b>4.0</b>

## CAREER STATISTICS

SEASON	TEAM	GP-GS	MIN/AVG	Field Goals		3-Point		F-Throws		Rebounds				Scoring						
				FG-FGA	FG%	3FG-3FGA	3FG%	FT-FTA	FT%	OFF	DEF	TOT	AVG	PF-FO	A	TO	BLK	STL	PTS	AVG
2020-21	UNM	16-0	118/7.4	5-20	.250	2-12	.167	13-20	.650	10	19	29	1.8	13-0	4	4	0	2	25	1.6
2021-22	UNM	1-0	20/19.9	2-3	.667	0-0	.000	0-0	.000	3	0	3	3.0	4-0	0	3	0	0	4	4.0
<b>TOTAL</b>		<b>17-0</b>	<b>138/8.1</b>	<b>7-23</b>	<b>.304</b>	<b>2-12</b>	<b>.167</b>	<b>13-20</b>	<b>.650</b>	<b>13</b>	<b>19</b>	<b>32</b>	<b>1.9</b>	<b>17-0</b>	<b>4</b>	<b>7</b>	<b>0</b>	<b>2</b>	<b>29</b>	<b>1.7</b>



# THE UNIVERSITY OF NEW MEXICO

## 2021-22 WOMEN'S BASKETBALL



# #11

## ZEYNO SEREN

G | 5-10 | FR | Ankara, Turkey (TED Ankara College Private HS)



PPG	FG %	3PT %	FT %	RPG	APG	SPG	BPG	MPG
1.0	.000	.000	.500	4.0	1.0	0.0	0.0	13.8

### NOTEWORTHY

- » Averaged 16.2 points, 5.1 assists, 7.0 rebounds and 3.0 steals
- » Competed for Turkey at the U16 European Championship in 2019 and the Baku Youth Olympics
- » Played for BOTAS Sports Club

### Seren's Top Performances

<b>Points</b>	Season	1 vs Lamar (11/9/21)	_____
	Career	Same	_____
<b>FGM</b>	Season	_____	_____
	Career	_____	_____
<b>FGA</b>	Season	1 vs Lamar (11/9/21)	_____
	Career	Same	_____
<b>3PT FGM</b>	Season	_____	_____
	Career	_____	_____
<b>3PT FGA</b>	Season	1 vs Lamar (11/9/21)	_____
	Career	Same	_____
<b>FTM</b>	Season	1 vs Lamar (11/9/21)	_____
	Career	Same	_____
<b>FTA</b>	Season	2 vs Lamar (11/9/21)	_____
	Career	Same	_____
<b>Rebounds</b>	Season	4 vs Lamar (11/9/21)	_____
	Career	Same	_____
<b>Assists</b>	Season	1 vs Lamar (11/9/21)	_____
	Career	Same	_____
<b>Blocks</b>	Season	_____	_____
	Career	_____	_____
<b>Steals</b>	Season	_____	_____
	Career	_____	_____
<b>Turnovers</b>	Season	_____	_____
	Career	_____	_____
<b>Min. Played</b>	Season	14 vs Lamar (11/9/21)	_____
	Career	Same	_____

## GAME-BY-GAME STATISTICS

Opponent	Date	GS	MIN	Total		3-Pointers		Free throws		Rebounds				PF	A	TO	BLK	STL	PTS	AVG
				FG-FGA	PCT	3FG-3FGA	PCT	FT-FTA	PCT	OFF	DEF	TOT	AVG							
Lamar University	11/09/2021	*	13:51	0-1	.000	0-1	.000	1-2	.500	0	4	4	4.0	1	1	0	0	0	1	1.0
<b>Totals</b>		<b>1</b>	<b>13:51</b>	<b>0-1</b>	<b>.000</b>	<b>0-1</b>	<b>.000</b>	<b>1-2</b>	<b>.500</b>	<b>0</b>	<b>4</b>	<b>4</b>	<b>4.0</b>	<b>1</b>	<b>1</b>	<b>0</b>	<b>0</b>	<b>0</b>	<b>1</b>	<b>1.0</b>

## CAREER STATISTICS

SEASON	TEAM	GP-GS	MIN/AVG	Field Goals		3-Point		F-Throws		Rebounds				Scoring							
				FG-FGA	FG%	3FG-3FGA	3FG%	FT-FTA	FT%	OFF	DEF	TOT	AVG	PF-FO	A	TO	BLK	STL	PTS	AVG	
2021-22	UNM	1-1	14/13.8	0-1	.000	0-1	.000	1-2	.500	0	4	4	4.0	1-0	1	0	0	0	0	1	1.0
<b>TOTAL</b>		<b>1-1</b>	<b>14/13.8</b>	<b>0-1</b>	<b>.000</b>	<b>0-1</b>	<b>.000</b>	<b>1-2</b>	<b>.500</b>	<b>0</b>	<b>4</b>	<b>4</b>	<b>4.0</b>	<b>1-0</b>	<b>1</b>	<b>0</b>	<b>0</b>	<b>0</b>	<b>0</b>	<b>1</b>	<b>1.0</b>



# THE UNIVERSITY OF NEW MEXICO

## 2021-22 WOMEN'S BASKETBALL



# #12

## ANIYAH AUGMON

G | 5-8 | FR | San José, Calif. (Woodside Priory School)



PPG	FG %	3PT %	FT %	RPG	APG	SPG	BPG	MPG
8.0	1.00	1.00	1.00	6.0	0.0	3.0	0.0	23.1

### NOTEWORTHY

- » Averaged 14.0 points, 7.0 rebounds, 4.0 assists and 3.0 steals throughout her high school career
- » Helped lead her teams to three CCS Championships (2017, 2018, 2019)
- » First team all-league in 2019, honorable mention in 2018 and second team all-league in 2017
- » Attended the Adidas All-American Camp
- » Competed for Peninsula Basketball Club where she averaged 15.0 points, 7.0 rebounds, 4.0 assists and 3.0 steals.

### Augmon's Top Performances

<b>Points</b>	Season	8 vs Lamar (11/9/21)
	Career	Same
<b>FGM</b>	Season	3 vs Lamar (11/9/21)
	Career	Same
<b>FGA</b>	Season	3 vs Lamar (11/9/21)
	Career	Same
<b>3PT FGM</b>	Season	1 vs Lamar (11/9/21)
	Career	Same
<b>3PT FGA</b>	Season	1 vs Lamar (11/9/21)
	Career	Same
<b>FTM</b>	Season	1 vs Lamar (11/9/21)
	Career	Same
<b>FTA</b>	Season	1 vs Lamar (11/9/21)
	Career	Same
<b>Rebounds</b>	Season	6 vs Lamar (11/9/21)
	Career	Same
<b>Assists</b>	Season	
	Career	
<b>Blocks</b>	Season	
	Career	
<b>Steals</b>	Season	3 vs Lamar (11/9/21)
	Career	Same
<b>Turnovers</b>	Season	2 vs Lamar (11/9/21)
	Career	Same
<b>Min. Played</b>	Season	23 vs Lamar (11/9/21)
	Career	Same

## GAME-BY-GAME STATISTICS

Opponent	Date	GS	MIN	Total		3-Pointers		Free throws		Rebounds				PF	A	TO	BLK	STL	PTS	AVG
				FG-FGA	PCT	3FG-3FGA	PCT	FT-FTA	PCT	OFF	DEF	TOT	AVG							
Lamar University	11/09/2021		23:03	3-3	1.000	1-1	1.000	1-1	1.000	0	6	6	6.0	2	0	2	0	3	8	8.0
<b>Totals</b>		<b>0</b>	<b>23:03</b>	<b>3-3</b>	<b>1.000</b>	<b>1-1</b>	<b>1.000</b>	<b>1-1</b>	<b>1.000</b>	<b>0</b>	<b>6</b>	<b>6</b>	<b>6.0</b>	<b>2</b>	<b>0</b>	<b>2</b>	<b>0</b>	<b>3</b>	<b>8</b>	<b>8.0</b>

## CAREER STATISTICS

SEASON	TEAM	GP-GS	MIN/AVG	Field Goals		3-Point		F-Throws		Rebounds				Scoring						
				FG-FGA	FG%	3FG-3FGA	3FG%	FT-FTA	FT%	OFF	DEF	TOT	AVG	PF	FO	A	TO	BLK	STL	PTS
2021-22	UNM	1-0	23/23.1	3-3	1.000	1-1	1.000	1-1	1.000	0	6	6	6.0	2-0	0	2	0	3	8	8.0
<b>TOTAL</b>		<b>1-0</b>	<b>23/23.1</b>	<b>3-3</b>	<b>1.000</b>	<b>1-1</b>	<b>1.000</b>	<b>1-1</b>	<b>1.000</b>	<b>0</b>	<b>6</b>	<b>6</b>	<b>6.0</b>	<b>2-0</b>	<b>0</b>	<b>2</b>	<b>0</b>	<b>3</b>	<b>8</b>	<b>8.0</b>



# THE UNIVERSITY OF NEW MEXICO 2021-22 WOMEN'S BASKETBALL



## #13

### SHAIQUEL McGRUDER

F | 6-0 | SR | Trotwood, Ohio (Trotwood-Madison HS)



PPG	FG %	3PT %	FT %	RPG	APG	SPG	BPG	MPG
15.0	1.00	1.00	.000	5.0	0.0	1.0	0.0	22.1

## NOTEWORTHY

- » Named to MW All-Defensive Team
- » Started all 20 games as a junior
- » Two games with 10-plus rebounds as a junior, one double-double against Sam Houston State (13 rebounds, 17 points)
- » Four games with multiple blocks last season, including 5 blocks against Sam Houston State
- » 10 games with multiple steals with a season-high 4 against Fresno State
- » Nine games with 10-plus points
- » Led the team in blocked shots with 23 and was 6th in the MW in blocked shots per game

### McGruder's Top Performances

<b>Points</b>	Season	15 vs Lamar (11/9/21)
	Career	18 vs. Northern NM (12/10/19)
<b>FGM</b>	Season	7 vs Lamar (11/9/21)
	Career	9 vs. Northern NM (12/10/19)
<b>FGA</b>	Season	7 vs Lamar (11/9/21)
	Career	12 vs. San Diego St. (2/12/20)
<b>3PT FGM</b>	Season	1 vs Lamar (11/9/21)
	Career	2 at SHSU (12/6/20)
<b>3PT FGA</b>	Season	1 vs Lamar (11/9/21)
	Career	4 vs. Colorado St. (3/5/21)
<b>FTM</b>	Season	
	Career	3 - done twice
<b>FTA</b>	Season	
	Career	4 - done twice
<b>Rebounds</b>	Season	5 vs Lamar (11/9/21)
	Career	17 vs. Nevada (3/1/20)
<b>Assists</b>	Season	
	Career	4 vs. Fresno State (1/28/21)
<b>Blocks</b>	Season	
	Career	5 at SHSU (12/6/20)
<b>Steals</b>	Season	1 vs Lamar (11/9/21)
	Career	8 vs. West Virginia (11/29/19)
<b>Turnovers</b>	Season	3 vs Lamar (11/9/21)
	Career	0 - done 39 times
<b>Min. Played</b>	Season	22 vs Lamar (11/9/21)
	Career	34 at SHSU (12/6/20)

## GAME-BY-GAME STATISTICS

Opponent	Date	GS	MIN	Total		3-Pointers		Free throws		Rebounds				PF	A	TO	BLK	STL	PTS	AVG
				FG-FGA	PCT	3FG-3FGA	PCT	FT-FTA	PCT	OFF	DEF	TOT	AVG							
Lamar University	11/09/2021	*	22:09	7-7	1.000	1-1	1.000	0-0	.000	2	3	5	5.0	4	0	3	0	1	15	15.0
<b>Totals</b>		<b>1</b>	<b>22:09</b>	<b>7-7</b>	<b>1.000</b>	<b>1-1</b>	<b>1.000</b>	<b>0-0</b>	<b>.000</b>	<b>2</b>	<b>3</b>	<b>5</b>	<b>5.0</b>	<b>4</b>	<b>0</b>	<b>3</b>	<b>0</b>	<b>1</b>	<b>15</b>	<b>15.0</b>

## CAREER STATISTICS

SEASON	TEAM	GP-GS	MIN/AVG	Field Goals		3-Point		F-Throws		Rebounds				Scoring						
				FG-FGA	FG%	3FG-3FGA	3FG%	FT-FTA	FT%	OFF	DEF	TOT	AVG	PF-FO	A	TO	BLK	STL	PTS	AVG
2018-19	UNM	26-0	212/8.1	33-58	.569	0-0	.000	7-18	.389	32	39	71	2.7	17-0	3	7	14	24	73	2.8
2019-20	UNM	31-8	558/18.0	97-163	.595	1-10	.100	20-27	.741	66	108	174	5.6	44-0	8	29	26	38	215	6.9
2020-21	UNM	20-20	471/23.6	80-132	.606	7-19	.368	15-22	.682	42	77	119	6.0	40-0	15	30	23	30	182	9.1
2021-22	UNM	1-1	22/22.1	7-7	1.000	1-1	1.000	0-0	.000	2	3	5	5.0	4-0	0	3	0	1	15	15.0
<b>TOTAL</b>		<b>78-29</b>	<b>1263/16.2</b>	<b>217-360</b>	<b>.603</b>	<b>9-30</b>	<b>.300</b>	<b>42-67</b>	<b>.627</b>	<b>142</b>	<b>227</b>	<b>369</b>	<b>4.7</b>	<b>105-0</b>	<b>26</b>	<b>69</b>	<b>63</b>	<b>93</b>	<b>485</b>	<b>6.2</b>



# THE UNIVERSITY OF NEW MEXICO 2021-22 WOMEN'S BASKETBALL



## #21

### MACKENZIE CURTIS

G | 5-9 | FR | Lakeside, Calif. (El Capitan HS)



PPG	FG %	3PT %	FT %	RPG	APG	SPG	BPG	MPG
0.0	.000	.000	.000	0.0	0.0	0.0	0.0	0.0

### NOTEWORTHY

- » Averaged 22.2 points, 9.5 rebounds, 3.3 assists, 3.5 steals and 1.0 blocks per game
- » Four-time team MVP, three-time league MVP, four-time San Diego Union Tribune Scholar-Athlete
- » Named First-Team All-CIF in 2020 and Second Team All-CIF in 2019
- » No. 1 scorer in San Diego for two years and No. 3 in California for scoring in the class of 2021

### Curtis' Top Performances

<b>Points</b>	Season _____ Career _____
<b>FGM</b>	Season _____ Career _____
<b>FGA</b>	Season _____ Career _____
<b>3PT FGM</b>	Season _____ Career _____
<b>3PT FGA</b>	Season _____ Career _____
<b>FTM</b>	Season _____ Career _____
<b>FTA</b>	Season _____ Career _____
<b>Rebounds</b>	Season _____ Career _____
<b>Assists</b>	Season _____ Career _____
<b>Blocks</b>	Season _____ Career _____
<b>Steals</b>	Season _____ Career _____
<b>Turnovers</b>	Season _____ Career _____
<b>Min. Played</b>	Season _____ Career _____

## GAME-BY-GAME STATISTICS

## CAREER STATISTICS



# THE UNIVERSITY OF NEW MEXICO

## 2021-22 WOMEN'S BASKETBALL



# #23

## JAEDYN DE LA CERDA

G | 5-7 | SR | Roswell, N.M. (Roswell HS)



PPG	FG %	3PT %	FT %	RPG	APG	SPG	BPG	MPG
15.0	.263	.125	.800	6.0	2.0	1.0	0.0	38.6

### NOTEWORTHY

- » Named to 2020-21 MW All-Conference Team and MW All-Tournament Team
  - » Fifth in the MW in points per game and in field-goal percentage (.437), but led the conference in free-throw percentage
  - » Scored in double figures 17 times including six games in which she scored 20 points or more last season
  - » Recorded her first double-double with 13 points and 11 rebounds at Arkansas-Pine Bluff, finishing with a career high in rebounds
  - » A scoring catalyst off the bench, set a program record for points off the bench as she scored 31 points vs. San José State (2/27/19)
  - » In HS, was named the 2016-17 New Mexico Gatorade Player of the Year in women's basketball
  - » Led Roswell HS to the 2016 New Mexico 5A State Championship
  - » Named as a 2016 All-State honoree as well as an Adidas All-American
- » 92 points away from 1,000 career points

### De La Cerda's Top Performances

<b>Points</b>	Season	15 vs Lamar (11/9/21)
	Career	31 vs. San Jose State (2/27/19)
<b>FGM</b>	Season	5 vs Lamar (11/9/21)
	Career	12 vs. San Jose State (2/27/19)
<b>FGA</b>	Season	19 vs Lamar (11/9/21)
	Career	26 vs. Cal. Baptist (3/19/21)
<b>3PT FGM</b>	Season	1 vs Lamar (11/9/21)
	Career	7 vs. San Jose State (2/27/19)
<b>3PT FGA</b>	Season	8 vs Lamar (11/9/21)
	Career	13 - done twice
<b>FTM</b>	Season	4 vs Lamar (11/9/21)
	Career	14 at SHSU (12/6/20)
<b>FTA</b>	Season	5 vs Lamar (11/9/21)
	Career	15 at SHSU (12/6/20)
<b>Rebounds</b>	Season	6 vs Lamar (11/9/21)
	Career	11 at Arkansas-PB (12/17/20)
<b>Assists</b>	Season	2 vs Lamar (11/9/21)
	Career	8 vs. NM State (11/17/19)
<b>Blocks</b>	Season	
	Career	1 - done seven times
<b>Steals</b>	Season	1 vs Lamar (11/9/21)
	Career	4 - done twice
<b>Turnovers</b>	Season	2 vs Lamar (11/9/21)
	Career	0 - done 35 times
<b>Min. Played</b>	Season	39 vs Lamar (11/9/21)
	Career	44 vs. San Diego St. (3/11/19)

### GAME-BY-GAME STATISTICS

Opponent	Date	GS	MIN	Total		3-Pointers		Free throws		Rebounds				PF	A	TO	BLK	STL	PTS	AVG
				FG-FGA	PCT	3FG-3FGA	PCT	FT-FTA	PCT	OFF	DEF	TOT	AVG							
Lamar University	11/09/2021	*	38:38	5-19	.263	1-8	.125	4-5	.800	2	4	6	6.0	2	2	2	0	1	15	15.0
<b>Totals</b>		<b>1</b>	<b>38:38</b>	<b>5-19</b>	<b>.263</b>	<b>1-8</b>	<b>.125</b>	<b>4-5</b>	<b>.800</b>	<b>2</b>	<b>4</b>	<b>6</b>	<b>6.0</b>	<b>2</b>	<b>2</b>	<b>2</b>	<b>0</b>	<b>1</b>	<b>15</b>	<b>15.0</b>

### CAREER STATISTICS

SEASON	TEAM	GP-GS	MIN/AVG	Field Goals		3-Point		F-Throws		Rebounds				Scoring						
				FG-FGA	FG%	3FG-3FGA	3FG%	FT-FTA	FT%	OFF	DEF	TOT	AVG	PF-FO	A	TO	BLK	STL	PTS	AVG
2017-18	UNM	13-0	35/2.7	8-20	.400	2-10	.200	5-6	.833	2	5	7	0.5	3-0	2	4	1	5	23	1.8
2018-19	UNM	30-5	557/18.6	82-221	.371	40-135	.296	25-32	.781	12	75	87	2.9	25-0	44	30	1	30	229	7.6
2019-20	UNM	31-14	814/26.3	121-325	.372	47-144	.326	52-64	.813	28	59	87	2.8	57-1	60	37	1	42	341	11.0
2020-21	UNM	20-20	562/28.1	107-245	.437	32-99	.323	54-63	.857	34	70	104	5.2	36-0	47	36	4	18	300	15.0
2021-22	UNM	1-1	39/38.6	5-19	.263	1-8	.125	4-5	.800	2	4	6	6.0	2-0	2	2	0	1	15	15.0
<b>TOTAL</b>		<b>95-40</b>	<b>2006/21.1</b>	<b>323-830</b>	<b>.389</b>	<b>122-396</b>	<b>.308</b>	<b>140-170</b>	<b>.824</b>	<b>78</b>	<b>213</b>	<b>291</b>	<b>3.1</b>	<b>123-1</b>	<b>155</b>	<b>109</b>	<b>7</b>	<b>96</b>	<b>908</b>	<b>9.6</b>



# THE UNIVERSITY OF NEW MEXICO 2021-22 WOMEN'S BASKETBALL



## #30

### PAULA REUS

F | 6-1 | FR | Palma de Mallorca, Spain (IES Joaquim Blume)



PPG	FG %	3PT %	FT %	RPG	APG	SPG	BPG	MPG
0.0	.000	.000	.000	0.0	0.0	0.0	0.0	0.0

### NOTEWORTHY

Will start out the season wearing #3 at home, #30 on the road.

- » Played on the U16 Spanish national team at the U16 FIBA 2019 European Championship, finishing third
- » Averaged 11.7 minutes, 3.5 points, 2.8 rebounds, 0.8 assists and 0.7 steals per game
- » Played for Barça CBS LF2, winning the regular season championship, and qualified for the finals

### Reus' Top Performances

<b>Points</b>	Season _____ Career _____
<b>FGM</b>	Season _____ Career _____
<b>FGA</b>	Season _____ Career _____
<b>3PT FGM</b>	Season _____ Career _____
<b>3PT FGA</b>	Season _____ Career _____
<b>FTM</b>	Season _____ Career _____
<b>FTA</b>	Season _____ Career _____
<b>Rebounds</b>	Season _____ Career _____
<b>Assists</b>	Season _____ Career _____
<b>Blocks</b>	Season _____ Career _____
<b>Steals</b>	Season _____ Career _____
<b>Turnovers</b>	Season _____ Career _____
<b>Min. Played</b>	Season _____ Career _____

## GAME-BY-GAME STATISTICS

## CAREER STATISTICS



# THE UNIVERSITY OF NEW MEXICO 2021-22 WOMEN'S BASKETBALL



## #32

### ANTONIA ANDERSON

G/F | 6-2 | SR | Cibolo, Texas (Byron P. Steele HS)



PPG	FG %	3PT %	FT %	RPG	APG	SPG	BPG	MPG
16.0	.556	.333	1.00	5.0	1.0	2.0	1.0	28.5

### NOTEWORTHY

- » Named to 2021-22 Preseason All-Conference Team
- » Named to 2020-21 MW All-Conference Team
- » Scored 10-plus points in 13 games with a career-high 29 points in the win over UNLV on Jan. 17 after making a career-high 12 baskets.
- » Led the team in rebounds (123) and rebounds per game last season
- » Recorded two double-doubles with 14 points and 10 rebounds at Air Force and 10 points and 11 rebounds against Colorado State (tied a career high)
- » Eighth in the MW in blocks per game at 1.07 and ranked in the top 15 in scoring, rebounding, field-goal percentage, blocked shots and defensive rebounds

» 157 points away from 1,000 career points

### Anderson's Top Performances

<b>Points</b>	Season	16 vs Lamar (11/9/21)
	Career	29 at UNLV (1/17/21)
<b>FGM</b>	Season	5 vs Lamar (11/9/21)
	Career	12 at UNLV (1/17/21)
<b>FGA</b>	Season	9 vs Lamar (11/9/21)
	Career	19 vs. Fresno (3/9/21)
<b>3PT FGM</b>	Season	1 vs Lamar (11/9/21)
	Career	4 at UNLV (1/17/21)
<b>3PT FGA</b>	Season	3 vs Lamar (11/9/21)
	Career	11 vs Colorado State (3/4/21)
<b>FTM</b>	Season	5 vs Lamar (11/9/21)
	Career	5 - done three times
<b>FTA</b>	Season	5 vs Lamar (11/9/21)
	Career	6 - done three times
<b>Rebounds</b>	Season	5 vs Lamar (11/9/21)
	Career	11 - done three times
<b>Assists</b>	Season	1 vs Lamar (11/9/21)
	Career	5 - done twice
<b>Blocks</b>	Season	1 vs Lamar (11/9/21)
	Career	6 vs. UC Riverside (11/5/19)
<b>Steals</b>	Season	2 vs Lamar (11/9/21)
	Career	4 vs. Fresno St. (2/1/20)
<b>Turnovers</b>	Season	2 vs Lamar (11/9/21)
	Career	0 - done 40 times
<b>Min. Played</b>	Season	28 vs Lamar (11/9/21)
	Career	38 at San José St. (1/22/20)

### GAME-BY-GAME STATISTICS

Opponent	Date	GS	MIN	Total		3-Pointers		Free throws		Rebounds				PF	A	TO	BLK	STL	PTS	AVG
				FG-FGA	PCT	3FG-3FGA	PCT	FT-FTA	PCT	OFF	DEF	TOT	AVG							
Lamar University	11/09/2021	*	28:29	5-9	.556	1-3	.333	5-5	1.000	2	3	5	5.0	3	1	2	1	2	16	16.0
<b>Totals</b>		<b>1</b>	<b>28:29</b>	<b>5-9</b>	<b>.556</b>	<b>1-3</b>	<b>.333</b>	<b>5-5</b>	<b>1.000</b>	<b>2</b>	<b>3</b>	<b>5</b>	<b>5.0</b>	<b>3</b>	<b>1</b>	<b>2</b>	<b>1</b>	<b>2</b>	<b>16</b>	<b>16.0</b>

### CAREER STATISTICS

SEASON	TEAM	GP-GS	MIN/AVG	Field Goals		3-Point		F-Throws		Rebounds				Scoring						
				FG-FGA	FG%	3FG-3FGA	3FG%	FT-FTA	FT%	OFF	DEF	TOT	AVG	PF-FO	A	TO	BLK	STL	PTS	AVG
2017-18	UNM	32-1	417/13.0	52-91	.571	2-10	.200	24-40	.600	31	65	96	3.0	50-0	5	17	34	13	130	4.1
2018-19	UNM	31-0	555/17.9	65-141	.461	10-33	.303	34-46	.739	45	72	117	3.8	64-2	19	36	27	24	174	5.6
2019-20	UNM	32-31	865/27.0	112-268	.418	29-92	.315	28-39	.718	35	136	171	5.3	91-5	54	64	43	39	281	8.8
2020-21	UNM	20-20	486/24.3	98-200	.490	22-67	.328	24-41	.585	26	97	123	6.2	62-6	37	37	19	19	242	12.1
2021-22	UNM	1-1	28/28.5	5-9	.556	1-3	.333	5-5	1.000	2	3	5	5.0	3-0	1	2	1	2	16	16.0
<b>TOTAL</b>		<b>116-53</b>	<b>2351/20.3</b>	<b>332-709</b>	<b>.468</b>	<b>64-205</b>	<b>.312</b>	<b>115-171</b>	<b>.673</b>	<b>139</b>	<b>373</b>	<b>512</b>	<b>4.4</b>	<b>270-13</b>	<b>116</b>	<b>156</b>	<b>124</b>	<b>97</b>	<b>843</b>	<b>7.3</b>



# THE UNIVERSITY OF NEW MEXICO 2021-22 WOMEN'S BASKETBALL



## #33

### VIANÈ CUMBER

G | 5-10 | FR | Albuquerque, N.M. (Sandia HS)



PPG	FG %	3PT %	FT %	RPG	APG	SPG	BPG	MPG
2.0	.250	.000	.000	4.0	0.0	1.0	0.0	15.4

### NOTEWORTHY

- » 2019-20 and 2021-21 New Mexico Gatorade Girls Basketball Player of the Year
- » Twice named MaxPreps New Mexico High School Girls Basketball Player of the Year
- » Named the best high school basketball player in New Mexico by MaxPreps
- » Averaged 26.5 points, 9.3 rebounds, 2.2 assists and 1.5 steals her senior season and 22.4 points, 10.6 rebounds, 2.5 assists and 3.3 steals as a junior
- » Led her team to a pair of district championships in 2018 and 2019

### Cumber's Top Performances

<b>Points</b>	Season	2 vs Lamar (11/9/21)
	Career	Same
<b>FGM</b>	Season	1 vs Lamar (11/9/21)
	Career	Same
<b>FGA</b>	Season	4 vs Lamar (11/9/21)
	Career	Same
<b>3PT FGM</b>	Season	
	Career	
<b>3PT FGA</b>	Season	3 vs Lamar (11/9/21)
	Career	Same
<b>FTM</b>	Season	
	Career	
<b>FTA</b>	Season	
	Career	
<b>Rebounds</b>	Season	4 vs Lamar (11/9/21)
	Career	Same
<b>Assists</b>	Season	
	Career	
<b>Blocks</b>	Season	
	Career	
<b>Steals</b>	Season	1 vs Lamar (11/9/21)
	Career	Same
<b>Turnovers</b>	Season	1 vs Lamar (11/9/21)
	Career	Same
<b>Min. Played</b>	Season	16 vs Lamar (11/9/21)
	Career	Same

## GAME-BY-GAME STATISTICS

Opponent	Date	GS	MIN	Total		3-Pointers		Free throws		Rebounds				PF	A	TO	BLK	STL	PTS	AVG
				FG-FGA	PCT	3FG-3FGA	PCT	FT-FTA	PCT	OFF	DEF	TOT	AVG							
Lamar University	11/09/2021		15:26	1-4	.250	0-3	.000	0-0	.000	0	4	4	4.0	1	0	1	0	1	2	2.0
<b>Totals</b>		<b>0</b>	<b>15:26</b>	<b>1-4</b>	<b>.250</b>	<b>0-3</b>	<b>.000</b>	<b>0-0</b>	<b>.000</b>	<b>0</b>	<b>4</b>	<b>4</b>	<b>4.0</b>	<b>1</b>	<b>0</b>	<b>1</b>	<b>0</b>	<b>1</b>	<b>2</b>	<b>2.0</b>

## CAREER STATISTICS

SEASON	TEAM	GP-GS	MIN/AVG	Field Goals		3-Point		F-Throws		Rebounds				Scoring						
				FG-FGA	FG%	3FG-3FGA	3FG%	FT-FTA	FT%	OFF	DEF	TOT	AVG	PF-FO	A	TO	BLK	STL	PTS	AVG
2021-22	UNM	1-0	15/15.4	1-4	.250	0-3	.000	0-0	.000	0	4	4	4.0	1-0	0	1	0	1	2	2.0
<b>TOTAL</b>		<b>1-0</b>	<b>15/15.4</b>	<b>1-4</b>	<b>.250</b>	<b>0-3</b>	<b>.000</b>	<b>0-0</b>	<b>.000</b>	<b>0</b>	<b>4</b>	<b>4</b>	<b>4.0</b>	<b>1-0</b>	<b>0</b>	<b>1</b>	<b>0</b>	<b>1</b>	<b>2</b>	<b>2.0</b>



# THE UNIVERSITY OF NEW MEXICO 2021-22 WOMEN'S BASKETBALL



## #34

### NEVAEH PARKINSON

F/C | 6-3 | SO | Dallas, Texas (John Paul II HS)



PPG	FG %	3PT %	FT %	RPG	APG	SPG	BPG	MPG
0.0	.000	.000	.000	0.0	1.0	0.0	0.0	4.0

### NOTEWORTHY

- » Played for Parish Episcopal School in Texas where she helped her team to the state championship in the 2017-18 season
- » Two-time First Team All-District and two-time First Team All-State honoree
- » Averaged 18.3 points, 10.1 rebounds and 1.4 blocks per game

### Parkinson's Top Performances

<b>Points</b>	Season	
	Career	5 at Arkansas-PB (12/17/20)
<b>FGM</b>	Season	
	Career	2 at Arkansas-PB (12/17/20)
<b>FGA</b>	Season	
	Career	2 - done three times
<b>3PT FGM</b>	Season	
	Career	1 at Arkansas-PB (12/17/20)
<b>3PT FGA</b>	Season	
	Career	1 - done three times
<b>FTM</b>	Season	
	Career	
<b>FTA</b>	Season	
	Career	2 vs. Midwestern St.(12/4/20)
<b>Rebounds</b>	Season	
	Career	2 - done twice
<b>Assists</b>	Season	
	Career	1 vs Lamar (11/9/21) Same
<b>Blocks</b>	Season	
	Career	1 at Arkansas-PB (12/17/20)
<b>Steals</b>	Season	
	Career	
<b>Turnovers</b>	Season	
	Career	0 - vs Lamar (11/9/21) 0 - done eight times
<b>Min. Played</b>	Season	
	Career	4 vs Lamar (11/9/21) 7 at Arkansas-PB (12/17/20)

## GAME-BY-GAME STATISTICS

Opponent	Date	GS	MIN	Total		3-Pointers		Free throws		Rebounds				PF	A	TO	BLK	STL	PTS	AVG
				FG-FGA	PCT	3FG-3FGA	PCT	FT-FTA	PCT	OFF	DEF	TOT	AVG							
Lamar University	11/09/2021		04:00	0-0	.000	0-0	.000	0-0	.000	0	0	0	0.0	0	1	0	0	0	0	0.0
<b>Totals</b>		<b>0</b>	<b>04:00</b>	<b>0-0</b>	<b>.000</b>	<b>0-0</b>	<b>.000</b>	<b>0-0</b>	<b>.000</b>	<b>0</b>	<b>0</b>	<b>0</b>	<b>0.0</b>	<b>0</b>	<b>1</b>	<b>0</b>	<b>0</b>	<b>0</b>	<b>0</b>	<b>0.0</b>

## CAREER STATISTICS

SEASON	TEAM	GP-GS	MIN/AVG	Field Goals		3-Point		F-Throws		Rebounds				Scoring						
				FG-FGA	FG%	3FG-3FGA	3FG%	FT-FTA	FT%	OFF	DEF	TOT	AVG	PF-FO	A	TO	BLK	STL	PTS	AVG
2020-21	UNM	8-0	21/2.7	2-9	.222	1-5	.200	0-2	.000	0	6	6	0.8	4-0	0	1	1	0	5	0.6
2021-22	UNM	1-0	4/4.0	0-0	.000	0-0	.000	0-0	.000	0	0	0	0.0	0-0	1	0	0	0	0	0.0
<b>TOTAL</b>		<b>9-0</b>	<b>25/2.8</b>	<b>2-9</b>	<b>.222</b>	<b>1-5</b>	<b>.200</b>	<b>0-2</b>	<b>.000</b>	<b>0</b>	<b>6</b>	<b>6</b>	<b>0.7</b>	<b>4-0</b>	<b>1</b>	<b>1</b>	<b>1</b>	<b>0</b>	<b>5</b>	<b>0.6</b>



# THE UNIVERSITY OF NEW MEXICO 2021-22 WOMEN'S BASKETBALL



## NEW MEXICO STATISTICS

### Game Records

Record	Overall	Home	Away	Neutral
ALL GAMES	1-0	1-0	0-0	0-0
CONFERENCE	0-0	0-0	0-0	0-0
NON-CONFERENCE	1-0	1-0	0-0	0-0

### Score by Periods

Team	1st	2nd	3rd	4th	OT	TOT
New Mexico	17	18	18	18	0	71
Opponents	15	13	9	17	0	54

### Team Box Score

No.	Player	Total					3-Point		F-Throw		Rebounds				PF DQ A TO BLK STL PTS AVG							
		GP-GS	MIN	AVG	FG-FGA	FG%	3FG-3FGA	3FG%	FT-FTA	FT%	OFF	DEF	TOT	AVG	Pf	DQ	A	TO	BLK	STL	PTS	AVG
32	ANDERSON, Antonia	1-1	28:29	28.5	5-9	.556	1-3	.333	5-5	1.000	2	3	5	5.0	3	0	1	2	1	2	16	16.0
13	MCGRUDER, Shaiquel	1-1	22:09	22.1	7-7	1.000	1-1	1.000	0-0	.000	2	3	5	5.0	4	0	0	3	0	1	15	15.0
23	DE LA CERDA, Jaedyn	1-1	38:38	38.6	5-19	.263	1-8	.125	4-5	.800	2	4	6	6.0	2	0	2	2	0	1	15	15.0
5	DUFF, LaTora	1-1	34:32	34.5	3-11	.273	2-9	.222	2-2	1.000	0	3	3	3.0	3	0	9	1	1	0	10	10.0
12	AUGMON, Aniyah	1-0	23:03	23.1	3-3	1.000	1-1	1.000	1-1	1.000	0	6	6	6.0	2	0	0	2	0	3	8	8.0
10	VAN BENNEKOM, Kath	1-0	19:53	19.9	2-3	.667	0-0	.000	0-0	.000	3	0	3	3.0	4	0	0	3	0	0	4	4.0
33	CUMBER, Vianè	1-0	15:26	15.4	1-4	.250	0-3	.000	0-0	.000	0	4	4	4.0	1	0	0	1	0	1	2	2.0
11	SEREN, Zeyno	1-1	13:51	13.8	0-1	.000	0-1	.000	1-2	.500	0	4	4	4.0	1	0	1	0	0	0	1	1.0
34	PARKINSON, Nevaeh	1-0	04:00	4.0	0-0	.000	0-0	.000	0-0	.000	0	0	0	0.0	0	0	1	0	0	0	0	0.0
Team												2	2							1		
<b>Total</b>		<b>1</b>	<b>200</b>		<b>26-57</b>	<b>.456</b>	<b>6-26</b>	<b>.231</b>	<b>13-15</b>	<b>.867</b>	<b>9</b>	<b>29</b>	<b>38</b>	<b>38.0</b>	<b>20</b>	<b>0</b>	<b>14</b>	<b>15</b>	<b>2</b>	<b>8</b>	<b>71</b>	<b>71.0</b>
<b>Opponents</b>		<b>1</b>	<b>200</b>		<b>18-52</b>	<b>.346</b>	<b>7-25</b>	<b>.280</b>	<b>11-23</b>	<b>.478</b>	<b>11</b>	<b>24</b>	<b>35</b>	<b>35.0</b>	<b>16</b>	<b>0</b>	<b>10</b>	<b>16</b>	<b>2</b>	<b>7</b>	<b>54</b>	<b>54.0</b>

### Team Statistics

	UNM	OPP
<b>Scoring</b>	<b>71</b>	<b>54</b>
Points per game	71.0	54.0
Scoring margin	+17.0	-
<b>Field goals-att</b>	<b>26-57</b>	<b>18-52</b>
Field goal pct	.456	.346
<b>3 point fg-att</b>	<b>6-26</b>	<b>7-25</b>
3-point FG pct	.231	.280
3-pt FG made per game	6.0	7.0
<b>Free throws-att</b>	<b>13-15</b>	<b>11-23</b>
Free throw pct	.867	.478
F-Throws made per game	13.0	11.0
<b>Rebounds</b>	<b>38</b>	<b>35</b>
Rebounds per game	38.0	35.0
Rebounding margin	+3.0	-
<b>Assists</b>	<b>14</b>	<b>10</b>
Assists per game	14.0	10.0
<b>Turnovers</b>	<b>15</b>	<b>16</b>
Turnovers per game	15.0	16.0
Turnover margin	+1.0	-
Assist/turnover ratio	0.9	0.6
<b>Steals</b>	<b>8</b>	<b>7</b>
Steals per game	8.0	7.0
<b>Blocks</b>	<b>2</b>	<b>2</b>
Blocks per game	2.0	2.0
<b>Winning streak</b>	<b>1</b>	<b>-</b>
Home win streak	1	-
<b>Attendance</b>	<b>3800</b>	<b>0</b>
Home games-Avg/Game	1-3800	0-0
Neutral site-Avg/Game	-	0-0

### Team Results

Date	Opponent		Score	Att.
11/09/2021	Lamar University	W	71-54	3800



# THE UNIVERSITY OF NEW MEXICO

## 2021-22 WOMEN'S BASKETBALL



### NORTHERN N.M. STATISTICS

Overall Record: 3-1 Conf: 0-0 Home: 1-0 Away: 2-1 Neutral: 0-0

#	Player	GP-GS	MIN	AVG	FG		3PT		FT		Rebounds				PF	DQ	A	TO	BLK	STL	PTS	AVG
					FG-FGA	FG%	3FG-FGA	3FG%	FT-FTA	FT%	OFF	DEF	TOT	AVG								
22	Patterson, Chris'Alee	4-4	124	31.0	18-48	.375	6-15	.400	6-14	.429	5	10	15	3.8	6	0	9	12	1	5	48	12.0
4	Davis, Kristen	4-4	104	26.0	15-33	.455	1-1	1.000	9-16	.563	17	5	22	5.5	13	0	2	2	1	3	40	10.0
3	Salazar, Miranda	4-4	122	30.5	12-29	.414	4-15	.267	9-12	.750	7	10	17	4.3	12	0	8	8	0	5	37	9.3
11	Williams, Rachel	2-0	23	11.5	8-20	.400	0-5	.000	1-3	.333	2	10	12	6.0	4	0	1	1	0	2	17	8.5
1	Silva, Ethena	3-2	74	24.7	9-19	.474	0-2	.000	1-5	.200	2	9	11	3.7	5	0	2	5	2	2	19	6.3
0	Fontenette, Jaidyn	4-4	119	29.8	8-36	.222	3-17	.176	5-9	.556	2	9	11	2.8	9	0	18	17	0	7	24	6.0
23	Jordan, Heavyn	2-0	25	12.5	5-17	.294	1-10	.100	0-2	.000	0	5	5	2.5	6	0	3	6	1	6	11	5.5
24	Sorensen, Rebecca	4-0	65	16.3	6-19	.316	0-0	.000	3-5	.600	5	9	14	3.5	5	0	0	7	4	2	15	3.8
2	Williams, Kylira	4-0	38	9.5	3-9	.333	1-5	.200	2-3	.667	3	1	4	1.0	3	0	1	4	0	2	9	2.3
20	Valdez, Destiny	4-0	69	17.3	2-15	.133	1-10	.100	3-4	.750	2	5	7	1.8	6	0	5	3	0	1	8	2.0
33	Evans-Collins, See'Airrah	4-2	57	14.3	3-18	.167	0-2	.000	0-3	.000	12	9	21	5.3	8	0	1	3	0	2	6	1.5
10	Sharpe, Lalique	3-0	9	3.0	1-5	.200	1-2	.500	0-0	.000	1	1	2	0.7	0	0	0	2	0	1	3	1.0
<b>Total</b>		<b>4</b>	<b>829</b>	<b>207.3</b>	<b>90-268</b>	<b>.336</b>	<b>18-84</b>	<b>.214</b>	<b>39-76</b>	<b>.513</b>	<b>60</b>	<b>85</b>	<b>145</b>	<b>36.3</b>	<b>77</b>	<b>0</b>	<b>50</b>	<b>70</b>	<b>9</b>	<b>38</b>	<b>237</b>	<b>59.25</b>
<b>Opponents</b>			<b>801</b>	<b>200.3</b>	<b>95-234</b>	<b>.406</b>	<b>22-76</b>	<b>.289</b>	<b>53-85</b>	<b>.624</b>	<b>45</b>	<b>117</b>	<b>162</b>	<b>40.5</b>	<b>60</b>	<b>3</b>	<b>49</b>	<b>90</b>	<b>11</b>	<b>42</b>	<b>265</b>	<b>66.25</b>

Team Statistics	NORTHERN	OPP
SCORING	237	265
Points Per Game	59.3	66.3
Scoring Margin	-7.0	-
FIELD GOALS-ATT	90-268	95-234
Field Goal Pct	.336	.406
3 POINT FG-ATT	18-84	22-76
3PT FG Pct	.214	.289
3PT Made Per Game	4.5	5.5
FREE THROWS-ATT	39-76	53-85
FT Pct	.513	.624
FT Made Per Game	9.8	13.3
REBOUNDS	145	162
Rebounds Per Game	36.3	40.5
Rebounds Margin	-4.2	-
ASSISTS	50	49
Assists Per Game	12.5	12.3
TURNOVERS	70	90
Turnovers Per Game	17.5	22.5
Turnovers Margin	5.0	-
Assist/Turnover Ratio	0.7	0.5
STEALS	38	42
Steals Per Game	9.5	10.5
BLOCKS	9	11
Blocks Per Game	2.3	2.8
ATTENDANCE	0	100
Dates/Avg Per Date	1-0	3-33
Neutral Site #/Avg	-	0-0

Conf	Date	Opponent	W/L	Score	Att.
	10/28/21	at Southwest	W	58-53	0
	10/30/21	SOUTHWEST	W	73-68	0
	11/02/21	at Embry-Riddle	W	65-55	100
	11/03/21	at Benedictine Mesa	L	41-89	0

\* = Conference game

Score by Periods	1st	2nd	3rd	4th	Total
Northern New Mexico	50	60	74	53	237
Opponents	82	71	75	37	265



# THE UNIVERSITY OF NEW MEXICO 2021-22 WOMEN'S BASKETBALL



## NEW MEXICO GAME-BY-GAME

Opponent	Date	Score	Total		3-Pointers		Free throws		Rebounds				PF	A	TO	BLK	STL	PTS	AVG
			FG-FGA	PCT	3FG-3FGA	PCT	FT-FTA	PCT	OFF	DEF	TOT	AVG							
Lamar University	11/09/2021	71-54 W	26-57	.456	6-26	.231	13-15	.867	9	29	38	38.0	20	14	15	2	8	71	71.0
<b>Total</b>		<b>71</b>	<b>26-57</b>	<b>.456</b>	<b>6-26</b>	<b>.231</b>	<b>13-15</b>	<b>.867</b>	<b>9</b>	<b>29</b>	<b>38</b>	<b>38.0</b>	<b>20</b>	<b>14</b>	<b>15</b>	<b>2</b>	<b>8</b>	<b>71</b>	<b>71.0</b>
Opponents		54	18-52	.346	7-25	.280	11-23	.478	11	24	35	35.0	16	10	16	2	7	54	54.0



# THE UNIVERSITY OF NEW MEXICO 2021-22 WOMEN'S BASKETBALL



## NEW MEXICO GAME-BY-GAME LEADERS

Opponent	Date	Score	Points	Rebounds	Assists	Steals	Blocked shots
LAMAR	11/09/21	71-54	16-Antonia Anderson	6-Aniyah Augmon Jaedyn De La Cerda	9-LaTora Duff	3-Aniyah Augmon	1-Antonia Anderson LaTora Duff



# THE UNIVERSITY OF NEW MEXICO 2021-22 WOMEN'S BASKETBALL



## NEW MEXICO GAME-BY-GAME POINTS-REBOUNDS-ASSISTS

Opponent	Date	Score	5	10	11	12	13	23	32	33	34
Lamar University	11/09/2021	71-54 W	DUFF, LATOR	VAN BENNEK	SEREN, ZEYN	AUGMON, ANI	MCGRUDER, S	DE LA CERD	ANDERSON, A	CUMBER, VIA	PARKINSON,
			10-3-9	4-3-0	1-4-1	8-6-0	15-5-0	15-6-2	16-5-1	2-4-0	0-0-1



# THE UNIVERSITY OF NEW MEXICO 2021-22 WOMEN'S BASKETBALL



## NEW MEXICO GAME HIGHS

POINTS	71	Lamar University (11/09/2021)
FIELD GOALS MADE	26	Lamar University (11/09/2021)
FIELD GOAL ATTEMPTS	57	Lamar University (11/09/2021)
FIELD GOAL PERCENTAGE	.456 (26-57)	Lamar University (11/09/2021)
3 PT FG MADE	6	Lamar University (11/09/2021)
3 PT FG ATTEMPTS	26	Lamar University (11/09/2021)
3 PT FG PERCENTAGE	.231 (6-26)	Lamar University (11/09/2021)
FREE THROWS MADE	13	Lamar University (11/09/2021)
FREE THROW ATTEMPTS	15	Lamar University (11/09/2021)
FREE THROW PERCENTAGE	.867 (13-15)	Lamar University (11/09/2021)
REBOUNDS	38	Lamar University (11/09/2021)
ASSISTS	14	Lamar University (11/09/2021)
STEALS	8	Lamar University (11/09/2021)
BLOCKED SHOTS	2	Lamar University (11/09/2021)
TURNOVERS	15	Lamar University (11/09/2021)
FOULS	20	Lamar University (11/09/2021)



# THE UNIVERSITY OF NEW MEXICO

## 2021-22 WOMEN'S BASKETBALL



<b>POINTS</b>	16	Antonia Anderson vs Lamar University (11/09/2021)
	15	Shaiquel McGruder vs Lamar University (11/09/2021)
	15	Jaedyn De La Cerda vs Lamar University (11/09/2021)
	10	LaTora Duff vs Lamar University (11/09/2021)
	8	Aniyah Augmon vs Lamar University (11/09/2021)
<b>FIELD GOALS MADE</b>	7	Shaiquel McGruder vs Lamar University (11/09/2021)
	5	Antonia Anderson vs Lamar University (11/09/2021)
	5	Jaedyn De La Cerda vs Lamar University (11/09/2021)
<b>FIELD GOAL ATTEMPTS</b>	19	Jaedyn De La Cerda vs Lamar University (11/09/2021)
	11	LaTora Duff vs Lamar University (11/09/2021)
<b>FIELD GOAL PERCENTAGE (min 5 made)</b>	1.000	(7-7) Shaiquel McGruder vs Lamar University (11/09/2021)
	.556	(5-9) Antonia Anderson vs Lamar University (11/09/2021)
<b>3 PT FG MADE</b>	2	LaTora Duff vs Lamar University (11/09/2021)
	1	Antonia Anderson vs Lamar University (11/09/2021)
	1	Aniyah Augmon vs Lamar University (11/09/2021)
	1	Shaiquel McGruder vs Lamar University (11/09/2021)
	1	Jaedyn De La Cerda vs Lamar University (11/09/2021)
<b>3 PT FG ATTEMPTS</b>	9	LaTora Duff vs Lamar University (11/09/2021)
	8	Jaedyn De La Cerda vs Lamar University (11/09/2021)
<b>3 PT FG PERCENTAGE (min 2 made)</b>	.222	(2-9) LaTora Duff vs Lamar University (11/09/2021)
<b>FREE THROWS MADE</b>	5	Antonia Anderson vs Lamar University (11/09/2021)
	4	Jaedyn De La Cerda vs Lamar University (11/09/2021)
<b>FREE THROW ATTEMPTS</b>	5	Jaedyn De La Cerda vs Lamar University (11/09/2021)
	5	Antonia Anderson vs Lamar University (11/09/2021)
<b>FREE THROW PERCENTAGE (min 3 made)</b>	1.000	(5-5) Antonia Anderson vs Lamar University (11/09/2021)
	.800	(4-5) Jaedyn De La Cerda vs Lamar University (11/09/2021)
<b>REBOUNDS</b>	6	Aniyah Augmon vs Lamar University (11/09/2021)
	6	Jaedyn De La Cerda vs Lamar University (11/09/2021)
<b>ASSISTS</b>	9	LaTora Duff vs Lamar University (11/09/2021)
	2	Jaedyn De La Cerda vs Lamar University (11/09/2021)
<b>STEALS</b>	3	Aniyah Augmon vs Lamar University (11/09/2021)
	2	Antonia Anderson vs Lamar University (11/09/2021)
<b>BLOCKED SHOTS</b>	1	Antonia Anderson vs Lamar University (11/09/2021)
	1	LaTora Duff vs Lamar University (11/09/2021)
<b>TURNOVERS</b>	3	Shaiquel McGruder vs Lamar University (11/09/2021)
	3	Kath van Bennekom vs Lamar University (11/09/2021)
<b>FOULS</b>	4	Shaiquel McGruder vs Lamar University (11/09/2021)
	4	Kath van Bennekom vs Lamar University (11/09/2021)



# THE UNIVERSITY OF NEW MEXICO

## 2021-22 WOMEN'S BASKETBALL



### Game 1 | New Mexico vs. Lamar

Nov. 9, 2021 | Albuquerque, N.M.



Official Basketball Box Score - Final  
**Lamar University at New Mexico**  
 11/09/21 The Pit, Albuquerque  
 2021-22 Women's Basketball

Game Time: 7:00 PM  
 Game Duration: 1:43  
 Attendance: 3,800

Officials: Peter Contreras, Jerry Cusky, Denise Lopez

Lamar University - 54

Record: 0-1

NO. Name	Min	FG			3P			FT			Rebounds		Fouls		TP	AS	TO	ST	Blocks		+/-	
		M/A	M/A	M/A	M/A	M/A	M/A	OR	DR	TOT	PF	FD	BS	BA								
41 Akasha Davis	C 26:25	5-6	0-0	2-8	2	1	3	3	7	12	0	3	1	0	0	-8						
0 Kayla Mitchell	G 27:57	2-8	0-1	0-0	2	4	6	1	0	4	2	3	2	0	1	-9						
3 Sabria Dean	G 33:04	4-9	2-5	4-7	1	2	3	2	6	14	2	1	0	0	0	-17						
10 Malay McQueen	G 28:44	5-11	3-7	0-0	1	2	3	1	1	13	0	2	2	0	0	-14						
21 Anyssia Gibbs	G 33:08	1-6	1-6	0-0	2	9	11	4	1	3	3	4	1	1	0	-13						
2 Angel Hastings	26:44	0-9	0-4	3-4	0	0	0	2	2	3	3	0	0	0	1	-11						
12 Micaela Wilson	09:32	1-3	1-2	0-2	1	0	1	0	1	3	0	0	1	1	0	-7						
22 NJ Weems	10:55	0-0	0-0	0-0	1	2	3	2	1	0	0	3	0	0	0	-6						
1 Hope Lemelle	03:31	0-0	0-0	2-2	0	0	0	1	1	2	0	0	0	0	0	0						
Team					1	4	5			0	0											
Totals		18-52	7-25	11-23	11	24	35	16	20	54	10	16	7	2	2	-17						

Shooting By Period

1 <sup>st</sup> FG%	5-12	41.7%
3PT%	4-9	44.4%
FT%	1-4	25%
2 <sup>nd</sup> FG%	4-14	28.6%
3PT%	1-5	20.0%
FT%	4-6	66.7%
3 <sup>rd</sup> FG%	2-11	18.2%
3PT%	1-7	14.3%
FT%	4-8	50%
4 <sup>th</sup> FG%	7-15	46.7%
3PT%	1-4	25.0%
FT%	2-5	40%
GM FG%	18-52	34.6%
3PT%	7-25	28.0%
FT%	11-23	47.8%

Dead Ball Rebounds: 6, 0

Technical Fouls: NONE

New Mexico - 71

Record: 1-0

NO. Name	Min	FG			3P			FT			Rebounds		Fouls		TP	AS	TO	ST	Blocks		+/-	
		M/A	M/A	M/A	M/A	M/A	M/A	OR	DR	TOT	PF	FD	BS	BA								
13 Shaiquell McGruder	F 22:09	7-7	1-1	0-0	2	3	5	4	2	15	0	3	1	0	0	7						
32 Antonia Anderson	F 28:29	5-9	1-3	5-5	2	3	5	3	4	16	1	2	2	1	1	14						
5 LaTora Duff	G 34:32	3-11	2-9	2-2	0	3	3	3	3	10	9	1	0	1	0	15						
11 Zeyno Sereen	G 13:50	0-1	0-1	1-2	0	4	4	1	1	1	1	0	0	0	0	1						
23 Jaedyn De La Cerda	G 38:38	5-19	1-8	4-5	2	4	6	2	4	15	2	2	1	0	1	18						
12 Anyyah Augmon	23:03	3-3	1-1	1-1	0	6	6	2	2	8	0	2	3	0	0	16						
10 Kath van Bennekorn	19:53	2-3	0-0	0-0	3	0	3	4	0	4	0	3	0	0	0	8						
33 Vianeh Cumber	15:26	1-4	0-3	0-0	0	4	4	1	0	2	0	1	1	0	0	1						
34 Nevaeh Parkinson	04:00	0-0	0-0	0-0	0	0	0	0	0	0	1	0	0	0	0	5						
Team					0	2	2			0	1											
Totals		26-57	6-26	13-15	9	29	38	20	16	71	14	15	8	2	2	17						

Shooting By Period

1 <sup>st</sup> FG%	6-14	42.9%
3PT%	2-8	25.0%
FT%	3-3	100%
2 <sup>nd</sup> FG%	5-15	33.3%
3PT%	1-6	16.7%
FT%	7-9	77.8%
3 <sup>rd</sup> FG%	7-13	53.8%
3PT%	1-4	25.0%
FT%	3-3	100%
4 <sup>th</sup> FG%	8-15	53.3%
3PT%	2-8	25.0%
FT%	0-0	0%
GM FG%	26-57	45.6%
3PT%	6-26	23.1%
FT%	13-15	86.7%

Dead Ball Rebounds: 0, 0

Technical Fouls: NONE

	LAMU	UNM	Points from	LAMU	UNM	Period by Period Scoring					
Biggest lead	0 (1 <sup>st</sup> 10:00)	17 (4 <sup>th</sup> 2:25)	Turnovers	14	20	1st	2nd	3rd	4th	TOT	
Best Scoring Run	8 (1 <sup>st</sup> 5:51)	9 (3 <sup>rd</sup> 3:38)	Paint	20	38	LAMU	15	13	9	17	54
Lead Changes	0		Second Chance	7	9	UNM	17	18	18	18	71
Times Tied	2		Fast Breaks	4	27						
Time with Lead	00:00	37:45	Bench	8	14						