

# THE UNIVERSITY OF NEW MEXICO SOFTBALL



2022 SOFTBALL NOTES | WEEK 3

@UNMLoboSB

www.GoLobos.com

#GoLobos

Allison Weiss, Assistant Director of Athletic Communications - Softball Contact | Email: allisonweiss@unm.edu | Cell: (661) 313-5402

## 2022 SCHEDULE

OVERALL: 6-3 • MW: 0-0 • H: 0-0 • A: 2-1 • N: 4-2

Date	Opponent	Time/Score
<b>Candrea Classic</b> Tucson, Ariz.		
2/11	Oregon State	W, 3-2
2/12	Southern Utah	W, 8-0 (6)
2/13	#2 Alabama	L, 8-3
2/13	at #9 Arizona	L, 1-0
<b>Lamar Invitational</b> Beaumont, Texas		
2/18	Ohio	W, 3-2
2/18	at Lamar	W, 2-1
2/19	at Lamar	W, 6-4 (12)
2/19	Creighton	L, 5-2
2/20	Ohio	W, 9-1 (5)
<b>Lobo Classic</b> Albuquerque, N.M.		
2/24	UTEP	4 p.m.
2/25	North Dakota State	5:30 p.m.
2/26	Buffalo	5:30 p.m.
2/27	Tarleton State	12:30 p.m.
<b>South Coast Invitational</b> Santa Barbara, Calif.		
3/3	at UCSB	12 p.m.
3/3	at UCSB	2:30 p.m.
3/4	Wagner	10:30 a.m.
3/4	Santa Clara	3 p.m.
3/5	Santa Clara	10:30 a.m.
3/8	New Mexico State	2 p.m.
3/8	New Mexico State	4:30 p.m.
<b>Dixie State Tournament</b> St. George, Utah		
3/11	Southern Utah	12:30 p.m.
3/11	at Dixie State	5:30 p.m.
3/12	Wisconsin	10 a.m.
3/12	Maine	3 p.m.
3/13	Wisconsin	10 a.m.
3/18	at San José State *	7 p.m.
3/19	at San José State *	4 p.m.
3/20	at San José State *	1 p.m.
3/22	at New Mexico State	4 p.m.
3/25	Utah State *	6 p.m.
3/26	Utah State *	4 p.m.
3/27	Utah State *	12 p.m.
3/31	at BYU	5 p.m.
3/31	at BYU	7 p.m.
4/1	at BYU	1 p.m.
4/8	at Colorado State *	4 p.m.
4/9	at Colorado State *	1 p.m.
4/10	at Colorado State *	12 p.m.
4/14	Fresno State *	6 p.m.
4/15	Fresno State *	4 p.m.
4/16	Fresno State *	11 a.m.
4/22	at Nevada *	4 p.m.
4/23	at Nevada *	2 p.m.
4/24	at Nevada *	1 p.m.
4/29	UNLV *	6 p.m.
4/30	UNLV *	4 p.m.
5/1	UNLV *	12 p.m.
5/6	at Boise State *	4 p.m.
5/7	at Boise State *	4 p.m.
5/8	at Boise State *	12 p.m.
5/12	San Diego State *	6 p.m.
5/13	San Diego State *	4 p.m.
5/14	San Diego State *	12 p.m.

Bold denotes home games  
 \*denotes Mountain West game  
 All times listed are Mountain Time  
 Game times are subject to change

## LOBO CLASSIC



### NEW MEXICO Lobos

Record ..... 6-3, 0-0 Mountain West  
 Head Coach ..... Paula Congleton  
 Record at UNM ..... 53-134 (Fifth Season)  
 Career Record (NCAA DI) ..... 86-211 (Sixth Season)



### UTEP Miners

Record ..... 5-6, C-USA  
 Head Coach ..... T.J. Hubbard  
 Record at UTEP ..... 21-49 (Third Season)  
 Career Record ..... 234-296-1 (12th season)



### NORTH DAKOTA STATE Bison

Record ..... 7-2, Summit  
 Head Coach ..... Darren Mueller  
 Record at NDSU ..... 677-397 (21st Season)  
 Career Record ..... Same



### BUFFALO Bulls

Record ..... 3-2, MAC  
 Head Coach ..... Mike Ruechel  
 Record at UB ..... 33-80-1 (Fourth Season)  
 Career Record ..... Same



### TARLETON Texans

Record ..... 10-0, WAC  
 Head Coach ..... Mark Cumpian  
 Record at TSU ..... 171-88 (Sixth Season)  
 Career Record ..... Same

## Media Information

**Location:**..... Lobo Softball Field  
**Date/Time:**  
 UTEP ..... Thursday, Feb. 24 - 4 p.m.  
 NDSU ..... Friday, Feb. 25 - 5:30 p.m.  
 Buffalo ..... Sat., Feb. 26 - 5:30 p.m.  
 Tarleton ..... Sun., Feb. 27 - 12:30 p.m.  
 \*All times in MT

**Live Video:**..... MW Network  
**Live Stats:**..... [golobos.com/sbstats](http://golobos.com/sbstats)  
**Social Media:** ..... @UNMLoboSB

Notes last updated: Feb. 22, 2022

## Series History

### VS. UTEP

Overall: 16-12  
 Last Five: 1-4  
 Last Meeting: 4/9/19 (L, 7-1)  
 Last Win: 2/8/19 (15-6)  
 Series Trend: L1

### VS. NDSU

Overall: 1-0  
 Last Five: 1-0  
 Last Meeting: 3/9/07 (W, 9-1(5))  
 Last Win: Same  
 Series Trend: W1

### VS. BUFFALO

Overall: 2-0  
 Last Five: 2-0  
 Last Meeting: 3/1/14 (W, 5-2)  
 Last Win: Same  
 Series Trend: W2

### VS. TARLETON

Overall: First meeting  
 Last Five: N/A  
 Last Meeting: N/A  
 Last Win: N/A  
 Series Trend: N/A

## BREAK OPEN THE RECORD BOOK

- At 6-3 entering the Lobo Classic, the Lobos are off to the best start in program history since 2012, when the Lobos started 9-0. The Lobos twice went 5-4 in that timespan (2020 and 2016).

## THE HONOR IS ALL OURS

- After a 4-1 week at the Cardinal Classic, Emma Bramson and Andrea Howard have been named the Mountain West Freshman and Player of the Week, respectively, as announced by the conference on Tuesday.
- It is the second time that Howard has been selected for the player of the week honor and the first



# NEWS AND NOTES

## GENERAL INFORMATION

Name of School.....	University of New Mexico
City/Zip.....	Albuquerque, N.M. 87106
Founded.....	1889 by Territorial Legislature
Enrollment.....	25,015
Nickname.....	Lobos
School Colors.....	Cherry & Silver
Conference.....	Mountain West
Affiliation.....	NCAA Division I
President.....	Dr. Garnett Stokes
Athletic Director.....	Eddie Nuñez

## PROGRAM HISTORY

First Year of Softball.....	1978
All-Time Record.....	1021-1170-3
Mountain West Record.....	132-305-1
NCAA Tournament Appearances.....	3
1980 (AIAW), 1981 (AIAW) and 1983 (NCAA)	
Last NCAA Postseason Opponent.....	Cal State Fullerton
Last NCAA Postseason Result.....	CSUF won series 2-1
Conference Championships.....	3
1980 (Intermountain), 1981 (Intermountain) and 1983 (High Country)	

## TEAM INFORMATION

2021 Overall Record.....	10-36
2019 MW Record.....	9-15 (7th)
Letterwinners Returning/Lost.....	13/6
Pitchers Returning/Lost.....	3/2
Starters Returning/Lost.....	6/3
Newcomers.....	10

## SOFTBALL STAFF

Head Coach.....	Dr. Paula Congleton (New Mexico, 1984)
Year at UNM.....	Fifth season
Record at UNM (Pct.).....	53-134 (.283)
MW Record at UNM (Pct.).....	19-53 (.247)
Career Record (Years).....	86-211 (6 years)
Assistant Coach.....	Kristen Hawkins (Virginia, 2013)
Year at UNM.....	First Season
Assistant Coach.....	Brandon Maurer (Cal State Fullerton, 2015 & 18)
Year at UNM.....	Second season
Volunteer Assistant Coach.....	Mike Forsythe
Year at UNM.....	First season
Strength Coach.....	Joaquin Chavez
Academic Advisor.....	Madison Steinbrock
Head Athletic Trainer.....	Bob Waller
Athletic Trainer.....	Kellyanne Gangaware

## COMMUNICATIONS

Softball Contact/Asst. Director of Comm.....	Allison Weiss
Email.....	allisonweiss@unm.edu
Cell Phone (Preferred).....	(661) 313-5402
Communications Office.....	(505) 925-5520

## DIGITAL MEDIA

Athletics Website.....	GoLobos.com
Main University Web Site.....	unm.edu
Conference Website.....	TheMW.com
Twitter.....	@UNMLoboSB
Instagram.....	@UNMLoboSB
Facebook.....	@UNMLoboSB

## FACILITIES

Venue.....	Lobo Softball Field
Dimensions.....	205-225-205
Capacity.....	1,500

for the freshman Bramson.

- Howard had a sensational weekend at the plate, with a .471 batting average, a .941 slugging percentage, a .500 on-base percentage, finishing with eight hits, two doubles, two home runs, 16 total bases and eight RBI. Howard led the team in batting average, slugging percentage, on-base percentage, runs scored (five), hits, RBI, doubles, home runs and total bases.
- The Albuquerque native had multiple hits in three of the games, and went 3-for-4 in the extra-inning win over Lamar while also intentionally walked twice. Howard recorded three RBI in the 6-4, 12-inning win against the host Cardinals, had three RBI in the 9-1 (five innings) win over Ohio on Sunday and two RBI in the 4-2 win over Ohio on Friday.
- It wasn't just her efficiency at the plate that made Howard dangerous, it was also when she delivered her hits. Trailing 2-0 in the sixth in the second game against Lamar, Howard tied the game with a two-run home run which ultimately allowed the Lobos to go to extra innings. The outfielder was intentionally walked in the eighth and 10th inning and when she was pitched to in the 12th, hit a single up the middle that scored a run to make it 5-3 Lobos. UNM went on to win 6-4.
- Bramson was nearly as clutch, recording six hits and four RBI, while hitting .353 and having a .368 on-base percentage. The Valencia, Calif., native was 7-for-11 in advancing runners and had a hit in four of the games with two games with two hits.
- The infielder drove in the first run of the game in Friday's game against Lamar on a single up the middle, and in Saturday's game against Lamar, hit a sacrifice fly in the 11th inning to score a run, which proved crucial after Lamar scored in the bottom of the 11th.
- Against Ohio on Sunday, Bramson battled to draw a walk to start the second inning, working a full count on a nine-pitch at-bat where the freshman fouled off three-straight pitches and was behind 1-2 in the count. She eventually came around to score for the first run of the game to tie the game. In the next inning, the freshman single to right field to score Howard for the second run and in the fifth inning, Bramson ended the game with a single through the right side of the infield to score the nine run of the game and pushed the Lobos into run-rule territory, effectively ending the game.
- On the weekend, Bramson was second on the team in hits and RBI, tied for second in total bases, third in batting average, and fourth in on-base percentage.

## UNTIL THE JOB IS DONE

- The Lobo softball team played in the third-longest game in program history on Saturday afternoon, going 12 innings before defeating host Lamar 6-4. It was the second-straight game against the Cardinals for the Lobos, with UNM winning 2-1 in the first meeting.
- It wasn't until the sixth that the Lobos broke through. Pinch hitting for New Mexico to start the sixth, Olivia Birkinshaw hit a triple to left field, and on the first pitch of the next at-bat, Andrea Howard tied the game with a home run to center for her second home run of the season. Lamar threatened to break the tie at the bottom of the inning with two runners in scoring position, but Emma Guindon (who entered in the fourth inning) recorded the third out on a swinging strikeout.
- Another run wasn't scored until the 11th inning, when after Tuck was placed on second to start the inning and moved to third on a wild pitch, Bramson hit a sacrifice fly to center that allowed Tuck to score. However, Lamar matched the run in the bottom of the 11th on a single up the middle to score its runner that was placed on second.
- The Lobos finally put the game away in the 12th with a sacrifice bunt by Broderick moving Janae Cameron over to third and a sacrifice fly to center by Young bringing Cameron in. Birkinshaw and Howard kept the inning going with consecutive singles to the outfield, with Birkinshaw scoring on Howard's hit. Romero brought in the third run of the inning on a double to center that scored Howard.
- Leading 6-3, Lamar added one final run on a grounder to second that moved the runner on second over and a wild pitch that scored the run. The Cardinals did have the tying run at the plate following a walk but a grounder to Ashley Archuleta at second ended the game.
- The Lobos used three pitchers in the game, with Samantha Fohrman going 3.0 innings before Guindon entered in the fourth and pitched 6.1 innings, with Amber Linton entering in the 10th to pitch the remaining 2.2 innings. Linton improved to 3-1 on the year with the decision.
- UNM struck out 10 batters with Guindon responsible for seven, Linton three and Fohrman one.

## PITCH PERFECT

- In the first two games of the 2022 season, the Lobos had two pitchers throw double-digit strikeouts and a near no-hitter.
- Making her first appearance in the circle for New Mexico, Amber Linton threw 10 strikeouts against Pac-12 school Oregon State. Of the 10 strikeouts, half came in the final nine outs, with three in the seventh as the Lobos held a one-run lead.
- Holding on to a 3-2 lead in the seventh, two Beaver batters reached base, but Linton closed with three strikeouts to close the door for the Lobo win.
- Emma Guindon recorded a career-high 11 strikeouts and allowed just one hit with no walks in the 8-0, six-inning win over Southern Utah on Feb. 12. With a 3-0 lead, Guindon was efficient in the circle, retiring the side on three strikeouts (two looking) in the fourth and recorded three more strikeouts in the fifth. Guindon struck out her seventh batter in-a-row to start the sixth for her final strikeout of the game.
- Against SUU, of Guindon's 83 pitches, 58 went for strikes, and of Linton's 137 pitches on Friday, 89 went for strikes
- The last time a Lobo pitcher recorded double-digit strikeouts was in 2019, with the two double-digit strikeouts only the fourth time in the last nine years that a Lobo has struck out 10 or more batters. However, in that timespan, the Lobos have never had two pitchers record 10 or more strikeouts in a game in the same year.
- At the Cardinal Classic, Guindon appeared in three games with a start and threw 12.1 innings, finishing with a 0.57 ERA. The RHP struck out 12, walked just two and allowed one run.
- Linton appeared in four games with two starts, and a complete game, and went 3-0 with a save

# NEWS AND NOTES

as well. The sophomore threw a team-high 14.2 innings, striking out 13 with six walks, didn't allow a single extra-base hit and finished with a 0.95 ERA.

- As a staff, the Lobos finished with a 1.70 ERA at the Cardinal Classic, striking out 28 while walking 11.
- Through the first two weekends of the season, the Lobo pitching staff has a 2.15 ERA and has thrown three complete games and recorded a shutout.
- Guindon has a 0.58 ERA with three starts and five appearances, throwing one complete game. Samantha Fohrman has a 1.75 ERA with two appearances and a start and Linton has a 2.58 ERA with six appearances, four starts, two complete games and a save.
- Guindon and Linton have thrown the most innings on the team with 24.1 and 21.2, respectively, with Guindon striking out 25 and Linton 23. Guindon has walked just three batters while Linton has walked nine.
- As a unit, the Lobo pitchers have struck out 53 while walking 17.
- Guindon ranks 31st in the NCAA in ERA with her 0.58, and is the third-best ERA in the conference.

## HOME RUN HOWARD RETURNS

- After leading the Lobos with 12 home runs last season, Andrea Howard picked right back up from where she left off, hitting a home run in the first inning against Southern Utah to give the Lobos an early 1-0 lead.
- She added two in the Cardinal Classic, including a clutch two-run home run to tie the game at the top of the sixth against Lamar, allowing the Lobos to extend the game to extra innings. The Lobos went on to win 6-4 in 12 innings.
- Howard now has 32 home runs in her career, placing her fifth all-time in home runs, two away from fourth and seven away from tying the program record set by Stefanie Carramusa (2010-12).
- Besides leading with three home runs, Howard leads the Lobos in batting average (.379), slugging percentage (.759), on-base percentage (.424), RBI (10), hits (11), runs scored (eight) and total bases (22). She is also tied for the team high in doubles with two.
- The Lobo outfielder also leads the team with three multiple-RBI games, one game with two and two games with three.

## NO INTRO LEVEL HERE

- The Lobos added 10 newcomers in the offseason, with several called upon from game one.
- New Mexico added two transfer pitchers in Amber Linton (Indiana) and Samantha Fohrman (Georgian Court) who already have proven to be game-changers in the circle, and three freshmen infielders that started opening day in Emma Bramson, Ashley Archuleta and Olivia Birkinshaw.
- UNM also added Janae Cameron behind the plate to provide veteran depth at the catcher position with Sydney Broderick.
- In the opening weekend, Archuleta started all four games at second, Bramson started all four games at third and Birkinshaw started two games, once as the designated player and once at first. Birkinshaw recorded her first collegiate hit against then-No. 9 Arizona, a double, and Archuleta recorded three hits on the weekend with her first against Oregon State. Archuleta also recorded a team-high three RBI in the win against Southern Utah, and Bramson's first hit came against No. 2 Alabama, which also produced her first RBI.
- In her first appearance with the Lobos, Cameron hit a two-run home run in the win over Southern Utah.
- Birkinshaw is second on the team in on-base percentage (.421), third in slugging percentage (.467) and fourth in batting average (.267), while hitting a double and a triple this season.
- Bramson and Archuleta have started all nine games this season, with Bramson and Archuleta tallying seven hits to date and Bramson second on the team in RBI (5) and Archuleta fifth in on-base percentage (.323) and tied for second with three walks.

## KEEP ON KEEPING ON

- Five different Lobos enter the weekend with on-base streaks greater than a game, led by eight games by Reyan Tuck. Peyton Robinson has a five-game streak of reaching base, Briana Martinez and Taryn Young each have a three-game streak and Emma Bramson has a two-game streak of reaching base.
- Tuck has an eight-game hitting streak, with Martinez and Bramson on a two-game hitting streak.

## SETTING THE TONE IN WEEK 1

- During the opening weekend, the Lobos had four gritty performances against four quality teams, two of which were ranked in the top 10 in the country. The Lobos won their first two games in different fashions, the first a one-run game against a Power 5 school in Oregon State, and a run-rule win over Southern Utah with the offense out hitting the Thunderbirds 7-1. The Lobos fell 8-3 to No. 2 Alabama and took No. 9 Arizona to the brink in a 1-0 final.
- The three runs scored by UNM were the most runs scored against the Crimson Tide in the Candrea Classic and was just the second team to score a run against Alabama (Oregon State scored one). In addition, UNM had six hits in the game, the most hits allowed by Alabama on the weekend.
- In the circle, Emma Guindon threw another stellar game with a complete game against the Wildcats, allowing just one run and striking out two, while Ashlyn Roberts threw 5.0 innings of relief to start the day against Alabama, striking out two as well. Samantha Fohrman made her Lobo debut against the Crimson Tide, throwing 1.0 inning and allowing one run on one hit.
- Against Alabama, the Lobos got on the board in the top of the sixth on a solo home run to left by Taryn Young. Young also had a single in the third for UNM's first hit of the game. Trailing 8-1 in the top of the seventh, the Lobos continued to battle, scoring two runs. Peyton Robinson led off the inning with a single through the right side followed by a single by Andrea Howard. Leslie Romero advanced both runners on her at-bat and Emma Bramson brought the first run in on a single through the right side. A sacrifice fly to center by Briana Martinez allowed Howard to tag for the second run and for the final runs of the game.
- Reyan Tuck currently has a three-game streak of reaching base and a three-game hitting streak following the Candrea Classic, with Ashley Archuleta, Janae Cameron and Olivia Birkinshaw having a one-game hit streak entering the Cardinal Classic.
- Leslie Romero led with four hits on the weekend and a .400 batting average, with Birkinshaw having a team-high .667 on-base percentage and Cameron having a team-best 1.333 slugging percentage following a two-run home run against SUU.
- The Lobos recorded three doubles and three home runs, scoring 14 runs on 20 hits. Nine players recorded at least one hit through the four games with six having multiple hits at the classic

## THANK YOU, T.Y.

- Outfielder Taryn Young was stellar at the plate and in right field at the Candrea Classic.
- After the Thunderbirds had their leadoff hitter reach base on a fielding error and reached second on a stolen base, Young erased the threat on a throw home to Janae Cameron, who easily made the tag to preserve the 1-0 lead.
- At the plate, Young got the Lobos on the board against Alabama on a solo home run to left and also had a single in the third for UNM's first hit of the game.

## EMBRACE THE CHALLENGE

- New Mexico has a history of playing top teams in the non-conference season. Last season, the non-conference portion of the schedule was heavily loaded with Power 5 programs, including two Pac-12 schools and four Big 12 schools, and with two teams in the top four of the preseason ESPN.com/USA Softball Collegiate Top 25 poll and four in the top 10, as well as two in the top four of the 2021 USA Today / NFCA Division I Top 25 Poll and three in the top six.
- This season, the Lobos opened the season against two top-10 teams in No. 2/2 Alabama and No. 9/11 Arizona, two teams that competed in the Women's College World Series last season.
- UNM will face three NCAA Tournament participants from a year ago in Arizona, Alabama and BYU and four Power 5 schools (Oregon State, Arizona, Alabama and Wisconsin) in the non-conference portion of the schedule, and has renewed the in-state rivalry series with New Mexico State with three games planned between the Lobos and Aggies.



# NEWS AND NOTES

## **SOMETHING TO PROVE**

- UNM was picked seventh in the Mountain West preseason poll.
- Last season, New Mexico won a Mountain West series for the first time since May 2018 (when UNM took two out of three against San Diego State) with a series win against Boise State. In addition, it was the first series win over Boise State since 2016.
- The Lobos ended the season winning four of their final five games and three of their final four series, including two of their final three series.

## **WELCOME BACK**

- Three seniors decided to use their extra year of eligibility. Outfielders Andrea Howard and Taryn Young, as well as catcher Sydney Broderick, returns to the Lobos for one more year and add some stability to the outfield and behind the plate.
- Howard led the Lobos last season in batting average (.336), slugging percentage (.728), hits (42), RBI (33), home runs (12), total bases (91) and walks (21). The Lobo was also second in on-base percentage (.427) and tied for the team lead in triples (two). Further, the Albuquerque native led the Mountain West in home runs, was tied for first in slugging percentage and total bases, tied for second in walks and tied for third in RBI. In just MW games, led the conference in home runs (eight), was second in slugging percentage (.809), third in total bases (55) and tied for third in walks (12). She finished the season on a six-game streak of reaching base.
- In addition, the Lobos return Emma Guindon, Ashlyn Roberts and Brianna Sanchez in the circle, Peyton Robinson and Diamond Sandoval in the outfield and Briana Martinez and Rachael Hathoot in the infield. With the graduation of Cameryn O'Grady, Martinez has moved to shortstop.

## **SCOUTING UTEP**

- UTEP enters the Lobo Classic 5-6 and have lost its last four. The Miners took part in the Littlewood Classic last weekend, losing to Minnesota (10-1), Portland State (4-1), California (13-1) and Arizona State (10-0). UTEP defeated Illinois State 4-3 to start the classic.
- Lexi Morales leads the Miners with a .462 batting average and 12 hits and also has a .500 slugging percentage and .576 on-base percentage with seven walks. Four different Miners have hit a home run this season in Pate Cathey, Ajia Richard, Karina Somoza and Cheyenne Stark. Cathey and Richard are also two of four players with two doubles and Cathey is tied with Morales with 13 total bases.
- Savannah Favre leads the team with three stolen bases on three attempts and Autumn Scott is also perfect with two stolen bases on two attempts. As a team, the Miners are 7-for-8 in stolen bases.
- UTEP has used five pitchers through its 11 games, with Aalijah Alarcon pitching a team-high 23.2 innings with seven appearances and six starts, throwing two complete games and earning a save. Alarcon has a 1.69 ERA with 17 strikeouts and seven walks, 33 hits and 21 runs allowed (16 earned) and is 2-2. Zaylie Calderon has thrown 16.0 innings with a 6.13 ERA and has appeared in six games with two starts. Annika Litterio has thrown 12.0 innings with a 2.08 ERA and has appeared in five games with three starts. As a staff, UTEP carries a 6.12 ERA, allowing 98 hits, 70 runs (60 earned), striking out 54 and walking 34. UTEP has given up 18 home runs and 17 doubles.
- The Miners have already had a common opponent with the Lobos in Creighton, with the Miners winning both games (7-4 and 8-7).

## **SCOUTING NORTH DAKOTA STATE**

- North Dakota State are 7-2 on the season and have won its last five games. In their most recent games at the GATA Challenge, the Bison beat UT Martin (10-0, five innings), Maine (12-2 and 8-2) and Georgia Southern (5-0). The Bison also beat Utah State 15-9 to start their five-game win streak.
- Molly Gates leads the Bison with a .469 batting average, 15 hits, 21 total bases, and a .525 on-base percentage and is tied for the team lead with six doubles. Cameryn Maykut has a team-high 18 RBI and is tied with Emilee Buringa for the team high in home runs with two. Buringa is also hitting over .400 with a .407 batting average.
- In the circle, NDSU has used three pitchers with Paige Vargas throwing a team-high 28.2 innings and making six appearances with five starts. Vargas has thrown four complete games, has struck out 30 with eight walks and has a 1.71 ERA. Mac Schulz has a 0.79 ERA with 17.2 innings in four appearances, two starts and one complete game. She has walked five and struck out six, but is allowing just two runs on 18 hits. Savy Williams has thrown 12.1 innings with three appearances and two starts with one complete game. As a staff, the Bison have a 2.74 ERA, allowing 28 runs on 60 hits (23 earned) and have struck out 42 with 19 walks.
- Buringa was named the Summit League Player of the Week on Monday after hitting .636 (7-for-11) with a home run and a double. She drove in seven runs and scored five more, while also recording a stolen base. She finished the weekend with a 1.000 slugging percentage and an OPS of 1.615.
- North Dakota State was picked to finish in a tie for second in The Summit League with one first-place vote.

## **SCOUTING BUFFALO**

- Buffalo opened its season last weekend, going 3-2 with wins over Cleveland State (4-1 and 5-4) and Penn State (5-3) and losses to Florida International (7-1 and 4-3).
- The Bulls were led at the plate by Madison Fernimen, who hit .429 with a .643 slugging percentage and .579 on-base percentage, and recorded six hits, five walks, three doubles and nine total bases. Alexis Lucyshyn recorded six RBI with a home run and a double and four total hits.
- Buffalo used four pitchers with Julia Tarantino throwing 20.0 of the team's 33.1 innings. The RHP started three games and threw two complete games, allowing nine runs on 20 hits, striking out eight and walking three. Tarantino has a 3.15 ERA. Alexis Lucyshyn started two games but made three appearances, throwing 8.2 innings and allowing nine runs on 13 hits with three walks and a strikeout and has a 6.46 ERA. As a staff, Buffalo has a 3.78 ERA, allowing 19 runs on 36 hits and has struck out 12 while walking seven.

## **SCOUTING TARLETON**

- Tarleton enters the Lobo Classic 10-0 with wins over Syracuse (2-1), Prairie View A&M (10-2 (6) and 11-8), Alabama State (7-3) and Texas A&M-Corpus Christi at the Whataburger Softball Invitational last weekend.
- Georgia Capell leads the Texans with 14 hits, 28 total bases, 13 RBI and an .875 slugging percentage, .438 batting average and is tied for the team high in home runs with four. Tristyn Trull has a team-high four doubles and Brady Rowland leads with nine walks and has 12 hits, three home runs and 23 total bases with a team-best .568 on-base percentage. On the base paths, Tarleton is 8-for-9 in stolen bases with four players attempting at least one stolen base.
- In the circle, the Texans have used seven pitchers, led by Tristan Bridges who has thrown 24.0 innings with four appearances, three starts and two complete games. The LHP has 23 strikeouts and has 12 walks, allowing six runs (four earned) on 14 hits, and carries a 1.17 ERA. Reagan Chism has thrown 11.0 innings with three appearances, two starts and a complete game, and has a 0.64 ERA with six strikeouts, three walks, seven hits, two runs (one earned). As a staff, the Texans hold a 2.12 ERA with 64 strikeouts to 39 walks, allowing 27 runs on 55 hits (20 earned).
- Brady Rowland was named the WAC Hitter of the Week, tying for the team high with six RBI while hitting .462 with two doubles, two home runs, and four runs scored.
- This will be the first meeting for New Mexico and Tarleton.

# NEWS AND NOTES

## STAT COMPARISON

	UTEP	NDSU	BU	TSU
BA	.246	.352	.220	.330
R	36	84	18	79
H	64	89	28	94
2B	13	33	6	17
3B	0	2	0	2
HR	4	6	2	18
RBI	31	81	15	64
BB	36	46	26	32
SO	55	36	42	45
ERA	6.12	2.74	3.78	2.12
SO	54	42	12	64
BB	34	19	7	39
H	98	60	36	55
R	70	28	19	27
ER	60	23	18	20
DP	14	3	8	15
FLD%	.940	.984	.962	.962

Hitting

Pitching

Fld.

## ESPN.COM/USA SOFTBALL COLLEGIATE TOP 25

WEEK 1 • FEB. 15

Rk.	Team (1st Votes)	Pts.	Rec	Prev.
1.	Oklahoma (24)	10-0	624	1
2.	Alabama	9-0	596	2
3.	Florida State (1)	10-0	570	6
4.	Florida	10-0	547	4
5.	Washington	9-1	527	5
6.	UCLA	7-3	505	3
7.	Virginia Tech	8-2	463	8
8.	Arkansas	7-3	382	10
9.	Clemson	6-3	370	12
10.	Arizona	7-2	367	11
11.	Oregon	8-1	354	13
12.	Oklahoma State	6-4	347	7
13.	Duke	8-2	339	14
14.	Kentucky	9-1	284	19
15.	Northwestern	7-2	276	23
16.	Michigan	5-4	203	16
17.	Tennessee	6-3	190	15
18.	Georgia	9-2	178	18
19.	Missouri	8-3	170	17
20.	Louisiana	6-0	169	20
21.	Auburn	9-1	137	25
22.	Arizona State	7-3	129	21
23.	LSU	6-5	89	22
24.	Texas	5-6	75	9
25.	South Florida	6-2	71	RV

Others receiving votes: Texas A&M (42), UCF (39), Notre Dame (30), Wisconsin (10), Illinois (8), Minnesota (8), BYU (7), James Madison (6), Baylor (3), San Diego State (3), Stanford (3), Oregon State (2), LMU (1).

## USA TODAY/ NFCA COACHES TOP 25 POLL

WEEK 1 • FEB. 15

Rk.	Team (1st Votes)	Pts.	Rec	Prev.
1	Oklahoma (32)	800	10-0	1
2	Alabama	765	9-0	2
3	Florida State	728	10-0	5
4	Florida	710	10-0	4
5	Washington	662	9-1	6
6	UCLA	638	7-3	3
7	Virginia Tech	591	8-2	8
8	Arizona	532	7-2	9
9	Oregon	470	8-1	12
10	Arkansas	462	7-3	10
11	Oklahoma State	449	6-4	7
12	Kentucky	448	9-1	16
13	Duke	427	8-2	14
14	Clemson	389	6-3	15
15	Georgia	380	9-2	13
16	Missouri	244	8-3	17
17	Tennessee	236	6-3	18
18	Northwestern	233	7-2	RV
19	Michigan	226	5-4	19
20	Louisiana	203	6-0	20
21	Auburn	167	9-1	RV
22	Arizona State	140	7-3	23
23	Texas	131	5-6	11
24	LSU	129	6-5	21
25	USF	70	6-2	RV

Others receiving votes: UCF (46), Notre Dame (37), Stanford (20), Wichita State (15), Minnesota (14), Iowa State (11), James Madison (11), Wisconsin (8), Illinois (5), Charlotte (2), Liberty (1).

## MOUNTAIN WEST INFORMATION

### PRESEASON MOUNTAIN WEST POLL

Rk.	Team (1st-Place Votes)	Points
1.	UNLV (5)	57
	San Diego State (3)	57
3.	Fresno State (1)	43
	Boise State	43
5.	Nevada	42
6.	Colorado State	35
7.	New Mexico	17
8.	San José State	15
	Utah State	15

## MOUNTAIN WEST PLAYERS OF THE WEEK

2022 MW Softball Player of the Week

Feb. 15: Janyssa Martin, OF, UNLV

FEB. 22: ANDREA HOWARD, OF, UNM

2022 MW Softball Pitcher of the Week

Feb. 15: Maggie Balint, SDSU

Feb. 22: Maggie Balint, SDSU

2022 MW Softball Freshman of the Week

Feb. 15: Isabella Espinoza, INF, SDSU

FEB. 22: EMMA BRAMSON, INF., UNM

## BY THE NUMBERS

Statistic	All Games	MW	MW Games
Batting Average:	--	--	--
Slugging Percentage:	--	--	--
On Base Percentage:	--	--	--
Runs Scored:	--	--	--
Hits:	--	--	--
RBIs:	--	--	--
HRs:	--	--	--
Total Bases:	--	--	--
ERA:	--	--	--
Opp. Batting Avg.:	--	--	--
Batters Struck Out:	--	--	--
Hits Allowed:	--	--	--
Runs Allowed:	--	--	--
Earned Runs Allowed:	--	--	--
Walks Allowed:	--	--	--
Home Runs Allowed:	--	--	--
Fielding Percentage:	--	--	--
Putouts:	--	--	--
Fielding Double Plays:	--	--	--
Caught Stealing By:	--	--	--

## MOUNTAIN WEST STANDINGS

SCHOOL	CONF	CPCT.	OVERALL	PCT.	STREAK
Boise State	0-0	0.000	9-1	0.900	W4
San Diego State	0-0	0.000	9-2	0.818	W4
UNLV	0-0	0.000	7-2	0.778	W2
<b>New Mexico</b>	<b>0-0</b>	<b>0.000</b>	<b>6-3</b>	<b>0.667</b>	<b>W1</b>
San José State	0-0	0.000	4-5	0.444	L1
Utah State	0-0	0.000	3-5	0.375	L1
Fresno State	0-0	0.000	2-5	0.286	W1
Colorado State	0-0	0.000	2-8	0.200	W1
Nevada	0-0	0.000	2-8	0.200	W1





00

Andrea Howard  
OF | 5-6 | SR.  
Albuquerque, N.M.



1

Briana Martinez  
UT | 5-3 | JR.  
Albuquerque, N.M.



2

Savana Martinez  
C | 5-3 | R-FR.  
Albuquerque, N.M.



3

Rachael Hathoot  
INF | 5-8 | JR.  
Albuquerque, N.M.



4

Taryn Young  
OF | 5-8 | SR.  
Anaheim, Calif.



5

Sydney Broderick  
C | 5-4 | SR.  
Mesa, Ariz.



6

Alexis Vigil  
INF | 5-0 | SR.  
Los Lunas, N.M.



7

Ashley Archuleta  
INF | 5-4 | FR.  
Rio Rancho, N.M.



10

McKenna Kostyszyn  
P | 5-7 | FR.  
Frisco, Texas



12

Savannah Braun  
INF | 5-10 | SO.  
Tualatin, Ore.



16

Leslie Romero  
C | 5-6 | JR.  
Gonzales, Calif.



17

Amber Linton  
P | 6-0 | SO.  
Franklin, Ind.



20

Emma Bramson  
INF | 5-7 | FR.  
Valencia, Calif.



21

Peyton Robinson  
OF | 5-6 | SR.  
Saginaw, Texas



24

Diamond Sandoval  
OF | 5-3 | SO.  
Norwalk, Calif.



25

Brianna Sanchez  
P | 5-6 | JR.  
West Covina, Calif.



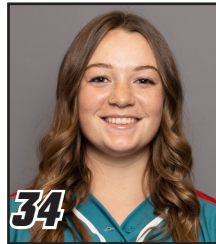
27

Olivia Birkinshaw  
UT | 5-10 | FR.  
Santa Margarita, Calif.



28

Samantha Fohrman  
P | 5-7 | JR.  
Cottage Grove, Minn.



34

Emma Guindon  
P | 5-9 | SR.  
Tomball, Texas



42

Loran Walker  
C / INF | 5-6 | FR.  
Meridian, Idaho



44

Lauren Garcia  
INF | 5-11 | FR.  
El Paso, Texas



55

Janae Cameron  
C | 5-9 | SR.  
Windsor, Colo.



66

Ashlyn Roberts  
P | 5-8 | SO.  
Sammamish, Wash.



77

Reyan Tuck  
1B | 6-0 | SR.  
Hillsboro, Ore.



99

Aysiah Gonzalez  
C | 5-7 | FR.  
La Puente, Calif.



Paula Congleton  
Head Coach



Kristen Hawkins  
Assistant Coach



Brandon Maurer  
Assistant Coach



Mike Forsythe  
Volunteer Ast.



Kellyann Gangaware  
Athletic Trainer

## NUMERICAL ROSTER

#	NAME	POS	HT	YR	B/T	HOMETOWN (PREVIOUS SCHOOL)
00	Andrea Howard	OF	5-6	Sr.	L/L	Albuquerque, N.M. (La Cueva HS)
1	Briana Martinez	UT	5-3	Jr.	R/R	Albuquerque, N.M. (Rio Rancho HS)
2	Savana Martinez	C	5-3	RS-Fr.	R/R	Albuquerque, N.M. (Rio Rancho HS)
3	Rachael Hathoot	INF	5-8	Jr.	R/R	Albuquerque, N.M. (La Cueva HS)
4	Taryn Young	OF	5-8	Sr.	R/R	Anaheim, Calif. (Arizona)
5	Sydney Broderick	C	5-4	Sr.	R/R	Mesa, Ariz. (Desert Ridge HS)
6	Alexis Vigil	INF	5-0	Sr.	R/R	Los Lunas, N.M. (College of Southern Nevada)
7	Ashley Archuleta	INF	5-4	Fr.	L/R	Rio Rancho, N.M. (Cleveland HS)
10	McKenna Kostyszyn	P	5-7	Fr.	R/R	Frisco, Texas (Frisco Independence HS)
12	Savannah Braun	INF	5-10	So.	R/R	Tualatin, Ore. (Tualatin HS)
16	Leslie Romero	C	5-4	Jr.	R/R	Gonzales, Calif. (Salinas HS)
17	Amber Linton	P	6-0	So.	R/R	Franklin, Ind. (Indiana)
20	Emma Bramson	INF	5-7	Fr.	R/R	Valencia, Calif. (Valencia HS)
21	Peyton Robinson	OF	5-6	Sr.	L/R	Saginaw, Texas (Southern Nazarene)
24	Diamond Sandoval	OF	5-3	So.	R/R	Norwalk, Calif. (St. Paul HS)
25	Brianna Sanchez	P	5-6	Jr.	R/R	West Covina, Calif. (Bishop Amat HS)
27	Olivia Birkinshaw	UT	5-10	Fr.	R/R	Santa Margarita, Calif. (Mission Viejo HS)
28	Samantha Fohrman	P	5-7	Jr.	R/R	Cottage Grove, Minn. (Georgian Court)
34	Emma Guindon	P	5-9	Sr.	R/R	Tomball, Texas (Monterey Peninsula College)
42	Loran Walker	C/INF	5-6	Fr.	R/R	Meridian, Idaho (Rocky Mountain HS)
44	Lauren Garcia	INF	5-11	Fr.	R/R	El Paso, Texas (Montwood HS)
55	Janae Cameron	C	5-9	Sr.	R/R	Windsor, Colo. (Nebraska Omaha)
66	Ashlyn Roberts	P	5-8	So.	L/L	Sammamish, Wash. (Eastlake HS)
77	Reyan Tuck	1B	6-0	Sr.	R/R	Hillsboro, Ore. (Towson)
99	Aysiah Gonzalez	C	5-7	Fr.	R/R	La Puente, Calif. (Bishop Amat HS)

## RETURNERS (10) - 2021 SEASON STATS

No.	Name	Pos.	Cl.	Avg.	GP-GS	AB	R	H	2B	3B	HR	RBI	SLG%	FLD%
00	Andrea Howard	OF	Sr.	.336	46-46	125	25	42	9	2	12	33	.728	.977
1	Briana Martinez	UT	So.	.186	43-43	102	8	19	5	1	1	10	.284	.960
3	Rachael Hathoot	INF	So.	.241	46-46	133	18	32	10	0	4	20	.406	.941
4	Taryn Young	OF	Sr.	.138	42-42	94	9	13	4	0	2	8	.245	.938
21	Peyton Robinson	OF	Jr.	.250	46-45	124	19	31	3	0	0	3	.274	.978

## PITCHERS RETURNING (3) - 2021 SEASON STATS

No.	Name	Cl.	ERA	W-L	APP	GS	CG	SHO	SV	IP	SO	BF
25	Brianna Sanchez	So.	21.0	0-1	8	1	0	0/0	0	7.0	4	52
34	Emma Guindon	Jr.	5.00	6-21	30	27	12	0/1	0	141.1	46	718
66	Ashlyn Roberts	Fr.	5.25	2-2	24	8	1	0/1	1	56.0	24	277

## KEY PLAYERS LOST (3) - 2021 SEASON STATS

No.	Name	Pos.	Cl.	Avg.	GP-GS	AB	R	H	2B	3B	HR	RBI	SLG%	FLD%
10	Cameryn O'Grady	SS	Sr.	.318	46-46	129	34	41	11	2	9	28	.643	.901
22	Izabella Owen	INF	Jr.	.261	40-40	115	7	30	3	0	1	11	.313	.892
32	Lauren Wilmert	C	Sr.	.125	36-31	80	6	10	1	0	1	5	.175	.947

## PITCHERS LOST (1) - 2020 SEASON STATS

No.	Name	Cl.	ERA	W-L	APP	GS	CG	SHO	SV	IP	SO	BF
99	Kiana Spencer	Sr.	8.22	2-8	19	6	1	0/0	0	53.2	21	305

## NEWCOMERS (10)

No.	Name	Pos.	No.	Name	Pos.
7	Ashley Archuleta	INF	28	Samantha Fohrman	P
10	McKenna Kostyszyn	P	42	Loran Walker	C/INF
17	Amber Linton	P	44	Lauren Garcia	INF
20	Emma Bramson	INF	55	Janae Cameron	C
27	Olivia Birkinshaw	UT	99	Aysiah Gonzalez	C

## PRONUNCIATION GUIDE

00	ANDREA Howard	On-dray-uh
3	RACHAEL HATHOOT	Ray-chel Hat-hoot
4	TARYN Young	Tair-in
6	Alexis VIGIL	Vee-hill
10	McKenna KOSTYSZYN	Co-sti-shin
12	Savannah BRAUN	Bron
25	BRIANNA Sanchez	Bree-on-uh
34	Emma GUINDON	Ginden
77	REYAN Tuck	Ree-anne
99	AYSIAH Gonzales	Asia
HC	Paula CONGLETON	Cong-le-ton
AC	Brandon MAURER	Rhymes with "power"
AT	Kellyann GANGAWARE	Gang-uh-wear

## CLASS

### Seniors (8) (\*Super Senior)

5	Sydney Broderick*	C
55	Janae Cameron	C
34	Emma Guindon	P
00	Andrea Howard*	OF
21	Peyton Robinson	OF
77	Reyan Tuck	IF
6	Alexis Vigil	INF
4	Taryn Young*	OF

### Juniors (5)

28	Samantha Fohrman	P
3	Rachael Hathoot	INF
1	Briana Martinez	INF
16	Leslie Romero	C
25	Brianna Sanchez	P

### Sophomores (4)

12	Savannah Braun	INF
17	Amber Linton	P
66	Ashlyn Roberts	P
20	Diamond Sandoval	OF

### Freshmen (8)

7	Ashley Archuleta	INF
27	Olivia Birkinshaw	UT
20	Emma Bramson	INF
44	Lauren Garcia	INF
99	Aysiah Gonzalez	C
10	McKenna Kostyszyn	P
2	Savana Martinez (R-Fr.)	C
42	Loran Walker	C/INF

## HOME STATE

### Arizona (1)

5	Sydney Broderick	C
---	------------------	---

### California (7)

27	Olivia Birkinshaw	UT
20	Emma Bramson	INF
99	Aysiah Gonzalez	C
16	Leslie Romero	OF
25	Brianna Sanchez	P
20	Diamond Sandoval	OF
4	Taryn Young	OF

### Colorado (1)

55	Janae Cameron	C
----	---------------	---

### Idaho (1)

42	Loran Walker	C/INF
----	--------------	-------

### Indiana (1)

17	Amber Linton	P
----	--------------	---

### New Mexico (6)

7	Ashley Archuleta	INF
3	Rachael Hathoot	INF
00	Andrea Howard	OF
1	Briana Martinez	UT
2	Savana Martinez	C
6	Alexis Vigil	INF

### Minnesota (1)

28	Samantha Fohrman	P
----	------------------	---

### Oregon (2)

12	Savannah Braun	INF
77	Reyan Tuck	1B

### Texas (4)

44	Lauren Garcia	INF
34	Emma Guindon	P
10	McKenna Kostyszyn	P
21	Peyton Robinson	OF

### Washington (1)

66	Ashlyn Roberts	P
----	----------------	---

## POSITION

Outfield (4)	Catcher (5)	1B (1)
Infield (6)	Pitcher (6)	UT (2)
C/INF (1)		





# Paula Congleton

5th Head Coach in UNM Program History  
Record at UNM: 53-134

## **NOTEWORTHY :**

- Named the fifth head coach in program history on June 20, 2017
- Enters her fourth season at her alma mater
- Earned her 300th career victory on April 17, 2014
- Earned her 350th career victory on April 22, 2017
- Earned her 400th career victory on May 4, 2018
- Earned her first win at UNM against St. Mary's on Feb. 9, 2018 (4-1)

## **MORE NOTES ON COACH CONGLETON**

- Spent 19 seasons at Santa Barbara City College with the Vaqueros molding the program into one of the elite programs in the WSC
- Three-time WSC Gold Division Coach of the Year
- 2011 Southern Cal Coaching Staff of the Year
- 2011 NFCA National Coaching Staff of the Year
- Led the Vaqueros to four Southern Cal Regional appearances and one trip to the Southern Cal Super Regional
- Guided the Vaqueros to their greatest success of the program, winning a Southern Cal Regional series and advancing to the Super Regional for the first time ever in 2016
- Led the 2016 SBCC squad to the second-most games in program history (30-14)
- The 2016 team finished third WSC Gold Division
- In 2011, led the Vaqueros to a program-record 31 wins (31-7 overall), leading the team to a WSC title and the Southern Cal Regional
- Four-time Scholar Athlete first baseman for the Lobos (3.89 GPA)
- Three-time All-American at New Mexico
- Received her Doctorate in educational administration in 2009
- Served as a full-time professor at SBCC teaching health, weight training and kinesiology
- Served as Associate Athletic Director and Coordinator of the Academic Achievement Zone for student-athletes at SBCC

## **COACHING EXPERIENCE**

### **Head Coach:**

2017-Present - New Mexico (53-134)  
1998-2017 - Santa Barbara City Coll. (Calif.) (354-322)  
1996-1998 - Cal. State University East Bay (33-77)

### **Graduate Assistant:**

1986-1988 - New Mexico

Overall NCAA DI record (Fifth Season): 53-134

Overall NCAA record (Sixth Season): 86-211

## **ALMA MATER**

New Mexico (1984)

## **TWITTER**

Follow @CoachCongleton



# 2022 NEW MEXICO OVERALL STATISTICS

Record: 6-3 Home: 0-0 Away: 2-1 Neutral: 4-2 Conference: 0-0

Player	avg	gp-gs	ab	r	h	2b	3b	hr	rbi	tb	slg%	bb	hp	so	gdp	ob%	sf	sh	sb-att	po	a	e	fld%
HOWARD, Andrea	.379	9-9	29	8	11	2	0	3	10	22	.759	3	0	4	0	.424	1	0	1-2	11	0	0	1.000
TUCK, Reyann	.348	8-8	23	2	8	2	0	0	2	10	.435	0	0	6	0	.348	0	1	0-0	51	2	1	.981
ROMERO, Leslie	.273	9-8	22	1	6	1	0	0	4	7	.318	1	0	2	0	.292	1	0	1-1	19	0	0	1.000
ROBINSON, Peyton	.269	9-9	26	6	7	0	0	0	0	7	.269	1	0	1	0	.296	0	1	2-2	9	0	0	1.000
ARCHULETA, Ashley	.258	9-9	31	2	8	2	0	0	4	10	.323	3	0	7	0	.324	0	0	0-0	19	15	0	1.000
BRAMSON, Emma	.250	9-9	28	4	7	0	0	0	5	7	.250	2	0	1	0	.290	1	0	0-0	7	14	1	.955
BIRKINSHAW, Olivia	.231	7-5	13	3	3	1	1	0	0	6	.462	1	3	5	0	.412	0	1	1-1	5	1	0	1.000
CAMERON, Janae	.222	3-2	9	2	2	1	0	1	3	6	.667	0	0	5	0	.222	0	0	0-0	15	0	1	.938
YOUNG, Taryn	.214	9-9	28	5	6	0	0	1	3	9	.321	3	0	7	0	.281	1	0	0-0	19	1	0	1.000
BRODERICK, Sydney	.200	3-2	5	0	1	0	0	0	0	1	.200	1	0	2	0	.333	0	1	0-0	15	3	1	.947
MARTINEZ, Briana	.091	9-9	22	3	2	0	0	1	3	5	.227	4	0	6	0	.222	1	1	0-1	11	19	4	.882
GONZALEZ, Aysiah	.000	3-1	4	0	0	0	0	0	0	0	.000	0	0	2	0	.000	0	0	0-0	0	0	0	.000
SANDOVAL, Diamond	.000	3-0	2	0	0	0	0	0	0	0	.000	0	0	1	0	.000	0	0	0-0	0	0	0	.000
MARTINEZ, Savana	.000	2-1	2	0	0	0	0	0	0	0	.000	0	0	1	0	.000	0	0	0-0	2	0	0	1.000
KOSTYSZYN, McKenn	.000	1-0	0	0	0	0	0	0	0	0	.000	0	0	0	0	.000	0	0	0-0	0	0	0	.000
FOHRMAN, Samantha	.000	2-1	0	0	0	0	0	0	0	0	.000	0	0	0	0	.000	0	0	0-0	0	1	0	1.000
ROBERTS, Ashlyn	.000	2-1	0	0	0	0	0	0	0	0	.000	0	0	0	0	.000	0	0	0-0	1	2	0	1.000
SANCHEZ, Brianna	.000	3-0	0	0	0	0	0	0	0	0	.000	0	0	0	0	.000	0	0	0-0	0	0	0	.000
GUINDON, Emma	.000	5-3	0	0	0	0	0	0	0	0	.000	0	0	0	0	.000	0	0	0-0	2	4	0	1.000
VIGIL, Alexis	.000	3-0	0	1	0	0	0	0	0	0	.000	0	0	0	0	.000	0	0	0-0	0	0	0	.000
LINTON, Amber	.000	6-4	0	0	0	0	0	0	0	0	.000	0	0	0	0	.000	0	0	0-0	0	4	0	1.000
Totals	.250	9	244	37	61	9	1	6	34	90	.369	19	3	50	0	.306	5	5	5-7	186	66	8	.969
Opponents	.206	9	228	24	47	10	1	1	19	62	.272	17	9	53	0	.285	2	7	9-10	185	66	15	.944

LOB - Team (57), Opp (56). DPs turned - Team (1), Opp (1). IBB - Team (2), HOWARD 2.

## (All games Sorted by Earned run avg)

Player	era	w-l	app	gs	cg	sho	sv	ip	h	r	er	bb	so	2b	3b	hr	b/avg	wp	hp	bk	sfa	sha
KOSTYSZYN, McKenn	0.00	0-0	1	0	0	0/0	0	1.0	1	0	0	0	1	0	0	0	.250	0	0	0	0	0
GUINDON, Emma	0.58	2-1	5	3	1	0/1	0	24.1	14	2	2	3	25	3	0	0	.169	1	2	0	0	5
FOHRMAN, Samantha	1.75	0-0	2	1	0	0/0	0	4.0	6	3	1	0	1	3	0	0	.333	0	1	0	0	0
LINTON, Amber	2.58	4-1	6	4	2	0/0	1	21.2	16	10	8	9	23	1	0	1	.195	1	4	0	0	1
ROBERTS, Ashlyn	3.89	0-1	2	1	0	0/0	0	9.0	9	6	5	2	2	2	1	0	.265	0	2	0	2	1
SANCHEZ, Brianna	10.50	0-0	3	0	0	0/1	0	2.0	1	3	3	3	1	1	0	0	.143	3	0	0	0	0
Totals	2.15	6-3	9	9	3	1/1	1	62.0	47	24	19	17	53	10	1	1	.206	5	9	0	2	7
Opponents	3.52	3-6	9	9	4	1/0	0	61.2	61	37	31	19	50	9	1	6	.250	5	3	0	5	5

PB - Team (1), ROMERO 1, Opp (2). SBA/ATT - BRODERICK (4-5), LINTON (4-4), CAMERON (3-3), FOHRMAN (1-2), GUINDON (2-2), ROMERO (2-2), ROBERTS (1-1), SANCHEZ (1-1).



## 2022 NEW MEXICO GAME-BY-GAME STATISTICS

Date	Opponent	ab	r	h	rbi	2b	3b	hr	tb	bb	ibb	sb	cs	hbp	sac	sf	qdp	k	po	a	e	lob	avg
Feb 11	vs Oregon State	23	3	5	3	1	0	0	6	1	0	0	0	2	0	0	0	7	21	8	0	5	.217
Feb 12	vs Southern Utah	27	8	7	7	1	0	2	14	4	0	0	0	0	0	0	0	5	18	1	1	8	.240
Feb 13	vs Alabama	25	3	6	3	0	0	1	9	0	0	0	0	0	0	1	0	7	18	3	2	2	.240
Feb 13	at Arizona	23	0	2	0	1	0	0	3	2	0	0	0	0	0	0	0	4	18	7	0	4	.204
Feb. 18 2	vs Ohio	26	4	10	4	3	0	0	13	1	0	0	1	0	0	1	0	1	21	5	1	6	.242
Feb 18	at Lamar	30	2	8	2	1	0	0	9	0	0	2	1	0	0	0	0	6	21	12	1	7	.247
Feb 19	at Lamar	40	6	9	6	1	1	1	15	5	2	0	0	0	3	2	0	12	36	16	1	11	.242
Feb 19	at Creighton	23	2	3	2	0	0	1	6	4	0	0	0	0	0	1	0	5	18	8	2	5	.230
Feb 20	vs Ohio	27	9	11	7	1	0	1	15	2	0	3	0	1	2	0	0	3	15	6	0	9	.250
Totals		244	37	61	34	9	1	6	90	19	2	5	2	3	5	5	0	50	186	66	8	57	.250

2022 New Mexico Lobos  
Team Game-by-Game for New Mexico (as of Feb 20, 2022)  
Pitching (All games)

Date	Opponent	ip	h	r	er	bb	so	2b	3b	hr	wp	bk	hbp	dp	ibb	score	w-l	sv	era
Feb 11	vs Oregon State	7.0	6	2	2	1	10	0	0	1	0	0	2	0	0	3-2	1-0	0	2.00
Feb 12	vs Southern Utah	6.0	1	0	0	1	11	0	0	0	0	0	2	0	0	8-0	2-0	0	1.08
Feb 13	vs Alabama	6.0	7	8	7	3	2	2	1	0	0	0	3	0	0	3-8	2-1	0	3.32
Feb 13	at Arizona	6.0	5	1	1	1	2	1	0	0	1	0	0	0	0	0-1	2-2	0	2.80
Feb. 18 2	vs Ohio	7.0	6	2	2	3	7	2	0	0	1	0	0	0	0	4-2	3-2	1	2.62
Feb 18	at Lamar	7.0	4	1	1	0	5	0	0	0	0	0	2	0	0	2-1	4-2	1	2.33
Feb 19	at Lamar	12.0	9	4	1	3	11	3	0	0	1	0	0	0	0	6-4	5-2	1	1.92
Feb 19	at Creighton	6.0	7	5	4	2	1	2	0	0	2	0	0	1	0	2-5	5-3	1	2.21
Feb 20	vs Ohio	5.0	2	1	1	3	4	0	0	0	0	0	0	0	0	9-1	6-3	1	2.15
Totals		62.0	47	24	19	17	53	10	1	1	5	0	9	1	0	37-24	6-3	1	2.15

# 2022 NEW MEXICO RECORD AND INNING BREAKDOWN

Score by innings	1	2	3	4	5	6	7	8	9	EX	Total
New Mexico	2	7	3	9	5	5	2	0	0	4	37
Opponents	4	3	3	5	4	3	0	0	0	2	24

## Record when ...

Overall	6-3	After 4 leading	5-0
Conference	0-0	..... trailing	1-3
Non-Conference	6-3	..... tied	0-0
Home games	0-0	After 5 leading	4-0
Away games	2-2	..... trailing	1-3
Neutral site	4-1	..... tied	0-0
Day games	5-2	After 6 leading	3-0
Night games	1-1	..... trailing	0-3
vs Left starter	0-0	..... tied	1-0
vs Right starter	6-3		
1-Run games	2-1	Hit 0 home runs	3-1
2-Run games	2-0	... 1 home run	2-2
5+Run games	2-1	... 2+ home runs	1-0
Extra innings	1-0		
Shutouts	1-1	Opponent 0 home runs	5-3
		..... 1 home run	1-0
		..... 2+ HRs	0-0
Scoring 0-2 runs	1-2		
..... 3-5 runs	2-1	Made 0 errors	2-1
..... 6-9 runs	3-0	... 1 error	4-0
..... 10+ runs	0-0	... 2+ errors	0-2
Opponent 0-2 runs	5-1		
..... 3-5 runs	1-1	Opp. made 0 errors	3-2
..... 6-9 runs	0-1	..... 1 error	0-1
..... 10+ runs	0-0	..... 2+ errors	3-0
Scored in 1st inning	2-0	Out-hit opponent	4-0
Opp. scored in 1st	0-1	Out-hit by opponent	1-3
Scores first	4-1	Hits are tied	1-0
Opp. scores first	2-2		

## Record when team scores:

Runs	0	1	2	3	4	5	6	7	8	9	10+
W-L	0-1	0-0	1-1	1-1	1-0	0-0	1-0	0-0	1-0	1-0	0-0

## Record when opponent scores:

Runs	0	1	2	3	4	5	6	7	8	9	10+
W-L	1-0	2-1	2-0	0-0	1-0	0-1	0-0	0-0	0-1	0-0	0-0

## Record when leading after:

Inn.	1	2	3	4	5	6
W-L	2-0	3-1	4-0	5-0	4-0	3-0

## Record when trailing after:

Inn.	1	2	3	4	5	6
W-L	0-1	1-1	1-3	1-3	1-3	0-3

## Record when tied after:

Inn.	1	2	3	4	5	6
W-L	4-2	2-1	1-0	0-0	0-0	1-0

Current winning streak: 1

Longest winning streak: 3

Longest losing streak: 2

Home attendance : 0 ( 0 dates avg = 0 )

Away attendance : 2922 ( 9 dates avg = 324 )

Total attendance: 2922 ( 9 dates avg = 324 )



# 2021 NEW MEXICO SITUATIONAL BREAKDOWN

Player	vs left			vs right			w/runners			w/bases empty			w/bases loaded			as leadoff			fly	gnd	fly/
	h	ab	avg	h	ab	avg	h	ab	avg	h	ab	avg	h	ab	avg	rch	op	pct	out	out	gnd
ARCHULETA, Ashle	0	0	.000	7	28	.250	3	9	.333	4	19	.211	1	2	.500	1	14	.071	4	10	0.4
BIRKINSHAW, Olivi	0	0	.000	4	15	.267	0	8	.000	4	7	.571	0	0	.000	3	6	.500	4	3	1.3
BRAMSON, Emma	0	0	.000	7	28	.250	6	15	.400	1	13	.077	1	1	1.000	3	5	.600	11	8	1.4
BRODERICK, Sydne	0	0	.000	1	5	.200	0	2	.000	1	3	.333	0	0	.000	1	1	1.000	1	2	0.5
CAMERON, Janae	0	0	.000	2	9	.222	2	5	.400	0	4	.000	0	0	.000	0	2	.000	0	2	0.0
GONZALEZ, Aysiah	0	0	.000	0	4	.000	0	1	.000	0	3	.000	0	0	.000	0	0	.000	1	0	99.9
HOWARD, Andrea	0	0	.000	11	29	.379	6	16	.375	5	13	.385	0	1	.000	3	3	1.000	10	3	3.3
MARTINEZ, Briana	0	0	.000	2	22	.091	1	8	.125	1	14	.071	0	0	.000	1	7	.143	8	5	1.6
MARTINEZ, Savana	0	0	.000	0	2	.000	0	0	.000	0	2	.000	0	0	.000	0	0	.000	1	0	99.9
ROBINSON, Peyton	0	0	.000	6	24	.250	2	9	.222	4	15	.267	0	1	.000	2	5	.400	6	10	0.6
ROMERO, Leslie	0	0	.000	7	25	.280	5	13	.385	2	12	.167	1	1	1.000	2	8	.250	9	8	1.1
SANDOVAL, Diamo	0	0	.000	0	2	.000	0	0	.000	0	2	.000	0	0	.000	0	0	.000	1	0	99.9
TUCK, Reyán	0	0	.000	8	23	.348	5	12	.417	3	11	.273	0	1	.000	0	5	.000	3	6	0.5
YOUNG, Taryn	0	0	.000	6	28	.214	1	15	.067	5	13	.385	0	1	.000	1	4	.250	10	5	2.0
Totals	0	0	.000	61	24	.250	31	11	.274	30	13	.229	3	8	.375	17	60	.283	69	62	1.1
Opponents	9	34	.265	38	19	.196	24	11	.212	23	11	.200	0	0	.000	22	59	.373	64	66	1.0

Player	pinch hitting			w/runners in scoring pos			w/runner on 3r and LT 2 out			with 2 outs			success adv runners			2- rnrns			rch	rch	kl
	h	ab	avg	h	ab	avg	rbi	op	pct	h	ab	avg	adv	op	pct	out	adv	rnrns	err	fc	
ARCHULETA, Ashle	0	0	.000	2	6	.333	1	2	.500	3	8	.375	6	11	.545	2	1	6	0	0	4
BIRKINSHAW, Olivi	2	2	1.000	0	2	.000	0	0	.000	2	7	.286	5	11	.455	0	3	4	1	0	1
BRAMSON, Emma	0	0	.000	5	12	.417	3	3	1.000	3	10	.300	9	16	.563	1	2	9	1	2	0
BRODERICK, Sydne	0	0	.000	0	1	.000	0	0	.000	1	3	.333	1	3	.333	0	1	1	0	0	2
CAMERON, Janae	0	3	.000	1	3	.333	0	0	.000	2	4	.500	2	5	.400	3	0	1	0	0	1
GONZALEZ, Aysiah	0	2	.000	0	0	.000	0	0	.000	0	1	.000	1	1	1.000	0	0	0	0	1	0
HOWARD, Andrea	0	0	.000	3	6	.500	2	2	1.000	5	17	.294	8	17	.471	3	1	8	2	0	2
MARTINEZ, Briana	0	0	.000	1	4	.250	1	1	1.000	2	7	.286	5	11	.455	2	1	0	3	1	2
MARTINEZ, Savana	0	0	.000	0	0	.000	0	0	.000	0	1	.000	0	0	.000	0	0	0	0	0	0
ROBINSON, Peyton	0	0	.000	2	8	.250	0	2	.000	1	6	.167	3	9	.333	0	0	4	1	1	0
ROMERO, Leslie	0	1	.000	5	11	.455	1	2	.500	4	8	.500	8	14	.571	4	5	5	0	1	0
SANDOVAL, Diamo	0	2	.000	0	0	.000	0	0	.000	0	2	.000	0	0	.000	0	0	0	0	0	0
TUCK, Reyán	0	0	.000	3	7	.429	0	1	.000	4	9	.444	8	13	.615	1	1	5	1	1	1
YOUNG, Taryn	0	0	.000	1	11	.091	1	2	.500	0	8	.000	4	16	.250	0	1	9	1	2	2
Totals	2	10	.200	23	71	.324	9	15	.600	27	91	.297	60	12	.472	16	16	57	10	9	15
Opponents	2	14	.143	16	75	.213	5	10	.500	14	78	.179	57	12	.445	9	27	56	6	8	15

Success Advancing Runners = percentage of times the batter advanced at least one runner during a plate appearance  
 #Rnrns Adv w/Out = TOTAL number of runners advanced when the player made an out

# 2022 NEW MEXICO LEADERS

<b>Batting avg</b>		<b>Slugging pct</b>		<b>On base pct</b>	
1. HOWARD, Andrea	.379	1. HOWARD, Andrea	.759	1. HOWARD, Andrea	.424
2. TUCK, Reyan	.348	2. CAMERON, Janae	.667	2. BIRKINSHAW, Olivia	.421
3. ROMERO, Leslie	.280	3. BIRKINSHAW, Olivia	.467	3. TUCK, Reyan	.348
4. BIRKINSHAW, Olivia	.267	4. TUCK, Reyan	.435	4. BRODERICK, Sydney	.333
5. ARCHULETA, Ashley	.250	5. ROMERO, Leslie	.360	5. ARCHULETA, Ashley	.323
<b>Runs scored</b>		<b>Hits</b>		<b>Runs batted in</b>	
1. HOWARD, Andrea	8	1. HOWARD, Andrea	11	1. HOWARD, Andrea	10
2. YOUNG, Taryn	5	2. TUCK, Reyan	8	2. BRAMSON, Emma	5
3. ROBINSON, Peyton	5	3. BRAMSON, Emma	7	ROMERO, Leslie	5
4. BIRKINSHAW, Olivia	4	ARCHULETA, Ashley	7	4. 4 tied at...	3
BRAMSON, Emma	4	ROMERO, Leslie	7		
<b>Doubles</b>		<b>Triples</b>		<b>Home runs</b>	
1. HOWARD, Andrea	2	1. BIRKINSHAW, Olivia	1	1. HOWARD, Andrea	3
ROMERO, Leslie	2			2. CAMERON, Janae	1
TUCK, Reyan	2			YOUNG, Taryn	1
4. 3 tied at.....	1			MARTINEZ, Briana	1
<b>Total bases</b>		<b>Walks</b>		<b>Hit by pitch</b>	
1. HOWARD, Andrea	22	1. MARTINEZ, Briana	4	1. BIRKINSHAW, Olivia	3
2. TUCK, Reyan	10	2. YOUNG, Taryn	3		
3. ROMERO, Leslie	9	ARCHULETA, Ashley	3		
YOUNG, Taryn	9	HOWARD, Andrea	3		
5. ARCHULETA, Ashley	8	5. BRAMSON, Emma	2		
<b>Sac bunts</b>		<b>Sac flies</b>		<b>Stolen bases</b>	
1. BIRKINSHAW, Olivia	2	1. YOUNG, Taryn	1	1. ROBINSON, Peyton	2
2. TUCK, Reyan	1	MARTINEZ, Briana	1	2. ROMERO, Leslie	1
BRODERICK, Sydney	1	BRAMSON, Emma	1	BIRKINSHAW, Olivia	1
MARTINEZ, Briana	1	HOWARD, Andrea	1	HOWARD, Andrea	1
		ROMERO, Leslie	1		
<b>Caught stealing</b>		<b>Steal attempts</b>		<b>Stolen base pct</b>	
1. MARTINEZ, Briana	1	1. ROBINSON, Peyton	2	1. ROMERO, Leslie	1.000
HOWARD, Andrea	1	HOWARD, Andrea	2	ROBINSON, Peyton	1.000
		3. ROMERO, Leslie	1	BIRKINSHAW, Olivia	1.000
		BIRKINSHAW, Olivia	1	4. HOWARD, Andrea	.500
		MARTINEZ, Briana	1	5. MARTINEZ, Briana	.000
<b>Strikeouts</b>		<b>Grounded into DP</b>		<b>Total plate appearances</b>	
1. YOUNG, Taryn	7			1. HOWARD, Andrea	33
ARCHULETA, Ashley	7			2. YOUNG, Taryn	32
3. MARTINEZ, Briana	6			3. BRAMSON, Emma	31
TUCK, Reyan	6			ARCHULETA, Ashley	31
5. 2 tied at.....	5			5. MARTINEZ, Briana	28
<b>At bats</b>		<b>Games played</b>		<b>Game starts</b>	
1. HOWARD, Andrea	29	1. 7 tied at.....	9	1. 6 tied at.....	9
2. YOUNG, Taryn	28				
ARCHULETA, Ashley	28				
BRAMSON, Emma	28				
5. ROMERO, Leslie	25				
<b>Games as sub</b>		<b>Chances</b>		<b>Putouts</b>	
1. VIGIL, Alexis	3	1. TUCK, Reyan	54	1. TUCK, Reyan	51
SANDOVAL, Diamond	3	2. MARTINEZ, Briana	34	2. ROMERO, Leslie	21
SANCHEZ, Brianna	3	3. ARCHULETA, Ashley	30	3. YOUNG, Taryn	19
		4. ROMERO, Leslie	23	4. ARCHULETA, Ashley	17
		5. BRAMSON, Emma	22	5. 2 tied at.....	15
<b>Fielding pct</b>		<b>Errors</b>		<b>Fielding double plays</b>	
1. ARCHULETA, Ashley	1.000	1. MARTINEZ, Briana	4	1. ARCHULETA, Ashley	1
ROMERO, Leslie	1.000	2. CAMERON, Janae	1		
YOUNG, Taryn	1.000	TUCK, Reyan	1		
HOWARD, Andrea	1.000	BRODERICK, Sydney	1		
BIRKINSHAW, Olivia	1.000	BRAMSON, Emma	1		
<b>Assists</b>		<b>Caught stealing by</b>		<b>Steal attempts against</b>	
1. MARTINEZ, Briana	19	1. FOHRMAN, Samantha	1	1. BRODERICK, Sydney	5
2. BRAMSON, Emma	14	BRODERICK, Sydney	1	2. LINTON, Amber	4
3. ARCHULETA, Ashley	13			3. CAMERON, Janae	3
4. LINTON, Amber	4			4. 3 tied at....	2
GUINDON, Emma	4				
<b>Stolen bases against</b>		<b>Catchers interference</b>			
1. LINTON, Amber	4				
BRODERICK, Sydney	4				
3. CAMERON, Janae	3				
4. ROMERO, Leslie	2				
GUINDON, Emma	2				
<b>Passed balls</b>					
1. ROMERO, Leslie	1				



# 2022 NEW MEXICO LEADERS

<b>Earned run avg</b> 1. KOSTYSZYN, McKenna 0.00 2. GUINDON, Emma 0.58 3. FOHRMAN, Samantha 1.75 4. LINTON, Amber 2.58 5. ROBERTS, Ashlyn 3.89	<b>Opposing bat avg</b> 1. SANCHEZ, Brianna .143 2. GUINDON, Emma .169 3. LINTON, Amber .195 4. KOSTYSZYN, McKenna .250 5. ROBERTS, Ashlyn .265	<b>Won-loss pct</b> 1. LINTON, Amber .800 2. GUINDON, Emma .667 3. ROBERTS, Ashlyn .000 4. SANCHEZ, Brianna .000 KOSTYSZYN, McKenna .000
<b>Wins</b> 1. LINTON, Amber 4 2. GUINDON, Emma 2	<b>Losses</b> 1. LINTON, Amber 1 GUINDON, Emma 1 ROBERTS, Ashlyn 1	<b>Saves</b> 1. LINTON, Amber 1
<b>Innings pitched</b> 1. GUINDON, Emma 24.1 2. LINTON, Amber 21.2 3. ROBERTS, Ashlyn 9.0 4. FOHRMAN, Samantha 4.0 5. SANCHEZ, Brianna 2.0	<b>Batters struck out</b> 1. GUINDON, Emma 25 2. LINTON, Amber 23 3. ROBERTS, Ashlyn 2 4. 3 tied at..... 1	<b>Appearances</b> 1. LINTON, Amber 6 2. GUINDON, Emma 5 3. SANCHEZ, Brianna 3 4. ROBERTS, Ashlyn 2 FOHRMAN, Samantha 2
<b>Games started</b> 1. LINTON, Amber 4 2. GUINDON, Emma 3 3. FOHRMAN, Samantha 1 ROBERTS, Ashlyn 1	<b>Games finished</b> 1. LINTON, Amber 2 2. SANCHEZ, Brianna 1 FOHRMAN, Samantha 1 KOSTYSZYN, McKenna 1 GUINDON, Emma 1	<b>Games in relief</b> 1. SANCHEZ, Brianna 3 2. GUINDON, Emma 2 LINTON, Amber 2 4. 3 tied at..... 1
<b>Wild pitches</b> 1. SANCHEZ, Brianna 3 2. LINTON, Amber 1 GUINDON, Emma 1	<b>Balks</b>	<b>Hit batters</b> 1. LINTON, Amber 4 2. ROBERTS, Ashlyn 2 GUINDON, Emma 2 4. FOHRMAN, Samantha 1
<b>Intentional BB allowed</b>	<b>Runners picked off</b>	<b>Batters SO out looking</b> 1. LINTON, Amber 8 2. GUINDON, Emma 7
<b>Sac bunts allowed</b> 1. GUINDON, Emma 5 2. ROBERTS, Ashlyn 1 LINTON, Amber 1	<b>Sac flies allowed</b> 1. ROBERTS, Ashlyn 2	<b>Hits allowed</b> 1. KOSTYSZYN, McKenna 1 SANCHEZ, Brianna 1 3. FOHRMAN, Samantha 6 4. ROBERTS, Ashlyn 9 5. GUINDON, Emma 14
<b>Runs allowed</b> 1. KOSTYSZYN, McKenna 0 2. GUINDON, Emma 2 3. FOHRMAN, Samantha 3 SANCHEZ, Brianna 3 5. ROBERTS, Ashlyn 6	<b>Earned runs allowed</b> 1. KOSTYSZYN, McKenna 0 2. FOHRMAN, Samantha 1 3. GUINDON, Emma 2 4. SANCHEZ, Brianna 3 5. ROBERTS, Ashlyn 5	<b>Walks allowed</b> 1. KOSTYSZYN, McKenna 0 FOHRMAN, Samantha 0 3. ROBERTS, Ashlyn 2 4. SANCHEZ, Brianna 3 GUINDON, Emma 3
<b>Doubles allowed</b> 1. KOSTYSZYN, McKenna 0 2. LINTON, Amber 1 SANCHEZ, Brianna 1 4. ROBERTS, Ashlyn 2 5. GUINDON, Emma 3	<b>Triples allowed</b> 1. KOSTYSZYN, McKenna 0 LINTON, Amber 0 SANCHEZ, Brianna 0 FOHRMAN, Samantha 0 GUINDON, Emma 0	<b>Home runs allowed</b> 1. KOSTYSZYN, McKenna 0 ROBERTS, Ashlyn 0 SANCHEZ, Brianna 0 FOHRMAN, Samantha 0 GUINDON, Emma 0



**00 ANDREA HOWARD**

**OF • 5-6 • SR.**

**ALBUQUERQUE, N.M. • LA CUEVA HS**

**SINGLE-GAME HIGHS**

Hits: 3, 5x, Last at Utah State, 5-14-21  
 Doubles: 1, 29x, Last vs. Ohio., 2-20-22  
 Triples: 1, 5x, Last at Texas, 5-1-21  
 Home runs: 2, 3x, Last at Utah State, 5-14-21  
 Total bases: 8, 3x, Last at Utah State, 5-14-21  
 RBI: 5, Northern Colorado, 2-14-20  
 Runs scored: 3, 6x, Last at Utah State, 5-14-21, 5-8-21  
 Walks: 4, UTEP, 2-8-19  
 Hit by pitch: 1, 4x, Last at Texas, 3-20-21  
 Struck out: 3, 5x, Last at Fresno St., 4-2-21

Sac flies: 2, San Diego State, 5-1-21  
 Sac bunts: 1, 3x, Last at Hawai'i, 2-23-19  
 At bats: 5, 2x, Last at Utah State, 4-6-19  
 Stolen bases: 1, 9x, Last vs. Lamar, 2-18-22  
 Putouts: 13, at UTEP, 4-16-18  
 Assists: 1, 15x, Last vs. San José State, 5-8-21  
 Named All-Mountain West Second Team in 2018  
 2019 Google Cloud Academic All-America® Second Team  
 2021 CoSIDA First Team All-American  
 Mountain West Player of the Week (Feb. 22)

**CAREER STATS (AT UNM)**

Year	avg	gp-gs	ab	r	h	2b	3b	hr	rbi	bb	so	sb-att
2018	.313	51-50	131	20	41	6	1	7	18	23	39	3-4
2019	.192	46-46	125	25	24	9	2	3	15	24	44	1-1
2020	.306	26-26	72	16	22	4	0	7	24	12	11	2-2
2021	.336	46-46	125	25	42	9	2	12	33	21	21	2-4
2022	.379	9-9	29	8	11	2	0	3	10	3	4	1-2
<b>TOTAL</b>	<b>.290</b>	<b>178-177</b>	<b>482</b>	<b>94</b>	<b>140</b>	<b>30</b>	<b>5</b>	<b>32</b>	<b>100</b>	<b>83</b>	<b>119</b>	<b>9-13</b>

**2022 GAME-BY-GAME**

Date	Opponent	Pos	AB	R	H	RBI	2B	3B	HR	BB	SB	CS	HBP	SAC	SF	GDP	K	PO	A	E	Avg
Feb 11	vs Oregon State	*of	3	0	1	1	0	0	0	0	0	0	0	0	0	0	2	1	0	0	.333
Feb 12	vs Southern Utah	*of	3	2	1	1	0	0	1	1	0	0	0	0	0	0	0	0	0	0	.333
Feb 13	vs Alabama	*of	3	1	1	0	0	0	0	0	0	0	0	0	0	0	0	6	0	0	.333
Feb 13	at Arizona	*of	3	0	0	0	0	0	0	0	0	0	0	0	0	0	0	1	0	0	.250
Feb. 18	vs Ohio	*of	2	0	1	2	1	0	0	0	0	1	0	0	1	0	0	0	0	0	.286
Feb 18	at Lamar	*of	4	1	2	0	0	0	0	0	1	0	0	0	0	0	0	0	0	0	.333
Feb 19	at Lamar	*of	4	2	3	3	0	0	1	2	0	0	0	0	0	0	0	1	0	0	.409
Feb 19	vs Creighton	*of	3	0	0	0	0	0	0	0	0	0	0	0	0	0	2	1	0	0	.360
Feb 20	vs Ohio	*of	4	2	2	3	1	0	1	0	0	0	0	0	0	0	0	1	0	0	.379
<b>Totals</b>		<b>9gs</b>	<b>29</b>	<b>8</b>	<b>11</b>	<b>10</b>	<b>2</b>	<b>0</b>	<b>3</b>	<b>3</b>	<b>1</b>	<b>1</b>	<b>0</b>	<b>0</b>	<b>1</b>	<b>0</b>	<b>4</b>	<b>11</b>	<b>0</b>	<b>0</b>	<b>.379</b>

On base pct. .424 • Slugging pct. .759



# THE 2022 LOBOS



## 1 BRIANA MARTINEZ *UT • 5-3 • JR.* *ALBUQUERQUE, N.M. • RIO RANCHO HS*

### SINGLE-GAME HIGHS

Hits: 3, 2x, Last vs. Northern Colo., 2-14-20  
 Doubles: 2, Northern Colorado, 3-1-20  
 Triples: 1, Nevada, 4-10-21  
 Home runs: 1, 3x, Last vs. Colorado St., 3-28-21  
 Total bases: 6, Grand Canyon, 2-9-20  
 RBI: 2, 6x, Last vs. Colorado St., 3-28-21  
 Runs scored: 3, Northern Colorado, 2-14-20  
 Walks: 3, Southern Utah, 2-20-21  
 Hit by pitch: 1, 4x, Last vs. Colorado St., 3-28-21

Struck out: 3, Seattle, 2-21-21  
 Sac flies: 1, Alabama, 2-13-22  
 Sac bunts: 1, 2x, Last at Texas, 3-20-21  
 At bats: 4, 4x, Last vs. Seattle, 2-21-21  
 Stolen bases: 1, 10x, Last vs. San José State, 5-9-21  
 Caught stealing:  
 Putouts: 6, Oklahoma State, 3-6-21  
 Assists: 5, Boise State, 4-24-21

### CAREER STATS (AT UNM)

Year	avg	gp-gs	ab	r	h	2b	3b	hr	rbi	bb	so	sb-att
2020	.286	26-26	70	13	20	5	0	2	14	20	15	5-5
2021	.186	43-43	102	8	19	5	1	1	10	13	39	5-5
2022	.091	9-9	22	3	2	0	0	1	3	4	6	0-1
TOTAL	.211	78-78	194	24	41	10	1	4	27	37	60	10-11

### 2022 GAME-BY-GAME

Date	Opponent	Pos	AB	R	H	RBI	2B	3B	HR	BB	SB	CS	HBP	SAC	SF	GDP	K	PO	A	E	Avg
Feb 11	vs Oregon State	*ss	2	0	0	0	0	0	0	1	0	0	0	0	0	0	1	0	4	0	.000
Feb 12	vs Southern Utah	*ss	3	0	0	0	0	0	0	0	0	0	0	0	0	0	0	2	0	0	.000
Feb 13	vs Alabama	*ss	2	0	0	1	0	0	0	0	0	0	0	0	1	0	1	1	1	1	.000
Feb 13	at Arizona	*ss	3	0	0	0	0	0	0	0	0	0	0	0	0	0	1	1	3	0	.000
Feb. 18	vs Ohio	*ss	2	0	0	0	0	0	0	1	0	0	0	0	0	0	0	2	1	0	.000
Feb 18	at Lamar	*ss	3	1	0	0	0	0	0	0	0	1	0	0	0	0	0	1	4	1	.000
Feb 19	at Lamar	*ss	3	0	0	0	0	0	1	0	0	0	0	0	0	0	2	2	3	1	.000
Feb 19	vs Creighton	*ss	2	1	1	1	0	0	1	1	0	0	0	0	0	0	1	2	1	1	.050
Feb 20	vs Ohio	*ss	2	1	1	1	0	0	0	0	0	0	0	1	0	0	0	0	2	0	.091
Totals		9gs	22	3	2	3	0	0	1	4	0	1	0	1	1	0	6	11	19	4	.091

On base pct. .222 • Slugging pct. .227

# THE 2022 LOBOS



## 2 SAVANA MARTINEZ *C • 5-3 • R-FR.* ALBUQUERQUE, N.M. • RIO RANCHO HS

### SINGLE-GAME HIGHS

Hits:  
Doubles:  
Triples:  
Home runs:  
Total bases:  
RBI:  
Runs scored:  
Walks:  
Hit by pitch:

Struck out: 1, Arizona, 2-13-22  
Sac flies:  
Sac bunts:  
At bats: 2, Arizona, 2-13-22  
Stolen bases:  
Caught stealing:  
Putouts: 2, Arizona, 2-13-22  
Assists:

### CAREER STATS (AT UNM)

Year	avg	gp-gs	ab	r	h	2b	3b	hr	rbi	bb	so	sb-att
2022	.000	2-1	2	0	0	0	0	0	0	0	1	0-0
<b>TOTAL</b>	<b>.000</b>	<b>2-1</b>	<b>2</b>	<b>0</b>	<b>0</b>	<b>0</b>	<b>0</b>	<b>0</b>	<b>0</b>	<b>0</b>	<b>1</b>	<b>0-0</b>

### 2022 GAME-BY-GAME

Date	Opponent	Pos	AB	R	H	RBI	2B	3B	HR	BB	SB	CS	HBP	SAC	SF	GDP	K	PO	A	E	Avg
Feb 13	at Arizona	*c	2	0	0	0	0	0	0	0	0	0	0	0	0	0	1	2	0	0	.000
Feb 19	at Lamar	pr	0	0	0	0	0	0	0	0	0	0	0	0	0	0	0	0	0	0	.000
<b>Totals</b>		<b>1gs</b>	<b>2</b>	<b>0</b>	<b>0</b>	<b>0</b>	<b>0</b>	<b>0</b>	<b>0</b>	<b>0</b>	<b>0</b>	<b>0</b>	<b>0</b>	<b>0</b>	<b>0</b>	<b>0</b>	<b>1</b>	<b>2</b>	<b>0</b>	<b>0</b>	<b>.000</b>

On base pct. .000 • Slugging pct. .000





**3 RACHAEL HATHOOT** INF • 5-8 • JR.  
ALBUQUERQUE, N.M. • LA CUEVA HS

**SINGLE-GAME HIGHS**

Hits: 2, 13x, Last at Utah State, 5-15-21  
 Doubles: 2, 2x, Last vs. San José State, 5-8-21  
 Triples: 1, 2x, Last vs. South Dakota, 2-29-20  
 Home runs: 1, 5x, Last at Utah State, 5-14-21  
 Total bases: 5, 2x, Last at Utah State, 5-14-21  
 RBI: 3, San José State, 5-8-21  
 Runs scored: 2, 8x, Last vs. San José State, 5-8-21  
 Walks: 2, Weber State, 2-7-20  
 Hit by pitch: 1, 5x, Last at UNLV, 4-18-21  
 Struck out: 3, San Diego State, 5-1-21  
 Sac flies:  
 Sac bunts: 1, 4x, Last at San Diego State, 5-1-21  
 At bats: 5, 2x, Last at GCU, 2-9-20  
 Stolen bases: 2, Texas, 3-20-21  
 Caught stealing: 1, 4x, Last vs. San José State, 5-8-21  
 Putouts: 7, Colorado State, 3-27-21  
 Assists: 5, UC Riverside, 2-20-20

**CAREER STATS (AT UNM)**

Year	avg	gp-gs	ab	r	h	2b	3b	hr	rbi	tb	slg%	bb	hbp	so	gdp	ob%	sf	sh	sb-att	po	a	e	fld%
2020	.250	26-26	84	19	21	6	2	1	12	34	.405	7	3	8	0	.330	0	2	0-1	38	47	6	.934
2021	.241	46-46	133	18	32	10	0	4	20	54	.406	9	2	25	0	.299	0	2	9-12	96	79	11	.941
TOTAL	.244	72-72	217	37	53	16	2	5	32	88	.406	16	5	33	0	.311	0	4	9-13	134	126	17	.939

**2022 GAME-BY-GAME**

# THE 2022 LOBOS



## 4 TARYN YOUNG

OF • 5-8 • SR.  
ANAHEIM, CALIF. • ARIZONA

### SINGLE-GAME HIGHS

Hits: 3, Nevada, 4-10-21  
Doubles: 1, 4x, Last at Utah State, 5-14-21  
Triples:  
Home runs: 2, California, 2-23-20  
Total bases: 8, California, 2-23-20  
RBI: 3, California, 2-23-20  
Runs scored: 3, San Diego, 2-22-20  
Walks: 2, 5x, Last vs. Creighton, 2-19-22  
Hit by pitch: 1, 4x, Last vs. Boise State, 4-24-21

Struck out: 3, 4x, Last at Lamar, 2-19-22  
Sac flies: 1, 2x, Last at Lamar, 2-19-22  
Sac bunts: 1, Texas Tech, 3-12-21  
At bats: 5, Lamar, 2-19-22  
Stolen bases:  
Caught stealing: 1, 2x, Last at Texas Tech, 3-12-21  
Putouts: 5, Arizona, 2-13-22  
Assists: 1, 3x, Last vs. Southern Utah, 2-12-22

### CAREER STATS (AT ARIZONA)

Year	avg	gp-gs	ab	r	h	2b	3b	hr	rbi	tb	slg%	bb	hbp	so	gdp	ob%	sf	sh	sb-att	po	a	e	fld%
2018	.000	4-0	0	3	0	0	0	0	0	0	.000	1	0	0	0	1.000	0	0	0-0	0	0	0	.000
2019	.000	5-0	1	0	0	0	0	0	0	0	.000	0	0	1	0	.000	0	0	0-0	3	0	0	1.000
TOTAL	.000	9-0	1	3	0	0	0	0	0	0	.000	1	0	1	0	.500	0	0	0-0	3	0	0	1.000

### CAREER STATS (AT UNM)

Year	avg	gp-gs	ab	r	h	2b	3b	hr	rbi	bb	so	sb-att
2020	.259	24-24	54	17	14	0	0	4	9	13	18	0-1
2021	.138	42-42	94	9	13	4	0	2	8	11	38	1-2
2022	.214	9-9	28	5	6	0	0	1	3	3	7	0-0
TOTAL	.188	75-75	176	31	33	4	0	7	20	27	63	1-3

### 2022 GAME-BY-GAME

Date	Opponent	Pos	AB	R	H	RBI	2B	3B	HR	BB	SB	CS	HBP	SAC	SF	GDP	K	PO	A	E	Avg
Feb 11	vs Oregon State	*of	3	0	0	0	0	0	0	0	0	0	0	0	0	0	1	1	0	0	.000
Feb 12	vs Southern Utah	*of	2	1	0	0	0	0	0	1	0	0	0	0	0	0	0	1	1	0	.000
Feb 13	vs Alabama	*of	3	1	2	1	0	0	1	0	0	0	0	0	0	0	1	3	0	0	.250
Feb 13	at Arizona	*of	3	0	0	0	0	0	0	0	0	0	0	0	0	0	1	5	0	0	.182
Feb. 18	vs Ohio	*of	3	2	2	1	0	0	0	0	0	0	0	0	0	0	0	3	0	0	.286
Feb 18	at Lamar	*of	4	0	0	0	0	0	0	0	0	0	0	0	0	0	1	0	0	0	.222
Feb 19	at Lamar	*of	5	0	1	1	0	0	0	0	0	0	0	0	1	0	3	2	0	0	.217
Feb 19	vs Creighton	*of	1	0	0	0	0	0	0	2	0	0	0	0	0	0	0	3	0	0	.208
Feb 20	vs Ohio	*of	4	1	1	0	0	0	0	0	0	0	0	0	0	0	0	1	0	0	.214
Totals		9gs	28	5	6	3	0	0	1	3	0	0	0	0	1	0	7	19	1	0	.214

On base pct. .281 • Slugging pct. .321





# 5 SYDNEY BRODERICK

**C • 5-4 • SR.**

**MESA, ARIZ. • DESERT RIDGE HS**

## SINGLE-GAME HIGHS

Hits: 3, St. Mary's, 3-10-18  
 Doubles: 1, 4x, Last at Utah State, 4-6-19  
 Home Runs: 1, 3x, Last at GCU, 2-8-20  
 Total bases: 4, 4x, Last at GCU, 2-8-20  
 RBI: 2, 2x, Last at NMSU, 4-2-19  
 Runs scored: 1, 14x, Last vs. La Salle, 2-29-20  
 Walks: 2, 3x, Last at GCU, 2-9-20  
 Hit by pitch: 1, 2x, Last at ASU, 2-26-21  
 Struck out: 3, at Colorado State, 4-8-18

Sac flies: 1, 2x, Last vs. San Diego, 2-22-20  
 Sac bunts: 1, 4x, Last at Lamar, 2-19-22  
 At bats: 4, 5x, Last vs. N. Colorado, 2-28-20  
 Stolen bases: 1, at Utah State, 4-5-19  
 Putouts: 10, at Colorado State, 4-7-18  
 Assists: 3, 2x, Last vs. Nevada, 3-30-19  
 Runners CS: 2, Utah State, 4-21-18

## CAREER STATS (AT UNM)

Year	avg	gp-gs	ab	r	h	2b	3b	hr	rbi	bb	so	sb-att
2018	.230	42-36	87	6	20	2	0	0	5	6	12	0-0
2019	.095	33-30	63	5	6	2	0	1	3	10	19	1-1
2020	.138	12-10	29	3	4	0	0	2	3	4	6	0-0
2021	.085	23-22	47	0	4	0	0	0	0	4	15	0-0
2022	.200	3-2	5	0	1	0	0	0	0	1	2	0-0
<b>TOTAL</b>	<b>.152</b>	<b>113-100</b>	<b>231</b>	<b>14</b>	<b>35</b>	<b>4</b>	<b>0</b>	<b>3</b>	<b>11</b>	<b>25</b>	<b>54</b>	<b>1-1</b>

## 2022 GAME-BY-GAME

Date	Opponent	Pos	AB	R	H	RBI	2B	3B	HR	BB	SB	CS	HBP	SAC	SF	GDP	K	PO	A	E	Avg
Feb 13	vs Alabama	*c	2	0	0	0	0	0	0	0	0	0	0	0	0	0	1	2	1	1	.000
Feb. 18	vs Ohio	c	0	0	0	0	0	0	0	0	0	0	0	0	0	0	0	4	0	0	.000
Feb 19	at Lamar	*c	3	0	1	0	0	0	0	1	0	0	0	1	0	0	1	9	2	0	.200
<b>Totals</b>		<b>2gs</b>	<b>5</b>	<b>0</b>	<b>1</b>	<b>0</b>	<b>0</b>	<b>0</b>	<b>0</b>	<b>1</b>	<b>0</b>	<b>0</b>	<b>0</b>	<b>1</b>	<b>0</b>	<b>0</b>	<b>2</b>	<b>15</b>	<b>3</b>	<b>1</b>	<b>.200</b>

On base pct. .333 • Slugging pct. .200

# THE 2022 LOBOS



## 6 ALEXIS VIGIL

INF • 5-0 • SR.  
LOS LUNAS, N.M. • COLLEGE OF SOUTHERN NEVADA

### SINGLE-GAME HIGHS

Hits: 1, Utah State, 5-15-21  
Doubles:  
Triples:  
Home runs:  
Total bases: 1, Utah State, 5-15-21  
RBI: 1, San José State, 5-9-21  
Runs scored: 1, 2x, Last vs. SUU, 2-12-22  
Walks: 1, at Texas Tech, 3-12-21  
Hit by pitch:

Struck out: 2, 3x, Last at Utah State, 5-14-21  
Sac flies: 1, San José State, 5-9-21  
Sac bunts:  
At bats: 3, 2x, Last at Utah State, 5-14-21  
Stolen bases:  
Caught stealing:  
Putouts: 2, 2x, Last vs. San José State, 5-9-21  
Assists: 3, 2x, Last vs. San José State, 5-9-21

### CAREER STATS (AT UNM)

Year	avg	gp-gs	ab	r	h	2b	3b	hr	rbi	bb	so	sb-att
2021	.045	14-7	22	2	1	0	0	0	1	1	11	0-0
2022	.000	3-0	0	1	0	0	0	0	0	0	0	0-0
TOTAL	.045	17-7	22	3	1	0	0	0	1	1	11	0-0

### 2022 GAME-BY-GAME

Date	Opponent	Pos	AB	R	H	RBI	2B	3B	HR	BB	SB	CS	HBP	SAC	SF	GDP	K	PO	A	E	Avg	
Feb 12	vs Southern Utah	pr	0	1	0	0	0	0	0	0	0	0	0	0	0	0	0	0	0	0	0	.000
Feb 13	vs Alabama	pr	0	0	0	0	0	0	0	0	0	0	0	0	0	0	0	0	0	0	0	.000
Feb 19	at Lamar	pr	0	0	0	0	0	0	0	0	0	0	0	0	0	0	0	0	0	0	0	.000
Totals		ogs	0	1	0	0	0	0	0	0	0	0	0	0	0	0	0	0	0	0	0	.000

On base pct. .000 • Slugging pct. .000





**7 ASHLEY ARCHULETA**

**INF • 5-4 • FR.**  
**RIO RANCHO, N.M. • CLEVELAND HS**

**SINGLE-GAME HIGHS**

Hits: 2, Ohio, 2-20-22  
Doubles: 1, Lamar, 2-18-22  
Triples:  
Home runs:  
Total bases: 2, 2x, Last vs Ohio, 2-20-22  
RBI: 3, Southern Utah, 2-12-22  
Runs scored: 1, 2x, Last vs Ohio, 2-20-22  
Walks: 1, 3x, Last vs. Ohio, 2-20-22  
Hit by pitch:

Struck out: 2, Alabama, 2-13-22  
Sac flies:  
Sac bunts:  
At bats: 4, 3x, Last vs. Ohio, 2-20-22  
Stolen bases:  
Caught stealing:  
Putouts: 4, 2x, Last vs. Creighton, 2-19-22  
Assists: 4, 2x, Last at Lamar, 2-19-22

**CAREER STATS (AT UNM)**

Year	avg	gp-gs	ab	r	h	2b	3b	hr	rbi	bb	so	sb-att
2022	.250	9-9	28	2	7	1	0	0	3	3	7	0-0
TOTAL	.250	9-9	28	2	7	1	0	0	3	3	7	0-0

**2022 GAME-BY-GAME**

Date	Opponent	Pos	AB	R	H	RBI	2B	3B	HR	BB	SB	CS	HBP	SAC	SF	GDP	K	PO	A	E	Avg
Feb 11	vs Oregon State	*2b	3	0	1	0	0	0	0	0	0	0	0	0	0	0	1	1	0	0	.333
Feb 12	vs Southern Utah	*2b	3	0	1	3	0	0	0	1	0	0	0	0	0	0	1	1	0	0	.333
Feb 13	vs Alabama	*2b	3	0	0	0	0	0	0	0	0	0	0	0	0	0	2	1	0	0	.222
Feb 13	at Arizona	*2b	3	0	1	0	0	0	0	0	0	0	0	0	0	0	0	4	0	0	.250
Feb. 18	vs Ohio	*2b	4	1	1	0	0	0	0	0	0	0	0	0	0	0	0	1	0	0	.250
Feb 18	at Lamar	*2b	4	0	1	0	1	0	0	0	0	0	0	0	0	0	1	3	4	0	.250
Feb 19	at Lamar	*2b	1	0	0	0	0	0	0	1	0	0	0	0	0	0	1	1	4	0	.238
Feb 19	vs Creighton	*2b	4	0	0	0	0	0	0	0	0	0	0	0	0	0	0	4	3	0	.200
Feb 20	vs Ohio	*2b	3	1	2	0	0	0	0	1	0	0	0	0	0	0	1	1	2	0	.250
Totals		9gs	28	2	7	3	1	0	0	3	0	0	0	0	0	0	7	17	13	0	.250



**10 MCKENNA KOSTYSZYN**

**P • 5-7 • FR.**  
**FRISCO, TEXAS • FRISCO INDEPENDENCE HS**

**SINGLE-GAME HIGHS**

Innings pitched:  
 Walks allowed:  
 Strikeouts:  
 Batters faced:  
 Putouts:  
 Assists:  
 Runners CS:

Fewest hits allowed (3.0 IP min.):  
 Fewest BB allowed (3.0 IP min.):

**CAREER STATS (AT UNM)**

Year	era	w-l	app	gs	cg	sho	sv	ip	h	r	er	bb	so
2022	0.00	0-0	1	0	0	0/0	0	1.0	1	0	0	0	1
<b>TOTAL</b>	<b>0.00</b>	<b>0-0</b>	<b>1</b>	<b>0</b>	<b>0</b>	<b>0/0</b>	<b>0</b>	<b>1.0</b>	<b>1</b>	<b>0</b>	<b>0</b>	<b>0</b>	<b>1</b>

**2022 GAME-BY-GAME**

Date	Opponent	GS	IP	H	R	ER	BB	SO	2B	3B	HR	WP	BK	HBP	IBB	Score	W-L	Sv	ERA	NP
Feb 19	vs Creighton		1.0	1	0	0	0	1	0	0	0	0	0	0	0	2-5	0-0	0	0.00	15
<b>Totals</b>		<b>0</b>	<b>1.0</b>	<b>1</b>	<b>0</b>	<b>0</b>	<b>0</b>	<b>1</b>	<b>0</b>	<b>0</b>	<b>0</b>	<b>0</b>	<b>0</b>	<b>0</b>	<b>0</b>	<b>2-5</b>	<b>0-0</b>	<b>0</b>	<b>0.00</b>	<b>-</b>





**12 SAVANNAH BRAUN**

**INF • 5-10 • 50.**  
**TUALATIN, ORE. • TUALATIN HS**

**SINGLE-GAME HIGHS**

Hits: 1, 2x, Last at Utah State, 5-15-21  
 Doubles:  
 Triples:  
 Home runs:  
 Total bases: 1, 2x, Last at Utah State, 5-15-21  
 RBI:  
 Runs scored:  
 Walks: 1, Oklahoma, 2-27-21  
 Hit by pitch:

Struck out: 1, Fresno State, 4-3-21  
 Sac flies:  
 Sac bunts:  
 At bats: 2, Utah State, 5-15-21  
 Stolen bases:  
 Caught stealing:  
 Field chances:  
 Putouts:  
 Assists:

**CAREER STATS (AT UNM)**

Year	avg	gp-gs	ab	r	h	2b	3b	hr	rbi	tb	slg%	bb	hbp	so	gdp	ob%	sf	sh	sb-att	po	a	e	fld%
2021	.500	4-1	4	0	2	0	0	0	0	2	.500	2	0	2	0	.667	0	0	0-0	0	0	0	.000
TOTAL	.500	4-1	4	0	2	0	0	0	0	2	.500	2	0	2	0	.667	0	0	0-0	0	0	0	.000

**2022 GAME-BY-GAME**

# THE 2022 LOBOS



## 16 LESLIE ROMERO

C • 5-4 • JR.

GONZALES, CALIF. • SALINAS HS

### SINGLE-GAME HIGHS

Hits: 2, 4x, Last vs. S. Utah, 2-11-22  
 Doubles: 1, 4x, Last at Lamar, 2-19-22  
 Home runs:  
 Total bases: 3, Oregon State, 2-11-22  
 RBI: 2, UCSB, 2-15-20  
 Runs scored: 1, 5x, Last vs. Ohio, 2-20-22  
 Walks: 1, 2x, Last at Arizona, 2-13-22  
 Struck out: 2, 2x, Last vs. Texas Southern, 3-6-20  
 Sac bunts: 1, S. Dakota, 2-29-20

Sac flies: 1, 2x, Last vs. Creighton, 2-19-22  
 At bats: 4, Lamar, 2-19-22  
 Stolen bases: 1, Ohio, 2-20-22  
 Putouts: 10, Oregon State, 2-11-22  
 Assists: 2, Lamar, 2-19-22

### CAREER STATS (AT UNM)

Year	avg	gp-gs	ab	r	h	2b	3b	hr	rbi	bb	so	sb-att
2019	.000	10-2	12	0	0	0	0	0	0	0	5	0-0
2020	.219	15-12	32	4	7	2	0	0	3	1	4	0-0
2022	.280	9-8	25	1	7	2	0	0	5	1	2	1-1
<b>TOTAL</b>	<b>.203</b>	<b>34-22</b>	<b>69</b>	<b>5</b>	<b>14</b>	<b>4</b>	<b>0</b>	<b>0</b>	<b>8</b>	<b>2</b>	<b>11</b>	<b>1-1</b>

### 2022 GAME-BY-GAME

Date	Opponent	Pos	AB	R	H	RBI	2B	3B	HR	BB	SB	CS	HBP	SAC	SF	GDP	K	PO	A	E	Avg
Feb 11	vs Oregon State	*c	2	0	2	1	1	0	0	0	0	0	0	0	0	0	0	10	0	0	1.000
Feb 12	vs Southern Utah	*dh	3	0	2	1	0	0	0	0	0	0	0	0	0	0	1	0	0	0	.800
Feb 13	vs Alabama	*dh	3	0	0	0	0	0	0	0	0	0	0	0	0	0	0	0	0	0	.500
Feb 13	at Arizona	*dh	2	0	0	0	0	0	0	1	0	0	0	0	0	0	0	0	0	0	.400
Feb. 18	vs Ohio	*dh	3	0	0	0	0	0	0	0	0	0	0	0	0	0	0	0	0	0	.308
Feb 18	at Lamar	*c	3	0	1	1	0	0	0	0	0	0	0	0	0	0	0	5	0	0	.312
Feb 19	at Lamar	ph/2	4	0	1	1	1	0	0	0	0	0	0	0	0	0	0	2	2	0	.300
Feb 19	vs Creighton	*c	2	0	0	1	0	0	0	0	0	0	0	0	1	0	0	1	0	0	.273
Feb 20	vs Ohio	*c	3	1	1	0	0	0	0	0	1	0	0	0	0	0	1	3	0	0	.280
<b>Totals</b>		<b>8gs</b>	<b>25</b>	<b>1</b>	<b>7</b>	<b>5</b>	<b>2</b>	<b>0</b>	<b>0</b>	<b>1</b>	<b>1</b>	<b>0</b>	<b>0</b>	<b>0</b>	<b>1</b>	<b>0</b>	<b>2</b>	<b>21</b>	<b>2</b>	<b>0</b>	<b>.280</b>



# THE 2022 LOBOS



## 17 AMBER LINTON

P • 6-0 • 50.  
FRANKLIN, IND. • INDIANA

### SINGLE-GAME HIGHS

Innings pitched: 7.0, 2x, Last at Lamar, 2-18-22  
Walks allowed: 3, Ohio, 2-20-22  
Strikeouts: 10, Oregon State, 2-11-22  
Batters faced: 30, Oregon State, 2-11-22  
Putouts: 1, 3x, Last at Iowa, 4-2-21  
Assists: 2, 4x, Last at Lamar, 2-18-22  
Runners CS:

Fewest hits allowed (3.0 IP min.): 1, Minnesota, 2-28-21  
Fewest BB allowed (3.0 IP min.): 0, 2x, Last at Lamar, 2-18-22

### CAREER STATS (AT INDIANA)

Year	era	w-l	app	qs	cq	sho	sv	ip	h	r	er	bb	so	2b	3b	hr	bf	bavg	wp	hbp	bk	sfa	sha
2021	4.87	5-2	19	4	0	0/0	0	44.1	51	33	24	24	21	12	2	2	214	.283	1	5	0	1	3
TOTAL	4.87	5-2	19	4	0	0/0	0	44.1	51	33	24	24	21	12	2	2	214	.283	1	5	0	1	3

### CAREER STATS (AT UNM)

Year	era	w-l	app	qs	cq	sho	sv	ip	h	r	er	bb	so
2022	2.58	4-1	6	4	2	0/0	1	21.2	16	10	8	9	23
TOTAL	2.58	4-1	6	4	2	0/0	1	21.2	16	10	8	9	23

### 2022 GAME-BY-GAME

Date	Opponent	GS	IP	H	R	ER	BB	SO	2B	3B	HR	WP	BK	HBP	IBB	Score	W-L	Sv	ERA	NP
Feb 11	vs Oregon State	*	7.0	6	2	2	1	10	0	0	1	0	0	2	0	3-2	1-0	0	2.00	137
Feb 13	vs Alabama	*	0.0	2	4	4	2	0	1	0	0	0	0	0	0	3-8	1-1	0	6.00	31
Feb. 18	vs Ohio	*	1.0	1	0	0	1	1	0	0	0	0	0	0	0	4-2	1-1	1	5.25	17
Feb 18	at Lamar	*	7.0	4	1	1	0	5	0	0	0	0	0	2	0	2-1	2-1	1	3.27	104
Feb 19	at Lamar	*	2.2	1	2	0	2	3	0	0	0	1	0	0	0	6-4	3-1	1	2.77	53
Feb 20	vs Ohio	*	4.0	2	1	1	3	4	0	0	0	0	0	0	0	9-1	4-1	1	2.58	73
Totals		4	21.2	16	10	8	9	23	1	0	1	1	0	4	0	27-18	4-1	1	2.58	-

# THE 2022 LOBOS



## 20 EMMA BRAMSON INF • 5-7 • FR. VALENCIA, CALIF. • VALENCIA HS

### SINGLE-GAME HIGHS

Hits: 2, 2x, Last vs. Ohio, 2-20-22  
 Doubles:  
 Triples:  
 Home runs:  
 Total bases: 2, 2x, Last vs. Ohio, 2-20-22  
 RBI: 2, Ohio, 2-20-22  
 Runs scored: 1, 4x, Last vs. Ohio, 2-20-22  
 Walks: 1, 2x, Last vs. Ohio, 2-20-22  
 Hit by pitch:

Struck out: 1, Lamar, 2-18-22  
 Sac flies: 1, Lamar, 2-19-22  
 Sac bunts:  
 At bats: 5, Lamar, 2-19-22  
 Stolen bases:  
 Caught stealing:  
 Putouts: 2, 2x, Last at Lamar, 2-18-22  
 Assists: 3, 2x, Last vs Ohio, 2-18-22  
 Mountain West Freshman of the Week (Feb. 22)

### CAREER STATS (AT UNM)

Year	avg	gp-gs	ab	r	h	2b	3b	hr	rbi	bb	so	sb-att
2022	.250	9-9	28	4	7	0	0	0	5	2	1	0-0
TOTAL	.250	9-9	28	4	7	0	0	0	5	2	1	0-0

### 2022 GAME-BY-GAME

Date	Opponent	Pos	AB	R	H	RBI	2B	3B	HR	BB	SB	CS	HBP	SAC	SF	GDP	K	PO	A	E	Avg
Feb 11	vs Oregon State	*3b	3	1	0	0	0	0	0	0	0	0	0	0	0	0	0	2	2	0	.000
Feb 12	vs Southern Utah	*3b	2	1	0	0	0	0	0	1	0	0	0	0	0	0	0	1	0	0	.000
Feb 13	vs Alabama	*3b	3	0	1	1	0	0	0	0	0	0	0	0	0	0	0	0	1	0	.125
Feb 13	at Arizona	*3b	3	0	0	0	0	0	0	0	0	0	0	0	0	0	0	0	3	0	.091
Feb. 18	vs Ohio	*3b	3	0	2	0	0	0	0	0	0	0	0	0	0	0	0	0	3	0	.214
Feb 18	at Lamar	*3b	3	0	1	1	0	0	0	0	0	0	0	0	0	0	1	2	2	0	.235
Feb 19	at Lamar	*3b	5	0	0	1	0	0	0	0	0	0	0	0	1	0	0	1	1	0	.182
Feb 19	vs Creighton	*3b	3	1	1	0	0	0	0	0	0	0	0	0	0	0	0	0	1	1	.200
Feb 20	vs Ohio	*3b	3	1	2	2	0	0	0	1	0	0	0	0	0	0	0	1	1	0	.250
Totals		9gs	28	4	7	5	0	0	0	2	0	0	0	0	1	0	1	7	14	1	.250





# 21 PEYTON ROBINSON

OF • 5-6 • SR.

SAGINAW, TEXAS • SOUTHERN NAZARENE

## SINGLE-GAME HIGHS

Hits: 3, 4x, Last vs. Nevada, 4-10-21  
 Doubles: 1, 8x, Last vs. Nevada, 4-10-21  
 Triples: 1, 2x, Last vs. Hawaii-Hilo, 2-14-20  
 Home runs:  
 Total bases: 4, 2x, Last vs. Nevada, 4-10-21  
 RBI: 3, East Central, 2-21-20  
 Runs scored: 2, 4x, Last vs. Boise St., 4-25-21  
 Walks: 2, Chadron St., 2-9-20  
 Hit by pitch:

Struck out: 3, 2x, Last vs. Boise St., 4-24-21  
 Sac flies: 1, 2x, Last at Oklahoma State, 3-6-21  
 Sac bunts: 1, 19x, Last vs. Boise St., 4-25-21  
 At bats: 6, Henderson State, 3-6-20  
 Stolen bases: 2, 5x, Last vs. Henderson St., 3-6-20  
 Caught stealing: 1, 5x, Last at UNLV, 4-17-21  
 Putouts: 6, Southern Utah, 2-21-21  
 Assists: 1, 6x, Last at San Diego State, 5-1-21

## CAREER STATS (AT UNM)

Year	avg	gp-gs	ab	r	h	2b	3b	hr	rbi	bb	so	sb-att
2021	.250	46-45	124	19	31	3	0	0	3	9	21	4-5
2022	.250	9-9	24	5	6	0	0	0	0	1	1	2-2
<b>TOTAL</b>	<b>.250</b>	<b>55-54</b>	<b>148</b>	<b>24</b>	<b>37</b>	<b>3</b>	<b>0</b>	<b>0</b>	<b>3</b>	<b>10</b>	<b>22</b>	<b>6-7</b>

## 2022 GAME-BY-GAME

Date	Opponent	Pos	AB	R	H	RBI	2B	3B	HR	BB	SB	CS	HBP	SAC	SF	GDP	K	PO	A	E	Avg	
Feb 11	vs Oregon State	*of	3	1	0	0	0	0	0	0	0	0	0	0	0	0	0	0	0	0	0	.000
Feb 12	vs Southern Utah	*of	4	1	1	0	0	0	0	0	0	0	0	0	0	0	1	0	0	0	0	.143
Feb 13	vs Alabama	*of	3	1	1	0	0	0	0	0	0	0	0	0	0	0	0	2	0	0	0	.200
Feb 13	at Arizona	*of	2	0	0	0	0	0	0	0	0	0	0	0	0	0	0	0	0	0	0	.167
Feb. 18	vs Ohio	*of/pr	2	1	1	0	0	0	0	0	0	0	0	0	0	0	0	2	0	0	0	.214
Feb 18	at Lamar	*of	3	0	2	0	0	0	0	0	1	0	0	0	0	0	0	0	0	0	0	.294
Feb 19	at Lamar	*of	2	0	0	0	0	0	0	0	0	0	0	0	0	0	0	0	0	0	0	.263
Feb 19	vs Creighton	*of	2	0	0	0	0	0	0	1	0	0	0	0	0	0	0	1	0	0	0	.238
Feb 20	vs Ohio	*of	3	1	1	0	0	0	0	0	1	0	0	0	0	0	0	2	0	0	0	.250
<b>Totals</b>			<b>9gs</b>	<b>24</b>	<b>5</b>	<b>6</b>	<b>0</b>	<b>0</b>	<b>0</b>	<b>1</b>	<b>2</b>	<b>0</b>	<b>0</b>	<b>0</b>	<b>0</b>	<b>0</b>	<b>1</b>	<b>7</b>	<b>0</b>	<b>0</b>	<b>0</b>	<b>.250</b>

# THE 2022 LOBOS



## 24 DIAMOND SANDOVAL

OF • 5-3 • 50.

NORWALK, CALIF. • ST. PAUL HS

### SINGLE-GAME HIGHS

Hits: 1, 2x, Last at Utah State, 5-14-21  
 Doubles:  
 Triples:  
 Home runs:  
 Total bases: 1, 2x, Last at Utah State, 5-14-21  
 RBI: 1, San Jose State, 5-8-21  
 Runs scored: 1, 2x, Last at Utah State, 5-14-21  
 Walks: 1, 3x, Last vs. Nevada, 4-10-21  
 Hit by pitch:

Struck out: 2, Nevada, 4-10-21  
 Sac flies:  
 Sac bunts:  
 At bats: 3, 2x, Last at Utah State, 5-14-21  
 Stolen bases:  
 Caught stealing:  
 Putouts:  
 Assists:

### CAREER STATS (AT UNM)

Year	avg	gp-gs	ab	r	h	2b	3b	hr	rbi	bb	so	sb-att
2021	.125	14-2	16	3	2	0	0	0	1	3	5	0-0
2022	.000	3-0	2	0	0	0	0	0	0	0	1	0-0
TOTAL	.111	17-2	18	3	2	0	0	0	1	3	6	0-0

### 2022 GAME-BY-GAME

Date	Opponent	Pos	AB	R	H	RBI	2B	3B	HR	BB	SB	CS	HBP	SAC	SF	GDP	K	PO	A	E	Avg	
Feb 11	vs Oregon State	pr	0	0	0	0	0	0	0	0	0	0	0	0	0	0	0	0	0	0	0	.000
Feb 19	at Lamar	ph	1	0	0	0	0	0	0	0	0	0	0	0	0	0	0	0	0	0	0	.000
Feb 19	vs Creighton	ph/d	1	0	0	0	0	0	0	0	0	0	0	0	0	0	1	0	0	0	0	.000
Totals		Ogs	2	0	0	0	0	0	0	0	0	0	0	0	0	0	1	0	0	0	0	.000





**25 BRIANNA SANCHEZ** P • 5-6 • JR.  
WEST COVINA, CALIF. • BISHOP AMAT HS

**SINGLE-GAME HIGHS**

Innings pitched: 7.0, Stanford, 2-8-20  
 Walks allowed: 3, 7x, Last at Fresno St., 4-3-21  
 Strikeouts: 1, 11x, Last at San José State, 5-8-21  
 Batters faced: 26, 2x, Last vs. N. Colorado, 3-1-20  
 Putouts: 2, Stanford, 2-8-20  
 Assists: 2, 2x, Last vs. La Salle, 2-29-20  
 Runners CS:  
 Fewest hits allowed (3.0 IP min.): 4, Stanford, 2-8-20  
 Fewest BB allowed (3.0 IP min.): 3, Stanford, 2-8-20

**CAREER STATS (AT UNM)**

Year	era	w-l	app	gs	cg	sho	sv	ip	h	r	er	bb	so
2020	4.50	1-4	16	5	1	1/0	1	32.2	47	26	21	23	7
2021	21.00	0-1	8	1	0	0/0	0	7.0	19	22	21	9	4
2022	10.50	0-0	3	0	0	0/1	0	2.0	1	3	3	3	1
<b>TOTAL</b>	<b>7.56</b>	<b>1-5</b>	<b>27</b>	<b>6</b>	<b>1</b>	<b>1/1</b>	<b>1</b>	<b>41.2</b>	<b>67</b>	<b>51</b>	<b>45</b>	<b>35</b>	<b>12</b>

**2022 GAME-BY-GAME**

Date	Opponent	Pos	AB	R	H	RBI	2B	3B	HR	BB	SB	CS	HBP	SAC	SF	GDP	K	PO	A	E	Avg
Feb 11	vs Oregon State	*c	2	0	2	1	1	0	0	0	0	0	0	0	0	0	0	10	0	0	1.000
Feb 12	vs Southern Utah	*dh	3	0	2	1	0	0	0	0	0	0	0	0	0	0	1	0	0	0	.800
Feb 13	vs Alabama	*dh	3	0	0	0	0	0	0	0	0	0	0	0	0	0	0	0	0	0	.500
Feb 13	at Arizona	*dh	2	0	0	0	0	0	0	1	0	0	0	0	0	0	0	0	0	0	.400
Feb. 18	vs Ohio	*dh	3	0	0	0	0	0	0	0	0	0	0	0	0	0	0	0	0	0	.308
Feb 18	at Lamar	*c	3	0	1	1	0	0	0	0	0	0	0	0	0	0	0	5	0	0	.312
Feb 19	at Lamar	ph/2	4	0	1	1	1	0	0	0	0	0	0	0	0	0	0	2	2	0	.300
Feb 19	vs Creighton	*c	2	0	0	1	0	0	0	0	0	0	0	0	1	0	0	1	0	0	.273
Feb 20	vs Ohio	*c	3	1	1	0	0	0	0	0	1	0	0	0	0	0	1	3	0	0	.280
<b>Totals</b>		<b>8gs</b>	<b>25</b>	<b>1</b>	<b>7</b>	<b>5</b>	<b>2</b>	<b>0</b>	<b>0</b>	<b>1</b>	<b>1</b>	<b>0</b>	<b>0</b>	<b>0</b>	<b>1</b>	<b>0</b>	<b>2</b>	<b>21</b>	<b>2</b>	<b>0</b>	<b>.280</b>

On base pct. .296 • Slugging pct. .360

# THE 2022 LOBOS



**27 OLIVIA BIRKINSHAW** *UT • 5-10 • FR.*  
*SANTA MARGARITA, CALIF. • MISSION VIEJO HS*

### SINGLE-GAME HIGHS

Hits: 2, Lamar, 2-19-22  
 Doubles: 1, at Arizona, 2-13-22  
 Triples: 1, Lamar, 2-19-22  
 Home runs:  
 Total bases: 4, Lamar, 2-19-22  
 RBI:  
 Runs scored: 2, Lamar, 2-19-22  
 Walks: 1, at Arizona, 2-13-22  
 Hit by pitch: 2, Oregon State, 2-11-22

Struck out: 2, Lamar, 2-18-22  
 Sac flies:  
 Sac bunts: 1, 2x, Last vs Ohio, 2-20-22  
 At bats: 3,3x, Last vs Creighton, 2-19-22  
 Stolen bases: 1, Ohio, 2-20-22  
 Caught stealing:  
 Putouts: 4, Arizona, 2-13-22  
 Assists: 1, Creighton, 2-19-22

### CAREER STATS (AT UNM)

Year	avg	gp-gs	ab	r	h	2b	3b	hr	rbi	bb	so	sb-att
2022	.267	7-5	15	4	4	1	1	0	0	1	5	1-1
TOTAL	.267	7-5	15	4	4	1	1	0	0	1	5	1-1

### 2022 GAME-BY-GAME

Date	Opponent	Pos	AB	R	H	RBI	2B	3B	HR	BB	SB	CS	HBP	SAC	SF	GDP	K	PO	A	E	Avg
Feb 11	vs Oregon State	*dh	1	1	0	0	0	0	0	0	0	0	2	0	0	0	0	0	0	0	.000
Feb 13	at Arizona	*1b	2	0	1	0	1	0	0	1	0	0	0	0	0	0	1	4	0	0	.333
Feb. 18	vs Ohio	ph	1	0	1	0	0	0	0	0	0	0	0	0	0	0	0	0	0	0	.500
Feb 18	at Lamar	*dh	3	0	0	0	0	0	0	0	0	0	0	0	0	0	2	0	0	0	.286
Feb 19	at Lamar	ph/of	3	2	2	0	0	1	0	0	0	0	0	1	0	0	0	2	0	0	.400
Feb 19	vs Creighton	*dh/1	3	0	0	0	0	0	0	0	0	0	0	0	0	0	1	1	1	0	.308
Feb 20	vs Ohio	*dh	2	1	0	0	0	0	0	0	1	0	1	1	0	0	1	0	0	0	.267
Totals		5gs	15	4	4	0	1	1	0	1	1	0	3	2	0	0	5	7	1	0	.267

On base pct. .421 • Slugging pct. .467



# THE 2022 LOBOS



## 28 SAMANTHA FOHRMAN

P • 5-7 • JR.

COTTAGE GROVE, MINN. • GEORGIAN COURT

### SINGLE-GAME HIGHS

Innings pitched: 3.0, Lamar, 2-19-22

Walks allowed:

Strikeouts: 1, Lamar, 2-19-22

Batters faced: 14, Lamar, 2-19-22

Putouts:

Assists: 1, Lamar, 2-19-22

Runners CS:1, Alabama, 2-13-22

Fewest hits allowed (3.0 IP min.): 5, Lamar, 2-19-22

Fewest BB allowed (3.0 IP min.): 0, Lamar, 2-19-22

### CAREER STATS (AT UNM)

Year	era	w-l	app	gs	cg	sho	sv	ip	h	r	er	bb	so
2022	1.75	0-0	2	1	0	0/0	0	4.0	6	3	1	0	1
TOTAL	1.75	0-0	2	1	0	0/0	0	4.0	6	3	1	0	1

### 2022 GAME-BY-GAME

Date	Opponent	GS	IP	H	R	ER	BB	SO	2B	3B	HR	WP	BK	HBP	IBB	Score	W-L	Sv	ERA	NP
Feb 13	vs Alabama		1.0	1	1	0	0	0	0	0	0	0	0	0	1	3-8	0-0	0	0.00	21
Feb 19	at Lamar	*	3.0	5	2	1	0	1	3	0	0	0	0	0	0	6-4	0-0	0	1.75	51
Totals		1	4.0	6	3	1	0	1	3	0	0	0	0	1	0	9-12	0-0	0	1.75	-



# 34 EMMA GUINDON

P • 5-9 • JR.

TOMBALL, TEXAS • MONTEREY PENINSULA COLLEGE

## SINGLE-GAME HIGHS

Innings pitched: 8.0, Prairie View, 4-16-19

Walks allowed: 6, 2x, Last at Northwestern St., 2-23-19

Strikeouts: 11, Southern Utah, 2-12-22

Batters faced: 35, 2x, Last at Utah State, 5-14-21

Putouts: 2, 2x, Last at Prairie View, 4-16-19

Assists: 5, Fresno State, 4-2-21

Runners CS: 1, 5x, Last at UNLV, 4-17-21

Fewest hits allowed (3.0 IP min.): 0, Incarnate Word, 4-18-19

Fewest BB allowed (3.0 IP min.): 0, 5x, Last at Arizona, 2-12-22

## CAREER STATS (AT UNM)

Year	era	w-l	app	gs	cq	sho	sv	ip	h	r	er	bb	so
2021	5.00	6-21	30	27	12	0/1	0	141.1	207	133	101	53	46
2022	0.58	2-1	5	3	1	0/1	0	24.1	14	2	2	3	25
<b>TOTAL</b>	<b>4.35</b>	<b>8-22</b>	<b>35</b>	<b>30</b>	<b>13</b>	<b>0/2</b>	<b>0</b>	<b>165.2</b>	<b>221</b>	<b>135</b>	<b>103</b>	<b>56</b>	<b>71</b>

## 2022 GAME-BY-GAME

Date	Opponent	GS	IP	H	R	ER	BB	SO	2B	3B	HR	WP	BK	HBP	IBB	Score	W-L	Sv	ERA	NP
Feb 12	vs Southern Utah	*	6.0	1	0	0	0	11	0	0	0	0	0	2	0	8-0	1-0	0	0.00	83
Feb 13	at Arizona	*	6.0	5	1	1	1	2	1	0	0	1	0	0	0	0-1	1-1	0	0.58	87
Feb. 18	vs Ohio	*	5.0	5	1	1	1	5	2	0	0	0	0	0	0	4-2	2-1	0	0.82	39
Feb 19	at Lamar		6.1	3	0	0	1	7	0	0	0	0	0	0	0	6-4	2-1	0	0.60	83
Feb 20	vs Ohio		1.0	0	0	0	0	0	0	0	0	0	0	0	0	9-1	2-1	0	0.58	10
<b>Totals</b>		<b>3</b>	<b>24.1</b>	<b>14</b>	<b>2</b>	<b>2</b>	<b>3</b>	<b>25</b>	<b>3</b>	<b>0</b>	<b>0</b>	<b>1</b>	<b>0</b>	<b>2</b>	<b>0</b>	<b>27-8</b>	<b>2-1</b>	<b>0</b>	<b>0.58</b>	<b>-</b>



**THE 2022 LOBOS**



**42 LORAN WALKER**

*C/INF • 5-6 • FR.  
MERIDIAN, IDAHO • ROCKY MOUNTAIN HS*

**SINGLE-GAME HIGHS**

**CAREER STATS (AT UNM)**

**2022 GAME-BY-GAME**

**THE 2022 LOBOS**



**44 LAUREN GARCIA**

**INF • 5-11 • FR.  
EL PASO, TEXAS • MONTWOOD HS**

**SINGLE-GAME HIGHS**

Out this season with an injury

**CAREER STATS (AT UNM)**

**2022 GAME-BY-GAME**





**55 JANAЕ CAMERON**

**C • 5-9 • SR.**

**WINDSOR, COLO. • NEBRASKA OMAHA**

**SINGLE-GAME HIGHS**

Hits: 4, North Dakota, 3-31-19  
 Doubles: 2, 2x, Last vs. Northern Iowa, 3-6-20  
 Triples:  
 Home runs:1, 4x, Last vs. Southern Utah, 2-12-22  
 Total bases: 4, Last vs. Southern Utah, 2-12-22  
 RBI: 4, North Dakota, 3-31-19  
 Runs scored: 2, 4x, Last vs. New Mexico, 3-7-21  
 Walks: 2, 2x, Last at Purdue Ft. Wayne, 4-13-19  
 Hit by pitch: 1, 2x, Last vs. Northern Iowa, 3-6-20

Struck out:3, Lamar, 2-19-22  
 Sac flies: 1, 2x, Last at Georgia, 2-15-19  
 Sac bunts: 1, 6x, Last at UMKC, 5-1-21  
 At bats: 5, North Dakota, 3-31-19  
 Stolen bases:  
 Caught stealing:  
 Putouts: 13, North Dakota, 3-27-21  
 Assists: 3, 4x, Last vs. South Dakota St., 3-22-19

**CAREER STATS (AT UNM)**

Year	avg	gp-gs	ab	r	h	2b	3b	hr	rbi	bb	so	sb-att
2022	.222	3-2	9	2	2	1	0	1	3	0	5	0-0
TOTAL	.222	3-2	9	2	2	1	0	1	3	0	5	0-0

**2022 GAME-BY-GAME**

Date	Opponent	Pos	AB	R	H	RBI	2B	3B	HR	BB	SB	CS	HBP	SAC	SF	GDP	K	PO	A	E	Avg
Feb 12	vs Southern Utah	*c	3	1	1	2	0	0	1	0	0	0	0	0	0	0	1	12	0	0	.333
Feb. 18	vs Ohio	*c	3	0	1	1	1	0	0	0	0	0	0	0	0	0	1	3	0	1	.333
Feb 19	at Lamar	ph	3	1	0	0	0	0	0	0	0	0	0	0	0	0	3	0	0	0	.222
Totals		2gs	9	2	2	3	1	0	1	0	0	0	0	0	0	0	5	15	0	1	.222

On base pct. .222 • Slugging pct. .667



# 66 ASHLYN ROBERTS

**P • 5-8 • FR.**  
**SAMMAMISH, WASH. • EASTLAKE HS**

### SINGLE-GAME HIGHS

Innings pitched: 7.0, Utah State, 5-14-21  
 Walks allowed: 2, 4x, Last at San Diego St., 5-1-21  
 Strikeouts: 4, Southern Utah, 2-21-21  
 Batters faced: 31, Utah State, 5-14-21  
 Putouts: 1, 3x, Last vs Alabama, 2-13-22  
 Assists: 1, 8x, Last at Utah State, 5-14-21  
 Runners CS: 2, Creighton, 2-19-22

Fewest hits allowed (3.0 IP min.): 3, 3x, Last vs. Boise St., 4-25-21  
 Fewest BB allowed (3.0 IP min.): 1, 8x, Last vs Creighton, 2-19-22

### CAREER STATS (AT UNM)

Year	era	w-l	app	gs	cg	sho	sv	ip	h	r	er	bb	so
2021	5.25	2-2	24	8	1	0/1	1	56.0	84	48	42	20	24
2022	3.89	0-1	2	1	0	0/0	0	9.0	9	6	5	2	2
<b>TOTAL</b>	<b>5.06</b>	<b>2-3</b>	<b>26</b>	<b>9</b>	<b>1</b>	<b>0/1</b>	<b>1</b>	<b>65.0</b>	<b>93</b>	<b>54</b>	<b>47</b>	<b>22</b>	<b>26</b>

### 2022 GAME-BY-GAME

Date	Opponent	GS	IP	H	R	ER	BB	SO	2B	3B	HR	WP	BK	HBP	IBB	Score	W-L	Sv	ERA	NP
Feb 13	vs Alabama		5.0	4	3	3	1	2	1	1	0	0	0	2	0	3-8	0-0	0	4.20	73
Feb 19	vs Creighton	*	4.0	5	3	2	1	0	1	0	0	0	0	0	0	2-5	0-1	0	3.89	73
<b>Totals</b>		<b>1</b>	<b>9.0</b>	<b>9</b>	<b>6</b>	<b>5</b>	<b>2</b>	<b>2</b>	<b>2</b>	<b>1</b>	<b>0</b>	<b>0</b>	<b>0</b>	<b>2</b>	<b>0</b>	<b>5-13</b>	<b>0-1</b>	<b>0</b>	<b>3.89</b>	<b>-</b>



# THE 2022 LOBOS



## 77 REYAN TUCK

IF • 6-0 • SR.  
HILLSBORO, ORE. • TOWSON

### SINGLE-GAME HIGHS

Hits: 2, 3x, Last vs. San Jose St., 5-8-21  
 Doubles: 1, 8x, Last vs Ohio, 2-18-22  
 Triples:  
 Home runs:  
 Total bases: 3, Boise State, 4-24-21  
 RBI: 2, 2x, Last vs. SUU, 2-20-21  
 Runs scored: 1, 6x, Last at Lamar, 2-19-22  
 Walks: 1, 5x, Last vs. San Jose State, 5-9-21  
 Hit by pitch: 1, 4x, Last at San Jose St., 5-8-21

Struck out: 2, 3x, Last vs. Boise St., 4-25-21  
 Sac flies: 1, 4x, Last at Utah State, 5-14-21  
 Sac bunts: 1, 2x, Last at Lamar, 2-19-22  
 At bats: 4, 2x, Last at Lamar, 2-19-22  
 Stolen bases: 1, Northern Colorado, 2-15-20  
 Caught stealing:  
 Putouts: 15, Lamar, 2-19-22  
 Assists: 2, San Jose State, 5-8-21

### CAREER STATS (AT UNM)

Year	avg	gp-gs	ab	r	h	2b	3b	hr	rbi	bb	so	sb-att
2020	.211	16-14	38	1	8	1	0	0	4	1	5	1-1
2021	.212	34-34	85	5	18	7	0	0	7	4	17	0-0
2022	.348	8-8	23	2	8	2	0	0	2	0	6	0-0
TOTAL	.233	58-56	146	8	34	10	0	0	13	5	28	1-1

### 2021 GAME-BY-GAME

Date	Opponent	Pos	AB	R	H	RBI	2B	3B	HR	BB	SB	CS	HBP	SAC	SF	GDP	K	PO	A	E	Avg
Feb 11	vs Oregon State	*1b	3	0	1	1	0	0	0	0	0	0	0	0	0	0	2	6	0	0	.333
Feb 12	vs Southern Utah	*1b	3	1	1	0	1	0	0	0	0	0	0	0	0	0	1	1	0	1	.333
Feb 13	vs Alabama	*1b	3	0	1	0	0	0	0	0	0	0	0	0	0	0	2	2	0	0	.333
Feb. 18	vs Ohio	*1b	3	0	1	0	1	0	0	0	0	0	0	0	0	0	0	6	0	0	.333
Feb 18	at Lamar	*1b	2	0	1	0	0	0	0	0	0	0	0	0	0	0	1	10	0	0	.357
Feb 19	at Lamar	*1b	4	1	1	0	0	0	0	0	0	0	0	1	0	0	0	15	1	0	.333
Feb 19	vs Creighton	*1b	2	0	1	0	0	0	0	0	0	0	0	0	0	0	0	5	0	0	.350
Feb 20	vs Ohio	*1b	3	0	1	1	0	0	0	0	0	0	0	0	0	0	0	6	1	0	.348
Totals		8gs	23	2	8	2	2	0	0	0	0	0	0	1	0	0	6	51	2	1	.348

# THE 2022 LOBOS



## 99 AYSIAH GONZALEZ

C • 5-7 • FR.

LA PUENTE, CALIF. • BISHOP AMAT HS

### SINGLE-GAME HIGHS

Hits:	Struck out: 2, Lamar, 2-19-22
Doubles:	Sac flies:
Triples:	Sac bunts:
Home runs:	At bats: 2, Lamar, 2-19-22
Total bases:	Stolen bases:
RBI:	Caught stealing:
Runs scored:	Putouts:
Walks:	Assists:
Hit by pitch:	

### CAREER STATS (AT UNM)

Year	avg	gp-gs	ab	r	h	2b	3b	hr	rbi	bb	so	sb-att
2022	.000	3-1	4	0	0	0	0	0	0	0	2	0-0
TOTAL	.000	3-1	4	0	0	0	0	0	0	0	2	0-0

### 2022 GAME-BY-GAME

Date	Opponent	Pos	AB	R	H	RBI	2B	3B	HR	BB	SB	CS	HBP	SAC	SF	GDP	K	PO	A	E	Avg
Feb 12	vs Southern Utah	ph	1	0	0	0	0	0	0	0	0	0	0	0	0	0	0	0	0	0	.000
Feb 18	at Lamar	ph	1	0	0	0	0	0	0	0	0	0	0	0	0	0	0	0	0	0	.000
Feb 19	at Lamar	*dh	2	0	0	0	0	0	0	0	0	0	0	0	0	0	2	0	0	0	.000
Totals		1gs	4	0	0	0	0	0	0	0	0	0	0	0	0	0	2	0	0	0	.000

