

THE UNIVERSITY OF NEW MEXICO SOFTBALL



2022 SOFTBALL NOTES | WEEK 4

@UNMLoboSB

www.GoLOBOS.com

#GoLOBOS

Allison Weiss, Assistant Director of Athletic Communications - Softball Contact | Email: allisonweiss@unm.edu | Cell: (661) 313-5402

2022 SCHEDULE

OVERALL: 10-3 • MW: 0-0 • H: 4-0 • A: 2-1 • N: 4-2

Date	Opponent	Time/Score
Candrea Classic Tucson, Ariz.		
2/11	Oregon State	W, 3-2
2/12	Southern Utah	W, 8-0 (6)
2/13	#2 Alabama	L, 8-3
2/13	at #9 Arizona	L, 1-0
Lamar Invitational Beaumont, Texas		
2/18	Ohio	W, 3-2
2/18	at Lamar	W, 2-1
2/19	at Lamar	W, 6-4 (12)
2/19	Creighton	L, 5-2
2/20	Ohio	W, 9-1 (5)
Lobo Classic Albuquerque, N.M.		
2/24	UTEP	W, 5-4
2/25	North Dakota State	W, 6-4
2/26	Buffalo	W, 6-2
2/27	Tarleton	W, 8-0 (5)
South Coast Invitational Santa Barbara, Calif.		
3/3	at UCSB	12 p.m.
3/3	at UCSB	2:30 p.m.
3/4	Wagner	10:30 a.m.
3/4	Santa Clara	3 p.m.
3/5	Santa Clara	10:30 a.m.
3/8	New Mexico State	2 p.m.
3/8	New Mexico State	4:30 p.m.
Dixie State Tournament St. George, Utah		
3/11	Southern Utah	12:30 p.m.
3/11	at Dixie State	5:30 p.m.
3/12	Wisconsin	10 a.m.
3/12	Maine	3 p.m.
3/13	Wisconsin	10 a.m.
3/18	at San José State *	7 p.m.
3/19	at San José State *	4 p.m.
3/20	at San José State *	1 p.m.
3/22	at New Mexico State	4 p.m.
3/25	Utah State *	6 p.m.
3/26	Utah State *	4 p.m.
3/27	Utah State *	12 p.m.
3/31	at BYU	5 p.m.
3/31	at BYU	7 p.m.
4/1	at BYU	1 p.m.
4/8	at Colorado State *	4 p.m.
4/9	at Colorado State *	1 p.m.
4/10	at Colorado State *	12 p.m.
4/14	Fresno State *	6 p.m.
4/15	Fresno State *	4 p.m.
4/16	Fresno State *	11 a.m.
4/22	at Nevada *	4 p.m.
4/23	at Nevada *	2 p.m.
4/24	at Nevada *	1 p.m.
4/29	UNLV *	6 p.m.
4/30	UNLV *	4 p.m.
5/1	UNLV *	12 p.m.
5/6	at Boise State *	4 p.m.
5/7	at Boise State *	4 p.m.
5/8	at Boise State *	12 p.m.
5/12	San Diego State *	6 p.m.
5/13	San Diego State *	4 p.m.
5/14	San Diego State *	12 p.m.

Bold denotes home games
 *denotes Mountain West game
 All times listed are Mountain Time
 Game times are subject to change

SOUTH COAST INVITATIONAL



NEW MEXICO Lobos

Record 10-3, Mountain West
 Head Coach Paula Congleton
 Record at UNM 57-134 (Fifth Season)
 Career Record (NCAA DI) 90-211 (Sixth Season)



UCSB Gauchos

Record 3-12, Big West
 Head Coach Brie Galiciano
 Record at UTEP 331-410 (15th Season)
 Career Record Same



WAGNER Seahawks

Record 2-8, Northeast Conference
 Head Coach Lindsey Ubrun
 Record at NDSU 47-92 (5th Season)
 Career Record Same



SANTA CLARA Broncos

Record 10-9, WCC
 Head Coach Gina Carbonatto
 Record at UB 26-45 (Third Season)
 Career Record Same

Media Information

Location:..... Santa Barbara, Calif.
Date/Time:
 UCSB Thurs. March 3 - 12/2:30 p.m.
 Wagner Friday, March 4 - 10:30 a.m.
 Santa Clara Friday, March 4 - 3 p.m.
 Santa Clara Sat., March 5 - 10:30 a.m.
 *All times in MT

Live Video:..... N/A
Live Stats:..... golobos.com/sbstats
Social Media: @UNMLoboSB

Notes last updated: March 2, 2022

Series History

VS. UCSB

Overall: 4-4
 Last Five: 2-3
 Last Meeting: 2/16/20 (L, 7-2)
 Last Win: 2/15/20 (9-1 (5))
 Series Trend: L1

VS. WAGNER

Overall: First meeting
 Last Five: First meeting
 Last Meeting: First meeting
 Last Win: First meeting
 Series Trend: First meeting

VS. SANTA CLARA

Overall: 7-2
 Last Five: 5-0
 Last Meeting: 3/12/17 (W, 6-1)
 Last Win: Same
 Series Trend: W7

BREAK OPEN THE RECORD BOOK

- The Lobos are off to their best start since 2012, when UNM started 9-0 and was 12-1 through its first 13 games.
- UNM has also won its last five games, with the last time the Lobos have had a winning streak that long back in 2013 (six games that spanned Feb. 16 to Feb. 23).

THE HONOR IS ALL OURS

- The Lobos have won three MW weekly conference awards in the last two weeks: one for pitcher, one for player and one for freshman.
- Amber Linton became the first Lobo to win MW Pitcher of the Week since Tess McPherson won back on Feb. 14, 2017.
- Linton earned the award following a dominating outing at the Lobo Classic in which the Lobo finished with a 0.98 ERA while making three appearances, two starts, throwing one complete game and earned a win and a save.
- Linton threw a team-high 14.1 innings and struck out 20, walking just four batters, and didn't allow a single extra-base hit in the 11 hits given up.
- After a 4-1 week at the Cardinal Classic, Emma Bramson and Andrea Howard have been named the Mountain West Freshman and Player of the Week, respectively, as announced by the conference on Tuesday.
- It is the second time that Howard has been selected for the player of the week honor and the first for the freshman Bramson.
- Howard had a sensational weekend at the plate, with a .471 batting average, a .941 slugging



NEWS AND NOTES

GENERAL INFORMATION

Name of School.....	University of New Mexico
City/Zip.....	Albuquerque, N.M. 87106
Founded.....	1889 by Territorial Legislature
Enrollment.....	25,015
Nickname.....	Lobos
School Colors.....	Cherry & Silver
Conference.....	Mountain West
Affiliation.....	NCAA Division I
President.....	Dr. Garnett Stokes
Athletic Director.....	Eddie Nuñez

PROGRAM HISTORY

First Year of Softball.....	1978
All-Time Record.....	1025-1170-3
Mountain West Record.....	132-305-1
NCAA Tournament Appearances.....	3
1980 (AIAW), 1981 (AIAW) and 1983 (NCAA)	
Last NCAA Postseason Opponent.....	Cal State Fullerton
Last NCAA Postseason Result.....	CSUF won series 2-1
Conference Championships.....	3
1980 (Intermountain), 1981 (Intermountain) and 1983 (High Country)	

TEAM INFORMATION

2021 Overall Record.....	10-36
2019 MW Record.....	9-15 (7th)
Letterwinners Returning/Lost.....	13/6
Pitchers Returning/Lost.....	3/2
Starters Returning/Lost.....	6/3
Newcomers.....	10

SOFTBALL STAFF

Head Coach.....	Dr. Paula Congleton (New Mexico, 1984)
Year at UNM.....	Fifth season
Record at UNM (Pct.).....	57-134 (.298)
MW Record at UNM (Pct.).....	19-53 (.247)
Career Record (Years).....	90-211 (6 years)
Assistant Coach.....	Kristen Hawkins (Virginia, 2013)
Year at UNM.....	First Season
Assistant Coach.....	Brandon Maurer (Cal State Fullerton, 2015 & 18)
Year at UNM.....	Second season
Volunteer Assistant Coach....	Mike Forsythe
Year at UNM.....	First season
Strength Coach.....	Joaquin Chavez
Academic Advisor.....	Madison Steinbrock
Head Athletic Trainer.....	Bob Waller
Athletic Trainer.....	Kellyanne Gangaware

COMMUNICATIONS

Softball Contact/Asst. Director of Comm.....	Allison Weiss
Email.....	allisonweiss@unm.edu
Cell Phone (Preferred).....	(661) 313-5402
Communications Office.....	(505) 925-5520

DIGITAL MEDIA

Athletics Website.....	GoLobos.com
Main University Web Site.....	unm.edu
Conference Website.....	TheMW.com
Twitter.....	@UNMLoboSB
Instagram.....	@UNMLoboSB
Facebook.....	@UNMLoboSB

FACILITIES

Venue.....	Lobo Softball Field
Dimensions.....	205-225-205
Capacity.....	1,500

percentage, a .500 on-base percentage, finishing with eight hits, two doubles, two home runs, 16 total bases and eight RBI. Howard led the team in batting average, slugging percentage, on-base percentage, runs scored (five), hits, RBI, doubles, home runs and total bases.

- The Albuquerque native had multiple hits in three of the games, and went 3-for-4 in the extra-inning win over Lamar while also intentionally walked twice. Howard recorded three RBI in the 6-4, 12-inning win against the host Cardinals, had three RBI in the 9-1 (five innings) win over Ohio on Sunday and two RBI in the 4-2 win over Ohio on Friday.
- It wasn't just her efficiency at the plate that made Howard dangerous, it was also when she delivered her hits. Trailing 2-0 in the sixth in the second game against Lamar, Howard tied the game with a two-run home run which ultimately allowed the Lobos to go to extra innings. The outfielder was intentionally walked in the eighth and 10th inning and when she was pitched to in the 12th, hit a single up the middle that scored a run to make it 5-3 Lobos. UNM went on to win 6-4.
- Bramson was nearly as clutch, recording six hits and four RBI, while hitting .353 and having a .368 on-base percentage. The Valencia, Calif., native was 7-for-11 in advancing runners and had a hit in four of the games with two games with two hits.
- The infielder drove in the first run of the game in Friday's game against Lamar on a single up the middle, and in Saturday's game against Lamar, hit a sacrifice fly in the 11th inning to score a run, which proved crucial after Lamar scored in the bottom of the 11th.
- Against Ohio on Sunday, Bramson battled to draw a walk to start the second inning, working a full count on a nine-pitch at-bat where the freshman fouled off three-straight pitches and was behind 1-2 in the count. She eventually came around to score for the first run of the game to tie the game. In the next inning, the freshman single to right field to score Howard for the second run and in the fifth inning, Bramson ended the game with a single through the right side of the infield to score the nine run of the game and pushed the Lobos into run-rule territory, effectively ending the game.
- On the weekend, Bramson was second on the team in hits and RBI, tied for second in total bases, third in batting average, and fourth in on-base percentage.

PITCH PERFECT

- To date in the 2022 season, the Lobos had two pitchers throw double-digit strikeouts three times and twice thrown a near no-hitter.
- Making her first appearance in the circle for New Mexico, Amber Linton threw 10 strikeouts against Pac-12 school Oregon State. Of the 10 strikeouts, half came in the final nine outs, with three in the seventh as the Lobos held a one-run lead.
- Holding on to a 3-2 lead in the seventh, two Beaver batters reached base, but Linton closed with three strikeouts to close the door for the Lobo win.
- Emma Guindon recorded a career-high 11 strikeouts and allowed just one hit with no walks in the 8-0, six-inning win over Southern Utah on Feb. 12. With a 3-0 lead, Guindon was efficient in the circle, retiring the side on three strikeouts (two looking) in the fourth and recorded three more strikeouts in the fifth. Guindon struck out her seventh batter in-a-row to start the sixth for her final strikeout of the game.
- Against SUU, of Guindon's 83 pitches, 58 went for strikes, and of Linton's 137 pitches on Friday, 89 went for strikes
- The last time a Lobo pitcher recorded double-digit strikeouts was in 2019, with the two double-digit strikeouts only the fourth time in the last nine years that a Lobo has struck out 10 or more batters. However, in that timespan, the Lobos have never had two pitchers record 10 or more strikeouts in a game in the same year.
- At the Cardinal Classic, Guindon appeared in three games with a start and threw 12.1 innings, finishing with a 0.57 ERA. The RHP struck out 12, walked just two and allowed one run.
- Linton appeared in four games with two starts, and a complete game, and went 3-0 with a save as well. The sophomore threw a team-high 14.2 innings, striking out 13 with six walks, didn't allow a single extra-base hit and finished with a 0.95 ERA.
- As a staff, the Lobos finished with a 1.70 ERA at the Cardinal Classic, striking out 28 while walking 11.
- Guindon has a 5-1 record with 0.80 ERA with five starts and eight appearances, throwing two complete games and two one-hitters.
- Linton and Guindon have thrown the most innings on the team with 36.0 and 35.0, respectively, with Guindon striking out 34 and Linton 43. Guindon has walked just six batters while Linton has walked 13.
- On the season, Linton carries a 1.94 ERA with six starts, nine appearances, three complete games, two saves. Linton also has a 5-1 record, and hasn't allowed an extra-base hit in her last seven appearances.
- As a pitching unit, the Lobos have combined for a 1.83 ERA, which ranks as the best in the MW and 30th in the NCAA. The Lobos also lead in opposing batting average with a .204, have allowed the fewest hits allowed in the MW at 67, the fewest home runs allowed at one and the fewest earned runs allowed with 23. As a unit, the Lobo pitchers have struck out 82 while walking 24.
- Guindon ranks 31st in the NCAA in ERA with her 0.80, and is the second-best ERA in the conference.

HOME RUN HOWARD RETURNS

- After leading the Lobos with 12 home runs last season, Andrea Howard picked right back up from where she left off, hitting a home run in the first inning against Southern Utah to give the Lobos an early 1-0 lead.
- In the Feb. 26 game against Buffalo, Howard hit two solo home runs, her fourth time hitting two home runs in a game in her career.
- She added two in the Cardinal Classic, including a clutch two-run home run to tie the game

NEWS AND NOTES

at the top of the sixth against Lamar, allowing the Lobos to extend the game to extra innings. The Lobos went on to win 6-4 in 12 innings.

- Howard now has 34 home runs in her career, placing her fourth all-time in home runs, two away from third and six away from breaking the program record set by Stefanie Carramusa (2010-12).
- Her five home runs rank 31st in the NCAA and she also ranks 32nd in RBI per game with 1.23, ranking second in the MW in both categories.
- Besides leading with five home runs, Howard leads the Lobos in batting average (.425), slugging percentage (.850), on-base percentage (.468), RBI (16), hits (17), runs scored (11) and total bases (34). She is also tied for the team high in doubles with two.
- The Lobo outfielder also leads the team with five multiple-hit games and five multiple-RBI games, with two games of three hits and three games of three RBI. She also has a three-game hitting streak and five game streak of reaching base.

STRIKING FIRST

- The Lobos have scored 12 runs in the first inning, outscoring opponents 12-4, and 14 runs in the second inning, outscoring opponents 14-3 in the frame.
- UNM is 6-0 when scoring in the first inning and 8-1 when scoring first in a game.
- In the game against North Dakota State, the Lobos scored five runs in the first inning, and against Tarleton, the Lobos plated five runs on five hits in the second inning to break open the game after scoring two runs in the first.
- The Lobos are also 6-0 when scoring 6-9 runs in a game, scoring nine runs against Ohio and eight runs twice (against Southern Utah and Tarleton).

KEEP ON KEEPING ON

- Four different Lobos enter the weekend with on-base streaks greater than a game, led by 12 games by Reyann Tuck. Emma Bramson has a six-game on-base streak, Andrea Howard has a five-game streak and Sydney Broderick has a two-game streak. Howard has a three-game hitting streak, with Broderick and Tuck on a two-game streak.

NO INTRO LEVEL HERE

- The Lobos added 10 newcomers in the offseason, with several called upon from game one.
- New Mexico added two transfer pitchers in Amber Linton (Indiana) and Samantha Fohrman (Georgian Court) who already have proven to be game-changers in the circle, and three freshmen infielders that started opening day in Emma Bramson, Ashley Archuleta and Olivia Birkinshaw.
- UNM also added Janae Cameron behind the plate to provide veteran depth at the catcher position with Sydney Broderick.
- In the opening weekend, Archuleta started all four games at second, Bramson started all four games at third and Birkinshaw started two games, once as the designated player and once at first. Birkinshaw recorded her first collegiate hit against then-No. 9 Arizona, a double, and Archuleta recorded three hits on the weekend with her first against Oregon State. Archuleta also recorded a team-high three RBI in the win against Southern Utah, and Bramson's first hit came against No. 2 Alabama, which also produced her first RBI.
- In her first appearance with the Lobos, Cameron hit a two-run home run in the win over Southern Utah.
- Bramson hit her first collegiate home run against UTEP on Feb. 24, a solo home run to the stands in left.
- Bramson and Archuleta have started in all 13 games at third and second, respectively. Bramson is fifth on the team in batting average (.289) and slugging percentage (.368), and second in on-base percentage (.378), walks (6), total bases (14) and RBI (7). Archuleta is fourth in on-base percentage (.354) and walks (4), second in doubles (2) and hit-by-pitches (2) and tied with Bramson for third in hits (11).
- Birkinshaw has played in eight games with six starts, and is fourth in slugging percentage (.375) and fifth in on-base percentage (.350).

SETTING THE TONE IN WEEK 1

- During the opening weekend, the Lobos had four gritty performances against four quality teams, two of which were ranked in the top 10 in the country. The Lobos won their first two games in different fashions, the first a one-run game against a Power 5 school in Oregon State, and a run-rule win over Southern Utah with the offense outperforming the Thunderbirds 7-1. The Lobos fell 8-3 to No. 2 Alabama and took No. 9 Arizona to the brink in a 1-0 final.
- The three runs scored by UNM were the most runs scored against the Crimson Tide in the Candrea Classic and was just the second team to score a run against Alabama (Oregon State scored one). In addition, UNM had six hits in the game, the most hits allowed by Alabama on the weekend.
- In the circle, Emma Guindon threw another stellar game with a complete game against the Wildcats, allowing just one run and striking out two, while Ashlyn Roberts threw 5.0 innings of relief to start the day against Alabama, striking out two as well. Samantha Fohrman made her Lobo debut against the Crimson Tide, throwing 1.0 inning and allowing one run on one hit.
- Against Alabama, the Lobos got on the board in the top of the sixth on a solo home run to left by Taryn Young. Young also had a single in the third for UNM's first hit of the game. Trailing 8-1 in the top of the seventh, the Lobos continued to battle, scoring two runs. Peyton Robinson led off the inning with a single through the right side followed by a single by Andrea Howard. Leslie Romero advanced both runners on her at-bat and Emma Bramson brought the first run in on a single through the right side. A sacrifice fly to center by Briana Martinez allowed Howard to tag for the second run and for the final runs of the game.
- Reyann Tuck currently has a three-game streak of reaching base and a three-game hitting streak following the Candrea Classic, with Ashley Archuleta, Janae Cameron and Olivia Birkinshaw having a one-game hit streak entering the Cardinal Classic.
- Leslie Romero led with four hits on the weekend and a .400 batting average, with Birkinshaw having a team-high .667 on-base percentage and Cameron having a team-best 1.333 slugging percentage following a two-run home run against SUU.
- The Lobos recorded three doubles and three home runs, scoring 14 runs on 20 hits. Nine players recorded at least one hit through the four games with six having multiple hits at the classic.

UNTIL THE JOB IS DONE

- The Lobo softball team played in the third-longest game in program history on Saturday afternoon, going 12 innings before defeating host Lamar 6-4. It was the second-straight game against the Cardinals for the Lobos, with UNM winning 2-1 in the first meeting.
- It wasn't until the sixth that the Lobos broke through. Pinch hitting for New Mexico to start the sixth, Olivia Birkinshaw hit a triple to left field, and on the first pitch of the next at-bat, Andrea Howard tied the game with a home run to center for her second home run of the season. Lamar threatened to break the tie at the bottom of the inning with two runners in scoring position, but Emma Guindon (who entered in the fourth inning) recorded the third out on a swinging strikeout.
- Another run wasn't scored until the 11th inning, when after Tuck was placed on second to start the inning and moved to third on a wild pitch, Bramson hit a sacrifice fly to center that allowed Tuck to score. However, Lamar matched the run in the bottom of the 11th on a single up the middle to score its runner that was placed on second.
- The Lobos finally put the game away in the 12th with a sacrifice bunt by Broderick moving Janae Cameron over to third and a sacrifice fly to center by Young bringing Cameron in. Birkinshaw and Howard kept the inning going with consecutive singles to the outfield, with Birkinshaw scoring on Howard's hit. Romero brought in the third run of the inning on a double to center that scored Howard.
- Leading 6-3, Lamar added one final run on a grounder to second that moved the runner on second over and a wild pitch that scored the run. The Cardinals did have the tying run at the plate following a walk but a grounder to Ashley Archuleta at second ended the game.
- The Lobos used three pitchers in the game, with Samantha Fohrman going 3.0 innings before Guindon entered in the fourth and pitched 6.1 innings, with Amber Linton entering in the 10th to pitch the remaining 2.2 innings. Linton improved to 3-1 on the year with the decision.
- UNM struck out 10 batters with Guindon responsible for seven, Linton three and Fohrman one.

EMBRACE THE CHALLENGE

- New Mexico has a history of playing top teams in the non-conference season. Last season, the non-conference portion of the schedule was heavily



NEWS AND NOTES

loaded with Power 5 programs, including two Pac-12 schools and four Big 12 schools, and with two teams in the top four of the preseason ESPN.com/USA Softball Collegiate Top 25 poll and four in the top 10, as well as two in the top four of the 2021 USA Today / NFCA Division I Top 25 Poll and three in the top six.

- This season, the Lobos opened the season against two top-10 teams in No. 2/2 Alabama and No. 9/11 Arizona, two teams that competed in the Women's College World Series last season.
- UNM will face three NCAA Tournament participants from a year ago in Arizona, Alabama and BYU and four Power 5 schools (Oregon State, Arizona, Alabama and Wisconsin) in the non-conference portion of the schedule, and has renewed the in-state rivalry series with New Mexico State with three games planned between the Lobos and Aggies.

SOMETHING TO PROVE

- UNM was picked seventh in the Mountain West preseason poll.
- Last season, New Mexico won a Mountain West series for the first time since May 2018 (when UNM took two out of three against San Diego State) with a series win against Boise State. In addition, it was the first series win over Boise State since 2016.
- The Lobos ended the season winning four of their final five games and three of their final four series, including two of their final three series.

WELCOME BACK

- Three seniors decided to use their extra year of eligibility. Outfielders Andrea Howard and Taryn Young, as well as catcher Sydney Broderick, returns to the Lobos for one more year and add some stability to the outfield and behind the plate.
- Howard led the Lobos last season in batting average (.336), slugging percentage (.728), hits (42), RBI (33), home runs (12), total bases (91) and walks (21). The Lobo was also second in on-base percentage (.427) and tied for the team lead in triples (two). Further, the Albuquerque native led the Mountain West in home runs, was tied for first in slugging percentage and total bases, tied for second in walks and tied for third in RBI. In just MW games, led the conference in home runs (eight), was second in slugging percentage (.809), third in total bases (55) and tied for third in walks (12). She finished the season on a six-game streak of reaching base.
- In addition, the Lobos return Emma Guindon, Ashlyn Roberts and Brianna Sanchez in the circle, Peyton Robinson and Diamond Sandoval in the outfield and Briana Martinez and Rachael Hathoot in the infield. With the graduation of Cameryn O'Grady, Martinez has moved to shortstop.

SCOUTING UCSB

- UC Santa Barbara enters the tournament 3-12 on the season and have lost its last two games. The Gauchos lost to Boise State 6-3 and 20-7, and also lost to Idaho State (3-1 and 9-6) in their last tournament. They defeated Providence 5-2 in between their games with Boise State and Idaho State.
- Maci Fines leads UCSB in hits (15), doubles (5), triples (2), total bases (24) and walks (5), while Teah Thies leads with 12 RBI and is tied with Nayah Pola for the team high in home runs with two. Madelyn McNally leads with three stolen bases with UCSB having seven as a team.
- UCSB has used five pitchers with Camryn Snyder leading at 52.0 innings, nine appearances, eight starts and five complete games. She carries a 5.38 ERA, allowing 60 hits, 48 runs (40 earned), 35 strikeouts and 22 walks. Ilona Sullivan has the second-highest time spent in the circle with 16.2 innings and has allowed 23 hits, 30 runs (28 earned), 13 strikeouts and 15 walks. Alyssa Molina and Lexy Mills have each started three games for UCSB with Molina going 16.0 innings and Mills 7.0 innings.
- As a staff, the Gauchos have an 8.22 ERA with 137 hits allowed, 148 runs (112 earned), 62 strikeouts and 73 walks.
- The Gauchos have common opponents with the Lobos in MW teams Boise State and Utah State (W, 9-6 and L, 8-7), as well as Arizona (lost 11-1, 6 innings), North Dakota State (W, 4-3 and L, 17-2, 6 innings).
- UCSB is 4-4 all-time against UNM, with the two teams meeting in 2020 at the Susan Craig Classic in Albuquerque. The Lobos split the two games with the Gauchos, winning 9-1 (5) and the Gauchos winning 6-3.

SCOUTING WAGNER

- Located in Staten Island, N.Y., Wagner enters the tournament 2-8 with wins over Morgan State (3-2) and Hampton (6-2), which came in its last four games. Wagner has played Colgate, Rutgers, East Carolina, Norfolk State, Morgan State and Hampton this season.
- Scarlett Lloyd and Keaghan Ward each have nine hits to lead the Seahawks, with Lloyd leading with 15 total bases, three doubles, four walks, a .625 slugging percentage, .448 on-base percentage and .375 batting average. Lloyd is tied with Kate Wolf with one home run.
- In the circle, Wagner has used three pitchers with Eve Harvey throwing a team-high 38.2 innings with eight starts and five complete games. A RHP, Harvey has allowed 34 hits, 20 runs (20 earned), 12 walks and struck out 17 and carries a 4.66 ERA. Lloyd has pitched 14.1 innings and has appeared in three games with one start and one complete game, allowing 29 hits, 23 runs (all earned) and 10 walks and struck out 16. Kayla Hooks has pitched 10.0 innings with one start and one complete game, and has allowed 10 hits, eight runs (six earned), to go with nine walks and eight strikeouts. As a unit, the Seahawks have a 7.00 ERA with 41 strikeouts and 31 walks.
- This will be the first meeting between both teams.

SCOUTING SANTA CLARA

- Santa Clara is 10-9 on the season and have won its last three following wins over Mount St. Mary's on Tuesday by scores of 1-0 and 3-0. Of their games this season, the Broncos have wins against Utah State (5-4) and Fresno State (8-0 (5) and 6-2) and losses against San José State (12-4 (6) and 9-0 (6)).
- Ashley Trierweiler leads the Broncos with 26 hits, a .419 batting average, a .471 on-base percentage and a .532 slugging percentage. Morgan Salmon leads with 11 RBI, Emma Bickford leads with seven doubles and Sammy Needham leads with eight walks. Allyson Ferreira has a team-high two triples and the only home run on the team.
- SCU has used seven pitchers this season, with the team holding a 3.04 ERA with 139 hits, 79 runs (54 earned), 45 strikeouts and 37 walks. Leading the way in the circle is Hannah Edwards, who has thrown 44.2 innings with eight starts and three complete games. A RHP, Edwards has a 2.04 ERA with 43 hits, 19 strikeouts, seven walks, 19 runs (13 earned) on the season. Sage Hager, a RHP, has thrown 35.0 innings with a 1.20 ERA on 26 hits, six runs (all earned), four walks and 14 strikeouts with six starts and four complete games. Regan Dias, also a RHP, has thrown 22.2 innings with 31 hits, 23 runs (16 earned), 14 walks and eight strikeouts and has a 4.94 ERA.
- Emma Bickford and Ashley Trierweiler were named to the 2022 preseason All-West Coast Conference team with the Broncos picked to finish fourth.
- Besides the MW schools that Santa Clara has already played, the Broncos and Lobos also have a shared opponent in BYU.
- UNM is 7-2 all time against Santa Clara, winning the last seven games. The last time the two teams met was in 2017, with the Lobos winning 10-2 (6), 7-3 and 6-1.

NEWS AND NOTES

STAT COMPARISON

	UNM	UCSB	WC	SCU
BA	.279	.253	.223	.261
R	62	50	19	64
H	95	95	57	123
2B	10	24	11	23
3B	1	3	1	5
HR	10	6	2	1
RBI	57	47	17	56
BB	33	20	14	42
SO	70	68	44	81
ERA	1.83	8.22	7.00	3.04
SO	82	62	41	45
BB	24	73	31	37
H	67	137	73	139
R	34	148	51	79
ER	23	112	49	54
DP	2	4	4	10
FLD%	.970	.943	.980	.949

Hitting

Pitching
Fld.

MOUNTAIN WEST INFORMATION

PRESEASON MOUNTAIN WEST POLL

Rk.	Team (1st-Place Votes)	Points
1.	UNLV (5)	57
	San Diego State (3)	57
3.	Fresno State (1)	43
	Boise State	43
5.	Nevada	42
6.	Colorado State	35
7.	New Mexico	17
8.	San José State	15
	Utah State	15

MOUNTAIN WEST PLAYERS OF THE WEEK

2022 MW Softball Player of the Week

Feb. 15: Janyssa Martin, OF, UNLV

FEB. 22: ANDREA HOWARD, OF, UNM

March 1: Ashley York, OF, CSU

2022 MW Softball Pitcher of the Week

Feb. 15: Maggie Balint, SDSU

Feb. 22: Maggie Balint, SDSU

MARCH 1: AMBER LINTON, P, UNM

2022 MW Softball Freshman of the Week

Feb. 15: Isabella Espinoza, INF, SDSU

FEB. 22: EMMA BRAMSON, INF., UNM

March 1: Dee Dee Hernandez, LHP, SDSU

ESPN.COM/USA SOFTBALL COLLEGIATE TOP 25

WEEK 3 • MARCH 1

Rk.	Team (1st Votes)	Pts.	Rec	Prev.
1.	Oklahoma (23)	15-0	623	1
2.	Alabama (1)	15-0	599	2
3.	Florida State (1)	15-0	573	3
4.	Florida	16-0	547	4
5.	UCLA	12-3	526	6
6.	Virginia Tech	11-2	497	7
7.	Washington	11-4	440	5
8.	Missouri	12-4	401	19
9.	Clemson	11-3	400	9
10.	Oklahoma State	10-4	396	12
11.	Arkansas	8-3	394	8
12.	Duke	13-3	351	13
13.	Kentucky	13-1	334	14
14.	Northwestern	10-4	306	15
15.	Oregon	11-3	293	11
16.	Arizona	10-4	277	10
17.	Tennessee	9-6	209	17
18.	Georgia	14-2	200	18
19.	Michigan	8-5	196	16
20.	Auburn	15-1	166	21
T21.	LSU	12-5	106	23
T21.	Louisiana	10-2	106	20
23.	Arizona State	9-4	99	22
24.	South Florida	10-3	46	25
25.	UCF	10-6	39	RV

Others receiving votes: Minnesota (28), Texas A&M (23), Oregon State (17), Notre Dame (15), Texas (15), Stanford (13), San Diego State (12), Illinois (8), Troy (5), James Madison (4), Charlotte (3), Cal State Fullerton (2), Iowa State (2).

USA TODAY/ NFCA COACHES TOP 25 POLL

WEEK 3 • MARCH 1

Rk.	Team (1st Votes)	Pts.	Rec	Prev.
1	Oklahoma (32)	800	15-0	1
2	Alabama	768	15-0	2
3	Florida State	734	15-0	3
4	Florida	704	16-0	4
5	UCLA	669	12-3	6
6	Virginia Tech	639	11-2	7
7	Washington	526	11-4	5
8	Oklahoma State	504	10-4	11
9	Arizona	492	10-4	8
10	Kentucky	488	13-1	12
11	Arkansas	466	8-3	10
12	Oregon	449	11-3	9
13	Duke	424	13-3	13
14	Clemson	416	11-3	14
15	Missouri	374	12-4	16
16	Georgia	348	14-2	15
17	Northwestern	296	10-4	18
18	Tennessee	247	9-6	17
19	Michigan	231	8-5	19
20	Auburn	214	15-1	21
21	Louisiana	182	10-2	20
22	LSU	133	12-5	24
23	Arizona State	106	9-4	22
24	UCF	50	10-6	RV
25	Notre Dame	39	12-3	RV

Others receiving votes: Texas (36), Stanford (25), USF (13), Charlotte (6), Iowa State (6), Liberty (5), James Madison (3), Texas A&M (2), Wisconsin (2), Fullerton (1), Georgia Tech (1), Illinois (1).

BY THE NUMBERS

Statistic	All Games	MW	MW Games
Batting Average:	.279	7th	--
Slugging Percentage:	--	--	--
On Base Percentage:	--	--	--
Runs Scored:	--	--	--
Hits:	--	--	--
RBI:	--	--	--
HRs:	10	4th	--
Total Bases:	--	--	--
ERA:	1.83	1st	--
Opp. Batting Avg.:	.204	1st	--
Batters Struck Out:	82	4th	--
Hits Allowed:	67	1st	--
Runs Allowed:	34	2nd	--
Earned Runs Allowed:	23	1st	--
Walks Allowed:	24	3rd	--
Home Runs Allowed:	1	1st	--
Fielding Percentage:	.970	3rd	--
Putouts:	--	--	--
Fielding Double Plays:	--	--	--
Caught Stealing By:	--	--	--

MOUNTAIN WEST STANDINGS

SCHOOL	CONF	CPCT.	OVERALL	PCT.	STREAK
Boise State	0-0	.000	13-2	.867	W4
UNLV	0-0	.000	12-2	.857	W7
New Mexico	0-0	.000	10-3	.769	W5
San Diego State	0-0	.000	11-5	.688	L1
San José State	0-0	.000	9-5	.643	W5
Utah State	0-0	.000	6-7	.462	W1
Colorado State	0-0	.000	6-9	.400	W3
Nevada	0-0	.000	2-13	.133	L5
Fresno State	0-0	.000	1-12	.077	L8





00

Andrea Howard
OF | 5-6 | SR.
Albuquerque, N.M.



1

Briana Martinez
UT | 5-3 | JR.
Albuquerque, N.M.



2

Savana Martinez
C | 5-3 | R-FR.
Albuquerque, N.M.



3

Rachael Hathoot
INF | 5-8 | JR.
Albuquerque, N.M.



4

Taryn Young
OF | 5-8 | SR.
Anaheim, Calif.



5

Sydney Broderick
C | 5-4 | SR.
Mesa, Ariz.



6

Alexis Vigil
INF | 5-0 | SR.
Los Lunas, N.M.



7

Ashley Archuleta
INF | 5-4 | FR.
Rio Rancho, N.M.



10

McKenna Kostyszyn
P | 5-7 | FR.
Frisco, Texas



12

Savannah Braun
INF | 5-10 | SO.
Tualatin, Ore.



16

Leslie Romero
C | 5-6 | JR.
Gonzales, Calif.



17

Amber Linton
P | 6-0 | SO.
Franklin, Ind.



20

Emma Bramson
INF | 5-7 | FR.
Valencia, Calif.



21

Peyton Robinson
OF | 5-6 | SR.
Saginaw, Texas



24

Diamond Sandoval
OF | 5-3 | SO.
Norwalk, Calif.



25

Brianna Sanchez
P | 5-6 | JR.
West Covina, Calif.



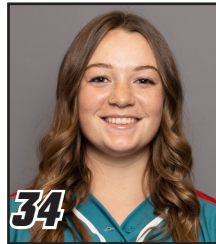
27

Olivia Birkinshaw
UT | 5-10 | FR.
Santa Margarita, Calif.



28

Samantha Fohrman
P | 5-7 | JR.
Cottage Grove, Minn.



34

Emma Guindon
P | 5-9 | SR.
Tomball, Texas



42

Loran Walker
C / INF | 5-6 | FR.
Meridian, Idaho



44

Lauren Garcia
INF | 5-11 | FR.
El Paso, Texas



55

Janae Cameron
C | 5-9 | SR.
Windsor, Colo.



66

Ashlyn Roberts
P | 5-8 | SO.
Sammamish, Wash.



77

Reyann Tuck
1B | 6-0 | SR.
Hillsboro, Ore.



99

Aysiah Gonzalez
C | 5-7 | FR.
La Puente, Calif.



Paula Congleton
Head Coach



Kristen Hawkins
Assistant Coach



Brandon Maurer
Assistant Coach



Mike Forsythe
Volunteer Ast.



Kellyann Gangaware
Athletic Trainer

NUMERICAL ROSTER

#	NAME	POS	HT	YR	B/T	HOMETOWN (PREVIOUS SCHOOL)
00	Andrea Howard	OF	5-6	Sr.	L/L	Albuquerque, N.M. (La Cueva HS)
1	Briana Martinez	UT	5-3	Jr.	R/R	Albuquerque, N.M. (Rio Rancho HS)
2	Savana Martinez	C	5-3	RS-Fr.	R/R	Albuquerque, N.M. (Rio Rancho HS)
3	Rachael Hathoot	INF	5-8	Jr.	R/R	Albuquerque, N.M. (La Cueva HS)
4	Taryn Young	OF	5-8	Sr.	R/R	Anaheim, Calif. (Arizona)
5	Sydney Broderick	C	5-4	Sr.	R/R	Mesa, Ariz. (Desert Ridge HS)
6	Alexis Vigil	INF	5-0	Sr.	R/R	Los Lunas, N.M. (College of Southern Nevada)
7	Ashley Archuleta	INF	5-4	Fr.	L/R	Rio Rancho, N.M. (Cleveland HS)
10	McKenna Kostyszyn	P	5-7	Fr.	R/R	Frisco, Texas (Frisco Independence HS)
12	Savannah Braun	INF	5-10	So.	R/R	Tualatin, Ore. (Tualatin HS)
16	Leslie Romero	C	5-4	Jr.	R/R	Gonzales, Calif. (Salinas HS)
17	Amber Linton	P	6-0	So.	R/R	Franklin, Ind. (Indiana)
20	Emma Bramson	INF	5-7	Fr.	R/R	Valencia, Calif. (Valencia HS)
21	Peyton Robinson	OF	5-6	Sr.	L/R	Saginaw, Texas (Southern Nazarene)
24	Diamond Sandoval	OF	5-3	So.	R/R	Norwalk, Calif. (St. Paul HS)
25	Brianna Sanchez	P	5-6	Jr.	R/R	West Covina, Calif. (Bishop Amat HS)
27	Olivia Birkinshaw	UT	5-10	Fr.	R/R	Santa Margarita, Calif. (Mission Viejo HS)
28	Samantha Fohrman	P	5-7	Jr.	R/R	Cottage Grove, Minn. (Georgian Court)
34	Emma Guindon	P	5-9	Sr.	R/R	Tomball, Texas (Monterey Peninsula College)
42	Loran Walker	C/INF	5-6	Fr.	R/R	Meridian, Idaho (Rocky Mountain HS)
44	Lauren Garcia	INF	5-11	Fr.	R/R	El Paso, Texas (Montwood HS)
55	Janae Cameron	C	5-9	Sr.	R/R	Windsor, Colo. (Nebraska Omaha)
66	Ashlyn Roberts	P	5-8	So.	L/L	Sammamish, Wash. (Eastlake HS)
77	Reyan Tuck	1B	6-0	Sr.	R/R	Hillsboro, Ore. (Towson)
99	Aysiah Gonzalez	C	5-7	Fr.	R/R	La Puente, Calif. (Bishop Amat HS)

RETURNERS (10) - 2021 SEASON STATS

No.	Name	Pos.	Cl.	Avg.	GP-GS	AB	R	H	2B	3B	HR	RBI	SLG%	FLD%
00	Andrea Howard	OF	Sr.	.336	46-46	125	25	42	9	2	12	33	.728	.977
1	Briana Martinez	UT	So.	.186	43-43	102	8	19	5	1	1	10	.284	.960
3	Rachael Hathoot	INF	So.	.241	46-46	133	18	32	10	0	4	20	.406	.941
4	Taryn Young	OF	Sr.	.138	42-42	94	9	13	4	0	2	8	.245	.938
21	Peyton Robinson	OF	Jr.	.250	46-45	124	19	31	3	0	0	3	.274	.978

PITCHERS RETURNING (3) - 2021 SEASON STATS

No.	Name	Cl.	ERA	W-L	APP	GS	CG	SHO	SV	IP	SO	BF
25	Brianna Sanchez	So.	21.0	0-1	8	1	0	0/0	0	7.0	4	52
34	Emma Guindon	Jr.	5.00	6-21	30	27	12	0/1	0	141.1	46	718
66	Ashlyn Roberts	Fr.	5.25	2-2	24	8	1	0/1	1	56.0	24	277

KEY PLAYERS LOST (3) - 2021 SEASON STATS

No.	Name	Pos.	Cl.	Avg.	GP-GS	AB	R	H	2B	3B	HR	RBI	SLG%	FLD%
10	Cameryn O'Grady	SS	Sr.	.318	46-46	129	34	41	11	2	9	28	.643	.901
22	Izabella Owen	INF	Jr.	.261	40-40	115	7	30	3	0	1	11	.313	.892
32	Lauren Wilmert	C	Sr.	.125	36-31	80	6	10	1	0	1	5	.175	.947

PITCHERS LOST (1) - 2020 SEASON STATS

No.	Name	Cl.	ERA	W-L	APP	GS	CG	SHO	SV	IP	SO	BF
99	Kiana Spencer	Sr.	8.22	2-8	19	6	1	0/0	0	53.2	21	305

NEWCOMERS (10)

No.	Name	Pos.	No.	Name	Pos.
7	Ashley Archuleta	INF	28	Samantha Fohrman	P
10	McKenna Kostyszyn	P	42	Loran Walker	C/INF
17	Amber Linton	P	44	Lauren Garcia	INF
20	Emma Bramson	INF	55	Janae Cameron	C
27	Olivia Birkinshaw	UT	99	Aysiah Gonzalez	C

PRONUNCIATION GUIDE

00	ANDREA Howard	On-dray-uh
3	RACHAEL HATHOOT	Ray-chel Hat-hoot
4	TARYN Young	Tair-in
6	Alexis VIGIL	Vee-hill
10	McKenna KOSTYSZYN	Co-sti-shin
12	Savannah BRAUN	Bron
25	BRIANNA Sanchez	Bree-on-uh
34	Emma GUINDON	Ginden
77	REYAN Tuck	Ree-anne
99	AYSIAH Gonzales	Asia
HC	Paula CONGLETON	Cong-le-ton
AC	Brandon MAURER	Rhymes with "power"
AT	Kellyann GANGAWARE	Gang-uh-wear

CLASS

Seniors (8) (*Super Senior)

5	Sydney Broderick*	C
55	Janae Cameron	C
34	Emma Guindon	P
00	Andrea Howard*	OF
21	Peyton Robinson	OF
77	Reyan Tuck	IF
6	Alexis Vigil	INF
4	Taryn Young*	OF

Juniors (5)

28	Samantha Fohrman	P
3	Rachael Hathoot	INF
1	Briana Martinez	INF
16	Leslie Romero	C
25	Brianna Sanchez	P

Sophomores (4)

12	Savannah Braun	INF
17	Amber Linton	P
66	Ashlyn Roberts	P
20	Diamond Sandoval	OF

Freshmen (8)

7	Ashley Archuleta	INF
27	Olivia Birkinshaw	UT
20	Emma Bramson	INF
44	Lauren Garcia	INF
99	Aysiah Gonzalez	C
10	McKenna Kostyszyn	P
2	Savana Martinez (R-Fr.)	C
42	Loran Walker	C/INF

HOME STATE

Arizona (1)

5	Sydney Broderick	C
---	------------------	---

California (7)

27	Olivia Birkinshaw	UT
20	Emma Bramson	INF
99	Aysiah Gonzalez	C
16	Leslie Romero	OF
25	Brianna Sanchez	P
20	Diamond Sandoval	OF
4	Taryn Young	OF

Colorado (1)

55	Janae Cameron	C
----	---------------	---

Idaho (1)

42	Loran Walker	C/INF
----	--------------	-------

Indiana (1)

17	Amber Linton	P
----	--------------	---

New Mexico (6)

7	Ashley Archuleta	INF
3	Rachael Hathoot	INF
00	Andrea Howard	OF
1	Briana Martinez	UT
2	Savana Martinez	C
6	Alexis Vigil	INF

Minnesota (1)

28	Samantha Fohrman	P
----	------------------	---

Oregon (2)

12	Savannah Braun	INF
77	Reyan Tuck	1B

Texas (4)

44	Lauren Garcia	INF
34	Emma Guindon	P
10	McKenna Kostyszyn	P
21	Peyton Robinson	OF

Washington (1)

66	Ashlyn Roberts	P
----	----------------	---

POSITION

Outfield (4)	Catcher (5)	1B (1)
Infield (6)	Pitcher (6)	UT (2)
C/INF (1)		





Paula Congleton

5th Head Coach in UNM Program History
Record at UNM: 57-134

NOTEWORTHY :

- Named the fifth head coach in program history on June 20, 2017
- Enters her fourth season at her alma mater
- Earned her 300th career victory on April 17, 2014
- Earned her 350th career victory on April 22, 2017
- Earned her 400th career victory on May 4, 2018
- Earned her first win at UNM against St. Mary's on Feb. 9, 2018 (4-1)

MORE NOTES ON COACH CONGLETON

- Spent 19 seasons at Santa Barbara City College with the Vaqueros molding the program into one of the elite programs in the WSC
- Three-time WSC Gold Division Coach of the Year
- 2011 Southern Cal Coaching Staff of the Year
- 2011 NFCA National Coaching Staff of the Year
- Led the Vaqueros to four Southern Cal Regional appearances and one trip to the Southern Cal Super Regional
- Guided the Vaqueros to their greatest success of the program, winning a Southern Cal Regional series and advancing to the Super Regional for the first time ever in 2016
- Led the 2016 SBCC squad to the second-most games in program history (30-14)
- The 2016 team finished third WSC Gold Division
- In 2011, led the Vaqueros to a program-record 31 wins (31-7 overall), leading the team to a WSC title and the Southern Cal Regional
- Four-time Scholar Athlete first baseman for the Lobos (3.89 GPA)
- Three-time All-American at New Mexico
- Received her Doctorate in educational administration in 2009
- Served as a full-time professor at SBCC teaching health, weight training and kinesiology
- Served as Associate Athletic Director and Coordinator of the Academic Achievement Zone for student-athletes at SBCC

COACHING EXPERIENCE

Head Coach:

2017-Present - New Mexico (57-134)
1998-2017 - Santa Barbara City Coll. (Calif.) (354-322)
1996-1998 - Cal. State University East Bay (33-77)

Graduate Assistant:

1986-1988 - New Mexico

Overall NCAA DI record (Fifth Season): 57-134

Overall NCAA record (Sixth Season): 90-211

ALMA MATER

New Mexico (1984)

TWITTER

Follow @CoachCongleton



2022 NEW MEXICO OVERALL STATISTICS

Record: 10-3 Home: 4-0 Away: 2-1 Neutral: 4-2 Conference: 0-0

Player	avg	gp-gs	ab	r	h	2b	3b	hr	rbi	tb	slg%	bb	hp	so	gdp	ob%	sf	sh	sb-att	po	a	e	fld%		
5 BRODERICK, Sydne	.429	4-3	7	1	3	0	0	0	1	3	.429	1	0	2	0	.500	0	1	0-0	15	3	1	.947		
0 HOWARD, Andrea	.425	13-13	40	11	17	2	0	5	16	34	.850	5	0	4	0	.468	2	0	1-2	15	0	0	1.000		
6 VIGIL, Alexis	.400	6-2	5	2	2	0	0	0	1	2	.400	1	0	1	0	.500	0	0	0-0	1	6	1	.875		
77 TUCK, Reyan	.364	12-12	33	3	12	2	0	0	6	14	.424	1	0	7	0	.371	1	1	0-0	77	2	1	.988		
16 ROMERO, Leslie	.303	13-11	33	3	10	1	0	1	7	14	.424	1	0	4	0	.314	1	0	1-1	40	1	0	1.000		
21 ROBINSON, Peyton	.294	13-13	34	8	10	0	0	0	2	10	.294	1	0	3	0	.314	0	3	3-3	13	0	0	1.000		
20 BRAMSON, Emma	.289	13-13	38	9	11	0	0	1	7	14	.368	6	0	2	0	.378	1	0	0-0	7	18	1	.962		
7 ARCHULETA, Ashle	.262	13-13	42	6	11	2	0	0	4	13	.310	4	2	7	0	.354	0	0	0-0	24	20	0	1.000		
4 YOUNG, Taryn	.231	13-13	39	8	9	1	0	1	5	13	.333	4	1	10	0	.311	1	0	0-0	24	1	0	1.000		
27 BIRKINSHAW, Olivi	.188	8-6	16	3	3	1	1	0	0	6	.375	1	3	8	0	.350	0	1	1-1	5	1	0	1.000		
55 CAMERON, Janae	.182	5-3	11	3	2	1	0	1	3	6	.545	1	0	7	0	.250	0	0	0-0	22	0	1	.957		
1 MARTINEZ, Briana	.125	13-13	32	5	4	0	0	1	4	7	.219	7	0	9	0	.275	1	2	0-1	16	28	6	.880		
99 GONZALEZ, Aysiah	.000	4-1	5	0	0	0	0	0	0	0	.000	0	0	3	0	.000	0	0	0-0	0	0	0	.000		

12 BRAUN, Savannah	1.000	1-0	1	0	1	0	0	0	1	1	1.000	0	0	0	0	1.000	0	0	0-0	0	0	0	.000		
24 SANDOVAL, Diamo	.000	5-0	3	0	0	0	0	0	0	0	.000	0	0	2	0	.000	0	0	0-0	0	0	0	.000		
2 MARTINEZ, Savana	.000	3-1	2	0	0	0	0	0	0	0	.000	0	0	1	0	.000	0	0	0-0	2	0	0	1.000		
34 GUINDON, Emma	.000	8-5	0	0	0	0	0	0	0	0	.000	0	0	0	0	.000	0	0	0-0	2	5	0	1.000		
17 LINTON, Amber	.000	9-6	0	0	0	0	0	0	0	0	.000	0	0	0	0	.000	0	0	0-0	0	4	0	1.000		
25 SANCHEZ, Brianna	.000	3-0	0	0	0	0	0	0	0	0	.000	0	0	0	0	.000	0	0	0-0	0	0	0	.000		
66 ROBERTS, Ashlyn	.000	3-1	0	0	0	0	0	0	0	0	.000	0	0	0	0	.000	0	0	0-0	1	2	0	1.000		
28 FOHRMAN, Samant	.000	2-1	0	0	0	0	0	0	0	0	.000	0	0	0	0	.000	0	0	0-0	0	1	0	1.000		
10 KOSTYSZYN, McK	.000	1-0	0	0	0	0	0	0	0	0	.000	0	0	0	0	.000	0	0	0-0	0	0	0	.000		
Totals	.279	13	341	62	95	10	1	10	57	137	.402	33	6	70	0	.346	7	8	6-8	264	92	11	.970		
Opponents	.204	13	328	34	67	13	1	1	29	85	.259	24	11	82	0	.279	2	7	10-11	252	85	23	.936		

LOB - Team (84), Opp (77). DPs turned - Team (2), Opp (3). IBB - Team (2), HOWARD 2.

(All games Sorted by Earned run avg)

Player	era	w-l	app	gs	cg	sho	sv	ip	h	r	er	bb	so	2b	3b	hr	b/avg	wp	hp	bk	sfa	sha
28 FOHRMAN, Samant	0.00	0-0	2	1	0	0/0	0	4.0	6	3	0	0	1	3	0	0	.333	0	1	0	0	0
10 KOSTYSZYN, McK	0.00	0-0	1	0	0	0/0	0	1.0	1	0	0	0	1	0	0	0	.250	0	0	0	0	0
34 GUINDON, Emma	0.80	5-1	8	5	2	1/1	0	35.0	20	5	4	6	34	4	0	0	.165	1	2	0	0	5
17 LINTON, Amber	1.94	5-1	9	6	3	0/0	2	36.0	27	16	10	13	43	1	0	1	.196	3	6	0	0	1
66 ROBERTS, Ashlyn	4.20	0-1	3	1	0	0/0	0	10.0	12	7	6	2	2	4	1	0	.300	0	2	0	2	1
25 SANCHEZ, Brianna	10.50	0-0	3	0	0	0/1	0	2.0	1	3	3	3	1	1	0	0	.143	3	0	0	0	0
Totals	1.83	10-3	13	13	5	2/1	2	88.0	67	34	23	24	82	13	1	1	.204	7	11	0	2	7
Opponents	4.33	3-10	13	13	5	1/0	0	84.0	95	62	52	33	70	10	1	10	.279	6	6	0	7	8

PB - Team (1), ROMERO 1, Opp (2). SBA/ATT - BRODERICK (4-5), LINTON (5-5), CAMERON (3-3), ROMERO (3-3), FOHRMAN (1-2), GUINDON (2-2), SANCHEZ (1-1), ROBERTS (1-1).



2022 NEW MEXICO GAME-BY-GAME STATISTICS

Date	Opponent	ab	r	h	rbi	2b	3b	hr	tb	bb	ibb	sb	cs	hbp	sac	sf	qdp	k	po	a	e	lob	avg
Feb 11	vs Oregon State	23	3	5	3	1	0	0	6	1	0	0	0	2	0	0	0	7	21	8	0	5	.217
Feb 12	vs Southern Utah	27	8	7	7	1	0	2	14	4	0	0	0	0	0	0	0	5	18	1	1	8	.240
Feb 13	vs Alabama	25	3	6	3	0	0	1	9	0	0	0	0	0	0	1	0	7	18	3	2	2	.240
Feb 13	at Arizona	23	0	2	0	1	0	0	3	2	0	0	0	0	0	0	0	4	18	7	0	4	.204
Feb. 18 2	vs Ohio	26	4	10	4	3	0	0	13	1	0	0	0	0	0	1	0	1	21	5	1	6	.242
Feb 18	at Lamar	30	2	8	2	1	0	0	9	0	0	2	1	0	0	0	0	6	21	12	1	7	.247
Feb 19	at Lamar	40	6	9	6	1	1	1	15	5	2	0	0	0	3	2	0	12	36	16	1	11	.242
Feb 19	vs Creighton	23	2	3	2	0	0	1	6	4	0	0	0	0	0	1	0	5	18	8	2	5	.230
Feb 20	vs Ohio	27	9	11	7	1	0	1	15	2	0	3	0	1	2	0	0	3	15	6	0	9	.250
Feb 24	UTEP	23	5	7	5	0	0	2	13	6	0	0	1	3	1	1	0	8	21	7	2	10	.255
Feb 25	NDSU	28	6	9	5	0	0	0	9	4	0	0	0	0	0	1	0	6	21	11	1	9	.261
Feb 26	BUFFALO	26	6	9	5	1	0	2	16	0	0	0	0	0	1	0	0	4	21	5	0	3	.268
Feb 27	TARLETON	20	8	9	8	0	0	0	9	4	0	1	0	0	1	0	0	2	15	3	0	5	.279
Totals		341	62	95	57	10	1	10	137	33	2	6	2	6	8	7	0	70	264	92	11	84	.279

2022 New Mexico Lobos
Team Game-by-Game for New Mexico (as of Mar 01, 2022)
Pitching (All games)

Date	Opponent	ip	h	r	er	bb	so	2b	3b	hr	wp	bk	hbp	dp	ibb	score	w-l	sv	era
Feb 11	vs Oregon State	7.0	6	2	2	1	10	0	0	1	0	0	2	0	0	3-2	1-0	0	2.00
Feb 12	vs Southern Utah	6.0	1	0	0	1	11	0	0	0	0	0	2	0	0	8-0	2-0	0	1.08
Feb 13	vs Alabama	6.0	7	8	7	3	2	2	1	0	0	0	3	0	0	3-8	2-1	0	3.32
Feb 13	at Arizona	6.0	5	1	1	1	2	1	0	0	1	0	0	0	0	0-1	2-2	0	2.80
Feb. 18 2	vs Ohio	7.0	6	2	2	3	7	2	0	0	1	0	0	0	0	4-2	3-2	1	2.62
Feb 18	at Lamar	7.0	4	1	1	0	5	0	0	0	0	0	2	0	0	2-1	4-2	1	2.33
Feb 19	at Lamar	12.0	9	4	0	3	11	3	0	0	1	0	0	0	0	6-4	5-2	1	1.78
Feb 19	vs Creighton	6.0	7	5	4	2	1	2	0	0	2	0	0	1	0	2-5	5-3	1	2.09
Feb 20	vs Ohio	5.0	2	1	1	3	4	0	0	0	0	0	0	0	0	9-1	6-3	1	2.03
Feb 24	UTEP	7.0	8	4	0	4	11	0	0	0	1	0	0	0	0	5-4	7-3	1	1.83
Feb 25	NDSU	7.0	7	4	3	2	2	3	0	0	0	0	0	1	0	6-4	8-3	2	1.93
Feb 26	BUFFALO	7.0	4	2	2	1	9	0	0	0	1	0	2	0	0	6-2	9-3	2	1.94
Feb 27	TARLETON	5.0	1	0	0	0	7	0	0	0	0	0	0	0	0	8-0	10-3	2	1.83
Totals		88.0	67	34	23	24	82	13	1	1	7	0	11	2	0	62-34	10-3	2	1.83

2022 NEW MEXICO RECORD AND INNING BREAKDOWN

Score by innings	1	2	3	4	5	6	7	8	9	EX	Total
New Mexico	12	14	5	10	6	8	3	0	0	4	62
Opponents	4	3	3	6	6	5	5	0	0	2	34

Record when ...

Overall	10-3	After 4 leading	9-0
Conference	0-0 trailing	1-3
Non-Conference	10-3 tied	0-0
Home games	4-0	After 5 leading	7-0
Away games	2-1 trailing	1-3
Neutral site	4-2 tied	0-0
Day games	7-2	After 6 leading	6-0
Night games	3-1 trailing	0-3
vs Left starter	1-0 tied	1-0
vs Right starter	9-3		
1-Run games	3-1	Hit 0 home runs	5-1
2-Run games	3-0	... 1 home run	2-2
5+Run games	3-1	... 2+ home runs	3-0
Extra innings	1-0		
Shutouts	2-1	Opponent 0 home runs	9-3
	 1 home run	1-0
	 2+ HRs	0-0
Scoring 0-2 runs	1-2		
..... 3-5 runs	3-1	Made 0 errors	4-1
..... 6-9 runs	6-0	... 1 error	5-0
..... 10+ runs	0-0	... 2+ errors	1-2
Opponent 0-2 runs	7-1		
..... 3-5 runs	3-1	Opp. made 0 errors	3-2
..... 6-9 runs	0-1 1 error	1-1
..... 10+ runs	0-0 2+ errors	6-0
Scored in 1st inning	6-0	Out-hit opponent	7-0
Opp. scored in 1st	0-1	Out-hit by opponent	2-3
Scores first	8-1	Hits are tied	1-0
Opp. scores first	2-2		

Record when team scores:

Runs	0	1	2	3	4	5	6	7	8	9	10+
W-L	0-1	0-0	1-1	1-1	1-0	1-0	3-0	0-0	2-0	1-0	0-0

Record when opponent scores:

Runs	0	1	2	3	4	5	6	7	8	9	10+
W-L	2-0	2-1	3-0	0-0	3-0	0-1	0-0	0-0	0-1	0-0	0-0

Record when leading after:

Inn.	1	2	3	4	5	6
W-L	6-0	7-1	8-0	9-0	7-0	6-0

Record when trailing after:

Inn.	1	2	3	4	5	6
W-L	0-1	1-1	1-3	1-3	1-3	0-3

Record when tied after:

Inn.	1	2	3	4	5	6
W-L	4-2	2-1	1-0	0-0	0-0	1-0

Current winning streak: 5

Longest winning streak: 5

Longest losing streak: 2

Home attendance : 1991 (4 dates avg = 497)

Away attendance : 2922 (9 dates avg = 324)

Total attendance: 4913 (13 dates avg = 377)



2021 NEW MEXICO SITUATIONAL BREAKDOWN

Player	vs left			vs right			w/runners			w/bases empty			w/bases loaded			as leadoff			fly	gnd	fly/
	h	ab	avg	h	ab	avg	h	ab	avg	h	ab	avg	h	ab	avg	rch	op	pct	out	out	gnd
7 ARCHULETA, As	2	4	.500	9	38	.237	4	16	.250	7	26	.269	1	3	.333	5	21	.238	7	17	0.4
27 BIRKINSHAW, Ol	0	0	.000	3	16	.188	0	8	.000	3	8	.375	0	0	.000	3	7	.429	3	2	1.5
20 BRAMSON, Emm	0	3	.000	11	35	.314	7	20	.350	4	18	.222	1	1	1.000	4	6	.667	14	10	1.4
12 BRAUN, Savann	1	1	1.000	0	0	.000	1	1	1.000	0	0	.000	1	1	1.000	0	0	.000	0	0	0.0
5 BRODERICK, Syd	1	1	1.000	2	6	.333	1	3	.333	2	4	.500	1	1	1.000	2	2	1.000	1	2	0.5
55 CAMERON, Jana	0	1	.000	2	10	.200	2	6	.333	0	5	.000	0	0	.000	0	2	.000	0	2	0.0
99 GONZALEZ, Aysi	0	0	.000	0	5	.000	0	2	.000	0	3	.000	0	0	.000	0	0	.000	1	0	99.9
0 HOWARD, Andre	0	3	.000	17	37	.459	9	24	.375	8	16	.500	0	1	.000	5	5	1.000	15	4	3.8
1 MARTINEZ, Brian	1	3	.333	3	29	.103	2	11	.182	2	21	.095	1	2	.500	2	11	.182	9	9	1.0
2 MARTINEZ, Sava	0	0	.000	0	2	.000	0	0	.000	0	2	.000	0	0	.000	0	0	.000	1	0	99.9
21 ROBINSON, Peyt	0	3	.000	10	31	.323	4	14	.286	6	20	.300	1	2	.500	2	6	.333	8	14	0.6
16 ROMERO, Leslie	2	3	.667	8	30	.267	6	16	.375	4	17	.235	2	2	1.000	3	9	.333	9	11	0.8
24 SANDOVAL, Dia	0	0	.000	0	3	.000	0	1	.000	0	2	.000	0	0	.000	0	0	.000	1	0	99.9
77 TUCK, Reyann	0	2	.000	12	31	.387	7	16	.438	5	17	.294	0	1	.000	0	6	.000	7	7	1.0
6 VIGIL, Alexis	2	2	1.000	0	3	.000	1	3	.333	1	2	.500	0	0	.000	1	1	1.000	2	0	99.9
4 YOUNG, Taryn	0	3	.000	9	36	.250	4	22	.182	5	17	.294	0	2	.000	2	8	.250	13	6	2.2
Totals	9	29	.310	86	31	.276	48	16	.294	47	17	.264	8	16	.500	29	84	.345	91	84	1.1
Opponents	12	40	.300	55	28	.191	37	16	.230	30	16	.180	1	1	1.000	29	90	.322	86	92	0.9

Player	pinch hitting			w/runners in scoring pos			w/runner on 3r and LT 2 out			with 2 outs			success adv runners			2- rnrns			rch	rch	kl
	h	ab	avg	h	ab	avg	rbi	op	pct	h	ab	avg	adv	op	pct	out	adv	rnrns	err	fc	
7 ARCHULETA, As	0	0	.000	3	12	.250	1	3	.333	4	11	.364	10	20	.500	3	1	10	0	1	4
27 BIRKINSHAW, Ol	2	2	1.000	0	1	.000	0	0	.000	1	6	.167	4	10	.400	0	2	4	1	0	3
20 BRAMSON, Emm	0	0	.000	5	13	.385	4	4	1.000	5	15	.333	15	24	.625	1	4	10	1	2	0
12 BRAUN, Savann	1	1	1.000	1	1	1.000	1	1	1.000	0	0	.000	1	1	1.000	0	0	0	0	0	0
5 BRODERICK, Syd	0	0	.000	1	2	.500	1	1	1.000	1	3	.333	2	4	.500	0	1	1	0	0	2
55 CAMERON, Jana	0	4	.000	1	3	.333	0	0	.000	2	6	.333	3	7	.429	3	0	2	0	0	2
99 GONZALEZ, Aysi	0	3	.000	0	1	.000	0	0	.000	0	2	.000	1	2	.500	0	0	2	0	1	0
0 HOWARD, Andre	0	0	.000	5	11	.455	4	4	1.000	7	22	.318	12	26	.462	4	2	13	2	1	2
1 MARTINEZ, Brian	0	0	.000	2	7	.286	2	2	1.000	2	9	.222	10	18	.556	2	3	4	4	1	3
2 MARTINEZ, Sava	0	0	.000	0	0	.000	0	0	.000	0	1	.000	0	0	.000	0	0	0	0	0	0
21 ROBINSON, Peyt	1	1	1.000	3	12	.250	1	4	.250	2	10	.200	7	17	.412	0	2	5	2	1	0
16 ROMERO, Leslie	0	1	.000	5	12	.417	1	3	.333	4	9	.444	10	17	.588	5	7	4	1	2	2
24 SANDOVAL, Dia	0	3	.000	0	0	.000	0	0	.000	0	2	.000	0	1	.000	0	0	0	0	0	0
77 TUCK, Reyann	0	0	.000	4	9	.444	3	4	.750	5	12	.417	13	19	.684	1	2	7	1	2	2
6 VIGIL, Alexis	0	0	.000	1	2	.500	1	1	1.000	1	2	.500	1	3	.333	0	0	1	0	0	0
4 YOUNG, Taryn	0	0	.000	1	13	.077	2	4	.500	1	12	.083	9	24	.375	1	1	11	2	2	2
Totals	4	15	.267	32	99	.323	21	31	.677	35	12	.287	98	19	.508	20	25	84	14	13	22
Opponents	2	16	.125	23	98	.235	6	12	.500	24	11	.209	74	17	.416	15	29	77	8	14	27

Success Advancing Runners = percentage of times the batter advanced at least one runner during a plate appearance
 #Rnrns Adv w/Out = TOTAL number of runners advanced when the player made an out

2022 NEW MEXICO LEADERS

Batting avg		Slugging pct		On base pct	
1. 0 HOWARD, Andrea	.425	1. 0 HOWARD, Andrea	.850	1. 0 HOWARD, Andrea	.468
2. 77 TUCK, Reyán	.364	2. 77 TUCK, Reyán	.424	2. 20 BRAMSON, Emma	.378
3. 16 ROMERO, Leslie	.303	3. 16 ROMERO, Leslie	.424	3. 77 TUCK, Reyán	.371
4. 21 ROBINSON, Peyton	.294	4. 27 BIRKINSHAW, Olivia	.375	4. 7 ARCHULETA, Ashley	.354
5. 20 BRAMSON, Emma	.289	5. 20 BRAMSON, Emma	.368	5. 27 BIRKINSHAW, Olivia	.350
Runs scored		Hits		Runs batted in	
1. 0 HOWARD, Andrea	11	1. 0 HOWARD, Andrea	17	1. 0 HOWARD, Andrea	16
2. 20 BRAMSON, Emma	9	2. 77 TUCK, Reyán	12	2. 20 BRAMSON, Emma	7
3. 4 YOUNG, Taryn	8	3. 7 ARCHULETA, Ashley	11	3. 16 ROMERO, Leslie	7
4. 21 ROBINSON, Peyton	8	4. 20 BRAMSON, Emma	11	4. 77 TUCK, Reyán	6
5. 7 ARCHULETA, Ashley	6	5. 2 tied at.....	10	5. 4 YOUNG, Taryn	5
Doubles		Triples		Home runs	
1. 77 TUCK, Reyán	2	1. 27 BIRKINSHAW, Olivia	1	1. 0 HOWARD, Andrea	5
2. 7 ARCHULETA, Ashley	2			2. 5 tied at.....	1
3. 0 HOWARD, Andrea	2				
4. 4 tied at.....	1				
Total bases		Walks		Hit by pitch	
1. 0 HOWARD, Andrea	34	1. 1 MARTINEZ, Briana	7	1. 27 BIRKINSHAW, Olivia	3
2. 20 BRAMSON, Emma	14	2. 20 BRAMSON, Emma	6	2. 7 ARCHULETA, Ashley	2
3. 16 ROMERO, Leslie	14	3. 0 HOWARD, Andrea	5	3. 4 YOUNG, Taryn	1
4. 77 TUCK, Reyán	14	4. 4 YOUNG, Taryn	4		
5. 2 tied at.....	13	5. 7 ARCHULETA, Ashley	4		
Sac bunts		Sac flies		Stolen bases	
1. 21 ROBINSON, Peyton	3	1. 0 HOWARD, Andrea	2	1. 21 ROBINSON, Peyton	3
2. 1 MARTINEZ, Briana	2	2. 5 tied at.....	1	2. 16 ROMERO, Leslie	1
3. 5 BRODERICK, Sydney	1			3. 27 BIRKINSHAW, Olivia	1
4. 77 TUCK, Reyán	1			4. 0 HOWARD, Andrea	1
5. 27 BIRKINSHAW, Olivia	1			5. 0 HOWARD, Andrea	1
Caught stealing		Steal attempts		Stolen base pct	
1. 1 MARTINEZ, Briana	1	1. 21 ROBINSON, Peyton	3	1. 21 ROBINSON, Peyton	1.000
2. 0 HOWARD, Andrea	1	2. 0 HOWARD, Andrea	2	2. 16 ROMERO, Leslie	1.000
		3. 16 ROMERO, Leslie	1	3. 27 BIRKINSHAW, Olivia	1.000
		4. 27 BIRKINSHAW, Olivia	1	4. 0 HOWARD, Andrea	.500
		5. 1 MARTINEZ, Briana	1	5. 1 MARTINEZ, Briana	.000
Strikeouts		Grounded into DP		Total plate appearances	
1. 4 YOUNG, Taryn	10			1. 7 ARCHULETA, Ashley	48
2. 1 MARTINEZ, Briana	9			2. 0 HOWARD, Andrea	47
3. 27 BIRKINSHAW, Olivia	8			3. 20 BRAMSON, Emma	45
4. 3 tied at.....	7			4. 4 YOUNG, Taryn	45
				5. 1 MARTINEZ, Briana	42
At bats		Games played		Game starts	
1. 7 ARCHULETA, Ashley	42	1. 7 tied at.....	13	1. 6 tied at.....	13
2. 0 HOWARD, Andrea	40				
3. 4 YOUNG, Taryn	39				
4. 20 BRAMSON, Emma	38				
5. 21 ROBINSON, Peyton	34				
Games as sub		Chances		Putouts	
1. 24 SANDOVAL, Diamond	5	1. 77 TUCK, Reyán	80	1. 77 TUCK, Reyán	77
2. 6 VIGIL, Alexis	4	2. 1 MARTINEZ, Briana	50	2. 16 ROMERO, Leslie	40
3. 4 tied at.....	3	3. 7 ARCHULETA, Ashley	44	3. 7 ARCHULETA, Ashley	24
		4. 16 ROMERO, Leslie	41	4. 4 YOUNG, Taryn	24
		5. 20 BRAMSON, Emma	26	5. 55 CAMERON, Janae	22
Fielding pct		Errors		Fielding double plays	
1. 7 ARCHULETA, Ashley	1.000	1. 1 MARTINEZ, Briana	6	1. 77 TUCK, Reyán	1
2. 16 ROMERO, Leslie	1.000	2. 5 tied at.....	1	2. 7 ARCHULETA, Ashley	1
3. 4 YOUNG, Taryn	1.000				
4. 0 HOWARD, Andrea	1.000				
5. 21 ROBINSON, Peyton	1.000				
Assists		Caught stealing by		Steal attempts against	
1. 1 MARTINEZ, Briana	28	1. 5 BRODERICK, Sydney	1	1. 5 BRODERICK, Sydney	5
2. 7 ARCHULETA, Ashley	20	2. 28 FOHRMAN, Samantha	1	2. 17 LINTON, Amber	5
3. 20 BRAMSON, Emma	18			3. 55 CAMERON, Janae	3
4. 6 VIGIL, Alexis	6			4. 16 ROMERO, Leslie	3
5. 34 GUINDON, Emma	5			5. 2 tied at.....	2
Stolen bases against		Catchers interference			
1. 17 LINTON, Amber	5				
2. 5 BRODERICK, Sydney	4				
3. 16 ROMERO, Leslie	3				
4. 55 CAMERON, Janae	3				
5. 34 GUINDON, Emma	2				
Passed balls					
1. 16 ROMERO, Leslie	1				



2022 NEW MEXICO LEADERS

Earned run avg

1. 28 FOHRMAN, Samantha	0.00
10 KOSTYSZYN, McKenna	0.00
3. 34 GUINDON, Emma	0.80
4. 17 LINTON, Amber	1.94
5. 66 ROBERTS, Ashlyn	4.20

Wins

1. 17 LINTON, Amber	5
34 GUINDON, Emma	5

Innings pitched

1. 17 LINTON, Amber	36.0
2. 34 GUINDON, Emma	35.0
3. 66 ROBERTS, Ashlyn	10.0
4. 28 FOHRMAN, Samantha	4.0
5. 25 SANCHEZ, Brianna	2.0

Games started

1. 17 LINTON, Amber	6
2. 34 GUINDON, Emma	5
3. 66 ROBERTS, Ashlyn	1
28 FOHRMAN, Samantha	1

Wild pitches

1. 17 LINTON, Amber	3
25 SANCHEZ, Brianna	3
3. 34 GUINDON, Emma	1

Intentional BB allowed

Sac bunts allowed

1. 34 GUINDON, Emma	5
2. 66 ROBERTS, Ashlyn	1
17 LINTON, Amber	1

Runs allowed

1. 10 KOSTYSZYN, McKenna	0
2. 28 FOHRMAN, Samantha	3
25 SANCHEZ, Brianna	3
4. 34 GUINDON, Emma	5
5. 66 ROBERTS, Ashlyn	7

Doubles allowed

1. 10 KOSTYSZYN, McKenna	0
2. 17 LINTON, Amber	1
25 SANCHEZ, Brianna	1
4. 28 FOHRMAN, Samantha	3
5. 66 ROBERTS, Ashlyn	4

Opposing bat avg

1. 25 SANCHEZ, Brianna	.143
2. 34 GUINDON, Emma	.165
3. 17 LINTON, Amber	.196
4. 10 KOSTYSZYN, McKenna	.250
5. 66 ROBERTS, Ashlyn	.300

Losses

1. 17 LINTON, Amber	1
34 GUINDON, Emma	1
66 ROBERTS, Ashlyn	1

Batters struck out

1. 17 LINTON, Amber	43
2. 34 GUINDON, Emma	34
3. 66 ROBERTS, Ashlyn	2
4. 3 tied at.....	1

Games finished

1. 17 LINTON, Amber	3
2. 34 GUINDON, Emma	2
3. 28 FOHRMAN, Samantha	1
25 SANCHEZ, Brianna	1
10 KOSTYSZYN, McKenna	1

Balks

Runners picked off

Sac flies allowed

1. 66 ROBERTS, Ashlyn	2
-----------------------	---

Earned runs allowed

1. 10 KOSTYSZYN, McKenna	0
28 FOHRMAN, Samantha	0
3. 25 SANCHEZ, Brianna	3
4. 34 GUINDON, Emma	4
5. 66 ROBERTS, Ashlyn	6

Triples allowed

1. 10 KOSTYSZYN, McKenna	0
17 LINTON, Amber	0
25 SANCHEZ, Brianna	0
28 FOHRMAN, Samantha	0
34 GUINDON, Emma	0

Won-loss pct

1. 34 GUINDON, Emma	.833
17 LINTON, Amber	.833
3. 66 ROBERTS, Ashlyn	.000
4. 25 SANCHEZ, Brianna	.000
10 KOSTYSZYN, McKenna	.000

Saves

1. 17 LINTON, Amber	2
---------------------	---

Appearances

1. 17 LINTON, Amber	9
2. 34 GUINDON, Emma	8
3. 66 ROBERTS, Ashlyn	3
25 SANCHEZ, Brianna	3
5. 28 FOHRMAN, Samantha	2

Games in relief

1. 17 LINTON, Amber	3
25 SANCHEZ, Brianna	3
34 GUINDON, Emma	3
4. 66 ROBERTS, Ashlyn	2
5. 2 tied at.....	1

Hit batters

1. 17 LINTON, Amber	6
2. 66 ROBERTS, Ashlyn	2
34 GUINDON, Emma	2
4. 28 FOHRMAN, Samantha	1

Batters SO out looking

1. 17 LINTON, Amber	16
2. 34 GUINDON, Emma	11

Hits allowed

1. 10 KOSTYSZYN, McKenna	1
25 SANCHEZ, Brianna	1
3. 28 FOHRMAN, Samantha	6
4. 66 ROBERTS, Ashlyn	12
5. 34 GUINDON, Emma	20

Walks allowed

1. 10 KOSTYSZYN, McKenna	0
28 FOHRMAN, Samantha	0
3. 66 ROBERTS, Ashlyn	2
4. 25 SANCHEZ, Brianna	3
5. 34 GUINDON, Emma	6

Home runs allowed

1. 10 KOSTYSZYN, McKenna	0
66 ROBERTS, Ashlyn	0
25 SANCHEZ, Brianna	0
28 FOHRMAN, Samantha	0
34 GUINDON, Emma	0



00 ANDREA HOWARD

OF • 5-6 • SR.

ALBUQUERQUE, N.M. • LA CUEVA HS

SINGLE-GAME HIGHS

Hits: 3, 6x, Last vs. Buffalo, 2-26-22
 Doubles: 1, 29x, Last vs. Ohio., 2-20-22
 Triples: 1, 5x, Last at Texas, 5-1-21
 Home runs: 2, 4x, Last vs. Buffalo, 2-26-22
 Total bases: 9, Buffalo, 2-26-22
 RBI: 5, Northern Colorado, 2-14-20
 Runs scored: 3, 6x, Last at Utah State, 5-14-21, 5-8-21
 Walks: 4, UTEP, 2-8-19
 Hit by pitch: 1, 4x, Last at Texas, 3-20-21
 Struck out: 3, 5x, Last at Fresno St., 4-2-21

Sac flies: 2, San Diego State, 5-1-21
 Sac bunts: 1, 3x, Last at Hawai'i, 2-23-19
 At bats: 5, 2x, Last at Utah State, 4-6-19
 Stolen bases: 1, 9x, Last vs. Lamar, 2-18-22
 Putouts: 13, at UTEP, 4-16-18
 Assists: 1, 15x, Last vs. San José State, 5-8-21
 Named All-Mountain West Second Team in 2018
 2019 Google Cloud Academic All-America® Second Team
 2021 CoSIDA First Team All-American
 Mountain West Player of the Week (Feb. 22)

CAREER STATS (AT UNM)

Year	avg	gp-gs	ab	r	h	2b	3b	hr	rbi	bb	so	sb-att
2018	.313	51-50	131	20	41	6	1	7	18	23	39	3-4
2019	.192	46-46	125	25	24	9	2	3	15	24	44	1-1
2020	.306	26-26	72	16	22	4	0	7	24	12	11	2-2
2021	.336	46-46	125	25	42	9	2	12	33	21	21	2-4
2022	.425	13-13	40	11	17	2	0	5	16	5	4	1-2
TOTAL	.296	182-181	493	97	146	30	5	34	106	85	119	9-13

2022 GAME-BY-GAME

Date	Opponent	Pos	AB	R	H	RBI	2B	3B	HR	BB	SB	CS	HBP	SAC	SF	GDP	K	PO	A	E	Avg
Feb 11	vs Oregon State	*of	3	0	1	1	0	0	0	0	0	0	0	0	0	0	2	1	0	0	.333
Feb 12	vs Southern Utah	*of	3	2	1	1	0	0	1	1	0	0	0	0	0	0	0	0	0	0	.333
Feb 13	vs Alabama	*of	3	1	1	0	0	0	0	0	0	0	0	0	0	0	0	6	0	0	.333
Feb 13	at Arizona	*of	3	0	0	0	0	0	0	0	0	0	0	0	0	0	0	1	0	0	.250
Feb. 18	vs Ohio	*of	2	0	1	2	1	0	0	0	0	0	0	0	1	0	0	0	0	0	.286
Feb 18	at Lamar	*of	4	1	2	0	0	0	0	0	1	0	0	0	0	0	0	0	0	0	.333
Feb 19	at Lamar	*of	4	2	3	3	0	0	1	2	0	0	0	0	0	0	0	1	0	0	.409
Feb 19	vs Creighton	*of	3	0	0	0	0	0	0	0	0	0	0	0	0	0	2	1	0	0	.360
Feb 20	vs Ohio	*of	4	2	2	3	1	0	1	0	0	0	0	0	0	0	0	1	0	0	.379
Feb 24	UTEP	*of	2	0	0	0	0	0	0	2	0	1	0	0	0	0	0	0	0	0	.355
Feb 25	NDSU	*of	3	0	1	1	0	0	0	0	0	0	0	0	1	0	0	2	0	0	.353
Feb 26	BUFFALO	*of	3	3	3	2	0	0	2	0	0	0	0	0	0	0	0	2	0	0	.405
Feb 27	TARLETON	*of	3	0	2	3	0	0	0	0	0	0	0	0	0	0	0	0	0	0	.425
Totals			13gs	40	11	17	16	2	0	5	5	1	1	0	0	2	0	4	15	0	.425

On base pct. .468 • Slugging pct. .850



THE 2022 LOBOS



1 BRIANA MARTINEZ *UT • 5-3 • JR.* *ALBUQUERQUE, N.M. • RIO RANCHO HS*

SINGLE-GAME HIGHS

Hits: 3, 2x, Last vs. Northern Colo., 2-14-20
 Doubles: 2, Northern Colorado, 3-1-20
 Triples: 1, Nevada, 4-10-21
 Home runs: 1, 3x, Last vs. Colorado St., 3-28-21
 Total bases: 6, Grand Canyon, 2-9-20
 RBI: 2, 6x, Last vs. Colorado St., 3-28-21
 Runs scored: 3, Northern Colorado, 2-14-20
 Walks: 3, Southern Utah, 2-20-21
 Hit by pitch: 1, 4x, Last vs. Colorado St., 3-28-21

Struck out: 3, Seattle, 2-21-21
 Sac flies: 1, Alabama, 2-13-22
 Sac bunts: 1, 4x, Last vs. Tarleton, 2-27-22
 At bats: 4, 5x, Last vs. North Dakota St., 2-25-22
 Stolen bases: 1, 10x, Last vs. San José State, 5-9-21
 Caught stealing: 1, Lamar, 2-18-22
 Putouts: 6, Oklahoma State, 3-6-21
 Assists: 5, Boise State, 4-24-21

CAREER STATS (AT UNM)

Year	avg	gp-gs	ab	r	h	2b	3b	hr	rbi	bb	so	sb-att
2020	.286	26-26	70	13	20	5	0	2	14	20	15	5-5
2021	.186	43-43	102	8	19	5	1	1	10	13	39	5-5
2022	.125	13-13	32	5	4	0	0	1	4	7	9	0-1
TOTAL	.211	82-82	204	26	43	10	1	4	28	40	63	10-11

2022 GAME-BY-GAME

Date	Opponent	Pos	AB	R	H	RBI	2B	3B	HR	BB	SB	CS	HBP	SAC	SF	GDP	K	PO	A	E	Avg
Feb 11	vs Oregon State	*ss	2	0	0	0	0	0	0	1	0	0	0	0	0	0	1	0	4	0	.000
Feb 12	vs Southern Utah	*ss	3	0	0	0	0	0	0	0	0	0	0	0	0	0	0	2	0	0	.000
Feb 13	vs Alabama	*ss	2	0	0	1	0	0	0	0	0	0	0	0	1	0	1	1	1	1	.000
Feb 13	at Arizona	*ss	3	0	0	0	0	0	0	0	0	0	0	0	0	0	1	1	3	0	.000
Feb. 18	vs Ohio	*ss	2	0	0	0	0	0	0	1	0	0	0	0	0	0	0	2	1	0	.000
Feb 18	at Lamar	*ss	3	1	0	0	0	0	0	0	0	1	0	0	0	0	0	1	4	1	.000
Feb 19	at Lamar	*ss	3	0	0	0	0	0	0	1	0	0	0	0	0	0	2	2	3	1	.000
Feb 19	vs Creighton	*ss	2	1	1	1	0	0	1	1	0	0	0	0	0	0	1	2	1	1	.050
Feb 20	vs Ohio	*ss	2	1	1	1	0	0	0	0	0	0	0	1	0	0	0	0	2	0	.091
Feb 24	UTEP	*ss	2	0	0	0	0	0	0	2	0	0	0	0	0	0	1	1	3	2	.083
Feb 25	NDSU	*ss	4	1	1	1	0	0	0	0	0	0	0	0	0	0	1	2	3	0	.107
Feb 26	BUFFALO	*ss	2	0	0	0	0	0	0	0	0	0	0	1	0	0	1	1	2	0	.100
Feb 27	TARLETON	*ss	2	1	1	0	0	0	0	1	0	0	0	0	0	0	0	1	1	0	.125
Totals			13gs	32	5	4	4	0	1	7	0	1	0	2	1	0	9	16	28	6	.125

On base pct. .275 • Slugging pct. .219

THE 2022 LOBOS



2 SAVANA MARTINEZ *C • 5-3 • R-FR.* ALBUQUERQUE, N.M. • RIO RANCHO HS

SINGLE-GAME HIGHS

Hits: Struck out: 1, Arizona, 2-13-22
 Doubles: Sac flies:
 Triples: Sac bunts:
 Home runs: At bats: 2, Arizona, 2-13-22
 Total bases: Stolen bases:
 RBI: Caught stealing:
 Runs scored: Putouts: 2, Arizona, 2-13-22
 Walks: Assists:
 Hit by pitch:

CAREER STATS (AT UNM)

Year	avg	gp-gs	ab	r	h	2b	3b	hr	rbi	bb	so	sb-att
2022	.000	3-1	2	0	0	0	0	0	0	0	1	0-0
TOTAL	.000	3-1	2	0	0	0	0	0	0	0	1	0-0

2022 GAME-BY-GAME

Date	Opponent	Pos	AB	R	H	RBI	2B	3B	HR	BB	SB	CS	HBP	SAC	SF	GDP	K	PO	A	E	Avg
Feb 13	at Arizona	*c	2	0	0	0	0	0	0	0	0	0	0	0	0	0	1	2	0	0	.000
Feb 19	at Lamar	pr	0	0	0	0	0	0	0	0	0	0	0	0	0	0	0	0	0	0	.000
Feb 26	BUFFALO	pr	0	0	0	0	0	0	0	0	0	0	0	0	0	0	0	0	0	0	.000
Totals		1gs	2	0	0	0	0	0	0	0	0	0	0	0	0	0	1	2	0	0	.000

On base pct. .000 • Slugging pct. .000





3 RACHAEL HATHOOT INF • 5-8 • JR.
ALBUQUERQUE, N.M. • LA CUEVA HS

SINGLE-GAME HIGHS

Hits: 2, 13x, Last at Utah State, 5-15-21
 Doubles: 2, 2x, Last vs. San José State, 5-8-21
 Triples: 1, 2x, Last vs. South Dakota, 2-29-20
 Home runs: 1, 5x, Last at Utah State, 5-14-21
 Total bases: 5, 2x, Last at Utah State, 5-14-21
 RBI: 3, San José State, 5-8-21
 Runs scored: 2, 8x, Last vs. San José State, 5-8-21
 Walks: 2, Weber State, 2-7-20
 Hit by pitch: 1, 5x, Last at UNLV, 4-18-21

Struck out: 3, San Diego State, 5-1-21
 Sac flies:
 Sac bunts: 1, 4x, Last at San Diego State, 5-1-21
 At bats: 5, 2x, Last at GCU, 2-9-20
 Stolen bases: 2, Texas, 3-20-21
 Caught stealing: 1, 4x, Last vs. San José State, 5-8-21
 Putouts: 7, Colorado State, 3-27-21
 Assists: 5, UC Riverside, 2-20-20

CAREER STATS (AT UNM)

Year	avg	gp-gs	ab	r	h	2b	3b	hr	rbi	tb	slg%	bb	hbp	so	gdp	ob%	sf	sh	sb-att	po	a	e	fld%
2020	.250	26-26	84	19	21	6	2	1	12	34	.405	7	3	8	0	.330	0	2	0-1	38	47	6	.934
2021	.241	46-46	133	18	32	10	0	4	20	54	.406	9	2	25	0	.299	0	2	9-12	96	79	11	.941
TOTAL	.244	72-72	217	37	53	16	2	5	32	88	.406	16	5	33	0	.311	0	4	9-13	134	126	17	.939

2022 GAME-BY-GAME

THE 2022 LOBOS



4 TARYN YOUNG

OF • 5-8 • SR.
ANAHEIM, CALIF. • ARIZONA

SINGLE-GAME HIGHS

Hits: 3, Nevada, 4-10-21
 Doubles: 1, 5x, Last vs. Buffalo, 2-26-22
 Triples:
 Home runs: 2, California, 2-23-20
 Total bases: 8, California, 2-23-20
 RBI: 3, California, 2-23-20
 Runs scored: 3, San Diego, 2-22-20
 Walks: 2, 5x, Last vs. Creighton, 2-19-22
 Hit by pitch: 1, 5x, Last vs. UTEP, 2-24-22

Struck out: 3, 4x, Last at Lamar, 2-19-22
 Sac flies: 1, 2x, Last at Lamar, 2-19-22
 Sac bunts: 1, Texas Tech, 3-12-21
 At bats: 5, Lamar, 2-19-22
 Stolen bases:
 Caught stealing: 1, 2x, Last at Texas Tech, 3-12-21
 Putouts: 5, Arizona, 2-13-22
 Assists: 1, 3x, Last vs. Southern Utah, 2-12-22

CAREER STATS (AT ARIZONA)

Year	avg	gp-gs	ab	r	h	2b	3b	hr	rbi	tb	slq%	bb	hbp	so	gdp	ob%	sf	sh	sb-att	po	a	e	fld%
2018	.000	4-0	0	3	0	0	0	0	0	0	.000	1	0	0	0	1.000	0	0	0-0	0	0	0	.000
2019	.000	5-0	1	0	0	0	0	0	0	0	.000	0	0	1	0	.000	0	0	0-0	3	0	0	1.000
TOTAL	.000	9-0	1	3	0	0	0	0	0	0	.000	1	0	1	0	.500	0	0	0-0	3	0	0	1.000

CAREER STATS (AT UNM)

Year	avg	gp-gs	ab	r	h	2b	3b	hr	rbi	bb	so	sb-att
2020	.259	24-24	54	17	14	0	0	4	9	13	18	0-1
2021	.138	42-42	94	9	13	4	0	2	8	11	38	1-2
2022	.231	13-13	39	8	9	1	0	1	5	4	10	0-0
TOTAL	.193	79-79	187	34	36	5	0	7	22	28	66	1-3

2022 GAME-BY-GAME

Date	Opponent	Pos	AB	R	H	RBI	2B	3B	HR	BB	SB	CS	HBP	SAC	SF	GDP	K	PO	A	E	Avg
Feb 11	vs Oregon State	*of	3	0	0	0	0	0	0	0	0	0	0	0	0	0	1	1	0	0	.000
Feb 12	vs Southern Utah	*of	2	1	0	0	0	0	0	1	0	0	0	0	0	0	0	1	1	0	.000
Feb 13	vs Alabama	*of	3	1	2	1	0	0	1	0	0	0	0	0	0	0	1	3	0	0	.250
Feb 13	at Arizona	*of	3	0	0	0	0	0	0	0	0	0	0	0	0	0	1	5	0	0	.182
Feb. 18	vs Ohio	*of	3	2	2	1	0	0	0	0	0	0	0	0	0	0	0	3	0	0	.286
Feb 18	at Lamar	*of	4	0	0	0	0	0	0	0	0	0	0	0	0	0	1	0	0	0	.222
Feb 19	at Lamar	*of	5	0	1	1	0	0	0	0	0	0	0	0	1	0	3	2	0	0	.217
Feb 19	vs Creighton	*of	1	0	0	0	0	0	0	2	0	0	0	0	0	0	0	3	0	0	.208
Feb 20	vs Ohio	*of	4	1	1	0	0	0	0	0	0	0	0	0	0	0	0	1	0	0	.214
Feb 24	UTEP	*of	2	1	1	0	0	0	0	0	0	1	0	0	0	0	1	2	0	0	.233
Feb 25	NDSU	*of	3	1	0	1	0	0	0	1	0	0	0	0	0	0	1	1	0	0	.212
Feb 26	BUFFALO	*of	3	1	2	1	1	0	0	0	0	0	0	0	0	0	0	2	0	0	.250
Feb 27	TARLETON	*of	3	0	0	0	0	0	0	0	0	0	0	0	0	0	1	0	0	0	.231
Totals		13gs	39	8	9	5	1	0	1	4	0	0	1	0	1	0	10	24	1	0	.231

On base pct. .311 • Slugging pct. .333





5 SYDNEY BRODERICK

C • 5-4 • SR.

MESA, ARIZ. • DESERT RIDGE HS

SINGLE-GAME HIGHS

Hits: 3, St. Mary's, 3-10-18
 Doubles: 1, 4x, Last at Utah State, 4-6-19
 Home Runs: 1, 3x, Last at GCU, 2-8-20
 Total bases: 4, 4x, Last at GCU, 2-8-20
 RBI: 2, 2x, Last at NMSU, 4-2-19
 Runs scored: 1, 15x, Last vs. Tarleton, 2-27-22
 Walks: 2, 3x, Last at GCU, 2-9-20
 Hit by pitch: 1, 2x, Last at ASU, 2-26-21
 Struck out: 3, at Colorado State, 4-8-18

Sac flies: 1, 2x, Last vs. San Diego, 2-22-20
 Sac bunts: 1, 4x, Last at Lamar, 2-19-22
 At bats: 4, 5x, Last vs. N. Colorado, 2-28-20
 Stolen bases: 1, at Utah State, 4-5-19
 Putouts: 10, at Colorado State, 4-7-18
 Assists: 3, 2x, Last vs. Nevada, 3-30-19
 Runners CS: 2, Utah State, 4-21-18

CAREER STATS (AT UNM)

Year	avg	gp-gs	ab	r	h	2b	3b	hr	rbi	bb	so	sb-att
2018	.230	42-36	87	6	20	2	0	0	5	6	12	0-0
2019	.095	33-30	63	5	6	2	0	1	3	10	19	1-1
2020	.138	12-10	29	3	4	0	0	2	3	4	6	0-0
2021	.085	23-22	47	0	4	0	0	0	0	4	15	0-0
2022	.429	4-3	7	1	3	0	0	0	1	1	2	0-0
TOTAL	.159	114-101	233	15	37	4	0	3	12	25	54	1-1

2022 GAME-BY-GAME

Date	Opponent	Pos	AB	R	H	RBI	2B	3B	HR	BB	SB	CS	HBP	SAC	SF	GDP	K	PO	A	E	Avg
Feb 13	vs Alabama	*c	2	0	0	0	0	0	0	0	0	0	0	0	0	0	1	2	1	1	.000
Feb. 18	vs Ohio	c	0	0	0	0	0	0	0	0	0	0	0	0	0	0	0	4	0	0	.000
Feb 19	at Lamar	*c	3	0	1	0	0	0	0	1	0	0	0	1	0	0	1	9	2	0	.200
Feb 27	TARLETON	*dh	2	1	2	1	0	0	0	0	0	0	0	0	0	0	0	0	0	0	.429
Totals		3gs	7	1	3	1	0	0	0	1	0	0	0	1	0	0	2	15	3	1	.429

On base pct. .500 • Slugging pct. .429

THE 2022 LOBOS



6 ALEXIS VIGIL

INF • 5-0 • SR.

LOS LUNAS, N.M. • COLLEGE OF SOUTHERN NEVADA

SINGLE-GAME HIGHS

Hits: 2, North Dakota State, 2-25-22

Doubles:

Triples:

Home runs:

Total bases: 1, Utah State, 5-15-21

RBI: 1, 2x, Last vs. North Dakota St., 2-25-22

Runs scored: 1, 3x, Last vs. UTEP, 2-24-22

Walks: 1, 2x, Last vs. UTEP, 2-24-22

Hit by pitch:

Struck out: 2, 3x, Last at Utah State, 5-14-21

Sac flies: 1, San José State, 5-9-21

Sac bunts:

At bats: 3, 2x, Last at Utah State, 5-14-21

Stolen bases:

Caught stealing:

Putouts: 2, 2x, Last vs. San José State, 5-9-21

Assists: 3, 2x, Last vs. San José State, 5-9-21

CAREER STATS (AT UNM)

Year	avg	gp-gs	ab	r	h	2b	3b	hr	rbi	bb	so	sb-att
2021	.045	14-7	22	2	1	0	0	0	1	1	11	0-0
2022	.400	6-2	5	2	2	0	0	0	1	1	1	0-0
TOTAL	.111	20-9	27	4	3	0	0	0	2	2	12	0-0

2022 GAME-BY-GAME

Date	Opponent	Pos	AB	R	H	RBI	2B	3B	HR	BB	SB	CS	HBP	SAC	SF	GDP	K	PO	A	E	Avg	
Feb 12	vs Southern Utah	pr	0	1	0	0	0	0	0	0	0	0	0	0	0	0	0	0	0	0	0	.000
Feb 13	vs Alabama	pr	0	0	0	0	0	0	0	0	0	0	0	0	0	0	0	0	0	0	0	.000
Feb 19	at Lamar	pr	0	0	0	0	0	0	0	0	0	0	0	0	0	0	0	0	0	0	0	.000
Feb 24	UTEP	ph	0	1	0	0	0	0	0	1	0	0	0	0	0	0	0	0	0	0	0	.000
Feb 25	NDSU	*2b	3	0	2	1	0	0	0	0	0	0	0	0	0	0	1	1	6	1	6	.667
Feb 26	BUFFALO	*dh	2	0	0	0	0	0	0	0	0	0	0	0	0	0	0	0	0	0	0	.400
Totals		2gs	5	2	2	1	0	0	0	1	0	0	0	0	0	0	1	1	6	1	6	.400

On base pct. .500 • Slugging pct. .400





7 ASHLEY ARCHULETA

INF • 5-4 • FR.
RIO RANCHO, N.M. • CLEVELAND HS

SINGLE-GAME HIGHS

Hits: 3, North Dakota State, 2-25-22
 Doubles: 1, Lamar, 2-18-22
 Triples:
 Home runs:
 Total bases: 3, North Dakota State, 2-25-22
 RBI: 3, Southern Utah, 2-12-22
 Runs scored: 2, 2x, Last vs. Tarleton, 2-27-22
 Walks: 1, 4x, Last vs. Tarleton, 2-27-22
 Hit by pitch: 2, UTEP, 2-24-22

Struck out: 2, Alabama, 2-13-22
 Sac flies:
 Sac bunts:
 At bats: 4, 5x, Last vs. North Dakota State, 2-25-22
 Stolen bases:
 Caught stealing:
 Putouts: 4, 2x, Last vs. Creighton, 2-19-22
 Assists: 6, at Lamar, 2-19-22

CAREER STATS (AT UNM)

Year	avg	gp-gs	ab	r	h	2b	3b	hr	rbi	bb	so	sb-att
2022	.262	13-13	42	6	11	2	0	0	4	4	7	0-0
TOTAL	.262	13-13	42	6	11	2	0	0	4	4	7	0-0

2022 GAME-BY-GAME

Date	Opponent	Pos	AB	R	H	RBI	2B	3B	HR	BB	SB	CS	HBP	SAC	SF	GDP	K	PO	A	E	Avg
Feb 11	vs Oregon State	*2b	3	0	1	0	0	0	0	0	0	0	0	0	0	0	1	1	0	0	.333
Feb 12	vs Southern Utah	*2b	3	0	1	3	0	0	0	1	0	0	0	0	0	0	1	1	0	0	.333
Feb 13	vs Alabama	*2b	3	0	0	0	0	0	0	0	0	0	0	0	0	0	2	1	0	0	.222
Feb 13	at Arizona	*2b	3	0	1	0	0	0	0	0	0	0	0	0	0	0	0	4	0	0	.250
Feb. 18	vs Ohio	*2b	4	1	1	0	0	0	0	0	0	0	0	0	0	0	0	1	0	0	.250
Feb 18	at Lamar	*2b	4	0	1	0	1	0	0	0	0	0	0	0	0	0	1	3	4	0	.250
Feb 19	at Lamar	*2b	4	0	1	1	1	0	0	1	0	0	0	0	0	0	1	3	6	0	.250
Feb 19	vs Creighton	*2b	4	0	0	0	0	0	0	0	0	0	0	0	0	0	0	4	3	0	.214
Feb 20	vs Ohio	*2b	3	1	2	0	0	0	0	1	0	0	0	0	0	0	1	1	2	0	.258
Feb 24	UTEP	*2b	2	0	0	0	0	0	0	0	0	0	2	0	0	0	0	2	2	0	.242
Feb 25	NDSU	*dh	4	2	3	0	0	0	0	0	0	0	0	0	0	0	0	0	0	0	.297
Feb 26	BUFFALO	*2b	3	0	0	0	0	0	0	0	0	0	0	0	0	0	0	1	2	0	.275
Feb 27	TARLETON	*2b	2	2	0	0	0	0	0	1	0	0	0	0	0	0	0	2	1	0	.262
Totals		13gs	42	6	11	4	2	0	0	4	0	0	2	0	0	0	7	24	20	0	.262

On base pct. .354 • Slugging pct. .310



10 MCKENNA KOSTYSZYN

P • 5-7 • FR.
FRISCO, TEXAS • FRISCO INDEPENDENCE HS

SINGLE-GAME HIGHS

Innings pitched: 1.0, Creighton, 2-19-22
 Walks allowed:
 Strikeouts: 1, Creighton, 2-19-22
 Batters faced: 4, Creighton, 2-19-22
 Putouts:
 Assists:
 Runners CS:

Fewest hits allowed (3.0 IP min.):
 Fewest BB allowed (3.0 IP min.):

CAREER STATS (AT UNM)

Year	era	w-l	app	gs	cg	sho	sv	ip	h	r	er	bb	so
2022	0.00	0-0	1	0	0	0/0	0	1.0	1	0	0	0	1
TOTAL	0.00	0-0	1	0	0	0/0	0	1.0	1	0	0	0	1

2022 GAME-BY-GAME

Date	Opponent	GS	IP	H	R	ER	BB	SO	2B	3B	HR	WP	BK	HBP	IBB	Score	W-L	Sv	ERA	NP
Feb 19	vs Creighton		1.0	1	0	0	0	1	0	0	0	0	0	0	0	2-5	0-0	0	0.00	15
Totals		0	1.0	1	0	0	0	1	0	0	0	0	0	0	0	2-5	0-0	0	0.00	-





12 SAVANNAH BRAUN

INF • 5-10 • 50.
TUALATIN, ORE. • TUALATIN HS

SINGLE-GAME HIGHS

Hits: 1, 3x, Last vs Tarleton, 2-27-22
Doubles:
Triples:
Home runs:
Total bases: 1, 3x, Last vs Tarleton, 2-27-22
RBI: 1, Tarleton, 2-27-22
Runs scored:
Walks: 1, Oklahoma, 2-27-21
Hit by pitch:

Struck out: 1, Fresno State, 4-3-21
Sac flies:
Sac bunts:
At bats: 2, Utah State, 5-15-21
Stolen bases:
Caught stealing:
Field chances:
Putouts:
Assists:

CAREER STATS (AT UNM)

Year	avg	gp-gs	ab	r	h	2b	3b	hr	rbi	bb	so	sb-att
2021	.500	4-1	4	0	2	0	0	0	0	2	2	0-0
2022	1.000	1-0	1	0	1	0	0	0	1	0	0	0-0
TOTAL	.600	5-1	5	0	3	0	0	0	1	2	2	0-0

2022 GAME-BY-GAME

Date	Opponent	Pos	AB	R	H	RBI	2B	3B	HR	BB	SB	CS	HBP	SAC	SF	GDP	K	PO	A	E	Avg	
Feb 27	TARLETON	ph	1	0	1	1	0	0	0	0	0	0	0	0	0	0	0	0	0	0	0	1.000
Totals		0gs	1	0	1	1	0	0	0	0	0	0	0	0	0	0	0	0	0	0	0	1.000

On base pct. 1.000 • Slugging pct. 1.000

THE 2022 LOBOS



16 LESLIE ROMERO

C • 5-4 • JR.

GONZALES, CALIF. • SALINAS HS

SINGLE-GAME HIGHS

Hits: 2, 6x, Last vs. NDSU, 2-25-22
 Doubles: 1, 4x, Last at Lamar, 2-19-22
 Home runs: 1, UTEP, 2-24-22
 Total bases: 5, UTEP, 2-24-22
 RBI: 3, UTEP, 2-24-22
 Runs scored: 1, 7x, Last vs. NDSU, 2-25-22
 Walks: 1, 2x, Last at Arizona, 2-13-22
 Struck out: 2, 2x, Last vs. Texas Southern, 3-6-20
 Sac bunts: 1, S. Dakota, 2-29-20

Sac flies: 1, 2x, Last vs. Creighton, 2-19-22
 At bats: 4, 3x, Last vs. NDSU, 2-25-22
 Stolen bases: 1, Ohio, 2-20-22
 Putouts: 10, 2x, Last vs UTEP, 2-24-22
 Assists:

CAREER STATS (AT UNM)

Year	avg	gp-gs	ab	r	h	2b	3b	hr	rbi	bb	so	sb-att
2019	.000	10-2	12	0	0	0	0	0	0	0	5	0-0
2020	.219	15-12	32	4	7	2	0	0	3	1	4	0-0
2022	.303	13-11	33	3	10	1	0	1	7	1	4	1-1
TOTAL	.221	38-25	77	7	17	3	0	1	10	2	13	1-1

2022 GAME-BY-GAME

Date	Opponent	Pos	AB	R	H	RBI	2B	3B	HR	BB	SB	CS	HBP	SAC	SF	GDP	K	PO	A	E	Avg
Feb 11	vs Oregon State	*c	2	0	2	1	1	0	0	0	0	0	0	0	0	0	0	10	0	0	1.000
Feb 12	vs Southern Utah	*dh	3	0	2	1	0	0	0	0	0	0	0	0	0	0	1	0	0	0	.800
Feb 13	vs Alabama	*dh	3	0	0	0	0	0	0	0	0	0	0	0	0	0	0	0	0	0	.500
Feb 13	at Arizona	*dh	2	0	0	0	0	0	0	1	0	0	0	0	0	0	0	0	0	0	.400
Feb. 18	vs Ohio	*dh	3	0	0	0	0	0	0	0	0	0	0	0	0	0	0	0	0	0	.308
Feb 18	at Lamar	*c	3	0	1	1	0	0	0	0	0	0	0	0	0	0	0	5	0	0	.312
Feb 19	at Lamar	ph	1	0	0	0	0	0	0	0	0	0	0	0	0	0	0	0	0	0	.294
Feb 19	vs Creighton	*c	2	0	0	1	0	0	0	0	0	0	0	0	1	0	0	1	0	0	.263
Feb 20	vs Ohio	*c	3	1	1	0	0	0	0	0	1	0	0	0	0	0	1	3	0	0	.273
Feb 24	UTEP	*c	4	1	2	3	0	0	1	0	0	0	0	0	0	0	1	10	1	0	.308
Feb 25	NDSU	*c	4	1	2	0	0	0	0	0	0	0	0	0	0	0	1	2	0	0	.333
Feb 26	BUFFALO	*c	3	0	0	0	0	0	0	0	0	0	0	0	0	0	0	9	0	0	.303
Feb 27	TARLETON	pr	0	0	0	0	0	0	0	0	0	0	0	0	0	0	0	0	0	0	.303
Totals			11gs	33	3	10	7	1	0	1	1	0	0	0	1	0	4	40	1	0	.303

On base pct. .314 • Slugging pct. .424



THE 2022 LOBOS



17 AMBER LINTON

P • 6-0 • 50.
FRANKLIN, IND. • INDIANA

SINGLE-GAME HIGHS

Innings pitched: 7.0, 3x, Last vs Buffalo, 2-26-22
 Walks allowed: 3, 2x, Last vs UTEP, 2-24-22
 Strikeouts: 11, UTEP, 2-24-22
 Batters faced: 32, UTEP, 2-24-22
 Putouts: 1, 3x, Last at Iowa, 4-2-21
 Assists: 2, 4x, Last at Lamar, 2-18-22
 Runners CS:
 Fewest hits allowed (3.0 IP min.): 1, Minnesota, 2-28-21
 Fewest BB allowed (3.0 IP min.): 0, 2x, Last at Lamar, 2-18-22
 Mountain West Pitcher of the Week (March 1)

CAREER STATS (AT INDIANA)

Year	era	w-l	app	qs	cg	sho	sv	ip	h	r	er	bb	so	2b	3b	hr	bf	bavg	wp	hbp	bk	sfa	sha
2021	4.87	5-2	19	4	0	0/0	0	44.1	51	33	24	24	21	12	2	2	214	.283	1	5	0	1	3
TOTAL	4.87	5-2	19	4	0	0/0	0	44.1	51	33	24	24	21	12	2	2	214	.283	1	5	0	1	3

CAREER STATS (AT UNM)

Year	era	w-l	app	qs	cg	sho	sv	ip	h	r	er	bb	so
2022	1.94	5-1	9	6	3	0/0	2	36.0	27	16	10	13	43
TOTAL	1.94	5-1	9	6	3	0/0	2	36.0	27	16	10	13	43

2022 GAME-BY-GAME

Date	Opponent	GS	IP	H	R	ER	BB	SO	2B	3B	HR	WP	BK	HBP	IBB	Score	W-L	Sv	ERA	NP
Feb 11	vs Oregon State	*	7.0	6	2	2	1	10	0	0	1	0	0	2	0	3-2	1-0	0	2.00	137
Feb 13	vs Alabama	*	0.0	2	4	4	2	0	1	0	0	0	0	0	0	3-8	1-1	0	6.00	31
Feb. 18	vs Ohio	*	1.0	1	0	0	1	1	0	0	0	0	0	0	0	4-2	1-1	1	5.25	17
Feb 18	at Lamar	*	7.0	4	1	1	0	5	0	0	0	0	0	2	0	2-1	2-1	1	3.27	104
Feb 19	at Lamar	*	2.2	1	2	0	2	3	0	0	0	1	0	0	0	6-4	3-1	1	2.77	53
Feb 20	vs Ohio	*	4.0	2	1	1	3	4	0	0	0	0	0	0	0	9-1	4-1	1	2.58	73
Feb 24	UTEP	*	6.2	7	4	0	3	11	0	0	0	1	0	0	0	5-4	4-1	1	1.98	121
Feb 25	NDSU	*	0.2	0	0	0	0	0	0	0	0	0	0	0	0	6-4	4-1	2	1.93	10
Feb 26	BUFFALO	*	7.0	4	2	2	1	9	0	0	0	1	0	2	0	6-2	5-1	2	1.94	86
Totals		6	36.0	27	16	10	13	43	1	0	1	3	0	6	0	44-28	5-1	2	1.94	-

THE 2022 LOBOS



20 EMMA BRAMSON INF • 5-7 • FR. VALENCIA, CALIF. • VALENCIA HS

SINGLE-GAME HIGHS

Hits: 2, 2x, Last vs. Ohio, 2-20-22
 Doubles:
 Triples:
 Home runs: 1, UTEP, 2-24-22
 Total bases: 5, UTEP, 2-24-22
 RBI: 2, Ohio, 2-20-22
 Runs scored: 2, Buffalo, 2-26-22
 Walks: 2, NDSU, 2-25-22
 Hit by pitch:

Struck out: 1, 2x, Last vs Buffalo, 2-26-22
 Sac flies: 1, Lamar, 2-19-22
 Sac bunts:
 At bats: 5, Lamar, 2-19-22
 Stolen bases:
 Caught stealing:
 Putouts: 2, 2x, Last at Lamar, 2-18-22
 Assists: 3, 2x, Last vs Ohio, 2-18-22
 Mountain West Freshman of the Week (Feb. 22)

CAREER STATS (AT UNM)

Year	avg	gp-gs	ab	r	h	2b	3b	hr	rbi	bb	so	sb-att
2022	.289	13-13	38	9	11	0	0	1	7	6	2	0-0
TOTAL	.289	13-13	38	9	11	0	0	1	7	6	2	0-0

2022 GAME-BY-GAME

Date	Opponent	Pos	AB	R	H	RBI	2B	3B	HR	BB	SB	CS	HBP	SAC	SF	GDP	K	PO	A	E	Avg
Feb 11	vs Oregon State	*3b	3	1	0	0	0	0	0	0	0	0	0	0	0	0	0	2	2	0	.000
Feb 12	vs Southern Utah	*3b	2	1	0	0	0	0	0	1	0	0	0	0	0	0	0	1	0	0	.000
Feb 13	vs Alabama	*3b	3	0	1	1	0	0	0	0	0	0	0	0	0	0	0	0	1	0	.125
Feb 13	at Arizona	*3b	3	0	0	0	0	0	0	0	0	0	0	0	0	0	0	0	3	0	.091
Feb. 18	vs Ohio	*3b	3	0	2	0	0	0	0	0	0	0	0	0	0	0	0	0	3	0	.214
Feb 18	at Lamar	*3b	3	0	1	1	0	0	0	0	0	0	0	0	0	0	1	2	2	0	.235
Feb 19	at Lamar	*3b	5	0	0	1	0	0	0	0	0	0	0	0	1	0	0	1	1	0	.182
Feb 19	vs Creighton	*3b	3	1	1	0	0	0	0	0	0	0	0	0	0	0	0	0	1	1	.200
Feb 20	vs Ohio	*3b	3	1	2	2	0	0	0	1	0	0	0	0	0	0	0	1	1	0	.250
Feb 24	UTEP	*3b	3	1	2	1	0	0	1	1	0	0	0	0	0	0	0	0	1	0	.290
Feb 25	NDSU	*3b	2	1	0	0	0	0	0	2	0	0	0	0	0	0	0	0	1	0	.273
Feb 26	BUFFALO	*3b	3	2	2	0	0	0	0	0	0	0	0	0	0	0	1	0	1	0	.306
Feb 27	TARLETON	*3b	2	1	0	1	0	0	0	1	0	0	0	0	0	0	0	0	1	0	.289
Totals			13gs	38	9	11	7	0	0	1	6	0	0	0	1	0	2	7	18	1	.289

On base pct. .378 • Slugging pct. .368





21 PEYTON ROBINSON

OF • 5-6 • SR.

SAGINAW, TEXAS • SOUTHERN NAZARENE

SINGLE-GAME HIGHS

Hits: 3, 4x, Last vs. Nevada, 4-10-21
 Doubles: 1, 8x, Last vs. Nevada, 4-10-21
 Triples: 1, 2x, Last vs. Hawaii-Hilo, 2-14-20
 Home runs:
 Total bases: 4, 2x, Last vs. Nevada, 4-10-21
 RBI: 3, East Central, 2-21-20
 Runs scored: 2, 4x, Last vs. Boise St., 4-25-21
 Walks: 2, Chadron St., 2-9-20
 Hit by pitch:

Struck out: 3, 2x, Last vs. Boise St., 4-24-21
 Sac flies: 1, 2x, Last at Oklahoma State, 3-6-21
 Sac bunts: 1, 21x, Last vs. Tarleton, 2-27-22
 At bats: 6, Henderson State, 3-6-20
 Stolen bases: 2, 5x, Last vs. Henderson St., 3-6-20
 Caught stealing: 1, 5x, Last at UNLV, 4-17-21
 Putouts: 6, Southern Utah, 2-21-21
 Assists: 1, 6x, Last at San Diego State, 5-1-21

CAREER STATS (AT UNM)

Year	avg	gp-gs	ab	r	h	2b	3b	hr	rbi	bb	so	sb-att
2021	.250	46-45	124	19	31	3	0	0	3	9	21	4-5
2022	.294	13-13	34	8	10	0	0	0	2	1	3	3-3
TOTAL	.259	59-58	158	27	41	3	0	0	5	10	24	7-8

2022 GAME-BY-GAME

Date	Opponent	Pos	AB	R	H	RBI	2B	3B	HR	BB	SB	CS	HBP	SAC	SF	GDP	K	PO	A	E	Avg	
Feb 11	vs Oregon State	*of	3	1	0	0	0	0	0	0	0	0	0	0	0	0	0	0	0	0	0	.000
Feb 12	vs Southern Utah	*of	4	1	1	0	0	0	0	0	0	0	0	0	0	0	1	0	0	0	0	.143
Feb 13	vs Alabama	*of	3	1	1	0	0	0	0	0	0	0	0	0	0	0	0	2	0	0	0	.200
Feb 13	at Arizona	*of	2	0	0	0	0	0	0	0	0	0	0	0	0	0	0	0	0	0	0	.167
Feb. 18	vs Ohio	*of/pr	2	1	1	0	0	0	0	0	0	0	0	0	0	0	0	2	0	0	0	.214
Feb 18	at Lamar	*of	3	0	2	0	0	0	0	0	1	0	0	0	0	0	0	0	0	0	0	.294
Feb 19	at Lamar	*of/ph	4	1	1	0	0	0	0	0	0	0	0	1	0	0	0	2	0	0	0	.286
Feb 19	vs Creighton	*of	2	0	0	0	0	0	0	1	0	0	0	0	0	0	0	1	0	0	0	.261
Feb 20	vs Ohio	*of	3	1	1	0	0	0	0	0	1	0	0	0	0	0	0	2	0	0	0	.269
Feb 24	UTEP	*of	2	0	1	0	0	0	0	0	0	0	0	1	0	0	1	1	0	0	0	.286
Feb 25	NDSU	*of	2	0	0	0	0	0	0	0	0	0	0	0	0	0	1	1	0	0	0	.267
Feb 26	BUFFALO	*of	2	0	0	0	0	0	0	0	0	0	0	0	0	0	0	0	0	0	0	.250
Feb 27	TARLETON	*of	2	2	2	2	0	0	0	0	1	0	0	1	0	0	0	2	0	0	0	.294
Totals			13gs	34	8	10	2	0	0	1	3	0	0	3	0	0	3	13	0	0	0	.294

On base pct. .314 • Slugging pct. .294

THE 2022 LOBOS



24 DIAMOND SANDOVAL

OF • 5-3 • 50.

NORWALK, CALIF. • ST. PAUL HS

SINGLE-GAME HIGHS

Hits: 1, 2x, Last at Utah State, 5-14-21
 Doubles:
 Triples:
 Home runs:
 Total bases: 1, 2x, Last at Utah State, 5-14-21
 RBI: 1, San Jose State, 5-8-21
 Runs scored: 1, 2x, Last at Utah State, 5-14-21
 Walks: 1, 3x, Last vs. Nevada, 4-10-21
 Hit by pitch:

Struck out: 2, Nevada, 4-10-21
 Sac flies:
 Sac bunts:
 At bats: 3, 2x, Last at Utah State, 5-14-21
 Stolen bases:
 Caught stealing:
 Putouts:
 Assists:

CAREER STATS (AT UNM)

Year	avg	gp-gs	ab	r	h	2b	3b	hr	rbi	bb	so	sb-att
2021	.125	14-2	16	3	2	0	0	0	1	3	5	0-0
2022	.000	5-0	3	0	0	0	0	0	0	0	2	0-0
TOTAL	.105	19-2	19	3	2	0	0	0	1	3	7	0-0

2022 GAME-BY-GAME

Date	Opponent	Pos	AB	R	H	RBI	2B	3B	HR	BB	SB	CS	HBP	SAC	SF	GDP	K	PO	A	E	Avg	
Feb 11	vs Oregon State	pr	0	0	0	0	0	0	0	0	0	0	0	0	0	0	0	0	0	0	0	.000
Feb 19	at Lamar	ph	1	0	0	0	0	0	0	0	0	0	0	0	0	0	0	0	0	0	0	.000
Feb 19	vs Creighton	ph/d	1	0	0	0	0	0	0	0	0	0	0	0	0	0	1	0	0	0	0	.000
Feb 25	NDSU	pr	0	0	0	0	0	0	0	0	0	0	0	0	0	0	0	0	0	0	0	.000
Feb 26	BUFFALO	ph/d	1	0	0	0	0	0	0	0	0	0	0	0	0	0	1	0	0	0	0	.000
Totals		ogs	3	0	0	0	0	0	0	0	0	0	0	0	0	0	2	0	0	0	0	.000

On base pct. .000 • Slugging pct. .000





25 BRIANNA SANCHEZ P • 5-6 • JR.
WEST COVINA, CALIF. • BISHOP AMAT HS

SINGLE-GAME HIGHS

Innings pitched: 7.0, Stanford, 2-8-20
 Walks allowed: 3, 7x, Last at Fresno St., 4-3-21
 Strikeouts: 1, 11x, Last at San José State, 5-8-21
 Batters faced: 26, 2x, Last vs. N. Colorado, 3-1-20
 Putouts: 2, Stanford, 2-8-20
 Assists: 2, 2x, Last vs. La Salle, 2-29-20
 Runners CS:
 Fewest hits allowed (3.0 IP min.): 4, Stanford, 2-8-20
 Fewest BB allowed (3.0 IP min.): 3, Stanford, 2-8-20

CAREER STATS (AT UNM)

Year	era	w-l	app	gs	cg	sho	sv	ip	h	r	er	bb	so
2020	4.50	1-4	16	5	1	1/0	1	32.2	47	26	21	23	7
2021	21.00	0-1	8	1	0	0/0	0	7.0	19	22	21	9	4
2022	10.50	0-0	3	0	0	0/1	0	2.0	1	3	3	3	1
TOTAL	7.56	1-5	27	6	1	1/1	1	41.2	67	51	45	35	12

2022 GAME-BY-GAME

Date	Opponent	GS	IP	H	R	ER	BB	SO	2B	3B	HR	WP	BK	HBP	IBB	Score	W-L	Sv	ERA	NP
Feb 12	vs Southern Utah		0.0	0	0	0	1	0	0	0	0	0	0	0	0	8-0	0-0	0	0.00	6
Feb. 18	vs Ohio		1.0	0	1	1	1	1	0	0	0	1	0	0	0	4-2	0-0	0	7.00	19
Feb 19	vs Creighton		1.0	1	2	2	1	0	1	0	0	2	0	0	0	2-5	0-0	0	10.50	26
Totals		0	2.0	1	3	3	3	1	1	0	0	3	0	0	0	14-7	0-0	0	10.50	-

THE 2022 LOBOS



27 OLIVIA BIRKINSHAW *UT • 5-10 • FR.* *SANTA MARGARITA, CALIF. • MISSION VIEJO HS*

SINGLE-GAME HIGHS

Hits: 2, Lamar, 2-19-22
 Doubles: 1, at Arizona, 2-13-22
 Triples: 1, Lamar, 2-19-22
 Home runs:
 Total bases: 4, Lamar, 2-19-22
 RBI:
 Runs scored: 2, Lamar, 2-19-22
 Walks: 1, at Arizona, 2-13-22
 Hit by pitch: 2, Oregon State, 2-11-22

Struck out: 3, UTEP, 2-24-22
 Sac flies:
 Sac bunts: 1, 2x, Last vs Ohio, 2-20-22
 At bats: 3, 4x, Last vs UTEP, 2-24-22
 Stolen bases: 1, Ohio, 2-20-22
 Caught stealing:
 Putouts: 4, Arizona, 2-13-22
 Assists: 1, Creighton, 2-19-22

CAREER STATS (AT UNM)

Year	avg	gp-gs	ab	r	h	2b	3b	hr	rbi	bb	so	sb-att
2022	.188	8-6	16	3	3	1	1	0	0	1	8	1-1
TOTAL	.188	8-6	16	3	3	1	1	0	0	1	8	1-1

2022 GAME-BY-GAME

Date	Opponent	Pos	AB	R	H	RBI	2B	3B	HR	BB	SB	CS	HBP	SAC	SF	GDP	K	PO	A	E	Avg
Feb 11	vs Oregon State	*dh	1	1	0	0	0	0	0	0	0	0	2	0	0	0	0	0	0	0	.000
Feb 13	at Arizona	*1b	2	0	1	0	1	0	0	1	0	0	0	0	0	0	1	4	0	0	.333
Feb. 18	vs Ohio	ph	1	0	1	0	0	0	0	0	0	0	0	0	0	0	0	0	0	0	.500
Feb 18	at Lamar	*dh	3	0	0	0	0	0	0	0	0	0	0	0	0	0	2	0	0	0	.286
Feb 19	at Lamar	ph	1	1	1	0	0	1	0	0	0	0	0	0	0	0	0	0	0	0	.375
Feb 19	vs Creighton	*dh/1	3	0	0	0	0	0	0	0	0	0	0	0	0	0	1	1	1	0	.273
Feb 20	vs Ohio	*dh	2	1	0	0	0	0	0	0	1	0	1	1	0	0	1	0	0	0	.231
Feb 24	UTEP	*dh	3	0	0	0	0	0	0	0	0	0	0	0	0	0	3	0	0	0	.188
Totals			6gs	16	3	3	0	1	1	0	1	1	0	3	1	0	8	5	1	0	.188

On base pct. .350 • Slugging pct. .375



THE 2022 LOBOS



28 SAMANTHA FOHRMAN

P • 5-7 • JR.

COTTAGE GROVE, MINN. • GEORGIAN COURT

SINGLE-GAME HIGHS

Innings pitched: 3.0, Lamar, 2-19-22

Walks allowed:

Strikeouts: 1, Lamar, 2-19-22

Batters faced: 14, Lamar, 2-19-22

Putouts:

Assists: 1, Lamar, 2-19-22

Runners CS:1, Alabama, 2-13-22

Fewest hits allowed (3.0 IP min.): 5, Lamar, 2-19-22

Fewest BB allowed (3.0 IP min.): 0, Lamar, 2-19-22

CAREER STATS (AT UNM)

Year	era	w-l	app	gs	cg	sho	sv	ip	h	r	er	bb	so
2022	1.75	0-0	2	1	0	0/0	0	4.0	6	3	1	0	1
TOTAL	1.75	0-0	2	1	0	0/0	0	4.0	6	3	1	0	1

2022 GAME-BY-GAME

Date	Opponent	GS	IP	H	R	ER	BB	SO	2B	3B	HR	WP	BK	HBP	IBB	Score	W-L	Sv	ERA	NP
Feb 13	vs Alabama		1.0	1	1	0	0	0	0	0	0	0	0	0	1	3-8	0-0	0	0.00	21
Feb 19	at Lamar	*	3.0	5	2	1	0	1	3	0	0	0	0	0	0	6-4	0-0	0	1.75	51
Totals		1	4.0	6	3	1	0	1	3	0	0	0	0	1	0	9-12	0-0	0	1.75	-



34 EMMA GUINDON

P • 5-9 • JR.

TOMBALL, TEXAS • MONTEREY PENINSULA COLLEGE

SINGLE-GAME HIGHS

Innings pitched: 8.0, Prairie View, 4-16-19
 Walks allowed: 6, 2x, Last at Northwestern St., 2-23-19
 Strikeouts: 11, Southern Utah, 2-12-22
 Batters faced: 35, 2x, Last at Utah State, 5-14-21
 Putouts: 2, 2x, Last at Prairie View, 4-16-19
 Assists: 5, Fresno State, 4-2-21
 Runners CS: 1, 5x, Last at UNLV, 4-17-21

Fewest hits allowed (3.0 IP min.): 0, Incarnate Word, 4-18-19
 Fewest BB allowed (3.0 IP min.): 0, 6x, Last vs Tarleton, 2-27-22

CAREER STATS (AT UNM)

Year	era	w-l	app	gs	cq	sho	sv	ip	h	r	er	bb	so
2021	5.00	6-21	30	27	12	0/1	0	141.1	207	133	101	53	46
2022	0.80	5-1	8	5	2	1/1	0	35.0	20	5	4	6	34
TOTAL	4.17	11-22	38	32	14	1/2	0	176.1	227	138	105	59	80

2022 GAME-BY-GAME

Date	Opponent	GS	IP	H	R	ER	BB	SO	2B	3B	HR	WP	BK	HBP	IBB	Score	W-L	Sv	ERA	NP
Feb 12	vs Southern Utah	*	6.0	1	0	0	0	11	0	0	0	0	0	2	0	8-0	1-0	0	0.00	83
Feb 13	at Arizona	*	6.0	5	1	1	1	2	1	0	0	1	0	0	0	0-1	1-1	0	0.58	87
Feb. 18	vs Ohio	*	5.0	5	1	1	1	5	2	0	0	0	0	0	0	4-2	2-1	0	0.82	39
Feb 19	at Lamar		6.1	3	0	0	1	7	0	0	0	0	0	0	0	6-4	2-1	0	0.60	83
Feb 20	vs Ohio		1.0	0	0	0	0	0	0	0	0	0	0	0	0	9-1	2-1	0	0.58	10
Feb 24	UTEP		0.1	1	0	0	1	0	0	0	0	0	0	0	0	5-4	3-1	0	0.57	14
Feb 25	NDSU	*	5.1	4	3	2	2	2	1	0	0	0	0	0	0	6-4	4-1	0	0.93	85
Feb 27	TARLETON	*	5.0	1	0	0	0	7	0	0	0	0	0	0	0	8-0	5-1	0	0.80	77
Totals		5	35.0	20	5	4	6	34	4	0	0	1	0	2	0	46-16	5-1	0	0.80	-



THE 2022 LOBOS



42 LORAN WALKER

*C/INF • 5-6 • FR.
MERIDIAN, IDAHO • ROCKY MOUNTAIN HS*

SINGLE-GAME HIGHS

CAREER STATS (AT UNM)

2022 GAME-BY-GAME

THE 2022 LOBOS



44 LAUREN GARCIA

**INF • 5-11 • FR.
EL PASO, TEXAS • MONTWOOD HS**

SINGLE-GAME HIGHS

Out this season with an injury

CAREER STATS (AT UNM)

2022 GAME-BY-GAME





55 JANAЕ CAMERON

C • 5-9 • SR.

WINDSOR, COLO. • NEBRASKA OMAHA

SINGLE-GAME HIGHS

Hits: 4, North Dakota, 3-31-19
 Doubles: 2, 2x, Last vs. Northern Iowa, 3-6-20
 Triples:
 Home runs: 1, 4x, Last vs. Southern Utah, 2-12-22
 Total bases: 4, Last vs. Southern Utah, 2-12-22
 RBI: 4, North Dakota, 3-31-19
 Runs scored: 2, 4x, Last vs. New Mexico, 3-7-21
 Walks: 2, 2x, Last at Purdue Ft. Wayne, 4-13-19
 Hit by pitch: 1, 2x, Last vs. Northern Iowa, 3-6-20

Struck out: 3, Lamar, 2-19-22
 Sac flies: 1, 2x, Last at Georgia, 2-15-19
 Sac bunts: 1, 6x, Last at UMKC, 5-1-21
 At bats: 5, North Dakota, 3-31-19
 Stolen bases:
 Caught stealing:
 Putouts: 13, North Dakota, 3-27-21
 Assists: 3, 4x, Last vs. South Dakota St., 3-22-19

CAREER STATS (AT UNM)

Year	avg	gp-gs	ab	r	h	2b	3b	hr	rbi	bb	so	sb-att
2022	.182	5-3	11	3	2	1	0	1	3	1	7	0-0
TOTAL	.182	5-3	11	3	2	1	0	1	3	1	7	0-0

2022 GAME-BY-GAME

Date	Opponent	Pos	AB	R	H	RBI	2B	3B	HR	BB	SB	CS	HBP	SAC	SF	GDP	K	PO	A	E	Avg
Feb 12	vs Southern Utah	*c	3	1	1	2	0	0	1	0	0	0	0	0	0	0	1	12	0	0	.333
Feb. 18	vs Ohio	*c	3	0	1	1	1	0	0	0	0	0	0	0	0	0	1	3	0	1	.333
Feb 19	at Lamar	ph	3	1	0	0	0	0	0	0	0	0	0	0	0	0	3	0	0	0	.222
Feb 26	BUFFALO	ph	1	0	0	0	0	0	0	0	0	0	0	0	0	0	1	0	0	0	.200
Feb 27	TARLETON	*c	1	1	0	0	0	0	0	1	0	0	0	0	0	0	1	7	0	0	.182
Totals		3gs	11	3	2	3	1	0	1	1	0	0	0	0	0	0	7	22	0	1	.182

On base pct. .250 • Slugging pct. .545



66 ASHLYN ROBERTS

P • 5-8 • FR.
SAMMAMISH, WASH. • EASTLAKE HS

SINGLE-GAME HIGHS

Innings pitched: 7.0, Utah State, 5-14-21
 Walks allowed: 2, 4x, Last at San Diego St., 5-1-21
 Strikeouts: 4, Southern Utah, 2-21-21
 Batters faced: 31, Utah State, 5-14-21
 Putouts: 1, 3x, Last vs Alabama, 2-13-22
 Assists: 2, Creighton, 2-19-22
 Runners CS: 2, Creighton, 2-19-22

Fewest hits allowed (3.0 IP min.): 3, 3x, Last vs. Boise St., 4-25-21
 Fewest BB allowed (3.0 IP min.): 1, 8x, Last vs Creighton, 2-19-22

CAREER STATS (AT UNM)

Year	era	w-l	app	gs	cg	sho	sv	ip	h	r	er	bb	so
2021	5.25	2-2	24	8	1	0/1	1	56.0	84	48	42	20	24
2022	4.20	0-1	3	1	0	0/0	0	10.0	12	7	6	2	2
TOTAL	5.09	2-3	27	9	1	0/1	1	66.0	96	55	48	22	26

2022 GAME-BY-GAME

Date	Opponent	GS	IP	H	R	ER	BB	SO	2B	3B	HR	WP	BK	HBP	IBB	Score	W-L	Sv	ERA	NP
Feb 13	vs Alabama		5.0	4	3	3	1	2	1	1	0	0	0	2	0	3-8	0-0	0	4.20	73
Feb 19	vs Creighton	*	4.0	5	3	2	1	0	1	0	0	0	0	0	0	2-5	0-1	0	3.89	73
Feb 25	NDSU		1.0	3	1	1	0	0	2	0	0	0	0	0	0	6-4	0-1	0	4.20	22
Totals		1	10.0	12	7	6	2	2	4	1	0	0	0	2	0	11-17	0-1	0	4.20	-





77 REYAN TUCK

IF • 6-0 • SR.
HILLSBORO, ORE. • TOWSON

SINGLE-GAME HIGHS

Hits: 2, 4x, Last vs. Buffalo, 2-26-22
 Doubles: 1, 8x, Last vs Ohio, 2-18-22
 Triples:
 Home runs:
 Total bases: 3, Boise State, 4-24-21
 RBI: 2, 3x, Last vs Buffalo, 2-26-22
 Runs scored: 1, 7x, Last vs UTEP, 2-24-22
 Walks: 1, 6x, Last vs. NDSU, 2-25-22
 Hit by pitch: 1, 4x, Last at San Jose St., 5-8-21

Struck out: 2, 5x, Last vs. Alabama, 2-13-22
 Sac flies: 1, 5x, Last vs UTEP, 2-24-22
 Sac bunts: 1, 2x, Last at Lamar, 2-19-22
 At bats: 4, 2x, Last at Lamar, 2-19-22
 Stolen bases: 1, Northern Colorado, 2-15-20
 Caught stealing:
 Putouts: 15, Lamar, 2-19-22
 Assists: 2, San Jose State, 5-8-21

CAREER STATS (AT UNM)

Year	avg	gp-gs	ab	r	h	2b	3b	hr	rbi	bb	so	sb-att
2020	.211	16-14	38	1	8	1	0	0	4	1	5	1-1
2021	.212	34-34	85	5	18	7	0	0	7	4	17	0-0
2022	.364	12-12	33	3	12	2	0	0	6	1	7	0-0
TOTAL	.244	62-60	156	9	38	10	0	0	17	6	29	1-1

2022 GAME-BY-GAME

Date	Opponent	Pos	AB	R	H	RBI	2B	3B	HR	BB	SB	CS	HBP	SAC	SF	GDP	K	PO	A	E	Avg
Feb 11	vs Oregon State	*1b	3	0	1	1	0	0	0	0	0	0	0	0	0	0	2	6	0	0	.333
Feb 12	vs Southern Utah	*1b	3	1	1	0	1	0	0	0	0	0	0	0	0	0	1	1	0	1	.333
Feb 13	vs Alabama	*1b	3	0	1	0	0	0	0	0	0	0	0	0	0	0	2	2	0	0	.333
Feb. 18	vs Ohio	*1b	3	0	1	0	1	0	0	0	0	0	0	0	0	0	0	6	0	0	.333
Feb 18	at Lamar	*1b	2	0	1	0	0	0	0	0	0	0	0	0	0	0	1	10	0	0	.357
Feb 19	at Lamar	*1b	4	1	1	0	0	0	0	0	0	0	0	1	0	0	0	15	1	0	.333
Feb 19	vs Creighton	*1b	2	0	1	0	0	0	0	0	0	0	0	0	0	0	0	5	0	0	.350
Feb 20	vs Ohio	*1b	3	0	1	1	0	0	0	0	0	0	0	0	0	0	0	6	1	0	.348
Feb 24	UTEP	*1b	3	1	1	1	0	0	0	0	0	0	0	0	1	0	1	5	0	0	.346
Feb 25	NDSU	*1b	2	0	0	1	0	0	0	1	0	0	0	0	0	0	0	12	0	0	.321
Feb 26	BUFFALO	*1b	3	0	2	2	0	0	0	0	0	0	0	0	0	0	0	6	0	0	.355
Feb 27	TARLETON	*1b	2	0	1	0	0	0	0	0	0	0	0	0	0	0	0	3	0	0	.364
Totals		12gs	33	3	12	6	2	0	0	1	0	0	0	1	1	0	7	77	2	1	.364

THE 2022 LOBOS



99 AYSIAH GONZALEZ

C • 5-7 • FR.

LA PUENTE, CALIF. • BISHOP AMAT HS

SINGLE-GAME HIGHS

Hits:	Struck out: 2, Lamar, 2-19-22
Doubles:	Sac flies:
Triples:	Sac bunts:
Home runs:	At bats: 2, Lamar, 2-19-22
Total bases:	Stolen bases:
RBI:	Caught stealing:
Runs scored:	Putouts:
Walks:	Assists:
Hit by pitch:	

CAREER STATS (AT UNM)

Year	avg	gp-gs	ab	r	h	2b	3b	hr	rbi	bb	so	sb-att
2022	.000	4-1	5	0	0	0	0	0	0	0	3	0-0
TOTAL	.000	4-1	5	0	0	0	0	0	0	0	3	0-0

2022 GAME-BY-GAME

Date	Opponent	Pos	AB	R	H	RBI	2B	3B	HR	BB	SB	CS	HBP	SAC	SF	GDP	K	PO	A	E	Avg	
Feb 12	vs Southern Utah	ph	1	0	0	0	0	0	0	0	0	0	0	0	0	0	0	0	0	0	0	.000
Feb 18	at Lamar	ph	1	0	0	0	0	0	0	0	0	0	0	0	0	0	0	0	0	0	0	.000
Feb 19	at Lamar	*dh	2	0	0	0	0	0	0	0	0	0	0	0	0	0	2	0	0	0	0	.000
Feb 25	NDSU	ph	1	0	0	0	0	0	0	0	0	0	0	0	0	0	1	0	0	0	0	.000
Totals		1gs	5	0	0	0	0	0	0	0	0	0	0	0	0	0	3	0	0	0	0	.000

On base pct. .000 • Slugging pct. .000

