

THE UNIVERSITY OF NEW MEXICO WOMEN'S BASKETBALL

DECEMBER 7 | vs SOUTHERN UTAH | 7 P.M. | THE PIT

2023-24 SCHEDULE

OVERALL: 7-2 • MW: 0-0 • H: 6-0 • A: 1-0 • N: 0-2

DATE	OPPONENT	TIME/SCORE
10/22	Eastern New Mexico (Exh.)	W, 77-57
10/29	Adams State (Exh.)	W, 60-45
11/6	Texas Southern	W, 76-59
11/9	at Pepperdine	W, 57-48
11/12	Tarleton State	W, 64-55
11/15	Texas A&M-Commerce	W, 75-74
11/23	Montana State%	L, 75-57
11/24	Georgia Tech%	L, 66-55
11/28	Eastern Illinois	W, 81-78 (OT)
12/2	New Mexico State	W, 67-52
12/4	Mississippi Valley State	W, 68-45
12/7	Southern Utah	7 p.m.
12/10	Hampton	2 p.m.
12/17	Western New Mexico	2 p.m.
12/22	at Gonzaga	2 p.m.
12/30	at Nevada*	2 p.m.
1/6	Boise State*	2 p.m.
1/10	Utah State*	7 p.m.
1/13	at Colorado State*	1 p.m.
1/17	Wyoming*	7 p.m.
1/20	at UNLV*	3 p.m.
1/24	Fresno State*	7 p.m.
1/27	at Air Force*	1 p.m.
1/31	at San José State*	12 p.m.
2/3	UNLV*	2 p.m.
2/7	at San Diego State*	12 p.m.
2/10	Colorado State*	12 p.m.
2/14	San José State*	7 p.m.
2/21	at Boise State*	6:30 p.m.
2/24	at Wyoming*	2 p.m.
2/28	San Diego State*	7 p.m.
3/2	Nevada*	2 p.m.
3/5	at Fresno State*	7 p.m.
3/10-13	MW Tournament	TBA

BOLD: Home * : Mountain West

All times are Mountain Time

QUICK POINTS BY THE NUMBERS

- 4 Lobos averaging double figures (Augmon, Cumber, Reus, Wilson)
- 6 times a Lobo has scored 20+ points
- 7 games in double figures for Augmon, 7 games for Wilson
- Augmon: 18th in NCAA in steals, 40th in steals per game
- Kohl: 15th in NCAA in blocks, 20th in blocks per game, 14th in rebounds, 27th in rebounds per game, 11th in offensive rebounds per game
- Wilson 28th in NCAA in free throws
- 29th in NCAA in rebounds per game (43.8), 30th in defensive rebounds per game (30.3)
- 39-4 at home over the last 4 years
- Led for 39:21 vs. Tarleton, 36:30 at Pepperdine, 37:53 vs. Texas Southern, 32:47 vs. NMSU, 39:34 vs. MVSU
- Outscoring opponents 113-64 in fast-break points
- Outscoring opponents 104-73 in second-chance points
- Outscoring opponents in the 1st (142-123), 2nd (146-131), 4th (161-144) & 600-552 overall
- Outscoring opponents 316-214 in paint
- 52.7% of points scored in paint
- +5.3 scoring margin, +5.1 rebounding margin



New Mexico Lobos
7-2, 0-0 MW
Head Coach: Mike Bradbury
Record at UNM: 148-80 (8th year)
Career Record: 326-197 (17th year)

Series History

Overall: UNM leads 4-3
Home Record: UNM leads 4-1
Current Streak: L1
Last Meeting: 11/7/22 (L, 76-68)

Broadcast Information

TV: MW Network
Radio: KNML
Live Stats: GoLobos.com/wbbstats



Southern Utah Thunderbirds
2-5, 0-0 WAC
Head Coach: Tracy Mason
Record at SUU: 80-72 (6th year)
Career Record: Same

PROJECTED STARTERS (BASED ON LAST GAME)

#	Name	POS.	HT.	YR.	NOTE
3	Nyah Wilson	G	5-8	Jr.	20+ pts in 3 games; career-high 9 reb. vs Tarleton
5	Lara Langermann	G	5-7	Fr.	Made first career start last game
12	Aniyah Augmon	G	5-8	Jr.	15+ pts in 4 games; career-high 8 steals at Pepp.
22	Charlotte Kohl	C	6-5	Gr.	3 dbl-dbls; 20 reb. vs TAMUC & MVSU; avg. 9.9 rpg
30	Paula Reus	F	6-1	Jr.	Scored in double figures in last 3 games; avg. 12.1 ppg

LOBO NOTES

FOUR-FOR-FOUR DEAL

UNM had a season-high four players finish in double figures three times this season, including in two of the last three games.

The first time came in the game against Texas A&M-Commerce, led by a career-high 22 from Nyah Wilson. Aniyah Augmon scored 16, Charlotte Kohl finished with 16 and Paula Reus added 11. The second time came in the game against Eastern Illinois behind a career-high 25 points from Reus, 21 points for Wilson, 14 points from Vianè Cumber and 10 from Augmon. In the game against New Mexico State, Reus and Kohl shared the team high in points at 15 (a career high for Kohl), Wilson scored 13 points and Augmon scored 10 points.

UNM has four players averaging double figures led by Wilson (15.2 ppg), Reus (12.1), Cumber (11.9 ppg) and Augmon (11.8 ppg). Kohl is close at 9.0 points per game.

ON ANY GIVEN NIGHT

The Lobos have been led in scoring by five different players (with four games of players sharing the team high) and in rebounds by four different players this season.

Vianè Cumber (22 points) and Charlotte Kohl (nine rebounds) led in the season opener, Aniyah Augmon (16 points and nine rebounds) led at Pepperdine and Paula Reus and Nyah Wilson (16 points each) and Wilson (nine rebounds) led against Tarleton State. In the game against Texas A&M-Commerce, Wilson led on her own with 22 points, and Kohl led in rebounds for the second time this season with a career-high 20 rebounds. In the game against Montana State, Cumber led with a career-best 24 points with Kohl leading on the boards with seven. In the game against Georgia Tech, Augmon and Wilson tied for the team high with 17 points and four players tied for the team high in rebounds with four in Paula Reus, Cumber, Hilda Joaquim and Nahawa Diarra Berthe. In the game against Eastern Illinois, Reus led in scoring (25 points) and Cumber led in rebounds with a career-best 14. In the game against New Mexico State, Kohl and Reus shared the team lead with 15 points and Kohl led in rebounds at 13, which the duo shared the team lead in points against Mississippi Valley State at 16 points and Kohl again led in rebounds with 20.

Cumber has led in scoring in two games and Reus, Wilson and Augmon once. Wilson and Reus have either led in scoring or tied for the team high in scoring three and four times, respectively.

HOT HANDS

Against Texas Southern, Vianè Cumber took over in the fourth quarter, scoring 13 of her game-high 22 points in the final 10 minutes, going 5-7 from the floor and 3-4 from three-point range.

The Texas A&M-Commerce game followed a similar storyline in that Nyah Wilson took over in the fourth quarter to score 15 of her career-high 22 points on 6-8 shooting. Wilson opened fourth with a driving layup and the Lobos continued to rely on the junior with Wilson making three consecutive layups as well as a three-pointer to tie the game at 63. Wilson ultimately scored the first 11 points of the fourth quarter for the Lobos, with her final points starting a 6-0 run that gave UNM a 69-65 lead.

Against Eastern Illinois, Paula Reus finished with a career-high 25 points, 17 of which came in the third and fourth quarters. She scored 10 points in the fourth quarter on 4-5 shooting and two three-pointers. In the overtime period, Cumber scored seven points, including the go-ahead basket with 32 seconds remaining and two free throws with seven seconds on the clock.

Wilson scored nine of her 13 points, Reus scored 10 of her 15 points and Augmon scored seven of her 10 points in the final two quarters against New Mexico State.

CONSISTENT CONTRIBUTORS

Aniyah Augmon has scored in double figures in seven games, including five of the last six, while Nyah Wilson has scored in double figures in seven games, including the last four, with three games scoring 20 or more points. Paula Reus has scored in double figures in five games, which includes the last three, and Vianè Cumber has scored in double figures in four games with two games with 20-plus points.



» Eight NCAA Tournament Appearances | 1998, 2002, 2003, 2004, 2005, 2006, 2007, 2008 «
» Five Mountain West Tournament Championships | 2003, 2004, 2005, 2007, 2008 «

THE UNIVERSITY OF NEW MEXICO

Location.....Albuquerque, N.M.
 Founded.....1889 by Territorial Legislature
 Enrollment.....22,225
 Nickname.....Lobos
 Colors.....Cherry (PMS 200) & Silver (PMS Cool Gray 6)
 Conference.....Mountain West Conference
 National Affiliation.....NCAA Division I
 President.....Dr. Garnett Stokes
 Vice President/Director of Athletics.....Eddie Nuñez
 Asst. Vice President/Deputy A.D.....David Williams
 Interim SWA.....Amy Beggin
 Faculty Representative.....Karen Gaudreault, Ph.D

FACILITY INFORMATION

Facility.....The Pit
 Capacity.....15,411
 Age.....Built in 1966 (Renovated in 2009-10)
 All-Time Home Record.....468-220 (.680)

PROGRAM HISTORY

First Season.....1974-75
 Overall Record.....747-586 (.560)
 Overall MW Record.....231-155 (.598)
 Postseason Tournament Appearances.....20
 NCAA Tournament Appearances.....8
 Last NCAA Postseason Appearance.....2022-23 (WNIT)
 Last NCAA Postseason Opponent.....Washington
 Last NCAA Postseason Result.....L, 67-56
 MW Regular Season Championships.....3
(2003-04, 2004-05, 2020-21)
 MW Tournament Championships.....5
(2002-03, 2003-04, 2004-05, 2006-07, 2007-08)

TEAM INFORMATION

2022-23 Overall Record.....21-13
 2022-23 Mountain West Record.....12-6
 2021-22 Mountain West Season Finish.....T-3rd
 2022-23 MW Tournament Finish.....Quarterfinal
 Letterwinners Returning | Lost.....6 | 6
 Starters Returning | Lost.....1 | 4

- » Three Mountain West Regular-Season Championships
- » Five Mountain West Tournament Championships
- » Seven NCAA Tournament Appearances Since 2001-02
- » Mountain West Attendance Leader 21 Seasons in a Row
- » WBCA Academic Top 25 Eight Times Since 2004-05

COACHING STAFF

Head Coach: Mike Bradbury (Chattanooga, 1993)
 Record at UNM (Years): 148-80 (8th season)
 Career Record (Years): 326-197 (17th season)
 Associate H.C.: Keith Freeman (2nd season)
 Alma Mater: Huntington College, 1986
 Assistant Coach: Nike McClure (2nd season)
 Alma Mater: New Mexico, 2019
 Assistant Coach: Mackenzie Novak (1st season)
 Alma Mater: Bethel University, 2021
 Graduate Assistant: Jaisa Nunn (1st season)
 Dir. of Operations: Hanna Hudson (2nd season)
 Dir. of Player Development: Isaiah Fernandez (2nd season)
 Athletic Trainer: Lexi Smith (3rd season)
 Strength Coach: Leila Petewon (1st season)

MISCELLANEOUS INFORMATION

2022-23 Total Attendance.....80,328
 2022-23 Average Attendance.....4,725
 2022-23 NCAA Attendance Rank.....18th
 2022-23 Mountain West Attendance Rank.....1st

MULTIMEDIA INFORMATION

Athletics Website.....www.GoLobos.com
 Main University Web Site.....www.unm.edu
 Conference Web Site.....www.TheMW.com
 Facebook.....www.facebook.com/NewMexicoLobos
 Twitter.....@UNMLobos

MEDIA RELATIONS

Women's Basketball Contact.....Allison Weiss
 Cell Phone (Preferred).....661-313-5402
 Email.....allisonweiss@unm.edu

INTERVIEW REQUESTS

All interviews with UNM student-athletes and coaches should be coordinated through the athletics communications office. Interviews may be arranged by contacting Allison Weiss in the athletics communications office (allisonweiss@unm.edu). All interview requests should be made at least 24 hours in advance.

The University of New Mexico Athletics
 1414 University Drive
 Albuquerque, N.M. 87106

GAME 10: NEW MEXICO vs SOUTHERN UTAH

GET THE REBOUND

The Lobos have shown their ability to control the boards, outrebounding their opponents 394-348 (+46) and outrebounding opponents in six games.

Charlotte Kohl leads the team with 89 rebounds (9.9 per game), with two 20-rebound performances, an 18-rebound outing in the final exhibition against Adams State, had a team-high eight rebounds in the first exhibition and grabbed nine against Texas Southern to start the season. Of her 89 rebounds, 40 are on the offensive end and her 4.44 offensive boards per game are the most in the conference. Kohl is 14th in the NCAA in rebounds, 11th in offensive rebounds per game and 27th in rebounds per game.

UNM outrebounded Texas Southern 49-36 (+13), Tarleton State 45-35 (+10), Texas A&M-Commerce 47-33 (+14), Eastern Illinois 47-46 (+1), New Mexico State 47-33 (+14) and Mississippi Valley State 56-39 (+17).

The Lobos are ranked 29th in the NCAA in rebounds per game (43.8), an improvement from last season in which the Lobos finished 177th in the NCAA in rebounds per game with 36.5. In addition, the Lobos have made an improvement in rebounding margin, finishing last season 246th at -2.0, compared to this season where the Lobos are currently ranked 92nd with an +5.1 rebounding margin. UNM is ranked 30th in defensive rebounds per game at 30.3.

CHARLOTTE'S BOARD

Charlotte Kohl became the first Lobo since 1978 to record multiple games of 20 rebounds, which was last done by Carol Moreland. Kohl brought down 20 rebounds in the game against Texas A&M-Commerce and again in the game against Mississippi Valley State.

In addition, she is one of three DI players to have multiple games with 20 rebounds (Saylor Poffenbarger, Arkansas and Lauren Gustin, BYU).

PAINT POINTS

UNM outscored opponents in the paint in eight games this season and by a 316-214 (+102) margin, with a +24 margin against Texas Southern (38-14), +8 margin at Pepperdine (34-26), a +10 margin against Tarleton State (34-24), a +22 margin against Texas A&M-Commerce (50-28), a +2 margin (32-30) against Georgia Tech, a +16 margin against Eastern Illinois (36-20) a +26 margin against New Mexico State (42-16) and a +10 margin against Mississippi Valley State (32-22). UNM has scored 316 of its 600 points (52.7%) in the paint thus far.

GET AHEAD, STAY AHEAD

So far this season, the Lobos have led for:

- 37:53 and led after each quarter against Texas Southern
- 36:30 and never trailed at Pepperdine
- 39:21 and never trailed against Tarleton State
- 32:47 and led after each quarter against New Mexico State
- 39:34 and led after each quarter against Mississippi Valley State

UNM is outscoring opponents 142-123 (+19) in the first quarter and 288-254 (+34) through the first two quarters. UNM is also outscoring opponents 161-144 (+17) in the fourth quarter.

In 2022-23, the Lobos were 18-4 on the season when leading after the first quarter and 18-4 overall when leading at the half. When leading at the end of the third quarter, the Lobos were 19-4 overall last season. This season, UNM is 5-1 when leading after the first quarter, 6-0 when leading at the half and 5-0 when leading after the third quarter.

DEFENSE DELIVERS

Three times this season the Lobos have held their opponents to six or fewer points in a quarter. In addition, UNM has held an opponent to under 20 points in the first two quarters twice this season.

In the win at Pepperdine, the Lobos held the Waves to four points in first quarter and without a point up until the 1:09 mark. Further, UNM held the Waves to 18 points in the first 20 minutes, with the last time that the Lobos held a team below 20 points in the first half was against Louisiana-Monroe on Nov. 27, 2021 (17 points). Pepperdine missed its first eight shots of the game and UNM forced two shot clock violations in that timespan. The Lobos were able to further expand their lead to 16 in the second quarter in part to a 6-0 Lobo run and holding Pepperdine to a 3:06 scoring drought. In the fourth quarter, Pepperdine scored its first points with 6:54 left in the game.

Against Tarleton State, the Lobos held the Texans to five points in the third quarter, outscoring them 20-5. UNM scored the first eight points of the quarter, ultimately going on a 10-1 run through the first 6:05. UNM later scored 10-straight points in a span of 1:55 for its best run of the game to build its largest lead of the contest at 53-31, taking a 53-33 lead into the final 10 minutes.

In the game against New Mexico State, the Lobos held the Aggies to six points in the first quarter and to 19 points in the first 20 minutes. It was the second time this season that the Lobos have held an opponent to under 20 points in the first half. The Lobos held the Aggies scoreless for the final 3:48 of the first quarter and for 4:24 in the second quarter.

Against Mississippi Valley State, the Lobos held MVSU to under 15 points in all four quarters with two quarters of 11 points, 13 points in the first quarter and 10 points in the fourth quarter.

In addition to holding opponents to low point totals, the Lobos have also relied on defense to close out games. In the game against Texas A&M-Commerce, UNM held the Lions the final 1:41 and for the final 27 seconds as the Lions had the ball for the final shot. In the game against Eastern

Illinois, the Lobos closed the game on a 7-0 run over the final 1:05 of overtime and got two pivotal stops with under 30 seconds.

CALL ON KOHL

Charlotte Kohl finished with a dominating stat line of a career-high 14 points, career-high 20 rebounds (10 offensive), career-high four blocks and an assist for her first double-double of the season and second of her career against Texas A&M-Commerce.

Kohl registered the double-double by halftime and became the first Lobo to have 20 rebounds in a game since Richelle van der Keijl had 20 against New Mexico State exactly seven years prior on Nov. 15, 2016. Prior to that, the last Lobo to collect 20 rebounds was Amanda Adamson against Texas Tech on Dec. 13, 2008.

Of note, five of her 10 offensive rebounds translated to 11 of UNM's 16 second-chance points, eight of which were scored by Kohl and the three-pointer she had the assist on.

Her 20 rebounds in a game are the most by a MW player this season.

She was named the Mountain West Player of the Week on Nov. 20 for the first weekly conference award in her collegiate career.

Kohl bested that performance against Mississippi Valley State with a career-high 16 points, matched her career high in rebounds with another 20 rebounds and set a career high in blocks with five. She was an efficient 7-9 from the floor and 2-2 from the free-throw line and recorded her double-double by half with 11 rebounds and 10 points. The Lobo has recorded a double-double in the last two games and has three on the season.

V FOR THREE

Viané Cumber scored a game- and career-high 24 points behind a career-high eight three-pointers against Montana State, knocking down her first three three-point attempts for her fourth time this season and for the 18th time in her career with three or more three-pointers in a game. Cumber made five three pointers in the first quarter alone.

Her eight three-pointers tied for the third-most in a game in program history and was the seventh time a player historically has made eight or more three-pointers in a game.

THE CUMBER EFFECT

After Viané Cumber entered the starting lineup against Colorado State on Jan. 26 last season, the Lobo scored double figures in nine of the games including four of the last five. The New Mexico native made six three-pointers and finished with 20 points in the last game of the season at Washington, her second game with 20 or more points last season.

Cumber picked right up in the first game of the 2023-24 season, tying her career high with 22 points that included four three-pointers. It was her 12th career game making four or more three-pointers.

Cumber has scored in double figures in four games this year with nine in two, leading the Lobos in scoring twice.

She added three more three-pointers at Pepperdine, three again against Tarleton, a career-best eight against Montana State and two against Eastern Illinois.

While she didn't make a three against New Mexico State, following a three against Eastern Illinois, she had 14-straight games with at least one, and has made a three in 39 games.

In her career, she's had 30 games with multiple threes and had 18 games making three or more three-pointers.

Further, Cumber has scored in double figures 23 times and 20 or more points four times (two times came this year).

The Lobo guard currently is third in the MW in three-pointers per game with 2.8 and in three-point field-goal percentage at .349, and is 44th in the NCAA in three-pointers with 22 and 43rd in three-pointers per game. She is also second in the MW in minutes played at 34.0 per game.

WILSON'S WORLD

Nyah Wilson has made quite the first impression in her first season as a Lobo, finishing in double figures in seven games, including in the last four games, with 20 or more points in three games, and setting several career highs.

In her first true game as a Lobo, Wilson finished with 20 points, four rebounds, three assists and a steal. The Dallas, Texas, native went 5-8 from the floor, a perfect 4-4 from behind the arc and nearly perfect at the free-throw line going 6-7. Her 20 points set a then-career high, as did her five made field goals, her four made three-pointers and four attempts.

She later bested that with 22 points on nine made field goals against Texas A&M-Commerce, scoring 15 points in the fourth quarter.

She added 16 points against Tarleton, setting a career high in rebounds (nine), made free throws (eight) and minutes played (33). She improved her career best in free throws, going 9-10 in the game against Georgia Tech.

In the last four games, she's scored 17 points (tying the team high), 21 points, 13 points and 14 points, while also going 9-10 and 6-6 from the free-throw line. Last week, she averaged 17.0 points per game and went

GAME 10: NEW MEXICO vs SOUTHERN UTAH

8-9 from the free-throw line.

On the season, she's scored 137 points and leads the team in points, and is fourth in the MW in points per game (15.2) and sixth in free-throw percentage (.796). Wilson is also ranked 28th in the NCAA in free throws (39) and 38th in free throw attempts (49).

STEAL THE SHOW

Aniyah Augmon was credited with 11 steals in the first week of the season, with eight at Pepperdine and three against Tarleton State and was a sign of things to come for the Lobo junior.

Her eight steals tied for the second most in a game by a Lobo in program history, with the last time it was done Feb. 8, 1998 by Tamika Stukes. Augmon had four steals in the first 20 minutes with three in the second quarter, which the four alone would have been a career high for the junior. She added two in the fourth quarter, including a steal and layup with 2:04 remaining in the game to make it 50-42 after Pepperdine closed within three at 45-42 with 2:37 to play.

She added two steals in the fourth quarter against Tarleton State 1:09 apart, with both resulting in fast-break points. She finished with six steals in the two games of the Cancun Challenge, two against Montana State and four against Georgia Tech.

Augmon has recorded multiple steals in four of the last five games with three more against Eastern Illinois and five against New Mexico State. She's had five or more steals in two games.

In her three years at UNM, she's had 18 games with multiple steals and 36 games with a steal. She currently is tied for third in the MW in steals per game at 2.8 as well as 18th in steals (25) and 40th in steals per game in the NCAA.

In eight games, she already surpassed her season total of steals from her freshman (24) and sophomore (23) seasons.

ALL ABOUT AUGMON

Beyond her career-high eight steals, Aniyah Augmon showcased her all-around ability to take over a game at Pepperdine, leading the Lobos with 16 points, nine rebounds and three assists.

Augmon had a career-high four steals through the first 20 minutes and scored eight points in the second quarter alone, and was the first player to reach double figures on a drive to the basket early in the third quarter. The Lobo junior had eight points, six rebounds and four steals in the final 20 minutes.

In the season opener, Augmon finished with 17 points, six rebounds, and a game- and career-high six assists.

She has scored in double figures in seven games this season, including in five of the last six (16 against Texas A&M-Commerce, 11 against Montana State, 17 against Georgia Tech, 10 against Eastern Illinois and 10 against New Mexico State).

In addition to being tied for third in steals per game, Augmon is ranked fifth in assists per game (4.0), 17th in scoring (11.8) and 16th in rebounds per game (5.6) in the MW.

HOME COURT ADVANTAGE

The Pit has proven to be a home court advantage for the Lobos of late.

UNM has gone 39-4 over the last four years: 6-0 this season, 14-3 last season and 17-1 the year prior, while also going 2-0 in the only two home games in 2020-21.

Coach Mike Bradbury is 94-24 in The Pit in his eight years at UNM.

Entering the season, UNM has gone 119-43 (.735) in The Pit with seven seasons with 10-plus home wins and three seasons with 15-plus wins in the last 10 years.

In the past seven years under Bradbury, the Lobos have led the MW in attendance in six (with the lone year the COVID season when UNM had two home games without any fans in attendance).

UNM finished 18th in the NCAA last season in attendance and has finished in the top 20 six times in the last seven years (exception was 2020-21 COVID season).

So far this season, UNM is 12th in the NCAA in attendance.

20/10 AGAIN

Last season, the Lobos finished with 20 wins, the second-straight year with 20 wins and the fourth time under Coach Mike Bradbury.

In addition, the Lobos surpassed 10 wins in the MW, the third-straight year and sixth overall in Bradbury's seven years at UNM.

PRIDE OF NEW MEXICO

The Lobos have three New Mexico natives on the roster in redshirt-freshman Natalia Chavez and sophomore Jaelyn Bates and junior Vianè Cumber.

In addition, the Lobos have a New Mexico Gatorade Player of the Year winner in Cumber, with Cumber winning in 2019-20 and 2020-21.

Recent Lobo Amaya Brown won in 2015-16 and 2017-18 and Jaedyn De La Cerda won in 2016-17, meaning the winner in five of the last seven

years were Lobos.

ABOUT SOUTHERN UTAH

Southern Utah enters the game 2-5 on the season and is coming off of a 73-67 loss at Texas A&M-Commerce on Tuesday. SUU is 0-2 on the road this season.

The Thunderbirds have three in double figures, led by Daylani Ballena (16.6 ppg), Megan Smith (15.9 ppg) and Ava Uhrich (11.4 ppg). Ballena has been the leading scorer in the last two games, three times on the season, and has also tied for the team high in one game. In addition, she has only finished with fewer than 10 points one time this season, scoring eight points at UC Santa Barbara and scored a season-high 25 points in the last game. Smith has led in scoring in two games and Uhrich in one game.

Smith also leads in rebounds at 7.1 per game and in blocks with 11.

Four players have started all seven games (Ballena, Smith, Charli Kay and Samantha Johnson), while Uhrich has started the last five and Alexa Lord has started two.

The Thunderbirds were picked to finish second in the WAC preseason coaches' poll, with 87 points and five first-place votes. SUU went 23-10 and 16-2 in conference last season, winning the WAC regular season title.

Historically, UNM is 4-3 all-time against SUU and 4-1 at home, with the last home game back in 2015, a 70-48 Lobo win.

LAST TIME IT HAPPENED (UNM)

As A Team

Scored 100 Points:	111 - vs. Utah State (2-25-23)
Scored 90 Points:	98 - at Utah State (1-28-23)
Scored Fewer Than 50 Points:	42 - at UNLV (1-11-17)
Scored Fewer Than 40 Points:	38 - at Colorado St. (1-3-15)
Won by 50 Points:	+56 (W, 111-55) - vs. Utah State (2-25-23)
Won by 40 Points:	+48 (W, 92-44) - vs. Northern NM (12-10-19)
Won By 30 Points:	+38 (W, 98-60) - at Utah State (1-28-23)
Lost By 30 Points:	-37 (L, 47-84) - at (RV) Arizona St. (12-14-19)
Lost By 40 Points:	-42 (L, 63-105) - at Oklahoma (12-16-17)
Shot 60% or Better:	61.2% - vs. Pacific (11-9-01)
Shot Less Than 30%:	29.6 (21-71) - vs. Mississippi State (12-21-22)
Shot 60% 3FG or Better:	64.0% (16-25) - at Fresno State (2-28-23)
Shot Less Than 20% 3FG:	6.7% (1-15) - vs Georgia Tech (11-24-23)
Made 15 3-Pointers:	16 - at Fresno State (2-28-23)
Shot 90% on FTs (10 or more):	91.7 (11-12) - vs. Texas Southern (11-6-23)
Shot Less Than 40% On FTs:	14.3% (1-7) - at UTEP (11-30-17)
Had 50 Rebounds:	56 - vs. Mississippi Valley State (12-4-23)
Had 20 Offensive Rebounds:	21 - vs. Northern New Mexico (11-12-21)
Had 25 Assists:	25 - vs. Utah State (2-25-23)
Had 20 Turnovers:	25 - at Air Force (2-23-23)
Had Less Than 10 Turnovers:	7 - San Diego State (3-6-23)
Had 10 Steals:	10 - at Air Force (2-23-23)
Had 10 Blocks:	11 - vs. Houston Baptist (11-23-21)
Had Two 20-Point Scorers:	vs. Eastern Illinois (11-28-23)
	Nyah Wilson (21) and Paula Reus (25)
Had Three 20-Point Scorers:	vs. Grand Canyon (3-16-22)
	LaTascya Duff (27), Jaedyn De La Cerda (22) and Shaiquel McGruder (20)
Had 7 Double-Digit Scorers:	vs. Utah State (2-25-23)
Had 6 Double-Digit Scorers:	at Arkansas-Pine Bluff (12-17-20)
Had 5 Double-Digit Scorers:	vs. San Diego State (3-6-23)
Had No Double-Digit Scorers:	vs. (RV) Arizona St. (12-14-19)
Had Two 10+ Rebounders:	vs. Nevada (3-1-20)
	Shaiquel McGruder (17) and Antonia Anderson (10)
Scored 50 Points In 1st Half:	56 - at Utah State (1-28-23)
Scored 50 Points In 2nd Half:	52 - vs. South Carolina State (12-29-22)
Scored 60 Points in a 2nd Half:	62 - vs. Utah State (2-25-23)
Scored 20 Or Fewer Points In 1st Half:	20 - vs Georgia Tech (11-24-23)
Scored 20 Or Fewer Points In 2nd Half:	17 - at UNLV (1-15-21)
Lowest Pts Scored in Quarter:	2 - at NMSU (11-15-22)
Failed To Make a 3FG:	at (RV) Arizona St. (12-14-19)
Defeated a Ranked Team:	W, 88-87 vs. No. 16 Marquette (11-13-17)
Lost To a Ranked Team:	L, 77-60 vs. No. 14 Arizona (12-4-22)
Won an OT Game:	W, 81-78 vs. Eastern Illinois (11-28-23)
Lost an OT Game:	L, 83-77 vs Arizona State (11-20-22)
Won a 2OT Game:	W, 89-85 at Houston (11-24-18)
Lost a 2OT Game:	L, 69-65 vs. Fresno St. (1-2-16)

As An Individual

Had a Triple-Double:	Aisia Robertson (28 pts, 11 rebs, 11 assists)
	at Houston (11-24-18)
Had a Double-Double (Pts/Reb):	Charlotte Kohl (16 pts, 20 reb)
	vs. Mississippi Valley State (12-4-23)
Had a Double-Double (Pts/Asst):	LaTora Duff (13 pts & 10 assists)
	vs. Arizona State (11-20-22)
Had a Double-Double (Reb/Asst):	Cherise Beynon (13 reb, 10 assists)
	vs. Fairleigh Dickinson (11-12-16)
Scored 20+ Pts with 10+ Rebs:	Shaiquel McGruder (25 pts & 14 reb)
	vs. Boise State (1-21-23)
Scored 30 Points:	LaTascya Duff (30 pts) at Utah State (1-28-23)
Scored 40 Points:	Cherise Beynon (41) at SDSU (1-20-18)
Scored 30 Points (MW Only):	LaTascya Duff (30 pts) at Utah State (1-28-23)
Scored 40 points (MW Only):	Cherise Beynon (41)
	at San Diego St. (1-20-18)
Had 20+ Rebounds:	Charlotte Kohl (20) vs. Mississippi Valley State (12-4-23)
Had 15+ Rebounds:	Shaiquel McGruder (15) vs. UNLV (1-3-22)
Had 15+ Assists:	Aisia Robertson (16) vs. Oklahoma (11-28-18)
Had 5+ Steals:	Aniyah Augmon (5) vs. New Mexico State (12-2-23)
Had 5+ Blocks:	Charlotte Kohl (5) vs. Mississippi Valley State (12-4-23)

LAST TIME IT HAPPENED (OPP)

As A Team

Scored 100 Points:	105 - Oklahoma (12-16-17)
Scored 90 Points:	93 - UNLV (2-2-23)
Scored Less Than 50 Points:	45 - Mississippi Valley State (12-4-23)
Scored Less Than 40 Points:	40 - Northern New Mexico (11-12-21)
Shot 50% Or Better:	51.8% (29-56) - Montana State (11-23-23)
Shot Less Than 30%:	29.2% (19-65) - Mississippi Valley State (12-4-23)
Shot 50% 3FG Or Better:	50.0% (7-14) - Texas Tech (11-28-21)
Shot Less Than 20% 3FG:	14.3% (2-14) - Pepperdine (11-9-23)
Made 15 3-Pointers:	15 - San José St. (1-22-20)
Shot 90% On FTs (10 or more):	90.0% (9-10) - Georgia Tech (11-24-23)
Shot Less Than 50% On FTs:	33.3% (3-9) - Mississippi Valley State (12-4-23)
Had 50 Rebounds:	53 - Mississippi State (12-21-22)
Had 20 Offensive Rebounds:	24 - Houston (11-12-22)
Had 25 Assists:	26 - Houston (11-20-21)
Had 20 Turnovers:	27 - Old Dominion (12-20-22)
Had 30 Turnovers:	30 - Northern NM (11-15-17)
Had Less Than 10 Turnovers:	8 - Fresno State (2-28-23)
Had 10 Steals:	16 - Air Force (2-23-23)
Had 10 Blocks:	12 - Boise State (1-21-23)
Had Two 20-Point Scorers:	UNLV (1-14-23)
	Desi-Rae Young (22) and Alyssa Durazo-Frescas (20)
Had 6 Double-Digit Scorers:	San Diego State (3-6-23)
Had 5 Double-Digit Scorers:	UNLV (2-2-23)
Had No Double-Digit Scorers:	Louisiana-Monroe (11-27-21)
Had Two 10+ Rebounders:	Arizona State (11-20-22)
	Kayla Mokwuah (13) and Treasure Hunt (15)
Scored 50+ Points In 1st Half:	54 - San José St. (1-22-20)
Scored 50+ Points In 2nd Half:	50 - Colorado State (3-8-22)
Scored 20 Or Less Points In 1st Half:	19 - New Mexico State (12-2-23)
Scored 20 Or Less In 2nd Half:	19 - Northern New Mexico (11-12-21)
Scored Less Than 10 Points in Quarter:	6 - New Mexico State (12-2-23)
Failed To Make a 3FG:	0-1 by San Diego State (2-18-15)

As An Individual

Had a Double-Double (Pts/Reb):	Macy McGlone (29 pts, 14 reb.)
	Eastern Illinois (11-28-23)
Had a Double-Double (Pts/Asst):	Miah Monahan (16 pts, 10 asts.)
	Eastern Illinois (11-28-23)
Had a Double-Double (Pts/Steals):	Jasmyne Harris (28 pts & 10 steals)
	Houston (11-28-18)
Had 20+ Points & 10+ Rebounds:	Macy McGlone (29 pts, 14 reb.)
	Eastern Illinois (11-28-23)
Scored 30 Points:	Essence Booker (31) - UNLV (1-27-22)
Scored 30 Points (MW Only):	Essence Booker (31) - UNLV (1-27-22)
Had 20+ Rebounds:	Kaylee Johnson (22) - No. 1 Stanford (11-24-14)
Had 15+ Rebounds:	Andjela Bigovic (16) - Tarleton State (11-12-23)
Had 10+ Assists:	Miah Monahan (10) - Eastern Illinois (11-28-23)
Had 5+ Steals:	Jo Huntimer (6) - Air Force (2-23-23)
Had 5+ Blocks:	Amberly Brown (5) - Mississippi Valley State (12-4-23)

GAME 10: NEW MEXICO vs SOUTHERN UTAH

STATS

STAT COMPARISON

SUU		UNM
69.7	Points Per Game	66.7
42.6	FG%	38.5
24.4	3FG%	25.8
69.2	FT%	70.1
5.4	Made 3-pt PG	6.0
39.4	Rebounds PG	43.8
16.1	Turnovers PG	14.4
14.7	Assists PG	11.9
3.9	Blocks PG	3.3
5.9	Steals PG	7.1
71.3	Scoring Defense	61.3
41.6	FG% Defense	37.6
33.1	3FG% Defense	29.7
+2.7	Rebound Margin	+5.1

UNM WHEN HOME/AWAY/NEUTRAL

STAT	HOME (6)	AWAY (1)	NEUTRAL (2)
PPG	71.8	57.0	56.0
Opp PPG	60.5	48.0	70.5
FG %	.404	.359	.336
3FG%	.273	.217	.234
3 FG MPG	6.3	5.0	5.5
FT%	.742	.545	.633
Opp FG%	.357	.323	.466
Opp 3FG%	.321	.143	.268
RPG	48.5	39.0	32.0
Opp RPG	37.0	43.0	41.5
APG	13.5	10.0	8.0
SPG	6.3	9.0	8.5
TOV	14.7	12.0	15.0

SPECIALTY STAT COMPARISON

(UNM/Opp.)

Opp.	Paint	Off TO	2nd Chance	Fast Break	Bench
Texas Southern	38/14	15/18	11/11	17/6	2/28
Pepperdine	34/26	13/10	11/10	7/0	13/12
Tarleton St.	34/24	17/8	6/11	15/9	12/14
Texas A&M-Com.	50/28	14/13	16/8	10/13	3/31
Montana St.	18/34	11/20	7/4	10/6	7/18
Georgia Tech	32/30	7/12	3/13	15/2	6/13
Eastern Illinois	36/20	22/15	15/9	16/16	2/14
NMSU	42/16	16/10	15/4	11/2	12/32
MVSU	32/22	13/11	20/3	12/10	13/25
Southern Utah					
Hampton					
Western N.M.					
Gonzaga					
Nevada					
Boise St.					
Utah St.					
Colorado St.					
Wyoming					
UNLV					
Fresno St.					
Air Force					
San José St.					
UNLV					
San Diego St.					
Colorado St.					
San José St.					
Boise St.					
Wyoming					
San Diego St.					
Nevada					
Fresno St.					

UNM STARTING LINEUPS (GAME)

Game	G	G	G	F	C
Texas Southern	Wilson	Augmon	Cumber	Reus	Kohl
Pepperdine	Wilson	Augmon	Cumber	Reus	Kohl
Tarleton State	Wilson	Augmon	Cumber	Reus	Kohl
Texas A&M-Commerce	Wilson	Augmon	Cumber	Reus	Kohl
Montana State	Wilson	Augmon	Cumber	Reus	Kohl
Georgia Tech	Wilson	Augmon	Cumber	Reus	Kohl
Eastern Illinois	Wilson	Augmon	Cumber	Reus	Kohl
New Mexico State	Wilson	Augmon	Cumber	Reus	Kohl
Mississippi Valley State	Wilson	Augmon	Langermann	Reus	Kohl
Southern Utah					
Hampton					
Western New Mexico					
Gonzaga					
Nevada					
Boise State					
Utah State					
Colorado State					
Wyoming					
UNLV					
Fresno State					
Air Force					
San José State					
UNLV					
San Diego State					
Colorado State					
San José State					
Boise State					
Wyoming					
San Diego State					
Nevada					
Fresno State					

UNM STARTING LINEUPS (RECORD)

Wilson, Augmon, Kohl, Reus, Cumber	6-2
Wilson, Langermann, Augmon, Kohl, Reus	1-0

DOUBLE-DOUBLE TRACKER

Charlotte Kohl (14 pts, 20 reb)	Texas A&M-Commerce (11/15)
Viané Cumber (14 pts, 14 reb)	Eastern Illinois (11/28)
Charlotte Kohl (15 pts, 13 reb)	New Mexico State (12/2)
Charlotte Kohl (16 pts, 20 reb)	Mississippi Valley St. (12/4)

CAREER DOUBLE-DOUBLES

	2023-24	Career
Aniyah Augmon	-	3
Charlotte Kohl	3	4
Hulda Joaquim	-	2
Paula Reus	-	1
Viané Cumber	1	1

20-POINT TRACKER

Viané Cumber	22 pts	Texas Southern (11/6)
Nyah Wilson	20 pts	Texas Southern (11/6)
Nyah Wilson	22 pts	Texas A&M-Commerce (11/15)
Viané Cumber	24 pts	Montana State (11/23)
Paula Reus	25 pts	Eastern Illinois (11/28)
Nyah Wilson	21 pts	Eastern Illinois (11/28)

	CONFERENCE						OVERALL							
Team (AP/Coaches)	W	L	Pct.	Home	Away	Neutral	W	L	Pct.	Home	Away	Neutral	Last 10	Strk
UNLV (RV/RV)	0	0	.000	0-0	0-0	0-0	8	0	1.000	5-0	3-0	0-0	9-1	W8
Colorado State	0	0	.000	0-0	0-0	0-0	7	0	1.000	5-0	2-0	0-0	8-2	W7
New Mexico	0	0	.000	0-0	0-0	0-0	7	2	.778	6-0	1-0	0-2	7-3	W3
Boise State	0	0	.000	0-0	0-0	0-0	6	2	.750	5-0	0-1	1-1	7-3	L1
Fresno State	0	0	.000	0-0	0-0	0-0	6	3	.667	5-1	0-2	1-0	6-4	W1
Nevada	0	0	.000	0-0	0-0	0-0	5	3	.625	3-2	0-1	2-0	6-4	L1
Wyoming	0	0	.000	0-0	0-0	0-0	4	3	.571	3-1	1-2	0-0	5-5	L1
Air Force	0	0	.000	0-0	0-0	0-0	5	4	.556	4-1	0-1	1-2	5-5	W1
San Diego State	0	0	.000	0-0	0-0	0-0	5	4	.556	4-3	1-1	0-0	5-5	W1
San José State	0	0	.000	0-0	0-0	0-0	4	6	.400	3-1	1-4	0-1	4-6	L2
Utah State	0	0	.000	0-0	0-0	0-0	3	5	.375	2-2	1-3	0-0	3-7	L2
^ MW Regular Season Champions % MW Tournament Champion														

^ MW Regular Season Champions

% MW Tournament Champion

MOUNTAIN WEST STATISTICS

2023-24 MW PLAYERS OF THE WEEK

TEAM

Offensive Rebounding	1st (43.8)
Rebounding Margin	3rd (+5.1)
Blocks per Game	4th (3.3)
3-Pt FG % Defense	4th (.297)
FG % Defense	5th (.376)
Scoring	T-5th (66.7)
Assist/Turnover Ratio	6th (0.8)
Scoring Margin	6th (+5.3)
3-Pt FG Made	6th (6.0)
Scoring Defense	6th (61.3)
Assists per Game	6th (11.9)
Free Throw %	8th (.701)
Steals per Game	9th (7.1)
FG %	9th (.385)
3-PT FG %	10th (.258)

Conference

CHARLOTTE KOHL - NOVEMBER 20

INDIVIDUAL

Scoring	All
Nyah Wilson	4th (15.2)
Paula Reus	T-14th (12.1)
Vianè Cumber	16th (11.9)
Aniyah Augmon	17th (11.8)
Rebounding	
Charlotte Kohl	2nd (9.9)
Paula Reus	11th (6.2)
Aniyah Augmon	16th (5.6)
Vianè Cumber	19th (5.1)
Free Throw %	
Nyah Wilson	6th (.796)
3-Point FG Made	
Vianè Cumber	3rd (2.8)
3-Point FG %	
Vianè Cumber	3rd (.349)
Steals	
Aniyah Augmon	T-3rd (2.8)
Assists	
Aniyah Augmon	5th (4.0)
Blocks	
Charlotte Kohl	2nd (2.3)
Minutes	
Vianè Cumber	2nd (34.0)
Aniyah Augmon	5th (33.3)
Paula Reus	8th (32.5)
Nyah Wilson	13th (30.3)

Conference

NCAA STATISTICS

TEAM

Fouls Per Game	20th
Rebounds Per Game	29th
Rebounds (Def.) Per Game	30th

INDIVIDUAL

Aniyah Augmon	
Steals	18th
Steals Per Game	40th
Assists	87th
Charlotte Kohl	
Rebounds (Off.) Per Game	11th
Rebounds	14th
Blocks	15th
Blocks Per Game	20th
Rebounds Per Game	27th
Double-Doubles	36th
Nyah Wilson	
Free Throws	28th
Free Throw Attempts	38th
Points	92nd
Vianè Cumber	
3-Point Attempts	35th
3-Pointers Per Game	43rd
3-Pointers	44th
Minutes Per Game	97th

LOBOS RECORD WHEN...

	Overall	In MW
Overall	7-2	0-0
At home	6-0	0-0
On the road	1-0	0-0
At neutral sites	0-2	0-0
After a win	5-1	0-0
After a loss	1-1	0-0
In overtime	0-0	0-0
vs. ranked opponents	0-0	0-0
Games decided by 1-4 points	2-0	0-0
Games decided by 5-9 points	2-0	0-0
Games decided by 10-19 points	2-2	0-0
Games decided by 20+ points	1-0	0-0
Leading after Q1	5-1	0-0
Trailing after Q1	2-1	0-0
Tied after Q1	0-0	0-0
Leading at half	6-0	0-0
Trailing at half	1-2	0-0
Tied at half	0-0	0-0
Leading after Q3	5-0	0-0
Trailing after Q3	2-2	0-0
Tied after Q3	0-0	0-0
Shooting 50% or better	0-0	0-0
Shooting between 40-49.9%	3-0	0-0
Shooting less than 40%	4-2	0-0
Opponent shoots 50% or better	0-1	0-0
Opponent shoots b/w 40-49.9%	2-1	0-0
Opponent shoots b/w 30-39.9%	4-0	0-0
Opponent shoots less than 30%	1-0	0-0
UNM higher FG%	6-0	0-0
Opponent higher FG%	1-2	0-0
FG% Tied	0-0	0-0
UNM outrebounds	6-0	0-0
Opponent outrebounds	1-2	0-0
Rebounds tied	0-0	0-0
UNM more made free throws	5-1	0-0
Opponent more made free throws	0-1	0-0
Made free throws tied	2-0	0-0
UNM 3FG% higher	2-0	0-0
Opponent 3FG% higher	5-2	0-0
3FG% tied	0-0	0-0
UNM has more fouls	3-0	0-0
Opponent has more fouls	4-2	0-0
Fouls are tied	0-0	0-0
UNM more turnovers	4-1	0-0
Opponent more turnovers	2-1	0-0
Turnovers tied	1-0	0-0
Scoring less than 50 points	0-0	0-0
Scoring 50-59 points	1-2	0-0
Scoring 60-69 points	3-0	0-0
Scoring 70-79 points	2-0	0-0
Scoring 80-89 points	1-0	0-0
Scoring 90-99 points	0-0	0-0
Scoring 100+ points	0-0	0-0
Allowing 40 points or less	0-0	0-0
Allowing 41-49 points	2-0	0-0
Allowing 50-59 points	3-0	0-0
Allowing 60-69 points	0-1	0-0
Allowing 70-79 points	2-1	0-0
Allowing 80-89 points	0-0	0-0
Allowing 90+ points	0-0	0-0
In November	5-2	0-0
In December	2-0	0-0
In January	0-0	0-0
In February	0-0	0-0
In March	0-0	0-0

SERIES HISTORY

SOUTHERN UTAH (4-3)

H: 4-1 A: 0-2 N: 0-0

1/22/87	L	81-74	H
1/7/92	W	76-66	H
1/6/93	L	64-53	A
12/16/95	W	59-46	H
12/14/96	W	62-54	H
11/27/15	W	70-48	H
11/7/22	L	76-68	A

2023-24 roster



Nahawa Diarra Berthe
G | 5-9 | JR.
Barcelona, Spain



Natalia Chavez
G | 5-10 | R-FR.
Cochiti Pueblo, N.M.



Nyah Wilson
G | 5-8 | JR.
Dallas, Texas



Gianna McManaman
PG | 5-7 | FR.
Chapel Hill, N.C.



Lara Langermann
G | 5-7 | FR.
Breckersfeld, Germany



Paris Lauro
F | 6-1 | FR.
Dallas, Texas



Aniyah Augmon
G | 5-8 | JR.
San José, Calif.



Hulda Joaquim
F | 6-1 | SR.
Maputo, Mozambique



Jaelyn Bates
PG | 5-7 | FR.
Albuquerque, N.M.



Mackenzie Curtis
G | 5-9 | SO.
Lakeside, Calif.



Charlotte Kohl
C | 6-5 | GR.
Giessen, Germany



Paula Reus
F | 6-1 | JR.
Palma de Mallorca,
Spain



Vianè Cumber
G | 5-10 | JR.
Albuquerque, N.M.



Mike Bradbury
Head Coach



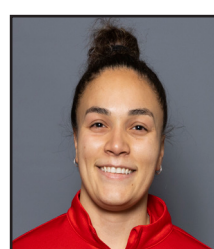
Keith Freeman
Assoc. Head Coach



Nike McClure
Assistant Coach



Mackenzie Novak
Assistant Coach



Jaisa Nunn
Graduate Assistant



Hanna Hudson
Director of Operations



Isaiah Fernandez
Director of Player
Development

NUMERICAL

#	Name	Pos	Ht	Yr	Hometown (Previous School)
1	Nahawa Diarra Berthe	G	5-9	Jr.	Barcelona, Spain (Odessa College)
2	Natalia Chavez	G	5-10	RS-Fr.	Cochiti Pueblo, N.M. (Volcano Vista HS)
3	Nyah Wilson	G	5-8	Jr.	Dallas, Texas (Syracuse)
4	Gianna McManaman	PG	5-7	Fr.	Chapel Hill, N.C. (Northwood HS)
5	Lara Langermann	G	5-7	Fr.	Breckerfeld, Germany (Theodor-Heuss-Gymnasium Hagen)
10	Paris Lauro	F	6-1	Fr.	Dallas, Texas (Highland Park HS)
12	Aniyah Augmon	G	5-8	Jr.	San José, Calif. (Woodside Priory School)
14	Hulda Joaquim	F	6-1	Sr.	Maputo, Mozambique (Seward County CC)
15	Jaelyn Bates	PG	5-7	So.	Albuquerque, N.M. (Volcano Vista HS)
21	Mackenzie Curtis	G	5-9	RS-So.	Lakeside, Calif. (El Capitan HS)
22	Charlotte Kohl	C	6-5	Sr.	Giessen, Germany (Mississippi State)
30	Paula Reus	F	6-1	Jr.	Palma de Mallorca, Spain (IES Joaquim Blume)
33	Vianè Cumber	G	5-10	Jr.	Albuquerque, N.M. (Sandia HS)

ALPHABETICAL

#	Name	Pos	Ht	Yr	Hometown (Previous School)
12	Aniyah Augmon	G	5-8	Jr.	San José, Calif. (Woodside Priory School)
15	Jaelyn Bates	PG	5-7	So.	Albuquerque, N.M. (Volcano Vista HS)
2	Natalia Chavez	G	5-10	RS-Fr.	Cochiti Pueblo, N.M. (Volcano Vista HS)
33	Vianè Cumber	G	5-10	Jr.	Albuquerque, N.M. (Sandia HS)
21	Mackenzie Curtis	G	5-9	RS-So.	Lakeside, Calif. (El Capitan HS)
1	Nahawa Diarra Berthe	G	5-9	Jr.	Barcelona, Spain (Odessa College)
14	Hulda Joaquim	F	6-1	Sr.	Maputo, Mozambique (Seward County CC)
22	Charlotte Kohl	C	6-5	Sr.	Giessen, Germany (Mississippi State)
5	Lara Langermann	G	5-7	Fr.	Breckerfeld, Germany (Theodor-Heuss-Gymnasium Hagen)
10	Paris Lauro	F	6-1	Fr.	Dallas, Texas (Highland Park HS)
4	Gianna McManaman	PG	5-7	Fr.	Chapel Hill, N.C. (Northwood HS)
30	Paula Reus	F	6-1	Jr.	Palma de Mallorca, Spain (IES Joaquim Blume)
3	Nyah Wilson	G	5-8	Jr.	Dallas, Texas (Syracuse)

STAFF

Mike Bradbury	Head Coach
Keith Freeman	Associate Head Coach
Nike McClure	Assistant Coach
Mackenzie Novak	Assistant Coach
Jaissa Nunn	Graduate Assistant
Hanna Hudson	Director of Operations
Isaiah Fernandez	Director of Player Development
Leila Petewon	Assistant Director of Athletic Performance (WBB)
Lexi Smith	Associate Athletic Trainer (WBB)

pronunciation guide

audio pronunciations available online

NAHAWA DIARRA BERTHE	Na-HA-wa D-are-a Bear-TAY
NYAH Wilson	Neye-ah
LARA LANGERMANN	La-Rah Lane-GRR-man
PARIS LAURO	Loro (rhymes with Zorro)
HULDA JOAQUIM	Ulda JOY-key-m
PAULA REUS	Rey-OOSE (rhymes with goose)
VIANE Cumber	V-UH-nay

by eligibility

Seniors (2)	
14 Hulda Joaquim	F
22 Charlotte Kohl (Gr.)	C

Juniors (5)	
1 Nahawa Diarra Berthe	G
3 Nyah Wilson	G
12 Aniyah Augmon	G
30 Paula Reus	F
33 Vianè Cumber	G

Sophomores (2)	
15 Jaelyn Bates	PG
21 Mackenzie Curtis (RS)	G

Freshmen (4 (1 Redshirt))	
2 Natalia Chavez (RS)	G
4 Gianna McManaman	PG
5 Lara Langermann	G
10 Paris Lauro	F

home state

California (2)	
12 Aniyah Augmon	G
21 Mackenzie Curtis	G

North Carolina (1)	
4 Gianna McManaman	PG

New Mexico (3)	
2 Natalia Chavez	G
15 Jaelyn Bates	PG
33 Vianè Cumber	G

Texas (2)	
3 Nyah Wilson	G
10 Paris Lauro	F

international

1 Nahawa Diarra Berthe (Spain)	G
5 Lara Langermann (Germany)	G
14 Hulda Joaquim (Mozambique)	F
22 Charlotte Kohl (Germany)	C
30 Paula Reus (Spain)	F



MIKE BRADBURY

RECORD AT UNM: 148-80 (8TH SEASON)

CAREER RECORD: 326-197 (17TH SEASON)

NOTEWORTHY:

- Named the sixth head coach in program history on March 31, 2016
- 26 wins in 2021-22 tied for most wins in program history
- Led UNM to 25 wins in 2017-18; tied for second-most wins in program history
- Led UNM to 20+ wins in four seasons, and .500 or better in six
- Earned his 100th win at UNM on Nov. 30, 2021; only the second coach in program history to reach 100. Earned his 300th career win on Nov. 22, 2022 against Western N.M.

Mike Bradbury enters his eighth season as head coach for The University of New Mexico women's basketball team. In his previous seven seasons at the helm, Bradbury has guided the Lobos to a 141-78 (.644) and 77-45 (.631) in conference. Four times in his tenure (2017-18, 2018-19, 2021-22 and 2022-23) the Lobos eclipsed the 20-win mark, with the Lobos tying the program record for most wins in a single season with 26 in 2021-22. Further, the 25 wins in 2017-18 were tied for the second-most wins in program history. The consecutive 20-plus win seasons under Bradbury in 2017-18 and 2018-19 were the first for the program since the 2007-08 – 2008-09 seasons.

Additionally, Bradbury became just the second coach in UNM history to win 100 games with a win over Grambling on Nov. 30, 2021.

The Lobos have sustained success under Bradbury as historically, UNM has finished either first or second in the conference in scoring offense in the last six years (four times first). In Bradbury's time at UNM, the Lobos have finished with 15 or made three-pointers 11 times and hold the top-five spots in three-pointers per game in program history.

In the most recent season, UNM finished 15th in the NCAA in made three-pointers per game at 8.5 per game, with 12 games with double-digit three-pointers. Of the 12 games, UNM made 18 (against South Carolina State) and three games with 16 (twice against Utah State and at Fresno State).

During the 2021-22 season, the program established several program records. UNM set the program record in made three-pointers (346), a program-best 171 made three-pointers in conference season, as well as a pro-

gram-record 596 assists on the season and 292 in conference games. In addition, the Lobos made a program-high 523 field goals in conference and scored the most points in conference in program history with 1,413 points. On Jan. 6 at Utah State, the Lobos set the program record and the MW record in made three-pointers in a game with 21, and three games later made 19 three-pointers for the second most in a game in program history. The Lobos also went on a nine-game win streak, the second longest in program history.

New Mexico ranked in the top 10 in the NCAA in made three-pointers (third), made three-pointers per game (fifth, 9.6 per game) and in assists (10th). In total, UNM ranked in the top 30 in nine categories, including scoring offense (14th, 76.7 points per game), assists per game (16th, 16.6 per game), assist/turnover ratio (18th, 1.21), field-goal percentage (19th, 45.1 percent), blocked shots (25th, 147) and three-point field-goal percentage (30th, 35.1 percent).



UNM added six postseason Mountain West honors with a conference-high three all-conference players in Antonia Anderson, Shaiquel McGruder and Jaedyn De La Cerda, an honorable mention in LaTora Duff, an all-defensive player in McGruder and an all-freshman in Paula Reus. The Lobos have had 12 conference selections in the last two seasons.

Further, five Lobos finished the 2021-22 season averaging double figures in points per game.

In the 2020-21 season, Bradbury led the Lobos to a Mountain West regular season championship, the first outright in program history and the first regular season title since the 2004-05 season. In addition, the Lobos were selected for the WNIT for the third

time in four years.

The Lobos produced one of the most prolific offenses not only in the conference, but in the country, finishing among the top 25 in several categories. Among them, UNM finished fourth in the NCAA in made three-pointers per game (10.2), sixth in assist-turnover ratio (1.40), ninth in scoring offense (81.2 points per game), 14th in fewest turnovers per game (12.0) and assists per game (16.8) and 22nd in scoring margin (12.7). The Lobos led the Mountain West in scoring offense, scoring margin, assists per game, turnover margin, assist-turnover ratio and made three-pointers as well as second in field-goal percentage and steals per game.

UNM set a program record in scoring with 120 points against Arkansas-Pine Bluff on Dec. 17, 2020 and in the process, made 17 three-pointers, falling just one short of tying the program record. Further, the Lobos registered 90-plus points in five games and 80-plus points in 11 of the 20 games on the season.

Four Lobos finished the 2020-21 season averaging double figures in points per game with six players finishing in double figures in scoring in two games (the only times it has been accomplished in program history), five players in five games and four in seven games.

As a result of UNM's successful season, five players were named to the All-Mountain West Team with LaTascya Duff also earning the superlative of Sixth Person of the Year. Duff was just the second Lobo to win the sixth person award. Making the all-conference team for the first time were Duff, Jaedyn De La Cerda and Antonia Anderson, as well as Shaiquel McGruder earning all-defensive and Ahlise Hurst earning the honorable mention distinction.

In his time at UNM, Bradbury has coached 13 All-Mountain West performers with Cherise Beynon, Jayla Everett, Jaisa Nunn, Aisia Robertson and Richelle van der Keijl joining De La Cerda, Duff, McGruder, Hurst and Anderson in making the All-Mountain West Team. Tesha Buck, Mykiel Burleson and Nike McClure have also earned MW recognition with Buck being the 2017-18 Newcomer of the Year, Burleson being named to the All-Freshman team in 2016-17 and McClure landing on the All-Defensive team in 2018-19.

In terms of major individual awards, Bradbury has coached the league's Newcomer of the Year each of his first three seasons in charge of the Lobos with van der Keijl earning the award in 2016-17, Buck in 2017-18 and Robertson in 2018-19. Additionally, Bradbury has coached the MW Player of the Year in Nunn (2018-19) and the Freshman of the Year in Everett (2018-19) as well as Sixth Person of the Year in Duff (2020-21).

CAREER HEAD COACHING YEAR-BY-YEAR

2007-08	11-19 (9-11)	Morehead State
2008-09	17-14 (11-7)	Morehead State
2009-10	22-11 (14-4)	Morehead State
2010-11	20-13 (11-7)	Wright State
2011-12	21-13 (12-6)	Wright State
2012-13	12-18 (6-10)	Wright State
2013-14	26-9 (12-4)	Wright State
2014-15	25-9 (12-4)	Wright State
2015-16	24-11 (12-6)	Wright State
2016-17	15-15 (10-8)	New Mexico
2017-18	25-11 (10-8)	New Mexico
2018-19	24-7 (14-4)	New Mexico
2019-20	15-17 (6-12)	New Mexico
2020-21	15-5 (11-3)	New Mexico
2021-22	26-10 (14-4)	New Mexico
2022-23	21-13 (12-6)	New Mexico
2023-24	7-2 (0-0)	New Mexico
Total	326-197 (176-104)	

EDUCATION

UT-Chattanooga - B.S. Recreation (1993)

COACHING EXPERIENCE

1991-93	Student Assistant	Chattanooga
1993-94	Assistant Coach	Chattanooga
1994-95	Assistant Coach	East Tennessee
1995-96	Assistant Coach	VCU
1996-02	Assistant Coach	Cincinnati
2002-07	Assistant Coach	Xavier
2007-10	Head Coach	Morehead State
2010-16	Head Coach	Wright State
2016-pres.	Head Coach	New Mexico

HEAD COACHING RECORD

2007-10	Morehead State	50-44 (.532)
2010-16	Wright State	128-73 (.637)
2016-pres.	New Mexico	148-80 (.649)
17 years		326-197 (.623)

RANKED OPPONENTS

#16 Marquette	11/13/17	W, 88-87
#23 West Virginia	11/29/19	L, 73-60
#6 Arizona	12/12/21	L, 77-60
#14 Arizona	12/4/22	L, 77-60

OPPONENT	Series	H	A	N
Abilene Christian	1-0	1-0		
Air Force	10-2	5-1	4-1	1-0
Arizona	0-2	0-1	0-1	
Arkansas-Pine Bluff	1-0		1-0	
Arizona State	0-2	0-1	0-1	
Auburn	0-1	0-1		
Ball State	0-1	0-1		
Boise State	5-7	4-1	1-5	0-1
California Baptist	0-1			0-1
Colorado State	9-5	7-1	2-3	0-1
Denver	0-1	0-1		
Eastern Illinois	1-0	1-0		
Fairleigh Dickinson	1-0	1-0		
Fresno State	8-6	4-1	3-3	1-2
Georgia Tech	0-1			0-1
Grambling State	1-0	1-0		
Grand Canyon	1-0	1-0		
Hartford	1-0	1-0		
Houston	3-1	2-0	1-1	
Houston Baptist	1-0	1-0		
Illinois	1-0	1-0		
Lamar	2-0	2-0		
Louisiana-Monroe	1-0			1-0
Loyola Marymount	0-1	0-1		
Marquette	1-1	1-0	0-1	
Midwestern State	1-0		1-0	
Minnesota	0-1	0-1		
Mississippi State	0-1			0-1
Mississippi Valley State	1-0	1-0		
Missouri	1-0			1-0
Montana State	0-1			0-1
Navy	1-0	1-0		
Nevada	10-3	5-0	5-2	0-1
New Mexico State	11-2	7-0	4-2	
Nicholls	1-0		1-0	
Northern Arizona	3-0	2-0	1-0	
Northern New Mexico	4-0	4-0		
Oklahoma	1-1	1-0	0-1	
Old Dominion	1-0			1-0
Oregon State	0-1		0-1	
Pepperdine	1-0		1-0	
Prairie View A&M	1-0	1-0		
Providence	1-0	1-0		
Rice	1-0	1-0		
Sacramento State	1-0	1-0		
Saint Mary's	1-0	1-0		
Sam Houston State	1-0		1-0	
San Diego	1-0	1-0		
San Diego State	8-8	4-1	3-5	1-2
San Jose State	8-3	4-1	3-2	1-0
SMU	1-0	1-0		
South Carolina State	1-0	1-0		
Southern Utah	0-1		0-1	
St. Joseph's	0-1	0-1		
Stephen F. Austin	1-1	1-0		0-1
Tarleton State	1-0	1-0		
TCU	0-1	0-1		
Texas A&M-Commerce	2-0	1-0	1-0	
Texas State	1-0	1-0		
Texas Southern	1-0	1-0		
Texas Tech	1-2	1-0	0-1	0-1
Tulsa	0-1	0-1		
UC Irvine	1-0	1-0		
UC Riverside	1-0	1-0		
UNLV	4-10	2-4	2-6	
Utah State	13-0	5-0	8-0	
UTEP	5-0	4-0	1-0	
Washington	0-1		0-1	
West Virginia	0-1			0-1
Western Michigan	1-0	1-0		
Western New Mexico	1-0	1-0		
Wichita State	1-0	1-0		
Wyoming	5-8	2-4	3-3	0-1
Total	148-80	94-24	47-41	7-15



NAHAWA DIARRA BERTHE

G | 5-9 | JR | Barcelona, Spain (Odessa College)



PPG	FG %	3PT %	FT %	RPG	APG	SPG	BPG	MPG
2.0	.273	.000	.500	1.6	1.1	0.6	0.0	12.6

NOTEWORTHY

- » First season at the DI level after spending past two seasons at Odessa
- » Started all 25 games for the Wranglers last season, averaging 29.6 minutes per game, 10.8 points per game, 4.2 rebounds per game, 2.6 assists per game and 2.3 steals per game
- » Scored in double figures in 16 games and recorded five or more rebounds in nine games

GAME-BY-GAME STATISTICS

Opponent	Date	GS	MIN	Total		3-Pointers		Free throws		Rebounds										
				FG-FGA	PCT	3FG-3FGA	PCT	FT-FTA	PCT	OFF	DEF	TOT	AVG	PF	A	TO	BLK	STL	PTS	AVG
Texas Southern	11/06/2023		08:14	0-2	.000	0-0	.000	0-0	.000	1	1	2	2.0	0	2	2	0	0	0	0.0
Tex. A&M-Commerce	11/15/2023		13:03	0-3	.000	0-1	.000	0-0	.000	0	0	0	1.0	2	1	0	0	1	0	0.0
vs Montana St.	11/23/2023		11:09	0-2	.000	0-1	.000	0-2	.000	0	1	1	1.0	0	1	0	0	1	0	0.0
vs Georgia Tech	11/24/2023		18:41	3-5	.600	0-0	.000	0-0	.000	1	3	4	1.8	2	0	2	0	0	6	1.5
Eastern Ill.	11/28/2023		04:16	0-2	.000	0-2	.000	0-0	.000	0	0	0	1.4	1	0	0	0	0	0	1.2
New Mexico St.	12/02/2023		11:30	1-2	.500	0-1	.000	2-2	1.000	1	1	2	1.5	1	0	2	0	0	4	1.7
Mississippi Val.	12/04/2023		21:03	2-6	.333	0-3	.000	0-0	.000	1	1	2	1.6	0	4	0	0	2	4	2.0
Totals		0	87:57	6-22	.273	0-8	.000	2-4	.500	4	7	11	1.6	6	8	6	0	4	14	2.0

TOP PERFORMANCES

Points	Season MW	6, Georgia Tech (11/24)
	Career	6, Georgia Tech (11/24)
FGM	Season MW	3, Georgia Tech (11/24)
	Career	3, Georgia Tech (11/24)
FGA	Season MW	6, Mississippi Valley (12/4)
	Career	6, Mississippi Valley (12/4)
3PT FGM	Season MW	
	Career	
3PT FGA	Season MW	3, Mississippi Valley (12/4)
	Career	3, Mississippi Valley (12/4)
FTM	Season MW	2, New Mexico St. (12/2)
	Career	2, New Mexico St. (12/2)
FTA	Season MW	2, 2x
	Career	2, 2x
Reb.	Season MW	4, Georgia Tech (11/24)
	Career	4, Georgia Tech (11/24)
Asts.	Season MW	4, Mississippi Valley (12/4)
	Career	4, Mississippi Valley (12/4)
Blocks	Season MW	
	Career	
Steals	Season MW	2, Mississippi Valley (12/4)
	Career	2, Mississippi Valley (12/4)
TO	Season MW	0, 4x
	Career	0, 4x
Min.	Season MW	21, Mississippi Valley (12/4)
	Career	21, Mississippi Valley (12/4)

PRODUCTION TRACKER

2023-24 Career

- Double-Double
- Scored 10+ pts
- Scored 20+ pts
- 10+ reb
- 3+ 3-pt

CAREER STATISTICS

				Field Goals		3-Point		F-Throws		Rebounds										Scoring	
SEASON	TEAM	GP-GS	MIN/AVG	FG-FGA	FG%	3FG-3FGA	3FG%	FT-FTA	FT%	OFF	DEF	TOT	AVG	PF-FO	A	TO	BLK	STL	PTS	AVG	
2023-24	UNM	7-0	88/12.6	6-22	.273	0-8	.000	2-4	.500	4	7	11	1.6	6-0	8	6	0	4	14	2.0	
TOTAL		7-0	88/12.6	6-22	.273	0-8	.000	2-4	.500	4	7	11	1.6	6-0	8	6	0	4	14	2.0	

#2

NATALIA CHAVEZ

G | 5-10 | R-FR | Cochiti Pueblo, N.M. (Volcano Vista HS)



PPG	FG %	3PT %	FT %	RPG	APG	SPG	BPG	MPG
0.0	.000	.000	--	0.0	0.4	0.2	0.0	4.7

NOTEWORTHY

REDSHIRTED LAST SEASON

» Named the 1-5A District Player of the Year in 2019-20 and 2020-21, while also earning first team all-state and first team all-metro during that time span

» Reached the 1,000-point career milestone in 2021

» Was up for an ESPY award for her game-winning half-court shot to win the 5A title

»Majoring in business administration

TOP PERFORMANCES

Points	Season	
	MW	
	Career	
FGM	Season	
	MW	
	Career	
FGA	Season	1, 3x
	MW	
	Career	1, 3x
3PT FGM	Season	
	MW	
	Career	
3PT FGA	Season	1, 3x
	MW	
	Career	1, 3x
FTM	Season	
	MW	
	Career	
FTA	Season	
	MW	
	Career	
Reb.	Season	
	MW	
	Career	
Asts.	Season	1, 2x
	MW	
	Career	1, 2x
Blocks	Season	
	MW	
	Career	
Steals	Season	1, New Mexico St. (12/2)
	MW	
	Career	1, New Mexico St. (12/2)
TO	Season	0, 3x
	MW	
	Career	0, 3x
Min.	Season	6, New Mexico St. (12/2)
	MW	
	Career	6, New Mexico St. (12/2)

GAME-BY-GAME STATISTICS

Opponent	Date	GS	MIN	Total		3-Pointers		Free throws		Rebounds										
				FG-FGA	PCT	3FG-3FGA	PCT	FT-FTA	PCT	OFF	DEF	TOT	AVG	PF	A	TO	BLK	STL	PTS	AVG
Texas Southern	11/06/2023		03:02	0-1	.000	0-1	.000	0-0	.000	0	0	0	0.0	0	0	0	0	0	0	0.0
Tex. A&M-Commerce	11/15/2023		04:46	0-0	.000	0-0	.000	0-0	.000	0	0	0	0.0	0	0	0	0	0	0	0.0
vs Montana St.	11/23/2023		03:12	0-1	.000	0-1	.000	0-0	.000	0	0	0	0.0	0	1	1	0	0	0	0.0
New Mexico St.	12/02/2023		06:40	0-0	.000	0-0	.000	0-0	.000	0	0	0	0.0	0	0	0	0	1	0	0.0
Mississippi Val.	12/04/2023		05:55	0-1	.000	0-1	.000	0-0	.000	0	0	0	0.0	0	1	1	0	0	0	0.0
Totals		0	23:35	0-3	.000	0-3	.000	0-0	.000	0	0	0	0.0	0	2	2	0	1	0	0.0

PRODUCTION TRACKER

2023-24 Career

Double-Double
Scored 10+ pts
Scored 20+ pts
10+ reb
3+ 3-pt

CAREER STATISTICS

				Field Goals		3-Point		F-Throws		Rebounds									Scoring	
SEASON	TEAM	GP-GS	MIN/AVG	FG-FGA	FG%	3FG-3FGA	3FG%	FT-FTA	FT%	OFF	DEF	TOT	AVG	PF-FO	A	TO	BLK	STL	PTS	AVG
2023-24	UNM	5-0	24/4.7	0-3	.000	0-3	.000	0-0	.000	0	0	0	0.0	0-0	2	2	0	1	0	0.0
TOTAL		5-0	24/4.7	0-3	.000	0-3	.000	0-0	.000	0	0	0	0.0	0-0	2	2	0	1	0	0.0

#3

NYAH WILSON

G | 5-8 | JR | Dallas, Texas (Syracuse)



PPG	FG %	3PT %	FT %	RPG	APG	SPG	BPG	MPG
15.2	.373	.345	.796	4.2	1.2	0.8	0.0	30.3

NOTEWORTHY

- » Appeared in 20 games as a sophomore and 20 games with one start as a freshman at Syracuse
- » Graduated from Duncanville High School and was a four-star recruit by ESPN HoopGurlz, a McDonald’s All-America nominee and was on the Terrific 25 rankings as a sophomore
- » Liberal arts major

GAME-BY-GAME STATISTICS

Opponent	Date	GS	MIN	Total		3-Pointers		Free throws		Rebounds				PF	A	TO	BLK	STL	PTS	AVG
				FG-FGA	PCT	3FG-3FGA	PCT	FT-FTA	PCT	OFF	DEF	TOT	AVG							
Texas Southern	11/06/2023	*	32:08	5-8	.625	4-4	1.000	6-7	.857	1	3	4	4.0	2	3	3	0	1	20	20.0
at Pepperdine	11/09/2023	*	29:20	3-10	.300	0-2	.000	2-2	1.000	0	3	3	3.5	4	2	1	0	0	8	14.0
Tarleton St.	11/12/2023	*	33:25	4-11	.364	0-1	.000	8-9	.889	0	9	9	5.3	1	2	1	0	0	16	14.7
Tex. A&M-Commerce	11/15/2023	*	27:42	9-13	.692	1-1	1.000	3-7	.429	0	2	2	4.5	3	0	5	0	0	22	16.5
vs Montana St.	11/23/2023	*	20:43	2-9	.222	0-2	.000	2-3	.667	1	1	2	4.0	4	1	0	0	2	6	14.4
vs Georgia Tech	11/24/2023	*	34:56	4-16	.250	0-3	.000	9-10	.900	0	3	3	3.8	2	0	1	0	1	17	14.8
Eastern Ill.	11/28/2023	*	40:08	7-20	.350	1-5	.200	6-6	1.000	3	4	7	4.3	2	1	2	0	1	21	15.7
New Mexico St.	12/02/2023	*	24:19	5-15	.333	1-2	.500	2-3	.667	1	2	3	4.1	4	0	3	0	1	13	15.4
Mississippi Val.	12/04/2023	*	29:58	5-16	.313	3-9	.333	1-2	.500	1	4	5	4.2	1	2	3	0	1	14	15.2
Totals		9	272:39	44-118	.373	10-29	.345	39-49	.796	7	31	38	4.2	23	11	19	0	7	137	15.2

TOP PERFORMANCES

Points	Season MW	22, Texas A&M-Com.(11/15)
	Career	22, Texas A&M-Com.(11/15)
FGM	Season MW	9, Texas A&M-Com. (11/15)
	Career	9, Texas A&M-Com. (11/15)
FGA	Season MW	20, Eastern Illinois (11/28)
	Career	20, Eastern Illinois (11/28)
3PT FGM	Season MW	4, Texas Southern (11/6)
	Career	4, Texas Southern (11/6)
3PT FGA	Season MW	9, Mississippi Valley (12/4)
	Career	9, Mississippi Valley (12/4)
FTM	Season MW	9, Georgia Tech (11/24)
	Career	9, Georgia Tech (11/24)
FTA	Season MW	10, Georgia Tech (11/24)
	Career	10, Georgia Tech (11/24)
Reb.	Season MW	9, Tarleton St. (11/12)
	Career	9, Tarleton St. (11/12)
Asts.	Season MW	3, Texas Southern (11/6)
	Career	4, Cornell (12/8/21)
Blocks	Season MW	
	Career	
Steals	Season MW	2, Montana State (11/23)
	Career	2, done 3x
TO	Season MW	0, Montana State (11/23)
	Career	0, done 27x
Min.	Season MW	40, Eastern Illinois (11/28)
	Career	40, Eastern Illinois (11/28)

PRODUCTION TRACKER

2023-24 Career

Double-Double		
Scored 10+ pts	7	7
Scored 20+ pts	3	3
10+ reb		
3+ 3-pt	2	2

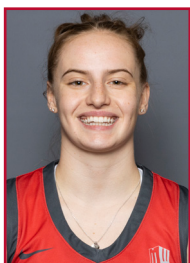
CAREER STATISTICS

				Field Goals		3-Point		F-Throws		Rebounds				Scoring						
SEASON	TEAM	GP-GS	MIN/AVG	FG-FGA	FG%	3FG-3FGA	3FG%	FT-FTA	FT%	OFF	DEF	TOT	AVG	PF-FO	A	TO	BLK	STL	PTS	AVG
2021-22	SU	20-1	179/9.0	16-46	.348	1-9	.111	3-9	.333	3	9	12	0.6	16-0	16	13	0	7	36	1.8
2022-23	SU	20-0	115/5.7	12-22	.545	0-2	.000	8-11	.727	4	12	16	0.8	12-0	8	9	0	7	32	1.6
2023-24	UNM	9-9	273/30.3	44-118	.373	10-29	.345	39-49	.796	7	31	38	4.2	23-0	11	19	0	7	137	15.2
TOTAL FOR UNM		9-9	273/30.3	44-118	.373	10-29	.345	39-49	.796	7	31	38	4.2	23-0	11	19	0	7	137	15.2
TOTAL		49-10	567/11.6	72-186	.387	11-40	.275	50-69	.725	14	52	66	1.3	51-0	35	41	0	21	205	4.2

#4

GIANNA MCMANAMAN

PG | 5-7 | FR | Chapel Hill, N.C. (Northwood HS)



PPG	FG %	3PT %	FT %	RPG	APG	SPG	BPG	MPG
--	--	--	--	--	--	--	--	--

NOTEWORTHY

- » Won conference championships in 2019-20, 2020-21 and 2021-22 and won a state championship in 2021-22
- » Averaged 12 ppg, 5 apg, 4 rpg and shot 43 percent from three-point range in high school
- » Is the fourth member of her family to attend UNM, joining her mother (Lia McManaman), grandfather (Robert Sanchez), grandmother (Bonnie Sanchez)
- » Majoring in exercise science

GAME-BY-GAME STATISTICS

TOP PERFORMANCES

Points	Season MW Career
FGM	Season MW Career
FGA	Season MW Career
3PT FGM	Season MW Career
3PT FGA	Season MW Career
FTM	Season MW Career
FTA	Season MW Career
Reb.	Season MW Career
Asts.	Season MW Career
Blocks	Season MW Career
Steals	Season MW Career
TO	Season MW Career
Min.	Season MW Career

PRODUCTION TRACKER

2023-24 Career

Double-Double
Scored 10+ pts
Scored 20+ pts
10+ reb
3+ 3-pt

CAREER STATISTICS

#5

LARA LANGERMANN

G | 5-7 | FR | Breckerfeld, Germany (Theodor-Heuss-Gymnasium Hagen)



PPG	FG %	3PT %	FT %	RPG	APG	SPG	BPG	MPG
2.6	.250	.208	.500	1.4	0.9	0.3	0.0	18.2

NOTEWORTHY

- » Recently played for the U18 and U20 German National Team over the summer.
- » Played for VfL Viactiv AstroLadies Bochum, a Division 2 team in the Damen Basketballbundesliga, the BasketGirls Ruhr in the Weibliche Nachwuchsbundesliga (WNBL), a first German under 18 league, and for VfL Viactiv AstroLadies Bochum in the Damen Basketballbundesliga, as well as Herner TC.
- » Majoring in exercise science

TOP PERFORMANCES

Points	Season	9, Pepperdine (11/9)
	MW	
	Career	9, Pepperdine (11/9)
FGM	Season	3, Pepperdine (11/9)
	MW	
	Career	3, Pepperdine (11/9)
FGA	Season	7, 2x
	MW	
	Career	7, 2x
3PT FGM	Season	2, 2x
	MW	
	Career	2, 2x
3PT FGA	Season	6, Mississippi Valley (12/4)
	MW	
	Career	6, Mississippi Valley (12/4)
FTM	Season	1, 2x
	MW	
	Career	1, 2x
FTA	Season	3, Pepperdine (11/9)
	MW	
	Career	3, Pepperdine (11/9)
Reb.	Season	3, 2x
	MW	
	Career	3, 2x
Asts.	Season	3, Mississippi Valley (12/4)
	MW	
	Career	3, Mississippi Valley (12/4)
Blocks	Season	
	MW	
	Career	
Steals	Season	1, 3x
	MW	
	Career	1, 3x
TO	Season	0, 5x
	MW	
	Career	0, 5x
Min. MW	Season	32, New Mexico St. (12/2)
	Career	32, New Mexico St. (12/2)

GAME-BY-GAME STATISTICS

Opponent	Date	GS	MIN	Total		3-Pointers		Free throws		Rebounds										
				FG-FGA	PCT	3FG-3FGA	PCT	FT-FTA	PCT	OFF	DEF	TOT	AVG	PF	A	TO	BLK	STL	PTS	AVG
Texas Southern	11/06/2023		12:36	0-1	.000	0-1	.000	0-0	.000	0	1	1	1.0	1	0	3	0	1	0	0.0
at Pepperdine	11/09/2023		22:29	3-6	.500	2-4	.500	1-3	.333	0	3	3	2.0	1	2	0	0	1	9	4.5
Tarleton St.	11/12/2023		19:02	0-3	.000	0-2	.000	0-0	.000	1	1	2	2.0	1	0	0	0	0	0	3.0
Tex. A&M-Commerce	11/15/2023		14:53	1-2	.500	1-1	1.000	0-0	.000	0	1	1	1.8	3	1	3	0	0	3	3.0
vs Montana St.	11/23/2023		24:12	1-6	.167	0-5	.000	1-1	1.000	0	1	1	1.6	0	1	2	0	0	3	3.0
vs Georgia Tech	11/24/2023		00:35	0-0	.000	0-0	.000	0-0	.000	0	0	0	1.3	0	0	0	0	0	0	2.5
Eastern Ill.	11/28/2023		06:44	0-0	.000	0-0	.000	0-0	.000	0	0	0	1.1	0	0	0	0	0	0	2.1
New Mexico St.	12/02/2023		32:18	2-7	.286	2-5	.400	0-0	.000	0	2	2	1.3	1	1	0	0	0	6	2.6
Mississippi Val.	12/04/2023	*	31:11	1-7	.143	0-6	.000	0-0	.000	0	3	3	1.4	2	3	1	0	1	2	2.6
Totals		1	164:00	8-32	.250	5-24	.208	2-4	.500	1	12	13	1.4	9	8	9	0	3	23	2.6

PRODUCTION TRACKER

2023-24 Career

- Double-Double
- Scored 10+ pts
- Scored 20+ pts
- 10+ reb
- 3+ 3-pt

CAREER STATISTICS

				Field Goals		3-Point		F-Throws		Rebounds								Scoring		
SEASON	TEAM	GP-GS	MIN/AVG	FG-FGA	FG%	3FG-3FGA	3FG%	FT-FTA	FT%	OFF	DEF	TOT	AVG	PF-FO	A	TO	BLK	STL	PTS	AVG
2023-24	UNM	9-1	164/18.2	8-32	.250	5-24	.208	2-4	.500	1	12	13	1.4	9-0	8	9	0	3	23	2.6
TOTAL		9-1	164/18.2	8-32	.250	5-24	.208	2-4	.500	1	12	13	1.4	9-0	8	9	0	3	23	2.6



PARIS LAURO

F | 6-1 | FR | Dallas, Texas (Highland Park HS)



PPG	FG %	3PT %	FT %	RPG	APG	SPG	BPG	MPG
0.7	1.000	--	--	0.7	0.0	0.0	0.0	1.9

NOTEWORTHY

» Averaged 17.3 ppg, 8.3 rpg, 2.0 bpg her junior season and 23.6 ppg, 8.0 rpg and 1.8 bpg and was named the District 7-6A Most Valuable Player her senior season.

» Named to the TABC 5A All-Region Team, named Offensive Player of the Year for District 13-5A and earned academic all-district her junior year

» Majoring in exercise science

GAME-BY-GAME STATISTICS

Opponent	Date	GS	MIN	Total		3-Pointers		Free throws		Rebounds				PF				PTS	
				FG-FGA	PCT	3FG-3FGA	PCT	FT-FTA	PCT	OFF	DEF	TOT	AVG	PF	A	TO	BLK	STL	PTS
Texas Southern	11/06/2023		01:25	0-0	.000	0-0	.000	0-0	.000	0	0	0	0.0	1	0	0	0	0	0.0
vs Montana St.	11/23/2023		01:30	0-0	.000	0-0	.000	0-0	.000	0	0	0	0.0	0	0	0	0	0	0.0
Mississippi Val.	12/04/2023		02:45	1-1	1.000	0-0	.000	0-0	.000	0	2	2	0.7	1	0	0	0	0	2
Totals		0	05:40	1-1	1.000	0-0	.000	0-0	.000	0	2	2	0.7	2	0	0	0	0	2

TOP PERFORMANCES

Points	Season	2, Mississippi Valley (12/4)
	MW	
	Career	2, Mississippi Valley (12/4)
FGM	Season	1, Mississippi Valley (12/4)
	MW	
	Career	1, Mississippi Valley (12/4)
FGA	Season	1, Mississippi Valley (12/4)
	MW	
	Career	1, Mississippi Valley (12/4)
3PT FGM	Season	
	MW	
	Career	
3PT FGA	Season	
	MW	
	Career	
FTM	Season	
	MW	
	Career	
FTA	Season	
	MW	
	Career	
Reb.	Season	2, Mississippi Valley (12/4)
	MW	
	Career	2, Mississippi Valley (12/4)
Asts.	Season	
	MW	
	Career	
Blocks	Season	
	MW	
	Career	
Steals	Season	
	MW	
	Career	
TO	Season	0, 3x
	MW	
	Career	0, 3x
Min.	Season	2 Mississippi Valley (12/4)
	MW	
	Career	2, Mississippi Valley (12/4)

PRODUCTION TRACKER

2023-24 Career

Double-Double
Scored 10+ pts
Scored 20+ pts
10+ reb
3+ 3-pt

CAREER STATISTICS

				Field Goals		3-Point		F-Throws		Rebounds										Scoring	
SEASON	TEAM	GP-GS	MIN/AVG	FG-FGA	FG%	3FG-3FGA	3FG%	FT-FTA	FT%	OFF	DEF	TOT	AVG	PF-FO	A	TO	BLK	STL	PTS	AVG	
2023-24	UNM	3-0	6/1.9	1-1	1.000	0-0	.000	0-0	.000	0	2	2	0.7	2-0	0	0	0	0	2	0.7	
TOTAL		3-0	6/1.9	1-1	1.000	0-0	.000	0-0	.000	0	2	2	0.7	2-0	0	0	0	0	2	0.7	

#12

ANIYAH AUGMON
G | 5-8 | JR | San José, Calif. (Woodside Priory School)



PPG	FG %	3PT %	FT %	RPG	APG	SPG	BPG	MPG
11.8	.396	.125	.613	5.6	4.0	2.8	0.4	33.3

NOTEWORTHY

- » 8 steals at Pepperdine tied for the second most by a Lobo in program history, which was last done on Feb. 8, 1998.
- » 18 games with multiple steals and 36 games with a steal in her 3 years
- » Averaged 21.2 minutes per game, 7.1 points per game, 4.4 rebounds per game, 1.9 assists per game, 0.7 steals per game, 0.2 blocks per game and shot 44.0% from the floor last season
- » Scored in double figures in 8 conference games
- » Career-high 18 points against UNLV after having a then-career-high 11 against Nevada
- » Perfect 3-3 from three at UNLV, perfect 6-6 from free-throw line against Boise State
- » First career double-double at UNLV with a team-high 18 points and team-high 10 rebounds. Second came at Utah State with 12 points and career-high 13 rebounds and third came at Air Force with team-high 17 points and team-high 11 rebounds
- » 10 or more rebounds in 4 games
- » Played in 33 games with 1 start (at Houston) as a freshman
- » Liberal arts major

GAME-BY-GAME STATISTICS

Opponent	Date	GS	MIN	Total		3-Pointers		Free throws		Rebounds				PF	A	TO	BLK	STL	PTS	AVG
				FG-FGA	PCT	3FG-3FGA	PCT	FT-FTA	PCT	OFF	DEF	TOT	AVG							
Texas Southern	11/06/2023	*	30:37	7-11	.636	1-2	.500	2-2	1.000	0	6	6	6.0	0	6	5	0	0	17	17.0
at Pepperdine	11/09/2023	*	36:40	7-17	.412	0-3	.000	2-4	.500	1	8	9	7.5	2	3	4	0	8	16	16.5
Tarleton St.	11/12/2023	*	26:47	1-6	.167	0-1	.000	0-0	.000	0	3	3	6.0	3	5	3	1	3	2	11.7
Tex. A&M-Commerce	11/15/2023	*	35:35	6-11	.545	0-1	.000	4-4	1.000	2	2	4	5.5	2	2	5	0	0	16	12.8
vs Montana St.	11/23/2023	*	36:27	5-11	.455	0-1	.000	1-2	.500	2	4	6	5.6	1	5	6	0	2	11	12.4
vs Georgia Tech	11/24/2023	*	33:02	6-16	.375	0-4	.000	5-8	.625	0	4	4	5.3	2	4	6	0	4	17	13.2
Eastern Ill.	11/28/2023	*	44:10	4-16	.250	1-5	.200	1-2	.500	3	5	8	5.7	1	6	6	2	3	10	12.7
New Mexico St.	12/02/2023	*	34:12	3-10	.300	0-3	.000	4-5	.800	2	4	6	5.8	2	3	5	0	5	10	12.4
Mississippi Val.	12/04/2023	*	22:13	3-8	.375	1-4	.250	0-4	.000	2	2	4	5.6	2	2	1	1	0	7	11.8
Totals		9	299:43	42-106	.396	3-24	.125	19-31	.613	12	38	50	5.6	15	36	41	4	25	106	11.8

TOP PERFORMANCES

Points	Season	17, 2x
	MW	18, UNLV (1/14/23)
	Career	18, UNLV (1/14/23)
FGM	Season	7, 2x
	MW	7, San Diego St. (2/4/23)
	Career	7, 3x
FGA	Season	17, Pepperdine (11/9)
	MW	13, Colorado St. (1/26/23)
	Career	17, Pepperdine (11/9)
3PT FGM	Season	1, 3x
	MW	3, UNLV (1/14/23)
	Career	3, UNLV (1/14/23)
3PT FGA	Season	5, Eastern Illinois (11/28)
	MW	4, Colorado St. (1/26/23)
	Career	5, Eastern Illinois (11/28)
FTM	Season	5, Georgia Tech (11/24)
	MW	8, Nevada (2/11/23)
	Career	8, Nevada (2/11/23)
FTA	Season	8, Georgia Tech (11/24)
	MW	10, Air Force (2/23/23)
	Career	10, Air Force (2/23/23)
Reb.	Season	9, Pepperdine (11/9)
	MW	13, Utah State (1/28/23)
	Career	13, Utah State (1/28/23)
Asts.	Season	6, 2x
	MW	5, Wyoming (1/5/23)
	Career	6, 2x
Blocks	Season	2, Eastern Illinois (11/28)
	MW	1, 5x
	Career	2, Eastern Illinois (11/28)
Steals	Season	8, Pepperdine (11/9)
	MW	3, Air Force (2/23/23)
	Career	8, Pepperdine (11/9)
TO	Season	1, Mississippi Valley (12/4)
	MW	0, 13x
	Career	0, done 15x
Min.	Season	44, Eastern Illinois (11/28)
	MW	30, 2x
	Career	44, Eastern Illinois (11/28)

PRODUCTION TRACKER

2023-24 Career

Double-Double	3
Scored 10+ pts	7
Scored 20+ pts	
10+ reb	5
3+ 3-pt	1

CAREER STATISTICS

				Field Goals		3-Point		F-Throws		Rebounds											Scoring	
SEASON	TEAM	GP-GS	MIN/AVG	FG-FGA	FG%	3FG-3FGA	3FG%	FT-FTA	FT%	OFF	DEF	TOT	AVG	PF-FO	A	TO	BLK	STL	PTS	AVG		
2021-22	UNM	33-1	312/9.5	15-35	.429	1-9	.111	15-23	.652	17	46	63	1.9	31-0	21	27	1	24	46	1.4		
2022-23	UNM	31-2	657/21.2	77-175	.440	11-37	.297	54-77	.701	49	86	135	4.4	63-1	60	74	6	23	219	7.1		
2023-24	UNM	9-9	300/33.3	42-106	.396	3-24	.125	19-31	.613	12	38	50	5.6	15-0	36	41	4	25	106	11.8		
TOTAL		73-12	1269/17.4	134-316	.424	15-70	.214	88-131	.672	78	170	248	3.4	109-1	117	142	11	72	371	5.1		

#14

HULDA JOAQUIM

F | 6-1 | SR | Maputo, Mozambique (Seward County CC)



PPG	FG %	3PT %	FT %	RPG	APG	SPG	BPG	MPG
1.9	.333	--	.600	4.3	0.6	0.2	0.0	13.5

NOTEWORTHY

- » Second season with the Lobos
- » Averaged 6.2 minutes per game, 2.2 points per game, 1.4 rebounds per game, 0.3 steals per game and 0.5 blocks per game last season, playing in 13 games.
- » Scored a season-high nine points against Western New Mexico, while also having season-high three steals, two blocks and six rebounds
- » Majoring in business administration

TOP PERFORMANCES

Points	Season	6, Tarleton St. (11/12)
	MW	5, Utah State (2/25/23)
	Career	9, Western N.M. (11/22/22)
FGM	Season	3, Tarleton St. (11/12)
	MW	2, Utah State (2/25/23)
	Career	4, Western N.M. (11/22/22)
FGA	Season	4, 3x
	MW	5, Utah State (2/25/23)
	Career	9, Western N.M. (11/22/22)
3PT FGM	Season	1, Utah State (2/25/23)
	MW	1, 2x
3PT FGA	Season	2, Utah State (2/25/23)
	MW	2, Utah State (2/25/23)
	Career	2, Utah State (2/25/23)
FTM	Season	2, Eastern Illinois (11/28)
	MW	1, UNLV (1/14/23)
	Career	2, 2x
FTA	Season	3, Montana State (11/23)
	MW	2, UNLV (1/14/23)
	Career	3, Montana State (11/23)
Reb.	Season	7, New Mexico St. (12/2)
	MW	3, 2x
	Career	7, New Mexico St. (12/2)
Asts.	Season	2, 2x
	MW	1, 2x
	Career	2, 2x
Blocks	Season	2, Utah State (2/25/23)
	MW	2, 2x
	Career	2, 2x
Steals	Season	1, Texas Southern (11/6)
	MW	1, UNLV (1/14/23)
	Career	3, Western N.M. (11/22/22)
TO	Season	0, 6x
	MW	0, 6x
	Career	0, 17x
Min.	Season	23, Tarleton St. (11/12)
	MW	12, Utah State (2/25/23)
	Career	23, Tarleton St. (11/12)

GAME-BY-GAME STATISTICS

Opponent	Date	GS	MIN	Total		3-Pointers		Free throws		Rebounds				PF				PTS		AVG
				FG-FGA	PCT	3FG-3FGA	PCT	FT-FTA	PCT	OFF	DEF	TOT	AVG	PF	FO	A	TO	BLK	STL	
Texas Southern	11/06/2023		09:30	1-4	.250	0-0	.000	0-0	.000	3	2	5	5.0	0	0	1	0	1	2	2.0
at Pepperdine	11/09/2023		13:29	2-3	.667	0-0	.000	0-0	.000	2	0	2	3.5	1	0	0	0	0	4	3.0
Tarleton St.	11/12/2023		23:11	3-4	.750	0-0	.000	0-0	.000	3	3	6	4.3	2	2	2	0	0	6	4.0
Tex. A&M-Commerce	11/15/2023		07:49	0-0	.000	0-0	.000	0-0	.000	1	2	3	4.0	0	0	0	0	0	0	3.0
vs Montana St.	11/23/2023		14:04	0-0	.000	0-0	.000	1-3	.333	2	1	3	3.8	0	0	0	0	1	1	2.6
vs Georgia Tech	11/24/2023		15:17	0-1	.000	0-0	.000	0-0	.000	2	2	4	3.8	0	0	0	0	0	0	2.2
Eastern Ill.	11/28/2023		13:56	0-2	.000	0-0	.000	2-2	1.000	1	2	3	3.7	2	0	1	0	0	2	2.1
New Mexico St.	12/02/2023		13:17	1-3	.333	0-0	.000	0-0	.000	3	4	7	4.1	2	1	0	0	0	2	2.1
Mississippi Val.	12/04/2023		11:06	0-4	.000	0-0	.000	0-0	.000	3	3	6	4.3	0	2	0	0	0	0	1.9
Totals		0	121:39	7-21	.333	0-0	.000	3-5	.600	20	19	39	4.3	7	5	4	0	2	17	1.9

PRODUCTION TRACKER

2023-24 Career

Double-Double
Scored 10+ pts
Scored 20+ pts
10+ reb
3+ 3-pt

CAREER STATISTICS

				Field Goals		3-Point		F-Throws		Rebounds								Scoring			
SEASON	TEAM	GP-GS	MIN	AVG	FG-FGA	FG%	3FG-3FGA	3FG%	FT-FTA	FT%	OFF	DEF	TOT	AVG	PF-FO	A	TO	BLK	STL	PTS	AVG
2022-23	UNM	13-0	80	6.2	11-26	.423	2-6	.333	4-6	.667	9	9	18	1.4	2-0	3	3	6	4	28	2.2
2023-24	UNM	9-0	122	13.5	7-21	.333	0-0	.000	3-5	.600	20	19	39	4.3	7-0	5	4	0	2	17	1.9
TOTAL		22-0	202	9.2	18-47	.383	2-6	.333	7-11	.636	29	28	57	2.6	9-0	8	7	6	6	45	2.0

#15

JAELYN BATES

PG | 5-7 | SO | Albuquerque, N.M. (Volcano Vista HS)



PPG	FG %	3PT %	FT %	RPG	APG	SPG	BPG	MPG
4.0	.429	.400	--	0.0	1.0	1.0	0.0	9.1

NOTEWORTHY

- » Averaged 10.1 minutes per game, 3.1 points per game, 1.3 assists per game, 0.4 steals per game, playing in 22 games last season
- » Scored in double figures in 4 games last season
- » Perfect 4-4 from 3 against S. Carolina State
- » 7 games with multiple assists, 8 games with at least 1 steal
- » Won back-to-back District 1-5A championships and won the 2019 and 2020 1-5A District tournament
- » Named first team all-district, first team all-metro, second team all-state, was named the District Tournament Player of the Game, District 1-5A Player of the Year and was named the Volcano Vista Winter Sports Female Athlete of the Year in 2019
- » Biochemistry major

GAME-BY-GAME STATISTICS

Opponent	Date	GS	MIN	Total		3-Pointers		Free throws		Rebounds											
				FG-FGA	PCT	3FG-3FGA	PCT	FT-FTA	PCT	OFF	DEF	TOT	AVG	PF	A	TO	BLK	STL	PTS	AVG	
vs Montana St.	11/23/2023		03:33	1-1	1.000	1-1	1.000	0-0	.000	0	0	0	0.0	1	0	1	0	0	3	3.0	
Mississippi Val.	12/04/2023		14:37	2-6	.333	1-4	.250	0-0	.000	0	0	0	0.0	2	2	1	0	2	5	4.0	
Totals		0	18:10	3-7	.429	2-5	.400	0-0	.000	0	0	0	0.0	3	2	2	0	2	8	4.0	

TOP PERFORMANCES

Points	Season	5, Mississippi Valley (12/4)
	MW	11, Utah State (2/25/23)
	Career	16, SCSU (12/29/22)
FGM	Season	2, Mississippi Valley (12/4)
	MW	4, Utah State (2/25/23)
	Career	6, SCSU (12/29/22)
FGA	Season	6, Mississippi Valley (12/4)
	MW	6, Utah State (2/25/23)
	Career	15, Southern Utah (11/7/23)
3PT FGM	Season	1, 2x
	MW	3, Utah State (2/25/23)
	Career	4, SCSU (12/29/22)
3PT FGA	Season	4, Mississippi Valley (12/4)
	MW	5, Utah State (2/25/23)
	Career	9, Southern Utah (11/7/23)
FTM	Season	
	MW	1, UNLV (1/14/23)
	Career	1, 2x
FTA	Season	
	MW	2, 2x
	Career	2, 3x
Reb.	Season	
	MW	3, UNLV (1/14/23)
	Career	5, Western N.M. (11/22/22)
Asts.	Season	2, Mississippi Valley (12/4)
	MW	3, 2x
	Career	8, Western N.M. (11/22/22)
Blocks	Season	
	MW	2, Utah State (2/25/23)
	Career	2, Utah State (2/25/23)
Steals	Season	2, Mississippi Valley (12/4)
	MW	1, 2x
	Career	2, 2x
TO	Season	1, 2x
	MW	
	Career	0, 9x
Min.	Season	14, Mississippi Valley (12/4)
	MW	17, Wyoming (1/5/23)
	Career	33, Western N.M.(11/22/22)

PRODUCTION TRACKER

2023-24 Career

Double-Double	
Scored 10+ pts	4
Scored 20+ pts	
10+ reb	
3+ 3-pt	2

CAREER STATISTICS

				Field Goals		3-Point		F-Throws		Rebounds									Scoring	
SEASON	TEAM	GP-GS	MIN/AVG	FG-FGA	FG%	3FG-3FGA	3FG%	FT-FTA	FT%	OFF	DEF	TOT	AVG	PF-FO	A	TO	BLK	STL	PTS	AVG
2022-23	UNM	22-1	222/10.1	27-67	.403	13-41	.317	2-7	.286	1	19	20	0.9	15-0	29	21	3	9	69	3.1
2023-24	UNM	2-0	18/9.1	3-7	.429	2-5	.400	0-0	.000	0	0	0	0.0	3-0	2	2	0	2	8	4.0
TOTAL		24-1	240/10.0	30-74	.405	15-46	.326	2-7	.286	1	19	20	0.8	18-0	31	23	3	11	77	3.2

#21 MACKENZIE CURTIS

G | 5-9 | R-SO | Lakeside, Calif. (El Capitan HS)



PPG	FG %	3PT %	FT %	RPG	APG	SPG	BPG	MPG
1.0	--	--	1.000	0.5	0.0	0.0	0.5	5.5

NOTEWORTHY

REDSHIRTED LAST SEASON

- » Finished in double figures in first college appearance
- » Played in 21 games, and averaged 5.9 minutes per game freshman season.
- » Scored in six games with a season-high 12 points and two assists against Northern New Mexico with season-high three, three-pointers
- » Averaged 22.2 points, 9.5 rebounds, 3.3 assists, 3.5 steals and 1.0 blocks per game in high school
- » Four-time team MVP, three-time league MVP, four-time San Diego Union Tribune Scholar-Athlete
- » Named First-Team All-CIF in 2020 and Second Team All-CIF in 2019
- » No. 1 scorer in San Diego for two years and No. 3 in California for scoring in the class of 2021
- » Education major

GAME-BY-GAME STATISTICS

Opponent	Date	GS	MIN	Total		3-Pointers		Free throws		Rebounds											
				FG-FGA	PCT	3FG-3FGA	PCT	FT-FTA	PCT	OFF	DEF	TOT	AVG	PF	A	TO	BLK	STL	PTS	AVG	
vs Georgia Tech	11/24/2023		05:44	0-0	.000	0-0	.000	0-0	.000	0	0	0	0.0	1	0	0	0	0	0.0		
Mississippi Val.	12/04/2023		05:21	0-0	.000	0-0	.000	2-2	1.000	0	1	1	0.5	0	0	1	1	0	2 1.0		
Totals		0	11:05	0-0	.000	0-0	.000	2-2	1.000	0	1	1	0.5	1	0	1	1	0	2 1.0		

TOP PERFORMANCES

Points	Season	2, Mississippi Valley (12/4)
	MW	3, Utah State (2/16/22)
	Career	12, N. N.M. (11/12/21)
FGM	Season	
	MW	1, 2x
	Career	3, N. N.M. (11/12/21)
FGA	Season	
	MW	4, Boise State (2/19/22)
	Career	10, N. N.M. (11/12/21)
3PT FGM	Season	
	MW	1, Utah State (2/16/22)
	Career	3, N. N.M. (11/12/21)
3PT FGA	Season	
	MW	2, Utah State (2/16/22)
	Career	7, N. N.M. (11/12/21)
FTM	Season	2, Mississippi Valley (12/4)
	MW	2, Utah State (2/16/22)
	Career	3, N. N.M. (11/12/21)
FTA	Season	2, Mississippi Valley (12/4)
	MW	2, Utah State (2/16/22)
	Career	4, N. N.M. (11/12/21)
Reb.	Season	1, Mississippi Valley (12/4)
	MW	1, 3x
	Career	3, 2x
Asts.	Season	
	MW	1, 3x
	Career	2, N. N.M. (11/12/21)
Blocks	Season	1, Mississippi Valley (12/4)
	MW	
	Career	1, Mississippi Valley (12/4)
Steals	Season	
	MW	1, Utah State (1/6/22)
	Career	1, Utah State (1/6/22)
TO	Season	0, Georgia Tech (11/24)
	MW	0, 11x
	Career	0, 13x
Min.	Season	5, 2x
	MW	11, Colorado St. (1/15/22)
	Career	19, N. N.M. (11/12/21)

PRODUCTION TRACKER

2023-24 Career

Double-Double	
Scored 10+ pts	1
Scored 20+ pts	
10+ reb	
3+ 3-pt	1

CAREER STATISTICS

				Field Goals		3-Point		F-Throws		Rebounds										Scoring	
SEASON	TEAM	GP-GS	MIN/AVG	FG-FGA	FG%	3FG-3FGA	3FG%	FT-FTA	FT%	OFF	DEF	TOT	AVG	PF-FO	A	TO	BLK	STL	PTS	AVG	
2021-22	UNM	21-0	123/5.9	7-36	.194	5-25	.200	5-6	.833	1	9	10	0.5	16-0	6	7	0	1	24	1.1	
2023-24	UNM	2-0	11/5.5	0-0	.000	0-0	.000	2-2	1.000	0	1	1	0.5	1-0	0	1	1	0	2	1.0	
TOTAL		23-0	134/5.8	7-36	.194	5-25	.200	7-8	.875	1	10	11	0.5	17-0	6	8	1	1	26	1.1	

#22

CHARLOTTE KOHL
C | 6-5 | GR | Giessen, Germany (Mississippi State)



PPG	FG %	3PT %	FT %	RPG	APG	SPG	BPG	MPG
9.0	.541	.500	.737	9.9	0.6	0.4	2.3	25.7

NOTEWORTHY

- » First year with the Lobos after graduating from Mississippi State. Has two years of eligibility remaining.
- » First Lobo with 20 rebounds in a game since Nov. 15, 2016 (Richelle van der Keijl (20))
- » First Lobo with multiple 20 rebound games in a season since Carol Moreland (1978)
- » 7 games with a block, 6 games with multiple blocks, 3 games with 4 or more blocks
- » Played in 55 games with 14 starts at MSU
- » Averaged 2.4 points, 3.2 rebounds and 0.8 blocks per game while shooting a team-high .537 from the field her sophomore season.
- » First career double-double was against Arkansas with 10 points and 18 rebounds during her sophomore season.
- » Graduated with a degree in psychology.

GAME-BY-GAME STATISTICS

Opponent	Date	GS	MIN	Total		3-Pointers		Free throws		Rebounds										
				FG-FGA	PCT	3FG-3FGA	PCT	FT-FTA	PCT	OFF	DEF	TOT	AVG	PF	A	TO	BLK	STL	PTS	AVG
Texas Southern	11/06/2023	*	25:51	2-6	.333	0-0	.000	2-2	1.000	3	6	9	9.0	1	1	2	3	1	6	6.0
at Pepperdine	11/09/2023	*	26:31	3-6	.500	0-0	.000	1-2	.500	5	1	6	7.5	3	0	4	0	0	7	6.5
Tarleton St.	11/12/2023	*	15:34	2-4	.500	0-0	.000	2-2	1.000	1	4	5	6.7	4	3	1	0	1	6	6.3
Tex. A&M-Commerce	11/15/2023	*	32:11	6-11	.545	0-1	.000	2-3	.667	10	10	20	10.0	1	1	0	4	0	14	8.3
vs Montana St.	11/23/2023	*	24:39	0-4	.000	0-0	.000	0-0	.000	4	3	7	9.4	5	0	4	2	1	0	6.6
vs Georgia Tech	11/24/2023	*	24:43	4-5	.800	0-0	.000	0-1	.000	0	3	3	8.3	4	0	1	1	1	8	6.8
Eastern Ill.	11/28/2023	*	31:04	3-5	.600	1-1	1.000	2-3	.667	3	3	6	8.0	4	0	0	2	0	9	7.1
New Mexico St.	12/02/2023	*	24:59	6-11	.545	0-0	.000	3-4	.750	7	6	13	8.6	3	0	0	4	0	15	8.1
Mississippi Val.	12/04/2023	*	26:09	7-9	.778	0-0	.000	2-2	1.000	7	13	20	9.9	1	0	1	5	0	16	9.0
Totals		9	231:41	33-61	.541	1-2	.500	14-19	.737	40	49	89	9.9	26	5	13	21	4	81	9.0

TOP PERFORMANCES

Points	Season	16, Mississippi Valley (12/4)
	MW	
FGM	Season	7, Mississippi Valley (12/4)
	MW	
FGA	Season	11, 2x
	MW	
3PT FGM	Season	1, Eastern Illinois (11/28)
	MW	
3PT FGA	Season	1, 2x
	MW	
FTM	Season	3, New Mexico St. (12/2)
	MW	
FTA	Season	4, New Mexico St. (12/2)
	MW	
Reb.	Season	20, 2x
	MW	
Asts.	Season	3, Tarleton St. (11/12)
	MW	
Blocks	Season	5, Mississippi Valley (12/4)
	MW	
Steals	Season	1, 4x
	MW	
TO	Season	0, 3x
	MW	
Min.	Season	32, Texas A&M-Com.(11/15)
	MW	
	Career	16, Mississippi Valley (12/4)
	Career	7, Mississippi Valley (12/4)
	Career	11, 2x
	Career	1, Eastern Illinois (11/28)
	Career	1, 9x
	Career	3, 4x
	Career	5, Florida A&M (12/15/22)
	Career	20, 2x
	Career	3, Tarleton St. (11/12)
	Career	5, Mississippi Valley (12/4)
	Career	2, Ole Miss (2/13/22)
	Career	0, 34x
	Career	34, Kentucky (2/15/22)

PRODUCTION TRACKER

	2023-24	Career
Double-Double	3	4
Scored 10+ pts	3	4
Scored 20+ pts		
10+ reb	3	5
3+ 3-pt		

CAREER STATISTICS

				Field Goals		3-Point		F-Throws		Rebounds										Scoring	
SEASON	TEAM	GP-GS	MIN/AVG	FG-FGA	FG%	3FG-3FGA	3FG%	FT-FTA	FT%	OFF	DEF	TOT	AVG	PF-FO	A	TO	BLK	STL	PTS	AVG	
2020-21	MSU	5-0	27/5.4	1-7	.143	0-2	.000	2-4	.500	3	2	5	1.0	4-0	3	5	1	0	4	0.8	
2021-22	MSU	29-11	396/13.7	29-54	.537	0-5	.000	13-29	.448	45	49	94	3.2	50-1	7	16	23	6	71	2.4	
2022-23	MSU	21-3	138/6.6	10-27	.370	0-0	.000	4-9	.444	6	14	20	1.0	26-0	5	13	6	2	24	1.1	
2023-24	UNM	9-9	232/25.7	33-61	.541	1-2	.500	14-19	.737	40	49	89	9.9	26-1	5	13	21	4	81	9.0	
TOTAL FOR UNM		9-9	232/25.7	33-61	.541	1-2	.500	14-19	.737	40	49	89	9.9	26-1	5	13	21	4	81	9.0	
TOTAL		64-23	793/12.4	73-149	.490	1-9	.111	33-61	.541	94	114	208	3.3	106-2	20	47	51	12	180	2.8	

#30

PAULA REUS

F | 6-1 | JR | Palma de Mallorca, Spain (IES Joaquim Blume)



PPG	FG %	3PT %	FT %	RPG	APG	SPG	BPG	MPG
12.1	.415	.234	.714	6.2	2.2	0.8	0.2	32.5

NOTEWORTHY

» Mountain West All-Freshman Team
» MW Freshman of the Week Jan. 24, 2022 and Feb. 21, 2022

» Played in 33 games with 22 starts and averaged 24.8 minutes per game, 8.0 points per game, 4.3 rebounds per game, 1.8 assists per game, 0.7 steals per game and 0.4 blocks per game last season
» First career double-double against New Mexico State (11 pts, 10 reb.) last season
» 13 games scoring in double figures, at least 1 steal in 17 games, 11 games with at least 1 block, 14 games with multiple assists

» 8 games scoring double figures freshman season
» Team-high 15 points at No. 6 Arizona, making her first seven shots of the game
» At least 1 steal in 17 games, 1 block in 10 games. Multiple steals in 5 games, multiple blocks in 4 games

» Played on the U16 Spanish national team at the U16 FIBA 2019 European Championship, finishing third
» Played for Barça CBS LF2, winning the regular season championship, and qualified for the finals
» Liberal arts major

GAME-BY-GAME STATISTICS

Opponent	Date	GS	MIN	Total		3-Pointers		Free throws		Rebounds				PF	A	TO	BLK	STL	PTS	AVG
				FG-FGA	PCT	3FG-3FGA	PCT	FT-FTA	PCT	OFF	DEF	TOT	AVG							
Texas Southern	11/06/2023	*	27:57	4-9	.444	0-2	.000	1-1	1.000	2	4	6	6.0	1	2	0	0	1	9	9.0
at Pepperdine	11/09/2023	*	36:18	2-11	.182	0-5	.000	0-0	.000	2	5	7	6.5	2	3	3	0	0	4	6.5
Tarleton St.	11/12/2023	*	34:31	7-12	.583	2-5	.400	0-0	.000	0	7	7	6.7	3	1	3	1	2	16	9.7
Tex. A&M-Commerce	11/15/2023	*	35:14	5-14	.357	0-2	.000	1-4	.250	1	7	8	7.0	1	1	3	0	1	11	10.0
vs Montana St.	11/23/2023	*	23:34	4-12	.333	1-6	.167	0-0	.000	1	4	5	6.6	2	3	4	0	0	9	9.8
vs Georgia Tech	11/24/2023	*	28:29	2-9	.222	0-4	.000	0-0	.000	0	4	4	6.2	4	0	1	0	1	4	8.8
Eastern Ill.	11/28/2023	*	41:18	8-15	.533	4-10	.400	5-6	.833	1	2	3	5.7	3	2	1	0	1	25	11.1
New Mexico St.	12/02/2023	*	35:04	6-12	.500	1-5	.200	2-2	1.000	0	8	8	6.0	2	5	2	1	0	15	11.6
Mississippi Val.	12/04/2023	*	29:42	6-12	.500	3-8	.375	1-1	1.000	0	8	8	6.2	0	3	3	0	1	16	12.1
Totals		9	292:07	44-106	.415	11-47	.234	10-14	.714	7	49	56	6.2	18	20	20	2	7	109	12.1

TOP PERFORMANCES

Points	Season	25, Eastern Illinois (11/28)
	MW	19, Fresno St. (1/22/22)
	Career	25, Eastern Illinois (11/28)
FGM	Season	8, Eastern Illinois (11/28)
	MW	8, Fresno St. (1/22/22)
	Career	8, 2x
FGA	Season	15, Eastern Illinois (11/28)
	MW	14, 2x
	Career	15, Eastern Illinois (11/28)
3PT FGM	Season	4, Eastern Illinois (11/28)
	MW	4, Colorado St. (1/15/22)
	Career	5, Texas A&M-C (11/26/22)
3PT FGA	Season	10, Eastern Illinois (11/28)
	MW	10, Colorado St. (1/15/22)
	Career	10, 2x
FTM	Season	5, Eastern Illinois (11/28)
	MW	5, San Diego St. (2/4/23)
	Career	5, 2x
FTA	Season	6, Eastern Illinois (11/28)
	MW	8, San Diego St. (2/4/23)
	Career	8, San Diego St. (2/4/23)
Reb.	Season	8, 3x
	MW	10, Colorado St. (1/7/23)
	Career	10, 2x
Asts.	Season	5, New Mexico St. (12/2)
	MW	4, 2x
	Career	7, Houston (11/20/21)
Blocks	Season	1, 2x
	MW	2, Utah State (2/16/22)
	Career	3, Texas A&M-C (11/26/22)
Steals	Season	2, Tarleton St. (11/12)
	MW	2, 2x
	Career	4, 2x
TO	Season	0, Texas Southern (11/6)
	MW	0, 8x
	Career	0, 16x
Min.	Season	41, Eastern Illinois (11/28)
	MW	32, Wyoming (1/5/23)
	Career	41, Eastern Illinois (11/28)

PRODUCTION TRACKER

2023-24 Career

Double-Double		1
Scored 10+ pts	5	26
Scored 20+ pts	1	1
10+ reb		2
3+ 3-pt	2	5

CAREER STATISTICS

				Field Goals		3-Point		F-Throws		Rebounds										Scoring	
SEASON	TEAM	GP-GS	MIN	AVG	FG-FGA	FG%	3FG-3FGA	3FG%	FT-FTA	FT%	OFF	DEF	TOT	AVG	PF-FO	A	TO	BLK	STL	PTS	AVG
2021-22	UNM	34-2	662	19.5	93-212	.439	18-67	.269	30-37	.811	25	109	134	3.9	48-0	61	51	15	21	234	6.9
2022-23	UNM	33-22	819	24.8	100-223	.448	35-96	.365	28-38	.737	20	121	141	4.3	56-1	60	59	14	24	263	8.0
2023-24	UNM	9-9	292	32.5	44-106	.415	11-47	.234	10-14	.714	7	49	56	6.2	18-0	20	20	2	7	109	12.1
TOTAL		76-33	1773	23.3	237-541	.438	64-210	.305	68-89	.764	52	279	331	4.4	122-1	141	130	31	52	606	8.0

#33

VIANÈ CUMBER

G | 5-10 | JR | Albuquerque, N.M. (Sandia HS)



PPG	FG %	3PT %	FT %	RPG	APG	SPG	BPG	MPG
11.9	.350	.349	.500	5.1	1.1	0.9	0.0	34.0

NOTEWORTHY

- » MW Freshman of the Week Nov. 15, 2021
- » 8 three-pointers against Montana State tied for the third-most in a game in program history and was the seventh time a player historically has made eight or more three-pointers in a game.
- » At least 1 steal in the last 5 games and at least 1 three-pointer 14 in the last 15 games.
- » Played in 33 games with 15 starts, including last 14 games last season
- » Averaged 22.9 minutes per game, 9.2 points per game, 2.9 rebounds per game, 0.9 assists per game, 0.5 steals per game her sophomore season
- » Shot 40.6% from three-point range with 21 games with multiple three-pointers. Includes two games with 6 three-pointers, 10 games with four or more three-pointers
- » Scored in double figures in 16 games with 2 games with 20 or more points
- » 2019-20 and 2020-21 New Mexico Gatorade Girls Basketball Player of the Year
- » Twice named MaxPreps New Mexico High School Girls Basketball Player of the Year
- » Named the best high school basketball player in New Mexico by MaxPreps
- » Averaged 26.5 points, 9.3 rebounds, 2.2 assists and 1.5 steals her senior season and 22.4 points, 10.6 rebounds, 2.5 assists and 3.3 steals as a junior
- » Led her team to a pair of district championships in 2018 and 2019
- » Liberal arts major

GAME-BY-GAME STATISTICS

Opponent	Date	GS	MIN	Total		3-Pointers		Free throws		Rebounds										
				FG-FGA	PCT	3FG-3FGA	PCT	FT-FTA	PCT	OFF	DEF	TOT	AVG	PF	A	TO	BLK	STL	PTS	AVG
Texas Southern	11/06/2023	*	35:44	9-18	.500	4-9	.444	0-0	.000	1	5	6	6.0	2	1	2	0	1	22	22.0
at Pepperdine	11/09/2023	*	35:13	3-11	.273	3-9	.333	0-0	.000	0	2	2	4.0	2	0	0	0	9	15.5	
Tarleton St.	11/12/2023	*	35:19	4-13	.308	3-9	.333	1-2	.500	2	5	7	5.0	2	0	2	0	12	14.3	
Tex. A&M-Commerce	11/15/2023	*	28:47	4-14	.286	1-7	.143	0-2	.000	2	2	4	4.8	2	1	1	0	1	9	13.0
vs Montana St.	11/23/2023	*	36:57	8-17	.471	8-15	.533	0-0	.000	0	3	3	4.4	1	0	0	0	2	24	15.2
vs Georgia Tech	11/24/2023	*	38:33	1-7	.143	1-4	.250	0-0	.000	0	4	4	4.3	0	0	1	0	1	3	13.2
Eastern Ill.	11/28/2023	*	43:24	5-16	.313	2-8	.250	2-2	1.000	1	13	14	5.7	0	5	1	0	1	14	13.3
New Mexico St.	12/02/2023	*	17:41	1-4	.250	0-2	.000	0-0	.000	0	1	1	5.1	1	2	1	0	1	2	11.9
Totals		8	271:38	35-100	.350	22-63	.349	3-6	.500	6	35	41	5.1	10	9	8	0	7	95	11.9

TOP PERFORMANCES

Points	Season	24, Montana State (11/23)
	MW	14, San José St. (1/24/22)
	Career	24, Montana State (11/23)
FGM	Season	9, Texas Southern (11/6)
	MW	6, 4x
	Career	9, Texas Southern (11/6)
FGA	Season	18, Texas Southern (11/6)
	MW	16, San José St. (2/18/23)
	Career	18, Texas Southern (11/6)
3PT FGM	Season	8, Montana State (11/23)
	MW	5, 2x
	Career	8, Montana State (11/23)
3PT FGA	Season	15, Montana State (11/23)
	MW	11, San José St. (2/18/23)
	Career	15, Montana State (11/23)
FTM	Season	2, Eastern Illinois (11/28)
	MW	4, Colorado St. (1/26/23)
	Career	4, Colorado St. (1/26/23)
FTA	Season	2, 3x
	MW	4, 2x
	Career	4, 2x
Reb.	Season	14, Eastern Illinois (11/28)
	MW	9, Wyoming (2/16/23)
	Career	14, Eastern Illinois (11/28)
Asts.	Season	5, Eastern Illinois (11/28)
	MW	4, 2x
	Career	5, Eastern Illinois (11/28)
Blocks	Season	
	MW	1, 2x
	Career	1, 4x
Steals	Season	2, Montana State (11/23)
	MW	2, Utah State (2/25/23)
	Career	4, Western N.M. (11/22/22)
TO	Season	0, 2x
	MW	0, 14x
	Career	0, 27x
Min.	Season	43, Eastern Illinois (11/28)
	MW	37, Colorado St. (1/26/23)
	Career	43, Eastern Illinois (11/28)

PRODUCTION TRACKER

2023-24 Career

Double-Double	1	1
Scored 10+ pts	4	23
Scored 20+ pts	2	4
10+ reb	1	1
3+ 3-pt	4	18

CAREER STATISTICS

				Field Goals		3-Point		F-Throws		Rebounds				Scoring						
SEASON	TEAM	GP-GS	MIN/AVG	FG-FGA	FG%	3FG-3FGA	3FG%	FT-FTA	FT%	OFF	DEF	TOT	AVG	PF-FO	A	TO	BLK	STL	PTS	AVG
2021-22	UNM	18-1	198/11.0	25-62	.403	15-45	.333	2-2	1.000	4	25	29	1.6	6-0	5	10	1	5	67	3.7
2022-23	UNM	33-15	757/22.9	107-249	.430	73-180	.406	18-22	.818	5	90	95	2.9	39-0	30	32	3	17	305	9.2
2023-24	UNM	8-8	272/34.0	35-100	.350	22-63	.349	3-6	.500	6	35	41	5.1	10-0	9	8	0	7	95	11.9
TOTAL		59-24	1226/20.8	167-411	.406	110-288	.382	23-30	.767	15	150	165	2.8	55-0	44	50	4	29	467	7.9

SEASON STATS

Game Records

Record	Overall	Home	Away	Neutral
ALL GAMES	7-2	6-0	1-0	0-2
CONFERENCE	0-0	0-0	0-0	0-0
NON-CONFERENCE	7-2	6-0	1-0	0-2

Score by Periods

Team	1st	2nd	3rd	4th	OT	TOT
New Mexico	142	146	136	161	15	600
Opponents	123	131	142	144	12	552

Team Box Score

No.	Player				Total		3-Point		F-Throw		Rebounds													
		GP-GS	MIN	AVG	FG-FGA	FG%	3FG-3FGA	3FG%	FT-FTA	FT%	OFF	DEF	TOT	AVG	PF	DQ	A	TO	BLK	STL	PTS	AVG		
3	WILSON, Nyah	9-9	272:39	30.3	44-118	.373	10-29	.345	39-49	.796	7	31	38	4.2	23	0	11	19	0	7	137	15.2		
30	REUS, Paula	9-9	292:07	32.5	44-106	.415	11-47	.234	10-14	.714	7	49	56	6.2	18	0	20	20	2	7	109	12.1		
33	CUMBER, Vianè	8-8	271:38	34.0	35-100	.350	22-63	.349	3-6	.500	6	35	41	5.1	10	0	9	8	0	7	95	11.9		
12	AUGMON, Aniyah	9-9	299:43	33.3	42-106	.396	3-24	.125	19-31	.613	12	38	50	5.6	15	0	36	41	4	25	106	11.8		
22	KOHL, Charlotte	9-9	231:41	25.7	33-61	.541	1-2	.500	14-19	.737	40	49	89	9.9	26	1	5	13	21	4	81	9.0		
15	BATES, Jaelyn	2-0	18:10	9.1	3-7	.429	2-5	.400	0-0	.000	0	0	0	0.0	3	0	2	2	0	2	8	4.0		
24	ROBBINS, Hannah	2-0	25:06	12.6	3-10	.300	0-4	.000	0-0	.000	2	8	10	5.0	1	0	1	3	2	2	6	3.0		
5	LANGERMANN, Lara	9-1	164:00	18.2	8-32	.250	5-24	.208	2-4	.500	1	12	13	1.4	9	0	8	9	0	3	23	2.6		
1	DIARRA BERTHE, Nahawa	7-0	87:57	12.6	6-22	.273	0-8	.000	2-4	.500	4	7	11	1.6	6	0	8	6	0	4	14	2.0		
14	JOAQUIM, Hulda	9-0	121:39	13.5	7-21	.333	0-0	.000	3-5	.600	20	19	39	4.3	7	0	5	4	0	2	17	1.9		
21	CURTIS, Mackenzie	2-0	11:05	5.5	0-0	.000	0-0	.000	2-2	1.000	0	1	1	0.5	1	0	0	1	1	0	2	1.0		
10	LAURO, Paris	3-0	05:40	1.9	1-1	1.000	0-0	.000	0-0	.000	0	2	2	0.7	2	0	0	0	0	0	2	0.7		
2	CHAVEZ, Natalia	5-0	23:35	4.7	0-3	.000	0-3	.000	0-0	.000	0	0	0	0.0	0	0	2	2	0	1	0	0.0		
Team											22	22	44					2						
Total		9	1825		226-587	.385	54-209	.258	94-134	.701	121	273	394	43.8	121	1	107	130	30	64	600	66.7		
Opponents		9	1825		216-575	.376	58-195	.297	62-89	.697	97	251	348	38.7	138	2	119	133	32	54	552	61.3		

Team Statistics

	UNM	OPP
Scoring	600	552
Points per game	66.7	61.3
Scoring margin	+5.3	-
Field goals-att	226-587	216-575
Field goal pct	.385	.376
3 point fg-att	54-209	58-195
3-point FG pct	.258	.297
3-pt FG made per game	6.0	6.4
Free throws-att	94-134	62-89
Free throw pct	.701	.697
F-Throws made per game	10.4	6.9
Rebounds	394	348
Rebounds per game	43.8	38.7
Rebounding margin	+5.1	-
Assists	107	119
Assists per game	11.9	13.2
Turnovers	130	133
Turnovers per game	14.4	14.8
Turnover margin	+0.3	-
Assist/turnover ratio	0.8	0.9
Steals	64	54
Steals per game	7.1	6.0
Blocks	30	32
Blocks per game	3.3	3.6
Winning streak	3	-
Home win streak	6	-
Attendance	28763	113
Home games-Avg/Game	6-4794	1-113
Neutral site-Avg/Game	-	2-158

Team Results

Date	Opponent		Score	Att.
11/06/2023	Texas Southern	W	76-59	5055
11/09/2023	at Pepperdine	W	57-48	113
11/12/2023	Tarleton St.	W	64-55	4626
11/15/2023	Tex. A&M-Commerce	W	75-74	4718
11/23/2023	vs Montana St.	L	57-75	166
11/24/2023	vs Georgia Tech	L	55-66	150
11/28/2023	Eastern Ill.	Wot	81-78	4471
12/02/2023	New Mexico St.	W	67-52	5379
12/04/2023	Mississippi Val.	W	68-45	4514

LAST WEEK STATS

Game Records

Record	Overall	Home	Away	Neutral
ALL GAMES	2-0	2-0	0-0	0-0
CONFERENCE	0-0	0-0	0-0	0-0
NON-CONFERENCE	2-0	2-0	0-0	0-0

Score by Periods

Team	1st	2nd	3rd	4th	OT	TOT
New Mexico	22	37	34	40	15	148
Opponents	30	32	28	28	12	130

Team Box Score

No.	Player				Total		3-Point		F-Throw		Rebounds											
		GP-GS	MIN	AVG	FG-FGA	FG%	3FG-3FGA	3FG%	FT-FTA	FT%	OFF	DEF	TOT	AVG	PF	DQ	A	TO	BLK	STL	PTS	AVG
30	REUS, Paula	2-2	76:22	38.2	14-27	.519	5-15	.333	7-8	.875	1	10	11	5.5	5	0	7	3	1	1	40	20.0
3	WILSON, Nyah	2-2	64:27	32.2	12-35	.343	2-7	.286	8-9	.889	4	6	10	5.0	6	0	1	5	0	2	34	17.0
22	KOHL, Charlotte	2-2	56:03	28.0	9-16	.563	1-1	1.000	5-7	.714	10	9	19	9.5	7	0	0	0	6	0	24	12.0
12	AUGMON, Aniyah	2-2	78:22	39.2	7-26	.269	1-8	.125	5-7	.714	5	9	14	7.0	3	0	9	11	2	8	20	10.0
33	CUMBER, Vianè	2-2	61:05	30.5	6-20	.300	2-10	.200	2-2	1.000	1	14	15	7.5	1	0	7	2	0	2	16	8.0
5	LANGERMANN, Lara	2-0	39:02	19.5	2-7	.286	2-5	.400	0-0	.000	0	2	2	1.0	1	0	1	0	0	0	6	3.0
1	DIARRA BERTHE, Nahawa	2-0	15:46	7.9	1-4	.250	0-3	.000	2-2	1.000	1	1	2	1.0	2	0	0	2	0	0	4	2.0
14	JOAQUIM, Hulda	2-0	27:13	13.6	1-5	.200	0-0	.000	2-2	1.000	4	6	10	5.0	4	0	1	1	0	0	4	2.0
2	CHAVEZ, Natalia	1-0	06:40	6.7	0-0	.000	0-0	.000	0-0	.000	0	0	0	0.0	0	0	0	0	0	1	0	0.0
Team											4	7	11									
Total		2	425		52-140	.371	13-49	.265	31-37	.838	30	64	94	47.0	29	0	26	24	9	14	148	74.0
Opponents		2	425		50-130	.385	17-53	.321	13-17	.765	19	60	79	39.5	32	1	34	30	9	13	130	65.0

Team Statistics

	UNM	OPP
Scoring	148	130
Points per game	74.0	65.0
Scoring margin	+9.0	-
Field goals-att	52-140	50-130
Field goal pct	.371	.385
3 point fg-att	13-49	17-53
3-point FG pct	.265	.321
3-pt FG made per game	6.5	8.5
Free throws-att	31-37	13-17
Free throw pct	.838	.765
F-Throws made per game	15.5	6.5
Rebounds	94	79
Rebounds per game	47.0	39.5
Rebounding margin	+7.5	-
Assists	26	34
Assists per game	13.0	17.0
Turnovers	24	30
Turnovers per game	12.0	15.0
Turnover margin	+3.0	-
Assist/turnover ratio	1.1	1.1
Steals	14	13
Steals per game	7.0	6.5
Blocks	9	9
Blocks per game	4.5	4.5
Winning streak	2	-
Home win streak	2	-
Attendance	9850	0
Home games-Avg/Game	2-4925	0-0
Neutral site-Avg/Game	-	0-0

Team Results

Date	Opponent		Score	Att.
11/28/2023	Eastern Ill.	Wot	81-78	4471
12/02/2023	New Mexico St.	W	67-52	5379

NEW MEXICO GAME-BY-GAME LEADERS

Date	Opponent		Score	Att.	High Points	High Rebounds
11/06/2023	Texas Southern	W	76-59	5055	(22) CUMBER, Vianè	(9) KOHL, Charlotte
11/09/2023	at Pepperdine	W	57-48	113	(16) AUGMON, Aniyah	(9) AUGMON, Aniyah
11/12/2023	Tarleton St.	W	64-55	4626	(16) REUS, Paula (16) WILSON, Nyah	(9) WILSON, Nyah
11/15/2023	Tex. A&M-Commerce	W	75-74	4718	(22) WILSON, Nyah	(20) KOHL, Charlotte
11/23/2023	vs Montana St.	L	57-75	166	(24) CUMBER, Vianè	(7) KOHL, Charlotte
11/24/2023	vs Georgia Tech	L	55-66	150	(17) AUGMON, Aniyah (17) WILSON, Nyah	(4) AUGMON, Aniyah (4) REUS, Paula
						(4) CUMBER, Vianè
						(4) JOAQUIM, Hulda
						(4) DIARRA BERTHE, Nahawa
11/28/2023	Eastern Ill.	Wot	81-78	4471	(25) REUS, Paula	(14) CUMBER, Vianè
12/02/2023	New Mexico St.	W	67-52	5379	(15) KOHL, Charlotte (15) REUS, Paula	(13) KOHL, Charlotte
12/04/2023	Mississippi Val.	W	68-45	4514	(16) KOHL, Charlotte (16) REUS, Paula	(20) KOHL, Charlotte

NEW MEXICO GAME-BY-GAME POINTS-REBOUNDS-ASSISTS

Opponent	Date	Score	1	2	3	5	10	12	14	15	21	22	24
			DIARRA BER	CHAVEZ, NAT	WILSON, NYA	LANGERMANN	LAURO, PARI	AUGMON, ANI	JOAQUIM, HU	BATES, JAE	CURTIS, MAC	KOHL, CHARL	ROBBINS, HA
Texas Southern	11/06/2023	76-59 W	0-2-2	0-0-0	20-4-3	0-1-0	0-0-0	17-6-6	2-5-0	DNP	DNP	6-9-1	0-6-0
at Pepperdine	11/09/2023	57-48 W	DNP	DNP	8-3-2	9-3-2	DNP	16-9-3	4-2-0	DNP	DNP	7-6-0	DNP
Tarleton St.	11/12/2023	64-55 W	DNP	DNP	16-9-2	0-2-0	DNP	2-3-5	6-6-2	DNP	DNP	6-5-3	6-4-1
Tex. A&M-Commerce	11/15/2023	75-74 W	0-0-1	0-0-0	22-2-0	3-1-1	DNP	16-4-2	0-3-0	DNP	DNP	14-20-1	DNP
vs Montana St.	11/23/2023	57-75 L	0-1-1	0-0-1	6-2-1	3-1-1	0-0-0	11-6-5	1-3-0	3-0-0	DNP	0-7-0	DNP
vs Georgia Tech	11/24/2023	55-66 L	6-4-0	DNP	17-3-0	0-0-0	DNP	17-4-4	0-4-0	DNP	0-0-0	8-3-0	DNP
Eastern Ill.	11/28/2023	81-78 Wot	0-0-0	DNP	21-7-1	0-0-0	DNP	10-8-6	2-3-0	DNP	DNP	9-6-0	DNP
New Mexico St.	12/02/2023	67-52 W	4-2-0	0-0-0	13-3-0	6-2-1	DNP	10-6-3	2-7-1	DNP	DNP	15-13-0	DNP
Mississippi Val.	12/04/2023	68-45 W	4-2-4	0-0-1	14-5-2	2-3-3	2-2-0	7-4-2	0-6-2	5-0-2	2-1-0	16-20-0	DNP

Opponent	Date	Score	30	33
			REUS, PAULA	CUMBER, VIA
Texas Southern	11/06/2023	76-59 W	9-6-2	22-6-1
at Pepperdine	11/09/2023	57-48 W	4-7-3	9-2-0
Tarleton St.	11/12/2023	64-55 W	16-7-1	12-7-0
Tex. A&M-Commerce	11/15/2023	75-74 W	11-8-1	9-4-1
vs Montana St.	11/23/2023	57-75 L	9-5-3	24-3-0
vs Georgia Tech	11/24/2023	55-66 L	4-4-0	3-4-0
Eastern Ill.	11/28/2023	81-78 Wot	25-3-2	14-14-5
New Mexico St.	12/02/2023	67-52 W	15-8-5	2-1-2
Mississippi Val.	12/04/2023	68-45 W	16-8-3	DNP

NEW MEXICO GAME-BY-GAME

				Total		3-Pointers		Free throws		Rebounds											
Opponent	Date	Score		FG-FGA	PCT	3FG-3FGA	PCT	FT-FTA	PCT	OFF	DEF	TOT	AVG	PF	A	TO	BLK	STL	PTS	AVG	
Texas Southern	11/06/2023	76-59	W	28-64	.438	9-22	.409	11-12	.917	12	37	49	49.0	9	15	19	5	8	76	76.0	
at Pepperdine	11/09/2023	57-48	W	23-64	.359	5-23	.217	6-11	.545	15	24	39	44.0	15	10	12	0	9	57	66.5	
Tarleton St.	11/12/2023	64-55	W	24-59	.407	5-19	.263	11-13	.846	10	35	45	44.3	16	14	15	2	6	64	65.7	
Tex. A&M-Commerce	11/15/2023	75-74	W	31-68	.456	3-14	.214	10-20	.500	19	28	47	45.0	14	7	18	4	3	75	68.0	
vs Montana St.	11/23/2023	57-75	L	21-63	.333	10-32	.313	5-11	.455	13	19	32	42.4	14	12	18	2	9	57	65.8	
vs Georgia Tech	11/24/2023	55-66	L	20-59	.339	1-15	.067	14-19	.737	6	26	32	40.7	15	4	12	1	8	55	64.0	
Eastern Ill.	11/28/2023	81-78	Wot	27-76	.355	9-31	.290	18-21	.857	14	33	47	41.6	13	14	11	4	6	81	66.4	
New Mexico St.	12/02/2023	67-52	W	25-64	.391	4-18	.222	13-16	.813	16	31	47	42.3	16	12	13	5	8	67	66.5	
Mississippi Val.	12/04/2023	68-45	W	27-70	.386	8-35	.229	6-11	.545	16	40	56	43.8	9	19	12	7	7	68	66.7	
Total		600		226-587	.385	54-209	.258	94-134	.701	121	273	394	43.8	121	107	130	30	64	600	66.7	

OPPONENT GAME-BY-GAME

				Total		3-Pointers		Free throws		Rebounds											
Opponent	Date	Score		FG-FGA	PCT	3FG-3FGA	PCT	FT-FTA	PCT	OFF	DEF	TOT	AVG	PF	A	TO	BLK	STL	PTS	AVG	
Texas Southern	11/06/2023	76-59	W	23-71	.324	8-31	.258	5-6	.833	11	25	36	36.0	12	11	14	5	7	59	59.0	
at Pepperdine	11/09/2023	57-48	W	20-62	.323	2-14	.143	6-8	.750	17	26	43	39.5	12	10	17	4	6	48	53.5	
Tarleton St.	11/12/2023	64-55	W	21-63	.333	8-27	.296	5-10	.500	10	25	35	38.0	12	8	14	2	5	55	54.0	
Tex. A&M-Commerce	11/15/2023	75-74	W	28-66	.424	8-17	.471	10-15	.667	11	22	33	36.8	19	11	14	1	6	74	59.0	
vs Montana St.	11/23/2023	57-75	L	29-56	.518	6-18	.333	11-14	.786	8	28	36	36.6	17	23	17	5	7	75	62.2	
vs Georgia Tech	11/24/2023	55-66	L	26-62	.419	5-23	.217	9-10	.900	11	36	47	38.3	22	13	16	0	2	66	62.8	
Eastern Ill.	11/28/2023	81-78	Wot	29-71	.408	12-37	.324	8-10	.800	10	36	46	39.4	17	22	17	8	7	78	65.0	
New Mexico St.	12/02/2023	67-52	W	21-59	.356	5-16	.313	5-7	.714	9	24	33	38.6	15	12	13	1	6	52	63.4	
Mississippi Val.	12/04/2023	68-45	W	19-65	.292	4-12	.333	3-9	.333	10	29	39	38.7	12	9	11	6	8	45	61.3	
Total		552		216-575	.376	58-195	.297	62-89	.697	97	251	348	38.7	138	119	133	32	54	552	61.3	

NEW MEXICO INDIVIDUAL GAME HIGHS

POINTS	25		Paula Reus vs Eastern Ill. (11/28/2023)
	24		Vianè Cumber vs Montana St. (N) (11/23/2023)
	22		Nyah Wilson vs Tex. A&M-Commerce (11/15/2023)
	22		Vianè Cumber vs Texas Southern (11/06/2023)
	21		Nyah Wilson vs Eastern Ill. (11/28/2023)
FIELD GOALS MADE	9		Nyah Wilson vs Tex. A&M-Commerce (11/15/2023)
	9		Vianè Cumber vs Texas Southern (11/06/2023)
FIELD GOAL ATTEMPTS	20		Nyah Wilson vs Eastern Ill. (11/28/2023)
	18		Vianè Cumber vs Texas Southern (11/06/2023)
FIELD GOAL PERCENTAGE (min 5 made)	.778	(7-9)	Charlotte Kohl vs Mississippi Val. (12/04/2023)
	.692	(9-13)	Nyah Wilson vs Tex. A&M-Commerce (11/15/2023)
3 PT FG MADE	8		Vianè Cumber vs Montana St. (N) (11/23/2023)
	4		Paula Reus vs Eastern Ill. (11/28/2023)
	4		Nyah Wilson vs Texas Southern (11/06/2023)
	4		Vianè Cumber vs Texas Southern (11/06/2023)
3 PT FG ATTEMPTS	15		Vianè Cumber vs Montana St. (N) (11/23/2023)
	10		Paula Reus vs Eastern Ill. (11/28/2023)
3 PT FG PERCENTAGE (min 2 made)	1.000	(4-4)	Nyah Wilson vs Texas Southern (11/06/2023)
	.533	(8-15)	Vianè Cumber vs Montana St. (N) (11/23/2023)
FREE THROWS MADE	9		Nyah Wilson vs Georgia Tech (N) (11/24/2023)
	8		Nyah Wilson vs Tarleton St. (11/12/2023)
FREE THROW ATTEMPTS	10		Nyah Wilson vs Georgia Tech (N) (11/24/2023)
	9		Nyah Wilson vs Tarleton St. (11/12/2023)
FREE THROW PERCENTAGE (min 3 made)	1.000	(6-6)	Nyah Wilson vs Eastern Ill. (11/28/2023)
	1.000	(4-4)	Aniyah Augmon vs Tex. A&M-Commerce (11/15/2023)
REBOUNDS	20		Charlotte Kohl vs Mississippi Val. (12/04/2023)
	20		Charlotte Kohl vs Tex. A&M-Commerce (11/15/2023)
ASSISTS	6		Aniyah Augmon vs Eastern Ill. (11/28/2023)
	6		Aniyah Augmon vs Texas Southern (11/06/2023)
STEALS	8		Aniyah Augmon at Pepperdine (11/09/2023)
	5		Aniyah Augmon vs New Mexico St. (12/02/2023)
BLOCKED SHOTS	5		Charlotte Kohl vs Mississippi Val. (12/04/2023)
	4		Charlotte Kohl vs New Mexico St. (12/02/2023)
	4		Charlotte Kohl vs Tex. A&M-Commerce (11/15/2023)
TURNOVERS	6		Aniyah Augmon vs Eastern Ill. (11/28/2023)
	6		Aniyah Augmon vs Georgia Tech (N) (11/24/2023)
	6		Aniyah Augmon vs Montana St. (N) (11/23/2023)
FOULS	5		Charlotte Kohl vs Montana St. (N) (11/23/2023)
	4		Nyah Wilson vs New Mexico St. (12/02/2023)
	4		Charlotte Kohl vs Eastern Ill. (11/28/2023)
	4		Charlotte Kohl vs Georgia Tech (N) (11/24/2023)
	4		Paula Reus vs Georgia Tech (N) (11/24/2023)
	4		Nyah Wilson vs Montana St. (N) (11/23/2023)
	4		Charlotte Kohl vs Tarleton St. (11/12/2023)
	4		Nyah Wilson at Pepperdine (11/09/2023)

NEW MEXICO GAME HIGHS

POINTS	81	Eastern Ill. (11/28/2023)
	76	Texas Southern (11/06/2023)
	75	Tex. A&M-Commerce (11/15/2023)
	68	Mississippi Val. (12/04/2023)
	67	New Mexico St. (12/02/2023)
FIELD GOALS MADE	31	Tex. A&M-Commerce (11/15/2023)
	28	Texas Southern (11/06/2023)
FIELD GOAL ATTEMPTS	76	Eastern Ill. (11/28/2023)
	70	Mississippi Val. (12/04/2023)
FIELD GOAL PERCENTAGE	.456 (31-68)	Tex. A&M-Commerce (11/15/2023)
	.438 (28-64)	Texas Southern (11/06/2023)
3 PT FG MADE	10	vs Montana St. (N) (11/23/2023)
	9	Eastern Ill. (11/28/2023)
	9	Texas Southern (11/06/2023)
3 PT FG ATTEMPTS	35	Mississippi Val. (12/04/2023)
	32	vs Montana St. (N) (11/23/2023)
3 PT FG PERCENTAGE	.409 (9-22)	Texas Southern (11/06/2023)
	.313 (10-32)	vs Montana St. (N) (11/23/2023)
FREE THROWS MADE	18	Eastern Ill. (11/28/2023)
	14	vs Georgia Tech (N) (11/24/2023)
FREE THROW ATTEMPTS	21	Eastern Ill. (11/28/2023)
	20	Tex. A&M-Commerce (11/15/2023)
FREE THROW PERCENTAGE	.917 (11-12)	Texas Southern (11/06/2023)
	.857 (18-21)	Eastern Ill. (11/28/2023)
REBOUNDS	56	Mississippi Val. (12/04/2023)
	49	Texas Southern (11/06/2023)
ASSISTS	19	Mississippi Val. (12/04/2023)
	15	Texas Southern (11/06/2023)
STEALS	9	vs Montana St. (N) (11/23/2023)
	9	at Pepperdine (11/09/2023)
BLOCKED SHOTS	7	Mississippi Val. (12/04/2023)
	5	New Mexico St. (12/02/2023)
	5	Texas Southern (11/06/2023)
TURNOVERS	19	Texas Southern (11/06/2023)
	18	vs Montana St. (N) (11/23/2023)
	18	Tex. A&M-Commerce (11/15/2023)
FOULS	16	New Mexico St. (12/02/2023)
	16	Tarleton St. (11/12/2023)

NEW MEXICO LEADERBOARD

Points

##	Player	G	Pts	Pts/G
3	Wilson, Nyah	9	137	15.2
30	Reus, Paula	9	109	12.1
12	Augmon, Aniyah	9	106	11.8
33	Cumber, Vianè	8	95	11.9
22	Kohl, Charlotte	9	81	9.0
5	Langermann, Lara	9	23	2.6
14	Joaquim, Hulda	9	17	1.9
1	Diarra Berthe, Nahawa	7	14	2.0
15	Bates, Jaelyn	2	8	4.0
24	Robbins, Hannah	2	6	3.0
21	Curtis, Mackenzie	2	2	1.0
10	Lauro, Paris	3	2	0.7

Scoring Average

##	Player	G	Pts	Pts/G
3	Wilson, Nyah	9	137	15.2
30	Reus, Paula	9	109	12.1
33	Cumber, Vianè	8	95	11.9
12	Augmon, Aniyah	9	106	11.8
22	Kohl, Charlotte	9	81	9.0
15	Bates, Jaelyn	2	8	4.0
24	Robbins, Hannah	2	6	3.0
5	Langermann, Lara	9	23	2.6
1	Diarra Berthe, Nahawa	7	14	2.0
14	Joaquim, Hulda	9	17	1.9
21	Curtis, Mackenzie	2	2	1.0
10	Lauro, Paris	3	2	0.7

Field Goal Percentage

##	Player	FG	Att	Pct
10	Lauro, Paris	1	1	1.000
22	Kohl, Charlotte	33	61	.541
15	Bates, Jaelyn	3	7	.429
30	Reus, Paula	44	106	.415
12	Augmon, Aniyah	42	106	.396
3	Wilson, Nyah	44	118	.373
33	Cumber, Vianè	35	100	.350
14	Joaquim, Hulda	7	21	.333
24	Robbins, Hannah	3	10	.300
1	Diarra Berthe, Nahawa	6	22	.273
5	Langermann, Lara	8	32	.250

Field Goal Attempts

##	Player	G	Att	Att/G
3	Wilson, Nyah	9	118	13.1
30	Reus, Paula	9	106	11.8
12	Augmon, Aniyah	9	106	11.8
33	Cumber, Vianè	8	100	12.5
22	Kohl, Charlotte	9	61	6.8

Field Goals Made

##	Player	G	Made	Made/G
3	Wilson, Nyah	9	44	4.9
30	Reus, Paula	9	44	4.9
12	Augmon, Aniyah	9	42	4.7
33	Cumber, Vianè	8	35	4.4
22	Kohl, Charlotte	9	33	3.7

3-Point FG Percentage

##	Player	3FG	Att	Pct
22	Kohl, Charlotte	1	2	.500
15	Bates, Jaelyn	2	5	.400
33	Cumber, Vianè	22	63	.349
3	Wilson, Nyah	10	29	.345
30	Reus, Paula	11	47	.234
5	Langermann, Lara	5	24	.208
12	Augmon, Aniyah	3	24	.125

3-Point FG Attempts

##	Player	G	Att	Att/G
33	Cumber, Vianè	8	63	7.9
30	Reus, Paula	9	47	5.2
3	Wilson, Nyah	9	29	3.2
12	Augmon, Aniyah	9	24	2.7
5	Langermann, Lara	9	24	2.7

3-Point FG Made

##	Player	G	Made	Made/G
33	Cumber, Vianè	8	22	2.8
30	Reus, Paula	9	11	1.2
3	Wilson, Nyah	9	10	1.1
5	Langermann, Lara	9	5	0.6
12	Augmon, Aniyah	9	3	0.3

NEW MEXICO LEADERBOARD

Free Throw Percentage

##	Player	Made	Att	Pct
21	Curtis, Mackenzie	2	2	1.000
3	Wilson, Nyah	39	49	.796
22	Kohl, Charlotte	14	19	.737
30	Reus, Paula	10	14	.714
12	Augmon, Aniyah	19	31	.613
14	Joaquim, Hulda	3	5	.600
33	Cumber, Vianè	3	6	.500
5	Langermann, Lara	2	4	.500
1	Diarra Berthe, Nahawa	2	4	.500

Free Throw Attempts

##	Player	G	Att	Att/G
3	Wilson, Nyah	9	49	5.4
12	Augmon, Aniyah	9	31	3.4
22	Kohl, Charlotte	9	19	2.1
30	Reus, Paula	9	14	1.6
33	Cumber, Vianè	8	6	0.8

Free Throws Made

##	Player	G	Made	Made/G
3	Wilson, Nyah	9	39	4.3
12	Augmon, Aniyah	9	19	2.1
22	Kohl, Charlotte	9	14	1.6
30	Reus, Paula	9	10	1.1
33	Cumber, Vianè	8	3	0.4

Rebounds

##	Player	G	Reb	Reb/G
22	Kohl, Charlotte	9	89	9.9
30	Reus, Paula	9	56	6.2
12	Augmon, Aniyah	9	50	5.6
33	Cumber, Vianè	8	41	5.1
14	Joaquim, Hulda	9	39	4.3

Assists

##	Player	G	Ast	Ast/G
12	Augmon, Aniyah	9	36	4.0
30	Reus, Paula	9	20	2.2
3	Wilson, Nyah	9	11	1.2
33	Cumber, Vianè	8	9	1.1
5	Langermann, Lara	9	8	0.9

Rebounds Average

##	Player	G	Reb	Reb/G
22	Kohl, Charlotte	9	89	9.9
30	Reus, Paula	9	56	6.2
12	Augmon, Aniyah	9	50	5.6
33	Cumber, Vianè	8	41	5.1
24	Robbins, Hannah	2	10	5.0

Steals

##	Player	G	Stl	Stl/G
12	Augmon, Aniyah	9	25	2.8
3	Wilson, Nyah	9	7	0.8
30	Reus, Paula	9	7	0.8
33	Cumber, Vianè	8	7	0.9
22	Kohl, Charlotte	9	4	0.4

Offensive Rebounds

##	Player	G	OReb	OReb/G
22	Kohl, Charlotte	9	40	4.4
14	Joaquim, Hulda	9	20	2.2
12	Augmon, Aniyah	9	12	1.3
3	Wilson, Nyah	9	7	0.8
30	Reus, Paula	9	7	0.8

Blocked Shots

##	Player	G	Blk	Blk/G
22	Kohl, Charlotte	9	21	2.3
12	Augmon, Aniyah	9	4	0.4
30	Reus, Paula	9	2	0.2
24	Robbins, Hannah	2	2	1.0
21	Curtis, Mackenzie	2	1	0.5

Defensive Rebounds

##	Player	G	DReb	DReb/G
30	Reus, Paula	9	49	5.4
22	Kohl, Charlotte	9	49	5.4
12	Augmon, Aniyah	9	38	4.2
33	Cumber, Vianè	8	35	4.4
3	Wilson, Nyah	9	31	3.4

Minutes

##	Player	G	Min	Min/G
12	Augmon, Aniyah	9	300	33:18
30	Reus, Paula	9	292	32:27
3	Wilson, Nyah	9	273	30:18
33	Cumber, Vianè	8	272	33:57
22	Kohl, Charlotte	9	232	25:45