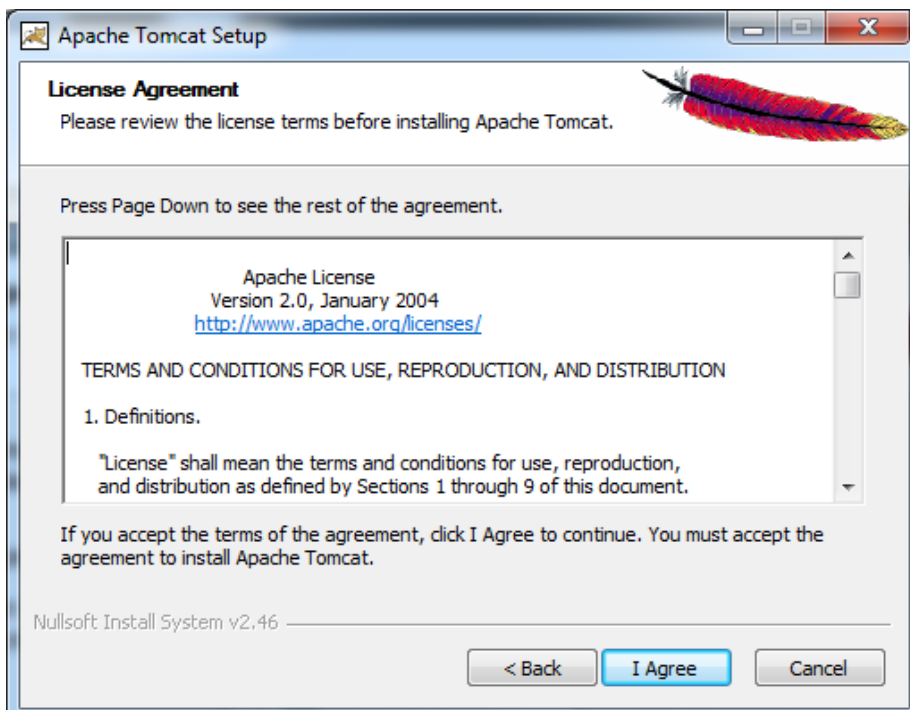
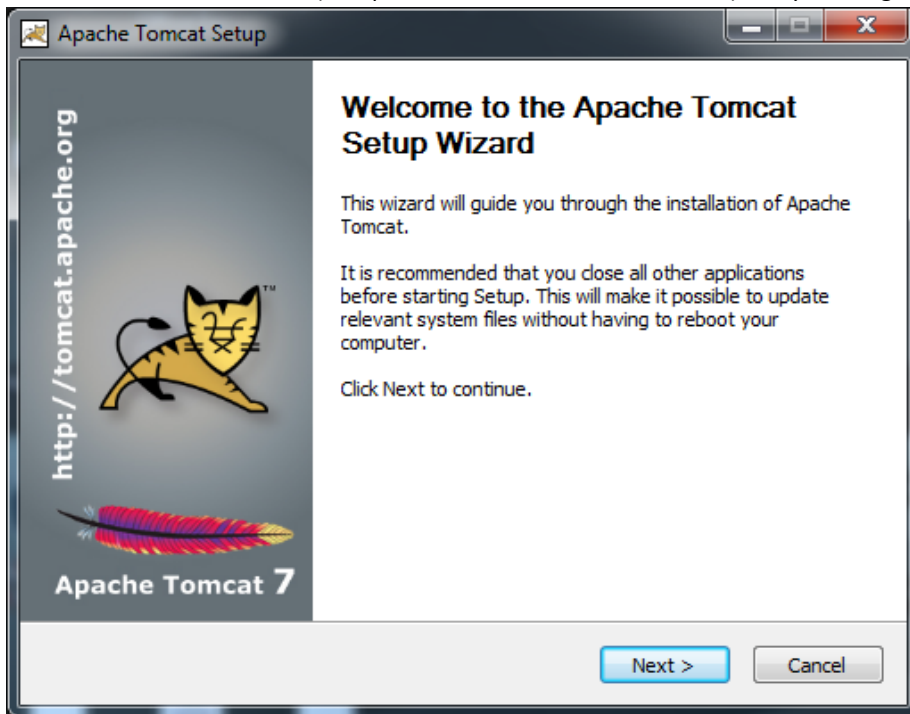
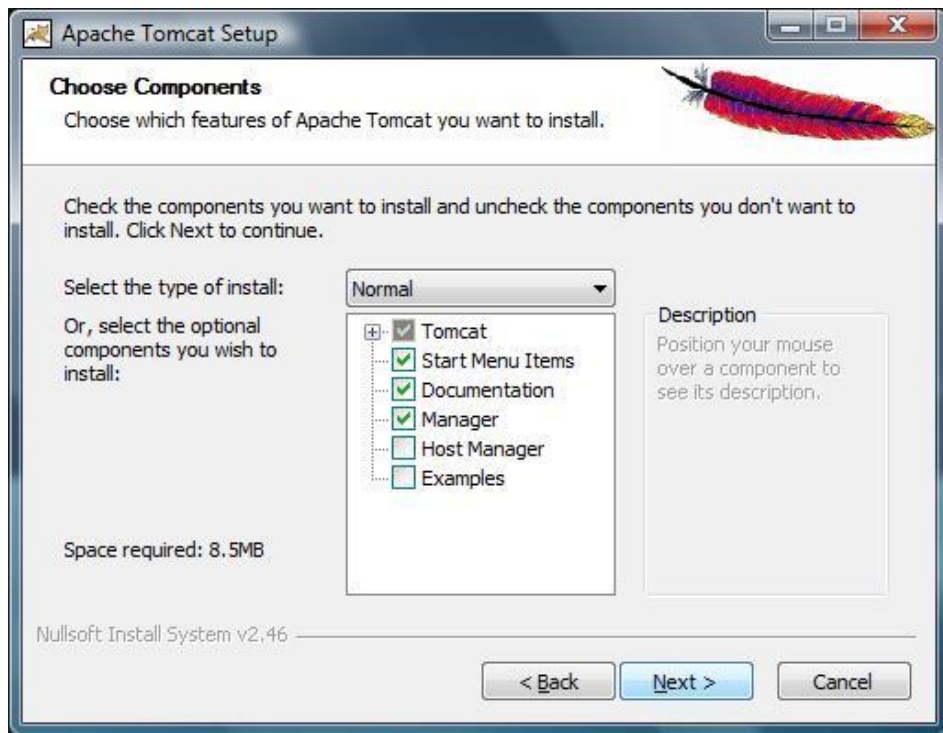


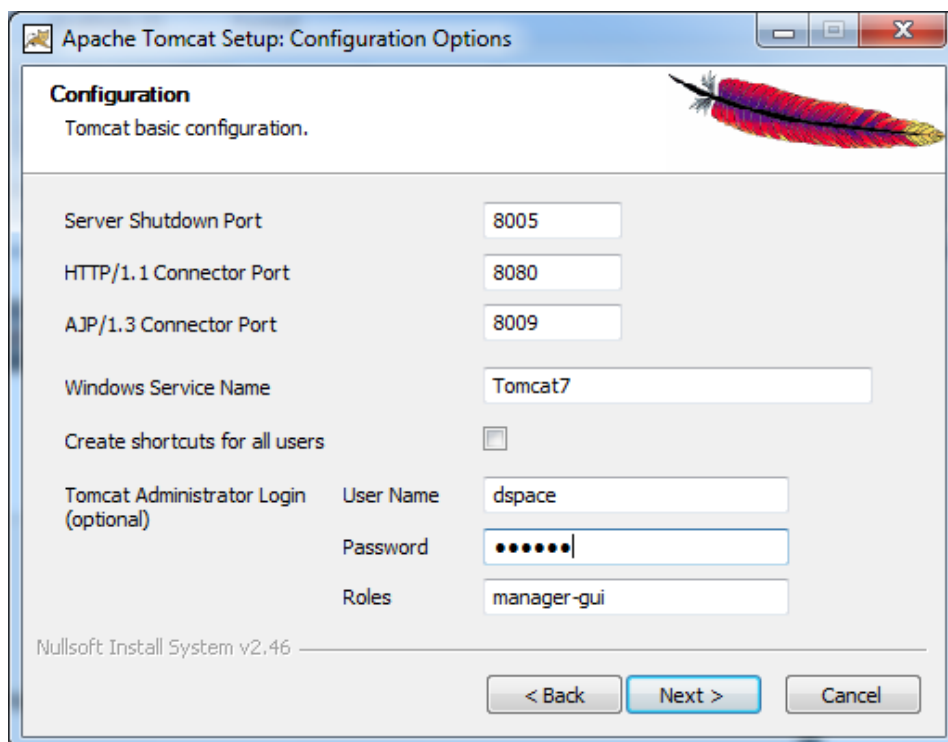
Easy Installer for AgriOcean DSpace – September 28, 2011

1. Only working under Windows 7 and Vista
2. Installing JAVA – JRE (If not already installed)
 - Download from <http://www.java.com/>
 - If not installed automatically, run the downloaded file
3. Installing Tomcat 7 (The web server)
 - Download from <http://tomcat.apache.org/download-70.cgi>:
(select [32-bit/64-bit Windows Service Installer](#))
 - Click on the downloaded file (accept to run if Windows ask for that) and you will get the following screens:

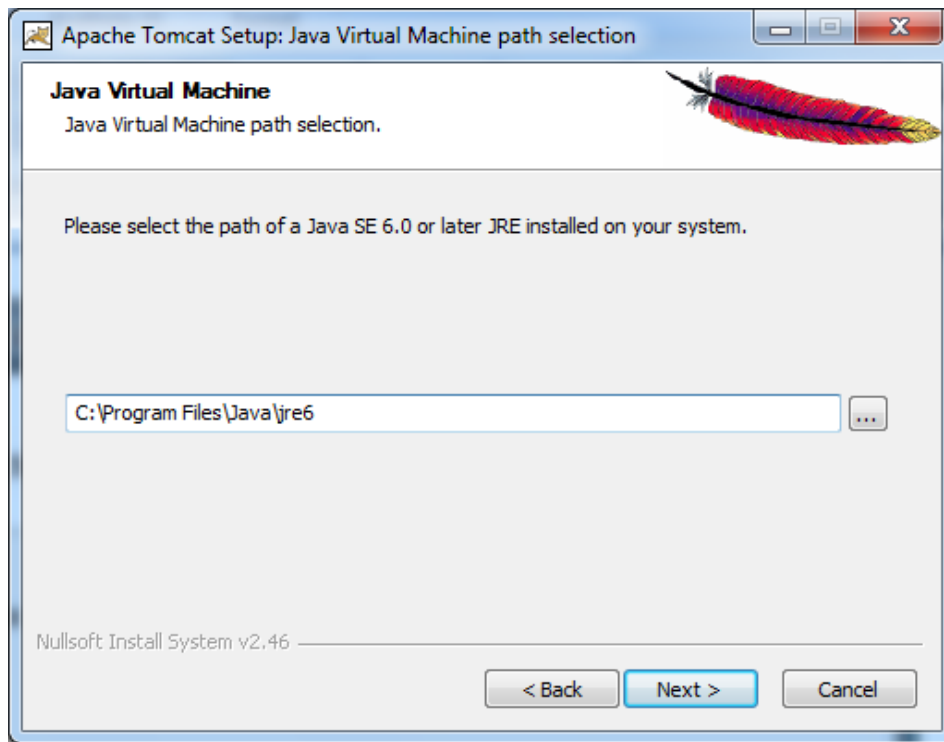




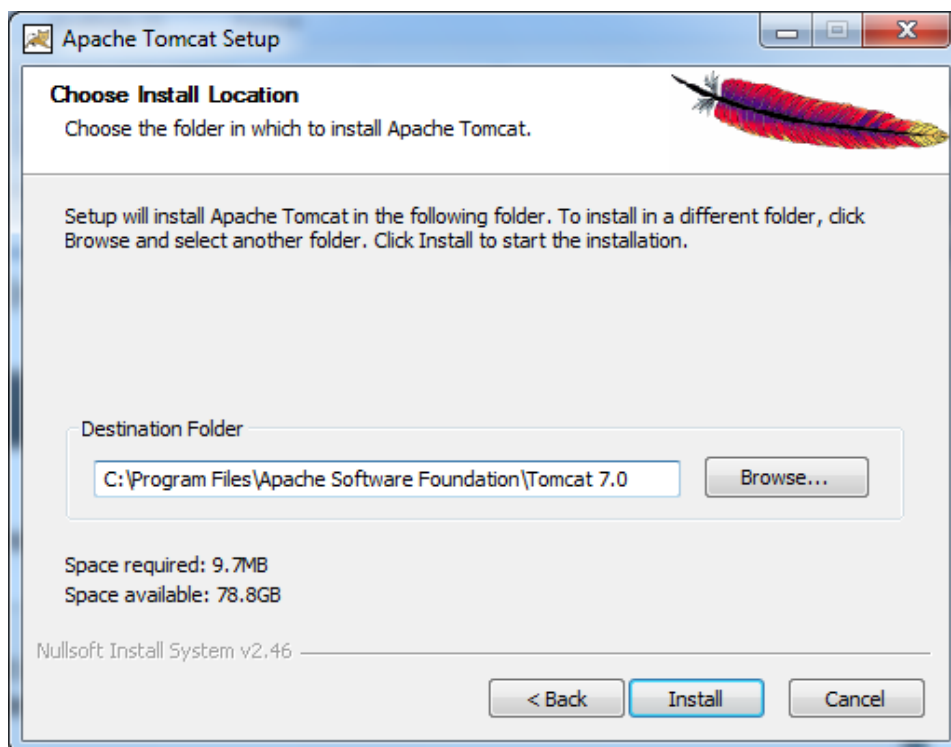
-
- Don't change anything on the standard settings



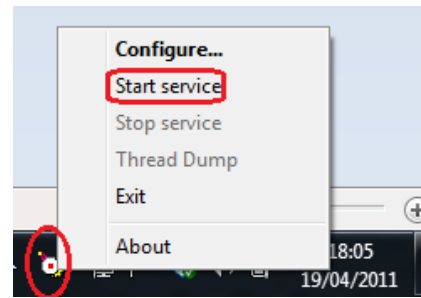
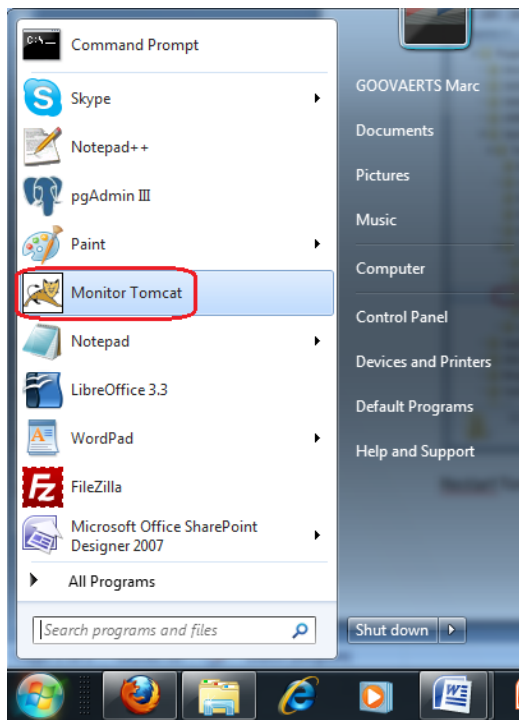
-
- Use port 8080 as HTTP/1.1 Connector Port (if you choose another port (80 – 8079 - ...) you will have to change the port definition for dspace (see further)
- Define a Tomcat administrator Login



-
- JAVA is automatically recognized when available (no change necessary). If it is not yet installed, then



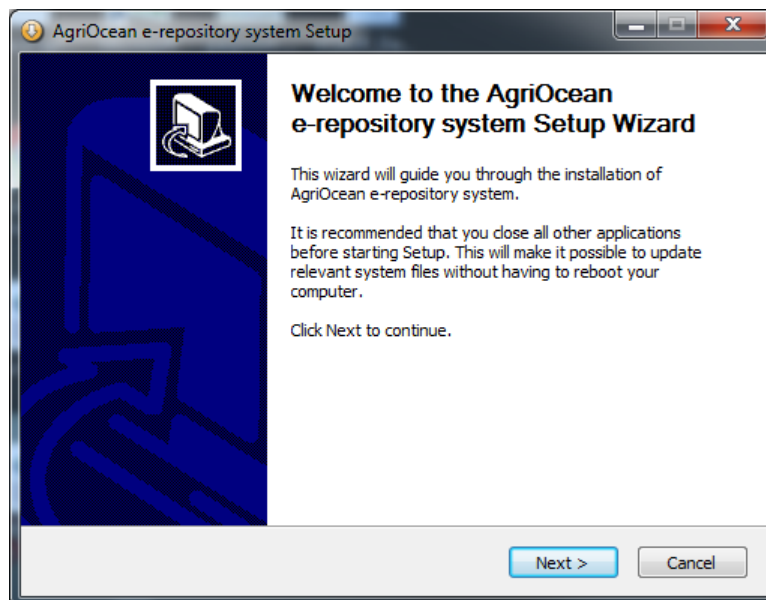
- - Push on the install button and Tomcat will be installed and run for the first time automatically.
 - With the Tomcat Monitor you can start and stop Tomcat.
- !! If Windows does not allow you to start up Tomcat (e.g. in Windows 7 Home version), you have to turn off the User Account Control (see <http://www.techknowl.com/turn-off-uac-in-windows-7-user-account.html>). Security in Internet Explorer makes it difficult to open localhost. Therefore it is easier to use Firefox, Chrome, Safari.**

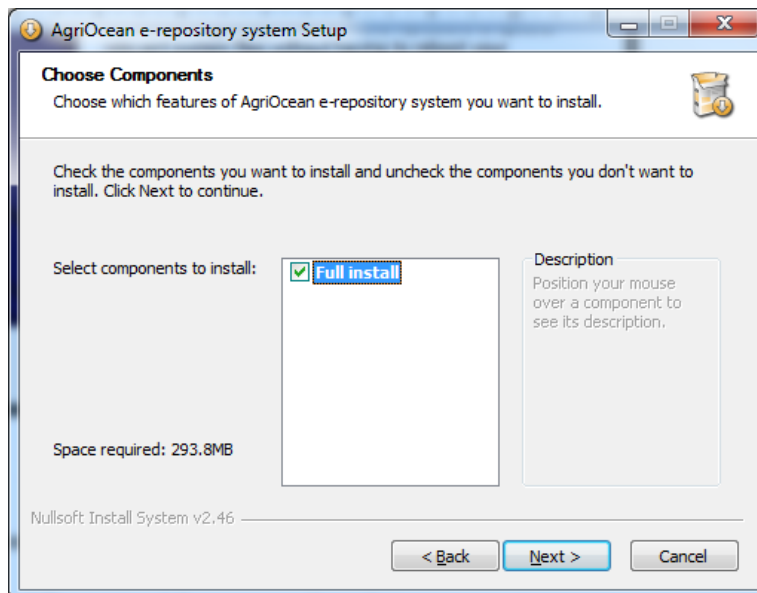


- Start the Monitor from the Start menu (Or under 'All Programs').
- In the main toolbar you will find the Monitor Icon. With the right mouse button you can open the menu.

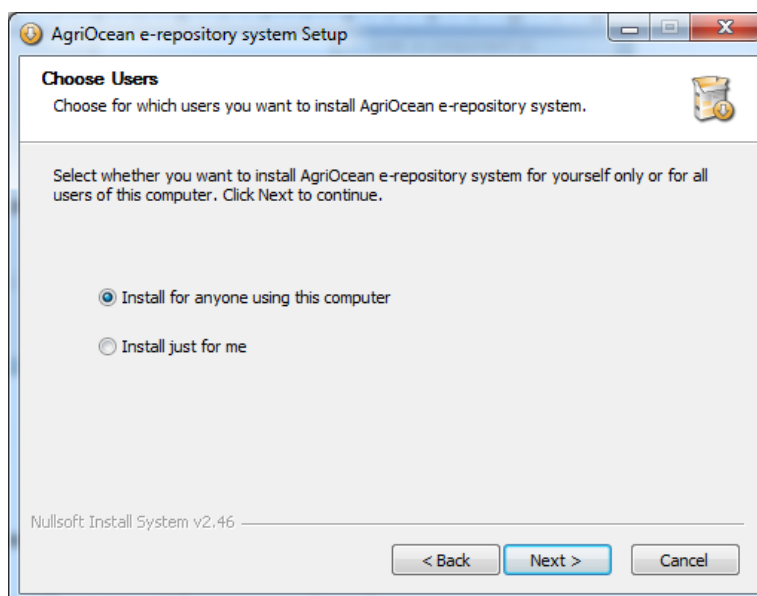
4. Installing the AgriOcean Dspace application

- Download from <http://code.google.com/p/agrioccean/downloads/list>
 - AgriOceanSetup.exe
 - Double click and the Dspace installer (beta-version) will start.

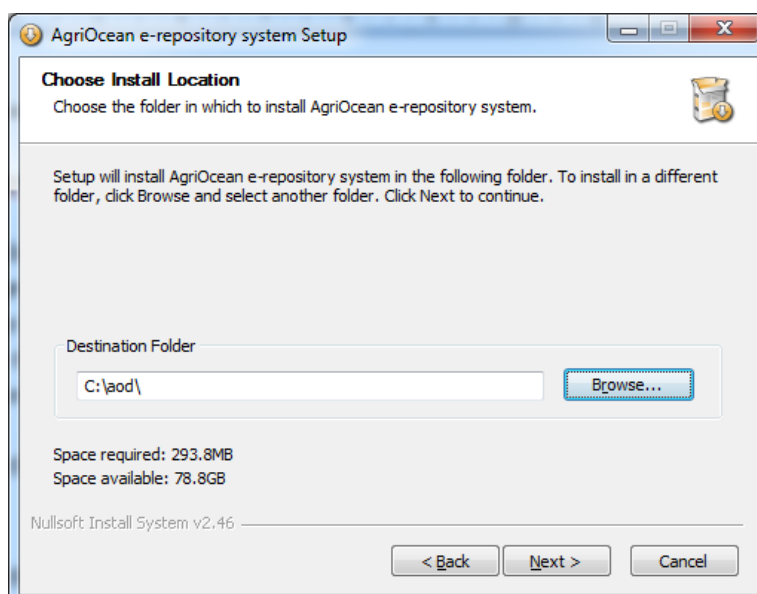




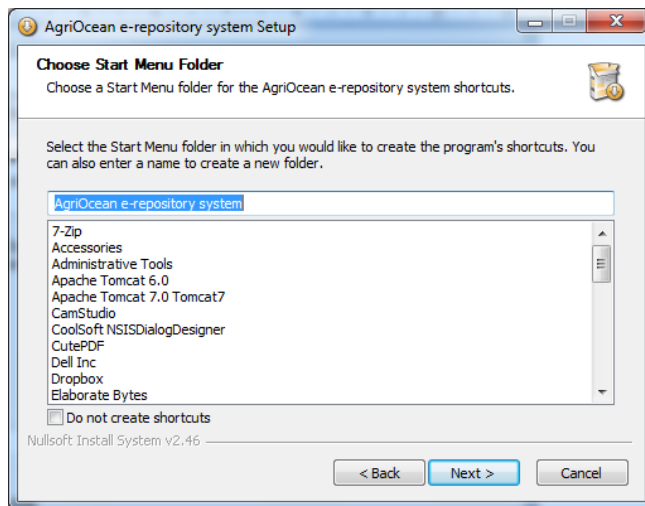
-
- Note: An update option will be created in the next version.



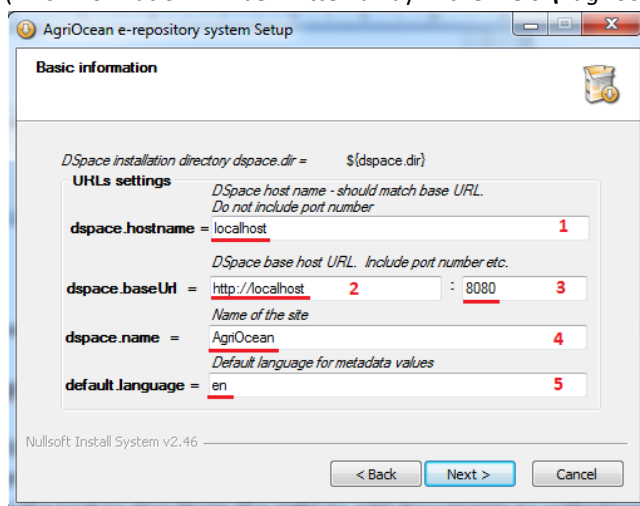
-



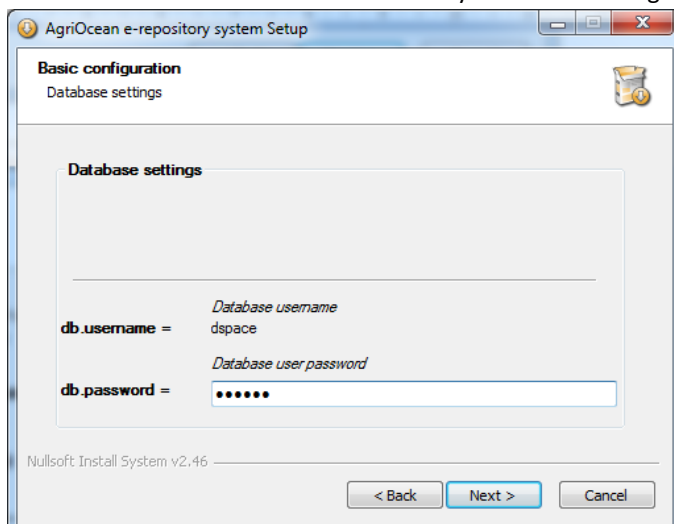
We suggest to create a specific folder as destination folder (e.g. c:\aod\). It will include the postgres and Dspace application.



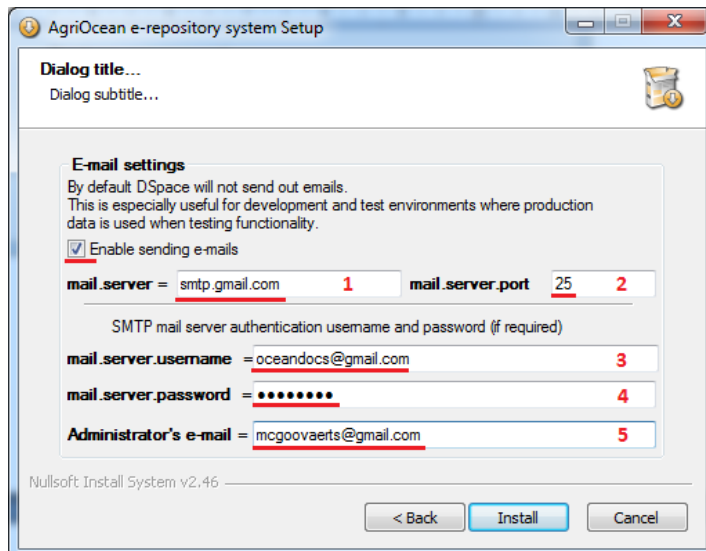
- The start menu will include the programs related to Agri Ocean Dspace: PgAdmin III and an uninstaller
- In the following screens you can define the major configuration options of DSpace.
(This information will be written away in the file `c:\<agriocean dir>\repos\config\dspace.cfg`)



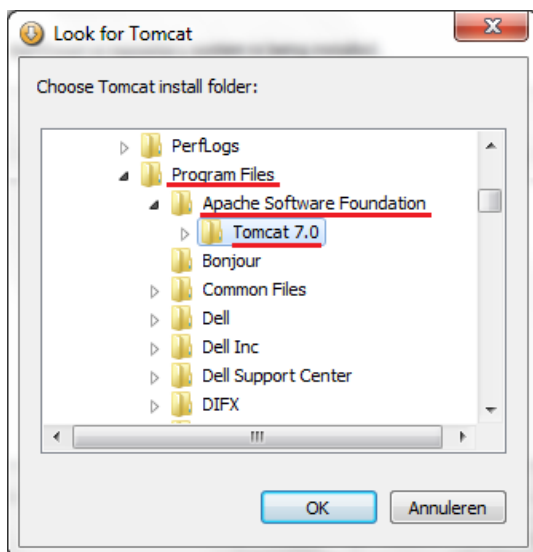
- Basic information contains standard values to set up AgriOcean DSpace locally on a computer.
- To change it to set it up as a web server
 - Enter the hostname or IP number of the server/PC. (1 – 2.).
 - To make it available on the standard port change it to port 80. (3).
 - In 4 you give a name to your repository.
 - Use the ISO639-1 code to define your standard language (http://en.wikipedia.org/wiki/List_of_ISO_639-1_codes) (5).



- - Fill out the password to access the database. Don't loose it.

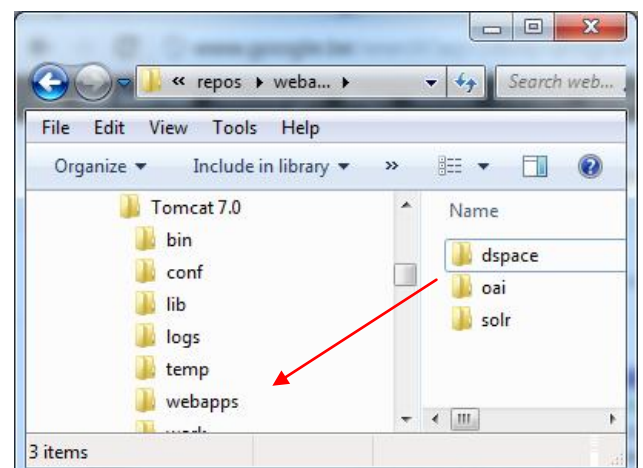


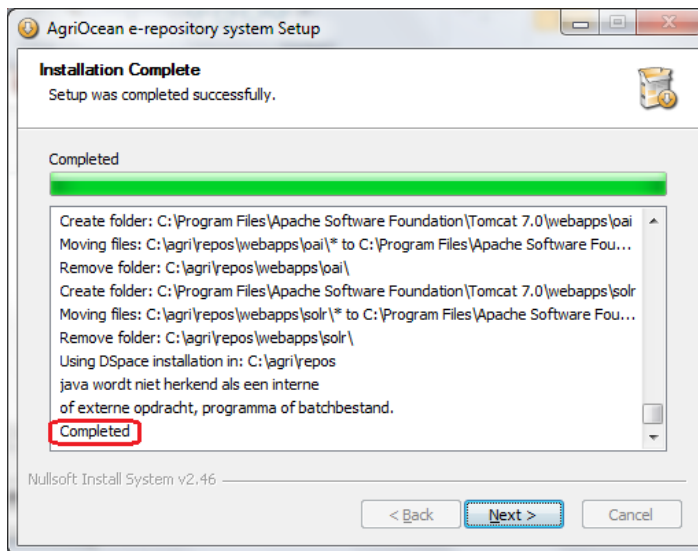
- It is important to install an email service in Dspace, surely when the repository is going on line.
- If you want simply do a test, don't enable sending an email.
- For registering and using the communication aspects of AgriOcean Dspace enable:
 - If you have your own mail server, simply fill out 1 and 2. If the system requires SMTP mail server authentication fill out 3 and 4. Ask your network manager.
 - You can always use gmail as your mail server. Use for 1 and 2 the default values. Create a gmail account. Fill out the gmail address in 3 and the password in 4.
 - You can reuse the gmail account as administrator's email or choose another one. All the e-mails sent and received will respectively come from and go to that address ().



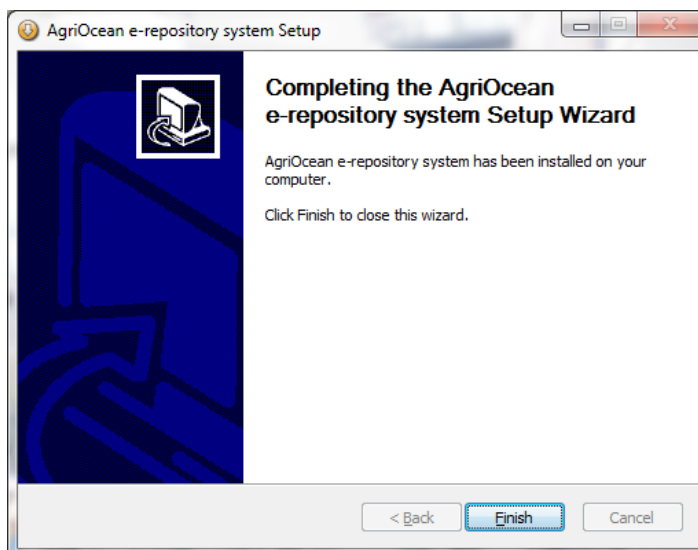
The Tomcat directory has to be defined. Simply go to the main directory of Tomcat (normally: Program Files\Apache Software Foundation\Tomcat 7.0. If you have used Tomcat 6 it will have another directory name. If you have a 64bit Windows it can even be in another main directory, e.g. Program Files (x86)).

If the definition is not correct, it is still possible to move the web applications (directories dspace, solr, oai) manually from <AgriOcean destination folder>\repos\ webapps to <destination folder Tomcat>\webapps





- After that it will take a few minutes before the AgriOcean Dspace is installed.



Finally

If the instructions are followed then you can start the application in your web browser, standard on <http://localhost:8080/dspace> or <http://<hostname>:port/dspace> if you changed hostname and/or port.

The login in MyDspace is **agri@ocean** with password **agri**.

You can create your own administrator account from the command line:

c:\<agriocan dir>\repos\bin\dspace create-administrator. Other users can simply create their account at 'My DSpace'. As Administrator you still have the task to give them the right to add documents to collections. Other commands are shown when you enter simply **c:\<agriocan dir>\repos\bin\dspace.**

If you don't want to install the package immediately, you can do some tests at <http://193.190.8.15/dspace> with the same login and password.

If you have problems with the installation, want to report bugs or have suggestions go to AgriOcean community page (<http://aims.fao.org/community/group/agriocan-dspace>)

Marc Goovaerts
marc.goovaerts@uhasselt.be

Diepenbeek, September 28 2011.