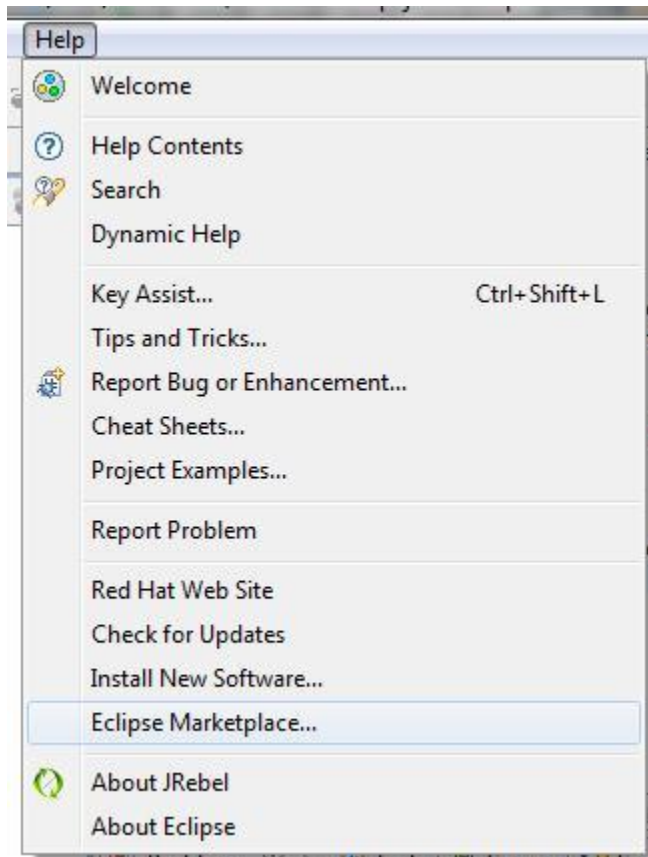


JRebel configuration

For Eclipse IDE

Open eclipse and go to marketplace, download JRebel from [here](#)



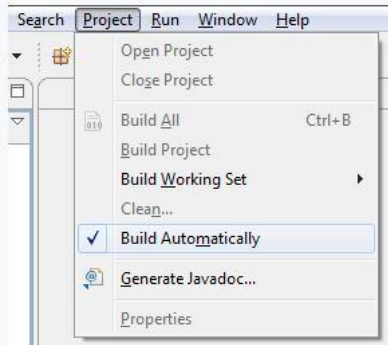
Install JRebel, after restart of IDE wizard will open (wizard is also accessible from window->preferences->JRebel->configuration Wizard).

First two steps are license and activation – you will obtain activation key from Roman.

3rd step choose setting - check I use Maven to build my app and uncheck I run the server from my IDE

Activation	Please select your development environment: Integrated Development Environment (IDE): <input type="text" value="Eclipse 3.3 or later"/> <input checked="" type="checkbox"/> I use Maven to build my application <input type="checkbox"/> I run the server from my IDE And enter your average redeploy time: JRebel can track how much time you're saving by using it. Just insert below your estimated redeploy time Average Redeploy Time in seconds: <input type="text" value="146"/>
License	
Choose settings	
Eclipse Configuration	
Application Configuration	
Server Configuration	
Finish	

4th step: check auto build project

Activation	IDE Configuration Guide: Eclipse 3.3 or later For the best JRebel experience in Eclipse, go to Project » Build Automatically and make sure it is checked. 
License	
Choose settings	
Eclipse Configuration	
Application Configuration	
Server Configuration	
Finish	

5th step: application configuration – I have done that and uploaded to SVN, just download new files (pom.xml)

I and rebel.xml for each modul)

6th step: server configuration – Select Java version, OS and server and then copy paste text from wizard, but save it as **standalone-jrebel.cmd** in bin of jboss server. Change run.bat in last line to standalone.bat. Now run only that file. Path to eclipse must be without spaces.

Activation

License

Choose settings

Eclipse Configuration

Application Configuration

Server Configuration

Finish

Server Configuration Guide: Manual Configure in IDE...

Choose your server settings:

Java Version:

Operating System:

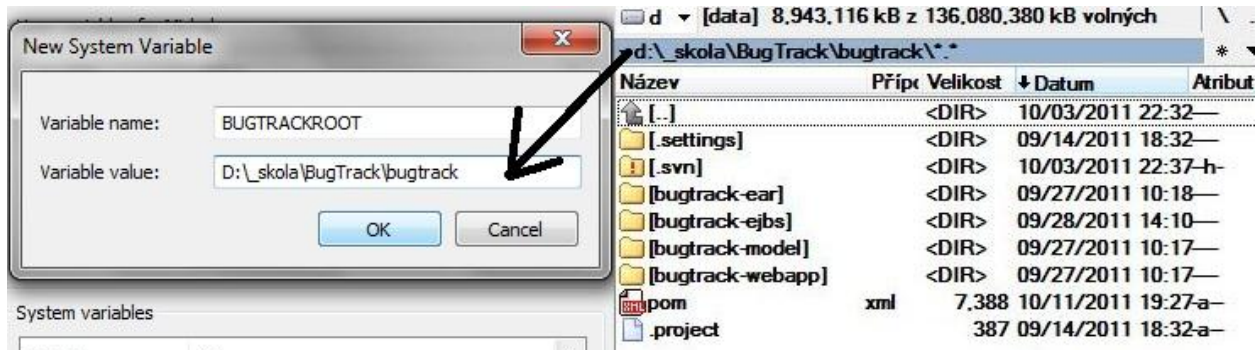
Server:

Go to %JBoss_HOME%\bin and create the file run-jrebel.cmd with the following contents:

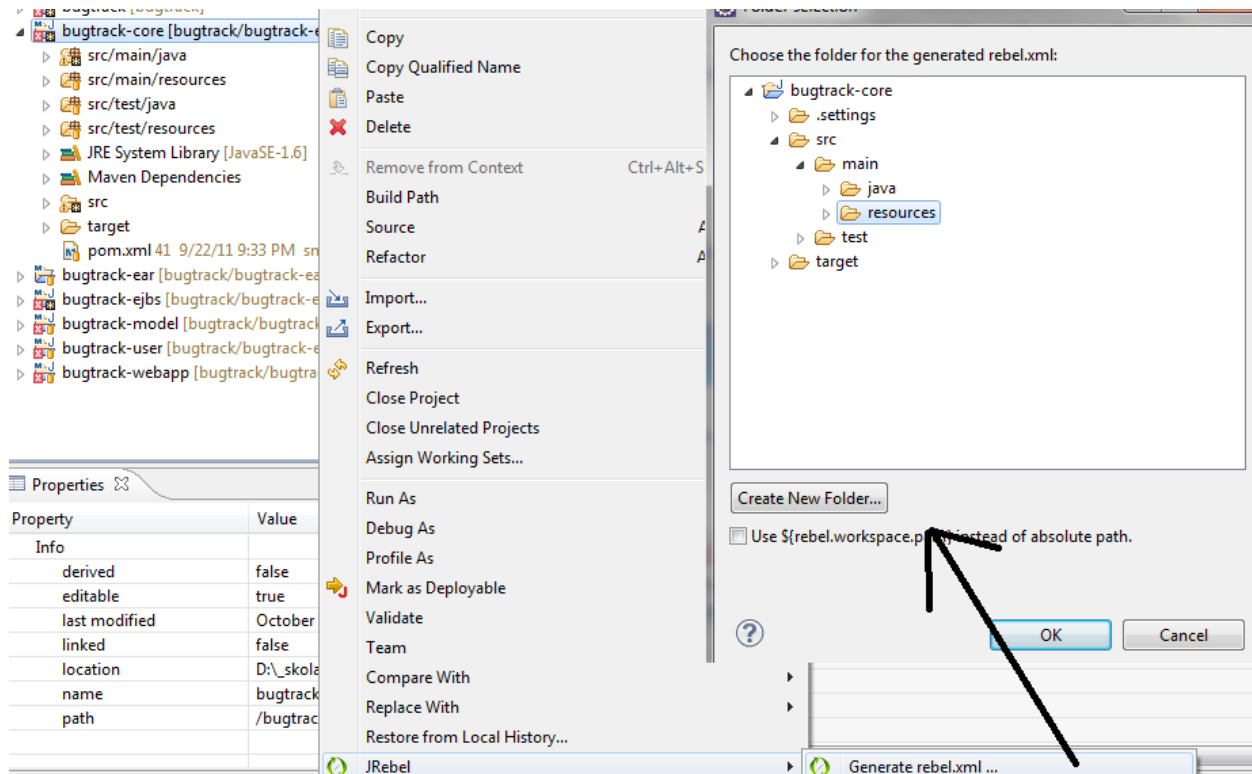
```
@echo off
set JAVA_OPTS=-javaagent:C:\eclipse\plugins\org.zeroturnaround.eclipse.embedder_4.5.0.201110041
call "%~dp0\run.bat" %*
```

Use this command file instead of run.bat if you want to run JBoss with JRebel.

Assign new system (environment) variable BUGTRACKROOT to bugtrack root (folder with main pom.xml).



We generate now rebel.xml for each module with EJBs – create for src/main/resources .



That's it!