

I18n Tool

Functions:

- ◆ Access the properties files easier
- ◆ Organize properties files to a tree
- ◆ Add/Rename/Delete key to properties files
- ◆ Search properties file by key/value
- ◆ Import properties/excel to current properties files
- ◆ Export current properties files to properties/excel

Steps

I.	Set up environment	2
1)	Copy the i18nTool to your folder	2
2)	Set your properties files	2
3)	Copy properties files to resource folder	2
II.	Run app	3
III.	Base Configuration	3
IV.	Filter items on [Explorer]	4
V.	Context Menu on [Explorer] Add/Rename/Delete/Search function	5
VI.	Search items	9
VII.	Save current app to properties/excel	11
VIII.	Load properties/excel to current app	14

I. Set up environment

1) Copy the i18nTool to your folder

from path (\\10.202.117.149\pca\SFA\Innovation Tools\i18nTool)
to path [D:\Daily Work\20110106\i18nTool](#)

2) Set your properties files

Go to the conf folder open [sysResource.properties](#) file, write the properties folder and properties files into it

```
i18nFolder=resource/  
i18nFiles=message.properties,message_en_MY.properties,message_ms_MY.properties,message  
_zh_MY.properties,message_zh_TW.properties
```

i18nFolder: it is the properties files parent folder. Accept relative path or absolutely path. It can be changed by IDE and manual.

i18nFiles: it stands for the app will show how many of the properties. Please use comma “,” to separate properties files.

Node: message.properties is the first value, it is important, all the app keys will base on its keys.

log.properties: It is a log configuration file, here you can set the output level and format. It follows the java logger rules.

3) Copy properties files to resource folder

[message.properties](#),message_en_MY.properties,message_ms_MY.properties,message
_zh_MY.properties,message_zh_TW.properties

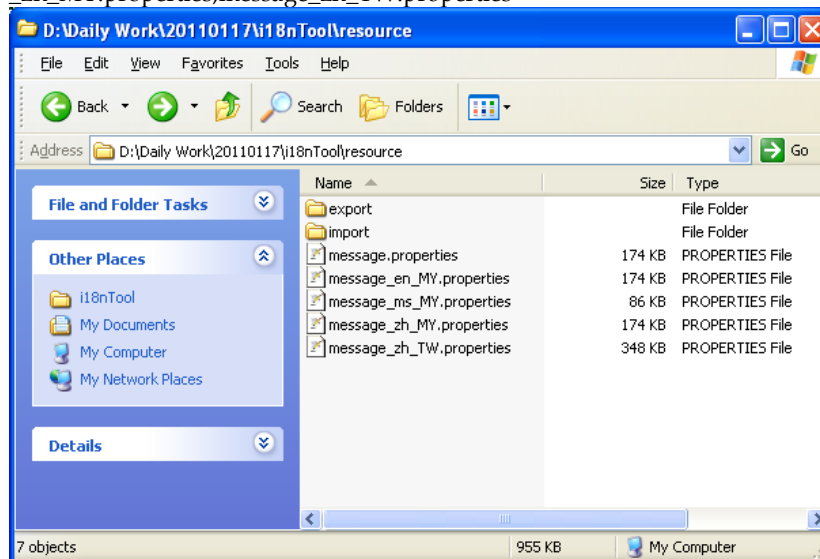


Figure 1 resource folder

II. Run app

Double click the i18nTool.exe

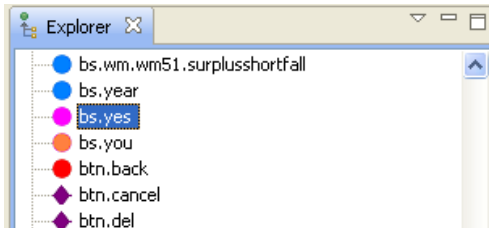


Figure 2 After loading/adding/modify you may see the node

- Circle-blue : it stands for the node is **normal**
- Circle-red: it stands for the node's messages are **all empty**
- Circle-pink: it stands for the node's messages at least two of the messages have been changed. One has empty, one has changed.
- Circle-orange: it stands for the node just has been **modified**.
- ◆ Rhombus-dark-pink: it stands for the node **contains empty** message(s)

III. Base Configuration

Click [Preference->General], and see the General Editor

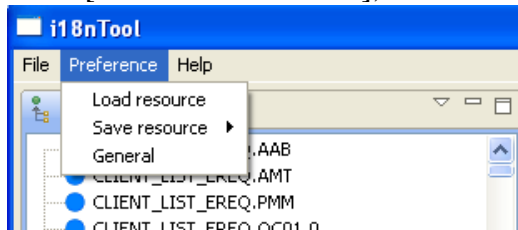


Figure 3 Click [Preference->General]

There are some base configuration parameters.

Resource locator: It base on the [i18nFolder's value in conf/sysResource.properties](#). It will update the import path and export path.

The app will read the value after reboot or next running if it is changed.

Import properties/excel: Only can choose one of them one time. Both will import properties/excel from [import path](#). Import properties only can import properties files' name are the same as the original properties files' name. Import excel only can import excel's name imported.xls.

Export properties: Only can choose one of them one time. Both will export current app's resource to [export path](#). Export properties only can export to properties files which are the same as the original properties files' name. Export excel only can export excel's name exported.xls.

Node: In export properties function, add a language as a template, it will create an assist.properties which content will be based on the special file.

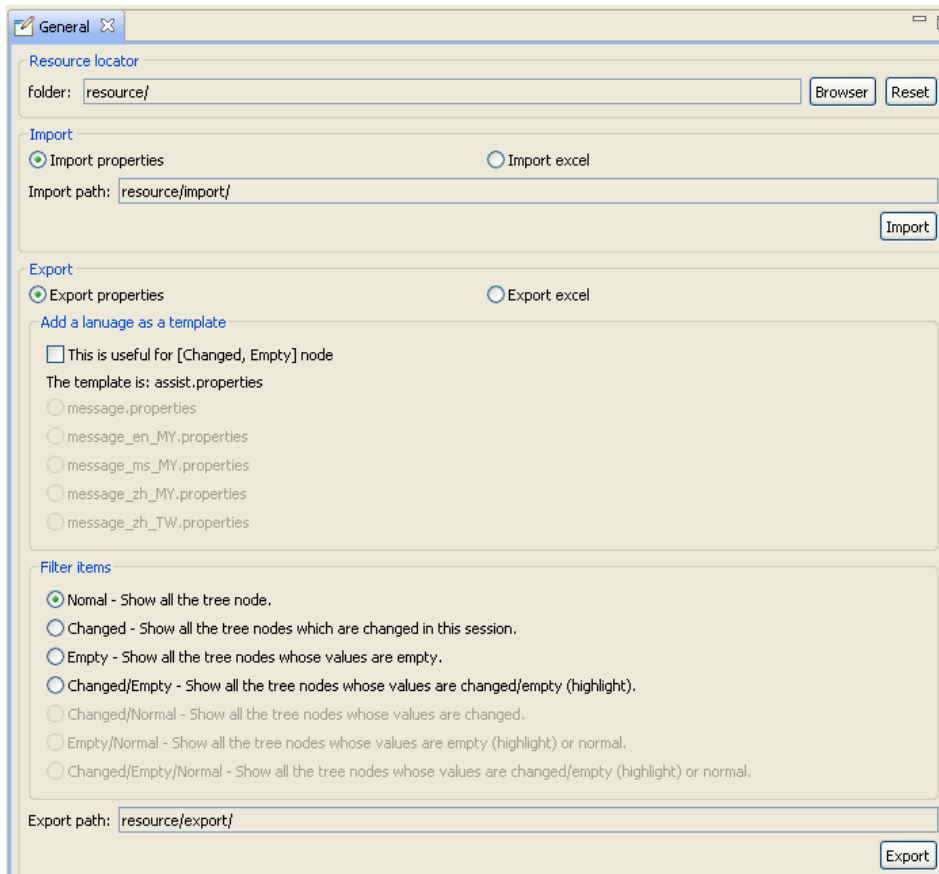


Figure 4 General Editor detail

IV. Filter items on [Explorer]

If there are too many keys are showed in the [Explorer] view, but you just want to see the empty or changed key, you can use filter function.

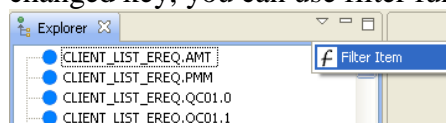


Figure 5 Click [Filter Item]

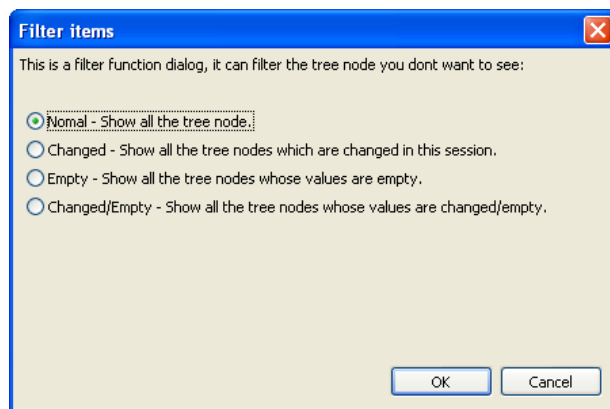


Figure 6 Filter items Dialog
When choose [Empty], click [OK]

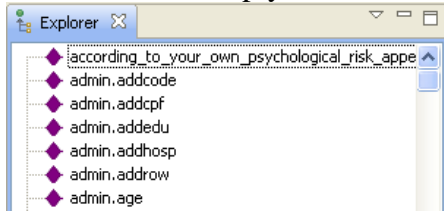


Figure 7 All empty nodes should be show

And we can go back to normal or others, use the filter function again.

V. Context Menu on [Explorer] Add/Rename/Delete/Search function

Right click one of the nodes in the tree of Explorer View. And you will see a pop up message contains Add key, Delete item, Rename item, Search item by key and Search item by value.

Add key

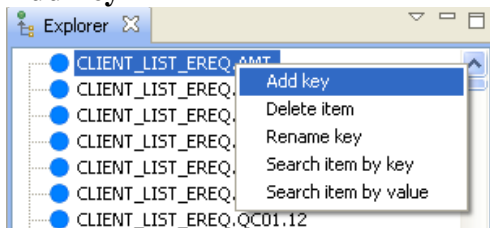


Figure 8 Click [Add Key] to add node

Show the Add Item Dialog, and input `CLIENT_LIST_EREQ.AAB` like below

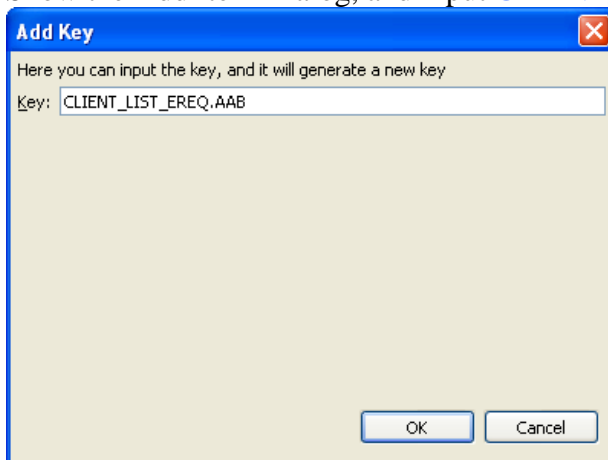


Figure 9 Add key Dialog

And click [OK], the key will be added to the Explorer View's tree. Currently there is no value in the key. The color icon of the node is **circle red**.

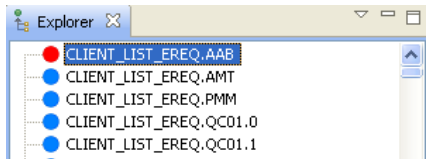


Figure 10 Added key to the tree

Add values to a key

Double Click the node and it will show the property in a new editor.

If the content of value is empty, the [clear the content] box will be checked.

If you check the [clear the content] box, the content of value will be clear.

message.properties (we call **VALUE**) is related to the **message.properties** file. Others are the same.

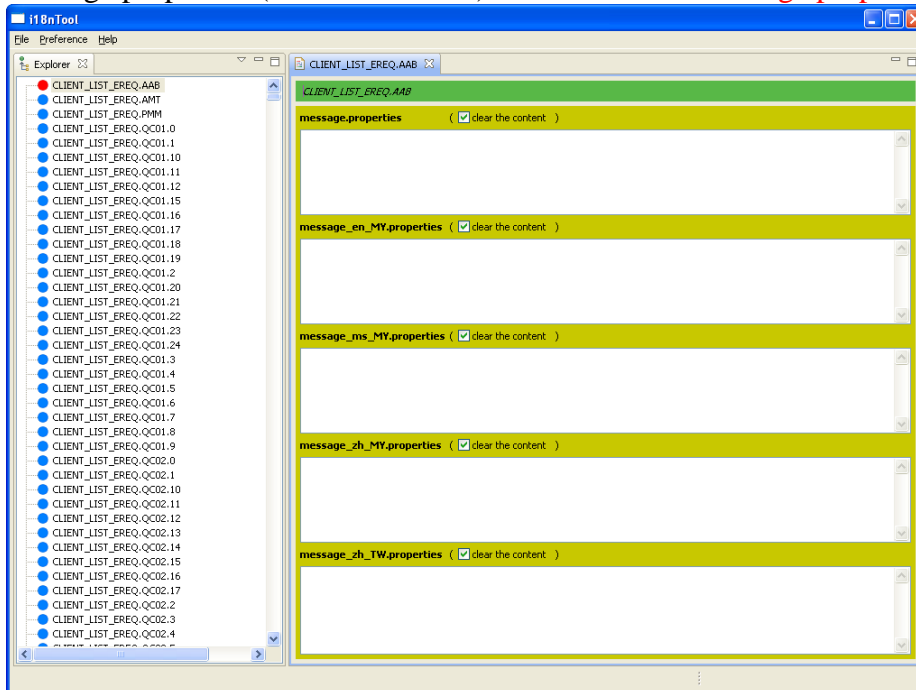


Figure 11 A editor will be created and related to the node's key and value

Input values to every **VALUE**.

Message.properties: A

Message_en_MY.properties: B

Message_ms_MY.properties: C

Message_zh_MY.properties: 字母 A

Message_zh_TW.properties: 繁體字

Use [File -> Save] or [Ctrl + S] to save the editor, after saving, the icon color of node will be changed to **circle orange**.

Delete key

First, choose the item you want to delete.

Second, right click and choose [Delete item].

Rename key

First, choose the item you want to rename.

Second, right click and choose [Rename key] .

Third, input value to New key.

Fourth, after clicking [OK], the icon color of node will be changed to **circle orange**.

eg: choose the item **CLIENT_LIST_EREQ.PMM** and Rename it to **CLIENT_LIST_EREQ.AMM**.

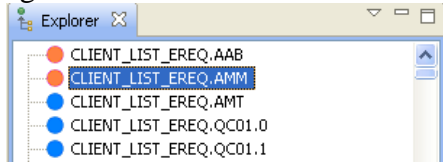


Figure 12 After Adding a new key and rename a existing key

Search items by key

First, focus on the tree's node.

Second, right click and choose [Search items by key].

eg: search the **CLIENT_LIST_EREQ.A**, all items contain the key **CLIENT_LIST_EREQ.A** will be show in the Search View.

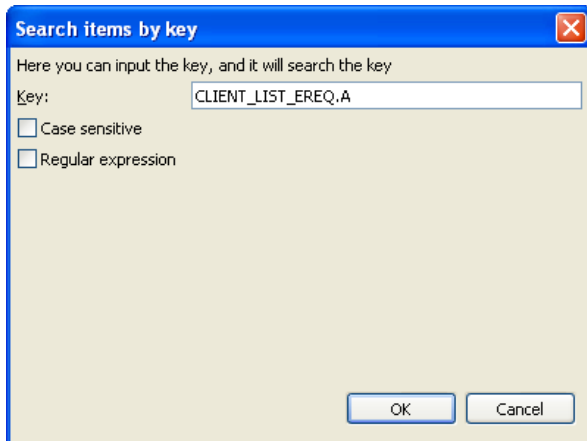


Figure 13 Search items by key dialog

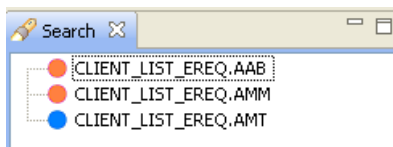


Figure 14 Search items by results

Search items by value

First, focus on the tree's node.

Second, right click and choose [Search items by key].

eg: search the **ab**, and all the items contain **ab** will be show in [Search] View.

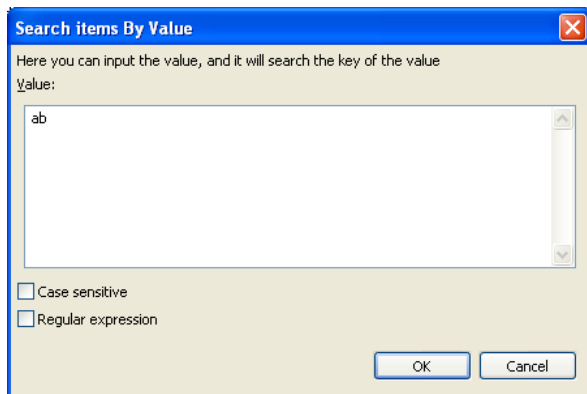


Figure 15 Search items by value dialog

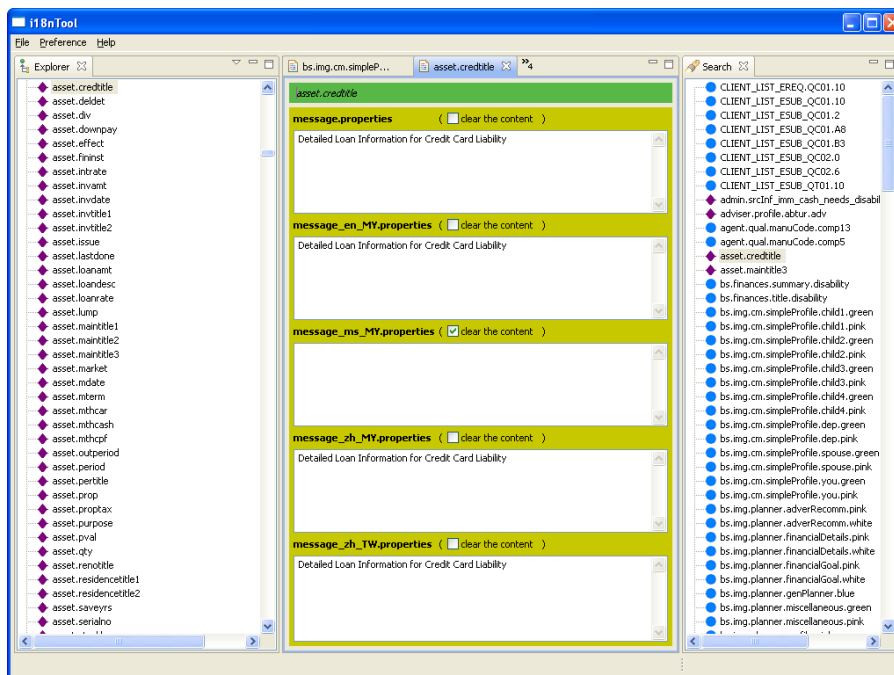


Figure 16 Search items by value results

Node: Search items by key/value both are contain a checkbox named **Case sensitive**, if checked, the search will rely on the Case sensitive, so you cant find “A” if you input “a”.
Contain a check box **Regular expression**, the search will rely on the regular match.

VI. Search items

Search items by key

Search items by value

Search items by key: You can search properties by key. And it will give all the properties.

First, focus on the tree's node.

Second, right click and choose [Search items by key].

eg: search the **CLIENT_LIST_EREQ.A**, all items contain the key **CLIENT_LIST_EREQ.A** will be show in the Search View.

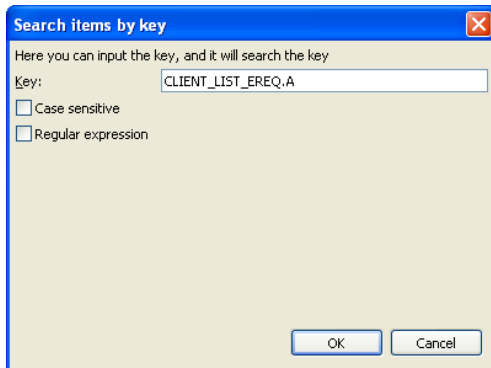


Figure 17 Search items by key dialog

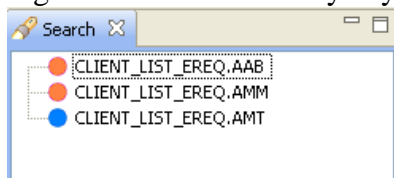


Figure 18 Search items by key results

Search items by value: You can search properties by value. And it will give all the properties.

First, focus on the tree's node.

Second, right click and choose [Search items by key].

eg: search the **ab**, and all the items contain **ab** will be show in Search View.

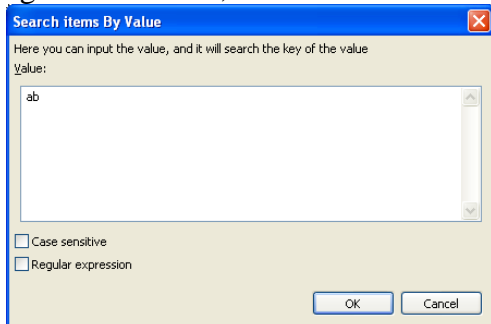


Figure 20 Search items by value dialog

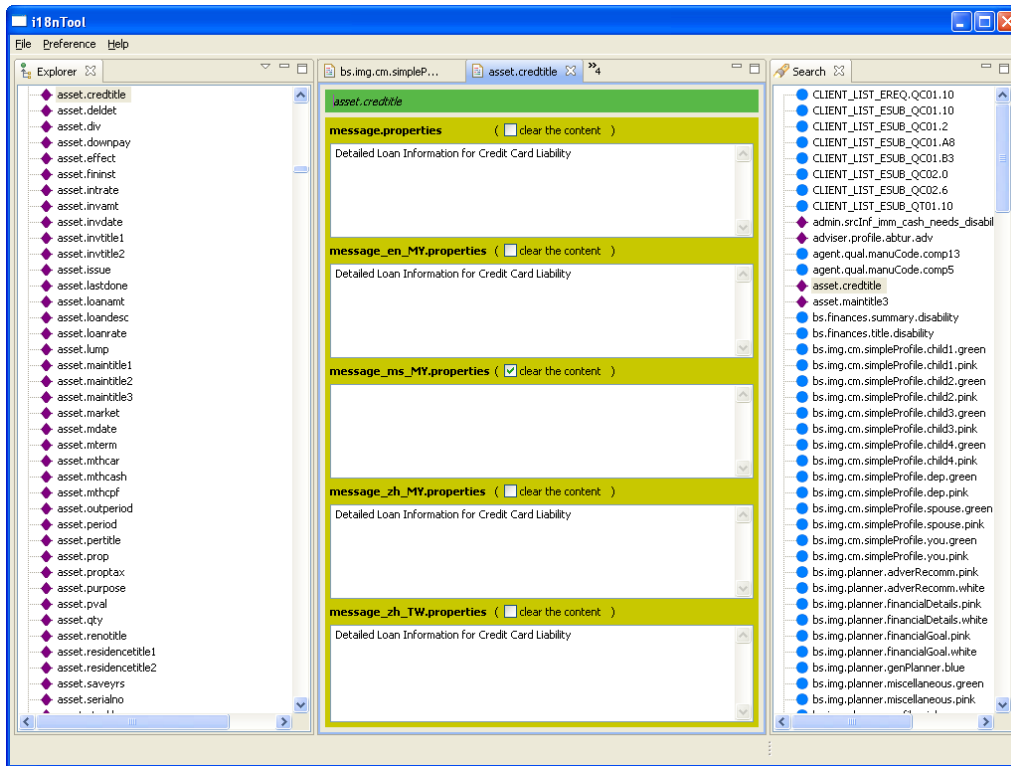


Figure 21 Search items by value results

Node: Search items by key/value both are contain a checkbox named **Case sensitive**, if checked, the search will rely on the Case sensitive, so you cant find “A” if you input “a”.
 Contain a check box **Regular expression**, the search will rely on the regular match.

VII. Save current app to properties/excel

Export items to properties/excel

Save All items to files

Export items to files: go to the [Preference->General] editor. Choose [export properties] and Check the **Changed** item box.

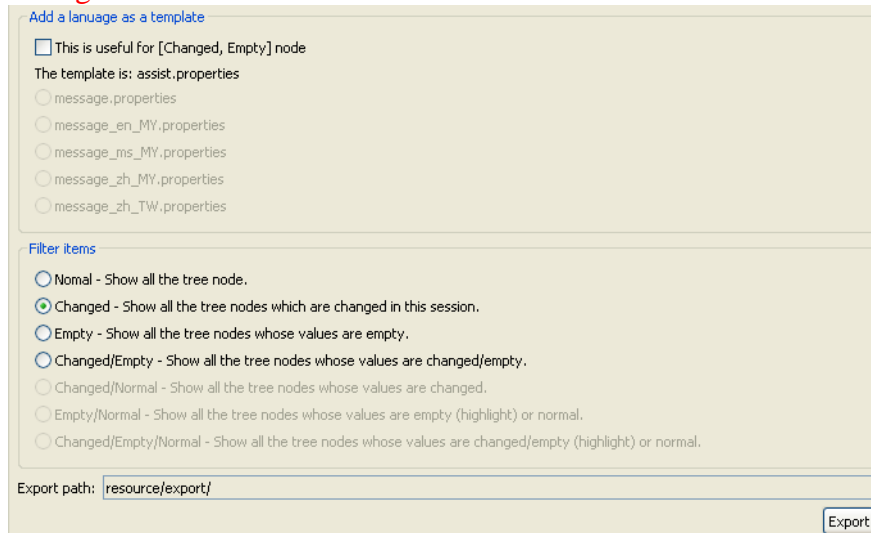


Figure 22 Export properties items

Node: There are several items for Filter

Normal: Export all items to the export folder, it is the same function as [Save resource->No encoding]

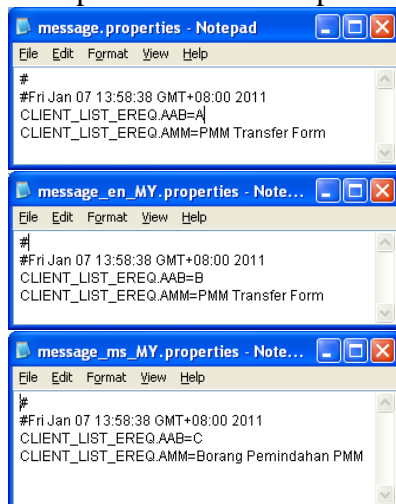
Changed: Export all items which have been changed at this time (before next reboot) to the export folder.

Empty: Export all items which are empty at this time (before next reboot) to the export folder.

Changed/Empty: Export all items which are empty or have been changed at this time (before next reboot) to the export folder.

Add a language as a template: Generate a new file (assist.properties) which will base on below files.

After clicking [Export]. The item **CLIENT_LIST_EREQ.AAB** and **CLIENT_LIST_EREQ.AMM** will be export to resource/export/ folder. This export action will not **encoding** the value.



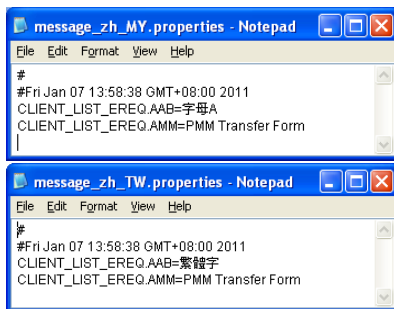


Figure 23 the results of the export action

Export items to files: go to the [Preference->General] editor. Choose [export excel] and Check the **Changed** item box.

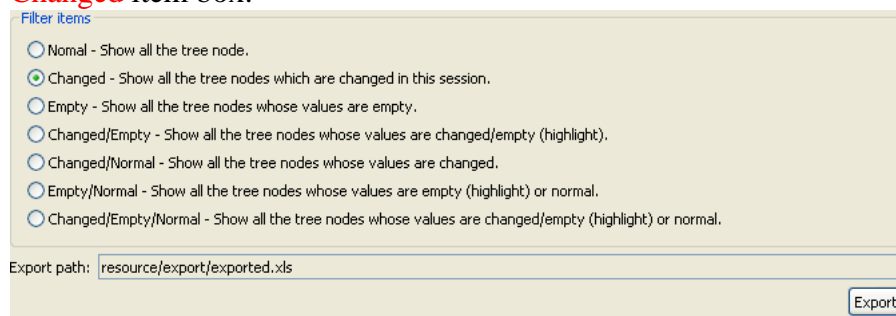


Figure 24 Export excel items

After clicking [Export], the exported.xls will be generated. And there are two items and colored.

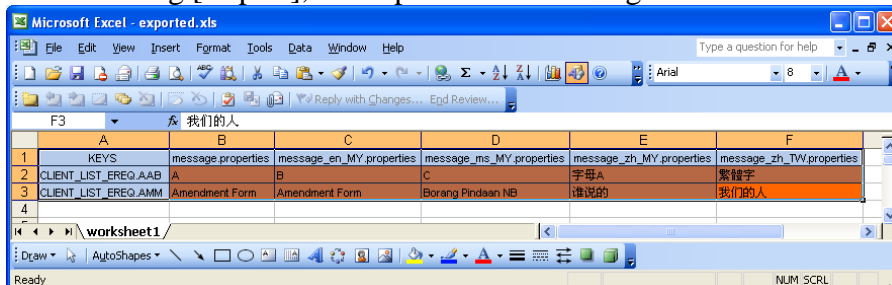


Figure 25 Export excel file

Node: There are several items for Filter.

Normal: Export all items to the exported.xls.

Changed: Export all items which have been changed at this time (before next reboot) to the exported.xls.

Empty: Export all items which are empty at this time (before next reboot) to the exported.xls.

Changed/Empty: Export all items which are empty or have been changed at this time (before next reboot) to the exported.xls.

Changed/Normal: Export all items to the exported.xls, and colored the changed items.

Empty/Normal: Export all items to the exported.xls, and colored the empty items.

Changed/Empty/Normal: Export all items to the exported.xls, and colored the changed/empty items.

Save All items to files:

There are two ways to save resource: **Encoding**, **No encoding**.

Encoding: save the resource if the value is not English, like Chinese, encode it to Unicode.

No encoding: save the resource if the value is Chinese, Not to encode it. The Save Resource action will save key=value to the folder which Resource Locator in General View defined (as resource/)

BTW: only you click Save Resource function, the key=value will be saved to the hard files.

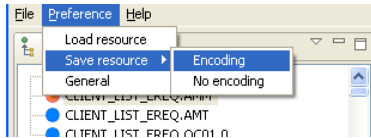


Figure 26 Save Resource using Encoding

This will save all the keys=values to the [resource/](#) folder. And the Chinese value is changed to Unicode.

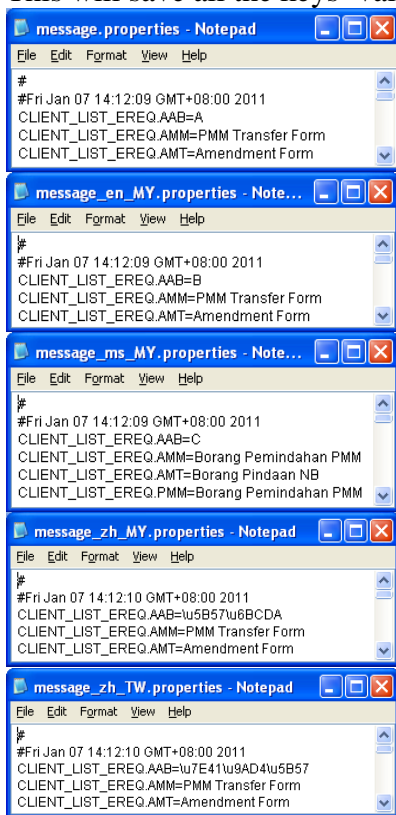


Figure 27 Save Resource using Encoding results

VIII. Load properties/excel to current app

Load properties to replace all

Import properties/excel to replace some items

Load properties to replace all

It is used for one case, especially you have changed the [Resource locator] path, and want to regenerate a new tree.

If the value in the file is Chinese; after loading, it will be automatically decoded to the word we can read.

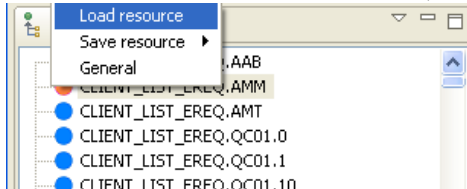


Figure 28 Load resource function

Import properties/excel to replace some items

We will use some modify properties to replace some current items which we don't want. This can import the resource from properties files or excel file.

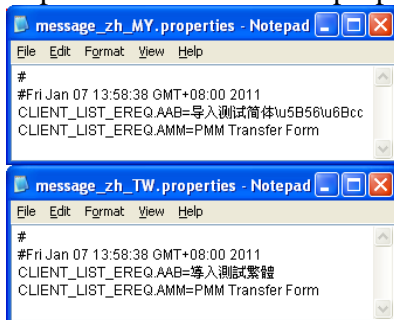


Figure 29 Import the properties file from [resource/import/](#) folder.

There is no empty value in the item, so the icon color of item will be circle blue.

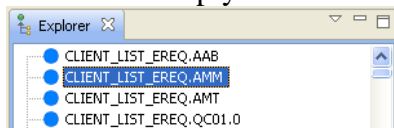


Figure 30 Explorer changed after import

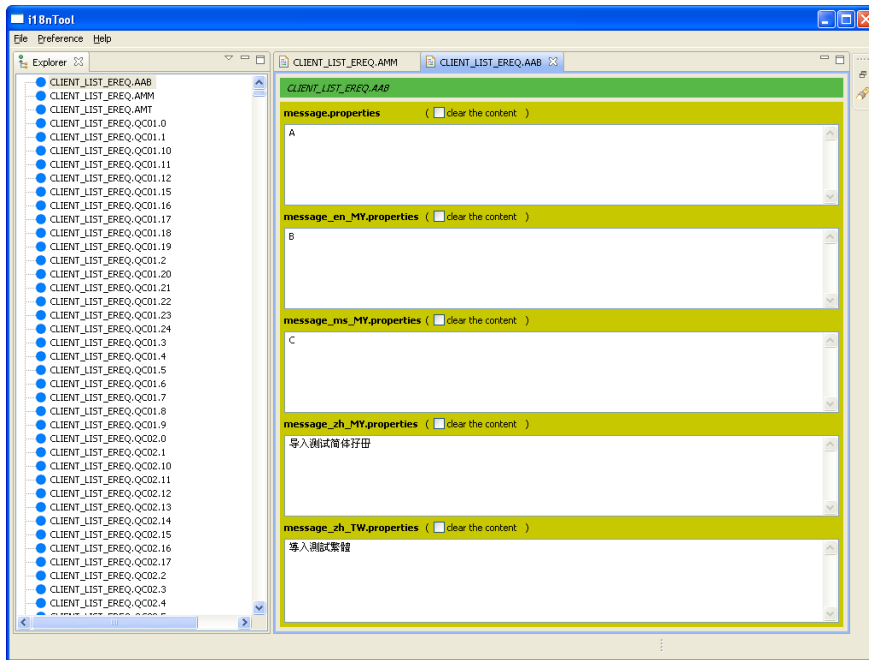


Figure 31 The values have been imported to the items