



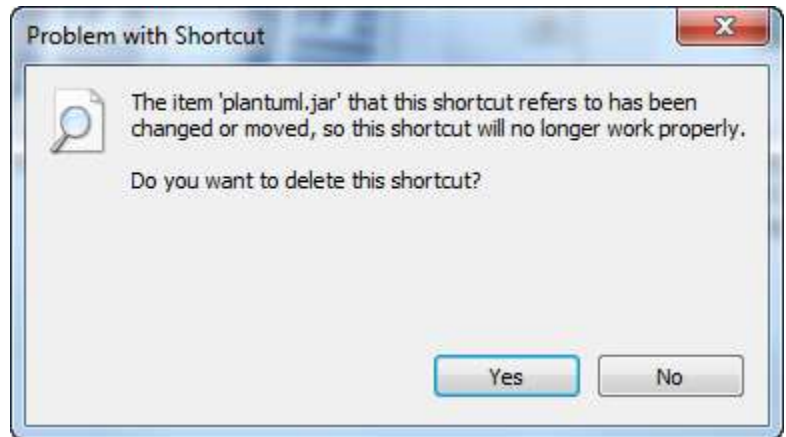
# Remap Shortcut Updater Personal Edition

## User Manual

Remap is a simple application designed to automate the task of re-pointing file and folder shortcuts to a new location.

While shortcuts can be manually edited, Remap automates this process, allowing users to process hundreds of shortcuts in a few seconds.

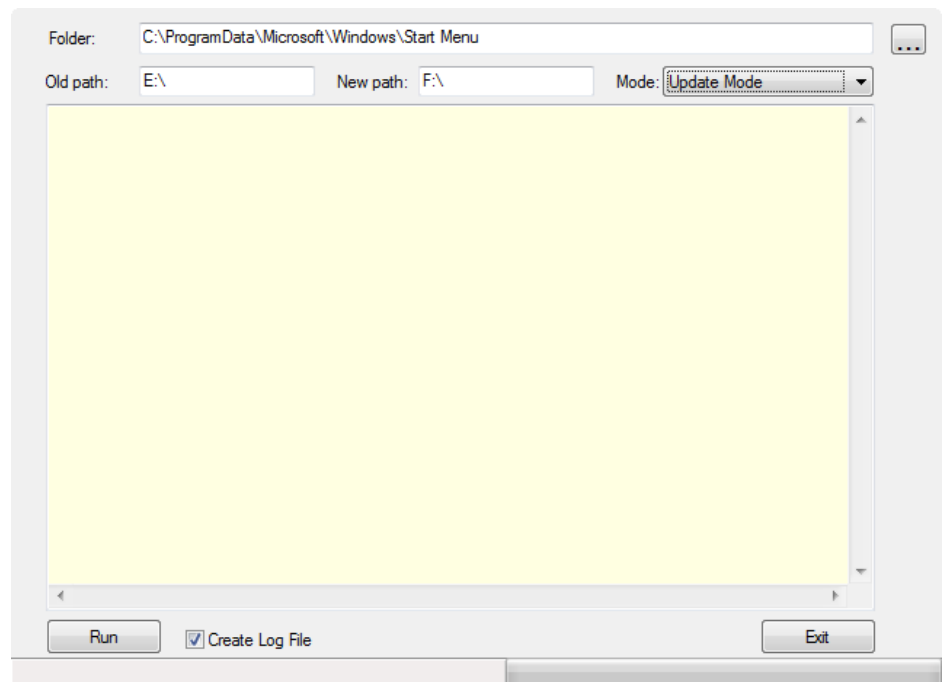
Shortcuts can become invalid if the target file, application or folder is moved to a new location or to a different disk drive. When trying to launch a broken shortcut, Windows will display an error showing that the destination is no longer there.



## How does it work?

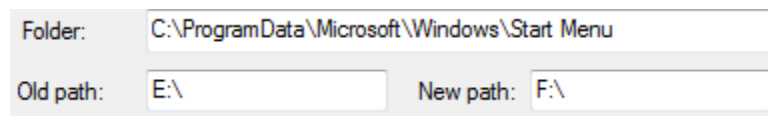
The Remap interface is very straightforward.

The main entry is the folder where the shortcuts you need to modify are located. Remap will recursively process the location given, as well as all subfolders nested up to 5 levels down from the initial location.



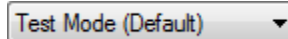
The other parameters are the "old path", and the "new path". Remap will simply look at the "Target" and "Start in" fields of the shortcut to string matching the text given as "old path". If a match is found, Remap will replace the text in "old path" with the text in "new path", and modify and save the shortcut.

For instance, if the target files were moved from the E:\ to the F:\ drive, simply enter the following:



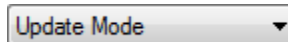
Folder: C:\ProgramData\Microsoft\Windows\Start Menu  
Old path: E:\ New path: F:\

Remap provides two modes: a "test mode", and an "update mode". Please note that test mode is the default. In test mode, Remap will simply read the shortcuts and tell the user what actions would have been taken with the given parameters. No updates are made.

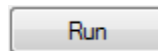


Test Mode (Default) ▼

Once update mode gives the expected results, switch to update mode to actually perform the changes.

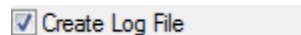


Update Mode ▼



Run

The results are given in a text box, and can also be saved as a text file.



☒ Create Log File

The log file contains the following information:

```
=====Processing Started=====
Gathering shortcut information for folder "C:\tmp\"
C:\ ==> D:\
>>>>Update Mode
Number of shortcuts to be processed: 2

'my Program - Shortcut'
  <==C:\Users\me\Documents\
  ==>D:\Users\me\Documents\
'my File - Shortcut'
  <==C:\Users\me\Documents\file.txt
  ==>D:\Users\me\Documents\file.txt

2 shortcuts processed in 0m 0.83s.
2 shortcuts matched.
=====Processing Completed=====
```

☞ Please note that Remap does not check if the destination is valid.

☞ Also, Remap does not perform a backup of the old shortcut; please make your own backup before making any changes to your system.

### **How do I install Remap on my system?**

Remap is a "green" portable application, no installation is required. Just download the executable and run it from anywhere.

### **How do I uninstall Remap?**

To remove ReMap, just delete the executable.

### **How much does it cost?**

The use of "ReMap Shortcut Updater Personal Edition" is absolutely free for personal use. However, if you find this software useful, please feel free to make a donation.

By using this software, you agree to the terms of our licensing agreement. This software is provided as-is, use it at your own risk.

For support and additional features, or for non-personal or commercial use, please contact us to purchase "ReMap Shortcut Updater Professional".

ReMap Pro edition features:

- the ability to perform multiple string substitutions
- is not limited to 5 levels of nesting
- 32 and 64 bit version
- command line version for silent processing
- additional logging capabilities



<http://mountwhite.net>