



**Minnesota at Penn St.**

02/27/22 Bryce Jordan Center, University Park, Pa.  
2021-22 Women's Basketball

Game Time: 2:00 PM  
Game Duration: 1:47  
Attendance: 2,401

Officials: Frank Steratore, Brad Maxey, Missy Brooks

Minnesota - 94

Record: 14-16 (7-11)

NO.	Name	Min	FG			Rebounds			Fouls		TP	AS	TO	ST	Blocks		+/-
			M-A	M-A	M-A	OR	DR	TOT	PF	FD					BS	BA	
12	Laura Bagwell Katalinich	F 22:10	7-17	0-0	2-4	6	4	10	2	4	16	1	1	0	0	1	7
30	Kadiatou Sissoko	F 35:12	12-22	0-0	8-10	7	7	14	2	7	32	2	1	2	0	0	12
3	Deja Winters	G 29:39	1-6	0-3	2-2	0	3	3	2	2	4	5	2	0	1	0	14
13	Gadiva Hubbard	G 33:02	2-8	2-5	2-2	2	1	3	4	1	8	1	2	2	0	0	7
14	Sara Scalia	G 40:00	11-18	8-13	2-2	2	6	8	3	2	32	3	2	2	0	0	11
15	Kayla Mershon	10:04	1-3	0-0	0-0	2	1	3	1	0	2	2	1	0	0	0	-1
1	Alexia Smith	20:05	0-4	0-0	0-0	3	0	3	1	1	0	1	1	0	0	0	-1
35	Bailey Helgren	09:48	0-0	0-0	0-0	0	0	0	3	0	0	2	0	0	0	0	6
Team						0	3	3			0		0				
<b>Totals</b>			34-78	10-21	16-20	22	25	47	18	17	94	17	10	6	1	1	11

Technical Fouls::NONE

Shooting By Period		
1st FG%	9-21	42.9%
3PT%	2-6	33.3%
FT%	2-2	100%
2nd FG%	7-20	35.0%
3PT%	2-3	66.7%
FT%	0-0	0%
3rd FG%	10-21	47.6%
3PT%	3-4	75.0%
FT%	5-8	62.5%
4th FG%	8-16	50.0%
3PT%	3-8	37.5%
FT%	9-10	90%
<b>GM FG%</b>	34-78	43.6%
<b>3PT%</b>	10-21	47.6%
<b>FT%</b>	16-20	80.0%

Dead Ball Rebounds: 2, 0

Penn St. - 83

Record: 11-17 (5-13)

NO.	Name	Min	FG			Rebounds			Fouls		TP	AS	TO	ST	Blocks		+/-
			M-A	M-A	M-A	OR	DR	TOT	PF	FD					BS	BA	
11	Anna Camden	F 13:05	1-2	0-1	2-2	0	4	4	2	1	4	0	0	0	0	0	-11
4	Niya Beverley	G 33:50	3-5	0-2	3-3	1	2	3	1	2	9	3	1	1	0	0	-4
5	Leilani Kapinus	G 07:45	1-3	0-0	0-0	0	2	2	0	0	2	0	4	0	1	0	-9
20	Makenna Marisa	G 38:38	11-20	1-5	5-7	0	7	7	0	6	28	4	4	1	0	0	-9
25	Kelly Jekot	G 20:35	1-3	0-2	0-0	1	2	3	4	0	2	2	0	0	0	0	-24
15	Maddie Burke	14:59	1-3	0-1	0-0	0	1	1	4	1	2	0	2	0	0	0	-1
23	Shay Hagans	32:03	2-7	0-2	4-4	0	1	1	3	2	8	0	1	0	0	1	-2
10	Tova Sabel	25:28	7-8	2-3	3-4	0	2	2	3	3	19	1	0	3	0	0	18
1	Ali Brigham	11:59	2-7	0-0	5-5	3	0	3	0	3	9	0	1	0	0	0	-18
12	Kayla Thomas	01:38	0-0	0-0	0-0	0	0	0	0	0	0	0	0	0	0	0	5
Team						1	3	4			0		0				
<b>Totals</b>			29-58	3-16	22-25	6	24	30	17	18	83	10	13	5	1	1	-11

Technical Fouls::NONE

Shooting By Period		
1st FG%	8-15	53.3%
3PT%	0-3	0.0%
FT%	0-2	0%
2nd FG%	4-11	36.4%
3PT%	0-4	0.0%
FT%	4-4	100%
3rd FG%	8-13	61.5%
3PT%	3-5	60.0%
FT%	7-7	100%
4th FG%	9-19	47.4%
3PT%	0-4	0.0%
FT%	11-12	91.7%
<b>GM FG%</b>	29-58	50.0%
<b>3PT%</b>	3-16	18.8%
<b>FT%</b>	22-25	88.0%

Dead Ball Rebounds: 1, 0

	MIN	PSU
<b>Biggest lead</b>	22 (3 <sup>rd</sup> 7:16)	2 (1 <sup>st</sup> 9:33)
<b>Best Scoring Run</b>	12(3 <sup>rd</sup> 7:16)	7(3 <sup>rd</sup> 6:03)
<b>Lead Changes</b>	1	
<b>Times Tied</b>	2	
<b>Time with Lead</b>	38:04	00:12

	MIN	PSU
<b>Points from</b>		
<b>Turnovers</b>	15	10
<b>Paint</b>	40	46
<b>Second Chance</b>	22	7
<b>Fast Breaks</b>	11	23
<b>Bench</b>	2	38

Period by Period Scoring					
	1st	2nd	3rd	4th	TOT
<b>MIN</b>	22	16	28	28	94
<b>PSU</b>	16	12	26	29	83



**Period 1**

**Quarter Starters:**

<b>PSU</b>	4 Beverley N	5 Kapinus L	11 Camden A	20 Marisa M	25 Jekot K
<b>MIN</b>	3 Winters D	12 Bagwell Katalinich L	13 Hubbard G	14 Scalia S	30 Sissoko K

Game Time	PSU	Score	Diff	MIN
10:00	5 KAPINUS L jumpball lost			30 SISSOKO K jumpball won
09:49				13 HUBBARD G 3pt FG , jump shot missed
09:46				14 SCALIA S offensive rebound (1)
09:39	4 BEVERLEY N steal (1)			14 SCALIA S turnover bad pass (1)
09:33	4 BEVERLEY N 2pt FG fast break from turnover in the paint, layup made (2)	<b>2-0</b>	<b>2</b>	
09:21		<b>2-2</b>	<b>0</b>	30 SISSOKO K 2pt FG in the paint, layup made (2)
08:48	5 KAPINUS L 2pt FG in the paint, layup missed			
08:44				13 HUBBARD G defensive rebound (1)
08:32				14 SCALIA S 3pt FG , jump shot missed
08:27				13 HUBBARD G offensive rebound (2)
08:21		<b>2-4</b>	<b>-2</b>	12 BAGWELL KATALINICH L 2pt FG second chance in the paint, layup made (2)
08:21				30 SISSOKO K assist (1)
07:59	5 KAPINUS L turnover bad pass (1)			13 HUBBARD G steal (1)
07:51				3 WINTERS D 2pt FG from turnover outside the paint, jump shot missed
07:47	5 KAPINUS L defensive rebound (1)			
07:43	11 CAMDEN A 2pt FG fast break in the paint, layup made (2)	<b>4-4</b>	<b>0</b>	
07:43	25 JEKOT K assist (1)			
07:26		<b>4-6</b>	<b>-2</b>	12 BAGWELL KATALINICH L 2pt FG in the paint, jump shot made (4)
07:26				3 WINTERS D assist (1)
07:03	5 KAPINUS L 2pt FG in the paint, layup missed			
07:00				12 BAGWELL KATALINICH L defensive rebound (1)
06:56				12 BAGWELL KATALINICH L 2pt FG in the paint, jump shot blocked
06:56	5 KAPINUS L block (1)			
06:51	5 KAPINUS L defensive rebound (2)			
06:50	5 KAPINUS L turnover lost ball (2)			
06:50	5 KAPINUS L substitution out			
06:50	11 CAMDEN A substitution out			
06:50	15 BURKE M substitution in			
06:50	23 HAGANS S substitution in			
06:33		<b>4-8</b>	<b>-4</b>	30 SISSOKO K 2pt FG from turnover outside the paint, jump shot made (4)
06:33				14 SCALIA S assist (1)
06:23	15 BURKE M 2pt FG in the paint, layup made (2)	<b>6-8</b>	<b>-2</b>	
06:08		<b>6-10</b>	<b>-4</b>	12 BAGWELL KATALINICH L 2pt FG outside the paint, jump shot made (6)
06:08				30 SISSOKO K assist (2)
05:46	23 HAGANS S 2pt FG in the paint, layup missed			
05:41	25 JEKOT K offensive rebound (1)			
05:39	23 HAGANS S 3pt FG second chance, jump shot missed			
05:36	4 BEVERLEY N offensive rebound (1)			



**Officials:** Frank Steratore, Brad Maxey, Missy Brooks

Game Time	PSU	Score	Diff	MIN
05:35	4 BEVERLEY N 3pt FG second chance, jump shot missed			
05:32				30 SISSOKO K defensive rebound (1)
05:27		<b>6-12</b>	<b>-6</b>	12 BAGWELL KATALINICH L 2pt FG in the paint, jump shot made (8)
05:27				13 HUBBARD G assist (1)
05:12	4 BEVERLEY N foul offensive (1 - 1)			12 BAGWELL KATALINICH L foul drawn (1)
05:12	4 BEVERLEY N turnover offensive (1)			
05:05				12 BAGWELL KATALINICH L substitution out
05:05				15 MERSHON K substitution in
04:54		<b>6-15</b>	<b>-9</b>	13 HUBBARD G 3pt FG from turnover, jump shot made (3)
04:54				15 MERSHON K assist (1)
04:34	20 MARISA M turnover lost ball (1)			
04:34	Timeout media			
04:34	25 JEKOT K substitution out			
04:34	10 SABEL T substitution in			
04:15				30 SISSOKO K 2pt FG from turnover in the paint, jump shot missed
04:11	23 HAGANS S defensive rebound (1)			
04:07	23 HAGANS S 2pt FG fast break in the paint, jump shot made (2)	<b>8-15</b>	<b>-7</b>	
03:49				30 SISSOKO K 2pt FG in the paint, layup missed
03:46	4 BEVERLEY N defensive rebound (2)			
03:40	10 SABEL T 2pt FG in the paint, layup made (2)	<b>10-15</b>	<b>-5</b>	
03:40	4 BEVERLEY N assist (1)			
03:30				30 SISSOKO K turnover travel (1)
03:30				13 HUBBARD G substitution out
03:30				30 SISSOKO K substitution out
03:30				1 SMITH A substitution in
03:30				12 BAGWELL KATALINICH L substitution in
03:16	20 MARISA M 2pt FG from turnover in the paint, jump shot made (2)	<b>12-15</b>	<b>-3</b>	
03:04				3 WINTERS D 3pt FG , jump shot missed
03:01	20 MARISA M defensive rebound (1)			
02:59	20 MARISA M foul drawn (1)			1 SMITH A foul shooting (1 - 1)
02:59	20 MARISA M free throw fast break 1 - 2 missed			
02:59	offensive dead ball rebound (1)			
02:59	20 MARISA M free throw fast break 2 - 2 missed			
02:58				12 BAGWELL KATALINICH L defensive rebound (2)
02:39		<b>12-18</b>	<b>-6</b>	14 SCALIA S 3pt FG , jump shot made (3)
02:39				3 WINTERS D assist (2)
02:24	4 BEVERLEY N 3pt FG , jump shot missed			
02:22				defensive rebound (7)
02:22	4 BEVERLEY N substitution out			
02:22	25 JEKOT K substitution in			
01:55	23 HAGANS S foul personal (1 - 2)			14 SCALIA S foul drawn (1)
01:45				12 BAGWELL KATALINICH L 2pt FG outside the paint, jump shot missed
01:41	10 SABEL T defensive rebound (1)			
01:35	20 MARISA M 2pt FG in the paint, jump shot missed			
01:32				3 WINTERS D defensive rebound (1)
01:30				14 SCALIA S 3pt FG , jump shot missed



**Officials:** Frank Steratore, Brad Maxey, Missy Brooks

Game Time	PSU	Score	Diff	MIN
01:28				1 SMITH A offensive rebound (1)
01:28	23 HAGANS S foul personal (2 - 3)			1 SMITH A foul drawn (1)
01:28	23 HAGANS S substitution out			
01:28	5 KAPINUS L substitution in			
01:22	20 MARISA M foul drawn (2)			15 MERSHON K foul offensive (1 - 2)
01:22				15 MERSHON K turnover offensive (1)
01:22				3 WINTERS D substitution out
01:22				15 MERSHON K substitution out
01:22				13 HUBBARD G substitution in
01:22				30 SISSOKO K substitution in
01:06	5 KAPINUS L 2pt FG from turnover in the paint, layup made (2)	<b>14-18</b>	<b>-4</b>	
01:06	25 JEKOT K assist (2)			
00:51				12 BAGWELL KATALINICH L 2pt FG in the paint, layup missed
00:42				1 SMITH A offensive rebound (2)
00:42				1 SMITH A 2pt FG second chance in the paint, layup missed
00:41				1 SMITH A offensive rebound (3)
00:41	15 BURKE M foul shooting (1 - 4)			30 SISSOKO K foul drawn (1)
00:41	15 BURKE M substitution out			
00:41	1 BRIGHAM A substitution in			
00:41		<b>14-19</b>	<b>-5</b>	30 SISSOKO K free throw 1 - 2 made (5)
00:41		<b>14-20</b>	<b>-6</b>	30 SISSOKO K free throw 2 - 2 made (6)
00:26	1 BRIGHAM A 2pt FG in the paint, layup made (2)	<b>16-20</b>	<b>-4</b>	
00:26	20 MARISA M assist (1)			
00:05				12 BAGWELL KATALINICH L 2pt FG in the paint, jump shot missed
00:00				12 BAGWELL KATALINICH L offensive rebound (3)
00:01		<b>16-22</b>	<b>-6</b>	12 BAGWELL KATALINICH L 2pt FG second chance in the paint, layup made (10)
<b>END OF PERIOD</b>				
<b>PSU 16-22 MIN</b>				



Minnesota at Penn St.

02/27/22 Bryce Jordan Center, University Park, Pa.  
2021-22 Women's Basketball

Game Time: 2:00 PM  
Game Duration: 1:47  
Attendance: 2,401

Officials: Frank Steratore, Brad Maxey, Missy Brooks

Minnesota - 22

NO.	Name	Min	FG			Rebounds			Fouls		TP	AS	TO	ST	Blocks		+/-
			M-A	3P	FT	OR	DR	TOT	PF	FD					BS	BA	
12	Laura Bagwell Katalinich	F 08:25	5-9	0-0	0-0	1	2	3	0	1	10	0	0	0	0	1	7
30	Kadiatou Sissoko	F 07:52	2-4	0-0	2-2	0	1	1	0	1	6	2	1	0	0	0	5
3	Deja Winters	G 08:38	0-2	0-1	0-0	0	1	1	0	0	0	2	0	0	0	0	6
13	Gadiva Hubbard	G 07:52	1-2	1-2	0-0	1	1	2	0	0	3	1	0	1	0	0	5
14	Sara Scalia	G 10:00	1-3	1-3	0-0	1	0	1	0	1	3	1	1	0	0	0	6
15	Kayla Mershon	03:43	0-0	0-0	0-0	0	0	0	1	0	0	1	1	0	0	0	0
1	Alexia Smith	03:30	0-1	0-0	0-0	3	0	3	1	1	0	0	0	0	0	0	1
Team						0	1	1			0		0				
<b>Totals</b>			9-21	2-6	2-2	6	6	12	2	4	22	7	3	1	0	1	6

Shooting By Period		
1st FG%	9-21	42.9%
3PT%	2-6	33.3%
FT%	2-2	100%
GM FG%	9-21	42.9%
3PT%	2-6	33.3%
FT%	2-2	100.0%

Dead Ball Rebounds: 0, 0

Technical Fouls::NONE

Penn St. - 16

NO.	Name	Min	FG			Rebounds			Fouls		TP	AS	TO	ST	Blocks		+/-
			M-A	3P	FT	OR	DR	TOT	PF	FD					BS	BA	
11	Anna Camden	F 03:10	1-1	0-0	0-0	0	0	0	0	0	2	0	0	0	0	0	-2
4	Niya Beverley	G 07:38	1-3	0-2	0-0	1	1	2	1	0	2	1	1	1	0	0	-6
5	Leilani Kapinus	G 04:38	1-3	0-0	0-0	0	2	2	0	0	2	0	2	0	1	0	-2
20	Makenna Marisa	G 10:00	1-2	0-0	0-2	0	1	1	0	2	2	1	1	0	0	0	-6
25	Kelly Jekot	G 07:48	0-0	0-0	0-0	1	0	1	0	0	0	2	0	0	0	0	-9
15	Maddie Burke	06:09	1-1	0-0	0-0	0	0	0	1	0	2	0	0	0	0	0	-2
23	Shay Hagans	05:22	1-3	0-1	0-0	0	1	1	2	0	2	0	0	0	0	0	-4
10	Tova Sabel	04:34	1-1	0-0	0-0	0	1	1	0	0	2	0	0	0	0	0	3
1	Ali Brigham	00:41	1-1	0-0	0-0	0	0	0	0	0	2	0	0	0	0	0	-2
Team						0	0	0			0		0				
<b>Totals</b>			8-15	0-3	0-2	2	6	8	4	2	16	4	4	1	1	0	-6

Shooting By Period		
1st FG%	8-15	53.3%
3PT%	0-3	0.0%
FT%	0-2	0%
GM FG%	8-15	53.3%
3PT%	0-3	0.0%
FT%	0-2	0.0%

Dead Ball Rebounds: 1, 0

Technical Fouls::NONE

	MIN	PSU
Biggest lead	9 (1 <sup>st</sup> 4:54)	2 (1 <sup>st</sup> 9:33)
Best Scoring Run	7 (1 <sup>st</sup> 4:54)	6 (1 <sup>st</sup> 3:16)
Lead Changes	1	
Times Tied	2	
Time with Lead	08:04	00:12

	MIN	PSU
Points from		
Turnovers	5	6
Paint	10	16
Second Chance	6	0
Fast Breaks	0	6
Bench	0	8

Period by Period Scoring					
	1st	2nd	3rd	4th	TOT
MIN	22	16	28	28	94
PSU	16	12	26	29	83



**Officials:** Frank Steratore, Brad Maxey, Missy Brooks

**Period 2**

**Quarter Starters:**

<b>PSU</b>	1 Brigham A	5 Kapinus L	11 Camden A	20 Marisa M	25 Jekot K
<b>MIN</b>	1 Smith A	12 Bagwell Katalinich L	13 Hubbard G	14 Scalia S	30 Sissoko K

Game Time	PSU	Score	Diff	MIN
10:00	10 SABEL T substitution out			
10:00	11 CAMDEN A substitution in			
09:49	1 BRIGHAM A 2pt FG in the paint, layup missed			
09:45				30 SISSOKO K defensive rebound (2)
09:35				12 BAGWELL KATALINICH L 2pt FG in the paint, jump shot missed
09:30				13 HUBBARD G offensive rebound (3)
09:30				13 HUBBARD G 2pt FG second chance in the paint, layup missed
09:28	11 CAMDEN A defensive rebound (1)			
09:02	1 BRIGHAM A turnover lost ball (1)			30 SISSOKO K steal (1)
08:46		<b>16-25</b>	<b>-9</b>	14 SCALIA S 3pt FG from turnover, jump shot made (6)
08:18	5 KAPINUS L turnover bad pass (3)			30 SISSOKO K steal (2)
08:11		<b>16-27</b>	<b>-11</b>	30 SISSOKO K 2pt FG fast break from turnover in the paint, layup made (8)
08:04	20 MARISA M 3pt FG , jump shot missed			
08:01				12 BAGWELL KATALINICH L defensive rebound (4)
07:47				14 SCALIA S 3pt FG , jump shot missed
07:43	25 JEKOT K defensive rebound (2)			
07:26	11 CAMDEN A 3pt FG , jump shot missed			
07:22				14 SCALIA S defensive rebound (2)
07:12				30 SISSOKO K 2pt FG outside the paint, jump shot missed
07:08	11 CAMDEN A defensive rebound (2)			
07:02	5 KAPINUS L turnover lost ball (4)			14 SCALIA S steal (1)
06:57				14 SCALIA S 2pt FG from turnover outside the paint, jump shot missed
06:53				12 BAGWELL KATALINICH L offensive rebound (5)
06:53		<b>16-29</b>	<b>-13</b>	12 BAGWELL KATALINICH L 2pt FG from turnover second chance in the paint, layup made (12)
06:53	Timeout media			
06:53	1 BRIGHAM A substitution out			
06:53	5 KAPINUS L substitution out			
06:53	11 CAMDEN A substitution out			
06:53	4 BEVERLEY N substitution in			
06:53	15 BURKE M substitution in			
06:53	23 HAGANS S substitution in			
06:53				1 SMITH A substitution out
06:53				12 BAGWELL KATALINICH L substitution out
06:53				3 WINTERS D substitution in
06:53				35 HELGREN B substitution in
06:38	15 BURKE M 3pt FG , jump shot missed			
06:36	offensive rebound (12)			
06:21	20 MARISA M foul drawn (3)			35 HELGREN B foul shooting (1 - 1)
06:21				35 HELGREN B substitution out
06:21				15 MERSHON K substitution in



**Officials:** Frank Steratore, Brad Maxey, Missy Brooks

Game Time	PSU	Score	Diff	MIN
06:21	20 MARISA M free throw 1 - 2 made (3)	<b>17-29</b>	<b>-12</b>	
06:21	20 MARISA M free throw 2 - 2 made (4)	<b>18-29</b>	<b>-11</b>	
05:58				30 SISSOKO K 2pt FG outside the paint, jump shot missed
05:54	20 MARISA M defensive rebound (2)			
05:47	20 MARISA M 2pt FG in the paint, layup made (6)	<b>20-29</b>	<b>-9</b>	
05:25		<b>20-32</b>	<b>-12</b>	14 SCALIA S 3pt FG , jump shot made (9)
05:08	25 JEKOT K substitution out			
05:08	10 SABEL T substitution in			
05:08				13 HUBBARD G substitution out
05:08				1 SMITH A substitution in
04:51	20 MARISA M 2pt FG outside the paint, jump shot made (8)	<b>22-32</b>	<b>-10</b>	
04:33		<b>22-34</b>	<b>-12</b>	14 SCALIA S 2pt FG in the paint, jump shot made (11)
04:24	23 HAGANS S turnover lost ball (1)			
04:02	10 SABEL T foul personal (1 - 1)			30 SISSOKO K foul drawn (2)
04:02	20 MARISA M substitution out			
04:02	11 CAMDEN A substitution in			
03:51				1 SMITH A 2pt FG from turnover outside the paint, jump shot missed
03:47	11 CAMDEN A defensive rebound (3)			
03:29	10 SABEL T 3pt FG , jump shot missed			
03:24				30 SISSOKO K defensive rebound (3)
03:10	10 SABEL T steal (1)			3 WINTERS D turnover bad pass (1)
03:02	15 BURKE M 2pt FG from turnover in the paint, layup missed			
02:58				15 MERSHON K defensive rebound (1)
02:52				30 SISSOKO K 2pt FG in the paint, layup missed
02:46				15 MERSHON K offensive rebound (2)
02:46		<b>22-36</b>	<b>-14</b>	15 MERSHON K 2pt FG second chance in the paint, layup made (2)
02:40	23 HAGANS S foul drawn (1)			14 SCALIA S foul shooting (1 - 2)
02:40	15 BURKE M substitution out			
02:40	20 MARISA M substitution in			
02:40				3 WINTERS D substitution out
02:40				15 MERSHON K substitution out
02:40				12 BAGWELL KATALINICH L substitution in
02:40				13 HUBBARD G substitution in
02:40	23 HAGANS S free throw fast break 1 - 2 made (3)	<b>23-36</b>	<b>-13</b>	
02:40	23 HAGANS S free throw fast break 2 - 2 made (4)	<b>24-36</b>	<b>-12</b>	
02:40				30 SISSOKO K substitution out
02:40				15 MERSHON K substitution in
02:27		<b>24-38</b>	<b>-14</b>	12 BAGWELL KATALINICH L 2pt FG in the paint, layup made (14)
02:27				15 MERSHON K assist (2)
02:08	23 HAGANS S 2pt FG in the paint, layup missed			
02:05				14 SCALIA S defensive rebound (3)
01:43				12 BAGWELL KATALINICH L 2pt FG in the paint, layup missed
01:41	10 SABEL T defensive rebound (2)			
01:38	4 BEVERLEY N 2pt FG fast break in the paint, layup made (4)	<b>26-38</b>	<b>-12</b>	
01:38	10 SABEL T assist (1)			
01:31	10 SABEL T steal (2)			12 BAGWELL KATALINICH L turnover bad pass (1)
01:13	23 HAGANS S 2pt FG from turnover in the paint, layup made (6)	<b>28-38</b>	<b>-10</b>	



Official Basketball Play by Play - 2nd Period  
**Minnesota at Penn St.**  
 02/27/22 Bryce Jordan Center, University Park, Pa.  
 2021-22 Women's Basketball

**Game Time:** 2:00 PM  
**Game Duration:** 1:47  
**Attendance:** 2,401

**Officials:** Frank Steratore, Brad Maxey, Missy Brooks

Game Time	PSU	Score	Diff	MIN
01:13				Timeout 30 Sec
01:13				15 MERSHON K substitution out
01:13				30 SISSOKO K substitution in
01:13				30 SISSOKO K substitution out
01:13				15 MERSHON K substitution in
00:51				13 HUBBARD G 2pt FG in the paint, jump shot missed
00:46				12 BAGWELL KATALINICH L offensive rebound (6)
00:31				15 MERSHON K 2pt FG second chance in the paint, layup missed
00:25				15 MERSHON K offensive rebound (3)
00:25				15 MERSHON K 2pt FG second chance in the paint, layup missed
00:24	11 CAMDEN A defensive rebound (4)			
00:07	20 MARISA M turnover lost ball (2)			13 HUBBARD G steal (2)
00:00				1 SMITH A 2pt FG from turnover in the paint, layup missed
00:00	defensive rebound (17)			
00:00				1 SMITH A substitution out
00:00				15 MERSHON K substitution out
00:00				3 WINTERS D substitution in
00:00				30 SISSOKO K substitution in
<b>END OF PERIOD</b>				
<b>PSU 28-38 MIN</b>				





Officials: Frank Steratore, Brad Maxey, Missy Brooks

Minnesota - 16

NO.	Name	Min	FG			Rebounds			Fouls		TP	AS	TO	ST	Blocks		+/-
			M-A	3P	FT	OR	DR	TOT	PF	FD					BS	BA	
12	Laura Bagwell Katalinich	F 05:47	2-4	0-0	0-0	2	1	3	0	0	4	0	1	0	0	0	3
30	Kadiatou Sissoko	F 07:20	1-4	0-0	0-0	0	2	2	0	1	2	0	0	2	0	0	6
3	Deja Winters	G 04:13	0-0	0-0	0-0	0	0	0	0	0	0	0	1	0	0	0	1
13	Gadiva Hubbard	G 07:32	0-2	0-0	0-0	1	0	1	0	0	0	0	0	1	0	0	2
14	Sara Scalia	G 10:00	3-5	2-3	0-0	0	2	2	1	0	8	0	0	1	0	0	4
35	Bailey Helgren	00:32	0-0	0-0	0-0	0	0	0	1	0	0	0	0	0	0	0	0
15	Kayla Mershon	06:21	1-3	0-0	0-0	2	1	3	0	0	2	1	0	0	0	0	-1
1	Alexia Smith	08:15	0-2	0-0	0-0	0	0	0	0	0	0	0	0	0	0	0	5
Team						0	0	0			0						
<b>Totals</b>			7-20	2-3	0-0	5	6	11	2	1	16	1	2	4	0	0	4

Shooting By Period		
2 <sup>nd</sup> FG%	7-20	35.0%
3PT%	2-3	66.7%
FT%	0-0	0%
GM FG%	7-20	35.0%
3PT%	2-3	66.7%
FT%	0-0	0.0%

Dead Ball Rebounds: 0, 0

Technical Fouls::NONE

Penn St. - 12

NO.	Name	Min	FG			Rebounds			Fouls		TP	AS	TO	ST	Blocks		+/-
			M-A	3P	FT	OR	DR	TOT	PF	FD					BS	BA	
11	Anna Camden	F 07:09	0-1	0-1	0-0	0	4	4	0	0	0	0	0	0	0	0	-5
4	Niya Beverley	G 06:53	1-1	0-0	0-0	0	0	0	0	0	2	0	0	0	0	0	3
5	Leilani Kapinus	G 03:07	0-0	0-0	0-0	0	0	0	0	0	0	0	2	0	0	0	-7
20	Makenna Marisa	G 08:38	2-3	0-1	2-2	0	1	1	0	1	6	0	1	0	0	0	-2
25	Kelly Jekot	G 04:52	0-0	0-0	0-0	0	1	1	0	0	0	0	0	0	0	0	-6
1	Ali Brigham	03:07	0-1	0-0	0-0	0	0	0	0	0	0	0	1	0	0	0	-7
15	Maddie Burke	04:13	0-2	0-1	0-0	0	0	0	0	0	0	0	0	0	0	0	-1
23	Shay Hagans	06:53	1-2	0-0	2-2	0	0	0	0	1	4	0	1	0	0	0	3
10	Tova Sabel	05:08	0-1	0-1	0-0	0	1	1	1	0	0	1	0	2	0	0	2
Team						1	1	2			0						
<b>Totals</b>			4-11	0-4	4-4	1	8	9	1	2	12	1	5	2	0	0	-4

Shooting By Period		
2 <sup>nd</sup> FG%	4-11	36.4%
3PT%	0-4	0.0%
FT%	4-4	100%
GM FG%	4-11	36.4%
3PT%	0-4	0.0%
FT%	4-4	100.0%

Dead Ball Rebounds: 0, 0

Technical Fouls::NONE

	MIN	PSU
Biggest lead	14 (2 <sup>nd</sup> 2:46)	0 (1 <sup>st</sup> 10:00)
Best Scoring Run	7(2 <sup>nd</sup> 6:53)	4(2 <sup>nd</sup> 5:47)
Lead Changes	0	
Times Tied	0	
Time with Lead	09:49	00:00

	MIN	PSU
Points from		
Turnovers	7	2
Paint	10	6
Second Chance	4	2
Fast Breaks	2	4
Bench	2	4

Period by Period Scoring					
	1st	2nd	3rd	4th	TOT
MIN	22	16	28	28	94
PSU	16	12	26	29	83



Officials: Frank Steratore, Brad Maxey, Missy Brooks

Minnesota - 38

NO.	Name	Min	FG			Rebounds			Fouls		TP	AS	TO	ST	Blocks		+/-
			M-A	M-A	M-A	OR	DR	TOT	PF	FD					BS	BA	
12	Laura Bagwell Katalinich	F 14:12	7-13	0-0	0-0	3	3	6	0	1	14	0	1	0	0	1	10
30	Kadiatou Sissoko	F 15:12	3-8	0-0	2-2	0	3	3	0	2	8	2	1	2	0	0	11
3	Deja Winters	G 12:51	0-2	0-1	0-0	0	1	1	0	0	0	2	1	0	0	0	7
13	Gadiva Hubbard	G 15:24	1-4	1-2	0-0	2	1	3	0	0	3	1	0	2	0	0	7
14	Sara Scalia	G 20:00	4-8	3-6	0-0	1	2	3	1	1	11	1	1	1	0	0	10
15	Kayla Mershon	10:04	1-3	0-0	0-0	2	1	3	1	0	2	2	1	0	0	0	-1
1	Alexia Smith	11:45	0-3	0-0	0-0	3	0	3	1	1	0	0	0	0	0	0	6
35	Bailey Helgren	00:32	0-0	0-0	0-0	0	0	0	1	0	0	0	0	0	0	0	0
Team						0	1	1			0		0				
<b>Totals</b>			16-41	4-9	2-2	11	12	23	4	5	38	8	5	5	0	1	10

Shooting By Period		
1st FG%	9-21	42.9%
3PT%	2-6	33.3%
FT%	2-2	100%
2nd FG%	7-20	35.0%
3PT%	2-3	66.7%
FT%	0-0	0%
GM FG%	16-41	39.0%
3PT%	4-9	44.4%
FT%	2-2	100.0%

Dead Ball Rebounds: 0, 0

Technical Fouls::NONE

Penn St. - 28

NO.	Name	Min	FG			Rebounds			Fouls		TP	AS	TO	ST	Blocks		+/-
			M-A	M-A	M-A	OR	DR	TOT	PF	FD					BS	BA	
11	Anna Camden	F 10:19	1-2	0-1	0-0	0	4	4	0	0	2	0	0	0	0	0	-7
4	Niya Beverley	G 14:31	2-4	0-2	0-0	1	1	2	1	0	4	1	1	1	0	0	-3
5	Leilani Kapinus	G 07:45	1-3	0-0	0-0	0	2	2	0	0	2	0	4	0	1	0	-9
20	Makenna Marisa	G 18:38	3-5	0-1	2-4	0	2	2	0	3	8	1	2	0	0	0	-8
25	Kelly Jekot	G 12:40	0-0	0-0	0-0	1	1	2	0	0	0	2	0	0	0	0	-15
15	Maddie Burke	10:22	1-3	0-1	0-0	0	0	0	1	0	2	0	0	0	0	0	-3
23	Shay Hagans	12:15	2-5	0-1	2-2	0	1	1	2	1	6	0	1	0	0	0	-1
10	Tova Sabel	09:42	1-2	0-1	0-0	0	2	2	1	0	2	1	0	2	0	0	5
1	Ali Brigham	03:48	1-2	0-0	0-0	0	0	0	0	0	2	0	1	0	0	0	-9
Team						1	1	2			0		0				
<b>Totals</b>			12-26	0-7	4-6	3	14	17	5	4	28	5	9	3	1	0	-10

Shooting By Period		
1st FG%	8-15	53.3%
3PT%	0-3	0.0%
FT%	0-2	0%
2nd FG%	4-11	36.4%
3PT%	0-4	0.0%
FT%	4-4	100%
GM FG%	12-26	46.2%
3PT%	0-7	0.0%
FT%	4-6	66.7%

Dead Ball Rebounds: 1, 0

Technical Fouls::NONE

	MIN	PSU
Biggest lead	14 (2 <sup>nd</sup> 2:46)	2 (1 <sup>st</sup> 9:33)
Best Scoring Run	9(2 <sup>nd</sup> 6:53)	6(1 <sup>st</sup> 3:16)
Lead Changes	1	
Times Tied	2	
Time with Lead	18:04	00:12

Points from	MIN	PSU
Turnovers	12	8
Paint	20	22
Second Chance	10	2
Fast Breaks	2	10
Bench	2	12

Period by Period Scoring					
	1st	2nd	3rd	4th	TOT
MIN	22	16	28	28	94
PSU	16	12	26	29	83



**Officials:** Frank Steratore, Brad Maxey, Missy Brooks

**Period 3**

**Quarter Starters:**

<b>PSU</b>	4 Beverley N	11 Camden A	20 Marisa M	23 Hagans S	25 Jekot K
<b>MIN</b>	3 Winters D	12 Bagwell Katalinich L	13 Hubbard G	14 Scalia S	30 Sissoko K

Game Time	PSU	Score	Diff	MIN
10:00	10 SABEL T substitution out			
10:00	25 JEKOT K substitution in			
09:45				30 SISSOKO K 2pt FG in the paint, layup missed
09:41				30 SISSOKO K offensive rebound (4)
09:41				30 SISSOKO K 2pt FG second chance in the paint, layup missed
09:38				30 SISSOKO K offensive rebound (5)
09:38		<b>28-40</b>	<b>-12</b>	30 SISSOKO K 2pt FG second chance in the paint, layup made (10)
09:35	25 JEKOT K 3pt FG , jump shot missed			
09:33				3 WINTERS D defensive rebound (2)
09:33	11 CAMDEN A foul personal (1 - 1)			3 WINTERS D foul drawn (1)
09:20				30 SISSOKO K 2pt FG outside the paint, jump shot missed
09:18				30 SISSOKO K offensive rebound (6)
09:18	11 CAMDEN A foul shooting (2 - 2)			30 SISSOKO K foul drawn (3)
09:18	11 CAMDEN A substitution out			
09:18	1 BRIGHAM A substitution in			
09:18				12 BAGWELL KATALINICH L substitution out
09:18				35 HELGREN B substitution in
09:18				30 SISSOKO K free throw 1 - 2 missed
09:18				offensive dead ball rebound (1)
09:18		<b>28-41</b>	<b>-13</b>	30 SISSOKO K free throw 2 - 2 made (11)
08:59	1 BRIGHAM A 2pt FG outside the paint, jump shot missed			
08:56				14 SCALIA S defensive rebound (4)
08:48		<b>28-44</b>	<b>-16</b>	14 SCALIA S 3pt FG , jump shot made (14)
08:48				3 WINTERS D assist (3)
08:31	20 MARISA M foul drawn (4)			30 SISSOKO K foul personal (1 - 1)
08:28	20 MARISA M 3pt FG , jump shot missed			
08:23				14 SCALIA S defensive rebound (5)
08:19		<b>28-47</b>	<b>-19</b>	14 SCALIA S 3pt FG fast break, jump shot made (17)
07:46	1 BRIGHAM A 2pt FG in the paint, layup missed			
07:44				14 SCALIA S defensive rebound (6)
07:16		<b>28-50</b>	<b>-22</b>	13 HUBBARD G 3pt FG , jump shot made (6)
07:12	Timeout 30 Sec			
07:12	Timeout media			
07:12	1 BRIGHAM A substitution out			
07:12	25 JEKOT K substitution out			
07:12	10 SABEL T substitution in			
07:12	12 THOMAS K substitution in			
07:12				35 HELGREN B substitution out
07:12				12 BAGWELL KATALINICH L substitution in
06:51	20 MARISA M 2pt FG in the paint, layup made (10)	<b>30-50</b>	<b>-20</b>	
06:39				12 BAGWELL KATALINICH L substitution out
06:39				35 HELGREN B substitution in



**Officials:** Frank Steratore, Brad Maxey, Missy Brooks

Game Time	PSU	Score	Diff	MIN
06:37				13 HUBBARD G turnover lost ball (1)
06:27	20 MARISA M 2pt FG from turnover in the paint, jump shot made (12)	<b>32-50</b>	<b>-18</b>	
06:11				3 WINTERS D 2pt FG in the paint, layup missed
06:08	20 MARISA M defensive rebound (3)			
06:03	10 SABEL T 3pt FG fast break, jump shot made (5)	<b>35-50</b>	<b>-15</b>	
06:03	20 MARISA M assist (2)			
05:46		<b>35-52</b>	<b>-17</b>	30 SISSOKO K 2pt FG in the paint, jump shot made (13)
05:46				35 HELGREN B assist (1)
05:34	10 SABEL T foul drawn (1)			3 WINTERS D foul shooting (1 - 2)
05:34				3 WINTERS D substitution out
05:34				1 SMITH A substitution in
05:34	12 THOMAS K substitution out			
05:34	15 BURKE M substitution in			
05:34				35 HELGREN B substitution out
05:34				12 BAGWELL KATALINICH L substitution in
05:34	10 SABEL T free throw 1 - 2 made (6)	<b>36-52</b>	<b>-16</b>	
05:34	10 SABEL T free throw 2 - 2 made (7)	<b>37-52</b>	<b>-15</b>	
05:20				13 HUBBARD G 2pt FG in the paint, layup missed
05:18				30 SISSOKO K offensive rebound (7)
05:16				14 SCALIA S 3pt FG second chance, jump shot missed
05:12	20 MARISA M defensive rebound (4)			
05:06	20 MARISA M 3pt FG , jump shot made (15)	<b>40-52</b>	<b>-12</b>	
04:49	15 BURKE M foul shooting (2 - 3)			14 SCALIA S foul drawn (2)
04:49				Timeout media
04:49		<b>40-53</b>	<b>-13</b>	14 SCALIA S free throw 1 - 2 made (18)
04:49		<b>40-54</b>	<b>-14</b>	14 SCALIA S free throw 2 - 2 made (19)
04:36	20 MARISA M 2pt FG outside the paint, jump shot made (17)	<b>42-54</b>	<b>-12</b>	
04:20		<b>42-56</b>	<b>-14</b>	30 SISSOKO K 2pt FG in the paint, jump shot made (15)
04:04	10 SABEL T 3pt FG , jump shot made (10)	<b>45-56</b>	<b>-11</b>	
04:04	4 BEVERLEY N assist (2)			
03:49	10 SABEL T steal (3)			1 SMITH A turnover bad pass (1)
03:42	15 BURKE M turnover lost ball (1)			
03:33				12 BAGWELL KATALINICH L 2pt FG from turnover in the paint, layup missed
03:32				12 BAGWELL KATALINICH L offensive rebound (7)
03:32	15 BURKE M foul shooting (3 - 4)			12 BAGWELL KATALINICH L foul drawn (2)
03:32		<b>45-57</b>	<b>-12</b>	12 BAGWELL KATALINICH L free throw 1 - 2 made (15)
03:32				12 BAGWELL KATALINICH L free throw 2 - 2 missed
03:30				30 SISSOKO K offensive rebound (8)
03:29	10 SABEL T foul shooting (2 - 5)			30 SISSOKO K foul drawn (4)
03:29		<b>45-58</b>	<b>-13</b>	30 SISSOKO K free throw 1 - 2 made (16)
03:29				30 SISSOKO K free throw 2 - 2 missed
03:28	20 MARISA M defensive rebound (5)			
03:22	10 SABEL T 2pt FG fast break in the paint, layup made (12)	<b>47-58</b>	<b>-11</b>	
03:22	20 MARISA M assist (3)			
03:03				30 SISSOKO K 2pt FG in the paint, jump shot missed
02:59				30 SISSOKO K offensive rebound (9)
02:48				12 BAGWELL KATALINICH L 2pt FG second chance in the paint, jump shot missed



**Officials:** Frank Steratore, Brad Maxey, Missy Brooks

Game Time	PSU	Score	Diff	MIN
02:44				30 SISSOKO K offensive rebound (10)
02:37				12 BAGWELL KATALINICH L 2pt FG second chance in the paint, jump shot missed
02:35	15 BURKE M defensive rebound (1)			
02:35	15 BURKE M foul drawn (1)			12 BAGWELL KATALINICH L foul personal (1 - 3)
02:35	15 BURKE M substitution out			
02:35	11 CAMDEN A substitution in			
02:22	11 CAMDEN A foul drawn (1)			13 HUBBARD G foul shooting (1 - 4)
02:22				13 HUBBARD G substitution out
02:22				3 WINTERS D substitution in
02:22	11 CAMDEN A free throw 1 - 2 made (3)	<b>48-58</b>	<b>-10</b>	
02:22	11 CAMDEN A free throw 2 - 2 made (4)	<b>49-58</b>	<b>-9</b>	
02:16		<b>49-60</b>	<b>-11</b>	3 WINTERS D 2pt FG fast break in the paint, layup made (2)
02:16				1 SMITH A assist (1)
02:00	23 HAGANS S 2pt FG in the paint, layup missed			
01:57				12 BAGWELL KATALINICH L defensive rebound (8)
01:40		<b>49-62</b>	<b>-13</b>	30 SISSOKO K 2pt FG outside the paint, jump shot made (18)
01:32	20 MARISA M turnover bad pass (3)			14 SCALIA S steal (2)
01:26		<b>49-64</b>	<b>-15</b>	30 SISSOKO K 2pt FG fast break from turnover in the paint, layup made (20)
01:26				14 SCALIA S assist (2)
01:12	20 MARISA M 2pt FG in the paint, layup made (19)	<b>51-64</b>	<b>-13</b>	
01:12	20 MARISA M foul drawn (5)			3 WINTERS D foul shooting (2 - 5)
01:12	11 CAMDEN A substitution out			
01:12	1 BRIGHAM A substitution in			
01:12				12 BAGWELL KATALINICH L substitution out
01:12				35 HELGREN B substitution in
01:12	20 MARISA M free throw 1 - 1 made (20)	<b>52-64</b>	<b>-12</b>	
00:46		<b>52-66</b>	<b>-14</b>	30 SISSOKO K 2pt FG outside the paint, jump shot made (22)
00:32	20 MARISA M turnover bad pass (4)			
00:04				1 SMITH A 2pt FG from turnover in the paint, jump shot missed
00:02	defensive rebound (22)			
00:02	1 BRIGHAM A foul drawn (1)			35 HELGREN B foul personal (2 - 6)
00:02	1 BRIGHAM A free throw fast break 1 - 2 made (3)	<b>53-66</b>	<b>-13</b>	
00:02	1 BRIGHAM A free throw fast break 2 - 2 made (4)	<b>54-66</b>	<b>-12</b>	
<b>END OF PERIOD</b>				
<b>PSU 54-66 MIN</b>				



**Officials:** Frank Steratore, Brad Maxey, Missy Brooks

**Minnesota - 28**

NO.	Name	F	Min	FG			Rebounds			Fouls		TP	AS	TO	ST	Blocks		+/-
				M-A	M-A	M-A	OR	DR	TOT	PF	FD					BS	BA	
12	Laura Bagwell Katalinich	F	05:37	0-3	0-0	1-2	1	1	2	1	1	1	0	0	0	0	0	-4
30	Kadiatou Sissoko	F	10:00	6-10	0-0	2-4	7	0	7	1	2	14	0	0	0	0	0	2
3	Deja Winters	G	06:48	1-2	0-0	0-0	0	1	1	2	1	2	1	0	0	0	0	8
13	Gadiva Hubbard	G	07:38	1-2	1-1	0-0	0	0	0	1	0	3	0	1	0	0	0	1
14	Sara Scalia	G	10:00	2-3	2-3	2-2	0	3	3	0	1	8	1	0	1	0	0	2
35	Bailey Helgren		04:23	0-0	0-0	0-0	0	0	0	1	0	0	1	0	0	0	0	6
1	Alexia Smith		05:34	0-1	0-0	0-0	0	0	0	0	0	0	1	1	0	0	0	-5
Team							0	0	0			0		0				
<b>Totals</b>				10-21	3-4	5-8	8	5	13	6	5	28	4	2	1	0	0	2

Shooting By Period		
3rd FG%	10-21	47.6%
3PT%	3-4	75.0%
FT%	5-8	62.5%
GM FG%	10-21	47.6%
3PT%	3-4	75.0%
FT%	5-8	62.5%

Dead Ball Rebounds: 1, 0

Technical Fouls::NONE

**Penn St. - 26**

NO.	Name	F	Min	FG			Rebounds			Fouls		TP	AS	TO	ST	Blocks		+/-
				M-A	M-A	M-A	OR	DR	TOT	PF	FD					BS	BA	
11	Anna Camden	F	02:05	0-0	0-0	2-2	0	0	0	2	1	2	0	0	0	0	0	-4
4	Niya Beverley	G	10:00	0-0	0-0	0-0	0	0	0	0	0	0	1	0	0	0	0	-2
5	Leilani Kapinus	G	00:00	0-0	0-0	0-0	0	0	0	0	0	0	0	0	0	0	0	0
20	Makenna Marisa	G	10:00	5-6	1-2	1-1	0	3	3	0	2	12	2	2	0	0	0	-2
25	Kelly Jekot	G	02:48	0-1	0-1	0-0	0	0	0	0	0	0	0	0	0	0	0	-12
23	Shay Hagans		10:00	0-1	0-0	0-0	0	0	0	0	0	0	0	0	0	0	0	-2
1	Ali Brigham		03:18	0-2	0-0	2-2	0	0	0	0	1	2	0	0	0	0	0	-9
10	Tova Sabel		07:12	3-3	2-2	2-2	0	0	0	1	1	10	0	0	1	0	0	10
12	Kayla Thomas		01:38	0-0	0-0	0-0	0	0	0	0	0	0	0	0	0	0	0	5
15	Maddie Burke		02:59	0-0	0-0	0-0	0	1	1	2	1	0	0	1	0	0	0	6
Team							0	1	1			0		0				
<b>Totals</b>				8-13	3-5	7-7	0	5	5	5	6	26	3	3	1	0	0	-2

Shooting By Period		
3rd FG%	8-13	61.5%
3PT%	3-5	60.0%
FT%	7-7	100%
GM FG%	8-13	61.5%
3PT%	3-5	60.0%
FT%	7-7	100%

Dead Ball Rebounds: 0, 0

Technical Fouls::NONE

	MIN	PSU
Biggest lead	22 (3 <sup>rd</sup> 7:16)	0 (1 <sup>st</sup> 10:00)
Best Scoring Run	12(3 <sup>rd</sup> 7:16)	7(3 <sup>rd</sup> 6:03)
Lead Changes	0	
Times Tied	0	
Time with Lead	09:45	00:00

	MIN	PSU
Points from		
Turnovers	3	2
Paint	10	8
Second Chance	5	0
Fast Breaks	7	7
Bench	0	12

Period by Period Scoring					
	1st	2nd	3rd	4th	TOT
MIN	22	16	28	28	94
PSU	16	12	26	29	83



**Officials:** Frank Steratore, Brad Maxey, Missy Brooks

**Period 4**

**Quarter Starters:**

<b>PSU</b>	1 Brigham A	4 Beverley N	10 Sabel T	20 Marisa M	23 Hagans S
<b>MIN</b>	3 Winters D	13 Hubbard G	14 Scalia S	30 Sissoko K	35 Helgren B

Game Time	PSU	Score	Diff	MIN
10:00				1 SMITH A substitution out
10:00				13 HUBBARD G substitution in
09:48	20 MARISA M 2pt FG outside the paint, jump shot missed			
09:44	1 BRIGHAM A offensive rebound (1)			
09:44	1 BRIGHAM A 2pt FG second chance in the paint, layup missed			
09:44	1 BRIGHAM A offensive rebound (2)			
09:44	1 BRIGHAM A foul drawn (2)			13 HUBBARD G foul shooting (2 - 1)
09:44	1 BRIGHAM A free throw 1 - 2 made (5)	<b>55-66</b>	<b>-11</b>	
09:44	1 BRIGHAM A free throw 2 - 2 made (6)	<b>56-66</b>	<b>-10</b>	
09:24				13 HUBBARD G 3pt FG , jump shot missed
09:19	4 BEVERLEY N defensive rebound (3)			
09:17	23 HAGANS S foul drawn (2)			14 SCALIA S foul shooting (2 - 2)
09:17	23 HAGANS S free throw fast break 1 - 2 made (7)	<b>57-66</b>	<b>-9</b>	
09:17	23 HAGANS S free throw fast break 2 - 2 made (8)	<b>58-66</b>	<b>-8</b>	
08:49		<b>58-68</b>	<b>-10</b>	30 SISSOKO K 2pt FG in the paint, layup made (24)
08:49				14 SCALIA S assist (3)
08:42	20 MARISA M foul drawn (6)			35 HELGREN B foul shooting (3 - 3)
08:42	20 MARISA M free throw fast break 1 - 2 made (21)	<b>59-68</b>	<b>-9</b>	
08:42	20 MARISA M free throw fast break 2 - 2 made (22)	<b>60-68</b>	<b>-8</b>	
08:42	1 BRIGHAM A substitution out			
08:42	15 BURKE M substitution in			
08:42				35 HELGREN B substitution out
08:42				12 BAGWELL KATALINICH L substitution in
08:33				12 BAGWELL KATALINICH L 2pt FG in the paint, layup missed
08:30				12 BAGWELL KATALINICH L offensive rebound (9)
08:27		<b>60-71</b>	<b>-11</b>	14 SCALIA S 3pt FG second chance, jump shot made (22)
08:27				12 BAGWELL KATALINICH L assist (1)
08:07	20 MARISA M 2pt FG in the paint, layup made (24)	<b>62-71</b>	<b>-9</b>	
07:53		<b>62-74</b>	<b>-12</b>	14 SCALIA S 3pt FG , jump shot made (25)
07:53				3 WINTERS D assist (4)
07:45	15 BURKE M foul offensive (4 - 1)			12 BAGWELL KATALINICH L foul drawn (3)
07:45	15 BURKE M turnover offensive (2)			
07:45	15 BURKE M substitution out			
07:45	1 BRIGHAM A substitution in			
07:45				12 BAGWELL KATALINICH L substitution out
07:45				35 HELGREN B substitution in
07:37	20 MARISA M steal (1)			14 SCALIA S turnover bad pass (2)
07:24	20 MARISA M 3pt FG from turnover, jump shot missed			
07:22				defensive rebound (38)
07:16				3 WINTERS D turnover bad pass (2)
07:05	20 MARISA M 3pt FG from turnover, jump shot missed			
07:01				3 WINTERS D defensive rebound (3)
06:48		<b>62-76</b>	<b>-14</b>	14 SCALIA S 2pt FG in the paint, jump shot made (27)



**Officials:** Frank Steratore, Brad Maxey, Missy Brooks

Game Time	PSU	Score	Diff	MIN
06:30	10 SABEL T 2pt FG in the paint, layup made (14)	<b>64-76</b>	<b>-12</b>	
06:17		<b>64-78</b>	<b>-14</b>	30 SISSOKO K 2pt FG in the paint, layup made (26)
06:17	10 SABEL T foul shooting (3 - 2)			30 SISSOKO K foul drawn (5)
06:17	10 SABEL T substitution out			
06:17	25 JEKOT K substitution in			
06:17		<b>64-79</b>	<b>-15</b>	30 SISSOKO K free throw 1 - 1 made (27)
06:06	20 MARISA M 2pt FG outside the paint, jump shot missed			
06:01				30 SISSOKO K defensive rebound (11)
05:51				3 WINTERS D 3pt FG , jump shot missed
05:47				14 SCALIA S offensive rebound (7)
05:36		<b>64-81</b>	<b>-17</b>	30 SISSOKO K 2pt FG second chance in the paint, layup made (29)
05:36				35 HELGREN B assist (2)
05:36	25 JEKOT K foul shooting (1 - 3)			30 SISSOKO K foul drawn (6)
05:36		<b>64-82</b>	<b>-18</b>	30 SISSOKO K free throw 1 - 1 made (30)
05:14	25 JEKOT K 3pt FG , jump shot missed			
05:09				30 SISSOKO K defensive rebound (12)
05:04				14 SCALIA S 3pt FG , jump shot missed
04:59	20 MARISA M defensive rebound (6)			
04:56	20 MARISA M 2pt FG outside the paint, jump shot missed			
04:51	1 BRIGHAM A offensive rebound (3)			
04:51	1 BRIGHAM A 2pt FG second chance in the paint, layup made (8)	<b>66-82</b>	<b>-16</b>	
04:51	1 BRIGHAM A foul drawn (3)			30 SISSOKO K foul shooting (2 - 4)
04:51	Timeout media			
04:51	25 JEKOT K substitution out			
04:51	10 SABEL T substitution in			
04:51	1 BRIGHAM A free throw 1 - 1 made (9)	<b>67-82</b>	<b>-15</b>	
04:40				13 HUBBARD G turnover lost ball (2)
04:40	23 HAGANS S substitution out			
04:40	25 JEKOT K substitution in			
04:29	1 BRIGHAM A 2pt FG from turnover in the paint, layup missed			
04:28				defensive rebound (43)
04:28	25 JEKOT K substitution out			
04:28	23 HAGANS S substitution in			
04:20		<b>67-85</b>	<b>-18</b>	14 SCALIA S 3pt FG , jump shot made (30)
04:20				3 WINTERS D assist (5)
04:10	10 SABEL T 2pt FG in the paint, layup made (16)	<b>69-85</b>	<b>-16</b>	
04:10	10 SABEL T foul drawn (2)			13 HUBBARD G foul shooting (3 - 5)
04:10	1 BRIGHAM A substitution out			
04:10	25 JEKOT K substitution in			
04:10				35 HELGREN B substitution out
04:10				12 BAGWELL KATALINICH L substitution in
04:10	10 SABEL T free throw 1 - 1 made (17)	<b>70-85</b>	<b>-15</b>	
04:05	23 HAGANS S foul shooting (3 - 4)			3 WINTERS D foul drawn (2)
04:05		<b>70-86</b>	<b>-16</b>	3 WINTERS D free throw fast break 1 - 2 made (3)
04:05		<b>70-87</b>	<b>-17</b>	3 WINTERS D free throw fast break 2 - 2 made (4)
03:49	4 BEVERLEY N 2pt FG in the paint, layup made (6)	<b>72-87</b>	<b>-15</b>	
03:49	4 BEVERLEY N foul drawn (1)			12 BAGWELL KATALINICH L foul shooting (2 - 6)
03:49	4 BEVERLEY N free throw 1 - 1 made (7)	<b>73-87</b>	<b>-14</b>	





**Officials:** Frank Steratore, Brad Maxey, Missy Brooks

Game Time	PSU	Score	Diff	MIN
03:17				13 HUBBARD G 3pt FG , jump shot missed
03:13	25 JEKOT K defensive rebound (3)			
03:07	4 BEVERLEY N foul drawn (2)			13 HUBBARD G foul shooting (4 - 7)
03:07	4 BEVERLEY N free throw 1 - 2 made (8)	<b>74-87</b>	<b>-13</b>	
03:07	4 BEVERLEY N free throw 2 - 2 made (9)	<b>75-87</b>	<b>-12</b>	
02:48				14 SCALIA S 2pt FG outside the paint, jump shot missed
02:46				12 BAGWELL KATALINICH L offensive rebound (10)
02:46	25 JEKOT K foul personal (2 - 5)			12 BAGWELL KATALINICH L foul drawn (4)
02:46				12 BAGWELL KATALINICH L free throw 1 - 2 missed
02:46				offensive dead ball rebound (2)
02:46		<b>75-88</b>	<b>-13</b>	12 BAGWELL KATALINICH L free throw 2 - 2 made (16)
02:46				12 BAGWELL KATALINICH L substitution out
02:46				1 SMITH A substitution in
02:41	25 JEKOT K 2pt FG fast break in the paint, layup made (2)	<b>77-88</b>	<b>-11</b>	
02:41	4 BEVERLEY N assist (3)			
02:18		<b>77-90</b>	<b>-13</b>	14 SCALIA S 2pt FG in the paint, jump shot made (32)
02:00	23 HAGANS S 3pt FG , jump shot blocked			
02:00				3 WINTERS D block (1)
01:54				14 SCALIA S defensive rebound (8)
01:33				30 SISSOKO K 2pt FG in the paint, layup missed
01:29	20 MARISA M defensive rebound (7)			
01:26	10 SABEL T 2pt FG in the paint, layup made (19)	<b>79-90</b>	<b>-11</b>	
01:26	20 MARISA M assist (4)			
01:26	10 SABEL T foul drawn (3)			14 SCALIA S foul shooting (3 - 8)
01:26	10 SABEL T free throw 1 - 1 missed			
01:24				30 SISSOKO K defensive rebound (13)
01:15				Timeout 30 Sec
00:59	25 JEKOT K foul shooting (3 - 6)			30 SISSOKO K foul drawn (7)
00:59		<b>79-91</b>	<b>-12</b>	30 SISSOKO K free throw 1 - 2 made (31)
00:59		<b>79-92</b>	<b>-13</b>	30 SISSOKO K free throw 2 - 2 made (32)
00:53	20 MARISA M 2pt FG in the paint, jump shot made (26)	<b>81-92</b>	<b>-11</b>	
00:41	25 JEKOT K foul personal (4 - 7)			13 HUBBARD G foul drawn (1)
00:41	4 BEVERLEY N substitution out			
00:41	25 JEKOT K substitution out			
00:41	11 CAMDEN A substitution in			
00:41	15 BURKE M substitution in			
00:41		<b>81-93</b>	<b>-12</b>	13 HUBBARD G free throw 1 - 2 made (7)
00:41		<b>81-94</b>	<b>-13</b>	13 HUBBARD G free throw 2 - 2 made (8)
00:33	20 MARISA M 2pt FG outside the paint, jump shot made (28)	<b>83-94</b>	<b>-11</b>	
00:01				3 WINTERS D 3pt FG , jump shot missed
00:01	defensive rebound (30)			
00:01	20 MARISA M 2pt FG in the paint, jump shot missed			
00:01				30 SISSOKO K defensive rebound (14)
<b>END OF GAME</b>				
<b>PSU 83-94 MIN</b>				



**Officials:** Frank Steratore, Brad Maxey, Missy Brooks

**Minnesota - 28**

NO.	Name	F	Min	FG	3P	FT	Rebounds			Fouls		TP	AS	TO	ST	Blocks		+/-
				M-A	M-A	M-A	OR	DR	TOT	PF	FD					BS	BA	
12	Laura Bagwell Katalinich	F	02:21	0-1	0-0	1-2	2	0	2	1	2	1	1	0	0	0	0	1
30	Kadiatou Sissoko	F	10:00	3-4	0-0	4-4	0	4	4	1	3	10	0	0	0	0	0	-1
3	Deja Winters	G	10:00	0-2	0-2	2-2	0	1	1	0	1	2	2	1	0	1	0	-1
13	Gadiva Hubbard	G	10:00	0-2	0-2	2-2	0	0	0	3	1	2	0	1	0	0	0	-1
14	Sara Scalia	G	10:00	5-7	3-4	0-0	1	1	2	2	0	13	1	1	0	0	0	-1
35	Bailey Helgren		04:53	0-0	0-0	0-0	0	0	0	1	0	0	1	0	0	0	0	0
1	Alexia Smith		02:46	0-0	0-0	0-0	0	0	0	0	0	0	0	0	0	0	0	-2
Team							0	2	2			0		0				
<b>Totals</b>				8-16	3-8	9-10	3	8	11	8	7	28	5	3	0	1	0	-1

Shooting By Period		
4 <sup>th</sup> FG%	8-16	50.0%
3PT%	3-8	37.5%
FT%	9-10	90%
GM FG%	8-16	50.0%
3PT%	3-8	37.5%
FT%	9-10	90.0%

Dead Ball Rebounds: 1, 0

Technical Fouls::NONE

**Penn St. - 29**

NO.	Name	F	Min	FG	3P	FT	Rebounds			Fouls		TP	AS	TO	ST	Blocks		+/-
				M-A	M-A	M-A	OR	DR	TOT	PF	FD					BS	BA	
11	Anna Camden	F	00:41	0-0	0-0	0-0	0	0	0	0	0	0	0	0	0	0	0	0
4	Niya Beverley	G	09:19	1-1	0-0	3-3	0	1	1	0	2	5	1	0	0	0	0	1
5	Leilani Kapinus	G	00:00	0-0	0-0	0-0	0	0	0	0	0	0	0	0	0	0	0	0
20	Makenna Marisa	G	10:00	3-9	0-2	2-2	0	2	2	0	1	8	1	0	1	0	0	1
25	Kelly Jekot	G	05:07	1-2	0-1	0-0	0	1	1	4	0	2	0	0	0	0	0	3
15	Maddie Burke		01:38	0-0	0-0	0-0	0	0	0	1	0	0	0	1	0	0	0	-4
1	Ali Brigham		04:53	1-3	0-0	3-3	3	0	3	0	2	5	0	0	0	0	0	0
10	Tova Sabel		08:34	3-3	0-0	1-2	0	0	0	1	2	7	0	0	0	0	0	3
23	Shay Hagans		09:48	0-1	0-1	2-2	0	0	0	1	1	2	0	0	0	0	1	1
Team							0	1	1			0		0				
<b>Totals</b>				9-19	0-4	11-12	3	5	8	7	8	29	2	1	1	0	1	1

Shooting By Period		
4 <sup>th</sup> FG%	9-19	47.4%
3PT%	0-4	0.0%
FT%	11-12	91.7%
GM FG%	9-19	47.4%
3PT%	0-4	0.0%
FT%	11-12	91.7%

Dead Ball Rebounds: 0, 0

Technical Fouls::NONE

	MIN	PSU
<b>Biggest lead</b>	18 (4 <sup>th</sup> 5:36)	0 (1 <sup>st</sup> 10:00)
<b>Best Scoring Run</b>	6(4 <sup>th</sup> 5:36)	5(4 <sup>th</sup> 3:07)
<b>Lead Changes</b>	0	
<b>Times Tied</b>	0	
<b>Time with Lead</b>	09:48	00:00

	MIN	PSU
<b>Points from</b>		
<b>Turnovers</b>	0	0
<b>Paint</b>	10	16
<b>Second Chance</b>	7	5
<b>Fast Breaks</b>	2	6
<b>Bench</b>	0	14

Period by Period Scoring					
	1st	2nd	3rd	4th	TOT
<b>MIN</b>	22	16	28	28	94
<b>PSU</b>	16	12	26	29	83



**Officials:** Frank Steratore, Brad Maxey, Missy Brooks

**Minnesota - 56**

NO.	Name	Min	FG			Rebounds			Fouls		TP	AS	TO	ST	Blocks		+/-
			M-A	3P	FT	OR	DR	TOT	PF	FD					BS	BA	
12	Laura Bagwell Katalinich	F 07:58	0-4	0-0	2-4	3	1	4	2	3	2	1	0	0	0	0	-3
30	Kadiatou Sissoko	F 20:00	9-14	0-0	6-8	7	4	11	2	5	24	0	0	0	0	0	1
3	Deja Winters	G 16:48	1-4	0-2	2-2	0	2	2	2	2	4	3	1	0	1	0	7
13	Gadiva Hubbard	G 17:38	1-4	1-3	2-2	0	0	0	4	1	5	0	2	0	0	0	0
14	Sara Scalia	G 20:00	7-10	5-7	2-2	1	4	5	2	1	21	2	1	1	0	0	1
35	Bailey Helgren	09:16	0-0	0-0	0-0	0	0	0	2	0	0	2	0	0	0	0	6
1	Alexia Smith	08:20	0-1	0-0	0-0	0	0	0	0	0	0	1	1	0	0	0	-7
Team						0	2	2			0						
<b>Totals</b>			18-37	6-12	14-18	11	13	24	14	12	56	9	5	1	1	0	1

Shooting By Period		
3 <sup>rd</sup> FG%	10-21	47.6%
3PT%	3-4	75.0%
FT%	5-8	62.5%
4 <sup>th</sup> FG%	8-16	50.0%
3PT%	3-8	37.5%
FT%	9-10	90%
GM FG%	18-37	48.6%
3PT%	6-12	50.0%
FT%	14-18	77.8%

Dead Ball Rebounds: 2, 0

Technical Fouls::NONE

**Penn St. - 55**

NO.	Name	Min	FG			Rebounds			Fouls		TP	AS	TO	ST	Blocks		+/-
			M-A	3P	FT	OR	DR	TOT	PF	FD					BS	BA	
11	Anna Camden	F 02:46	0-0	0-0	2-2	0	0	0	2	1	2	0	0	0	0	0	-4
4	Niya Beverley	G 19:19	1-1	0-0	3-3	0	1	1	0	2	5	2	0	0	0	0	-1
5	Leilani Kapinus	G 00:00	0-0	0-0	0-0	0	0	0	0	0	0	0	0	0	0	0	0
20	Makenna Marisa	G 20:00	8-15	1-4	3-3	0	5	5	0	3	20	3	2	1	0	0	-1
25	Kelly Jekot	G 07:55	1-3	0-2	0-0	0	1	1	4	0	2	0	0	0	0	0	-9
1	Ali Brigham	08:11	1-5	0-0	5-5	3	0	3	0	3	7	0	0	0	0	0	-9
10	Tova Sabel	15:46	6-6	2-2	3-4	0	0	0	2	3	17	0	0	1	0	0	13
12	Kayla Thomas	01:38	0-0	0-0	0-0	0	0	0	0	0	0	0	0	0	0	0	5
15	Maddie Burke	04:37	0-0	0-0	0-0	0	1	1	3	1	0	0	2	0	0	0	2
23	Shay Hagans	19:48	0-2	0-1	2-2	0	0	0	1	1	2	0	0	0	0	1	-1
Team						0	2	2			0						
<b>Totals</b>			17-32	3-9	18-19	3	10	13	12	14	55	5	4	2	0	1	-1

Shooting By Period		
3 <sup>rd</sup> FG%	8-13	61.5%
3PT%	3-5	60.0%
FT%	7-7	100%
4 <sup>th</sup> FG%	9-19	47.4%
3PT%	0-4	0.0%
FT%	11-12	91.7%
GM FG%	17-32	53.1%
3PT%	3-9	33.3%
FT%	18-19	94.7%

Dead Ball Rebounds: 0, 0

Technical Fouls::NONE

	MIN	PSU
<b>Biggest lead</b>	22 (3 <sup>rd</sup> 7:16)	0 (1 <sup>st</sup> 10:00)
<b>Best Scoring Run</b>	12 (3 <sup>rd</sup> 7:16)	7 (3 <sup>rd</sup> 6:03)
<b>Lead Changes</b>	0	
<b>Times Tied</b>	0	
<b>Time with Lead</b>	19:45	00:00

	MIN	PSU
<b>Points from</b>		
<b>Turnovers</b>	3	2
<b>Paint</b>	20	24
<b>Second Chance</b>	12	5
<b>Fast Breaks</b>	9	13
<b>Bench</b>	0	26

Period by Period Scoring					
	1st	2nd	3rd	4th	TOT
<b>MIN</b>	22	16	28	28	94
<b>PSU</b>	16	12	26	29	83

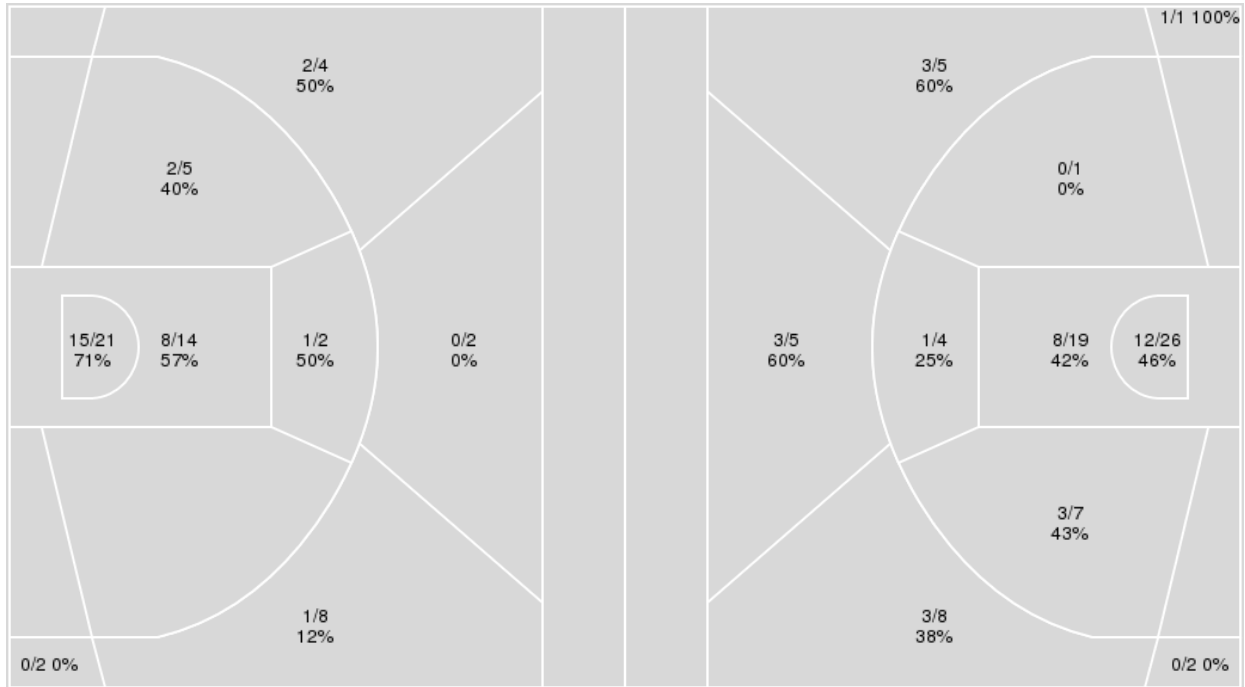


**Officials:** Frank Steratore, Brad Maxey, Missy Brooks

{ Players => 0, 1, 3, 4, 5, 10, 11, 12, 15, 20, 22, 23, 25; } FG Types => All; Results => All;  
 All; Results => All;

**Penn St.**

**Minnesota**



Penn St.	M/A	%
Field Goals	29/58	50
2 Points	26/42	62
3 Points	3/16	19
Free Throws	22/25	88

Minnesota	M/A	%
Field Goals	34/78	44
2 Points	24/57	42
3 Points	10/21	48
Free Throws	16/20	80



**Minnesota at Penn St.**

02/27/22 Bryce Jordan Center, University Park, Pa.  
2021-22 Women's Basketball

**Game Time:** 2:00 PM  
**Game Duration:** 1:47  
**Attendance:** 2,401

**Officials:** Frank Steratore, Brad Maxey, Missy Brooks

**Minnesota**

No	Name	Mins		Score		Points Diff		Points per Min		Assists		Rebounds		Steals		Turnovers	
		On	Off	On	Off	On	Off	On	Off	On	Off	On	Off	On	Off	On	Off
1	Alexia Smith	20:05	19:55	40 - 41	54 - 42	-1	12	1.99	2.71	4	13	27	20	5	1	4	6
3	Deja Winters	29:39	10:21	75 - 61	19 - 22	14	-3	2.53	1.84	16	1	31	16	2	4	8	2
12	Laura Bagwell Katalinich	22:10	17:50	51 - 44	43 - 39	7	4	2.30	2.41	11	6	32	15	6	0	4	6
13	Gadiva Hubbard	33:02	06:58	79 - 72	15 - 11	7	4	2.39	2.15	14	3	39	8	5	1	8	2
14	Sara Scalia	40:00	00:00	94 - 83	0 - 0	11	0	2.35	0.00	17	0	47	0	6	0	10	0
15	Kayla Mershon	10:04	29:56	15 - 16	79 - 67	-1	12	1.49	2.64	3	14	10	37	1	5	4	6
30	Kadiatou Sissoko	35:12	04:48	89 - 77	5 - 6	12	-1	2.53	1.04	15	2	40	7	5	1	8	2
35	Bailey Helgren	09:48	30:12	27 - 21	67 - 62	6	5	2.76	2.22	5	12	9	38	0	6	4	6

**Penn St.**

No	Name	Mins		Score		Points Diff		Points per Min		Assists		Rebounds		Steals		Turnovers	
		On	Off	On	Off	On	Off	On	Off	On	Off	On	Off	On	Off	On	Off
1	Ali Brigham	11:59	28:01	18 - 36	65 - 58	-18	7	1.50	2.32	1	9	9	21	1	4	4	9
4	Niya Beverley	33:50	06:10	77 - 81	6 - 13	-4	-7	2.28	0.97	8	2	25	5	5	0	10	3
5	Leilani Kapinus	07:45	32:15	8 - 17	75 - 77	-9	-2	1.03	2.33	3	7	5	25	1	4	5	8
10	Tova Sabel	25:28	14:32	71 - 53	12 - 41	18	-29	2.79	0.83	9	1	19	11	4	1	6	7
11	Anna Camden	13:05	26:55	16 - 27	67 - 67	-11	0	1.22	2.49	2	8	10	20	3	2	7	6
12	Kayla Thomas	01:38	38:22	7 - 2	76 - 92	5	-16	4.29	1.98	1	9	1	29	0	5	0	13
15	Maddie Burke	14:59	25:01	32 - 33	51 - 61	-1	-10	2.14	2.04	4	6	13	17	2	3	5	8
20	Makenna Marisa	38:38	01:22	83 - 92	0 - 2	-9	-2	2.15	0.00	10	0	29	1	4	1	13	0
23	Shay Hagans	32:03	07:57	75 - 77	8 - 17	-2	-9	2.34	1.01	7	3	25	5	4	1	8	5
25	Kelly Jekot	20:35	19:25	28 - 52	55 - 42	-24	13	1.36	2.83	5	5	14	16	1	4	7	6

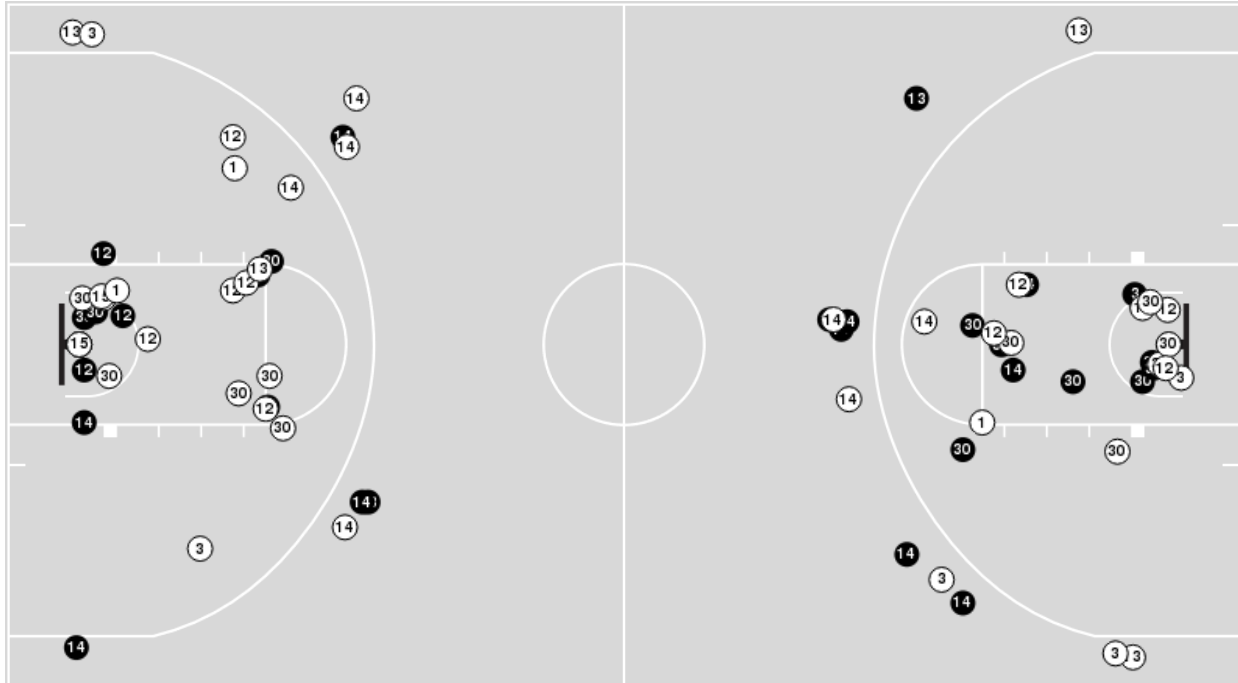


**Officials:** Frank Steratore, Brad Maxey, Missy Brooks

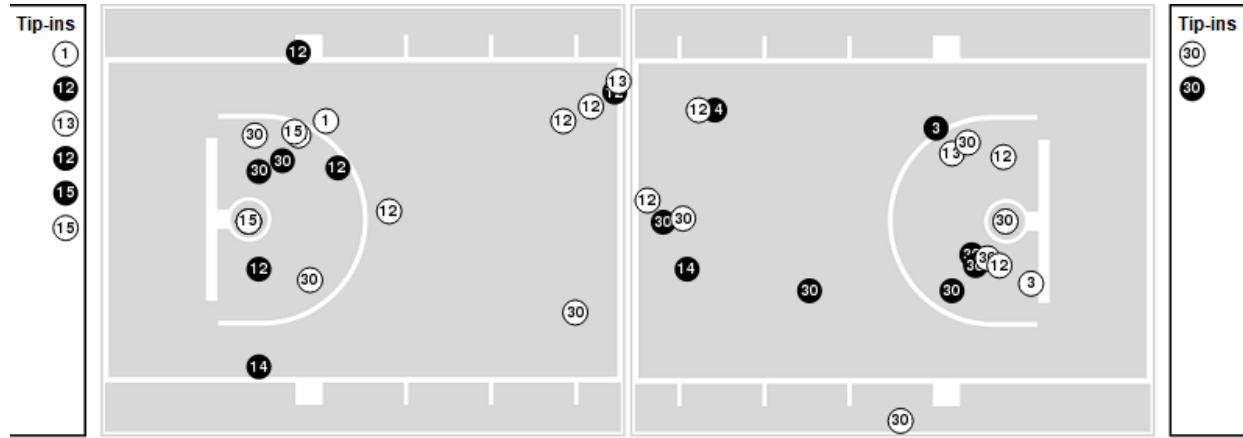
Players => AllFG Types=>AllResults=>All

**Minnesota**

**All Field Goals**



**Blow Up Chart**



● Made ○ Missed N - Player Number

Minnesota	M/A	%
Field Goals	34/78	44
2 Points	24/57	42
3 Points	10/21	48
Free Throws	16/20	80

Minnesota	M/A	%
Points in the Paint	40 (20 / 45)	44
Fast Break Points	11 (6/6)	100
Second Chance Points	22 (14/26)	54
Effective FG%	50	

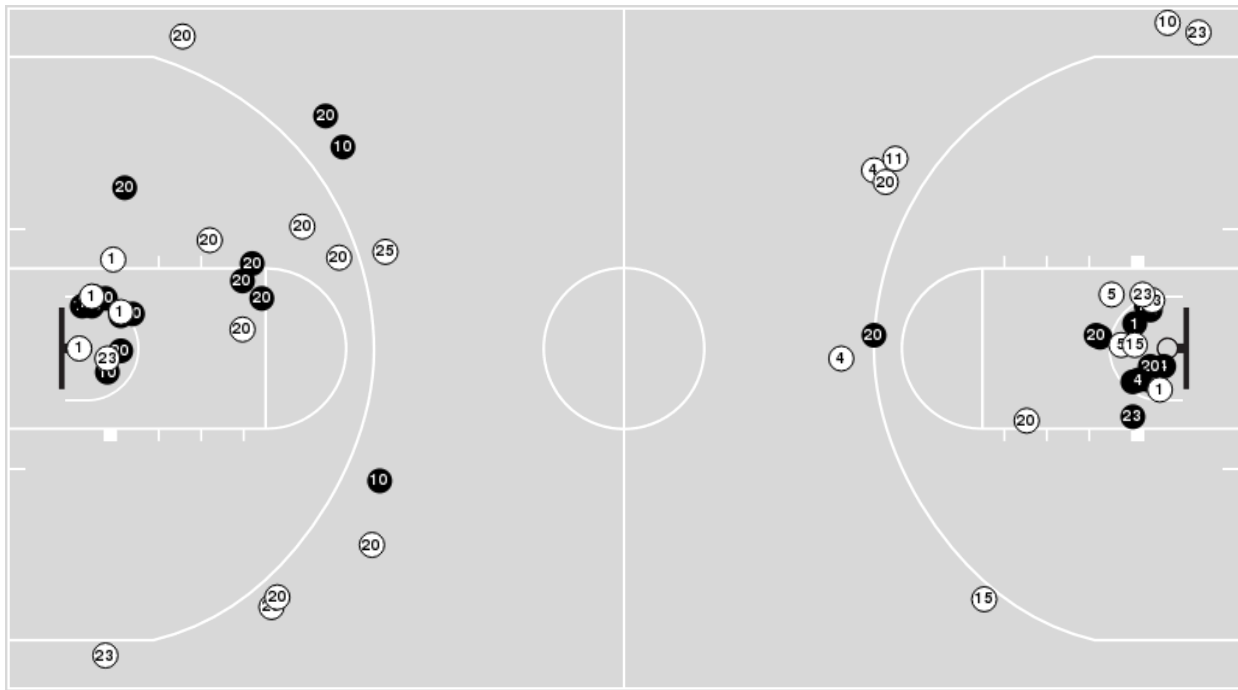


**Officials:** Frank Steratore, Brad Maxey, Missy Brooks

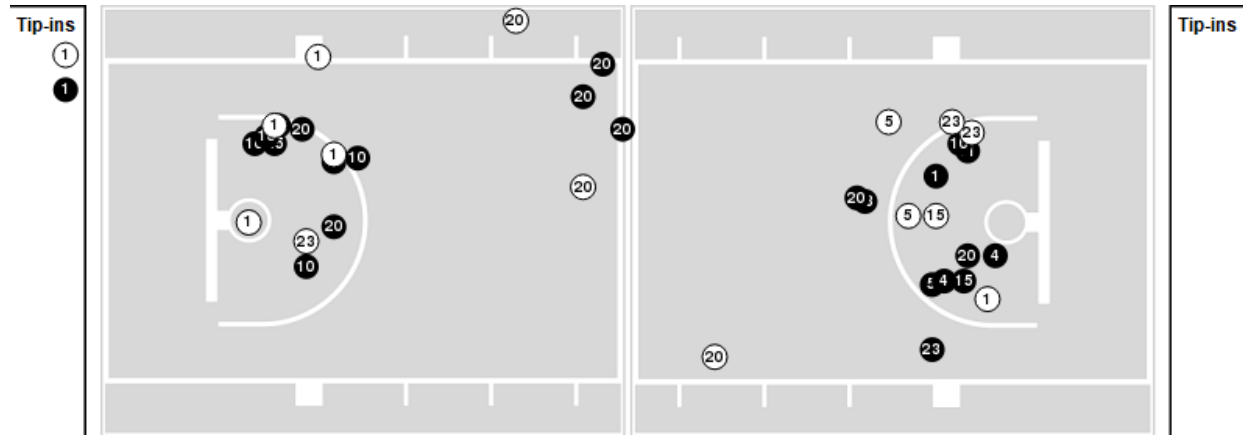
Players => 0, 1, 3, 4, 5, 10, 11, 12, 15, 20, 22, 23, 25FG Types=>AllResults=>All

**Penn St.**

**All Field Goals**



**Blow Up Chart**



● Made    ○ Missed    N - Player Number

Penn St.	M/A	%
Field Goals	29/58	50
2 Points	26/42	62
3 Points	3/16	19
Free Throws	22/25	88

Penn St.	M/A	%
Points in the Paint	46 (23 / 35)	66
Fast Break Points	23 (15/17)	88
Second Chance Points	7 (6/9)	67
Effective FG%	53	



**Officials:** Frank Steratore, Brad Maxey, Missy Brooks

**Minnesota**

Lineup	Quarter On	Time On	Quarter Off	Time Off	Time on Court	Score	Score Diff	Reb	Stl	Tov	Ass	PPP
3- Winters D/ 12- Bagwell Katalinich L/ 13- Hubbard G/ 14- Scalia S/ 30- Sissoko K/	1	10:00	1	05:05	04:55	12-6	6	5	1	1	5	1.3333
3- Winters D/ 13- Hubbard G/ 14- Scalia S/ 15- Mershon K/ 30- Sissoko K/	1	05:05	1	03:30	01:35	3-4	-1	0	0	1	1	0.7500
1- Smith A/ 3- Winters D/ 12- Bagwell Katalinich L/ 14- Scalia S/ 15- Mershon K/	1	03:30	1	01:22	02:08	3-2	1	4	0	1	1	0.7500
1- Smith A/ 12- Bagwell Katalinich L/ 13- Hubbard G/ 14- Scalia S/ 30- Sissoko K/	1	01:22	2	06:53	04:29	11-4	7	8	3	0	0	1.3959
3- Winters D/ 13- Hubbard G/ 14- Scalia S/ 30- Sissoko K/ 35- Helgren B/	2	06:53	2	06:21	00:32	0-0	0	0	0	0	0	0.0000
3- Winters D/ 13- Hubbard G/ 14- Scalia S/ 15- Mershon K/ 30- Sissoko K/	2	06:21	2	05:08	01:13	3-4	-1	0	0	0	0	1.5000
1- Smith A/ 3- Winters D/ 14- Scalia S/ 15- Mershon K/ 30- Sissoko K/	2	05:08	2	02:40	02:28	4-2	2	3	0	1	0	1.0000
1- Smith A/ 12- Bagwell Katalinich L/ 13- Hubbard G/ 14- Scalia S/ 30- Sissoko K/	2	02:40	2	02:40	00:00	0-2	-2	0	0	0	0	0.0000
1- Smith A/ 12- Bagwell Katalinich L/ 13- Hubbard G/ 14- Scalia S/ 15- Mershon K/	2	02:40	2	01:13	01:27	2-4	-2	1	0	1	1	0.6667
1- Smith A/ 12- Bagwell Katalinich L/ 13- Hubbard G/ 14- Scalia S/ 30- Sissoko K/	2	01:13	2	01:13	00:00	0-0	0	0	0	0	0	0.0000
1- Smith A/ 12- Bagwell Katalinich L/ 13- Hubbard G/ 14- Scalia S/ 15- Mershon K/	2	01:13	2	00:00	01:13	0-0	0	2	1	0	0	0.0000
3- Winters D/ 12- Bagwell Katalinich L/ 13- Hubbard G/ 14- Scalia S/ 30- Sissoko K/	2	00:00	3	09:18	00:42	2-0	2	4	0	0	0	2.0000
3- Winters D/ 13- Hubbard G/ 14- Scalia S/ 30- Sissoko K/ 35- Helgren B/	3	09:18	3	07:12	02:06	10-0	10	3	0	0	1	2.5773
3- Winters D/ 12- Bagwell Katalinich L/ 13- Hubbard G/ 14- Scalia S/ 30- Sissoko K/	3	07:12	3	06:39	00:33	0-2	-2	0	0	0	0	0.0000
3- Winters D/ 13- Hubbard G/ 14- Scalia S/ 30- Sissoko K/ 35- Helgren B/	3	06:39	3	05:34	01:05	2-5	-3	0	0	1	1	0.6667
1- Smith A/ 13- Hubbard G/ 14- Scalia S/ 30- Sissoko K/ 35- Helgren B/	3	05:34	3	05:34	00:00	0-0	0	0	0	0	0	0.0000
1- Smith A/ 12- Bagwell Katalinich L/ 13- Hubbard G/ 14- Scalia S/ 30- Sissoko K/	3	05:34	3	02:22	03:12	6-12	-6	5	0	1	0	1.0638
1- Smith A/ 3- Winters D/ 12- Bagwell Katalinich L/ 14- Scalia S/ 30- Sissoko K/	3	02:22	3	01:12	01:10	6-4	2	1	1	0	2	2.0000
1- Smith A/ 3- Winters D/ 14- Scalia S/ 30- Sissoko K/ 35- Helgren B/	3	01:12	4	10:00	01:12	2-3	-1	0	0	0	0	1.0000
3- Winters D/ 13- Hubbard G/ 14- Scalia S/ 30- Sissoko K/ 35- Helgren B/	4	10:00	4	08:42	01:18	2-6	-4	0	0	0	1	1.0000
3- Winters D/ 12- Bagwell Katalinich L/ 13- Hubbard G/ 14- Scalia S/ 30- Sissoko K/	4	08:42	4	07:45	00:57	6-2	4	1	0	0	2	3.0000
3- Winters D/ 13- Hubbard G/ 14- Scalia S/ 30- Sissoko K/ 35- Helgren B/	4	07:45	4	04:10	03:35	11-7	4	6	0	3	2	1.2387
3- Winters D/ 12- Bagwell Katalinich L/ 13- Hubbard G/ 14- Scalia S/ 30- Sissoko K/	4	04:10	4	02:46	01:24	3-6	-3	1	0	0	0	1.0870
1- Smith A/ 3- Winters D/ 13- Hubbard G/ 14- Scalia S/ 30- Sissoko K/	4	02:46	4	00:00	02:46	6-8	-2	3	0	0	0	1.2605





**Officials:** Frank Steratore, Brad Maxey, Missy Brooks

**Penn St.**

Lineup	Quarter On	Time On	Quarter Off	Time Off	Time on Court	Score	Score Diff	Reb	Stl	Tov	Ass	PPP
4- Beverley N/ 5- Kapinus L/ 11- Camden A/ 20- Marisa M/ 25- Jekot K/	1	10:00	1	06:50	03:10	4-6	-2	2	1	2	1	0.6667
4- Beverley N/ 15- Burke M/ 20- Marisa M/ 23- Hagans S/ 25- Jekot K/	1	06:50	1	04:34	02:16	2-9	-7	2	0	2	0	0.5000
4- Beverley N/ 10- Sabel T/ 15- Burke M/ 20- Marisa M/ 23- Hagans S/	1	04:34	1	02:22	02:12	6-3	3	3	0	0	1	1.2295
10- Sabel T/ 15- Burke M/ 20- Marisa M/ 23- Hagans S/ 25- Jekot K/	1	02:22	1	01:28	00:54	0-0	0	1	0	0	0	0.0000
5- Kapinus L/ 10- Sabel T/ 15- Burke M/ 20- Marisa M/ 25- Jekot K/	1	01:28	1	00:41	00:47	2-0	2	0	0	0	1	2.0000
1- Brigham A/ 5- Kapinus L/ 10- Sabel T/ 20- Marisa M/ 25- Jekot K/	1	00:41	2	10:00	00:41	2-4	-2	0	0	0	1	2.0000
1- Brigham A/ 5- Kapinus L/ 11- Camden A/ 20- Marisa M/ 25- Jekot K/	2	10:00	2	06:53	03:07	0-7	-7	3	0	3	0	0.0000
4- Beverley N/ 15- Burke M/ 20- Marisa M/ 23- Hagans S/ 25- Jekot K/	2	06:53	2	05:08	01:45	4-3	1	2	0	0	0	2.1277
4- Beverley N/ 10- Sabel T/ 15- Burke M/ 20- Marisa M/ 23- Hagans S/	2	05:08	2	04:02	01:06	2-2	0	0	0	1	0	1.0000
4- Beverley N/ 10- Sabel T/ 11- Camden A/ 15- Burke M/ 23- Hagans S/	2	04:02	2	02:40	01:22	0-2	-2	1	1	0	0	0.0000
4- Beverley N/ 10- Sabel T/ 11- Camden A/ 20- Marisa M/ 23- Hagans S/	2	02:40	3	10:00	02:40	6-2	4	3	1	1	1	1.2295
4- Beverley N/ 11- Camden A/ 20- Marisa M/ 23- Hagans S/ 25- Jekot K/	3	10:00	3	09:18	00:42	0-2	-2	0	0	0	0	0.0000
1- Brigham A/ 4- Beverley N/ 20- Marisa M/ 23- Hagans S/ 25- Jekot K/	3	09:18	3	07:12	02:06	0-10	-10	0	0	0	0	0.0000
4- Beverley N/ 10- Sabel T/ 12- Thomas K/ 20- Marisa M/ 23- Hagans S/	3	07:12	3	05:34	01:38	7-2	5	1	0	0	1	2.3333
4- Beverley N/ 10- Sabel T/ 15- Burke M/ 20- Marisa M/ 23- Hagans S/	3	05:34	3	02:35	02:59	12-6	6	3	1	1	2	2.0408
4- Beverley N/ 10- Sabel T/ 11- Camden A/ 20- Marisa M/ 23- Hagans S/	3	02:35	3	01:12	01:23	4-6	-2	0	0	1	0	1.0309
1- Brigham A/ 4- Beverley N/ 10- Sabel T/ 20- Marisa M/ 23- Hagans S/	3	01:12	4	08:42	02:30	9-4	5	4	0	1	0	1.8145
4- Beverley N/ 10- Sabel T/ 15- Burke M/ 20- Marisa M/ 23- Hagans S/	4	08:42	4	07:45	00:57	2-6	-4	0	0	1	0	1.0000
1- Brigham A/ 4- Beverley N/ 10- Sabel T/ 20- Marisa M/ 23- Hagans S/	4	07:45	4	06:17	01:28	2-4	-2	0	1	0	0	0.6667
1- Brigham A/ 4- Beverley N/ 20- Marisa M/ 23- Hagans S/ 25- Jekot K/	4	06:17	4	04:51	01:26	2-4	-2	2	0	0	0	0.6667
1- Brigham A/ 4- Beverley N/ 10- Sabel T/ 20- Marisa M/ 23- Hagans S/	4	04:51	4	04:40	00:11	1-0	1	0	0	0	0	2.2727
1- Brigham A/ 4- Beverley N/ 10- Sabel T/ 20- Marisa M/ 25- Jekot K/	4	04:40	4	04:28	00:12	0-0	0	0	0	0	0	0.0000
1- Brigham A/ 4- Beverley N/ 10- Sabel T/ 20- Marisa M/ 23- Hagans S/	4	04:28	4	04:10	00:18	2-3	-1	0	0	0	0	2.0000
4- Beverley N/ 10- Sabel T/ 20- Marisa M/ 23- Hagans S/ 25- Jekot K/	4	04:10	4	00:41	03:29	12-7	5	2	0	0	2	1.6667
10- Sabel T/ 11- Camden A/ 15- Burke M/ 20- Marisa M/ 23- Hagans S/	4	00:41	4	00:00	00:41	2-2	0	1	0	0	0	1.0000



**Officials:** Frank Steratore, Brad Maxey, Missy Brooks

**Minnesota**

Lineup	Time	Score	Score Diff	Pts/Min	Reb	Stl	Tov	Ass	PPP
3- Winters D/ 13- Hubbard G/ 14- Scalia S/ 30- Sissoko K/ 35- Helgren B/	08:36	25-18	7	2.9070	9	0	4	5	1.4077
3- Winters D/ 12- Bagwell Katalinich L/ 13- Hubbard G/ 14- Scalia S/ 30- Sissoko K/	08:31	23-16	7	2.7006	11	1	1	7	1.5583
1- Smith A/ 12- Bagwell Katalinich L/ 13- Hubbard G/ 14- Scalia S/ 30- Sissoko K/	07:41	17-18	-1	2.2126	13	3	1	0	1.2574
3- Winters D/ 13- Hubbard G/ 14- Scalia S/ 15- Mershon K/ 30- Sissoko K/	02:48	6-8	-2	2.1429	0	0	1	1	1.0000
1- Smith A/ 3- Winters D/ 13- Hubbard G/ 14- Scalia S/ 30- Sissoko K/	02:46	6-8	-2	2.1687	3	0	0	0	1.2605
1- Smith A/ 12- Bagwell Katalinich L/ 13- Hubbard G/ 14- Scalia S/ 15- Mershon K/	02:40	2-4	-2	0.7500	3	1	1	1	0.4000
1- Smith A/ 3- Winters D/ 14- Scalia S/ 15- Mershon K/ 30- Sissoko K/	02:28	4-2	2	1.6216	3	0	1	0	1.0000
1- Smith A/ 3- Winters D/ 12- Bagwell Katalinich L/ 14- Scalia S/ 15- Mershon K/	02:08	3-2	1	1.4063	4	0	1	1	0.7500
1- Smith A/ 3- Winters D/ 14- Scalia S/ 30- Sissoko K/ 35- Helgren B/	01:12	2-3	-1	1.6667	0	0	0	0	1.0000
1- Smith A/ 3- Winters D/ 12- Bagwell Katalinich L/ 14- Scalia S/ 30- Sissoko K/	01:10	6-4	2	5.1429	1	1	0	2	2.0000
1- Smith A/ 13- Hubbard G/ 14- Scalia S/ 30- Sissoko K/ 35- Helgren B/	00:00	0-0	0	NaN	0	0	0	0	0.0000



**Officials:** Frank Steratore, Brad Maxey, Missy Brooks

**Penn St.**

Lineup	Time	Score	Score Diff	Pts/Min	Reb	Stl	Tov	Ass	PPP
4- Beverley N/ 10- Sabel T/ 15- Burke M/ 20- Marisa M/ 23- Hagans S/	07:14	22-17	5	3.0415	6	1	3	3	1.4905
1- Brigham A/ 4- Beverley N/ 10- Sabel T/ 20- Marisa M/ 23- Hagans S/	04:27	14-11	3	3.1461	4	1	1	0	1.4894
4- Beverley N/ 10- Sabel T/ 11- Camden A/ 20- Marisa M/ 23- Hagans S/	04:03	10-8	2	2.4691	3	1	2	1	1.1416
4- Beverley N/ 15- Burke M/ 20- Marisa M/ 23- Hagans S/ 25- Jekot K/	04:01	6-12	-6	1.4938	4	0	2	0	1.0204
1- Brigham A/ 4- Beverley N/ 20- Marisa M/ 23- Hagans S/ 25- Jekot K/	03:32	2-14	-12	0.5660	2	0	0	0	0.3333
4- Beverley N/ 10- Sabel T/ 20- Marisa M/ 23- Hagans S/ 25- Jekot K/	03:29	12-7	5	3.4450	2	0	0	2	1.6667
4- Beverley N/ 5- Kapinus L/ 11- Camden A/ 20- Marisa M/ 25- Jekot K/	03:10	4-6	-2	1.2632	2	1	2	1	0.6667
1- Brigham A/ 5- Kapinus L/ 11- Camden A/ 20- Marisa M/ 25- Jekot K/	03:07	0-7	-7	0.0000	3	0	3	0	0.0000
4- Beverley N/ 10- Sabel T/ 12- Thomas K/ 20- Marisa M/ 23- Hagans S/	01:38	7-2	5	4.2857	1	0	0	1	2.3333
4- Beverley N/ 10- Sabel T/ 11- Camden A/ 15- Burke M/ 23- Hagans S/	01:22	0-2	-2	0.0000	1	1	0	0	0.0000
10- Sabel T/ 15- Burke M/ 20- Marisa M/ 23- Hagans S/ 25- Jekot K/	00:54	0-0	0	0.0000	1	0	0	0	0.0000
5- Kapinus L/ 10- Sabel T/ 15- Burke M/ 20- Marisa M/ 25- Jekot K/	00:47	2-0	2	2.5532	0	0	0	1	2.0000
4- Beverley N/ 11- Camden A/ 20- Marisa M/ 23- Hagans S/ 25- Jekot K/	00:42	0-2	-2	0.0000	0	0	0	0	0.0000
1- Brigham A/ 5- Kapinus L/ 10- Sabel T/ 20- Marisa M/ 25- Jekot K/	00:41	2-4	-2	2.9268	0	0	0	1	2.0000
10- Sabel T/ 11- Camden A/ 15- Burke M/ 20- Marisa M/ 23- Hagans S/	00:41	2-2	0	2.9268	1	0	0	0	1.0000
1- Brigham A/ 4- Beverley N/ 10- Sabel T/ 20- Marisa M/ 25- Jekot K/	00:12	0-0	0	0.0000	0	0	0	0	0.0000