



Michigan at Penn St.

01/13/22 Bryce Jordan Center, University Park, PA  
2021-22 Women's Basketball

Game Time: 8:00 PM  
Game Duration: 1:50  
Attendance: 1,622

Officials:

Michigan - 74

Record: 14-2 (5-1)

NO.	Name	F	Min	FG			3P			FT			Rebounds			Fouls		TP	AS	TO	ST	Blocks		+/-
				M-A	M-A	M-A	OR	DR	TOT	PF	FD	BS	BA											
00	Naz Hillmon	F	30:56	7-14	0-0	7-8	3	1	4	3	9	21	3	5	2	1	4	1	4	17				
33	Emily Kiser	F	36:30	6-10	0-0	1-2	3	10	13	2	2	13	1	3	1	2	0	25						
3	Maddie Nolan	G	32:34	5-9	3-7	2-3	3	3	6	1	3	15	2	0	3	0	0	24						
23	Danielle Rauch	G	28:42	0-2	0-0	0-0	1	1	2	3	0	0	5	2	0	0	0	8						
32	Leigha Brown	G	35:11	5-14	3-5	4-4	1	4	5	1	4	17	2	2	3	0	2	19						
1	Amy Dilk		14:03	1-2	1-2	2-2	0	1	1	1	1	5	2	4	0	2	0	3						
44	Cameron Williams		05:18	0-0	0-0	0-0	1	0	1	1	0	0	0	0	0	0	0	-7						
5	Laila Phelia		09:38	0-3	0-1	3-4	1	1	2	0	2	3	0	1	0	0	0	-1						
30	Elise Stuck		05:45	0-1	0-0	0-0	1	2	3	2	0	0	0	0	1	0	0	4						
34	Izabel Varejão		01:23	0-1	0-0	0-0	0	0	0	1	0	0	0	0	0	0	1	-7						
Team							2	1	3			0			2									
<b>Totals</b>				24-56	7-15	19-23	16	24	40	15	21	74	15	19	10	5	7	17						

Technical Fouls::NONE

Shooting By Period		
1st FG%	10-14	71.4%
3PT%	5-5	100.0%
FT%	0-0	0%
2nd FG%	5-12	41.7%
3PT%	1-5	20.0%
FT%	3-4	75%
3rd FG%	4-16	25.0%
3PT%	0-3	0.0%
FT%	10-12	83.3%
4th FG%	5-14	35.7%
3PT%	1-2	50.0%
FT%	6-7	85.7%
GM FG%	24-56	42.9%
3PT%	7-15	46.7%
FT%	19-23	82.6%

Dead Ball Rebounds: 1, 0

Penn St. - 57

Record: 7-7 (1-3)

NO.	Name	F	Min	FG			3P			FT			Rebounds			Fouls		TP	AS	TO	ST	Blocks		+/-
				M-A	M-A	M-A	OR	DR	TOT	PF	FD	BS	BA											
11	Anna Camden	F	24:32	1-2	0-0	0-0	1	4	5	4	0	2	0	3	4	2	0	-6						
5	Leilani Kapinus	G	33:14	6-13	1-5	4-8	2	3	5	3	4	17	0	2	1	2	0	-11						
20	Makenna Marisa	G	38:28	6-19	2-6	3-4	5	2	7	0	4	17	2	5	2	0	2	-20						
23	Shay Hagans	G	31:48	4-10	0-2	0-0	0	1	1	3	1	8	2	2	3	0	1	-18						
25	Kelly Jekot	G	17:59	0-2	0-1	0-0	0	2	2	1	0	0	0	0	0	0	0	-20						
1	Ali Brigham		23:42	4-7	0-0	3-4	5	3	8	5	4	11	2	4	0	3	1	-10						
10	Tova Sabel		20:32	1-6	0-3	0-2	2	2	4	1	2	2	0	0	0	0	0	-1						
15	Maddie Burke		09:45	0-1	0-0	0-0	0	1	1	4	0	0	0	0	0	0	1	1						
Team							2	1	3			0			2									
<b>Totals</b>				22-60	3-17	10-18	17	19	36	21	15	57	6	18	10	7	5	-17						

Technical Fouls::NONE

Shooting By Period		
1st FG%	6-15	40.0%
3PT%	2-6	33.3%
FT%	0-0	0%
2nd FG%	5-18	27.8%
3PT%	0-6	0.0%
FT%	3-5	60%
3rd FG%	4-10	40.0%
3PT%	0-2	0.0%
FT%	3-7	42.9%
4th FG%	7-17	41.2%
3PT%	1-3	33.3%
FT%	4-6	66.7%
GM FG%	22-60	36.7%
3PT%	3-17	17.6%
FT%	10-18	55.6%

Dead Ball Rebounds: 5, 0

	MICH	PSU
Biggest lead	22 (3 <sup>rd</sup> 1:45)	0 (1 <sup>st</sup> 10:00)
Best Scoring Run	10 (1 <sup>st</sup> 6:20)	9 (4 <sup>th</sup> 7:32)
Lead Changes	0	
Times Tied	0	
Time with Lead	39:08	00:00

	MICH	PSU
Points from		
Turnovers	27	13
Paint	32	32
Second Chance	15	19
Fast Breaks	12	10
Bench	8	13

	Period by Period Scoring				
	1st	2nd	3rd	4th	TOT
MICH	25	14	18	17	74
PSU	14	13	11	19	57



**Officials:**

**Period 1**

**Quarter Starters:**

<b>PSU</b>	5 Kapinus L	11 Camden A	20 Marisa M	23 Hagans S	25 Jekot K
<b>MICH</b>	00 Hillmon N	3 Nolan M	23 Rauch D	32 Brown L	33 Kiser E

Game Time	PSU	Score	Diff	MICH
10:00	5 KAPINUS L jumpball lost			00 HILLMON N jumpball won
09:48	5 KAPINUS L steal (1)			00 HILLMON N turnover lost ball (1)
09:25	20 MARISA M turnover lost ball (1)			32 BROWN L steal (1)
09:08		<b>0-3</b>	<b>-3</b>	32 BROWN L 3pt FG from turnover, jump shot made (3)
09:08				3 NOLAN M assist (1)
08:42	5 KAPINUS L 2pt FG in the paint, layup missed			
08:39				33 KISER E defensive rebound (1)
08:34				32 BROWN L 2pt FG in the paint, jump shot blocked
08:34	5 KAPINUS L block (1)			
08:28	20 MARISA M defensive rebound (1)			
08:04	20 MARISA M 2pt FG in the paint, jump shot missed			
08:01				3 NOLAN M defensive rebound (1)
07:52				00 HILLMON N 2pt FG in the paint, layup missed
07:47				00 HILLMON N offensive rebound (1)
07:45		<b>0-6</b>	<b>-6</b>	3 NOLAN M 3pt FG second chance, jump shot made (3)
07:45				23 RAUCH D assist (1)
07:11	turnover shot clock (2)			
07:11	11 CAMDEN A substitution out			
07:11	1 BRIGHAM A substitution in			
07:04				33 KISER E 2pt FG from turnover outside the paint, jump shot missed
06:59	1 BRIGHAM A defensive rebound (1)			
06:43	1 BRIGHAM A turnover bad pass (1)			32 BROWN L steal (2)
06:39		<b>0-8</b>	<b>-8</b>	32 BROWN L 2pt FG fast break from turnover in the paint, layup made (5)
06:27	23 HAGANS S turnover bad pass (1)			32 BROWN L steal (3)
06:20		<b>0-10</b>	<b>-10</b>	33 KISER E 2pt FG fast break from turnover in the paint, layup made (2)
06:20				23 RAUCH D assist (2)
06:20	Timeout 30 Sec			
06:20				Timeout media
06:03	5 KAPINUS L 3pt FG , jump shot made (3)	<b>3-10</b>	<b>-7</b>	
06:03	20 MARISA M assist (1)			
05:54		<b>3-12</b>	<b>-9</b>	32 BROWN L 2pt FG in the paint, jump shot made (7)
05:38	5 KAPINUS L 3pt FG , jump shot missed			
05:34				3 NOLAN M defensive rebound (2)
05:26		<b>3-15</b>	<b>-12</b>	3 NOLAN M 3pt FG , jump shot made (6)
05:26				23 RAUCH D assist (3)
05:10	20 MARISA M 2pt FG in the paint, layup made (2)	<b>5-15</b>	<b>-10</b>	
04:50		<b>5-18</b>	<b>-13</b>	32 BROWN L 3pt FG , jump shot made (10)
04:50				00 HILLMON N assist (1)
04:28	1 BRIGHAM A 2pt FG in the paint, layup blocked			
04:28				00 HILLMON N block (1)
04:22	20 MARISA M offensive rebound (2)			



Official Basketball Play by Play - 1st Period  
**Michigan at Penn St.**  
 01/13/22 Bryce Jordan Center, University Park, PA  
 2021-22 Women's Basketball

**Game Time:** 8:00 PM  
**Game Duration:** 1:50  
**Attendance:** 1,622

**Officials:**

Game Time	PSU	Score	Diff	MICH
04:21	20 MARISA M turnover bad pass (2)			
04:21	23 HAGANS S substitution out			
04:21	25 JEKOT K substitution out			
04:21	10 SABEL T substitution in			
04:21	11 CAMDEN A substitution in			
04:21				33 KISER E substitution out
04:21				1 DILK A substitution in
04:18		<b>5-20</b>	<b>-15</b>	3 NOLAN M 2pt FG from turnover in the paint, layup made (8)
04:13				32 BROWN L substitution out
04:13				44 WILLIAMS C substitution in
04:02	20 MARISA M 3pt FG , jump shot made (5)	<b>8-20</b>	<b>-12</b>	
04:02	1 BRIGHAM A assist (1)			
03:42	20 MARISA M steal (1)			1 DILK A turnover bad pass (1)
03:36	20 MARISA M 3pt FG from turnover, jump shot missed			
03:34				defensive rebound (5)
03:34	1 BRIGHAM A substitution out			
03:34	15 BURKE M substitution in			
03:34				3 NOLAN M substitution out
03:34				5 PHELIA L substitution in
03:18				00 HILLMON N turnover 3 seconds (2)
03:18				00 HILLMON N substitution out
03:18				44 WILLIAMS C substitution out
03:18				30 STUCK E substitution in
03:18				33 KISER E substitution in
02:57	20 MARISA M 3pt FG from turnover, jump shot missed			
02:54	5 KAPINUS L offensive rebound (1)			
02:53	5 KAPINUS L 2pt FG from turnover second chance in the paint, layup made (5)	<b>10-20</b>	<b>-10</b>	
02:38	15 BURKE M foul personal (1 - 1)			33 KISER E foul drawn (1)
02:38				23 RAUCH D substitution out
02:38				32 BROWN L substitution in
02:31	5 KAPINUS L substitution out			
02:31	23 HAGANS S substitution in			
02:25		<b>10-23</b>	<b>-13</b>	1 DILK A 3pt FG , jump shot made (3)
02:25				32 BROWN L assist (1)
02:07	20 MARISA M 2pt FG outside the paint, jump shot missed			
02:04				30 STUCK E defensive rebound (1)
01:54		<b>10-25</b>	<b>-15</b>	33 KISER E 2pt FG in the paint, layup made (4)
01:54				1 DILK A assist (1)
01:29	10 SABEL T 2pt FG in the paint, layup missed			
01:22	10 SABEL T offensive rebound (1)			
01:22	10 SABEL T 2pt FG second chance in the paint, dunk, made (2)	<b>12-25</b>	<b>-13</b>	
01:22	11 CAMDEN A steal (1)			1 DILK A turnover bad pass (2)
01:22	20 MARISA M substitution out			
01:22	25 JEKOT K substitution in			
01:05	23 HAGANS S 3pt FG from turnover, jump shot missed			
01:00				33 KISER E defensive rebound (2)
00:47	10 SABEL T substitution out			
00:47	15 BURKE M substitution out			



Official Basketball Play by Play - 1st Period  
**Michigan at Penn St.**  
 01/13/22 Bryce Jordan Center, University Park, PA  
 2021-22 Women's Basketball

**Game Time:** 8:00 PM  
**Game Duration:** 1:50  
**Attendance:** 1,622

**Officials:**

Game Time	PSU	Score	Diff	MICH
00:47	23 HAGANS S substitution out			
00:47	1 BRIGHAM A substitution in			
00:47	5 KAPINUS L substitution in			
00:47	20 MARISA M substitution in			
00:47				30 STUCK E substitution out
00:47				44 WILLIAMS C substitution in
00:41				32 BROWN L 2pt FG outside the paint, jump shot missed
00:37	11 CAMDEN A defensive rebound (1)			
00:20	11 CAMDEN A turnover bad pass (1)			33 KISER E steal (1)
00:08	11 CAMDEN A steal (2)			1 DILK A turnover bad pass (3)
00:02	5 KAPINUS L 2pt FG fast break from turnover in the paint, layup made (7)	<b>14-25</b>	<b>-11</b>	
00:02	20 MARISA M assist (2)			
<b>END OF PERIOD</b>				
<b>PSU 14-25 MICH</b>				



Michigan at Penn St.

01/13/22 Bryce Jordan Center, University Park, PA  
2021-22 Women's Basketball

Game Time: 8:00 PM  
Game Duration: 1:50  
Attendance: 1,622

Officials:

Michigan - 25

NO.	Name	F	Min	FG			Rebounds			Fouls		TP	AS	TO	ST	Blocks		+/-
				M-A	3P	FT	OR	DR	TOT	PF	FD					BS	BA	
00	Naz Hillmon	F	06:42	0-1	0-0	0-0	1	0	1	0	0	0	1	2	0	1	0	12
33	Emily Kiser	F	08:57	2-3	0-0	0-0	0	2	2	0	1	4	0	0	1	0	0	12
3	Maddie Nolan	G	06:26	3-3	2-2	0-0	0	2	2	0	0	8	1	0	0	0	0	12
23	Danielle Rauch	G	07:22	0-0	0-0	0-0	0	0	0	0	0	0	3	0	0	0	0	10
32	Leigha Brown	G	08:25	4-6	2-2	0-0	0	0	0	0	0	10	1	0	3	0	1	16
1	Amy Dilk		04:21	1-1	1-1	0-0	0	0	0	0	0	3	1	3	0	0	0	-2
44	Cameron Williams		01:42	0-0	0-0	0-0	0	0	0	0	0	0	0	0	0	0	0	-5
5	Laila Phelia		03:34	0-0	0-0	0-0	0	0	0	0	0	0	0	0	0	0	0	-1
30	Elise Stuck		02:31	0-0	0-0	0-0	0	1	1	0	0	0	0	0	0	0	0	1
Team							0	1	1			0		0				
<b>Totals</b>				10-14	5-5	0-0	1	6	7	0	1	25	7	5	4	1	1	11

Shooting By Period		
1st FG%	10-14	71.4%
3PT%	5-5	100.0%
FT%	0-0	0%
GM FG%	10-14	71.4%
3PT%	5-5	100.0%
FT%	0-0	0.0%

Dead Ball Rebounds: 0, 0

Technical Fouls::NONE

Penn St. - 14

NO.	Name	F	Min	FG			Rebounds			Fouls		TP	AS	TO	ST	Blocks		+/-
				M-A	3P	FT	OR	DR	TOT	PF	FD					BS	BA	
11	Anna Camden	F	07:10	0-0	0-0	0-0	0	1	1	0	0	0	0	1	2	0	0	-4
5	Leilani Kapinus	G	08:16	3-5	1-2	0-0	1	0	1	0	0	7	0	0	1	1	0	-8
20	Makenna Marisa	G	09:25	2-6	1-3	0-0	1	1	2	0	0	5	2	2	1	0	0	-11
23	Shay Hagans	G	07:23	0-1	0-1	0-0	0	0	0	0	0	0	0	1	0	0	0	-16
25	Kelly Jekot	G	07:01	0-0	0-0	0-0	0	0	0	0	0	0	0	0	0	0	0	-11
1	Ali Brigham		04:24	0-1	0-0	0-0	0	1	1	0	0	0	1	1	0	0	1	-4
10	Tova Sabel		03:34	1-2	0-0	0-0	1	0	1	0	0	2	0	0	0	0	0	0
15	Maddie Burke		02:47	0-0	0-0	0-0	0	0	0	1	0	0	0	0	0	0	0	-1
Team							0	0	0			0		1				
<b>Totals</b>				6-15	2-6	0-0	3	3	6	1	0	14	3	6	4	1	1	-11

Shooting By Period		
1st FG%	6-15	40.0%
3PT%	2-6	33.3%
FT%	0-0	0%
GM FG%	6-15	40.0%
3PT%	2-6	33.3%
FT%	0-0	0.0%

Dead Ball Rebounds: 0, 0

Technical Fouls::NONE

	MICH	PSU
Biggest lead	15 (1 <sup>st</sup> 4:18)	0 (1 <sup>st</sup> 10:00)
Best Scoring Run	10 (1 <sup>st</sup> 6:20)	5 (1 <sup>st</sup> 2:53)
Lead Changes	0	
Times Tied	0	
Time with Lead	09:08	00:00

Points from	MICH	PSU
Turnovers	9	4
Paint	10	8
Second Chance	3	4
Fast Breaks	4	2
Bench	3	2

	Period by Period Scoring				
	1st	2nd	3rd	4th	TOT
MICH	25	14	18	17	74
PSU	14	13	11	19	57



**Officials:**

**Period 2**

**Quarter Starters:**

<b>PSU</b>	1 Brigham A	5 Kapinus L	11 Camden A	20 Marisa M	25 Jekot K
<b>MICH</b>	00 Hillmon N	3 Nolan M	23 Rauch D	32 Brown L	33 Kiser E

Game Time	PSU	Score	Diff	MICH
10:00				1 DILK A substitution out
10:00				5 PHELIA L substitution out
10:00				44 WILLIAMS C substitution out
10:00				00 HILLMON N substitution in
10:00				3 NOLAN M substitution in
10:00				23 RAUCH D substitution in
09:47	20 MARISA M 2pt FG outside the paint, jump shot made (7)	<b>16-25</b>	<b>-9</b>	
09:27		<b>16-27</b>	<b>-11</b>	00 HILLMON N 2pt FG in the paint, layup made (2)
08:54	25 JEKOT K 2pt FG in the paint, jump shot missed			
08:51	1 BRIGHAM A offensive rebound (2)			
08:49	5 KAPINUS L 3pt FG second chance, jump shot missed			
08:45				33 KISER E defensive rebound (3)
08:39				00 HILLMON N 2pt FG in the paint, layup blocked
08:39	1 BRIGHAM A block (1)			
08:29	25 JEKOT K defensive rebound (1)			
08:26	20 MARISA M 2pt FG in the paint, jump shot missed			
08:22				33 KISER E defensive rebound (4)
08:10				32 BROWN L 3pt FG , jump shot missed
08:06				33 KISER E offensive rebound (5)
08:04	11 CAMDEN A steal (3)			33 KISER E turnover lost ball (1)
07:52	5 KAPINUS L 2pt FG from turnover in the paint, layup made (9)	<b>18-27</b>	<b>-9</b>	
07:52	1 BRIGHAM A assist (2)			
07:39		<b>18-30</b>	<b>-12</b>	32 BROWN L 3pt FG , jump shot made (13)
07:39				00 HILLMON N assist (2)
07:18	1 BRIGHAM A 2pt FG in the paint, jump shot missed			
07:15				32 BROWN L defensive rebound (1)
07:10				3 NOLAN M 3pt FG , jump shot missed
07:04	11 CAMDEN A defensive rebound (2)			
06:55	20 MARISA M 2pt FG outside the paint, jump shot made (9)	<b>20-30</b>	<b>-10</b>	
06:40				00 HILLMON N 2pt FG in the paint, jump shot missed
06:36	25 JEKOT K defensive rebound (2)			
06:14	20 MARISA M 3pt FG , jump shot missed			
06:10	20 MARISA M offensive rebound (3)			
06:07	5 KAPINUS L 3pt FG second chance, jump shot missed			
06:02				33 KISER E defensive rebound (6)
05:56		<b>20-32</b>	<b>-12</b>	00 HILLMON N 2pt FG fast break in the paint, layup made (4)
05:56				23 RAUCH D assist (4)
05:30	1 BRIGHAM A turnover travel (2)			
05:30	1 BRIGHAM A substitution out			
05:30	5 KAPINUS L substitution out			
05:30	25 JEKOT K substitution out			
05:30	10 SABEL T substitution in			
05:30	15 BURKE M substitution in			



**Officials:**

Game Time	PSU	Score	Diff	MICH
05:30	23 HAGANS S substitution in			
05:30				3 NOLAN M substitution out
05:30				23 RAUCH D substitution out
05:30				33 KISER E substitution out
05:30				1 DILK A substitution in
05:30				5 PHELIA L substitution in
05:30				44 WILLIAMS C substitution in
05:18				00 HILLMON N 2pt FG from turnover in the paint, layup blocked
05:18	11 CAMDEN A block (1)			
05:18				00 HILLMON N offensive rebound (2)
05:17	11 CAMDEN A foul personal (1 - 1)			32 BROWN L foul drawn (1)
05:10				5 PHELIA L turnover travel (1)
04:50	10 SABEL T 3pt FG from turnover, jump shot missed			
04:45				1 DILK A defensive rebound (1)
04:40	23 HAGANS S steal (1)			1 DILK A turnover lost ball (4)
04:26	20 MARISA M foul drawn (1)			44 WILLIAMS C foul personal (1 - 1)
04:26	Timeout media			
04:26				44 WILLIAMS C substitution out
04:26				33 KISER E substitution in
04:14	20 MARISA M 2pt FG from turnover in the paint, layup blocked			
04:14				33 KISER E block (1)
04:10				33 KISER E defensive rebound (7)
04:05	11 CAMDEN A foul personal (2 - 2)			00 HILLMON N foul drawn (1)
04:05	11 CAMDEN A substitution out			
04:05	5 KAPINUS L substitution in			
03:54				5 PHELIA L 3pt FG , jump shot missed
03:50	20 MARISA M defensive rebound (4)			
03:46	20 MARISA M foul drawn (2)			00 HILLMON N foul shooting (1 - 2)
03:46	20 MARISA M free throw fast break 1 - 2 made (10)	<b>21-32</b>	<b>-11</b>	
03:46	20 MARISA M free throw fast break 2 - 2 made (11)	<b>22-32</b>	<b>-10</b>	
03:40				32 BROWN L turnover lost ball (1)
03:13	23 HAGANS S 2pt FG from turnover outside the paint, jump shot missed			
03:10				33 KISER E defensive rebound (8)
03:02	15 BURKE M foul shooting (2 - 3)			5 PHELIA L foul drawn (1)
03:02	15 BURKE M substitution out			
03:02	1 BRIGHAM A substitution in			
03:02				1 DILK A substitution out
03:02				23 RAUCH D substitution in
03:02		<b>22-33</b>	<b>-11</b>	5 PHELIA L free throw 1 - 2 made (1)
03:02				5 PHELIA L free throw 2 - 2 missed
03:02	5 KAPINUS L defensive rebound (2)			
02:45	10 SABEL T 3pt FG , jump shot missed			
02:41	1 BRIGHAM A offensive rebound (3)			
02:40	1 BRIGHAM A 2pt FG second chance in the paint, layup made (2)	<b>24-33</b>	<b>-9</b>	
02:40	1 BRIGHAM A foul drawn (1)			23 RAUCH D foul shooting (1 - 3)
02:40				5 PHELIA L substitution out
02:40				3 NOLAN M substitution in
02:40	1 BRIGHAM A free throw 1 - 1 made (3)	<b>25-33</b>	<b>-8</b>	



Official Basketball Play by Play - 2nd Period  
**Michigan at Penn St.**  
 01/13/22 Bryce Jordan Center, University Park, PA  
 2021-22 Women's Basketball

**Game Time:** 8:00 PM  
**Game Duration:** 1:50  
**Attendance:** 1,622

**Officials:**

Game Time	PSU	Score	Diff	MICH
02:38	23 HAGANS S foul personal (1 - 4)			32 BROWN L foul drawn (2)
02:18				32 BROWN L 3pt FG , jump shot missed
02:09				3 NOLAN M offensive rebound (3)
02:07		<b>25-35</b>	<b>-10</b>	00 HILLMON N 2pt FG second chance in the paint, layup made (6)
01:51	23 HAGANS S 2pt FG in the paint, layup made (2)	<b>27-35</b>	<b>-8</b>	
01:38	20 MARISA M steal (2)			23 RAUCH D turnover lost ball (1)
01:26	5 KAPINUS L foul drawn (1)			23 RAUCH D foul shooting (2 - 4)
01:26	5 KAPINUS L free throw 1 - 2 missed			
01:26	offensive dead ball rebound (1)			
01:26	5 KAPINUS L free throw 2 - 2 missed			
01:24				00 HILLMON N defensive rebound (3)
01:15		<b>27-37</b>	<b>-10</b>	33 KISER E 2pt FG in the paint, layup made (6)
01:15				00 HILLMON N assist (3)
00:51	23 HAGANS S turnover (2)			
00:39	23 HAGANS S steal (2)			00 HILLMON N turnover lost ball (3)
00:34	23 HAGANS S 2pt FG from turnover in the paint, layup missed			
00:32				32 BROWN L defensive rebound (2)
00:32	5 KAPINUS L foul personal (1 - 5)			32 BROWN L foul drawn (3)
00:32	5 KAPINUS L substitution out			
00:32	15 BURKE M substitution in			
00:32		<b>27-38</b>	<b>-11</b>	32 BROWN L free throw fast break 1 - 2 made (14)
00:32		<b>27-39</b>	<b>-12</b>	32 BROWN L free throw fast break 2 - 2 made (15)
00:04	10 SABEL T 2pt FG in the paint, layup missed			
00:03	offensive rebound (15)			
00:03	15 BURKE M substitution out			
00:03	11 CAMDEN A substitution in			
00:00	20 MARISA M 3pt FG second chance, jump shot missed			
00:00	offensive dead ball rebound (2)			
<b>END OF PERIOD</b>				
<b>PSU 27-39 MICH</b>				





**Michigan at Penn St.**

01/13/22 Bryce Jordan Center, University Park, PA  
2021-22 Women's Basketball

Game Time: 8:00 PM  
Game Duration: 1:50  
Attendance: 1,622

Officials:

**Michigan - 14**

NO.	Name	F	Min	FG			Rebounds			Fouls		TP	AS	TO	ST	Blocks		+/-
				M-A	3P	FT	OR	DR	TOT	PF	FD					BS	BA	
00	Naz Hillmon	F	10:00	3-6	0-0	0-0	1	1	2	1	1	6	2	1	0	0	2	1
33	Emily Kiser	F	08:56	1-1	0-0	0-0	1	5	6	0	0	2	0	1	0	1	0	1
3	Maddie Nolan	G	07:10	0-1	0-1	0-0	1	0	1	0	0	0	0	0	0	0	0	4
23	Danielle Rauch	G	07:32	0-0	0-0	0-0	0	0	0	2	0	0	1	1	0	0	0	3
32	Leigha Brown	G	10:00	1-3	1-3	2-2	0	2	2	0	3	5	0	1	0	0	0	1
1	Amy Dilk		02:28	0-0	0-0	0-0	0	1	1	0	0	0	0	1	0	0	0	-2
5	Laila Phelia		02:50	0-1	0-1	1-2	0	0	0	0	1	1	0	1	0	0	0	-3
44	Cameron Williams		01:04	0-0	0-0	0-0	0	0	0	1	0	0	0	0	0	0	0	0
Team							0	0	0			0						
<b>Totals</b>				5-12	1-5	3-4	3	9	12	4	5	14	3	6	0	1	2	1

Shooting By Period		
2 <sup>nd</sup> FG%	5-12	41.7%
3PT%	1-5	20.0%
FT%	3-4	75%
GM FG%	5-12	41.7%
3PT%	1-5	20.0%
FT%	3-4	75.0%

Dead Ball Rebounds: 0, 0

Technical Fouls::NONE

**Penn St. - 13**

NO.	Name	F	Min	FG			Rebounds			Fouls		TP	AS	TO	ST	Blocks		+/-
				M-A	3P	FT	OR	DR	TOT	PF	FD					BS	BA	
11	Anna Camden	F	05:59	0-0	0-0	0-0	0	1	1	2	0	0	0	0	1	1	0	-1
5	Leilani Kapinus	G	08:03	1-3	0-2	0-2	0	1	1	1	1	2	0	0	0	0	0	1
20	Makenna Marisa	G	10:00	2-6	0-2	2-2	1	1	2	0	2	6	0	0	1	0	1	-1
23	Shay Hagans	G	05:30	1-3	0-0	0-0	0	0	0	1	0	2	0	1	2	0	0	0
25	Kelly Jekot	G	04:30	0-1	0-0	0-0	0	2	2	0	0	0	0	0	0	0	0	-1
10	Tova Sabel		05:30	0-3	0-2	0-0	0	0	0	0	0	0	0	0	0	0	0	0
15	Maddie Burke		02:56	0-0	0-0	0-0	0	0	0	1	0	0	0	0	0	0	0	0
1	Ali Brigham		07:32	1-2	0-0	1-1	2	0	2	0	1	3	1	1	0	1	0	-3
Team							1	0	1			0						
<b>Totals</b>				5-18	0-6	3-5	4	5	9	5	4	13	1	2	4	2	1	-1

Shooting By Period		
2 <sup>nd</sup> FG%	5-18	27.8%
3PT%	0-6	0.0%
FT%	3-5	60%
GM FG%	5-18	27.8%
3PT%	0-6	0.0%
FT%	3-5	60.0%

Dead Ball Rebounds: 2, 0

Technical Fouls::NONE

	MICH	PSU
Biggest lead	12 (2 <sup>nd</sup> 7:39)	0 (1 <sup>st</sup> 10:00)
Best Scoring Run	4 (2 <sup>nd</sup> 0:32)	3 (2 <sup>nd</sup> 2:40)
Lead Changes	0	
Times Tied	0	
Time with Lead	09:47	00:00

Points from	MICH	PSU
Turnovers	0	2
Paint	8	6
Second Chance	2	3
Fast Breaks	4	2
Bench	1	3

	Period by Period Scoring				
	1st	2nd	3rd	4th	TOT
MICH	25	14	18	17	74
PSU	14	13	11	19	57



**Michigan at Penn St.**

01/13/22 Bryce Jordan Center, University Park, PA  
2021-22 Women's Basketball

Game Time: 8:00 PM  
Game Duration: 1:50  
Attendance: 1,622

Officials:

**Michigan - 39**

NO.	Name	Min	FG			Rebounds			Fouls		TP	AS	TO	ST	Blocks		+/-
			M-A	3P	FT	OR	DR	TOT	PF	FD					BS	BA	
00	Naz Hillmon	F 16:42	3-7	0-0	0-0	2	1	3	1	1	6	3	3	0	1	2	13
33	Emily Kiser	F 17:53	3-4	0-0	0-0	1	7	8	0	1	6	0	1	1	1	0	13
3	Maddie Nolan	G 13:36	3-4	2-3	0-0	1	2	3	0	0	8	1	0	0	0	0	16
23	Danielle Rauch	G 14:54	0-0	0-0	0-0	0	0	0	2	0	0	4	1	0	0	0	13
32	Leigha Brown	G 18:25	5-9	3-5	2-2	0	2	2	0	3	15	1	1	3	0	1	17
1	Amy Dilk	06:49	1-1	1-1	0-0	0	1	1	0	0	3	1	4	0	0	0	-4
44	Cameron Williams	02:46	0-0	0-0	0-0	0	0	0	1	0	0	0	0	0	0	0	-5
5	Laila Phelia	06:24	0-1	0-1	1-2	0	0	0	0	1	1	0	1	0	0	0	-4
30	Elise Stuck	02:31	0-0	0-0	0-0	0	1	1	0	0	0	0	0	0	0	0	1
Team						0	1	1			0		0				
<b>Totals</b>			15-26	6-10	3-4	4	15	19	4	6	39	10	11	4	2	3	12

Shooting By Period		
1 <sup>st</sup> FG%	10-14	71.4%
3PT%	5-5	100.0%
FT%	0-0	0%
2 <sup>nd</sup> FG%	5-12	41.7%
3PT%	1-5	20.0%
FT%	3-4	75%
GM FG%	15-26	57.7%
3PT%	6-10	60.0%
FT%	3-4	75.0%

Dead Ball Rebounds: 0, 0

Technical Fouls::NONE

**Penn St. - 27**

NO.	Name	Min	FG			Rebounds			Fouls		TP	AS	TO	ST	Blocks		+/-
			M-A	3P	FT	OR	DR	TOT	PF	FD					BS	BA	
11	Anna Camden	F 13:09	0-0	0-0	0-0	0	2	2	2	0	0	0	1	3	1	0	-5
5	Leilani Kapinus	G 16:19	4-8	1-4	0-2	1	1	2	1	1	9	0	0	1	1	0	-7
20	Makenna Marisa	G 19:25	4-12	1-5	2-2	2	2	4	0	2	11	2	2	2	0	1	-12
23	Shay Hagans	G 12:53	1-4	0-1	0-0	0	0	0	1	0	2	0	2	2	0	0	-16
25	Kelly Jekot	G 11:31	0-1	0-0	0-0	0	2	2	0	0	0	0	0	0	0	0	-12
1	Ali Brigham	11:56	1-3	0-0	1-1	2	1	3	0	1	3	2	2	0	1	1	-7
10	Tova Sabel	09:04	1-5	0-2	0-0	1	0	1	0	0	2	0	0	0	0	0	0
15	Maddie Burke	05:43	0-0	0-0	0-0	0	0	0	2	0	0	0	0	0	0	0	-1
Team						1	0	1			0		1				
<b>Totals</b>			11-33	2-12	3-5	7	8	15	6	4	27	4	8	8	3	2	-12

Shooting By Period		
1 <sup>st</sup> FG%	6-15	40.0%
3PT%	2-6	33.3%
FT%	0-0	0%
2 <sup>nd</sup> FG%	5-18	27.8%
3PT%	0-6	0.0%
FT%	3-5	60%
GM FG%	11-33	33.3%
3PT%	2-12	16.7%
FT%	3-5	60.0%

Dead Ball Rebounds: 2, 0

Technical Fouls::NONE

	MICH	PSU
Biggest lead	15 (1 <sup>st</sup> 4:18)	0 (1 <sup>st</sup> 10:00)
Best Scoring Run	10 (1 <sup>st</sup> 6:20)	6 (2 <sup>nd</sup> 9:47)
Lead Changes	0	
Times Tied	0	
Time with Lead	19:08	00:00

Points from	MICH	PSU
Turnovers	9	6
Paint	18	14
Second Chance	5	7
Fast Breaks	8	4
Bench	4	5

	Period by Period Scoring				
	1st	2nd	3rd	4th	TOT
MICH	25	14	18	17	74
PSU	14	13	11	19	57



**Officials:**

**Period 3**

**Quarter Starters:**

<b>PSU</b>	5 Kapinus L	11 Camden A	20 Marisa M	23 Hagans S	25 Jekot K
<b>MICH</b>	00 Hillmon N	3 Nolan M	23 Rauch D	32 Brown L	33 Kiser E

Game Time	PSU	Score	Diff	MICH
10:00	1 BRIGHAM A substitution out			
10:00	10 SABEL T substitution out			
10:00	5 KAPINUS L substitution in			
10:00	25 JEKOT K substitution in			
09:49	20 MARISA M turnover lost ball (3)			3 NOLAN M steal (1)
09:34		<b>27-41</b>	<b>-14</b>	33 KISER E 2pt FG from turnover in the paint, layup made (8)
09:34				32 BROWN L assist (2)
09:20	20 MARISA M foul drawn (3)			3 NOLAN M foul shooting (1 - 1)
09:20	20 MARISA M free throw 1 - 2 made (12)	<b>28-41</b>	<b>-13</b>	
09:20	20 MARISA M free throw 2 - 2 missed			
09:19				3 NOLAN M defensive rebound (4)
09:06	23 HAGANS S foul drawn (1)			00 HILLMON N foul offensive (2 - 2)
09:06				00 HILLMON N turnover offensive (4)
08:41	20 MARISA M turnover bad pass (4)			3 NOLAN M steal (2)
08:22				33 KISER E turnover out of bounds (2)
08:05	11 CAMDEN A turnover (2)			
07:53		<b>28-43</b>	<b>-15</b>	00 HILLMON N 2pt FG from turnover in the paint, layup made (8)
07:53	11 CAMDEN A foul shooting (3 - 1)			00 HILLMON N foul drawn (2)
07:53	11 CAMDEN A substitution out			
07:53	1 BRIGHAM A substitution in			
07:53		<b>28-44</b>	<b>-16</b>	00 HILLMON N free throw 1 - 1 made (9)
07:40	25 JEKOT K 3pt FG , jump shot missed			
07:35				32 BROWN L defensive rebound (3)
07:22				00 HILLMON N 2pt FG in the paint, layup blocked
07:22	1 BRIGHAM A block (2)			
07:17				23 RAUCH D offensive rebound (1)
07:06				33 KISER E 2pt FG second chance in the paint, jump shot missed
07:05				3 NOLAN M offensive rebound (5)
07:05		<b>28-46</b>	<b>-18</b>	3 NOLAN M 2pt FG second chance in the paint, layup made (10)
07:05	5 KAPINUS L foul shooting (2 - 2)			3 NOLAN M foul drawn (1)
07:05	5 KAPINUS L substitution out			
07:05	25 JEKOT K substitution out			
07:05	10 SABEL T substitution in			
07:05	15 BURKE M substitution in			
07:05				3 NOLAN M free throw 1 - 1 missed
07:03	15 BURKE M defensive rebound (1)			
06:35	23 HAGANS S 2pt FG in the paint, jump shot missed			
06:32				33 KISER E defensive rebound (9)
06:28	10 SABEL T foul personal (1 - 3)			00 HILLMON N foul drawn (3)
06:19	1 BRIGHAM A foul shooting (1 - 4)			00 HILLMON N foul drawn (4)
06:19		<b>28-47</b>	<b>-19</b>	00 HILLMON N free throw 1 - 2 made (10)



**Officials:**

Game Time	PSU	Score	Diff	MICH
06:19		<b>28-48</b>	<b>-20</b>	00 HILLMON N free throw 2 - 2 made (11)
05:55	10 SABEL T foul drawn (1)			32 BROWN L foul personal (1 - 3)
05:55	20 MARISA M substitution out			
05:55	5 KAPINUS L substitution in			
05:49	10 SABEL T 3pt FG , jump shot missed			
05:46	1 BRIGHAM A offensive rebound (4)			
05:46	1 BRIGHAM A 2pt FG second chance in the paint, layup made (5)	<b>30-48</b>	<b>-18</b>	
05:46	1 BRIGHAM A foul drawn (2)			00 HILLMON N foul shooting (3 - 4)
05:46				00 HILLMON N substitution out
05:46				44 WILLIAMS C substitution in
05:46	1 BRIGHAM A free throw 1 - 1 made (6)	<b>31-48</b>	<b>-17</b>	
05:15				23 RAUCH D 2pt FG outside the paint, jump shot missed
05:11				3 NOLAN M offensive rebound (6)
05:07				3 NOLAN M 3pt FG second chance, jump shot missed
05:03				44 WILLIAMS C offensive rebound (1)
04:58	5 KAPINUS L foul shooting (3 - 5)			33 KISER E foul drawn (2)
04:58	Timeout media			
04:58	5 KAPINUS L substitution out			
04:58	20 MARISA M substitution in			
04:58		<b>31-49</b>	<b>-18</b>	33 KISER E free throw 1 - 2 made (9)
04:58				33 KISER E free throw 2 - 2 missed
04:58	1 BRIGHAM A defensive rebound (5)			
04:36	1 BRIGHAM A 2pt FG in the paint, layup made (8)	<b>33-49</b>	<b>-16</b>	
04:29	15 BURKE M foul personal (3 - 6)			3 NOLAN M foul drawn (2)
04:29				23 RAUCH D substitution out
04:29				1 DILK A substitution in
04:29		<b>33-50</b>	<b>-17</b>	3 NOLAN M free throw 1 - 2 made (11)
04:29		<b>33-51</b>	<b>-18</b>	3 NOLAN M free throw 2 - 2 made (12)
04:29	1 BRIGHAM A 2pt FG in the paint, layup made (10)	<b>35-51</b>	<b>-16</b>	
03:46				32 BROWN L 2pt FG in the paint, layup missed
03:43	10 SABEL T defensive rebound (2)			
03:39	15 BURKE M 2pt FG in the paint, jump shot blocked			
03:39				1 DILK A block (1)
03:27	10 SABEL T offensive rebound (3)			
03:14	turnover shot clock (12)			
03:14				32 BROWN L substitution out
03:14				5 PHELIA L substitution in
03:14				44 WILLIAMS C substitution out
03:14				30 STUCK E substitution in
03:03	15 BURKE M foul shooting (4 - 7)			5 PHELIA L foul drawn (2)
03:03	15 BURKE M substitution out			
03:03	5 KAPINUS L substitution in			
03:03		<b>35-52</b>	<b>-17</b>	5 PHELIA L free throw 1 - 2 made (2)
03:03		<b>35-53</b>	<b>-18</b>	5 PHELIA L free throw 2 - 2 made (3)
02:47	1 BRIGHAM A turnover 3 seconds (3)			
02:37	1 BRIGHAM A foul drawn (3)			33 KISER E foul offensive (1 - 5)
02:37				33 KISER E turnover offensive (3)
02:15	1 BRIGHAM A turnover bad pass (4)			



Official Basketball Play by Play - 3rd Period  
**Michigan at Penn St.**  
 01/13/22 Bryce Jordan Center, University Park, PA  
 2021-22 Women's Basketball

**Game Time:** 8:00 PM  
**Game Duration:** 1:50  
**Attendance:** 1,622

**Officials:**

Game Time	PSU	Score	Diff	MICH
02:14	23 HAGANS S foul personal (2 - 8)			1 DILK A foul drawn (1)
02:14		<b>35-54</b>	<b>-19</b>	1 DILK A free throw fast break 1 - 2 made (4)
02:14		<b>35-55</b>	<b>-20</b>	1 DILK A free throw fast break 2 - 2 made (5)
01:54	5 KAPINUS L turnover lost ball (1)			30 STUCK E steal (1)
01:48				5 PHELIA L 2pt FG from turnover in the paint, layup missed
01:48				offensive rebound (27)
01:45		<b>35-57</b>	<b>-22</b>	33 KISER E 2pt FG from turnover second chance outside the paint, jump shot made (11)
01:45				1 DILK A assist (2)
01:18	20 MARISA M 2pt FG in the paint, layup blocked			
01:18				1 DILK A block (2)
01:12	20 MARISA M offensive rebound (5)			
01:11	20 MARISA M 2pt FG second chance in the paint, layup missed			
01:07				5 PHELIA L defensive rebound (1)
01:05				3 NOLAN M 3pt FG , jump shot missed
01:02				5 PHELIA L offensive rebound (2)
01:02				5 PHELIA L 2pt FG second chance in the paint, layup missed
01:02	5 KAPINUS L defensive rebound (3)			
01:02	5 KAPINUS L foul drawn (2)			30 STUCK E foul personal (1 - 6)
01:02				3 NOLAN M substitution out
01:02				23 RAUCH D substitution in
01:02	5 KAPINUS L free throw fast break 1 - 2 missed			
01:02	offensive dead ball rebound (3)			
01:02	1 BRIGHAM A substitution out			
01:02	11 CAMDEN A substitution in			
01:02	5 KAPINUS L free throw fast break 2 - 2 made (10)	<b>36-57</b>	<b>-21</b>	
00:52				1 DILK A 3pt FG , jump shot missed
00:51	10 SABEL T defensive rebound (4)			
00:51	10 SABEL T foul drawn (2)			30 STUCK E foul personal (2 - 7)
00:51	10 SABEL T free throw fast break 1 - 2 missed			
00:51	offensive dead ball rebound (4)			
00:51	10 SABEL T free throw fast break 2 - 2 missed			
00:49				30 STUCK E defensive rebound (2)
00:19				23 RAUCH D 2pt FG outside the paint, jump shot missed
00:16				33 KISER E offensive rebound (10)
00:15				33 KISER E 2pt FG second chance in the paint, layup missed
00:12				30 STUCK E offensive rebound (3)
00:11				30 STUCK E 2pt FG second chance in the paint, layup missed
00:07	11 CAMDEN A defensive rebound (3)			
00:02	23 HAGANS S 2pt FG in the paint, layup made (4)	<b>38-57</b>	<b>-19</b>	
<b>END OF PERIOD</b>				
<b>PSU 38-57 MICH</b>				



**Michigan at Penn St.**

01/13/22 Bryce Jordan Center, University Park, PA  
2021-22 Women's Basketball

Game Time: 8:00 PM  
Game Duration: 1:50  
Attendance: 1,622

Officials:

**Michigan - 18**

NO.	Name	Min	FG		3P		FT			Rebounds			Fouls		TP	AS	TO	ST	Blocks		+/-
			M-A	M-A	M-A	M-A	OR	DR	TOT	PF	FD	BS	BA								
00	Naz Hillmon	F 04:14	1-2	0-0	3-3	0	0	0	2	3	5	0	1	0	0	1	0	0	0	1	6
33	Emily Kiser	F 10:00	2-4	0-0	1-2	1	1	2	1	1	5	0	2	0	0	2	0	0	0	0	7
3	Maddie Nolan	G 08:58	1-3	0-2	2-3	2	1	3	1	2	4	0	0	2	0	0	0	0	0	10	
23	Danielle Rauch	G 06:33	0-2	0-0	0-0	1	0	1	0	0	0	0	0	0	0	0	0	0	0	1	
32	Leigha Brown	G 06:46	0-1	0-0	0-0	0	1	1	1	0	0	1	0	0	0	0	0	0	0	4	
44	Cameron Williams	02:32	0-0	0-0	0-0	1	0	1	0	0	0	0	0	0	0	0	0	0	0	-2	
1	Amy Dilk	04:29	0-1	0-1	2-2	0	0	0	0	1	2	1	0	0	0	2	0	0	0	3	
5	Laila Phelia	03:14	0-2	0-0	2-2	1	1	2	0	1	2	0	0	0	0	0	0	0	0	3	
30	Elise Stuck	03:14	0-1	0-0	0-0	1	1	2	2	0	0	0	0	0	0	1	0	0	0	3	
Team						1	0	1			0			0							
<b>Totals</b>			4-16	0-3	10-12	8	5	13	7	8	18	2	3	3	2	1	7				

Shooting By Period		
3rd FG%	4-16	25.0%
3PT%	0-3	0.0%
FT%	10-12	83.3%
GM FG%	4-16	25.0%
3PT%	0-3	0.0%
FT%	10-12	83.3%

Dead Ball Rebounds: 0, 0

Technical Fouls::NONE

**Penn St. - 11**

NO.	Name	Min	FG		3P		FT			Rebounds			Fouls		TP	AS	TO	ST	Blocks		+/-
			M-A	M-A	M-A	M-A	OR	DR	TOT	PF	FD	BS	BA								
11	Anna Camden	F 03:09	0-0	0-0	0-0	0	1	1	1	0	0	0	1	0	0	0	1	0	0	0	0
5	Leilani Kapinus	G 06:55	0-0	0-0	1-2	0	1	1	2	1	1	0	1	0	1	0	0	0	0	0	-6
20	Makenna Marisa	G 09:03	0-2	0-0	1-2	1	0	1	0	1	1	0	2	0	0	0	1	0	1	-10	
23	Shay Hagans	G 10:00	1-2	0-0	0-0	0	0	0	1	1	2	0	0	0	0	0	0	0	0	-7	
25	Kelly Jekot	G 02:55	0-1	0-1	0-0	0	0	0	0	0	0	0	0	0	0	0	0	0	0	-6	
1	Ali Brigham	06:51	3-3	0-0	1-1	1	1	2	1	2	7	0	2	0	1	0	0	0	0	-7	
10	Tova Sabel	07:05	0-1	0-1	0-2	1	2	3	1	2	0	0	0	0	0	0	0	0	0	-1	
15	Maddie Burke	04:02	0-1	0-0	0-0	0	1	1	2	0	0	0	0	0	0	0	0	1	2		
Team						0	0	0			0			1							
<b>Totals</b>			4-10	0-2	3-7	3	6	9	8	7	11	0	7	0	1	2	-7				

Shooting By Period		
3rd FG%	4-10	40.0%
3PT%	0-2	0.0%
FT%	3-7	42.9%
GM FG%	4-10	40.0%
3PT%	0-2	0.0%
FT%	3-7	42.9%

Dead Ball Rebounds: 2, 0

Technical Fouls::NONE

	MICH	PSU
Biggest lead	22 (3 <sup>rd</sup> 1:45)	0 (1 <sup>st</sup> 10:00)
Best Scoring Run	7(3 <sup>rd</sup> 6:19)	3(3 <sup>rd</sup> 5:46)
Lead Changes	0	
Times Tied	0	
Time with Lead	09:34	00:00

Points from	MICH	PSU
Turnovers	11	0
Paint	6	8
Second Chance	5	3
Fast Breaks	2	1
Bench	4	7

	Period by Period Scoring				
	1st	2nd	3rd	4th	TOT
MICH	25	14	18	17	74
PSU	14	13	11	19	57



**Officials:**

**Period 4**

**Quarter Starters:**

<b>PSU</b>	1 Brigham A	5 Kapinus L	20 Marisa M	23 Hagans S	25 Jekot K
<b>MICH</b>	00 Hillmon N	3 Nolan M	23 Rauch D	32 Brown L	33 Kiser E

Game Time	PSU	Score	Diff	MICH
10:00	10 SABEL T substitution out			
10:00	11 CAMDEN A substitution out			
10:00	1 BRIGHAM A substitution in			
10:00	25 JEKOT K substitution in			
10:00				1 DILK A substitution out
10:00				5 PHELIA L substitution out
10:00				30 STUCK E substitution out
10:00				00 HILLMON N substitution in
10:00				3 NOLAN M substitution in
10:00				32 BROWN L substitution in
09:42	20 MARISA M 2pt FG in the paint, layup missed			
09:38	1 BRIGHAM A offensive rebound (6)			
09:35	1 BRIGHAM A 2pt FG second chance in the paint, layup missed			
09:35	1 BRIGHAM A offensive rebound (7)			
09:35	1 BRIGHAM A foul drawn (4)			33 KISER E foul shooting (2 - 1)
09:35	1 BRIGHAM A free throw 1 - 2 missed			
09:35	offensive dead ball rebound (5)			
09:35	1 BRIGHAM A free throw 2 - 2 made (11)	<b>39-57</b>	<b>-18</b>	
09:18	1 BRIGHAM A foul personal (2 - 1)			00 HILLMON N foul drawn (5)
09:18		<b>39-59</b>	<b>-20</b>	33 KISER E 2pt FG in the paint, layup made (13)
09:18				3 NOLAN M assist (2)
09:03	5 KAPINUS L 2pt FG in the paint, layup missed			
09:01	5 KAPINUS L offensive rebound (4)			
09:00	5 KAPINUS L 2pt FG second chance in the paint, layup made (12)	<b>41-59</b>	<b>-18</b>	
08:40	23 HAGANS S foul personal (3 - 2)			3 NOLAN M foul drawn (3)
08:40				33 KISER E substitution out
08:40				34 VAREJÃO I substitution in
08:40				32 BROWN L 2pt FG outside the paint, jump shot blocked
08:40	5 KAPINUS L block (2)			
08:40	23 HAGANS S defensive rebound (1)			
08:40	23 HAGANS S 2pt FG fast break in the paint, layup made (6)	<b>43-59</b>	<b>-16</b>	
08:40				34 VAREJÃO I 2pt FG in the paint, layup blocked
08:40	1 BRIGHAM A block (3)			
08:40	1 BRIGHAM A defensive rebound (8)			
08:24	20 MARISA M 2pt FG outside the paint, jump shot missed			
08:16	offensive rebound (30)			
08:14	23 HAGANS S substitution out			
08:14	11 CAMDEN A substitution in			
07:59	20 MARISA M foul drawn (4)			34 VAREJÃO I foul personal (1 - 2)
07:45	5 KAPINUS L foul drawn (3)			23 RAUCH D foul shooting (3 - 3)
07:45	25 JEKOT K substitution out			
07:45	23 HAGANS S substitution in			



**Officials:**

Game Time	PSU	Score	Diff	MICH
07:45	5 KAPINUS L free throw 1 - 2 made (13)	<b>44-59</b>	<b>-15</b>	
07:45	5 KAPINUS L free throw 2 - 2 made (14)	<b>45-59</b>	<b>-14</b>	
07:37	11 CAMDEN A steal (4)			32 BROWN L turnover lost ball (2)
07:32	20 MARISA M 3pt FG from turnover, jump shot made (15)	<b>48-59</b>	<b>-11</b>	
07:32	23 HAGANS S assist (1)			
07:18				32 BROWN L 2pt FG in the paint, layup missed
07:17	defensive rebound (31)			
07:17				34 VAREJÃO I substitution out
07:17				33 KISER E substitution in
07:17				Timeout 30 Sec
07:17	Timeout media			
07:17	1 BRIGHAM A substitution out			
07:17	25 JEKOT K substitution in			
06:56	20 MARISA M turnover bad pass (5)			00 HILLMON N steal (1)
06:45				00 HILLMON N 2pt FG from turnover in the paint, layup missed
06:41				33 KISER E offensive rebound (11)
06:39				32 BROWN L 2pt FG from turnover second chance in the paint, jump shot missed
06:35				00 HILLMON N offensive rebound (4)
06:35		<b>48-61</b>	<b>-13</b>	00 HILLMON N 2pt FG from turnover second chance in the paint, layup made (13)
06:35	25 JEKOT K foul shooting (1 - 3)			00 HILLMON N foul drawn (6)
06:35	25 JEKOT K substitution out			
06:35	1 BRIGHAM A substitution in			
06:35		<b>48-62</b>	<b>-14</b>	00 HILLMON N free throw 1 - 1 made (14)
06:15	23 HAGANS S 2pt FG in the paint, layup made (8)	<b>50-62</b>	<b>-12</b>	
05:44	23 HAGANS S steal (3)			00 HILLMON N turnover lost ball (5)
05:39	5 KAPINUS L 2pt FG fast break from turnover in the paint, layup made (16)	<b>52-62</b>	<b>-10</b>	
05:39	23 HAGANS S assist (2)			
05:28		<b>52-64</b>	<b>-12</b>	00 HILLMON N 2pt FG in the paint, layup made (16)
05:28	1 BRIGHAM A foul shooting (3 - 4)			00 HILLMON N foul drawn (7)
05:28	25 JEKOT K substitution in			
05:28	23 HAGANS S substitution out			
05:28		<b>52-65</b>	<b>-13</b>	00 HILLMON N free throw 1 - 1 made (17)
05:06	11 CAMDEN A turnover lost ball (3)			00 HILLMON N steal (2)
04:56		<b>52-67</b>	<b>-15</b>	00 HILLMON N 2pt FG from turnover in the paint, layup made (19)
04:56				23 RAUCH D assist (5)
04:56	1 BRIGHAM A foul shooting (4 - 5)			00 HILLMON N foul drawn (8)
04:56	Timeout media			
04:56				00 HILLMON N free throw 1 - 1 missed
04:53	5 KAPINUS L defensive rebound (5)			
04:52	25 JEKOT K substitution out			
04:52	10 SABEL T substitution in			
04:52	1 BRIGHAM A substitution out			
04:52	23 HAGANS S substitution in			
04:39	20 MARISA M 2pt FG in the paint, layup missed			
04:35				23 RAUCH D defensive rebound (2)
04:31				32 BROWN L 2pt FG in the paint, layup missed





Official Basketball Play by Play - 4th Period  
**Michigan at Penn St.**  
 01/13/22 Bryce Jordan Center, University Park, PA  
 2021-22 Women's Basketball

**Game Time:** 8:00 PM  
**Game Duration:** 1:50  
**Attendance:** 1,622

**Officials:**

Game Time	PSU	Score	Diff	MICH
04:30				offensive rebound (36)
04:15				23 RAUCH D turnover bad pass (2)
03:54	23 HAGANS S 2pt FG from turnover in the paint, layup blocked			
03:54				33 KISER E block (2)
03:50	11 CAMDEN A offensive rebound (4)			
03:50	11 CAMDEN A 2pt FG from turnover second chance outside the paint, jump shot made (2)	<b>54-67</b>	<b>-13</b>	
03:17				00 HILLMON N 2pt FG outside the paint, jump shot blocked
03:17	11 CAMDEN A block (2)			
03:17				offensive dead ball rebound (1)
03:17				turnover shot clock (18)
02:53	23 HAGANS S 3pt FG from turnover, jump shot missed			
02:50	20 MARISA M offensive rebound (6)			
02:45				23 RAUCH D substitution out
02:45				1 DILK A substitution in
02:44	5 KAPINUS L 2pt FG from turnover second chance in the paint, layup missed			
02:41				33 KISER E defensive rebound (12)
02:29				33 KISER E 2pt FG in the paint, jump shot missed
02:25	11 CAMDEN A defensive rebound (5)			
02:21	5 KAPINUS L foul drawn (4)			1 DILK A foul shooting (1 - 4)
02:21	5 KAPINUS L free throw fast break 1 - 2 made (17)	<b>55-67</b>	<b>-12</b>	
02:21	5 KAPINUS L free throw fast break 2 - 2 missed			
02:20				32 BROWN L defensive rebound (4)
02:15	11 CAMDEN A foul personal (4 - 6)			00 HILLMON N foul drawn (9)
02:15	10 SABEL T substitution out			
02:15	1 BRIGHAM A substitution in			
02:15		<b>55-68</b>	<b>-13</b>	00 HILLMON N free throw fast break 1 - 2 made (20)
02:15		<b>55-69</b>	<b>-14</b>	00 HILLMON N free throw fast break 2 - 2 made (21)
02:00	5 KAPINUS L turnover lost ball (2)			3 NOLAN M steal (3)
01:48				3 NOLAN M 3pt FG from turnover, jump shot missed
01:46				32 BROWN L offensive rebound (5)
01:46	1 BRIGHAM A foul shooting (5 - 7)			32 BROWN L foul drawn (4)
01:46	1 BRIGHAM A substitution out			
01:46	10 SABEL T substitution in			
01:46		<b>55-70</b>	<b>-15</b>	32 BROWN L free throw 1 - 2 made (16)
01:46		<b>55-71</b>	<b>-16</b>	32 BROWN L free throw 2 - 2 made (17)
01:46	Timeout 30 Sec			
01:18	11 CAMDEN A 2pt FG outside the paint, jump shot missed			
01:11				33 KISER E defensive rebound (13)
00:56		<b>55-74</b>	<b>-19</b>	3 NOLAN M 3pt FG , jump shot made (15)
00:56				33 KISER E assist (1)
00:32	5 KAPINUS L 3pt FG , jump shot missed			
00:28	20 MARISA M offensive rebound (7)			
00:27	20 MARISA M 2pt FG second chance in the paint, jump shot made (17)	<b>57-74</b>	<b>-17</b>	
00:00				turnover shot clock (19)
<b>END OF GAME</b>				
<b>PSU 57-74 MICH</b>				



**Michigan at Penn St.**

01/13/22 Bryce Jordan Center, University Park, PA  
2021-22 Women's Basketball

Game Time: 8:00 PM  
Game Duration: 1:50  
Attendance: 1,622

Officials:

**Michigan - 17**

NO.	Name	F	Min	FG			Rebounds			Fouls		TP	AS	TO	ST	Blocks		+/-
				M-A	3P	FT	OR	DR	TOT	PF	FD					BS	BA	
00	Naz Hillmon	F	10:00	3-5	0-0	4-5	1	0	1	0	5	10	0	1	2	0	1	-2
33	Emily Kiser	F	08:37	1-2	0-0	0-0	1	2	3	1	0	2	1	0	0	1	0	5
3	Maddie Nolan	G	10:00	1-2	1-2	0-0	0	0	0	0	1	3	1	0	1	0	0	-2
23	Danielle Rauch	G	07:15	0-0	0-0	0-0	0	1	1	1	0	0	1	1	0	0	0	-6
32	Leigha Brown	G	10:00	0-4	0-0	2-2	1	1	2	0	1	2	0	1	0	0	1	-2
5	Laila Phelia		00:00	0-0	0-0	0-0	0	0	0	0	0	0	0	0	0	0	0	0
30	Elise Stuck		00:00	0-0	0-0	0-0	0	0	0	0	0	0	0	0	0	0	0	0
34	Izabel Varejão		01:23	0-1	0-0	0-0	0	0	0	1	0	0	0	0	0	0	1	-7
1	Amy Dilk		02:45	0-0	0-0	0-0	0	0	0	1	0	0	0	0	0	0	0	4
Team							1	0	1			0		2				
<b>Totals</b>				5-14	1-2	6-7	4	4	8	4	7	17	3	5	3	1	3	-2

Shooting By Period		
4 <sup>th</sup> FG%	5-14	35.7%
3PT%	1-2	50.0%
FT%	6-7	85.7%
GM FG%	5-14	35.7%
3PT%	1-2	50.0%
FT%	6-7	85.7%

Dead Ball Rebounds: 1, 0

Technical Fouls::NONE

**Penn St. - 19**

NO.	Name	F	Min	FG			Rebounds			Fouls		TP	AS	TO	ST	Blocks		+/-
				M-A	3P	FT	OR	DR	TOT	PF	FD					BS	BA	
11	Anna Camden	F	08:14	1-2	0-0	0-0	1	1	2	1	0	2	0	1	1	1	0	-1
5	Leilani Kapinus	G	10:00	2-5	0-1	3-4	1	1	2	0	2	7	0	1	0	1	0	2
20	Makenna Marisa	G	10:00	2-5	1-1	0-0	2	0	2	0	1	5	0	1	0	0	0	2
23	Shay Hagans	G	08:55	2-4	0-1	0-0	0	1	1	1	0	4	2	0	1	0	1	5
25	Kelly Jekot	G	03:33	0-0	0-0	0-0	0	0	0	1	0	0	0	0	0	0	0	-2
1	Ali Brigham		04:55	0-1	0-0	1-2	2	1	3	4	1	1	0	0	0	1	0	4
10	Tova Sabel		04:23	0-0	0-0	0-0	0	0	0	0	0	0	0	0	0	0	0	0
Team							1	1	2			0		0				
<b>Totals</b>				7-17	1-3	4-6	7	5	12	7	4	19	2	3	2	3	1	2

Shooting By Period		
4 <sup>th</sup> FG%	7-17	41.2%
3PT%	1-3	33.3%
FT%	4-6	66.7%
GM FG%	7-17	41.2%
3PT%	1-3	33.3%
FT%	4-6	66.7%

Dead Ball Rebounds: 1, 0

Technical Fouls::NONE

	MICH	PSU
Biggest lead	20 (4 <sup>th</sup> 9:18)	0 (1 <sup>st</sup> 10:00)
Best Scoring Run	7(4 <sup>th</sup> 0:56)	9(4 <sup>th</sup> 7:32)
Lead Changes	0	
Times Tied	0	
Time with Lead	09:42	00:00

Points from	MICH	PSU
Turnovers	7	7
Paint	8	10
Second Chance	5	9
Fast Breaks	2	5
Bench	0	1

	Period by Period Scoring				
	1st	2nd	3rd	4th	TOT
MICH	25	14	18	17	74
PSU	14	13	11	19	57



Officials:

Michigan - 35

NO.	Name	Min	FG		3P	FT		Rebounds			Fouls		TP	AS	TO	ST	Blocks		+/-
			M-A	M-A	M-A	OR	DR	TOT	PF	FD	BS	BA							
00	Naz Hillmon	F 14:14	4-7	0-0	7-8	1	0	1	2	8	15	0	2	2	0	2	0	2	4
33	Emily Kiser	F 18:37	3-6	0-0	1-2	2	3	5	2	1	7	1	2	0	1	0	1	0	12
3	Maddie Nolan	G 18:58	2-5	1-4	2-3	2	1	3	1	3	7	1	0	3	0	0	0	8	
23	Danielle Rauch	G 13:48	0-2	0-0	0-0	1	1	2	1	0	0	1	1	0	0	0	0	-5	
32	Leigha Brown	G 16:46	0-5	0-0	2-2	1	2	3	1	1	2	1	1	0	0	0	1	2	
44	Cameron Williams	02:32	0-0	0-0	0-0	1	0	1	0	0	0	0	0	0	0	0	0	-2	
1	Amy Dilk	07:14	0-1	0-1	2-2	0	0	0	1	1	2	1	0	0	0	2	0	7	
5	Laila Phelia	03:14	0-2	0-0	2-2	1	1	2	0	1	2	0	0	0	0	0	0	3	
30	Elise Stuck	03:14	0-1	0-0	0-0	1	1	2	2	0	0	0	0	0	1	0	0	3	
34	Izabel Varejão	01:23	0-1	0-0	0-0	0	0	0	1	0	0	0	0	0	0	0	1	-7	
Team								2	0	2		0		2					
<b>Totals</b>			9-30	1-5	16-19	12	9	21	11	15	35	5	8	6	3	4	5		

Shooting By Period		
3 <sup>rd</sup> FG%	4-16	25.0%
3PT%	0-3	0.0%
FT%	10-12	83.3%
4 <sup>th</sup> FG%	5-14	35.7%
3PT%	1-2	50.0%
FT%	6-7	85.7%
GM FG%	9-30	30.0%
3PT%	1-5	20.0%
FT%	16-19	84.2%

Dead Ball Rebounds: 1, 0

Technical Fouls::NONE

Penn St. - 30

NO.	Name	Min	FG		3P	FT		Rebounds			Fouls		TP	AS	TO	ST	Blocks		+/-
			M-A	M-A	M-A	OR	DR	TOT	PF	FD	BS	BA							
11	Anna Camden	F 11:23	1-2	0-0	0-0	1	2	3	2	0	2	0	2	1	1	0	0	-1	
5	Leilani Kapinus	G 16:55	2-5	0-1	4-6	1	2	3	2	3	8	0	2	0	1	0	0	-4	
20	Makenna Marisa	G 19:03	2-7	1-1	1-2	3	0	3	0	2	6	0	3	0	0	1	0	-8	
23	Shay Hagans	G 18:55	3-6	0-1	0-0	0	1	1	2	1	6	2	0	1	0	1	0	-2	
25	Kelly Jekot	G 06:28	0-1	0-1	0-0	0	0	0	1	0	0	0	0	0	0	0	0	-8	
1	Ali Brigham	11:46	3-4	0-0	2-3	3	2	5	5	3	8	0	2	0	2	0	0	-3	
10	Tova Sabel	11:28	0-1	0-1	0-2	1	2	3	1	2	0	0	0	0	0	0	0	-1	
15	Maddie Burke	04:02	0-1	0-0	0-0	0	1	1	2	0	0	0	0	0	0	0	1	2	
Team								1	1	2		0		1					
<b>Totals</b>			11-27	1-5	7-13	10	11	21	15	11	30	2	10	2	4	3	-5		

Shooting By Period		
3 <sup>rd</sup> FG%	4-10	40.0%
3PT%	0-2	0.0%
FT%	3-7	42.9%
4 <sup>th</sup> FG%	7-17	41.2%
3PT%	1-3	33.3%
FT%	4-6	66.7%
GM FG%	11-27	40.7%
3PT%	1-5	20.0%
FT%	7-13	53.8%

Dead Ball Rebounds: 3, 0

Technical Fouls::NONE

	MICH	PSU
Biggest lead	22 (3 <sup>rd</sup> 1:45)	0 (1 <sup>st</sup> 10:00)
Best Scoring Run	7(3 <sup>rd</sup> 6:19)	9(4 <sup>th</sup> 7:32)
Lead Changes	0	
Times Tied	0	
Time with Lead	19:34	00:00

Points from	MICH	PSU
Turnovers	18	7
Paint	14	18
Second Chance	10	12
Fast Breaks	4	6
Bench	4	8

	Period by Period Scoring				
	1st	2nd	3rd	4th	TOT
MICH	25	14	18	17	74
PSU	14	13	11	19	57

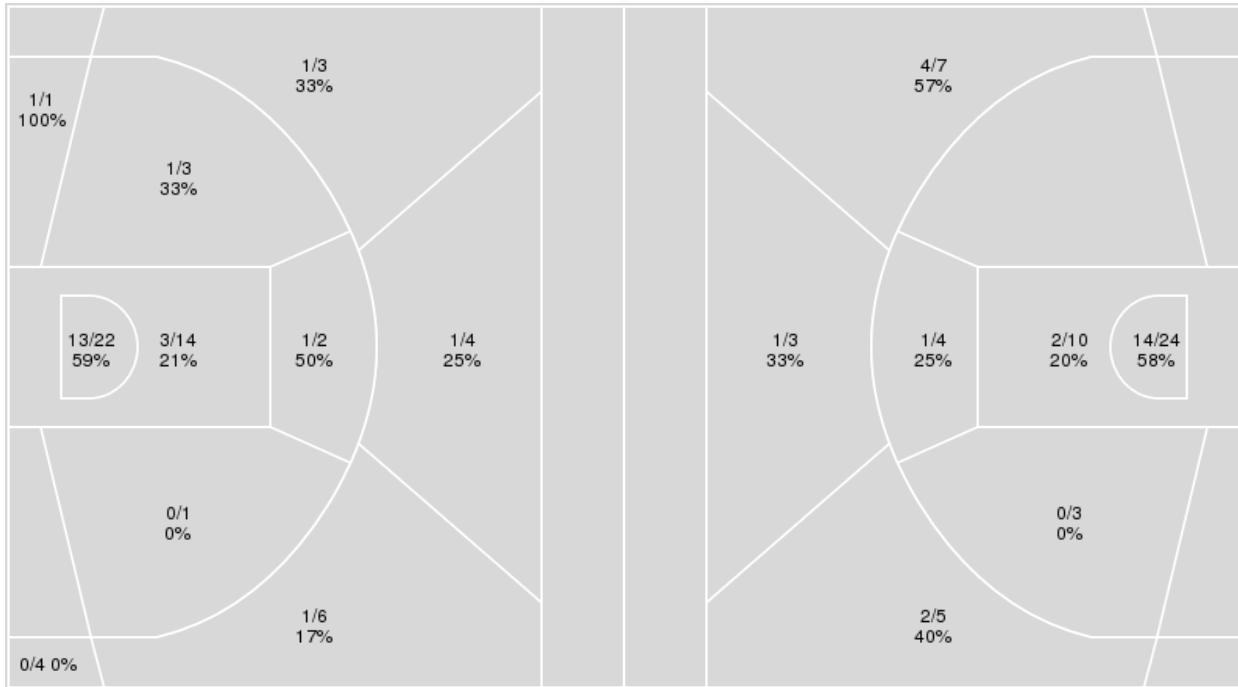


**Officials:**

{ Players => 0, 1, 3, 4, 5, 10, 11, 12, 15, 20, 22, 23, 25; } FG Types => { Players => All; } FG Types => All; Results => All;  
 All; Results => All;

**Penn St.**

**Michigan**



<b>Penn St.</b>	<b>M/A</b>	<b>%</b>
Field Goals	22/60	37
2 Points	19/43	44
3 Points	3/17	18
Free Throws	10/18	56

<b>Michigan</b>	<b>M/A</b>	<b>%</b>
Field Goals	24/56	43
2 Points	17/41	41
3 Points	7/15	47
Free Throws	19/23	83



## Michigan at Penn St.

01/13/22 Bryce Jordan Center, University Park, PA  
2021-22 Women's Basketball

Game Time: 8:00 PM

Game Duration: 1:50

Attendance: 1,622

Officials:

## Michigan

No	Name	Mins		Score		Points Diff		Points per Min		Assists		Rebounds		Steals		Turnovers	
		On	Off	On	Off	On	Off	On	Off	On	Off	On	Off	On	Off	On	Off
00	Naz Hillmon	30:56	09:04	60 - 43	14 - 14	17	0	1.94	1.54	12	3	30	10	8	2	16	3
1	Amy Dilk	14:03	25:57	22 - 19	52 - 38	3	14	1.57	2.00	4	11	17	23	3	7	9	10
3	Maddie Nolan	32:34	07:26	68 - 44	6 - 13	24	-7	2.09	0.81	13	2	31	9	9	1	13	6
5	Laila Phelia	09:38	30:22	12 - 13	62 - 44	-1	18	1.25	2.04	3	12	12	28	2	8	7	12
23	Danielle Rauch	28:42	11:18	54 - 46	20 - 11	8	9	1.88	1.77	11	4	27	13	7	3	12	7
30	Elise Stuck	05:45	34:15	11 - 7	63 - 50	4	13	1.91	1.84	3	12	8	32	1	9	2	17
32	Leigha Brown	35:11	04:49	68 - 49	6 - 8	19	-2	1.93	1.25	14	1	33	7	9	1	16	3
33	Emily Kiser	36:30	03:30	72 - 47	2 - 10	25	-8	1.97	0.57	15	0	37	3	10	0	14	5
34	Izabel Varejão	01:23	38:37	0 - 7	74 - 50	-7	24	0.00	1.92	0	15	0	40	0	10	1	18
44	Cameron Williams	05:18	34:42	3 - 10	71 - 47	-7	24	0.57	2.05	0	15	5	35	1	9	5	14

## Penn St.

No	Name	Mins		Score		Points Diff		Points per Min		Assists		Rebounds		Steals		Turnovers	
		On	Off	On	Off	On	Off	On	Off	On	Off	On	Off	On	Off	On	Off
1	Ali Brigham	23:42	16:18	42 - 52	15 - 22	-10	-7	1.77	0.92	6	0	26	10	7	3	12	6
5	Leilani Kapinus	33:14	06:46	51 - 62	6 - 12	-11	-6	1.53	0.89	6	0	30	6	8	2	17	1
10	Tova Sabel	20:32	19:28	29 - 30	28 - 44	-1	-16	1.41	1.44	1	5	19	17	5	5	5	13
11	Anna Camden	24:32	15:28	33 - 39	24 - 35	-6	-11	1.35	1.55	5	1	17	19	8	2	10	8
15	Maddie Burke	09:45	30:15	13 - 12	44 - 62	1	-18	1.33	1.45	0	6	9	27	2	8	1	17
20	Makenna Marisa	38:28	01:32	54 - 74	3 - 0	-20	3	1.40	1.96	6	0	35	1	10	0	18	0
23	Shay Hagans	31:48	08:12	44 - 62	13 - 12	-18	1	1.38	1.59	3	3	28	8	7	3	15	3
25	Kelly Jekot	17:59	22:01	19 - 39	38 - 35	-20	3	1.06	1.73	3	3	16	20	3	7	12	6

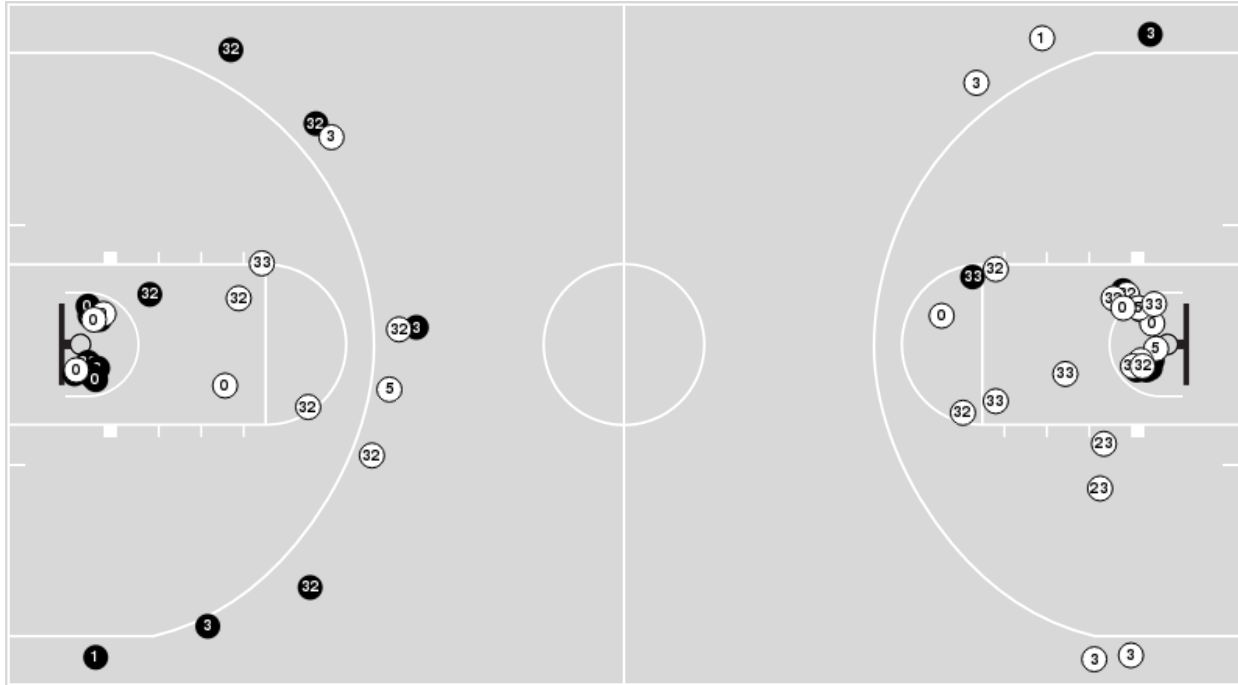


Officials:

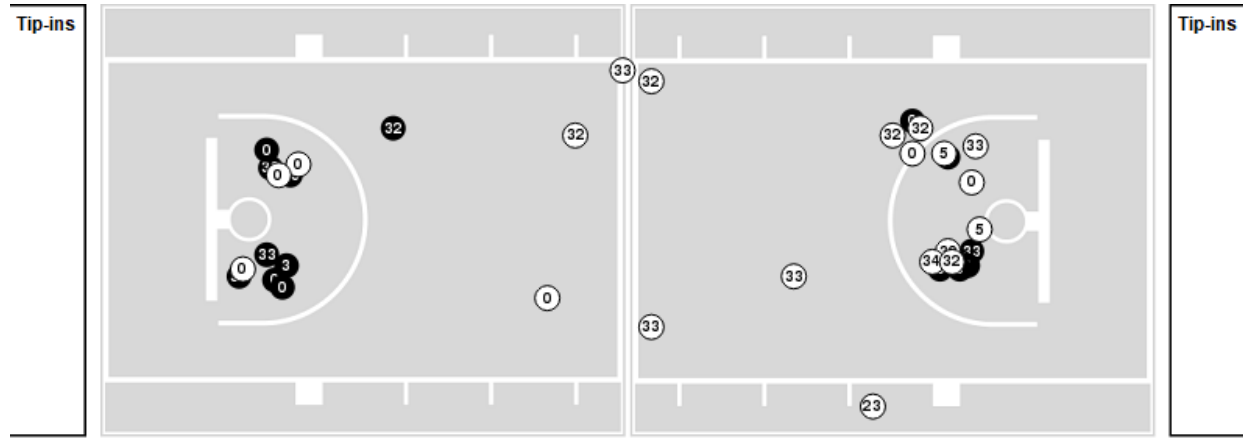
Players => AllFG Types=>AllResults=>All

**Michigan**

**All Field Goals**



**Blow Up Chart**



● Made ○ Missed N - Player Number

Michigan	M/A	%
Field Goals	24/56	43
2 Points	17/41	41
3 Points	7/15	47
Free Throws	19/23	83

Michigan	M/A	%
Points in the Paint	32 (16 / 34)	47
Fast Break Points	12 (9/9)	100
Second Chance Points	15 (9/17)	53
Effective FG%	49	





Official Basketball Rotations Summary - Final  
**Michigan at Penn St.**  
 01/13/22 Bryce Jordan Center, University Park, PA  
 2021-22 Women's Basketball

Game Time: 8:00 PM  
 Game Duration: 1:50  
 Attendance: 1,622

Officials:

**Michigan**

Lineup	Quarter On	Time On	Quarter Off	Time Off	Time on Court	Score	Score Diff	Reb	Stl	Tov	Ass	PPP
00- Hillmon N/ 3- Nolan M/ 23- Rauch D/ 32- Brown L/ 33- Kiser E/	1	10:00	1	04:21	05:39	18-5	13	4	3	1	5	1.8000
00- Hillmon N/ 1- Dilk A/ 3- Nolan M/ 23- Rauch D/ 32- Brown L/	1	04:21	1	04:13	00:08	2-0	2	0	0	0	0	2.0000
00- Hillmon N/ 1- Dilk A/ 3- Nolan M/ 23- Rauch D/ 44- Williams C/	1	04:13	1	03:34	00:39	0-3	-3	1	0	1	0	0.0000
00- Hillmon N/ 1- Dilk A/ 5- Phelia L/ 23- Rauch D/ 44- Williams C/	1	03:34	1	03:18	00:16	0-0	0	0	0	1	0	0.0000
1- Dilk A/ 5- Phelia L/ 23- Rauch D/ 30- Stuck E/ 33- Kiser E/	1	03:18	1	02:38	00:40	0-2	-2	0	0	0	0	0.0000
1- Dilk A/ 5- Phelia L/ 30- Stuck E/ 32- Brown L/ 33- Kiser E/	1	02:38	1	00:47	01:51	5-2	3	2	0	1	2	1.6667
1- Dilk A/ 5- Phelia L/ 32- Brown L/ 33- Kiser E/ 44- Williams C/	1	00:47	2	10:00	00:47	0-2	-2	0	1	1	0	0.0000
00- Hillmon N/ 3- Nolan M/ 23- Rauch D/ 32- Brown L/ 33- Kiser E/	2	10:00	2	05:30	04:30	7-6	1	5	0	1	2	1.0000
00- Hillmon N/ 1- Dilk A/ 5- Phelia L/ 32- Brown L/ 44- Williams C/	2	05:30	2	04:26	01:04	0-0	0	2	0	2	0	0.0000
00- Hillmon N/ 1- Dilk A/ 5- Phelia L/ 32- Brown L/ 33- Kiser E/	2	04:26	2	03:02	01:24	0-2	-2	2	0	1	0	0.0000
00- Hillmon N/ 5- Phelia L/ 23- Rauch D/ 32- Brown L/ 33- Kiser E/	2	03:02	2	02:40	00:22	1-2	-1	0	0	0	0	1.1364
00- Hillmon N/ 3- Nolan M/ 23- Rauch D/ 32- Brown L/ 33- Kiser E/	2	02:40	3	05:46	06:54	15-6	9	8	2	4	2	1.2887
3- Nolan M/ 23- Rauch D/ 32- Brown L/ 33- Kiser E/ 44- Williams C/	3	05:46	3	04:29	01:17	1-3	-2	2	0	0	0	1.1364
1- Dilk A/ 3- Nolan M/ 32- Brown L/ 33- Kiser E/ 44- Williams C/	3	04:29	3	03:14	01:15	2-2	0	0	0	0	0	1.0638
1- Dilk A/ 3- Nolan M/ 5- Phelia L/ 33- Kiser E/ 44- Williams C/	3	03:14	3	03:14	00:00	0-0	0	0	0	0	0	0.0000
1- Dilk A/ 3- Nolan M/ 5- Phelia L/ 30- Stuck E/ 33- Kiser E/	3	03:14	3	01:02	02:12	6-0	6	3	1	1	1	1.2605
1- Dilk A/ 5- Phelia L/ 23- Rauch D/ 30- Stuck E/ 33- Kiser E/	3	01:02	4	10:00	01:02	0-3	-3	3	0	0	0	0.0000
00- Hillmon N/ 3- Nolan M/ 23- Rauch D/ 32- Brown L/ 33- Kiser E/	4	10:00	4	08:40	01:20	2-3	-1	0	0	0	1	2.0000
00- Hillmon N/ 3- Nolan M/ 23- Rauch D/ 32- Brown L/ 34- Varejão I/	4	08:40	4	07:17	01:23	0-7	-7	0	0	1	0	0.0000
00- Hillmon N/ 3- Nolan M/ 23- Rauch D/ 32- Brown L/ 33- Kiser E/	4	07:17	4	02:45	04:32	8-6	2	4	2	3	1	0.9615
00- Hillmon N/ 1- Dilk A/ 3- Nolan M/ 32- Brown L/ 33- Kiser E/	4	02:45	4	00:00	02:45	7-3	4	4	1	1	1	1.4706





Officials:

**Penn St.**

Lineup	Quarter On	Time On	Quarter Off	Time Off	Time on Court	Score	Score Diff	Reb	Stl	Tov	Ass	PPP
5- Kapinus L/ 11- Camden A/ 20- Marisa M/ 23- Hagans S/ 25- Jekot K/	1	10:00	1	07:11	02:49	0-6	-6	1	1	2	0	0.0000
1- Brigham A/ 5- Kapinus L/ 20- Marisa M/ 23- Hagans S/ 25- Jekot K/	1	07:11	1	04:21	02:50	5-12	-7	2	0	3	1	0.8333
1- Brigham A/ 5- Kapinus L/ 10- Sabel T/ 11- Camden A/ 20- Marisa M/	1	04:21	1	03:34	00:47	3-2	1	0	1	0	1	1.5000
5- Kapinus L/ 10- Sabel T/ 11- Camden A/ 15- Burke M/ 20- Marisa M/	1	03:34	1	02:31	01:03	2-0	2	1	0	0	0	2.0000
10- Sabel T/ 11- Camden A/ 15- Burke M/ 20- Marisa M/ 23- Hagans S/	1	02:31	1	01:22	01:09	2-5	-3	1	1	0	0	1.0000
10- Sabel T/ 11- Camden A/ 15- Burke M/ 23- Hagans S/ 25- Jekot K/	1	01:22	1	00:47	00:35	0-0	0	0	0	0	0	0.0000
1- Brigham A/ 5- Kapinus L/ 11- Camden A/ 20- Marisa M/ 25- Jekot K/	1	00:47	2	05:30	05:17	8-7	1	6	2	2	2	0.8000
10- Sabel T/ 11- Camden A/ 15- Burke M/ 20- Marisa M/ 23- Hagans S/	2	05:30	2	04:05	01:25	0-0	0	0	1	0	0	0.0000
5- Kapinus L/ 10- Sabel T/ 15- Burke M/ 20- Marisa M/ 23- Hagans S/	2	04:05	2	03:02	01:03	2-0	2	1	0	0	0	1.0638
1- Brigham A/ 5- Kapinus L/ 10- Sabel T/ 20- Marisa M/ 23- Hagans S/	2	03:02	2	00:32	02:30	5-5	0	2	2	1	0	0.9398
1- Brigham A/ 10- Sabel T/ 15- Burke M/ 20- Marisa M/ 23- Hagans S/	2	00:32	2	00:03	00:28	0-2	-2	1	0	0	0	0.0000
1- Brigham A/ 10- Sabel T/ 11- Camden A/ 20- Marisa M/ 23- Hagans S/	2	00:03	3	10:00	00:04	0-0	0	0	0	0	0	0.0000
5- Kapinus L/ 11- Camden A/ 20- Marisa M/ 23- Hagans S/ 25- Jekot K/	3	10:00	3	07:53	02:07	1-4	-3	0	0	3	0	0.2577
1- Brigham A/ 5- Kapinus L/ 20- Marisa M/ 23- Hagans S/ 25- Jekot K/	3	07:53	3	07:05	00:48	0-3	-3	0	0	0	0	0.0000
1- Brigham A/ 10- Sabel T/ 15- Burke M/ 20- Marisa M/ 23- Hagans S/	3	07:05	3	05:55	01:10	0-2	-2	1	0	0	0	0.0000
1- Brigham A/ 5- Kapinus L/ 10- Sabel T/ 15- Burke M/ 23- Hagans S/	3	05:55	3	04:58	00:57	3-0	3	1	0	0	0	2.0833
1- Brigham A/ 10- Sabel T/ 15- Burke M/ 20- Marisa M/ 23- Hagans S/	3	04:58	3	03:03	01:55	4-3	1	3	0	1	0	1.3333
1- Brigham A/ 5- Kapinus L/ 10- Sabel T/ 20- Marisa M/ 23- Hagans S/	3	03:03	3	01:02	02:01	0-6	-6	2	0	3	0	0.0000
5- Kapinus L/ 10- Sabel T/ 11- Camden A/ 20- Marisa M/ 23- Hagans S/	3	01:02	4	10:00	01:02	3-0	3	2	0	0	0	1.2931
1- Brigham A/ 5- Kapinus L/ 20- Marisa M/ 23- Hagans S/ 25- Jekot K/	4	10:00	4	08:14	01:46	5-2	3	6	0	0	0	1.7361
1- Brigham A/ 5- Kapinus L/ 11- Camden A/ 20- Marisa M/ 25- Jekot K/	4	08:14	4	07:45	00:29	0-0	0	0	0	0	0	0.0000
1- Brigham A/ 5- Kapinus L/ 11- Camden A/ 20- Marisa M/ 23- Hagans S/	4	07:45	4	07:17	00:28	5-0	5	1	1	0	1	2.6596
5- Kapinus L/ 11- Camden A/ 20- Marisa M/ 23- Hagans S/ 25- Jekot K/	4	07:17	4	06:35	00:42	0-2	-2	0	0	1	0	0.0000
1- Brigham A/ 5- Kapinus L/ 11- Camden A/ 20- Marisa M/ 23- Hagans S/	4	06:35	4	05:28	01:07	4-3	1	0	1	0	1	2.0000
1- Brigham A/ 5- Kapinus L/ 11- Camden A/ 20- Marisa M/ 25- Jekot K/	4	05:28	4	04:52	00:36	0-3	-3	1	0	1	0	0.0000
5- Kapinus L/ 10- Sabel T/ 11- Camden A/ 20- Marisa M/ 23- Hagans S/	4	04:52	4	02:15	02:37	3-0	3	3	0	0	0	0.7732
1- Brigham A/ 5- Kapinus L/ 11- Camden A/ 20- Marisa M/ 23- Hagans S/	4	02:15	4	01:46	00:29	0-2	-2	0	0	1	0	0.0000
5- Kapinus L/ 10- Sabel T/ 11- Camden A/ 20- Marisa M/ 23- Hagans S/	4	01:46	4	00:00	01:46	2-5	-3	1	0	0	0	1.0000



**Officials:**

**Michigan**

Lineup	Time	Score	Score Diff	Pts/Min	Reb	Stl	Tov	Ass	PPP
00- Hillmon N/ 3- Nolan M/ 23- Rauch D/ 32- Brown L/ 33- Kiser E/	22:55	50-26	24	2.1818	21	7	9	11	1.3172
00- Hillmon N/ 1- Dilk A/ 3- Nolan M/ 32- Brown L/ 33- Kiser E/	02:45	7-3	4	2.5455	4	1	1	1	1.4706
1- Dilk A/ 3- Nolan M/ 5- Phelia L/ 30- Stuck E/ 33- Kiser E/	02:12	6-0	6	2.7273	3	1	1	1	1.2605
1- Dilk A/ 5- Phelia L/ 30- Stuck E/ 32- Brown L/ 33- Kiser E/	01:51	5-2	3	2.7027	2	0	1	2	1.6667
1- Dilk A/ 5- Phelia L/ 23- Rauch D/ 30- Stuck E/ 33- Kiser E/	01:42	0-5	-5	0.0000	3	0	0	0	0.0000
00- Hillmon N/ 1- Dilk A/ 5- Phelia L/ 32- Brown L/ 33- Kiser E/	01:24	0-2	-2	0.0000	2	0	1	0	0.0000
00- Hillmon N/ 3- Nolan M/ 23- Rauch D/ 32- Brown L/ 34- Varejão I/	01:23	0-7	-7	0.0000	0	0	1	0	0.0000
3- Nolan M/ 23- Rauch D/ 32- Brown L/ 33- Kiser E/ 44- Williams C/	01:17	1-3	-2	0.7792	2	0	0	0	1.1364
1- Dilk A/ 3- Nolan M/ 32- Brown L/ 33- Kiser E/ 44- Williams C/	01:15	2-2	0	1.6000	0	0	0	0	1.0638
00- Hillmon N/ 1- Dilk A/ 5- Phelia L/ 32- Brown L/ 44- Williams C/	01:04	0-0	0	0.0000	2	0	2	0	0.0000
1- Dilk A/ 5- Phelia L/ 32- Brown L/ 33- Kiser E/ 44- Williams C/	00:47	0-2	-2	0.0000	0	1	1	0	0.0000
00- Hillmon N/ 1- Dilk A/ 3- Nolan M/ 23- Rauch D/ 44- Williams C/	00:39	0-3	-3	0.0000	1	0	1	0	0.0000
00- Hillmon N/ 5- Phelia L/ 23- Rauch D/ 32- Brown L/ 33- Kiser E/	00:22	1-2	-1	2.7273	0	0	0	0	1.1364
00- Hillmon N/ 1- Dilk A/ 5- Phelia L/ 23- Rauch D/ 44- Williams C/	00:16	0-0	0	0.0000	0	0	1	0	0.0000
00- Hillmon N/ 1- Dilk A/ 3- Nolan M/ 23- Rauch D/ 32- Brown L/	00:08	2-0	2	15.0000	0	0	0	0	2.0000
1- Dilk A/ 3- Nolan M/ 5- Phelia L/ 33- Kiser E/ 44- Williams C/	00:00	0-0	0	NaN	0	0	0	0	0.0000



**Officials:**

**Penn St.**

Lineup	Time	Score	Score Diff	Pts/Min	Reb	Stl	Tov	Ass	PPP
1- Brigham A/ 5- Kapinus L/ 11- Camden A/ 20- Marisa M/ 25- Jekot K/	06:22	8-10	-2	1.2565	7	2	3	2	0.7273
5- Kapinus L/ 11- Camden A/ 20- Marisa M/ 23- Hagans S/ 25- Jekot K/	05:38	1-12	-11	0.1775	1	1	6	0	0.1126
5- Kapinus L/ 10- Sabel T/ 11- Camden A/ 20- Marisa M/ 23- Hagans S/	05:25	8-5	3	1.4769	6	0	0	0	0.9756
1- Brigham A/ 5- Kapinus L/ 20- Marisa M/ 23- Hagans S/ 25- Jekot K/	05:24	10-17	-7	1.8519	8	0	3	1	1.0121
1- Brigham A/ 5- Kapinus L/ 10- Sabel T/ 20- Marisa M/ 23- Hagans S/	04:31	5-11	-6	1.1070	4	2	4	0	0.5123
1- Brigham A/ 10- Sabel T/ 15- Burke M/ 20- Marisa M/ 23- Hagans S/	03:33	4-7	-3	1.1268	5	0	1	0	1.0000
10- Sabel T/ 11- Camden A/ 15- Burke M/ 20- Marisa M/ 23- Hagans S/	02:34	2-5	-3	0.7792	1	2	0	0	0.5000
1- Brigham A/ 5- Kapinus L/ 11- Camden A/ 20- Marisa M/ 23- Hagans S/	02:04	9-5	4	4.3548	1	2	1	2	1.8443
5- Kapinus L/ 10- Sabel T/ 11- Camden A/ 15- Burke M/ 20- Marisa M/	01:03	2-0	2	1.9048	1	0	0	0	2.0000
5- Kapinus L/ 10- Sabel T/ 15- Burke M/ 20- Marisa M/ 23- Hagans S/	01:03	2-0	2	1.9048	1	0	0	0	1.0638
1- Brigham A/ 5- Kapinus L/ 10- Sabel T/ 15- Burke M/ 23- Hagans S/	00:57	3-0	3	3.1579	1	0	0	0	2.0833
1- Brigham A/ 5- Kapinus L/ 10- Sabel T/ 11- Camden A/ 20- Marisa M/	00:47	3-2	1	3.8298	0	1	0	1	1.5000
10- Sabel T/ 11- Camden A/ 15- Burke M/ 23- Hagans S/ 25- Jekot K/	00:35	0-0	0	0.0000	0	0	0	0	0.0000
1- Brigham A/ 10- Sabel T/ 11- Camden A/ 20- Marisa M/ 23- Hagans S/	00:04	0-0	0	0.0000	0	0	0	0	0.0000