



Penn St. at Duquesne

12/18/21 UPMC Cooper Fieldhouse, Pittsburgh, PA
2021-22 Duquesne Women's Basketball

Game Time: 5:00 PM
Game Duration: 1:57
Attendance: 1,139

Officials: Geraldine Smith-Washington, Nic Cappel, Andrew Bills

Penn St. - 68

Record: 7-5

NO.	Name	F	Min	FG			3P			FT			Rebounds			Fouls		TP	AS	TO	ST	Blocks		+/-
				M-A	M-A	M-A	OR	DR	TOT	PF	FD	BS	BA											
11	Anna Camden	F	23:41	2-4	1-2	0-0	1	8	9	3	0	5	1	1	1	2	2	0	13					
5	Leilani Kapinus	G	21:24	2-6	0-1	0-0	1	6	7	4	2	4	1	1	1	1	0	-2						
20	Makenna Marisa	G	39:29	12-27	3-11	6-7	0	3	3	3	7	33	4	4	2	0	1	6						
23	Shay Hagans	G	31:20	3-5	0-0	0-2	0	3	3	1	2	6	3	2	1	0	0	7						
25	Kelly Jekot	G	12:09	1-2	1-1	0-0	1	0	1	1	0	3	1	0	0	1	0	5						
4	Niya Beverley		13:40	0-2	0-1	0-0	0	1	1	1	0	0	0	1	0	0	-2							
1	Ali Brigham		28:02	6-10	0-0	3-4	3	4	7	4	3	15	3	2	0	3	2	10						
10	Tova Sabel		16:16	1-6	0-3	0-0	0	2	2	2	0	2	0	2	3	0	0	4						
15	Maddie Burke		13:59	0-1	0-1	0-0	2	2	4	1	0	0	0	1	0	0	-1							
Team							1	0	1			0		0										
Totals				27-63	5-20	9-13	9	29	38	20	14	68	13	14	9	7	3	8						

Technical Fouls::NONE

Shooting By Period		
1st FG%	6-17	35.3%
3PT%	1-8	12.5%
FT%	1-4	25%
2nd FG%	9-18	50.0%
3PT%	1-3	33.3%
FT%	3-3	100%
3rd FG%	10-14	71.4%
3PT%	3-4	75.0%
FT%	0-0	0%
4th FG%	2-14	14.3%
3PT%	0-5	0.0%
FT%	5-6	83.3%
GM FG%	27-63	42.9%
3PT%	5-20	25.0%
FT%	9-13	69.2%

Dead Ball Rebounds: 2, 0

Duquesne - 60

Record: 5-7

NO.	Name	C	Min	FG			3P			FT			Rebounds			Fouls		TP	AS	TO	ST	Blocks		+/-
				M-A	M-A	M-A	OR	DR	TOT	PF	FD	BS	BA											
13	Laia Sole	C	19:01	2-7	0-0	0-0	0	3	3	1	0	4	3	1	0	0	1	-9						
4	Megan McConnell	G	38:33	2-10	1-3	2-2	2	9	11	2	3	7	6	1	3	0	2	-6						
11	Halle Bovell	G	17:32	0-2	0-0	0-0	2	1	3	0	2	0	0	5	0	0	1							
21	Libby Bazalak	G	32:56	3-6	1-2	2-4	0	3	3	2	5	9	1	4	1	0	-18							
24	Tess Myers	G	39:31	7-14	5-8	2-2	0	2	2	1	1	21	0	0	1	0	-5							
23	Fatou Pouye		26:09	5-12	0-2	2-4	2	5	7	3	5	12	1	7	1	1	-5							
31	Precious Johnson		10:10	1-3	0-0	1-2	1	3	4	3	1	3	2	1	0	1	-1							
20	Amaya Hamilton		16:08	1-5	0-0	2-4	3	3	6	2	3	4	0	1	1	0	3							
Team							3	0	3			0		0										
Totals				21-59	7-15	11-18	13	29	42	14	20	60	13	20	7	3	7	-8						

Technical Fouls::NONE

Shooting By Period		
1st FG%	7-13	53.8%
3PT%	2-2	100.0%
FT%	2-2	100%
2nd FG%	5-16	31.3%
3PT%	2-4	50.0%
FT%	4-6	66.7%
3rd FG%	5-16	31.3%
3PT%	3-6	50.0%
FT%	2-6	33.3%
4th FG%	4-14	28.6%
3PT%	0-3	0.0%
FT%	3-4	75%
GM FG%	21-59	35.6%
3PT%	7-15	46.7%
FT%	11-18	61.1%

Dead Ball Rebounds: 3, 0

	PSU	DUQ
Biggest lead	11 (3 rd 3:10)	8 (2 nd 5:17)
Best Scoring Run	11 (2 nd 1:49)	10 (4 th 5:47)
Lead Changes	4	
Times Tied	7	
Time with Lead	21:38	14:10

	PSU	DUQ
Points from		
Turnovers	15	6
Paint	40	24
Second Chance	6	9
Fast Breaks	18	6
Bench	17	19

	Period by Period Scoring				
	1st	2nd	3rd	4th	TOT
PSU	14	22	23	9	68
DUQ	18	16	15	11	60



Officials: Geraldine Smith-Washington, Nic Cappel, Andrew Bills

Period 1

Quarter Starters:

DUQ	4 McConnell M	11 Bovell H	13 Sole L	21 Bazalak L	24 Myers T
PSU	5 Kapinus L	11 Camden A	20 Marisa M	23 Hagans S	25 Jekot K

Game Time	DUQ	Score	Diff	PSU
10:00	11 BOVELL H jumpball lost			5 KAPINUS L jumpball won
09:39	4 MCCONNELL M steal (1)			20 MARISA M turnover bad pass (1)
09:39	4 MCCONNELL M foul drawn (1)			11 CAMDEN A foul personal (1 - 1)
09:30	4 MCCONNELL M 2pt FG from turnover outside the paint, jump shot missed			
09:27				23 HAGANS S defensive rebound (1)
09:27	24 MYERS T foul shooting (1 - 1)			23 HAGANS S foul drawn (1)
09:27				23 HAGANS S free throw fast break 1 - 2 missed
09:27				offensive dead ball rebound (1)
09:27				23 HAGANS S free throw fast break 2 - 2 missed
09:25				11 CAMDEN A offensive rebound (1)
09:15				20 MARISA M 2pt FG second chance in the paint, layup missed
09:12	13 SOLE L defensive rebound (1)			
08:53	13 SOLE L 2pt FG outside the paint, jump shot missed			
08:49				5 KAPINUS L defensive rebound (1)
08:45		0-2	-2	20 MARISA M 2pt FG fast break in the paint, layup made (2)
08:45				23 HAGANS S assist (1)
08:17	13 SOLE L 2pt FG in the paint, layup made (2)	2-2	0	
08:17	4 MCCONNELL M assist (1)			
08:05		2-4	-2	20 MARISA M 2pt FG in the paint, layup made (4)
08:05				25 JEKOT K assist (1)
07:52	21 BAZELAK L foul drawn (1)			25 JEKOT K foul personal (1 - 2)
07:52	11 BOVELL H substitution out			
07:52	23 POUYE F substitution in			
07:52				5 KAPINUS L substitution out
07:52				4 BEVERLEY N substitution in
07:45	13 SOLE L 2pt FG in the paint, layup made (4)	4-4	0	
07:45	21 BAZELAK L assist (1)			
07:37				4 BEVERLEY N 2pt FG in the paint, layup missed
07:33	4 MCCONNELL M defensive rebound (1)			
07:20	23 POUYE F 2pt FG in the paint, driving layup made (2)	6-4	2	
06:53	23 POUYE F steal (1)			23 HAGANS S turnover bad pass (1)
06:39	13 SOLE L 2pt FG from turnover in the paint, layup missed			
06:36				4 BEVERLEY N defensive rebound (1)
06:29	21 BAZELAK L foul shooting (1 - 2)			20 MARISA M foul drawn (1)
06:29	13 SOLE L substitution out			
06:29	31 JOHNSON P substitution in			
06:29				11 CAMDEN A substitution out
06:29				25 JEKOT K substitution out
06:29				1 BRIGHAM A substitution in
06:29				10 SABEL T substitution in
06:29		6-5	1	20 MARISA M free throw 1 - 2 made (5)
06:29				20 MARISA M free throw 2 - 2 missed



Official Basketball Play by Play - 1st Period
Penn St. at Duquesne
 12/18/21 UPMC Cooper Fieldhouse, Pittsburgh, PA
 2021-22 Duquesne Women's Basketball

Game Time: 5:00 PM
Game Duration: 1:57
Attendance: 1,139

Officials: Geraldine Smith-Washington, Nic Cappel, Andrew Bills

Game Time	DUQ	Score	Diff	PSU
06:27	21 BAZELAK L defensive rebound (1)			
06:27	21 BAZELAK L foul drawn (2)			20 MARISA M foul personal (1 - 3)
06:04	23 POUYE F turnover bad pass (1)			10 SABEL T steal (1)
05:55		6-7	-1	1 BRIGHAM A 2pt FG from turnover in the paint, layup made (2)
05:55				20 MARISA M assist (1)
05:27	21 BAZELAK L 3pt FG , jump shot made (3)	9-7	2	
05:27	31 JOHNSON P assist (1)			
05:08				20 MARISA M 3pt FG , jump shot missed
05:05	31 JOHNSON P defensive rebound (1)			
05:00	24 MYERS T 2pt FG outside the paint, jump shot missed			
04:56				20 MARISA M defensive rebound (1)
04:51				10 SABEL T 3pt FG , jump shot missed
04:46				1 BRIGHAM A offensive rebound (1)
04:46		9-9	0	1 BRIGHAM A 2pt FG second chance in the paint, layup made (4)
04:33	24 MYERS T 3pt FG , jump shot made (3)	12-9	3	
04:33	4 MCCONNELL M assist (2)			
04:16				10 SABEL T 2pt FG in the paint, layup missed
04:13	24 MYERS T defensive rebound (1)			
04:05	21 BAZELAK L turnover bad pass (1)			
04:05	Timeout media			
04:05	21 BAZELAK L substitution out			
04:05	20 HAMILTON A substitution in			
04:05				23 HAGANS S substitution out
04:05				5 KAPINUS L substitution in
03:50				10 SABEL T turnover travel (1)
03:50				10 SABEL T substitution out
03:50				15 BURKE M substitution in
03:37	31 JOHNSON P turnover bad pass (1)			
03:21				4 BEVERLEY N 3pt FG from turnover, jump shot missed
03:17	20 HAMILTON A defensive rebound (1)			
03:08	31 JOHNSON P 2pt FG in the paint, layup made (2)	14-9	5	
03:08	23 POUYE F assist (1)			
02:57				20 MARISA M 3pt FG , jump shot missed
02:54	23 POUYE F defensive rebound (1)			
02:48	20 HAMILTON A 2pt FG outside the paint, jump shot missed			
02:42				15 BURKE M defensive rebound (1)
02:39				4 BEVERLEY N turnover out of bounds (1)
02:39	31 JOHNSON P substitution out			
02:39	13 SOLE L substitution in			
02:39				1 BRIGHAM A substitution out
02:39				4 BEVERLEY N substitution out
02:39				11 CAMDEN A substitution in
02:39				23 HAGANS S substitution in
02:28	23 POUYE F 2pt FG from turnover in the paint, layup made (4)	16-9	7	
02:28	13 SOLE L assist (1)			
02:17				11 CAMDEN A 3pt FG , jump shot missed
02:14	4 MCCONNELL M defensive rebound (2)			
02:13	4 MCCONNELL M foul drawn (2)			5 KAPINUS L foul personal (1 - 4)



Official Basketball Play by Play - 1st Period
Penn St. at Duquesne
 12/18/21 UPMC Cooper Fieldhouse, Pittsburgh, PA
 2021-22 Duquesne Women's Basketball

Game Time: 5:00 PM
Game Duration: 1:57
Attendance: 1,139

Officials: Geraldine Smith-Washington, Nic Cappel, Andrew Bills

Game Time	DUQ	Score	Diff	PSU
02:13	4 MCCONNELL M substitution out			
02:13	21 BAZELAK L substitution in			
02:07	Timeout 30 Sec			
02:04	21 BAZELAK L 2pt FG in the paint, layup missed			
02:00	20 HAMILTON A offensive rebound (2)			
02:02	23 POUYE F turnover lost ball (2)			
01:41				5 KAPINUS L 3pt FG from turnover, jump shot missed
01:38	23 POUYE F defensive rebound (2)			
01:30	21 BAZELAK L turnover bad pass (2)			5 KAPINUS L steal (1)
01:30	23 POUYE F substitution out			
01:30	11 BOVELL H substitution in			
01:30				5 KAPINUS L substitution out
01:30				25 JEKOT K substitution in
01:23	20 HAMILTON A substitution out			
01:23	23 POUYE F substitution in			
01:15				20 MARISA M 3pt FG from turnover, jump shot missed
01:09				25 JEKOT K offensive rebound (1)
01:09				25 JEKOT K 2pt FG from turnover second chance in the paint, layup missed
01:08	13 SOLE L defensive rebound (2)			
01:03	23 POUYE F turnover lost ball (3)			11 CAMDEN A steal (1)
00:56		16-11	5	11 CAMDEN A 2pt FG fast break from turnover in the paint, layup made (2)
00:56				20 MARISA M assist (2)
00:46	23 POUYE F turnover out of bounds (4)			
00:46	23 POUYE F substitution out			
00:46	4 MCCONNELL M substitution in			
00:37	21 BAZELAK L foul drawn (3)			11 CAMDEN A foul offensive (2 - 5)
00:37				11 CAMDEN A turnover offensive (1)
00:29	4 MCCONNELL M foul drawn (3)			23 HAGANS S foul shooting (1 - 6)
00:29				11 CAMDEN A substitution out
00:29				15 BURKE M substitution out
00:29				23 HAGANS S substitution out
00:29				1 BRIGHAM A substitution in
00:29				4 BEVERLEY N substitution in
00:29				5 KAPINUS L substitution in
00:29	4 MCCONNELL M free throw 1 - 2 made (1)	17-11	6	
00:29	4 MCCONNELL M free throw 2 - 2 made (2)	18-11	7	
00:29	24 MYERS T substitution out			
00:29	20 HAMILTON A substitution in			
00:10		18-14	4	20 MARISA M 3pt FG , jump shot made (8)
END OF PERIOD				
DUQ 18-14 PSU				



Penn St. at Duquesne

12/18/21 UPMC Cooper Fieldhouse, Pittsburgh, PA
2021-22 Duquesne Women's Basketball

Game Time: 5:00 PM
Game Duration: 1:57
Attendance: 1,139

Officials: Geraldine Smith-Washington, Nic Cappel, Andrew Bills

Penn St. - 14

NO.	Name	F	Min	FG	3P	FT	Rebounds			Fouls		TP	AS	TO	ST	Blocks		+/-
				M-A	M-A	M-A	OR	DR	TOT	PF	FD					BS	BA	
11	Anna Camden	F	05:41	1-2	0-1	0-0	1	0	1	2	0	2	0	1	1	0	0	-2
5	Leilani Kapinus	G	05:12	0-1	0-1	0-0	0	1	1	1	0	0	0	0	1	0	0	-1
20	Makenna Marisa	G	10:00	3-7	1-4	1-2	0	1	1	1	1	8	2	1	0	0	0	-4
23	Shay Hagans	G	08:05	0-0	0-0	0-2	0	1	1	1	1	0	1	1	0	0	0	-3
25	Kelly Jekot	G	05:01	0-1	0-0	0-0	1	0	1	1	0	0	1	0	0	0	0	1
4	Niya Beverley		05:42	0-2	0-1	0-0	0	1	1	0	0	0	0	1	0	0	0	-6
1	Ali Brigham		04:19	2-2	0-0	0-0	1	0	1	0	0	4	0	0	0	0	0	-2
10	Tova Sabel		02:39	0-2	0-1	0-0	0	0	0	0	0	0	0	1	1	0	0	-1
15	Maddie Burke		03:21	0-0	0-0	0-0	0	1	1	0	0	0	0	0	0	0	0	-2
Team							0	0	0			0						
Totals				6-17	1-8	1-4	3	5	8	6	2	14	4	5	3	0	0	-4

Shooting By Period		
1st FG%	6-17	35.3%
3PT%	1-8	12.5%
FT%	1-4	25%
GM FG%	6-17	35.3%
3PT%	1-8	12.5%
FT%	1-4	25.0%

Dead Ball Rebounds: 1, 0

Technical Fouls::NONE

Duquesne - 18

NO.	Name	C	Min	FG	3P	FT	Rebounds			Fouls		TP	AS	TO	ST	Blocks		+/-
				M-A	M-A	M-A	OR	DR	TOT	PF	FD					BS	BA	
13	Laia Sole	C	06:10	2-4	0-0	0-0	0	2	2	0	0	4	1	0	0	0	0	1
4	Megan McConnell	G	08:33	0-1	0-0	2-2	0	2	2	0	3	2	2	0	1	0	0	6
11	Halle Bovell	G	03:38	0-0	0-0	0-0	0	0	0	0	0	0	0	0	0	0	0	-5
21	Libby Bazelak	G	08:08	1-2	1-1	0-0	0	1	1	1	3	3	1	2	0	0	0	0
24	Tess Myers	G	09:31	1-2	1-1	0-0	0	1	1	1	0	3	0	0	0	0	0	7
23	Fatou Pouye		06:59	2-2	0-0	0-0	0	2	2	0	0	4	1	4	1	0	0	7
31	Precious Johnson		03:50	1-1	0-0	0-0	0	1	1	0	0	2	1	1	0	0	0	3
20	Amaya Hamilton		03:11	0-1	0-0	0-0	1	1	2	0	0	0	0	0	0	0	0	1
Team							0	0	0			0						
Totals				7-13	2-2	2-2	1	10	11	2	6	18	6	7	2	0	0	4

Shooting By Period		
1st FG%	7-13	53.8%
3PT%	2-2	100.0%
FT%	2-2	100%
GM FG%	7-13	53.8%
3PT%	2-2	100.0%
FT%	2-2	100.0%

Dead Ball Rebounds: 0, 0

Technical Fouls::NONE

	PSU	DUQ
Biggest lead	2 (1 st 8:45)	7 (1 st 2:28)
Best Scoring Run	3(1 st 5:55)	7(1 st 2:28)
Lead Changes	3	
Times Tied	3	
Time with Lead	01:16	06:39

Points from	PSU	DUQ
Turnovers	4	4
Paint	10	10
Second Chance	2	0
Fast Breaks	4	0
Bench	4	6

	Period by Period Scoring				
	1st	2nd	3rd	4th	TOT
PSU	14	22	23	9	68
DUQ	18	16	15	11	60



Period 2

Quarter Starters:

DUQ	4 McConnell M	11 Bovell H	13 Sole L	21 Bazelak L	24 Myers T
PSU	1 Brigham A	4 Beverley N	5 Kapinus L	20 Marisa M	25 Jekot K

Game Time	DUQ	Score	Diff	PSU
10:00	20 HAMILTON A substitution out			
10:00	24 MYERS T substitution in			
09:49	24 MYERS T 2pt FG outside the paint, jump shot missed			
09:45				5 KAPINUS L defensive rebound (2)
09:38		18-16	2	1 BRIGHAM A 2pt FG in the paint, layup made (6)
09:38				5 KAPINUS L assist (1)
09:13	4 MCCONNELL M 2pt FG in the paint, layup blocked			
09:13				1 BRIGHAM A block (1)
09:13	offensive rebound (12)			
09:09	24 MYERS T 3pt FG second chance, jump shot made (6)	21-16	5	
09:09	13 SOLE L assist (2)			
08:42				5 KAPINUS L 2pt FG outside the paint, jump shot missed
08:39	13 SOLE L defensive rebound (3)			
08:31	21 BAZELAK L 2pt FG outside the paint, jump shot made (5)	23-16	7	
08:31	4 MCCONNELL M assist (3)			
08:09		23-19	4	25 JEKOT K 3pt FG , jump shot made (3)
08:09				1 BRIGHAM A assist (1)
07:50	24 MYERS T 2pt FG outside the paint, pull up jump shot made (8)	25-19	6	
07:40				20 MARISA M 3pt FG , jump shot missed
07:35				1 BRIGHAM A offensive rebound (2)
07:35				1 BRIGHAM A 2pt FG second chance in the paint, layup missed
07:34	4 MCCONNELL M defensive rebound (3)			
07:17	13 SOLE L 2pt FG in the paint, layup missed			
07:14	11 BOVELL H offensive rebound (1)			
07:13	11 BOVELL H turnover 3 seconds (1)			
07:13	11 BOVELL H substitution out			
07:13	13 SOLE L substitution out			
07:13	23 POUYE F substitution in			
07:13	31 JOHNSON P substitution in			
07:13				5 KAPINUS L substitution out
07:13				25 JEKOT K substitution out
07:13				10 SABEL T substitution in
07:13				23 HAGANS S substitution in
06:58				23 HAGANS S 2pt FG from turnover outside the paint, jump shot missed
06:57	31 JOHNSON P defensive rebound (2)			
06:57	23 POUYE F foul drawn (1)			1 BRIGHAM A foul personal (1 - 1)
06:41	31 JOHNSON P 2pt FG in the paint, layup missed			
06:39	31 JOHNSON P offensive rebound (3)			
06:39	31 JOHNSON P foul drawn (1)			1 BRIGHAM A foul shooting (2 - 2)
06:39				4 BEVERLEY N substitution out
06:39				5 KAPINUS L substitution in
06:39	31 JOHNSON P free throw 1 - 2 missed			



Official Basketball Play by Play - 2nd Period
Penn St. at Duquesne
 12/18/21 UPMC Cooper Fieldhouse, Pittsburgh, PA
 2021-22 Duquesne Women's Basketball

Game Time: 5:00 PM
Game Duration: 1:57
Attendance: 1,139

Officials: Geraldine Smith-Washington, Nic Cappel, Andrew Bills

Game Time	DUQ	Score	Diff	PSU
06:39	offensive dead ball rebound (1)			
06:39	31 JOHNSON P free throw 2 - 2 made (3)	26-19	7	
06:11		26-21	5	1 BRIGHAM A 2pt FG in the paint, layup made (8)
06:11				23 HAGANS S assist (2)
05:49	23 POUYE F 2pt FG in the paint, layup made (6)	28-21	7	
05:49	31 JOHNSON P assist (2)			
05:28		28-23	5	5 KAPINUS L 2pt FG in the paint, layup made (2)
05:28				1 BRIGHAM A assist (2)
05:17	24 MYERS T 3pt FG , jump shot made (11)	31-23	8	
05:17	4 MCCONNELL M assist (4)			
05:06	31 JOHNSON P foul shooting (1 - 1)			1 BRIGHAM A foul drawn (1)
05:06				20 MARISA M substitution out
05:06				15 BURKE M substitution in
05:06		31-24	7	1 BRIGHAM A free throw 1 - 2 made (9)
05:06		31-25	6	1 BRIGHAM A free throw 2 - 2 made (10)
05:06				1 BRIGHAM A substitution out
05:06				5 KAPINUS L substitution out
05:06				11 CAMDEN A substitution in
05:06				5 KAPINUS L substitution in
04:49	24 MYERS T 3pt FG , jump shot missed			
04:45				5 KAPINUS L defensive rebound (3)
04:45	31 JOHNSON P foul personal (2 - 2)			5 KAPINUS L foul drawn (1)
04:45				Timeout media
04:45	31 JOHNSON P substitution out			
04:45	13 SOLE L substitution in			
04:45				10 SABEL T substitution out
04:45				20 MARISA M substitution in
04:23				5 KAPINUS L 2pt FG in the paint, layup missed
04:19	24 MYERS T defensive rebound (2)			
04:16	23 POUYE F turnover bad pass (5)			
04:16				5 KAPINUS L substitution out
04:16				1 BRIGHAM A substitution in
04:03		31-27	4	1 BRIGHAM A 2pt FG from turnover outside the paint, jump shot made (12)
03:47	23 POUYE F 2pt FG outside the paint, jump shot missed			
03:44				11 CAMDEN A defensive rebound (2)
03:41		31-29	2	23 HAGANS S 2pt FG fast break in the paint, layup made (2)
03:26	21 BAZELAK L 2pt FG in the paint, layup blocked			
03:26				11 CAMDEN A block (1)
03:21				11 CAMDEN A defensive rebound (3)
03:11	24 MYERS T steal (1)			23 HAGANS S turnover bad pass (2)
02:59	4 MCCONNELL M 3pt FG from turnover, jump shot missed			
02:56	4 MCCONNELL M offensive rebound (4)			
02:53	4 MCCONNELL M 2pt FG from turnover second chance in the paint, layup missed			
02:50				11 CAMDEN A defensive rebound (4)
02:42	13 SOLE L foul personal (1 - 3)			1 BRIGHAM A foul drawn (2)
02:42	13 SOLE L substitution out			
02:42	20 HAMILTON A substitution in			
02:42				20 MARISA M substitution out



Official Basketball Play by Play - 2nd Period
Penn St. at Duquesne
 12/18/21 UPMC Cooper Fieldhouse, Pittsburgh, PA
 2021-22 Duquesne Women's Basketball

Game Time: 5:00 PM
Game Duration: 1:57
Attendance: 1,139

Officials: Geraldine Smith-Washington, Nic Cappel, Andrew Bills

Game Time	DUQ	Score	Diff	PSU
02:42				23 HAGANS S substitution out
02:42				4 BEVERLEY N substitution in
02:42				5 KAPINUS L substitution in
02:32				5 KAPINUS L substitution out
02:32				20 MARISA M substitution in
02:29		31-31	0	20 MARISA M 2pt FG in the paint, layup made (10)
01:56	4 MCCONNELL M 2pt FG in the paint, layup missed			
01:53				1 BRIGHAM A defensive rebound (3)
01:49		31-33	-2	20 MARISA M 2pt FG fast break in the paint, layup made (12)
01:49	21 BAZELAK L foul shooting (2 - 4)			20 MARISA M foul drawn (2)
01:49	20 HAMILTON A substitution out			
01:49	11 BOVELL H substitution in			
01:49				1 BRIGHAM A substitution out
01:49				11 CAMDEN A substitution out
01:49				5 KAPINUS L substitution in
01:49				23 HAGANS S substitution in
01:49		31-34	-3	20 MARISA M free throw fast break 1 - 1 made (13)
01:49	23 POUYE F turnover bad pass (6)			
01:39				20 MARISA M 2pt FG from turnover in the paint, layup missed
01:35	23 POUYE F defensive rebound (3)			
01:33	24 MYERS T foul drawn (1)			5 KAPINUS L foul shooting (2 - 3)
01:33	24 MYERS T free throw fast break 1 - 2 made (12)	32-34	-2	
01:33	24 MYERS T free throw fast break 2 - 2 made (13)	33-34	-1	
01:33				5 KAPINUS L substitution out
01:33				25 JEKOT K substitution in
01:10				23 HAGANS S 2pt FG in the paint, layup missed
01:06				15 BURKE M offensive rebound (2)
01:07				15 BURKE M turnover 3 seconds (1)
01:07	11 BOVELL H substitution out			
01:07	13 SOLE L substitution in			
01:01	4 MCCONNELL M 2pt FG from turnover in the paint, layup blocked			
01:01				25 JEKOT K block (1)
00:56				23 HAGANS S defensive rebound (2)
00:50				20 MARISA M 3pt FG , jump shot missed
00:49	23 POUYE F defensive rebound (4)			
00:49	23 POUYE F foul drawn (2)			15 BURKE M foul personal (1 - 4)
00:34	23 POUYE F foul drawn (3)			4 BEVERLEY N foul shooting (1 - 5)
00:34	13 SOLE L substitution out			
00:34	21 BAZELAK L substitution out			
00:34	11 BOVELL H substitution in			
00:34	20 HAMILTON A substitution in			
00:34	23 POUYE F free throw 1 - 2 made (7)	34-34	0	
00:34	23 POUYE F free throw 2 - 2 missed			
00:32				15 BURKE M defensive rebound (3)
00:08				20 MARISA M 2pt FG in the paint, layup blocked
00:08	20 HAMILTON A block (1)			
00:08				offensive rebound (19)
00:02		34-36	-2	20 MARISA M 2pt FG second chance in the paint, driving layup made (15)



Official Basketball Play by Play - 2nd Period
Penn St. at Duquesne
12/18/21 UPMC Cooper Fieldhouse, Pittsburgh, PA
2021-22 Duquesne Women's Basketball

Game Time: 5:00 PM
Game Duration: 1:57
Attendance: 1,139

Officials: Geraldine Smith-Washington, Nic Cappel, Andrew Bills

Game Time	DUQ	Score	Diff	PSU
END OF PERIOD				
DUQ 34-36 PSU				



Penn St. at Duquesne

12/18/21 UPMC Cooper Fieldhouse, Pittsburgh, PA
2021-22 Duquesne Women's Basketball

Game Time: 5:00 PM
Game Duration: 1:57
Attendance: 1,139

Officials: Geraldine Smith-Washington, Nic Cappel, Andrew Bills

Penn St. - 22

NO.	Name	F	Min	FG			Rebounds			Fouls		TP	AS	TO	ST	Blocks		+/-
				M-A	3P	FT	OR	DR	TOT	PF	FD					BS	BA	
11	Anna Camden	F	03:17	0-0	0-0	0-0	0	3	3	0	0	0	0	0	0	1	0	8
5	Leilani Kapinus	G	05:36	1-3	0-0	0-0	0	2	2	1	1	2	1	0	0	0	0	-3
20	Makenna Marisa	G	09:29	3-7	0-2	1-1	0	0	0	0	1	7	0	0	0	0	1	4
23	Shay Hagans	G	06:20	1-3	0-0	0-0	0	1	1	0	0	2	1	1	0	0	0	4
25	Kelly Jekot	G	04:20	1-1	1-1	0-0	0	0	0	0	0	3	0	0	0	1	0	-1
10	Tova Sabel		02:28	0-0	0-0	0-0	0	0	0	0	0	0	0	0	0	0	0	0
15	Maddie Burke		05:06	0-0	0-0	0-0	1	1	2	1	0	0	0	1	0	0	0	10
1	Ali Brigham		07:21	3-4	0-0	2-2	1	1	2	2	2	8	2	0	0	1	0	6
4	Niya Beverley		06:03	0-0	0-0	0-0	0	0	0	1	0	0	0	0	0	0	0	2
Team							1	0	1			0		0				
Totals				9-18	1-3	3-3	3	8	11	5	4	22	4	2	0	3	1	6

Shooting By Period		
2 nd FG%	9-18	50.0%
3PT%	1-3	33.3%
FT%	3-3	100%
GM FG%	9-18	50.0%
3PT%	1-3	33.3%
FT%	3-3	100.0%

Dead Ball Rebounds: 0, 0

Technical Fouls::NONE

Duquesne - 16

NO.	Name	C	Min	FG			Rebounds			Fouls		TP	AS	TO	ST	Blocks		+/-
				M-A	3P	FT	OR	DR	TOT	PF	FD					BS	BA	
13	Laia Sole	C	05:23	0-1	0-0	0-0	0	1	1	1	0	0	1	0	0	0	0	-2
4	Megan McConnell	G	10:00	0-5	0-1	0-0	1	1	2	0	0	0	2	0	0	0	2	-6
11	Halle Bovell	G	04:03	0-0	0-0	0-0	1	0	1	0	0	0	0	1	0	0	2	
21	Libby Bazelak	G	09:26	1-2	0-0	0-0	0	0	0	1	0	2	0	0	0	0	1	-5
24	Tess Myers	G	10:00	3-5	2-3	2-2	0	1	1	0	1	10	0	0	1	0	0	-6
23	Fatou Pouye		07:13	1-2	0-0	1-2	0	2	2	0	3	3	0	2	0	0	0	-8
31	Precious Johnson		02:28	0-1	0-0	1-2	1	1	2	2	1	1	1	0	0	0	0	0
20	Amaya Hamilton		01:27	0-0	0-0	0-0	0	0	0	0	0	0	0	0	0	1	0	-5
Team							1	0	1			0		0				
Totals				5-16	2-4	4-6	4	6	10	4	5	16	4	3	1	1	3	-6

Shooting By Period		
2 nd FG%	5-16	31.3%
3PT%	2-4	50.0%
FT%	4-6	66.7%
GM FG%	5-16	31.3%
3PT%	2-4	50.0%
FT%	4-6	66.7%

Dead Ball Rebounds: 1, 0

Technical Fouls::NONE

	PSU	DUQ
Biggest lead	3 (2 nd 1:49)	8 (2 nd 5:17)
Best Scoring Run	11 (2 nd 1:49)	5 (2 nd 8:31)
Lead Changes	1	
Times Tied	2	
Time with Lead	01:18	07:20

Points from	PSU	DUQ
Turnovers	2	0
Paint	14	2
Second Chance	2	4
Fast Breaks	5	2
Bench	8	4

	Period by Period Scoring				
	1st	2nd	3rd	4th	TOT
PSU	14	22	23	9	68
DUQ	18	16	15	11	60



Penn St. at Duquesne

12/18/21 UPMC Cooper Fieldhouse, Pittsburgh, PA
2021-22 Duquesne Women's Basketball

Game Time: 5:00 PM
Game Duration: 1:57
Attendance: 1,139

Officials: Geraldine Smith-Washington, Nic Cappel, Andrew Bills

Penn St. - 36

NO.	Name	F	Min	FG	3P	FT	Rebounds			Fouls		TP	AS	TO	ST	Blocks		+/-
				M-A	M-A	M-A	OR	DR	TOT	PF	FD					BS	BA	
11	Anna Camden	F	08:58	1-2	0-1	0-0	1	3	4	2	0	2	0	1	1	1	0	6
5	Leilani Kapinus	G	10:48	1-4	0-1	0-0	0	3	3	2	1	2	1	0	1	0	0	-4
20	Makenna Marisa	G	19:29	6-14	1-6	2-3	0	1	1	1	2	15	2	1	0	0	1	0
23	Shay Hagans	G	14:25	1-3	0-0	0-2	0	2	2	1	1	2	2	2	0	0	0	1
25	Kelly Jekot	G	09:21	1-2	1-1	0-0	1	0	1	1	0	3	1	0	0	1	0	0
4	Niya Beverley		11:45	0-2	0-1	0-0	0	1	1	1	0	0	0	1	0	0	0	-4
1	Ali Brigham		11:40	5-6	0-0	2-2	2	1	3	2	2	12	2	0	0	1	0	4
10	Tova Sabel		05:07	0-2	0-1	0-0	0	0	0	0	0	0	0	1	1	0	0	-1
15	Maddie Burke		08:27	0-0	0-0	0-0	1	2	3	1	0	0	0	1	0	0	0	8
Team							1	0	1			0		0				
Totals				15-35	2-11	4-7	6	13	19	11	6	36	8	7	3	3	1	2

Shooting By Period		
1 st FG%	6-17	35.3%
3PT%	1-8	12.5%
FT%	1-4	25%
2 nd FG%	9-18	50.0%
3PT%	1-3	33.3%
FT%	3-3	100%
GM FG%	15-35	42.9%
3PT%	2-11	18.2%
FT%	4-7	57.1%

Dead Ball Rebounds: 1, 0

Technical Fouls::NONE

Duquesne - 34

NO.	Name	C	Min	FG	3P	FT	Rebounds			Fouls		TP	AS	TO	ST	Blocks		+/-
				M-A	M-A	M-A	OR	DR	TOT	PF	FD					BS	BA	
13	Laia Sole	C	11:33	2-5	0-0	0-0	0	3	3	1	0	4	2	0	0	0	0	-1
4	Megan McConnell	G	18:33	0-6	0-1	2-2	1	3	4	0	3	2	4	0	1	0	2	0
11	Halle Bovell	G	07:41	0-0	0-0	0-0	1	0	1	0	0	0	0	1	0	0	0	-3
21	Libby Bazalak	G	17:34	2-4	1-1	0-0	0	1	1	2	3	5	1	2	0	0	1	-5
24	Tess Myers	G	19:31	4-7	3-4	2-2	0	2	2	1	1	13	0	0	1	0	0	1
23	Fatou Pouye		14:12	3-4	0-0	1-2	0	4	4	0	3	7	1	6	1	0	0	-1
31	Precious Johnson		06:18	1-2	0-0	1-2	1	2	3	2	1	3	2	1	0	0	0	3
20	Amaya Hamilton		04:38	0-1	0-0	0-0	1	1	2	0	0	0	0	0	0	1	0	-4
Team							1	0	1			0		0				
Totals				12-29	4-6	6-8	5	16	21	6	11	34	10	10	3	1	3	-2

Shooting By Period		
1 st FG%	7-13	53.8%
3PT%	2-2	100.0%
FT%	2-2	100%
2 nd FG%	5-16	31.3%
3PT%	2-4	50.0%
FT%	4-6	66.7%
GM FG%	12-29	41.4%
3PT%	4-6	66.7%
FT%	6-8	75.0%

Dead Ball Rebounds: 1, 0

Technical Fouls::NONE

	PSU	DUQ
Biggest lead	3 (2 nd 1:49)	8 (2 nd 5:17)
Best Scoring Run	11 (2 nd 1:49)	7 (1 st 2:28)
Lead Changes	4	
Times Tied	5	
Time with Lead	02:34	14:10

Points from	PSU	DUQ
Turnovers	6	4
Paint	24	12
Second Chance	4	4
Fast Breaks	9	2
Bench	12	10

	Period by Period Scoring				
	1st	2nd	3rd	4th	TOT
PSU	14	22	23	9	68
DUQ	18	16	15	11	60



Officials: Geraldine Smith-Washington, Nic Cappel, Andrew Bills

Period 3

Quarter Starters:

DUQ	4 McConnell M	11 Bovell H	13 Sole L	21 Bazelak L	24 Myers T
PSU	1 Brigham A	5 Kapinus L	11 Camden A	20 Marisa M	23 Hagans S

Game Time	DUQ	Score	Diff	PSU
10:00	20 HAMILTON A substitution out			
10:00	23 POUYE F substitution out			
10:00	13 SOLE L substitution in			
10:00	21 BAZELAK L substitution in			
10:00				4 BEVERLEY N substitution out
10:00				15 BURKE M substitution out
10:00				25 JEKOT K substitution out
10:00				1 BRIGHAM A substitution in
10:00				5 KAPINUS L substitution in
10:00				11 CAMDEN A substitution in
09:47	13 SOLE L 2pt FG in the paint, hook shot blocked			
09:47				11 CAMDEN A block (2)
09:47				11 CAMDEN A defensive rebound (5)
09:40		34-38	-4	23 HAGANS S 2pt FG in the paint, layup made (4)
09:22	21 BAZELAK L foul drawn (4)			5 KAPINUS L foul shooting (3 - 1)
09:22	21 BAZELAK L free throw 1 - 2 made (6)	35-38	-3	
09:22	21 BAZELAK L free throw 2 - 2 missed			
09:21				11 CAMDEN A defensive rebound (6)
09:01		35-40	-5	5 KAPINUS L 2pt FG in the paint, layup made (4)
09:01				1 BRIGHAM A assist (3)
08:39	24 MYERS T 3pt FG , jump shot missed			
08:35	11 BOVELL H offensive rebound (2)			
08:35	11 BOVELL H 2pt FG second chance in the paint, layup missed			
08:34				5 KAPINUS L defensive rebound (4)
08:08				20 MARISA M 2pt FG outside the paint, jump shot missed
08:05	21 BAZELAK L defensive rebound (2)			
08:00	24 MYERS T 2pt FG fast break in the paint, layup made (15)	37-40	-3	
07:41				11 CAMDEN A 2pt FG outside the paint, jump shot missed
07:37	4 MCCONNELL M defensive rebound (5)			
07:32	24 MYERS T 3pt FG , jump shot made (18)	40-40	0	
07:32	4 MCCONNELL M assist (5)			
07:24	11 BOVELL H foul drawn (1)			20 MARISA M foul offensive (2 - 2)
07:24				20 MARISA M turnover offensive (2)
07:24	13 SOLE L substitution out			
07:24	31 JOHNSON P substitution in			
07:24				5 KAPINUS L substitution out
07:24				25 JEKOT K substitution in
07:24	Timeout media			
07:24				Timeout 30 Sec
07:01	11 BOVELL H 2pt FG from turnover outside the paint, jump shot missed			
06:57				23 HAGANS S defensive rebound (3)
06:51		40-43	-3	11 CAMDEN A 3pt FG , jump shot made (5)



Official Basketball Play by Play - 3rd Period
Penn St. at Duquesne
 12/18/21 UPMC Cooper Fieldhouse, Pittsburgh, PA
 2021-22 Duquesne Women's Basketball

Game Time: 5:00 PM
Game Duration: 1:57
Attendance: 1,139

Officials: Geraldine Smith-Washington, Nic Cappel, Andrew Bills

Game Time	DUQ	Score	Diff	PSU
06:51				20 MARISA M assist (3)
06:30	4 MCCONNELL M 2pt FG in the paint, driving layup made (4)	42-43	-1	
06:23		42-45	-3	20 MARISA M 2pt FG fast break outside the paint, jump shot made (17)
05:57	11 BOVELL H turnover bad pass (2)			23 HAGANS S steal (1)
05:52		42-47	-5	23 HAGANS S 2pt FG fast break from turnover in the paint, layup made (6)
05:32	11 BOVELL H turnover bad pass (3)			
05:32	11 BOVELL H substitution out			
05:32	31 JOHNSON P substitution out			
05:32	13 SOLE L substitution in			
05:32	23 POUYE F substitution in			
05:32				1 BRIGHAM A substitution out
05:32				23 HAGANS S substitution out
05:32				25 JEKOT K substitution out
05:32				4 BEVERLEY N substitution in
05:32				5 KAPINUS L substitution in
05:32				10 SABEL T substitution in
05:24		42-50	-8	20 MARISA M 3pt FG from turnover, jump shot made (20)
05:24				11 CAMDEN A assist (1)
05:12	24 MYERS T 3pt FG , jump shot blocked			
05:12				5 KAPINUS L block (1)
05:09	offensive rebound (25)			
04:53	13 SOLE L 2pt FG second chance in the paint, layup missed			
04:50	4 MCCONNELL M offensive rebound (6)			
04:38	24 MYERS T 3pt FG second chance, jump shot made (21)	45-50	-5	
04:38	13 SOLE L assist (3)			
04:29		45-53	-8	20 MARISA M 3pt FG , jump shot made (23)
04:15	21 BAZELAK L foul drawn (5)			20 MARISA M foul shooting (3 - 3)
04:15	Timeout media			
04:15	21 BAZELAK L free throw 1 - 2 missed			
04:15	offensive dead ball rebound (2)			
04:15	21 BAZELAK L free throw 2 - 2 made (7)	46-53	-7	
03:43				20 MARISA M 3pt FG , jump shot missed
03:39	4 MCCONNELL M defensive rebound (7)			
03:37	23 POUYE F foul drawn (4)			11 CAMDEN A foul personal (3 - 4)
03:37				4 BEVERLEY N substitution out
03:37				11 CAMDEN A substitution out
03:37				1 BRIGHAM A substitution in
03:37				23 HAGANS S substitution in
03:36	23 POUYE F 3pt FG , jump shot missed			
03:36				5 KAPINUS L defensive rebound (5)
03:33	4 MCCONNELL M foul personal (1 - 1)			5 KAPINUS L foul drawn (2)
03:20		46-55	-9	20 MARISA M 2pt FG in the paint, driving layup made (25)
03:15	13 SOLE L turnover bad pass (1)			10 SABEL T steal (2)
03:10		46-57	-11	1 BRIGHAM A 2pt FG fast break from turnover in the paint, layup made (14)
03:10				23 HAGANS S assist (3)
02:50	21 BAZELAK L turnover bad pass (3)			
02:50	23 POUYE F substitution out			



Official Basketball Play by Play - 3rd Period
Penn St. at Duquesne
 12/18/21 UPMC Cooper Fieldhouse, Pittsburgh, PA
 2021-22 Duquesne Women's Basketball

Game Time: 5:00 PM
Game Duration: 1:57
Attendance: 1,139

Officials: Geraldine Smith-Washington, Nic Cappel, Andrew Bills

Game Time	DUQ	Score	Diff	PSU
02:50	20 HAMILTON A substitution in			
02:30				5 KAPINUS L turnover 3 seconds (1)
02:05	24 MYERS T 2pt FG from turnover outside the paint, jump shot missed			
02:02				20 MARISA M defensive rebound (2)
02:00	20 HAMILTON A steal (1)			20 MARISA M turnover bad pass (3)
02:00	13 SOLE L substitution out			
02:00	21 BAZELAK L substitution out			
02:00	11 BOVELL H substitution in			
02:00	31 JOHNSON P substitution in			
02:00				5 KAPINUS L substitution out
02:00				15 BURKE M substitution in
01:48	20 HAMILTON A 2pt FG from turnover in the paint, layup missed			
01:47	20 HAMILTON A offensive rebound (3)			
01:48	20 HAMILTON A foul drawn (1)			1 BRIGHAM A foul shooting (3 - 5)
01:48	20 HAMILTON A free throw 1 - 2 missed			
01:48	offensive dead ball rebound (3)			
01:48	20 HAMILTON A free throw 2 - 2 missed			
01:48				10 SABEL T defensive rebound (1)
01:33	31 JOHNSON P foul personal (3 - 2)			20 MARISA M foul drawn (3)
01:17				1 BRIGHAM A 2pt FG in the paint, layup blocked
01:17	31 JOHNSON P block (1)			
01:11	31 JOHNSON P defensive rebound (4)			
00:58	4 MCCONNELL M 3pt FG , jump shot made (7)	49-57	-8	
00:50		49-59	-10	20 MARISA M 2pt FG in the paint, layup made (27)
00:24	31 JOHNSON P 2pt FG in the paint, layup blocked			
00:24				1 BRIGHAM A block (2)
00:20				1 BRIGHAM A defensive rebound (4)
00:19	4 MCCONNELL M steal (2)			1 BRIGHAM A turnover bad pass (1)
00:01	4 MCCONNELL M 2pt FG from turnover outside the paint, jump shot missed			
00:00				10 SABEL T defensive rebound (2)
END OF PERIOD				
DUQ 49-59 PSU				



Penn St. at Duquesne

12/18/21 UPMC Cooper Fieldhouse, Pittsburgh, PA
2021-22 Duquesne Women's Basketball

Game Time: 5:00 PM
Game Duration: 1:57
Attendance: 1,139

Officials: Geraldine Smith-Washington, Nic Cappel, Andrew Bills

Penn St. - 23

NO.	Name	F	Min	FG	3P	FT	Rebounds			Fouls		TP	AS	TO	ST	Blocks		+/-
				M-A	M-A	M-A	OR	DR	TOT	PF	FD					BS	BA	
11	Anna Camden	F	06:23	1-2	1-1	0-0	0	2	2	1	0	3	1	0	0	1	0	5
5	Leilani Kapinus	G	06:08	1-1	0-0	0-0	0	2	2	1	1	2	0	1	0	1	0	4
20	Makenna Marisa	G	10:00	5-7	2-3	0-0	0	1	1	2	1	12	1	2	0	0	0	8
23	Shay Hagans	G	08:05	2-2	0-0	0-0	0	1	1	0	0	4	1	0	1	0	0	6
25	Kelly Jekot	G	01:52	0-0	0-0	0-0	0	0	0	0	0	0	0	0	0	0	0	5
1	Ali Brigham		08:05	1-2	0-0	0-0	0	1	1	1	0	2	1	1	0	1	1	6
4	Niya Beverley		01:55	0-0	0-0	0-0	0	0	0	0	0	0	0	0	0	0	0	2
10	Tova Sabel		05:32	0-0	0-0	0-0	0	2	2	0	0	0	0	0	1	0	0	5
15	Maddie Burke		02:00	0-0	0-0	0-0	0	0	0	0	0	0	0	0	0	0	0	-1
Team							0	0	0			0		0				
Totals				10-14	3-4	0-0	0	9	9	5	2	23	4	4	2	3	1	8

Shooting By Period		
3rd FG%	10-14	71.4%
3PT%	3-4	75.0%
FT%	0-0	0%
GM FG%	10-14	71.4%
3PT%	3-4	75.0%
FT%	0-0	0.0%

Dead Ball Rebounds: 0, 0

Technical Fouls::NONE

Duquesne - 15

NO.	Name	C	Min	FG	3P	FT	Rebounds			Fouls		TP	AS	TO	ST	Blocks		+/-
				M-A	M-A	M-A	OR	DR	TOT	PF	FD					BS	BA	
13	Laia Sole	C	06:08	0-2	0-0	0-0	0	0	0	0	0	0	1	1	0	0	1	-4
4	Megan McConnell	G	10:00	2-3	1-1	0-0	1	2	3	1	0	5	1	0	1	0	0	-8
11	Halle Bovell	G	06:28	0-2	0-0	0-0	1	0	1	0	1	0	0	2	0	0	0	-2
21	Libby Bazalak	G	08:00	0-0	0-0	2-4	0	1	1	0	2	2	0	1	0	0	0	-9
24	Tess Myers	G	10:00	3-6	2-4	0-0	0	0	0	0	0	8	0	0	0	0	1	-8
31	Precious Johnson		03:52	0-1	0-0	0-0	0	1	1	1	0	0	0	0	0	1	1	-4
23	Fatou Pouye		02:42	0-1	0-1	0-0	0	0	0	0	1	0	0	0	0	0	0	-6
20	Amaya Hamilton		02:50	0-1	0-0	0-2	1	0	1	0	1	0	0	0	1	0	0	1
Team							1	0	1			0		0				
Totals				5-16	3-6	2-6	4	4	8	2	5	15	2	4	2	1	3	-8

Shooting By Period		
3rd FG%	5-16	31.3%
3PT%	3-6	50.0%
FT%	2-6	33.3%
GM FG%	5-16	31.3%
3PT%	3-6	50.0%
FT%	2-6	33.3%

Dead Ball Rebounds: 2, 0

Technical Fouls::NONE

	PSU	DUQ
Biggest lead	11 (3 rd 3:10)	0 (1 st 10:00)
Best Scoring Run	7(3 rd 5:24)	5(3 rd 7:32)
Lead Changes	0	
Times Tied	1	
Time with Lead	09:06	00:00

Points from	PSU	DUQ
Turnovers	7	0
Paint	12	4
Second Chance	0	3
Fast Breaks	6	2
Bench	2	0

	Period by Period Scoring				
	1st	2nd	3rd	4th	TOT
PSU	14	22	23	9	68
DUQ	18	16	15	11	60



Period 4

Quarter Starters:

DUQ	4 McConnell M	11 Bovell H	20 Hamilton A	23 Pouye F	24 Myers T
PSU	1 Brigham A	10 Sabel T	15 Burke M	20 Marisa M	23 Hagans S

Game Time	DUQ	Score	Diff	PSU
10:00	31 JOHNSON P substitution out			
10:00	23 POUYE F substitution in			
09:49	11 BOVELL H turnover bad pass (4)			10 SABEL T steal (3)
09:21				1 BRIGHAM A 2pt FG from turnover in the paint, jump shot blocked
09:21	23 POUYE F block (1)			
09:16	23 POUYE F defensive rebound (5)			
09:14	20 HAMILTON A foul drawn (2)			10 SABEL T foul shooting (1 - 1)
09:14	20 HAMILTON A free throw fast break 1 - 2 made (1)	50-59	-9	
09:14	20 HAMILTON A free throw fast break 2 - 2 made (2)	51-59	-8	
08:52				20 MARISA M 3pt FG , jump shot missed
08:46	11 BOVELL H defensive rebound (3)			
08:41	20 HAMILTON A 2pt FG in the paint, jump shot made (4)	53-59	-6	
08:20	23 POUYE F foul personal (1 - 1)			20 MARISA M foul drawn (4)
08:20				1 BRIGHAM A substitution out
08:20				11 CAMDEN A substitution in
08:12				10 SABEL T 3pt FG , jump shot missed
08:09				15 BURKE M offensive rebound (4)
07:57				20 MARISA M 2pt FG second chance outside the paint, jump shot missed
07:54	4 MCCONNELL M defensive rebound (8)			
07:40	23 POUYE F 2pt FG in the paint, layup made (9)	55-59	-4	
07:40	4 MCCONNELL M assist (6)			
07:22	11 BOVELL H foul drawn (2)			10 SABEL T foul offensive (2 - 2)
07:22				10 SABEL T turnover offensive (2)
07:22	11 BOVELL H substitution out			
07:22	21 BAZELAK L substitution in			
07:22				10 SABEL T substitution out
07:22				5 KAPINUS L substitution in
07:04	20 HAMILTON A turnover lost ball (1)			20 MARISA M steal (1)
06:58	23 POUYE F foul personal (2 - 2)			20 MARISA M foul drawn (5)
06:42	4 MCCONNELL M foul personal (2 - 3)			23 HAGANS S foul drawn (2)
06:42				23 HAGANS S substitution out
06:42				1 BRIGHAM A substitution in
06:38				15 BURKE M 3pt FG from turnover, jump shot missed
06:35	4 MCCONNELL M defensive rebound (9)			
06:28	21 BAZELAK L 2pt FG in the paint, driving layup made (9)	57-59	-2	
06:28				Timeout 30 Sec
06:28				Timeout media
06:28				15 BURKE M substitution out
06:28				25 JEKOT K substitution in
06:02	4 MCCONNELL M steal (3)			20 MARISA M turnover lost ball (4)
05:52	4 MCCONNELL M 3pt FG from turnover, jump shot missed			
05:48	23 POUYE F offensive rebound (6)			



Official Basketball Play by Play - 4th Period
Penn St. at Duquesne
 12/18/21 UPMC Cooper Fieldhouse, Pittsburgh, PA
 2021-22 Duquesne Women's Basketball

Game Time: 5:00 PM
Game Duration: 1:57
Attendance: 1,139

Officials: Geraldine Smith-Washington, Nic Cappel, Andrew Bills

Game Time	DUQ	Score	Diff	PSU
05:47	23 POUYE F 2pt FG from turnover second chance in the paint, layup made (11)	59-59	0	
05:32	20 HAMILTON A foul shooting (1 - 4)			20 MARISA M foul drawn (6)
05:32		59-60	-1	20 MARISA M free throw 1 - 2 made (28)
05:32		59-61	-2	20 MARISA M free throw 2 - 2 made (29)
05:32				25 JEKOT K substitution out
05:32				23 HAGANS S substitution in
05:05	23 POUYE F foul drawn (5)			1 BRIGHAM A foul shooting (4 - 3)
05:05	23 POUYE F free throw 1 - 2 made (12)	60-61	-1	
05:05	23 POUYE F free throw 2 - 2 missed			
05:02	20 HAMILTON A offensive rebound (4)			
04:49	23 POUYE F 2pt FG second chance in the paint, layup blocked			
04:49				1 BRIGHAM A block (3)
04:49	offensive rebound (36)			
04:47	23 POUYE F turnover travel (7)			
04:21				20 MARISA M 2pt FG from turnover outside the paint, jump shot missed
04:16				5 KAPINUS L offensive rebound (6)
04:16				5 KAPINUS L 2pt FG from turnover second chance in the paint, layup missed
04:14	20 HAMILTON A defensive rebound (5)			
04:06	20 HAMILTON A 2pt FG outside the paint, jump shot missed			
04:03				5 KAPINUS L defensive rebound (7)
03:53				20 MARISA M 3pt FG , jump shot missed
03:49	21 BAZELAK L defensive rebound (3)			
03:44	23 POUYE F substitution out			
03:44	11 BOVELL H substitution in			
03:44				1 BRIGHAM A substitution out
03:44				10 SABEL T substitution in
03:44	Timeout 30 Sec			
03:39	20 HAMILTON A foul drawn (3)			5 KAPINUS L foul personal (4 - 4)
03:39				5 KAPINUS L substitution out
03:39				1 BRIGHAM A substitution in
03:36	11 BOVELL H turnover lost ball (5)			20 MARISA M steal (2)
03:31				1 BRIGHAM A 2pt FG from turnover in the paint, layup missed
03:28	4 MCCONNELL M defensive rebound (10)			
03:23	4 MCCONNELL M turnover bad pass (1)			11 CAMDEN A steal (2)
03:01				10 SABEL T 3pt FG from turnover, jump shot missed
02:59				1 BRIGHAM A offensive rebound (5)
02:59	11 BOVELL H substitution out			
02:59	20 HAMILTON A substitution out			
02:59	13 SOLE L substitution in			
02:59	23 POUYE F substitution in			
02:53		60-63	-3	20 MARISA M 2pt FG from turnover second chance in the paint, driving layup made (31)
02:30	23 POUYE F 2pt FG in the paint, layup missed			
02:27				20 MARISA M defensive rebound (3)
02:13				20 MARISA M 2pt FG outside the paint, jump shot missed
02:10	4 MCCONNELL M defensive rebound (11)			
02:00	24 MYERS T 2pt FG in the paint, layup missed			



Official Basketball Play by Play - 4th Period
Penn St. at Duquesne
 12/18/21 UPMC Cooper Fieldhouse, Pittsburgh, PA
 2021-22 Duquesne Women's Basketball

Game Time: 5:00 PM
Game Duration: 1:57
Attendance: 1,139

Officials: Geraldine Smith-Washington, Nic Cappel, Andrew Bills

Game Time	DUQ	Score	Diff	PSU
01:56				11 CAMDEN A defensive rebound (7)
01:54		60-65	-5	10 SABEL T 2pt FG fast break in the paint, layup made (2)
01:54				20 MARISA M assist (4)
01:39	21 BAZELAK L turnover travel (4)			
01:39	13 SOLE L substitution out			
01:39	20 HAMILTON A substitution in			
01:27				10 SABEL T 2pt FG from turnover in the paint, layup missed
01:24	20 HAMILTON A defensive rebound (6)			
01:13	23 POUYE F 2pt FG in the paint, layup missed			
01:10				11 CAMDEN A defensive rebound (8)
00:44	23 POUYE F foul shooting (3 - 5)			20 MARISA M foul drawn (7)
00:44		60-66	-6	20 MARISA M free throw 1 - 2 made (32)
00:44		60-67	-7	20 MARISA M free throw 2 - 2 made (33)
00:44				10 SABEL T substitution out
00:44				5 KAPINUS L substitution in
00:44	Timeout 30 Sec			
00:33	23 POUYE F 2pt FG in the paint, layup missed			
00:31				1 BRIGHAM A defensive rebound (6)
00:32	20 HAMILTON A foul shooting (2 - 6)			1 BRIGHAM A foul drawn (3)
00:32				1 BRIGHAM A free throw fast break 1 - 2 missed
00:32				offensive dead ball rebound (2)
00:32		60-68	-8	1 BRIGHAM A free throw fast break 2 - 2 made (15)
00:19	21 BAZELAK L 3pt FG , jump shot missed			
00:15	23 POUYE F offensive rebound (7)			
00:14	23 POUYE F 3pt FG second chance, jump shot missed			
00:11				1 BRIGHAM A defensive rebound (7)
00:11	21 BAZELAK L steal (1)			1 BRIGHAM A turnover lost ball (2)
00:09	20 HAMILTON A 2pt FG from turnover outside the paint, jump shot missed			
00:05				11 CAMDEN A defensive rebound (9)
END OF GAME				
DUQ 60-68 PSU				



Penn St. at Duquesne

12/18/21 UPMC Cooper Fieldhouse, Pittsburgh, PA
2021-22 Duquesne Women's Basketball

Game Time: 5:00 PM
Game Duration: 1:57
Attendance: 1,139

Officials: Geraldine Smith-Washington, Nic Cappel, Andrew Bills

Penn St. - 9

NO.	Name	F	Min	FG			Rebounds			Fouls		TP	AS	TO	ST	Blocks		+/-
				M-A	3P	FT	OR	DR	TOT	PF	FD					BS	BA	
11	Anna Camden	F	08:20	0-0	0-0	0-0	0	3	3	0	0	0	0	0	1	0	0	2
5	Leilani Kapinus	G	04:28	0-1	0-0	0-0	1	1	2	1	0	0	0	0	0	0	0	-2
20	Makenna Marisa	G	10:00	1-6	0-2	4-4	0	1	1	0	4	6	1	1	2	0	0	-2
23	Shay Hagans	G	08:50	0-0	0-0	0-0	0	0	0	0	1	0	0	0	0	0	0	0
25	Kelly Jekot	G	00:56	0-0	0-0	0-0	0	0	0	0	0	0	0	0	0	0	0	0
15	Maddie Burke		03:32	0-1	0-1	0-0	1	0	1	0	0	0	0	0	0	0	0	-8
1	Ali Brigham		08:17	0-2	0-0	1-2	1	2	3	1	1	1	0	1	0	1	1	0
10	Tova Sabel		05:37	1-4	0-2	0-0	0	0	0	2	0	2	0	1	1	0	0	0
Team							0	0	0		0		0					
Totals				2-14	0-5	5-6	3	7	10	4	6	9	1	3	4	1	1	-2

Shooting By Period		
4 th FG%	2-14	14.3%
3PT%	0-5	0.0%
FT%	5-6	83.3%
GM FG%	2-14	14.3%
3PT%	0-5	0.0%
FT%	5-6	83.3%

Dead Ball Rebounds: 1, 0

Technical Fouls::NONE

Duquesne - 11

NO.	Name	C	Min	FG			Rebounds			Fouls		TP	AS	TO	ST	Blocks		+/-
				M-A	3P	FT	OR	DR	TOT	PF	FD					BS	BA	
13	Laia Sole	C	01:20	0-0	0-0	0-0	0	0	0	0	0	0	0	0	0	0	0	-4
4	Megan McConnell	G	10:00	0-1	0-1	0-0	0	4	4	1	0	0	1	1	1	0	0	2
11	Halle Bovell	G	03:23	0-0	0-0	0-0	0	1	1	0	1	0	0	2	0	0	0	6
21	Libby Bazalak	G	07:22	1-2	0-1	0-0	0	1	1	0	0	2	0	1	1	0	0	-4
24	Tess Myers	G	10:00	0-1	0-0	0-0	0	0	0	0	0	0	0	0	0	0	0	2
31	Precious Johnson		00:00	0-0	0-0	0-0	0	0	0	0	0	0	0	0	0	0	0	0
23	Fatou Pouye		09:15	2-7	0-1	1-2	2	1	3	3	1	5	0	1	0	1	1	2
20	Amaya Hamilton		08:40	1-3	0-0	2-2	1	2	3	2	2	4	0	1	0	0	0	6
Team							1	0	1		0		0					
Totals				4-14	0-3	3-4	4	9	13	6	4	11	1	6	2	1	1	2

Shooting By Period		
4 th FG%	4-14	28.6%
3PT%	0-3	0.0%
FT%	3-4	75%
GM FG%	4-14	28.6%
3PT%	0-3	0.0%
FT%	3-4	75.0%

Dead Ball Rebounds: 0, 0

Technical Fouls::NONE

	PSU	DUQ	Points from		PSU	DUQ	Period by Period Scoring								
Biggest lead	10 (4 th 9:21)	0 (1 st 10:00)	Turnovers	2	2	1st	2nd	3rd	4th	TOT					
Best Scoring Run	7(4 th 0:32)	10(4 th 5:47)	Paint	4	8	PSU	14	22	23	9	68				
Lead Changes	0		Second Chance	2	2	DUQ	18	16	15	11	60				
Times Tied	1		Fast Breaks	3	2										
Time with Lead	09:06	00:00	Bench	3	9										



Penn St. at Duquesne

12/18/21 UPMC Cooper Fieldhouse, Pittsburgh, PA
2021-22 Duquesne Women's Basketball

Game Time: 5:00 PM
Game Duration: 1:57
Attendance: 1,139

Officials: Geraldine Smith-Washington, Nic Cappel, Andrew Bills

Penn St. - 32

NO.	Name	F	Min	FG	3P	FT	Rebounds			Fouls		TP	AS	TO	ST	Blocks		+/-
				M-A	M-A	M-A	OR	DR	TOT	PF	FD					BS	BA	
11	Anna Camden	F	14:43	1-2	1-1	0-0	0	5	5	1	0	3	1	0	1	1	0	7
5	Leilani Kapinus	G	10:36	1-2	0-0	0-0	1	3	4	2	1	2	0	1	0	1	0	2
20	Makenna Marisa	G	20:00	6-13	2-5	4-4	0	2	2	2	5	18	2	3	2	0	0	6
23	Shay Hagans	G	16:55	2-2	0-0	0-0	0	1	1	0	1	4	1	0	1	0	0	6
25	Kelly Jekot	G	02:48	0-0	0-0	0-0	0	0	0	0	0	0	0	0	0	0	0	5
1	Ali Brigham		16:22	1-4	0-0	1-2	1	3	4	2	1	3	1	2	0	2	2	6
4	Niya Beverley		01:55	0-0	0-0	0-0	0	0	0	0	0	0	0	0	0	0	0	2
10	Tova Sabel		11:09	1-4	0-2	0-0	0	2	2	2	0	2	0	1	2	0	0	5
15	Maddie Burke		05:32	0-1	0-1	0-0	1	0	1	0	0	0	0	0	0	0	0	-9
Team							0	0	0			0		0				
Totals				12-28	3-9	5-6	3	16	19	9	8	32	5	7	6	4	2	6

Shooting By Period		
3 rd FG%	10-14	71.4%
3PT%	3-4	75.0%
FT%	0-0	0%
4 th FG%	2-14	14.3%
3PT%	0-5	0.0%
FT%	5-6	83.3%
GM FG%	12-28	42.9%
3PT%	3-9	33.3%
FT%	5-6	83.3%

Dead Ball Rebounds: 1, 0

Technical Fouls::NONE

Duquesne - 26

NO.	Name	C	Min	FG	3P	FT	Rebounds			Fouls		TP	AS	TO	ST	Blocks		+/-
				M-A	M-A	M-A	OR	DR	TOT	PF	FD					BS	BA	
13	Laia Sole	C	07:28	0-2	0-0	0-0	0	0	0	0	0	0	1	1	0	0	1	-8
4	Megan McConnell	G	20:00	2-4	1-2	0-0	1	6	7	2	0	5	2	1	2	0	0	-6
11	Halle Bovell	G	09:51	0-2	0-0	0-0	1	1	2	0	2	0	0	4	0	0	0	4
21	Libby Bazalak	G	15:22	1-2	0-1	2-4	0	2	2	0	2	4	0	2	1	0	0	-13
24	Tess Myers	G	20:00	3-7	2-4	0-0	0	0	0	0	0	8	0	0	0	0	1	-6
31	Precious Johnson		03:52	0-1	0-0	0-0	0	1	1	1	0	0	0	0	0	1	1	-4
23	Fatou Pouye		11:57	2-8	0-2	1-2	2	1	3	3	2	5	0	1	0	1	1	-4
20	Amaya Hamilton		11:30	1-4	0-0	2-4	2	2	4	2	3	4	0	1	1	0	0	7
Team							2	0	2			0		0				
Totals				9-30	3-9	5-10	8	13	21	8	9	26	3	10	4	2	4	-6

Shooting By Period		
3 rd FG%	5-16	31.3%
3PT%	3-6	50.0%
FT%	2-6	33.3%
4 th FG%	4-14	28.6%
3PT%	0-3	0.0%
FT%	3-4	75%
GM FG%	9-30	30.0%
3PT%	3-9	33.3%
FT%	5-10	50.0%

Dead Ball Rebounds: 2, 0

Technical Fouls::NONE

	PSU	DUQ
Biggest lead	11 (3 rd 3:10)	0 (1 st 10:00)
Best Scoring Run	7(3 rd 5:24)	10(4 th 5:47)
Lead Changes	0	
Times Tied	2	
Time with Lead	18:51	00:00

Points from	PSU	DUQ
Turnovers	9	2
Paint	16	12
Second Chance	2	5
Fast Breaks	9	4
Bench	5	9

	Period by Period Scoring				
	1st	2nd	3rd	4th	TOT
PSU	14	22	23	9	68
DUQ	18	16	15	11	60

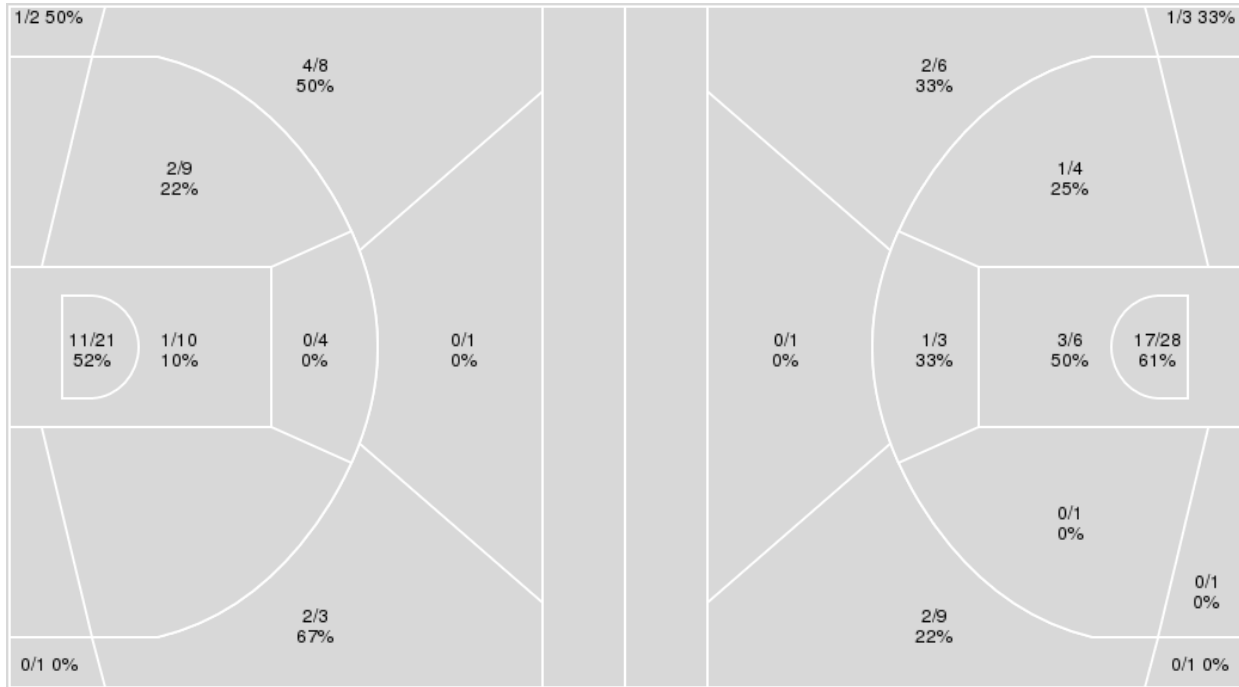


Officials: Geraldine Smith-Washington, Nic Cappel, Andrew Bills

{ Players => 0, 1, 2, 3, 4, 10, 11, 13, 14, 20, 21, 22, 23, 24, 31, 35; } FG { Players => All; } FG Types => All; Results => All;
 Types => All; Results => All;

Duquesne

Penn St.



Duquesne	M/A	%
Field Goals	21/59	36
2 Points	14/44	32
3 Points	7/15	47
Free Throws	11/18	61

Penn St.	M/A	%
Field Goals	27/63	43
2 Points	22/43	51
3 Points	5/20	25
Free Throws	9/13	69



Penn St. at Duquesne

12/18/21 UPMC Cooper Fieldhouse, Pittsburgh, PA
2021-22 Duquesne Women's Basketball

Game Time: 5:00 PM
Game Duration: 1:57
Attendance: 1,139

Officials: Geraldine Smith-Washington, Nic Cappel, Andrew Bills

Penn St.

No	Name	Mins		Score		Points Diff		Points per Min		Assists		Rebounds		Steals		Turnovers	
		On	Off	On	Off	On	Off	On	Off	On	Off	On	Off	On	Off	On	Off
1	Ali Brigham	28:02	11:58	53 - 43	15 - 17	10	-2	1.89	1.25	9	4	27	11	6	3	9	5
4	Niya Beverley	13:40	26:20	26 - 28	42 - 32	-2	10	1.90	1.59	4	9	11	27	1	8	4	10
5	Leilani Kapinus	21:24	18:36	36 - 38	32 - 22	-2	10	1.68	1.72	9	4	17	21	3	6	8	6
10	Tova Sabel	16:16	23:44	29 - 25	39 - 35	4	4	1.78	1.64	6	7	13	25	5	4	5	9
11	Anna Camden	23:41	16:19	40 - 27	28 - 33	13	-5	1.69	1.72	7	6	24	14	6	3	8	6
15	Maddie Burke	13:59	26:01	17 - 18	51 - 42	-1	9	1.22	1.96	1	12	15	23	4	5	6	8
20	Makenna Marisa	39:29	00:31	66 - 60	2 - 0	6	2	1.67	3.87	13	0	37	1	9	0	14	0
23	Shay Hagans	31:20	08:40	48 - 41	20 - 19	7	1	1.53	2.31	10	3	34	4	9	0	11	3
25	Kelly Jekot	12:09	27:51	25 - 20	43 - 40	5	3	2.06	1.54	6	7	12	26	2	7	5	9

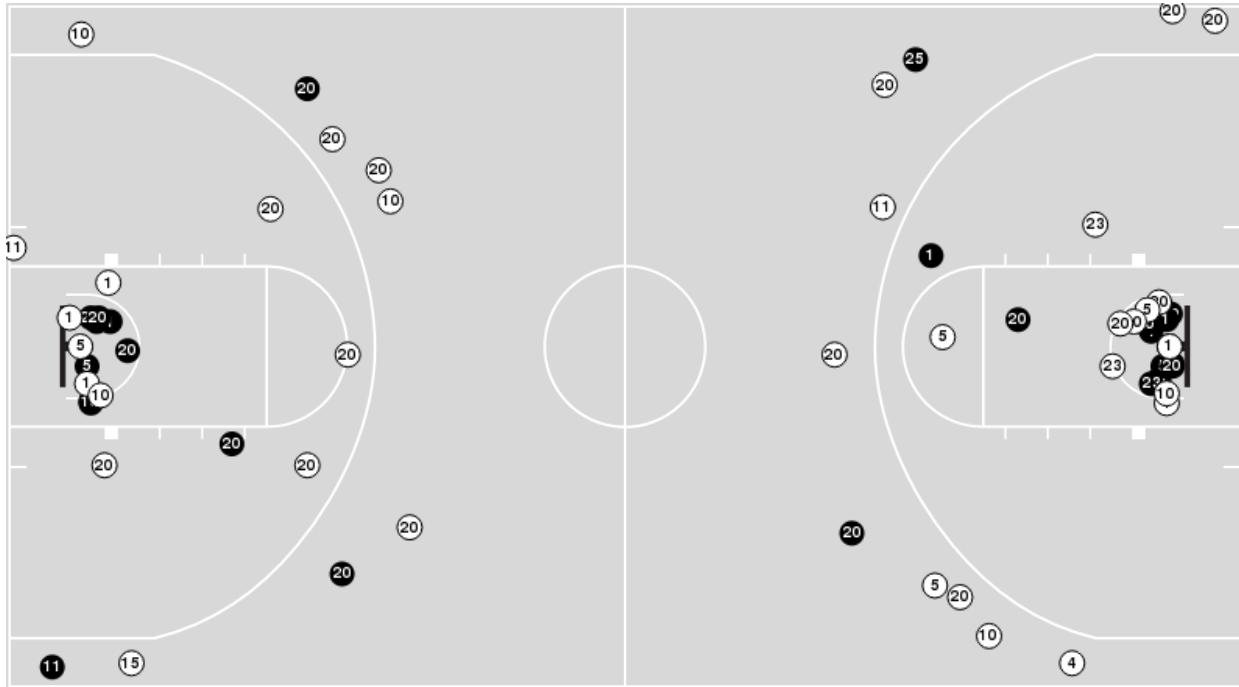
Duquesne

No	Name	Mins		Score		Points Diff		Points per Min		Assists		Rebounds		Steals		Turnovers	
		On	Off	On	Off	On	Off	On	Off	On	Off	On	Off	On	Off	On	Off
4	Megan McConnell	38:33	01:27	60 - 66	0 - 2	-6	-2	1.56	0.00	13	0	39	3	7	0	16	4
11	Halle Bovell	17:32	22:28	31 - 30	29 - 38	1	-9	1.77	1.29	5	8	16	26	2	5	9	11
13	Laia Sole	19:01	20:59	27 - 36	33 - 32	-9	1	1.42	1.57	7	6	20	22	4	3	9	11
20	Amaya Hamilton	16:08	23:52	19 - 16	41 - 52	3	-11	1.18	1.72	3	10	19	23	4	3	8	12
21	Libby Bazalak	32:56	07:04	46 - 64	14 - 4	-18	10	1.40	1.98	10	3	34	8	6	1	18	2
23	Fatou Pouye	26:09	13:51	38 - 43	22 - 25	-5	-3	1.45	1.59	9	4	31	11	4	3	15	5
24	Tess Myers	39:31	00:29	60 - 65	0 - 3	-5	-3	1.52	0.00	13	0	42	0	7	0	20	0
31	Precious Johnson	10:10	29:50	19 - 20	41 - 48	-1	-7	1.87	1.37	5	8	9	33	1	6	5	15

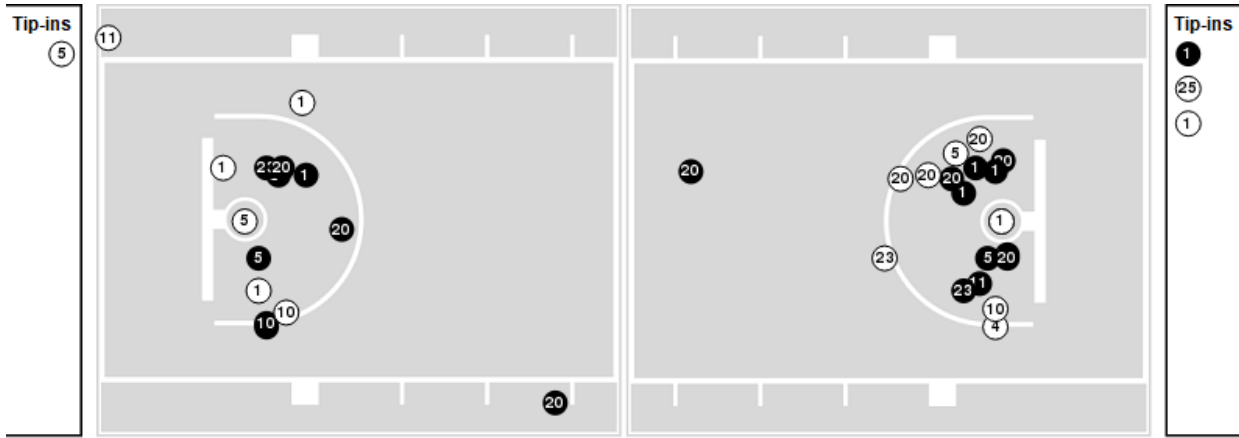


Players => AllFG Types=>AllResults=>All
Penn St.

All Field Goals



Blow Up Chart



● Made ○ Missed N - Player Number

Penn St.	M/A	%
Field Goals	27/63	43
2 Points	22/43	51
3 Points	5/20	25
Free Throws	9/13	69

Penn St.	M/A	%
Points in the Paint	40 (20 / 34)	59
Fast Break Points	18 (10/13)	77
Second Chance Points	6 (3/8)	38
Effective FG%	47	

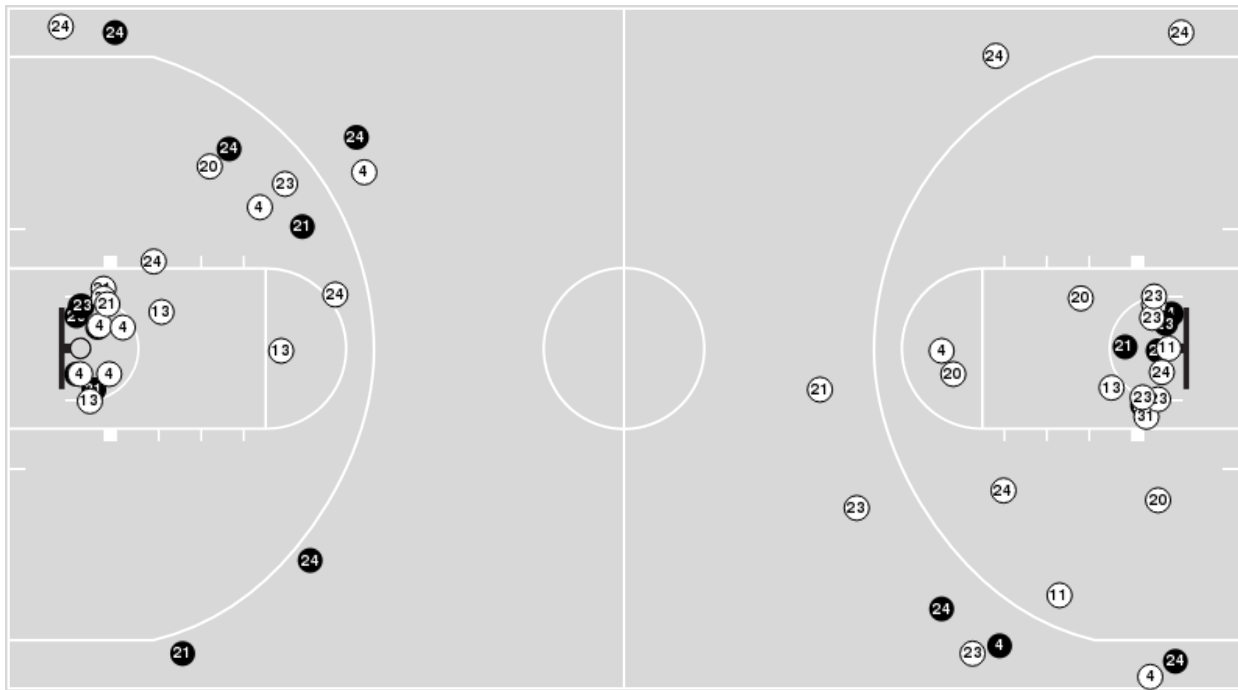


Officials: Geraldine Smith-Washington, Nic Cappel, Andrew Bills

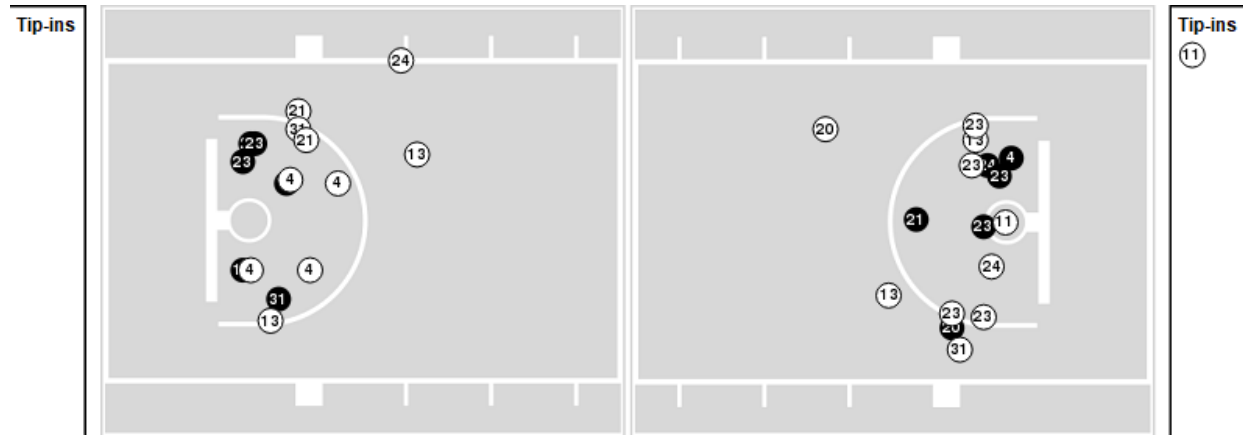
Players => 0, 1, 2, 3, 4, 10, 11, 13, 14, 20, 21, 22, 23, 24, 31, 35FG Types=>AllResults=>All

Duquesne

All Field Goals



Blow Up Chart



● Made ○ Missed N - Player Number

Duquesne	M/A	%
Field Goals	21/59	36
2 Points	14/44	32
3 Points	7/15	47
Free Throws	11/18	61

Duquesne	M/A	%
Points in the Paint	24 (12 / 31)	39
Fast Break Points	6 (5/5)	100
Second Chance Points	9 (4/12)	33
Effective FG%	42	



Officials: Geraldine Smith-Washington, Nic Cappel, Andrew Bills

Penn St.

Lineup	Quarter On	Time On	Quarter Off	Time Off	Time on Court	Score	Score Diff	Reb	Stl	Tov	Ass	PPP
5- Kapinus L/ 11- Camden A/ 20- Marisa M/ 23- Hagans S/ 25- Jekot K/	1	10:00	1	07:52	02:08	4-2	2	3	0	1	2	1.0309
4- Beverley N/ 11- Camden A/ 20- Marisa M/ 23- Hagans S/ 25- Jekot K/	1	07:52	1	06:29	01:23	0-4	-4	1	0	1	0	0.0000
1- Brigham A/ 4- Beverley N/ 10- Sabel T/ 20- Marisa M/ 23- Hagans S/	1	06:29	1	04:05	02:24	5-6	-1	2	1	0	1	1.0246
1- Brigham A/ 4- Beverley N/ 5- Kapinus L/ 10- Sabel T/ 20- Marisa M/	1	04:05	1	03:50	00:15	0-0	0	0	0	1	0	0.0000
1- Brigham A/ 4- Beverley N/ 5- Kapinus L/ 15- Burke M/ 20- Marisa M/	1	03:50	1	02:39	01:11	0-2	-2	1	0	1	0	0.0000
5- Kapinus L/ 11- Camden A/ 15- Burke M/ 20- Marisa M/ 23- Hagans S/	1	02:39	1	01:30	01:09	0-2	-2	0	1	0	0	0.0000
11- Camden A/ 15- Burke M/ 20- Marisa M/ 23- Hagans S/ 25- Jekot K/	1	01:30	1	00:29	01:01	2-0	2	1	1	1	1	0.6667
1- Brigham A/ 4- Beverley N/ 5- Kapinus L/ 20- Marisa M/ 25- Jekot K/	1	00:29	2	07:13	03:16	8-9	-1	2	0	0	2	1.6000
1- Brigham A/ 4- Beverley N/ 10- Sabel T/ 20- Marisa M/ 23- Hagans S/	2	07:13	2	06:39	00:34	0-0	0	0	0	0	0	0.0000
1- Brigham A/ 5- Kapinus L/ 10- Sabel T/ 20- Marisa M/ 23- Hagans S/	2	06:39	2	05:06	01:33	4-6	-2	0	0	0	2	2.0000
1- Brigham A/ 5- Kapinus L/ 10- Sabel T/ 15- Burke M/ 23- Hagans S/	2	05:06	2	05:06	00:00	2-0	2	0	0	0	0	2.2727
10- Sabel T/ 11- Camden A/ 15- Burke M/ 23- Hagans S/	2	05:06	2	05:06	00:00	0-0	0	0	0	0	0	0.0000
5- Kapinus L/ 10- Sabel T/ 11- Camden A/ 15- Burke M/ 23- Hagans S/	2	05:06	2	04:45	00:21	0-0	0	1	0	0	0	0.0000
5- Kapinus L/ 11- Camden A/ 15- Burke M/ 20- Marisa M/ 23- Hagans S/	2	04:45	2	04:16	00:29	0-0	0	0	0	0	0	0.0000
1- Brigham A/ 11- Camden A/ 15- Burke M/ 20- Marisa M/ 23- Hagans S/	2	04:16	2	02:42	01:34	4-0	4	3	0	1	0	1.3333
1- Brigham A/ 4- Beverley N/ 5- Kapinus L/ 11- Camden A/ 15- Burke M/	2	02:42	2	02:32	00:10	0-0	0	0	0	0	0	0.0000
1- Brigham A/ 4- Beverley N/ 11- Camden A/ 15- Burke M/ 20- Marisa M/	2	02:32	2	01:49	00:43	4-0	4	1	0	0	0	2.0000
4- Beverley N/ 5- Kapinus L/ 15- Burke M/ 20- Marisa M/ 23- Hagans S/	2	01:49	2	01:33	00:16	1-2	-1	0	0	0	0	0.6944
4- Beverley N/ 15- Burke M/ 20- Marisa M/ 23- Hagans S/ 25- Jekot K/	2	01:33	3	10:00	01:33	2-1	1	4	0	1	0	0.6667
1- Brigham A/ 5- Kapinus L/ 11- Camden A/ 20- Marisa M/ 23- Hagans S/	3	10:00	3	07:24	02:36	4-6	-2	3	0	1	1	0.8000
1- Brigham A/ 11- Camden A/ 20- Marisa M/ 23- Hagans S/ 25- Jekot K/	3	07:24	3	05:32	01:52	7-2	5	1	1	0	1	2.3333
4- Beverley N/ 5- Kapinus L/ 10- Sabel T/ 11- Camden A/ 20- Marisa M/	3	05:32	3	03:37	01:55	6-4	2	0	0	0	1	2.0000
1- Brigham A/ 5- Kapinus L/ 10- Sabel T/ 20- Marisa M/ 23- Hagans S/	3	03:37	3	02:00	01:37	4-0	4	2	1	2	1	1.0000
1- Brigham A/ 10- Sabel T/ 15- Burke M/ 20- Marisa M/ 23- Hagans S/	3	02:00	4	08:20	03:40	2-7	-5	3	1	1	0	0.4000
10- Sabel T/ 11- Camden A/ 15- Burke M/ 20- Marisa M/ 23- Hagans S/	4	08:20	4	07:22	00:58	0-2	-2	1	0	1	0	0.0000
5- Kapinus L/ 11- Camden A/ 15- Burke M/ 20- Marisa M/ 23- Hagans S/	4	07:22	4	06:42	00:40	0-0	0	0	1	0	0	0.0000
1- Brigham A/ 5- Kapinus L/ 11- Camden A/ 15- Burke M/ 20- Marisa M/	4	06:42	4	06:28	00:14	0-2	-2	0	0	0	0	0.0000
1- Brigham A/ 5- Kapinus L/ 11- Camden A/ 20- Marisa M/ 25- Jekot K/	4	06:28	4	05:32	00:56	2-2	0	0	0	1	0	1.0638
1- Brigham A/ 5- Kapinus L/ 11- Camden A/ 20- Marisa M/ 23- Hagans S/	4	05:32	4	03:44	01:48	0-1	-1	2	0	0	0	0.0000
5- Kapinus L/ 10- Sabel T/ 11- Camden A/ 20- Marisa M/ 23- Hagans S/	4	03:44	4	03:39	00:05	0-0	0	0	0	0	0	0.0000
1- Brigham A/ 10- Sabel T/ 11- Camden A/ 20- Marisa M/ 23- Hagans S/	4	03:39	4	00:44	02:54	6-0	6	4	2	0	1	1.0204
1- Brigham A/ 5- Kapinus L/ 11- Camden A/ 20- Marisa M/ 23- Hagans S/	4	00:44	4	00:00	00:45	1-0	1	3	0	1	0	0.5319



Duquesne

Lineup	Quarter On	Time On	Quarter Off	Time Off	Time on Court	Score	Score Diff	Reb	Stl	Tov	Ass	PPP
4- McConnell M/ 11- Bovell H/ 13- Sole L/ 21- Bazalak L/ 24- Myers T/	1	10:00	1	07:52	02:08	2-4	-2	1	1	0	1	0.6667
4- McConnell M/ 13- Sole L/ 21- Bazalak L/ 23- Pouye F/ 24- Myers T/	1	07:52	1	06:29	01:23	4-0	4	1	1	0	1	1.3333
4- McConnell M/ 21- Bazalak L/ 23- Pouye F/ 24- Myers T/ 31- Johnson P/	1	06:29	1	04:05	02:24	6-5	1	3	0	2	2	1.2000
4- McConnell M/ 20- Hamilton A/ 23- Pouye F/ 24- Myers T/ 31- Johnson P/	1	04:05	1	02:39	01:26	2-0	2	2	0	1	1	0.6667
4- McConnell M/ 13- Sole L/ 20- Hamilton A/ 23- Pouye F/ 24- Myers T/	1	02:39	1	02:13	00:26	2-0	2	1	0	0	1	2.0000
13- Sole L/ 20- Hamilton A/ 21- Bazalak L/ 23- Pouye F/ 24- Myers T/	1	02:13	1	01:30	00:43	0-0	0	2	0	2	0	0.0000
11- Bovell H/ 13- Sole L/ 20- Hamilton A/ 21- Bazalak L/ 24- Myers T/	1	01:30	1	01:23	00:07	0-0	0	0	0	0	0	0.0000
11- Bovell H/ 13- Sole L/ 21- Bazalak L/ 23- Pouye F/ 24- Myers T/	1	01:23	1	00:46	00:37	0-2	-2	1	0	2	0	0.0000
4- McConnell M/ 11- Bovell H/ 13- Sole L/ 21- Bazalak L/ 24- Myers T/	1	00:46	1	00:29	00:17	2-0	2	0	0	0	0	2.2727
4- McConnell M/ 11- Bovell H/ 13- Sole L/ 20- Hamilton A/ 21- Bazalak L/	1	00:29	2	10:00	00:29	0-3	-3	0	0	0	0	0.0000
4- McConnell M/ 11- Bovell H/ 13- Sole L/ 21- Bazalak L/ 24- Myers T/	2	10:00	2	07:13	02:47	7-5	2	4	0	1	2	1.4000
4- McConnell M/ 21- Bazalak L/ 23- Pouye F/ 24- Myers T/ 31- Johnson P/	2	07:13	2	04:45	02:28	6-6	0	2	0	0	2	1.5464
4- McConnell M/ 13- Sole L/ 21- Bazalak L/ 23- Pouye F/ 24- Myers T/	2	04:45	2	02:42	02:03	0-4	-4	2	1	1	0	0.0000
4- McConnell M/ 20- Hamilton A/ 21- Bazalak L/ 23- Pouye F/ 24- Myers T/	2	02:42	2	01:49	00:53	0-4	-4	0	0	0	0	0.0000
4- McConnell M/ 11- Bovell H/ 21- Bazalak L/ 23- Pouye F/ 24- Myers T/	2	01:49	2	01:07	00:42	2-1	1	1	0	1	0	1.0638
4- McConnell M/ 13- Sole L/ 21- Bazalak L/ 23- Pouye F/ 24- Myers T/	2	01:07	2	00:34	00:33	0-0	0	1	0	0	0	0.0000
4- McConnell M/ 11- Bovell H/ 20- Hamilton A/ 23- Pouye F/ 24- Myers T/	2	00:34	3	10:00	00:34	1-2	-1	0	0	0	0	1.1364
4- McConnell M/ 11- Bovell H/ 13- Sole L/ 21- Bazalak L/ 24- Myers T/	3	10:00	3	07:24	02:36	6-4	2	3	0	0	1	1.2295
4- McConnell M/ 11- Bovell H/ 21- Bazalak L/ 24- Myers T/ 31- Johnson P/	3	07:24	3	05:32	01:52	2-7	-5	0	0	2	0	0.5000
4- McConnell M/ 13- Sole L/ 21- Bazalak L/ 23- Pouye F/ 24- Myers T/	3	05:32	3	02:50	02:42	4-10	-6	3	0	2	1	0.8197
4- McConnell M/ 13- Sole L/ 20- Hamilton A/ 21- Bazalak L/ 24- Myers T/	3	02:50	3	02:00	00:50	0-0	0	0	1	0	0	0.0000
4- McConnell M/ 11- Bovell H/ 20- Hamilton A/ 24- Myers T/ 31- Johnson P/	3	02:00	4	10:00	02:00	3-2	1	2	1	0	0	0.7732
4- McConnell M/ 11- Bovell H/ 20- Hamilton A/ 23- Pouye F/ 24- Myers T/	4	10:00	4	07:22	02:38	6-0	6	3	0	1	1	1.5464
4- McConnell M/ 20- Hamilton A/ 21- Bazalak L/ 23- Pouye F/ 24- Myers T/	4	07:22	4	03:44	03:38	5-2	3	6	1	2	0	1.0246
4- McConnell M/ 11- Bovell H/ 20- Hamilton A/ 21- Bazalak L/ 24- Myers T/	4	03:44	4	02:59	00:45	0-0	0	1	0	2	0	0.0000
4- McConnell M/ 13- Sole L/ 21- Bazalak L/ 23- Pouye F/ 24- Myers T/	4	02:59	4	01:39	01:20	0-4	-4	1	0	1	0	0.0000
4- McConnell M/ 20- Hamilton A/ 21- Bazalak L/ 23- Pouye F/ 24- Myers T/	4	01:39	4	00:00	01:39	0-3	-3	2	1	0	0	0.0000



Officials: Geraldine Smith-Washington, Nic Cappel, Andrew Bills

Penn St.

Lineup	Time	Score	Score Diff	Pts/Min	Reb	Stl	Tov	Ass	PPP
1- Brigham A/ 5- Kapinus L/ 11- Camden A/ 20- Marisa M/ 23- Hagans S/	05:09	5-7	-2	0.9709	8	0	2	1	0.5631
1- Brigham A/ 10- Sabel T/ 15- Burke M/ 20- Marisa M/ 23- Hagans S/	03:40	2-7	-5	0.5455	3	1	1	0	0.4000
1- Brigham A/ 4- Beverley N/ 5- Kapinus L/ 20- Marisa M/ 25- Jekot K/	03:16	8-9	-1	2.4490	2	0	0	2	1.6000
1- Brigham A/ 5- Kapinus L/ 10- Sabel T/ 20- Marisa M/ 23- Hagans S/	03:10	8-6	2	2.5263	2	1	2	3	1.3333
1- Brigham A/ 4- Beverley N/ 10- Sabel T/ 20- Marisa M/ 23- Hagans S/	02:58	5-6	-1	1.6854	2	1	0	1	0.8503
1- Brigham A/ 10- Sabel T/ 11- Camden A/ 20- Marisa M/ 23- Hagans S/	02:54	6-0	6	2.0690	4	2	0	1	1.0204
5- Kapinus L/ 11- Camden A/ 15- Burke M/ 20- Marisa M/ 23- Hagans S/	02:18	0-2	-2	0.0000	0	2	0	0	0.0000
5- Kapinus L/ 11- Camden A/ 20- Marisa M/ 23- Hagans S/ 25- Jekot K/	02:08	4-2	2	1.8750	3	0	1	2	1.0309
4- Beverley N/ 5- Kapinus L/ 10- Sabel T/ 11- Camden A/ 20- Marisa M/	01:55	6-4	2	3.1304	0	0	0	1	2.0000
1- Brigham A/ 11- Camden A/ 20- Marisa M/ 23- Hagans S/ 25- Jekot K/	01:52	7-2	5	3.7500	1	1	0	1	2.3333
1- Brigham A/ 11- Camden A/ 15- Burke M/ 20- Marisa M/ 23- Hagans S/	01:34	4-0	4	2.5532	3	0	1	0	1.3333
4- Beverley N/ 15- Burke M/ 20- Marisa M/ 23- Hagans S/ 25- Jekot K/	01:33	2-1	1	1.2903	4	0	1	0	0.6667
4- Beverley N/ 11- Camden A/ 20- Marisa M/ 23- Hagans S/ 25- Jekot K/	01:23	0-4	-4	0.0000	1	0	1	0	0.0000
1- Brigham A/ 4- Beverley N/ 5- Kapinus L/ 15- Burke M/ 20- Marisa M/	01:11	0-2	-2	0.0000	1	0	1	0	0.0000
11- Camden A/ 15- Burke M/ 20- Marisa M/ 23- Hagans S/ 25- Jekot K/	01:01	2-0	2	1.9672	1	1	1	1	0.6667
10- Sabel T/ 11- Camden A/ 15- Burke M/ 20- Marisa M/ 23- Hagans S/	00:58	0-2	-2	0.0000	1	0	1	0	0.0000
1- Brigham A/ 5- Kapinus L/ 11- Camden A/ 20- Marisa M/ 25- Jekot K/	00:56	2-2	0	2.1429	0	0	1	0	1.0638
1- Brigham A/ 4- Beverley N/ 11- Camden A/ 15- Burke M/ 20- Marisa M/	00:43	4-0	4	5.5814	1	0	0	0	2.0000
5- Kapinus L/ 10- Sabel T/ 11- Camden A/ 15- Burke M/ 23- Hagans S/	00:21	0-0	0	0.0000	1	0	0	0	0.0000
4- Beverley N/ 5- Kapinus L/ 15- Burke M/ 20- Marisa M/ 23- Hagans S/	00:16	1-2	-1	3.7500	0	0	0	0	0.6944
1- Brigham A/ 4- Beverley N/ 5- Kapinus L/ 10- Sabel T/ 20- Marisa M/	00:15	0-0	0	0.0000	0	0	1	0	0.0000
1- Brigham A/ 5- Kapinus L/ 11- Camden A/ 15- Burke M/ 20- Marisa M/	00:14	0-2	-2	0.0000	0	0	0	0	0.0000
1- Brigham A/ 4- Beverley N/ 5- Kapinus L/ 11- Camden A/ 15- Burke M/	00:10	0-0	0	0.0000	0	0	0	0	0.0000
5- Kapinus L/ 10- Sabel T/ 11- Camden A/ 20- Marisa M/ 23- Hagans S/	00:05	0-0	0	0.0000	0	0	0	0	0.0000
1- Brigham A/ 5- Kapinus L/ 10- Sabel T/ 15- Burke M/ 23- Hagans S/	00:00	2-0	2	∞	0	0	0	0	2.2727
10- Sabel T/ 11- Camden A/ 15- Burke M/ 23- Hagans S/	00:00	0-0	0	NaN	0	0	0	0	0.0000



Officials: Geraldine Smith-Washington, Nic Cappel, Andrew Bills

Duquesne

Lineup	Time	Score	Score Diff	Pts/Min	Reb	Stl	Tov	Ass	PPP
4- McConnell M/ 13- Sole L/ 21- Bazalak L/ 23- Pouye F/ 24- Myers T/	08:01	8-18	-10	0.9979	8	2	4	2	0.5038
4- McConnell M/ 11- Bovell H/ 13- Sole L/ 21- Bazalak L/ 24- Myers T/	07:48	17-13	4	2.1795	8	1	1	4	1.2355
4- McConnell M/ 20- Hamilton A/ 21- Bazalak L/ 23- Pouye F/ 24- Myers T/	06:10	5-9	-4	0.8108	8	2	2	0	0.5061
4- McConnell M/ 21- Bazalak L/ 23- Pouye F/ 24- Myers T/ 31- Johnson P/	04:52	12-11	1	2.4658	5	0	2	4	1.3514
4- McConnell M/ 11- Bovell H/ 20- Hamilton A/ 23- Pouye F/ 24- Myers T/	03:12	7-2	5	2.1875	3	0	1	1	1.4706
4- McConnell M/ 11- Bovell H/ 20- Hamilton A/ 24- Myers T/ 31- Johnson P/	02:00	3-2	1	1.5000	2	1	0	0	0.7732
4- McConnell M/ 11- Bovell H/ 21- Bazalak L/ 24- Myers T/ 31- Johnson P/	01:52	2-7	-5	1.0714	0	0	2	0	0.5000
4- McConnell M/ 20- Hamilton A/ 23- Pouye F/ 24- Myers T/ 31- Johnson P/	01:26	2-0	2	1.3953	2	0	1	1	0.6667
4- McConnell M/ 13- Sole L/ 20- Hamilton A/ 21- Bazalak L/ 24- Myers T/	00:50	0-0	0	0.0000	0	1	0	0	0.0000
4- McConnell M/ 11- Bovell H/ 20- Hamilton A/ 21- Bazalak L/ 24- Myers T/	00:45	0-0	0	0.0000	1	0	2	0	0.0000
13- Sole L/ 20- Hamilton A/ 21- Bazalak L/ 23- Pouye F/ 24- Myers T/	00:43	0-0	0	0.0000	2	0	2	0	0.0000
4- McConnell M/ 11- Bovell H/ 21- Bazalak L/ 23- Pouye F/ 24- Myers T/	00:42	2-1	1	2.8571	1	0	1	0	1.0638
11- Bovell H/ 13- Sole L/ 21- Bazalak L/ 23- Pouye F/ 24- Myers T/	00:37	0-2	-2	0.0000	1	0	2	0	0.0000
4- McConnell M/ 11- Bovell H/ 13- Sole L/ 20- Hamilton A/ 21- Bazalak L/	00:29	0-3	-3	0.0000	0	0	0	0	0.0000
4- McConnell M/ 13- Sole L/ 20- Hamilton A/ 23- Pouye F/ 24- Myers T/	00:26	2-0	2	4.6154	1	0	0	1	2.0000
11- Bovell H/ 13- Sole L/ 20- Hamilton A/ 21- Bazalak L/ 24- Myers T/	00:07	0-0	0	0.0000	0	0	0	0	0.0000