



Officials: Karen Preato, Tiara Cruse, Fatou Cissoko-Stephens

Penn St. - 69

Record: 4-4

NO.	Name	C/G	Min	FG			3P			FT			Rebounds			Fouls		TP	AS	TO	ST	Blocks		+/-
				M-A	M-A	M-A	OR	DR	TOT	PF	FD	BS	BA											
1	Ali Brigham	C	28:49	9-15	0-0	0-0	2	3	5	2	3	18	1	6	0	0	1	6	0	0	0	1	-9	
4	Niya Beverley	G	32:13	3-6	2-5	2-2	0	1	1	1	2	10	3	1	2	1	0	1	2	1	0	0	-23	
5	Leilani Kapinus	G	21:46	4-7	0-0	0-0	4	2	6	5	0	8	3	5	3	2	0	5	3	2	0	0	-11	
20	Makenna Marisa	G	32:38	6-15	0-2	2-2	0	4	4	2	2	14	6	3	3	0	1	6	3	3	0	1	-10	
23	Shay Hagans	G	19:07	1-3	1-2	0-0	0	0	0	0	0	3	1	2	0	0	0	2	0	0	0	0	-10	
0	Nyam Thornton		08:11	0-1	0-1	0-0	1	2	3	1	1	0	2	1	0	0	0	1	0	0	0	0	-3	
10	Tova Sabel		12:40	2-4	1-2	0-0	0	3	3	1	0	5	0	1	0	0	0	1	0	0	0	0	-4	
11	Anna Camden		16:35	0-5	0-4	0-0	1	2	3	1	0	0	1	1	0	0	0	1	0	0	0	0	-5	
15	Maddie Burke		12:51	1-5	1-4	0-0	0	3	3	1	1	3	1	1	0	1	0	1	0	1	0	0	-4	
25	Kelly Jekot		15:10	3-5	2-2	0-0	0	0	0	2	0	8	2	0	3	0	0	0	3	0	0	0	-6	
Team							3	2	5			0			0									
<b>Totals</b>				29-66	7-22	4-4	11	22	33	16	9	69	20	21	11	4	2							-17

Technical Fouls::NONE

Shooting By Period		
1 <sup>st</sup> FG%	6-16	37.5%
3PT%	2-6	33.3%
FT%	0-0	0%
2 <sup>nd</sup> FG%	8-16	50.0%
3PT%	1-5	20.0%
FT%	1-1	100%
3 <sup>rd</sup> FG%	6-13	46.2%
3PT%	3-6	50.0%
FT%	1-1	100%
4 <sup>th</sup> FG%	9-21	42.9%
3PT%	1-5	20.0%
FT%	2-2	100%
GM FG%	29-66	43.9%
3PT%	7-22	31.8%
FT%	4-4	100.0%

Dead Ball Rebounds: 0, 0

Boston College - 86

Record: 6-1

NO.	Name	C/G	Min	FG			3P			FT			Rebounds			Fouls		TP	AS	TO	ST	Blocks		+/-
				M-A	M-A	M-A	OR	DR	TOT	PF	FD	BS	BA											
3	Jaelyn Batts	F	27:20	7-8	0-0	2-2	6	6	12	1	1	16	5	4	2	0	0	16	5	4	2	0	0	16
13	Taylor Soule	F	29:51	0-7	0-0	4-4	1	4	5	1	4	4	5	2	2	0	1	12	5	2	2	0	1	12
5	Maria Gakdeng	C	17:34	3-4	0-0	0-0	3	4	7	1	0	6	0	1	1	2	7	6	0	1	1	2	1	7
1	Cameron Swartz	G	32:57	11-24	2-7	5-6	0	4	4	0	5	29	2	5	2	0	19	29	2	5	2	0	2	19
14	Marnelle Garraud	G	30:18	5-8	4-7	2-2	0	2	2	3	3	16	1	3	2	0	19	16	1	3	2	0	0	19
12	Ally VanTimmeren		21:49	4-9	0-0	0-0	4	1	5	2	1	8	2	0	2	0	9	8	2	0	2	0	0	9
10	Makayla Dickens		21:45	1-9	1-7	1-2	2	2	4	0	1	4	4	1	0	0	0	4	4	1	0	0	0	0
2	Kaylah Ivey		17:49	1-2	1-2	0-0	0	1	1	0	1	3	1	1	1	0	2	3	1	1	1	0	0	2
32	Clara Ford		00:37	0-0	0-0	0-0	0	0	0	1	0	0	0	0	0	0	1	0	0	0	0	0	0	1
Team							1	2	3			0			0									
<b>Totals</b>				32-71	8-23	14-16	17	26	43	9	16	86	20	17	12	2	4	17						

Technical Fouls::NONE

Shooting By Period		
1 <sup>st</sup> FG%	8-17	47.1%
3PT%	1-6	16.7%
FT%	3-4	75%
2 <sup>nd</sup> FG%	7-20	35.0%
3PT%	1-6	16.7%
FT%	2-2	100%
3 <sup>rd</sup> FG%	10-19	52.6%
3PT%	5-8	62.5%
FT%	4-5	80%
4 <sup>th</sup> FG%	7-15	46.7%
3PT%	1-3	33.3%
FT%	5-5	100%
GM FG%	32-71	45.1%
3PT%	8-23	34.8%
FT%	14-16	87.5%

Dead Ball Rebounds: 2, 0

	PSU	BC
Biggest lead	0 (1 <sup>st</sup> 10:00)	23 (4 <sup>th</sup> 8:23)
Best Scoring Run	7(2 <sup>nd</sup> 1:52)	6(2 <sup>nd</sup> 9:34)
Lead Changes	0	
Times Tied	1	
Time with Lead	00:00	39:31

	PSU	BC
Points from		
Turnovers	15	21
Paint	42	32
Second Chance	10	15
Fast Breaks	11	7
Bench	16	15

	Period by Period Scoring				
	1st	2nd	3rd	4th	TOT
PSU	14	18	16	21	69
BC	20	17	29	20	86



**Period 1**

**Quarter Starters:**

<b>BC</b>	1 Swartz C	3 Batts J	5 Gakdeng M	13 Soule T	14 Garraud M
<b>PSU</b>	1 Brigham A	4 Beverley N	5 Kapinus L	20 Marisa M	23 Hagans S

Game Time	BC	Score	Diff	PSU
10:00	13 SOULE T jumpball won			5 KAPINUS L jumpball lost
09:54	1 SWARTZ C 2pt FG in the paint, layup made (2)	<b>2-0</b>	<b>2</b>	
09:54	13 SOULE T assist (1)			
09:43				20 MARISA M 3pt FG , jump shot missed
09:39	13 SOULE T defensive rebound (1)			
09:25	1 SWARTZ C 3pt FG , jump shot missed			
09:21	3 BATTS J offensive rebound (1)			
09:09	1 SWARTZ C turnover bad pass (1)			5 KAPINUS L steal (1)
08:49				5 KAPINUS L 2pt FG from turnover in the paint, layup missed
08:47				5 KAPINUS L offensive rebound (1)
08:46				5 KAPINUS L 2pt FG from turnover second chance in the paint, layup missed
08:43	14 GARRAUD M defensive rebound (1)			
08:30	13 SOULE T 2pt FG in the paint, layup missed			
08:26				1 BRIGHAM A defensive rebound (1)
08:25	14 GARRAUD M foul drawn (1)			4 BEVERLEY N foul offensive (1 - 1)
08:25				4 BEVERLEY N turnover offensive (1)
08:06	1 SWARTZ C 2pt FG from turnover outside the paint, pull up jump shot made (4)	<b>4-0</b>	<b>4</b>	
07:53	14 GARRAUD M steal (1)			23 HAGANS S turnover bad pass (1)
07:48	14 GARRAUD M 3pt FG from turnover, jump shot missed			
07:42	3 BATTS J offensive rebound (2)			
07:42	3 BATTS J turnover lost ball (1)			5 KAPINUS L steal (2)
07:40				5 KAPINUS L turnover travel (1)
07:40				5 KAPINUS L substitution out
07:40				23 HAGANS S substitution out
07:40				0 THORNTON N substitution in
07:40				10 SABEL T substitution in
07:28	13 SOULE T 2pt FG from turnover in the paint, turnaround jump shot missed			
07:24				0 THORNTON N defensive rebound (1)
07:18				0 THORNTON N 3pt FG , jump shot missed
07:14	1 SWARTZ C defensive rebound (1)			
07:12	1 SWARTZ C turnover bad pass (2)			
07:06	14 GARRAUD M foul personal (1 - 1)			0 THORNTON N foul drawn (1)
07:06				4 BEVERLEY N substitution out
07:06				11 CAMDEN A substitution in
06:43		<b>4-2</b>	<b>2</b>	10 SABEL T 2pt FG from turnover in the paint, layup made (2)
06:43				20 MARISA M assist (1)
06:31	14 GARRAUD M 3pt FG , jump shot missed			
06:28				11 CAMDEN A defensive rebound (1)
06:20	5 GAKDENG M foul personal (1 - 2)			1 BRIGHAM A foul drawn (1)
06:20	5 GAKDENG M substitution out			
06:20	12 VANTIMMEREN A substitution in			



**Penn St. at Boston College**

12/02/21 Conte Forum, Chestnut Hill, Mass  
2021-22 Women's Basketball

Game Time: 6:00 PM

Game Duration: 1:46

Attendance: 833

Officials: Karen Preato, Tiara Cruse, Fatou Cissoko-Stephens

Game Time	BC	Score	Diff	PSU
06:20				1 BRIGHAM A substitution out
06:20				15 BURKE M substitution in
06:17				15 BURKE M 3pt FG , jump shot missed
06:12	13 SOULE T defensive rebound (2)			
06:00	12 VANTIMMEREN A 2pt FG outside the paint, jump shot made (2)	<b>6-2</b>	<b>4</b>	
06:00	14 GARRAUD M assist (1)			
05:38	jump ball situation			
05:38	3 BATTS J substitution out			
05:38	10 DICKENS M substitution in			
05:30				20 MARISA M 2pt FG in the paint, driving layup missed
05:28	12 VANTIMMEREN A defensive rebound (1)			
05:28	14 GARRAUD M turnover dribbling violation (1)			
05:28				20 MARISA M substitution out
05:28				1 BRIGHAM A substitution in
05:14				1 BRIGHAM A 2pt FG from turnover in the paint, driving layup missed
05:10				0 THORNTON N offensive rebound (2)
05:06		<b>6-4</b>	<b>2</b>	1 BRIGHAM A 2pt FG from turnover second chance in the paint, layup made (2)
05:06				0 THORNTON N assist (1)
04:55	13 SOULE T foul drawn (1)			11 CAMDEN A foul shooting (1 - 2)
04:55	Timeout media			
04:55	14 GARRAUD M substitution out			
04:55	2 IVEY K substitution in			
04:55				0 THORNTON N substitution out
04:55				10 SABEL T substitution out
04:55				11 CAMDEN A substitution out
04:55				4 BEVERLEY N substitution in
04:55				20 MARISA M substitution in
04:55				25 JEKOT K substitution in
04:55	13 SOULE T free throw 1 - 2 made (1)	<b>7-4</b>	<b>3</b>	
04:55	13 SOULE T free throw 2 - 2 made (2)	<b>8-4</b>	<b>4</b>	
04:51	13 SOULE T steal (1)			1 BRIGHAM A turnover bad pass (1)
04:46	13 SOULE T turnover lost ball (1)			25 JEKOT K steal (1)
04:29		<b>8-6</b>	<b>2</b>	1 BRIGHAM A 2pt FG from turnover in the paint, layup made (4)
04:29				25 JEKOT K assist (1)
04:22	10 DICKENS M 3pt FG , jump shot missed			
04:19				15 BURKE M defensive rebound (1)
04:13				25 JEKOT K 2pt FG outside the paint, pull up jump shot missed
04:10	10 DICKENS M defensive rebound (1)			
04:06	2 IVEY K 3pt FG fast break, jump shot made (3)	<b>11-6</b>	<b>5</b>	
04:06	10 DICKENS M assist (1)			
03:53		<b>11-9</b>	<b>2</b>	25 JEKOT K 3pt FG , jump shot made (3)
03:53				15 BURKE M assist (1)
03:32	1 SWARTZ C 3pt FG , jump shot missed			
03:27	12 VANTIMMEREN A offensive rebound (2)			
03:27	12 VANTIMMEREN A 2pt FG second chance in the paint, layup missed			
03:27	10 DICKENS M offensive rebound (2)			



**Penn St. at Boston College**

12/02/21 Conte Forum, Chestnut Hill, Mass  
2021-22 Women's Basketball

Officials: Karen Preato, Tiara Cruse, Fatou Cissoko-Stephens

Game Time	BC	Score	Diff	PSU
03:27	10 DICKENS M foul drawn (1)			20 MARISA M foul shooting (1 - 3)
03:27	1 SWARTZ C substitution out			
03:27	13 SOULE T substitution out			
03:27	5 GAKDENG M substitution in			
03:27	14 GARRAUD M substitution in			
03:27	12 VANTIMMEREN A substitution out			
03:27	3 BATTS J substitution in			
03:27				1 BRIGHAM A substitution out
03:27				15 BURKE M substitution out
03:27				20 MARISA M substitution out
03:27				25 JEKOT K substitution out
03:27				5 KAPINUS L substitution in
03:27				10 SABEL T substitution in
03:27				11 CAMDEN A substitution in
03:27				23 HAGANS S substitution in
03:27	10 DICKENS M free throw 1 - 2 missed			
03:27	offensive dead ball rebound (1)			
03:27	10 DICKENS M free throw 2 - 2 made (1)	<b>12-9</b>	<b>3</b>	
03:00		<b>12-12</b>	<b>0</b>	23 HAGANS S 3pt FG , jump shot made (3)
03:00				11 CAMDEN A assist (1)
02:37	3 BATTS J 2pt FG outside the paint, pull up jump shot made (2)	<b>14-12</b>	<b>2</b>	
02:12	2 IVEY K steal (1)			10 SABEL T turnover bad pass (1)
02:06	3 BATTS J 2pt FG fast break from turnover in the paint, layup made (4)	<b>16-12</b>	<b>4</b>	
02:06	2 IVEY K assist (1)			
01:51	14 GARRAUD M steal (2)			5 KAPINUS L turnover lost ball (2)
01:43	2 IVEY K turnover lost ball (1)			5 KAPINUS L steal (3)
01:39		<b>16-14</b>	<b>2</b>	4 BEVERLEY N 2pt FG fast break from turnover in the paint, layup made (2)
01:39				5 KAPINUS L assist (1)
01:24	3 BATTS J 2pt FG outside the paint, turnaround jump shot made (6)	<b>18-14</b>	<b>4</b>	
00:57				11 CAMDEN A 3pt FG , jump shot missed
00:52	5 GAKDENG M defensive rebound (1)			
00:46	3 BATTS J 2pt FG in the paint, layup missed			
00:42				10 SABEL T defensive rebound (1)
00:33				5 KAPINUS L turnover travel (3)
00:33	5 GAKDENG M substitution out			
00:33	14 GARRAUD M substitution out			
00:33	1 SWARTZ C substitution in			
00:33	13 SOULE T substitution in			
00:33	10 DICKENS M substitution out			
00:33	12 VANTIMMEREN A substitution in			
00:33				5 KAPINUS L substitution out
00:33				10 SABEL T substitution out
00:33				11 CAMDEN A substitution out
00:33				1 BRIGHAM A substitution in
00:33				20 MARISA M substitution in
00:33				25 JEKOT K substitution in



Official Basketball Play by Play - 1st Period

### Penn St. at Boston College

12/02/21 Conte Forum, Chestnut Hill, Mass  
2021-22 Women's Basketball

Game Time: 6:00 PM

Game Duration: 1:46

Attendance: 833

Officials: Karen Preato, Tiara Cruse, Fatou Cissoko-Stephens

Game Time	BC	Score	Diff	PSU
00:16	12 VANTIMMEREN A 2pt FG from turnover in the paint, layup made (4)	20-14	6	
00:16	13 SOULE T assist (2)			
00:01				1 BRIGHAM A 2pt FG in the paint, turnaround jump shot missed
00:01	3 BATTIS J defensive rebound (3)			
END OF PERIOD				
BC 20-14 PSU				



**Penn St. at Boston College**

12/02/21 Conte Forum, Chestnut Hill, Mass  
2021-22 Women's Basketball

Game Time: 6:00 PM

Game Duration: 1:46

Attendance: 833

Officials: Karen Preato, Tiara Cruse, Fatou Cissoko-Stephens

**Penn St. - 14**

NO.	Name	C	Min	FG			Rebounds			Fouls		TP	AS	TO	ST	Blocks		+/-
				M-A	M-A	M-A	OR	DR	TOT	PF	FD					BS	BA	
1	Ali Brigham	C	06:14	2-4	0-0	0-0	0	1	1	0	1	4	0	1	0	0	0	-2
4	Niya Beverley	G	07:49	1-1	0-0	0-0	0	0	0	1	0	2	0	1	0	0	0	-8
5	Leilani Kapinus	G	05:14	0-2	0-0	0-0	1	0	1	0	0	0	1	3	3	0	0	-6
20	Makenna Marisa	G	06:33	0-2	0-1	0-0	0	0	0	1	0	0	1	0	0	0	0	-6
23	Shay Hagans	G	05:47	1-1	1-1	0-0	0	0	0	0	0	3	0	1	0	0	0	-8
0	Nyam Thornton		02:45	0-1	0-1	0-0	1	1	2	0	1	0	1	0	0	0	0	2
10	Tova Sabel		05:39	1-1	0-0	0-0	0	1	1	0	0	2	0	1	0	0	0	0
11	Anna Camden		05:05	0-1	0-1	0-0	0	1	1	1	0	0	1	0	0	0	0	0
15	Maddie Burke		02:53	0-1	0-1	0-0	0	1	1	0	0	0	1	0	0	0	0	0
25	Kelly Jekot		02:01	1-2	1-1	0-0	0	0	0	0	0	3	1	0	1	0	0	-2
Team							0	0	0		0		0					
<b>Totals</b>				6-16	2-6	0-0	2	5	7	3	2	14	6	7	4	0	0	-6

Shooting By Period		
1st FG%	6-16	37.5%
3PT%	2-6	33.3%
FT%	0-0	0%
GM FG%	6-16	37.5%
3PT%	2-6	33.3%
FT%	0-0	0.0%

Dead Ball Rebounds: 0, 0

Technical Fouls::NONE

**Boston College - 20**

NO.	Name	C	Min	FG			Rebounds			Fouls		TP	AS	TO	ST	Blocks		+/-
				M-A	M-A	M-A	OR	DR	TOT	PF	FD					BS	BA	
3	Jaelyn Batts	F	07:49	3-4	0-0	0-0	2	1	3	0	0	6	0	1	0	0	0	8
13	Taylor Soule	F	07:06	0-2	0-0	2-2	0	2	2	0	1	2	2	1	1	0	0	4
5	Maria Gakdeng	C	06:34	0-0	0-0	0-0	0	1	1	1	0	0	0	0	0	0	0	4
1	Cameron Swartz	G	07:06	2-4	0-2	0-0	0	1	1	0	0	4	0	2	0	0	0	4
14	Marnelle Garraud	G	07:59	0-2	0-2	0-0	0	1	1	1	1	0	1	1	2	0	0	4
12	Ally VanTimmeren		03:26	2-3	0-0	0-0	1	1	2	0	0	4	0	0	0	0	0	2
10	Makayla Dickens		05:05	0-1	0-1	1-2	1	1	2	0	1	1	1	0	0	0	0	0
2	Kaylah Ivey		04:55	1-1	1-1	0-0	0	0	0	0	0	3	1	1	1	0	0	4
Team							0	0	0		0		0					
<b>Totals</b>				8-17	1-6	3-4	4	8	12	2	3	20	5	6	4	0	0	6

Shooting By Period		
1st FG%	8-17	47.1%
3PT%	1-6	16.7%
FT%	3-4	75%
GM FG%	8-17	47.1%
3PT%	1-6	16.7%
FT%	3-4	75.0%

Dead Ball Rebounds: 1, 0

Technical Fouls::NONE

	PSU	BC
Biggest lead	0 (1st 10:00)	6 (1st 0:16)
Best Scoring Run	3(1st 3:53)	4(1st 8:06)
Lead Changes	0	
Times Tied	1	
Time with Lead	00:00	09:31

Points from	PSU	BC
Turnovers	8	6
Paint	8	6
Second Chance	2	1
Fast Breaks	2	5
Bench	5	8

	Period by Period Scoring				
	1st	2nd	3rd	4th	TOT
PSU	14	18	16	21	69
BC	20	17	29	20	86

**Period 2****Quarter Starters:**

<b>BC</b>	1 Swartz C	3 Batts J	12 VanTimmeren A	13 Soule T	14 Garraud M
<b>PSU</b>	0 Thornton N	1 Brigham A	4 Beverley N	20 Marisa M	25 Jekot K

Game Time	BC	Score	Diff	PSU
10:00	2 IVEY K substitution out			
10:00	14 GARRAUD M substitution in			
10:00				23 HAGANS S substitution out
10:00				0 THORNTON N substitution in
09:42	1 SWARTZ C 2pt FG outside the paint, jump shot missed			
09:38	12 VANTIMMEREN A offensive rebound (3)			
09:34	14 GARRAUD M 2pt FG second chance in the paint, driving layup made (2)	<b>22-14</b>	<b>8</b>	
09:11		<b>22-16</b>	<b>6</b>	1 BRIGHAM A 2pt FG in the paint, layup made (6)
09:11				25 JEKOT K assist (2)
08:59	12 VANTIMMEREN A 2pt FG in the paint, layup made (6)	<b>24-16</b>	<b>8</b>	
08:59	1 SWARTZ C assist (1)			
08:43		<b>24-18</b>	<b>6</b>	20 MARISA M 2pt FG in the paint, driving layup made (2)
08:43	3 BATTS J foul shooting (1 - 1)			20 MARISA M foul drawn (1)
08:43	3 BATTS J substitution out			
08:43	10 DICKENS M substitution in			
08:43				0 THORNTON N substitution out
08:43				25 JEKOT K substitution out
08:43				5 KAPINUS L substitution in
08:43				23 HAGANS S substitution in
08:43		<b>24-19</b>	<b>5</b>	20 MARISA M free throw 1 - 1 made (3)
08:28	1 SWARTZ C 2pt FG outside the paint, turnaround jump shot made (6)	<b>26-19</b>	<b>7</b>	
08:08		<b>26-21</b>	<b>5</b>	1 BRIGHAM A 2pt FG in the paint, layup made (8)
08:08				20 MARISA M assist (2)
07:50	12 VANTIMMEREN A 2pt FG outside the paint, jump shot made (8)	<b>28-21</b>	<b>7</b>	
07:50	13 SOULE T assist (3)			
07:35	13 SOULE T steal (2)			1 BRIGHAM A turnover lost ball (2)
07:21	1 SWARTZ C foul drawn (1)			20 MARISA M foul shooting (2 - 1)
07:21	12 VANTIMMEREN A substitution out			
07:21	14 GARRAUD M substitution out			
07:21	2 IVEY K substitution in			
07:21	5 GAKDENG M substitution in			
07:21				1 BRIGHAM A substitution out
07:21				20 MARISA M substitution out
07:21				10 SABEL T substitution in
07:21				11 CAMDEN A substitution in
07:21	1 SWARTZ C free throw 1 - 2 made (7)	<b>29-21</b>	<b>8</b>	
07:21	1 SWARTZ C free throw 2 - 2 made (8)	<b>30-21</b>	<b>9</b>	
06:58	5 GAKDENG M steal (1)			11 CAMDEN A turnover bad pass (1)
06:53	10 DICKENS M 2pt FG from turnover outside the paint, pull up jump shot missed			
06:50				10 SABEL T defensive rebound (2)



**Penn St. at Boston College**

12/02/21 Conte Forum, Chestnut Hill, Mass  
2021-22 Women's Basketball

Game Time: 6:00 PM

Game Duration: 1:46

Attendance: 833

Officials: Karen Preato, Tiara Cruse, Fatou Cissoko-Stephens

Game Time	BC	Score	Diff	PSU
06:44				10 SABEL T 3pt FG , jump shot missed
06:39	2 IVEY K defensive rebound (1)			
06:36	13 SOULE T foul drawn (2)			10 SABEL T foul personal (1 - 2)
06:36				23 HAGANS S substitution out
06:36				20 MARISA M substitution in
06:33	1 SWARTZ C 3pt FG , jump shot missed			
06:29				5 KAPINUS L defensive rebound (2)
06:24		<b>30-23</b>	<b>7</b>	20 MARISA M 2pt FG in the paint, pull up jump shot made (5)
06:07	2 IVEY K 3pt FG , jump shot missed			
06:04				20 MARISA M defensive rebound (1)
05:58				11 CAMDEN A 3pt FG , jump shot missed
05:54	13 SOULE T defensive rebound (3)			
05:46	1 SWARTZ C 2pt FG outside the paint, pull up jump shot missed			
05:42	5 GAKDENG M offensive rebound (2)			
05:40	10 DICKENS M 3pt FG second chance, jump shot missed			
05:38	5 GAKDENG M offensive rebound (3)			
05:37	5 GAKDENG M 2pt FG second chance in the paint, layup made (2)	<b>32-23</b>	<b>9</b>	
05:04	1 SWARTZ C steal (1)			5 KAPINUS L turnover bad pass (4)
05:01	1 SWARTZ C turnover lost ball (3)			
05:01	1 SWARTZ C substitution out			
05:01	5 GAKDENG M substitution out			
05:01	13 SOULE T substitution out			
05:01	3 BATTS J substitution in			
05:01	12 VANTIMMEREN A substitution in			
05:01	14 GARRAUD M substitution in			
05:01				5 KAPINUS L substitution out
05:01				10 SABEL T substitution out
05:01				11 CAMDEN A substitution out
05:01				1 BRIGHAM A substitution in
05:01				15 BURKE M substitution in
05:01				25 JEKOT K substitution in
04:57				1 BRIGHAM A 2pt FG from turnover in the paint, layup missed
04:55	3 BATTS J defensive rebound (4)			
04:34	12 VANTIMMEREN A 2pt FG outside the paint, pull up jump shot missed			
04:31				4 BEVERLEY N defensive rebound (1)
04:12				20 MARISA M 3pt FG , jump shot missed
04:12	defensive rebound (19)			
04:12	Timeout media			
04:12				4 BEVERLEY N substitution out
04:12				23 HAGANS S substitution in
03:51	3 BATTS J substitution out			
03:51	13 SOULE T substitution in			
03:42	13 SOULE T 2pt FG outside the paint, step back jump shot missed			
03:36				20 MARISA M defensive rebound (2)
03:32		<b>32-26</b>	<b>6</b>	15 BURKE M 3pt FG , jump shot made (3)
03:32				20 MARISA M assist (3)
03:17	13 SOULE T 2pt FG in the paint, layup missed			



**Penn St. at Boston College**12/02/21 Conte Forum, Chestnut Hill, Mass  
2021-22 Women's Basketball

Game Time: 6:00 PM

Game Duration: 1:46

Attendance: 833

Officials: Karen Preato, Tiara Cruse, Fatou Cissoko-Stephens

Game Time	BC	Score	Diff	PSU
03:13				15 BURKE M defensive rebound (2)
03:02		<b>32-28</b>	<b>4</b>	20 MARISA M 2pt FG in the paint, jump shot made (7)
02:45	13 SOULE T 2pt FG in the paint, turnaround jump shot missed			
02:42				15 BURKE M defensive rebound (3)
02:35				15 BURKE M 3pt FG , jump shot missed
02:32	14 GARRAUD M defensive rebound (2)			
02:29	10 DICKENS M 3pt FG , jump shot missed			
02:26				defensive rebound (15)
02:26	10 DICKENS M substitution out			
02:26	12 VANTIMMEREN A substitution out			
02:26	13 SOULE T substitution out			
02:26	1 SWARTZ C substitution in			
02:26	3 BATTS J substitution in			
02:26	5 GAKDENG M substitution in			
02:26				23 HAGANS S substitution out
02:26				25 JEKOT K substitution out
02:26				4 BEVERLEY N substitution in
02:26				5 KAPINUS L substitution in
02:14				1 BRIGHAM A 2pt FG in the paint, layup missed
02:11	3 BATTS J defensive rebound (5)			
02:03	1 SWARTZ C 3pt FG , jump shot missed			
01:59	3 BATTS J offensive rebound (6)			
01:57	1 SWARTZ C turnover bad pass (4)			4 BEVERLEY N steal (1)
01:52		<b>32-30</b>	<b>2</b>	5 KAPINUS L 2pt FG fast break from turnover in the paint, layup made (2)
01:52				4 BEVERLEY N assist (1)
01:32	1 SWARTZ C 2pt FG in the paint, driving layup made (10)	<b>34-30</b>	<b>4</b>	
01:20				20 MARISA M 2pt FG outside the paint, pull up jump shot missed
01:17	1 SWARTZ C defensive rebound (2)			
01:07	5 GAKDENG M 2pt FG in the paint, layup blocked			
01:07				15 BURKE M block (1)
01:02				20 MARISA M defensive rebound (3)
00:47		<b>34-32</b>	<b>2</b>	1 BRIGHAM A 2pt FG in the paint, layup made (10)
00:47				20 MARISA M assist (4)
00:28	14 GARRAUD M 3pt FG , jump shot made (5)	<b>37-32</b>	<b>5</b>	
00:28	3 BATTS J assist (1)			
00:04				1 BRIGHAM A 2pt FG outside the paint, jump shot missed
00:01	3 BATTS J defensive rebound (7)			
<b>END OF PERIOD</b>				
<b>BC 37-32 PSU</b>				



**Penn St. at Boston College**

12/02/21 Conte Forum, Chestnut Hill, Mass  
2021-22 Women's Basketball

Game Time: 6:00 PM  
Game Duration: 1:46  
Attendance: 833

Officials: Karen Preato, Tiara Cruse, Fatou Cissoko-Stephens

**Penn St. - 18**

NO.	Name	C/G	Min	FG			Rebounds			Fouls		TP	AS	TO	ST	Blocks		+/-
				M-A	3P-M-A	FT-M-A	OR	DR	TOT	PF	FD					BS	BA	
1	Ali Brigham	C	07:40	3-6	0-0	0-0	0	0	0	0	0	6	0	1	0	0	0	3
4	Niya Beverley	G	08:14	0-0	0-0	0-0	0	1	1	0	0	0	1	0	1	0	0	-4
5	Leilani Kapinus	G	06:08	1-1	0-0	0-0	0	1	1	0	0	2	0	1	0	0	0	-4
20	Makenna Marisa	G	09:15	3-5	0-1	1-1	0	3	3	1	1	7	3	0	0	0	0	3
23	Shay Hagans	G	03:53	0-0	0-0	0-0	0	0	0	0	0	0	0	0	0	0	0	2
0	Nyam Thornton		01:17	0-0	0-0	0-0	0	0	0	0	0	0	0	0	0	0	0	0
10	Tova Sabel		02:20	0-1	0-1	0-0	0	1	1	1	0	0	0	0	0	0	0	-2
11	Anna Camden		02:20	0-1	0-1	0-0	0	0	0	0	0	0	0	1	0	0	0	-2
15	Maddie Burke		05:01	1-2	1-2	0-0	0	2	2	0	0	3	0	0	0	1	0	4
25	Kelly Jekot		03:52	0-0	0-0	0-0	0	0	0	0	0	0	1	0	0	0	0	5
Team							0	1	1			0		0				
<b>Totals</b>				8-16	1-5	1-1	0	9	9	2	1	18	5	3	1	1	0	1

Shooting By Period		
2nd FG%	8-16	50.0%
3PT%	1-5	20.0%
FT%	1-1	100%
GM FG%	8-16	50.0%
3PT%	1-5	20.0%
FT%	1-1	100.0%

Dead Ball Rebounds: 0, 0

Technical Fouls::NONE

**Boston College - 17**

NO.	Name	C/G	Min	FG			Rebounds			Fouls		TP	AS	TO	ST	Blocks		+/-
				M-A	3P-M-A	FT-M-A	OR	DR	TOT	PF	FD					BS	BA	
3	Jaelyn Batts	F	04:53	0-0	0-0	0-0	1	3	4	1	0	0	1	0	0	0	0	1
13	Taylor Soule	F	06:24	0-3	0-0	0-0	0	1	1	0	1	0	1	0	1	0	0	-2
5	Maria Gakdeng	C	04:46	1-2	0-0	0-0	2	0	2	0	0	2	0	0	1	0	1	3
1	Cameron Swartz	G	07:25	2-6	0-2	2-2	0	1	1	0	1	6	1	2	1	0	0	4
14	Marnelle Garraud	G	07:40	2-2	1-1	0-0	0	1	1	0	0	5	0	0	0	0	0	-3
10	Makayla Dickens		06:17	0-3	0-2	0-0	0	0	0	0	0	0	0	0	0	0	0	-2
2	Kaylah Ivey		07:21	0-1	0-1	0-0	0	1	1	0	0	0	0	0	0	0	0	-2
12	Ally VanTimmeren		05:14	2-3	0-0	0-0	1	0	1	0	0	4	0	0	0	0	0	-4
Team							0	1	1			0		0				
<b>Totals</b>				7-20	1-6	2-2	4	8	12	1	2	17	3	2	3	0	1	-1

Shooting By Period		
2nd FG%	7-20	35.0%
3PT%	1-6	16.7%
FT%	2-2	100%
GM FG%	7-20	35.0%
3PT%	1-6	16.7%
FT%	2-2	100.0%

Dead Ball Rebounds: 0, 0

Technical Fouls::NONE

	PSU	BC
Biggest lead	0 (1 <sup>st</sup> 10:00)	9 (2 <sup>nd</sup> 7:21)
Best Scoring Run	7(2 <sup>nd</sup> 1:52)	4(2 <sup>nd</sup> 7:21)
Lead Changes	0	
Times Tied	0	
Time with Lead	00:00	09:42

Points from	PSU	BC
Turnovers	2	2
Paint	14	8
Second Chance	0	4
Fast Breaks	2	0
Bench	3	4

	Period by Period Scoring				
	1st	2nd	3rd	4th	TOT
PSU	14	18	16	21	69
BC	20	17	29	20	86



Officials: Karen Preato, Tiara Cruse, Fatou Cissoko-Stephens

**Penn St. - 32**

NO.	Name	C	Min	FG			3P			FT			Rebounds			Fouls		TP	AS	TO	ST	Blocks		+/-
				M-A	M-A	M-A	OR	DR	TOT	PF	FD	BS	BA											
1	Ali Brigham	C	13:54	5-10	0-0	0-0	0	1	1	0	1	10	0	1	2	0	2	0	0	0	0	0	1	
4	Niya Beverley	G	16:03	1-1	0-0	0-0	0	1	1	1	0	2	1	1	1	1	1	1	0	0	0	-12		
5	Leilani Kapinus	G	11:22	1-3	0-0	0-0	1	1	2	0	0	2	1	4	3	0	0	0	0	0	0	-10		
20	Makenna Marisa	G	15:48	3-7	0-2	1-1	0	3	3	2	1	7	4	0	0	0	0	0	0	0	0	-3		
23	Shay Hagans	G	09:40	1-1	1-1	0-0	0	0	0	0	0	3	0	1	0	0	0	0	0	0	0	-6		
0	Nyam Thornton		04:02	0-1	0-1	0-0	1	1	2	0	1	0	1	0	0	0	0	0	0	0	0	2		
10	Tova Sabel		07:59	1-2	0-1	0-0	0	2	2	1	0	2	0	1	0	0	0	0	0	0	0	-2		
11	Anna Camden		07:25	0-2	0-2	0-0	0	1	1	1	0	0	1	1	0	0	0	0	0	0	0	-2		
15	Maddie Burke		07:54	1-3	1-3	0-0	0	3	3	0	0	3	1	0	0	1	0	0	1	0	0	4		
25	Kelly Jekot		05:53	1-2	1-1	0-0	0	0	0	0	0	3	2	0	1	0	0	0	0	0	0	3		
Team							0	1	1			0			0									
<b>Totals</b>				14-32	3-11	1-1	2	14	16	5	3	32	11	10	5	1	0						-5	

Shooting By Period		
1 <sup>st</sup> FG%	6-16	37.5%
3PT%	2-6	33.3%
FT%	0-0	0%
2 <sup>nd</sup> FG%	8-16	50.0%
3PT%	1-5	20.0%
FT%	1-1	100%
GM FG%	14-32	43.8%
3PT%	3-11	27.3%
FT%	1-1	100.0%

Dead Ball Rebounds: 0, 0

Technical Fouls::NONE

**Boston College - 37**

NO.	Name	C	Min	FG			3P			FT			Rebounds			Fouls		TP	AS	TO	ST	Blocks		+/-
				M-A	M-A	M-A	OR	DR	TOT	PF	FD	BS	BA											
3	Jaelyn Batts	F	12:42	3-4	0-0	0-0	3	4	7	1	0	6	1	1	0	0	0	0	0	0	0	0	9	
13	Taylor Soule	F	13:30	0-5	0-0	2-2	0	3	3	0	2	2	3	1	2	0	0	0	0	0	0	0	2	
5	Maria Gakdeng	C	11:20	1-2	0-0	0-0	2	1	3	1	0	2	0	0	1	0	1	0	1	0	1	7		
1	Cameron Swartz	G	14:31	4-10	0-4	2-2	0	2	2	0	1	10	1	4	1	0	0	0	0	0	0	8		
14	Marnelle Garraud	G	15:39	2-4	1-3	0-0	0	2	2	1	1	5	1	1	2	0	0	0	0	0	0	1		
12	Ally VanTimmeren		08:40	4-6	0-0	0-0	2	1	3	0	0	8	0	0	0	0	0	0	0	0	0	-2		
10	Makayla Dickens		11:22	0-4	0-3	1-2	1	1	2	0	1	1	1	0	0	0	0	0	0	0	0	-2		
2	Kaylah Ivey		12:16	1-2	1-2	0-0	0	1	1	0	0	3	1	1	1	0	0	0	0	0	0	2		
Team							0	1	1			0			0									
<b>Totals</b>				15-37	2-12	5-6	8	16	24	3	5	37	8	8	7	0	1						5	

Shooting By Period		
1 <sup>st</sup> FG%	8-17	47.1%
3PT%	1-6	16.7%
FT%	3-4	75%
2 <sup>nd</sup> FG%	7-20	35.0%
3PT%	1-6	16.7%
FT%	2-2	100%
GM FG%	15-37	40.5%
3PT%	2-12	16.7%
FT%	5-6	83.3%

Dead Ball Rebounds: 1, 0

Technical Fouls::NONE

	PSU	BC
Biggest lead	0 (1 <sup>st</sup> 10:00)	9 (2 <sup>nd</sup> 7:21)
Best Scoring Run	7(2 <sup>nd</sup> 1:52)	6(2 <sup>nd</sup> 9:34)
Lead Changes	0	
Times Tied	1	
Time with Lead	00:00	19:31

Points from	PSU	BC
Turnovers	10	8
Paint	22	14
Second Chance	2	5
Fast Breaks	4	5
Bench	8	12

	Period by Period Scoring				
	1st	2nd	3rd	4th	TOT
PSU	14	18	16	21	69
BC	20	17	29	20	86

**Period 3****Quarter Starters:**

<b>BC</b>	1 Swartz C	3 Batts J	5 Gakdeng M	13 Soule T	14 Garraud M
<b>PSU</b>	1 Brigham A	4 Beverley N	5 Kapinus L	20 Marisa M	23 Hagans S

Game Time	BC	Score	Diff	PSU
10:00	2 IVEY K substitution out			
10:00	13 SOULE T substitution in			
10:00				15 BURKE M substitution out
10:00				23 HAGANS S substitution in
09:45	1 SWARTZ C 2pt FG outside the paint, pull up jump shot missed			
09:40	3 BATTS J offensive rebound (8)			
09:34	5 GAKDENG M turnover travel (1)			
09:22				20 MARISA M 2pt FG from turnover outside the paint, jump shot missed
09:19	5 GAKDENG M defensive rebound (4)			
09:14	1 SWARTZ C 2pt FG in the paint, layup blocked			
09:14				4 BEVERLEY N block (1)
09:10	3 BATTS J offensive rebound (9)			
09:09	14 GARRAUD M 3pt FG second chance, jump shot made (8)	<b>40-32</b>	<b>8</b>	
09:09	3 BATTS J assist (2)			
08:48		<b>40-35</b>	<b>5</b>	4 BEVERLEY N 3pt FG , jump shot made (5)
08:48				5 KAPINUS L assist (2)
08:42	14 GARRAUD M foul drawn (2)			5 KAPINUS L foul personal (1 - 1)
08:42	5 GAKDENG M substitution out			
08:42	12 VANTIMMEREN A substitution in			
08:35	1 SWARTZ C 2pt FG fast break in the paint, driving layup made (12)	<b>42-35</b>	<b>7</b>	
08:25	12 VANTIMMEREN A foul drawn (1)			1 BRIGHAM A foul offensive (1 - 2)
08:25				1 BRIGHAM A turnover offensive (3)
08:12	3 BATTS J 2pt FG from turnover in the paint, turnaround jump shot made (8)	<b>44-35</b>	<b>9</b>	
08:12	1 SWARTZ C assist (2)			
07:55				23 HAGANS S 3pt FG , jump shot missed
07:53				1 BRIGHAM A offensive rebound (2)
07:53	13 SOULE T foul drawn (3)			5 KAPINUS L foul offensive (2 - 3)
07:53				5 KAPINUS L turnover offensive (5)
07:53				5 KAPINUS L substitution out
07:53				25 JEKOT K substitution in
07:46	14 GARRAUD M turnover lost ball (2)			20 MARISA M steal (1)
07:44		<b>44-37</b>	<b>7</b>	20 MARISA M 2pt FG fast break from turnover in the paint, layup made (9)
07:44				4 BEVERLEY N assist (2)
07:44	14 GARRAUD M foul shooting (2 - 1)			20 MARISA M foul drawn (2)
07:44	14 GARRAUD M substitution out			
07:44	10 DICKENS M substitution in			
07:44		<b>44-38</b>	<b>6</b>	20 MARISA M free throw fast break 1 - 1 made (10)
07:16	10 DICKENS M 3pt FG , jump shot missed			
07:11	12 VANTIMMEREN A offensive rebound (4)			
07:08	jump ball situation			



**Penn St. at Boston College**

12/02/21 Conte Forum, Chestnut Hill, Mass  
2021-22 Women's Basketball

Officials: Karen Preato, Tiara Cruse, Fatou Cissoko-Stephens

Game Time	BC	Score	Diff	PSU
07:08	13 SOULE T turnover lost ball (2)			25 JEKOT K steal (2)
07:08				23 HAGANS S substitution out
07:08				15 BURKE M substitution in
06:58	13 SOULE T foul personal (1 - 2)			15 BURKE M foul drawn (1)
06:58	3 BATTS J substitution out			
06:58	14 GARRAUD M substitution in			
06:50				4 BEVERLEY N 3pt FG from turnover, jump shot missed
06:47	13 SOULE T defensive rebound (4)			
06:42	10 DICKENS M 3pt FG , pull up jump shot made (4)	<b>47-38</b>	<b>9</b>	
06:30	12 VANTIMMEREN A steal (1)			15 BURKE M turnover bad pass (1)
06:17	12 VANTIMMEREN A 2pt FG from turnover outside the paint, jump shot missed			
06:14	10 DICKENS M offensive rebound (3)			
05:59	1 SWARTZ C foul drawn (2)			15 BURKE M foul shooting (1 - 4)
05:59	12 VANTIMMEREN A substitution out			
05:59	14 GARRAUD M substitution out			
05:59	2 IVEY K substitution in			
05:59	5 GAKDENG M substitution in			
05:59				1 BRIGHAM A substitution out
05:59				20 MARISA M substitution out
05:59				25 JEKOT K substitution out
05:59				0 THORNTON N substitution in
05:59				5 KAPINUS L substitution in
05:59				11 CAMDEN A substitution in
05:59				15 BURKE M substitution out
05:59				10 SABEL T substitution in
05:59	1 SWARTZ C free throw 1 - 2 missed			
05:59	offensive dead ball rebound (2)			
05:59	1 SWARTZ C free throw 2 - 2 made (13)	<b>48-38</b>	<b>10</b>	
05:32				10 SABEL T 2pt FG in the paint, layup missed
05:29	1 SWARTZ C defensive rebound (3)			
05:26	5 GAKDENG M 2pt FG in the paint, layup made (4)	<b>50-38</b>	<b>12</b>	
05:26	10 DICKENS M assist (2)			
05:09		<b>50-41</b>	<b>9</b>	10 SABEL T 3pt FG , jump shot made (5)
05:09				0 THORNTON N assist (2)
04:58	10 DICKENS M 3pt FG , jump shot missed			
04:55	5 GAKDENG M offensive rebound (5)			
04:53	1 SWARTZ C 2pt FG second chance outside the paint, jump shot missed			
04:48	13 SOULE T offensive rebound (5)			
04:48	13 SOULE T substitution out			
04:48	5 GAKDENG M substitution out			
04:48	3 BATTS J substitution in			
04:48	12 VANTIMMEREN A substitution in			
04:48				0 THORNTON N substitution out
04:48				11 CAMDEN A substitution out
04:48				1 BRIGHAM A substitution in
04:48				25 JEKOT K substitution in
04:44	10 DICKENS M turnover bad pass (1)			25 JEKOT K steal (3)
04:19	3 BATTS J steal (1)			1 BRIGHAM A turnover lost ball (4)



**Penn St. at Boston College**

12/02/21 Conte Forum, Chestnut Hill, Mass  
2021-22 Women's Basketball

**Game Time:** 6:00 PM  
**Game Duration:** 1:46  
**Attendance:** 833

**Officials:** Karen Preato, Tiara Cruse, Fatou Cissoko-Stephens

Game Time	BC	Score	Diff	PSU
04:05	1 SWARTZ C 3pt FG from turnover, jump shot made (16)	<b>53-41</b>	<b>12</b>	
04:05	3 BATTS J assist (3)			
04:05	1 SWARTZ C foul drawn (3)			5 KAPINUS L foul shooting (3 - 5)
04:05				5 KAPINUS L substitution out
04:05				25 JEKOT K substitution out
04:05				15 BURKE M substitution in
04:05				20 MARISA M substitution in
04:05	3 BATTS J substitution out			
04:05	10 DICKENS M substitution out			
04:05	12 VANTIMMEREN A substitution out			
04:05	13 SOULE T substitution in			
04:05	14 GARRAUD M substitution in			
04:05	32 FORD C substitution in			
04:05	1 SWARTZ C free throw 1 - 1 made (17)	<b>54-41</b>	<b>13</b>	
03:51				1 BRIGHAM A turnover 3 seconds (5)
03:42	13 SOULE T 2pt FG from turnover in the paint, layup missed			
03:38				1 BRIGHAM A defensive rebound (3)
03:33	32 FORD C foul personal (1 - 3)			1 BRIGHAM A foul drawn (2)
03:30				15 BURKE M 3pt FG , jump shot missed
03:28	defensive rebound (34)			
03:28	32 FORD C substitution out			
03:28	12 VANTIMMEREN A substitution in			
03:28				10 SABEL T substitution out
03:28				23 HAGANS S substitution in
03:13	1 SWARTZ C 2pt FG in the paint, driving layup made (19)	<b>56-41</b>	<b>15</b>	
03:13	13 SOULE T assist (4)			
02:56	12 VANTIMMEREN A foul personal (1 - 4)			1 BRIGHAM A foul drawn (3)
02:56	13 SOULE T substitution out			
02:56	3 BATTS J substitution in			
02:47		<b>56-43</b>	<b>13</b>	1 BRIGHAM A 2pt FG in the paint, layup made (12)
02:47				20 MARISA M assist (5)
02:30	3 BATTS J 2pt FG outside the paint, turnaround jump shot made (10)	<b>58-43</b>	<b>15</b>	
02:22				20 MARISA M turnover travel (1)
02:22	14 GARRAUD M substitution out			
02:22	10 DICKENS M substitution in			
02:22				1 BRIGHAM A substitution out
02:22				20 MARISA M substitution out
02:22				5 KAPINUS L substitution in
02:22				11 CAMDEN A substitution in
02:05	1 SWARTZ C 3pt FG from turnover, jump shot blocked			
02:05				5 KAPINUS L block (1)
02:01	12 VANTIMMEREN A offensive rebound (5)			
01:58	3 BATTS J turnover travel (2)			
01:58				5 KAPINUS L substitution out
01:58				23 HAGANS S substitution out
01:58				20 MARISA M substitution in
01:58				25 JEKOT K substitution in
01:58				20 MARISA M 2pt FG from turnover in the paint, driving layup missed



**Penn St. at Boston College**

12/02/21 Conte Forum, Chestnut Hill, Mass  
2021-22 Women's Basketball

**Game Time:** 6:00 PM

**Game Duration:** 1:46

**Attendance:** 833

**Officials:** Karen Preato, Tiara Cruse, Fatou Cissoko-Stephens

Game Time	BC	Score	Diff	PSU
01:55				11 CAMDEN A offensive rebound (2)
01:39	2 IVEY K substitution out			
01:39	13 SOULE T substitution in			
01:35				15 BURKE M 2pt FG from turnover second chance in the paint, step back jump shot missed
01:34	1 SWARTZ C defensive rebound (4)			
01:34	3 BATTS J foul drawn (1)			25 JEKOT K foul personal (1 - 6)
01:34				15 BURKE M substitution out
01:34				1 BRIGHAM A substitution in
01:34	3 BATTS J free throw 1 - 2 made (11)	<b>59-43</b>	<b>16</b>	
01:34	3 BATTS J free throw 2 - 2 made (12)	<b>60-43</b>	<b>17</b>	
01:34	1 SWARTZ C substitution out			
01:34	14 GARRAUD M substitution in			
01:27		<b>60-45</b>	<b>15</b>	25 JEKOT K 2pt FG fast break in the paint, layup made (5)
01:27				20 MARISA M assist (6)
00:57	12 VANTIMMEREN A 2pt FG in the paint, layup missed			
00:56	offensive rebound (37)			
00:51	14 GARRAUD M 3pt FG second chance, jump shot made (11)	<b>63-45</b>	<b>18</b>	
00:51	10 DICKENS M assist (3)			
00:30		<b>63-48</b>	<b>15</b>	25 JEKOT K 3pt FG , jump shot made (8)
00:30				4 BEVERLEY N assist (3)
00:02	14 GARRAUD M 3pt FG , jump shot made (14)	<b>66-48</b>	<b>18</b>	
00:02	3 BATTS J assist (4)			
<b>END OF PERIOD</b>				
<b>BC 66-48 PSU</b>				



**Penn St. at Boston College**

12/02/21 Conte Forum, Chestnut Hill, Mass  
2021-22 Women's Basketball

Game Time: 6:00 PM  
Game Duration: 1:46  
Attendance: 833

Officials: Karen Preato, Tiara Cruse, Fatou Cissoko-Stephens

**Penn St. - 16**

NO.	Name	C/G	Min	FG			Rebounds			Fouls		TP	AS	TO	ST	Blocks		+/-	
				M-A	M-A	M-A	OR	DR	TOT	PF	FD					BS	BA		
1	Ali Brigham	C	08:01	1-1	0-0	0-0	1	1	2	1	2	2	0	3	0	0	0	-13	
4	Niya Beverley	G	10:00	1-2	1-2	0-0	0	0	0	0	0	3	2	0	0	1	0	-13	
5	Leilani Kapinus	G	04:25	0-0	0-0	0-0	0	0	0	3	0	0	1	1	0	1	0	-7	
20	Makenna Marisa	G	07:42	1-3	0-0	1-1	0	0	0	0	1	3	2	1	1	0	0	-10	
23	Shay Hagans	G	04:22	0-1	0-1	0-0	0	0	0	0	0	0	0	0	0	0	0	-3	
25	Kelly Jekot		04:35	2-2	1-1	0-0	0	0	0	1	0	5	0	0	2	0	0	-6	
15	Maddie Burke		03:40	0-2	0-1	0-0	0	0	0	1	1	0	0	1	0	0	0	-6	
0	Nyam Thornton		01:11	0-0	0-0	0-0	0	0	0	0	0	0	1	0	0	0	0	0	
10	Tova Sabel		02:31	1-2	1-1	0-0	0	0	0	0	0	3	0	0	0	0	0	-4	
11	Anna Camden		03:33	0-0	0-0	0-0	1	0	1	0	0	0	0	0	0	0	0	-3	
Team							0	0	0			0							
<b>Totals</b>				6-13	3-6	1-1	2	1	3	6	4	16	6	6	3	2	0	0	-13

Shooting By Period		
3 <sup>rd</sup> FG%	6-13	46.2%
3PT%	3-6	50.0%
FT%	1-1	100%
GM FG%	6-13	46.2%
3PT%	3-6	50.0%
FT%	1-1	100.0%

Dead Ball Rebounds: 0, 0

Technical Fouls::NONE

**Boston College - 29**

NO.	Name	C/G	Min	FG			Rebounds			Fouls		TP	AS	TO	ST	Blocks		+/-
				M-A	M-A	M-A	OR	DR	TOT	PF	FD					BS	BA	
3	Jaelyn Batts	F	06:41	2-2	0-0	2-2	2	0	2	0	1	6	3	1	1	0	0	7
13	Taylor Soule	F	08:00	0-1	0-0	0-0	1	1	2	1	1	0	1	1	0	0	0	10
5	Maria Gakdeng	C	02:29	1-1	0-0	0-0	1	1	2	0	0	2	0	1	0	0	0	0
1	Cameron Swartz	G	08:26	3-7	1-2	2-3	0	2	2	0	2	9	1	0	0	0	2	12
14	Marnelle Garraud	G	06:32	3-3	3-3	0-0	0	0	0	1	1	9	0	1	0	0	0	9
12	Ally VanTimmeren		06:54	0-2	0-0	0-0	2	0	2	1	1	0	0	0	1	0	0	12
10	Makayla Dickens		06:01	1-3	1-3	0-0	1	0	1	0	0	3	2	1	0	0	0	8
2	Kaylah Ivey		04:20	0-0	0-0	0-0	0	0	0	0	0	0	0	0	0	0	0	6
32	Clara Ford		00:37	0-0	0-0	0-0	0	0	0	1	0	0	0	0	0	0	0	1
Team							1	1	2			0						
<b>Totals</b>				10-19	5-8	4-5	8	5	13	4	6	29	7	5	2	0	2	13

Shooting By Period		
3 <sup>rd</sup> FG%	10-19	52.6%
3PT%	5-8	62.5%
FT%	4-5	80%
GM FG%	10-19	52.6%
3PT%	5-8	62.5%
FT%	4-5	80.0%

Dead Ball Rebounds: 1, 0

Technical Fouls::NONE

	PSU	BC
Biggest lead	0 (1 <sup>st</sup> 10:00)	18 (3 <sup>rd</sup> 0:51)
Best Scoring Run	3(3 <sup>rd</sup> 8:48)	6(3 <sup>rd</sup> 5:26)
Lead Changes	0	
Times Tied	0	
Time with Lead	00:00	09:45

	PSU	BC
Points from		
Turnovers	3	7
Paint	6	8
Second Chance	0	7
Fast Breaks	5	2
Bench	8	3

Period by Period Scoring					
	1st	2nd	3rd	4th	TOT
PSU	14	18	16	21	69
BC	20	17	29	20	86





**Period 4**

**Quarter Starters:**

<b>BC</b>	1 Swartz C	3 Batts J	12 VanTimmeren A	13 Soule T	14 Garraud M
<b>PSU</b>	0 Thornton N	1 Brigham A	20 Marisa M	23 Hagans S	25 Jekot K

Game Time	BC	Score	Diff	PSU
10:00	10 DICKENS M substitution out			
10:00	1 SWARTZ C substitution in			
10:00				4 BEVERLEY N substitution out
10:00				11 CAMDEN A substitution out
10:00				0 THORNTON N substitution in
10:00				23 HAGANS S substitution in
09:43	13 SOULE T foul drawn (4)			0 THORNTON N foul shooting (1 - 1)
09:43	13 SOULE T free throw 1 - 2 made (3)	<b>67-48</b>	<b>19</b>	
09:43	13 SOULE T free throw 2 - 2 made (4)	<b>68-48</b>	<b>20</b>	
09:11		<b>68-50</b>	<b>18</b>	1 BRIGHAM A 2pt FG in the paint, layup made (14)
09:00	1 SWARTZ C 2pt FG in the paint, jump shot missed			
09:00	3 BATTIS J offensive rebound (10)			
08:50	1 SWARTZ C 3pt FG second chance, jump shot made (22)	<b>71-50</b>	<b>21</b>	
08:50	12 VANTIMMEREN A assist (1)			
08:31				0 THORNTON N turnover bad pass (1)
08:31				0 THORNTON N substitution out
08:31				23 HAGANS S substitution out
08:31				25 JEKOT K substitution out
08:31				4 BEVERLEY N substitution in
08:31				5 KAPINUS L substitution in
08:31				11 CAMDEN A substitution in
08:23	3 BATTIS J 2pt FG from turnover outside the paint, pull up jump shot made (14)	<b>73-50</b>	<b>23</b>	
08:23	13 SOULE T assist (5)			
08:11	3 BATTIS J steal (2)			20 MARISA M turnover bad pass (2)
08:05	14 GARRAUD M 3pt FG from turnover, pull up jump shot missed			
08:04				defensive rebound (20)
07:49				11 CAMDEN A 3pt FG , jump shot missed
07:49				offensive rebound (21)
07:49	12 VANTIMMEREN A foul personal (2 - 1)			4 BEVERLEY N foul drawn (1)
07:49	14 GARRAUD M substitution out			
07:49	10 DICKENS M substitution in			
07:42		<b>73-52</b>	<b>21</b>	20 MARISA M 2pt FG second chance outside the paint, step back jump shot made (12)
07:21	13 SOULE T 2pt FG outside the paint, jump shot blocked			
07:21				5 KAPINUS L block (2)
07:17				5 KAPINUS L defensive rebound (3)
07:15		<b>73-54</b>	<b>19</b>	5 KAPINUS L 2pt FG fast break in the paint, layup made (4)
07:03	1 SWARTZ C turnover bad pass (5)			
07:03	12 VANTIMMEREN A substitution out			
07:03	13 SOULE T substitution out			
07:03	5 GAKDENG M substitution in			
07:03	14 GARRAUD M substitution in			
07:03				1 BRIGHAM A substitution out



**Penn St. at Boston College**

12/02/21 Conte Forum, Chestnut Hill, Mass  
2021-22 Women's Basketball

Game Time: 6:00 PM

Game Duration: 1:46

Attendance: 833

Officials: Karen Preato, Tiara Cruse, Fatou Cissoko-Stephens

Game Time	BC	Score	Diff	PSU
07:03				10 SABEL T substitution in
06:49				20 MARISA M 2pt FG from turnover outside the paint, jump shot missed
06:49				offensive rebound (23)
06:49				20 MARISA M substitution out
06:49				25 JEKOT K substitution in
06:34				4 BEVERLEY N 3pt FG from turnover second chance, jump shot missed
06:30	5 GAKDENG M defensive rebound (6)			
06:12	1 SWARTZ C 2pt FG in the paint, driving layup made (24)	<b>75-54</b>	<b>21</b>	
05:59				11 CAMDEN A 3pt FG , jump shot missed
05:57				offensive rebound (24)
05:57	3 BATTS J substitution out			
05:57	5 GAKDENG M substitution out			
05:57	14 GARRAUD M substitution out			
05:57	2 IVEY K substitution in			
05:57	12 VANTIMMEREN A substitution in			
05:57	13 SOULE T substitution in			
05:57				4 BEVERLEY N substitution out
05:57				20 MARISA M substitution in
05:50		<b>75-56</b>	<b>19</b>	5 KAPINUS L 2pt FG second chance in the paint, layup made (6)
05:39	12 VANTIMMEREN A 2pt FG outside the paint, jump shot missed			
05:37				10 SABEL T defensive rebound (3)
05:15				11 CAMDEN A 2pt FG outside the paint, turnaround jump shot missed
05:11	10 DICKENS M defensive rebound (4)			
05:09	10 DICKENS M 3pt FG , jump shot missed			
05:03				11 CAMDEN A defensive rebound (3)
05:00				25 JEKOT K 2pt FG in the paint, layup missed
04:57				5 KAPINUS L offensive rebound (4)
04:56		<b>75-58</b>	<b>17</b>	5 KAPINUS L 2pt FG second chance in the paint, layup made (8)
04:53	2 IVEY K foul drawn (1)			25 JEKOT K foul personal (2 - 2)
04:53	Timeout media			
04:53	10 DICKENS M substitution out			
04:53	12 VANTIMMEREN A substitution out			
04:53	13 SOULE T substitution out			
04:53	3 BATTS J substitution in			
04:53	5 GAKDENG M substitution in			
04:53	14 GARRAUD M substitution in			
04:53				5 KAPINUS L substitution out
04:53				10 SABEL T substitution out
04:53				1 BRIGHAM A substitution in
04:53				15 BURKE M substitution in
04:47	14 GARRAUD M foul drawn (3)			1 BRIGHAM A foul shooting (2 - 3)
04:47	2 IVEY K substitution out			
04:47	13 SOULE T substitution in			
04:47	14 GARRAUD M free throw 1 - 2 made (15)	<b>76-58</b>	<b>18</b>	
04:47	14 GARRAUD M free throw 2 - 2 made (16)	<b>77-58</b>	<b>19</b>	



**Penn St. at Boston College**

12/02/21 Conte Forum, Chestnut Hill, Mass  
2021-22 Women's Basketball

Game Time: 6:00 PM

Game Duration: 1:46

Attendance: 833

Officials: Karen Preato, Tiara Cruse, Fatou Cissoko-Stephens

Game Time	BC	Score	Diff	PSU
04:32				1 BRIGHAM A 2pt FG in the paint, layup blocked
04:32	5 GAKDENG M block (1)			
04:29	5 GAKDENG M defensive rebound (7)			
04:13	1 SWARTZ C 2pt FG in the paint, layup missed			
04:10				1 BRIGHAM A defensive rebound (4)
04:01		<b>77-60</b>	<b>17</b>	20 MARISA M 2pt FG in the paint, layup made (14)
04:01				1 BRIGHAM A assist (1)
03:40	5 GAKDENG M 2pt FG in the paint, layup made (6)	<b>79-60</b>	<b>19</b>	
03:40	3 BATTS J assist (5)			
03:36				Timeout 30 Sec
03:36				Timeout media
03:36				11 CAMDEN A substitution out
03:36				15 BURKE M substitution out
03:36				25 JEKOT K substitution out
03:36				4 BEVERLEY N substitution in
03:36				5 KAPINUS L substitution in
03:36				23 HAGANS S substitution in
03:27				20 MARISA M 2pt FG in the paint, layup blocked
03:27	5 GAKDENG M block (2)			
03:22				1 BRIGHAM A offensive rebound (5)
03:21		<b>79-62</b>	<b>17</b>	1 BRIGHAM A 2pt FG second chance in the paint, layup made (16)
03:17	jump ball situation			
03:17	14 GARRAUD M turnover lost ball (3)			20 MARISA M steal (2)
03:05		<b>79-64</b>	<b>15</b>	1 BRIGHAM A 2pt FG from turnover in the paint, layup made (18)
03:05				5 KAPINUS L assist (3)
02:45	3 BATTS J turnover bad pass (3)			4 BEVERLEY N steal (2)
02:37				23 HAGANS S 2pt FG from turnover in the paint, floating jump shot missed
02:33				5 KAPINUS L offensive rebound (5)
02:32				5 KAPINUS L 2pt FG from turnover second chance in the paint, layup missed
02:28	3 BATTS J defensive rebound (11)			
02:27	3 BATTS J turnover lost ball (4)			20 MARISA M steal (3)
02:22				20 MARISA M 2pt FG from turnover in the paint, layup missed
02:19				5 KAPINUS L offensive rebound (6)
02:18				4 BEVERLEY N 3pt FG from turnover second chance, jump shot missed
02:14	3 BATTS J defensive rebound (12)			
02:14	5 GAKDENG M substitution out			
02:14	12 VANTIMMEREN A substitution in			
02:14				1 BRIGHAM A substitution out
02:14				11 CAMDEN A substitution in
02:14	3 BATTS J substitution out			
02:14	10 DICKENS M substitution in			
02:11	1 SWARTZ C 2pt FG in the paint, layup missed			
02:08				20 MARISA M defensive rebound (4)
02:07				20 MARISA M turnover bad pass (3)
01:47	1 SWARTZ C 2pt FG from turnover in the paint, driving layup made (26)	<b>81-64</b>	<b>17</b>	



**Penn St. at Boston College**

12/02/21 Conte Forum, Chestnut Hill, Mass  
2021-22 Women's Basketball

**Game Time:** 6:00 PM

**Game Duration:** 1:46

**Attendance:** 833

**Officials:** Karen Preato, Tiara Cruse, Fatou Cissoko-Stephens

Game Time	BC	Score	Diff	PSU
01:32	14 GARRAUD M foul shooting (3 - 2)			4 BEVERLEY N foul drawn (2)
01:32				11 CAMDEN A substitution out
01:32				1 BRIGHAM A substitution in
01:32	14 GARRAUD M substitution out			
01:32	2 IVEY K substitution in			
01:32		<b>81-65</b>	<b>16</b>	4 BEVERLEY N free throw 1 - 2 made (6)
01:32		<b>81-66</b>	<b>15</b>	4 BEVERLEY N free throw 2 - 2 made (7)
01:29	Timeout 30 Sec			
01:29	2 IVEY K substitution out			
01:29	14 GARRAUD M substitution in			
01:29				1 BRIGHAM A substitution out
01:29				0 THORNTON N substitution in
01:17	1 SWARTZ C foul drawn (4)			5 KAPINUS L foul personal (4 - 4)
01:15	1 SWARTZ C 2pt FG in the paint, layup made (28)	<b>83-66</b>	<b>17</b>	
01:15	10 DICKENS M assist (4)			
01:15	1 SWARTZ C foul drawn (5)			5 KAPINUS L foul shooting (5 - 5)
01:15				5 KAPINUS L substitution out
01:15				1 BRIGHAM A substitution in
01:15	1 SWARTZ C free throw 1 - 1 made (29)	<b>84-66</b>	<b>18</b>	
01:15	10 DICKENS M substitution out			
01:15	3 BATTS J substitution in			
01:02	12 VANTIMMEREN A steal (2)			1 BRIGHAM A turnover lost ball (6)
00:46	3 BATTS J 2pt FG from turnover in the paint, layup made (16)	<b>86-66</b>	<b>20</b>	
00:46	12 VANTIMMEREN A assist (2)			
00:32	1 SWARTZ C steal (2)			23 HAGANS S turnover bad pass (2)
00:26	Timeout 30 Sec			
00:26	13 SOULE T substitution out			
00:26	10 DICKENS M substitution in			
00:15	10 DICKENS M 2pt FG from turnover outside the paint, pull up jump shot missed			
00:11				0 THORNTON N defensive rebound (3)
00:02		<b>86-69</b>	<b>17</b>	4 BEVERLEY N 3pt FG , jump shot made (10)
00:02				23 HAGANS S assist (1)
<b>END OF GAME</b>				
<b>BC 86-69 PSU</b>				



**Penn St. at Boston College**

12/02/21 Conte Forum, Chestnut Hill, Mass  
2021-22 Women's Basketball

Game Time: 6:00 PM  
Game Duration: 1:46  
Attendance: 833

Officials: Karen Preato, Tiara Cruse, Fatou Cissoko-Stephens

**Penn St. - 21**

NO.	Name	C/G	Min	FG			Rebounds			Fouls		TP	AS	TO	ST	Blocks		+/-
				M-A	M-A	M-A	OR	DR	TOT	PF	FD					BS	BA	
1	Ali Brigham	C	06:54	3-4	0-0	0-0	1	1	2	1	0	6	1	1	0	0	1	3
4	Niya Beverley	G	06:10	1-3	1-3	2-2	0	0	0	0	2	5	0	0	1	0	0	2
5	Leilani Kapinus	G	05:59	3-4	0-0	0-0	3	1	4	2	0	6	1	0	0	1	0	6
20	Makenna Marisa	G	09:08	2-5	0-0	0-0	0	1	1	0	0	4	0	2	2	0	1	3
23	Shay Hagans	G	05:05	0-1	0-0	0-0	0	0	0	0	0	0	1	1	0	0	0	-1
0	Nyam Thornton		02:58	0-0	0-0	0-0	0	1	1	1	0	0	0	1	0	0	0	-5
11	Anna Camden		05:37	0-3	0-2	0-0	0	1	1	0	0	0	0	0	0	0	0	0
10	Tova Sabel		02:10	0-0	0-0	0-0	0	1	1	0	0	0	0	0	0	0	0	2
25	Kelly Jekot		04:42	0-1	0-0	0-0	0	0	0	1	0	0	0	0	0	0	0	-3
15	Maddie Burke		01:17	0-0	0-0	0-0	0	0	0	0	0	0	0	0	0	0	0	-2
Team							3	1	4			0		0				
<b>Totals</b>				9-21	1-5	2-2	7	7	14	5	2	21	3	5	3	1	2	1

Shooting By Period		
4 <sup>th</sup> FG%	9-21	42.9%
3PT%	1-5	20.0%
FT%	2-2	100%
GM FG%	9-21	42.9%
3PT%	1-5	20.0%
FT%	2-2	100.0%

Dead Ball Rebounds: 0, 0

Technical Fouls::NONE

**Boston College - 20**

NO.	Name	C/G	Min	FG			Rebounds			Fouls		TP	AS	TO	ST	Blocks		+/-
				M-A	M-A	M-A	OR	DR	TOT	PF	FD					BS	BA	
3	Jaelyn Batts	F	07:57	2-2	0-0	0-0	1	2	3	0	0	4	1	2	1	0	0	0
13	Taylor Soule	F	08:21	0-1	0-0	2-2	0	0	0	0	1	2	1	0	0	0	1	0
5	Maria Gakdeng	C	03:45	1-1	0-0	0-0	0	2	2	0	0	2	0	0	0	2	0	0
1	Cameron Swartz	G	10:00	4-7	1-1	1-1	0	0	0	0	2	10	0	1	1	0	0	-1
14	Marnelle Garraud	G	08:07	0-1	0-1	2-2	0	0	0	1	1	2	0	1	0	0	0	9
10	Makayla Dickens		04:22	0-2	0-1	0-0	0	1	1	0	0	0	1	0	0	0	0	-6
2	Kaylah Ivey		01:13	0-0	0-0	0-0	0	0	0	0	1	0	0	0	0	0	0	-6
12	Ally VanTimmeren		06:15	0-1	0-0	0-0	0	0	0	1	0	0	2	0	1	0	0	-1
Team							0	0	0			0		0				
<b>Totals</b>				7-15	1-3	5-5	1	5	6	2	5	20	5	4	3	2	1	-1

Shooting By Period		
4 <sup>th</sup> FG%	7-15	46.7%
3PT%	1-3	33.3%
FT%	5-5	100%
GM FG%	7-15	46.7%
3PT%	1-3	33.3%
FT%	5-5	100.0%

Dead Ball Rebounds: 0, 0

Technical Fouls::NONE

	PSU	BC
Biggest lead	0 (1 <sup>st</sup> 10:00)	23 (4 <sup>th</sup> 8:23)
Best Scoring Run	4(4 <sup>th</sup> 7:15)	5(4 <sup>th</sup> 8:23)
Lead Changes	0	
Times Tied	0	
Time with Lead	00:00	09:43

	PSU	BC
Points from		
Turnovers	2	6
Paint	14	10
Second Chance	8	3
Fast Breaks	2	0
Bench	0	0

	Period by Period Scoring				
	1st	2nd	3rd	4th	TOT
PSU	14	18	16	21	69
BC	20	17	29	20	86



**Penn St. at Boston College**

12/02/21 Conte Forum, Chestnut Hill, Mass  
2021-22 Women's Basketball

Game Time: 6:00 PM  
Game Duration: 1:46  
Attendance: 833

Officials: Karen Preato, Tiara Cruse, Fatou Cissoko-Stephens

**Penn St. - 37**

NO.	Name	C/G	Min	FG			3P			FT			Rebounds			Fouls		TP	AS	TO	ST	Blocks		+/-
				M-A	M-A	M-A	OR	DR	TOT	PF	FD	BS	BA											
1	Ali Brigham	C	14:55	4-5	0-0	0-0	2	2	4	2	2	8	1	4	0	0	1	4	0	0	1	-10		
4	Niya Beverley	G	16:10	2-5	2-5	2-2	0	0	0	0	2	8	2	0	1	1	0	1	1	0	-11			
5	Leilani Kapinus	G	10:24	3-4	0-0	0-0	3	1	4	5	0	6	2	1	0	2	0	1	0	0	-1			
20	Makenna Marisa	G	16:50	3-8	0-0	1-1	0	1	1	0	1	7	2	3	3	0	1	0	0	0	-7			
23	Shay Hagans	G	09:27	0-2	0-1	0-0	0	0	0	0	0	0	1	1	0	0	0	0	0	0	-4			
25	Kelly Jekot		09:17	2-3	1-1	0-0	0	0	0	2	0	5	0	0	2	0	0	2	0	0	-9			
15	Maddie Burke		04:57	0-2	0-1	0-0	0	0	0	1	1	0	0	1	0	0	0	0	0	0	-8			
0	Nyam Thornton		04:09	0-0	0-0	0-0	0	1	1	1	0	0	1	1	0	0	0	0	0	0	-5			
10	Tova Sabel		04:41	1-2	1-1	0-0	0	1	1	0	0	3	0	0	0	0	0	0	0	0	-2			
11	Anna Camden		09:10	0-3	0-2	0-0	1	1	2	0	0	0	0	0	0	0	0	0	0	0	-3			
Team							3	1	4			0			0									
<b>Totals</b>				15-34	4-11	3-3	9	8	17	11	6	37	9	11	6	3	2					-12		

Shooting By Period		
3 <sup>rd</sup> FG%	6-13	46.2%
3PT%	3-6	50.0%
FT%	1-1	100%
4 <sup>th</sup> FG%	9-21	42.9%
3PT%	1-5	20.0%
FT%	2-2	100%
GM FG%	15-34	44.1%
3PT%	4-11	36.4%
FT%	3-3	100.0%

Dead Ball Rebounds: 0, 0

Technical Fouls::NONE

**Boston College - 49**

NO.	Name	C/G	Min	FG			3P			FT			Rebounds			Fouls		TP	AS	TO	ST	Blocks		+/-
				M-A	M-A	M-A	OR	DR	TOT	PF	FD	BS	BA											
3	Jaelyn Batts	F	14:38	4-4	0-0	2-2	3	2	5	0	1	10	4	3	2	0	0	7						
13	Taylor Soule	F	16:21	0-2	0-0	2-2	1	1	2	1	2	2	2	1	0	0	1	10						
5	Maria Gakdeng	C	06:14	2-2	0-0	0-0	1	3	4	0	0	4	0	1	0	2	0	0						
1	Cameron Swartz	G	18:26	7-14	2-3	3-4	0	2	2	0	4	19	1	1	1	0	2	11						
14	Marnelle Garraud	G	14:39	3-4	3-4	2-2	0	0	0	2	2	11	0	2	0	0	0	18						
12	Ally VanTimmeren		13:09	0-3	0-0	0-0	2	0	2	2	1	0	2	0	2	0	0	11						
10	Makayla Dickens		10:23	1-5	1-4	0-0	1	1	2	0	0	3	3	1	0	0	0	2						
2	Kaylah Ivey		05:33	0-0	0-0	0-0	0	0	0	0	1	0	0	0	0	0	0	0						
32	Clara Ford		00:37	0-0	0-0	0-0	0	0	0	1	0	0	0	0	0	0	0	1						
Team							1	1	2			0			0									
<b>Totals</b>				17-34	6-11	9-10	9	10	19	6	11	49	12	9	5	2	3	12						

Shooting By Period		
3 <sup>rd</sup> FG%	10-19	52.6%
3PT%	5-8	62.5%
FT%	4-5	80%
4 <sup>th</sup> FG%	7-15	46.7%
3PT%	1-3	33.3%
FT%	5-5	100%
GM FG%	17-34	50.0%
3PT%	6-11	54.5%
FT%	9-10	90.0%

Dead Ball Rebounds: 1, 0

Technical Fouls::NONE

	PSU	BC
Biggest lead	0 (1 <sup>st</sup> 10:00)	23 (4 <sup>th</sup> 8:23)
Best Scoring Run	4(4 <sup>th</sup> 7:15)	6(3 <sup>rd</sup> 5:26)
Lead Changes	0	
Times Tied	0	
Time with Lead	00:00	19:45

Points from	PSU	BC
Turnovers	5	13
Paint	20	18
Second Chance	8	10
Fast Breaks	7	2
Bench	8	3

Period by Period Scoring					
	1st	2nd	3rd	4th	TOT
PSU	14	18	16	21	69
BC	20	17	29	20	86



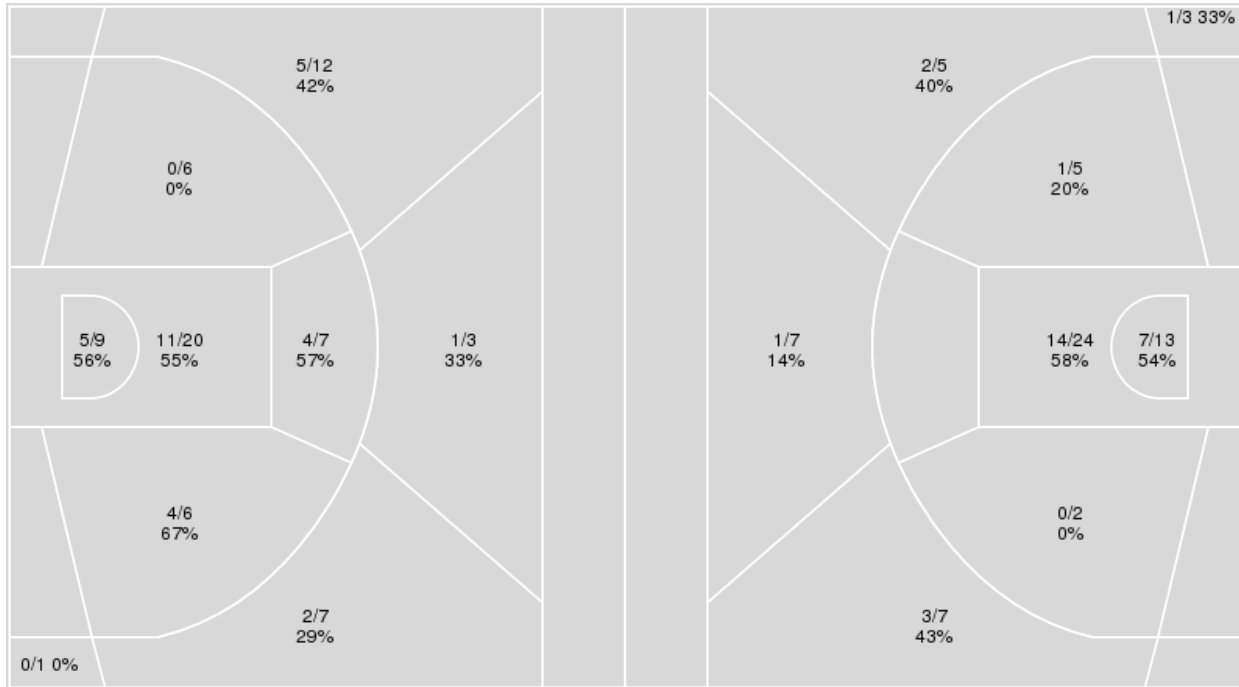
**Officials:** Karen Preato, Tiara Cruse, Fatou Cissoko-Stephens

{ Players => 0, 1, 2, 3, 4, 5, 10, 11, 12, 13, 14, 21, 24, 32, 44; } FG  
 Types => All; Results => All;

{ Players => All; } FG Types => All; Results => All;

**Boston College**

**Penn St.**



<b>Boston College</b>	<b>M/A</b>	<b>%</b>
Field Goals	32/71	45
2 Points	24/48	50
3 Points	8/23	35
Free Throws	14/16	88

<b>Penn St.</b>	<b>M/A</b>	<b>%</b>
Field Goals	29/66	44
2 Points	22/44	50
3 Points	7/22	32
Free Throws	4/4	100



**Penn St. at Boston College**

12/02/21 Conte Forum, Chestnut Hill, Mass  
2021-22 Women's Basketball

Game Time: 6:00 PM

Game Duration: 1:46

Attendance: 833

Officials: Karen Preato, Tiara Cruse, Fatou Cissoko-Stephens

**Penn St.**

No	Name	Mins		Score		Points Diff		Points per Min		Assists		Rebounds		Steals		Turnovers	
		On	Off	On	Off	On	Off	On	Off	On	Off	On	Off	On	Off	On	Off
0	Nyam Thornton	08:11	31:49	16 - 19	53 - 67	-3	-14	1.96	1.67	5	15	4	29	0	11	3	18
1	Ali Brigham	28:49	11:11	55 - 64	14 - 22	-9	-8	1.91	1.25	17	3	22	11	10	1	15	6
4	Niya Beverley	32:13	07:47	52 - 75	17 - 11	-23	6	1.61	2.18	16	4	23	10	11	0	20	1
5	Leilani Kapinus	21:46	18:14	34 - 45	35 - 41	-11	-6	1.56	1.92	8	12	20	13	8	3	14	7
10	Tova Sabel	12:40	27:20	18 - 22	51 - 64	-4	-13	1.42	1.87	5	15	13	20	2	9	7	14
11	Anna Camden	16:35	23:25	29 - 34	40 - 52	-5	-12	1.75	1.71	8	12	17	16	1	10	7	14
15	Maddie Burke	12:51	27:09	20 - 24	49 - 62	-4	-13	1.56	1.80	8	12	11	22	2	9	4	17
20	Makenna Marisa	32:38	07:22	59 - 69	10 - 17	-10	-7	1.81	1.36	16	4	29	4	9	2	16	5
23	Shay Hagans	19:07	20:53	32 - 42	37 - 44	-10	-7	1.67	1.77	9	11	14	19	8	3	15	6
25	Kelly Jekot	15:10	24:50	30 - 36	39 - 50	-6	-11	1.98	1.57	8	12	12	21	4	7	4	17

**Boston College**

No	Name	Mins		Score		Points Diff		Points per Min		Assists		Rebounds		Steals		Turnovers	
		On	Off	On	Off	On	Off	On	Off	On	Off	On	Off	On	Off	On	Off
1	Cameron Swartz	32:57	07:03	73 - 54	13 - 15	19	-2	2.22	1.84	17	3	38	5	10	2	16	1
2	Kaylah Ivey	17:49	22:11	34 - 32	52 - 37	2	15	1.91	2.34	7	13	22	21	6	6	6	11
3	Jaelyn Batts	27:20	12:40	59 - 43	27 - 26	16	1	2.16	2.13	15	5	27	16	7	5	14	3
5	Maria Gakdeng	17:34	22:26	32 - 25	54 - 44	7	10	1.82	2.41	6	14	24	19	5	7	10	7
10	Makayla Dickens	21:45	18:15	44 - 44	42 - 25	0	17	2.02	2.30	8	12	23	20	8	4	8	9
12	Ally VanTimmeren	21:49	18:11	53 - 44	33 - 25	9	8	2.43	1.81	14	6	18	25	7	5	7	10
13	Taylor Soule	29:51	10:09	67 - 55	19 - 14	12	5	2.24	1.87	17	3	34	9	9	3	13	4
14	Marnelle Garraud	30:18	09:42	67 - 48	19 - 21	19	-2	2.21	1.96	16	4	28	15	8	4	11	6
32	Clara Ford	00:37	39:23	1 - 0	85 - 69	1	16	1.62	2.16	0	20	1	42	0	12	0	17

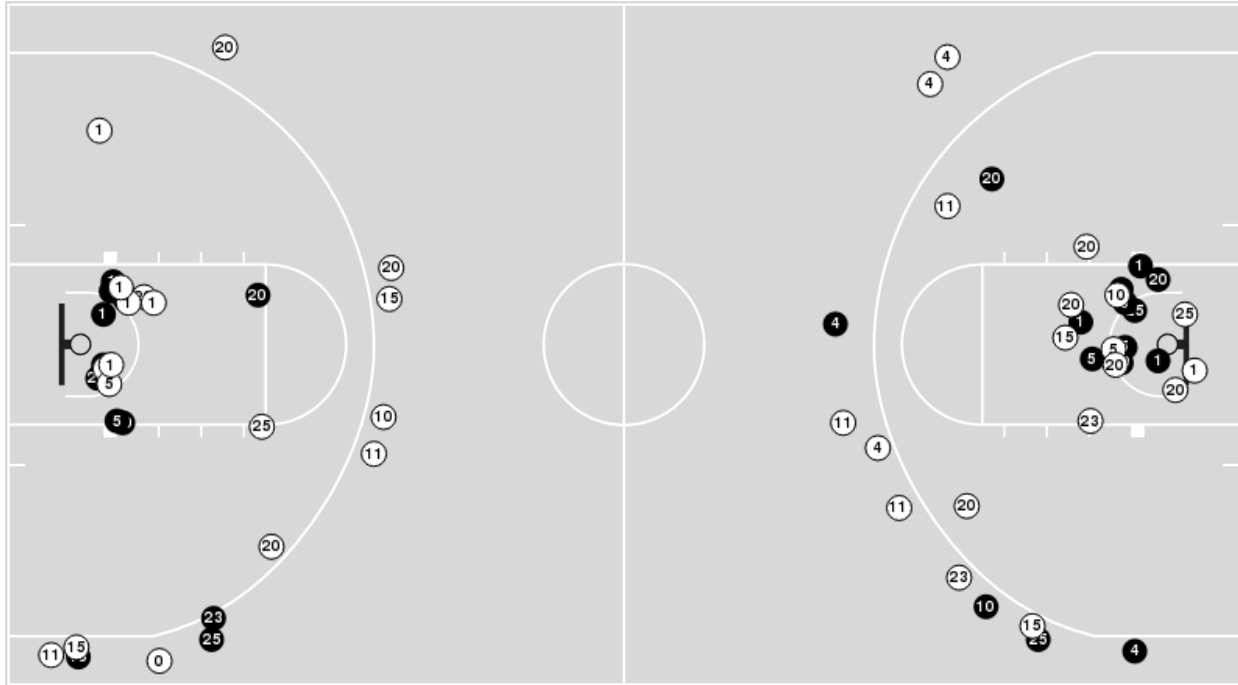




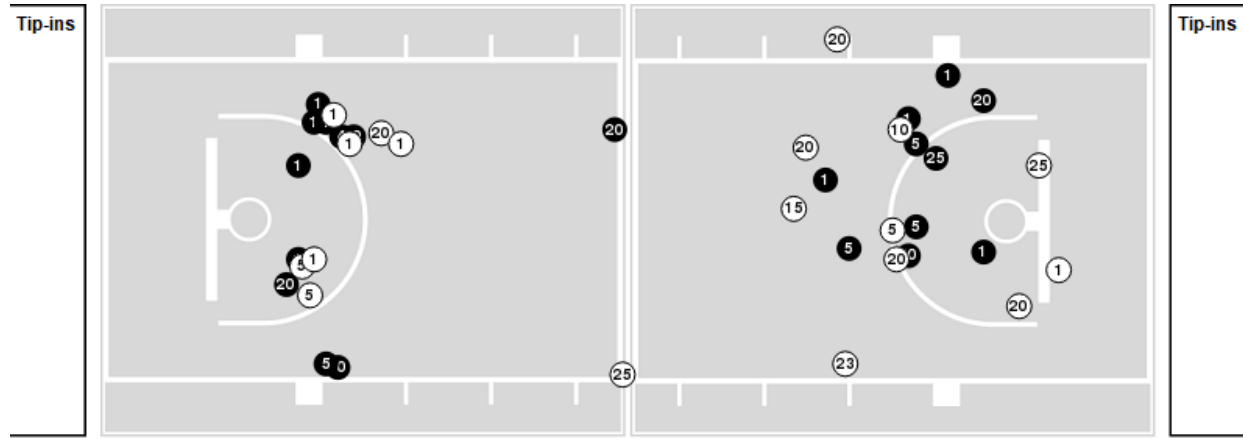
**Officials:** Karen Preato, Tiara Cruse, Fatou Cissoko-Stephens

Players => AllFG Types=>AllResults=>All  
**Penn St.**

**All Field Goals**



**Blow Up Chart**



● Made    ○ Missed    N - Player Number

Penn St.	M/A	%
Field Goals	29/66	44
2 Points	22/44	50
3 Points	7/22	32
Free Throws	4/4	100

Penn St.	M/A	%
Points in the Paint	42 (21 / 37)	57
Fast Break Points	11 (6/6)	100
Second Chance Points	10 (5/10)	50
Effective FG%	49	

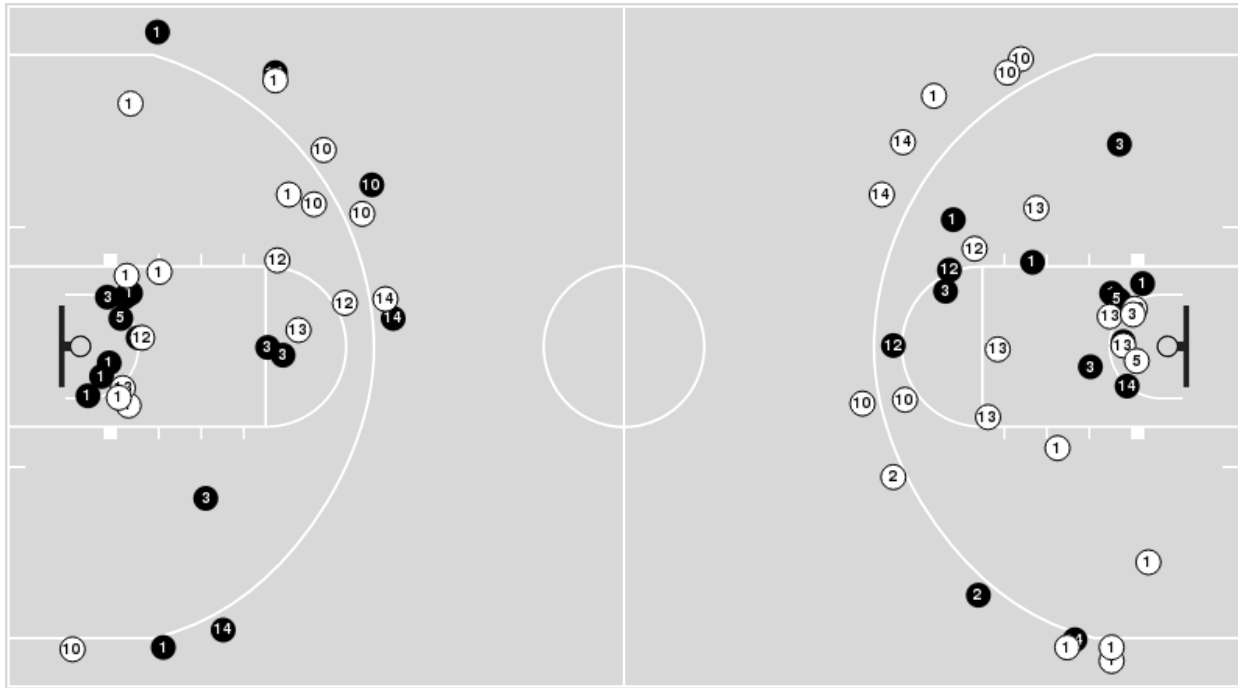


**Officials:** Karen Preato, Tiara Cruse, Fatou Cissoko-Stephens

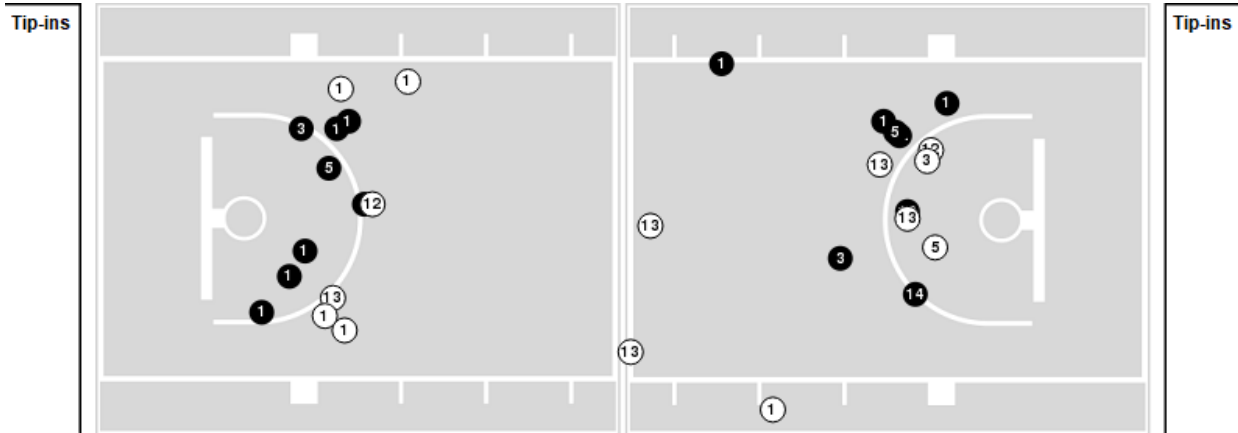
Players => 0, 1, 2, 3, 4, 5, 10, 11, 12, 13, 14, 21, 24, 32, 44FG Types=>AllResults=>All

**Boston College**

**All Field Goals**



**Blow Up Chart**



● Made ○ Missed N - Player Number

Boston College	M/A	%
Field Goals	32/71	45
2 Points	24/48	50
3 Points	8/23	35
Free Throws	14/16	88

Boston College	M/A	%
Points in the Paint	32 (16 / 29)	55
Fast Break Points	7 (3/3)	100
Second Chance Points	15 (7/12)	58
Effective FG%	51	



**Penn St. at Boston College**

12/02/21 Conte Forum, Chestnut Hill, Mass  
2021-22 Women's Basketball

**Game Time:** 6:00 PM  
**Game Duration:** 1:46  
**Attendance:** 833

**Officials:** Karen Preato, Tiara Cruse, Fatou Cissoko-Stephens

**Penn St.**

Lineup	Quarter On	Time On	Quarter Off	Time Off	Time on Court	Score	Score Diff	Reb	Stl	Tov	Ass	PPP
1- Brigham A/ 4- Beverley N/ 5- Kapinus L/ 20- Marisa M/ 23- Hagans S/	1	10:00	1	07:40	02:20	0-4	-4	2	2	3	0	0.0000
0- Thornton N/ 1- Brigham A/ 4- Beverley N/ 10- Sabel T/ 20- Marisa M/	1	07:40	1	07:06	00:34	0-0	0	1	0	0	0	0.0000
0- Thornton N/ 1- Brigham A/ 10- Sabel T/ 11- Camden A/ 20- Marisa M/	1	07:06	1	06:20	00:46	2-0	2	1	0	0	1	2.0000
0- Thornton N/ 10- Sabel T/ 11- Camden A/ 15- Burke M/ 20- Marisa M/	1	06:20	1	05:28	00:52	0-2	-2	0	0	0	0	0.0000
0- Thornton N/ 1- Brigham A/ 10- Sabel T/ 11- Camden A/ 15- Burke M/	1	05:28	1	04:55	00:33	2-0	2	1	0	0	1	2.0000
1- Brigham A/ 4- Beverley N/ 15- Burke M/ 20- Marisa M/ 25- Jekot K/	1	04:55	1	03:27	01:28	5-5	0	1	1	1	2	1.2500
4- Beverley N/ 5- Kapinus L/ 10- Sabel T/ 11- Camden A/ 23- Hagans S/	1	03:27	1	00:33	02:54	5-7	-2	1	1	3	2	0.8333
1- Brigham A/ 4- Beverley N/ 20- Marisa M/ 23- Hagans S/ 25- Jekot K/	1	00:33	2	10:00	00:33	0-2	-2	0	0	0	0	0.0000
0- Thornton N/ 1- Brigham A/ 4- Beverley N/ 20- Marisa M/ 25- Jekot K/	2	10:00	2	08:43	01:17	4-4	0	0	0	0	1	2.0000
1- Brigham A/ 4- Beverley N/ 5- Kapinus L/ 20- Marisa M/ 23- Hagans S/	2	08:43	2	07:21	01:22	3-4	-1	0	0	1	1	1.2295
4- Beverley N/ 5- Kapinus L/ 10- Sabel T/ 11- Camden A/ 23- Hagans S/	2	07:21	2	06:36	00:45	0-2	-2	1	0	1	0	0.0000
4- Beverley N/ 5- Kapinus L/ 10- Sabel T/ 11- Camden A/ 20- Marisa M/	2	06:36	2	05:01	01:35	2-2	0	2	0	1	0	0.6667
1- Brigham A/ 4- Beverley N/ 15- Burke M/ 20- Marisa M/ 25- Jekot K/	2	05:01	2	04:12	00:49	0-0	0	1	0	0	0	0.0000
1- Brigham A/ 15- Burke M/ 20- Marisa M/ 23- Hagans S/ 25- Jekot K/	2	04:12	2	02:26	01:46	5-0	5	4	0	0	1	1.6667
1- Brigham A/ 4- Beverley N/ 5- Kapinus L/ 15- Burke M/ 20- Marisa M/	2	02:26	3	10:00	02:26	4-5	-1	1	1	0	2	0.8000
1- Brigham A/ 4- Beverley N/ 5- Kapinus L/ 20- Marisa M/ 23- Hagans S/	3	10:00	3	07:53	02:07	3-7	-4	1	0	2	1	0.7500
1- Brigham A/ 4- Beverley N/ 20- Marisa M/ 23- Hagans S/ 25- Jekot K/	3	07:53	3	07:08	00:45	3-0	3	0	2	0	1	2.0833
1- Brigham A/ 4- Beverley N/ 15- Burke M/ 20- Marisa M/ 25- Jekot K/	3	07:08	3	05:59	01:09	0-3	-3	0	0	1	0	0.0000
0- Thornton N/ 4- Beverley N/ 5- Kapinus L/ 10- Sabel T/ 11- Camden A/	3	05:59	3	04:48	01:11	3-3	0	0	0	0	1	1.5000
1- Brigham A/ 4- Beverley N/ 5- Kapinus L/ 10- Sabel T/ 25- Jekot K/	3	04:48	3	04:05	00:43	0-3	-3	0	1	1	0	0.0000
1- Brigham A/ 4- Beverley N/ 10- Sabel T/ 15- Burke M/ 20- Marisa M/	3	04:05	3	03:28	00:37	0-1	-1	1	0	1	0	0.0000
1- Brigham A/ 4- Beverley N/ 15- Burke M/ 20- Marisa M/ 23- Hagans S/	3	03:28	3	02:22	01:06	2-4	-2	0	0	1	1	1.0000
4- Beverley N/ 5- Kapinus L/ 11- Camden A/ 15- Burke M/ 23- Hagans S/	3	02:22	3	01:58	00:24	0-0	0	0	0	0	0	0.0000
4- Beverley N/ 11- Camden A/ 15- Burke M/ 20- Marisa M/ 25- Jekot K/	3	01:58	3	01:34	00:24	0-0	0	1	0	0	0	0.0000
1- Brigham A/ 4- Beverley N/ 11- Camden A/ 20- Marisa M/ 25- Jekot K/	3	01:34	4	10:00	01:34	5-8	-3	0	0	0	2	2.5000
0- Thornton N/ 1- Brigham A/ 20- Marisa M/ 23- Hagans S/ 25- Jekot K/	4	10:00	4	08:31	01:29	2-5	-3	0	0	1	0	1.0000
1- Brigham A/ 4- Beverley N/ 5- Kapinus L/ 11- Camden A/ 20- Marisa M/	4	08:31	4	07:03	01:28	4-2	2	3	0	1	0	1.3333
4- Beverley N/ 5- Kapinus L/ 10- Sabel T/ 11- Camden A/ 20- Marisa M/	4	07:03	4	06:49	00:14	0-0	0	1	0	0	0	0.0000
4- Beverley N/ 5- Kapinus L/ 10- Sabel T/ 11- Camden A/ 25- Jekot K/	4	06:49	4	05:57	00:52	0-2	-2	1	0	0	0	0.0000
5- Kapinus L/ 10- Sabel T/ 11- Camden A/ 20- Marisa M/ 25- Jekot K/	4	05:57	4	04:53	01:04	4-0	4	3	0	0	0	1.3333
1- Brigham A/ 11- Camden A/ 15- Burke M/ 20- Marisa M/ 25- Jekot K/	4	04:53	4	03:36	01:17	2-4	-2	1	0	0	1	1.0000
1- Brigham A/ 4- Beverley N/ 5- Kapinus L/ 20- Marisa M/ 23- Hagans S/	4	03:36	4	02:14	01:22	4-0	4	3	3	0	1	1.0000
4- Beverley N/ 5- Kapinus L/ 11- Camden A/ 20- Marisa M/ 23- Hagans S/	4	02:14	4	01:32	00:42	0-2	-2	1	0	1	0	0.0000
1- Brigham A/ 4- Beverley N/ 5- Kapinus L/ 20- Marisa M/ 23- Hagans S/	4	01:32	4	01:29	00:03	2-0	2	0	0	0	0	2.2727
0- Thornton N/ 4- Beverley N/ 5- Kapinus L/ 20- Marisa M/ 23- Hagans S/	4	01:29	4	01:15	00:14	0-2	-2	0	0	0	0	0.0000
0- Thornton N/ 1- Brigham A/ 4- Beverley N/ 20- Marisa M/ 23- Hagans S/	4	01:15	4	00:00	01:15	3-3	0	1	0	2	1	1.0000



**Penn St. at Boston College**

12/02/21 Conte Forum, Chestnut Hill, Mass  
2021-22 Women's Basketball

**Game Time:** 6:00 PM  
**Game Duration:** 1:46  
**Attendance:** 833

**Officials:** Karen Preato, Tiara Cruse, Fatou Cissoko-Stephens

**Boston College**

Lineup	Quarter On	Time On	Quarter Off	Time Off	Time on Court	Score	Score Diff	Reb	Stl	Tov	Ass	PPP
1- Swartz C/ 3- Batts J/ 5- Gakdeng M/ 13- Soule T/ 14- Garraud M/	1	10:00	1	06:20	03:40	4-2	2	5	1	3	1	0.5000
1- Swartz C/ 3- Batts J/ 12- VanTimmeren A/ 13- Soule T/ 14- Garraud M/	1	06:20	1	05:38	00:42	2-0	2	1	0	0	1	2.0000
1- Swartz C/ 10- Dickens M/ 12- VanTimmeren A/ 13- Soule T/ 14- Garraud M/	1	05:38	1	04:55	00:43	0-2	-2	1	0	1	0	0.0000
1- Swartz C/ 2- Ivey K/ 10- Dickens M/ 12- VanTimmeren A/ 13- Soule T/	1	04:55	1	03:27	01:28	5-5	0	3	1	1	1	1.2887
2- Ivey K/ 3- Batts J/ 5- Gakdeng M/ 10- Dickens M/ 14- Garraud M/	1	03:27	1	00:33	02:54	7-5	2	1	2	1	1	1.1905
1- Swartz C/ 2- Ivey K/ 3- Batts J/ 12- VanTimmeren A/ 13- Soule T/	1	00:33	2	10:00	00:33	2-0	2	1	0	0	1	2.0000
1- Swartz C/ 3- Batts J/ 12- VanTimmeren A/ 13- Soule T/ 14- Garraud M/	2	10:00	2	08:43	01:17	4-4	0	1	0	0	1	2.0000
1- Swartz C/ 10- Dickens M/ 12- VanTimmeren A/ 13- Soule T/ 14- Garraud M/	2	08:43	2	07:21	01:22	4-3	1	0	1	0	1	2.0000
1- Swartz C/ 2- Ivey K/ 5- Gakdeng M/ 10- Dickens M/ 13- Soule T/	2	07:21	2	05:01	02:20	4-2	2	4	2	1	0	0.6803
2- Ivey K/ 3- Batts J/ 10- Dickens M/ 12- VanTimmeren A/ 14- Garraud M/	2	05:01	2	03:51	01:10	0-0	0	2	0	0	0	0.0000
2- Ivey K/ 10- Dickens M/ 12- VanTimmeren A/ 13- Soule T/ 14- Garraud M/	2	03:51	2	02:26	01:25	0-5	-5	1	0	0	0	0.0000
1- Swartz C/ 2- Ivey K/ 3- Batts J/ 5- Gakdeng M/ 14- Garraud M/	2	02:26	3	10:00	02:26	5-4	1	4	0	1	1	1.2500
1- Swartz C/ 3- Batts J/ 5- Gakdeng M/ 13- Soule T/ 14- Garraud M/	3	10:00	3	08:42	01:18	3-3	0	3	0	1	1	1.5000
1- Swartz C/ 3- Batts J/ 12- VanTimmeren A/ 13- Soule T/ 14- Garraud M/	3	08:42	3	07:44	00:58	4-2	2	0	0	1	1	1.3333
1- Swartz C/ 3- Batts J/ 10- Dickens M/ 12- VanTimmeren A/ 13- Soule T/	3	07:44	3	06:58	00:46	0-1	-1	1	0	1	0	0.0000
1- Swartz C/ 10- Dickens M/ 12- VanTimmeren A/ 13- Soule T/ 14- Garraud M/	3	06:58	3	05:59	00:59	3-0	3	2	1	0	0	3.0000
1- Swartz C/ 2- Ivey K/ 5- Gakdeng M/ 10- Dickens M/ 13- Soule T/	3	05:59	3	04:48	01:11	3-3	0	3	0	0	1	1.5957
1- Swartz C/ 2- Ivey K/ 3- Batts J/ 10- Dickens M/ 12- VanTimmeren A/	3	04:48	3	04:05	00:43	3-0	3	0	1	1	1	1.5000
1- Swartz C/ 2- Ivey K/ 13- Soule T/ 14- Garraud M/ 32- Ford C/	3	04:05	3	03:28	00:37	1-0	1	1	0	0	0	0.6944
1- Swartz C/ 2- Ivey K/ 12- VanTimmeren A/ 13- Soule T/ 14- Garraud M/	3	03:28	3	02:56	00:32	2-0	2	0	0	0	1	2.0000
1- Swartz C/ 2- Ivey K/ 3- Batts J/ 12- VanTimmeren A/ 14- Garraud M/	3	02:56	3	02:22	00:34	2-2	0	0	0	0	0	2.0000
1- Swartz C/ 2- Ivey K/ 3- Batts J/ 10- Dickens M/ 12- VanTimmeren A/	3	02:22	3	01:39	00:43	0-0	0	1	0	1	0	0.0000
1- Swartz C/ 3- Batts J/ 10- Dickens M/ 12- VanTimmeren A/ 13- Soule T/	3	01:39	3	01:34	00:05	2-0	2	1	0	0	0	2.2727
3- Batts J/ 10- Dickens M/ 12- VanTimmeren A/ 13- Soule T/ 14- Garraud M/	3	01:34	4	10:00	01:34	6-5	1	1	0	0	2	3.0000
1- Swartz C/ 3- Batts J/ 12- VanTimmeren A/ 13- Soule T/ 14- Garraud M/	4	10:00	4	07:49	02:11	7-2	5	1	1	0	2	1.8041
1- Swartz C/ 3- Batts J/ 10- Dickens M/ 12- VanTimmeren A/ 13- Soule T/	4	07:49	4	07:03	00:46	0-4	-4	0	0	1	0	0.0000
1- Swartz C/ 3- Batts J/ 5- Gakdeng M/ 10- Dickens M/ 14- Garraud M/	4	07:03	4	05:57	01:06	2-0	2	1	0	0	0	2.0000
1- Swartz C/ 2- Ivey K/ 10- Dickens M/ 12- VanTimmeren A/ 13- Soule T/	4	05:57	4	04:53	01:04	0-4	-4	1	0	0	0	0.0000
1- Swartz C/ 2- Ivey K/ 3- Batts J/ 5- Gakdeng M/ 14- Garraud M/	4	04:53	4	04:47	00:06	0-0	0	0	0	0	0	0.0000
1- Swartz C/ 3- Batts J/ 5- Gakdeng M/ 13- Soule T/ 14- Garraud M/	4	04:47	4	02:14	02:33	4-6	-2	3	0	3	1	0.6803
1- Swartz C/ 3- Batts J/ 12- VanTimmeren A/ 13- Soule T/ 14- Garraud M/	4	02:14	4	02:14	00:00	0-0	0	0	0	0	0	0.0000
1- Swartz C/ 10- Dickens M/ 12- VanTimmeren A/ 13- Soule T/ 14- Garraud M/	4	02:14	4	01:32	00:42	2-0	2	0	0	0	0	1.0000
1- Swartz C/ 2- Ivey K/ 10- Dickens M/ 12- VanTimmeren A/ 13- Soule T/	4	01:32	4	01:29	00:03	0-2	-2	0	0	0	0	0.0000
1- Swartz C/ 10- Dickens M/ 12- VanTimmeren A/ 13- Soule T/ 14- Garraud M/	4	01:29	4	01:15	00:14	3-0	3	0	0	0	1	2.0833
1- Swartz C/ 3- Batts J/ 12- VanTimmeren A/ 13- Soule T/ 14- Garraud M/	4	01:15	4	00:26	00:48	2-0	2	0	2	0	1	2.0000
1- Swartz C/ 3- Batts J/ 10- Dickens M/ 12- VanTimmeren A/ 14- Garraud M/	4	00:26	4	00:00	00:27	0-3	-3	0	0	0	0	0.0000



**Penn St. at Boston College**

12/02/21 Conte Forum, Chestnut Hill, Mass  
2021-22 Women's Basketball

**Game Time:** 6:00 PM  
**Game Duration:** 1:46  
**Attendance:** 833

**Officials:** Karen Preato, Tiara Cruse, Fatou Cissoko-Stephens

**Penn St.**

Lineup	Time	Score	Score Diff	Pts/Min	Reb	Stl	Tov	Ass	PPP
1- Brigham A/ 4- Beverley N/ 5- Kapinus L/ 20- Marisa M/ 23- Hagans S/	07:14	12-15	-3	1.6590	6	5	6	3	0.7353
4- Beverley N/ 5- Kapinus L/ 10- Sabel T/ 11- Camden A/ 23- Hagans S/	03:39	5-9	-4	1.3699	2	1	4	2	0.6250
1- Brigham A/ 4- Beverley N/ 15- Burke M/ 20- Marisa M/ 25- Jekot K/	03:26	5-8	-3	1.4563	2	1	2	2	0.6250
1- Brigham A/ 4- Beverley N/ 5- Kapinus L/ 15- Burke M/ 20- Marisa M/	02:26	4-5	-1	1.6438	1	1	0	2	0.8000
4- Beverley N/ 5- Kapinus L/ 10- Sabel T/ 11- Camden A/ 20- Marisa M/	01:49	2-2	0	1.1009	3	0	1	0	0.6667
1- Brigham A/ 15- Burke M/ 20- Marisa M/ 23- Hagans S/ 25- Jekot K/	01:46	5-0	5	2.8302	4	0	0	1	1.6667
1- Brigham A/ 4- Beverley N/ 11- Camden A/ 20- Marisa M/ 25- Jekot K/	01:34	5-8	-3	3.1915	0	0	0	2	2.5000
0- Thornton N/ 1- Brigham A/ 20- Marisa M/ 23- Hagans S/ 25- Jekot K/	01:29	2-5	-3	1.3483	0	0	1	0	1.0000
1- Brigham A/ 4- Beverley N/ 5- Kapinus L/ 11- Camden A/ 20- Marisa M/	01:28	4-2	2	2.7273	3	0	1	0	1.3333
1- Brigham A/ 4- Beverley N/ 20- Marisa M/ 23- Hagans S/ 25- Jekot K/	01:18	3-2	1	2.3077	0	2	0	1	1.2295
0- Thornton N/ 1- Brigham A/ 4- Beverley N/ 20- Marisa M/ 25- Jekot K/	01:17	4-4	0	3.1169	0	0	0	1	2.0000
1- Brigham A/ 11- Camden A/ 15- Burke M/ 20- Marisa M/ 25- Jekot K/	01:17	2-4	-2	1.5584	1	0	0	1	1.0000
0- Thornton N/ 1- Brigham A/ 4- Beverley N/ 20- Marisa M/ 23- Hagans S/	01:15	3-3	0	2.4000	1	0	2	1	1.0000
0- Thornton N/ 4- Beverley N/ 5- Kapinus L/ 10- Sabel T/ 11- Camden A/	01:11	3-3	0	2.5352	0	0	0	1	1.5000
1- Brigham A/ 4- Beverley N/ 15- Burke M/ 20- Marisa M/ 23- Hagans S/	01:06	2-4	-2	1.8182	0	0	1	1	1.0000
5- Kapinus L/ 10- Sabel T/ 11- Camden A/ 20- Marisa M/ 25- Jekot K/	01:04	4-0	4	3.7500	3	0	0	0	1.3333
0- Thornton N/ 10- Sabel T/ 11- Camden A/ 15- Burke M/ 20- Marisa M/	00:52	0-2	-2	0.0000	0	0	0	0	0.0000
4- Beverley N/ 5- Kapinus L/ 10- Sabel T/ 11- Camden A/ 25- Jekot K/	00:52	0-2	-2	0.0000	1	0	0	0	0.0000
0- Thornton N/ 1- Brigham A/ 10- Sabel T/ 11- Camden A/ 20- Marisa M/	00:46	2-0	2	2.6087	1	0	0	1	2.0000
1- Brigham A/ 4- Beverley N/ 5- Kapinus L/ 10- Sabel T/ 25- Jekot K/	00:43	0-3	-3	0.0000	0	1	1	0	0.0000
4- Beverley N/ 5- Kapinus L/ 11- Camden A/ 20- Marisa M/ 23- Hagans S/	00:42	0-2	-2	0.0000	1	0	1	0	0.0000
1- Brigham A/ 4- Beverley N/ 10- Sabel T/ 15- Burke M/ 20- Marisa M/	00:37	0-1	-1	0.0000	1	0	1	0	0.0000
0- Thornton N/ 1- Brigham A/ 4- Beverley N/ 10- Sabel T/ 20- Marisa M/	00:34	0-0	0	0.0000	1	0	0	0	0.0000
0- Thornton N/ 1- Brigham A/ 10- Sabel T/ 11- Camden A/ 15- Burke M/	00:33	2-0	2	3.6364	1	0	0	1	2.0000
4- Beverley N/ 5- Kapinus L/ 11- Camden A/ 15- Burke M/ 23- Hagans S/	00:24	0-0	0	0.0000	0	0	0	0	0.0000
4- Beverley N/ 11- Camden A/ 15- Burke M/ 20- Marisa M/ 25- Jekot K/	00:24	0-0	0	0.0000	1	0	0	0	0.0000
0- Thornton N/ 4- Beverley N/ 5- Kapinus L/ 20- Marisa M/ 23- Hagans S/	00:14	0-2	-2	0.0000	0	0	0	0	0.0000



**Penn St. at Boston College**

12/02/21 Conte Forum, Chestnut Hill, Mass  
2021-22 Women's Basketball

**Game Time:** 6:00 PM  
**Game Duration:** 1:46  
**Attendance:** 833

**Officials:** Karen Preato, Tiara Cruse, Fatou Cissoko-Stephens

**Boston College**

Lineup	Time	Score	Score Diff	Pts/Min	Reb	Stl	Tov	Ass	PPP
1- Swartz C/3- Batts J/5- Gakdeng M/13- Soule T/14- Garraud M/	07:31	11-11	0	1.4634	11	1	7	3	0.6927
1- Swartz C/3- Batts J/12- VanTimmeren A/13- Soule T/14- Garraud M/	05:56	19-8	11	3.2022	3	3	1	6	1.7463
1- Swartz C/10- Dickens M/12- VanTimmeren A/13- Soule T/14- Garraud M/	04:00	12-5	7	3.0000	3	2	1	2	1.6129
1- Swartz C/2- Ivey K/5- Gakdeng M/10- Dickens M/13- Soule T/	03:31	7-5	2	1.9905	7	2	1	1	0.9021
2- Ivey K/3- Batts J/5- Gakdeng M/10- Dickens M/14- Garraud M/	02:54	7-5	2	2.4138	1	2	1	1	1.1905
1- Swartz C/2- Ivey K/10- Dickens M/12- VanTimmeren A/13- Soule T/	02:35	5-11	-6	1.9355	4	1	1	1	0.8503
1- Swartz C/2- Ivey K/3- Batts J/5- Gakdeng M/14- Garraud M/	02:32	5-4	1	1.9737	4	0	1	1	1.2500
1- Swartz C/3- Batts J/10- Dickens M/12- VanTimmeren A/13- Soule T/	01:37	2-5	-3	1.2371	2	0	2	0	0.5155
3- Batts J/10- Dickens M/12- VanTimmeren A/13- Soule T/14- Garraud M/	01:34	6-5	1	3.8298	1	0	0	2	3.0000
1- Swartz C/2- Ivey K/3- Batts J/10- Dickens M/12- VanTimmeren A/	01:26	3-0	3	2.0930	1	1	2	1	1.0000
2- Ivey K/10- Dickens M/12- VanTimmeren A/13- Soule T/14- Garraud M/	01:25	0-5	-5	0.0000	1	0	0	0	0.0000
2- Ivey K/3- Batts J/10- Dickens M/12- VanTimmeren A/14- Garraud M/	01:10	0-0	0	0.0000	2	0	0	0	0.0000
1- Swartz C/3- Batts J/5- Gakdeng M/10- Dickens M/14- Garraud M/	01:06	2-0	2	1.8182	1	0	0	0	2.0000
1- Swartz C/2- Ivey K/13- Soule T/14- Garraud M/32- Ford C/	00:37	1-0	1	1.6216	1	0	0	0	0.6944
1- Swartz C/2- Ivey K/3- Batts J/12- VanTimmeren A/14- Garraud M/	00:34	2-2	0	3.5294	0	0	0	0	2.0000
1- Swartz C/2- Ivey K/3- Batts J/12- VanTimmeren A/13- Soule T/	00:33	2-0	2	3.6364	1	0	0	1	2.0000
1- Swartz C/2- Ivey K/12- VanTimmeren A/13- Soule T/14- Garraud M/	00:32	2-0	2	3.7500	0	0	0	1	2.0000
1- Swartz C/3- Batts J/10- Dickens M/12- VanTimmeren A/14- Garraud M/	00:27	0-3	-3	0.0000	0	0	0	0	0.0000