



Illinois at Penn St.

01/16/22 Bryce Jordan Center, University Park, Pa.
2021-22 Women's Basketball

Game Time: 2:00 PM
Game Duration: 1:36
Attendance: 2,048

Officials: Nykesha Thompson, Kevin Pethel, Jamie Broderick

Illinois - 72

Record: 6-9 (1-3)

NO.	Name	F	Min	FG		3P		FT		Rebounds			Fouls		TP	AS	TO	ST	Blocks		+/-	
				M-A	M-A	M-A	OR	DR	TOT	PF	FD	BS	BA									
20	Erika Porter	F	13:20	0-1	0-0	0-0	0	0	0	0	0	0	1	0	0	0	0	0	0	0	0	-20
44	Kendall Bostic	F	21:14	2-5	0-0	1-2	3	11	14	2	2	5	1	2	0	1	2	0	1	1	-10	
5	De'Myla Brown	G	30:59	7-16	3-6	2-2	1	3	4	2	2	19	4	1	5	0	2	0	2	-12		
11	Jada Peebles	G	14:28	0-1	0-0	0-0	1	1	2	0	0	0	0	3	1	0	0	0	0	-11		
32	Aaliyah Nye	G	29:02	4-13	2-9	0-0	1	3	4	1	1	10	1	2	0	0	0	1	-20			
14	Geovana Lopes		11:28	4-6	0-0	0-0	3	2	5	3	0	8	0	1	2	0	0	0	-5			
24	Adalia McKenzie		20:47	3-10	0-1	2-2	4	0	4	0	1	8	1	0	0	0	0	1	-4			
0	Sara Anastasieska		25:26	5-11	1-3	0-0	0	0	0	1	1	11	4	2	1	0	1	-3				
12	Jayla Oden		25:32	3-9	1-3	1-2	2	1	3	2	6	8	3	3	2	0	0	-7				
3	Solape Amusan		04:16	1-3	1-3	0-0	0	1	1	0	0	3	0	0	0	1	0	1				
22	Eva Rubin		03:28	0-0	0-0	0-0	0	0	0	0	0	0	1	0	0	0	0	1				
Team										1	3	4			0							
Totals				29-75	8-25	6-8	16	25	41	12	13	72	15	14	11	2	6	-18				

Technical Fouls::NONE

Shooting By Period		
1 st FG%	5-18	27.8%
3PT%	2-9	22.2%
FT%	2-2	100%
2 nd FG%	6-17	35.3%
3PT%	0-1	0.0%
FT%	0-0	0%
3 rd FG%	12-20	60.0%
3PT%	2-4	50.0%
FT%	1-2	50%
4 th FG%	6-20	30.0%
3PT%	4-11	36.4%
FT%	3-4	75%
GM FG%	29-75	38.7%
3PT%	8-25	32.0%
FT%	6-8	75.0%

Dead Ball Rebounds: 1, 0

Penn St. - 90

Record: 8-7 (2-3)

NO.	Name	C	Min	FG		3P		FT		Rebounds			Fouls		TP	AS	TO	ST	Blocks		+/-
				M-A	M-A	M-A	OR	DR	TOT	PF	FD	BS	BA								
1	Ali Brigham	C	22:24	2-6	0-0	0-1	1	4	5	0	3	4	2	1	0	1	1	10			
5	Leilani Kapinus	G	28:34	5-11	1-3	3-4	1	3	4	1	2	14	1	2	2	2	0	8			
20	Makenna Marisa	G	36:33	8-16	4-8	5-5	0	5	5	2	3	25	10	4	2	0	0	17			
23	Shay Hagans	G	31:15	8-11	0-1	1-3	1	2	3	3	3	17	4	2	4	0	0	17			
25	Kelly Jekot	G	22:37	1-4	1-1	0-0	2	4	6	1	0	3	0	1	0	0	1	3			
11	Anna Camden		20:04	4-9	0-3	0-0	1	7	8	1	1	8	1	0	2	2	0	20			
15	Maddie Burke		20:25	4-5	4-5	0-0	0	0	0	1	0	12	1	1	2	1	0	20			
10	Tova Sabel		11:26	2-3	1-1	0-0	1	3	4	2	0	5	0	1	0	0	0	-1			
12	Kayla Thomas		06:42	1-3	0-0	0-0	2	1	3	2	0	2	0	3	0	0	0	-4			
Team										1	1	2			0						
Totals				35-68	11-22	9-13	10	30	40	13	12	90	19	15	12	6	2	18			

Technical Fouls::NONE

Shooting By Period		
1 st FG%	8-16	50.0%
3PT%	3-7	42.9%
FT%	5-8	62.5%
2 nd FG%	11-20	55.0%
3PT%	3-4	75.0%
FT%	0-0	0%
3 rd FG%	12-17	70.6%
3PT%	2-4	50.0%
FT%	3-3	100%
4 th FG%	4-15	26.7%
3PT%	3-7	42.9%
FT%	1-2	50%
GM FG%	35-68	51.5%
3PT%	11-22	50.0%
FT%	9-13	69.2%

Dead Ball Rebounds: 2, 1

	ILL	PSU
Biggest lead	0 (1 st 10:00)	27 (3 rd 3:46)
Best Scoring Run	12 (4 th 5:43)	10 (2 nd 2:40)
Lead Changes	0	
Times Tied	0	
Time with Lead	00:00	38:52

	ILL	PSU
Points from	15	19
Turnovers	36	46
Paint	17	9
Second Chance	10	35
Fast Breaks	38	27
Bench		

	Period by Period Scoring				
	1st	2nd	3rd	4th	TOT
ILL	14	12	27	19	72
PSU	24	25	29	12	90



Officials: Nykeshia Thompson, Kevin Pethel, Jamie Broderick

Period 1

Quarter Starters:

PSU 1 Brigham A 5 Kapinus L 20 Marisa M 23 Hagans S 25 Jekot K
ILL 5 Brown D 11 Peebles J 20 Porter E 32 Nye A 44 Bostic K

Game Time	PSU	Score	Diff	ILL
10:00	5 KAPINUS L jumpball won			20 PORTER E jumpball lost
09:43	20 MARISA M 2pt FG outside the paint, jump shot missed			
09:40	1 BRIGHAM A offensive rebound (1)			
09:38	1 BRIGHAM A 2pt FG second chance in the paint, layup missed			
09:34				44 BOSTIC K defensive rebound (1)
09:12				32 NYE A 3pt FG , jump shot missed
09:09	defensive rebound (2)			
08:52	23 HAGANS S 2pt FG outside the paint, jump shot made (2)	2-0	2	
08:35				5 BROWN D 2pt FG outside the paint, jump shot missed
08:31				5 BROWN D offensive rebound (1)
08:22				5 BROWN D 3pt FG second chance, jump shot blocked
08:22	5 KAPINUS L block (1)			
08:14	23 HAGANS S defensive rebound (1)			
08:02	20 MARISA M 3pt FG , jump shot missed			
07:58	25 JEKOT K offensive rebound (1)			
07:56	23 HAGANS S 2pt FG second chance in the paint, jump shot made (4)	4-0	4	
07:56	23 HAGANS S foul drawn (1)			5 BROWN D foul shooting (1 - 1)
07:56	23 HAGANS S free throw 1 - 1 missed			
07:56				44 BOSTIC K defensive rebound (2)
07:56		4-3	1	32 NYE A 3pt FG , jump shot made (3)
07:56				5 BROWN D assist (1)
07:22	5 KAPINUS L 3pt FG , jump shot missed			
07:15				5 BROWN D defensive rebound (2)
07:04				32 NYE A 3pt FG , jump shot missed
07:00	23 HAGANS S defensive rebound (2)			
06:56	23 HAGANS S 2pt FG fast break in the paint, jump shot made (6)	6-3	3	
06:34				5 BROWN D 2pt FG outside the paint, jump shot missed
06:29				44 BOSTIC K offensive rebound (3)
06:27	23 HAGANS S steal (1)			44 BOSTIC K turnover lost ball (1)
06:27	23 HAGANS S foul drawn (2)			44 BOSTIC K foul personal (1 - 2)
06:27	1 BRIGHAM A substitution out			
06:27	11 CAMDEN A substitution in			
06:12	25 JEKOT K 3pt FG from turnover, jump shot made (3)	9-3	6	
06:12	11 CAMDEN A assist (1)			
05:57		9-6	3	32 NYE A 3pt FG , jump shot made (6)
05:57				5 BROWN D assist (2)
05:32	20 MARISA M foul drawn (1)			20 PORTER E foul shooting (1 - 3)
05:32	23 HAGANS S substitution out			
05:32	15 BURKE M substitution in			
05:32				20 PORTER E substitution out
05:32				14 LOPES G substitution in
05:32	20 MARISA M free throw 1 - 2 made (1)	10-6	4	



Officials: Nykesha Thompson, Kevin Pethel, Jamie Broderick

Game Time	PSU	Score	Diff	ILL
05:32	20 MARISA M free throw 2 - 2 made (2)	11-6	5	
05:19				32 NYE A 3pt FG , jump shot missed
05:15	11 CAMDEN A defensive rebound (1)			
05:08	11 CAMDEN A 3pt FG , jump shot missed			
05:05				44 BOSTIC K defensive rebound (4)
04:47				5 BROWN D 3pt FG , jump shot missed
04:43	25 JEKOT K defensive rebound (2)			
04:39	5 KAPINUS L foul drawn (1)			32 NYE A foul shooting (1 - 4)
04:39	Timeout media			
04:39	25 JEKOT K substitution out			
04:39	23 HAGANS S substitution in			
04:39				5 BROWN D substitution out
04:39				24 MCKENZIE A substitution in
04:39	5 KAPINUS L free throw fast break 1 - 2 missed			
04:39	offensive dead ball rebound (1)			
04:39	5 KAPINUS L free throw fast break 2 - 2 made (1)	12-6	6	
04:26				24 MCKENZIE A 2pt FG outside the paint, jump shot blocked
04:26	11 CAMDEN A block (1)			
04:21	11 CAMDEN A defensive rebound (2)			
04:17	15 BURKE M 3pt FG , jump shot missed			
04:12				44 BOSTIC K defensive rebound (5)
04:08				14 LOPES G 2pt FG in the paint, layup missed
04:04	11 CAMDEN A defensive rebound (3)			
03:59	11 CAMDEN A 2pt FG in the paint, jump shot missed			
03:55				44 BOSTIC K defensive rebound (6)
03:44				24 MCKENZIE A 3pt FG , jump shot missed
03:38				14 LOPES G offensive rebound (1)
03:37		12-8	4	14 LOPES G 2pt FG second chance in the paint, layup made (2)
03:23	20 MARISA M 2pt FG in the paint, layup made (4)	14-8	6	
03:04				44 BOSTIC K 2pt FG outside the paint, jump shot missed
02:59				14 LOPES G offensive rebound (2)
02:58	23 HAGANS S steal (2)			14 LOPES G turnover lost ball (1)
02:55	5 KAPINUS L foul drawn (2)			44 BOSTIC K foul personal (2 - 5)
02:55	15 BURKE M substitution out			
02:55	1 BRIGHAM A substitution in			
02:55	5 KAPINUS L free throw fast break 1 - 2 made (2)	15-8	7	
02:55	5 KAPINUS L free throw fast break 2 - 2 made (3)	16-8	8	
02:55	5 KAPINUS L substitution out			
02:55	10 SABEL T substitution in			
02:54				11 PEEBLES J substitution out
02:54				44 BOSTIC K substitution out
02:54				0 ANASTASIESKA S substitution in
02:54				12 ODEN J substitution in
02:47	23 HAGANS S foul personal (1 - 1)			12 ODEN J foul drawn (1)
02:29				14 LOPES G 2pt FG in the paint, jump shot missed
02:29				24 MCKENZIE A offensive rebound (1)
02:29	11 CAMDEN A foul shooting (1 - 2)			24 MCKENZIE A foul drawn (1)
02:29		16-9	7	24 MCKENZIE A free throw 1 - 2 made (1)
02:29		16-10	6	24 MCKENZIE A free throw 2 - 2 made (2)



Officials: Nykesha Thompson, Kevin Pethel, Jamie Broderick

Game Time	PSU	Score	Diff	ILL
02:18	20 MARISA M 3pt FG , jump shot made (7)	19-10	9	
02:18	23 HAGANS S assist (1)			
02:04				32 NYE A turnover out of bounds (1)
02:04	11 CAMDEN A substitution out			
02:04	25 JEKOT K substitution in			
01:34	1 BRIGHAM A 2pt FG from turnover in the paint, hook shot missed			
01:29				32 NYE A defensive rebound (1)
01:21				12 ODEN J 3pt FG , jump shot missed
01:13				24 MCKENZIE A offensive rebound (2)
01:10		19-12	7	0 ANASTASIESKA S 2pt FG second chance in the paint, layup made (2)
00:39	1 BRIGHAM A 2pt FG in the paint, layup made (2)	21-12	9	
00:39	20 MARISA M assist (1)			
00:39	1 BRIGHAM A foul drawn (1)			14 LOPES G foul shooting (1 - 6)
00:39	10 SABEL T substitution out			
00:39	5 KAPINUS L substitution in			
00:39	1 BRIGHAM A free throw 1 - 1 missed			
00:36				14 LOPES G defensive rebound (3)
00:23		21-14	7	14 LOPES G 2pt FG in the paint, layup made (4)
00:23				0 ANASTASIESKA S assist (1)
00:00	20 MARISA M 3pt FG , jump shot made (10)	24-14	10	
00:00	23 HAGANS S assist (2)			
END OF PERIOD				
PSU 24-14 ILL				



Officials: Nykeshia Thompson, Kevin Pethel, Jamie Broderick

Illinois - 14

NO.	Name	F	Min	FG	3P	FT	Rebounds			Fouls		TP	AS	TO	ST	Blocks		+/-
				M-A	M-A	M-A	OR	DR	TOT	PF	FD					BS	BA	
20	Erika Porter	F	04:28	0-0	0-0	0-0	0	0	0	1	0	0	0	0	0	0	0	-3
44	Kendall Bostic	F	07:06	0-1	0-0	0-0	1	5	6	2	0	0	0	1	0	0	0	-8
5	De'Myla Brown	G	05:21	0-4	0-2	0-0	1	1	2	1	0	0	2	0	0	0	1	-5
11	Jada Peebles	G	07:06	0-0	0-0	0-0	0	0	0	0	0	0	0	0	0	0	0	-8
32	Aaliyah Nye	G	10:00	2-5	2-5	0-0	0	1	1	1	0	6	0	1	0	0	0	-10
14	Geovana Lopes		05:32	2-4	0-0	0-0	2	1	3	1	0	4	0	1	0	0	0	-7
24	Adalia McKenzie		04:39	0-2	0-1	2-2	2	0	2	0	1	2	0	0	0	0	1	-5
0	Sara Anastasieska		02:54	1-1	0-0	0-0	0	0	0	0	0	2	1	0	0	0	0	-2
12	Jayla Oden		02:54	0-1	0-1	0-0	0	0	0	0	1	0	0	0	0	0	0	-2
Team							0	0	0			0						
Totals				5-18	2-9	2-2	6	8	14	6	2	14	3	3	0	0	2	-10

Shooting By Period		
1st FG%	5-18	27.8%
3PT%	2-9	22.2%
FT%	2-2	100%
GM FG%	5-18	27.8%
3PT%	2-9	22.2%
FT%	2-2	100.0%

Dead Ball Rebounds: 0, 0

Technical Fouls::NONE

Penn St. - 24

NO.	Name	C	Min	FG	3P	FT	Rebounds			Fouls		TP	AS	TO	ST	Blocks		+/-
				M-A	M-A	M-A	OR	DR	TOT	PF	FD					BS	BA	
1	Ali Brigham	C	06:28	1-3	0-0	0-1	1	0	1	0	1	2	0	0	0	0	0	7
5	Leilani Kapinus	G	07:45	0-1	0-1	3-4	0	0	0	0	2	3	0	0	0	1	0	9
20	Makenna Marisa	G	10:00	3-5	2-3	2-2	0	0	0	0	1	10	1	0	0	0	0	10
23	Shay Hagans	G	09:07	3-3	0-0	0-1	0	2	2	1	2	6	2	0	2	0	0	8
25	Kelly Jekot	G	07:25	1-1	1-1	0-0	1	1	2	0	0	3	0	0	0	0	0	6
11	Anna Camden		04:23	0-2	0-1	0-0	0	3	3	1	0	0	1	0	0	1	0	6
15	Maddie Burke		02:37	0-1	0-1	0-0	0	0	0	0	0	0	0	0	0	0	0	3
10	Tova Sabel		02:15	0-0	0-0	0-0	0	0	0	0	0	0	0	0	0	0	0	1
Team							0	1	1			0						
Totals				8-16	3-7	5-8	2	7	9	2	6	24	4	0	2	2	0	10

Shooting By Period		
1st FG%	8-16	50.0%
3PT%	3-7	42.9%
FT%	5-8	62.5%
GM FG%	8-16	50.0%
3PT%	3-7	42.9%
FT%	5-8	62.5%

Dead Ball Rebounds: 1, 0

Technical Fouls::NONE

	ILL	PSU
Biggest lead	0 (1 st 10:00)	10 (1 st 0:00)
Best Scoring Run	3(1 st 7:56)	5(1 st 6:12)
Lead Changes	0	
Times Tied	0	
Time with Lead	00:00	08:52

Points from	ILL	PSU
Turnovers	0	5
Paint	6	8
Second Chance	6	2
Fast Breaks	0	5
Bench	8	0

Period by Period Scoring					
	1st	2nd	3rd	4th	TOT
ILL	14	12	27	19	72
PSU	24	25	29	12	90



Period 2

Quarter Starters:

PSU	1 Brigham A	5 Kapinus L	20 Marisa M	23 Hagans S	25 Jekot K
ILL	0 Anastasieska S	12 Oden J	14 Lopes G	24 McKenzie A	32 Nye A

Game Time	PSU	Score	Diff	ILL
09:51				0 ANASTASIESKA S 2pt FG in the paint, jump shot missed
09:46				12 ODEN J offensive rebound (1)
09:40				0 ANASTASIESKA S turnover travel (1)
09:17	1 BRIGHAM A turnover bad pass (1)			14 LOPES G steal (1)
08:54				24 MCKENZIE A 2pt FG from turnover in the paint, jump shot missed
08:50	1 BRIGHAM A defensive rebound (2)			
08:35	5 KAPINUS L 2pt FG in the paint, layup missed			
08:31				14 LOPES G defensive rebound (4)
08:25		24-16	8	12 ODEN J 2pt FG in the paint, layup made (2)
08:09	20 MARISA M 3pt FG , jump shot made (13)	27-16	11	
08:09	1 BRIGHAM A assist (1)			
07:52				24 MCKENZIE A 2pt FG in the paint, layup missed
07:45				24 MCKENZIE A offensive rebound (3)
07:45		27-18	9	24 MCKENZIE A 2pt FG second chance in the paint, dunk, made (4)
07:32	20 MARISA M turnover bad pass (1)			14 LOPES G steal (2)
07:26				12 ODEN J 2pt FG from turnover in the paint, jump shot missed
07:21	20 MARISA M defensive rebound (1)			
07:19	1 BRIGHAM A substitution out			
07:19	11 CAMDEN A substitution in			
07:19				12 ODEN J substitution out
07:19				14 LOPES G substitution out
07:19				32 NYE A substitution out
07:19				5 BROWN D substitution in
07:19				11 PEEBLES J substitution in
07:19				20 PORTER E substitution in
07:03	5 KAPINUS L 2pt FG in the paint, layup missed			
07:02	offensive rebound (12)			
06:56	25 JEKOT K 2pt FG second chance in the paint, jump shot missed			
06:52	25 JEKOT K offensive rebound (3)			
06:52	25 JEKOT K 2pt FG second chance in the paint, layup missed			
06:52				defensive rebound (18)
06:37	25 JEKOT K substitution out			
06:37	15 BURKE M substitution in			
06:35	5 KAPINUS L steal (1)			11 PEEBLES J turnover bad pass (1)
06:29	23 HAGANS S 2pt FG fast break from turnover in the paint, layup made (8)	29-18	11	
06:14	15 BURKE M steal (1)			11 PEEBLES J turnover lost ball (2)
05:51	11 CAMDEN A 2pt FG from turnover in the paint, jump shot missed			
05:47	5 KAPINUS L offensive rebound (1)			
05:46	5 KAPINUS L 2pt FG from turnover second chance in the paint, layup missed			



Officials: Nykeshia Thompson, Kevin Pethel, Jamie Broderick

Game Time	PSU	Score	Diff	ILL
05:43				11 PEEBLES J defensive rebound (1)
05:29		29-20	9	0 ANASTASIESKA S 2pt FG in the paint, jump shot made (4)
05:29				24 MCKENZIE A assist (1)
05:20	20 MARISA M 2pt FG in the paint, jump shot missed			
05:11	11 CAMDEN A offensive rebound (4)			
05:11	11 CAMDEN A 2pt FG second chance in the paint, layup made (2)	31-20	11	
05:01	11 CAMDEN A steal (1)			11 PEEBLES J turnover bad pass (3)
04:56	5 KAPINUS L 2pt FG fast break from turnover in the paint, layup made (5)	33-20	13	
04:56	23 HAGANS S assist (3)			
04:53				Timeout 30 Sec
04:53				Timeout media
04:53	5 KAPINUS L substitution out			
04:53	1 BRIGHAM A substitution in			
04:53				0 ANASTASIESKA S substitution out
04:53				11 PEEBLES J substitution out
04:53				24 MCKENZIE A substitution out
04:53				12 ODEN J substitution in
04:53				32 NYE A substitution in
04:53				44 BOSTIC K substitution in
04:36				20 PORTER E 2pt FG in the paint, layup missed
04:33	11 CAMDEN A defensive rebound (5)			
04:08	1 BRIGHAM A 2pt FG outside the paint, jump shot missed			
04:04				32 NYE A defensive rebound (2)
03:42				44 BOSTIC K 2pt FG in the paint, jump shot missed
03:39	1 BRIGHAM A defensive rebound (3)			
03:23	1 BRIGHAM A 2pt FG in the paint, layup made (4)	35-20	15	
03:11				12 ODEN J 2pt FG in the paint, jump shot missed
03:08				44 BOSTIC K offensive rebound (7)
03:07				44 BOSTIC K 2pt FG second chance in the paint, layup blocked
03:07	11 CAMDEN A block (2)			
03:01	20 MARISA M defensive rebound (2)			
03:00	23 HAGANS S 2pt FG fast break in the paint, layup made (10)	37-20	17	
03:00	20 MARISA M assist (2)			
02:48				32 NYE A 3pt FG , jump shot missed
02:44	20 MARISA M defensive rebound (3)			
02:40	20 MARISA M 2pt FG fast break in the paint, layup made (15)	39-20	19	
02:28		39-22	17	5 BROWN D 2pt FG outside the paint, jump shot made (2)
02:09	11 CAMDEN A 2pt FG in the paint, layup made (4)	41-22	19	
02:09	20 MARISA M assist (3)			
02:00	15 BURKE M steal (2)			12 ODEN J turnover bad pass (1)
01:53	23 HAGANS S 2pt FG fast break from turnover in the paint, layup made (12)	43-22	21	
01:53	15 BURKE M assist (1)			
01:41	1 BRIGHAM A substitution out			
01:41	11 CAMDEN A substitution out			
01:41	23 HAGANS S substitution out			
01:41	5 KAPINUS L substitution in			
01:41	10 SABEL T substitution in			



Officials: Nykesha Thompson, Kevin Pethel, Jamie Broderick

Game Time	PSU	Score	Diff	ILL
01:41	25 JEKOT K substitution in			
01:41				5 BROWN D substitution out
01:41				12 ODEN J substitution out
01:41				44 BOSTIC K substitution out
01:41				0 ANASTASIESKA S substitution in
01:41				11 PEEBLES J substitution in
01:41				24 MCKENZIE A substitution in
01:30		43-24	19	32 NYE A 2pt FG in the paint, jump shot made (8)
01:19	5 KAPINUS L 3pt FG , jump shot made (8)	46-24	22	
01:19	20 MARISA M assist (4)			
01:03				0 ANASTASIESKA S 2pt FG in the paint, layup missed
01:00	25 JEKOT K defensive rebound (4)			
00:55	20 MARISA M 3pt FG , jump shot missed			
00:52				32 NYE A defensive rebound (3)
00:52	10 SABEL T foul personal (1 - 1)			32 NYE A foul drawn (1)
00:41		46-26	20	24 MCKENZIE A 2pt FG outside the paint, jump shot made (6)
00:23	10 SABEL T 3pt FG , jump shot made (3)	49-26	23	
00:23	5 KAPINUS L assist (1)			
00:01				11 PEEBLES J 2pt FG outside the paint, jump shot missed
00:00	defensive dead ball rebound (2)			
END OF PERIOD				
PSU 49-26 ILL				



Officials: Nykeshia Thompson, Kevin Pethel, Jamie Broderick

Illinois - 12

NO.	Name	F	Min	FG	3P	FT	Rebounds			Fouls		TP	AS	TO	ST	Blocks		+/-
				M-A	M-A	M-A	OR	DR	TOT	PF	FD					BS	BA	
20	Erika Porter	F	07:19	0-1	0-0	0-0	0	0	0	0	0	0	0	0	0	0	0	-14
44	Kendall Bostic	F	03:12	0-2	0-0	0-0	1	0	1	0	0	0	0	0	0	0	1	-8
5	De'Myla Brown	G	05:38	1-1	0-0	0-0	0	0	0	0	0	2	0	0	0	0	0	-12
11	Jada Peebles	G	04:07	0-1	0-0	0-0	0	1	1	0	0	0	0	3	0	0	0	-6
32	Aaliyah Nye	G	07:34	1-2	0-1	0-0	0	2	2	0	1	2	0	0	0	0	0	-9
14	Geovana Lopes		02:41	0-0	0-0	0-0	0	1	1	0	0	0	0	0	2	0	0	1
12	Jayla Oden		05:53	1-3	0-0	0-0	1	0	1	0	0	2	0	1	0	0	0	-7
0	Sara Anastasieska		06:48	1-3	0-0	0-0	0	0	0	0	0	2	0	1	0	0	0	-5
24	Adalia McKenzie		06:48	2-4	0-0	0-0	1	0	1	0	0	4	1	0	0	0	0	-5
Team							0	1	1			0		0				
Totals				6-17	0-1	0-0	3	5	8	0	1	12	1	5	2	0	1	-13

Shooting By Period		
2nd FG%	6-17	35.3%
3PT%	0-1	0.0%
FT%	0-0	0%
GM FG%	6-17	35.3%
3PT%	0-1	0.0%
FT%	0-0	0.0%

Dead Ball Rebounds: 0, 0

Technical Fouls::NONE

Penn St. - 25

NO.	Name	C	Min	FG	3P	FT	Rebounds			Fouls		TP	AS	TO	ST	Blocks		+/-
				M-A	M-A	M-A	OR	DR	TOT	PF	FD					BS	BA	
1	Ali Brigham	C	05:53	1-2	0-0	0-0	0	2	2	0	0	2	1	1	0	0	0	7
5	Leilani Kapinus	G	06:48	2-5	1-1	0-0	1	0	1	0	0	5	1	0	1	0	0	5
20	Makenna Marisa	G	10:00	2-4	1-2	0-0	0	3	3	0	0	5	3	1	0	0	0	13
23	Shay Hagans	G	08:19	3-3	0-0	0-0	0	0	0	0	0	6	1	0	0	0	0	11
25	Kelly Jekot	G	05:04	0-2	0-0	0-0	1	1	2	0	0	0	0	0	0	0	0	1
11	Anna Camden		05:38	2-3	0-0	0-0	1	1	2	0	0	4	0	0	1	1	0	12
15	Maddie Burke		06:37	0-0	0-0	0-0	0	0	0	0	0	0	1	0	2	0	0	14
10	Tova Sabel		01:41	1-1	1-1	0-0	0	0	0	1	0	3	0	0	0	0	0	2
Team							1	0	1			0		0				
Totals				11-20	3-4	0-0	4	7	11	1	0	25	7	2	4	1	0	13

Shooting By Period		
2nd FG%	11-20	55.0%
3PT%	3-4	75.0%
FT%	0-0	0%
GM FG%	11-20	55.0%
3PT%	3-4	75.0%
FT%	0-0	0.0%

Dead Ball Rebounds: 0, 1

Technical Fouls::NONE

	ILL	PSU
Biggest lead	0 (1 st 10:00)	23 (2 nd 0:23)
Best Scoring Run	2(2 nd 8:25)	10(2 nd 2:40)
Lead Changes	0	
Times Tied	0	
Time with Lead	00:00	09:51

Points from	ILL	PSU
Turnovers	0	6
Paint	8	16
Second Chance	2	2
Fast Breaks	0	10
Bench	8	7

Period by Period Scoring					
	1st	2nd	3rd	4th	TOT
ILL	14	12	27	19	72
PSU	24	25	29	12	90



Officials: Nykeshia Thompson, Kevin Pethel, Jamie Broderick

Illinois - 26

NO.	Name	Min	FG			3P			FT			Rebounds			Fouls		TP	AS	TO	ST	Blocks		+/-
			M-A	M-A	M-A	OR	DR	TOT	PF	FD	BS	BA											
20	Erika Porter	F 11:47	0-1	0-0	0-0	0	0	0	1	0	0	0	0	0	0	0	0	0	0	0	0	0	-17
44	Kendall Bostic	F 10:18	0-3	0-0	0-0	2	5	7	2	0	0	0	0	1	0	0	1	0	0	1	0	1	-16
5	De'Myla Brown	G 10:59	1-5	0-2	0-0	1	1	2	1	0	2	1	0	2	2	0	0	0	0	0	1	-17	
11	Jada Peebles	G 11:13	0-1	0-0	0-0	0	1	1	0	0	0	0	0	3	0	3	0	0	0	0	0	-14	
32	Aaliyah Nye	G 17:34	3-7	2-6	0-0	0	3	3	1	1	8	0	1	0	1	0	0	0	0	0	0	-19	
14	Geovana Lopes	08:13	2-4	0-0	0-0	2	2	4	1	0	4	0	1	2	0	0	0	0	0	0	0	-6	
24	Adalia McKenzie	11:27	2-6	0-1	2-2	3	0	3	0	1	6	1	0	0	0	0	0	0	0	1	0	-10	
0	Sara Anastasieska	09:42	2-4	0-0	0-0	0	0	0	0	0	4	1	1	0	0	0	0	0	0	0	0	-7	
12	Jayla Oden	08:47	1-4	0-1	0-0	1	0	1	0	1	2	0	1	0	0	0	0	0	0	0	0	-9	
Team						0	1	1			0			0									
Totals			11-35	2-10	2-2	9	13	22	6	3	26	4	8	2	0	3							-23

Shooting By Period		
1 st FG%	5-18	27.8%
3PT%	2-9	22.2%
FT%	2-2	100%
2 nd FG%	6-17	35.3%
3PT%	0-1	0.0%
FT%	0-0	0%
GM FG%	11-35	31.4%
3PT%	2-10	20.0%
FT%	2-2	100.0%

Dead Ball Rebounds: 0, 0

Technical Fouls: NONE

Penn St. - 49

NO.	Name	Min	FG			3P			FT			Rebounds			Fouls		TP	AS	TO	ST	Blocks		+/-
			M-A	M-A	M-A	OR	DR	TOT	PF	FD	BS	BA											
1	Ali Brigham	C 12:21	2-5	0-0	0-1	1	2	3	0	1	4	1	1	0	0	0	0	0	0	0	0	0	14
5	Leilani Kapinus	G 14:33	2-6	1-2	3-4	1	0	1	0	2	8	1	0	1	1	0	1	1	0	0	0	14	
20	Makenna Marisa	G 20:00	5-9	3-5	2-2	0	3	3	0	1	15	4	1	0	0	0	0	0	0	0	0	23	
23	Shay Hagans	G 17:26	6-6	0-0	0-1	0	2	2	1	2	12	3	0	2	0	0	0	0	0	0	0	19	
25	Kelly Jekot	G 12:29	1-3	1-1	0-0	2	2	4	0	0	3	0	0	0	0	0	0	0	0	0	0	7	
11	Anna Camden	10:01	2-5	0-1	0-0	1	4	5	1	0	4	1	0	1	2	0	1	2	0	0	0	18	
15	Maddie Burke	09:14	0-1	0-1	0-0	0	0	0	0	0	0	1	0	2	0	0	0	0	0	0	0	17	
10	Tova Sabel	03:56	1-1	1-1	0-0	0	0	0	1	0	3	0	0	0	0	0	0	0	0	0	0	3	
Team						1	1	2			0			0									
Totals			19-36	6-11	5-8	6	14	20	3	6	49	11	2	6	3	0	23						

Shooting By Period		
1 st FG%	8-16	50.0%
3PT%	3-7	42.9%
FT%	5-8	62.5%
2 nd FG%	11-20	55.0%
3PT%	3-4	75.0%
FT%	0-0	0%
GM FG%	19-36	52.8%
3PT%	6-11	54.5%
FT%	5-8	62.5%

Dead Ball Rebounds: 1, 1

Technical Fouls: NONE

	ILL	PSU
Biggest lead	0 (1 st 10:00)	23 (2 nd 0:23)
Best Scoring Run	3 (1 st 7:56)	10 (2 nd 2:40)
Lead Changes	0	
Times Tied	0	
Time with Lead	00:00	18:52

Points from	ILL	PSU
Turnovers	0	11
Paint	14	24
Second Chance	8	4
Fast Breaks	0	15
Bench	16	7

	Period by Period Scoring				
	1st	2nd	3rd	4th	TOT
ILL	14	12	27	19	72
PSU	24	25	29	12	90



Period 3

Quarter Starters:

PSU	1 Brigham A	5 Kapinus L	20 Marisa M	23 Hagans S	25 Jekot K
ILL	0 Anastasieska S	5 Brown D	11 Peebles J	14 Lopes G	32 Nye A

Game Time	PSU	Score	Diff	ILL
10:00	10 SABEL T substitution out			
10:00	15 BURKE M substitution out			
10:00	1 BRIGHAM A substitution in			
10:00	23 HAGANS S substitution in			
10:00				20 PORTER E substitution out
10:00				24 MCKENZIE A substitution out
10:00				5 BROWN D substitution in
10:00				14 LOPES G substitution in
09:41	1 BRIGHAM A foul drawn (2)			14 LOPES G foul personal (2 - 1)
09:33	20 MARISA M turnover bad pass (2)			5 BROWN D steal (1)
09:29		49-28	21	5 BROWN D 2pt FG fast break from turnover in the paint, layup made (4)
09:02	23 HAGANS S 3pt FG , jump shot missed			
08:59				defensive rebound (23)
08:52				32 NYE A 3pt FG , jump shot missed
08:48	5 KAPINUS L defensive rebound (2)			
08:43	5 KAPINUS L 2pt FG fast break in the paint, layup made (10)	51-28	23	
08:32				5 BROWN D 2pt FG in the paint, jump shot missed
08:27				11 PEEBLES J offensive rebound (2)
08:24		51-30	21	0 ANASTASIESKA S 2pt FG second chance in the paint, jump shot made (6)
08:24				5 BROWN D assist (3)
07:55	23 HAGANS S turnover bad pass (1)			11 PEEBLES J steal (1)
07:41				0 ANASTASIESKA S 2pt FG from turnover in the paint, layup blocked
07:41	1 BRIGHAM A block (1)			
07:37				14 LOPES G offensive rebound (5)
07:35		51-32	19	14 LOPES G 2pt FG from turnover second chance in the paint, layup made (6)
07:22	20 MARISA M 3pt FG , jump shot made (18)	54-32	22	
07:22	1 BRIGHAM A assist (2)			
06:59		54-34	20	14 LOPES G 2pt FG in the paint, layup made (8)
06:59				0 ANASTASIESKA S assist (2)
06:45	20 MARISA M foul drawn (2)			14 LOPES G foul shooting (3 - 2)
06:45	1 BRIGHAM A substitution out			
06:45	25 JEKOT K substitution out			
06:45	11 CAMDEN A substitution in			
06:45	15 BURKE M substitution in			
06:45				11 PEEBLES J substitution out
06:45				12 ODEN J substitution in
06:45	20 MARISA M free throw 1 - 2 made (19)	55-34	21	
06:45	20 MARISA M free throw 2 - 2 made (20)	56-34	22	
06:45				14 LOPES G substitution out
06:45				20 PORTER E substitution in



Officials: Nykesha Thompson, Kevin Pethel, Jamie Broderick

Game Time	PSU	Score	Diff	ILL
06:38		56-36	20	5 BROWN D 2pt FG fast break in the paint, layup made (6)
06:21	11 CAMDEN A 2pt FG in the paint, jump shot made (6)	58-36	22	
06:21	20 MARISA M assist (5)			
06:08	23 HAGANS S steal (3)			5 BROWN D turnover bad pass (1)
06:03	23 HAGANS S 2pt FG fast break from turnover in the paint, layup made (14)	60-36	24	
05:53		60-38	22	32 NYE A 2pt FG outside the paint, jump shot made (10)
05:53				12 ODEN J assist (1)
05:45	15 BURKE M 3pt FG fast break, jump shot made (3)	63-38	25	
05:45	20 MARISA M assist (6)			
05:17		63-40	23	0 ANASTASIESKA S 2pt FG in the paint, layup made (8)
05:12	20 MARISA M 2pt FG fast break in the paint, layup made (22)	65-40	25	
05:12	20 MARISA M foul drawn (3)			5 BROWN D foul shooting (2 - 3)
05:12	11 CAMDEN A substitution out			
05:12	23 HAGANS S substitution out			
05:12	10 SABEL T substitution in			
05:12	12 THOMAS K substitution in			
05:12				20 PORTER E substitution out
05:12				44 BOSTIC K substitution in
05:12	20 MARISA M free throw fast break 1 - 1 made (23)	66-40	26	
05:04				12 ODEN J 2pt FG in the paint, jump shot missed
04:58				44 BOSTIC K offensive rebound (8)
04:57		66-43	23	5 BROWN D 3pt FG second chance, jump shot made (9)
04:57				44 BOSTIC K assist (1)
04:35	12 THOMAS K 2pt FG in the paint, jump shot missed			
04:30	12 THOMAS K offensive rebound (1)			
04:30	12 THOMAS K 2pt FG second chance in the paint, layup made (2)	68-43	25	
04:19		68-45	23	44 BOSTIC K 2pt FG in the paint, layup made (2)
04:19				32 NYE A assist (1)
04:12	5 KAPINUS L 2pt FG fast break in the paint, layup made (12)	70-45	25	
04:12				Timeout 30 Sec
04:12				Timeout media
03:51	5 KAPINUS L steal (2)			32 NYE A turnover bad pass (2)
03:46	5 KAPINUS L 2pt FG fast break from turnover in the paint, layup made (14)	72-45	27	
03:39	20 MARISA M steal (1)			0 ANASTASIESKA S turnover lost ball (2)
03:31	12 THOMAS K turnover lost ball (1)			
03:31				Timeout media
03:18		72-48	24	5 BROWN D 3pt FG from turnover, jump shot made (12)
03:18				12 ODEN J assist (2)
03:08	15 BURKE M turnover bad pass (1)			5 BROWN D steal (2)
03:02		72-50	22	5 BROWN D 2pt FG fast break from turnover in the paint, layup made (14)
02:49	20 MARISA M 3pt FG , jump shot missed			
02:46				defensive rebound (27)
02:46	5 KAPINUS L substitution out			
02:46	10 SABEL T substitution out			
02:46	12 THOMAS K substitution out			
02:46	15 BURKE M substitution out			



Official Basketball Play by Play - 3rd Period
Illinois at Penn St.
 01/16/22 Bryce Jordan Center, University Park, Pa.
 2021-22 Women's Basketball

Game Time: 2:00 PM
Game Duration: 1:36
Attendance: 2,048

Officials: Nykesha Thompson, Kevin Pethel, Jamie Broderick

Game Time	PSU	Score	Diff	ILL
02:46	1 BRIGHAM A substitution in			
02:46	11 CAMDEN A substitution in			
02:46	23 HAGANS S substitution in			
02:46	25 JEKOT K substitution in			
02:46				32 NYE A substitution out
02:46				24 MCKENZIE A substitution in
02:27		72-52	20	12 ODEN J 2pt FG in the paint, layup made (4)
02:18	11 CAMDEN A 2pt FG fast break in the paint, layup made (8)	74-52	22	
02:18	20 MARISA M assist (7)			
02:08				5 BROWN D 2pt FG in the paint, layup missed
02:05	20 MARISA M defensive rebound (4)			
01:59	20 MARISA M 2pt FG in the paint, pull up jump shot made (25)	76-52	24	
01:48				0 ANASTASIESKA S 2pt FG in the paint, jump shot missed
01:48	1 BRIGHAM A defensive rebound (4)			
01:48	1 BRIGHAM A foul drawn (3)			0 ANASTASIESKA S foul personal (1 - 4)
01:34	20 MARISA M turnover lost ball (3)			5 BROWN D steal (3)
01:20				0 ANASTASIESKA S 3pt FG from turnover, jump shot missed
01:16	25 JEKOT K defensive rebound (5)			
01:08	25 JEKOT K 2pt FG in the paint, layup blocked			
01:08				44 BOSTIC K block (1)
01:04				44 BOSTIC K defensive rebound (9)
01:04	23 HAGANS S foul personal (2 - 1)			12 ODEN J foul drawn (2)
01:02	23 HAGANS S steal (4)			12 ODEN J turnover bad pass (2)
00:57	23 HAGANS S 2pt FG fast break from turnover in the paint, layup made (16)	78-52	26	
00:49	20 MARISA M foul personal (1 - 2)			0 ANASTASIESKA S foul drawn (1)
00:37	25 JEKOT K foul shooting (1 - 3)			44 BOSTIC K foul drawn (1)
00:37		78-53	25	44 BOSTIC K free throw 1 - 2 made (3)
00:37				44 BOSTIC K free throw 2 - 2 missed
00:34	11 CAMDEN A defensive rebound (6)			
00:21	25 JEKOT K turnover bad pass (1)			
00:21	25 JEKOT K substitution out			
00:21	5 KAPINUS L substitution in			
00:12				24 MCKENZIE A 2pt FG from turnover outside the paint, jump shot missed
00:08	5 KAPINUS L defensive rebound (3)			
00:01	23 HAGANS S 2pt FG outside the paint, jump shot missed			
00:01				44 BOSTIC K defensive rebound (10)
END OF PERIOD				
PSU 78-53 ILL				



Officials: Nykeshia Thompson, Kevin Pethel, Jamie Broderick

Illinois - 27

NO.	Name	F	Min	FG			Rebounds			Fouls		TP	AS	TO	ST	Blocks		+/-
				M-A	M-A	M-A	OR	DR	TOT	PF	FD					BS	BA	
20	Erika Porter	F	01:33	0-0	0-0	0-0	0	0	0	0	0	0	0	0	0	0	0	-3
44	Kendall Bostic	F	05:12	1-1	0-0	1-2	1	2	3	0	1	3	1	0	0	1	0	0
5	De'Myla Brown	G	10:00	5-7	2-2	0-0	0	0	0	1	0	12	1	1	3	0	0	-2
11	Jada Peebles	G	03:15	0-0	0-0	0-0	1	0	1	0	0	0	0	0	1	0	0	3
32	Aaliyah Nye	G	07:14	1-2	0-1	0-0	0	0	0	0	0	2	1	1	0	0	0	1
0	Sara Anastasieska		10:00	2-5	0-1	0-0	0	0	0	1	1	4	1	1	0	0	1	-2
14	Geovana Lopes		03:15	2-2	0-0	0-0	1	0	1	2	0	4	0	0	0	0	0	1
12	Jayla Oden		06:45	1-2	0-0	0-0	0	0	0	0	1	2	2	1	0	0	0	-5
24	Adalia McKenzie		02:46	0-1	0-0	0-0	0	0	0	0	0	0	0	0	0	0	0	-3
Team							0	2	2			0		0				
Totals				12-20	2-4	1-2	3	4	7	4	3	27	6	4	4	1	1	-2

Shooting By Period		
3rd FG%	12-20	60.0%
3PT%	2-4	50.0%
FT%	1-2	50%
GM FG%	12-20	60.0%
3PT%	2-4	50.0%
FT%	1-2	50.0%

Dead Ball Rebounds: 0, 0

Technical Fouls::NONE

Penn St. - 29

NO.	Name	C	Min	FG			Rebounds			Fouls		TP	AS	TO	ST	Blocks		+/-
				M-A	M-A	M-A	OR	DR	TOT	PF	FD					BS	BA	
1	Ali Brigham	C	06:01	0-0	0-0	0-0	0	1	1	0	2	0	1	0	0	1	0	0
5	Leilani Kapinus	G	07:35	3-3	0-0	0-0	0	2	2	0	0	6	0	0	1	0	0	-1
20	Makenna Marisa	G	10:00	3-4	1-2	3-3	0	1	1	1	2	10	3	2	1	0	0	2
23	Shay Hagans	G	07:34	2-4	0-1	0-0	0	0	0	1	0	4	0	1	2	0	0	5
25	Kelly Jekot	G	05:40	0-1	0-0	0-0	0	1	1	1	0	0	0	1	0	0	1	0
11	Anna Camden		04:19	2-2	0-0	0-0	0	1	1	0	0	4	0	0	0	0	0	8
15	Maddie Burke		03:59	1-1	1-1	0-0	0	0	0	0	0	3	0	1	0	0	0	2
10	Tova Sabel		02:26	0-0	0-0	0-0	0	0	0	0	0	0	0	0	0	0	0	-3
12	Kayla Thomas		02:26	1-2	0-0	0-0	1	0	1	0	0	2	0	1	0	0	0	-3
Team							0	0	0			0		0				
Totals				12-17	2-4	3-3	1	6	7	3	4	29	4	6	4	1	1	2

Shooting By Period		
3rd FG%	12-17	70.6%
3PT%	2-4	50.0%
FT%	3-3	100%
GM FG%	12-17	70.6%
3PT%	2-4	50.0%
FT%	3-3	100.0%

Dead Ball Rebounds: 0, 0

Technical Fouls::NONE

	ILL	PSU
Biggest lead	0 (1 st 10:00)	27 (3 rd 3:46)
Best Scoring Run	7(3 rd 2:27)	6(3 rd 0:57)
Lead Changes	0	
Times Tied	0	
Time with Lead	00:00	09:29

Points from	ILL	PSU
Turnovers	9	6
Paint	18	20
Second Chance	7	2
Fast Breaks	6	18
Bench	10	9

Period by Period Scoring					
	1st	2nd	3rd	4th	TOT
ILL	14	12	27	19	72
PSU	24	25	29	12	90



Officials: Nykeshia Thompson, Kevin Pethel, Jamie Broderick

Period 4

Quarter Starters:

PSU	1 Brigham A	5 Kapinus L	11 Camden A	20 Marisa M	23 Hagans S
ILL	0 Anastasieska S	5 Brown D	12 Oden J	24 McKenzie A	44 Bostic K

Game Time	PSU	Score	Diff	ILL
09:45	5 KAPINUS L 2pt FG in the paint, layup missed			
09:42				44 BOSTIC K defensive rebound (11)
09:30		78-56	22	12 ODEN J 3pt FG , jump shot made (7)
09:30				5 BROWN D assist (4)
09:09	20 MARISA M 3pt FG , jump shot missed			
09:06	23 HAGANS S offensive rebound (3)			
09:05	23 HAGANS S 2pt FG second chance in the paint, jump shot missed			
09:01				44 BOSTIC K defensive rebound (12)
08:55				12 ODEN J 3pt FG , jump shot missed
08:52				offensive rebound (32)
08:52	1 BRIGHAM A substitution out			
08:52	25 JEKOT K substitution in			
08:44				5 BROWN D 2pt FG second chance in the paint, jump shot missed
08:39	11 CAMDEN A defensive rebound (7)			
08:27	20 MARISA M 2pt FG in the paint, layup missed			
08:24				44 BOSTIC K defensive rebound (13)
08:15		78-59	19	5 BROWN D 3pt FG , jump shot made (17)
08:15				0 ANASTASIESKA S assist (3)
07:51	11 CAMDEN A 3pt FG , jump shot missed			
07:46				12 ODEN J defensive rebound (2)
07:42		78-61	17	44 BOSTIC K 2pt FG fast break in the paint, layup made (5)
07:42				0 ANASTASIESKA S assist (4)
07:42	Timeout 30 Sec			
07:42	Timeout media			
07:42				24 MCKENZIE A substitution out
07:42				32 NYE A substitution in
07:25	20 MARISA M turnover bad pass (4)			0 ANASTASIESKA S steal (1)
07:12	20 MARISA M foul personal (2 - 1)			44 BOSTIC K foul drawn (2)
07:12	20 MARISA M substitution out			
07:12	15 BURKE M substitution in			
07:00				32 NYE A 3pt FG from turnover, jump shot blocked
07:00	5 KAPINUS L block (2)			
06:54				12 ODEN J offensive rebound (3)
06:52				32 NYE A 3pt FG from turnover second chance, jump shot missed
06:48	25 JEKOT K defensive rebound (6)			
06:45	23 HAGANS S foul offensive (3 - 2)			12 ODEN J foul drawn (3)
06:45	23 HAGANS S turnover offensive (2)			
06:36				32 NYE A 2pt FG from turnover in the paint, layup missed
06:32				32 NYE A offensive rebound (4)
06:32				32 NYE A 2pt FG from turnover second chance in the paint, layup missed



Officials: Nykeshia Thompson, Kevin Pethel, Jamie Broderick

Game Time	PSU	Score	Diff	ILL
06:30	11 CAMDEN A defensive rebound (8)			
06:08	5 KAPINUS L turnover lost ball (1)			5 BROWN D steal (4)
06:08	15 BURKE M foul personal (1 - 3)			5 BROWN D foul drawn (1)
06:08	25 JEKOT K substitution out			
06:08	10 SABEL T substitution in			
05:53				12 ODEN J 2pt FG from turnover in the paint, jump shot missed
05:49	5 KAPINUS L defensive rebound (4)			
05:48	5 KAPINUS L turnover bad pass (2)			12 ODEN J steal (1)
05:48	5 KAPINUS L foul personal (1 - 4)			12 ODEN J foul drawn (4)
05:48	5 KAPINUS L substitution out			
05:48	23 HAGANS S substitution out			
05:48	1 BRIGHAM A substitution in			
05:48	20 MARISA M substitution in			
05:43		78-64	14	0 ANASTASIESKA S 3pt FG from turnover, jump shot made (11)
05:43				12 ODEN J assist (3)
05:26	11 CAMDEN A 3pt FG , jump shot missed			
05:22	10 SABEL T offensive rebound (1)			
05:21	10 SABEL T 2pt FG second chance in the paint, layup missed			
05:17				44 BOSTIC K defensive rebound (14)
05:08				0 ANASTASIESKA S 3pt FG , jump shot missed
05:03	20 MARISA M defensive rebound (5)			
04:59	15 BURKE M 3pt FG , jump shot made (6)	81-64	17	
04:59	20 MARISA M assist (8)			
04:45	20 MARISA M steal (2)			44 BOSTIC K turnover bad pass (2)
04:40	10 SABEL T 2pt FG fast break from turnover in the paint, layup made (5)	83-64	19	
04:40	20 MARISA M assist (9)			
04:16	11 CAMDEN A steal (2)			12 ODEN J turnover lost ball (3)
04:16	11 CAMDEN A foul drawn (1)			12 ODEN J foul personal (1 - 1)
04:16	11 CAMDEN A substitution out			
04:16	12 THOMAS K substitution in			
04:16				44 BOSTIC K substitution out
04:16				24 MCKENZIE A substitution in
04:16				0 ANASTASIESKA S substitution out
04:16				3 AMUSAN S substitution in
04:05	20 MARISA M 2pt FG from turnover outside the paint, jump shot missed			
04:02				5 BROWN D defensive rebound (3)
03:54				3 AMUSAN S 3pt FG , jump shot missed
03:50	10 SABEL T defensive rebound (2)			
03:48	10 SABEL T turnover bad pass (1)			12 ODEN J steal (2)
03:43				24 MCKENZIE A 2pt FG from turnover in the paint, jump shot missed
03:40	1 BRIGHAM A defensive rebound (5)			
03:28	12 THOMAS K foul offensive (1 - 5)			12 ODEN J foul drawn (5)
03:28	12 THOMAS K turnover offensive (2)			
03:28				32 NYE A substitution out
03:28				22 RUBIN E substitution in
03:12		83-67	16	3 AMUSAN S 3pt FG from turnover, jump shot made (3)
03:12				22 RUBIN E assist (1)



Officials: Nykesha Thompson, Kevin Pethel, Jamie Broderick

Game Time	PSU	Score	Diff	ILL
02:59	1 BRIGHAM A 2pt FG in the paint, layup blocked			
02:59				3 AMUSAN S block (1)
02:54				3 AMUSAN S defensive rebound (1)
02:54	1 BRIGHAM A substitution out			
02:54	20 MARISA M substitution out			
02:54	5 KAPINUS L substitution in			
02:54	23 HAGANS S substitution in			
02:39				5 BROWN D 3pt FG , jump shot missed
02:34	10 SABEL T defensive rebound (3)			
02:30	12 THOMAS K 2pt FG in the paint, layup missed			
02:27	12 THOMAS K offensive rebound (2)			
02:26	15 BURKE M 3pt FG second chance, jump shot made (9)	86-67	19	
02:26	23 HAGANS S assist (4)			
02:07				3 AMUSAN S 3pt FG , jump shot missed
02:03	10 SABEL T defensive rebound (4)			
01:46	5 KAPINUS L 3pt FG , jump shot missed			
01:44				5 BROWN D defensive rebound (4)
01:44	10 SABEL T foul personal (2 - 6)			5 BROWN D foul drawn (2)
01:44	23 HAGANS S substitution out			
01:44	20 MARISA M substitution in			
01:44		86-68	18	5 BROWN D free throw fast break 1 - 2 made (18)
01:44		86-69	17	5 BROWN D free throw fast break 2 - 2 made (19)
01:44	10 SABEL T substitution out			
01:44	25 JEKOT K substitution in			
01:22	12 THOMAS K turnover bad pass (3)			5 BROWN D steal (5)
01:16				5 BROWN D 2pt FG from turnover in the paint, layup blocked
01:16	15 BURKE M block (1)			
01:12	12 THOMAS K defensive rebound (3)			
01:05	15 BURKE M 3pt FG , jump shot made (12)	89-69	20	
01:05	20 MARISA M assist (10)			
00:53	12 THOMAS K foul personal (2 - 7)			12 ODEN J foul drawn (6)
00:53	25 JEKOT K substitution out			
00:53	23 HAGANS S substitution in			
00:53	20 MARISA M substitution out			
00:53	25 JEKOT K substitution in			
00:53				12 ODEN J free throw 1 - 2 missed
00:53				offensive dead ball rebound (1)
00:53		89-70	19	12 ODEN J free throw 2 - 2 made (8)
00:39	23 HAGANS S foul drawn (3)			12 ODEN J foul shooting (2 - 2)
00:39	5 KAPINUS L substitution out			
00:39	10 SABEL T substitution in			
00:39	23 HAGANS S free throw 1 - 2 missed			
00:39	offensive dead ball rebound (3)			
00:39	23 HAGANS S free throw 2 - 2 made (17)	90-70	20	
00:29				24 MCKENZIE A 2pt FG in the paint, layup missed
00:24				24 MCKENZIE A offensive rebound (4)
00:23		90-72	18	24 MCKENZIE A 2pt FG second chance in the paint, layup made (8)
END OF GAME				



Official Basketball Play by Play - 4th Period
Illinois at Penn St.
01/16/22 Bryce Jordan Center, University Park, Pa.
2021-22 Women's Basketball

Game Time: 2:00 PM
Game Duration: 1:36
Attendance: 2,048

Officials: Nykesha Thompson, Kevin Pethel, Jamie Broderick

Game Time	PSU	Score	Diff	ILL
PSU 90-72 ILL				



Illinois at Penn St.

01/16/22 Bryce Jordan Center, University Park, Pa.
2021-22 Women's Basketball

Game Time: 2:00 PM
Game Duration: 1:36
Attendance: 2,048

Officials: Nykeshia Thompson, Kevin Pethel, Jamie Broderick

Illinois - 19

NO.	Name	F	Min	FG	3P	FT	Rebounds			Fouls		TP	AS	TO	ST	Blocks		+/-
				M-A	M-A	M-A	OR	DR	TOT	PF	FD					BS	BA	
20	Erika Porter	F	00:00	0-0	0-0	0-0	0	0	0	0	0	0	0	0	0	0	0	0
44	Kendall Bostic	F	05:44	1-1	0-0	0-0	0	4	4	0	1	2	0	1	0	0	0	6
5	De'Myla Brown	G	10:00	1-4	1-2	2-2	0	2	2	0	2	5	1	0	2	0	1	7
11	Jada Peebles	G	00:00	0-0	0-0	0-0	0	0	0	0	0	0	0	0	0	0	0	0
32	Aaliyah Nye	G	04:14	0-4	0-2	0-0	1	0	1	0	0	0	0	0	0	0	1	-2
0	Sara Anastasieska		05:44	1-2	1-2	0-0	0	0	0	0	0	3	2	0	1	0	0	6
12	Jayla Oden		10:00	1-3	1-2	1-2	1	1	2	2	4	4	1	1	2	0	0	7
3	Solape Amusan		04:16	1-3	1-3	0-0	0	1	1	0	0	3	0	0	0	1	0	1
24	Adalia McKenzie		06:34	1-3	0-0	0-0	1	0	1	0	0	2	0	0	0	0	0	9
22	Eva Rubin		03:28	0-0	0-0	0-0	0	0	0	0	0	0	1	0	0	0	0	1
Team							1	0	1			0		0				
Totals				6-20	4-11	3-4	4	8	12	2	7	19	5	2	5	1	2	7

Shooting By Period		
4 th FG%	6-20	30.0%
3PT%	4-11	36.4%
FT%	3-4	75%
GM FG%	6-20	30.0%
3PT%	4-11	36.4%
FT%	3-4	75.0%

Dead Ball Rebounds: 1, 0

Technical Fouls::NONE

Penn St. - 12

NO.	Name	C	Min	FG	3P	FT	Rebounds			Fouls		TP	AS	TO	ST	Blocks		+/-
				M-A	M-A	M-A	OR	DR	TOT	PF	FD					BS	BA	
1	Ali Brigham	C	04:02	0-1	0-0	0-0	0	1	1	0	0	0	0	0	0	0	1	-4
5	Leilani Kapinus	G	06:26	0-2	0-1	0-0	0	1	1	1	0	0	0	2	0	1	0	-5
20	Makenna Marisa	G	06:33	0-3	0-1	0-0	0	1	1	1	0	0	3	1	1	0	0	-8
23	Shay Hagans	G	06:15	0-1	0-0	1-2	1	0	1	1	1	1	1	1	0	0	0	-7
25	Kelly Jekot	G	04:28	0-0	0-0	0-0	0	1	1	0	0	0	0	0	0	0	0	-4
11	Anna Camden		05:44	0-2	0-2	0-0	0	2	2	0	1	0	0	0	1	0	0	-6
15	Maddie Burke		07:12	3-3	3-3	0-0	0	0	0	1	0	9	0	0	0	1	0	1
10	Tova Sabel		05:04	1-2	0-0	0-0	1	3	4	1	0	2	0	1	0	0	0	-1
12	Kayla Thomas		04:16	0-1	0-0	0-0	1	1	2	2	0	0	0	2	0	0	0	-1
Team							0	0	0			0		0				
Totals				4-15	3-7	1-2	3	10	13	7	2	12	4	7	2	2	1	-7

Shooting By Period		
4 th FG%	4-15	26.7%
3PT%	3-7	42.9%
FT%	1-2	50%
GM FG%	4-15	26.7%
3PT%	3-7	42.9%
FT%	1-2	50.0%

Dead Ball Rebounds: 1, 0

Technical Fouls::NONE

	ILL	PSU
Biggest lead	0 (1 st 10:00)	25 (4 th 9:45)
Best Scoring Run	11 (4 th 5:43)	5 (4 th 4:40)
Lead Changes	0	
Times Tied	0	
Time with Lead	00:00	09:45

	ILL	PSU
Points from		
Turnovers	6	2
Paint	4	2
Second Chance	2	3
Fast Breaks	4	2
Bench	12	11

	Period by Period Scoring				
	1st	2nd	3rd	4th	TOT
ILL	14	12	27	19	72
PSU	24	25	29	12	90



Illinois at Penn St.

01/16/22 Bryce Jordan Center, University Park, Pa.
2021-22 Women's Basketball

Game Time: 2:00 PM
Game Duration: 1:36
Attendance: 2,048

Officials: Nykeshia Thompson, Kevin Pethel, Jamie Broderick

Illinois - 46

NO.	Name	F	Min	FG			3P			FT			Rebounds			Fouls		TP	AS	TO	ST	Blocks		+/-
				M-A	M-A	M-A	OR	DR	TOT	PF	FD	BS	BA											
20	Erika Porter	F	01:33	0-0	0-0	0-0	0	0	0	0	0	0	0	0	0	0	0	0	0	0	0	0	-3	
44	Kendall Bostic	F	10:56	2-2	0-0	1-2	1	6	7	0	2	5	1	1	0	1	0	1	0	1	0	6		
5	De'Myla Brown	G	20:00	6-11	3-4	2-2	0	2	2	1	2	17	2	1	5	0	1	5	0	1	5			
11	Jada Peebles	G	03:15	0-0	0-0	0-0	1	0	1	0	0	0	0	0	0	1	0	0	1	0	3			
32	Aaliyah Nye	G	11:28	1-6	0-3	0-0	1	0	1	0	0	2	1	1	1	0	0	1	0	1	-1			
0	Sara Anastasieska		15:44	3-7	1-3	0-0	0	0	0	1	1	7	3	1	1	0	1	0	1	4				
14	Geovana Lopes		03:15	2-2	0-0	0-0	1	0	1	2	0	4	0	0	0	0	0	0	0	1				
12	Jayla Oden		16:45	2-5	1-2	1-2	1	1	2	2	5	6	3	2	2	0	0	2	0	2				
24	Adalia McKenzie		09:20	1-4	0-0	0-0	1	0	1	0	0	2	0	0	0	0	0	0	0	6				
3	Solape Amusan		04:16	1-3	1-3	0-0	0	1	1	0	0	3	0	0	0	1	0	1	0	1				
22	Eva Rubin		03:28	0-0	0-0	0-0	0	0	0	0	0	0	1	0	0	0	0	0	0	1				
Team							1	2	3			0			0									
Totals				18-40	6-15	4-6	7	12	19	6	10	46	11	6	9	2	3	5						

Shooting By Period		
3 rd FG%	12-20	60.0%
3PT%	2-4	50.0%
FT%	1-2	50%
4 th FG%	6-20	30.0%
3PT%	4-11	36.4%
FT%	3-4	75%
GM FG%	18-40	45.0%
3PT%	6-15	40.0%
FT%	4-6	66.7%

Dead Ball Rebounds: 1, 0

Technical Fouls::NONE

Penn St. - 41

NO.	Name	C	Min	FG			3P			FT			Rebounds			Fouls		TP	AS	TO	ST	Blocks		+/-
				M-A	M-A	M-A	OR	DR	TOT	PF	FD	BS	BA											
1	Ali Brigham	C	10:03	0-1	0-0	0-0	0	2	2	0	2	0	1	0	0	1	1	-4						
5	Leilani Kapinus	G	14:01	3-5	0-1	0-0	0	3	3	1	0	6	0	2	1	1	0	-6						
20	Makenna Marisa	G	16:33	3-7	1-3	3-3	0	2	2	2	2	10	6	3	2	0	0	-6						
23	Shay Hagans	G	13:49	2-5	0-1	1-2	1	0	1	2	1	5	1	2	2	0	0	-2						
25	Kelly Jekot	G	10:08	0-1	0-0	0-0	0	2	2	1	0	0	0	1	0	0	1	-4						
11	Anna Camden		10:03	2-4	0-2	0-0	0	3	3	0	1	4	0	0	1	0	2							
15	Maddie Burke		11:11	4-4	4-4	0-0	0	0	0	1	0	12	0	1	0	1	3							
10	Tova Sabel		07:30	1-2	0-0	0-0	1	3	4	1	0	2	0	1	0	0	-4							
12	Kayla Thomas		06:42	1-3	0-0	0-0	2	1	3	2	0	2	0	3	0	0	-4							
Team							0	0	0			0			0									
Totals				16-32	5-11	4-5	4	16	20	10	6	41	8	13	6	3	2	-5						

Shooting By Period		
3 rd FG%	12-17	70.6%
3PT%	2-4	50.0%
FT%	3-3	100%
4 th FG%	4-15	26.7%
3PT%	3-7	42.9%
FT%	1-2	50%
GM FG%	16-32	50.0%
3PT%	5-11	45.5%
FT%	4-5	80.0%

Dead Ball Rebounds: 1, 0

Technical Fouls::NONE

	ILL	PSU
Biggest lead	0 (1 st 10:00)	27 (3 rd 3:46)
Best Scoring Run	12(4 th 5:43)	6(3 rd 0:57)
Lead Changes	0	
Times Tied	0	
Time with Lead	00:00	19:29

	ILL	PSU
Points from		
Turnovers	15	8
Paint	22	22
Second Chance	9	5
Fast Breaks	10	20
Bench	22	20

Period by Period Scoring					
	1st	2nd	3rd	4th	TOT
ILL	14	12	27	19	72
PSU	24	25	29	12	90



Illinois at Penn St.

01/16/22 Bryce Jordan Center, University Park, Pa.
2021-22 Women's Basketball

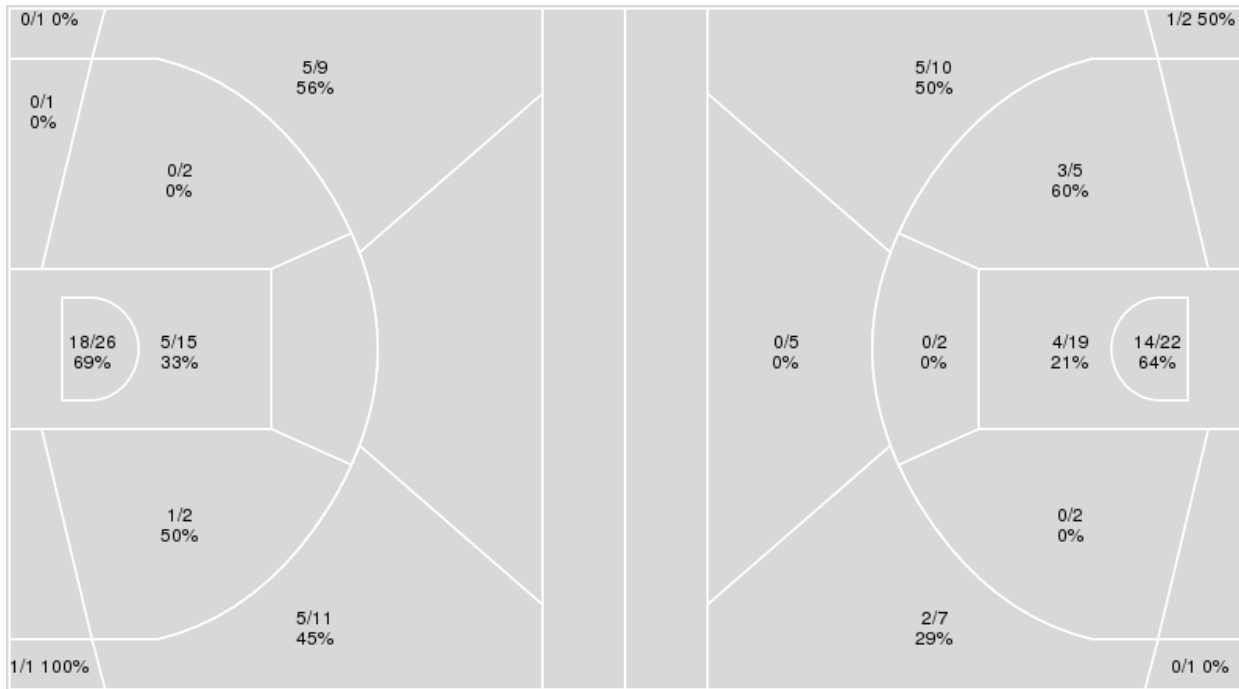
Game Time: 2:00 PM
Game Duration: 1:36
Attendance: 2,048

Officials: Nykeshia Thompson, Kevin Pethel, Jamie Broderick

{ Players => 0, 1, 3, 4, 5, 10, 11, 12, 15, 20, 22, 23, 25; } FG Types => All; Results => All;
All; Results => All;

Penn St.

Illinois



Penn St.	M/A	%
Field Goals	35/68	51
2 Points	24/46	52
3 Points	11/22	50
Free Throws	9/13	69

Illinois	M/A	%
Field Goals	29/75	39
2 Points	21/50	42
3 Points	8/25	32
Free Throws	6/8	75



Illinois at Penn St.

01/16/22 Bryce Jordan Center, University Park, Pa.
2021-22 Women's Basketball

Game Time: 2:00 PM
Game Duration: 1:36
Attendance: 2,048

Officials: Nykeshia Thompson, Kevin Pethel, Jamie Broderick

Illinois

No	Name	Mins		Score		Points Diff		Points per Min		Assists		Rebounds		Steals		Turnovers	
		On	Off	On	Off	On	Off	On	Off	On	Off	On	Off	On	Off	On	Off
0	Sara Anastasieska	25:26	14:34	54 - 57	18 - 33	-3	-15	2.12	1.24	12	3	25	16	9	2	11	3
3	Solape Amusan	04:16	35:44	8 - 7	64 - 83	1	-19	1.88	1.79	1	14	4	37	2	9	0	14
5	De'Myla Brown	30:59	09:01	56 - 68	16 - 22	-12	-6	1.81	1.77	14	1	29	12	9	2	11	3
11	Jada Peebles	14:28	25:32	22 - 33	50 - 57	-11	-7	1.52	1.96	5	10	16	25	2	9	5	9
12	Jayla Oden	25:32	14:28	50 - 57	22 - 33	-7	-11	1.96	1.52	10	5	25	16	9	2	9	5
14	Geovana Lopes	11:28	28:32	20 - 25	52 - 65	-5	-13	1.74	1.82	3	12	15	26	4	7	3	11
20	Erika Porter	13:20	26:40	20 - 40	52 - 50	-20	2	1.50	1.95	4	11	10	31	0	11	6	8
22	Eva Rubin	03:28	36:32	8 - 7	64 - 83	1	-19	2.31	1.75	1	14	3	38	1	10	0	14
24	Adalia McKenzie	20:47	19:13	37 - 41	35 - 49	-4	-14	1.78	1.82	6	9	25	16	5	6	7	7
32	Aaliyah Nye	29:02	10:58	51 - 71	21 - 19	-20	2	1.76	1.91	10	5	29	12	9	2	10	4
44	Kendall Bostic	21:14	18:46	34 - 44	38 - 46	-10	-8	1.60	2.02	9	6	24	17	5	6	8	6

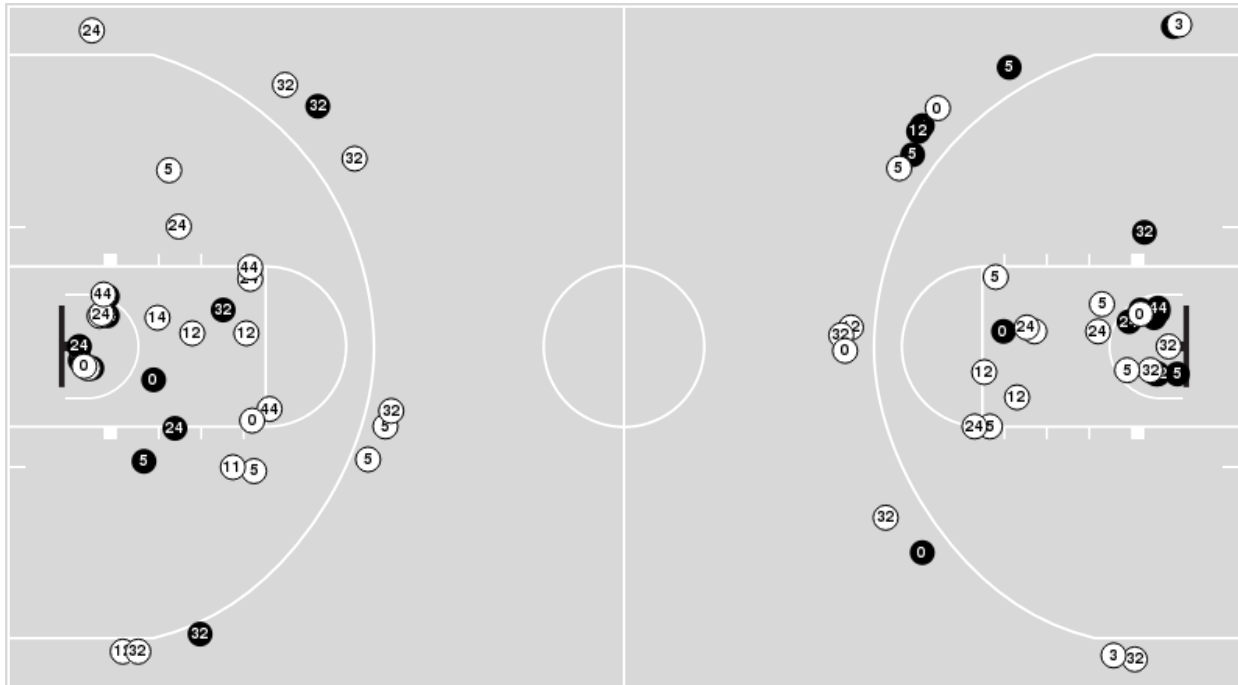
Penn St.

No	Name	Mins		Score		Points Diff		Points per Min		Assists		Rebounds		Steals		Turnovers	
		On	Off	On	Off	On	Off	On	Off	On	Off	On	Off	On	Off	On	Off
1	Ali Brigham	22:24	17:36	45 - 35	45 - 37	10	8	2.01	2.56	11	8	22	18	5	7	8	7
5	Leilani Kapinus	28:34	11:26	63 - 55	27 - 17	8	10	2.21	2.36	11	8	28	12	8	4	11	4
10	Tova Sabel	11:26	28:34	27 - 28	63 - 44	-1	19	2.36	2.21	7	12	10	30	4	8	5	10
11	Anna Camden	20:04	19:56	51 - 31	39 - 41	20	-2	2.54	1.96	11	8	24	16	9	3	6	9
12	Kayla Thomas	06:42	33:18	14 - 18	76 - 54	-4	22	2.09	2.28	2	17	7	33	2	10	5	10
15	Maddie Burke	20:25	19:35	57 - 37	33 - 35	20	-2	2.79	1.69	12	7	23	17	10	2	8	7
20	Makenna Marisa	36:33	03:27	86 - 69	4 - 3	17	1	2.35	1.16	18	1	34	6	12	0	12	3
23	Shay Hagans	31:15	08:45	67 - 50	23 - 22	17	1	2.14	2.63	14	5	31	9	8	4	10	5
25	Kelly Jekot	22:37	17:23	40 - 37	50 - 35	3	15	1.77	2.88	9	10	21	19	2	10	10	5

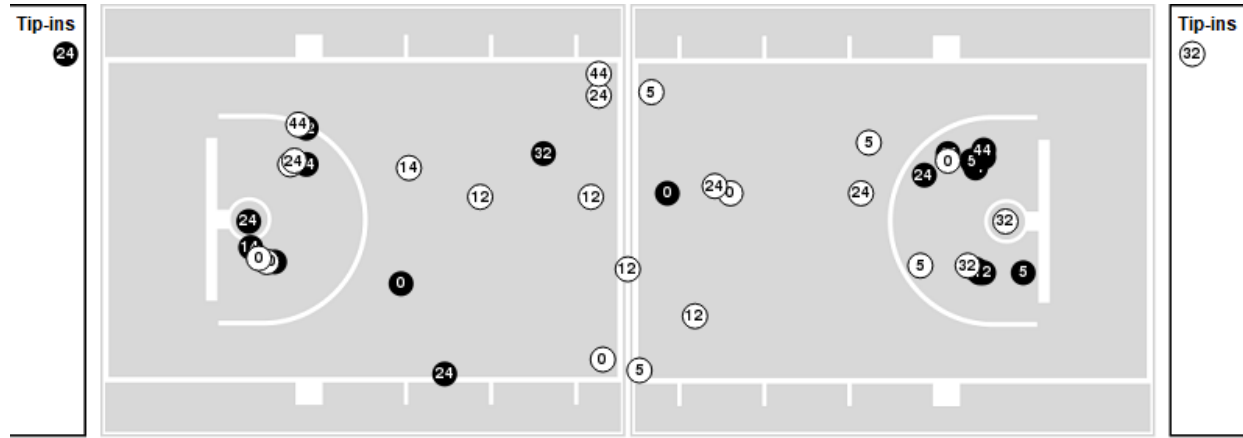


Players => AllFG Types=>AllResults=>All
Illinois

All Field Goals



Blow Up Chart



● Made ○ Missed N - Player Number

Illinois	M/A	%
Field Goals	29/75	39
2 Points	21/50	42
3 Points	8/25	32
Free Throws	6/8	75

Illinois	M/A	%
Points in the Paint	36 (18 / 41)	44
Fast Break Points	10 (6/6)	100
Second Chance Points	17 (9/14)	64
Effective FG%	44	



Illinois at Penn St.

01/16/22 Bryce Jordan Center, University Park, Pa.
2021-22 Women's Basketball

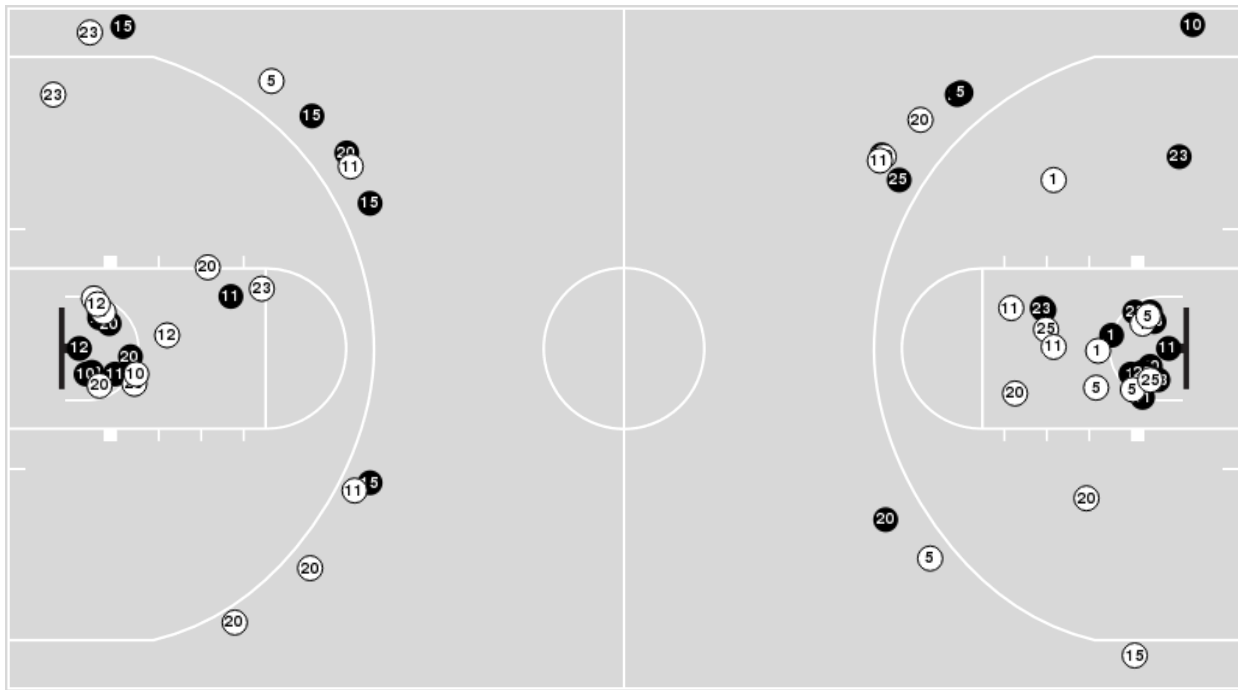
Game Time: 2:00 PM
Game Duration: 1:36
Attendance: 2,048

Officials: Nykeshia Thompson, Kevin Pethel, Jamie Broderick

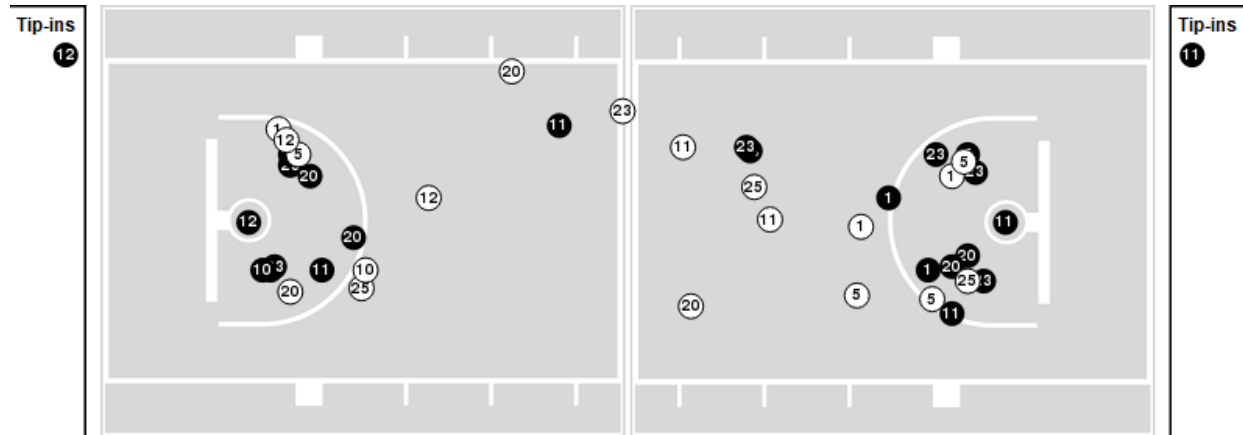
Players => 0, 1, 3, 4, 5, 10, 11, 12, 15, 20, 22, 23, 25FG Types=>AllResults=>All

Penn St.

All Field Goals



Blow Up Chart



● Made ○ Missed N - Player Number

Penn St.	M/A	%
Field Goals	35/68	51
2 Points	24/46	52
3 Points	11/22	50
Free Throws	9/13	69

Penn St.	M/A	%
Points in the Paint	46 (23 / 41)	56
Fast Break Points	35 (19/20)	95
Second Chance Points	9 (4/11)	36
Effective FG%	60	



Officials: Nykeshia Thompson, Kevin Pethel, Jamie Broderick

Illinois

Lineup	Quarter On	Time On	Quarter Off	Time Off	Time on Court	Score	Score Diff	Reb	Stl	Tov	Ass	PPP
5- Brown D/ 11- Peebles J/ 20- Porter E/ 32- Nye A/ 44- Bostic K/	1	10:00	1	05:32	04:28	6-9	-3	5	0	1	2	1.0000
5- Brown D/ 11- Peebles J/ 14- Lopes G/ 32- Nye A/ 44- Bostic K/	1	05:32	1	04:39	00:53	0-2	-2	1	0	0	0	0.0000
11- Peebles J/ 14- Lopes G/ 24- McKenzie A/ 32- Nye A/ 44- Bostic K/	1	04:39	1	02:54	01:45	2-5	-3	4	0	1	0	0.5000
0- Anastasieska S/ 12- Oden J/ 14- Lopes G/ 24- McKenzie A/ 32- Nye A/	1	02:54	2	07:19	05:35	10-11	-1	7	2	2	1	1.1261
0- Anastasieska S/ 5- Brown D/ 11- Peebles J/ 20- Porter E/ 24- McKenzie A/	2	07:19	2	04:53	02:26	2-6	-4	2	0	3	1	0.5000
5- Brown D/ 12- Oden J/ 20- Porter E/ 32- Nye A/ 44- Bostic K/	2	04:53	2	01:41	03:12	2-10	-8	2	0	1	0	0.3333
0- Anastasieska S/ 11- Peebles J/ 20- Porter E/ 24- McKenzie A/ 32- Nye A/	2	01:41	3	10:00	01:41	4-6	-2	1	0	0	0	1.0000
0- Anastasieska S/ 5- Brown D/ 11- Peebles J/ 14- Lopes G/ 32- Nye A/	3	10:00	3	06:45	03:15	8-5	3	3	2	0	2	1.6000
0- Anastasieska S/ 5- Brown D/ 12- Oden J/ 14- Lopes G/ 32- Nye A/	3	06:45	3	06:45	00:00	0-2	-2	0	0	0	0	0.0000
0- Anastasieska S/ 5- Brown D/ 12- Oden J/ 20- Porter E/ 32- Nye A/	3	06:45	3	05:12	01:33	6-9	-3	0	0	1	1	1.5000
0- Anastasieska S/ 5- Brown D/ 12- Oden J/ 32- Nye A/ 44- Bostic K/	3	05:12	3	02:46	02:26	10-7	3	2	1	2	3	1.6667
0- Anastasieska S/ 5- Brown D/ 12- Oden J/ 24- McKenzie A/ 44- Bostic K/	3	02:46	4	07:42	05:04	11-6	5	7	1	1	3	1.0110
0- Anastasieska S/ 5- Brown D/ 12- Oden J/ 32- Nye A/ 44- Bostic K/	4	07:42	4	04:16	03:26	3-5	-2	3	3	2	1	0.4286
0- Anastasieska S/ 5- Brown D/ 12- Oden J/ 24- McKenzie A/ 32- Nye A/	4	04:16	4	04:16	00:00	0-0	0	0	0	0	0	0.0000
3- Amusan S/ 5- Brown D/ 12- Oden J/ 24- McKenzie A/ 32- Nye A/	4	04:16	4	03:28	00:48	0-0	0	1	1	0	0	0.0000
3- Amusan S/ 5- Brown D/ 12- Oden J/ 22- Rubin E/ 24- McKenzie A/	4	03:28	4	00:00	03:28	8-7	1	3	1	0	1	1.1834



Officials: Nykeshia Thompson, Kevin Pethel, Jamie Broderick

Penn St.

Lineup	Quarter On	Time On	Quarter Off	Time Off	Time on Court	Score	Score Diff	Reb	Stl	Tov	Ass	PPP
1- Brigham A/ 5- Kapinus L/ 20- Marisa M/ 23- Hagans S/ 25- Jekot K/	1	10:00	1	06:27	03:33	6-3	3	5	1	0	0	1.1029
5- Kapinus L/ 11- Camden A/ 20- Marisa M/ 23- Hagans S/ 25- Jekot K/	1	06:27	1	05:32	00:55	3-3	0	0	0	0	1	3.0000
5- Kapinus L/ 11- Camden A/ 15- Burke M/ 20- Marisa M/ 25- Jekot K/	1	05:32	1	04:39	00:53	2-0	2	2	0	0	0	1.0638
5- Kapinus L/ 11- Camden A/ 15- Burke M/ 20- Marisa M/ 23- Hagans S/	1	04:39	1	02:55	01:44	3-2	1	2	1	0	0	0.7732
1- Brigham A/ 5- Kapinus L/ 11- Camden A/ 20- Marisa M/ 23- Hagans S/	1	02:55	1	02:55	00:00	2-0	2	0	0	0	0	2.2727
1- Brigham A/ 10- Sabel T/ 11- Camden A/ 20- Marisa M/ 23- Hagans S/	1	02:55	1	02:04	00:51	3-2	1	0	0	0	1	3.0000
1- Brigham A/ 10- Sabel T/ 20- Marisa M/ 23- Hagans S/ 25- Jekot K/	1	02:04	1	00:39	01:24	2-2	0	0	0	0	1	1.0000
1- Brigham A/ 5- Kapinus L/ 20- Marisa M/ 23- Hagans S/ 25- Jekot K/	1	00:39	2	07:19	03:21	6-6	0	2	0	2	2	1.1029
5- Kapinus L/ 11- Camden A/ 20- Marisa M/ 23- Hagans S/ 25- Jekot K/	2	07:19	2	06:37	00:42	0-0	0	2	0	0	0	0.0000
5- Kapinus L/ 11- Camden A/ 15- Burke M/ 20- Marisa M/ 23- Hagans S/	2	06:37	2	04:53	01:44	6-2	4	2	3	0	1	1.5000
1- Brigham A/ 11- Camden A/ 15- Burke M/ 20- Marisa M/ 23- Hagans S/	2	04:53	2	01:41	03:12	10-2	8	4	1	0	3	1.6667
5- Kapinus L/ 10- Sabel T/ 15- Burke M/ 20- Marisa M/ 25- Jekot K/	2	01:41	3	10:00	01:41	6-4	2	1	0	0	2	2.0000
1- Brigham A/ 5- Kapinus L/ 20- Marisa M/ 23- Hagans S/ 25- Jekot K/	3	10:00	3	06:45	03:15	5-8	-3	1	0	2	1	1.0000
5- Kapinus L/ 11- Camden A/ 15- Burke M/ 20- Marisa M/ 23- Hagans S/	3	06:45	3	05:12	01:33	11-6	5	0	1	0	2	2.2541
5- Kapinus L/ 10- Sabel T/ 12- Thomas K/ 15- Burke M/ 20- Marisa M/	3	05:12	3	02:46	02:26	7-10	-3	1	2	2	0	1.0870
1- Brigham A/ 11- Camden A/ 20- Marisa M/ 23- Hagans S/ 25- Jekot K/	3	02:46	3	00:21	02:25	6-3	3	4	1	2	1	1.0000
1- Brigham A/ 5- Kapinus L/ 11- Camden A/ 20- Marisa M/ 23- Hagans S/	3	00:21	4	08:52	01:29	0-3	-3	2	0	0	0	0.0000
5- Kapinus L/ 11- Camden A/ 20- Marisa M/ 23- Hagans S/ 25- Jekot K/	4	08:52	4	07:12	01:40	0-5	-5	1	0	1	0	0.0000
5- Kapinus L/ 11- Camden A/ 15- Burke M/ 23- Hagans S/ 25- Jekot K/	4	07:12	4	06:08	01:04	0-0	0	2	0	2	0	0.0000
5- Kapinus L/ 10- Sabel T/ 11- Camden A/ 15- Burke M/ 23- Hagans S/	4	06:08	4	05:48	00:20	0-0	0	1	0	1	0	0.0000
1- Brigham A/ 10- Sabel T/ 11- Camden A/ 15- Burke M/ 20- Marisa M/	4	05:48	4	04:16	01:32	5-3	2	2	2	0	2	1.6667
1- Brigham A/ 10- Sabel T/ 12- Thomas K/ 15- Burke M/ 20- Marisa M/	4	04:16	4	02:54	01:22	0-3	-3	2	0	2	0	0.0000
5- Kapinus L/ 10- Sabel T/ 12- Thomas K/ 15- Burke M/ 23- Hagans S/	4	02:54	4	01:44	01:10	3-0	3	3	0	0	1	1.5000
5- Kapinus L/ 10- Sabel T/ 12- Thomas K/ 15- Burke M/ 20- Marisa M/	4	01:44	4	01:44	00:00	0-2	-2	0	0	0	0	0.0000
5- Kapinus L/ 12- Thomas K/ 15- Burke M/ 20- Marisa M/ 25- Jekot K/	4	01:44	4	00:53	00:51	3-0	3	1	0	1	1	1.5000
5- Kapinus L/ 12- Thomas K/ 15- Burke M/ 20- Marisa M/ 23- Hagans S/	4	00:53	4	00:53	00:00	0-0	0	0	0	0	0	0.0000
5- Kapinus L/ 12- Thomas K/ 15- Burke M/ 23- Hagans S/ 25- Jekot K/	4	00:53	4	00:39	00:13	0-1	-1	0	0	0	0	0.0000
10- Sabel T/ 12- Thomas K/ 15- Burke M/ 23- Hagans S/ 25- Jekot K/	4	00:39	4	00:00	00:40	1-2	-1	0	0	0	0	1.1364



Illinois at Penn St.

01/16/22 Bryce Jordan Center, University Park, Pa.
2021-22 Women's Basketball

Game Time: 2:00 PM
Game Duration: 1:36
Attendance: 2,048

Officials: Nykeshia Thompson, Kevin Pethel, Jamie Broderick

Illinois

Lineup	Time	Score	Score Diff	Pts/Min	Reb	Stl	Tov	Ass	PPP
0- Anastasieska S/ 5- Brown D/ 12- Oden J/ 32- Nye A/ 44- Bostic K/	05:52	13-12	1	2.2159	5	4	4	4	1.0000
0- Anastasieska S/ 12- Oden J/ 14- Lopes G/ 24- McKenzie A/ 32- Nye A/	05:35	10-11	-1	1.7910	7	2	2	1	1.1261
0- Anastasieska S/ 5- Brown D/ 12- Oden J/ 24- McKenzie A/ 44- Bostic K/	05:04	11-6	5	2.1711	7	1	1	3	1.0110
5- Brown D/ 11- Peebles J/ 20- Porter E/ 32- Nye A/ 44- Bostic K/	04:28	6-9	-3	1.3433	5	0	1	2	1.0000
3- Amusan S/ 5- Brown D/ 12- Oden J/ 22- Rubin E/ 24- McKenzie A/	03:28	8-7	1	2.3077	3	1	0	1	1.1834
0- Anastasieska S/ 5- Brown D/ 11- Peebles J/ 14- Lopes G/ 32- Nye A/	03:15	8-5	3	2.4615	3	2	0	2	1.6000
5- Brown D/ 12- Oden J/ 20- Porter E/ 32- Nye A/ 44- Bostic K/	03:12	2-10	-8	0.6250	2	0	1	0	0.3333
0- Anastasieska S/ 5- Brown D/ 11- Peebles J/ 20- Porter E/ 24- McKenzie A/	02:26	2-6	-4	0.8219	2	0	3	1	0.5000
11- Peebles J/ 14- Lopes G/ 24- McKenzie A/ 32- Nye A/ 44- Bostic K/	01:45	2-5	-3	1.1429	4	0	1	0	0.5000
0- Anastasieska S/ 11- Peebles J/ 20- Porter E/ 24- McKenzie A/ 32- Nye A/	01:41	4-6	-2	2.3762	1	0	0	0	1.0000
0- Anastasieska S/ 5- Brown D/ 12- Oden J/ 20- Porter E/ 32- Nye A/	01:33	6-9	-3	3.8710	0	0	1	1	1.5000
5- Brown D/ 11- Peebles J/ 14- Lopes G/ 32- Nye A/ 44- Bostic K/	00:53	0-2	-2	0.0000	1	0	0	0	0.0000
3- Amusan S/ 5- Brown D/ 12- Oden J/ 24- McKenzie A/ 32- Nye A/	00:48	0-0	0	0.0000	1	1	0	0	0.0000
0- Anastasieska S/ 5- Brown D/ 12- Oden J/ 14- Lopes G/ 32- Nye A/	00:00	0-2	-2	NaN	0	0	0	0	0.0000
0- Anastasieska S/ 5- Brown D/ 12- Oden J/ 24- McKenzie A/ 32- Nye A/	00:00	0-0	0	NaN	0	0	0	0	0.0000



Officials: Nykeshia Thompson, Kevin Pethel, Jamie Broderick

Penn St.

Lineup	Time	Score	Score Diff	Pts/Min	Reb	Stl	Tov	Ass	PPP
1- Brigham A/ 5- Kapinus L/ 20- Marisa M/ 23- Hagans S/ 25- Jekot K/	10:09	17-17	0	1.6749	8	1	4	3	1.0705
5- Kapinus L/ 11- Camden A/ 15- Burke M/ 20- Marisa M/ 23- Hagans S/	05:01	20-10	10	3.9867	4	5	0	3	1.5674
5- Kapinus L/ 11- Camden A/ 20- Marisa M/ 23- Hagans S/ 25- Jekot K/	03:17	3-8	-5	0.9137	3	0	1	1	0.6000
1- Brigham A/ 11- Camden A/ 15- Burke M/ 20- Marisa M/ 23- Hagans S/	03:12	10-2	8	3.1250	4	1	0	3	1.6667
5- Kapinus L/ 10- Sabel T/ 12- Thomas K/ 15- Burke M/ 20- Marisa M/	02:26	7-12	-5	2.8767	1	2	2	0	1.0870
1- Brigham A/ 11- Camden A/ 20- Marisa M/ 23- Hagans S/ 25- Jekot K/	02:25	6-3	3	2.4828	4	1	2	1	1.0000
5- Kapinus L/ 10- Sabel T/ 15- Burke M/ 20- Marisa M/ 25- Jekot K/	01:41	6-4	2	3.5644	1	0	0	2	2.0000
1- Brigham A/ 10- Sabel T/ 11- Camden A/ 15- Burke M/ 20- Marisa M/	01:32	5-3	2	3.2609	2	2	0	2	1.6667
1- Brigham A/ 5- Kapinus L/ 11- Camden A/ 20- Marisa M/ 23- Hagans S/	01:29	2-3	-1	1.3483	2	0	0	0	0.5155
1- Brigham A/ 10- Sabel T/ 20- Marisa M/ 23- Hagans S/ 25- Jekot K/	01:24	2-2	0	1.4286	0	0	0	1	1.0000
1- Brigham A/ 10- Sabel T/ 12- Thomas K/ 15- Burke M/ 20- Marisa M/	01:22	0-3	-3	0.0000	2	0	2	0	0.0000
5- Kapinus L/ 10- Sabel T/ 12- Thomas K/ 15- Burke M/ 23- Hagans S/	01:10	3-0	3	2.5714	3	0	0	1	1.5000
5- Kapinus L/ 11- Camden A/ 15- Burke M/ 23- Hagans S/ 25- Jekot K/	01:04	0-0	0	0.0000	2	0	2	0	0.0000
5- Kapinus L/ 11- Camden A/ 15- Burke M/ 20- Marisa M/ 25- Jekot K/	00:53	2-0	2	2.2642	2	0	0	0	1.0638
1- Brigham A/ 10- Sabel T/ 11- Camden A/ 20- Marisa M/ 23- Hagans S/	00:51	3-2	1	3.5294	0	0	0	1	3.0000
5- Kapinus L/ 12- Thomas K/ 15- Burke M/ 20- Marisa M/ 25- Jekot K/	00:51	3-0	3	3.5294	1	0	1	1	1.5000
10- Sabel T/ 12- Thomas K/ 15- Burke M/ 23- Hagans S/ 25- Jekot K/	00:40	1-2	-1	1.5000	0	0	0	0	1.1364
5- Kapinus L/ 10- Sabel T/ 11- Camden A/ 15- Burke M/ 23- Hagans S/	00:20	0-0	0	0.0000	1	0	1	0	0.0000
5- Kapinus L/ 12- Thomas K/ 15- Burke M/ 23- Hagans S/ 25- Jekot K/	00:13	0-1	-1	0.0000	0	0	0	0	0.0000
5- Kapinus L/ 12- Thomas K/ 15- Burke M/ 20- Marisa M/ 23- Hagans S/	00:00	0-0	0	NaN	0	0	0	0	0.0000