



**Penn St. at Nebraska**

01/11/23 Pinnacle Bank Arena, Lincoln  
2022-23 Women's Basketball

Game Time: 7:01 PM  
Game Duration: 1:43  
Attendance: 3,082

Officials: Felicia Grinter, Angelica Suffren, Missy Brooks

Penn St. - 51

Record: 11-6 (2-4)

NO.	Name	F	Min	FG			3P			FT			Rebounds			Fouls		TP	AS	TO	ST	Blocks		+/-
				M-A	M-A	M-A	OR	DR	TOT	PF	FD	BS	BA											
10	Chanaya Pinto	F	26:25	0-3	0-2	3-4	2	3	5	3	2	3	2	3	3	2	3	6	0	0	0	0	-24	
24	Alexa Williamson	F	15:01	2-5	0-0	1-2	2	2	4	1	1	5	1	1	0	1	1	0	1	1	1	1	-4	
4	Shay Ciezki	G	27:04	4-9	2-4	0-0	0	1	1	1	1	10	1	3	1	0	1	0	1	0	1	-26		
5	Leilani Kapinus	G	22:35	1-10	0-1	1-2	2	3	5	3	1	3	0	3	1	1	1	1	1	1	1	-27		
20	Makenna Marisa	G	31:46	5-19	1-8	3-4	0	1	1	0	2	14	3	4	3	0	2	0	0	0	2	-35		
33	Johnasia Cash		07:20	0-2	0-0	0-0	1	2	3	3	0	0	0	2	0	0	0	0	0	0	0	-14		
11	Anna Camden		11:49	1-2	1-2	0-0	0	1	1	0	0	3	1	0	1	0	0	0	0	0	0	-6		
23	Taniyah Thompson		23:32	4-9	1-3	1-2	1	1	2	2	3	10	0	1	1	0	1	0	1	0	1	-18		
1	Ali Brigham		10:29	0-1	0-0	0-0	1	0	1	2	0	0	0	0	0	0	0	1	0	0	0	-14		
2	Aicha Dia		10:23	0-1	0-0	0-0	2	2	4	0	1	0	1	0	2	1	0	2	1	0	0	13		
0	Ivane Tensaie		06:48	0-1	0-1	0-0	0	1	1	0	0	0	0	0	0	0	0	0	0	0	0	5		
12	Kayla Thomas		06:48	1-1	0-0	1-2	0	1	1	0	0	3	0	1	0	0	0	0	0	0	0	5		
Team							3	1	4			0		1										
<b>Totals</b>				18-63	5-21	10-16	14	19	33	15	11	51	9	19	15	4	6						-29	

Shooting By Period		
1 <sup>st</sup> FG%	4-16	25.0%
3PT%	0-5	0.0%
FT%	2-2	100%
2 <sup>nd</sup> FG%	6-15	40.0%
3PT%	3-6	50.0%
FT%	3-4	75%
3 <sup>rd</sup> FG%	3-14	21.4%
3PT%	0-1	0.0%
FT%	4-8	50%
4 <sup>th</sup> FG%	5-18	27.8%
3PT%	2-9	22.2%
FT%	1-2	50%
GM FG%	18-63	28.6%
3PT%	5-21	23.8%
FT%	10-16	62.5%

Technical Fouls::NONE

Dead Ball Rebounds: 3, 0

Nebraska - 80

Record: 11-6 (3-3)

NO.	Name	F	Min	FG			3P			FT			Rebounds			Fouls		TP	AS	TO	ST	Blocks		+/-
				M-A	M-A	M-A	OR	DR	TOT	PF	FD	BS	BA											
34	Isabelle Bourne	F	28:40	4-9	2-6	0-0	3	1	4	0	0	10	1	0	0	0	0	0	0	0	0	0	26	
40	Alexis Markowski	C	26:01	4-8	0-2	3-4	6	9	15	2	6	11	1	2	1	0	0	0	0	0	0	0	15	
1	Jaz Shelley	G	33:23	4-9	2-3	0-0	2	7	9	1	0	10	10	6	3	2	0	31					31	
4	Sam Haiby	G	25:48	2-10	0-2	3-3	0	6	6	0	4	7	4	2	2	2	1	19					19	
42	Maddie Krull	G	26:08	5-10	3-5	1-1	0	2	2	4	2	14	1	3	2	0	0	18					18	
15	Kendall Moriarty		14:27	1-4	1-3	0-0	1	1	2	1	1	3	2	2	2	0	2	-4					-4	
21	Annika Stewart		09:48	2-3	1-1	0-0	0	1	1	0	0	5	2	2	0	2	0	11					11	
14	Callin Hake		18:18	6-9	4-6	0-0	0	1	1	1	1	16	1	2	1	0	0	25					25	
32	Kendall Coley		05:45	0-0	0-0	0-0	0	2	2	1	0	0	1	1	0	0	0	-5					-5	
44	Maggie Mendelson		11:42	2-5	0-0	0-0	0	3	3	1	1	4	1	1	0	0	1	9					9	
Team							6	1	7			0		1										
<b>Totals</b>				30-67	13-28	7-8	18	34	52	11	15	80	24	22	11	6	4							29

Shooting By Period		
1 <sup>st</sup> FG%	8-22	36.4%
3PT%	4-14	28.6%
FT%	1-1	100%
2 <sup>nd</sup> FG%	8-16	50.0%
3PT%	4-6	66.7%
FT%	0-0	0%
3 <sup>rd</sup> FG%	5-13	38.5%
3PT%	2-3	66.7%
FT%	5-6	83.3%
4 <sup>th</sup> FG%	9-16	56.3%
3PT%	3-5	60.0%
FT%	1-1	100%
GM FG%	30-67	44.8%
3PT%	13-28	46.4%
FT%	7-8	87.5%

Technical Fouls::NONE

Dead Ball Rebounds: 1, 0

	PEN	NEB
Biggest lead	2 (1 <sup>st</sup> 9:14)	34 (4 <sup>th</sup> 6:48)
Best Scoring Run	11 (2 <sup>nd</sup> 0:21)	14 (4 <sup>th</sup> 6:48)
Lead Changes	3	
Times Tied	1	
Time with Lead	03:07	36:07

	PEN	NEB
Points from		
Turnovers	24	22
Paint	22	34
Second Chance	7	11
Fast Breaks	9	6
Bench	16	28

	Period by Period Scoring				
	1st	2nd	3rd	4th	TOT
PEN	10	18	10	13	51
NEB	21	20	17	22	80



**Period 1**

**Quarter Starters:**

<b>NEB</b>	1 Shelley J	4 Haiby S	34 Bourne I	40 Markowski A	42 Krull M
<b>PEN</b>	4 Ciezki S	5 Kapinus L	10 Pinto C	20 Marisa M	24 Williamson A

Game Time	NEB	Score	Diff	PEN
10:00	40 MARKOWSKI A jumpball lost			24 WILLIAMSON A jumpball won
09:30				10 PINTO C 3pt FG , jump shot missed
09:26	40 MARKOWSKI A defensive rebound (1)			
09:20	4 HAIBY S turnover bad pass (1)			10 PINTO C steal (1)
09:14		<b>0-2</b>	<b>-2</b>	24 WILLIAMSON A 2pt FG fast break from turnover in the paint, layup made (2)
09:14				10 PINTO C assist (1)
08:57	1 SHELLEY J 3pt FG , jump shot made (3)	<b>3-2</b>	<b>1</b>	
08:57	4 HAIBY S assist (1)			
08:47	42 KRULL M foul shooting (1 - 1)			20 MARISA M foul drawn (1)
08:47		<b>3-3</b>	<b>0</b>	20 MARISA M free throw 1 - 2 made (1)
08:47		<b>3-4</b>	<b>-1</b>	20 MARISA M free throw 2 - 2 made (2)
08:25	4 HAIBY S 2pt FG in the paint, layup missed			
08:22				24 WILLIAMSON A defensive rebound (1)
08:04				5 KAPINUS L 2pt FG in the paint, jump shot missed
08:02				24 WILLIAMSON A offensive rebound (2)
07:53	42 KRULL M steal (1)			5 KAPINUS L turnover bad pass (1)
07:47	1 SHELLEY J turnover bad pass (1)			
07:27	1 SHELLEY J steal (1)			20 MARISA M turnover bad pass (1)
07:11	4 HAIBY S 3pt FG from turnover, jump shot missed			
07:09	40 MARKOWSKI A offensive rebound (2)			
07:09	4 HAIBY S substitution out			
07:09	15 MORIARTY K substitution in			
07:03	42 KRULL M 3pt FG from turnover second chance, jump shot missed			
06:59	1 SHELLEY J offensive rebound (1)			
06:59	1 SHELLEY J 2pt FG from turnover second chance in the paint, layup missed			
06:58	1 SHELLEY J offensive rebound (2)			
06:57	15 MORIARTY K 3pt FG from turnover second chance, jump shot missed			
06:55	34 BOURNE I offensive rebound (1)			
06:46	1 SHELLEY J 3pt FG from turnover second chance, jump shot missed			
06:43	offensive rebound (6)			
06:43				24 WILLIAMSON A substitution out
06:43				33 CASH J substitution in
06:40	34 BOURNE I 3pt FG from turnover second chance, jump shot missed			
06:38				20 MARISA M defensive rebound (1)
06:34				20 MARISA M 3pt FG , jump shot missed
06:30	1 SHELLEY J defensive rebound (3)			
06:21	42 KRULL M turnover lost ball (1)			10 PINTO C steal (2)
06:13	15 MORIARTY K steal (1)			10 PINTO C turnover lost ball (1)
06:13	40 MARKOWSKI A substitution out			



**Penn St. at Nebraska**

01/11/23 Pinnacle Bank Arena, Lincoln  
2022-23 Women's Basketball

**Game Time:** 7:01 PM  
**Game Duration:** 1:43  
**Attendance:** 3,082

**Officials:** Felicia Grinter, Angelica Suffren, Missy Brooks

Game Time	NEB	Score	Diff	PEN
06:13	21 STEWART A substitution in			
05:57	21 STEWART A 3pt FG from turnover, jump shot made (3)	<b>6-4</b>	<b>2</b>	
05:57	1 SHELLEY J assist (1)			
05:35				33 CASH J 2pt FG in the paint, jump shot missed
05:32	21 STEWART A defensive rebound (1)			
05:28	42 KRULL M 2pt FG in the paint, layup missed			
05:27	offensive rebound (9)			
05:27	42 KRULL M substitution out			
05:27	14 HAKE C substitution in			
05:27				4 CIEZKI S substitution out
05:27				10 PINTO C substitution out
05:27				11 CAMDEN A substitution in
05:27				23 THOMPSON T substitution in
05:27	14 HAKE C 3pt FG second chance, jump shot made (3)	<b>9-4</b>	<b>5</b>	
05:27	21 STEWART A assist (1)			
05:27		<b>9-6</b>	<b>3</b>	20 MARISA M 2pt FG in the paint, layup made (4)
04:45	21 STEWART A turnover bad pass (1)			20 MARISA M steal (1)
04:37		<b>9-8</b>	<b>1</b>	20 MARISA M 2pt FG fast break from turnover in the paint, layup made (6)
04:32	14 HAKE C 3pt FG , jump shot made (6)	<b>12-8</b>	<b>4</b>	
04:32	1 SHELLEY J assist (2)			
04:07				5 KAPINUS L 2pt FG in the paint, jump shot missed
04:04	15 MORIARTY K defensive rebound (1)			
03:56	15 MORIARTY K 3pt FG , jump shot blocked			
03:56				5 KAPINUS L block (1)
03:56	offensive rebound (11)			
03:56	Timeout media			
03:56	1 SHELLEY J substitution out			
03:56	21 STEWART A substitution out			
03:56	34 BOURNE I substitution out			
03:56	4 HAIBY S substitution in			
03:56	32 COLEY K substitution in			
03:56	40 MARKOWSKI A substitution in			
03:56				33 CASH J substitution out
03:56				4 CIEZKI S substitution in
03:50	14 HAKE C 2pt FG second chance in the paint, layup made (8)	<b>14-8</b>	<b>6</b>	
03:50	40 MARKOWSKI A assist (1)			
03:34				4 CIEZKI S turnover travel (1)
03:34				5 KAPINUS L substitution out
03:34				10 PINTO C substitution in
03:34				11 CAMDEN A substitution out
03:34				1 BRIGHAM A substitution in
03:15	40 MARKOWSKI A 2pt FG from turnover in the paint, layup made (2)	<b>16-8</b>	<b>8</b>	
03:15	32 COLEY K assist (1)			
03:02				20 MARISA M turnover travel (2)
03:02	15 MORIARTY K substitution out			
03:02	32 COLEY K substitution out			
03:02	1 SHELLEY J substitution in			
03:02	34 BOURNE I substitution in			



**Penn St. at Nebraska**

01/11/23 Pinnacle Bank Arena, Lincoln  
2022-23 Women's Basketball

**Game Time:** 7:01 PM  
**Game Duration:** 1:43  
**Attendance:** 3,082

**Officials:** Felicia Grinter, Angelica Suffren, Missy Brooks

Game Time	NEB	Score	Diff	PEN
03:00	14 HAKE C turnover lost ball (1)			4 CIEZKI S steal (1)
02:56				4 CIEZKI S 2pt FG from turnover in the paint, layup missed
02:53				23 THOMPSON T offensive rebound (1)
02:53		<b>16-10</b>	<b>6</b>	23 THOMPSON T 2pt FG from turnover second chance in the paint, layup made (2)
02:42	14 HAKE C turnover lost ball (2)			20 MARISA M steal (2)
02:31				4 CIEZKI S 3pt FG from turnover, jump shot missed
02:28	4 HAIBY S defensive rebound (1)			
02:22	14 HAKE C 3pt FG , jump shot missed			
02:20	offensive rebound (13)			
02:20	14 HAKE C substitution out			
02:20	42 KRULL M substitution in			
02:20				4 CIEZKI S substitution out
02:20				5 KAPINUS L substitution in
02:19	1 SHELLEY J turnover bad pass (2)			10 PINTO C steal (3)
02:16	42 KRULL M foul drawn (1)			10 PINTO C foul offensive (1 - 1)
02:16				10 PINTO C turnover offensive (2)
01:58	34 BOURNE I 3pt FG from turnover, jump shot missed			
01:55				10 PINTO C defensive rebound (1)
01:51				20 MARISA M 3pt FG , jump shot missed
01:47				1 BRIGHAM A offensive rebound (1)
01:45				5 KAPINUS L 2pt FG second chance in the paint, layup missed
01:44	4 HAIBY S defensive rebound (2)			
01:44	4 HAIBY S foul drawn (1)			5 KAPINUS L foul loose ball (1 - 2)
01:44				5 KAPINUS L substitution out
01:44				4 CIEZKI S substitution in
01:34	34 BOURNE I 3pt FG from turnover, jump shot missed			
01:31	40 MARKOWSKI A offensive rebound (3)			
01:21	34 BOURNE I 3pt FG from turnover second chance, jump shot missed			
01:19	40 MARKOWSKI A offensive rebound (4)			
01:18	40 MARKOWSKI A 2pt FG from turnover second chance in the paint, layup made (4)	<b>18-10</b>	<b>8</b>	
00:58				20 MARISA M 2pt FG in the paint, layup blocked
00:58	1 SHELLEY J block (1)			
00:54	40 MARKOWSKI A defensive rebound (5)			
00:39	42 KRULL M 2pt FG in the paint, layup missed			
00:37				23 THOMPSON T defensive rebound (2)
00:31				20 MARISA M 3pt FG , jump shot missed
00:28	42 KRULL M defensive rebound (1)			
00:09	4 HAIBY S 2pt FG in the paint, driving layup made (2)	<b>20-10</b>	<b>10</b>	
00:09	4 HAIBY S foul drawn (2)			1 BRIGHAM A foul shooting (1 - 3)
00:09	40 MARKOWSKI A substitution out			
00:09	44 MENDELSON M substitution in			
00:09				1 BRIGHAM A substitution out
00:09				20 MARISA M substitution out
00:09				5 KAPINUS L substitution in
00:09				24 WILLIAMSON A substitution in
00:09	4 HAIBY S free throw 1 - 1 made (3)	<b>21-10</b>	<b>11</b>	
00:09	4 HAIBY S substitution out			



Official Basketball Play by Play - 1st Period

**Penn St. at Nebraska**

01/11/23 Pinnacle Bank Arena, Lincoln  
2022-23 Women's Basketball

**Game Time:** 7:01 PM

**Game Duration:** 1:43

**Attendance:** 3,082

**Officials:** Felicia Grinter, Angelica Suffren, Missy Brooks

Game Time	NEB	Score	Diff	PEN
00:09	15 MORIARTY K substitution in			
00:00				4 CIEZKI S 2pt FG outside the paint, jump shot missed
00:00	defensive rebound (19)			
<b>END OF PERIOD</b>				
<b>NEB 21-10 PEN</b>				



**Penn St. at Nebraska**

01/11/23 Pinnacle Bank Arena, Lincoln  
2022-23 Women's Basketball

Game Time: 7:01 PM  
Game Duration: 1:43  
Attendance: 3,082

Officials: Felicia Grinter, Angelica Suffren, Missy Brooks

**Penn St. - 10**

NO.	Name	F	Min	FG			Rebounds			Fouls		TP	AS	TO	ST	Blocks		+/-
				M-A	M-A	M-A	OR	DR	TOT	PF	FD					BS	BA	
10	Chanaya Pinto	F	08:07	0-1	0-1	0-0	0	1	1	1	0	0	1	2	3	0	0	-7
24	Alexa Williamson	F	03:26	1-1	0-0	0-0	1	1	2	0	0	2	0	0	0	0	0	0
4	Shay Ciezki	G	07:53	0-3	0-1	0-0	0	0	0	0	0	0	0	1	1	0	0	-9
5	Leilani Kapinus	G	07:11	0-3	0-0	0-0	0	0	0	1	0	0	0	1	0	1	0	-7
20	Makenna Marisa	G	09:51	2-6	0-3	2-2	0	1	1	0	1	6	0	2	2	0	1	-10
33	Johnasia Cash		02:47	0-1	0-0	0-0	0	0	0	0	0	0	0	0	0	0	0	-5
11	Anna Camden		01:53	0-0	0-0	0-0	0	0	0	0	0	0	0	0	0	0	0	-4
23	Taniyah Thompson		05:27	1-1	0-0	0-0	1	1	2	0	0	2	0	0	0	0	0	-9
1	Ali Brigham		03:25	0-0	0-0	0-0	1	0	1	1	0	0	0	0	0	0	0	-4
Team							0	0	0		0		0					
<b>Totals</b>				4-16	0-5	2-2	3	4	7	3	1	10	1	6	6	1	1	-11

Shooting By Period		
1st FG%	4-16	25.0%
3PT%	0-5	0.0%
FT%	2-2	100%
GM FG%	4-16	25.0%
3PT%	0-5	0.0%
FT%	2-2	100.0%

Dead Ball Rebounds: 0, 0

Technical Fouls::NONE

**Nebraska - 21**

NO.	Name	F	Min	FG			Rebounds			Fouls		TP	AS	TO	ST	Blocks		+/-
				M-A	M-A	M-A	OR	DR	TOT	PF	FD					BS	BA	
34	Isabelle Bourne	F	09:06	0-4	0-4	0-0	1	0	1	0	0	0	0	0	0	0	0	7
40	Alexis Markowski	C	07:34	2-2	0-0	0-0	3	2	5	0	0	4	1	0	0	0	0	5
1	Jaz Shelley	G	09:06	1-3	1-2	0-0	2	1	3	0	0	3	2	2	1	1	0	7
4	Sam Haiby	G	06:38	1-3	0-1	1-1	0	2	2	0	2	3	1	1	0	0	0	6
42	Maddie Krull	G	06:53	0-3	0-1	0-0	0	1	1	1	1	0	0	1	1	0	0	7
15	Kendall Moriarty		04:16	0-2	0-2	0-0	0	1	1	0	0	0	0	0	1	0	1	9
21	Annika Stewart		02:17	1-1	1-1	0-0	0	1	1	0	0	3	1	1	0	0	0	5
14	Callin Hake		03:07	3-4	2-3	0-0	0	0	0	0	0	8	0	2	0	0	0	4
32	Kendall Coley		00:54	0-0	0-0	0-0	0	0	0	0	0	0	1	0	0	0	0	4
44	Maggie Mendelson		00:09	0-0	0-0	0-0	0	0	0	0	0	0	0	0	0	0	0	1
Team							4	1	5		0		0					
<b>Totals</b>				8-22	4-14	1-1	10	9	19	1	3	21	6	7	3	1	1	11

Shooting By Period		
1st FG%	8-22	36.4%
3PT%	4-14	28.6%
FT%	1-1	100%
GM FG%	8-22	36.4%
3PT%	4-14	28.6%
FT%	1-1	100.0%

Dead Ball Rebounds: 0, 0

Technical Fouls::NONE

	PEN	NEB
Biggest lead	2 (1 <sup>st</sup> 9:14)	11 (1 <sup>st</sup> 0:09)
Best Scoring Run	4 (1 <sup>st</sup> 4:37)	7 (1 <sup>st</sup> 3:15)
Lead Changes	3	
Times Tied	1	
Time with Lead	03:07	06:07

Points from	PEN	NEB
Turnovers	6	7
Paint	8	8
Second Chance	2	7
Fast Breaks	4	0
Bench	2	11

Period by Period Scoring					
	1st	2nd	3rd	4th	TOT
PEN	10	18	10	13	51
NEB	21	20	17	22	80



**Period 2**

**Quarter Starters:**

<b>NEB</b>	1 Shelley J	15 Moriarty K	34 Bourne I	42 Krull M	44 Mendelson M
<b>PEN</b>	4 Ciezki S	5 Kapinus L	10 Pinto C	20 Marisa M	24 Williamson A

Game Time	NEB	Score	Diff	PEN
10:00				23 THOMPSON T substitution out
10:00				20 MARISA M substitution in
09:50		<b>21-12</b>	<b>9</b>	5 KAPINUS L 2pt FG in the paint, layup made (2)
09:50				24 WILLIAMSON A assist (1)
09:34	15 MORIARTY K foul drawn (1)			24 WILLIAMSON A foul personal (1 - 1)
09:23	42 KRULL M 3pt FG , jump shot missed			
09:19	15 MORIARTY K offensive rebound (2)			
09:18	15 MORIARTY K turnover bad pass (1)			5 KAPINUS L steal (1)
08:57				20 MARISA M 2pt FG from turnover in the paint, jump shot missed
08:55	1 SHELLEY J defensive rebound (4)			
08:51	15 MORIARTY K turnover travel (2)			
08:51	15 MORIARTY K substitution out			
08:51	34 BOURNE I substitution out			
08:51	4 HAIBY S substitution in			
08:51	21 STEWART A substitution in			
08:38				20 MARISA M 3pt FG from turnover, pull up jump shot missed
08:35	4 HAIBY S defensive rebound (3)			
08:23	44 MENDELSON M 2pt FG in the paint, jump shot made (2)	<b>23-12</b>	<b>11</b>	
08:23	21 STEWART A assist (2)			
08:16		<b>23-14</b>	<b>9</b>	4 CIEZKI S 2pt FG outside the paint, jump shot made (2)
07:46	1 SHELLEY J 3pt FG , jump shot made (6)	<b>26-14</b>	<b>12</b>	
07:46	4 HAIBY S assist (2)			
07:24	42 KRULL M steal (2)			10 PINTO C turnover lost ball (3)
07:17	44 MENDELSON M 2pt FG from turnover in the paint, layup blocked			
07:17				24 WILLIAMSON A block (1)
07:14				5 KAPINUS L defensive rebound (1)
07:12				20 MARISA M 2pt FG in the paint, jump shot blocked
07:12	21 STEWART A block (1)			
07:12				offensive rebound (9)
07:12	44 MENDELSON M substitution out			
07:12	40 MARKOWSKI A substitution in			
07:12				10 PINTO C substitution out
07:12				24 WILLIAMSON A substitution out
07:12				23 THOMPSON T substitution in
07:12				33 CASH J substitution in
07:05				4 CIEZKI S 3pt FG second chance, jump shot missed
07:02	1 SHELLEY J defensive rebound (5)			
06:57	21 STEWART A 2pt FG fast break in the paint, layup made (5)	<b>28-14</b>	<b>14</b>	
06:57	1 SHELLEY J assist (3)			
06:50	4 HAIBY S foul drawn (3)			5 KAPINUS L foul offensive (2 - 2)
06:50				5 KAPINUS L turnover offensive (2)
06:50	21 STEWART A substitution out			



**Penn St. at Nebraska**

01/11/23 Pinnacle Bank Arena, Lincoln  
2022-23 Women's Basketball

**Game Time:** 7:01 PM  
**Game Duration:** 1:43  
**Attendance:** 3,082

**Officials:** Felicia Grinter, Angelica Suffren, Missy Brooks

Game Time	NEB	Score	Diff	PEN
06:50	42 KRULL M substitution out			
06:50	14 HAKE C substitution in			
06:50	34 BOURNE I substitution in			
06:50				5 KAPINUS L substitution out
06:50				10 PINTO C substitution in
06:28	34 BOURNE I 2pt FG from turnover in the paint, layup made (2)	<b>30-14</b>	<b>16</b>	
06:28	1 SHELLEY J assist (4)			
06:01				23 THOMPSON T turnover travel (1)
06:01				10 PINTO C substitution out
06:01				11 CAMDEN A substitution in
05:45	34 BOURNE I 3pt FG from turnover, jump shot made (5)	<b>33-14</b>	<b>19</b>	
05:45	1 SHELLEY J assist (5)			
05:16	40 MARKOWSKI A steal (1)			4 CIEZKI S turnover bad pass (2)
05:06	40 MARKOWSKI A 3pt FG from turnover, jump shot missed			
05:03				33 CASH J defensive rebound (1)
04:59				20 MARISA M 2pt FG outside the paint, jump shot missed
04:57	40 MARKOWSKI A defensive rebound (6)			
04:55	40 MARKOWSKI A turnover bad pass (1)			11 CAMDEN A steal (1)
04:50		<b>33-17</b>	<b>16</b>	20 MARISA M 3pt FG from turnover, jump shot made (9)
04:50				4 CIEZKI S assist (1)
04:15	4 HAIBY S 2pt FG outside the paint, jump shot missed			
04:12	40 MARKOWSKI A offensive rebound (7)			
04:10	40 MARKOWSKI A 2pt FG second chance in the paint, layup made (6)	<b>35-17</b>	<b>18</b>	
03:55	14 HAKE C steal (1)			33 CASH J turnover bad pass (1)
03:37	14 HAKE C 3pt FG from turnover, jump shot made (11)	<b>38-17</b>	<b>21</b>	
03:37	1 SHELLEY J assist (6)			
03:35				Timeout 30 Sec
03:35	Timeout media			
03:35	4 HAIBY S substitution out			
03:35	14 HAKE C substitution out			
03:35	34 BOURNE I substitution out			
03:35	40 MARKOWSKI A substitution out			
03:35	15 MORIARTY K substitution in			
03:35	32 COLEY K substitution in			
03:35	42 KRULL M substitution in			
03:35	44 MENDELSON M substitution in			
03:35				11 CAMDEN A substitution out
03:35				23 THOMPSON T substitution out
03:35				33 CASH J substitution out
03:35				2 DIA A substitution in
03:35				10 PINTO C substitution in
03:35				24 WILLIAMSON A substitution in
03:09		<b>38-19</b>	<b>19</b>	20 MARISA M 2pt FG in the paint, jump shot made (11)
02:52	32 COLEY K turnover lost ball (1)			10 PINTO C steal (4)
02:50	32 COLEY K foul shooting (1 - 1)			10 PINTO C foul drawn (1)
02:50		<b>38-20</b>	<b>18</b>	10 PINTO C free throw fast break 1 - 2 made (1)
02:50		<b>38-21</b>	<b>17</b>	10 PINTO C free throw fast break 2 - 2 made (2)
02:22	1 SHELLEY J turnover out of bounds (3)			



**Penn St. at Nebraska**01/11/23 Pinnacle Bank Arena, Lincoln  
2022-23 Women's Basketball

Game Time: 7:01 PM

Game Duration: 1:43

Attendance: 3,082

Officials: Felicia Grinter, Angelica Suffren, Missy Brooks

Game Time	NEB	Score	Diff	PEN
02:22	15 MORIARTY K substitution out			
02:22	32 COLEY K substitution out			
02:22	44 MENDELSON M substitution out			
02:22	4 HAIBY S substitution in			
02:22	34 BOURNE I substitution in			
02:22	40 MARKOWSKI A substitution in			
02:05		<b>38-24</b>	<b>14</b>	4 CIEZKI S 3pt FG from turnover, jump shot made (5)
02:05				20 MARISA M assist (1)
01:47	42 KRULL M 2pt FG in the paint, layup missed			
01:44	40 MARKOWSKI A offensive rebound (8)			
01:44	40 MARKOWSKI A 2pt FG second chance in the paint, layup missed			
01:43	34 BOURNE I offensive rebound (2)			
01:38	1 SHELLEY J turnover bad pass (4)			10 PINTO C steal (5)
01:29				24 WILLIAMSON A 2pt FG from turnover in the paint, layup blocked
01:29	4 HAIBY S block (1)			
01:26				10 PINTO C offensive rebound (2)
01:25	40 MARKOWSKI A foul shooting (1 - 2)			10 PINTO C foul drawn (2)
01:25				24 WILLIAMSON A substitution out
01:25				33 CASH J substitution in
01:25		<b>38-25</b>	<b>13</b>	10 PINTO C free throw 1 - 2 made (3)
01:25				10 PINTO C free throw 2 - 2 missed
01:24	40 MARKOWSKI A defensive rebound (9)			
01:10	40 MARKOWSKI A foul drawn (1)			33 CASH J foul personal (1 - 3)
01:08	4 HAIBY S 2pt FG in the paint, layup missed			
01:08				33 CASH J defensive rebound (2)
00:58				10 PINTO C 2pt FG outside the paint, jump shot missed
00:58				offensive rebound (13)
00:51				10 PINTO C 3pt FG second chance, jump shot missed
00:48				33 CASH J offensive rebound (3)
00:48				33 CASH J 2pt FG second chance in the paint, layup missed
00:46	40 MARKOWSKI A defensive rebound (10)			
00:44	40 MARKOWSKI A foul drawn (2)			33 CASH J foul personal (2 - 4)
00:44				33 CASH J substitution out
00:44				24 WILLIAMSON A substitution in
00:26	1 SHELLEY J 2pt FG in the paint, layup missed			
00:24				10 PINTO C defensive rebound (3)
00:21		<b>38-28</b>	<b>10</b>	4 CIEZKI S 3pt FG , jump shot made (8)
00:21				10 PINTO C assist (2)
00:04	42 KRULL M 3pt FG , jump shot made (3)	<b>41-28</b>	<b>13</b>	
00:04	4 HAIBY S assist (3)			
<b>END OF PERIOD</b>				
<b>NEB 41-28 PEN</b>				



**Penn St. at Nebraska**

01/11/23 Pinnacle Bank Arena, Lincoln  
2022-23 Women's Basketball

Game Time: 7:01 PM  
Game Duration: 1:43  
Attendance: 3,082

Officials: Felicia Grinter, Angelica Suffren, Missy Brooks

**Penn St. - 18**

NO.	Name	F	Min	FG			Rebounds			Fouls		TP	AS	TO	ST	Blocks		+/-
				M-A	M-A	M-A	OR	DR	TOT	PF	FD					BS	BA	
10	Chanaya Pinto	F	07:12	0-2	0-1	3-4	1	1	2	0	2	3	1	1	2	0	0	5
24	Alexa Williamson	F	05:43	0-1	0-0	0-0	0	0	0	1	0	0	1	0	0	1	1	6
4	Shay Ciezki	G	10:00	3-4	2-3	0-0	0	0	0	0	0	8	1	1	0	0	0	-2
5	Leilani Kapinus	G	03:10	1-1	0-0	0-0	0	1	1	1	0	2	0	1	1	0	0	-3
20	Makenna Marisa	G	10:00	2-6	1-2	0-0	0	0	0	0	0	5	1	0	0	0	1	-2
23	Taniyah Thompson		03:37	0-0	0-0	0-0	0	0	0	0	0	0	0	1	0	0	0	-9
33	Johnasia Cash		04:17	0-1	0-0	0-0	1	2	3	2	0	0	0	1	0	0	0	-8
11	Anna Camden		02:26	0-0	0-0	0-0	0	0	0	0	0	0	0	0	1	0	0	-5
2	Aicha Dia		03:35	0-0	0-0	0-0	0	0	0	0	0	0	0	0	0	0	0	8
Team							2	0	2			0		0				
<b>Totals</b>				6-15	3-6	3-4	4	4	8	4	2	18	4	5	4	1	2	-2

Shooting By Period		
2 <sup>nd</sup> FG%	6-15	40.0%
3PT%	3-6	50.0%
FT%	3-4	75%
GM FG%	6-15	40.0%
3PT%	3-6	50.0%
FT%	3-4	75.0%

Dead Ball Rebounds: 0, 0

Technical Fouls::NONE

**Nebraska - 20**

NO.	Name	F	Min	FG			Rebounds			Fouls		TP	AS	TO	ST	Blocks		+/-
				M-A	M-A	M-A	OR	DR	TOT	PF	FD					BS	BA	
34	Isabelle Bourne	F	06:46	2-2	1-1	0-0	1	0	1	0	0	5	0	0	0	0	0	1
40	Alexis Markowski	C	05:59	1-3	0-1	0-0	2	3	5	1	2	2	0	1	1	0	0	5
1	Jaz Shelley	G	10:00	1-2	1-1	0-0	0	2	2	0	0	3	4	2	0	0	0	2
4	Sam Haiby	G	07:38	0-2	0-0	0-0	0	1	1	0	1	0	2	0	0	1	0	8
42	Maddie Krull	G	06:45	1-3	1-2	0-0	0	0	0	0	0	3	0	0	1	0	0	-5
21	Annika Stewart		02:01	1-1	0-0	0-0	0	0	0	0	0	2	1	0	0	1	0	5
14	Callin Hake		03:15	1-1	1-1	0-0	0	0	0	0	0	3	0	0	1	0	0	7
15	Kendall Moriarty		02:22	0-0	0-0	0-0	1	0	1	0	1	0	0	2	0	0	0	-6
32	Kendall Coley		01:13	0-0	0-0	0-0	0	0	0	1	0	0	0	1	0	0	0	-4
44	Maggie Mendelson		04:01	1-2	0-0	0-0	0	0	0	0	0	2	0	0	0	0	1	-3
Team							0	0	0			0		0				
<b>Totals</b>				8-16	4-6	0-0	4	6	10	2	4	20	7	6	3	2	1	2

Shooting By Period		
2 <sup>nd</sup> FG%	8-16	50.0%
3PT%	4-6	66.7%
FT%	0-0	0%
GM FG%	8-16	50.0%
3PT%	4-6	66.7%
FT%	0-0	0.0%

Dead Ball Rebounds: 0, 0

Technical Fouls::NONE

	PEN	NEB
Biggest lead	0 (1 <sup>st</sup> 10:00)	21 (2 <sup>nd</sup> 3:37)
Best Scoring Run	11 (2 <sup>nd</sup> 0:21)	10 (2 <sup>nd</sup> 5:45)
Lead Changes	0	
Times Tied	0	
Time with Lead	00:00	09:50

	PEN	NEB
Points from		
Turnovers	9	8
Paint	4	8
Second Chance	1	2
Fast Breaks	2	2
Bench	0	7

	Period by Period Scoring				
	1st	2nd	3rd	4th	TOT
PEN	10	18	10	13	51
NEB	21	20	17	22	80



**Penn St. at Nebraska**

01/11/23 Pinnacle Bank Arena, Lincoln  
2022-23 Women's Basketball

Game Time: 7:01 PM  
Game Duration: 1:43  
Attendance: 3,082

Officials: Felicia Grinter, Angelica Suffren, Missy Brooks

**Penn St. - 28**

NO.	Name	Min	FG			Rebounds			Fouls		TP	AS	TO	ST	Blocks		+/-
			M-A	M-A	M-A	OR	DR	TOT	PF	FD					BS	BA	
10	Chanaya Pinto	F 15:19	0-3	0-2	3-4	1	2	3	1	2	3	2	3	5	0	0	-2
24	Alexa Williamson	F 09:09	1-2	0-0	0-0	1	1	2	1	0	2	1	0	0	1	1	6
4	Shay Ciezki	G 17:53	3-7	2-4	0-0	0	0	0	0	0	8	1	2	1	0	0	-11
5	Leilani Kapinus	G 10:21	1-4	0-0	0-0	0	1	1	2	0	2	0	2	1	1	0	-10
20	Makenna Marisa	G 19:51	4-12	1-5	2-2	0	1	1	0	1	11	1	2	2	0	2	-12
33	Johnasia Cash	07:04	0-2	0-0	0-0	1	2	3	2	0	0	0	1	0	0	0	-13
11	Anna Camden	04:19	0-0	0-0	0-0	0	0	0	0	0	0	0	0	1	0	0	-9
23	Taniyah Thompson	09:04	1-1	0-0	0-0	1	1	2	0	0	2	0	1	0	0	0	-18
1	Ali Brigham	03:25	0-0	0-0	0-0	1	0	1	1	0	0	0	0	0	0	0	-4
2	Aicha Dia	03:35	0-0	0-0	0-0	0	0	0	0	0	0	0	0	0	0	0	8
Team						2	0	2			0		0				
<b>Totals</b>			10-31	3-11	5-6	7	8	15	7	3	28	5	11	10	2	3	-13

Shooting By Period		
1 <sup>st</sup> FG%	4-16	25.0%
3PT%	0-5	0.0%
FT%	2-2	100%
2 <sup>nd</sup> FG%	6-15	40.0%
3PT%	3-6	50.0%
FT%	3-4	75%
GM FG%	10-31	32.3%
3PT%	3-11	27.3%
FT%	5-6	83.3%

Dead Ball Rebounds: 0, 0

Technical Fouls::NONE

**Nebraska - 41**

NO.	Name	Min	FG			Rebounds			Fouls		TP	AS	TO	ST	Blocks		+/-
			M-A	M-A	M-A	OR	DR	TOT	PF	FD					BS	BA	
34	Isabelle Bourne	F 15:52	2-6	1-5	0-0	2	0	2	0	0	5	0	0	0	0	0	8
40	Alexis Markowski	C 13:33	3-5	0-1	0-0	5	5	10	1	2	6	1	1	1	0	0	10
1	Jaz Shelley	G 19:06	2-5	2-3	0-0	2	3	5	0	0	6	6	4	1	1	0	9
4	Sam Haiby	G 14:16	1-5	0-1	1-1	0	3	3	0	3	3	3	1	0	1	0	14
42	Maddie Krull	G 13:38	1-6	1-3	0-0	0	1	1	1	1	3	0	1	2	0	0	2
15	Kendall Moriarty	06:38	0-2	0-2	0-0	1	1	2	0	1	0	0	2	1	0	1	3
21	Annika Stewart	04:18	2-2	1-1	0-0	0	1	1	0	0	5	2	1	0	1	0	10
14	Callin Hake	06:22	4-5	3-4	0-0	0	0	0	0	0	11	0	2	1	0	0	11
32	Kendall Coley	02:07	0-0	0-0	0-0	0	0	0	1	0	0	1	1	0	0	0	0
44	Maggie Mendelson	04:10	1-2	0-0	0-0	0	0	0	0	0	2	0	0	0	0	1	-2
Team						4	1	5			0		0				
<b>Totals</b>			16-38	8-20	1-1	14	15	29	3	7	41	13	13	6	3	2	13

Shooting By Period		
1 <sup>st</sup> FG%	8-22	36.4%
3PT%	4-14	28.6%
FT%	1-1	100%
2 <sup>nd</sup> FG%	8-16	50.0%
3PT%	4-6	66.7%
FT%	0-0	0%
GM FG%	16-38	42.1%
3PT%	8-20	40.0%
FT%	1-1	100.0%

Dead Ball Rebounds: 0, 0

Technical Fouls::NONE

	PEN	NEB
Biggest lead	2 (1 <sup>st</sup> 9:14)	21 (2 <sup>nd</sup> 3:37)
Best Scoring Run	11 (2 <sup>nd</sup> 0:21)	10 (2 <sup>nd</sup> 5:45)
Lead Changes	3	
Times Tied	1	
Time with Lead	03:07	16:07

Points from	PEN	NEB
Turnovers	15	15
Paint	12	16
Second Chance	3	9
Fast Breaks	6	2
Bench	2	18

	Period by Period Scoring				
	1st	2nd	3rd	4th	TOT
PEN	10	18	10	13	51
NEB	21	20	17	22	80



**Period 3**

**Quarter Starters:**

<b>NEB</b>	1 Shelley J	4 Haiby S	34 Bourne I	40 Markowski A	42 Krull M
<b>PEN</b>	4 Ciezki S	5 Kapinus L	10 Pinto C	20 Marisa M	24 Williamson A

Game Time	NEB	Score	Diff	PEN
10:00				2 DIA A substitution out
10:00				5 KAPINUS L substitution in
09:52		<b>41-30</b>	<b>11</b>	20 MARISA M 2pt FG in the paint, layup made (13)
09:31	4 HAIBY S 2pt FG in the paint, layup made (5)	<b>43-30</b>	<b>13</b>	
09:31	1 SHELLEY J assist (7)			
09:01				20 MARISA M 2pt FG outside the paint, jump shot missed
08:57	1 SHELLEY J defensive rebound (6)			
08:45	42 KRULL M 3pt FG , jump shot made (6)	<b>46-30</b>	<b>16</b>	
08:45	1 SHELLEY J assist (8)			
08:09				4 CIEZKI S 2pt FG outside the paint, jump shot blocked
08:09	4 HAIBY S block (2)			
08:09				offensive rebound (16)
08:09				turnover shot clock (12)
08:05	42 KRULL M turnover travel (2)			
07:38		<b>46-32</b>	<b>14</b>	24 WILLIAMSON A 2pt FG from turnover in the paint, layup made (4)
07:38				20 MARISA M assist (2)
07:21	42 KRULL M 3pt FG , jump shot made (9)	<b>49-32</b>	<b>17</b>	
07:21	4 HAIBY S assist (4)			
07:20	40 MARKOWSKI A foul drawn (3)			10 PINTO C foul loose ball (2 - 1)
07:20				4 CIEZKI S substitution out
07:20				23 THOMPSON T substitution in
07:17	40 MARKOWSKI A foul drawn (4)			23 THOMPSON T foul shooting (1 - 2)
07:17	40 MARKOWSKI A free throw 1 - 2 missed			
07:17	offensive dead ball rebound (1)			
07:17	40 MARKOWSKI A free throw 2 - 2 made (7)	<b>50-32</b>	<b>18</b>	
06:58				24 WILLIAMSON A 2pt FG in the paint, jump shot missed
06:56	42 KRULL M defensive rebound (2)			
06:56	42 KRULL M turnover bad pass (3)			
06:37	4 HAIBY S steal (1)			24 WILLIAMSON A turnover bad pass (1)
06:30	40 MARKOWSKI A 3pt FG from turnover, jump shot missed			
06:28				5 KAPINUS L defensive rebound (2)
06:22				5 KAPINUS L 2pt FG in the paint, layup missed
06:20				5 KAPINUS L offensive rebound (3)
06:19				5 KAPINUS L 2pt FG second chance in the paint, jump shot missed
06:17	4 HAIBY S defensive rebound (4)			
06:06	1 SHELLEY J 2pt FG in the paint, layup missed			
06:03				24 WILLIAMSON A defensive rebound (3)
05:58				20 MARISA M turnover travel (3)
05:58	4 HAIBY S substitution out			
05:58	40 MARKOWSKI A substitution out			
05:58	15 MORIARTY K substitution in			
05:58	44 MENDELSON M substitution in			



**Penn St. at Nebraska**

01/11/23 Pinnacle Bank Arena, Lincoln  
2022-23 Women's Basketball

**Game Time:** 7:01 PM  
**Game Duration:** 1:43  
**Attendance:** 3,082

**Officials:** Felicia Grinter, Angelica Suffren, Missy Brooks

Game Time	NEB	Score	Diff	PEN
05:58				5 KAPINUS L substitution out
05:58				10 PINTO C substitution out
05:58				24 WILLIAMSON A substitution out
05:58				1 BRIGHAM A substitution in
05:58				4 CIEZKI S substitution in
05:58				11 CAMDEN A substitution in
05:25	44 MENDELSON M 2pt FG from turnover in the paint, jump shot made (4)	<b>52-32</b>	<b>20</b>	
05:25	15 MORIARTY K assist (1)			
05:16	34 BOURNE I substitution out			
05:16	32 COLEY K substitution in			
05:16				11 CAMDEN A substitution out
05:16				5 KAPINUS L substitution in
05:14	15 MORIARTY K foul shooting (1 - 1)			20 MARISA M foul drawn (2)
05:14		<b>52-33</b>	<b>19</b>	20 MARISA M free throw 1 - 2 made (14)
05:14				20 MARISA M free throw 2 - 2 missed
05:14	32 COLEY K defensive rebound (1)			
04:48	Timeout media			
04:47	44 MENDELSON M 2pt FG in the paint, jump shot missed			
04:45				4 CIEZKI S defensive rebound (1)
04:27	15 MORIARTY K steal (2)			20 MARISA M turnover lost ball (4)
04:08	44 MENDELSON M turnover lost ball (1)			20 MARISA M steal (3)
04:02		<b>52-35</b>	<b>17</b>	4 CIEZKI S 2pt FG fast break from turnover in the paint, layup made (10)
04:02				20 MARISA M assist (3)
03:52	15 MORIARTY K 2pt FG in the paint, layup blocked			
03:52				1 BRIGHAM A block (1)
03:52	offensive rebound (34)			
03:52	1 SHELLEY J substitution out			
03:52	42 KRULL M substitution out			
03:52	4 HAIBY S substitution in			
03:52	14 HAKE C substitution in			
03:52				20 MARISA M substitution out
03:52				10 PINTO C substitution in
03:51	4 HAIBY S 2pt FG second chance outside the paint, jump shot missed			
03:47				10 PINTO C defensive rebound (4)
03:34	44 MENDELSON M foul shooting (1 - 2)			23 THOMPSON T foul drawn (1)
03:34	32 COLEY K substitution out			
03:34	44 MENDELSON M substitution out			
03:34	21 STEWART A substitution in			
03:34	40 MARKOWSKI A substitution in			
03:34				23 THOMPSON T free throw 1 - 2 missed
03:34				offensive dead ball rebound (1)
03:34		<b>52-36</b>	<b>16</b>	23 THOMPSON T free throw 2 - 2 made (3)
03:04	4 HAIBY S turnover bad pass (2)			10 PINTO C steal (6)
03:02				5 KAPINUS L 2pt FG from turnover in the paint, jump shot blocked
03:02	21 STEWART A block (2)			
03:02				5 KAPINUS L offensive rebound (4)



**Penn St. at Nebraska**

01/11/23 Pinnacle Bank Arena, Lincoln  
2022-23 Women's Basketball

**Game Time:** 7:01 PM  
**Game Duration:** 1:43  
**Attendance:** 3,082

**Officials:** Felicia Grinter, Angelica Suffren, Missy Brooks

Game Time	NEB	Score	Diff	PEN
03:02	40 MARKOWSKI A foul shooting (2 - 3)			5 KAPINUS L foul drawn (1)
03:02	15 MORIARTY K substitution out			
03:02	1 SHELLEY J substitution in			
03:02				5 KAPINUS L free throw fast break 1 - 2 missed
03:02				offensive dead ball rebound (2)
03:02		<b>52-37</b>	<b>15</b>	5 KAPINUS L free throw fast break 2 - 2 made (3)
02:47	4 HAIBY S 2pt FG in the paint, layup missed			
02:45				5 KAPINUS L defensive rebound (5)
02:38	4 HAIBY S steal (2)			5 KAPINUS L turnover bad pass (3)
02:35	4 HAIBY S foul drawn (4)			4 CIEZKI S foul shooting (1 - 3)
02:35				5 KAPINUS L substitution out
02:35				20 MARISA M substitution in
02:35	4 HAIBY S free throw fast break 1 - 2 made (6)	<b>53-37</b>	<b>16</b>	
02:35	4 HAIBY S free throw fast break 2 - 2 made (7)	<b>54-37</b>	<b>17</b>	
02:19	1 SHELLEY J steal (2)			4 CIEZKI S turnover lost ball (3)
02:19				4 CIEZKI S substitution out
02:19				5 KAPINUS L substitution in
01:57	40 MARKOWSKI A turnover 3 seconds (2)			
01:31				20 MARISA M 2pt FG from turnover outside the paint, jump shot missed
01:30	40 MARKOWSKI A defensive rebound (11)			
01:30	40 MARKOWSKI A foul drawn (5)			1 BRIGHAM A foul loose ball (2 - 4)
01:30				1 BRIGHAM A substitution out
01:30				24 WILLIAMSON A substitution in
01:12	1 SHELLEY J 2pt FG in the paint, layup missed			
01:12	40 MARKOWSKI A offensive rebound (12)			
01:12	40 MARKOWSKI A foul drawn (6)			10 PINTO C foul loose ball (3 - 5)
01:12	40 MARKOWSKI A free throw 1 - 2 made (8)	<b>55-37</b>	<b>18</b>	
01:12	40 MARKOWSKI A free throw 2 - 2 made (9)	<b>56-37</b>	<b>19</b>	
00:48				20 MARISA M 3pt FG , jump shot missed
00:48	40 MARKOWSKI A defensive rebound (13)			
00:39	14 HAKE C 2pt FG in the paint, layup made (13)	<b>58-37</b>	<b>21</b>	
00:29				5 KAPINUS L 2pt FG in the paint, layup missed
00:29				24 WILLIAMSON A offensive rebound (4)
00:29	14 HAKE C foul shooting (1 - 4)			24 WILLIAMSON A foul drawn (1)
00:29				24 WILLIAMSON A free throw 1 - 2 missed
00:29				offensive dead ball rebound (3)
00:29		<b>58-38</b>	<b>20</b>	24 WILLIAMSON A free throw 2 - 2 made (5)
00:25	1 SHELLEY J turnover bad pass (5)			23 THOMPSON T steal (1)
00:22				23 THOMPSON T 2pt FG from turnover outside the paint, jump shot blocked
00:22	1 SHELLEY J block (2)			
00:19	1 SHELLEY J defensive rebound (7)			
00:12	21 STEWART A 2pt FG outside the paint, jump shot missed			
00:10				defensive rebound (25)
00:00				20 MARISA M 2pt FG outside the paint, jump shot missed
00:00	40 MARKOWSKI A defensive rebound (14)			
<b>END OF PERIOD</b>				
<b>NEB 58-38 PEN</b>				



**Penn St. at Nebraska**

01/11/23 Pinnacle Bank Arena, Lincoln  
2022-23 Women's Basketball

Game Time: 7:01 PM  
Game Duration: 1:43  
Attendance: 3,082

Officials: Felicia Grinter, Angelica Suffren, Missy Brooks

**Penn St. - 10**

NO.	Name	F	Min	FG			Rebounds			Fouls		TP	AS	TO	ST	Blocks		+/-
				M-A	M-A	M-A	OR	DR	TOT	PF	FD					BS	BA	
10	Chanaya Pinto	F	07:54	0-0	0-0	0-0	0	1	1	2	0	0	0	0	1	0	0	-8
24	Alexa Williamson	F	05:32	1-2	0-0	1-2	1	1	2	0	1	3	0	1	0	0	0	-8
4	Shay Ciezki	G	06:19	1-2	0-0	0-0	0	1	1	1	0	2	0	1	0	0	1	-3
5	Leilani Kapinus	G	09:02	0-4	0-0	1-2	2	2	4	0	1	1	0	1	0	0	1	-3
20	Makenna Marisa	G	08:43	1-5	0-1	1-2	0	0	0	0	1	3	2	2	1	0	0	-9
2	Aicha Dia		00:00	0-0	0-0	0-0	0	0	0	0	0	0	0	0	0	0	0	0
23	Taniyah Thompson		07:20	0-1	0-0	1-2	0	0	0	1	1	1	0	0	1	0	1	-3
1	Ali Brigham		04:28	0-0	0-0	0-0	0	0	0	1	0	0	0	0	0	1	0	1
11	Anna Camden		00:42	0-0	0-0	0-0	0	0	0	0	0	0	0	0	0	0	0	-2
Team							1	1	2					1				
<b>Totals</b>				3-14	0-1	4-8	4	6	10	5	4	10	2	6	3	1	3	-7

Shooting By Period		
3rd FG%	3-14	21.4%
3PT%	0-1	0.0%
FT%	4-8	50%
GM FG%	3-14	21.4%
3PT%	0-1	0.0%
FT%	4-8	50.0%

Dead Ball Rebounds: 3, 0

Technical Fouls::NONE

**Nebraska - 17**

NO.	Name	F	Min	FG			Rebounds			Fouls		TP	AS	TO	ST	Blocks		+/-
				M-A	M-A	M-A	OR	DR	TOT	PF	FD					BS	BA	
34	Isabelle Bourne	F	04:44	0-0	0-0	0-0	0	0	0	0	0	0	0	0	0	0	0	7
40	Alexis Markowski	C	07:36	0-1	0-1	3-4	1	3	4	1	4	3	0	1	0	0	0	8
1	Jaz Shelley	G	09:10	0-2	0-0	0-0	0	2	2	0	0	0	2	1	1	1	0	8
4	Sam Haiby	G	07:54	1-3	0-0	2-2	0	1	1	0	1	4	1	1	2	1	0	8
42	Maddie Krull	G	06:08	2-2	2-2	0-0	0	1	1	0	0	6	0	2	0	0	0	4
15	Kendall Moriarty		02:56	0-1	0-0	0-0	0	0	0	1	0	0	1	0	1	0	1	-2
44	Maggie Mendelson		02:24	1-2	0-0	0-0	0	0	0	1	0	2	0	1	0	0	0	-1
32	Kendall Coley		01:42	0-0	0-0	0-0	0	1	1	0	0	0	0	0	0	0	0	-3
14	Callin Hake		03:52	1-1	0-0	0-0	0	0	0	1	0	2	0	0	0	0	0	3
21	Annika Stewart		03:34	0-1	0-0	0-0	0	0	0	0	0	0	0	0	0	1	0	3
Team							1	0	1					0				
<b>Totals</b>				5-13	2-3	5-6	2	8	10	4	5	17	4	6	4	3	1	7

Shooting By Period		
3rd FG%	5-13	38.5%
3PT%	2-3	66.7%
FT%	5-6	83.3%
GM FG%	5-13	38.5%
3PT%	2-3	66.7%
FT%	5-6	83.3%

Dead Ball Rebounds: 1, 0

Technical Fouls::NONE

	PEN	NEB
Biggest lead	0 (1 <sup>st</sup> 10:00)	21 (3 <sup>rd</sup> 0:39)
Best Scoring Run	5(3 <sup>rd</sup> 3:02)	6(3 <sup>rd</sup> 5:25)
Lead Changes	0	
Times Tied	0	
Time with Lead	00:00	09:52

	PEN	NEB
Points from		
Turnovers	5	4
Paint	6	6
Second Chance	2	2
Fast Breaks	3	2
Bench	1	4

Period by Period Scoring					
	1st	2nd	3rd	4th	TOT
PEN	10	18	10	13	51
NEB	21	20	17	22	80

**Period 4****Quarter Starters:**

<b>NEB</b>	1 Shelley J	14 Hake C	34 Bourne I	42 Krull M	44 Mendelson M
<b>PEN</b>	5 Kapinus L	10 Pinto C	20 Marisa M	23 Thompson T	24 Williamson A

Game Time	NEB	Score	Diff	PEN
10:00	4 HAIBY S substitution out			
10:00	21 STEWART A substitution out			
10:00	40 MARKOWSKI A substitution out			
10:00	34 BOURNE I substitution in			
10:00	42 KRULL M substitution in			
10:00	44 MENDELSON M substitution in			
09:45				24 WILLIAMSON A 2pt FG in the paint, jump shot missed
09:43	1 SHELLEY J defensive rebound (8)			
09:40	42 KRULL M 2pt FG in the paint, layup made (11)	<b>60-38</b>	<b>22</b>	
09:40	1 SHELLEY J assist (9)			
09:40	42 KRULL M foul drawn (2)			23 THOMPSON T foul shooting (2 - 1)
09:40				23 THOMPSON T substitution out
09:40				24 WILLIAMSON A substitution out
09:40				4 CIEZKI S substitution in
09:40				33 CASH J substitution in
09:40	42 KRULL M free throw 1 - 1 made (12)	<b>61-38</b>	<b>23</b>	
09:24	14 HAKE C foul drawn (1)			33 CASH J foul offensive (3 - 2)
09:24				33 CASH J turnover offensive (2)
09:24				33 CASH J substitution out
09:24				1 BRIGHAM A substitution in
09:03	34 BOURNE I 3pt FG from turnover, jump shot made (8)	<b>64-38</b>	<b>26</b>	
09:03	14 HAKE C assist (1)			
08:42	42 KRULL M foul personal (2 - 1)			4 CIEZKI S foul drawn (1)
08:28				1 BRIGHAM A 2pt FG in the paint, jump shot missed
08:26	44 MENDELSON M defensive rebound (1)			
08:17	1 SHELLEY J 2pt FG in the paint, driving layup made (8)	<b>66-38</b>	<b>28</b>	
08:10				5 KAPINUS L 2pt FG in the paint, layup missed
08:08	44 MENDELSON M defensive rebound (2)			
08:06	44 MENDELSON M foul drawn (1)			5 KAPINUS L foul personal (3 - 3)
08:06				Timeout 30 Sec
08:06				Timeout media
07:57	42 KRULL M 2pt FG in the paint, layup made (14)	<b>68-38</b>	<b>30</b>	
07:57	44 MENDELSON M assist (1)			
07:37				5 KAPINUS L 3pt FG , jump shot missed
07:33				10 PINTO C offensive rebound (5)
07:28				20 MARISA M 3pt FG second chance, jump shot missed
07:23	44 MENDELSON M defensive rebound (3)			
07:17	34 BOURNE I 2pt FG in the paint, layup made (10)	<b>70-38</b>	<b>32</b>	
07:17	42 KRULL M assist (1)			
06:54				20 MARISA M 3pt FG , jump shot missed
06:50	34 BOURNE I defensive rebound (3)			
06:48	1 SHELLEY J 2pt FG fast break in the paint, layup made (10)	<b>72-38</b>	<b>34</b>	
06:48	34 BOURNE I assist (1)			





**Penn St. at Nebraska**

01/11/23 Pinnacle Bank Arena, Lincoln  
2022-23 Women's Basketball

**Game Time:** 7:01 PM  
**Game Duration:** 1:43  
**Attendance:** 3,082

**Officials:** Felicia Grinter, Angelica Suffren, Missy Brooks

Game Time	NEB	Score	Diff	PEN
06:48				Timeout 30 Sec
06:48	Timeout media			
06:48	44 MENDELSON M substitution out			
06:48	40 MARKOWSKI A substitution in			
06:48				1 BRIGHAM A substitution out
06:48				4 CIEZKI S substitution out
06:48				5 KAPINUS L substitution out
06:48				10 PINTO C substitution out
06:48				20 MARISA M substitution out
06:48				0 TENSAIE I substitution in
06:48				2 DIA A substitution in
06:48				11 CAMDEN A substitution in
06:48				12 THOMAS K substitution in
06:48				23 THOMPSON T substitution in
06:36	42 KRULL M foul shooting (3 - 2)			23 THOMPSON T foul drawn (2)
06:36		<b>72-39</b>	<b>33</b>	12 THOMAS K free throw 1 - 2 made (1)
06:36				12 THOMAS K free throw 2 - 2 missed
06:33	1 SHELLEY J defensive rebound (9)			
06:26	1 SHELLEY J steal (3)			12 THOMAS K turnover lost ball (1)
06:21	14 HAKE C 2pt FG from turnover in the paint, layup missed			
06:14				11 CAMDEN A defensive rebound (1)
05:59				23 THOMPSON T 2pt FG in the paint, layup missed
05:56				2 DIA A offensive rebound (1)
05:56				2 DIA A 2pt FG second chance in the paint, layup missed
05:55	14 HAKE C defensive rebound (1)			
05:36	1 SHELLEY J turnover bad pass (6)			2 DIA A steal (1)
05:30		<b>72-41</b>	<b>31</b>	23 THOMPSON T 2pt FG from turnover in the paint, jump shot made (5)
05:05	14 HAKE C 3pt FG , jump shot made (16)	<b>75-41</b>	<b>34</b>	
05:05	1 SHELLEY J assist (10)			
04:53	1 SHELLEY J foul personal (1 - 3)			23 THOMPSON T foul drawn (3)
04:53	1 SHELLEY J substitution out			
04:53	42 KRULL M substitution out			
04:53	4 HAIBY S substitution in			
04:53	15 MORIARTY K substitution in			
04:51				23 THOMPSON T 2pt FG outside the paint, jump shot missed
04:46	4 HAIBY S defensive rebound (5)			
04:36	40 MARKOWSKI A 2pt FG in the paint, jump shot missed			
04:34				2 DIA A defensive rebound (2)
04:17		<b>75-43</b>	<b>32</b>	12 THOMAS K 2pt FG in the paint, layup made (3)
04:17				11 CAMDEN A assist (1)
03:59	4 HAIBY S 2pt FG in the paint, layup missed			
03:57				2 DIA A defensive rebound (3)
03:33				0 TENSAIE I 3pt FG , jump shot missed
03:31	4 HAIBY S defensive rebound (6)			
03:15	14 HAKE C 3pt FG , jump shot missed			
03:12	34 BOURNE I offensive rebound (4)			
03:11	34 BOURNE I 2pt FG second chance in the paint, layup missed			
03:09				12 THOMAS K defensive rebound (1)



**Penn St. at Nebraska**

01/11/23 Pinnacle Bank Arena, Lincoln  
2022-23 Women's Basketball

**Game Time:** 7:01 PM  
**Game Duration:** 1:43  
**Attendance:** 3,082

**Officials:** Felicia Grinter, Angelica Suffren, Missy Brooks

Game Time	NEB	Score	Diff	PEN
02:52		<b>75-46</b>	<b>29</b>	23 THOMPSON T 3pt FG , jump shot made (8)
02:24	40 MARKOWSKI A 2pt FG in the paint, layup made (11)	<b>77-46</b>	<b>31</b>	
02:24	15 MORIARTY K assist (2)			
02:05				23 THOMPSON T 3pt FG , jump shot missed
02:02	40 MARKOWSKI A defensive rebound (15)			
01:56	34 BOURNE I substitution out			
01:56	40 MARKOWSKI A substitution out			
01:56	32 COLEY K substitution in			
01:56	44 MENDELSON M substitution in			
01:56	14 HAKE C substitution out			
01:56	21 STEWART A substitution in			
01:56	Timeout 30 Sec			
01:32	4 HAIBY S 3pt FG , jump shot blocked			
01:32				2 DIA A block (1)
01:31	offensive rebound (51)			
01:31	turnover shot clock (21)			
01:15	4 HAIBY S substitution out			
01:15	42 KRULL M substitution in			
01:04				23 THOMPSON T 3pt FG from turnover, jump shot missed
01:03				2 DIA A offensive rebound (4)
01:03	42 KRULL M foul loose ball (4 - 4)			2 DIA A foul drawn (1)
00:59		<b>77-48</b>	<b>29</b>	23 THOMPSON T 2pt FG from turnover second chance outside the paint, jump shot made (10)
00:56	21 STEWART A turnover bad pass (2)			2 DIA A steal (2)
00:52				11 CAMDEN A 3pt FG from turnover, jump shot missed
00:49	32 COLEY K defensive rebound (2)			
00:45	44 MENDELSON M 2pt FG in the paint, layup missed			
00:43				0 TENSAIE I defensive rebound (1)
00:31		<b>77-51</b>	<b>26</b>	11 CAMDEN A 3pt FG , jump shot made (3)
00:31				2 DIA A assist (1)
00:02	15 MORIARTY K 3pt FG , jump shot made (3)	<b>80-51</b>	<b>29</b>	
<b>END OF GAME</b>				
<b>NEB 80-51 PEN</b>				



**Penn St. at Nebraska**

01/11/23 Pinnacle Bank Arena, Lincoln  
2022-23 Women's Basketball

Game Time: 7:01 PM  
Game Duration: 1:43  
Attendance: 3,082

Officials: Felicia Grinter, Angelica Suffren, Missy Brooks

**Penn St. - 13**

NO.	Name	F	Min	FG	3P	FT	Rebounds			Fouls		TP	AS	TO	ST	Blocks		+/-
				M-A	M-A	M-A	OR	DR	TOT	PF	FD					BS	BA	
10	Chanaya Pinto	F	03:12	0-0	0-0	0-0	1	0	1	0	0	0	0	0	0	0	0	-14
24	Alexa Williamson	F	00:20	0-1	0-0	0-0	0	0	0	0	0	0	0	0	0	0	0	-2
4	Shay Ciezki	G	02:52	0-0	0-0	0-0	0	0	0	0	1	0	0	0	0	0	0	-12
5	Leilani Kapinus	G	03:12	0-2	0-1	0-0	0	0	0	1	0	0	0	0	0	0	0	-14
20	Makenna Marisa	G	03:12	0-2	0-2	0-0	0	0	0	0	0	0	0	0	0	0	0	-14
33	Johnasia Cash		00:16	0-0	0-0	0-0	0	0	0	1	0	0	0	1	0	0	0	-1
1	Ali Brigham		02:36	0-1	0-0	0-0	0	0	0	0	0	0	0	0	0	0	0	-11
0	Ivane Tensaie		06:48	0-1	0-1	0-0	0	1	1	0	0	0	0	0	0	0	0	5
2	Aicha Dia		06:48	0-1	0-0	0-0	2	2	4	0	1	0	1	0	2	1	0	5
11	Anna Camden		06:48	1-2	1-2	0-0	0	1	1	0	0	3	1	0	0	0	0	5
12	Kayla Thomas		06:48	1-1	0-0	1-2	0	1	1	0	0	3	0	1	0	0	0	5
23	Taniyah Thompson		07:08	3-7	1-3	0-0	0	0	0	1	2	7	0	0	0	0	0	3
Team							0	0	0			0						
<b>Totals</b>				5-18	2-9	1-2	3	5	8	3	4	13	2	2	2	1	0	-9

Shooting By Period		
4 <sup>th</sup> FG%	5-18	27.8%
3PT%	2-9	22.2%
FT%	1-2	50%
GM FG%	5-18	27.8%
3PT%	2-9	22.2%
FT%	1-2	50.0%

Dead Ball Rebounds: 0, 0

Technical Fouls::NONE

**Nebraska - 22**

NO.	Name	F	Min	FG	3P	FT	Rebounds			Fouls		TP	AS	TO	ST	Blocks		+/-
				M-A	M-A	M-A	OR	DR	TOT	PF	FD					BS	BA	
34	Isabelle Bourne	F	08:04	2-3	1-1	0-0	1	1	2	0	0	5	1	0	0	0	0	11
40	Alexis Markowski	C	04:52	1-2	0-0	0-0	0	1	1	0	0	2	0	0	0	0	0	-3
1	Jaz Shelley	G	05:07	2-2	0-0	0-0	0	2	2	1	0	4	2	1	1	0	0	14
4	Sam Haiby	G	03:38	0-2	0-1	0-0	0	2	2	0	0	0	0	0	0	0	1	-3
42	Maddie Krull	G	06:22	2-2	0-0	1-1	0	0	0	3	1	5	1	0	0	0	0	12
14	Callin Hake		08:04	1-3	1-2	0-0	0	1	1	0	1	3	1	0	0	0	0	11
44	Maggie Mendelson		05:08	0-1	0-0	0-0	0	3	3	0	1	0	1	0	0	0	0	12
15	Kendall Moriarty		04:53	1-1	1-1	0-0	0	0	0	0	0	3	1	0	0	0	0	-5
21	Annika Stewart		01:56	0-0	0-0	0-0	0	0	0	0	0	0	0	1	0	0	0	-2
32	Kendall Coley		01:56	0-0	0-0	0-0	0	1	1	0	0	0	0	0	0	0	0	-2
Team							1	0	1			0		1				
<b>Totals</b>				9-16	3-5	1-1	2	11	13	4	3	22	7	3	1	0	1	9

Shooting By Period		
4 <sup>th</sup> FG%	9-16	56.3%
3PT%	3-5	60.0%
FT%	1-1	100%
GM FG%	9-16	56.3%
3PT%	3-5	60.0%
FT%	1-1	100.0%

Dead Ball Rebounds: 0, 0

Technical Fouls::NONE

	PEN	NEB
Biggest lead	0 (1 <sup>st</sup> 10:00)	34 (4 <sup>th</sup> 6:48)
Best Scoring Run	5 (4 <sup>th</sup> 2:52)	14 (4 <sup>th</sup> 6:48)
Lead Changes	0	
Times Tied	0	
Time with Lead	00:00	09:45

	PEN	NEB
Points from		
Turnovers	4	3
Paint	4	12
Second Chance	2	0
Fast Breaks	0	2
Bench	13	6

Period by Period Scoring					
	1st	2nd	3rd	4th	TOT
PEN	10	18	10	13	51
NEB	21	20	17	22	80



**Penn St. at Nebraska**

01/11/23 Pinnacle Bank Arena, Lincoln  
2022-23 Women's Basketball

Game Time: 7:01 PM  
Game Duration: 1:43  
Attendance: 3,082

Officials: Felicia Grinter, Angelica Suffren, Missy Brooks

**Penn St. - 23**

NO.	Name	F	Min	FG			Rebounds			Fouls		TP	AS	TO	ST	Blocks		+/-
				M-A	M-A	M-A	OR	DR	TOT	PF	FD					BS	BA	
10	Chanaya Pinto	F	11:06	0-0	0-0	0-0	1	1	2	2	0	0	0	0	1	0	0	-22
24	Alexa Williamson	F	05:52	1-3	0-0	1-2	1	1	2	0	1	3	0	1	0	0	0	-10
4	Shay Ciezki	G	09:11	1-2	0-0	0-0	0	1	1	1	1	2	0	1	0	0	1	-15
5	Leilani Kapinus	G	12:14	0-6	0-1	1-2	2	2	4	1	1	1	0	1	0	0	1	-17
20	Makenna Marisa	G	11:55	1-7	0-3	1-2	0	0	0	0	1	3	2	2	1	0	0	-23
23	Taniyah Thompson		14:28	3-8	1-3	1-2	0	0	0	2	3	8	0	0	1	0	1	0
1	Ali Brigham		07:04	0-1	0-0	0-0	0	0	0	1	0	0	0	0	0	1	0	-10
11	Anna Camden		07:30	1-2	1-2	0-0	0	1	1	0	0	3	1	0	0	0	0	3
33	Johnasia Cash		00:16	0-0	0-0	0-0	0	0	0	1	0	0	0	1	0	0	0	-1
0	Ivane Tensaie		06:48	0-1	0-1	0-0	0	1	1	0	0	0	0	0	0	0	0	5
2	Aicha Dia		06:48	0-1	0-0	0-0	2	2	4	0	1	0	1	0	2	1	0	5
12	Kayla Thomas		06:48	1-1	0-0	1-2	0	1	1	0	0	3	0	1	0	0	0	5
Team							1	1	2			0		1				
<b>Totals</b>				8-32	2-10	5-10	7	11	18	8	8	23	4	8	5	2	3	-16

Shooting By Period		
3 <sup>rd</sup> FG%	3-14	21.4%
3PT%	0-1	0.0%
FT%	4-8	50%
4 <sup>th</sup> FG%	5-18	27.8%
3PT%	2-9	22.2%
FT%	1-2	50%
GM FG%	8-32	25.0%
3PT%	2-10	20.0%
FT%	5-10	50.0%

Dead Ball Rebounds: 3, 0

Technical Fouls::NONE

**Nebraska - 39**

NO.	Name	F	Min	FG			Rebounds			Fouls		TP	AS	TO	ST	Blocks		+/-
				M-A	M-A	M-A	OR	DR	TOT	PF	FD					BS	BA	
34	Isabelle Bourne	F	12:48	2-3	1-1	0-0	1	1	2	0	0	5	1	0	0	0	0	18
40	Alexis Markowski	C	12:28	1-3	0-1	3-4	1	4	5	1	4	5	0	1	0	0	0	5
1	Jaz Shelley	G	14:17	2-4	0-0	0-0	0	4	4	1	0	4	4	2	2	1	0	22
4	Sam Haiby	G	11:32	1-5	0-1	2-2	0	3	3	0	1	4	1	1	2	1	1	5
42	Maddie Krull	G	12:30	4-4	2-2	1-1	0	1	1	3	1	11	1	2	0	0	0	16
15	Kendall Moriarty		07:49	1-2	1-1	0-0	0	0	0	1	0	3	2	0	1	0	1	-7
44	Maggie Mendelson		07:32	1-3	0-0	0-0	0	3	3	1	1	2	1	1	0	0	0	11
32	Kendall Coley		03:38	0-0	0-0	0-0	0	2	2	0	0	0	0	0	0	0	0	-5
14	Callin Hake		11:56	2-4	1-2	0-0	0	1	1	1	1	5	1	0	0	0	0	14
21	Annika Stewart		05:30	0-1	0-0	0-0	0	0	0	0	0	0	0	1	0	1	0	1
Team							2	0	2			0		1				
<b>Totals</b>				14-29	5-8	6-7	4	19	23	8	8	39	11	9	5	3	2	16

Shooting By Period		
3 <sup>rd</sup> FG%	5-13	38.5%
3PT%	2-3	66.7%
FT%	5-6	83.3%
4 <sup>th</sup> FG%	9-16	56.3%
3PT%	3-5	60.0%
FT%	1-1	100%
GM FG%	14-29	48.3%
3PT%	5-8	62.5%
FT%	6-7	85.7%

Dead Ball Rebounds: 1, 0

Technical Fouls::NONE

	PEN	NEB
Biggest lead	0 (1 <sup>st</sup> 10:00)	34 (4 <sup>th</sup> 6:48)
Best Scoring Run	5 (3 <sup>rd</sup> 3:02)	14 (4 <sup>th</sup> 6:48)
Lead Changes	0	
Times Tied	0	
Time with Lead	00:00	19:52

	PEN	NEB
Points from		
Turnovers	9	7
Paint	10	18
Second Chance	4	2
Fast Breaks	3	4
Bench	14	10

Period by Period Scoring					
	1st	2nd	3rd	4th	TOT
PEN	10	18	10	13	51
NEB	21	20	17	22	80



**Penn St. at Nebraska**

01/11/23 Pinnacle Bank Arena, Lincoln  
2022-23 Women's Basketball

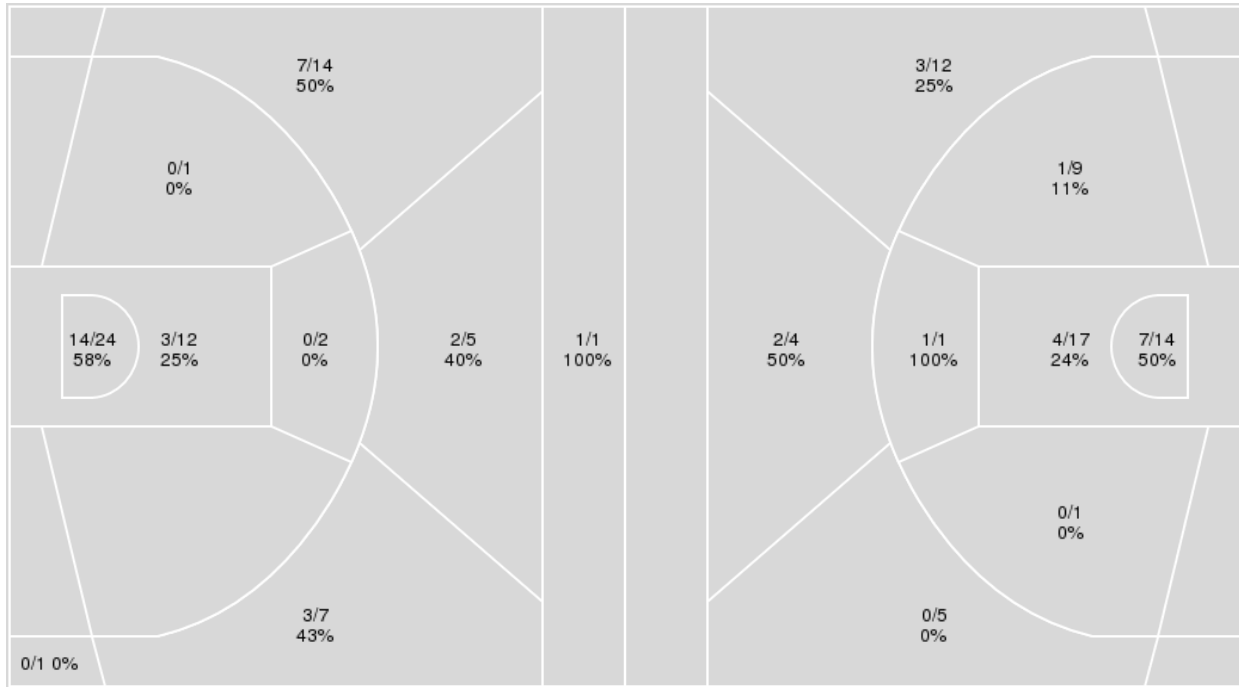
Officials: Felicia Grinter, Angelica Suffren, Missy Brooks

{ Players => All; } FG Types => All; Results => All;

{ Players => All; } FG Types => All; Results => All;

**Nebraska**

**Penn St.**



Nebraska	M/A	%
Field Goals	30/67	45
2 Points	17/39	44
3 Points	13/28	46
Free Throws	7/8	88

Penn St.	M/A	%
Field Goals	18/63	29
2 Points	13/42	31
3 Points	5/21	24
Free Throws	10/16	62



**Penn St. at Nebraska**

01/11/23 Pinnacle Bank Arena, Lincoln  
2022-23 Women's Basketball

Game Time: 7:01 PM  
Game Duration: 1:43  
Attendance: 3,082

Officials: Felicia Grinter, Angelica Suffren, Missy Brooks

**Penn St.**

No	Name	Mins		Score		Points Diff		Points per Min		Assists		Rebounds		Steals		Turnovers	
		On	Off	On	Off	On	Off	On	Off	On	Off	On	Off	On	Off	On	Off
0	Ivane Tensaie	06:48	33:12	13 - 8	38 - 72	5	-34	1.91	1.14	2	7	7	26	2	13	1	18
1	Ali Brigham	10:29	29:31	7 - 21	44 - 59	-14	-15	0.67	1.49	1	8	9	24	5	10	5	14
2	Aicha Dia	10:23	29:37	24 - 11	27 - 69	13	-42	2.31	0.91	4	5	12	21	4	11	1	18
4	Shay Ciezki	27:04	12:56	33 - 59	18 - 21	-26	-3	1.22	1.39	7	2	19	14	10	5	15	4
5	Leilani Kapinus	22:35	17:25	22 - 49	29 - 31	-27	-2	0.97	1.67	4	5	18	15	8	7	13	6
10	Chanaya Pinto	26:25	13:35	28 - 52	23 - 28	-24	-5	1.06	1.69	5	4	24	9	10	5	13	6
11	Anna Camden	11:49	28:11	20 - 26	31 - 54	-6	-23	1.69	1.10	3	6	8	25	4	11	4	15
12	Kayla Thomas	06:48	33:12	13 - 8	38 - 72	5	-34	1.91	1.14	2	7	7	26	2	13	1	18
20	Makenna Marisa	31:46	08:14	36 - 71	15 - 9	-35	6	1.13	1.82	7	2	23	10	12	3	17	2
23	Taniyah Thompson	23:32	16:28	28 - 46	23 - 34	-18	-11	1.19	1.40	4	5	21	12	10	5	13	6
24	Alexa Williamson	15:01	24:59	23 - 27	28 - 53	-4	-25	1.53	1.12	5	4	12	21	5	10	6	13
33	Johnasia Cash	07:20	32:40	8 - 22	43 - 58	-14	-15	1.09	1.32	1	8	5	28	3	12	6	13

**Nebraska**

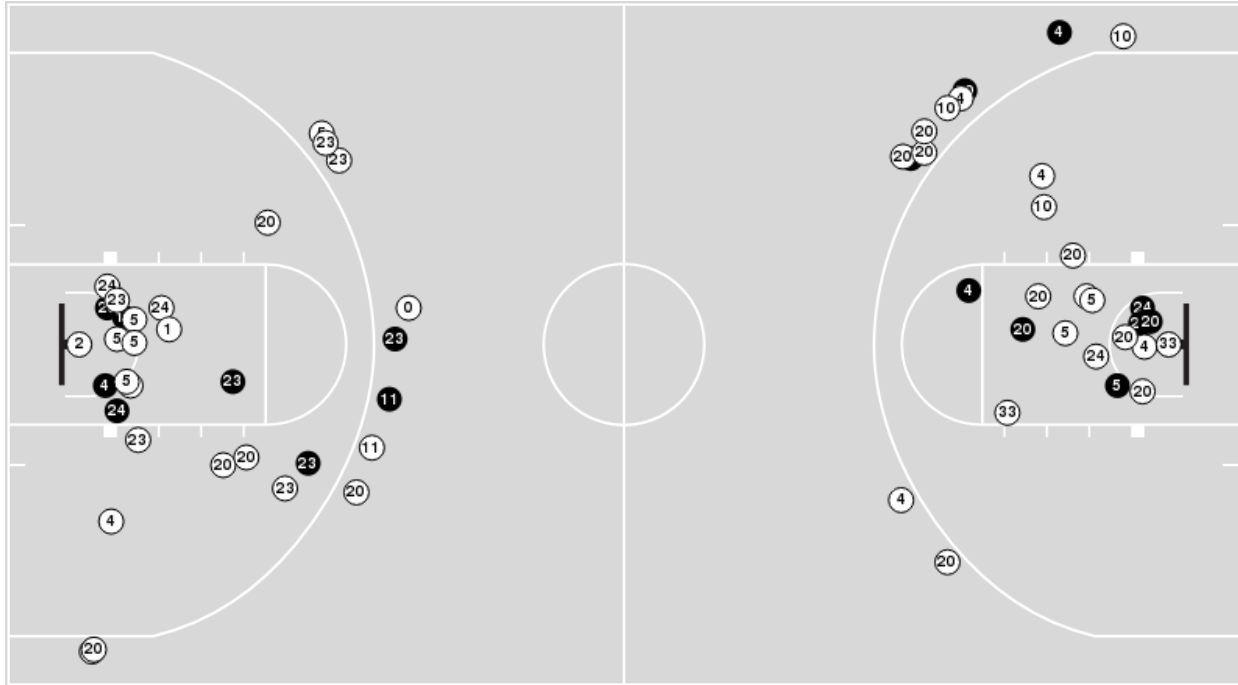
No	Name	Mins		Score		Points Diff		Points per Min		Assists		Rebounds		Steals		Turnovers	
		On	Off	On	Off	On	Off	On	Off	On	Off	On	Off	On	Off	On	Off
1	Jaz Shelley	33:23	06:37	71 - 40	9 - 11	31	-2	2.13	1.36	21	3	46	6	11	0	19	3
4	Sam Haiby	25:48	14:12	49 - 30	31 - 21	19	10	1.90	2.18	14	10	30	22	8	3	13	9
14	Callin Hake	18:18	21:42	45 - 20	35 - 31	25	4	2.46	1.61	14	10	22	30	5	6	8	14
15	Kendall Moriarty	14:27	25:33	20 - 24	60 - 27	-4	33	1.38	2.35	7	17	20	32	2	9	10	12
21	Annika Stewart	09:48	30:12	25 - 14	55 - 37	11	18	2.55	1.82	6	18	13	39	3	8	6	16
32	Kendall Coley	05:45	34:15	7 - 12	73 - 39	-5	34	1.22	2.13	2	22	4	48	1	10	5	17
34	Isabelle Bourne	28:40	11:20	60 - 34	20 - 17	26	3	2.09	1.76	19	5	41	11	7	4	14	8
40	Alexis Markowski	26:01	13:59	46 - 31	34 - 20	15	14	1.77	2.43	13	11	35	17	9	2	14	8
42	Maddie Krull	26:08	13:52	52 - 34	28 - 17	18	11	1.99	2.02	16	8	36	16	7	4	14	8
44	Maggie Mendelson	11:42	28:18	25 - 16	55 - 35	9	20	2.14	1.94	8	16	13	39	2	9	7	15



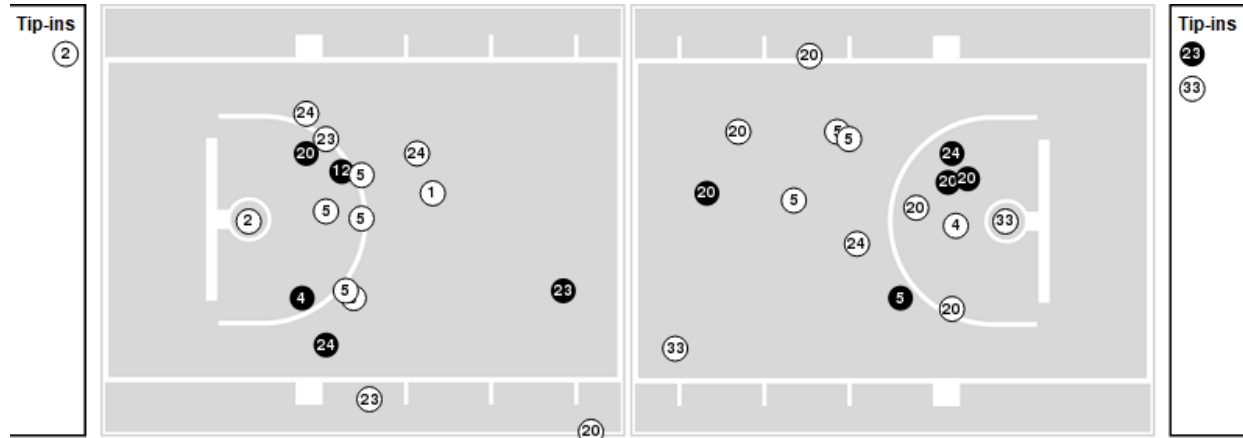
Players => AllFG Types=>AllResults=>All

**Penn St.**

**All Field Goals**



**Blow Up Chart**



**N** Made    **M** Missed    N - Player Number

Penn St.	M/A	%
Field Goals	18/63	29
2 Points	13/42	31
3 Points	5/21	24
Free Throws	10/16	62

Penn St.	M/A	%
Points in the Paint	22 (11 / 31)	35
Fast Break Points	9 (6/7)	86
Second Chance Points	7 (5/15)	33
Effective FG%	33	



**Penn St. at Nebraska**

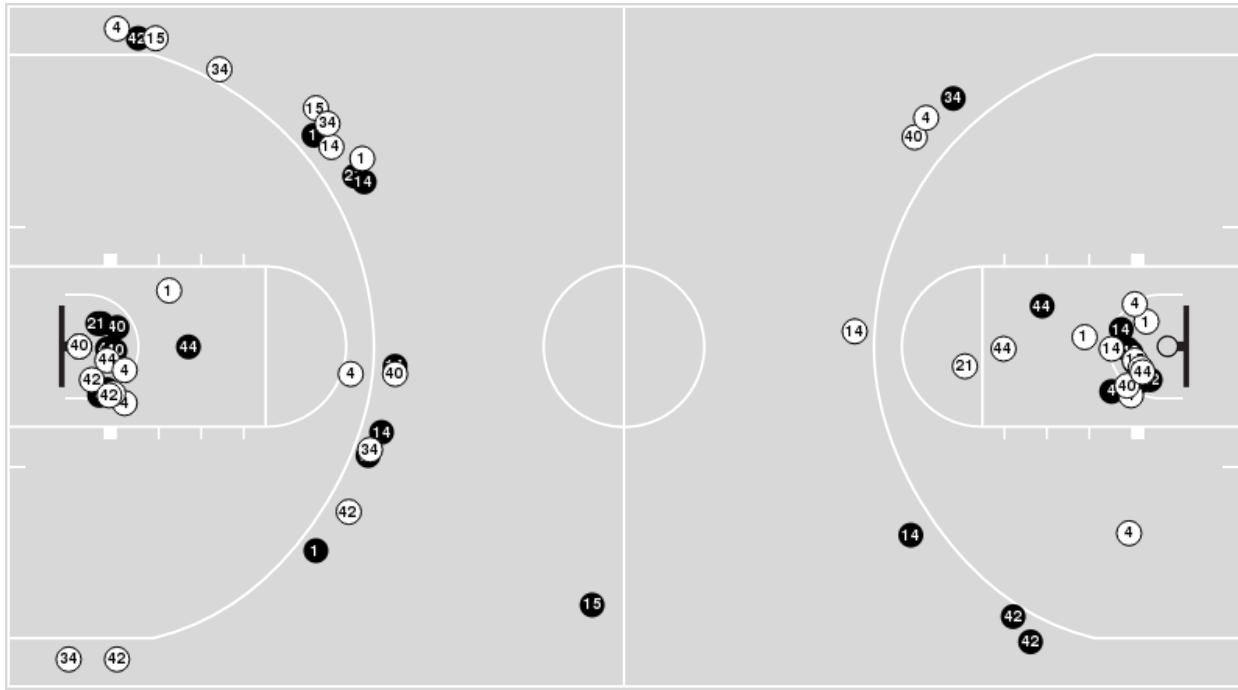
01/11/23 Pinnacle Bank Arena, Lincoln  
2022-23 Women's Basketball

Officials: Felicia Grinter, Angelica Suffren, Missy Brooks

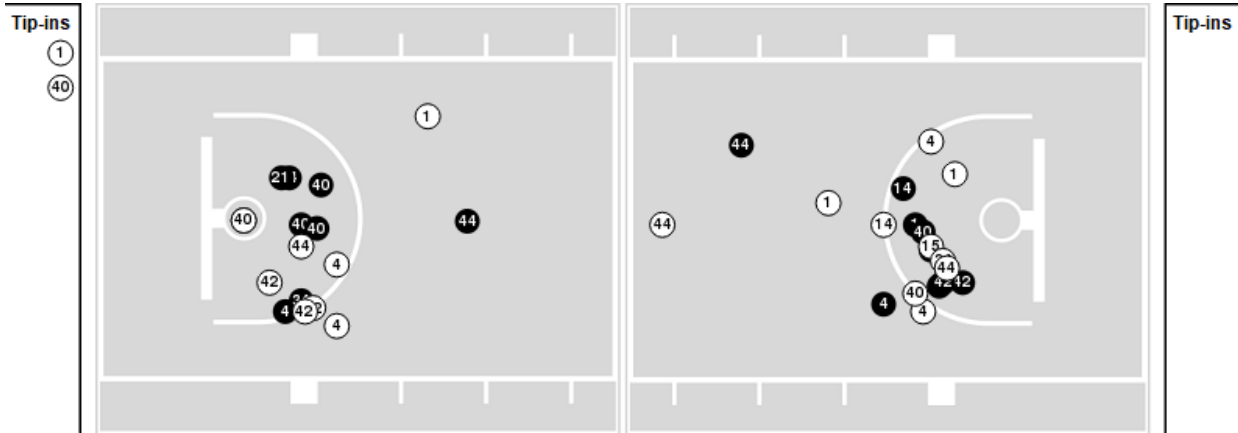
Players => AllFG Types=>AllResults=>All

**Nebraska**

**All Field Goals**



**Blow Up Chart**



● Made    ○ Missed    N - Player Number

Nebraska	M/A	%
Field Goals	30/67	45
2 Points	17/39	44
3 Points	13/28	46
Free Throws	7/8	88

Nebraska	M/A	%
Points in the Paint	34 (17 / 36)	47
Fast Break Points	6 (4/4)	100
Second Chance Points	11 (6/15)	40
Effective FG%	54	





**Penn St. at Nebraska**

01/11/23 Pinnacle Bank Arena, Lincoln  
2022-23 Women's Basketball

**Game Time:** 7:01 PM  
**Game Duration:** 1:43  
**Attendance:** 3,082

**Officials:** Felicia Grinter, Angelica Suffren, Missy Brooks

**Penn St.**

Lineup	Quarter On	Time On	Quarter Off	Time Off	Time on Court	Score	Score Diff	Reb	Stl	Tov	Ass	PPP
4- Ciezki S/ 5- Kapinus L/ 10- Pinto C/ 20- Marisa M/ 24- Williamson A/	1	10:00	1	06:43	03:17	4-3	1	2	1	2	1	0.8197
4- Ciezki S/ 5- Kapinus L/ 10- Pinto C/ 20- Marisa M/ 33- Cash J/	1	06:43	1	05:27	01:16	0-3	-3	1	1	1	0	0.0000
5- Kapinus L/ 11- Camden A/ 20- Marisa M/ 23- Thompson T/ 33- Cash J/	1	05:27	1	03:56	01:31	4-6	-2	0	1	0	0	1.3333
4- Ciezki S/ 5- Kapinus L/ 11- Camden A/ 20- Marisa M/ 23- Thompson T/	1	03:56	1	03:34	00:22	0-2	-2	0	0	1	0	0.0000
4- Ciezki S/ 10- Pinto C/ 11- Camden A/ 20- Marisa M/ 23- Thompson T/	1	03:34	1	03:34	00:00	0-0	0	0	0	0	0	0.0000
1- Brigham A/ 4- Ciezki S/ 10- Pinto C/ 20- Marisa M/ 23- Thompson T/	1	03:34	1	02:20	01:14	2-2	0	1	2	1	0	0.6667
1- Brigham A/ 5- Kapinus L/ 10- Pinto C/ 20- Marisa M/ 23- Thompson T/	1	02:20	1	01:44	00:36	0-0	0	2	1	1	0	0.0000
1- Brigham A/ 4- Ciezki S/ 10- Pinto C/ 20- Marisa M/ 23- Thompson T/	1	01:44	1	00:09	01:35	0-4	-4	1	0	0	0	0.0000
4- Ciezki S/ 5- Kapinus L/ 10- Pinto C/ 23- Thompson T/ 24- Williamson A/	1	00:09	2	10:00	00:09	0-1	-1	0	0	0	0	0.0000
4- Ciezki S/ 5- Kapinus L/ 10- Pinto C/ 20- Marisa M/ 24- Williamson A/	2	10:00	2	07:12	02:48	4-5	-1	2	1	1	1	0.8000
4- Ciezki S/ 5- Kapinus L/ 20- Marisa M/ 23- Thompson T/ 33- Cash J/	2	07:12	2	06:50	00:22	0-2	-2	0	0	1	0	0.0000
4- Ciezki S/ 10- Pinto C/ 20- Marisa M/ 23- Thompson T/ 33- Cash J/	2	06:50	2	06:01	00:49	0-2	-2	0	0	1	0	0.0000
4- Ciezki S/ 11- Camden A/ 20- Marisa M/ 23- Thompson T/ 33- Cash J/	2	06:01	2	03:35	02:26	3-8	-5	1	1	2	1	0.7500
2- Dia A/ 4- Ciezki S/ 10- Pinto C/ 20- Marisa M/ 24- Williamson A/	2	03:35	2	01:25	02:10	7-0	7	1	2	0	1	2.4306
2- Dia A/ 4- Ciezki S/ 10- Pinto C/ 20- Marisa M/ 33- Cash J/	2	01:25	2	00:44	00:40	1-0	1	3	0	0	0	0.5319
2- Dia A/ 4- Ciezki S/ 10- Pinto C/ 20- Marisa M/ 24- Williamson A/	2	00:44	3	10:00	00:45	3-3	0	1	0	0	1	3.0000
4- Ciezki S/ 5- Kapinus L/ 10- Pinto C/ 20- Marisa M/ 24- Williamson A/	3	10:00	3	07:20	02:40	4-8	-4	1	0	1	1	1.0000
5- Kapinus L/ 10- Pinto C/ 20- Marisa M/ 23- Thompson T/ 24- Williamson A/	3	07:20	3	05:58	01:22	0-1	-1	3	0	2	0	0.0000
1- Brigham A/ 4- Ciezki S/ 11- Camden A/ 20- Marisa M/ 23- Thompson T/	3	05:58	3	05:16	00:42	0-2	-2	0	0	0	0	0.0000
1- Brigham A/ 4- Ciezki S/ 5- Kapinus L/ 20- Marisa M/ 23- Thompson T/	3	05:16	3	03:52	01:24	3-0	3	1	1	1	1	1.0417
1- Brigham A/ 4- Ciezki S/ 5- Kapinus L/ 10- Pinto C/ 23- Thompson T/	3	03:52	3	02:35	01:17	2-0	2	3	1	1	0	0.7246
1- Brigham A/ 4- Ciezki S/ 10- Pinto C/ 20- Marisa M/ 23- Thompson T/	3	02:35	3	02:19	00:16	0-2	-2	0	0	1	0	0.0000
1- Brigham A/ 5- Kapinus L/ 10- Pinto C/ 20- Marisa M/ 23- Thompson T/	3	02:19	3	01:30	00:49	0-0	0	0	0	0	0	0.0000
5- Kapinus L/ 10- Pinto C/ 20- Marisa M/ 23- Thompson T/ 24- Williamson A/	3	01:30	4	09:40	01:50	1-6	-5	2	1	0	0	0.2049
4- Ciezki S/ 5- Kapinus L/ 10- Pinto C/ 20- Marisa M/ 33- Cash J/	4	09:40	4	09:24	00:16	0-1	-1	0	0	1	0	0.0000
1- Brigham A/ 4- Ciezki S/ 5- Kapinus L/ 10- Pinto C/ 20- Marisa M/	4	09:24	4	06:48	02:36	0-11	-11	1	0	0	0	0.0000
0- Tensaie I/ 2- Dia A/ 11- Camden A/ 12- Thomas K/ 23- Thompson T/	4	06:48	4	00:00	06:48	13-8	5	7	2	1	2	1.0943



**Penn St. at Nebraska**

01/11/23 Pinnacle Bank Arena, Lincoln  
2022-23 Women's Basketball

**Game Time:** 7:01 PM  
**Game Duration:** 1:43  
**Attendance:** 3,082

**Officials:** Felicia Grinter, Angelica Suffren, Missy Brooks

**Nebraska**

Lineup	Quarter On	Time On	Quarter Off	Time Off	Time on Court	Score	Score Diff	Reb	Stl	Tov	Ass	PPP
1- Shelley J/ 4- Haiby S/ 34- Bourne I/ 40- Markowski A/ 42- Krull M/	1	10:00	1	07:09	02:51	3-4	-1	2	2	2	1	0.7500
1- Shelley J/ 15- Moriarty K/ 34- Bourne I/ 40- Markowski A/ 42- Krull M/	1	07:09	1	06:13	00:56	0-0	0	5	1	1	0	0.0000
1- Shelley J/ 15- Moriarty K/ 21- Stewart A/ 34- Bourne I/ 42- Krull M/	1	06:13	1	05:27	00:46	3-0	3	2	0	0	1	3.0000
1- Shelley J/ 14- Hake C/ 15- Moriarty K/ 21- Stewart A/ 34- Bourne I/	1	05:27	1	03:56	01:31	6-4	2	2	0	1	2	2.0000
4- Haiby S/ 14- Hake C/ 15- Moriarty K/ 32- Coley K/ 40- Markowski A/	1	03:56	1	03:02	00:54	4-0	4	0	0	0	2	2.0000
1- Shelley J/ 4- Haiby S/ 14- Hake C/ 34- Bourne I/ 40- Markowski A/	1	03:02	1	02:20	00:42	0-2	-2	2	0	2	0	0.0000
1- Shelley J/ 4- Haiby S/ 34- Bourne I/ 40- Markowski A/ 42- Krull M/	1	02:20	1	00:09	02:11	4-0	4	5	0	1	0	0.8000
1- Shelley J/ 4- Haiby S/ 34- Bourne I/ 42- Krull M/ 44- Mendelson M/	1	00:09	1	00:09	00:00	1-0	1	0	0	0	0	2.2727
1- Shelley J/ 15- Moriarty K/ 34- Bourne I/ 42- Krull M/ 44- Mendelson M/	1	00:09	2	08:51	01:18	0-2	-2	3	0	2	0	0.0000
1- Shelley J/ 4- Haiby S/ 21- Stewart A/ 42- Krull M/ 44- Mendelson M/	2	08:51	2	07:12	01:39	5-2	3	1	1	0	2	1.6667
1- Shelley J/ 4- Haiby S/ 21- Stewart A/ 40- Markowski A/ 42- Krull M/	2	07:12	2	06:50	00:22	2-0	2	1	0	0	1	2.0000
1- Shelley J/ 4- Haiby S/ 14- Hake C/ 34- Bourne I/ 40- Markowski A/	2	06:50	2	03:35	03:15	10-3	7	2	2	1	3	1.6667
1- Shelley J/ 15- Moriarty K/ 32- Coley K/ 42- Krull M/ 44- Mendelson M/	2	03:35	2	02:22	01:13	0-4	-4	0	0	2	0	0.0000
1- Shelley J/ 4- Haiby S/ 34- Bourne I/ 40- Markowski A/ 42- Krull M/	2	02:22	3	05:58	06:24	12-11	1	7	1	3	4	1.0101
1- Shelley J/ 15- Moriarty K/ 34- Bourne I/ 42- Krull M/ 44- Mendelson M/	3	05:58	3	05:16	00:42	2-0	2	0	0	0	1	2.0000
1- Shelley J/ 15- Moriarty K/ 32- Coley K/ 42- Krull M/ 44- Mendelson M/	3	05:16	3	03:52	01:24	0-3	-3	2	1	1	0	0.0000
4- Haiby S/ 14- Hake C/ 15- Moriarty K/ 32- Coley K/ 44- Mendelson M/	3	03:52	3	03:34	00:18	0-0	0	0	0	0	0	0.0000
4- Haiby S/ 14- Hake C/ 15- Moriarty K/ 21- Stewart A/ 40- Markowski A/	3	03:34	3	03:02	00:32	0-1	-1	0	0	1	0	0.0000
1- Shelley J/ 4- Haiby S/ 14- Hake C/ 21- Stewart A/ 40- Markowski A/	3	03:02	4	10:00	03:02	6-2	4	5	2	2	0	0.8876
1- Shelley J/ 14- Hake C/ 34- Bourne I/ 42- Krull M/ 44- Mendelson M/	4	10:00	4	06:48	03:12	14-0	14	5	0	0	5	2.1739
1- Shelley J/ 14- Hake C/ 34- Bourne I/ 40- Markowski A/ 42- Krull M/	4	06:48	4	04:53	01:55	3-3	0	2	1	1	1	1.0000
4- Haiby S/ 14- Hake C/ 15- Moriarty K/ 34- Bourne I/ 40- Markowski A/	4	04:53	4	01:56	02:57	2-5	-3	4	0	0	1	0.5000
4- Haiby S/ 14- Hake C/ 15- Moriarty K/ 32- Coley K/ 44- Mendelson M/	4	01:56	4	01:56	00:00	0-0	0	0	0	0	0	0.0000
4- Haiby S/ 15- Moriarty K/ 21- Stewart A/ 32- Coley K/ 44- Mendelson M/	4	01:56	4	01:15	00:41	0-0	0	1	0	1	0	0.0000
15- Moriarty K/ 21- Stewart A/ 32- Coley K/ 42- Krull M/ 44- Mendelson M/	4	01:15	4	00:00	01:15	3-5	-2	1	0	1	0	1.0000



**Penn St. at Nebraska**

01/11/23 Pinnacle Bank Arena, Lincoln  
2022-23 Women's Basketball

**Game Time:** 7:01 PM  
**Game Duration:** 1:43  
**Attendance:** 3,082

**Officials:** Felicia Grinter, Angelica Suffren, Missy Brooks

**Penn St.**

Lineup	Time	Score	Score Diff	Pts/Min	Reb	Stl	Tov	Ass	PPP
4- Ciezki S/ 5- Kapinus L/ 10- Pinto C/ 20- Marisa M/ 24- Williamson A/	08:45	12-16	-4	1.3714	5	2	4	3	0.8646
0- Tensaie I/ 2- Dia A/ 11- Camden A/ 12- Thomas K/ 23- Thompson T/	06:48	13-8	5	1.9118	7	2	1	2	1.0943
5- Kapinus L/ 10- Pinto C/ 20- Marisa M/ 23- Thompson T/ 24- Williamson A/	03:12	1-7	-6	0.3125	5	1	2	0	0.1126
1- Brigham A/ 4- Ciezki S/ 10- Pinto C/ 20- Marisa M/ 23- Thompson T/	03:05	2-8	-6	0.6486	2	2	2	0	0.3333
2- Dia A/ 4- Ciezki S/ 10- Pinto C/ 20- Marisa M/ 24- Williamson A/	02:55	10-3	7	3.4286	2	2	0	2	2.5773
1- Brigham A/ 4- Ciezki S/ 5- Kapinus L/ 10- Pinto C/ 20- Marisa M/	02:36	0-11	-11	0.0000	1	0	0	0	0.0000
4- Ciezki S/ 11- Camden A/ 20- Marisa M/ 23- Thompson T/ 33- Cash J/	02:26	3-8	-5	1.2329	1	1	2	1	0.7500
4- Ciezki S/ 5- Kapinus L/ 10- Pinto C/ 20- Marisa M/ 33- Cash J/	01:32	0-4	-4	0.0000	1	1	2	0	0.0000
5- Kapinus L/ 11- Camden A/ 20- Marisa M/ 23- Thompson T/ 33- Cash J/	01:31	4-6	-2	2.6374	0	1	0	0	1.3333
1- Brigham A/ 5- Kapinus L/ 10- Pinto C/ 20- Marisa M/ 23- Thompson T/	01:25	0-0	0	0.0000	2	1	1	0	0.0000
1- Brigham A/ 4- Ciezki S/ 5- Kapinus L/ 20- Marisa M/ 23- Thompson T/	01:24	3-0	3	2.1429	1	1	1	1	1.0417
1- Brigham A/ 4- Ciezki S/ 5- Kapinus L/ 10- Pinto C/ 23- Thompson T/	01:17	2-0	2	1.5584	3	1	1	0	0.7246
4- Ciezki S/ 10- Pinto C/ 20- Marisa M/ 23- Thompson T/ 33- Cash J/	00:49	0-2	-2	0.0000	0	0	1	0	0.0000
1- Brigham A/ 4- Ciezki S/ 11- Camden A/ 20- Marisa M/ 23- Thompson T/	00:42	0-2	-2	0.0000	0	0	0	0	0.0000
2- Dia A/ 4- Ciezki S/ 10- Pinto C/ 20- Marisa M/ 33- Cash J/	00:40	1-0	1	1.5000	3	0	0	0	0.5319
4- Ciezki S/ 5- Kapinus L/ 11- Camden A/ 20- Marisa M/ 23- Thompson T/	00:22	0-2	-2	0.0000	0	0	1	0	0.0000
4- Ciezki S/ 5- Kapinus L/ 20- Marisa M/ 23- Thompson T/ 33- Cash J/	00:22	0-2	-2	0.0000	0	0	1	0	0.0000
4- Ciezki S/ 5- Kapinus L/ 10- Pinto C/ 23- Thompson T/ 24- Williamson A/	00:09	0-1	-1	0.0000	0	0	0	0	0.0000
4- Ciezki S/ 10- Pinto C/ 11- Camden A/ 20- Marisa M/ 23- Thompson T/	00:00	0-0	0	NaN	0	0	0	0	0.0000



**Penn St. at Nebraska**

01/11/23 Pinnacle Bank Arena, Lincoln  
2022-23 Women's Basketball

**Game Time:** 7:01 PM  
**Game Duration:** 1:43  
**Attendance:** 3,082

**Officials:** Felicia Grinter, Angelica Suffren, Missy Brooks

**Nebraska**

Lineup	Time	Score	Score Diff	Pts/Min	Reb	Stl	Tov	Ass	PPP
1- Shelley J/ 4- Haiby S/ 34- Bourne I/ 40- Markowski A/ 42- Krull M/	11:26	19-15	4	1.6618	14	3	6	5	0.9100
1- Shelley J/ 4- Haiby S/ 14- Hake C/ 34- Bourne I/ 40- Markowski A/	03:57	10-5	5	2.5316	4	2	3	3	1.2500
1- Shelley J/ 14- Hake C/ 34- Bourne I/ 42- Krull M/ 44- Mendelson M/	03:12	14-0	14	4.3750	5	0	0	5	2.1739
1- Shelley J/ 4- Haiby S/ 14- Hake C/ 21- Stewart A/ 40- Markowski A/	03:02	6-2	4	1.9780	5	2	2	0	0.8876
4- Haiby S/ 14- Hake C/ 15- Moriarty K/ 34- Bourne I/ 40- Markowski A/	02:57	2-5	-3	0.6780	4	0	0	1	0.5000
1- Shelley J/ 15- Moriarty K/ 32- Coley K/ 42- Krull M/ 44- Mendelson M/	02:37	0-7	-7	0.0000	2	1	3	0	0.0000
1- Shelley J/ 15- Moriarty K/ 34- Bourne I/ 42- Krull M/ 44- Mendelson M/	02:00	2-2	0	1.0000	3	0	2	1	0.6667
1- Shelley J/ 14- Hake C/ 34- Bourne I/ 40- Markowski A/ 42- Krull M/	01:55	3-3	0	1.5652	2	1	1	1	1.0000
1- Shelley J/ 4- Haiby S/ 21- Stewart A/ 42- Krull M/ 44- Mendelson M/	01:39	5-2	3	3.0303	1	1	0	2	1.6667
1- Shelley J/ 14- Hake C/ 15- Moriarty K/ 21- Stewart A/ 34- Bourne I/	01:31	6-4	2	3.9560	2	0	1	2	2.0000
15- Moriarty K/ 21- Stewart A/ 32- Coley K/ 42- Krull M/ 44- Mendelson M/	01:15	3-5	-2	2.4000	1	0	1	0	1.0000
1- Shelley J/ 15- Moriarty K/ 34- Bourne I/ 40- Markowski A/ 42- Krull M/	00:56	0-0	0	0.0000	5	1	1	0	0.0000
4- Haiby S/ 14- Hake C/ 15- Moriarty K/ 32- Coley K/ 40- Markowski A/	00:54	4-0	4	4.4444	0	0	0	2	2.0000
1- Shelley J/ 15- Moriarty K/ 21- Stewart A/ 34- Bourne I/ 42- Krull M/	00:46	3-0	3	3.9130	2	0	0	1	3.0000
4- Haiby S/ 15- Moriarty K/ 21- Stewart A/ 32- Coley K/ 44- Mendelson M/	00:41	0-0	0	0.0000	1	0	1	0	0.0000
4- Haiby S/ 14- Hake C/ 15- Moriarty K/ 21- Stewart A/ 40- Markowski A/	00:32	0-1	-1	0.0000	0	0	1	0	0.0000
1- Shelley J/ 4- Haiby S/ 21- Stewart A/ 40- Markowski A/ 42- Krull M/	00:22	2-0	2	5.4545	1	0	0	1	2.0000
4- Haiby S/ 14- Hake C/ 15- Moriarty K/ 32- Coley K/ 44- Mendelson M/	00:18	0-0	0	0.0000	0	0	0	0	0.0000
1- Shelley J/ 4- Haiby S/ 34- Bourne I/ 42- Krull M/ 44- Mendelson M/	00:00	1-0	1	∞	0	0	0	0	2.2727