



Nebraska at Penn St.

02/17/22 Bryce Jordan Center, University Park, Pa.
2021-22 Women's Basketball

Game Time: 7:00 PM
Game Duration: 1:46
Attendance: 1,801

Officials: Angie Enlund, Maggie Tieman, Bruce Morris

Nebraska - 76

Record: 19-7 (8-7)

NO.	Name	Min	FG			3P			FT			Rebounds			Fouls		TP	AS	TO	ST	Blocks		+/-
			M-A	M-A	M-A	OR	DR	TOT	PF	FD	BS	BA											
34	Isabelle Bourne	F 29:52	7-14	1-3	0-0	2	5	7	2	1	15	1	2	0	0	1	2	0	0	0	1	-13	
40	Alexis Markowski	C 30:57	10-15	0-1	3-5	3	4	7	1	5	23	0	0	0	0	0	0	0	0	0	0	10	
1	Jaz Shelley	G 37:13	3-11	3-9	1-2	2	3	5	2	2	10	5	4	2	0	0	4	2	0	0	0	-8	
3	Allison Weidner	G 29:51	3-10	0-1	1-1	4	4	8	1	2	7	6	4	2	0	2	4	2	0	2	0	-4	
4	Sam Haiby	G 35:51	3-11	1-5	4-4	2	3	5	3	4	11	6	2	1	0	3	2	1	0	3	-8		
11	Ruby Porter	08:49	0-1	0-1	0-0	0	3	3	0	0	0	3	0	0	0	0	0	0	0	0	0	-1	
14	Bella Cravens	19:11	5-7	0-0	0-0	0	4	4	2	1	10	1	1	0	0	1	1	0	0	1	-11		
5	Mi'Cole Cayton	06:56	0-1	0-0	0-0	1	0	1	1	2	0	0	1	0	0	0	1	0	0	0	-2		
15	Kendall Moriarty	01:20	0-0	0-0	0-0	0	0	0	0	0	0	0	0	0	0	0	0	0	0	0	2		
Team						1	1	2			0			1									
Totals			31-70	5-20	9-12	15	27	42	12	17	76	22	15	5	0	7						-7	

Technical Fouls::NONE

Shooting By Period		
1st FG%	8-20	40.0%
3PT%	3-10	30.0%
FT%	1-2	50%
2nd FG%	8-16	50.0%
3PT%	0-0	0.0%
FT%	1-1	100%
3rd FG%	10-20	50.0%
3PT%	2-4	50.0%
FT%	2-2	100%
4th FG%	5-14	35.7%
3PT%	0-6	0.0%
FT%	5-7	71.4%
GM FG%	31-70	44.3%
3PT%	5-20	25.0%
FT%	9-12	75.0%

Dead Ball Rebounds: 4, 0

Penn St. - 83

Record: 10-15 (4-11)

NO.	Name	Min	FG			3P			FT			Rebounds			Fouls		TP	AS	TO	ST	Blocks		+/-
			M-A	M-A	M-A	OR	DR	TOT	PF	FD	BS	BA											
11	Anna Camden	F 22:36	4-8	1-3	0-0	1	2	3	4	0	9	1	1	1	2	0	1	1	1	2	0	13	
1	Ali Brigham	C 10:11	1-3	0-0	0-0	1	1	2	1	0	2	0	1	0	2	0	1	0	2	0	-3		
5	Leilani Kapinus	G 16:59	3-6	0-2	0-1	0	5	5	4	3	6	0	3	3	1	0	3	3	1	0	-7		
20	Makenna Marisa	G 39:07	7-18	2-8	6-6	2	4	6	3	4	22	8	4	1	1	0	4	1	1	0	9		
25	Kelly Jekot	G 24:16	4-5	4-5	1-3	0	3	3	0	1	13	2	1	2	0	0	2	1	2	0	8		
12	Kayla Thomas	15:19	1-3	0-0	0-0	1	2	3	3	0	2	0	1	1	1	0	1	1	1	0	-12		
4	Niya Beverley	29:52	4-8	2-5	2-3	2	2	4	1	2	12	2	0	3	0	0	3	0	0	0	8		
23	Shay Hagans	19:14	3-8	0-1	2-2	2	2	4	1	2	8	2	1	1	0	0	1	1	0	0	19		
15	Maddie Burke	22:26	3-7	3-6	0-0	0	1	1	0	0	9	1	1	1	0	0	1	1	0	0	0		
Team						3	1	4			0			0									
Totals			30-66	12-30	11-15	12	23	35	17	12	83	16	13	13	7	0	7					7	

Technical Fouls::NONE

Shooting By Period		
1st FG%	5-16	31.3%
3PT%	2-10	20.0%
FT%	2-2	100%
2nd FG%	5-12	41.7%
3PT%	2-3	66.7%
FT%	2-2	100%
3rd FG%	8-18	44.4%
3PT%	4-9	44.4%
FT%	4-5	80%
4th FG%	12-20	60.0%
3PT%	4-8	50.0%
FT%	3-6	50%
GM FG%	30-66	45.5%
3PT%	12-30	40.0%
FT%	11-15	73.3%

Dead Ball Rebounds: 1, 0

	NEB	PSU
Biggest lead	13 (2 nd 2:14)	9 (4 th 0:11)
Best Scoring Run	6 (2 nd 2:14)	15 (4 th 6:01)
Lead Changes	2	
Times Tied	2	
Time with Lead	31:44	07:03

	NEB	PSU
Points from		
Turnovers	17	12
Paint	44	30
Second Chance	19	15
Fast Breaks	15	21
Bench	10	31

	Period by Period Scoring				
	1st	2nd	3rd	4th	TOT
NEB	20	17	24	15	76
PSU	14	14	24	31	83



Officials: Angie Enlund, Maggie Tieman, Bruce Morris

Period 1

Quarter Starters:

PSU	1 Brigham A	5 Kapinus L	11 Camden A	20 Marisa M	25 Jekot K
NEB	1 Shelley J	3 Weidner A	4 Haiby S	34 Bourne I	40 Markowski A

Game Time	PSU	Score	Diff	NEB
10:00	5 KAPINUS L jumpball won			40 MARKOWSKI A jumpball lost
09:43	20 MARISA M 3pt FG , jump shot made (3)	3-0	3	
09:43	25 JEKOT K assist (1)			
09:12				1 SHELLEY J 3pt FG , jump shot missed
09:10				3 WEIDNER A offensive rebound (1)
09:10	jump ball situation			
09:08		3-2	1	40 MARKOWSKI A 2pt FG second chance outside the paint, jump shot made (2)
09:08				1 SHELLEY J assist (1)
08:55	5 KAPINUS L foul offensive (1 - 1)			1 SHELLEY J foul drawn (1)
08:55	5 KAPINUS L turnover offensive (1)			
08:28				34 BOURNE I 3pt FG from turnover, jump shot missed
08:22				3 WEIDNER A offensive rebound (2)
08:21		3-4	-1	3 WEIDNER A 2pt FG from turnover second chance in the paint, layup made (2)
08:04	1 BRIGHAM A 2pt FG in the paint, layup missed			
08:01				34 BOURNE I defensive rebound (1)
07:57	11 CAMDEN A foul shooting (1 - 2)			40 MARKOWSKI A foul drawn (1)
07:57				40 MARKOWSKI A free throw fast break 1 - 2 missed
07:57				offensive dead ball rebound (1)
07:57		3-5	-2	40 MARKOWSKI A free throw fast break 2 - 2 made (3)
07:35	5 KAPINUS L 2pt FG in the paint, driving layup made (2)	5-5	0	
07:25				34 BOURNE I 2pt FG in the paint, layup blocked
07:25	1 BRIGHAM A block (1)			
07:23				34 BOURNE I offensive rebound (2)
07:24	1 BRIGHAM A substitution out			
07:24	12 THOMAS K substitution in			
07:20	5 KAPINUS L steal (1)			1 SHELLEY J turnover bad pass (1)
07:14	11 CAMDEN A 3pt FG from turnover, jump shot missed			
07:10				40 MARKOWSKI A defensive rebound (1)
06:59		5-8	-3	4 HAIBY S 3pt FG , jump shot made (3)
06:59				1 SHELLEY J assist (2)
06:26	25 JEKOT K turnover bad pass (1)			3 WEIDNER A steal (1)
06:18				3 WEIDNER A 2pt FG from turnover in the paint, layup missed
06:16	5 KAPINUS L defensive rebound (1)			
06:13	jump ball situation			
06:13	5 KAPINUS L substitution out			
06:13	25 JEKOT K substitution out			
06:13	4 BEVERLEY N substitution in			
06:13	23 HAGANS S substitution in			
06:13				3 WEIDNER A substitution out
06:13				40 MARKOWSKI A substitution out
06:13				11 PORTER R substitution in
06:13				14 CRAVENS B substitution in



Officials: Angie Enlund, Maggie Tieman, Bruce Morris

Game Time	PSU	Score	Diff	NEB
06:10	11 CAMDEN A 3pt FG , jump shot missed			
06:07				11 PORTER R defensive rebound (1)
06:02		5-10	-5	14 CRAVENS B 2pt FG fast break in the paint, layup made (2)
06:02				4 HAIBY S assist (1)
05:44	20 MARISA M 3pt FG , jump shot missed			
05:39				14 CRAVENS B defensive rebound (1)
05:19				34 BOURNE I 2pt FG in the paint, layup missed
05:16	20 MARISA M defensive rebound (1)			
05:12	20 MARISA M foul drawn (1)			4 HAIBY S foul shooting (1 - 1)
05:12	11 CAMDEN A substitution out			
05:12	15 BURKE M substitution in			
05:12	20 MARISA M free throw fast break 1 - 2 made (4)	6-10	-4	
05:12	20 MARISA M free throw fast break 2 - 2 made (5)	7-10	-3	
04:48				4 HAIBY S 3pt FG , jump shot missed
04:45	4 BEVERLEY N defensive rebound (1)			
04:41	15 BURKE M 3pt FG , jump shot missed			
04:38				4 HAIBY S defensive rebound (1)
04:35				4 HAIBY S 2pt FG in the paint, layup missed
04:33	defensive rebound (4)			
04:33	Timeout media			
04:33				4 HAIBY S substitution out
04:33				34 BOURNE I substitution out
04:33				5 CAYTON M substitution in
04:33				40 MARKOWSKI A substitution in
04:11	12 THOMAS K 2pt FG in the paint, layup missed			
04:09				40 MARKOWSKI A defensive rebound (2)
04:01		7-13	-6	1 SHELLEY J 3pt FG , jump shot made (3)
04:01				11 PORTER R assist (1)
03:47	15 BURKE M 3pt FG , jump shot made (3)	10-13	-3	
03:47	20 MARISA M assist (1)			
03:31				1 SHELLEY J 3pt FG , jump shot missed
03:29				5 CAYTON M offensive rebound (1)
03:29	20 MARISA M foul personal (1 - 3)			5 CAYTON M foul drawn (1)
03:29	23 HAGANS S substitution out			
03:29	5 KAPINUS L substitution in			
03:28				1 SHELLEY J 2pt FG second chance outside the paint, jump shot missed
03:24	5 KAPINUS L defensive rebound (2)			
03:23	5 KAPINUS L foul drawn (1)			5 CAYTON M foul personal (1 - 2)
03:12	5 KAPINUS L 2pt FG in the paint, layup missed			
03:11				defensive rebound (11)
02:54		10-16	-6	1 SHELLEY J 3pt FG , jump shot made (6)
02:54				11 PORTER R assist (2)
02:34	20 MARISA M 3pt FG , jump shot missed			
02:29	12 THOMAS K offensive rebound (1)			
02:28	12 THOMAS K 2pt FG second chance in the paint, layup made (2)	12-16	-4	
02:11		12-18	-6	40 MARKOWSKI A 2pt FG in the paint, layup made (5)
02:11				11 PORTER R assist (3)
01:54	5 KAPINUS L 3pt FG , jump shot missed			



Officials: Angie Enlund, Maggie Tieman, Bruce Morris

Game Time	PSU	Score	Diff	NEB
01:52				14 CRAVENS B defensive rebound (2)
01:52	12 THOMAS K foul personal (1 - 4)			14 CRAVENS B foul drawn (1)
01:52	12 THOMAS K substitution out			
01:52	1 BRIGHAM A substitution in			
01:52				5 CAYTON M substitution out
01:52				11 PORTER R substitution out
01:52				14 CRAVENS B substitution out
01:52				3 WEIDNER A substitution in
01:52				4 HAIBY S substitution in
01:52				34 BOURNE I substitution in
01:26	5 KAPINUS L steal (2)			4 HAIBY S turnover bad pass (1)
01:01	5 KAPINUS L 3pt FG from turnover, jump shot missed			
00:57	4 BEVERLEY N offensive rebound (2)			
00:54	20 MARISA M 3pt FG from turnover second chance, jump shot missed			
00:49				40 MARKOWSKI A defensive rebound (3)
00:47				1 SHELLEY J 3pt FG , jump shot missed
00:43				4 HAIBY S offensive rebound (2)
00:42				40 MARKOWSKI A 3pt FG second chance, jump shot missed
00:39				1 SHELLEY J offensive rebound (1)
00:35		12-20	-8	34 BOURNE I 2pt FG second chance outside the paint, jump shot made (2)
00:35				1 SHELLEY J assist (3)
00:11	1 BRIGHAM A 2pt FG in the paint, layup made (2)	14-20	-6	
00:11	20 MARISA M assist (2)			
00:01				34 BOURNE I 3pt FG , jump shot missed
00:00				offensive dead ball rebound (2)
END OF PERIOD				
PSU 14-20 NEB				



Nebraska at Penn St.

02/17/22 Bryce Jordan Center, University Park, Pa.
2021-22 Women's Basketball

Game Time: 7:00 PM
Game Duration: 1:46
Attendance: 1,801

Officials: Angie Enlund, Maggie Tieman, Bruce Morris

Nebraska - 20

NO.	Name	Min	FG	3P	FT	Rebounds			Fouls		TP	AS	TO	ST	Blocks		+/-
			M-A	M-A	M-A	OR	DR	TOT	PF	FD					BS	BA	
34	Isabelle Bourne	F 07:19	1-5	0-2	0-0	1	1	2	0	0	2	0	0	0	0	1	3
40	Alexis Markowski	C 08:20	2-3	0-1	1-2	0	3	3	0	1	5	0	0	0	0	0	6
1	Jaz Shelley	G 10:00	2-6	2-5	0-0	1	0	1	0	1	6	3	1	0	0	0	6
3	Allison Weidner	G 05:39	1-2	0-0	0-0	2	0	2	0	0	2	0	0	1	0	0	3
4	Sam Haiby	G 07:19	1-3	1-2	0-0	1	1	2	1	0	3	1	1	0	0	0	3
11	Ruby Porter	04:21	0-0	0-0	0-0	0	1	1	0	0	0	3	0	0	0	0	3
14	Bella Cravens	04:21	1-1	0-0	0-0	0	2	2	0	1	2	0	0	0	0	0	3
5	Mi'Cole Cayton	02:41	0-0	0-0	0-0	1	0	1	1	1	0	0	0	0	0	0	3
Team						0	1	1			0		0				
Totals			8-20	3-10	1-2	6	9	15	2	4	20	7	2	1	0	1	6

Shooting By Period		
1st FG%	8-20	40.0%
3PT%	3-10	30.0%
FT%	1-2	50%
GM FG%	8-20	40.0%
3PT%	3-10	30.0%
FT%	1-2	50.0%

Dead Ball Rebounds: 2, 0

Technical Fouls::NONE

Penn St. - 14

NO.	Name	Min	FG	3P	FT	Rebounds			Fouls		TP	AS	TO	ST	Blocks		+/-
			M-A	M-A	M-A	OR	DR	TOT	PF	FD					BS	BA	
11	Anna Camden	F 04:48	0-2	0-2	0-0	0	0	0	1	0	0	0	0	0	0	0	-5
1	Ali Brigham	C 04:28	1-2	0-0	0-0	0	0	0	0	0	2	0	0	0	1	0	0
5	Leilani Kapinus	G 07:16	1-4	0-2	0-0	0	2	2	1	1	2	0	1	2	0	0	-6
20	Makenna Marisa	G 10:00	1-4	1-4	2-2	0	1	1	1	1	5	2	0	0	0	0	-6
25	Kelly Jekot	G 03:47	0-0	0-0	0-0	0	0	0	0	0	0	1	1	0	0	0	-3
12	Kayla Thomas	05:32	1-2	0-0	0-0	1	0	1	1	0	2	0	0	0	0	0	-6
4	Niya Beverley	06:13	0-0	0-0	0-0	1	1	2	0	0	0	0	0	0	0	0	-3
23	Shay Hagans	02:44	0-0	0-0	0-0	0	0	0	0	0	0	0	0	0	0	0	0
15	Maddie Burke	05:12	1-2	1-2	0-0	0	0	0	0	0	3	0	0	0	0	0	-1
Team						0	1	1			0		0				
Totals			5-16	2-10	2-2	2	5	7	4	2	14	3	2	2	1	0	-6

Shooting By Period		
1st FG%	5-16	31.3%
3PT%	2-10	20.0%
FT%	2-2	100%
GM FG%	5-16	31.3%
3PT%	2-10	20.0%
FT%	2-2	100.0%

Dead Ball Rebounds: 0, 0

Technical Fouls::NONE

	NEB	PSU
Biggest lead	8 (1 st 0:35)	3 (1 st 9:43)
Best Scoring Run	5 (1 st 7:57)	3 (1 st 9:43)
Lead Changes	1	
Times Tied	1	
Time with Lead	07:45	01:22

Points from	NEB	PSU
Turnovers	2	0
Paint	6	6
Second Chance	6	2
Fast Breaks	3	2
Bench	2	5

Period by Period Scoring					
	1st	2nd	3rd	4th	TOT
NEB	20	17	24	15	76
PSU	14	14	24	31	83



Period 2

Quarter Starters:

PSU	1 Brigham A	4 Beverley N	5 Kapinus L	11 Camden A	25 Jekot K
NEB	3 Weidner A	4 Haiby S	15 Moriarty K	34 Bourne I	40 Markowski A

Game Time	PSU	Score	Diff	NEB
10:00	15 BURKE M substitution out			
10:00	20 MARISA M substitution out			
10:00	11 CAMDEN A substitution in			
10:00	25 JEKOT K substitution in			
10:00				1 SHELLEY J substitution out
10:00				15 MORIARTY K substitution in
09:46		14-22	-8	34 BOURNE I 2pt FG in the paint, jump shot made (4)
09:46				4 HAIBY S assist (2)
09:07	25 JEKOT K substitution out			
09:07	20 MARISA M substitution in			
09:07	jump ball situation			
09:03	20 MARISA M 2pt FG in the paint, jump shot missed			
09:01				4 HAIBY S defensive rebound (3)
08:50				40 MARKOWSKI A 2pt FG in the paint, layup missed
08:48	5 KAPINUS L defensive rebound (3)			
08:40	5 KAPINUS L turnover bad pass (2)			
08:40	5 KAPINUS L substitution out			
08:40	23 HAGANS S substitution in			
08:40				15 MORIARTY K substitution out
08:40				1 SHELLEY J substitution in
08:13				4 HAIBY S 2pt FG from turnover in the paint, layup blocked
08:13	1 BRIGHAM A block (2)			
08:10	1 BRIGHAM A defensive rebound (1)			
08:08	23 HAGANS S 2pt FG in the paint, layup missed			
08:05				1 SHELLEY J defensive rebound (2)
08:00	11 CAMDEN A steal (1)			1 SHELLEY J turnover bad pass (2)
07:35	20 MARISA M 2pt FG from turnover in the paint, jump shot missed			
07:32	1 BRIGHAM A offensive rebound (2)			
07:31	1 BRIGHAM A 2pt FG from turnover second chance in the paint, layup missed			
07:27				3 WEIDNER A defensive rebound (3)
07:25		14-24	-10	34 BOURNE I 2pt FG fast break in the paint, layup made (6)
07:25				3 WEIDNER A assist (1)
07:14	20 MARISA M turnover lost ball (1)			
07:14	1 BRIGHAM A substitution out			
07:14	4 BEVERLEY N substitution out			
07:14	12 THOMAS K substitution in			
07:14	15 BURKE M substitution in			
07:14				3 WEIDNER A substitution out
07:14				40 MARKOWSKI A substitution out
07:14				5 CAYTON M substitution in
07:14				14 CRAVENS B substitution in
06:49				5 CAYTON M 2pt FG from turnover in the paint, layup missed



Officials: Angie Enlund, Maggie Tieman, Bruce Morris

Game Time	PSU	Score	Diff	NEB
06:46	12 THOMAS K defensive rebound (2)			
06:42	20 MARISA M foul drawn (2)			1 SHELLEY J foul shooting (1 - 1)
06:42	11 CAMDEN A substitution out			
06:42	5 KAPINUS L substitution in			
06:42	20 MARISA M free throw 1 - 2 made (6)	15-24	-9	
06:42	20 MARISA M free throw 2 - 2 made (7)	16-24	-8	
06:12				turnover shot clock (4)
05:54	5 KAPINUS L foul offensive (2 - 1)			5 CAYTON M foul drawn (2)
05:54	5 KAPINUS L turnover offensive (3)			
05:54	5 KAPINUS L substitution out			
05:54	25 JEKOT K substitution in			
05:54				4 HAIBY S substitution out
05:54				3 WEIDNER A substitution in
05:41	25 JEKOT K steal (1)			3 WEIDNER A turnover lost ball (1)
05:27	23 HAGANS S 2pt FG from turnover in the paint, jump shot missed			
05:24				34 BOURNE I defensive rebound (3)
05:15		16-26	-10	3 WEIDNER A 2pt FG in the paint, layup made (4)
05:15				34 BOURNE I assist (1)
05:15	12 THOMAS K foul shooting (2 - 2)			3 WEIDNER A foul drawn (1)
05:15	12 THOMAS K substitution out			
05:15	1 BRIGHAM A substitution in			
05:15		16-27	-11	3 WEIDNER A free throw 1 - 1 made (5)
05:01	25 JEKOT K 3pt FG , jump shot made (3)	19-27	-8	
05:01	20 MARISA M assist (3)			
04:41	25 JEKOT K steal (2)			3 WEIDNER A turnover lost ball (2)
04:32	23 HAGANS S turnover bad pass (1)			1 SHELLEY J steal (1)
04:27				3 WEIDNER A 2pt FG from turnover in the paint, layup missed
04:27				offensive rebound (20)
04:27	Timeout media			
04:27	23 HAGANS S substitution out			
04:27	4 BEVERLEY N substitution in			
04:27				5 CAYTON M substitution out
04:27				34 BOURNE I substitution out
04:27				4 HAIBY S substitution in
04:27				40 MARKOWSKI A substitution in
04:23		19-29	-10	40 MARKOWSKI A 2pt FG from turnover second chance in the paint, layup made (7)
04:23				1 SHELLEY J assist (4)
04:03	15 BURKE M 3pt FG , jump shot made (6)	22-29	-7	
04:03	25 JEKOT K assist (2)			
03:50		22-31	-9	14 CRAVENS B 2pt FG in the paint, layup made (4)
03:50				3 WEIDNER A assist (2)
03:35	15 BURKE M turnover travel (1)			
03:35	1 BRIGHAM A substitution out			
03:35	12 THOMAS K substitution in			
03:19		22-33	-11	40 MARKOWSKI A 2pt FG from turnover in the paint, layup made (9)
03:19				3 WEIDNER A assist (3)
03:00	12 THOMAS K turnover travel (1)			



Official Basketball Play by Play - 2nd Period
Nebraska at Penn St.
 02/17/22 Bryce Jordan Center, University Park, Pa.
 2021-22 Women's Basketball

Game Time: 7:00 PM
Game Duration: 1:46
Attendance: 1,801

Officials: Angie Enlund, Maggie Tieman, Bruce Morris

Game Time	PSU	Score	Diff	NEB
02:40				14 CRAVENS B 2pt FG from turnover in the paint, layup missed
02:38	25 JEKOT K defensive rebound (1)			
02:25	4 BEVERLEY N 3pt FG , jump shot missed			
02:21				14 CRAVENS B defensive rebound (3)
02:14		22-35	-13	3 WEIDNER A 2pt FG fast break in the paint, driving layup made (7)
01:49	20 MARISA M foul drawn (3)			40 MARKOWSKI A foul personal (1 - 2)
01:49	12 THOMAS K substitution out			
01:49	11 CAMDEN A substitution in			
01:49				14 CRAVENS B substitution out
01:49				34 BOURNE I substitution in
01:41	20 MARISA M 2pt FG outside the paint, jump shot missed			
01:38				3 WEIDNER A defensive rebound (4)
01:33				3 WEIDNER A 2pt FG in the paint, layup missed
01:31	20 MARISA M defensive rebound (2)			
01:22	11 CAMDEN A 2pt FG in the paint, layup made (2)	24-35	-11	
01:11	11 CAMDEN A foul personal (2 - 3)			40 MARKOWSKI A foul drawn (2)
01:11	4 BEVERLEY N substitution out			
01:11	23 HAGANS S substitution in			
01:08	15 BURKE M steal (1)			1 SHELLEY J turnover lost ball (3)
01:04	20 MARISA M 2pt FG fast break from turnover in the paint, layup made (9)	26-35	-9	
01:04	15 BURKE M assist (1)			
00:44				40 MARKOWSKI A 2pt FG outside the paint, jump shot missed
00:41				1 SHELLEY J offensive rebound (3)
00:38				34 BOURNE I 2pt FG second chance in the paint, layup missed
00:35	23 HAGANS S defensive rebound (1)			
00:09	23 HAGANS S 2pt FG in the paint, driving layup made (2)	28-35	-7	
00:00		28-37	-9	4 HAIBY S 2pt FG in the paint, layup made (5)
END OF PERIOD				
PSU 28-37 NEB				



Nebraska at Penn St.

02/17/22 Bryce Jordan Center, University Park, Pa.
2021-22 Women's Basketball

Game Time: 7:00 PM
Game Duration: 1:46
Attendance: 1,801

Officials: Angie Enlund, Maggie Tieman, Bruce Morris

Nebraska - 17

NO.	Name	Min	FG			Rebounds			Fouls		TP	AS	TO	ST	Blocks		+/-
			M-A	3P	FT	OR	DR	TOT	PF	FD					BS	BA	
34	Isabelle Bourne	F 07:22	2-3	0-0	0-0	0	1	1	0	0	4	1	0	0	0	0	-2
40	Alexis Markowski	C 07:13	2-4	0-0	0-0	0	0	0	1	1	4	0	0	0	0	0	5
1	Jaz Shelley	G 08:40	0-0	0-0	0-0	1	1	2	1	0	0	1	2	1	0	0	1
3	Allison Weidner	G 08:40	2-4	0-0	1-1	0	2	2	0	1	5	3	2	0	0	0	5
4	Sam Haiby	G 08:33	1-2	0-0	0-0	0	1	1	0	0	2	1	0	0	0	1	3
15	Kendall Moriarty	01:20	0-0	0-0	0-0	0	0	0	0	0	0	0	0	0	0	0	2
5	MiCole Cayton	02:47	0-1	0-0	0-0	0	0	0	0	1	0	0	0	0	0	0	-2
14	Bella Cravens	05:25	1-2	0-0	0-0	0	1	1	0	0	2	0	0	0	0	0	3
Team						1	0	1			0		1				
Totals			8-16	0-0	1-1	2	6	8	2	3	17	6	5	1	0	1	3

Shooting By Period		
2 nd FG%	8-16	50.0%
3PT%	0-0	0.0%
FT%	1-1	100%
GM FG%	8-16	50.0%
3PT%	0-0	0.0%
FT%	1-1	100.0%

Dead Ball Rebounds: 0, 0

Technical Fouls: NONE

Penn St. - 14

NO.	Name	Min	FG			Rebounds			Fouls		TP	AS	TO	ST	Blocks		+/-
			M-A	3P	FT	OR	DR	TOT	PF	FD					BS	BA	
11	Anna Camden	F 05:07	1-1	0-0	0-0	0	0	0	1	0	2	0	0	1	0	0	0
1	Ali Brigham	C 04:26	0-1	0-0	0-0	1	1	2	0	0	0	0	0	0	1	0	-3
5	Leilani Kapinus	G 02:08	0-0	0-0	0-0	0	1	1	1	0	0	0	2	0	0	0	0
20	Makenna Marisa	G 09:07	1-4	0-0	2-2	0	1	1	0	2	4	1	1	0	0	0	-1
25	Kelly Jekot	G 06:47	1-1	1-1	0-0	0	1	1	0	0	3	1	0	2	0	0	-3
23	Shay Hagans	05:24	1-3	0-0	0-0	0	1	1	0	0	2	0	1	0	0	0	2
12	Kayla Thomas	03:45	0-0	0-0	0-0	0	1	1	1	0	0	0	1	0	0	0	-4
15	Maddie Burke	07:14	1-1	1-1	0-0	0	0	0	0	0	3	1	1	1	0	0	1
4	Niya Beverley	06:02	0-1	0-1	0-0	0	0	0	0	0	0	0	0	0	0	0	-7
Team						0	0	0			0		0				
Totals			5-12	2-3	2-2	1	6	7	3	2	14	3	6	4	1	0	-3

Shooting By Period		
2 nd FG%	5-12	41.7%
3PT%	2-3	66.7%
FT%	2-2	100%
GM FG%	5-12	41.7%
3PT%	2-3	66.7%
FT%	2-2	100.0%

Dead Ball Rebounds: 0, 0

Technical Fouls: NONE

	NEB	PSU
Biggest lead	13 (2 nd 2:14)	0 (1 st 10:00)
Best Scoring Run	6(2 nd 2:14)	6(2 nd 0:09)
Lead Changes	0	
Times Tied	0	
Time with Lead	09:46	00:00

Points from	NEB	PSU
Turnovers	4	2
Paint	16	6
Second Chance	2	0
Fast Breaks	4	2
Bench	2	5

	Period by Period Scoring				
	1st	2nd	3rd	4th	TOT
NEB	20	17	24	15	76
PSU	14	14	24	31	83



Nebraska at Penn St.

02/17/22 Bryce Jordan Center, University Park, Pa.
2021-22 Women's Basketball

Game Time: 7:00 PM
Game Duration: 1:46
Attendance: 1,801

Officials: Angie Enlund, Maggie Tieman, Bruce Morris

Nebraska - 37

NO.	Name	Min	FG			Rebounds			Fouls		TP	AS	TO	ST	Blocks		+/-
			M-A	M-A	M-A	OR	DR	TOT	PF	FD					BS	BA	
34	Isabelle Bourne	F 14:41	3-8	0-2	0-0	1	2	3	0	0	6	1	0	0	0	1	1
40	Alexis Markowski	C 15:33	4-7	0-1	1-2	0	3	3	1	2	9	0	0	0	0	0	11
1	Jaz Shelley	G 18:40	2-6	2-5	0-0	2	1	3	1	1	6	4	3	1	0	0	7
3	Allison Weidner	G 14:19	3-6	0-0	1-1	2	2	4	0	1	7	3	2	1	0	0	8
4	Sam Haiby	G 15:52	2-5	1-2	0-0	1	2	3	1	0	5	2	1	0	0	1	6
11	Ruby Porter	04:21	0-0	0-0	0-0	0	1	1	0	0	0	3	0	0	0	0	3
14	Bella Cravens	09:46	2-3	0-0	0-0	0	3	3	0	1	4	0	0	0	0	0	6
5	Mi'Cole Cayton	05:28	0-1	0-0	0-0	1	0	1	1	2	0	0	0	0	0	0	1
15	Kendall Moriarty	01:20	0-0	0-0	0-0	0	0	0	0	0	0	0	0	0	0	0	2
Team						1	1	2			0		1				
Totals			16-36	3-10	2-3	8	15	23	4	7	37	13	7	2	0	2	9

Shooting By Period		
1st FG%	8-20	40.0%
3PT%	3-10	30.0%
FT%	1-2	50%
2nd FG%	8-16	50.0%
3PT%	0-0	0.0%
FT%	1-1	100%
GM FG%	16-36	44.4%
3PT%	3-10	30.0%
FT%	2-3	66.7%

Dead Ball Rebounds: 2, 0

Technical Fouls::NONE

Penn St. - 28

NO.	Name	Min	FG			Rebounds			Fouls		TP	AS	TO	ST	Blocks		+/-
			M-A	M-A	M-A	OR	DR	TOT	PF	FD					BS	BA	
11	Anna Camden	F 09:55	1-3	0-2	0-0	0	0	0	2	0	2	0	0	1	0	0	-5
1	Ali Brigham	C 08:54	1-3	0-0	0-0	1	1	2	0	0	2	0	0	0	2	0	-3
5	Leilani Kapinus	G 09:24	1-4	0-2	0-0	0	3	3	2	1	2	0	3	2	0	0	-6
20	Makenna Marisa	G 19:07	2-8	1-4	4-4	0	2	2	1	3	9	3	1	0	0	0	-7
25	Kelly Jekot	G 10:34	1-1	1-1	0-0	0	1	1	0	0	3	2	1	2	0	0	-6
12	Kayla Thomas	09:17	1-2	0-0	0-0	1	1	2	2	0	2	0	1	0	0	0	-10
4	Niya Beverley	12:15	0-1	0-1	0-0	1	1	2	0	0	0	0	0	0	0	0	-10
23	Shay Hagans	08:08	1-3	0-0	0-0	0	1	1	0	0	2	0	1	0	0	0	2
15	Maddie Burke	12:26	2-3	2-3	0-0	0	0	0	0	0	6	1	1	1	0	0	0
Team						0	1	1			0		0				
Totals			10-28	4-13	4-4	3	11	14	7	4	28	6	8	6	2	0	-9

Shooting By Period		
1st FG%	5-16	31.3%
3PT%	2-10	20.0%
FT%	2-2	100%
2nd FG%	5-12	41.7%
3PT%	2-3	66.7%
FT%	2-2	100%
GM FG%	10-28	35.7%
3PT%	4-13	30.8%
FT%	4-4	100.0%

Dead Ball Rebounds: 0, 0

Technical Fouls::NONE

	NEB	PSU
Biggest lead	13 (2 nd 2:14)	3 (1 st 9:43)
Best Scoring Run	6(2 nd 2:14)	6(2 nd 0:09)
Lead Changes	1	
Times Tied	1	
Time with Lead	17:45	01:22

Points from	NEB	PSU
Turnovers	6	2
Paint	22	12
Second Chance	8	2
Fast Breaks	7	4
Bench	4	10

Period by Period Scoring					
	1st	2nd	3rd	4th	TOT
NEB	20	17	24	15	76
PSU	14	14	24	31	83



Period 3

Quarter Starters:

PSU	5 Kapinus L	11 Camden A	15 Burke M	20 Marisa M	25 Jekot K
NEB	1 Shelley J	3 Weidner A	4 Haiby S	34 Bourne I	40 Markowski A

Game Time	PSU	Score	Diff	NEB
10:00	23 HAGANS S substitution out			
10:00	5 KAPINUS L substitution in			
09:41				1 SHELLEY J 2pt FG in the paint, layup missed
09:37				40 MARKOWSKI A offensive rebound (4)
09:36		28-39	-11	40 MARKOWSKI A 2pt FG second chance in the paint, layup made (11)
09:16	25 JEKOT K 3pt FG , jump shot made (6)	31-39	-8	
09:16	20 MARISA M assist (4)			
08:51		31-42	-11	34 BOURNE I 3pt FG , jump shot made (9)
08:51				4 HAIBY S assist (3)
08:40	20 MARISA M turnover bad pass (2)			4 HAIBY S steal (1)
08:36				4 HAIBY S 2pt FG from turnover in the paint, layup missed
08:33				4 HAIBY S offensive rebound (4)
08:18		31-44	-13	40 MARKOWSKI A 2pt FG from turnover second chance in the paint, layup made (13)
07:59	11 CAMDEN A 2pt FG outside the paint, jump shot missed			
07:56				1 SHELLEY J defensive rebound (4)
07:57	5 KAPINUS L foul personal (3 - 1)			3 WEIDNER A foul drawn (2)
07:57	5 KAPINUS L substitution out			
07:57	4 BEVERLEY N substitution in			
07:41				40 MARKOWSKI A 2pt FG in the paint, layup missed
07:37				3 WEIDNER A offensive rebound (5)
07:36				3 WEIDNER A 2pt FG second chance in the paint, layup blocked
07:36	11 CAMDEN A block (1)			
07:31	25 JEKOT K defensive rebound (2)			
07:26	11 CAMDEN A 2pt FG in the paint, layup missed			
07:24				40 MARKOWSKI A defensive rebound (5)
07:17	4 BEVERLEY N steal (1)			4 HAIBY S turnover bad pass (2)
07:13	4 BEVERLEY N 2pt FG fast break from turnover in the paint, layup made (2)	33-44	-11	
06:58		33-46	-13	34 BOURNE I 2pt FG fast break in the paint, layup made (11)
06:58				1 SHELLEY J assist (5)
06:39	20 MARISA M 3pt FG , jump shot missed			
06:35				34 BOURNE I defensive rebound (4)
06:28				40 MARKOWSKI A 2pt FG in the paint, layup missed
06:24	15 BURKE M defensive rebound (1)			
06:18	4 BEVERLEY N 2pt FG in the paint, driving layup made (4)	35-46	-11	
06:18	4 BEVERLEY N foul drawn (1)			3 WEIDNER A foul shooting (1 - 1)
06:18	11 CAMDEN A substitution out			
06:18	25 JEKOT K substitution out			
06:18	12 THOMAS K substitution in			
06:18	23 HAGANS S substitution in			
06:18				1 SHELLEY J substitution out



Officials: Angie Enlund, Maggie Tieman, Bruce Morris

Game Time	PSU	Score	Diff	NEB
06:18				3 WEIDNER A substitution out
06:18				40 MARKOWSKI A substitution out
06:18				5 CAYTON M substitution in
06:18				11 PORTER R substitution in
06:18				14 CRAVENS B substitution in
06:18	4 BEVERLEY N free throw 1 - 1 made (5)	36-46	-10	
05:59		36-48	-12	14 CRAVENS B 2pt FG in the paint, jump shot made (6)
05:59				4 HAIBY S assist (4)
05:52	15 BURKE M 3pt FG fast break, jump shot made (9)	39-48	-9	
05:52	23 HAGANS S assist (1)			
05:42	12 THOMAS K steal (1)			5 CAYTON M turnover bad pass (1)
05:28	4 BEVERLEY N foul drawn (2)			4 HAIBY S foul shooting (2 - 2)
05:28	4 BEVERLEY N free throw 1 - 2 made (6)	40-48	-8	
05:28	4 BEVERLEY N free throw 2 - 2 missed			
05:26				14 CRAVENS B defensive rebound (4)
05:11		40-50	-10	14 CRAVENS B 2pt FG in the paint, layup made (8)
04:51	20 MARISA M foul drawn (4)			34 BOURNE I foul shooting (1 - 3)
04:51	Timeout media			
04:51	12 THOMAS K substitution out			
04:51	1 BRIGHAM A substitution in			
04:51				4 HAIBY S substitution out
04:51				34 BOURNE I substitution out
04:51				1 SHELLEY J substitution in
04:51				40 MARKOWSKI A substitution in
04:51	20 MARISA M free throw 1 - 2 made (10)	41-50	-9	
04:51	20 MARISA M free throw 2 - 2 made (11)	42-50	-8	
04:50				1 SHELLEY J turnover bad pass (4)
04:50				5 CAYTON M substitution out
04:50				11 PORTER R substitution out
04:50				3 WEIDNER A substitution in
04:50				4 HAIBY S substitution in
04:49	15 BURKE M 2pt FG from turnover outside the paint, jump shot missed			
04:46	23 HAGANS S offensive rebound (2)			
04:28	1 BRIGHAM A foul offensive (1 - 2)			40 MARKOWSKI A foul drawn (3)
04:28	1 BRIGHAM A turnover offensive (1)			
04:17		42-53	-11	1 SHELLEY J 3pt FG from turnover, jump shot made (9)
04:17				3 WEIDNER A assist (4)
04:06	15 BURKE M 3pt FG , jump shot missed			
04:03	23 HAGANS S offensive rebound (3)			
04:00	4 BEVERLEY N 3pt FG second chance, jump shot made (9)	45-53	-8	
04:00	23 HAGANS S assist (2)			
03:52	20 MARISA M foul shooting (2 - 3)			4 HAIBY S foul drawn (1)
03:52		45-54	-9	4 HAIBY S free throw fast break 1 - 2 made (6)
03:52		45-55	-10	4 HAIBY S free throw fast break 2 - 2 made (7)
03:37	23 HAGANS S 3pt FG , jump shot missed			
03:34	offensive rebound (19)			
03:34	1 BRIGHAM A substitution out			
03:34	11 CAMDEN A substitution in			



Official Basketball Play by Play - 3rd Period
Nebraska at Penn St.
 02/17/22 Bryce Jordan Center, University Park, Pa.
 2021-22 Women's Basketball

Game Time: 7:00 PM
Game Duration: 1:46
Attendance: 1,801

Officials: Angie Enlund, Maggie Tieman, Bruce Morris

Game Time	PSU	Score	Diff	NEB
03:29	11 CAMDEN A turnover bad pass (1)			3 WEIDNER A steal (2)
03:22		45-57	-12	14 CRAVENS B 2pt FG fast break from turnover in the paint, layup made (10)
03:22				3 WEIDNER A assist (5)
03:21	Timeout 30 Sec			
03:21				Timeout media
03:21				40 MARKOWSKI A substitution out
03:21				34 BOURNE I substitution in
03:02	20 MARISA M 2pt FG outside the paint, jump shot made (13)	47-57	-10	
02:45		47-59	-12	34 BOURNE I 2pt FG in the paint, layup made (13)
02:45				3 WEIDNER A assist (6)
02:34	23 HAGANS S 2pt FG in the paint, jump shot missed			
02:31	11 CAMDEN A offensive rebound (1)			
02:30	20 MARISA M 3pt FG second chance, jump shot made (16)	50-59	-9	
02:30	11 CAMDEN A assist (1)			
02:14				1 SHELLEY J 3pt FG , jump shot missed
02:12				34 BOURNE I offensive rebound (5)
02:12	11 CAMDEN A foul personal (3 - 4)			34 BOURNE I foul drawn (1)
02:12	11 CAMDEN A substitution out			
02:12	23 HAGANS S substitution out			
02:12	5 KAPINUS L substitution in			
02:12	12 THOMAS K substitution in			
02:10				14 CRAVENS B 2pt FG second chance in the paint, jump shot blocked
02:10	12 THOMAS K block (1)			
02:02	12 THOMAS K defensive rebound (3)			
02:01	5 KAPINUS L 2pt FG fast break in the paint, layup made (4)	52-59	-7	
02:01	4 BEVERLEY N assist (1)			
01:49				34 BOURNE I 2pt FG in the paint, hook shot missed
01:44	5 KAPINUS L defensive rebound (4)			
01:43	4 BEVERLEY N 2pt FG in the paint, layup missed			
01:39				34 BOURNE I defensive rebound (6)
01:18	4 BEVERLEY N steal (2)			34 BOURNE I turnover lost ball (1)
01:18				34 BOURNE I substitution out
01:18				40 MARKOWSKI A substitution in
00:59	4 BEVERLEY N 3pt FG from turnover, jump shot missed			
00:58	offensive rebound (23)			
00:52	20 MARISA M turnover lost ball (3)			1 SHELLEY J steal (2)
00:41				3 WEIDNER A 2pt FG from turnover in the paint, layup blocked
00:41	5 KAPINUS L block (1)			
00:34				3 WEIDNER A offensive rebound (6)
00:32		52-61	-9	40 MARKOWSKI A 2pt FG from turnover second chance outside the paint, jump shot made (15)
00:32				14 CRAVENS B assist (1)
00:21	15 BURKE M 3pt FG , jump shot missed			
00:19				3 WEIDNER A defensive rebound (7)
00:02				1 SHELLEY J 3pt FG , jump shot missed
00:00	20 MARISA M defensive rebound (3)			
END OF PERIOD				
PSU 52-61 NEB				



Nebraska at Penn St.

02/17/22 Bryce Jordan Center, University Park, Pa.
2021-22 Women's Basketball

Game Time: 7:00 PM
Game Duration: 1:46
Attendance: 1,801

Officials: Angie Enlund, Maggie Tieman, Bruce Morris

Nebraska - 24

NO.	Name	F	Min	FG	3P	FT	Rebounds			Fouls		TP	AS	TO	ST	Blocks		+/-
				M-A	M-A	M-A	OR	DR	TOT	PF	FD					BS	BA	
34	Isabelle Bourne	F	07:12	3-4	1-1	0-0	1	2	3	1	1	7	0	1	0	0	0	-4
40	Alexis Markowski	C	06:30	3-5	0-0	0-0	1	1	2	0	1	6	0	0	0	0	0	6
1	Jaz Shelley	G	08:33	1-4	1-3	0-0	0	1	1	0	0	3	1	1	1	0	0	1
3	Allison Weidner	G	08:32	0-2	0-0	0-0	2	1	3	1	1	0	3	0	1	0	2	3
4	Sam Haiby	G	09:59	0-1	0-0	2-2	1	0	1	1	1	2	2	1	1	0	0	2
5	Mi'Cole Cayton		01:28	0-0	0-0	0-0	0	0	0	0	0	0	0	1	0	0	0	-3
11	Ruby Porter		01:28	0-0	0-0	0-0	0	0	0	0	0	0	0	0	0	0	0	-3
14	Bella Cravens		06:18	3-4	0-0	0-0	0	1	1	0	0	6	1	0	0	0	1	-2
Team							0	0	0			0		0				
Totals				10-20	2-4	2-2	5	6	11	3	4	24	7	4	3	0	3	0

Shooting By Period		
3rd FG%	10-20	50.0%
3PT%	2-4	50.0%
FT%	2-2	100%
GM FG%	10-20	50.0%
3PT%	2-4	50.0%
FT%	2-2	100.0%

Dead Ball Rebounds: 0, 0

Technical Fouls::NONE

Penn St. - 24

NO.	Name	F	Min	FG	3P	FT	Rebounds			Fouls		TP	AS	TO	ST	Blocks		+/-
				M-A	M-A	M-A	OR	DR	TOT	PF	FD					BS	BA	
11	Anna Camden	F	05:04	0-2	0-0	0-0	1	0	1	1	0	0	1	1	0	1	0	-1
1	Ali Brigham	C	01:17	0-0	0-0	0-0	0	0	0	1	0	0	0	1	0	0	0	0
5	Leilani Kapinus	G	04:15	1-1	0-0	0-0	0	1	1	1	0	2	0	0	0	1	0	-4
20	Makenna Marisa	G	10:00	2-3	1-2	2-2	0	1	1	1	1	7	1	2	0	0	0	0
25	Kelly Jekot	G	03:42	1-1	1-1	0-0	0	1	1	0	0	3	0	0	0	0	0	-2
15	Maddie Burke		10:00	1-4	1-3	0-0	0	1	1	0	0	3	0	0	0	0	0	0
4	Niya Beverley		07:57	3-5	1-2	2-3	0	0	0	0	2	9	1	0	2	0	0	4
12	Kayla Thomas		03:39	0-0	0-0	0-0	0	1	1	0	0	0	0	0	1	1	0	1
23	Shay Hagans		04:06	0-2	0-1	0-0	2	0	2	0	0	0	2	0	0	0	0	2
Team							2	0	2			0		0				
Totals				8-18	4-9	4-5	5	5	10	4	3	24	5	4	3	3	0	0

Shooting By Period		
3rd FG%	8-18	44.4%
3PT%	4-9	44.4%
FT%	4-5	80%
GM FG%	8-18	44.4%
3PT%	4-9	44.4%
FT%	4-5	80.0%

Dead Ball Rebounds: 0, 0

Technical Fouls::NONE

	NEB	PSU
Biggest lead	13 (3 rd 8:18)	0 (1 st 10:00)
Best Scoring Run	5(3 rd 8:18)	5(3 rd 2:01)
Lead Changes	0	
Times Tied	0	
Time with Lead	09:41	00:00

Points from	NEB	PSU
Turnovers	9	3
Paint	14	6
Second Chance	6	6
Fast Breaks	6	7
Bench	6	12

Period by Period Scoring					
	1st	2nd	3rd	4th	TOT
NEB	20	17	24	15	76
PSU	14	14	24	31	83



Period 4

Quarter Starters:

PSU	4 Beverley N	5 Kapinus L	12 Thomas K	20 Marisa M	25 Jekot K
NEB	1 Shelley J	4 Haiby S	11 Porter R	14 Cravens B	40 Markowski A

Game Time	PSU	Score	Diff	NEB
10:00	15 BURKE M substitution out			
10:00	25 JEKOT K substitution in			
10:00				3 WEIDNER A substitution out
10:00				11 PORTER R substitution in
09:45				11 PORTER R 3pt FG , jump shot missed
09:40	4 BEVERLEY N defensive rebound (3)			
09:32	20 MARISA M 3pt FG , jump shot missed			
09:30				1 SHELLEY J defensive rebound (5)
09:21		52-63	-11	40 MARKOWSKI A 2pt FG in the paint, layup made (17)
09:21				4 HAIBY S assist (5)
09:09	5 KAPINUS L foul drawn (2)			14 CRAVENS B foul personal (1 - 1)
09:09				14 CRAVENS B substitution out
09:09				34 BOURNE I substitution in
08:54	20 MARISA M 3pt FG , jump shot missed			
08:50	4 BEVERLEY N offensive rebound (4)			
08:44	25 JEKOT K 3pt FG second chance, jump shot made (9)	55-63	-8	
08:44	4 BEVERLEY N assist (2)			
08:25				34 BOURNE I 2pt FG outside the paint, jump shot missed
08:23	5 KAPINUS L defensive rebound (5)			
08:18	25 JEKOT K 3pt FG , jump shot missed			
08:14	offensive rebound (28)			
08:09	12 THOMAS K 2pt FG second chance in the paint, layup missed			
08:07				11 PORTER R defensive rebound (2)
08:02		55-65	-10	4 HAIBY S 2pt FG fast break in the paint, driving layup made (9)
07:47	20 MARISA M 2pt FG in the paint, layup missed			
07:44				11 PORTER R defensive rebound (3)
07:40				4 HAIBY S 3pt FG , jump shot missed
07:37				40 MARKOWSKI A offensive rebound (6)
07:37		55-67	-12	40 MARKOWSKI A 2pt FG second chance in the paint, layup made (19)
07:37	12 THOMAS K foul shooting (3 - 1)			40 MARKOWSKI A foul drawn (4)
07:37	12 THOMAS K substitution out			
07:37	11 CAMDEN A substitution in			
07:37		55-68	-13	40 MARKOWSKI A free throw 1 - 1 made (20)
07:37				40 MARKOWSKI A substitution out
07:37				14 CRAVENS B substitution in
07:25	11 CAMDEN A 3pt FG , jump shot made (5)	58-68	-10	
07:25	20 MARISA M assist (5)			
07:02	5 KAPINUS L steal (3)			34 BOURNE I turnover bad pass (2)
07:00	5 KAPINUS L 2pt FG fast break from turnover in the paint, driving layup made (6)	60-68	-8	
07:00	5 KAPINUS L foul drawn (3)			14 CRAVENS B foul shooting (2 - 2)
07:00	4 BEVERLEY N substitution out			
07:00	23 HAGANS S substitution in			



Officials: Angie Enlund, Maggie Tieman, Bruce Morris

Game Time	PSU	Score	Diff	NEB
07:00				11 PORTER R substitution out
07:00				3 WEIDNER A substitution in
07:00	5 KAPINUS L free throw fast break 1 - 1 missed			
06:59	20 MARISA M offensive rebound (4)			
06:54	11 CAMDEN A 2pt FG second chance outside the paint, jump shot made (7)	62-68	-6	
06:40	5 KAPINUS L foul personal (4 - 2)			4 HAIBY S foul drawn (2)
06:40	5 KAPINUS L substitution out			
06:40	4 BEVERLEY N substitution in			
06:40				34 BOURNE I substitution out
06:40				40 MARKOWSKI A substitution in
06:30	4 BEVERLEY N steal (3)			14 CRAVENS B turnover bad pass (1)
06:27	23 HAGANS S 2pt FG fast break from turnover in the paint, layup made (4)	64-68	-4	
06:27	23 HAGANS S foul drawn (1)			4 HAIBY S foul shooting (3 - 3)
06:27	23 HAGANS S free throw fast break 1 - 1 made (5)	65-68	-3	
06:21	23 HAGANS S steal (1)			3 WEIDNER A turnover lost ball (3)
06:19	23 HAGANS S 2pt FG from turnover in the paint, layup missed			
06:18	20 MARISA M offensive rebound (5)			
06:17	20 MARISA M 2pt FG fast break from turnover second chance in the paint, layup made (18)	67-68	-1	
06:17				Timeout 30 Sec
06:17				Timeout media
06:05				3 WEIDNER A 2pt FG in the paint, layup missed
06:02	20 MARISA M defensive rebound (6)			
06:01	23 HAGANS S 2pt FG fast break in the paint, layup made (7)	69-68	1	
06:01	20 MARISA M assist (6)			
06:01	23 HAGANS S foul drawn (2)			1 SHELLEY J foul shooting (2 - 4)
06:01	23 HAGANS S free throw fast break 1 - 1 made (8)	70-68	2	
05:34	20 MARISA M steal (1)			3 WEIDNER A turnover bad pass (4)
05:30	20 MARISA M turnover travel (4)			
05:30				14 CRAVENS B substitution out
05:30				34 BOURNE I substitution in
05:05	4 BEVERLEY N foul shooting (1 - 3)			4 HAIBY S foul drawn (3)
05:05		70-69	1	4 HAIBY S free throw 1 - 2 made (10)
05:05		70-70	0	4 HAIBY S free throw 2 - 2 made (11)
04:45	4 BEVERLEY N 3pt FG , jump shot made (12)	73-70	3	
04:45	20 MARISA M assist (7)			
04:36	23 HAGANS S foul personal (1 - 4)			4 HAIBY S foul drawn (4)
04:25	20 MARISA M foul personal (3 - 5)			40 MARKOWSKI A foul drawn (5)
04:25				40 MARKOWSKI A free throw 1 - 2 missed
04:25				offensive dead ball rebound (3)
04:25		73-71	2	40 MARKOWSKI A free throw 2 - 2 made (21)
03:56	11 CAMDEN A 2pt FG in the paint, jump shot made (9)	75-71	4	
03:46	11 CAMDEN A foul personal (4 - 6)			1 SHELLEY J foul drawn (2)
03:46				1 SHELLEY J free throw 1 - 2 missed
03:46				offensive dead ball rebound (4)
03:46		75-72	3	1 SHELLEY J free throw 2 - 2 made (10)
03:30	25 JEKOT K foul drawn (1)			34 BOURNE I foul shooting (2 - 5)
03:29	25 JEKOT K free throw 1 - 3 made (10)	76-72	4	



Officials: Angie Enlund, Maggie Tieman, Bruce Morris

Game Time	PSU	Score	Diff	NEB
03:29	25 JEKOT K free throw 2 - 3 missed			
03:29	offensive dead ball rebound (1)			
03:29	25 JEKOT K free throw 3 - 3 missed			
03:27				3 WEIDNER A defensive rebound (8)
03:03		76-74	2	34 BOURNE I 2pt FG outside the paint, jump shot made (15)
03:03				4 HAIBY S assist (6)
02:47	4 BEVERLEY N 3pt FG , jump shot missed			
02:44				4 HAIBY S defensive rebound (5)
02:37				4 HAIBY S 2pt FG in the paint, layup blocked
02:37	11 CAMDEN A block (2)			
02:34	11 CAMDEN A defensive rebound (2)			
02:08	20 MARISA M 2pt FG outside the paint, jump shot made (20)	78-74	4	
01:51				1 SHELLEY J 3pt FG , jump shot missed
01:46	11 CAMDEN A defensive rebound (3)			
01:27	20 MARISA M 2pt FG in the paint, jump shot missed			
01:26				34 BOURNE I defensive rebound (7)
01:26				Timeout 30 Sec
00:58				4 HAIBY S 3pt FG , jump shot blocked
00:58	20 MARISA M block (1)			
00:51	25 JEKOT K defensive rebound (3)			
00:47	Timeout 30 Sec			
00:36	25 JEKOT K 3pt FG , jump shot made (13)	81-74	7	
00:36	20 MARISA M assist (8)			
00:28				3 WEIDNER A 3pt FG , jump shot missed
00:24	23 HAGANS S defensive rebound (4)			
00:20	Timeout 30 Sec			
00:20				40 MARKOWSKI A substitution out
00:20				14 CRAVENS B substitution in
00:11	20 MARISA M 2pt FG in the paint, driving layup made (22)	83-74	9	
00:11				Timeout 30 Sec
00:11				14 CRAVENS B substitution out
00:11				40 MARKOWSKI A substitution in
00:04				4 HAIBY S 3pt FG , jump shot missed
00:01				40 MARKOWSKI A offensive rebound (7)
00:01		83-76	7	40 MARKOWSKI A 2pt FG second chance in the paint, layup made (23)
END OF GAME				
PSU 83-76 NEB				



Officials: Angie Enlund, Maggie Tieman, Bruce Morris

Nebraska - 15

NO.	Name	Min	FG			Rebounds			Fouls		TP	AS	TO	ST	Blocks		+/-
			M-A	M-A	M-A	OR	DR	TOT	PF	FD					BS	BA	
34	Isabelle Bourne	F 07:59	1-2	0-0	0-0	0	1	1	1	0	2	0	1	0	0	0	-10
40	Alexis Markowski	C 08:54	3-3	0-0	2-3	2	0	2	0	2	8	0	0	0	0	0	-7
1	Jaz Shelley	G 10:00	0-1	0-1	1-2	0	1	1	1	1	1	0	0	0	0	0	-16
3	Allison Weidner	G 07:00	0-2	0-1	0-0	0	1	1	0	0	0	0	2	0	0	0	-15
4	Sam Haiby	G 10:00	1-5	0-3	2-2	0	1	1	1	3	4	2	0	0	0	2	-16
11	Ruby Porter	03:00	0-1	0-1	0-0	0	2	2	0	0	0	0	0	0	0	0	-1
14	Bella Cravens	03:07	0-0	0-0	0-0	0	0	0	2	0	0	0	1	0	0	0	-15
Team						0	0	0			0						
Totals			5-14	0-6	5-7	2	6	8	5	6	15	2	4	0	0	2	-16

Shooting By Period		
4 th FG%	5-14	35.7%
3PT%	0-6	0.0%
FT%	5-7	71.4%
GM FG%	5-14	35.7%
3PT%	0-6	0.0%
FT%	5-7	71.4%

Dead Ball Rebounds: 2, 0

Technical Fouls::NONE

Penn St. - 31

NO.	Name	Min	FG			Rebounds			Fouls		TP	AS	TO	ST	Blocks		+/-
			M-A	M-A	M-A	OR	DR	TOT	PF	FD					BS	BA	
11	Anna Camden	F 07:37	3-3	1-1	0-0	0	2	2	1	0	7	0	0	0	1	0	19
1	Ali Brigham	C 00:00	0-0	0-0	0-0	0	0	0	0	0	0	0	0	0	0	0	0
5	Leilani Kapinus	G 03:20	1-1	0-0	0-1	0	1	1	1	2	2	0	0	1	0	0	3
20	Makenna Marisa	G 10:00	3-7	0-2	0-0	2	1	3	1	0	6	4	1	1	1	0	16
25	Kelly Jekot	G 10:00	2-3	2-3	1-3	0	1	1	0	1	7	0	0	0	0	0	16
12	Kayla Thomas	02:23	0-1	0-0	0-0	0	0	0	1	0	0	0	0	0	0	0	-3
15	Maddie Burke	00:00	0-0	0-0	0-0	0	0	0	0	0	0	0	0	0	0	0	0
23	Shay Hagans	07:00	2-3	0-0	2-2	0	1	1	1	2	6	0	0	1	0	0	15
4	Niya Beverley	09:40	1-2	1-2	0-0	1	1	2	1	0	3	1	0	1	0	0	14
Team						1	0	1			0						
Totals			12-20	4-8	3-6	4	7	11	6	5	31	5	1	4	2	0	16

Shooting By Period		
4 th FG%	12-20	60.0%
3PT%	4-8	50.0%
FT%	3-6	50%
GM FG%	12-20	60.0%
3PT%	4-8	50.0%
FT%	3-6	50.0%

Dead Ball Rebounds: 1, 0

Technical Fouls::NONE

	NEB	PSU
Biggest lead	13 (4 th 7:37)	9 (4 th 0:11)
Best Scoring Run	5(4 th 7:37)	15(4 th 6:01)
Lead Changes	1	
Times Tied	1	
Time with Lead	03:44	05:41

Points from	NEB	PSU
Turnovers	2	7
Paint	8	12
Second Chance	5	7
Fast Breaks	2	10
Bench	0	9

Period by Period Scoring					
	1st	2nd	3rd	4th	TOT
NEB	20	17	24	15	76
PSU	14	14	24	31	83



Officials: Angie Enlund, Maggie Tieman, Bruce Morris

Nebraska - 39

NO.	Name	Min	FG			Rebounds			Fouls		TP	AS	TO	ST	Blocks		+/-
			M-A	M-A	M-A	OR	DR	TOT	PF	FD					BS	BA	
34	Isabelle Bourne	F 15:11	4-6	1-1	0-0	1	3	4	2	1	9	0	2	0	0	0	-14
40	Alexis Markowski	C 15:24	6-8	0-0	2-3	3	1	4	0	3	14	0	0	0	0	0	-1
1	Jaz Shelley	G 18:33	1-5	1-4	1-2	0	2	2	1	1	4	1	1	1	0	0	-15
3	Allison Weidner	G 15:32	0-4	0-1	0-0	2	2	4	1	1	0	3	2	1	0	2	-12
4	Sam Haiby	G 19:59	1-6	0-3	4-4	1	1	2	2	4	6	4	1	1	0	2	-14
5	Mi'Cole Cayton	01:28	0-0	0-0	0-0	0	0	0	0	0	0	0	1	0	0	0	-3
11	Ruby Porter	04:28	0-1	0-1	0-0	0	2	2	0	0	0	0	0	0	0	0	-4
14	Bella Cravens	09:25	3-4	0-0	0-0	0	1	1	2	0	6	1	1	0	0	1	-17
Team						0	0	0			0		0				
Totals			15-34	2-10	7-9	7	12	19	8	10	39	9	8	3	0	5	-16

Shooting By Period		
3 rd FG%	10-20	50.0%
3PT%	2-4	50.0%
FT%	2-2	100%
4 th FG%	5-14	35.7%
3PT%	0-6	0.0%
FT%	5-7	71.4%
GM FG%	15-34	44.1%
3PT%	2-10	20.0%
FT%	7-9	77.8%

Dead Ball Rebounds: 2, 0

Technical Fouls::NONE

Penn St. - 55

NO.	Name	Min	FG			Rebounds			Fouls		TP	AS	TO	ST	Blocks		+/-
			M-A	M-A	M-A	OR	DR	TOT	PF	FD					BS	BA	
11	Anna Camden	F 12:41	3-5	1-1	0-0	1	2	3	2	0	7	1	1	0	2	0	18
1	Ali Brigham	C 01:17	0-0	0-0	0-0	0	0	0	1	0	0	0	1	0	0	0	0
5	Leilani Kapinus	G 07:35	2-2	0-0	0-1	0	2	2	2	2	4	0	0	1	1	0	-1
20	Makenna Marisa	G 20:00	5-10	1-4	2-2	2	2	4	2	1	13	5	3	1	1	0	16
25	Kelly Jekot	G 13:42	3-4	3-4	1-3	0	2	2	0	1	10	0	0	0	0	0	14
15	Maddie Burke	10:00	1-4	1-3	0-0	0	1	1	0	0	3	0	0	0	0	0	0
4	Niya Beverley	17:37	4-7	2-4	2-3	1	1	2	1	2	12	2	0	3	0	0	18
12	Kayla Thomas	06:02	0-1	0-0	0-0	0	1	1	1	0	0	0	0	1	1	0	-2
23	Shay Hagans	11:06	2-5	0-1	2-2	2	1	3	1	2	6	2	0	1	0	0	17
Team						3	0	3			0		0				
Totals			20-38	8-17	7-11	9	12	21	10	8	55	10	5	7	5	0	16

Shooting By Period		
3 rd FG%	8-18	44.4%
3PT%	4-9	44.4%
FT%	4-5	80%
4 th FG%	12-20	60.0%
3PT%	4-8	50.0%
FT%	3-6	50%
GM FG%	20-38	52.6%
3PT%	8-17	47.1%
FT%	7-11	63.6%

Dead Ball Rebounds: 1, 0

Technical Fouls::NONE

	NEB	PSU
Biggest lead	13 (3 rd 8:18)	9 (4 th 0:11)
Best Scoring Run	5(3 rd 8:18)	15(4 th 6:01)
Lead Changes	1	
Times Tied	1	
Time with Lead	13:40	05:41

Points from	NEB	PSU
Turnovers	11	10
Paint	22	18
Second Chance	11	13
Fast Breaks	8	17
Bench	6	21

Period by Period Scoring					
	1st	2nd	3rd	4th	TOT
NEB	20	17	24	15	76
PSU	14	14	24	31	83

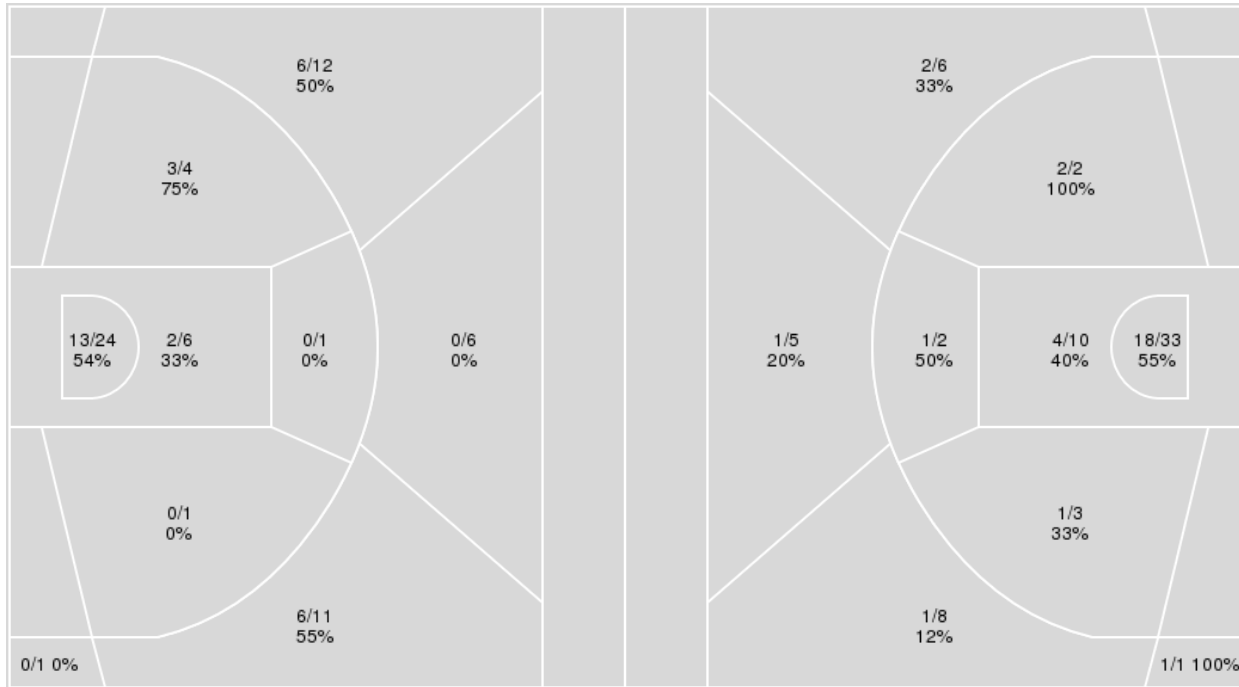


Officials: Angie Enlund, Maggie Tieman, Bruce Morris

{ Players => 0, 1, 3, 4, 5, 10, 11, 12, 15, 20, 22, 23, 25; } FG Types => { Players => All; } FG Types => All; Results => All;
 All; Results => All;

Penn St.

Nebraska



Penn St.	M/A	%
Field Goals	30/66	45
2 Points	18/36	50
3 Points	12/30	40
Free Throws	11/15	73

Nebraska	M/A	%
Field Goals	31/70	44
2 Points	26/50	52
3 Points	5/20	25
Free Throws	9/12	75



Nebraska at Penn St.

02/17/22 Bryce Jordan Center, University Park, Pa.
2021-22 Women's Basketball

Game Time: 7:00 PM
Game Duration: 1:46
Attendance: 1,801

Officials: Angie Enlund, Maggie Tieman, Bruce Morris

Nebraska

No	Name	Mins		Score		Points Diff		Points per Min		Assists		Rebounds		Steals		Turnovers	
		On	Off	On	Off	On	Off	On	Off	On	Off	On	Off	On	Off	On	Off
1	Jaz Shelley	37:13	02:47	70 - 78	6 - 5	-8	1	1.88	2.16	20	2	40	2	5	0	14	1
3	Allison Weidner	29:51	10:09	55 - 59	21 - 24	-4	-3	1.84	2.07	16	6	30	12	5	0	11	4
4	Sam Haiby	35:51	04:09	65 - 73	11 - 10	-8	1	1.81	2.65	18	4	36	6	4	1	12	3
5	Mi'Cole Cayton	06:56	33:04	15 - 17	61 - 66	-2	-5	2.16	1.84	5	17	7	35	1	4	5	10
11	Ruby Porter	08:49	31:11	21 - 22	55 - 61	-1	-6	2.38	1.76	6	16	12	30	0	5	3	12
14	Bella Cravens	19:11	20:49	38 - 49	38 - 34	-11	4	1.98	1.83	14	8	16	26	3	2	10	5
15	Kendall Moriarty	01:20	38:40	2 - 0	74 - 83	2	-9	1.50	1.91	1	21	1	41	0	5	0	15
34	Isabelle Bourne	29:52	10:08	49 - 62	27 - 21	-13	6	1.64	2.66	12	10	34	8	3	2	11	4
40	Alexis Markowski	30:57	09:03	65 - 55	11 - 28	10	-17	2.10	1.22	18	4	34	8	4	1	9	6

Penn St.

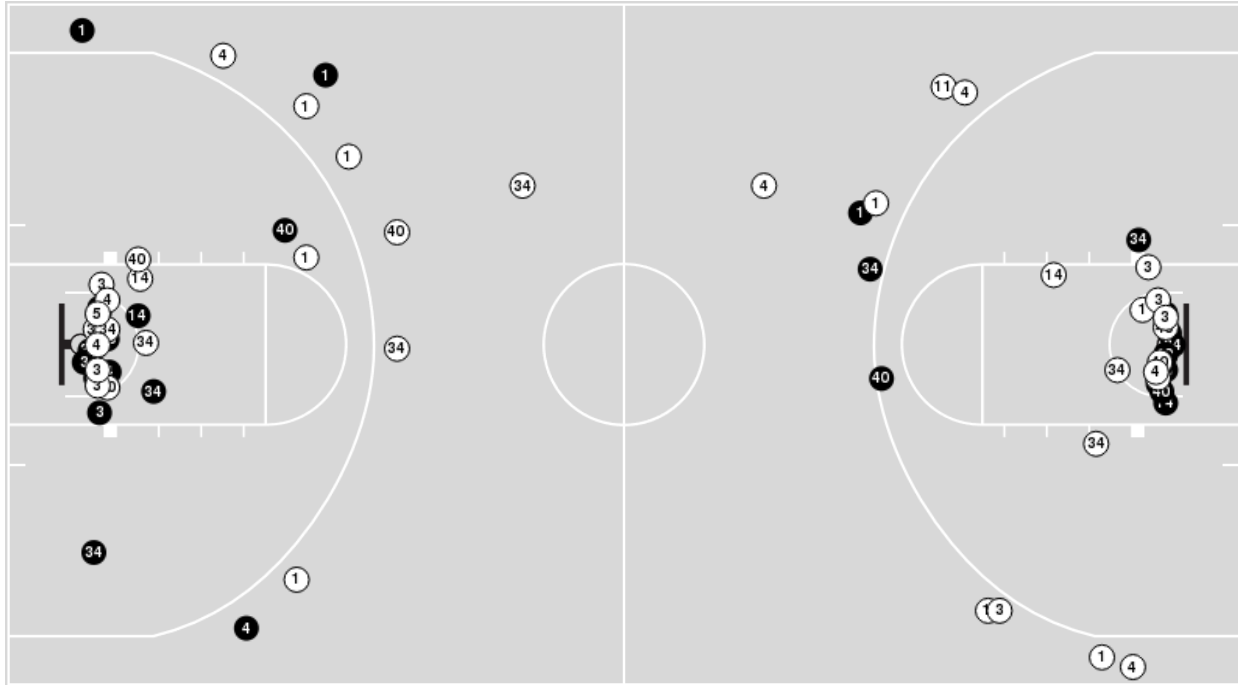
No	Name	Mins		Score		Points Diff		Points per Min		Assists		Rebounds		Steals		Turnovers	
		On	Off	On	Off	On	Off	On	Off	On	Off	On	Off	On	Off	On	Off
1	Ali Brigham	10:11	29:49	18 - 21	65 - 55	-3	10	1.77	2.18	5	11	7	28	3	10	6	7
4	Niya Beverley	29:52	10:08	64 - 56	19 - 20	8	-1	2.14	1.88	12	4	31	4	9	4	8	5
5	Leilani Kapinus	16:59	23:01	26 - 33	57 - 43	-7	14	1.53	2.48	6	10	14	21	4	9	6	7
11	Anna Camden	22:36	17:24	51 - 38	32 - 38	13	-6	2.26	1.84	8	8	18	17	8	5	7	6
12	Kayla Thomas	15:19	24:41	19 - 31	64 - 45	-12	19	1.24	2.59	4	12	16	19	4	9	4	9
15	Maddie Burke	22:26	17:34	47 - 47	36 - 29	0	7	2.10	2.05	10	6	19	16	7	6	8	5
20	Makenna Marisa	39:07	00:53	83 - 74	0 - 2	9	-2	2.12	0.00	16	0	35	0	13	0	13	0
23	Shay Hagans	19:14	20:46	52 - 33	31 - 43	19	-12	2.70	1.49	9	7	18	17	8	5	6	7
25	Kelly Jekot	24:16	15:44	55 - 47	28 - 29	8	-1	2.27	1.78	10	6	17	18	9	4	7	6



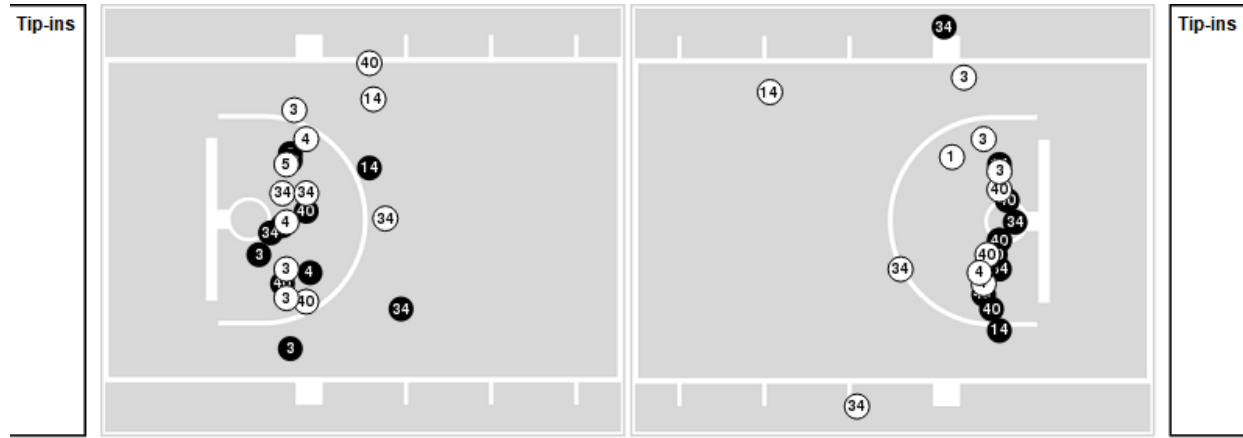
Officials: Angie Enlund, Maggie Tieman, Bruce Morris

Players => AllFG Types=>AllResults=>All
Nebraska

All Field Goals



Blow Up Chart



● Made ○ Missed N - Player Number

Nebraska	M/A	%
Field Goals	31/70	44
2 Points	26/50	52
3 Points	5/20	25
Free Throws	9/12	75

Nebraska	M/A	%
Points in the Paint	44 (22 / 43)	51
Fast Break Points	15 (9/10)	90
Second Chance Points	19 (10/15)	67
Effective FG%	48	

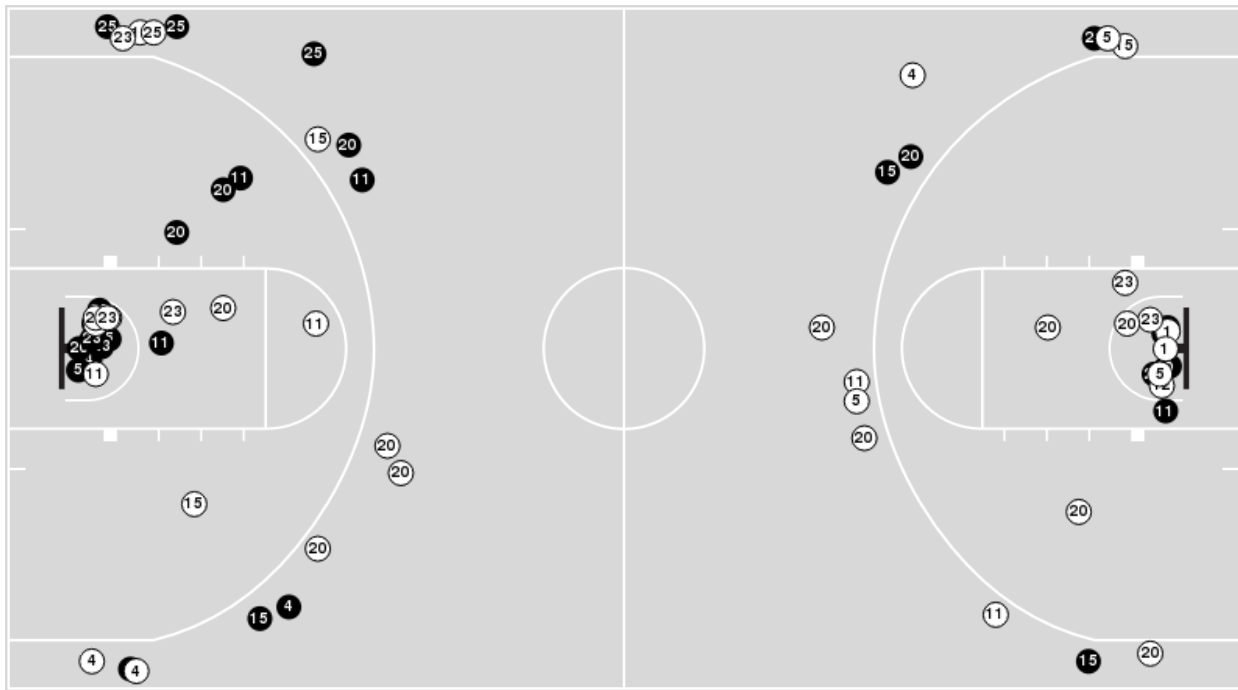


Officials: Angie Enlund, Maggie Tieman, Bruce Morris

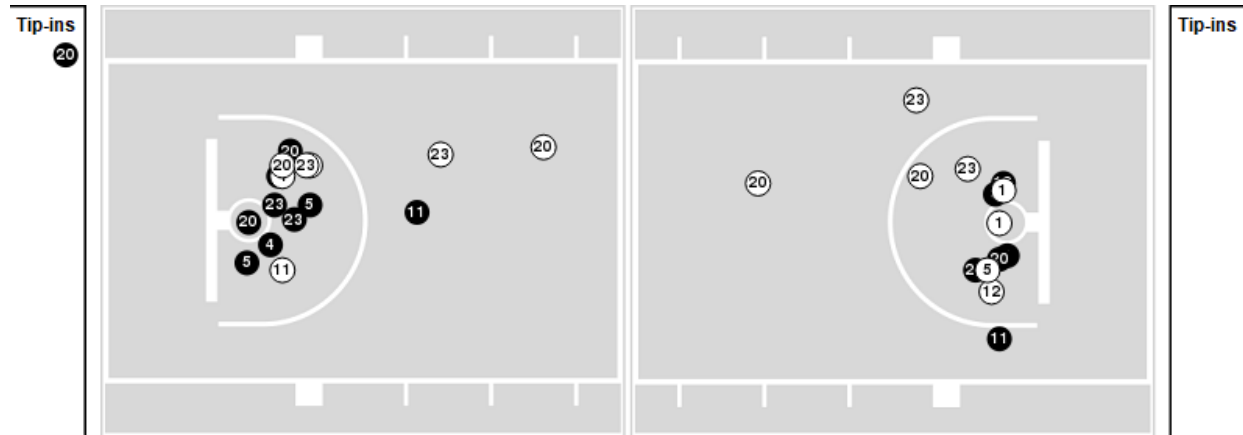
Players => 0, 1, 3, 4, 5, 10, 11, 12, 15, 20, 22, 23, 25FG Types=>AllResults=>All

Penn St.

All Field Goals



Blow Up Chart



● Made ○ Missed N - Player Number

Penn St.	M/A	%
Field Goals	30/66	45
2 Points	18/36	50
3 Points	12/30	40
Free Throws	11/15	73

Penn St.	M/A	%
Points in the Paint	30 (15 / 30)	50
Fast Break Points	21 (12/13)	92
Second Chance Points	15 (6/9)	67
Effective FG%	55	



Officials: Angie Enlund, Maggie Tieman, Bruce Morris

Nebraska

Lineup	Quarter On	Time On	Quarter Off	Time Off	Time on Court	Score	Score Diff	Reb	Stl	Tov	Ass	PPP
1- Shelley J/ 3- Weidner A/ 4- Haiby S/ 34- Bourne I/ 40- Markowski A/	1	10:00	1	06:13	03:47	8-5	3	5	1	1	2	1.3605
1- Shelley J/ 4- Haiby S/ 11- Porter R/ 14- Cravens B/ 34- Bourne I/	1	06:13	1	04:33	01:40	2-2	0	3	0	0	1	0.5000
1- Shelley J/ 5- Cayton M/ 11- Porter R/ 14- Cravens B/ 40- Markowski A/	1	04:33	1	01:52	02:41	8-5	3	4	0	0	3	2.0000
1- Shelley J/ 3- Weidner A/ 4- Haiby S/ 34- Bourne I/ 40- Markowski A/	1	01:52	2	10:00	01:52	2-2	0	3	0	1	1	0.6667
3- Weidner A/ 4- Haiby S/ 15- Moriarty K/ 34- Bourne I/ 40- Markowski A/	2	10:00	2	08:40	01:20	2-0	2	1	0	0	1	1.0000
1- Shelley J/ 3- Weidner A/ 4- Haiby S/ 34- Bourne I/ 40- Markowski A/	2	08:40	2	07:14	01:26	2-0	2	2	0	1	1	0.6667
1- Shelley J/ 4- Haiby S/ 5- Cayton M/ 14- Cravens B/ 34- Bourne I/	2	07:14	2	05:54	01:20	0-2	-2	0	0	1	0	0.0000
1- Shelley J/ 3- Weidner A/ 5- Cayton M/ 14- Cravens B/ 34- Bourne I/	2	05:54	2	04:27	01:27	3-3	0	2	1	2	1	0.8721
1- Shelley J/ 3- Weidner A/ 4- Haiby S/ 14- Cravens B/ 40- Markowski A/	2	04:27	2	01:49	02:38	8-3	5	1	0	0	3	1.6000
1- Shelley J/ 3- Weidner A/ 4- Haiby S/ 34- Bourne I/ 40- Markowski A/	2	01:49	3	06:18	05:31	11-13	-2	8	1	2	2	1.0000
4- Haiby S/ 5- Cayton M/ 11- Porter R/ 14- Cravens B/ 34- Bourne I/	3	06:18	3	04:51	01:27	4-5	-1	1	0	1	1	1.3333
1- Shelley J/ 5- Cayton M/ 11- Porter R/ 14- Cravens B/ 40- Markowski A/	3	04:51	3	04:50	00:01	0-2	-2	0	0	1	0	0.0000
1- Shelley J/ 3- Weidner A/ 4- Haiby S/ 14- Cravens B/ 40- Markowski A/	3	04:50	3	03:21	01:29	7-3	4	0	1	0	2	2.4306
1- Shelley J/ 3- Weidner A/ 4- Haiby S/ 14- Cravens B/ 34- Bourne I/	3	03:21	3	01:18	02:03	2-7	-5	2	0	1	1	0.5000
1- Shelley J/ 3- Weidner A/ 4- Haiby S/ 14- Cravens B/ 40- Markowski A/	3	01:18	4	10:00	01:18	2-0	2	2	1	0	1	1.0000
1- Shelley J/ 4- Haiby S/ 11- Porter R/ 14- Cravens B/ 40- Markowski A/	4	10:00	4	09:09	00:51	2-0	2	1	0	0	1	1.0000
1- Shelley J/ 4- Haiby S/ 11- Porter R/ 34- Bourne I/ 40- Markowski A/	4	09:09	4	07:37	01:32	5-3	2	3	0	0	0	1.4535
1- Shelley J/ 4- Haiby S/ 11- Porter R/ 14- Cravens B/ 34- Bourne I/	4	07:37	4	07:00	00:37	0-5	-5	0	0	1	0	0.0000
1- Shelley J/ 3- Weidner A/ 4- Haiby S/ 14- Cravens B/ 34- Bourne I/	4	07:00	4	06:40	00:20	0-2	-2	0	0	0	0	0.0000
1- Shelley J/ 3- Weidner A/ 4- Haiby S/ 14- Cravens B/ 40- Markowski A/	4	06:40	4	05:30	01:10	0-8	-8	0	0	3	0	0.0000
1- Shelley J/ 3- Weidner A/ 4- Haiby S/ 34- Bourne I/ 40- Markowski A/	4	05:30	4	00:20	05:10	6-11	-5	3	0	0	1	0.7853
1- Shelley J/ 3- Weidner A/ 4- Haiby S/ 14- Cravens B/ 34- Bourne I/	4	00:20	4	00:11	00:09	0-2	-2	0	0	0	0	0.0000
1- Shelley J/ 3- Weidner A/ 4- Haiby S/ 34- Bourne I/ 40- Markowski A/	4	00:11	4	00:00	00:11	2-0	2	1	0	0	0	2.0000



Officials: Angie Enlund, Maggie Tieman, Bruce Morris

Penn St.

Lineup	Quarter On	Time On	Quarter Off	Time Off	Time on Court	Score	Score Diff	Reb	Stl	Tov	Ass	PPP
1- Brigham A/ 5- Kapinus L/ 11- Camden A/ 20- Marisa M/ 25- Jekot K/	1	10:00	1	07:24	02:36	5-5	0	0	0	1	1	1.2500
5- Kapinus L/ 11- Camden A/ 12- Thomas K/ 20- Marisa M/ 25- Jekot K/	1	07:24	1	06:13	01:11	0-3	-3	1	1	1	0	0.0000
4- Beverley N/ 11- Camden A/ 12- Thomas K/ 20- Marisa M/ 23- Hagans S/	1	06:13	1	05:12	01:01	0-2	-2	1	0	0	0	0.0000
4- Beverley N/ 12- Thomas K/ 15- Burke M/ 20- Marisa M/ 23- Hagans S/	1	05:12	1	03:29	01:43	5-3	2	2	0	0	1	1.2887
4- Beverley N/ 5- Kapinus L/ 12- Thomas K/ 15- Burke M/ 20- Marisa M/	1	03:29	1	01:52	01:37	2-5	-3	2	0	0	0	0.6667
1- Brigham A/ 4- Beverley N/ 5- Kapinus L/ 15- Burke M/ 20- Marisa M/	1	01:52	2	10:00	01:52	2-2	0	1	1	0	1	1.0000
1- Brigham A/ 4- Beverley N/ 5- Kapinus L/ 11- Camden A/ 25- Jekot K/	2	10:00	2	09:07	00:53	0-2	-2	0	0	0	0	0.0000
1- Brigham A/ 4- Beverley N/ 5- Kapinus L/ 11- Camden A/ 20- Marisa M/	2	09:07	2	08:40	00:27	0-0	0	1	0	1	0	0.0000
1- Brigham A/ 4- Beverley N/ 11- Camden A/ 20- Marisa M/ 23- Hagans S/	2	08:40	2	07:14	01:26	0-2	-2	2	1	1	0	0.0000
11- Camden A/ 12- Thomas K/ 15- Burke M/ 20- Marisa M/ 23- Hagans S/	2	07:14	2	06:42	00:32	0-0	0	1	0	0	0	0.0000
5- Kapinus L/ 12- Thomas K/ 15- Burke M/ 20- Marisa M/ 23- Hagans S/	2	06:42	2	05:54	00:48	2-0	2	0	0	1	0	1.0638
12- Thomas K/ 15- Burke M/ 20- Marisa M/ 23- Hagans S/ 25- Jekot K/	2	05:54	2	05:15	00:39	0-2	-2	0	1	0	0	0.0000
1- Brigham A/ 15- Burke M/ 20- Marisa M/ 23- Hagans S/ 25- Jekot K/	2	05:15	2	04:27	00:48	3-1	2	0	1	1	1	1.5000
1- Brigham A/ 4- Beverley N/ 15- Burke M/ 20- Marisa M/ 25- Jekot K/	2	04:27	2	03:35	00:52	3-4	-1	0	0	1	1	1.5000
4- Beverley N/ 12- Thomas K/ 15- Burke M/ 20- Marisa M/ 25- Jekot K/	2	03:35	2	01:49	01:46	0-4	-4	1	0	1	0	0.0000
4- Beverley N/ 11- Camden A/ 15- Burke M/ 20- Marisa M/ 25- Jekot K/	2	01:49	2	01:11	00:38	2-0	2	1	0	0	0	1.0000
11- Camden A/ 15- Burke M/ 20- Marisa M/ 23- Hagans S/ 25- Jekot K/	2	01:11	3	10:00	01:11	4-2	2	1	1	0	1	2.0000
5- Kapinus L/ 11- Camden A/ 15- Burke M/ 20- Marisa M/ 25- Jekot K/	3	10:00	3	07:57	02:03	3-7	-4	0	0	1	1	1.0000
4- Beverley N/ 11- Camden A/ 15- Burke M/ 20- Marisa M/ 25- Jekot K/	3	07:57	3	06:18	01:39	4-2	2	2	1	0	0	1.0000
4- Beverley N/ 12- Thomas K/ 15- Burke M/ 20- Marisa M/ 23- Hagans S/	3	06:18	3	04:51	01:27	5-4	1	0	1	0	1	2.1552
1- Brigham A/ 4- Beverley N/ 15- Burke M/ 20- Marisa M/ 23- Hagans S/	3	04:51	3	03:34	01:17	5-5	0	3	0	1	1	1.7361
4- Beverley N/ 11- Camden A/ 15- Burke M/ 20- Marisa M/ 23- Hagans S/	3	03:34	3	02:12	01:22	5-4	1	1	0	1	1	1.6667
4- Beverley N/ 5- Kapinus L/ 12- Thomas K/ 15- Burke M/ 20- Marisa M/	3	02:12	4	10:00	02:12	2-2	0	4	1	1	1	0.5000
4- Beverley N/ 5- Kapinus L/ 12- Thomas K/ 20- Marisa M/ 25- Jekot K/	4	10:00	4	07:37	02:23	3-6	-3	4	0	0	1	0.7500
4- Beverley N/ 5- Kapinus L/ 11- Camden A/ 20- Marisa M/ 25- Jekot K/	4	07:37	4	07:00	00:37	5-1	4	0	1	0	1	2.5000
5- Kapinus L/ 11- Camden A/ 20- Marisa M/ 23- Hagans S/ 25- Jekot K/	4	07:00	4	06:40	00:20	2-0	2	1	0	0	0	4.5455
4- Beverley N/ 11- Camden A/ 20- Marisa M/ 23- Hagans S/ 25- Jekot K/	4	06:40	4	00:00	06:40	21-8	13	6	3	1	3	1.5909



Officials: Angie Enlund, Maggie Tieman, Bruce Morris

Nebraska

Lineup	Time	Score	Score Diff	Pts/Min	Reb	Stl	Tov	Ass	PPP
1- Shelley J/ 3- Weidner A/ 4- Haiby S/ 34- Bourne I/ 40- Markowski A/	17:57	31-31	0	1.7270	22	2	5	7	0.9835
1- Shelley J/ 3- Weidner A/ 4- Haiby S/ 14- Cravens B/ 40- Markowski A/	06:35	17-14	3	2.5823	3	2	3	6	1.2248
1- Shelley J/ 5- Cayton M/ 11- Porter R/ 14- Cravens B/ 40- Markowski A/	02:42	8-7	1	2.9630	4	0	1	3	1.6000
1- Shelley J/ 3- Weidner A/ 4- Haiby S/ 14- Cravens B/ 34- Bourne I/	02:32	2-11	-9	0.7895	2	0	1	1	0.5000
1- Shelley J/ 4- Haiby S/ 11- Porter R/ 14- Cravens B/ 34- Bourne I/	02:17	2-7	-5	0.8759	3	0	1	1	0.4000
1- Shelley J/ 4- Haiby S/ 11- Porter R/ 34- Bourne I/ 40- Markowski A/	01:32	5-3	2	3.2609	3	0	0	0	1.4535
1- Shelley J/ 3- Weidner A/ 5- Cayton M/ 14- Cravens B/ 34- Bourne I/	01:27	3-3	0	2.0690	2	1	2	1	0.8721
4- Haiby S/ 5- Cayton M/ 11- Porter R/ 14- Cravens B/ 34- Bourne I/	01:27	4-5	-1	2.7586	1	0	1	1	1.3333
3- Weidner A/ 4- Haiby S/ 15- Moriarty K/ 34- Bourne I/ 40- Markowski A/	01:20	2-0	2	1.5000	1	0	0	1	1.0000
1- Shelley J/ 4- Haiby S/ 5- Cayton M/ 14- Cravens B/ 34- Bourne I/	01:20	0-2	-2	0.0000	0	0	1	0	0.0000
1- Shelley J/ 4- Haiby S/ 11- Porter R/ 14- Cravens B/ 40- Markowski A/	00:51	2-0	2	2.3529	1	0	0	1	1.0000



Officials: Angie Enlund, Maggie Tieman, Bruce Morris

Penn St.

Lineup	Time	Score	Score Diff	Pts/Min	Reb	Stl	Tov	Ass	PPP
4- Beverley N/ 11- Camden A/ 20- Marisa M/ 23- Hagans S/ 25- Jekot K/	06:40	21-8	13	3.1500	6	3	1	3	1.5909
4- Beverley N/ 5- Kapinus L/ 12- Thomas K/ 15- Burke M/ 20- Marisa M/	03:49	4-7	-3	1.0480	6	1	1	1	0.5714
4- Beverley N/ 12- Thomas K/ 15- Burke M/ 20- Marisa M/ 23- Hagans S/	03:10	10-7	3	3.1579	2	1	0	2	1.6129
1- Brigham A/ 5- Kapinus L/ 11- Camden A/ 20- Marisa M/ 25- Jekot K/	02:36	5-5	0	1.9231	0	0	1	1	1.2500
4- Beverley N/ 5- Kapinus L/ 12- Thomas K/ 20- Marisa M/ 25- Jekot K/	02:23	3-6	-3	1.2587	4	0	0	1	0.7500
4- Beverley N/ 11- Camden A/ 15- Burke M/ 20- Marisa M/ 25- Jekot K/	02:17	6-2	4	2.6277	3	1	0	0	1.0000
5- Kapinus L/ 11- Camden A/ 15- Burke M/ 20- Marisa M/ 25- Jekot K/	02:03	3-7	-4	1.4634	0	0	1	1	1.0000
1- Brigham A/ 4- Beverley N/ 5- Kapinus L/ 15- Burke M/ 20- Marisa M/	01:52	2-2	0	1.0714	1	1	0	1	1.0000
4- Beverley N/ 12- Thomas K/ 15- Burke M/ 20- Marisa M/ 25- Jekot K/	01:46	0-4	-4	0.0000	1	0	1	0	0.0000
1- Brigham A/ 4- Beverley N/ 11- Camden A/ 20- Marisa M/ 23- Hagans S/	01:26	0-2	-2	0.0000	2	1	1	0	0.0000
4- Beverley N/ 11- Camden A/ 15- Burke M/ 20- Marisa M/ 23- Hagans S/	01:22	5-4	1	3.6585	1	0	1	1	1.6667
1- Brigham A/ 4- Beverley N/ 15- Burke M/ 20- Marisa M/ 23- Hagans S/	01:17	5-5	0	3.8961	3	0	1	1	1.7361
5- Kapinus L/ 11- Camden A/ 12- Thomas K/ 20- Marisa M/ 25- Jekot K/	01:11	0-3	-3	0.0000	1	1	1	0	0.0000
11- Camden A/ 15- Burke M/ 20- Marisa M/ 23- Hagans S/ 25- Jekot K/	01:11	4-2	2	3.3803	1	1	0	1	2.0000
4- Beverley N/ 11- Camden A/ 12- Thomas K/ 20- Marisa M/ 23- Hagans S/	01:01	0-2	-2	0.0000	1	0	0	0	0.0000
1- Brigham A/ 4- Beverley N/ 5- Kapinus L/ 11- Camden A/ 25- Jekot K/	00:53	0-2	-2	0.0000	0	0	0	0	0.0000
1- Brigham A/ 4- Beverley N/ 15- Burke M/ 20- Marisa M/ 25- Jekot K/	00:52	3-4	-1	3.4615	0	0	1	1	1.5000
5- Kapinus L/ 12- Thomas K/ 15- Burke M/ 20- Marisa M/ 23- Hagans S/	00:48	2-0	2	2.5000	0	0	1	0	1.0638
1- Brigham A/ 15- Burke M/ 20- Marisa M/ 23- Hagans S/ 25- Jekot K/	00:48	3-1	2	3.7500	0	1	1	1	1.5000
12- Thomas K/ 15- Burke M/ 20- Marisa M/ 23- Hagans S/ 25- Jekot K/	00:39	0-2	-2	0.0000	0	1	0	0	0.0000
4- Beverley N/ 5- Kapinus L/ 11- Camden A/ 20- Marisa M/ 25- Jekot K/	00:37	5-1	4	8.1081	0	1	0	1	2.5000
11- Camden A/ 12- Thomas K/ 15- Burke M/ 20- Marisa M/ 23- Hagans S/	00:32	0-0	0	0.0000	1	0	0	0	0.0000
1- Brigham A/ 4- Beverley N/ 5- Kapinus L/ 11- Camden A/ 20- Marisa M/	00:27	0-0	0	0.0000	1	0	1	0	0.0000
5- Kapinus L/ 11- Camden A/ 20- Marisa M/ 23- Hagans S/ 25- Jekot K/	00:20	2-0	2	6.0000	1	0	0	0	4.5455