



2019-20 SCHEDULE/RESULTS

| | | | |
|--|--|---|---------|
| O28 | COAST GUARD (Exh.) | W | 104-64 |
| N5 | HARTFORD | L | 59-74 |
| N9 | at St. John's [FS2] | L | 57-87 |
| N14 | at Arizona St. ¹ [PAC12] | L | 49-90 |
| N16 | at UMass ¹ [ESPN+] | L | 43-89 |
| N19 | NEW HAMPSHIRE | L | 63-77 |
| N23 | vs. Vermont ¹ [ESPN3] | L | 49-81 |
| N24 | vs. Columbia ¹ [ESPN3] | L | 52-82 |
| D1 | at UMass Lowell [ESPN3] | L | 71-73 |
| D7 | MAINE | L | 64-66 |
| D15 | at Boston College [ACCNX] | L | 55-74 |
| D18 | at Dartmouth [ESPN+] | L | 60-76 |
| D20 | at #23 Penn State [BTN] | | 6:00 PM |
| D29 | CONNECTICUT COLLEGE | | 1:00 PM |
| J2 | ROBERT MORRIS* | | 7:30 PM |
| J4 | SAINT FRANCIS U* | | 3:30 PM |
| J9 | at LIU* | | 7:00 PM |
| J11 | MERRIMACK* | | 3:30 PM |
| J15 | at Sacred Heart* | | 7:00 PM |
| J18 | at Mount St. Mary's* | | 4:00 PM |
| J20 | at Fairleigh Dickinson* | | 7:00 PM |
| J23 | SACRED HEART* | | 7:00 PM |
| J25 | WAGNER* | | 3:30 PM |
| J30 | at Saint Francis U* | | 7:00 PM |
| F1 | at Robert Morris* | | 1:00 PM |
| F8 | at Bryant* [ESPN+] | | 4:00 PM |
| F13 | LIU* | | 7:00 PM |
| F15 | BRYANT* | | 3:30 PM |
| F18 | FAIRLEIGH DICKINSON* [ESPN3] | | 7:00 PM |
| F21 | at Wagner* | | 7:00 PM |
| F27 | at Merrimack* | | 7:00 PM |
| F29 | ST. FRANCIS BROOKLYN* | | 1:00 PM |
| NORTHEAST CONFERENCE TOURNAMENT | | | |
| M4 | Quarterfinals ² | | |
| M7 | Semifinals ² [ESPN3] | | |
| M10 | Championship ² [ESPN/ESPN2] | | |

All Times Eastern

Home Games in CAPS

* - Northeast Conference Game

1 - Air Force Reserve Tip-Off Tour, presented by Citi
(Mohegan Sun Arena | Uncasville, CT)

2 - at the site of higher seed

All home games and road NEC games are available live on NECFrontRow.com. Bruce Biel (play-by-play) and Marc Robbins (analyst) will call the action for CCSU Basketball this season.



| Projected Starters | | | | | |
|--------------------|----|---------------------------------------|------|-------|------------------------------------|
| Pos No. | | Pts. | Reb. | Notes | |
| F/G | 15 | Jamir Coleman (Sr., 6-7, 205) | 9.7 | 4.2 | SH: 27p (12-16 fg) at UMass Lowell |
| F | 20 | Stephane Ayangma (Jr., 6-6, 215) | 5.7 | 5.0 | Matched CH 8r at Boston College |
| G/F | 0 | Greg Outlaw (Fr., 6-4, 175) | 10.7 | 4.3 | CH 18p, 7r, 3stl at Boston College |
| G | 10 | Zach Newkirk (So., 6-1, 185) | 3.3 | 1.8 | Has started all 11 games |
| G/F | 13 | Jamir Reed (Fr., 6-4, 200) | 8.5 | 3.7 | CH 15p (6-12 fg) at Dartmouth |
| Off The Bench | | | | | |
| G | 1 | Trey Tennyson (Fr., 6-4, 170) | 4.6 | 1.0 | CH 12p (4-10 fg) at Dartmouth |
| G | 2 | Myles Baker (Fr., 6-2, 170) | 9.0 | 2.3 | 15p vs. Maine (13p in 2nd half) |
| G | 3 | Ian Krishnan (So., 6-2, 180) | | | 2018-19 NEC All-Rookie Team |
| F | 5 | Xavier Wilson (Fr., 6-7, 210) | 4.1 | 3.4 | Tied CH 3stl at Boston College |
| G | 11 | Thai Segwai (So., 6-2, 195) | 0.9 | 0.9 | 3r, 2a at Dartmouth |
| G | 22 | Javen Udofia (Fr., 6-2, 170) | 2.3 | 0.5 | 2r vs. Columbia; 5p vs. Vermont |
| F | 23 | Karrington Wallace (So., 6-7, 180) | 4.8 | 4.6 | Has missed past 4 games |
| F/C | 24 | Ola Olamuyiwa (Fr., 6-9, 220) | 0.6 | 0.6 | 1p, 1r at Boston College |
| F | 30 | Donyell Marshall, Jr. (Sr., 6-6, 185) | 0.0 | 0.4 | 1 blk, 1 reb vs. Columbia |
| G | 40 | Tyler Rowe (Sr., 5-9, 160) | | | 20.3 ppg at WestConn ('17-18) |

SERIES HISTORY: PENN STATE

CCSU Record: H: 0-0 • A: 0-2 • N: 0-0

| | |
|----------------------------------|--------------------------|
| Series Record: | Penn State, 2-0 |
| First Meeting:..... | Dec. 10, 1994 • L, 62-85 |
| Last Meeting: | Jan. 22, 2010 • L, 61-77 |
| Last CCSU Win: | |
| Current CCSU Streak: | L2 |
| Last Mount St. Mary's Win: | Jan. 22, 2010 • 61-77 |

OPENING NOTES

- Central Connecticut travels to #23 Penn State on Friday for its final road game of the non-conference slate. CCSU is facing a ranked foe for the first time since playing #5 Ohio State on Dec. 7, 2013.
- Central hosts Connecticut College on Dec. 29 to wrap up non-conference play.

WITH A CCSU WIN TODAY...

- CCSU would get its first win of the season. A win would mark the second straight year CCSU got its first victory of the season on the road.
- Central is currently one of four teams without a win over a Division I opponent (Florida A&M, Houston Baptist, Mississippi Valley St.).

CENTRAL NEWCOMERS LEAD THE WAY

- With a roster featuring 10 players in their first year with the program, the Blue Devils have relied on one of the country's youngest rosters this season.
- Six of seven players playing 20+ minutes are in their first year at CCSU and four of CCSU's top-5 scorers are all newcomers. The 10 newcomers have contributed 79.6% (495-of-622) of the Blue Devils' scoring through eight games.
- In the final 4:45 vs. Maine, CCSU used a lineup of 5 newcomers, outscoring Maine 12-5 the rest of the way to comeback and nearly erase a 16-point deficit.

CCSU ROSTER HAS A FRESH LOOK

- CCSU is one of 14 schools nationally with 7 or more freshmen on the roster and per KenPom, the Blue Devils are the 4th-youngest in terms of D1 experience.
- Central Connecticut has 11 underclassmen and a total of 10 players in their first year with the program and has started at least 3 first-year players in every game, including three freshmen against Hartford.
- The Blue Devils also feature two junior college transfers (Ayangma, Newkirk) and a senior transfer (Rowe) who are in their first season of eligibility with the program.



TENNYSON TURNING IT AROUND

- Since going scoreless in three straight games, Trey Tennyson has posted career-bests in consecutive games.
- Tennyson has shot 39% from the field and is averaging 11.0 ppg off the bench in the past two games.

BAKER COOKS IN 2ND HALF AGAINST MAINE

- Myles Baker finished with 15 points vs. Maine, scoring 13 points after halftime, nearly bringing CCSU from 16 down.
- He poured in 11 points in the final 4:59 and got Central within 65-64 with :12 to play before coming up short.

OUTLAW NAMED NEC ROOKIE OF THE WEEK

- Greg Outlaw was named Northeast Conference Rookie of the Week on Dec. 2 following his play at UMass Lowell.
- He had a career-high 16 points on 7-12 shooting. He scored 5 straight to spark a 9-3 run and give CCSU a late 71-70 lead.
- He is 2nd among NEC freshman in scoring and 1st in steals.

COLEMAN HITTING HIS STRIDE

- Jamir Coleman scored 10+ in 4 straight games (Nov. 23-Dec. 7) and shot .600 (24-of-40) from the field in that span. He had a season-high 27 points (12-16 fg) at UMass Lowell.
- He is CCSU's leading returnee with 12.3 points, 6.1 rebounds per game last season. He had 4 20-point games and 5 double-doubles.

BLUE DEVILS TAKING CARE OF THE BALL

- Since committing a season-high 24 turnovers at UMass, Central gave it away a season-low in three straight games.
- CCSU has a positive turnover margin in four of the last five games.

REED NAMED ALL-TOURNAMENT

- Jamir Reed was named to the Hall of Fame Tip-Off All-Tournament Team for the Springfield Bracket.
- In two games at Mohegan Sun, he averaged 12.5 ppg and 4.0 rpg. He had a career-high 14 points vs. Columbia.

AN INTERNATIONAL ROSTER

- The Blue Devils' program has student-athletes from 4 countries (including the United States) in 2019-20.
- CCSU has 12 student-athletes representing 9 states and England (Thai Segwai), Cameroon (Stephane Ayungma) and Nigeria (Ola Olamuyiwa).
- Central is among a group of 46 schools with student-athletes representing 3+ foreign countries.

MARSHALL AMONG FORMER NBA PLAYERS COACHING

- CCSU head coach Donyell Marshall enjoyed a 15-year career in the NBA playing with eight teams.
- Marshall, who was the 4th overall pick in the 1994 NBA Draft, is one of six former Top-10 picks currently coaching.
- Marshall was UConn's first consensus First-Team All-American as a junior in 1994. He is one of eight former consensus First-Team All-Americans now coaching Division I.

BLUE DEVILS VS. POSTSEASON PARTICIPANTS

- In 2019-20, CCSU will face seven teams that played in the postseason last year. Fairleigh Dickinson, St. John's, Arizona St., Vermont (NCAA); Saint Francis U (NIT); Robert Morris and St. Francis Brooklyn (CIT) all made postseason trips last year.
- CCSU is 0-3 against postseason participants from last year. In 2018-19, the Blue Devils went 1-10 against eight teams that played in the postseason the previous year.

WORKING OVERTIME

- The Blue Devils are 5-4 under Donyell Marshall in overtime games. CCSU was 2-0 in OT during the 2018-19 season.
- CCSU defeated Fairleigh Dickinson in 2ot (1/10/19) - the 7th multi-overtime in program history since going O1 in 1986-87.

CENTRAL AND THE THREE-POINT SHOT

- CCSU has made a three-pointer in 140 straight games dating back to Feb. 5, 2015 at St. Francis Brooklyn.
- As a team, the Blue Devils rank 5th in the NEC (.322) in three-point accuracy. CCSU hit a season-high 9 against UNH.

CENTRAL COMES UP JUST SHORT

- Central's back-to-back two-point losses at UMass Lowell and vs. Maine was the first time since Jan. 21 (at Sacred Heart, 61-62) and Jan. 26, 2012 (Monmouth, 56-58 ot) that CCSU had consecutive losses by two-or-fewer points.

KRISHNAN WAS AMONG NEC'S TOP ROOKIES

- Sophomore Ian Krishnan earned Northeast Conference All-Rookie Team after ranking 2nd among NEC freshmen in scoring. He is ineligible (academics) for the first semester.
- Krishnan was 6th in the league with 2.3 three-pointers per game and scored 12.0 ppg. He had 19 double-digit games.
- He scored a career-high 28 at Georgetown and made a career-high seven three-pointers at Fairleigh Dickinson.

SENATOR OLAMUYIWA

- Freshman Ola Olamuyiwa was sworn in as a student body senator on the CCSU SGA Student Senate on Oct. 9.
- Olamuyiwa was also student government president at The Patrick School prior to coming to Central.
- Olamuyiwa and his teammates had the opportunity to meet with U.S. Senator Chris Murphy (D-CT) when he visited the CCSU campus earlier in the fall.
- The SGA Student Senate meets weekly on Wednesdays and is seen as a "voice" for the undergraduate student body.

CCSU POSTS MARKS AMONG PROGRAM'S BEST IN 2018-19

- In 2018-19, CCSU set a single-season Northeast Conference record making 78.2% of free throws (previously 77.2% - Wagner, 2010-11). The mark ranked 5th in the NCAA.
- Central tied the 4th-best single-game mark in program history by hitting 13 three-pointers at Fairleigh Dickinson on Jan. 10, 2019. Central would end the season with 201 three-pointers post the 6th-best single-season total.
- CCSU blocked 110 shots, the 9th-most in program-history and most since 2013-14 (146).
- Individually, Ian Krishnan made 71 three-pointers - the 9th-most in a season - including 7 in a win at Fairleigh Dickinson, which is the 10th most in a game in CCSU history.

BLUE DEVILS WELCOME ALEX INYATKIN

- CCSU teamed with Team IMPACT to welcome 12-year-old Alex Inyatkin into the men's basketball program.
- The Blue Devils held a signing ceremony on April 24 in the Athletic Department that included Alex and his family.
- Inyatkin will be with the team for the season and attend games, practices and other team functions.
- Team IMPACT connects children facing serious and chronic illnesses with local college athletic teams, forming life-long bonds and life-changing outcomes.



84 YEARS OF CCSU BASKETBALL

- This is the 84th season of men's basketball at Central Connecticut. CCSU is 1,112-964 all-time (.536).
- Bill Detrick is the school's all-time winningest coach, having won 468 games in 29 seasons as head coach.
- CCSU's first year of competition was in 1934-35 under coach Harrison J. Kaiser, the athletic building's namesake.

"ALL IN, BALL OUT": YEAR 2

- The NEC's "All In, Ball Out" branding campaign was launched in 2018-19 and captures the essence and attitude of the NEC's basketball-centric nature, and conveys a host of traits common to student-athletes, teams and the NEC.
- A series of hoops theme nights were announced to take place during league play and enhance the fan experience through coordinated marketing efforts within the conference.

CCSU AND THE NORTHEAST CONFERENCE - 22ND SEASON

- 2018-19 marks the 22nd season that Central has competed in the Northeast Conference. CCSU has an all-time record of 203-195 (.510) in the NEC regular season, going 116-84 (.580) at home and 87-112 (.437) on the road. Year-by-year records:

| | | | |
|----------------------|----------------------|----------------------|----------------------|
| 1997-98: 3-13 | 1998-99: 11-9 | 1999-00: 15-3 | 2000-01: 11-9 |
| 2001-02: 19-1 | 2002-03: 12-6 | 2003-04: 9-9 | 2004-05: 8-10 |
| 2005-06: 13-5 | 2006-07: 16-2 | 2007-08: 10-8 | 2008-09: 8-10 |
| 2009-10: 9-9 | 2010-11: 11-7 | 2011-12: 10-8 | 2012-13: 9-9 |
| 2013-14: 7-9 | 2014-15: 3-15 | 2015-16: 3-15 | 2016-17: 4-14 |
| 2017-18: 7-11 | 2018-19: 5-13 | 2019-20: | |

- CCSU is 15-14 (.517) in NEC postseason games and have won three league titles (2000, 2002, 2007).

NORTHEAST CONFERENCE PRESEASON COACHES POLL

- Central was picked 10th in the preseason coaches poll at NEC Social Media Day in Brooklyn, NY, at Barclay's Center on Oct. 23. Complete poll (first place votes):

1. LIU (5)
2. Sacred Heart (3)
3. Saint Francis U (1)
4. Fairleigh Dickinson (2)
5. Robert Morris
6. Bryant
7. Mount St. Mary's
8. St. Francis Brooklyn
9. Wagner
10. **Central Connecticut**
11. Merrimack

- The Preseason All-NEC Team included Saint Francis U senior Keith Braxton, the 2018-19 NEC Player of the Year, was a unanimous selection, along with Raiquan Clark (Sr., LIU) and Jahlil Jenkins (Jr., Fairleigh Dickinson). E.J. Anosike (Jr., Sacred Heart) and Adam Grant (Sr., Bryant) rounded out the preseason selections.

FOLLOW THE BLUE DEVILS AND NEC BASKETBALL

- CCSU's official athletics website, www.ccsubludevils.com, has the latest news, results and other information.
- Follow "CCSUBluDevils" on Facebook, Twitter, Instagram and Snapchat and @KizerBlueDevil for in-game Twitter updates on. The men's basketball team can be followed on Twitter (@CCSU_MBB) and Instagram (ccsu_mbb).
- The CCSU Athletics podcast is taped weekly and available for download anywhere you listen to podcasts.
- All CCSU basketball home games and NEC games stream, live and for free, on NECFrontRow.com. Download the NEC On The Run app to stream live video and watch archived games on iOS, Android, Roku and Amazon TV devices.

QUICK FACTS

General Information

Name of School:.....Central Connecticut State University,
..... Central Connecticut or CCSU
Location:..... New Britain, CT
Founded: 1849
Enrollment:.....12,000
Nickname: Blue Devils
Colors:..... Blue (PMS 287), Gray (PMS 428) and White
Home Court (Capacity):.....William H. Detrick Gymnasium (2,654)
Conference:.....Northeast Conference
President:.....Dr. Zulma R. Toro (University of Puerto Rico)
Athletic Director:..... Brian Barrio (Boston College)
Athletic Dept. Phone:.....(860) 832-3040
Ticket Office Phone: (860) 832-2583

Coaching Staff

Head Coach:.....Donyell Marshall (University of Connecticut)
Years at CCSU:.....4th Season
Overall:..... Same
Assistant Coaches:.....Mike Witcoskie (4th Season),
.....Anthony Ross (4th Season), Baba Diallo (2nd Season)

Team Facts

2018-19 Overall Record:.....11-20 • H: 5-7 • A: 5-12 • N: 1-1
2018-19 NEC Record:.....5-13 • H: 2-7 • A: 3-6 • N: 0-0
NEC Finish:..... 10th of 10
Starters (Returning/Lost):2/3
Letterwinners (Returning/Lost):.....5/9
Newcomers:..... 9

CCSU Basketball History

2019-20:84th Season
First Year:.....1934-35
First Year NCAA Division I:.....1986-87
Years:.....1934-43, 1944-2015
NEC Championships:2000, 2002, 2007
NCAA Tournament Trips (Last):.....3 (2007)

Athletic Communications & Media Relations

Men's Basketball Contact: Jeff Mead
Office Phone: (860) 832-3057
Cell Phone:(973) 223-0568
Email:j.mead@ccsu.edu
Asst. A.D./Athletic Communications: Thomas Pincince
Fax: (860) 832-3084
Website:..... CCSUBluDevils.com
.....NECFrontRow.com
Facebook:..... CCSU Blue Devils
Twitter:..... @CCSUBluDevils
Instagram:CCSUBluDevils
Mailing Address: Attention: SID Office
.....Kaiser Hall
..... 1615 Stanley Street
.....New Britain, CT 06050

Game Broadcast Information

Video • Home Only:.....NECFrontRow.com
.....Bruce Biel (play by play), Marc Robbins (color analyst)



#GOBLUEDEVILS



CCSUBLUDEVILS.COM

NORTHEAST CONFERENCE

STANDINGS

through games of Dec. 18, 2019

| School | NEC | Pct. | Overall | Pct. | Streak | H | A | N |
|----------------------|-----|-------|---------|-------|--------|-----|-----|-----|
| Bryant | 0-0 | 0.000 | 7-4 | 0.636 | W3 | 4-1 | 3-3 | 0-0 |
| Saint Francis U | 0-0 | 0.000 | 6-4 | 0.600 | W4 | 3-1 | 3-3 | 0-0 |
| Merrimack | 0-0 | 0.000 | 6-5 | 0.545 | W1 | 2-0 | 3-4 | 1-1 |
| Sacred Heart | 0-0 | 0.000 | 6-5 | 0.545 | L1 | 2-0 | 3-4 | 1-1 |
| St. Francis Brooklyn | 0-0 | 0.000 | 5-6 | 0.455 | W2 | 4-0 | 1-6 | 0-0 |
| Robert Morris | 0-0 | 0.000 | 4-8 | 0.333 | W2 | 2-1 | 1-7 | 1-0 |
| LIU | 0-0 | 0.000 | 3-7 | 0.300 | L1 | 0-1 | 2-5 | 1-1 |
| Mount St. Mary's | 0-0 | 0.000 | 3-8 | 0.273 | L3 | 2-2 | 1-6 | 0-0 |
| Wagner | 0-0 | 0.000 | 2-7 | 0.222 | L4 | 1-1 | 1-6 | 0-0 |
| Fairleigh Dickinson | 0-0 | 0.000 | 2-8 | 0.200 | L3 | 2-1 | 0-7 | 0-0 |
| CENTRAL CONNECTICUT | 0-0 | 0.000 | 0-11 | 0.000 | L11 | 0-3 | 0-6 | 0-2 |

NORTHEAST CONFERENCE WEEKLY AWARD WINNERS

PLAYER OF THE WEEK

Week 6 • Dec. 16 Chauncey Hawkins, St. Francis Brooklyn
 Week 5 • Dec. 9 . E.J. Anosike, Sacred Heart/Jermaine Jackson, Jr., LIU
 Week 4 • Dec. 2 Raiquan Clark, LIU
 Week 3 • Nov. 25 E.J. Anosike, Sacred Heart
 Week 2 • Nov. 18 Keith Braxton, Saint Francis U
 Week 1 • Nov. 11 Juvaris Hayes, Merrimack

ROOKIE OF THE WEEK

Week 6 • Dec. 16 Benson Lin, Bryant
 Week 5 • Dec. 9 Benson Lin, Bryant
 Week 4 • Dec. 2 **GREG OUTLAW, CCSU**
 Week 3 • Nov. 25 Charles Pride, Bryant
 Week 2 • Nov. 18 Jordan Minor, Merrimack
 Week 1 • Nov. 11 Charles Pride, Bryant

BLUE DEVILS AMONG NEC LEADERS

TEAM STAT RANKINGS (through 12/18/19)

| Stat | NEC Rk. | Top 100 NCAA Rk. |
|------------------------|---------|------------------|
| Scoring Offense | 56.5 | 11th |
| Scoring Defense | 79.0 | 9th |
| Scoring Margin | -22.5 | 11th |
| Free Throw Pct. | .606 | 11th |
| Field Goal Pct. | .365 | 11th |
| Field Goal Pct. (Def.) | .470 | 10th |
| 3-Point FG Pct. | .322 | 5th |
| 3-Point FG Pct. (Def.) | .345 | 6th |
| Rebounding Margin | -9.5 | 10th |
| Blocked Shots | 3.1 | 6th |
| Assists | 8.9 | 11th |
| Steals | 6.6 | 5th |
| Turnovers | 16.2 | 11th |
| Turnovers Caused | 13.3 | 8th |
| Turnover Margin | -2.9 | 9th |
| Assist/TO Ratio | 0.6 | 11th |
| Offensive Rebounds | 7.3 | 10th |
| Defensive Rebounds | 24.4 | 8th |
| Def. Rebound Pct. | .693 | 8th |
| Off. Rebound Pct. | .194 | 10th |
| 3-pt. FG Made | 5.8 | 11th |

INDIVIDUAL STAT RANKINGS (through 12/18/19)

| Player/Category | Stat | Top 10 NEC Rk. | Top 100 NCAA Rk. |
|-----------------|------|----------------|------------------|
| GREG OUTLAW | | | |
| Steals | 1.5 | t-7th | |
| XAVIER WILSON | | | |
| Blocked Shots | 0.9 | t-9th | |





DONYELL MARSHALL
HEAD COACH
4TH SEASON

COACHING HIGHLIGHTS:

Central Connecticut State University
 2016-present
 Head Coach
 • Connecticut 100 Men of Color (2017)
 • Hoopdirt.com Coach of the Week (Wk 12 - 2/7/17)

University at Buffalo
 2015-16
 Assistant Coach and Recruiting Coordinator
 • NCAA Tournament, MAAC Championship, 20-15 record

Rider University
 2013-15
 Assistant Coach
 • 2014-15: Tied program-record for wins (21);
 Program-record for MAAC wins (15)

Maine Red Claws 2011-12
 Assistant Coach

George Washington University
 2010-11
 Assistant Coach

NBA PLAYING EXPERIENCE:

- Philadelphia 76ers (2008-09)
- Seattle SuperSonics (2008)
- Cleveland Cavaliers (2005-08)
 - 2007 NBA Finals appearance
- Toronto Raptors (2003-05)
- Chicago Bulls (2002-03)
- Utah Jazz (2000-02)
- Golden State Warriors (1995-2000)
- Minnesota Timberwolves (1994-95)

PLAYING HIGHLIGHTS:

- Then-NBA Single-Game Record 12 3-Pointers (3/13/05)
- 1 of 6 players with 10,000 pts/5,000 reb/750 3-pt/750 blk
- #4 pick in the 1994 NBA Draft
- First Team All-BIG EAST (1992-93, 1993-94)
- BIG EAST Offensive & Defensive Player of the Year (1993-94)
- Member of UConn's "All-Century Team"
- UConn's First Consensus First Team All-American
- National Player of the Year (Finalist)
- ECAC & New England Player of the Year
- Team USA (Summer 1993)
- McDonald's All-American
- Pennsylvania Player of the Year (Gatorade & USA Today)

MARSHALL BY THE NUMBERS

AGAINST THE NEC

Here's how Marshall and the Blue Devils have done versus current members of the Northeast Conference. (Regular Season & Postseason)

| Opponent | Overall | H | A | N | Postseason |
|----------------------|--------------|-------------|-------------|------------|------------|
| Bryant | 3-3 | 2-1 | 1-2 | 0-0 | 0-0 |
| Fairleigh Dickinson | 2-4 | 1-2 | 1-2 | 0-0 | 0-0 |
| LIU Brooklyn | 2-4 | 2-2 | 0-2 | 0-0 | 0-0 |
| Merrimack | | | | | |
| Mount St. Mary's | 2-4 | 0-2 | 2-2 | 0-0 | 0-0 |
| Robert Morris | 2-4 | 0-3 | 2-1 | 0-0 | 0-0 |
| Sacred Heart | 0-6 | 0-3 | 0-3 | 0-0 | 0-0 |
| St. Francis Brooklyn | 3-3 | 3-0 | 0-3 | 0-0 | 0-0 |
| Saint Francis U | 2-4 | 1-2 | 1-2 | 0-0 | 0-0 |
| Wagner | 0-7 | 0-3 | 0-4 | 0-0 | 0-1 |
| TOTALS | 16-39 | 9-18 | 7-21 | 0-0 | 0-1 |

CAREER RECORD

| Season | Overall | NEC | Postseason |
|----------------|--------------|--------------|-------------------|
| 2016-17: | 6-23 | 4-14 | |
| 2017-18: | 14-18 | 7-11 | NEC Quarterfinals |
| 2018-19: | 11-20 | 5-13 | |
| 2019-20: | 0-11 | | |
| Career: | 31-72 | 16-38 | |

HOME AND AWAY

| Season | Overall | Home | Away | Neutral |
|----------------|--------------|--------------|--------------|------------|
| 2016-17: | 6-23 | 3-9 | 3-14 | 0-0 |
| 2017-18: | 14-18 | 8-4 | 6-14 | 0-0 |
| 2018-19: | 11-20 | 5-7 | 5-12 | 1-1 |
| 2019-20 | 0-11 | 0-3 | 0-6 | 0-2 |
| Career: | 31-72 | 16-23 | 14-46 | 1-3 |

OVERTIME GAMES

| Date | Score | Result | Opponent |
|----------|--------|--------|-------------------------|
| 12/31/16 | 77-86 | ot L | at St. Francis Brooklyn |
| 1/21/17 | 84-83 | ot W | at Saint Francis U |
| 11/10/17 | 84-85 | ot L | at Hartford |
| 11/21/17 | 74-71 | ot W | Coppin State |
| 1/27/18 | 89-94 | ot L | at LIU Brooklyn |
| 2/15/18 | 71-77 | ot L | at Saint Francis U |
| 2/24/18 | 78-75 | ot W | St. Francis Brooklyn |
| 12/22/18 | 93-90 | 2ot W | at Maine |
| 1/10/19 | 103-96 | 2ot W | at Fairleigh Dickinson |

MARSHALL VS. D1 NON-CONFERENCE OPPONENTS

| Opponent | Overall | Home | Away | Neutral |
|------------------|---------|------|------|---------|
| Arizona State | 0-1 | 0-0 | 0-1 | 0-0 |
| Austin Peay | 0-1 | 0-0 | 0-0 | 0-1 |
| Binghamton | 0-1 | 0-0 | 0-1 | 0-0 |
| Boston College | 0-2 | 0-0 | 0-2 | 0-0 |
| Brown | 1-1 | 0-1 | 1-0 | 0-0 |
| Cleveland State | 1-0 | 0-0 | 1-0 | 0-0 |
| Columbia | 0-1 | 0-0 | 0-0 | 0-1 |
| Coppin State | 1-0 | 1-0 | 0-0 | 0-0 |
| Dartmouth | 0-1 | 0-0 | 0-1 | 0-0 |
| DePaul | 0-1 | 0-0 | 0-1 | 0-0 |
| Duquesne | 0-1 | 0-0 | 0-1 | 0-0 |
| East Carolina | 1-0 | 0-0 | 1-0 | 0-0 |
| Florida A&M | 1-0 | 0-0 | 0-0 | 1-0 |
| Fordham | 0-1 | 0-0 | 0-1 | 0-0 |
| Georgetown | 0-1 | 0-0 | 0-1 | 0-0 |
| Hartford | 2-2 | 1-1 | 1-1 | 0-0 |
| Loyola Marymount | 0-1 | 0-0 | 0-1 | 0-0 |
| Maine | 3-1 | 1-1 | 2-0 | 0-0 |

| Opponent | Overall | Home | Away | Neutral |
|--------------------|--------------|------------|-------------|------------|
| Massachusetts | 0-1 | 0-0 | 0-1 | 0-0 |
| UMass Lowell | 2-2 | 1-0 | 1-2 | 0-0 |
| New Hampshire | 0-1 | 0-1 | 0-0 | 0-0 |
| North Carolina A&T | 1-1 | 1-0 | 0-1 | 0-0 |
| Northern Illinois | 0-1 | 0-0 | 0-1 | 0-0 |
| Oregon State | 0-1 | 0-0 | 0-1 | 0-0 |
| Penn | 0-1 | 0-1 | 0-0 | 0-0 |
| Penn State | | | | |
| Providence | 0-1 | 0-0 | 0-1 | 0-0 |
| Rutgers | 0-2 | 0-0 | 0-2 | 0-0 |
| St. John's | 0-2 | 0-0 | 0-2 | 0-0 |
| Seton Hall | 0-1 | 0-0 | 0-1 | 0-0 |
| Vermont | 0-1 | 0-0 | 0-0 | 0-1 |
| Virginia Tech | 0-1 | 0-0 | 0-1 | 0-0 |
| Yale | 0-1 | 0-0 | 0-1 | 0-0 |
| TOTALS | 13-33 | 5-5 | 7-25 | 1-3 |



2018-19 CENTRAL CONNECTICUT ROSTER

NUMERICAL ROSTER

| No. | Name | Pos. | Cl. | Ht. | Wt. | Hometown/Last School |
|-----|-----------------------|------|-----|-----|-----|---|
| 0 | Greg Outlaw | G/F | Fr. | 6-4 | 175 | Chicago, IL/Rezin Orr Academy |
| 1 | Trey Tennyson | G | Fr. | 6-4 | 170 | Mansfield, TX/Mansfield Legacy |
| 2 | Myles Baker | G | Fr. | 6-2 | 170 | Chicago, IL/Whitney Young |
| 3 | Ian Krishnan | G | So. | 6-2 | 180 | Boyds, MD/Proctor Academy (NH) |
| 5 | Xavier Wilson | F | Fr. | 6-7 | 210 | Spring Valley, NY/The Hotchkiss School (CT) |
| 10 | Zach Newkirk | G | So. | 6-1 | 185 | Raleigh, NC/Brunswick CC |
| 11 | Thai Segwai | G | So. | 6-2 | 185 | London, England/City of London Academy |
| 13 | Jamir Reed | G | Fr. | 6-4 | 200 | Philadelphia, PA/Mastery Charter North |
| 15 | Jamir Coleman | F | Sr. | 6-7 | 215 | San Antonio, TX/South Plains College |
| 20 | Stephane Ayangma | F | Jr. | 6-6 | 215 | Yaounde, Cameroon/Hinds CC (MS) |
| 22 | Javen Udofia | G | Fr. | 6-2 | 170 | Omaha, NE/Bryan |
| 23 | Karrington Wallace | F | So. | 6-7 | 200 | Philadelphia, PA/Archbishop Wood |
| 24 | Ola Olamuyiwa | C | Fr. | 6-9 | 220 | Lagos, Nigeria/The Patrick School (NJ) |
| 30 | Donyell Marshall, Jr. | F | Sr. | 6-6 | 185 | Pepper Pike, OH/Orange |
| 40 | Tyler Rowe | G | Sr. | 5-9 | 160 | East Hartford, CT/Western Connecticut St. |

Head Coach: Donyell Marshall (4th Season, Connecticut)
 Assistant Coaches: Mike Witcoskie (4th Season, Susquehanna)
 Anthony Ross (4th Season, East Stroudsburg)
 Baba Diallo (2nd Season, Baker University)
 Director of Operations: Eric Wheeler (3rd Season, Massachusetts)
 Managers: Mike McNally, Matt Trudeau, Kevin Fee, James Longo

PRONUNCIATIONS

| | | | |
|-------------------------|------------------------|-----------------------|---------------|
| <u>STEPHANE AYANGMA</u> | stef-on eye-yung-muh | Mike <u>WITCOSKIE</u> | whit-coss-key |
| <u>JAMIR Coleman</u> | juh-meer | Baba <u>DIALLO</u> | dee-ah-lo |
| <u>JAMIR Reed</u> | juh-meer | | |
| <u>OLA OLAMUYIWA</u> | oh-la ola-moo-yee-wah | | |
| <u>THAI SEGWAI</u> | ty seg-why | | |
| <u>JAVEN UDOFIA</u> | jay-ven you-doe-fee-uh | | |

BY CLASS

| | |
|-----------------|--|
| Seniors (3): | Jamir Coleman (6-7, G/F) Donyell Marshall, Jr. (6-6, F) Tyler Rowe (5-9, G) |
| Juniors (1): | Stephane Ayangma (6-6, F) |
| Sophomores (4): | Ian Krishnan (6-2, G) Zach Newkirk (6-1, G) Thai Segwai (6-2, G) Karrington Wallace (6-7, G) |
| Freshmen (7): | Myles Baker (6-2, G) Ola Olamuyiwa (6-9, F/C) Greg Outlaw (6-4, G/F) Jamir Reed (6-4, G) Trey Tennyson (6-4, G) Javin Udofia (6-2, G) Xavier Wilson (6-7, F) |

BY STATE/COUNTRY

| | |
|-----------------|--|
| Connecticut: | Tyler Rowe (5-9, G) |
| Illinois: | Myles Baker (6-2, G) Greg Outlaw (6-4, G/F) |
| Maryland: | Ian Krishnan (6-2, G) |
| Nebraska: | Javin Udofia (6-2, G) |
| New York: | Xavier Wilson (6-7, F) |
| North Carolina: | Zach Newkirk (6-1, G) |
| Ohio: | Donyell Marshall, Jr. (6-6, F) |
| Pennsylvania: | Jamir Reed (6-4, G) Karrington Wallace (6-7, G) |
| Texas: | Jamir Coleman (6-7, G/F) Trey Tennyson (6-4, G) |
| Cameroon: | Stephane Ayangma (6-6, F) |
| England: | Thai Segwai (6-2, G) |
| Nigeria: | Ola Olamuyiwa (6-9, F/C) |



2019-20 CCSU MEN'S BASKETBALL TV ROSTER



0 GREG OUTLAW
Fr. • G/F • 6-4 • 175
Chicago, IL



1 TREY TENNYSON
Fr. • G • 6-4 • 170
Mansfield, TX



2 MYLES BAKER
Fr. • G • 6-2 • 170
Chicago, IL



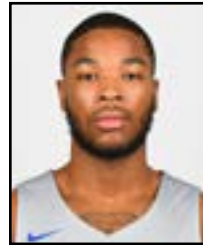
3 IAN KRISHNAN
So. • G • 6-2 • 180
Boyd's, MD



5 XAVIER WILSON
Fr. • F • 6-7 • 210
Spring Valley, NY



10 ZACH NEWKIRK
So. • G • 6-1 • 185
Raleigh, NC



11 THAI SEGWAI
So. • G • 6-2 • 185
London, England



13 JAMIR REED
Fr. • G • 6-4 • 200
Philadelphia, PA



15 JAMIR COLEMAN
Sr. • F • 6-7 • 215
San Antonio, TX



20 STEPH AYANGMA
Jr. • F • 6-6 • 215
Yaounde, Cameroon



22 JAVEN UDOFIA
Fr. • G • 6-2 • 170
Omaha, NE



23 KARRINGTON WALLACE
So. • F • 6-7 • 200
Philadelphia, PA



24 OLA OLAMUYIWA
Fr. • C • 6-9 • 220
Lagos, Nigeria



30 DONYELL MARSHALL
Sr. • F • 6-6 • 185
Pepper Pike, OH



40 TYLER ROWE
Sr. • G • 5-9 • 160
East Hartford, CT



DONYELL MARSHALL
Head Coach
4th Season



MIKE WITCOSKIE
Assistant Coach
4th Season



ANTHONY ROSS
Assistant Coach
4th Season



BABA DIALLO
Assistant Coach
2nd Season



INDIVIDUAL SEASON & CAREER HIGHS

#0 GREG OUTLAW

SEASON

CAREER

PTS: 18 at Boston College, 12/15/19
 REB: 7, 2x, last at Boston College, 12/15/19
 FGM: 8 at Boston College, 12/15/19
 FGA: 17 at Boston College, 12/15/19
 3FGM: 1, 2x, last at Boston College, 12/15/19
 3FGA: 3 at Boston College, 12/15/19
 FTM: 5, 3x, last at Arizona St., 11/14/19
 FTA: 9 at St. John's, 11/9/19
 ASST: 6 vs. Hartford, 11/5/19
 BLK: 2 at UMass Lowell, 12/1/19
 STL: 3, 3x, last at Boston College, 12/15/19
 MIN: 35, 2x, last at Boston College, 12/15/19

..... 18 at Boston College, 12/15/19
 7, 2x, last at Boston College, 12/15/19
 8 at Boston College, 12/15/19
 17 at Boston College, 12/15/19
 1, 2x, last at Boston College, 12/15/19
 3 at Boston College, 12/15/19
 5, 3x, last at Arizona St., 11/14/19
 9 at St. John's, 11/9/19
 6 vs. Hartford, 11/5/19
 2 at UMass Lowell, 12/1/19
 3, 3x, last at Boston College, 12/15/19
 35, 2x, last at Boston College, 12/15/19

#1 TREY TENNYSON

SEASON

CAREER

PTS: 12 at Dartmouth, 12/18/19
 REB: 4 at Arizona St., 11/14/19
 FGM: 4 at Dartmouth, 12/18/19
 FGA: 10 at Dartmouth, 12/18/19
 3FGM: 3 at Dartmouth, 12/18/19
 3FGA: 7 at Dartmouth, 12/18/19
 FTM: 3, 3x, last at Boston College, 12/15/19
 FTA: 6 at St. John's, 11/9/19
 ASST: 2, 2x, last at Boston College, 12/15/19
 BLK: 1 at St. John's, 11/9/19
 STL: 2, 2x, last vs. Vermont, 11/23/19
 MIN: 26 at Dartmouth, 12/18/19

..... 12 at Dartmouth, 12/18/19
 4 at Arizona St., 11/14/19
 4 at Dartmouth, 12/18/19
 10 at Dartmouth, 12/18/19
 3 at Dartmouth, 12/18/19
 7 at Dartmouth, 12/18/19
 3, 3x, last at Boston College, 12/15/19
 6 at St. John's, 11/9/19
 2, 2x, last at Boston College, 12/15/19
 1 at St. John's, 11/9/19
 2, 2x, last vs. Vermont, 11/23/19
 26 at Dartmouth, 12/18/19

#2 MYLES BAKER

SEASON

CAREER

PTS: 16 vs. New Hampshire, 11/19/19
 REB: 6 at Dartmouth, 12/18/19
 FGM: 5 vs. New Hampshire, 11/19/19
 FGA: 15 vs. Maine, 12/7/19
 3FGM: 4 vs. New Hampshire, 11/19/19
 3FGA: 7, 3x, last vs. Maine, 12/7/19
 FTM: 3 at UMass, 11/16/19
 FTA: 4 at UMass, 11/16/19
 ASST: 4 at UMass, 11/16/19
 BLK: - -
 STL: 2 vs. Vermont, 11/23/19
 MIN: 28, 2x, last vs. UNH, 11/19/19

..... 16 vs. New Hampshire, 11/19/19
 6 at Dartmouth, 12/18/19
 5 vs. New Hampshire, 11/19/19
 15 vs. Maine, 12/7/19
 4 vs. New Hampshire, 11/19/19
 7, 3x, last vs. Maine, 12/7/19
 3 at UMass, 11/16/19
 4 at UMass, 11/16/19
 4 at UMass, 11/16/19
 - -
 2 vs. Vermont, 11/23/19
 28, 2x, last vs. UNH, 11/19/19

#3 IAN KRISHNAN

SEASON

CAREER

PTS: - -
 REB: - -
 FGM: - -
 FGA: - -
 3FGM: - -
 3FGA: - -
 FTM: - -
 FTA: - -
 ASST: - -
 BLK: - -
 STL: - -
 MIN: - -

..... 28 at Georgetown, 11/10/18
 6 at Mount St. Mary's, 1/12/19
 10, 2x, last at FDU, 1/10/19
 17, 3x, last vs. SFBK, 1/31/19
 7 at Fairleigh Dickinson, 1/10/19
 13 at Fairleigh Dickinson, 1/10/19
 5 vs. UMass Lowell, 11/13/18
 6 vs. UMass Lowell, 11/13/18
 3, 3x, last vs. Mount St. Mary's, 2/21/19
 - -
 4 vs. UMass Lowell, 11/13/18
 47 at Maine, 12/22/18

#5 XAVIER WILSON

SEASON

CAREER

PTS: 12 vs. Columbia, 11/24/19
 REB: 8 vs. Maine, 12/7/19
 FGM: 5 vs. Columbia, 11/24/19
 FGA: 9 vs. Maine, 12/7/19
 3FGM: 2 vs. Columbia, 11/24/19
 3FGA: 3, 3x, last vs. Maine, 12/7/19
 FTM: 3 at Boston College, 12/15/19
 FTA: 6 at Boston College, 12/15/19
 ASST: 1, 4x, last at Boston College, 12/15/19
 BLK: 3 at UMass Lowell, 12/1/19
 STL: 3, 2x, last at Boston College, 12/15/19
 MIN: 28 at UMass Lowell, 12/1/19

..... 12 vs. Columbia, 11/24/19
 8 vs. Maine, 12/7/19
 5 vs. Columbia, 11/24/19
 9 vs. Maine, 12/7/19
 2 vs. Columbia, 11/24/19
 3, 3x, last vs. Maine, 12/7/19
 3 at Boston College, 12/15/19
 6 at Boston College, 12/15/19
 1, 4x, last at Boston College, 12/15/19
 3 at UMass Lowell, 12/1/19
 3, 2x, last at Boston College, 12/15/19
 28 at UMass Lowell, 12/1/19



INDIVIDUAL SEASON & CAREER HIGHS

#10 ZACH NEWKIRK

| | SEASON | CAREER |
|-------------|------------------------------------|------------------------------------|
| PTS: | 8 vs. Maine, 12/7/19 | 8 vs. Maine, 12/7/19 |
| REB: | 4 vs. Maine, 12/7/19 | 4 vs. Maine, 12/7/19 |
| FGM: | 3 at Arizona St., 11/14/19 | 3 at Arizona St., 11/14/19 |
| FGA: | 8 at Arizona St., 11/14/19 | 8 at Arizona St., 11/14/19 |
| 3FGM: | 2, 2x, last vs. UNH, 11/19/19 | 2, 2x, last vs. UNH, 11/19/19 |
| 3FGA: | 4 at Arizona St., 11/14/19 | 4 at Arizona St., 11/14/19 |
| FTM: | 4 vs. Maine, 12/7/19 | 4 vs. Maine, 12/7/19 |
| FTA: | 6 vs. Maine, 12/7/19 | 6 vs. Maine, 12/7/19 |
| ASST: | 4, 2x, last vs. Columbia, 11/24/19 | 4, 2x, last vs. Columbia, 11/24/19 |
| BLK: | - - | - - |
| STL: | 1, 4x, last vs. Maine, 12/7/19 | 1, 4x, last vs. Maine, 12/7/19 |
| MIN: | 36 vs. Maine, 12/7/19 | 36 vs. Maine, 12/7/19 |

#11 THAI SEGWAI

| | SEASON | CAREER |
|-------------|--------------------------------------|--|
| PTS: | 4 vs. Columbia, 11/24/19 | 7, 2x, last at LIU, 2/28/19 |
| REB: | 3 at Dartmouth, 12/18/19 | 3, 5x, last at Dartmouth, 12/18/19 |
| FGM: | 2 vs. Columbia, 11/24/19 | 3 at LIU, 2/28/19 |
| FGA: | 3 vs. Columbia, 11/24/19 | 6 vs. Sacred Heart, 2/23/19 |
| 3FGM: | - - | 1, 3x, last vs. Sacred Heart, 2/23/19 |
| 3FGA: | - - | 2, 2x, last vs. Florida A&M, 11/18/18 |
| FTM: | 2 at St. John's, 11/9/19 | 3, 2x, last at Mount St. Mary's, 1/12/19 |
| FTA: | 2 at St. John's, 11/9/19 | 5 at Mount St. Mary's, 1/12/19 |
| ASST: | 2, 2x, last at Dartmouth, 12/18/19 | 3, 3x, last vs. LIU, 1/26/19 |
| BLK: | - - | - - |
| STL: | 1, 2x, last at UMass Lowell, 12/1/19 | 1, 8x, last at UMass Lowell, 12/1/19 |
| MIN: | 11 at Boston College, 12/15/19 | 24 vs. Sacred Heart, 2/23/19 |

#13 JAMIR REED

| | SEASON | CAREER |
|-------------|------------------------------------|------------------------------------|
| PTS: | 15 at Dartmouth, 12/18/19 | 15 at Dartmouth, 12/18/19 |
| REB: | 6 vs. Vermont, 11/23/19 | 6 vs. Vermont, 11/23/19 |
| FGM: | 6 at Dartmouth, 12/18/19 | 6 at Dartmouth, 12/18/19 |
| FGA: | 12 at Dartmouth, 12/18/19 | 12 at Dartmouth, 12/18/19 |
| 3FGM: | 3, 3x, last at Dartmouth, 12/18/19 | 3, 3x, last at Dartmouth, 12/18/19 |
| 3FGA: | 7, 2x, last at Dartmouth, 12/18/19 | 7, 2x, last at Dartmouth, 12/18/19 |
| FTM: | 5 vs. Maine, 12/7/19 | 5 vs. Maine, 12/7/19 |
| FTA: | 7 vs. Maine, 12/7/19 | 7 vs. Maine, 12/7/19 |
| ASST: | 4 vs. Hartford, 11/5/19 | 4 vs. Hartford, 11/5/19 |
| BLK: | 1, 4x, last vs. Maine, 12/7/19 | 1, 4x, last vs. Maine, 12/7/19 |
| STL: | 2 at St. John's, 11/9/19 | 2 at St. John's, 11/9/19 |
| MIN: | 36 at UMass, 11/16/19 | 36 at UMass, 11/16/19 |

#15 JAMIR COLEMAN

| | SEASON | CAREER |
|-------------|--------------------------------------|---------------------------------------|
| PTS: | 27 at UMass Lowell, 12/1/19 | 27, 2x, last at UMass Lowell, 12/1/19 |
| REB: | 7 vs. New Hampshire, 11/19/19 | 11, 3x, last at LIU Brooklyn, 2/28/19 |
| FGM: | 12 at UMass Lowell, 12/1/19 | 12 at UMass Lowell, 12/1/19 |
| FGA: | 16 at UMass Lowell, 12/1/19 | 19 vs. Robert Morris, 1/21/19 |
| 3FGM: | 1, 4x, last vs. Maine, 12/7/19 | 3, 2x, last vs. Sacred Heart, 2/23/19 |
| 3FGA: | 3, 3x, last at UMass Lowell, 12/1/19 | 6, 2x, last at Wagner, 2/14/19 |
| FTM: | 4, 3x, last at Dartmouth, 12/18/19 | 9, 2x, last at SFBK, 2/16/19 |
| FTA: | 6, 2x, last at Dartmouth, 12/18/19 | 9, 2x, last at SFBK, 2/16/19 |
| ASST: | 2 at UMass Lowell, 12/1/19 | 3, 2x, last at Virginia Tech, 12/1/18 |
| BLK: | 1 vs. Maine, 12/7/19 | 3, 2x, last vs. Sacred Heart, 2/23/19 |
| STL: | 3 vs. Hartford, 11/5/19 | 3, 4x, last vs. Hartford, 11/5/19 |
| MIN: | 33 at UMass Lowell, 12/1/19 | 41 at Maine, 12/22/18 |

#20 STEPHANE AYANGMA

| | SEASON | CAREER |
|-------------|---|---|
| PTS: | 15 vs. New Hampshire, 11/19/19 | 15 vs. New Hampshire, 11/19/19 |
| REB: | 8, 2x, last at Boston College, 12/15/19 | 8, 2x, last at Boston College, 12/15/19 |
| FGM: | 4, 2x, last at UMass Lowell, 12/1/19 | 4, 2x, last at UMass Lowell, 12/1/19 |
| FGA: | 9 vs. Vermont, 11/23/19 | 9 vs. Vermont, 11/23/19 |
| 3FGM: | 2 at Arizona St., 11/14/19 | 2 at Arizona St., 11/14/19 |
| 3FGA: | 3, 2x, last vs. Columbia, 11/24/19 | 3, 2x, last vs. Columbia, 11/24/19 |
| FTM: | 6 vs. New Hampshire, 11/19/19 | 6 vs. New Hampshire, 11/19/19 |
| FTA: | 7 vs. New Hampshire, 11/19/19 | 7 vs. New Hampshire, 11/19/19 |
| ASST: | 1, 6x, last at Dartmouth, 12/18/19 | 1, 6x, last at Dartmouth, 12/18/19 |
| BLK: | 1, 3x, last at Boston College, 12/15/19 | 1, 3x, last at Boston College, 12/15/19 |
| STL: | 2 vs. New Hampshire, 11/19/19 | 2 vs. New Hampshire, 11/19/19 |
| MIN: | 29 vs. Columbia, 11/24/19 | 29 vs. Columbia, 11/24/19 |



INDIVIDUAL SEASON & CAREER HIGHS

#22 JAVEN UDOFIA

| | SEASON | CAREER |
|-------|------------------------------------|------------------------------------|
| PTS: | 4 at Arizona St., 11/14/19 | 4 at Arizona St., 11/14/19 |
| REB: | - | - |
| FGM: | 1, 2x, last vs. Vermont, 11/23/19 | 1, 2x, last vs. Vermont, 11/23/19 |
| FGA: | 4 at Arizona St., 11/14/19 | 4 at Arizona St., 11/14/19 |
| 3FGM: | 1, 2x, last vs. Vermont, 11/23/19 | 1, 2x, last vs. Vermont, 11/23/19 |
| 3FGA: | 3 at Arizona St., 11/14/19 | 3 at Arizona St., 11/14/19 |
| FTM: | 2 vs. Vermont, 11/23/19 | 2 vs. Vermont, 11/23/19 |
| FTA: | 2, 3x, last vs. Columbia, 11/24/19 | 2, 3x, last vs. Columbia, 11/24/19 |
| ASST: | 1 at Arizona St., 11/14/19 | 1 at Arizona St., 11/14/19 |
| BLK: | - | - |
| STL: | - | - |
| MIN: | 10 vs. Columbia, 11/24/19 | 10 vs. Columbia, 11/24/19 |

#23 KARRINGTON WALLACE

| | SEASON | CAREER |
|-------|--------------------------------------|---------------------------------------|
| PTS: | 7 at Arizona St., 11/14/19 | 12 at Georgetown, 11/10/18 |
| REB: | 10 at St. John's, 11/9/19 | 10 at St. John's, 11/9/19 |
| FGM: | 3, 2x, last at Arizona St., 11/14/19 | 4, 3x, last at LIU, 2/28/19 |
| FGA: | 10 at Arizona St., 11/14/19 | 10 at Arizona St., 11/14/19 |
| 3FGM: | - | 1 vs. UMass Lowell, 11/13/18 |
| 3FGA: | - | 3 vs. UMass Lowell, 11/13/18 |
| FTM: | 2 at St. John's, 11/9/19 | 4 at Georgetown, 11/10/18 |
| FTA: | 6 at St. John's, 11/9/19 | 4, 2x, last at Oregon State, 12/29/18 |
| ASST: | 1, 3x, last vs. UNH, 11/19/19 | 2 vs. Fairleigh Dickinson, 3/2/19 |
| BLK: | 2, 2x, last at UMass, 11/16/19 | 2, 3x, last at UMass, 11/16/19 |
| STL: | 2 vs. Hartford, 11/5/19 | 2, 2x, last vs. Hartford, 11/5/19 |
| MIN: | 20 at St. John's, 11/9/19 | 28 vs. Wagner, 1/3/19 |

#24 OLA OLAMUYIWA

| | SEASON | CAREER |
|-------|------------------------------------|------------------------------------|
| PTS: | 2 vs. Columbia, 11/24/19 | 2 vs. Columbia, 11/24/19 |
| REB: | 2 vs. Vermont, 11/23/19 | 2 vs. Vermont, 11/23/19 |
| FGM: | 1 vs. Columbia, 11/24/19 | 1 vs. Columbia, 11/24/19 |
| FGA: | 2, 2x, last vs. Columbia, 11/24/19 | 2, 2x, last vs. Columbia, 11/24/19 |
| 3FGM: | - | - |
| 3FGA: | - | - |
| FTM: | 1 at Boston College, 12/15/19 | 1 at Boston College, 12/15/19 |
| FTA: | 2 at Boston College, 12/15/19 | 2 at Boston College, 12/15/19 |
| ASST: | - | - |
| BLK: | 1 vs. Vermont, 11/23/19 | 1 vs. Vermont, 11/23/19 |
| STL: | - | - |
| MIN: | 5 vs. Columbia, 11/24/19 | 5 vs. Columbia, 11/24/19 |

#30 DONYELL MARSHALL

| | SEASON | CAREER |
|-------|------------------------------------|---|
| PTS: | - | 4 vs. Pine Manor, 11/25/18 |
| REB: | 1, 2x, last vs. Columbia, 11/24/19 | 4 at Bryant, 2/25/17 |
| FGM: | - | 1, 5x, last vs. Pine Manor, 11/25/18 |
| FGA: | 1, 2x, last vs. Columbia, 11/24/19 | 2, 2x, last at Boston College, 12/17/17 |
| 3FGM: | - | - |
| 3FGA: | - | 1 at Virginia Tech, 12/1/18 |
| FTM: | - | 2, 4x, last vs. Pine Manor, 11/25/18 |
| FTA: | - | 2, 6x, last vs. PSU Wilkes-Barre, 12/8/18 |
| ASST: | - | 1 vs. Hartford, 11/11/6 |
| BLK: | 1, 2x, last vs. Columbia, 11/24/19 | 1, 4x, last vs. Columbia, 11/24/19 |
| STL: | 1 at Arizona St., 11/14/19 | 1, 2x, at Arizona St., 11/14/19 |
| MIN: | 3, 3x, last vs. Columbia, 11/24/19 | 5, 2x, last at LIU, 2/28/19 |

#40 TYLER ROWE

| | SEASON | CAREER |
|-------|--------|--------|
| PTS: | - | - |
| REB: | - | - |
| FGM: | - | - |
| FGA: | - | - |
| 3FGM: | - | - |
| 3FGA: | - | - |
| FTM: | - | - |
| FTA: | - | - |
| ASST: | - | - |
| BLK: | - | - |
| STL: | - | - |
| MIN: | - | - |



CAREER STATISTICS

AYANGMA, Stephane

| | | | | Field Goals | | 3-Point | | F-Throws | | Rebounds | | | | | | | | Scoring | | |
|--------------|------|-------------|-----------------|--------------|-------------|-------------|-------------|--------------|-------------|-----------|-----------|-----------|------------|-------------|----------|-----------|----------|----------|-----------|------------|
| SEASON | TEAM | GP-GS | MIN/AVG | FG-FGA | FG% | 3FG-FGA | 3FG% | FT-FTA | FT% | OFF | DEF | TOT | AVG | PF-FO | AST | TO | BLK | STL | PTS | AVG |
| 2019-20 | CCSU | 11-5 | 258/23.5 | 24-60 | .400 | 4-14 | .286 | 11-19 | .579 | 12 | 43 | 55 | 5.0 | 22-0 | 6 | 15 | 4 | 6 | 63 | 5.7 |
| TOTAL | | 11-5 | 258/23.5 | 24-60 | .400 | 4-14 | .286 | 11-19 | .579 | 12 | 43 | 55 | 5.0 | 22-0 | 6 | 15 | 4 | 6 | 63 | 5.7 |

BAKER, Myles

| | | | | Field Goals | | 3-Point | | F-Throws | | Rebounds | | | | | | | | Scoring | | |
|--------------|------|------------|-----------------|--------------|-------------|--------------|-------------|--------------|-------------|----------|-----------|-----------|------------|------------|-----------|-----------|----------|----------|-----------|------------|
| SEASON | TEAM | GP-GS | MIN/AVG | FG-FGA | FG% | 3FG-FGA | 3FG% | FT-FTA | FT% | OFF | DEF | TOT | AVG | PF-FO | AST | TO | BLK | STL | PTS | AVG |
| 2019-20 | CCSU | 9-1 | 213/23.6 | 24-81 | .296 | 16-44 | .364 | 13-19 | .684 | 3 | 21 | 24 | 2.7 | 6-0 | 11 | 20 | 0 | 5 | 77 | 8.6 |
| TOTAL | | 9-1 | 213/23.6 | 24-81 | .296 | 16-44 | .364 | 13-19 | .684 | 3 | 21 | 24 | 2.7 | 6-0 | 11 | 20 | 0 | 5 | 77 | 8.6 |

COLEMAN, Jamir

| | | | | Field Goals | | 3-Point | | F-Throws | | Rebounds | | | | | | | | Scoring | | |
|--------------|------|--------------|------------------|----------------|-------------|--------------|-------------|---------------|-------------|-----------|------------|------------|------------|-------------|-----------|-----------|-----------|-----------|------------|-------------|
| SEASON | TEAM | GP-GS | MIN/AVG | FG-FGA | FG% | 3FG-FGA | 3FG% | FT-FTA | FT% | OFF | DEF | TOT | AVG | PF-FO | AST | TO | BLK | STL | PTS | AVG |
| 2018-19 | CCSU | 30-30 | 854/28.5 | 131-298 | .440 | 25-73 | .342 | 75-89 | .843 | 51 | 134 | 185 | 6.2 | 56-0 | 28 | 46 | 21 | 32 | 362 | 12.1 |
| 2019-20 | CCSU | 10-10 | 220/22.0 | 36-78 | .462 | 5-15 | .333 | 20-29 | .690 | 7 | 35 | 42 | 4.2 | 33-3 | 5 | 27 | 1 | 13 | 97 | 9.7 |
| TOTAL | | 40-40 | 1074/26.8 | 167-376 | .444 | 30-88 | .341 | 95-118 | .805 | 58 | 169 | 227 | 5.7 | 89-3 | 33 | 73 | 22 | 45 | 459 | 11.5 |

KRISHNAN, Ian

| | | | | Field Goals | | 3-Point | | F-Throws | | Rebounds | | | | | | | | Scoring | | |
|--------------|------|--------------|------------------|----------------|-------------|---------------|-------------|--------------|-------------|----------|-----------|-----------|------------|-------------|-----------|-----------|----------|-----------|------------|-------------|
| SEASON | TEAM | GP-GS | MIN/AVG | FG-FGA | FG% | 3FG-FGA | 3FG% | FT-FTA | FT% | OFF | DEF | TOT | AVG | PF-FO | AST | TO | BLK | STL | PTS | AVG |
| 2018-19 | CCSU | 31-30 | 1053/34.0 | 129-355 | .363 | 71-209 | .340 | 43-51 | .843 | 8 | 53 | 61 | 2.0 | 81-0 | 36 | 32 | 1 | 24 | 372 | 12.0 |
| TOTAL | | 31-30 | 1053/34.0 | 129-355 | .363 | 71-209 | .340 | 43-51 | .843 | 8 | 53 | 61 | 2.0 | 81-0 | 36 | 32 | 1 | 24 | 372 | 12.0 |

MARSHALL, JR., Donyell

| | | | | Field Goals | | 3-Point | | F-Throws | | Rebounds | | | | | | | | Scoring | | |
|--------------|------|-------------|---------------|-------------|-------------|------------|-------------|-------------|-------------|----------|-----------|-----------|------------|------------|----------|----------|----------|----------|-----------|------------|
| SEASON | TEAM | GP-GS | MIN/AVG | FG-FGA | FG% | 3FG-FGA | 3FG% | FT-FTA | FT% | OFF | DEF | TOT | AVG | PF-FO | AST | TO | BLK | STL | PTS | AVG |
| 2016-17 | CCSU | 12-0 | 32/2.7 | 3-6 | .500 | 0-0 | .000 | 6-8 | .750 | 2 | 9 | 11 | 0.9 | 1-0 | 1 | 3 | 1 | 1 | 12 | 1.0 |
| 2017-18 | CCSU | 7-0 | 14/2.0 | 1-3 | .333 | 0-0 | .000 | 0-0 | .000 | 1 | 1 | 2 | 0.3 | 2-0 | 0 | 0 | 1 | 0 | 2 | 0.3 |
| 2018-19 | CCSU | 7-0 | 21/3.0 | 1-3 | .333 | 0-2 | .000 | 2-4 | .500 | 1 | 2 | 3 | 0.4 | 2-0 | 0 | 1 | 0 | 0 | 4 | 0.6 |
| 2019-20 | CCSU | 5-0 | 13/2.6 | 0-2 | .000 | 0-0 | .000 | 0-0 | .000 | 1 | 1 | 2 | 0.4 | 1-0 | 0 | 0 | 2 | 1 | 0 | 0.0 |
| TOTAL | | 31-0 | 80/2.6 | 5-14 | .357 | 0-2 | .000 | 8-12 | .667 | 5 | 13 | 18 | 0.6 | 6-0 | 1 | 4 | 4 | 2 | 18 | 0.6 |

NEWKIRK, Zach

| | | | | Field Goals | | 3-Point | | F-Throws | | Rebounds | | | | | | | | Scoring | | |
|--------------|------|--------------|-----------------|--------------|-------------|-------------|-------------|-------------|-------------|----------|-----------|-----------|------------|-------------|-----------|-----------|----------|----------|-----------|------------|
| SEASON | TEAM | GP-GS | MIN/AVG | FG-FGA | FG% | 3FG-FGA | 3FG% | FT-FTA | FT% | OFF | DEF | TOT | AVG | PF-FO | AST | TO | BLK | STL | PTS | AVG |
| 2019-20 | CCSU | 11-11 | 284/25.8 | 12-38 | .316 | 5-14 | .357 | 7-12 | .583 | 3 | 17 | 20 | 1.8 | 31-1 | 19 | 24 | 0 | 5 | 36 | 3.3 |
| TOTAL | | 11-11 | 284/25.8 | 12-38 | .316 | 5-14 | .357 | 7-12 | .583 | 3 | 17 | 20 | 1.8 | 31-1 | 19 | 24 | 0 | 5 | 36 | 3.3 |

OLAMUYIWA, Ola

| | | | | Field Goals | | 3-Point | | F-Throws | | Rebounds | | | | | | | | Scoring | | |
|--------------|------|------------|---------------|-------------|-------------|------------|-------------|------------|-------------|----------|----------|----------|------------|------------|----------|----------|----------|----------|----------|------------|
| SEASON | TEAM | GP-GS | MIN/AVG | FG-FGA | FG% | 3FG-FGA | 3FG% | FT-FTA | FT% | OFF | DEF | TOT | AVG | PF-FO | AST | TO | BLK | STL | PTS | AVG |
| 2019-20 | CCSU | 5-0 | 14/2.8 | 1-5 | .200 | 0-0 | .000 | 1-2 | .500 | 3 | 0 | 3 | 0.6 | 0-0 | 0 | 1 | 1 | 0 | 3 | 0.6 |
| TOTAL | | 5-0 | 14/2.8 | 1-5 | .200 | 0-0 | .000 | 1-2 | .500 | 3 | 0 | 3 | 0.6 | 0-0 | 0 | 1 | 1 | 0 | 3 | 0.6 |



CAREER STATISTICS

OUTLAW, Greg

| | | | | Field Goals | | 3-Point | | F-Throws | | Rebounds | | | | | | | | Scoring | | |
|--------------|------|--------------|-----------------|---------------|-------------|-------------|-------------|--------------|-------------|-----------|-----------|-----------|------------|-------------|-----------|-----------|----------|-----------|------------|-------------|
| SEASON | TEAM | GP-GS | MIN/AVG | FG-FGA | FG% | 3FG-FGA | 3FG% | FT-FTA | FT% | OFF | DEF | TOT | AVG | PF-FO | AST | TO | BLK | STL | PTS | AVG |
| 2019-20 | CCSU | 11-10 | 318/28.9 | 45-109 | .413 | 2-12 | .167 | 26-44 | .591 | 14 | 33 | 47 | 4.3 | 29-1 | 15 | 23 | 4 | 17 | 118 | 10.7 |
| TOTAL | | 11-10 | 318/28.9 | 45-109 | .413 | 2-12 | .167 | 26-44 | .591 | 14 | 33 | 47 | 4.3 | 29-1 | 15 | 23 | 4 | 17 | 118 | 10.7 |

REED, Jamir

| | | | | Field Goals | | 3-Point | | F-Throws | | Rebounds | | | | | | | | Scoring | | |
|--------------|------|--------------|-----------------|--------------|-------------|--------------|-------------|--------------|-------------|----------|-----------|-----------|------------|-------------|-----------|-----------|----------|----------|-----------|------------|
| SEASON | TEAM | GP-GS | MIN/AVG | FG-FGA | FG% | 3FG-FGA | 3FG% | FT-FTA | FT% | OFF | DEF | TOT | AVG | PF-FO | AST | TO | BLK | STL | PTS | AVG |
| 2019-20 | CCSU | 11-10 | 328/29.9 | 31-84 | .369 | 17-53 | .321 | 14-20 | .700 | 4 | 37 | 41 | 3.7 | 24-0 | 18 | 22 | 4 | 5 | 93 | 8.5 |
| TOTAL | | 11-10 | 328/29.9 | 31-84 | .369 | 17-53 | .321 | 14-20 | .700 | 4 | 37 | 41 | 3.7 | 24-0 | 18 | 22 | 4 | 5 | 93 | 8.5 |

ROWE, Tyler

SEGWAI, Thai

| | | | | Field Goals | | 3-Point | | F-Throws | | Rebounds | | | | | | | | Scoring | | |
|--------------|------|-------------|-----------------|--------------|-------------|------------|-------------|--------------|-------------|----------|-----------|-----------|------------|-------------|-----------|-----------|----------|----------|-----------|------------|
| SEASON | TEAM | GP-GS | MIN/AVG | FG-FGA | FG% | 3FG-FGA | 3FG% | FT-FTA | FT% | OFF | DEF | TOT | AVG | PF-FO | AST | TO | BLK | STL | PTS | AVG |
| 2018-19 | CCSU | 24-0 | 325/13.5 | 18-47 | .383 | 3-9 | .333 | 21-31 | .677 | 7 | 26 | 33 | 1.4 | 35-0 | 30 | 36 | 0 | 6 | 60 | 2.5 |
| 2019-20 | CCSU | 7-0 | 47/6.7 | 2-6 | .333 | 0-0 | .000 | 2-2 | 1.000 | 1 | 5 | 6 | 0.9 | 5-0 | 6 | 4 | 0 | 2 | 6 | 0.9 |
| TOTAL | | 31-0 | 372/12.0 | 20-53 | .377 | 3-9 | .333 | 23-33 | .697 | 8 | 31 | 39 | 1.3 | 40-0 | 36 | 40 | 0 | 8 | 66 | 2.1 |

TENNYSON, Trey

| | | | | Field Goals | | 3-Point | | F-Throws | | Rebounds | | | | | | | | Scoring | | |
|--------------|------|-------------|-----------------|--------------|-------------|-------------|-------------|--------------|-------------|----------|-----------|-----------|------------|-------------|----------|-----------|----------|----------|-----------|------------|
| SEASON | TEAM | GP-GS | MIN/AVG | FG-FGA | FG% | 3FG-FGA | 3FG% | FT-FTA | FT% | OFF | DEF | TOT | AVG | PF-FO | AST | TO | BLK | STL | PTS | AVG |
| 2019-20 | CCSU | 11-0 | 151/13.7 | 14-46 | .304 | 9-23 | .391 | 14-20 | .700 | 0 | 11 | 11 | 1.0 | 17-1 | 8 | 15 | 1 | 6 | 51 | 4.6 |
| TOTAL | | 11-0 | 151/13.7 | 14-46 | .304 | 9-23 | .391 | 14-20 | .700 | 0 | 11 | 11 | 1.0 | 17-1 | 8 | 15 | 1 | 6 | 51 | 4.6 |

UDOFIA, Javen

| | | | | Field Goals | | 3-Point | | F-Throws | | Rebounds | | | | | | | | Scoring | | |
|--------------|------|------------|---------------|-------------|-------------|------------|-------------|------------|-------------|----------|----------|----------|------------|------------|----------|----------|----------|----------|----------|------------|
| SEASON | TEAM | GP-GS | MIN/AVG | FG-FGA | FG% | 3FG-FGA | 3FG% | FT-FTA | FT% | OFF | DEF | TOT | AVG | PF-FO | AST | TO | BLK | STL | PTS | AVG |
| 2019-20 | CCSU | 4-0 | 23/5.8 | 2-10 | .200 | 2-5 | .400 | 3-6 | .500 | 0 | 2 | 2 | 0.5 | 3-0 | 1 | 3 | 0 | 0 | 9 | 2.3 |
| TOTAL | | 4-0 | 23/5.8 | 2-10 | .200 | 2-5 | .400 | 3-6 | .500 | 0 | 2 | 2 | 0.5 | 3-0 | 1 | 3 | 0 | 0 | 9 | 2.3 |

WALLACE, Karrington

| | | | | Field Goals | | 3-Point | | F-Throws | | Rebounds | | | | | | | | Scoring | | |
|--------------|------|-------------|-----------------|---------------|-------------|------------|-------------|--------------|-------------|-----------|-----------|-----------|------------|-------------|-----------|-----------|-----------|-----------|------------|------------|
| SEASON | TEAM | GP-GS | MIN/AVG | FG-FGA | FG% | 3FG-FGA | 3FG% | FT-FTA | FT% | OFF | DEF | TOT | AVG | PF-FO | AST | TO | BLK | STL | PTS | AVG |
| 2018-19 | CCSU | 28-3 | 379/13.5 | 36-77 | .468 | 1-4 | .250 | 11-17 | .647 | 24 | 52 | 76 | 2.7 | 41-0 | 8 | 19 | 12 | 8 | 84 | 3.0 |
| 2019-20 | CCSU | 5-5 | 84/16.7 | 10-24 | .417 | 0-0 | .000 | 4-9 | .444 | 6 | 17 | 23 | 4.6 | 11-0 | 3 | 9 | 7 | 3 | 24 | 4.8 |
| TOTAL | | 33-8 | 463/14.0 | 46-101 | .455 | 1-4 | .250 | 15-26 | .577 | 30 | 69 | 99 | 3.0 | 52-0 | 11 | 28 | 19 | 11 | 108 | 3.3 |

WILSON, Xavier

| | | | | Field Goals | | 3-Point | | F-Throws | | Rebounds | | | | | | | | Scoring | | |
|--------------|------|-------------|-----------------|--------------|-------------|-------------|-------------|-------------|-------------|-----------|-----------|-----------|------------|-------------|----------|-----------|-----------|-----------|-----------|------------|
| SEASON | TEAM | GP-GS | MIN/AVG | FG-FGA | FG% | 3FG-FGA | 3FG% | FT-FTA | FT% | OFF | DEF | TOT | AVG | PF-FO | AST | TO | BLK | STL | PTS | AVG |
| 2019-20 | CCSU | 11-3 | 248/22.5 | 18-57 | .316 | 4-19 | .211 | 5-16 | .313 | 11 | 26 | 37 | 3.4 | 25-0 | 6 | 11 | 10 | 10 | 45 | 4.1 |
| TOTAL | | 11-3 | 248/22.5 | 18-57 | .316 | 4-19 | .211 | 5-16 | .313 | 11 | 26 | 37 | 3.4 | 25-0 | 6 | 11 | 10 | 10 | 45 | 4.1 |



STATISTICAL TRENDS

CCSU

Best 1st Half Shooting Percentage:
53.3% (16-30) at UMass Lowell (12/1/19)

Worst 1st Half Shooting Percentage:
31.0% (9-29) at Arizona State (11/14/19)

Best 2nd Half Shooting Percentage:
50.0% (15-30) at UMass Lowell (12/1/19)

Worst 2nd Half Shooting Percentage:
10.7% (3-28) vs. Vermont (11/23/19)

Best Overall Shooting Percentage:
51.7% (31-60) at UMass Lowell (12/1/19)

Worst Overall Shooting Percentage:
25.0% (13-52) vs. Vermont (11/23/19)

Most Points in 1st Half:
35 at UMass Lowell (12/1/19)

Fewest Points in 1st Half:
18 at UMass (11/16/19)

Most Points in 2nd Half:
40 vs. Maine (12/7/19)

Fewest Points in 2nd Half:
16 vs. Vermont (11/23/19)

OPPONENTS

Opponent Best 1st Half Shooting Percentage:
59.3% (16-27) vs. Columbia (11/24/19)

Opponent Worst 1st Half Shooting Percentage:
36.4% (12-33) vs. New Hampshire (11/19/19)

Opponent Best 2nd Half Shooting Percentage:
58.6% (17-29) at Dartmouth (12/18/19)

Opponent Worst 2nd Half Shooting Percentage:
36.1% (13-36) at Arizona State (11/14/19)

Opponent Best Overall Shooting Percentage:
54.4% (31-57) vs. Vermont (11/23/19)

Opponent Worst Overall Shooting Percentage:
40.3% (27-67) at Boston College (12/15/19)

Most Points by Opponent in 1st Half:
48 vs. Columbia (11/24/19)

Fewest Points by Opponent in 1st Half:
33 vs. Hartford (11/5/19)

Most Points by Opponent in 2nd Half:
50 at UMass (11/16/19)

Fewest Points by Opponent in 2nd Half:
30 vs. Maine (12/7/19)

CCSU LEADS/DEFICITS

Largest Lead:
8 (14-6) vs. New Hampshire (11/19/19)

Largest Deficit:
47 (42-89) at UMass (11/16/19)

Largest Lead in a Loss:
8 (14-6) vs. New Hampshire (11/19/19)

Largest Deficit in a Win:

Largest Halftime Lead:

Largest Halftime Deficit:
22 (26-48) vs. Columbia (11/24/19)

Largest Halftime Lead in a Loss:

Largest Halftime Deficit in a Win:

BLUE DEVILS AT THE FOUL LINE

| In the Final 5:00 of the 2nd Half | | | In the Final 1:00 of the 2nd Half | | | In Overtime |
|-----------------------------------|-------|-------|-----------------------------------|-----|------|-------------|
| Stephane Ayangma | 5-8 | .625 | Ola Olamuyiwa | 1-2 | .500 | TEAM |
| Myles Baker | 6-7 | .857 | Jamir Reed | 0-1 | .000 | |
| Jamir Coleman | 2-3 | .667 | Karrington Wallace | 1-2 | .500 | |
| Zach Newkirk | 1-2 | .500 | TEAM | 2-5 | .400 | |
| Ola Olamuyiwa | 1-2 | .500 | | | | |
| Greg Outlaw | 4-6 | .667 | | | | |
| Jamir Reed | 1-3 | .333 | | | | |
| Thai Segwai | 2-2 | 1.000 | | | | |
| Javen Udofia | 3-6 | .500 | | | | |
| Karrington Wallace | 2-4 | .500 | | | | |
| Xavier Wilson | 1-2 | .500 | | | | |
| TEAM | 28-45 | .622 | | | | |



2019-20 STATISTICAL TRENDS

RECORD WHEN THE BLUE DEVILS ARE:

| | Overall | NEC |
|--|---------|-----|
| At Home | 0-3 | 0-0 |
| On the Road | 0-6 | 0-0 |
| Neutral | 0-2 | 0-0 |
| Day Games | 0-6 | 0-0 |
| Night Games | 0-5 | 0-0 |
| On Television | 0-7 | 0-0 |
| Overtime (All OT games) | 0-0 | 0-0 |
| Single Overtime | 0-0 | 0-0 |
| Double Overtime | 0-0 | 0-0 |
| Games decided by 16+ points | 0-7 | 0-0 |
| Games decided by 11-15 points | 0-2 | 0-0 |
| Games decided by 6-10 points | 0-0 | 0-0 |
| Games decided by 5 or fewer points | 0-2 | 0-0 |
| Scoring 90+ points | 0-0 | 0-0 |
| Scoring 80-89 points | 0-0 | 0-0 |
| Scoring 70-79 points | 0-1 | 0-0 |
| Scoring 60-69 points | 0-3 | 0-0 |
| Scoring fewer than 60 points | 0-7 | 0-0 |
| Allowing 90+ points | 0-1 | 0-0 |
| Allowing 80-89 points | 0-4 | 0-0 |
| Allowing 70-79 points | 0-5 | 0-0 |
| Allowing 60-69 points | 0-1 | 0-0 |
| Allowing fewer than 60 points | 0-0 | 0-0 |
| Shooting 50%+ FG | 0-1 | 0-0 |
| Shooting 45-49% | 0-0 | 0-0 |
| Shooting 40-44% | 0-1 | 0-0 |
| Shooting below 40% | 0-9 | 0-0 |
| Opponent shoots 50%+ | 0-3 | 0-0 |
| Opponent shoots 45-49% | 0-3 | 0-0 |
| Opponent shoots 40-44% | 0-5 | 0-0 |
| Opponent shoots below 40% | 0-0 | 0-0 |
| Shooting 50%+ 3 PT FG | 0-0 | 0-0 |
| Shooting 40-49% | 0-0 | 0-0 |
| Shooting 30-39% | 0-8 | 0-0 |
| Shooting 20-29% | 0-3 | 0-0 |
| Shooting less than 20% | 0-0 | 0-0 |
| Shooting 70%+ FT | 0-2 | 0-0 |
| Shooting 60-69% | 0-2 | 0-0 |
| Shooting 50-59% | 0-6 | 0-0 |
| Shooting less than 50% | 0-0 | 0-0 |
| Shooting zero FT | 0-1 | 0-0 |
| Outrebounding opponent | 0-1 | 0-0 |
| Being outrebounded | 0-10 | 0-0 |
| Equal number of rebounds | 0-0 | 0-0 |
| 40+ rebounds | 0-1 | 0-0 |
| 30-39 rebounds | 0-8 | 0-0 |
| 20-29 rebounds | 0-2 | 0-0 |
| Less than 20 rebounds | 0-0 | 0-0 |
| When leading at half | 0-0 | 0-0 |
| When trailing at half | 0-11 | 0-0 |
| When tied at the half | 0-0 | 0-0 |
| When leading with 5:00 to play | 0-0 | 0-0 |
| When trailing with 5:00 to play | 0-11 | 0-0 |
| When tied with 5:00 to play | 0-0 | 0-0 |
| Starting Lineups: | | |
| Newkirk, Baker, Outlaw, Coleman, Wallace | 0-1 | 0-0 |
| Newkirk, Reed, Wilson, Coleman, Wallace | 0-1 | 0-0 |
| Newkirk, Reed, Outlaw, Coleman, Wallace | 0-3 | 0-0 |
| Newkirk, Reed, Outlaw, Coleman, Ayangma | 0-4 | 0-0 |
| Newkirk, Reed, Outlaw, Wilson, Ayangma | 0-1 | 0-0 |
| Newkirk, Reed, Outlaw, Coleman, Wilson | 0-1 | 0-0 |

RECORD WHEN LEADING TEAM IN SCORING

| Player | Season | Record | Career | Record |
|---------------|--------|--------|--------|--------|
| Myles Baker | 2 | 0-2 | 2 | 0-2 |
| Jamir Coleman | 3 | 0-3 | 11 | 0-11 |
| Ian Krishnan | | | 3 | 1-2 |
| Greg Outlaw | 5 | 0-5 | 5 | 0-5 |
| Jamir Reed | 4 | 0-4 | 4 | 0-4 |

RECORD WHEN LEADING TEAM IN REBOUNDING

| Player | Season | Record | Career | Record |
|--------------------|--------|--------|--------|--------|
| Stephane Ayangma | 4 | 0-4 | 4 | 0-4 |
| Myles Baker | 1 | 0-1 | 1 | 0-1 |
| Jamir Coleman | 2 | 0-2 | 13 | 2-11 |
| Greg Outlaw | 2 | 0-2 | 2 | 0-2 |
| Jamir Reed | 2 | 0-2 | 2 | 0-2 |
| Karrington Wallace | 1 | 0-1 | 1 | 0-1 |
| Xavier Wilson | 2 | 0-2 | 2 | 0-2 |

RECORD WHEN LEADING TEAM IN ASSISTS

| Player | Season | Record | Career | Record |
|---------------|--------|--------|--------|--------|
| Myles Baker | 3 | 0-3 | 3 | 0-3 |
| Jamir Coleman | 2 | 0-2 | 3 | 0-3 |
| Zach Newkirk | 4 | 0-4 | 4 | 0-4 |
| Greg Outlaw | 2 | 0-2 | 2 | 0-2 |
| Jamir Reed | 4 | 0-4 | 4 | 0-4 |
| Thai Segwai | 1 | 0-1 | 2 | 0-2 |
| Xavier Wilson | 1 | 0-1 | 1 | 0-1 |

MISCELLANEOUS

Double-Digit Scoring

| Player | Season | Streak | Career |
|--------------------|--------|--------|--------|
| Stephane Ayangma | 1 | | 1 |
| Myles Baker | 2 | | 2 |
| Jamir Coleman | 5 | | 22 |
| Ian Krishnan | | | 19 |
| Greg Outlaw | 7 | | 7 |
| Jamir Reed | 5 | 1 | 5 |
| Trey Tennyson | 2 | 2 | 2 |
| Karrington Wallace | | | 1 |
| Xavier Wilson | 1 | | 1 |

20+ Point Games

| Player | Season | Streak | Career |
|---------------|--------|--------|--------|
| Jamir Coleman | 1 | | 5 |
| Ian Krishnan | | | 4 |

30+ Point Games

| Player | Season | Streak | Career |
|--------|--------|--------|--------|
| | | | |

7+ Rebound Games

| Player | Season | Streak | Career |
|--------------------|--------|--------|--------|
| Stephane Ayangma | 3 | | 3 |
| Jamir Coleman | 1 | | 18 |
| Greg Outlaw | 2 | | 2 |
| Karrington Wallace | 1 | | 1 |
| Xavier Wilson | 2 | | 2 |

10+ Rebound Games

| Player | Season | Streak | Career |
|--------------------|--------|--------|--------|
| Jamir Coleman | | | 5 |
| Karrington Wallace | 1 | | 1 |

5+ Assist Games

| Player | Season | Streak | Career |
|-------------|--------|--------|--------|
| Greg Outlaw | 1 | | 1 |

5+ Steal Games

| Player | Season | Streak | Career |
|--------|--------|--------|--------|
| | | | |

5+ Blocked Shot Games

| Player | Season | Streak | Career |
|--------|--------|--------|--------|
| | | | |

Double-Doubles

| Player | Season | Streak | Career |
|---------------|--------|--------|--------|
| Jamir Coleman | | | 5 |

Triple-Doubles

| Player | Season | Streak | Career |
|--------|--------|--------|--------|
| | | | |

Dunks

| Player | Season | Career |
|-----------------------|--------|--------|
| Karrington Wallace | 4 | 10 |
| Stephane Ayangma | 4 | 4 |
| Jamir Coleman | 1 | 8 |
| Greg Outlaw | 1 | 1 |
| Xavier Wilson | 1 | 1 |
| Ian Krishnan | | 1 |
| Donyell Marshall, Jr. | | 1 |



WHEN WAS THE LAST TIME THE BLUE DEVILS...

Individual

| | | |
|--------------------------------|-------|---|
| 50+ Points | | Has Never Happened |
| 40-49 Points/game | | Kyle Vinales, 42, at Wagner, 2/14/13 |
| 35-39 Points/game | | Tyler Kohl, 35 at Saint Francis U, 2/7/19 |
| 30-34 Points/game | | Tyler Kohl, 33 at Maine, 12/22/18 |
| 30-39 Rebounds/game | | Howie Dickenman, 32 vs. Trenton St., 12/12/67 |
| 20-29 Rebounds/game | | Obie Nwadike, 20 vs. St. Francis Brooklyn, 2/2/06 |
| 15+ Rebounds/game | | Tyler Kohl, 16, at Wagner, 2/1/18 |
| 10+ Assists/game | | Tyler Kohl, 12, at Fairleigh Dickinson, 1/10/19 |
| 10+ Blocks/game | | Keith Closs, 12, vs. Troy St., 1/20/96 |
| 5+ Blocks/game | | Mustafa Jones, 6, at Sacred Heart, 2/11/17 |
| 5+ Steals/game | | Khalen Cumberlander, 5, vs. UMass Lowell, 12/18/16 |
| 10+ 3pt FG/game | | Tristan Blackwood, 10, vs. Robert Morris, 2/22/07 |
| 5+ 3pt FG/game | | Ian Krishnan, 7, at Fairleigh Dickinson, 1/10/19 |
| 10+ FT made/game | | Tyler Kohl, 12-16, at Saint Francis U, 2/7/19 |
| Double-Double (pts/rebs) | | Jamir Coleman, 12 pts/11 reb at LIU Brooklyn, 2/28/19 |
| Double-Double (pts/asts) | | Kyle Vinales, 13 pts/11 asts vs. Mount St. Mary's, 2/23/12 |
| Triple-Double (three recorded) | | Tyler Kohl, 27 pts/12 rbs/11 ast at Fairleigh Dickinson, 1/10/19 |
| | | Keith Closs, 23 pts/10 rbs/11 blocks vs. Eastern Illinois, 1/15/96 |
| | | Keith Closs, 12 pts/12 rbs/10 blocks vs. Delaware St., 12/2/95 |
| Two Players Scored 30+ Points | | Ken Horton (30), Robby Ptacek (30) vs. Sacred Heart, 12/3/11 |
| Two Players Score 20+ Points | | Tyler Kohl (22), Joe Hugley (21) at Loyola Marymount, 11/21/18 |
| Three Players Score 20+ Points | | Tyler Kohl (27), Ian Krishnan (27), Joe Hugley (24) at Fairleigh Dickinson, 1/10/19 |
| Three Players Score 15+ Points | | Tyler Kohl (29), Ian Krishnan (16), Jamir Coleman (15), vs. St. Francis Brooklyn, 1/31/19 |
| Four Players Score 10+ Points | | Myles Baker (15), Jamir Coleman (13), Jamir Reed (13), Greg Outlaw (11) |
| | | vs. Maine, 12/7/19 |
| Five Players Score 10+ Points | | Tyler Kohl (20), Jamir Coleman (19), Deion Bute (14), Ian Krishnan (13), Joe Hugley (10) |
| | | vs. Florida A&M, 11/18/18 |
| Six Players Score 10+ Points | | Tyler Kohl (23), Kashaun Hicks (15), Deion Bute (12), Mustafa Jones (12), Tyson Batiste (11), Joe Hugley (11) |
| | | at LIU Brooklyn, 1/27/18 |
| 0 Players Score 10+ Points | | Greg Outlaw (9) at Arizona State, 11/14/19 |

Team

| | | |
|-------------------------------|-------|--|
| One-point win | | 66-65 vs. Fairleigh Dickinson, 1/18/18 |
| One-point loss | | 84-85 (ot) at Hartford, 11/10/17 |
| 30+ Margin of victory | | 83-51 at Bryant, 12/1/11 |
| 20+ Margin of victory | | 79-58 vs. Penn State Wilkes-Barre, 12/8/18 |
| 30+ Margin of defeat | | 52-82 (L) vs. Columbia, 11/24/19 |
| 20+ Margin of defeat | | 55-84 (L) at LIU Brooklyn, 2/28/19 |
| 100+ points scored | | 103-96 (2ot) (W) at Fairleigh Dickinson, 1/10/19 |
| 100+ points allowed | | 73-109 (L) at Purdue, 11/13/13 |
| Both teams scoring 100 points | | 106-107 (L) vs. LaSalle (4ot), 12/18/05 |
| Overtime win | | 103-96 (2ot) at Fairleigh Dickinson, 1/10/19 |
| Overtime loss | | 71-77 (ot) at Saint Francis U, 2/15/18 |
| CCSU Shot 0 FTs | | 0-0, at Robert Morris (52-53 loss), 2/14/15 |
| CCSU Missed 0 FTs | | 12-12, vs. LIU Brooklyn, 1/26/19 |
| CCSU Makes 0 3fg | | 0-6, at Wagner, 1/31/15 |



2019-20 ONE-LINE GAME RECAPS

Nov. 5, 2019 • New Britain, CT
OPPONENT: Hartford (Detrick Gymnasium)
RESULT: L, 59-74
ONE LINER: CCSU was held to one field goal in a five-minute span of the second half as Hartford built a double-digit lead.

Nov. 9, 2019 • Queens, NY
OPPONENT: St. John's (Carnesecca Arena)
RESULT: L, 57-87
ONE LINER: Jamir Coleman and Greg Outlaw had 11 points each as CCSU was within 39-33 at half before SJU pulled away with a 20-0 run.

Nov. 14, 2019 • Tempe, AZ
OPPONENT: Arizona State (Desert Financial Arena)
RESULT: L, 49-90
ONE LINER: The Blue Devils were held to just two field goals in the opening 11:00 of the second half.

Nov. 16, 2019 • Amherst, MA
OPPONENT: Massachusetts (Mullins Center)
RESULT: L, 43, 89
ONE LINER: Greg Outlaw had 12 points, 5 rebounds, 3 steals, but CCSU shot just 33.3 percent overall and 4-of-14 from the arc.

Nov. 19, 2019 • New Britain, CT
OPPONENT: New Hampshire (Detrick Gymnasium)
RESULT: L, 63-77
ONE LINER: CCSU had three players in double-figures for the first time this season, led by Myles Baker's 16 points.

Nov. 23, 2019 • Uncasville, CT
OPPONENT: Vermont (Mohegan Sun Arena)
RESULT: L, 49-81
ONE LINER: Central was held without a field goal for 9-plus minutes in the second half and shot just 13-of-52 (.250) in the game.

Nov. 24, 2019 • Uncasville, CT
OPPONENT: Columbia (Mohegan Sun Arena)
RESULT: L, 52-82
ONE LINER: CCSU was without two starters and Columbia scored 13 straight as part of an 18-3 run in the first half to take control of the game.

Dec. 1, 2019 • Lowell, MA
OPPONENT: UMass Lowell (Tsongas Center)
RESULT: L, 71-73
ONE LINER: The Blue Devils shot 51.7% from the field and Jamir Coleman (27) and Greg Outlaw (16) scored season-highs, but UML scored the game-winning layup with 5 seconds to play.

Dec. 7, 2019 • New Britain, CT
OPPONENT: Maine (Detrick Gymnasium)
RESULT: L, 64-66
ONE LINER: CCSU rallied from down 16 after halftime to get within 1 with 0:12 to play, but Central's final shot was blocked at the buzzer.

Dec. 15, 2019 • Chestnut Hill, MA
OPPONENT: Boston College (Conte Forum)
RESULT: L, 55-74
ONE LINER: Greg Outlaw (18) and Trey Tennyson (10) each had career-highs, but BC outscored CCSU 16-4 over a 4:48 span in the first half to take the lead for good after trailing early.

Dec. 18, 2019 • Hanover, NH
OPPONENT: Dartmouth (Leede Arena)
RESULT: L, 60-76
ONE LINER: Jamir Reed scored a career-high and tied the game at 45 midway through the second half, but Dartmouth pulled away with a 17-2 run.

Dec. 20, 2019 • University Park, PA
OPPONENT: Penn State (Bryce Jordan Center)
RESULT:
ONE LINER:

Dec. 29, 2019 • New Britain, CT
OPPONENT: Connecticut Col. (Detrick Gymnasium)
RESULT:
ONE LINER:

Jan. 2, 2020 • New Britain, CT
OPPONENT: Robert Morris (Detrick Gymnasium)
RESULT:
ONE LINER:

Jan. 4, 2020 • New Britain, CT
OPPONENT: Saint Francis U (Detrick Gymnasium)
RESULT:
ONE LINER:

Jan. 9, 2020 • Brooklyn, NY
OPPONENT: LIU (Steinberg Wellness Center)
RESULT:
ONE LINER:

Jan. 11, 2020 • New Britain, CT
OPPONENT: Merrimack (Detrick Gymnasium)
RESULT:
ONE LINER:

Jan. 15, 2020 • Fairfield, CT
OPPONENT: Sacred Heart (Pitt Center)
RESULT:
ONE LINER:

Jan. 18, 2020 • Emmitsburg, MD
OPPONENT: Mount St. Mary's (Knott Arena)
RESULT:
ONE LINER:

Jan. 20, 2020 • Hackensack, NJ
OPPONENT: Fairleigh Dickinson (Rothman Center)
RESULT:
ONE LINER:

Jan. 23, 2020 • New Britain, CT
OPPONENT: Sacred Heart (Detrick Gymnasium)
RESULT:
ONE LINER:

Jan. 25, 2020 • New Britain, CT
OPPONENT: Wagner (Detrick Gymnasium)
RESULT:
ONE LINER:

Jan. 30, 2020 • Loretto, PA
OPPONENT: Saint Francis U (DeGol Arena)
RESULT:
ONE LINER:

Feb. 1, 2020 • Moon Township, PA
OPPONENT: Robert Morris (UPMC Events Center)
RESULT:
ONE LINER:

Feb. 8, 2020 • Smithfield, RI
OPPONENT: Bryant (Chace Center)
RESULT:
ONE LINER:

Feb. 13, 2020 • New Britain, CT
OPPONENT: LIU (Detrick Gymnasium)
RESULT:
ONE LINER:

Feb. 15, 2020 • New Britain, CT
OPPONENT: Bryant (Detrick Gymnasium)
RESULT:
ONE LINER:

Feb. 18, 2020 • New Britain, CT
OPPONENT: Fairleigh Dickinson (Detrick Gym)
RESULT:
ONE LINER:

Feb. 21, 2020 • Staten Island, NY
OPPONENT: Wagner (Spiro Sports Center)
RESULT:
ONE LINER:

Feb. 27, 2020 • North Andover, CT
OPPONENT: Merrimack (Hammel Court)
RESULT:
ONE LINER:

Feb. 29, 2020 • New Britain, CT
OPPONENT: St. Francis Brooklyn (Detrick Gym)
RESULT:
ONE LINER:



LAST TIME OUT...



Official Basketball Box Score - Final
Central Conn. St. at Dartmouth
 12/18/19 Leede Arena, Hanover
 2019-20 Men's Basketball

Game Time: 4:00 PM
 Game Duration: 1:49
 Attendance: 1,007

Officials: Matt Levine, Jeffrey Adams, Lee Marelli

Central Conn. St. - 60

Record: 0-11

| NO. | Name | Min | FG | 3P | FT | Rebounds | | | Fouls | | TP | AS | TO | ST | Blocks | | +/- |
|---------------|------------------|---------|-------|------|------|----------|----|-----|-------|----|----|----|----|----|--------|----|-----|
| | | | M-A | M-A | M-A | OR | DR | TOT | PF | FD | | | | | BS | BA | |
| 15 | Jamir Coleman | F 17:26 | 2-8 | 0-1 | 4-6 | 0 | 3 | 3 | 3 | 2 | 8 | 0 | 1 | 2 | 0 | 0 | -7 |
| 20 | Stephane Ayangma | F 21:15 | 2-8 | 0-2 | 0-1 | 1 | 2 | 3 | 3 | 1 | 4 | 1 | 1 | 0 | 0 | 1 | -18 |
| 0 | Greg Outlaw | G 25:07 | 4-5 | 0-1 | 0-1 | 0 | 3 | 3 | 2 | 2 | 8 | 0 | 3 | 0 | 0 | 0 | -5 |
| 10 | Zach Newkirk | G 19:02 | 1-2 | 0-0 | 0-0 | 0 | 2 | 2 | 4 | 0 | 2 | 1 | 0 | 1 | 0 | 0 | -9 |
| 13 | Jamir Reed | G 32:19 | 6-12 | 3-7 | 0-0 | 0 | 5 | 5 | 4 | 1 | 15 | 2 | 2 | 0 | 0 | 0 | -18 |
| 5 | Xavier Wilson | 22:54 | 2-7 | 1-3 | 1-2 | 0 | 2 | 2 | 4 | 1 | 6 | 0 | 1 | 0 | 0 | 2 | -2 |
| 1 | Trey Tennyson | 25:53 | 4-10 | 3-7 | 1-1 | 0 | 3 | 3 | 2 | 3 | 12 | 1 | 0 | 1 | 0 | 0 | -16 |
| 2 | Myles Baker | 22:51 | 2-8 | 0-1 | 1-3 | 2 | 4 | 6 | 1 | 3 | 5 | 1 | 1 | 1 | 0 | 2 | -4 |
| 11 | Thai Segwai | 13:13 | 0-0 | 0-0 | 0-0 | 1 | 2 | 3 | 2 | 3 | 0 | 2 | 1 | 0 | 0 | 0 | -1 |
| Team | | | | | | 2 | 2 | 4 | | | 0 | | 1 | | | | |
| Totals | | | 23-60 | 7-22 | 7-14 | 6 | 28 | 34 | 25 | 16 | 60 | 8 | 11 | 5 | 0 | 5 | -16 |

| Shooting By Period | | |
|--------------------|------|-------------|
| 1 st | FG% | 9-24 37.5% |
| | 3PT% | 1-8 12.5% |
| | FT% | 4-5 80% |
| 2 nd | FG% | 14-36 38.9% |
| | 3PT% | 6-14 42.9% |
| | FT% | 3-9 33.3% |
| GM | FG% | 23-60 38.3% |
| | 3PT% | 7-22 31.8% |
| | FT% | 7-14 50.0% |

Dead Ball Rebounds: 2, 0

Technical Fouls::NONE

Dartmouth - 76

Record: 7-5

| NO. | Name | Min | FG | 3P | FT | Rebounds | | | Fouls | | TP | AS | TO | ST | Blocks | | +/- |
|---------------|-------------------|---------|-------|------|-------|----------|----|-----|-------|----|----|----|----|----|--------|----|-----|
| | | | M-A | M-A | M-A | OR | DR | TOT | PF | FD | | | | | BS | BA | |
| 21 | Aaryn Rai | F 24:53 | 6-9 | 1-2 | 1-3 | 6 | 8 | 14 | 4 | 7 | 14 | 7 | 2 | 0 | 0 | 0 | 14 |
| 23 | Chris Knight | F 26:04 | 8-8 | 0-0 | 2-3 | 0 | 3 | 3 | 1 | 3 | 18 | 1 | 0 | 1 | 3 | 0 | 23 |
| 1 | Taurus Samuels | G 34:17 | 2-9 | 1-5 | 4-7 | 0 | 4 | 4 | 2 | 5 | 9 | 2 | 0 | 1 | 0 | 0 | 13 |
| 5 | Ian Sistare | G 29:01 | 3-9 | 1-5 | 2-2 | 0 | 8 | 8 | 2 | 4 | 9 | 3 | 4 | 0 | 0 | 0 | 20 |
| 10 | James Foye | G 27:18 | 3-7 | 2-6 | 1-2 | 0 | 3 | 3 | 2 | 1 | 9 | 3 | 1 | 0 | 1 | 0 | 22 |
| 3 | Ian Carter | 13:42 | 1-1 | 0-0 | 1-2 | 1 | 4 | 5 | 0 | 2 | 3 | 0 | 0 | 0 | 0 | 0 | -8 |
| 11 | Wes Slajchert | 16:44 | 1-4 | 1-3 | 1-2 | 0 | 0 | 0 | 2 | 1 | 4 | 1 | 1 | 0 | 0 | 0 | -7 |
| 4 | Trevon Ary-Turner | 15:31 | 2-4 | 1-3 | 0-0 | 0 | 2 | 2 | 1 | 1 | 5 | 0 | 1 | 0 | 1 | 0 | 0 |
| 22 | Garrison Wade | 07:39 | 2-5 | 0-3 | 1-1 | 0 | 2 | 2 | 3 | 1 | 5 | 1 | 1 | 0 | 0 | 0 | -1 |
| 12 | Paul Hudson | 04:03 | 0-1 | 0-1 | 0-0 | 0 | 0 | 0 | 0 | 0 | 0 | 1 | 0 | 0 | 0 | 0 | 2 |
| 0 | Jayden Reaves | 00:12 | 0-0 | 0-0 | 0-0 | 0 | 1 | 1 | 0 | 0 | 0 | 0 | 0 | 0 | 0 | 0 | 0 |
| 14 | Jackson Blaufeld | 00:12 | 0-0 | 0-0 | 0-0 | 0 | 0 | 0 | 0 | 0 | 0 | 0 | 0 | 0 | 0 | 0 | 1 |
| 32 | Demilade Adelekun | 00:12 | 0-0 | 0-0 | 0-0 | 0 | 0 | 0 | 0 | 0 | 0 | 0 | 0 | 0 | 0 | 0 | 0 |
| 33 | Nathaniel Ogbu | 00:12 | 0-0 | 0-0 | 0-0 | 0 | 0 | 0 | 0 | 0 | 0 | 0 | 0 | 0 | 0 | 0 | 1 |
| Team | | | | | | 2 | 1 | 3 | | | 0 | | 2 | | | | |
| Totals | | | 28-57 | 7-28 | 13-22 | 9 | 36 | 45 | 17 | 25 | 76 | 19 | 12 | 2 | 5 | 0 | 16 |

| Shooting By Period | | |
|--------------------|------|-------------|
| 1 st | FG% | 11-28 39.3% |
| | 3PT% | 4-17 23.5% |
| | FT% | 5-8 62.5% |
| 2 nd | FG% | 17-29 58.6% |
| | 3PT% | 3-11 27.3% |
| | FT% | 8-14 57.1% |
| GM | FG% | 28-57 49.1% |
| | 3PT% | 7-28 25.0% |
| | FT% | 13-22 59.1% |

Dead Ball Rebounds: 1, 0

Technical Fouls: Rai 2nd 17:33

| | CCSU | DART |
|------------------|---------------------------|---------------------------|
| Biggest lead | 2 (1 st 19:13) | 17 (2 nd 2:50) |
| Best Scoring Run | 6 (1 st 3:37) | 10 (2 nd 7:08) |
| Lead Changes | 3 | |
| Times Tied | 5 | |
| Time with Lead | 00:40 | 36:28 |

| Points from | CCSU | DART |
|---------------|------|------|
| Turnovers | 8 | 16 |
| Paint | 22 | 42 |
| Second Chance | 0 | 12 |
| Fast Breaks | 4 | 13 |
| Bench | 23 | 17 |

| | Period by Period Scoring | | |
|------|--------------------------|-----|-----|
| | 1st | 2nd | TOT |
| CCSU | 23 | 37 | 60 |
| DART | 31 | 45 | 76 |



#GOBLUEDEVILS



CCSUBLUDEVILS.COM

2019-20 STATISTICS

RESULTS

| Date | Opponent | Score | Att. | High Points | High Rebounds |
|----------|--------------------|---------|------|--|---|
| 11/05/19 | HARTFORD | 59-74 L | 2115 | (13)OUTLAW, Greg (13)REED, Jamir | (8)AYANGMA, Stephane |
| 11/09/19 | at St. John's (NY) | 57-87 L | 3582 | (11)OUTLAW, Greg (11)COLEMAN, Jamir | (10)WALLACE, Karrington |
| 11/14/19 | at Arizona St. | 49-90 L | 7496 | (9)OUTLAW, Greg | (6)COLEMAN, Jamir |
| 11/16/19 | at Massachusetts | 43-89 L | 2873 | (12)OUTLAW, Greg | (5)AYANGMA, Stephane (5)OUTLAW, Greg (5)REED, Jamir |
| 11/19/19 | NEW HAMPSHIRE | 63-77 L | 1274 | (16)BAKER, Myles | (7)COLEMAN, Jamir |
| 11/23/19 | vs Vermont | 49-81 L | 7862 | (11)REED, Jamir (11)COLEMAN, Jamir | (6)REED, Jamir |
| 11/24/19 | vs Columbia | 52-82 L | 5822 | (14)REED, Jamir | (7)OUTLAW, Greg |
| 12/01/19 | at UMass Lowell | 71-73 L | 779 | (27)COLEMAN, Jamir | (7)AYANGMA, Stephane (7)WILSON, Xavier |
| 12/07/19 | MAINE | 64-66 L | 1107 | (15)BAKER, Myles | (8)WILSON, Xavier |
| 12/15/19 | at Boston College | 55-74 L | 3963 | (18)OUTLAW, Greg | (8)AYANGMA, Stephane |
| 12/18/19 | at Dartmouth | 60-76 L | 1007 | (15)REED, Jamir | (6)BAKER, Myles |

* - Conference game

| Attendance Summary | Games | Attend | Avg/Game |
|--------------------|-------|--------|----------|
| Home | 3 | 4496 | 1499 |
| Away | 6 | 19700 | 3283 |
| Neutral | 2 | 13684 | 6842 |
| Total | 11 | 37880 | 3444 |

TEAM GAME-BY-GAME COMPARISON

| Opponent | 1st | 2nd | Score | Mar | Total FG | FG Pct | 3-Pointers | 3FG Pct | Free Throw | FT Pct | Rebounds | Assist T/Over | Block | Steal | Fouls |
|-----------------|-------|-------|-------|------|-------------|-----------|------------|-----------|-------------|-----------|------------|---------------|-------|-------|------------|
| HARTFORD | 30/33 | 29/41 | 59-74 | (15) | 22-52/26-56 | .423/.464 | 5-14/10-26 | .357/.385 | 10-19/12-15 | .526/.800 | 35/33 +2 | 15/18 | 19/15 | 3/2 | 9/7 17/18 |
| St. John's (NY) | 33/39 | 24/48 | 57-87 | (30) | 18-53/34-76 | .340/.447 | 6-18/11-28 | .333/.393 | 15-30/8-15 | .500/.533 | 34/43 (9) | 10/19 | 21/15 | 4/8 | 4/10 16/24 |
| Arizona St. | 23/43 | 26/47 | 49-90 | (41) | 17-57/29-65 | .298/.446 | 4-17/7-27 | .235/.259 | 11-21/25-33 | .524/.758 | 39/46 (7) | 9/19 | 23/11 | 5/5 | 6/14 28/18 |
| Massachusetts | 18/39 | 25/50 | 43-89 | (46) | 16-48/32-61 | .333/.525 | 4-14/10-22 | .286/.455 | 7-12/15-21 | .583/.714 | 27/41 (14) | 10/15 | 24/12 | 4/6 | 7/13 20/16 |
| NEW HAMPSHIRE | 30/35 | 33/42 | 63-77 | (14) | 20-58/27-62 | .345/.435 | 9-23/11-27 | .391/.407 | 14-18/12-22 | .778/.545 | 32/51 (19) | 10/19 | 14/16 | 4/3 | 8/7 20/19 |
| Vermont | 33/42 | 16/39 | 49-81 | (32) | 13-52/31-57 | .250/.544 | 7-21/9-24 | .333/.375 | 16-18/10-14 | .889/.714 | 30/36 (6) | 7/12 | 13/10 | 1/5 | 6/8 15/12 |
| Columbia | 26/48 | 26/34 | 52-82 | (30) | 20-57/32-59 | .351/.542 | 7-22/11-27 | .318/.407 | 5-11/7-9 | .455/.778 | 24/41 (17) | 8/18 | 8/11 | 2/5 | 5/3 12/11 |
| UMass Lowell | 35/38 | 36/35 | 71-73 | (2) | 31-60/26-59 | .517/.441 | 5-14/6-19 | .357/.316 | 4-7/15-22 | .571/.682 | 29/40 (11) | 11/15 | 12/13 | 6/1 | 9/4 21/10 |
| MAINE | 24/36 | 40/30 | 64-66 | (2) | 21-57/24-53 | .368/.453 | 6-19/10-29 | .316/.345 | 16-26/8-16 | .615/.500 | 33/36 (3) | 3/17 | 10/15 | 4/3 | 6/5 17/20 |
| Boston College | 23/35 | 32/39 | 55-74 | (19) | 18-46/27-67 | .391/.403 | 4-15/6-27 | .267/.222 | 15-22/14-17 | .682/.824 | 31/40 (9) | 7/15 | 23/16 | 1/4 | 8/14 16/17 |
| Dartmouth | 23/31 | 37/45 | 60-76 | (16) | 23-60/28-57 | .383/.491 | 7-22/7-28 | .318/.250 | 7-14/13-22 | .500/.591 | 34/45 (11) | 8/19 | 11/12 | 0/5 | 5/2 25/17 |

Note: Game totals are displayed in the format TEAM/OPPONENT for each category



2019-20 STATISTICS

ALL GAMES

| RECORD: | OVERALL | HOME | AWAY | NEUTRAL |
|----------------|---------|------|------|---------|
| ALL GAMES | 0-11 | 0-3 | 0-6 | 0-2 |
| CONFERENCE | 0-0 | 0-0 | 0-0 | 0-0 |
| NON-CONFERENCE | 0-11 | 0-3 | 0-6 | 0-2 |

| ## | Player | gp-gs | min | avg | Total | | 3-Point | | F-Throw | | Rebounds | | | | pf | dq | a | to | blk | stl | pts | avg |
|----------------|-----------------|-------|------|------|---------|-----|---------|------|---------|-------|----------|-----|-----|------|-----|----|-----|-----|-----|-----|-----|------|
| | | | | | fg-fga | fg% | 3fg-fga | 3fg% | ft-fta | ft% | off | def | tot | avg | | | | | | | | |
| 00 | OUTLAW, Greg | 11-10 | 316 | 28.7 | 45-109 | .41 | 2-12 | .16 | 26-44 | .59 | 14 | 33 | 47 | 4.3 | 29 | 1 | 15 | 23 | 4 | 17 | 118 | 10.7 |
| 15 | COLEMAN, Jamir | 10-10 | 221 | 22.1 | 36-78 | .46 | 5-15 | .33 | 20-29 | .69 | 7 | 35 | 42 | 4.2 | 33 | 3 | 5 | 27 | 1 | 13 | 97 | 9.7 |
| 02 | BAKER, Myles | 9-1 | 214 | 23.8 | 24-81 | .29 | 16-44 | .36 | 13-19 | .68 | 3 | 21 | 24 | 2.7 | 6 | 0 | 11 | 20 | 0 | 5 | 77 | 8.6 |
| 13 | REED, Jamir | 11-10 | 327 | 29.7 | 31-84 | .36 | 17-53 | .32 | 14-20 | .70 | 4 | 37 | 41 | 3.7 | 24 | 0 | 18 | 22 | 4 | 5 | 93 | 8.5 |
| 20 | AYANGMA, Steph | 11-5 | 261 | 23.7 | 24-60 | .40 | 4-14 | .28 | 11-19 | .57 | 12 | 43 | 55 | 5.0 | 22 | 0 | 6 | 15 | 4 | 6 | 63 | 5.7 |
| 23 | WALLACE, Karrin | 5-5 | 85 | 17.0 | 10-24 | .41 | 0-0 | .00 | 4-9 | .44 | 6 | 17 | 23 | 4.6 | 11 | 0 | 3 | 9 | 7 | 3 | 24 | 4.8 |
| 01 | TENNYSON, Trey | 11-0 | 151 | 13.7 | 14-46 | .30 | 9-23 | .39 | 14-20 | .70 | 0 | 11 | 11 | 1.0 | 17 | 1 | 8 | 15 | 1 | 6 | 51 | 4.6 |
| 05 | WILSON, Xavier | 11-3 | 245 | 22.3 | 18-57 | .31 | 4-19 | .21 | 5-16 | .31 | 11 | 26 | 37 | 3.4 | 25 | 0 | 6 | 11 | 10 | 10 | 45 | 4.1 |
| 10 | NEWKIRK, Zach | 11-11 | 285 | 25.9 | 12-38 | .31 | 5-14 | .35 | 7-12 | .58 | 3 | 17 | 20 | 1.8 | 31 | 1 | 19 | 24 | 0 | 5 | 36 | 3.3 |
| 22 | UDOFIA, Javen | 4-0 | 22 | 5.5 | 2-10 | .20 | 2-5 | .40 | 3-6 | .50 | 0 | 2 | 2 | 0.5 | 3 | 0 | 1 | 3 | 0 | 0 | 9 | 2.3 |
| 11 | SEGWAI, Thai | 7-0 | 47 | 6.7 | 2-6 | .33 | 0-0 | .00 | 2-2 | 1.000 | 1 | 5 | 6 | 0.9 | 5 | 0 | 6 | 4 | 0 | 2 | 6 | 0.9 |
| 24 | OLAMUYIWA, Ola | 5-0 | 14 | 2.8 | 1-5 | .20 | 0-0 | .00 | 1-2 | .50 | 3 | 0 | 3 | 0.6 | 0 | 0 | 0 | 1 | 1 | 0 | 3 | 0.6 |
| 30 | MARSHALL JR, D | 5-0 | 12 | 2.4 | 0-2 | .00 | 0-0 | .00 | 0-0 | .00 | 1 | 1 | 2 | 0.4 | 1 | 0 | 0 | 0 | 2 | 1 | 0 | 0.0 |
| Team | | | | | | | | | | | 15 | 20 | 35 | | | | 4 | | | | | |
| Total..... | | 11 | 2200 | | 219-600 | .36 | 64-199 | .32 | 120-198 | .60 | 80 | 268 | 348 | 31.6 | 207 | 6 | 98 | 178 | 34 | 73 | 622 | 56.5 |
| Opponents..... | | 11 | 2200 | | 316-672 | .47 | 98-284 | .34 | 139-206 | .67 | 119 | 333 | 452 | 41.1 | 182 | - | 186 | 146 | 47 | 87 | 869 | 79.0 |

| Score by Periods | 1st | 2nd | Totals |
|---------------------|-----|-----|--------|
| Central Connecticut | 298 | 324 | 622 |
| Opponents | 419 | 450 | 869 |

