



# PENN STATE WOMEN'S HOCKEY

## 2012-13 NITTANY LIONS

GoPSUsports.com // @PennStateWHKY // Facebook.com/PennStateWomensHockey  
 Contact: **Jeremy Fallis** // jeremy.fallis@psu.edu // O: (814) 865-3613 // C: (814) 206-6544

### 2012-13 SCHEDULE

Overall: 7-19-1 // Home: 4-8-1 // Away: 3-11-0  
 CHA: 1-12-1 // Home: 0-7-1 // Away: 1-5-0

Date	Opponent	Result/Time
Oct. 6	at Vermont	W 5-3
Oct. 7	at Vermont	L 1-3
Oct. 13 *	SYRACUSE	L 0-4
Oct. 14 *	SYRACUSE	L 0-6
Oct. 19	at Sacred Heart	L 1-2
Oct. 20	at Sacred Heart	W 6-1
Oct. 25 *	RIT	L 1-4
Oct. 26 *	RIT	T (OT) 2-2
Nov. 2	SACRED HEART	W 6-0
Nov. 3	SACRED HEART	W 8-2
Nov. 10 *	ROBERT MORRIS	L 1-7
Nov. 11 *	ROBERT MORRIS	L 1-4
Nov. 16 *	at Lindenwood	L 1-5
Nov. 17 *	at Lindenwood	W 3-2
Nov. 30 *	at #4 Mercyhurst	L 0-5
Dec. 1 *	at #4 Mercyhurst	L 1-7
Dec. 7	at St. Lawrence	L 1-3
Dec. 8	at St. Lawrence	L 2-4
Jan. 4	CHATHAM	W 10-0
Jan. 5	CHATHAM	W 4-0
Jan. 11	at Union	L 0-1
Jan. 12	at Union	L 1-2
Jan. 25 *	at Syracuse	L 0-1
Jan. 26 *	at Syracuse	L 1-4
Jan. 29	PRINCETON	L 0-3
Feb. 1 *	#7 MERCYHURST	L 2-5
Feb. 2 *	#7 MERCYHURST	L 1-4

**Feb. 8 \*** LINDENWOOD **2:00 p.m.**  
**Feb. 9 \*** LINDENWOOD **2:00 p.m.**

Feb. 15 *	at RIT	7:00 p.m.
Feb. 16 *	at RIT	7:00 p.m.
Feb. 22 *	at Robert Morris	7:00 p.m.
Feb. 23 *	at Robert Morris	3:00 p.m.

#### 2013 CHA TOURNAMENT

Mar. 1	^ First Round - Game 1	TBA
Mar. 2	^ First Round - Game 2	TBA
Mar. 3	^ First Round - Game 3 (if necessary)	TBA
Mar. 8	% Semifinals	TBA
Mar. 9	% Final	TBA

All Times Eastern

Home games in **CAPS** at Greenberg Ice Pavilion

\* - College Hockey America games

^ - CHA First Round at higher seed

% - CHA Semifinals & Final hosted by No. 1 seed

Rankings based on USA Today/USA Hockey poll



### PENN STATE NITTANY LIONS

(7-19-1, 1-12-1 CHA)

### LINDENWOOD LIONS

(3-23-2, 3-9-2 CHA)

Games 28-29: Feb. 8-9, 2013 • 2 p.m. // 2 p.m. • Greenberg Ice Pavilion • University Park, Pa.

#### GAME DAY

VENUE  
 STREAMING COVERAGE  
 SERIES RECORD  
 LAST MEETING  
 NEXT SERIES

Greenberg Ice Pavilion (1,300)  
 AmericaOneSports.com (\$) 1-1-0  
 11/17/12, Penn State 3-2  
 Feb. 15-16 at RIT

#### GAME NOTES

- Penn State hosts Lindenwood in its home finale this weekend
- Nittany Lions dropped hard-fought games to No. 7 Mercyhurst last weekend
- Penn State celebrates **Skate for the Cure** this weekend
- Lindenwood took three of four points last week vs. RIT
- Penn State and Lindenwood split a series on Nov. 16-17 in Missouri
- **Celine Whitlinger** has saved 246 of last 258 shots she has faced
- **Kate Christoffersen** will be honored for Senior Day on Saturday

#### ON THE INSIDE

Page 2: **CHA Standings and Team Comparison**

Pages 8-11: **2012-13 Penn State Women's Hockey Stats**

Page 12: \$90 million **Pegula Ice Arena** is on target for a Sept. 2013 opening

Pages 13-14: **The Nittany Lion Roster & TV/Radio Roster**

#### SEASON STATISTICAL LEADERS

FORWARDS		GP	G	A	PTS	SH	+/-	GWG
40	Shannon Yoxheimer	26	12	14	26	136	-2	3
24	Taylor Gross	26	4	14	18	69	-2	0
15	Jess Desorcie	26	5	12	17	38	-1	0
16	Hannah Hoenshell	21	8	3	11	47	+4	1
19	Jill Holdcroft	27	9	2	11	40	-8	0
20	Emily Laurenzi	27	2	5	7	26	+6	1
22	Jenna Welch	27	2	5	7	35	-7	0
23	Birdie Shaw	25	2	3	5	45	-5	0
10	Micayla Catanzariti	27	3	2	5	48	-9	0
DEFENSE		GP	G	A	PTS	SH	+/-	BLK
4	Jordin Pardoski	27	3	5	8	23	0	24
17	Paige Jahnke	27	0	7	7	25	-6	37
33	Madison Smiddy	15	1	6	7	13	+3	14
2	Jeanette Bateman	27	1	4	5	20	-6	29
8	Taylor McGee	20	0	2	2	11	-6	16
GOALTENDER		GP-GS	Record	MIN	GA	GAA	SV	SV%
37	Nicole Paniccia	20-20	6-13-1	1119:45	60	3.22	712	.922
30	Celine Whitlinger	9-7	1-6-0	447:31	21	2.82	324	.939



@PennStateWHKY



PennStateWomensHockey



GoPSUTV



# NITTANY LION WOMEN'S HOCKEY

## GAME NOTES VS. LINDENWOOD (FEB. 8-9)

### SKATE FOR THE CURE

Penn State women's hockey is hosting Skate for the Cure this weekend, College Hockey America's initiative to raise money for local charities of its member schools. The funds women's hockey raises this weekend will benefit the Penn State Milton S. Hershey Cancer Institute.

The Nittany Lions will be auctioning off several items from the athletic community including signed baseball helmets, lacrosse gear and much more. The silent auctions will run all weekend, while Penn State wears pink bands, accessories and t-shirts on Friday afternoon. Fans are encouraged to wear pink this weekend as well.

### SCOUTING THE LIONS

Last weekend, Lindenwood (3-23-2, 3-9-2 CHA) had its most successful weekend as an NCAA Division I program, taking three of four points in a home series with RIT. The Lions and Tigers skated to a 1-1 tie on Friday before a wild Saturday game yielded a 4-3 win for the Lions. RIT came back from a two-goal deficit to the game with 54 seconds remaining before Lindenwood got the game winner from leading scorer Alison Wickenheiser with seven seconds left.

Wickenheiser has a team-high nine goals and 17 points, while a quintet of Lions have double-digit points in Kendra Broad (13), Allysson Arcibal (12), Lyndsay Kirkham (12), Alyssa West (12) and Chelsea Witwicke (11).

In net the reigning CHA Rookie of the Week Nicole Hensley is Lindenwood's top goaltender. Hensley has a conference-high 767 saves and a 3-14-2 record. On the season, Hensley owns a 4.06 GAA and .910 save percentage. Backup Taylor Fairchild has a 6.17 GAA, .867 save percentage and a 0-9-0 record in 11 appearances.

### LAST TIME VS. LINDENWOOD

The Nittany Lions and Lindenwood split their first NCAA meetings in Wentzville, Mo. on Nov. 16-17. Lindenwood took the opener, 5-1, dominating the game from beginning to end with a 37-16 edge in shots. Nicole Hensley made 15 saves, while Jill Holdcroft tallied PSU's only goal. Allysson Arcibal scored twice for Lindenwood.

The next day was a different story as a tight battle saw Lindenwood go up twice, once in the first period and again in the third period. Nevertheless, Taylor Gross scored 36 seconds after Lindenwood's second go-ahead goal to tie the game and Emily Laurenzi's power-play goal with 5:50 left gave PSU its first CHA victory. Shannon Yoxheimer had two assists and Nicole Paniccia made 28 saves for PSU, who out-shot LU 33-30.

### SENIOR DAY

Penn State women's hockey will celebrate Senior Day by honoring **Kate Christoffersen** in PSU's final home game on Saturday. Christoffersen was one of eight members of Penn State's ACHA team to be a part of the varsity side this year. Fellow

classmate **Lindsay Reihl** is expected to return next year for the Nittany Lions.

### YOUTH MOVEMENT

As is expected with a brand new varsity program, there are many freshmen on the team—17 in all. All 17 freshmen have made an appearance on the ice this season and have accounted for 75.9% of the goals scored (44 of 58).

	GP	G	A	Pts.
<b>Jeanette Bateman</b>	27	1	4	5
<b>Micayla Catanzariti</b>	27	3	2	5
<b>Hannah Hoenshell</b>	21	8	3	11
<b>Jill Holdcroft</b>	27	9	2	11
<b>Paige Jahnke</b>	27	0	7	7
<b>Darby Kern</b>	11	0	1	1
<b>Emily Laurenzi</b>	27	2	5	7
<b>Taylor McGee</b>	20	0	2	2
<b>Jordin Pardoski</b>	27	3	5	8
<b>Kendra Rasmussen</b>	26	3	1	4
<b>Birdie Shaw</b>	25	2	3	5
<b>Stephanie Walkom</b>	1	0	0	0
<b>Sarah Wilkie</b>	19	0	0	0
<b>Shannon Yoxheimer</b>	26	12	14	26
<b>Katie Zinn</b>	12	1	3	4
	GP	GAA	SV	Pct.
<b>Brooke Meyer</b>	3	0.00	17	1.000
<b>Celine Whitlinger</b>	9	2.82	324	.939

### WHITLINGER'S NET DOMINANCE

**Celine Whitlinger** has been most impressive for the Nittany Lions over the last two-plus months. Since Nov. 30, Whitlinger has made five starts and seven total appearances, playing 328:51. During that time, she has a 2.19 GAA, a .953 save percentage and a CHA Rookie of the Week honor from December. The freshman netminder has saved over 40 shots on four occasions including back-to-back 50-plus save performances against

### GAMEDAY COMPARISON

#### TEAM STATS

Overall record	7-19-1	3-23-2
Conference record	1-12-1	3-9-2
Goals scored	59	44
Goals scored per game	2.2	1.6
Goals allowed	84	134
Goals allowed per game	3.1	4.8
First period goals	19	10
Second period goals	19	17
Third period goals	21	17
Overtime goals	0	0
Shots	704	710
Shots per game	26.1	25.4
Shot pct.	.084	.062
Assists	90	67
Penalties per game	4.1	5.7
Power plays	14-101	19-137
Power-play pct.	.139	.139
Penalty kills	25-109	43-140
Penalty-kill pct.	.771	.693
Saves	1053	1145
Shutouts	3	0

#### LEADERS

Points	Yoxheimer (26)	Whickenheiser (17)
Goals	Yoxheimer (12)	Whickenheiser (9)
Assists	Two with 14	Witwicke (10)
Shots	Yoxheimer (136)	Whickenheiser (117)
Shot Pct.	Holdcroft (.225)	Broad (.099)
+/-	Laurenzi (+6)	Wynn (-5)
Faceoff Pct.	Holdcroft (.512)	Post (.466)
Saves	Paniccia (712)	Hensley (767)
Save Pct.	Whitlinger (.939)	Hensley (.910)
GAA	Whitlinger (2.82)	Hensley (4.06)
Record	Paniccia (6-13-1)	Hensley (3-14-2)

### 2012-13 COLLEGE HOCKEY AMERICA STANDINGS

(as of Feb. 5, 2013)

	Pts.	CHA	GF	GA	Overall	GF	GA	Last 10
Mercyhurst (7/7)	24	12-2-0	68	14	21-5-1	114	43	7-3-0
Syracuse	21	10-3-1	40	19	16-11-1	80	56	7-3-0
RIT	15	5-4-5	29	31	12-11-5	79	61	5-2-3
Robert Morris	13	6-7-1	35	29	10-11-3	59	53	1-8-1
Lindenwood	8	3-9-2	25	58	3-23-2	44	134	2-7-1
<b>PENN STATE</b>	<b>3</b>	<b>1-12-1</b>	<b>14</b>	<b>60</b>	<b>7-19-1</b>	<b>59</b>	<b>84</b>	<b>2-8-0</b>

### PAST RESULTS & UPCOMING SCHEDULE

#### Friday, Feb. 1

RIT 1, Lindenwood\* 1 (OT)  
Syracuse 3, Robert Morris\* 2  
**Mercyhurst 5, PENN STATE\* 2**

#### Saturday, Feb. 2

**Mercyhurst 4, PENN STATE\* 1**  
Lindenwood\* 4, RIT 3  
Syracuse 2, Robert Morris\* 1

#### Friday, Feb. 8

**Lindenwood at PENN STATE, 2 p.m.**  
Robert Morris at Mercyhurst, 3 p.m.  
Syracuse at RIT, 7 p.m.

#### Saturday, Feb. 9

Robert Morris at Mercyhurst, 2 p.m.  
**Lindenwood at PENN STATE, 2 p.m.**  
RIT at Syracuse, 7 p.m.

#### Friday, Feb. 15

Mercyhurst at Syracuse, 7 p.m.  
**PENN STATE at RIT, 7 p.m.**  
Robert Morris at Lindenwood, 8 p.m.

#### Saturday, Feb. 16

Mercyhurst at Syracuse, 2 p.m.  
Robert Morris at Lindenwood, 3 p.m.  
**PENN STATE at RIT, 7 p.m.**





# NITTANY LION WOMEN'S HOCKEY

the two best CHA teams Syracuse (51) and Mercyhurst (59). In all, Whitlinger has allowed just 12 goals against 258 shots on net to aid the Penn State effort.

## PENN STATE FIGHTS, FALLS TO LAKERS

A pair of valiant efforts weren't enough to upset the No. 7 Mercyhurst Lakers this past weekend (Feb. 1-2), falling 5-2 and 4-1. Penn State's three-goal deficit on Friday was too great to overcome, but PSU matched Mercyhurst 2-2 over the course of 56 minutes between the second period of Friday and Saturday's game. **Celine Whitlinger** was outstanding in net on Friday night, making a career-high 59 saves to keep the Lions in it. **Hannah Hoenshell** beat MU's goaltender with a nifty move and **Jordin Pardoski** netted a power-play goal off a Laker skate.

On Saturday, **Nicole Paniccia** was tasked with stopping the Mercyhurst onslaught and saved 46 of 50 shots. **Jill Holdcroft's** late third period goal on the power play ended the shutout and PSU dropped the season series 0-4-0 to the CHA leaders.

## LIONS FALL PREY TO TIGERS

Penn State skated against Princeton for the first time on Tuesday night (Jan. 29) and dropped a

3-0 decision at Greenberg Ice Pavilion. The Tigers tallied a goal in each period, while goaltender **Nicole Paniccia** made 27 saves for the Nittany Lions. Princeton out-shot Penn State 30-19 for the game.

## LIONS FALL IN SYRACUSE

Penn State dropped both games to Syracuse in its return to CHA play. In the Friday, Jan. 25 matchup, Nicole Paniccia's 45-save performance wasn't enough as a first-period Orange goal was the difference, 1-0. The next day, Celine Whitlinger had to stand tall in net, making 51 saves in a 4-1 loss to Syracuse. The Orange opened the game with three goals in the first 11:29, but Penn State outscored the Orange 1-0 until a last-minute empty-netter capped the scoring. **Jill Holdcroft** tallied her eighth of the year and her team-leading fourth power-play goal. **Shannon Yoxheimer** and **Jess Desorcie** fed the Holdcroft goal.

## PENN STATE'S RECORD IS...

4-8-1	..... at home
3-11-0	..... on the road
0-0-1	..... in overtime
5-3-1	..... when scoring first
2-16-0	..... when opponent scores first
5-0-1	..... when leading after the 1st period
1-11-0	..... when trailing after the 1st period
1-8-0	..... when tied after the 1st period
6-0-1	..... when leading after the 2nd period
0-16-0	..... when trailing after the 2nd period
1-3-0	..... when tied after the 2nd period
6-1-0	..... when out-shooting opponent
1-18-1	..... when out-shot by opponent
0-0-0	..... when taking same # of shots
7-2-0	..... when winning more faceoffs
0-17-1	..... when losing more faceoffs
0-0-0	..... when tied in faceoffs
1-10-0	..... when taking more penalties
3-6-0	..... when taking fewer penalties
3-3-1	..... when taking the same # of penalties
4-6-1	..... when scoring a power play goal
3-13-0	..... when not scoring a power play goal
4-11-1	..... when allowing a power play goal
3-8-0	..... when not allowing a power play goal
0-6-0	..... when scoring 0 goals
0-11-0	..... when scoring 1 goal
0-2-1	..... when scoring 2 goals
1-0-0	..... when scoring 3 goals
6-0-0	..... when scoring 4+ goals
3-0-0	..... when allowing 0 goals
1-2-0	..... when allowing 1 goal
2-2-1	..... when allowing 2 goals
1-3-0	..... when allowing 3 goals
0-12-0	..... when allowing 4+ goals
2-5-1	..... in October
3-4-0	..... in November
0-3-0	..... in December
2-5-0	..... in January
0-2-0	..... in February
0-0-0	..... in March
0-1-0	..... on Tuesday
0-1-0	..... on Thursday
2-7-1	..... on Friday
5-7-0	..... on Saturday
0-3-0	..... on Sunday
4-9-0	..... during the day
3-10-1	..... at night
1-1-0	..... vs. Hockey East
1-12-1	..... vs. College Hockey America
0-5-0	..... vs. ECAC Hockey
3-1-0	..... vs. D-I Independents
2-0-0	..... vs. Division III
0-4-0	..... vs. ranked opponents
7-15-1	..... vs. unranked opponents
5-3-1	..... when Shannon Yoxheimer scores
6-13-1	..... when Nicole Paniccia starts
1-4-1	..... games decided by a goal or less

## 2012-13 MEDIA INFORMATION

### Penn State Athletic Communications

Primary Contact: Jeremy Fallis  
 Email: jeremy.fallis@psu.edu  
 Secondary Contact: Brian Hoerst  
 Email: bjh33@psu.edu  
 Office: 814-865-1757

### Interviews

Penn State student-athletes and coaches are available for interviews after practice each day. Please contact Jeremy Fallis in advance.

### Credentials

Contact Jeremy Fallis for home game credentials at Greenberg Ice Pavilion.

### Postgame

Head coach Josh Brandwene and requested student-athletes are available to the media following each game in the studio rink. Please alert Jeremy Fallis or Brian Hoerst during the game of any requests.

### Yearbook

The 2012-13 Penn State women's hockey yearbook will be made available to media members at the first home game on Oct. 13. The public may purchase copies for \$6 online.

[GoPSUsports.com](http://GoPSUsports.com)

[Facebook.com/PennStateWomensHockey](https://www.facebook.com/PennStateWomensHockey)

[@PennStateWHKY](https://twitter.com/PennStateWHKY)

## 2012-13 WOMEN'S HOCKEY POLLS

(as of Feb. 5, 2013)

### USA Today/USA Hockey

1	Minnesota	28-0-0	1
2	Boston College	20-4-2	2
3	Boston University	18-3-3	3
4	Cornell	19-4-0	5
5	Harvard	17-2-2	4
6	Clarkson	21-7-0	6
<b>7</b>	<b>Mercyhurst</b>	<b>21-5-1</b>	<b>7</b>
8	North Dakota	18-10-0	9
9	Wisconsin	15-9-2	8
10	Minnesota-Duluth	13-10-3	10

Others: **St. Lawrence**, *Northeastern*, *Providence*

### USCHO.com

1	Minnesota	28-0-0	1
2	Boston College	20-4-2	2
3	Boston University	18-3-3	4
4	Cornell	19-4-0	5
5	Harvard	17-2-2	3
6	Clarkson	21-7-0	6
<b>7</b>	<b>Mercyhurst</b>	<b>21-5-1</b>	<b>7</b>
8	Wisconsin	15-9-2	8
9	North Dakota	18-10-0	9
10	Minnesota-Duluth	13-10-3	10

Others: *Northeastern*, **St. Lawrence**, *Providence*

**Bold indicates 2012-13 opponent**



# NITTANY LION WOMEN'S HOCKEY

## LIONS DROP ONE GOAL GAMES AT UNION

Penn State dropped both ends of a two-game series (Jan. 11-12) at Union in one-goal fashion, 1-0 and 2-1. **Celine Whitlinger's** career-high 48-save performance kept PSU in the opener before a late third-period goal propelled the Dutchwomen. Union took a 2-0 lead in the series finale, but **Jess Desorcie** cut the lead in half. Nevertheless, the Dutchwomen held on for the slim win.

## PENN STATE SWEEPS CHATHAM

The Nittany Lions trounced an overmatched Chatham team on Friday-Saturday, Jan. 4-5, winning 10-0 and 4-0. The weekend saw every Nittany Lion see ice time as PSU out-shot Chatham 119-33, scoring 14 times, tallying 22 assists, 36 points and a plus-65 rating. Additionally, Penn State posted back-to-back shutouts for the first time in the young history of the program.

In Friday's game, Penn State scored five in the first, four in the second and added one more for the 10 spot. **Shannon Yoxheimer** scored the first two goals of the game and **Hannah Hoenshell** tallied a school-record four points as Penn State eased by the Division III Cougars.

Penn State set new records for most goals in a game (10), most goals in a period (5, in the first) and most assists in a game (17). Hoenshell tallied a two-goal, two-assist effort, while **Jeanette Bateman** became the first Nittany Lion to register three assists. **Jordin Pardoski** added a three-point game of her own behind a goal and two assists to celebrate her 19th birthday.

The game also featured a couple of firsts as **Tess Weaver** scored her first varsity goal at the end of the first period and freshman **Darby Kern** notched her first point on an assist in the first period. In all, 15 Nittany Lions earned a point.

**Kendra Rasmussen** tallied her first multi-goal game of her career and **Jill Holdcroft** tallied two points on a goal and an assist. In all, 16 of 18 Nittany Lion skaters tallied a point.

The goaltending trio of **Nicole Paniccia**, **Celine Whitlinger** and **Brooke Meyer** combined for Penn State's second shutout of the year. Paniccia and Meyer made six stops, while Whitlinger saved five.

On Saturday, Junior assistant captain **Jenna Welch** scored twice and linemate **Katie Zinn** posted three points behind her first collegiate goal and two assists.

Penn State out-shot Chatham, 71-16, peppering the Cougar net. Zinn scored the opening goal in the first, Welch doubled the lead in the second and added another in the third before Holdcroft finished off the scoring. **Paige Jahnke** had two helpers and **Madison Smiddy** added her sixth assist of the season in the game.

Whitlinger won her first collegiate game with 12

saves in 52:34 of game time. Meyer polished off the shutout with four stops in the final 7:26.

## HOENSHELL EARNS ROOKIE OF THE WEEK

Freshman forward **Hannah Hoenshell** collected College Hockey America Rookie of the Week laurels, the conference office announced Monday, Jan. 7. The award is the first of her career for the Plano, Texas, native, who tallied four points on a pair of goals and assists in a 10-0 win over Chatham Jan. 4.

## STROEMEL TO LEAD USA UNIVERSITY TEAM

Penn State women's hockey director of operations and video coach **Mo Stroemel** will lead the 2013 U.S. Women's National University Team at the 2013 World University Games in Italy announced on Jan. 9. Stroemel was also in charge of the inaugural 2011 team that placed fourth in Turkey. Stroemel's 2011 squad featured current Nittany Lion assistant captain **Lindsay Reihl** and current equipment manager **Graham Pepperman**.

## SAINTS ESCAPE NITTANY LIONS

Penn State battled St. Lawrence Friday night (Dec. 7), but ultimately fell to the Saints, 3-1, on the road in Canton, N.Y. Freshman **Jill Holdcroft** netted her fifth goal of the season on a power play in the second period, but St. Lawrence responded with a two-goal final frame to put away the Nittany Lions. **Celine Whitlinger**, in her third start of the season, denied a career-high 45 shots in goal, besting her previous record of 40 set against Vermont Oct. 7. Whitlinger was aided by a stingy Nittany Lion defense that totaled 17 blocked shots to hold St. Lawrence to just a pair of goals before an empty-netter sealed the final score at 3-1. **Jenna Welch** led the way by getting in front of three attempts.

On Saturday, Dec. 8, Penn State pulled within one late in the third period, but could not complete the comeback against St. Lawrence as the Saints skated to a 4-2 victory to earn the series sweep. **Jess Desorcie** scored early, assisted by **Taylor Gross** and **Shannon Yoxheimer** for a 1-0 lead. Down 3-1, **Hanna Hoenshell** scored her fifth of the season midway through the third period. SLU managed a power-play goal with less than two minutes to play for the 4-2 final. **Nicole Paniccia** made 54 saves in goal for the Lions.

## WHITLINGER NAMED ROOKIE OF THE WEEK

Freshman netminder **Celine Whitlinger's** career night at St. Lawrence on Friday, Dec. 7, translated into her first collegiate honor: College Hockey America Rookie of the Week. Whitlinger earned Penn State's second CHA Rookie of the Week this season after **Micayla Catanzariti's** honor on Oct. 8.

Whitlinger made stop after stop on as the Nittany Lions looked to upset established St. Lawrence. The California native posted 45 saves in all as Penn State fell 3-1. St. Lawrence went to the NCAA Tournament last season and is among the

best teams in the ECAC Hockey.

## SET TO JOIN THE NITTANY LIONS

On Nov. 14, head coach **Josh Brandwene** welcomed next year's Nittany Lions. Minnesota natives **Laura Bowman** (Minnetonka, Minn.), **Sarah Nielsen** (Edina, Minn.), **Amy Petersen** (Minnetonka, Minn.) and **New York** product **Kelly Seward** (Williamsville, N.Y.). Bowman and Petersen have led Minnetonka to the last two Minnesota high school state titles.

## CHA ROOKIE OF THE MONTH HONORS TO YOXHEIMER

Freshman forward **Shannon Yoxheimer** was named College Hockey America's Rookie of the Month for her performance during November. Yoxheimer led the Nittany Lions with nine points and helped lead Penn State to a 3-4-0 record last month.

Yoxheimer was Penn State's most powerful weapon offensively, accounting for 39 shots, four goals, five points and nine points during the varsity program's second month. Her four goals were tied for a team-high, while her five assists and nine points were each team bests.

## AT THE MERCY OF THE LAKERS

Penn State dropped both games at No. 4 Mercyhurst last weekend (Nov. 30-Dec. 1), but still put forth positive efforts. Friday night's 5-0 loss highlight was **Celine Whitlinger's** strong third period that yielded one goal in 29 shots as the freshman netminder made her return to the ice. Her last ap-

## HONORS & AWARDS

### Micayla Catanzariti

CHA Rookie of the Week (10/8)

Penn State Student-Athlete of the Week (10/9)

### Hannah Hoenshell

CHA Rookie of the Week (1/6)

### Celine Whitlinger

CHA Rookie of the Week (12/10)

### Shannon Yoxheimer

CHA November Rookie of the Month (12/4)

CHA Player of the Week (10/22)

Penn State Student-Athlete of the Week (10/23)

## OVER THE AIR

### The CHA on AmericaOneSports.com

All Penn State games during CHA play will be streamed live on AmericaOneSports.com. Subscribers can purchase a 1-day package for \$8, 30-day packages for \$30 or a season pass for \$125.

Penn State home games will have Ryan Smith and Jared Abbott on the call.



# NITTANY LION WOMEN'S HOCKEY



pearance was Oct. 14 vs. Syracuse.

In Saturday's game, Penn State took a 1-0 lead on a **Jess Desorcie** marker off **Taylor Gross's** breakaway attempt 8:29 into the contest. The play was set up by **Shannon Yoxheimer**, who caused a turnover at the blue line and allowed Gross to streak in uncontested for the second time in minutes. Mercyhurst tied the game 1-1 before the period was out and held a 3-1 advantage after two periods as the Lakers won 7-1. **Nicole Paniccia** was named third star of the game by setting a new school record with 64 saves.

## CHA SPLIT AT LINDENWOOD

Penn State women's hockey earned another inaugural milestone on Saturday, Nov. 17, defeating Lindenwood 3-2 for its first College Hockey America victory. Freshman forward **Emily Laurenzi** struck for the game-winning goal to complete a comeback at Lindenwood Ice Arena. Fellow classmate **Jill Holdcroft** and junior captain **Taylor Gross** each notched their fourth goals of the season for the Nittany Lions. Freshman forward **Shannon Yoxheimer** had two assists to aid the Nittany Lion attack.

Penn State found itself down twice to Lindenwood and each time fought back to knot the game. With 5:50 left in the third period in a 2-2 game, Laurenzi tucked home her second goal of the season as the Nittany Lions held off LU for the final portions of the game. **Paige Jahnke** and **Hannah Hoenshell** assisted on the power-play goal.

The previous day did not go as well for the Nittany Lions. Lindenwood scored twice in the second period to break a 1-1 dealock and went on to win, 5-1, for the Lions' first win of the season. Holdcroft scored a power-play goal from Yoxheimer and Gross.

## WEEKEND SWEEP BY RMU

Penn State faced the 2012 CHA Tournament champion Robert Morris in a two-game series (Nov. 10-11), falling 7-1 and 4-1. **Shannon Yoxheimer** scored in the opener off a **Taylor Gross** faceoff win, but RMU's Rebecca Vint scored five times to pace the Colonials.

In the second game, it was more of the same early as Robert Morris staked out a 3-0 lead through two periods, but Penn State held the Colonials scoreless in the second. That turned the momentum around as Penn State went toe-to-toe with the defending champions in the third. **Micayla Catanzariti** scored a goal with 6:19 remaining to spark the Lions. **Birdie Shaw** and **Jill Holdcroft** were credited with assists. Twenty-three seconds later, Yoxheimer's shot was saved by Delayne Brian and Taylor Gross's attempt was stopped by Brian to keep it a two-goal game. With 2:23 left, RMU took an interference penalty as Penn State had a 6-on-4, but couldn't convert before RMU tallied an empty-net goal with 13 second remaining. **Nicole Paniccia** made 49 saves in Sunday's loss.

## YOXHEIMER FINALLY STOPPED

Penn State's leading scorer, **Shannon Yoxheimer**, has been on a roll over the past four weeks, scoring eight of her team-high 10 goals. In that stretch, Yoxheimer scored in seven-straight games after a three-game drought. The seven-game streak started at Sacred Heart as she scored PSU's only goal and has continued with a career

## NCAA TEAM RANKS

(As of Feb. 4, 2013)

Goals Per Game	25th
Goals Against Per Game	25th
Scoring Margin	24th
Most Penalty Minutes Per Game	25th
Power-Play Percentage	26th
Penalty-Kill Percentage	29th
Combined Special Teams	27th
Winning Percentage	29th

## NCAA INDIVIDUAL RANKS

(Top 100 as of Feb. 4, 2013)

<b>Jess Desorcie</b>	
Assists Per Game	T-91st

<b>Taylor Gross</b>	
Assists Per Game	T-61st

<b>Jill Holdcroft</b>	
Goals Per Game	T-90th
Power-Play Goals Per Game	T-18th
Points Per Game (Rookies)	T-45th

<b>Hannah Hoenshell</b>	
Goals Per Game	T-70th
Points Per Game (Rookies)	T-31st

<b>Nicole Paniccia</b>	
Goals-Against Average	39th
Save Percentage	13th
Winning Percentage	33rd

<b>Shannon Yoxheimer</b>	
Points Per Game	T-41st
Goals Per Game	T-39th
Game-Winning Goals	T-20th
Assists Per Game	T-61st
Points Per Game (Rookies)	T-8th

## CHA TEAM RANKS

(As of Feb. 4, 2013)

Goals	4th
Assists	4th
Goals Per Game	5th
Goals Against	5th
Goals-Against Average	5th
Saves	2nd
Save Percentage	2nd
Shots on Goal	6th
Least Penalty Minutes	2nd
Power-Play Goals	T-5th
Power-Play Percentage	4th
Power-Play Goals Against	4th
Penalty-Kill Percentage	5th

## CHA INDIVIDUAL RANKS

(Top 10 as of Feb. 5, 2013)

<b>Taylor Gross</b>	
Assists	T-8th

<b>Jill Holdcroft</b>	
Goals	T-10th
Power-Play Goals	T-4th

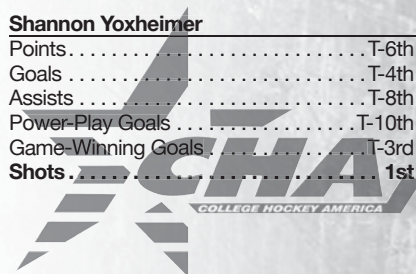
<b>Paige Jahnke</b>	
Assists	T-9th

<b>Nicole Paniccia</b>	
Games Played	T-2nd
Games Started	T-1st
Minutes Played	4th
Goals-Against Average	7th
Saves	2nd
Save Percentage	4th
Wins	6th
Win Percentage	7th

<b>Jordin Pardoski</b>	
Goals (D)	T-7th
Penalty Minutes	T-8th
Penalty Minutes (D)	T-5th

<b>Celine Whitlinger</b>	
Games Played	11th
Games Started	11th
Minutes Played	11th
Saves	7th
Wins	11th

<b>Shannon Yoxheimer</b>	
Points	T-6th
Goals	T-4th
Assists	T-8th
Power-Play Goals	T-10th
Game-Winning Goals	T-3rd
Shots	1st





# NITTANY LION WOMEN'S HOCKEY

day vs. SHU on Nov. 3 as she scored a goal and career-high two assists. Yoxheimer also accounted for Penn State's first two game-winning goals, notching two goals at Vermont (Oct. 6) and the go-ahead goal at SHU (Oct. 20). Yoxheimer scored against Robert Morris on Saturday, but we held scoreless for the first time since Oct. 14 in the Sunday matchup.

## EIGHT FROM EIGHT IN WIN OVER SHU

Penn State earned its first series sweep in program history, defeating Sacred Heart, 8-2, on Saturday (Nov. 3) afternoon at Greenberg Ice Pavilion. Eight different Nittany Lions tallied a goal with **Jess Desorcie**, **Taylor Gross** and **Shannon Yoxheimer** notching three-point days.

Yoxheimer opened the scoring before SHU tied it up early in the second period before Gross, **Kendra Rasmussen** and **Jill Holdcroft** scored successive goals for a 4-1 lead midway through the period.

After another SHU tally, PSU would rally off the last four goals, this time coming from Desorcie, **Jenna Welch**, **Madison Smiddy** and **Emily Laurenzi**. Welch, Smiddy and Laurenzi scored their first goals of the season for Penn State.

**Nicole Paniccia** made 23 saves in net for the Nittany Lions to improve to 4-3-1 on the season. Penn State dominated the game in the faceoff circle, 54-25, which led to a 64-25 shot advantage.

## FIRST HOME WIN, SHUTOUT & HAT TRICK

Friday night, Nov. 2 at Greenberg Ice Pavilion was historic for Penn State as the women's hockey team won its first home game, 6-0, over Sacred Heart. The program's first shutout featured the first hat trick by **Hannah Hoenshell**. **Shannon Yoxheimer** scored twice and **Jill Holdcroft** scored her first ever goal in the rout.

Hoenshell opened the game's scoring seven minutes into the contest, which highlighted a 22-2 Penn State advantage in shots over the Pioneers.

The Nittany Lions would light the lamp three times in the second as Hoenshell, Yoxheimer and Holdcroft stretched the lead to 4-0.

In the third, Penn State would make it 5-0 just 10 seconds into the period on a Yoxheimer laser from the left wing and Hoenshell would cap her hat trick five minutes later for the 6-0 final score.

The Nittany Lions out-shot the Pioneers 66-18 as goaltenders **Nicole Paniccia** (11 saves) and **Brooke Meyer** (7 saves) combined for the school's first shutout.

## PSU EARNS FIRST CHA POINT

Penn State was 89 seconds away from its first CHA victory on Friday, Oct. 26 vs. RIT, but had to settle with a hard-fought 2-2 tie. After a 4-1 loss to RIT on Thursday, Penn State fell to 0-3-1 in CHA play. Goaltender **Nicole Paniccia** and forward **Shannon Yoxheimer** shined for Penn State, providing outstanding defense and offense, respectively. Paniccia made 93 saves last week, including a school-record 59 stops in the 2-2 tie. Paniccia finished the weekend with a .939 save percentage after a 34-save effort in Thursday's matchup.

Yoxheimer scored Penn State's lone goal in the opener and opened the scoring on Friday before Taylor Gross made it

## THE LAST TIME

### PENN STATE...

Scored 0 goals	1/29/13	vs. Princeton (0-3)
Scored 3 goals	11/17/12	at Lindenwood (3-2)
Scored 4 goals	1/5/13	vs. Chatham (4-0)
Scored 5 goals	10/6/12	at Vermont (5-3)
Scored 6 goals	11/2/12	vs. Sacred Heart (6-0)
Scored 7 goals	Never	
Scored 8 goals	11/3/12	vs. Sacred Heart (8-2)
Scored 9 goals	Never	
Scored 10 goals	1/4/13	vs. Chatham (10-0)
Allowed 0 goals	1/5/13	vs. Chatham (4-0)
Allowed 1 goal	1/25/13	at Syracuse (0-1)
Allowed 2 goals	1/12/13	at Union (1-2)
Allowed 3 goals	1/29/13	vs. Princeton (0-3)
Allowed 4 goals	2/2/13	vs. #7 Mercyhurst (1-4)
Allowed 5 goals	2/1/13	vs. #7 Mercyhurst (2-5)
Allowed 6+ goals	12/1/12	at #4 Mercyhurst (1-7)
Won in overtime	Never	
Lost in overtime	Never	
Tied in overtime	10/26/12	vs. RIT (2-2)
Played a ranked team	2/2/13	vs. #7 Mercyhurst (1-4)
Attempted 10-19 shots	2/2/13	12 vs. #7 Mercyhurst (1-4)
Attempted 20-29 shots	1/12/13	26 at Union (1-2)
Attempted 30-39 shots	11/17/12	33 at Lindenwood (3-2)
Attempted 40-49 shots	1/4/13	48 vs. Chatham (10-0)
Attempted 50-59 shots	Never	
Attempted 60-69 shots	11/3/12	64 vs. Sacred Heart (8-2)
Attempted 70+ shots	1/5/13	71 vs. Chatham (4-0)
Allowed 10-19 shots	1/5/13	16 vs. Chatham (4-0)
Allowed 20-29 shots	11/3/12	25 vs. Sacred Heart (8-2)
Allowed 30-39 shots	1/29/13	30 vs. Princeton (0-3)
Allowed 40-49 shots	1/25/13	44 at Syracuse (0-1)
Allowed 50-59 shots	2/2/13	50 vs. #7 Mercyhurst (1-4)
Allowed 60-69 shots	2/1/13	64 vs. #7 Mercyhurst 2-5
Allowed 70+ shots	12/1/12	71 at #4 Mercyhurst (1-7)
Tallied 5-9 assists	1/5/13	5 vs. Chatham (4-0)
Tallied 10-15 assists	11/3/12	12 vs. Sacred Heart (8-2)
Tallied 15+ assists	1/4/13	17 vs. Chatham (10-0)
Scored 10-19 points	11/2/12	12 vs. Sacred Heart (6-0)
Scored 20+ points	1/4/13	27 vs. Chatham (10-0)
Scored 2 power-play goals	11/17/12	at Lindenwood (3-2)
Scored 3 power-play goals	10/20/12	at Sacred Heart (6-1)
Allowed 0 power-play goals	2/2/13	vs. #7 Mercyhurst (1-4)
Allowed 2 power-play goals	2/1/13	vs. #7 Mercyhurst (2-5)
Had 5 different goal scorers	Never	
Had 6 different goal scorers	10/20/12	at Sacred Heart (6-1)
Had 7 different goal scorers	1/4/13	vs. Chatham (10-0)
Had 8 different goal scorers	11/3/12	vs. Sacred Heart (8-2)

### A PENN STATE PLAYER...

Scored 2 goals	1/5/13	J. Welch vs. Chatham (4-0)
Scored 3 goals	11/2/12	H. Hoenshell vs. Sacred Heart (6-0)
Scored 4 goals	Never	
Had 3 assists	1/4/13	J. Bateman vs. Chatham (10-0)
Had 5 points	Never	
Had 10+ shots	1/5/13	12, T. Weaver vs. Chatham (4-0)
Saved 40-49 shots	2/2/13	46, N. Paniccia vs. #7 Mercyhurst (1-4)
Saved 50-59 shots	2/1/13	59, C. Whitlinger vs. #7 Mercyhurst (2-5)
Saved 60+ shots	12/1/12	64, N. Paniccia at #4 Mercyhurst (1-7)
Had a shutout	1/5/13	C. Whitlinger/B. Meyer vs. Chatham (4-0)
Scored an empty-net goal	10/6/12	B. Shaw at Vermont (5-3)
Scored a short-handed goal	Never	



# NITTANY LION WOMEN'S HOCKEY



2-0 just seconds later. **Paige Jahnke, Madison Smiddy**, Yoxheimer and Gross each had an assist in the tie as the Tigers scored once in the first and another in the third. RIT held a 99-36 shot advantage in the series.

## YOX NAMED CHA PLAYER OF THE WEEK

For her efforts against Sacred Heart, **Shannon Yoxheimer** was named CHA Player of the Week for a three-point weekend and a game-winning goal over the Pioneers (Oct. 19-20). Yoxheimer leads the team with four goals and is tied with Taylor Gross for points with five. Yoxheimer is the first Nittany Lion to receive CHA Offensive Player of the Weeks honors and joins fellow classmate **Micayla Catanzariti** (Rookie of the Week, Oct. 8) on the honor roll.

## ANOTHER WEEKEND OF FIRSTS

The second road trip in Penn State women's hockey history resulted in another split result, but it was not without some firsts. The Nittany Lions tallied six goals in a victory at Sacred Heart (Oct. 20), the most in the short history of the program and the largest margin of victory (5). Additionally, the Lions tallied eight assists, which matched the inaugural game.

Individually, **Jeanette Bateman, Jordin Pardoski** and **Hannah Hoenshell** scored their first collegiate goals on Oct. 20. **Jess Desorcie** tallied her first Penn State varsity goal, while **Lindsay Reihl** and **Jenna Welch** recorded their first Penn State points on assists. Welch had a two-helper game as did **Madison Smiddy**, who notched her first multi-point game. **Cara Mendelson** and Hoenshell hit the ice for the first time, bringing the total number of Nittany Lions to see ice time to 23.

## HISTORIC FIRST WIN

Penn State women's hockey made history on Saturday, Oct. 6 at Vermont's Gutterson Fieldhouse by winning its inaugural game, 5-3. The Nittany Lions scored five goals from three freshmen making their respective debuts as junior goaltender **Nicole Paniccia** made 31 saves in her PSU opener. **Shannon Yoxheimer** and **Micayla Catanzariti** each scored twice for the Nittany Lions.

Down 2-1, Penn State was not to be deterred, reeling off three straight goals to take a 4-2 lead midway through the third period. Despite a Vermont goal with 6:34 left in the third, **Birdie Shaw** scored an empty-net goal to seal the Nittany Lion victory. Junior captain **Taylor Gross** made her Penn State debut known with two assists and was named the first star of the game, Yoxheimer was second.

## FIRST TIME FOR EVERYTHING

Penn State had a varsity team debut for the first time since 1994 (women's soccer) when the women's hockey team defeated Vermont, 5-3 on Oct. 6. The successful debut was the first since 1977 when the men's volleyball team defeated East Stroudsburg.

**Game:** Oct. 6, 2012 at Vermont, 2:00 p.m.  
**Win:** Nicole Paniccia, Oct. 6 at Vermont, 5-3  
**Goal:** Shannon Yoxheimer  
**Multi-Goal Game:** Micayla Catanzariti  
**Game-Winning Goal:** Shannon Yoxheimer  
**Assists:** Taylor Gross, Emily Laurenzi  
**Multi-Assist Game:** Jess Desorcie  
**Faceoff:** Emily Laurenzi  
**Faceoff win:** Emily Laurenzi  
**Shot:** Katie Zinn  
**Save:** Nicole Paniccia  
**Empty-Net Goal:** Birdie Shaw

## CATANZARITI HONORED

Freshman forward **Micayla Catanzariti** was named College Hockey America's Rookie of the Week on Oct. 8. Catanzariti led the Nittany Lions to a win in their inaugural opener on Saturday with two goals and an assist at Vermont. Catanzariti was also named Highmark's Penn State Women's Student-Athlete of the Week.

## FIRST HEAD COACH

A 1991 graduate of Penn State, head coach **Josh Brandwene** is the first to lead the Nittany Lions. A four-year hockey player at PSU, Brandwene brings 20 years of coaching experience to Happy Valley. Brandwene picked up his first win in the team's debut on Saturday, Oct. 6 at Vermont.

## CAPTAIN, OUR CAPTAIN

Junior forward **Taylor Gross** leads Penn State as its first captain. The University of Connecticut transfer appeared in 48 games for the Huskies before joining Penn State's club side in January 2012. In September, the team voted fellow UConn transfer **Jenna Welch** and senior defender **Lindsay Reihl** as assistant captains.

## CONTINUING PENN STATE HOCKEY

Eight members of the current varsity team played for the women's club team at some point. Seniors **Lindsay Reihl** and **Kate Christoffersen** and sophomores **Cara Mendelson, Katie Murphy, Madison Smiddy** and **Tess Weaver** played all of last season for head coach **Josh Brandwene** in Penn State's last year at the club level. Reihl and Christoffersen played three years for the PSU club team as well. **Taylor Gross** and **Jess Desorcie** joined the six players midway through the season in preparation of the 2012-13 season.

## PEGULA ICE ARENA ON SCHEDULE

**Pegula Ice Arena**, a \$90 million state-of-the-art facility, will serve as the home of the Penn State hockey programs in 2012-13. As of Jan. 10, 2013, all the steel has been put in place for the project with installation of glass and some brick on the outside. Additionally, portions of the center-hung scoreboard have been assembled.

The building held its official topping off ceremony on Friday, Nov. 9, 2012. Construction is set to conclude in time for the 2012-13 season as the building will open Sept. 5, 2013.

For more information on Pegula Ice Arena, visit page 12 of the game notes.

## NEXT TIME OUT

The Nittany Lions return to the road for a two-game series at RIT on Friday-Saturday, Feb. 15-16 for a pair of 7 p.m. faceoffs.



# NITTANY LION WOMEN'S HOCKEY

## LAST TWO GAMES

### #7 MERCYHURST 5, PENN STATE 2 (Feb. 1, 2013)

Mercyhurst (20-5-1, 11-2-0 CHA) vs. Penn State (7-18-1, 1-11-1 CHA)  
Date: Feb 01, 2013 • Location: University Park, Pa. • Arena: Greenberg Pavilion  
Attendance: 201 • Start time: 7:00 pm • End time: 9:10 • Total time: 2:10

Table with columns: Prd, Time, Team, Score, Assists, Vis. on ice, Home on ice. Rows 1-7 detailing game events.

TEAM SUMMARY table with columns: #, Player, G, A, P, Sh +/-, BI. Rows for both teams and totals.

GOALTENDERS table with columns: ##, Player, Dec, Min, GA, 1, 2, 3, Saves. Rows for both teams.

PENALTY SUMMARY table with columns: Prd, Player, Team, Min, Offense, Time. Rows for both teams.

Table with columns: Prd, Player, Team, Min, Offense, Time. Rows for both teams.

Win-CIampa, Stephanie (12-1-0). Loss-Whittingler, Celine (1-6-0).

### MERCYHURST 4, PENN STATE 1 (Feb. 2, 2013)

Mercyhurst (21-5-1, 12-2-0 CHA) vs. Penn State (7-19-1, 1-12-1 CHA)  
Date: Feb 02, 2013 • Location: University Park, Pa. • Arena: Greenberg Pavilion  
Attendance: 251 • Start time: 2 pm • End time: 3:59 • Total time: 1:59

Table with columns: Prd, Time, Team, Score, Assists, Vis. on ice, Home on ice. Rows 1-5 detailing game events.

TEAM SUMMARY table with columns: #, Player, G, A, P, Sh +/-, BI. Rows for both teams and totals.

GOALTENDERS table with columns: ##, Player, Dec, Min, GA, 1, 2, 3, Saves. Rows for both teams.

PENALTY SUMMARY table with columns: Prd, Player, Team, Min, Offense, Time. Rows for both teams.

Table with columns: Prd, Player, Team, Min, Offense, Time. Rows for both teams.

Win-Makela, Amanda (9-4-1). Loss-Paniccia, Nicole (6-13-1).

## LAST TIME VS. LINDENWOOD

### LINDENWOOD 5, PENN STATE 1 (Nov. 16, 2012)

Penn State (4-8-1, 0-6-1 CHA) vs. Lindenwood (1-10-0, 1-2-0 CHA)  
Date: Nov 16, 2012 • Location: Wentzville, Mo. • Arena: Lindenwood Ice Arena  
Attendance: 150 • Start time: 7:00 pm • End time: 8:57 • Total time: 1:57

Table with columns: Prd, Time, Team, Score, Assists, Vis. on ice, Home on ice. Rows 1-6 detailing game events.

TEAM SUMMARY table with columns: #, Player, G, A, P, Sh +/-, BI. Rows for both teams and totals.

GOALTENDERS table with columns: ##, Player, Dec, Min, GA, 1, 2, 3, Saves. Rows for both teams.

PENALTY SUMMARY table with columns: Prd, Player, Team, Min, Offense, Time. Rows for both teams.

Table with columns: Prd, Player, Team, Min, Offense, Time. Rows for both teams.

Win-Hensley, Nicole (1-8-0). Loss-Paniccia, Nicole (4-6-1).

### PENN STATE 3, LINDENWOOD 2 (Nov. 17, 2012)

Penn State (5-8-1, 1-6-1 CHA) vs. Lindenwood (1-11-0, 1-3-0 CHA)  
Date: Nov 17, 2012 • Location: Wentzville, Mo. • Arena: Lindenwood Ice Arena  
Attendance: 122 • Start time: 2:00 pm • End time: 4:04 pm • Total time: 2:04

Table with columns: Prd, Time, Team, Score, Assists, Vis. on ice, Home on ice. Rows 1-5 detailing game events.

TEAM SUMMARY table with columns: #, Player, G, A, P, Sh +/-, BI. Rows for both teams and totals.

GOALTENDERS table with columns: ##, Player, Dec, Min, GA, 1, 2, 3, Saves. Rows for both teams.

PENALTY SUMMARY table with columns: Prd, Player, Team, Min, Offense, Time. Rows for both teams.

Table with columns: Prd, Player, Team, Min, Offense, Time. Rows for both teams.

Win-Paniccia, Nicole (5-6-1). Loss-Hensley, Nicole (1-9-0).



# NITTANY LION WOMEN'S HOCKEY



## 2012-13 Penn State Women's Hockey Penn State Combined Team Statistics (as of Feb 06, 2013) All games

Date	Opponent	Score	Att.	Record:	Overall	Home	Away	Neutral
Oct 06	at Vermont	w 5-3	785	ALL GAMES	7-19-1	4-8-1	3-11-0	0-0-0
Oct 07	at Vermont	L 1-3	326	CONFERENCE	1-12-1	0-7-1	1-5-0	0-0-0
* Oct 13	SYRACUSE	L 0-4	408	NON-CONFERENCE	6-7-0	4-1-0	2-6-0	0-0-0
* Oct 14	SYRACUSE	L 0-6	285					
Oct 19	at Sacred Heart	L 1-2	123					
Oct 20	at Sacred Heart	w 6-1	213					
* Oct 25	RIT	L 1-4	229					
* Oct 26	RIT	Tot 2-2	238					
Nov 02	SACRED HEART	w 6-0	231					
Nov 03	SACRED HEART	w 8-2	127					
* Nov 10	ROBERT MORRIS	L 1-7	152					
* Nov 11	ROBERT MORRIS	L 1-4	127					
* Nov 16	at Lindenwood	L 1-5	150					
* Nov 17	at Lindenwood	w 3-2	122					
* Nov 30	at #4 Mercyhurst	L 0-5	925					
* Dec 01	at #4 Mercyhurst	L 1-7	725					
Dec 07	at St. Lawrence	L 1-3	236					
Dec 08	at St. Lawrence	L 2-4	244					
Jan 04	CHATHAM	w 10-0	293					
Jan 05	CHATHAM	w 4-0	207					
Jan 11	at Union	L 0-1	106					
Jan 12	at Union	L 1-2	131					
* Jan 25	at Syracuse	L 0-1	132					
* Jan 26	at Syracuse	L 1-4	257					
Jan 29	PRINCETON	L 0-3	237					
* Feb 01	#7 MERCYHURST	L 2-5	201					
* Feb 02	#7 MERCYHURST	L 1-4	251					

	PSU	OPP
<b>TEAM STATISTICS</b>		
<b>SHOT STATISTICS</b>		
Goals-Shot attempts	59-704	84-1137
Shot pct.	.084	.074
Goals/Game	2.2	3.1
Shots/Game	26.1	42.1
<b>POWER PLAYS</b>		
Goals-Power Plays	14-101	25-109
Conversion Percent	.139	.229
<b>GOAL BREAKDOWN</b>		
Power Play	14	25
Short-handed	0	2
Empty net	1	3
Penalty	0	0
Unassisted	6	8
Overtime	0	0
<b>PENALTIES</b>		
Number	112	106
Minutes	224	212
Penalties/Game	4.1	3.9
Pen minutes/Game	8.3	7.9
<b>FACEOFFS (W-L)</b>	725-854	854-725
Faceoff W-L Pct.	.459	.541

#	Player	gp	g	a	pts	sh	sh%	pen-min	pp	sh
40	Yoxheimer, Shannon	26	12	14	26	136	.088	5-10	3	0
24	Gross, Taylor	26	4	14	18	69	.058	4-8	2	0
15	Desorcie, Jess	26	5	12	17	38	.132	4-8	0	0
19	Holdcroft, Jill	27	9	2	11	40	.225	2-4	5	0
16	Hoenshell, Hannah	21	8	3	11	47	.170	3-6	0	0
4	Pardoski, Jordin	27	3	5	8	23	.130	15-30	1	0
22	Welch, Jenna	27	4	3	7	35	.114	10-20	0	0
20	Laurenzi, Emily	27	2	5	7	26	.077	5-10	1	0
15	Smiddy, Madison	15	1	6	7	13	.077	5-10	1	0
37	Jahnke, Paige	27	0	7	7	25	.000	10-20	0	0
10	Catanzariti, Micayla	27	3	2	5	48	.062	13-26	0	0
23	Shaw, Birdie	25	2	3	5	45	.044	10-20	0	0
2	Bateman, Jeanette	27	1	4	5	20	.050	4-8	1	0
13	Rasmussen, Kendra	26	3	1	4	39	.077	2-4	0	0
11	Zinn, Katie	12	1	3	4	18	.056	1-2	0	0
37	Weaver, Tess	23	1	2	3	34	.029	2-4	0	0
8	McGee, Taylor	20	0	2	2	11	.000	8-16	0	0
14	Kern, Darby	11	0	1	1	6	.000	1-2	0	0
6	Reihl, Lindsay	27	0	1	1	11	.000	5-10	0	0
12	Christoffersen, Kate	1	0	0	0	4	.000	0-0	0	0
3	Mendelson, Cara	2	0	0	0	3	.000	0-0	0	0
25	Murphy, Katie	11	0	0	0	4	.000	0-0	0	0
5	Walkom, Stephanie	1	0	0	0	3	.000	0-0	0	0
21	Wilkie, Sarah	19	0	0	0	6	.000	1-2	0	0
TM	TEAM	15	0	0	0	0	.000	2-4	0	0
	Total	27	59	90	149	704	.084	112-224	14	0
	Opponents	27	84	138	222	1137	.074	106-212	25	2

#	Goalie	gp	min	ga	gaavg	saves	save%	w-l-t
31	Meyer, Brooke	3	47:26	0	0.00	17	1.000	0-0-0
30	Whitlinger, Celine	9	447:31	21	2.82	324	.939	1-6-0
37	Paniccia, Nicole	20	1119:35	60	3.22	712	.922	6-13-1
TM	EMPTY NET	15	10:28	3	-	0	.000	0-0-0
	Total	27	1625:00	84	3.10	1053	.926	7-19-1
	Opponents	27	1625:00	59	2.18	645	.916	19-7-1

Attendance Summary		PSU	Opponent
Total		2986	4475
Dates/Avg Per Date		13/230	14/320
Neutral Site #/Avg		0/0	

Goals by Period	1st	2nd	3rd	Total
Penn State	19	19	21	59
Opponents	27	25	32	84

Saves by Period	1st	2nd	3rd	Total
Penn State	327	355	366	1053
Opponents	217	208	220	645



# NITTANY LION WOMEN'S HOCKEY

Opponent	Date	Score	2 BATEMAN,JE	3 MENDELSON,	4 PARDOSKI,J	5 WALKOM,STE	6 REIHL,LINDS	8 MCGEE,TAYL	10 CATANZARITI	11 ZINN,KATIE	12 CHRISTOFFE	13 RASMUSSEN,	14 KERN,DARBY
at UVM	Oct 06	5-3 W	0-0-0	DNP	0-0-0	DNP	0-0-0	0-0-0	2-1-3	0-0-0	DNP	DNP	DNP
at UVM	Oct 07	1-3 L	0-0-0	DNP	0-0-0	DNP	0-0-0	0-1-1	0-0-0	0-0-0	DNP	0-0-0	DNP
SU	Oct 13	0-4 L	0-0-0	DNP	0-0-0	DNP	0-0-0	0-0-0	0-0-0	0-0-0	DNP	0-0-0	DNP
SU	Oct 14	0-6 L	0-0-0	DNP	0-0-0	DNP	0-0-0	0-0-0	0-0-0	0-0-0	DNP	0-0-0	DNP
at SHU	Oct 19	1-2 L	0-0-0	DNP	0-0-0	DNP	0-0-0	DNP	0-0-0	0-0-0	DNP	0-0-0	DNP
at SHU	Oct 20	6-1 W	1-0-1	0-0-0	1-0-1	DNP	0-1-1	DNP	0-0-0	DNP	DNP	0-0-0	DNP
RIT	Oct 25	1-4 L	0-0-0	DNP	0-0-0	DNP	0-0-0	0-0-0	0-0-0	DNP	DNP	0-0-0	DNP
RIT	Oct 26	2-2 T	0-0-0	DNP	0-0-0	DNP	0-0-0	0-0-0	0-0-0	0-0-0	DNP	0-0-0	DNP
SHU	Nov 02	6-0 W	0-0-0	DNP	0-0-0	DNP	0-0-0	0-0-0	0-0-0	0-1-1	DNP	0-0-0	DNP
SHU	Nov 03	8-2 W	0-1-1	DNP	0-0-0	DNP	0-0-0	0-0-0	0-0-0	0-0-0	DNP	1-1-2	DNP
RMU	Nov 10	1-7 L	0-0-0	DNP	0-0-0	DNP	0-0-0	0-0-0	0-0-0	0-0-0	DNP	0-0-0	DNP
RMU	Nov 11	1-4 L	0-0-0	DNP	0-0-0	DNP	0-0-0	DNP	1-0-1	DNP	DNP	0-0-0	DNP
at LU	Nov 16	1-5 L	0-0-0	DNP	0-1-1	DNP	0-0-0	DNP	0-0-0	DNP	DNP	0-0-0	DNP
at LU	Nov 17	3-2 W	0-0-0	DNP	0-1-1	DNP	0-0-0	DNP	0-0-0	DNP	DNP	0-0-0	DNP
at MU	Nov 30	0-5 L	0-0-0	DNP	0-0-0	DNP	0-0-0	DNP	0-0-0	DNP	DNP	0-0-0	0-0-0
at MU	Dec 01	1-7 L	0-0-0	DNP	0-0-0	DNP	0-0-0	0-0-0	0-0-0	DNP	DNP	0-0-0	0-0-0
at SLU	Dec 07	1-3 L	0-0-0	DNP	0-0-0	DNP	0-0-0	0-0-0	0-0-0	DNP	DNP	0-0-0	0-0-0
at SLU	Dec 08	2-4 L	0-0-0	DNP	0-0-0	DNP	0-0-0	0-0-0	0-0-0	DNP	DNP	0-0-0	0-0-0
CHA	Jan 04	10-0 W	0-3-3	DNP	1-2-3	DNP	0-0-0	0-1-1	0-1-1	DNP	DNP	2-0-2	0-1-1
CHA	Jan 05	4-0 W	0-0-0	0-0-0	0-0-0	0-0-0	0-0-0	DNP	0-0-0	1-2-3	0-0-0	0-0-0	0-0-0
at UNION	Jan 11	0-1 L	0-0-0	DNP	0-0-0	DNP	0-0-0	0-0-0	0-0-0	0-0-0	DNP	0-0-0	0-0-0
at UNION	Jan 12	1-2 L	0-0-0	DNP	0-0-0	DNP	0-0-0	0-0-0	0-0-0	0-0-0	DNP	0-0-0	0-0-0
at SU	Jan 25	0-1 L	0-0-0	DNP	0-0-0	DNP	0-0-0	0-0-0	0-0-0	DNP	DNP	0-0-0	0-0-0
at SU	Jan 26	1-4 L	0-0-0	DNP	0-0-0	DNP	0-0-0	0-0-0	0-0-0	DNP	DNP	0-0-0	0-0-0
PRIN	Jan 29	0-3 L	0-0-0	DNP	0-0-0	DNP	0-0-0	0-0-0	0-0-0	DNP	DNP	0-0-0	0-0-0
MU	Feb 01	2-5 L	0-0-0	DNP	1-0-1	DNP	0-0-0	0-0-0	0-0-0	DNP	DNP	0-0-0	DNP
MU	Feb 02	1-4 L	0-0-0	DNP	0-1-1	DNP	0-0-0	0-0-0	0-0-0	DNP	DNP	0-0-0	DNP
Opponent	Date	Score	15 DESORCIE,JE	16 HOENSHHELL,	17 JAHNKE,PAIG	19 HOLDCROFT,	20 LAURENZI,EM	21 WILKIE,SARA	22 WELCH,JENN	23 SHAW,BIRDIE	24 GROSS,TAYL	25 MURPHY,KAT	30 WHITLINGER,
at UVM	Oct 06	5-3 W	0-2-2	DNP	0-0-0	0-0-0	0-1-1	DNP	0-0-0	1-1-2	0-2-2	DNP	DNP
at UVM	Oct 07	1-3 L	0-1-1	DNP	0-0-0	0-0-0	0-0-0	DNP	0-0-0	1-0-1	0-0-0	DNP	0-0-0
SU	Oct 13	0-4 L	0-0-0	DNP	0-0-0	0-0-0	0-0-0	0-0-0	0-0-0	0-0-0	0-0-0	0-0-0	DNP
SU	Oct 14	0-6 L	0-0-0	DNP	0-0-0	0-0-0	0-0-0	0-0-0	0-0-0	0-0-0	0-0-0	0-0-0	0-0-0
at SHU	Oct 19	1-2 L	0-0-0	DNP	0-0-0	0-0-0	0-0-0	0-0-0	0-0-0	0-1-1	0-1-1	0-0-0	DNP
at SHU	Oct 20	6-1 W	1-0-1	1-0-1	0-0-0	0-0-0	0-1-1	0-0-0	0-2-2	DNP	1-1-2	0-0-0	DNP
RIT	Oct 25	1-4 L	0-0-0	0-0-0	0-1-1	0-0-0	0-0-0	0-0-0	0-0-0	0-0-0	0-1-1	0-0-0	DNP
RIT	Oct 26	2-2 T	0-1-1	0-0-0	0-0-0	0-0-0	0-0-0	DNP	0-0-0	0-0-0	1-1-2	DNP	DNP
SHU	Nov 02	6-0 W	0-2-2	3-0-3	0-0-0	1-0-1	0-2-2	DNP	0-0-0	0-0-0	0-1-1	DNP	DNP
SHU	Nov 03	8-2 W	1-2-3	0-0-0	0-1-1	1-0-1	1-0-1	DNP	1-1-2	0-0-0	1-2-3	DNP	DNP
RMU	Nov 10	1-7 L	0-0-0	0-0-0	0-0-0	0-0-0	0-0-0	DNP	0-0-0	0-0-0	0-1-1	DNP	DNP
RMU	Nov 11	1-4 L	0-0-0	0-0-0	0-0-0	0-1-1	0-0-0	0-0-0	0-0-0	0-1-1	0-0-0	0-0-0	DNP
at LU	Nov 16	1-5 L	0-0-0	0-0-0	0-0-0	1-0-1	0-0-0	0-0-0	0-0-0	0-0-0	0-0-0	0-0-0	DNP
at LU	Nov 17	3-2 W	0-0-0	0-1-1	0-1-1	1-0-1	1-0-1	0-0-0	0-0-0	0-0-0	1-0-1	0-0-0	DNP
at MU	Nov 30	0-5 L	0-0-0	0-0-0	0-0-0	0-0-0	0-0-0	0-0-0	0-0-0	0-0-0	0-0-0	DNP	0-0-0
at MU	Dec 01	1-7 L	1-0-1	0-0-0	0-0-0	0-0-0	0-0-0	0-0-0	0-0-0	0-0-0	0-1-1	DNP	DNP
at SLU	Dec 07	1-3 L	0-0-0	0-0-0	0-0-0	1-0-1	0-0-0	0-0-0	0-0-0	0-0-0	0-0-0	DNP	0-0-0
at SLU	Dec 08	2-4 L	1-0-1	1-0-1	0-0-0	0-0-0	0-0-0	0-0-0	0-0-0	0-0-0	0-1-1	DNP	DNP
CHA	Jan 04	10-0 W	0-2-2	2-2-4	0-1-1	1-1-2	0-1-1	0-0-0	1-0-1	0-0-0	0-1-1	DNP	0-0-0
CHA	Jan 05	4-0 W	DNP	DNP	0-2-2	1-0-1	0-0-0	DNP	2-0-2	0-0-0	DNP	0-0-0	0-0-0
at UNION	Jan 11	0-1 L	0-0-0	0-0-0	0-0-0	0-0-0	0-0-0	0-0-0	0-0-0	0-0-0	0-0-0	DNP	0-0-0
at UNION	Jan 12	1-2 L	1-0-1	0-0-0	0-0-0	0-0-0	0-0-0	0-0-0	0-0-0	DNP	0-1-1	DNP	DNP
at SU	Jan 25	0-1 L	0-0-0	0-0-0	0-0-0	0-0-0	0-0-0	0-0-0	0-0-0	0-0-0	0-0-0	DNP	DNP
at SU	Jan 26	1-4 L	0-1-1	0-0-0	0-0-0	1-0-1	0-0-0	DNP	0-0-0	0-0-0	0-0-0	DNP	0-0-0
PRIN	Jan 29	0-3 L	0-0-0	0-0-0	0-0-0	0-0-0	0-0-0	0-0-0	0-0-0	0-0-0	0-0-0	DNP	DNP
MU	Feb 01	2-5 L	0-1-1	1-0-1	0-1-1	0-0-0	0-0-0	0-0-0	0-0-0	0-0-0	0-0-0	0-0-0	0-0-0
MU	Feb 02	1-4 L	0-0-0	0-0-0	0-0-0	1-0-1	0-0-0	0-0-0	0-0-0	0-0-0	0-0-0	0-0-0	DNP
Opponent	Date	Score	31 MEYER,BROO	33 SMIDDY,MADI	36 WEAVER,TES	37 PANICCIA,NIC	40 YOXHEIMER,						
at UVM	Oct 06	5-3 W	DNP	0-1-1	DNP	0-0-0	2-0-2						
at UVM	Oct 07	1-3 L	DNP	0-0-0	DNP	DNP	0-0-0						
SU	Oct 13	0-4 L	DNP	DNP	0-0-0	0-0-0	0-0-0						
SU	Oct 14	0-6 L	DNP	DNP	0-0-0	DNP	0-0-0						
at SHU	Oct 19	1-2 L	DNP	0-0-0	0-0-0	0-0-0	1-0-1						
at SHU	Oct 20	6-1 W	DNP	0-2-2	0-0-0	0-0-0	1-1-2						
RIT	Oct 25	1-4 L	DNP	0-0-0	DNP	0-0-0	1-0-1						
RIT	Oct 26	2-2 T	DNP	0-1-1	0-0-0	0-0-0	1-1-2						
SHU	Nov 02	6-0 W	0-0-0	0-0-0	0-0-0	0-0-0	2-0-2						
SHU	Nov 03	8-2 W	DNP	1-1-2	0-1-1	0-0-0	1-2-3						
RMU	Nov 10	1-7 L	DNP	0-0-0	0-0-0	0-0-0	1-0-1						
RMU	Nov 11	1-4 L	DNP	0-0-0	0-0-0	0-0-0	0-0-0						
at LU	Nov 16	1-5 L	DNP	0-0-0	0-0-0	0-0-0	0-1-1						
at LU	Nov 17	3-2 W	DNP	0-0-0	0-0-0	0-0-0	0-2-2						
at MU	Nov 30	0-5 L	DNP	0-0-0	0-0-0	0-0-0	0-0-0						
at MU	Dec 01	1-7 L	DNP	DNP	0-0-0	0-0-0	0-1-1						
at SLU	Dec 07	1-3 L	DNP	DNP	0-0-0	DNP	0-1-1						
at SLU	Dec 08	2-4 L	DNP	DNP	0-0-0	0-0-0	0-1-1						
CHA	Jan 04	10-0 W	0-0-0	DNP	1-1-2	0-0-0	2-0-2						
CHA	Jan 05	4-0 W	0-0-0	0-1-1	0-0-0	DNP	DNP						
at UNION	Jan 11	0-1 L	DNP	DNP	DNP	DNP	0-0-0						
at UNION	Jan 12	1-2 L	DNP	DNP	0-0-0	0-0-0	0-1-1						
at SU	Jan 25	0-1 L	DNP	DNP	0-0-0	0-0-0	0-0-0						
at SU	Jan 26	1-4 L	DNP	0-0-0	0-0-0	DNP	0-1-1						
PRIN	Jan 29	0-3 L	DNP	DNP	0-0-0	0-0-0	0-0-0						
MU	Feb 01	2-5 L	DNP	DNP	0-0-0	DNP	0-1-1						
MU	Feb 02	1-4 L	DNP	DNP	0-0-0	0-0-0	0-1-1						



# NITTANY LION WOMEN'S HOCKEY



**2012-13 Penn State Women's Hockey  
Penn State High/Low Analysis (as of Feb 06, 2013)  
All games**

**Penn State - TEAM GAME HIGHS**

POINTS	27	vs Chatham (Jan 04, 2013)
GOALS	10	vs Chatham (Jan 04, 2013)
ASSISTS	17	vs Chatham (Jan 04, 2013)
SHOTS ON GOAL	71	vs Chatham (Jan 05, 2013)
SAVES	64	at Mercyhurst (Dec 01, 2012)
PENALTIES	9	vs Mercyhurst (Feb 01, 2013)
PENALTY MINUTES	18	vs Mercyhurst (Feb 01, 2013)

**Opponent - GAME HIGHS**

POINTS	19	at Mercyhurst (Dec 01, 2012)
GOALS	7	at Mercyhurst (Dec 01, 2012)
ASSISTS	12	at Mercyhurst (Dec 01, 2012)
SHOTS ON GOAL	71	at Mercyhurst (Dec 01, 2012)
SAVES	67	vs Chatham (Jan 05, 2013)
PENALTIES	10	at Lindenwood (Nov 17, 2012)
PENALTY MINUTES	20	at Lindenwood (Nov 17, 2012)

**Penn State - GAME LOWS**

POINTS	0	vs Syracuse (Oct 13, 2012)
	0	vs Syracuse (Oct 14, 2012)
	0	at Mercyhurst (Nov 30, 2012)
	0	at Union (Jan 11, 2013)
	0	at Syracuse (Jan 25, 2013)
	0	vs Princeton (Jan 29, 2013)
	0	vs Syracuse (Oct 13, 2012)
	0	vs Syracuse (Oct 14, 2012)
	0	at Mercyhurst (Nov 30, 2012)
	0	at Union (Jan 11, 2013)
	0	at Syracuse (Jan 25, 2013)
	0	vs Princeton (Jan 29, 2013)
	0	vs Syracuse (Oct 13, 2012)
	0	vs Syracuse (Oct 14, 2012)
	0	at Mercyhurst (Nov 30, 2012)
	0	at Union (Jan 11, 2013)
	0	at Syracuse (Jan 25, 2013)
	0	vs Princeton (Jan 29, 2013)
SHOTS ON GOAL	10	at Mercyhurst (Nov 30, 2012)
	10	at Mercyhurst (Dec 01, 2012)
SAVES	16	vs Chatham (Jan 05, 2013)
PENALTIES	1	vs Chatham (Jan 05, 2013)
	1	at Union (Jan 12, 2013)
	1	vs Princeton (Jan 29, 2013)
PENALTY MINUTES	2	vs Chatham (Jan 05, 2013)
	2	at Union (Jan 12, 2013)
	2	vs Princeton (Jan 29, 2013)

**Opponent - GAME LOWS**

POINTS	0	vs Sacred Heart (Nov 02, 2012)
	0	vs Chatham (Jan 04, 2013)
	0	vs Chatham (Jan 05, 2013)
GOALS	0	vs Sacred Heart (Nov 02, 2012)
	0	vs Chatham (Jan 04, 2013)
	0	vs Chatham (Jan 05, 2013)
ASSISTS	0	vs Sacred Heart (Nov 02, 2012)
	0	vs Chatham (Jan 04, 2013)
	0	vs Chatham (Jan 05, 2013)
SHOTS ON GOAL	16	vs Chatham (Jan 05, 2013)
SAVES	9	at Mercyhurst (Dec 01, 2012)
PENALTIES	1	at Mercyhurst (Nov 30, 2012)
	1	vs Chatham (Jan 05, 2013)
	1	at Union (Jan 12, 2013)
PENALTY MINUTES	2	at Mercyhurst (Nov 30, 2012)
	2	vs Chatham (Jan 05, 2013)
	2	at Union (Jan 12, 2013)





# NITTANY LION WOMEN'S HOCKEY

## PEGULA ICE ARENA FUTURE HOME OF PENN STATE HOCKEY

### FACTS

**Construction Groundbreaking:** January 2012

**Ceremonial Groundbreaking:** April 20, 2012

**Projected Opening:** September 5, 2013

**Capacity:** 6,000 (Arena rink); 300 (Community rink)

**Size:** 200,000 square feet

### AMENITIES

*Two NHL-sized (200' x 85') ice surfaces*

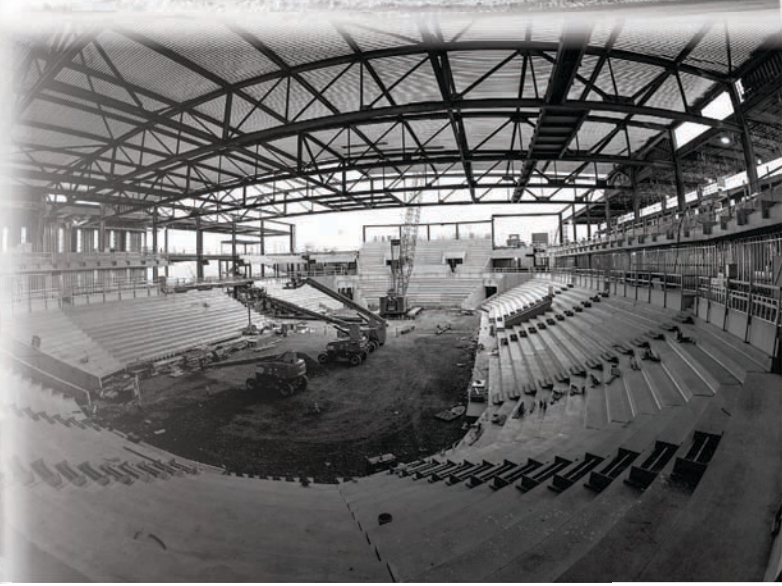
#### **Arena rink will offer:**

- 6,000-seat overall capacity
- 1,000-seat student section
- First-rate varsity locker rooms
- Team lounges and dry changing room
- Strength and conditioning center
- Shooting gallery
- Suites, loge boxes and club seats
- State-of-the-art television and radio broadcasting facilities
- Press box and media center
- Concession stands with café
- Videoboard

#### **Community rink will offer:**

- 300-seat capacity
- Eight locker rooms
- Skate rental center

Pegula Ice Arena will have the ability to host National Hockey League and American Hockey League games, as well as professional ice shows, local hockey and figure skating programs.



*Left to Right: Kim and Terry Pegula, Dr. Rodney Erickson, The Nittany Lion, Joe Battista and Karen Peetz at the Pegula Ice Arena ceremonial groundbreaking.*





# NITTANY LION WOMEN'S HOCKEY



## 2012-13 PENN STATE WOMEN'S HOCKEY NUMERICAL ROSTER

No.	Name	Yr.	Pos.	Ht.	S/C	Hometown	Last Team
2	Jeanette Bateman	Fr.	F/D	5-6	R	Greeley, Colo.	Colorado Select
3	Cara Mendelson	So.	F/D	5-6	R	Pittsburgh, Pa.	Steel City Selects
4	Jordin Pardoski	Fr.	D	5-5	R	Rochester Hills, Mich.	Detroit Honeybaked
5	Stephanie Walkom	Fr.	D	5-7	R	Moon Township, Pa.	Pittsburgh Penguins Elite
6	Lindsay Reihl	Sr.	D	5-4	R	Cheshire, Conn.	Connecticut Polar Bears
8	Taylor McGee	Fr.	D	5-3	R	Pearl River, N.Y.	Taft School (Conn.)
10	Micayla Catanzariti	Fr.	F	5-4	R	Rancho Santa Margarita, Calif.	Gilmour Academy (Ohio)
11	Katie Zinn	Fr.	F	5-7	R	Coquitlam, B.C.	Gilmour Academy (Ohio)
12	Kate Christoffersen	Sr.	F	5-3	R	Trumbull, Conn.	Connecticut Polar Bears
13	Kendra Rasmussen	Fr.	F	5-5	L	Sartell, Minn.	Sartell/Sauk Rapids HS
14	Darby Kern	Fr.	F	5-11	R	Venetia, Pa.	Pittsburgh Penguins Elite
15	Jess Desorcie	So.	F	5-4	L	Westford, Vt.	Connecticut College
16	Hannah Hoenshell	Fr.	F	5-3	R	Plano, Texas	Texas Alliance
17	Paige Jahnke	Fr.	D	5-6	R	Oakdale, Minn.	Roseville HS/Minnesota Jr. Whitecaps
19	Jill Holdcroft	Fr.	F	5-1	R	Pennsylvania Furnace, Pa.	Pittsburgh Penguins Elite
20	Emily Laurenzi	Fr.	F	5-2	R	Townsend, Del.	National Sports Academy (N.Y.)
21	Sarah Wilkie	Fr.	D	5-6	R	Ashby, Mass.	Williston Northampton School
22	Jenna Welch	Jr.	F	5-8	R	Austin, Texas	Connecticut
23	Birdie Shaw	Fr.	F	5-2	L	Troy, Mich.	Detroit Honeybaked
24	Taylor Gross	Jr.	F	5-1	R	Colorado Springs, Colo.	Connecticut
25	Katie Murphy	So.	F	5-4	L	Novi, Mich.	Detroit Honeybaked
30	Celine Whitlinger	Fr.	G	5-8	L	Garden Grove, Calif.	Gilmour Academy (Ohio)
31	Brooke Meyer	Fr.	G	5-7	L	Naperville, Ill.	Chicago Huskies
33	Madison Smiddy	So.	D	5-7	L	Grand Rapids, Mich.	Detroit Honeybaked
36	Tess Weaver	So.	F	5-5	R	Windber, Pa.	Pittsburgh Penguins Elite
37	Nicole Paniccia	Jr.	G	5-5	L	Oakville, Ont.	Connecticut
40	Shannon Yoxheimer	Fr.	F	5-7	L	Jackson, Mich.	North American Hockey Academy (Vt.)

**Head Coach:** Josh Brandwene (First Year)

**Assistant Coaches:** Gina Kearns (First Year), Casey McCullion (First Year); **Director of Operations/Video Coach:** Mo Stroemel (First Year)

**Captain:** Taylor Gross; **Assistant Captains:** Lindsay Reihl, Jenna Welch

ALPHABETICAL ROSTER		PRONUNCIATION GUIDE		LIONS BY STATE		LIONS BY POSITION	
<b>No.</b>	<b>Name</b>	<b>Brandwene</b>	BRAND-ween	<b>California (2):</b>	Catanzariti, Whitlinger	<b>Forward (17):</b>	Bateman, Catanzariti
2	Jeanette Bateman	<b>Catanzariti</b>	Cah-TAN-zah-REE-tee	<b>Colorado (2):</b>	Bateman, Gross		Christoffersen, Desorcie, Gross,
10	Micayla Catanzariti	<b>Jahnke</b>	YAWN-kee	<b>Connecticut (2):</b>	Christoffersen, Reihl		Hoenshell, Holdcroft, Kern, Laurenzi,
12	Kate Christoffersen	<b>Jeanette</b>	Jeh-NETT				Mendelson, Murphy, Rasmussen,
15	Jess Desorcie	<b>Kearns</b>	KERNS	<b>Delaware (1):</b>	Laurenzi		Shaw, Weaver, Welch, Yoxheimer,
24	Taylor Gross	<b>McCullion</b>	Mick-CULL-yon	<b>Illinois (1):</b>	Meyer		Zinn
16	Hannah Hoenshell	<b>Paniccia</b>	Pah-NEE-cha	<b>Massachusetts (1):</b>	Wilkie		
19	Jill Holdcroft	<b>Reihl</b>	RILE	<b>Michigan (5):</b>	Murphy, Pardoski, Shaw, Smiddy, Yoxheimer	<b>Defense (9):</b>	Bateman, Jahnke, McGee, Mendelson, Pardoski, Reihl, Smiddy, Walkom, Wilkie
17	Paige Jahnke	<b>Stroemel</b>	STRAW-mull	<b>Minnesota (2):</b>	Jahnke, Rasmussen		
14	Darby Kern			<b>New York (1):</b>	McGee		
20	Emily Laurenzi			<b>Pennsylvania (5):</b>	Holdcroft, Kern, Mendelson, Walkom, Weaver	<b>Goalie (3):</b>	Meyer, Paniccia, Whitlinger
8	Taylor McGee			<b>Texas (2):</b>	Hoenshell, Welch		
3	Cara Mendelson			<b>Vermont (1):</b>	Desorcie		
31	Brooke Meyer						
25	Katie Murphy						
37	Nicole Paniccia						
4	Jordin Pardoski						
13	Kendra Rasmussen						
6	Lindsay Reihl						
23	Birdie Shaw						
33	Madison Smiddy						
5	Stephanie Walkom						
36	Tess Weaver						
22	Jenna Welch						
30	Celine Whitlinger						
21	Sara Wilkie						
40	Shannon Yoxheimer						
11	Katie Zinn						





# NITTANY LION WOMEN'S HOCKEY



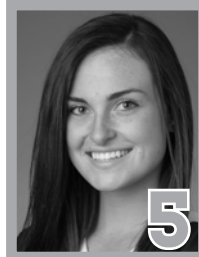
**2**  
**JEANNETTE BATEMAN**  
Freshman • F/D  
Greeley, Colo.



**3**  
**CARA MENDELSON**  
Sophomore • F/D  
Pittsburgh, Pa.



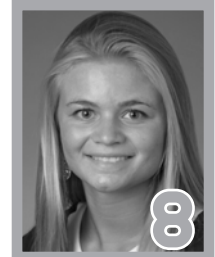
**4**  
**JORDIN PARDOSKI**  
Freshman • D  
Rochester Hills, Mich.



**5**  
**STEPHANIE WALKOM**  
Freshman • D  
Moon Township, Pa.



**6** **A**  
**LINDSAY REIHL**  
Senior • D  
Cheshire, Conn.



**8**  
**TAYLOR MCGEE**  
Freshman • D  
Pearl River, N.Y.



**10**  
**MICAYLA CATANZARITI**  
Freshman • F  
Rancho Santa Margarita, Calif.



**11**  
**KATIE ZINN**  
Freshman • F  
Coquitlam, B.C.



**12**  
**KATE CHRISTOFFERSEN**  
Senior • F  
Trumbull, Conn.



**13**  
**KENDRA RASMUSSEN**  
Freshman • F  
Sartell, Minn.



**14**  
**DARBY KERN**  
Freshman • F  
Venetia, Pa.



**15**  
**JESS DESORCIE**  
Sophomore • F  
Westford, Vt.



**16**  
**HANNAH HOENSHELL**  
Freshman • F  
Plano, Texas



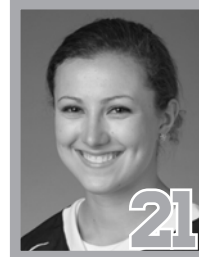
**17**  
**PAIGE JAHNKE**  
Freshman • D  
Oakdale, Minn.



**19**  
**JILL HOLDCROFT**  
Freshman • F  
Pennsylvania Furnace, Pa.



**20**  
**EMILY LAURENZI**  
Freshman • F  
Townsend, Del.



**21**  
**SARAH WILKIE**  
Freshman • D  
Ashby, Mass.



**22** **A**  
**JENNA WELCH**  
Junior • F  
Austin, Texas



**23**  
**BIRDIE SHAW**  
Freshman • F  
Troy, Mich.



**24** **C**  
**TAYLOR GROSS**  
Junior • F  
Colorado Springs, Colo.



**25**  
**KATIE MURPHY**  
Sophomore • F  
Novi, Mich.



**30**  
**CELINE WHITLINGER**  
Freshman • G  
Garden Grove, Calif.



**31**  
**BROOKE MEYER**  
Freshman • G  
Naperville, Ill.



**33**  
**MADISON SMIDDY**  
Sophomore • D  
Grand Rapids, Mich.



**36**  
**TESS WEAVER**  
Sophomore • F  
Windber, Pa.



**37**  
**NICOLE PANICCIA**  
Junior • G  
Oakville, Ont.



**40**  
**SHANNON YOXHEIMER**  
Freshman • F  
Jackson, Mich.