

RUTGERS®



2016 SCHEDULE & RESULTS

Overall: 9-3-6 | Big Ten: 4-2-5

Home: 6-1-3 | Away: 3-2-3 | Neutral: 0-0-0

Date	Opponent	Time
Aug. 19	at Rider	W, 4-1
AUG. 21	PROVIDENCE	T, 1-1 (2OT)
AUG. 26	ST. JOSEPH'S	W, 1-0
Aug. 28	at No. 10 UConn	W, 2-0
SEPT. 2	GEORGETOWN	L, 2-1 (OT)
SEPT. 9	CORNELL	W, 2-0
SEPT. 11	DREXEL	W, 5-0
SEPT. 16	MARYLAND*	W, 1-0
SEPT. 23	NO. 21 NORTHWESTERN*	W, 2-0
SEPT. 25	ILLINOIS*	T, 0-0 (2OT)
Sept. 29	at Michigan*^	L, 3-2 (2OT)
Oct. 2	at Michigan State*	W, 3-1
OCT. 6	PURDUE*	W, 2-1 (OT)
Oct. 9	at Indiana*	T, 2-2 (2OT)
Oct. 13	at No. 16 Penn State*^	T, 2-2 (2OT)
Oct. 16	at Ohio State*^	T, 0-0 (2OT)
OCT. 22	NEBRASKA*	T, 0-0 (2OT)
Oct. 26	at Wisconsin*^	L, 2-1
Big Ten Tournament		
Oct. 30	at No. 21 Penn State	1 p.m.

^ BTN Televised Match

* Big Ten Conference Match

Home games denoted by **BOLD CAPS**

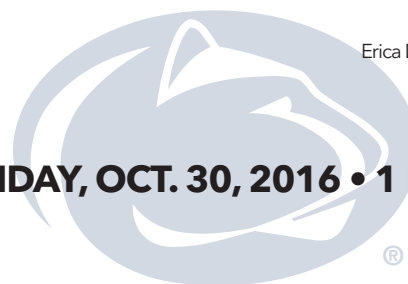
All Matches in Eastern Time

2016 BIG TEN WOMEN'S SOCCER TOURNAMENT QUARTERFINALS

NO. 21 PENN STATE NITTANY LIONS

Record:
Head Coach:
Record at PSU:
Career Record:
Series (RU Trend):

11-3-4, 7-1-3 Big Ten
Erica Damback (William & Mary, '97)
168-53-14 (10th Season)
208-81-17 (14th Season)
PSU leads, 9-5-2 (T1)



SUNDAY, OCT. 30, 2016 • 1 P.M.

Location:
Facility:
TV:
Live Stream:

University Park, Pa.
Jeffrey Field
N/A
BTN Plus (\$)

RUTGERS QUICK KICKS

- As the No. 7 seed for the Big Ten Tournament, Rutgers will face No. 2 Penn State in the quarterfinals in a rematch of last season's championship match.
- The Scarlet Knights fell at Wisconsin, 2-1, on Wednesday night to close the regular season. The loss snapped an unbeaten streak of six matches (2-0-4).
- Despite the loss, RU qualified for its third consecutive Big Ten Tournament since joining the league in 2014. The program is a combined 2-2 in its previous three tourney trips.
- While Penn State has won two of the last three meetings, the teams are an even 2-2-1 against one another since RU joined the conference in 2014.
- The Scarlet Knights received votes from the NSCAA this week. RU is No. 23 in NCAA RPI.
- Based on the program record nine overtime matches this season, Rutgers has played an additional 142:23 minutes of game action.
- RU's six draws this season are a new program record. Previously, the Scarlet Knights tied five matches in 1998, 2003, and 2013.
- The Scarlet Knights have used six different lineups this season and have a combined 62 starts among members of their freshman class. Three rookies - Nicole Whitley, Amanda Visco, and Chantelle Swaby - have started double digit matches.

- Senior Madison Tiernan is RU's points leader (22) on the year. Three of Tiernan's eight goals this season were game-winners.
- Tiernan is tied for tied for seventh on Rutgers' all-time points list with 60 (22g, 16a) and 10th on the all-time goal list with 21 in her career.
- Whitley is second on Rutgers in points with 15 on the year (3g, 9a). Whitley leads Rutgers with nine assists. That total is good for fourth in the NCAA and leads the Big Ten Conference.
- Senior defender Erin Smith and Tiernan are the most seasoned Scarlet Knights in the lineup. Tiernan has started 80 matches and played in 83 in her career, while Smith has started 78 and played in 82. Smith has started a team-leading 67 consecutive matches dating back to her freshman season.
- Visco logged the full-time for the team-leading 16th time this season at Wisconsin Wednesday night.
- Senior goalkeeper Alana Jimenez has shut out eight opponents this season and has a 0.77 GAA and .783 save percentage.
- Head coach Mike O'Neill enters his third season leading the Scarlet Knights. He is 44-13-10 in his career and is the first coach in program history to guide the program to consecutive NCAA appearances in his first two seasons.

MEDIA INFORMATION

POST-MATCH INTERVIEW POLICY

Rutgers head coach Mike O'Neill and student-athletes will be made available to the media following a brief cooling-off period. Please direct any student-athlete requests to Assistant Director of Athletic Communications Anthony Hernandez (ahernandez@scarletknights.com/ 609-709-0013).

IN-SEASON INTERVIEW POLICY

Rutgers holds weekly media availability (either in person or via teleconference). Requests for head coach Mike O'Neill and student-athletes should be made - if possible - 24-48 hours in advance. All interviews MUST be coordinated through the Office of Athletic Communications, and interviews will not be granted on the day of competition until after the event has concluded.

AWARDS, HONORS, DISTINCTIONS

2016

Big Ten Freshman of the Year

Nicole Whitley, Midfielder

All-Big Ten

Erin Smith, Sr., Defender (First Team)

Madison Tiernan, Sr., Forward (Second Team)

Nicole Whitley, Fr., Midfielder (Third Team)

Big Ten All-Freshman Team

Taylor Aylmer, Forward

Amanda Visco, Defender

Nicole Whitley, Midfielder

Big Ten Sportsmanship Award Winner

Tori Prager, Sr., Midfielder

TopDrawerSoccer.com Team of the Week

Erin Smith, Sr., Defender (Sept. 27)

TopDrawerSoccer.com Midseason Top 100

Erin Smith, Sr., Defender - No. 51 (National)

Colby Ciarrocca, Sr., Forward - No. 92 (National)

Nicole Whitley, Midfielder - No. 22 (Freshman)

Amanda Visco, Defender - No. 61 (Freshman)

Big Ten Freshman of the Week

Co- Nicole Whitley, Midfielder (Sept. 20)

Big Ten Preseason Honors List

Madison Tiernan, Sr., Forward

Erin Smith, Sr., Defender

Colby Ciarrocca, Sr., Forward

Scouting Penn State

• Penn State, the defending Big Ten Tournament and national champions, closed the regular season with a 2-0 win over Ohio State to clinch a share of its 18th Big Ten regular season title.

• The Nittany Lions and Scarlet Knights will meet in the postseason for the second consecutive year. The programs met last year in the Big Ten Tournament final and in the College Cup semifinals.

• Frannie Crouse paces PSU with 12 goals and 25 points. Megan Shafer (14 points) and Charlotte Williams (12 points) are the only other Nittany Lions with double digit points.

• Goalkeeper Amanda Dennis is 11-3-4 on the year with a 0.80 goals-against average and .762 save percentage. She has recorded seven shutouts.

All-Time Series vs. The Nittany Lions

• Penn State leads the all-time series, 9-5-2, after a 2-2 draw against the Scarlet Knights earlier this season. Sunday's matchup is a rematch of last year's tournament final, which PSU took, 2-0. Though Penn State has taken two of the last three contests, since RU joined the league in 2014 the teams are even at 2-2-1.

All-Conference Honorees

• Six Scarlet Knights were recognized by the Big Ten Conference for their standout performance this season. Senior defender Erin Smith (First Team), senior forward Madison Tiernan (Second Team) and freshman midfielder Nicole Whitley (Third Team) were named All-Big Ten performers, while Whitley, Taylor Aylmer, and Amanda Visco earned spots on the Big Ten All-Freshman Team. Senior midfielder Tori Prager was named the program's Big Ten Sportsmanship Award recipient. The five all-conference players matches last years total.

Big Ten Freshman of the Year

• Rookie Nicole Whitley, the conference's leader in assists this season with nine, was named Big Ten Freshman of the Year. It is the second consecutive year Rutgers secured a player of the year honor after the program garnered Big Ten Goalkeeper of the Year (Casey Murphy) and Defender of the Year (Erica Skroski) laurels in 2015.

Postseason Success

• Dating back to the 2000 season, the Scarlet Knights have qualified for 17 consecutive postseason conference tournaments. From 2000-2012,

RUTGERS IN THE POLLS

2016

Date	NSCAA	SA	TDS
PRE	10	13	11
Week 1	22	16	12
Week 2	12	7	8
Week 3	23	21	20
Week 4	22	21	19
Week 5	22	21	18
Week 6	19	21	17
Week 7	24	22	22
Week 8	RV	23	25
Week 9	RV	NR	NR
Week 10	RV	NR	RV

2015

Date	NSCAA	SA	TDS
PRE	24	NR	22
Week 1	24	NR	21
Week 2	22	23	18
Week 3	19	20	13
Week 4	15	16	13
Week 5	11	16	10
Week 6	25	25	17
Week 7	23	22	14
Week 8	25	19	14
Week 9	12	12	14
Week 10	9	10	11
Week 11	-	-	11

Week 12	-	-	6
Week 13	-	-	3^
Final (Dec. 9) 4*	9	4	

2014

Date	NSCAA	SA	TDS
PRE	NR	NR	NR
Week 1	RV	NR	NR
Week 2	RV	NR	NR
Week 3	25	NR	NR
Week 4	RV	NR	NR
Week 5	25	17	RV
Week 6	25	16	RV
Week 7	20	10	25
Week 8	14	7	15
Week 9	16	10	18
Week 10	23	21	24
Week 11	23	19	22
Week 12	25	21	23
Week 13	25	21	20

* - highest NSCAA ranking in school history

^ - highest overall ranking in school history

NATIONAL WOMEN'S SOCCER RANKINGS (bold indicates 2016 opponent)

NSCAA (Week 10)	Record	Soccer America (Week 10)	Record	TopDrawerSoccer.com (Week 10)	Record
1. West Virginia	15-1-1	1. West Virginia	15-1-1	1. West Virginia	15-1-1
2. South Carolina	16-0-1	2. South Carolina	16-0-1	2. South Carolina	16-0-1
3. Stanford	14-1-1	3. Stanford	14-1-1	3. USC	13-3-0
4. USC	13-3-0	4. USC	13-3-0	4. Stanford	14-1-1
5. BYU	13-2-1	5. Florida State	12-2-2	5. BYU	13-2-1
6. Duke	12-3-2	6. Duke	12-3-2	6. Duke	12-3-2
7. Virginia	12-3-2	7. Georgetown	13-2-2	7. Virginia	12-3-2
8. Florida State	12-2-2	8. BYU	13-2-1	8. UCLA	12-3-1
9. UCLA	12-3-1	9. Virginia	12-3-2	9. Florida State	12-2-2
10. Georgetown	13-2-2	10. Notre Dame	11-2-4	10. Notre Dame	11-2-4
11. Minnesota	12-3-3	11. North Carolina	10-3-3	11. Florida	12-4-0
12. Notre Dame	11-2-4	12. UCLA	12-3-1	12. Clemson	12-3-2
13. Auburn	12-5-0	13. Clemson	12-3-2	13. UConn	14-2-1
14. Clemson	12-3-2	14. UConn	14-2-1	14. Georgetown	13-2-2
15. Pepperdine	11-3-3	15. Florida	12-4-0	15. California	12-3-2
16. North Carolina	10-3-3	16. Colorado	13-4-0	16. North Carolina	10-3-3
17. Florida	12-4-0	17. California	12-3-2	17. Minnesota	12-3-3
18. California	12-2-2	18. Penn State	10-3-4	18. Northwestern	13-1-3
19. UConn	14-2-1	19. Auburn	12-5-0	19. Pepperdine	11-3-3
20. Northwestern	13-1-3	20. Arkansas	14-4-0	20. Arkansas	14-4-0
21. Penn State	10-3-4	21. Minnesota	12-3-3	21. Penn State	10-3-4
22. Colorado	12-4-0	22. Northwestern	13-1-3	22. Kansas	9-4-4
23. Arkansas	14-4-0	23. Pepperdine	11-3-3	23. Utah	10-3-3
24. Oklahoma	12-4-2	24. Utah	10-3-3	24. Oklahoma	12-4-2
25. Kansas	8-4-5	T-25. Kansas	9-4-4	25. Colorado	13-4-0
		T-25. Oklahoma	12-4-2		

Rutgers advanced to the BIG EAST Tournament 13 times and in 2013, made a run to the American Athletic Conference finals in its only year in the league.

- Rutgers qualified for the 2016 Big Ten Tournament as the No. 7 seed, the 2015 Big Ten Tournament as a No. 3 seed, and the 2014 tournament as a No. 4 seed. The team's all-time B1G Tournament record is 2-2 and includes last season's title game appearance at Penn State.

Going Dancing

- The Scarlet Knights have qualified for the NCAA Tournament in four consecutive seasons, six times in the last eight years, and 10 times overall. All-time, the Scarlet Knights are 10-8-5 in NCAA Tournament action. Rutgers won all three of its home matches during the 2015 postseason and is 6-0-2 all-time at Yurcak Field in NCAA Tourney contests.

Rutgers vs. The Big Ten

- Rutgers is 29-24-11 all-time against the Big Ten Conference, and has won 24 of its last 41 (24-9-8) matches against league opponents dating back to the 2008 NCAA Tournament.

TopDrawerSoccer.com Top 100

- Four Scarlet Knights were listed in the TopDrawerSoccer.com Mid-season Top 100 Senior defender Erin Smith (No. 51) and junior forward Colby Ciarrocca (No. 92) made the Women's National Top 100 list, which includes sophomores, juniors, and seniors. Meanwhile, rookies Nicole Whitley (No. 22) and Amanda Visco (No. 61) were placed on the Women's Freshman Top 100.

Consistent Recognition

- Rutgers has received votes in each of the last three weeks, but is not ranked in the NSCAA Top 25 for the first time since the middle of the 2014 season. The Scarlet Knights were ranked in 29 prior polls before dropping out weeks ago, climbing as high as No. 4 in last season's final poll after reaching the first NCAA College Cup in program history.

As Seen On TV

- Rutgers women's soccer played four nationally televised games this regular season on Big Ten Network. The Scarlet Knights lost in their

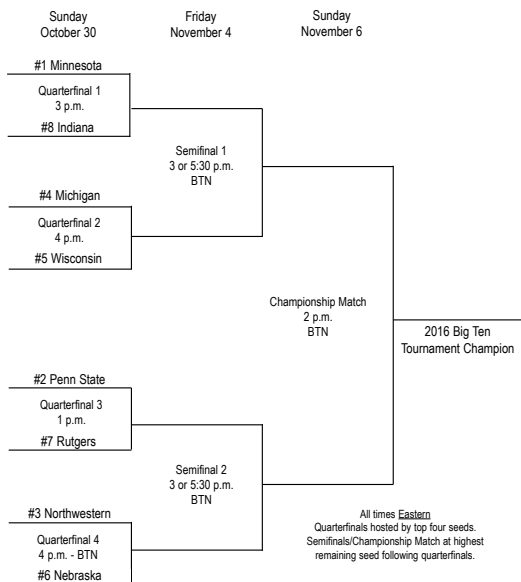
BIG TEN STANDINGS - FINAL						
Team	Conference			Overall		
	W-L-T	%	Pts.	W-L-T	%*	
1. Minnesota*	7-1-3	.773	24	13-3-3	.763	
2. Penn State*	7-1-3	.773	24	11-3-4	.722	
3. Northwestern*	7-1-3	.773	24	14-1-3	.861	
4. Michigan	6-3-2	.636	20	10-4-3	.676	
5. Wisconsin	5-2-4	.636	19	8-4-7	.605	
6. Nebraska	5-3-3	.591	18	11-5-3	.658	
7. RUTGERS	4-2-5	.591	17	9-3-6	.667	
8. Indiana	4-4-3	.500	15	7-8-3	.474	
9. Ohio State	4-4-3	.500	15	10-6-3	.605	
10. Michigan St.	4-7-0	.364	12	7-10-1	.417	
11. Illinois	3-6-2	.364	11	6-11-2	.368	
12. Purdue	2-8-1	.227	7	4-12-1	.265	
13. Iowa	2-9-0	.182	6	8-11-0	.421	
14. Maryland	1-10-0	.091	3	3-15-1	.184	

*Ranked in the NSCAA/Soccer America/TopDrawerSoccer.com Top 25

NCAA STATISTICS LEADERS (OCT. 28)					
INDIVIDUAL					
CATEGORY/RANK	NAME	GP	NO.	AVG./G	
ASSISTS					
6.	Nicole Whitley	18	9	0.50	
GOALIE MINUTES PLAYED					
10.	Alana Jimenez	18	1753:35	97.38	
SHOTS PER GAME					
12.	Madison Tiernan	18	87	4.83	
SHUTOUTS					
26.	Alana Jimenez	18	8	0.44	
TEAM					
CATEGORY/RANK	NAME	GP	NO.	AVG./G	
SHOTS ON GOAL PER GAME					
15.	Rutgers	18	150	8.33	
SHOTS PER GAME					
33.	Rutgers	18	298	16.56	
GAA					
46.	Rutgers	18	15	0.76	

BIG TEN STATISTICS LEADERS					
INDIVIDUAL					
CATEGORY/RANK	NAME	GP	NO.	AVG./G	
ASSISTS					
1.	Nicole Whitley	18	9	0.50	
SHOTS					
1.	Madison Tiernan	18	87	4.83	
SHUTOUTS					
T-4.	Alana Jimenez	18	8	0.44	
GAME-WINNING GOALS					
T-5.	Madison Tiernan	18	3	0.17	
POINTS					
5.	Madison Tiernan	18	22	1.22	
TEAM					
CATEGORY/RANK	NAME	GP	NO.	AVG./G	
SHOTS ON GOAL					
1.	Rutgers	18	150	8.33	
SHOTS					
2.	Rutgers	18	302	16.78	
GOALS					
4.	Rutgers	18	31	1.72	
POINTS					
5.	Rutgers	18	88	4.89	
ASSISTS					
5.	Rutgers	18	26	1.44	

2016 BIG TEN TOURNAMENT BRACKET



first TV appearance at Michigan in double overtime on Sept. 29, tied No. 13 Penn State on Oct. 13 and played to a scoreless draw at Ohio State on Oct. 16. The Scarlet Knights fell to Wisconsin in their regular season finale, 2-1, on Wednesday, Oct. 26 at 8 p.m.

Rewriting History

- With 60 points (22g, 16a), Madison Tiernan is tied for seventh on Rutgers' all-time list.

- Tiernan is third all-time in shots (263), tied for seventh all-time in game-winning goals (eight), and ninth all-time in total goals (22).

Passing the Torch

- Freshman Nicole Whitley, who is sixth in the nation with nine assists, has the most helpers for an RU freshman in program history.

- Her three assists against Drexel were the most in a single game for an RU player since the school's all-time assists leader Gina DeMaio on Sept. 22, 2008. DeMaio tallied 29 assists at RU and eight as a rookie in 2006.

- Whitley's assist total is the eighth-best in RU history and paces the Big Ten.

Rutgers in Conference Openers

- Dating back to the 1993 season and the program's days in the Atlantic 10 Conference, BIG EAST Conference, American Athletic Conference, and now the Big Ten Conference, Rutgers is 12-9-3 in conference openers.

Nonconference Dominance "On the Banks"

- Rutgers is 43-6-4 in nonconference home games (including postseason) for an .849 winning percentage since 2007. RU lost against Georgetown, 2-1, in overtime on Sept. 2, ending a nonconference home unbeaten streak of 29 consecutive matches (28-0-1) dating back to 2011.

Home Cookin'

- Since the start of the 2006 season, RU is 91-17-12 (.808) at Yurcak Field, including a 6-1-3 mark this season, 13-0-1 record last season, a 9-1-0 record in 2014, an 11-1 record in 2013, a 7-3 mark in 2012, and a 6-2-2 record in 2011.

- RU is 39-3-4 (.891) in its last 46 contests at Yurcak Field dating back to the 2013 season. The only losses were against Georgetown, 2-1 (OT) on Sept. 2, 2016, Northwestern, 1-0, on Oct. 19, 2014 and vs. UConn, 2-1, on Oct. 24, 2013.

- The 2015 Scarlet Knights joined the 1987 (8-0) and 1984 (5-0) teams as the only other home unbeaten in history. The Scarlet Knights' 13 home wins reset the program record from 2013 (11-1).

Closing Out Matches

- Once the Scarlet Knights take a lead into halftime, they rarely relinquish it. Since 2008, Rutgers holds a 56-3-3 mark with a lead at half, including a 5-1-1 record this season, 12-0-0 record last season, an 8-0-0 record in 2014 and a 7-1-1 mark in 2013. The lone losses came at Wisconsin in 2016, against No. 21 San Diego in 2009 and No. 21/19 UCF on Oct. 18, 2013, all three by 2-1 margins.

RU In Regular Season Finales

- The Scarlet Knights fell for the first time in 10 regular season finales (6-1-3) Wednesday night at Wisconsin. Overall, RU is 19-11-3 all-time in regular season finales, including 11-3-3 since 2000.

A Shore Thing

- Once Shore Conference rivals, freshmen Nicole Whitley and Amanda Visco are starters for the Scarlet Knights making a big impact. Whitley, a Freehold Township HS product, assisted Visco, a Colts Neck HS player, on her first-career goal against Saint Joseph's on Aug. 26 and is sixth in the country with nine helpers. Visco has started the first 18 games at centerback, logging the full-time in 16 matches. Starting goalkeeper and Ocean Township HS product Alana Jimenez is also a former Shore Conference player.

South Jersey Connection

- A host of Scarlet Knights hail from South Jersey, one of the biggest soccer hotbeds in the nation. Courtney Norton, Tori Prager, and Kenie Wright from Lenape High School, Jenna Seddon from Absegami High School, Jenna Sayers from Oakcrest High School, and Madison Tiernan from Eastern Regional comprise nearly a third of RU's N.J. products. Prager, Wright, and Tiernan are all experienced starters, with Prager and Tiernan serving as team captains this season.

New Knights on the Block

- Eleven of the team's 13 newcomers have seen the pitch so far this season: Taylor Aylmer, Chantelle Swaby, Erica Murphy, Amanda Visco, Carina Hendley, Tierney Wiltshire, Megan Katona, Jenna Sayers, Brianna Starr, Brittany LaPlant, and Nicole Whitley. Murphy, Swaby, Whitley, and Visco all earned starts so far this season.

The Scarlet Knights added 13 newcomers and returned 15 letterwinners from last season's College Cup team. The College Cup berth was the first in program history and was RU's fourth consecutive NCAA Tournament berth.

Tiernan Storms out of the Gates

- Senior Madison Tiernan paced RU offensively in its opening weekend, scoring a goal and tallying an assist for three points. Tiernan scored in the opening game of the year for the third time in her career.

National Spotlight Shines on Piscataway

- Rutgers women's soccer was ranked No. 10 in the nation in the National Soccer Coaches Association of America (NSCAA) Preseason Poll. The program has been ranked or received votes in seven of the last eight NSCAA preseason polls. The No. 10 ranking is the highest to start a season for the program.

Best Foot Forward

- The Scarlet Knights are 24-5-4 (.788) all-time in season openers.

Seasoned Vets

- RU returns 15 letterwinners and five starters "To the Banks," this season. The Scarlet Knights have nine seniors on this year's roster.

Shutout Soccer

• Rutgers started 2015 with eight consecutive shutouts for the first time in program history. RU's 770:16-minute scoreless streak this season was the longest in program history. The Scarlet Knights posted 19 clean sheets overall last season, a new program record.

- 11.....Purdue
- 12..... Indiana
- 13.....Iowa
- 14.....Maryland

Early Season Success

• RU has started the season 2-0 12 times in the last 14 years and 4-0 in four of the last five seasons.

Clean Sheets

• Rutgers notched 19 shutouts last season, a new RU record for most shutouts in a season. The previous record was set in 2006, when current associate head coach Meg Ryan was a defender and captain for the Scarlet Knights.

Streamlined Success

• RU has recorded double-digit victories 21 times in the last 32 years. In 32 seasons of Rutgers women's soccer, the Scarlet Knights have finished .500 or better 25 times.

Five-Goal Outbursts

• Against Drexel on Sept. 11, Rutgers posted its seventh five-goal match since 2006. The Scarlet Knights also posted five goals against Princeton (Sept. 5, 2014), (Sept. 13, 2013), Cincinnati (Oct. 14, 2012), Villanova (Sept. 22, 2008), Farleigh Dickinson (Sept. 23, 2007) and USF (Oct. 1, 2006).

Big Ten Preseason Coaches Poll

• Rutgers women's soccer, ranked No. 10 in the National Soccer Coaches Association of America (NSCAA) Pre-season Poll, was picked to finish second in the Big Ten Conference, according to a preseason vote by league coaches. Last year's NCAA and league champion, Penn State, was picked to finish first, while Wisconsin rounds out the top-three.

Three Scarlet Knights - forwards Colby Ciarrocca and Madison Tiernan, and defender Erin Smith - were named to the Big Ten Women's Soccer Preseason Honors List. Rutgers' No. 2 position in the preseason conference poll is its highest since joining the Big Ten in 2014. The Scarlet Knights were picked to finish tied for eighth in 2014 before earning the No. 4 spot, and finished third in the league in 2015 as predicted in the preseason. RU advanced to the Big Ten Tournament Final last season. The full Big Ten Women's Soccer Preseason Poll is available below.

BIG TEN WOMEN'S SOCCER PRESEASON COACHES' POLL

- 1.....Penn State
- 2..... RUTGERS**
- 3..... Wisconsin
- 4..... Michigan
- 5.....Ohio State
- 6.....Minnesota
- 7..... Northwestern
- 8..... Nebraska
- 9..... Illinois
- 10..... Michigan State

RUTGERS RECORD BOOK - WHERE ACTIVE PLAYERS STAND

SINGLE-SEASON RECORDS

Points				
Player	Year	G	A	Pts
1. Carli Lloyd	2001	15	7	37
2. Elyse Eichman-Dolan	1984	15	6	36
3. Jonelle Filigno	2012	15	5	35
4. Christa Aluotto	1992	15	4	34
5. Kris Kurzynowski	1988	15	3	33
Keri Lages	2001	13	7	33
7. Christa Aluotto	1991	13	5	31
Carli Lloyd	2002	12	7	31

Goals

Player	Year	G
1. Elyse Eichman-Dolan	1984	15
Kris Kurzynowski	1988	15
Christa Aluotto	1992	15
Carli Lloyd	2001	15
Jonelle Filigno	2012	15
6. Kris Kurzynowski	1989	13
Christa Aluotto	1991	13
Keri Lages	2001	13
Carli Lloyd	2003	13

Assists

Player	Year	A
1. Jennifer Gibbons	1991	13
Gina DeMaio	2008	13
3. Vicki Hoekstra	1989	11
Beth Uydess	1991	11
5. Cindy Soffel	1984	10
Lynn Hallowell	1988	10
Erica "Boo" Schubert	2001	10
8. Nicole Whitley	2016	9

Shots

Player	Years	Sh
1. Carli Lloyd	2003	88
2. Madison Tiernan	2016	87
3. Judy Kalafut	1989	86
4. Christa Aluotto	1992	78
Carli Lloyd	2001	78

Game-Winning Goals

Player	Year	GWG
1. Jonelle Filigno	2012	7
2. Carli Lloyd	2003	6
3. Kris Kurzynowski	1988	5
Kris Kurzynowski	1989	5
Christa Aluotto	1992	5
Caycie Gusman	2008	5
Jonelle Filigno	2013	5

Shutouts

Player	Years	SHO
1. Casey Murphy	2015	19
2. Erin Guthrie	2006	14
T- 3. Saskia Webber	1991	11
Erin Guthrie	2009	11

CAREER RECORDS

Points			
Player (Years)	G	A	Pts
1. Carli Lloyd (2001-04)	50	17	117
2. Kris Kurzynowski (1988-91)	49	14	112
3. Christa Aluotto (1989-92)	39	21	99
4. Jonelle Filigno (2010-13)	33	13	79
5. Beth Uydess (1990-93)	23	23	69

T-7. Madison Tiernan (2013-16) 22 16 60

Goals

Player	Years	G
1. Carli Lloyd	2001-04	50
2. Kris Kurzynowski	1988-91	49
3. Christa Aluotto	1989-92	39
4. Jonelle Filigno	2010-13	33
5. Judy Kalafut	1987-90	27

T-9. Madison Tiernan 2013-16 22

Assists

Player	Years	A
1. Gina DeMaio	2006-10	29
2. Jennifer Gibbons	1989-92	27
3. Beth Schimenti	1986-89	24
4. Lynn Hallowell	1985-88	23
Beth Uydess	1990-93	23

Shots

Player	Years	Sh
1. Carli Lloyd	2001-04	295
2. Gina DeMaio	2006-10	272
3. Madison Tiernan	2013-16	263

Game-Winning Goals

Player	Years	GWG
1. Jonelle Filigno	2010-13	17
2. Kris Kurzynowski	1988-91	15
Carli Lloyd	2001-04	15
4. Christa Aluotto	1989-92	12
5. Beth Uydess	1990-93	9
Alicia Hall	2005-08	9

T-7. Madison Tiernan 2013-16 8

Goals-Against Average

Player	Years	GAA
1. Casey Murphy	2014-present	0.49
2. Jessica Hardy	1984-85	0.50
3. Kimberly Myers	1993	0.58

Shutouts

Player	Years	SHO
1. Erin Guthrie	2006-09	44
2. Saskia Webber	1989-92	34
3. Casey Murphy	2014-Present	29

RUTGERS WHEN...

Day Games:	3-0-4
Night Games:	6-3-2
Home:	6-1-3
Away:	3-2-3
Neutral:	0-0-0
Overtime:	1-2-6
Leading at half:	5-1-1
Trailing at half:	1-0-0
Tied at half:	3-2-5
Scoring 2+ goals:	6-1-2
Scoring < 2 goals:	3-2-4
Outshoots opponent:	8-1-4
Opponent outshoots RU:	1-2-2
Shots tied:	0-0-0
Takes more corner kicks:	6-1-2
Corner kicks tied:	1-1-0
Takes less corner kicks:	2-1-4
On Big Ten Network:	0-2-2
Versus ranked opponents:	2-0-1
Big Ten Conference matches:	4-2-5

GOAL BREAKDOWN

Time	RU	Opp.	RU Goal Scorers (Minute)
1-15	5	3	Tiernan (4'), Hendley (9'), Whitley (10'), Tiernan (10'), Prager (14')
16-30	4	1	Ciarrocca (17'), Tiernan (24'), Tiernan (25'), Tiernan (26')
31-45	5	2	LaPlant (33'), Murphy (33'), LaPlant (34'), Murphy (40'), Tiernan (43')
46-60	6	2	Ciarrocca (46'), Tiernan (47'), Ciarrocca (48'), Andresen (50'), Aylmer (50'), Whitley (57')
61-75	7	3	Whitley (62'), Ciarrocca (63'), Ciarrocca (65'), Prager (70'), Puchalski (71'), Visco (73'), Visco (75')
76-90	3	2	Seddon (76'), Murphy (81'), Hendley (86')
91-110	1	2	Tiernan (99')
TOTAL	31	15	

RUTGERS VS. OPPONENT STATISTICAL COMPARISON

	RUTGERS	PENN STATE
Overall Record	9-3-6	11-3-4
Conference Record	4-2-5	7-1-3
Goals Scored	31	31
Goals Allowed	15	15
Goals Per Game	1.72	1.72
Goals Allowed Per Game	0.83	0.83
Assists Per Game	1.44	1.66
Shots Per Game	16.6	16.2
Opponent Shots Per Game	9.4	9.7
Corner Kicks Per Game	5.3	4.6
Opponent Corner Kicks Per Game	3.6	3.8
Saves Per Game	3.0	2.7
Shutouts	9	8
Fouls	177	111
Fouls Drawn	131	143

THE LAST TIME...

(TEAM)

Home win Oct. 6, 2016 vs. Purdue, 2-1 (OT)
 Home loss Sept. 2, 2016 vs. Georgetown, 1-2 (OT)
 Home draw Oct. 22, 2016 vs. Nebraska, 0-0 (2OT)
 Away win Aug. 28, 2016 at No. 10 UConn, 2-0
 Away loss Oct. 26, 2016 at Wisconsin, 1-2
 Away draw Oct. 16, 2016 at Ohio State, 0-0 (2OT)
 Neutral win Nov. 6, 2015 vs. Ohio State, 2-0
 Neutral loss Dec. 4, 2015 vs. No. 6 Penn State, 0-2
 Neutral draw Nov. 8, 2013 vs. Memphis, 0-0 (2OT)
 Conference win Oct. 6, 2016 vs. Purdue, 2-1 (OT)
 Conference loss Oct. 26, 2016 at Wisconsin, 1-2
 Conference draw Oct. 22, 2016 vs. Nebraska, 0-0 (2OT)
 Nonconference win Sept. 11, 2016 vs. Drexel, 5-0
 Nonconference loss Sept. 2, 2016 vs. Georgetown, 1-2 (OT)
 Nonconference draw Aug. 21, 2016 vs. Providence, 1-1 (2OT)
 Beat a ranked opponent Sept. 23, 2016 vs. No. 21 Northwestern, 2-0
 Beat a top-10 opponent Aug. 28, 2016 at No. 10 UConn, 2-0
 Lost to a ranked opponent Dec. 4, 2015 vs. No. 6 Penn State, 0-2
 Shut out an opponent Oct. 22, 2016 vs. Nebraska, 0-0 (2OT)
 Scored one goal Oct. 26, 2016 at Wisconsin, 1-2
 Scored two goals Oct. 13, 2016 at No. 13 Penn State, 2-2 (2OT)
 Scored three goals Oct. 2, 2016 at Michigan State, 3-1
 Scored four goals Aug. 19, 2016 at Rider, 4-1
 Scored five goals Sept. 11, 2016 vs. Drexel, 5-0
 Scored six-plus goals Oct. 2, 2005 at Pittsburgh, 6-2
 Shut out Oct. 22, 2016 vs. Nebraska, 0-0 (2OT)
 Allowed one goal Oct. 6, 2016 vs. Purdue, 2-1 (OT)
 Allowed two goals Oct. 26, 2016 at Wisconsin, 1-2
 Allowed three goals Sept. 29, 2016 at Michigan, 2-3 (2OT)
 Allowed four goals Sept. 29, 2013 at Louisville, 1-4
 Allowed five-plus goals Nov. 16, 2012 at No. 3 Virginia, 1-6
 Won in OT Oct. 6, 2016 vs. Purdue, 2-1 (OT)
 Lost in OT Sept. 2, 2016 vs. Georgetown, 1-2 (OT)
 Won in 2OT Nov. 3, 2013 vs. Cincinnati, 2-1 (2OT)
 Lost in 2OT Sept. 29, 2016 at Michigan, 2-3 (2OT)
 Won in PKs Nov. 27, 2015 at No. 1 Virginia, 0-0 (7-6)
 Lost in PKs Nov. 16, 2014 at No. 12 West Virginia, 0-0 (3-0)

(INDIVIDUAL)

Scored two goals Cassie Inacio vs. Princeton (Sept. 6, 2015)
 Scored a hat trick Jonelle Filigno vs. Fordham (Aug. 29, 2011)
 Keri Lages vs. La Salle (Sept. 17, 2001)
 Scored four or more goals 4, Stef Scholz vs. Princeton (Sept. 15, 2013)
 Tallied five-plus points 5, Sara Corson at Army (Aug. 25, 2013)
 6, Jonelle Filigno vs. Fordham (Aug. 29, 2011)
 Tallied two-plus assists 2, Nicole Whitley at Michigan State (Oct. 2, 2016)
 3, Nicole Whitley vs. Drexel (Sept. 11, 2016)
 2, Samantha Valliant at Iowa (Oct. 28, 2015)
 2, Madison Tiernan vs. Vanderbilt (Aug. 24, 2014)
 2, Tricia DiPaolo vs. Villanova (Sept. 20, 2013)
 Shut out an opponent Alana Jimenez vs. Nebraska (Oct. 22, 2016)
 Made 10-plus saves 10, Jess Janosz vs. No. 16 UCF (Nov. 10, 2013)

(AN OPPONENT HAD)

Scored a hat trick Nicky Waldek, Michigan (Sept. 29, 2016)
 Scored two goals Rose Lavelle, Wisconsin (Oct. 26, 2016)
 Rachel Corboz, Georgetown (Sept. 2, 2016)
 Josee Stiever, Minnesota (Oct. 26, 2014)
 Marissa Duguay, Memphis (Oct. 4, 2013)
 Charlyn Corral, Louisville (Sept. 29, 2013)
 Danielle Colaprico, No. 5 Virginia (Sept. 6, 2013)
 Kelley Monogue, Texas A&M (Aug. 31, 2012)
 Monique Gjini, Louisville (Oct. 11, 2007)
 Tallied five-plus points 6, Nicky Waldek, Michigan (Sept. 29, 2016)
 Tallied two-plus assists 2, Ashley Pafko, Minnesota (Oct. 26, 2014)
 Tallied a shutout Aubrei Corder, Nebraska (Oct. 22, 2016)
 Made 10-plus saves 11, Jordan Ginther, Purdue (Oct. 6, 2016)

RUTGERS MATCH-BY-MATCH STARTERS

Opponent	GK	B	B	B	B	M	M	M	F	F	F
Rider (1)	Jimenez	Wright	Swaby	Visco	Smith	Andresen	Prager	Whitley	Murphy	Tiernan	Ciarrocca
Providence (2)	Jimenez	Wright	Moneme	Visco	Smith	Andresen	Prager	Whitley	Murphy	Tiernan	Ciarrocca
Saint Joseph's (1)	Jimenez	Wright	Swaby	Visco	Smith	Andresen	Prager	Whitley	Murphy	Tiernan	Ciarrocca
UConn (1)	Jimenez	Wright	Swaby	Visco	Smith	Andresen	Prager	Whitley	Murphy	Tiernan	Ciarrocca
Georgetown (1)	Jimenez	Wright	Swaby	Visco	Smith	Andresen	Prager	Whitley	Murphy	Tiernan	Ciarrocca
Cornell (1)	Jimenez	Wright	Swaby	Visco	Smith	Andresen	Prager	Whitley	Murphy	Tiernan	Ciarrocca
Drexel (3)	Jimenez	Wright	Swaby	Visco	Smith	Andresen	Prager	Whitley	Hendley	Tiernan	Ciarrocca
Maryland (3)	Jimenez	Wright	Swaby	Visco	Smith	Andresen	Prager	Whitley	Hendley	Tiernan	Ciarrocca
Northwestern (3)	Jimenez	Wright	Swaby	Visco	Smith	Andresen	Prager	Whitley	Hendley	Tiernan	Ciarrocca
Illinois (3)	Jimenez	Wright	Swaby	Visco	Smith	Andresen	Prager	Whitley	Hendley	Tiernan	Ciarrocca
Michigan (4)	Jimenez	Wright	Swaby	Visco	Smith	Andresen	Prager	Whitley	LaPlant	Tiernan	Ciarrocca
Michigan State (4)	Jimenez	Wright	Swaby	Visco	Smith	Andresen	Prager	Whitley	LaPlant	Tiernan	Ciarrocca
Purdue (4)	Jimenez	Wright	Swaby	Visco	Smith	Andresen	Prager	Whitley	LaPlant	Tiernan	Ciarrocca
Indiana (4)	Jimenez	Wright	Swaby	Visco	Smith	Andresen	Prager	Whitley	LaPlant	Tiernan	Ciarrocca
Penn State (3)	Jimenez	Wright	Swaby	Visco	Smith	Andresen	Prager	Whitley	Hendley	Tiernan	Ciarrocca
Ohio State (5)	Jimenez	Wright	Swaby	Visco	Smith	Andresen	Prager	Whitley	Aylmer	Tiernan	Ciarrocca
Nebraska (6)	Jimenez	Wright	Swaby	Visco	Smith	Andresen	Prager	Whitley	Seddon	Tiernan	Ciarrocca
Wisconsin (6)	Jimenez	Wright	Swaby	Visco	Smith	Andresen	Prager	Whitley	Seddon	Tiernan	Ciarrocca
Penn State											

(1): 4-1-0 | (2): 0-0-1 | (3): 3-0-2 | (4): 2-1-1 | (5): 0-0-1 | (6): 0-1-1

HEAD COACH MIKE O'NEILL



Mike O'Neill enters his third season as head coach of Rutgers women's soccer after 16 years with the program. The longtime New Jersey native served as the Scarlet Knights' associate head coach from 2004-13, now lending his local and national player expertise at the helm as Rutgers competes in the Big Ten Conference.

In 2015, O'Neill became the first head coach in Rutgers women's soccer history to lead the program to the NCAA Women's College Cup. In addition, he is the first to guide the program to NCAA Tournament berths in each of his first two seasons.

Throughout O'Neill's tenure at Rutgers, the program has produced eight MAC Hermann Trophy candidates, eight NSCAA All-America selections, and 25 NSCAA All-Region honorees.

A USSF "A" licensed coach who holds a KNVB Dutch International Badge, O'Neill was a member of Seton Hall's BIG EAST Championship teams in 1987 and 1988, helping the Pirates reach the NCAA Tournament Elite Eight each of those years.

O'Neill graduated from Seton Hall University in 1990 with a bachelor's degree in business management. A native of Kearny, N.J., he currently resides in New Egypt with his wife, Rachel, and their children, Madelyn, Kylie and Michael.

THE O'NEILL FILE

Year	School	Record	Pct.
2014	Rutgers	13-6-1	.679
2015	Rutgers	19-4-3	.788
2016	Rutgers	9-3-6	.666
TOTAL		44-13-10*	.731

* As associate head coach, O'Neill was credited with three RU wins (Seton Hall, Sept. 18, 2009; Stony Brook, Aug. 14, 2010; Colgate, Aug. 27, 2010).

ASSOCIATE HEAD COACH MEG RYAN



Meghan Ryan begins her ninth year with the Rutgers coaching staff and third as the program's associate head coach. Ryan previously served as an assistant coach for the Scarlet Knights for four seasons after spending two years as a volunteer assistant. Ryan, a three-year RU captain at center back, graduated in 2007. Throughout Ryan's tenure with the Scarlet Knights, the program has produced six MAC Hermann Trophy candidates, six NSCAA All-American selections, and 14 NSCAA All-Region honorees.

With Ryan as the orchestrator of the RU defense, the Scarlet Knights have not posted a GAA higher than 1.06 in Ryan's coaching career (since 2008), six times recording a GAA under 1.00 and four times posting a GAA under 0.65. In 2015, RU led the NCAA in GAA (0.37), shutouts (19), and shutout percentage (.731). All three statistical achievements set single-season RU records.

On the club level, Ryan has excelled with Players Development Academy (PDA) as the head coach of PDA the Arsenal and assistant coach of the PDA Slammers. Ryan coached the Arsenal to a 2015 U17 ECNL National Championship, and has won two other ECNL national titles as an assistant with the Slammers (2014, 2013). She is the first female head coach in ECNL history to win a national championship.

In 2006, Ryan anchored a defense that was arguably one of the best in the country. The team finished 16-3-4, allowing a mere six goals and posting 16 shutouts, the most in the program's history. RU finished the season ranked No. 6 in shutout percentage, No. 10 in won-lost-tied percentage and No. 11 in goals-against average.

Ryan was a two-time BIG EAST Academic All-Star, a three-time BIG EAST Defensive Player of the Week, an Eastern Collegiate Athletic Conference (ECAC) Defensive Player of the Week and a Soccerbuzz Elite Team of the Week honoree once.

ASSISTANT COACH LUBOS ANCIN



Former Rutgers men's soccer goalkeeper Lubos Ancin returned to Piscataway in 2014 as an assistant coach for the women's soccer program. Entering his third season, Ancin assumes multiple of responsibilities, namely supervising the Rutgers goalkeeping corps.

Ancin's presence has undoubtedly been felt by RU's defensive unit and goalkeeper Casey Murphy. On their way to the first College Cup in program history in 2015, the Scarlet Knights led the NCAA in goals-against average (0.37), shutouts (19), and shutout percentage (.731). All three statistical achievements set single-season RU records.

Ancin joins RU with substantial playing and coaching experience. From 2004-2014, Ancin served as the assistant head coach at the Paul Blodgett Goalkeeper Training School, preparing and running practices for goalkeepers of all ages.

A goalkeeper for the Scarlet Knights from 2003-05, Ancin played in 33 games and made 99 saves in his career. He finished with eight collegiate shutouts, once earning BIG EAST and ECAC Goalkeeper of the Week honors. Ancin was also placed on the College Soccer News National Team of the Week in October of 2004.

Ancin currently resides in Dunellen, N.J. and is happily married to his wife, Hana. The couple welcomed their daughter, Juliet, to the world in 2015.

ASSISTANT COACH TRICIA DIPAOLO



Former Scarlet Knight Trish DiPaolo begins her third season on staff as a volunteer assistant coach. DiPaolo, a four-year captain and seven-year player for RU, overcame numerous injuries and served as an integral part of the Scarlet Knights' success in her career.

DiPaolo's experience includes time at the club, high school, college and professional levels. This past year, DiPaolo earned a spot as a back on Sky Blue FC of the National Women's Soccer League (NWSL). She has served as a student assistant coach since 2007 at the Rutgers University Soccer Youth Camps, providing training and instruction throughout camp sessions. Further, DiPaolo has six years of experience with East Brunswick Girls Soccer as a trainer under head coach Eddy Lam.

DiPaolo tied for third in Rutgers history with 85 matches played for her career and was the unheralded leader of the squad since the 2010 season. Initially a forward, DiPaolo closed her career as the leader in the backfield for Rutgers and ended her time in Scarlet with four goals and nine assists.

The Sparta, N.J., native earned her bachelor's degree in exercise science and sport management from Rutgers in May of 2011 and went on to finish her master's degree in human resource management "On the Banks" in 2013.

RUTGERS NUMERICAL ROSTER

No.	Name	Pos.	Cl.	Ht.	Hometown/High School
1	Alana Jimenez	GK	R-Sr.	5-9	Ocean, N.J./Ocean Township
2	Jenna Seddon	F	Sr.	5-7	Galloway, N.J./Absegami
3	Chantelle Swaby	B	Fr.	5-11	West Hartford, Conn./Hall
4	Colby Ciarrocca	F	Jr.	5-8	Montgomery, N.J./Montgomery
5	Taylor Aylmer	M	Fr.	5-8	Garnerville, N.Y./North Rockland
6	Ali Ryan	F	Sr.	5-4	Bowie, Md./Bowie
7	Carina Hendley	F	Fr.	5-7	Irvine, Calif./Northwood
8	Nicole Whitley	M	Fr.	5-3	Freehold, N.J./Freehold Township
9	Kenie Wright	B/M	So.	5-3	Mount Laurel, N.J./Lenape
13	Tiernny Wiltshire	M/B	Fr.	5-4	Elmer, N.J./Arthur P. Schalick
14	Megan Katona	M	Fr.	5-7	San Antonio, Texas/Alamo Heights
15	Erin Smith (c)	B	Sr.	5-7	Medford Lakes, N.J./Shawnee
17	Jennifer Andresen	M	Sr.	5-4	Wyckoff, N.J./Ramapo
18	Erica Murphy	F	Sr.	5-5	Millstone Township, N.J./Pennington Prep
20	Amanda Visco	B	Fr.	5-7	Manalapan, N.J./Colts Neck
21	Jenna Sayers	F/M	Fr.	5-8	Mays Landing, N.J./Oakcrest
22	Maggie Barron	GK	Fr.	5-8	Centreville, Va./Westfield
23	Casey Murphy (c)	GK	Jr.	6-0	Bridgewater, N.J./Bridgewater-Raritan
24	Jessica Puchalski	F	Sr.	5-7	South Brunswick, N.J./South Brunswick
25	Brianna Starr	F/M	Fr.	5-7	Severn, Md./Archbishop Spalding
27	Brianna Scarola	GK	Jr.	5-8	Chester, N.J./West Morris Mendham
28	Megan Herr	F/M	Fr.	5-7	Pittsburgh, Pa./Pine-Richland
29	Adora Moneme	B	So.	5-10	Union, N.J./Union
31	Christy Monroy	B	Jr.	5-4	Scotch Plains, N.J./Scotch Plains-Fanwood
36	Tori Prager (c)	M	Sr.	5-6	Mount Laurel, N.J./Lenape
44	Brittany LaPlant	F	Fr.	5-6	Queensbury, N.Y./Queensbury
50	Courtney Norton	B	Jr.	5-9	Mount Laurel, N.J./Lenape
73	Madison Tiernan (c)	F/M	Sr.	5-4	Voorhees, N.J./Eastern Regional

(c) denotes captain

Pronunciation Guide:

Jennifer Andresen Ann-DREE-Sen
 Taylor Aylmer AI-Murr
 Colby Ciarrocca Shuh-ROCK-Uhh
 Adora Moneme Moe-NEH-May
 Alana Jimenez Him-EH-Nez
 Tori Prager PRAY-grr
 Jessica Puchalski Puh-Chal-Skee
 Jenna Seddon Said-In
 Brianna Scarola Bree-ON-uh Ska-ROW-La
 Chantelle Swaby Shan-Tell Sway-Bee
 Tiernny Wiltshire Tier-Knee Wilt-Shy-Err

RUTGERS UNIVERSITY QUICK FACTS

Location.....	New Brunswick, N.J.	All-Time Record:.....	366-230-72
Founded.....	1766	Started DI Women's Soccer:.....	1984
Enrollment.....	65,000	All-Time Record at Yurcak Field (Est. 1994):..	
President.....	Dr. Robert Barchi	160-59-23
Nickname	Scarlet Knights	All-Time BIG EAST Record (Years):..	81-62-19(18)
Colors	Scarlet	All-Time AAC Record (Years):	5-3-1 (One)
Director of Athletics	Patrick Hobbs	All-Time Big Ten Record (Years):..	18-8-8 (Three)
Conference	Big Ten	NCAA Appearances/Last:	10/2015
Home Field	Yurcak Field	Best NCAA Finish: ..	College Cup Semis (2015)
Surface (Capacity).....	Natural Grass (5,000)		
Web Site.....	www.ScarletKnights.com		
Head Coach	Mike O'Neill (Seton Hall '90)		
Record at Rutgers (Season) ...	44-13-10 (Third)		
Overall Record (Season).....	44-13-10 (Third)		
Associate Head Coach	Meghan Ryan		
Vol. Assistant Coach	Tricia DiPaolo		
Director of Soccer Operations	Jonah Silk		

ROSTER BREAKDOWN

BY CLASS:

Freshmen (12): Taylor Aylmer, Maggie Barron, Carina Hendley, Megan Herr, Megan Katona, Brittany LaPlant, Jenna Sayers, Brianna Starr, Chantelle Swaby, Amanda Visco, Nicole Whitley, Tiernny Wiltshire
 Sophomores (2): Adora Moneme, Kenie Wright
 Juniors (5): Colby Ciarrocca, Christy Monroy, Casey Murphy, Courtney Norton, Brianna Scarola
 Seniors (9): Jennifer Andresen, Alana Jimenez, Erica Murphy, Tori Prager, Jessica Puchalski, Ali Ryan, Jenna Seddon, Erin Smith, Madison Tiernan

BY STATE/COUNTRY:

New Jersey (19): Jennifer Andresen, Colby Ciarrocca, Alana Jimenez, Adora Moneme, Christy Monroy, Casey Murphy, Erica Murphy, Courtney Norton, Tori Prager, Jessica Puchalski, Jenna Sayers, Brianna Scarola, Jenna Seddon, Erin Smith, Madison Tiernan, Amanda Visco, Nicole Whitley, Tiernny Wiltshire, Kenie Wright
 Maryland (2): Ali Ryan, Brianna Starr
 New York (2): Taylor Aylmer, Brittany LaPlant
 California (1): Carina Hendley
 Connecticut (1): Chantelle Swaby
 Pennsylvania (1): Megan Herr
 Texas (1): Megan Katona
 Virginia (1): Maggie Barron

Starters Returning/Lost:	5/6
Letterwinners Returning/Lost:	15/16
Newcomers:	13

SCARLET KNIGHTS

1 ALANA JIMENEZ SR. GOALKEEPER 5-9 OCEAN TOWNSHIP/ OCEAN, N.J.

SINGLE-GAME HIGHS:

Saves: 7, at Michigan -- Sep 29, 2016

CAREER STATISTICS

SEASON	GP	GS	MINUTES	GA	GA AVG	SAVES	SAVE%	W	L	T	SHO
2013	4	0	126:51	4	2.84	8	.667	0	0	1	0.2
2014	1	0	2:35	0	0.00	0	.000	0	0	0	0.1
2015											
2016	18	18	1753:35	15	0.77	54	.783	9	3	6	8.1
TOTAL	23	18	1883:01	19	0.91	62	.765	9	3	7	8.4

2 JENNA SEDDON SR. FORWARD 5-7 ABSEGAMI/GALLOWAY, N.J.

SINGLE-GAME HIGHS:

Points: 2, vs Hofstra -- Aug 23, 2015

Goals: 1, vs Hofstra -- Aug 23, 2015

Assists: 1, UConn -- Sep 13, 2015

Shots: 2, 4 times

CAREER STATISTICS

SEASON	GP	GS	G	A	Pts	Shots	Shot%	SOG	SOG%	GW	PK-Att
2013	9	0	0	0	0	0	.000	0	.000	0	0-0
2014	3	0	0	0	0	0	.000	0	.000	0	0-0
2015	18	0	1	1	3	9	.111	5	.556	1	0-0
2016	16	2	1	0	2	3	.333	1	.333	0	0-0
TOTAL	46	2	2	1	5	12	.167	6	.500	1	0-0

3 CHANTELE SWABY FR. DEFENDER 5-11 HALL/WEST HARTFORD, CONN.

SINGLE-GAME HIGHS:

Shots: 2, at Michigan -- Sep 29, 2016

CAREER STATISTICS

SEASON	GP	GS	G	A	Pts	Shots	Shot%	SOG	SOG%	GW	PK-Att
2016	17	17	0	0	0	6	.000	2	.333	0	0-0
TOTAL	17	17	0	0	0	6	.000	2	.333	0	0-0

4 COLBY CIARROCCA JR. FORWARD 5-8 MONTGOMERY/ MONTGOMERY, N.J.

SINGLE-GAME HIGHS:

Points: 4, Memphis -- Aug 31, 2014 ; Cincinnati -- Aug 29, 2014*

Goals: 2, Memphis -- Aug 31, 2014 ; Cincinnati -- Aug 29, 2014*

Assists: 1, 6 times

Shots: 6, Providence -- Aug 21, 2016

*occurred while playing at Vanderbilt

CAREER STATISTICS

SEASON	GP	GS	G	A	Pts	Shots	Shot%	SOG	SOG%	GW	PK-Att
2014*	13	4	5	0	10	26	.192	8	.308	2	0-0
2015	26	26	9	4	22	51	.176	28	.549	4	0-0
2016	18	18	5	3	13	42	.119	26	.619	0	0-0
At Rutgers	44	44	14	7	35	93	.151	54	.581	4	0-0
TOTAL*	57	48	19	7	45	119	.160	62	.521	6	0-0

* Includes statistics from prior team/school

SCARLET KNIGHTS

5 TAYLOR AYLMEY FR. MIDFIELD 5-8 NORTH ROCKLAND/ GARNERVILLE, N.Y.

SINGLE-GAME HIGHS:

Points: 2, at Penn State -- Oct 13, 2016
 Goals: 1, at Penn State -- Oct 13, 2016
 Assists: 1, at Rider University -- Aug 19, 2016 ; Northwestern -- Sep 23, 2016
 Shots: 2, 6 times

CAREER STATISTICS

SEASON	GP	GS	G	A	Pts	Shots	Shot%	SOG	SOG%	GW	PK-Att
2016	18	1	1	2	4	19	.053	6	.316	0	0-0
TOTAL	18	1	1	2	4	19	.053	6	.316	0	0-0

6 ALI RYAN SR. FORWARD 5-4 BOWIE/ BOWIE, MD.

SINGLE-GAME HIGHS:

Points: 1, Cincinnati -- Nov 03, 2013
 Assists: 1, Cincinnati -- Nov 03, 2013 ; Drexel -- Sep 11, 2016
 Shots: 2, Cincinnati -- Nov 03, 2013

CAREER STATISTICS

SEASON	GP	GS	G	A	Pts	Shots	Shot%	SOG	SOG%	GW	PK-Att
2013	16	3	0	1	1	8	.000	5	.625	0	0-0
2014	17	0	0	0	0	3	.000	2	.667	0	0-0
2015	9	0	0	0	0	5	.000	2	.400	0	0-0
2016	7	0	0	1	1	0	.000	0	.000	0	0-0
TOTAL	49	3	0	2	2	16	.000	9	.562	0	0-0

7 CARINA HENDLEY FR. FORWARD 5-7 NORTHWOOD/ IRVINE, CALIF.

SINGLE-GAME HIGHS:

Points: 2, Cornell -- Sep 09, 2016 ; Drexel -- Sep 11, 2016
 Goals: 1, Cornell -- Sep 09, 2016 ; Drexel -- Sep 11, 2016
 Assists: 1, at Michigan -- Sep 29, 2016
 Shots: 4, Cornell -- Sep 09, 2016

CAREER STATISTICS

SEASON	GP	GS	G	A	Pts	Shots	Shot%	SOG	SOG%	GW	PK-Att
2016	17	5	2	1	5	14	.143	10	.714	1	0-0
TOTAL	17	5	2	1	5	14	.143	10	.714	1	0-0

8 NICOLE WHITLEY FR. MIDFIELD 5-3 FREEHOLD/ FREEHOLD, N.J.

SINGLE-GAME HIGHS:

Points: 4, at Michigan State -- Oct 02, 2016
 Goals: 1, at Rider University -- Aug 19, 2016 ; at Michigan State -- Oct 02, 2016 ; Maryland -- Sep 16, 2016
 Assists: 3, Drexel -- Sep 11, 2016
 Shots: 7, at Rider University -- Aug 19, 2016

CAREER STATISTICS

SEASON	GP	GS	G	A	Pts	Shots	Shot%	SOG	SOG%	GW	PK-Att
2016	18	18	3	9	15	26	.115	15	.577	1	0-1
TOTAL	18	18	3	9	15	26	.115	15	.577	1	0-1

SCARLET KNIGHTS**9 KENIE WRIGHT SO. DEFENDER 5-3 LENAPE/ MOUNT LAUREL, N.J.****SINGLE-GAME HIGHS:**

Points: 2, Minnesota -- Nov 01, 2015

Goals: 1, Minnesota -- Nov 01, 2015

Assists: 1, UConn -- Nov 22, 2015 ; Indiana -- Oct 08, 2015

Shots: 1, 7 times

CAREER STATISTICS

SEASON	GP	GS	G	A	Pts	Shots	Shot%	SOG	SOG%	GW	PK-Att
2015	26	16	1	2	4	6	.167	2	.333	0	0-0
2016	18	18	0	0	0	1	.000	1	1.000	0	0-0
TOTAL	44	34	1	2	4	7	.143	3	.429	0	0-0

13 TIERNY WILTSHIRE FR. DEFENDER 5-4 ARTHUR P. SCHALICK/ELMER, N.J.**SINGLE-GAME HIGHS:**

Shots: 2, Cornell -- Sep 09, 2016

CAREER STATISTICS

SEASON	GP	GS	G	A	Pts	Shots	Shot%	SOG	SOG%	GW	PK-Att
2016	16	0	0	0	0	4	.000	1	.250	0	0-0
TOTAL	16	0	0	0	0	4	.000	1	.250	0	0-0

14 MEGAN KATONA FR. DEFENDER 5-7 ALAMO HEIGHTS/SAN ANTONIO, TEXAS**SINGLE-GAME HIGHS:****CAREER STATISTICS**

SEASON	GP	GS	G	A	Pts	Shots	Shot%	SOG	SOG%	GW	PK-Att
2016	4	0	0	0	0	0	.000	0	.000	0	0-0
TOTAL	4	0	0	0	0	0	.000	0	.000	0	0-0

15 ERIN SMITH SR. DEFENDER 5-7 SHAWNEE/ MEDFORD LAKES, N.J.**SINGLE-GAME HIGHS:**

Points: 3, Minnesota -- Oct 23, 2015

Goals: 1, Minnesota -- Oct 23, 2015 ; Drexel -- Sep 06, 2015

Assists: 1, UMass -- Aug 30, 2015 ; Ohio State -- Oct 15, 2015 ; Minnesota -- Oct 23, 2015

Shots: 2, 7 times

CAREER STATISTICS

SEASON	GP	GS	G	A	Pts	Shots	Shot%	SOG	SOG%	GW	PK-Att
2013	18	14	0	0	0	2	.000	2	1.000	0	0-0
2014	20	20	0	0	0	3	.000	2	.667	0	0-0
2015	26	26	2	3	7	17	.118	10	.588	2	0-0
2016	18	18	0	0	0	3	.000	2	.667	0	0-0
TOTAL	82	78	2	3	7	25	.080	16	.640	2	0-0

SCARLET KNIGHTS

17 JENNIFER ANDRESEN SR. MIDFIELD 5-4 RAMAPO/ WYCKOFF, N.J.

SINGLE-GAME HIGHS:

Points: 2, Stony Brook -- Aug 22, 2014 ; vs Ohio State -- Nov 06, 2015 ; at Michigan State -- Oct 02, 2016
 Goals: 1, Stony Brook -- Aug 22, 2014 ; vs Ohio State -- Nov 06, 2015 ; at Michigan State -- Oct 02, 2016
 Assists: 1, 9 times
 Shots: 4, at Rider University -- Aug 19, 2016 ; Fordham -- Sep 01, 2013

CAREER STATISTICS

SEASON	GP	GS	G	A	Pts	Shots	Shot%	SOG	SOG%	GW	PK-Att
2013	20	6	0	3	3	14	.000	6	.429	0	0-0
2014	11	1	1	1	3	7	.143	5	.714	0	0-0
2015	26	8	1	4	6	25	.040	8	.320	0	0-0
2016	18	18	1	1	3	19	.053	6	.316	1	0-1
TOTAL	75	33	3	9	15	65	.046	25	.385	1	0-1

18 ERICA MURPHY SR. FORWARD 5-5 PENNINGTON PREP/ MILLSTONE, N.J.

SINGLE-GAME HIGHS:

Points: 2, at Wisconsin -- Oct 26, 2016 ; Drexel -- Sep 11, 2016 ; Northwestern -- Sep 23, 2016
 Goals: 1, at Wisconsin -- Oct 26, 2016 ; Drexel -- Sep 11, 2016 ; Northwestern -- Sep 23, 2016
 Assists: 1, at Michigan State -- Oct 02, 2016
 Shots: 4, Northwestern -- Sep 23, 2016

CAREER STATISTICS

SEASON	GP	GS	G	A	Pts	Shots	Shot%	SOG	SOG%	GW	PK-Att
2013*	21	1	2	0	4	11	.182	5	.455	2	0-0
2014*	19	19	8	1	17	53	.151	25	.472	3	0-0
2015*	18	17	16	3	35	70	.229	37	.529	4	0-0
2016	18	6	3	1	7	23	.130	11	.478	1	0-0
At Rutgers	18	6	3	1	7	23	.130	11	.478	1	0-0
TOTAL*	76	43	29	5	63	157	.185	78	.497	10	0-0

* Includes statistics from prior team/school

20 AMANDA VISCO FR. DEFENDER 5-7 COLTS NECK/ MANALAPAN, N.J.

SINGLE-GAME HIGHS:

Points: 2, Saint Joseph's -- Aug 26, 2016 ; at Michigan -- Sep 29, 2016
 Goals: 1, Saint Joseph's -- Aug 26, 2016 ; at Michigan -- Sep 29, 2016
 Shots: 2, Saint Joseph's -- Aug 26, 2016 ; Maryland -- Sep 16, 2016

CAREER STATISTICS

SEASON	GP	GS	G	A	Pts	Shots	Shot%	SOG	SOG%	GW	PK-Att
2016	18	18	2	0	4	7	.286	4	.571	1	0-0
TOTAL	18	18	2	0	4	7	.286	4	.571	1	0-0

21 JENNA SAYERS FR. FORWARD 5-8 OAKCREST/ MAYS LANDING, N.J.

SINGLE-GAME HIGHS:

Shots: 1, at Rider University -- Aug 19, 2016 ; at Indiana -- Oct 09, 2016

CAREER STATISTICS

SEASON	GP	GS	G	A	Pts	Shots	Shot%	SOG	SOG%	GW	PK-Att
2016	9	0	0	0	0	2	.000	2	1.000	0	0-0
TOTAL	9	0	0	0	0	2	.000	2	1.000	0	0-0

SCARLET KNIGHTS

22 MAGGIE BARRON FR. GOALKEEPER 5-8 WESTFIELD/ CENTREVILLE, VA.

SINGLE-GAME HIGHS:

CAREER STATISTICS

SEASON	GP	GS	MINUTES	GA	GA AVG	SAVES	SAVE%	W	L	T	SHO
2016											
TOTAL											

23 CASEY MURPHY JR. GOALKEEPER 6-0 BRIDGEWATER-RARITAN/ BRIDGEWATER, N.J.

SINGLE-GAME HIGHS:

Saves: 8 , Indiana -- Oct 02, 2014

CAREER STATISTICS

SEASON	GP	GS	MINUTES	GA	GA AVG	SAVES	SAVE%	W	L	T	SHO
2014	20	20	1825:14	13	0.64	63	.829	13	6	1	10.1
2015	26	26	2402:23	10	0.37	80	.889	19	4	3	19
2016											
TOTAL	46	46	4227:37	23	0.49	143	.861	32	10	4	29.1

24 JESSICA PUCHALSKI SR. FORWARD 5-7 SOUTH BRUNSWICK/ SOUTH BRUNSWICK, N.J.

SINGLE-GAME HIGHS:

Points: 2, 6 times

Goals: 1, 6 times

Assists: 1, Stony Brook -- Aug 22, 2014 ; Vanderbilt -- Aug 24, 2014 ; Purdue -- Oct 05, 2014

Shots: 2, Nebraska -- Oct 22, 2016 ; Minnesota -- Oct 23, 2015 ; at IOWA -- Sep 28, 2014

CAREER STATISTICS

SEASON	GP	GS	G	A	Pts	Shots	Shot%	SOG	SOG%	GW	PK-Att
2013	14	1	2	0	4	5	.400	3	.600	0	0-0
2014	20	0	2	3	7	5	.400	2	.400	2	0-0
2015	21	2	1	0	2	6	.167	5	.833	0	0-0
2016	12	0	1	0	2	4	.250	2	.500	1	0-0
TOTAL	67	3	6	3	15	20	.300	12	.600	3	0-0

25 BRIANNA STARR FR. FORWARD 5-7 ARCHBISHOP SPALDING/ SEVERN, MD.

SINGLE-GAME HIGHS:

CAREER STATISTICS

SEASON	GP	GS	G	A	Pts	Shots	Shot%	GW	PK-Att
2016	2	0	0	0	0	0	.000	0	0-0
TOTAL	2	0	0	0	0	0	.000	0	0-0

SCARLET KNIGHTS

27 BRIANNA SCAROLA JR. GOALKEEPER 5-8 WEST MORRIS MENDHAM/ CHESTER, N.J.

SINGLE-GAME HIGHS:

CAREER STATISTICS

SEASON	GP	GS	MINUTES	GA	GA AVG	SAVES	SAVE%	W	L	T	SHO
2014											
2015											
2016	1	0	8:48	0	0.00	0	.000	0	0	0	0.1
TOTAL	1	0	8:48	0	0.00	0	.000	0	0	0	0.1

28 MEGAN HERR FR. FORWARD 5-7 PINE-RICHLAND/PITTSBURGH, PA.

SINGLE-GAME HIGHS:

CAREER STATISTICS

SEASON	GP	GS	G	A	Pts	Shots	Shot%	GW	PK-Att
2016									
TOTAL									

29 ADORA MONEME SO. DEFENDER 5-10 UNION/UNION, N.J.

SINGLE-GAME HIGHS:

Points: 2, vs Loyola Marymount -- Aug 21, 2015 ; Ohio State -- Oct 15, 2015
Goals: 1, vs Loyola Marymount -- Aug 21, 2015 ; Ohio State -- Oct 15, 2015
Shots: 2, vs Hofstra -- Aug 23, 2015

CAREER STATISTICS

SEASON	GP	GS	G	A	Pts	Shots	Shot%	SOG	SOG%	GW	PK-Att
2015	14	0	2	0	4	6	.333	5	.833	2	0-0
2016	11	1	0	0	0	1	.000	1	1.000	0	0-0
TOTAL	25	1	2	0	4	7	.286	6	.857	2	0-0

31 CHRISTY MONROY JR. MIDFIELD 5-4 SCOTCH PLAINS-FANWOOD/ SCOTCH PLAINS, N.J.

SINGLE-GAME HIGHS:

Shots: 1, Providence -- Aug 21, 2016

CAREER STATISTICS

SEASON	GP	GS	G	A	Pts	Shots	Shot%	SOG	SOG%	GW	PK-Att
2015	14	0	2	0	4	6	.333	5	.833	2	0-0
2016	12	0	0	0	0	1	.000	1	1.000	0	0-0
TOTAL	18	0	0	0	0	1	.000	1	1.000	0	0-0

SCARLET KNIGHTS

36 TORI PRAGER SR. MIDFIELD 5-6 LENAPE/ MOUNT LAUREL, N.J.

SINGLE-GAME HIGHS:

Points: 2, at Rider University -- Aug 19, 2016 ; at Michigan State -- Oct 02, 2016 ; at Indiana -- Oct 09, 2016
 Goals: 1, at Rider University -- Aug 19, 2016 ; at Indiana -- Oct 09, 2016
 Assists: 2, at Michigan State -- Oct 02, 2016
 Shots: 4, at Princeton -- Sep 03, 2015

CAREER STATISTICS

SEASON	GP	GS	G	A	Pts	Shots	Shot%	SOG	SOG%	GW	PK-Att
2013	22	17	0	1	1	7	.000	3	.429	0	0-0
2014	20	0	0	1	1	11	.000	6	.545	0	0-0
2015	22	7	0	1	1	18	.000	7	.389	0	0-0
2016	18	18	2	2	6	22	.091	9	.409	0	0-0
TOTAL	82	42	2	5	9	58	.034	25	.431	0	0-0

44 BRITTANY LAPLANT FR. FORWARD 5-6 QUEENSBURY/ QUEENSBURY, N.Y.

SINGLE-GAME HIGHS:

Points: 2, Providence -- Aug 21, 2016 ; at UCONN -- Aug 28, 2016
 Goals: 1, Providence -- Aug 21, 2016 ; at UCONN -- Aug 28, 2016
 Shots: 3, Northwestern -- Sep 23, 2016

CAREER STATISTICS

SEASON	GP	GS	G	A	Pts	Shots	Shot%	SOG	SOG%	GW	PK-Att
2016	16	4	2	0	4	13	.154	8	.615	0	0-0
TOTAL	16	4	2	0	4	13	.154	8	.615	0	0-0

50 COURTNEY NORTON JR. DEFENDER 5-9 LENAPE/ MOUNT LAUREL, N.J.

SINGLE-GAME HIGHS:

Shots: 1, Drexel -- Sep 11, 2016

CAREER STATISTICS

SEASON	GP	GS	G	A	Pts	Shots	Shot%	SOG	SOG%	GW	PK-Att
2014	5	0	0	0	0	0	.000	0	.000	0	0-0
2015	8	0	0	0	0	0	.000	0	.000	0	0-0
2016	4	0	0	0	0	1	.000	1	1.000	0	0-0
TOTAL	17	0	0	0	0	1	.000	1	1.000	0	0-0

73 MADISON TIERNAN SR. FORWARD 5-4 EASTERN REGIONAL/ VOORHEES, N.J.

SINGLE-GAME HIGHS:

Points: 4, Stony Brook -- Aug 22, 2014
 Goals: 2, Stony Brook -- Aug 22, 2014
 Assists: 2, Vanderbilt -- Aug 24, 2014
 Shots: 12, at Michigan -- Sep 29, 2016

CAREER STATISTICS

SEASON	GP	GS	G	A	Pts	Shots	Shot%	SOG	SOG%	GW	PK-Att
2013	22	21	6	5	17	57	.105	22	.386	1	0-0
2014	20	19	6	3	15	56	.107	26	.464	3	0-0
2015	23	22	2	2	6	63	.032	19	.302	1	0-0
2016	18	18	8	6	22	87	.092	41	.471	3	0-0
TOTAL	83	80	22	16	60	263	.084	108	.411	8	0-0

2016 RUTGERS WOMEN'S SOCCER



#1 Alana Jimenez



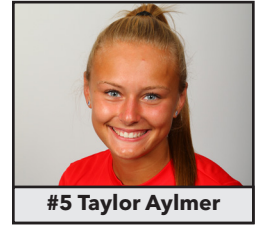
#2 Jenna Seddon



#3 Chantelle Swaby



#4 Colby Ciarrocca



#5 Taylor Aylmer



#6 Ali Ryan



#7 Carina Hendley



#8 Nicole Whitley



#9 Kenie Wright



#13 Tiernny Wiltshire



#14 Megan Katona



#15 Erin Smith



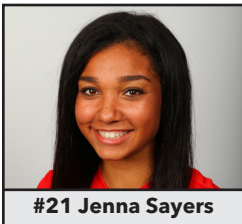
#17 Jennifer Andresen



#18 Erica Murphy



#20 Amanda Visco



#21 Jenna Sayers



#22 Maggie Barron



#23 Casey Murphy



#24 Jessica Puchalski



#25 Brianna Starr



#27 Brianna Scarola



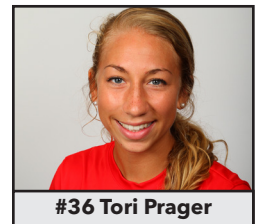
#28 Megan Herr



#29 Adora Moneme



#31 Christy Monroy



#36 Tori Prager



#44 Brittany LaPlant



#50 Courtney Norton



#73 Madison Tiernan



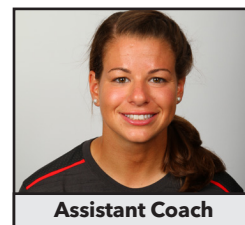
Head Coach
Mike O'Neill



Associate Head Coach
Meg Ryan



Assistant Coach
Lubos Ancin



Assistant Coach
Trish DiPaolo



Director of Operations
Jonah Silk

SEASON STATISTICS



2016 Rutgers Women's Soccer Rutgers Combined Team Statistics (as of Oct 26, 2016) All games



RECORD:	OVERALL	HOME	AWAY	NEUTRAL
ALL GAMES	9-3-6	6-1-3	3-2-3	0-0
CONFERENCE	4-2-5	3-0-2	1-2-3	0-0
NON-CONFERENCE	5-1-1	3-1-1	2-0	0-0

Date	Opponent	Score	Att.	#	Player	gp	g	a	pts	sh	sh%	sog	sog%	gw	pk-att
Aug 19	at Rider University	w 4-1	819	73	Tiernan, Madison	18	8	6	22	87	.092	41	.471	3	0-0
Aug 21	PROVIDENCE	To2 1-1	350	8	Whitley, Nicole	18	3	9	15	26	.115	15	.577	1	0-1
Aug 26	SAINT JOSEPH'S	w 1-0	1135	4	Ciarrocca, Colby	18	5	3	13	42	.119	26	.619	0	0-0
Aug 28	at #10 UCONN	w 2-0	937	18	Murphy, Erica	18	3	1	7	23	.130	11	.478	1	0-0
Sep 02	GEORGETOWN	Lot 1-2	775	36	Prager, Tori	18	2	2	6	22	.091	9	.409	0	0-0
Sep 09	CORNELL	w 2-0	495	7	Hendley, Carina	17	2	1	5	14	.143	10	.714	1	0-0
Sep 11	DREXEL	w 5-0	415	44	LaPlant, Brittany	16	2	0	4	13	.154	8	.615	0	0-0
* Sep 16	MARYLAND	w 1-0	947	20	Visco, Amanda	18	2	0	4	7	.286	4	.571	1	0-0
* Sep 23	#21 NORTHWESTERN	w 2-0	1206	5	Aylmer, Taylor	18	1	2	4	19	.053	6	.316	0	0-0
* Sep 25	ILLINOIS	To2 0-0	301	17	Pudresen, Jennifer	18	1	1	3	19	.053	6	.316	1	0-1
* Sep 29	at Michigan	Lo2 2-3	321	24	Puchalski, Jessica	12	1	0	2	4	.250	2	.500	1	0-0
* Oct 02	at Michigan State	w 3-1	422	2	Seddon, Jenna	16	1	0	2	3	.333	1	.333	0	0-0
* Oct 06	PURDUE	Wot 2-1	395	6	Ryan, Allison	7	0	1	1	0	.000	0	.000	0	0-0
* Oct 09	at Indiana	To2 2-2	491	3	Swaby, Chantelle	17	0	0	0	6	.000	2	.333	0	0-0
* Oct 13	at #16 Penn State	To2 2-2	870	13	Wiltshire, Tiernny	16	0	0	0	4	.000	1	.250	0	0-0
* Oct 16	at #17 Ohio State	To2 0-0	726	15	Smith, Erin	18	0	0	0	3	.000	2	.667	0	0-0
* Oct 22	NEBRASKA	To2 0-0	1054	21	Sayers, Jenna	9	0	0	0	2	.000	2	1.000	0	0-0
* Oct 26	at Wisconsin	L 1-2	250	50	Norton, Courtney	4	0	0	0	1	.000	1	1.000	0	0-0
				31	Monroy, Christy	12	0	0	0	1	.000	1	1.000	0	0-0
				29	Moneme, Adora	11	0	0	0	1	.000	1	1.000	0	0-0
				9	Wright, Kenie	18	0	0	0	1	.000	1	1.000	0	0-0
				27	Scarola, Brianna	1	0	0	0	0	.000	0	.000	0	0-0
				25	Starr, Brianna	2	0	0	0	0	.000	0	.000	0	0-0
				14	Katona, Megan	4	0	0	0	0	.000	0	.000	0	0-0
				1	Jimenez, Alana	18	0	0	0	0	.000	0	.000	0	0-0
					Total	18	31	26	88	298	.104	150	.503	9	0-2
					Opponents	18	15	9	39	169	.089	71	.420	3	3-3

TEAM STATISTICS	RU	OPP
SHOT STATISTICS		
Goals-Shot attempts	31-298	15-169
Goals scored per game	1.72	0.83
Shot pct.	.104	.089
Shots on goal-Attempts	150-298	71-169
SOG pct.	.503	.420
Shots/Game	16.6	9.4
CORNER KICKS	95	65
PENALTY KICKS	0-2	3-3
OFFSIDES	50	11
PENALTIES		
Fouls	177	131
Yellow cards	11	7
Red cards	0	0
ATTENDANCE		
Total	7073	4836
Dates/Avg Per Date	10/707	8/604
Neutral Site #/Avg	0/0	

#	Goalie	GP	Min.	GA	GAAvg	Saves	Pct	W-L-T	Sho
27	Scarola, Brianna	1	8:48	0	0.00	0	.000	0-0-0	0/1
1	Jimenez, Alana	18	1753:35	15	0.77	54	.783	9-3-6	8/1
	Total	18	1762:23	15	0.77	56	.789	9-3-6	9
	Opponents	18	1762:23	31	1.58	119	.793	3-9-6	3

Goals by Period	1st	2nd	OT	OT2	Total
Rutgers	14	16	1	0	31
Opponents	6	7	1	1	15

Shots by Period	1st	2nd	OT	OT2	Total
Rutgers	128	145	17	8	298
Opponents	66	84	11	8	169

Saves by Period	1st	2nd	OT	OT2	Total
Rutgers	27	24	3	2	56
Opponents	48	58	10	3	119

Corners by Period	1st	2nd	OT	OT2	Total
Rutgers	42	45	5	3	95
Opponents	34	28	3	0	65

Fouls by Period	1st	2nd	OT	OT2	Total
Rutgers	82	77	8	10	177
Opponents	61	57	9	4	131

BIG TEN CONFERENCE SEASON STATISTICS



2016 Rutgers Women's Soccer Rutgers Combined Team Statistics (as of Oct 26, 2016) Conference games



RECORD:	OVERALL	HOME	AWAY	NEUTRAL
ALL GAMES	4-2-5	3-0-2	1-2-3	0-0
CONFERENCE	4-2-5	3-0-2	1-2-3	0-0
NON-CONFERENCE	0-0	0-0	0-0	0-0

Date	Opponent	Score	Att.
* Sep 16	MARYLAND	w 1-0	947
* Sep 23	#21 NORTHWESTERN	w 2-0	1206
* Sep 25	ILLINOIS	To2 0-0	301
* Sep 29	at Michigan	Lo2 2-3	321
* Oct 02	at Michigan State	w 3-1	422
* Oct 06	PURDUE	Wot 2-1	395
* Oct 09	at Indiana	To2 2-2	491
* Oct 13	at #16 Penn State	To2 2-2	870
* Oct 16	at #17 Ohio State	To2 0-0	726
* Oct 22	NEBRASKA	To2 0-0	1054
* Oct 26	at Wisconsin	L 1-2	250

TEAM STATISTICS	RU	OPP
SHOT STATISTICS		
Goals-Shot attempts	15-175	11-111
Goals scored per game	1.36	1.00
Shot pct.	.086	.099
Shots on goal-Attempts	87-175	44-111
SOG pct.	.497	.396
Shots/Game	15.9	10.1
CORNER KICKS	39	54
PENALTY KICKS	0-2	1-1
OFFSIDES	33	11
PENALTIES		
Fouls	131	85
Yellow cards	9	5
Red cards	0	0
ATTENDANCE		
Total	3903	3080
Dates/Avg Per Date	5/781	6/513
Neutral Site #/Avg	0/0	

#	Player	gp	g	a	pts	sh	sh%	sog	sog%	gw	pk-att
73	Tiernan, Madison	11	4	4	12	56	.071	24	.429	1	0-0
4	Ciarrocca, Colby	11	3	2	8	23	.130	14	.609	0	0-0
8	Whitley, Nicole	11	2	3	7	15	.133	11	.733	1	0-1
18	Murphy, Erica	11	2	1	5	13	.154	5	.385	1	0-0
36	Prager, Tori	11	1	2	4	15	.067	7	.467	0	0-0
5	Aylmer, Taylor	11	1	1	3	13	.077	4	.308	0	0-0
17	Andresen, Jennifer	11	1	0	2	10	.100	5	.500	1	0-1
20	Visco, Amanda	11	1	0	2	3	.333	2	.667	0	0-0
7	Hendley, Carina	11	0	1	1	5	.000	3	.600	0	0-0
44	LaPlant, Brittany	9	0	0	0	7	.000	4	.571	0	0-0
3	Swaby, Chantelle	11	0	0	0	5	.000	2	.400	0	0-0
15	Smith, Erin	11	0	0	0	3	.000	2	.667	0	0-0
24	Puchalski, Jessica	6	0	0	0	2	.000	1	.500	0	0-0
29	Moneme, Adora	6	0	0	0	1	.000	1	1.000	0	0-0
21	Sayers, Jenna	5	0	0	0	1	.000	1	1.000	0	0-0
13	Wiltshire, Tiernny	9	0	0	0	1	.000	0	.000	0	0-0
9	Wright, Kenie	11	0	0	0	1	.000	1	1.000	0	0-0
2	Seddon, Jenna	11	0	0	0	1	.000	0	.000	0	0-0
50	Norton, Courtney	1	0	0	0	0	.000	0	.000	0	0-0
31	Monroy, Christy	6	0	0	0	0	.000	0	.000	0	0-0
6	Ryan, Allison	5	0	0	0	0	.000	0	.000	0	0-0
Total		11	15	14	44	175	.086	87	.497	4	0-2
Opponents		11	11	8	30	111	.099	44	.396	2	1-1

#	Goalie	GP	Min.	GA	GAAvg	Saves	Pct	W-L-T	Sho
1	Jimenez, Alana	11	1111:48	11	0.89	31	.738	4-2-5	5/0
Total		11	1111:48	11	0.89	33	.750	4-2-5	5
Opponents		11	1111:48	15	1.21	72	.828	2-4-5	3

Goals by Period	1st	2nd	OT	OT2	Total
Rutgers	8	6	1	0	15
Opponents	4	6	0	1	11

Shots by Period	1st	2nd	OT	OT2	Total
Rutgers	64	90	14	7	175
Opponents	42	52	10	7	111

Saves by Period	1st	2nd	OT	OT2	Total
Rutgers	14	14	3	2	33
Opponents	27	34	8	3	72

Corners by Period	1st	2nd	OT	OT2	Total
Rutgers	15	18	5	1	39
Opponents	29	22	3	0	54

Fouls by Period	1st	2nd	OT	OT2	Total
Rutgers	57	56	8	10	131
Opponents	38	35	9	3	85

SPECIALTY STATISTICS



2016 Rutgers Women's Soccer Rutgers Team Game-by-Game Comparison (as of Oct 26, 2016) All games



Date	Opponent	Score	Goals	Assists	Shots	On Goal	Corners	Fouls	YC	RC	Offside
Aug 19	Rider University	4-1	4/1	3/0	24/5	12/3	12/1	7/12	0/1	0/0	3/0
Aug 21	PROVIDENCE	1-1	1/1	1/0	24/4	10/2	9/0	9/6	1/0	0/0	2/0
Aug 26	SAINT JOSEPH'S	1-0	1/0	1/0	19/8	9/3	9/1	10/5	0/0	0/0	3/0
Aug 28	UCONN	2-0	2/0	1/0	9/22	6/6	4/2	8/5	0/0	0/0	7/0
Sep 02	GEORGETOWN	1-2	1/2	0/1	7/11	4/8	7/4	6/4	1/1	0/0	2/0
Sep 09	CORNELL	2-0	2/0	1/0	18/4	10/3	6/1	4/9	0/0	0/0	0/0
Sep 11	DREXEL	5-0	5/0	5/0	22/4	12/2	9/2	2/5	0/0	0/0	0/0
Sep 16	MARYLAND	1-0	1/0	0/0	21/4	9/1	0/4	18/8	2/0	0/0	3/0
Sep 23	NORTHWESTERN	2-0	2/0	3/0	20/3	8/1	2/2	8/4	0/0	0/0	2/0
Sep 25	ILLINOIS	0-0	0/0	0/0	10/4	5/0	6/7	9/11	1/1	0/0	1/1
Sep 29	Michigan	2-3	2/3	2/1	25/12	12/10	6/6	10/5	0/0	0/0	2/3
Oct 02	Michigan State	3-1	3/1	6/1	17/12	10/3	6/8	16/8	1/1	0/0	0/1
Oct 06	PURDUE	2-1	2/1	1/0	20/9	13/7	9/3	10/10	0/1	0/0	5/0
Oct 09	Indiana	2-2	2/2	1/1	19/14	11/6	7/1	11/12	1/1	0/0	4/1
Oct 13	Penn State	2-2	2/2	0/2	12/18	7/5	2/7	15/7	1/0	0/0	1/0
Oct 16	Ohio State	0-0	0/0	0/0	7/10	2/4	0/1	17/7	1/0	0/0	6/4
Oct 22	NEBRASKA	0-0	0/0	0/0	17/9	7/1	0/3	12/7	1/0	0/0	9/0
Oct 26	Wisconsin	1-2	1/2	1/3	7/16	3/6	1/12	5/6	1/1	0/0	0/1
Totals		31-15	31/15	26/9	298/169	150/71	95/66	177/131	11/7	0/0	50/11

Note: Game totals are displayed in the format TEAM/OPPONENT for each category



2016 Rutgers Women's Soccer Rutgers High/Low Analysis (as of Oct 26, 2016) All games



Rutgers - TEAM GAME HIGHS

POINTS	15	vs Drexel (Sep 11)
	12	at Michigan State (Oct 02)
GOALS	5	vs Drexel (Sep 11)
	4	at Rider University (Aug 19)
ASSISTS	6	at Michigan State (Oct 02)
	5	vs Drexel (Sep 11)
SHOTS	25	at Michigan (Sep 29)
	24	vs Providence (Aug 21)
	24	at Rider University (Aug 19)
SHOT PERCENT	.227 (5-22)	vs Drexel (Sep 11)
	.222 (2-9)	at UCONN (Aug 28)
SHOTS ON GOAL	13	vs Purdue (Oct 06)
	12	at Michigan (Sep 29)
	12	vs Drexel (Sep 11)
	12	at Rider University (Aug 19)
ON GOAL PERCENT	.667 (6-9)	at UCONN (Aug 28)
	.650 (13-20)	vs Purdue (Oct 06)
SAVES	7	at Michigan (Sep 29)
	6	vs Purdue (Oct 06)
	6	vs Georgetown (Sep 02)
	6	at UCONN (Aug 28)
CORNER KICKS	12	at Rider University (Aug 19)
	9	vs Purdue (Oct 06)
	9	vs Drexel (Sep 11)
	9	vs Saint Joseph's (Aug 26)
	9	vs Providence (Aug 21)
FOULS	18	vs Maryland (Sep 16)
	17	at Ohio State (Oct 16)

Opponent - GAME HIGHS

POINTS	7	at Wisconsin (Oct 26)
	7	at Michigan (Sep 29)
GOALS	3	at Michigan (Sep 29)
	2	at Wisconsin (Oct 26)
	2	at Penn State (Oct 13)
	2	at Indiana (Oct 09)
	2	vs Georgetown (Sep 02)
ASSISTS	3	at Wisconsin (Oct 26)
	2	at Penn State (Oct 13)
SHOTS	22	at UCONN (Aug 28)
	18	at Penn State (Oct 13)
SHOT PERCENT	.250 (3-12)	at Michigan (Sep 29)
	.250 (1-4)	vs Providence (Aug 21)
SHOTS ON GOAL	10	at Michigan (Sep 29)
	8	vs Georgetown (Sep 02)
ON GOAL PERCENT	.833 (10-12)	at Michigan (Sep 29)
	.778 (7-9)	vs Purdue (Oct 06)
SAVES	11	vs Purdue (Oct 06)
	10	at Michigan (Sep 29)
CORNER KICKS	12	at Wisconsin (Oct 26)
	8	at Michigan State (Oct 02)
	12	at Indiana (Oct 09)
FOULS	12	at Rider University (Aug 19)



2016 Rutgers Women's Soccer Rutgers High/Low Analysis (as of Oct 26, 2016) All games



Rutgers - GAME LOWS

POINTS	0	vs Illinois (Sep 25)
	0	at Ohio State (Oct 16)
GOALS	0	vs Nebraska (Oct 22)
	0	vs Illinois (Sep 25)
	0	at Ohio State (Oct 16)
	0	vs Nebraska (Oct 22)
ASSISTS	0	vs Georgetown (Sep 02)
	0	vs Maryland (Sep 16)
	0	vs Illinois (Sep 25)
	0	at Penn State (Oct 13)
	0	at Ohio State (Oct 16)
	0	vs Nebraska (Oct 22)
SHOTS	7	vs Georgetown (Sep 02)
	7	at Ohio State (Oct 16)
	7	at Wisconsin (Oct 26)
SHOTS ON GOAL	2	at Ohio State (Oct 16)
	3	at Wisconsin (Oct 26)
SAVES	0	vs Illinois (Sep 25)
	1	vs Providence (Aug 21)
	1	vs Maryland (Sep 16)
	1	vs Northwestern (Sep 23)
	1	vs Nebraska (Oct 22)
CORNER KICKS	0	vs Maryland (Sep 16)
	0	at Ohio State (Oct 16)
	0	vs Nebraska (Oct 22)
FOULS	2	vs Drexel (Sep 11)
	4	vs Cornell (Sep 09)



2016 Rutgers Women's Soccer Rutgers High/Low Analysis (as of Oct 26, 2016) All games



Opponent - GAME LOWS

POINTS	0	vs Saint Joseph's (Aug 26)
	0	at UCONN (Aug 28)
	0	vs Cornell (Sep 09)
	0	vs Drexel (Sep 11)
	0	vs Maryland (Sep 16)
	0	vs Northwestern (Sep 23)
	0	vs Illinois (Sep 25)
	0	at Ohio State (Oct 16)
	0	vs Nebraska (Oct 22)
GOALS	0	vs Saint Joseph's (Aug 26)
	0	at UCONN (Aug 28)
	0	vs Cornell (Sep 09)
	0	vs Drexel (Sep 11)
	0	vs Maryland (Sep 16)
	0	vs Northwestern (Sep 23)
	0	vs Illinois (Sep 25)
	0	at Ohio State (Oct 16)
	0	vs Nebraska (Oct 22)
ASSISTS	0	at Rider University (Aug 19)
	0	vs Providence (Aug 21)
	0	vs Saint Joseph's (Aug 26)
	0	at UCONN (Aug 28)
	0	vs Cornell (Sep 09)
	0	vs Drexel (Sep 11)
	0	vs Maryland (Sep 16)
	0	vs Northwestern (Sep 23)
	0	vs Illinois (Sep 25)
	0	vs Purdue (Oct 06)
	0	at Ohio State (Oct 16)
	0	vs Nebraska (Oct 22)
SHOTS	3	vs Northwestern (Sep 23)
	3	vs Providence (Aug 21)
	4	vs Cornell (Sep 09)
	4	vs Drexel (Sep 11)
	4	vs Maryland (Sep 16)
	4	vs Illinois (Sep 25)
SHOTS ON GOAL	0	vs Illinois (Sep 25)
	1	vs Maryland (Sep 16)
	1	vs Northwestern (Sep 23)
	1	vs Nebraska (Oct 22)
SAVES	2	at Ohio State (Oct 16)
	2	at Wisconsin (Oct 26)
CORNER KICKS	0	vs Providence (Aug 21)
	1	at Rider University (Aug 19)
	1	vs Saint Joseph's (Aug 26)
	1	vs Cornell (Sep 09)
	1	at Indiana (Oct 09)
	1	at Ohio State (Oct 16)
FOULS	4	vs Georgetown (Sep 02)
	4	vs Northwestern (Sep 23)

GAMES 13-16



Soccer Box Score (Final) 2016 Rutgers Women's Soccer

Purdue vs #24 Rutgers (Oct 06, 2016 at Piscataway, N.J.)



Purdue (3-9-0, 1-5-0 Big Ten) vs.
Rutgers (9-2-2, 4-1-1 Big Ten)
Date: Oct 06, 2016 • Attendance: 395
Weather: Clear, 66 degrees

Purdue	Sh	SO	G	A	Fo	Min
gk 1 GINTHER, Jordan	-	-	-	-	-	99
d 4 KASER, Megan	-	-	-	-	-	99
f 11 LEINERT, Hannah	2	2	-	-	-	32
d 17 KOROLAS, Vanessa	1	1	1	-	-	83
m 18 OLSON, Dagny	-	-	-	-	-	86
m 19 PETRINA, Andrea	2	1	-	-	-	90
d 20 WILLIAMS, Hannah	-	-	-	-	-	99
d 21 MUSSALLEM, Hannah	-	-	-	-	-	95
f 25 DUNCAN, Maddy	-	-	-	-	-	99
m 27 SZALACH, Christa	1	-	-	-	-	52
m 77 ARKANS, Erika	1	1	-	-	-	81
-- Substitutes --	-	-	-	-	-	-
2 MILLARO, Gianna	-	-	-	-	-	24
5 BROSIANIAN, Lydia	1	1	-	-	-	51
7 RILEY, Brady	1	1	-	-	-	52
8 LaMERE, Gabby	-	-	-	-	-	23
10 SABANAGIC, Ena	-	-	-	-	-	12
22 BITTNER, Katie	-	-	-	-	-	24
29 SEVING, Kyrie	-	-	-	-	-	5
Totals	9	7	1	0	10	

# Goalkeepers	Min	GA	Saves
1 GINTHER, Jordan	98:42	2	11

Shots by period	1	2	OT	Total
Purdue	2	5	2	9
Rutgers	7	12	1	20

Corner kicks	1	2	OT	Total
Purdue	1	2	0	3
Rutgers	4	4	1	9

Scoring summary:

No.	Time	Team	Goal scorer	Assist	Description
1.	55:14	PUR	KOROLAS, Vanessa (2)	(unassisted)	#17 makes run up left side, finds space, f from inside 18
2.	62:32	RU	Ciarrocca, Colby (5)	Tiernan, Madison	Pushed up left side by #73, centered in b
3.	98:42	RU	Tiernan, Madison (6)	(unassisted)	

Cautions and ejections:

YC-PUR #10 (70:11)

Win-Jimenez, Alana (9-2-2). Loss-GINTHER, Jordan (1-6).

Stadium: Yurcak Field

Officials: Referee: Sergio Gonzalez; Asst. Referee: Mark Garcia; Gianly Barbat;

Alt. Official: George Evangelo

Offsides: Purdue 0, Rutgers 5.

Official's signature

Goals by period	1	2	OT	Total
Purdue	0	1	0	1
Rutgers	0	1	1	2

Rutgers	Sh	SO	G	A	Fo	Min
gk 1 Jimenez, Alana	-	-	-	-	-	99
d 3 Swaby, Chantelle	1	-	-	-	-	99
f 4 Ciarrocca, Colby	2	2	1	-	-	83
m 8 Whitley, Nicole	2	2	-	-	-	69
d 9 Wright, Kenie	-	-	-	-	-	72
d 15 Smith, Erin	1	1	-	-	-	99
m 17 Andresen, Jennifer	-	-	-	-	-	50
d 20 Visco, Amanda	-	-	-	-	-	99
m 36 Prager, Tori	2	-	-	-	-	78
f 44 LaPlant, Brittany	2	2	-	-	-	30
f 73 Tiernan, Madison	7	3	1	1	-	83
-- Substitutes --	-	-	-	-	-	-
2 Seddon, Jenna	-	-	-	-	-	29
5 Ayimer, Taylor	2	2	-	-	-	43
6 Ryan, Allison	-	-	-	-	-	9
7 Hendley, Carina	-	-	-	-	-	25
13 Wiltshire, Tierny	-	-	-	-	-	32
18 Murphy, Erica	-	-	-	-	-	37
29 Moneme, Adora	1	1	-	-	-	42
31 Monroy, Christy	-	-	-	-	-	16
Totals	20	13	2	1	10	

# Goalkeepers	Min	GA	Saves
1 Jimenez, Alana	98:42	1	5
TM Team	0:00	0	1

Saves by period	1	2	OT	Total
Purdue	6	5	0	11
Rutgers	2	2	2	6

Fouls	1	2	OT	Total
Purdue	3	5	2	10
Rutgers	2	6	2	10



Soccer Box Score (Final) 2016 Rutgers Women's Soccer

#24 Rutgers vs Indiana (Oct 09, 2016 at Bloomington, Ind.)



Rutgers (9-2-3, 4-1-2 Big) vs.
Indiana (5-7-3, 2-3-2 Big)
Date: Oct 09, 2016 • Attendance: 491
Weather:

Rutgers	Sh	SO	G	A	Fo	Min
gk 1 Jimenez, Alana	-	-	-	-	-	110
d 3 Swaby, Chantelle	2	2	-	-	-	110
f 4 Ciarrocca, Colby	3	1	-	-	-	85
8 Whitley, Nicole	1	-	-	-	-	69
9 Wright, Kenie	-	-	-	-	-	110
15 Smith, Erin	1	-	-	-	-	110
17 Andresen, Jennifer	2	1	-	-	-	91
20 Visco, Amanda	-	-	-	-	-	110
36 Prager, Tori	2	2	1	-	-	101
44 LaPlant, Brittany	-	-	-	-	-	36
73 Tiernan, Madison	6	4	1	-	-	91
-- Substitutes --	-	-	-	-	-	-
2 Seddon, Jenna	-	-	-	-	-	14
5 Ayimer, Taylor	1	-	-	-	-	23
7 Hendley, Carina	-	-	-	-	-	9
13 Wiltshire, Tierny	-	-	-	-	-	30
18 Murphy, Erica	-	-	-	-	-	15
21 Sayers, Jenna	1	1	-	-	-	29
24 Puchalski, Jessica	-	-	-	-	-	5
29 Moneme, Adora	-	-	-	-	-	57
31 Monroy, Christy	-	-	-	-	-	5
Totals	19	11	2	1	11	

# Goalkeepers	Min	GA	Saves
1 Jimenez, Alana	110:00	2	4

Shots by period	1	2	OT	O2	Total
Rutgers	8	8	2	1	19
Indiana	7	4	2	1	14

Corner kicks	1	2	OT	O2	Total
Rutgers	4	2	0	1	7
Indiana	1	0	0	0	1

Scoring summary:

No.	Time	Team	Goal scorer	Assist	Description
1.	9:41	RU	Tiernan, Madison (7)	(unassisted)	off deflection from cross, put into top right
2.	13:03	RU	Prager, Tori (2)	Ciarrocca, Colby	fired from 25 yards, top right
3.	31:24	IND	BORSCHKE, MARISSA (1)		
4.	40:59	IND	KILGORE, SYDNEY (1)	BLACHA, CASSIDY	off rebound from shot by 23, lower left

Cautions and ejections:

YC-RU #15 (31:24); YC-IND #26 (74:06)

Rutgers-Jimenez, Alana (9-2-3). Indiana-L'HOMMEDIEU, SARAH (5-6-3).

Stadium: Armstrong Stadium

Officials: Referee: Jorge Cuate; Asst. Referee: Eulogio Villaalpando; Nick Thompson;

Alt. Official: Tyler Uffelmann; Scorer: Caitlin Davis;

Offsides: Rutgers 4, Indiana 1.

Official's signature

Goals by period	1	2	OT	O2	Total
Rutgers	2	0	0	0	2
Indiana	2	0	0	0	2

Indiana	Sh	SO	G	A	Fo	Min
gk 26 L'HOMMEDIEU, SARAH	-	-	-	-	-	110
4 BROWN, MYKAYLA	-	-	-	-	-	40
5 BORSCHKE, MARISSA	1	1	1	-	-	110
6 DE ANGELIS, JULIA	-	-	-	-	-	43
7 SMITH, KAYLA	-	-	-	-	-	57
13 PIPER, MAYA	2	-	-	-	-	41
14 JORDEN, ALLISON	-	-	-	-	-	101
15 ELLIS, VERONICA	3	2	-	-	-	104
16 KIRK, KYLIE	-	-	-	-	-	110
19 DAVIDSON, CHANDR	-	-	-	-	-	41
21 SCOTT, MEGHAN	-	-	-	-	-	110
-- Substitutes --	-	-	-	-	-	-
3 ALLEN, ABBY	1	-	-	-	-	31
18 GILLIAM, JULIA	-	-	-	-	-	13
20 DREHER, CAROLINE	1	-	-	-	-	29
23 BLACHA, CASSIDY	4	2	-	-	-	59
24 KILGORE, SYDNEY	2	1	1	-	-	51
27 MILLER, MACY	-	-	-	-	-	69
29 LYNN, JUSTINE	-	-	-	-	-	91
Totals	14	6	2	1	12	

# Goalkeepers	Min	GA	Saves
26 L'HOMMEDIEU, SARAH	110:00	2	8
TM TEAM	0:00	0	1

Saves by period	1	2	OT	O2	Total
Rutgers	2	2	0	0	4
Indiana	5	2	1	1	9

Fouls	1	2	OT	O2	Total
Rutgers	7	2	1	1	11
Indiana	4	6	1	1	12



Soccer Box Score (Final) 2016 Rutgers Women's Soccer

Rutgers vs #16 Penn State (Oct 13, 2016 at University Park, Pa.)



Rutgers 9-2-4 (4-1-3) vs.
Penn State 9-2-4 (5-0-3)
Date: Oct 13, 2016 • Attendance: 870
Weather: 49 degrees, clear

Rutgers	Sh	SO	G	A	Fo	Min
gk 1 Jimenez, Alana	-	-	-	-	-	110
d 3 Swaby, Chantelle	-	-	-	-	-	110
f 4 Ciarrocca, Colby	3	2	-	-	-	107
f 7 Hendley, Carina	-	-	-	-	-	16
m 8 Whitley, Nicole	1	1	-	-	-	75
d 9 Wright, Kenie	-	-	-	-	-	110
d 15 Smith, Erin	-	-	-	-	-	110
m 17 Andresen, Jennifer	2	-	-	-	-	110
d 20 Visco, Amanda	-	-	-	-	-	110
m 36 Prager, Tori	1	1	-	-	-	103
f 73 Tiernan, Madison	4	2	1	-	-	100
-- Substitutes --	-	-	-	-	-	-
2 Seddon, Jenna	-	-	-	-	-	22
5 Ayimer, Taylor	1	1	-	-	-	42
6 Ryan, Allison	-	-	-	-	-	10
13 Wiltshire, Tierny	-	-	-	-	-	34
18 Murphy, Erica	-	-	-	-	-	25
29 Moneme, Adora	-	-	-	-	-	7
Totals	12	7	2	0	15	

# Goalkeepers	Min	GA	Saves
1 Jimenez, Alana	110:00	2	3

Shots by period	1	2	OT	O2	Total
Rutgers	3	6	1	2	12
Penn State	6	9	1	2	18

Corner kicks	1	2	OT	O2	Total
Rutgers	0	1	1	0	2
Penn State	4	3	0	0	7

Scoring summary:

No.	Time	Team	Goal scorer	Assist	Description
1.	9:07	PSU	Megan Schaffer (5)	Charlotte Williams	Through ball from 12, 11-yards out left si the net
2.	42:33	RU	Tiernan, Madison (8)	(unassisted)	Top right corner, 27-yards out
3.	49:41	RU	Ayimer, Taylor (1)	(unassisted)	8-yards out
4.	66:56	PSU	Frannie Crouse (10)	Emma Hasco	20-yards out, bottom left corner

Cautions and ejections:

YC-RU #20 (80:12)

Rutgers-Jimenez, Alana (9-2-4). Penn State-Amanda Dennis (9-2-4).

Stadium: Jeffrey Field

Officials: Referee: Cory Richardson; Asst. Referee: Ryan Slack; Michael Matlock;

Alt. Official: Justin Frear;

Offsides: Rutgers 1, Penn State 0.

Official's signature

Goals by period	1	2	OT	O2	Total
Rutgers	1	1	0	0	2
Penn State	1	1	0	0	2

Penn State	Sh	SO	G	A	Fo	Min
gk 00 Amanda Dennis	-	-	-	-	-	110
d 1 Brittany Basinger	1	-	-	-	-	100
d 2 Grace Fisk	-	-	-	-	-	110
f 4 Megan Schaffer	3	1	-	-	-	110
d 7 Elizabeth Ball	-	-	-	-	-	110
f 9 Frannie Crouse	4	2	1	-	-	103
m 12 Charlotte Williams	4	1	-	-	-</	

GAMES 17-20



Soccer Box Score (Final) 2016 Rutgers Women's Soccer

Nebraska vs Rutgers (Oct 22, 2016 at Piscataway, N.J.)



Nebraska (10-5-3, 4-3-3 BIG) vs.
Rutgers (9-2-6, 4-1-5 BIG)
Date: Oct 22, 2016 • Attendance: 1054
Weather: Cloudy, windy, 45 degrees

Po #	Player	Sh	SO	G	A	Fo	Min
gk	25 Corder, Aubrei	-	-	-	-	-	110
d	5 Miramontez, Sinclair	-	-	-	-	-	110
m	8 Hanson, Haley	-	-	-	-	-	105
m	9 Miramontez, Sydney	-	-	-	-	-	110
m	10 Claassen, Courtney	1	-	-	-	-	106
m	17 Buel, Caroline	-	-	-	-	-	100
f	19 Johnson, Jaycie	1	-	-	-	-	108
m	20 Reinhard, Sami	-	-	-	-	-	98
f	21 Flynn, Caroline	5	-	-	-	-	110
d	22 Peterson, Alli	-	-	-	-	-	110
f	26 Huber, Elyse	2	1	-	-	-	95
-- Substitutes --							
	2 O'Neal, Emily	-	-	-	-	-	10
	4 McClanahan, Amanda	-	-	-	-	-	10
	15 Hilton, Amanda	-	-	-	-	-	16
	29 McKinney, Hannah	-	-	-	-	-	6
	32 Brandt, Meg	-	-	-	-	-	5
Totals							

#	Goalkeepers	Min	GA	Saves
25	Corder, Aubrei	110:00	0	7

Shots by period	1	2	OT	O2	Total
Nebraska	4	1	2	2	9
Rutgers	5	6	4	2	17

Corner kicks	1	2	OT	O2	Total
Nebraska	1	1	1	0	3
Rutgers	0	0	0	0	0

Scoring summary:

No.	Time	Team	Goal scorer	Assist	Description
YC-RU #73 (78:23)					

Cautions and ejections:

YC-RU #73 (78:23)

Nebraska-Corder, Aubrei (10-5-3). Rutgers-Jimenez, Alana (9-2-6).
Stadium: Yurcak Field
Officials: Referee: Marc Lawrence; Asst. Referee: Georgios Zervos; Ernest Zielinski;
Alt. Official: David Bork;
Offsides: Nebraska 0, Rutgers 9.

Official's signature

Goals by period	1	2	OT	O2	Total
Nebraska	0	0	0	0	0
Rutgers	0	0	0	0	0

Po #	Player	Sh	SO	G	A	Fo	Min
gk	1 Jimenez, Alana	-	-	-	-	-	110
f	2 Seddon, Jenna	-	-	-	-	-	40
d	3 Swaby, Chantelle	-	-	-	-	-	110
f	4 Ciarrocca, Colby	2	2	-	-	-	95
m	8 Whitley, Nicole	-	-	-	-	-	49
d	9 Wright, Kenie	-	-	-	-	-	110
d	15 Smith, Erin	-	-	-	-	-	110
m	17 Andresen, Jennifer	-	-	-	-	-	104
d	20 Visco, Amanda	-	-	-	-	-	110
m	36 Prager, Tori	1	1	-	-	-	110
f	73 Tiernan, Madison	10	3	-	-	-	101
-- Substitutes --							
	5 Aylmer, Taylor	2	-	-	-	-	68
	6 Ryan, Allison	-	-	-	-	-	2
	7 Hendley, Carina	-	-	-	-	-	10
	18 Murphy, Erica	-	-	-	-	-	21
	21 Sayers, Jenna	-	-	-	-	-	9
	24 Puchalski, Jessica	2	1	-	-	-	46
	31 Monroy, Christy	-	-	-	-	-	6
Totals							

#	Goalkeepers	Min	GA	Saves
1	Jimenez, Alana	110:00	0	1

Saves by period	1	2	OT	O2	Total
Nebraska	1	3	2	1	7
Rutgers	0	0	0	1	1

Fouls	1	2	OT	O2	Total
Nebraska	3	2	2	0	7
Rutgers	2	8	0	2	12



Soccer Box Score (Final) 2016 Rutgers Women's Soccer

Rutgers vs Wisconsin (Oct 26, 2016 at Madison, Wis.)



Rutgers (9-3-6, 4-2-5) vs.
Wisconsin (8-4-7, 5-2-4)
Date: Oct 26, 2016 • Attendance: 250
Weather: Rainy, cold

Po #	Player	Sh	SO	G	A	Fo	Min
gk	1 Jimenez, Alana	-	-	-	-	-	90
f	2 Seddon, Jenna	-	-	-	-	-	20
d	3 Swaby, Chantelle	-	-	-	-	-	90
f	4 Ciarrocca, Colby	-	-	-	-	-	80
m	8 Whitley, Nicole	-	-	-	-	-	49
d	9 Wright, Kenie	-	-	-	-	-	90
d	15 Smith, Erin	-	-	-	-	-	90
m	17 Andresen, Jennifer	-	-	-	-	-	68
d	20 Visco, Amanda	-	-	-	-	-	90
m	36 Prager, Tori	1	-	-	-	-	90
m/f	73 Tiernan, Madison	2	1	-	-	-	85
-- Substitutes --							
	5 Aylmer, Taylor	1	-	-	-	-	45
	7 Hendley, Carina	-	-	-	-	-	8
	18 Murphy, Erica	3	2	1	-	-	41
	21 Sayers, Jenna	-	-	-	-	-	5
	24 Puchalski, Jessica	-	-	-	-	-	27
	44 LaPlant, Brittany	-	-	-	-	-	27
Totals							

#	Goalkeepers	Min	GA	Saves
1	Jimenez, Alana	90:00	2	4

Shots by period	1	2	Total
Rutgers	2	5	7
Wisconsin	7	9	16

Corner kicks	1	2	Total
Rutgers	0	1	1
Wisconsin	7	5	12

Scoring summary:

No.	Time	Team	Goal scorer	Assist	Description
1.	39:20	RU	Murphy, Erica (3)	Tiernan, Madison	Beat keeper on ball played through back II
2.	73:34	WIS	Rose Lavelle (4)	Grace Bahr	Volley off header
3.	82:05	WIS	Rose Lavelle (5)	Micaela Powers Payton Wesley	Beater keeper low from 20 yds

Cautions and ejections:
YC-RU #36 (33:16); YC-WIS #19 (69:25)

Win-Caitlyn Clem (8-4-7). Loss-Jimenez, Alana (9-3-6).

Stadium: McClimmon Complex
Officials: Referee: Alex Beehler; Asst. Referee: Calin Radosav; Scott Irwin;
Alt. Official: Brian Lambrecht; Timekeeper: Neeraj Kulkarni; Scorer: Chris Martinelli;
Offsides: Rutgers 0, Wisconsin 1.

Official's signature

Goals by period	1	2	Total
Rutgers	1	0	1
Wisconsin	0	2	2

Po #	Player	Sh	SO	G	A	Fo	Min
gk	0 Caitlyn Clem	-	-	-	-	-	90
m	3 Rose Lavelle	4	3	2	-	-	90
f	4 Sydney McGinnis	5	-	-	-	-	82
d	7 Holly Heckendorf	1	-	-	-	-	82
d	9 Morgan Taylor	-	-	-	-	-	90
m	10 Allie Winterfield	1	-	-	-	-	46
m	12 Micaela Powers	3	1	-	-	-	78
t	16 Alexis Tye	-	-	-	-	-	90
d	18 Kylie Schwarz	1	1	-	-	-	90
f	19 Emily Borgmann	1	1	-	-	-	73
d	30 Camryn Biegalski	-	-	-	-	-	39
-- Substitutes --							
	5 Payton Wesley	-	-	-	-	-	67
	13 Grace Bahr	-	-	-	-	-	22
	15 Dani Rhodes	-	-	-	-	-	17
	21 Becca Harrison	-	-	-	-	-	26
	23 Steph Fabry	-	-	-	-	-	8
Totals							

#	Goalkeepers	Min	GA	Saves
0	Caitlyn Clem	90:00	1	2

Saves by period	1	2	Total
Rutgers	2	2	4
Wisconsin	1	1	2

Fouls	1	2	Total
Rutgers	4	1	5
Wisconsin	4	2	6