



2011-12 PENN STATE LADY LION BASKETBALL

WOMEN'S BASKETBALL CONTACT:
 Kristina Petersen
 Twitter: @ladylionsid
 Website: www.GoPSUsports.com
 Email: kap18@psu.edu
 Cell: 814-883-4581
 Office: 814-865-1757



Penn State Athletic Communications: 101D Bryce Jordan Center, University Park, PA 16802 ♦ Office: 814-865-1757 ♦ Fax: 814-863-3165

Games #5-6: #17/16 Penn State at Nugget Classic

Fri., Nov. 25 & Sat., Nov. 26 ▶ Lawlor Events Center ▶ Reno, Nev.

NOVEMBER	
Sat. 5	BLOOMSBURG (exh.) W, 101-81 Lady Lion Classic (University Park, Pa.)
Fri. 11	WASHINGTON STATE..... W, 72-60
Sun. 13	MIDDLE TENN. (BTN.com) ... W, 65-49
Thurs. 17	at Delaware L, 71-80
Sun. 20	at South Carolina (SportSouth) .W, 55-50 John Ascuaga's Nugget Classic (Reno, Nev.)
Fri. 25	vs. Iowa State 7 p.m.
Sat. 26	vs. Butler/Nevada 8/10 p.m. Big Ten/ACC Challenge
Wed. 30	NORTH CAROLINA (BTN) ... 6:30 p.m. DECEMBER
Big 12/Big Ten Challenge	
Sat. 3	at Texas Tech..... 3 p.m.
Tues. 6	VIRGINIA TECH (BTN.com) 7 p.m.
Sun. 11	UMES (BTN.com) 2 p.m.
Sun. 18	WAGNER (BTN.com) 1 p.m.
Wed. 21	at Bucknell..... 7 p.m.
Fri. 30	NEBRASKA * (BTN.com) 7 p.m. JANUARY
Mon. 2	at Wisconsin * (BTN-WC) 1/3 p.m.
Sat. 7	MICHIGAN STATE * (CBS) 2 p.m.
Thurs. 12	MICHIGAN * (BTN) 6 p.m.
Sun. 15	at Nebraska * (BTN.com) 3:05 p.m.
Thurs. 19	at Illinois * (BTN.com) 8 p.m.
Sun. 22	IOWA * (ESPN2) 3 p.m.
Thurs. 26	at Michigan * (BTN.com) 7 p.m.
Sun. 29	at Michigan State * (ESPN2) 3 p.m. FEBRUARY
Thurs. 2	INDIANA * (BTN.com) 7 p.m.
Sun. 5	at Minnesota * (BTN.com) 3 p.m.
Thurs. 9	WISCONSIN * (BTN.com) 7 p.m.
Sun. 12	at Northwestern * (BTN) 1 p.m.
Thurs. 16	at Purdue * (BTN) 6 p.m.
Mon. 20	OHIO STATE * (ESPN2) 7 p.m. WBCA Pink Zone at Penn State
Sun. 26	MINNESOTA * (BTN-WC) ... 12/2/4 p.m. MARCH
Thur.-Sun. 1-4	Big Ten Tournament (Indianapolis)
Sat.-Tues. 17-20	NCAA Tourn. 1st & 2nd Round
Sat.-Tues. 24-27	NCAA Tournament Regionals APRIL
Sun./Tues. 1/3	NCAA Final Four (Denver, Colo.)

BOLD CAPS indicates home game.
 * - indicates Big Ten game.
 All times are Eastern Time.
 BTN - Big Ten Network
 BTN.com - BigTenNetwork.com
 Schedule subject to change. Please visit www.GoPSUsports.com for up-to-date tip times.

		NUGGET CLASSIC
Penn State Lady Lions	Iowa State Cyclones	Butler Bulldogs
Record: 3-1, 0-0 Big Ten Last Game: PSU 55, S. Carolina 50 (11/20) Head Coach: Coquese Washington Career Record: 69-61 (5th yr.) Record at PSU: 69-61 (5th yr.)	Record: 3-0, 0-0 Big 12 Last Game: ISU 65, N. Arizona 41 (11/20) Head Coach: Bill Fennelly Career Record: 523-213 (24th yr.) Record at ISU: 357-160 (17th yr.)	Record: 1-2, 0-0 Horizon Last Game: IPFW 68, Butler 60 (11/20) Head Coach: Beth Couture Career Record: 407-246 (23rd yr.) Record at BU: 149-129 (10th yr.)
Statistical Leaders	Statistical Leaders	Nevada Wolfpack
Points Maggie Lucas (16.5) Rebounds Talia East (10.0) Assists Alex Bentley (5.0)	Points Chelsea Poppens (14.0) Rebounds Chelsea Poppens (10.0) Assists Nikki Moody (6.3)	Record: 1-2, 0-0 WAC Last Game: Binghamton 58, Nev. 52 (11/20) Head Coach: Jane Albright Career Record: 455-355 (28th yr.) Record at Nevada: 45-39 (4th yr.)

GAME DAY INFORMATION

SCOUTING IOWA STATE

The Cyclones are 3-0 on the season with wins over Houston Baptist, Drake and Northern Arizona. Chelsea Poppens leads Iowa State attack, averaging a double-double with 14.0 points and 10.0 rebounds per game. Hallie Christofferson is also accounting for 13.3 points and 8.0 rebounds per outing, while Nikki Moody accounts for 10.0 tallies per game. The Cyclones are outscoring their opponents by 23.7 points per game this season.

ALL-TIME VS. THE CYCLONES

The Lady Lions were victorious in the only previous meeting with Iowa State, earning a 66-65 win in the 2000 NCAA Tournament Midwest Regional semifinal. The game was played in Kansas City, Mo. and was part of Penn State's Final Four run.

LAST TIME VS. ISU

Helen Darling posted a double-double with 21 points and 11 rebounds as the Lady Lions claimed a 66-65 win in the NCAA Tournament Midwest Regional semifinals on March 25, 2000. Current Penn State assistant coach **Maren Walseth** added 14 points and five rebounds in the win.

STORYLINES

- ✓ Sophomore **Talia East** pulled in a career highs of 15 rebounds and seven blocked shots in the win at South Carolina. East's seven rejections are tied for the third-most in school history.
- ✓ The Lady Lions are outscoring their opponents 10-0 in their three wins this season.
- ✓ Penn State closed the game with a 13-0 run over the final 5:47 to earn a win at South Carolina Sunday.
- ✓ PSU was held without a three-point field goal for the first time since Jan. 7, 2007 (vs. Michigan) at South Carolina Sunday.
- ✓ **Zhaque Gray** and **Maggie Lucas** each reached the 600-point plateau at Delaware Nov. 17. Lucas is the third-fastest to 600 in school history.
- ✓ The Lady Lions picked up their fifth consecutive season-opening win under Coquese Washington.
- ✓ Penn State is 17th in Associated Press poll and 16th in the ESPN/USA Today Coaches Poll.
- ✓ The Lady Lions were picked to finish first in the Big Ten in a vote of the coaches and media.
- ✓ Bentley was selected as the Big Ten Preseason Player of the Year in a vote of the league's coaches and media.

UP NEXT

The Lady Lions return to the Bryce Jordan Center for the first time in 17 days when they face #16 North Carolina in the Big Ten/ACC Challenge. Penn State is 2-2 all-time against the Tarheels, including a 3-1 record at home. The last meeting between the teams saw PSU upset the #2 Tarheels, 77-71, in December 2004.



2011-12 ROSTER

PENN STATE LADY LIONS

No.	Name	Pos.	Cl./Elg.	Ht.	Hometown/High School (Previous School)
2	Dara Taylor	G	Jr./Jr.#	5-8	Wilmington, Del./Caravel Academy (Maryland)
5	Talia East *	F/C	So./So.	6-3	Philadelphia, Pa./Friends' Central School
12	Zhaque Gray ***	G	Sr./Sr.	5-8	Chicago, Ill./Prep John Hope
15	Renee Womack ***	G	Sr./Sr.	5-10	Lansdale, Pa./Methacton
20	Alex Bentley **	G	Jr./Jr.	5-7	Indianapolis, Ind./Ben Davis
23	Ariel Edwards *	F	So./So.	6-2	Elmont, N.Y./Christ the King
24	Mia Nickson *	F	Sr./Jr.	6-2	Ashburn, Va./Notre Dame Acad. (Boston College)
25	Gizelle Studevent **	G	Jr./Jr.	5-11	La Jolla, Calif./The Bishop's School
33	Maggie Lucas *	G	So./So.	5-10	Narberth, Pa./Germantown Academy
40	Marisa Wolfe **	F	Jr./Jr.	6-2	Ford City, Pa./Ford City
44	Tori Waldner	F	Fr./Fr.	6-5	Milton, Ga./Milton
54	Nikki Greene **	F/C	Jr./Jr.	6-4	Diboll, Texas/Diboll

Head Coach: Coquese Washington (Notre Dame '92)

Assistant Coaches: Fred Chmiel, Kia Damon, Maren Walseth

Captains: Mia Nickson, Marisa Wolfe

* Indicates letters earned # - Taylor will sit out the 2011-12 season due to NCAA transfer rules.

IOWA STATE CYCLONES

No.	Name	Pos.	Cl.	Ht.	Hometown/High School (Previous School)
2	Melissa Youngblut	G/F	Fr.	5-11	Davenport, Iowa/Assumption
3	Kelsey Harris	G	So.	5-10	Brea, Calif./Brea Olinda
4	Nikki Moody	G	Fr.	5-8	Eules, Texas/Trinity
5	Hallie Christofferson	F	So.	6-3	Hamlin, Iowa/Exira
10	Lauren Mansfield	G	Sr.	5-7	Adelaide, Australia/Salisbury (Midland College)
12	Jessica Schroll	G/F	Jr.	5-11	Midland, Mich./H.H. Dow
21	Kileah Mays	C	Fr.	6-1	Duncanville, Texas/Duncanville
22	Brynn Williamson	G/F	Fr.	5-11	Kansas City, Mo./Staley
23	Chassidy Cole	G	Sr.	5-8	Amarillo, Texas/Amarillo (Howard College)
24	Elly Arganbright	G	So.	5-6	Panora, Iowa/Panorama
32	Fallon Ellis	G/F	Fr.	5-11	Missouri City, Texas/Westbury Christian
33	Chelsea Poppens	F	Jr.	6-2	Aplington, Iowa/Aplington-Parkersburg
42	Amanda Zimmerman	F	Jr.	6-1	Huxley, Iowa/Ballard
55	Anna Prins	C	Jr.	6-7	Broomfield, Colo./Broomfield

Head Coach: Bill Fennelly

Associate Head Coach: Jack Easley

Assistant Coaches: Latoja Schaben, Jodi Steyer

TEAM COMPARISON

PENN STATE		IOWA STATE
Lucas (16.5)	Scoring Leader	Poppens (14.0)
East (10.0)	Rebounding Leader	Poppens (10.0)
Bentley (5.0)	Assist Leader	Moody (6.3)
Bentley (2.3)	Steals Leader	Moody (2.0)
East (3.0)	Blocks Leader	Three with 1.0
65.8	Scoring Offense	69.7
59.8	Scoring Defense	46.0
+6.0	Scoring Margin	+23.7
44.8	Rebounds Per Game	46.7
+2.8	Rebound Margin	+18.3
10.8	Assists Per Game	16.0
7.5	Steals Per Game	8.3
.387	Field Goal Pct.	.411
.319	FG Defense Pct.	.311
.290	3-pt. FG Pct.	.231
.221	3-pt. FG Pct. Def.	.244
.778	Free Throw Pct.	.757
0.6	Assist/Turnover	1.0
Won 1	W/L Streak	Won 3

SERIES HISTORY

Overall:	PSU leads 1-0
Last meeting:	3/25/00
Last result:	PSU, 66-65
Current streak:	PSU - 1 win
Last 10:	PSU, 1-0
Last 10 meetings:	3/25/00 N W, 66-65

QUICK FACTS

THE UNIVERSITY

Location: University Park, Pa.
 Founded: 1855
 Enrollment: 42,294
 Colors: Blue & White
 Nickname: Lady Lions
 Conference: Big Ten
 President: Dr. Rodney Erickson
 Director of Athletics: Tim Curley
 Acting Director of Athletics: David Joyner
 Senior Woman Administrator: Charmelle Green
 Facility (cap.): Bryce Jordan Center (15,261)
 All-Time Record at BJC: 177-47 (16 seasons)

ATHLETIC COMMUNICATIONS

WBB Contact: Kristina Petersen
 Phone/Fax: (814) 865-1757/(814) 863-3165
 E-mail: kap18@psu.edu
 Address: 101-D Bryce Jordan Center
 University Park, Pa. 16802
 Press Row Phone: 814-863-3294
 Website: www.GoPSUsports.com
 Twitter: @ladylionsid

TEAM INFORMATION

2011-12 Record: 3-1
 Home: 2-0 Away: 1-1 Neutral: 0-0
 Big Ten Record: 0-0
 Home: 0-0 Away: 0-0
 Letterwinners Returning/Lost: 10/1
 Starters Returning/Lost: 4/1
 Big Ten Tournament: Runner-up
 Postseason: NCAA Second Round

THE HISTORY

First Year of Women's Basketball: 1965
 All-Time Record: 808-374 (47 seasons)
 All-Time Big Ten Rec.: 204-110 (19 seasons)
 NCAA Tournament Appearances: 22
 NCAA Tournament Record: 27-22

WOMEN'S BASKETBALL

Head Coach: Coquese Washington
 Alma Mater: Notre Dame '92
 Overall Record: 69-61 (fifth season)
 School Record: 69-61 (fifth season)
 Basketball Office Phone: 814-863-2672
 Best Time To Reach Coach: Through SID
 Assistant Coaches (Alma Mater):
 Fred Chmiel (Excelsior College)
 Kia Damon (Millersville '97)
 Maren Walseth (Penn State '02)
 Twitter: @pennstatewbb
 Facebook: facebook.com/pennstateladylions

PRONUNCIATIONS

Coquese	ko-KWEES
Chmiel	shuh-MEAL
Maren Walseth	MARR-en WALL-seth
Zhaque	Jacque-QWAY
Gizelle Studevent	juh-ZELL STEW-duh-vent
Talia	tah-LEE-uh
Ariel	AIR-e-I
Dara	DAR-uh



STANDINGS (thru games of 11/22)

Team	Big Ten			Overall		
	W	L	Pct.	W	L	Pct.
Nebraska	0	0	.000	4	0	1.000
Michigan	0	0	.000	4	0	1.000
Northwestern	0	0	.000	4	0	1.000
Purdue	0	0	.000	4	0	1.000
Ohio State	0	0	.000	3	0	1.000
Iowa	0	0	.000	3	1	.750
PENN STATE	0	0	.000	3	1	.750
Michigan State	0	0	.000	4	2	.667
Minnesota	0	0	.000	3	2	.600
Indiana	0	0	.000	2	2	.500
Illinois	0	0	.000	2	3	.400
Wisconsin	0	0	.000	1	3	.250

BIG TEN SCHEDULE

NOVEMBER 22

at Miami (Ohio) 77, Indiana 72
Michigan State 70, at UW-Milwaukee 57
Northwestern 44, at LSU 43
at Ohio State 73, Howard 50
at Purdue 76, Chicago State 49

NOVEMBER 23

Wisconsin at BYU 7 p.m.

NOVEMBER 24

UW-Green Bay vs. Illinois 3 p.m.
Prairie View A&M vs. Michigan 6:45 p.m.
Tulane vs. Purdue 1:30 p.m.

NOVEMBER 25

Arizona State vs. Illinois 3 p.m.
St. John's vs. Iowa TBA
Toledo at Indiana 7 p.m.
Washington State vs. Michigan 9 p.m.
Quinnipiac vs. Minnesota 8 p.m.
Nebraska at Florida A&M 3 p.m.
Stony Brook at Ohio State 2 p.m.
Iowa State vs. Penn State 6 p.m.
Kansas State vs. Purdue 10 p.m.
Montana State vs. Wisconsin 5 p.m.

NOVEMBER 26

TBA vs. Iowa TBA
Marquette vs. Michigan 9 p.m.
TBA vs. Minnesota TBA
TBA vs. Penn State TBA
TBA vs. Wisconsin TBA

NOVEMBER 27

Oakland at Michigan State 2 p.m.
Nebraska at Florida State 2 p.m.
DePaul at Northwestern 3 p.m.
LSU at Ohio State 5 p.m.

All times are Eastern.

PROJECTED STARTERS



12 ZHAQUE GRAY G
Sr., 5-8, Chicago, Ill.
10.8 pts., 4.3 rebs., 1.3 asst., .316 3FG%

Notes: Tallied 15 points and three rebs. at Delaware (11/17) ... Named to Lady Lion Classic All-Tournament Team ... 13th player in school history with 100 career three-pointers (107).



20 ALEX BENTLEY G
Jr., 5-7, Indianapolis, Ind.
14.0 ppg, 5.0 apg, 2.3 spg, .950 FT%

Notes: Just missed double-double with 20 pts., 9 assts. at Delaware (11/17) ... Surpassed 900-point mark vs. MTSU ... Big Ten Preseason POY ... Wade Trophy and Wooden Award preseason lists.



33 MAGGIE LUCAS G
So., 5-10, Narberth, Pa.
16.5 ppg, 4.0 rpg, .290 3FG%, .826 FT%

Notes: Had team-best 18 pts. at South Carolina (11/20) ... 7th in three-pointers in school history (121) ... Big Ten Freshman of the Year ... Broke Kelly Mazzante's PSU freshman scoring record (552).



23 ARIEL EDWARDS F
So., 6-2, Elmont, N.Y.
8.0 ppg, 4.5 rpg, 1.0 spg

Notes: Was 5-for-7 from the field en route to 10 pts., 7 rebs. at South Carolina (11/20) ... Accounted for eight points and career-best eight rebounds in first collegiate start at Delaware (11/17).



54 NIKKI GREENE C
Jr., 6-4, Diboll, Texas
5.8 ppg, 7.5 rpg, 1.0 bpg, 1.0 spg

Notes: Narrowly missed a double-double with 9 pts., 10 rebs. vs. MTSU ... All-Big Ten honorable mention selection ... Big Ten All-Defensive team ... Seventh on Penn State's blocked shots list (133).

SCOUTING IOWA STATE: The Cyclones are 3-0 on the season with wins over Houston Baptist, Drake and Northern Arizona. Chelsea Poppens leads Iowa State attack, averaging a double-double with 14.0 points and 10.0 rebounds per game. Hallie Christofferson is also accounting for 13.3 points and 8.0 rebounds per outing, while Nikki Moody accounts for 10.0 tallies per game. The Cyclones are outscoring their opponents by 23.7 points per game this season.

ALL-TIME VS. THE CYCLONES: The Lady Lions were victorious in the only previous meeting with Iowa State, earning a 66-65 win in the 2000 NCAA Tournament Midwest Regional semifinal. The game was played in Kansas City, Mo. and was part of Penn State's Final Four run.

LAST TIME VS. ISU: Helen Darling posted a double-double with 21 points and 11 rebounds as the Lady Lions claimed a 66-65 win in the NCAA Tournament Midwest Regional semifinals on March 25, 2000. Current Penn State assistant coach **Maren Walseth** added 14 points and five rebounds in the win.

USA BASKETBALL TRIALS REVISITED: Iowa State head coach Bill Fennelly was the head coach of the World University Games squad that **Alex Bentley** and **Maggie Lucas** tried out for last spring. Fennelly coached alongside former Lady Lions Suzie McConnell Serio and Terri Williams-Flounoy in the international tournament.

TOURNEY HISTORY: The Lady Lions are 125-49 in regular-season tournament play with 27 titles. The Lady Lions have won a trio of tourney crowns under Coquese Washington in the season-opening Lady Lion Classic, the WBCA Classic and the Dead River Company Classic.

LAST TIME VS. IOWA STATE MAR. 25, 2000 • KANSAS CITY, MO.

Penn State Lady Lions 66 • 29-5

#	Player	Total		3-Ptr		Rebounds		PF	TP	A TO	Bk Stl	Min		
		FG	FGA	FG	FGA	Off	Def							
20	Shepherd, Lisa	1	1-3	0-2	0-0	3	3	6	1	2	4	3	0	39
24	Walseth, Maren	1	5-13	0-0	4-6	4	11	5	3	14	2	2	0	32
40	Garner, Andrea	C	4-10	0-0	0-0	1	4	5	4	8	0	2	1	21
25	Falcone, Chrissy	G	2-6	2-5	0-0	1	0	1	1	6	0	1	0	18
20	Darling, Helen	G	7-12	2-4	5-6	1	10	11	4	21	6	3	0	40
12	Carr, Katrina		2-8	0-3	3-4	1	1	2	0	7	1	0	1	19
22	Craby, Marissa		0-0	0-0	0-0	0	0	0	0	1	0	0	0	2
24	Anajoniu, Nicole		1-1	0-0	1-3	2	5	7	3	3	0	1	0	7
31	Barnes, Rashana		2-6	0-0	1-2	2	1	3	2	5	0	3	1	22
Team						11	11	22						
Totals			24-60	4-14	14-21	16	26	42	18	66	13	11	5	60
FG % 1st Half:		0-0	0.0%	2nd half:	24-60	40.0%	Game:	24-60	40.0%					Double
3FG % 1st Half:		0-0	0.0%	2nd half:	4-14	28.6%	Game:	4-14	28.6%					Rebounds
FT % 1st Half:		0-0	0.0%	2nd half:	14-21	66.7%	Game:	14-21	66.7%					4-1

#3 seed Iowa State 65 • 27-6

#	Player	Total		3-Ptr		Rebounds		PF	TP	A TO	Bk Stl	Min			
		FG	FGA	FG	FGA	Off	Def								
00	Ciprietye, Gintare	1	2	0	0	1-3	1	2	3	3	3	0	2	0	11
04	Freese, Stacy	2	2	0	2	0-0	0	4	4	3	4	6	2	0	36
12	Haugen, Erica	1	2	1	2	0-1	0	0	0	1	3	0	0	1	14
13	Wilson, Lindsey	5	10	1-4	4-5		0	0	0	15	1	1	0	2	27
22	Gahan, Tracy	2	4	1	1	0-0	0	1	1	3	5	2	1	0	21
32	Welle, Angie	3	4	0-0	5-6		2	3	5	4	11	0	1	0	25
42	Francis, Desiree	6	13	2-4	0-0		1	3	4	2	14	2	2	0	21
45	Husman, Monica	0	1	0-1	0-0		0	1	1	1	0	0	0	1	6
51	Taylor, Megan	4	13	2-9	0-0		3	8	11	1	10	2	3	0	39
Team							3	1	4						
Totals			24-56	7-23	10-15	10	23	33	18	65	13	13	2	10	200
FG % 1st Half:		0-0	0.0%	2nd half:	24-56	42.9%	Game:	24-56	42.9%					Double	
3FG % 1st Half:		0-0	0.0%	2nd half:	7-23	30.4%	Game:	7-23	30.4%					Rebounds	
FT % 1st Half:		0-0	0.0%	2nd half:	10-15	66.7%	Game:	10-15	66.7%					0	

Officials: Nan Sisk, Joe Cunningham, Sue Bauch
Technical fouls: Penn State Lady Lions-None; #3 seed Iowa State-None.
Attendance: 8195
NCAA Midwest Regional Semifinal

Score by periods	1st	2nd	Total
Penn State Lady Lions	36	30	66
#3 seed Iowa State	32	33	65

Points	In	Off	2nd	Fast	Bench
PS	Paint	T/O	Chance	Break	0
0	0	0	0	0	0
0	0	0	0	0	0

WHAT'S AT STAKE

A Penn State Over ISU Win Would:

- Make Penn State 4-1 on the season.
- Improve the Lady Lions to 2-0 all-time vs. Iowa State.
- Be Coquese Washington's 70th career win.

Two wins at the Nugget Classic Win Would:

- Make Penn State 5-1 on the season.
- Be PSU's 28th regular-season tournament title and second this season (Lady Lion Classic).



POTENTIAL NUGGET CLASSIC OPPONENT ROSTERS

BUTLER BULLDOGS

No.	Name	Pos.	Cl.	Ht.	Hometown/High School (Previous School)
2	Jessika Lark	G/F	Fr.	5-8	Pendleton, Ind./Pendleton Heights
3	Haley Howard	F	Fr.	5-11	Whiteland, Ind./Whiteland
10	Mandy McDivitt	G	So.	5-8	Connersville, Ind./Connersville
11	Hannah Douglas	G	Fr.	5-9	Pendleton, Ind./Pendleton Heights
12	Terra Burns	G	Sr.	5-8	Peoria, Ill./Peoria
13	Elizabeth Jennings	G/F	Jr.	6-1	Anderson, Ind./Lapel
20	Becca Bornhorst	F	Jr.	6-1	Dublin, Ohio/Dublin-Coffman
22	Jenna Cobb	G	So.	5-7	New Holland, Ohio/Miami Trace
23	Daress McClung	F	So.	6-0	Indianapolis, Ind./Lawrence North (Cincinnati)
25	Devin Brierly	G	Sr.	5-9	Hanover, Ind./Southwestern
32	Amanda Raker	F	Fr.	6-1	Indianapolis, Ind./Perry Meridian
33	Kaley May	G	Sr.	5-10	Avon, Ind./Avon
50	Sarah Hamm	C	So.	6-2	Winchester, Ind./Winchester

Head Coach: Beth Couture

Associate Head Coach: Amy Cherubini

Assistant Coaches: Tisha Hill, Ashley Hayes

NEVADA WOLFPACK

No.	Name	Pos.	Cl.	Ht.	Hometown/High School (Previous School)
3	Danika Sharp	G	So.	5-9	West Wendover, Nev./West Wendover
5	Chanelle Brennan	G	Jr.	5-11	Ventura, Calif./Ventura (Ventura College)
12	Faith Lois	G	Fr.	5-11	Westosha, Wisc./Westosha Central
14	Aja Johnson	F	Fr.	6-1	Oakland, Calif./The Athenian School
15	Kelsey Kaelin	G	Fr.	5-8	Tigard, Ore./Tigard
21	Kate Kevorken	G	Sr.	6-0	Westlake Vill., Calif./Thousand Oaks (No. Colo.)
23	Amanda Johnson	G	Sr.	5-7	Oceanside, Calif./El Camino
24	Emily Burns	F	Fr.	6-0	Reno, Nev./Galena
25	Christina Gough	G	Sr.	5-8	Reno, Nev./Reno (Yakima Community College)
32	Arielle Wideman	G	So.	5-9	Chino Hills, Calif./Bishop Amat
34	Kayla Williams	F	Sr.	6-0	Sparks, Nev./Reed
44	Amber Smith	F	So.	6-0	Moreno Valley, Calif./Canyon Springs
55	Mimi Mungedi	C	Fr.	6-7	Libreville, Gabon/Nelson Mandela

Head Coach: Jane Albright

Associate Head Coach: Ron Stewart

Assistant Coaches: Kami Malnaa, Camille Williams

RETURN TO SILVER STATE: The Lady Lions are playing in the state of Nevada for the first time since the 1994-95 season when they played in teh Showboat Shootout in Las Vegas. This is PSU's visit to Reno. If the Lady Lions face Nevada, it will be the first meeting between the schools and just the second time PSU will play a school from the state of Nevada (PSU 71, UNLV 67; Jan. 5, 1985).

LATE RALLIES: The Lady Lions have used late runs to claim each of their three wins this season. Penn State needed a 13-0 run against South Carolina (Nov. 20), a 19-0 run against Middle Tennessee (Nov. 13) and a 13-0 spurt versus Washington State (Nov. 11). In the final five minutes of their three wins, the Lady Lions are outscoring their opponents an average of 10-0 and holding them to an 0-for-26 effort from the field.

LATE RALLIES

Team	Run	Length	Deficit
Washington State	13-0	6:53	1
Middle Tennessee	19-0	6:45	3
South Carolina	13-0	5:22	8

A BLOCK EAST: Sophomore center **Talia East** rejected seven shots in the win at South Carolina Nov. 20. The seven blocks are tied for third on Penn State's single-game charts and are the most since **Nikki Greene** blocked seven shots against Purdue on Jan. 28, 2010. Additionally, East hauled in 15 rebounds against the Gamecocks, the most rebounds for a Penn State player since **Mia Nickson** had 15 caroms at Iowa on Feb. 6, 2011.

THREES STRING STOPPED: The Lady Lions were held without a three-pointer for the first time under Coquese Washington at South Carolina Nov. 20. The last time Penn State did not connect from downtown was Jan. 7, 2007 at Michigan, a string of 143 games.

WOLFE RETURNS: After missing the first three games of the season due to concussion-like symptoms, junior post player **Marisa Wolfe** returned to go 2-for-3 from the field and tally four points in the win at South Carolina Nov. 20.

EAST HAULS IN BOARDS: **Talia East** continued her solid play with another career-best rebounding effort at Delaware Thursday. The sophomore center snared a personal-best 11 rebounds for the first double figure rebounding performance of her career. She also added eight rebounds and a pair of blocked shots versus the Blue Hens.

EDWARDS GETS THE NOD: Sophomore **Ariel Edwards** earned her first career start at Delaware Thursday in place of an ailing Mia Nickson. Edwards responded with a solid eight-point, eight-rebound night against the Blue Hens. The eight caroms tie her career high set last year against Hartford in the Caribbean Challenge.

TEAM COMPARISON

	PENN STATE	BUTLER	NEVADA
Scoring Leader	Lucas (16.5)	Burns (12.0)	Kevorken (14.7)
Rebounding Leader	East (10.0)	Burns (5.3)	Williams (9.7)
Assist Leader	Bentley (5.0)	Burns (3.3)	Johnson (4.7)
Steals Leader	Bentley (2.3)	Burns (2.0)	Sharp (3.0)
Blocks Leader	East (3.0)	Hamm (2.0)	Burns (0.7)
Scoring Offense	65.8	56.0	63.3
Scoring Defense	59.8	66.0	66.3
Scoring Margin	+6.0	-10.0	-3.0
Rebounds Per Game	44.8	33.7	44.7
Rebound Margin	+2.8	-5.0	+3.0
Assists Per Game	10.8	10.3	13.3
Steals Per Game	7.5	8.3	11.3
Field Goal Pct.	.387	.355	.347
FG Defense Pct.	.319	.400	.376
3-pt. FG Pct.	.290	.352	.250
3-pt. FG Pct. Def.	.221	.309	.340
Free Throw Pct.	.778	.689	.732
Assist/Turnover	0.6	0.6	0.8
W/L Streak	Won 1	Lost 1	Lost 2

SERIES HISTORY

Butler Bulldogs

First Meeting

Nevada Wolfpack

First Meeting



PENN STATE'S RECORD WHEN...

Playing at home	2-0
Playing on the road	1-1
Playing at a neutral site	0-0
vs. Top 10 teams	0-0
vs. Top 25 teams	0-0
Games decided by 3 points or less	0-0
Games decided by 4-10 points	1-1
Games decided by 11-19 points	2-0
Games decided by 20 points or more	0-0
Leading at the half	1-1
Tied at the half	0-0
Trailing at the half	2-0
Leading with 5:00 remaining	2-0
Trailing with 5:00 remaining	1-1
Tied with 5:00 remaining	0-0
In overtime	0-0
PSU scores 40-49 points	0-0
PSU scores 50-59 points	1-0
PSU scores 60-69 points	1-0
PSU scores 70-79 points	1-1
PSU scores 80 points or more	0-0
PSU shoots 45% or better	1-0
PSU shoots less than 45%	2-1
PSU shoots better than opponent	3-0
Opponent shoots better than PSU	0-1
Opponent scores less than 39 points	0-0
Opponent scores 40-49 points	1-0
Opponent scores 50-59 points	1-0
Opponent scores 60-69 points	1-0
Opponent scores more than 70 points	0-1
Opponent shoots better than 45%	0-1
Opponent shoots less than 45%	3-0
PSU outrebounds opponent	2-0
Opponent outrebounds PSU or tied	1-1
PSU commits 14 or less turnovers	1-1
PSU commits 15 or more turnovers	2-0
PSU makes at least 5 3-pointers	2-1
PSU makes four 3-pointers or less	1-0
Recording 7 or more steals	2-0
Recording 6 or less steals	1-1
Wearing white uniforms	2-0
Wearing blue uniforms	1-1
Wearing gray uniforms	0-0
Wearing pink uniforms	0-0
Penn State wins the tip	2-0
Penn State loses the tip	1-1
Penn State scores first	2-0
Opponent scores first	1-1
Playing during the day (before 5 p.m.)	2-0
Playing at night	1-1
On Monday	0-0
On Tuesday	0-0
On Wednesday	0-0
On Thursday	0-1
On Friday	1-0
On Saturday	0-0
On Sunday	2-0
In November	3-1
In December	0-0
In January	0-0
In February	0-0
In March	0-0

PAIR REACHES 600 POINTS: Senior guard **Zhaque Gray** and sophomore guard **Maggie Lucas** both reached the 600-point plateau for their careers at Delaware Thursday. Gray's 15 points brought her career total to 601, while Lucas' 12 tallies gave her an even 600 markers for her career. Lucas reached 600 points in 38 games, making her the third-fastest player in school history to reach 600 points (Kelly Mazzante and Susan Robinson, 33 games).

BENTLEY TIES PERSONAL ASSISTS MARK: Junior guard **Alex Bentley** narrowly missed out on her first career double-double with 20 points and nine assists at Delaware Thursday. The nine helpers tie Bentley's career high, which she has reached four times in her career. She also added three steals and three rebounds on the night.

LUCAS INTO 7TH ON 3S LIST: Sophomore guard **Maggie Lucas** moved into seventh place on Penn State's career three-pointers list with three triples at Delaware Nov. 17. She passed Brianne O'Rourke (2006-09) with her effort versus the Blue Hens. She needs four triples to pass Tina Nicholson (124) on the chart.

Career Three-Point Field Goals Made

1.	357	Kelly Mazzante (133 games), 2001-04
2.	230	Lisa Shepherd (128 games), 1998-01
3.	191	Jess Strom (133 games), 2002-05
4.	179	Tyra Grant (122 games), 2007-10
5.	175	Tiffany Longworth (122 games), 1994-97
6.	124	Tina Nicholson (124 games), 1993-96
7.	121	Maggie Lucas (35 games), 2011-pres.
8.	120	Brianne O'Rourke (120 games), 2006-09

LADY LION CLASSIC CROWN: Penn State picked up its 27th regular-season title with wins over Washington State (72-60) and Middle Tennessee (65-49) in the Lady Lion Classic. It is the third regular-season title acquired under Coquese Washington (2006 WBCA Classic, 2009 Dead River Company Classic and 2011 Lady Lion Classic).

LUCAS TABBED TOURNEY MVP: Sophomore guard **Maggie Lucas** was selected as the Lady Lion Classic Tournament MVP after averaging 18.0 points, 5.5 rebounds and 3.5 assists in two games. Additionally senior guard **Zhaque Gray** and junior guard **Alex Bentley** were named to the Lady Lion Classic All-Tournament team.

BENTLEY REACHES MILESTONES: Junior guard **Alex Bentley** reached the 900-point plateau with eight tallies against Middle Tennessee Nov. 13. Additionally, Bentley became the 14th player in school history with 300 assists as she dished out four helpers against Washington State Nov. 11.

EAST'S CAREER NIGHT: Sophomore center **Talia East** turned in a career performance in the season-opening win over Washington State. She was a perfect 3-for-3 from the field on the way to a career-high six points. She also hauled in a personal-best eight rebounds against the Cougars.

LIONS IN THE BIG TEN STATS

A breakdown of where Penn State ranks in the Big Ten's statistical categories. Through games of Nov. 22.

TEAM	
Scoring Offense.....	6th (65.8)
Scoring Defense.....	8th (59.8)
Scoring Margin.....	9th (+6.0)
Free Throw Percentage.....	3rd (.778)
FG Percentage.....	10th (.387)
FG Percentage Defense.....	3rd (.319)
3-point FG Percentage.....	7th (.290)
3-point FG Pct. Defense.....	1st (.230)
3-point FG Made.....	6th (4.5)
Rebounding Offense.....	6th (44.8)
Rebounding Defense.....	12th (42.0)
Rebounding Margin.....	9th (+2.8)
Offensive Rebounds.....	T-8th (13.0)
Defensive Rebounds.....	3rd (31.8)
Blocked Shots.....	T-4th (4.8)
Assists.....	11th (10.8)
Steals.....	8th (7.5)
Turnover Margin.....	11th (-3.5)
Assist to Turnover Ratio.....	11th (0.6)

INDIVIDUAL

Scoring.....	4th - Maggie Lucas (16.5)
.....	T-12th - Alex Bentley (14.0)
.....	T-23rd - Zhaque Gray (10.8)
Rebounding.....	3rd - Talia East (10.0)
.....	9th - Nikki Greene (7.5)
Assists.....	T-3rd - Alex Bentley (5.0)
FT Percentage.....	4th - Alex Bentley (.950)
.....	11th - Maggie Lucas (.826)
Steals.....	T-8th - Alex Bentley (2.3)
3FG Made.....	4th - Maggie Lucas (2.3)
.....	T-13th - Zhaque Gray (1.5)
Blocked Shots.....	T-1st - Talia East (3.0)
.....	T-12th - Nikki Greene (1.0)
Assist-to-TO Ratio.....	15th - Alex Bentley (0.9)
Off. Reb.	T-9th - Nikki Greene (3.0)
.....	T-13th - Talia East (2.5)
Def. Reb.....	1st - Talia East (7.5)
.....	T-14th - Nikki Greene (4.5)
Minutes.....	2nd - Maggie Lucas (37.5)
.....	T-10th - Alex Bentley (34.2)

ANOTHER SEASON-OPENING WIN: The Lady Lions collected their fifth-straight season-opening win under head coach Coquese Washington with a 72-60 come-from-behind win over Washington State Nov. 11. Penn State has started each of Washington's four seasons with at least three wins.



MILESTONE WATCH

Milestone Watch

Milestone	Player	Current Total
1,000 points	Alex Bentley	926
700 points	Maggie Lucas	618
	Zhaque Gray	607
600 points	Nikki Greene	539
500 points	Mia Nickson (career)	422
400 points	Mia Nickson (PSU)	377
200 points	Marisa Wolfe	167
	Renee Womack	164
	Ariel Edwards	129
100 points	Gizelle Studevent	86
500 rebounds	Nikki Greene	494
400 rebounds	Mia Nickson (career)	308
300 rebounds	Mia Nickson (PSU)	251
200 rebounds	Alex Bentley	191
	Renee Womack	174
	Zhaque Gray	161
	Marisa Wolfe	155
	Maggie Lucas	124
100 rebounds	Ariel Edwards	80
400 assists	Alex Bentley	319
100 assists	Zhaque Gray	94
	Maggie Lucas	57
150 steals	Alex Bentley	127
100 steals	Maggie Lucas	61
150 blocks	Nikki Greene	134
150 3-pointers	Maggie Lucas	121
	Zhaque Gray	107

Milestone Reached

Milestone	Player	Reached
600 points	Zhaque Gray	11/17/11
600 points	Maggie Lucas	11/17/11
900 points	Alex Bentley	11/13/11
400 rebounds	Mia Nickson (career)	11/13/11
300 assists	Alex Bentley	11/11/11
100 points	Ariel Edwards	11/11/11

PSU 17TH IN AP POLL: The Penn State Lady Lions dropped six spots to 17th in the Nov. 21 Associated Press poll. The Lady Lions peaked at No. 11 in the Nov. 14 poll, their highest ranking in the AP poll since they were fifth in the final 2004 poll. Additionally, Penn State made its first appearance in the preseason AP poll since the 2003-04 campaign.

LIONS RANKED 16TH IN COACHES POLL: The Lady Lions dropped four spots to 16th in the Nov. 22 ESPN/USA Today coaches poll. Penn State peaked at 12th, the highest ranking in the ESPN/USA Today Coaches' Poll for the Lady Lions since they were seventh in the final 2004 poll. Additionally, Penn State appeared in the preseason coaches' poll since starting the 2003-04 campaign eighth.

AGEE SIGNS NLI: ESPN/HoopGurlz 34th-ranked recruit **Candice Agee** signed a National Letter of Intent (NLI) to play of the Lady Lions beginning in the 2012-13 season. The signing of Agee and addition of transfer **Dara Taylor**, the Lady Lions have the 18th-ranked recruiting class by Dan Olson's Collegiate Girls Basketball Report. Agee is the first commit in the Lady Lions' 2012 recruiting class, averaged 17.0 points, 10.9 rebounds, 7.3 blocks and 2.7 steals per game for the Hawks as a junior. The native of Victorville, Calif. is a highly touted recruit, ranking 34th by ESPN/HoopGurlz, 38th by Collegiate Girls Report, 17th by Blue Star Basketball and 40th by All-Star Girls Report and Peach State. The Hawks finished the season with a 22-6 record with a perfect conference record en route to the Desert Sky title.

PENN STATE BIG TEN FAVORITES: With 10 returning letterwinners from a team that posted a second place regular-season finish and a runner-up effort in the Big Ten Tournament, the Lady Lions were selected to finish first in the Big Ten Conference in a vote of the league's coaches and media. PSU finished ahead of Purdue and Iowa in the coaches' vote and Purdue and Michigan State in the media poll.

BENTLEY BIG TEN PRESEASON POY: Junior point guard Alex Bentley was selected as the conference's Preseason Player of the Year by both the coaches and the media. She shared the coaches' Preseason Player of the Year with Ohio State's Samantha Prahalis.

VETERANS RETURN: The Lady Lions return 10 letterwinners and four starters, including All-Big Ten first team selection **Alex Bentley**, Big Ten Freshman of the Year and Sixth Player of the Year **Maggie Lucas** and Big Ten All-Defensive choice **Nikki Greene**.

PRESS CONFERENCES

Coquese Washington will hold a weekly press conference and the Lady Lions will have media availability on a weekly basis throughout the season. All press conferences will begin at 2:45 p.m. (unless otherwise noted) and go for approximately 15-20 minutes, followed by an open media session prior to practice from 3-3:20 p.m. Press conference will be held in the Media Room at the Bryce Jordan Center (unless otherwise noted).

Press Conference Dates

Tuesday, Nov. 29 (Coquese - 2:25 p.m.;
players - 2:40-3 p.m.)
Wednesday, Dec. 7 or Thursday, Dec. 8
Wednesday, Dec. 14
Tuesday, Dec. 20
Thursday, Dec. 29
Wednesday, Jan. 4
Wednesday, Jan. 11
Wednesday, Jan. 18
Wednesday, Jan. 25
Wednesday, Feb. 1 (location TBA)
Wednesday, Feb. 8 (location TBA)
Wednesday, Feb. 15
Wednesday, Feb. 22
Wednesday, Feb. 29 (time TBA)

LADY LIONS 12TH IN SPORTING NEWS PRESEASON POLL: The Lady Lions are ranked 12th in the "Sporting News" preseason poll and sophomore guard **Maggie Lucas** is a preseason third team All-American, according to the magazine. Penn State is the highest ranked of the three Big Ten teams (Purdue, Michigan State) in the preseason Top 25.

PENN STATE'S OVERALL/BIG TEN YEAR-BY-YEAR REVIEW

Year	Overall	Big Ten	Home	BT Home	Road	BT Road	Neutral
1992-93	22-6	14-4	12-2	9-0	9-4	5-4	0-0
1993-94	28-3	16-2	14-0	9-0	11-2	7-2	3-1
1994-95	26-5	13-3	14-2	8-0	9-3	5-3	3-0
1995-96*	27-7	13-3	14-2	8-0	8-4	5-3	5-1
1996-97	15-12	8-8	9-3	5-3	5-6	3-5	1-3
1997-98	21-13	8-8	10-5	4-4	6-6	4-4	5-2
1998-99	22-8	12-4	9-2	6-2	9-4	6-2	4-2
1999-00	30-5	15-1	14-0	8-0	9-2	7-1	7-3
2000-01	19-10	11-5	11-2	7-1	6-5	4-4	2-3
2001-02	23-12	11-5	10-4	6-2	9-5	5-3	4-3
2002-03	26-9	13-3	16-0	8-0	7-7	5-3	2-2
2003-04	28-6	15-1	12-1	8-0	9-3	7-1	6-2
2004-05	19-11	13-3	12-0	8-0	6-9	5-3	1-2
2005-06	13-16	6-10	8-6	5-3	3-8	1-7	2-2
2006-07	15-16	7-9	12-1	7-1	2-12	0-7	1-3
2007-08	13-18	4-14	10-6	3-6	3-11	1-8	0-1
2008-09	11-18	6-12	8-6	4-5	2-9	2-7	1-3
2009-10	17-14	8-10	9-6	5-4	5-7	3-6	3-1
2010-11	25-10	11-5	14-4	6-2	7-4	5-3	4-2
2011-12	3-1	0-0	2-0	0-0	1-1	0-0	0-0

* First season at the Bryce Jordan Center



THE LAST TIME PENN STATE...

SCORING

Player scored 20 points: at Delaware (20, Alex Bentley), 11/17/11
Player scored 25 points: vs. Dayton (25, Alex Bentley), 3/19/11
Player scored 30 points: vs. Iowa (32, Tyra Grant), 3/5/10
Player scored 35 points: vs. Wisconsin (35, Kelly Mazzante), 3/2/03
Player scored 40 points: vs. Minnesota (49, Kelly Mazzante), 12/28/01
Two players scored 20 points: vs. Washington State (22, Alex Bentley & 22, Maggie Lucas), 11/11/11
Three players scored 20 pts.: at Dayton (26, Alex Bentley; 27, Zhaque Gray; 20, Nikki Greene), 11/12/10
Two players scored 25 points: at Boston College (28, Alex Bentley; 28, Maggie Lucas), 12/2/10
Player scored 25 points/3 consecutive games: Kelly Mazzante (31, vs. Baylor, 12/9/03; 31, vs. Pittsburgh, 12/14/03; 29, Louisiana Tech, 12/21/03)
Five in double figures: at Michigan (11, Alex Bentley; 11, Zhaque Gray; 14, Nikki Greene; 23, Maggie Lucas; 10, Julia Trogele), 2/3/11
Six in double figures: at Oakland (15, Alex Bentley; 16, Ariel Edwards; 16, Zhaque Gray; 13, Maggie Lucas; 10, Mia Nickson; 10, Gizelle Studevent; 10, Julia Trogele), 11/18/10
Seven in double figures: at Oakland (15, Alex Bentley; 16, Ariel Edwards; 16, Zhaque Gray; 13, Maggie Lucas; 10, Mia Nickson; 10, Gizelle Studevent; 10, Julia Trogele), 11/18/10
PSU scored 50 points in a half: at Boston College (55 points, second half), 12/2/10
PSU scored 55 points in a half: at Boston College (55 points, second half), 12/2/10
PSU scored 60 points in a half: vs. Northwestern (65 points, first half), 1/2/00
PSU scored 100 points: at Boston College (Lot, 113-104), 12/2/10
PSU scored 100 points in Big Ten game: vs. Illinois (W, 101-80), 2/15/01
PSU scored 100 points in a home game: vs. Maryland (W, 101-74), 12/4/02
PSU scored fewer than 15 points in a half: vs. Wisconsin (13, first half), 2/25/10
PSU scored fewer than 20 points in a half: vs. Michigan State (18, first half), 2/10/11
PSU scored fewer than 40 points in a game: vs. Wisconsin (L, 39-71), 2/25/10
PSU scored fewer than 50 points in a game: vs. Purdue (L, 49-60), 2/24/11
PSU scored fewer than 50 points in a Big Ten game: vs. Purdue (L, 49-60), 2/24/11
OPP scored 50 points in a half: vs. Duke (50, second half), 11/18/05
OPP scored 100 points: at Boston College (Lot, 113-104), 12/2/10
OPP scored fewer than 20 points in a game: at Dickinson (W, 57-16), 3/6/71
OPP scored fewer than 30 points in a game: vs. Rider (W, 95-21), 11/14/10
OPP scored fewer than 40 points in a game: vs. Rider (W, 95-21), 11/14/10
OPP scored fewer than 50 points in a game: vs. Middle Tennessee State (W, 65-49), 11/13/11
OPP scored fewer than 50 points in a Big Ten game: at Wisconsin (W, 54-43), 1/21/10

FIELD GOAL SHOOTING

Player made every shot from the field (min. 7): vs. Michigan St. (Amanda Brown, 8-8), 1/25/07
PSU shot 55% in a game: at Michigan (.565), 2/3/11
PSU shot 55% in consecutive games: vs. Northwestern (.682), 3/2/96; vs. Ohio St. (.585), 3/3/96
PSU shot 60% in a game: vs. Michigan State (.608), 2/23/96
PSU shot below 25% in a game: at Alabama (.230), 12/19/96
PSU shot below 30% in a game: vs. Wisconsin (.273), 2/25/10
PSU shot below 35% in a game and won: vs. Indiana (.321), 1/10/10
PSU shot 55% in a half: vs. DePaul (.567, First Half), 3/21/11
PSU shot 60% in a half: at Indiana (.606, Second Half), 2/13/11
PSU shot 65% in a half: at Michigan (.679, Second Half), 2/3/11
PSU shot 70% in a half: vs. Ohio State (.704, Second Half), 3/4/07
PSU shot 55% in both halves: vs. Iowa (.552, First Half; .565, Second Half), 1/26/06
PSU shot below 20% in a half: at Indiana (.231, First Half), 2/28/10
PSU shot below 25% in a half: at Pittsburgh (.188, First Half), 11/24/08

THREE-POINT SHOOTING

Player made every shot from the field (min. 4): at Clemson (Jessica Brungo, 5-5), 12/7/02
Player made 4 three-pointers in a half: vs. Minnesota (Maggie Lucas, 4), 1/13/11
Player made 5 three-pointers in a half: vs. Bucknell (Maggie Lucas, 6), 12/28/10
Player made 6 three-pointers in a half: vs. Bucknell (Maggie Lucas, 6), 12/28/10
Player made 5 three-pointers in a game: vs. Illinois (Maggie Lucas, 5), 3/5/11
Player made 6 three-pointers in a game: at Indiana (Maggie Lucas, 6), 2/13/11
Player made 7 three-pointers in a game: vs. Hartford (Maggie Lucas, 7), 11/27/10
Player made 8 three-pointers in a game: at Minnesota (Kelly Mazzante, 8), 12/28/01
Player attempted 10 three-pointers in a game: at Indiana (Maggie Lucas, 10), 2/13/11
PSU made 10 three-pointers: at Indiana (11), 2/13/11
PSU did not make a three-pointer: at South Carolina (0-6), 11/20/11
PSU attempted 20 three-pointers: at Delaware (21), 11/17/11
PSU shot 60% 3FG (min. 5 att.): vs. Illinois (12-20, .600), 1/16/11

FREE THROW SHOOTING

Player made every shot from FT line (min. 10): vs. Illinois (Julia Trogele, 12-12), 3/5/11
PSU shot 90% (min. 10 att.): at South Carolina (13-14, .929), 11/20/11
PSU shot below 50% (min. 10 att.): vs. Holy Cross (9-20, .450), 11/28/09
PSU made 30 free throws: vs. Pittsburgh (34), 11/11/07
PSU made fewer than five FTs: at Michigan (3), 2/3/11
PSU attempted 40 free throws: vs. Pittsburgh (41), 11/11/07
PSU attempted fewer than 5 FTs: at Michigan (4), 2/3/11

REBOUNDS

Player had 15 rebounds: at South Carolina (15, Talia East), 11/20/11
Player had 20 rebounds: vs. Indiana (20, Nikki Greene), 1/23/11
Two players with double-digit rebs.: vs. Middle Tennessee St. (10, Nikki Greene; 10, Mia Nickson), 11/13/11
Three players had double-digit rebounds: at Indiana (11, Nikki Greene; 10, Meredith Monroe; 11, Julia Trogele), 1/10/10
PSU had 60 rebounds: vs. Indiana (61), 1/23/11
PSU had 50 rebounds: vs. Middle Tennessee State (50), 11/13/11
PSU had 20 or fewer rebounds: vs. Michigan State (20), 1/19/03
OPP had 20 or fewer rebounds: at Indiana (20), 2/13/11
PSU had 20 offensive rebounds: vs. Middle Tennessee State (21), 11/13/11
PSU had 25 offensive rebounds: vs. Indiana (33), 1/23/11

ASSISTS

Player had 10 assists: at Indiana (11, Julia Trogele), 2/13/11
Player had 10 assists/consecutive games: Helen Darling, three games (12 at LaSalle, 12/8/99; 11 vs. Auburn, 12/11/99; 10 vs. Clemson, 12/19/99)
Player had 15 assists: vs. Wisconsin (15, Helen Darling), 1/29/99
PSU had 30 assists: vs. St. Francis (Pa.) (32), 12/2/99
PSU had fewer than 10 assists: vs. Washington State (9), 11/11/11
PSU had fewer than 5 assists: at Michigan State (4), 2/4/10

BLOCKED SHOTS

Player blocked 5 shots: at South Carolina (Talia East, 7), 11/20/11
Player blocked 6 shots: at South Carolina (Talia East, 7), 11/20/11
PSU blocked 10 shots: vs. Purdue (11), 1/28/10
PSU blocked 0 shots: vs. Purdue, 2/19/09

STEALS

Player had 7 steals: vs. Michigan (Brienne O'Rourke, 7), 2/2/06
Player had 8 steals: vs. Fairfield (Kelly Mazzante, 8), 12/2/01
PSU had 20 steals: vs. Bucknell (21), 12/28/10

TURNOVERS

PSU committed 25 or more: at Ohio State (27), 2/17/11
PSU committed 25 or more and won: vs. Minnesota (26), 1/13/11
PSU committed 10 or fewer: vs. Ohio State (9), 3/6/11
PSU committed 10 or fewer in consecutive games: vs. Minnesota (9), 1/22/04; at Ohio St. (9), 1/25/04
OPP committed 25 or more: Maine (26), 12/12/10

DOUBLE-DOUBLES

Points & rebounds: vs. DePaul (Julia Trogele; 14 points, 11 rebounds), 3/21/11
Points & rebounds/consecutive games: Nikki Greene (12 points, 10 rebounds vs. Ohio State, 1/30/11; 16 points, 14 rebounds at Illinois, 1/27/11)
Points & rebounds/3 consecutive games: Amanda Brown (19 pts., 17 rebs. at Northwestern, 2/11/07; 14 pts., 10 rebs. vs. Minnesota, 2/15/07; 14 pts., 11 rebs. at Iowa, 2/18/07)
Points & rebounds/4 consecutive games: Angie Potthoff (vs. Northwestern, 1/31/97; at Illinois, 2/2/97; vs. Michigan, 2/7/97; vs. Indiana, 2/9/97; vs. Iowa, 2/16/97; vs. Michigan State, 2/21/97)
Points & rebounds/5 consecutive games: Angie Potthoff (vs. Northwestern, 1/31/97; at Illinois, 2/2/97; vs. Michigan, 2/7/97; vs. Indiana, 2/9/97; vs. Iowa, 2/16/97; vs. Michigan State, 2/21/97)
Points & assists: at Indiana (Julia Trogele; 15 points, 11 assists), 2/13/11
Points & assists/consecutive games: Helen Darling (12 points, 12 assists at La Salle, 12/8/99; 10 points, 11 assists vs. Auburn, 12/11/99)
Two players had double-doubles: at Illinois (Nikki Greene, 16 pts., 14 rebs.; Julia Trogele, 19 pts., 11 rebs.), 1/27/11
Three players had double-doubles: vs. Coppin State (Brienne O'Rourke, 12 points, 13 assists; Julia Trogele, 12 points, 13 rebounds; Janessa Wolff, 15 points, 10 rebounds), 11/29/08
15 points and 15 rebounds: vs. Indiana (Mia Nickson; 25 points, 17 rebounds), 1/23/11
20 points and 10 rebounds: vs. Indiana (Mia Nickson; 25 points, 17 rebounds), 2/3/11

MARGIN OF VICTORY

PSU won by 20-30 points: vs. Illinois (21), 1/16/11
PSU won by 20-30 points in a Big Ten game: vs. Illinois (21), 1/16/11
PSU won by 31-40 points: vs. Bucknell (37), 12/9/08
PSU won by 41-50 points: vs. Bucknell (48), 12/28/10
PSU won by 51+ points: vs. Rider (74), 11/14/10
PSU lost by 20-30 points: at Ohio State (22), 2/17/11
PSU lost by 20-30 points in a Big Ten game: at Ohio State (22), 2/17/11
PSU lost by 31+ points: vs. Wisconsin (32), 2/25/10

MISCELLANEOUS

Led PSU in points/rebounds/assists: Tyra Grant vs. Michigan (25 pts., 9 rebs., 4 asst.), 2/18/10
Hit "final seconds" (under 10 seconds) game-winning shot: Julia Trogele at Illinois (9 sec.), 1/27/11
Hit "final minute" game-winning shot: Nikki Greene vs. Indiana (40 seconds remaining), 2/13/11
Played every minute: at Illinois (Tyra Grant), 12/31/09
Played more than 40 minutes: at Dayton (Alex Bentley, 46; Zhaque Gray, 44; Mia Nickson, 41), 11/12/10
PSU rallied from a 10-point deficit to win: vs. Middle Tenn. St. (down 10 15:38 2nd half, won 65-49), 11/13/11
PSU rallied from a 15-point deficit to win: at Indiana (down by 16 at 10:02 in 1st half, won 80-77), 2/13/11
PSU had a 5-game winning streak: 5 games, 1/23/11 – 2/6/11
PSU had a 5-game losing streak: 6 games, 1/28/10 – 2/14/10
PSU went undefeated at home: 2004-05 season
PSU sold out the BJC: Purdue, 2/29/04

OVERTIME

PSU played an OT game: at Boston College (L, 113-104), 12/2/10
PSU won an OT game: at Oakland (96-89), 11/18/10
PSU lost an OT game: at Boston College (L, 113-104), 12/2/10
PSU played two or more OT games in a season: 2010-11 season (three)
PSU won two or more OT games in a season: 2010-11 season (two)

RANKINGS

Ranked the No. 1 team in the AP poll: vs. Connecticut (L, 77-63), 12/14/08
Played the No. 1 team in the Coaches poll: vs. Connecticut (L, 77-63), 12/14/08
Defeated the No. 1 team in the AP poll: at Virginia (73-71), 1/3/91
Defeated Top 10 opponent: vs. #11/10 Duke (86-84), 12/2/07
Defeated Top 10 opponent on the road: at #7 Purdue (47-42), 1/2/04
Defeated Top 10 opponent by double digits: vs. #10 Minnesota (81-68), 1/30/05
Played consecutive Top 10 teams: at #2/3 Texas 11/14/04, at #6/6 Duke 11/19/04
Defeated Top 25 opponent: vs. #14/13 Iowa (68-59), 12/30/10
Defeated Top 25 opponent on the road: at No. 20/22 Iowa (82-75), 2/6/11
Defeated Top 25 opponent by double digits: vs. #21 Michigan State (69-58), 1/25/07



2011-12 GAME-BY-GAME STARTING LINEUPS

Date	Opponent	Pt Guard	Guard	Guard	Forward	Center
11/5	BLOOMSBURG	Bentley	Gray	Lucas	Nickson	Greene
11/11	WASHINGTON ST.	Bentley	Gray	Lucas	Nickson	Greene
11/13	MIDDLE TENNESSEE	Bentley	Gray	Lucas	Nickson	Greene
11/17	at Delaware	Bentley	Gray	Lucas	Edwards	Greene
11/20	at South Carolina	Bentley	Gray	Lucas	Edwards	Greene

BENTLEY NAMED TO PAIR OF WATCH LISTS:

Junior point guard **Alex Bentley** has been named to a pair of preseason watch lists for National Player of the Year. Bentley is one of 25 players on the WBCA's Wade Trophy Watch List and is among the 30 players on the Wooden Award preseason chart. Bentley was instrumental in helping the Lady Lions return NCAA Tournament for the first time since 2005 with a 25-10 record. She became the 11th different Lady Lion to garner All-Big Ten first team honors last season after finishing in the Top 15 in the Big Ten in scoring (12th/14.4), assists (2nd/5.0), field goal percentage (14th/.446), free throw percentage (11th/.798) and assist-to-turnover ratio (4th/1.7). Bentley, who participated in USA Basketball World University Games trials in Colorado this summer, is the 14th player in school history with 300 career assists.

LIONS ARE 16TH IN ATHLON PRESEASON POLL:

In addition to their #12 ranking in the "Sporting News" preseason poll, the Lady Lions are 16th in the "Athlon" preseason rankings. Penn State is the highest ranked of the two Big Ten teams (Ohio State) in the preseason Top 25.

BENTLEY AND LUCAS PARTICIPATE IN USA BASKETBALL TRIALS:

Guards **Alex Bentley** and **Maggie Lucas** participated in the 2011 USA Basketball World University Game Trials this past spring. The pair were part of the group of 35 of the nation's top collegiate players that accepted invitations to attend the 2011 USA Basketball Women's World University Games Team Trials. Former Lady Lion standouts Terri Williams-Flournoy and Suzie McConnell-Serio were assistant coaches for the World University Games team.

TEAM CAPTAINS: Junior Mia Nickson and Marisa Wolfe

have been selected as the team captains for the 2011-12 Lady Lions. Nickson, who is a team captain for the second consecutive year, accounted for 10.5 points and 6.7 rebounds per game. She was ninth in the Big Ten in rebounding and 14th in free throw percentage (.795). Nickson finished second in the league in field goal percentage with a .521 effort on the year and was third in offensive rebounds (3.2). Wolfe earned her first eight collegiate starts last season and finished the year averaging 2.6 points and 2.4 rebounds per game. The junior was outstanding from the free throw line, going 17-for-20 (.850). Wolfe also tallied a career-best eight assists, 12 steals and five blocked shots.

TAYLOR TRANSFERS TO PSU:

The Lady Lions added 5-7 transfer **Dara Taylor** to the roster during the summer. Taylor, who will sit out the 2011-12 season due to NCAA transfer rules, will have two years of eligibility remaining when she begins competing for the Lady Lions in 2012-13. Taylor comes to Penn State after playing the first two years of her collegiate career at Maryland. As a freshman, she accounted for 5.5 points and 5.0 assists per game. Taylor, who broke the Maryland freshman season record for assists with 171 helpers, finished third in the ACC in assists and sixth in assist-to-turnover ratio (1.2) as a rookie. Last season, Taylor appeared in 32 games and tallied 1.7 points and 2.2 assists per game.

WALDNER LONE FRESHMAN:

The lone freshman of the Lady Lions' roster this season is rookie post player **Tori Waldner** from Milton, Ga. Waldner earned All-Region 6AAAAA first team honors as a senior at Milton High School and was a 2011 McDonald's All-American nominee. She chipped in 12.0 points and 8.0 rebounds as a senior to lead the Eagles to a 22-5 record and the Elite 8 in the State Championship playoffs in 2011.

2012 RECRUITING CLASS

ESPN/HoopGurlz 34th-ranked recruit Candice Agee signed a National Letter of Intent (NLI) to play of the Lady Lions beginning in the 2012-13 season. The 6-6 center from Silverado High School in Victorville, Calif. signed her NLI in November in a ceremony at her high school. The signing of Agee and addition of transfer Dara Taylor, the Lady Lions have the 18th-ranked recruiting class by Dan Olson's Collegiate Girls Basketball Report.

"We are so excited to have Candice join the Penn State family," Washington said. "She is a very talented player and will complement our current post players in a lot of ways. She adds size, skill and athleticism to our front line, and she has a competitive streak that you love to see. She will definitely be an impact player for us on the court. In addition, she comes from a delightful family and her mom, dad and younger brother will also be wonderful additions to Lady Lion basketball."

Agee is the first commit in the Lady Lions' 2012 recruiting class, averaged 17.0 points, 10.9 rebounds, 7.3 blocks and 2.7 steals per game for the Hawks as a junior. The native of Victorville, Calif. is a highly touted recruit, ranking 34th by ESPN/HoopGurlz, 38th by Collegiate Girls Report, 17th by Blue Star Basketball and 40th by All-Star Girls Report and Peach State. The Hawks finished the season with a 22-6 record with a perfect conference record en route to the Desert Sky title.

Agee is a three-time Desert Sky League first team selection and was the league's Most Valuable Player as a junior. Additionally, she was the Daily Press Girls' Athlete of the Year. Agee begins her senior season with 991 career points, 649 rebounds and 390 blocks. was named to the All-Region first team as a junior. The center plays her AAU ball with West Coast Premier. Agee also plays volleyball at Silverado High School. Agee chose Penn State over Kansas State, Miami, UNLV, UCLA, USC, Tennessee, Vanderbilt, North Carolina, Georgetown, Georgia, Oregon, Oregon State, Washington and Washington State.

LADY LIONS SEASON BESTS

Player	Points	Rebounds	Assists	Blocks	Steals
Alex Bentley	22 (Wash. St.)	4 (Wash. St.)	9 (Delaware)	1 (Delaware)	3 (2X)
Talia East	6 (3X)	15 (S. Carolina)	-	7 (S. Carolina)	1 (3X)
Ariel Edwards	10 (2X)	8 (Delaware)	1 (3X)	-	2 (Mid. Tenn.)
Zhaque Gray	15 (2X)	6 (Mid. Tenn.)	2 (Mid. Tenn.)	1 (S. Carolina)	1 (2X)
Nikki Greene	9 (Mid. Tenn.)	12 (Wash. St.)	1 (2X)	2 (Wash. St.)	3 (Wash. St.)
Maggie Lucas	22 (Wash. St.)	9 (Wash. St.)	5 (Mid. Tenn.)	1 (Wash. St.)	2 (Mid. Tenn.)
Mia Nickson	6 (Wash. St.)	10 (Mid. Tenn.)	-	-	1 (2X)
Gizelle Studevent	4 (2X)	3 (Mid. Tenn.)	1 (2X)	-	1 (S. Carolina)
Tori Waldner	-	2 (Delaware)	-	-	-
Marisa Wolfe	4 (S. Carolina)	-	-	-	-
Renee Womack	-	-	-	-	-

PSU IN THE POLLS

	AP	Coaches
Preseason	12	14
Nov. 14/15	11	12
Nov. 21/22	17	16



NATIONAL POLLS

ASSOCIATED PRESS (NOV. 21)

No.	Team (1st)	Rec.	Pts.	LW
1.	Baylor (39)	4-0	999	1
2.	Connecticut	2-0	927	4
3.	Stanford	3-0	903	5
4.	Notre Dame	3-1	888	2
5.	Texas A&M (1)	4-0	861	6
6.	Tennessee	2-1	765	3
7.	Duke	3-0	757	8
8.	Maryland	4-0	727	10
9.	Miami (Fla.)	2-1	642	7
10.	Georgia	4-0	616	12
11.	Louisville	3-1	610	9
12.	Oklahoma	2-0	507	13
13.	Rutgers	3-0	466	15
14.	Kentucky	4-0	452	17
15.	Purdue	3-0	446	16
16.	North Carolina	3-0	390	19
17.	PENN STATE	3-1	324	11
18.	Ohio State	2-0	212	24
19.	Texas Tech	2-0	201	25
20.	LSU	2-1	171	20
21.	Georgetown	2-2	166	14
22.	Virginia	4-0	153	NR
23.	DePaul	4-1	151	18
24.	Texas	2-1	113	NR
25.	UCLA	2-1	106	22

Others receiving votes: UW-Green Bay 92; Delaware 79; Gonzaga 67; Georgia Tech 59; Iowa State 29; Florida State 20; Kansas State 19; Nebraska 13; San Diego State 13; Tulane 11; Vanderbilt 10; USC 9; Princeton 9; UNLV 8; California 4; Michigan State 2; Michigan 2; Arkansas 1.

ESPN/USA TODAY TOP 25 (NOV. 22)

No.	Team (1st)	Rec.	Pts.	LW
1.	Baylor (29)	4-0	773	1
2.	Connecticut (2)	3-0	734	4
3.	Notre Dame	3-1	701	2
4.	Texas A&M	4-0	678	6
5.	Stanford	3-1	638	5
6.	Duke	3-0	603	8
7.	Tennessee	2-1	602	3
8.	Maryland	4-0	550	9
9.	Miami (Fla.)	2-1	500	7
10.	Georgia	4-0	497	11
11.	Kentucky	4-0	455	13
12.	Louisville	3-1	447	10
13.	Rutgers	3-0	385	15
14.	Oklahoma	2-0	364	14
15.	North Carolina	3-0	324	17
16.	Penn State	3-1	272	12
17.	Purdue	3-0	271	20
18.	UW-Green Bay	3-0	191	23
19.	Ohio State	2-0	156	25
20.	DePaul	4-1	150	18
21.	Georgetown	3-2	141	16
22.	Texas	2-1	125	24
23.	LSU	3-1	96	21
24.	Florida State	3-2	68	19
25.	Georgia Tech	3-0	64	NR

Others receiving votes: Vanderbilt 62; Iowa State 47; Gonzaga 46; Virginia 28; Texas Tech 25; Syracuse 19; Delaware 13; Oklahoma State 10; UCLA 9; Kansas 6; Princeton 4; St. John's 4; UNLV 3; Villanova 3; Michigan 2; Temple 2; Tulane 2; James Madison 1; Middle Tennessee 1; Nebraska 1; San Diego State 1; Southern California 1.

*Bold type indicates 2011-12 Penn State opponent.

STATISTICAL LEADERS

Check here throughout the season for a breakdown of how many times a player leads Penn State in the following statistical categories. (First number is solo, the second is shared.)

Points	Lucas (1/1), Bentley (1/1), Gray (1)
Rebounds	Greene (1/1), East (2), Nickson (-/1)
Assists	Bentley (3), Lucas (1)
Steals	Bentley (2/1), Greene (1), Edwards (-/1), Gray (-/1), Lucas (-/1), East (-/1), Studevent (-/1)
Blocks	Greene (-/2), East (2/2)
FG % (min. 4 attempts)	Bentley (1), Gray (1), Edwards (1), East (-/1), Greene (-/1)
FT % (min 4 attempts)	Bentley (3/1), Lucas (-/1), Gray (-/1)
3FG % (min. 2 att.)	Bentley (2), Lucas (1)

PENN STATE VS. THE BIG TEN

Illinois	Overall	27-14	Nebraska	Overall	2-0
	Big Ten Games	20-11		Big Ten Games	0-0
	Big Ten Tournament	4-2		Big Ten Tournament	0-0
	Home	15-2		Home	1-0
	Away	8-10		Away	0-0
	Neutral	4-2		Neutral	1-0
Indiana	Overall	27-9	Northwestern	Overall	29-7
	Big Ten Games	22-8		Big Ten Games	26-6
	Big Ten Tournament	3-1		Big Ten Tournament	2-0
	Home	15-2		Home	16-1
	Away	9-6		Away	11-5
	Neutral	3-1		Neutral	2-1
Iowa	Overall	23-17	Ohio State	Overall	31-21
	Big Ten Games	18-14		Big Ten Games	18-14
	Big Ten Tournament	2-1		Big Ten Tournament	4-5
	Home	13-5		Home	16-6
	Away	7-11		Away	11-9
	Neutral	3-1		Neutral	4-6
Michigan	Overall	26-9	Purdue	Overall	15-25
	Big Ten Games	24-7		Big Ten Games	13-19
	Big Ten Tournament	1-2		Big Ten Tournament	2-3
	Home	13-2		Home	9-8
	Away	12-5		Away	4-14
	Neutral	1-2		Neutral	2-3
Michigan State	Overall	24-11	Wisconsin	Overall	25-10
	Big Ten Games	21-10		Big Ten Games	22-10
	Big Ten Tournament	2-1		Big Ten Tournament	2-0
	Home	14-3		Home	15-2
	Away	8-7		Away	8-8
	Neutral	2-1		Neutral	2-0
Minnesota	Overall	22-11			
	Big Ten Games	20-11			
	Big Ten Tournament	1-0			
	Home	13-3			
	Away	8-8			
	Neutral	1-0			





COQUESE WASHINGTON

Head Coach 5th Season

PENN STATE LADY LION BASKETBALL

Coquese Washington, who helped lead Notre Dame to the 2001 NCAA Championship, was introduced as the fifth head coach of the Penn State women's basketball program on April 23, 2007. Washington is the first female African-American head coach in Penn State history.

The Lady Lions returned to the national stage in Washington's fourth year with a second-place finish in the Big Ten regular season standings, a runner-up finish in the Big Ten Tournament and a berth in the NCAA Tournament. Penn State tallied its most victories since the 2003-04 campaign and 23rd 20-win season with a 25-10 overall record and an 11-5 mark in conference play. The Lady Lions worked their way back to the "Big Dance" for the first time since 2004-05 and advanced to the second round for the first time in seven years with a win over Dayton in the first round in front of a raucous Bryce Jordan Center crowd. After a remarkable season in the books and steps toward returning the Lady Lions to national prominence, Washington was selected as the 2011 BCA Female Coach of the Year.

Penn State was a dominating force from the perimeter as the Lady Lions tied the school record with 228 three-pointers and led NCAA Division I from deep with a .415 three-point field goal percentage. Pacing the Lady Lions from downtown was Maggie Lucas, who broke the Big Ten three-pointers record with 112 triples to go along with a .426 shooting percentage. For her efforts, Lucas was selected as the Big Ten Freshman of the Year and Big Ten Sixth Player of the Year while breaking the Penn State freshman season scoring record (552 pts.). Additionally with Washington's guidance, Alex Bentley became the 11th different player in school history to take home first team All-Big Ten accolades after finishing second in the conference in assists. After outstanding seasons, both Lucas and Bentley were invited to the USA Basketball World University Games Trials.

Washington's third season saw the Lady Lions return to the postseason for the first time since 2004-05 with a WNIT berth. The Lions earned their most overall wins (17) and conference wins (8) since the 2004-05 campaign en route to a sixth-place finish in the Big Ten.

Washington led Tyra Grant to back-to-back first team All-Big Ten honors and *Associated Press* Honorable Mention All-America accolades in her senior season. Grant capped off her career by being selected by the Phoenix Mercury in the second round of the WNBA Draft. The four-time all-conference pick left Penn State third in school history in

scoring with 2,044 points. Washington also guided Bentley to third team All-Big Ten honors, as well as a unanimous selection to the Big Ten All-Freshman team.

That year, Washington and the Lady Lions garnered one of the top recruiting classes in the country, finishing 22nd on the ESPN/HoopGurlz recruiting chart. The class included just the second McDonald's High School All-American in Penn State history in Lucas, WBCA High School All-American Ariel Edwards and All-State selection Talia East.

In Washington's second season, the Lady Lions moved up three positions in the Big Ten standings, finishing in a tie for seventh place. Under Washington's guidance in 2008-09, Grant became the 10th different player in school history to earn first team All-Big Ten honors.

The Coquese Washington era started in style as the Lady Lions won their first three games of the season, including a win over #20/21 Pittsburgh, to claim the WBCA Classic title. Just three weeks later, Washington guided the Lady Lions to their first ever win over perennial contender and 10th-ranked Duke in the inaugural Big Ten/ACC Challenge, a game that was televised on ESPN2.

Washington came to Happy Valley after eight seasons as an associate head coach and assistant coach under Muffet McGraw at Notre Dame, her alma mater. During Washington's eight years on the bench, Notre Dame amassed a 188-69 record with eight NCAA Tournament appearances, including four Sweet Sixteen runs and a National Championship in 2001.

Washington was a four-year starting point guard for Notre Dame under McGraw and was the team captain on Notre Dame's first-ever NCAA Tournament team. She was a two-time All-Midwestern Collegiate Conference (MCC) selection and led Notre Dame to three MCC Tournament titles.

The epitome of a student-athlete, Washington graduated from Notre Dame in 1992, a full year ahead of schedule, with a bachelor's degree in history. She went on to attain "Double Domer" status in 1997 after earning her Juris Doctorate from the Notre Dame Law School.

In addition to assisting with the efforts of the WBCA Pink Zone at Penn State to raise money and awareness for breast cancer, Washington created Coquese's Drive for the Women's Resource Center. The first four Coquese's Drives raised more than \$56,869 for the Centre County Women's Resource Center to aid in the fight against domestic violence.

Washington's Coaching Record vs. Opponents

Arizona 1-0	Dayton 2-1	Hartford 1-0	Michigan State 2-5	Ohio State 1-6	Syracuse 0-1
Army 1-0	Delaware 1-1	Hofstra 0-1	Middle Tennessee 1-0	Old Dominion 0-1	Texas A&M 0-1
Boston College 0-1	DePaul 0-1	Holy Cross 1-0	Minnesota 2-6	Pittsburgh 2-1	Texas Tech 1-0
Bucknell 4-0	Drexel 2-1	Illinois 7-3	Mississippi 1-0	Prairie View A&M 1-0	Utah 1-0
Buffalo 1-0	Duke 1-0	Indiana 3-4	Monmouth 1-0	Purdue 1-7	Washington State 1-0
Charlotte 1-0	Florida State 0-1	Iowa 4-5	NJIT 1-0	Rider 1-0	Wisconsin 2-5
Connecticut 0-1	Georgetown 1-0	Maine 1-0	Northwestern 5-1	South Carolina 4-1	UW-Green Bay 0-1
Coppin State 1-0	Georgia Tech 0-1	Michigan 5-3	Oakland 2-0	Stony Brook 1-0	Xavier 0-1

THE WASHINGTON FILE

COACHING RESUME

2007-pres. - Head Coach, Penn State University
 2011-pres. - President, NCAA Women's Basketball Issues Committee
 2010-pres. - Treasurer, WBCA Executive Committee
 2008-pres. - Member, WBCA Board of Directors
 2009-pres. - Member, USA Basketball Women's Junior National Committee
 2005-07 - Assoc. Head Coach, Univ. of Notre Dame
 1999-05 - Assistant Coach, Univ. of Notre Dame

PLAYING EXPERIENCE

2002-03 - WNBA's Indiana Fever
 2000-02 - WNBA's Houston Comets
 1998-99 - WNBA's New York Liberty
 1997-98 - ABL's Portland Power
 1989-93 - University of Notre Dame

EDUCATION

Notre Dame '92, B.A. History
 Notre Dame Law School '97, Juris Doctorate

NOTABLE

- ❖ 2011 BCA Female Coach of the Year.
- ❖ Helped guide Notre Dame to the 2001 NCAA Championship.
- ❖ Eight consecutive recruiting classes at Notre Dame ranked in the Top 25 nationally.
- ❖ Notre Dame had four Sweet Sixteen appearances and eight NCAA Tournament berths during Washington's tenure.
- ❖ Point guard for the 2000 WNBA Champion Houston Comets.
- ❖ Founding President, WNBA Players Association, 1999-01.
- ❖ Actively negotiated first two collective bargaining agreements for the WNBPA.
- ❖ Inducted into the Greater Flint Area Sports Hall of Fame in Dec. 2009.

FAMILY

Husband: Raynell Brown
 Children: Quenton (6), Rhaiyna (2)

Washington is currently serving on the 29-member WBCA Board of Directors, where she is the Treasurer of the Executive Committee. Washington is also a member of the USA Basketball Women's Junior National Team Selection Committee and the president of the NCAA Women's Basketball Issues Committee.

A native of Flint, Mich., Washington and her husband, Raynell Brown, have a son, Quenton (6), and a daughter, Rhaiyna (2). They reside in Port Matilda, Pa.





#2 Dara Taylor

Jr. * G * 5-8 * Wilmington, Del./Caraval Acad. (Maryland)

2011-12 Season Notes:

Will sit out the 2011-12 season due to NCAA Transfer policy.

2010-11 (at Maryland):

Had two points, two steals and four assists in the NCAA Tournament game against Georgetown (3/22) ... Registered six points, four steals and four assists in the win over Saint Joseph's (1/2)

... Dished out four assists against La Salle (12/28) ... Notched five dimes against Delaware State (12/19) ... Was 3-for-4 from the field and finished with seven points and three assists in the win over UMBC (12/10) ... Accounted for four assists and four steals at Purdue (12/2) ... Tallied six points, five assists, four rebounds and a steal in the win over East Carolina (11/26) ... Recorded five points and five assists in the victory over Towson (11/18).

2009-10 (at Maryland)

Broke Maryland's freshman season assists record with 171 helpers Recorded more than six assists in 15 of 27 starts ... Finished third in the ACC in assists and sixth in assist-to-turnover ratio (1.2) ... Grabbed career-high eight rebounds in WNIT Second Round win over East Carolina (3/21) ... Contributed 10 points in ACC Tournament win over North Carolina (3/4) ... Netted a career-high 17 points on 7-of-12 shooting against Clemson (2/14) ... Made 7-of-10 free throws to help clinch the win over Wake Forest (2/11) ... Finished the game with nine points and two steals against the Demon Deacons

... Accounted for nine assists at Virginia Tech (1/28) ... Had six points, eight assists and seven rebounds versus Boston College (1/14) ... Notched first career double-double with 10 points and career-high 11 assists at No. 19/21 Virginia (1/11) ... Dished out eight assists versus Saint Joseph's (1/3) ... Notched nine points, eight assists and four rebounds versus UNC-Wilmington (12/29) ... Accounted for 11 points with seven assists in a win over Samford (11/24) ... Chipped in six points, nine assists and five rebounds against Old Dominion (11/19) ... Had 10 points with five assists in win against New Hampshire (11/16).

CAREER HIGHS

Points 17 vs. Clemson (2/14/10)
Rebs. 8 vs. East Carolina (3/21/10)
Assists 11 at American (12/20/09)
 11 at Virginia (1/11/10)
Steals 6 vs. N.C. Central (11/14/09)
Blocks 1 (3x) last at St. Joseph's 1/2/11
Minutes 38 at American (12/20/09)
FGM 7 vs. Clemson (2/14/10)
FGA 14 at N.C. State (1/17/10)
FG% 1.000 (3x)
 last vs. N.C. State (2-2) (2/6/11)
3FGM 2 vs. Samford (1/24/09)
 2 vs. Clemson (2/14/10)
3FGA 5 at Mississippi State (11/22/09)
3PT % 1.000 (1-1) at Longwood (1/31/10)
 1.000 (1-1) vs. Providence (3/25/10)
FTM 7 at Wake Forest (2/11/10)
FTA 10 at Wake Forest (2/11/10)
 10 vs. North Carolina (3/4/10)
FT % 1.000 (7x)
 last vs. Georgetown (2-2) (3/22/11)
Career Double-Doubles 1

HIGH SCHOOL

McDonald's High School All-American ... 52nd-ranked player by ESPN/HoopGurlz out of Caravel Academy ... 2009 Delaware Gatorade Player of the Year ... Two-time All-State selection with a first team berth as a senior and a second team nod as a junior ... 1,192 career points at Caravel Academy ... Averaged 17.8 points, 5.5 assists, 5.0 rebounds and 5.0 steals per game as a senior ... Selected to the Delaware's Finest third team All-Decade (2000-09) team ... Played AAU for the Philly Belles alongside Lady Lion teammate Maggie Lucas.



#5 Talia East

So. * F/C * 6-3 * Philadelphia, Pa./The Friends School

2011-12 Highlights:

- Had arguably the best game of her career, registering in personal bests of 15 rebounds and seven blocks to go along with six points at South Carolina (11/20).
- Her seven blocks at South Carolina are tied for the third on the PSU single-game charts and are the most for a Lady Lion since Nikki Greene blocked seven shots against Purdue on Jan. 28, 2010.

2011-12 Season Notes:

- Turned in her first career double-digit rebounding performance as she hauled in a personal-best 11 caroms at Delaware (11/17). Also equalled her career scoring mark with six points against the Blue Hens.
- Notched two points, six rebounds and a blocked shot in the Lady Lion Classic Championship game win over Middle Tennessee (11/13).
- Had a career night in the season-opening win over Washington State (11/11) with personal bests of six points via a 3-for-3 shooting effort and eight rebounds.
- Tallied four points, five rebounds and two steals in the exhibition win over Bloomsburg (11/5).

CAREER HIGHS

Points 6 (3x)
 last at South Carolina (11/20/11)
Rebs. 15 at South Carolina (11/20/11)
Assists n/a
Steals 1 (6x)
 last at South Carolina (11/20/11)
Blocks 7 at South Carolina (11/20/11)
Minutes 29 at South Carolina (11/20/11)
FGM 3 at South Carolina (11/20/11)
 3 vs. Washington State (11/11/11)
FGA 6 at South Carolina (11/20/11)
FG% 1.000 (5x)
 last vs. Washington State (3-3) (11/11/11)
3FGM n/a
3FGA n/a
3PT % n/a
FTM 2 at Delaware (11/17/11)
FTA 2 (3x) last at Delaware (11/17/11)
FT % 1.000 (2-2) at Delaware (11/17/11)
Career Double-Doubles n/a

GAME-BY-GAME

	P	R	B
WASH. STATE	6	8	2
MID. TENN.	2	6	1
at Delaware	6	11	2
at South Carolina	6	15	7
vs. Iowa State			
Butler/Nevada			
NORTH CAROLINA			
at Texas Tech			
VIRGINIA TECH			
UMES			
WAGNER			
at Bucknell			
NEBRASKA			
at Wisconsin			
MICHIGAN ST.			
MICHIGAN			
at Nebraska			
at Illinois			
IOWA			
at Michigan			
at Michigan State			
INDIANA			
at Minnesota			
WISCONSIN			
at Northwestern			
at Purdue			
OHIO STATE			
MINNESOTA			

Five-Time Big Ten Champions • Two-Time Big Ten Tournament Champions • 2000 NCAA Final Four • 22 NCAA Tournament Appearances





#12 Zhaque Gray

Sr. * G * 5-8 * Chicago, Ill./Prep John Hope

2011-12 Highlights:

- Surpassed the 600-point plateau for her career with 15 tallies at Delaware (11/17).
- Named to Lady Lion Classic All-Tournament team after averaging 11.0 points, 5.0 rebounds in two games.

2011-12 Season Notes:

- Had a team-best 15 points to go along with six rebounds and two assists in the Lady Lion Classic title game win over Middle Tennessee (11/13).
- Registered seven points and four rebounds against Washington State (11/11).

CAREER HIGHS

Points	27 at Dayton (11/12/10)
Rebs	6 at South Carolina (11/22/09)
	6 vs. NJIT (11/15/09)
Assists	5 (3x) last vs. Iowa (12/30/10)
Steals	3 vs. Bucknell (12/28/10)
	3 vs. Michigan State (12/21/08)
Blocks	1 at South Carolina (11/20/11)
	1 at Iowa (2/6/11)
Minutes	44 at Dayton (11/12/10)
FGM	10 at Dayton (11/12/10)
FGA	17 at Dayton (11/12/10)
FG%	1.000 (3-3) at Indiana (2/13/11)
	1.000 (4-4) at Michigan (2/9/09)
3FGM	7 at Dayton (11/12/10)
3FGA	11 at Dayton (11/12/10)
3PT%	1.000 (4x)
	last at Indiana (2-2) (2/13/11)
FTM	5 at Ohio State (2/17/11)
FTA	6 at Ohio State (2/17/11)
FT%	1.000 (19x)
	last at South Carolina (4-4) (11/20/11)
Career Double-Doubles	n/a

GAME-BY-GAME

	P	R	A
WASH. STATE	7	4	1
MID. TENN.	15	6	2
at Delaware	15	3	4
at South Carolina	6	4	2
vs. Iowa State			
Butler/Nevada			
NORTH CAROLINA			
at Texas Tech			
VIRGINIA TECH			
UMES			
WAGNER			
at Bucknell			
NEBRASKA			
at Wisconsin			
MICHIGAN ST.			
MICHIGAN			
at Nebraska			
at Illinois			
IOWA			
at Michigan			
at Michigan State			
INDIANA			
at Minnesota			
WISCONSIN			
at Northwestern			
at Purdue			
OHIO STATE			
MINNESOTA			



#15 Renee Womack

Sr. * G * 5-10 * Lansdale, Pa./Methacton

CAREER HIGHS

Points	10 at Wisconsin (1/2/11)
Rebs	8 (2x) last vs. Iowa (12/28/09)
Assists	4 vs. Iowa (12/28/09)
Steals	4 vs. Bucknell (12/28/10)
Blocks	3 vs. Iowa (12/28/09)
Minutes	30 vs. Iowa (12/28/09)
FGM	4 at Wisconsin (1/2/11)
	4 vs. Stony Brook (11/19/08)
FGA	8 vs. Army (12/8/10)
	8 vs. Stony Brook (11/19/08)
FG%	1.000 (8x)
	last vs. Illinois (2-2) (3/5/11)
3FGM	1 (7x) last at Indiana (2/13/11)
3FGA	2 (4x) last at Indiana (2/13/11)
3PT%	1.000 (3x)
	last vs. Illinois (2-2) (1/16/11)
FTM	3 at Dayton (11/12/10)
FTA	4 at Ohio State (2/17/11)
	4 at Dayton (11/12/10)
FT%	1.000 (4x)
	last at Iowa (2-2) (2/6/11)
Career Double-Doubles	n/a

GAME-BY-GAME

	P	R	A
WASH. STATE	DNP		
MID. TENN.	DNP		
at Delaware	DNP		
at South Carolina	DNP		
vs. Iowa State			
Butler/Nevada			
NORTH CAROLINA			
at Texas Tech			
VIRGINIA TECH			
UMES			
WAGNER			
at Bucknell			
NEBRASKA			
at Wisconsin			
MICHIGAN ST.			
MICHIGAN			
at Nebraska			
at Illinois			
IOWA			
at Michigan			
at Michigan State			
INDIANA			
at Minnesota			
WISCONSIN			
at Northwestern			
at Purdue			
OHIO STATE			
MINNESOTA			





#20 Alex Bentley

Jr. * G * 5-7 * Indianapolis, Ind./Ben Davis

2011-12 Highlights:

- On Wade Trophy and Wooden Award preseason watch lists.
- Big Ten Preseason Player of the Year (coaches and media).
- Named to Lady Lion Classic All-Tournament team after averaging 15.0 points, 3.0 rebounds, 4.0 assists and 2.5 steals in two games.

2011-12 Season Notes:

- Narrowly missed her first career double-double with a team-best 20 points and a career-high tying nine assists at Delaware (11/17).
- Surpassed the 900-point mark for her career with eight tallies in the win over Middle Tennessee (11/13).
- Accounted for 22 points, four rebounds, four assists and a pair of steals in the win over Washington State (11/11).
- Became the 14th player in school history to record 300 career assists against the Cougars.

CAREER HIGHS

Points	28 at Boston College (12/2/10)
Rebs.	7 vs. Iowa (12/28/09)
Assists	9 (4x)last at Delaware (11/17/11)
Steals	4 (6x)last vs. Purdue (3/4/11)
Blocks	2 (3X) last vs. Drexel (12/21/10)
Minutes	46 at Dayton (11/12/10)
FGM	12 vs. Dayton (3/19/11)
FGA	28 vs. Dayton (3/19/11)
FG%	.833 (5-6) at Illinois (12/31/09)
3FGM	4 at Purdue (2/14/10)
3FGA	6 (3x) last at Purdue (2/14/10)
3PT%	1.000 (6x)last vs. Washington State (2-2) (11/11/11)
FTM	10 at Northwestern (1/6/11)
FTA	12 at Northwestern (1/6/11)
FT%	1.000 (21x)last at South Carolina (4-4) (11/20/11)
Career Double-Doubles	n/a

GAME-BY-GAME

	P	R	A
WASH. STATE	22	4	4
MID. TENN.	8	2	4
at Delaware	20	3	9
at South Carolina	6	2	3
vs. Iowa State			
Butler/Nevada			
NORTH CAROLINA			
at Texas Tech			
VIRGINIA TECH			
UMES			
WAGNER			
at Bucknell			
NEBRASKA			
at Wisconsin			
MICHIGAN ST.			
MICHIGAN			
at Nebraska			
at Illinois			
IOWA			
at Michigan			
at Michigan State			
INDIANA			
at Minnesota			
WISCONSIN			
at Northwestern			
at Purdue			
OHIO STATE			
MINNESOTA			



#23 Ariel Edwards

So. * G/F * 6-2 * Elmont, N.Y./Christ the King

2011-12 Highlights:

- In her first collegiate start, tallied eight points and equalled her career high with eight rebounds at Delaware (11/17).

2011-12 Season Notes:

- Was 5-for-7 from the field en route to 10 points, seven rebounds and an assist at South Carolina (11/20).
- Scored five of her 10 points in a key Lady Lion run that gave Penn State its first lead of the game against Middle Tennessee (11/13). Also notched a pair of steals against the Blue Raiders.
- Tallied four points and two rebounds in the season-opening win over Washington State (11/11).

CAREER HIGHS

Points	16 at Oakland (11/18/10)
Rebs.	8 at Delaware (11/17/11)
Assists	8 vs. Hartford (11/27/10)
Assists	2 (3X)last vs. DePaul (3/21/11)
Steals	2 (3X)last vs. Middle Tennessee (11/13/11)
Blocks	2 at Oakland (11/18/10)
Minutes	38 at Delaware (11/17/11)
FGM	5 at South Carolina (11/20/11)
FGA	11 at Delaware (11/17/11)
FG%	1.000 (3X)last vs. DePaul (1-1) (3/21/11)
3FGM	2 vs. Army (12/8/10)
3FGA	2 vs. Hartford (11/27/10)
3FGA	4 vs. Army (12/8/10)
3PT %	1.000 (2X)last vs. DePaul (1-1) (3/21/11)
FTM	7 at Oakland (11/18/10)
FTA	8 at Oakland (11/18/10)
FT %	1.000 (5x)last vs. Illinois (2-2) (3/5/11)
Career Double-Doubles	n/a

GAME-BY-GAME

	P	R	A
WASH. STATE	4	2	1
MID. TENN.	10	1	1
at Delaware	8	8	0
at South Carolina	10	7	1
vs. Iowa State			
Butler/Nevada			
NORTH CAROLINA			
at Texas Tech			
VIRGINIA TECH			
UMES			
WAGNER			
at Bucknell			
NEBRASKA			
at Wisconsin			
MICHIGAN ST.			
MICHIGAN			
at Nebraska			
at Illinois			
IOWA			
at Michigan			
at Michigan State			
INDIANA			
at Minnesota			
WISCONSIN			
at Northwestern			
at Purdue			
OHIO STATE			
MINNESOTA			





#24 Mia Nickson

RS-Jr. * F * 6-2 * Ashburn, Va./Notre Dame Acad. (BC)

2011-12 Highlights:

- ♦ Hauled in 10 rebounds, including five on the offensive glass against Middle Tennessee (11/13).

2011-12 Season Notes:

- ♦ Had six points and seven rebounds in the win over Washington State (11/13) in the opening round of the Lady Lion Classic.

CAREER HIGHS

Points 26 vs. Texas Tech (12/5/10)
Rebs. 17 vs. Indiana (1/23/11)
Assists 4 vs. Maine (12/12/10)
Steals 6 vs. Indiana (1/23/11)
..... 6 vs. Bucknell (12/28/10)
Blocks 1 (3x) last at Purdue (1/20/11)
Minutes 41 at Dayton (11/12/10)
FGM 9 vs. Indiana (1/23/11)
FGA 16 vs. Indiana (1/23/11)
FG% 1.000 (4X)
..... last vs. Minnesota (5-5) (1/13/11)
3FGM n/a
3FGA n/a
3PT % n/a
FTM 10 vs. Michigan State (2/10/11)
..... 10 vs. Texas Tech (12/5/10)
FTA 11 vs. Michigan State (2/10/11)
..... 11 vs. Texas Tech (12/5/10)
FT % 1.000 (12X)
..... last vs. Dayton (6-6) (3/19/11)
Career Double-Doubles 6

GAME-BY-GAME

	P	R	A
WASH. STATE	6	7	0
MID. TENN.	3	10	0
at Delaware	DNP		
at South Carolina	DNP		
vs. Iowa State			
Butler/Nevada			
NORTH CAROLINA			
at Texas Tech			
VIRGINIA TECH			
UMES			
WAGNER			
at Bucknell			
NEBRASKA			
at Wisconsin			
MICHIGAN ST.			
MICHIGAN			
at Nebraska			
at Illinois			
IOWA			
at Michigan			
at Michigan State			
INDIANA			
at Minnesota			
WISCONSIN			
at Northwestern			
at Purdue			
OHIO STATE			
MINNESOTA			



#25 Gizelle Studevent

Jr. * G * 5-11 * La Jolla, Calif./The Bishop's School

2011-12 Highlights:

- ♦ Hit a pair of key jumpers en route to four points and three rebounds against Middle Tennessee (11/13).

2011-12 Season Notes:

- ♦ Was 2-for-3 from the field and finished with four points at Delaware (11/17).
- ♦ Notched two points and a rebound against Washington State (11/11).
- ♦ Had four points and two rebounds in the exhibition win over Bloomsburg (11/5).

CAREER HIGHS

Points 10 at Oakland (11/18/10)
Rebs. 3 (5x)
..... last vs. Middle Tennessee (11/13/11)
Assists 2 at Northwestern (1/6/11)
Steals 2 vs. Rider (11/14/10)
Blocks 1 (2x) last vs. Minnesota (2/11/10)
Minutes 20 (2x) last vs. Hofstra (3/18/10)
FGM 3 (2X) last at Oakland (11/18/10)
FGA 8 vs. Monmouth (12/9/09)
FG% 1.000 (3x)
..... last at Ohio State (1-1) (2/17/11)
3FGM 1 (4x) last vs. Minnesota (1/13/11)
3FGA 3 vs. Monmouth (12/9/09)
3PT% 1.000 (4x)
..... last vs. Minnesota (1-1) (1/13/11)
FTM 3 vs. Maine (12/12/10)
..... 3 at Oakland (11/18/10)
FTA 4 vs. Maine (12/12/10)
..... 4 at Oakland (11/18/10)
FT% 1.000 (3x)
..... last vs. Army (2-2) (12/8/10)
Career Double-Doubles n/a

GAME-BY-GAME

	P	R	A
WASH. STATE	2	1	0
MID. TENN.	4	3	1
at Delaware	4	1	0
at South Carolina	0	1	1
vs. Iowa State			
Butler/Nevada			
NORTH CAROLINA			
at Texas Tech			
VIRGINIA TECH			
UMES			
WAGNER			
at Bucknell			
NEBRASKA			
at Wisconsin			
MICHIGAN ST.			
MICHIGAN			
at Nebraska			
at Illinois			
IOWA			
at Michigan			
at Michigan State			
INDIANA			
at Minnesota			
WISCONSIN			
at Northwestern			
at Purdue			
OHIO STATE			
MINNESOTA			





#33 Maggie Lucas

So. * G * 5-10 * Narberth, Pa./Germantown Academy

2011-12 Highlights:

- Seventh on Penn State's career three-pointers list (121).
- Selected as Lady Lion Classic MVP after averaging 18.0 points, 5.5 rebounds, 3.5 assists and 1.0 steals in a pair of wins.

2011-12 Season Notes:

- Tallied a team-best 18 points with two assists and two rebounds at South Carolina (11/20).
- Reached the 600-point plateau with 12 points to go along with three rebounds and two assists at Delaware (11/17). She reaches 600 points in the third-fewest games in school history (Kelly Mazzante & Susan Robinson; 33 games).
- Connected on a trio of three-pointers en route to 14 points and a career-high five assists in the victory over Middle Tennessee (11/13).
- Tied for team scoring honors with 22 points, including an 11-for-13 effort from the free throw line, in the season-opening win over Washington State (11/11).
- Pulled in a personal-best nine rebounds in the win over the Cougars.

CAREER HIGHS

Points..... 28 at Boston College (12/2/10)
 Rebs. 9 vs. Washington State (11/11/11)
 Assists . 5 vs. Middle Tennessee (11/13/11)
 Steals..... 4 (3x) last vs. Iowa (12/30/10)
 Blocks 2 vs. Purdue (2/24/11)
 Minutes 39 at Delaware (11/17/11)
 39 at Boston College (12/2/10)
 FGM..... 9 (3x) last at Michigan (2/3/11)
 FGA 18 at Boston College (12/2/10)
 FG%714 (5-7) at Northwestern (1/6/11)
 3FGM..... 7 vs. Hartford (11/27/10)
 3FGA 16 at Boston College (12/2/10)
 3PT % . .833 (5-6) at Northwestern (1/6/11)
 FTM 11 vs. Washington State (11/11/11)
 FTA 13 vs. Washington State (11/11/11)
 FT % 1.000 (17x)
 last at South Carolina (4-4) (11/20/11)
 Career Double-Doubles n/a

GAME-BY-GAME

	P	R	A
WASH. STATE	22	9	2
MID. TENN.	14	2	5
at Delaware	12	3	2
at South Carolina	18	2	2
vs. Iowa State			
Butler/Nevada			
NORTH CAROLINA			
at Texas Tech			
VIRGINIA TECH			
UMES			
WAGNER			
at Bucknell			
NEBRASKA			
at Wisconsin			
MICHIGAN ST.			
MICHIGAN			
at Nebraska			
at Illinois			
IOWA			
at Michigan			
at Michigan State			
INDIANA			
at Minnesota			
WISCONSIN			
at Northwestern			
at Purdue			
OHIO STATE			
MINNESOTA			



#40 Marisa Wolfe

Jr. * F * 6-2 * Ford City, Pa./Ford City

2011-12 Season Notes:

- Was 2-for-3 from the field and finished with four points in her first game of the season at South Carolina (11/20).
- Missed the first three games of the season due to concussion-like symptoms.

CAREER HIGHS

Points..... 13 vs. Michigan (2/18/10)
 Rebs. 7 vs. Green Bay (11/26/10)
 Assists 1 (9x)
 last vs. Ohio State (3/6/11)
 Steals..... 3 at Northwestern (1/3/10)
 Blocks 2 (4x)
 last at Northwestern (1/6/11)
 Minutes 30 vs. Green Bay (11/26/10)
 FGM..... 5 vs. Michigan (2/18/10)
 5 at Northwestern (1/3/10)
 FGA 7 vs. Michigan (2/18/10)
 FG% 1.000 (7x)
 last at Iowa (1-1) (2/6/11)
 3FGM..... 2 vs. Illinois (1/24/10)
 3FGA 3 vs. Illinois (1/24/10)
 3PT%..... .667 (2-3) vs. Illinois (1/24/10)
 FTM 4 vs. South Carolina (11/21/10)
 FTA 4 (3x)
 last vs. Green Bay (11/26/10)
 FT% 1.000 (11x)
 last vs. Purdue (2-2) (3/4/11)
 Career Double-Doubles n/a

GAME-BY-GAME

	P	R	A
WASH. STATE	DNP		
MID. TENN.	DNP		
at Delaware	DNP		
at South Carolina	4	0	0
vs. Iowa State			
Butler/Nevada			
NORTH CAROLINA			
at Texas Tech			
VIRGINIA TECH			
UMES			
WAGNER			
at Bucknell			
NEBRASKA			
at Wisconsin			
MICHIGAN ST.			
MICHIGAN			
at Nebraska			
at Illinois			
IOWA			
at Michigan			
at Michigan State			
INDIANA			
at Minnesota			
WISCONSIN			
at Northwestern			
at Purdue			
OHIO STATE			
MINNESOTA			





#44 Tori Waldner

Fr. * F/C * 6-5 * Milton, Ga./Milton

2011-12 Season Notes:

- Saw her first action of the season at Delaware (11/17) and pulled in a pair of rebounds in eight minutes on the court.
- Had three points and a rebound in four minutes of action in the exhibition win over Bloomsburg (11/5).

CAREER HIGHS

Points.....	n/a
Rebs.....	2 at Delaware (11/17/11)
Assists.....	n/a
Steals.....	n/a
Blocks.....	n/a
Minutes.....	8 at Delaware (11/17/11)
FGM.....	n/a
FGA.....	1 at Delaware (11/17/11)
FG%.....	n/a
3FGM.....	n/a
3FGA.....	n/a
3PT %.....	n/a
FTM.....	n/a
FTA.....	n/a
FT %.....	n/a
Career Double-Doubles.....	n/a

GAME-BY-GAME

	P	R	A
WASH. STATE	DNP		
MID. TENN.	DNP		
at Delaware	0	2	0
at South Carolina	0	0	0
vs. Iowa State			
Butler/Nevada			
NORTH CAROLINA			
at Texas Tech			
VIRGINIA TECH			
UMES			
WAGNER			
at Bucknell			
NEBRASKA			
at Wisconsin			
MICHIGAN ST.			
MICHIGAN			
at Nebraska			
at Illinois			
IOWA			
at Michigan			
at Michigan State			
INDIANA			
at Minnesota			
WISCONSIN			
at Northwestern			
at Purdue			
OHIO STATE			
MINNESOTA			



#54 Nikki Greene

Jr. * C * 6-4 * Diboll, Texas/Diboll

2011-12 Highlights:

- Seventh on Penn State's career blocks list with 134 rejections.
- Needs six rebounds to become the 27th member of the Lady Lions' 500-rebound club.

2011-12 Season Notes:

- Narrowly missed a double-double with nine points, 10 rebounds and blocked shot in the Lady Lion Classic Championship game win over Middle Tennessee (11/13).
- Snared a team-best 12 rebounds to go along with three points, two blocks and three steals against Washington State (11/11).

CAREER HIGHS

Points.....	24 vs. Utah (11/25/10)
Rebs.....	20 vs. Indiana (1/23/11)
Assists.....	2 (2x) last vs. Purdue (1/28/10)
Steals.....	4 vs. Maine (12/12/10)
.....	4 vs. Hofstra (3/18/10)
Blocks.....	7 vs. Purdue (1/28/10)
Minutes.....	32 vs. Purdue (1/28/10)
FGM.....	9 vs. Utah (11/25/10)
.....	9 at Dayton (11/12/10)
FGA.....	17 at Dayton (11/12/10)
FG%.....	1.000 (1-1) at Minnesota (12/6/09)
3FGM.....	n/a
3FGA.....	n/a
3PT%.....	n/a
FTM.....	8 vs. Pittsburgh (12/12/09)
FTA.....	13 vs. Monmouth (12/9/09)
FT%.....	1.000 (7x)
.....	last at Delaware (2-2) (11/17/11)
Career Double-Doubles.....	7

GAME-BY-GAME

	P	R	B
WASH. STATE	3	12	2
MID. TENN.	9	10	1
at Delaware	6	4	0
at South Carolina	5	4	1
vs. Iowa State			
Butler/Nevada			
NORTH CAROLINA			
at Texas Tech			
VIRGINIA TECH			
UMES			
WAGNER			
at Bucknell			
NEBRASKA			
at Wisconsin			
MICHIGAN ST.			
MICHIGAN			
at Nebraska			
at Illinois			
IOWA			
at Michigan			
at Michigan State			
INDIANA			
at Minnesota			
WISCONSIN			
at Northwestern			
at Purdue			
OHIO STATE			
MINNESOTA			



#11/12 Penn State 55, South Carolina 50

Game #4 * Nov. 20, 2011 * Columbia, S.C.

Penn State 55 • 3-1

##	Player	Total			3-Ptr			Rebounds			PF	TP	A	TO	Blk	Stl	Min
		FG	FGA	FT	FTA	Off	Def	Tot									
23	Edwards, Ariel	f	5-7	0-1	0-0	1	6	7	3	10	1	4	0	1		31	
54	Greene, Nikki	c	2-4	0-0	1-2	1	3	4	4	5	1	3	1	0		19	
12	Gray, Zhaque	g	1-5	0-1	4-4	0	4	4	2	6	2	1	1	1		38	
20	Bentley, Alex	g	1-4	0-0	4-4	0	2	2	2	6	3	7	0	1		32	
33	Lucas, Maggie	g	7-13	0-4	4-4	0	2	2	2	18	2	2	0	1		38	
05	East, Talia		3-6	0-0	0-0	1	14	15	2	6	0	3	7	1		29	
25	Studevent, Gizelle		0-0	0-0	0-0	0	1	1	0	0	1	2	0	1		5	
40	Wolfe, Marisa		2-3	0-0	0-0	0	0	0	1	4	0	0	0	0		7	
44	Waldner, Tori		0-0	0-0	0-0	0	0	0	0	0	1	0	0	0		1	
Team						2	2	4									
Totals			21-42	0-6	13-14	5	34	39	16	55	10	23	9	6	200		

FG % 1st Half: 11-22 50.0% 2nd half: 10-20 50.0% Game: 21-42 50.0% Deadball Rebounds 0
 3FG % 1st Half: 0-2 0.0% 2nd half: 0-4 0.0% Game: 0-6 0.0%
 FT % 1st Half: 4-4 100.0% 2nd half: 9-10 90.0% Game: 13-14 92.9%

South Carolina 50 • 3-1

##	Player	Total			3-Ptr			Rebounds			PF	TP	A	TO	Blk	Stl	Min
		FG	FGA	FT	FTA	Off	Def	Tot									
12	STEPHENS, Charenee	f	1-3	0-0	2-3	5	3	8	0	4	0	2	0	1		19	
03	WALKER, Ieasia	g	6-20	3-9	0-0	1	3	4	1	15	1	1	0	5		38	
05	GRANT, Markeshia	g	3-12	1-8	0-0	0	0	0	3	7	2	0	0	1		33	
11	SUTTON, La'Keisha	g	2-17	1-4	2-2	2	0	2	1	7	3	2	1	0		30	
22	NEWTON, Courtney	g	0-1	0-1	0-0	0	0	0	1	0	0	1	0	0		10	
01	WILSON, Ebony		0-0	0-0	0-0	0	0	0	2	0	0	0	0	0		1	
20	WHITE, Sancheon		0-4	0-1	1-2	2	0	2	2	1	0	0	0	1		12	
21	BRUNER, Ashley		4-8	0-0	1-3	9	9	18	3	9	2	2	2	1		30	
23	ROY, Tina		2-7	1-6	0-0	0	0	0	0	5	0	0	0	0		7	
24	WELCH, Aleighsa		1-4	0-0	0-0	6	0	6	2	2	0	0	0	1		20	
Team						0	0	0			2						
Totals			19-76	6-29	6-10	25	15	40	15	50	8	10	3	10	200		

FG % 1st Half: 9-38 23.7% 2nd half: 10-38 26.3% Game: 19-76 25.0% Deadball Rebounds 2.2
 3FG % 1st Half: 2-12 16.7% 2nd half: 4-17 23.5% Game: 6-29 20.7%
 FT % 1st Half: 2-3 66.7% 2nd half: 4-7 57.1% Game: 6-10 60.0%

Officials: Beverly Roberts, Eric Brewton, Felicia Grinter
 Technical fouls: Penn State-None, South Carolina-None.
 Attendance: 2391

Score by periods	1st	2nd	Total
Penn State	26	29	55
South Carolina	22	28	50

Points	In	Off	2nd	Fast	Bench
PSU	26	8	3	4	10
SC	20	17	16	2	17

Last FG - PSU 2nd-00:23, SC 2nd-05:47.
 Largest lead - PSU by 6 1st-00:50, SC by 8 2nd-06:40.

Score tied - 4 times.
 Lead changed - 14 times.

Notable

- The Lady Lions used a 13-0 run, including the final six tallies coming from **Maggie Lucas**, over the final 5:22 to earn the come-from-behind win.
- Talia East** rejected a career-high seven shots, which ties her for the third-highest single-game total in school history.
- PSU was held without a three-point field goal for the first time since Jan. 7, 2007 (vs. Michigan).



2011-12 RADIO/TV CHART



#2

Dara Taylor
5-8 * Jr./Jr. * G
Wilmington, Del.
Caravel Academy
(Maryland)



#5

Talia East
6-3 * So./So. * F/C
Philadelphia, Pa.
Friends' Central School



#12

Zhaque Gray
5-8 * Sr./Sr. * G
Chicago, Ill.
Prep John Hope



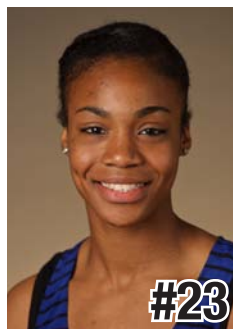
#15

Renee Womack
5-10 * Sr./Sr. * G
Lansdale, Pa.
Methacton



#20

Alex Bentley
5-7 * Jr./Jr. * G
Indianapolis, Ind.
Ben Davis



#23

Ariel Edwards
6-2 * So./So. * F
Elmont, N.Y.
Christ the King



#24

Mia Nickson
6-2 * Sr./Jr. * F
Ashburn, Va.
Notre Dame Academy
(Boston College)



#25

Gizelle Studevent
5-11 * Jr./Jr. * G
La Jolla, Calif.
The Bishop's School



#33

Maggie Lucas
5-10 * So./So. * G
Narberth, Pa.
Germantown Academy



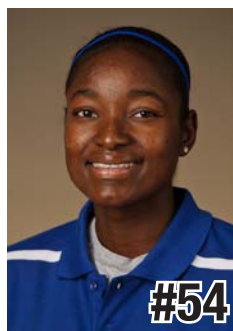
#40

Marisa Wolfe
6-2 * Jr./Jr. * F
Ford City, Pa.
Ford City



#44

Tori Waldner
6-5 * Fr./Fr. * F/C
Milton, Ga.
Milton



#54

Nikki Greene
6-4 * Jr./Jr. * F/C
Diboll, Texas
Diboll



HC

Coquese Washington
Head Coach
Notre Dame '92
Fifth Season



AC

Fred Chmiel
Assistant Coach
Excelsior College
Second Season



AC

Kia Damon
Assistant Coach
Millersville '97
Fifth Season



AC

Maren Walseth
Assistant Coach
Penn State '02
Fifth Season



DO

Ethan Gelfand
Director of Basketball
Operations
First Season



VO

Mike Miller
Director of Video &
Technology Operations
Seventh Season

Five-Time Big Ten Champions • Two-Time Big Ten Tournament Champions • 2000 NCAA Final Four • 22 NCAA Tournament Appearances



2011-12 Penn State Basketball
Penn State Combined Team Statistics (as of Nov 20, 2011)
All games

RECORD:	OVERALL	HOME	AWAY	NEUTRAL
ALL GAMES	3-1	2-0	1-1	0-0
CONFERENCE	0-0	0-0	0-0	0-0
NON-CONFERENCE	3-1	2-0	1-1	0-0

##	Player	gp-gs	min	avg	Total		3-Point		F-Throw		Rebounds				pf	dq	a	to	blk	stl	pts	avg		
					fg-fga	fg%	3fg-fga	3fg%	ft-fta	ft%	off	def	tot	avg										
33	Lucas, Maggie	4-4	150	37.5	19-52	.365	9-31	.290	19-23	.826	4	12	16	4.0	7	0	11	10	1	4	66	16.5		
20	Bentley, Alex	4-4	137	34.2	17-42	.405	3-7	.429	19-20	.950	1	10	11	2.8	11	0	20	23	1	9	56	14.0		
12	Gray, Zhaque	4-4	130	32.5	15-42	.357	6-19	.316	7-8	.875	2	15	17	4.3	8	0	5	9	1	3	43	10.8		
23	Edwards, Ariel	4-2	110	27.5	14-33	.424	0-5	.000	4-7	.571	5	13	18	4.5	11	1	3	8	0	4	32	8.0		
54	Greene, Nikki	4-4	73	18.3	8-22	.364	0-0	.000	7-11	.636	12	18	30	7.5	16	0	2	12	4	4	23	5.8		
05	East, Talia	4-0	86	21.5	9-17	.529	0-0	.000	2-3	.667	10	30	40	10.0	11	1	0	5	12	3	20	5.0		
24	Nickson, Mia	2-2	62	31.0	2-13	.154	0-0	.000	5-9	.556	7	10	17	8.5	6	0	0	2	0	2	9	4.5		
40	Wolfe, Marisa	1-0	7	7.0	2-3	.667	0-0	.000	0-0	.000	0	0	0	0.0	1	0	0	0	0	0	4	4.0		
25	Studevent, Gizelle	4-0	36	9.0	5-10	.500	0-0	.000	0-0	.000	1	5	6	1.5	0	0	2	3	0	1	10	2.5		
44	Waldner, Tori	2-0	9	4.5	0-1	.000	0-0	.000	0-0	.000	0	2	2	1.0	2	0	0	1	0	0	0	0.0		
Team											10	12	22											
Total.....		4	800		91-235	.387	18-62	.290	63-81	.778	52	127	179	44.8	73	2	43	73	19	30	263	65.8		
Opponents.....		4	800		88-276	.319	21-95	.221	42-57	.737	68	100	168	42.0	70	1	49	59	13	31	239	59.8		

TEAM STATISTICS	PSU	OPP	Date	Opponent	Score	Att.
SCORING	263	239	11/11/11	WSU	w 72-60	0
Points per game	65.8	59.8	11/13/11	MT	w 65-49	3238
Scoring margin	+6.0	-	11/17/11	at Delaware	L 71-80	3352
FIELD GOALS-ATT	91-235	88-276	11/20/11	at South Carolina	w 55-50	2391
Field goal pct	.387	.319	* - Conference game			
3 POINT FG-ATT	18-62	21-95				
3-point FG pct	.290	.221				
3-pt FG made per game	4.5	5.3				
FREE THROWS-ATT	63-81	42-57				
Free throw pct	.778	.737				
F-Throws made per game	15.8	10.5				
REBOUNDS	179	168				
Rebounds per game	44.8	42.0				
Rebounding margin	+2.8	-				
ASSISTS	43	49				
Assists per game	10.8	12.3				
TURNOVERS	73	59				
Turnovers per game	18.3	14.8				
Turnover margin	-3.5	-				
Assist/turnover ratio	0.6	0.8				
STEALS	30	31				
Steals per game	7.5	7.8				
BLOCKS	19	13				
Blocks per game	4.8	3.3				
ATTENDANCE	3238	5743				
Home games-Avg/Game	2-1619	2-2872				
Neutral site-Avg/Game	-	0-0				

Score by Periods	1st	2nd	Totals
Penn State	122	141	263
Opponents	124	115	239

2011-12 Penn State Basketball
Penn State Category Leaders (as of Nov 20, 2011)
All games

Points	G	Pts	Pts/G
Lucas, Maggie	4	66	16.5
Bentley, Alex	4	56	14.0
Gray, Zhaque	4	43	10.8
Edwards, Ariel	4	32	8.0
Greene, Nikki	4	23	5.8
East, Talia	4	20	5.0
Studevent, Gizelle	4	10	2.5
Nickson, Mia	2	9	4.5
Wolfe, Marisa	1	4	4.0

Scoring Average	G	Pts	Avg/G
Lucas, Maggie	4	66	16.5
Bentley, Alex	4	56	14.0
Gray, Zhaque	4	43	10.8
Edwards, Ariel	4	32	8.0
Greene, Nikki	4	23	5.8
East, Talia	4	20	5.0
Nickson, Mia	2	9	4.5
Wolfe, Marisa	1	4	4.0
Studevent, Gizelle	4	10	2.5
Waldner, Tori	2	0	0.0

FG Percentage	FG	Att	Pct
Wolfe, Marisa	2	3	.667
East, Talia	9	17	.529
Studevent, Gizelle	5	10	.500
Edwards, Ariel	14	33	.424
Bentley, Alex	17	42	.405
Lucas, Maggie	19	52	.365
Greene, Nikki	8	22	.364
Gray, Zhaque	15	42	.357
Nickson, Mia	2	13	.154
Waldner, Tori	0	1	.000

Field Goal Attempts	G	Att	Att/G
Lucas, Maggie	4	52	13.0
Bentley, Alex	4	42	10.5
Gray, Zhaque	4	42	10.5
Edwards, Ariel	4	33	8.3
Greene, Nikki	4	22	5.5

Field Goals Made	G	Made	Made/G
Lucas, Maggie	4	19	4.8
Bentley, Alex	4	17	4.3
Gray, Zhaque	4	15	3.8
Edwards, Ariel	4	14	3.5
East, Talia	4	9	2.3

3-Point Percentage	3FG	Att	Pct
Bentley, Alex	3	7	.429
Gray, Zhaque	6	19	.316
Lucas, Maggie	9	31	.290
Edwards, Ariel	0	5	.000

3-Point FG Attempts	G	Att	Att/G
Lucas, Maggie	4	31	7.8
Gray, Zhaque	4	19	4.8
Bentley, Alex	4	7	1.8
Edwards, Ariel	4	5	1.3

3-Point FG Made	G	Made	Made/G
Lucas, Maggie	4	9	2.3
Gray, Zhaque	4	6	1.5
Bentley, Alex	4	3	0.8

Free Throw Percent	FG	Att	Pct
Bentley, Alex	19	20	.950
Gray, Zhaque	7	8	.875
Lucas, Maggie	19	23	.826
East, Talia	2	3	.667
Greene, Nikki	7	11	.636
Edwards, Ariel	4	7	.571
Nickson, Mia	5	9	.556

Free Throw Attempts	G	Att	Att/G
Lucas, Maggie	4	23	5.8
Bentley, Alex	4	20	5.0
Greene, Nikki	4	11	2.8
Nickson, Mia	2	9	4.5
Gray, Zhaque	4	8	2.0

Free Throws Made	G	Made	Made/G
Bentley, Alex	4	19	4.8
Lucas, Maggie	4	19	4.8
Gray, Zhaque	4	7	1.8
Greene, Nikki	4	7	1.8
Nickson, Mia	2	5	2.5

2011-12 Penn State Basketball
Penn State Category Leaders (as of Nov 20, 2011)
All games

Rebounds	G	Reb	Reb/G
East, Talia	4	40	10.0
Greene, Nikki	4	30	7.5
Edwards, Ariel	4	18	4.5
Nickson, Mia	2	17	8.5
Gray, Zhaque	4	17	4.3

Rebound Average	G	Reb	Avg/G
East, Talia	4	40	10.0
Nickson, Mia	2	17	8.5
Greene, Nikki	4	30	7.5
Edwards, Ariel	4	18	4.5
Gray, Zhaque	4	17	4.3

Offensive Rebounds	G	No.	Avg/G
Greene, Nikki	4	12	3.0
East, Talia	4	10	2.5
Nickson, Mia	2	7	3.5
Edwards, Ariel	4	5	1.3
Lucas, Maggie	4	4	1.0

Defensive Rebounds	G	No.	Avg/G
East, Talia	4	30	7.5
Greene, Nikki	4	18	4.5
Gray, Zhaque	4	15	3.8
Edwards, Ariel	4	13	3.3
Lucas, Maggie	4	12	3.0

Fouls	G	No.	Per/G
Greene, Nikki	4	16	4.0
Bentley, Alex	4	11	2.8
Edwards, Ariel	4	11	2.8
East, Talia	4	11	2.8
Gray, Zhaque	4	8	2.0

Foulsouts	G	No.
Edwards, Ariel	4	1
East, Talia	4	1

Assists	G	No.	Ast/G
Bentley, Alex	4	20	5.0
Lucas, Maggie	4	11	2.8
Gray, Zhaque	4	5	1.3
Edwards, Ariel	4	3	0.8
Greene, Nikki	4	2	0.5
Studevent, Gizelle	4	2	0.5

Steals	G	No.	Stl/G
Bentley, Alex	4	9	2.3
Greene, Nikki	4	4	1.0
Edwards, Ariel	4	4	1.0
Lucas, Maggie	4	4	1.0
Gray, Zhaque	4	3	0.8
East, Talia	4	3	0.8

Blocked Shots	G	No.	Blk/G
East, Talia	4	12	3.0
Greene, Nikki	4	4	1.0
Bentley, Alex	4	1	0.3
Gray, Zhaque	4	1	0.3
Lucas, Maggie	4	1	0.3

Minutes	G	No.	Min/G
Lucas, Maggie	4	150	37.5
Bentley, Alex	4	137	34.2
Gray, Zhaque	4	130	32.5
Edwards, Ariel	4	110	27.5
East, Talia	4	86	21.5

Turnovers	G	No.	TO/G
Bentley, Alex	4	23	5.8
Greene, Nikki	4	12	3.0
Lucas, Maggie	4	10	2.5
Gray, Zhaque	4	9	2.3
Edwards, Ariel	4	8	2.0