

PENN STATE LADY LION

BASKETBALL GAME NOTES

2014-2015

Penn State Athletic Communications: 101D Bryce Jordan Center, University Park, PA 16802 Office: 814-865-1757 Fax: 814-863-3165
 Women's Basketball Contact: Kristina Petersen Twitter: @ladylionsid Website: www.GoPSUsports.com Email: kap18@psu.edu Cell: 814-883-4581 Office: 814-865-1757



SCHEDULE/RESULTS

NOVEMBER	
Sun. 2	INDIANA (PA.) (ex.) W, 75-71 <i>Preseason WNIT</i>
Fri. 14	TOWSON..... noon
Sun. 16	WNIT Second Round 2 p.m.
Th-Sa 20-22	WNIT Third or Consolation ... 7 p.m.
Sun. 23	WNIT (CBS College Sports) .. 3 p.m.
Tues. 25	ST. BONAVENTURE 5:30 p.m.
Georgia State Thanksgiving Tournament	
Fri. 28	vs. Liberty 2 p.m.
Sun. 30	vs. GSU/Samford 12:30/2:30 p.m.
DECEMBER	
Big Ten/ACC Challenge	
Thurs. 4	at Syracuse 7 p.m.
Sun. 7	WAGNER..... 2 p.m.
Wed. 10	at Hartford 7 p.m.
Sun. 14	RIDER..... 2:30 p.m.
Sun. 21	USF..... 2 p.m.
Sun. 28	at Iowa * (BTN Plus) 3 p.m.
JANUARY	
Thurs. 1	at Michigan * (BTN Plus) 1 p.m.
Sun. 4	ILLINOIS * (BTN Plus) 2 p.m.
Tues. 6	at Wisconsin * (BTN) 9 p.m.
Sat. 10	RUTGERS * (BTN) noon
Thurs. 15	at Nebraska * (BTN) 7 p.m.
Sun. 18	at Ohio State * (BTN Plus) 2 p.m.
Thurs. 22	INDIANA * (BTN Plus) 7 p.m.
Sun. 25	NORTHWESTERN * (BTN Plus) 2 p.m.
Wed. 28	at Minnesota * (BTN Plus) 8 p.m.
FEBRUARY	
Sun. 1	at Rutgers * (BTN) noon
Thurs. 5	MARYLAND * (BTN Plus) 7 p.m.
Sun. 8	at Purdue * (BTN Plus) 2 p.m.
Wed. 11	MICHIGAN ST. * (BTN Plus) ... 7 p.m.
Sun. 15	MINNESOTA * (BTN Plus) 2 p.m.
Mon. 23	at Maryland * (BTN) 7 p.m.
Thurs. 26	OHIO STATE * (BTN Plus) 7 p.m.
MARCH	
Ninth Annual Pink Zone at Penn State	
Sun. 1	WISCONSIN * (BTN/BTN Plus) 1/3/5 p.m.
Wed.-Sun.	4-8 Big Ten Tournament (BTN/ESPN2) Hoffman Estates, Ill.
Sat.-Tues.	20-23.. NCAA Tourn. 1st & 2nd Round
Sat.-Tues.	27-30..... NCAA Tourn. Regionals
APRIL	
Sun./Tues.	5/7 NCAA Final Four (Tampa, Fla.)

BOLD CAPS indicates home game
 * - indicates Big Ten game
 All times are Eastern Time.
 BTN - Big Ten Network BTN Plus - BTN.com
 Schedule subject to change. Please visit www.GoPSUsports.com for up-to-date tip times.

Game #1: Towson at Penn State

Fri., Nov. 14 ▶ noon ▶ Bryce Jordan Center ▶ University Park, Pa.

		SETTING THE SCENE
Penn State Lady Lions	Towson Tigers	The Towson Game
<p>2013-14 Record: 24-8, 13-3 Big Ten Last Game: Stanford 82, PSU 57 (3/30/14) Head Coach: Coquese Washington Career Record: 142-81 (8th yr.) Record at PSU: 142-81 (8th yr.)</p> <p>Returning Statistical Leaders Points Tori Waldner (4.8) Rebounds Tori Waldner (5.6) Assists Tori Waldner (1.0)</p>	<p>2013-14 Record: 13-17, 7-9 CAA Last Game: Charleston 70, TU 64 (3/14/14) Head Coach: Niki Reid Geckeler Career Record: 98-92 (7th yr.) Record at Towson: 13-17 (2nd yr.)</p> <p>Returning Statistical Leaders Points L. Hines-Allen (14.1) Rebounds L. Hines-Allen (8.4) Assists D. Johnson (3.6)</p>	<p>Series: Towson leads 1-0</p> <p>Last Meeting: Towson 64, PSU 62 (3/7/75)</p> <p>Streak: Towson - 1 win</p> <p>Television: none</p> <p>Radio: The game is on the Penn State Sports Network and WRSC 1390 The Fanatic locally with Jerry Fisher and Julia Trogele calling the action. The audio feed is available at www.GoPSUsports.com.</p> <p>Webstream: GoPSUsports.com</p> <p>Live Stats: GoPSUsports.com</p>

SERIES QUICK HITS

- ✓ In the only previous meetings between Penn State and Towson, the Tigers edged the Lady Lions, 64-63, on March 7, 1975 in the EAIWA Mid-Atlantic Tournament in Glassboro, N.J.
- ✓ Mag Strittmatter led the Lady Lions in that 1975 contest with a double-double via 25 points and 17 rebounds.
- ✓ Penn State is 10-18 all-time against CAA foes.
- ✓ The Lady Lions are participating in the Preseason WNIT for the second time in program history.
- ✓ Penn State made its first appearance in 2002, finishing second in the tournament after an 88-66 loss at Kansas State in the Championship game.
- ✓ With a win over Towson, the Lady Lions will face the winner of the St. Francis (N.Y.)-Albany game in the second round on Sunday, Nov. 16 at 2 p.m.

STORYLINES

- ✓ With the graduation of the 2014 senior class, the Lady Lions will have to replace 75% of their scoring and steals and nearly 50% of their rebounds from a season ago.
- ✓ **Tori Waldner** is the squad's lone returning starter and only senior on the roster. She accounted for 4.8 points and 5.6 rebounds per game a year ago. She was 12th in the Big Ten in blocks (1.2).
- ✓ Waldner is tied for 11th in program history with 89 career blocks.
- ✓ **Kaliyah Mitchell** was a solid contributor as a rookie, accounting for 4.5 points and 4.4 boards, both of which rank second among returnees.
- ✓ **Peyton Whitted** will take on an expanded role for Penn State this season after averaging 2.9 points and 2.8 rebounds per game as a freshman.

UP NEXT

Penn State continues play in the Preseason WNIT pending the outcome of Friday's game. With a win, the Lady Lions will face the winner of Albany-St. Francis (N.Y.) on Sunday, Nov. 16 at 2 p.m. With a loss, Penn State will host a four-team consolation tournament Fri., Nov. 21 and Sat., Nov. 22 with games at 4:30 and 7 p.m. each day.

Table of Contents	Possible Starters 3	Milestone Watch 8
Schedule, Results, Storylines 1	PSU's Record When 5	Coquese Washington 13
Roster, Quick Facts 2	Polls 6	Player Bios 14-24
Team Comparison, Series History 2	The Last Time Penn State 7	2014-15 Box Scores 25
What's at Stake 3	Record Book 8	2013-14 Stats 26-27
Big Ten Standings/Schedule 3	2015 Signing Class 8	Radio/TV Chart 28



2014-15 ROSTER

PENN STATE LADY LIONS

No.	Name	Pos.	Cl./Elg.	Ht.	Hometown/High School (Previous School)
1	Candice Agee **	C	Jr./Jr.	6-6	Victorville, Calif./Silverado
3	Brianna Banks	G	Sr./Sr. [^]	5-9	Newnan, Ga./Fayette County (Connecticut)
5	Sierra Moore	G	Jr./So.	5-11	Hanover, Pa./Delone Catholic (Duke)
10	Keke Sevellian *	G	So./So.	5-7	Goodrich, Mich./Goodrich
11	Alex Harris *	F	So./So.	6-3	Lorain, Ohio/Lorain
12	Lindsey Spann	G	So./Fr.	5-6	Laurel, Md./Good Counsel
14	Dominique Brooks	C	Jr./Jr.	6-4	Lansing, Ill./T.F. South (Trinity Valley C.C.)
15	Kalayah Mitchell *	F	So./So.	6-2	Stone Mountain, Ga./Stephenson
25	Peyton Whitted *	F	So./So.	6-3	Suwanee, Ga./North Gwinnett
41	Jenny DeGraaf *	F	So./So.	6-1	Springboro, Ohio/Springboro
44	Tori Waldner ***	F/C	Sr./Sr.	6-5	Milton, Ga./Milton

Head Coach: Coquese Washington (Notre Dame '92)

Asst. Coaches: Itoro Coleman, Kia Damon, Jocelyn Wyatt

Captains: Tori Waldner, Sierra Moore, Lindsey Spann

* Indicates letters earned

TOWSON TIGERS

No.	Name	Pos.	Cl.	Ht.	Hometown/High School (Previous School)
0	LaTorri Hines-Allen	F	R-Sr.	6-2	Montclair, N.J./Montclair
1	Dominique Johnson	G	Jr.	5-6	Laurel, Md./Riverdale Baptist
2	Breonn Hughey	G	Fr.	5-5	Washington, D.C./Capital Christian Academy
3	Ciara Webb	G	Sr.	5-9	Baltimore, Md./Patterson
4	Braysia Hicks	G	Fr.	5-10	Yorktown, Va./Hampton Roads Academy
5	Jordyn Smith	F	R-Fr.	6-0	Durham, N.C./Hillside
10	Alexandra Silva	G	Sr.	5-3	Hagerstown, Md./South Hagerstown
11	Nicole Hamilton-Carter	C	Sr.	6-4	Stockholm, Sweden/Fryshuset Gymnasium
12	Markeema Crawford	G	Fr.	5-7	Orlando, Fla./Edgewater
13	Camille Alberson	F	Sr.	6-2	Arlington, Tenn./Arlington
14	Brianna Bush	F	So.	6-1	District Heights, Md./Elizabeth Seton
20	Markell Smith	G	Sr.	6-1	Chesapeake, Va./Norfolk Collegiate School
23	Ece Yurdakul	G	Fr.	5-7	Istanbul, Turkey/Freedom Christian Acad. (N.C.)
32	Shanea Butler	G	Fr.	6-0	Waldorf, Md./Westlake
33	Daijha Thomas	C	Fr.	6-3	St. Leonard, Md./Calvert

Head Coach: Niki Reid Geckeler

Assistant Coaches: Brian Johnson, James Simmons, Christie Rogers

TEAM COMPARISON

PENN STATE		TOWSON
Waldner (4.8)	Returning Scoring Leader	Hines-Allen (14.1)
Waldner (5.6)	Returning Rebounding Leader	Hines-Allen (8.4)
Waldner (1.0)	Returning Assist Leader	Johnson (3.6)
Mitchell (0.6)	Returning Steals Leader	Hines-Allen (1.2)
Waldner (1.2)	Returning Blocks Leader	Hines-Allen (0.4)
75.1	Scoring Offense	59.2
66.9	Scoring Defense	64.0
+8.2	Scoring Margin	-4.8
43.9	Rebounds Per Game	40.3
+7.0	Rebound Margin	+3.4
12.8	Assists Per Game	10.3
8.5	Steals Per Game	7.4
.419	Field Goal Pct.	.370
.380	FG Defense Pct.	.415
.318	3-pt. FG Pct.	.265
.316	3-pt. FG Pct. Def.	.340
.773	Free Throw Pct.	.610
0.8	Assist/Turnover	0.7
Lost 1	W/L Streak	Lost 2

SERIES HISTORY

Overall:	Towson leads 1-0
Last meeting:	Mar. 7, 1975
Last result:	TU, 64-63
Current streak:	TU - 1 win
Last 10:	TU, 1-0
Last 10 meetings:	3/7/75 N TU, 64-63

QUICK FACTS

THE UNIVERSITY

Location: University Park, Pa.
 Founded: 1855
 Enrollment: 48,184 (as of fall 2013)
 Colors: Blue & White
 Nickname: Lady Lions
 Conference: Big Ten
 President: Eric Barron
 Director of Athletics: Sandy Barbour
 Senior Woman Administrator: Charmelle Green
 Asst. Athletic Director: Jenn James
 Facility (cap.): Bryce Jordan Center (15,104)
 All-Time Record at BJC: 215-53 (19 seasons)

ATHLETIC COMMUNICATIONS

WBB Contact: Kristina Petersen
 Phone/Fax: (814) 865-1757/(814) 863-3165
 E-mail: kap18@psu.edu
 Address: 101-D Bryce Jordan Center
 University Park, Pa. 16802
 Press Row Phone: 814-863-3294
 Website: www.GoPSUsports.com
 Twitter: @ladylionsid

TEAM INFORMATION

2013-14 Record: 24-8
 Home: 14-4 Away: 8-3 Neutral: 2-1
 Big Ten Record (finish): 13-3 (1st)
 Home: 6-2 Away: 7-1
 Letterwinners Returning/Lost: 6/5
 Starters Returning/Lost: 1/4
 Big Ten Tournament: Quarterfinals
 Postseason: NCAA Sweet Sixteen

THE HISTORY

First Year of Women's Basketball: 1965
 All-Time Record: 881-394 (50 seasons)
 All-Time Big Ten Rec.: 244-122 (22 seasons)
 NCAA Tournament Appearances: 25
 NCAA Tournament Record: 32-25

WOMEN'S BASKETBALL

Head Coach: Coquese Washington
 Alma Mater: Notre Dame '92
 Overall Record: 142-81 (seven seasons)
 School Record: 142-81 (seven seasons)
 Twitter: @coquesewashing
 Basketball Office Phone: 814-863-2672
 Basketball Office Fax: 814-863-1221
 Best Time To Reach Coach: Through SID
 Assistant Coaches (Alma Mater):
 Itoro Coleman (Clemson '00)
 Kia Damon (Millersville '97)
 Jocelyn Wyatt (Appalachian State '06)
 Twitter/Instagram: @pennstatewbb
 Facebook: facebook.com/pennstateladylions

PRONUNCIATIONS

Coquese	ko-KWEES
Itoro	E-tora
Agee	AYE-gee
DeGraaf	D-graph
Kalayah	kah-LEE-uh
Sevellian	sev-ILL-e-on
Whitted	wit-ED





2013-14 STANDINGS (FINAL)

Team	Big Ten			Overall		
	W	L	Pct.	W	L	Pct.
PENN STATE	13	3	.812	24	8	.750
Michigan State	13	3	.812	23	10	.697
Nebraska	12	4	.750	26	7	.788
Purdue	11	5	.688	22	9	.710
Iowa	11	5	.688	27	9	.750
Minnesota	8	8	.500	22	13	.629
Michigan	8	8	.500	20	14	.588
Ohio State	5	11	.312	17	18	.486
Northwestern	5	11	.312	17	16	.515
Indiana	5	11	.312	21	13	.618
Wisconsin	3	13	.188	10	19	.345
Illinois	2	14	.125	9	21	.300

BIG TEN SCHEDULE

NOVEMBER 14

Mount St. Mary's at Maryland	11 a.m.
Towson at Penn State	12 p.m.
IPFW at Illinois	4 p.m.
USC-Upstate at Iowa	7 p.m.
Detroit Mercy at Michigan	7 p.m.
Ohio State at Virginia	7 p.m.
Purdue at Ball State	7 p.m.
St. Joseph's at Rutgers	7 p.m.
Northwestern at Chicago State	8:05 p.m.
Southeastern Louisiana at Minnesota	9 p.m.

NOVEMBER 15

Gardner Webb at Indiana	2 p.m.
Pepperdine at Nebraska	TBD

NOVEMBER 16

Wagner at Maryland	2 p.m.
Bucknell at Michigan	2 p.m.
Eastern Michigan at Michigan State	2 p.m.
St. Francis at Ohio State	2 p.m.
TBD vs. Penn State	2 p.m.
Robert Morris at Iowa	3 p.m.
Hampton at Northwestern	3 p.m.
Illinois State at Wisconsin	4 p.m.
Alcorn State at Nebraska	6 p.m.

All times are Eastern.

POSSIBLE STARTERS



5 SIERRA MOORE G
RS-So., 5-11, Hanover, Pa.
2.5 ppg, .448 FG% (2012-13 at Duke)

Notes: Sat out 2013-14 season due to NCAA transfer rules after coming to Penn State from Duke ... Broke the YAIAA high school scoring record (boys or girls) ... McDonald's High School All-American in 2012.



12 LINDSEY SPANN G
RS-Fr., 5-6, Laurel, Md.

Notes: Missed 2013-14 season after tearing her right ACL in the first practice of the summer ... 22nd-ranked player by Collegiate Girls Basketball Report out of high school.



15 KALIYAH MITCHELL G
So., 6-2, Stone Mountain, Ga.
4.5 ppg, 4.4 rpg, .735 FT%, 20 steals

Notes: Leads the returnees in steals with 20 ... Second-best scoring average among returning players (4.5) ... Had eight points and seven rebounds in the NCAA 2nd Round game vs. Florida.



25 PEYTON WHITTED F
So., 6-3, Suwanee, Ga.
2.9 ppg, 2.8 rpg, .463 FG%, .696 FT%

Notes: Led the team in field goal percentage as a freshman (.463) ... Averaged 2.9 points and 2.8 rebounds per game last season ... Had a career-high 11 points and six rebounds at Northwestern.



44 TORI WALDNER C
Sr., 6-5, Milton, Ga.
4.8 ppg, 5.6 rpg, 1.2 bpg, .421 FG%

Notes: Ranks 10th on Penn State's all-time blocked shots list (89) ... Third on the team in rebounding (5.6) last season ... President of Penn State's SAAB ... Academic All-Big Ten choice.

LAST TIME OUT

- After sitting out last season due to NCAA transfer rules, sophomore Sierra Moore made the most of her debut with the Lady Lions, scoring 15 of their last 25 points in a 75-71 exhibition win over IUP on Nov. 2.
- With the Crimson Hawks leading, 54-50, Moore led the rally with 15 of her team-best 18 points over the final 11:44 of the contest.
- Freshman **Lindsey Spann** added 14 points and four assists on the day, while sophomore **Peyton Whitted** had a near double-double with eight points, 10 rebounds and five assists.
- **Kaliyah Mitchell** also reached double figures for the Lady Lions with 12 points, nine rebounds and three steals.
- **Jenny DeGraaf** rounded out the double-digit scorers for Penn State with 11 tallies on 4-of-5 shooting from the field, including a pair of makes from long range.

SCOUTING TOWSON

- The Tigers were 13-17 overall and 7-9 in CAA play a year ago.
- Towson returns three of its top five scorers from last season.
- LaTorri Hines-Allen is the squad's top returning scorer after averaging 14.1 points per game and a team-best 8.4 rebounds per outing.
- Dominique Johnson added 10.3 points and 3.6 assists per game, while Markell Smith chipped in 4.4 points per contest, which was fifth on the team a year ago.

ALL-TIME VERSUS THE TIGERS

- In the only previous meetings between Penn State and Towson, the Tigers edged the Lady Lions, 64-63, on March 7, 1975 in the EIAAW Mid-Atlantic Tournament in Glassboro, N.J.
- Mag Strittmatter led the Lady Lions in that 1975 contest with a double-double via 25 points and 17 rebounds.
- Penn State is 10-18 all-time against CAA foes.

WHAT'S AT STAKE

A Penn State Win Would:

- Make PSU 39-12 all-time in season-openers.
- Improve Penn State to 43-8 all-time in home openers.
- Make Penn State 16-3 all-time in season openers at the BJC.
- Make Coquese Washington 8-0 in season openers.
- Even the all-time series record with Towson at 1-1.

PRESEASON WNIT

- The Lady Lions are participating in the Preseason WNIT for the second time in program history.
- Penn State made its first appearance in 2002, finishing second in the tournament after an 88-66 loss at Kansas State in the Championship game.
- With a win over Towson, the Lady Lions will face the winner of the St. Francis (N.Y.)-Albany game on Sunday, Nov. 16 at 2 p.m.
- If Penn State loses to the Tigers, the Lady Lions will host a four-team consolation bracket on Friday, Nov. 21 and Saturday, Nov. 22 at 4:30 and 7 p.m. with Penn State playing the 7 p.m. game each day.



OPENING SUCCESS

- The Lady Lions have found success in their season openers over the years, posting a 38-12 record since 1965 in the first game of the season.
- Penn State is also 42-8 all-time in home openers, including a 15-3 mark in the Bryce Jordan Center.
- Additionally, **Coquese Washington** is a perfect 7-0 in the first game of the season since taking the helm of the Lady Lion program for the 2007-08 season.
- In fact, the Lady Lions have started at least 2-0 in each of Washington's seven seasons.

PRESEASON SIGHTINGS

- Penn State is first among the teams receiving votes in the preseason USA Today Sports Coaches' Poll with 55 points, just five tallies out of the Top 25.
- The Lady Lions were among the teams receiving votes in the preseason Associated Press poll, garnering 43 points to rank third among the teams receiving votes.
- Penn State is also ranked 22nd in the Lindy's preview magazine.
- The Lady Lions are one of six Big Ten teams lists in the magazine's preseason Top 25 (Maryland, Nebraska, Purdue, Michigan State, Iowa).

TORI EXTRA CURRICULAR

- Senior post player **Tori Waldner** has shown that she is more than just a basketball player as she competes in the classroom and gives back tirelessly to the community.
- Waldner is currently the president of the Penn State Student-Athlete Advisory Board (SAAB). As part of her duties as SAAB president, she is involved in the community services efforts and creating programming for Penn State student-athletes on topics of diversity and inclusion.
- She is also involved in Penn State Life Link, a program in which State College Area School District special-needs students between the ages of 18 and 21 are given an opportunity to interact with students of their own age in an environment that is socially and academically conducive to continued growth with the hope of future independent living.
- Waldner regularly meets these students for lunch, swims with the students as a physical activity and provides guidance to help them on their road to independence.
- She is also involved in the "It's on Us" initiative- an awareness campaign to help put an end to sexual assault on college campuses.
- As part of her involvement, Waldner was part of a meeting with other universities at the White House.
- Waldner is also stellar in the classroom, collecting two Academic All-Big Ten honors.

FUN FOUR YEARS

- The Lady Lions have put together quite a four-year run that includes three Big Ten Championships, two NCAA Sweet Sixteen appearances and four NCAA Tournament berths.
- During the last four years, Penn State has also collected 101 wins (25.3 wins per season) and has been ranked for 62 weeks in the Top 25, including 21 weeks in the Top 10.
- Additionally, the Lady Lions have churned out three WNBA Draft Picks, five McDonald's All-Americans, 16 All-Big Ten performers, two Big Ten Players of the Year and one Big Ten Defensive Player of the Year, all while posting a 100% Graduation Rate.

LADY LIONS GET SOCIAL: The Lady Lions are on several social media sites, including Twitter, Instagram and Facebook. Follow the Lady Lions and assistant coaches (@pennstatewbb), head coach Coquese Washington (@coquesewashing) and sports information contact Kris Petersen (@ladylionsid) on Twitter to get the inside scoop. The Lady Lions are also on Instagram (@pennstatewbb) and Facebook at www.facebook.com/pennstateladylions.



OF NOTE

- Sophomore **Kaliyah Mitchell** has channeled her inner Maggie Lucas and has connected on her last 14 shots from the free throw line, dating back to Northwestern (Feb. 20, 2014).
- Head coach **Coquese Washington** has selected senior **Tori Waldner**, redshirt-sophomore **Sierra Moore** and redshirt-freshman **Lindsey Spann** as team captains for the 2014-15 season.
- Sophomore forward **Peyton Whitted's** father, Kevin, was recently named the head coach of the NBA Developmental League's Westchester Knicks.

2015 PINK ZONE AT PENN STATE

- The Ninth Annual Pink Zone at Penn State will be held Sunday, March 1 in the Bryce Jordan Center when the Lady Lions take on Wisconsin. The time for the game will be determined later in the season.
- Last year, the Lady Lions donated a record \$310,000 to breast cancer causes.
- All totalled, the Lady Lions have donated more than \$1.135 million for breast cancer research and awareness in the first eight years.
- This year's fundraising efforts will benefit the Mount Nittany Medical Center, Penn State Hershey Cancer Institute, Pennsylvania Breast Cancer Coalition, the Kay Yow Cancer Fund, J.C. Blair Memorial Hospital and Lewistown Hospital.
- For more information on the Pink Zone at Penn State, visit the official Pink Zone website at www.pennsylvaniapinkzone.org.

PENN STATE'S OVERALL/BIG TEN YEAR-BY-YEAR REVIEW

Year	Overall	Big Ten	Home	BT Home	Road	BT Road	Neutral
1992-93	22-6	14-4	12-2	9-0	9-4	5-4	0-0
1993-94	28-3	16-2	14-0	9-0	11-2	7-2	3-1
1994-95	26-5	13-3	14-2	8-0	9-3	5-3	3-0
1995-96*	27-7	13-3	14-2	8-0	8-4	5-3	5-1
1996-97	15-12	8-8	9-3	5-3	5-6	3-5	1-3
1997-98	21-13	8-8	10-5	4-4	6-6	4-4	5-2
1998-99	22-8	12-4	9-2	6-2	9-4	6-2	4-2
1999-00	30-5	15-1	14-0	8-0	9-2	7-1	7-3
2000-01	19-10	11-5	11-2	7-1	6-5	4-4	2-3
2001-02	23-12	11-5	10-4	6-2	9-5	5-3	4-3
2002-03	26-9	13-3	16-0	8-0	7-7	5-3	2-2
2003-04	28-6	15-1	12-1	8-0	9-3	7-1	6-2
2004-05	19-11	13-3	12-0	8-0	6-9	5-3	1-2
2005-06	13-16	6-10	8-6	5-3	3-8	1-7	2-2
2006-07	15-16	7-9	12-1	7-1	2-12	0-7	1-3
2007-08	13-18	4-14	10-6	3-6	3-11	1-8	0-1
2008-09	11-18	6-12	8-6	4-5	2-9	2-7	1-3
2009-10	17-14	8-10	9-6	5-4	5-7	3-6	3-1
2010-11	25-10	11-5	14-4	6-2	7-4	5-3	4-2
2011-12	26-7	13-3	12-2	6-2	11-3	7-1	3-2
2012-13	26-6	14-2	14-0	8-0	9-5	6-2	3-1
2013-14	24-8	13-3	14-4	6-2	8-3	7-1	2-1

* First season at the Bryce Jordan Center



PENN STATE-TOWSON NOTABLE GAMES

Mar. 7, 1975 - Towson 64, Penn State 63

The Tigers pulled out a 64-63 win over the Lady Lions in the second round of the EAIWA Mid-Atlantic Tournament in Glassboro, N.J. Mag Strittmatter led Penn State with a 25 points and 17 rebounds for a double-double.

GETTING ON THE COURT

- The Lady Lions may not have any true freshmen on the roster, but there will be a pair of Lady Lions that will don a Penn State uniform for the first time this season after sitting out the 2013-14 campaign.
- Redshirt-sophomore **Sierra Moore** returns to the court after missing last season due to NCAA Transfer Rules.
- She excelled in high school at Delone Catholic, where she broke the York-Adams Interscholastic Athletic Association (YAIAA) scoring record with 2,595 points.
- Redshirt-freshman **Lindsey Spann** hits the hardwood after missing last year with a torn ACL.
- She was the 22nd-ranked player by Collegiate Girls Basketball Report out of high school. She averaged 15.9 points, 5.3 assists and 2.4 steals at Good Counsel her senior year.

TORI'S REJECTING ROLE

- Senior center **Tori Waldner** is tied for 11th in program history with 89 career blocks entering her senior season.
- She needs three rejections to move into a tie with Bethany Collins (92; 1985-88) for a spot in the Top 10.
- Waldner also needs 11 rejections to become the ninth player in program history with 100 blocked shots.
- She would also be the third Lady Lion in the last three years to reach the 100-block mark, joining Nikki Greene (215; 2010-13) and Talia East (102; 2011-14).

FRESH FACES

- The Lady Lions have added a pair of transfers to the roster in junior college transfer **Dominique Brooks** and UConn transfer **Brianna Banks**.
- Brooks comes to the Lady Lions after a two-year career at Trinity Valley Community College.
- She was efficient from the field at TVCC as she connected on 51.1% of her shots to help the Cardinals to back-to-back NJCAA National Championships.
- Banks will have to sit out the 2014-15 season after transferring from Connecticut.
- She will have one year of eligibility remaining after competing for three seasons at UConn where she won a pair of National Championships.

LADY LIONS EXCELLING AT THE NEXT LEVEL

- The Lady Lions have found recent success at the professional level, both in the WNBA and overseas.
- Penn State had four players on WNBA rosters last summer, including 10-year veteran Tanisha Wright, second-year player Alex Bentley and rookies Maggie Lucas and Nikki Greene.
- The Lady Lions also tout eight players (Wright, Bentley, Lucas, Greene, Ariel Edwards, Dara Taylor, Talia East, Brianna O'Rourke) playing overseas this fall in Europe and South America.
- Wright, who is playing for Abdullah Gul University in Turkey, just finished her 10th season with the WNBA's Seattle Storm.
- In her tenure with the Storm, Wright has accrued 2,591 points, 1,008 assists and 903 rebounds.
- She is a four-time WNBA All-Defensive first team honoree and helped Seattle to the 2010 WNBA Championship.
- After completing stellar WNBA season with the Connecticut Sun, Bentley is now playing for Tarbes Gespe Bigorre of the LFB in France.
- Bentley accounted for 12.2 points, 3.7 assists and 1.3 steals while starting 30 of 34 games for the Sun.
- Greene completed her rookie season with the WNBA's LA Sparks and is now playing in Israel for the Ramat Hasharon Electra Basketball Club.
- After playing her rookie season with the WNBA's Indianapolis Fever, Lucas has gone to France to play for Arras Pays D'Artois Basket Feminine.
- Lucas accounted for 3.7 points per game and shot .957 from the free throw line in her rookie season with the Fever.
- Edwards is playing with C.B. Bembibre PDM of the LFB in Spain.
- Taylor inked a contract to play with AZS UMCS Lublin of the Basket Liga Kobiet in Poland.
- O'Rourke is playing for Pallacanestro Torino of the Italy-Serie A2 league.
- Since graduating in 2009, O'Rourke has played in Germany and Slovakia in the last five years.

PENN STATE'S RECORD WHEN...

Playing at home	0-0
Playing on the road	0-0
Playing at a neutral site	0-0
vs. Top 10 teams	0-0
vs. Top 25 teams	0-0
Games decided by 3 points or less	0-0
Games decided by 4-10 points	0-0
Games decided by 11-19 points	0-0
Games decided by 20 points or more	0-0
Leading at the half	0-0
Tied at the half	0-0
Trailing at the half	0-0
Leading with 5:00 remaining	0-0
Trailing with 5:00 remaining	0-0
Tied with 5:00 remaining	0-0
In overtime	0-0
PSU scores 40-49 points	0-0
PSU scores 50-59 points	0-0
PSU scores 60-69 points	0-0
PSU scores 70-79 points	0-0
PSU scores 80 points or more	0-0
PSU shoots 45% or better	0-0
PSU shoots less than 45%	0-0
PSU shoots better than opponent	0-0
Opponent shoots better than PSU or tied	0-0
Opponent scores less than 39 points	0-0
Opponent scores 40-49 points	0-0
Opponent scores 50-59 points	0-0
Opponent scores 60-69 points	0-0
Opponent scores more than 70 points	0-0
Opponent shoots better than 45%	0-0
Opponent shoots less than 45%	0-0
PSU outrebounds opponent	0-0
Opponent outrebounds PSU or tied	0-0
PSU commits 14 or less turnovers	0-0
PSU commits 15 or more turnovers	0-0
PSU makes at least 5 3-pointers	0-0
PSU makes four 3-pointers or less	0-0
Recording 7 or more steals	0-0
Recording 6 or less steals	0-0
Wearing white uniforms	0-0
Wearing blue uniforms	0-0
Wearing white and pink uniforms	0-0
Penn State wins the tip	0-0
Penn State loses the tip	0-0
Penn State scores first	0-0
Opponent scores first	0-0
Playing during the day (before 5 p.m.)	0-0
Playing at night	0-0
On Monday	0-0
On Tuesday	0-0
On Wednesday	0-0
On Thursday	0-0
On Friday	0-0
On Saturday	0-0
On Sunday	0-0
In November	0-0
In December	0-0
In January	0-0
In February	0-0
In March	0-0



NATIONAL POLLS

ASSOCIATED PRESS (PRESEASON)

No.	Team (1st)	Rec.	Pts.	LW
1.	Connecticut (35)	40-0	875	1
2.	South Carolina	29-5	824	8
3.	Notre Dame	37-1	798	2
4.	Tennessee	29-6	749	3
5.	Texas A&M	27-9	702	15
6.	Stanford	33-4	645	6
7.	Duke	28-7	577	9
8.	Baylor	32-5	573	5
9.	Texas	22-12	532	NR
10.	Maryland	28-7	531	11
11.	Kentucky	26-9	522	10
12.	Louisville	33-5	505	4
13.	North Carolina	27-10	504	12
14.	Michigan State	23-10	433	20
15.	California	22-10	423	24
16.	Nebraska	26-7	314	13
17.	West Virginia	30-5	306	7
18.	DePaul	29-7	301	23
19.	Iowa	27-9	236	19
20.	Oregon State	24-11	183	NR
21.	Oklahoma State	25-9	158	21
22.	Dayton	23-8	95	NR
23.	UCLA	13-18	86	NR
24t.	Rutgers	28-9	65	NR
24t.	Syracuse	23-10	65	NR

Others Receiving Votes: LSU 58, Purdue 45, **PENN STATE 43**, Georgia 37, Gonzaga 28, NC State 24, Vanderbilt 23, Oklahoma 17, BYU 14, Arkansas 14, Mississippi State 13, Florida St 10, **South Florida 8**, **Minnesota 8**, St. John's 7, Oregon 5, Western Kentucky 4, Green Bay 4, Middle Tennessee 3, Iowa State 2, **Northwestern 2**, Arizona State 1, Colorado State 1, Albany 1, James Madison 1.

USA TODAY COACHES' TOP 25 (PRESEASON)

No.	Team (1st)	Rec.	Pts.	LW
1.	Connecticut (32)	40-0	800	1
2.	South Carolina	29-5	739	9
3.	Notre Dame	37-1	736	2
4.	Tennessee	29-6	683	8
5.	Texas A&M	27-9	630	10
6.	Stanford	33-4	608	3
7.	Duke	28-7	566	13
8.	Maryland	28-7	543	4
9.	Baylor	32-5	531	6
10.	Kentucky	26-9	484	11
11.	Louisville	33-5	474	5
12.	Texas	22-12	458	NR
13.	North Carolina	27-10	407	7
14.	California	22-10	366	20
15.	Michigan State	23-10	343	23
16.	Nebraska	26-7	305	17
17.	West Virginia	30-5	274	12
18.	DePaul	29-7	246	16
19.	Iowa	27-9	217	NR
20.	Oklahoma State	25-9	164	15
21.	Oregon State	24-11	123	25
22.	Dayton	23-8	117	NR
23.	UCLA	13-18	116	NR
24.	LSU	21-13	65	24
25.	Syracuse	23-10	55	NR

Others Receiving Votes: **PENN STATE 50**, Rutgers 45, Purdue 37, Georgia 29, Vanderbilt 24, Gonzaga 17, BYU 16, Florida State 16, St. John's 16, NC State 14, Iowa State 12, **South Florida 11**, **Ohio State 10**, Arkansas 9, Oklahoma 8, Oregon 8, Middle Tennessee 7, USC 7, Western Kentucky 5, James Madison 3, Arizona St 2, **Albany 1**, Arkansas State 1, Marist 1, CS Northridge 1.

*Bold type indicates 2014-15 Penn State opponent

2014-15 GAME-BY-GAME STARTING LINEUPS

Date	Opponent	Pt Guard	Guard	Forward	Forward	Center
11/2	INDIANA (PA.)	Spann	Moore	Mitchell	Whitted	Waldner

THREE McDONALD'S ALL-AMERICANS

- The Lady Lions tout three McDonald's High School All-Americans on their roster this season in **Candice Agee, Sierra Moore and Brianna Banks**.
- Banks played in the 2011, while Agee and Moore were in the 2012 game.
- Prior to **Coquese Washington** taking over the reigns, the Lady Lions only had one McDonald's High School All-American in program history.

BOUNCEBACK-ABILITY

- Penn State has shown that it is resilient after a loss. The Lady Lions have won their last 20 games following a loss, dating back to the 2010-11 season.
- The Lady Lions last lost consecutive games on Feb. 17 and Feb. 24, 2011.
- Senior forward/center **Tori Waldner** has never lost consecutive games in her collegiate career.

The Lady Lions continued their return to national prominence last season with a third-straight Big Ten regular-season title and fourth consecutive NCAA Tournament appearance. Here are some highlights from the 2013-14 season:

BIG TEN THREE-PEAT

- With a 77-62 win over Michigan on March 1, Penn State clinched a share of its third-straight Big Ten regular-season title with a 13-3 record in conference play.
- This is the first time school history that the Lady Lions have won three consecutive conference regular-season titles (Big Ten or Atlantic 10).
- The Lady Lions join Ohio State (2005-10 and 1982-87) and Iowa (1987-90) as the only Big Ten teams to win three or more consecutive Big Ten titles.
- Penn State has won eight overall regular season crowns (1994, 1995, 2000, 2003, 2004, 2012, 2013, 2014).
- The Lady Lions earned the No. 1 overall seed in the Big Ten Tournament for the seventh time in program history.

FINISHING TOP 15 IN THE AP

- The Lady Lions will finish the season ranked 14th in the Associated Press poll, marking the third-straight season that Penn State has accomplished that feat.
- This is the first time since a six-year stretch from 1991-96 that Penn State has finished the season in the Top 15 in the AP poll in three or more consecutive years.

FOURTH-STRAIGHT 20-WIN SEASON

- With a 78-68 victory over Wisconsin on Feb. 16, the Lady Lions posted their fourth consecutive 20-win season.
- This is the 26th season 20-win season in the program's 50-year history.
- The win also marked the 10th home win of the season, giving the Lions four-straight 10-win home slates.

BIG TEN ROAD WARRIORS

- The Lady Lions picked up their school-record eighth consecutive Big Ten road win with a 71-63 victory at Indiana on Feb. 13.
- The previous school-record for consecutive Big Ten road wins was seven that took place from Jan. 31, 1999 until Jan. 16, 2000.
- The streak was snapped at Nebraska on Feb. 24 with a 94-74 loss, marking Penn State's first Big Ten road loss since an 89-81 loss at Minnesota on Feb. 28, 2012.
- The win over the Hoosiers also marked the seventh Big Ten road victory of the season, which ties the school record (1994, 2000, 2004, 2012).
- The Lady Lions are 20-4 in Big Ten road games since 2011-12.

LADY LIONS AND THE NCAA TOURNAMENT

- The Lady Lions made their 25th NCAA Tournament appearance in 2013-14 and claimed their fourth consecutive tourney berth.
- Penn State is one of only 10 teams to earn 25 or more NCAA Tournament bids, joining Tennessee (33), Georgia (30), Stanford (28), Texas (27), Louisiana Tech (27), Vanderbilt (26), Connecticut (26), Old Dominion (25) and North Carolina (25).
- Penn State earned a No. 3 seed for the second-straight season, marking the first time since a six-year span from 1991 to 1996 that Penn State has been a top three seed in back-to-back tournaments.
- The Lady Lions are one of 13 teams to advance to the NCAA Tournament Second Round each of the last four years.



THE LAST TIME PENN STATE...

SCORING

Player scored 20 points: at Stanford (22, Ariel Edwards), 3/30/14
 Player scored 25 points: vs. Ohio State (29, Ariel Edwards), 3/7/14
 Player scored 30 points: at Indiana (32, Maggie Lucas), 2/13/14
 Player scored 35 points: vs. Georgetown (39, Maggie Lucas), 12/9/12
 Player scored 40 points: vs. Minnesota (49, Kelly Mazzante), 12/28/01
 Two players scored 20 points: vs. Florida (22, Maggie Lucas; 22 Dara Taylor), 3/25/14
 Three players scored 20 pts.: at Nevada (26, Maggie Lucas; 23, Alex Bentley; 21, Zhaque Gray), 11/26/11
 Two players scored 25 points: at Boston College (28, Alex Bentley; 28, Maggie Lucas), 12/2/10
 Player scored 25 points/3 consecutive games: Maggie Lucas (32, at Indiana, 2/13/14; 25 vs. Wisconsin, 2/16/14; 26 vs. Northwestern, 2/20/14)
 Five in double figures: at Northwestern (19, Maggie Lucas; 15, Ariel Edwards; 11, Dara Taylor; 11, Talia East; 11, Peyton Whitted), 2/2/14
 Six in double figures: at Oakland (15, Alex Bentley; 16, Ariel Edwards; 16, Zhaque Gray; 13, Maggie Lucas; 10, Mia Nickson; 10, Gizelle Studevent; 10, Julia Trogele), 11/18/10
 Seven in double figures: at Oakland (15, Alex Bentley; 16, Ariel Edwards; 16, Zhaque Gray; 13, Maggie Lucas; 10, Mia Nickson; 10, Gizelle Studevent; 10, Julia Trogele), 11/18/10
 PSU scored 50 points in a half: at Illinois (51, second half), 1/9/14
 PSU scored 50 points in both halves: vs. St. Francis (Pa.) (55, first half; 62, second half), 11/8/13
 PSU scored 55 points in a half: vs. St. Francis (Pa.) (55, first half; 62, second half), 11/8/13
 PSU scored 60 points in a half: vs. St. Francis (Pa.) (62, second half), 11/8/13
 PSU scored 100 points: vs. St. Francis (Pa.) (W, 117-77), 11/8/13
 PSU scored 100 points in Big Ten game: vs. Illinois (W, 101-80), 2/15/01
 PSU scored 100 points in a home game: vs. St. Francis (Pa.) (W, 117-77), 11/8/13
 PSU scored fewer than 15 points in a half: vs. Wisconsin (13, first half), 2/25/10
 PSU scored fewer than 20 points in a half: vs. Michigan State (19, first half), 3/9/13
 PSU scored fewer than 40 points in a game: vs. Wisconsin (L, 39-71), 2/25/10
 PSU scored fewer than 50 points in a game: vs. Michigan State (L, 46-54), 3/9/13
 PSU scored fewer than 50 points in a Big Ten game: vs. Purdue (L, 49-60), 2/24/11
 OPP scored 50 points in a half: vs. Ohio State (58, first half), 3/7/14
 OPP scored 100 points: at Boston College (Lot, 113-104), 12/2/10
 OPP scored fewer than 20 points in a game: at Dickinson (W, 57-16), 3/6/71
 OPP scored fewer than 30 points in a game: vs. Virginia Tech (W, 66-28), 12/6/11
 OPP scored fewer than 40 points in a game: vs. Wisconsin (W, 84-40), 1/17/13
 OPP scored fewer than 50 points in a game: vs. Ohio State (W, 66-42), 1/16/14
 OPP scored fewer than 50 points in a Big Ten game: vs. Ohio State (W, 66-42), 1/16/14

FIELD GOAL SHOOTING

Player made every shot from the field (min. 7): vs. Michigan St. (Amanda Brown, 8-8), 1/25/07
 PSU shot 55% or better in a game: vs. Illinois (.611), 2/20/13
 PSU shot 55% or better in consecutive games: vs. Northwestern (.682), 3/2/96; vs. Ohio St. (.585), 3/3/96
 PSU shot 60% in a game: vs. Illinois (.611), 2/20/13
 PSU shot below 25% in a game: vs. Michigan State (.224), 3/9/13
 PSU shot below 30% in a game: vs. Michigan State (.224), 3/9/13
 PSU shot below 35% in a game and won: vs. Michigan State (.333), 1/19/14
 PSU shot below 30% in a game and won: vs. Northwestern (.299), 1/3/13
 PSU shot 55% in a half: vs. Michigan (.565, second half), 3/1/14
 PSU shot 60% in a half: at Illinois (.630, second half), 1/9/14
 PSU shot 65% in a half: at Georgetown (.680, second half), 12/8/13
 PSU shot 70% in a half: vs. Virginia Tech (.714, second half), 12/6/11
 PSU shot 55% in both halves: vs. Illinois (.586, first half; .640, second half), 2/20/13
 PSU shot 20% or below in a half: vs. Michigan State (.200, first half), 3/9/13
 PSU shot below 25% in a half: at Georgetown (.206, first half), 12/8/13

THREE-POINT SHOOTING

Player made every shot from the field (min. 4): at Bucknell (4-4, Maggie Lucas), 12/21/11
 Player made 4 three-pointers in a half: vs. Connecticut (4 in the second, Maggie Lucas), 11/17/13
 Player made 5 three-pointers in a half: vs. Michigan State (5 in the second, Maggie Lucas), 3/9/13
 Player made 6 three-pointers in a half: vs. Michigan State (5 in the second, Maggie Lucas), 3/9/13
 Player made 5 three-pointers in a game: vs. Northwestern (5, Maggie Lucas), 2/20/14
 Player made 6 three-pointers in a game: vs. Michigan State (7, Maggie Lucas), 3/9/13
 Player made 7 three-pointers in a game: vs. Michigan State (7, Maggie Lucas), 3/9/13
 Player made 8 three-pointers in a game: at Nebraska (8, Maggie Lucas), 3/3/13
 Player attempted 10 three-pointers in a game: at Illinois (11, Maggie Lucas), 1/9/14
 PSU made 10 three-pointers: vs. North Carolina (14), 11/30/11
 PSU did not make a three-pointer: vs. Hartford (0-8), 12/29/13
 PSU attempted 20 three-pointers: vs. Connecticut (21), 11/17/13
 PSU shot 60% 3FG (min. 5 att.): vs. Illinois (.667; 6-9), 2/20/13

FREE THROW SHOOTING

Player made every shot from FT line (min. 10): at Illinois (10-10, Maggie Lucas), 1/9/14
 PSU shot 90% (min. 10 att.): vs. Michigan (18-19, .947), 3/1/14
 PSU shot below 50% (min. 10 att.): at Purdue (8-21, .381), 1/30/14
 PSU made 30 free throws: vs. St. Francis (Pa.) (37), 11/8/13
 PSU made fewer than five FTs: at Michigan (3), 2/3/11
 PSU attempted 40 free throws: vs. St. Francis (Pa.) (43), 11/8/13
 PSU attempted fewer than five FTs: at Michigan (4), 2/3/11

REBOUNDS

Player had 15 rebounds: at LSU (16, Nikki Greene), 3/26/13
 Player had 20 rebounds: at Cal State Northridge (20, Nikki Greene), 11/24/12
 Two players with double-digit rebs.: at Illinois (11, Ariel Edwards; 10, Peyton Whitted), 1/9/14
 Three players had double-digit rebounds: vs. Ohio State (15, Nikki Greene; 15, Mia Nickson; 10, Maggie Lucas), 2/20/12
 PSU had 60 rebounds: vs. Ohio State (60), 2/20/12
 PSU had 50 rebounds: vs. Indiana (54), 1/22/14
 PSU had 20 or fewer rebounds: vs. Michigan State (20), 1/19/03
 OPP had 20 or fewer rebounds: at Indiana (20), 2/13/11
 PSU had 20 offensive rebounds: vs. Ohio State (20), 1/16/14
 PSU had 25 offensive rebounds: vs. Ohio State (29), 2/20/12

ASSISTS

Player had 10 assists: vs. Minnesota (10, Dara Taylor), 1/26/14
 Player had 10 assists/consecutive games: Helen Darling (12 at LaSalle, 12/8/99; 11 vs. Auburn, 12/11/99; 10 vs. Clemson, 12/19/99)
 Player had 15 assists: vs. North Carolina (15, Alex Bentley), 11/30/11
 PSU had 30 assists: vs. St. Francis (Pa.) (32), 12/2/99
 PSU had fewer than 10 assists: at Stanford (6), 3/30/14
 PSU had fewer than 5 assists: at Michigan State (4), 2/4/10

BLOCKED SHOTS

Player blocked 5 shots: vs. Northwestern (5, Tori Waldner), 2/20/14
 Player blocked 6 shots: vs. Purdue (7, Talia East), 1/12/14
 PSU blocked 10 shots: vs. Purdue (14), 1/12/14
 PSU blocked 0 shots: at Illinois, 1/9/14

STEALS

Player had 7 steals: vs. Alcorn State (7, Dara Taylor), 12/22/13
 Player had 8 steals: vs. NJIT (8, Alex Bentley), 12/23/12
 PSU had 20 steals: vs. Bucknell (21), 12/28/10

TURNOVERS

PSU committed 25 or more: at Illinois (27), 1/9/14
 PSU committed 25 or more and won: at Illinois (27), 1/9/14
 PSU committed 10 or fewer: vs. Wisconsin (7), 2/16/14
 PSU committed 10 or fewer in consecutive games: vs. Minnesota (9), 1/22/04; at Ohio St. (9), 1/25/04
 OPP committed 25 or more: vs. Oregon State (26), 11/30/13

DOUBLE-DOUBLES

Points & rebounds: vs. Wichita State (Talia East, 13 points, 13 rebounds), 3/23/14
 Points & rebounds/consecutive games: Nikki Greene (12 points, 10 rebounds vs. Ohio State, 1/30/11; 16 points, 14 rebounds at Illinois, 1/27/11)
 Points & rebounds/3 consecutive games: Amanda Brown (19 pts., 17 rebs. at Northwestern, 2/11/07; 14 pts., 10 rebs. vs. Minnesota, 2/15/07; 14 pts., 11 rebs. at Iowa, 2/18/07)
 Points & rebounds/4 consecutive games: Angie Potthoff (vs. Northwestern, 1/31/97; at Illinois, 2/2/97; vs. Michigan, 2/7/97; vs. Indiana, 2/9/97; vs. Iowa, 2/16/97; vs. Michigan State, 2/21/97)
 Points & rebounds/5 consecutive games: Angie Potthoff (vs. Northwestern, 1/31/97; at Illinois, 2/2/97; vs. Michigan, 2/7/97; vs. Indiana, 2/9/97; vs. Iowa, 2/16/97; vs. Michigan State, 2/21/97)
 Points & assists: vs. Minnesota (Dara Taylor, 15 points, 10 assists), 1/26/14
 Points & assists/consecutive games: Helen Darling (12 pts., 12 assts. at La Salle, 12/8/99; 10 pts., 11 assts. vs. Auburn, 12/11/99)
 Two players had double-doubles: vs. Ohio State (Nikki Greene, 25 pts., 15 rebs.; Mia Nickson, 18 pts., 15 rebs.; Maggie Lucas, 12 pts., 10 rebs.), 2/20/12
 Three players had double-doubles: vs. Ohio State (Nikki Greene, 25 pts., 15 rebs.; Mia Nickson, 18 pts., 15 rebs.; Maggie Lucas, 12 pts., 10 rebs.), 2/20/12
 15 points & 15 rebounds: at LSU (Nikki Greene, 16 pts., 16 rebs), 3/26/13
 20 points and 10 rebounds: vs. Ohio State (Ariel Edwards, 29 points, 10 rebounds), 3/7/14

MARGIN OF VICTORY

PSU won by 20-30 points: vs. Florida (22), 3/25/14
 PSU won by 20-30 points in a Big Ten game: at Ohio State (20), 2/9/14
 PSU won consecutive Big Ten games by 20+ pts.: vs. Wisconsin (44), 1/17/13; vs. Nebraska (22), 1/13/13; at Michigan St. (21), 1/6/13
 PSU won by 31-40 points: vs. Bucknell (43), 11/20/13
 PSU won by 41-50 points: vs. Bucknell (43), 11/20/13
 PSU won by 51+ points: vs. Fairleigh Dickinson (57), 12/2/12
 PSU lost by 20-30 points: at Stanford (25, 82-57), 3/30/14
 PSU lost by 20-30 points in a Big Ten game: at Nebraska (20; 94-74), 2/24/14
 PSU lost by 31+ points: vs. Wisconsin (32), 2/25/10

MISCELLANEOUS

Led PSU in points/rebounds/assists: Dara Taylor vs. Florida (22 pts., 8 rebs., 4 asst.), 3/25/14
 Hit "final seconds" (under 10 seconds) game-winning shot: Julia Trogele at Illinois (9 sec.), 1/27/11
 Hit "final minute" game-winning shot: Alex Bentley at Minnesota (3-ptr. with :38.9 remaining), 2/5/12
 Player played every minute: at Nebraska (Dara Taylor), 2/24/14
 Player played more than 40 min.: at Dayton (Alex Bentley, 46; Zhaque Gray, 44; Mia Nickson, 41), 11/12/10
 Committed 10 or fewer fouls: vs. Virginia Tech (9), 12/6/11
 Committed 30 or more fouls: vs. Iowa State (32), 11/25/11
 PSU rallied from a 10-pt. deficit to win: vs. Wichita State (down by 11 at 6:39 in 1st, won 62-56), 3/23/14
 PSU rallied from a 15-pt. deficit to win: at CS-Northridge (down by 17 at 5:52 in 1st half, won 85-73), 11/24/12
 PSU had a 5-game winning streak: 6 games, 1/16/14-2/2/14
 Hit "final minute" game-winning streak: 11 games, 12/9/12 - 1/27/13
 PSU had a 5-game losing streak: 6 games, 1/28/10 - 2/14/10
 PSU went undefeated at home: 2012-13 season
 PSU sold out the BJC: Purdue, 2/29/04

OVERTIME

PSU played an OT game: at Boston College (L, 113-104), 12/2/10
 PSU won an OT game: at Oakland (96-89), 11/18/10
 PSU lost an OT game: at Boston College (L, 113-104), 12/2/10
 PSU played two or more OT games in a season: 2010-11 season (three)
 PSU won two or more OT games in a season: 2010-11 season (two)

RANKINGS

Played the No. 1 team in the AP poll: vs. Connecticut (L, 71-52), 11/17/13
 Played the No. 1 team in the Coaches poll: vs. Connecticut (L, 71-52), 11/17/13
 Defeated the No. 1 team in the AP poll: at Virginia (73-71), 1/3/91
 Defeated Top 10 opponent: vs. #8/11 Ohio State (84-66), 2/20/12
 Defeated Top 10 opponent on the road: at #7 Purdue (47-42), 1/2/04
 Defeated Top 10 opponent by double digits: vs. #8/11 Ohio State (84-66), 2/20/12
 Played consecutive Top 10 teams: at #2/3 Texas 11/14/04, at #6/6 Duke 11/19/04
 Defeated Top 25 opponent: at #16/19 Purdue (75-72), 1/30/14
 Defeated Top 25 opponent on the road: at #16/19 Purdue (75-72), 1/30/14
 Defeated Top 25 opponent by double digits: at #23/22 Iowa (87-71), 1/5/14



2015 RECRUITING CLASS

LADY LIONS SECURE TOP 10 CLASS

- The four-player class is ranked eighth by Prospect Nation, ninth by All-Star Girls Report, 10th by Blue Star Basketball and 11th by ESPN/HoopGurlz and Collegiate Girls Basketball Report.
- The class features two Top 20 players and three Top 100 signees in both the Blue Star Basketball and Prospect Nation rankings.
- This is believed to be the highest-ranked class in program history.
- This is the third Top 15 class to sign under Washington, joining the 2009 and 2013 classes that were ranked 14th by ESPN/Hoopgurlz.
- It is also the fourth Top 25 recruiting class for Washington (2010 class was 22nd).

AMARI CARTER * 5-8 * Guard * Washington, D.C. * St. John's College

- A 5-7 guard, Carter is ranked as the #31 overall recruit by both ESPN/HoopGurlz and Collegiate Girls Basketball Report.
- She is also rated 19th by Prospect Nation and Blue Star Basketball and 32nd by All Star Girls Report.
- She averaged 17.5 points, 4.0 rebounds, 4.0 assists and 2.0 steals for St. John's College High School in Washington, D.C.
- She led the team to a 25-7 overall record and the 2014 DC State Athletic Association championship.
- Last season, Carter was named to the Washington Post All-Metropolitan first team and All-WCAC first team.
- As a sophomore, Carter helped the Cadets to the 2013 WCAC Championship en route to collecting second team All-WCAC honors and an All-Metropolitan honorable mention selection.
- She is a 2014-15 Sporting News Preseason High School All-America honorable mention choice.
- Carter has participated in USA Basketball U16 (2013) and U17 (2014) Trials.
- She plays her AAU ball with the Maryland Lady Terps.

TENIYA PAGE * 5-7 * Point Guard * Chicago Heights, Ill. * Marian Catholic

- Page, a 5-7 point guard out of Marian Catholic in Chicago, Ill., is the 21st-ranked prospect by both ESPN/HoopGurlz and Collegiate Girls Basketball Report.
- She also comes in ranked 17th by Blue Star Basketball, 20th by Prospect Nation and 26th by All Star Girls Report.
- A 2014-15 Sporting News Preseason High School All-America honorable mention selection, Page has 1,135 career points entering her final season for the Spartans.
- Last season, she accounted for 14.4 points, 4.7 assists, 3.5 rebounds and 1.8 steals per game to help Marian Catholic to a 28-5 overall record, a East Suburban Catholic Conference championship and a third-place finish in the Illinois High School Association Class 4A Basketball Tournament.
- Page was selected first team All-State by the Illinois Basketball Coaches Association, second team All-State by the Associated Press, first team All-State by The Northwest Indiana Times and third team All-State by the Chicago Tribune in 2014.
- As a sophomore, Page guided Marian Catholic to the IHSA 4A State Championship with a 33-1 record on the season.
- Page has participated in USA Basketball U16 (2013) and U17 (2014) Trials.
- She plays AAU basketball for Midwest Elite.

ASHANTI THOMAS * 6-5 * Post * Lexington, Ky. * Lafayette

- Thomas, a 6-2 post player out of Lexington, Ky., is the 87th-ranked recruit by Prospect Nation and is ranked 106th and 109th by All-Star Girls Report and Blue Star Basketball, respectively.
- She is a candidate for Kentucky Miss Basketball entering her senior season.
- As a junior, she led the Generals to a 29-4 overall record with a 9-1 mark in districts en route to a District and Regional championships.
- Thomas averaged 9.2 points and 8.2 rebounds per game last season on the way to All-State third team accolades from KySports.tv.
- During her sophomore campaign, Thomas accounted for 10.3 points and 9.5 rebounds per outing on the way to claiming Fayette County Public Schools All-City first team.
- Thomas plays AAU basketball for Mac Irvin Lady Fire.

JAYLEN WILLIAMS * 6-4 * Post * Braintree, Mass. * Archbishop Williams

- A 6-4 post player, Williams is the ranked 80th by Blue Star Basketball Report after missing her junior campaign at Archbishop Williams due to a knee injury.
- The 2014-15 Sporting News Preseason High School All-America honorable mention honoree accounted for 8.5 points, a team-best 11.6 rebounds, 3.5 blocks and 4.3 assists per game as a sophomore.
- Williams helped the Bishops to the 2013 Massachusetts Interscholastic Athletic Association (MIAA) Division 3 State Championship with a 23-5 record.
- She played her AAU basketball for Lady Rivals AAU select team under the guidance of Scott Hazelton. Williams and the Rivals squad have won two state championships.
- She also has a strong athletic background in her family as her father, Brent, played in the NFL for 11 years with the Jets, Seahawks and Patriots. Her brother, Brennan, has played for the Houston Texans and her other brother, Camren, is a junior linebacker for the Ohio State football team.

RECORD BOOK

CAREER BLOCKS

1.	268	Kim Calhoun, 1993-96
2.	215	Nikki Greene, 2010-13
3.	192	Mary Donovan, 1977-81
4.	189	Rashana Barnes, 1999-02
5.	185	Andrea Garner, 1997-00
6.	172	Amanda Brown, 2004-07
7.	140	Tina Henry, 1990-93
8.	102	Talia East, 2011-14
9.	94	Jess Brungo, 2001-04
10.	92	Bethany Collins, 1985-88
11.	89	Tori Waldner, 2012-present
	89	Kathy Phillips, 1989-92
13.	87	Reicina Russell, 2003-04
	87	Vicki Link, 1984-87
15.	81	Kahadeejah Herbert, 1982-85
16.	75	Tyra Grant, 2007-10
17.	68	Kelly Mazzante, 2001-04
18.	67	Janessa Wolff, 2008-10
19.	66	Adrie DeVries, 1987-90
20.	61	Tanisha Wright, 2002-05

as of start of 2014-15 season.

MILESTONE WATCH

Milestone Watch

Milestone	Player	Current Total
300 points	Tori Waldner	266
200 points	Candice Agee	150
	Kalayah Mitchell	144
100 points	Peyton Whitted	91
	Sierra Moore (career)	63
	Alex Harris	57
400 rebounds	Tori Waldner	331
200 rebounds	Kalayah Mitchell	140
	Candice Agee	122
100 rebounds	Alex Harris	96
	Peyton Whitted	88
50 assists	Kalayah Mitchell	28
100 blocks	Tori Waldner	89
50 blocks	Candice Agee	34
50 steals	Tori Waldner	43

PSU IN THE POLLS

Week of	AP	Coaches
Preseason	RV	RV





COQUESE WASHINGTON

Head Coach
8th Season

PENN STATE LADY LION BASKETBALL

Coquese Washington was introduced as the fifth head coach of the Penn State women's basketball program on April 23, 2007. Washington is the first female African-American head coach in Penn State history.

Washington led the 2013-14 Lady Lion squad to a feat that no other Penn State team has accomplished, winning three consecutive conference regular-season titles with a 13-3 record in Big Ten action. Led by the play of a strong senior class, the Lady Lions advanced to the NCAA Sweet Sixteen for the second time in three years. The graduating class of Maggie Lucas, Ariel Edwards, Dara Taylor and Talia East produced 101 wins, which is the second-highest total by a Lady Lion class.

Along the way to collecting her second Big Ten Player of the Year award, Lucas finished second in school history and fourth in Big Ten history in scoring (2,510) and broke the Penn State and Big Ten records for career three-pointers made (365) and career free throw percentage (.907). She was selected in the second round of the 2014 WNBA Draft by the Phoenix Mercury. Edwards became the 36th member of the 1,000-point club en route to collecting All-Big Ten first team accolades. She

finished seventh in the Big Ten in scoring (15.7) and was 11th in free throw percentage (.814). Edwards signed a free agent contract with the WNBA's Tulsa Shock. Taylor also had a stellar senior campaign and collected the Big Ten Defensive Player of the Year award after leading the conference in steals. East also earned postseason honors as she was named All-Big Ten honorable mention. In addition, Washington was honored with her third consecutive Big Ten Coach of the Year honor.

The Lady Lions continued their run in the national spotlight in 2012-13 as they collected their second-straight Big Ten regular-season title and seventh overall with a 26-6 overall record and 14-2 mark in conference play. In each of Washington's first six years, Penn State improved its Big Ten win total. The Lady Lions posted their third consecutive 25-win season, joining the 1993-94, 1994-95 and 1995-96 squads as the only teams in program history to accomplish the feat. The Lady Lions were consistently ranked in the Top 10 for most of the season and finished eighth in the Associated Press Top 25 and 12th in the USA Today Sports Coaches' Poll.

With another stellar campaign, the accolades continued to roll in for the Lady Lions. Washington was selected as the Big Ten Coach of the Year by the media for the second-straight season and became just the fifth mentor in Big Ten history to win back-to-back Coach of the Year accolades. She was also the WBCA Region 6 Coach of the Year and a finalist for WBCA National Coach of the Year for the second-straight season.

The awards also piled up for Penn State's dynamic backcourt of Lucas and Alex Bentley. Lucas was selected as the Big Ten Player of the Year, was a Wade Trophy Finalist and was an All-America choice by four outlets, including the WBCA (honorable mention), Associated Press (second team), USBWA (first team) and Full Court (second team). She is just the third Lady Lion in program history to win Big Ten Player of the Year honors. Bentley earned her third-straight first team All-Big Ten award and honorable mention All-America bids from the WBCA and Associated Press. She was also selected as the 2013 recipient of the Frances Pomeroy Naismith Award, which is presented to the nation's outstanding female collegian 5-8 and under. Nikki Greene also capped a stellar career for the Lady Lions with third team All-Big Ten accolades. She also became the first player in school history to accumulate 1,000 points, 900 rebounds and 200 blocks.

Both Bentley and Greene heard their names called on WNBA Draft night. Bentley was selected with the 13th overall pick by the Atlanta Dream to become the highest draft pick for the Lady Lions since Tanisha Wright (12th) in 2005. Greene was the 26th overall selection by the Phoenix Mercury.

For her efforts in rebuilding the Penn State program, Washington was honored as the Big Ten Coach of the Year and the WBCA Region 6 Coach of the Year, making her a finalist for WBCA National Coach of the Year. The accolades were not just limited to Washington; all five Lady Lion starters earned All-Big Ten recognition, including first team bids for Bentley and Lucas. Both Bentley and Lucas also garnered honorable mention All-America honors from the WBCA and Associated Press, respectively.

The Lady Lions returned to the national stage in Washington's fourth year with a second-place finish in the Big Ten regular season standings, a runner-up finish in the Big Ten Tournament and a berth in the NCAA Tournament. Penn State tallied its 23rd 20-win season with a 25-10 overall record and an

THE WASHINGTON FILE

COACHING RESUME

2007-pres. - Head Coach, Penn State
2013 - Asst. Coach, USA Basketball World U. Games
2013-pres. - Vice President/President-Elect, WBCA
2012-pres. - Kay Yow Cancer Fund Board of Directors
2011-pres. - NCAA WBB Issues Committee
2010-13 - Treasurer, WBCA Executive Committee
2008-pres. - WBCA Board of Directors
2009-12 - USA Basketball Women's Jr. National Comm.
2005-07 - Associate Head Coach, Notre Dame
1999-05 - Assistant Coach, Notre Dame

PLAYING EXPERIENCE

2002-03 - WNBA's Indiana Fever
2000-02 - WNBA's Houston Comets
1998-99 - WNBA's New York Liberty
1997-98 - ABL's Portland Power
1989-93 - University of Notre Dame

EDUCATION

Notre Dame '92, B.A. History
Notre Dame Law School '97, Juris Doctorate

AWARDS

- ❖ 2012, 2013, 2014 Big Ten Coach of the Year
- ❖ 2012, 2013 WBCA Region 6 Coach of the Year
- ❖ 2012, 2013 WBCA National Coach of the Year Finalist
- ❖ 2011, 2013 BCA Female Coach of the Year
- ❖ 2009 Greater Flint Hall of Fame Inductee
- ❖ 2008 WBCA "Rising Star" Award Winner

FAMILY

Husband: Raynell Brown
Children: Quenton (9), Rhaiyna (5)

11-5 mark in conference play. The Lady Lions worked their way back to the "Big Dance" for the first time since 2004-05.

Washington came to Happy Valley after eight seasons as an associate head coach and assistant coach under Muffet McGraw at Notre Dame, her alma mater. During Washington's eight years on the bench, Notre Dame amassed a 188-69 record with eight NCAA Tournament appearances, including four Sweet Sixteen runs and a National Championship in 2001.

Washington was a four-year starting point guard for Notre Dame under McGraw and was the team captain on Notre Dame's first-ever NCAA Tournament team. She was a two-time All-Midwestern Collegiate Conference (MCC) selection and led Notre Dame to three MCC Tournament titles.

The epitome of a student-athlete, Washington graduated from Notre Dame in 1992, a full year ahead of schedule, with a bachelor's degree in history. She went on to attain "Double Domer" status in 1997 after earning her Juris Doctorate from the Notre Dame Law School.

Washington juggled finishing her law degree with the start of her professional basketball career. She returned to the hardwood as a professional in 1997-98, playing for the ABL's Portland Power before spending a two-year stint with the WNBA's New York Liberty (1998-99). Washington moved to Houston for the 2000 season, where she played an instrumental role in leading the Comets to the WNBA title. Washington guided the Fever to their first-ever playoff berth and became the first player in WNBA history to lead three different teams to the postseason.

In addition to assisting with the efforts of the Pink Zone at Penn State to raise money and awareness for breast cancer, Washington created Coquese's Drive for the Women's Resource Center. Coquese's Drive for the Women's Resource Center has raised more than \$118,000 to aid in the fight against domestic violence.

Washington is currently serving on the 29-member WBCA Board of Directors, where she is the Vice President/President-Elect of the Executive Committee after a three-year stint as Treasurer.

A native of Flint, Mich., Washington and her husband, Raynell Brown, have a son, Quenton (9), and a daughter, Rhaiyna (5). They reside in Port Matilda, Pa.

Washington vs. Opponents

Alcorn State	1-0	Michigan	10-3
Arizona	1-0	Michigan State	5-8
Army	1-0	Middle Tennessee	1-0
Boston College	0-1	Minnesota	7-7
Bucknell	6-0	Mississippi	1-0
Buffalo	1-0	Monmouth	1-0
Cal Poly	1-0	Nebraska	3-2
CS-Northridge	1-0	Nevada	1-0
Charlotte	1-0	NJIT	2-0
Connecticut	0-4	North Carolina	1-0
Coppin State	1-0	Notre Dame	0-1
Dayton	2-1	Northwestern	9-1
Delaware	1-1	Oakland	2-0
DePaul	0-1	Ohio State	6-7
Detroit	1-0	Old Dominion	0-1
Drexel	2-1	Oregon State	1-0
Duke	1-0	Pittsburgh	2-1
Fair Dickinson	1-0	Prairie View A&M	1-0
Florida	1-0	Purdue	4-9
Fordham	1-0	Rider	1-0
Florida State	0-1	St. Francis (Pa.)	1-0
Georgetown	3-0	South Carolina	4-1
Georgia Tech	0-1	South Dakota St.	1-1
Hartford	2-0	Stanford	0-1
Hofstra	0-1	Stony Brook	1-0
Holy Cross	1-0	Syracuse	0-1
Howard	1-0	Texas A&M	2-1
Illinois	10-3	UTEP	1-0
Illinois State	1-0	Texas Tech	1-1
Indiana	7-4	Utah	1-0
Iowa	7-6	Virginia Tech	2-0
Iowa State	1-0	Wagner	1-0
Lafayette	1-0	Washington State	1-0
LSU	1-1	Wichita State	1-0
Maine	1-0	Wisconsin	6-6
UMES	1-0	UW-Green Bay	0-1
Miami (Fla.)	0-1	Xavier	0-1





#1 Candice Agee

Jr. * C * 6-6 * Victorville, Calif./Silverado

Highlights:

- ♦ Ranks 23rd in program history in blocked shots per game (0.6 bpg).

Notable:

- ♦ 2012 McDonald's High School All-American.
- ♦ Competed for the United States in the FIBA U19 World Championship (July 2013) and FIBA Americas U18 Championship (August 2012).

14-15 GAME-BY-GAME

OPPONENT	Min.	FG	3FG	FT	O-D-R	PF	A	TO	B	S	Pts
TOWSON											
WNIT											
WNIT											
WNIT											
ST. BONAVENTURE											
vs. Liberty											
vs. Georgia State/Samford											
at Syracuse											
WAGNER											
at Hartford											
RIDER											
USF											
at Iowa											
at Michigan											
ILLINOIS											
at Wisconsin											
RUTGERS											
at Nebraska											
at Ohio State											
INDIANA											
NORTHWESTERN											
at Minnesota											
at Rutgers											
MARYLAND											
at Purdue											
MICHIGAN ST.											
MINNESOTA											
at Maryland											
OHIO STATE											
WISCONSIN											

AGEE'S CAREER/SEASON HIGHS

	SEASON HIGHS	CAREER HIGHS
Points	n/a	16 vs. Bucknell (11/20/13)
Rebs.	n/a	9 vs. Fairleigh Dickinson (12/2/12)
Assists	n/a	1 (10x) last vs. Ohio State (3/7/14)
Steals	n/a	2 vs. NJIT (12/23/12)
Blocks	n/a	3 vs. Illinois (2/20/13)
Minutes	n/a	21 vs. Bucknell (11/20/13)
FGM	n/a	7 vs. Bucknell (11/20/13)
FGA	n/a	10 vs. Bucknell (11/20/13)
3FGM	n/a	n/a
3FGA	n/a	n/a
FTM	n/a	4 vs. Illinois (2/20/13)
FTA	n/a	8 vs. Illinois (2/20/13)

AGEE'S MISCELLANEOUS STATS

Category	Season	Career	Last Time
Double Figure Scoring	n/a	1	16 vs. Bucknell (11/20/13)
20-point games	n/a	n/a	
Double Figure Rebounds	n/a	n/a	
5-plus Rebounds	n/a	7	6 vs. Minnesota (1/26/14)
5-plus Assists	n/a	n/a	
3-plus Blocks	n/a	1	3 vs. Illinois (2/20/13)
Double-Doubles	n/a	n/a	

AGEE'S CAREER STATS

Year	GP-GS	MIN	FG-A	PCT	3FG-A	PCT	FT-A	PCT	REB	AVG	PF-O	A	TO	B	S	PTS	AVG
2012-13	26-0	204	20-54	.370	0-0	.000	11-20	.550	17-31-48	1.8	33-0	2	13	13	4	51	2.0
2013-14	32-3	330	34-84	.405	0-0	.000	31-61	.508	31-43-74	2.3	54-1	8	28	21	4	99	3.1
CAREER	58-3	534	54-138	.391	0-0	.000	42-81	.519	48-74-122	2.1	87-1	10	41	34	8	150	2.6





#3 Brianna Banks

RS-Sr. * G * 5-9 * Newnan, Ga./Fayette County (Connecticut)

2014-15 Season:

- Will sit out the 2014-15 season due to NCAA Transfer Rules after transferring from Connecticut.
- Has one year of eligibility remaining.

2013-14 Season (at Connecticut):

- Started eight-straight games (November 20 - December 22).
- Dished out five assists to go with four points and three steals against UCF (2/19).
- Notched three steals to compliment four points, three assists and five rebounds at Cincinnati (2/1).
- Registered seven points three assists and three steals at UCF (1/1).
- Connected on three of her four shots from the field en route to eight points, five rebounds, four assists and three steals against UC Davis (12/5).
- Had a season-high 12 points with a career-best seven rebounds in the win over Ohio State (12/1).
- Was 4-for-5 from the field, including 3-for-3 from three-point range, on the way to 12 points against Monmouth (11/23).
- Chipped in with 10 points on 4-6 shooting in a season-high 31-minutes of action against Oregon (11/20).
- Had nine points and three rebounds at #8/7 Maryland (11/15).

2012-13 Season (at Connecticut):

- Finished sixth on the team in scoring (7.3).
- Had 12 points to go along with four rebounds at Marquette (1/12).
- Tallied 18 points on 8-of-13 shooting and pulled in six rebounds against Oakland (12/19).
- Registered 10 points and two steals against #10/10 Penn State (12/6).
- Connected on three of her four three-point attempts en route to 11 points against #9/10 Maryland (12/3).
- Had a career-high 20 points thanks to a 6-for-10 shooting night, including a 4-for-5 effort from beyond the arc, against Colgate (11/28).
- Had a balanced statistical night with 12 points, six assists, two rebounds and a steal with only one turnover in 20 minutes against Wake Forest (11/22).
- Opened the season with a perfect 5-for-5 shooting night for 10 points against Charleston (11/11).

2011-12 Season (at Connecticut):

- Shot 50.5 percent from the field.
- Hit on all three of her shots from the field en route to eight points with four assists and two steals at Marquette (2/25).
- Was 5-for-5 from the field and finished with 12 points, two rebounds and two steals against Fairfield (12/29).
- Collected 17 points via a 7-for-10 shooting effort and 3-for-3 night at the free throw line against Fairleigh Dickinson (11/25).
- Tallied 12 points thanks to a 5-for-7 shooting night against Pacific (11/15).

High School:

- Averaged 16.2 points, 5.5 rebounds, 5.1 assists and 5.0 steals per game in her final season at Fayette County High School, which ended in a State Championship.
- Honored as a 2011 McDonald's All-American and WBCA Honorable Mention All-American in addition to being named "Miss Basketball" in the state of Georgia.
- Honored as the Fayette County Player of the Year by the *Fayette County News* and selected to the All-State first team in 2011.
- Led the West Team with 17 points on 7-of-12 shooting in the 2011 McDonald's All-American Game.
- Was a second team All-State selection and the Coweta County Player of the year during her junior season.
- Rated as the No. 24 overall recruit by ESPN Hoopgurlz and the No. 15 overall prospect by the All-Star Girls Report.
- Tabbed as the No. 11 recruit nationally by Blue Star.
- Honored as a first team All-Metro selection by the *Atlanta Journal-Constitution* in 2009-10.
- Selected as the 2010 Coweta County Player of the Year by the *Times-Herald*.

BANKS' CAREER STATS

Year	GP-GS	MIN	FG-A	PCT	3FG-A	PCT	FT-A	PCT	REB	AVG	PF-O	A	TO	B	S	PTS	AVG
2011-12*	32-0	393	46-91	.505	3-24	.125	19-27	.704	5-30-35	1.1	27-0	32	31	3	25	114	3.6
2012-13*	21-0	359	56-117	.479	18-52	.346	23-33	.697	6-30-36	1.7	22-0	35	22	4	25	153	7.3
2013-14*	37-8	527	49-103	.476	13-44	.295	19-29	.655	20-37-57	1.5	42-1	45	27	6	34	130	3.5
CAREER	90-8	1279	151-311	.486	34-120	.283	61-89	.685	31-97-128	1.4	91-1	112	80	13	84	397	4.4

* - at Connecticut

10-Time Big Ten Champions • Two-Time Big Ten Tournament Champions • 2000 NCAA Final Four • 25 NCAA Tournament Appearances





#5 Sierra Moore

RS-So. * G * 5-11 * Hanover, Pa./Delone Catholic (Duke)

Highlights:

- Sat out the 2013-14 season due to NCAA Transfer Rules.
- Selected as a team tri-captain.

2014-15 Season Notes:

- Scored 15 of her team-best 18 points over the final 11:44 of the contest to propel the Lady Lions to an exhibition win over IUP (11/2).

Notable:

- Appeared in 25 games as a freshman at Duke.
- Garnered Gatorade Player of the Year and Associated Press Class AA Player of the Year honors in the state of Pennsylvania as a high school senior year.
- Was a McDonald's High School All-American in 2011-12.
- Holds the York-Adams Interscholastic Athletic Association (YAIAA) scoring record with 2,595 points at Delone Catholic.
- Was also a track standout, finishing in the Top 10 in the State Championships in the 200-meters (7th in 2009 and 2010) and 4x100 relay (4th in 2009).

14-15 GAME-BY-GAME

OPPONENT	Min.	FG	3FG	FT	O-D-R	PF	A	TO	B	S	Pts
TOWSON											
WNIT											
WNIT											
WNIT											
ST. BONAVENTURE											
vs. Liberty											
vs. Georgia State/Samford											
at Syracuse											
WAGNER											
at Hartford											
RIDER											
USF											
at Iowa											
at Michigan											
ILLINOIS											
at Wisconsin											
RUTGERS											
at Nebraska											
at Ohio State											
INDIANA											
NORTHWESTERN											
at Minnesota											
at Rutgers											
MARYLAND											
at Purdue											
MICHIGAN ST.											
MINNESOTA											
at Maryland											
OHIO STATE											
WISCONSIN											

MOORE'S CAREER/SEASON HIGHS

	SEASON HIGHS	CAREER HIGHS
Points	n/a	10 vs. CSU-Bakersfield (12/21/13)
Rebs.	n/a	5 vs. Iona (11/18/12)
Assists	n/a	3 vs. CSU-Bakersfield (12/21/13)
Steals	n/a	3 vs. Iona (11/18/12)
Blocks	n/a	1 vs. Monmouth (12/30/12)
		1 at Xavier (11/25/12)
Minutes	n/a	22 vs. CSU-Bakersfield (12/21/13)
FGM	n/a	4 vs. Monmouth (12/30/12)
FGA	n/a	8 vs. Iona (11/19/12)
3FGM	n/a	n/a
3FGA	n/a	n/a
FTM	n/a	4 vs. CSU-Bakersfield (12/21/13)
FTA	n/a	6 vs. CSU-Bakersfield (12/21/13)

italics indicate at Duke

MOORE'S MISCELLANEOUS STATS

Category	Season	Career	Last Time
Double Figure Scoring	n/a	1	10 vs. CSU-Bakersfield (12/21/13)
20-point games	n/a	n/a	
Double Figure Rebounds	n/a	n/a	
5-plus Rebounds	n/a	1	5 vs. Iona (11/18/12)
5-plus Assists	n/a	n/a	
3-plus Steals	n/a	1	3 vs. Iona (11/18/12)
Double-Doubles	n/a	n/a	

MOORE'S CAREER STATS

Year	GP-GS	MIN	FG-A	PCT	3FG-A	PCT	FT-A	PCT	REB	AVG	PF-O	A	TO	B	S	PTS	AVG
2012-13*	25-0	194	26-58	.448	0-0	.000	11-22	.500	11-13-24	1.0	21-0	12	6	2	11	63	2.5
CAREER	25-0	194	26-58	.448	0-0	.000	11-22	.500	11-13-24	1.0	21-0	12	6	2	11	63	2.5

* - at Duke





#10 Keke Sevillian

So. * G * 5-7 * Goodrich, Mich./Goodrich

2014-15 Season Notes:

- Tallied four points, four rebounds, three assists and three steals in the exhibition win over IUP (11/2).

Notable:

- Led Goodrich High School in Michigan to its first-ever Class B State Championship in 2011-12 with a perfect 28-0 record.
- Holds the Goodrich High School record in the 300-meter hurdles and 200-meter dash and finished second in the state championships in the 300-meters hurdles her freshman and sophomore seasons.
- Father, Clarence, was a wide receiver for the Vanderbilt football team from 1989-92 and ranks in the school's Top 10 in career receiving yards.
- Aunt, Nicole Hendrix, played basketball at Stanford from 1991-94, winning a National Championship in 1992.

14-15 GAME-BY-GAME

OPPONENT	Min.	FG	3FG	FT	O-D-R	PF	A	TO	B	S	Pts
TOWSON											
WNIT											
WNIT											
WNIT											
ST. BONAVENTURE											
vs. Liberty											
vs. Georgia State/Samford											
at Syracuse											
WAGNER											
at Hartford											
RIDER											
USF											
at Iowa											
at Michigan											
ILLINOIS											
at Wisconsin											
RUTGERS											
at Nebraska											
at Ohio State											
INDIANA											
NORTHWESTERN											
at Minnesota											
at Rutgers											
MARYLAND											
at Purdue											
MICHIGAN ST.											
MINNESOTA											
at Maryland											
OHIO STATE											
WISCONSIN											

SEVILLIAN'S CAREER/SEASON HIGHS

	SEASON HIGHS	CAREER HIGHS
Points	n/a	8 vs. St. Francis (Pa.) (11/8/13)
Rebs.	n/a	3 vs. St. Francis (Pa.) (11/8/13)
Assists	n/a	1 (5x) last vs. Minnesota (1/26/14)
Steals	n/a	4 vs. St. Francis (Pa.) (11/8/13)
Blocks	n/a	n/a
Minutes	n/a	18 vs. St. Francis (Pa.) (11/8/13)
FGM	n/a	2 vs. Illinois State (11/30/13)
		2 vs. St. Francis (Pa.) (11/8/13)
FGA	n/a	6 vs. St. Francis (Pa.) (11/8/13)
3FGM	n/a	1 (4x) last vs. Ohio State (1/16/14)
3FGA	n/a	3 (3x) last vs. Ohio State (1/16/14)
FTM	n/a	4 vs. St. Francis (Pa.) (11/8/13)
FTA	n/a	4 vs. St. Francis (Pa.) (11/8/13)

SEVILLIAN'S MISCELLANEOUS STATS

Category	Season	Career	Last Time
Double Figure Scoring	n/a	n/a	
20-point games	n/a	n/a	
Double Figure Rebounds	n/a	n/a	
5-plus Rebounds	n/a	n/a	
5-plus Assists	n/a	n/a	
3-plus Steals	n/a	n/a	
Double-Doubles	n/a	n/a	

SEVILLIAN'S CAREER STATS

Year	GP-GS	MIN	FG-A	PCT	3FG-A	PCT	FT-A	PCT	REB	AVG	PF-O	A	TO	B	S	PTS	AVG
2013-14	22-0	120	8-28	.286	4-13	.308	11-13	.846	1-11-12	0.5	19-0	5	15	0	8	31	1.4
CAREER	22-0	120	8-28	.286	4-13	.308	11-13	.846	1-11-12	0.5	19-0	5	15	0	8	31	1.4

10-Time Big Ten Champions • Two-Time Big Ten Tournament Champions • 2000 NCAA Final Four • 25 NCAA Tournament Appearances





#11 Alex Harris

So. * F * 6-3 * Lorain, Ohio/Lorain

Notable:

- ♦ Appeared in 29 contests as a freshman.
- ♦ Had three double-digit rebounding performances as a freshman and 10 outings with five or more rebounds.
- ♦ Collegiate Girls Basketball Report and All-Star Girls Report both rated her as the 49th-ranked recruit .
- ♦ Named 2012-13 Division 1 Lorain County Player of the Year.

14-15 GAME-BY-GAME

OPPONENT	Min.	FG	3FG	FT	O-D-R	PF	A	TO	B	S	Pts
TOWSON											
WNIT											
WNIT											
WNIT											
ST. BONAVENTURE											
vs. Liberty											
vs. Georgia State/Samford											
at Syracuse											
WAGNER											
at Hartford											
RIDER											
USF											
at Iowa											
at Michigan											
ILLINOIS											
at Wisconsin											
RUTGERS											
at Nebraska											
at Ohio State											
INDIANA											
NORTHWESTERN											
at Minnesota											
at Rutgers											
MARYLAND											
at Purdue											
MICHIGAN ST.											
MINNESOTA											
at Maryland											
OHIO STATE											
WISCONSIN											

HARRIS' CAREER/SEASON HIGHS

	SEASON HIGHS	CAREER HIGHS
Points	n/a	8 vs. Bucknell (11/20/13)
Rebs.	n/a	11 vs. Illinois State (11/30/13)
		11 vs. Bucknell (11/20/13)
Assists	n/a	2 vs. Illinois State (11/30/13)
Steals	n/a	1 (6x) last at Indiana (2/13/14)
Blocks	n/a	3 at Purdue (1/30/14)
		3 vs. St. Francis (Pa.) (11/8/13)
Minutes	n/a	22 vs. Fordham (11/10/13)
FGM	n/a	3 vs. Bucknell (11/20/13)
FGA	n/a	5 vs. Purdue (1/12/14)
		5 vs. Oregon State (11/29/13)
3FGM	n/a	n/a
3FGA	n/a	n/a
FTM	n/a	2 (5x) last vs. Notre Dame (12/4/13)
FTA	n/a	5 vs. Bucknell (11/20/13)

HARRIS' MISCELLANEOUS STATS

Category	Season	Career	Last Time
Double Figure Scoring	n/a	n/a	
20-point games	n/a	n/a	
Double Figure Rebounds	n/a	3	11 vs. Illinois State (11/30/13)
5-plus Rebounds	n/a	10	5 vs. Minnesota (1/26/14)
5-plus Blocks	n/a	n/a	
3-plus Blocks	n/a	1	3 at Purdue (1/30/14)
Double-Doubles	n/a	n/a	

HARRIS' CAREER STATS

Year	GP-GS	MIN	FG-A	PCT	3FG-A	PCT	FT-A	PCT	REB	AVG	PF-O	A	TO	B	S	PTS	AVG
2013-14	29-0	256	20-50	.400	0-0	.000	17-34	.500	39-57-96	3.3	33-0	5	19	15	6	57	2.0
CAREER	29-0	256	20-50	.400	0-0	.000	17-34	.500	39-57-96	3.3	33-0	5	19	15	6	57	2.0





#12 Lindsey Spann

RS-Fr. * G * 5-6 * Laurel, Md./Good Counsel

Highlights:

- ♦ Missed the 2013-14 season after tearing her right ACL.
- ♦ Selected as a team tri-captain.

2014-15 Season Notes:

- ♦ Recorded 14 points and dished out four assists in the exhibition win over IUP (11/2).

Notable:

- ♦ Ranked as the 22nd-best player by Collegiate Girls Basketball Report and 88th-rated player by Blue Star Basketball.
- ♦ Guided Good Counsel to a 25-5 overall record and 16-3 mark in league play.
- ♦ Participated in USA Basketball's U16 Trials in May 2011.

14-15 GAME-BY-GAME

OPPONENT	Min.	FG	3FG	FT	O-D-R	PF	A	TO	B	S	Pts
TOWSON											
WNIT											
WNIT											
WNIT											
ST. BONAVENTURE											
vs. Liberty											
vs. Georgia State/Samford											
at Syracuse											
WAGNER											
at Hartford											
RIDER											
USF											
at Iowa											
at Michigan											
ILLINOIS											
at Wisconsin											
RUTGERS											
at Nebraska											
at Ohio State											
INDIANA											
NORTHWESTERN											
at Minnesota											
at Rutgers											
MARYLAND											
at Purdue											
MICHIGAN ST.											
MINNESOTA											
at Maryland											
OHIO STATE											
WISCONSIN											

SPANN'S CAREER/SEASON HIGHS			
	SEASON HIGHS		CAREER HIGHS
Points	n/a		n/a
Rebs.	n/a		n/a
Assists	n/a		n/a
Steals	n/a		n/a
Blocks	n/a		n/a
Minutes	n/a		n/a
FGM	n/a		n/a
FGA	n/a		n/a
3FGM	n/a		n/a
3FGA	n/a		n/a
FTM	n/a		n/a
FTA	n/a		n/a

SPANN'S MISCELLANEOUS STATS			
Category	Season	Career	Last Time
Double Figure Scoring	n/a	n/a	
20-point games	n/a	n/a	
Double Figure Rebounds	n/a	n/a	
5-plus Rebounds	n/a	n/a	
5-plus Assists	n/a	n/a	
3-plus Steals	n/a	n/a	
Double-Doubles	n/a	n/a	

10-Time Big Ten Champions • Two-Time Big Ten Tournament Champions • 2000 NCAA Final Four • 25 NCAA Tournament Appearances





#14 Dominique Brooks

Jr. * C * 6-4 * Lansing, Ill./T.F. South (Trinity Valley C.C.)

2014-15 Season Notes:

- ♦ Had four rebounds and a blocked shot in the exhibition win against IUP (11/2).

Notable:

- ♦ Won two NJCAA National Championships while at Trinity Valley Community College.
- ♦ Participated in USA Basketball U18 Trials in 2012

14-15 GAME-BY-GAME

OPPONENT	Min.	FG	3FG	FT	O-D-R	PF	A	TO	B	S	Pts
TOWSON											
WNIT											
WNIT											
WNIT											
ST. BONAVENTURE											
vs. Liberty											
vs. Georgia State/Samford											
at Syracuse											
WAGNER											
at Hartford											
RIDER											
USF											
at Iowa											
at Michigan											
ILLINOIS											
at Wisconsin											
RUTGERS											
at Nebraska											
at Ohio State											
INDIANA											
NORTHWESTERN											
at Minnesota											
at Rutgers											
MARYLAND											
at Purdue											
MICHIGAN ST.											
MINNESOTA											
at Maryland											
OHIO STATE											
WISCONSIN											

BROOKS' CAREER/SEASON HIGHS			
	SEASON HIGHS	CAREER HIGHS	
Points	n/a	n/a	
Rebs.	n/a	n/a	
Assists	n/a	n/a	
Steals	n/a	n/a	
Blocks	n/a	n/a	
Minutes	n/a	n/a	
FGM	n/a	n/a	
FGA	n/a	n/a	
3FGM	n/a	n/a	
3FGA	n/a	n/a	
FTM	n/a	n/a	
FTA	n/a	n/a	

BROOKS' MISCELLANEOUS STATS			
Category	Season	Career	Last Time
Double Figure Scoring	n/a	n/a	
20-point games	n/a	n/a	
Double Figure Rebounds	n/a	n/a	
5-plus Rebounds	n/a	n/a	
5-plus Assists	n/a	n/a	
3-plus Steals	n/a	n/a	
Double-Doubles	n/a	n/a	





#15 Kaliyah Mitchell

So. * F * 6-2 * Stone Mountain, Ga./Stephenson

Highlights:

- ♦ Second-leading returning scorer and rebounder from 2013-14.
- ♦ Has made her last 14 free throw attempts, dating back to the Northwestern game (2/20/14).

2014-15 Season Notes:

- ♦ Posted a near double-double with 12 points, nine rebounds and three steals in the exhibition win versus IUP (11/2).

Notable:

- ♦ Was the 54th-ranked recruit by Collegiate Girls Basketball Report and 40th-ranked recruit by All-Star Girls Report.
- ♦ Brother, Kenny, was an all-conference basketball player at Virginia State University.

14-15 GAME-BY-GAME

OPPONENT	Min.	FG	3FG	FT	O-D-R	PF	A	TO	B	S	Pts
TOWSON											
WNIT											
WNIT											
WNIT											
ST. BONAVENTURE											
vs. Liberty											
vs. Georgia State/Samford											
at Syracuse											
WAGNER											
at Hartford											
RIDER											
USF											
at Iowa											
at Michigan											
ILLINOIS											
at Wisconsin											
RUTGERS											
at Nebraska											
at Ohio State											
INDIANA											
NORTHWESTERN											
at Minnesota											
at Rutgers											
MARYLAND											
at Purdue											
MICHIGAN ST.											
MINNESOTA											
at Maryland											
OHIO STATE											
WISCONSIN											

MITCHELL'S CAREER/SEASON HIGHS

	SEASON HIGHS	CAREER HIGHS
Points	n/a	14 vs. Bucknell (11/20/13)
Rebs.	n/a	10 at Michigan State (1/19/14)
Assists	n/a	2 (6x) last vs. Florida (3/25/14)
Steals	n/a	4 vs. Florida (3/25/14)
Blocks	n/a	2 at Iowa (1/5/14)
Minutes	n/a	27 vs. Ohio State (3/7/14)
FGM	n/a	5 vs. St. Francis (Pa.) (11/8/13)
FGA	n/a	8 vs. Florida (3/25/14)
		8 vs. St. Francis (Pa.) (11/8/13)
3FGM	n/a	1 vs. Illinois State (11/30/13)
3FGA	n/a	3 at Nebraska (2/24/14)
FTM	n/a	7 vs. Northwestern (2/20/14)
FTA	n/a	7 (3x) last vs. Northwestern (2/20/14)

MITCHELL'S MISCELLANEOUS STATS

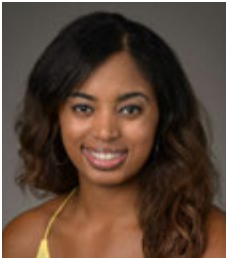
Category	Season	Career	Last Time
Double Figure Scoring	n/a	2	14 vs. Bucknell (11/20/13)
20-point games	n/a	n/a	
Double Figure Rebounds	n/a	1	10 at Michigan State (1/19/14)
5-plus Rebounds	n/a	13	7 vs. Ohio State (3/7/14)
5-plus Assists	n/a	n/a	
3-plus Steals	n/a	2	4 vs. Florida (3/25/14)
Double-Doubles	n/a	n/a	

MITCHELL'S CAREER STATS

Year	GP-GS	MIN	FG-A	PCT	3FG-A	PCT	FT-A	PCT	REB	AVG	PF-O	A	TO	B	S	PTS	AVG
2013-14	32-0	546	41-114	.360	1-14	.071	61-83	.735	40-100-140	4.4	64-2	28	26	5	20	144	4.5
CAREER	32-0	546	41-114	.360	1-14	.071	61-83	.735	40-100-140	4.4	64-2	28	26	5	20	144	4.5

10-Time Big Ten Champions • Two-Time Big Ten Tournament Champions • 2000 NCAA Final Four • 25 NCAA Tournament Appearances





#25 Peyton Whitted

So. * F * 6-3 * Suwanee, Ga./North Gwinnett

2014-15 Season Notes:

- ♦ Pulled in 10 rebounds to go along with eight points and five assists in the exhibition win over IUP (11/2).

Notable:

- ♦ Led North Gwinnett to the Georgia State Championship game after averaging 13.7 points, 5.7 rebounds, 1.4 steals and 2.0 assists per game as a senior.
- ♦ Participated in USA Basketball's U16 Trials in May 2011.
- ♦ Father, Kevin, played basketball at Tennessee from 1993-95.
- ♦ Kevin is currently the head coach of the NBA D-League's Westchester Knicks.
- ♦ Kevin broke Michael Jordan's Laney High School scoring record with 1,554 points.

14-15 GAME-BY-GAME

OPPONENT	Min.	FG	3FG	FT	O-D-R	PF	A	TO	B	S	Pts
TOWSON											
WNIT											
WNIT											
WNIT											
ST. BONAVENTURE											
vs. Liberty											
vs. Georgia State/Samford											
at Syracuse											
WAGNER											
at Hartford											
RIDER											
USF											
at Iowa											
at Michigan											
ILLINOIS											
at Wisconsin											
RUTGERS											
at Nebraska											
at Ohio State											
INDIANA											
NORTHWESTERN											
at Minnesota											
at Rutgers											
MARYLAND											
at Purdue											
MICHIGAN ST.											
MINNESOTA											
at Maryland											
OHIO STATE											
WISCONSIN											

WHITTED'S CAREER/SEASON HIGHS

	SEASON HIGHS	CAREER HIGHS
Points	n/a	11 at Northwestern (2/2/14)
Rebs.	n/a	10 at Illinois (1/9/14)
Assists	n/a	2 at Iowa (1/5/14)
		2 vs. Alcorn State (12/22/13)
Steals	n/a	2 (3x) last vs. Ohio State (3/7/14)
Blocks	n/a	3 at South Dakota St. (12/11/13)
Minutes	n/a	24 at Illinois (1/9/14)
FGM	n/a	5 at Northwestern (2/2/14)
FGA	n/a	7 vs. Alcorn State (12/22/13)
3FGM	n/a	1 vs. Ohio State (3/7/14)
3FGA	n/a	3 vs. Bucknell (11/20/13)
FTM	n/a	5 at Illinois (1/9/14)
FTA	n/a	5 at Illinois (1/9/14)

WHITTED'S MISCELLANEOUS STATS

Category	Season	Career	Last Time
Double Figure Scoring	n/a	1	11 at Northwestern (2/2/14)
20-point games	n/a	n/a	
Double Figure Rebounds	n/a	1	10 at Illinois (1/9/14)
5-plus Rebounds	n/a	5	5 vs. Wichita State (3/23/14)
5-plus Assists	n/a	n/a	
3-plus Steals	n/a	n/a	
Double-Doubles	n/a	n/a	

WHITTED'S CAREER STATS

Year	GP-GS	MIN	FG-A	PCT	3FG-A	PCT	FT-A	PCT	REB	AVG	PF-O	A	TO	B	S	PTS	AVG
2013-14	31-0	344	37-80	.463	1-17	.059	16-23	.696	35-53-88	2.8	58-0	8	26	5	12	91	2.9
CAREER	31-0	344	37-80	.463	1-17	.059	16-23	.696	35-53-88	2.8	58-0	8	26	5	12	91	2.9





#41 Jenny DeGraaf

So. * F * 6-1 * Springboro, Ohio/Springboro

2014-15 Season Notes:

- ♦ Hit 4-of-5 shots from the field, including two attempts from long range, en route to 11 points in the exhibition against IUP (11/2).

Notable:

- ♦ Set the Springboro High School single-season record for free throws made with 121, including 25 consecutive makes from the charity stripe in 2013.

14-15 GAME-BY-GAME

OPPONENT	Min.	FG	3FG	FT	O-D-R	PF	A	TO	B	S	Pts
TOWSON											
WNIT											
WNIT											
WNIT											
ST. BONAVENTURE											
vs. Liberty											
vs. Georgia State/Samford											
at Syracuse											
WAGNER											
at Hartford											
RIDER											
USF											
at Iowa											
at Michigan											
ILLINOIS											
at Wisconsin											
RUTGERS											
at Nebraska											
at Ohio State											
INDIANA											
NORTHWESTERN											
at Minnesota											
at Rutgers											
MARYLAND											
at Purdue											
MICHIGAN ST.											
MINNESOTA											
at Maryland											
OHIO STATE											
WISCONSIN											

DeGRAAF'S CAREER/SEASON HIGHS

	SEASON HIGHS	CAREER HIGHS
Points	n/a	5 vs. Ohio State (1/16/14) 5 vs. Alcorn State (12/22/13)
Rebs.	n/a	2 (3x) last at Nebraska (2/24/14)
Assists	n/a	2 (2x) last vs. Bucknell (11/20/13)
Steals	n/a	1 vs. Alcorn State (12/22/13)
Blocks	n/a	n/a
Minutes	n/a	12 vs. Alcorn State (12/22/13)
FGM	n/a	2 (3x) last vs. Minnesota (1/26/14)
FGA	n/a	4 vs. Minnesota (1/26/14)
3FGM	n/a	1 vs. Ohio State (1/16/14) 1 vs. Alcorn State (12/22/13)
3FGA	n/a	2 vs. Minnesota (1/26/14) 2 vs. Bucknell (11/20/13)
FTM	n/a	n/a
FTA	n/a	n/a

DeGRAAF'S MISCELLANEOUS STATS

Category	Season	Career	Last Time
Double Figure Scoring	n/a	n/a	
20-point games	n/a	n/a	
Double Figure Rebounds	n/a	n/a	
5-plus Rebounds	n/a	n/a	
5-plus Assists	n/a	n/a	
3-plus Steals	n/a	n/a	
Double-Doubles	n/a	n/a	

DeGRAAF'S CAREER STATS

Year	GP-GS	MIN	FG-A	PCT	3FG-A	PCT	FT-A	PCT	REB	AVG	PF-O	A	TO	B	S	PTS	AVG
2013-14	17-0	76	7-20	.350	2-7	.286	0-0	.000	3-6-9	0.5	5-0	4	5	0	1	16	0.9
CAREER	17-0	76	7-20	.350	2-7	.286	0-0	.000	3-6-9	0.5	5-0	4	5	0	1	16	0.9

10-Time Big Ten Champions • Two-Time Big Ten Tournament Champions • 2000 NCAA Final Four • 25 NCAA Tournament Appearances





#44 Tori Waldner

Sr. * F/C * 6-5 * Milton, Ga./Milton

Highlights:

- ♦ Ranks tied for 11th on Penn State's career blocks list (89).
- ♦ Selected as a team tri-captain.

2014-15 Season Notes:

- ♦ Had four points and five rebounds in the exhibition against IUP (11/2).

Notable:

- ♦ President of the Penn State Student-Athlete Advisory Board (SAAB).
- ♦ Was a member of the 2014 Penn State Homecoming Court.
- ♦ Participates in LifeliNK, which is program in which State College Area School District special-needs students between the ages of 18 and 21 are given an opportunity to interact with students of their own age in an environment that is socially and academically conducive to continued growth with the hope of future independent living.
- ♦ Became just the 15th player in Lady Lion program history to record 80 or more blocks in a career.
- ♦ Had a streak of 12-straight games with at least one block (11/10/13-1/5/14).
- ♦ Mother, Diane, played basketball and lacrosse at Russell Sage College in Troy, New York.

14-15 GAME-BY-GAME

OPPONENT	Min.	FG	3FG	FT	O-D-R	PF	A	TO	B	S	Pts
TOWSON											
WNIT											
WNIT											
WNIT											
ST. BONAVENTURE											
vs. Liberty											
vs. Georgia State/Samford											
at Syracuse											
WAGNER											
at Hartford											
RIDER											
USF											
at Iowa											
at Michigan											
ILLINOIS											
at Wisconsin											
RUTGERS											
at Nebraska											
at Ohio State											
INDIANA											
NORTHWESTERN											
at Minnesota											
at Rutgers											
MARYLAND											
at Purdue											
MICHIGAN ST.											
MINNESOTA											
at Maryland											
OHIO STATE											
WISCONSIN											

WALDNER'S CAREER/SEASON HIGHS

SEASON HIGHS		CAREER HIGHS	
Points	n/a	14	vs. Northwestern (2/20/14)
Rebs.	n/a	11	vs. Texas A&M (12/15/13)
Assists	n/a	5	vs. Illinois State (11/30/13)
Steals	n/a	3	vs. Michigan State (2/10/13)
Blocks	n/a	5	vs. Northwestern (2/20/14)
		5	vs. Minnesota (1/24/13)
Minutes	n/a	33	vs. Texas A&M (12/15/13)
FGM	n/a	6	vs. Northwestern (2/20/14)
FGA	n/a	13	vs. Wisconsin (2/16/14)
3FGM	n/a	1	vs. Connecticut (11/17/13)
3FGA	n/a	2	vs. Connecticut (11/17/13)
FTM	n/a	6	vs. Howard (11/11/12)
FTA	n/a	6	vs. Howard (11/11/12)

WALDNER'S MISCELLANEOUS STATS

Category	Season	Career	Last Time
Double Figure Scoring	n/a	6	14 vs. Northwestern (2/20/14)
20-point games	n/a	n/a	
Double Figure Rebounds	n/a	4	10 vs. Alcorn St. (12/22/13)
5-plus Rebounds	n/a	29	5 at Stanford(3/30/14)
5-plus Assists	n/a	1	5 vs. Illinois State (11/30/13)
3-plus Steals	n/a	1	3 vs. Michigan State (2/10/13)
5-plus Blocks	n/a	2	5 vs. Northwestern (2/20/14)
Double-Doubles	n/a	n/a	

WALDNER'S CAREER STATS

Year	GP-GS	MIN	FG-A	PCT	3FG-A	PCT	FT-A	PCT	REB	AVG	PF-O	A	TO	B	S	PTS	AVG
2011-12	31-0	272	25-56	.446	0-1	.000	13-23	.565	13-54-67	2.2	50-0	15	24	18	16	63	2.0
2012-13	30-0	275	19-59	.322	0-1	.000	10-13	.769	31-54-85	2.8	47-0	8	22	32	11	48	1.6
2013-14	32-32	677	67-159	.421	1-3	.333	20-33	.606	48-131-179	5.6	83-1	32	39	39	16	155	4.8
CAREER	93-32	1224	111-274	.405	1-5	.200	43-69	.623	92-239-331	3.6	180-1	55	85	89	43	266	2.9



Penn State 75, Indiana (Pa.) 71

Exhibition Game * Nov. 2, 2014 * University Park, Pa.

IUP 71 • 0-0

#	Player	Total		3-Ptr		Rebounds			PF	TP	A	TO	Blk	Stl	Min
		FG-FGA	FG-FGA	FT-FTA	Off	Def	Tot								
00	STONER, Ashley *	4-9	0-0	0-0	3	2	5	4	8	0	3	0	0	26	
03	STAMP, Lindsay *	0-6	0-3	3-6	1	3	4	2	3	2	1	0	0	22	
05	MATHE, Marita *	4-13	4-9	0-1	0	3	3	2	12	5	3	0	0	35	
12	STAPLETON, Leslie *	2-10	1-7	0-0	0	0	0	0	5	2	0	0	1	29	
24	FAIRMAN, Amy *	8-13	6-8	4-6	1	3	4	4	26	6	1	0	2	30	
10	WAREHAM, Marina	1-1	1-1	0-0	0	0	0	0	3	1	2	0	0	5	
11	GRAHAM, Amy	0-0	0-0	0-0	1	0	1	0	0	0	0	1	0	2	
13	BURNS, Monica	0-0	0-0	0-0	0	0	0	0	0	0	0	0	0	2	
14	AIKEN, Alexis	0-0	0-0	0-0	0	0	0	0	0	0	0	0	0	3	
15	BROOKS, Zhane	2-5	0-0	4-6	2	3	5	4	8	2	0	1	2	25	
20	LIVINGSTON, Mackenzie	0-0	0-0	0-0	0	0	0	0	0	1	0	0	0	1	
23	DENMAN, Halle	0-1	0-0	0-0	1	0	1	0	0	0	0	0	0	2	
42	SMITH, Megan	2-6	2-4	0-0	1	0	1	0	6	1	1	0	0	18	
	Team				2	1	3			1					
	Totals	23-64	14-32	11-19	12	15	27	16	71	20	12	2	5	200	

FG % 1st Half: 10-36 27.8% 2nd half: 13-28 46.4% Game: 23-64 35.9% Deadball Rebounds 7.1
 3FG % 1st Half: 7-18 38.9% 2nd half: 7-14 50.0% Game: 14-32 43.8%
 FT % 1st Half: 6-12 50.0% 2nd half: 5-7 71.4% Game: 11-19 57.9%

Penn State 75 • 0-0

#	Player	Total		3-Ptr		Rebounds			PF	TP	A	TO	Blk	Stl	Min
		FG-FGA	FG-FGA	FT-FTA	Off	Def	Tot								
05	Moore, Sierra *	8-13	0-0	2-3	4	3	7	4	18	0	4	0	0	27	
12	Spann, Lindsey *	5-12	0-3	4-4	1	2	3	2	14	4	2	0	0	37	
15	Mitchell, Kailiyah *	5-10	0-2	2-2	3	6	9	4	12	2	3	0	3	36	
25	Whitted, Peyton *	4-7	0-0	0-0	4	6	10	3	8	5	2	1	0	24	
44	Waldner, Tori *	2-10	0-0	0-0	3	2	5	3	4	1	4	2	0	21	
10	Sevillian, Keke	2-4	0-1	0-0	1	3	4	3	4	3	1	0	3	19	
14	Brooks, Dominique	2-4	0-0	0-0	0	1	1	1	4	0	2	1	0	12	
41	DeGraaf, Jenny	4-5	2-3	1-2	0	4	4	4	11	0	2	0	0	24	
	Team				2	3	5								
	Totals	32-65	2-9	9-11	18	30	48	24	75	15	20	4	6	200	

FG % 1st Half: 17-32 53.1% 2nd half: 15-33 45.5% Game: 32-65 49.2% Deadball Rebounds 1
 3FG % 1st Half: 1-3 33.3% 2nd half: 1-6 16.7% Game: 2-9 22.2%
 FT % 1st Half: 2-4 50.0% 2nd half: 7-7 100.0 Game: 9-11 81.8%

Officials: Frank Steratore, Kevin Pethtel, Shannon Feck
 Technical fouls: IUP-None. Penn State-None.
 Attendance: 3327

Score by periods	1st	2nd	Total
IUP	33	38	71
Penn State	37	38	75

Notable

- With the Crimson Hawks leading, sophomore **Sierra Moore** led the Penn State rally with 15 of her team-best 18 points over the final 11:44 of the contest.
- Sophomore **Jenny DeGraaf** had a solid outing, connecting on 4-of-5 shots from the field, including 2-of-3 from three point range, for 11 points.



**2013-14 Penn State Women's Basketball
Penn State Combined Team Statistics (FINAL)
All games**

RECORD:	OVERALL	HOME	AWAY	NEUTRAL
ALL GAMES	24-8	14-4	8-3	2-1
CONFERENCE	13-3	6-2	7-1	0-0
NON-CONFERENCE	11-5	8-2	1-2	2-1

#	Player	gp-gs	min	avg	Total		3-Point		F-Throw		Rebounds				pf	dq	a	to	blk	stl	pts	avg		
					fg-fga	fg%	3fg-fga	3fg%	ft-fa	ft%	off	def	tot	avg										
33	Lucas, Maggie	32-32	1120	35.0	207-529	.391	73-205	.356	185-195	.949	15	120	135	4.2	65	1	70	97	2	61	672	21.0		
23	Edwards, Ariel	32-32	1038	32.4	185-409	.452	15-39	.385	118-145	.814	64	119	183	5.7	71	2	73	63	13	34	503	15.7		
02	Taylor, Dara	32-32	1101	34.4	143-363	.394	20-70	.286	69-92	.750	31	70	101	3.2	72	1	154	105	5	87	375	11.7		
05	East, Talia	32-29	779	24.3	98-184	.533	0-0	.000	64-87	.736	80	157	237	7.4	99	1	24	79	45	23	260	8.1		
44	Waldner, Tori	32-32	677	21.2	67-159	.421	1-3	.333	20-33	.606	48	131	179	5.6	83	1	32	39	39	16	155	4.8		
15	Mitchell, Kaliyah	32-0	546	17.1	41-114	.360	1-14	.071	61-83	.735	40	100	140	4.4	64	2	28	26	5	20	144	4.5		
01	Agee, Candice	32-3	330	10.3	34-84	.405	0-0	.000	31-61	.508	31	43	74	2.3	54	1	8	28	21	4	99	3.1		
25	Whitted, Peyton	31-0	344	11.1	37-80	.463	1-17	.059	16-23	.696	35	53	88	2.8	58	0	8	26	5	12	91	2.9		
11	Harris, Alex	29-0	256	8.8	20-50	.400	0-0	.000	17-34	.500	39	57	96	3.3	33	0	5	19	15	6	57	2.0		
10	Sevillian, Keke	22-0	120	5.5	8-28	.286	4-13	.308	11-13	.846	1	11	12	0.5	19	0	5	15	0	8	31	1.4		
41	DeGraaf, Jenny	17-0	76	4.5	7-20	.350	2-7	.286	0-0	.000	3	6	9	0.5	5	0	4	5	0	1	16	0.9		
20	Alston, Infiniti	4-0	13	3.3	0-2	.000	0-0	.000	0-0	.000	0	0	0	0.0	6	0	0	1	0	0	0	0.0		
Team											73	78	151											
Total.....		32	6400	847-2022		.419	117-368	.318	592-766	.773	460	945	1405	43.9	629	9	411	518	150	272	2403	75.1		
Opponents.....		32	6400	745-1958		.380	220-697	.316	432-624	.692	373	807	1180	36.9	668	18	435	542	123	241	2142	66.9		

TEAM STATISTICS	PSU	OPP	Date	Opponent	Score	Att.		
SCORING	2403	2142	11/8/13	ST. FRANCIS (PA.)	w	117-77	3908	
Points per game	75.1	66.9	11/10/13	FORDHAM	w	78-61	3834	
Scoring margin	+8.2	-	11/17/13	CONNECTICUT	L	52-71	8194	
FIELD GOALS-ATT	847-2022	745-1958	11/20/13	BUCKNELL	w	92-49	3646	
Field goal pct	.419	.380	11-29-13	vs Oregon State	w	61-56	0	
3 POINT FG-ATT	117-368	220-697	11-30-13	vs Illinois State	w	72-60	236	
3-point FG pct	.318	.316	12/4/13	NOTRE DAME	L	67-77	5805	
3-pt FG made per game	3.7	6.9	12/08/13	at Georgetown	w	77-68	529	
FREE THROWS-ATT	592-766	432-624	12/11/13	at South Dakota State	L	79-83	1713	
Free throw pct	.773	.692	12/15/13	TEXAS A&M	w	66-58	4777	
F-Throws made per game	18.5	13.5	12/22/13	ALCORN STATE	w	85-62	8284	
REBOUNDS	1405	1180	12/29/13	HARTFORD	w	70-56	4629	
Rebounds per game	43.9	36.9	* 1/5/14	at Iowa	w	87-71	6230	
Rebounding margin	+7.0	-	* 01/09/14	at Illinois	w	82-76	1317	
ASSISTS	411	435	* 1/12/14	PURDUE	L	74-84	4853	
Assists per game	12.8	13.6	* 1/16/14	OHIO STATE	w	66-42	3964	
TURNOVERS	518	542	* 01/19/14	at Michigan State	w	66-54	9232	
Turnovers per game	16.2	16.9	* 1/22/14	INDIANA	w	65-52	4828	
Turnover margin	+0.8	-	* 1/26/14	MINNESOTA	w	83-53	6292	
Assist/turnover ratio	0.8	0.8	* 1/30/14	at Purdue	w	75-72	7785	
STEALS	272	241	* 2/2/14	at Northwestern	w	79-75	1698	
Steals per game	8.5	7.5	* 2/6/14	IOWA	L	70-73	4033	
BLOCKS	150	123	* 02/09/14	at Ohio State	w	74-54	6591	
Blocks per game	4.7	3.8	* 2/13/14	at Indiana	w	71-63	2115	
ATTENDANCE	97511	50602	* 2/16/14	WISCONSIN	w	78-68	12585	
Home games-Avg/Game	18-5417	11-4042	* 2/20/14	NORTHWESTERN	w	82-73	3960	
Neutral site-Avg/Game	-	3-2046	* 02/24/14	at Nebraska	L	74-94	7253	
Score by Periods	1st	2nd	Totals	* 3/1/14	MICHIGAN	w	77-62	6494
Penn State	1154	1249	2403	03/07/14	vs Ohio State	L	82-99	5903
Opponents	1090	1052	2142	3/23/14	WICHITA STATE	w	62-56	3925
				3/25/14	FLORIDA	w	83-61	3500
				3/30/14	at Stanford	L	57-82	0

* - Conference game



**2013-14 Penn State Women's Basketball
Penn State Combined Team Statistics (FINAL)
Conference games**

RECORD:	OVERALL	HOME	AWAY	NEUTRAL
ALL GAMES	13-3	6-2	7-1	0-0
CONFERENCE	13-3	6-2	7-1	0-0
NON-CONFERENCE	0-0	0-0	0-0	0-0

#	Player	gp-gs	min	avg	Total		3-Point		F-Throw		Rebounds				a	to	blk	stl	pts	avg		
					fg-fga	fg%	3fg-fga	3fg%	ft-fa	ft%	off	def	tot	avg							pf	dq
33	Lucas, Maggie	16-16	586	36.6	109-264	.413	41-103	.398	89-94	.947	7	60	67	4.2	29	0	39	48	1	29	348	21.8
23	Edwards, Ariel	16-16	536	33.5	94-217	.433	10-18	.556	54-66	.818	41	67	108	6.8	36	1	38	33	6	14	252	15.8
02	Taylor, Dara	16-16	580	36.2	71-178	.399	11-35	.314	33-46	.717	15	35	50	3.1	34	0	82	47	2	45	186	11.6
05	East, Talia	16-16	421	26.3	55-100	.550	0-0	.000	40-53	.755	37	94	131	8.2	51	0	11	41	25	10	150	9.4
44	Waldner, Tori	16-16	351	21.9	37-87	.425	0-1	.000	11-15	.733	23	61	84	5.3	45	0	17	24	16	10	85	5.3
15	Mitchell, Kaliyah	16-0	264	16.5	17-54	.315	0-6	.000	30-43	.698	16	58	74	4.6	32	0	19	11	4	8	64	4.0
25	Whitted, Peyton	16-0	183	11.4	24-46	.522	0-4	.000	9-11	.818	21	32	53	3.3	34	0	3	16	0	4	57	3.6
01	Agee, Candice	16-0	134	8.4	9-24	.375	0-0	.000	14-31	.452	7	19	26	1.6	20	1	3	13	9	2	32	2.0
11	Harris, Alex	15-0	88	5.9	6-19	.316	0-0	.000	4-10	.400	15	13	28	1.9	12	0	1	5	5	2	16	1.1
41	DeGraaf, Jenny	9-0	27	3.0	4-10	.400	1-3	.333	0-0	.000	2	1	3	0.3	1	0	0	2	0	0	9	1.0
10	Sevillian, Keke	10-0	30	3.0	1-7	.143	1-4	.250	1-3	.333	1	2	3	0.3	1	0	1	2	0	1	4	0.4
Team											41	37	78				2					
Total.....		16	3200		427-1006	.424	64-174	.368	285-372	.766	226	479	705	44.1	295	2	214	244	68	125	1203	75.2
Opponents.....		16	3200		380-976	.389	113-355	.318	193-273	.707	165	403	568	35.5	328	11	224	257	74	117	1066	66.6

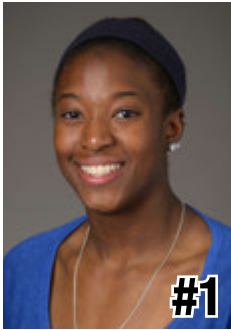
TEAM STATISTICS	PSU	OPP	Date	Opponent	Score	Att.
SCORING	1203	1066	* 1/5/14	at Iowa	w 87-71	6230
Points per game	75.2	66.6	* 01/09/14	at Illinois	w 82-76	1317
Scoring margin	+8.6	-	* 1/12/14	PURDUE	L 74-84	4853
FIELD GOALS-ATT	427-1006	380-976	* 1/16/14	OHIO STATE	w 66-42	3964
Field goal pct	.424	.389	* 01/19/14	at Michigan State	w 66-54	9232
3 POINT FG-ATT	64-174	113-355	* 1/22/14	INDIANA	w 65-52	4828
3-point FG pct	.368	.318	* 1/26/14	MINNESOTA	w 83-53	6292
3-pt FG made per game	4.0	7.1	* 1/30/14	at Purdue	w 75-72	7785
FREE THROWS-ATT	285-372	193-273	* 2/2/14	at Northwestern	w 79-75	1698
Free throw pct	.766	.707	* 2/6/14	IOWA	L 70-73	4033
F-Throws made per game	17.8	12.1	* 02/09/14	at Ohio State	w 74-54	6591
REBOUNDS	705	568	* 2/13/14	at Indiana	w 71-63	2115
Rebounds per game	44.1	35.5	* 2/16/14	WISCONSIN	w 78-68	12585
Rebounding margin	+8.6	-	* 2/20/14	NORTHWESTERN	w 82-73	3960
ASSISTS	214	224	* 02/24/14	at Nebraska	L 74-94	7253
Assists per game	13.4	14.0	* 3/1/14	MICHIGAN	w 77-62	6494
TURNOVERS	244	257				
Turnovers per game	15.3	16.1	* - Conference game			
Turnover margin	+0.8	-				
Assist/turnover ratio	0.9	0.9				
STEALS	125	117				
Steals per game	7.8	7.3				
BLOCKS	68	74				
Blocks per game	4.3	4.6				
ATTENDANCE	47009	42221				
Home games-Avg/Game	8-5876	8-5278				
Neutral site-Avg/Game	-	0-0				

Score by Periods	1st	2nd	Totals
Penn State	577	626	1203
Opponents	530	536	1066

10-Time Big Ten Champions • Two-Time Big Ten Tournament Champions • 2000 NCAA Final Four • 25 NCAA Tournament Appearances



2014-15 RADIO/TV CHART



#1

Candice Agee

6-6 * Jr./Jr. * C
Victorville, Calif.
Silverado



#3

Brianna Banks

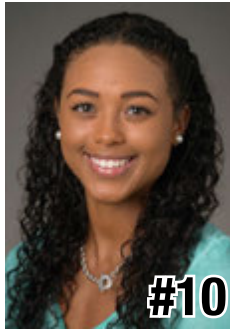
5-9 * Sr./-- * G
Newnan, Ga.
Fayette County
(Connecticut)



#5

Sierra Moore

5-11 * Jr./So. * G
Hanover, Pa.
Delone Catholic
(Duke)



#10

Keke Sevillian

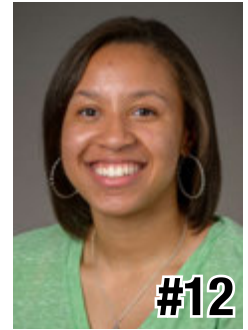
5-7 * So./So. * G
Goodrich, Mich.
Goodrich



#11

Alex Harris

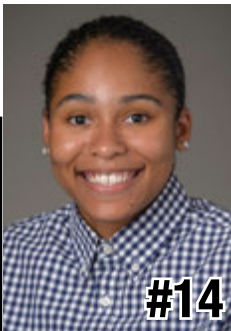
6-3 * So./So. * F
Lorain, Ohio
Lorain



#12

Lindsey Spann

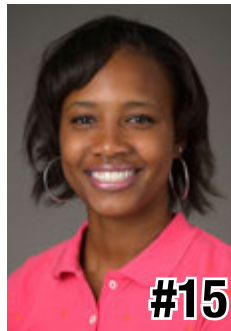
5-6 * So./Fr. * G
Laurel, Md.
Good Counsel



#14

Dominique Brooks

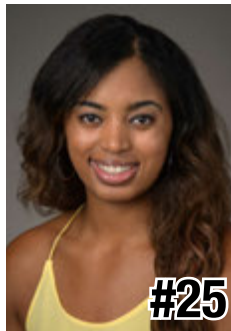
6-4 * Jr./Jr. * C
Lansing, Ill.
T.F. South
(Trinity Valley C.C.)



#15

Kaliyah Mitchell

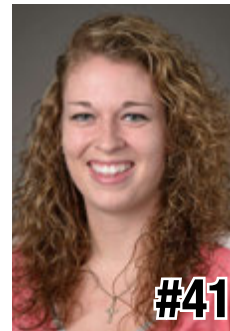
6-2 * So./So. * F
Stone Mountain, Ga.
Stephenson



#25

Peyton Whitted

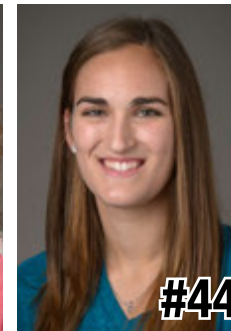
6-3 * So./So. * F
Suwanee, Ga.
North Gwinnett



#41

Jenny DeGraaf

6-1 * So./So. * F
Springboro, Ohio
Springboro



#44

Tori Waldner

6-5 * Sr./Sr. * F/C
Milton, Ga.
Milton



HC

Coquese Washington

Head Coach
Notre Dame '92
Eighth Season



AC

Itoro Coleman

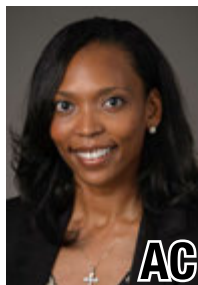
Assistant Coach
Clemson '00
First Season
Fourth Overall



AC

Kia Damon

Assistant Coach
Millersville '97
Eighth Season



AC

Jocelyn Wyatt

Assistant Coach
Appalachian State '06
First Season



DO

Ethan Gelfand

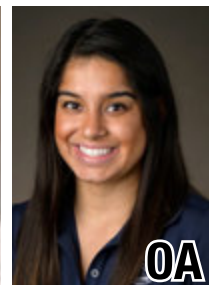
Director of Operations
Wake Forest '06
Fourth Season



VO

Mike Miller

Director of Video &
Technology Ops
High Point '02
10th Season



OA

Jennifer Montoya

Operations Assistant
Penn State '14
First Season

10-Time Big Ten Champions • Two-Time Big Ten Tournament Champions • 2000 NCAA Final Four • 25 NCAA Tournament Appearances

