



PENN STATE WOMEN'S HOCKEY

2013-14 NITTANY LIONS

GoPSUsports.com // Twitter & Instagram: **PennStateWHKY** // Facebook.com/PennStateWomensHockey
 Contact: **Jeremy Fallis** // jeremy.fallis@psu.edu // O: (814) 863-1388 // C: (814) 206-6544

2013-14 SCHEDULE

Overall: 1-0-1 // Home: 0-0-0 // Away: 1-0-1
 CHA: 0-0-0 // Home: 0-0-0 // Away: 0-0-0

Date	Opponent	Result/Time
Oct. 4	at Vermont	T (OT) 3-3
Oct. 5	at Vermont	W 4-2
Oct. 11	at Quinnipiac	7:00 p.m.
Oct. 12	at Quinnipiac	4:00 p.m.
Oct. 18	UNION	7:00 p.m.
Oct. 19	UNION	2:00 p.m.
Oct. 26	NEW HAMPSHIRE	7:00 p.m.
Oct. 27	NEW HAMPSHIRE	7:00 p.m.
Oct. 31 *	ROBERT MORRIS	7:00 p.m.
Nov. 1 *	ROBERT MORRIS	4:00 p.m.
Nov. 9 *	SYRACUSE	2:00 p.m.
Nov. 10 *	SYRACUSE	2:00 p.m.
Nov. 15 *	at RIT	7:00 p.m.
Nov. 16 *	at RIT	3:00 p.m.
Nov. 22 *	at Lindenwood	8:00 p.m.
Nov. 23 *	at Lindenwood	3:00 p.m.
Nov. 30	MAINE	2:00 p.m.
Dec. 6 *	at #10 Mercyhurst	3:00 p.m.
Dec. 7 *	at #10 Mercyhurst	2:00 p.m.
Jan. 3	at Ohio State	7:07 p.m.
Jan. 4	at Ohio State	4:07 p.m.
Jan. 10	COLGATE	7:00 p.m.
Jan. 11	COLGATE	2:00 p.m.
Jan. 24 *	at Syracuse	7:00 p.m.
Jan. 25 *	at Syracuse	2:00 p.m.
Jan. 28	at Princeton	7:00 p.m.
Jan. 31 *	RIT	7:00 p.m.
Feb. 1 *	RIT	2:00 p.m.
Feb. 8 *	LINDENWOOD	Noon
Feb. 9 *	LINDENWOOD	Noon
Feb. 15 *	#10 MERCYHURST	8:00 p.m.
Feb. 16 *	#10 MERCYHURST	1:00 p.m.
Feb. 21 *	at Robert Morris	3:00 p.m.
Feb. 22 *	at Robert Morris	3:00 p.m.
2014 CHA TOURNAMENT		
Feb. 28 ^	CHA First Round - Game 1	TBA
March 1 ^	CHA First Round - Game 2	TBA
March 2 ^	CHA First Round - Game 3	TBA
March 7 %	CHA Semifinals	TBA
March 8 %	CHA Final	

All Times Eastern
 Home games in **CAPS** at Pegula Ice Arena
 * - College Hockey America games
 ^ - CHA First Round at higher seed
 % - CHA Semifinals & Final hosted by No. 1 seed
 Rankings based on USA Today/USA Hockey poll



PENN STATE NITTANY LIONS
 (1-0-1)



QUINNIPIAC BOBCATS
 (1-0-1)

Games 3-4: Oct. 11-12, 2013 // High Point Solutions Arena at TD Bank Sports Center // Hamden, Conn.

GAME DAY

VENUE High Point Solutions Arena at TD Bank Sports Center (3,084)
 STREAMING COVERAGE QuinnipiacBobcats.com on YouTube
 SERIES RECORD 0-0-0
 LAST MEETING First Meeting on Oct. 11, 2013
 NEXT TIME OUT Oct. 18-19 vs. Union at Pegula Ice Arena

GAME NOTES

- Penn State travels to Quinnipiac for two games at site of 2014 Women's Frozen Four
- Nittany Lions opened season 1-0-1 at Vermont with 3-3 tie and 4-2 win
- Quinnipiac went 1-0-1 last week at St. Cloud State with a 0-0 tie and 3-1 win
- **Hannah Hoenshell** was named CHA Player of the Week for 3-point game at UVM
- **Kelly Seward** earned CHA Rookie of the Week for 2-goal weekend at Vermont
- Lions scored 3 or more goals in back-to-back games for first time since Jan. 4-5
- Penn State's freshmen and sophomores have tallied 16 of team's 19 points

ON THE INSIDE

Page 2: **CHA Standings and Team Comparison**
 Page 7: **The Nittany Lion Roster & Pronunciation Guide**
 Page 8: **2013-14 Penn State Box Scores**
 Page 9: **2013-14 Penn State Women's Hockey Stats**
 Page 10: **The Nittany Lion TV/Radio Roster**

STATISTICAL LEADERS

FORWARDS		GP	G	A	PTS	SH	+/-	GWG
16	Hannah Hoenshell	2	1	2	3	2	+3	1
40	Shannon Yoxheimer	2	1	2	3	8	+1	0
12	Sarah Nielsen	2	0	3	3	4	+2	0
18	Laura Bowman	2	2	0	2	6	+2	0
24	Taylor Gross	2	1	1	2	7	0	0
9	Amy Petersen	2	0	2	2	2	+2	0

DEFENSE		GP	G	A	PTS	SH	+/-	BLK
27	Kelly Seward	2	2	0	2	3	+2	7
4	Jordin Pardoski	2	0	1	1	3	+1	1
6	Lindsay Reihl	2	0	1	1	0	+1	5
21	Sarah Wilkie	2	0	0	0	1	+2	0
17	Paige Jahnke	2	0	0	0	1	0	2

GOALTENDER		GP-GS	Record	MIN	GA	GAA	SV	SV%
30	Celine Whitlinger	1-1	1-0-0	60:00	2	2.00	37	.949
37	Nicole Paniccia	1-1	0-0-1	65:00	3	2.77	35	.921



@PennStateWHKY



PennStateWomensHockey



GoPSUTV



NITTANY LION WOMEN'S HOCKEY

GAME NOTES AT QUINNIPIAC (OCT. 11-12)

SCOUTING THE BOBCATS

Quinnipiac opened its season in identical fashion to Penn State: 1-0-1. The Bobcats opened Friday at St. Cloud State with a 0-0 tie and came back from a goal down to defeat the Huskies 3-1 on Saturday. The Quinnipiac defense was stout, allowing just one goal in 125 minutes of hockey, but the offense didn't get on the board for the first 117:54 of the season. QU scored three goals in a span of 4:14 late in the third period for the victory.

Freshman Emma Woods supplied the game-winner and the insurance goal in Saturday's victory to earn the ECAC Hockey Rookie of the Week honor. Junior goaltender Chelsea Laden was tabbed the conference's Goalie of the Week as both earned their first weekly awards. Laden was in net for all 125 minutes, posting a 0.48 GAA and saving 97.9 percent of the shots on net. Sophomore Nicole Connery was vital to the QU offense with a goal and two assists on Saturday. Senior Kelly Babstock bagged two assists of her own. Babstock led the Bobcats last year with 55 points on 28 goals and 27 assists. Junior Nicole Kosta was second on the squad last season with 39 points on 11 goals and 28 assists.

LIONS FINISH WEEKEND UNDEFEATED

The Nittany Lions opened their second season in impressive fashion with a 1-0-1 weekend at Vermont. **Shannon Yoxheimer** notched three points and the Nittany Lions played to a 3-3 tie with Vermont at Gutterson Fieldhouse on Friday night (Oct. 4). Twice Penn State trailed and each time PSU responded with a tying goal. Freshman **Kelly Seward** scored the game's opening goal and **Taylor Gross** tied things up at two in the third period. Senior goaltender **Nicole Paniccia** was spectacular in net making 35 saves to keep the dangerous Catamounts in check.

Penn State scored three of the game's final four goals to defeat Vermont, 4-2, on Saturday afternoon (Oct. 5) at Gutterson Fieldhouse. **Hannah Hoenshell** tallied a game-high three points on a goal and two excellent assists, while freshman **Laura Bowman** scored her first two collegiate goals. Hoenshell was a game-high plus-four, while Bowman and fellow linemate **Amy Petersen** carded plus-three ratings. Sophomore goaltender **Celine Whitlinger** saved 37 Catamount shots as Penn State went 1-0-1 in its season-opening series. The Nittany Lions improved to 2-1-1 all-time against Vermont.

HOENSHHELL, SEWARD EARN CHA AWARDS

Penn State forward **Hannah Hoenshell** and defender **Kelly Seward** were named College Hockey America's Player and Rookie of the Week, respectively, on Monday, Oct. 7.

A crafty forward with incredible stick skills, Hoenshell propelled Penn State to an undefeated weekend at Vermont, supplying three points and a game-high plus-four rating in Saturday's 4-2 win. Hoenshell was involved in three of Penn State's four goals, tallying a goal and two assists. Her goal was her second career game-winning goal.

Seward was fantastic on both sides of the ice this weekend as she tallied two goals, which ties for the team high after two games. Seward posted a plus-two rating and seven blocked shots for the weekend as well. In both games, Seward scored Penn State's first goal. On Friday it was a power-play tally and Saturday it was a game-tying goal in the first period.

OFFENSIVE BREAKOUT

Last season, Penn State struggled to score, averaging just 1.67 goals per game against Division I competition. In the opening two games, Penn State tallied seven goals (3.5 gpg). Moreover, the Nittany Lions tallied three or more goals in consecutive games for the first time since Jan. 4-5 (10-0 and 4-0 wins vs. Chatham).

GAMEDAY COMPARISON

TEAM STATS		
Overall record	1-0-1	1-0-1
Conference record	n/a	n/a
Goals scored	7	3
Goals scored per game	3.5	1.5
Goals allowed	5	1
Goals allowed per game	2.5	0.5
First period goals	2	0
Second period goals	3	0
Third period goals	2	3
Overtime goals	0	0
Shots	43	71
Shots per game	21.5	35.5
Shot pct.	.163	.042
Assists	12	4
Penalties per game	5.5	4.0
Power plays	1-9	0-10
Power-play pct.	.111	.100
Penalty kills	1-10	1-8
Penalty-kill pct.	.900	.125
Saves	72	46
Shutouts	0	1

LEADERS

Points	Three with 3	Connery (3)
Goals	Two with 2	Woods (2)
Assists	Nielsen (3)	Two with 2
Shots	Yoxheimer (8)	Babstock (14)
Shot Pct.	Seward (.667)	Woods (.333)
+/-	Hoenshell (+3)	Three at +3
Faceoff Pct.	Nielsen (.472)	n/a
Saves	Whitlinger (37)	Laden (46)
Save Pct.	Whitlinger (.949)	Laden (.979)
GAA	Whitlinger (2.00)	Laden (0.48)
Record	Whitlinger (1-0-0)	Laden (1-0-1)

2013-14 COLLEGE HOCKEY AMERICA STANDINGS

(as of Oct. 9, 2013)

	Pts.	CHA	GF	GA	Overall	GF	GA	Last 10
PENN STATE	0	0-0-0	0	0	1-0-1	7	5	1-0-1
Robert Morris	0	0-0-0	0	0	1-1-0	3	5	1-1-0
Syracuse	0	0-0-0	0	0	1-1-0	6	4	1-1-0
Mercyhurst (10/rv)	0	0-0-0	0	0	1-2-0	8	10	1-2-0
RIT	0	0-0-0	0	0	1-2-0	8	19	1-2-0
Lindenwood	0	0-0-0	0	0	0-3-1	5	15	0-3-1

PAST RESULTS & UPCOMING SCHEDULE

Friday, Oct. 4

Syracuse 4, Northeastern* 1
RPI 3, Robert Morris* 0
PENN STATE 3, Vermont* 3 (OT)
RIT 3, New Hampshire* 2
North Dakota* 5, Lindenwood 1

Saturday, Oct. 5

Northeastern* 5, RIT 4
New Hampshire* 3, Syracuse 2
PENN STATE 4, Vermont* 2
Robert Morris* 3, RPI 2 (OT)
Ohio State 4, Mercyhurst* 3 (OT)
North Dakota* 6, Lindenwood 1

Saturday, Oct. 11

PENN STATE at Quinnipiac, 7 p.m.
Clarkson at Syracuse, 7 p.m.
Vermont at RIT, 7 p.m.
Robert Morris at Bemidji State, 7 p.m.
Minnesota State at Lindenwood, 8 p.m.

Saturday, Oct. 12

Minnesota State at Lindenwood, 1 p.m.
Mercyhurst at Providence, 2 p.m.
Vermont at RIT, 3 p.m.
PENN STATE at Quinnipiac, 4 p.m.
Syracuse at Clarkson, 4 p.m.
Robert Morris at Bemidji State, 4 p.m.

Sunday, Oct. 13

Mercyhurst at Providence, 2 p.m.
* home team



NITTANY LION WOMEN'S HOCKEY

YOUTH SUPPLIES THE OFFENSE

The four additions of freshmen **Laura Bowman, Amy Petersen, Sarah Nielsen and Kelly Seward** injected an instant bump in scoring production with nine of the team's 19 points. Bowman and Seward each tallied two goals, while Nielsen (3 assists) and Petersen (2) combined for five assists. To prove the youth of the team, 16 of the team's 19 points were collectively tallied by freshmen and sophomores.

LIONS SEARCHING FOR FIRST WIN OVER ECAC HOCKEY

Last season the Nittany Lions went 0-5-0 against teams from ECAC Hockey. The Quinnipiac games are the first two of seven matchups against the ECAC, which is comprised of seven Ivy League teams and five other Northeastern schools.

PENN STATE HAS A #NEWDEN

On Sept. 6, Mortensen Construction turned the keys over to Penn State and its new \$90 million home, Pegula Ice Arena. The Nittany Lions host 17 games in the state-of-the-art arena that seats 5,782 beginning with a series vs. Union

(Oct. 18-19). That kicks off an eight-game home stand over 23 days.

BRING 'EM BACK

Penn State brings back 24 of its 27 members from last year's team. In those 24 student-athletes, Penn State returns its top 14 scorers and almost 99 percent of its offense along with every member of its stout goaltending corps.

YOXHEIMER MAKES HER MARK

Leading the team in scoring last season was **Shannon Yoxheimer**, a left-handed forward. Yoxheimer buried 14 goals with 17 assists for a grand total of 31 points, all team highs. She led College Hockey America in shots (169) and put away three power play goals as well as a team-high three game-winning goals. Yoxheimer's numbers ranked her in the top 10 nationally in goals, points and assists for rookies. The CHA coaches named Yoxheimer to the All-Rookie team.

PENN STATE'S RECORD IS...

0-0-0	at home
1-0-1	on the road
0-0-1	in overtime
0-0-1	when scoring first
1-0-0	when opponent scores first
1-0-0	when leading after the 1st period
0-0-0	when trailing after the 1st period
0-0-1	when tied after the 1st period
1-0-0	when leading after the 2nd period
0-0-0	when trailing after the 2nd period
0-0-1	when tied after the 2nd period
0-0-0	when out-shooting opponent
1-0-1	when out-shot by opponent
0-0-0	when taking same # of shots
0-0-0	when winning more faceoffs
1-0-1	when losing more faceoffs
0-0-0	when tied in faceoffs
0-0-1	when taking more penalties
1-0-0	when taking fewer penalties
0-0-0	when taking the same # of penalties
0-0-1	when scoring a power play goal
1-0-0	when not scoring a power play goal
0-0-1	when allowing a power play goal
1-0-0	when not allowing a power play goal
0-0-0	when scoring 0 goals
0-0-0	when scoring 1 goal
0-0-0	when scoring 2 goals
0-0-1	when scoring 3 goals
1-0-0	when scoring 4+ goals
0-0-0	when allowing 0 goals
0-0-0	when allowing 1 goal
1-0-0	when allowing 2 goals
0-0-1	when allowing 3 goals
0-0-0	when allowing 4+ goals
1-0-1	in October
0-0-0	in November
0-0-0	in December
0-0-0	in January
0-0-0	in February
0-0-0	in March
0-0-0	on Tuesday
0-0-0	on Thursday
0-0-1	on Friday
1-0-0	on Saturday
0-0-0	on Sunday
1-0-0	during the day
0-0-1	at night
1-0-1	vs. Hockey East
0-0-0	vs. College Hockey America
0-0-0	vs. ECAC Hockey
0-0-0	vs. WCHA
0-0-0	vs. ranked opponents
1-0-1	vs. unranked opponents
0-0-1	when Shannon Yoxheimer scores
0-0-1	when Nicole Paniccia starts
1-0-1	when a freshman scores
0-0-1	games decided by a goal or less

2013-14 WOMEN'S HOCKEY POLLS

USA Today/USA Hockey (Oct. 8, 2013)

1	Minnesota	2-0-0	1
2	Boston College	1-0-0	2
3	Clarkson	3-0-0	3
4	Cornell	0-0-0	7
5	Wisconsin	2-0-0	6
6	North Dakota	2-0-0	4
7	Boston University	0-0-0	5
8	Harvard	0-0-0	8
9	Minnesota-Duluth	2-0-0	10
10	Mercyhurst	1-2-0	9

Others: **Ohio State, Quinnipiac, Northeastern, Dartmouth**

USCHO.com (Oct. 7, 2013)

1	Minnesota	2-0-0	1
2	Boston College	1-0-0	2
3	Clarkson	3-0-0	3
4	Cornell	0-0-0	4
	Wisconsin	2-0-0	6
6	North Dakota	2-0-0	8
7	Boston University	0-0-0	5
8	Harvard	0-0-0	9
9	Minnesota-Duluth	2-0-0	RV
10	Ohio State	1-0-0	RV

Others: **Quinnipiac, Mercyhurst, Northeastern, Dartmouth**

Bold indicates 2013-14 opponent

2013-14 MEDIA INFORMATION

Penn State Athletic Communications

Primary Contact: Jeremy Fallis
 Email: jeremy.fallis@psu.edu
 Office: 814-865-1757

Interviews

Penn State student-athletes and coaches are available for interviews after practice each day. Please contact Jeremy Fallis in advance.

Credentials

Contact Jeremy Fallis for home game credentials at Pegula Ice Arena.

Postgame

Head coach Josh Brandwene and requested student-athletes are available to the media following each game in the studio rink. Please alert Jeremy Fallis during the game of any requests.

Yearbook

A complimentary copy of the 2013-14 Penn State women's hockey yearbook will be made available to members of the media. The public may purchase copies for \$6 online.

GoPSUsports.com

[Facebook.com/PennStateWomensHockey](https://www.facebook.com/PennStateWomensHockey)

[@PennStateWHKY](https://twitter.com/PennStateWHKY)



NITTANY LION WOMEN'S HOCKEY

THE PANICCIA WALL

Senior goaltender **Nicole Paniccia** excelled between the pipes for the Blue and White last year, stopping 1,028 shots with a 92.8 save percentage. Paniccia's save tally was second in all of NCAA Division I, topped only by fellow CHA upstart Lindenwood's Nicole Hensley. Paniccia was in net for six of PSU's seven victories last year as well as both of Penn State's ties.

POWER-PLAY HOLDCROFT

Sophomore forward **Jill Holdcroft** was lethal on the power play last season, scoring six of her 10 goals last year on the advantage. Despite missing the CHA playoffs at RIT, Holdcroft still ranked second on the team in scoring (10 goals) and added two assists for good measure.

IN THE THICK OF THINGS

Penn State's record of 7-26-2 last season is a little deceiving when considering how close the Nittany Lions were in many of their losses. In fact, 12 of the 26 losses were decided by two goals or less. This year, the Nittany Lions look to change their fortunes in spite of a 1-6-2 record games decided by less than a goal.

CAPTAINS' CORNER

Senior forward **Taylor Gross** once again leads Penn State as its first captain following her first year with the letter in 2012-13. Gross was second on the team in points (22) and assists (15) last season with 34 appearances. The University of Connecticut transfer appeared in 48 games for the Huskies before joining Penn State's club side in January 2012. Senior forward **Jenna Welch** and **Lindsay Reihl**, a graduate student defender, reprise their roles as assistant captains this year. Joining the veteran trio is **Jordin Pardoski**, a vocal sophomore defender who is a first-year assistant captain.

NEW NITTANY LIONS

Four freshmen join the Nittany Lions for the 2013-14 campaign. Minnesota forwards **Laura Bowman**, **Amy Petersen** and **Sarah Nielsen** provide an instant dose of goal scoring from their high school success. Defender **Kelly Seward** of New York is the tallest Nittany Lion blueliner.

FIRST HEAD COACH

A 1991 graduate of Penn State, head coach **Josh Brandwene** is the first to lead the Nittany Lions. Brandwene compiled a 7-26-2 record last season with 17 freshmen on the team. A four-year hockey player at PSU, Brandwene brings 20 years of coaching experience to Happy Valley.

CONTINUING PENN STATE HOCKEY

Seven members of the current varsity team played for the women's club team at some point. Graduate student **Lindsay Reihl** along with juniors **Cara Mendelson**, **Katie Murphy**, **Madison Smiddy** and **Tess Weaver** played all of the 2011-12 season for head coach **Josh Brandwene** in Penn State's last year at the club level. **Taylor Gross** and **Jess Desorcie** joined the five aforementioned players midway through the season in preparation of the 2012-13 season.

NEXT TIME OUT

Penn State returns to Hockey Valley to open Pegula Ice Arena on Friday-Saturday, Oct. 18-19 against Union. The Union series kicks off eight straight home games for the Nittany Lions. Penn State women's hockey plays eight of the first 11 varsity games at Pegula Ice Arena. The men's team opens PIA on Friday, Oct. 11 against Army.

2012-13 HONORS & AWARDS

Hannah Hoenshell

CHA Player of the Week (10/7)

Kelly Seward

CHA Rookie of the Week (10/7)

OVER THE AIR

This weekend's games will be streamed free of charge by Quinnipiac through YouTube.

The CHA on AmericaOneSports.com

Penn State home & away games during CHA play will be streamed live on AmericaOneSports.com. Subscribers can purchase a 1-day package for \$8, 30-day packages for \$30 or a season pass for \$125.

NITTANY LION WOMEN'S HOCKEY



NCAA TEAM RANKS

(As of Oct. 7, 2013)

Goals Per Game	9th
Goals Against Per Game	T-12th
Scoring Margin	T-7th
Most Penalty Minutes Per Game	T-12th
Power-Play Percentage	18th
Penalty-Kill Percentage	7th
Combined Special Teams	11th
Winning Percentage	T-8th

NCAA INDIVIDUAL RANKS

(Top 100 as of Oct. 1, 2013)

Laura Bowman

Points per game	T-39th
Goals per game	T-7th
Points per game (Rookies)	T-9th

Taylor Gross

Points per game	T-39th
Goals per game	T-36th

Hannah Hoenshell

Points per game	T-23rd
Goals per game	T-36th
Assists per game	T-15th
Game-winning goals	T-3rd

Sarah Nielsen

Points per game	T-23rd
Assists per game	T-8th
Points per game (Rookies)	T-5th

Jordin Pardoski

Assists per game	T-66th
Points per game (Defense)	T-29th

Amy Petersen

Points per game	T-39th
Assists per game	T-15th
Points per game (Rookies)	T-9th

Lindsay Reihl

Assists per game	T-66th
Points per game (Defense)	T-29th

Kelly Seward

Points per game	T-39th
Goals per game	T-7th
Power-play goals per game	T-6th
Points per game (Defense)	T-7th
Points per game (Rookies)	T-9th

Shannon Yoxheimer

Points per game	T-23rd
Goals per game	T-36th
Assists per game	T-15th

CHA TEAM RANKS

Goals	n/a
Assists	n/a
Goals Per Game	n/a
Goals Against	n/a
Goals-Against Average	n/a
Saves	n/a
Save Percentage	n/a
Shots on Goal	n/a
Least Penalty Minutes	n/a
Power-Play Goals	n/a
Power-Play Percentage	n/a
Power-Play Goals Against	n/a
Penalty-Kill Percentage	n/a

CHA INDIVIDUAL RANKS





NITTANY LION WOMEN'S HOCKEY

THE LAST TIME

PENN STATE...

Scored 0 goals	3/1/13 at RIT (0-1)
Scored 3 goals	10/4/13 at Vermont (3-3)
Scored 4 goals	10/5/13 at Vermont (4-2)
Scored 5 goals	10/6/12 at Vermont (5-3)
Scored 6 goals	11/2/12 vs. Sacred Heart (6-0)
Scored 7 goals	Never
Scored 8 goals	11/3/12 vs. Sacred Heart (8-2)
Scored 9 goals	Never
Scored 10 goals	1/4/13 vs. Chatham (10-0)
Allowed 0 goals	1/5/13 vs. Chatham (4-0)
Allowed 1 goal	3/1/13 at RIT (0-1)
Allowed 2 goals	10/5/13 at Vermont (4-2)
Allowed 3 goals	10/4/13 at Vermont (3-3)
Allowed 4 goals	2/23/13 at Robert Morris (2-4)
Allowed 5 goals	2/1/13 vs. #7 Mercyhurst (2-5)
Allowed 6+ goals	12/1/12 at #4 Mercyhurst (1-7)
Won in overtime	Never
Lost in overtime	3/2/13 at RIT (2-3)
Tied in overtime	10/4/13 at Vermont (3-3)
Played a ranked team	2/2/13 vs. #7 Mercyhurst (1-4)
Attempted 10-19 shots	3/2/13 19 at RIT (2-3)
Attempted 20-29 shots	10/5/13 22 at Vermont (4-2)
Attempted 30-39 shots	2/8/13 36 vs. Lindenwood (1-3)
Attempted 40-49 shots	1/4/13 48 vs. Chatham (10-0)
Attempted 50-59 shots	Never
Attempted 60-69 shots	11/3/12 64 vs. Sacred Heart (8-2)
Attempted 70+ shots	1/5/13 71 vs. Chatham (4-0)
Allowed 10-19 shots	1/5/13 16 vs. Chatham (4-0)
Allowed 20-29 shots	11/3/12 25 vs. Sacred Heart (8-2)
Allowed 30-39 shots	10/5/13 39 at Vermont (4-2)
Allowed 40-49 shots	2/16/13 45 at RIT (0-4)
Allowed 50-59 shots	3/2/13 57 at RIT (2-3)
Allowed 60-69 shots	2/22/13 63 at Robert Morris (1-4)
Allowed 70+ shots	12/1/12 71 at #4 Mercyhurst (1-7)
Tallied 5-9 assists	10/5/13 6 at Vermont (4-2)
Tallied 10-15 assists	11/3/12 12 vs. Sacred Heart (8-2)
Tallied 15+ assists	1/4/13 17 vs. Chatham (10-0)
Scored 10-19 points	10/5/13 10 at Vermont (4-2)
Scored 20+ points	1/4/13 27 vs. Chatham (10-0)
Scored 2 power-play goals	11/17/12 at Lindenwood (3-2)
Scored 3 power-play goals	10/20/12 at Sacred Heart (6-1)
Allowed 0 power-play goals	2/2/13 vs. #7 Mercyhurst (1-4)
Allowed 2 power-play goals	2/23/13 at Robert Morris (2-4)
Had 5 different goal scorers	Never
Had 6 different goal scorers	10/20/12 at Sacred Heart (6-1)
Had 7 different goal scorers	1/4/13 vs. Chatham (10-0)
Had 8 different goal scorers	11/3/12 vs. Sacred Heart (8-2)

A PENN STATE PLAYER...

Scored 2 goals	10/5/13 L. Bowman at Vermont (4-2)
Scored 3 goals	11/2/12 H. Hoenshell vs. Sacred Heart (6-0)
Scored 4 goals	Never
Had 3 assists	1/4/13 J. Bateman vs. Chatham (10-0)
Had 5 points	Never
Had 10+ shots	1/5/13 12, T. Weaver vs. Chatham (4-0)
Saved 40-49 shots	2/16/13 41, N. Paniccia at RIT (0-4)
Saved 50-59 shots	3/2/13 54, N. Paniccia at RIT (2-3)
Saved 60+ shots	12/1/12 64, N. Paniccia at #4 Mercyhurst (1-7)
Had a shutout	1/5/13 C. Whitlinger/B. Meyer vs. Chatham (4-0)
Scored an empty-net goal	10/6/12 B. Shaw at Vermont (5-3)
Scored a short-handed goal	Never

NITTANY LION WOMEN'S HOCKEY



2013-14 PENN STATE WOMEN'S HOCKEY NUMERICAL ROSTER

No.	Name	Yr.	Pos.	Ht.	S/C	Hometown	Last Team
2	Jeanette Bateman	So.	D	5-6	R	Greeley, Colo.	Colorado Select
3	Cara Mendelson	Jr.	F	5-6	R	Pittsburgh, Pa.	Steel City Selects
4	Jordin Pardoski	So.	D	5-5	R	Rochester Hills, Mich.	Detroit Honeybaked
5	Stephanie Walkom	So.	D	5-7	R	Moon Township, Pa.	Pittsburgh Penguins Elite
6	Lindsay Reihl	Gr.	D	5-4	R	Cheshire, Conn.	Connecticut Polar Bears
9	Amy Petersen	Fr.	F	5-4	R	Minnetonka, Minn.	Minnetonka HS
10	Micayla Catanzariti	So.	F	5-4	R	Rancho Santa Margarita, Calif.	Gilmour Academy (Ohio)
12	Sarah Nielsen	Fr.	F	5-6	L	Edina, Minn.	Edina HS
13	Kendra Rasmussen	So.	F	5-5	L	Sartell, Minn.	Sartell/Sauk Rapids HS
14	Darby Kern	So.	F	5-11	R	Venetia, Pa.	Pittsburgh Penguins Elite
15	Jess Desorcie	Jr.	F	5-4	L	Westford, Vt.	Connecticut College
16	Hannah Hoenshell	So.	F	5-3	R	Plano, Texas	Texas Alliance
17	Paige Jahnke	So.	D	5-6	R	Oakdale, Minn.	Roseville HS / Minnesota Jr. Whitecaps
18	Laura Bowman	Fr.	F	5-7	R	Minnetonka, Minn.	Minnetonka HS
19	Jill Holdcroft	So.	F	5-1	R	Pennsylvania Furnace, Pa.	Pittsburgh Penguins Elite
20	Emily Laurenzi	So.	F	5-2	R	Townsend, Del.	National Sports Academy (N.Y.)
21	Sarah Wilkie	So.	D	5-6	R	Ashby, Mass.	Williston Northampton School
22	Jenna Welch	Sr.	F	5-8	R	Austin, Texas	Connecticut
23	Birdie Shaw	So.	F	5-2	L	Troy, Mich.	Detroit Honeybaked
24	Taylor Gross	Sr.	F	5-1	R	Colorado Springs, Colo.	Connecticut
25	Katie Murphy	Jr.	F	5-4	L	Novi, Mich.	Detroit Honeybaked
27	Kelly Seward	Fr.	D	5-9	L	Williamsville, N.Y.	Nichols School / Buffalo Bisons
30	Celine Whitlinger	So.	G	5-8	L	Garden Grove, Calif.	Gilmour Academy (Ohio)
31	Brooke Meyer	So.	G	5-7	L	Naperville, Ill.	Chicago Huskies
33	Madison Smiddy	Jr.	D	5-7	L	Grand Rapids, Mich.	Detroit Honeybaked
36	Tess Weaver	Jr.	F	5-5	R	Windber, Pa.	Pittsburgh Penguins Elite
37	Nicole Paniccia	Sr.	G	5-5	L	Oakville, Ont.	Connecticut
40	Shannon Yoxheimer	So.	F	5-7	L	Jackson, Mich.	North American Hockey Academy (Vt.)

Head Coach: Josh Brandwene (Second Year)

Assistant Coaches: Gina Kearns (Second Year), Casey McCullion (Second Year); **Director of Operations** Alex Dawes (First Year)

Captain: Taylor Gross; **Assistant Captains:** Jordin Pardoski, Lindsay Reihl, Jenna Welch

ALPHABETICAL ROSTER		PRONUNCIATION GUIDE		LIONS BY STATE		LIONS BY POSITION	
No.	Name	Brandwene	BRAND-ween	California (2):	Catanzariti, Whitlinger	Forward (17):	Bowman, Catanzariti, Desorcie, Gross, Hoenshell, Holdcroft, Kern, Laurenzi, Mendelson, Murphy, Nielsen, Petersen, Rasmussen, Shaw, Weaver, Welch, Yoxheimer
2	Jeanette Bateman	Catanzariti	Cah-TAN-zah-REE-tee	Colorado (2):	Bateman, Gross	Defense (8):	Bateman, Jahnke, Pardoski, Reihl, Seward, Smiddy, Walkom, Wilkie
18	Laura Bowman	Desorcie	Deh-SORE-see	Connecticut (1):	Reihl	Goalie (3):	Meyer, Paniccia, Whitlinger
10	Micayla Catanzariti	Jahnke	YAWN-kee	Delaware (1):	Laurenzi		
15	Jess Desorcie	Jeanette	Jeh-NETT	Illinois (1):	Meyer		
24	Taylor Gross	Kearns	KERNs	Massachusetts (1):	Wilkie		
16	Hannah Hoenshell	McCullion	Mick-CULL-yon	Michigan (5):	Murphy, Pardoski, Shaw, Smiddy, Yoxheimer		
19	Jill Holdcroft	Paniccia	Pah-NEE-cha	Minnesota (5):	Bowman, Jahnke, Nielsen, Petersen, Rasmussen		
17	Paige Jahnke	Reihl	RILE	New York (1):	Seward		
14	Darby Kern			Pennsylvania (5):	Holdcroft, Kern, Mendelson, Walkom, Weaver		
20	Emily Laurenzi			Texas (2):	Hoenshell, Welch		
3	Cara Mendelson			Vermont (1):	Desorcie		
31	Brooke Meyer						
25	Katie Murphy						
12	Sarah Nielsen						
37	Nicole Paniccia						
4	Jordin Pardoski						
9	Amy Petersen						
13	Kendra Rasmussen						
6	Lindsay Reihl						
27	Kelly Seward						
23	Birdie Shaw						
33	Madison Smiddy						
5	Stephanie Walkom						
36	Tess Weaver						
22	Jenna Welch						
30	Celine Whitlinger						
21	Sarah Wilkie						
40	Shannon Yoxheimer						





NITTANY LION WOMEN'S HOCKEY

OCT. 6, 2013: PENN STATE 3, VERMONT 3 (OT)

Penn State (0-0-1, 0-0-0 CHA) vs. Vermont (0-0-1, 0-0-0 WHEA)
Date: Oct 04, 2013 • Location: Burlington, Vt. • Arena: Gutterson Fieldhouse
Attendance: 435 • Start time: 7:00 pm • End time: 9:15 pm • Total time: 2:15

Prd	Time	Team	Scored by	Assists	Vis. on Ice	Home on Ice
1.	2nd 13:32	PSU	PP Seward, Kelly/1	Pardoski, Jordn/1 Yoxheimer, Shannon	27,4,40,16,24	11,16,21,26
2.	2nd 19:25	UVM	EV Andreaskos, Victoria/1	Zuback, Brittany/1 Salerno, Ashley/1	2,6,9,12,24	44,19,11,21,26
3.	3rd 02:39	UVM	EV Pelkey, Amanda/1	Repaci, Gina/1	2,16,17,18,19	21,19,44,11,13
4.	3rd 04:50	PSU	EV Gross, Taylor/1	Andreaskos, Victoria/ Yoxheimer, Shann/2	24,40,12,4,21	5,13,16,22,25
5.	3rd 15:56	UVM	PP Zuback, Brittany/1	Pelkey, Amanda/1	4, 19,20,21	19,21,44,11,13
6.	3rd 16:23	PSU	EV Yoxheimer, Shannon/1	Nielsen, Sarah/2 Gross, Taylor/1	40,12,24,6,27	15,19,44,11,13

Goals by Period					
Team	1	2	3	OT	Tot
PSU	0	1	2	0	3
UVM	0	1	2	0	3

Shots by Period					
Team	1	2	3	OT	Tot
PSU	6	5	8	2	21
UVM	12	11	11	4	38

Power Play Goals-Att (Sh)				
Prd	PSU	UVM		
1st	0-1 (2)	0-2 (5)		
2nd	1-2 (2)	0-5 (8)		
3rd	0-3 (2)	1-1 (2)		
OT	0-0 (0)	0-0 (0)		
Total	1-6 (6)	1-8 (15)		

Penalties-Minutes by Prd				
Prd	PSU	UVM		
1st	2-4	1-2		
2nd	5-10	2-4		
3rd	1-2	3-6		
OT	0-0	0-0		
Total	8-16	6-12		

Three stars:
1. Pelkey, Amanda
2. Yoxheimer, Shannon
3. Zuback, Brittany

Officials:
Referee: Katie Guay
Referee: Wayne Silva
Linesman: Larry Legault
Linesman: Jeremy Letourneau

TEAM SUMMARY

#	Penn State	G	A	PI	Sh +/-	BI	#	Vermont	G	A	PI	Sh +/-	BI		
2	Bateman, Jeanet	0	0	0	0	-2	3	4	Vogl, Greer	0	0	0	1	0	0
4	Pardoski, Jordn	0	1	0	0	0	2	5	Leveillee, Casey	0	0	0	2	-1	0
6	Reihl, Lindsay	0	0	2	0	0	2	7	Ade, Rachael	0	0	0	1	0	1
9	Petersen, Amy	0	0	0	0	-1	0	9	Rancourt, Daniel	0	0	0	2	0	1
10	Catanzarilli, Mica	0	0	2	0	0	4	11	Salerno, Ashley	0	1	0	4	+1	0
12	Nielsen, Sarah	0	2	2	2	+1	0	13	Repaci, Gina	0	1	0	4	-1	1
15	Desorcie, Jess	0	0	0	1	0	0	15	Dineen, Kellie	0	0	0	0	-1	0
16	Hoenshell, Hann	0	0	0	1	-1	0	16	Baker, Bridget	0	0	4	2	-1	0
17	Jahnke, Paige	0	2	0	0	-1	2	17	McNally, Delia	0	0	0	3	0	1
18	Bowman, Laura	0	0	2	2	-1	1	18	Campeau, Cassi	0	0	0	0	0	0
19	Holdcroft, Jill	0	0	0	1	-1	0	19	Zuback, Brittany	1	1	2	4	+1	1
20	Laurenzi, Emily	0	0	0	0	0	2	21	Pelkey, Amanda	1	1	0	7	+2	0
21	Wilkie, Sarah	0	0	0	0	+1	0	22	Kelly, Sarah	0	0	4	1	-1	0
22	Welch, Jenna	0	0	0	0	0	0	25	Dalbec, Megan	0	0	0	0	-1	0
23	Shaw, Birdie	0	0	0	1	0	0	26	Campbell, Sarah	0	0	0	4	+1	2
24	Gross, Taylor	1	1	0	4	+1	0	44	Andreaskos, Victo	1	2	0	3	+1	0
27	Seward, Kelly	1	0	2	2	+1	4	T	Team	0	0	2	0	0	0
40	Yoxheimer, Shan	1	2	0	4	+2	0	30	Litchfield, Madis						
T	TEAM	0	0	2	0	0	0	Totals	3	6	12	38	0	7	
30	Whittinger, Celin														
31	Meyer, Brooke	dnp													
Totals		3	6	16	21	0	18								

GOALTENDERS

#	Penn State	Dec	Min	GA	1	2	3	OT	Saves	#	Vermont	Dec	Min	GA	1	2	3	OT	Saves	
37	Paniccia, Nicole	T	65:00	3	12	10	9	4	35	34	Douville, Roxanne	T	64:38	3	6	6	2	18		
													0:32	0	0	0	0	0	0	

PENALTY SUMMARY

Prd	Player	Team	MinOffense	Time	Prd	Player	Team	MinOffense	Time
1st	TEAM	PSU	2 Too Many Players On	03:51 PP	2nd	Kelly, Sarah	UVM	2 Hooking	13:23 PP
1st	Baker, Bridget	UVM	2 Interference	05:05 PP	2nd	Pardoski, Jordn	PSU	2 Checking	15:43 PP
1st	Bowman, Laura	PSU	2 Interference	12:39 PP	2nd	Seward, Kelly	PSU	2 Checking	17:09 PP
2nd	Reihl, Lindsay	PSU	2 Tripping	01:49 PP	3rd	TEAM	UVM	2 Too Many Players On	06:46 PP
2nd	Kelly, Sarah	UVM	2 Diving	04:45 PP	3rd	Baker, Bridget	UVM	2 Interference	13:23 PP
2nd	Nielsen, Sarah	PSU	2 Elbowing	07:56 PP	3rd	Jahnke, Paige	PSU	2 Interference	14:51 PP
2nd	Catanzarilli, Mica	PSU	2 Tripping	10:42 PP	3rd	Zuback, Brittany	UVM	2 Interference	16:53 PP

Penn State-Paniccia, Nicole (0-0-1). Vermont-Douville, Roxanne (0-0-1).

OCT. 7, 2013: PENN STATE 4, VERMONT 2

Penn State (1-0-1, 0-0-0 CHA) vs. Vermont (0-1-1, 0-0-0 WHEA)
Date: Oct 05, 2013 • Location: Burlington, Vt. • Arena: Gutterson Fieldhouse
Attendance: 760 • Start time: 2:30 pm • End time: 4:25 pm • Total time: 1:55

Prd	Time	Team	Scored by	Assists	Vis. on Ice	Home on Ice
1.	1st 06:51	UVM	EV Repaci, Gina/1	McNally, Delia/1 Baker, Bridget/1	6,10,22,23,27	13,17,16,9,11
3.	1st 11:49	PSU	EV Seward, Kelly/2	Petersen, Amy/1	27,9,6,16,18	9,11,13,15,17
3.	1st 12:01	PSU	EV Bowman, Laura/1	Hoenshell, Hanna/1	18,16,6,9,27	5,6,7,15,18
4.	2nd 03:48	UVM	EV Colang, Dayna/1	Zuback, Brittany/2 Pelkey, Amanda/2	2,17,40,24	6,19,21,7
5.	2nd 03:54	PSU	EV Hoenshell, Hannah/1	Nielsen, Sarah/3	16,12,2,17	6,7,19,21
6.	2nd 17:22	PSU	EV Bowman, Laura/2	Hoenshell, Hanna/2 Petersen, Amy/2	18,16,9,17,21	5,13,15,22,26

Goals by Period				
Team	1	2	3	Tot
PSU	2	2	0	4
UVM	1	1	0	2

Shots by Period				
Team	1	2	3	Tot
PSU	11	6	5	22
UVM	13	10	16	39

Power Play Goals-Att (Sh)				
Prd	PSU	UVM		
1st	0-1 (1)	0-1 (5)		
2nd	0-1 (1)	0-0 (0)		
3rd	0-1 (0)	0-1 (5)		
Total	0-3 (2)	0-2 (10)		

Penalties-Minutes by Prd				
Prd	PSU	UVM		
1st	1-2	1-2		
2nd	1-2	2-4		
3rd	1-2	1-2		
Total	3-6	4-8		

Three stars:
1. Bowman, Laura
2. Repaci, Gina
3. Whittinger, Celine

Officials:
Referee: Katie Guay
Referee: Wayne Silva
Linesman: Larry Legault
Linesman: Tom Nichols

TEAM SUMMARY

#	Penn State	G	A	PI	Sh +/-	BI	#	Vermont	G	A	PI	Sh +/-	BI		
2	Bateman, Jeanet	0	0	0	0	0	2	4	Vogl, Greer	0	0	0	0	0	0
4	Pardoski, Jordn	0	0	0	0	0	1	5	Leveillee, Casey	0	0	0	0	-2	0
6	Reihl, Lindsay	0	1	2	0	+1	3	6	Colang, Dayna	1	0	0	2	-1	2
9	Petersen, Amy	0	2	0	2	+3	0	7	Ade, Rachael	0	0	0	2	-1	1
10	Catanzarilli, Mica	0	0	0	0	-1	3	9	Rancourt, Daniel	0	0	0	4	0	1
12	Nielsen, Sarah	0	1	0	2	+1	0	11	Salerno, Ashley	0	0	0	1	0	0
15	Desorcie, Jess	0	0	0	1	0	0	13	Repaci, Gina	1	0	2	7	-1	2
16	Hoenshell, Hann	1	2	2	1	+4	1	15	Dineen, Kellie	0	0	2	0	-3	1
17	Jahnke, Paige	0	0	0	1	+1	0	16	Baker, Bridget	0	1	0	0	+1	0
18	Bowman, Laura	2	0	0	4	+2	0	17	McNally, Delia	0	1	0	0	0	0
19	Holdcroft, Jill	0	0	0	1	0	0	18	Campeau, Cassi	0	0	0	0	-1	0
20	Laurenzi, Emily	0	0	0	1	0	3	19	Zuback, Brittany	0	1	0	6	0	0
21	Wilkie, Sarah	0	0	0	1	+1	0	21	Pelkey, Amanda	0	1	0	7	0	0
22	Welch, Jenna	0	0	2	0	-1	1	22	Kelly, Sarah	0	0	2	1	-1	0
23	Shaw, Birdie	0	0	0	0	-1	0	25	Dalbec, Megan	0	0	0	0	0	0
24	Gross, Taylor	0	0	0	3	-1	0	26	Campbell, Sarah	0	0	0	5	-1	1
27	Seward, Kelly	1	0	0	1	+1	3	44	Andreaskos, Victo	0	0	2	1	0	0
40	Yoxheimer, Shan	0	0	0	4	-1	0	30	Litchfield, Madis						
T	TEAM	0	0	2	0	0	0	Totals	2	4	8	39	-10	8	
37	Paniccia, Nicole														
Totals		4	6	6	22	+1	17								

GOALTENDERS

#	Penn State	Dec	Min	GA	1	2	3	Saves	#	Vermont	Dec	Min	GA	1	2	3	Saves
30	Whittinger, Celine	W	60:00	2	12	9	16	37	34	Douville, Roxanne	L	58:03	4	9	4	5	18
												1:57	0	0	0	0	0

PENALTY SUMMARY

Prd	Player	Team	MinOffense	Time	Prd	Player	Team	MinOffense	Time
1st	Reihl, Lindsay	PSU	2 Tripping	12:28 PP	2nd	Andreaskos, Victoria	UVM	2 Checking	07:16 PP
1st	Dineen, Kellie	UVM	2 Checking	16:16 PP	3rd	Hoenshell, Hannah	PSU	2 Tripping	13:17 PP
2nd	Welch, Jenna	PSU	2 Hooking	03:24	3rd	Repaci, Gina	UVM	2 Delay Of Game	16:49 PP
2nd	Kelly, Sarah	UVM	2 Embellishment	03:24					

Win-Whittinger, Celine (1-0-0). Loss-Douville, Roxanne (0-1-1).

NITTANY LION WOMEN'S HOCKEY



2013-14 Penn State Women's Hockey Penn State Combined Team Statistics (as of Oct 09, 2013) All games

Date	Opponent	Score	Att.
Oct 04	at Vermont	Tot 3-3	435
Oct 05	at Vermont	W 4-2	760

TEAM STATISTICS	PSU	OPP
SHOT STATISTICS		
Goals-Shot attempts	7-43	5-77
Shot pct.	.163	.065
Goals/Game	3.5	2.5
Shots/Game	21.5	38.5
POWER PLAYS		
Goals-Power Plays	1-9	1-10
Conversion Percent	.111	.100
GOAL BREAKDOWN		
Power Play	1	1
Short-handed	0	0
Empty net	0	0
Penalty	0	0
Unassisted	0	0
Overtime	0	0
PENALTIES		
Number	11	10
Minutes	22	20
Penalties/Game	5.5	5.0
Pen minutes/Game	11.0	10.0
FACEOFFS (W-L)	53-69	69-53
Faceoff W-L Pct.	.434	.566

Record:	Overall	Home	Away	Neutral
ALL GAMES	1-0-1	0-0-0	1-0-1	0-0-0
CONFERENCE	0-0-0	0-0-0	0-0-0	0-0-0
NON-CONFERENCE	1-0-1	0-0-0	1-0-1	0-0-0

#	Player	gp	g	a	pts	sh	sh%	pen-min	pp	sh
16	Hoenshell, Hannah	2	1	2	3	2	.500	1-2	0	0
40	Yoxheimer, Shannon	2	1	2	3	8	.125	0-0	0	0
12	Nielsen, Sarah	2	0	3	3	4	.000	1-2	0	0
18	Bowman, Laura	2	2	0	2	6	.333	1-2	0	0
27	Seward, Kelly	2	2	0	2	3	.667	1-2	1	0
24	Gross, Taylor	2	1	1	2	7	.143	0-0	0	0
9	Petersen, Amy	2	0	2	2	2	.000	0-0	0	0
4	Pardoski, Jordin	2	0	1	1	3	.000	1-2	0	0
6	Reihl, Lindsay	2	0	1	1	0	.000	2-4	0	0
2	Bateman, Jeanette	2	0	0	0	0	.000	0-0	0	0
10	Catanzariti, Micayla	2	0	0	0	0	.000	1-2	0	0
15	Desorcie, Jess	2	0	0	0	2	.000	0-0	0	0
19	Holdcroft, Jill	2	0	0	0	2	.000	0-0	0	0
17	Jahnke, Paige	2	0	0	0	1	.000	1-2	0	0
20	Laurenzi, Emily	2	0	0	0	1	.000	0-0	0	0
23	Shaw, Birdie	2	0	0	0	1	.000	0-0	0	0
22	Welch, Jenna	2	0	0	0	0	.000	1-2	0	0
21	Wilkie, Sarah	2	0	0	0	1	.000	0-0	0	0
Total		2	7	12	19	43	.163	11-22	1	0
Opponents		2	5	10	15	77	.065	10-20	1	0

#	Goalie	gp	min	ga	gaavg	saves	save%	w-l-t
30	Whitinger, Celine	1	60:00	2	2.00	37	.949	1-0-0
37	Paniccia, Nicole	1	65:00	3	2.77	35	.921	0-0-1
Total		2	125:00	5	2.40	72	.935	1-0-1
Opponents		2	125:00	7	3.36	36	.837	0-1-1

Attendance Summary	PSU	Opponent
Total	0	1195
Dates/Avg Per Date	0/0	2/598
Neutral Site #/Avg	0/0	

Goals by Period	1st	2nd	3rd	Total
Penn State	2	3	2	7
Opponents	1	2	2	5

Saves by Period	1st	2nd	3rd	Total
Penn State	24	19	25	72
Opponents	15	8	11	36



NITTANY LION WOMEN'S HOCKEY



JEANNETTE BATEMAN
Sophomore • D
Greeley, Colo.



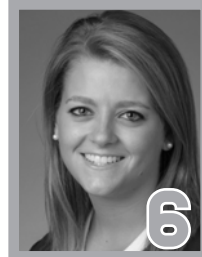
CARA MENDELSON
Junior • F
Pittsburgh, Pa.



JORDYN PARDOSKI^A
Sophomore • D
Rochester Hills, Mich.



STEPHANIE WALKOM
Sophomore • D
Moon Township, Pa.



LINDSAY REIHL^A
Grad Student • D
Cheshire, Conn.



AMY PETERSEN
Freshman • F
Minnetonka, Minn.



MICAYLA CATANZARITI
Sophomore • F
Rancho Santa Margarita, Calif.



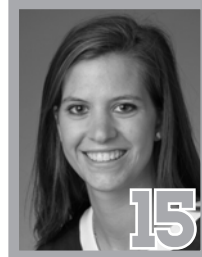
SARAH NIELSEN
Freshman • F
Edina, Minn.



KENDRA RASMUSSEN
Sophomore • F
Sartell, Minn.



DARBY KERN
Sophomore • F
Venetia, Pa.



JESS DESORCIE
Junior • F
Westford, Vt.



HANNAH HOENSHELL
Sophomore • F
Plano, Texas



PAIGE JAHNKE
Sophomore • D
Oakdale, Minn.



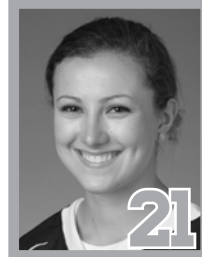
LAURA BOWMAN
Freshman • F
Minnetonka, Minn.



JILL HOLDCROFT
Sophomore • F
Pennsylvania Furnace, Pa.



EMILY LAURENZI
Sophomore • F
Townsend, Del.



SARAH WILKIE
Sophomore • D
Ashby, Mass.



JENNA WELCH^A
Senior • F
Austin, Texas



BIRDIE SHAW
Sophomore • F
Troy, Mich.



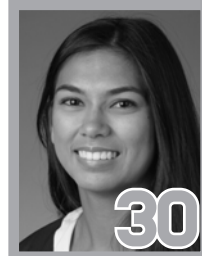
TAYLOR GROSS^C
Senior • F
Colorado Springs, Colo.



KATIE MURPHY
Junior • F
Novi, Mich.



KELLY SEWARD
Freshman • D
Williamsville, N.Y.



CELINE WHITLINGER
Sophomore • G
Garden Grove, Calif.



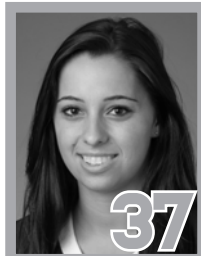
BROOKE MEYER
Sophomore • G
Naperville, Ill.



MADISON SMIDDY
Junior • D
Grand Rapids, Mich.



TESS WEAVER
Junior • F
Windber, Pa.



NICOLE PANICCIA
Senior • G
Oakville, Ont.



SHANNON YOXHEIMER
Sophomore • F
Jackson, Mich.