

# PENN STATE WOMEN'S VOLLEYBALL

## 2013 PSU MATCH NOTES

Arielle Sargent, Ast. Dir. of Athletic Communications • O: 814-865-8139 • C: 814-321-8286 • ans26@psu.edu • @PennStateVBALL

### PENN STATE CLASSIC - MATCH DETAILS



#### NO. PSU VS. ALBANY

Friday, Sept. 20  
7 p.m.  
Rec Hall  
University Park, Pa.



#### NO. PSU VS. EASTERN KENTUCKY

Saturday, Sept. 21  
p.m.  
Rec Hall  
University Park, Pa.



#### NO. PSU VS. YALE

Saturday, Sept. 21  
7 p.m.  
Rec Hall  
University Park, Pa.



### PENN STATE VS. ALBANY

The Nittany Lions will take on the Great Danes this weekend for the second time in program history, having faced Albany just once before in 2007. The last time the two clubs met, PSU claimed a 3-0 victory to advance to the second round of the 2007 NCAA Tournament.

### SCOUTING THE GREAT DANES

Albany enters the weekend looking to put an end to a nine-matching losing streak, and secure the first victory of the season. The freshman class is pacing the Great Dane offense this year, as four of the rookies have notched double-digit kills this year, contributing to 77 percent of Albany's kills. Freshman Amanda Dolan is leading the squad with 45 kills and a team-best 22 blocks.

### PENN STATE VS. EASTERN KENTUCKY

PSU owns a 5-1 record against the Colonels as the Lions have captured 3-0 wins in each victory against Eastern Kentucky. The most recent meeting between the two teams was Sept. 1, 2006. Penn State won the contest in straight sets to extend the streak to three straight matches without a loss, dating back to 1985.

### SCOUTING THE COLONELS

After opening the 2013 season on a 4-0 streak, Eastern Kentucky enters the Penn State Classic looking to halt a six-game skid. The Colonels lost all three matches last weekend in the Thunder Invite. Ashley Edmond and Alexis Plagens are leading the Colonel offense with 100+ kills this season. Edmond is at the helm of the pair with 141 killos, averaging a squad-best 3.53 kills per frame. She's also tallied 10 aces, 17 digs and 14 blocks.

### PENN STATE VS. YALE

Penn State has never lost a match or a set to the Bulldogs, as the Nittany Lions own a 7-0 record against Yale. The history between the two teams dates all the way back to 1978, when the two teams met twice, with PSU claiming wins in both matches. The most recent tilt between the two clubs, with the most recent meeting occurring in December of 2008.

### SCOUTING THE BULLDOGS

Yale is out to a 4-2 start in 2013, behind solid offensive contributions from Mollie Rogers and Brittani Steinberg, who have led the squad to a .279 team hitting percentage. Rogers is pacing the squad with a team-best 65 kills, while averaging 1.86 digs per set. Maddie Rudnick is anchoring the defense with 114 digs, tallying 5.18 per frame. Last weekend, the Bulldogs went 2-1 with the only loss coming to nationally ranked opponent, Stanford. Yale answered back the next day with wins against Air Force and Army.

### 2013 SCHEDULE

#### AUGUST

##### 30-31 Penn State Invitational

30	vs. Dabrowa (Exhibition)	W, 3-0
31	vs. No. 19 Louisville	W, 3-0
31	vs. Syracuse	W, 3-0

#### SEPTEMBER

##### 7-8 Nike Big Four Volleyball Classic

7	vs. No. 1 Texas	L, 3-2
8	vs. No. 9 Florida	W, 3-0

##### 13-14 Florida Gulf Coast Tournament

13	vs. Marquette	W, 3-0
14	vs. Central Arkansas	W, 3-0
14	vs. Florida Gulf Coast	W, 3-0

##### 20-21 Penn State Classic

20	vs. Albany	7 p.m.
21	vs. Eastern Kentucky	10 a.m.
21	vs. Yale	7 p.m.
27	vs. Michigan*	7 p.m.
28	vs. Michigan*#	7:30 p.m.

#### OCTOBER

3	at Indiana*#	7 p.m.
5	at Purdue*	7:30 p.m.
9	vs. Minnesota*#	7 p.m.
12	vs. Wisconsin*	8:30 p.m.
18	at Illinois*#	8 p.m.
20	at Northwestern*	2 p.m.
23	vs. Ohio State*#	7 p.m.
26	vs. Iowa*	7 p.m.

#### NOVEMBER

1	at Michigan*#	8 p.m.
2	at Michigan State*#	8:30 p.m.
8	vs. Purdue*	7 p.m.
9	vs. Indiana*	7 p.m.
15	at Wisconsin*	8 p.m.
16	at Minnesota*	8 p.m.
22	vs. Northwestern*	7 p.m.
23	vs. Illinois*	7 p.m.
27	at Ohio State*#	8 p.m.
30	at Nebraska*#	8 p.m.

#### DECEMBER

6	NCAA First and Second Rounds	Campus Sites
7	NCAA First and Second Rounds	Campus Sites
13	NCAA Regionals	Campus Sites
14	NCAA Regionals	Campus Sites
20	NCAA National Championship	Seattle, WA.
21	NCAA National Championship	Seattle, WA.

Home matches played at Rec Hall in **bold** • All times ET and subject to change •  
\* Indicates Big Ten match • # indicates match will be aired on TV



# 2013 PENN STATE WOMEN'S VOLLEYBALL

## PSU AT A GLANCE

### THE UNIVERSITY

Location:.....University Park, Pa. 16802  
 Founded:..... 1855  
 Enrollment:.....44,112  
 Colors:..... Blue & White  
 Nickname:..... Nittany Lions  
 Conference:..... Big Ten  
 President:..... Dr. Rodney Erickson  
 Acting Director of Athletics:..... Dr. Dave Joyner  
 Assoc. A.D./SWA.....Charmelle Greene  
 Facility (capacity):.....Rec Hall (5,812)

### VOLLEYBALL STAFF

Head Coach:.....Russ Rose (35th season)  
 Alma Mater:.....George Williams, 1975  
 Overall Record (Yrs/Pct):.....1,091-175 (34/.862)  
 School Record:.....same  
 Asst. Coaches:..... Steve Aird (2nd season)  
 .....Kaleena Davidson (5th season)  
 Dir. of VB Operations:.. Adam Hughes (4th season)  
 Office Phone:.....(814) 863-7475 or (814) 863-7474  
 Office Fax:.....(814) 865-1746  
 Office Address:.....235 Rec Hall

### SEASON IN REVIEW

2012 Record:..... 33-3  
 Home: ..... 17-0  
 Away: ..... 10-1  
 Neutral: .....6-2  
 Big Ten record (finish):..... 19-1 (1st)  
 Home: 10-0..... Away: 9-1  
 Final AVCA Ranking:..... No. 3  
 Postseason Play:..... NCAA National Semifinals  
 First Round:..... def. Binghamton, 3-0  
 Second Round:..... def. Bowling Green, 3-0  
 Regional Semifinal:..... def. No. 16 Kentucky, 3-0  
 Regional Final..... def. No. 11 Minnesota, 3-1  
 National Semifinal:.....lost to No. 5 Oregon, 3-1

### NITTANY LION HISTORY

First Year of Volleyball:..... 1976  
 All-Time Record (Years):..... 1,142-218-4 (37)  
 All-Time Big Ten Record:..... 388-52  
 Years/Win Pct:..... 22/.882  
 Big Ten Titles: (14) '92, '93, '96, '97, '98, '99, '03,  
 ..... '04, '05, '06, '07, '08, '09, '10, '12)  
 NCAA Tournament Appearances:..... 32  
 NCAA Tournament Record:.....78-27  
 NCAA National Championships:.....5  
 (1999, 2007, 2008, 2009, 2010)

## 2013 PENN STATE NUMERICAL ROSTER

NO.	NAME	YR.	POS.	HT.	HOMETOWN/HIGH SCHOOL
1	Ariel Scott	Sr.	RS	6-4	Ridgewood, N.J.
2	Lara Caraway	So.	DS	5-4	Evans City, Pa.
3	Kendall Pierce	So.	DS	5-6	Eden, N.Y.
4	Dominique Gonzalez	Jr.	L	5-6	San Antonio, Texas
6	Maddie Martin	Sr.	OH	6-1	Tampa, Fla.
7	Nia Grant	Jr.	OH	6-2	Warren, Ohio
8	Erica Denney	RS-Jr.	MH	6-5	Aurora, Colo.
9	Paulina Prieto Cerame	RS-Fr.	OH	6-2	Miami, Fla.
10	Carley Muller	Fr.	DS	5-7	Manhattan Beach, Calif.
12	Micha Hancock	Jr.	S	5-11	Edmond, Okla.
13	Taylor Krause	Fr.	DS/S	5-6	Allentown, Pa.
14	Aiyana Whitney	RS-So.	OH	6-5	Norwood, N.J.
15	Maggie Harding	Sr.	DS	5-6	State College, Pa.
16	Katie Slay	Sr.	MH	6-6	Raleigh, N.C.
17	Megan Courtney	So.	S/OH	6-2	Dayton, Ohio
18	Deja McClendon	Sr.	OH	6-1	Louisville, Ky
23	Kelly Robertson	Fr.	MH	6-0	Allentown, Pa./Parkland High
24	Laura Broerman	Fr.	DS	5-4	Colorado Springs, Colo.
33	Lacey Fuller	Jr.	DS	5-6	San Diego, Calif.

**Head Coach:** Russ Rose (George Williams, 1975), 35th year

**Assistant Coaches:** Steve Aird (Penn State, 2001), 2nd year

Kaleena Davidson (Penn State, 2006), 5th year

**Director of Volleyball Operations:** Adam Hughes (Penn State, 2006), 4th year

## ALPHABETICAL ROSTER

NO.	NAME	YR.	POS.	HT.	HOMETOWN/HIGH SCHOOL
24	Laura Broerman	Fr.	DS	5-4	Colorado Springs, Colo.
2	Lara Caraway	So.	DS	5-4	Evans City, Pa.
17	Megan Courtney	So.	S/OH	6-2	Dayton, Ohio
8	Erica Denney	RS-Jr.	MH	6-5	Aurora, Colo.
33	Lacey Fuller	Jr.	DS	5-6	San Diego, Calif.
4	Dominique Gonzalez	Jr.	L	5-6	San Antonio, Texas
7	Nia Grant	Jr.	OH	6-2	Warren, Ohio
12	Micha Hancock	Jr.	S	5-11	Edmond, Okla.
15	Maggie Harding	Sr.	DS	5-6	State College, Pa.
13	Taylor Krause	Fr.	DS/S	5-6	Allentown, Pa.
6	Maddie Martin	Sr.	OH	6-1	Tampa, Fla.
18	Deja McClendon	Sr.	OH	6-1	Louisville, Ky.
10	Carley Muller	Fr.	DS	5-7	Manhattan Beach, Calif.
3	Kendall Pierce	So.	DS	5-6	Eden, N.Y.
9	Paulina Prieto Cerame	RS-Fr.	OH	6-2	Miami, Fla.
23	Kelly Robertson	Fr.	MH	6-0	Allentown, Pa.
1	Ariel Scott	Sr.	RS	6-4	Ridgewood, N.J.
16	Katie Slay	Sr.	MH	6-6	Raleigh, N.C.
14	Aiyana Whitney	RS-So.	OH	6-5	Norwood, N.J.

## PRONUNCIATIONS

Aiyana.....	l-yahn-uh	Broerman.....	Bra-er-man
Ariel.....	Air-ee-el	Micha.....	Mike-uh
Aird.....	Air-d	Nia.....	Nee-uh
Kaleena.....	KA-lee-na	Muller.....	Muh-ler
Lacey.....	Lace-ee	Paulina.....	Paul-ee-na
Lara.....	Lar-uh	Prieto.....	Pre-eh-toe



# TV/RADIO ROSTER



**1** Ariel Scott  
Sr., RS, 6-4  
Ridgewood, N.J.



**2** Lara Caraway  
So., DS, 5-4  
Evans City, Pa.



**3** Kendall Pierce  
So., DS, 5-6  
Eden, N.Y.



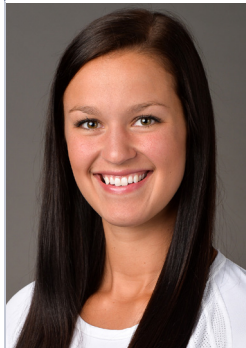
**4** Dominique Gonzalez  
Jr., DS, 5-6  
San Antonio, Texas



**6** Maddie Martin  
Sr., OH, 6-1  
Tampa, Fla.



**7** Nia Grant  
r., OH, 6-2  
Warren, Ohio



**8** Erica Denney  
RS-Jr., MH, 6-3  
Aurora, Colo.



**9** Paulina P. Cerame  
RS-Fr., OH, 6-2  
San Juan, Puerto Rico



**10** Carley Muller  
Fr., DS, 5-7  
Manhattan Beach, Calif.



**12** Micha Hancock  
Jr., S, 5-11  
Edmond, Okla.



**13** Taylor Krause  
Fr., DS/S, 5-6  
Allentown, Pa.



**14** Aiyana Whitney  
RS-So., OH, 6-4  
Norwood, N.J.



**15** Maggie Harding  
Sr., DS, 5-6  
State College, Pa.



**16** Katie Slay  
Sr., MH, 6-6  
Raleigh, N.C.



**17** Megan Courtney  
So., S/OH, 6-2  
Dayton, Ohio



**18** Deja McClendon  
Sr., OH, 6-1  
Louisville, Ky.



**23** Kelly Robertson  
Fr., MH, 6-0  
Allentown, Pa.



**24** Laura Broerman  
Fr., DS, 5-4  
Colorado Springs, Colo.



**33** Lacey Fuller  
Jr., DS, 5-6  
San Diego, Calif.



Russ Rose  
Head Coach



Steve Aird  
Assistant Coach



Kaleena Davidson  
Assistant Coach



Adam Hughes  
Director of  
Operations



JJ Goddu  
Volunteer  
Assistant Coach



## AROUND THE BIG TEN



### 2013 BIG TEN STANDINGS

Team	Big Ten Record	Overall Pct.	Record	Pct.
Ohio State	0-0	.000	9-0	1.000
Minnesota	0-0	.000	8-1	.889
Wisconsin	0-0	.000	8-1	.889
Indiana	0-0	.000	8-1	.889
Michigan State	0-0	.000	8-1	.889
Michigan	0-0	.000	7-1	.875
Nebraska	0-0	.000	7-1	.875
Penn State	0-0	.000	6-1	.857
Iowa	0-0	.000	9-2	.818
Purdue	0-0	.000	6-2	.750
Northwestern	0-0	.000	5-4	.556
Illinois	0-0	.000	4-4	.500

### THIS WEEKEND IN THE BIG TEN

#### SEPTEMBER 17

IOWA at Milwaukee 7 p.m.

#### SEPTEMBER 20

#16 ILLINOIS at #15 North Carolina - 7 p.m.

INDIANA at Duke - 7 p.m.

Marshall at #10 MICHIGAN - 11:30 a.m.

Maryland at #10 MICHIGAN - 7 p.m.

Eastern Michigan at #14 MICHIGAN STATE - 7 p.m.

#9 MINNESOTA vs. Rhode Island - 10 a.m.

#9 MINNESOTA vs. New Hampshire - 5:30 p.m.

South Florida at NORTHWESTERN - 1 p.m.

Miami (OH) at NORTHWESTERN - 8 p.m.

#13 OHIO STATE vs. Maryland E. Shore - 4:30 p.m.

Albany at #1 PENN STATE - 7 p.m.

Syracuse at #21 PURDUE - 7 p.m.

WISCONSIN (rv) at N.C. State - 7 p.m.

#### SEPTEMBER 21

#16 ILLINOIS at Duke - 7 p.m.

INDIANA at North Carolina - 7 p.m.

#25 Iowa State at IOWA - 8 p.m.

#24 Ohio at #10 MICHIGAN - 7 p.m.

Duquesne at #14 MICHIGAN STATE - Noon

Cincinnati at #14 MICHIGAN STATE - 7:30 p.m.

#9 MINNESOTA vs. Connecticut - Noon

#9 MINNESOTA at Dartmouth - 7 p.m.

#13 OHIO STATE vs. Valparaiso - 11 a.m.

#13 OHIO STATE at Buffalo - 7 p.m.

Eastern Kentucky at #1 PENN STATE - 10 a.m.

Yale at #1 PENN STATE - 8 p.m.

Northern Kentucky at #21 PURDUE - Noon

Florida International at #21 PURDUE - 7:30 p.m.

WISCONSIN (rv) vs. VCU - 10:30 a.m.

WISCONSIN (rv) vs. Colgate - 5 p.m.

#### SEPTEMBER 22

#12 NEBRASKA at #6 Texas - 2 p.m.

IUPUI at NORTHWESTERN - 2 p.m.

### WEEKEND IN REVIEW

Penn State powered past Marquette, Central Arkansas and tournament host, FGCU on the way to the Hilton Garden Inn Homewood Suites Classic title last weekend. The Nittany Lions defeated all three opponents in straight sets, marking the sixth time this season PSU has won a match in straight sets. Senior Katie Slay earned MVP honors for her performance on the court, while junior Micha Hancock and sophomore Megan Courtney joined her on the all-tournament team.

### HANCOCK LEADING THE NATION IN ACES PER SET

Junior Micha Hancock is leading the nation in aces per set for the second straight week, according to the second NCAA DI stats release. Hancock is averaging 0.96 aces per frame across seven matches so far this season, while also leading the team with 16. Hancock has recorded at least one service ace in every match this season, including eight against Syracuse and five at No. 6 Texas.

As a team, Penn State is averaging 2.00 aces per set, which ranks 14th in the country. Aside from Hancock, Nia Grant has also recorded at least one ace in every match this season for a season total of six, which ranks second on the squad.

### WEEK THREE: PSU RECLAIMS NO. 1 SPOT IN AVCA RANKINGS

Following an undefeated opening weekend, the Nittany Lions reclaimed the No. 1 ranking in the AVCA weekly Top 25 Coaches' Poll for the second time this season, while also picking up top rankings in the RichKern.com and Volleyball Magazine polls. In the AVCA poll, Penn State received 45-of-60 possible first-place votes. Last year, Penn State spent six weeks atop the standings, including five consecutive weeks from Sept. 24 to Oct.22, before earning the No. 1 overall seed in the NCAA Tournament, Nov. 9. The No. 1 ranking marks the 77th time in program history that Penn State has reached the top of the polls, having earned its first-ever No. 1 ranking Sept. 2, 1997.

### SLAY EARNS HGIHS CLASSIC ALL-TOURNAMENT MVP HONORS

Senior Katie Slay earned her first all-tournament honors of the season after earning the MVP title in the Hilton Garden Inn Homewood Suites Classic last weekend. Slay recorded two season-high marks in the 3-0 weekend, registering a team-high eight blocks against Central Arkansas and a squad-best .818 hitting percentage at FGCU. She also combined for 23 kills on the week, with only one error while leading the team with a .667 hitting percentage. Slay also averaged 1.78 blocks per set across all three matches and extended her streak to seven straight games with at least one block.

### COURTNEY AND HANCOCK NAB SPOTS ON ALL-TOURNAMENT TEAM

Junior Micha Hancock and sophomore Megan Courtney both earned spots on the all-tournament team last weekend. The honor was Hancock's second of the season.

Hancock dished out more than 30 assists in all three PSU victories this weekend, while pacing tournament MVP, Katie Slay to a season-high .818 hitting clip against FGCU. She notched three aces against both Central Arkansas and FGCU for an 0.67 average per frame on the week.

Courtney tied for first on the team in kills against Marquette and FCGU while leading the squad with double-digit kills (10) against Central Arkansas last weekend. She combined for 28 total kills in all three matches, adding 17 digs.

### GOTTA PLAY THE BEST TO BE THE BEST

Three of the four matches the Nittany Lions have played this season have been against teams ranked within the top 25. Penn State has tallied a 3-1 mark against ranked opponents in 2013, tallying wins against No. 19 Louisville and No. 8 Florida. Presently, there are eight more matches against ranked foes slated for the rest of the season.

### HANCOCK EARNS PENN STATE INVITATIONAL MVP HONORS

Micha Hancock earned Penn State Invitational MVP honors for a pair of outstanding performances last weekend. Hancock tied for third on the squad in kills with five against Syracuse, on 556 hitting. She also dished out 30 assists, while pacing the team to a .313 hitting clip. Against Louisville, Hancock registered eight service aces, which is just two shy of her career-high mark of 10 that she set against Binghamton in the NCAA Tournament last season. She also tallied two kills and seven digs against the Cardinals to round out the weekend.



## AVCA TOP 25 COACHES' POLL

Sept. 16, 2013

NO.	SCHOOL	PTS.	RECORD	PW
1.	<b>PENN STATE (45)</b>	1476	6-1	3
2.	San Diego (13)	1379	7-1	9
3.	Washington (2)	1327	6-0	6
4.	Florida	1282	8-1	5
5.	USC	1266	8-1	1
6.	Texas	1179	5-2	2
7.	Hawai'i	1155	8-1	10
8.	Stanford	1108	5-2	8
9.	Minnesota	1004	8-1	4
10.	Michigan	947	7-1	7
11.	UCLA	878	8-1	11
12.	Nebraska	842	7-1	12
13.	Ohio State	804	9-0	13
14.	Michigan State	632	8-1	15
15.	North Carolina	598	9-0	18
16.	Illinois	588	4-4	14
17.	Florida State	524	6-3	16
18.	Arizona State	431	8-1	NR
19.	Kentucky	420	6-3	19
20.	Oregon	264	7-3	20
21.	Purdue	253	6-2	22
22.	Colorado State	235	8-0	NR
23.	Creighton	164	7-2	24
24.	Ohio	152	8-1	NR
25.	Iowa State	147	5-4	17

**RECEIVING VOTES:**Texas A&M 96; California 92; Oklahoma 88; Western Kentucky 58; Kansas State 40; Pepperdine 17; Wisconsin 17; St. Mary's (CA) 16; Cal State Northridge 4

\*2013 opponents in *italics*

## PSU PRESENCE IN THE COACHES' POLL

Aug. 12: #2

Sept. 2 #1

Sept. 7 #3

Sept. 9 #3

Sept. 16 #1

Next Poll: Sept. 23

## FAMILAR FACES

Yale head coach Erin Appleman will return to Rec Hall for a homecoming this weekend, but this time she'll be on the opposite bench. Appleman served as an assistant coach for eight years on the sidelines with head coach Russ Rose. From 1993 to 1999 the Nittany Lions reached the national semifinals of the NCAA tournament five times, while also capturing five Big Ten titles.

## PREITO CERAME AND SLAY EARN PSU INVITE ALL-TOURNAMENT

Redshirt freshman Paulina Prieto Cerame and senior Katie Slay also earned Penn State Invitational All-Tournament team honors in the Penn State Invitational. In her first season in the blue and white, Preto Cerame recorded a team-high nine kills against Syracuse and hit double-digits with 10 against No. 19 Louisville. Slay led the squad with a team-best five blocks against Syracuse, including two solo blocks. She also tied for third on the team with five kills. Against the Cardinals, she posted three blocks, including one solo block, adding three kills.

## NITTANY LIONS IMPROVE TO 29-6 IN SEASON-OPENERS

With a victory against Syracuse, Penn State improved to 29-6 all-time in season-openers. The win marks the second-straight season opening triumph for the Lions after knocking off Morehead State 3-0 in the first match of the 2012 season. Penn State has not lost a season-opener since Aug. 26, 2011, when PSU lost to Oregon, marking the first season-opening loss since 2005.

The Penn State Invitational also marked the first time the Nittany Lions opened the season at home in six years. The last time PSU opened at Rec Hall was in 2007, when Penn State defeated Texas, 3-1, on Aug. 24 and 25 to kick of the start of an eventual national championship campaign.

## SISTER, SISTER!

In Penn State's final matchup of the Penn State Invitational, three-time AVCA All-American Deja McClendon lined up against her sister, Maya McClendon, who is currently an outside hitter for the No. 19-ranked Louisville Cardinals. Deja led with a team-high 17 digs, while Maya led the Cards offense with eight kills.

## SCOTT SELECTED AS CANDIDATE FOR SENIOR CLASS AWARD

Penn State women's volleyball senior Ariel Scott has been selected as a candidate for the 2013 Senior CLASS Award, as announced today. Scott is one of 30 to earn a spot on the ballot, along with four others from the Big Ten conference.

Scott, a unanimous Preseason All-Big Ten selection, helped guide PSU to a spot in the NCAA National Semifinals, picking up numerous honors along the way. The 2012 First Team AVCA All-American and 2012 Big Ten Player of the Year returns to the court in 2013 for her final season after starting all 36 games last year. She led the squad with a team-best, 469 kills, averaging 3.75 per set with a .308 hitting clip. The NCAA West Lafayette Regional Championship MVP recorded double-digit kills in 24-of-26 matches.

## PSU EARNS NO. 2 RANKING IN AVCA PRESEASON COACHES' POLL

The defending Big Ten Champion Nittany Lions enter the 2013 season with the No. 2 ranking, according to the 2013 AVCA Preseason Coaches' Poll. The Lions are among Big Ten teams to break into the top 10, with Minnesota and Michigan coming in at No. 6 and No. 7 and Nebraska at No. 10.

Defending NCAA Champion Texas nabbed the top spot, earning 55 of 60 possible first-place votes. The Nittany Lions received three first place votes, while third-ranked Stanford earned two. Rounding out the top five is USC and Washington, who are ranked fourth and

## STREAKS

Penn State holds the top three winning streaks in Big Ten history. Penn State's most recent streak of 65 consecutive matches began on Nov. 11, 2006 and ended on Sept. 24, 2010 at Illinois. It is the longest streak in league history. Penn State's other two conference winning streaks were 49 matches and 41. Illinois owns the fourth (40) and fifth (25) longest conference winning streaks.

## TOP FIVE BIG TEN STREAKS

- 65 - Penn State (11/11/06 - 9/18/10)
  - snapped at Illinois (9/24/10)
- 49 - Penn State (11/1/97 - 11/27/99)
  - snapped at Wisconsin (9/22/00)
- 41 - Penn State (10/22/04 - 10/21/06)
  - snapped at Wisconsin (10/27/06)
- 40 - Illinois (11/15/85 - 11/20/87)
  - snapped at Purdue (11/27/87)
- 25 - Illinois (10/2/92 - 10/9/93)



# 2013 PENN STATE WOMEN'S VOLLEYBALL

## DOUBLE - DOUBLES

### **DEJA MCCLENDON (24 CAREER)**

- at Texas, 9/7/13 (20 kills, 17 digs)

### **MEGAN COURTNEY (4 CAREER)**

- vs. Florida , 9/8/13 (11 kills, 12 digs)

## 2013 HONORS

### **DEJA MCCLENDON**

- Preseason All-Big Ten

### **MEGAN COURTNEY**

- Preseason All-Big Ten
- Hilton Garden Inn Homewood Suites All-Tournament

### **MICHA HANCOCK**

- Preseason All-Big Ten
- Penn State Invitational MVP
- Hilton Garden Inn Homewood Suites All-Tournament

### **KATIE SLAY**

- Preseason All-Big Ten
- Penn State Invitational All-Tournament
- Hilton Garden Inn Homewood Suites Classic MVP

### **ARIEL SCOTT**

- Unanimous Preseason All-Big Ten
- Senior CLASS Award candidate

### **PAULINA PREITO CERAME**

- Penn State Invitational All-Tournament

## ALL-BIG TEN PRESEASON INFO

### **PRESEASON POLL**

1. Penn State
2. Minnesota
3. Michigan
4. Nebraska
5. Michigan State
6. Illinois

### **ALL-BIG TEN TEAM**

Name, School Yr. Pos.	Ashley Wittman, MINN
Jocelynn Birks, ILL	Stephanie Holthus, NU
Liz McMahon, ILL	Megan Courtney, PSU
Jennifer Cross, MICH	Micha Hancock, PSU
Lexi Dannemiller, MICH	Deja McClendon, PSU
Lexi Erwin, MICH	ARIEL SCOTT, PSU
LAUREN WICINSKI, MSU	Katie Slay, PSU
TORI DIXON, MINN	*Unanimous in all caps

## NISSANY LIONS ON TV

There's no need to worry this year if you can't follow Penn State on the road or make it to every home match. As one of the nation's top volleyball programs, Penn State has earned regional and national exposure. This year, the Nittany Lions will be on television at least eight times between the Big Ten Network and ESPN. All other matches will be streamed live on GoPSUsports.com via All-Access or on BigTenNetwork.com. All schools will provide live scoring via the web, as well.

### **PENN STATE WOMEN'S VOLLEYBALL TV SCHEDULE**

<u>Date</u>	<u>Opponent</u>	<u>Air Time</u>
Sept. 28	vs. Michigan	BTN - live
Oct. 3	at Indiana	ESPN2 - live
Oct. 9	vs. Minnesota	BTN - live
Oct. 18	at Illinois	BTN - live
Oct. 23	vs. Ohio State	ESPN2 - delay
Nov. 1	at Michigan	BTN - live
Nov. 2	at Michigan State	BTN - live
Nov. 27	at Ohio State	BTN - live
Nov. 30	at Nebraska	BTN - live

## INTERNATIONAL INFLUENCE

Over the weekend, Dabrowa hit the court in Rec Hall, making its first stop on a tour throughout the United States. Dabrowa is a top professional team from Poland that reached the title match of the CEV Women's Volleyball Cup in 2010-11. The CEV is the governing body of 55 national federation teams from across Europe, and the highest level of competition for professional clubs. This year, Dabrowa captured the Polish Cup, qualifying the team for its fifth appearance in the CEV Women's Volleyball Cup since 2009. Dabrowa's lineup consists of athletes from four different countries including Belgium, Czech Republic, Italy and Poland.

Current player, Maja Tokarska also played on the 2012 Olympic team for Poland. The club will tour the United States for three weeks, taking on other collegiate teams such as Kent State, Pittsburgh, Ohio State, Purdue, Bowling Green, Notre Dame and Northwestern.

## PENN STATE PICKED TO FINISH FIRST IN BIG TEN PRESEASON POLL

PSU was picked as the Big Ten preseason favorite in the 2013 Preseason Coaches' Poll, marking the Lions' eighth first-place nod within the last nine years. Following Penn State in the No. 2 slot is Minnesota, followed by Michigan, Nebraska and Michigan State. Illinois rounds out the group, slated at sixth.

## FIVE EARN BIG TEN PRESEASON HONORS

Penn State dominated the Preseason All-Big Ten honors this year with five Nittany Lions earning honors. Ariel Scott led the group with a unanimous selection, marking her second straight appearance on the list. Deja McClendon earned her third consecutive nod, while Katie Slay also notched her second straight. Micha Hancock and Megan Courtney also earned spots on the list.

## LEADER OF THE PACK

Team captains for the 2013-14 year include junior Dominique Gonzalez and senior Maggie Harding. Gonzalez is no stranger to the leadership role, having served as a team captain during the 2012-13 season.

## JUST LIONS, PLEASE

When referring to the Penn State women's volleyball team please use only the terms Nittany Lions or just Lions. Both Penn State and PSU are also acceptable.

## WHAT'S NEXT?

After wrapping up the non-conference portion of the schedule this weekend, Penn State will officially open Big Ten play next week, welcoming two nationally ranked conference foes to Rec Hall. PSU will square off against No. 14 Michigan State on Friday, before taking on No. 10 Michigan the next day.



# 2013 PENN STATE WOMEN'S VOLLEYBALL

## RICKKERN.COM TOP 30

Poll #3 • Sept. 16, 2013

NO.	SCHOOL	POINTS
1.	<b>PENN STATE</b>	<b>656</b>
2.	San Diego	590
3.	Florida	589
4.	USC	576
5.	Texas	568
6.	Hawaii	559
7.	Stanford	532
8.	Washington	518
9.	Michigan	499
10.	Minnesota	483
11.	UCLA	433
12.	Nebraska	419
13.	Ohio State	381
14.	Michigan State	381
15.	Illinois	301
16.	Florida State	285
17.	North Carolina	262
18.	Oregon	254
19.	Arizona State	237
20.	Purdue	237
21.	Iowa State	184
22.	Ohio	158
23.	Kentucky	156
24.	Creighton	146
25.	Wisconsin	144
26.	Cal	134
27.	Texas A&M	123
28.	WKU	121
29.	Oklahoma	72
30.	Colorado State	66

**Receiving Votes:** Cal, Texas A&M, BYU, Wichita State, Long Beach State, Miami (Fla.), Pepperdine, Arizona, Auburn, Colorado State, Missouri, Pacific

## VOLLEYBALL MAGAZINE TOP 20

Poll #3 • Sept. 16, 2013

NO.	SCHOOL	POINTS	PREVIOUS
1.	<b>PENN STATE (7)</b>	<b>195</b>	<b>3</b>
2.	Washington (1)	176	5
3.	San Diego (2)	169	10
4.	USC	166	1
5.	Hawaii	151	8
6.	Texas	147	2
7.	Florida	146	9
8.	Stanford	139	7
9.	Minnesota	130	4
10.	Michigan	116	6
11.	UCLA	96	11
12.	Nebraska	83	12
13.	Ohio State	75	13
14.	Arizona State	61	20
15.	North Carolina	56	19
16.	Michigan State	50	14
17.	Florida State	49	15
18.	Illinois	28	16
19.	Oregon	14	18
20.	Wisconsin	9	RV

**Receiving Votes:** Louisville, North Carolina, BYU, Arizona State, California, Kansas, Missouri, Wichita State, Ohio, Central Arkansas, Kentucky

## NIITTANY LIONS BY MONTH

Penn State is 37-5 (.881) all-time during the month of August, including the pair of victories this weekend against Syracuse and No. 19 Louisville. Its first two losses came during the inaugural NACWAA in 1995 when Nebraska swept the Lions, and in the 1999 NACWAA when Florida outlasted Penn State, 3-2, in the opening round. Most recently, the Nittany Lions suffered a season opening loss to Oregon in 2011 before rebounding with a hard fought 3-2 win against nationally-ranked USC.

Penn State is 354-55-4 (.863) all-time during the month of September. The Lions are 179-16 (.921) during September dating back to the 1995 season and 37-7 (.840) within the last five years.

PSU is 379-67 (.850) all-time during the month of October. Penn State has posted a 79-11 (.878) mark in October across the last 10 seasons, a record of 43-3 (.935) in the last five years and did not lose a match during the month from 2007 to 2010.

Penn State is 275-57 (.828) all-time during the month of November, including a 77-8 (.918) mark over the last 10 seasons. The Lions had a six-year streak from 1995-2000 where they did not lose a match in the month, and in the last five seasons, Penn State has a 38-3 (.927) mark in November.

## QUICK SETS

From Oct. 16, 1996 to Nov. 9, 2001, Penn State won 139 consecutive matches when taking a 2-0 lead. Since joining the Big Ten in 1991, Penn State has played in 738 total matches, winning 652. Additionally, 519 of those 652 wins, or 79%, have been three-game sweeps. Across the last seven years, Penn State has won 194 of its 238 victories in three games (81%), including 37-of-38 (98%) in 2008 and 32-of-38 in 2009 (84%).

In the last 15 years, the Lions have lost only 57 matches. And of those 22 teams that defeated the Lions – BYU, Florida, Illinois, Indiana, Long Beach State, Michigan, Michigan State, Minnesota, Nebraska, Northwestern, Ohio State, Oregon, Oregon State, Purdue, USC, Stanford, Temple, Tennessee, Texas, UCLA, Washington and Wisconsin – only eight of these teams (Nebraska, Stanford, Ohio State, Illinois, Wisconsin, UCLA, Minnesota and Florida) have been able to beat Penn State a third time. The Lions have compiled a 274-55 mark in the last 15 years versus these teams.

vs. Michigan	27-2	vs. Stanford	5-5
vs. Northwestern	28-2	vs. Michigan State	26-2
vs. Wisconsin	24-6	vs. Ohio State	25-5
vs. Florida	4-2	vs. UCLA	3-3
vs. Nebraska	5-4	vs. Minnesota	26-6
vs. LBSU	0-1	vs. USC	2-1
vs. Illinois	26-5	vs. Temple	2-1
vs. Brigham Young	3-1	vs. Tennessee	0-1
vs. Purdue	30-1	vs. Indiana	29-1
vs. Washington	0-1	vs. Texas	9-2
		vs. Oregon	0-2
		vs. Oregon State	0-1

## PENN STATE BY THE NUMBERS

5	Number of NCAA National Championships (1999, 2007, 2008, 2009, 2010)
15	Number of Big Ten titles in 22 seasons in the league
21	Number of Conference Players of the Year
32	Number of NCAA Tournaments PSU has participated in, one of two to play in all 32
36	Number of consecutive 20-win seasons
37	Seasons of Penn State women's volleyball, which started in 1976 under Tom Tait
65	Longest Big Ten winning streak recorded by Penn State from 11/11/06 to 9/24/10
76	Number of polls in which Penn State was ranked No. 1
94	Number of consecutive home match wins from 9/1/06 to 12/11/10
109	Number of consecutive matches wins between 9/21/07 to 9/11/10
142	Number of Academic All-Big Ten honorees in 21 years
1,091	Number of wins by head coach Russ Rose prior to entering his 35th season in 2013
1,145	Number of wins in Penn State women's volleyball history



# 2013 PENN STATE WOMEN'S VOLLEYBALL

## RUSS ROSE AT A GLANCE ...

- 2007 AVCA Hall of Fame Inductee
- 2005 USA Volleyball All-Time Great Coach Honoree
- 2000 US Olympic Committee Coach of the Year
- Four-time AVCA Coach of the Year  
1997, 1999, 2007, 2008
- Six-time AVCA Mideast Region Coach of the Year  
1996, 2007, 2008, 2009, 2010, 2012
- Three-time Volleyball Monthly Coach of the Year  
1990, 1993, 1999
- Seven-time Mideast Region Coach of the Year  
1990, 1992, 1993, 1994, 2007, 2008, 2012
- Thirteen-time Big Ten Conference Coach of the Year  
1992, 1993, 1996, 1997 (co), 1998, 2003 (co),  
2005, 2006, 2007, 2008, 2009, 2010, 2012
- 1996 District II Coach of the Year
- Six-Time Atlantic 10 Coach of the Year
- Four-time Northeast Region Coach of the Year
- National Jewish Sports Hall of Fame
- 2010 USAV Leader in Volleyball

## BY THE NUMBERS ...

### 1999, 2007, 2008, 2009 & 2010

NCAA National Champions

### NO. 1

All-Time Winning Percentage (.862) among active DI coaches

### 1,091

Career wins in 34 seasons, the highest win total ever for a Penn State head coach

### 3

Number of active coaches in NCAA Division I history with 1,000 career wins

### 32

Straight NCAA Tournament appearances

### 15

Big Ten titles in 22 years

### 8

Consecutive Atlantic 10 titles

### 150

Academic All-Big Ten selections in 22 years

### 21

Conference Players of the Year in last 28 years

At least 1 All-American in 33-of-34 seasons

## THE LAST TIME A LION...

- Had 30 or more kills..... 31 - Nicole Fawcett vs. Cal Poly (8/31/07)
- Had 10 or more blocks ..... 12 - Katie Slay at Michigan (10/20/12)
- Had five or more aces ..... 5 - Micha Hancock vs. Texas (9/7/13)
- Had 25 or more digs..... 35 - Alyssa D'Errico at Minnesota (11/27/10)
- Had 80 or more assists..... 82 - Samatha Spink vs. Illinois (11/24/95)
- Hit .800 or better (min. 12 kills) ..... .929 (13-0-14) A. Wilson vs. St. Francis (9/19/09)

## THE LAST TIME PENN STATE...

### VS. NON-CONFERENCE OPPONENTS (REGULAR-SEASON MATCHES)

- Won a match .....vs. FGCU, 9/14/13 (25-8, 25-15, 25-17)
- Lost a match ..... vs. Texas, 9/7/13 (27-25, 17-25, 25-1, 21-25, 10-15)
- Won at home .....vs. Louisville, 8/31/13 (25-15, 25-16, 25-13)
- Lost at home ..... vs. Oregon, 8/26/11 (25-16, 25-21, 25-20, 25-22)
- Won 3-0 at home .....vs. Louisville, 8/31/13 (25-15, 25-16, 25-13)
- Lost 3-0 at home ..... vs. UC-Santa Barbara, 9/18/86 (1-15, 7-15, 13-15)
- Won 3-0 on the road .....vs. FGCU, 9/14/13 (25-8, 25-15, 25-17)
- Lost 3-0 on the road..... vs. Stanford, 9/11/10 (26-28, 12-25, 18-25)

### VS. BIG TEN OPPONENTS (REGULAR-SEASON MATCHES)

- Won a match .....vs. Michigan State, 11/24/12 (25-13, 25-21, 25-15)
- Lost a match .....at Nebraska, 10/28/12 (25-12, 30-32, 25-19, 23-25, 10-15)
- Won at home .....vs. Michigan State, 11/24/12 (25-13, 25-21, 25-15)
- Lost at home.....vs. Illinois, 10/8/11 (25-21, 21-25, 25-23, 21-25, 12-15)
- Won 3-0 at home .....vs. Michigan State, 11/24/12 (25-13, 25-21, 25-15)
- Lost 3-0 at home ..... vs. Minnesota, 10/18/03 (26-30, 18-30, 21-30)
- Won 3-0 on the road.....at Indiana, 11/16/12 (25-12, 25-18, 25-22)
- Lost 3-0 on the road .....at Illinois, 11/11/11 (21-25, 23-25, 26-28)

## ALL MATCHES

- Won a match .....vs. FGCU, 9/14/13 (25-8, 25-15, 25-17)
- Lost a match..... vs. Texas, 9/7/13 (27-25, 17-25, 25-1, 21-25, 10-15)
- Won at home .....vs. Louisville, 8/31/13 (25-15, 25-16, 25-13)
- Lost at home.....vs. Illinois, 10/8/11 (25-21, 21-25, 25-23, 21-25, 12-15)
- Won 3-0 at home .....vs. Louisville, 8/31/13 (25-15, 25-16, 25-13)
- Lost 3-0 at home ..... vs. Minnesota, 10/18/03 (26-30, 18-30, 21-30)
- Won 3-0 on the road.....vs. FGCU, 9/14/13 (25-8, 25-15, 25-17)
- Lost 3-0 on the road ..... vs. Texas, 9/7/13 (27-25, 17-25, 25-1, 21-25, 10-15)

## DOUBLE FIGURE CLUB

	KILLS	DIGS	BLOCKS
# 1 Ariel Scott	1 (8/31)	--	--
#9 Paulina Prieto Cerame	1 (8/31) 2 (9/7)	--	--
#18 Deja McClendon	1 (9/7)	1 (8/31) 2 (9/7)	--
#17 Megan Courtney	1 (9/8) 2 (9/14)	1 (9/8) 2 (9/14)	--
#16 Katie Slay	1 (9/7)	--	--
#6 Maddie Martin	--	1 (9/7)	--
#4 Dominique Gonzalez	--	1 (9/7) 2 (9/13) 3 (9/14) 4 (9/14)	--





# 2013 PENN STATE WOMEN'S VOLLEYBALL

## AMONG THE ELITE

Only three Division I coaches have more than 1,000 career wins and only 10 in the history of Division I women's volleyball have more than 800. Russ Rose is one of them.

**1,106**

Andy Banachowski, UCLA (ret.) (40 years)

**1,103**

Dave Shoji, Hawaii (38 years)

**1,091**

Russ Rose, Penn State (34 years)

**892**

Mike Hebert, Minnesota (ret.) (35 years)

**886**

Elaine Michaelis, BYU (ret.) (33 years)

**898**

Shelton Collier, Wingate (32 years)

**882**

Kathy Gregory, UCSB (ret.) (38 years)

**828**

Debby Colberg, Sacramento St. (ret.) (32 years)

**809**

Marilyn Nolen, St. Louis (ret.) (32 years)

**836**

Mick Haley, USC (27 years)

\*Numbers verified by the NCAA prior to the 2013\*

## ROSE APPROACHING HISTORIC MARK

With the win against No. 8 Florida, head coach Russ Rose improved to 1,097- 176 all-time, which puts him just nine wins shy of Andy Banachowski's mark of 1,106.

Two weeks ago, Hawaii head coach Dave Shoji surpassed Banachowski's mark with 1,107 wins to become the all-time leader in the category. With Banachowski no longer on the active list, the winningest coach in NCAA DI history will likely be determined by the end of the season as Rose and Shoji go head-to-head.

## A CLOSER LOOK AT THIS WEEKEND'S OPPONENTS

Here's the statistical story on three of the four teams competing in this weekend's Penn State Classic at home in Rec Hall.

	PENN STATE	ALBANY	E. KENTUCKY	YALE
Hitting %	.299	.070	.150	.248
Kills per set	13.43	8.11	12.25	13.0
Assists per set	11.91	7.59	11.43	12.28
Aces per set	1.90	0.5	1.50	1.91
Digs per set	13.30	12.5	13.33	15.11
Blocks per set	2.50	1.30	1.30	1.55

## ALBANY GREAT DANES

2013 RECORD: 0-9, 0-0



**MJ ENGSTROM**  
HEAD COACH

### COACHING STAFF »

Head Coach..... MJ Engstrom  
Alma Mater .....Minnesota  
Overall Record ..... 102-51  
Record at UA ..... 102-51  
Assistant Coach..... Rich Zwolinski  
Alma Mater .....UMBC  
Assistant Coach....Brooke Stanley  
Alma Mater .....Albany



**AMANDA DOLAN**  
MB - 6-3 - FR.

### PLAYER TO WATCH »

The Carolina Classic All-Tournament team honoree is leading the UA offense with 45 kills, while also leading the squad in blocking with 22 total blocks in 2013. The all-tournament honors were Dolan's second of the year.

## EASTERN KENTUCKY COLONELS

2013 RECORD: 4-6, 0-0



**LORI DUNCAN**  
HEAD COACH

### COACHING STAFF »

Head Coach.....Lori Duncan  
Alma Mater ..... Eastern Kentucky  
Overall Record ..... 219-359  
Record at EKU..... 190-259  
Assistant Coach.....Liz Sellers  
Alma Mater ..... Eastern Kentucky  
Assistant Coach.....Lauren Snyder  
Alma Mater ..... Eastern Kentucky



**ASHLEY EDMOND**  
OH - 6-0 - SR.

### PLAYER TO WATCH »

The 2012 All-Ohio Valley conference selection is leading the team in kills this season with 141, averaging 3.53 per set. Edmond also ranks second on the squad with 10 aces and third in blocking with 14 total blocks.

## YALE BULLDOGS

2013 RECORD: 4-2



**DAVE NICHOLS**  
HEAD COACH

### COACHING STAFF »

Head Coach.....Erin Appleman  
Alma Mater .....San Diego State  
Overall Record ..... 112-28  
Record at Yale..... 112-28  
Assistant Coach.....Kevin Laseau  
Alma Mater .....Ball State  
Assistant Coach..... Don Gleason  
Alma Mater .....RIT



**KAITLIN HOLM**  
OH - 6-0 - SO.

### PLAYER TO WATCH »

The two-time All-Ivy First Team honoree is leading the team with 65 kills in 2013, average a squad-best 2.95 kills per set. Rogers has also tallied 31 digs and three total blocks, including one solo stuff.



# 2013 PENN STATE WOMEN'S VOLLEYBALL

## 2013 PENN STATE SUPERLATIVES

<u>THREE SETS</u>	<u>INDIVIDUAL</u>	<u>TEAM</u>
Kills:	11, 2x last, Megan Courtney vs. Florida (9/8)	43, 2x last vs. Marquette (9/13)
Attacks:	26 - Ariel Scott vs. Louisville (8/31)	99, 2x last vs. Florida (9/8)
Attack Percentage*:	.833 (5-0-6) - Micha Hancock vs. Florida (9/8)	.414 (43-7-87) - vs. Marquette (9/13)
Assists:	33 - Micha Hancock vs. Marquette (9/13)	41 - vs. Marquette (9/13)
Aces:	8 - Micha Hancock vs. Syracuse (8/31)	9, 2x last vs. Florida (9/8)
Digs:	17 - Deja McClendon vs. Louisville (8/31)	47 - vs. Louisville (8/31)
Solo Blocks:	2, 3x, last Deja McClendon vs. FGCU (9/14)	6 - vs. Central Arkansas (9/14)
Block Assists:	6 - Katie Slay vs. Central Arkansas (9/14)	12, 2x last vs. FGCU (9/14)
Total Blocks:	8 - Katie Slay vs. Central Arkansas (9/14)	15.0 - vs. FGCU (9/14)

## 2013 PENN STATE SUPERLATIVES\* FOUR SET SUPERLATIVES REFLECT 2012 RESULTS

<u>FOUR SETS</u>	<u>INDIVIDUAL</u>	<u>TEAM</u>
Kills:	25 - Ariel Scott vs. Minnesota (12/8)	66 - vs. Nebraska (9/19)
Attacks:	50 - Ariel Scott vs. Nebraska (9/19)	156 - vs. Minnesota (12/8)
Attack Percentage*:	.600 (10-1-15) - Katie Slay vs. Nebraska (9/19)	.317 (50-12-120) - at Purdue (11/17)
Assists:	55 - Micha Hancock vs. Nebraska (9/19)	63 - vs. Nebraska (9/19)
Aces:	7 - Micha Hancock vs. Minnesota (11/2)	11 - vs. Minnesota (11/2)
Digs:	20 - 2x, last, D. Gonzalez vs. Minnesota (12/8)	73 - vs. Minnesota (12/8)
Solo Blocks:	4 - Deja McClendon vs. Minnesota (12/8)	5 - vs. Minnesota (12/8)
Block Assists:	7 - 2x, last, N. Grant vs. Minnesota (12/8)	27 - vs. Indiana (10/13)
Total Blocks:	8 - Nia Grant vs. Indiana (10/13)	15.5 - vs. Indiana (10/13)

<u>FIVE SETS</u>	<u>INDIVIDUAL</u>	<u>TEAM</u>
Kills:	20 - Deja McClendon at Texas (9/7)	69 - at Texas (9/7)
Attacks:	46 - Deja McClendon at Texas (9/7)	179 - at Texas (9/7)
Attack Percentage*:	.370 (20-3-46) - Deja McClendon at Texas (9/7)	.246 (69-25-179) - at Texas (9/7)
Assists:	51 - Micha Hancock at Texas (9/7)	59 - at Texas (9/7)
Aces:	3 - Nia Grant at Texas (9/7)	6 - at Texas (9/7)
Digs:	17 - Deja McClendon at Texas (9/7)	65 - at Texas (9/7)
Solo Blocks:	1 - Katie Slay at Texas (9/7)	1 - at Texas (9/7)
Block Assists:	4 - Micha Hancock at Texas (9/7)	14 - at Texas (9/7)
Total Blocks:	4 - Katie Slay and Micha Hancock at Texas (9/7)	15.0 - at Texas (9/7)

## 2013 OPPONENT SUPERLATIVES

<u>THREE SETS</u>	<u>INDIVIDUAL</u>	<u>TEAM</u>
Kills:	13 - Autumn Bailey, Marquette (9/13)	35 - Central Arkansas (9/14)
Attacks:	37 - Jessica Nagy, Central Arkansas (9/14)	106 - Central Arkansas (9/14)
Attack Percentage*:	.350 (10-3-20) - Chlose Mann, Florida (9/8)	.194 (34-16-93) - Florida (9/8)
Assists:	30, 2x, last Marissa Collins, Central Arkansas (9/14)	34, 2x last Central Arkansas (9/14)
Aces:	1 - Taylor Brauneis, Florida (9/8)	1 - Florida (9/8)
Digs:	15 - Shelbee Berringer, Central Arkansas (9/8)	39 - Florida (9/8)
Solo Blocks:	1, 4x, last Olivia Mesner, FGCU (9/14)	1, 4x last, FGCU (9/14)
Block Assists:	1, 11x, last Karina Mambuca, FGCU (9/14)	11 - Louisville (8/31)
Total Blocks:	2, 2x - Paige Gantar, Central Arkansas (9/14)	9.0 - Syracuse (8/31)

## 2013 PENN STATE SUPERLATIVES\* FOUR SET SUPERLATIVES REFLECT 2012 RESULTS

<u>FOUR SETS</u>	<u>INDIVIDUAL</u>	<u>TEAM</u>
Kills:	19 - Ariel Turner, Purdue (11/17)	55 - Nebraska (9/19)
Attacks:	57 - Katherine Harms, Minnesota (12/8)	159 - Iowa (9/22)
Attack Percentage*:	.538 (8-1-13) - Tori Dixon, Minnesota (12/8)	.209 (55-24-148) - Nebraska (9/19)
Assists:	44 - Lauren Cook, Nebraska (9/19)	52 - Purdue (11/17)
Aces:	3 - 2x, last, J. Haverly, Indiana (10/13)	8 - Iowa (9/22)
Digs:	20 - Bethany Yeager, Iowa (9/22)	61 - Minnesota (12/8)
Solo Blocks:	3 - Tori Dixon, Minnesota (11/2)	5 - Nebraska (9/19)
Block Assists:	8 - Tori Dixon, Minnesota (11/2)	26 - Minnesota (11/2)
Total Blocks:	11 - Tori Dixon, Minnesota (11/2)	16.0 - Minnesota (11/2)

<u>FIVE SETS</u>	<u>INDIVIDUAL</u>	<u>TEAM</u>
Kills:	15 - Hailey Eckerman, Texas (9/7)	52 - Texas (9/7)
Attacks:	39 - Hailey Eckerman, Texas (9/7)	141 - Texas (9/7)
Attack Percentage*:	.462 (6-0-13) Molly McCage, Texas (9/7)	.262 (52-15-141) - Texas (9/7)
Assists:	22 - Chloe Collins, Texas (9/7)	49 - Texas (9/7)
Aces:	1, 3x last, Sarah Palmer, Texas (9/7)	3 - Texas (9/7)
Digs:	20 - Amy Neal, Texas (9/7)	73 - Texas (9/7)
Solo Blocks:	1, 4x last, Molly McCage, Texas (9/7)	4 - Texas (9/7)
Block Assists:	5 - Molly McCage, Texas (9/7)	18 - Texas (9/7)
Total Blocks:	6 - Molly McCage, Texas (9/7)	22.0 - Texas (9/7)



# 2013 PENN STATE WOMEN'S VOLLEYBALL

## 2013 SCHEDULE AND RESULTS

DATE	OPPONENT	W/L	SCORE	SET SCORES	SITE	ATT.	RECORD	TIME
Aug. 30	Dabrowa (EXHIB.)	W	3-0	28-26, 25-21, 25-20	University Park, Pa.	2246	---	1:39
Aug. 31	Syracuse	W	3-0	25-16, 25-15, 25-17	University Park, Pa.	3141	1-0	1:13
Aug. 31	Louisville	W	3-0	25-15, 25-16, 25-13	University Park, Pa.	3141	2-0	1:23
Sept. 7	Texas	L	3-2	27-25, 17-25, 25-13, 21-25, 10-15	Austin, Texas	4373	2-1	2:31
Sept. 8	Florida	W	3-0	25-18, 25-17, 25-20	Austin, Texas	---	3-1	1:32
Sept. 13	Marquette	W	3-0	25-17, 25-12, 25-17	Fort Myers, Fla.	127	4-1	1:20
Sept. 14	Central Arkansas	W	3-0	25-20, 25-22, 25-10	Fort Myers, Fla.	89	5-1	1:25
Sept. 15	FGCU	W	3-0	25-8, 25-15, 25-17	Fort Myers, Fla.	2,006	6-1	1:23

## INDIVIDUAL PLAYER MATCH-BY-MATCH HIGHS

DATE	OPPONENT	KILLS	ATTACKS	ASSISTS	DIGS	TOTAL BLOCKS
Aug. 31	Syracuse	Prieto Cerame - 9	Prieto Cerame - 17	Hancock - 30	Gonzalez - 7 Hancock - 7	Slay - 5
Aug. 31	Louisville	Scott - 11	Scott - 26	Hancock - 28	McClendon - 17	Grant - 3 Slay - 3 Prieto Cerame - 3
Sept. 7	Texas	McClendon - 20	McClendon - 46	Hancock - 51	McClendon - 17	Hancock - 4 Slay - 4
Sept. 8	Florida	Courtney - 11	McClendon - 25	Hancock - 29	Courtney - 12	Hancock - 3 Slay - 3
Sept. 13	Marquette	Courtney - 9 McClendon - 9	McClendon - 22	Hancock - 33	Gonzalez - 11	Courtney - 4
Sept. 14	FGCU	Slay - 9 Courtney - 9	McClendon - 15	Hancock - 31	Gonzalez - 11	Slay - 4
Sept. 14	Central Arkansas	Courtney - 10	Courtney - 21 McClendon - 21	Hancock - 30	Gonzalez - 14	Slay - 8
<b>TOTALS (INCLUDING TIES)</b>		Prieto Cerame - 1 Scott - 1	Prieto Cerame - 1  Scott - 1 McClendon - 5 Courtney - 1	Hancock - 7	Gonzalez - 4  Hancock - 1 McClendon - 2 Courtney - 1	Slay - 6  Hancock - 2 Grant - 1 Prieto Cerame - 1 Courtney - 1

## TEAM MATCH-BY-MATCH STAT COMPARISON

DATE	OPPONENT	SETS	KILLS	HITTING %	ACES	DIGS	TOTAL TEAM BLOCKS	TOTAL PTS SCORED*
Aug. 31	Syracuse/PSU	3	26/43	.102/.313	0/4	36/39	5.0/6.0	31.0/53.0
Aug. 31	Louisville/PSU	3	25/34	.020/.247	0/9	32/47	3.0/7.5	28.0/50.5
Sept. 7	Texas/PSU	5	52/69	.262/.246	3/6	73/65	22.0/15.0	68.0/83.0
Sept. 8	Florida/PSU	3	42/34	.194/.303	1/9	35/39	3.0/10.0	37.0/57.0
Sept. 13	Marquette/PSU	3	43/34	.163/.414	0/3	32/41	4.0/13.0	36.0/53.0
Sept. 14	UCA/PSU	3	35/39	.151/.247	0/8	36/37	5.0/18.0	38.0/59.0
Sept. 14	FGCU/PSU	3	24/39	.000/.381	0/4	33/42	3.0/15.0	26.0/53.0

\* indicates total points scored by a team (kills, aces, blocks), not the cumulative total game scores, which also take into account opponent errors



# 2013 PENN STATE WOMEN'S VOLLEYBALL



**MAGGIE  
HARDING**

SENIOR  
STATE COLLEGE, PA.

DEFENSIVE SPECIALIST

## 2013 MATCH-BY-MATCH

OPP.	K	E	TA	PCT.	A	SA	D	TB
Syracuse	0	0	0	0	0	0	0	0
Louisville	0	0	0	0	0	0	0	0
Texas	0	0	0	0	0	0	0	0
Florida	0	0	0	0	0	0	0	0
Marquette	0	0	0	0	0	0	0	0
Central Arkansas	0	0	0	0	1	0	0	0
FGCU	0	0	0	0	0	0	0	0

**2013 (Senior):** One of two team captains ... Saw action on the court against No. 19 Louisville (8/31) ... Recorded one assists against Central Arkansas (9/14).

**2012 (Redshirt Sophomore):** Recipient of the Elite 89 Award ... Academic All-Big Ten ... Saw action in eight matches and eight sets as a serving and defensive specialist ... Made 2012 debut vs. Morehead State (8/24).

## HARDINGS CAREER STATS

SEASON	MP-SP	K	E	TA	PCT.	ASSISTS	ACES	DIGS	BS	BA	TB	KPS	APS	SAPS	DPS	BPS
2010	Redshirt season															
2011	4-4	0	0	0	.000	0	0	0	0	0	0	0.00	0.00	0.00	0.00	0.00
2012	8-8	0	0	0	.000	0	2	0	0	0	0	0.00	0.00	0.00	0.00	0.00
2013	1-1	0	0	0	.000	0	0	0	0	0	0	0.00	0.00	0.00	0.00	0.00
<b>CAREER</b>	<b>13-13</b>	<b>0</b>	<b>0</b>	<b>0</b>	<b>.000</b>	<b>1</b>	<b>2</b>	<b>0</b>	<b>0</b>	<b>0</b>	<b>0</b>	<b>0.00</b>	<b>0.00</b>	<b>0.00</b>	<b>0.00</b>	<b>0.00</b>

2013 SEASON HIGHS	CATEGORY	CAREER HIGH
N/A	Kills	N/A
N/A	Attacks	N/A
N/A	Hitting Percentage	N/A
1 vs. Central Arkansas (9/14)	Assists	1 vs. Central Arkansas (9/14)
N/A	Aces	N/A
N/A	Digs	N/A
N/A	Blocks	N/A



# 2013 PENN STATE WOMEN'S VOLLEYBALL



## MADDIE MARTIN

SENIOR  
TAMPA, FLA.

OUTSIDE HITTER

### 2013 MATCH-BY-MATCH

OPP.	K	E	TA	PCT.	A	SA	D	TB
Syracuse	1	0	6	.167	2	0	7	0
Louisville	0	0	0	0	0	0	0	0
Texas	0	0	1	0	0	1	10	0
Florida	0	0	0	0	0	0	0	0
Marquette	0	0	0	0	0	0	1	0
Central Arkansas	0	0	0	0	0	0	0	0
FGCU	1	1	3	0	0	0	1	0

**2013 (Senior):** Recorded one kill, two assists and seven digs against Syracuse (8/31) ... Saw action on the court against No. 19 Louisville (8/31). Recorded 10 digs and a service ace against No. 6 Texas (9/7). Played against No. 8 Florida (9/8) ... Posted one dig against Marquette (9/13) ... Saw action against Central Arkansas (9/14) ... Tallied one kill and one dig at FGCU (9/14).

**2012 (Junior):** Academic All-Big Ten ... Played in 30 matches and 62 sets at outside hitter ... Totaled 51 kills, 14 aces, 71 digs and eight blocks during the 2012 season ... Posted five kills and eight digs vs. Stanford (8/31) ... Pounded four kills and had seven digs vs. DePaul (9/8) ... Recorded five kills vs. Nebraska (9/19) ... Notched five kills at Northwestern (10/5) ... Tallied four kills and nine digs vs. Indiana (10/13) ... Had two aces at Ohio State (10/17) ... Registered an ace and five digs vs. Illinois (11/8).

### MARTIN'S CAREER STATS

SEASON	MP-SP	K	E	TA	PCT.	ASSISTS	ACES	DIGS	BS	BA	TB	KPS	APS	SAPS	DPS	BPS
2010	20-29	22	10	62	.194	1	3	15	0	6	6.0	0.76	0.03	0.10	0.52	0.21
2011	33-98	141	60	410	.198	20	17	156	5	34	39.0	1.44	0.20	0.17	1.59	0.40
2012	30-62	51	21	129	.233	3	14	71	0	8	8.0	0.82	0.05	0.23	1.15	0.13
2013	7-13	2	1	10	.100	2	1	19	0	0	0.0	0.15	0.15	0.08	1.46	0.00
<b>CAREER</b>	<b>90-202</b>	<b>216</b>	<b>92</b>	<b>611</b>	<b>.203</b>	<b>26</b>	<b>35</b>	<b>261</b>	<b>5</b>	<b>48</b>	<b>53.0</b>	<b>1.07</b>	<b>0.13</b>	<b>0.17</b>	<b>1.29</b>	<b>0.26</b>

2013 SEASON HIGHS	CATEGORY	CAREER HIGH
8 at Louisville (8/25)	Kills	13 at Michigan State (11/26/11)
22 at Louisville (8/25)	Attacks	44 at Stanford (9/9/11)
.444 (5-1-9) vs. Duquesne (9/15)	Hitting Percentage	.600 (6-0-10) at Indiana (10/9/10)
1, 3x, last vs. Northwestern (11/10)	Assists	3 at Michigan State (11/26/11)
3 vs. Eastern Illinois (9/15)	Aces	3 vs. Eastern Illinois (9/15/12)
10 vs. Texas (9/7)	Digs	14 vs. Iowa (10/28/11)
2 at Louisville (8/25)	Blocks	5 at Michigan State (11/26/11)



# 2013 PENN STATE WOMEN'S VOLLEYBALL



## DEJA McCLENDON

SENIOR  
LOUISVILLE, KY.

OUTSIDE HITTER

### 2013 MATCH-BY-MATCH

OPP.	K	E	TA	PCT.	A	SA	D	TB
Syracuse	3	2	10	.100	0	0	4	1
Louisville	2	3	10	-.100	2	0	17	1
Texas	20	3	46	.370	0	0	17	0
Florida	5	4	25	.040	2	0	5	1
Marquette	3	2	22	.318	2	0	5	2
Central Arkansas	6	4	21	.095	1	0	3	2
FGCU	5	2	15	.200	0	0	6	3

**2013 (Senior):** Tied for fourth in the Big Ten with 21 digs, averaging 4.20 per set ... Posted three kills, four digs and a solo block against Syracuse (8/31) ... Notched two kills, two assists, a block assist and a team-high 17 kills against No. 19 Louisville (8/31) ... Led the team with 20 kills and a squad-best 17 digs to match her season high mark against No. 6 Texas (9/7) ... Tallied five kills, five digs and a solo block against No. 8 Florida (9/8) ... Tied for team-best with nine kills against Marquette (9/13) on .318 hitting, adding two assists, five digs and two block assists ... Registered six kills, one assist, three digs and a season-high two solo blocks against Central Arkansas (9/14) ... Pounded five kills and recorded six digs and three blocks, including two solo stuffs at FGCU (9/15).

### CAREER HONORS

#### 2013

Preseason All-Big Ten

#### 2012

AVCA Third Team All-America  
West Lafayette Regional All-Tournament  
AVCA Mid-east Region  
Unanimous All-Big Ten  
Preseason All-Big Ten  
Active Ankle Challenge All-Tournament  
Big Four Volleyball Classic  
All-Tournament  
Chicago Classic All-Tournament

#### 2011

AVCA First Team All-America  
NCAA Lexington Regional  
All-Tournament  
AVCA All-Mid-east Region  
First Team All-Big Ten  
Big Ten Player of the Week (11/14)  
Nike Big Four All-Tournament Team  
Pittsburgh Invitational All-Tournament  
AVCA Showcase All-Tournament  
Unanimous Preseason All-Big Ten

#### 2010

AVCA Division I National Freshman of the Year  
AVCA Second Team All-America  
NCAA Championship Most Outstanding Player  
NCAA Championship All-Tournament  
AVCA All-Mid-east Region  
AVCA Mid-east Region Freshman of the Year  
Unanimous Big Ten All-Freshman  
First Team All-Big Ten  
Big Ten Freshman of the Year  
Five-time Big Ten Freshman of the Week  
Hampton Inn Classic All-Tournament  
Carolina Classic All-Tournament

### ACTIVE NCAA CAREER KILLS

1. Megan Devine , East Tenn. St.	1,523
2. Ashley Wittman , Minnesota	1,432
3. Taylor Akana , Siena	1,412
4. Lisa Henning , Missouri	1,400
5. Stephanie Holthus , Northwestern	1,388
6. Paige Penrod , Bowling Green	1,301
7. <b>Deja McClendon, Penn St.</b>	<b>1,283</b>
8. Katilynn Pelger , Kansas St.	1,250
9. Leah Sully , UC Santa Barbara	1,242
10. Juliette Thevenin , Sout Carolina	1,241

### PSU ALL-TIME KILLS LEADERS

1. 2,282	Lori Barberich, 1981-84
2. 2,142	Megan Hodge, 2006-09
3. 1,944	Nicole Fawcett, 2005-08
4. 1,842	Terri Zemaitis, 1994-97
5. 1,750	Lauren Cacciamani, 1996-99
6. 1,573	JoAnn Elwell, 1987-90
7. 1,482	Marcia Leap, 1982-85
8. 1,468	Mishka Levy, 1999-02
9. 1,438	Noelle Zientara, 1987-90
10. 1,393	Elizabeth Ramirez, 1986-89
11. 1,340	Ashley Pederson, 2001-04
12. 1,330	Cara Smith, 2000-03
13. 1,310	Katie Schumacher, 1998-01
14. 1,295	Blair Brown, 2007-10
15. <b>1,283</b>	<b>Deja McClendon, 2010-present</b>
16. 1,274	Leanne Kling, 1989-92
17. 1,245	Laura Cook, 1991-94
18. 1,244	Christa Harmotto, 2005-08
19. 1,234	Vida Kernich, 1983-86
20. 1,136	Carrie Schonveld, 1996-99

### McCLENDON'S CAREER STATS

SEASON	MP-SP	K	E	TA	PCT.	ASSISTS	ACES	DIGS	BS	BA	TB	KPS	APS	SAPS	DPS	BPS
2010	37-122	418	112	925	.331	15	20	229	8	76	84	3.43	0.12	0.16	1.88	0.69
2011	33-122	432	144	1,090	.264	27	13	245	13	48	61	3.54	0.22	0.11	2.01	0.50
2012	36-124	403	131	1,106	.246	42	18	339	23	47	70	3.25	0.34	0.15	2.73	0.56
2013	7-22	50	20	149	.201	7	0	57	6	4	3	2.27	0.32	0.00	2.59	0.45
<b>CAREER</b>	<b>113-390</b>	<b>1,303</b>	<b>407</b>	<b>3,270</b>	<b>.274</b>	<b>91</b>	<b>51</b>	<b>870</b>	<b>50</b>	<b>175</b>	<b>218</b>	<b>3.34</b>	<b>0.23</b>	<b>0.13</b>	<b>2.23</b>	<b>0.58</b>

2013 SEASON HIGHS	CATEGORY	CAREER HIGH
20 vs. Texas (9/7)	Kills	25, 2x, last vs. Texas (9/10/11)
46, vs. Texas (9/7)	Attacks	64 at Nebraska (10/28/12)
.370 (20-3-46) vs. Texas (9/7)	Hitting Percentage	800 (12-0-15) vs. Binghamton (11/30/12)
2, 2x last vs. Florida (9/8)	Assists	4, 3x, last at Michigan (10/20/12)
N/A	Aces	3 vs. Wisconsin (9/30/11)
17, 2x s vs. Texas (9/7)	Digs	29 at Michigan (10/20/12)
1, 3x, last vs. Florida (9/8)	Blocks	7 vs. Minnesota (12/8/12)



# 2013 PENN STATE WOMEN'S VOLLEYBALL



## ARIEL SCOTT

SENIOR  
RIDGEWOOD, N.J.

OUTSIDE HITTER

### 2013 MATCH-BY-MATCH

OPP.	K	E	TA	PCT.	A	SA	D	TB
Syracuse	5	2	11	.273	0	0	0	0
Louisville	11	5	26	.231	0	0	6	2
Texas	5	7	23	-.087	0	0	5	0
Florida	0	0	0	0	0	0	0	0
Marquette	0	1	3	-.333	0	0	1	0
Central Arkansas	8	1	17	.412	0	1	1	0
FGCU	1	1	7	0	0	0	0	0

**2013 (Senior):** Unanimous Preseason All-Big Ten ... Candidate for Senior CLASS Award ... Tied for fourth in the Big Ten in kills, averaging 4.00 per set ... Tied for third on the team with five kills against Syracuse (8/31) ... Notched her first double-digit kills performance of the season, recording a team-high 11 kills against No. 19 Louisville (8/31), adding two block assists ... Recorded five kills and five digs against No. 8 Florida (9/8) ... Had one dig against Marquette (9/13) ... Ranked second on the squad with eight kills, notching a season-high .412 hitting clip, adding an ace and a dig against Central Arkansas (9/14) ... Had one kills against FGCU (9/14).

### CAREER HONORS

#### 2013

Unanimous Preseason All-Big Ten  
Senior CLASS Award candidate

#### 2011

AVCA Third Team All-America  
AVCA All-Mideast Region  
Unanimous First Team All-Big Ten  
Hampton Inn Classic All-Tournament

#### 2012

AVCA First Team All-America  
Big Ten Player of the Year  
Unanimous All-Big Ten  
West Lafayette Regional MVP  
AVCA Mideast Region  
Preseason All-Big Ten  
Active Ankle Challenge MVP  
Big Four Volleyball Classic MVP  
Big Ten Player of the Week (11/5)

### SCOTT'S CAREER STATS

SEASON	MP-SP	K	E	TA	PCT.	ASSISTS	ACES	DIGS	BS	BA	TB	KPS	APS	SAPS	DPS	BPS
2010	21-64	143	57	414	.208	0	0	29	3	40	43	2.23	0.00	0.00	0.45	0.67
2011	33-118	418	136	1,083	.260	14	8	143	5	81	86	3.54	0.12	0.07	1.21	0.73
2012	36-125	469	127	1,110	.308	12	3	105	11	91	102	3.75	0.10	0.02	0.84	0.82
2013	6-12	30	17	87	.149	0	1	13	0	2	2	2.50	0.00	0.08	1.08	0.17
<b>CAREER</b>	<b>96-319</b>	<b>1,060</b>	<b>337</b>	<b>2,694</b>	<b>.268</b>	<b>26</b>	<b>12</b>	<b>290</b>	<b>19</b>	<b>214</b>	<b>233</b>	<b>3.32</b>	<b>0.08</b>	<b>0.04</b>	<b>0.91</b>	<b>0.73</b>

2013 SEASON HIGHS	CATEGORY	CAREER HIGH
11 vs. Louisville (8/31)	Kills	28 vs. Illinois (10/8/11)
26 vs. Louisville (8/31)	Attacks	85 vs. Stanford (8/31/12)
.412 (8-1-17) vs. Central Arkansas (9/14)	Hitting Percentage	.571 (8-0-14) vs. Binghamton (11/30/12)
N/A	Assists	2, 3x, last vs. Illinois (10/8/11)
1 vs. Central Arkansas (9/14)	Aces	2, 2x, last at Ohio State (11/23/11)
6 vs. Louisville (8/31)	Digs	13 vs. Northwestern (10/5/11)
2 vs. Louisville (8/31)	Blocks	8 vs. Minnesota (11/4/11)



# 2013 PENN STATE WOMEN'S VOLLEYBALL



**KATIE  
SLAY**

SENIOR  
RALEIGH, N.C.

MIDDLE HITTER

**2013 (Senior):** Preseason All-Big Ten team ... Ranked fifth in the Big Ten in blocking, averaging 1.33 per set, while tied for the most solo blocks in the league with three ... Earned Penn State Invitational All-Tournament team honors ... Tied for second on the squad with five kills against Syracuse (8/31), while also recording a team-high five blocks, including two solo blocks ... Notched three kills against No. 19 Louisville (8/31), adding one dig and tying for first on the team with three blocks, including one solo block. Recorded double-digit kills with 12 against No. 6 Texas (9/7) and tied for second on the team in blocking with four blocks, including one solo block. Had four kills, tallying a season-best .400 hitting clip, while tying for second on the squad with three blocks against No. 8 Florida (9/8) ... Ranked second on the team with eight kills with no errors on .800 hitting against Marquette (9/13), adding one dig and a team-high four block assists ... Pounded six kills, two assists, one dig and a squad-best eight blocks, including two solo stuffs against Central Arkansas (9/14) ... Tied for first on the team with nine kills on 11 perfect swings for a season-high .818 hitting percentage against FGCU (9/14), while also tallying one assist and four blocks.

## 2013 MATCH-BY-MATCH

OPP.	K	E	TA	PCT.	A	SA	D	TB
Syracuse	5	1	12	.333	2	0	2	6
Louisville	3	1	7	.286	0	0	1	3
Texas	12	3	26	.346	0	0	0	5
Florida	4	0	10	.400	2	0	0	3
Marquette	8	0	10	.800	0	0	1	4
Central Arkansas	6	1	2	.417	2	0	1	8
FGCU	9	0	11	.818	1	0	0	4

## PSU ALL-TIME TOTAL BLOCKS

1.	767	Lauren Cacciamani, 1996-99
2.	736	Terri Zemaitis, 1994-97
3.	712	JoAnn Elwell, 1987-90
4.	682	Christa Harmotto, 2005-08
5.	633	Arielle Wilson, 2007-10
6.	572	Cara Smith, 2000-03
7.	547	Saundi Lamoureux, 1991-94
8.	482	Melissa Walbridge, 2004-07
9.	479	Cassy Salyer, 2003-06
10.	471	Leanne Kling, 1989-92
11.	448	Alisha Glass, 2006-09
12.	440	Michelle Jaworski, 1987-90
13.	435	<b>KATIE SLAY, 2010-present</b>
14.	415	Blair Brown, 2006-10
15.	401	Mishka Levy, 1999-02

## PSU ALL-TIME HITTING %

1.	Arielle Wilson, 2007-10	.468
2.	Christa Harmotto, 2005-08	.433
3.	Melissa Walbridge, 2004-07	.412
4.	<b>KATIE SLAY, 2010-present</b>	<b>.397</b>
5.	Lauren Cacciamani, 1996-99	.391
6.	Lori Barberich, 1981-84	.386
7.	JoAnn Elwell, 1987-1990	.385
8.	Cara Smith, 2000-03	.367
9.	Cassy Salyer 2003-06	.340
10.	Alisha Glass 2006-2009	.336

## CAREER HONORS

### 2013

Preseason All-Big Ten  
Penn State Invitational All Tournament  
Hilton Garden Inn MVP

### 2012

AVCA Second Team All-America  
AVCA Mid-east Region  
All-Big Ten  
Preseason All-Big Ten  
Active Ankle Challenge All-Tournament Team  
Big Ten Defensive Player of the Week (8/27, 10/8, 11/26)  
Penn State Classic MVP

### 2011

AVCA Second Team All-America  
AVCA All-Mideast Region  
Big Ten Defensive Player of the Year  
First Team All-Big Ten  
Academic All-Big Ten  
Two-time Big Ten Defensive Player of the Week  
Hampton Inn Classic MVP  
Preseason All-Big Ten

## SLAY'S CAREER STATS

SEASON	MP-SP	K	E	TA	PCT.	ASSISTS	ACES	DIGS	BS	BA	TB	KPS	APS	SAPS	DPS	BPS
2010	23-52	54	12	104	.404	7	0	5	9	74	83	1.04	0.13	0.00	0.10	1.60
2011	33-122	257	63	502	.386	14	2	44	27	146	173	2.11	0.11	0.02	0.36	1.42
2012	35-122	279	58	537	.412	9	0	15	19	145	164	2.29	0.07	---	0.12	1.34
2013	7-23	47	6	88	.466	7	0	5	7	24	31	1.71	0.29	0.00	0.21	1.07
<b>CAREER</b>	<b>98-319</b>	<b>637</b>	<b>139</b>	<b>1,231</b>	<b>.405</b>	<b>37</b>	<b>2</b>	<b>69</b>	<b>62</b>	<b>389</b>	<b>451</b>	<b>2.00</b>	<b>0.12</b>	<b>0.01</b>	<b>0.22</b>	<b>1.41</b>

## 2013 SEASON HIGHS ..... CATEGORY ..... CAREER HIGH

12 vs. Texas (9/7).....	Kills.....	16 at Wisconsin (11/6/11)
26 vs. Texas (9/8).....	Attacks.....	28, 2x, last at Illinois (10/6/12)
.400 (4-0-10) vs. Florida (9/8).....	Hitting Percentage.....	.889 (8-0-9), 2x, last vs. Portland (9/14/12)
2, 2x last vs. Florida (9/8).....	Assists.....	3 vs. Long Island (9/16/11)
N/A.....	Aces.....	1, 2x, last vs. Wisconsin (9/30/11)
2 vs. Syracuse (8/31).....	Digs.....	6 vs. Oregon (8/26/11)
5 vs. Syracuse (8/31).....	Blocks.....	12 at Michigan (10/20/12)





**2013 (Redshirt Junior):** Has not played in any matches this season.

**2012 (Redshirt Sophomore):** Academic All-Big Ten ... Appeared in six matches and nine sets ... Made her 2012 debut vs. Stanford (8/31) ... Recorded her first career start against DePaul (9/8) and had a team-best five blocks ... Posted a block vs. Northwestern (11/10).

### DENNEY'S CAREER STATS

SEASON	MP-SP	K	E	TA	PCT.	ASSISTS	ACES	DIGS	BS	BA	TB	KPS	APS	SAPS	DPS	BPS
2010	Redshirt season															
2011	2-2	1	1	6	.000	0	0	0	0	0	0	0.50	0.00	0.00	0.00	0.00
2012	6-9	7	1	13	.462	0	0	2	0	7	0	0.78	0.00	0.00	0.22	0.78
2013	0-0	0	0	0	-.000	0	0	0	0	0	0	0.00	0.00	0.00	0.00	0.00
<b>CAREER</b>	<b>8-11</b>	<b>8</b>	<b>2</b>	<b>19</b>	<b>.316</b>	<b>0</b>	<b>0</b>	<b>2</b>	<b>0</b>	<b>7</b>	<b>0</b>	<b>0.73</b>	<b>0.00</b>	<b>0.00</b>	<b>0.18</b>	<b>0.64</b>

2013 SEASON HIGHS	CATEGORY	CAREER HIGH
N/A	Kills	4 vs. DePaul (9/8/12)
N/A	Attacks	7 vs. DePaul (9/8/12)
N/A	Hitting Percentage	.600 (3-0-5) vs. Eastern Illinois (9/15/12)
N/A	Assists	N/A
N/A	Aces	N/A
N/A	Digs	1, 2x, last vs. Eastern Illinois (9/15/12)
N/A	Blocks	5 vs. DePaul (9/8/12)



# 2013 PENN STATE WOMEN'S VOLLEYBALL



**LACEY  
FULLER**

JUNIOR  
SAN DIEGO, CALIF.

DEFENSIVE SPECIALIST

## 2013 MATCH-BY-MATCH

OPP.	K	E	TA	PCT.	A	SA	D	TB
Syracuse	0	0	0	0	0	1	3	0
Louisville	0	0	0	0	0	0	4	0
Texas	0	0	0	0	0	0	0	0
Florida	0	0	0	0	1	1	2	0
Marquette	0	0	0	0	0	0	3	0
Central Arkansas	0	0	0	0	0	2	7	0
FGCU	0	0	0	0	0	0	6	0

**2013 (Junior):** Recorded one ace and three digs against Syracuse (8/31) ... Notched four digs against No. 19 Louisville (8/31). Saw action on the court against No. 6 Texas (9/7) ... Had an assist, an ace and two digs against No. 8 Florida (9/8) ... Registered three digs against Marquette (9/13) ... Matched a career-high mark with two aces against Central Arkansas (9/14), adding a season-high seven digs ... Posted six digs against FGCU (9/14).

## FULLER'S CAREER STATS

SEASON	MP-SP	K	E	TA	PCT.	ASSISTS	ACES	DIGS	BS	BA	TB	KPS	APS	SAPS	DPS	BPS
2011	30-67	0	0	0	.000	4	7	59	0	0	0	0.00	0.06	0.10	0.88	0.00
2012	36-119	0	2	4	-.500	15	19	169	0	0	0	0.00	0.13	0.16	1.42	0.00
2013	7-19	0	0	0	.000	1	4	25	0	0	0	0.00	0.05	0.21	1.32	0.00
<b>CAREER</b>	<b>70-196</b>	<b>0</b>	<b>2</b>	<b>4</b>	<b>-.500</b>	<b>20</b>	<b>30</b>	<b>253</b>	<b>0</b>	<b>0</b>	<b>0</b>	<b>0.00</b>	<b>0.10</b>	<b>0.51</b>	<b>1.23</b>	<b>0.00</b>

2013 SEASON HIGHS	CATEGORY	CAREER HIGH
N/A	Kills	N/A
N/A	Attacks	1, 34x, last vs. Minnesota (12/8/12)
N/A	Hitting Percentage	N/A
1 vs. Florida (9/8)	Assists	2, 2x, last vs. Texas (9/1/12)
1, 2x last vs. Florida (9/8)	Aces	2, 4x, last vs. Bowling Green (12/1/12)
4 vs. Louisville (8/31)	Digs	13 vs. Texas (9/9/11)
N/A	Blocks	N/A



# 2013 PENN STATE WOMEN'S VOLLEYBALL



## DOMINIQUE GONZALEZ

JUNIOR  
SAN ANTONIO, TEXAS

DEFENSIVE SPECIALIST

### 2013 MATCH-BY-MATCH

OPP.	K	E	TA	PCT.	A	SA	D	TB
Syracuse	0	0	0	0	1	0	3	0
Louisville	0	0	1	0	0	0	9	0
Texas	0	0	2	0	7	0	13	0
Florida	0	1	1	-1.00	2	1	11	0
Marquette	0	0	0	0	4	2	11	0
Central Arkansas	0	0	0	0	0	1	14	0
FGCU	0	0	1	0	3	0	11	0

**2013 (Junior):** Tied for team-best with seven digs against Syracuse (8/31) ... Notched nine digs in her second start for the Lions against No. 19 Louisville (8/31) ... Ranked second on the team with a season-high 13 digs against No. 6 Texas (9/7) ... Posted 11 digs, an ace and two assists against No. 8 Florida (9/8).

### CAREER HONORS

2012

Chicago Classic All-Tournament Team

### GONZALEZ'S CAREER STATS

SEASON	MP-SP	K	E	TA	PCT.	ASSISTS	ACES	DIGS	BS	BA	TB	KPS	APS	SAPS	DPS	BPS
2011	29-84	0	0	4	.000	19	8	123	0	0	0	0.00	0.23	0.10	1.46	0.00
2012	36-125	5	1	14	.286	26	26	457	0	0	0	0.04	0.77	0.21	3.66	0.00
2013	7-23	0	1	4	-.250	17	4	72	0	0	0	0.00	0.74	0.17	3.13	0.00
<b>CAREER</b>	<b>69-223</b>	<b>5</b>	<b>2</b>	<b>22</b>	<b>0.136</b>	<b>132</b>	<b>38</b>	<b>652</b>	<b>0</b>	<b>0</b>	<b>0</b>	<b>0.02</b>	<b>0.57</b>	<b>0.16</b>	<b>2.81</b>	<b>0.00</b>

2013 SEASON HIGHS	CATEGORY	CAREER HIGH
N/A	Kills	1, 4x, last at Purdue (11/17/12)
1, 3x last vs. Florida (9/8)	Attacks	2, 2x, last vs. DePaul (9/8/12)
N/A	Hitting Percentage	N/A
2 vs. Florida (9/8)	Assists	7 vs. Minnesota (12/8/12)
1 vs. Florida (9/8)	Aces	2, 4x, last at Purdue (11/17/12)
13 vs. Texas (9/7)	Digs	29 at Nebraska (10/29/12)
N/A	Blocks	N/A



# 2013 PENN STATE WOMEN'S VOLLEYBALL



## NIA GRANT

JUNIOR  
WARREN, OHIO

MIDDLE HITTER

### 2013 MATCH-BY-MATCH

OPP.	K	E	TA	PCT.	A	SA	D	TB
Syracuse	6	1	16	.312	0	1	3	1
Louisville	5	2	11	.231	0	0	6	2
Texas	4	2	8	.250	0	3	4	4
Florida	8	3	16	.312	1	1	1	2
Marquette	5	1	9	.444	0	1	2	2
Central Arkansas	6	2	11	.364	0	1	3	1
FGCU	6	1	12	.417	0	0	1	2

**2013 (Junior):** Ranked second on the team with six kills against Syracuse (8/31), adding one service ace and three digs ... Posted five kills, one assist, a service ace and three block assists against No. 19 Louisville (8/31) ... Tallied four kills, three aces, four digs and three block assists against No. 6 Texas (9/7) ... Ranked third on the squad with eight kills, one assist, an ace, one dig and a block against No. 8 Florida (9/8).

### GRANT'S CAREER STATS

SEASON	MP-SP	K	E	TA	PCT.	ASSISTS	ACES	DIGS	BS	BA	TB	KPS	APS	SAPS	DPS	BPS
2011	32-117	151	44	309	.346	7	13	43	13	94	107	1.29	0.06	0.11	0.37	0.91
2012	36-124	205	52	407	.376	5	0	13	9	111	120	1.65	0.04	0.00	0.10	0.97
2013	7-22	40	12	83	.337	2	8	14	2	10	12	1.82	0.09	0.36	0.64	0.55
<b>CAREER</b>	<b>75-263</b>	<b>396</b>	<b>108</b>	<b>799</b>	<b>.360</b>	<b>14</b>	<b>21</b>	<b>70</b>	<b>24</b>	<b>215</b>	<b>239</b>	<b>1.51</b>	<b>0.05</b>	<b>0.08</b>	<b>0.27</b>	<b>0.91</b>

2013 SEASON HIGHS	CATEGORY	CAREER HIGH
8 vs. Florida (9/8)	Kills	11, 2x, last vs. Iowa (9/22/12)
16, 2x last vs. Florida (9/8)	Attacks	20 vs. Iowa (9/22/12)
.312, last (8-3-16) vs. Florida (9/8)	Hitting Percentage	.818 (9-0-11) vs. Ohio State (10/19/11)
1, 2x last vs. Florida (9/8)	Assists	2 vs. Texas (9/10/11)
3 vs. Texas (9/7)	Aces	3 vs. Texas (9/7/13)
4 vs. Texas (9/7)	Digs	5, 2x, last vs. Illinois (10/8/11)
3, 2x last vs. Texas (9/7)	Blocks	9 at Minnesota (11/4/11)



# 2013 PENN STATE WOMEN'S VOLLEYBALL



## MICHA HANCOCK

JUNIOR  
EDMOND, OKLA.

SETTER

### 2013 MATCH-BY-MATCH

OPP.	K	E	TA	PCT.	A	SA	D	TB
Syracuse	5	0	9	.556	30	1	7	0
Louisville	2	0	5	.400	28	8	7	1
Texas	4	0	8	.500	51	2	8	4
Florida	5	0	6	.833	29	5	3	4
Marquette	4	0	8	.500	33	0	7	3
Central Arkansas	1	2	7	-.143	30	3	5	1
FGCU	2	0	5	.400	31	3	5	1

**2013 (Junior):** Leads the Big Ten in service aces with nine, averaging 1.50 per set ... Ranks seventh in the league in assists, averaging 9.67 per set ... Earned Penn State Invitational MVP honors ... Tied for third on the team with five kills against Syracuse (8/31), adding 30 assists a service ace and seven digs ... Also paced the squad to a .313 hitting clip against the Orange ... Recorded a team-high eight service aces against No. 19 Louisville (8/31), tallying two kills, 28 assists, seven digs and one block assist ... Hit .500 with four kills on eight errorless swings, while dishing out 51 assists and notching two aces, eight digs and four blocks against No. 6 Texas (9/7) ... Had five kills without a single error on .833 hitting, adding five aces, three digs and three blocks against No. 8 Florida (9/8) ... Paced the offense to a .303 hitting percentage against the Gators, including a .500 mark in the opening set.

### CAREER HONORS

#### 2013

Preseason All-Big Ten  
Penn State Invitational MVP  
Hilton Garden Inn All-Tournament

#### 2011

AVCA Mideast Region  
Freshman of the Year  
Unanimous Big Ten All-Freshman Team  
Big Ten Freshman of the Year  
Co-Big Ten Freshman of the Week (11/14, 11/21, 11/28)  
Pittsburgh Invitational MVP  
AVCA Showcase All Tournament

#### 2012

AVCA First Team All-American  
West Lafayette Regional All-Tournament  
AVCA Mideast Region  
Big Ten Setter of the Year  
First Team All-Big Ten  
Big Four Volleyball Classic All-Tournament  
Big Ten Player of the Week (9/3)  
Big Ten Setter of the Week (9/3, 9/24, 10/1, 10/22, 11/5, 11/19)  
AVCA National Player of the Week (11/6)

### NCAA LEADERS: ACES PER SET

1. MICHA HANCOCK, PSU	.96
2. Betsi Metter, Loyola Marymt.	.90
3. Kendall Polan, Yale	.72
4. Samantha Bricio, USC	.68
5. Cassie Strickland, Wash.	.61
6. Kellie Culbertson, Tulsa	.59
-Rachel Wiechecki, Radford	.59
8. Veronika Ban, Cen. Conn. St.	.58
-Lexi Millington, Maris	.58
-Lindsey Owens, Virginia Tech	.58
11. Lauren Behrens, St. Peter's	.58
-Breanna Homer, Sam Hou. St.	.58
13. Kelsey Wilson, Akron	.57
14. Vendula Strakova, Hampton	.56
15. Taylor Brauneis, Florida	.54

### PSU ALL-TIME SERVICE ACES

1.	235	Ellen Hensler, 1983-86
2.	194	Micha Hancock, 2011-present
3.	183	Vida Kernich, 1983-86
4.	175	Lori Barberich, 1981-84
5.	163	Michelle Jaworski, 1987-90
6.	155	Noelle Zientara, 1987-90
7.	151	Elizabeth Ramirez, 1986-89
8.	146	Alyssa D'Errico, 2007-10
9.	134	Roberta Holehouse, 2005-08
10.	127	Nicole Fawcett, 2005-08
11.	126	Zeynep Ton, 1992-95
12.	118	Sam Tortorello, 2002-05
13.	107	Jennifer Schuller, 1988-91
		Megan Hodge, 2006-09
15.	105	Kim Kumfer, 1989-92

### HANCOCK'S CAREER STATS

SEASON	MP-SP	K	E	TA	PCT.	ASSISTS	ACES	DIGS	BS	BA	TB	KPS	APS	SAPS	DPS	BPS
2011	33-121	110	34	246	.309	1,275	91	279	5	54	59	0.91	10.54	0.75	2.31	0.49
2012	36-125	125	32	260	.358	1,403	81	298	8	68	76	1.00	11.22	0.65	2.38	0.61
2013	7-23	23	2	48	.438	232	22	42	1	12	13	1.00	10.09	0.96	1.83	0.57
<b>CAREER</b>	<b>76-269</b>	<b>258</b>	<b>68</b>	<b>554</b>	<b>.343</b>	<b>2,910</b>	<b>194</b>	<b>619</b>	<b>14</b>	<b>134</b>	<b>148</b>	<b>.96</b>	<b>10.82</b>	<b>0.72</b>	<b>2.30</b>	<b>0.55</b>

### 2013 SEASON HIGHS ..... CATEGORY ..... CAREER HIGH

5, 2x last vs. Florida (9/8)	Kills	7, 5x, last at Michigan (10/20/12)
9 vs. Syracuse (8/31)	Attacks	15 vs. Illinois (10/8/11)
.833 (5-0-6) vs. Florida (9/8)	Hitting Percentage	.875 (7-0-8) vs. USC (8/27/11)
51 vs. Texas (9/8)	Assists	60 at Wisconsin (11/6/11)
8 vs. Syracuse (8/31)	Aces	10 vs. Binghamton (11/30/12)
8 vs. Texas (9/7)	Digs	23 vs. Stanford (8/31/12)
4 vs. Texas (9/7)	Blocks	8 at Nebraska (10/28/12)



# 2013 PENN STATE WOMEN'S VOLLEYBALL



## AIYANA WHITNEY

REDSHIRT SOPHOMORE  
NORWOOD, N.J.

OUTSIDE HITTER

### 2013 MATCH-BY-MATCH

OPP.	K	E	TA	PCT.	A	SA	D	TB
Syracuse	6	1	11	.455	0	0	3	2
Louisville	1	0	2	.500	0	0	0	0
Texas	1	1	5	0	1	0	7	1
Florida	0	0	0	0	0	0	0	0
Marquette	1	0	1	1.000	0	0	0	0
Central Arkansas	0	0	0	0	0	0	0	0
FGCU	1	0	3	.333	0	0	1	1

**2013 (Redshirt sophomore):** Tied for second on the team with six kills against Syracuse (8/31), tallying a .455 hitting clip and recording three digs and two block assists ... Had one kill against No. 19 Louisville (8/31) ... Recorded one kill and a block at No. 6 Texas (9/7).

**2012 (Sophomore):** Redshirt season.

### WHITNEY'S CAREER STATS

SEASON	MP-SP	K	E	TA	PCT.	ASSISTS	ACES	DIGS	BS	BA	TB	KPS	APS	SAPS	DPS	BPS
2011	24-65	113	51	320	.194	0	0	14	3	22	25	1.74	0.00	0.00	0.22	0.38
2012	Redshirt season															
2013	6-7	10	2	22	.364	0	0	4	0	4	4	1.43	0.00	0.00	0.57	0.57
<b>CAREER</b>	<b>30-72</b>	<b>123</b>	<b>53</b>	<b>342</b>	<b>.205</b>	<b>0</b>	<b>0</b>	<b>18</b>	<b>3</b>	<b>26</b>	<b>29</b>	<b>1.71</b>	<b>0.00</b>	<b>0.00</b>	<b>0.25</b>	<b>0.40</b>

2013 SEASON HIGHS	CATEGORY	CAREER HIGH
6 vs. Syracuse (8/31)	Kills	15 vs. Texas 9/10/11)
11 vs. Syracuse (8/31)	Attacks	30 vs. Texas (9/10/11)
.500 (1-0-2) vs. Louisville	Hitting Percentage	.500 (8-0-16) vs. Delaware (12/3/11)
N/A	Assists	N/A
N/A	Aces	N/A
3 vs. Syracuse (8/31)	Digs	5 at Wisconsin (11/6/11)
2 vs. Syracuse (8/31)	Blocks	4 vs. Nebraska (10/29/11)



# 2013 PENN STATE WOMEN'S VOLLEYBALL



## LARA CARAWAY

SOPHOMORE  
EVANS CITY, PA.

DEFENSIVE SPECIALIST

### 2013 MATCH-BY-MATCH

OPP.	K	E	TA	PCT.	A	SA	D	TB
Syracuse	0	0	0	0	0	0	0	0
Louisville	0	0	0	0	0	0	0	0
Texas	0	0	0	0	0	0	0	0
Florida	0	0	0	0	0	0	0	0
Marquette	0	0	1	0	0	0	1	0
Central Arkansas	0	0	0	0	0	0	0	0
FGCU	0	0	0	0	1	0	2	0

**2013 (Sophomore):** Saw action on the court for the first time this season against Syracuse (8/31).

**2012 (Freshman):** Made her collegiate debut vs. Morehead State (8/24) ...had an ace vs. DePaul (9/8) ... posted two digs vs. Iowa (9/22) ... recorded an ace vs. Minnesota (11/2).

### CARAWAY'S CAREER STATS

SEASON	MP-SP	K	E	TA	PCT.	ASSISTS	ACES	DIGS	BS	BA	TB	KPS	APS	SAPS	DPS	BPS
2012	16-24	0	0	0	.000	1	3	5	0	0	0	0.00	0.04	0.12	0.21	0.00
2013	4-6	0	0	1	.000	1	0	2	0	0	0	0.00	0.00	0.00	0.33	0.00
<b>CAREER</b>	<b>20-30</b>	<b>0</b>	<b>0</b>	<b>1</b>	<b>.000</b>	<b>2</b>	<b>3</b>	<b>7</b>	<b>0</b>	<b>0</b>	<b>0</b>	<b>0.00</b>	<b>0.04</b>	<b>0.12</b>	<b>0.23</b>	<b>0.00</b>

2013 SEASON HIGHS	CATEGORY	CAREER HIGH
N/A	Kills	N/A
N/A	Attacks	N/A
N/A	Hitting Percentage	N/A
N/A	Assists	1 at Iowa (10/24)
N/A	Aces	1, 3x, last vs. Minnesota (11/2/12)
N/A	Digs	2 vs. Iowa (9/22/12)
N/A	Blocks	N/A



# 2013 PENN STATE WOMEN'S VOLLEYBALL



## MEGAN COURTNEY

SOPHOMORE  
DAYTON, OHIO

OUTSIDE HITTER

### 2013 MATCH-BY-MATCH

OPP.	K	E	TA	PCT.	A	SA	D	TB
Syracuse	3	2	7	.143	0	0	3	2
Louisville	0	0	0	0	0	0	0	0
Texas	5	1	14	.286	1	0	7	1
Florida	11	3	24	.333	0	0	12	1
Marquette	9	1	7	.471	1	0	10	1
Central Arkansas	10	2	21	.381	0	0	2	5
FGCU	9	0	14	.643	0	0	5	1

**2013 (Sophomore):** Earned Preseason All-Big Ten honors ... Had three kills, three digs and a block assist against Syracuse (8/31) ... Recorded five kills, seven digs, one assist and one block assist against No. 6 Texas (9/7) ... Registered a double-double against No. 8 Florida (9/8) with 11 kills and 12 digs on .333 hitting, adding one block assist.

### CAREER HONORS

#### 2013

Preseason All-Big Ten  
Hilton Garden Inn Homewood Suites Classic All-Tournament

#### 2012

AVCA Mid-east Regional Freshman of the Year  
Unanimous Big Ten All-Freshman Team  
Big Ten Freshman of the Year  
Big Ten Co-Freshman of the Week (11/14, 11/21, 11/28)  
Pittsburgh Invitational MVP

### COURTNEY'S CAREER STATS

SEASON	MP-SP	K	E	TA	PCT.	ASSISTS	ACES	DIGS	BS	BA	TB	KPS	APS	SAPS	DPS	BPS
2012	36-120	240	88	632	.241	33	13	237	32	69	101	2.00	0.28	0.11	1.98	0.84
2013	6-18	47	9	97	.392	2	0	39	0	10	10	2.61	0.11	0.00	2.17	0.56
<b>CAREER</b>	<b>42-138</b>	<b>287</b>	<b>97</b>	<b>729</b>	<b>.261</b>	<b>35</b>	<b>13</b>	<b>276</b>	<b>32</b>	<b>79</b>	<b>111</b>	<b>2.08</b>	<b>0.25</b>	<b>0.09</b>	<b>2.00</b>	<b>0.80</b>

2013 SEASON HIGHS	CATEGORY	CAREER HIGH
11 vs. Florida (9/8)	Kills	13 at Michigan (10/20/12)
24 vs. Florida (9/8)	Attacks	47 at Michigan (10/20/12)
.333 (11-3-24) vs. Florida (9/8)	Hitting Percentage	.533 (8-0-15) vs. Texas (9/1/12)
N/A	Assists	4 vs. Morehead State (8/24/12)
N/A	Aces	2, 3x, last at Purdue (11/17/12)
12 vs. Florida (9/8)	Digs	15, 2x, last at Wisconsin (9/28/12)
1, 3x last vs. Florida (9/8)	Blocks	8 at Michigan (10/20/12)





# 2013 PENN STATE WOMEN'S VOLLEYBALL



## PAULINA PRIETO CERAME

REDSHIRT FRESHMAN  
SAN JUAN, PUERTO RICO

OUTSIDE HITTER

### 2013 MATCH-BY-MATCH

OPP.	K	E	TA	PCT.	A	SA	D	TB
Syracuse	9	3	17	.312	0	1	3	1
Louisville	10	3	19	.368	0	0	3	3
Texas	18	8	47	.213	0	0	0	2
Florida	9	1	17	.471	0	0	1	1
Marquette	7	2	16	.312	1	0	0	1
Central Arkansas	2	3	8	-.125	0	0	1	1
FGCU	5	2	13	.231	1	0	2	3

**2013 (Redshirt Freshman):** Earned Penn State Invitational All-Tournament Team honors for her performance on the court ... Registered nine kills and two digs in her first collegiate appearance for the Nittany Lions against Syracuse (8/31) ... Hit double-digits against No. 19 Louisville (8/31), posting 10 kills, while also racking up three digs and three blocks, including one solo block ... Ranked second on the team with 18 kills at No. 6 Texas (9/8), adding two block assists ... Recorded nine kills on .471 hitting with one dig and a block assist against No. 8 Florida (9/8).

**2012 (Freshman):** Redshirt Season.

### CAREER HONORS

2013

Penn State Invitational All-Tournament team

### PRIETO CERAME'S CAREER STATS

SEASON	MP-SP	K	E	TA	PCT.	ASSISTS	ACES	DIGS	BS	BA	TB	KPS	APS	SAPS	DPS	BPS
2012	Redshirt season															
2013	7-21	60	22	137	.310	2	0	9	4	7	11	2.86	0.10	0.00	0.43	0.52
<b>CAREER</b>	<b>7-21</b>	<b>60</b>	<b>22</b>	<b>137</b>	<b>.310</b>	<b>2</b>	<b>0</b>	<b>9</b>	<b>4</b>	<b>7</b>	<b>11</b>	<b>2.86</b>	<b>0.10</b>	<b>0.00</b>	<b>0.43</b>	<b>0.52</b>

2013 SEASON HIGHS	CATEGORY	CAREER HIGH
18 vs. Texas (9/7)	Kills	18 vs. Texas (9/7/13)
47 vs. Texas (9/7)	Attacks	47 vs. Texas (9/7/13)
.471 (9-1-17) vs. Florida (9/8)	Hitting Percentage	.471 (9-1-17) vs. Florida (9/8/13)
N/A	Assists	N/A
N/A	Aces	N/A
3 vs. Louisville (8/31)	Digs	3 vs. Louisville (8/31/13)
3 vs. Louisville (8/31)	Blocks	3 vs. Louisville (8/31/13)



# 2013 PENN STATE WOMEN'S VOLLEYBALL



## KENDALL PIERCE

SOPHOMORE  
EDEN, N.Y.

DEFENSIVE SPECIALIST

### 2013 MATCH-BY-MATCH

OPP.	K	E	TA	PCT.	A	SA	D	TB
Syracuse	0	0	0	0	0	1	0	0
Louisville	0	0	0	0	0	0	0	0
Texas	0	0	0	0	0	0	1	0
Florida	0	0	0	0	0	1	0	0
Marquette	0	0	0	0	0	0	0	0
Central Arkansas	0	0	0	0	0	0	0	0
FGCU	0	0	0	0	0	1	2	0

Florida (9/8).

**2013 (Sophomore):** Recorded an ace against Syracuse (8/31) ... Saw action on the court against No. 19 Louisville (8/31) ... Had one dig against No. 6 Texas (9/7) ... Notched one service ace against No. 8

### PIERCE'S CAREER STATS

SEASON	MP-SP	K	E	TA	PCT.	ASSISTS	ACES	DIGS	BS	BA	TB	KPS	APS	SAPS	DPS	BPS
2012	18-29	0	0	0	.000	2	9	7	0	0	0	0.00	0.07	0.31	0.24	0.00
2013	7-13	0	0	0	.000	0	3	3	0	0	0	0.00	0.00	0.23	0.23	0.00
<b>CAREER</b>	<b>25-42</b>	<b>0</b>	<b>0</b>	<b>0</b>	<b>.000</b>	<b>2</b>	<b>12</b>	<b>10</b>	<b>0</b>	<b>0</b>	<b>0</b>	<b>0.00</b>	<b>0.07</b>	<b>0.29</b>	<b>0.24</b>	<b>0.00</b>

2013 SEASON HIGHS	CATEGORY	CAREER HIGH
N/A	Kills	N/A
N/A	Attacks	N/A
N/A	Hitting Percentage	N/A
N/A	Assists	1, 2x, last vs. Binghamton (11/30/12)
1, 2x last vs. Florida (9/8)	Aces	2, 2x, last vs. Bowling Green (12/1/12)
1 vs. Texas (9/7)	Digs	1, 7x, last vs. Texas (9/7/13)
N/A	Blocks	N/A



## LAURA BROERMAN

FRESHMAN  
COLORADO SPRINGS, COLO.

DEFENSIVE SPECIALIST

### 2013 MATCH-BY-MATCH

OPP.	K	E	TA	PCT.	A	SA	D	TB
Syracuse	0	0	0	0	0	0	1	0
Louisville	0	0	0	0	0	0	0	0
Texas	0	0	0	0	0	0	0	0
Florida	0	0	0	0	0	0	0	0
Marquette	0	0	0	0	0	0	0	0
Central Arkansas	0	0	0	0	0	0	0	0
FGCU	0	0	0	0	0	0	0	0

**2013 (Freshman):** Made her collegiate debut for the Nittany Lions against Syracuse (8/31), tallying one dig.

### BROERMAN'S CAREER STATS

SEASON	MP-SP	K	E	TA	PCT.	ASSISTS	ACES	DIGS	BS	BA	TB	KPS	APS	SAPS	DPS	BPS
2013	2-2	0	0	0	.000	0	0	1	0	0	0	0.00	0.00	0.00	.50	0.00
<b>CAREER</b>	<b>2-2</b>	<b>0</b>	<b>0</b>	<b>0</b>	<b>.000</b>	<b>0</b>	<b>0</b>	<b>1</b>	<b>0</b>	<b>0</b>	<b>0</b>	<b>0.00</b>	<b>0.00</b>	<b>0.00</b>	<b>.50</b>	<b>0.00</b>

2013 SEASON HIGHS	CATEGORY	CAREER HIGH
N/A	Kills	N/A
N/A	Attacks	N/A
N/A	Hitting Percentage	N/A
N/A	Assists	N/A
N/A	Aces	N/A
1 vs. Syracuse (8/31)	Digs	1 vs. Syracuse (8/31/13)



# 2013 PENN STATE WOMEN'S VOLLEYBALL



## TAYLOR KRAUSE

FRESHMAN  
ALLENTOWN, PA.

DEFENSIVE SPECIALIST

### 2013 MATCH-BY-MATCH

OPP.	K	E	TA	PCT.	A	SA	D	TB
Syracuse	0	0	0	0	0	0	1	0
Louisville	0	0	0	0	0	0	0	0
Texas	0	0	0	0	0	0	0	0
Florida	0	0	0	0	0	0	0	0
Marquette	0	0	0	0	0	0	0	0
Central Arkansas	0	0	0	0	0	0	0	0
FGCU	0	0	0	0	0	0	0	0

**2013 (Freshman):** Made her collegiate debut for Penn State against Syracuse (8/31), notching on dig.

### KRAUSE'S CAREER STATS

SEASON	MP-SP	K	E	TA	PCT.	ASSISTS	ACES	DIGS	BS	BA	TB	KPS	APS	SAPS	DPS	BPS
2013	2-2	0	0	0	.000	0	0	1	0	0	0	0.00	0.00	0.00	0.50	0.00
<b>CAREER</b>	<b>2-2</b>	<b>0</b>	<b>0</b>	<b>0</b>	<b>.000</b>	<b>0</b>	<b>0</b>	<b>1</b>	<b>0</b>	<b>0</b>	<b>0</b>	<b>0.00</b>	<b>0.00</b>	<b>0.00</b>	<b>0.50</b>	<b>0.00</b>

2013 SEASON HIGHS	CATEGORY	CAREER HIGH
N/A	Kills	N/A
N/A	Attacks	N/A
N/A	Hitting Percentage	N/A
N/A	Assists	N/A
N/A	Aces	N/A
1 vs. Syracuse (8/31)	Digs	1 vs. Syracuse (8/31/13)
N/A	Blocks	N/A



## CARLEY MULLER

FRESHMAN  
MANHATTAN BEACH, CALIF.

DEFENSIVE SPECIALIST

### 2013 MATCH-BY-MATCH

OPP.	K	E	TA	PCT.	A	SA	D	TB
Syracuse	0	0	0	0	0	0	0	0
Louisville	0	0	0	0	0	0	0	0
Texas	0	0	0	0	0	0	0	0
Florida	0	0	0	0	0	0	0	0
Marquette	0	0	0	0	0	0	0	0
Central Arkansas	0	0	0	0	0	0	0	0
FGCU	0	0	0	0	0	0	0	0

**2013 (Freshman):** Made her collegiate debut on the court against Syracuse (8/31).

### MULLER'S CAREER STATS

SEASON	MP-SP	K	E	TA	PCT.	ASSISTS	ACES	DIGS	BS	BA	TB	KPS	APS	SAPS	DPS	BPS
2013	2-2	0	0	0	.000	0	0	0	0	0	0	0.00	0.00	0.00	0.00	0.00
<b>CAREER</b>	<b>2-2</b>	<b>0</b>	<b>0</b>	<b>0</b>	<b>.000</b>	<b>0</b>	<b>0</b>	<b>0</b>	<b>0</b>	<b>0</b>	<b>0</b>	<b>0.00</b>	<b>0.00</b>	<b>0.00</b>	<b>0.00</b>	<b>0.00</b>

2013 SEASON HIGHS	CATEGORY	CAREER HIGH
N/A	Kills	N/A
N/A	Attacks	N/A
N/A	Hitting Percentage	N/A
N/A	Assists	N/A
N/A	Aces	N/A
N/A	Digs	N/A
N/A	Blocks	N/A







# 2013 PENN STATE MATCH SUMMARIES



## PSU 3, FGCU 0

Fort Myers, Florida (Alico Arena)

Sept. 14, 2013

Penn State closed out the Florida Gulf Coast Tournament with a sweep of the host school (25-8, 25-15, 25-17).

In the first set the Nittany Lions jumped out to an early lead on back-to-back kills by Slay then pushed to 16-4 on a Pierce ace while cruising to a 25-7 victory.

The second set featured another set of back-to-back kills by Slay and another by Scott while the Nittany Lions took a 2-0 lead into set three on score of 25-15.

Early in the third Penn State and FGCU had a little bit of back and forth action before the Nittany Lions began to pull away with kills from Hancock and McClendon. Hancock added an ace before Prieto Cerame secured the sweep with a kill.

### NO. 3 PENN STATE (5-1, 0-0)

Name	SP	K	E	TA	PCT	A	SA	SE	RE	D	BS	BA	BE
Grant	2	6	1	12	.417	0	0	0	0	1	1	1	0
P. Cerame	3	5	2	13	.231	1	0	0	0	2	1	2	0
Hancock	3	2	0	5	.400	3	2	0	5	0	1	0	0
Slay	3	9	0	11	.818	1	0	0	0	0	1	3	0
Courtney	3	9	0	14	.643	0	0	0	0	5	0	1	0
McClendon	3	5	2	15	.200	0	0	0	0	6	2	1	0
Scott	1	1	1	7	.000	0	0	0	0	0	0	0	0
Caraway	1	0	0	0	.000	1	0	1	0	2	0	0	0
Pierce	2	0	0	0	.000	0	1	1	0	2	0	0	0
Gonzalez	3	0	0	1	.000	3	0	1	0	11	0	0	0
Martin	1	1	1	3	.000	0	0	2	0	1	0	0	0
Krause	1	0	0	0	.000	0	0	0	0	0	0	0	0
Whitney	1	1	0	3	.333	0	0	0	0	1	0	1	0
Broerman	1	0	0	0	.000	0	0	0	0	0	0	0	0
Fuller	3	0	0	0	.000	0	0	1	0	6	0	0	0
<b>TOTALS</b>	<b>3</b>	<b>39</b>	<b>7</b>	<b>84</b>	<b>.381</b>	<b>37</b>	<b>4</b>	<b>8</b>	<b>0</b>	<b>42</b>	<b>5</b>	<b>10</b>	<b>0</b>

Set	K	E	TA	Pct
1	11	1	24	.417
2	14	2	35	.343
3	14	4	25	.400

Penn State	25	25	25
Florida Gulf Coast	8	15	17

### FLORIDA GULF COAST UNIVERSITY (1-9, 0-0)

Name	SP	K	E	TA	PCT	A	SA	SE	RE	D	BS	BA	BE
Mesner	3	2	5	11	-.273	0	0	0	0	0	0	1	0
Holm	3	4	8	22	-.182	0	0	0	0	0	0	0	1
Meyer	3	0	0	0	.000	20	0	1	0	6	0	0	1
Pinder	3	6	3	25	.120	1	0	0	2	14	0	0	0
Mambuca	3	3	0	10	.300	1	0	0	0	4	0	1	1
Barnes	3	9	7	31	.065	0	0	3	0	3	0	0	1
Moeller	2	0	0	0	.000	0	0	0	0	0	0	0	0
Jordan	1	0	0	0	.000	0	0	0	0	0	0	0	0
Masters	3	0	1	2	-.500	2	0	0	1	6	0	0	0
<b>TOTAL</b>	<b>3</b>	<b>24</b>	<b>24</b>	<b>101</b>	<b>.000</b>	<b>24</b>	<b>0</b>	<b>4</b>	<b>4</b>	<b>33</b>	<b>1</b>	<b>2</b>	<b>3</b>

Set	K	E	TA	Pct
1	5	12	33	-.212
2	10	5	41	.122
3	9	7	27	.074

	1	2	3	Total
Tie score	0	3	5	8
Lead changes	0	1	1	2