



# MICHIGAN STATE

NATION'S BEST SIX FINAL FOURS APPEARANCES IN 16 SEASONS

## YOU DON'T WANT TO MISS THIS

\* **Branden Dawson** needs two blocks to reach **100** for his career becoming the third player in MSU history with **1,000** career points and **100** career blocks. (see page 2)

\* **MSU** ranks second in the Big Ten in field-goal percentage defense. (see page 2)

## 2014-15 SCHEDULE

### November

3	THE MASTER'S COLLEGE (Exh.) (BTN Plus)	W, 97-56
7	ST. CLOUD STATE (Exh.) (BTN Plus)	W, 101-46
14	at Navy [1] (CBS Sports Network)	W, 64-59
18	vs. #4 Duke [2] (ESPN)	L, 81-71
21	LOYOLA (CHICAGO) (BTN)	W, 87-52
	Orlando Classic	
24	SANTA CLARA (BTN)	W, 79-52
27	vs. Rider [3] (ESPN2)	W, 77-45
28	vs. Marquette [3] (ESPN2)	W, 79-68
30	vs. #11 Kansas [3] (ESPN)	L, 61-56

### December

3	at Notre Dame [4] (ESPN2)	L, 79-78, OT
6	ARKANSAS-PINE BLUFF (BTN)	W, 85-52
14	OAKLAND (ESPNU)	W, 87-61
17	EASTERN MICHIGAN (BTN)	W, 66-46
20	TEXAS SOUTHERN (ESPNU)	L, 71-64, OT
22	THE CITADEL (BTN Plus)	W, 82-56
30	#12 MARYLAND (ESPN2)	L, 68-66, 2OT

### January

5	INDIANA (BTN)	W, 70-50
8	at Iowa (ESPN)	W, 75-61
11	NORTHWESTERN (BTN)	W, 84-77, OT
17	at #14 Maryland (CBS)	L, 75-59
21	PENN STATE (BTN)	7 p.m.
24	at Nebraska (ESPN)	4 p.m.
27	at Rutgers (BTN)	9 p.m.

### February

1	MICHIGAN (CBS)	1 p.m.
7	ILLINOIS (ESPN/ESPN2)	12 p.m.
10	at Northwestern (BTN)	7 p.m.
14	OHIO STATE (ESPN/ESPN2)	12 p.m.
17	at Michigan (ESPN)	9 p.m.
22	at Illinois (BTN)	7:30 p.m.
26	MINNESOTA (BTN)	7 p.m.

### March

1	at Wisconsin (CBS/BTN)	4/7:30 p.m.
4	PURDUE (BTN)	8 p.m.
7	at Indiana (ESPN/ESPN2)	TBA
11-15	Big Ten Tournament - Chicago, Ill.	
17-18	NCAA Tournament - First Round	
19-22	NCAA Tournament - Second & Third Rounds	
26-29	NCAA Tournament - Regionals	

### April

4 & 6	NCAA Final Four - Indianapolis, Ind.	
-------	--------------------------------------	--

Home games (**BOLD**) played at the Breslin Center  
Game times are Eastern Standard Time

- [1] - Veterans Classic
- [2] - Champions Classic - Indianapolis, Ind.
- [3] - Orlando Classic - Lake Buena Vista, Fla.
- [4] - ACC/Big Ten Challenge



## GAME #19

MICHIGAN STATE (12-6, 3-2)  
VS. PENN STATE (12-6, 0-5)



January 21, 2015 - 7 p.m. EST

East Lansing, Mich. - Breslin Center

Radio: Spartan Sports Network - Will Tieman (Play by Play),  
Gus Ganakas and Matt Steigenga (Analysts)

TV: BTN - Kevin Kugler (Play by Play), Stephen Bardo (Analyst)

Satellite Radio: SIRIUS 91, XM 91

## THE OPENING TIP

Michigan State looks to start a new winning streak as it hosts Penn State on Wednesday in the 400th game in Breslin Center history. The Spartans feature one of the top defenses in the Big Ten, while the Nittany Lions feature D.J. Newbill, the conference's leading scorer.

## THE JUMP BALL

	Michigan State	Penn State
<b>Record</b>	12-6, 3-2	12-6, 0-5
<b>Coach</b>	Tom Izzo	Pat Chambers
<b>Career Record (Years)</b>	480-193 (20th)	92-93 (6th)
<b>Leading Scorer</b>	Denzel Valentine (13.9)	D.J. Newbill (21.7)
<b>Leading Rebounder</b>	Branden Dawson (9.5)	Ross Travis (7.1)
<b>Leading Assists</b>	Travis Trice (5.8)	D.J. Newbill (3.2)

## POSSIBLE MICHIGAN STATE STARTING LINEUP

	Michigan State Spartans (12-6, 3-2)	Ppg.	Rpg.	Appg.	Other
<b>F</b>	#34 Gavin Schilling (So., 6-9, 240)	7.1	4.4	0.4	.684 FG%
	<i>* Notched first-career double-double vs. Santa Clara with 14 points and 11 rebounds ... Leads the Big Ten in field-goal percentage ... Started the last 12 games.</i>				
<b>F</b>	#22 Branden Dawson (Sr., 6-6, 225)	11.5	9.5	1.8	1.3 spg
	<i>* Leads the Big Ten in rebounding ... Grabbed a career-high 18 rebounds at Notre Dame, tied for the most by a Spartan since 2007 ... Averaging 11.6 rebounds in conference games.</i>				
<b>F</b>	#2 Javon Bess (Fr., 6-5, 215)	2.9	3.3	1.5	8-16 FG
	<i>* Ohio Division I co-player of the year ... Debuted vs. EMU after missing 10 games due to injury ... Made his first career start at Maryland, totaling six points and four assists.</i>				
<b>G</b>	#20 Travis Trice (Sr., 6-0, 170)	13.8	3.3	5.8	40-104 3FG
	<i>* Co-Captain ... Three games this season with 25 points or more (Navy, MD, Iowa) ... 3.5 assist-to-turnover ratio leads the Big Ten and ranks eighth in the nation ... 2nd in the Big Ten in assists.</i>				
<b>G</b>	#45 Denzel Valentine (Jr., 6-5, 220)	13.9	5.9	4.2	43-97 3FG
	<i>* Co-Captain ... 6th in B1G in made 3FG and 3FG% ... 8th in B1G in assists ... Scored a career-high 25 points vs. Marquette ... Arguably B1G's most-versatile player.</i>				
<b>G</b>	#5 Bryn Forbes (Jr., 6-3, 180)	9.7	1.3	1.2	37-80 3FG
	<i>* Started 16 games ... Has made a 3-pointer in 77 of 82 career games.</i>				
<b>F</b>	#10 Matt Costello (Jr., 6-9, 245)	7.7	5.9	0.6	.615 FG%
	<i>* Career-high 17 points vs. TSU ... Two double-doubles ... Avg. 9.4 ppg in last 10 gms.</i>				
<b>G</b>	#11 Tum Tum Nairn Jr. (Fr., 5-10, 170)	1.8	1.4	2.7	17.4 mpg
	<i>* Made first start vs. Ind., scoring seven points ... Season-best seven assists against Loyola.</i>				
<b>F</b>	#0 Marvin Clark Jr. (Fr., 6-6, 230)	6.2	2.8	0.2	13-34 3FG
	<i>* Started five games, avg. 9.4 points ... MSU is 7-0 when he scores in double-figures.</i>				
<b>G</b>	#3 Alvin Ellis III (So., 6-4, 210)	1.8	0.5	0.7	0.7 spg
	<i>* Missed six games due to ankle injury ... Shot .462 from 3-point range in 2013-14.</i>				
<b>F</b>	#41 Colby Wollenman (R-Jr., 6-7, 230)	1.5	2.0	0.3	12-19 FG
	<i>* Played in 37 career games ... Grabbed career-high five rebounds vs. Santa Clara and Kansas.</i>				
<b>G</b>	#15 Keenan Wetzel (R-Sr., 6-4, 210)	0.4	0.4	0.0	1-8 3FG
	<i>* Played in 41 career games, including 12 last season ... On scholarship in 2014-15.</i>				
<b>F</b>	#13 Trevor Bohnhoff (Jr., 6-7, 225)	0.2	0.1	0.0	2.1 mpg
	<i>* Played in 21 career games ... Grabbed one rebound vs. Kansas in first career 1st-half minutes.</i>				



**Branden Dawson has three double-doubles through the first five conference games.**

## 2014-15 MICHIGAN STATE NUMERICAL ROSTER

No.	Name	Pos.	Ht.	Wt.	Yr.	Hometown/High School
0	Marvin Clark Jr.	F	6-6	230	Fr.	Kansas City, Mo./Sunrise Christian Academy (Bel Aire, Kan.)
2	Javon Bess	G	6-5	215	Fr.	Columbus, Ohio/Gahanna Lincoln
3	Alvin Ellis III	G	6-4	210	So.	Matteson, Ill./Chicago De La Salle
5	Bryn Forbes	G	6-3	180	Jr.	Lansing, Mich./Sexton (Cleveland State)
10	Matt Costello	F	6-9	245	Jr.	Linwood, Mich./Bay City Western
11	Lourawls "Tum Tum" Nairn Jr.	G	5-10	170	Fr.	Nassau, Bahamas/Sunrise Christian Academy (Bel Aire, Kan.)
13	Trevor Bohnhoff	F	6-7	225	Jr.	Saginaw, Mich./Nouvel
*14	Eron Harris	G	6-3	180	Jr.	Indianapolis, Ind./Lawrence North (West Virginia)
15	Keenan Wetzel	G	6-4	210	R-Sr.	Monroe, Mich./St. Mary Catholic Central
20	Travis Trice	G	6-0	175	Sr.	Huber Heights, Ohio/Wayne
22	Branden Dawson	F	6-6	225	Sr.	Gary, Ind./Lew Wallace
25	Kenny Goins	F	6-6	215	Fr.	Troy, Mich./Warren Mott
*30	Matt Van Dyk	F	6-5	205	Jr.	Imlay City, Mich./Imlay City
34	Gavin Schilling	F	6-9	240	So.	Chicago, Ill./Findlay Prep (Henderson, Nev.)
41	Colby Wollenman	F	6-7	230	R-Jr.	Big Horn, Wyo./Big Horn
45	Denzel Valentine	G	6-5	220	Jr.	Lansing, Mich./Sexton

\* Must sit out the 2014-15 season due to NCAA Transfer rules

**Head Coach:** Tom Izzo (20th season)

**Associate Head Coach:** Dwayne Stephens (12th season)

**Assistant Coach:** Mike Garland (15th season)

**Assistant Coach:** Dane Fife (4th season)

**Director of Basketball Operations:** Kevin Pauga

**Video Coordinator:** Brett Ferguson

**Assistant Video Coordinator:** Doug Herner

**Athletic Trainer:** Quinton Sawyer

**Equipment Manager:** Dave Pruder

**Strength and Conditioning Coach:** Mike Vorkapich

### PRONUNCIATION GUIDE

Javon Bess	.....	Juh-vaughn
Trevor Bohnhoff	.....	BON-hoff
Bryn Forbes	.....	Rhymes with win
Kenny Goins	.....	Rhymes with coins
Eron Harris	.....	Aaron
Lourawls "Tum Tum" Nairn Jr.	.....	Nairn - One syllable
.....	.....	(Nair rhymes with hair)
Colby Wollenman	.....	WALL-en-munn

### ON THIS DATE

**Michigan State is 18-11 all-time on Jan. 21, including 14-5 at home.**

Year	Site	W/L	Score	Opponent
1905	H	W	47-20	Bay City YMCA
1911	H	W	51-11	Armour Institute
1913	H	W	37-12	Detroit Rayls
1920	H	W	34-15	Kalamazoo
1921	A	L	19-39	DePauw
1922	H	L	28-39	Kalamazoo
1927	A	W	39-30	Lake Forest
1928	A	L	18-21	Marquette
1933	H	W	35-13	Olivet
1935	H	W	45-24	Hillsdale
1936	A	L	19-27	Kentucky
1939	A	L	33-34	Butler
1952	H	W	50-39	Wisconsin
1956	H	W	80-69	Minnesota
1961	H	L	62-77	Northwestern
1963	H	L	59-60	Iowa
1967	A	L	59-81	Michigan
1974	H	W	95-86	Iowa
1978	H	W	68-58	Iowa
1982	A	W	64-62	Michigan
1984	H	L	68-82	Ohio State
1989	A	L	60-75	Indiana
1998	A	W	78-57	Iowa
1999	H	W	80-65	Iowa
2001	H	W	71-56	Ohio State
2004	A	W	73-61	Northwestern
2006	H	W	85-55	Iowa
2009	H	L	63-70	Northwestern
2012	H	W	83-58	Purdue
2014	H	W	71-66	Indiana

### THE STARTING FIVE

#### 1. Spartan Defense

Over the last 16 games, Michigan State is holding opponents to 60.9 points and a .370 FG%, including .291 from 3-point range. On the season, MSU is limiting teams to 61.9 points on .381 FG%, including .300 from 3-point range. The Spartans rank second in the Big Ten in FG pct. defense, third in 3-point FG pct. defense, and sixth in scoring defense. The all-time lows of the Izzo era were a .379 FG% in 2011-12 and .298 3FG% in 2001-02.

#### 2. All-Time Block Leaders

Branden Dawson ranks fifth in Michigan State history with 98 career blocks, just behind Delvon Roe (106). With two blocks he will join Draymond Green and Adreian Payne as the only players in MSU history with 1,000 career points and 100 career blocks. Payne is the MSU career leader with 141 blocks. With 74 blocks in his two-plus seasons, Matt Costello could appear in the Top 10 later in the season. Paul Davis currently ranks 10th with 87 career blocks.

#### 3. Dawson's Double-Doubles

It's been a good start to Big Ten play for Branden Dawson, as he has already posted double-doubles in three games (at Maryland, Northwestern, at Iowa). Against Iowa, he grabbed 15 rebounds, a personal best against a Big Ten opponent. Dawson has grabbed double-figure rebounds in four of five conference games, averaging a Big Ten-best 11.6 rebounds per game in Big Ten play (9.5 rpg overall). He has four double-doubles this season and 16 for his career.

#### 4. Breslin Advantage

Michigan State is 347-52 (.870) at home all-time since Breslin Center opened in 1989, including 179-39 (.821) in Big Ten play. Under Tom Izzo, the Spartans are 273-37 (.881) at Breslin, including a 138-26 (.841) conference record. MSU has won 54 of the last 62 (.871) games at Breslin.

#### 5. Keeping The 3-Pointer In Perspective

Michigan State is shooting .401 from 3-point range this season, marking the best percentage of the Tom Izzo era. But on-target shooting does not equal an over-reliance on the outside shot. MSU has attempted 339 3-pointers in 1036 field-goal attempts, meaning 32.7 percent of its shots are from behind the arc. That is tied with 2010-11 squad for the third-highest percentage of the Izzo era, well behind the 36.3 percent from the 2013-14 Spartans and just behind the 2004-05 team (32.8%). It's the sixth time in Izzo's 20 seasons that more than 30 percent of the shot attempts have been 3-pointers, joining the 2003-04 (31.2%) and 1999-2000 (31.1%) squads.

**Tom Izzo is 26-6 all-time against Penn State.**

## TALE OF THE TAPE - MSU/PSU STAT BREAKDOWNS

Category (Big Ten Stats)	MSU	PSU
Scoring Offense	73.8 (70.8)	70.4 (66.4)
Scoring Defense	61.9 (66.2)	67.8 (74.4)
Scoring Margin	+11.9 (+4.6)	+2.6 (-8.0)
Field Goal Pct.	.480 (.446)	.436 (.438)
Field Goal Pct. Defense	.381 (.387)	.404 (.482)
3Pt. FG Pct.	.401 (.341)	.317 (.287)
3Pt. FG Pct. Defense	.300 (.327)	.333 (.425)
Free Throw Pct.	.632 (.632)	.699 (.704)
Rebound Margin	+7.3 (+2.6)	+1.6 (-2.6)
Turnovers per game	12.2 (10.8)	12.7 (11.4)

## POSSIBLE PENN STATE STARTING LINEUP

Penn State Nittany Lions (12-6, 0-5)	Ppg.	Rpg.	Apq.	Other
F - #5 Donovan Jack (Jr., 6-9, 210)	5.1	3.7	0.6	.545 FG%
F - #10 Brandon Taylor (Jr., 6-6, 225)	9.6	6.1	0.9	29-97 3FG
F - #43 Ross Travis (Sr., 6-7, 235)	5.1	7.1	0.8	.472 FG%
G - #33 Shep Garner (Fr., 6-1, 185)	9.4	2.7	2.3	31-91 3FG
G - #2 D.J. Newbill (Sr., 6-4, 210)	21.7	4.6	3.2	27-77 3FG

## MSU VS. PENN STATE NOTES

### Series History

Michigan State leads the all-time series with Penn State, 33-7, including a 20-1 advantage in East Lansing. The Spartans have won 17 of the last 21 games in the series. Tom Izzo is 26-6 in his career against Penn State.

### Coach Chambers

Patrick Chambers (Philadelphia University, '94) is 92-93 in his sixth season as a collegiate head coach, including 50-65 in his fourth season at Penn State. Before his arrival in University Park, Chambers spent two seasons at Boston University, making the 2011 NCAA Tournament.

### The Last Meeting

Michigan State defeated Penn State, 82-67, on Feb. 6, 2014, in East Lansing. Playing without an injured Keith Appling and Branden Dawson, and marking the return of Adreian Payne, after missing seven games, the Spartans played a terrific first half. Leading 11-8 early, MSU went on an 11-0 run to claim a 22-8 lead, and the lead never dropped into single digits after that, as the Spartans held a 46-30 halftime advantage. For the game, MSU shot 46.7 percent from the field and 52.2 percent (12-23) from 3-point range, while holding PSU to 36.8 percent overall (22.7 percent from behind the arc). Kenny Kaminski led the Spartans with 19 points. Starting in place of Appling at the point, Travis Trice dished out seven assists while committing no turnovers. Tim Frazier led the Nittany Lions with 22 points, while D.J. Newbill added 17.

### Nittany Lion Notes

D.J. Newbill leads the Big Ten in scoring at 21.7 points overall and 22.4 points through five conference games. He is the only Nittany Lion to average double-figures in scoring. Newbill ranks ninth in Penn State career scoring ... Three of Penn State's five Big Ten losses have been by four or fewer points or have come in overtime, including a four-point loss at Rutgers and a three-point defeat at Indiana ... Penn State was 12-1 in non-conference action, setting a program record for non-conference victories ... The Nittany Lions have out-rebounded 10 of 18 opponents.

## MSU PLAYERS VS. PENN STATE

Name	GP/GS	Min/Avg.	FG/Pct.	3FG/Pct.	FT/Pct.	Pts/Avg.	Reb/Avg.	Ast/Avg.
Bohnhoff	1/0	2/2.0	0-1/.000	0-0/.000	0-0/.000	0/0.0	1/1.0	0/0.0
Costello	3/1	40/13.3	3-3/1.000	0-0/.000	4-5/.800	10/3.3	8/2.6	5/1.7
Dawson	3/2	67/22.3	15-25/.600	0-0/.000	5-5/1.000	37/12.3	23/7.7	4/1.3
Ellis	2/0	13/6.5	1-1/1.000	1-1/1.000	2-2/1.000	5/2.5	3/1.5	0/0.0
Schilling	2/0	15/7.5	1-3/.333	0-0/.000	1-2/.500	3/1.5	6/3.0	0/0.0
Trice	4/1	92/23.0	11-30/.367	6-15/.400	5-5/1.000	33/8.3	10/2.5	12/3.0
Valentine	3/2	79/26.3	8-21/.381	2-5/.400	4-4/1.000	22/7.3	16/5.3	14/4.7
Wetzel	1/0	4/4.0	1-1/1.000	1-1/1.000	0-0/.000	3/3.0	0/0.0	0/0.0
Wollenman	1/0	4/4.0	0-0/.000	0-0/.000	0-0/.000	0/0.0	0/0.0	0/0.0

## MSU VS. PENN STATE

### Series Quick Facts

**Overall:** MSU leads 33-7  
**At East Lansing:** 20-1  
**At Breslin Center:** 16-1  
**At University Park:** 13-4  
**At Neutral Site:** 0-2  
**Izzo vs. PSU:** 26-6  
**Chambers vs. MSU:** 0-4  
**Most MSU Points:** 98 (Jan. 3, 2001)  
**Most PSU Points:** 85 (Feb. 2, 2008)  
**Fewest MSU Points:** 16 (Jan. 2, 1929)  
**Fewest PSU Points:** 14 (Jan. 2, 1929)  
**Largest MSU Margin:** 37 (Feb. 20, 2008)  
**Largest PSU Margin:** 9 (Feb. 2, 2008)

**Last MSU Win:** Feb. 6, 2014 (82-67)  
**Last PSU Win:** March 12, 2011 (48-61)  
**Current Streak:** MSU won four  
**Longest MSU Win Streak:** Eight  
**Longest MSU Home Win Streak:** 16  
**Longest MSU Away Win Streak:** Seven  
**Longest PSU Win Streak:** One  
**Longest PSU Home Win Streak:** One  
**Longest PSU Away Win Streak:** One  
**\* Active Streak**

**In Overtime:** 0-0

### Last 15 Meetings (MSU 11-4)

Date	Site	W/L	MSU-Opp
1-28-06	H	W	69-60
1-20-07	A	W	91-64
2-2-08	A	L	76-85
2-20-08	H	W	86-49
1-14-09	A	W	78-73
2-1-09	H	L	68-72
2-13-10	A	W	65-54
3-4-10	H	W	67-65
1-8-11	A	L	62-66
2-10-11	H	W	75-57
3-12-11	N	L	48-61
2-8-12	H	W	77-57
1-16-13	A	W	81-72
12-31-13	A	W	79-63
2-6-14	H	W	82-67

### Individual Superlatives

#### MSU Players

**Most Points vs. PSU:**  
 Shannon Brown - 29 (2006)  
**Most Rebounds vs. PSU:**  
 Antonio Smith - 17 (1997)  
**Most Assists vs. PSU:**  
 Eric Snow - 13 (1995)

#### PSU Players

**Most Points vs. MSU:**  
 Talor Battle - 30 (2010)  
**Most Rebounds vs. MSU:**  
 Geary Claxton - 13 (2006)  
 Aaron Johnson - 13 (2003)  
**Most Assists vs. MSU:**  
 Talor Battle - 8 (2010)



## MSU leads the Big Ten in 3-point field-goal percentage (.401).

### Big Ten Conference Standings (Through games of Jan. 18)

	Big Ten		Overall	
	W-L	Pct.	W-L	Pct.
Maryland	5-1	.833	17-2	.895
Wisconsin	4-1	.800	16-2	.889
Indiana	4-1	.800	14-4	.778
Iowa	4-1	.800	13-5	.722
Michigan	4-2	.667	11-7	.611
<b>Michigan State</b>	3-2	.600	12-6	.667
Purdue	3-2	.600	11-7	.611
Ohio State	3-3	.500	14-5	.737
Nebraska	2-3	.400	10-7	.588
Illinois	2-4	.333	12-7	.632
Rutgers	2-4	.333	10-9	.526
Northwestern	1-4	.200	10-8	.556
Minnesota	1-5	.167	12-7	.632
Penn State	0-5	.000	12-5	.706

### Big Ten Conference Schedule Jan. 19-Jan. 25 (All Times Eastern)

#### Tuesday, Jan. 20

Michigan at Rutgers, 6:30 p.m.  
Minnesota at Nebraska, 8:30 p.m.  
Iowa at Wisconsin, 9 p.m.

#### Wednesday, Jan. 21

Penn State at Michigan State, 7 p.m.  
Purdue at Illinois, 9 p.m.

#### Thursday, Jan. 22

Ohio State at Northwestern, 7 p.m.  
Maryland at Indiana, 9 p.m.

#### Saturday, Jan. 24

Iowa at Purdue, 12 p.m.  
Rutgers at Penn State, 12 p.m.  
Illinois at Minnesota, 2:15 p.m.  
Michigan State at Nebraska, 4 p.m.  
Wisconsin at Michigan, 7 p.m.

#### Sunday, Jan. 25

Indiana at Ohio State, 1:30 p.m.  
Northwestern at Maryland, 7:30 p.m.

## GM. 18 RECAP • MARYLAND 74 - MICHIGAN STATE 59

Maryland defeated Michigan State 74-59 in College Park. The Spartans got off to a good start, leading 10-5 after seven minutes, but Maryland quickly answered with a 9-0 run to take a 14-10 lead it would not give up. Jake Layman scored the final seven points of the run. The Terrapins led 29-22 with four minutes left in the first half. MSU had two opportunities to cut into the lead but missed a pair of shots and Branden Dawson picked up his second foul with 3:13 remaining in the half, sending him to the bench. With Dawson out of the game, Maryland closed on an 11-4 run to take a 40-26 lead into the halftime locker room. In the second half, MSU made a couple of mini-pushes, but could never cut Maryland's lead into single digits.

### MSU VS. MARYLAND NOTES

- \* Javon Bess made his first career start, becoming the third Spartan freshman to start a game this season.
- \* Branden Dawson matched his career high with four blocked shots, moving into fifth place on the MSU career list.
- \* Maryland matched its season high with 11 made 3-pointers, while its .524 percentage from behind the arc was a season high, and a season high for a Spartan opponent.
- \* Maryland made 20-of-22 shots from the foul line, while MSU connected on just 4-of-13 attempts, marking a season low for made free throws and free-throw percentage.
- \* The 14 combined points for Travis Trice (5 points) and Denzel Valentine (9 points) were a combined season low for the duo.
- \* Maryland converted 12 Spartan turnovers into 20 points.
- \* MSU made its first trip to College Park to play Maryland since 1955.
- \* Matt Costello's 12 points were a personal best against a Big Ten opponent.

### MSU BASKETBALL NOTES

#### Izzo's 20th Season

In his 20th season as Michigan State head coach, the 2014-15 campaign is Tom Izzo's 32nd year in East Lansing. An eight-time National Coach of the Year, Izzo has guided MSU to seven Big Ten Championships, four Big Ten Tournament titles, 17 straight NCAA Tournaments, six Final Four appearances, and the 2000 NCAA Championship in his stint as head coach. He is MSU's all-time winningest coach with 480 wins, and is the longest serving active men's basketball coach in the Big Ten. In addition, his 468 victories are the fourth-most by a coach in his first 19 years of coaching in NCAA history. The only high-major coaches with longer active tenures at one school are Syracuse's Jim Boeheim (39th season) and Duke's Mike Krzyzewski (35th season).

#### Big Ten Success

Michigan State has captured at least a share of the Big Ten Championship or a Big Ten Tournament title in four of the last six seasons. After winning the title outright in 2009, the Spartans shared the conference crown in 2010 and 2012. In 2012, MSU also added a Big Ten Tournament title to its resume. Last season, MSU won the Big Ten Tournament after finishing tied for second in the regular season. During Tom Izzo's tenure, the Spartans have won seven regular-season titles and four tournament crowns.

#### Spartans On Target From Deep

Michigan State is shooting .401 (136-339) from 3-point range this season, leading the Big Ten and ranking 16th in the nation. In conference play, however, MSU is shooting just .341. Bryn Forbes (.463) ranks third in the Big Ten, while Denzel Valentine (.443) ranks sixth in the conference. Marvin Clark Jr. (.382) and Travis Trice (.385) also shoot better than 38 percent from behind the arc.

#### Dawson's Defense

Branden Dawson is known for dominating the backboard and his rim-rattling dunks, but he's also among the best defensive players in the conference, as his strength and athleticism give him the versatility to guard nearly any position on the floor. Consider what some of the best players in the Big Ten have done against Dawson: Maryland's Jake Layman (Dec. 30) (Avg. 15.8 ppg entering the game - 4 pts., 2-4 FG, 0-2 3FG, 9 rebs., 36 min.), Indiana's Troy Williams (Jan. 5) (13.6 ppg - 0 pts., 0-2 FG, 1 reb., 17 min.), Iowa's Aaron White (Jan. 8) (17.2 ppg - 8 pts., 2-4 FG, 1-1 3FG, 28 min.).

**Branden Dawson is averaging 10.7 rebounds over his last nine games.**

### **Balanced Scoring**

Michigan State features a balanced scoring attack with three players averaging in double figures, four averaging 9.7 points or more, and seven players averaging 6.2 points or more. Six different Spartans have led the team in scoring in a single game, as seven different players have scored in double figures at least once. There have been five games in which five Spartans have reached double figures, one more time than all of last season. The Spartans are a perfect 8-0 when four or more players score in double-figures, and just 4-6 when three or fewer Spartans hit double-figures.

### **Spartans Strong On The Glass**

Michigan State owns a Big Ten-best +7.3 rebounding margin, having out-rebounded 14 of 18 opponents. In the Tom Izzo era, MSU has out-rebounded 519 of 673 opponents (.771), posting a 411-108 (.792) mark in those games. The Spartans have led the nation in rebounding in four of the last 15 seasons (2000, 2001, 2009, 2010), ranking in the Top 10 nine times and the Top 25 on 12 occasions. MSU has led the Big Ten in rebounding margin in conference games in 11 of the last 17 years.

### **Free Basketball**

Michigan State is 1-3 in overtime games this season, as the four overtime games are the most since the Spartans played four during the 2003-04 season. MSU entered the season having won seven straight overtime games dating back to a loss to Minnesota in the 2010 Big Ten Tournament. The last time MSU played more than four overtime games in a season came during the 1987-88 season when it played five.

### **Big Ten Success, Part II**

Michigan State has won 13 regular-season Big Ten Championships, including three of the last six, since joining the league prior to the 1950-51 season. The Spartans' first ever league game was at Northwestern, where MSU claimed a 67-62 victory on Jan. 6, 1951. All-time, MSU is 582-463 (.557) in league play, including 224-103 (.685) under Tom Izzo, who ranks fourth in league history with 224 conference wins. Izzo has guided MSU to seven of its 13 league crowns. Since Izzo's first season (1995-96), MSU has a Big Ten-best record of 224-103, 16.5 games better than second-place Wisconsin (207-119).

### **Izzo Moves Up Big Ten Coaching List**

Tom Izzo ranks fourth on the career Big Ten victories list with 224. It's likely that Izzo will rank third by the end of the season, moving past Purdue's Ward Lambert (228 wins). Indiana's Bob Knight is the all-time leader with 353 Big Ten wins, while Gene Keady ranks second with 265 victories. In terms of most wins at a Big Ten institution, Izzo already ranks third with 480, trailing only Knight (661 wins) and Keady (512).

### **Trice From Distance**

Travis Trice is situated to end his career as one of the most prolific 3-point shooters in MSU history. Midway through his senior year, Trice is tied with Jason Klein for seventh place in career 3-pointers (152), standing just nine out of sixth (Durrell Summers, 161). With a career 3-point field-goal percentage of .409 (152-372), Trice ranks ninth in MSU history.

### **Dawson Attacks The Glass**

Branden Dawson leads the Big Ten in rebounding at 9.5 boards per contest. In conference games, he's averaging a Big Ten-best 11.6 rebounds, recording double-figure rebounds in four of five games. Over his last nine games, he's averaging 10.7 boards. Earlier this season, he grabbed a career-high 18 rebounds (nine offensive boards) at Notre Dame. The 18 rebounds are tied for the most by a Spartan since Goran Suton grabbed 20 vs. Oakland in 2007. Dawson's nine offensive rebounds against the Irish are tied for the third-best single-game effort in MSU history (since 1986-87). He pulled down 15 rebounds at Iowa, marking his personal best against a Big Ten opponent.

### **The Costello-Schilling Combination**

Junior Matt Costello (7.7 ppg, 5.9 rpg) and sophomore Gavin Schilling (7.1 ppg, 4.4 rpg) have combined to give Michigan State a solid post presence. The two Spartans average a combined 14.8 points and 10.3 rebounds, shooting .647 (110-170) from the field. Schilling leads the Big Ten in field-goal percentage, while Costello ranks second.

## **MSU'S RECORD IN 2014-15 WHEN:**

At home: 8-2  
On road: 2-2  
Neutral: 2-2  
Leading at the half: 10-2  
Trailing at the half: 1-4  
Tied at halftime: 1-0

Shoot 50% or above from field: 7-1  
Shoot less than 50% from field: 5-5  
Opp. shoots 50% or above: 0-2  
Opp. shoots less than 50%: 12-4  
MSU outshoots opp.: 12-2  
Opp. outshoots MSU: 0-4  
Both teams shoot same from floor: 0-0

MSU outrebounds opp.: 11-3  
Opp. outrebounds MSU: 1-2  
Rebounds are equal: 0-1

MSU has more turnovers: 7-4  
Opp. has more turnovers: 5-2  
Turnovers are equal: 0-0

Game decided by 1-5 pts: 1-3  
Game decided by 6-10 pts: 1-2  
Game decided by 11-15 pts: 2-0  
Game decided by 16+ pts: 8-1

MSU scores less than 60 pts: 0-2  
MSU scores 60-69 pts: 2-2  
MSU scores 70-79 pts: 5-2  
MSU scores 80+ pts: 5-0

MSU allows less than 60 pts: 8-0  
MSU allows 60-69 pts: 3-2  
MSU allows 70-79 pts: 1-3  
MSU allows 80+ pts: 0-1

MSU in overtime: 1-3

One MSU player scores 10+: 0-1  
Two MSU players score 10+: 1-2  
Three MSU players score 10+: 3-3  
Four MSU players score 10+: 3-0  
Five MSU players score 10+: 5-0  
Six MSU players score 10+: 0-0

In November: 5-2  
In December: 4-3  
In January: 3-1  
In February: 0-0  
In March: 0-0

On Sunday: 2-1  
On Monday: 3-0  
On Tuesday: 0-2  
On Wednesday: 1-1  
On Thursday: 2-0  
On Friday: 3-0  
On Saturday: 1-2

Day Games: 2-2  
Night Games: 10-4

**Travis Trice averages 6.1 assists per game, the most by a Spartan since Mateen Cleaves in 1999-2000.**

**Associated Press  
Top 25 (Jan. 19)**

Team	Pts
1. Kentucky (63)	1,623
2. Virginia (2)	1,562
3. Gonzaga	1,467
4. Villanova	1,429
5. Duke	1,345
6. Wisconsin	1,282
7. Arizona	1,228
8. Notre Dame	1,055
9. Iowa State	1,004
10. Louisville	1,003
11. Kansas	943
12. Utah	940
13. Maryland	937
14. Wichita State	857
15. North Carolina	803
16. VCU	670
17. Texas	554
18. West Virginia	501
19. Oklahoma	445
20. Northern Iowa	387
21. Baylor	260
22. Dayton	241
23. Indiana	93
24. Seton Hall	91
25. Iowa	85

**USA Today  
Top 25 (Jan. 19)**

Team	Pts
1. Kentucky (31)	799
2. Virginia (1)	768
3. Gonzaga	723
4. Villanova	697
5. Wisconsin	654
6. Duke	653
7. Arizona	602
8. Maryland	514
9. Notre Dame	504
10. Louisville	502
11. Utah	473
12. Iowa State	443
13. Wichita State	424
14. Kansas	422
15. North Carolina	390
16. VCU	317
17. West Virginia	273
18. Texas	233
19. Northern Iowa	202
20. Oklahoma	195
21. Baylor	120
22. Dayton	100
23. Indiana	56
24. Seton Hall	40
25. Stanford	33

**MSU By Week**

Date	AP	Coaches
Preseason	18	18
Nov. 17	19	19
Nov. 24	20	19
Dec. 1	19	18
Dec. 8	RV	23
Dec. 15	25	22
Dec. 22	--	RV
Dec. 29	--	--
Jan. 5	--	--
Jan. 12	RV	RV
Jan. 19	RV	RV

**A Thin Line Between Victory And Defeat**

In four of Michigan State's six defeats, the Spartans have either led or been within a possession in the final minute of the contest, with three of the losses coming in overtime (one in double overtime). Against Kansas, MSU trailed by just three points in the final minute with possession of the ball. At Notre Dame, MSU led by six with under eight minutes left, before falling by a single point in overtime. In an overtime upset loss to Texas Southern, MSU led by eight points with eight minutes to play, and by six with under four minutes to play. In the Big Ten opener, MSU led Maryland by five with under five minutes to play and by four with under two minutes left in overtime, before losing a two-point game in double overtime. Outside of the loss to Texas Southern, MSU has lost five games to four Top 13 teams with a combined mark of 65-9 (through Jan. 19).

**Valentine Brings Florida Heat Up North**

Joined by teammate Travis Trice on the Orlando Classic All-Tournament Team, Denzel Valentine had an exceptional Thanksgiving weekend in Florida. In three games, Valentine averaged a team-best 19.3 points, shooting .543 (19-35) from the field and .609 (14-23) from 3-point range. He scored a career-high 19 points in the quarterfinals vs. Rider, only to better that effort one night later with 25 points against Marquette. His solid play continued at Notre Dame, scoring a team-high 22 points, shooting 7-of-13, including 4-of-7 from 3-point range. He's averaging 14.9 points and shooting .487 (38-78) from 3-point range in the last 14 games.

**Costello Playing Well**

Matt Costello is averaging 9.4 points over the last 10 games, in addition to 5.6 rebounds, shooting .632 from the field in 20.0 minutes per contest. Costello started the first six games of the season, averaging 6.2 points and 7.5 rebounds in 20.2 minutes, shooting .593 from the field. He's come off the bench in the last 12 games, averaging 8.5 points and 5.2 rebounds in 19.0 minutes, shooting .625 from the field. Costello has posted two double-doubles on the season.

**Valentine's Continual Improvement**

Always known for his versatility, Denzel Valentine has worked hard to become a terrific shooter. After shooting .281 (16-57) from 3-point range as a freshman and improving to .377 (43-114) as a sophomore, Valentine is one of the best shooters in the conference this season. He ranks sixth in the Big Ten in made 3-point field goals per game (2.5) and 3-point field-goal percentage (.443; 43-97). Over the last 14 games, he's shooting .487 from behind the arc (38-78).

**Dawson's Injury**

Branden Dawson suffered a stable, non-displaced fracture on his left wrist after taking a hard fall in the Dec. 17 contest vs. Eastern Michigan. He missed MSU's next two games vs. Texas Southern (Dec. 20) and The Citadel (Dec. 22). He returned to the lineup against Maryland (Dec. 30), totaling nine points and 11 rebounds, while wearing a brace. He had the brace removed prior to MSU's second game vs. Maryland (Jan. 17). Earlier this season, Dawson missed the game against Santa Clara with the flu, and came off the bench vs. Rider and Marquette while recovering from the same illness.

**Starting Suits Trice Nicely**

In his first year as a primary starter, senior Travis Trice is proving he is up to the challenge. He ranks second in the Big Ten in assists (5.8 apg) and paces the conference in assist-to-turnover ratio (3.5), leading the Spartans in both categories. He is eighth in 3-point field goals made (2.2). His 5.8 assists are the most by a Spartan since Mateen Cleaves averaged 6.9 as a senior. Trice entered the year having started just eight games in his career, but he did average 9.3 points and 3.6 assists in those eight games last season.

**Long Range Firepower**

Michigan State established a school single-season record in 2013-14 with 307 made 3-pointers, 54 more than the previous school record. The Spartans made 10 or more 3-pointers in 14 games, including a school single-game record 17 at Purdue, tying the Big Ten record for a conference game. This season, MSU is averaging 7.6 made 3-pointers per contest, ranking fifth in the Big Ten. Denzel Valentine leads MSU and ranks sixth in the Big Ten with 43 made 3-pointers (2.4 pg). The Spartans have made eight or more 3-pointers in nine games, including six games with 10 or more.



**MSU is 8-0 when four or more players score in double-figures.**

### **The 1,000-Point Club**

With four points against Eastern Michigan before leaving with a wrist injury, Branden Dawson became the 46th Spartan to reach 1,000 career points at MSU. With 1,066 career points, he ranks 41st in MSU history, needing 16 points to pass Goran Suton (1,081 points), and 34 to pass Bill Kilgore (1,099 points). Bryn Forbes (1,079 points) has also eclipsed the 1,000-point career mark this season, although 905 of those came in his first two seasons at Cleveland State.

### **Spartans Share The Ball**

Unselfishness is a trademark of all Tom Izzo teams. That was never on display more than it was last year, as the Spartans established a school single-season record with 637 assists, leading the Big Ten with 16.76 assists per game. This season, MSU is averaging 18.0 assists per game, leading the Big Ten and ranking third in the nation, recording an assist on 65.2 percent of its baskets. In 10 games, MSU has recorded an assist on more than 70 percent of its baskets (vs. Navy 18 ast., 25 FG - 72.0%; vs. Loyola 27 ast., 36 FG - 75.0%; vs. Santa Clara 22 ast., 29 FG - 75.9%; vs. Ark.-Pine Bluff 27 ast., 30 FG - 90.0%; vs. Oakland 25 ast., 34 FG - 73.5%; vs. Eastern Michigan 17 ast., 20 FG - 85.0%; vs. The Citadel 23 ast., 32 FG - 71.9%; vs. Maryland 15 ast., 21 FG - 71.4%; vs. Indiana 21 ast., 28 FG - 75.0%; vs. Iowa 19 ast., 27 FG - 70.4%).

### **Playing The Best**

Since the 1997-98 season, the year of Michigan State's first of 17 straight trips to the NCAA Tournament, the Spartans have played 190 games against ranked opponents. That total ranks first among teams that have appeared in a Final Four since then. The Spartans are followed by North Carolina (173), Kentucky (165), Illinois (164), Texas (163), and Duke (162). (Through games of Jan. 19)

### **Making Up For Lost Time**

After missing the first 10 games of the season while recovering from a broken right foot, freshman Javon Bess made his Michigan State debut against Eastern Michigan. The 2014 Ohio Co-Division I Player of the Year, Bess checked in about six minutes into the second half and promptly grabbed a rebound. He finished with five rebounds and one point in just nine minutes of play. He made his first career start at Maryland, totaling six points and four assists in 22 minutes. Through eight games, he's averaging 2.9 points and 3.3 rebounds per game. His development was further stunted by a pair of sprained ankles suffered since the return from the holiday break, limiting him to just 33 total minutes in the first four Big Ten games.

### **Double-Double Trouble**

Four different Spartans have posted a double-double this season as Branden Dawson (vs. Notre Dame-16 pts., 18 reb.; vs. Indiana-14 pts., 13 reb.; vs. Iowa-14 pts., 15 rebs.; vs. Maryland-14 pts., 10 reb.) leads MSU with four. Matt Costello (vs. Loyola-13 pts., 11 reb.; vs. Texas Southern-17 pts., 10 reb.) has two, while Gavin Schilling (vs. Santa Clara-14 pts., 11 reb.) and Denzel Valentine (vs. Santa Clara-13 pts., 11 reb.) each have one. For his career, Dawson has 16 double-doubles, while Valentine has totaled five.

### **Spartans Strong On The Road**

Michigan State owns a Big Ten-best 34-22 (.607) mark in conference road games over the last six-plus seasons (since the start of 2008-09 Big Ten play). Ohio State is 32-25 on the road, while Wisconsin is 30-26.

### **MSU's M.A.S.H. Unit**

Michigan State has dealt with injury issues for much of the season. Freshman Javon Bess underwent surgery in late October on a broken bone in his right foot. After missing the first 10 games, he made his debut against Eastern Michigan. Two minor ankle sprains since Christmas have further hampered his development. Sophomore Alvin Ellis III suffered a severe sprained right ankle after just three minutes against Navy and did not return to action until playing five minutes against Notre Dame. Junior Bryn Forbes did not miss any time, but he played with a brace on his left (non-shooting) hand while recovering from a broken bone for the first 10 games. Senior Branden Dawson missed MSU's game vs. Santa Clara with the flu, which also limited his minutes at the Orlando Classic. Against Eastern Michigan, he suffered a wrist injury that kept him out of action for two games. In total, MSU has lost 19 games due to illness and injury.

## **Spartan Sports Network Radio Affiliates**

<b>City</b> .....	<b>Call Letters (Frequency)</b>
Alma .....	WQBX-FM 104.9
Alpena .....	WKJZ-FM 94.9
Ann Arbor.....	WLBY-AM 1290
Bad Axe .....	WLEW-AM 1340
Battle Creek.....	WBCK-FM 95.3
Benton Harbor .....	WCSY-FM 103.7
Detroit.....	WJR-AM 760
Escanaba.....	WUPF-FM 107.3
Flint.....	WWCK-AM 1570
Gaylord.....	WMJZ-FM 101.5
Grand Haven .....	WGHN-FM 92.1
Grand Rapids .....	WBBL-FM 107.3
Greenville .....	WGLM-AM 1380
Hastings.....	WBCH-AM 1220
.....	WBCH-FM 100.1
Holland .....	WPNW-AM 1260
.....	WPNW-FM 96.5
Iron Mountain.....	WMIQ-AM 1450
Ishpeming.....	WUPG-FM 96.7
Jackson .....	WIBM-AM 1450
.....	WIBM-FM 101.9
Kalamazoo.....	WKZO-AM 590
Lansing .....	WJIM-AM 1240
.....	WMMQ-FM 94.9
Ludington/Manistee .....	WLDN-FM 98.7
Midland.....	WLUN-FM 100.9
Newberry .....	WMJT-FM 96.7
Ontonagon.....	WUPY-FM 101.1
Petoskey.....	WJML-AM 1110
Port Huron .....	WPHM-AM 1380
Saginaw.....	WILZ-FM 104.5
Tawas City .....	WQLB-FM 103.3
Traverse City .....	WLDR-FM 101.9

\* Sirius/XM Radio

\* Streaming at [www.spartansportsnetwork.com](http://www.spartansportsnetwork.com)

**Seven Spartan opponents are currently ranked in at least one of two polls.**

## MSU IN BIG TEN AND NCAA STATISTICS

Team	Big Ten Rank	NCAA Rank
Scoring Offense	73.8 5th	49th
Scoring Defense	61.9 6th	73rd
Scoring Margin	+11.9 4th	29th
FG Pct.	.480 3rd	27th
FG Pct. Def.	.381 2nd	23rd
3-Pt FG Pct.	.401 1st	16th
3-Pt FG Pct. Def.	.300 3rd	42nd
3-Pt. FGs/Game	7.6 5th	64th
FT Pct.	.632 14th	319th
Rebound Margin	+7.3 1st	20th
Assists	18.0 1st	3rd
Steals	5.7 10th	257th
Blocked Shots	4.3 6th	91st
Turnover Margin	-0.4 9th	213th
Assist/TO Ratio	1.5 3rd	9th
Off. Rebounds	11.4 5th	---
Def. Rebounds	27.5 2nd	---
Off. Rebound Pct.	.342 5th	---
Def. Rebound Pct.	.741 2nd	---

### INDIVIDUAL

Scoring	Big Ten	NCAA
Denzel Valentine	13.9 14th	---

Rebounding	Big Ten	NCAA
Branden Dawson	9.5 1st	24th

Assists	Big Ten	NCAA
Travis Trice	5.8 2nd	20th
Denzel Valentine	4.2 8th	---

FG Percentage	Big Ten	NCAA
Gavin Schilling	.684 1st	---
Matt Costello	.615 2nd	---
Branden Dawson	.500 15th	87th

Steals	Big Ten	NCAA
Branden Dawson	1.3 14th	---

3-Pt FG Percentage	Big Ten	NCAA
Bryn Forbes	.463 3rd	---
Denzel Valentine	.443 6th	---

3-Pt FG Made	Big Ten	NCAA
Denzel Valentine	2.4 6th	---
Travis Trice	2.2 8th	---
Bryn Forbes	2.1 9th	---

Blocked Shots	Big Ten	NCAA
Matt Costello	1.0 t-14th	---

Assist/Turnover Ratio	Big Ten	NCAA
Travis Trice	3.5 1st	8th
Denzel Valentine	1.7 11th	---

Offensive Rebounds	Big Ten	NCAA
Branden Dawson	3.1 1st	54th
Matt Costello	1.9 15th	---

Defensive Rebounds	Big Ten	NCAA
Branden Dawson	6.5 2nd	27th
Denzel Valentine	4.6 t-14th	---

Minutes Played	Big Ten	NCAA
Travis Trice	33.1 t-9th	---

\* Big Ten stats through games of January 18.  
NCAA stats through games of January 19.

### Trice Nominated For Good Works Team

Travis Trice is one of 158 male nominees for the 2015 Allstate NABC Good Works Team. This prestigious community service award recognizes a distinguished group of student-athletes who have demonstrated a commitment to enriching the lives of others and contributing to the greater good in their communities. From the nominees, a distinguished voting panel will select a 10-member team comprised of five student-athletes from the Division I level and five from Divisions II, III and the NAIA.

### MSU's Sunrise Connection

Freshmen Marvin Clark Jr. and Lourawls "Tum Tum" Nairn Jr., both products of Sunrise Christian Academy in Bel Aire, Kansas, are making big contributions as Spartan freshmen. Clark Jr. ranks seventh on the team in scoring at 6.2 ppg. Nairn Jr. ranks third on the team with 2.7 assists per game, and has shown remarkable leadership skills for a freshman.

### Ranked Opponents

Michigan State is currently not ranked, but is receiving votes in both the USA Today Coaches Poll and the Associated Press Top 25. Seven Spartan opponents are ranked in the Top 25: Duke (No. 5 AP/No. 6 USA Today), Wisconsin (6/5), Notre Dame (8/9), Kansas (11/14), Maryland (13/8), Indiana (23/23) and Iowa (25/-).

### Preseason All-American

Branden Dawson was named a preseason first-team All-American by The Sporting News. He was a preseason first-team All-Big Ten selection as chosen by Lindy's Sports and Sporting News. ESPN.com ranked Dawson No. 15 in its player rankings, while ESPN.com's Jeff Goodman named him a third-team All-American. Dawson was also selected to the John R. Wooden Award Preseason Top 50 list and the Naismith Award Watch List.

### Prep Teammates

Michigan State's roster features three pairs of high school teammates. Junior Denzel Valentine has been reunited with high school classmate Bryn Forbes, who spent his first two seasons at Cleveland State. The duo teamed to appear in three-straight Michigan Class B title games from 2010-2012, capturing the state championship in 2011 and 2012. Forbes transferred to MSU this past June, and later received a waiver from the NCAA allowing him to play this season. Freshmen Lourawls "Tum Tum" Nairn Jr. and Marvin Clark Jr. both attended Sunrise Christian Academy in Bel Aire, Kansas. They were teammates during the 2012-13 season, posting a 29-1 record, with Clark as a senior and Nairn as a junior. Clark then did a year of prep school at Sunrise Christian last season, while Nairn finished his high school career. Sophomores Alvin Ellis III and Gavin Schilling were teammates at Chicago De La Salle as juniors in 2011-12. Ellis graduated from De La Salle, while Schilling spent his final season at Findlay Prep in Nevada. In addition, although Branden Dawson (Indiana) and Travis Trice (Ohio) attended high school in different states, they were AAU teammates for SYF Players over the summer.

### Big Ten Schedule

Moving to a 14-team conference for 2014-15, each Big Ten team will play five schools twice, four schools on the road, and four schools at home. Michigan State will go home and home with Maryland, Indiana, Northwestern, Michigan, and Illinois. The Spartans will host Penn State, Ohio State, Minnesota, and Purdue, while traveling to Iowa, Nebraska, Rutgers, and Wisconsin. Eight of Michigan State's 13 Big Ten opponents appeared in the 2014 postseason, including five in the NCAA Tournament (Iowa, Michigan, Nebraska, Ohio State, Wisconsin), two in the NIT (Illinois, Minnesota) and one in the CBI (Penn State).



**MSU leads all Big Ten schools with eight players appearing on NBA rosters this season.**

**Spartans In The NBA**

Michigan State leads all Big Ten schools with eight players appearing on NBA rosters this season. Gary Harris (Denver) and Adreian Payne (Atlanta) are in their rookie seasons after being selected in the first round of the 2014 NBA Draft. They join former Spartans Alan Anderson (Brooklyn), Shannon Brown (Miami), Draymond Green (Golden State), Zach Randolph (Memphis) and Jason Richardson (Philadelphia) in the NBA. Kalin Lucas (Memphis) signed a free-agent contract in November and appeared in his first career game on Nov. 19.

**Spartans Sign Strong Recruiting Class**

Michigan State signed three talented players to National Letters of Intent during the early signing period. **Kyle Ahrens** (G, 6-5, 195) led Versailles (Ohio) High School to the Ohio Division III state title game as a sophomore. He was averaging 22 points, seven rebounds as four assists as a junior before suffering a season-ending leg injury in the sixth game of the season. **Deyonta Davis** (F/C, 6-10, 215) is a five-star big man who averaged 15.0 points, 13.6 rebounds and 7.1 blocks as a junior at Muskegon High School, leading his team to a perfect 28-0 mark and a Michigan Class A state championship. He established a Michigan state high school single-season record with 199 blocks in 2013-14. **Matt McQuaid** (G, 6-5, 180) averaged 14.7 points and 5.7 rebounds as a junior at Duncanville (Texas) High School. He exploded during the off season, averaging 15.6 points in the 2014 Nike EYBL circuit, shooting 45.1 percent from 3-point range. ESPN.com's Jeff Goodman called him "arguably the best pure shooter in the country."

**MSU IN  
BIG TEN STATISTICS  
(CONFERENCE GAMES ONLY)**

Team		Big Ten Rank
Scoring Offense	70.8	3rd
Scoring Defense	66.2	7th
Scoring Margin	+4.6	3rd
FG Pct.	.446	5th
FG Pct. Def.	.387	3rd
3-Pt FG Pct.	.341	5th
3-Pt FG Pct. Def.	.327	7th
3-Pt. FGs/Game	5.6	10th
FT Pct.	.632	13th
Rebound Margin	+2.6	4th
Assists	17.2	1st
Steals	6.2	4th
Blocked Shots	4.8	3rd
Turnover Margin	+0.6	8th
Assist/TO Ratio	1.6	2nd
Off. Rebounds	11.6	t-2nd
Def. Rebounds	25.8	3rd
Off. Rebound Pct.	.315	5th
Def. Rebound Pct.	.729	6th

**INDIVIDUAL**

Scoring		Big Ten
Travis Trice	16.0	8th

Rebounding		Big Ten
Branden Dawson	11.6	1st
Denzel Valentine	6.8	t-8th

Field-Goal Percentage		Big Ten
Branden Dawson	.526	9th

Assists		Big Ten
Travis Trice	5.6	t-1st
Denzel Valentine	4.0	t-4th

Steals		Big Ten
Travis Trice	1.8	7th

3-Pt FG Percentage		Big Ten
Bryn Forbes	.500	5th

3-Pt FG Made		Big Ten
Travis Trice	2.4	7th

Blocked Shots		Big Ten
Branden Dawson	1.6	t-3rd
Matt Costello	1.2	t-10th

Assist/Turnover Ratio		Big Ten
Travis Trice	4.0	1st
Denzel Valentine	2.5	t-5th

Offensive Rebounds		Big Ten
Branden Dawson	3.6	2nd
Denzel Valentine	2.2	t-6th
Gavin Schilling	1.8	t-15th

Defensive Rebounds		Big Ten
Branden Dawson	8.0	1st
Denzel Valentine	4.6	t-11th

\* Big Ten stats through games of Jan. 18.



## Tom Izzo is Michigan State's all-time winningest coach.



### THE BOOK ON TOM IZZO

- \* Eight-Time National Coach of the Year
- \* One NCAA, Seven Big Ten & Four Big Ten Tournament titles
- \* Six Final Four appearances
- \* Three-Time Big Ten Coach of the Year
- \* 17 straight NCAA Tournament appearances
- \* 13 NBA Draft Picks, including six first rounders
- \* Seven All-Americans - Two Academic All-Americans
- \* Graduates 83% of players that complete eligibility
- \* Longest serving active Big Ten men's basketball coach
- \* One of five coaches in Big Ten history with seven league titles.

\* MSU's all-time winningest coach - third-winningest in Big Ten history  
 \* Fourteen 20-win seasons

#### Coach Izzo

In his 20th year, Tom Izzo (Northern Michigan, '77) is 480-193 (.713), and 224-103 (.685) in the Big Ten, as the head coach of the Michigan State basketball program. He ranks as the winningest coach in Michigan State history, having passed his mentor Jud Heathcote with his 341st career victory on Nov. 28, 2009. In his 19 full seasons as a head coach, Izzo has captured eight National Coach of the Year awards, including the Clair Bee Award in 2005 and NABC honors in 2001 and 2012. In 1999, Izzo was named National Coach of the Year by Basketball Times, while earning similar honors from The Associated Press, Basketball News and the USBWA in '98. He also earned National Coach of the Year accolades from CBSSports.com in 2012. He earned Big Ten Coach of the Year honors in 1998, 2009 and 2012.

#### Among The Big Ten's Best

Tom Izzo's .685 winning percentage in Big Ten games ranks fourth all-time among league coaches with at least 10 years of service, behind Wisconsin's Bo Ryan (.705), former Indiana coach Bob Knight (.700), Ohio State's Thad Matta (.689) and just ahead of former Purdue coach Ward Lambert (.685). In all games, Matta ranks first at .767, followed by Knight (.734), Ryan (.733), Izzo (.713), Wisconsin's Walter Meanwell (.712), and Lambert (.709). With 224 conference victories, Izzo ranks fourth all-time.

#### Izzo Among Best Ever

Through his first 19 seasons, Tom Izzo won 468 games, ranking fourth in college basketball history for most wins by a college coach in his first 18 years.

#### Izzo's Coaching Tree

Three current Division I head coaches all served as assistants to Tom Izzo, including Tom Crean (Indiana), Brian Gregory (Georgia Tech), and Mark Montgomery (Northern Illinois). Stan Heath has been a head coach for 12 seasons, with stints at Kent State, Arkansas and South Florida. Mike Garland served as head coach at Cleveland State for three seasons and Stan Joplin, an assistant during Izzo's first season, spent 12 seasons as head coach at Toledo. Jim Boylen was head coach at Utah for four years. Doug Wojcik spent nine seasons between Tulsa and College of Charleston.

### IZZO CAREER COACHING RECORD

Year	Overall	Pct.	Big Ten	Pct.	Finish	Postseason
1995-96	16-16	.500	9-9	.500	7th	NIT Second Round
1996-97	17-12	.586	9-9	.500	T-6th	NIT Second Round
1997-98	22-8	.733	13-3	.813	T-1st	NCAA Sweet 16
1998-99	33-5	.868	15-1	.938	1st	NCAA Final Four
1999-2000	32-7	.821	13-3	.813	T-1st	NCAA Champion
2000-01	28-5	.848	13-3	.813	T-1st	NCAA Final Four
2001-02	19-12	.613	10-6	.625	5th	NCAA First Round
2002-03	22-13	.629	10-6	.625	T-3rd	NCAA Elite Eight
2003-04	18-12	.600	12-4	.750	T-2nd	NCAA First Round
2004-05	26-7	.788	13-3	.813	2nd	NCAA Final Four
2005-06	22-12	.647	8-8	.500	T-6th	NCAA First Round
2006-07	23-12	.657	8-8	.500	T-7th	NCAA Second Round
2007-08	27-9	.750	12-6	.667	4th	NCAA Sweet 16
2008-09	31-7	.816	15-3	.833	1st	NCAA Runner Up
2009-10	28-9	.757	14-4	.778	T-1st	NCAA Final Four
2010-11	19-15	.559	9-9	.500	t-4th	NCAA Second Round
2011-12	29-8	.784	13-5	.722	T-1st	NCAA Sweet 16
2012-13	27-9	.750	13-5	.722	T-2nd	NCAA Sweet 16
2013-14	29-9	.784	12-6	.667	T-2nd	NCAA Elite Eight
2014-15	12-6	.667	3-2	.600		
<b>20 Years</b>	<b>480-193</b>	<b>.713</b>	<b>224-103</b>	<b>.685</b>		

#### Most Final Four Appearances - Active Coach

Coach	Appearances
1. Mike Krzyzewski	11
2. Roy Williams	7
Rick Pitino	7
4. Tom Izzo	6

#### Most Consecutive NCAA Tournament Appearances - Active Streak

Coach	Appearances
1. Mike Krzyzewski	19
2. Tom Izzo	17

#### Most Wins In First 19 Seasons

Coach	Wins
1. Roy Williams	524
2. Bill Self	476
3. Jerry Tarkanian	473
4. Tom Izzo	468

#### Big Ten Conference Games

##### Winning Percentage

##### Minimum 10 Years in Conference

Coach	Pct. (W-L)
1. Bo Ryan (UW)	.705 (160-67)
2. Bob Knight (IND)	.700 (353-151)
3. Thad Matta (OSU)	.689 (124-56)
4. Tom Izzo (MSU)	<b>.685 (224-103)</b>
5. Ward Lambert (PUR)	.685 (228-105)

#### Career Big Ten Victories

Coach	Wins
1. Bob Knight (IND)	353
2. Gene Keady (PUR)	265
3. Ward Lambert (PUR)	228
4. Tom Izzo (MSU)	<b>224</b>
5. Lou Henson (ILL)	214
6. Branch McCracken (IND)	210
7. Jud Heathcote (MSU)	182

#### Highest NCAA Tournament Winning Percentage - Active

Coach	Pct. (W-L)
1. Mike Krzyzewski	.759 (82-26)
2. Rick Pitino	.758 (50-16)
3. Billy Donovan	.750 (33-11)
4. Roy Williams	.741 (63-22)
5. John Calipari	.738 (31-11)
6. Larry Brown	.737 (14-5)
7. Tom Izzo	<b>.732 (41-15)</b>

#### Notable Izzo Wins

- Win #1: vs. Chaminade (69-66), 11/20/95
- Big Ten Win #1: vs. Indiana (65-60), 1/4/96
- Win #100: vs. Indiana (77-71 OT), 1/11/2000
- Win #200: vs. Iowa (89-72), 2/4/2004
- Big Ten Win #100: vs. Minnesota (69-58), 2/14/2004
- Win #232\*: vs. Duke (78-68), 3/25/2005
- Win #300: vs. Iowa (66-52), 2/23/2008
- Win #341\*\*: vs. UMass (106-68), 11/28/2009
- Win #400: vs. Minnesota (68-52), 1/25/2012
- Big Ten Win #200: vs. Ohio State (59-56), 1/19/2013

\* Became MSU's second-winningest coach  
 \*\* Became MSU's all-time winningest coach



# 2 JAVON BESS

Freshman • Guard • 6-5 • 215  
Columbus, Ohio • Gahanna Lincoln



## Get To Know Javon

- \* 2014 Ohio Division I co-player of the year.
- \* Sister Zenobia plays basketball for Illinois State

## Last Time Out

- \* 6 pts. (3-5 FG, 0-3 FT), 2 rebs., 4 asts., 1 stl. vs. Maryland

\* Missed the first 10 games while recovering from a broken right foot.

**Capsule:** Long, tough, skilled wing ... Ability to contribute defensively immediately ... Plays with great pace offensively ... Quality rebounder, especially on the offensive end ... Possesses a good understanding of the game and looks to exploit mismatches offensively ... Has great versatility both offensively and defensively.

**2014-15 Notes:** Made first career start at Maryland, totaling six points and four assists in 22 minutes ... Dished out three assists in 14 minutes at Iowa ... Collected four points and three rebounds vs. Indiana ... Scored a season-high eight points vs. The Citadel ... Grabbed eight rebounds in 17 minutes vs. Texas Southern ... Made his Spartan debut vs. Eastern Michigan, grabbing five rebounds in nine minutes.

## Bess' 2014-15 Game-by-Game Stats

Opponent	fg	3fg	ft	off-def	reb	pf	pts	ast	to	blk	stl	min
at Navy (11/14)												
vs. Duke (11/18)												
Loyola (11/21)												
Santa Clara (11/24)												
vs. Rider (11/27)												
vs. Marquette (11/28)												
vs. Kansas (11/30)												
at Notre Dame (12/3)												
Arkansas-Pine Bluff (12/6)												
Oakland (12/14)												
Eastern Michigan (12/17)	0-1	0-0	1-2	1-4	5	1	1	0	0	0	0	9
Texas Southern (12/20)	1-5	0-1	1-4	5-3	8	3	3	3	0	1	1	17
The Citadel (12/22)	2-2	0-0	4-6	2-3	5	2	8	0	0	0	1	15
Maryland (12/30)	0-0	0-0	0-0	0-2	2	0	0	0	0	0	0	5
Indiana (1/5)	2-2	0-0	0-0	1-2	3	1	4	1	0	0	0	9
at Iowa (1/8)	0-1	0-0	0-0	1-0	1	0	0	3	0	1	1	14
Northwestern (1/11)	0-0	0-0	1-2	0-0	0	0	1	1	0	0	0	5
Maryland (1/17)	*	3-5	0-0	0-3	1-1	2	3	6	4	2	0	22

## Season Highs

### Minutes

Season: 22 - at Maryland (1/17/15)  
Big Ten: 22 - at Maryland (1/17/15)

### Points

Season: 8 - vs. The Citadel (12/22/14)  
Big Ten: 6 - at Maryland (1/17/15)

### Rebounds

Season: 8 - vs. Texas Southern (12/20/14)  
Big Ten: 3 - vs. Indiana (1/5/15)

### Assists

Season: 4 - at Maryland (1/17/15)  
Big Ten: 4 - at Maryland (1/17/15)

### Field Goals

Season: 3 - at Maryland (1/17/15)  
Big Ten: 3 - at Maryland (1/17/15)

### Field Goal Attempts

Season: 5 - twice, last at Maryland (1/17/15)  
Big Ten: 5 - at Maryland (1/17/15)

### 3-Point Field Goals

Season:  
Big Ten:

### 3-Point FG Attempts

Season: 1 - vs. Texas Southern (12/20/14)  
Big Ten:

### Free Throws

Season: 4 - vs. The Citadel (12/22/14)  
Big Ten: 1 - vs. Northwestern (1/11/15)

### Free Throw Attempts

Season: 6 - vs. The Citadel (12/22/14)  
Big Ten: 3 - at Maryland (1/17/15)

### Steals

Season: 1 - four times, last at Maryland (1/17/15)  
Big Ten: 1 - twice, last at Maryland (1/17/15)

### Blocks

Season: 1 - twice, last at Iowa (1/8/15)  
Big Ten: 1 - at Iowa (1/8/15)

## Miscellaneous Stats (MSU's Record)

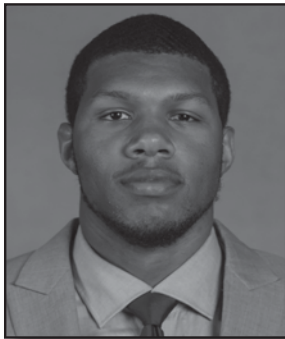
	Season	Career
Double-Figure Scoring	0 (0-0)	0 (0-0)
Double-Figure Rebounding	0 (0-0)	0 (0-0)
Double-Figure Assists	0 (0-0)	0 (0-0)
Double-Doubles	0 (0-0)	0 (0-0)
Led MSU in Scoring	0 (0-0)	0 (0-0)
Led MSU in Rebounding	0 (0-0)	0 (0-0)
Led MSU in Assists	1 (0-1)	1 (0-1)
20+ Point Games	0 (0-0)	0 (0-0)
30+ Point Games	0 (0-0)	0 (0-0)

## Bess' Career Stats

Year	GP/GS	Min./Avg	FG-FGA	FG%	-3-Point-		FT-FTA	FT%	OFF-DEF	REB	AVG	PF/D	A	TO	BL	ST	PTS	AVG
					FG-FGA	FG%												
2014-15	8/1	96/12.0	8-16	.500	0-1	.000	7-17	.412	11-15	26	3.3	10/0	12	2	2	4	23	2.9
Totals	8/1	96/12.0	8-16	.500	0-1	.000	7-17	.412	11-15	26	3.3	10/0	12	2	2	4	23	2.9

# O MARVIN CLARK JR.

Freshman • Forward • 6-6 • 230  
Kansas City, Mo. • Sunrise Christian



## Get To Know Marvin

\* Strongest freshman and third strongest player of the Tom Izzo era; can bench press 185 pounds (NBA testing standard) 26 times.

\* High school teammate of Lourawls "Tum Tum" Nairn Jr. at Sunrise Christian Academy in 2012-13.

## Last Time Out

\* 0 points (0-1 FG), 1 rebound, 1 block vs. Maryland

## Season Highs

### Minutes

Season: 28 - vs. Santa Clara (11/24/14)  
Big Ten: 10 - vs. Northwestern (1/11/15)

### Points

Season: 15 - twice, last vs. Santa Clara (11/24/14)  
Big Ten: 6 - vs. Northwestern (1/11/15)

### Rebounds

Season: 6 - twice, last vs. The Citadel (12/22/14)  
Big Ten: 2 - twice, last vs. Northwestern (1/11/15)

### Assists

Season: 2 - vs. Rider (11/27/14)  
Big Ten: 1 - vs. Indiana (1/5/15)

### Field Goals

Season: 6 - vs. Santa Clara (11/24/14)  
Big Ten: 3 - vs. Northwestern (1/11/15)

### Field Goal Attempts

Season: 11 - vs. Santa Clara (11/24/14)  
Big Ten: 5 - vs. Northwestern (1/11/15)

### 3-Point Field Goals

Season: 3 - twice, last vs. Santa Clara (11/24/14)  
Big Ten:

### 3-Point FG Attempts

Season: 5 - vs. Santa Clara (11/24/14)  
Big Ten: 2 - vs. Northwestern (1/11/15)

### Free Throws

Season: 3 - three times, last vs. Eastern Michigan (12/17/14)  
Big Ten: 2 - at Iowa (1/8/15)

### Free Throw Attempts

Season: 5 - twice, last vs. Eastern Michigan (12/17/14)  
Big Ten: 2 - at Iowa (1/8/15)

### Steals

Season: 1 - five times, last vs. The Citadel (12/22/14)  
Big Ten:

### Blocks

Season: 4 - vs. Santa Clara (11/24/14)  
Big Ten: 1 - twice, last at Maryland (1/17/15)

## Miscellaneous Stats (MSU's Record)

	Season	Career
Double-Figure Scoring	7 (7-0)	7 (7-0)
Double-Figure Rebounding	0 (0-0)	0 (0-0)
Double-Figure Assists	0 (0-0)	0 (0-0)
Double-Doubles	0 (0-0)	0 (0-0)
Led MSU in Scoring	1 (1-0)	1 (1-0)
Led MSU in Rebounding	1 (1-0)	1 (1-0)
Led MSU in Assists	0 (0-0)	0 (0-0)
20+ Point Games	0 (0-0)	0 (0-0)
30+ Point Games	0 (0-0)	0 (0-0)

**Capsule:** Physical wing with a sweet shooting stroke ... Improving as a player off the dribble ... Big Ten-ready body as a true freshman, with the athleticism to defend multiple positions ... Strength and size allow for offensive versatility.

**2014-15 Notes:** Scored 12 points and matched his season high with six rebounds vs. The Citadel ... Totaled 11 points and a season-high six rebounds vs. Eastern Michigan ... Scored 12 points vs. Oakland ... Totaled 10 points and five rebounds vs. Arkansas-Pine Bluff ... Scored 10 points vs. Marquette ... Made his first career start against Santa Clara, in place of an ill Branden Dawson, matching his season high with 15 points, while adding four blocks on the defensive end ... Scored a team-high 15 points against Loyola in just 12 minutes, connecting on 5-of-6 shots, including 3-of-4 3-pointers ... Scored five points and grabbed six rebounds in his Spartan debut at Navy.

## Clark's 2014-15 Game-by-Game Stats

Opponent	fg	3fg	ft	off-def	reb	pf	pts	ast	to	blk	stl	min
at Navy (11/14)	2-2	1-1	0-0	1-5	6	2	5	0	4	0	0	13
vs. Duke (11/18)	1-3	0-1	0-0	2-1	3	4	2	0	1	0	0	13
Loyola (11/21)	5-6	3-4	2-3	2-1	3	3	15	0	1	1	1	12
Santa Clara (11/24)	* 6-11	3-5	0-0	2-2	4	2	15	0	2	4	0	28
vs. Rider (11/27)	* 3-4	2-3	0-0	1-2	3	4	8	2	1	0	0	16
vs. Marquette (11/28)	* 3-6	2-4	2-2	0-1	1	2	10	0	1	0	0	17
vs. Kansas (11/30)	0-7	0-4	0-0	0-0	0	2	0	0	0	0	0	7
at Notre Dame (12/3)	0-0	0-0	0-0	0-1	1	1	0	0	1	0	0	4
Arkansas-Pine Bluff (12/6)	3-4	1-2	3-3	1-4	5	3	10	0	3	1	1	15
Oakland (12/14)	4-6	1-2	3-5	2-2	4	1	12	0	0	0	1	16
Eastern Michigan (12/17)	4-8	0-2	3-5	2-4	6	3	11	0	2	0	0	13
Texas Southern (12/20)	* 1-2	0-1	0-0	1-2	3	1	2	0	0	1	1	11
The Citadel (12/22)	* 5-8	0-2	2-2	0-6	6	2	12	0	0	1	1	19
Maryland (12/30)	0-1	0-1	0-0	0-0	0	2	0	0	2	1	0	8
Indiana (1/5)	1-2	0-0	0-0	2-0	2	1	2	1	0	0	0	5
at Iowa (1/8)	0-0	0-0	2-2	0-0	0	2	0	0	0	0	0	2
Northwestern (1/11)	3-5	0-2	0-0	1-1	2	1	6	0	0	0	0	10
Maryland (1/17)	0-1	0-0	0-0	0-1	1	0	0	0	0	1	0	4

## Clark's Career Stats

Year	GP/GS	Min./Avg	FG-FGA	FG%	-3-Point-		FT-FTA	FT%	OFF-DEF	REB	AVG	PF/D	A	TO	BL	ST	PTS	AVG
					FG-FGA	FG%												
2014-15	18/5	213/11.8	41-76	.539	13-34	.382	17-22	.773	17-33	50	2.8	36/0	3	18	10	5	112	6.2
Totals	18/5	213/11.8	41-76	.539	13-34	.382	17-22	.773	17-33	50	2.8	36/0	3	18	10	5	112	6.2

# 10 MATT COSTELLO

Junior • Forward • 6-9 • 245  
Linwood, Mich. • Bay City Western



### Get To Know Matt

\* Models his on-court game after former NBA star Dennis Rodman, willing to do all the little things

\* Off the court, teammates describe him as a child-in-a-man's body for his easy-going demeanor, his eclectic taste in movies, and the fact that roommate Travis Trice says he's likely to eat a Fruit Roll-Up or pudding cup on any given day

\* Outstanding student that could challenge for Academic All-America honors

### Last Time Out

\* 12 pts. (6-10 FG, 0-2 FT), 7 rebs., 1 ast., 2 blks. vs. Maryland

- \* **Shooting .632 (36-57) from the field in the last 10 games, averaging 9.4 ppg**
- \* **Second in the Big Ten in field-goal percentage (.615)**

**Capsule:** Long, tough post player ... Strong rebounder that loves to attack the glass ... Has good timing that equates to a proficiency at blocking shots ... Continues to work on increasing his shooting range out near 3-point line.

**2014-15 Notes:** Recorded 12 points and seven rebounds against Maryland ... Scored 13 points vs. The Citadel ... Posted a double-double against Texas Southern, scoring a team-high 17 points, on 8-of-10 shooting, and adding 10 rebounds ... Narrowly missed a double-double with 10 points and a team-best nine rebounds vs. Eastern Michigan ... Made 5-of-6 shots vs. Oakland, en route to scoring 11 points ... Scored 15 points vs. Arkansas-Pine Bluff, hitting 5-of-6 shots from the field and 5-of-6 from the foul line ... Led MSU with nine rebounds against Rider, while blocking three shots ... Grabbed nine rebounds against Santa Clara ... Notched his second career double-double with 13 points and 11 rebounds against Loyola, also posting career highs for field goals (6) and field-goal attempts (10) ... Started the season opener at Navy, totaling six points and seven rebounds.

### Costello's 2014-15 Game-by-Game Stats

Opponent	fg	3fg	ft	off-def	reb	pf	pts	ast	to	blk	stl	min
at Navy (11/14)	* 3-3	0-0	0-0	1-6	7	4	6	0	1	0	0	22
vs. Duke (11/18)	* 3-5	0-1	0-1	2-2	4	3	6	0	0	0	1	21
Loyola (11/21)	* 6-10	0-0	1-2	2-9	11	2	13	1	2	1	1	22
Santa Clara (11/24)	* 0-2	0-0	2-5	5-4	9	2	2	2	1	2	0	17
vs. Rider (11/27)	* 3-6	0-1	0-1	1-8	9	4	6	1	2	3	2	19
vs. Marquette (11/28)	* 1-1	0-0	2-2	2-3	5	2	4	0	1	1	0	20
vs. Kansas (11/30)	2-4	0-0	0-0	0-3	3	3	4	1	1	0	0	15
at Notre Dame (12/3)	2-3	0-0	0-0	1-2	3	2	4	0	0	1	0	13
Arkansas-Pine Bluff (12/6)	5-6	0-0	5-6	3-2	5	1	15	0	3	0	1	19
Oakland (12/14)	5-6	0-0	1-1	0-3	3	3	11	1	1	1	0	19
Eastern Michigan (12/17)	2-5	0-0	6-6	3-6	9	3	10	1	1	1	0	22
Texas Southern (12/20)	8-10	0-0	1-1	6-4	10	1	17	0	2	1	0	22
The Citadel (12/22)	5-7	0-0	3-3	3-2	5	1	13	1	1	1	0	16
Maryland (12/30)	2-6	0-0	5-6	2-4	6	4	9	0	1	0	0	25
Indiana (1/5)	1-3	0-0	0-0	0-7	7	0	2	1	0	2	0	16
at Iowa (1/8)	1-2	0-0	0-0	0-3	3	3	2	1	1	2	1	19
Northwestern (1/11)	1-2	0-0	1-2	0-1	1	0	3	0	1	0	0	19
Maryland (1/17)	6-10	0-1	0-2	4-3	7	1	12	1	1	2	0	23

### Career/Season Highs

#### Minutes

Career: 28 - twice, last vs. Iowa (1/28/14)  
Season: 25 - vs. Maryland (12/30/14)  
Big Ten: 28 - twice, last vs. Iowa (1/28/14)

#### Points

Career: 17 - vs. Texas Southern (12/20/14)  
Season: 17 - vs. Texas Southern (12/20/14)  
Big Ten: 12 - at Maryland (1/17/15)

#### Rebounds

Career: 12 - vs. Iowa (1/28/14)  
Season: 11 - vs. Loyola (11/21/14)  
Big Ten: 12 - vs. Iowa (1/28/14)

#### Assists

Career: 3 - vs. Penn State (2/6/14)  
Season: 2 - vs. Santa Clara (11/24/14)  
Big Ten: 3 - vs. Penn State (2/6/14)

#### Field Goals

Career: 8 - vs. Texas Southern (12/20/14)  
Season: 8 - vs. Texas Southern (12/20/14)  
Big Ten: 6 - at Maryland (1/17/15)

#### Field Goal Attempts

Career: 10 - three times, last at Maryland (1/17/15)  
Season: 10 - three times, last at Maryland (1/17/15)  
Big Ten: 10 - at Maryland (1/17/15)

#### 3-Point Field Goals

Career:  
Season:  
Big Ten:

#### 3-Point FG Attempts

Career: 1 - twice, last vs. Rider (11/27/14)  
Season: 1 - twice, last vs. Rider (11/27/14)  
Big Ten: 1 - at Maryland (1/17/15)

#### Free Throws

Career: 6 - vs. Eastern Michigan (12/17/14)  
Season: 6 - vs. Eastern Michigan (12/17/14)  
Big Ten: 5 - three times, last vs. Maryland (12/30/14)

#### Free Throw Attempts

Career: 6 - six times, last vs. Maryland (12/30/14)  
Season: 6 - three times, last vs. Maryland (12/30/14)  
Big Ten: 6 - three times, last vs. Maryland (12/30/14)

#### Steals

Career: 2 - four times, last vs. Rider (11/27/14)  
Season: 2 - vs. Rider (11/27/14)  
Big Ten: 2 - twice, last vs. Indiana (1/4/14)

#### Blocks

Career: 6 - vs. Illinois (1/18/14)  
Season: 3 - vs. Rider (11/27/14)  
Big Ten: 6 - vs. Illinois (1/18/14)

### Miscellaneous Stats (MSU's Record)

	Season	Career
Double-Figure Scoring	7 (5-2)	9 (7-2)
Double-Figure Rebounding	2 (1-1)	3 (2-1)
Double-Figure Assists	0 (0-0)	0 (0-0)
Double-Doubles	2 (1-1)	3 (2-1)
Led MSU in Scoring	2 (1-1)	2 (1-1)
Led MSU in Rebounding	4 (3-1)	5 (3-2)
Led MSU in Assists	0 (0-0)	0 (0-0)
20+ Point Games	0 (0-0)	0 (0-0)
30+ Point Games	0 (0-0)	0 (0-0)

### Costello's Career Stats

Year	GP/GS	Min./Avg	FG-FGA	FG%	3-Point FG-FGA	3-Point FG%	FT-FTA	FT%	OFF-DEF	REB	AVG	PF/D	A	TO	BL	ST	PTS	AVG
2012-13	30/0	184/6.1	15-32	.469	0-0	.000	14-17	.824	10-30	40	1.3	36/0	5	7	13	6	44	1.5
2013-14	34/20	501/14.7	52-87	.598	0-0	.000	33-50	.660	47-66	113	3.3	70/0	27	22	43	9	137	4.0
2014-15	18/6	349/19.4	56-91	.615	0-3	.000	27-38	.711	35-72	107	5.9	39/0	11	20	18	6	139	7.7
<b>Totals</b>	<b>82/26</b>	<b>1034/12.6</b>	<b>123-210</b>	<b>.586</b>	<b>0-3</b>	<b>.000</b>	<b>74-105</b>	<b>.705</b>	<b>92-168</b>	<b>260</b>	<b>3.2</b>	<b>145/0</b>	<b>43</b>	<b>49</b>	<b>74</b>	<b>21</b>	<b>320</b>	<b>3.9</b>



# 22 BRANDEN DAWSON

Senior • Forward • 6-6 • 225  
Gary, Ind. • Lew Wallace



## Get To Know Branden

\* Says his mother, Cassandra Dawson, is his role model

\* Wears a motivational wristband that reads "What's Your Why?" given to him by Lourawls "Tum Tum" Nairn Jr. - Dawson says his "why" is a promise he made to his mother to get his degree, and a desire to provide for his mother and his four-year old son My'Shawn

## Last Time Out

\* 14 pts. (6-12 FG, 2-4 FT), 10 rebs., 4 blks., 1 stl. vs. Maryland

**\* Leads the Big Ten in rebounding (9.5)**

**Capsule:** Opted to return to Michigan State for his senior season rather than enter the 2014 NBA Draft on the heels of a fantastic final month ... Owns a dynamic combination of elite athleticism and Big Ten strength ... Has tremendous rebounding instincts both on the offensive and defensive end ... Terrific defender with the ability and versatility to defend multiple positions ... Tireless worker in the gym, developing his outside shot and ball-handling skills during the offseason.

**2014-15:** Posted a double-double with 14 points and 10 rebounds at Maryland, matching his career high with four blocks ... Started his 100th career game, recording his second-straight double-double with 14 points and 15 rebounds at Iowa, marking a personal high for most boards against a Big Ten opponent ... Notched a double-double with 14 points and 13 rebounds vs. Indiana ... Returned to action vs. Maryland, after missing the previous two games due to a left wrist injury, grabbing a team-high 11 rebounds ... Scored his 1,000th-career point against Eastern Michigan, but also suffered a left wrist injury in the second half ... Scored 15 points vs. Oakland, adding a season high-tying three steals ... Grabbed a career-high 18 rebounds vs. Notre Dame - tied for the most by a Spartan since 2007; his nine offensive rebounds are tied for the third most by a Spartan since 1986-87; posted his first double-double of the season, adding 16 points against the Irish ... Scored a team-high 15 points against Loyola, adding seven rebounds ... Narrowly missed a double-double vs. Duke with 18 points and nine rebounds, hitting 8-of-10 shots from the field ... Led MSU with eight rebounds vs. Navy, adding 12 points and three steals.

## Dawson's 2014-15 Game-by-Game Stats

Opponent	fg	3fg	ft	off-def	reb	pf	pts	ast	to	blk	stl	min
at Navy (11/14)	* 6-10	0-0	0-0	2-6	8	0	12	2	1	1	3	27
vs. Duke (11/18)	* 8-10	0-0	2-5	4-5	9	3	18	1	3	0	1	29
Loyola (11/21)	* 7-11	0-0	1-3	2-5	7	3	15	3	1	1	1	27
Santa Clara (11/24)	DNP-Illness											
vs. Rider (11/27)	1-4	0-0	1-3	1-5	6	2	3	3	0	0	1	16
vs. Marquette (11/28)	2-3	0-0	1-2	0-8	8	2	5	2	2	1	1	28
vs. Kansas (11/30)	* 4-15	0-0	0-1	2-7	9	4	8	0	0	1	2	24
at Notre Dame (12/3)	* 8-19	0-0	0-0	9-9	18	2	16	2	4	1	0	39
Arkansas-Pine Bluff (12/6)	* 5-10	0-0	2-3	3-4	7	1	12	4	2	1	1	24
Oakland (12/14)	* 7-14	0-0	1-4	2-4	6	3	15	2	1	0	3	21
Eastern Michigan (12/17)	* 1-5	0-0	2-2	3-4	7	1	4	1	3	0	1	18
Texas Southern (12/20)	DNP-Injured											
The Citadel (12/22)	DNP-Injured											
Maryland (12/30)	* 4-11	0-0	1-5	4-7	11	0	9	2	2	2	1	43
Indiana (1/5)	* 7-10	0-0	0-0	5-8	13	1	14	2	3	2	2	35
at Iowa (1/8)	* 7-13	0-0	0-0	2-13	15	2	14	2	4	0	0	36
Northwestern (1/11)	* 6-11	0-0	1-4	4-5	9	3	13	1	0	0	2	36
Maryland (1/17)	* 6-12	0-0	2-4	3-7	10	5	14	0	2	4	1	24

## Dawson's Career Stats

Year	GP/GS	Min./Avg	FG-FGA	FG%	-3-Point-		FT-FTA	FT%	OFF-DEF	REB	AVG	PF/D	A	TO	BL	ST	PTS	AVG
					FG-FGA	FG%												
2011-12	31/31	640/20.6	109-189	.577	0-3	.000	41-69	.594	67-72	139	4.5	41/0	29	43	26	29	259	8.4
2012-13	36/35	969/26.9	139-262	.531	0-5	.000	43-80	.538	77-135	212	5.9	58/0	47	73	33	57	321	8.9
2013-14	28/23	792/28.3	136-222	.613	0-1	.000	42-64	.656	83-150	233	8.3	41/0	46	36	25	35	314	11.2
2014-15	15/13	427/28.5	79-158	.500	0-0	.000	14-36	.389	46-97	143	9.5	32/1	27	28	14	20	172	11.5
<b>Totals</b>	<b>110/102</b>	<b>2828/25.7</b>	<b>463-831</b>	<b>.557</b>	<b>0-9</b>	<b>.000</b>	<b>140-249</b>	<b>.562</b>	<b>273-454</b>	<b>727</b>	<b>6.6</b>	<b>172/1</b>	<b>149</b>	<b>180</b>	<b>98</b>	<b>141</b>	<b>1066</b>	<b>9.7</b>

## Career/Season Highs

### Minutes

Career: 43 - vs. Maryland (12/30/14)  
Season: 43 - vs. Maryland (12/30/14)  
Big Ten: 43 - vs. Maryland (12/30/14)

### Points

Career: 26 - vs. Harvard (3/22/14)  
Season: 18 - vs. Duke (11/18/14)  
Big Ten: 20 - twice, last vs. Penn State (12/31/13)

### Rebounds

Career: 18 - at Notre Dame (12/3/14)  
Season: 18 - at Notre Dame (12/3/14)  
Big Ten: 15 - at Iowa (1/8/15)

### Assists

Career: 5 - vs. McNeese State (11/8/13)  
Season: 4 - vs. Arkansas-Pine Bluff (12/6/14)  
Big Ten: 3 - five times, last vs. Michigan (2/12/13)

### Field Goals

Career: 12 - vs. Harvard (3/22/14)  
Season: 8 - twice, last at Notre Dame (12/3/14)  
Big Ten: 8 - last vs. Penn State (12/31/13)

### Field Goal Attempts

Career: 19 - at Notre Dame (12/3/14)  
Season: 19 - at Notre Dame (12/3/14)  
Big Ten: 15 - vs. Purdue (1/5/13)

### 3-Point Field Goals

Career:  
Season:  
Big Ten:

### 3-Point FG Attempts

Career: 1 - nine times, last vs. Harvard (3/22/14)  
Season:  
Big Ten: 1 - four times, last vs. Illinois (1/31/13)

### Free Throws

Career: 6 - three times, last vs. Virginia (3/28/14)  
Season: 2 - four times, last at Maryland (1/17/15)  
Big Ten: 6 - vs. Purdue (2/9/13)

### Free Throw Attempts

Career: 8 - twice, last vs. Virginia (3/28/14)  
Season: 5 - twice, last vs. Maryland (12/30/14)  
Big Ten: 6 - twice, last vs. Indiana (1/21/14)

### Steals

Career: 5 - three times, last vs. Iowa (3/6/14)  
Season: 3 - twice, last vs. Oakland (12/14/14)  
Big Ten: 5 - vs. Iowa (3/6/14)

### Blocks

Career: 4 - four times, last at Maryland (1/17/15)  
Season: 4 - at Maryland (1/17/15)  
Big Ten: 4 - three times, last at Maryland (1/17/15)

## Miscellaneous Stats (MSU's Record)

	Season	Career
Double-Figure Scoring	10 (7-3)	53 (45-8)
Double-Figure Rebounding	5 (2-3)	23 (18-5)
Double-Figure Assists	0 (0-0)	0 (0-0)
Double-Doubles	4 (2-2)	16 (12-4)
Led MSU in Scoring	3 (1-2)	13 (9-4)
Led MSU in Rebounding	12 (7-5)	40 (33-7)
Led MSU in Assists	0 (0-0)	2 (1-1)
20+ Point Games	0 (0-0)	3 (3-0)
30+ Point Games	0 (0-0)	0 (0-0)



# 3 ALVIN ELLIS III

Sophomore • Guard • 6-4 • 210  
Matteson, Ill. • Chicago De La Salle



### Get To Know Alvin

\* Teammate of Gavin Schilling as a prep junior at Chicago De La Salle high school

\* Originally signed with Minnesota as a prep senior, but was released from his scholarship, following the firing of Tubby Smith

### Last Time Out

\* 2 points (0-3 FG, 0-2 3FG, 2-3 FT) vs. Maryland

**Capsule:** Long wing player with the versatility to play multiple positions ... Praised by Coach Izzo for his understanding of the game ... Very good vision and passing skills ... Moves very well without the ball.

**2014-15 Notes:** Scored six points in 19 minutes against The Citadel, both of which were season highs ... Scored three points against Eastern Michigan ... Played 17 minutes vs. Oakland, dishing out a career-best four assists ... Played eight minutes vs. Arkansas-Pine Bluff, scoring two points and recording two steals ... Returned to action at Notre Dame, playing five minutes after missing the previous six with an ankle injury ... Left the Navy contest with a sprained right ankle after just three minutes.

### Ellis' 2014-15 Game-by-Game Stats

Opponent	fg	3fg	ft	off-def	reb	pf	pts	ast	to	blk	stl	min
at Navy (11/14)	* 0-1	0-1	0-0	0-0	0	1	0	1	1	0	0	3
vs. Duke (11/18)												DNP-Injured
Loyola (11/21)												DNP-Injured
Santa Clara (11/24)												DNP-Injured
vs. Rider (11/27)												DNP-Injured
vs. Marquette (11/28)												DNP-Injured
vs. Kansas (11/30)												DNP-Injured
at Notre Dame (12/3)	0-2	0-1	0-0	0-0	0	1	0	0	0	0	0	5
Arkansas-Pine Bluff (12/6)	1-2	0-0	0-1	0-0	0	1	2	0	2	1	2	8
Oakland (12/14)	0-2	0-2	2-2	0-3	3	2	2	4	0	0	1	17
Eastern Michigan (12/17)	0-3	0-1	3-4	0-1	1	2	3	0	0	1	1	14
Texas Southern (12/20)	1-4	1-2	0-0	0-0	0	0	3	0	1	0	0	8
The Citadel (12/22)	2-3	1-1	1-2	0-0	0	2	6	1	1	0	2	19
Maryland (12/30)	1-1	0-0	0-1	0-1	1	3	2	1	0	0	1	22
Indiana (1/5)	0-0	0-0	1-2	0-1	1	2	1	1	1	1	1	7
at Iowa (1/8)	0-0	0-0	0-0	0-0	0	0	0	0	0	0	0	3
Northwestern (1/11)	0-0	0-0	0-0	0-0	0	0	0	0	1	0	0	3
Maryland (1/17)	0-3	0-2	2-3	0-0	0	2	2	0	0	0	0	9

### Season Highs

#### Minutes

Career: 23 - vs. Wisconsin (2/9/14)  
Season: 22 - vs. Maryland (12/30/14)  
Big Ten: 23 - vs. Wisconsin (2/9/14)

#### Points

Career: 12 - vs. Michigan (1/25/14)  
Season: 6 - vs. The Citadel (12/22/14)  
Big Ten: 12 - vs. Michigan (1/25/14)

#### Rebounds

Career: 3 - four times, last vs. Eastern Michigan (12/17/14)  
Season: 3 - vs. Eastern Michigan (12/17/14)  
Big Ten: 3 - vs. Penn State (2/6/14)

#### Assists

Career: 4 - vs. Oakland (12/14/14)  
Season: 4 - vs. Oakland (12/14/14)  
Big Ten: 1 - six times, last vs. Indiana (1/5/15)

#### Field Goals

Career: 4 - vs. Michigan (1/25/14)  
Season: 2 - vs. The Citadel (12/22/14)  
Big Ten: 4 - vs. Michigan (1/25/14)

#### Field Goal Attempts

Career: 6 - vs. McNeese State (11/8/13)  
Season: 4 - vs. Texas Southern (12/20/14)  
Big Ten: 5 - vs. Wisconsin (2/9/14)

#### 3-Point Field Goals

Career: 2 - vs. Michigan (1/25/14)  
Season: 1 - twice, last vs. The Citadel (12/22/14)  
Big Ten: 2 - vs. Michigan (1/25/14)

#### 3-Point FG Attempts

Career: 2 - four times, last at Maryland (1/17/15)  
Season: 2 - three times, last at Maryland (1/17/15)  
Big Ten: 2 - twice, last at Maryland (1/17/15)

#### Free Throws

Career: 3 - vs. Eastern Michigan (12/17/14)  
Season: 3 - vs. Eastern Michigan (12/17/14)  
Big Ten: 2 - four times, last at Maryland (1/17/15)

#### Free Throw Attempts

Career: 5 - vs. North Florida (12/17/13)  
Season: 4 - vs. Eastern Michigan (12/17/14)  
Big Ten: 3 - at Maryland (1/17/15)

#### Steals

Career: 2 - four times, last vs. The Citadel (12/22/14)  
Season: 2 - twice, last vs. The Citadel (12/22/14)  
Big Ten: 2 - vs. Ohio State (1/7/14)

#### Blocks

Career: 1 - six times, last vs. Indiana (1/5/15)  
Season: 1 - three times, last vs. Indiana (1/5/15)  
Big Ten: 1 - four times, last vs. Indiana (1/5/15)

### Miscellaneous Stats (MSU's Record)

	Season	Career
Double-Figure Scoring	0 (0-0)	1 (0-1)
Double-Figure Rebounding	0 (0-0)	0 (0-0)
Double-Figure Assists	0 (0-0)	0 (0-0)
Double-Doubles	0 (0-0)	0 (0-0)
Led MSU in Scoring	0 (0-0)	0 (0-0)
Led MSU in Rebounding	0 (0-0)	0 (0-0)
Led MSU in Assists	0 (0-0)	0 (0-0)
20+ Point Games	0 (0-0)	0 (0-0)
30+ Point Games	0 (0-0)	0 (0-0)

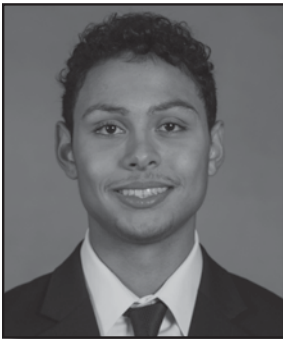
### Ellis' Career Stats

Year	GP/GS	Min./Avg	FG-FGA	FG%	-3-Point-		FT-FTA	FT%	OFF-DEF	REB	AVG	PF/D	A	TO	BL	ST	PTS	AVG
					FG-FGA	FG%												
2013-14	36/1	285/7.9	24-50	.480	6-13	.462	13-22	.591	8-15	23	0.6	42/1	14	22	3	13	67	1.9
2014-15	12/1	118/9.8	5-21	.238	2-10	.200	9-15	.600	0-6	6	0.5	16/0	8	7	3	8	21	1.8
Totals	48/2	403/8.4	29-71	.408	8-23	.348	22-37	.595	8-21	29	0.6	58/1	22	29	6	21	88	1.8



# 5 BRYN FORBES

Junior • Guard • 6-3 • 180  
Lansing, Mich. • Sexton



### Get To Know Bryn

\* High school teammate of Denzel Valentine at Lansing Sexton, capturing back-to-back Michigan Class B state championships in 2011 and 2012

\* Been a close friend of Denzel's since age 7, sometimes even taking vacations with the Valentine family to Disney-World and a Disney cruise

### Last Time Out

\* 5 points (2-6 FG, 1-3 3FG), 1 block, 1 steal vs. Maryland

- \* Has made a 3-pointer in 77 of 82 career games.
- \* Third in the Big Ten in 3-point field-goal percentage (.463)
- \* Ninth in the Big Ten in 3-point field-goals made (2.1)

**Capsule:** Joins the Spartans after transferring from Cleveland State where he spent his first two seasons ... Received a waiver from the NCAA and will be eligible to play for the Spartans this season.

**2014-15 Notes:** Scored 11 points vs. Northwestern, his first double-figure effort against a Big Ten opponent ... Led MSU with 14 points vs. Eastern Michigan ... Made 5-of-6 shots, including both 3-point attempts, to score 12 points vs. Oakland ... Hit 4-of-7 3-pointers to score 12 points vs. Arkansas-Pine Bluff, adding a career-high four assists ... Had a perfect shooting night at Notre Dame, hitting all seven shots, including four 3-pointers to finish with a season-high 18 ... Scored 15 points vs. Rider ... Scored 10 points vs. Santa Clara, including knocking down three 3-pointers ... Scored eight points vs. Loyola, including hitting on 2-of-3 3-pointers ... Scored nine points against Duke in his first start as a Spartan ... Made his Spartan debut against Navy, scoring five points.

### Forbes' 2014-15 Game-by-Game Stats

Opponent	fg	3fg	ft	off-def	reb	pf	pts	ast	to	blk	stl	min
at Navy (11/14)	1-8	1-6	2-2	0-0	0 0	5	0	1	0	1	0	27
vs. Duke (11/18)	* 3-9	3-8	0-0	0-2	2 2	9	0	0	0	0	0	30
Loyola (11/21)	* 3-5	2-3	0-0	0-1	1 0	8	2	1	0	1	0	27
Santa Clara (11/24)	* 3-8	3-7	1-2	1-3	4 2	10	2	2	0	1	0	31
vs. Rider (11/27)	* 5-10	2-5	3-3	0-1	1 1	15	2	1	0	1	0	28
vs. Marquette (11/28)	* 3-4	2-3	1-1	0-0	0 2	9	0	1	0	1	0	18
vs. Kansas (11/30)	* 2-3	1-2	2-2	0-2	2 1	7	1	0	0	0	0	36
at Notre Dame (12/3)	* 7-7	4-4	0-0	0-1	1 3	18	2	1	0	1	0	37
Arkansas-Pine Bluff (12/6)	* 4-7	4-7	0-0	0-2	2 3	12	4	1	0	1	0	27
Oakland (12/14)	* 5-6	2-2	0-0	0-2	2 0	12	1	1	0	1	0	26
Eastern Michigan (12/17)	* 4-7	3-6	3-4	1-2	3 2	14	0	0	0	0	0	32
Texas Southern (12/20)	* 1-9	1-9	3-4	1-0	1 1	6	1	0	0	0	0	36
The Citadel (12/22)	* 2-4	1-2	2-2	0-1	1 1	7	2	0	0	0	0	19
Maryland (12/30)	* 3-8	2-5	1-2	0-0	0 3	9	2	3	0	2	0	40
Indiana (1/5)	* 3-6	2-4	1-2	0-0	0 2	9	1	2	0	0	0	27
at Iowa (1/8)	* 2-3	1-1	3-3	0-0	0 2	8	0	1	0	1	0	22
Northwestern (1/11)	* 4-5	2-3	1-1	0-4	4 2	11	2	1	1	0	0	36
Maryland (1/17)	* 2-6	1-3	0-0	0-0	0 1	5	0	0	1	1	0	22

### Season Highs

#### Minutes

Career: 46 - vs. Drexel (12/4/13)  
Season: 40 - vs. Maryland (12/30/14)  
Big Ten: 40 - vs. Maryland (12/30/14)

#### Points

Career: 27 - twice, last vs. Detroit (1/31/14)  
Season: 18 - at Notre Dame (12/3/14)  
Big Ten: 11 - vs. Northwestern (1/11/15)

#### Rebounds

Career: 8 - twice, last at Illinois-Chicago (2/2/13)  
Season: 4 - twice, last vs. Northwestern (1/11/15)  
Big Ten: 4 - vs. Northwestern (1/11/15)

#### Assists

Career: 4 - vs. Arkansas-Pine Bluff (12/6/14)  
Season: 4 - vs. Arkansas-Pine Bluff (12/6/14)  
Big Ten: 2 - twice, last vs. Northwestern (1/11/15)

#### Field Goals

Career: 10 - vs. Notre Dame (Ohio) (12/18/13)  
Season: 7 - at Notre Dame (12/3/14)  
Big Ten: 4 - vs. Northwestern (1/11/15)

#### Field Goal Attempts

Career: 16 - three times, last vs. Notre Dame (Ohio) (12/18/13)  
Season: 10 - vs. Rider (11/27/14)  
Big Ten: 8 - vs. Maryland (12/30/14)

#### 3-Point Field Goals

Career: 5 - vs. Notre Dame (Ohio) (12/18/13)  
Season: 4 - twice, last vs. Arkansas-Pine Bluff (12/6/14)  
Big Ten: 2 - three times, last vs. Northwestern (1/11/15)

#### 3-Point FG Attempts

Career: 10 - three times, last vs. Notre Dame (Ohio) (12/18/13)  
Season: 9 - vs. Texas Southern (12/20/14)  
Big Ten: 5 - vs. Maryland (12/30/14)

#### Free Throws

Career: 11 - at Kentucky (11/25/13)  
Season: 3 - four times, last at Iowa (1/8/15)  
Big Ten: 3 - at Iowa (1/8/15)

#### Free Throw Attempts

Career: 11 - at Kentucky (11/25/13)  
Season: 4 - twice, last vs. Texas Southern (12/20/14)  
Big Ten: 3 - at Iowa (1/8/15)

#### Steals

Career: 4 - three times, last at Eastern Illinois (1/28/14)  
Season: 2 - vs. Maryland (12/30/14)  
Big Ten: 2 - vs. Maryland (12/30/14)

#### Blocks

Career: 1 - four times, last at Maryland (1/17/15)  
Season: 1 - twice, last at Maryland (1/17/15)  
Big Ten: 1 - twice, last at Maryland (1/17/15)

#### Miscellaneous Stats (MSU's Record)

	Season	Career
Double-Figure Scoring	7 (6-1)	56 (5-1)*
Double-Figure Rebounding	0 (0-0)	0 (0-0)
Double-Figure Assists	0 (0-0)	0 (0-0)
Double-Doubles	0 (0-0)	0 (0-0)
Led MSU in Scoring	1 (1-0)	1 (1-0)
Led MSU in Rebounding	0 (0-0)	0 (0-0)
Led MSU in Assists	0 (0-0)	0 (0-0)
20+ Point Games	0 (0-0)	14 (0-0)*
30+ Point Games	0 (0-0)	0 (0-0)

\* Totals include games at Cleveland St. - records do not

### Forbes' Career Stats

Year	GP/GS	Min./Avg	FG-FGA	FG%	3-Point- FG-FGA	3-Point- FG%	FT-FTA	FT%	OFF-DEF	REB	AVG	PF/D	A	TO	BL	ST	PTS	AVG
2012-13 (at CSU)	32/18	905/28.3	136-314	.433	61-157	.389	74-92	.804	24-87	111	3.5	57/0	38	53	1	25	407	12.7
2013-14 (at CSU)	32/32	1102/34.4	154-355	.434	81-191	.424	109-132	.826	23-76	99	3.1	50/1	54	50	1	25	498	15.6
2014-15	18/16	521/28.9	57-115	.496	37-80	.463	23-28	.821	3-21	24	1.3	28/0	22	16	2	12	174	9.7
<b>Totals</b>	<b>82/66</b>	<b>2528/30.8</b>	<b>347-784</b>	<b>.443</b>	<b>179-428</b>	<b>.418</b>	<b>206-252</b>	<b>.817</b>	<b>50-184</b>	<b>234</b>	<b>2.9</b>	<b>135/1</b>	<b>114</b>	<b>119</b>	<b>4</b>	<b>62</b>	<b>1079</b>	<b>13.2</b>





# 11 TUM TUM NAIRN JR.

Freshman • Guard • 5-10 • 170  
Nassau, Bahamas • Sunrise Christian



### Get To Know Tum Tum

\* Full name is Lourawls Nairn Jr. - Moved to the United States from the Bahamas at age 13

\* Nicknamed "Tum Tum" by his mother after a character in the 1992 movie "3 Ninjas" because he was always eating as a child

\* His leadership skills are so impressive that Draymond Green told Coach Izzo that if he were to ever name a freshman a captain, that Nairn would be that guy; and Mateen Cleaves said "he reminds me of myself"

### Last Time Out

\* 2 points (1-2 FG), 2 assists vs. Maryland

**Capsule:** Incredible leadership qualities, has the respect of his teammates despite being just a true freshman ... Lightning quick with the basketball, can make a case as the fastest player in the class of 2014 ... Hard-nosed defender with incredible toughness and strength ... Enjoys creating scoring opportunities for teammates ... Brings energy, excitement and enthusiasm every time he takes the court ... Has a great work ethic and a desire to be great.

**2014-15 Notes:** Scored four points at Iowa ... Made his first career start against Indiana, scoring a season-high seven points ... Grabbed a season-high five rebounds, while also recording five assists and two steals against Oakland ... Dished out six assists against Arkansas-Pine Bluff ... Recorded two steals in the second half against Marquette, sparking MSU's decisive run, while playing a season-high 26 minutes ... Dished out seven assists against Loyola ... Scored his first career points against Duke ... Dished out four assists in his Spartan debut at Navy.

### Nairn's 2014-15 Game-by-Game Stats

Opponent	fg	3fg	ft	off-def	reb	pf	pts	ast	to	blk	stl	min
at Navy (11/14)	0-1	0-0	0-0	1-2	3 0	0	0	4	1	0	0	20
vs. Duke (11/18)	1-3	0-1	0-0	0-1	1 2	2	2	2	2	0	0	21
Loyola (11/21)	1-2	0-0	1-2	0-1	1 1	3	7	3	0	0	0	21
Santa Clara (11/24)	1-4	0-1	0-0	0-3	3 3	2	4	0	0	0	0	22
vs. Rider (11/27)	0-2	0-0	1-2	0-1	1 0	1	2	1	0	0	0	20
vs. Marquette (11/28)	1-2	0-0	0-0	0-1	1 2	2	3	2	0	0	2	26
vs. Kansas (11/30)	1-4	0-0	1-2	0-0	0 1	3	1	0	0	0	0	18
at Notre Dame (12/3)	0-0	0-0	0-0	0-2	2 1	0	3	1	0	0	0	14
Arkansas-Pine Bluff (12/6)	0-0	0-0	1-3	0-1	1 2	1	6	3	0	0	0	17
Oakland (12/14)	0-1	0-0	1-2	1-4	5 4	1	5	2	0	2	2	20
Eastern Michigan (12/17)	0-1	0-0	0-0	0-1	1 0	0	1	0	0	0	0	5
Texas Southern (12/20)	0-1	0-0	1-2	0-2	2 3	1	2	0	0	0	0	22
The Citadel (12/22)	0-2	0-0	1-2	2-0	2 0	1	1	1	0	0	0	12
Maryland (12/30)	0-4	0-0	0-0	0-1	1 5	0	0	0	0	0	0	9
Indiana (1/5)	* 3-5	0-0	1-2	0-0	0 2	7	2	0	0	1	1	26
at Iowa (1/8)	2-4	0-1	0-0	0-0	0 0	4	2	1	0	0	0	18
Northwestern (1/11)	1-4	0-0	0-0	0-1	1 2	2	2	0	0	0	0	13
Maryland (1/17)	1-2	0-0	0-0	0-0	0 3	2	2	0	0	1	10	

### Season Highs

#### Minutes

Season: 26 - twice, last vs. Indiana (1/5/15)  
Big Ten: 26 - vs. Indiana (1/5/15)

#### Points

Season: 7 - vs. Indiana (1/5/15)  
Big Ten: 7 - vs. Indiana (1/5/15)

#### Rebounds

Season: 5 - Oakland (12/14/14)  
Big Ten: 1 - twice, last vs. Northwestern (1/11/15)

#### Assists

Season: 7 - vs. Loyola (11/21/14)  
Big Ten: 2 - four times, last at Maryland (1/17/15)

#### Field Goals

Season: 3 - vs. Indiana (1/5/15)  
Big Ten: 3 - vs. Indiana (1/5/15)

#### Field Goal Attempts

Season: 5 - vs. Indiana (1/5/15)  
Big Ten: 5 - vs. Indiana (1/5/15)

#### 3-Point Field Goals

Season:  
Big Ten:

#### 3-Point FG Attempts

Season: 1 - three times, last at Iowa (1/8/15)  
Big Ten: 1 - at Iowa (1/8/15)

#### Free Throws

Season: 1 - eight times, last vs. Indiana (1/5/15)  
Big Ten: 1 - vs. Indiana (1/5/15)

#### Free Throw Attempts

Season: 3 - vs. Arkansas-Pine Bluff (12/6/14)  
Big Ten: 2 - vs. Indiana (1/5/15)

#### Steals

Season: 2 - twice, last vs. Oakland (12/14/14)  
Big Ten: 1 - twice, last at Maryland (1/17/15)

#### Blocks

Season:  
Big Ten:

### Miscellaneous Stats (MSU's Record)

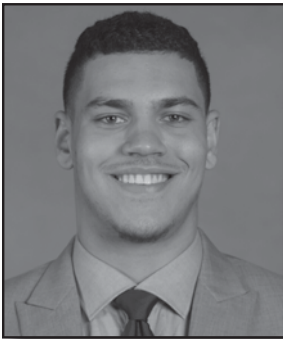
	Season	Career
Double-Figure Scoring	0 (0-0)	0 (0-0)
Double-Figure Rebounding	0 (0-0)	0 (0-0)
Double-Figure Assists	0 (0-0)	0 (0-0)
Double-Doubles	0 (0-0)	0 (0-0)
Led MSU in Scoring	0 (0-0)	0 (0-0)
Led MSU in Rebounding	0 (0-0)	0 (0-0)
Led MSU in Assists	1 (1-0)	1 (1-0)
20+ Point Games	0 (0-0)	0 (0-0)
30+ Point Games	0 (0-0)	0 (0-0)

### Nairn's Career Stats

Year	GP/GS	Min./Avg	FG-FGA	FG%	-3-Point-		FT-FTA	FT%	OFF-DEF	REB	AVG	PF/D	A	TO	BL	ST	PTS	AVG
					FG-FGA	FG%												
2014-15	18/1	314/17.4	12-42	.286	0-3	.000	8-17	.471	4-21	25	1.4	31/1	49	17	0	6	32	1.8
Totals	18/1	314/17.4	12-42	.286	0-3	.000	8-17	.471	4-21	25	1.4	31/1	49	17	0	6	32	1.8

# 34 GAVIN SCHILLING

Sophomore • Forward • 6-9 • 240  
Chicago, Ill. • Findlay Prep (Nev.)



### Get To Know Gavin

\* Born in Germany and raised in France, Schilling moved back to the U.S. in 2003; he speaks three languages fluently

\* Teammate of Alvin Ellis III as a prep junior at Chicago De La Salle High School, he attended four schools in four seasons

### Last Time Out

\* 2 points (1-1 FG, 0-1 FT), 2 rebounds vs. Maryland

\* **Leads the Big Ten in field-goal percentage (.684)**

**Capsule:** Strong post player with good quickness ... Plays extremely hard and doesn't back down from anyone ... Quick jumping rebounder with developing offensive skill set - at his best around the basket ... Possesses incredible toughness.

**2014-15 Notes:** Scored 13 points against Northwestern, a personal best against a Big Ten opponent ... Narrowly missed a double-double vs. Indiana, totaling 10 points and nine rebounds ... Scored 11 points on 5-of-6 shooting vs. The Citadel ... Scored nine points vs. Texas Southern ... Totaled nine points and six rebounds at Notre Dame ... Made his first start of the season vs. Kansas, scoring six points and blocking two shots in just 14 minutes ... Blocked a career-high three shots against Marquette ... Made all three field-goal attempts and all four free-throw attempts en route to scoring 10 points vs. Rider, adding six rebounds ... Posted career highs in both points (14) and rebounds (11) against Santa Clara, recording his first-career double-double in 18 minutes ... Scored eight points against Loyola, while matching his career high with two blocks ... Totaled four points and three rebounds at Navy.

### Schilling's 2014-15 Game-by-Game Stats

Opponent	fg	3fg	ft	off-def	reb	pf	pts	ast	to	blk	stl	min
at Navy (11/14)	2-2	0-0	0-2	2-1	3 3	4	0	2	1	0	13	
vs. Duke (11/18)	1-3	0-0	0-0	1-2	3 0	2	1	0	0	0	19	
Loyola (11/21)	4-4	0-0	0-0	0-3	3 2	8	0	1	2	0	18	
Santa Clara (11/24)	6-8	0-0	2-3	7-4	11 2	14	0	1	1	1	18	
vs. Rider (11/27)	3-3	0-0	4-4	2-4	6 4	10	0	3	0	0	16	
vs. Marquette (11/28)	2-3	0-0	1-1	0-0	0 4	5	0	0	3	0	9	
vs. Kansas (11/30)	* 2-3	0-0	2-2	2-2	4 4	6	0	2	2	0	14	
at Notre Dame (12/3)	* 4-7	0-0	1-4	4-2	6 3	9	2	1	1	0	32	
Arkansas-Pine Bluff (12/6)	* 3-4	0-0	1-6	0-5	5 1	7	1	1	0	1	19	
Oakland (12/14)	* 2-4	0-0	0-3	2-4	6 2	4	0	0	0	0	17	
Eastern Michigan (12/17)	* 2-4	0-0	1-2	0-3	3 2	5	0	1	2	0	16	
Texas Southern (12/20)	* 4-6	0-0	1-5	2-1	3 2	9	1	2	0	0	23	
The Citadel (12/22)	* 5-6	0-0	1-2	0-4	4 2	11	0	0	0	1	21	
Maryland (12/30)	* 3-3	0-0	1-2	0-6	6 1	7	0	0	2	1	25	
Indiana (1/5)	* 4-5	0-0	2-4	4-5	9 2	10	0	4	2	0	22	
at Iowa (1/8)	* 1-3	0-0	0-0	0-0	0 4	2	1	1	0	0	12	
Northwestern (1/11)	* 5-10	0-0	3-3	4-2	6 5	13	1	2	0	1	26	
Maryland (1/17)	* 1-1	0-0	0-1	1-1	2 2	2	0	1	0	0	15	

### Season Highs

#### Minutes

Career: 32 - at Notre Dame (12/3/14)  
Season: 32 - at Notre Dame (12/3/14)  
Big Ten: 26 - vs. Northwestern (1/11/15)

#### Points

Career: 14 - vs. Santa Clara (11/24/14)  
Season: 14 - vs. Santa Clara (11/24/14)  
Big Ten: 13 - vs. Northwestern (1/11/15)

#### Rebounds

Career: 11 - vs. Santa Clara (11/24/14)  
Season: 11 - vs. Santa Clara (11/24/14)  
Big Ten: 9 - vs. Indiana (1/5/15)

#### Assists

Career: 2 - three times, last at Notre Dame (12/3/14)  
Season: 2 - at Notre Dame (12/3/14)  
Big Ten: 1 - five times, last vs. Northwestern (1/11/15)

#### Field Goals

Career: 6 - vs. Santa Clara (11/24/14)  
Season: 6 - vs. Santa Clara (11/24/14)  
Big Ten: 5 - vs. Northwestern (1/11/15)

#### Field Goal Attempts

Career: 10 - vs. Northwestern (1/11/15)  
Season: 10 - vs. Northwestern (1/11/15)  
Big Ten: 10 - vs. Northwestern (1/11/15)

#### 3-Point Field Goals

Career:  
Season:  
Big Ten:

#### 3-Point FG Attempts

Career:  
Season:  
Big Ten:

#### Free Throws

Career: 4 - vs. Rider (11/27/14)  
Season: 4 - vs. Rider (11/27/14)  
Big Ten: 3 - vs. Northwestern (1/11/15)

#### Free Throw Attempts

Career: 6 - twice, last vs. Arkansas-Pine Bluff (12/6/14)  
Season: 6 - vs. Arkansas-Pine Bluff (12/6/14)  
Big Ten: 4 - vs. Indiana (1/5/15)

#### Steals

Career: 1 - five times, last vs. Northwestern (1/11/15)  
Season: 1 - five times, last vs. Northwestern (1/11/15)  
Big Ten: 1 - twice, last vs. Northwestern (1/11/15)

#### Blocks

Career: 3 - vs. Marquette (11/28/14)  
Season: 3 - vs. Marquette (11/28/14)  
Big Ten: 2 - three times, last vs. Indiana (1/5/15)

### Miscellaneous Stats (MSU's Record)

	Season	Career
Double-Figure Scoring	5 (5-0)	5 (5-0)
Double-Figure Rebounding	1 (1-0)	1 (1-0)
Double-Figure Assists	0 (0-0)	0 (0-0)
Double-Doubles	1 (1-0)	1 (1-0)
Led MSU in Scoring	0 (0-0)	0 (0-0)
Led MSU in Rebounding	2 (2-0)	2 (2-0)
Led MSU in Assists	0 (0-0)	0 (0-0)
20+ Point Games	0 (0-0)	0 (0-0)
30+ Point Games	0 (0-0)	0 (0-0)

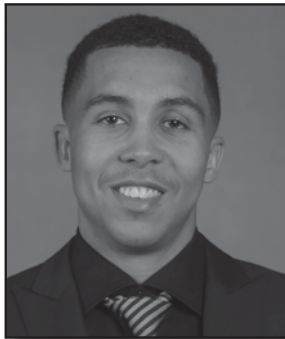
### Schilling's Career Stats

Year	GP/GS	Min./Avg	FG-FGA	FG%	-3-Point-		FT-FTA	FT%	OFF-DEF	REB	AVG	PF/D	A	TO	BL	ST	PTS	AVG
					FG-FGA	FG%												
2013-14	37/1	238/6.4	21-38	.553	0-0	.000	11-21	.524	28-31	59	1.6	50/1	9	20	8	0	53	1.4
2014-15	18/12	335/18.6	54-79	.684	0-0	.000	20-44	.455	31-49	80	4.4	45/1	7	22	16	5	128	7.1
<b>Totals</b>	<b>55/13</b>	<b>573/10.4</b>	<b>75-117</b>	<b>.641</b>	<b>0-0</b>	<b>.000</b>	<b>31-65</b>	<b>.477</b>	<b>59-80</b>	<b>139</b>	<b>2.5</b>	<b>95/2</b>	<b>16</b>	<b>42</b>	<b>24</b>	<b>5</b>	<b>181</b>	<b>3.3</b>



# 20 TRAVIS TRICE

Senior • Guard • 6-0 • 175  
Huber Heights, Ohio • Wayne



### Get To Know Travis

\* Played for his dad, Travis, in high school - his father played two years each at Purdue and Butler. His grandfather, Bob Pritchett, played at Vincennes and Old Dominion and is in the Old Dominion Hall of Fame

\* Had a mysterious illness in summer 2012 that had him fearing for his life; eventually the brain infection disappeared - something he credits to his religious faith

\* Youth basketball teammate of Ohio State quarterback Braxton Miller

### Last Time Out

\* 5 pts. (2-8 FG, 1-5 3FG), 5 rebs., 1 asts., vs. Maryland

### \* Co-captain

\* **Orlando Classic All-Tournament Team (14.3 ppg, 5.3 rpg, 4.3 apg)**

\* **Second in the Big Ten in assists (5.8 apg)**

\* **Leads the Big Ten and ranks eighth in the nation in assist-to-turnover ratio (3.5-to-1)**

\* **Eighth in the Big Ten in 3-point field goals made (2.2 pg)**

**Capsule:** Possesses great leadership abilities ... Can create opportunities for teammates, but is also a terrific outside shooter ... Tough determined player despite small frame ... Son of a high-school coach with a high basketball IQ.

**2014-15 Notes:** Recorded his first career double-double vs. Northwestern, scoring a team-high 18 points and tallying 10 assists ... Scored 25 points at Iowa, including 16 in the second half, hitting 7-of-8 3-pointers for the game, tying the MSU single-game 3-point field-goal percentage record ... Led MSU with a career-high 26 points vs. Maryland, adding six assists and four steals ... Dished out a career-high 11 assists against The Citadel, while committing just two turnovers ... Tallied eight assists against Oakland ... Scored 19 points vs. Marquette, while also recording a team-high seven assists ... Recorded eight assists against Santa Clara, while also scoring a game-high 19 points and blocking two shots ... Tallied seven assists against Loyola ... Led MSU with eight assists against Duke, adding 15 points and a career-high six rebounds ... Scored a then-career-high 25 points at Navy, playing in front of his uncle - a former football player at the Naval Academy - and his grandfather - a veteran of the US Navy (1968-72).

### Trice's 2014-15 Game-by-Game Stats

Opponent	fg	3fg	ft	off-def	reb	pf	pts	ast	to	blk	stl	min
at Navy (11/14)	* 8-14	5-6	4-6	0-5	5 1	25	5 0	1	1	34		
vs. Duke (11/18)	* 7-15	1-5	0-0	2-4	6 4	15	8 2	0	0	34		
Loyola (11/21)	* 5-8	2-5	1-3	0-2	2 0	13	7 1	0	0	30		
Santa Clara (11/24)	* 6-15	5-11	2-3	0-3	3 1	19	8 1	2	1	33		
vs. Rider (11/27)	* 4-10	2-6	0-0	1-5	6 3	10	4 3	0	0	30		
vs. Marquette (11/28)	* 6-12	2-6	5-6	1-5	6 2	19	7 1	0	1	37		
vs. Kansas (11/30)	* 3-14	2-6	6-8	2-2	4 1	14	2 1	0	2	34		
at Notre Dame (12/3)	* 3-13	1-5	0-0	0-2	2 5	7	5 2	0	1	37		
Arkansas-Pine Bluff (12/6)	* 5-9	3-6	2-3	0-4	4 1	15	3 1	0	0	27		
Oakland (12/14)	* 2-6	2-4	0-0	0-3	3 1	6	8 2	0	1	25		
Eastern Michigan (12/17)	* 5-12	3-7	0-0	0-1	1 1	13	6 3	0	1	35		
Texas Southern (12/20)	* 3-13	0-3	0-0	0-1	1 4	6	3 4	0	3	36		
The Citadel (12/22)	* 3-9	0-3	0-0	1-1	2 0	6	11 2	0	2	30		
Maryland (12/30)	* 7-22	3-11	9-10	0-0	0 4	26	6 1	0	4	44		
Indiana (1/5)	* 1-8	1-5	3-4	0-5	5 3	6	7 0	0	1	24		
at Iowa (1/8)	* 8-13	7-8	2-5	0-2	2 1	25	4 1	0	1	33		
Northwestern (1/11)	* 5-12	0-2	8-10	1-1	2 1	18	10 1	0	3	43		
Maryland (1/17)	* 2-8	1-5	0-0	2-3	5 3	5	1 4	0	0	30		

### Trice's Career Stats

Year	GP/GS	Min./Avg	FG-FGA	FG%	-3-Point- FG-FGA	FG%	FT-FTA	FT%	OFF-DEF	REB	AVG	PF/D	A	TO	BL	ST	PTS	AVG
2011-12	32/0	551/17.2	48-126	.381	30-74	.405	19-33	.576	5-52	57	1.8	58/0	56	37	2	25	145	4.5
2012-13	27/0	503/18.6	41-128	.320	29-72	.403	18-25	.720	8-34	42	1.6	51/0	50	34	1	25	129	4.8
2013-14	36/8	801/22.3	87-207	.420	53-122	.434	36-44	.818	8-50	58	1.6	58/1	84	37	6	32	263	7.3
2014-15	18/17	596/33.1	83-213	.390	40-104	.385	42-58	.724	10-49	59	3.3	36/1	105	30	3	22	248	13.8
<b>Totals</b>	<b>113/25</b>	<b>2451/21.7</b>	<b>259-674</b>	<b>.384</b>	<b>152-372</b>	<b>.409</b>	<b>115-160</b>	<b>.719</b>	<b>31-185</b>	<b>216</b>	<b>1.9</b>	<b>203/2</b>	<b>295</b>	<b>138</b>	<b>12</b>	<b>104</b>	<b>785</b>	<b>6.9</b>

### Career/Season Highs

#### Minutes

Career: 44 - vs. Maryland (12/30/14)  
Season: 44 - vs. Maryland (12/30/14)  
Big Ten: 44 - vs. Maryland (12/30/14)

#### Points

Career: 26 - vs. Maryland (12/30/14)  
Season: 26 - vs. Maryland (12/30/14)  
Big Ten: 26 - vs. Maryland (12/30/14)

#### Rebounds

Career: 6 - three times, last vs. Marquette (11/28/14)  
Season: 6 - three times, last vs. Marquette (11/28/14)  
Big Ten: 5 - three times, last at Maryland (1/17/15)

#### Assists

Career: 11 - vs. The Citadel (12/22/14)  
Season: 11 - vs. The Citadel (12/22/14)  
Big Ten: 10 - vs. Northwestern (1/11/15)

#### Field Goals

Career: 8 - at Navy (11/14/14)  
Season: 8 - at Navy (11/14/14)  
Big Ten: 8 - at Iowa (1/8/15)

#### Field Goal Attempts

Career: 22 - vs. Maryland (12/30/14)  
Season: 22 - vs. Maryland (12/30/14)  
Big Ten: 22 - vs. Maryland (12/30/14)

#### 3-Point Field Goals

Career: 7 - at Iowa (1/8/15)  
Season: 7 - at Iowa (1/8/15)  
Big Ten: 7 - at Iowa (1/8/15)

#### 3-Point FG Attempts

Career: 11 - twice, last vs. Maryland (12/30/14)  
Season: 11 - twice, last vs. Maryland (12/30/14)  
Big Ten: 11 - vs. Maryland (12/30/14)

#### Free Throws

Career: 9 - vs. Maryland (12/30/14)  
Season: 9 - vs. Maryland (12/30/14)  
Big Ten: 9 - vs. Maryland (12/30/14)

#### Free Throw Attempts

Career: 10 - twice, last vs. Northwestern (1/11/15)  
Season: 10 - twice, last vs. Northwestern (1/11/15)  
Big Ten: 10 - twice, last vs. Northwestern (1/11/15)

#### Steals

Career: 6 - vs. Wisconsin (3/7/13)  
Season: 4 - vs. Maryland (12/30/14)  
Big Ten: 6 - vs. Wisconsin (3/7/13)

#### Blocks

Career: 2 - twice, last vs. Santa Clara (11/24/14)  
Season: 2 - vs. Santa Clara (11/24/14)  
Big Ten: 2 - vs. Minnesota (1/11/14)

### Miscellaneous Stats (MSU's Record)

	Season	Career
Double-Figure Scoring	12 (9-3)	31 (27-4)
Double-Figure Rebounding	0 (0-0)	0 (0-0)
Double-Figure Assists	2 (2-0)	2 (2-0)
Double-Doubles	1 (1-0)	1 (1-0)
Led MSU in Scoring	7 (5-2)	9 (7-2)
Led MSU in Rebounding	0 (0-0)	0 (0-0)
Led MSU in Assists	13 (8-5)	28 (21-7)
20+ Point Games	3 (2-1)	4 (3-1)
30+ Point Games	0 (0-0)	0 (0-0)

# 45 DENZEL VALENTINE

Junior • Guard • 6-5 • 220  
Lansing, Mich. • Sexton



### Get To Know Denzel

\* Played for father Carlton, who was a four-year letterwinner at MSU from 1985-88, at Lansing Sexton High School

\* Brother Drew played basketball at Oakland University and is now a graduate manager with the Spartans

\* Mentioned by Coach Izzo in the same breath as Mateen Cleaves, Travis Walton and Draymond Green for exceptional leadership skills

### Last Time Out

\* 9 pts. (4-9 FG, 1-6 3FG), 6 rebs., 5 ast., vs. Maryland

### \* Co-captain

\* **Orlando Classic All-Tournament Team (19.3 ppg, 5.0 rpg)**

\* **Sixth in the Big Ten in 3-point field-goal percentage (.443)**

\* **Sixth in the Big Ten in 3-point field goals made (2.4 pg)**

\* **Eighth in the Big Ten in assists (4.2 apg)**

**Capsule:** Stong leadership skills ... Among the most versatile players in college basketball, named the Big Ten's Most Versatile Player by Lindy's Sports ... Poised for a breakout season ... Possesses a high basketball IQ and excellent passing skills that allow him to be a playmaker in the open court, as well as the half court ... One of the better rebounding guards to ever play for Coach Izzo ... Second generation Spartan that embraces the Michigan State tradition.

**2014-15 Notes:** Totaled 18 points, nine rebounds and six assists at Iowa, scoring 15 points in the second half ... Led MSU with 18 points against The Citadel, connecting on 8-of-11 shot attempts ... Tied his season high with eight assists vs. Eastern Michigan, adding seven rebounds ... Scored a team-high 19 points vs. Oakland, hitting 5-of-6 3-pointers, while adding four assists ... Dished out a season-high eight assists against Arkansas-Pine Bluff ... Scored a team-high 22 points at Notre Dame ... Recorded 14 points and seven rebounds against Kansas ... Led MSU with a career-high 25 points vs. Marquette, including hitting 6-of-10 3-pointers ... Scored 17 of his 19 points in the second half, hitting five second-half 3-pointers ... Posted his fifth-career double-double with 13 points and 11 rebounds against Santa Clara ... Totaled 12 points, six rebounds and seven assists against Loyola, adding two steals ... Scored 13 points vs. Duke ... Led MSU with six assists at Navy.

### Valentine's 2014-15 Game-by-Game Stats

Opponent	fg	3fg	ft	off-def	reb	pf	pts	ast	to	blk	stl	min
Navy (11/14)	* 2-10	1-5	0-0	1-2	3	2	5	6	3	1	1	36
vs. Duke (11/18)	* 4-9	1-4	4-4	1-3	4	4	13	3	5	0	0	27
Loyola (11/21)	* 5-10	2-5	0-0	0-6	6	1	12	7	3	0	2	30
Santa Clara (11/24)	* 5-14	1-5	2-2	3-8	11	2	13	6	3	0	1	30
vs. Rider (11/27)	* 6-13	5-8	2-2	1-4	5	1	19	2	2	0	0	32
vs. Marquette (11/28)	* 8-14	6-10	3-4	0-3	3	2	25	2	7	1	2	39
vs. Kansas (11/30)	* 5-8	3-5	1-2	2-5	7	3	14	0	3	0	1	32
at Notre Dame (12/3)	* 7-13	4-7	4-5	1-4	5	4	22	2	2	1	0	42
Arkansas-Pine Bluff (12/6)	* 3-6	2-3	0-0	1-5	6	1	8	8	1	2	1	29
Oakland (12/14)	* 7-12	5-6	0-0	1-2	3	1	19	4	1	0	1	28
Eastern Michigan (12/17)	* 2-6	1-4	0-0	2-5	7	3	5	8	2	1	1	33
Texas Southern (12/20)	* 4-9	2-5	5-5	1-5	6	5	15	2	2	0	0	34
The Citadel (12/22)	* 8-11	2-3	0-0	0-6	6	3	18	6	4	0	1	34
Maryland (12/30)	* 1-9	0-5	2-2	2-6	8	5	4	4	3	0	2	29
Indiana (1/5)	* 6-18	2-5	1-2	3-3	6	1	15	4	1	0	0	25
at Iowa (1/8)	* 6-14	4-7	2-2	3-6	9	4	18	6	1	0	1	32
Northwestern (1/11)	* 6-13	1-4	4-4	1-4	5	0	17	1	1	0	0	34
Maryland (1/17)	* 4-9	1-6	0-0	2-4	6	0	9	5	2	0	0	35

### Valentine's Career Stats

Year	GP/GS	Min./Avg	FG-FGA	FG%	3-Point-FG-FGA	3-Point-FG%	FT-FTA	FT%	OFF-DEF	REB	AVG	PF/D	A	TO	BL	ST	PTS	AVG
2012-13	36/15	749/20.8	69-155	.445	16-57	.281	26-39	.667	39-110	149	4.1	68/1	87	71	12	28	180	5.0
2013-14	38/33	1116/29.4	108-265	.408	43-114	.377	44-65	.677	47-181	228	6.0	98/2	144	69	12	37	303	8.0
2014-15	18/18	581/32.3	89-198	.449	43-97	.443	30-34	.882	24-82	106	5.9	42/2	76	46	6	14	251	13.9
<b>Totals</b>	<b>92/66</b>	<b>2446/26.6</b>	<b>266-618</b>	<b>.430</b>	<b>102-268</b>	<b>.381</b>	<b>100-138</b>	<b>.725</b>	<b>110-373</b>	<b>483</b>	<b>5.3</b>	<b>208/5</b>	<b>307</b>	<b>186</b>	<b>30</b>	<b>79</b>	<b>734</b>	<b>8.0</b>

### Career/Season Highs

#### Minutes

Career: 42 - at Notre Dame (12/3/14)

Season: 42 - at Notre Dame (12/3/14)

Big Ten: 38 - vs. Minnesota (1/11/14)

#### Points

Career: 25 - vs. Marquette (11/28/14)

Season: 25 - vs. Marquette (11/28/14)

Big Ten: 18 - at Iowa (1/8/15)

#### Rebounds

Career: 13 - vs. New Orleans (12/28/13)

Season: 11 - vs. Santa Clara (11/24/14)

Big Ten: 11 - twice, last vs. Penn State (2/6/14)

#### Assists

Career: 9 - vs. Iowa (3/6/14)

Season: 8 - twice, last vs. Eastern Michigan (12/17/14)

Big Ten: 9 - vs. Iowa (3/6/14)

#### Field Goals

Career: 8 - vs. Marquette (11/28/14)

Season: 8 - vs. Marquette (11/28/14)

Big Ten: 6 - four times, last vs. Northwestern (1/11/15)

#### Field Goal Attempts

Career: 18 - vs. Indiana (1/5/15)

Season: 18 - vs. Indiana (1/5/15)

Big Ten: 18 - vs. Indiana (1/5/15)

#### 3-Point Field Goals

Career: 6 - vs. Marquette (11/28/14)

Season: 6 - vs. Marquette (11/28/14)

Big Ten: 4 - at Iowa (1/8/15)

#### 3-Point FG Attempts

Career: 10 - vs. Marquette (11/28/14)

Season: 10 - vs. Marquette (11/28/14)

Big Ten: 7 - twice, last at Iowa (1/8/15)

#### Free Throws

Career: 7 - vs. Purdue (2/20/14)

Season: 5 - vs. Texas Southern (12/20/14)

Big Ten: 7 - vs. Purdue (2/20/14)

#### Free Throw Attempts

Career: 8 - vs. Illinois (1/31/13)

Season: 5 - twice, last vs. Texas Southern (12/20/14)

Big Ten: 8 - vs. Illinois (1/31/13)

#### Steals

Career: 4 - three times, last vs. Penn State (2/6/14)

Season: 2 - three times, last vs. Maryland (12/30/14)

Big Ten: 4 - twice, last vs. Penn State (2/6/14)

#### Blocks

Career: 2 - five times, last vs. Arkansas-Pine Bluff (12/6/14)

Season: 2 - vs. Arkansas-Pine Bluff (12/6/14)

Big Ten: 2 - twice, last vs. Ohio State (1/7/14)

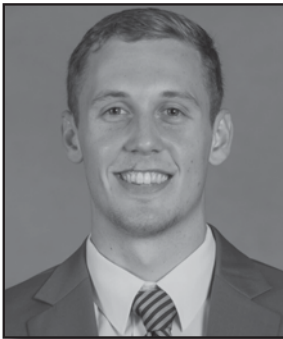
### Miscellaneous Stats (MSU's Record)

	Season	Career
Double-Figure Scoring	13 (9-4)	34 (27-7)
Double-Figure Rebounding	1 (1-0)	7 (7-0)
Double-Figure Assists	0 (0-0)	0 (0-0)
Double-Doubles	1 (1-0)	5 (5-0)
Led MSU in Scoring	6 (4-2)	6 (4-2)
Led MSU in Rebounding	1 (1-0)	17 (14-3)
Led MSU in Assists	6 (5-1)	31 (25-6)
20+ Point Games	2 (1-1)	2 (1-1)
30+ Point Games	0 (0-0)	0 (0-0)



# 41 COLBY WOLLENMAN

R-Junior • Forward • 6-7 • 230  
Big Horn, Wyo. • Big Horn



### Get To Know Colby

\* 2011 Milward Simpson Multi-Sport Athlete of the Year for the State of Wyoming, excelling in football, soccer and basketball

\* Originally came to MSU on an academic scholarship. Awarded athletic scholarship before this season

\* Pre-med student - recently excelled on his MCAT

### Last Time Out

\* 2 points (1-1 FG) vs. Maryland

### Career/Season Highs

#### Minutes

Career: 18 - vs. Kansas (11/30/14)  
Season: 18 - vs. Kansas (11/30/14)  
Big Ten: 9 - at Iowa (1/8/15)

#### Points

Career: 4 - three times, last vs. Oakland (12/14/14)  
Season: 4 - three times, last vs. Oakland (12/14/14)  
Big Ten: 2 - at Maryland (1/17/15)

#### Rebounds

Career: 5 - twice, last vs. Kansas (11/30/14)  
Season: 5 - twice, last vs. Kansas (11/30/14)  
Big Ten: 2 - at Iowa (1/8/15)

#### Assists

Career: 1 - four times, last vs. Indiana (1/5/15)  
Season: 1 - four times, last vs. Indiana (1/5/15)  
Big Ten: 1 - vs. Indiana (1/5/15)

#### Field Goals

Career: 2 - three times, last vs. Oakland (12/14/14)  
Season: 2 - three times, last vs. Oakland (12/14/14)  
Big Ten:

#### Field Goal Attempts

Career: 3 - twice, last vs. Oakland (12/14/14)  
Season: 3 - twice, last vs. Oakland (12/14/14)  
Big Ten: 1 - vs. Nebraska (2/25/14)

#### 3-Point Field Goals

Career:  
Season:  
Big Ten:

#### 3-Point FG Attempts

Career:  
Season:  
Big Ten:

#### Free Throws

Career: 2 - vs. Delaware (3/20/14)  
Season:  
Big Ten:

#### Free Throw Attempts

Career: 2 - three times, last vs. Santa Clara (11/24/14)  
Season: 2 - vs. Santa Clara (11/24/14)  
Big Ten:

#### Steals

Career:  
Season:  
Big Ten:

#### Blocks

Career: 1 - three times, last at Notre Dame (12/3/14)  
Season: 1 - three times, last at Notre Dame (12/3/14)  
Big Ten:

### Miscellaneous Stats (MSU's Record)

	Season	Career
Double-Figure Scoring	0 (0-0)	0 (0-0)
Double-Figure Rebounding	0 (0-0)	0 (0-0)
Double-Figure Assists	0 (0-0)	0 (0-0)
Double-Doubles	0 (0-0)	0 (0-0)
Led MSU in Scoring	0 (0-0)	0 (0-0)
Led MSU in Rebounding	0 (0-0)	0 (0-0)
Led MSU in Assists	0 (0-0)	0 (0-0)
20+ Point Games	0 (0-0)	0 (0-0)
30+ Point Games	0 (0-0)	0 (0-0)

**Capsule:** Joined the Spartans as a walk-on prior to the 2011-12 season ... Possesses good strength and a solid mid-range jump shot.

**2014-15 Notes:** Grabbed four rebounds vs. Texas Southern ... Scored four points and grabbed two rebounds against Oakland ... Played a career-high 18 minutes against Kansas, matching his career high with five rebounds ... Matched his career high with four points, adding a career-best five rebounds, in 15 minutes ... Grabbed four rebounds in eight minutes against Loyola ... Scored a career-high four points against Duke in six minutes - all coming in the first half ... Scored two points in five minutes at Navy.

### Wollenman's 2014-15 Game-by-Game Stats

Opponent	fg	3fg	ft	off-def	reb	pf	pts	ast	to	blk	stl	min
at Navy (11/14)	1-2	0-0	0-0	0-1	1 0	2	0	0	0	0	0	5
vs. Duke (11/18)	2-3	0-0	0-0	0-1	1 0	4	4	0	0	0	0	6
Loyola (11/21)	0-0	0-0	0-0	1-3	4 1	0	0	1	0	0	0	8
Santa Clara (11/24)	2-2	0-0	0-2	1-4	5 1	4	4	0	2	1	0	15
vs. Rider (11/27)	1-1	0-0	0-0	1-1	2 0	2	0	1	0	0	0	11
vs. Marquette (11/28)	0-0	0-0	0-0	0-1	1 0	0	0	1	0	0	0	6
vs. Kansas (11/30)	0-1	0-0	0-0	0-5	5 3	0	0	0	1	0	0	18
at Notre Dame (12/3)	1-1	0-0	0-0	0-0	0 0	2	0	0	1	0	0	2
Arkansas-Pine Bluff (12/6)	1-2	0-0	0-0	2-1	3 0	2	1	0	0	0	0	8
Oakland (12/14)	2-3	0-0	0-0	1-1	2 1	4	0	0	0	0	0	4
Eastern Michigan (12/17)	0-0	0-0	0-0	0-1	1 0	0	0	0	0	0	0	2
Texas Southern (12/20)	1-2	0-0	0-0	1-3	4 2	2	2	1	2	0	0	16
The Citadel (12/22)	0-1	0-0	0-0	0-1	1 2	0	1	1	0	0	0	12
Maryland (12/30)												DNP
Indiana (1/5)	0-0	0-0	0-0	0-0	0 0	0	0	1	0	0	0	2
at Iowa (1/8)	0-0	0-0	0-0	1-1	2 3	0	0	0	0	0	0	9
Northwestern (1/11)												DNP
Maryland (1/17)	1-1	0-0	0-0	0-0	0 1	2	0	0	0	0	0	4

### Wollenman's Career Stats

Year	GP/GS	Min./Avg	FG-FGA	FG%	-3-Point- FG-FGA	FG%	FT-FTA	FT%	OFF-DEF	REB	AVG	PF/D	A	TO	BL	ST	PTS	AVG
2011-12	9/0	10/1.1	1-2	.500	0-0	.000	0-0	.000	0-1	1	0.1	1/0	0	2	0	0	2	0.2
2012-13																		
					-- Redshirted --													
2013-14	12/0	25/2.1	1-2	.500	0-0	.000	3-5	.600	0-2	2	0.2	4/0	0	0	0	0	5	0.4
2014-15	16/0	128/8.0	12-19	.632	0-0	.000	0-2	.000	8-24	32	2.0	14/0	4	8	3	0	24	1.5
<b>Totals</b>	<b>37/0</b>	<b>163/4.4</b>	<b>14-23</b>	<b>.609</b>	<b>0-0</b>	<b>.000</b>	<b>3-7</b>	<b>.429</b>	<b>8-27</b>	<b>35</b>	<b>0.9</b>	<b>19/0</b>	<b>4</b>	<b>10</b>	<b>3</b>	<b>0</b>	<b>31</b>	<b>0.8</b>



# 13 TREVOR BOHNHOFF

Junior • Forward • 6-7 • 225  
Saginaw, Mich. • Nouvel



**Capsule:** Joined the Spartans as a walk-on during the 2012-13 season ... 2014 Academic All-Big Ten.

**2014-15 Notes:** Scored his first point of the season vs. Arkansas-Pine Bluff, hitting 1-of-2 free throws ... Played his first career first-half minutes against Kansas, grabbing one rebound.

**Career Highs**

**Minutes:** 3 - 3x, last vs. The Citadel (12/22/14)  
**Points:** 2 - twice, last vs. New Orleans (12/28/13)  
**Rebounds:** 1 - 6x, last vs. Kansas (11/30/14)  
**Assists:** 0  
**Field Goals:** 1 - vs. McNeese State (11/8/13)  
**FG Att.:** 1 - twice, last vs. Penn State (2/6/14)  
**3-Point Field Goals:** 0  
**3-Point FG Attempts:** 0  
**Free Throws:** 2 - vs. New Orleans (12/28/13)  
**FT Att.:** 2 - 5x, last vs. Oakland (12/14/14)  
**Steals:** 1 - vs. Wisconsin (3/7/13)  
**Blocks:** 0

**Bohnhoff's 2014-15 Game-by-Game Stats**

Opponent	fg	3fg	ft	off-def	reb	pf	pts	ast	to	blk	stl	min
Loyola (11/21)	0-0	0-0	0-0	0-0	0	0	0	0	0	0	0	2
Santa Clara (11/24)	0-0	0-0	0-0	0-0	0	0	0	0	0	0	0	2
vs. Rider (11/27)	0-0	0-0	0-0	0-0	0	0	0	0	0	0	0	3
vs. Kansas (11/30)	0-0	0-0	0-0	1-0	1	0	0	0	0	0	0	2
Arkansas-Pine Bluff (12/6)	0-0	0-0	1-2	0-0	0	0	1	0	0	0	0	2
Oakland (12/14)	0-0	0-0	1-2	0-0	0	0	1	0	0	0	0	3
The Citadel (12/22)	0-0	0-0	0-0	0-0	0	0	0	0	0	0	0	3
Indiana (1/5)	0-0	0-0	0-0	0-0	0	0	0	0	0	0	0	1
Maryland (1/17)	0-0	0-0	0-0	0-0	0	0	0	0	0	0	0	1

**Bohnhoff's Career Stats**

Year	GP/GS	Min./Avg	FG-FGA	FG%	-3-Point- FG-FGA	FG%	FT-FTA	FT%	OFF-DEF	REB	AVG	PF/D	A	TO	BL	ST	PTS	AVG
2012-13	4/0	3/0.8	0-0	.000	0-0	.000	1-2	.500	1-0	1	0.3	0/0	0	0	0	1	1	0.3
2013-14	8/0	13/1.6	1-2	.500	0-0	.000	2-4	.500	3-1	4	0.5	2/0	0	0	0	0	4	0.5
2014-15	9/0	19/2.1	0-0	.000	0-0	.000	2-4	.500	1-0	1	0.1	0/0	0	0	0	0	2	0.2
Totals	21/0	35/1.7	1-2	.500	0-0	.000	5-10	.500	5-1	6	0.3	2/0	0	0	0	1	7	0.3

# 15 KEENAN WETZEL

R-Senior • Guard • 6-4 • 210  
Monroe, Mich. • St. Mary Catholic Cent.



**Capsule:** Joined the Spartans as a walk-on prior to the 2011-12 season ... Received his bachelor's degree as a media and information major in May 2014 and is currently pursuing a master's degree in advertising.

**2014-15 Notes:** Scored three points and grabbed two rebounds in a career-high nine minutes against Rider.

**Career Highs**

**Minutes:** 9 - vs. Rider (11/27/14)  
**Points:** 4 - vs. Mount St. Mary's (11/29/13)  
**Rebounds:** 2 - twice, last vs. Rider (11/27/14)  
**Assists:** 1 - vs. Virginia Tech (11/22/13)  
**Field Goals:** 2 - vs. Mount St. Mary's (11/29/13)  
**FG Att.:** 3 - vs. Mount St. Mary's (11/29/13)  
**3-Point FG:** 1 - 3x, last vs. Rider (11/27/14)  
**3-Point FG Att.:** 2 - vs. Rider (11/27/14)  
**Free Throws:** 1 - vs. Purdue (1/21/12)  
**FT Att.:** 2 - vs. Purdue (1/21/12)  
**Steals:** 0  
**Blocks:** 1 - vs. Oakland (11/23/12)

**Wetzel's 2014-15 Game-by-Game Stats**

Opponent	fg	3fg	ft	off-def	reb	pf	pts	ast	to	blk	stl	min
Loyola (11/21)	0-1	0-1	0-0	0-0	0	0	0	0	0	0	0	3
Santa Clara (11/24)	0-2	0-1	0-0	0-0	0	0	0	0	0	0	0	4
vs. Rider (11/27)	1-2	1-2	0-0	1-1	2	1	3	0	0	0	0	9
Arkansas-Pine Bluff (12/6)	0-0	0-0	0-0	0-1	1	0	0	0	1	0	0	5
Oakland (12/14)	0-1	0-1	0-0	0-0	0	0	0	0	0	0	0	4
Eastern Michigan (12/17)	0-1	0-1	0-0	0-0	0	1	0	0	0	0	0	1
Indiana (1/5)	0-1	0-1	0-0	0-0	0	0	0	0	0	0	0	1
Maryland (1/17)	0-0	0-0	0-0	0-0	0	0	0	0	0	0	0	1

**Wetzel's Career Stats**

Year	GP/GS	Min./Avg	FG-FGA	FG%	-3-Point- FG-FGA	FG%	FT-FTA	FT%	OFF-DEF	REB	AVG	PF/D	A	TO	BL	ST	PTS	AVG
2011-12	11/0	12/1.1	1-2	.500	1-2	.500	1-2	.500	0-0	0	0.0	1/0	0	1	0	0	4	0.4
2012-13	10/0	7/0.7	0-2	.000	0-2	.000	0-0	.000	0-2	2	0.2	1/0	0	1	1	0	0	0.0
2013-14	12/0	21/1.8	4-9	.444	1-3	.333	0-0	.000	3-1	4	0.3	3/0	1	0	0	0	9	0.8
2014-15	8/0	28/3.5	1-8	.125	1-7	.143	0-0	.000	1-2	3	0.4	2/0	0	1	0	0	3	0.4
Totals	41/0	68/1.7	6-21	.286	3-14	.214	1-2	.500	4-5	9	0.2	7/0	1	3	1	0	16	0.4

















## 2014-15 STATISTICS

### SEASON BOX SCORE

OVERALL RECORD: 12-6 (HOME: 8-2; AWAY: 2-2; NEUTRAL: 2-2)

BIG TEN RECORD: 3-2 (HOME: 2-1; AWAY: 1-1)

##	Player	GPGS	Total			3-PTS			Rebounds			PF	FO	A	TO	Blk	Stl	Pts	Avg							
			Min	Avg	FG FGA Pct	3FG FGA Pct	FT FTA Pct	Off	Def	Tot	Avg															
45	Valentine, Denzel	18	18	581	32.3	89	198	.449	43	97	.443	30	34	.882	24	82	106	5.9	42	2	76	46	6	14	251	13.9
20	Trice, Travis	18	17	596	33.1	83	213	.390	40	104	.385	42	58	.724	10	49	59	3.3	36	1	105	30	3	22	248	13.8
22	Dawson, Branden	15	13	427	28.5	79	158	.500	0	0	.000	14	36	.389	46	97	143	9.5	32	1	27	28	14	20	172	11.5
05	Forbes, Bryn	18	16	521	28.9	57	115	.496	37	80	.463	23	28	.821	3	21	24	1.3	28	0	22	16	2	12	174	9.7
10	Costello, Matt	18	6	349	19.4	56	91	.615	0	3	.000	27	38	.711	35	72	107	5.9	39	0	11	20	18	6	139	7.7
34	Schilling, Gavin	18	12	335	18.6	54	79	.684	0	0	.000	20	44	.455	31	49	80	4.4	45	1	7	22	16	5	128	7.1
00	Clark Jr., Marvin	18	5	213	11.8	41	76	.539	13	34	.382	17	22	.773	17	33	50	2.8	36	0	3	18	10	5	112	6.2
02	Bess, Javon	8	1	96	12.0	8	16	.500	0	1	.000	7	17	.412	11	15	26	3.3	10	0	12	2	2	4	23	2.9
11	Nairn Jr., Lourawls	18	1	314	17.4	12	42	.286	0	3	.000	8	17	.471	4	21	25	1.4	31	1	49	17	0	6	32	1.8
03	Ellis III, Alvin	12	1	118	9.8	5	21	.238	2	10	.200	9	15	.600	0	6	6	0.5	16	0	8	7	3	8	21	1.8
41	Wollenman, Colby	16	0	128	8.0	12	19	.632	0	0	.000	0	2	.000	8	24	32	2.0	14	0	4	8	3	0	24	1.5
15	Wetzel, Keenan	8	0	28	3.5	1	8	.125	1	7	.143	0	0	.000	1	2	3	0.4	2	0	0	1	0	0	3	0.4
13	Bohnhoff, Trevor	9	0	19	2.1	0	0	.000	0	0	.000	2	4	.500	1	0	1	0.1	0	0	0	0	0	0	2	0.2
TM TEAM.....															15	24	39	2.2	0		4				0	
Total.....		18				497	1036	.480	136	339	.401	199	315	.632	206	495	701	38.9	331	6	324	219	77	102	1329	73.8
Opponents.....		18				379	996	.381	102	340	.300	254	353	.720	173	396	569	31.6	320	-	197	213	51	103	1114	61.9

SCORE BY PERIODS:	1st	2nd	OT	2OT	Total
Michigan State	623	656	39	11	1329
Opponents	488	573	40	13	1114

DEADBALL REBOUNDS:	OFF	DEF	Total
Michigan State	52	0	52
Opponents	48	1	49

Team Statistics	MSU	OPP
<b>SCORING</b>	1329	1114
Points per game	73.8	61.9
Scoring margin	+11.9	-
<b>FIELD GOALS-ATT</b>	497-1036	379-996
Field goal pct	.480	.381
<b>3 POINT FG-ATT</b>	136-339	102-340
3-point FG pct	.401	.300
3-pt FG made per game	7.6	5.7
<b>FREE THROWS-ATT</b>	199-315	254-353
Free throw pct	.632	.720
F-Throws made per game	11.1	14.1
<b>REBOUNDS</b>	701	569
Rebounds per game	38.9	31.6
Rebounding margin	+7.3	-
<b>ASSISTS</b>	324	197
Assists per game	18.0	10.9
<b>TURNOVERS</b>	219	213
Turnovers per game	12.2	11.8
Turnover margin	-0.3	-
Assist/turnover ratio	1.5	0.9
<b>STEALS</b>	102	103
Steals per game	5.7	5.7
<b>BLOCKS</b>	77	51
Blocks per game	4.3	2.8
<b>WINNING STREAK</b>	0	-
Home win streak	2	-
<b>ATTENDANCE</b>	147970	78665
Home games-Avg/Game	10-14797	4-11963
Neutral site-Avg/Game	-	4-7703

### Michigan State Starting Lineups

Opponent	Guard	Guard	G/F	Forward	Center	Record w/
Navy	Trice	Ellis	Valentine	Dawson	Costello	1-0
Duke	Trice	Forbes	Valentine	Dawson	Costello	0-1
<b>Loyola</b>	<b>Trice</b>	<b>Forbes</b>	<b>Valentine</b>	<b>Dawson</b>	<b>Costello</b>	<b>1-1</b>
<b>Santa Clara</b>	<b>Trice</b>	<b>Forbes</b>	<b>Valentine</b>	<b>Clark Jr.</b>	<b>Costello</b>	<b>1-0</b>
vs. Rider	Trice	Forbes	Valentine	Clark Jr.	Costello	2-0
vs. Marquette	Trice	Forbes	Valentine	Clark Jr.	Costello	3-0
vs. Kansas	Trice	Forbes	Valentine	Dawson	Schilling	0-1
at Notre Dame	Trice	Forbes	Valentine	Dawson	Schilling	0-2
<b>Ark.-Pine Bluff</b>	<b>Trice</b>	<b>Forbes</b>	<b>Valentine</b>	<b>Dawson</b>	<b>Schilling</b>	<b>1-2</b>
<b>Oakland</b>	<b>Trice</b>	<b>Forbes</b>	<b>Valentine</b>	<b>Dawson</b>	<b>Schilling</b>	<b>2-2</b>
<b>Eastern Michigan</b>	<b>Trice</b>	<b>Forbes</b>	<b>Valentine</b>	<b>Dawson</b>	<b>Schilling</b>	<b>3-2</b>
<b>Texas Southern</b>	<b>Trice</b>	<b>Forbes</b>	<b>Valentine</b>	<b>Clark Jr.</b>	<b>Schilling</b>	<b>0-1</b>
<b>The Citadel</b>	<b>Trice</b>	<b>Forbes</b>	<b>Valentine</b>	<b>Clark Jr.</b>	<b>Schilling</b>	<b>1-1</b>
<b>Maryland</b>	<b>Trice</b>	<b>Forbes</b>	<b>Valentine</b>	<b>Dawson</b>	<b>Schilling</b>	<b>3-3</b>
<b>Indiana</b>	<b>Nairn</b>	<b>Forbes</b>	<b>Valentine</b>	<b>Dawson</b>	<b>Schilling</b>	<b>1-0</b>
at Iowa	Trice	Forbes	Valentine	Dawson	Schilling	4-3
<b>Northwestern</b>	<b>Trice</b>	<b>Forbes</b>	<b>Valentine</b>	<b>Dawson</b>	<b>Schilling</b>	<b>5-3</b>
at Maryland	Trice	Valentine	Bess	Dawson	Schilling	0-1
<b>Penn State</b>						
at Nebraska						
at Rutgers						
<b>Michigan</b>						
<b>Illinois</b>						
at Northwestern						
<b>Ohio State</b>						
at Michigan						
at Illinois						
<b>Minnesota</b>						
at Wisconsin						
<b>Purdue</b>						
at Indiana						

## 2014-15 STATISTICS

SEASON BOX SCORE - CONFERENCE GAMES ONLY

BIG TEN RECORD: 3-2 (HOME: 2-1; AWAY: 1-1)

##	Player	GPGS	Total			3-PTS			Rebounds				PF	FO	A	TO	Blk	Stl	Pts	Avg
			Min	Avg	FG FGA Pct	3FG FGA Pct	FT FTA Pct	Off	Def	Tot	Avg									
20	Trice, Travis	5 4	174	34.8	23 63 .365	12 31 .387	22 29 .759	3 11	14	2.8	12	0	28	7	0	9	80	16.0		
22	Dawson, Branden	5 5	174	34.8	30 57 .526	0 0 .000	4 13 .308	18 40	58	11.6	11	1	7	11	8	6	64	12.8		
45	Valentine, Denzel	5 5	155	31.0	23 63 .365	8 27 .296	9 10 .900	11 23	34	6.8	10	1	20	8	0	3	63	12.6		
05	Forbes, Bryn	5 4	147	29.4	14 28 .500	8 16 .500	6 8 .750	0 4	4	0.8	10	0	5	7	2	4	42	8.4		
34	Schilling, Gavin	5 5	100	20.0	14 22 .636	0 0 .000	6 10 .600	9 14	23	4.6	14	1	2	8	4	2	34	6.8		
10	Costello, Matt	5 0	102	20.4	11 23 .478	0 1 .000	6 10 .600	6 18	24	4.8	8	0	3	4	6	1	28	5.6		
11	Nairn Jr., Lourawls	5 1	76	15.2	7 19 .368	0 1 .000	1 2 .500	0 2	2	0.4	12	1	8	1	0	2	15	3.0		
02	Bess, Javon	5 1	55	11.0	5 8 .625	0 0 .000	1 5 .200	3 5	8	1.6	4	0	9	2	1	2	11	2.2		
00	Clark Jr., Marvin	5 0	29	5.8	4 9 .444	0 3 .000	2 2 1.000	3 2	5	1.0	6	0	1	2	2	0	10	2.0		
03	Ellis III, Alvin	5 0	44	8.8	1 4 .250	0 2 .000	3 6 .500	0 2	2	0.4	7	0	2	2	1	2	5	1.0		
41	Wollenman, Colby	3 0	15	5.0	1 1 1.000	0 0 .000	0 0 .000	1 1	2	0.7	4	0	1	0	0	0	2	0.7		
15	Wetzel, Keenan	2 0	2	1.0	0 1 .000	0 1 .000	0 0 .000	0 0	0	0.0	0	0	0	0	0	0	0	0.0		
13	Bohnhoff, Trevor	2 0	2	1.0	0 0 .000	0 0 .000	0 0 .000	0 0	0	0.0	0	0	0	0	0	0	0	0.0		
TM TEAM.....											4	7	11	2.2			0			
<b>Total.....</b>			<b>5</b>		<b>133 298 .446</b>	<b>28 82 .341</b>	<b>60 95 .632</b>	<b>58 129 187 37.4</b>	<b>98 4 86 54 24 31</b>	<b>354 70.8</b>										
<b>Opponents.....</b>			<b>5</b>		<b>106 274 .387</b>	<b>34 104 .327</b>	<b>85 107 .794</b>	<b>48 126 174 34.8</b>	<b>88 - 56 58 16 18</b>	<b>331 66.2</b>										

SCORE BY PERIODS:	1st	2nd	OT	2OT	Total
Michigan State	144	180	19	11	354
Opponents	153	153	12	13	331

DEADBALL REBOUNDS:	OFF	DEF	Total
Michigan State	15	0	15
Opponents	13	1	14

Team Statistics	MSU	OPP
SCORING	354	331
Points per game	70.8	66.2
Scoring margin	+4.6	-

FIELD GOALS-ATT	133-298	106-274
Field goal pct	.446	.387
3 POINT FG-ATT	28-82	34-104
3-point FG pct	.341	.327
3-pt FG made per game	5.6	6.8
FREE THROWS-ATT	60-95	85-107
Free throw pct	.632	.794
F-Throws made per game	12.0	17.0

REBOUNDS	187	174
Rebounds per game	37.4	34.8
Rebounding margin	+2.6	-

ASSISTS	86	56
Assists per game	17.2	11.2

TURNOVERS	54	58
Turnovers per game	10.8	11.6
Turnover margin	+0.8	-
Assist/turnover ratio	1.6	1.0

STEALS	31	18
Steals per game	6.2	3.6

BLOCKS	24	16
Blocks per game	4.8	3.2

WINNING STREAK	0	-
Home win streak	2	-

ATTENDANCE	44391	33004
Home games-Avg/Game	3-14797	2-16502
Neutral site-Avg/Game	-	0-0

### Michigan State Firsts

Opponent	First Points	How	Time	First Sub	Time
at Navy	Denzel Valentine	Jumper	19:54	Bryn Forbes	17:02
vs. Duke	Denzel Valentine	Jumper	19:29	Gavin Schilling	16:45
Lovola	Matt Costello	Layup	19:17	Clark Jr./Schilling	15:44
Santa Clara	Marvin Clark Jr.	3-Pointer	19:40	Nairn Jr./Schilling	16:13
vs. Rider	Travis Trice	3-Pointer	19:07	Branden Dawson	16:50
vs. Marquette	Marvin Clark Jr.	Layup	17:57	Schilling/Dawson/Nairn Jr.	16:20
vs. Kansas	Denzel Valentine	3-Pointer	17:42	Matt Costello	18:36
at Notre Dame	Denzel Valentine	Jumper	19:50	Ellis/Costello	15:58
Ark.-Pine Bluff	Branden Dawson	Layup	19:36	Clark Jr./Costello/Nairn Jr.	16:29
Oakland	Travis Trice	3-Pointer	19:20	Costello	17:44
Eastern Michigan	Bryn Forbes	3-Pointer	19:02	Matt Costello	16:34
Texas Southern	Gavin Schilling	Free Throw	18:06	Colby Wollenman	18:06
The Citadel	Gavin Schilling	Free Throw	19:02	Alvin Ellis III	19:02
Maryland	Gavin Schilling	Layup	19:20	Matt Costello	16:10
Indiana	Denzel Valentine	Free Throw	18:57	Costello/Trice	15:25
at Iowa	Branden Dawson	Dunk	19:49	Matt Costello	17:26
Northwestern	Gavin Schilling	Layup	18:58	Nairn Jr./Costello	17:02
at Maryland	Branden Dawson	Jumper	17:37	Forbes/Costello/Nairn Jr.	16:51
<b>Penn State</b>					
at Nebraska					
at Rutgers					
<b>Michigan</b>					
<b>Illinois</b>					
at Northwestern					
<b>Ohio State</b>					
at Michigan					
at Illinois					
<b>Minnesota</b>					
at Wisconsin					
<b>Purdue</b>					
at Indiana					

## 2014-15 RESULTS

OVERALL RECORD: 12-6 (HOME: 8-2; AWAY: 2-2; NEUTRAL: 2-2)

BIG TEN RECORD: 3-2 (HOME: 2-1; AWAY: 1-1)

Date	Opponent	Result	Attend.	Points Leader	Rebounds Leader	Assists Leader
11/14	# at Navy (18/-)	W, 64-59	5,699	Trice (25)	Dawson (8)	Valentine (6)
11/18	+ vs. Duke (19/4)	L, 81-71	19,306	Dawson (18)	Dawson (9)	Trice (8)
11/21	Loyola (19/-)	W, 87-52	14,797	Dawson/Clark Jr. (15)	Costello (11)	Three tied with 7
11/24	\$ Santa Clara (20/-)	W, 79-52	14,797	Trice (19)	Valentine/Schilling (11)	Trice (8)
11/27	% vs. Rider (20/-)	W, 77-45	3,216	Valentine (19)	Costello (9)	Trice (4)
11/28	% vs. Marquette (20/-)	W, 79-68	3,449	Valentine (25)	Dawson (8)	Trice (7)
11/30	% vs. Kansas (20/11)	L, 61-56	4,842	Trice/Valentine (14)	Dawson (9)	Trice (2)
12/3	@ at Notre Dame (19/-)	L, 79-78, OT	9,149	Valentine (22)	Dawson (18)	Trice (5)
12/6	Ark.-Pine Bluff (19/-)	W, 85-52	14,797	Trice/Costello (15)	Dawson (7)	Valentine (8)
12/14	Oakland	W, 87-61	14,797	Valentine (19)	Dawson/Schilling (6)	Trice (8)
12/17	Eastern Michigan (25/-)	W, 66-46	14,797	Forbes (14)	Costello (9)	Valentine (8)
12/20	Texas Southern (25/-)	L, 64-71, OT	14,797	Costello (17)	Costello (10)	Trice/Bess (3)
12/22	The Citadel	W, 82-56	14,797	Valentine (18)	Clark Jr./Valentine (6)	Trice (11)
12/30	* Maryland (-/12)	L, 66-68, 2OT	14,797	Trice (26)	Dawson (11)	Trice (6)
1/5	* Indiana	W, 70-50	14,797	Valentine (15)	Dawson (13)	Trice (7)
1/8	* at Iowa	W, 75-61	15,054	Trice (25)	Dawson (15)	Valentine (6)
1/11	* Northwestern	W, 84-77, OT	14,797	Trice (18)	Dawson (9)	Trice (10)
1/17	* at Maryland (-/14)	L, 59-75	17,950	Dawson (14)	Dawson (10)	Valentine (5)
1/21	* Penn State					
1/24	* at Nebraska					
1/27	* at Rutgers					
2/1	* Michigan					
2/7	* Illinois					
2/10	* at Northwestern					
2/14	* Ohio State					
2/17	* at Michigan					
2/22	* at Illinois					
2/26	* Minnesota					
3/1	* at Wisconsin					
3/4	* Purdue					
3/7	* at Indiana					

Associated Press rankings in parentheses (MSU/Opp.)

# - Veterans Classic

+ - Champions Classic (United Center, Chicago, Ill.)

\$ - Orlando Classic (East Lansing)

% - Orlando Classic (Lake Buena Vista, Fla.)

@ - Big Ten/ACC Challenge

\* - indicates Big Ten Conference game

Attendance Summary	Totals	Avg./Game
HOME (10 games)	147,970	14,797
AWAY (4 games)	47,852	11,963
NEUTRAL (4 games)	30,813	7,703
TOTAL (18 games)	226,635	12,591

## TEAM SUPERLATIVES

MICHIGAN STATE	HIGH	LOW
Points	87 Twice, MR: vs. OAKLAND (12/14)	56 vs. Kansas (11/30)
First-Half Points	54 vs. ARK.-PINE BLUFF (12/6)	14 vs. MARYLAND (12/30)
Second-Half Points	50 vs. THE CITADEL (12/22)	20 vs. Kansas (11/30)
Winning Margin	35 vs. LOYOLA (11/21)	5 at Navy (11/14)
Field Goals	36 vs. LOYOLA (11/21)	19 vs. Kansas (11/30)
Field Goal Attempts	66 vs. SANTA CLARA (11/24)	45 vs. Marquette (11/28)
Field Goal Percentage	.632 vs. LOYOLA (11/21)	.322 vs. Kansas (11/30)
3-Point Field Goals	12 Four times, MR: at Iowa (1/8)	3 Twice, MR: at Maryland (1/17)
3-Point Field Goal Attempts	25 vs. Rider (11/27)	11 THE CITADEL (12/22)
3-Point Field Goal Percentage (min. 10 att.)	.706 at Iowa (1/8)	.176 at Maryland (1/17)
Free Throws Made	19 Twice, MR: vs. NORTHWESTERN (1/11)	4 at Maryland (1/17)
Free Throw Attempts	28 vs. MARYLAND (12/30)	9 at Notre Dame (12/3)
Free Throw Percentage (min. 10 att.)	.833 vs. Marquette (11/28)	.308 at Maryland (1/17)
Rebounds	52 vs. SANTA CLARA (11/24)	28 vs. Marquette (11/28)
Offensive Rebounds	21 vs. SANTA CLARA (11/24)	5 vs. Marquette (11/28)
Defensive Rebounds	35 vs. EASTERN MICHIGAN (12/17)	21 vs. NORTHWESTERN (1/11)
Personal Fouls	27 vs. MARYLAND (12/30)	13 vs. LOYOLA (11/21)
Assists	27 Twice, MR: vs. ARK.-PINE BLUFF (12/6)	5 vs. Kansas (11/30)
Turnovers	18 vs. ARK.-PINE BLUFF (12/6)	7 Twice, MR: vs. NORTHWESTERN (1/11)
Blocked Shots	10 vs. SANTA CLARA (11/24)	0 vs. Duke (11/18)
Steals	11 vs. MARYLAND (12/30)	2 Twice, MR: at Notre Dame (12/3)

OPPONENTS	HIGH	LOW
Points	81 vs. Duke (11/18)	45 vs. Rider (11/27)
First-Half Points	40 3X, MR: at Maryland (1/17)	11 vs. Rider (11/27)
Second-Half Points	41 vs. Duke (11/18)	22 at Iowa (1/8)
Winning Margin	16 at Maryland (1/17)	1 at Notre Dame (12/3)
Field Goals	27 vs. Duke (11/18)	14 vs. EASTERN MICHIGAN (12/17)
Field Goal Attempts	62 Three times, MR: vs. EMU (12/17)	47 vs. TEXAS SOUTHERN (12/20)
Field Goal Percentage (min. 10 att.)	.540 vs. Duke (11/18)	.226 vs. EASTERN MICHIGAN (12/17)
3-Point Field Goals	12 vs. NORTHWESTERN (1/11)	1 vs. Rider (11/27)
3-Point Field Goal Attempts	25 vs. NORTHWESTERN (1/11)	12 Twice, MR: at Iowa (1/8)
3-Point Field Goal Percentage (min. 10 att.)	.524 at Maryland (1/17)	.077 vs. Rider (11/27)
Free Throws Made	26 vs. MARYLAND (12/30)	5 vs. LOYOLA (11/21)
Free Throw Attempts	32 vs. MARYLAND (12/30)	8 vs. LOYOLA (11/21)
Free Throw Percentage (min. 10 att.)	.917 vs. SANTA CLARA (11/24)	.571 vs. ARK.-PINE BLUFF (12/6)
Rebounds	52 vs. MARYLAND (12/30)	19 vs. THE CITADEL (12/22)
Offensive Rebounds	17 vs. Rider (11/27)	4 vs. THE CITADEL (12/22)
Defensive Rebounds	40 vs. MARYLAND (12/30)	15 Twice, vs. THE CITADEL (12/22)
Personal Fouls	24 vs. MARYLAND (12/30)	13 vs. INDIANA (1/5)
Assists	18 at Navy (11/14)	3 vs. Rider (11/27)
Turnovers	21 vs. MARYLAND (12/30)	4 at Notre Dame (12/3)
Blocked Shots	8 vs. EASTERN MICHIGAN (12/17)	0 vs. Marquette (11/28)
Steals	15 vs. ARK.-PINE BLUFF (12/6)	1 vs. NORTHWESTERN (1/11)



## INDIVIDUAL SUPERLATIVES

### MICHIGAN STATE HIGHS

<b>Points</b>	26. Travis Trice vs. Maryland (12/30)
<b>Field Goals</b>	8. Five times
<b>Field Goal Attempts</b>	22. Travis Trice vs. Maryland (12/30)
<b>FG Pct. (min. 5 made)</b>	1.000 (7-7), Bryn Forbes vs. Notre Dame (12/3)
<b>3-Point Field Goals</b>	7. Travis Trice vs. Iowa (1/8)
<b>3-Point FG Attempts</b>	11. Twice
<b>3-Point FG Pct. (min. 5 made)</b>	.875 (7-8), Travis Trice vs. Iowa (1/8)
<b>Free Throws</b>	9. Travis Trice vs. Maryland (12/30)
<b>Free Throw Attempts</b>	10. Twice
<b>Free Throw Pct. (min. 5 made)</b>	1.000 (6-6), Matt Costello vs. E. Michigan (12/17)
<b>Rebounds</b>	18. Branden Dawson vs. Notre Dame (12/3)
<b>Assists</b>	11. Travis Trice vs. The Citadel (12/22)
<b>Turnovers</b>	7. Denzel Valentine vs. Marquette (11/28)
<b>Blocked Shots</b>	4. Twice
<b>Steals</b>	4. Travis Trice vs. Maryland (12/30)
<b>Minutes Played</b>	44. Travis Trice vs. Maryland (12/30)

### OPPONENT HIGHS

<b>Points</b>	27. Jerian Grant, Notre Dame (12/3)
<b>Field Goals</b>	9. Jerian Grant, Notre Dame (12/3)
<b>Field Goal Attempts</b>	17. Twice
<b>FG Pct. (min. 5 made)</b>	.833 (5-6), Edward Alade, Navy (11/14)
<b>3-Point Field Goals</b>	6. Melo Trimble, Maryland (1/17)
<b>3-Point FG Attempts</b>	11. Melo Trimble, Maryland (1/17)
<b>3-Point FG Pct. (min. 3 made)</b>	.750 (3-4), Twice
<b>Free Throws</b>	12. Melo Trimble, Maryland (12/30)
<b>Free Throw Attempts</b>	14. Melo Trimble, Maryland (12/30)
<b>Free Throw Pct. (min. 5 made)</b>	1.000 (7-7), Tyus Jones, Duke (11/18)
<b>Rebounds</b>	12. Jake Layman, Maryland (1/17)
<b>Assists</b>	6. Four times
<b>Turnovers</b>	7. Twice
<b>Blocked Shots</b>	4. Cliff Alexander, Kansas (11/30)
<b>Steals</b>	5. Marcel Mosley, Ark.-Pine Bluff (12/6)
<b>Minutes Played</b>	45. Twice

## MICHIGAN STATE'S TOP INDIVIDUAL GAMES

### POINTS

26.....	Travis Trice vs. Maryland (12/30)
25.....	Travis Trice at Iowa (1/8)
25.....	Denzel Valentine vs. Marquette (11/28)
25.....	Travis Trice at Navy (11/14)
22.....	Denzel Valentine vs. Notre Dame (12/3)
19.....	Denzel Valentine vs. Oakland (12/14)
19.....	Travis Trice vs. Marquette (11/28)
19.....	Denzel Valentine vs. Rider (11/27)
19.....	Travis Trice vs. Santa Clara (11/24)
18.....	Five Occasions

### REBOUNDS

18.....	Branden Dawson vs. Notre Dame (12/3)
15.....	Branden Dawson at Iowa (1/8)
13.....	Branden Dawson vs. Indiana (1/5)
11.....	Branden Dawson vs. Maryland (12/30)
11.....	Gavin Schilling vs. Santa Clara (11/24)
11.....	Branden Dawson vs. Santa Clara (11/24)
11.....	Matt Costello vs. Loyola (11/21)
10.....	Branden Dawson at Maryland (1/17)
10.....	Matt Costello vs. Texas Southern (12/20)

### ASSISTS

11.....	Travis Trice vs. The Citadel (12/22)
10.....	Travis Trice vs. Northwestern (1/11)
8.....	Denzel Valentine vs. Eastern Michigan (12/17)
8.....	Travis Trice vs. Oakland (12/14)
8.....	Denzel Valentine vs. Ark.-Pine Bluff (12/6)
8.....	Travis Trice vs. Santa Clara (11/24)
8.....	Travis Trice vs. Duke (11/18)
7.....	Five Occasions

### BLOCKED SHOTS

4.....	Branden Dawson at Maryland (1/17)
4.....	Marvin Clark Jr. vs. Santa Clara (11/24)
3.....	Gavin Schilling vs. Marquette (11/28)
3.....	Matt Costello vs. Rider (11/27)

### STEALS

4.....	Travis Trice vs. Maryland (12/30)
3.....	Travis Trice vs. Northwestern (1/11)
3.....	Travis Trice vs. Texas Southern (12/20)
3.....	Branden Dawson vs. Oakland (12/14)
3.....	Branden Dawson at Navy (11/14)

### MINUTES

44.....	Travis Trice vs. Maryland (12/30)
43.....	Travis Trice vs. Northwestern (1/11)
43.....	Branden Dawson vs. Maryland (12/30)
42.....	Denzel Valentine vs. Notre Dame (12/3)
40.....	Bryn Forbes vs. Maryland (12/30)
39.....	Branden Dawson vs. Notre Dame (12/3)
39.....	Denzel Valentine vs. Marquette (11/28)
37.....	Bryn Forbes vs. Notre Dame (12/3)
37.....	Travis Trice vs. Notre Dame (12/3)
37.....	Travis Trice vs. Marquette (11/28)

## GAME-BY-GAME TEAM STATISTICS

	Pts.	1st	2nd	OT	2OT	FG-A	Pct.	3FG-A	Pct.	FT-A	Pct.	Off-Def-Tot	PF	A	TO	BLK	ST
Michigan State	64	36	28	--	--	25-53	.472	8-19	.421	6-10	.600	8-30-38	13	18	15	4	6
at Navy	59	29	30	--	--	24-59	.407	5-17	.294	6-10	.600	8-22-30	17	18	10	2	8
Duke	81	40	41	--	--	27-50	.540	7-14	.500	20-26	.769	5-20-25	16	15	8	5	6
vs. Michigan State	71	33	38	--	--	30-60	.500	5-20	.250	6-10	.600	13-22-35	22	15	13	0	2
Loyola	52	14	38	--	--	20-58	.345	7-20	.350	5-8	.625	8-15-23	18	13	16	1	5
at Michigan State	87	38	49	--	--	36-57	.632	9-18	.500	6-13	.462	8-32-40	13	27	15	5	6
Santa Clara	52	14	38	--	--	18-62	.290	5-22	.227	11-12	.917	13-21-34	18	6	13	3	6
at Michigan State	79	40	39	--	--	29-66	.439	12-30	.400	9-17	.529	21-31-52	15	22	12	10	4
Rider	45	11	34	--	--	16-62	.258	1-13	.077	12-19	.632	17-21-38	18	3	11	1	7
vs. Michigan State	77	32	45	--	--	27-55	.491	12-25	.480	11-15	.733	9-33-42	20	16	14	3	4
Marquette	68	34	34	--	--	25-56	.446	6-14	.429	12-18	.667	12-17-29	17	13	12	0	8
vs. Michigan State	79	35	44	--	--	26-45	.578	12-23	.522	15-18	.833	5-23-28	18	14	16	6	7
Kansas	61	35	26	--	--	20-54	.370	3-14	.214	18-27	.667	13-31-44	17	8	12	5	3
vs. Michigan State	56	36	20	--	--	19-59	.322	6-17	.353	12-17	.706	10-26-36	22	5	7	4	5
Michigan State	78	35	32	11	--	32-65	.492	9-17	.529	5-9	.556	18-25-43	22	16	12	5	2
at Notre Dame	79	37	30	12	--	26-56	.464	7-23	.304	20-25	.800	8-18-26	14	7	4	3	7
Arkansas-Pine Bluff	52	20	32	--	--	17-55	.309	6-24	.250	12-21	.571	11-17-28	23	9	17	3	15
at Michigan State	85	54	31	--	--	30-50	.600	10-18	.556	15-27	.556	10-32-42	14	27	18	5	8
Oakland	61	31	30	--	--	21-53	.396	5-20	.250	14-22	.636	8-24-32	17	15	15	1	4
at Michigan State	87	44	43	--	--	34-61	.557	10-17	.588	9-19	.474	9-28-37	18	25	8	1	10
Eastern Michigan	46	19	27	--	--	14-62	.226	4-22	.182	14-19	.737	13-26-39	19	8	11	8	6
at Michigan State	66	34	32	--	--	20-53	.377	7-21	.333	19-25	.760	12-35-47	19	17	12	5	4
Texas Southern	71	25	30	16	--	25-47	.532	4-12	.333	17-26	.654	5-23-28	21	11	11	2	7
at Michigan State	64	30	25	9	--	24-61	.393	4-21	.190	12-21	.571	18-22-40	22	13	13	3	5
The Citadel	56	26	30	--	--	20-48	.417	8-21	.381	8-13	.615	4-15-19	17	15	15	1	3
at Michigan State	82	32	50	--	--	32-53	.604	4-11	.364	14-19	.737	8-26-34	15	23	10	2	8
Maryland	68	17	31	7	13	19-57	.333	4-22	.182	26-32	.813	12-40-52	24	8	21	4	7
at Michigan State	66	14	34	7	11	21-65	.323	5-22	.227	19-28	.679	8-28-36	27	15	13	5	11
Indiana	50	17	33	--	--	17-60	.283	5-24	.208	11-13	.846	11-17-28	13	8	6	1	4
at Michigan State	70	36	34	--	--	28-60	.467	5-15	.333	9-16	.563	17-33-50	15	21	11	7	5
Michigan State	75	28	47	--	--	27-53	.509	12-17	.709	9-12	.750	8-27-35	21	19	11	3	5
at Iowa	61	39	22	--	--	22-51	.431	2-12	.167	15-24	.625	8-21-29	14	12	9	4	4
Northwestern	77	40	32	5	--	26-55	.473	12-25	.480	13-16	.813	7-24-31	20	17	14	1	1
at Michigan State	84	40	32	12	--	31-62	.500	3-11	.273	19-26	.731	11-21-32	14	18	7	1	6
Michigan State	59	26	33	--	--	26-58	.448	3-17	.176	4-13	.308	14-20-34	21	13	12	8	4
at Maryland	75	40	35	--	--	22-51	.431	11-21	.524	20-22	.909	10-24-34	17	11	8	6	2
Penn State at Michigan State																	
Michigan State at Nebraska																	
Michigan State at Rutgers																	
Michigan at Michigan State																	
Illinois at Michigan State																	
Michigan State at Northwestern																	
Ohio State at Michigan State																	
Michigan State at Michigan																	
Michigan State at Illinois																	
Minnesota at Michigan State																	
Michigan State at Wisconsin																	
Purdue at Michigan State																	
Michigan State at Indiana																	

POINTS-REBOUNDS-ASSISTS

Opponent	0-Clark Jr.	2-Bess	3-Ellis III	5-Forbes	10-Costello	11-Nairn Jr.	13-Bohnhoff	15-Weitzel	20-Trice	22-Dawson	34-Schilling	41-Wollenman	45-Valentine
at Navy	5-6-0	DNP-INJ	0-0-1	5-0-0	6-7-0	0-3-4	DNP	DNP	25-5-5	12-8-2	4-3-0	2-1-0	5-3-6
vs. Duke	2-3-0	DNP-INJ	DNP-INJ	9-2-0	6-4-0	2-1-2	DNP	DNP	15-6-8	18-9-1	2-3-1	4-1-0	13-4-3
Loyola	15-3-0	DNP-INJ	DNP-INJ	8-1-2	13-11-1	3-1-7	0-0-0	0-0-0	13-2-7	15-7-3	8-3-0	0-4-0	12-6-7
Santa Clara	15-4-0	DNP-INJ	DNP-INJ	10-4-2	2-9-2	2-3-4	0-0-0	0-0-0	19-3-8	DNP-ILL	14-11-0	4-5-0	13-11-6
vs. Rider	8-3-2	DNP-INJ	DNP-INJ	15-1-2	6-9-1	1-1-2	0-0-0	3-2-0	10-6-4	3-6-3	10-6-0	2-2-0	19-5-2
vs. Marquette	10-1-0	DNP-INJ	DNP-INJ	9-0-0	4-5-0	2-1-3	DNP	DNP	19-6-7	5-8-2	5-0-0	0-1-0	25-3-2
vs. Kansas	0-0-0	DNP-INJ	DNP-INJ	7-2-1	4-3-1	3-0-1	0-1-0	DNP	14-4-2	8-9-0	6-4-0	0-5-0	14-7-0
at Notre Dame	0-1-0	DNP-INJ	0-0-0	18-1-2	4-3-0	0-2-3	DNP	DNP	7-2-5	16-18-2	9-6-2	2-0-0	22-5-2
Ark.-Pine Bluff	10-5-0	DNP-INJ	2-0-0	12-2-4	15-5-0	1-1-6	1-0-0	0-1-0	15-4-3	12-7-4	7-5-1	2-3-1	8-6-8
Oakland	12-4-0	DNP-INJ	2-3-4	12-2-1	11-3-1	1-5-5	1-0-0	0-0-0	6-3-8	15-6-2	4-6-0	4-2-0	19-3-4
Eastern Michigan	11-6-0	1-5-0	3-1-0	14-3-0	10-9-1	0-1-1	DNP	0-0-0	13-1-6	4-7-1	5-3-0	0-1-0	5-7-8
Texas Southern	2-3-0	3-8-3	3-0-0	6-1-1	17-10-0	1-2-2	DNP	DNP	6-1-3	DNP-INJ	9-3-1	2-4-1	15-6-2
The Citadel	12-6-0	8-5-0	6-0-1	7-1-2	13-5-1	1-2-1	0-0-0	DNP	6-2-11	DNP-INJ	11-4-0	0-1-1	18-6-6
Maryland	0-0-0	0-2-0	2-1-1	9-0-2	9-6-0	0-1-0	DNP	DNP	26-0-6	9-11-2	7-6-0	DNP	4-8-4
Indiana	2-2-1	4-3-1	1-1-1	9-0-1	2-7-1	7-0-2	0-0-0	0-0-0	6-5-7	14-13-2	10-9-0	0-0-1	15-6-4
at Iowa	2-0-0	0-1-3	0-0-0	8-0-0	2-3-1	4-0-2	DNP	DNP	25-2-4	14-15-2	2-0-1	0-2-0	18-9-6
Northwestern	6-2-0	1-0-1	0-0-0	11-4-2	3-1-0	2-1-2	DNP	DNP	18-2-10	13-9-1	13-6-1	DNP	17-5-1
at Maryland	0-1-0	6-2-4	2-0-0	5-0-0	12-7-1	2-0-2	0-0-0	0-0-0	5-5-1	14-10-0	2-2-0	2-0-0	9-6-5
Penn State													
at Nebraska													
at Rutgers													
Michigan													
Illinois													
at Northwestern													
Ohio State													
at Michigan													
at Illinois													
Minnesota													
at Wisconsin													
Purdue													
at Indiana													

SPECIALTY STATS

Opponent	Points off TO (MSU-Opp.)	Points In Paint (MSU-Opp.)	2nd Chance Points (MSU-Opp.)	Fast Break Points (MSU-Opp.)	Bench Points (MSU-Opp.)	Largest Lead	Largest Deficit	Lead Changes	Ties
at Navy	10-19	26-30	4-7	7-7	16-17	13 (42-29)	4 (14-18)	6	4
vs. Duke	4-24	34-38	11-3	16-16	10-7	--	14 (63-77)	0	1
Loyola	14-14	46-14	10-3	14-5	26-22	39 (74-35)	--	0	0
Santa Clara	17-15	24-24	17-10	19-13	20-15	37 (72-35)	--	0	0
vs. Rider	12-11	24-18	8-14	6-0	19-12	35 (56-21)	--	0	0
vs. Marquette	16-20	18-36	4-9	4-6	12-15	16 (65-49)	5 (4-9)	5	5
vs. Kansas	13-8	20-24	7-12	6-2	7-12	7 (23-16)	8 (46-54)	4	5
at Notre Dame	4-16	30-32	15-11	2-10	6-2	7 (54-47)	7 (28-35)	11	9
Ark.-Pine Bluff	26-14	34-12	8-4	17-13	31-2	37 (65-28)	--	0	0
Oakland	15-6	36-28	15-12	25-8	31-24	29 (87-58)	3 (12-15)	3	5
Eastern Michigan	9-14	24-16	11-2	16-10	25-17	24 (66-42)	--	0	2
Texas Southern	4-15	32-36	18-11	7-4	26-38	8 (50-42)	8 (60-68)	3	4
The Citadel	17-13	44-16	5-2	30-3	28-11	34 (70-36)	3 (0-3)	5	2
Maryland	20-8	26-24	8-6	10-14	11-18	5 (40-35)	8 (7-15)	13	8
Indiana	12-12	30-20	17-3	23-10	15-16	30 (50-20)	1 (1-2)	2	1
at Iowa	12-10	24-30	11-4	6-4	8-18	17 (72-55)	11 (28-39)	2	2
Northwestern	22-10	34-26	12-4	13-10	12-28	14 (23-9)	4 (49-53)	6	11
at Maryland	8-20	38-20	14-13	6-0	23-11	5 (10-5)	21 (42-63)	2	0
Penn State									
at Nebraska									
at Rutgers									
Michigan									
Illinois									
at Northwestern									
Ohio State									
at Michigan									
at Illinois									
Minnesota									
at Wisconsin									
Purdue									
at Indiana									

