

MINNESOTA



Gopher Women's Hockey Release: Oct. 1, 2015

6 national titles • 11 NCAA Frozen Four appearances • 9 WCHA regular season titles • 6 WCHA Final Face-Off titles • 34 All-American honors • 27 Patty Kazmaier Award finalists

University of Minnesota Athletic Communications | 244 Bierman Field Athletic Building, 516 15th Avenue SE, Minneapolis, MN 55455 | GopherSports.com
 Contact: Mandy Hansen | Email: hans1758@umn.edu | Phone: 612-889-7696 | Twitter/Instagram: @GopherWHockey | Facebook.com/GopherWomensHockey

2015-16 SCHEDULE/RESULTS

Record: 0-0-0 • WCHA Record: 0-0-0-0

DATE	OPPONENT	TIME/RESULT
9/25	MINNESOTA WHITECAPS (EXH)	W, 5-4
10/1	at Penn State	6 p.m. CT
10/2	at Penn State	6 p.m. CT
10/9	ST. CLOUD STATE*	7:07 p.m. CT
10/10	ST. CLOUD STATE*	4:07 p.m. CT
10/16	at Ohio State*	5:07 p.m. CT
10/17	at Ohio State*	1:07 p.m. CT
10/23	MINNESOTA DULUTH*	6:07 p.m. CT
10/24	MINNESOTA DULUTH*	4:07 p.m. CT
10/29	at North Dakota*	7:07 p.m. CT
10/30	at North Dakota*	7:07 p.m. CT
11/13	BEMIDJI STATE*	7:07 p.m. CT
11/14	BEMIDJI STATE*	4:07 p.m. CT
11/20	YALE	7:07 p.m. CT
11/21	YALE	TBA
11/27	at Minnesota State*	2:07 p.m. CT
11/28	at Minnesota State*	2:07 p.m. CT
12/4	at Wisconsin*	7:07 p.m. CT
12/5	at Wisconsin*	3:07 p.m. CT
12/11	vs. St. Cloud State^	6:30 p.m. CT
1/6	MINNESOTA WHITECAPS (EXH)	7 p.m. CT
1/9	OHIO STATE*	2:07 p.m. CT
1/10	OHIO STATE*	2:07 p.m. CT
1/16	MINNESOTA STATE*	2:07 p.m. CT
1/17	MINNESOTA STATE*	2:07 p.m. CT
1/22	at St. Cloud State*	3:07 p.m. CT
1/23	at St. Cloud State*	3:07 p.m. CT
1/29	at Bemidji State*	7:07 p.m. CT
1/30	at Bemidji State*	4:07 p.m. CT
2/5	NORTH DAKOTA*	6:07 p.m. CT
2/6	NORTH DAKOTA*	4:07 p.m. CT
2/12	at Minnesota Duluth*	7:07 p.m. CT
2/13	at Minnesota Duluth*	4:07 p.m. CT
2/19	WISCONSIN*	7:07 p.m. CT
2/20	WISCONSIN*	4:07 p.m. CT
2/26-28	WCHA First Round*	TBA
3/5-6	WCHA FINAL FACE-OFF [§]	TBA
3/12	NCAA First Round [§]	TBA
3/18-20	NCAA Frozen Four+	TBA

All times Central.

Home games in **BOLD CAPS** at Ridder Arena.

Rankings reflect USCHO.com poll at time of game.

* WCHA game

^{EXH} Exhibition game

[^] U.S. Hockey Hall of Fame game (OVAL, Roseville, Minn.)

[§] WCHA First Round (at top seeds)

[§] WCHA FINAL FACE-OFF (Ridder Arena, Minneapolis, Minn.)

[§] NCAA First Round (at top seeds)

⁺ NCAA Frozen Four (Whittemore Center Arena, Durham, N.H.)

GAMES 1-2: NO. 1 MINNESOTA AT PENN STATE

OCT. 1-2, 2015 • PEGULA ICE ARENA (5,782) • UNIVERSITY PARK, PA.

Game 1: Thursday, Oct. 1, 2015 • 6 p.m. CT

Game 2: Friday, Oct. 2, 2015 • 6 p.m. CT

Coverage: Free Audio & Live Stats at GopherSports.com | @GopherWHockey on Twitter

NO. 1 MINNESOTA	PENN STATE
Rankings (USCHO/USA Today)..... 1/1	Rankings (USCHO/USA Today)..... NR/NR
2015-16 Record, WCHA..... 0-0-0 (0-0-0)	2014-15 Record, CHA..... 0-0-0 (0-0-0)
2014-15 Record, WCHA..... 34-3-4 (22-2-4)	2014-15 Record, CHA..... 17-16-4 (9-9-2)
Head Coach..... Brad Frost	Head Coach..... Josh Brandwene
Record..... 258-41-21 (9th Season)	Record..... 28-67-9 (4th Season)

Gophers to Begin National Title Defense on the Road

The No. 1 University of Minnesota women's hockey team begins the 2015-16 season and its national title defense on the road at Penn State in a Thursday-Friday series this week. Both games are scheduled for 6 p.m. CT at the Nittany Lions' Pegula Ice Arena.

Minnesota enters the 2015-16 season as the WCHA preseason favorite and ranks at the top of both the USCHO.com and USA Today/USA Hockey Magazine preseason national polls.

About the Series: Minnesota vs. Penn State

Thursday's game marks the second-ever meeting between Minnesota and Penn State in women's hockey. It is also a rematch of the Gophers' season-opener a year ago when the Maroon & Gold defeated the Nittany Lions, 8-0, at Ridder Arena. Hannah Brandt had three points, and Dani Cameranesi and Milica McMillen each scored twice to lead the Gophers offensively, while Sidney Peters made 15 saves in her first career start.

Scouting the Opponent: Penn State

The 2014-15 season marks the fourth year of Penn State women's hockey at the varsity level. The Nittany Lions (0-0-0) posted a 17-16-4 overall record and went 9-9-2 in CHA play last season. PSU returns 23 letterwinners and nine of its top-10 scorers from last season. Under fourth-year head coach Josh Brandwene, the Nittany Lions have added four newcomers and are captained by Jordin Pardoski (C), Shannon Yoxheimer (C), Laura Bowman (A) and Sarah Wilkie (A).

Last season's winning record for Penn State marked the program's first as an NCAA Division I program. The Nittany Lions' fourth-place finish in the CHA regular-season standings marked their highest conference regular-season finish in program history as well. Last year, Penn State was the most-improved NCAA team with four times as many wins as the 2013-14 season. The Nittany Lions swept Lindenwood (1-0, 3-1) to advance to the CHA semifinal but fell to No. 2 seed Syracuse, 2-0, to end the 2014-15 season.

Gophers Tune Up with 5-4 Exhibition Win

The Gophers defeated the Minnesota Whitecaps, 5-4, in an exhibition game at Ridder Arena last Friday. Hannah Brandt (2g-1a), Kelly Pannek (2g-1a) and Kate Schipper (1g-2a) each recorded three points, and Amanda Leveille and Sidney Peters split time in net.

Maroon & Gold Roster Breakdown

Minnesota returns 16 players from its 2015 national championship team, including seven of its top 10 scorers from a year ago led by senior Hannah Brandt and junior Dani Cameranesi. Brandt led the Gophers and ranked second in the nation with 74 points (34 goals, 40 assists), while Cameranesi posted her career-best 65 points (23 goals, 42 assists) as a sophomore in 2014-15.

The Gophers also return All-American defensemen Lee Stecklein and Milica McMillen to strengthen the blue line. The team will look to Megan Wolfe and Sydney Baldwin along with the addition of freshmen Sophie Skarzynski and Anna Barlow to further bolster the defensive corps.

Senior goaltender Amanda Leveille suits up for her final season in Maroon & Gold, following a junior season with a 1.18 GAA and a .946 save percentage. Leveille's goals against average

2015-16 SITUATIONAL RECORDS

Overall record	0-0-0
In home games	0-0-0
In road games	0-0-0
At neutral sites	0-0-0
Against USCHO.com poll ranked opponents	0-0-0
Against WCHA opponents	0-0-0
Against ECAC Hockey teams	0-0-0
Against CHA teams	0-0-0
Against Hockey East teams	0-0-0
In non-conference games	0-0-0
In overtime games	0-0-0
In day games (4:07 p.m. or earlier)	0-0-0
In night games	0-0-0
Minnesota scores first	0-0-0
Opponent scores first	0-0-0
Minnesota leads at 1st intermission	0-0-0
Minnesota trails at 1st intermission	0-0-0
Tied at 1st intermission	0-0-0
Minnesota leads at 2nd intermission	0-0-0
Minnesota trails at 2nd intermission	0-0-0
Tied at 2nd intermission	0-0-0
Minnesota leads in shots	0-0-0
Minnesota trails in shots	0-0-0
Shots are even	0-0-0
Minnesota has 0-19 shots	0-0-0
Minnesota has 20-29 shots	0-0-0
Minnesota has 30-39 shots	0-0-0
Minnesota has 40-49 shots	0-0-0
Minnesota has 50 or more shots	0-0-0
Minnesota allows 0-19 shots	0-0-0
Minnesota allows 20-29 shots	0-0-0
Minnesota allows 30-39 shots	0-0-0
Minnesota allows 40-49 shots	0-0-0
Minnesota allows 50 or more shots	0-0-0
Minnesota scores on power play	0-0-0
Minnesota is scoreless on power play	0-0-0
Opponent scores on power play	0-0-0
Opponent is scoreless on power play	0-0-0
Scoring 1 goal	0-0-0
Scoring 2 goals	0-0-0
Scoring 3 goals	0-0-0
Scoring 4 goals	0-0-0
Scoring 5 goals	0-0-0
Scoring 6 goals	0-0-0
Scoring 7+ goals	0-0-0
Allowing 1 goal	0-0-0
Allowing 2 goals	0-0-0
Allowing 3 goals	0-0-0
Allowing 4 goals	0-0-0
Allowing 5 goals	0-0-0
Allowing 6 goals	0-0-0
Allowing 7+ goals	0-0-0
In one-goal games	0-0-0
In two-goal games	0-0-0
In three-goal games	0-0-0
On Monday	0-0-0
On Tuesday	0-0-0
On Wednesday	0-0-0
On Thursday	0-0-0
On Friday	0-0-0
On Saturday	0-0-0
On Sunday	0-0-0
In October	0-0-0
In November	0-0-0
In December	0-0-0
In January	0-0-0
In February	0-0-0
In March	0-0-0
Current overall streak	3-0-0
Home unbeaten streak	15-0-2 (11/22/14-present)
Road winning streak (not incl. neutral sites)	3-0-0 (2/7/15-present)

ranked third in the national rankings, while her save percentage ranked second in the NCAA in 2014-15.

The 2015-16 season marks Brad Frost's ninth season as the head coach of the Gophers. Frost enters his ninth year at the helm with an overall record of 258-41-21 (.839). Frost needs just 21 wins to surpass Laura Halldorson (278-67-22) as the winningest coach in Gopher women's hockey history.

Brandt Poised to Make History

Hannah Brandt enters her senior season as the NCAA's active career scoring leader with 221 career points (90 goals, 131 assists). She ranks fifth in Minnesota history and 16th in NCAA history. Brandt needs just 26 points to surpass Natalie Darwitz (246 points) as the Gophers' all-time career scoring leader.

Gophers Add Nine Newcomers

Minnesota has added nine newcomers for 2015-16, made up of seven true freshmen and two transfers. The newest Gophers are Anna Barlow (South St. Paul, Minn.), Tianna Gunderson (Roseau, Minn.), Emma May (Eagan, Minn.), Sarah Potomak (Aldergrove, B.C.), Caitlin Reilly (Chanhassen, Minn.), Sophie Skarzynski (Lake Forest, Ill.), Nicole Schammel (Red Wing, Minn.), Sierra Smith (Stillwater, Minn.), and Taylor Williamson (Edina, Minn.). Reilly, a transfer from Penn State, and Schammel, a transfer from Minnesota State, join the Maroon & Gold as sophomores. Schammel will sit out the 2015-16 season due to WCHA in-league transfer rules.

A Look at the 2015-16 Schedule

Minnesota's 2015-16 schedule features two exhibition games against the Minnesota Whitecaps, the U.S. Hockey Hall of Fame Game, an always-challenging WCHA slate, and the return of the WCHA FINAL FACEOFF to Ridder Arena. In addition to Penn State, the Gophers' non-conference schedule also includes a series against Yale at Ridder Arena Nov. 20-21.

Duo Set to Captain Minnesota

Senior Hannah Brandt and junior Lee Stecklein have been named Minnesota's captains this season. Brandt enters her first season as a team captain, and Stecklein was an assistant captain last year.

Brandt, Potomak Collect WCHA Preseason Honors

Gopher senior Hannah Brandt was named the WCHA Preseason Player of the Year for the third-straight season, and Minnesota rookie Sarah Potomak took home WCHA Preseason Rookie of the Year honors. In addition, the Gophers were selected as the league's preseason favorite, collecting six first-place votes and 48 total points in the annual preseason poll of the WCHA's eight head coaches.

Looking Back at Minnesota's Sixth National Title

Minnesota capped its 2014-15 season by winning the program's third NCAA title in the last four years and its sixth overall national crown. The Gophers finished the season with an overall record of 34-3-4. Last season's Gophers also captured the program's ninth WCHA regular-season title.

Top-seeded Minnesota defeated No. 3 seed Harvard by a score of 4-1 in the 2015 NCAA Women's Frozen Four national championship game at Ridder Arena. Minnesota advanced to its fourth-straight NCAA title game with a 3-1 win over fourth-seeded Wisconsin in front of a sold-out crowd at Ridder Arena in the Frozen Four semifinal round.

Minnesota in Season-Openers

The Gophers are 17-1-0 in season-openers, including a 6-0-0 mark in season-opening games on the road. Most recently, Minnesota defeated Colgate, 3-1, to open the 2013-14 season.

Home, Sweet Home

The Gophers ended the 2014-15 season on a 17-game home unbeaten streak (15-0-2). The Gophers are 63-2-4 in their last 69 home games, dating back to Feb. 18, 2012. In 2014-15, Minnesota was 19-1-3 at home and led the nation in attendance, averaging 1,634 fans per game and 2,037 fans per home game.

Minnesota is 130-6-5 in the team's last 141 games, a stretch that includes an NCAA-record 62-game winning streak (Feb. 28, 2012 through Nov. 17, 2013).

Up Next: Gophers Host St. Cloud State

Minnesota opens WCHA play at home by hosting St. Cloud State at Ridder Arena next weekend. Puck drop is scheduled for 7 p.m. CT Friday, Oct. 9 and 4 p.m. CT Saturday, Oct. 10.

Fans can take advantage of a Break the Ice BOGO ticket special, enjoying the start of the season with buy one, get one free tickets for the series. Buy one ticket to the Oct. 9 game and get one free for Oct. 10. Join the team in celebrating the 2015 NCAA title with a banner-raising ceremony prior to Friday's game at Ridder Arena as well.

GOPHERS IN THE RANKINGS

2014-15 WCHA FINAL STANDINGS

Team	WCHA			Overall			
	Pts	GP	W-L-T-SW	GF-GA	GP	W-L-T	GF-GA
1. Minnesota	72	28	22-2-4-2	116-36	41	34-3-4	184-48
2. Wisconsin	61	28	19-6-3-1	89-36	40	29-7-4	138-45
3. North Dakota	53	28	16-9-3-2	67-43	37	22-12-3	97-59
4. UMD	48	28	14-10-4-2	68-56	37	20-12-5	98-70
5. Bemidji State	41	28	13-14-1-1	58-57	39	21-17-1	86-70
6. Ohio State	40	28	12-13-3-1	60-61	36	17-16-3	82-76
7. St. Cloud State	17	28	5-22-1-1	28-98	37	8-28-1	45-127
8. Minn. State	4	28	1-26-1-0	30-129	36	3-32-1	42-160

USCHO.COM DIV. I WOMEN'S POLL

2015 Preseason Poll: Sept. 21, 2015

Rk.	Team (1st place votes)	Record	Pts.	Last Rk.
1.	Minnesota (15)	34-3-4	150	1
2.	Boston College	34-3-2	128	3
3.	Wisconsin	29-7-4	124	4
4.	Harvard	27-6-3	101	2
5.	Clarkson	24-11-3	84	7
6.	North Dakota	22-12-3	64	8
7.	Quinnipiac	26-9-3	56	6
8.	Boston University	25-9-3	49	5
9.	Bemidji State	21-17-1	25	10
10.	Cornell	19-11-3	18	9

Others receiving votes: Northeastern 11, Mercyhurst 6, Minnesota Duluth 5, St. Lawrence 4.

USA TODAY/USA HOCKEY MAG. POLL

2015 Preseason Poll: Sept. 29, 2015

Rk.	Team (1st place votes)	Pts.	Last Rk.	Record
1.	Minnesota (19)	190	1	0-0-0
2.	Boston College	162	4	0-0-0
3.	Wisconsin	155	3	0-0-0
4.	Harvard	134	2	0-0-0
5.	Clarkson	111	7	0-0-0
6.	North Dakota	80	8	0-0-0
7.	Quinnipiac	78	6	0-0-0
8.	Boston University	64	5	0-0-0
T9.	Bemidji State	23	10	1-0-1
T9.	Northeastern	23	—	1-0-1

Others receiving votes: Cornell 14, Mercyhurst 5, Minnesota Duluth 3, Syracuse 2, St. Lawrence 1.

GOPHERS IN THE NATIONAL RANKINGS

Date: Preseason USCHO/USA Today 1/1

2015-16 GOPHER WOMEN'S HOCKEY SUPERLATIVES

FASTEST GOAL SCORED IN A PERIOD

Gophers _____

Opponent _____

FASTEST FIRST GOAL SCORED IN A GAME

Gophers _____

Opponent _____

LATEST GOAL SCORED IN A PERIOD

Gophers _____

Opponent _____

LATEST FIRST GOAL SCORED IN A GAME

Gophers _____

Opponent _____

MOST GOALS SCORED IN A PERIOD

Gophers _____

Opponent _____

Combined _____

MOST GOALS SCORED IN A GAME

Gophers _____

Opponent _____

Combined _____

MINNESOTA IN SEASON-OPENERS • Overall: 17-1-0 • Road: 6-0-0

YEAR	OPPONENT	RESULT	YEAR	OPPONENT	RESULT
1997-98	AUGSBURG	W, 8-0	2006-07	MAINE	W, 5-2
1998-99	at Minnesota State	W, 11-1	2007-08	NORTHEASTERN	W, 5-3
1999-00	ST. CLOUD STATE	W, 10-1	2008-09	ROBERT MORRIS	L, 2-3
2000-01	at St. Cloud State	W, 4-1	2009-10	SYRACUSE	W, 4-3
2001-02	MINNESOTA STATE	W, 2-0	2010-11	at Clarkson	W, 5-0
2002-03	at Univ. of Findlay	W, 8-1	2011-12	UNION	W, 6-1
2003-04	OHIO STATE	W, 6-3	2012-13	COLGATE	W, 7-0
2004-05	at North Dakota	W, 8-0	2013-14	at Colgate	W, 3-1
2005-06	CONNECTICUT	W, 3-0	2014-15	PENN STATE	W, 8-0

THE LAST TIME MINNESOTA...

Won at homevs. Harvard (W, 4-1), March 22, 2015
Lost at home vs. Bemidji State (L, 1-0), Nov. 1, 2014
Tied at homevs. Ohio State (T, 3-3), Jan. 30, 2015
Won on the road..... at Bemidji State (W, 4-2), Feb. 21, 2015
Lost on the road.....at North Dakota (L, 3-0), Feb. 6, 2015
Tied on the road.....at Minnesota Duluth (T, 3-3), Oct. 11, 2014
Won at a neutral site vs. St. Cloud State at Braemar Arena (W, 5-0), Nov. 24, 2014
Lost at a neutral site..... vs. Bemidji State at Grand Forks, N.D. (L, 1-0), March 7, 2015
Tied at a neutral site.....vs. Niagara at Durham, N.H. (T, 2-2), March 24, 2002
Swept a regular-season home series.....vs. Minnesota Duluth (W, 7-1; W, 2-0), Feb. 13-14, 2015
Was swept in a regular-season home series..... vs. North Dakota (L, 4-3; L, 3-1), Oct. 15-16, 2010
Swept a regular-season road series.....at Bemidji State (W, 3-2; W, 4-2), Feb. 20-21, 2015
Was swept in a regular-season road series.....at Minnesota Duluth (L, 3-2; L, 4-2), Oct. 29-30, 2010
Won a WCHA regular-season game at Bemidji State (W, 4-2), Feb. 21, 2015
Lost a WCHA regular-season gameat North Dakota (L, 3-0), Feb. 6, 2015
Tied a WCHA regular-season gamevs. Ohio State (T, 3-3), Jan. 30, 2015
Won a non-conference gamevs. Harvard (W, 4-1), March 22, 2015
Lost a non-conference gamevs. Bemidji State (L, 1-0), March 7, 2015
Tied a non-conference game vs. Harvard (T, 0-0), Dec. 5, 2009
Won in overtimeat Wisconsin (W, 2-1, OT), Oct. 18, 2014
Lost in overtimevs. North Dakota (L, 2-1, OT), Feb. 17, 2012
Won a shootout.....vs. Ohio State (T, 3-3), Jan. 30, 2015
Lost a shootout vs. Bemidji State (T, 2-2), Oct. 31, 2014
Defeated a USCHO-ranked opponent..... vs. No. 4 Harvard (W, 4-1), March 22, 2015
Scored in first 2:00.....vs. Ohio State (Lorence, 1:30), Jan. 30, 2015
Allowed a goal in first 2:00at Bemidji State (Grenier, 1:59), Feb. 21, 2015
Shut out an opponent.....vs. Minnesota State (W, 10-0), Feb. 27, 2015
Was shut outvs. Bemidji State (L, 1-0), March 7, 2015
Scored one goal vs. Wisconsin (T, 1-1), Jan. 11, 2015
Scored two goals.....vs. Minnesota Duluth (W, 2-0), Feb. 14, 2015
Scored three goals.....vs. Wisconsin (W, 3-1), March 20, 2015
Scored four goals.....vs. Harvard (W, 4-1), March 22, 2015
Scored five goals.....vs. Minnesota State (W, 5-1), Feb. 28, 2015
Scored six goalsvs. RIT (W, 6-2), March 14, 2015
Scored seven goals..... vs. Minnesota Duluth (W, 7-1), Feb. 13, 2015
Scored eight goalsvs. Penn State (W, 8-0), Oct. 3, 2014
Scored nine goals at Ohio State (W, 9-2), Dec. 7, 2013
Scored 10 or more goals.....vs. Minnesota State (W, 10-0), Feb. 27, 2015
Allowed one goalvs. Harvard (W, 4-1), March 22, 2015
Allowed two goals.....vs. RIT (W, 6-2), March 14, 2015
Allowed three goals.....at North Dakota (L, 3-0), Feb. 6, 2015
Allowed four goals..... at Ohio State (W, 7-4), Feb. 11, 2012
Allowed five goals.....vs. Clarkson (L, 5-4), March 23, 2014
Allowed six goalsat St. Cloud State (L, 6-3), Feb. 13, 2010
Allowed seven goals..... at Minnesota Duluth (L, 7-1), Feb. 17, 2007
Allowed eight goals vs. Harvard (L, 8-3), Nov. 7, 1999
Allowed nine or more goals.....vs. Beatrice Aeros (L, 9-0), Jan. 31, 1999
Scored one power-play goalvs. Wisconsin (W, 3-1), March 20, 2015
Scored two power-play goals.....at North Dakota (W, 3-1), Feb. 7, 2015
Scored three power-play goals..... vs. RIT (W, 6-2), March 14, 2015
Scored four or more power-play goals..... vs. St. Cloud State, (W, 12-0), Dec. 5, 2014
Allowed one power-play goalvs. RIT (W, 6-2), March 14, 2015
Allowed two power-play goals..... at Ohio State (W, 4-2), Nov. 14, 2014
Allowed three power-play goals..... vs. North Dakota (W, 6-3), Jan. 12, 2013
Allowed four or more power-play goals.....vs. Ohio State, (W, 9-5), Nov. 4, 2005
Scored a shorthanded goal..... Lee Stecklein vs. RIT (W, 6-2), March 14, 2015
Allowed a shorthanded goal.....at North Dakota (Amy Menke), (L, 3-0), Feb. 6, 2015
Scored an empty-net goal Rachael Bona vs. Harvard (W 4-1), March 22, 2015
Allowed an empty-net goal in a gameat North Dakota (Amy Menke), (L, 3-0), Feb. 6, 2015
Scored a hat trick..... Hannah Brandt vs. Minnesota State, Feb. 27, 2015
Scored a natural hat trick Dani Cameranesi at Wisconsin, Oct. 17, 2014
Allowed a hat trick at Minnesota Duluth (Haley Irwin), (L, 4-2) Oct. 30, 2010
Scored four goals..... Amanda Kessel vs. North Dakota, Jan. 11, 2013
Scored five or more goalsNadine Muzerall vs. Bemidji State, Jan. 22, 2000
Had five different goal scorers..... vs. Minnesota State (W, 7-3), Jan. 16, 2015
Had six different goal scorersvs. RIT (W, 6-2), March 14, 2015
Had seven different goal scorers..... vs. Minnesota Duluth (W, 7-1), Feb. 13, 2015
Had eight different goal scorers..... vs. St. Cloud State (W, 12-0), Dec. 5, 2014
Had nine different goal scorersvs. Princeton (W, 9-1), Dec. 1, 2013
Had 10 or more different goal scorers..... vs. Wisconsin (W, 10-0), Feb. 7, 1998
Scored on a penalty shot Emily West vs. Wisconsin, March 18, 2012
Attempted a penalty shot Rachael Bona at Minnesota Duluth, Oct. 10, 2014
Allowed a penalty shot goal.....vs. Bemidji State (Erin Cody), (W, 4-1), Feb. 11, 2011
Opponent attempted a penalty shot.....vs. Bemidji State (Erin Cody), (W, 4-1), Feb. 11, 2011
Goaltender made 50 or more savesNoora Rätty (50) vs. North Dakota, March 16, 2013
Opponent made 50 or more saves..... vs. Minn. State (Erin Krichiver, 54), (W, 7-3), Jan. 16, 2015

2015-16 GOPHER AWARD WINNERS

WCHA PRESEASON AWARDS

Player of the Year: Hannah Brandt
Rookie of the Year: Sarah Potomak

2014-15 GOPHER AWARD WINNERS

WCHA OFFENSIVE PLAYER OF THE WEEK

Oct. 21: Dani Cameranesi
Oct. 28: Hannah Brandt
Nov. 18: Meghan Lorence
Nov. 25: Dani Cameranesi
Dec. 9: Hannah Brandt
Jan. 7: Rachael Bona (Co-Player of the Week)
Jan. 13: Hannah Brandt
Jan. 20: Maryanne Menefee
Feb. 17: Dani Cameranesi
Feb. 24: Dani Cameranesi

WCHA DEFENSIVE PLAYER OF THE WEEK

Oct. 7: Lee Stecklein
Oct. 21: Amanda Leveille (Co-Player of the Week)
Oct. 28: Milica McMillen

WCHA ROOKIE OF THE WEEK

Nov. 25: Kelly Pannek
Dec. 9: Kelly Pannek
Jan. 7: Kelly Pannek

PATTY KAZMAIER AWARD FINALISTS

Hannah Brandt (Top 3)
Dani Cameranesi (Top 10)
Rachel Ramsey (Top 10)

CCM DIVISION I ALL-AMERICANS

Hannah Brandt (First Team)
Dani Cameranesi (Second Team)
Rachel Ramsey (First Team)
Lee Stecklein (Second Team)

ALL-WCHA TEAMS

Hannah Brandt, Player of the Year (First Team)
Rachel Ramsey, Defensive Player of the Year (First Team)
Dani Cameranesi (First Team)
Lee Stecklein (First Team)
Milica McMillen (Second Team)
Rachael Bona (Third Team)
Sydney Baldwin (Rookie Team)
Kelly Pannek (Rookie Team)

WCHA SCHOLAR-ATHLETES

Rachael Bona
Hannah Brandt
Kelsey Cline
Sidney Peters
Kate Schipper
Lee Stecklein

WCHA ALL-ACADEMIC TEAM

Rachael Bona, Hannah Brandt, Dani Cameranesi, Kelsey Cline, Kate Flug, Paige Haley, Meghan Lorence, Milica McMillen, Maryanne Menefee, Sidney Peters, Rachel Ramsey, Kate Schipper, Shyler Sletta, Lee Stecklein

ALL-USCHO TEAM

Hannah Brandt (First Team)
Lee Stecklein (First Team)
Rachel Ramsey (Second Team)
Dani Cameranesi (Third Team)
Amanda Leveille (Third Team)
Kelly Pannek (Rookie Team)

FROZEN FOUR ALL-TOURNAMENT TEAM

Hannah Brandt (Most Outstanding Player)
Dani Cameranesi
Amanda Leveille
Maryanne Menefee
Megan Wolfe

GOPHER CAREER-BESTS: GAME & SERIES HIGHS

#2 Lee STECKLEIN

Goals: 1 (8X, last vs. RIT, 3/14/15)
Assists: 2 (7X, last vs. MSU, 2/27/15)
Points: 3 at New Hampshire, 11/24/12

Series Goals: 2 (2X, last vs. UMD, 2/13-14/15)
Series Assists: 4 (3X, last vs. PSU/BU, 10/3-4/14)
Series Points: 4 (2X, last vs. PSU/BU, 10/3-4/14)

#3 Anna BARLOW

Goals: ---
Assists: ---
Points: ---

Series Goals: ---
Series Assists: ---
Series Points: ---

#4 Tianna GUNDERSON

Goals: ---
Assists: ---
Points: ---

Series Goals: ---
Series Assists: ---
Series Points: ---

#5 Sophie SKARZYNSKI

Goals: ---
Assists: ---
Points: ---

Series Goals: ---
Series Assists: ---
Series Points: ---

#6 Kate SCHIPPER

Goals: 2 at UND, 2/1/14
Assists: 3 vs. BSU, 2/7/14
Points: 4 vs. BSU, 2/7/14

Series Goals: 2 (2X, last at OSU, 11/14-15/14)
Series Assists: 3 (3X, last vs. BSU, 2/7-8/14)
Series Points: 4 (2X, last at OSU, 11/14-15/14)

#7 Taylor WILLIAMSON

Goals: ---
Assists: ---
Points: ---

Series Goals: ---
Series Assists: ---
Series Points: ---

#9 Sydney BALDWIN

Goals: 2 vs. MSU, 2/27/15
Assists: 1 (5X, last at SCSU, 1/24/15)
Points: 3 vs. MSU, 2/27/15

Series Goals: 2 vs. MSU, 2/27-28/15
Series Assists: 1 (6X, last at SCSU, 1/23-24/15)
Series Points: 3 vs. MSU, 2/27-28/15

#10 Cara PIAZZA

Goals: 1 (10X, last vs. UMD, 2/13/15)
Assists: 2 vs. MSU, 2/27/15
Points: 3 vs. MSU, 2/27/15

Series Goals: 2 (2X, last vs. MSU, 1/16-17/15)
Series Assists: 2 vs. MSU, 2/27-28/15
Series Points: 3 vs. MSU, 2/27-28/15

#11 Kelsey CLINE

Goals: 1 (3X, last vs. PSU, 10/3/14)
Assists: 3 vs. SCSU, 12/6/14
Points: 3 vs. SCSU, 12/6/14

Series Goals: 1 (3X, last vs. PSU/BU, 10/3-4/14)
Series Assists: 3 vs. SCSU, 12/5-6/14
Series Points: 3 vs. SCSU, 12/5-6/14

#12 Megan WOLFE

Goals: 2 vs. UND, 11/16/13
Assists: 2 vs. MSU, 2/28/15
Points: 2 (5X, last at MSU, 2/28/15)

Series Goals: 2 vs. UND, 11/16-17/13
Series Assists: 4 vs. MSU, 2/27-28/15
Series Points: 4 vs. MSU, 2/27-28/15

#13 Milica MCMILLEN

Goals: 2 (4X, last vs. SCSU, 12/6/14)
Assists: 3 vs. BSU, 2/8/14
Points: 4 at OSU, 12/8/13

Series Goals: 3 (2X, last vs. UND, 10/24-25/14)
Series Assists: 5 vs. BSU, 2/7-8/14
Series Points: 5 (2X, last vs. BSU, 2/7-8/14)

#14 Maryanne MENEFFEE

Goals: 3 (2X, last vs. MSU, 1/16/15)
Assists: 3 (3X, last vs. MSU, 2/27/15)
Points: 4 (6X, last vs. MSU, 2/27/15)

Series Goals: 4 (2X, last vs. MSU, 1/16-17/15)
Series Assists: 3 (8X, last vs. MSU, 2/27-28/15)
Series Points: 7 vs. MSU, 1/16-17/15

#15 Paige HALEY

Goals: 1 vs. SCSU, 12/5/14
Assists: 2 vs. MSU, 2/27/15
Points: 2 vs. MSU, 2/27/15

Series Goals: 1 vs. SCSU, 12/5-6/14
Series Assists: 2 vs. MSU, 2/27-28/15
Series Points: 2 vs. MSU, 2/27-28/15

#17 Sierra SMITH

Goals: ---
Assists: ---
Points: ---

Series Goals: ---
Series Assists: ---
Series Points: ---

#18 Brook GARZONE

Goals: 1 (5X, last vs. UND, 11/16/13)
Assists: 2 (2X, last at OSU, 12/7/13)
Points: 2 (2X, last at OSU, 12/7/13)

Series Goals: 2 vs. MSU, 11/1-2/13
Series Assists: 2 (7X, last vs. MSU, 2/27-28/15)
Series Points: 2 (8X, last vs. MSU, 2/27-28/15)

#19 Kelly PANNEK

Goals: 3 (2X, last vs. SLU, 1/4/15)
Assists: 4 vs. SCSU, 12/5/14
Points: 5 vs. SLU, 1/4/15

Series Goals: 4 vs. SLU, 1/4-6/15
Series Assists: 6 vs. SCSU, 12/5-6/14
Series Points: 6 (2X, last vs. SLU, 1/4-6/15)

#20 Nina RODGERS

Goals: 2 vs. SCSU, 12/5/14
Assists: 1 (2X, last at SCSU, 1/24/15)
Points: 2 (2X, last at SCSU, 1/24/15)

Series Goals: 2 (2X, last at SCSU, 1/23-24/15)
Series Assists: 1 (2X, last at SCSU, 1/23-24/15)
Series Points: 2 (2X, last at SCSU, 1/23-24/15)

#21 Dani CAMERANESI

Goals: 3 (2X, last at MSU, 11/21/14)
Assists: 6 vs. SCSU, 12/5/14
Points: 6 (2X, last vs. MSU, 2/27/15)

Series Goals: 4 vs. MSU, 11/21-22/14
Series Assists: 6 (2X, last vs. SLU, 1/4-6/15)
Series Points: 7 vs. MSU, 2/27-28/15)

#22 Hannah BRANDT

Goals: 3 (4X, last vs. MSU, 2/27/15)
Assists: 6 vs. SCSU, 12/5/14
Points: 7 vs. SCSU, 12/5/14

Series Goals: 5 vs. Colgate, 9/28-29/12
Series Assists: 7 vs. SCSU, 12/5-6/14
Series Points: 9 (2X, last vs. SCSU, 12/5-6/14)

#23 Caitlin REILLY

Goals: ---
Assists: ---
Points: ---

Series Goals: ---
Series Assists: ---
Series Points: ---

#25 Nicole SCHAMMEL

Goals: ---
Assists: ---
Points: ---

Series Goals: ---
Series Assists: ---
Series Points: ---

#26 Sarah POTOMAK

Goals: ---
Assists: ---
Points: ---

Series Goals: ---
Series Assists: ---
Series Points: ---

#29 Amanda LEVILLIE

Saves: 40 at Wisconsin, 10/18/14
Shots Faced: 41 at Wisconsin, 10/18/14

Series Saves: 63 at Wisconsin, 10/17-18/14
Series Shots Faced: 65 at Wisconsin, 10/17-18/14

#31 Emma MAY

Saves: ---
Shots Faced: ---

Series Saves: ---
Series Shots Faced: ---

#37 Sidney PETERS

Saves: 19 (2X, last at BSU, 2/21/15)
Shots Faced: 21 (2X, last at BSU, 2/21/15)

Series Saves: ---
Series Shots Faced: ---

2015-16 MINNESOTA SCHEDULE/RESULTS

Date	Opponent	Time/Result	Goals (Season goals)	Goaltender, Saves	Attendance
9/25	MINNESOTA WHITECAPS!	W, 5-4	Pannek, Brandt, Brandt, Pannek ^{PPG} , Schipper	Leveille, 10; Peters, 3	500
10/1	at Penn State	6:00 p.m. CT			
10/2	at Penn State	6:00 p.m. CT			
10/9	ST. CLOUD STATE*	7:07 p.m. CT			
10/10	ST. CLOUD STATE*	4:07 p.m. CT			
10/16	at Ohio State*	5:07 p.m. CT			
10/17	at Ohio State*	1:07 p.m. CT			
10/23	MINNESOTA DULUTH*	6:07 p.m. CT			
10/24	MINNESOTA DULUTH*	4:07 p.m. CT			
10/29	at North Dakota*	7:07 p.m. CT			
10/30	at North Dakota*	7:07 p.m. CT			
11/13	BEMIDJI STATE*	7:07 p.m. CT			
11/14	BEMIDJI STATE*	4:07 p.m. CT			
11/20	YALE	7:07 p.m. CT			
11/21	YALE	TBA			
11/27	at Minnesota State*	2:07 p.m. CT			
11/28	at Minnesota State*	2:07 p.m. CT			
12/4	at Wisconsin*	7:07 p.m. CT			
12/5	at Wisconsin*	3:07 p.m. CT			
12/11	vs. St. Cloud State [^]	6:30 p.m. CT			
1/6	MINNESOTA WHITECAPS!	7:00 p.m. CT			
1/9	OHIO STATE*	2:07 p.m. CT			
1/10	OHIO STATE*	2:07 p.m. CT			
1/16	MINNESOTA STATE*	2:07 p.m. CT			
1/17	MINNESOTA STATE*	2:07 p.m. CT			
1/22	at St. Cloud State*	3:07 p.m. CT			
1/23	at St. Cloud State*	3:07 p.m. CT			
1/29	at Bemidji State*	7:07 p.m. CT			
1/30	at Bemidji State*	4:07 p.m. CT			
2/5	NORTH DAKOTA*	6:07 p.m. CT			
2/6	NORTH DAKOTA*	4:07 p.m. CT			
2/12	at Minnesota Duluth*	7:07 p.m. CT			
2/13	at Minnesota Duluth*	4:07 p.m. CT			
2/19	WISCONSIN*	7:07 p.m. CT			
2/20	WISCONSIN*	4:07 p.m. CT			
2/26-28	WCHA First Round %	TBA			
3/5-6	WCHA FINAL FACE-OFF \$	TBA			
3/12	NCAA First Round &	TBA			
3/18-20	NCAA Frozen Four +	TBA			

* WCHA game • % WCHA First-Round (Campus sites) • \$ WCHA FINAL FACE-OFF (Ridder Arena, Minneapolis) & NCAA Quarterfinal (Campus sites) • + NCAA Frozen Four (Durham, N.H.) • ^ U.S. Hockey Hall of Fame game (OVAL, Roseville, Minn.) • ! Exhibition game

Home games in **BOLD CAPS** at Ridder Arena.

Please note: **Bold** denotes game-winning goal; (#) denotes individual season goals; PPG denotes power-play goal; SHG denotes shorthanded goal; ENG denotes empty net goal; DPG denotes delayed penalty goal; HT denotes hat tricks; EX denotes extra attacker.

MINNESOTA QUICK FACTS

UNIVERSITY INFORMATION

School:	University of Minnesota
Location:	Minneapolis, Minn. 55455
Founded:	1851
Enrollment:	51,147
Nickname:	Golden Gophers
Colors:	Maroon and Gold
Conference:	Big Ten/WCHA (women's hockey)
Division:	NCAA I
President:	Dr. Eric Kaler
Interim Director of Athletics:	Beth Goetz
Assoc. Athletics Director - W Hockey:	Tom McGinnis

TEAM INFORMATION

2014-15 Overall record:	34-3-4
2014-15 WCHA record (finish):	22-2-4-2 (1st)
2014-15 WCHA Tournament:	Tied for third
2014-15 NCAA Tournament:	Champions
2014-15 Players returning/lost:	16/5
2015-16 Newcomers:	9

PROGRAM HISTORY

First season:	1997-98 (17th season)
All-time record:	536-108-43 (.811)
WCHA record:	334-63-31 (.817)
WCHA postseason record:	39-11-0 (.780)
WCHA regular season titles:	9 (2001,02,04,05,09,10,13,14,15)
WCHA tournament titles:	6 (2002, 04, 05, 12, 13, 14)
NCAA berths:	13 (2002,03,04,05,06,08,09,10,11,12,13,14,15)
National titles:	6 (2000, 04, 05, 12, 13, 15)
NCAA postseason record (since 2000-01):	20-9-1
NCAA Frozen Four record (since 2000-01):	12-7-1

COACHING STAFF

Head Coach:	Brad Frost
Alma Mater:	Bethel, 1996
Career Record:	258-41-21 (9th season)
WCHA Record:	177-29-18-9
Associate Head Coach:	Joel Johnson (Bethel, 1996)
Assistant Coach:	Nadine Muzerall (Minnesota, 2001)
Volunteer Assistant Coach:	Andy Kent (Augsburg, 2009)
Dir. of Operations:	Dean Thibodeau (St. Cloud State, 2013)
Athletic Training:	Jaime Hall (Spring Arbor, 2008)
Strength & Conditioning:	Cal Dietz (Findlay, 1996)

FACILITY INFORMATION

Home Rink:	Ridder Arena
Capacity:	3,400
Opened:	2002
Address:	1901 4th St. SE Minneapolis, MN 55455
Press Box Phone:	612-625-6900

ATHLETIC COMMUNICATIONS

Assistant Director (Women's Hockey Contact):	Mandy Hansen
Cell Phone:	612-889-7696
Office Phone:	612-626-9394
Office Fax:	612-625-0359
Email:	hans1758@umn.edu

CONNECT WITH GOPHER WOMEN'S HOCKEY ONLINE

Official website:	GopherSports.com
Twitter:	@GopherWHockey, #GWH, #Gophers
Facebook:	Facebook.com/GopherWomensHockey
Instagram:	@gopherwhockey
YouTube:	YouTube.com/user/GopherAthletics

HEAD COACH BRAD FROST

The 2015-16 season marks head coach Brad Frost's ninth season at the helm of Gopher women's hockey. In eight seasons as head coach, Frost has brought the program to the pinnacle of the collegiate hockey world by advancing to four-straight national championship games and winning three of the last four national crowns, including back-to-back titles in 2012 and 2013. After joining the program in 2001 as an assistant coach and later holding the interim head coach title during the 2007-08, Frost was named the program's second head coach on April 16, 2008.



BRAD FROST
9TH YEAR AT MINNESOTA
BETHEL, 1996

With eight years of experience under his belt, the Bethel University graduate has guided the Gophers to three NCAA national championships, six NCAA Frozen Four appearances, five WCHA regular season titles and three WCHA Final Face-Off championships. Frost concluded the 2014-15 season with a career record of 258-41-21 (.839) and has not had a team finish lower than second in the WCHA.

COACHING EXCELLENCE

Frost, who has won three national titles, is considered one of the best and most respected coaches in collegiate hockey. In his eight seasons, he has been named an AHCA Coach of the Year Finalist five times and has won the national honor twice (2013 and 2014). Frost has also been named WCHA Coach of the Year four times (2008, 2009, 2013 and 2014). Under his tutelage, the Gophers have accumulated five seasons with 30 or more wins. In 2013, Frost led the Gophers to the NCAA's first-ever perfect season (41-0-0).

PLAYER DEVELOPMENT

Over the last eight years, Frost has coached some of the top talent not only in the nation but also in the world. He has seen seven players (Megan Bozek, Mira Jalosuo, Amanda Kessel, Gigi Marvin, Noora Rätty, Anne Schleper and Lee Stecklein) represent their respective countries in the Olympics. He also aided the development of former Gophers and Olympians Natalie Darwitz, Kelly Stephens, Lyndsay Wall and Krissy Wendell while a Minnesota assistant coach. Frost has coached a total of 12 players to a combined 18 All-American honors. Among those All-Americans is 2013 Patty Kazmaier Memorial Award winner Amanda Kessel. A total of nine Minnesota student-athletes have been named Top-10 Patty Kaz Finalists 15 times under Frost's tutelage.

ACADEMIC SUCCESS

Under Frost's guidance, the Gophers have recorded a 3.0 or higher grade point average and increased the team's Academic Progress Rating (APR) each season. Minnesota has accumulated 86 WCHA All-Academic Team awards, 25 WCHA Scholar Athlete honorees and two WCHA Outstanding Student-Athlete of the Year award recipients (Gigi Marvin, 2009 and Kelly Terry, 2014) since Frost took reign.

INTERNATIONAL COACHING EXPERIENCE

Frost has served USA Hockey by working development camps and serving as a coach for various U.S. teams. In 2006, he was an assistant coach of the U.S. Under-22 Team, and from 2008-09, he was an assistant coach for the U.S. National Team.

PERSONAL LIFE

Frost grew up in Burlington, Ontario, and attended Aldershot High School. After graduating from Aldershot, he decided to attend college at Bethel University, which is where his parents originally met. While at Bethel, he studied Physical & Health Education and was a two-sport athlete, competing in hockey and golf. Frost was a four-year letterwinner in hockey and completed his career ranked eighth on Bethel's career scoring list. In 1994 and 1995, he was voted the team's Most Valuable Player and Most Inspirational. He also captained the Royals his junior and senior seasons. At Bethel, Frost met his wife Dayna. They now reside in Cottage Grove, Minn., and have three sons: Micah, Jonah and Josiah.

2015-16 MINNESOTA ROSTER

No.	Name	Pos.	Ht.	Year	Hometown (High School/Last Team)
2	Lee Stecklein (C)	D	6-0	JR	Roseville, Minn. (Roseville Area HS/U.S. Olympic Team)
3	Anna Barlow	D	5-6	FR	South St. Paul, Minn. (South St. Paul Secondary)
4	Tianna Gunderson	F	5-6	FR	Roseau, Minn. (Roseau HS)
5	Sophie Skarzynski	D	5-8	FR	Lake Forest, Ill. (Loyola Academy/Chicago Mission)
6	Kate Schipper	F	5-4	JR	Brooklyn Park, Minn. (Breck School)
7	Taylor Williamson	F	5-7	FR	Edina, Minn. (Edina HS)
9	Sydney Baldwin	D	5-7	SO	Minnetonka, Minn. (Minnetonka HS)
10	Cara Piazza	F	5-7	SO	Darien, Ill. (Downers Grove South HS/Chicago Mission)
11	Kelsey Cline	D/F	5-6	JR	Bloomington, Minn. (Bloomington Jefferson HS)
12	Megan Wolfe	D/F	5-8	JR	Eagan, Minn. (Eagan HS)
13	Milica McMillen	D	5-10	SR	St. Paul, Minn. (Breck School)
14	Maryanne Menefee	F	5-6	SR	Lansing, Mich. (Lansing Eastern HS/Little Caesar's U-19)
15	Paige Haley	D/F	5-9	JR	Red Wing, Minn. (Red Wing HS)
17	Sierra Smith	F	5-8	FR	Stillwater, Minn. (Stillwater Area HS)
18	Brook Garzone	D/F	5-6	SR	Sand Springs, Okla. (Shattuck-St. Mary's School)
19	Kelly Pannek	F	5-8	SO	Plymouth, Minn. (Benilde-St. Margaret's HS)
20	Nina Rodgers	F	5-5	SO	Minnetonka, Minn. (Hopkins HS)
21	Dani Cameranesi	F	5-5	JR	Plymouth, Minn. (Blake School)
22	Hannah Brandt (C)	F	5-6	SR	Vadnais Heights, Minn. (Hill-Murray HS)
23	Caitlin Reilly	F	5-5	SO	Chanhausen, Minn. (Benilde-St. Margaret's HS/Penn State)
25	Nicole Schammel	F	5-5	SO	Red Wing, Minn. (Red Wing HS/Minnesota State)
26	Sarah Potomak	F	5-5	FR	Aldergrove, B.C. (George Elliot Secondary/Pursuit of Excellence)
29	Amanda Leveille	G	5-7	SR	Kingston, Ontario (Frontenac Secondary School)
31	Emma May	G	5-6	FR	Eagan, Minn. (Cretin-Derham Hall)
37	Sidney Peters	G	5-10	RS SO	Geneva, Ill. (North American Hockey Academy)

Head Coach: Brad Frost (Bethel, 1996) | **Associate Head Coach:** Joel Johnson (Bethel, 1996)

Assistant Coach: Nadine Muzerall (Minnesota, 2001) | **Volunteer Assistant Coach:** Andy Kent (Augsburg, 2009)

ROSTER BREAKDOWN

BY CLASS...

Freshmen (7)

Anna Barlow
Tianna Gunderson
Sophie Skarzynski
Taylor Williamson
Sierra Smith
Sarah Potomak
Emma May

Sophomores (7)

Sydney Baldwin
Cara Piazza
Kelly Pannek
Nina Rodgers
Caitlin Reilly
Nicole Schammel
Sidney Peters

Juniors (6)

Lee Stecklein
Kate Schipper
Kelsey Cline
Megan Wolfe
Paige Haley
Dani Cameranesi

Seniors (5)

Milica McMillen
Maryanne Menefee
Brook Garzone
Hannah Brandt
Amanda Leveille

BY STATE...

Illinois (3)

Sidney Peters
Cara Piazza
Sophie Skarzynski

Minnesota (18)

Anna Barlow
Tianna Gunderson
Taylor Williamson
Sierra Smith
Emma May
Sydney Baldwin
Kelly Pannek
Nina Rodgers
Caitlin Reilly
Nicole Schammel
Lee Stecklein

Kate Schipper

Kelsey Cline
Megan Wolfe
Paige Haley
Dani Cameranesi
Milica McMillen
Hannah Brandt

Michigan (1)

Maryanne Menefee

Oklahoma (1)

Brook Garzone

BY PROVINCE...

Ontario (1)

Amanda Leveille

British Columbia (1)

Sarah Potomak

PRONUNCIATION GUIDE

NAME

Anna Barlow
Dani Cameranesi
Brook Garzone
Tianna Gunderson
Amanda Leveille
Milica McMillen
Maryanne Menefee
Kelly Pannek
Cara Piazza
Sarah Potomak
Caitlin Reilly
Sophie Skarzynski
Kate Schipper
Lee Stecklein
Megan Wolfe

PRONUNCIATION

ANN-uh BAR-low
CAM-ren-EE-zee
gar-ZONE
tee-AH-nuh
LEHV-ee-ay
mel-EETZ-uh
MEN-uh-fee
PAN-ick
CARE-uh pee-AH-zuh
POT-uh-mack
Riley
scar-ZIN-skee
Shipper
STECK-line
Wolf

2015-16 GOPHER WOMEN'S HOCKEY



2 Lee Stecklein • D • JR
Roseville, Minn.



3 Anna Barlow • D • FR
South St. Paul, Minn.



4 Tianna Gunderson • F • FR
Roseau, Minn.



5 Sophie Skarzynski • D • FR
Lake Forest, Ill.



6 Kate Schipper • F • JR
Brooklyn Park, Minn.



7 Taylor Williamson • F • FR
Edina, Minn.



9 Sydney Baldwin • D • SO
Minnetonka, Minn.



10 Cara Piazza • F • SO
Darien, Ill.



11 Kelsey Cline • D/F • JR
Bloomington, Minn.



12 Megan Wolfe • D/F • JR
Eagan, Minn.



13 Milica McMillen • D • SR
St. Paul, Minn.



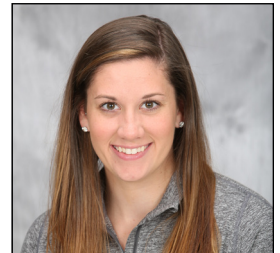
14 Maryanne Menefee • F • SR
Lansing, Mich.



15 Paige Haley • D/F • JR
Red Wing, Minn.



17 Sierra Smith • F • FR
Stillwater, Minn.



18 Brook Garzone • D/F • SR
Sand Springs, Okla.



19 Kelly Pannek • F • SO
Plymouth, Minn.



20 Nina Rodgers • F • SO
Minnetonka, Minn.



21 Dani Cameranesi • F • JR
Plymouth, Minn.



22 Hannah Brandt • F • SR
Vadnais Heights, Minn.



23 Caitlin Reilly • F • SO
Chanhausen, Minn.



25 Nicole Schammel • F • SO
Red Wing, Minn.



26 Sarah Potomak • F • FR
Aldergrove, B.C.



29 Amanda Leveille • G • SR
Kingston, Ont.



31 Emma May • G • FR
Eagan, Minn.



37 Sidney Peters • G • RS-SO
Geneva, Ill.

MINNESOTA INDIVIDUAL CAREER TOP-10 RECORDS

Career Points

Rk.	Name	G	A	P	Years
1.	Natalie Darwitz	102	144	246	2002-05
2.	Krissy Wendell	106	131	237	2002-05
3.	Nadine Muzerall	139	96	235	1997-01
4.	Amanda Kessel	97	134	231	2010-13
5.	Hannah Brandt	90	131	221	2012-present
6.	Kelly Stephens	97	122	219	2001-05
7.	Ambria Thomas	89	112	201	1997-01
8.	Gigi Marvin	87	108	195	2005-09
9.	Ronda Curtin	60	107	167	1999-03
10.	Laura Slominski	65	97	162	1998-02

Career Goals

Rk.	Name	Goals	Years
1.	Nadine Muzerall	139	1997-01
2.	Krissy Wendell	106	2002-05
3.	Natalie Darwitz	102	2002-05
T-4.	Amanda Kessel	97	2010-13
T-4.	Kelly Stephens	97	2001-05
6.	Hannah Brandt	90	2012-present
7.	Ambria Thomas	89	1997-01
8.	Gigi Marvin	87	2005-09
9.	Emily West	82	2007-12
10.	Bobbi Ross	75	2004-08

Career Assists

Rk.	Name	Assists	Years
1.	Natalie Darwitz	144	2002-05
2.	Amanda Kessel	134	2010-13
T-3.	Hannah Brandt	131	2012-present
T-3.	Krissy Wendell	131	2002-05
5.	Kelly Stephens	122	2001-05
6.	Ambria Thomas	112	1997-01
7.	Gigi Marvin	108	2005-09
8.	Ronda Curtin	107	1999-03
9.	Megan Bozek	99	2009-13
10.	Kelly Terry	98	2010-14

Career Power-Play Goals

Rk.	Name	PPG	Years
1.	Nadine Muzerall	40	1997-01
2.	Krissy Wendell	33	2002-05
3.	Kelly Stephens	32	2001-05
4.	Gigi Marvin	31	2005-09
5.	Natalie Darwitz	29	2002-05
6.	Bobbi Ross	27	2004-08
7.	Megan Bozek	26	2009-13
8.	Ronda Curtin	25	1999-03
9.	Erica McKenzie	24	2004-08
T-10.	Milica McMillen	21	2012-present
T-10.	Jen Schoullis	21	2007-12
	Hannah Brandt	19	2012-present

Career Shorthanded Goals

Rk.	Name	SHG	Years
1.	Krissy Wendell	16	2002-05
T-2.	Amanda Kessel	10	2010-13
T-2.	Bobbi Ross	10	2004-08
4.	Ambria Thomas	8	1997-01
5.	Natalie Darwitz	7	2002-05
T-6.	Kelly Stephens	6	2001-05
T-6.	Emily West	6	2007-12
T-8.	Gigi Marvin	5	2005-09
T-8.	Monique Lamoureux	5	2008-09
T-10.	Erica McKenzie	4	2004-08
T-10.	Nadine Muzerall	4	1997-01
T-10.	La Toya Clarke	4	2000-04
T-10.	Kris Scholz	4	1997-01
	Hannah Brandt	3	2012-present

Career Game-Winning Goals

Rk.	Name	GWG	Years
T-1.	Krissy Wendell	24	2002-05
T-1.	Nadine Muzerall	24	1997-01
3.	Emily West	22	2007-12
4.	Bobbi Ross	20	2004-08
T-5.	Hannah Brandt	18	2012-present
T-5.	Erica McKenzie	18	2004-08
T-5.	Ambria Thomas	18	1997-01
T-5.	Natalie Darwitz	18	2002-05
9.	Kelly Stephens	17	2001-05
T-10.	Gigi Marvin	16	2005-09
T-10.	Amanda Kessel	16	2010-13

Career Shots on Goal

Rk.	Name	Shots	Years
1.	Nadine Muzerall	726	1999-01
2.	Emily West	650	2007-12
3.	Natalie Darwitz	630	2002-05
4.	Kelly Stephens	609	2001-05
5.	Rachael Bona	573	2011-15
6.	Amanda Kessel	536	2010-13
7.	Megan Bozek	530	2009-13
8.	La Toya Clarke	529	2000-04
9.	Hannah Brandt	522	2012-present
10.	Gigi Marvin	517	2005-09

Career Points by a Defenseman

Rk.	Name	Points	Years
1.	Megan Bozek	146	2009-13
2.	Wynny Brodt	134	1998-03
3.	Rachel Ramsey	130	2011-15
4.	Anne Schleper	114	2008-12
5.	Courtney Kennedy	112	1998-01
6.	Milica McMillen	92	2012-present
7.	Ronda Curtin	85	1999-03
8.	Melanie Gagnon	81	2005-09
9.	Anyia Miller	78	2004-08
10.	Lyndsay Wall	69	2003-05

Career Goals by a Defenseman

Rk.	Name	Goals	Years
1.	Megan Bozek	47	2009-13
2.	Wynny Brodt	41	1998-02
T-3.	Milica McMillen	35	2012-present
T-3.	Courtney Kennedy	35	1998-01
5.	Rachel Ramsey	34	2011-15
6.	Anne Schleper	32	2008-12
7.	Brittany Ralph	24	1997-99
8.	Anyia Miller	22	2004-08
9.	Lyndsay Wall	20	2003-05
10.	Ronda Curtin	19	1999-03

Career Assists by a Defenseman

Rk.	Name	Assists	Years
1.	Megan Bozek	99	2009-13
2.	Rachel Ramsey	96	2011-15
3.	Wynny Brodt	93	1998-03
4.	Anne Schleper	82	2008-12
5.	Courtney Kennedy	77	1998-01
6.	Melanie Gagnon	67	2005-09
7.	Ronda Curtin	63	1999-03
8.	Milica McMillen	57	2012-present
9.	Anyia Miller	56	2004-08
10.	Emily Bucholtz	55	1997-01

Career Games Played

Rk.	Name	GP	Years
T-1.	Rachael Bona	164	2011-15
T-1.	Rachel Ramsey	164	2011-15
T-3.	Bethany Brausen	161	2010-14
T-3.	Baylee Gillanders	161	2010-14
5.	Anne Schleper	159	2008-12
T-6.	Meghan Lorence	158	2011-15
T-6.	Kelly Terry	158	2010-14
T-6.	Sarah Erickson	158	2008-12
9.	Megan Bozek	157	2009-13
T-10.	Sarah Davis	156	2010-14
T-10.	Jen Schoullis	156	2007-12

Career Penalties

Rk.	Name	Pen.	Min.	Years
1.	Kelly Stephens	121	242	2001-05
2.	Melanie Gagnon	108	235	2005-09
3.	Courtney Kennedy	105	232	1998-01
4.	Kelly Seeler	99	209	2008-12
5.	Bobbi Ross	85	170	2004-08
6.	Emily West	84	176	2007-12
7.	Sarah Erickson	82	208	2008-12
8.	Megan Bozek	81	162	2009-13
9.	Milica McMillen	77	176	2012-present
10.	Allie Sanchez	75	161	2002-06

Career Penalty Minutes

Rk.	Name	Minutes	Years
1.	Kelly Stephens	242	2001-05
2.	Melanie Gagnon	235	2005-09
3.	Courtney Kennedy	232	1999-01
4.	Kelly Seeler	209	2008-12
5.	Sarah Erickson	208	2008-12
T-6.	Milica McMillen	176	2012-present
T-6.	Emily West	176	2007-12
8.	Bobbi Ross	170	2004-08
9.	Megan Bozek	162	2009-13
10.	Allie Sanchez	161	2002-06

Career Plus/Minus

Rk.	Name	+/-	Years
1.	Hannah Brandt	+188	2012-present
2.	Rachel Ramsey	+172	2011-15
3.	Kelly Stephens	+170	2001-05
4.	Ambria Thomas	+160	1997-01
5.	Krissy Wendell	+156	2002-05
6.	Megan Bozek	+153	2009-13
7.	Amanda Kessel	+151	2010-13
8.	Nadine Muzerall	+149	1997-01
9.	Baylee Gillanders	+142	2010-14
10.	Natalie Darwitz	+141	2002-05
	Maryanne Menefee	+135	2012-present

Career Goaltender Saves

Rk.	Name	Saves	Years
1.	Noora Rätty	3250	2009-13
2.	Erica Killewald	2385	1997-01
3.	Jody Horak	2213	2001-05
4.	Amanda Leveille	1623	2012-present
5.	Kim Hanlon	1225	2005-09
6.	Brenda Reinen	1034	2001-05
7.	Brittany Chartier	854	2005-07
8.	Alyssa Grogan	713	2008-12
9.	Jenny Lura	688	2007-11
10.	Crystal Nicholas	323	1998-00

Career Goaltender Wins

Rk.	Name	W	L	T	Years
1.	Noora Rätty	114	17	8	2009-13
2.	Jody Horak	83	14	6	2001-05
3.	Erica Killewald	73	23	9	1997-01
4.	Amanda Leveille	69	5	4	2012-present
5.	Kim Hanlon	43	14	2	2005-09
6.	Brendan Reinen	36	3	5	2001-05
7.	Brittany Chartier	27	13	2	2005-07
T-8.	Crystal Nicholas	25	0	0	1998-00
T-8.	Jenny Lura	25	8	3	2007-12
T-8.	Alyssa Grogan	25	7	3	2008-12

Career Goaltender Shutouts

Rk.	Name	Shutouts	Years
1.	Noora Rätty	43	2009-13
T-2.	Amanda Leveille	22	2012-present
T-2.	Erica Killewald	22	1997-01
4.	Jody Horak	20	2001-05
5.	Kim Hanlon	13	2005-09
T-6.	Brenda Reinen	10	2001-05
T-6.	Crystal Nicholas	10	1998-00
8.	Brittany Chartier	8	2005-07
9.	Alyssa Grogan	6	2008-12
10.	Jenny Lura	4	2007-11

Career Save Percent (Career must be complete.)

Rk.	Name	Save Percent	Years
1.	Noora Raty	.946 (185 GA, 3250 Svs)	2009-13
2.	Brenda Reinen	.934 (73 GA, 1034 Svs)	2001-05
3.	Jody Horak	.931 (164 GA, 2213 Svs)	2001-05
4.	Erica Killewald	.923 (199 GA, 2385 Svs)	1997-01
5.	Kim Hanlon	.913 (116 GA, 1225 Svs)	2005-09
6.	Jenny Lura	.912 (66 GA, 688 Svs)	2007-11
7.	Crystal Nicholas	.912 (31 GA, 323 Svs)	1998-00
8.	Alyssa Grogan	.911 (70 GA, 713 Svs)	2008-12
9.	Brittany Chartier	.908 (87 GA, 854 Svs)	2005-07
10.	Stephanie Johnson	.876 (20 GA, 141 Svs)	2000-02

MINNESOTA INDIVIDUAL SINGLE-GAME RECORDS

Points

Rk.	Name	Goals	Date
T-1.	Hannah Brandt vs. St. Cloud State	7	Dec. 5, 2014
T-1.	Nadine Muzerall vs. Bemidji State	7	Jan. 22, 2000
T-3.	Dani Cameranesi vs. St. Cloud State	6	Dec. 5, 2014
T-3.	Dani Cameranesi vs. St. Cloud State	6	Feb. 27, 2015
T-3.	Amanda Kessel vs. North Dakota	6	Jan. 11, 2013
T-3.	Hannah Brandt vs. Colgate	6	Sept. 29, 2012
T-3.	Amanda Kessel vs. St. Cloud State	6	Feb. 3, 2012
T-3.	Jen Schoullis vs. New Hampshire	6	Nov. 19, 2011
T-3.	Jocelyne Lamoureux vs. Bemidji State	6	Jan. 17, 2009
T-3.	Monique Lamoureux vs. Bemidji State	6	Jan. 17, 2009
T-3.	Gigi Marvin vs. Niagara	6	Jan. 3, 2009
T-3.	Monique Lamoureux vs. Minn. State	6	Nov. 22, 2008
T-3.	Krissy Wendell vs. Ohio State	6	Nov. 6, 2004
T-3.	Kelly Stephens vs. North Dakota	6	Nov. 30, 2003
T-3.	Natalie Darwitz vs. North Dakota	6	Nov. 30, 2003
T-3.	Natalie Darwitz vs. St. Cloud State	6	Jan. 11, 2003
T-3.	Laura Slominski vs. Bemidji State	6	Jan. 11, 2000
T-3.	Winnie Brodt vs. Bemidji State	6	Jan. 11, 2000

Goals

Rk.	Name	Goals	Date
1.	Nadine Muzerall vs. Bemidji State	5	Jan. 22, 2000
T-2.	Amanda Kessel vs. North Dakota	4	Jan. 11, 2013
T-2.	Amanda Kessel vs. New Hampshire	4	Nov. 18, 2011
T-2.	Monique Lamoureux at Minn. State	4	Jan. 31, 2009
T-2.	Bobbi Ross vs. New Hampshire	4	March 24, 2006
T-2.	Erica McKenzie vs. Brown	4	Nov. 12, 2005
T-2.	Bobbi Ross vs. Ohio State	4	Nov. 4, 2005
T-2.	Kelly Stephens vs. Ohio State	4	Nov. 6, 2004
T-2.	Natalie Darwitz at Minnesota State	4	Oct. 30, 2004
T-2.	Krissy Wendell vs. St. Cloud State	4	March 6, 2004
T-2.	Krissy Wendell vs. Ohio State	4	Oct. 17, 2003
T-2.	Nadine Muzerall vs. New Hampshire	4	Jan. 29, 2000
T-2.	Ambria Thomas vs. Bemidji State	4	Jan. 11, 2000
T-2.	Jenny Schmidgall at Minnesota Duluth	4	Nov. 15, 1998

Assists

Rk.	Name	Goals	Date
T-1.	Hannah Brandt vs. St. Cloud State	6	Dec. 5, 2014
T-1.	Dani Cameranesi vs. St. Cloud State	6	Dec. 5, 2014
T-3.	Jen Schoullis vs. New Hampshire	5	Nov. 19, 2011
T-3.	Natalie Darwitz vs. St. Cloud State	5	Oct. 15, 2004
T-3.	Natalie Darwitz vs. North Dakota	5	Nov. 30, 2003
T-3.	Natalie Darwitz vs. St. Cloud State	5	Jan. 11, 2003
T-3.	Ronda Curtin vs. St. Cloud State	5	Dec. 14, 2001
T-3.	Ambria Thomas vs. Bemidji State	5	Jan. 22, 2000
T-3.	Winnie Brodt at Bemidji State	5	Jan. 11, 2000
T-3.	Courtney Kennedy vs. Minnesota State	5	Nov. 23, 1999

Shots on Goal

Rk.	Name	SOG	Date
1.	La Toya Clarke vs. Minnesota State	14	Jan. 14, 2001
T-2.	Natalie Darwitz at Minnesota Duluth	13	Feb. 26, 2005
T-2.	Natalie Darwitz at Wisconsin	13	Dec. 5, 2004
T-2.	Natalie Darwitz vs. Minnesota Duluth	13	Feb. 29, 2004
T-2.	Natalie Darwitz at Minnesota State	13	Dec. 8, 2002
T-2.	Natalie Darwitz at Findlay	13	Oct. 13, 2002
T-2.	La Toya Clarke vs. St. Cloud State	13	Feb. 9, 2001
T-8.	Monique Lamoureux vs. Mercyhurst	12	March 20, 2009
T-8.	Monique Lamoureux at Minnesota State	12	Jan. 31, 2009
T-8.	Natalie Darwitz vs. Brown	12	Jan. 14, 2005
T-8.	Kelly Stephens vs. Wisconsin	12	Feb. 14, 2004
T-8.	La Toya Clarke vs. Minnesota State	12	Oct. 13, 2001
T-8.	Courtney Kennedy at Minnesota Duluth	12	March 3, 2001
T-8.	Nadine Muzerall vs. Bemidji State	12	Dec. 1, 2000
T-8.	Nadine Muzerall vs. Minnesota State	12	March 2, 2000
T-8.	Jenny Schmidgall vs. Alberta	12	Dec. 19, 1998

Power-Play Goals

Rk.	Name	PPG	Date
T-1.	Bobbi Ross vs. Ohio State	3	Nov. 4, 2005
T-1.	Laura Slominski vs. St. Cloud State	3	Oct. 15, 2000
T-1.	Nadine Muzerall vs. New Hampshire	3	Jan. 29, 2000
T-4.	42 times	2	
Last -	Dani Cameranesi vs. Minn. State	2	Nov. 21, 2014

Shorthanded Goals

Rk.	Name	SHG	Date
T-1.	Bobbi Ross vs. Minnesota Duluth	2	Oct. 26, 2007
T-1.	Natalie Darwitz vs. Minnesota State	2	Oct. 30, 2004
T-1.	Krissy Wendell vs. Mercyhurst	2	Jan. 16, 2004
T-1.	Ambria Thomas at Bemidji State	2	Jan. 11, 2000
T-1.	Ambria Thomas vs. Augsburg	2	Nov. 2, 1997

Plus/Minus

Rk.	Name	Plus/Minus	Date
T-1.	Dani Cameranesi vs. Minnesota State	+7	Feb. 27, 2015
T-1.	Ronda Curtin at St. Cloud State	+7	March 2, 2002
T-1.	Emily Buchholz vs. Wisconsin	+7	Feb. 7, 1998
T-1.	Marisa Pettiford vs. St. Cloud State	+7	Nov. 15, 1997
T-5.	30 times	+6	
Last -	Sydney Baldwin vs. Minn. State	+6	Feb. 27, 2015
Last -	Maryanne Menefee vs. Minn. State	+6	Feb. 27, 2015

Most Penalties

Rk.	Name	Penalties	Date
1.	Kelly Stephens vs. St. Cloud State	6	Oct. 16, 2004
T-2.	Natalie Darwitz vs. Minnesota Duluth	5	Feb. 29, 2004
T-2.	Danielle Ashley vs. Dartmouth	5	Feb. 7, 2004
T-4.	Nine times	4	
Last -	Melanie Gagnon at Minn. State	4	Jan. 31, 2009

Most Penalty Minutes

Rk.	Name	Pen. Min.	Date
1.	Courtney Kennedy vs. Minnesota State	19	Jan. 15, 2000
T-2.	Sarah Erickson vs. North Dakota	17	Oct. 15, 2010
T-2.	Rachael Drazan vs. Harvard	17	Nov. 29, 2008
T-2.	Andrea Nichols vs. Wisconsin	17	March 12, 2006
T-2.	Dagny Willey vs. Minnesota Duluth	17	Oct. 29, 2005
T-6.	Melanie Gagnon vs. Minnesota State	16	Jan. 31, 2009
T-6.	Courtney Kennedy vs. Minnesota Duluth	16	March 2, 2001
T-8.	18 times	15	
Last -	Kelly Pannek vs. RIT	15	March 14, 2015
Last -	Meghan Lorence vs. RIT	15	March 14, 2015

Saves

Rk.	Name	Saves	Date
T-1.	Noora Raty vs. Wisconsin	51	March 5, 2011
T-1.	Erica Killewald at Minnesota Duluth	51	Feb. 12, 2000
3.	Noora Raty vs. North Dakota	50	March 16, 2013
4.	Noora Raty at Wisconsin	46	Jan. 28, 2011
T-5.	Jody Horak vs. Minnesota Duluth	43	March 14, 2004
T-5.	Jody Horak vs. Dartmouth	43	Nov. 24, 2001
T-7.	Noora Raty vs. Wisconsin	42	March 18, 2012
T-7.	Brenda Reinen vs. Minnesota Duluth	42	Jan. 18, 2002
T-9.	Noora Raty vs. Minnesota State	41	Feb. 27, 2010
T-9.	Jody Horak vs. Minnesota Duluth	41	Jan. 19, 2002
T-9.	Erica Killewald vs. Brown	41	March 27, 1999

MINNESOTA TEAM SINGLE-SEASON AND SINGLE-GAME RECORDS

TEAM SINGLE-SEASON RECORDS

Games Played

Most: 41, five times, last 2014-15
Fewest: 31, 1997-98

Winning Percentage

Highest Overall: 1.000 (41-0-0), 2012-13
Lowest Overall: .653 (23-12-1), 2006-07
Highest Home: 1.000 (23-0-0), 2012-13

Wins

Most Overall: 41, 2012-13
Fewest Overall: 21, 1997-98

Losses

Most Overall: 12, 2006-07
Fewest Overall: 0, 2012-13
Consecutive Overall: 3, three times, last Jan. 5-12, 2007

Ties

Most Overall: 6, 2001-02
Fewest Overall: 0, 2012-13
Consecutive Overall: 2, four times, last Jan. 15-16, 2010

Points

Most: 566, 2012-13
Fewest: 296, 2006-07
Most Per Game: 14.72, 1998-99
Fewest Per Game: 7.44, 2005-06

Goals

Most: 216, 2012-13
Fewest: 115, 2006-07
Most Per Game: 5.75, 1998-99
Fewest Per Game: 2.98, 2005-06

Assists

Most: 350, 2012-13
Fewest: 171, 2001-02
Most Per Game: 8.97, 1998-99
Fewest Per Game: 4.46, 2005-06

Goals Against

Most: 83, 2006-07
Fewest: 36, 2012-13

Shots on Goal

Most: 1,681, 2014-15
Fewest: 1,063, 1997-98
Most Per Game: 41.0, 2014-15
Fewest Per Game: 30.58, 2001-02

Shot Percentage

Best: .155 (206-1,331), 1999-00
Worst: .091 (122-1,337), 2005-06

Power-Play Goals

Most: 70, 2004-05
Fewest: 18, 1997-98

Power-Play Opportunities

Most: 235, 2008-09
Fewest: 103, 1997-98

Power-Play Efficiency

Best: .327 (53-162), 2013-14
Worst: .174 (36-207), 2005-06

Penalty Kill Efficiency

Best: .921 (116-126), 1998-99; .921 (116-126), 2013-14
Worst: .812 (95-117), 2001-02

Shorthanded Goals

Most: 19, 2004-05
Fewest: 2, two times, last 2001-02
Most Allowed: 4, two times, last 2008-09
Fewest Allowed: 0, three times, last 2013-14

Empty Net Goals

Most: 7, 2012-13
Fewest: 0, three times, last 2007-08
Most Allowed: 2, three times, 2010-11
Fewest Allowed: 0, eight times, last 2013-14

Hat Tricks

Most: 11, 1999-00
Fewest: 0, 2006-07
Most Allowed: 2, two times, last 2002-03
Fewest Allowed: 0, eight times, last 2013-14

Penalties

Most: 302, 2008-09
Fewest: 125, 2014-15
Most Per Game: 7.55, 2008-09
Fewest Per Game: 3.0, 2014-15

Penalty Minutes

Most: 675, 2008-09
Fewest: 264, 1997-98
Most Per Game: 16.88, 2008-09
Fewest Per Game: 6.9, 2014-15

Overtime Games

Most Overall: 12, 2001-02
Fewest Overall: 1, two times, last 2013-14
Consecutive Overall: 3, two times, last Jan. 28-Feb. 4, 2006
Most Home: 5, 2001-02
Most Road: 6, 2001-02

Shutouts

Most Overall: 21, 2012-13
Fewest Overall: 4, 2006-07
Consecutive Overall: 6, Feb. 22-March 9, 2013
Most Home: 12, 2012-13
Fewest Home: 3, 2006-07
Most Road: 9, 2012-13
Fewest Road: 0, 2000-01
Most by Opponents: 3, five times, last 2014-15
Fewest by Opponents: 0, six times, last 2013-14

Home Attendance

Most: 46,862 (23 games), 2014-15
Fewest: 13, 664 (14 games), 2000-01

Saves

Most: 1,046, 2010-11
Fewest: 604, 1997-98
Most Per Game: 27.53, 2010-11
Fewest Per Game: 17.75, 2004-05

Saves Percentage

Best: .960, 2012-13
Worst: .898, 2006-07
Best by Opponents: .909, 2005-06
Worst by Opponents: .845, 1999-00

Goals Against Average

Best: 0.86, 2012-13
Worst: 2.30, 2006-07
Best by Opponents: 2.96, 2005-06
Worst by Opponents: 5.68, 1998-99

Minutes Without Allowing a Goal

Most: 395:01, Feb. 16-March 16, 2013

TEAM SINGLE-GAME RECORDS

Goals

Most Scored: 12, two times (last vs. St. Cloud State, Dec. 5, 2014)
Most Allowed: 9 vs. Beatrice Aeros at New Hampshire, Jan. 31, 1999

Assists

Most Recorded: 20, three times (last vs. Minnesota State, Feb. 27, 2015)
Most Allowed: 13 at Minnesota Duluth, Feb. 14, 2003

Points

Most Recorded: 32 vs. St. Cloud State, Dec. 5, 2014
Most Allowed: 20, two times (last at Minnesota Duluth, Feb. 14, 2003)

Shots on Goal

Most Recorded: 72 at Augsburg, Feb. 13, 1999
Fewest Recorded: 12 vs. New Hampshire, March 20, 1998
Most Allowed: 56 vs. Wisconsin, March 5, 2011
Fewest Allowed: 1 at Bemidji State, Nov. 14, 1998

Shot Percentage

Highest: .370 (10-27), vs. St. Cloud State, Jan. 9, 1999

Power-Play Goals

Most Scored: 5, two times (last at Wayne State, Jan. 5, 2008)
Most Allowed: 4, three times (last vs. Ohio State, Nov. 4, 2005)

Shorthanded Goals

Most Scored: 4, at Bemidji State, Jan. 11, 2000
Most Allowed: 1, 30 times (last at North Dakota, Feb. 6, 2015)

Hat Tricks

Most Scored: 2, six times, last vs. St. Lawrence, Jan. 4, 2015
Most Allowed: 1, 11 times (last at Minnesota Duluth, Oct. 30, 2010)

Saves

Most Made: 51, two times (last vs. Wisconsin, March 5, 2011)
Fewest Made: 1, at Bemidji State, Nov. 14, 1998
Most Made by Opponent: 63 vs. Robert Morris, Oct. 3, 2008
Fewest Made by Opponent: 11 vs. New Hampshire, March 20, 1998

Penalties

Most: 15, two times (last vs. St. Cloud State, Oct. 16, 2004)
Fewest: 0, five times (last at Bemidji State, Feb. 20, 2015)
Most by Opponent: 16 vs. Minnesota Duluth, Feb. 29, 2004
Fewest by Opponent: 0, two times (last at Bemidji State, Feb. 20, 2015)

Penalty Minutes

Most: 49 vs. North Dakota, Oct. 15, 2010
Fewest: 0, five times (last at Bemidji State, Feb. 20, 2015)
Most by Opponent: 43 vs. North Dakota, Oct. 15, 2010
Fewest by Opponent: 0, two times (last at Bemidji State, Feb. 20, 2015)

Fastest Goals

Two Goals: 0:05 (Amanda Kessel, 14:34; Kelly Terry, 14:39), at Bemidji State, Dec. 4, 2010

Three Goals: 0:29 (Kris Scholz, 6:55; Ambria Thomas, 7:09; Tracy Donaghue, 7:24), at Minnesota State, Feb. 14, 1999

Four Goals: 0:57 (Meghan Lorence, 11:31; Sarah Davis, 11:57; Hannah Brandt, 12:08; Maryanne Menefee, 12:28), vs. St. Cloud State, March 1, 2014

Five Goals: 4:12 (Hannah Brandt, 5:00; Maryanne Menefee, 5:39; Sarah Davis, 8:04; Rachael Bona, 8:33; Hannah Brandt, 9:12), vs. Bemidji State, Feb. 7, 2014

GOPHER WOMEN'S HOCKEY HISTORY: ALL-TIME SERIES RECORDS

NCAA DIVISION I OPPONENTS

OPPONENT	RECORD	LAST	FIRST	CURRENT STREAK
Bemidji State	60-6-7	L, 1-0 (March 7, 2015)	W, 10-0 (Nov. 14, 1998)	Lost 1
Boston College	4-1-1	W, 3-2 (OT) (March 22, 2013)	W, 4-3 (Jan. 15, 1998)	Won 1
Boston University	4-0-0	W, 5-2 (Oct. 4, 2014)	W, 4-2 (Oct. 6, 2007)	Won 4
Brown	11-5-1	W, 3-0 (Nov. 13, 2005)	L, 4-3 (Dec. 28, 1997)	Won 7
Clarkson	5-1-0	L, 5-4 (March 23, 2014)	W, 4-0 (Nov. 27, 2009)	Lost 1
Colgate	4-0-0	W, 8-3 (Oct. 5, 2013)	W, 7-0 (Sept. 28, 2012)	Won 4
Connecticut	1-0-0	W, 3-0 (Oct. 7, 2006)	W, 3-0 (Oct. 7, 2006)	Won 1
Cornell	4-0-0	W, 3-1 (March 16, 2012)	W, 3-2 (Nov. 30, 1997)	Won 4
Dartmouth	7-6-0	W, 7-2 (March 25, 2005)	W, 5-4 (Dec. 11, 1999)	Won 2
Findlay	4-0-0	W, 7-2 (Oct. 13, 2002)	W, 7-1 (Jan. 26, 2002)	Won 4
Harvard	13-5-1	W, 4-1 (March 22, 2015)	L, 3-2 (Nov. 6, 1997)	Won 5
Maine	1-0-0	W, 5-2 (Oct. 6, 2006)	W, 5-2 (Oct. 6, 2006)	Won 1
Mercyhurst	6-1-0	L, 5-4 (March 20, 2009)	W, 3-0 (Jan. 6, 2001)	Lost 1
Minnesota Duluth	45-24-7	W, 2-0 (Feb. 14, 2015)	W, 10-0 (Nov. 15, 1998)	Won 2
Minnesota State	71-3-3	W, 5-1 (Feb. 28, 2015)	W, 8-1 (Nov. 20, 1998)	Won 26
New Hampshire	10-5-3	W, 4-0 (Nov. 25, 2012)	L, 5-1 (Nov. 9, 1997)	Won 4
Niagara	5-1-1	W, 5-3 (Jan. 4, 2009)	W, 4-2 (Jan. 7, 2001)	Won 4
North Dakota	46-7-0	W, 3-1 (Feb. 7, 2015)	W, 6-2 (Nov. 29, 2003)	Won 1
Northeastern	4-2-2	W, 5-3 (Oct. 5, 2007)	T, 2-2, OT (Jan. 24, 1998)	Won 2
Ohio State	61-8-3	W, 3-1 (Jan. 31, 2015)	W, 4-1 (Feb. 4, 2000)	Won 1
Penn State	1-0-0	W, 8-0 (Oct. 3, 2014)	W, 8-0 (Oct. 3, 2014)	Won 1
Princeton	8-0-1	W, 5-2 (Nov. 30, 2014)	W, 6-1 (Nov. 29, 1997)	Won 6
Providence	6-1-0	W, 6-1 (March 18, 2005)	W, 5-4 (Nov. 28, 1997)	Won 1
RIT	1-0-0	W, 6-2 (March 14, 2015)	W, 6-2 (March 14, 2015)	Won 1
Robert Morris	1-1-0	W, 7-1 (Oct. 4, 2008)	L, 3-2 (Oct. 3, 2008)	Won 1
St. Cloud State	67-3-2	W, 7-1 (Jan. 24, 2015)	W, 10-0 (Nov. 15, 1997)	Won 25
St. Lawrence	10-1-1	W, 5-1 (Jan. 6, 2015)	W, 6-1 (Jan. 6, 1998)	Won 4
Syracuse	3-0-0	W, 4-0 (Oct. 1, 2011)	W, 4-3 (Oct. 2, 2009)	Won 3
Union	1-0-0	W, 6-1 (Sept. 30, 2011)	W, 6-1 (Sept. 30, 2011)	Won 1
Wayne State	2-0-1	W, 1-0 (Oct. 9, 2010)	W, 6-3 (Jan. 5, 2008)	Won 1
Wisconsin	45-26-9	W, 3-1 (March 20, 2015)	W, 10-0 (Feb. 7, 1998)	Won 1
Yale	3-0-0	W, 2-1 (Jan. 18, 1998)	W, 4-1 (Nov. 24, 2013)	Won 3

OTHER OPPONENTS: NCAA DIV. III, CLUB, NATIONAL, AND INTERNATIONAL OPPONENTS*

OPPONENT	RECORD	LAST	FIRST	CURRENT STREAK
Alberta	2-0-0	W, 8-2 (Dec. 20, 1998)	W, 9-2 (Dec. 19, 1998)	Won 2
Augsburg	4-0-0	W, 10-1 (Feb. 13, 1999)	W, 8-0 (Nov. 2, 1997)	Won 4
Beatrice Aeros	0-1-0	L, 9-0 (Jan. 31, 1999)	L, 9-0 (Jan. 31, 1999)	Lost 1
British Columbia	1-0-0	W, 10-2 (Nov. 8, 1997)	W, 10-2 (Nov. 8, 1997)	Won 1
Concordia (Quebec)	2-0-0	W, 6-4 (Jan. 16, 1999)	W, 3-0 (Jan. 29, 1999)	Won 2
Gustavus Adolphus	3-0-0	W, 8-1 (Dec. 3, 1998)	W, 6-0 (Nov. 23, 1997)	Won 3
Manitoba	3-0-0	W, 3-1 (Dec. 18, 1998)	W, 3-0 (Jan. 30, 1998)	Won 3
Minnesota Blue J's	1-0-0	W, 6-1 (March 1, 1998)	W, 6-1 (March 1, 1998)	Won 1
Minnesota CODP	1-0-0	W, 10-1 (March 22, 1999)	W, 10-1 (March 22, 1999)	Won 1
Minn. Thoroughbreds	1-0-0	W, 4-2 (Feb. 27, 1998)	W, 4-2 (Feb. 27, 1998)	Won 1
Queen's	1-0-0	W, 10-0 (Nov. 29, 1998)	W, 10-0 (Nov. 29, 1998)	Won 1
Toronto	1-0-0	W, 5-1 (Jan. 17, 1999)	W, 5-1 (Jan. 17, 1999)	Won 1
Wilfrid Laurier	2-0-0	W, 7-1 (Jan. 23, 1999)	W, 10-0 (Jan. 22, 1999)	Won 2

*Games against these opponents counted toward regular-season records prior to 1999-2000 season.

PROGRAM TOTAL

TOTAL	RECORD	LAST	FIRST	CURRENT STREAK
18 seasons	536-108-43	W, 4-1 vs. Harvard (March 22, 2015)	W, 8-0 vs. Augsburg (Nov. 2, 1997)	Won 3

RIDDER ARENA: HOME OF GOPHER WOMEN'S HOCKEY

SERIES RECORDS AT RIDDER ARENA

OPPONENT	RECORD	LAST
Bemidji State	27-3-3	L, 1-0, 11/1/14
Boston College	3-0-1	W, 3-2 (OT), 3/22/13
Boston University	4-0-0	W, 5-2, 10/4/14
Brown	5-0-0	W, 3-0, 11/13/05
Clarkson	3-0-0	W, 3-2 (OT), 3/13/10
Colgate	2-0-0	W, 11-0, 9/29/12
Connecticut	1-0-0	W, 3-0, 10/7/05
Dartmouth	1-1-0	W, 7-3, 2/8/04
Harvard	6-0-0	W, 4-1, 3/22/15
Maine	1-0-0	W, 5-2, 10/6/06
Mercyhurst	2-0-0	W, 3-1, 1/17/04
Minnesota Duluth	22-6-3	W, 2-0, 2/14/15
Minnesota State	29-1-0	W, 5-1, 2/28/15
New Hampshire	2-1-0	W, 6-1, 11/19/11
Niagara	2-0-0	W, 3-1, 11/12/06
North Dakota	25-4-0	W, 5-0, 10/25/14
Northeastern	1-0-0	W, 5-3, 10/5/07
Ohio State	28-2-2	W, 3-1, 1/31/15
Penn State	1-0-0	W, 8-0, 10/3/14
Princeton	3-0-0	W, 9-1, 12/1/13
RIT	1-0-0	W, 6-2, 3/14/15
Robert Morris	1-1-0	W, 7-1, 10/4/08
St. Cloud State	28-0-2	W, 7-0, 12/6/14
St. Lawrence	2-1-0	W, 5-1, 1/6/15
Syracuse	3-0-0	W, 4-0, 10/1/11
Union	1-0-0	W, 6-1, 9/30/11
Wayne State	1-0-0	W, 1-0, 10/9/10
Wisconsin	16-13-4	W, 3-1, 3/20/15
Overall	221-33-15	W, 3-1, 3/20/15

YEAR-BY-YEAR AT RIDDER ARENA

SEASON	OVERALL	WCHA
2002-03	10-2-1 (.808)	8-2-1 (.773)
2003-04	16-3-0 (.842)	11-2-0 (.846)
2004-05	18-0-1 (.974)	12-0-1 (.923)
2005-06	15-7-0 (.681)	8-5-0 (.615)
2006-07	16-6-0 (.727)	10-4-0 (.714)
2007-08	16-2-3 (.761)	11-1-2 (.857)
2008-09	18-3-2 (.826)	11-1-2 (.857)
2009-10	20-3-1 (.854)	12-1-1 (.893)
2010-11	16-4-1 (.786)	10-3-1 (.750)
2011-12	18-1-2 (.905)	11-1-2 (.857)
2012-13	23-0-0 (1.000)	14-0-0 (1.000)
2013-14	16-1-1 (.917)	11-1-1 (.885)
2014-15	19-1-3 (.891)	10-1-3 (.821)
13 Seasons	221-33-15 (.849)	139-22-14 (.834)



RIDDER ARENA: HOME OF GOPHER WOMEN'S HOCKEY

The first-ever facility built specifically for women's hockey, Ridder Arena is home to the six-time national champion Gopher women's hockey program. Since its opening in 2002, Ridder Arena has been a regular host of WCHA Championships, NCAA Regionals and Frozen Fours. A brand-new center-hung video board was installed during the 2011-12 season.

- Site of the 2010, 2013, and 2015 NCAA Women's Frozen Fours
- First facility dedicated solely to women's ice hockey
- Seating capacity of 3,400, including a club room with 210 seats and nine suites with seating for 14 apiece
- Houses 11 locker rooms, a training room and full weightroom
- Ice sheet size is 200' x 85'
- Built adjacent to 10,000-seat Mariucci Arena and is connected via underground tunnels
- Practice site for several visiting NHL teams, men's college programs and the IIHF Under-18 Worlds pre-tournament camp
- Hosted the Minnesota Girls State Hockey Tournament
- First game on October 19, 2002 drew 3,239 fans
- Set an attendance record of 3,400 with its first sold-out crowd on Dec. 1, 2012
- Has hosted five sold-out Gopher women's hockey games
- Hosted eight WCHA conference championships (2004, 2005, 2006, 2007, 2009, 2010, 2011 and 2013)
- Host of the 2016 WCHA FINAL FACE-OFF

TOP 10 RIDDER ARENA GOPHER WOMEN'S HOCKEY CROWDS

ATTENDANCE	DATE	OPPONENT	RESULT	NOTES
T1. 3,400	3/22/15	Harvard	W, 4-1	Gophers' 6th national title
T1. 3,400	3/20/15	Wisconsin	W, 3-1	Frozen Four semifinal
T1. 3,400	3/24/13	Boston University	W, 6-3	Gophers' 5th national title
T1. 3,400	3/22/13	Boston College	W, 3-2 (OT)	Frozen Four semifinal
T1. 3,400	12/1/12	Wisconsin	W, 4-1	First Ridder sellout
6. 3,251	1/6/07	Wisconsin	L, 4-1	---
7. 3,239	10/19/02	St. Cloud State	W, 8-0	First game at Ridder
8. 3,150	11/17/13	North Dakota	L, 3-2	End of 62-game win streak
9. 3,056	11/30/02	Minnesota Duluth	L, 4-3	---
10. 3,017	2/2/13	Minnesota Duluth	W, 6-2	---

MINNESOTA 2014-15 STATISTICS: COMBINED TEAM STATISTICS

Minnesota Gopher Women's Hockey Minnesota Combined Team Statistics (2014-15 Final) All games

Date	Opponent	Score	Att.	Record:	Overall	Home	Away	Neutral					
Oct 03	PENN STATE	w 8-0	2155	ALL GAMES	34-3-4	19-1-3	14-1-1	1-1-0					
Oct 04	#6 BOSTON UNIVERSITY	w 5-2	1962	CONFERENCE	22-2-4	10-1-3	12-1-1	0-0-0					
* Oct 10	at Minnesota Duluth	w 3-0	1061	NON-CONFERENCE	12-1-0	9-0-0	2-0-0	1-1-0					
* Oct 11	at Minnesota Duluth	Tot 3-3	1303										
* Oct 17	at #1 Wisconsin	w 4-1	2273										
* Oct 18	at #1 Wisconsin	Wot 2-1	2273										
* Oct 24	#9 NORTH DAKOTA	w 5-2	1647	# Player	gp	g	a	pts	sh	sh%	pen-min	pp	sh
* Oct 25	#9 NORTH DAKOTA	w 5-0	2494	22 Hannah Brandt	40	34	40	74	209	.163	7-14	4	1
* Oct 31	BEMIDJI STATE	Tot 2-2	1105	21 Dani Cameranesi	40	23	42	65	189	.122	12-24	7	0
* Nov 01	BEMIDJI STATE	L 0-1	2198	14 Maryanne Menefee	39	23	24	47	103	.223	0-0	4	0
* Nov 14	at Ohio State	w 4-2	328	19 Kelly Pannek	41	14	30	44	109	.128	5-21	3	0
* Nov 15	at Ohio State	w 5-3	284	7 Rachael Bona	41	15	23	38	182	.082	11-22	3	0
* Nov 21	at Minnesota State	w 5-1	230	20 Meghan Lorence	41	18	16	34	111	.162	16-43	6	1
* Nov 22	MINNESOTA STATE	w 4-0	2499	5 Rachel Ramsey	41	9	24	33	154	.058	15-30	3	0
Nov 24	vs St. Cloud State	w 5-0	2250	13 Milica McMillen	37	11	16	27	130	.085	22-55	7	0
Nov 29	at Princeton	w 2-1	223	2 Lee Stecklein	40	5	22	27	78	.064	2-4	2	1
Nov 30	at Princeton	w 5-2	202	6 Kate Schipper	41	7	15	22	71	.099	10-20	1	0
* Dec 05	ST. CLOUD STATE	w 12-0	1521	12 Megan Wolfe	41	3	16	19	47	.064	3-6	0	0
* Dec 06	ST. CLOUD STATE	w 7-0	1672	10 Cara Piazza	41	11	6	17	106	.104	4-8	2	0
Jan 04	ST. LAWRENECE	w 10-0	1053	18 Brook Garzone	38	0	15	15	22	.000	2-4	0	0
Jan 06	ST. LAWRENECE	w 5-1	850	9 Sydney Baldwin	41	5	6	11	78	.064	4-8	0	0
* Jan 10	#3 WISCONSIN	w 4-1	2441	11 Kelsey Cline	41	1	7	8	23	.043	2-4	0	0
* Jan 11	#3 WISCONSIN	Tot 1-1	2728	27 Nina Rodgers	41	4	2	6	35	.114	2-4	0	0
* Jan 16	MINNESOTA STATE	w 7-3	1714	15 Paige Haley	35	1	3	4	21	.048	3-6	0	0
* Jan 17	at Minnesota State	w 7-1	207	3 Kate Flug	11	0	1	1	13	.000	2-4	0	0
* Jan 23	at St. Cloud State	w 4-0	355	29 Amanda Leveille	34	0	1	1	0	.000	1-2	0	0
* Jan 24	at St. Cloud State	w 7-1	455	31 Shyler Sletta	5	0	0	0	0	.000	1-2	0	0
* Jan 30	OHIO STATE	Tot 3-3	2340	TM TEAM	14	0	0	0	0	.000	1-2	0	0
* Jan 31	OHIO STATE	w 3-1	2032	Total	41	184	309	493	1681	.109	125-283	42	3
* Feb 06	at #8 North Dakota	L 0-3	4818	Opponents	41	48	63	111	874	.055	155-321	12	1
* Feb 07	at #8 North Dakota	w 3-1	1879										
* Feb 13	#6 MINNESOTA DULUTH	w 7-1	2588	# Goalie	gp	min	ga	gaavg	saves	save%	w-l-t		
* Feb 14	#6 MINNESOTA DULUTH	w 2-0	2730	31 Shyler Sletta	5	127:47	1	0.47	36	.973	1-0-0		
* Feb 20	at Bemidji State	w 3-2	393	37 Sidney Peters	7	364:21	7	1.15	101	.935	5-0-1		
* Feb 21	at Bemidji State	w 4-2	540	29 Amanda Leveille	34	1984:18	39	1.18	689	.946	28-3-3		
Feb 27	MINNESOTA STATE	w 10-0	1131	TM EMPTY NET	14	7:34	1	-	0	.000	0-0-0		
Feb 28	MINNESOTA STATE	w 5-1	1406	Total	41	2484:00	48	1.16	826	.945	34-3-4		
Mar 07	vs #10 Bemidji State	L 0-1	1059	Opponents	41	2484:00	184	4.44	1497	.891	3-34-4		
Mar 14	RIT	w 6-2	1796										
Mar 20	#4 WISCONSIN	w 3-1	3400										
Mar 22	#3 HARVARD	w 4-1	3400										

TEAM STATISTICS	MINN	OPP
SHOT STATISTICS		
Goals-Shot attempts	184-1681	48-874
Shot pct.	.109	.055
Goals/Game	4.5	1.2
Shots/Game	41.0	21.3
POWER PLAYS		
Goals-Power Plays	42-137	12-108
Conversion Percent	.307	.111
Shot Attempts	316	119
Shot Percent	.133	.101
GOAL BREAKDOWN		
Power Play	42	12
Short-handed	3	1
Empty net	6	1
Penalty	0	0
Unassisted	12	8
Overtime	1	0
Shootout	0	0
Delayed Penalty	0	0
PENALTIES		
Number	125	155
Minutes	283	321
Penalties/Game	3.0	3.8
Pen minutes/Game	6.9	7.8
SHOOTOUTS (Made-Att)	6-14	5-13

Attendance Summary	MINN	Opponent
Total	46862	16824
Dates/Avg Per Date	23/2037	16/1052
Neutral Site #/Avg	2/1654	

Goals by Period	1st	2nd	3rd	OT	Total
Minnesota	55	65	63	1	184
Opponents	10	19	19	0	48

Saves by Period	1st	2nd	3rd	OT	Total
Minnesota	280	268	268	10	826
Opponents	470	544	464	19	1497

MINNESOTA 2014-15 STATISTICS: INDIVIDUAL

Minnesota Gopher Women's Hockey Minnesota Overall Individual Statistics (2014-15 Final) All games

Overall: 34-3-4 Conf: 22-2-4 Home: 19-1-3 Away: 14-1-1 Neut: 1-1-0

##	Player	gp	Shots					+	Penalties				Goals										blk
			g	a	pts	sh	sh%		pen-min	min	maj	oth	pp	sh	fg	gw	gt	ot	ht	pn	ua		
22	Hannah Brandt	40	34	40	74	209	.163	+69	7-14	7	0	0	4	1	5	6	2	0	1	0	1	26	
21	Dani Cameranesi	40	23	42	65	189	.122	+63	12-24	12	0	0	7	0	3	6	1	0	2	0	2	19	
14	Maryanne Menefee	39	23	24	47	103	.223	+47	0-0	0	0	0	4	0	5	6	0	0	1	0	1	7	
19	Kelly Pannek	41	14	30	44	109	.128	+28	5-21	3	1	1	3	0	3	2	0	0	2	0	1	26	
7	Rachael Bona	41	15	23	38	182	.082	+26	11-22	11	0	0	3	0	1	3	0	0	1	0	0	15	
20	Meghan Lorence	41	18	16	34	111	.162	+26	16-43	14	1	1	6	1	6	2	0	0	1	0	0	8	
5	Rachel Ramsey	41	9	24	33	154	.058	+49	15-30	15	0	0	3	0	0	3	0	1	0	0	0	58	
13	Milica McMillen	37	11	16	27	130	.085	+24	22-55	20	1	1	7	0	3	2	0	0	0	0	1	50	
2	Lee Stecklein	40	5	22	27	78	.064	+44	2-4	2	0	0	2	1	0	0	0	0	0	0	2	59	
6	Kate Schipper	41	7	15	22	71	.099	+12	10-20	10	0	0	1	0	1	1	0	0	0	0	0	11	
12	Megan Wolfe	41	3	16	19	47	.064	+41	3-6	3	0	0	0	0	1	0	0	0	0	0	0	27	
10	Cara Piazza	41	11	6	17	106	.104	+12	4-8	4	0	0	2	0	1	2	0	0	0	0	2	20	
18	Brook Garzone	38	0	15	15	22	.000	+16	2-4	2	0	0	0	0	0	0	0	0	0	0	0	15	
9	Sydney Baldwin	41	5	6	11	78	.064	+32	4-8	4	0	0	0	0	1	1	0	0	0	0	0	52	
11	Kelsey Cline	41	1	7	8	23	.043	+26	2-4	2	0	0	0	0	0	0	0	0	0	0	1	33	
27	Nina Rodgers	41	4	2	6	35	.114	+4	2-4	2	0	0	0	0	0	0	0	0	0	0	1	6	
15	Paige Haley	35	1	3	4	21	.048	+5	3-6	3	0	0	0	0	0	0	0	0	0	0	0	5	
3	Kate Flug	11	0	1	1	13	.000	+2	2-4	2	0	0	0	0	0	0	0	0	0	0	0	0	
29	Amanda Leveille	34	0	1	1	0	.000	0	1-2	1	0	0	0	0	0	0	0	0	0	0	0	0	
31	Shyler Sletta	5	0	0	0	0	.000	0	1-2	1	0	0	0	0	0	0	0	0	0	0	0	0	
TM	TEAM	14	0	0	0	0	.000	0	1-2	1	0	0	0	0	0	0	0	0	0	0	0	0	
	Total	41	184	309	493	1681	.109	+526	125-283	119	3	3	42	3	30	34	3	1	8	0	12	437	
	Opponents	41	48	63	111	874	.055	-	155-321	153	1	1	12	1	11	3	1	0	0	0	8	662	

##	Goalie	gp-gs	Goal average			Saves		Record				Goals allowed							
			minutes	ga	avg	saves	pct	w	l	t	sho	pp	sh	en	pen	sog			
31	Shyler Sletta	5-1	127:47	1	0.47	36	.973	1	0	0	1	0	0	0	0	0	0	0	0
37	Sidney Peters	7-6	364:21	7	1.15	101	.935	5	0	1	2	0	0	0	0	0	0	0	
29	Amanda Leveille	34-34	1984:18	39	1.18	689	.946	28	3	3	6	12	1	0	0	0	0	0	
TM	EMPTY NET	14-0	7:34	1	-	0	.000	0	0	0	2	0	0	1	0	0	0	0	
	Total	41-0	2484:00	48	1.16	826	.945	34	3	4	11	12	1	1	0	0	0	0	
	Opponents	41-0	2484:00	184	4.44	1497	.891	3	34	4	3	42	3	6	0	0	0	0	

MINNESOTA 2014-15 STATISTICS: INDIVIDUAL

Minnesota Gopher Women's Hockey Minnesota Overall Individual Statistics (2014-15 Final) All games

##	Power Play Scoring	GP	G	A	Pts	Shots	Pct.
22	Hannah Brandt	40	4	13	17	45	.089
7	Rachael Bona	41	3	11	14	21	.143
19	Kelly Pannek	41	3	11	14	21	.143
21	Dani Cameranesi	40	7	6	13	31	.226
5	Rachel Ramsey	41	3	10	13	63	.048
13	Milica McMillen	37	7	4	11	44	.159
20	Meghan Lorence	41	6	5	11	14	.429
14	Maryanne Menefee	39	4	5	9	21	.190
6	Kate Schipper	41	1	8	9	7	.143
2	Lee Stecklein	40	2	5	7	19	.105
10	Cara Piazza	41	2	0	2	11	.182
12	Megan Wolfe	41	0	2	2	4	.000
3	Kate Flug	11	0	1	1	0	.000
27	Nina Rodgers	41	0	1	1	3	.000
15	Paige Haley	35	0	1	1	2	.000
11	Kelsey Cline	41	0	0	0	4	.000
9	Sydney Baldwin	41	0	0	0	4	.000
18	Brook Garzone	38	0	0	0	1	.000

MINNESOTA 2014-15 STATISTICS: TEAM STATISTICS

Minnesota Gopher Women's Hockey Minnesota Overall Team Statistics (2014-15 Final) All games

Overall: 34-3-4 Conf: 22-2-4 Home: 19-1-3 Away: 14-1-1 Neut: 1-1-0

TEAM STATISTICS	MINN	OPP
SHOT STATISTICS		
Goals-Shot attempts	184-1681	48-874
Shot pct.	.109	.055
Goals/Game	4.5	1.2
Shots/Game	41.0	21.3
Assists	309	63
POWER PLAYS		
Goals-Power Plays	42-137	12-108
Conversion Percent	.307	.111
Shot Attempts	316	119
Shot Percent	.133	.101
GOAL BREAKDOWN		
Total Goals	184	48
Power Play	42	12
Short-handed	3	1
Empty net	6	1
Penalty	0	0
Unassisted	12	8
Overtime	1	0
Shootout	0	0
Delayed Penalty	0	0
PENALTIES		
Number	125	155
Minutes	283	321
Penalties/Game	3.0	3.8
Pen minutes/Game	6.9	7.8
Minor	119	153
Major	3	1
10-minute Misconduct	0	0
Game Misconduct	3	1
Gross Misconduct	0	0
Match	0	0
SHOOTOUTS (Made-Att)	6-14	5-13
ATTENDANCE		
Total	46862	16824
Dates/Avg Per Date	23/2037	16/1052
Neutral Site #/Avg	2/1654	

Goals by Period	1st	2nd	3rd	OT	Total
Minnesota	55	65	63	1	184
Opponents	10	19	19	0	48

Saves by Period	1st	2nd	3rd	OT	Total
Minnesota	280	268	268	10	826
Opponents	470	544	464	19	1497

MINNESOTA 2014-15 STATISTICS: GAME-BY-GAME GOALS-ASSISTS-POINTS

Minnesota Gopher Women's Hockey Minnesota Game-by-Game Goals-Assists-Points (2014-15 Final) All games

Opponent	Date	Score	2	3	5	6	7	9	10	11	12	13	14
			STECKLEIN,L	FLUG,KATE	RAMSEY,RAC	SCHIPPER,KA	BONA,RACHA	BALDWIN,SY	PIAZZA,CARA	CLINE,KELSE	WOLFE,MEG	MCMLLEN,MI	MENEFEE,MA
PSU	Oct 03	8-0 W	0-2-2	0-1-1	0-1-1	0-0-0	0-2-2	0-0-0	1-0-1	1-0-1	0-1-1	2-0-2	DNP
BU	Oct 04	5-2 W	0-2-2	0-0-0	0-2-2	0-1-1	0-2-2	0-0-0	1-0-1	0-0-0	0-1-1	1-0-1	DNP
at UMD	Oct 10	3-0 W	0-0-0	0-0-0	0-1-1	0-0-0	0-0-0	0-0-0	0-0-0	0-1-1	0-0-0	0-1-1	0-0-0
at UMD	Oct 11	3-3 t	0-1-1	0-0-0	0-0-0	0-1-1	0-1-1	0-0-0	0-0-0	0-0-0	0-1-1	0-1-1	0-0-0
at WIS	Oct 17	4-1 W	0-1-1	0-0-0	0-1-1	0-0-0	0-0-0	0-0-0	0-0-0	0-0-0	0-0-0	0-0-0	0-0-0
at WIS	Oct 18	2-1 W	0-0-0	0-0-0	1-0-1	0-1-1	1-0-1	0-0-0	0-0-0	0-0-0	0-0-0	0-0-0	0-0-0
UND	Oct 24	5-2 W	0-0-0	0-0-0	0-0-0	0-0-0	0-1-1	0-0-0	1-0-1	0-0-0	0-1-1	2-0-2	0-1-1
UND	Oct 25	5-0 W	0-0-0	0-0-0	0-0-0	0-0-0	0-0-0	0-0-0	0-0-0	0-0-0	0-0-0	1-1-2	2-0-2
BSU	Oct 31	2-2 t	0-1-1	0-0-0	0-1-1	0-0-0	0-0-0	0-0-0	0-0-0	0-0-0	0-0-0	0-0-0	0-0-0
BSU	Nov 01	0-1 L	DNP	0-0-0	0-0-0	0-0-0	0-0-0	0-0-0	0-0-0	0-0-0	0-0-0	0-0-0	0-0-0
at OSU	Nov 14	4-2 W	0-1-1	DNP	0-1-1	1-1-2	1-2-3	0-0-0	0-0-0	0-0-0	0-0-0	0-1-1	1-0-1
at OSU	Nov 15	5-3 W	0-1-1	DNP	1-0-1	1-1-2	0-2-2	0-0-0	0-1-1	0-0-0	0-0-0	0-2-2	0-0-0
at MSU	Nov 21	5-1 W	0-0-0	DNP	0-2-2	0-0-0	0-2-2	0-0-0	0-1-1	0-0-0	0-0-0	1-1-2	0-2-2
MSU	Nov 22	4-0 W	0-2-2	DNP	0-0-0	0-1-1	1-0-1	0-1-1	0-0-0	0-0-0	0-0-0	0-1-1	0-1-1
vs SCSU	Nov 24	5-0 W	0-0-0	DNP	0-1-1	1-1-2	0-1-1	0-0-0	0-1-1	0-0-0	0-0-0	0-0-0	0-2-2
at PRINW	Nov 29	2-1 W	0-0-0	DNP	0-0-0	0-0-0	0-0-0	0-0-0	0-0-0	0-0-0	0-0-0	0-0-0	1-0-1
at PRINW	Nov 30	5-2 W	0-0-0	DNP	0-1-1	0-0-0	1-0-1	0-1-1	0-0-0	0-0-0	0-2-2	1-0-1	1-0-1
SCSU	Dec 05	12-0 W	0-0-0	DNP	1-1-2	0-0-0	2-2-4	0-0-0	1-0-1	0-0-0	0-0-0	0-0-0	2-0-2
SCSU	Dec 06	7-0 W	0-1-1	DNP	1-0-1	1-1-2	0-2-2	1-1-2	0-0-0	0-3-3	0-0-0	2-0-2	0-0-0
SLU	Jan 04	10-0 W	0-0-0	DNP	1-0-1	0-0-0	3-0-3	1-1-2	0-0-0	0-1-1	0-2-2	0-0-0	1-3-4
SLU	Jan 06	5-1 W	0-2-2	DNP	0-1-1	0-0-0	2-1-3	0-0-0	0-0-0	0-0-0	0-0-0	0-1-1	1-0-1
WIS	Jan 10	4-1 W	0-0-0	DNP	0-1-1	0-0-0	0-0-0	0-0-0	1-0-1	0-0-0	0-1-1	0-0-0	0-2-2
WIS	Jan 11	1-1 t	0-1-1	DNP	0-0-0	0-0-0	0-0-0	0-0-0	0-0-0	0-0-0	0-0-0	0-0-0	0-0-0
MSU	Jan 16	7-3 W	0-1-1	DNP	1-0-1	0-0-0	0-1-1	1-0-1	1-0-1	0-0-0	0-0-0	0-2-2	3-1-4
at MSU	Jan 17	7-1 W	1-0-1	DNP	0-2-2	0-0-0	1-1-2	0-0-0	1-0-1	0-0-0	0-0-0	DNP	1-2-3
at SCSU	Jan 23	4-0 W	0-0-0	DNP	0-1-1	0-0-0	0-0-0	0-0-0	0-0-0	0-0-0	0-0-0	DNP	2-0-2
at SCSU	Jan 24	7-1 W	0-0-0	DNP	0-0-0	0-0-0	0-0-0	0-1-1	1-0-1	0-0-0	1-0-1	DNP	1-1-2
OSU	Jan 30	3-3 t	1-0-1	DNP	0-1-1	0-0-0	0-0-0	0-0-0	1-0-1	0-0-0	0-1-1	0-0-0	0-0-0
OSU	Jan 31	3-1 W	0-0-0	DNP	0-2-2	1-0-1	0-0-0	0-0-0	0-0-0	0-0-0	0-0-0	0-0-0	0-0-0
at UND	Feb 06	0-3 L	0-0-0	DNP	0-0-0	0-0-0	0-0-0	0-0-0	0-0-0	0-0-0	0-0-0	0-0-0	0-0-0
at UND	Feb 07	3-1 W	0-1-1	DNP	1-0-1	0-2-2	0-0-0	0-0-0	0-0-0	0-0-0	0-0-0	0-1-1	0-1-1
UMD	Feb 13	7-1 W	1-0-1	DNP	1-2-3	0-1-1	0-1-1	0-0-0	1-0-1	0-1-1	0-0-0	0-1-1	1-0-1
UMD	Feb 14	2-0 W	1-0-1	DNP	0-0-0	0-0-0	0-0-0	0-0-0	0-0-0	0-0-0	0-0-0	0-0-0	0-0-0
at BSU	Feb 20	3-2 W	0-1-1	DNP	0-1-1	0-0-0	1-0-1	0-0-0	0-0-0	0-0-0	0-0-0	0-2-2	0-0-0
at BSU	Feb 21	4-2 W	0-0-0	DNP	0-0-0	0-1-1	0-1-1	0-0-0	0-0-0	0-0-0	1-1-2	0-0-0	1-1-2
MSU	Feb 27	10-0 W	0-2-2	DNP	0-0-0	1-0-1	0-0-0	2-1-3	1-2-3	0-0-0	0-2-2	DNP	1-3-4
MSU	Feb 28	5-1 W	0-1-1	DNP	0-0-0	0-1-1	1-0-1	0-0-0	0-0-0	0-1-1	0-2-2	0-0-0	2-0-2
vs BSU	Mar 07	0-1 L	0-0-0	DNP	0-0-0	0-0-0	0-0-0	0-0-0	0-0-0	0-0-0	0-0-0	0-0-0	0-0-0
RIT	Mar 14	6-2 W	1-0-1	DNP	1-1-2	1-2-3	0-0-0	0-0-0	0-1-1	0-0-0	0-0-0	1-1-2	1-1-2
WIS	Mar 20	3-1 W	0-0-0	DNP	0-0-0	0-0-0	0-0-0	0-0-0	0-0-0	0-0-0	0-1-1	0-0-0	1-2-3
HARVW	Mar 22	4-1 W	0-1-1	0-0-0	0-0-0	0-0-0	1-1-2	0-0-0	0-0-0	0-0-0	1-0-1	0-0-0	0-1-1

MINNESOTA 2014-15 STATISTICS: GAME-BY-GAME GOALS-ASSISTS-POINTS

Minnesota Gopher Women's Hockey Minnesota Game-by-Game Goals-Assists-Points (2014-15 Final) All games

Opponent	Date	Score		15	18	19	20	21	22	27	29	31	37
				HALEY,PAIGE	GARZONE,BR	PANNEK,KEL	LORENCE,ME	CAMERANESI	BRANDT,HAN	RODGERS,NI	LEVELLE,AM	SLETTA,SHYL	PETERS,SIDN
PSU	Oct 03	8-0	W	0-0-0	0-1-1	0-0-0	1-1-2	2-0-2	1-2-3	0-1-1	DNP	DNP	0-0-0
BU	Oct 04	5-2	W	0-0-0	0-1-1	0-0-0	2-0-2	0-0-0	1-0-1	0-0-0	0-0-0	DNP	DNP
at UMD	Oct 10	3-0	W	0-0-0	0-0-0	0-1-1	0-0-0	1-2-3	2-0-2	0-0-0	0-0-0	DNP	DNP
at UMD	Oct 11	3-3	t	0-0-0	0-0-0	0-0-0	1-0-1	0-1-1	2-0-2	0-0-0	0-0-0	DNP	DNP
at WIS	Oct 17	4-1	W	0-0-0	0-1-1	0-0-0	0-0-0	3-0-3	1-1-2	0-0-0	0-0-0	DNP	DNP
at WIS	Oct 18	2-1	W	0-0-0	0-0-0	0-0-0	0-1-1	0-1-1	0-1-1	0-0-0	0-0-0	DNP	DNP
UND	Oct 24	5-2	W	0-0-0	0-0-0	0-2-2	0-0-0	2-0-2	0-2-2	0-0-0	0-0-0	DNP	DNP
UND	Oct 25	5-0	W	0-0-0	0-0-0	0-2-2	0-0-0	0-2-2	2-3-5	0-0-0	0-0-0	DNP	DNP
BSU	Oct 31	2-2	t	0-0-0	0-0-0	1-0-1	0-0-0	1-0-1	0-0-0	0-0-0	DNP	DNP	0-0-0
BSU	Nov 01	0-1	L	0-0-0	0-0-0	0-0-0	0-0-0	DNP	DNP	0-0-0	0-0-0	DNP	DNP
at OSU	Nov 14	4-2	W	0-0-0	DNP	0-1-1	1-0-1	0-1-1	0-0-0	0-0-0	0-0-0	DNP	DNP
at OSU	Nov 15	5-3	W	0-0-0	0-1-1	0-1-1	3-0-3	0-0-0	0-1-1	0-0-0	0-0-0	DNP	DNP
at MSU	Nov 21	5-1	W	0-0-0	0-1-1	0-0-0	0-0-0	3-0-3	1-1-2	0-0-0	0-0-0	0-0-0	DNP
MSU	Nov 22	4-0	W	0-0-0	0-0-0	0-0-0	0-0-0	1-0-1	2-1-3	0-0-0	DNP	0-0-0	0-0-0
vs SCSU	Nov 24	5-0	W	0-0-0	0-1-1	3-0-3	0-1-1	1-0-1	0-0-0	0-0-0	0-0-0	DNP	DNP
at PRINW	Nov 29	2-1	W	0-0-0	0-1-1	0-1-1	0-1-1	0-0-0	1-0-1	0-0-0	0-0-0	DNP	DNP
at PRINW	Nov 30	5-2	W	0-0-0	0-0-0	0-2-2	0-0-0	1-2-3	1-2-3	0-0-0	0-0-0	DNP	DNP
SCSU	Dec 05	12-0	W	1-0-1	DNP	0-4-4	2-1-3	0-6-6	1-6-7	2-0-2	DNP	DNP	0-0-0
SCSU	Dec 06	7-0	W	0-0-0	DNP	0-2-2	1-0-1	0-0-0	1-1-2	0-0-0	0-0-0	DNP	DNP
SLU	Jan 04	10-0	W	0-1-1	0-1-1	3-2-5	0-2-2	0-4-4	1-2-3	0-0-0	0-0-0	DNP	DNP
SLU	Jan 06	5-1	W	0-0-0	0-0-0	1-0-1	0-2-2	0-2-2	1-0-1	0-0-0	0-0-0	DNP	DNP
WIS	Jan 10	4-1	W	0-0-0	0-0-0	0-0-0	0-0-0	1-1-2	2-1-3	0-0-0	0-0-0	DNP	DNP
WIS	Jan 11	1-1	t	0-0-0	0-0-0	0-0-0	0-1-1	0-0-0	1-0-1	0-0-0	0-0-0	DNP	DNP
MSU	Jan 16	7-3	W	0-0-0	0-0-0	0-1-1	1-0-1	0-3-3	0-3-3	0-0-0	DNP	DNP	0-0-0
at MSU	Jan 17	7-1	W	0-0-0	0-1-1	1-2-3	0-1-1	1-2-3	1-2-3	0-0-0	0-0-0	DNP	DNP
at SCSU	Jan 23	4-0	W	0-0-0	0-0-0	0-2-2	1-0-1	0-1-1	0-3-3	1-0-1	DNP	0-0-0	DNP
at SCSU	Jan 24	7-1	W	0-0-0	0-1-1	1-1-2	1-1-2	0-2-2	1-1-2	1-1-2	0-0-0	DNP	DNP
OSU	Jan 30	3-3	t	0-0-0	0-1-1	0-1-1	1-1-2	0-0-0	0-0-0	0-0-0	0-0-0	DNP	DNP
OSU	Jan 31	3-1	W	0-0-0	0-0-0	1-2-3	0-0-0	0-0-0	1-0-1	0-0-0	0-0-0	DNP	DNP
at UND	Feb 06	0-3	L	DNP	0-0-0	0-0-0	0-0-0	0-0-0	0-0-0	0-0-0	0-0-0	DNP	DNP
at UND	Feb 07	3-1	W	DNP	0-0-0	0-0-0	0-0-0	1-0-1	1-0-1	0-0-0	0-0-0	DNP	DNP
UMD	Feb 13	7-1	W	DNP	0-1-1	1-0-1	1-2-3	0-2-2	1-0-1	0-0-0	0-0-0	0-0-0	DNP
UMD	Feb 14	2-0	W	DNP	0-0-0	0-0-0	0-0-0	1-0-1	0-0-0	0-0-0	0-0-0	DNP	DNP
at BSU	Feb 20	3-2	W	DNP	0-0-0	0-0-0	0-0-0	1-1-2	1-1-2	0-0-0	0-0-0	DNP	DNP
at BSU	Feb 21	4-2	W	DNP	0-0-0	0-0-0	1-0-1	1-1-2	0-1-1	0-0-0	DNP	DNP	0-0-0
MSU	Feb 27	10-0	W	0-2-2	0-1-1	0-2-2	0-0-0	2-4-6	3-1-4	0-0-0	0-0-0	DNP	0-0-0
MSU	Feb 28	5-1	W	0-0-0	0-1-1	1-0-1	0-1-1	0-1-1	1-0-1	0-0-0	0-0-0	0-0-0	DNP
vs BSU	Mar 07	0-1	L	0-0-0	0-0-0	0-0-0	0-0-0	0-0-0	0-0-0	0-0-0	0-0-0	DNP	DNP
RIT	Mar 14	6-2	W	0-0-0	0-1-1	0-0-0	0-0-0	0-1-1	1-2-3	0-0-0	0-0-0	DNP	DNP
WIS	Mar 20	3-1	W	0-0-0	0-0-0	1-0-1	0-0-0	0-1-1	1-2-3	0-0-0	0-0-0	DNP	DNP
HARVW	Mar 22	4-1	W	0-0-0	0-0-0	0-1-1	1-0-1	0-1-1	1-0-1	0-0-0	0-1-1	DNP	DNP