

PENN STATE

WOMEN'S SOCCER



2013

GoPSUsports.com | ONE TEAM

2013 SEASON

Overall	12-5-1
At home	8-1-1
On the Road	4-4-0
Big Ten	6-4-0

2013 SCHEDULE

AUGUST

23	WEST VIRGINIA ¹	T, 2-2 (2OT)
25	HOFSTRA ¹	W, 2-1
30	at No. 5 Virginia	L, 5-1

SEPTEMBER

1	LA SALLE	W, 5-1
6	BOSTON UNIVERSITY	W, 1-0
10	at Bucknell	W, 6-0
13	at Oklahoma State	W, 4-2
15	at Tulsa	W, 3-2
20	NORTHWESTERN*	W, 3-2(2OT)
26	PURDUE*	W, 6-1
29	INDIANA*	W, 4-1

OCTOBER

4	at No. 18 Wisconsin*	W, 2-1
6	at Minnesota*	L, 1-0
13	No. 19 MICHIGAN*	L, 1-0
17	OHIO STATE*	W, 4-2
20	ILLINOIS	W, 5-0
25	at Iowa*	L, 3-2
27	at No. 21 Nebraska*	L, 3-2 (2OT)

NOVEMBER

1	at Michigan State*	3:00 p.m.
6	Big Ten Quarterfinals ²	TBA
8	Big Ten Semifinals ²	TBA
10	Big Ten Championship ²	TBA
15-17	NCAA First Round	TBA
22	NCAA Second Round	TBA
24	NCAA Third Round	TBA
29-30	NCAA Quarterfinals	TBA

DECEMBER

1	NCAA Quarterfinals	TBA
6	College Cup Semifinals	TBA
8	College Cup Championship	TBA

* - Big Ten match

1 - Penn State Invitational, University Park, Pa.

2 - Big Ten Tournament, Champaign, Ill.

Home matches in **CAPS** at Jeffrey Field
All times Eastern

MEDIA INFORMATION

Soccer Contact:	Kellie O'Brien
E-mail:	kbo2@psu.edu
Phone (Office):	(814) 863-1377
Phone (Cell):	(814) 321-5119
Athletics Website:	GoPSUsports.com
Facebook:	PSUWomensSoccer
Twitter:	@PennStateWSOC
Instagram:	@PennStateWSOC

#22 PENN STATE NITTANY LIONS

(12-5-1, 6-4-0 Big Ten)

MICHIGAN STATE SPARTANS

(9-7-2, 3-7-0 Big Ten)



Nov. 1, 2013 • 3 p.m. • DeMartin Soccer Complex • East Lansing, Mich.

MATCH DAY (vs. MICHIGAN STATE)

VENUE	DeMartin Soccer Complex (Grass, 2,500)
ONLINE COVERAGE	GameTracker
SERIES RECORD	Penn State leads 17-4-0
LAST MEETING	Oct. 29, 2012 (PSU won, 5-1)

MATCH NOTES

- Penn State closes out the regular season at Michigan State on Friday
- The Nittany Lions have compiled a 17-4-0 record against the Spartans all-time
- PSU is tied for third in the B1G standings
- The Lions lead the conference in every offensive category
- Hayes ranks in top five nationally in three statistical categories
- The Blue and White rank No. 22 in NSCAA poll
- Hayes selected as Senior CLASS Award finalist

ON THE PITCH

The No. 22 Penn State women's soccer team closes out the regular season on Friday, traveling to Michigan State for a 3 p.m. match-up. The Nittany Lions are tied for third with Indiana in the Big Ten standings. The top eight teams in the conference qualify for the Big Ten Tournament, which will be hosted by Illinois Nov. 6-10.

PENN STATE NO. 22 IN NSCAA POLL

After 10 weeks of action, the Penn State women's soccer team ranks 22nd overall according to the NSCAA rankings. Michigan (8) and Nebraska (18) also represent the Big Ten in the poll while Wisconsin and Indiana are just outside of the Top 25, receiving votes.

LEADING THE LEAGUE

The Blue and White currently lead the conference in every offensive category. They are No. 1 in goals (52), goals per game (2.89), assists (46), assists per game (2.56), points (150) and shots (327). Penn State is also in the top five in the nation in points (3rd), scoring offense (3rd) and assists (4th).

2013 STAT LEADERS

POINTS		GAME-WINNING GOALS	
Maya Hayes	39	Maya Hayes	4
Tani Costa	21	Mallory Weber	2
Mallory Weber	19	Raquel Rodriguez	2
Raquel Rodriguez	18		
GOALS		ASSISTS	
Maya Hayes	17	Raquel Rodriguez	8
Tani Costa	8	Mallory Weber	7
Mallory Weber	6	Taylor Schram	6
		Emily Hurd	6
		SAVES	
		Britt Eckerstrom	72



GAMEDAY CENTRAL

SCOUTING MICHIGAN STATE

Michigan State enters Friday's contest at 9-7-2 overall and 3-7-0 in Big Ten action after splitting with Northwestern and Illinois last weekend. The Spartans used goals from Kirsten Evans and Alexandra Gjonaj to edge the Wildcats, 3-2, on Friday before getting shutout by the Fighting Illini, 2-0, on Sunday.

MSU's offensive attack is led by sophomores Mary Kathryn Fiebertz and Allyson Krause. Fiebertz leads the team in goals with six while Krause has notched five goals and four assists. Sophomore Gabrielle Gauruder leads the Spartans in goal with 54 saves and a goals-against average of 1.13.

SERIES HISTORY vs. THE SPARTANS

Penn State has compiled a 17-4-0 record against Michigan State all-time. The Lions overpowered MSU by a count of 5-1 last season at Jeffrey Field.

PSU has not dropped a match to the Spartans since 2009, when the Blue and White fell in a 3-2 overtime decision.

LAST TIME OUT

In a match between two of the top Big Ten teams, the No. 16 Penn State women's soccer team battled No. 21 Nebraska to a double-overtime ending but fell just short as the Huskers escaped with a 3-2 victory on Sunday afternoon. Junior Whitney Church and senior Maya Hayes each notched goals for the Blue and White.

After a scoreless first half, the Lions were determined to get on the board early in the second and found success less than two minutes after the break. PSU was awarded a free kick at the 46:44 mark and Church fired the ball in from the top of the 18 yard box to put the Lions up 1-0.

Nebraska nearly scored the equalizer just five minutes later as Jackson found the back of the net on a header before the play was negated due to offside.

Jackson buried the ball on her next shot, heading in a long pass to the far post from senior Ari Romero to tie the match at 1-1 in the 75th minute.

The Huskers pulled ahead eight minutes later as freshman Jaycie Johnson tapped in a rebound. Britt Eckerstrom made a fantastic diving save on the initial shot by Jackson but could not hold on to the ball as Johnson found it just outside of the box and sent it in before the keeper could react.

With the time winding down it looked as though Nebraska would pull out the win in regulation, but the Lions weren't done yet. Freshman Brittany Basinger sent the ball to Hayes at the edge of the box and the senior headed it in to even the score at 2-2 and push the match into overtime.

Johnson ended the game in the 103rd minute of action. The forward ran the length of the field and beat two Penn State defenders before blasting the golden goal into the lower left corner from 20 yards out.

BLUE AND WHITE EDGED BY IOWA

Despite a two-goal performance by senior Tani Costa, the No. 16 Penn State women's soccer team could not get past a tough Iowa attack as the Lions fell to the Hawkeyes, 3-2, on Friday night at the Iowa Soccer Complex.

Redshirt junior Katie Nasenbenny found the back of the net early in the game to give the Hawks a 1-0 advantage in the fourth minute of action. Iowa was awarded a corner kick at the 3:50 mark and was able to capitalize as Ashley Catrell crossed the ball to Nasenbenny and the midfielder put the ball in on a header.

Costa netted her first goal in 23rd minute on a penalty kick after an Iowa defender was called for a hand ball inside the box. The forward buried the ball into the bottom left corner of the net to tie the match a 1-1.

Iowa pulled ahead again at the 40:31 mark as Catrell sneaked the ball past Eckerstrom to put the score at 2-1.

The Hawkeye lead would not last long, however, as Costa tallied the equalizer less than a minute later. Costa received the ball on a throw in from Emily Carrollo and fired it in at the far post from just outside the 18 yard box to bring the count to 2-2 in the 42nd minute.

Each team took just four shots apiece in the second half but Iowa found success on the final attempt as Lacasse notched the game-winning goal for the Hawkeyes in the 75th minute to cap the scoring at 3-2.

HAYES FINALIST FOR SENIOR CLASS AWARD

Penn State senior Maya Hayes has been selected as one-of-10 finalists for the 2013 Senior CLASS Award in collegiate soccer. Hayes is the first PSU women's soccer student-athlete in the seven-year history of the award to be named a finalist.

The Senior CLASS (Celebrating Loyalty and Achievement for Staying in School) Award is presented yearly to a Division I senior student-athlete who has notable achievements in four areas of excellence - community, classroom, character and competition.

Penn State fans can vote for Hayes at the Senior Class Award website. Fans can vote DAILY for their top three choices and are encouraged to vote often as fan voting is a key factor in determining the winner of the award.

Hayes leads the Nittany Lions and the Big Ten and tied for third in the nation in points this season with 37 through 16 matches. The forward is also second in the league and tied for fourth in the country in goals (16) and has notched five assists.

A two-time NSCAA first team All-America selection, Hayes was second on the team in goals (16) and points (38) in 2012 despite missing the first seven games while participating in the U20 World Cup with the U.S. U20 Women's National Team. She led the nation in scoring in her sophomore season, registering 31 goals and eight assists for a Big Ten-record 70 points.

A kinesiology major, Hayes has received several academic awards during her time as a Nittany Lion. She was a 2011 CoSIDA/Captial One third-team Academic All-America selection and CoSIDA/Captial One first team All-District selection. Hayes was included on the Dean's List for the spring 2013 semester and was inducted into Penn State's Athletic Honor Society, Spiritus Leoninus. She is also a two-time Academic All-Big Ten selection.

Fans are encouraged to vote on the Senior CLASS Award website through November 25. Fan votes will be combined with media and Division I head coaches' votes to determine the winner. The Senior CLASS Award winners will be announced during the 2013 NCAA Men's and Women's College Cup championships in December.

2013 BIG TEN STANDINGS

Team	Big Ten	Pts.	Overall
Nebraska	9-1-0	27	14-3-1
Michigan	8-1-1	25	14-2-1
Penn State	6-4-0	18	12-5-1
Indiana	6-4-0	18	13-4-1
Minnesota	4-4-2	14	11-5-2
Ohio State	4-4-2	14	10-5-3
Iowa	4-5-1	13	12-5-1
Wisconsin	4-5-1	13	9-6-2
Illinois	4-5-1	13	9-7-2
Michigan State	3-7-0	9	9-7-2
Purdue	3-7-0	9	8-9-1
Northwestern	1-9-0	3	3-13-2



TOP TIER

Senior Maya Hayes leads the B1G and is tied for second in the nation in points with 39. The forward is also second in the B1G and tied for fifth in the country in goals with 17.

Hayes has found the back of the net in 14-of-18 matches this season.

IN THE BOOKS

Forward Maya Hayes solidified her place in the Penn State record books after notching the second most goals (31) and most points (70) in a single season during her sophomore campaign but she is not stopping there. The senior is now No. 3 on the career goals ledger after netting 17 so far this season, bringing her total to 69 in just 82 games.

All-American Tiffany Weimer (2002-05) and MAC Hermann Trophy winner Christie Welsh (1999-02) are atop the standings with an impressive 91 and 82 goals, respectively.

Hayes is also third on the career points record list with 158. Welsh leads the category with a remarkable 216 points and Weimer follows closely with 214.

HOME FIELD DOMINANCE

The Lions are a force to be reckoned with when playing at Jeffrey Field, having amassed a home record of 190-22-11 (.877). At 96-4-4 (.942), the Nittany Lions have the best Big Ten home record in the conference.

PSU also leads the league in attendance, averaging 1,742 fans per game this season. The program with the next highest attendance average is Michigan at 853 fans per match.

LIONS BLANK ILLINI

The No. 17 Penn State women's soccer team registered its first shutout of the Big Ten season on Sunday, downing Illinois by a count of 5-0 in the final home game of the regular season. Sophomore Raquel Rodriguez notched the first multi-goal performance of her career with two goals while Tani Costa, Mallory Weber and Maya Hayes also found the back of the net.

Rodriguez put Penn State on the board early, notching her first goal in the eighth minute. Senior Taylor Schram sent a through ball to Rodriguez and the midfielder fired it in from just outside the box to put the Lions up 1-0.

It did not take long for Rodriguez to double the Nittany Lions' lead as she buried another ball in the net just six minutes later. She rebounded the ball after a shot by Emily Hurd was blocked by an Illini defender and was able to finish from the top of the 18 yard box.

Costa pushed PSU's lead to 3-0 in the 31st minute after notching her sixth goal of the season. The forward made use of her quick footwork to turn a defender around before sending the ball in from 12 yards out.

The Blue and White showed no sign of slowing down entering the second half as Weber flicked in another goal at the 47:20 mark. The sophomore received the ball on a cross from freshman Brittany Basinger (Purcellville, Va.) and put it in from point blank range to give the Lions a 4-0 advantage.

Hayes capped the scoring in the 50th minute with her 16th goal of the year. Weber found Hayes inside the 18 yard box and the senior slipped the ball past Illinois keeper Claire Wheatly from 12 yards deep.

LIONS ROAST BUCKEYES

Seniors Taylor Schram and Maya Hayes led the No. 17 Penn State women's soccer team to a 4-2 victory over Big Ten rival Ohio State on Thursday afternoon at Jeffrey Field. Schram netted the Lions' first goal of the match and Hayes found the back of the net twice.

The OSU defense held the Nittany Lions to its second lowest shot count of the season, allowing just 10 shots by the Blue and White offensive attack. The Lions had seven attempts on net to the Buckeyes' six and were awarded eight corner kicks while Ohio State took five.

2013 PENN STATE WOMEN'S SOCCER ROSTER

No.	Name	Pos.	Elig.	Ht.	Hometown	High School	Pronunciation
0	Meghan Kaminski	GK	So.	6-1	Doylestown, Pa.	Central Bucks South	
00	Lexi Golestani	GK	Fr.	5-6	Montgomery, N.J.	The Hun School of Princeton	GOAL-es-tawn-EE
1	Brittany Basinger	D	Fr.	5-7	Fairfax, Va.	Woodgrove	BAY-singer
2	Megan Ritchey	M	So.	5-3	State College, Pa.	State College Area	
3	Emily Hurd	M	R-Jr.	5-7	Sammamish, Wash.	Eastlake	
4	Lexi Marton	D	R-Sr.	5-11	Aurora, Ontario	The Country Day School	
5	Maya Hayes	F	Sr.	5-7	West Orange, N.J.	Newark Academy	
6	Anna Witte	D	Fr.	5-4	Morrisville, N.C.	Cary	witt-EE
7	Corey Persson	M	So.	5-3	Danvers, Mass.	Danvers	
8	Jenna Kalwa	D/M	So.	5-5	Pennington, N.J.	Hopewell Valley Central	
9	Andrea Gunderson	D	Fr.	5-6	West Chester, Pa.	WC Rustin	
11	Raquel Rodriguez	F/M	So.	5-6	San Jose, Costa Rica	International Christian	
12	Kindrah Kohne	M	Jr.	5-5	Homer, N.Y.	Homer	KO-nee
14	Kori Chapic	F/M	Jr.	5-7	Novelty, Ohio	West Geauga	CHAP-ick
15	Erin Kehoe	D	Sr.	5-4	Crystal Lake, Ill.	Prairie Ridge	
16	Mallory Weber	F	So.	5-6	Novi, Mich.	Northville	
17	Whitney Church	D	Jr.	5-5	Ashburn, Va.	Broad Run	
18	Angela Widlacki	D	Fr.	5-5	Naperville, Ill.	Naperville North	
19	Taylor Schram	F/M	Sr.	5-5	Canonsburg, Pa.	Canon-McMillan	SHRAM
20	Salina Williford	M/D	Fr.	5-4	Wayne, Pa.	Conestoga	
21	Teddy Chase	D	So.	5-7	Wayne, Pa.	The Shipley School	
22	Tani Costa	F	R-Sr.	5-8	Honolulu, Hawaii	Kalani	TAH-nee
23	Bri Hovington	D	Sr.	5-4	Lothian, Md.	Southern	
24	Liv Brandy	D	Fr.	5-4	Gibsonia, Pa.	Home Schooled	
25	Mallory Peterson	F/M	So.	5-5	Clinton Corner, N.Y.	Millbrook	
26	Emily Carrollo	F/M	GS	5-5	Sussex, N.J.	Pope John Regional	KA-roll-oh
27	Maggie Chapman	M	Fr.	5-4	Dumfries, Va.	Forest Park	
28	Britt Eckerstrom	GK	R-So.	5-10	Germantown, Md.	Northwest	
30	Chloe Buehler	GK	Fr.	5-7	Perrysburg, Ohio	Perrysburg	BYOO-lur

Head Coach: Erica Walsh (Seventh year)

Assistant Coaches: Ann Cook (Seventh year), Tim Wassell (Fourth year)

Director of Operations: Kara Lowery (First year)

Volunteer Assistant: Mike Eckberg (First Year)



2013 PENN STATE WOMEN'S SOCCER

After two consecutive scoreless games, PSU made sure to find the back of the net early. Schram received a low cross from sophomore Mallory Weber and put the ball in on a sliding kick from six yards out to put Penn State up 1-0.

The Penn State lead was extended to 2-0 at the 33:12 mark after the Buckeyes sent an own goal into the net. Weber crossed the ball towards the goal and it deflected off of OSU defender Marisa Wolf, putting the Blue and White up 2-0.

Nichelle Prince put the Buckeyes on the board a little over three minutes later. Alexis Degler found Prince inside the 18 yard box and the forward finished from 12 yards out, bringing the score to 2-1.

The Buckeyes were awarded a corner kick in the 53rd minute and were able to capitalize on it as Morgan Wolcott netted the equalizer. Danica Wu took the corner kick and sent the ball flying towards Wolcott, who found the ball and headed it inside the far post to tie the match at 2-2.

The Nittany Lions did not waste any time responding as Hayes notched her first goal just over a minute later. The senior intercepted an OSU pass inside the 18 yard box and beat the goalkeeper before burying the ball in the net from eight yards out.

Three minutes later, Hayes booted another one in to register her third multi-goal game of the season. The forward rebounded the ball after a shot by Schram collided with the crossbar and was able to knock it in from just outside the box.

Michela Paradiso attempted to cut the deficit in the 83rd minute as she found the ball inside the box, but her shot was off target as the ball sailed high, leaving the final score at 4-2.

TWO NAMED TO HERMANN WATCH LIST

Penn State women's soccer senior forward Maya Hayes and junior defender Whitney Church have been named to the Missouri Athletic Club's Hermann Trophy Watch List for the 2013 season.

The MAC Hermann Trophy is collegiate soccer's most prestigious award presented annually to one male and one female athlete. The winners will be announced Friday, Jan. 10, 2014 at the trophy presentation banquet at the Missouri Athletic Club in St. Louis. Christie Welsh is the only Penn State athlete to win the award (2001).

This is Hayes' second consecutive year on the watch list and Church's first appearance. Hayes was a finalist for the award in 2011 and a semifinalist in 2012. Hayes and Church are joined by Illinois' Vanessa DiBernardo as Big Ten honorees for the award.

Hayes is a two-time NSCAA first team All-America selection and has earned back-to-back Big Ten Forward of the Year honors. She finished second on the team in goals (16) and points (38) in 2012, despite missing the first seven games of the season while participating in the U20 World Cup with the U.S. U20 National Team.

Church received NSCAA first team All-Great Lakes recognition and Big Ten Defender of the Year honors in 2012. She led the Nittany Lion defensive attack, starting all 27 contests and logging over 2,000 minutes.

SOCIAL MEDIA

For complete coverage of Penn State women's soccer, please visit <http://www.GoPSUsports.com/sports/w-soccer>. Follow PSU women's soccer on Twitter and Instagram: @PennStateWSOC. Penn State women's soccer is also on Facebook: www.facebook.com/PSUWomensSoccer.

PENN STATE CAREER RECORDS

SHOTS

1.	431	Christie Welsh	97 gms.	1999-02
2.	381	Katie Schoepfer	92 gms.	2006-09
3.	356	Tiffany Weimer	97 gms.	2002-05
4.	347	Joanna Lohman	101 gms.	2000-03
5.	317	Rachel Hoffman	87 gms.	1994-97
6.	314	Christine Nairn	94 gms.	2009-12
7.	283	Heidi Drummond	98 gms.	2000-03
8.	275	Maya Hayes	82 gms.	2010-
9.	253	Danielle Toney	99 gms.	2007-10
10.	230	Kelly Convey	93 gms.	1996-99

GOALS

1.	91	Tiffany Weimer	97 gms.	2002-05
2.	82	Christie Welsh	97 gms.	1999-02
3.	69	Maya Hayes	82 gms.	2010-
4.	58	Rachel Hoffman	87 gms.	1994-97
5.	56	Heidi Drummond	98 gms.	2000-03
6.	48	Katie Schoepfer	92 gms.	2006-09
7.	44	Carole Dutchka	87 gms.	1995-98
8.	41	Joanna Lohman	101 gms.	2000-03
9.	38	Danielle Toney	99 gms.	2007-10
10.	34	Christine Nairn	93 gms.	2009-12

GAME-WINNING GOALS

1.	27	Christie Welsh	97 gms.	1999-02
	27	Tiffany Weimer	97 gms.	2002-05
3.	19	Heidi Drummond	98 gms.	2000-03
4.	18	Katie Schoepfer	92 gms.	2006-09
	18	Rachel Hoffman	87 gms.	1994-97
6.	17	Carole Dutchka	87 gms.	1995-98
	17	Maya Hayes	82 gms.	2010-
8.	15	Joanna Lohman	101 gms.	2000-03
9.	12	Danielle Toney	99 gms.	2007-10
10.	12	Christine Nairn	93 gms.	2009-12

ASSISTS

1.	52	Christie Welsh	97 gms.	1999-02
2.	41	Christine Nairn	94 gms.	2009-12
3.	37	Joanna Lohman	101 gms.	2000-03
4.	32	Tiffany Weimer	97 gms.	2002-05
5.	31	Rachel Hoffman	87 gms.	1994-97
6.	29	Stephanie Smith	101 gms.	2000-03
7.	26	Katie Schoepfer	92 gms.	2006-09
		Heidi Drummond	98 gms.	2000-03
		Kelly Convey	93 gms.	1996-99
10.	25	Liz Villamil	87 gms.	1994-97

POINTS

1.	216	Christie Welsh	97 gms.	1999-02
2.	214	Tiffany Weimer	97 gms.	2002-05
3.	158	Maya Hayes	82 gms.	2010-
4.	147	Rachel Hoffman	87 gms.	1994-97
5.	138	Heidi Drummond	98 gms.	2000-03
6.	122	Katie Schoepfer	92 gms.	2006-09
7.	119	Joanna Lohman	101 gms.	2000-03
8.	108	Carole Dutchka	87 gms.	1995-98
	109	Christine Nairn	94 gms.	2009-12
10.	96	Danielle Toney	99 gms.	2007-10

GAMES PLAYED

1.	104	Bonnie Young		1997-01
2.	103	Megan Mills		1998-01
3.	101	Joanna Lohman		2000-03
	101	Stephanie Smith		2000-03
5.	100	Emily Oleksiuk		1998-01
6.	99	Danielle Toney		2007-10
7.	97	Luanne Strom		1997-00
	97	Tiffany Weimer		2002-05
	97	Christie Welsh		1999-02
10.	96	Courtney Lawson		1996-99

GAMES STARTED

1.	103	Megan Mills		1997-01
	103	Bonnie Young		1997-01
3.	101	Joanna Lohman		2000-03
	101	Stephanie Smith		2000-03
5.	100	Emily Oleksiuk		1998-01



INDIVIDUAL HONORS & AWARDS

Brittany Basinger

TDS Preseason Best XI all-freshman team

Whitney Church

TDS National Team of the Week (9/24)

Big Ten Offensive POW (9/23)

Philly Soccer News POW (9/23)

MAC Hermann Trophy Watch List

TDS Preseason Best XI second team

Big Ten Player to Watch

Maya Hayes

TopDrawerSoccer Nat'l Team of the Week (10/22)

Senior CLASS Award finalist (10/16)

Disney Soccer/NSCAA National POW (9/17, 10/22)

Big Ten Offensive POW (9/16, 10/21)

Philly Soccer News POW (9/16, 10/21)

MAC Hermann Trophy Watch List

Senior CLASS Award Candidate

Soccer America Preseason All-American

TDS Preseason Best XI first team

Big Ten Player to Watch

Raquel Rodriguez

TopDrawerSoccer National Team of the Week (10/1)

Big Ten Offensive POW (9/30)

Philly Soccer News POW (9/30)

Big Ten Player to Watch

PENN STATE SEASON RECORDS

SHOTS

124	Tiffany Weimer	23 gms.	2004
123	Christie Welsh	26 gms.	2001
115	Joanna Lohman	25 gms.	2003
114	Christie Welsh	24 gms.	2002
104	Katie Schoepfer	24 gms.	2008
104	Katie Schoepfer	24 gms.	2007

GOALS

32	Tiffany Weimer	25 gms.	2005
31	Maya Hayes	26 gms.	2011
27	Christie Welsh	26 gms.	1999
26	Tiffany Weimer	23 gms.	2004
25	Christie Welsh	26 gms.	2001
21	Tiffany Weimer	25 gms.	2003

ASSISTS

18	Christie Welsh	26 gms.	2001
14	Joanna Lohman	26 gms.	2001
13	Christine Nairn	25 gms.	2011
13	Christie Welsh	26 gms.	1999
12	Christine Nairn	27 gms.	2012
12	Taylor Schram	24 gms.	2011
12	Tiffany Weimer	23 gms.	2004
12	Stephanie Smith	26 gms.	2000

POINTS

70	Maya Hayes	26 gms.	2011
69	Tiffany Weimer	25 gms.	2005
68	Christie Welsh	26 gms.	2001
67	Christie Welsh	26 gms.	1999
64	Tiffany Weimer	23 gms.	2004
51	Tiffany Weimer	25 gms.	2003
46	Christine Nairn	27 gms.	2012

GAME-WINNING GOALS

13	Tiffany Weimer	25 gms.	2005
9	Maya Hayes	26 gms.	2011
9	Christie Welsh	26 gms.	1999
8	Joanna Lohman	25 gms.	2003
7	Katie Schoepfer	24 gms.	2007
7	Christie Welsh	21 gms.	2000
7	Carole Dutchka	26 gms.	1998

SAVES

132	Emily Oleksiuk	25 gms.	1998
115	Emily Oleksiuk	26 gms.	1999
115	Emily Oleksiuk	24 gms.	2000

SHUTOUTS

15.4	Emily Oleksiuk	24 gms.	2000
11	Erin McLeod	21 gms.	2004
10	Amanda Brown	23 gms.	2003
9.85	Emily Oleksiuk	26 gms.	1999
9	Erin McLeod	24 gms.	2005

WINS

22	Erin McLeod	24 gms.	2005
21	Erin McNulty	26 gms.	2011
21	Emily Oleksiuk	25 gms.	1999
20	Emily Oleksiuk	26 gms.	2001
20	Emily Oleksiuk	26 gms.	2000

GOALS AGAINST AVG.

0.41	Emily Oleksiuk	2222:40	10 GA	2000
0.43	Erin McLeod	1885:59	9 GA	2004
0.62	Alyssa Naeher	2176:18	15 GA	2007
0.75	Emily Oleksiuk	2168:52	18 GA	2001



MISCELLANEOUS STATISTICS

PENN STATE is...

190-22-11..... All-time at Jeffrey Field
96-4-4..... All-time vs. Big Ten at Jeffrey Field

In 2013...

8-1-1..... at home
4-4-0..... on the road
0-0-0..... at neutral site
1-1-1..... in overtime
7-3-1..... when wearing white
5-2-0..... when wearing blue
10-0-0..... when leading at halftime
1-2-1..... when trailing at halftime
2-2-0..... when tied at halftime
11-2-0..... when scoring first goal
1-3-1..... when opponent scores first goal
12-3-1..... when out-shooting opponent
0-2-0..... when out-shot by opponent
0-0-0..... when shooting the same # of shots
8-4-1..... when taking more corner kicks
4-1-0..... when allowing more corner kicks
0-0-0..... when taking the same corner kicks
1-3-0..... against ranked opponents
11-2-1..... against unranked opponents
0-1-0..... against higher-ranked opponents
1-2-0..... against lower-ranked opponents
0-2-0..... when scoring 0 goals
1-0-0..... when scoring 1 goal
2-2-1..... when scoring 2 goals
9-0-0..... when scoring 3+ goals
3-0-0..... when allowing 0 goals
5-2-0..... when allowing 1 goal
3-0-1..... when allowing 2 goals
0-3-0..... when allowing 3+ goals
1-0-0..... on Tuesday
0-0-0..... on Wednesday
2-0-0..... on Thursday
4-2-1..... on Friday
0-0-0..... on Saturday
5-3-0..... on Sunday
12-5-1..... on grass
0-0-0..... on turf
6-2-1..... at night
6-3-0..... during the day
1-0-0..... vs. Atlantic 10
0-1-0..... vs. ACC
0-0-0..... vs. Big East
6-4-0..... vs. Big Ten
1-0-1..... vs. Big 12
1-0-0..... vs. Conference USA
0-0-0..... vs. Mountain West
0-0-0..... vs. Pac-12
2-0-0..... vs. Patriot League
0-0-0..... vs. WAC
0-0-0..... vs. MAC
0-0-0..... vs. NEC
1-0-0..... when a freshman scores
1-2-0..... in one-goal games

THE LAST TIME

PENN STATE...

Scored 3 goals
Scored 4 goals
Scored 5 goals
Scored 6 goals
Scored 7 goals
Scored 8 goals
Scored 9 goals
Allowed 0 goals
Allowed 1 goal
Allowed 2 goals
Allowed 3 goals
Allowed 4 goals
Allowed 5+ goals
Won in overtime
Lost in overtime
Won in double overtime
Lost in double overtime
Tied in double overtime
Was ranked in the NSCAA Top 25
Was ranked in the NSCAA Top 10
Played a NSCAA Top 10 Team
Played a NSCAA Top 25 Team
Defeated a NSCAA Top 10 Team
Defeated a NSCAA Top 25 Team
Attempted less than 10 shots
Attempted 10-19 shots
Attempted 20-29 shots
Attempted 30-39 shots
Attempted 40+ shots
Allowed 4 or less shots
Allowed 5-9 shots
Allowed 10-15 shots
Allowed 16+ shots
Scored 15-24 points
Scored 25+ points
Made 10-14 saves
Made 15+ saves
Had 10+ corner kicks
Allowed 10+ corner kicks
Tallied 5-7 assists
Tallied 8+ assists
Won an NCAA Tourney game
Lost an NCAA Tourney game
Won a road NCAA Tourney game
Won a neutral NCAA Tourney game
Won penalty kick shootout
Lost penalty kick shootout

A PENN STATE PLAYER...

Scored 2 goals
Scored 3 goals
Scored 4 goals
Had 2 assists
Had 3 assists
Had 4 assists
Had 5-9 points
Had 10+ points
Attempted 10+ shots
Made 10-14 saves
Made 15+ saves
Scored in the Big Ten Tournament
Had a Big Ten Tourney shutout
Scored in an NCAA game
Had an NCAA game shutout

9/20/13..... vs. Northwestern (3-2, 2OT)
10/17/13..... vs. Ohio State (4-2)
10/20/13..... vs. Illinois (5-0)
9/26/13..... vs. Purdue (6-1)
9/1/02..... vs. Pittsburgh (7-2)
10/9/05..... vs. Iowa (8-0)
9/25/01..... vs. Bucknell (9-2)
10/20/13..... vs. Illinois (5-0)
10/13/13..... vs. No. 19 Michigan (0-1)
10/17/13..... vs. Ohio State (4-2)
10/27/13..... at #21 Nebraska (2-3, 2OT)
12/2/12..... vs. #13 North Carolina (1-4)
8/30/13..... vs. Virginia (1-5)
11/30/12..... vs. #7 Florida State (2-1)
11/6/11..... vs. #18 Illinois (1-2)
9/20/13..... vs. Northwestern (3-2)
10/27/13..... at #21 Nebraska (2-3)
8/23/12..... vs. West Virginia (2-2, 2OT)
10/29/13..... 22nd
10/1/13..... 7th
8/30/13..... vs. #5 Virginia (1-5)
10/13/13..... vs. #19 Michigan (0-1)
11/30/12..... vs. #7 Florida State (2-1)
10/6/13..... at #18 Wisconsin (2-1)
8/30/13..... vs. #5 Virginia (1-5)
10/27/13..... 19 at #21 Nebraska (2-3, 2OT)
10/13/13..... 21 vs. Michigan (0-1)
9/10/13..... 30 at Bucknell (6-0)
11/7/10..... 42 vs. Michigan (1-0)
9/26/13..... 1 vs. Purdue (6-1)
10/20/13..... 8 vs. Illinois (5-0)
10/4/13..... 15 at #18 Wisconsin (2-1)
10/25/13..... 16 at Iowa (2-3)
9/26/13..... 15 vs. Purdue (6-1)
9/25/01..... 26 vs. Bucknell (9-2)
10/31/12..... 14 vs. Iowa (2-0)
9/2/95..... 17 vs. James Madison (4-2)
10/6/13..... 14 at Minnesota (0-1)
9/12/10..... 10 at #4 Portland (2-4)
10/7/12..... 5 vs. Indiana (5-2)
9/10/13..... 8 at Bucknell (6-0)
11/30/12..... vs. #7 Florida State (2-1)
12/2/12..... vs. #13 North Carolina (1-4)
11/30/02..... at Connecticut (2-1)
11/30/12..... vs. #7 Florida State (2-1)
11/18/12..... vs. Michigan (1-1, 3-2 PKs)
11/9/07..... vs. Ohio State (2-2, 4-5 PKs)

10/25/13..... Tani Costa at Iowa (2-3, 2OT)
9/4/11..... Maya Hayes at Pittsburgh (3-0)
10/7/01..... Christie Welsh vs. Michigan (6-2)
10/20/13..... Mallory Weber vs. Illinois (5-0)
9/13/13..... Tani Costa at Oklahoma St. (4-2)
9/17/03..... Ali Krieger vs. Bucknell (6-0)
9/1/13..... Maya Hayes 5 vs. La Salle (5-1)
10/7/01..... 10, Christie Welsh vs. Michigan (6-2)
11/11/11..... 10, Christine Naim vs. Army (1-0)
10/31/12..... 14, Erin McNulty vs. Iowa (2-0)
9/3/94..... 15, Robin Van Praag at Minnesota (3-2)
10/31/12..... Maddy Evans vs. Iowa (2-0)
10/31/12..... McNulty vs. Iowa (2-0)
12/2/12 Taylor Schram vs. #13 North Carolina (1-4)
11/23/12..... Erin McNulty vs. #19 Duke (1-0)

**WEEKLY RANKINGS**

	PS	1	2	3	4	5	6	7	8	9	10	11	F
NSCAA	4	9	14	13	9	8	7	11	17	16	22		
NCAA RPI	NA	NA	NA	NA	NA	7	3	2	5	4	9		
TopDrawerSoccer	5	9	9	9	7	7	7	8	10	9	19		
Soccer America	2	7	16	15	11	9	8	10	21	17	NR		

NATIONAL POLLS**NSCAA TOP 25**
(as of Oct. 29)

#	Team	Record	Last
1	Virginia	18-0-0	1
2	UCLA	14-1-2	2
3	Florida State	14-1-3	3
4	North Carolina	15-3-0	5
5	Virginia Tech	14-2-2	4
6	Florida	14-3-1	7
7	Stanford	12-3-1	8
8	Michigan	14-2-1	10
9	Santa Clara	11-3-1	11
10	South Carolina	14-2-2	13
11	Portland	13-2-1	6
12	Texas Tech	15-1-2	18
13	Denver	16-1-1	14
14	Marquette	15-3-0	17
15	Georgetown	14-1-2	15
16	West Virginia	13-3-2	9
17	UCF	15-2-2	19
18	Nebraska	14-3-1	21
19	Notre Dame	11-5-1	20
20	BYU	11-4-1	24
21	California	9-2-5	12
22	Penn State	12-5-1	16
23	Wake Forest	10-5-2	22
24	Texas A&M	13-4-1	RV
25	Mississippi	13-4-2	23

Also Receiving Votes: Colorado (58), Duke (25), Louisville (17), Kentucky (14), Utah (12), Boston U (8), Harvard (5), Pepperdine (4), Wisconsin (3), Indiana (1)

NCAA RPI
(as of Oct. 28)

#	Team	Record
1	Virginia	18-0-0
2	UCLA	14-1-2
3	North Carolina	15-3-0
4	Marquette	15-3-0
5	Georgetown	14-1-2
6	Florida State	14-1-3
7	Michigan	14-2-1
8	Nebraska	14-3-1
9	Penn State	12-5-1
10	Virginia Tech	14-2-2
11	UCF	15-2-2
12	Florida	14-3-1
13	Denver	16-1-1
14	Santa Clara	11-3-1
15	Wake Forest	10-5-2
16	Stanford	12-3-1
17	South Carolina	14-2-2
18	Portland	13-2-1
19	Louisville	12-4-1
20	BYU	11-4-1
21	West Virginia	13-3-2
22	Minnesota	11-5-2
23	Colorado	12-4-1
24	Colorado College	12-4-1
25	Notre Dame	11-5-1

SOCCER AMERICA TOP 25
(as of Oct. 28)

#	Team	Record	Last
1	Virginia	18-0-0	1
2	UCLA	14-1-2	2
3	Florida State	14-1-3	3
4	North Carolina	15-3-0	4
5	Virginia Tech	14-2-2	7
6	Stanford	12-3-1	8
7	Marquette	15-3-0	10
8	Michigan	15-2-1	11
9	Georgetown	14-1-2	12
10	Notre Dame	11-5-1	9
11	Santa Clara	11-3-1	15
12	Florida	14-3-1	17
13	UCF	15-2-2	18
14	Texas Tech	15-1-2	16
15	Nebraska	14-3-1	22
16	Portland	13-2-1	5
17	West Virginia	13-3-2	6
18	South Carolina	14-2-2	13
19	Wake Forest	10-5-2	19
20	BYU	11-4-1	NR
21	Denver	16-1-1	23
22	Texas	12-4-2	25
23	Texas A&M	13-4-1	24
24	Louisville	12-4-1	NR
25	Duke	8-6-4	NR
	Utah	8-3-6	NR

TOP DRAWER SOCCER TOP 25
(as of Oct. 28)

#	Team	Record
1	Virginia	18-0-0
2	UCLA	14-1-2
3	North Carolina	15-3-0
4	Florida State	14-1-3
5	Virginia Tech	14-2-2
6	Florida	14-3-1
7	Texas Tech	15-1-2
8	Georgetown	14-1-2
9	Portland	13-2-1
10	Stanford	12-3-1
11	Denver	16-1-1
12	Michigan	15-2-1
13	South Carolina	14-2-2
14	UCF	15-2-2
15	West Virginia	13-3-2
16	Santa Clara	11-3-1
17	Nebraska	14-3-1
18	Marquette	15-3-0
19	Penn State	12-5-1
20	California	9-3-5
21	Notre Dame	11-5-1
22	BYU	11-4-1
23	Wake Forest	10-5-2
24	Texas A&M	13-4-1
25	Louisville	12-4-1

Others Considered: Minnesota, Mississippi, Washington State, Colorado College, Kentucky



2013 PENN STATE WOMEN'S SOCCER



PSU 2, WVU 2 (2 OT)
University Park, Pa. (Jeffrey Field)
Aug. 25, 2013

Soccer Box Score (Final) The Automated ScoreBook For Soccer WVU vs #4 PSU (Aug 23, 2013 at University Park, Pa.)

WVU (0-0-1) vs.
PSU (0-0-1)
Date: Aug 23, 2013 • Attendance: 3742
Weather:

WVU	Sh	SO	G	A	Min
gk 23 KEANE, SARA	-	-	-	-	110
d 3 EMAUS, LEAH	-	-	-	-	110
f 7 MALONEY, KELSIE	2	1	1	1	90
f 9 SILVA, FRANCES	1	1	1	1	110
d 10 CROWDER, JESS	-	-	-	-	110
m 22 BANAUELOS, BRYCE	1	1	-	-	68
d 14 BLACK, CARLY	2	-	-	-	65
m 27 HILL, AMANDA	-	-	-	-	110
m 32 BLOSSER, KARA	4	1	-	-	93
d 88 BUCHANAN, KADEISH	-	-	-	-	110
f 99 SCHWINDL, KATE	1	-	-	-	77
-- Substitutes --					
1 NEWHOUSE, MICHELL	-	-	-	-	45
6 PRICE, CARL	-	-	-	-	5
11 LAWRENCE, ASHLEY	1	1	-	-	12
14 STEYN, ANNALIKA	-	-	-	-	23
20 CONNELLY, ALI	-	-	-	-	5
21 BROADWATER, TESSA	-	-	-	-	22
Totals	12	5	2	2	

# Goalkeepers	Min	GA	Saves
23 KEANE, SARA	110:00	2	8

Shots by period	1	2	OT	O2	Total
WVU	2	7	1	1	11
PSU	8	10	1	2	21

Corner kicks	1	2	OT	O2	Total
WVU	2	2	2	0	6
PSU	3	8	0	0	11

Scoring summary:

No.	Time	Team	Goal scorer	Assist	Description
1.	4:17	WVU	SILVA, FRANCES (1)	MALONEY, KELSIE	cross to middle
2.	69:52	WVU	MALONEY, KELSIE (1)	LAWRENCE, ASHLEY	header off cross in the middle
3.	80:36	PSU	Schram, Taylor (1)	Hayes, Maya	shot from 12 yds out
4.	81:48	PSU	Hayes, Maya (1)	Weber, Mallory	cross from weber to hayes to beat keeper

Cautions and ejections:

WVU-KEANE, SARA (0-0-1). PSU-Eckerstrom, Britt (0-0-1).
Stadium: Jeffrey Field
Officials: Referee: Tim Snyder; Asst. Referee: Dustin Killick; Mike Rossi;
Alt. Official: Stan Latta;
Offsides: WVU 2, PSU 4.

Official's signature



PSU 2, HOFSTRA 1
University Park, Pa. (Jeffrey Field)
Aug. 27, 2013

Soccer Box Score (Final) The Automated ScoreBook For Soccer HOFSTRA vs #4 Penn State (Aug 25, 2013 at University Park, Pa.)

HOFSTRA (0-2-0) vs.
Penn State (1-0-1)
Date: Aug 25, 2013 • Attendance: 732
Weather:

HOFSTRA	Sh	SO	G	A	Min
1 Morphitis, Emily	-	-	-	-	45
2 Kerns, Tara	-	-	-	-	90
6 Moyer, Ingrid	-	-	-	-	90
7 Staplehurst, Ruby	2	2	-	-	90
8 Dale, Chloe	-	-	-	-	47
9 Stobbs, Amber	2	1	-	-	74
10 Farriella, Brittany	-	-	-	-	90
17 Mulholland, Jill	1	1	-	-	90
19 Scolarici, Sam	1	-	-	-	83
21 Galton, Leah	2	2	1	-	73
23 Dudley, Caylin	-	-	-	-	83
-- Substitutes --					
13 Molleda, Jeannine	1	1	-	-	43
14 Echeverry, Lulu	-	-	-	-	28
15 Ullrich, Mallory	-	-	-	-	7
25 Agudelo, Emily	-	-	-	-	12
27 Mehring, Friederike	-	-	-	-	45
Totals	9	7	1	0	

# Goalkeepers	Min	GA	Saves
1 Morphitis, Emily	45:00	2	4
27 Mehring, Friederike	45:00	0	1

Shots by period	1	2	Total
HOFSTRA	4	5	9
Penn State	9	5	14

Corner kicks	1	2	Total
HOFSTRA	0	7	7
Penn State	1	3	4

Scoring summary:

No.	Time	Team	Goal scorer	Assist	Description
1.	10:29	PSU	Hayes, Maya (2)	Carroll, Emily	shot from 6 yds on cross from carroll
2.	19:08	PSU	Weber, Mallory (1)	(unassisted)	intercepts goal kick, scores 1v1
3.	50:41	HOFSTRA	Galton, Leah	(unassisted)	turn and shot from 12 yds out

Cautions and ejections:

Win-Eckerstrom, Britt (1-0-1). Loss-Morphitis, Emily (0-1-1).
Stadium: Jeffrey Field
Officials: Referee: Tim Deljanov; Asst. Referee: Adnan Pelja; Ann Ross;
Alt. Official: Stan Latta;
Offsides: HOFSTRA 0, Penn State 2.

Official's signature



UVA 5, PSU 1
Charlottesville, Va. (Klockner Stadium)
Aug. 30, 2013

Soccer Box Score (Final) 2013 Penn State Women's Soccer #7 PSU vs #6 Virginia (Aug 30, 2013 at Charlottesville, Va.)

PSU (1-1-1) vs.
Virginia (3-0-0)
Date: Aug 30, 2013 • Attendance: 2609
Weather: 84 degrees, sunny

PSU	Sh	SO	G	A	Min
gk 28 Eckerstrom, Britt	-	-	-	-	90
d 1 Basinger, Brittany	-	-	-	-	69
m 3 Hurd, Emily	-	-	-	-	71
f 5 Hayes, Maya	2	1	1	1	74
m 11 Rodriguez, Raquel	2	1	1	1	75
m 14 Chapic, Kori	1	-	-	-	90
f 16 Weber, Mallory	-	-	-	-	121
d 17 Church, Whitney	-	-	-	-	90
m 19 Schram, Taylor	1	-	-	-	74
f 22 Costa, Tani	1	-	-	-	73
d 23 Hovington, Bri	-	-	-	-	90
-- Substitutes --					
7 Persson, Corey	-	-	-	-	27
12 Kohne, Kindrah	-	-	-	-	15
15 Kehoe, Erin	-	-	-	-	13
20 Williford, Salina	2	1	-	-	47
25 Peterson, Mallory	-	-	-	-	23
26 Carroll, Emily	-	-	-	-	62
Totals	9	3	1	1	

# Goalkeepers	Min	GA	Saves
28 Eckerstrom, Britt	90:00	5	8

Shots by period	1	2	Total
PSU	3	6	9
Virginia	12	15	27

Corner kicks	1	2	Total
PSU	0	2	2
Virginia	3	2	5

Scoring summary:

No.	Time	Team	Goal scorer	Assist	Description
1.	6:19	PSU	Hayes, Maya (3)	Weber, Mallory	tap in from cross
2.	13:27	VA	Morgan Brian (2)	Makenzy Doniak	one time left footer from top 18
3.	18:16	VA	Makenzy Doniak (2)	Danielle Colaprico	inside far post from 15 yards
4.	21:49	VA	Kate Norbo (1)	Danielle Colaprico	from 15 yards off breakaway
5.	46:13	VA	Shasta Fisher (1)	Gloria Douglas	far post from 15 yards after give and go
6.	77:06	VA	Brittany Ratcliffe (4)	Kali Torres	right footed toe poke off break

Cautions and ejections:

Win-Morgan Stearns (2-0). Loss-Eckerstrom, Britt (1-1-1).
Stadium: Klockner Stadium
Officials: Referee: James Conley; Asst. Referee: Brendan Orino; Andrew Halley;
Timekeeper: Lecky Stone; Scorer: Steve Kirkland;
Offsides: PSU 2, Virginia 3.

Official's signature



PSU 5, LaSALLE 1
University Park, Pa. (Jeffrey Field)
Sept. 1, 2013

Soccer Box Score (Final) 2013 Penn State Women's Soccer LASALLE vs #9 PSU (Sep 01, 2013 at University Park, Pa.)

LASALLE (2-1) vs.
PSU (2-1-1)
Date: Sep 01, 2013 • Attendance: 1012
Weather:

LASALLE	Sh	SO	G	A	Min
gk 0 GETZINGER, Katie	-	-	-	-	90
2 FENTON, Emily	1	-	-	-	79
3 NIEMIEC, Courtney	2	-	-	-	90
5 NICKELS, Kari	-	-	-	-	39
6 CHILCOAT, Ashley	-	-	-	-	90
8 VOLLRATH, Chrissy	-	-	-	-	82
15 HAYCOCK, Kelsey	3	2	1	-	85
17 AIXEN, Keri	-	-	-	-	82
18 WASHINGTON, Rene	1	-	-	-	83
19 CARBONE, Gabriella	-	-	-	-	47
20 MUHAMMAD, Najla	-	-	-	-	25
-- Substitutes --					
10 HUSEINI, Maryam	1	-	-	-	40
11 DOLHANSKY, Anna	1	-	-	-	44
12 CAMMARATA, Jackie	-	-	-	-	8
13 DWYER, Shannon	-	-	-	-	16
16 KAGAN, Jessica	3	1	-	-	36
22 CELLINE, Kelsey	-	-	-	-	6
23 MARX, Danielle	-	-	-	-	28
26 BATEMAN, Marykate	-	-	-	-	5
29 DAVIS, Deja	-	-	-	-	21
Totals	12	3	1	2	

# Goalkeepers	Min	GA	Saves
0 GETZINGER, Katie	90:00	5	8

Shots by period	1	2	Total
LASALLE	5	7	12
PSU	9	12	21

Corner kicks	1	2	Total
LASALLE	1	1	2
PSU	2	4	6

Scoring summary:

No.	Time	Team	Goal scorer	Assist	Description
1.	33:48	PSU	Hayes, Maya (4)	(unassisted)	pile up in box with loose ball found by Ha shot
2.	38:47	PSU	Rodriguez, Raquel (1)	(unassisted)	long run into the box, shot low right
3.	58:48	LASALLE	HAYCOCK, Kelsey	HUSEINI, Maryam	corner kick goal 5 yard out
4.	70:31	PSU	Costa, Tani (1)	Hayes, Maya	pass from Hayes to wide open Costs in bo
5.	73:46	PSU	Hayes, Maya (5)	Chapic, Kori	corner kick goal 5 yard out
6.	84:16	PSU	Schram, Taylor (2)	Rodriguez, Raquel	stolen at 18 yard line with immediate sh

Cautions and ejections:

Win-Eckerstrom, Britt (2-1-1). Loss-GETZINGER, Katie (1-1-1).
Stadium: Jeffrey Field
Officials: Referee: Charles Murphy; Asst. Referee: Brian Opiela; Lucas Feathers;
Alt. Official: Nathan Utz;
Offsides: LASALLE 1, PSU 2.

Official's signature

2013 PENN STATE WOMEN'S SOCCER



PSU 1, BOSTON U O

University Park, Pa. (Jeffrey Field)
Sept. 6, 2013

Soccer Box Score (Final)

2013 Penn State Women's Soccer Boston University vs #14 Penn State (Sep 06, 2013 at University Park, Pa.)

Boston University (3-1-1) vs.
Penn State (2-2-1)
Date: Sep 06, 2013 • Attendance: 1556
Weather:

Po #	Player	Sh	SO	G	A	Min
gk 00	Green, Andrea	-	-	-	-	90
4	Pleuler, Clare	-	-	-	-	66
7	Mullen, Erin	-	-	-	-	82
8	Clemens, Madison	2	1	-	-	59
9	Strom, Kylie	2	-	-	-	83
16	Rumsey, Amanda	-	-	-	-	72
17	Krebs, Taylor	2	1	-	-	69
19	Miller, Kai	-	-	-	-	90
21	McGoldrick, Megan	-	-	-	-	43
22	Clark, Emma	-	-	-	-	69
23	Hollenbaugh, McKenz	-	-	-	-	90
-- Substitutes --						
6	Turchi, Jamie	-	-	-	-	29
12	Fisher, Jenna	-	-	-	-	32
14	MacLellan, Lauren	-	-	-	-	32
15	Blozialis, Rachel	-	-	-	-	42
18	Cuffia, Ana	2	-	-	-	29
26	Kosienski, Erica	1	1	-	-	42
Totals		9	3	0	0	

#	Goalkeepers	Min	GA	Saves
00	Green, Andrea	90:00	1	2

Shots by period	1	2	Total
Boston University	6	3	9
Penn State	6	8	14

Corner kicks	1	2	Total
Boston University	0	0	0
Penn State	2	3	5

Scoring summary:

No.	Time	Team	Goal scorer	Assist	Description
1.	52:59	PSU	Schram, Taylor (3)	Weber, Mallory	Assist from Weber, six yards out
				Rodriguez, Raquel	

Cautions and ejections:

YC-PSU #14 (81:08); YC-BOSTONU #22 (84:09)

Win-Eckerstrom, Britt (3-1-1). Loss-Green, Andrea (1-2-1).
Stadium: Jeffrey Field
Officials: Referee: Alan Robinson; Asst. Referee: Mike Gorsegnier; Carl Everhart;
Alt. Official: Stan Latta;
Offsides: Boston University 4, Penn State 0.

Official's signature



PSU 4, OKLAHOMA ST. 2

Stillwater, Okla. (Cowgirl Complex)
Sept. 13, 2013

Soccer Box Score (Final)

2013 Penn State Women's Soccer #9 Penn State vs Oklahoma State (Sep 13, 2013 at Stillwater, Okla.)

Penn State (5-1-1) vs.
Oklahoma State (3-2-2)
Date: Sep 13, 2013 • Attendance: 1316
Weather:

Po #	Player	Sh	SO	G	A	Min
gk 28	Eckerstrom, Britt	-	-	-	-	90
d 1	Basinger, Brittany	1	1	-	-	54
m 3	Hurd, Emily	5	1	-	-	70
f 5	Hayes, Maya	3	2	2	-	86
m 11	Rodriguez, Raquel	2	1	-	-	76
m 14	Chapic, Kori	3	1	1	-	90
m 16	Weber, Mallory	3	1	1	-	76
d 17	Church, Whitney	-	-	-	-	90
f 19	Schram, Taylor	-	-	-	-	56
d 20	Willford, Salina	2	-	-	-	90
d 23	Hovington, Bri	-	-	-	-	90
-- Substitutes --						
7	Persson, Corey	-	-	-	-	36
12	Kohne, Kindrah	-	-	-	-	48
22	Costa, Tani	2	-	-	-	3
25	Peterson, Mallory	-	-	-	-	25
26	Carroll, Emily	-	-	-	-	10
Totals		21	7	4	3	

#	Goalkeepers	Min	GA	Saves
28	Eckerstrom, Britt	90:00	2	7

Shots by period	1	2	Total
Penn State	12	9	21
Oklahoma State	7	7	14

Corner kicks	1	2	Total
Penn State	4	5	9
Oklahoma State	0	1	1

Scoring summary:

No.	Time	Team	Goal scorer	Assist	Description
1.	6:17	OSU	Stephenson, Allie (2)	Robertson, Joanna	Shot from 22 yds, top shelf
2.	22:34	OSU	Killion, Krissi (1)	Stephenson, Allie	Beats defender and GK, shot from 8 yds
3.	24:01	PSU	Chapic, Kori (1)	(unassisted)	30 yds to far post
4.	35:34	PSU	Weber, Mallory (4)	Costa, Tani	Cross into box flicked in from 5 yds
5.	37:48	PSU	Hayes, Maya (2)	Costa, Tani	Shot from 20 yds
6.	83:54	PSU	Hayes, Maya (8)	Costa, Tani	Long pass ahead, Hayes 1 v 1 with GK

Cautions and ejections:

YC-PSU #3 (38:44)
Win-Eckerstrom, Britt (5-1-1). Loss-Medina, Rosa (3-2-2).
Stadium: Cowgirl Complex
Officials: Referee: Corey Rockwell; Asst. Referee: David Warner; Jerome Schoch;
Alt. Official: Jack Damrill;
Offsides: Penn State 0, Oklahoma State 1.

Official's signature



PSU 6, BUCKNELL O

Lewisburg, Pa. (Emmitt Field)
Sept. 10, 2013

Soccer Box Score (Final)

2013 Penn State Women's Soccer #13 Penn State vs Bucknell (Sep 10, 2013 at Lewisburg, Pa.)

Penn State (4-1-1) vs.
Bucknell (2-4-0)
Date: Sep 10, 2013 • Attendance: 1390
Weather: 90, humid

Penn State		Sh	SO	G	A	Min
Po #	Player					
gk 28	Eckerstrom, Britt	-	-	-	-	45
1	Basinger, Brittany	-	-	-	-	29
3	Hurd, Emily	1	1	1	1	29
5	Hayes, Maya	3	1	1	1	25
11	Rodriguez, Raquel	2	2	-	3	25
14	Chapic, Kori	1	1	-	-	29
16	Weber, Mallory	3	2	2	-	20
17	Church, Whitney	1	-	-	1	57
19	Schram, Taylor	2	1	-	1	23
20	Willford, Salina	-	-	-	-	31
23	Hovington, Bri	-	-	-	-	20
-- Substitutes --						
0	Kaminski, Meghan	-	-	-	-	38
00	Golestani, Lexi	-	-	-	-	7
2	Ritchey, Megan	-	-	-	-	47
4	Marton, Lexi	-	-	-	-	66
6	Witte, Anna	-	-	-	-	61
7	Persson, Corey	1	1	1	-	66
8	Kalwa, Jenna	2	1	-	-	61
12	Kohne, Kindrah	2	-	-	-	59
15	Kehoe, Erin	1	-	-	1	61
21	Chase, Teddy	2	1	-	-	59
24	Brandy, Liv	4	1	1	-	36
25	Peterson, Mallory	2	-	-	-	46
26	Carroll, Emily	3	1	-	-	50
Totals		30	13	6	8	

#	Goalkeepers	Min	GA	Saves
28	Eckerstrom, Britt	45:00	0	2
0	Kaminski, Meghan	37:47	0	1
00	Golestani, Lexi	7:13	0	1

Shots by period	1	2	Total
Penn State	19	11	30
Bucknell	4	5	9

Corner kicks	1	2	Total
Penn State	6	3	9
Bucknell	1	1	2

Scoring summary:

No.	Time	Team	Goal scorer	Assist	Description
1.	1:59	PSU	Weber, Mallory (2)	Rodriguez, Raquel	Shot over keeper from 12 yds.
2.	18:33	PSU	Hurd, Emily (1)	Rodriguez, Raquel	#3 1v1 in box, scores from 15 yds out
3.	20:25	PSU	Weber, Mallory (3)	Schram, Taylor	Tap in from close range
4.	21:36	PSU	Hayes, Maya (6)	Hayes, Maya	#11 thru ball to #5 for breakaway
5.	41:28	PSU	Persson, Corey (1)	Church, Whitney	Turns defender around in box, shot to left goal
6.	68:18	PSU	Brandy, Liv (1)	Kehoe, Erin	Near-post header on corner kick

Cautions and ejections:

Win-Eckerstrom, Britt (4-1-1). Loss-Ashworth, Jessie (2-4-0).
Stadium: Emmitt Field
Officials: Referee: Jose Rivero; Asst. Referee: Jorge Ramirez; Jack Schiavone;
Offsides: Penn State 0, Bucknell 0.

Official's signature



PSU 3, TULSA 2

Tulsa, Okla. (Hurricane Stadium)
Sept. 15, 2013

Soccer Box Score (Final)

2012 Tulsa Women's Soccer #13 Penn State vs Tulsa (9/15/2013 at Tulsa, Okla.)

Penn State (6-1-1) vs.
Tulsa (5-2)
Date: 9/15/2013 • Attendance: 252
Weather: 85 degrees, winds from S at 14 mph, cloudy

Penn State					
Pos#	Player	Sh	SO	G	A
gk 28	Eckerstrom, Britt	-	-	-	-
d 1	Basinger, Brittany	-	-	-	-
m 3	Hurd, Emily	-	-	-	2
f 5	Hayes, Maya	1	1	1	-
f 11	Rodriguez, Raquel	1	1	-	-
14	Chapic, Kori	-	-	-	-
f 16	Weber, Mallory	2	1	-	-
d 17	Church, Whitney	1	-	-	-
f 19	Schram, Taylor	3	2	-	-
d 20	Willford, Salina	-	-	-	-
d 23	Hovington, Bri	-	-	-	-
-- Substitutes --					
4	Marton, Lexi	-	-	-	-
7	Persson, Corey	-	-	-	-
12	Kohne, Kindrah	-	-	-	-
15	Kehoe, Erin	-	-	-	-
22	Costa, Tani	3	1	-	-
25	Peterson, Mallory	1	1	-	-
26	Carroll, Emily	-	-	-	-
Totals		12	7	3	4

#	Goalkeepers	Min	GA	Saves
28	Eckerstrom, Britt	90:00	2	4

Shots by period	1	2	Total
Penn State	6	6	12
Tulsa	4	7	11

Corner kicks	1	2	Total
Penn State	1	2	3
Tulsa	0	4	4

Scoring summary:

No.	Time	Team	Goal scorer	Assist	Description
1.	22:06	PSU	Weber, Mallory (5)	Hurd, Emily	Scoored on a header from 4 yards out.
2.	57:14	TLS	NICHOLSON, Claire (2)	Schram, Taylor	Penalty kick
3.	73:42	TLS	Costa, Tani (2)	Hurd, Emily	Beats the keeper and tapped in to the goal from 5 yards out
4.	85:28	TLS	PELLEY, Camille (3)	KIRCH, Lindsay	From 19 to 11 to 8. Tapped in from 7 yards out.
5.	89:40	PSU	Hayes, Maya (9)	PARMAR, Kajal	From 15 yards out. In to the top of the net.

Cautions and ejections:

Win-Eckerstrom, Britt (6-1-1). Loss-HARRYMAN, Hayley (5-2).
Stadium: Hurricane Stadium
Officials: Referee: Ryan Cigich; Asst. Referee: Reza Namavar; Joe Forier;
Alt. Official: Larry Morgan; Timekeeper: TU AMR; Scorer: TU AMR;
Offsides: Penn State 1, Tulsa 0.

Official's signature



2013 PENN STATE WOMEN'S SOCCER



PSU 3, WVU 2 (2 OT)

University Park, Pa. (Jeffrey Field)

Sept. 20, 2013

Soccer Box Score (Final) 2013 Penn State Women's Soccer

Northwestern vs #9 Penn State (Sep 20, 2013 at University Park, Pa.)

Northwestern (2-5-2, 0-1-0) vs.
Penn State (7-1-1, 1-0-0)
Date: Sep 20, 2013 • Attendance: 3118
Weather:

Northwestern	Sh	SO	G	A	Fo	Min
18 Hascher, Jenna	-	-	-	-	-	106
4 Cikos, Natalie	-	-	-	-	-	33
5 Jewell, Nicole	-	-	-	-	-	72
12 McGinty, Margo	1	1	-	-	-	106
13 Podkopa, Bo	-	-	-	-	-	106
14 Schrakamp, Sami	1	-	-	-	-	145
17 Allen, Kate	7	6	2	-	-	96
19 Scott, Kourtney	-	-	-	-	-	100
24 Alyinovich, Jackie	-	-	-	-	-	106
29 Erikson, Mary	-	-	-	-	-	106
37 Korn, Jennifer	-	-	-	-	-	58
-- Substitutes --	-	-	-	-	-	-
2 Landgrebe, Katie	-	-	-	-	-	22
3 Sierks, Julie	1	1	-	-	-	33
15 Waddle, Georgia	1	-	-	-	-	29
20 Lagunas, Natalie	-	-	-	-	-	14
21 Steiner, Addie	-	-	-	-	-	27
22 Barry, KK	-	-	-	-	-	0
25 Zampa, Rachel	-	-	-	-	-	6
26 Moore, Kaitlin	-	-	-	-	-	79
32 Gancedo, Katie	-	-	-	-	-	18
Totals	11	8	2	2	-	-

# Goalkeepers	Min	GA	Saves
18 Hascher, Jenna	106:25	3	11

Shots by period	1	2	OT	O2	Total
Northwestern	4	6	0	1	11
Penn State	10	12	4	3	29

Corner kicks	1	2	OT	O2	Total
Northwestern	1	5	0	0	6
Penn State	1	3	1	0	5

Scoring summary:

No.	Time	Team	Goal scorer	Assist	Description
1.	3:43	NU	Allen, Kate (1)	Schrakamp, Sami	shot from 12 yards into top of net
2.	7:57	NU	Allen, Kate	Waddle, Georgia	
3.	7:31	PSU	Church, Whitney (1)	Rodriguez, Raquel	headed in corner from rodriguez from
4.	83:44	PSU	Hayes, Maya (10)	Chapic, Kori	Beat defenders, shot from 6 yards
5.	106:25	PSU	Church, Whitney (2)	Costa, Tani	drilled from 20 yards out to far corner

Cautions and ejections:
YC-NU #5 (30:05); YC-PSU #5 (69:13)

Win-Eckerstrom, Britt (7-1-1). Loss-Hascher, Jenna (2-3-2).
Stadium: Jeffrey Field
Officials: Referee: Niko Bratis; Asst. Referee: Matthew Richardson; Paul Wehrman;
Alt. Official: John Douglas;
Offsides: Northwestern 1, Penn State 1.

Official's signature



PSU 4, INDIANA 1

University Park, Pa. (Jeffrey Field)

Sept. 29, 2013

Soccer Box Score (Final) 2013 Penn State Women's Soccer

Indiana vs #8 Penn State (Sep 29, 2013 at University Park, Pa.)

Indiana (8-2-1, 1-2-0) vs.
Penn State (9-1-1, 3-0-0)
Date: Sep 29, 2013 • Attendance: 1582
Weather:

Indiana	Sh	SO	G	A	Fo	Min
1 Flower, Shannon	-	-	-	-	-	90
3 Keller, Tori	-	-	-	-	-	24
4 Ross, Lara	-	-	-	-	-	90
5 Borschke, Marissa	-	-	-	-	-	90
7 Nouanesengsy, Lisa	1	-	-	-	-	90
10 Candler, Rebecca	1	-	-	-	-	78
12 Smith, Abby	1	-	-	-	-	66
13 White, Bekah	1	-	-	-	-	62
20 Dreher, Rebecca	-	-	-	-	-	90
21 Steigerwalt, Kayleigh	5	4	-	-	-	50
23 McCusker, Kate	2	-	-	-	-	49
-- Substitutes --	-	-	-	-	-	-
2 Bujowes, Jessie	-	-	-	-	-	41
6 Stanley, Jen	-	-	-	-	-	5
8 Kowalski, Ari	-	-	-	-	-	74
14 Feinstein, Kallee	-	-	-	-	-	8
15 Ellis, Veronica	1	1	-	-	-	11
17 Woolums, Jordan	1	1	-	-	-	29
24 Melink, Monica	3	2	1	-	-	43
Totals	16	9	1	1	6	-

# Goalkeepers	Min	GA	Saves
1 Flower, Shannon	90:00	4	6

Shots by period	1	2	Total
Indiana	8	8	16
Penn State	7	10	17

Corner kicks	1	2	Total
Indiana	5	2	7
Penn State	1	1	2

Scoring summary:

No.	Time	Team	Goal scorer	Assist	Description
1.	6:07	PSU	Rodriguez, Raquel (3)	Hurd, Emily	Chapic cross to Rodruiguez headed in fro yards
2.	25:01	IND	Melink, Monica (2)	Candler, Rebecca	Cross by 2 to 24 5 yards out header
3.	53:35	PSU	Costa, Tani (4)	Hurd, Emily	Hurd cross to Costa shot straight ahead fr yards
4.	59:09	PSU	Hurd, Emily (2)	(unassisted)	Hurd from corner of 18 yard box
5.	82:45	PSU	Hayes, Maya (12)	Schram, Taylor	Beats defender shot from left box 12 yard under keeper

Cautions and ejections:
YC-IND #4 (43:33); YC-IND #5 (79:46)

Win-Eckerstrom, Britt (9-1-1). Loss-Flower, Shannon (8-2-1).
Stadium: Jeffrey Field
Officials: Referee: Robert Sheker; Asst. Referee: Mike Lukashunas; Tim Deljanovan;
Alt. Official: Stan Latta; Scorer: Kellie O'Brien;
Offsides: Indiana 5, Penn State 1.

Official's signature



PSU 6, HOFSTRA 1

University Park, Pa. (Jeffrey Field)

Sept. 26, 2013

Soccer Box Score (Final) 2013 Penn State Women's Soccer

Purdue vs #8 Penn State (Sep 26, 2013 at University, Pa.)

Purdue (5-4-1, 0-2-0) vs.
Penn State (8-1-1, 2-0-0)
Date: Sep 26, 2013 • Attendance: 851
Weather:

Purdue	Sh	SO	G	A	Fo	Min
00 KRIDLER, Clara	-	-	-	-	-	72
d 4 KASER, Megan	-	-	-	-	-	57
d 7 NELLAMS, Makaela	-	-	-	-	-	61
m 10 KURAMOTO, Mollie	-	-	-	-	-	45
f 12 WILLIAMS, Maddy	1	1	1	-	-	55
d 14 LOVE, Kim	-	-	-	-	-	61
f 16 HAIRSTON, Alex	-	-	-	-	-	61
f 19 PAWLK, Jordan	-	-	-	-	-	45
m 23 STUART, Hadley	-	-	-	-	-	60
d 35 LASKY, Mikayla	-	-	-	-	-	90
m 44 CASELLA, Melissa	-	-	-	-	-	45
-- Substitutes --	-	-	-	-	-	-
1 GINTHER, Jordan	-	-	-	-	-	45
2 MILARO, Gianna	-	-	-	-	-	17
11 NEWOTT, Taylor	-	-	-	-	-	18
15 HAIRSTON, Juliana	-	-	-	-	-	11
17 FRICK, Jordan	-	-	-	-	-	47
20 ASHER, Chinyelu	-	-	-	-	-	26
22 BITTNER, Katie	-	-	-	-	-	31
24 GREGORY, Holly	-	-	-	-	-	18
26 REPASKY, Della	-	-	-	-	-	15
27 SZALACH, Christa	-	-	-	-	-	15
28 HVELLY, Nicole	-	-	-	-	-	18
32 FOWEE, Kate	-	-	-	-	-	17
34 TOPPIN-HERBERT, S	-	-	-	-	-	14
Totals	1	1	1	2	6	-

# Goalkeepers	Min	GA	Saves
1 GINTHER, Jordan	78:18	1	0

Shots by period	1	2	Total
Purdue	1	0	1
Penn State	16	9	25

Corner kicks	1	2	Total
Purdue	0	1	1
Penn State	5	3	8

Scoring summary:

No.	Time	Team	Goal scorer	Assist	Description
1.	15:26	PSU	Rodriguez, Raquel (2)	Hayes, Maya	Hayes cross to Rodriguez, shot from eight out
2.	15:26	PUR	WILLIAMS, Maddy (7)	PAWLK, Jordan	Back heel from 19 to 16, shot from ten ya
3.	37:08	PSU	OWN GOAL (1)	HAIRSTON, Alex	Header off the corner
4.	44:47	PSU	OWN GOAL (1)	Rodriguez, Raquel	costa shot deflected in by PUR 14
5.	52:19	PSU	Costa, Tani (3)	Hurd, Emily	(unassisted)
6.	62:00	PSU	Hayes, Maya (11)	Costa, Tani	Hurd crossed to Costa from four yards ou
7.	76:17	PSU	Kohne, Kindrah (1)	Corner kick	Beat defender and sidone past goalie fro yards out

Cautions and ejections:

Win-Eckerstrom, Britt (8-1-1). Loss-KRIDLER, Clara (3-5-0).
Stadium: Jeffrey Field
Officials: Referee: Cesar Ibarra; Asst. Referee: Sam Elbary; Michael Matlock;
Alt. Official: Ross Kleinstuber; Scorer: Kellie O'Brien;
Offsides: Purdue 2, Penn State 1.

Official's signature



PSU 2, WISCONSIN 1

Madison, Wis. (McClint Complex)

Oct. 4, 2013

Soccer Box Score (Final)

2013 Penn State Women's Soccer
#8 Penn State vs #18 Wisconsin (Oct 04, 2013 at Madison, Wis.)

Penn State (10-1-1, 4-0-0) vs.
Wisconsin (7-2-2, 2-1-1)
Date: Oct 04, 2013 • Attendance: 453
Weather:

Penn State	Sh	SO	G	A	Fo	Min
28 Eckerstrom, Britt	-	-	-	-	-	90
d 1 Basinger, Brittany	-	-	-	-	-	90
m 3 Hurd, Emily	2	1	-	-	-	68
f 5 Hayes, Maya	3	1	1	1	-	90
f/m11 Rodriguez, Raquel	3	3	-	-	-	71
f/m14 Chapic, Kori	2	-	-	-	-	90
f 16 Weber, Mallory	3	2	-	-	-	88
f/m17 Church, Whitney	-	-	-	-	-	90
f/m19 Schram, Taylor	1	-	-	-	-	79
m/20 Williford, Salina	-	-	-	-	-	90
d 23 Hovington, Bri	-	-	-	-	-	51
-- Substitutes --	-	-	-	-	-	-
7 Persson, Corey	-	-	-	-	-	11
12 Kohne, Kindrah	1	-	-	-	-	11
15 Kehoe, Erin	-	-	-	-	-	2
22 Costa, Tani	1	1	-	-	-	48
26 Carroll, Emily	-	-	-	-	-	22
Totals	16	8	2	3	9	-

# Goalkeepers	Min	GA	Saves
28 Eckerstrom, Britt	90:00	1	3

Shots by period	1	2	Total
Penn State	10	6	16
Wisconsin	11	4	15

Corner kicks	1	2	Total
Penn State	3	2	5
Wisconsin	3	0	3

Scoring summary:

No.	Time	Team	Goal scorer	Assist	Description
1.	30:59	PSU	Costa, Tani (5)	Hayes, Maya	Beat keeper low on ball slotted top of 6 y
2.	35:24	PSU	Hayes, Maya (13)	Weber, Mallory	from endline
3.	65:28	WIS	Lavelle, Rose (5)	Schram, Taylor	Header past keeper off early serve from ri

Cautions and ejections:
YC-PSU #1 (55:05)

Win-Eckerstrom, Britt (10-1-1). Loss-Richard, Genevieve (7-1-1).
Stadium: McClint Complex
Officials: Referee: Chris Martelli;
Offsides: Penn State 1, Wisconsin 1.

Official's signature

2013 PENN STATE WOMEN'S SOCCER



MINNESOTA 1, PSU 0

Minneapolis, Minn. (Elizabeth Lyle Robbie Stadium)

Oct. 6, 2013

Soccer Box Score (Final) 2013 Penn State Women's Soccer Penn State vs Minnesota (Oct 06, 2013 at Falcon Heights, Minn)

Penn State (10-2-1) vs.
Minnesota (9-3-1)
Date: Oct 06, 2013 • Attendance: 796
Weather: 54, Rainy

Penn State	Sh	SO	G	A	Fo	Min
1 Basinger, Brittany	-	-	-	-	-	45
3 Hurd, Emily	3	3	-	-	-	45
5 Hayes, Maya	3	1	-	-	-	45
11 Rodriguez, Raquel	-	-	-	-	-	45
14 Chapic, Kori	3	2	-	-	-	45
16 Weber, Mallory	-	-	-	-	-	45
17 Church, Whitney	1	-	-	-	-	45
19 Schram, Taylor	6	-	-	-	-	45
20 Williford, Salina	1	-	-	-	-	45
23 Hovington, Bri	-	-	-	-	-	45
28 Eckerstrom, Britt	-	-	-	-	-	45
-- Substitutes --	-	-	-	-	-	-
7 Persson, Corey	-	-	-	-	-	0
12 Kohne, Kindrah	-	-	-	-	-	0
15 Kehoe, Erin	-	-	-	-	-	0
22 Costa, Tani	3	1	-	-	-	0
26 Carroll, Emily	-	-	-	-	-	0
Totals	20	7	0	0	5	

# Goalkeepers	Min	GA	Saves
28 Eckerstrom, Britt	90:00	1	1

Shots by period	1	2	Total
Penn State	7	13	20
Minnesota	4	2	6

Corner kicks	1	2	Total
Penn State	4	10	14
Minnesota	4	2	6

Scoring summary:

No.	Time	Team	Goal scorer	Assist	Description
1.	16:22	MINN	Herverson, Haley	Brandt, Steph	

Cautions and ejections:

Stadium: ELR Stadium
Officials:
Offsides: Penn State 0, Minnesota 5.

Official's signature



MICHIGAN 1, PSU 0

University Park, Pa. (Jeffrey Field)

Oct. 13, 2013

Soccer Box Score (Final) 2013 Penn State Women's Soccer #19 Michigan vs #11 Penn State (Oct 13, 2013 at University Park, Pa.)

Michigan (10-2-1, 4-1-1 B1G) vs.
Penn State (10-3-1, 4-2-0 B1G)
Date: Oct 13, 2013 • Attendance: 2144
Weather:

Michigan	Sh	SO	G	A	Fo	Min
gk 0 BUCKLIN, Taylor	-	-	-	-	-	90
m 4 LEWIS, Madison	1	-	-	-	-	66
d 6 ZADORSKY, Shelina	-	-	-	-	-	90
m 7 TOOHEY, Meghan	1	1	-	-	-	90
m 8 MCCOMBS, Tori	1	1	-	-	-	67
m 9 MANNINO, Kayla	-	-	-	-	-	90
m 10 MURILLO, Christina	-	-	-	-	-	35
d 19 THOMPSON-SHAW, K	-	-	-	-	-	90
d 21 HEIN, Holly	-	-	-	-	-	90
f 22 EZURIKE, Nkem	3	-	1	-	-	85
d 24 SOSENKO, Chloe	-	-	-	-	-	90
-- Substitutes --	-	-	-	-	-	-
11 HAIDAR, Lulu	-	-	-	-	-	4
16 COLLINS, Cassie	-	-	-	-	-	51
17 SOCCORSI, Anna	-	-	-	-	-	9
30 ORDONEZ, Christina	1	1	-	-	-	25
31 HARRIS, Corinne	-	-	-	-	-	18
Totals	7	3	1	1	9	

# Goalkeepers	Min	GA	Saves
0 BUCKLIN, Taylor	90:00	0	7

Shots by period	1	2	Total
Michigan	4	3	7
Penn State	7	14	21

Corner kicks	1	2	Total
Michigan	3	0	3
Penn State	3	4	7

Scoring summary:

No.	Time	Team	Goal scorer	Assist	Description
1.	66:38	MICH	MCCOMBS, Tori (1)	EZURIKE, Nkem	22 crossed to 8, shot from point blank

Cautions and ejections:
YC-MICH #22 (85:27); YC-PSU #28 (89:15)

Win-BUCKLIN, Taylor (10-2-1). Loss-Eckerstrom, Britt (10-3-1).

Stadium: Jeffrey Field
Officials: Referee: Edvin Jurisevic; Asst. Referee: Ron Dambrosia; Jason Cullum;
Alt. Official: Matthew Boren; Scorer: Kellie O'Brien;
Offsides: Michigan 0, Penn State 0.

Official's signature



PSU 4, OHIO ST. 2

University Park, Pa. (Jeffrey Field)

Oct. 17, 2013

Soccer Box Score (Final) 2013 Penn State Women's Soccer Ohio State vs #17 Penn State (Oct 17, 2013 at University Park, Pa.)

Ohio State (8-4-3, 2-3-2) vs.
Penn State (11-3-1, 5-2-0)
Date: Oct 17, 2013 • Attendance: 567
Weather:

Ohio State	Sh	SO	G	A	Fo	Min
gk 0 McVicker, Jillian	-	-	-	-	-	90
d 2 Wolf, Maria	-	-	-	-	-	90
f 5 Gruber, Elynn	-	-	-	-	-	90
f 7 Prince, Nichelle	3	2	1	-	-	90
f 8 Varner, Kayla	1	1	-	-	-	90
m 9 Paradiso, Michela	1	-	-	-	-	60
m 15 Niederhaus, Kristen	2	1	-	-	-	90
d 17 Skinner, Bridget	-	-	-	-	-	52
m 19 Wu, Danica	-	-	1	-	-	80
d 20 Fuller, Megan	-	-	-	-	-	87
d 33 Wolcott, Morgan	1	1	1	-	-	90
-- Substitutes --	-	-	-	-	-	-
11 Deqler, Alexis	-	-	-	-	-	40
23 Schisler, Taylor	1	1	-	-	-	41
Totals	9	6	2	2	6	

# Goalkeepers	Min	GA	Saves
0 McVicker, Jillian	90:00	4	3

Shots by period	1	2	Total
Ohio State	4	5	9
Penn State	5	5	10

Corner kicks	1	2	Total
Ohio State	1	4	5
Penn State	5	3	8

Scoring summary:

No.	Time	Team	Goal scorer	Assist	Description
1.	5:46	PSU	Schram, Taylor (4)	Weber, Mallory	weber crossed in front of goal
2.	33:12	PSU	OWN GOAL	(unassisted)	weber cross knocked in by wolf
3.	36:55	OHIOST	Prince, Nichelle (8)	Degler, Alexis	shot from 12 yards out
4.	53:28	OHIOST	Wolcott, Morgan (1)	Wu, Danica	headed in off of corner just outside of six box
5.	54:42	PSU	Hayes, Maya (14)	(unassisted)	beats defender and keeper shot from 8 ya
6.	57:19	PSU	Hayes, Maya (15)	(unassisted)	rebounded from schrams shot after deflec crossbar

Cautions and ejections:

Win-Eckerstrom, Britt (11-3-1). Loss-McVicker, Jillian (4-4-2).
Stadium: Jeffrey Field
Officials: Referee: Nikola Aleksic; Asst. Referee: Paul Deverser; Eric Blackburn;
Alt. Official: John Douglas; Scorer: Kellie O'Brien;
Offsides: Ohio State 3, Penn State 2.

Official's signature



PSU 5, ILLINOIS 0

University Park, Pa. (Jeffrey Field)

Oct. 20, 2013

Soccer Box Score (Final) 2013 Penn State Women's Soccer Illinois vs #17 Penn State (Oct 20, 2013 at University Park, Pa.)

Illinois (8-6-2, 3-4-1) vs.
Penn State (12-3-1, 6-2-0)
Date: Oct 20, 2013 • Attendance: 2119
Weather:

Illinois	Sh	SO	G	A	Fo	Min
gk 1 Wheatley, Claire	-	-	-	-	-	90
d 2 Brown, Cassidy	2	1	-	-	-	90
f 3 Flaws, Jannelle	-	-	-	-	-	20
f 7 Pawlowski, Megan	1	-	-	-	-	80
d 8 Conine, Casey	-	-	-	-	-	90
m 15 Weykamp, Alaina	-	-	-	-	-	90
m 17 O'Brien, Lexi	1	1	-	-	-	71
d 18 Leary, Noelle	-	-	-	-	-	25
d 19 Farrell, Christina	-	-	-	-	-	90
d 24 Feher, Amy	1	-	-	-	-	90
m 27 Peterson, Taylore	-	-	-	-	-	90
-- Substitutes --	-	-	-	-	-	-
0 Johnston, Meeqan	3	3	-	-	-	61
6 Robshaw, Reagan	-	-	-	-	-	49
9 Green, Megan	-	-	-	-	-	10
10 Stucky, Allison	-	-	-	-	-	17
23 Medellin, Anastasia	-	-	-	-	-	28
Totals	8	5	0	0	3	

# Goalkeepers	Min	GA	Saves
1 Wheatley, Claire	90:00	5	7

Shots by period	1	2	Total
Illinois	2	6	8
Penn State	9	8	17

Corner kicks	1	2	Total
Illinois	4	3	7
Penn State	3	3	6

Scoring summary:

No.	Time	Team	Goal scorer	Assist	Description
1.	7:30	PSU	Rodriguez, Raquel (4)	Schram, Taylor	Through ball to Rodriguez just outside bo
2.	13:39	PSU	Rodriguez, Raquel (5)	Weber, Mallory	Ripped one from top of the box on rebound
3.	30:47	PSU	Costa, Tani (6)	(unassisted)	Turned defender around, shot from twelve
4.	47:20	PSU	Weber, Mallory (6)	Basinger, Brittany	Cross from Basinger shot from point blank
5.	49:48	PSU	Hayes, Maya (16)	Weber, Mallory	Weber passed to Hayes, shot from twelve

Cautions and ejections:

Win-Eckerstrom, Britt (12-3-1). Loss-Wheatley, Claire (8-6-1).
Stadium: Jeffrey Field
Officials: Referee: Shane Butler; Asst. Referee: Zach Rubinch; Korey Carter;
Alt. Official: Stan Latta; Scorer: Kellie O'Brien;
Offsides: Illinois 0, Penn State 3.

Official's signature



2013 PENN STATE WOMEN'S SOCCER



IOWA 3, PSU 2

Iowa City, Iowa (Iowa Soccer Complex)

Oct. 25, 2013

Soccer Box Score (Final)

2013 Penn State Women's Soccer

#16 Penn State vs IOWA (Oct 25, 2013 at Iowa City, IA)

Penn State (12-4-1) vs.

IOWA (12-4-1)

Date: Oct 25, 2013 • Attendance: 350

Weather:

Penn State					
Po #	Player	Sh	SO	G	A Fo Min
gk 28	Eckerstrom, Britt	-	-	-	- 90
1	Basinger, Brittany	-	-	-	- 90
3	Hurd, Emily	2	-	-	- 62
5	Hayes, Maya	2	1	-	- 68
11	Rodriguez, Raquel	-	-	-	- 67
14	Chapic, Kori	-	-	-	- 82
16	Weber, Mallory	2	1	-	- 87
17	Church, Whitney	-	-	-	- 90
19	Schram, Taylor	2	-	-	- 84
20	Williford, Salina	1	-	-	- 89
23	Hovington, Bri	-	-	-	- 82
--	Substitutes --				
7	Persson, Corey	-	-	-	- 8
22	Costa, Tani	2	2	2	- 68
26	Carrollo, Emily	-	-	-	- 12
Totals		11	4	2	1 11

#	Goalkeepers	Min	GA	Saves
28	Eckerstrom, Britt	90:00	3	4
TM	TEAM	0:00	0	1

Shots by period	1	2	Total
Penn State	7	4	11
IOWA	12	4	16

Corner kicks	1	2	Total
Penn State	5	5	10
IOWA	1	0	1

Scoring summary:

No.	Time	Team	Goal scorer	Assist	Description
1.	3:54	IOWA	Nasenbenny, Katie (3)	Catrell, Ashley	Cross from Catrell, headed into top left corner
2.	22:48	PSU	Costa, Tani (7)	Penalty kick	Penalty kick goal, dribbled into bottom left corner
3.	40:31	IOWA	Catrell, Ashley (5)	Lacasse, Cloe	Between goalies legs
4.	41:04	PSU	Costa, Tani (8)	Carrollo, Emily	
5.	74:24	IOWA	Lacasse, Cloe (4)	(unassisted)	Deflected off keeper

Cautions and ejections:

YC-PSU #20 (12:55); YC-PSU #14 (82:48); YC-IOWA #11 (82:48)

Win-Clark, Hannah (12-4-1). Loss-Eckerstrom, Britt (12-4-1).

Stadium: Iowa Soccer Complex

Officials: Referee: Cesar Ibarra; Asst. Referee: Tyler Turner; Keyi Zhang;

Alt. Official: Paul Lassance; Timekeeper: John Lundell; Scorer: Eric Clark;

Offsides: Penn State 1, IOWA 3.

Official's signature



NEBRASKA 3, PSU 2 (2OT)

Lincoln, Neb. (Nebraska Soccer Field)

Oct. 27, 2013

Soccer Box Score (Final)

2013 Penn State Women's Soccer

#16 Penn State vs #21 Nebraska (Oct 27, 2013 at Lincoln, Neb.)

Penn State (12-5-1, 6-4-0 B1G) vs.

Nebraska (14-3-1, 9-1-0 B1G)

Date: Oct 27, 2013 • Attendance: 404

Weather: Low 60s and sunny

Penn State					
Po #	Player	Sh	SO	G	A Fo Min
gk 28	Eckerstrom, Britt	-	-	-	- 103
d 1	Basinger, Brittany	-	-	-	- 93
mf 3	Hurd, Emily	-	-	-	- 90
f 5	Hayes, Maya	5	4	1	- 103
f 11	Rodriguez, Raquel	2	1	-	- 81
f 14	Chapic, Kori	1	-	-	- 82
f 16	Weber, Mallory	5	2	-	- 101
d 17	Church, Whitney	3	2	1	- 103
f 19	Schram, Taylor	2	1	-	- 89
mf 20	Williford, Salina	-	-	-	- 91
d 23	Hovington, Bri	-	-	-	- 103
--	Substitutes --				
7	Persson, Corey	-	-	-	- 2
12	Kohne, Kindrah	-	-	-	- 10
22	Costa, Tani	1	-	-	- 63
26	Carrollo, Emily	-	-	-	- 13
Totals		19	10	2	3 14

#	Goalkeepers	Min	GA	Saves
28	Eckerstrom, Britt	102:55	3	5

Shots by period	1	2	OT	O2	Total
Penn State	6	9	3	1	19
Nebraska	6	5	4	1	16

Corner kicks	1	2	OT	O2	Total
Penn State	5	3	0	1	9
Nebraska	2	1	0	0	3

Scoring summary:

No.	Time	Team	Goal scorer	Assist	Description
1.	46:44	PSU	Church, Whitney (3)	Hurd, Emily	free kick 11 tap to 3, back to 17 ripped in
2.	74:27	NEB	Jackson, Jordan (8)	Rodriguez, Raquel	long pass from 2 bouncing ball headed in post
3.	82:43	NEB	Johnson, Jaycie (8)	Jackson, Jordan	16 shot, keeper parried it, 19 tap in rebound
4.	88:08	PSU	Hayes, Maya (17)	Basinger, Brittany	1 chipped into box headed in by 5
5.	102:55	NEB	Johnson, Jaycie (9)	Stevens, Emma	19 ran coast to coast beats keeper lower left corner

Cautions and ejections:

YC-NEB #22 (72:15)

Win-Stevens, Emma (14-3-1). Loss-Eckerstrom, Britt (12-4-1).

Stadium: Nebraska Soccer Field

Officials: Referee: Khalaf Allatayfeh; Asst. Referee: Brent Wilson; Chris Greer;

Alt. Official: Juan Chamizo; Timekeeper: Yan Xin Lee; Scorer: Chris Roelke;

Offsides: Penn State 5, Nebraska 5.

Official's signature



ERICA WALSH

Head Coach • Seventh Year
WILLIAM & MARY '97

PSU RECORD: 112-41-8 (.720)
Overall Record: 151-69-11 (.677)

2012 NSCAA NATIONAL COACH OF THE YEAR TWO-TIME BIG TEN COACH OF THE YEAR (2009, 2012)

Head coach Erica Walsh enters her seventh season at the helm of the Penn State women's soccer program in 2013. Walsh's 2012 Nittany Lions were the most successful team in program history after advancing to their first-ever national title game. The Nittany Lions won 21 of 27 games and were unbeaten in Big Ten action with a 10-0-1 record. The Lions registered their 15th consecutive Big Ten title and 18th-straight NCAA Tournament appearance. The 15-title mark stands as the most consecutive Big Ten Championships by a women's program, along with the present Northwestern tennis team.

WALSH'S COLLEGIATE RÉSUMÉ

Head Coach

PENN STATE 2007-present
2012 NSCAA National Coach of the Year
2012 Big Ten Coach of the Year
2009 Big Ten Coach of the Year

Harvard 2006
Dartmouth 2000-02

Assistant Coach

Florida State 2005-06
Dartmouth 1998-99

Graduate Assistant

Lehigh 2003-04
Dartmouth 1997

Student-Athlete

William & Mary 1993-97
William & Mary Hall of Fame Inductee

WALSH'S NATIONAL RÉSUMÉ

Head Coach

U.S. Women's Under-17 2004-07

Assistant Coach

U.S. Women's National Team 2008-present
2008 Olympic Gold Medalists
2011 World Cup Silver Medalists
U.S. Women's Under-19 2004

Senior Christine Nairn became just the seventh Nittany Lion to finish as a finalist for the prestigious Missouri Athletic Club's Hermann Trophy in 2012 under Walsh's tutelage while junior Maya Hayes was named a semifinalist for the award.

Walsh's success was recognized at the conference and national level as she earned Big Ten Coach of the Year and NSCAA Coach of the Year honors.

Her 2011 team was a dominant force, winning 21 of 26 matches, while out-scoring opponents 70-24. The Nittany Lions were 10-1-0 in Big Ten action and posted the seventh undefeated season at Jeffrey Field (9-0). Walsh helped guide the Lions to their 14th-straight Big Ten title and a spot to the NCAA Sweet Sixteen for

the first time since 2007.

With Walsh's guidance, sophomore Maya Hayes became the nation's most prolific scorer in soccer in 2011. Hayes was a finalist for the M.A.C. Hermann Trophy. Hayes led the nation with 31 goals and 70 points. The sophomore phenom broke single-season record at Penn State for goals and points.

During the 2011 summer, Walsh had an extraordinary experience of being one of the top assistants to Pia Sundhage and the 2011 United State women's national team at the FIFA World Cup in

Germany. The U.S. made a sparkling run through knockout play to the final, falling to eventual champions Japan.

During the 2010 season, Walsh's young club made a remarkable turnaround mid-season, overcoming a two-game deficit in the league standings over the final weeks to capture a share of a record-breaking 13th straight Big Ten title.

After a tough 2-4 start to the 2009 season, Walsh led the Nittany Lions to a remarkable turnaround, going 10-1-2 in the last 13 games of the regular season, earning her the 2009 Big Ten Coach of the Year Award for her efforts. In March of 2010, Walsh's alma mater, William & Mary, honored her by inducting her into the W&M Athletics Hall of Fame.

With the impressive end to the season, Walsh and her charges captured the program's 12th-straight Big Ten Championship, tying a record for most consecutive women's Big Ten titles won held by the Michigan swimming & diving program. By winning the Big Ten, the Nittany Lions continued their string of NCAA Tournament berths, making their 15th-straight appearance in the 64-team field in 2009. For the second time in three years, Penn State hosted the first and second rounds of tournament play.

Walsh also orchestrated one of the finest awards seasons in Penn State history when Katie Schoepfer, Alyssa Naeher and Christine Nairn swept the year-end Big Ten Player of the Year awards. Schoepfer was named the Offensive Player of the Year, Naeher the Defensive Player of the Year and Nairn the Freshman of the Year. Danielle Toney was named to the All-Big Ten First Team, while Lexi Marton garnered Second Team mention. Walsh has now coached two players of the year to three awards as Naeher was also the 2007 recipient of the Defensive Player of the Year honors in Walsh's first year in Happy Valley.

Walsh continued her success from the 2007 campaign into a 16-8-0 record that saw Penn State capture its 11th-straight Big Ten Championship and the 2008 Big Ten Tournament crown.

Her transition to Penn State was quite smooth as the 2007 team finished 18-4-2, including a 9-1-0 mark in conference play, and was ranked 12th in the final NSCAA poll of the season.

When she came to Penn State, Walsh brought with her a wealth of experience at both the international and collegiate levels. She already has coached at six different universities, including three stints as head coach as well as serving as an assistant for the U.S. U-19 team in 2004. Walsh served as head coach of the U-17 team from December 2004 until her hire at Penn State in February of 2007.

As of January 2009, Walsh was appointed as a member of the Panel of Instructors and Lecturers for FIFA Courses. In addition, she was appointed as the Chairman of the Women's Technical Committee for the period of January 1, 2009 to June 30, 2011.

In January of 2008, Walsh was named as the assistant coach by Pia Sundhage for the U.S. National Team. With Walsh's help and guidance the U.S. team completed its historic run with a gold medal at the 2008 Olympic Games in Beijing, China. Even sweeter was that Walsh's main responsibility was the U.S. Team's defense, which held fellow world power Brazil scoreless in the gold medal game.

The head coach at Harvard University as well as the U.S. Under-17 team prior to her hiring at Penn State, Walsh has consistently been active among the coaching ranks both at the Division I level and the U.S. Youth National Team program for nearly a decade. Prior to her time with the Crimson, she was part of a Florida State staff that led the Seminoles to one of its most successful year to date. FSU joined Penn State in the 2005 Women's Soccer College Cup, with both programs reaching the national semifinals.



Walsh's coaching path began in 1997 as a graduate assistant with Bucknell University. In 1998, she accepted a position at Dartmouth, where she was an assistant coach for two seasons. After helping the team to a final NSCAA ranking of No. 8 at the conclusion of the team's 1998 NCAA quarterfinal run as well as an Ivy League championship in 1999, Walsh assumed head coaching duties before the 2000 season.

As head coach, Walsh led the Big Green to back-to-back Ivy League co-championships in 2000 and 2001. Her squad was ranked in the NSCAA's top 25 each year, rising as high as No. 13 in 2001. In her three seasons as head coach, Dartmouth was invited to the NCAA Tournament each season and reached the round of 16 twice. All three of her teams earned the NSCAA's Academic Team Award.

Walsh left Dartmouth to earn her Master's in business administration at Lehigh University where she served as a graduate assistant from 2003-04.

Beginning in the spring of 2004, Walsh joined the United States Under-19 team as an assistant coach where she helped with preparations for the Under-19 World Cup. The U.S. finished with the bronze medal in Thailand after defeating Brazil in the third place match. After the World Cup, Walsh was appointed the U.S. National Team's U-17 head coach, a position which she held for three years.

As a player, Walsh was an NSCAA All-Region selection at William & Mary. A two-time first team All-CAA pick, she propelled her team to four NCAA Tournament appearances as well as two CAA regular season and two CAA league championships.

A high school All-American at Lower Moreland, she was also a member of the U.S. Under-17 National Team.

Walsh earned her Bachelor of Science degree with a concentration in biology from William & Mary in 1997 and resides in State College,

WALSH'S ACCOLADES

10 YEARS OF COLLEGE HEAD COACHING EXPERIENCE

1 COLLEGE CUP APPEARANCE

1 NATIONAL CHAMPIONSHIP APPEARANCE

13 NCAA TOURNAMENT WINS

9 NCAA TOURNAMENT APPEARANCES

10 ALL-AMERICA HONORS

6 BIG TEN CHAMPIONSHIPS

1 OLYMPIC GOLD MEDAL

1 NATIONAL COACH OF THE YEAR AWARD

2 BIG TEN COACH OF THE YEAR AWARDS

WALSH'S CAREER AT PENN STATE

Season	Overall	Pct.	Big Ten	Pct.	Finish	NCAA
2007	18-4-2	.792	9-1-0	.900	1st	Third Round
2008	16-8-0	.667	8-2-0	.800	T-1st	First Round
2009	13-6-2	.667	8-1-1	.850	1st	Second Round
2010	11-9-1	.548	8-2-0	.800	T-1st	Second Round
2011	21-5-0	.808	10-1-0	.909	1st	Third Round
2012	21-4-2	.815	10-0-1	.955	1st	Second Place
2013	12-5-1	.694	6-4-0	.600	--	--
Penn State	112-41-8	.720	59-11-2	.833		6 NCAAAs (10-6)
Career	151-69-11	.677				9 NCAAAs (13-9)

2013 Penn State Women's Soccer Penn State Combined Team Statistics (as of Oct 29, 2013) All games

RECORD:	OVERALL	HOME	AWAY	NEUTRAL
ALL GAMES	12-5-1	8-1-1	4-4	0-0
CONFERENCE	6-4	5-1	1-3	0-0
NON-CONFERENCE	6-1-1	3-0-1	3-1	0-0

Date	Opponent	Score	Att.	#	Player	gp	g	a	pts	sh	sh%	sog	sog%	gw	pk-att
Aug 23	WVU	To2 2-2	3742	5	Hayes, Maya	18	17	5	39	63	.270	37	.587	4	0-0
Aug 25	HOFSTRA	w 2-1	732	19	Schram, Taylor	18	4	6	14	43	.093	14	.326	1	0-0
Aug 30	at #6 Virginia	L 1-5	2609	22	Costa, Tani	17	8	5	21	38	.211	19	.500	1	1-1
Sep 01	LASALLE	w 5-1	1012	11	Rodriguez, Raquel	18	5	8	18	36	.139	17	.472	2	0-0
Sep 06	BOSTON UNIVERSITY	w 1-0	1556	16	Weber, Mallory	18	6	7	19	33	.182	15	.455	2	0-0
Sep 10	at Bucknell	w 6-0	1390	3	Hurd, Emily	18	2	6	10	27	.074	15	.556	0	0-0
Sep 13	at Oklahoma State	w 4-2	1316	14	Chapic, Kori	18	2	3	7	21	.095	7	.333	1	0-0
9/15/2013	at Tulsa	w 3-2	252	17	Church, Whitney	18	3	1	7	16	.188	8	.500	1	0-0
* Sep 20	NORTHWESTERN	wo2 3-2	3118	20	Williford, Salina	18	0	0	0	8	.000	2	.250	0	0-0
* Sep 26	PURDUE	w 6-1	851	26	Carrollo, Emily	16	0	2	2	7	.000	5	.714	0	0-0
* Sep 29	INDIANA	w 4-1	1582	12	Kohne, Kindrah	15	1	0	2	7	.143	2	.286	0	0-0
* Oct 04	at #18 Wisconsin	w 2-1	453	1	Basinger, Brittany	18	0	2	2	6	.000	4	.667	0	0-0
* Oct 06	at Minnesota	L 0-1	796	25	Peterson, Mallory	11	0	1	1	5	.000	1	.200	0	0-0
* Oct 13	#19 MICHIGAN	L 0-1	2144	24	Brandy, Liv	2	1	0	2	4	.250	1	.250	0	0-0
* Oct 17	OHIO STATE	w 4-2	567	15	Kehoe, Erin	10	0	1	1	3	.000	1	.333	0	0-0
* Oct 20	ILLINOIS	w 5-0	2119	23	Hovington, Bri	18	0	0	0	3	.000	1	.333	0	0-0
* Oct 25	at IOWA	L 2-3	350	8	Kalwa, Jenna	4	0	0	0	2	.000	1	.500	0	0-0
* Oct 27	at #21 Nebraska	Lo2 2-3	404	7	Persson, Corey	17	1	0	2	2	.500	1	.500	0	0-0
				21	Chase, Teddy	5	0	0	0	2	.000	1	.500	0	0-0
				2	Ritchey, Megan	3	0	0	0	1	.000	0	.000	0	0-0
				28	Eckerstrom, Britt	18	0	0	0	0	.000	0	.000	0	0-0
				0	Kaminski, Meghan	3	0	0	0	0	.000	0	.000	0	0-0
				6	Witte, Anna	4	0	0	0	0	.000	0	.000	0	0-0
				4	Marton, Lexi	6	0	0	0	0	.000	0	.000	0	0-0
					Total	18	52	47	151	327	.159	154	.471	12	1-1
					Opponents	18	28	29	85	208	.135	104	.500	5	1-1

TEAM STATISTICS	PSU	OPP
SHOT STATISTICS		
Goals-Shot attempts	52-327	28-208
Goals scored per game	2.89	1.56
Shot pct.	.159	.135
Shots on goal-Attempts	154-327	104-208
SOG pct.	.471	.500
Shots/Game	18.2	11.6
CORNER KICKS	123	69
PENALTY KICKS	1-1	1-1
PENALTIES		
Yellow cards	8	7
Red cards	0	0
ATTENDANCE		
Total	17423	7570
Dates/Avg Per Date	10/1742	8/946
Neutral Site #/Avg	0/0	

#	Goalie	GP	Min.	GA	GAAvg	Saves	Pct	W-L-T	Sho
00	Golestani, Lexi	1	7:13	0	0.00	1	1.000	0-0-0	0/1
0	Kaminski, Meghan	3	65:29	0	0.00	2	1.000	0-0-0	0/2
28	Eckerstrom, Britt	18	1596:38	28	1.58	72	.720	12-5-1	1/2
	Total	18	1669:20	28	1.51	76	.731	12-5-1	3
	Opponents	18	1669:20	52	2.80	102	.662	5-12-1	2

Goals by Period	1st	2nd	OT	OT2	Total
Penn State	27	24	0	1	52
Opponents	13	14	0	1	28

Shots by Period	1st	2nd	OT	OT2	Total
Penn State	156	157	8	6	327
Opponents	100	99	6	3	208

Saves by Period	1st	2nd	OT	OT2	Total
Penn State	38	33	3	2	76
Opponents	53	43	4	2	102

Corners by Period	1st	2nd	OT	OT2	Total
Penn State	54	67	1	1	123
Opponents	31	36	2	0	69

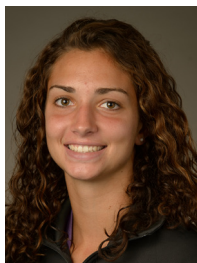
Fouls by Period	1st	2nd	OT	OT2	Total
Penn State	66	73	2	1	142



2013 PENN STATE WOMEN'S SOCCER



LEXI GOLESTANI
Freshman • GK
Montgomery, N.J.



MEGHAN KAMINSKI
Sophomore • GK
Doylestown, Pa.



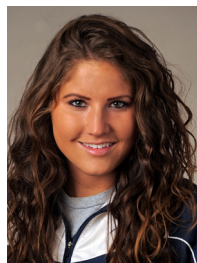
BRITTANY BASINGER
Freshman • D
Fairfax, Va.



MEGHAN RITCHEY
Sophomore • M
State College, Pa.



EMILY HURD
R - Junior • M
Sammamish, Wash.



LEXI MARTON
R - Senior • D
Aurora, Ontario



MAYA HAYES
Senior • F
West Orange, N.J.



ANNA WITTE
Freshman • D
Morrisville, N.C.



COREY PERSSON
Freshman • M
Danvers, Mass.



JENNA KALWA
Sophomore • M/D
Pennington, N.J.



ANDREA GUNDERSON
Freshman • D
West Chester, Pa.



RAQUEL RODRIGUEZ
Sophomore • F/M
San Jose, Costa Rica



KINDRAH KOHNE
Junior • D
Homer, N.Y.



KORI CHAPIC
Sophomore • D
Homer, N.Y.



ERIN KEHOE
Senior • M
Crystal, Ill.



MALLORY WEBER
Sophomore • F
Novi, Mich.



WHITNEY CHURCH
Junior • D
Ashburn, Va.



ANGELA WIDLACKI
Freshman • D
Naperville, Ill.



TAYLOR SCHRAM
Senior • F
Canonsburg, Pa.



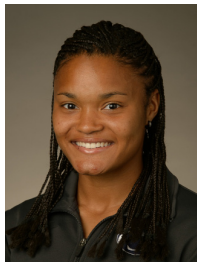
SALINA WILLIFORD
Freshman • M/D
Wayne, Pa.



TEDDY CHASE
Sophomore • D
Wayne, Pa.



TANI COSTA
R - Senior • F
Honolulu, Hawaii



BRI HOVINGTON
Senior • D
Lothian, Md.



LIV BRANDY
Freshman • D
Gibsonia, Pa.



MALLORY PETERSON
Sophomore • F/M
Clinton Corners, N.Y.



EMILY CORROLLO
Grad. Student • F/M
Sussex, N.J.



MAGGIE CHAPMAN
Freshman • M
Dumfries, Va.



BRITT ECKSTROM
R - Sophomore • GK
Germantown, Md.



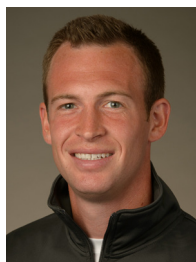
CHLOE BUEHLER
Freshman • GK
Perrysburg, Ohio



ERICA WALSH
Head Coach • 7th Year
William & Mary '97



ANN COOK
Assistant Coach • 7th Year
William & Mary '97



TIM WASSELL
Assistant Coach • 4th Year
PSU Altoona '06



KARA LOWERY
Director of Ops. • 1st Year
Southern Nazarene '97



MIKE ECKBERG
Volunteer Asst. • 1st Year
Luther College '07