



2012-13 PENN STATE LADY LION BASKETBALL

WOMEN'S BASKETBALL CONTACT:
 Kristina Petersen
 Twitter: @ladylionsid
 Website: www.GoPSUsports.com
 Email: kap18@psu.edu
 Cell: 814-883-4581
 Office: 814-865-1757

Penn State Athletic Communications: 101D Bryce Jordan Center, University Park, PA 16802 ♦ Office: 814-865-1757 ♦ Fax: 814-863-3165

SCHEDULE/RESULTS

NOVEMBER	
Sat. 3	CALIFORNIA (PA.) (ex.).....W, 95-39
Sun. 11	HOWARD (BTN.com)..... 2 p.m.
Wed. 14	at Texas A&M.....8 p.m.
Sun. 18	LAFAYETTE (BTN.com)..... 2 p.m.
Radisson Hotel Chatsworth Thanksgiving Basketball Tournament	
Fri. 23	vs. Detroit..... 5:30 p.m.
Sat. 24	vs. CS-Northridge/S. Ala...3/5:30 p.m.
Big Ten/ACC Challenge	
Thurs. 29	at Miami (Fla.).....7:05 p.m.
DECEMBER	
Sun. 2	FAIR. DICKINSON (BTN.com)...2 p.m.
Thurs. 6	at Connecticut (SNY).....7 p.m.
Sun. 9	GEORGETOWN (BTN).....noon
Wed. 12	at Virginia Tech.....7 p.m.
Sun. 16	SOUTH DAKOTA STATE..... 2 p.m.
Sun. 23	NJIT (BTN.com).....1:30 p.m.
JANUARY	
Thurs. 3	NORTHWESTERN* (BTN.com) . 7 p.m.
Sun. 6	at Michigan State* (BTN).....TBA
Sun. 13	NEBRASKA* (ESPN2)..... 2 p.m.
Thurs. 17	WISCONSIN* (BTN.com)..... 7 p.m.
Mon. 21	at Michigan* (BTN).....6:30 p.m.
Thurs. 24	MINNESOTA* (BTN).....6:30 p.m.
Sun. 27	at Ohio State* (BTN).....1 p.m.
Thurs. 31	at Wisconsin* (BTN.com).....8 p.m.
FEBRUARY	
Mon. 4	PURDUE* (ESPN2)..... 7 p.m.
Thurs. 7	at Indiana* (BTN).....6:30 p.m.
Sun. 10	MICHIGAN STATE* (ESPN2)... 2 p.m.
Thurs. 14	at Iowa* (BTN.com).....8 p.m.
Wed. 20	ILLINOIS* (BTN.com)..... 7 p.m.
Seventh Annual Pink Zone at Penn State	
Sun. 24	MICHIGAN* (BTN)..... 1 p.m.
Thurs. 28	at Minnesota* (BTN-WC).....TBA
MARCH	
Sun. 3	at Nebraska* (BTN-WC).....TBA
Th.-Su. 7-10 Big Ten Tournament (BTN/ESPN2) (Hoffman Estates, Ill.)
Sa.-Tu. 23-26 NCAA 1st & 2nd Round
Sa.-Tu. 30-Apr. 2 NCAA Regionals
APRIL	
Su./Tu. 7/9	...NCAA Final Four (New Orleans, La.)
BOLD CAPS indicates home game.	
* - indicates Big Ten game.	
All times are Eastern Time.	
BTN - Big Ten Network	
BTN.com - BigTenNetwork.com	
<i>Schedule subject to change. Please visit www.GoPSUsports.com for up-to-date tip times.</i>	

Game #1: Howard at #8/8 Penn State

Sun., Nov. 11 ▶ 2 p.m. ▶ Bryce Jordan Center ▶ University Park, Pa.

		SETTING THE SCENE
Penn State Lady Lions	Howard Bison	The Howard Game
Record: 0-0, 0-0 Big Ten	Record: 0-1, 0-0 MEAC	Series: Penn State leads 2-0
Last 2011-12 Game: UConn 77, PSU 59 (3/25/12)	Last Game: St. Francis 69, Howard 61 (11/9/12)	Last Meeting: PSU 107, Howard 69 (11/26/89)
Head Coach: Coqese Washington	Head Coach: Niki Reid Geckeler	Streak: Penn State - 2 wins
Career Record: 92-67 (6th yr.)	Career Record: 65-64 (5th yr.)	Television: none
Record at PSU: 92-67 (6th yr.)	Record at Howard: 65-64 (5th yr.)	Radio: The game is on the Penn State Sports Network and ESPN Radio 1450 locally with Jerry Fisher and Brian Tripp calling the action. The audio feed is available at www.GoPSUsports.com.
2011-12 Returning Statistical Leaders	2011-12 Returning Statistical Leaders	Webstream: BTN.com
Points Maggie Lucas (19.5)	Points Tamoria Holmes (18.3)	Live Stats: GoPSUsports.com
Rebounds Nikki Greene (7.8)	Rebounds Saadia Doyle (8.6)	
Assists Alex Bentley (4.7)	Assists C. Curly-Payne (5.0)	

GAME DAY INFORMATION

SCOUTING HOWARD

The Bison are the preseason favorite to win the MEAC after posting a 24-9 overall record and 14-2 mark in conference play a year ago. Leading the Bison are seniors Saadia Doyle, who is the MEAC Preseason Player of the Year, and Tamoria Holmes, a preseason All-MEAC first team choice. Doyle averaged 17.1 points and a team-best 8.6 rebounds last season, while Holmes paced Howard with an 18.3 scoring average. The Bison dropped a 69-61 decision at St. Francis (Pa.) to open the season Friday.

ALL-TIME VS. THE BISON

The Lady Lions are 2-0 all-time against Howard, but haven't met the Bison since the 1989-90 season. Penn State picked up an 82-44 home win on Dec. 2, 1980 and a 107-69 neutral site win on Nov. 26, 1989. The Lady Lions are a perfect 6-0 all-time against MEAC schools.

LAST TIME VS. HOWARD

The last time these squads squared off was in the consolation round of the Amana-Hawkeye Classic in Iowa City on Nov. 26, 1989. Susan Robinson earned a double-double against the Bison with 30 points and 11 rebounds.

STORYLINES

- ✓ Penn State won its first Big Ten regular season title since 2003-04 and sixth overall with a 13-3 mark in conference play.
- ✓ The Lady Lions are eighth in the preseason AP and USA Today Sports/ESPN Coaches' poll, their highest ranking since the 2003-04 season.
- ✓ Penn State returns 86% of its scoring offense and 93.2% of its rebounding from the Big Ten Championship team a year ago.
- ✓ Bentley and Lucas are among 25 players named to the "Wade Watch" list for the State Farm® Wade Trophy.
- ✓ **Alex Bentley** was in the Top 15 in the Big Ten in scoring (11th - 14.1), assists (4th - 4.7), steals (2nd - 3.0), assist-to-turnover ratio (7th - 1.4) and minutes played (8th - 33.9).
- ✓ Junior guard **Maggie Lucas** is third on Penn State's career three-pointers list (194), 25th in career scoring list (1,194) and sits atop the Penn State career free throw percentage list (.881) entering her junior year.
- ✓ An All-Big Ten third team pick, **Nikki Greene** is fifth on Penn State's career blocks list (176) and 12th on PSU's career rebounding list (723).

UP NEXT

The Lady Lions hit the road to face Texas A&M, which is 15th in the AP poll and 12th in the Coaches' poll, on Wed., Nov. 14. Penn State returns home to face Lafayette on Sun., Nov. 18 at 2 p.m., for Kids Day and YMCA day. Go to www.GoPSUsports.com/promotions/wbb.html for complete promotions information.



2012-13 ROSTER

PENN STATE LADY LIONS

No.	Name	Pos.	Cl./Elg.	Ht.	Hometown/High School (Previous School)
1	Candice Agee	C	Fr./Fr.	6-6	Victorville, Calif./Silverado
2	Dara Taylor	G	Sr./Jr.	5-8	Wilmington, Del./Caravel Academy (Maryland)
5	Talia East **	F/C	Jr./Jr.	6-3	Philadelphia, Pa./Friends' Central School
20	Alex Bentley ***	G	Sr./Sr.	5-7	Indianapolis, Ind./Ben Davis
23	Ariel Edwards **	G/F	Jr./Jr.	6-3	Elmont, N.Y./Christ the King
24	Mia Nickson **	F	Gr./Sr.	6-2	Ashburn, Va./Notre Dame Acad. (Boston College)
25	Gizelle Studevent ***	G	Sr./Sr.	5-11	La Jolla, Calif./The Bishop's School
33	Maggie Lucas **	G	Jr./Jr.	5-10	Narberth, Pa./Germantown Academy
40	Marisa Wolfe ***	F	Sr./Sr.	6-2	Ford City, Pa./Ford City
44	Tori Waldner *	F	So./So.	6-5	Milton, Ga./Milton
54	Nikki Greene ***	F/C	Sr./Sr.	6-4	Diboll, Texas/Diboll

Head Coach: Coquese Washington (Notre Dame '92)

Asst. Coaches: Fred Chmiel, Kia Damon, Maren Walseth

Captains: Alex Bentley, Mia Nickson, Marisa Wolfe

* Indicates letters earned

HOWARD BISON

No.	Name	Pos.	Cl./Elg.	Ht.	Hometown/High School (Previous School)
2	Te'Shya Heslip	G	Fr./Fr.	5-4	Dumfries, Va./Potomac
4	Tamoria Holmes	G	Sr./Sr.	5-6	Durham, N.C./Hillside
5	Cheyenne Curly-Payne	G	Sr./Sr.	5-4	San Diego, Calif./Eastlake
10	Jerrelle Gorham	G	Sr./Jr.	5-8	Durham, N.C./Hillside
11	Adelle Walton	G	Sr./Sr.	5-7	San Diego, Calif./Francis Parker
13	Saadia Doyle	G	Sr./Sr.	5-10	Atlanta, Ga./Columbia
14	Cabria Johnson	F	Sr./Jr.	6-0	Upper Marlboro, Md./Elizabeth Seton
21	Cheyenne Brown	F	So./So.	5-10	Silver Spring, Md./Spring Brook
24	Imani Bailey	G	Fr./Fr.	5-8	Laurel, Md./Meade
25	Julee O'Neal	F	Sr./Sr.	6-2	Durham, N.C./Hillside
32	Nicole Deterville	F	Sr./Sr.	6-0	Toronto, Ontario/West Collegiate Institute
34	Portia Deterville	F	Sr./Sr.	6-0	Toronto, Ontario/West Collegiate Institute
44	Kara Smith	G	Sr./Sr.	6-0	Chicago, Ill./Whitney M. Young Magnet

Head Coach: Niki Reid Geckeler

Assistant Coaches: Brian Johnson, James Simmons

TEAM COMPARISON

PENN STATE		HOWARD
Lucas (19.5)	Returning Scoring Leader	Holmes (18.3)
Greene (7.8)	Returning Rebounding Leader	Doyle (8.6)
Bentley (4.7)	Returning Assist Leader	Curley-Payne (5.0)
Bentley (3.0)	Returning Steals Leader	Curley-Payne (2.8)
Greene (1.4)	Returning Blocks Leader	N. Deterville (0.7)
75.7	Scoring Offense	58.7
62.5	Scoring Defense	53.0
+13.2	Scoring Margin	+5.7
42.1	Rebounds Per Game	36.5
+1.8	Rebound Margin	-0.2
12.8	Assists Per Game	11.8
9.2	Steals Per Game	10.2
.431	Field Goal Pct.	.361
.358	FG Defense Pct.	.378
.362	3-pt. FG Pct.	.259
.260	3-pt. FG Pct. Def.	.298
.735	Free Throw Pct.	.730
0.9	Assist/Turnover	0.9
Lost 1	W/L Streak	Lost 2

SERIES HISTORY

Overall:	PSU leads 2-0
Last meeting:	Nov. 26, 1989
Last result:	PSU, 107-69
Current streak:	PSU - 2 wins
Last 10:	PSU, 2-0
Last 10 meetings:	
12/2/80	H PSU, 82-44
11/26/89	N PSU, 107-69

QUICK FACTS

THE UNIVERSITY

Location: University Park, Pa.
 Founded: 1855
 Enrollment: 42,294
 Colors: Blue & White
 Nickname: Lady Lions
 Conference: Big Ten
 President: Dr. Rodney Erickson
 Acting Athletics Director: Dr. David Joyner
 Facility (cap.): Bryce Jordan Center (15,261)
 All-Time Record at BJC: 187-49 (18 seasons)

ATHLETIC COMMUNICATIONS

WBB Contact: Kristina Petersen
 Phone/Fax: (814) 865-1757/(814) 863-3165
 E-mail: kap18@psu.edu
 Address: 101-D Bryce Jordan Center
 University Park, Pa. 16802
 Press Row Phone: 814-863-3294
 Website: www.GoPSUsports.com
 Twitter: @ladylionsid

TEAM INFORMATION

2011-12 Record: 26-7
 Home: 12-2 Away: 11-3 Neutral: 3-2
 Big Ten Record (finish): 13-3 (1st)
 Home: 6-2 Away: 7-1
 Letterwinners Returning/Lost: 9/1
 Starters Returning/Lost: 4/1
 Big Ten Tournament: Semifinals
 Postseason: NCAA Sweet Sixteen

THE HISTORY

First Year of Women's Basketball: 1965
 All-Time Record: 831-380 (48 seasons)
 All-Time Big Ten Rec.: 217-117 (20 seasons)
 NCAA Tournament Appearances: 23
 NCAA Tournament Record: 29-23

WOMEN'S BASKETBALL

Head Coach: Coquese Washington
 Alma Mater: Notre Dame '92
 Overall Record: 92-67 (five seasons)
 School Record: 92-67 (five seasons)
 Basketball Office Phone: 814-863-2672
 Best Time To Reach Coach: Through SID
 Assistant Coaches (Alma Mater):
 Fred Chmiel (Excelsior College)
 Kia Damon (Millersville '97)
 Maren Walseth (Penn State '02)
 Twitter: @pennstatewbb
 Facebook: facebook.com/pennstateladylions
 YouTube: YouTube.com/pennstateladylions
 Instagram: pennstateladylions

PRONUNCIATIONS

Agee	A-jee
Coquese	ko-KWEES
Chmiel	shuh-MEAL
Maren Walseth	MARR-en WALL-seth
Gizelle Studevent	juh-ZELL STEW-duh-vent
Talia	tah-LEE-uh
Ariel	AIR-e-I
Dara	DAR-uh





2011-12 STANDINGS (FINAL)

Team	Big Ten			Overall		
	W	L	Pct.	W	L	Pct.
PENN STATE	13	3	.812	26	7	.788
Ohio State	11	5	.688	25	7	.781
Iowa	11	5	.688	19	12	.613
Purdue	11	5	.688	25	9	.735
Michigan State	11	5	.688	20	12	.625
Nebraska	10	6	.625	24	9	.727
Michigan	8	8	.500	20	12	.625
Minnesota	6	10	.375	19	17	.528
Wisconsin	5	11	.312	9	20	.310
Illinois	5	11	.312	11	19	.367
Northwestern	4	12	.250	14	16	.467
Indiana	1	15	.062	6	24	.200

BIG TEN SCHEDULE

NOVEMBER 9

at Valparaiso 64, Indiana 52
 at Iowa 63, Northern Illinois 40
 at Michigan 70, Detroit-Mercy 22
 at Nebraska 68, North Carolina A&T 50
 at Northwestern 79, Tennessee-Martin 69
 Notre Dame 57, vs. Ohio State 51

NOVEMBER 10

Washington State at Minnesota 1 p.m.
 South Carolina Upstate at Purdue 7 p.m.

NOVEMBER 11

Evansville at Illinois 3 p.m.
 TBA at Iowa TBA
 Texas-Arlington at Michigan State 2 p.m.
 TBA at Minnesota TBA
 Temple at Nebraska 3 p.m.
 Central Michigan at Northwestern TBA
 Howard at Penn State 2 p.m.
 Milwaukee at Wisconsin 7 p.m.

All times are Eastern.

PROJECTED STARTERS



20 ALEX BENTLEY G
 Sr., 5-7, Indianapolis, Ind.
 14.1 ppg, 4.7 apg, 3.0 spg, .423 FG%

Notes: On 2013 Wade Watch List ... 2012 WBCA Honorable Mention All-America ... Big Ten Preseason Co-Player of the Year ... 15th on Penn State's career scoring list (1,335) and 10th in assists (455).



23 ARIEL EDWARDS G/F
 Jr., 6-3, Elmont, N.Y.
 7.0 ppg, 4.3 rpg, .710 FT%, .429 FG%

Notes: Set personal bests in points (202), rebounds (125), assists (32), steals (22) and blocks (5) last season ... Had 15 pts. in 18 min. in NCAA Tournament 2nd round win over LSU.



24 MIA NICKSON F
 Sr., 6-2, Ashburn, Va.
 8.5 ppg, 7.8 rpg, .422 FG%, .716 FT%

Notes: On 2013 Wade Watch List ... 2012 AP Honorable Mention All-America ... 2012 All-Big Ten first team choice ... 1st on Penn State's career free throw pct. chart (.881) and 25th in scoring (1,194).



33 MAGGIE LUCAS G
 Jr., 5-10, Narberth, Pa.
 19.5 ppg, 4.7 rpg, .410 3FG%, .886 FT%

Notes: All-Big Ten third team selection ... Fifth on Penn State's blocked shots list (176) ... 12th on PSU's career rebounding chart (723) ... Academic All-Big Ten choice.



54 NIKKI GREENE C
 Sr., 6-4, Diboll, Texas
 9.8 ppg, 7.8 rpg, 1.4 bpg, .472 FG%

Notes: All-Big Ten third team selection ... Fifth on Penn State's blocked shots list (176) ... 12th on PSU's career rebounding chart (723) ... Academic All-Big Ten choice.

LAST TIME OUT: The eighth-ranked Penn State Lady Lions defeated California (Pa.), led by Lady Lion legend Jess Strom, by a score of 95-39 in an exhibition contest on Nov. 3. Junior guard **Maggie Lucas** led the way for Penn State with 19 points, while senior **Nikki Greene** posted a double-double. Greene scored 15 of her 18 points in the second half and added 11 boards in just 21 minutes of action.

SCOUTING HOWARD: The Bison are the preseason favorite to win the MEAC after posting a 24-9 overall record and 14-2 mark in conference play a year ago. Leading the Bison are seniors Saadia Doyle, who is the MEAC Preseason Player of the Year, and Tamoria Holmes. Doyle averaged 17.1 points and a team-best 8.6 rebounds last season, while Holmes paced Howard with an 18.3 scoring average. The Bison dropped a 69-61 decision at St. Francis (Pa.) to open the season Friday.

ALL-TIME VS. THE BISON: The Lady Lions are 2-0 all-time against Howard, but haven't met the Bison since the 1989-90 season. Penn State picked up an 82-44 home win on Dec. 2, 1980 and a 107-69 neutral site win on Nov. 26, 1989. The Lady Lions are a perfect 6-0 all-time against MEAC schools.

LAST TIME VS. HOWARD: The last time these squads squared off was in the consolation round of the Amana-Hawkeye Classic in Iowa City on Nov. 26, 1989. Susan Robinson earned a double-double against the Bison with 30 points and 11 rebounds.

WHAT'S AT STAKE

A Penn State Win Would:

- Make Penn State 1-0 on the season.
- Improve PSU to 37-12 all-time in openers.
- Make the Lions 41-8 all-time in home openers.
- Be the seventh-straight season-opening win under Coquese Washington.

GREENE HITS THE STARTS CENTURY MARK: Senior center **Nikki Greene** will make her 100th career start against the Bison on Nov. 11. The Diboll, Texas native has started every game in her career and will have a chance to break Kelly Mazzante's school record of 130 starts. Greene will be the 11th player in school history with 100 career starts.

LADY LIONS IN OPENERS: Penn State is 36-12 all-time in season openers since the program's inception in 1965. Additionally, the Lady Lions are 40-18 all-time in home openers with a 13-3 mark in home openers at the Bryce Jordan Center. The Lady Lions have been victorious in all six of their openers under head coach **Coquese Washington**.

PSU 8TH IN AP POLL: The Penn State Lady Lions are ranked eighth in the Associated Press preseason poll. It is the highest ranking in the AP poll for the Lady Lions since they were fifth in the final 2004 poll. The Lady Lions were ranked in the AP poll every week last season, finishing the year 11th.

LIONS RANKED 8TH IN COACHES POLL: The Lady Lions are ranked eighth in the USA Today Sports/ESPN coaches' preseason poll. It is the highest ranking in the Coaches' Poll for the Lady Lions since they were seventh in the final 2004 poll. Penn State was ranked for 18 of the 19 weeks last season, peaking at ninth in the final poll.

PENN STATE BIG TEN FAVORITES: With nine returning letterwinners from a team that claimed its sixth Big Ten regular-season title and advanced to the Sweet Sixteen for the first time since 2004, the Penn State Lady Lions were selected to finish first in the Big Ten Conference in a vote of the league's coaches and media. PSU finished ahead of Nebraska and Purdue in the coaches vote and Nebraska and Ohio State in the media poll.

Six-Time Big Ten Champions • Two-Time Big Ten Tournament Champions • 2000 NCAA Final Four • 23 NCAA Tournament Appearances



PRESS CONFERENCES

Coquese Washington will hold a weekly press conference and the Lady Lions will have media availability on a weekly basis throughout the season. All press conferences will begin at 2:30 p.m. (unless otherwise noted) and go for approximately 15-20 minutes, followed by a 20-minute open media session prior to practice. Press conference will be held in the Media Room at the Bryce Jordan Center (unless otherwise noted).

Press Conference Dates

Wednesday, Nov. 7
 Tuesday, Nov. 13 (Room B)
 Wednesday, Nov. 28
 Wednesday, Dec. 5
 Tuesday, Dec. 11

Press conference dates and times for the spring semester will be announced at a later date.

BENTLEY & LUCAS WIN PRESEASON HONORS:

Senior point guard **Alex Bentley** was selected as the coaches' preseason Co-Player of the Year and to the preseason All-Big Ten first team by the media, while junior shooting guard **Maggie Lucas** was named to the All-Big Ten first team by both the coaches and media. Bentley shared Player of the Year accolades with Tayler Hill.

LUCAS EARNS VOTES FOR PRESEASON AP ALL-AMERICA:

Junior guard **Maggie Lucas** was among the players to receive votes for the Associated Press Preseason All-America team. The Narberth, Pa. native earned AP All-America honorable mention honors as a sophomore last season. She is one of three Big Ten players getting votes for the preseason honor, joining Ohio State's Tayler Hill and Nebraska's Jordan Hooper.

VETERANS RETURN:

The Lady Lions return nine letterwinners and four starters, including All-Big Ten first team selections **Alex Bentley** and **Maggie Lucas**, as well as All-Big Ten honorable mention choices **Nikki Greene** and **Mia Nickson**. Penn State returns 86% of its scoring offense and 93.2% of its rebounding from the Big Ten Championship team a year ago.

TRIO OF McDONALD'S ALL-AMERICANS:

Prior to **Coquese Washington's** tenure, the Lady Lions had only one McDonald's High School All-American in program history, but with the addition of **Candice Agee**, Penn State will tout three McDonald's High School All-Americans on their roster this season. Agee joins **Maggie Lucas** and **Dara Taylor** as honorees of the prestigious All-America team.

MAGS IN THE ESPNW BLOGOSPHERE:

Junior guard **Maggie Lucas** is a weekly contributing blogger for espnW. Lucas will be blogging about various topics all year long. Her blogs can be found at espn.com/espnw/blog/category/maggie-lucas/.

BENTLEY SENIOR CLASS AWARD CANDIDATE:

Senior guard **Alex Bentley** has been selected as one of the 30 candidates for the 2012-13 Senior CLASS Award, given to the student-athletes that have notable achievements in four areas of excellence – community, classroom, character and competition. Midway through the year, the 10 finalists will be announced and give media, coaches and fans the opportunity to vote on the student-athletes the exemplifies the four Cs of community, classroom, character and competition. An acronym for Celebrating Loyalty and Achievement for Staying in School®, the Senior CLASS Award focuses on the total student-athlete and encourages students to use their platform in athletics to make a positive impact as leaders in their communities.

LADY LIONS 8TH IN LINDY'S PRESEASON POLL:

The Lady Lions are ranked eighth in the Lindy's preseason poll to pace the three Big Ten teams in the preseason rankings. Joining Penn State the preseason Top 25 are Purdue and Nebraska.

LADY LIONS 10TH IN ATHLON PRESEASON POLL:

The Lady Lions are ranked 10th in the Athlon preseason poll and sophomore guard **Maggie Lucas** is a preseason second team All-American, according to the magazine. Penn State is among four Big Ten teams (Ohio State - 4th; Nebraska - 21st; Michigan - 22nd) in Athlon's preseason Top 25.

TEAM CAPTAINS:

Seniors **Alex Bentley**, **Mia Nickson** and **Marisa Wolfe** will serve as team captains for the 2012-13 season. Nickson will serve in the captain role for the third consecutive season, while Wolfe is a captain for the second-straight season. Bentley claims her first team captain honor.

LADY LIONS ON TWITTER & FACEBOOK:

The Lady Lions are on Twitter. Follow the Lady Lions and assistant coaches (@pennstatewbb) and sports information contact Kris Petersen (@ladylionsid) to get the inside scoop. The Lady Lions are also on Facebook at www.facebook.com/pennstateladylions.



2012 EUROPEAN TOUR: The Lady Lions enjoyed a 10-day European Tour in August. The team traveled to France and Italy, visiting six cities along the way. The Lady Lions played and won three games and saw many of the famous sites, including the Colosseum, the Vatican, the Eiffel Tower and the Mediterranean Sea.

BENTLEY IN THE RECORD BOOKS:

Senior guard **Alex Bentley** opens her senior season in the Top 15 in the Penn State record books in several categories. The Indianapolis native enters her final year in the blue and white 15th in scoring (1,335), 10th in assists (455), 12th in steals (216) and 10th in field goals attempted (1,245).

LUCAS LOADS UP IN RECORD BOOKS:

Despite only being a junior, **Maggie Lucas** has etched her name into the Penn State record books in a short amount of time. The guard enters her junior year 25th in career scoring (1,194), third in all-time three-point field goals made (194), third in career three-point field goal percentage (.419) and sixth in career three-point field goals attempted (463). Lucas also sits atop Penn State's all-time free throw percentage list with an .881 mark (236-268) from the free throw line.

PENN STATE'S OVERALL/BIG TEN YEAR-BY-YEAR REVIEW

Year	Overall	Big Ten	Home	BT Home	Road	BT Road	Neutral
1992-93	22-6	14-4	12-2	9-0	9-4	5-4	0-0
1993-94	28-3	16-2	14-0	9-0	11-2	7-2	3-1
1994-95	26-5	13-3	14-2	8-0	9-3	5-3	3-0
1995-96*	27-7	13-3	14-2	8-0	8-4	5-3	5-1
1996-97	15-12	8-8	9-3	5-3	5-6	3-5	1-3
1997-98	21-13	8-8	10-5	4-4	6-6	4-4	5-2
1998-99	22-8	12-4	9-2	6-2	9-4	6-2	4-2
1999-00	30-5	15-1	14-0	8-0	9-2	7-1	7-3
2000-01	19-10	11-5	11-2	7-1	6-5	4-4	2-3
2001-02	23-12	11-5	10-4	6-2	9-5	5-3	4-3
2002-03	26-9	13-3	16-0	8-0	7-7	5-3	2-2
2003-04	28-6	15-1	12-1	8-0	9-3	7-1	6-2
2004-05	19-11	13-3	12-0	8-0	6-9	5-3	1-2
2005-06	13-16	6-10	8-6	5-3	3-8	1-7	2-2
2006-07	15-16	7-9	12-1	7-1	2-12	0-7	1-3
2007-08	13-18	4-14	10-6	3-6	3-11	1-8	0-1
2008-09	11-18	6-12	8-6	4-5	2-9	2-7	1-3
2009-10	17-14	8-10	9-6	5-4	5-7	3-6	3-1
2010-11	25-10	11-5	14-4	6-2	7-4	5-3	4-2
2011-12	26-7	13-3	12-2	6-2	11-3	7-1	3-2
2012-13	0-0	0-0	0-0	0-0	0-0	0-0	0-0

* First season at the Bryce Jordan Center



NATIONAL POLLS

ASSOCIATED PRESS (PRESEASON)

No.	Team (1st)	Rec.	Pts.	Reb.	Sts.	Blks.	FT%	3Pt%	Opp.
1.	Baylor (40)	0-0	1000	--	--	--	--	--	--
2.	Connecticut	0-0	951	--	--	--	--	--	--
3.	Duke	0-0	909	--	--	--	--	--	--
4.	Stanford	0-0	854	--	--	--	--	--	--
5.	Maryland	0-0	827	--	--	--	--	--	--
6.	Kentucky	0-0	767	--	--	--	--	--	--
7.	Notre Dame	0-0	754	--	--	--	--	--	--
8.	PENN STATE	0-0	676	--	--	--	--	--	--
9.	Louisville	0-0	657	--	--	--	--	--	--
10.	Georgia	0-0	599	--	--	--	--	--	--
11.	Delaware	0-0	545	--	--	--	--	--	--
12.	Oklahoma	0-0	476	--	--	--	--	--	--
13.	California	0-0	428	--	--	--	--	--	--
14.	St. John's	0-0	422	--	--	--	--	--	--
15.	Texas A&M	0-0	370	--	--	--	--	--	--
16.	Vanderbilt	0-0	361	--	--	--	--	--	--
17.	West Virginia	0-0	335	--	--	--	--	--	--
18.	Nebraska	0-0	297	--	--	--	--	--	--
19.	Ohio State	0-0	273	--	--	--	--	--	--
20.	Tennessee	0-0	256	--	--	--	--	--	--
21.	Purdue	0-0	223	--	--	--	--	--	--
22.	Georgia Tech	0-0	140	--	--	--	--	--	--
23.	Oklahoma State	0-0	139	--	--	--	--	--	--
24.	Miami (Fla.)	0-0	110	--	--	--	--	--	--
25.	DePaul	0-0	104	--	--	--	--	--	--

Others Receiving Votes: Kansas 90; Middle Tennessee State 70; Green Bay 57; Texas 52; Iowa State 51; San Diego State 48; Rutgers 41; **Georgetown 24**; LSU 14; UCLA 14; Virginia 12; North Carolina 12; Florida State 12; **Michigan 9**; Iowa 6; Princeton 4; UTEP 3; South Carolina 2; **Michigan State 2**; Fresno St. 2; Creighton 1; USC 1.

USA TODAY/ESPN TOP 25 (PRESEASON)

No.	Team (1st)	Rec.	Pts.	Reb.	Sts.	Blks.	FT%	3Pt%	Opp.
1.	Baylor (31)	0-0	775	--	--	--	--	--	--
2.	Connecticut	0-0	736	--	--	--	--	--	--
3.	Duke	0-0	674	--	--	--	--	--	--
4.	Stanford	0-0	669	--	--	--	--	--	--
5.	Maryland	0-0	656	--	--	--	--	--	--
6.	Notre Dame	0-0	617	--	--	--	--	--	--
7.	Kentucky	0-0	599	--	--	--	--	--	--
8.	PENN STATE	0-0	521	--	--	--	--	--	--
9.	Louisville	0-0	460	--	--	--	--	--	--
10.	Delaware	0-0	411	--	--	--	--	--	--
11.	Georgia	0-0	409	--	--	--	--	--	--
12.	Texas A&M	0-0	361	--	--	--	--	--	--
13.	St. John's	0-0	315	--	--	--	--	--	--
14.	Oklahoma	0-0	308	--	--	--	--	--	--
15.	California	0-0	294	--	--	--	--	--	--
16.	Tennessee	0-0	284	--	--	--	--	--	--
17.	Vanderbilt	0-0	241	--	--	--	--	--	--
18.	Purdue	0-0	240	--	--	--	--	--	--
19.	Nebraska	0-0	203	--	--	--	--	--	--
20.	Georgia Tech	0-0	198	--	--	--	--	--	--
21.	Ohio State	0-0	185	--	--	--	--	--	--
22.	West Virginia	0-0	182	--	--	--	--	--	--
23.	Miami (Fla.)	0-0	95	--	--	--	--	--	--
24.	Oklahoma State	0-0	94	--	--	--	--	--	--
25.	Kansas	0-0	89	--	--	--	--	--	--

Others Receiving Votes: Green Bay 89, DePaul 68, South Carolina 49, Gonzaga 43, **Georgetown 38**, Iowa State 33, Rutgers 33, Middle Tennessee State 28, Texas 20, UCLA 11, LSU 11, **Michigan 7**, Virginia 7, St. Bonaventure 6, Arkansas 4, **Iowa 4**, San Diego State 3, Syracuse 2, BYU 2, Marist 1.

*Bold type indicates 2012-13 Penn State opponent.

GREENE GOING FOR 1,000s: Senior center **Nikki Greene** will have a shot at becoming just the fourth player in school history to be a part of an elite club with 1,000 points and 1,000 rebounds. The Diboll, Texas native needs 161 points to reach the 1,000-point mark and 277 rebounds for 1,000 career caroms. Greene would need to average 5.4 points and 9.2 rebounds in a 30-game season to accomplish the milestone. The members of the 1,000-1,000 club are Susan Robinson (2,253-1,070), Kahadeejah Herbert (2,025-1,103) and Andrea Garner (1,619-1,016).

AGEE IS LONE FRESHMAN: Center **Candice Agee** is the lone freshman on the Penn State roster this season. The 6-6 rookie was a McDonald's High School All-America, bringing the total to three McDonald's selections on this season's roster. Agee was the 34th-ranked recruit by ESPN/HoopGurlz as a senior in high school. She averaged 15.9 points, 8.3 rebounds, 3.5 blocks and 3.4 steals per game at Silverado High School in California.

STRONG SENIOR CLASS: Coquese Washington's first Top 25 recruiting class is now the Lady Lions' senior class. The grouping of **Alex Bentley**, **Nikki Greene**, **Mia Nickson**, **Gizelle Studevent** and **Marisa Wolfe** have been huge contributors in Penn State's return to national prominence. The quintet has accounted for 3,122 points and 1,695 rebounds with 255 starts in 420 games. Last season, the five seniors accounted for 45.1% of the team's offense and 44.9% of its rebounds.

TAYLOR TURNED LOOSE: After having sit out last season due to the NCAA Transfer Policy, junior guard **Dara Taylor** is ready to return to the court, this time in a Lady Lion uniform. She broke the Maryland freshman assists record with 171 helpers in 2009-10 season. As a sophomore, she averaged 2.2 assists per game.

BENTLEY AND LUCAS ON WADE & WOODEN WATCH LISTS: Senior point guard **Alex Bentley** and junior guard **Maggie Lucas** have been named to the Wade Trophy and Wooden Award watch lists for this season. Bentley and Lucas are among 25 players that have been named to the "Wade Watch" list for the State Farm® Wade Trophy. Additionally, the pair are among the 30 players listed on the Wooden Award preseason chart. Bentley and Lucas are two of the five Big Ten players on the preseason lists, which also includes Ohio State's Taylor Hill and the Nebraska duo of Jordan Hooper and Lindsey Moore.

AGEE WINS GOLD MEDAL WITH USA BASKETBALL U18 TEAM: Freshman center **Candice Agee** helped the USA Basketball U18 National Team to a gold medal at the FIBA Americas Championship in Puerto Rico in August. Agee averaged 5.4 points, 3.0 rebounds, 1.4 steals and 1.2 blocks in Team USA's five games. The rookie was 13-for-21 from the field en route to a team-best .619 field goal percentage. Agee had an 11-point and four-rebound performance in dominating 99-26 victory over Puerto Rico.

2013 WBCA PINK ZONE: The 2013 Pink Zone at Penn State will take place on Sunday, Feb. 24 as the Lady Lions take on Michigan in the Bryce Jordan Center. Last year, the Lady Lions donated nearly \$203,000 for breast cancer causes. This year's fundraising efforts will benefit the Mount Nittany Medical Center, Penn State Hershey Cancer Institute, Pennsylvania Breast Cancer Coalition, the Kay Yow Cancer Fund, J.C. Blair Memorial Hospital and Lewistown Hospital. For more information on the Pink Zone at Penn State, visit the official Pink Zone website at www.pennsylvaniapinkzone.org.

COQUESE'S DRIVE A SUCCESS: The fifth annual Coquese's Drive for the Women's Resource Center golf tournament was another great fundraising event. The tournament, held on August 31, 2012, had 128 golfers participate and raised \$24,000 for the Centre County Women's Resource Center (CCWRC).

LADYLIONS.COM: LadyLions.com is a website dedicated exclusively to women's basketball at Penn State. The website gives the Lady Lions a chance to showcase the Penn State women's basketball program to potential recruits and fans. The site has a team blog, live chats and an "Ask Coach Quese" mailbag. The blog is regularly updated with entries from Lady Lion basketball players, coaches and staff members. Coach Quese will answer fan questions each Tuesday throughout the season. Questions can be submitted to Coach Quese by emailing them to askcoachquese@gmail.com. Be sure to include your name and hometown when submitting a question.

LADY LIONS ON THE TUBE & WEB: The Lady Lions will have at least 10 games broadcast nationally on ESPN2 and the Big Ten Network. Additionally, Penn State will have nine games streamed on www.btn.com, many of which will be rebroadcast on the Big Ten Network as "Student U" productions. Penn State will appear on ESPN2 three times this year against Nebraska (Sun., Jan. 13), Purdue (Mon., Feb. 4) and Michigan State (Sun., Feb. 10). The Lions will also appear on the Big Ten Network against Georgetown (Sun., Dec. 9), at Michigan State (Sun., Jan. 6), at Michigan (Mon., Jan. 21), versus Minnesota (Thurs., Jan. 24), at Ohio State (Sun., Jan. 27), at Indiana (Thurs., Feb. 7) and versus Michigan (Sun., Feb. 24). Penn State also has a chance to be part of the Big Ten Network Wildcard games at Minnesota (Thurs., Feb. 28) and at Nebraska (Sun., Mar. 3). Additionally, Penn State will appear on SNY when it travels to Connecticut (Thurs., Dec. 6).

2011-12 SEASON AT A GLANCE: There are several highlights for the Lady Lions to look back on following the 2011-12 season, a Big Ten Championship, a return to the NCAA Sweet Sixteen and back-to-back 25-win seasons. Let's take a look back at the 2011-12 campaign.



MILESTONE WATCH

Milestone Watch

Milestone	Player	Current Total
1,400 points	Alex Bentley	1,335
1,200 points	Maggie Lucas	1,194
900 points	Nikki Greene	839
700 points	Mia Nickson (career)	616
600 points	Mia Nickson (PSU)	571
300 points	Ariel Edwards	299
	Dara Taylor (career)	242
	Marisa Wolfe	242
200 points	Gizelle Studevent	135
	Talia East	125
100 points	Tori Waldner	63
800 rebounds	Nikki Greene	723
500 rebounds	Mia Nickson (career)	477
	Mia Nickson (PSU)	420
300 rebounds	Alex Bentley	268
	Maggie Lucas	262
200 rebounds	Talia East	192
	Ariel Edwards	187
100 rebounds	Gizelle Studevent	76
	Tori Waldner	67
500 assists	Alex Bentley	455
300 assists	Dara Taylor (career)	242
200 assists	Maggie Lucas	147
250 steals	Alex Bentley	216
150 steals	Maggie Lucas	104
100 steals	Nikki Greene	96
	Dara Taylor (career)	75
200 blocks	Nikki Greene	176
50 blocks	Talia East	36
200 3-pt FGs	Maggie Lucas	194

BIG TEN CHAMPIONS: The Lady Lions clinched the Big Ten regular-season title outright for the first time since 2004 with a 74-51 win over Minnesota Feb. 26. It was the sixth overall regular-season crown for the Lady Lions and fourth outright (2000, 2003, 2004). Penn State served as the top seed in the Big Ten Tournament for the first time since 2004 and the fifth time in program history (1995, 2000, 2003, 2004).

PSU 11TH IN AP POLL: The Lady Lions finished 11th in the final Associated Press Top 25 of the season. Penn State finished ranked in the AP Top 25 for the first time since finishing 22nd in the 2005 final AP poll. The Lady Lions peaked at ninth in the Feb. 27 poll, the highest ranking for a Penn State team in the AP poll since PSU was fifth in the final 2004 poll. Additionally, Penn State made its first appearance in the preseason AP poll since the 2003-04 campaign.

LIONS RANKED 9TH IN COACHES POLL: The Lady Lions were ninth in the final regular-season ESPN/USA Today coaches poll. The ranking was Penn State's best of the season and is the highest ranking in the ESPN/USA Today Coaches' Poll for the Lady Lions since they were seventh in the final 2004 poll. Additionally, Penn State appeared in the preseason coaches' poll for the first time since starting the 2003-04 campaign eighth.

SWEET SIXTEEN: With wins over #13 UTEP and #5 LSU, the Lady Lions advanced to the Sweet Sixteen for the first time since 2004 and the 12th time in program history.

23RD NCAA TOURNAMENT BERTH: Penn State made its 23rd NCAA Tournament appearance and second-straight. The Lady Lions are one of only 12 teams to earn 23 or more NCAA Tournament berths. The Lady Lions are 29-23 all-time in the NCAA Tournament.

ALEX WBCA ALL-AMERICAN: Junior guard **Alex Bentley** was named to the 2012 Women's Basketball Coaches Association (WBCA) Division I Coaches' All-America Honorable Mention Team. She is the first Lady Lion to garner WBCA All-America honors since Kelly Mazzante was a first team selection in 2004. Bentley is the sixth different Penn State player to earn WBCA All-American accolades, joining Suzie McConnell, Susan Robinson, Tina Nicholson, Angie Potthoff, Helen Darling and Kelly Mazzante. Those six Lady Lions have combined for 10 total WBCA All-America honors in program history.

LUCAS EARNS AP ALL-AMERICA HONORS: Sophomore guard **Maggie Lucas** capped off an outstanding sophomore campaign by taking home Associated Press (AP) All-America honorable mention accolades. She is the first Lady Lion to garner AP honors since Tyra Grant was also an honorable mention selection in 2010. She is the 15th Lady Lion to earn AP All-America honors since the award began in 1995. Lucas is the fourth Penn State sophomore to claim AP accolades, joining Angie Potthoff (1995 – honorable mention), Kelly Mazzante (2002 – 2nd team) and Tanisha Wright (2003 – honorable mention).

COQUESE WBCA REGIONAL COY: Head coach **Coquese Washington** was selected as the 2012 Russell Athletic/WBCA Region 6 Coach of the Year. Washington was one of eight finalists for the 2012 Russell Athletic/WBCA National Coach of the Year. Washington is the first Lady Lion coach to earn Regional Coach of the Year honors since Rene Portland won the WBCA National Coach of the Year award in 2004.

FOURTH TO 600: Guard **Maggie Lucas** became the fourth different Lady Lion to score more than 600 points in a season with 642 tallies in her sophomore season. It is the sixth time in program history a player has surpassed the 600-point mark in a season. Lucas joins Kelly Mazzante (three times; 872, 2001-02; 837, 2002-03; 681, 2003-04), Suzie McConnell (682, 1987-88) and Susan Robinson (633, 1989-90) as the only players in program history to accomplish the feat.

ROAD WARRIORS: The Lady Lions picked up their 11th road win of the season with a 90-80 win over fifth-seeded LSU in the second round of the NCAA Tournament. The 11 road victories were the most by a Penn State team since the 1993-94 team also won 11 contests away from Happy Valley.

BACK-TO-BACK 25-WIN SEASONS: With the March 18 win over UTEP, the Lady Lions claimed their second-straight 25-win season for the first time since the 2002-03 and 2003-04 seasons. Penn State was 25-10 a year ago and finished 2011-12 with a 26-7 this season. Overall, the Lady Lions have 12 25-win campaigns overall. Penn State's 26 wins are the most since the 2004 squad went 28-6.

BIG TEN WINS: The Lady Lions picked up their 13th Big Ten win of the season against the Gophers in the regular-season finale. The 13 conference victories are the most by a Penn State team since the 2004-05 squad went 13-3 in conference play.

WASHINGTON NAMED COACH OF THE YEAR: After leading the Lady Lions to their first Big Ten regular-season title since 2004, **Coquese Washington** was selected as the Big Ten Coach of the Year by both the coaches and the media. Washington joins four-time winner Rene Portland (1994, 2000, 2003, 2004) on the list of Penn State mentors to win top conference coaching honors. The Lady Lions started conference play 1-2, but rallied to win 12 of their next 13 games to claim the crown.

DUO NAMED TO FIRST TEAM: Junior guard **Alex Bentley** and sophomore guard **Maggie Lucas** were both named to the All-Big Ten first team after stellar seasons. A first team choice last season, Bentley becomes the ninth different Lady Lion to earn first team accolades twice, while Lucas is the 12th different Penn State player to earn top all-conference honors. The Lady Lions have 26 All-Big Ten first team selections, the most of any team in the Big Ten since joining the conference in 1992-93. Bentley was also named to the Big Ten All-Defensive team.

MORE BIG TEN HONORS: Junior center **Nikki Greene** earned third team All-Big Ten honors from the media and an honorable mention nod from the coaches. It is the second time that Greene has earned All-Big Ten honors after an honorable mention appearance a year ago. Additionally, senior guard **Zhaque Gray** and junior forward **Mia Nickson** were named Honorable Mention All-Big Ten. It is the first all-conference honors for the pair.

PERFECT FOR FEBRUARY: The Lions finished February with a perfect 7-0 record. It is Penn State's first undefeated month since 2003-04 when that squad was 9-0 in January.



THE LAST TIME PENN STATE...

SCORING

Player scored 20 points: vs. LSU (30, Maggie Lucas), 3/20/12
Player scored 25 points: vs. LSU (30, Maggie Lucas), 3/20/12
Player scored 30 points: vs. LSU (30, Maggie Lucas), 3/20/12
Player scored 35 points: vs. Wisconsin (35, Kelly Mazzante), 3/2/03
Player scored 40 points: vs. Minnesota (49, Kelly Mazzante), 12/28/01
Two players scored 20 points: vs. UTEP (23, Maggie Lucas; 21, Alex Bentley), 3/18/12
Three players scored 20 pts.: at Nevada (26, Maggie Lucas; 23, Alex Bentley; 21, Zhaque Gray), 11/26/11
Two players scored 25 points: at Boston College (28, Alex Bentley; 28, Maggie Lucas), 12/2/10
Player scored 25 points/3 consecutive games: Kelly Mazzante (31, vs. Baylor, 12/9/03; 31, vs. Pittsburgh, 12/14/03; 29, Louisiana Tech, 12/21/03)
Five in double figures: vs. LSU (30, Maggie Lucas; 15, Ariel Edwards; 14, Mia Nickson; 10, Zhaque Gray; 10, Alex Bentley), 3/20/12
Six in double figures: at Oakland (15, Alex Bentley; 16, Ariel Edwards; 16, Zhaque Gray; 13, Maggie Lucas; 10, Mia Nickson; 10, Gizelle Studevent; 10, Julia Trogele), 11/18/10
Seven in double figures: at Oakland (15, Alex Bentley; 16, Ariel Edwards; 16, Zhaque Gray; 13, Maggie Lucas; 10, Mia Nickson; 10, Gizelle Studevent; 10, Julia Trogele), 11/18/10
PSU scored 50 points in a half: vs. LSU (54, second half), 3/20/12
PSU scored 55 points in a half: at Nebraska (55, second half), 1/15/12
PSU scored 60 points in a half: vs. Northwestern (65 points, first half), 1/2/00
PSU scored 100 points: vs. Wagner (W, 103-42), 12/18/11
PSU scored 100 points in Big Ten game: vs. Illinois (W, 101-80), 2/15/01
PSU scored 100 points in a home game: vs. Wagner (W, 103-42), 12/18/11
PSU scored fewer than 15 points in a half: vs. Wisconsin (13, first half), 2/25/10
PSU scored fewer than 20 points in a half: vs. Michigan State (18, first half), 2/10/11
PSU scored fewer than 40 points in a game: vs. Wisconsin (L, 39-71), 2/25/10
PSU scored fewer than 50 points in a game: vs. Purdue (L, 49-60), 2/24/11
PSU scored fewer than 50 points in a Big Ten game: vs. Purdue (L, 49-60), 2/24/11
OPP scored 50 points in a half: vs. Duke (50, second half), 11/18/05
OPP scored 100 points: at Boston College (Lot, 113-104), 12/2/10
OPP scored fewer than 20 points in a game: at Dickinson (W, 57-16), 3/6/71
OPP scored fewer than 30 points in a game: vs. Virginia Tech (W, 66-28), 12/6/11
OPP scored fewer than 40 points in a game: vs. Virginia Tech (W, 66-28), 12/6/11
OPP scored fewer than 50 points in a game: vs. Indiana (W, 76-44), 2/2/12
OPP scored fewer than 50 points in a Big Ten game: vs. Indiana (W, 76-44), 2/2/12

FIELD GOAL SHOOTING

Player made every shot from the field (min. 7): vs. Michigan St. (Amanda Brown, 8-8), 1/25/07
PSU shot 55% in a game: at Michigan (.561), 1/26/12
PSU shot 55% in consecutive games: vs. Northwestern (.682), 3/2/96; vs. Ohio St. (.585), 3/3/96
PSU shot 60% in a game: vs. Michigan State (.608), 2/23/96
PSU shot below 25% in a game: at Alabama (.230), 12/19/96
PSU shot below 30% in a game: vs. Nebraska (.294), 12/30/11
PSU shot below 35% in a game and won: vs. Iowa (.338), 1/22/12
PSU shot 55% in a half: at Northwestern (.571, second half), 2/12/12
PSU shot 60% in a half: at Michigan (.667, second half), 1/26/12
PSU shot 65% in a half: at Michigan (.667, second half), 1/26/12
PSU shot 70% in a half: vs. Virginia Tech (.714, second half), 12/6/11
PSU shot 55% in both halves: vs. Iowa (.552, first half; .565, second half), 1/26/06
PSU shot below 20% in a half: at Indiana (.231, first half), 2/28/10
PSU shot below 25% in a half: vs. Nebraska (.233, second half), 12/30/11

THREE-POINT SHOOTING

Player made every shot from the field (min. 4): at Bucknell (4-4, Maggie Lucas), 12/21/11
Player made 4 three-pointers in a half: vs. LSU (5 in first, Maggie Lucas), 3/20/12
Player made 5 three-pointers in a half: vs. LSU (5 in first, Maggie Lucas), 3/20/12
Player made 6 three-pointers in a half: vs. Michigan State (6 in second, Maggie Lucas), 1/7/12
Player made 5 three-pointers in a game: vs. LSU (5, Maggie Lucas), 3/20/12
Player made 6 three-pointers in a game: vs. Michigan State (7, Maggie Lucas), 1/7/12
Player made 7 three-pointers in a game: vs. Michigan State (7, Maggie Lucas), 1/7/12
Player made 8 three-pointers in a game: at Minnesota (8, Kelly Mazzante), 12/28/01
Player attempted 10 three-pointers in a game: vs. Connecticut (11, Maggie Lucas), 3/25/12
PSU made 10 three-pointers: vs. North Carolina (14), 11/30/11
PSU did not make a three-pointer: at South Carolina (0-6), 11/20/11
PSU attempted 20 three-pointers: vs. Michigan State (24), 1/7/12
PSU shot 60% 3FG (min. 5 att.): at Bucknell (8-13, .615), 12/21/11

FREE THROW SHOOTING

Player made every shot from FT line (min. 10): vs. LSU (11-11, Maggie Lucas), 3/20/12
PSU shot 90% (min. 10 att.): vs. North Carolina (14-24, .929), 11/30/11
PSU shot below 50% (min. 10 att.): vs. Holy Cross (9-20, .450), 11/28/09
PSU made 30 free throws: vs. Pittsburgh (34), 11/11/07
PSU made fewer than five FTs: at Michigan (3), 2/3/11
PSU attempted 40 free throws: vs. Pittsburgh (41), 11/11/07
PSU attempted fewer than five FTs: at Michigan (4), 2/3/11

REBOUNDS

Player had 15 rebounds: vs. Ohio State (15, Nikki Greene; 15, Mia Nickson), 2/20/12
Player had 20 rebounds: vs. Indiana (20, Nikki Greene), 1/23/11
Two players with double-digit rebs.: vs. Ohio State (15, Nikki Greene; 15, Mia Nickson), 2/20/12
Three players had double-digit rebounds: vs. Ohio State (15, Nikki Greene; 15, Mia Nickson; 10, Maggie Lucas), 2/20/12
PSU had 60 rebounds: vs. Ohio State (60), 2/20/12
PSU had 50 rebounds: vs. Ohio State (60), 2/20/12
PSU had 20 or fewer rebounds: vs. Michigan State (20), 1/19/03
OPP had 20 or fewer rebounds: at Indiana (20), 2/13/11
PSU had 20 offensive rebounds: vs. Ohio State (29), 2/20/12
PSU had 25 offensive rebounds: vs. Ohio State (29), 2/20/12

ASSISTS

Player had 10 assists: vs. North Carolina (15, Alex Bentley), 11/30/11
Player had 10 assists/consecutive games: Helen Darling (12 at LaSalle, 12/8/99; 11 vs. Auburn, 12/11/99; 10 vs. Clemson, 12/19/99)
Player had 15 assists: vs. North Carolina (15, Alex Bentley), 11/30/11
PSU had 30 assists: vs. St. Francis (Pa.) (32), 12/2/99
PSU had fewer than 10 assists: vs. Connecticut (8), 3/25/12
PSU had fewer than 5 assists: at Michigan State (4), 2/4/10

BLOCKED SHOTS

Player blocked 5 shots: at South Carolina (7, Talia East), 11/20/11
Player blocked 6 shots: at South Carolina (7, Talia East), 11/20/11
PSU blocked 10 shots: vs. Purdue (11), 1/28/10
PSU blocked 0 shots: vs. Purdue, 2/19/09

STEALS

Player had 7 steals: vs. Minnesota (7, Alex Bentley), 3/2/12
Player had 8 steals: vs. Nebraska (8, Alex Bentley), 12/30/11
PSU had 20 steals: vs. Bucknell (21), 12/28/10

TURNOVERS

PSU committed 25 or more: vs. Michigan State (25), 1/7/12
PSU committed 25 or more and won: vs. Minnesota (26), 1/13/11
PSU committed 10 or fewer: vs. Purdue (8), 3/3/12
PSU committed 10 or fewer in consecutive games: vs. Minnesota (9), 1/22/04; at Ohio St. (9), 1/25/04
OPP committed 25 or more: vs. Nebraska (26), 12/30/11

DOUBLE-DOUBLES

Points & rebounds: vs. LSU (Mia Nickson, 14 pts., 10 rebs.), 3/20/12
Points & rebounds/consecutive games: Nikki Greene (12 points, 10 rebounds vs. Ohio State, 1/30/11; 16 points, 14 rebounds at Illinois, 1/27/11)
Points & rebounds/3 consecutive games: Amanda Brown (19 pts., 17 rebs. at Northwestern, 2/11/07; 14 pts., 10 rebs. vs. Minnesota, 2/15/07; 14 pts., 11 rebs. at Iowa, 2/18/07)
Points & rebounds/4 consecutive games: Angie Potthoff (vs. Northwestern, 1/31/97; at Illinois, 2/2/97; vs. Michigan, 2/7/97; vs. Indiana, 2/9/97; vs. Iowa, 2/16/97; vs. Michigan State, 2/21/97)
Points & rebounds/5 consecutive games: Angie Potthoff (vs. Northwestern, 1/31/97; at Illinois, 2/2/97; vs. Michigan, 2/7/97; vs. Indiana, 2/9/97; vs. Iowa, 2/16/97; vs. Michigan State, 2/21/97)
Points & assists: vs. North Carolina (Alex Bentley; 15 points, 15 assists), 11/30/11
Points & assists/consecutive games: Helen Darling (12 pts., 12 assts. at La Salle, 12/8/99; 10 pts., 11 assts. vs. Auburn, 12/11/99)
Two players had double-doubles: vs. Ohio State (Nikki Greene, 25 pts., 15 rebs.; Mia Nickson, 18 pts., 15 rebs.; Maggie Lucas, 12 pts., 10 rebs.), 2/20/12
Three players had double-doubles: vs. Ohio State (Nikki Greene, 25 pts., 15 rebs.; Mia Nickson, 18 pts., 15 rebs.; Maggie Lucas, 12 pts., 10 rebs.), 2/20/12
15 points & 15 rebounds: vs. Ohio St. (Nikki Greene, 25 pts., 15 rebs.; Mia Nickson, 18 pts., 15 rebs.), 2/20/12
20 points and 10 rebounds: vs. Ohio State (Nikki Greene, 25 pts., 15 rebs.), 2/20/12

MARGIN OF VICTORY

PSU won by 20-30 points: vs. Minnesota (23), 2/26/12
PSU won by 20-30 points in a Big Ten game: vs. Minnesota (23), 2/26/12
PSU won by 31-40 points: vs. Indiana (32), 2/2/12
PSU won by 41-50 points: vs. Wagner (61), 12/18/11
PSU won by 51+ points: vs. Wagner (61), 12/18/11
PSU lost by 20-30 points: at Ohio State (22), 2/17/11
PSU lost by 20-30 points in a Big Ten game: at Ohio State (22), 2/17/11
PSU lost by 31+ points: vs. Wisconsin (32), 2/25/10

MISCELLANEOUS

Led PSU in points/rebounds/assists: Tyra Grant vs. Michigan (25 pts., 9 rebs., 4 asst.), 2/18/10
Hit "final seconds" (under 10 seconds) game-winning shot: Julia Trogele at Illinois (9 sec.), 1/27/11
Hit "final minute" game-winning shot: Alex Bentley at Minnesota (3-ptr. with :38.9 remaining), 2/5/12
Player played every minute: vs. Connecticut (Maggie Lucas), 3/25/12
Player played more than 40 min.: at Dayton (Alex Bentley, 46; Zhaque Gray, 44; Mia Nickson, 41), 11/12/10
Committed 10 or fewer fouls: vs. Virginia Tech (9), 12/6/11
Committed 30 or more fouls: vs. Iowa State (32), 11/25/11
PSU rallied from a 10-point deficit to win: vs. Minnesota (down 13 at 7:55 in first half, won 78-74), 3/2/12
PSU rallied from a 15-point deficit to win: at Minnesota (down by 15 at 4:52 in first half, won 68-65), 2/5/12
PSU had a 5-game winning streak: 8 games, 2/2/12 - 3/2/12
PSU had a 5-game losing streak: 6 games, 1/28/10 - 2/14/10
PSU went undefeated at home: 2004-05 season
PSU sold out the BJC: Purdue, 2/29/04

OVERTIME

PSU played an OT game: at Boston College (L, 113-104), 12/2/10
PSU won an OT game: at Oakland (96-89), 11/18/10
PSU lost an OT game: at Boston College (L, 113-104), 12/2/10
PSU played two or more OT games in a season: 2010-11 season (three)
PSU won two or more OT games in a season: 2010-11 season (two)

RANKINGS

Played the No. 1 team in the AP poll: vs. Connecticut (L, 77-63), 12/14/08
Played the No. 1 team in the Coaches poll: vs. Connecticut (L, 77-63), 12/14/08
Defeated the No. 1 team in the AP poll: at Virginia (73-71), 1/3/91
Defeated Top 10 opponent: vs. #8/11 Ohio State (84-66), 2/20/12
Defeated Top 10 opponent on the road: at #7 Purdue (47-42), 1/2/04
Defeated Top 10 opponent by double digits: vs. #8/11 Ohio State (84-66), 2/20/12
Played consecutive Top 10 teams: at #2/3 Texas 11/14/04, at #6/6 Duke 11/19/04
Defeated Top 25 opponent: vs. #8/11 Ohio State (84-66), 2/20/12
Defeated Top 25 opponent on the road: at #17/19 Purdue (74-63), 2/16/12
Defeated Top 25 opponent by double digits: vs. #8/11 Ohio State (84-66), 2/20/12



RECORD BOOK

CAREER SCORING

1. 2,919 Kelly Mazzante, 2001-04
2. 2,253 Susan Robinson, 1989-92
3. 2,044 Tyra Grant, 2007-10
4. 2,025 Kahadeejah Herbert, 1982-85
5. 1,995 Tanisha Wright, 2002-05
6. 1,897 Suzie McConnell, 1985-88
7. 1,725 Angie Potthoff, 1993-97
8. 1,663 Lisa Shepherd, 1998-01
9. 1,619 Andrea Garner, 1997-00
10. 1,538 Tanya Garner, 1988-91
11. 1,514 Vicki Link, 1984-87
12. 1,466 Jess Strom, 2002-05
13. 1,463 Katina Mack, 1992-96
14. 1,428 Jen Bednarek, 1977-80
15. **1,335 Alex Bentley, 2010-present**
16. 1,328 Maren Walseth, 1998-01
17. 1,320 Cheryl Ellison, 1980-83
18. 1,295 Kathy Phillips, 1989-92
19. 1,294 Helen Darling, 1997-00
20. 1,288 Carol Walderman, 1981-83
21. 1,280 Louise Leimkuhler, 1980-82
22. 1,240 Tina Nicholson, 1993-96
23. 1,238 Kam Gissendanner, 2006-08
24. 1,233 Amanda Brown, 2004-07
25. **1,194 Maggie Lucas, 2011-present**

CAREER BLOCKS

1. 268 Kim Calhoun, 1993-96
2. 192 Mary Donovan, 1977-81
3. 189 Rashana Barnes, 1999-02
4. 185 Andrea Garner, 1997-00
5. **180 Nikki Greene, 2010-present**

CAREER REBOUNDS

1. 1,103 Kahadeejah Herbert, 1982-85
2. 1,070 Susan Robinson, 1989-92
3. 1,016 Andrea Garner, 1997-00
4. 943 Vicki Link, 1984-87
5. 918 Angie Potthoff, 1993-97
6. 820 Mag Strittmatter, 1975-78
7. 818 Cheryl Ellison, 1980-83
8. 808 Amanda Brown, 2004-07
9. 773 Mary Donovan, 1978-81
10. 757 Bethany Collins, 1985-88
11. 728 Rashana Barnes, 1999-02
12. **723 Nikki Greene, 2010-present**
13. 721 Missy Masley, 1992-95
14. 719 Louise Leimkuhler, 1980-83
15. 717 Kathy Phillips, 1989-92
16. 690 Julia Trogele, 2008-11
17. 672 Helen Darling, 1997-00
18. 649 Jess Brungo, 2001-04
19. 645 Maren Walseth, 1998-01
20. 621 Tanisha Wright, 2002-05

CAREER THREE-POINT FIELD GOALS MADE

1. 357 Kelly Mazzante, 2001-04
2. 230 Lisa Shepherd, 1998-01
3. **194 Maggie Lucas, 2011-present**
4. 191 Jess Strom, 2002-05
5. 179 Tyra Grant, 2007-10

CAREER FIELD GOALS MADE

1. 1,051 Kelly Mazzante, 2001-04
2. 866 Susan Robinson, 1989-92
3. 771 Tanisha Wright, 2002-05
4. 757 Kahadeejah Herbert, 1982-85
5. 729 Suzie McConnell, 1985-88
6. 709 Angie Potthoff, 1993-97
7. 687 Tyra Grant, 2007-10
8. 668 Jen Bednarek, 1977-80
9. 660 Andrea Garner, 1997-00
10. 598 Vicki Link, 1984-87
- **545 Alex Bentley, 2010-present**

CAREER FIELD GOALS ATTEMPTED

1. 2,430 Kelly Mazzante, 2001-04
2. 1,755 Tyra Grant, 2007-10
3. 1,672 Susan Robinson, 1989-92
4. 1,667 Tanisha Wright, 2002-05
5. 1,526 Suzie McConnell, 1985-88
6. 1,365 Andrea Garner, 1997-00
7. 1,347 Kahadeejah Herbert, 1982-85
8. 1,329 Jen Bednarek, 1977-80
9. 1,260 Lisa Shepherd, 1999-01
10. **1,245 Alex Bentley, 2010-present**

CAREER ASSISTS

1. 1,307* Suzie McConnell, 1984-88
2. 826 Tina Nicholson, 1993-96
3. 791 Helen Darling, 1997-00
4. 776 Jess Strom, 2002-05
5. 632 Annie Troyan, 1981-83
6. 567 Dana Eikenberg, 1989-92
7. 560 Brianne O'Rourke, 2006-09
8. 528 Nancy Kuhl, 1975-79
9. 484 Tanisha Wright, 2002-05
10. **455 Alex Bentley, 2010-present**

CAREER STEALS

1. 507 Suzie McConnell, 1985-88
2. 314 Helen Darling, 1997-00
3. 310 Jess Strom, 2002-05
4. 293 Tina Nicholson, 1993-96
5. 289 Kelly Mazzante, 2001-04
6. 267 Tanisha Wright, 2002-05
7. 257 Nancy Kuhl, 1975-79
8. 247 Corinne Gulas, 1980-81
9. 224 Kahadeejah Herbert, 1982-85
10. 223 Tanya Garner, 1987-91
11. 217 Carol Walderman, 1981-83
12. **216 Alex Bentley, 2010-present**





COQUESE WASHINGTON

Head Coach
6th Season

PENN STATE
LADY LION BASKETBALL

Coquese Washington, who helped lead Notre Dame to the 2001 NCAA Championship, was introduced as the fifth head coach of the Penn State women's basketball program on April 23, 2007. Washington is the first female African-American head coach in Penn State history.

Washington returned the Lady Lions to Big Ten prominence in her fifth season as she guided Penn State to the Big Ten regular-season title with a 13-3 record in conference play. Additionally, the Lady Lions advanced to the NCAA Tournament Sweet Sixteen with wins over UTEP and LSU en route to a 26-7 overall record. The Lady Lions posted back-to-back 20-win seasons for the first time since 2002-03 and 2003-04. It was also the first Big Ten crown and Sweet Sixteen berth for the Lady Lions since 2003-04. The Lady Lions were ranked throughout the season and finished ninth in the ESPN/USA Today Coaches' Poll and 11th in the Associated Press Top 25.

For her efforts in rebuilding the Penn State program, Washington was honored as the Big Ten Coach of the Year and the WBCA Region 6 Coach of the Year, making her a finalist for WBCA National Coach of the Year. The accolades were not just limited to Washington; all five Lady Lion starters earned All-Big Ten recognition, including first team bids for Alex Bentley and Maggie Lucas. Both Bentley

and Lucas also garnered honorable mention All-America honors from the WBCA and Associated Press, respectively. Bentley became the 33rd player in school history to reach the 1,000-point plateau and just the 15th junior to reach the milestone. Lucas also joined the 1,000-point club in 2011-12, becoming just the third sophomore in program history to accomplish the feat.

On the recruiting trail, the Lady Lions' 2012 class earned a Top 20 class from Dan Olson's Collegiate Girls Basketball Report. The class includes transfer Dara Taylor, who sat out the 2011-12 season due to NCAA transfer rules, and McDonald's High School All-American Candice Agee from California. The addition of Taylor, who was a 2009 McDonald's All-American, and Agee gives the Lady Lions three McDonald's All-Americans on the roster heading into the 2012-13 campaign, joining 2010 honoree Lucas. Additionally, Agee earned a gold medal with the USA Basketball U18 National Team Trials at the 2012 FIBA Americas Championship in August.

The Lady Lions returned to the national stage in Washington's fourth year with a second-place finish in the Big Ten regular season standings, a runner-up finish in the Big Ten Tournament and a berth in the NCAA Tournament. Penn State tallied its 23rd 20-win season with a 25-10 overall record and an 11-5 mark in conference play. The Lady Lions worked their way back to the "Big Dance" for the first time since 2004-05 and advanced to the second round for the first time in seven years with a win over Dayton in the first round in front of a raucous BJC crowd.

Penn State was a dominating force from the perimeter as the Lady Lions tied the school record with 228 three-pointers and led NCAA Division I from deep with a .415 three-point field goal percentage. Pacing the Lady Lions from downtown was Lucas, who broke the Big Ten three-pointers record with 112 triples to go along with a .426 shooting percentage. For her efforts, Lucas was selected as the Big Ten Freshman of the Year and Big Ten Sixth Player of the Year while breaking the Penn State freshman season scoring record (552 pts.). Additionally with Washington's guidance, Bentley became the 11th different player in school history to take home first team All-Big Ten accolades after finishing second in the conference in assists. After outstanding seasons, both Lucas and Bentley were invited to the USA Basketball World University Games Trials.

Washington's third season saw the Lady Lions return to the postseason for the first time since 2004-05 with a WNIT berth. The Lions earned their most overall wins (17) and conference wins (8) since the 2004-05 campaign en route to a sixth-place finish in the Big Ten. Penn State picked up a pair of wins over ranked opponents in #15/15 Pittsburgh and #20/23 Michigan State.

In Washington's second season, the Lady Lions moved up three positions in the Big Ten standings, finishing in a tie for seventh place. Under Washington's guidance in 2008-

THE WASHINGTON FILE

COACHING RESUME

2007-pres. - Head Coach, Penn State
2012-pres. - Kay Yow Cancer Fund Board of Directors
2011-pres. - NCAA WBB Issues Committee
2010-pres. - Treasurer, WBCA Executive Committee
2008-pres. - WBCA Board of Directors
2009-12 - USA Basketball Women's Jr. National Committee
2005-07 - Associate Head Coach, Notre Dame
1999-05 - Assistant Coach, Notre Dame

PLAYING EXPERIENCE

2002-03 - WNBA's Indiana Fever
2000-02 - WNBA's Houston Comets
1998-99 - WNBA's New York Liberty
1997-98 - ABL's Portland Power
1989-93 - University of Notre Dame

EDUCATION

Notre Dame '92, B.A. History
Notre Dame Law School '97, Juris Doctorate

AWARDS

- ❖ 2012 Big Ten Coach of the Year
- ❖ 2012 WBCA Region 6 Coach of the Year
- ❖ 2012 WBCA National Coach of the Year Finalist
- ❖ 2011 BCA Female Coach of the Year
- ❖ 2009 Greater Flint Hall of Fame Inductee
- ❖ 2008 WBCA "Rising Star" Award Winner

FAMILY

Husband: Raynell Brown
Children: Quenton (7), Rhaiyna (3)

09, Grant became the 10th different player in school history to earn first team All-Big Ten honors. Grant was also a semifinalist for the Naismith Player of the Year award.

In her first season at the helm, Washington and the Lady Lions picked up two nationally-televised wins, downed two nationally-ranked foes and took home the 25th regular-season tournament crown in program history.

Washington came to Happy Valley after eight seasons as an associate head coach and assistant coach under Muffet McGraw at Notre Dame, her alma mater. During Washington's eight years on the bench, Notre Dame amassed a 188-69 record with eight NCAA Tournament appearances, including four Sweet Sixteen runs and a National Championship in 2001.

One of the top recruiters in the country, Washington was instrumental in helping the Irish to secure eight consecutive Top 25 recruiting classes, according to "Blue Star Index," a feat only accomplished by two other programs in the country (Connecticut and Tennessee).

Washington was a four-year starting point guard for Notre Dame under McGraw and was the team captain on Notre Dame's first-ever NCAA Tournament team. She was a two-time All-Midwestern Collegiate Conference (MCC) selection and led Notre Dame to three MCC Tournament titles.

The epitome of a student-athlete, Washington graduated from Notre Dame in 1992, a full year ahead of schedule, with a bachelor's degree in history. She went on to attain "Double Domer" status in 1997 after earning her Juris Doctorate from the Notre Dame Law School.

Washington is currently serving on the 29-member WBCA Board of Directors, where she is the Treasurer of the Executive Committee. Washington is also a member of the Kay Yow Cancer Fund Board of Directors and the NCAA Women's Basketball Issues Committee.

A native of Flint, Mich., Washington and her husband, Raynell Brown, have a son, Quenton (7), and a daughter, Rhaiyna (3). They reside in Port Matilda, Pa.

Washington's Coaching Record vs. Opponents

Arizona	1-0	Minnesota	5-6
Army	1-0	Mississippi	1-0
Boston College	0-1	Monmouth	1-0
Bucknell	5-0	Nebraska	1-1
Buffalo	1-0	Nevada	1-0
Charlotte	1-0	NJIT	1-0
Connecticut	0-2	North Carolina	1-0
Coppin State	1-0	Northwestern	6-1
Dayton	2-1	Oakland	2-0
Delaware	1-1	Ohio State	2-6
DePaul	0-1	Old Dominion	0-1
Drexel	2-1	Pittsburgh	2-1
Duke	1-0	Prairie View A&M	1-0
Florida State	0-1	Purdue	2-8
Georgetown	1-0	Rider	1-0
Georgia Tech	0-1	South Carolina	4-1
Hartford	1-0	Stony Brook	1-0
Hofstra	0-1	Syracuse	0-1
Holy Cross	1-0	Texas A&M	0-1
Illinois	8-3	UTEP	1-0
Indiana	4-4	Texas Tech	1-1
Iowa	5-5	Utah	1-0
Iowa State	1-0	Virginia Tech	1-0
LSU	1-0	Wagner	1-0
Maine	1-0	Washington State	1-0
UMES	1-0	Wisconsin	4-5
Michigan	7-3	UW-Green Bay	0-1
Michigan State	2-7	Xavier	0-1
Middle Tennessee	1-0		



No. 12/14 Penn State 101, Bloomsburg 81

Exhibition Game * Nov. 5, 2011 * University Park, Pa.

Bloomsburg 81

#	Player	Total		3-Ptr	Rebounds			PF	TP	A	TO	Blk	Stl	Min
		FG-FGA	FG-FGA	FG-FGA	Off	Def	Tot							
03	GALLAGHER, Kelsey	* 8-15	4-5	2-2	1	3	4	1	22	1	4	1	1	25
20	FLANAGAN, Alyssa	* 0-2	0-1	2-4	1	3	4	2	2	6	4	2	1	28
22	OXENRIDER, Kayla	* 4-11	1-3	5-6	0	3	3	2	14	2	7	1	2	33
31	ELLIS, Lauren	* 1-2	0-0	0-0	2	7	9	4	2	3	0	0	0	32
34	WIELLER, Dana	* 5-10	3-5	3-4	1	3	4	5	16	0	4	0	0	23
05	DUDECK, Brianna	0-3	0-0	0-0	1	0	1	0	0	0	1	0	0	6
10	NYCE, Courtney	0-3	0-2	0-0	0	1	1	2	0	0	2	0	0	5
15	NOACK, Catherine	6-8	5-6	2-2	2	2	4	0	19	1	2	0	0	26
30	SIMMONS, Marla	2-4	0-1	2-2	1	3	4	1	6	1	2	0	0	11
32	BORSKI, Maggie	0-0	0-0	0-0	0	0	0	0	0	1	0	0	0	11
Team					1	0	1							
Totals		26-58	13-23	16-20	10	25	35	17	81	15	26	4	4	200
FG % 1st Half: 11-26		42.3%	2nd half: 15-32	46.9%	Game: 26-58		44.8%					Deadball		
3FG % 1st Half: 7-10		70.0%	2nd half: 6-13	46.2%	Game: 13-23		56.5%					Rebounds		3
FT % 1st Half: 6-9		66.7%	2nd half: 10-11	90.9%	Game: 16-20		80.0%							

Penn State 101

#	Player	Total		3-Ptr	Rebounds			PF	TP	A	TO	Blk	Stl	Min
		FG-FGA	FG-FGA	FG-FGA	Off	Def	Tot							
12	Gray, Zhaque	* 4-12	1-4	0-0	0	1	1	4	9	0	1	0	2	30
20	Bentley, Alex	* 7-12	0-2	2-2	2	6	8	2	16	9	2	0	7	30
24	Nickson, Mia	* 5-9	0-0	4-4	3	1	4	3	14	0	0	1	1	22
33	Lucas, Maggie	* 10-15	7-8	8-9	0	3	3	2	35	1	1	0	1	35
54	Greene, Nikki	* 6-8	0-0	0-2	4	3	7	3	12	0	2	0	0	16
05	East, Talia	2-3	0-0	0-0	2	3	5	2	4	0	1	0	2	13
23	Edwards, Ariel	1-10	0-1	2-3	3	3	6	3	4	0	2	0	1	30
25	Studevent, Gizelle	2-8	0-1	0-0	1	1	2	1	4	0	2	0	0	20
44	Waldner, Tori	1-1	0-0	1-1	0	1	1	0	3	0	0	0	0	4
Team					2	1	3							
Totals		38-78	8-16	17-21	17	23	40	20	101	10	12	1	14	200
FG % 1st Half: 18-41		43.9%	2nd half: 20-37	54.1%	Game: 38-78		48.7%					Deadball		
3FG % 1st Half: 4-11		36.4%	2nd half: 4-5	80.0%	Game: 8-16		50.0%					Rebounds		2
FT % 1st Half: 7-9		77.8%	2nd half: 10-12	83.3%	Game: 17-21		81.0%							

Officials: Kevin Pethel, Kathy Ridilla, Shannon Feck
 Technical fouls: Bloomsburg-None, Penn State-None.
 Attendance: 7742

Score by periods	1st	2nd	Total
Bloomsburg	35	46	81
Penn State	47	54	101

Points	In	Off	2nd	Fast	Bench
BLOOM	20	20	18	3	25
PSU1112	52	33	23	16	15

Last FG - BLOOM 2nd-01:25, PSU1112 2nd-01:08.
 Largest lead - BLOOM by 5 1st-18:42, PSU1112 by 20 2nd-11:10.

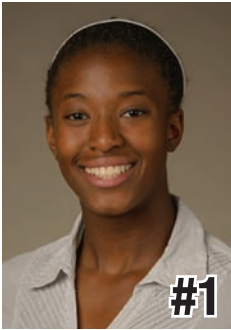
Score tied - 4 times.
 Lead changed - 3 times.

Notable

- Sophomore guard **Maggie Lucas** led the Lady Lions' offensive outburst with 35 points, including a 7-for-8 effort from three-point range.
- **Alex Bentley** had an all-around performance with 16 points, eight rebounds, nine assists and seven steals.
- Junior forward **Mia Nickson** also reached double figures with 14 points and four rebounds.



2012-13 RADIO/TV CHART



#1

Candice Agee
6-6 * Fr./Fr. * F/C
Victorville, Calif.
Silverado



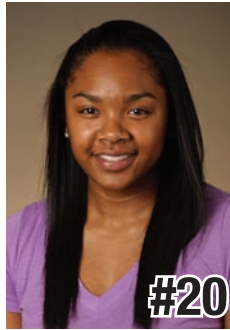
#2

Dara Taylor
5-8 * Sr./Jr. * G
Wilmington, Del.
Caravel Academy
(Maryland)



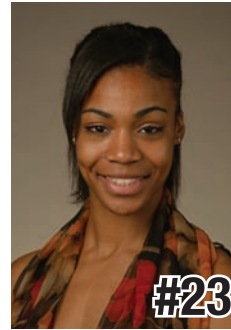
#5

Talia East
6-3 * Jr./Jr.* F/C
Philadelphia, Pa.
Friends' Central School



#20

Alex Bentley
5-7 * Sr./Sr. * G
Indianapolis, Ind.
Ben Davis



#23

Ariel Edwards
6-3 * Jr./Jr. * F
Elmont, N.Y.
Christ the King



#24

Mia Nickson
6-2 * Gr./Sr. * F
Ashburn, Va.
Notre Dame Academy
(Boston College)



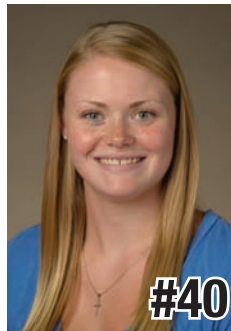
#25

Gizelle Studevent
5-11 * Sr./Sr. * G
La Jolla, Calif.
The Bishop's School



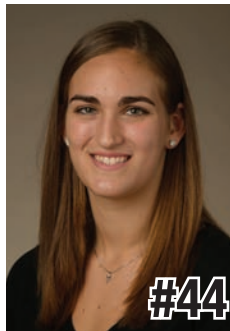
#33

Maggie Lucas
5-10 * Jr./Jr. * G
Narberth, Pa.
Germantown Academy



#40

Marisa Wolfe
6-2 * Sr./Sr. * F
Ford City, Pa.
Ford City



#44

Tori Waldner
6-5 * So./So. * F/C
Milton, Ga.
Milton



#54

Nikki Greene
6-4 * Sr./Sr. * F/C
Diboll, Texas
Diboll



HC

Coquese Washington
Head Coach
Notre Dame '92
Sixth Season



AC

Fred Chmiel
Assistant Coach
Excelsior College
Third Season



AC

Kia Damon
Assistant Coach
Millersville '97
Sixth Season



AC

Maren Walseth
Assistant Coach
Penn State '02
Sixth Season



DO

Ethan Gelfand
Director of Basketball
Operations
Second Season



VO

Mike Miller
Director of Video &
Technology Operations
Eighth Season

Six-Time Big Ten Champions • Two-Time Big Ten Tournament Champions • 2000 NCAA Final Four • 23 NCAA Tournament Appearances



2011-12 Penn State Lady Lions
Penn State Combined Team Statistics (as of Apr 04, 2012)
All games

RECORD:	OVERALL	HOME	AWAY	NEUTRAL
ALL GAMES	26-7	12-2	11-3	3-2
CONFERENCE	13-3	6-2	7-1	0-0
NON-CONFERENCE	13-4	6-0	4-2	3-2

##	Player	gp-gs	min	avg	Total		3-Point		F-Throw		Rebounds			pf	dq	a	to	blk	stl	pts	avg			
					fg-fga	fg%	3fg-fga	3fg%	ft-fta	ft%	off	def	tot									avg		
33	Lucas, Maggie	33-33	1173	35.5	202-470	.430	82-200	.410	156-176	.886	29	125	154	4.7	54	0	91	87	6	47	642	19.5		
20	Bentley, Alex	33-33	1119	33.9	184-435	.423	19-63	.302	78-114	.684	15	73	88	2.7	79	2	156	114	8	98	465	14.1		
12	Gray, Zhaque	33-33	1015	30.8	126-315	.400	48-137	.350	49-58	.845	22	72	94	2.8	71	0	57	50	1	27	349	10.6		
54	Greene, Nikki	33-33	680	20.6	120-254	.472	0-0	.000	83-129	.643	97	162	259	7.8	116	3	13	58	46	37	323	9.8		
24	Nickson, Mia	24-24	636	26.5	70-166	.422	0-0	.000	63-88	.716	80	106	186	7.8	50	0	23	27	8	19	203	8.5		
23	Edwards, Ariel	29-9	698	24.1	75-175	.429	8-27	.296	44-62	.710	43	82	125	4.3	59	1	32	46	5	22	202	7.0		
40	Wolfe, Marisa	22-0	243	11.0	31-63	.492	1-4	.250	16-22	.727	17	36	53	2.4	35	0	8	16	5	10	79	3.6		
05	East, Talia	33-0	457	13.8	49-107	.458	0-0	.000	15-33	.455	49	124	173	5.2	48	2	8	33	34	17	113	3.4		
44	Waldner, Tori	31-0	272	8.8	25-56	.446	0-1	.000	13-23	.565	13	54	67	2.2	50	0	15	24	18	16	63	2.0		
25	Studevent, Gizelle	31-0	307	9.9	26-64	.406	0-4	.000	7-8	.875	11	27	38	1.2	19	0	18	14	0	9	59	1.9		
Team											73	79	152											
Total.....		33	6600		908-2105	.431	158-436	.362	524-713	.735	449	940	1389	42.1	581	8	421	475	131	302	2498	75.7		
Opponents.....		33	6600		745-2079	.358	151-580	.260	420-598	.702	480	850	1330	40.3	597	12	399	567	105	226	2061	62.5		

TEAM STATISTICS	PSU	OPP	Date	Opponent	Score	Att.	
SCORING	2498	2061	11/11/11	WASHINGTON STATE	w 72-60	3807	
Points per game	75.7	62.5	11/13/11	MIDDLE TENNESSEE	w 65-49	3238	
Scoring margin	+13.2	-	11/17/11	at Delaware	L 71-80	3352	
FIELD GOALS-ATT	908-2105	745-2079	11/20/11	at South Carolina	w 55-50	2391	
Field goal pct	.431	.358	11/25/11	vs Iowa State	w 66-59	1089	
3 POINT FG-ATT	158-436	151-580	11/26/11	at Nevada	w 103-65	759	
3-point FG pct	.362	.260	11/30/11	NORTH CAROLINA	w 103-84	3963	
3-pt FG made per game	4.8	4.6	12-03-11	at TTU	L 66-70	8923	
FREE THROWS-ATT	524-713	420-598	12/6/11	VIRGINIA TECH	w 66-28	3236	
Free throw pct	.735	.702	12/11/11	UMES	w 76-51	3386	
F-Throws made per game	15.9	12.7	12/18/11	WAGNER	w 103-42	7202	
REBOUNDS	1389	1330	12/21/11	at BUCKNELL	w 78-54	1490	
Rebounds per game	42.1	40.3	* 12/30/11	NEBRASKA	L 63-71	5116	
Rebounding margin	+1.8	-	* 01/02/12	at Wisconsin	w 82-49	4171	
ASSISTS	421	399	* 1/7/12	MICHIGAN STATE	L 65-75	4906	
Assists per game	12.8	12.1	* 1/12/12	MICHIGAN	w 78-63	3567	
TURNOVERS	475	567	* 01/15/12	at Nebraska	w 93-73	7752	
Turnovers per game	14.4	17.2	* 1/19/12	at Illinois	w 71-65	654	
Turnover margin	+2.8	-	* 1/22/12	IOWA	w 68-52	4714	
Assist/turnover ratio	0.9	0.7	* 01/26/12	at Michigan	w 77-56	1072	
STEALS	302	226	* 01/29/12	at Michigan State	L 77-83	9634	
Steals per game	9.2	6.8	* 2/2/12	INDIANA	w 76-44	3536	
BLOCKS	131	105	* 02/05/12	at Minnesota	w 68-65	4324	
Blocks per game	4.0	3.2	* 2/9/12	WISCONSIN	w 69-54	3654	
ATTENDANCE	69383	62641	* 02/12/12	at Northwestern	w 77-63	1867	
Home games-Avg/Game	14-4956	14-4167	* 02/16/12	at Purdue	w 74-63	8681	
Neutral site-Avg/Game	-	5-860	* 2/20/12	OHIO STATE	w 84-66	5209	
Score by Periods	1st	2nd	Totals	* 2/26/12	MINNESOTA	w 74-51	13849
Penn State	1211	1287	2498	3/2/12	vs Minnesota	w 78-74	0
Opponents	1030	1031	2061	3/3/12	vs Purdue	L 66-68	0
				03/18/12	vs UTEP	w 85-77	3212
				03/20/12	at LSU	w 90-80	3270
				3/25/12	vs Connecticut	L 59-77	0

* - Conference game

2011-12 Penn State Lady Lions
Penn State Category Leaders (as of Apr 04, 2012)
All games

Points	G	Pts	Pts/G	Scoring Average	G	Pts	Avg/G
Lucas, Maggie	33	642	19.5	Lucas, Maggie	33	642	19.5
Bentley, Alex	33	465	14.1	Bentley, Alex	33	465	14.1
Gray, Zhaque	33	349	10.6	Gray, Zhaque	33	349	10.6
Greene, Nikki	33	323	9.8	Greene, Nikki	33	323	9.8
Nickson, Mia	24	203	8.5	Nickson, Mia	24	203	8.5
Edwards, Ariel	29	202	7.0	Edwards, Ariel	29	202	7.0
East, Talia	33	113	3.4	Wolfe, Marisa	22	79	3.6
Wolfe, Marisa	22	79	3.6	East, Talia	33	113	3.4
Waldner, Tori	31	63	2.0	Waldner, Tori	31	63	2.0
Studevent, Gizelle	31	59	1.9	Studevent, Gizelle	31	59	1.9

FG Percentage	FG	Att	Pct	Field Goal Attempts	G	Att	Att/G
Wolfe, Marisa	31	63	.492	Lucas, Maggie	33	470	14.2
Greene, Nikki	120	254	.472	Bentley, Alex	33	435	13.2
East, Talia	49	107	.458	Gray, Zhaque	33	315	9.5
Waldner, Tori	25	56	.446	Greene, Nikki	33	254	7.7
Lucas, Maggie	202	470	.430	Edwards, Ariel	29	175	6.0
Edwards, Ariel	75	175	.429	Field Goals Made	G	Made	Made/G
Bentley, Alex	184	435	.423	Lucas, Maggie	33	202	6.1
Nickson, Mia	70	166	.422	Bentley, Alex	33	184	5.6
Studevent, Gizelle	26	64	.406	Gray, Zhaque	33	126	3.8
Gray, Zhaque	126	315	.400	Greene, Nikki	33	120	3.6
				Edwards, Ariel	29	75	2.6

3-Point Percentage	3FG	Att	Pct	3-Point FG Attempts	G	Att	Att/G
Lucas, Maggie	82	200	.410	Lucas, Maggie	33	200	6.1
Gray, Zhaque	48	137	.350	Gray, Zhaque	33	137	4.2
Bentley, Alex	19	63	.302	Bentley, Alex	33	63	1.9
Edwards, Ariel	8	27	.296	Edwards, Ariel	29	27	0.9
Wolfe, Marisa	1	4	.250	Wolfe, Marisa	22	4	0.2
Waldner, Tori	0	1	.000	Studevent, Gizelle	31	4	0.1
Studevent, Gizelle	0	4	.000				

3-Point FG Made	G	Made	Made/G
Lucas, Maggie	33	82	2.5
Gray, Zhaque	33	48	1.5
Bentley, Alex	33	19	0.6
Edwards, Ariel	29	8	0.3
Wolfe, Marisa	22	1	0.0

Free Throw Percent	FG	Att	Pct	Free Throw Attempts	G	Att	Att/G
Lucas, Maggie	156	176	.886	Lucas, Maggie	33	176	5.3
Studevent, Gizelle	7	8	.875	Greene, Nikki	33	129	3.9
Gray, Zhaque	49	58	.845	Bentley, Alex	33	114	3.5
Wolfe, Marisa	16	22	.727	Nickson, Mia	24	88	3.7
Nickson, Mia	63	88	.716	Edwards, Ariel	29	62	2.1
Edwards, Ariel	44	62	.710	Free Throws Made	G	Made	Made/G
Bentley, Alex	78	114	.684	Lucas, Maggie	33	156	4.7
Greene, Nikki	83	129	.643	Greene, Nikki	33	83	2.5
Waldner, Tori	13	23	.565	Bentley, Alex	33	78	2.4
East, Talia	15	33	.455	Nickson, Mia	24	63	2.6
				Gray, Zhaque	33	49	1.5

2011-12 Penn State Lady Lions
 Penn State Category Leaders (as of Apr 04, 2012)
 All games

<u>Rebounds</u>	<u>G</u>	<u>Reb</u>	<u>Reb/G</u>
Greene, Nikki	33	259	7.8
Nickson, Mia	24	186	7.8
East, Talia	33	173	5.2
Lucas, Maggie	33	154	4.7
Edwards, Ariel	29	125	4.3

<u>Assists</u>	<u>G</u>	<u>No.</u>	<u>Ast/G</u>
Bentley, Alex	33	156	4.7
Lucas, Maggie	33	91	2.8
Gray, Zhaque	33	57	1.7
Edwards, Ariel	29	32	1.1
Nickson, Mia	24	23	1.0

<u>Rebound Average</u>	<u>G</u>	<u>Reb</u>	<u>Avg/G</u>
Greene, Nikki	33	259	7.8
Nickson, Mia	24	186	7.8
East, Talia	33	173	5.2
Lucas, Maggie	33	154	4.7
Edwards, Ariel	29	125	4.3

<u>Steals</u>	<u>G</u>	<u>No.</u>	<u>Stl/G</u>
Bentley, Alex	33	98	3.0
Lucas, Maggie	33	47	1.4
Greene, Nikki	33	37	1.1
Gray, Zhaque	33	27	0.8
Edwards, Ariel	29	22	0.8

<u>Offensive Rebounds</u>	<u>G</u>	<u>No.</u>	<u>Avg/G</u>
Greene, Nikki	33	97	2.9
Nickson, Mia	24	80	3.3
East, Talia	33	49	1.5
Edwards, Ariel	29	43	1.5
Lucas, Maggie	33	29	0.9

<u>Blocked Shots</u>	<u>G</u>	<u>No.</u>	<u>Blk/G</u>
Greene, Nikki	33	46	1.4
East, Talia	33	34	1.0
Waldner, Tori	31	18	0.6
Bentley, Alex	33	8	0.2
Nickson, Mia	24	8	0.3

<u>Defensive Rebounds</u>	<u>G</u>	<u>No.</u>	<u>Avg/G</u>
Greene, Nikki	33	162	4.9
Lucas, Maggie	33	125	3.8
East, Talia	33	124	3.8
Nickson, Mia	24	106	4.4
Edwards, Ariel	29	82	2.8

<u>Minutes</u>	<u>G</u>	<u>No.</u>	<u>Min/G</u>
Lucas, Maggie	33	1173	35.5
Bentley, Alex	33	1119	33.9
Gray, Zhaque	33	1015	30.8
Edwards, Ariel	29	698	24.1
Greene, Nikki	33	680	20.6

<u>Fouls</u>	<u>G</u>	<u>No.</u>	<u>Per/G</u>
Greene, Nikki	33	116	3.5
Bentley, Alex	33	79	2.4
Gray, Zhaque	33	71	2.2
Edwards, Ariel	29	59	2.0
Lucas, Maggie	33	54	1.6

<u>Turnovers</u>	<u>G</u>	<u>No.</u>	<u>TO/G</u>
Bentley, Alex	33	114	3.5
Lucas, Maggie	33	87	2.6
Greene, Nikki	33	58	1.8
Gray, Zhaque	33	50	1.5
Edwards, Ariel	29	46	1.6

<u>Foulsouts</u>	<u>G</u>	<u>No.</u>
Greene, Nikki	33	3
Bentley, Alex	33	2
East, Talia	33	2
Edwards, Ariel	29	1



**2011-12 Penn State Lady Lions
Penn State Combined Team Statistics (as of Feb 26, 2012)
Conference games**



RECORD:	OVERALL	HOME	AWAY	NEUTRAL
ALL GAMES	13-3	6-2	7-1	0-0
CONFERENCE	13-3	6-2	7-1	0-0
NON-CONFERENCE	0-0	0-0	0-0	0-0

##	Player	gp-gs	min	avg	Total		3-Point		F-Throw		Rebounds			pf	dq	a	to	blk	stl	pts	avg	
					fg-fga	fg%	3fg-fga	3fg%	ft-fa	ft%	off	def	tot									avg
33	Lucas, Maggie	16-16	572	35.8	104-238	.437	39-87	.448	63-69	.913	16	61	77	4.8	21	0	51	45	3	23	310	19.4
20	Bentley, Alex	16-16	547	34.2	90-219	.411	7-30	.233	24-44	.545	10	40	50	3.1	38	1	65	54	4	49	211	13.2
54	Greene, Nikki	16-16	344	21.5	64-130	.492	0-0	.000	39-62	.629	53	92	145	9.1	60	2	7	23	23	21	167	10.4
12	Gray, Zhaque	16-16	462	28.9	53-147	.361	19-63	.302	19-22	.864	11	34	45	2.8	35	0	25	21	0	11	144	9.0
24	Nickson, Mia	15-15	379	25.3	45-99	.455	0-0	.000	41-58	.707	50	63	113	7.5	29	0	15	21	3	8	131	8.7
23	Edwards, Ariel	14-1	317	22.6	35-76	.461	4-11	.364	24-32	.750	26	34	60	4.3	30	0	13	23	3	7	98	7.0
40	Wolfe, Marisa	9-0	106	11.8	12-23	.522	0-1	.000	8-10	.800	4	19	23	2.6	13	0	3	8	1	1	32	3.6
05	East, Talia	16-0	190	11.9	16-42	.381	0-0	.000	8-12	.667	23	44	67	4.2	16	1	3	14	11	5	40	2.5
44	Waldner, Tori	16-0	135	8.4	13-30	.433	0-0	.000	8-13	.615	6	21	27	1.7	26	0	9	8	8	9	34	2.1
25	Studevent, Gizelle	16-0	148	9.3	12-31	.387	0-2	.000	5-6	.833	6	13	19	1.2	11	0	8	6	0	2	29	1.8
Team											33	38	71				5					
Total.....		16	3200		444-1035	.429	69-194	.356	239-328	.729	238	459	697	43.6	279	4	199	228	56	136	1196	74.8
Opponents.....		16	3200		357-962	.371	65-253	.257	214-310	.690	195	404	599	37.4	278	6	190	258	47	111	993	62.1

TEAM STATISTICS	PSU	OPP	Date	Opponent	Score	Att.
SCORING	1196	993	* 12/30/11	NEBRASKA	L 63-71	5116
Points per game	74.8	62.1	* 1/2/12	at Wisconsin	w 82-49	4171
Scoring margin	+12.7	-	* 1/7/12	MICHIGAN STATE	L 65-75	4906
FIELD GOALS-ATT	444-1035	357-962	* 1/12/12	MICHIGAN	w 78-63	3567
Field goal pct	.429	.371	* 01/15/12	at Nebraska	w 93-73	7752
3 POINT FG-ATT	69-194	65-253	* 1/19/12	at Illinois	w 71-65	654
3-point FG pct	.356	.257	* 1/22/12	IOWA	w 68-52	4714
3-pt FG made per game	4.3	4.1	* 01/26/12	at Michigan	w 77-56	1072
FREE THROWS-ATT	239-328	214-310	* 01/29/12	at Michigan State	L 77-83	9634
Free throw pct	.729	.690	* 2/2/12	INDIANA	w 76-44	3536
F-Throws made per game	14.9	13.4	* 02/05/12	at Minnesota	w 68-65	4324
REBOUNDS	697	599	* 2/9/12	WISCONSIN	w 69-54	3654
Rebounds per game	43.6	37.4	* 02/12/12	at Northwestern	w 77-63	1867
Rebounding margin	+6.1	-	* 02/16/12	at Purdue	w 74-63	8681
ASSISTS	199	190	* 2/20/12	OHIO STATE	w 84-66	5209
Assists per game	12.4	11.9	* 2/26/12	MINNESOTA	w 74-51	13849
TURNOVERS	228	258				
Turnovers per game	14.3	16.1				
Turnover margin	+1.9	-				
Assist/turnover ratio	0.9	0.7				
STEALS	136	111				
Steals per game	8.5	6.9				
BLOCKS	56	47				
Blocks per game	3.5	2.9				
ATTENDANCE	44551	38155				
Home games-Avg/Game	8-5569	8-4769				
Neutral site-Avg/Game	-	0-0				

Score by Periods	1st	2nd	Totals
Penn State	584	612	1196
Opponents	487	506	993



**2011-12 Penn State Lady Lions
Penn State Category Leaders (as of Feb 26, 2012)
Conference games**



Points	G	Pts	Pts/G
Lucas, Maggie	16	310	19.4
Bentley, Alex	16	211	13.2
Greene, Nikki	16	167	10.4
Gray, Zhaque	16	144	9.0
Nickson, Mia	15	131	8.7
Edwards, Ariel	14	98	7.0
East, Talia	16	40	2.5
Waldner, Tori	16	34	2.1
Wolfe, Marisa	9	32	3.6
Studevent, Gizelle	16	29	1.8

FG Percentage	FG	Att	Pct
Wolfe, Marisa	12	23	.522
Greene, Nikki	64	130	.492
Edwards, Ariel	35	76	.461
Nickson, Mia	45	99	.455
Lucas, Maggie	104	238	.437
Waldner, Tori	13	30	.433
Bentley, Alex	90	219	.411
Studevent, Gizelle	12	31	.387
East, Talia	16	42	.381
Gray, Zhaque	53	147	.361

3-Point Percentage	3FG	Att	Pct
Lucas, Maggie	39	87	.448
Edwards, Ariel	4	11	.364
Gray, Zhaque	19	63	.302
Bentley, Alex	7	30	.233
Studevent, Gizelle	0	2	.000
Wolfe, Marisa	0	1	.000

Free Throw Percent	FG	Att	Pct
Lucas, Maggie	63	69	.913
Gray, Zhaque	19	22	.864
Studevent, Gizelle	5	6	.833
Wolfe, Marisa	8	10	.800
Edwards, Ariel	24	32	.750
Nickson, Mia	41	58	.707
East, Talia	8	12	.667
Greene, Nikki	39	62	.629
Waldner, Tori	8	13	.615
Bentley, Alex	24	44	.545

Scoring Average	G	Pts	Avg/G
Lucas, Maggie	16	310	19.4
Bentley, Alex	16	211	13.2
Greene, Nikki	16	167	10.4
Gray, Zhaque	16	144	9.0
Nickson, Mia	15	131	8.7
Edwards, Ariel	14	98	7.0
Wolfe, Marisa	9	32	3.6
East, Talia	16	40	2.5
Waldner, Tori	16	34	2.1
Studevent, Gizelle	16	29	1.8

Field Goal Attempts	G	Att	Att/G
Lucas, Maggie	16	238	14.9
Bentley, Alex	16	219	13.7
Gray, Zhaque	16	147	9.2
Greene, Nikki	16	130	8.1
Nickson, Mia	15	99	6.6

Field Goals Made	G	Made	Made/G
Lucas, Maggie	16	104	6.5
Bentley, Alex	16	90	5.6
Greene, Nikki	16	64	4.0
Gray, Zhaque	16	53	3.3
Nickson, Mia	15	45	3.0

3-Point FG Attempts	G	Att	Att/G
Lucas, Maggie	16	87	5.4
Gray, Zhaque	16	63	3.9
Bentley, Alex	16	30	1.9
Edwards, Ariel	14	11	0.8
Studevent, Gizelle	16	2	0.1

3-Point FG Made	G	Made	Made/G
Lucas, Maggie	16	39	2.4
Gray, Zhaque	16	19	1.2
Bentley, Alex	16	7	0.4
Edwards, Ariel	14	4	0.3

Free Throw Attempts	G	Att	Att/G
Lucas, Maggie	16	69	4.3
Greene, Nikki	16	62	3.9
Nickson, Mia	15	58	3.9
Bentley, Alex	16	44	2.8
Edwards, Ariel	14	32	2.3

Free Throws Made	G	Made	Made/G
Lucas, Maggie	16	63	3.9
Nickson, Mia	15	41	2.7
Greene, Nikki	16	39	2.4
Bentley, Alex	16	24	1.5
Edwards, Ariel	14	24	1.7



**2011-12 Penn State Lady Lions
Penn State Category Leaders (as of Feb 26, 2012)
Conference games**



Rebounds	G	Reb	Reb/G
Greene, Nikki	16	145	9.1
Nickson, Mia	15	113	7.5
Lucas, Maggie	16	77	4.8
East, Talia	16	67	4.2
Edwards, Ariel	14	60	4.3

Rebound Average	G	Reb	Avg/G
Greene, Nikki	16	145	9.1
Nickson, Mia	15	113	7.5
Lucas, Maggie	16	77	4.8
Edwards, Ariel	14	60	4.3
East, Talia	16	67	4.2

Offensive Rebounds	G	No.	Avg/G
Greene, Nikki	16	53	3.3
Nickson, Mia	15	50	3.3
Edwards, Ariel	14	26	1.9
East, Talia	16	23	1.4
Lucas, Maggie	16	16	1.0

Defensive Rebounds	G	No.	Avg/G
Greene, Nikki	16	92	5.8
Nickson, Mia	15	63	4.2
Lucas, Maggie	16	61	3.8
East, Talia	16	44	2.8
Bentley, Alex	16	40	2.5

Fouls	G	No.	Per/G
Greene, Nikki	16	60	3.8
Bentley, Alex	16	38	2.4
Gray, Zhaque	16	35	2.2
Edwards, Ariel	14	30	2.1
Nickson, Mia	15	29	1.9

Foulsouts	G	No.
Greene, Nikki	16	2
East, Talia	16	1
Bentley, Alex	16	1

Assists	G	No.	Ast/G
Bentley, Alex	16	65	4.1
Lucas, Maggie	16	51	3.2
Gray, Zhaque	16	25	1.6
Nickson, Mia	15	15	1.0
Edwards, Ariel	14	13	0.9

Steals	G	No.	Stl/G
Bentley, Alex	16	49	3.1
Lucas, Maggie	16	23	1.4
Greene, Nikki	16	21	1.3
Gray, Zhaque	16	11	0.7
Waldner, Tori	16	9	0.6

Blocked Shots	G	No.	Blk/G
Greene, Nikki	16	23	1.4
East, Talia	16	11	0.7
Waldner, Tori	16	8	0.5
Bentley, Alex	16	4	0.3
Nickson, Mia	15	3	0.2
Edwards, Ariel	14	3	0.2
Lucas, Maggie	16	3	0.2

Minutes	G	No.	Min/G
Lucas, Maggie	16	572	35.8
Bentley, Alex	16	547	34.2
Gray, Zhaque	16	462	28.9
Nickson, Mia	15	379	25.3
Greene, Nikki	16	344	21.5

Turnovers	G	No.	TO/G
Bentley, Alex	16	54	3.4
Lucas, Maggie	16	45	2.8
Edwards, Ariel	14	23	1.6
Greene, Nikki	16	23	1.4
Gray, Zhaque	16	21	1.3
Nickson, Mia	15	21	1.4