

# PENN STATE

## WOMEN'S SOCCER



2013

GoPSUsports.com | ONE TEAM

### 2013 SEASON

Overall .....	15-6-1
At home .....	9-1-1
On the road.....	5-4-0
Neutral .....	1-1-0
Big Ten.....	7-4-0

### 2013 SCHEDULE

#### AUGUST

23	WEST VIRGINIA <sup>1</sup> .....	T, 2-2 (2OT)
25	HOFSTRA <sup>1</sup> .....	W, 2-1
30	at No. 5 Virginia .....	L, 5-1

#### SEPTEMBER

1	LA SALLE .....	W, 5-1
6	BOSTON UNIVERSITY .....	W, 1-0
10	at Bucknell .....	W, 6-0
13	at Oklahoma State.....	W, 4-2
15	at Tulsa .....	W, 3-2
20	NORTHWESTERN* .....	W, 3-2(2OT)
26	PURDUE* .....	W, 6-1
29	INDIANA* .....	W, 4-1

#### OCTOBER

4	at No. 18 Wisconsin* .....	W, 2-1
6	at Minnesota* .....	L, 1-0
13	No. 19 MICHIGAN* .....	L, 1-0
17	OHIO STATE* .....	W, 4-2
20	ILLINOIS* .....	W, 5-0
25	at Iowa* .....	L, 3-2
27	at No. 21 Nebraska* .....	L, 3-2 (2OT)

#### NOVEMBER

1	at Michigan State* .....	W, 3-0
6	Wisconsin <sup>2</sup> .....	W, 2-0
8	Iowa <sup>2</sup> .....	L, 1-0
15	MONMOUTH <sup>3</sup> .....	W, 3-0
22	Wake Forest <sup>4</sup> .....	4 p.m.
24	NCAA Third Round .....	TBA
29-30	NCAA Quarterfinals .....	TBA

#### DECEMBER

1	NCAA Quarterfinals .....	TBA
6	College Cup Semifinals .....	TBA
8	College Cup Championship .....	TBA

\* - Big Ten match

1 - Penn State Invitational, University Park, Pa.

2 - Big Ten Tournament, Champaign, Ill.

3 - NCAA Tournament, University Park, Pa.

4 - NCAA Tournament, Charlottesville, Va.

Home matches in **CAPS** at Jeffrey Field

All times Eastern

### MEDIA INFORMATION

Soccer Contact:..... Kellie O'Brien

E-mail: ..... kbo2@psu.edu

Phone (Office): ..... (814) 863-1377

Phone (Cell):..... (814) 321-5119

Athletics Website:..... GoPSUsports.com

Facebook:..... PSUWomensSoccer

Twitter/Instagram:..... @PennStateWSOC

## #24 PENN STATE NITTANY LIONS (15-6-1)



## WAKE FOREST DEMON DEACONS (11-6-2)

Nov. 22, 2013 • 4 p.m. • Klockner Stadium • Charlottesville, Va.

### MATCH DAY (vs. WAKE FOREST)

VENUE	Klockner Stadium (3,600)
ONLINE COVERAGE	GameTracker
SERIES RECORD	Wake Forest leads 2-0-0
LAST MEETING	Nov. 20, 2011 (WFU won, 4-2)

### MATCH NOTES

- Penn State faces Wake Forest in the second round of the NCAA Tournament
- The Lions are 0-2-0 vs. the Demon Deacons all-time and 0-1 in the postseason
- WFU defeated PSU 4-2 in the third round of the 2011 NCAA Tournament
- The Blue and White are 11-4-0 in NCAA second round matches
- PSU owns a 4-3-1 record at neutral sites during the NCAA Tournament
- Penn State ranks in the top five in the nation in three categories
- Hayes named Senior CLASS Award finalist
- Costa nets career-high 10th goal of the season
- Five Big Ten teams advance to NCAA second round

### ON THE PITCH

The No. 4 seeded Penn State women's soccer team has advanced to the second round of the NCAA Tournament after turning in a dominating 3-0 victory over Monmouth last Friday. The Nittany Lions will face Wake Forest at Virginia in the second round on Friday at 4 p.m. in Klockner Stadium.

### OFFENSIVE POWER

Penn State's offensive attack has proven to be one of the best in the nation this season as the Nittany Lions rank in the top five in three different categories. The Blue and White are third in points (7.95), rank fourth in scoring offense (2.73) and are tied for fifth in assists (2.50).

### DOUBLING UP

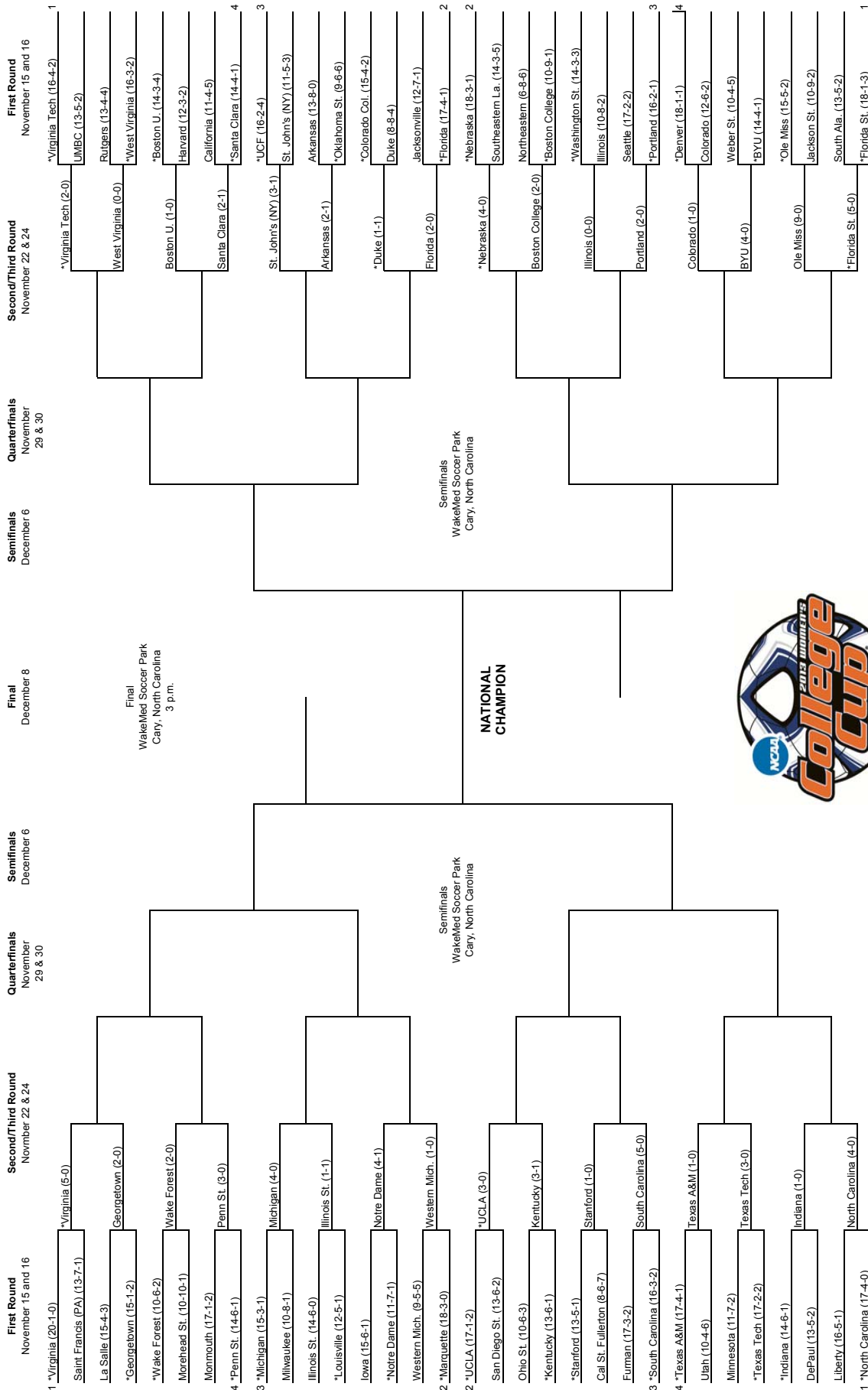
With Maya Hayes at 19 goals and Tani Costa at 10 goals this season, the Lions have now had at least two players in double digits in goals for the three straight seasons. Last season, Christine Naim (17), Hayes (16) and Mallory Weber (13) reached double figures and in 2011 Hayes (31) and Taylor Schram (12) posted double figures.

### 2013 STAT LEADERS

POINTS		GAME-WINNING GOALS	
Maya Hayes	44	Maya Hayes	4
Tani Costa	27	Raquel Rodriguez	3
Mallory Weber	22	Mallory Weber	2
Raquel Rodriguez	21	Taylor Schram	2
		Tani Costa	2
GOALS		ASSISTS	
Maya Hayes	19	Raquel Rodriguez	9
Tani Costa	10	Mallory Weber	8
Mallory Weber	7	Taylor Schram	8
Raquel Rodriguez	6		
		SAVES	
		Britt Eckerstrom	90



## 2013 NCAA Division I Women's SOCCER CHAMPIONSHIP



\*Host institution for preliminary round games  
Order of semifinal games will be determined after quarterfinal round games are completed.  
Second semifinal game will begin play 45 minutes after the conclusion of the first game.



## PENN STATE'S NCAA TOURNAMENT HISTORY

Date	Round	Seed	Opponent	Result	PSU	OPP
Nov. 11, 1995	First	–	<b>JAMES MADISON</b>	L	1	2
Nov. 17, 1996	First	–	at #19 George Mason	W	2	0
Nov. 24, 1996	Second	–	at #6 Santa Clara	L	1	3
<b>Nov. 16, 1997</b>	<b>First</b>	<b>–</b>	<b>#7 WILLIAM &amp; MARY</b>	<b>L (2OT)</b>	<b>2</b>	<b>3</b>
Nov. 15, 1998	Second	#7	<b>INDIANA</b>	W	2	1
Nov. 21, 1998	Third	–	<b>CLEMSON</b>	W	1	0
Nov. 29, 1998	Quarterfinals	–	at #2 Florida	L	1	3
Nov. 14, 1999	Second	#6	<b>#25 MARYLAND</b>	W	3	2
Nov. 21, 1999	Third	–	<b>#19 SO. METHODIST</b>	W	5	0
Nov. 27, 1999	Quarterfinals	–	<b>HARTFORD</b>	W	2	0
Dec. 3, 1999	Semifinals	–	vs. #2 North Carolina <sup>1</sup>	L	0	2
Nov. 12, 2000	Second	#7	<b>ILLINOIS (OT)</b>	W	1	0
Nov. 17, 2000	Third	–	<b>DARTMOUTH</b>	W	4	0
Nov. 25, 2000	Quarterfinals	–	<b>#12 PORTLAND</b>	<b>L (OT)</b>	<b>0</b>	<b>1</b>
Nov. 16, 2001	First	–	<b>BUCKNELL</b>	W	3	1
Nov. 18, 2001	Second	–	<b>VILLANOVA</b>	W	3	0
Nov. 24, 2001	Third	–	at #13 Connecticut	W	2	0
Nov. 30, 2001	Quarterfinals	–	at #1 North Carolina	L	1	2
Nov. 15, 2002	First	–	vs. Princeton <sup>2</sup>	W	2	0
Nov. 17, 2002	Second	–	at #17 Maryland	W	2	1
Nov. 24, 2002	Third	–	<b>#23 VIRGINIA</b>	W	3	0
Nov. 30, 2002	Quarterfinals	–	at #7 Connecticut	W	2	1
Dec. 6, 2002	Semifinals	–	vs. #9 Portland <sup>3</sup>	L	0	2
Nov. 14, 2003	First	#5	<b>NAVY</b>	W	5	0
Nov. 16, 2003	Second	–	<b>RUTGERS</b>	W	3	1
Nov. 22, 2003	Third	–	<b>#23 TEXAS A&amp;M</b>	W	3	0
Nov. 28, 2003	Quarterfinals	–	at #2 UCLA	L	0	4
Nov. 12, 2004	First	#2	<b>BINGHAMTON</b>	W	6	1
Nov. 14, 2004	Second	–	<b>MARYLAND</b>	L	0	1
Nov. 11, 2005	First	#1	<b>BUCKNELL</b>	W	6	0
Nov. 13, 2005	Second	–	<b>#21 WEST VIRGINIA</b>	W	5	2
Nov. 19, 2005	Third	–	<b>#9 TEXAS A&amp;M</b>	W	4	1
Nov. 25, 2005	Quarterfinals	–	<b>#8 SANTA CLARA</b>	W	2	1
Dec. 2, 2005	Semifinals	–	vs. #1 Portland <sup>4</sup>	T (2OT*)	0	0
Nov. 10, 2006	First	#2	<b>NIAGARA</b>	W	3	1
Nov. 12, 2006	Second	–	<b>VILLANOVA</b>	W	2	0
Nov. 17, 2006	Third	–	<b>#13 BOSTON COLLEGE</b>	W	1	0
Nov. 24, 2006	Quarterfinals	–	at #1 Notre Dame	L	0	4
Nov. 16, 2007	First	#1	<b>MONMOUTH</b>	W	4	0
Nov. 18, 2007	Second	–	<b>HOFSTRA</b>	W (OT)	2	1
Nov. 24, 2007	Third	–	<b>#12 WEST VIRGINIA</b>	L	0	1
Nov. 14, 2008	First	–	at Rutgers	L (2OT)	1	2
Nov. 13, 2009	First	#4	<b>COLGATE</b>	W	5	0
Nov. 15, 2009	Second	–	<b>VIRGINIA</b>	L	2	6
Nov. 12, 2010	First	–	vs. Penn <sup>5</sup>	W	1	0
Nov. 14, 2010	Second	–	at #14 West Virginia	L	1	2
Nov. 11, 2011	First	#4	<b>ARMY</b>	W	1	0
Nov. 18, 2011	Second	–	vs. #12 Marquette <sup>6</sup>	W	4	1
Nov. 20, 2011	Third	–	at #6 Wake Forest	L	2	4
Nov. 10, 2012	First	#1	<b>LIU BROOKLYN</b>	W	4	0
Nov. 16, 2012	Second	–	<b>BOSTON COLLEGE</b>	W	5	2
Nov. 18, 2012	Third	–	<b>MICHIGAN</b>	T (2OT)**	1	1
Nov. 23, 2012	Quarterfinals	–	<b>DUKE</b>	W	1	0
Nov. 30, 2012	Semifinals	–	vs. Florida State <sup>7</sup>	W (OT)	2	1
Dec. 2, 2012	Championship	–	vs. North Carolina <sup>7</sup>	L	1	4
Nov. 15, 2013	First	#4	<b>MONMOUTH</b>	W	3	0
<b>Totals</b>	<b>19 Appearances (56 games)</b>			<b>37-17-2</b>	<b>118</b>	<b>64</b>

**BOLD CAPS** indicate home contests

1 – San Jose, Calif.; 2 – College Park, Md.; 3 – Austin, Texas; 4 – College Station, Texas; 5 – Morgantown, W. Va.; 6 – Winston-Salem, N.C.; 7 – San Diego, Calif.

\* – Portland advanced on penalty kicks, 4-3

\*\* – Penn State advanced on penalty kicks, 3-2

Note: From 2005-present, the top four teams in each region were seeded 1-4



## PENN STATE TOURNAMENT OVERVIEW

Penn State has been selected to participate in its 19th consecutive NCAA Tournament in 2013.

Overall, the Nittany Lions are 13-3 in first round games (PSU received byes from the first round in 1998, 1999 and 2000). The Lions had a seven-game first-round winning streak snapped at Rutgers in 2008, falling to the Scarlet Knights 2-1 in double overtime.

Penn State is a four-time College Cup participant (1999, 2002, 2005, 2012) and has advanced to the quarterfinals nine times, posting a 4-5 record.

The Blue and White advanced to their first-ever National Championship match in 2013, but could not get past ACC powerhouse North Carolina as they finished out the season as national runners-up.

Penn State has amassed an impressive record of 30-6-1 at Jeffrey Field, out scoring opponents 90-28 in NCAA Play.

Penn State has hosted the first and second rounds in the pod format 10 of the last 13 years. In those nine seasons in which PSU hosted, the Lions went 14-2.

## APPEARANCES BY ROUND

### NATIONAL CHAMPIONSHIP GAME 2012

### COLLEGE CUP 1999, 2002, 2005, 2012

### QUARTERFINALS 1997, 1999, 2000, 2001, 2002, 2003, 2005, 2006, 2012

### THIRD ROUND 1998, 1999, 2000, 2001, 2002, 2003, 2005, 2006, 2007, 2011, 2012

### SECOND ROUND 1996, 1998, 1999, 2000, 2001, 2002, 2003, 2004, 2005, 2006, 2007, 2009, 2010, 2011, 2012, 2013

## NCAA TOURNAMENT RECORD

	Record	GF	GA
Overall	37-17-2	118	64
Record at Jeffrey Field	30-6-1	90	28
Away Record	4-8-0	15	26
Neutral Record	4-3-1	10	10
Overtime Games	2-3-2	8	9



## GAMEDAY CENTRAL

### PENN STATE VS. WAKE FOREST

#### SCOUTING WAKE FOREST

Wake Forest enters Friday's match at 11-6-2 overall. The Demon Deacons have advanced to the second round for the ninth time in program history after defeating Morehead State, 2-0, in the first round last Saturday. WFU is 3-8-0 in second round games all-time, most recently defeating Boston University, 2-0, in the 2011 tournament.

The Deacs are lead by Riley Ridgik and Ally Berry. Ridkis has notched a team-high 11 goals to go along with four assists while Berry has tallied five assists and four goals. Goalkeeper Aubrey Bledsoe leads WFU between the pipes, having registered 70 saves and seven shutouts for a goals-against average of .860.

#### SERIES HISTORY vs. THE DEACS

The Nittany Lions and the Demon Deacons have met just twice before with Wake Forest taking away wins on both occasions.

PSU fell to WFU, 4-2, in the third round of the 2011 NCAA Tournament in the most recent meeting between the two programs.

The Lions have posted a 34-17-1 record against current members of the ACC with the most recent victory coming against Florida State last season, 2-1, in the NCAA Tournament semifinals.

#### NCAA TOURNAMENT HISTORY

Penn State is appearing in its 19th straight NCAA Tournament this season. The Nittany Lions advanced to their first-ever National Championship game last season and have made it to the College Cup on four occasions (1999, 2002, 2005 and 2012). PSU has advanced to the quarterfinals nine times and the third round 11 times.

The Lions have hosted 37 NCAA Tournament games on Jeffrey Field and boast a dominant 30-6-1 record at home. Penn State is 13-3 in first round matches and owns an overall tournament record of 37-17-2.

#### LIONS FLY BY HAWKS IN NCAA OPENER

Penn State earned a 3-0 shutout victory over Monmouth last Friday on Jeffrey Field in the first round of the NCAA Tournament. Senior Tani Costa found the back of the net twice, earning her ninth and 10th goals of the season, and Whitney Church added another goal for the Lions. Goalkeeper Britt Eckerstrom collected six saves for the third consecutive game en route to PSU's sixth shutout of the season. The redshirt sophomore has corralled 90 total saves this year. Penn State is now 13-3 in NCAA first round matches.

#### COSTA TALLIES CAREER HIGH

Senior Tani Costa found the back of the net twice in the first round match vs. Monmouth last Friday, tallying her ninth and 10th goals of the season. The 10 goals is the most ever for the forward, surpassing her previous career high of nine goals from 2010.

#### FIVE B1G TEAMS ADVANCE TO 2ND ROUND

Just three of the Big Ten Conference-record eight NCAA qualifying teams fell in the first round of the NCAA Tournament, putting five B1G squads in second round match-ups. Penn State, Nebraska, Michigan, Indiana and Illinois have each advanced to the second round and will play on Friday with hopes to move on to the Sweet 16 on Sunday.

#### PENN STATE NO. 24 IN NSCAA POLL

After 12 weeks of action, the Penn State women's soccer team ranks 24th overall according to the NSCAA rankings. Nebraska (10) and Michigan (11) also represent the Big Ten in the poll while Iowa is just outside of the Top 25, receiving votes.

#### MAKING A B1G IMPACT IN THE TOURNAMENT

The Big Ten is very well represented in this year's tournament with a conference-record eight teams making the cut. The previous record of six squads occurred in 1998, 2002 and 2010.

Joining Penn State in the national competition this season are Nebraska, Michigan, Indiana, Iowa, Illinois, Minnesota and Ohio State. The Cornhuskers will host Southeastern Louisiana while Michigan welcomes Milwaukee and Indiana hosts DePaul. Iowa will travel to Notre Dame, Illinois matches up against Washington State, Minnesota is set to take on Texas Tech and Ohio State will face Kentucky.

#### SIX LIONS EARN ALL-BIG TEN HONORS

The Penn State women's soccer team claimed six All-Big Ten laurels for the 2013 campaign. Senior Maya Hayes and sophomore Mallory Weber headlined the group, earning first team All-Big Ten honors.

Hayes has been named a first team selection for the third consecutive season. A two-time NSCAA first team All-American, Hayes has registered 19 goals this season to go along with five assists for a Big Ten-best 43 points. The West Orange, N.J. native reached a milestone in career goals last the weekend, surpassing the 70-goal mark. She leads all-active players in Division I women's soccer in career goals (71) and is second in the nation in career points (162).

Weber, an All-Big Ten freshman team selection in 2012, is earning first team honors for the first time. The midfielder has posted six goals and seven assists for the Nittany Lions this season and is fourth on the team with 19 points.

NCAA RANKS (As of 11/11/13)		BIG TEN RANKS (As of 11/10/13)		BIG TEN RANKS (Conference only as of 11/2/13)	
TEAM		TEAM		TEAM	
Points	3rd	Points	1st	Points	1st
Scoring Off.	4th	Goals	1st	Goals	1st
Assists	T-5th	Assists	1st	Assists	1st
W-L-T Pct.	T-42nd	Shots	1st	Shots	1st
		Goals Allowed	9th	Goals Allowed	6th
		GAA	8th	GAA	6th
<u>MAYA HAYES</u>		Saves	5th	Saves	11th
Points	6th	Shutouts	6th	Shutouts	T-6th
PPG	T-11th	Fouls	8th	Fouls	10th
Goals	7th	Corner Kicks	1st	Corner Kicks	1st
GPG	13th				
		<u>MAYA HAYES</u>		<u>MAYA HAYES</u>	
		Points	1st	Points	2nd
<u>RAQUEL RODRIGUEZ</u>		PPG	2nd	PPG	2nd
Assists	T-38th	Goals	2nd	Goals	2nd
		GPG	2nd	GPG	2nd
		<u>RAQUEL RODRIGUEZ</u>		<u>RAQUEL RODRIGUEZ</u>	
		Assists	T-4th	Assists	T-5th
				APG	T-7th
		<u>TANI COSTA</u>		<u>TANI COSTA</u>	
		Points	7th	Goals	T-4th
		Goals	T-7th		



## BIG TEN STANDINGS

Team	Big Ten	Pts.	Overall
Nebraska	10-1-0	30	19-3-1
Michigan	9-1-1	28	16-3-1
<b>Penn State</b>	<b>7-4-0</b>	<b>21</b>	<b>15-6-1</b>
Indiana	6-5-0	18	15-6-1
Iowa	5-5-1	16	15-7-1
Wisconsin	5-5-1	16	10-7-2
Illinois	5-5-1	16	10-8-3
Minnesota	4-5-2	14	11-8-2
Ohio State	4-5-2	14	10-7-3
Michigan State	3-8-0	9	9-8-2
Purdue	3-8-0	9	8-10-1
Northwestern	1-10-0	3	3-14-2

Senior Tani Costa is Penn State's representative on the Sportsmanship Award Honoree list. The forward is second on the team in points, goals and assists with 22, eight and six, respectively.

The Sportsmanship Award is granted to a student-athlete who has distinguished themselves through sportsmanship and ethical behavior while also maintaining good academic standing and demonstrating good citizenship outside of the sport.

### HAYES FINALIST FOR SENIOR CLASS AWARD

Penn State senior Maya Hayes has been selected as one-of-10 finalists for the 2013 Senior CLASS Award in collegiate soccer. Hayes is the first PSU women's soccer student-athlete in the seven-year history of the award to be named a finalist.

The Senior CLASS (Celebrating Loyalty and Achievement for Staying in School) Award is presented yearly to a Division I senior student-athlete who has notable achievements in four areas of excellence - community, classroom, character and competition.

Penn State fans can vote for Hayes at the Senior Class Award website. Fans can vote DAILY for their top three choices and are encouraged to vote often as fan voting is a key factor in determining the winner of the award.

Hayes leads the Big Ten and is sixth in the nation in points this season with 44 through 22 matches. The forward is also second in the league and seventh in the country in goals (19) and has notched six assists.

A two-time NSCAA first team All-America selection, Hayes was second on the team in goals (16) and points (38) in 2012 despite missing the first seven games while participating in the U20 World Cup with the U.S. U20 Women's National Team. She led the nation in scoring in her sophomore season, registering 31 goals and eight assists for a Big Ten-record 70 points.

A kinesiology major, Hayes has received several academic awards during her time as a Nittany Lion. She was a 2011 CoSIDA/Captial One third-team Academic All-America selection and CoSIDA/Capital One first team All-District selection. Hayes was included on the Dean's List for the spring 2013 semester and was inducted into Penn State's Athletic Honor Society, Spiritus Leoninus. She is also a two-time Academic All-Big Ten selection.

Fans are encouraged to vote on the Senior CLASS Award website through November 25. Fan votes will be combined with media and Division I head coaches' votes to determine the winner. The Senior CLASS Award winners will be announced during the 2013 NCAA Men's and Women's College Cup championships in December.

### IN THE BOOKS

Forward Maya Hayes solidified her place in the Penn State record books after notching the second most goals (31) and most points (70) in a single season during her sophomore campaign but she is not stopping there. The senior is now No. 3 on the career goals ledger after netting 19 so far this season, bringing her total to 71 in 89 games.

All-American Tiffany Weimer (2002-05) and MAC Hermann Trophy winner Christie Welsh (1999-02) are atop the standings with an impressive 91 and 82 goals, respectively.

Hayes is also third on the career points record list with 163. Welsh leads the category with a remarkable 216 points and Weimer follows closely with 214.

### HOME FIELD DOMINANCE

The Lions are a force to be reckoned with when playing at Jeffrey Field, having amassed a home record of 191-22-11 (.877). At 96-4-4 (.942), the Nittany Lions have the best Big Ten home record in the conference.

PSU also leads the league in attendance, averaging 1,652 fans per game this season. The program with the next highest attendance average is Michigan at 883 fans per match.

Senior Taylor Schram and junior Whitney Church earned second team All-Big Ten laurels for their efforts on the pitch this season. Schram is claiming second team accolades for the second time as she was also named to the second team in 2011. The midfielder is fifth on the team in points (14) after tallying four goals and six assists.

Church earns all-conference honors for the second-straight year after logging over 1,500 minutes for the Nittany Lion backline this season. The defender has found the back of the net on three occasions and has posted two game-winning goals and one assist for PSU.

Freshman Brittany Basinger was honored on the All-Big Ten freshman team for her defensive efforts. The defender has started every match for the Nittany Lions this season, registering two assists, and has recorded over 1,400 minutes on the playing field.

## PROBABLE STARTERS

No.	Field Players	Ht.	Elig.	Pos.	GP-GS	Min.	G	A	Pts.	Sh	GW	Notes
1	Brittany Basinger	5-7	Fr.	D	22-22	1972	0	2	2	6	0	All-Big Ten Freshman Team selection
3	Emily Hurd	5-7	R-Jr.	M	22-21	1504	2	7	11	37	0	Tied for third on the team in assists with seven
5	Maya Hayes	5-7	Sr.	F	22-22	1719	19	6	44	79	4	Leads team in points (43) and goals (19)
11	Raquel Rodriguez	5-6	So.	M	22-22	1486	6	9	21	45	3	Leads team in assists (9) and is fourth in points (21)
14	Kori Chapic	5-7	Jr.	M	22-22	1723	2	3	7	25	1	Has started all 22 matches this season
16	Mallory Weber	5-6	So.	F	22-22	1539	7	8	22	46	2	Notched her seventh goal of the season vs. Wisconsin
17	Whitney Church	5-5	Jr.	D	22-20	1855	4	1	9	22	1	Netted a goal in the first round match vs. Monmouth
19	Taylor Schram	5-5	Sr.	M	22-22	1634	5	8	18	50	2	Tallied two asst. in the first round match vs. Monmouth
20	Salina Williford	5-4	Fr.	D	22-17	1502	0	0	0	9	0	Has made 17 starts for PSU this season
23	Bri Hovington	5-4	Sr.	D	20-20	1496	0	0	0	3	0	Has started all but two matches this season

No.	Goalkeeper	Ht.	Yr.	GP-GS	Min	Sv.	Pct.	GA	GAA	SHO	Rec.	Notes
28	Britt Eckerstrom	5-10	R-So.	22-22	1944:15	90	.756	29	1.34	3	15-6-1	Third in the Big Ten in saves (90)

## TOP RESERVES

No.	Field Players	Ht.	Elig.	Pos.	GP-GS	Min.	G	A	Pts.	Sh	GW	Notes
7	Corey Persson	5-3	So.	M	20-2	569	1	0	2	2	0	Has seen action in all but two games this season
12	Kindrah Kohne	5-5	Jr.	M	19-0	449	1	0	2	7	0	Scored her first career goal vs. Purdue (9/26)
22	Tani Costa	5-8	R-Sr.	F	21-7	1229	10	7	25	52	2	Notched two goals vs. Monmouth
26	Emily Carrollo	5-5	GS	F/M	19-1	526	0	2	2	8	0	Has seen action in all but three games this season

No.	Goalkeeper	Ht.	Yr.	GP-GS	Min	Sv.	Pct.	GA	GAA	SHO	Rec.	Notes
0	Meghan Kaminski	6-1	So.	4-0	77:52	3	1.000	0	0.00	0	0-0-0	Has seen action in four matches this season



## TWO NAMED TO HERMANN WATCH LIST

Penn State women's soccer senior forward Maya Hayes and junior defender Whitney Church have been named to the Missouri Athletic Club's Hermann Trophy Watch List for the 2013 season.

The MAC Hermann Trophy is collegiate soccer's most prestigious award presented annually to one male and one female athlete. The winners will be announced Friday, Jan. 10, 2014 at the trophy presentation banquet at the Missouri Athletic Club in St. Louis. Christie Welsh is the only Penn State athlete to win the award (2001).

This is Hayes' second consecutive year on the watch list and Church's first appearance. Hayes was a finalist for the award in 2011 and a semifinalist in 2012. Hayes and Church are joined by Illinois' Vanessa DiBernardo as Big Ten honorees for the award.

Hayes is a two-time NSCAA first team All-America selection and has earned back-to-back Big Ten Forward of the Year honors. She finished second on the team in goals (16) and points (38) in 2012, despite missing the first seven games of the season while participating in the U20 World Cup with the U.S. U20 National Team.

Church received NSCAA first team All-Great Lakes recognition and Big Ten Defender of the Year honors in 2012. She led the Nittany Lion defensive attack, starting all 27 contests and logging over 2,000 minutes.

## SOCIAL MEDIA

For complete coverage of Penn State women's soccer, please visit <http://www.GoPSUsports.com/sports/w-soccer>. Follow PSU women's soccer on Twitter and Instagram: @PennStateWSOC. Penn State women's soccer is also on Facebook: [www.facebook.com/PSUWomensSoccer](http://www.facebook.com/PSUWomensSoccer).

## INDIVIDUAL HONORS & AWARDS

### Brittany Basinger

All-Big Ten Freshman Team  
TDS Preseason Best XI all-freshman team

### Whitney Church

Second Team All-Big Ten  
TDS National Team of the Week (9/24)  
Big Ten Offensive POW (9/23)  
Philly Soccer News POW (9/23)  
MAC Hermann Trophy Watch List  
TDS Preseason Best XI second team  
Big Ten Player to Watch

### Britt Eckerstrom

Big Ten All-Tournament Team

### Tani Costa

Big Ten Sportsmanship Award Honoree

### Raquel Rodriguez

TopDrawerSoccer National Team of the Week (10/1)  
Big Ten Offensive POW (9/30)  
Philly Soccer News POW (9/30)  
Big Ten Player to Watch

### Maya Hayes

First Team All-Big Ten  
TDS Nat'l Team of the Week (10/22, 11/5)  
Senior CLASS Award finalist (10/16)  
Disney Soccer/NSCAA National POW (9/17, 10/22)  
Big Ten Offensive POW (9/16, 10/21, 11/4)  
Philly Soccer News POW (9/16, 10/21)  
MAC Hermann Trophy Watch List  
Senior CLASS Award Candidate  
Soccer America Preseason All-American  
TDS Preseason Best XI first team  
Big Ten Player to Watch

### Taylor Schram

Second Team All-Big Ten

### Mallory Weber

First Team All-Big Ten

## PENN STATE CAREER RECORDS

### SHOTS

1.	431	Christie Welsh	97 gms.	1999-02
2.	381	Katie Schoepfer	92 gms.	2006-09
3.	356	Tiffany Weimer	97 gms.	2002-05
4.	347	Joanna Lohman	101 gms.	2000-03
5.	317	Rachel Hoffman	87 gms.	1994-97
6.	314	Christine Nairn	94 gms.	2009-12
7.	<b>289</b>	<b>Maya Hayes</b>	<b>89 gms.</b>	<b>2010-</b>
9.	283	Heidi Drummond	98 gms.	2000-03
9.	253	Danielle Toney	99 gms.	2007-10
10.	230	Kelly Convey	93 gms.	1996-99

### GOALS

1.	91	Tiffany Weimer	97 gms.	2002-05
2.	82	Christie Welsh	97 gms.	1999-02
3.	<b>71</b>	<b>Maya Hayes</b>	<b>89 gms.</b>	<b>2010-</b>
4.	58	Rachel Hoffman	87 gms.	1994-97
5.	56	Heidi Drummond	98 gms.	2000-03
6.	48	Katie Schoepfer	92 gms.	2006-09
7.	44	Carole Dutchka	87 gms.	1995-98
8.	41	Joanna Lohman	101 gms.	2000-03
9.	38	Danielle Toney	99 gms.	2007-10
10.	34	Christine Nairn	93 gms.	2009-12

### GAME-WINNING GOALS

1.	27	Christie Welsh	97 gms.	1999-02
	27	Tiffany Weimer	97 gms.	2002-05
3.	19	Heidi Drummond	98 gms.	2000-03
4.	18	Katie Schoepfer	92 gms.	2006-09
	18	Rachel Hoffman	87 gms.	1994-97
6.	17	Carole Dutchka	87 gms.	1995-98
	<b>17</b>	<b>Maya Hayes</b>	<b>89 gms.</b>	<b>2010-</b>
8.	15	Joanna Lohman	101 gms.	2000-03
9.	12	Danielle Toney	99 gms.	2007-10
10.	12	Christine Nairn	93 gms.	2009-12

### ASSISTS

1.	52	Christie Welsh	97 gms.	1999-02
2.	41	Christine Nairn	94 gms.	2009-12
3.	37	Joanna Lohman	101 gms.	2000-03
4.	32	Tiffany Weimer	97 gms.	2002-05
5.	31	Rachel Hoffman	87 gms.	1994-97
6.	29	Stephanie Smith	101 gms.	2000-03
7.	26	Katie Schoepfer	92 gms.	2006-09
		Heidi Drummond	98 gms.	2000-03
		Kelly Convey	93 gms.	1996-99
10.	25	Liz Villamil	87 gms.	1994-97
--	<b>24</b>	<b>Taylor Schram</b>	<b>83 gms.</b>	<b>2010-</b>
--	<b>21</b>	<b>Maya Hayes</b>	<b>89 gms.</b>	<b>2010-</b>

### POINTS

1.	216	Christie Welsh	97 gms.	1999-02
2.	214	Tiffany Weimer	97 gms.	2002-05
3.	<b>163</b>	<b>Maya Hayes</b>	<b>89 gms.</b>	<b>2010-</b>
4.	147	Rachel Hoffman	87 gms.	1994-97
5.	138	Heidi Drummond	98 gms.	2000-03
6.	122	Katie Schoepfer	92 gms.	2006-09
7.	119	Joanna Lohman	101 gms.	2000-03
8.	108	Carole Dutchka	87 gms.	1995-98
	109	Christine Nairn	94 gms.	2009-12
10.	96	Danielle Toney	99 gms.	2007-10

### GAMES PLAYED

1.	104	Bonnie Young		1997-01
2.	103	Megan Mills		1998-01
3.	101	Joanna Lohman		2000-03
	101	Stephanie Smith		2000-03
5.	100	Emily Oleksiuk		1998-01
6.	99	Danielle Toney		2007-10
7.	97	Luanne Strom		1997-00
	97	Tiffany Weimer		2002-05
	97	Christie Welsh		1999-02
10.	96	Courtney Lawson		1996-99



## PENN STATE SEASON RECORDS

### SHOTS

124	Tiffany Weimer	23 gms.	2004
123	Christie Welsh	26 gms.	2001
115	Joanna Lohman	25 gms.	2003
114	Christie Welsh	24 gms.	2002
104	Katie Schoepfer	24 gms.	2008
104	Katie Schoepfer	24 gms.	2007

### GAME-WINNING GOALS

13	Tiffany Weimer	25 gms.	2005
<b>9</b>	<b>Maya Hayes</b>	<b>26 gms.</b>	<b>2011</b>
9	Christie Welsh	26 gms.	1999
8	Joanna Lohman	25 gms.	2003
7	Katie Schoepfer	24 gms.	2007
7	Christie Welsh	21 gms.	2000
7	Carole Dutchka	26 gms.	1998

### GOALS

32	Tiffany Weimer	25 gms.	2005
<b>31</b>	<b>Maya Hayes</b>	<b>26 gms.</b>	<b>2011</b>
27	Christie Welsh	26 gms.	1999
26	Tiffany Weimer	23 gms.	2004
25	Christie Welsh	26 gms.	2001
21	Tiffany Weimer	25 gms.	2003

### SAVES

132	Emily Oleksiuk	25 gms.	1998
115	Emily Oleksiuk	26 gms.	1999
115	Emily Oleksiuk	24 gms.	2000

### ASSISTS

18	Christie Welsh	26 gms.	2001
14	Joanna Lohman	26 gms.	2001
13	Christine Nairn	25 gms.	2011
13	Christie Welsh	26 gms.	1999
12	Christine Nairn	27 gms.	2012
<b>12</b>	<b>Taylor Schram</b>	<b>24 gms.</b>	<b>2011</b>
12	Tiffany Weimer	23 gms.	2004
12	Stephanie Smith	26 gms.	2000

### SHUTOUTS

15.4	Emily Oleksiuk	24 gms.	2000
11	Erin McLeod	21 gms.	2004
10	Amanda Brown	23 gms.	2003
9.85	Emily Oleksiuk	26 gms.	1999
9	Erin McLeod	24 gms.	2005

### WINS

22	Erin McLeod	24 gms.	2005
21	Erin McNulty	26 gms.	2011
21	Emily Oleksiuk	25 gms.	1999
20	Emily Oleksiuk	26 gms.	2001
20	Emily Oleksiuk	26 gms.	2000

### POINTS

<b>70</b>	<b>Maya Hayes</b>	<b>26 gms.</b>	<b>2011</b>
69	Tiffany Weimer	25 gms.	2005
68	Christie Welsh	26 gms.	2001
67	Christie Welsh	26 gms.	1999
64	Tiffany Weimer	23 gms.	2004
51	Tiffany Weimer	25 gms.	2003
46	Christine Nairn	27 gms.	2012

### GOALS AGAINST AVG.

0.41	Emily Oleksiuk	2222:40	10 GA	2000
0.43	Erin McLeod	1885:59	9 GA	2004
0.62	Alyssa Naeher	2176:18	15 GA	2007
0.75	Emily Oleksiuk	2168:52	18 GA	2001

## 2013 PENN STATE WOMEN'S SOCCER ROSTER

No.	Name	Pos.	Elig.	Ht.	Hometown	High School	Pronunciation
0	Meghan Kaminski	GK	So.	6-1	Doylestown, Pa.	Central Bucks South	
00	Lexi Golestani	GK	Fr.	5-6	Montgomery, N.J.	The Hun School of Princeton	GOAL-es-tawn-EE
1	Brittany Basinger	D	Fr.	5-7	Fairfax, Va.	Woodgrove	BAY-singer
2	Megan Ritchey	M	So.	5-3	State College, Pa.	State College Area	
3	Emily Hurd	M	R-Jr.	5-7	Sammamish, Wash.	Eastlake	
4	Lexi Marton	D	R-Sr.	5-11	Aurora, Ontario	The Country Day School	
5	Maya Hayes	F	Sr.	5-7	West Orange, N.J.	Newark Academy	
6	Anna Witte	D	Fr.	5-4	Morrisville, N.C.	Cary	witt-EE
7	Corey Persson	M	So.	5-3	Danvers, Mass.	Danvers	
8	Jenna Kalwa	D/M	So.	5-5	Pennington, N.J.	Hopewell Valley Central	
9	Andrea Gunderson	D	Fr.	5-6	West Chester, Pa.	WC Rustin	
11	Raquel Rodriguez	F/M	So.	5-6	San Jose, Costa Rica	International Christian	
12	Kindrah Kohne	M	Jr.	5-5	Homer, N.Y.	Homer	KO-nee
14	Kori Chapic	F/M	Jr.	5-7	Novelty, Ohio	West Geauga	CHAP-ick
15	Erin Kehoe	D	Sr.	5-4	Crystal Lake, Ill.	Prairie Ridge	
16	Mallory Weber	F	So.	5-6	Novi, Mich.	Northville	
17	Whitney Church	D	Jr.	5-5	Ashburn, Va.	Broad Run	
18	Angela Widlacki	D	Fr.	5-5	Naperville, Ill.	Naperville North	
19	Taylor Schram	F/M	Sr.	5-5	Canonsburg, Pa.	Canon-McMillan	SHRAM
20	Salina Williford	M/D	Fr.	5-4	Wayne, Pa.	Conestoga	
21	Teddy Chase	D	So.	5-7	Wayne, Pa.	The Shipley School	
22	Tani Costa	F	R-Sr.	5-8	Honolulu, Hawaii	Kalani	TAH-nee
23	Bri Hovington	D	Sr.	5-4	Lothian, Md.	Southern	
24	Liv Brandy	D	Fr.	5-4	Gibsonia, Pa.	Home Schooled	
25	Mallory Peterson	F/M	So.	5-5	Clinton Corner, N.Y.	Millbrook	
26	Emily Carrollo	F/M	GS	5-5	Sussex, N.J.	Pope John Regional	KA-roll-oh
27	Maggie Chapman	M	Fr.	5-4	Dumfries, Va.	Forest Park	
28	Britt Eckerstrom	GK	R-So.	5-10	Germantown, Md.	Northwest	
30	Chloe Buehler	GK	Fr.	5-7	Perrysburg, Ohio	Perrysburg	BYOO-lur

**Head Coach:** Erica Walsh (Seventh year)

**Assistant Coaches:** Ann Cook (Seventh year), Tim Wassell (Fourth year)

**Director of Operations:** Kara Lowery (First year)

**Volunteer Assistant:** Mike Eckberg (First Year)



## THE LAST TIME

### PENN STATE...

Scored 3 goals	11/15/13	vs. Monmouth (3-0)
Scored 4 goals	10/17/13	vs. Ohio State (4-2)
Scored 5 goals	10/20/13	vs. Illinois (5-0)
Scored 6 goals	9/26/13	vs. Purdue (6-1)
Scored 7 goals	9/1/02	vs. Pittsburgh (7-2)
Scored 8 goals	10/9/05	vs. Iowa (8-0)
Scored 9 goals	9/25/01	vs. Bucknell (9-2)
Allowed 0 goals	11/15/13	vs. Monmouth (3-0)
Allowed 1 goal	11/8/13	vs. Iowa (0-1)
Allowed 2 goals	10/17/13	vs. Ohio State (4-2)
Allowed 3 goals	10/27/13	at #21 Nebraska (2-3, 2OT)
Allowed 4 goals	12/2/12	vs. #13 North Carolina (1-4)
Allowed 5+ goals	8/30/13	vs. Virginia (1-5)
Won in overtime	11/30/12	vs. #7 Florida State (2-1)
Lost in overtime	11/6/11	vs. #18 Illinois (1-2)
Won in double overtime	9/20/13	vs. Northwestern (3-2)
Lost in double overtime	10/27/13	at #21 Nebraska (2-3)
Tied in double overtime	8/23/12	vs. West Virginia (2-2, 2OT)
Was ranked in the NSCAA Top 25	11/12/13	24th
Was ranked in the NSCAA Top 10	10/1/13	7th
Played a NSCAA Top 10 Team	8/30/13	vs. #5 Virginia (1-5)
Played a NSCAA Top 25 Team	10/13/13	vs. #19 Michigan (0-1)
Defeated a NSCAA Top 10 Team	11/30/12	vs. #7 Florida State (2-1)
Defeated a NSCAA Top 25 Team	10/6/13	at #18 Wisconsin (2-1)
Attempted less than 10 shots	11/6/13	8 vs. Wisconsin (2-0)
Attempted 10-19 shots	10/27/13	19 at #21 Nebraska (2-3, 2OT)
Attempted 20-29 shots	11/15/13	25 vs. Monmouth (3-0)
Attempted 30-39 shots	9/10/13	30 at Bucknell (6-0)
Attempted 40+ shots	11/7/10	42 vs. Michigan (1-0)
Allowed 4 or less shots	9/26/13	1 vs. Purdue (6-1)
Allowed 5-9 shots	11/1/13	5 at Michigan State (3-0)
Allowed 10-15 shots	11/15/13	11 vs. Monmouth (3-0)
Allowed 16+ shots	10/25/13	16 at Iowa (2-3)
Scored 15-24 points	9/26/13	15 vs. Purdue (6-1)
Scored 25+ points	9/25/01	26 vs. Bucknell (9-2)
Made 10-14 saves	10/31/12	14 vs. Iowa (2-0)
Made 15+ saves	9/2/95	17 vs. James Madison (4-2)
Had 10+ corner kicks	11/15/13	10 vs. Monmouth (3-0)
Allowed 10+ corner kicks	9/12/10	10 at #4 Portland (2-4)
Tallied 5-7 assists	10/7/12	5 vs. Indiana (5-2)
Tallied 8+ assists	9/10/13	8 at Bucknell (6-0)
Won an NCAA Tourney game	11/15/13	vs. Monmouth (3-0)
Lost an NCAA Tourney game	12/2/12	vs. #13 North Carolina (1-4)
Won a road NCAA Tourney game	11/30/02	at Connecticut (2-1)
Won a neutral NCAA Tourney game	11/30/12	vs. #7 Florida State (2-1)
Won penalty kick shootout	11/18/12	vs. Michigan (1-1, 3-2 PKs)
Lost penalty kick shootout	11/9/07	vs. Ohio State (2-2, 4-5 PKs)

### A PENN STATE PLAYER...

Scored 2 goals	11/15/13	Tani Costa vs. Monmouth (3-0)
Scored 3 goals	9/4/11	Maya Hayes at Pittsburgh (3-0)
Scored 4 goals	10/7/01	Christie Welsh vs. Michigan (6-2)
Had 2 assists	11/15/13	Taylor Schram vs. Monmouth (3-0)
Had 3 assists	9/13/13	Tani Costa at Oklahoma St. (4-2)
Had 4 assists	9/17/03	Ali Krieger vs. Bucknell (6-0)
Had 5-9 points	9/1/13	Maya Hayes 5 vs. La Salle (5-1)
Had 10+ points	10/7/01	10, Christie Welsh vs. Michigan (6-2)
Attempted 10+ shots	11/11/11	10, Christine Nairn vs. Army (1-0)
Made 10-14 saves	10/31/12	14, Erin McNulty vs. Iowa (2-0)
Made 15+ saves	9/3/94	15, Robin Van Praag at Minnesota (3-2)
Scored in the Big Ten Tournament	11/6/13	Mallory Weber vs. Wisconsin (2-0)
Had a Big Ten Tourney shootout	11/6/13	Britt Eckerstrom vs. Wisconsin (2-0)
Scored in an NCAA game	11/15/13	Whitney Church vs. Monmouth (3-0)
Had an NCAA game shootout	11/15/13	Britt Eckerstrom vs. Monmouth (3-0)

## MISCELLANEOUS STATISTICS

### PENN STATE is...

191-22-11... All-time at Jeffrey Field  
96-4-4... All-time vs. Big Ten at Jeffrey Field

### In 2013...

9-1-1... at home  
5-4-0... on the road  
1-1-0... at neutral site  
1-1-1... in overtime  
9-4-1... when wearing white  
6-2-0... when wearing blue  
12-0-0... when leading at halftime  
1-3-1... when trailing at halftime  
2-2-0... when tied at halftime  
13-2-0... when scoring first goal  
1-4-1... when opponent scores first goal  
14-4-1... when out-shooting opponent  
1-2-0... when out-shot by opponent  
0-0-0... when shooting the same # of shots  
10-5-1... when taking more corner kicks  
5-1-0... when allowing more corner kicks  
0-0-0... when taking the same corner kicks  
1-3-0... against ranked opponents  
14-3-1... against unranked opponents  
0-1-0... against higher-ranked opponents  
1-2-0... against lower-ranked opponents  
0-3-0... when scoring 0 goals  
1-0-0... when scoring 1 goal  
3-2-1... when scoring 2 goals  
11-0-0... when scoring 3+ goals  
6-0-0... when allowing 0 goals  
5-3-0... when allowing 1 goal  
3-0-1... when allowing 2 goals  
0-3-0... when allowing 3+ goals  
1-0-0... on Tuesday  
1-0-0... on Wednesday  
2-0-0... on Thursday  
6-3-1... on Friday  
0-0-0... on Saturday  
5-3-0... on Sunday  
14-6-1... on grass  
1-0-0... on turf  
7-2-1... at night  
8-4-0... during the day  
1-0-0... vs. Atlantic 10  
0-1-0... vs. ACC  
0-0-0... vs. Big East  
8-5-0... vs. Big Ten  
1-0-1... vs. Big 12  
1-0-0... vs. Conference USA  
0-0-0... vs. MAC  
1-0-0... vs. MAAC  
0-0-0... vs. Mountain West  
0-0-0... vs. NEC  
0-0-0... vs. Pac-12  
2-0-0... vs. Patriot League  
0-0-0... vs. WAC  
1-0-0... when a freshman scores  
1-3-0... in one-goal games





## WEEKLY RANKINGS

	PS	1	2	3	4	5	6	7	8	9	10	11	F
NSCAA	4	9	14	13	9	8	7	11	17	16	22	20	24
NCAA RPI	NA	NA	NA	NA	NA	7	3	2	5	4	9	9	9
TopDrawerSoccer	5	9	9	9	7	7	7	8	10	9	19	19	23
Soccer America	2	7	16	15	11	9	8	10	21	17	NR	NR	NR

## NATIONAL POLLS

### NSCAA TOP 25 (as of Nov. 12)

#	Team	Record	Last
1	Virginia	20-1-0	1
2	UCLA	17-1-2	2
3	Florida State	16-1-3	3
4	Virginia Tech	15-3-2	6
5	North Carolina	17-4-0	4
6	Florida	17-4-1	5
7	Portland	16-2-1	12
8	Marquette	18-3-0	13
9	Santa Clara	14-4-1	8
10	Nebraska	18-3-1	18
11	Michigan	16-3-1	7
12	West Virginia	16-3-2	16
13	Texas A&M	17-4-1	21
14	South Carolina	16-3-2	9
15	Denver	18-1-1	14
16	UCF	16-2-4	17
17	Stanford	13-5-1	10
18	Texas Tech	17-2-2	11
19	BYU	14-4-1	19
20	Georgetown	15-2-2	15
21	Washington St.	15-3-3	24
22	Mississippi	15-5-2	22
23	Notre Dame	11-7-1	23
24	<b>Penn State</b>	<b>14-6-1</b>	<b>20</b>
25	Boston U	14-3-4	25

**Also Receiving Votes:** Iowa (42), California (32), Harvard (9), Utah (4), Seattle (2), Arizona State (1), Colorado College (1), La Salle (1), Colorado (1)

### NCAA RPI (as of Nov. 11)

#	Team	Record
1	Virginia	20-1-0
2	Marquette	18-3-0
3	Florida State	18-1-3
4	Nebraska	18-3-1
5	North Carolina	17-4-0
6	UCLA	17-1-2
7	Virginia Tech	16-4-2
8	Michigan	15-3-1
9	<b>Penn State</b>	<b>14-6-1</b>
10	Florida	17-4-1
11	UCF	16-2-4
12	Georgetown	15-2-2
13	South Carolina	16-3-2
14	Denver	18-1-1
15	West Virginia	16-3-2
16	Texas A&M	17-4-1
17	Portland	16-2-1
18	Washington St.	14-3-3
19	Colorado College	15-4-2
20	Santa Clara	14-4-1
21	Stanford	13-5-1
22	Louisville	12-5-1
23	BYU	14-4-1
24	Wake Forest	10-6-2
25	Minnesota	11-7-2

### SOCCER AMERICA TOP 25 (as of Nov. 12)

#	Team	Record	Last
1	Florida State	18-1-3	3
2	UCLA	17-1-2	2
3	Virginia	20-1-0	1
4	Virginia Tech	16-4-2	5
5	North Carolina	17-4-0	4
6	Marquette	18-3-0	6
7	Nebraska	18-3-1	14
8	Texas A&M	17-4-1	20
9	West Virginia	16-3-2	17
10	Portland	16-2-1	15
11	Michigan	15-3-1	7
12	Georgetown	15-2-2	8
13	Stanford	13-5-1	9
14	Santa Clara	14-4-1	10
15	Florida	18-4-1	11
16	UCF	16-2-4	12
17	Texas Tech	17-2-2	13
18	BYU	14-4-1	19
19	Notre Dame	11-7-1	16
20	South Carolina	16-3-2	18
21	Denver	18-1-1	21
22	Washington St.	14-3-3	22
23	Wake Forest	10-6-2	24
24	Colorado Coll.	15-4-2	25
25	Iowa	15-6-1	NR

### TOP DRAWER SOCCER TOP 25 (as of Nov. 18)

#	Team	Record
1	Florida State	19-1-3
2	UCLA	18-1-2
3	Virginia	21-1-0
4	Virginia Tech	17-4-2
5	North Carolina	18-4-0
6	Portland	17-2-1
7	West Virginia	16-3-3
8	Florida	19-4-1
9	Nebraska	19-3-1
10	Michigan	16-3-1
11	South Carolina	17-3-2
12	Texas A&M	18-4-1
13	Georgetown	16-2-2
14	Stanford	14-5-1
15	Texas Tech	18-2-2
16	BYU	15-4-1
17	Santa Clara	15-4-1
18	UCF	16-3-4
19	<b>Penn State</b>	<b>15-6-1</b>
20	Marquette	18-4-0
21	Denver	18-2-1
22	Colorado Coll.	15-4-3
23	Boston U	15-3-4
24	Mississippi	16-5-2
25	Washington State	14-3-4

**Others Considered:** California, Notre Dame, Kentucky, Colorado, Indiana



## PSU 2, WVU 2 (2 OT)

University Park, Pa. (Jeffrey Field)  
Aug. 25, 2013

### Soccer Box Score (Final)

The Automated ScoreBook For Soccer  
WVU vs #4 PSU (Aug 23, 2013 at University Park, Pa.)

WVU (0-0-1) vs.  
PSU (0-0-1)  
Date: Aug 23, 2013 • Attendance: 3742  
Weather:

WVU	Po #	Player	Sh	SO	G	A	Min
gk	23	KEANE, SARA	-	-	-	-	110
d	3	EMANUS, LEAH	-	-	-	-	110
f	7	MALONEY, KELSIE	2	1	1	1	90
f	9	SILVA, FRANCES	1	1	1	1	110
d	10	CROWDER, JESS	-	-	-	-	110
m	22	BANUELOS, BRYCE	1	1	-	-	68
d	24	BLACK, CARLY	-	-	-	-	65
m	27	HILL, AMANDA	-	-	-	-	110
m	32	BLOSSER, KARA	4	1	-	-	93
d	88	BUCHANAN, KADEISH	-	-	-	-	110
f	99	SCHWINDL, KATE	1	-	-	-	77
-- Substitutes --							
	1	NEUHOUSE, MICHELL	-	-	-	-	45
	6	PRICE, CARI	-	-	-	-	5
	11	LAWRENCE, ASHLEY	1	1	-	-	54
	14	STEYN, ANNALIKA	-	-	-	-	23
	20	CONNELLY, ALI	-	-	-	-	5
	21	BROADWATER, TESSA	-	-	-	-	22
Totals							

# Goalkeepers	Min	GA	Saves
23 KEANE, SARA	110:00	2	8

Shots by period	1	2	OT	O2	Total
WVU	2	7	2	1	12
PSU	8	10	1	2	21

Corner kicks	1	2	OT	O2	Total
WVU	2	2	2	0	6
PSU	3	8	0	0	11

#### Scoring summary:

No.	Time	Team	Goal scorer	Assist	Description
1.	4:17	WVU	SILVA, FRANCES (1)	MALONEY, KELSIE	cross to middle
2.	69:52	WVU	MALONEY, KELSIE (1)	LAWRENCE, ASHLEY	header off cross in the middle
3.	80:36	PSU	Schram, Taylor (1)	Hayes, Maya	shot from 12 yds out
4.	81:48	PSU	Hayes, Maya (1)	Weber, Mallory	cross from weber to hayes to beat keeper

#### Cautions and ejections:

WVU-KEANE, SARA (0-0-1). PSU-Eckerstrom, Britt (0-0-1).

Stadium: Jeffrey Field

Officials: Referee: Tim Snyder; Asst. Referee: Dustin Killick; Mike Rossi;

Alt. Official: Stan Latta;

Offsides: WVU 2, PSU 4.

Official's signature



## PSU 2, HOFSTRA 1

University Park, Pa. (Jeffrey Field)  
Aug. 27, 2013

### Soccer Box Score (Final)

The Automated ScoreBook For Soccer  
HOFSTRA vs #4 Penn State (Aug 25, 2013 at University Park, Pa.)

HOFSTRA (0-2-0) vs.  
Penn State (1-0-1)  
Date: Aug 25, 2013 • Attendance: 732  
Weather:

HOFSTRA	Po #	Player	Sh	SO	G	A	Min
1	Morphitis, Emily	-	-	-	-	45	
2	Kerns, Tara	-	-	-	-	90	
6	Moyer, Ingrid	-	-	-	-	90	
7	Staplehurst, Ruby	2	2	-	-	90	
8	Dale, Chloe	-	-	-	-	47	
9	Stobbs, Amber	2	1	-	-	74	
10	Farrilla, Brittany	-	-	-	-	90	
17	Mulholland, Jill	1	1	-	-	90	
19	Scolarici, Sam	1	-	-	-	83	
21	Galton, Leah	2	2	1	-	73	
23	Dudley, Caylin	-	-	-	-	83	
-- Substitutes --							
	13	Molleda, Jeannine	1	1	-	43	
	16	Echeverry, Lulu	-	-	-	28	
	15	Ulrich, Mallory	-	-	-	7	
	25	Agudelo, Emily	-	-	-	12	
	27	Mehring, Friederike	-	-	-	45	
Totals							

# Goalkeepers	Min	GA	Saves
1 Morphitis, Emily	45:00	2	4
27 Mehring, Friederike	45:00	0	1

Shots by period	1	2	Total
HOFSTRA	4	5	9
Penn State	9	5	14

Corner kicks	1	2	Total
HOFSTRA	0	7	7
Penn State	1	3	4

#### Scoring summary:

No.	Time	Team	Goal scorer	Assist	Description
1.	10:29	PSU	Hayes, Maya (2)	Carroll, Emily	shot from 6 yds on cross from carroll
2.	19:08	PSU	Weber, Mallory (1)	(unassisted)	intercepts goal kick, scores 1v1
3.	50:41	HOFSTR	Galton, Leah	(unassisted)	turn and shot from 12 yds out

#### Cautions and ejections:

Win-Eckerstrom, Britt (1-0-1). Loss-Morphitis, Emily (0-1).

Stadium: Jeffrey Field

Officials: Referee: Tim Deljanovan; Asst. Referee: Adnan Pejia; Ann Ross;

Alt. Official: Stan Latta;

Offsides: HOFSTRA 0, Penn State 2.

Official's signature



## UVA 5, PSU 1

Charlottesville, Va. (Klockner Stadium)  
Aug. 30, 2013

### Soccer Box Score (Final)

2013 Penn State Women's Soccer  
#7 PSU vs #6 Virginia (Aug 30, 2013 at Charlottesville, Va.)

PSU (1-1-1) vs.  
Virginia (3-0-0)  
Date: Aug 30, 2013 • Attendance: 2609  
Weather: 84 degrees, sunny

PSU	Po #	Player	Sh	SO	G	A	Min
gk	28	Eckerstrom, Britt	-	-	-	-	90
d	1	Basinger, Brittany	-	-	-	-	69
m	3	Hurd, Emily	-	-	-	-	71
f	5	Hayes, Maya	2	1	1	-	74
m	11	Rodriguez, Raquel	1	-	-	-	75
d	14	Chapic, Kori	1	-	-	-	90
f	16	Weber, Mallory	-	-	-	-	21
d	17	Church, Whitney	-	-	-	-	90
m	19	Schram, Taylor	1	-	-	-	74
f	22	Costa, Tani	1	-	-	-	53
d	23	Hovington, Bri	-	-	-	-	90
-- Substitutes --							
	7	Persson, Corey	-	-	-	-	27
	12	Kohne, Kindrah	-	-	-	-	15
	15	Keohoe, Erin	-	-	-	-	13
	20	Williford, Salina	2	1	-	-	47
	25	Peterson, Mallory	-	-	-	-	23
	26	Carroll, Emily	-	-	-	-	69
Totals							

# Goalkeepers	Min	GA	Saves
28 Eckerstrom, Britt	90:00	5	8

Shots by period	1	2	Total
PSU	3	6	9
Virginia	12	15	27

Corner kicks	1	2	Total
PSU	0	2	2
Virginia	3	2	5

#### Scoring summary:

No.	Time	Team	Goal scorer	Assist	Description
1.	6:19	PSU	Hayes, Maya (3)	Weber, Mallory	tap in from cross
2.	13:27	VA	Morgan Brian (2)	Makenzy Doniak	one time left footer from top 18
3.	18:16	VA	Makenzy Doniak (2)	Gloria Douglas	inside far post from 15 yards
4.	21:49	VA	Kate Norbo (1)	Danielle Colaprico	from 15 yards off breakaway
5.	46:13	VA	Shasta Fisher (1)	Gloria Douglas	far post from 15 yards after give and go
6.	77:06	VA	Brittany Ratcliffe (4)	Kaili Torres	right footed toe poke off break

#### Cautions and ejections:

Win-Morgan Stearns (2-0). Loss-Eckerstrom, Britt (1-1-1).

Stadium: Klockner Stadium

Officials: Referee: James Conlee; Asst. Referee: Brendan Orino; Andrew Halley;

Timekeeper: Lecky Stone; Scorer: Steve Kirkland;

Offsides: PSU 2, Virginia 3.

Official's signature



## PSU 5, LaSALLE 1

University Park, Pa. (Jeffrey Field)  
Sept. 1, 2013

### Soccer Box Score (Final)

2013 Penn State Women's Soccer  
LASALLE vs #9 PSU (Sep 01, 2013 at University Park, Pa.)

LASALLE (2-1) vs.  
PSU (2-1-1)  
Date: Sep 01, 2013 • Attendance: 1012  
Weather:

LASALLE	Po #	Player	Sh	SO	G	A	Min
gk	0	GETZINGER, Katie	-	-	-	-	90
2	FENTON, Emily	1	-	-	-	79	
3	NIEMIC, Courtney	2	-	-	-	90	
5	NICKLES, Kari	-	-	-	-	39	
6	CHILCOAT, Ashley	-	-	-	-	90	
8	VOLLRATH, Chrissy	-	-	-	-	82	
15	HAYCOCK, Kelsey	3	2	1	-	82	
17	AIKEN, Keri	-	-	-	-	82	
18	WASHINGTON, Rene	1	-	-	-	83	
19	CARBONE, Gabriella	-	-	-	-	47	
20	MUHAMMAD, Najla	-	-	-	-	25	
-- Substitutes --							
	10	HUSEINI, Maryam	1	-	-	40	
	11	DOLHANSKY, Anna	1	-	-	44	
	12	CAMMARATA, Jackie	-	-	-	8	
	13	DWYER, Shannon	-	-	-	16	
	16	KAGAN, Jessika	3	1	-	36	
	22	CELLINE, Kelsey	-	-	-	6	
	23	MARX, Danielle	-	-	-	28	
	26	BATEMAN, Marykate	-	-	-	5	
	29	DAVIS, Deja	-	-	-	21	
Totals							

# Goalkeepers	Min	GA	Saves
0 GETZINGER, Katie	90:00	5	8

Shots by period	1	2	Total
LASALLE	5	7	12
PSU	9	12	21

Corner kicks	1	2	Total
LASALLE	1	1	2
PSU	2	4	6

#### Scoring summary:

No.	Time	Team	Goal scorer	Assist	Description
1.	33:48	PSU	Hayes, Maya (4)	(unassisted)	pile up in box with loose ball found by Ha shot
2.	38:47	PSU	Rodriguez, Raquel (1)	(unassisted)	long run into the box, shot low right
3.	68:18	LASALL	HAYCOCK, Kelsey	HUSEINI, Maryam	CHILCOAT, Ashley
4.	70:31	PSU	Costa, Tani (1)	Hayes, Maya	pass from Hayes to wide open Costs in bo
5.	73:46	PSU	Hayes, Maya (5)	Chapic, Kori	corner kick goal 5 yard out
6.	84:16	PSU	Schram, Taylor (2)	Rodriguez, Raquel	(unassisted)
stolen at 18 yard line with immediate sh					

#### Cautions and ejections:

Win-Eckerstrom, Britt (2-1-1). Loss-GETZINGER, Katie (1-1).

Stadium: Jeffrey Field

Officials: Referee: Charles Murphy; Asst. Referee: Brian Opiela; Lucas Feathers;

Alt. Official: Nathan Utz;

Offsides: LASALLE 1, PSU 2.

Official's signature



# GAME NOTES

# 2013 WOMEN'S SOCCER



**PSU 1, BOSTON U 0**  
University Park, Pa. (Jeffrey Field)  
Sept. 6, 2013

**Soccer Box Score (Final)**  
**2013 Penn State Women's Soccer**

**Boston University vs #14 Penn State (Sep 06, 2013 at University Park, Pa.)**

Boston University (3-1-1) vs.  
Penn State (2-2-1)  
Date: Sep 06, 2013 • Attendance: 1556  
Weather:

PSU #	Player	Sh	SO	G	A	Min
gk 00	Green, Andrea	-	-	-	-	90
4	Pleuler, Clare	-	-	-	-	66
7	Mullen, Erin	-	-	-	-	82
8	Clemens, Madison	2	1	-	-	59
9	Srom, Kylie	2	-	-	-	83
16	Runsey, Amanda	-	-	-	-	72
17	Krebs, Taylor	2	1	-	-	69
19	Miller, Kai	-	-	-	-	90
21	McGoldrick, Megan	-	-	-	-	43
22	Clark, Emma	-	-	-	-	69
23	Hollenbaugh, McKenz	-	-	-	-	90
-- Substitutes --						
6	Turchi, Jamie	-	-	-	-	29
12	Fisher, Jenna	-	-	-	-	32
14	MacLellan, Lauren	-	-	-	-	32
15	Bloznalis, Rachel	-	-	-	-	42
18	Cuffia, Ana	2	-	-	-	29
26	Kosienski, Erica	1	1	-	-	42
Totals						

#	Goalkeepers	Min	GA	Saves
00	Green, Andrea	90:00	1	2

Shots by period	1	2	Total
Boston University	6	3	9
Penn State	6	8	14

Corner kicks	1	2	Total
Boston University	0	0	0
Penn State	2	3	5

**Scoring summary:**

No.	Time	Team	Goal scorer	Assist	Description
1.	52:59	PSU	Schram, Taylor (3)	Weber, Mallory	Assist from Weber, six yards out
				Rodriguez, Raquel	

**Cautions and ejections:**  
YC-PSU #14 (81:08); YC-BOSTONU #22 (84:09)

Win-Eckerstrom, Britt (3-1-1). Loss-Green, Andrea (1-2-1).  
Stadium: Jeffrey Field  
Officials: Referee: Alan Robinson; Asst. Referee: Mike Gorsegner; Carl Everhart;  
Alt. Official: Stan Letta;  
Offsides: Boston University 4, Penn State 0.

Official's signature



**PSU 6, BUCKNELL 0**  
Lewisburg, Pa. (Emmitt Field)  
Sept. 10, 2013

**Soccer Box Score (Final)**  
**2013 Penn State Women's Soccer**

**#13 Penn State vs Bucknell (Sep 10, 2013 at Lewisburg, Pa.)**

Penn State (4-1-1) vs.  
Bucknell (2-4-0)  
Date: Sep 10, 2013 • Attendance: 1390  
Weather: 90, humid

PSU #	Player	Sh	SO	G	A	Min
gk 28	Eckerstrom, Britt	-	-	-	-	45
1	Basinger, Brittany	2	-	-	-	29
3	Hurd, Emily	1	1	-	-	29
5	Hayes, Maya	3	1	1	25	
11	Rodriguez, Raquel	2	2	-	25	
14	Chapic, Kori	1	-	-	29	
16	Weber, Mallory	3	2	-	20	
17	Church, Whitney	1	-	-	57	
20	Willford, Salina	2	1	-	23	
20	Willford, Salina	-	-	-	31	
23	Hovington, Bri	-	-	-	20	
-- Substitutes --						
0	Kaminski, Meghan	-	-	-	38	
0	Golestani, Lexi	-	-	-	7	
2	Ritchey, Megan	-	-	-	47	
4	Marton, Lexi	-	-	-	66	
6	Witte, Anna	-	-	-	61	
7	Persson, Corey	1	1	-	66	
8	Kalwa, Jenna	2	1	-	61	
12	Kohne, Kindrah	2	-	-	59	
15	Keheo, Erin	1	-	-	61	
21	Chase, Teddy	2	1	-	59	
24	Brandy, Liv	4	1	-	36	
25	Peterson, Mallory	2	-	-	146	
26	Carollo, Emily	3	1	-	50	
Totals						

#	Goalkeepers	Min	GA	Saves
28	Eckerstrom, Britt	45:00	0	2
0	Kaminski, Meghan	37:47	0	1
00	Golestani, Lexi	7:13	0	1

Shots by period	1	2	Total
Penn State	19	11	30
Bucknell	4	5	9

Corner kicks	1	2	Total
Penn State	6	3	9
Bucknell	1	1	2

**Scoring summary:**

No.	Time	Team	Goal scorer	Assist	Description
1.	18:31	PSU	Weber, Mallory (2)	Rodriguez, Raquel	Shot over keeper from 12 yds
2.	20:25	PSU	Hurd, Emily (1)	Rodriguez, Raquel	#3 lv1 in box, scores from 15 yds out
3.	20:25	PSU	Weber, Mallory (3)	Schram, Taylor	Tap in from close range
4.	21:36	PSU	Hayes, Maya (6)	Rodriguez, Raquel	#11 thru ball to #5 for breakaway
5.	41:28	PSU	Persson, Corey (1)	Church, Whitney	Turns defender around in box, shot to left
6.	68:18	PSU	Brandy, Liv (1)	Peterson, Mallory	goal
				Keheo, Erin	Near-post header on corner kick

**Cautions and ejections:**

Win-Eckerstrom, Britt (4-1-1). Loss-Ashworth, Jessie (2-4-0).  
Stadium: Emmitt Field  
Officials: Referee: Jose Rivero; Asst. Referee: Jorge Ramirez; Jack Schiavone;  
Offsides: Penn State 0, Bucknell 0.

Official's signature



**PSU 4, OKLAHOMA ST. 2**  
Stillwater, Okla. (Cowgirl Complex)  
Sept. 13, 2013

**Soccer Box Score (Final)**  
**2013 Penn State Women's Soccer**

**#9 Penn State vs Oklahoma State (Sep 13, 2013 at Stillwater, Okla.)**

Penn State (5-1-1) vs.  
Oklahoma State (3-2-2)  
Date: Sep 13, 2013 • Attendance: 1316  
Weather:

PSU #	Player	Sh	SO	G	A	Min
gk 28	Eckerstrom, Britt	-	-	-	-	90
d 1	Basinger, Brittany	1	1	-	-	54
m 3	Hurd, Emily	5	1	-	-	70
f 5	Hayes, Maya	3	2	-	-	86
m 11	Rodriguez, Raquel	2	1	-	-	76
mf 14	Chapic, Kori	3	1	-	-	90
mf 16	Weber, Mallory	3	1	-	-	76
d 17	Church, Whitney	-	-	-	-	90
f 19	Schram, Taylor	-	-	-	-	56
d 20	Willford, Salina	2	-	-	-	90
d 23	Hovington, Bri	-	-	-	-	90
-- Substitutes --						
7	Persson, Corey	-	-	-	-	36
12	Kohne, Kindrah	-	-	-	-	4
22	Costa, Tani	2	-	-	-	48
25	Peterson, Mallory	-	-	-	-	25
26	Carollo, Emily	-	-	-	-	10
Totals						

#	Goalkeepers	Min	GA	Saves
28	Eckerstrom, Britt	90:00	2	7

Shots by period	1	2	Total
Penn State	12	9	21
Oklahoma State	7	7	14

Corner kicks	1	2	Total
Penn State	4	5	9
Oklahoma State	0	1	1

**Scoring summary:**

No.	Time	Team	Goal scorer	Assist	Description
1.	6:17	OSU	Stephenson, Allie (2)	Robertson, Joanna	Shot from 22 yds, top shelf
2.	22:34	OSU	Killion, Krissi (1)	Stephenson, Allie	Beats defender and GK, shot from 8 yds
3.	24:01	PSU	Chapic, Kori (1)	(unassisted)	30 yds to far post
4.	35:34	PSU	Weber, Mallory (4)	Costa, Tani	Cross into box flicked in from 5 yds
5.	37:48	PSU	Hayes, Maya (7)	Costa, Tani	Shot from 20 yds
6.	83:54	PSU	Hayes, Maya (8)	Costa, Tani	Long pass ahead, Hayes 1 v 1 with GK

**Cautions and ejections:**

YC-PSU #3 (38:44)  
Win-Eckerstrom, Britt (5-1-1). Loss-Medina, Rosa (3-2-2).  
Stadium: Cowgirl Complex  
Officials: Referee: Corey Rockwell; Asst. Referee: David Warner; Jerome Schoch;  
Alt. Official: Jack Darnill;  
Offsides: Penn State 0, Oklahoma State 1.

Official's signature



**PSU 3, TULSA 2**  
Tulsa, Okla. (Hurricane Stadium)  
Sept. 15, 2013

**Soccer Box Score (Final)**  
**2012 Tulsa Women's Soccer**

**#13 Penn State vs Tulsa (9/15/2013 at Tulsa, Okla.)**

Penn State (6-1-1) vs.  
Tulsa (5-2)  
Date: 9/15/2013 • Attendance: 252  
Weather: 85 degrees, winds from S at 14 mph, cloudy

PSU #	Player	Sh	SO	G	A	Fo
gk 28	Eckerstrom, Britt	-	-	-	-	-
d 1	Basinger, Brittany	-	-	-	-	-
m 3	Hurd, Emily	-	-	-	-	-
f 5	Hayes, Maya	1	1	-	-	-
f 11	Rodriguez, Raquel	1	1	-	-	-
f 14	Chapic, Kori	-	-	-	-	-
f 16	Weber, Mallory	2	1	-	-	-
d 17	Church, Whitney	1	-	-	-	-
f 19	Schram, Taylor	3	2	-	-	-
mf 20	Willford, Salina	1	1	-	-	-
d 23	Hovington, Bri	-	-	-	-	-
-- Substitutes --						
4	Marton, Lexi	-	-	-	-	-
7	Persson, Corey	-	-	-	-	-
12	Kohne, Kindrah	-	-	-	-	-
15	Keheo, Erin	-	-	-	-	-
22	Costa, Tani	3	1	-	-	-
25	Peterson, Mallory	1	1	-	-	-
26	Carollo, Emily	-	-	-	-	-
Totals						

#	Goalkeepers	Min	GA	Saves
28	Eckerstrom, Britt	90:00	2	4

Shots by period	1	2	Total
Penn State	6	6	12
Tulsa	4	7	11

Corner kicks	1	2	Total
Penn State	1	2	3
Tulsa	0	4	4

**Scoring summary:**

No.	Time	Team	Goal scorer	Assist	Description
1.	22:06	PSU	Weber, Mallory (5)	Hurd, Emily	Scored on a header from 4 yards out.
2.	57:14	TLS	NICHOLSON, Claire (2)	Schram, Taylor	Penalty kick
3.	73:42	PSU	Costa, Tani (2)	Hurd, Emily	Beats the keeper and tapped in to the goal from 5 yards out
4.	85:28	TLS	PELLEY, Camille (3)	KIRCH, Lindsay	From 19 to 11 to 8. Tapped in from 7 yards out.
5.	89:40	PSU	Hayes, Maya (9)	Schram, Taylor	From 15 yards out. In to the top of the net.

**Cautions and ejections:**

Win-Eckerstrom, Britt (6-1-1). Loss-HARRYMAN, Hayley (5-2).  
Stadium: Hurricane Stadium  
Officials: Referee: Ryan Cigich; Asst. Referee: Reza Namavar; Joe Forler;  
Alt. Official: Larry Morgan; Timekeeper: TU AMR; Scorer: TU AMR;  
Offsides: Penn State 1, Tulsa 0.

Official's signature



**PSU 3, WVU 2 (2 OT)**  
University Park, Pa. (Jeffrey Field)  
Sept. 20, 2013

**Soccer Box Score (Final)**  
**2013 Penn State Women's Soccer**

**Northwestern vs #9 Penn State (Sep 20, 2013 at University Park, Pa.)**

Northwestern (2-5-2, 0-1-0) vs. Penn State (7-1-1, 1-0-0)  
Date: Sep 20, 2013 • Attendance: 3118  
Weather:

Goals by period	1	2	OT	O2	Total
Northwestern	1	0	0	0	1
Penn State	0	2	0	1	3

Northwestern	Sh	SO	G	A	Fo	Min
18 Hascher, Jenna	-	-	-	-	-	106
4 Cikos, Natalie	-	-	-	-	-	33
5 Jewell, Nicole	-	-	-	-	-	72
12 McGinty, Margo	1	1	-	-	-	106
13 Podkopaec, Bo	-	-	-	-	-	106
14 Schrakamp, Sami	1	-	-	-	-	45
17 Allen, Kate	7	6	2	-	-	96
19 Scott, Kourtney	-	-	-	-	-	100
24 Alyonovich, Jackie	-	-	-	-	-	106
29 Erikson, Mary	-	-	-	-	-	106
37 Korn, Jennifer	-	-	-	-	-	58
-- Substitutes --	-	-	-	-	-	-
2 Landgrebe, Katie	-	-	-	-	-	22
3 Sierks, Julie	1	1	-	-	-	22
15 Waddle, Georgia	1	-	-	-	-	29
20 Lagunas, Natalie	-	-	-	-	-	14
21 Steiner, Addie	-	-	-	-	-	27
22 Barr, KK	-	-	-	-	-	6
25 Zampa, Rachel	-	-	-	-	-	6
26 Moore, Kaitlin	-	-	-	-	-	79
32 Gancedo, Katie	-	-	-	-	-	18
Totals	11	8	2	2		

# Goalkeepers	Min	GA	Saves
18 Hascher, Jenna	106:25	3	11

Shots by period	1	2	OT	O2	Total
Northwestern	4	6	0	1	11
Penn State	10	12	4	3	29

Corner kicks	1	2	OT	O2	Total
Northwestern	1	5	0	0	6
Penn State	1	3	1	0	5

**Scoring summary:**

No.	Time	Team	Goal scorer	Assist	Description
1.	3:43	NU	Allen, Kate (1)	Schrakamp, Sami	Shot from 12 yards into top of net
2.	7:57	NU	Allen, Kate	Waddle, Georgia	
3.	79:31	PSU	Church, Whitney (1)	Rodriguez, Raquel	headed in on corner from rodriguez from
4.	83:44	PSU	Hayes, Maya (10)	Chapic, Kori	Beat defenders, shot from 6 yards
5.	106:25	PSU	Church, Whitney (2)	Costa, Tani	drilled from 20 yards out to far corner

**Cautions and ejections:**  
YC-NU #5 (30:05); YC-PSU #5 (69:13)  
Win-Eckerstrom, Britt (7-1-1). Loss-Hascher, Jenna (2-3-2).  
Stadium: Jeffrey Field  
Officials: Referee: Niko Bratis; Asst. Referee: Matthew Richardson; Paul Wehrman;  
Alt. Official: John Douglas;  
Offsides: Northwestern 1, Penn State 1.

Official's signature



**PSU 6, HOFSTRA 1**  
University Park, Pa. (Jeffrey Field)  
Sept. 26, 2013

**Soccer Box Score (Final)**  
**2013 Penn State Women's Soccer**

**Purdue vs #8 Penn State (Sep 26, 2013 at University, Pa.)**

Purdue (5-4-1, 0-2-0) vs. Penn State (8-1-1, 2-0-0)  
Date: Sep 26, 2013 • Attendance: 851  
Weather:

Goals by period	1	2	Total
Purdue	1	0	1
Penn State	3	3	6

Purdue	Sh	SO	G	A	Fo	Min
00 KRIDLER, Clara	-	-	-	-	-	72
d 4 KASER, Megan	-	-	-	-	-	57
d 7 NELLAMS, Makaela	-	-	-	-	-	61
m 10 KURAMOTO, Mollie	-	-	-	-	-	45
f 12 WILLIAMS, Maddy	1	1	1	-	-	55
d 14 LOVE, Kim	-	-	-	-	-	90
f 16 HAIRSTON, Alex	-	-	-	-	-	61
f 19 PAWLAK, Jordan	-	-	-	-	-	45
m 23 STUART, Hadley	-	-	-	-	-	60
d 35 LASKY, Mikayla	-	-	-	-	-	90
m 44 CASSELLA, Melissa	-	-	-	-	-	45
-- Substitutes --	-	-	-	-	-	-
1 GINTHER, Jordan	-	-	-	-	-	45
2 MILARO, Gianna	-	-	-	-	-	17
11 NEWOTT, Taylor	-	-	-	-	-	18
15 HAIRSTON, Juliana	-	-	-	-	-	11
17 FRICK, Jordan	-	-	-	-	-	47
20 ASHER, Chinyelu	-	-	-	-	-	26
22 BITTNER, Katie	-	-	-	-	-	31
24 GREGORY, Holly	-	-	-	-	-	18
26 REPASKY, Della	-	-	-	-	-	15
27 SZALACH, Christa	-	-	-	-	-	15
28 HVELLY, Nicole	-	-	-	-	-	18
32 FOWLE, Kate	-	-	-	-	-	17
34 TOPPIN-HERBERT, S	-	-	-	-	-	14
Totals	1	1	1	2	6	

# Goalkeepers	Min	GA	Saves
28 Eckerstrom, Britt	78:18	1	0
1 GINTHER, Jordan	18:22	1	0

Shots by period	1	2	Total
Purdue	1	0	1
Penn State	16	9	25

Corner kicks	1	2	Total
Purdue	0	1	1
Penn State	5	3	8

**Scoring summary:**

No.	Time	Team	Goal scorer	Assist	Description
1.	15:26	PUR	WILLIAMS, Maddy (7)	Rodriguez, Raquel (2)	Hayes, Maya
2.	37:08	PSU	Chapic, Kori (2)	PAWLAK, Jordan	Header off the corner
3.	44:47	PSU	OWN GOAL (1)	HAIRSTON, Alex	Costa shot deflected in by PUR 14
4.	52:19	PSU	Costa, Tani (3)	Hurd, Emily	Hurd crossed to Costa from four yards out
5.	62:00	PSU	Hayes, Maya (11)	Costa, Tani	Beat defender and sidone past goalie fro yards out
7.	76:17	PSU	Kohne, Kindrah (1)	Corner kick	Shot from 20 yards out

**Cautions and ejections:**  
Win-Eckerstrom, Britt (8-1-1). Loss-KRIDLER, Clara (3-5-0).  
Stadium: Jeffrey Field  
Officials: Referee: Cesar Ibarra; Asst. Referee: Sam Elbery; Michael Matlock;  
Alt. Official: Ross Kleinhuber; Scorer: Kellie O'Brien;  
Offsides: Purdue 2, Penn State 1.

Official's signature



**PSU 4, INDIANA 1**  
University Park, Pa. (Jeffrey Field)  
Sept. 29, 2013

**Soccer Box Score (Final)**  
**2013 Penn State Women's Soccer**

**Indiana vs #8 Penn State (Sep 29, 2013 at University Park, Pa.)**

Indiana (8-2-1, 1-2-0) vs. Penn State (9-1-1, 3-0-0)  
Date: Sep 29, 2013 • Attendance: 1582  
Weather:

Goals by period	1	2	Total
Indiana	1	0	1
Penn State	1	3	4

Indiana	Sh	SO	G	A	Fo	Min
1 Flower, Shannon	-	-	-	-	-	90
d 3 Keller, Tori	-	-	-	-	-	24
d 4 Ross, Lara	-	-	-	-	-	90
d 5 Borschke, Marissa	-	-	-	-	-	90
m 7 Nouanesengsy, Lisa	1	-	-	-	-	90
f 10 Candler, Rebecca	1	-	-	-	-	78
f 12 Smith, Abby	1	-	-	-	-	68
m 13 White, Bekah	1	-	-	-	-	62
d 20 Dreher, Rebecca	-	-	-	-	-	90
f 21 Steigerwalt, Kayleigh	5	4	-	-	-	50
f 23 McCusker, Kate	2	-	-	-	-	49
-- Substitutes --	-	-	-	-	-	-
2 Bujouves, Jessie	-	-	-	-	-	41
6 Stanley, Jen	-	-	-	-	-	5
8 Kowalski, Ari	-	-	-	-	-	74
14 Feinstein, Kaliee	-	-	-	-	-	8
15 Ellis, Veronica	1	1	-	-	-	11
17 Woolums, Jordan	1	1	-	-	-	29
24 Melink, Monica	3	2	1	-	-	43
Totals	16	9	1	1	6	

# Goalkeepers	Min	GA	Saves
1 Flower, Shannon	90:00	4	6

Shots by period	1	2	Total
Indiana	8	8	16
Penn State	7	10	17

Corner kicks	1	2	Total
Indiana	5	2	7
Penn State	1	1	2

**Scoring summary:**

No.	Time	Team	Goal scorer	Assist	Description
1.	6:07	PSU	Rodriguez, Raquel (3)	Hurd, Emily	Chapick cross to Rodruiguez headed in fro yards
2.	25:01	IND	Melink, Monica (2)	Candler, Rebecca	Cross by 2 to 24 5 yards out header
3.	53:35	PSU	Costa, Tani (4)	Hurd, Emily	Hurd cross to Costa shot straight ahead fr yards
4.	59:09	PSU	Hurd, Emily (2)	(unassisted)	Hurd from corner of 18 yard box
5.	82:45	PSU	Hayes, Maya (12)	Schram, Taylor	Beats defender shot from left box 12 yard under keeper

**Cautions and ejections:**  
YC-IND #4 (43:33); YC-IND #5 (79:46)  
Win-Eckerstrom, Britt (9-1-1). Loss-Flower, Shannon (8-2-1).  
Stadium: Jeffrey Field  
Officials: Referee: Robert Sheker; Asst. Referee: Mike Lukashunas; Tim Deljanovan;  
Alt. Official: Stan Latta; Scorer: Kellie O'Brien;  
Offsides: Indiana 5, Penn State 1.

Official's signature



**PSU 2, WISCONSIN 1**  
Madison, Wis. (McClimon Complex)  
Oct. 4, 2013

**Soccer Box Score (Final)**  
**2013 Penn State Women's Soccer**

**#8 Penn State vs #18 Wisconsin (Oct 04, 2013 at Madison, Wis.)**

Penn State (10-1-1, 4-0-0) vs. Wisconsin (7-2-2, 2-1-1)  
Date: Oct 04, 2013 • Attendance: 453  
Weather:

Goals by period	1	2	Total
Penn State	2	0	2
Wisconsin	0	1	1

Penn State	Sh	SO	G	A	Fo	Min
gk 28 Eckerstrom, Britt	-	-	-	-	-	90
d 1 Basinger, Brittany	-	-	-	-	-	90
m 3 Hurd, Emily	2	1	-	-	-	68
f 5 Hayes, Maya	3	1	1	-	-	90
f/m 11 Rodriguez, Raquel	3	3	-	-	-	71
f/m 14 Chapic, Kori	2	-	-	-	-	90
f 16 Weber, Mallory	3	2	-	-	-	88
d 17 Church, Whitney	-	-	-	-	-	90
f/m 19 Schram, Taylor	1	-	-	-	-	79
m/20 Williford, Salina	-	-	-	-	-	90
d 23 Hovington, Bri	-	-	-	-	-	90
-- Substitutes --	-	-	-	-	-	-
7 Persson, Corey	-	-	-	-	-	11
12 Kohne, Kindrah	1	-	-	-	-	11
15 Kehoe, Erin	-	-	-	-	-	2
22 Costa, Tani	1	1	1	-	-	48
26 Carrollo, Emily	-	-	-	-	-	22
Totals	16	8	2	3	9	

# Goalkeepers	Min	GA	Saves
28 Eckerstrom, Britt	90:00	1	3

Shots by period	1	2	Total
Penn State	10	6	16
Wisconsin	11	4	15

Corner kicks	1	2	Total
Penn State	3	2	5
Wisconsin	3	0	3

**Scoring summary:**

No.	Time	Team	Goal scorer	Assist	Description
1.	30:59	PSU	Costa, Tani (5)	Hayes, Maya	Beat keeper low on ball slotted top 6 y from endline
2.	35:24	PSU	Hayes, Maya (13)	Weber, Mallory	Header past keeper off early serve from ri
3.	65:28	WIS	Lavelle, Rose (5)	McNicol, Kinley	Finish far post off blocked shot

**Cautions and ejections:**  
YC-PSU #1 (55:05)  
Win-Eckerstrom, Britt (10-1-1). Loss-Richard, Genevieve (7-1-1).  
Stadium: McClimon Complex  
Officials: Scorer: Chris Martineili;  
Offsides: Penn State 1, Wisconsin 1.

Official's signature



# GAME NOTES



## MINNESOTA 1, PSU 0

Minneapolis, Minn. (Elizabeth Lyle Robbie Stadium)  
Oct. 6, 2013

### Soccer Box Score (Final) 2013 Penn State Women's Soccer Penn State vs Minnesota (Oct 06, 2013 at Falcon Heights, Minn)

Penn State (10-2-1) vs.  
Minnesota (9-3-1)  
Date: Oct 06, 2013 • Attendance: 796  
Weather: 54, Rainy

Penn State	Po #	Player	Sh	SO	G	A	Fo	Min
	1	Basinger, Brittany	-	-	-	-	-	45
	3	Hurd, Emily	3	3	-	-	-	45
	5	Hayes, Maya	3	1	-	-	-	45
	11	Rodriguez, Raquel	-	-	-	-	-	45
	14	Chapic, Kori	3	2	-	-	-	45
	16	Weber, Mallory	-	-	-	-	-	45
	17	Church, Whitney	1	-	-	-	-	45
	19	Schram, Taylor	6	-	-	-	-	45
	20	Williford, Salina	1	-	-	-	-	45
	23	Hovington, Bri	-	-	-	-	-	45
	28	Eckerstrom, Britt	-	-	-	-	-	45
		-- Substitutes --						
	7	Persson, Corey	-	-	-	-	-	0
	12	Kohne, Kindrah	-	-	-	-	-	0
	15	Kehoe, Erin	-	-	-	-	-	0
	22	Costa, Tani	3	1	-	-	-	0
	26	Carroll, Emily	-	-	-	-	-	0
		Totals	20	7	0	0	5	

# Goalkeepers	Min	GA	Saves
28 Eckerstrom, Britt	90:00	1	1

Shots by period	1	2	Total
Penn State	7	13	20
Minnesota	4	2	6

Corner kicks	1	2	Total
Penn State	4	10	14
Minnesota	4	2	6

#### Scoring summary:

No.	Time	Team	Goal scorer	Assist	Description
1.	16:22	MINN	Helverson, Haley	Brandt, Steph	

#### Cautions and ejections:

Stadium: ELR Stadium

Officials:  
Offsides: Penn State 0, Minnesota 5.

Official's signature



## MICHIGAN 1, PSU 0

University Park, Pa. (Jeffrey Field)  
Oct. 13, 2013

### Soccer Box Score (Final) 2013 Penn State Women's Soccer #19 Michigan vs #11 Penn State (Oct 13, 2013 at University Park, Pa.)

Michigan (10-2-1, 4-1-1 B1G) vs.  
Penn State (10-3-1, 4-2-0 B1G)  
Date: Oct 13, 2013 • Attendance: 2144  
Weather:

Michigan	Po #	Player	Sh	SO	G	A	Fo	Min
	00	BUCKLIN, Taylor	-	-	-	-	-	90
	4	LEWIS, Madison	1	-	-	-	-	66
	6	ZADORSKY, Shelina	-	-	-	-	-	90
	7	TOOHEY, Meghan	1	1	-	-	-	90
	8	MCCOMBS, Tori	1	1	1	-	-	67
	9	MANNINO, Kayla	-	-	-	-	-	90
	10	MURILLO, Christina	-	-	-	-	-	35
	19	THOMPSON-SHAW, K	-	-	-	-	-	90
	21	HEIN, Holly	-	-	-	-	-	90
	22	EZURIKE, Nkem	3	-	1	-	-	85
	24	SOSENKO, Chloe	-	-	-	-	-	90
		-- Substitutes --						
	11	HAIDAR, Lulu	-	-	-	-	-	4
	16	COLLINS, Cassie	-	-	-	-	-	51
	17	SCORRALI, Anna	-	-	-	-	-	9
	30	ORDONEZ, Christina	1	1	-	-	-	25
	31	HARRIS, Corinne	-	-	-	-	-	18
		Totals	7	3	1	1	9	

# Goalkeepers	Min	GA	Saves
0 BUCKLIN, Taylor	90:00	0	7

Shots by period	1	2	Total
Michigan	4	3	7
Penn State	7	14	21

Corner kicks	1	2	Total
Michigan	3	0	3
Penn State	3	4	7

#### Scoring summary:

No.	Time	Team	Goal scorer	Assist	Description
1.	66:38	MICH	MCCOMBS, Tori (1)	EZURIKE, Nkem	22 crossed to 8, shot from point blank

#### Cautions and ejections:

Win-BUCKLIN, Taylor (10-2-1). Loss-Eckerstrom, Britt (10-3-1).

Stadium: Jeffrey Field  
Officials: Referee: Edvin Jurisevic; Asst. Referee: Ron Dambrosia; Jason Cullum;  
Alt. Official: Matthew Boren; Scorer: Kellie O'Brien;  
Offsides: Michigan 0, Penn State 0.

Official's signature



## PSU 4, OHIO ST. 2

University Park, Pa. (Jeffrey Field)  
Oct. 17, 2013

### Soccer Box Score (Final) 2013 Penn State Women's Soccer Ohio State vs #17 Penn State (Oct 17, 2013 at University Park, Pa.)

Ohio State (8-4-3, 2-3-2) vs.  
Penn State (11-3-1, 5-2-0)  
Date: Oct 17, 2013 • Attendance: 567  
Weather:

Ohio State	Po #	Player	Sh	SO	G	A	Fo	Min
	gk	0	McVicker, Jillian	-	-	-	-	90
	2	Wolf, Maria	-	-	-	-	-	90
	f	5	Gruber, Elyn	-	-	-	-	90
	f	7	Prince, Nichelle	3	2	1	-	90
	f	8	Varner, Kayla	1	1	-	-	90
	m	9	Paradiso, Michela	-	-	-	-	60
	m	15	Niederhaus, Kristen	2	1	-	-	90
	d	17	Skinner, Bridget	-	-	-	-	52
	m	19	Wu, Danica	-	-	1	-	80
	d	20	Fuller, Megan	-	-	-	-	87
	d	33	Wolcott, Morgan	1	1	1	-	90
		-- Substitutes --						
	11	Deqler, Alexis	-	-	-	-	-	40
	23	Schissler, Taylor	1	1	-	-	-	41
		Totals	9	6	2	2	6	

# Goalkeepers	Min	GA	Saves
0 McVicker, Jillian	90:00	4	3

Shots by period	1	2	Total
Ohio State	4	5	9
Penn State	5	5	10

Corner kicks	1	2	Total
Ohio State	1	4	5
Penn State	5	3	8

#### Scoring summary:

No.	Time	Team	Goal scorer	Assist	Description
1.	3:46	PSU	Schram, Taylor (4)	Weber, Mallory	weber crossed in front of goal
2.	33:12	PSU	OWN GOAL	(unassisted)	weber cross knocked in by wolf
3.	36:55	OHIOST	Prince, Nichelle (8)	Degler, Alexis	headed in off of corner just outside of six box
4.	53:28	OHIOST	Wolcott, Morgan (1)	Wu, Danica	
5.	54:42	PSU	Hayes, Maya (14)	(unassisted)	beats defender and keeper shot from 8 ya rebounded from schrams shot after defec crossbar
6.	57:19	PSU	Hayes, Maya (15)	(unassisted)	

#### Cautions and ejections:

Win-Eckerstrom, Britt (11-3-1). Loss-McVicker, Jillian (4-4-2).

Stadium: Jeffrey Field  
Officials: Referee: Nikola Aleksic; Asst. Referee: Paul Devers; Eric Blackburn;  
Alt. Official: John Douglas; Scorer: Kellie O'Brien;  
Offsides: Ohio State 3, Penn State 2.

Official's signature



## PSU 5, ILLINOIS 0

University Park, Pa. (Jeffrey Field)  
Oct. 20, 2013

### Soccer Box Score (Final) 2013 Penn State Women's Soccer Illinois vs #17 Penn State (Oct 20, 2013 at University Park, Pa.)

Illinois (8-6-2, 3-4-1) vs.  
Penn State (12-3-1, 6-2-0)  
Date: Oct 20, 2013 • Attendance: 2119  
Weather:

Illinois	Po #	Player	Sh	SO	G	A	Fo	Min
	gk	1	Wheatley, Claire	-	-	-	-	90
	d	2	Brown, Cassidy	2	1	-	-	90
	f	3	Flaws, Jannelle	-	-	-	-	20
	f	7	Pawloski, Megan	1	-	-	-	80
	d	18	Leary, Noelle	-	-	-	-	90
	m	15	Weykamp, Ailina	-	-	-	-	90
	m	17	Chase, Teddy	1	1	-	-	71
	d	14	Leary, Noelle	-	-	-	-	25
	d	19	Farrell, Christina	-	-	-	-	90
	d	24	Feier, Amy	1	-	-	-	90
	m	27	Peterson, Taylore	-	-	-	-	90
		-- Substitutes --						
	0	Johnston, Meeqan	3	3	-	-	-	61
	6	Robshaw, Reagan	-	-	-	-	-	49
	9	Green, Meagan	-	-	-	-	-	10
	10	Stucky, Allison	-	-	-	-	-	17
	23	Medellin, Anastasia	-	-	-	-	-	28
		Totals	8	5	0	0	3	

# Goalkeepers	Min	GA	Saves
1 Wheatley, Claire	90:00	5	7

Shots by period	1	2	Total
Illinois	2	6	8
Penn State	9	8	17

Corner kicks	1	2	Total
Illinois	4	3	7
Penn State	3	3	6

#### Scoring summary:

No.	Time	Team	Goal scorer	Assist	Description
1.	7:30	PSU	Rodriguez, Raquel (4)	Schram, Taylor	Through ball to Rodriguez just outside box
2.	13:39	PSU	Rodriguez, Raquel (5)	Weber, Mallory	Ripped one from top of the box on rebound
3.	30:47	PSU	Costa, Tani (6)	(unassisted)	Turned defender around, shot from twelve
4.	47:20	PSU	Weber, Mallory (6)	Basinger, Brittany	Cross from Basinger shot from point blank
5.	49:48	PSU	Hayes, Maya (16)	Weber, Mallory	Weber passed to Hayes, shot from twelve

#### Cautions and ejections:

Win-Eckerstrom, Britt (12-3-1). Loss-Wheatley, Claire (8-6-1).

Stadium: Jeffrey Field  
Officials: Referee: Shane Butler; Asst. Referee: Zach Rubinch; Korey Carter;  
Alt. Official: Stan Latta; Scorer: Kellie O'Brien;  
Offsides: Illinois 0, Penn State 3.

Official's signature



## IOWA 3, PSU 2

Iowa City, Iowa (Iowa Soccer Complex)  
Oct. 25, 2013

### Soccer Box Score (Final) 2013 Penn State Women's Soccer #16 Penn State vs IOWA (Oct 25, 2013 at Iowa City, IA)

Penn State (12-4-1) vs. Iowa (12-4-1)  
Date: Oct 25, 2013 • Attendance: 350  
Weather:

Penn State	Sh	SO	G	A	Fo	Min
gk 28 Eckerstrom, Britt	-	-	-	-	-	90
d 1 Basinger, Brittany	-	-	-	-	-	90
m 3 Hurd, Emily	2	-	-	-	-	62
f 5 Hayes, Maya	2	1	-	-	-	68
f 11 Rodriguez, Raquel	-	-	-	-	-	67
f 14 Chapic, Kori	-	-	-	-	-	82
f 16 Weber, Mallory	2	1	-	-	-	87
f 17 Church, Whitney	-	-	-	-	-	90
f 19 Schram, Taylor	2	-	-	-	-	84
m 20 Williford, Salina	1	-	-	-	-	89
d 23 Hovington, Bri	-	-	-	-	-	82
-- Substitutes --	-	-	-	-	-	-
f 7 Persson, Corey	-	-	-	-	-	8
d 22 Costa, Tani	2	2	-	-	-	68
d 26 Carrollo, Emily	-	-	-	-	-	12
Totals	11	4	2	11		

# Goalkeepers	Min	GA	Saves
28 Eckerstrom, Britt	90:00	3	4
TM TEAM	0:00	0	1

Shots by period	1	2	Total
Penn State	7	4	11
IOWA	12	4	16

Corner kicks	1	2	Total
Penn State	5	5	10
IOWA	1	0	1

#### Scoring summary:

No.	Time	Team	Goal scorer	Assist	Description
1.	3:54	IOWA	Nasenbenny, Katie (3)	Catrell, Ashley	Cross from Catrell, headed into top left c
2.	22:48	PSU	Costa, Tani (7)	Penalty kick	Penalty kick goal, dribbled into bottom left corner
3.	40:31	IOWA	Catrell, Ashley (5)	Lacasse, Cloe	Between goalies legs
4.	41:04	PSU	Costa, Tani (8)	Carrollo, Emily	Deflected off keeper
5.	74:24	IOWA	Lacasse, Cloe (4)	(unassisted)	

#### Cautions and ejections:

YC-PSU #20 (12:55); YC-PSU #14 (82:48); YC-IOWA #11 (82:48)

Win-Clark, Hannah (12-4-1). Loss-Eckerstrom, Britt (12-4-1).

Stadium: Iowa Soccer Complex

Officials: Referee: Cesar Ibarra; Asst. Referee: Tyler Turner; Keyi Zhang;  
Alt. Official: Paul Lassance; Timekeeper: John Lundell; Scorer: Eric Clark;  
Offsides: Penn State 1, IOWA 3.

Official's signature



## PSU 3, MICHIGAN STATE 0

East Lansing, Mich. (DeMartin Soccer Complex)  
Nov. 1, 2013

### Soccer Box Score (Final) 2013 Penn State Women's Soccer Penn State vs Michigan State (Nov 01, 2013 at East Lansing, Mich.)

Penn State (13-5-1, 7-4-0 B1G) vs. Michigan State (9-8-2, 3-0-0 B1G)  
Date: Nov 01, 2013 • Attendance: 515  
Weather: 49, cloudy

Penn State	Sh	SO	G	A	Fo	Min
gk 28 Eckerstrom, Britt	-	-	-	-	-	78
d 1 Basinger, Brittany	-	-	-	-	-	90
m 3 Hurd, Emily	4	2	-	-	-	61
f 5 Hayes, Maya	6	5	2	-	-	67
f 11 Rodriguez, Raquel	1	1	1	1	-	43
f 14 Chapic, Kori	1	1	-	-	-	70
f 16 Weber, Mallory	2	1	-	-	-	81
d 17 Church, Whitney	1	-	-	-	-	75
f 19 Schram, Taylor	4	-	-	-	-	68
m 20 Williford, Salina	1	-	-	-	-	50
d 23 Hovington, Bri	-	-	-	-	-	90
-- Substitutes --	-	-	-	-	-	-
0 Kaminski, Meghan	-	-	-	-	-	12
2 Ritchey, Megan	-	-	-	-	-	9
4 Marton, Lexi	-	-	-	-	-	15
7 Persson, Corey	-	-	-	-	-	29
12 Kohne, Kindrah	-	-	-	-	-	38
15 Kehoe, Erin	-	-	-	-	-	9
22 Costa, Tani	3	1	-	-	-	61
25 Peterson, Mallory	1	-	-	-	-	23
26 Carrollo, Emily	1	-	-	-	-	20
Totals	24	12	3	25		

# Goalkeepers	Min	GA	Saves
28 Eckerstrom, Britt	0:00	0	1
0 Kaminski, Meghan	12:23	0	1

Shots by period	1	2	Total
Penn State	12	12	24
Michigan State	2	3	5

Corner kicks	1	2	Total
Penn State	3	3	6
Michigan State	2	0	2

#### Scoring summary:

No.	Time	Team	Goal scorer	Assist	Description
1.	10:13	PSU	Rodriguez, Raquel (6)	Penalty kick	
2.	53:08	PSU	Hayes, Maya (18)	Rodriguez, Raquel	A blast from sixteen yards out.
3.	68:25	PSU	Hayes, Maya (19)	Costa, Tani	Off a rebound.

#### Cautions and ejections:

YC-MSU #5 (80:08)

Win-Eckerstrom, Britt (13-5-1). Loss-Clem, Courtney (4-5-2).

Stadium: DeMartin Stadium

Officials: Referee: Shane Butler; Asst. Referee: Cory Richardson; Justin Tatsak;  
Alt. Official: Sierra Smith; Scorer: Jeremy Crawford;  
Offsides: Penn State 1, Michigan State 2.

Official's signature



## NEBRASKA 3, PSU 2 (2OT)

Lincoln, Neb. (Nebraska Soccer Field)  
Oct. 27, 2013

### Soccer Box Score (Final) 2013 Penn State Women's Soccer #16 Penn State vs #21 Nebraska (Oct 27, 2013 at Lincoln, Neb.)

Penn State (12-5-1, 6-4-0 B1G) vs. Nebraska (14-3-1, 9-1-0 B1G)  
Date: Oct 27, 2013 • Attendance: 404  
Weather: Low 60s and sunny

Penn State	Sh	SO	G	A	Fo	Min
gk 28 Eckerstrom, Britt	-	-	-	-	-	103
d 1 Basinger, Brittany	-	-	-	-	-	93
mf 3 Hurd, Emily	-	-	-	-	-	90
f 5 Hayes, Maya	5	4	1	-	-	103
f 11 Rodriguez, Raquel	2	1	-	-	-	81
f 14 Chapic, Kori	1	-	-	-	-	82
f 16 Weber, Mallory	5	2	-	-	-	101
d 17 Church, Whitney	3	2	1	-	-	103
f 19 Schram, Taylor	2	1	-	-	-	89
mf 20 Williford, Salina	-	-	-	-	-	91
d 23 Hovington, Bri	-	-	-	-	-	103
-- Substitutes --	-	-	-	-	-	-
7 Persson, Corey	-	-	-	-	-	2
d 12 Kohne, Kindrah	-	-	-	-	-	63
22 Costa, Tani	1	-	-	-	-	2
26 Carrollo, Emily	-	-	-	-	-	13
Totals	19	10	2	314		

# Goalkeepers	Min	GA	Saves
28 Eckerstrom, Britt	102:55	3	5

Shots by period	1	2	OT	O2	Total
Penn State	6	9	3	1	19
Nebraska	6	5	4	1	16

Corner kicks	1	2	OT	O2	Total
Penn State	5	3	0	1	9
Nebraska	2	1	0	0	3

#### Scoring summary:

No.	Time	Team	Goal scorer	Assist	Description
1.	46:44	PSU	Church, Whitney (3)	Hurd, Emily	free kick 11 tap to 3, back to 17 ripped le
2.	74:27	NEB	Jackson, Jordan (8)	Rodriguez, Raquel	long pass from 2 bouncing ball headed in past
3.	82:43	NEB	Johnson, Jaycie (8)	Jackson, Jordan	16 shot, keeper parried it, 19 tap in rebou
4.	88:08	PSU	Hayes, Maya (17)	Basinger, Brittany	1 chipped into box headed in by 5
5.	102:55	NEB	Johnson, Jaycie (9)	Stevens, Emma	19 ran coast to coast beats keeper lower l corner

#### Cautions and ejections:

YC-NEB #22 (72:15)

Win-Stevens, Emma (14-3-1). Loss-Eckerstrom, Britt (12-4-1).

Stadium: Nebraska Soccer Fld

Officials: Referee: Khalaf Allatayfeh; Asst. Referee: Brent Wilson; Chris Greer;  
Alt. Official: Juan Chamizo; Timekeeper: Yan Xin Lee; Scorer: Chris Roelke;  
Offsides: Penn State 5, Nebraska 5.

Official's signature



## PSU 2, WISCONSIN 0

Champaign, Ill. (Illinois Campus Recreation Fields)  
Nov. 6, 2013

### Soccer Box Score (Final) 2013 Big Ten Tournament #6 Wisconsin vs #3 Penn State (Nov 06, 2013 at Champaign, Ill.)

Wisconsin (10-7-2) vs. Penn State (14-5-1)  
Date: Nov 06, 2013 • Attendance:  
Weather:

Wisconsin	Sh	SO	G	A
gk 24 Richard, Genevieve	-	-	-	-
d 2 Holmes, Lindsey	2	1	-	-
m 3 Lavelle, Rose	3	1	-	-
m 5 Meuer, McKenna	-	-	-	-
d 6 Stelzer, Brianna	-	-	-	-
d 8 Peterson, Lexi	-	-	-	-
m 13 McNicol, Kinley	1	1	-	-
f 15 Walls, Cara	3	2	-	-
d 18 Schwarz, Kylie	1	1	-	-
f 21 Kelter, Alev	2	-	-	-
d 30 Heller, Alexandra	-	-	-	-
-- Substitutes --	-	-	-	-
20 Greenhalgh, Nikki	-	-	-	-
22 Williams, Kodee	-	-	-	-
Totals	12	6	0	0

# Goalkeepers	Min	GA	Saves
24 Richard, Genevieve	90:00	2	3

Shots by period	1	2	Total
Wisconsin	2	10	12
Penn State	5	3	8

Corner kicks	1	2	Total
Wisconsin	3	6	9
Penn State	4	2	6

#### Scoring summary:

No.	Time	Team	Goal scorer	Assist	Description
1.	10:49	PSU	Schram, Taylor (5)	Hurd, Emily	put away in center of box off cross
2.	21:31	PSU	Costa, Tani (9)	Hurd, Emily	left-sided cross into center of box

#### Cautions and ejections:

Win-Eckerstrom, Britt (14-5-1). Loss-Richard, Genevieve (10-6-1).

Stadium: Campus Turf Fields

Officials: Referee: Shane Butler; Asst. Referee: Cein Aseora; Terry Vaughn;

Alt. Official: Mandy Love; Scorer: Mandy Love;  
Offsides: Wisconsin 2, Penn State 1.

Official's signature



# GAME NOTES



## IOWA 1, PSU 0

Champaign, Ill. (Illinois Soccer Stadium)  
Nov. 8, 2013

### Soccer Box Score (Final) 2013 Penn State Women's Soccer

#7 IOWA vs #3 Penn State (Nov 08, 2013 at Champaign, Ill.)

IOWA (15-5-1) vs.  
Penn State (14-6-1)  
Date: Nov 08, 2013 • Attendance:  
Weather: 48 degrees, partly cloudy, slight breeze

Po #	Player	Sh	SO	G	A	Fo	Min
gk 1	Clark, Hannah	-	-	-	-	-	90
d 3	Brown, Caitlin	-	-	-	-	-	90
f 8	Catrell, Ashley	6	3	-	-	-	90
d 9	Lulek, Amanda	-	-	-	-	-	90
m 11	Toelle, Bri	2	1	-	1	-	81
d 14	Scott, Emily	-	-	-	-	-	90
m 16	Thomas, Anne Marie	-	-	-	-	-	90
m 19	Melin, Alex	-	-	-	-	-	90
f 20	Lacasse, Cloe	3	1	-	-	-	90
d 22	Pickert, Melanie	1	1	1	-	-	90
m 27	Nasenbenny, Katie	2	1	-	-	-	90
-- Substitutes --							
6	Urban, Nicole	-	-	-	-	-	9
Totals		14	7	1	1	4	

Goals by period	1	2	Total
IOWA	1	0	1
Penn State	0	0	0

Penn State	Po #	Player	Sh	SO	G	A	Fo	Min
gk 28	Eckerstrom, Britt	-	-	-	-	-	-	90
d 1	Basinger, Brittany	-	-	-	-	-	-	82
m 3	Hurd, Emily	2	2	-	-	-	79	
f 5	Hayes, Maya	5	2	-	-	-	75	
m 11	Rodriguez, Raquel	4	-	-	-	-	81	
d 14	Chapic, Kori	1	-	-	-	-	90	
m 16	Weber, Mallory	4	-	-	-	-	90	
d 17	Church, Whitney	2	-	-	-	-	90	
m 19	Schram, Taylor	-	-	-	-	-	75	
d 20	Williford, Salina	-	-	-	-	-	42	
f 22	Costa, Tani	7	4	-	-	-	66	
-- Substitutes --								
4	Marton, Lexi	-	-	-	-	-	3	
7	Persson, Corey	-	-	-	-	-	45	
12	Kohne, Kindrah	-	-	-	-	-	47	
15	Kehoe, Erin	-	-	-	-	-	15	
26	Carrollo, Emily	-	-	-	-	-	20	
Totals		25	8	0	0	9		

#	Goalkeepers	Min	GA	Saves
1	Clark, Hannah	90:00	0	8

Shots by period	1	2	Total
IOWA	11	3	14
Penn State	8	17	25

Corner kicks	1	2	Total
IOWA	3	1	4
Penn State	2	8	10

#### Scoring summary:

No.	Time	Team	Goal scorer	Assist	Description
1.	19:01	IOWA	Pickert, Melanie (6)	Toelle, Bri	off corner kick, flicked in

Cautions and ejections:  
YC-PSU #TM (19:01)

Win-Clark, Hannah (15-5-1). Loss-Eckerstrom, Britt (14-6-1).  
Stadium: Ill Soccer Stadium  
Officials: Referee: Cien Asoera; Asst. Referee: Jorge Cuate; Cesar Ibarra;  
Alt. Official: Christopher Koloffon;  
Offsides: IOWA 3, Penn State 0.

Official's signature

# 2013 WOMEN'S SOCCER



## PSU 3, MU 0

University Park, Pa. (Jeffrey Field)  
Nov. 15, 2013

### Soccer Box Score (Final) 2013 Penn State Women's Soccer

Monmouth vs #24 Penn State (Nov 15, 2013 at University Park, Pa.)

Monmouth (17-2-2) vs.  
Penn State (15-6-1)  
Date: Nov 15, 2013 • Attendance: 747  
Weather: 47, Light wind

Monmouth	Po #	Player	Sh	SO	G	A	Fo	Min
gk 00	Lewis, Ashley	-	-	-	-	-	-	90
f 3	Plescia, Monique	1	-	-	-	-	65	
d 4	Hubbard, Martika	-	-	-	-	-	90	
m 6	Boyle, Brianna	-	-	-	-	-	78	
m 7	Spracklin, Julie	1	-	-	-	-	54	
d 12	Collazo, Breyann	1	-	-	-	-	36	
m 15	Goncalves, Monique	-	-	-	-	-	90	
f 18	McTamney, Alexis	2	2	-	-	-	58	
m 21	Costello, Dana	6	4	-	-	-	84	
d 23	Clemmer, Kim	-	-	-	-	-	90	
d 26	Freguetti, Alexa	-	-	-	-	-	90	
-- Substitutes --								
5	Antzoulatos, Tina	-	-	-	-	-	14	
9	Axelrod, Danielle	-	-	-	-	-	6	
11	Poole, Cara	-	-	-	-	-	12	
17	Tolentino, Karly	-	-	-	-	-	27	
22	Brett, Kristen	-	-	-	-	-	49	
24	Murphy, Erica	-	-	-	-	-	23	
25	Howard, Colleen	-	-	-	-	-	34	
Totals		11	6	0	0	3		

Goals by period	1	2	Total
Monmouth	0	0	0
Penn State	1	2	3

Penn State	Po #	Player	Sh	SO	G	A	Fo	Min
gk 28	Eckerstrom, Britt	-	-	-	-	-	-	90
d 1	Basinger, Brittany	-	-	-	-	-	-	70
m 3	Hurd, Emily	4	2	-	-	-	68	
f 5	Hayes, Maya	3	-	1	-	-	82	
m 11	Rodriguez, Raquel	3	1	-	-	-	75	
d 14	Chapic, Kori	2	-	-	-	-	90	
f 16	Weber, Mallory	6	4	-	1	-	90	
d 17	Church, Whitney	3	2	1	-	-	90	
m 19	Schram, Taylor	-	-	-	2	-	90	
d 20	Williford, Salina	-	-	-	-	-	90	
m 22	Costa, Tani	3	3	2	-	-	69	
-- Substitutes --								
4	Marton, Lexi	-	-	-	-	-	12	
7	Persson, Corey	-	-	-	-	-	20	
12	Kohne, Kindrah	-	-	-	-	-	25	
15	Kehoe, Erin	1	-	-	-	-	22	
25	Peterson, Mallory	-	-	-	-	-	8	
Totals		25	12	3	4	3		

#	Goalkeepers	Min	GA	Saves
00	Lewis, Ashley	90:00	3	9

Shots by period	1	2	Total
Monmouth	4	7	11
Penn State	14	11	25

Corner kicks	1	2	Total
Monmouth	1	1	2
Penn State	6	4	10

#### Scoring summary:

No.	Time	Team	Goal scorer	Assist	Description
1.	6:37	PSU	Costa, Tani (9)	Weber, Mallory	Weber crossed to Costa in front of goal
2.	51:00	PSU	Costa, Tani (10)	Schram, Taylor	Hayes through ball to Schram passed to Costa from 12
3.	66:29	PSU	Church, Whitney (4)	Schram, Taylor	Headed in from middle of box off corner

Cautions and ejections:  
YC-PSU #20 (7:14)

Win-Eckerstrom, Britt (15-6-1). Loss-Lewis, Ashley (16-2-1).  
Stadium: Jeffrey Field  
Officials: Referee: Jason Callum; Asst. Referee: Matthew Boren; Tim Deljanovan;  
Alt. Official: Ross Kleinstuber; Timekeeper: Kyle Gabel; Scorer: Kellie O'Brien;  
Offsides: Monmouth 0, Penn State 1.

Official's signature




0

**MEGHAN  
KAMINSKI**  
Doylestown, Pa.  
CENTRAL BUCKS SOUTH

Sophomore • **GOALKEEPER** • 6-1

**THE LAST TIME ...**

Played.... at Michigan St. (11/1/13)

CAREER STATS						
Season	GP-GS	G	A	PTS	GWG	SH
2012	2-0	0	0	0	0	1
2013	4-0	0	0	0	0	0
<b>TOTAL</b>	<b>6-0</b>	<b>0</b>	<b>0</b>	<b>0</b>	<b>0</b>	<b>1</b>

Season	GP-GS	Minutes	Record	SHO	Saves	Pct.	GA	GAA
2012	--	--	-	-	-	-	-	-
2013	4-0	77:52	0-0-0	0/3	3	1.000	0	0.00
<b>TOTAL</b>	<b>4-0</b>	<b>77:52</b>	<b>0-0-0</b>	<b>0/3</b>	<b>3</b>	<b>1.000</b>	<b>0</b>	<b>0.00</b>



00

**LEXI  
GOLESTANI**  
Montgomery, N.J.  
The Hun School of Princeton

Freshman • **GOALKEEPER** • 5-6

**THE LAST TIME ...**

Played..... at Bucknell (9/10/13)

CAREER STATS								
Season	GP-GS	Minutes	Record	SHO	Saves	Pct.	GA	GAA
2013	1-0	7:13	0-0-0	0	1	1.00	0	0.00
<b>TOTAL</b>	<b>1-0</b>	<b>7:13</b>	<b>0-0-0</b>	<b>0</b>	<b>1</b>	<b>1.00</b>	<b>0</b>	<b>0.00</b>



1

**BRITTANY  
BASINGER**  
Purcellville, Va.  
WOODGROVE

Freshman • **DEFENSE** • 5-7

**THE LAST TIME ...**

1 Assist.....at Nebraska (10/27/13)

CAREER STATS						
Season	GP-GS	G	A	PTS	GWG	SH
2013	22-22	0	2	2	0	6
<b>TOTAL</b>	<b>22-22</b>	<b>0</b>	<b>2</b>	<b>2</b>	<b>0</b>	<b>6</b>



2

**MEGAN  
RITCHEY**  
State College, Pa.  
STATE COLLEGE AREA

Sophomore • **MIDFIELD** • 5-3

**THE LAST TIME ...**

Played.... at Michigan St. (11/1/13)

CAREER STATS						
Season	GP-GS	G	A	PTS	GWG	SH
2012	8-0	0	0	0	0	2
2013	4-0	0	0	0	0	1
<b>TOTAL</b>	<b>12-0</b>	<b>0</b>	<b>0</b>	<b>0</b>	<b>0</b>	<b>3</b>





# 3

## EMILY HURD

Sammamish, Wash.  
**EASTLAKE**

Redshirt Junior • **MIDFIELD** • 5-7

### THE LAST TIME ...

1 Goal ..... vs. Indiana (9/29/13)

GW ..... vs. Iowa (10/31/12)

1 Assist ..... vs. Wisconsin (11/6/13)

2 Assists ..... vs. Indiana (9/29/13)

4 points ..... vs. Indiana (9/29/13)

### CAREER HIGH ...

Goals ..... 1 (10x, last v. Indiana, 9/29/13)

Assists ..... 2 (4x, last v. Indiana 9/29/13)

Points ..... 4 (2x, last v. Indiana 9/29/13)

CAREER STATS						
Season	GP-GS	G	A	PTS	GWG	SH
2010		Redshirt	Season			
2011	24-13	6	5	17	1	22
2012	27-27	2	8	12	1	21
2013	22-21	2	7	11	0	37
<b>TOTAL</b>	<b>73-61</b>	<b>10</b>	<b>20</b>	<b>40</b>	<b>2</b>	<b>78</b>



# 4

## LEXI MARTON

Aurora, Ontario  
**THE COUNTRY DAY SCHOOL**

Redshirt Senior • **DEFENSE** • 5-11

### THE LAST TIME ...

Started ..... at Wake Forest (11/20/11)

1 Assist ..... at Wake Forest (11/20/11)

CAREER STATS						
Season	GP-GS	G	A	PTS	GWG	SH
2009	20-20	0	0	0	0	2
2010	7-7	0	0	0	0	1
2011	20-13	0	3	3	0	2
2012				Redshirt Season		
2013	9-0	0	0	0	0	0
<b>TOTAL</b>	<b>56-40</b>	<b>0</b>	<b>3</b>	<b>3</b>	<b>0</b>	<b>5</b>



# 5

## MAYA HAYES

West Orange, N.J.  
**NEWARK ACADEMY**

Senior • **FORWARD** • 5-7

### THE LAST TIME ...

1 Goal ..... vs. Indiana (9/29/13)

2 Goals ..... at Michigan St. (11/1/13)

3 Goals ..... at Pitt (9/4/11)

GW ..... vs. Ohio St. (10/17/13)

1 Assist ..... vs. Monmouth (11/15/13)

3 Assists ..... vs. Ohio St. (9/29/11)

4 points ..... vs. Michigan St. (11/1/13)

5 points ..... vs. La Salle (9/1/13)

6 points ..... at Pitt (9/4/11)

### CAREER HIGH ...

Goals ..... 3 at Pitt (9/4/11)

Assists ..... 3 vs. Ohio St. 9/29/11

Points ..... 6 at Pitt (9/4/11)

CAREER STATS						
Season	GP-GS	G	A	PTS	GWG	SH
2010	21-13	5	1	11	0	35
2011	26-26	31	8	70	9	97
2012	20-19	16	6	38	4	80
2013	22-22	19	6	44	4	79
<b>TOTAL</b>	<b>89-80</b>	<b>71</b>	<b>21</b>	<b>163</b>	<b>17</b>	<b>291</b>



# 6

## ANNA WITTE

Morrisville, N.C.  
**CARY**

Freshman • **DEFENSE** • 5-4

### THE LAST TIME ...

Played ..... vs. Illinois (10/20/13)

CAREER STATS						
Season	GP-GS	G	A	PTS	GWG	SH
2013	4-0	0	0	0	0	0
<b>TOTAL</b>	<b>4-0</b>	<b>0</b>	<b>0</b>	<b>0</b>	<b>0</b>	<b>0</b>




7

**COREY  
PERSSON**

Danvers, Mass.  
**DANVERS**

Sophomore • **MIDFIELD** • 5-3

**THE LAST TIME ...**

Started.....vs. Hofstra (8/25/13)  
 1 Goal..... at Bucknell (9/10/13)  
 1 Assist..... at Illinois (9/23/12)

CAREER STATS						
Season	GP-GS	G	A	PTS	GWG	SH
2012	27-14	0	2	2	0	3
2013	20-2	1	0	2	0	2
<b>TOTAL</b>	<b>47-16</b>	<b>1</b>	<b>2</b>	<b>4</b>	<b>0</b>	<b>5</b>



8

**JENNA  
KALWA**

Pennington, N.J.  
**HOPEWELL VALLEY CENTRAL**

Sophomore • **DEFENSE/MIDFIELD** • 5-5

**THE LAST TIME ...**

Played..... vs. Illinois (10/20/13)  
 1 Goal . vs. Central Mich. (8/26/12)

CAREER STATS						
Season	GP-GS	G	A	PTS	GWG	SH
2012	8-0	1	2	4	0	1
2013	4-0	0	0	0	0	2
<b>TOTAL</b>	<b>12-0</b>	<b>1</b>	<b>2</b>	<b>4</b>	<b>0</b>	<b>3</b>



11

**RAQUEL  
RODRIGUEZ**

San Jose, Costa Rica  
**INTERNATIONAL CHRISTIAN**

Sophomore • **MIDFIELD** • 5-6

**THE LAST TIME ...**

1 Goal..... at Michigan St. (11/1/13)  
 2 Goals ..... vs. Illinois (10/20/13)  
 GW ..... at Michigan St. (11/1/13)  
 1 Assist ..... at Michigan St. (11/1/13)  
 2 Assists ..... vs. Minnesota (9/30/12)  
 3 Assists ..... at Bucknell (9/10/13)  
 3 Points..... at Michigan St. (11/1/13)  
 4 points ..... vs. Illinois (10/20/13)

**CAREER HIGH ...**

Goals .....2 vs. Illinois (10/20/13)  
 Assists .....3 at Bucknell (9/10/13)  
 Points.....4 vs. Illinois (10/20/13)

CAREER STATS						
Season	GP-GS	G	A	PTS	GWG	SH
2012	25-24	4	10	18	0	46
2013	22-22	6	9	21	3	45
<b>TOTAL</b>	<b>47-46</b>	<b>10</b>	<b>19</b>	<b>39</b>	<b>3</b>	<b>91</b>



12

**KINDRAH  
KOHNE**

Homer, N.Y.  
**HOMER**

Junior • **MIDFIELD** • 5-5

**THE LAST TIME ...**

Started.....vs. Bucknell (10/2/12)  
 1 Goal.....vs. Purdue, (9/26/13)  
 1 Assist.....Central Mich. (8/26/12)

CAREER STATS						
Season	GP-GS	G	A	PTS	GWG	SH
2011	12-0	0	0	0	0	0
2012	19-4	0	1	1	0	10
2013	19-0	1	0	2	0	7
<b>TOTAL</b>	<b>50-4</b>	<b>1</b>	<b>1</b>	<b>3</b>	<b>0</b>	<b>17</b>




14

**KORI  
CHAPIC**  
Novelty, Ohio  
**WEST GEAUGA**

Junior • **MIDFIELD** • 5-7

**THE LAST TIME ...**

1 Goal ..... vs. Purdue (9/26/13)  
 GW ..... vs. Purdue (9/26/13)  
 1 Assist ..... vs. Indiana (9/29/13)  
 3 Points... vs. Northwestern (11/2/11)

**CAREER HIGH ...**

Goals ..... 1 (6x, last v. Purdue, 9/26/13)  
 Assists ... 1 (10x, last v. Indiana, 9/29/13)  
 Points ..... 3 vs. Northwestern (11/2/11)

CAREER STATS						
Season	GP-GS	G	A	PTS	GWG	SH
2011	26-26	3	6	12	3	39
2012	21-20	1	1	3	0	13
2013	22-22	2	3	7	1	25
<b>TOTAL</b>	<b>69-68</b>	<b>6</b>	<b>10</b>	<b>22</b>	<b>4</b>	<b>77</b>



15

**ERIN  
KEHOE**  
Crystal Lake, Ill.  
**PRAIRIE RIDGE (LOYOLA CHICAGO)**

Senior • **DEFENSE** • 5-4

**THE LAST TIME ...**

Played..... vs. Iowa (11/8/13)

1 Goal... v. Central Mich. (8/26/12)

1 Assist ..... at Bucknell (9/10/13)

CAREER STATS						
Season	GP-GS	G	A	PTS	GWG	SH
2010*	19-5	0	0	0	0	12
2011	5-0	0	0	0	0	1
2012	20-0	1	2	4	0	2
2013	13-0	0	1	1	0	4
<b>TOTAL</b>	<b>57-5</b>	<b>1</b>	<b>3</b>	<b>5</b>	<b>0</b>	<b>18</b>

\* at Loyola Chicago



16

**MALLORY  
WEBER**  
Novi, Mich.  
**NORTHVILLE**

Sophomore • **FORWARD** • 5-6

**THE LAST TIME ...**

1 Goal ..... vs. Wisconsin (11/6/13)  
 2 Goals ..... at Bucknell (9/10/13)  
 GW ..... at Bucknell (9/10/13)  
 1 Assist ..... vs. Monmouth (11/15/13)  
 2 Assists ..... vs. Illinois (9/20/13)  
 4 points ..... vs. Illinois (10/20/13)

**CAREER HIGH ...**

Goals .... 2 (3x, last at Bucknell, 9/10/13)  
 Assists ..... 2 vs. Illinois (10/20/13)  
 Points ..... 4 (4x, last v. Illinois, 10/20/13)

CAREER STATS						
Season	GP-GS	G	A	PTS	GWG	SH
2012	26-26	13	4	30	5	39
2013	22-22	7	8	22	2	46
<b>TOTAL</b>	<b>48-48</b>	<b>20</b>	<b>12</b>	<b>52</b>	<b>7</b>	<b>85</b>



17

**WHITNEY  
CHURCH**  
Ashburn, Va.  
**BROAD RUN**

Junior • **DEFENSE** • 5-5

**THE LAST TIME ...**

1 Goal ..... vs. Monmouth (11/15/13)  
 2 Goals ... vs. Northwestern (9/20/13)  
 GW ..... vs. Northwestern (9/20/13)  
 1 Assist ..... at Bucknell (9/10/13)  
 4 points... vs. Northwestern (9/20/13)

**CAREER HIGH ...**

Goals ..... 2 (2x, last v. NU, 9/20/13)  
 Assists ... 1 (3x, last at Bucknell, 9/10/13)  
 Points ..... 4 (2x, last v. NU, 9/20/13)

CAREER STATS						
Season	GP-GS	G	A	PTS	GWG	SH
2011	26-15	1	1	3	0	14
2012	27-27	3	1	7	1	10
2013	22-20	4	1	9	1	22
<b>TOTAL</b>	<b>75-62</b>	<b>8</b>	<b>3</b>	<b>15</b>	<b>2</b>	<b>46</b>




19

**TAYLOR  
SCHRAM**

Canonsburg, Pa.  
**CANON-McMILLAN**

Senior • **MIDFIELD** • 5-5

**THE LAST TIME ...**

1 Goal ..... vs. Wisconsin (11/6/13)  
 2 Goals ..... vs. Nebraska (10/14/11)  
 GW ..... vs. Wisconsin (11/6/13)  
 1 Assist ..... vs. Illinois (10/20/13)  
 2 Assists ... vs. Monmouth (11/15/13)  
 3 Assists ..... vs. W. Virginia (8/26/11)  
 3 Points ..... vs. Purdue (10/28/11)  
 5 points ..... vs. Nebraska (10/14/11)

**CAREER HIGH ...**

Goals ..... 2 vs. Nebraska (10/14/11)  
 Assists ..... 3 vs. W. Virginia (8/26/11)  
 Points ..... 5 (2x, last v. Neb. , 10/14/11)

CAREER STATS						
Season	GP-GS	G	A	PTS	GWG	SH
2010	21-8	2	3	7	1	15
2011	24-24	12	12	36	2	46
2012	16-15	5	1	11	1	40
2013	22-22	5	8	18	2	50
<b>TOTAL</b>	<b>83-69</b>	<b>24</b>	<b>24</b>	<b>72</b>	<b>6</b>	<b>151</b>



20

**SALINA  
WILLIFORD**

Wayne, Pa.  
**CONESTOGA**

Freshman • **DEFENSE** • 5-4

**THE LAST TIME ...**

Started ..... vs. Iowa (11/8/13)

CAREER STATS						
Season	GP-GS	G	A	PTS	GWG	SH
2013	22-17	0	0	0	0	9
<b>TOTAL</b>	<b>22-17</b>	<b>0</b>	<b>0</b>	<b>0</b>	<b>0</b>	<b>9</b>



21

**TEDDY  
CHASE**

Wayne, Pa.  
**THE SHIPLEY SCHOOL**

Sophomore • **DEFENSE** • 5-7

**THE LAST TIME ...**

Played ..... vs. Illinois (10/20/13)  
 1 Assist ..... vs. St. John's (8/19/12)

CAREER STATS						
Season	GP-GS	G	A	PTS	GWG	SH
2012	8-0	0	1	1	0	0
2013	5-0	0	0	0	0	2
<b>TOTAL</b>	<b>13-0</b>	<b>0</b>	<b>1</b>	<b>1</b>	<b>0</b>	<b>2</b>



22

**TANI  
COSTA**

Honolulu, Hawaii  
**KALANI**

Redshirt Senior • **FORWARD** • 5-8

**THE LAST TIME ...**

1 Goal ..... vs. Illinois (10/20/13)  
 2 Goals ..... vs. Monmouth (11/15/13)  
 3 Goals ..... vs. Indiana (10/28/10)  
 GW ..... vs. Monmouth (11/15/13)  
 1 Assist ..... vs. Wisconsin (11/6/13)  
 2 Assists .. at Northwestern (9/21/12)  
 3 Assists .. at Oklahoma St. (9/13/13)  
 3 Points ..... vs. Purdue (9/26/13)

4 Points ..... vs. Monmouth (11/15/13)  
 6 Points ..... vs. Indiana (10/28/10)

**CAREER HIGH ...**

Goals ..... 3 vs. Indiana (10/28/10)  
 Assists ..... 3 at Oklahoma St. (9/13/13)  
 Points ..... 6 vs. Indiana (10/29/10)

CAREER STATS						
Season	GP-GS	G	A	PTS	GWG	SH
2009				Redshirt Season		
2010	19-8	9	5	23	3	45
2011	0-0	0	0	0	0	0
2012	25-13	6	6	18	2	50
2013	21-7	10	7	27	2	52
<b>TOTAL</b>	<b>65-28</b>	<b>25</b>	<b>18</b>	<b>68</b>	<b>7</b>	<b>147</b>




23

**BRI HOVINGTON**  
Lothian, Md.  
**SOUTHERN**

Senior • DEFENSE • 5-4

### THE LAST TIME ...

Started..... vs. Wisconsin (11/6/13)  
1 Assist..... vs. Army (11/11/11)

CAREER STATS						
Season	GP-GS	G	A	PTS	GWG	SH
2010	18-15	0	1	1	0	1
2011	20-15	0	2	2	0	3
2012	23-20	0	0	0	0	2
2013	20-20	0	0	0	0	3
<b>TOTAL</b>	<b>81-70</b>	<b>0</b>	<b>3</b>	<b>3</b>	<b>0</b>	<b>6</b>



24

**LIV BRANDY**  
Gibsonia, Pa.  
**HOME SCHOOLED**

Freshman • DEFENSE • 5-4

### THE LAST TIME ...

Played..... vs. Purdue (9/26/13)  
1 Goal..... at Bucknell (9/10/13)

CAREER STATS						
Season	GP-GS	G	A	PTS	GWG	SH
2013	2-0	1	0	2	0	2
<b>TOTAL</b>	<b>2-0</b>	<b>1</b>	<b>0</b>	<b>2</b>	<b>0</b>	<b>2</b>



25


**MALLORY PETERSON**  
Clinton Corner, N.Y.  
**MILLBROOK**

Sophomore • FORWARD/MIDFIELD • 5-5

### THE LAST TIME ...

Played..... vs. Monmouth (11/15/13)  
2 Goals..... vs. Michigan St. (10/19/12)  
1 Assist..... at Bucknell (9/10/13)  
4 Points..... vs. Michigan St. (10/19/12)

CAREER STATS						
Season	GP-GS	G	A	PTS	GWG	SH
2012	19-0	2	1	5	0	4
2013	13-0	0	1	1	0	5
<b>TOTAL</b>	<b>32-0</b>	<b>2</b>	<b>2</b>	<b>6</b>	<b>0</b>	<b>9</b>



26

**EMILY CARROLLO**  
Wantage, N.J.  
**POPE JOHN REGIONAL**

Grad. Student • FORWARD/MIDFIELD • 5-5

### THE LAST TIME ...

Started..... vs. Hofstra (8/25/13)  
1 Assist..... at Iowa (10/25/13)

CAREER STATS						
Season	GP-GS	G	A	PTS	GWG	SH
2009*	20-11	0	0	0	0	9
2010*	22-20	0	2	2	0	7
2011*	Redshirt Season					
2012*	20-4	0	0	0	0	7
2013	19-1	0	2	2	0	8
<b>TOTAL</b>	<b>81-36</b>	<b>0</b>	<b>4</b>	<b>4</b>	<b>0</b>	<b>31</b>

\* at Virginia




28

**BRITT  
ECKERSTROM**  
Germantown, Md.  
**NORTHWEST**

Redshirt Sophomore • **GOALKEEPER** • 5-10

**THE LAST TIME ...**

Started.....vs. Monmouth (11/15/13)  
 Won .....vs. Monmouth (11/15/13)  
 Shut Out .....vs. Monmouth (11/15/13)

**CAREER HIGH ...**

Saves.....9 at Ohio State (9/27/12)

**CAREER STATS**

Season	GP-GS	Minutes	Record	SHO	Saves	Pct.	GA	GAA
2011			Redshirt Season					
2012	11-4	508:24	4-0-0	1/2	27	.844	5	0.89
2013	22-22	1944:15	15-6-1	3/3	90	.756	29	1.34
<b>TOTAL</b>	<b>33-26</b>	<b>2452:39</b>	<b>19-6-1</b>	<b>4/5</b>	<b>117</b>	<b>.775</b>	<b>34</b>	<b>1.06</b>



## ERICA WALSH

Head Coach • Seventh Year  
WILLIAM & MARY '97

**PSU RECORD:** 115-42-8 (.721)  
**Overall Record:** 154-70-11 (.679)

**2012 NSCAA NATIONAL COACH OF THE YEAR  
TWO-TIME BIG TEN COACH OF THE YEAR (2009, 2012)**

Head coach Erica Walsh enters her seventh season at the helm of the Penn State women's soccer program in 2013. Walsh's 2012 Nittany Lions were the most successful team in program history after advancing to their first-ever national title game. The Nittany Lions won 21 of 27 games and were unbeaten in Big Ten action with a 10-0-1 record. The Lions registered their 15th consecutive Big Ten title and 18th-straight NCAA Tournament appearance. The 15-title mark stands as the most consecutive Big Ten Championships by a women's program, along with the present Northwestern tennis team.

### WALSH'S COLLEGIATE RÉSUMÉ

#### Head Coach

PENN STATE 2007-present  
*2012 NSCAA National Coach of the Year*  
*2012 Big Ten Coach of the Year*  
*2009 Big Ten Coach of the Year*

Harvard 2006  
Dartmouth 2000-02

#### Assistant Coach

Florida State 2005-06  
Dartmouth 1998-99

#### Graduate Assistant

Lehigh 2003-04  
Dartmouth 1997

#### Student-Athlete

William & Mary 1993-97  
*William & Mary Hall of Fame Inductee*

### WALSH'S NATIONAL RÉSUMÉ

#### Head Coach

U.S. Women's Under-17 2004-07

#### Assistant Coach

U.S. Women's National Team 2008-present  
*2008 Olympic Gold Medalists*  
*2011 World Cup Silver Medalists*  
U.S. Women's Under-19 2004

Senior Christine Nairn became just the seventh Nittany Lion to finish as a finalist for the prestigious Missouri Athletic Club's Hermann Trophy in 2012 under Walsh's tutelage while junior Maya Hayes was named a semifinalist for the award.

Walsh's success was recognized at the conference and national level as she earned Big Ten Coach of the Year and NSCAA Coach of the Year honors.

Her 2011 team was a dominant force, winning 21 of 26 matches, while out-scoring opponents 70-24. The Nittany Lions were 10-1-0 in Big Ten action and posted the seventh undefeated season at Jeffrey Field (9-0). Walsh helped guide the Lions to their 14th-straight Big Ten title and a spot to the NCAA Sweet Sixteen for

the first time since 2007.

With Walsh's guidance, sophomore Maya Hayes became the nation's most prolific scorer in soccer in 2011. Hayes was a finalist for the M.A.C. Hermann Trophy. Hayes led the nation with 31 goals and 70 points. The sophomore phenom broke single-season record at Penn State for goals and points.

During the 2011 summer, Walsh had an extraordinary experience of being one of the top assistants to Pia Sundhage and the 2011 United State women's national team at the FIFA World Cup in

Germany. The U.S. made a sparkling run through knockout play to the final, falling to eventual champions Japan.

During the 2010 season, Walsh's young club made a remarkable turnaround mid-season, overcoming a two-game deficit in the league standings over the final weeks to capture a share of a record-breaking 13th straight Big Ten title.

After a tough 2-4 start to the 2009 season, Walsh led the Nittany Lions to a remarkable turnaround, going 10-1-2 in the last 13 games of the regular season, earning her the 2009 Big Ten Coach of the Year Award for her efforts. In March of 2010, Walsh's alma mater, William & Mary, honored her by inducting her into the W&M Athletics Hall of Fame.

With the impressive end to the season, Walsh and her charges captured the program's 12th-straight Big Ten Championship, tying a record for most consecutive women's Big Ten titles won held by the Michigan swimming & diving program. By winning the Big Ten, the Nittany Lions continued their string of NCAA Tournament berths, making their 15th-straight appearance in the 64-team field in 2009. For the second time in three years, Penn State hosted the first and second rounds of tournament play.

Walsh also orchestrated one of the finest awards seasons in Penn State history when Katie Schoepfer, Alyssa Naeher and Christine Nairn swept the year-end Big Ten Player of the Year awards. Schoepfer was named the Offensive Player of the Year, Naeher the Defensive Player of the Year and Nairn the Freshman of the Year. Danielle Toney was named to the All-Big Ten First Team, while Lexi Marton garnered Second Team mention. Walsh has now coached two players of the year to three awards as Naeher was also the 2007 recipient of the Defensive Player of the Year honors in Walsh's first year in Happy Valley.

Walsh continued her success from the 2007 campaign into a 16-8-0 record that saw Penn State capture its 11th-straight Big Ten Championship and the 2008 Big Ten Tournament crown.

Her transition to Penn State was quite smooth as the 2007 team finished 18-4-2, including a 9-1-0 mark in conference play, and was ranked 12th in the final NSCAA poll of the season.

When she came to Penn State, Walsh brought with her a wealth of experience at both the international and collegiate levels. She already has coached at six different universities, including three stints as head coach as well as serving as an assistant for the U.S. U-19 team in 2004. Walsh served as head coach of the U-17 team from December 2004 until her hire at Penn State in February of 2007.

As of January 2009, Walsh was appointed as a member of the Panel of Instructors and Lecturers for FIFA Courses. In addition, she was appointed as the Chairman of the Women's Technical Committee for the period of January 1, 2009 to June 30, 2011.

In January of 2008, Walsh was named as the assistant coach by Pia Sundhage for the U.S. National Team. With Walsh's help and guidance the U.S. team completed its historic run with a gold medal at the 2008 Olympic Games in Beijing, China. Even sweeter was that Walsh's main responsibility was the U.S. Team's defense, which held fellow world power Brazil scoreless in the gold medal game.

The head coach at Harvard University as well as the U.S. Under-17 team prior to her hiring at Penn State, Walsh has consistently been active among the coaching ranks both at the Division I level and the U.S. Youth National Team program for nearly a decade. Prior to her time with the Crimson, she was part of a Florida State staff that led the Seminoles to one of its most successful year to date. FSU joined Penn State in the 2005 Women's Soccer College Cup, with both programs reaching the national semifinals.



Walsh's coaching path began in 1997 as a graduate assistant with Bucknell University. In 1998, she accepted a position at Dartmouth, where she was an assistant coach for two seasons. After helping the team to a final NSCAA ranking of No. 8 at the conclusion of the team's 1998 NCAA quarterfinal run as well as an Ivy League championship in 1999, Walsh assumed head coaching duties before the 2000 season.

As head coach, Walsh led the Big Green to back-to-back Ivy League co-championships in 2000 and 2001. Her squad was ranked in the NSCAA's top 25 each year, rising as high as No. 13 in 2001. In her three seasons as head coach, Dartmouth was invited to the NCAA Tournament each season and reached the round of 16 twice. All three of her teams earned the NSCAA's Academic Team Award.

Walsh left Dartmouth to earn her Master's in business administration at Lehigh University where she served as a graduate assistant from 2003-04.

Beginning in the spring of 2004, Walsh joined the United States Under-19 team as an assistant coach where she helped with preparations for the Under-19 World Cup. The U.S. finished with the bronze medal in Thailand after defeating Brazil in the third place match. After the World Cup, Walsh was appointed the U.S. National Team's U-17 head coach, a position which she held for three years.

As a player, Walsh was an NSCAA All-Region selection at William & Mary. A two-time first team All-CAA pick, she propelled her team to four NCAA Tournament appearances as well as two CAA regular season and two CAA league championships.

A high school All-American at Lower Moreland, she was also a member of the U.S. Under-17 National Team.

Walsh earned her Bachelor of Science degree with a concentration in biology from William & Mary in 1997 and resides in State College, Pa.

## WALSH'S ACCOLADES

**10 YEARS** OF COLLEGE HEAD COACHING EXPERIENCE

**1** COLLEGE CUP APPEARANCE

**1** NATIONAL CHAMPIONSHIP APPEARANCE

**14** NCAA TOURNAMENT WINS

**10** NCAA TOURNAMENT APPEARANCES

**10** ALL-AMERICA HONORS

**6** BIG TEN CHAMPIONSHIPS

**1** OLYMPIC GOLD MEDAL

**1** NATIONAL COACH OF THE YEAR AWARD

**2** BIG TEN COACH OF THE YEAR AWARDS

## WALSH'S CAREER AT PENN STATE

Season	Overall	Pct.	Big Ten	Pct.	Finish	NCAA
2007	18-4-2	.792	9-1-0	.900	1st	Third Round
2008	16-8-0	.667	8-2-0	.800	T-1st	First Round
2009	13-6-2	.667	8-1-1	.850	1st	Second Round
2010	11-9-1	.548	8-2-0	.800	T-1st	Second Round
2011	21-5-0	.808	10-1-0	.909	1st	Third Round
2012	21-4-2	.815	10-0-1	.955	1st	Second Place
2013	15-6-1	.705	7-4-0	.636	3rd	--
<b>Penn State</b>	<b>115-41-8</b>	<b>.721</b>	<b>60-11-2</b>	<b>.836</b>		<b>7 NCAAs (11-6)</b>
<b>Career</b>	<b>154-69-11</b>	<b>.679</b>				<b>10 NCAAs (14-9)</b>





## 2013 Penn State Women's Soccer Penn State Combined Team Statistics (as of Nov 15, 2013) All games

RECORD:	OVERALL	HOME	AWAY	NEUTRAL
ALL GAMES	15-6-1	9-1-1	5-4	1-1
CONFERENCE	7-4	5-1	2-3	0-0
NON-CONFERENCE	8-2-1	4-0-1	3-1	1-1

Date	Opponent	Score	Att.	#	Player	gp	g	a	pts	sh	sh%	sog	sog%	gw	pk-att
Aug 23	WVU	To2 2-2	3742	5	Hayes, Maya	22	19	6	44	79	.241	45	.570	4	0-0
Aug 25	HOFSTRA	w 2-1	732	22	Costa, Tani	21	10	7	27	52	.192	28	.538	2	1-1
Aug 30	at #6 Virginia	L 1-5	2609	16	Weber, Mallory	22	7	8	22	46	.152	21	.457	2	0-0
Sep 01	LASALLE	w 5-1	1012	11	Rodriguez, Raquel	22	6	9	21	45	.133	19	.422	3	1-1
Sep 06	BOSTON UNIVERSITY	w 1-0	1556	19	Schram, Taylor	22	5	8	18	50	.100	16	.320	2	0-0
Sep 10	at Bucknell	w 6-0	1390	7	Hurd, Emily	22	2	7	11	37	.054	21	.568	0	0-0
Sep 13	at Oklahoma State	w 4-2	1316	13	Church, Whitney	22	4	1	9	22	.182	10	.455	1	0-0
9/15/2013	at Tulsa	w 3-2	252	14	Chapic, Kori	22	2	3	7	25	.080	8	.320	1	0-0
* Sep 20	NORTHWESTERN	wo2 3-2	3118	12	Kohne, Kindrah	19	1	0	2	7	.143	2	.286	0	0-0
* Sep 26	PURDUE	w 6-1	851	24	Brandy, Liv	2	1	0	2	4	.250	1	.250	0	0-0
* Sep 29	INDIANA	w 4-1	1582	7	Persson, Corey	20	1	0	2	2	.500	1	.500	0	0-0
* Oct 04	at #18 Wisconsin	w 2-1	453	26	Carrollo, Emily	19	0	2	2	8	.000	6	.750	0	0-0
* Oct 06	at Minnesota	L 0-1	796	1	Basinger, Brittany	22	0	2	2	6	.000	4	.667	0	0-0
* Oct 13	#19 MICHIGAN	L 0-1	2144	25	Peterson, Mallory	13	0	1	1	5	.000	1	.200	0	0-0
* Oct 17	OHIO STATE	w 4-2	567	15	Kehoe, Erin	13	0	1	1	4	.000	1	.250	0	0-0
* Oct 20	ILLINOIS	w 5-0	2119	20	Williford, Salina	22	0	0	0	9	.000	2	.222	0	0-0
* Oct 25	at IOWA	L 2-3	350	23	Hovington, Bri	20	0	0	0	3	.000	1	.333	0	0-0
* Oct 27	at #21 Nebraska	Lo2 2-3	404	21	Chase, Teddy	5	0	0	0	2	.000	1	.500	0	0-0
* Nov 01	at Michigan State	w 3-0	515	8	Kalwa, Jenna	4	0	0	0	2	.000	1	.500	0	0-0
Nov 06	vs #6 Wisconsin	w 2-0	325	2	Ritchey, Megan	4	0	0	0	1	.000	0	.000	0	0-0
Nov 08	vs #7 IOWA	L 0-1	0	28	Eckerstrom, Britt	22	0	0	0	0	.000	0	.000	0	0-0
Nov 15	MONMOUTH	w 3-0	747	6	Witte, Anna	4	0	0	0	0	.000	0	.000	0	0-0
				4	Marton, Lexi	9	0	0	0	0	.000	0	.000	0	0-0
				0	Kaminski, Meghan	4	0	0	0	0	.000	0	.000	0	0-0

TEAM STATISTICS	PSU	OPP
<b>SHOT STATISTICS</b>		
Goals-Shot attempts	60-409	29-250
Goals scored per game	2.73	1.32
Shot pct.	.147	.116
Shots on goal-Attempts	191-409	124-250
SOG pct.	.467	.496
Shots/Game	18.6	11.4
CORNER KICKS	155	86
PENALTY KICKS	2-2	1-1
<b>PENALTIES</b>		
Yellow cards	10	8
Red cards	0	0
<b>ATTENDANCE</b>		
Total	18170	8085
Dates/Avg Per Date	11/1652	9/898
Neutral Site #/Avg	2/162	

Total	22	60	55	175	409	.147	191	.467	15	2-2
Opponents	22	29	30	88	250	.116	124	.496	6	1-1

#	Goalie	GP	Min.	GA	GAAvg	Saves	Pct	W-L-T	Sho
0	Kaminski, Meghan	4	77:52	0	0.00	3	1.000	0-0-0	0/3
00	Golestani, Lexi	1	7:13	0	0.00	1	1.000	0-0-0	0/1
28	Eckerstrom, Britt	22	1944:15	29	1.34	90	.756	15-6-1	3/3
Total		22	2029:20	29	1.29	95	.766	15-6-1	6
Opponents		22	2029:20	60	2.66	131	.686	6-15-1	3

Goals by Period	1st	2nd	OT	OT2	Total
Penn State	31	28	0	1	60
Opponents	14	14	0	1	29

Shots by Period	1st	2nd	OT	OT2	Total
Penn State	195	200	8	6	409
Opponents	119	122	6	3	250

Saves by Period	1st	2nd	OT	OT2	Total
Penn State	46	44	3	2	95
Opponents	66	59	4	2	131

Corners by Period	1st	2nd	OT	OT2	Total
Penn State	69	84	1	1	155
Opponents	40	44	2	0	86

Fouls by Period	1st	2nd	OT	OT2	Total
Penn State	75	89	2	1	167

# 2013 WOMEN'S SOCCER

# GAME NOTES



**LEXI GOLESTANI**  
Freshman • GK  
Montgomery, N.J.



**MEGHAN KAMINSKI**  
Sophomore • GK  
Doylestown, Pa.



**BRITTANY BASINGER**  
Freshman • D  
Fairfax, Va.



**MEGHAN RITCHEY**  
Sophomore • M  
State College, Pa.



**EMILY HURD**  
R - Junior • M  
Sammamish, Wash.



**LEXI MARTON**  
R - Senior • D  
Aurora, Ontario



**MAYA HAYES**  
Senior • F  
West Orange, N.J.



**ANNA WITTE**  
Freshman • D  
Morrisville, N.C.



**COREY PERSSON**  
Freshman • M  
Danvers, Mass.



**JENNA KALWA**  
Sophomore • M/D  
Pennington, N.J.



**ANDREA GUNDERSON**  
Freshman • D  
West Chester, Pa.



**RAQUEL RODRIGUEZ**  
Sophomore • F/M  
San Jose, Costa Rica



**KINDRAH KOHNE**  
Junior • D  
Homer, N.Y.



**KORI CHAPIC**  
Sophomore • D  
Homer, N.Y.



**ERIN KEHOE**  
Senior • M  
Crystal, Ill.



**MALLORY WEBER**  
Sophomore • F  
Novi, Mich.



**WHITNEY CHURCH**  
Junior • D  
Ashburn, Va.



**ANGELA WIDLACKI**  
Freshman • D  
Naperville, Ill.



**TAYLOR SCHRAM**  
Senior • F  
Canonsburg, Pa.



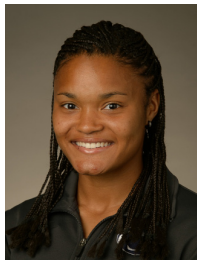
**SALINA WILLIFORD**  
Freshman • M/D  
Wayne, Pa.



**TEDDY CHASE**  
Sophomore • D  
Wayne, Pa.



**TANI COSTA**  
R - Senior • F  
Honolulu, Hawaii



**BRI HOVINGTON**  
Senior • D  
Lothian, Md.



**LIV BRANDY**  
Freshman • D  
Gibsonia, Pa.



**MALLORY PETERSON**  
Sophomore • F/M  
Clinton Corners, N.Y.



**EMILY CORROLLO**  
Grad. Student • F/M  
Sussex, N.J.



**MAGGIE CHAPMAN**  
Freshman • M  
Dumfries, Va.



**BRITT ECKERSTROM**  
R - Sophomore • GK  
Germantown, Md.



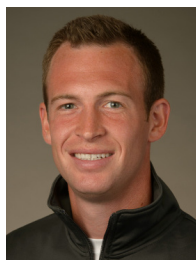
**CHLOE BUEHLER**  
Freshman • GK  
Perrysburg, Ohio



**ERICA WALSH**  
Head Coach • 7th Year  
William & Mary '97



**ANN COOK**  
Assistant Coach • 7th Year  
William & Mary '97



**TIM WASSELL**  
Assistant Coach • 4th Year  
PSU Altoona '06



**KARA LOWERY**  
Director of Ops. • 1st Year  
Southern Nazarene '97



**MIKE ECKBERG**  
Volunteer Asst. • 1st Year  
Luther College '07