

PENN STATE LADY LION

BASKETBALL GAME NOTES

2014-2015

Penn State Athletic Communications: 101D Bryce Jordan Center, University Park, PA 16802 Office: 814-865-1757 Fax: 814-863-3165
 Women's Basketball Contact: Kristina Petersen Twitter: @ladylionsid Website: www.GoPSUsports.com Email: kap18@psu.edu Cell: 814-883-4581 Office: 814-865-1757



SCHEDULE/RESULTS

NOVEMBER	
Sun. 2	INDIANA (PA.) (ex.) W, 75-71 <i>Preseason WNIT</i>
Fri. 14	TOWSON..... W, 71-64
Sun. 16	ALBANY L, 53-54
Sat. 22	SETON HALL L, 70-75
Tues. 25	ST. BONAVENTURE (BTN Plus) ..L, 54-56 <i>Georgia State Thanksgiving Tournament</i>
Fri. 28	vs. Liberty 2 p.m.
Sun. 30	vs. GSU/Samford 12:30/2:30 p.m.
DECEMBER	
<i>Big Ten/ACC Challenge</i>	
Thurs. 4	at Syracuse 7 p.m.
Sun. 7	WAGNER (BTN Plus) 2 p.m.
Wed. 10	at Hartford 7 p.m.
Sun. 14	RIDER..... 2:30 p.m.
Sun. 21	USF (BTN Plus) 2 p.m.
Sun. 28	at Iowa * (BTN Plus) 3 p.m.
JANUARY	
Thurs. 1	at Michigan * (BTN Plus) 1 p.m.
Sun. 4	ILLINOIS * (BTN Plus) 2 p.m.
Tues. 6	at Wisconsin * (BTN) 9 p.m.
Sat. 10	RUTGERS * (BTN) noon
Thurs. 15	at Nebraska * (BTN) 7 p.m.
Sun. 18	at Ohio State * (BTN Plus) 2 p.m.
Thurs. 22	INDIANA * (BTN Plus) 7 p.m.
Sun. 25	NORTHWESTERN * (BTN Plus) 2 p.m.
Wed. 28	at Minnesota * (BTN Plus) 8 p.m.
FEBRUARY	
Sun. 1	at Rutgers * (BTN) noon
Thurs. 5	MARYLAND * (BTN Plus) 7 p.m.
Sun. 8	at Purdue * (BTN Plus) 2 p.m.
Wed. 11	MICHIGAN ST. * (BTN Plus) ... 7 p.m.
Sun. 15	MINNESOTA * (BTN Plus) 2 p.m.
Mon. 23	at Maryland * (BTN) 7 p.m.
Thurs. 26	OHIO STATE * (BTN Plus) 7 p.m.
MARCH	
<i>Ninth Annual Pink Zone at Penn State</i>	
Sun. 1	WISCONSIN * (BTN/BTN Plus) 1/3/5 p.m.
Wed.-Sun. 4-8 Big Ten Tourn. (BTN/ESPN2) Hoffman Estates, Ill.
Sat.-Tues. 20-23 NCAA Tourn. 1st & 2nd Round
Sat.-Tues. 27-30 NCAA Tourn. Regionals
APRIL	
Sun./Tues. 5/7 NCAA Final Four (Tampa, Fla.)

BOLD CAPS indicates home game
 * - indicates Big Ten game
 All times are Eastern Time.
 BTN - Big Ten Network BTN Plus - BTN.com
 Schedule subject to change. Please visit www.GoPSUsports.com for up-to-date tip times.

Game #5-6: Penn State at Georgia State Thanksgiving Tournament

Fri., Nov. 28 & Sun., Nov. 30 ▶ GSU Sports Arena ▶ Atlanta, Ga.

		SETTING THE SCENE
Penn State Lady Lions	Liberty Flames	The Liberty Game
Record: 1-3, 0-0 Big Ten Last Game: St. Bona. 56, PSU 54 (11/25) Head Coach: Coquese Washington Career Record: 143-84 (8th yr.) Record at PSU: 143-84 (8th yr.)	Record: 2-2, 0-0 Big South Last Game: Elon 73, LU 62 (11/25) Head Coach: Carey Green Career Record: 359-123 (16th yr.) Record at LU: 359-123 (16th yr.)	Series: Liberty leads 1-0 Last Meeting: Liberty 78, PSU 70 (3/20/05) Streak: Liberty - 1 win Television: none Radio: The game is on the Penn State Sports Network and 1390 The Fanatic locally with Jerry Fisher calling the action. The audio feed is available at www.GoPSUsports.com. Webstream: GeorgiaStateSports.com Live Stats: GoPSUsports.com
Statistical Leaders Points Lindsey Spann (14.0) Rebounds Tori Waldner (8.3) Assists Sierra Moore (3.8)	Statistical Leaders Points Karly Buer (12.5) Rebounds Ashley Ringer (10.8) Assists Sadalia Ellis (4.5)	

SERIES QUICK HITS

- ✓ The Flames are 2-2 on the season with wins over VCU and Saint Joseph's in overtime, but are coming off of a 73-62 loss to Elon.
- ✓ Karly Buer leads Liberty with a 12.5 scoring average thanks to a 45.0 field goal percentage.
- ✓ Ashley Ringer has led the Flames in rebounding each game with double-digit performances in every outing.
- ✓ Sadalia Ellis is also accounting for double figures with an 11.8 scoring average with a team-best 18 assists in four games.
- ✓ The Lady Lions lost the only previous meeting with Liberty, a 78-70 decision in the first round of the 2005 NCAA Tournament.
- ✓ The game versus the Flames is also the only time that Penn State has faced a Big South opponent.

STORYLINES

- ✓ Penn State has won its last three Thanksgiving tournaments, dating back to 2011.
- ✓ The Lady Lions won the Junkanoo Jam last season, the Cal State Northridge tourney in 2012 and the Nugget Classic in 2011.
- ✓ Senior **Tori Waldner** moved into ninth place on Penn State's career blocks with 99 rejections after a three-block performance vs. Seton Hall.
- ✓ Sophomore **Sierra Moore** had a career-high 15 points to surpass the 100-point plateau for her career against St. Bonaventure.
- ✓ Freshman **Lindsey Spann** reached double figures for the fourth straight game with 13 points against St. Bonaventure.
- ✓ Junior **Candice Agee** recorded a career-high 21 points on 9-of-15 shooting against Seton Hall

UP NEXT

Penn State continues its three-game road swing with the ACC/Big Ten Challenge at Syracuse on Thursday, Dec. 4 before returning home to host Wagner on Sunday, Dec. 7 at 2 p.m.

Table of Contents	PSU's Record When..... 5	Miscellaneous Stats..... 10
Schedule, Results, Storylines..... 1	Lions in the Big Ten Stats..... 6	Coquese Washington 11
Roster, Quick Facts 2	The Last Time Penn State 7	Player Bios 12-23
Team Comparison, Series History 2	Record Book..... 8	2014-15 Box Scores 24
What's at Stake 3	2015 Signing Class..... 8	2014-15 Stats 25
Big Ten Standings/Schedule..... 3	Milestone Watch 8	Radio/TV Chart..... 26
Possible Starters 3	Season Highs/Lows..... 9	



2014-15 ROSTER

PENN STATE LADY LIONS

No.	Name	Pos.	Cl./Elg.	Ht.	Hometown/High School (Previous School)
1	Candice Agee **	C	Jr./Jr.	6-6	Victorville, Calif./Silverado
3	Brianna Banks	G	Sr./Sr. [^]	5-9	Newnan, Ga./Fayette County (Connecticut)
5	Sierra Moore	G	Jr./So.	5-11	Hanover, Pa./Delone Catholic (Duke)
10	Keke Sevillian *	G	So./So.	5-7	Goodrich, Mich./Goodrich
11	Alex Harris *	F	So./So.	6-3	Lorain, Ohio/Lorain
12	Lindsey Spann	G	So./Fr.	5-6	Laurel, Md./Good Counsel
14	Dominique Brooks	C	Jr./Jr.	6-4	Lansing, Ill./T.F. South (Trinity Valley C.C.)
15	Kalayah Mitchell *	F	So./So.	6-2	Stone Mountain, Ga./Stephenson
25	Peyton Whitted *	F	So./So.	6-3	Suwanee, Ga./North Gwinnett
34	Molly Dincher	G/F	Sr./Sr.	6-0	Williamsport, Pa./Williamsport Area (PSU Wilkes Barre)
41	Jenny DeGraaf *	F	So./So.	6-1	Springboro, Ohio/Springboro
44	Tori Waldner ***	F/C	Sr./Sr.	6-5	Milton, Ga./Milton

Head Coach: Coquese Washington (Notre Dame '92)

Asst. Coaches: Itoro Coleman, Kia Damon, Jocelyn Wyatt

Captains: Tori Waldner, Sierra Moore, Lindsey Spann

* Indicates letters earned

LIBERTY FLAMES

No.	Name	Pos.	Cl.	Ht.	Hometown/High School (Previous School)
1	Mickayla Sanders	F	So.	6-0	Clayton, N.C./Cary Academy
2	Candice Leatherwood	G	Fr.	5-6	Detroit, Mich./Farmington Hills Mercy
3	Sadalia Ellis	G	Jr.	5-6	Houston, Texas/Cypress Falls
4	Ellee Rollins	G	Sr.	5-7	Elkton, Md./Caravel Academy
5	Mikal Johnson	G	Jr.	5-8	Manassas, Va./Osborn (Rider)
10	Jaymee Fisher-Davis	G	Jr.	5-7	Charlotte, N.C./Butler
12	Audrey Rettstatt	F	So.	5-11	Galena, Ohio/Worthington Christian
14	Karly Buer	G	RS-Sr.	5-7	Concordia, Kan./Concordia (Missouri State)
15	Simone Brown	F	So.	5-11	Land O' Lakes, Fla./Father Lopez
21	Emily Frazier	G	R-Sr.	5-7	Magnolia, Texas/Home Schooled
22	Sheana Vega	G	FSr.	5-8	Jackson, N.J./Jackson Memorial
24	Jasmine Gardner	F/C	RS-Sr.	6-2	Memphis, Tenn./Mitchell
34	Katelyn Adams	F/C	RS-Jr.	6-5	Burnsville, Minn./Minnehaha Academy
44	Catherine Kearney	F/C	RS-Jr.	6-6	Monroeville, N.J./Gloucester County Christian
55	Ashley Rininger	F/C	RS-Jr.	6-4	Canton, Ohio/GlenOak

Head Coach: Carey Green

Assistant Coaches: Alexis Sherard, Andrea "Andy" Bloodworth, Brittany Hoyt

TEAM COMPARISON

PENN STATE		LIBERTY	
Spann (14.0)	Scoring Leader	Buer (12.5)	
Waldner (8.3)	Rebounding Leader	Rininger (10.8)	
Moore (3.8)	Assist Leader	Ellis (4.5)	
Mitchell (2.8)	Steals Leader	Ellis/Frazier (1.5)	
Waldner (2.5)	Blocks Leader	Rininger (1.5)	
62.0	Scoring Offense	71.0	
62.2	Scoring Defense	70.0	
-0.2	Scoring Margin	+1.0	
41.0	Rebounds Per Game	49.5	
-1.0	Rebound Margin	+12.8	
13.5	Assists Per Game	14.0	
9.3	Steals Per Game	7.3	
.403	Field Goal Pct.	.382	
.339	FG Defense Pct.	.387	
.283	3-pt. FG Pct.	.258	
.303	3-pt. FG Pct. Def.	.361	
.592	Free Throw Pct.	.716	
0.8	Assist/Turnover	0.7	
Lost 3	W/L Streak	Lost 1	

SERIES HISTORY

Overall:	LU leads 1-0
Last meeting:	3/20/05
Last result:	LU, 78-70
Current streak:	LU - 1 win
Last 10:	LU, 1-0
Last 10 meetings:	3/20/05 N LU, 78-70

QUICK FACTS

THE UNIVERSITY

Location: University Park, Pa.
 Founded: 1855
 Enrollment: 48,184 (as of fall 2013)
 Colors: Blue & White
 Nickname: Lady Lions
 Conference: Big Ten
 President: Eric Barron
 Director of Athletics: Sandy Barbour
 Senior Woman Administrator: Charmelle Green
 Asst. Athletic Director: Jenn James
 Facility (cap.): Bryce Jordan Center (15,104)
 All-Time Record at BJC: 216-56 (19 seasons)

ATHLETIC COMMUNICATIONS

WBB Contact: Kristina Petersen
 Phone/Fax: (814) 865-1757/(814) 863-3165
 E-mail: kap18@psu.edu
 Address: 101-D Bryce Jordan Center
 University Park, Pa. 16802
 Press Row Phone: 814-863-3294
 Website: www.GoPSUsports.com
 Twitter: @ladylionsid

TEAM INFORMATION

2014-15 Record: 1-3
 Home: 1-3 Away: 0-0 Neutral: 0-0
 Big Ten Record: 0-0
 Home: 0-0 Away: 0-0
 Letterwinners Returning/Lost: 6/5
 Starters Returning/Lost: 1/4
 Big Ten Tournament: Quarterfinals
 Postseason: NCAA Sweet Sixteen

THE HISTORY

First Year of Women's Basketball: 1965
 All-Time Record: 882-397 (50 seasons)
 All-Time Big Ten Rec.: 244-122 (22 seasons)
 NCAA Tournament Appearances: 25
 NCAA Tournament Record: 32-25

WOMEN'S BASKETBALL

Head Coach: Coquese Washington
 Alma Mater: Notre Dame '92
 Overall Record: 143-84 (eighth season)
 School Record: 143-84 (eighth season)
 Twitter: @coquesewashing
 Basketball Office Phone: 814-863-2672
 Basketball Office Fax: 814-863-1221
 Best Time To Reach Coach: Through SID
 Assistant Coaches (Alma Mater):
 Itoro Coleman (Clemson '00)
 Kia Damon (Millersville '97)
 Jocelyn Wyatt (Appalachian State '06)
 Twitter/Instagram: @pennstatewbb
 Facebook: facebook.com/pennstateladylions

PRONUNCIATIONS

Coquese	ko-KWEES
Itoro	E-tora
Agee	AYE-gee
DeGraaf	D-graph
Kalayah	kah-LEE-uh
Sevillian	sev-ILL-e-on
Whitted	wit-ED



STANDINGS (as of 11/25)

Team	Big Ten			Overall		
	W	L	Pct.	W	L	Pct.
Iowa	0	0	.000	5	0	1.000
Maryland	0	0	.000	5	0	1.000
Illinois	0	0	.000	4	0	1.000
Indiana	0	0	.000	4	0	1.000
Minnesota	0	0	.000	4	0	1.000
Nebraska	0	0	.000	4	0	1.000
Rutgers	0	0	.000	4	0	1.000
Northwestern	0	0	.000	3	0	1.000
Michigan	0	0	.000	3	1	.750
Michigan State	0	0	.000	2	1	.667
Purdue	0	0	.000	2	1	.667
Ohio State	0	0	.000	2	2	.500
Wisconsin	0	0	.000	1	2	.333
Penn State	0	0	.000	1	3	.250

BIG TEN SCHEDULE

NOVEMBER 24

at Maryland 65, Loyola (Md.) 43

NOVEMBER 25

St. Bonaventure 56, at Penn State 54

Rutgers 81, at Wagner 53

at Iowa 73, Northern Iowa 45

at Minnesota 107, Southern 62

NOVEMBER 26

Illinois-Chicago at Northwestern 1 p.m.

East Tennessee State at Indiana 2 p.m.

Oakland at Michigan State 7:30 p.m.

NOVEMBER 27

Clemson vs. Ohio State 1:15 p.m.

South Carolina vs. Wisconsin 4:15 p.m.

Kentucky vs. Illinois 6 p.m.

NOVEMBER 28

Texas Tech vs. Purdue 1 p.m.

Wichita State vs. Ohio State 1:15 p.m.

Washington State vs. Michigan 2 p.m.

Liberty vs. Penn State 2 p.m.

Colgate at Rutgers 2 p.m.

James Madison vs. Maryland 3:30 p.m.

Arkansas vs. Iowa 4 p.m.

Nebraska at UCLA 4 p.m.

Syracuse/E. Carolina vs. Wisconsin 5:45 p.m.

Vanderbilt vs. Minnesota 7 p.m.

South Florida vs. Illinois 8:15 p.m.

NOVEMBER 29

TBD vs. Minnesota TBD

TBD vs. Purdue 1/3:15 p.m.

San Diego State vs. Michigan 2 p.m.

Washington State vs. Maryland 3:30 p.m.

Florida Gulf Coast vs. Ohio State 3:30 p.m.

Oklahoma vs. Illinois 6 p.m.

Gonzaga vs. Iowa 6:30 p.m.

Northwestern at DePaul 8 p.m.

NOVEMBER 30

TBD vs. Minnesota TBD

GA State/Samford vs. Penn State 12:30/2:30 p.m.

Davidson at Rutgers 1 p.m.

Indiana State at Indiana 2 p.m.

Miami (Ohio) at Michigan State 2 p.m.

Northern Colorado at Nebraska 3 p.m.

All times are Eastern.

POSSIBLE STARTERS



1 CANDICE AGEE C
Jr., 6-6, Victorville, Calif.
10.0 ppg, 5.8 rpg, 1.8 bpg, 1.3 spg

Notes: Notched 8 pts., 2 blocks vs. St. Bonaventure ... Had a career-high 21 points on a 9-of-15 shooting effort against Seton Hall ... Ranks 20th on PSU's career blocked shots average list (0.6).



5 SIERRA MOORE G
RS-So., 5-11, Hanover, Pa.
12.3 ppg, 7.0 rpg, 3.8 apg, 1.0 bpg

Notes: Had career-high 15 points vs. St. Bonaventure ... Notched first career double-double with 14 points & 10 rebounds vs. Seton Hall ... Had 12 points, five rebounds and two blocks vs. Towson.



12 LINDSEY SPANN G
RS-Fr., 5-6, Laurel, Md.
14.0 ppg, 2.5 rpg, 3.5 apg, 1.3 spg

Notes: Had 13 points & 5 assists vs. St. Bonaventure ... Recorded 12 points and 3 steals vs. Seton Hall ... Led the team in scoring with 14 points & 4 assts. vs. Albany ... Tallied 17 points & 5 rebounds vs. Towson.



15 KALIYAH MITCHELL G
So., 6-2, Stone Mountain, Ga.
7.3 ppg, 7.0 rpg, 2.8 spg

Notes: Leads the team in steals (2.8) and second in rebounding (7.0) ... Pulled in 10 rebounds and eight rebounds versus Seton Hall ... Had 10 points and three steals in season opener vs. Towson.



25 PEYTON WHITTED F
So., 6-3, Suwanee, Ga.
4.0 ppg, 5.3 rpg, 1.3 apg, 1.0 spg

Notes: Had four points against St. Bonaventure ... Made first career start vs. Towson ... Led the team in field goal percentage as a freshman (.463) ... Averaged 2.9 points and 2.8 rebounds last season.

LAST TIME OUT

- A Nyla Rueter layup with 1.4 seconds left in the game broke a 54-54 tie and Penn State's final shot fell short as the Lady Lions fell to St. Bonaventure, 56-54, on Tuesday.
- The Lady Lions held the advantage for much of the game, leading for 31:03 of the 40 minutes.
- Sophomore **Sierra Moore** led the way with a game- and career-high 15 points – nine coming in the second half – and added five rebounds and three assists.
- Freshman **Lindsey Spann** continued her solid start to the season by chipping in 13 points and a career-best five assists.
- Penn State turned the ball over just once in the second half, but were held without a field goal in the final 7:08 of the game after establishing a nine-point lead.

SCOUTING LIBERTY

- The Flames are 2-2 on the season with wins over VCU and Saint Joseph's in overtime, but are coming off of a 73-62 loss to Elon.
- Karly Buer leads Liberty with a 12.5 scoring average thanks in part to a 45.0 field goal percentage and an 83.3 free throw percentage.
- Ashley Rininger has led the Flames in rebounding each game with double-digit performances in every outing. She leads the team with 10.8 average to go along with a 12.0 scoring mark.
- Sadalia Ellis is also accounting for double figures with an 11.8 scoring average with a team-best 18 assists in four games.

ALL-TIME VERSUS THE FLAMES

- The Lady Lions lost the only previous meeting with Liberty, a 78-70 decision in the first round of the 2005 NCAA Tournament.
- The game against the Flames is also the only time that Penn State has faced a Big South opponent.

LAST TIME VERSUS LU

- The Flames overcame a five-point Penn State halftime lead by shooting 50 percent in the second half on the way to a 78-70 win over the Lady Lions in the first round of the 2005 NCAA Tournament.
- Penn State took a seven-point lead just after the break with a Tanisha Wright jumper, but the Flames reeled off a 16-2 run to take an eight-point lead and never looked back.
- Wright completed her outstanding Penn State career with a team-high 19 points to go along with six rebounds and three assists.
- Jess Strom, also playing in her final game as a Lady Lion, added 13 points and five assists, while Jennifer Brenden had 13 points on 5-of-7 shooting.

WHAT'S AT STAKE

A Penn State Win Versus Liberty Would:

- Make Penn State 1-1 all-time against Liberty.
- Snap the Lady Lions' three-game losing streak.
- Make the Lady Lions record at 2-3 on the season.



POTENTIAL SUNDAY OPPONENTS

GEORGIA STATE PANTHERS (2-0)

No.	Name	Pos.	Cl.	Ht.	Hometown/High School (Previous School)
1	Mariam Hannoun	G	So.	5-10	Nahariya, Israel/Ironi Nahariya
2	Miranda Smith	F/G	Sr.	5-9	Roanoke, Va./Patrick Henry
3	Jordan Ulm	G	R-So.	5-7	Lawrenceville, Ga./Collins Hill
5	Alisha Andrews	G	Sr.	4-11	Stone Mountain, Ga./Redan (UNCW)
10	Makeba Ponder	G	Fr.	5-8	Moultrie, Ga./Colquitt County
11	Ashanti Groover	F/C	So.	6-2	Bartow, Fla./Bartow
12	Ashlee Cole	G	Jr.	5-8	Ellenwood, Ga./Forest Park
13	Brittany Logan	C	Sr.	6-4	Decatur, Ga./Lane Acad. (S.C.)/Ga. Perimeter C.C.)
20	Kayla Nolan	G	Sr.	5-8	Duluth, Ga./Duluth
21	Morgan Jackson	F	Jr.	6-0	Gainesville, Ga./East Hall
22	Jamila Mayfield	F/C	So.	6-4	Macon, Ga./Howard
23	Ashley Watson	G	Sr.	5-6	San Jose, Calif./Archbishop Mitty
24	Gaby Moss	G	Jr.	5-8	Alexandria, Va./T.C. Williams
25	Mynessa Nichols	F	Fr.	5-11	Myrna, Tenn./Ensworth
32	Haley Gerrin	F/C	So.	6-2	Clarkesville, Ga./Habersham Central
33	Tatianna Jackson	G	Jr.	5-10	Atlanta, Ga./Chattanooga (Lovett)

Head Coach: Sharon Baldwin-Tener

Assistant Coaches: Erin Bath, Jeri Porter

SAMFORD BULLDOGS (1-1)

No.	Name	Pos.	Cl.	Ht.	Hometown/High School (Previous School)
2	Hannah Nichols	G	So.	5-10	Madison, Ala./Madison County
3	Destiney Elliott	F	Fr.	6-0	Oneonta, Ala./Oneonta
4	Lydia McGee	G	R-So.	5-10	Madison, Ala./Madison Academy
5	Kassidy Blevins	G	So.	5-9	Ringgold, Ga./Gordon Lee
10	Taylor Reece	F	R-Jr.	6-3	Hendersonville, Tenn./Brentwood Academy
11	Amara Mayers	G	R-Jr.	5-9	Harvest, Ala./Madison Academy (Belmont)
12	Krista Stricklin	G	Jr.	5-7	Hayden, Ala./Hayden
13	Brittany Stevens	G	So.	5-3	Norcross, Ga./Wesleyan School
21	Keke Fletcher	F	R-Jr.	5-11	Huntsville, Ala./Madison Academy
22	Ellen Riggins	F	So.	6-0	Murfreesboro, Tenn./Oakland
33	Hailey Pierson	F	R-Fr.	6-0	Brentwood, Tenn./Brentwood Academy

Head Coach: Mike Morris

Assistant Coaches: Matthew Fitzpatrick, Jazmine Powers, Ruth Ketcham

TEAM COMPARISON

PENN STATE		GEORGIA ST.
Spann (14.0)	Scoring Leader	Logan (13.5)
Waldner (8.3)	Rebounding Leader	Logan (8.5)
Moore (3.8)	Assist Leader	Watson (4.5)
62.0	Scoring Offense	86.5
62.2	Scoring Defense	57.0
-0.2	Scoring Margin	+29.5
41.0	Rebounds Per Game	48.5
-1.0	Rebound Margin	+6.5
13.5	Assists Per Game	18.0
403	Field Goal Pct.	.421
.339	FG Defense Pct.	.331
.283	3-pt. FG Pct.	.379
.303	3-pt. FG Pct. Def.	.242
.592	Free Throw Pct.a	.741
0.8	Assist/Turnover	1.1

SERIES HISTORY

Overall: _____ First Meeting: _____

TEAM COMPARISON

PENN STATE		SAMFORD
Spann (14.0)	Scoring Leader	Reece (14.0)
Waldner (8.3)	Rebounding Leader	Elliott (7.0)
Moore (3.8)	Assist Leader	Elliott (4.0)
62.0	Scoring Offense	54.5
62.2	Scoring Defense	57.0
-0.2	Scoring Margin	-2.5
41.0	Rebounds Per Game	31.0
-1.0	Rebound Margin	-2.0
13.5	Assists Per Game	13.5
403	Field Goal Pct.	.418
.339	FG Defense Pct.	.390
.283	3-pt. FG Pct.	.346
.303	3-pt. FG Pct. Def.	.269
.592	Free Throw Pct.a	.727
0.8	Assist/Turnover	0.8

SERIES HISTORY

Overall: _____ First Meeting: _____

SCOUTING GEORGIA STATE

- The Panthers are 2-0 on the season with wins over North Florida and Thomas.
- Brittany Logan is shooting 55 percent from the field and leads the team with a 13.5 scoring average and 8.5 rebounding mark.
- Kayla Nolan adds 12.5 points per game, while Alisha Andrews chips in 12.0 points per outing.
- Makeba Ponder is the final Panther averaging double figures at a 10.0 mark.

ALL-TIME VERSUS THE PANTHERS

- This would be the first-ever meeting between the Lady Lions and Georgia State.
- Penn State has never faced a Sun Belt team.

SCOUTING SAMFORD

- The Bulldogs are 1-1 on the season with a win over Alabama A&M and a loss to Memphis.
- Taylor Reece is averaging a team-best 14.0 points per game while shooting 48 percent from the field.
- Destiney Elliott accounts for 10.0 points and a team-high 7.0 rebounds per game, while Hannah Nichols is 6-for-8 from the field on the season and is averaging 8.0 points per outing.

ALL-TIME VERSUS THE BULLDOGS

- This would be the first-ever meeting between the Lady Lions and Samford.
- Penn State is 3-0 all-time against current SoCon teams with wins over Chattanooga, East Tennessee State and Furman.

TURKEY TOURNEYS

- The Lady Lions have won the last three Thanksgiving tournaments that they have competed in.
- Penn State won the Junkanoo Jam last season with wins over Oregon State and Illinois State.
- PSU also has Thanksgiving tourney wins in the Radisson Thanksgiving Tournament at Cal State Northridge in 2012 and the John Q. Ascuaga Nugget Classic in 2011.

HEADING HOME TO THE ATL

- The Georgia State tournament marks a homecoming for three Lady Lions - senior Tori Waldner and sophomores Kaliyah Mitchell and Peyton Whitted.
- Transfer Brianna Banks is also a native of Atlanta, but is not able to travel with the team due to NCAA transfer rules.
- Waldner is from the Atlanta suburb of Milton, while Mitchell is from another Atlanta suburb, Stone Mountain, and Whitted is from Suwanee, Georgia.

MOORE CAREER MARKS

- Sophomore guard Sierra Moore continues to adapt quickly to her role with the Lady Lions.
- Moore posted her third double-digit scoring performance in the first four games of the season with a career-high 15 points on 6-of-12 shooting against St. Bonaventure.
- With her effort against the Bonnies, Moore surpassed the 100 point plateau for her career, scoring 15 in the contest. She scored 63 during her freshman season at Duke and has 49 through four games at Penn State for a career total of 112.



PRESS CONFERENCE SCHEDULE

Coquese Washington will hold a weekly press conference and the Lady Lions will have media availability on a weekly basis throughout the season. All press conferences will begin at 2:30 p.m. (unless otherwise noted) and go for approximately 15-20 minutes, followed by a 15-minute open media session prior to practice. Press conference will be held in the Media Room at the Bryce Jordan Center (unless otherwise noted).

Press Conference Dates

Tuesday, Dec. 2	Wednesday, Feb. 4
Monday, Dec. 8	Tuesday, Feb. 10 (Practice Gym)
Wednesday, Dec. 17 (Time TBD)	Wednesday, Feb. 18
Tuesday, Dec. 30 (Time TBD)	Wednesday, Feb. 25
Thursday, Jan. 8 (Time TBD)	Tuesday, March 3 or Wednesday,
Wednesday, Jan. 14	March 4 (pending travel plans for
Wednesday, Jan. 21	BTT)
Tuesday, Jan. 27	

LADY LIONS GET SOCIAL: The Lady Lions are on several social media sites, including Twitter, Instagram and Facebook. Follow the Lady Lions and assistant coaches (@pennstatewbb), head coach Coquese Washington (@coquesewashing) and sports information contact Kris Petersen (@ladylionsid) on Twitter to get the inside scoop. The Lady Lions are also on Instagram (@pennstatewbb) and Facebook at www.facebook.com/pennstateladylions.



OF NOTE

- Sophomore **Keke Sevillian** made her first career start and junior **Candice Agee** made her fourth career start against Seton Hall (11/22).
- Sophomore **Kaliyah Mitchell** tied her career high with 10 rebounds against Seton Hall on Nov. 22.
- With the loss to Seton Hall, Penn State dropped to 1-2 to start a season for the first time since 2005-06, when the Lady Lions started 1-3.
- Freshman **Lindsey Spann** and sophomores **Kaliyah Mitchell**, **Sierra Moore** and **Payton Whitted** all made their first career starts for the Lady Lions against Towson on Nov. 14.
- Junior **Candice Agee** tied her career high with nine rebounds against Towson Nov. 14. She also grabbed nine rebounds vs. Fairleigh Dickinson on Dec. 2, 2012.
- Sophomore **Keke Sevillian** reached a career high in assists with five in the season opener against Towson on Nov. 14.
- With the win over Towson on Nov. 14, **Coquese Washington** improved to a perfect 8-0 in the first game of the season since taking the helm of the Lady Lion program for the 2007-08 season.
- Head coach **Coquese Washington** has selected senior **Tori Waldner**, redshirt-sophomore **Sierra Moore** and redshirt-freshman **Lindsey Spann** as team captains for the 2014-15 season.
- Sophomore forward **Payton Whitted's** father, Kevin, was recently named the head coach of the NBA Developmental League's Westchester Knicks.

CLOSE, BUT NO CIGAR

- The Lady Lions' 1-3 record on the season is deceiving as Penn State's three losses are by a total of eight points.
- In each loss, the Lady Lions have had a chance to tie or take the lead in the final 11 seconds.

AGGRESSIVE AGEE

- Junior center **Candice Agee** was a dominant force in the post for the Lady Lions against Seton Hall, connecting on 9-of-15 shots en route to a career-high 21 points.
- The performance marked the first time that Agee has surpassed the 20-point plateau in her career.
- Agee's previous personal best was 16 points set against Bucknell on Nov. 20, 2013.
- Additionally, Agee, who made her first start of the season and fourth of her career, tied her personal best with three blocked shots.

"SIE"-ING DOUBLE

- Sophomore **Sierra Moore** posted her first career double-double with 14 points and a personal-best 10 rebounds against Seton Hall on Nov. 22.
- Moore's 14 points surpasses her previous career high of 12 set against Towson in the season opener.
- Her 10 boards double her previous personal best of five caroms accomplished twice during her collegiate career against Towson and Iona, while she was at Duke.
- Moore also established a career high with five assists against the Pirates.

TORI'S REJECTING ROLE

- Senior center **Tori Waldner** moved into ninth place in program history with 99 career blocks.
- With her performance against Seton Hall on Nov. 22, she passed Jess Brungo (94; 2001-04) for the ninth spot.
- Waldner needs three rejections to tie Talia East (102; 2011-14) for eighth place.
- Waldner also needs one rejection to become the ninth player in program history with 100 blocked shots.
- She would also be the third Lady Lion in the last three years to reach the 100-block mark, joining Nikki Greene (215; 2010-13) and Talia East (102; 2011-14).

PENN STATE'S OVERALL/BIG TEN YEAR-BY-YEAR REVIEW

Year	Overall	Big Ten	Home	BT Home	Road	BT Road	Neutral
1992-93	22-6	14-4	12-2	9-0	9-4	5-4	0-0
1993-94	28-3	16-2	14-0	9-0	11-2	7-2	3-1
1994-95	26-5	13-3	14-2	8-0	9-3	5-3	3-0
1995-96*	27-7	13-3	14-2	8-0	8-4	5-3	5-1
1996-97	15-12	8-8	9-3	5-3	5-6	3-5	1-3
1997-98	21-13	8-8	10-5	4-4	6-6	4-4	5-2
1998-99	22-8	12-4	9-2	6-2	9-4	6-2	4-2
1999-00	30-5	15-1	14-0	8-0	9-2	7-1	7-3
2000-01	19-10	11-5	11-2	7-1	6-5	4-4	2-3
2001-02	23-12	11-5	10-4	6-2	9-5	5-3	4-3
2002-03	26-9	13-3	16-0	8-0	7-7	5-3	2-2
2003-04	28-6	15-1	12-1	8-0	9-3	7-1	6-2
2004-05	19-11	13-3	12-0	8-0	6-9	5-3	1-2
2005-06	13-16	6-10	8-6	5-3	3-8	1-7	2-2
2006-07	15-16	7-9	12-1	7-1	2-12	0-7	1-3
2007-08	13-18	4-14	10-6	3-6	3-11	1-8	0-1
2008-09	11-18	6-12	8-6	4-5	2-9	2-7	1-3
2009-10	17-14	8-10	9-6	5-4	5-7	3-6	3-1
2010-11	25-10	11-5	14-4	6-2	7-4	5-3	4-2
2011-12	26-7	13-3	12-2	6-2	11-3	7-1	3-2
2012-13	26-6	14-2	14-0	8-0	9-5	6-2	3-1
2013-14	24-8	13-3	14-4	6-2	8-3	7-1	2-1
2014-15	1-3	0-0	1-3	0-0	0-0	0-0	0-0

* First season at the Bryce Jordan Center



SCORING SPANN

- Freshman guard **Lindsey Spann** led the Lady Lions in scoring for the second straight game with 14 points against Albany on Nov. 16.
- This marks the first time a Penn State freshman has led the team in scoring in consecutive games since Maggie Lucas did so versus Minnesota (1/13/11) and versus Illinois (1/16/11).
- Spann handed out four assists for the second straight game.

DeGRAAF FROM DEEP

- Sophomore forward **Jenny DeGraaf** went 4-for-4 from beyond the arc en route to a career-high 12 points against Albany on Nov. 15.
- She is the first Lady Lion to connect on all of her three-point attempts in a game (min. 4 attempts) since Maggie Lucas also netted four shots on four attempts vs. Bucknell on Dec. 21, 2011.
- The four three pointers made are a career-high for DeGraaf, who had made one three pointer on two occasions entering the game.
- DeGraaf's 12 points are a career-high, passing her two five point efforts from last season. She scored five points vs. Ohio State (1/16/14) and vs. Alcorn State (12/22/13).
- She also tied her personal mark with three rebounds against the Great Danes.

STELLAR DEBUT

- Freshman **Lindsey Spann** made her long-awaited Lady Lion debut with the start against Towson on Nov. 14.
- Spann, who missed last season with an ACL injury, had a team-high 17 points on 7-of-14 shooting.
- She also grabbed five rebounds and dished out four assists versus the Tigers.
- Spann is the first Penn State freshman to lead the team in scoring since Maggie Lucas did so 13 times during her rookie season in 2010-11.

DOUBLING UP

- Senior post player **Tori Waldner** recorded the first double-double of her Penn State career with 11 points and 11 rebounds in the season opener against Towson on Nov. 14.
- She tied her career high with 11 boards, equaling the mark she set against Texas A&M on Dec. 15, 2013.
- Waldner's double-double was the first since Talia East scored 13 points and grabbed 13 rebounds vs. Wichita State, Mar. 23, 2014.

MEETING MOLLY

- The Lady Lions announced the addition of walk-on **Molly Dincher** to the roster prior to the season-opener against Towson.
- Dincher served as a Lady Lion manager for a year and a half.
- Dincher also played at Penn State Wilkes-Barre for two seasons where she helped the Mountain Lions to the 2011-12 PSUAC North Division Championship.
- She averaged 7.3 points and 8.6 rebounds that season for Wilkes-Barre, her final season for the Mountain Lions.
- She also rejected 33 shots and had 27 assists in 21 appearances that included 16 starts.
- Since coming to University Park, Dincher played for the Penn State women's club basketball team that took second in the National Championships in 2012-13.
- A three-year letterwinner, Dincher played her high school basketball at Williamsport Area High School. In her final season, the Millionaires were 12-8.

TORI EXTRA CURRICULAR

- Senior post player **Tori Waldner** has shown that she is more than just a basketball player as she competes in the classroom and gives back tirelessly to the community.
- Waldner is currently the president of the Penn State Student-Athlete Advisory Board (SAAB). As part of her duties as SAAB president, she is involved in the community services efforts and creating programming for Penn State student-athletes on topics of diversity and inclusion.
- She is also involved in Penn State Life Link, a program in which State College Area School District special-needs students between the ages of 18 and 21 are given an opportunity to interact with students of their own age in an environment that is socially and academically conducive to continued growth with the hope of future independent living.
- Waldner regularly meets these students for lunch, swims with the students as a physical activity and provides guidance to help them on their road to independence.
- She is also involved in the "It's on Us" initiative- an awareness campaign to help put an end to sexual assault on college campuses.
- As part of her involvement, Waldner was part of a meeting with other universities at the White House.
- Waldner is also stellar in the classroom, collecting two Academic All-Big Ten honors.

PENN STATE'S RECORD WHEN...

Playing at home	1-3
Playing on the road	0-0
Playing at a neutral site	0-0
vs. Top 10 teams	0-0
vs. Top 25 teams	0-0
Games decided by 3 points or less	0-2
Games decided by 4-10 points	1-1
Games decided by 11-19 points	0-0
Games decided by 20 points or more	0-0
Leading at the half	1-1
Tied at the half	0-1
Trailing at the half	0-1
Leading with 5:00 remaining	1-1
Trailing with 5:00 remaining	0-2
Tied with 5:00 remaining	0-0
In overtime	0-0
PSU scores 40-49 points	0-0
PSU scores 50-59 points	0-2
PSU scores 60-69 points	0-0
PSU scores 70-79 points	1-1
PSU scores 80 points or more	0-0
PSU shoots 45% or better	1-0
PSU shoots less than 45%	0-3
PSU shoots better than opponent	1-3
Opponent shoots better than PSU or tied	0-0
Opponent scores less than 39 points	0-0
Opponent scores 40-49 points	0-0
Opponent scores 50-59 points	0-2
Opponent scores 60-69 points	1-0
Opponent scores more than 70 points	0-1
Opponent shoots better than 45%	0-0
Opponent shoots less than 45%	1-3
PSU outrebounds opponent	1-1
Opponent outrebounds PSU or tied	0-2
PSU commits 14 or less turnovers	1-1
PSU commits 15 or more turnovers	0-2
PSU makes at least 5 3-pointers	0-1
PSU makes four 3-pointers or less	1-2
Recording 7 or more steals	1-3
Recording 6 or less steals	0-0
Wearing white uniforms	1-3
Wearing blue uniforms	0-0
Wearing white and pink uniforms	0-0
Penn State wins the tip	0-1
Penn State loses the tip	1-2
Penn State scores first	1-2
Opponent scores first	0-0
Playing during the day (before 5 p.m.)	1-1
Playing at night	0-2
On Monday	0-0
On Tuesday	0-1
On Wednesday	0-0
On Thursday	0-0
On Friday	1-0
On Saturday	0-1
On Sunday	0-1
In November	1-3
In December	0-0
In January	0-0
In February	0-0
In March	0-0



LIONS IN THE BIG TEN STATS

A breakdown of where Penn State ranks in the Big Ten's overall statistical categories. Through games of Nov. 25.

TEAM	
Scoring Offense.....	14th (62.0)
Scoring Defense.....	8th (62.2)
Scoring Margin.....	13th (-0.2)
Free Throw Percentage.....	14th (.592)
FG Percentage.....	12th (.403)
FG Percentage Defense.....	8th (.339)
3-point FG Percentage.....	12th (.283)
3-point FG Pct. Defense.....	7th (.303)
3-point FG Made.....	12th (3.3)
Rebounding Offense.....	T-9th (41.0)
Rebounding Defense.....	12th (42.0)
Rebounding Margin.....	12th (-1.0)
Offensive Rebounds.....	10th (12.0)
Defensive Rebounds.....	T-6th (29.0)
Blocked Shots.....	4th (6.0)
Assists.....	12th (13.5)
Steals.....	9th (9.3)
Turnover Margin.....	11th (+0.8)
Assist to Turnover Ratio.....	12th (0.8)

INDIVIDUAL	
Scoring.....	T-19th - Lindsey Spann (14.0)
Rebounding.....	T-11th - Tori Waldner (8.3) T-18th - Kaliyah Mitchell (7.0)
Assists.....	T-13th - Sierra Moore (3.8)
Steals.....	6th - Kaliyah Mitchell (2.8)
3FG Percentage.....	T-7th - Jenny DeGraaf (.500)
Blocked Shots.....	4th - Tori Waldner (2.5) T-6th - Candice Agee (1.8)
Off. Reb.....	T-12th - Sierra Moore (2.8)
Def. Reb.....	T-12th - Tori Waldner (6.3)
Minutes.....	5th - Sierra Moore (35.8)

2014-15 GAME-BY-GAME STARTING LINEUPS

Date	Opponent	Pt Guard	Guard	Guard/Forward	Forward	Center
11/2	INDIANA (PA.)	Spann	Moore	Mitchell	Whitted	Waldner
11/14	TOWSON	Spann	Moore	Mitchell	Whitted	Waldner
11/16	TOWSON	Spann	Moore	Mitchell	Whitted	Waldner
11/22	SETON HALL	Spann	Moore	Sevillian	Mitchell	Agee
11/25	ST. BONAVENTURE	Spann	Moore	Mitchell	Whitted	Agee

2015 PINK ZONE AT PENN STATE

- The Ninth Annual Pink Zone at Penn State will be held Sunday, March 1 in the Bryce Jordan Center when the Lady Lions take on Wisconsin. The time for the game will be determined later in the season.
- Last year, the Lady Lions donated a record \$310,000 to breast cancer causes.
- All totalled, the Lady Lions have donated more than \$1.135 million for breast cancer research and awareness in the first eight years.
- This year's fundraising efforts will benefit the Mount Nittany Medical Center, Penn State Hershey Cancer Institute, Pennsylvania Breast Cancer Coalition, the Kay Yow Cancer Fund, J.C. Blair Memorial Hospital and Lewistown Hospital.
- For more information on the Pink Zone at Penn State, visit the official Pink Zone website at www.pennsylvaniapinkzone.org.

GETTING ON THE COURT

- The Lady Lions may not have any true freshmen on the roster, but there will be a pair of Lady Lions that will don a Penn State uniform for the first time this season after sitting out the 2013-14 campaign.
- Redshirt-sophomore **Sierra Moore** returns to the court after missing last season due to NCAA Transfer Rules.
- She excelled in high school at Delone Catholic, where she broke the York-Adams Interscholastic Athletic Association (YAIAA) scoring record with 2,595 points.
- Redshirt-freshman **Lindsey Spann** hits the hardwood after missing last year with a torn ACL.
- She was the 22nd-ranked player by Collegiate Girls Basketball Report out of high school. She averaged 15.9 points, 5.3 assists and 2.4 steals at Good Counsel her senior year.

FRESH FACES

- The Lady Lions have added a pair of transfers to the roster in junior college transfer **Dominique Brooks** and UConn transfer **Brianna Banks**.
- Brooks comes to the Lady Lions after a two-year career at Trinity Valley Community College.
- She was efficient from the field at TVCC as she connected on 51.1% of her shots to help the Cardinals to back-to-back NJCAA National Championships.
- Banks will have to sit out the 2014-15 season after transferring from Connecticut.
- She will have one year of eligibility remaining after competing for three seasons at UConn where she won a pair of National Championships.

LADY LIONS EXCELLING AT THE NEXT LEVEL

- The Lady Lions have found recent success at the professional level, both in the WNBA and overseas.
- Penn State had four players on WNBA rosters last summer, including 10-year veteran Tanisha Wright, second-year player Alex Bentley and rookies Maggie Lucas and Nikki Greene.
- The Lady Lions also tout eight players (Wright, Bentley, Lucas, Greene, Ariel Edwards, Dara Taylor, Talia East, Brianne O'Rourke) playing overseas this fall in Europe and South America.
- Wright, who is playing for Abdullah Gul University in Turkey, just finished her 10th season with the WNBA's Seattle Storm.
- In her tenure with the Storm, Wright has accrued 2,591 points, 1,008 assists and 903 rebounds.
- She is a four-time WNBA All-Defensive first team honoree and helped Seattle to the 2010 WNBA Championship.
- After completing stellar WNBA season with the Connecticut Sun, Bentley is now playing for Tarbes Gespe Bigorre of the LFB in France.
- Bentley accounted for 12.2 points, 3.7 assists and 1.3 steals while starting 30 of 34 games for the Sun.
- Greene completed her rookie season with the WNBA's LA Sparks and is now playing in Israel for the Ramat Hasharon Electra Basketball Club.
- After playing her rookie season with the WNBA's Indianapolis Fever, Lucas has gone to France to play for Arras Pays D'Artois Basket Feminine.
- Lucas accounted for 3.7 points per game and shot .957 from the free throw line in her rookie season with the Fever.
- Edwards is playing with C.B. Bembibre PDM of the LFB in Spain.
- Taylor inked a contract to play with AZS UMCS Lublin of the Basket Liga Kobiet in Poland.
- O'Rourke is playing for Pallacanestro Torino of the Italy-Serie A2 league.



THE LAST TIME PENN STATE...

SCORING

Player scored 20 points: vs. Seton Hall (21, Candice Agee), 11/22/14
Player scored 25 points: vs. Ohio State (29, Ariel Edwards), 3/7/14
Player scored 30 points: at Indiana (32, Maggie Lucas), 2/13/14
Player scored 35 points: vs. Georgetown (39, Maggie Lucas), 12/9/12
Player scored 40 points: vs. Minnesota (49, Kelly Mazzante), 12/28/01
Two players scored 20 points: vs. Florida (22, Maggie Lucas; 22 Dara Taylor), 3/25/14
Three players scored 20 pts.: at Nevada (26, Maggie Lucas; 23, Alex Bentley; 21, Zhaque Gray), 11/26/11
Two players scored 25 points: at Boston College (28, Alex Bentley; 28, Maggie Lucas), 12/2/10
Player scored 25 points/3 consecutive games: Maggie Lucas (32, at Indiana, 2/13/14; 25 vs. Wisconsin, 2/16/14; 26 vs. Northwestern, 2/20/14)
Five in double figures: at Northwestern (19, Maggie Lucas; 15, Ariel Edwards; 11, Dara Taylor; 11, Talia East; 11, Peyton Whitted), 2/2/14
Six in double figures: at Oakland (15, Alex Bentley; 16, Ariel Edwards; 16, Zhaque Gray; 13, Maggie Lucas; 10, Mia Nickson; 10, Gizelle Studevent; 10, Julia Trogele), 11/18/10
Seven in double figures: at Oakland (15, Alex Bentley; 16, Ariel Edwards; 16, Zhaque Gray; 13, Maggie Lucas; 10, Mia Nickson; 10, Gizelle Studevent; 10, Julia Trogele), 11/18/10
PSU scored 50 points in a half: at Illinois (51, second half), 1/9/14
PSU scored 50 points in both halves: vs. St. Francis (Pa.) (55, first half; 62, second half), 11/8/13
PSU scored 55 points in a half: vs. St. Francis (Pa.) (55, first half; 62, second half), 11/8/13
PSU scored 60 points in a half: vs. St. Francis (Pa.) (62, second half), 11/8/13
PSU scored 100 points: vs. St. Francis (Pa.) (W, 117-77), 11/8/13
PSU scored 100 points in Big Ten game: vs. Illinois (W, 101-80), 2/15/01
PSU scored 100 points in a home game: vs. St. Francis (Pa.) (W, 117-77), 11/8/13
PSU scored fewer than 15 points in a half: vs. Wisconsin (13, first half), 2/25/10
PSU scored fewer than 20 points in a half: vs. Michigan State (19, first half), 3/9/13
PSU scored fewer than 40 points in a game: vs. Wisconsin (L, 39-71), 2/25/10
PSU scored fewer than 50 points in a game: vs. Michigan State (L, 46-54), 3/9/13
PSU scored fewer than 50 points in a Big Ten game: vs. Purdue (L, 49-60), 2/24/11
OPP scored 50 points in a half: vs. Ohio State (58, first half), 3/7/14
OPP scored 100 points: at Boston College (Lot, 113-104), 12/2/10
OPP scored fewer than 20 points in a game: at Dickinson (W, 57-16), 3/6/71
OPP scored fewer than 30 points in a game: vs. Virginia Tech (W, 66-28), 12/6/11
OPP scored fewer than 40 points in a game: vs. Wisconsin (W, 84-40), 1/17/13
OPP scored fewer than 50 points in a game: vs. Ohio State (W, 66-42), 1/16/14
OPP scored fewer than 50 points in a Big Ten game: vs. Ohio State (W, 66-42), 1/16/14

FIELD GOAL SHOOTING

Player made every shot from the field (min. 7): vs. Michigan St. (Amanda Brown, 8-8), 1/25/07
PSU shot 55% or better in a game: vs. Illinois (.611), 2/20/13
PSU shot 55% or better in consecutive games: vs. Northwestern (.682), 3/2/96; vs. Ohio St. (.585), 3/3/96
PSU shot 60% in a game: vs. Illinois (.611), 2/20/13
PSU shot below 25% in a game: vs. Michigan State (.224), 3/9/13
PSU shot below 30% in a game: vs. Michigan State (.224), 3/9/13
PSU shot below 35% in a game and won: vs. Michigan State (.333), 1/19/14
PSU shot below 30% in a game and won: vs. Northwestern (.299), 1/3/13
PSU shot 55% in a half: vs. Towson (.556, second half), 11/14/14
PSU shot 60% in a half: at Illinois (.630, second half), 1/9/14
PSU shot 65% in a half: at Georgetown (.680, second half), 12/8/13
PSU shot 70% in a half: vs. Virginia Tech (.714, second half), 12/6/11
PSU shot 55% in both halves: vs. Illinois (.586, first half; .640, second half), 2/20/13
PSU shot 20% or below in a half: vs. Michigan State (.200, first half), 3/9/13
PSU shot below 25% in a half: at Georgetown (.206, first half), 12/8/13

THREE-POINT SHOOTING

Player made every shot from the field (min. 4): vs. Albany (4-4, Jenny DeGraaf), 11/16/14
Player made 4 three-pointers in a half: vs. Connecticut (4 in the second, Maggie Lucas), 11/17/13
Player made 5 three-pointers in a half: vs. Michigan State (5 in the second, Maggie Lucas), 3/9/13
Player made 6 three-pointers in a half: vs. Michigan State (5 in the second, Maggie Lucas), 3/9/13
Player made 5 three-pointers in a game: vs. Northwestern (5, Maggie Lucas), 2/20/14
Player made 6 three-pointers in a game: vs. Michigan State (7, Maggie Lucas), 3/9/13
Player made 7 three-pointers in a game: vs. Michigan State (7, Maggie Lucas), 3/9/13
Player made 8 three-pointers in a game: at Nebraska (8, Maggie Lucas), 3/3/13
Player attempted 10 three-pointers in a game: at Illinois (11, Maggie Lucas), 1/9/14
PSU made 10 three-pointers: vs. North Carolina (14), 11/30/11
PSU did not make a three-pointer: vs. Hartford (0-8), 12/29/13
PSU attempted 20 three-pointers: vs. Connecticut (21), 11/17/13
PSU shot 60% 3FG (min. 5 att.): vs. Illinois (.667; 6-9), 2/20/13

FREE THROW SHOOTING

Player made every shot from FT line (min. 10): at Illinois (10-10, Maggie Lucas), 1/9/14
PSU shot 90% (min. 10 att.): vs. Michigan (18-19, .947), 3/1/14
PSU shot below 50% (min. 10 att.): at Purdue (8-21, .381), 1/30/14
PSU made 30 free throws: vs. St. Francis (Pa.) (37), 11/8/13
PSU made fewer than five FTs: at Michigan (3), 2/3/11
PSU attempted 40 free throws: vs. St. Francis (Pa.) (43), 11/8/13
PSU attempted fewer than five FTs: at Michigan (4), 2/3/11

REBOUNDS

Player had 15 rebounds: at LSU (16, Nikki Greene), 3/26/13
Player had 20 rebounds: at Cal State Northridge (20, Nikki Greene), 11/24/12
Two players with double-digit rebs.: at Illinois (11, Ariel Edwards; 10, Peyton Whitted), 1/9/14
Three players had double-digit rebounds: vs. Ohio State (15, Nikki Greene; 15, Mia Nickson; 10, Maggie Lucas), 2/20/12
PSU had 60 rebounds: vs. Ohio State (60), 2/20/12
PSU had 50 rebounds: vs. Seton Hall (50), 11/22/14
PSU had 20 or fewer rebounds: vs. Michigan State (20), 1/19/03
OPP had 20 or fewer rebounds: at Indiana (20), 2/13/11
PSU had 20 offensive rebounds: vs. Seton Hall (21), 11/22/14
PSU had 25 offensive rebounds: vs. Ohio State (29), 2/20/12

ASSISTS

Player had 10 assists: vs. Minnesota (10, Dara Taylor), 1/26/14
Player had 10 assists/consecutive games: Helen Darling (12 at LaSalle, 12/8/99; 11 vs. Auburn, 12/11/99; 10 vs. Clemson, 12/19/99)
Player had 15 assists: vs. North Carolina (15, Alex Bentley), 11/30/11
PSU had 30 assists: vs. St. Francis (Pa.) (32), 12/2/99
PSU had fewer than 10 assists: at Stanford (6), 3/30/14
PSU had fewer than 5 assists: at Michigan State (4), 2/4/10

BLOCKED SHOTS

Player blocked 5 shots: vs. Northwestern (5, Tori Waldner), 2/20/14
Player blocked 6 shots: vs. Purdue (7, Talia East), 1/12/14
PSU blocked 10 shots: vs. Purdue (14), 1/12/14
PSU blocked 0 shots: at Illinois, 1/9/14

STEALS

Player had 7 steals: vs. Alcorn State (7, Dara Taylor), 12/22/13
PSU had 8 steals: vs. NJIT (8, Alex Bentley), 12/23/12
PSU had 20 steals: vs. Bucknell (21), 12/28/10

TURNOVERS

PSU committed 25 or more: at Illinois (27), 1/9/14
PSU committed 25 or more and won: at Illinois (27), 1/9/14
PSU committed 10 or fewer: vs. Wisconsin (7), 2/16/14
PSU committed 10 or fewer in consecutive games: vs. Minnesota (9), 1/22/04; at Ohio St. (9), 1/25/04
OPP committed 25 or more: vs. Oregon State (26), 11/30/13

DOUBLE-DOUBLES

Points & rebounds: vs. Seton Hall (Sierra Moore, 14 points, 10 rebounds), 11/22/14
Points & rebounds/consecutive games: Nikki Greene (12 points, 10 rebounds vs. Ohio State, 1/30/11; 16 points, 14 rebounds at Illinois, 1/27/11)
Points & rebounds/3 consecutive games: Amanda Brown (19 pts., 17 rebs. at Northwestern, 2/11/07; 14 pts., 10 rebs. vs. Minnesota, 2/15/07; 14 pts., 11 rebs. at Iowa, 2/18/07)
Points & rebounds/4 consecutive games: Angie Potthoff (vs. Northwestern, 1/31/97; at Illinois, 2/2/97; vs. Michigan, 2/7/97; vs. Indiana, 2/9/97; vs. Iowa, 2/16/97; vs. Michigan State, 2/21/97)
Points & rebounds/5 consecutive games: Angie Potthoff (vs. Northwestern, 1/31/97; at Illinois, 2/2/97; vs. Michigan, 2/7/97; vs. Indiana, 2/9/97; vs. Iowa, 2/16/97; vs. Michigan State, 2/21/97)
Points & assists: vs. Minnesota (Dara Taylor, 15 points, 10 assists), 1/26/14
Points & assists/consecutive games: Helen Darling (12 pts., 12 assts. at La Salle, 12/8/99; 10 pts., 11 assts. vs. Auburn, 12/11/99)
Two players had double-doubles: vs. Ohio State (Nikki Greene, 25 pts., 15 rebs.; Mia Nickson, 18 pts., 15 rebs.; Maggie Lucas, 12 pts., 10 rebs.), 2/20/12
Three players had double-doubles: vs. Ohio State (Nikki Greene, 25 pts., 15 rebs.; Mia Nickson, 18 pts., 15 rebs.; Maggie Lucas, 12 pts., 10 rebs.), 2/20/12
15 points & 15 rebounds: at LSU (Nikki Greene, 16 pts., 16 rebs), 3/26/13
20 points and 10 rebounds: vs. Ohio State (Ariel Edwards, 29 points, 10 rebounds), 3/7/14

MARGIN OF VICTORY

PSU won by 20-30 points: vs. Florida (22), 3/25/14
PSU won by 20-30 points in a Big Ten game: at Ohio State (20), 2/9/14
PSU won consecutive Big Ten games by 20+ pts.: vs. Wisconsin (44), 1/17/13; vs. Nebraska (22), 1/13/13; at Michigan St. (21), 1/6/13
PSU won by 31-40 points: vs. Bucknell (43), 11/20/13
PSU won by 41-50 points: vs. Bucknell (43), 11/20/13
PSU won by 51+ points: vs. Fairleigh Dickinson (57), 12/2/12
PSU lost by 20-30 points: at Stanford (25, 82-57), 3/30/14
PSU lost by 20-30 points in a Big Ten game: at Nebraska (20; 94-74), 2/24/14
PSU lost by 31+ points: vs. Wisconsin (32), 2/25/10

MISCELLANEOUS

Led PSU in points/rebounds/assists: Dara Taylor vs. Florida (22 pts., 8 rebs., 4 asst.), 3/25/14
Hit "final seconds" (under 10 seconds) game-winning shot: Julia Trogele at Illinois (9 sec.), 1/27/11
Hit "final minute" game-winning shot: Alex Bentley at Minnesota (3-pt. with :38.9 remaining), 2/5/12
Player played every minute: at Nebraska (Dara Taylor), 2/24/14
Player played more than 40 min.: at Dayton (Alex Bentley, 46; Zhaque Gray, 44; Mia Nickson, 41), 11/12/10
Committed 10 or fewer fouls: vs. Virginia Tech (9), 12/6/11
Committed 30 or more fouls: vs. Iowa State (32), 11/25/11
PSU rallied from a 10-pt. deficit to win: vs. Wichita State (down by 11 at 6:39 in 1st, won 62-56), 3/23/14
PSU rallied from a 15-pt. deficit to win: at CS-Northridge (down by 17 at 5:52 in 1st half, won 85-73), 11/24/12
PSU had a 5-game winning streak: 6 games, 1/16/14-2/2/14
PSU had a 10-game winning streak: 11 games, 12/9/12 - 1/27/13
PSU had a 5-game losing streak: 6 games, 1/28/10 - 2/14/10
PSU went undefeated at home: 2012-13 season
PSU sold out the BJC: Purdue, 2/29/04

OVERTIME

PSU played an OT game: at Boston College (L, 113-104), 12/2/10
PSU won an OT game: at Oakland (96-89), 11/18/10
PSU lost an OT game: at Boston College (L, 113-104), 12/2/10
PSU played two or more OT games in a season: 2010-11 season (three)
PSU won two or more OT games in a season: 2010-11 season (two)

RANKINGS

Played the No. 1 team in the AP poll: vs. Connecticut (L, 71-52), 11/17/13
Played the No. 1 team in the Coaches poll: vs. Connecticut (L, 71-52), 11/17/13
Defeated the No. 1 team in the AP poll: at Virginia (73-71), 1/3/91
Defeated Top 10 opponent: vs. #8/11 Ohio State (84-66), 2/20/12
Defeated Top 10 opponent on the road: at #7 Purdue (47-42), 1/2/04
Defeated Top 10 opponent by double digits: vs. #8/11 Ohio State (84-66), 2/20/12
Played consecutive Top 10 teams: at #2/3 Texas 11/14/04, at #6/6 Duke 11/19/04
Defeated Top 25 opponent: at #16/19 Purdue (75-72), 1/30/14
Defeated Top 25 opponent on the road: at #16/19 Purdue (75-72), 1/30/14
Defeated Top 25 opponent by double digits: at #23/22 Iowa (87-71), 1/5/14



2015 RECRUITING CLASS

LADY LIONS SECURE TOP 10 CLASS

- The four-player class is ranked eighth by Prospect Nation, ninth by All-Star Girls Report, 10th by Blue Star Basketball and 11th by ESPN/HoopGurlz and Collegiate Girls Basketball Report.
- The class features two Top 20 players and three Top 100 signees in both the Blue Star Basketball and Prospect Nation rankings.
- This is believed to be the highest-ranked class in program history.
- This is the third Top 15 class to sign under Washington, joining the 2009 and 2013 classes that were ranked 14th by ESPN/Hoopgurlz.
- It is also the fourth Top 25 recruiting class for Washington (2010 class was 22nd).

AMARI CARTER * 5-8 * Guard * Washington, D.C. * St. John's College

- A 5-7 guard, Carter is ranked as the #31 overall recruit by both ESPN/HoopGurlz and Collegiate Girls Basketball Report.
- She is also rated 19th by Prospect Nation and Blue Star Basketball and 32nd by All Star Girls Report.
- She averaged 17.5 points, 4.0 rebounds, 4.0 assists and 2.0 steals for St. John's College High School in Washington, D.C.
- She led the team to a 25-7 overall record and the 2014 DC State Athletic Association championship.
- Last season, Carter was named to the Washington Post All-Metropolitan first team and All-WCAC first team.
- As a sophomore, Carter helped the Cadets to the 2013 WCAC Championship en route to collecting second team All-WCAC honors and an All-Metropolitan honorable mention selection.
- She is a 2014-15 Sporting News Preseason High School All-America honorable mention choice.
- Carter has participated in USA Basketball U16 (2013) and U17 (2014) Trials.
- She plays her AAU ball with the Maryland Lady Terps.

TENIYA PAGE * 5-7 * Point Guard * Chicago Heights, Ill. * Marian Catholic

- Page, a 5-7 point guard out of Marian Catholic in Chicago, Ill., is the 21st-ranked prospect by both ESPN/HoopGurlz and Collegiate Girls Basketball Report.
- She also comes in ranked 17th by Blue Star Basketball, 20th by Prospect Nation and 26th by All Star Girls Report.
- A 2014-15 Sporting News Preseason High School All-America honorable mention selection, Page has 1,135 career points entering her final season for the Spartans.
- Last season, she accounted for 14.4 points, 4.7 assists, 3.5 rebounds and 1.8 steals per game to help Marian Catholic to a 28-5 overall record, a East Suburban Catholic Conference championship and a third-place finish in the Illinois High School Association Class 4A Basketball Tournament.
- Page was selected first team All-State by the Illinois Basketball Coaches Association, second team All-State by the Associated Press, first team All-State by The Northwest Indiana Times and third team All-State by the Chicago Tribune in 2014.
- As a sophomore, Page guided Marian Catholic to the IHSA 4A State Championship with a 33-1 record on the season.
- Page has participated in USA Basketball U16 (2013) and U17 (2014) Trials.
- She plays AAU basketball for Midwest Elite.

ASHANTI THOMAS * 6-5 * Post * Lexington, Ky. * Lafayette

- Thomas, a 6-2 post player out of Lexington, Ky., is the 87th-ranked recruit by Prospect Nation and is ranked 106th and 109th by All-Star Girls Report and Blue Star Basketball, respectively.
- She is a candidate for Kentucky Miss Basketball entering her senior season.
- As a junior, she led the Generals to a 29-4 overall record with a 9-1 mark in districts en route to a District and Regional championships.
- Thomas averaged 9.2 points and 8.2 rebounds per game last season on the way to All-State third team accolades from KySports.tv.
- During her sophomore campaign, Thomas accounted for 10.3 points and 9.5 rebounds per outing on the way to claiming Fayette County Public Schools All-City first team.
- Thomas plays AAU basketball for Mac Irvin Lady Fire.

JAYLEN WILLIAMS * 6-4 * Post * Braintree, Mass. * Archbishop Williams

- A 6-4 post player, Williams is the ranked 80th by Blue Star Basketball Report after missing her junior campaign at Archbishop Williams due to a knee injury.
- The 2014-15 Sporting News Preseason High School All-America honorable mention honoree accounted for 8.5 points, a team-best 11.6 rebounds, 3.5 blocks and 4.3 assists per game as a sophomore.
- Williams helped the Bishops to the 2013 Massachusetts Interscholastic Athletic Association (MIAA) Division 3 State Championship with a 23-5 record.
- She played her AAU basketball for Lady Rivals AAU select team under the guidance of Scott Hazelton. Williams and the Rivals squad have won two state championships.
- She also has a strong athletic background in her family as her father, Brent, played in the NFL for 11 years with the Jets, Seahawks and Patriots. Her brother, Brennan, has played for the Houston Texans and her other brother, Camren, is a junior linebacker for the Ohio State football team.

RECORD BOOK

CAREER BLOCKS

1.	268	Kim Calhoun, 1993-96
2.	215	Nikki Greene, 2010-13
3.	192	Mary Donovan, 1977-81
4.	189	Rashana Barnes, 1999-02
5.	185	Andrea Garner, 1997-00
6.	172	Amanda Brown, 2004-07
7.	140	Tina Henry, 1990-93
8.	102	Talia East, 2011-14
9.	99	Tori Waldner, 2012-present
10.	94	Jess Brungo, 2001-04

as of Nov. 25

MILESTONE WATCH

Milestone Watch

Milestone	Player	Current Total
300 points	Tori Waldner	223
200 points	Candice Agee	190
	Kalayah Mitchell	173
	Peyton Whitted	107
	Sierra Moore (career)	112
100 points	Alex Harris	57
400 rebounds	Tori Waldner	364
200 rebounds	Kalayah Mitchell	168
	Candice Agee	145
	Peyton Whitted	109
100 rebounds	Alex Harris	96
50 assists	Kalayah Mitchell	29
100 blocks	Tori Waldner	99
50 blocks	Candice Agee	41
50 steals	Tori Waldner	47

Milestone Reached

Milestone	Player	Reached
100 points	Sierra Moore (career)	11/25
100 points	Peyton Whitted	11/22
100 rebounds	Peyton Whitted	11/16



2014-15 SINGLE GAME HIGHS & LOWS

Team Superlatives

Penn State High	Penn State Low	Category	Opponent High	Opponent Low
75, vs. Seton Hall (11/22)	53, vs. Albany (11/16)	Points/Game	75, Seton Hall (11/22)	54, Albany (11/16)
41, vs. Seton Hall (11/22)	24, vs. St. Bonaventure (11/25)	Points/Half	38, Seton Hall (11/22)	23, vs. St. Bonaventure (11/25)
27, vs. Towson (11/14)	19, vs. Albany (11/16)	Field Goals Made	22, Towson (11/14)	18, twice (MR: vs. St. Bona., 11/25)
66, vs. Seton Hall (11/22)	51, vs. Albany (11/16)	Field Goal Attempts	69, Towson (11/14)	51, vs. St. Bonaventure (11/25)
.450, vs. Towson (11/14)	.373, vs. Albany (11/16)	FG Percentage	.375, Seton Hall (11/22)	.316, Albany (11/16)
6, vs. Albany (11/16)	2, twice (MR: vs. St. Bonaventure, 11/25)	3-pt. FG Made	9, Towson (11/14)	2, Albany (11/16)
13, vs. Albany (11/16)	10, vs. St. Bonaventure (11/25)	3-pt. FG Attempts	30, Towson (11/14)	15, twice (MR: Seton Hall, 11/22)
.462, vs. Albany (11/16)	.182, vs. Seton Hall (11/22)	3-pt. FG Percentage	.440, Seton Hall (11/22)	.133, Albany (11/16)
16, vs. Seton Hall (11/22)	6, vs. St. Bonaventure (11/25)	Free Throws Made	27, Seton Hall (11/22)	11, Towson (11/14)
28, vs. Seton Hall (11/22)	11, vs. St. Bonaventure (11/25)	Free Throw Attempts	37, Seton Hall (11/22)	17, Towson (11/14)
.692, vs. Albany (11/16)	.545, vs. St. Bonaventure (11/25)	Free Throw Percentage	.730, Seton Hall (11/22)	.636, vs. St. Bonaventure (11/25)
50, vs. Seton Hall (11/22)	31, vs. Albany (11/16)	Rebounds	49, Albany (11/16)	38, Towson (11/14)
15, vs. Towson (11/14)	13, 3x (MR: vs. St. Bonaventure, 11/25)	Assists	14, Seton Hall (11/22)	9, vs. St. Bonaventure (11/25)
11, vs. Albany (11/16)	7, vs. Towson (11/14)	Steals	12, Seton Hall (11/22)	6, Towson (11/14)
9, vs. Seton Hall (11/22)	2, vs. Towson (11/14)	Blocked Shots	4, 3x (MR: vs. St. Bonaventure, 11/25)	3, Albany (11/16)
23, vs. Albany (11/16)	14, twice (MR: vs. St. Bonaventure, 11/25)	Turnovers	24, Albany (11/16)	13, Towson (11/14)
29, vs. Albany (11/16)	16, vs. Towson (11/14)	Fouls	25, Seton Hall (11/22)	16, vs. St. Bonaventure (11/25)

Individual Superlatives

	Penn State	Opponent
Points	21, Candice Agee vs. Seton Hall (11/22)	32, Dominique Johnson, Towson (11/14)
Field Goals Made	9, Candice Agee vs. Seton Hall (11/22)	12, Dominique Johnson, Towson (11/14)
Field Goal Attempts	15, Candice Agee vs. Seton Hall (11/22)	30, Dominique Johnson, Towson (11/14)
Field Goal Pct. (min. 5 made)	.714, Tori Waldner vs. Towson (11/14)	.625, Shereesha Richards, Albany (11/16)
3-pt. Field Goals Made	4, Jenny DeGraaf vs. Albany (11/16)	6, Dominique Johnson, Towson (11/14)
3-pt. Field Goal Attempts	5, Keke Sevillian vs. Towson (11/14)	16, Dominique Johnson, Towson (11/14)
3-pt. Field Goal Pct. (min. 2 made)	1.000, twice (MR: , Jenny DeGraaf vs. Albany, 11/16)	.750, Emily Michael, St. Bonaventure (11/25)
Free Throws Made	4, 5x (MR: Moore/Mitchell vs. Seton Hall, 11/22)	9, Ka-Deidre Simmons, Seton Hall (11/22)
Free Throw Attempts	6, 5x (MR: Sierra Moore vs. St. Bonaventure, 11/25)	12, twice (MR: Ka-Deidre Simmons, Seton Hall, 11/22)
Free Throw Percentage (min. 3 made)	1.000, 3x (MR: Lindsey Spann vs. Seton Hall, 11/22)	1.000, 4x (MR: Egan/Gordon, Seton Hall, 11/22)
Rebounds	11, Tori Waldner vs. Towson (11/14)	15, Imani Tate, Albany (11/16)
Assists	5, 3x (MR: Lindsey Spann vs. St. Bonaventure, 11/25)	7, Breonn Hughey, Towson (11/14)
Steals	4, twice (MR: Kaliyah Mitchell vs. St. Bonaventure, 11/25)	3, 5x (MR: Nyla Rueter, St. Bonaventure, 11/25)
Blocked Shots	4, Tori Waldner vs. Albany (11/16)	2, 4x (MR: Matea Britvar, St. Bonaventure, 11/25)
Turnovers	5, twice (MR: Lindsey Spann vs. Seton Hall, 11/22)	7, Shereesha Richards, Albany (11/16)



MISCELLANEOUS STATS

LEADING SCORER Lindsey Spann 2 Candice Agee 1 Sierra Moore 1	TECHNICAL FOULS Penn State 1 Opponents 1	LARGEST LEAD 16, vs. Towson (11/14)	CLUTCH FREE THROWS (FINAL 5 MIN. & OT) Kaliyah Mitchell 2-2 1.000 Lindsey Spann 5-6 .833 Sierra Moore 3-5 .600 Keke Sevellian 1-2 .500 Candice Agee 2-5 .400
LEADING REBOUNDER Tori Waldner 2 Kaliyah Mitchell 2 Sierra Moore 1	FOUR-POINT PLAYS Penn State 0 Opponents 0	LARGEST DEFICIT 14, vs. Seton Hall (11/22)	NOTE: Totals may not add up to games played due to ties.
LEADER IN ASSISTS Lindsey Spann 2 Keke Sevellian 1 Sierra Moore 1	THREE-POINT PLAYS Penn State 1 Opponents 0	LARGEST DEFICIT OVERCOME TO WIN 8, vs. Towson (12:50 in 2nd half) (11/14)	
LEADER IN STEALS Kaliyah Mitchell 3 Lindsey Spann 1	PSU'S FIRST SUBSTITUTION Tori Waldner 2 Keke Sevellian 1 Candice Agee 1 Jenny DeGraaf 1	LARGEST LEAD GIVEN UP IN LOSS 9, vs. St. Bonaventure (7:08 in 2nd half) (11/25)	
LEADER IN BLOCKS Tori Waldner 3 Sierra Moore 1	BENCH POINTS Penn State 57 (14.3 ppg) Opponents 33 (8.3 ppg)	LARGEST WIN 7, vs. Towson (71-64) (11/14)	
GAMES STARTED Sierra Moore 4 Lindsey Spann 4 Kaliyah Mitchell 4 Peyton Whitted 3 Tori Waldner 2 Candice Agee 2 Keke Sevellian 1	JUMP BALLS CONTROLLED Penn State 1 Opponents 3	LARGEST DEFEAT 5, vs. Seton Hall (75-70) (11/22)	
20-POINT SCORING GAMES Penn State 1 Opponents 3	FIRST SCORE OF GAME Penn State 3 Opponents 1	MOST CONSECUTIVE POINTS 9, vs. Towson (10:29 to 6:02, 1st half) (1/14)	
Candice Agee 1	RUNS OF 10-0 OR BETTER Penn State 0 Opponents 1	MOST CONSECUTIVE POINTS BY OPP 12, Towson (1:38, first half to 19:50, second half) (11/14)	
30-POINT SCORING GAMES Penn State 0 Opponents 1	LARGEST HALFTIME LEAD 2, vs. Towson (31-29) (11/14)	LONGEST WINNING STREAK 1, 11/14	
	LARGEST HALFTIME DEFICIT 8, vs. Seton Hall (37-29) (11/22)	LONGEST LOSING STREAK 3, 11/16-present	

SPECIALITY STATS (PSU/OPP)

	Paint	Off TO	2nd	FastBr	Bench		Paint	Off TO	2nd	FastBr	Bench
Towson	30/14	13/16	5/9	13/4	17/7	St. Bonaventure	28/20	14/7	6/9	6/0	12/3
Albany	22/30	14/17	6/12	10/4	14/12						
Seton Hall	40/26	18/22	22/10	8/12	14/11						

LADY LIONS BY THE NUMBERS

DOUBLE FIGURE PERFORMANCES

Lindsey Spann - 4
 Sierra Moore - 3
 Kaliyah Mitchell - 1
 Candice Agee - 1
 Tori Waldner - 1
 Jenny DeGraaf - 1

20-POINT PERFORMANCES

Candice Agee - 1

30-POINT PERFORMANCES

none

DOUBLE-DOUBLE PERFORMANCES

Tori Waldner - 1
 Candice Agee - 1

DOUBLE-DIGIT REBOUNDING PERFORMANCES

Tori Waldner - 1
 Candice Agee - 1

DOUBLE-DIGIT ASSIST PERFORMANCES

none





COQUESE WASHINGTON

Head Coach
8th Season

PENN STATE LADY LION BASKETBALL

Coquese Washington was introduced as the fifth head coach of the Penn State women's basketball program on April 23, 2007. Washington is the first female African-American head coach in Penn State history.

Washington led the 2013-14 Lady Lion squad to a feat that no other Penn State team has accomplished, winning three consecutive conference regular-season titles with a 13-3 record in Big Ten action. Led by the play of a strong senior class, the Lady Lions advanced to the NCAA Sweet Sixteen for the second time in three years. The graduating class of Maggie Lucas, Ariel Edwards, Dara Taylor and Talia East produced 101 wins, which is the second-highest total by a Lady Lion class.

Along the way to collecting her second Big Ten Player of the Year award, Lucas finished second in school history and fourth in Big Ten history in scoring (2,510) and broke the Penn State and Big Ten records for career three-pointers made (365) and career free throw percentage (.907). She was selected in the second round of the 2014 WNBA Draft by the Phoenix

Mercury. Edwards became the 36th member of the 1,000-point club en route to collecting All-Big Ten first team accolades. She finished seventh in the Big Ten in scoring (15.7) and was 11th in free throw percentage (.814). Edwards signed a free agent contract with the WNBA's Tulsa Shock. Taylor also had a stellar senior campaign and collected the Big Ten Defensive Player of the Year award after leading the conference in steals. East also earned postseason honors as she was named All-Big Ten honorable mention. In addition, Washington was honored with her third consecutive Big Ten Coach of the Year honor.

The Lady Lions continued their run in the national spotlight in 2012-13 as they collected their second-straight Big Ten regular-season title and seventh overall with a 26-6 overall record and 14-2 mark in conference play. In each of Washington's first six years, Penn State improved its Big Ten win total. The Lady Lions posted their third consecutive 25-win season, joining the 1993-94, 1994-95 and 1995-96 squads as the only teams in program history to accomplish the feat. The Lady Lions were consistently ranked in the Top 10 for most of the season and finished eighth in the Associated Press Top 25 and 12th in the USA Today Sports Coaches' Poll.

With another stellar campaign, the accolades continued to roll in for the Lady Lions. Washington was selected as the Big Ten Coach of the Year by the media for the second-straight season and became just the fifth mentor in Big Ten history to win back-to-back Coach of the Year accolades. She was also the WBCA Region 6 Coach of the Year and a finalist for WBCA National Coach of the Year for the second-straight season.

The awards also piled up for Penn State's dynamic backcourt of Lucas and Alex Bentley. Lucas was selected as the Big Ten Player of the Year, was a Wade Trophy Finalist and was an All-America choice by four outlets, including the WBCA (honorable mention), Associated Press (second team), USBWA (first team) and Full Court (second team). She is just the third Lady Lion in program history to win Big Ten Player of the Year honors. Bentley earned her third-straight first team All-Big Ten award and honorable mention All-America bids from the WBCA and Associated Press. She was also selected as the 2013 recipient of the Frances Pomeroy Naismith Award, which is presented to the nation's outstanding female collegian 5-8 and under. Nikki Greene also capped a stellar career for the Lady Lions with third team All-Big Ten accolades. She also became the first player in school history to accumulate 1,000 points, 900 rebounds and 200 blocks.

Both Bentley and Greene heard their names called on WNBA Draft night. Bentley was selected with the 13th overall pick by the Atlanta Dream to become the highest draft pick for the Lady Lions since Tanisha Wright (12th) in 2005. Greene was the 26th overall selection by the Phoenix Mercury.

For her efforts in rebuilding the Penn State program, Washington was honored as the Big Ten Coach of the Year and the WBCA Region 6 Coach of the Year, making her a finalist for WBCA National Coach of the Year. The accolades were not just limited to Washington; all five Lady Lion starters earned All-Big Ten recognition, including first team bids for Bentley and Lucas. Both Bentley and Lucas also garnered honorable mention All-America honors from the WBCA and Associated Press, respectively.

The Lady Lions returned to the national stage in Washington's fourth year with a second-place finish in the Big Ten regular season standings, a runner-up finish in the Big Ten

THE WASHINGTON FILE

COACHING RESUME

2007-pres. - Head Coach, Penn State
2013 - Asst. Coach, USA Basketball World U. Games
2013-pres. - Vice President/President-Elect, WBCA
2012-pres. - Kay Yow Cancer Fund Board of Directors
2011-pres. - NCAA WBB Issues Committee
2010-13 - Treasurer, WBCA Executive Committee
2008-pres. - WBCA Board of Directors
2009-12 - USA Basketball Women's Jr. National Comm.
2005-07 - Associate Head Coach, Notre Dame
1999-05 - Assistant Coach, Notre Dame

PLAYING EXPERIENCE

2002-03 - WNBA's Indiana Fever
2000-02 - WNBA's Houston Comets
1998-99 - WNBA's New York Liberty
1997-98 - ABL's Portland Power
1989-93 - University of Notre Dame

EDUCATION

Notre Dame '92, B.A. History
Notre Dame Law School '97, Juris Doctorate

AWARDS

- ❖ 2012, 2013, 2014 Big Ten Coach of the Year
- ❖ 2012, 2013 WBCA Region 6 Coach of the Year
- ❖ 2012, 2013 WBCA National Coach of the Year Finalist
- ❖ 2011, 2013 WBCA Female Coach of the Year
- ❖ 2009 Greater Flint Hall of Fame Inductee

FAMILY

Husband: Raynell Brown
Children: Quenton (9), Rhaiyna (5)

Washington vs. Opponents

Albany.....	0-1	Michigan State.....	5-8
Alcorn State.....	1-0	Middle Tennessee.....	1-0
Arizona.....	1-0	Minnesota.....	7-7
Army.....	1-0	Mississippi.....	1-0
Boston College.....	0-1	Monmouth.....	1-0
Bucknell.....	6-0	Nebraska.....	3-2
Buffalo.....	1-0	Nevada.....	1-0
Cal Poly.....	1-0	NJIT.....	2-0
CS-Northridge.....	1-0	North Carolina.....	1-0
Charlotte.....	1-0	Notre Dame.....	0-1
Connecticut.....	0-4	Northwestern.....	9-1
Coppin State.....	1-0	Oakland.....	2-0
Dayton.....	2-1	Ohio State.....	6-7
Delaware.....	1-1	Old Dominion.....	0-1
DePaul.....	0-1	Oregon State.....	1-0
Detroit.....	1-0	Pittsburgh.....	2-1
Drexel.....	2-1	Prairie View A&M.....	1-0
Duke.....	1-0	Purdue.....	4-9
Fair Dickinson.....	1-0	Rider.....	1-0
Florida.....	1-0	Seton Hall.....	0-1
Fordham.....	1-0	St. Bonaventure.....	0-1
Florida State.....	0-1	St. Francis (Pa.).....	1-0
Georgetown.....	3-0	South Carolina.....	4-1
Georgia Tech.....	0-1	South Dakota St.....	1-1
Hartford.....	2-0	Stanford.....	0-1
Hofstra.....	0-1	Stony Brook.....	1-0
Holy Cross.....	1-0	Syracuse.....	0-1
Howard.....	1-0	Texas A&M.....	2-1
Illinois.....	10-3	UTEP.....	1-0
Illinois State.....	1-0	Texas Tech.....	1-1
Indiana.....	7-4	Towson.....	1-0
Iowa.....	7-6	Utah.....	1-0
Iowa State.....	1-0	Virginia Tech.....	2-0
Lafayette.....	1-0	Wagner.....	1-0
LSU.....	1-1	Washington State.....	1-0
Maine.....	1-0	Wichita State.....	1-0
UMES.....	1-0	Wisconsin.....	6-6
Miami (Fla.).....	0-1	UW-Green Bay.....	0-1
Michigan.....	10-3	Xavier.....	0-1

Tournament and a berth in the NCAA Tournament. Penn State tallied its 23rd 20-win season with a 25-10 overall record and an 11-5 mark in conference play. The Lady Lions worked their way back to the "Big Dance" for the first time since 2004-05.

Washington came to Happy Valley after eight seasons as an associate head coach and assistant coach under Muffet McGraw at Notre Dame, her alma mater. During Washington's eight years on the bench, Notre Dame amassed a 188-69 record with eight NCAA Tournament appearances, including four Sweet Sixteen runs and a National Championship in 2001.

Washington was a four-year starting point guard for Notre Dame under McGraw and was the team captain on Notre Dame's first-ever NCAA Tournament team. She was a two-time All-Midwestern Collegiate Conference (MCC) selection and led Notre Dame to three MCC Tournament titles.

The epitome of a student-athlete, Washington graduated from Notre Dame in 1992, a full year ahead of schedule, with a bachelor's degree in history. She went on to attain "Double Domer" status in 1997 after earning her Juris Doctorate from the Notre Dame Law School.

Washington juggled finishing her law degree with the start of her professional basketball career. She returned to the hardwood as a professional in 1997-98, playing for the ABL's Portland Power before spending a two-year stint with the WNBA's New York Liberty (1998-99). Washington moved to Houston for the 2000 season, where she played an instrumental role in leading the Comets to the WNBA title. Washington guided the Fever to their first-ever playoff berth and became the first player in WNBA history to lead three different teams to the postseason.

In addition to assisting with the efforts of the Pink Zone at Penn State to raise money and awareness for breast cancer, Washington created Coquese's Drive for the Women's Resource Center. Coquese's Drive for the Women's Resource Center has raised more than \$118,000 to aid in the fight against domestic violence.

Washington is currently serving on the 29-member WBCA Board of Directors, where she is the Vice President/President-Elect of the Executive Committee.

A native of Flint, Mich., Washington and her husband, Raynell Brown, have a son, Quenton (9), and a daughter, Rhaiyna (5). They reside in Port Matilda, Pa.





#1 Candice Agee

Jr. * C * 6-6 * Victorville, Calif./Silverado

Highlights:

- ♦ Ranks 19th in program history in blocked shots per game (0.7 bpg).
- ♦ Made her first start of the season and fourth of her career versus Seton Hall (11/22).

2014-15 Season Notes:

- ♦ Had eight points, four rebounds and two blocks against St. Bonaventure (11/25).
- ♦ Went 9-for-15 from the field en route to a career-high 21 points with five rebounds, two blocks and two steals in just 17 minutes against Seton Hall (11/22).
- ♦ Blocked three shots and had two steals against Albany (11/16).
- ♦ Nearly posted a double-double with nine points and nine rebounds, which tied her career high, in the season-opening win over Towson (11/14).

Notable:

- ♦ 2012 McDonald's High School All-American.
- ♦ Competed for the United States in the FIBA U19 World Championship (July 2013) and FIBA Americas U18 Championship (August 2012).

14-15 GAME-BY-GAME

OPPONENT	Min.	FG	3FG	FT	O-D-R	PF	A	TO	B	S	Pts
TOWSON	18	3-6	0-0	3-6	4-5-9	1	0	0	0	0	9
ALBANY	19	1-6	0-0	0-0	1-4-5	4	2	1	3	2	4
SETON HALL	17	9-15	0-0	3-6	3-2-5	4	1	1	2	2	21
ST. BONA	24	4-8	0-0	0-0	1-3-4	3	2	3	2	1	8
vs. Liberty											
vs. Georgia State/Samford											
at Syracuse											
WAGNER											
at Hartford											
RIDER											
USF											
at Iowa											
at Michigan											
ILLINOIS											
at Wisconsin											
RUTGERS											
at Nebraska											
at Ohio State											
INDIANA											
NORTHWESTERN											
at Minnesota											
at Rutgers											
MARYLAND											
at Purdue											
MICHIGAN ST.											
MINNESOTA											
at Maryland											
OHIO STATE											
WISCONSIN											

AGEE'S CAREER/SEASON HIGHS

	SEASON HIGHS	CAREER HIGHS
Points	21 vs. Seton Hall (11/22/14)	21 vs. Seton Hall (11/22/14)
Rebs.	9 vs. Towson (11/14/14)	9 vs. Towson (11/14/14)
		9 vs. Fairleigh Dickinson (12/2/12)
Assists	2 vs. St. Bonaventure (11/25/14)	2 vs. St. Bonaventure (11/25/14)
	2 vs. Albany (11/16/14)	2 vs. Albany (11/16/14)
Steals	2 vs. Seton Hall (11/22/14)	2 3x last vs. Seton Hall (11/22/14)
	2 vs. Albany (11/16/14)	
Blocks	3 vs. Albany (11/16/14)	3 vs. Albany (11/16/14)
		3 vs. Illinois (2/20/13)
Minutes	24 vs. St. Bonaventure (11/25/14)	24 vs. St. Bonaventure (11/25/14)
FGM	9 vs. Seton Hall (11/22/14)	9 vs. Seton Hall (11/22/14)
FGA	15 vs. Seton Hall (11/22/14)	15 vs. Seton Hall (11/22/14)
3FGM	n/a	n/a
3FGA	n/a	n/a
FTM	3 vs. Seton Hall (11/22/14)	4 vs. Illinois (2/20/13)
	3 vs. Towson (11/14/14)	
FTA	6 vs. Seton Hall (11/22/14)	8 vs. Illinois (2/20/13)
	6 vs. Towson (11/14/14)	

AGEE'S MISCELLANEOUS STATS

Category	Season	Career	Last Time
Double Figure Scoring	1	2	21 vs. Seton Hall (11/22/14)
20-point games	1	1	21 vs. Seton Hall (11/22/14)
Double Figure Rebounds	n/a	n/a	
5-plus Rebounds	3	10	5 vs. Seton Hall (11/22/14)
5-plus Assists	n/a	n/a	
3-plus Blocks	1	2	3 vs. Albany (11/16/14)
Double-Doubles	1	1	vs. Seton Hall (11/22/14)

AGEE'S CAREER STATS

Year	GP-GS	MIN	FG-A	PCT	3FG-A	PCT	FT-A	PCT	REB	AVG	PF-O	A	TO	B	S	PTS	AVG
2012-13	26-0	204	20-54	.370	0-0	.000	11-20	.550	17-31-48	1.8	33-0	2	13	13	4	51	2.0
2013-14	32-3	330	34-84	.405	0-0	.000	31-61	.508	31-43-74	2.3	54-1	8	28	21	4	99	3.1
2014-15	4-2	78	17-35	.486	0-0	.000	6-12	.500	9-14-23	5.8	12-0	5	5	7	5	40	10.0
TOTAL	62-5	612	71-173	.410	0-0	.000	48-93	.516	57-88-145	2.3	99-1	15	46	41	13	190	3.1

10-Time Big Ten Champions • Two-Time Big Ten Tournament Champions • 2000 NCAA Final Four • 25 NCAA Tournament Appearances





#3 Brianna Banks

RS-Sr. * G * 5-9 * Newnan, Ga./Fayette County (Connecticut)

2014-15 Season:

- Will sit out the 2014-15 season due to NCAA Transfer Rules after transferring from Connecticut.
- Has one year of eligibility remaining.

2013-14 Season (at Connecticut):

- Started eight-straight games (November 20 - December 22).
- Dished out five assists to go with four points and three steals against UCF (2/19).
- Notched three steals to compliment four points, three assists and five rebounds at Cincinnati (2/1).
- Registered seven points three assists and three steals at UCF (1/1).
- Connected on three of her four shots from the field en route to eight points, five rebounds, four assists and three steals against UC Davis (12/5).
- Had a season-high 12 points with a career-best seven rebounds in the win over Ohio State (12/1).
- Was 4-for-5 from the field, including 3-for-3 from three-point range, on the way to 12 points against Monmouth (11/23).
- Chipped in with 10 points on 4-6 shooting in a season-high 31-minutes of action against Oregon (11/20).
- Had nine points and three rebounds at #8/7 Maryland (11/15).

2012-13 Season (at Connecticut):

- Finished sixth on the team in scoring (7.3).
- Had 12 points to go along with four rebounds at Marquette (1/12).
- Tallied 18 points on 8-of-13 shooting and pulled in six rebounds against Oakland (12/19).
- Registered 10 points and two steals against #10/10 Penn State (12/6).
- Connected on three of her four three-point attempts en route to 11 points against #9/10 Maryland (12/3).
- Had a career-high 20 points thanks to a 6-for-10 shooting night, including a 4-for-5 effort from beyond the arc, against Colgate (11/28).
- Had a balanced statistical night with 12 points, six assists, two rebounds and a steal with only one turnover in 20 minutes against Wake Forest (11/22).
- Opened the season with a perfect 5-for-5 shooting night for 10 points against Charleston (11/11).

2011-12 Season (at Connecticut):

- Shot 50.5 percent from the field.
- Hit on all three of her shots from the field en route to eight points with four assists and two steals at Marquette (2/25).
- Was 5-for-5 from the field and finished with 12 points, two rebounds and two steals against Fairfield (12/29).
- Collected 17 points via a 7-for-10 shooting effort and 3-for-3 night at the free throw line against Fairleigh Dickinson (11/25).
- Tallied 12 points thanks to a 5-for-7 shooting night against Pacific (11/15).

High School:

- Averaged 16.2 points, 5.5 rebounds, 5.1 assists and 5.0 steals per game in her final season at Fayette County High School, which ended in a State Championship.
- Honored as a 2011 McDonald's All-American and WBCA Honorable Mention All-American in addition to being named "Miss Basketball" in the state of Georgia.
- Honored as the Fayette County Player of the Year by the *Fayette County News* and selected to the All-State first team in 2011.
- Led the West Team with 17 points on 7-of-12 shooting in the 2011 McDonald's All-American Game.
- Was a second team All-State selection and the Coweta County Player of the year during her junior season.
- Rated as the No. 24 overall recruit by ESPN Hoopgurlz and the No. 15 overall prospect by the All-Star Girls Report.
- Tabbed as the No. 11 recruit nationally by Blue Star.
- Honored as a first team All-Metro selection by the *Atlanta Journal-Constitution* in 2009-10.
- Selected as the 2010 Coweta County Player of the Year by the *Times-Herald*.

BANKS' CAREER STATS

Year	GP-GS	MIN	FG-A	PCT	3FG-A	PCT	FT-A	PCT	REB	AVG	PF-O	A	TO	B	S	PTS	AVG
2011-12*	32-0	393	46-91	.505	3-24	.125	19-27	.704	5-30-35	1.1	27-0	32	31	3	25	114	3.6
2012-13*	21-0	359	56-117	.479	18-52	.346	23-33	.697	6-30-36	1.7	22-0	35	22	4	25	153	7.3
2013-14*	37-8	527	49-103	.476	13-44	.295	19-29	.655	20-37-57	1.5	42-1	45	27	6	34	130	3.5
CAREER	90-8	1279	151-311	.486	34-120	.283	61-89	.685	31-97-128	1.4	91-1	112	80	13	84	397	4.4

* - at Connecticut





#5 Sierra Moore

RS-So. * G * 5-11 * Hanover, Pa./Delone Catholic (Duke)

Highlights:

- ♦ Sat out the 2013-14 season due to NCAA Transfer Rules.
- ♦ Selected as a team tri-captain.
- ♦ Posted first career double-double with 14 points and a personal-best 10 rebounds against Seton Hall (11/22).

2014-15 Season Notes:

- ♦ Had a game- and career-high 15 points via a 6-for-12 shooting performance versus St. Bonaventure (11/25).
- ♦ Tallied eight points to go along with three rebounds, three assists and a steal versus Albany (11/16).
- ♦ Filled the stats sheet with 12 points, five rebounds, four assists, two blocks and a steal in the win over Towson (11/14).
- ♦ Scored 15 of her team-best 18 points over the final 11:44 of the contest to propel the Lady Lions to an exhibition win over IUP (11/2).

Notable:

- ♦ Appeared in 25 games as a freshman at Duke.
- ♦ Garnered Gatorade Player of the Year and Associated Press Class AA Player of the Year honors in the state of Pennsylvania as a high school senior year.
- ♦ Was a McDonald's High School All-American in 2011-12.
- ♦ Holds the York-Adams Interscholastic Athletic Association (YAIAA) scoring record with 2,595 points at Delone Catholic.
- ♦ Was also a track standout, finishing in the Top 10 in the State Championships in the 200-meters (7th in 2009 and 2010) and 4x100 relay (4th in 2009).

14-15 GAME-BY-GAME

OPPONENT	Min.	FG	3FG	FT	O-D-R	PF	A	TO	B	S	Pts
TOWSON	39	5-12	1-1	1-3	1-4-5	0	4	4	2	1	12
ALBANY	30	4-8	0-0	0-1	2-1-3	4	3	4	1	1	8
SETON HALL	37	5-12	0-0	4-6	7-3-10	1	5	3	1	0	14
ST. BONA	37	6-12	0-0	3-6	1-4-5	3	3	3	0	0	15
vs. Liberty											
vs. Georgia State/Samford											
at Syracuse											
WAGNER											
at Hartford											
RIDER											
USF											
at Iowa											
at Michigan											
ILLINOIS											
at Wisconsin											
RUTGERS											
at Nebraska											
at Ohio State											
INDIANA											
NORTHWESTERN											
at Minnesota											
at Rutgers											
MARYLAND											
at Purdue											
MICHIGAN ST.											
MINNESOTA											
at Maryland											
OHIO STATE											
WISCONSIN											

MOORE'S CAREER/SEASON HIGHS			
	SEASON HIGHS	CAREER HIGHS	
Points	15 vs. St. Bonaventure (11/25/14)	15 vs. St. Bonaventure (11/25/14)	
Rebs.	10 vs. Seton Hall (11/22/14)	10 vs. Seton Hall (11/22/14)	
Assists	5 vs. Seton Hall (11/22/14)	5 vs. Seton Hall (11/22/14)	
Steals	1 vs. Albany (11/16/14) 1 vs. Towson (11/14/14)	3 vs. Iona (11/18/12)	
Blocks	2 vs. Towson (11/14/14)	2 vs. Towson (11/14/14)	
Minutes	39 vs. Towson (11/14/14)	39 vs. Towson (11/14/14)	
FGM	6 vs. St. Bonaventure (11/25/14)	6 vs. St. Bonaventure (11/25/14)	
FGA	12 (3x) last vs. St. Bonaventure (11/25/14)	12 (3x) vs. St. Bonaventure (11/25/14)	
3FGM	1 vs. Towson (11/14/14)	1 vs. Towson (11/14/14)	
3FGA	1 vs. Towson (11/14/14)	1 vs. Towson (11/14/14)	
FTM	4 vs. Seton Hall (11/22/14)	4 vs. Seton Hall (11/22/14)	
		4 vs. CSU-Bakersfield (12/21/13)	
FTA	6 vs. St. Bonaventure (11/25/14) 6 vs. Seton Hall (11/22/14)	6 (3x) last vs. St. Bonaventure (11/25/14)	
<i>italics indicate at Duke</i>			
MOORE'S MISCELLANEOUS STATS			
Category	Season	Career	Last Time
Double Figure Scoring	3	4	15 vs. St. Bonaventure (11/25/14)
20-point games	n/a	n/a	
Double Figure Rebounds	1	1	10 vs. Seton Hall (11/22/14)
5-plus Rebounds	3	4	5 vs. St. Bonaventure (11/25/14)
5-plus Assists	1	1	5 vs. Seton Hall (11/22/14)
3-plus Steals	n/a	1	3 vs. Iona (11/18/12)
Double-Doubles	1	1	14 p, 10 r vs. Seton Hall (11/22/14)

MOORE'S CAREER STATS																	
Year	GP-GS	MIN	FG-A	PCT	3FG-A	PCT	FT-A	PCT	REB	AVG	PF-O	A	TO	B	S	PTS	AVG
2012-13*	25-0	194	26-58	.448	0-0	.000	11-22	.500	11-13-24	1.0	21-0	12	6	2	11	63	2.5
2014-15	4-4	143	20-44	.455	1-1	1.000	8-16	.500	11-12-23	5.8	8-0	15	14	4	2	49	12.3
PSU	4-4	143	20-44	.455	1-1	1.000	8-16	.500	11-12-23	5.8	8-0	15	14	4	2	49	12.3
TOTAL	29-4	337	46-102	.451	1-1	1.000	19-38	.500	22-25-47	1.6	29-0	27	20	6	13	112	3.9

* - at Duke

10-Time Big Ten Champions • Two-Time Big Ten Tournament Champions • 2000 NCAA Final Four • 25 NCAA Tournament Appearances





#10 Keke Sevillian

So. * G * 5-7 * Goodrich, Mich./Goodrich

Highlights:

- Made first career start against Seton Hall (11/22).

2014-15 Season Notes:

- Knocked down a pair of three-pointers and dished out a career-high five assists in the season-opener against Towson (11/14).
- Tallied four points, four rebounds, three assists and three steals in the exhibition win over IUP (11/2).

Notable:

- Led Goodrich High School in Michigan to its first-ever Class B State Championship in 2011-12 with a perfect 28-0 record.
- Holds the Goodrich High School record in the 300-meter hurdles and 200-meter dash and finished second in the state championships in the 300-meters hurdles her freshman and sophomore seasons.
- Father, Clarence, was a wide receiver for the Vanderbilt football team from 1989-92 and ranks in the school's Top 10 in career receiving yards.
- Aunt, Nicole Hendrix, played basketball at Stanford from 1991-94, winning a National Championship in 1992.

14-15 GAME-BY-GAME

OPPONENT	Min.	FG	3FG	FT	O-D-R	PF	A	TO	B	S	Pts
TOWSON	19	2-6	2-5	0-1	0-1-1	2	5	0	0	0	6
ALBANY	13	0-5	0-3	0-0	0-0-0	4	1	1	0	2	0
SETON HALL	14	0-5	0-2	1-2	0-0-0	2	1	2	0	1	1
ST. BONA	10	0-4	0-0	0-0	0-0-0	0	1	1	0	1	0
vs. Liberty											
vs. Georgia State/Samford											
at Syracuse											
WAGNER											
at Hartford											
RIDER											
USF											
at Iowa											
at Michigan											
ILLINOIS											
at Wisconsin											
RUTGERS											
at Nebraska											
at Ohio State											
INDIANA											
NORTHWESTERN											
at Minnesota											
at Rutgers											
MARYLAND											
at Purdue											
MICHIGAN ST.											
MINNESOTA											
at Maryland											
OHIO STATE											
WISCONSIN											

SEVILLIAN'S CAREER/SEASON HIGHS

	SEASON HIGHS	CAREER HIGHS
Points	6 vs. Towson (11/14/14)	8 vs. St. Francis (Pa.) (11/8/13)
Rebs.	1 vs. Towson (11/14/14)	3 vs. St. Francis (Pa.) (11/8/13)
Assists	5 vs. Towson (11/14/14)	5 vs. Towson (11/14/14)
Steals	2 vs. Albany (11/16/14)	4 vs. St. Francis (Pa.) (11/8/13)
Blocks	n/a	n/a
Minutes	19 vs. Towson (11/14/14)	19 vs. Towson (11/14/14)
FGM	2 vs. Towson (11/14/14)	2 (3x) last vs. Towson (11/14/14)
FGA	6 vs. Towson (11/14/14)	6 vs. Towson (11/14/14) 6 vs. St. Francis (Pa.) (11/8/13)
3FGM	2 vs. Towson (11/14/14)	2 vs. Towson (11/14/14)
3FGA	5 vs. Towson (11/14/14)	5 vs. Towson (11/14/14)
FTM	1 vs. Seton Hall (11/22/14)	4 vs. St. Francis (Pa.) (11/8/13)
FTA	2 vs. Seton Hall (11/22/14)	4 vs. St. Francis (Pa.) (11/8/13)

SEVILLIAN'S MISCELLANEOUS STATS

Category	Season	Career	Last Time
Double Figure Scoring	n/a	n/a	
20-point games	n/a	n/a	
Double Figure Rebounds	n/a	n/a	
5-plus Rebounds	n/a	n/a	
5-plus Assists	1	1	5 vs. Towson (11/14)
3-plus Steals	n/a	n/a	
Double-Doubles	n/a	n/a	

SEVILLIAN'S CAREER STATS

Year	GP-GS	MIN	FG-A	PCT	3FG-A	PCT	FT-A	PCT	REB	AVG	PF-O	A	TO	B	S	PTS	AVG
2013-14	22-0	120	8-28	.286	4-13	.308	11-13	.846	1-11-12	0.5	19-0	5	15	0	8	31	1.4
2014-15	4-1	56	2-20	.100	2-10	.200	1-3	.333	0-1-1	0.3	8-0	8	4	0	4	7	1.8
TOTAL	26-1	176	10-48	.208	6-23	.261	12-16	.750	1-12-13	0.5	27-0	13	19	0	12	38	1.5





#11 Alex Harris

So. * F * 6-3 * Lorain, Ohio/Lorain

Notable:

- ♦ Appeared in 29 contests as a freshman.
- ♦ Had three double-digit rebounding performances as a freshman and 10 outings with five or more rebounds.
- ♦ Collegiate Girls Basketball Report and All-Star Girls Report both rated her as the 49th-ranked recruit .
- ♦ Named 2012-13 Division 1 Lorain County Player of the Year.

14-15 GAME-BY-GAME

OPPONENT	Min.	FG	3FG	FT	O-D-R	PF	A	TO	B	S	Pts
TOWSON		DNP									
ALBANY		DNP									
SETON HALL		DNP									
ST. BONA		DNP									
vs. Liberty											
vs. Georgia State/Samford											
at Syracuse											
WAGNER											
at Hartford											
RIDER											
USF											
at Iowa											
at Michigan											
ILLINOIS											
at Wisconsin											
RUTGERS											
at Nebraska											
at Ohio State											
INDIANA											
NORTHWESTERN											
at Minnesota											
at Rutgers											
MARYLAND											
at Purdue											
MICHIGAN ST.											
MINNESOTA											
at Maryland											
OHIO STATE											
WISCONSIN											

HARRIS' CAREER/SEASON HIGHS

	SEASON HIGHS	CAREER HIGHS
Points	n/a	8 vs. Bucknell (11/20/13)
Rebs.	n/a	11 vs. Illinois State (11/30/13)
		11 vs. Bucknell (11/20/13)
Assists	n/a	2 vs. Illinois State (11/30/13)
Steals	n/a	1 (6x) last at Indiana (2/13/14)
Blocks	n/a	3 at Purdue (1/30/14)
		3 vs. St. Francis (Pa.) (11/8/13)
Minutes	n/a	22 vs. Fordham (11/10/13)
FGM	n/a	3 vs. Bucknell (11/20/13)
FGA	n/a	5 vs. Purdue (1/12/14)
		5 vs. Oregon State (11/29/13)
3FGM	n/a	n/a
3FGA	n/a	n/a
FTM	n/a	2 (5x) last vs. Notre Dame (12/4/13)
FTA	n/a	5 vs. Bucknell (11/20/13)

HARRIS' MISCELLANEOUS STATS

Category	Season	Career	Last Time
Double Figure Scoring	n/a	n/a	
20-point games	n/a	n/a	
Double Figure Rebounds	n/a	3	11 vs. Illinois State (11/30/13)
5-plus Rebounds	n/a	10	5 vs. Minnesota (1/26/14)
5-plus Blocks	n/a	n/a	
3-plus Blocks	n/a	1	3 at Purdue (1/30/14)
Double-Doubles	n/a	n/a	

HARRIS' CAREER STATS

Year	GP-GS	MIN	FG-A	PCT	3FG-A	PCT	FT-A	PCT	REB	AVG	PF-O	A	TO	B	S	PTS	AVG
2013-14	29-0	256	20-50	.400	0-0	.000	17-34	.500	39-57-96	3.3	33-0	5	19	15	6	57	2.0
CAREER	29-0	256	20-50	.400	0-0	.000	17-34	.500	39-57-96	3.3	33-0	5	19	15	6	57	2.0

10-Time Big Ten Champions • Two-Time Big Ten Tournament Champions • 2000 NCAA Final Four • 25 NCAA Tournament Appearances





#12 Lindsey Spann

RS-Fr. * G * 5-6 * Laurel, Md./Good Counsel

Highlights:

- ♦ Missed the 2013-14 season after tearing her right ACL.
- ♦ Selected as a team tri-captain.

2014-15 Season Notes:

- ♦ Reached double figures for the fourth consecutive game to start her Penn State career with 13 points to go along with five assists and two steals against St. Bonaventure (11/25).
- ♦ Chipped in 12 points and three steals against Seton Hall (11/22).
- ♦ Led the Lady Lions in scoring for the second straight game with 14 points against Albany (11/16), marking the first time a freshman has been the team's leading scorer in two straight games since Maggie Lucas did so vs. Minnesota (1/13/11) and vs. Illinois (1/16/11).
- ♦ Went 7-for-14 from the field for a team-high 17 points in her collegiate debut against Towson (11/14).
- ♦ Also tallied five rebounds and four assists against the Tigers.
- ♦ Recorded 14 points and dished out four assists in the exhibition win over IUP (11/2).

Notable:

- ♦ Ranked as the 22nd-best player by Collegiate Girls Basketball Report and 88th-rated player by Blue Star Basketball.
- ♦ Guided Good Counsel to a 25-5 overall record and 16-3 mark in league play.
- ♦ Participated in USA Basketball's U16 Trials in May 2011.

14-15 GAME-BY-GAME

OPPONENT	Min.	FG	3FG	FT	O-D-R	PF	A	TO	B	S	Pts
TOWSON	32	7-14	0-2	3-4	0-5-5	2	4	4	0	0	17
ALBANY	31	6-12	1-3	1-2	0-1-1	3	4	3	0	0	14
SETON HALL	27	4-10	2-4	2-2	0-2-2	5	1	5	0	3	12
ST. BONA	34	4-14	2-6	3-4	1-1-2	3	5	1	0	2	13
vs. Liberty											
vs. Georgia State/Samford											
at Syracuse											
WAGNER											
at Hartford											
RIDER											
USF											
at Iowa											
at Michigan											
ILLINOIS											
at Wisconsin											
RUTGERS											
at Nebraska											
at Ohio State											
INDIANA											
NORTHWESTERN											
at Minnesota											
at Rutgers											
MARYLAND											
at Purdue											
MICHIGAN ST.											
MINNESOTA											
at Maryland											
OHIO STATE											
WISCONSIN											

SPANN'S CAREER/SEASON HIGHS

	SEASON HIGHS	CAREER HIGHS
Points	17 vs. Towson (11/14/14)	17 vs. Towson (11/14/14)
Rebs.	5 vs. Towson (11/14/14)	5 vs. Towson (11/14/14)
Assists	5 vs. St. Bonaventure (11/25/14)	5 vs. St. Bonaventure (11/25/14)
Steals	3 vs. Seton Hall (11/22/14)	3 vs. Seton Hall (11/22/14)
Blocks	n/a	n/a
Minutes	34 vs. St. Bonaventure (11/25/14)	34 vs. St. Bonaventure (11/25/14)
FGM	7 vs. Towson (11/14/14)	7 vs. Towson (11/14/14)
FGA	14 vs. St. Bonaventure (11/25/14) 14 vs. Towson (11/14/14)	14 vs. St. Bonaventure (11/25/14) 14 vs. Towson (11/14/14)
3FGM	2 vs. St. Bonaventure (11/25/14) 2 vs. Seton Hall (11/22/14)	2 vs. St. Bonaventure (11/25/14) 2 vs. Seton Hall (11/22/14)
3FGA	6 vs. St. Bonaventure (11/25/14)	6 vs. St. Bonaventure (11/25/14)
FTM	3 vs. St. Bonaventure (11/25/14) 3 vs. Towson (11/14/14)	3 vs. St. Bonaventure (11/25/14) 3 vs. Towson (11/14/14)
FTA	4 vs. St. Bonaventure (11/25/14) 4 vs. Towson (11/14/14)	4 vs. St. Bonaventure (11/25/14) 4 vs. Towson (11/14/14)

SPANN'S MISCELLANEOUS STATS

Category	Season	Career	Last Time
Double Figure Scoring	4	4	14 vs. St. Bonaventure (11/25/14)
20-point games	n/a	n/a	
Double Figure Rebounds	n/a	n/a	
5-plus Rebounds	1	1	5 vs. Towson (11/14/14)
5-plus Assists	1	1	5 vs. St. Bonaventure (11/25/14)
3-plus Steals	1	1	3 vs. Seton Hall (11/22/14)
Double-Doubles	n/a	n/a	

SPANN'S CAREER STATS

Year	GP-GS	MIN	FG-A	PCT	3FG-A	PCT	FT-A	PCT	REB	AVG	PF-O	A	TO	B	S	PTS	AVG
2014-15	4-4	124	21-50	.420	5-15	.333	9-12	.750	1-9-10	2.5	13-1	14	13	0	5	56	14.0
TOTAL	4-4	124	21-50	.420	5-15	.333	9-12	.750	1-9-10	2.5	13-1	14	13	0	5	56	14.0





#14 Dominique Brooks

Jr. * C * 6-4 * Lansing, Ill./T.F. South (Trinity Valley C.C.)

2014-15 Season Notes:

- ♦ Hit a pair of free throws in her Penn State debut in the win over Towson (11/14)
- ♦ Had four rebounds and a blocked shot in the exhibition win against IUP (11/2).

Notable:

- ♦ Won two NJCAA National Championships while at Trinity Valley Community College.
- ♦ Participated in USA Basketball U18 Trials in 2012

14-15 GAME-BY-GAME

OPPONENT	Min.	FG	3FG	FT	O-D-R	PF	A	TO	B	S	Pts
TOWSON	3	0-0	0-0	2-2	0-0-0	1	0	0	0	0	2
ALBANY	2	0-0	0-0	0-0	0-0-0	1	0	1	0	0	0
SETON HALL	3	0-0	0-0	0-0	0-0-0	2	0	0	0	0	0
ST. BONA	1	0-0	0-0	0-0	0-0-0	0	0	1	0	0	0
vs. Liberty											
vs. Georgia State/Samford											
at Syracuse											
WAGNER											
at Hartford											
RIDER											
USF											
at Iowa											
at Michigan											
ILLINOIS											
at Wisconsin											
RUTGERS											
at Nebraska											
at Ohio State											
INDIANA											
NORTHWESTERN											
at Minnesota											
at Rutgers											
MARYLAND											
at Purdue											
MICHIGAN ST.											
MINNESOTA											
at Maryland											
OHIO STATE											
WISCONSIN											

BROOKS' CAREER/SEASON HIGHS		
	SEASON HIGHS	CAREER HIGHS
Points	2 vs. Towson (11/14/14)	2 vs. Towson (11/14/14)
Rebs.	n/a	n/a
Assists	n/a	n/a
Steals	n/a	n/a
Blocks	n/a	n/a
Minutes	3 vs. Seton Hall (11/22/14) 3 vs. Towson (11/14/14)	3 vs. Seton Hall (11/22/14) 3 vs. Towson (11/14/14)
FGM	n/a	n/a
FGA	n/a	n/a
3FGM	n/a	n/a
3FGA	n/a	n/a
FTM	2 vs. Towson (11/14/14)	2 vs. Towson (11/14/14)
FTA	2 vs. Towson (11/14/14)	2 vs. Towson (11/14/14)

BROOKS' MISCELLANEOUS STATS			
Category	Season	Career	Last Time
Double Figure Scoring	n/a	n/a	
20-point games	n/a	n/a	
Double Figure Rebounds	n/a	n/a	
5-plus Rebounds	n/a	n/a	
5-plus Assists	n/a	n/a	
3-plus Steals	n/a	n/a	
Double-Doubles	n/a	n/a	

BROOKS' CAREER STATS																	
Year	GP-GS	MIN	FG-A	PCT	3FG-A	PCT	FT-A	PCT	REB	AVG	PF-O	A	TO	B	S	PTS	AVG
2014-15	4-0	9	0-0	.000	0-0	.000	2-2	1.000	0-0-0	0.0	4-0	0	2	0	0	2	0.5
TOTAL	4-0	9	0-0	.000	0-0	.000	2-2	1.000	0-0-0	0.0	4-0	0	2	0	0	2	0.5

10-Time Big Ten Champions • Two-Time Big Ten Tournament Champions • 2000 NCAA Final Four • 25 NCAA Tournament Appearances





#15 Kaliyah Mitchell

So. * F * 6-2 * Stone Mountain, Ga./Stephenson

Highlights:

- ♦ Second-leading returning scorer and rebounder from 2013-14.
- ♦ Made 16-straight free throw attempts from 2/20/14 until 11/14/14.

2014-15 Season Notes:

- ♦ Pulled in nine rebounds against St. Bonaventure (11/25).
- ♦ Registered eight points and tied her career high with 10 rebounds against Seton Hall (11/22).
- ♦ Chipped in nine points, six rebounds and tied her career high with four steals against Albany (11/16).
- ♦ Accounted for 10 points and a team-best three steals against Towson (11/14).
- ♦ Posted a near double-double with 12 points, nine rebounds and three steals in the exhibition win versus IUP (11/2).

Notable:

- ♦ Was the 54th-ranked recruit by Collegiate Girls Basketball Report and 40th-ranked recruit by All-Star Girls Report.
- ♦ Brother, Kenny, was an all-conference basketball player at Virginia State University.

14-15 GAME-BY-GAME

OPPONENT	Min.	FG	3FG	FT	O-D-R	PF	A	TO	B	S	Pts
TOWSON	25	3-8	0-2	4-6	2-3-4	4	0	3	0	3	10
ALBANY	30	2-7	1-2	4-5	1-5-6	4	0	5	0	4	9
SETON HALL	32	2-9	0-1	4-6	3-7-10	2	0	1	1	0	8
ST. BONA	29	1-7	0-1	0-1	1-8-9	3	1	3	0	4	2
vs. Liberty											
vs. Georgia State/Samford											
at Syracuse											
WAGNER											
at Hartford											
RIDER											
USF											
at Iowa											
at Michigan											
ILLINOIS											
at Wisconsin											
RUTGERS											
at Nebraska											
at Ohio State											
INDIANA											
NORTHWESTERN											
at Minnesota											
at Rutgers											
MARYLAND											
at Purdue											
MICHIGAN ST.											
MINNESOTA											
at Maryland											
OHIO STATE											
WISCONSIN											

MITCHELL'S CAREER/SEASON HIGHS

	SEASON HIGHS	CAREER HIGHS
Points	10 vs. Towson (11/14/14)	14 vs. Bucknell (11/20/13)
Rebs.	10 vs. Seton Hall (11/22/14)	10 vs. Seton Hall (11/22/14) 10 at Michigan State (1/19/14)
Assists	1 vs. St. Bonaventure (11/25/14)	2 (6x) last vs. Florida (3/25/14)
Steals	4 vs. St. Bonaventure (11/25/14) 4 vs. Albany (11/16/14)	4 (3x) last vs. St. Bonaventure (11/25/14)
Blocks	1 vs. Seton Hall (11/22/14)	2 at Iowa (1/5/14)
Minutes	32 vs. Seton Hall (11/22/14)	32 vs. Seton Hall (11/22/14)
FGM	3 vs. Towson (11/14/14)	5 vs. St. Francis (Pa.) (11/8/13)
FGA	9 vs. Seton Hall (11/22/14)	9 vs. Seton Hall (11/22/14)
3FGM	1 vs. Albany (11/16/14)	1 vs. Albany (11/16/14) 1 vs. Illinois State (11/30/13)
3FGA	2 vs. Albany (11/16/14) 2 vs. Towson (11/14/14)	3 at Nebraska (2/24/14)
FTM	4 3x last vs. Seton Hall (11/22/14)	7 vs. Northwestern (2/20/14)
FTA	6 vs. Towson (11/14/14)	7 (3x) last vs. Northwestern (2/20/14)

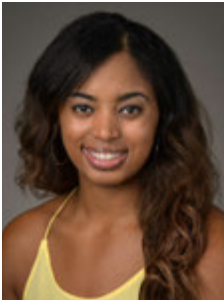
MITCHELL'S MISCELLANEOUS STATS

Category	Season	Career	Last Time
Double Figure Scoring	1	3	10 vs. Towson (11/14/14)
20-point games	n/a	n/a	
Double Figure Rebounds	1	2	10 vs. Seton Hall (11/22/14)
5-plus Rebounds	3	16	9 vs. St. Bonaventure (11/25/14)
5-plus Assists	n/a	n/a	
3-plus Steals	3	5	4 vs. St. Bonaventure (11/25/14)
Double-Doubles	n/a	n/a	

MITCHELL'S CAREER STATS

Year	GP-GS	MIN	FG-A	PCT	3FG-A	PCT	FT-A	PCT	REB	AVG	PF-O	A	TO	B	S	PTS	AVG
2013-14	32-0	546	41-114	.360	1-14	.071	61-83	.735	40-100-140	4.4	64-2	28	26	5	20	144	4.5
2014-15	4-4	116	8-31	.258	1-6	.167	12-18	.667	6-22-28	7.0	13-0	1	12	1	11	29	7.3
TOTAL	36-4	662	49-145	.338	2-20	.100	73-101	.723	46-122-168	4.7	77-2	29	38	6	31	173	4.8





#25 Peyton Whitted

So. * F * 6-3 * Suwanee, Ga./North Gwinnett

2014-15 Season Notes:

- ♦ Tallied six points, seven rebounds and two assists against Seton Hall (11/22).
- ♦ Grabbed nine rebounds with four points and two assists in the win over Towson (11/14).
- ♦ Pulled in 10 rebounds to go along with eight points and five assists in the exhibition win over IUP (11/2).

Notable:

- ♦ Led North Gwinnett to the Georgia State Championship game after averaging 13.7 points, 5.7 rebounds, 1.4 steals and 2.0 assists per game as a senior.
- ♦ Participated in USA Basketball's U16 Trials in May 2011.
- ♦ Father, Kevin, played basketball at Tennessee from 1993-95.
- ♦ Kevin is currently the head coach of the NBA D-League's Westchester Knicks.
- ♦ Kevin broke Michael Jordan's Laney High School scoring record with 1,554 points.

14-15 GAME-BY-GAME

OPPONENT	Min.	FG	3FG	FT	O-D-R	PF	A	TO	B	S	Pts
TOWSON	23	2-5	0-0	0-0	3-6-9	3	2	3	0	1	4
ALBANY	19	1-5	0-1	0-1	1-3-4	4	1	3	0	1	2
SETON HALL	23	2-6	0-3	2-6	1-6-7	3	2	4	1	1	6
ST. BONA	9	2-3	0-1	0-0	1-0-1	2	0	0	0	1	4
vs. Liberty											
vs. Georgia State/Samford											
at Syracuse											
WAGNER											
at Hartford											
RIDER											
USF											
at Iowa											
at Michigan											
ILLINOIS											
at Wisconsin											
RUTGERS											
at Nebraska											
at Ohio State											
INDIANA											
NORTHWESTERN											
at Minnesota											
at Rutgers											
MARYLAND											
at Purdue											
MICHIGAN ST.											
MINNESOTA											
at Maryland											
OHIO STATE											
WISCONSIN											

WHITTED'S CAREER/SEASON HIGHS

	SEASON HIGHS	CAREER HIGHS
Points	6 vs. Seton Hall (11/22/14)	11 at Northwestern (2/2/14)
Rebs.	9 vs. Towson (11/14/14)	10 at Illinois (1/9/14)
Assists	2 vs. Seton Hall (11/22/14) 2 vs. Towson (11/14/14)	2 (4x) last vs. Seton Hall (11/22/14)
Steals	1 (4x) last vs. St. Bona. (11/25/14)	2 (3x) last vs. Ohio State (3/7/14)
Blocks	1 vs. Seton Hall (11/22/14)	3 at South Dakota St. (12/11/13)
Minutes	23 vs. Seton Hall (11/22/14) 23 vs. Towson (11/14/14)	24 at Illinois (1/9/14)
FGM	2 (3x) last vs. St. Bonaventure (11/25/14)	5 at Northwestern (2/2/14)
FGA	6 vs. Seton Hall (11/22/14)	7 vs. Alcorn State (12/22/13)
3FGM	n/a	1 vs. Ohio State (3/7/14)
3FGA	3 vs. Seton Hall (11/22/14)	3 vs. Seton Hall (11/22/14) 3 vs. Bucknell (11/20/13)
FTM	2 vs. Seton Hall (11/22/14)	5 at Illinois (1/9/14)
FTA	6 vs. Seton Hall (11/22/14)	6 vs. Seton Hall (11/22/14)

WHITTED'S MISCELLANEOUS STATS

Category	Season	Career	Last Time
Double Figure Scoring	n/a	1	11 at Northwestern (2/2/14)
20-point games	n/a	n/a	
Double Figure Rebounds	n/a	1	10 at Illinois (1/9/14)
5-plus Rebounds	2	7	7 vs. Seton Hall (11/22/14)
5-plus Assists	n/a	n/a	
3-plus Steals	n/a	n/a	
Double-Doubles	n/a	n/a	

WHITTED'S CAREER STATS

Year	GP-GS	MIN	FG-A	PCT	3FG-A	PCT	FT-A	PCT	REB	AVG	PF-O	A	TO	B	S	PTS	AVG
2013-14	31-0	344	37-80	.463	1-17	.059	16-23	.696	35-53-88	2.8	58-0	8	26	5	12	91	2.9
2014-15	4-3	74	7-19	.368	0-5	.000	2-7	.286	6-15-21	5.3	12-0	5	10	1	4	16	4.0
TOTAL	35-3	418	44-99	.444	1-22	.045	18-30	.600	41-68-109	3.1	70-0	13	36	6	16	107	3.1

10-Time Big Ten Champions • Two-Time Big Ten Tournament Champions • 2000 NCAA Final Four • 25 NCAA Tournament Appearances





#34 Molly Dincher

Sr. * G/F * 6-0 * Williamsport, Pa./Williamsport Area (Penn State Wilkes-Barre)

Highlights:

- ♦ Added to the Lady Lion roster as a walk-on on November 14.
- ♦ Served as a Lady Lion manager for a year and a half.

Notable:

- ♦ Dincher played at Penn State Wilkes-Barre for two seasons where she helped the Mountain Lions to the 2011-12 PSUAC North Division Championship.
- ♦ She averaged 7.3 points and 8.6 rebounds that season for Wilkes-Barre, her final season for the Mountain Lions.
- ♦ She also rejected 33 shots and had 27 assists in 21 appearances that included 16 starts.
- ♦ As a freshman at Wilke-Barre, Dincher finished seventh in the United States Collegiate Athletic Associations USCAA) in blocked shots, averaging 1.5 per game.
- ♦ Since coming to University Park, Dincher played for the Penn State women's club basketball team that took second in the National Championships in 2012-13.
- ♦ She also served as a manager for the Lady Lions for the last year and a half.
- ♦ A three-year letterwinner, Dincher played her high school basketball at Williamsport Area High School. In her final season, the Millionaires were 12-8.

14-15 GAME-BY-GAME

OPPONENT	Min.	FG	3FG	FT	O-D-R	PF	A	TO	B	S	Pts
TOWSON	DNP										
ALBANY	DNP										
SETON HALL	DNP										
ST. BONA	DNP										
vs. Liberty											
vs. Georgia State/Samford											
at Syracuse											
WAGNER											
at Hartford											
RIDER											
USF											
at Iowa											
at Michigan											
ILLINOIS											
at Wisconsin											
RUTGERS											
at Nebraska											
at Ohio State											
INDIANA											
NORTHWESTERN											
at Minnesota											
at Rutgers											
MARYLAND											
at Purdue											
MICHIGAN ST.											
MINNESOTA											
at Maryland											
OHIO STATE											
WISCONSIN											

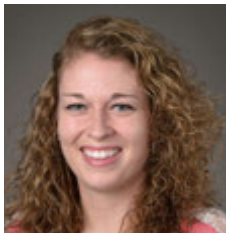
DINCHER'S CAREER/SEASON HIGHS

	SEASON HIGHS	CAREER HIGHS
Points	n/a	n/a
Rebs.	n/a	n/a
Assists	n/a	n/a
Steals	n/a	n/a
Blocks	n/a	n/a
Minutes	n/a	n/a
FGM	n/a	n/a
FGA	n/a	n/a
3FGM	n/a	n/a
3FGA	n/a	n/a
FTM	n/a	n/a
FTA	n/a	n/a

DINCHER'S MISCELLANEOUS STATS

Category	Season	Career	Last Time
Double Figure Scoring	n/a	n/a	
20-point games	n/a	n/a	
Double Figure Rebounds	n/a	n/a	
5-plus Rebounds	n/a	n/a	
5-plus Assists	n/a	n/a	
3-plus Steals	n/a	n/a	
Double-Doubles	n/a	n/a	





#41 Jenny DeGraaf

So. * F * 6-1 * Springboro, Ohio/Springboro

2014-15 Season Notes:

- Registered eight points on a 4-of-7 effort with four rebounds in a career-high 27 minutes against St. Bonaventure (11/25).
- Posted six points on 3-for-5 shooting and five rebounds against Seton Hall (11/22).
- Connected on all four of her three-point attempts en route to a career-high 12 points in a personal-best 22 minutes against Albany (11/16).
- Hit 4-of-5 shots from the field, including two attempts from long range, en route to 11 points in the exhibition against IUP (11/2).

Notable:

- Set the Springboro High School single-season record for free throws made with 121, including 25 consecutive makes from the charity stripe in 2013.

14-15 GAME-BY-GAME

OPPONENT	Min.	FG	3FG	FT	O-D-R	PF	A	TO	B	S	Pts
TOWSON	15	0-2	0-2	0-0	0-3-3	1	0	0	0	1	0
ALBANY	22	4-4	4-4	0-0	0-0-0	1	0	1	0	0	12
SETON HALL	24	3-5	0-0	0-0	2-3-5	1	1	1	1	1	6
ST. BONA	27	4-7	0-2	0-0	0-4-4	1	0	0	0	0	8
vs. Liberty											
vs. Georgia State/Samford											
at Syracuse											
WAGNER											
at Hartford											
RIDER											
USF											
at Iowa											
at Michigan											
ILLINOIS											
at Wisconsin											
RUTGERS											
at Nebraska											
at Ohio State											
INDIANA											
NORTHWESTERN											
at Minnesota											
at Rutgers											
MARYLAND											
at Purdue											
MICHIGAN ST.											
MINNESOTA											
at Maryland											
OHIO STATE											
WISCONSIN											

DeGRAAF'S CAREER/SEASON HIGHS

	SEASON HIGHS	CAREER HIGHS
Points	12 vs. Albany (11/16/14)	12 vs. Albany (11/16/14)
Rebs.	5 vs. Seton Hall (11/22/14)	5 vs. Seton Hall (11/22/14)
Assists	1 vs. Seton Hall (11/22/14)	2 (2x) last vs. Bucknell (11/20/13)
Steals	1 vs. Seton Hall (11/22/14)	1 vs. Seton Hall (11/22/14) 1 vs. Alcorn State (12/22/13)
Blocks	1 vs. Seton Hall (11/22/14)	1 vs. Seton Hall (11/22/14)
Minutes	27 vs. St. Bonaventure (11/25/14)	27 vs. St. Bonaventure (11/25/14)
FGM	4 vs. St. Bonaventure (11/25/14) 4 vs. Albany (11/16/14)	4 vs. St. Bonaventure (11/25/14) 4 vs. Albany (11/16/14)
FGA	7 vs. St. Bonaventure (11/25/14)	7 vs. St. Bonaventure (11/25/14)
3FGM	4 vs. Albany (11/16/14)	4 vs. Albany (11/16/14)
3FGA	4 vs. Albany (11/16/14)	4 vs. Albany (11/16/14)
FTM	n/a	n/a
FTA	n/a	n/a

DeGRAAF'S MISCELLANEOUS STATS

Category	Season	Career	Last Time
Double Figure Scoring	1	1	12 vs. Albany (11/16/14)
20-point games	n/a	n/a	
Double Figure Rebounds	n/a	n/a	
5-plus Rebounds	1	1	5 vs. Seton Hall (11/22/14)
5-plus Assists	n/a	n/a	
3-plus Steals	n/a	n/a	
Double-Doubles	n/a	n/a	

DeGRAAF'S CAREER STATS

Year	GP-GS	MIN	FG-A	PCT	3FG-A	PCT	FT-A	PCT	REB	AVG	PF-O	A	TO	B	S	PTS	AVG
2013-14	17-0	76	7-20	.350	2-7	.286	0-0	.000	3-6-9	0.5	5-0	4	5	0	1	16	0.9
2014-15	4-0	88	11-18	.611	4-8	.500	0-0	.000	2-10-12	3.0	4-0	1	2	1	2	26	6.5
TOTAL	21-0	164	18-38	.474	6-15	.400	0-0	.000	5-16-21	1.0	9-0	5	7	1	3	42	2.0

10-Time Big Ten Champions • Two-Time Big Ten Tournament Champions • 2000 NCAA Final Four • 25 NCAA Tournament Appearances





#44 Tori Waldner

Sr. * F/C * 6-5 * Milton, Ga./Milton

Highlights:

- ♦ Ranks ninth on Penn State's career blocks list (99).
- ♦ Selected as a team tri-captain.

2014-15 Season Notes:

- ♦ Logged four points, six rebounds and three blocks against St. Bonaventure (11/25).
- ♦ Tallied seven rebounds, three blocks and a pair of steals versus Seton Hall (11/22).
- ♦ Recorded four blocked shots and nine rebounds against Albany (11/16).
- ♦ Notched her first career double-double with 11 points on 5-of-7 shooting and 11 rebounds, which tied her career high, in the season-opening win over Towson (11/14).
- ♦ Had four points and five rebounds in the exhibition against IUP (11/2).

Notable:

- ♦ President of the Penn State Student-Athlete Advisory Board (SAAB).
- ♦ Was a member of the 2014 Penn State Homecoming Court.
- ♦ Participates in LifeLink, which is program in which State College Area School District special-needs students between the ages of 18 and 21 are given an opportunity to interact with students of their own age in an environment that is socially and academically conducive to continued growth with the hope of future independent living.
- ♦ Became just the 15th player in Lady Lion program history to record 80 or more blocks in a career.
- ♦ Had a streak of 12-straight games with at least one block (11/10/13-1/5/14).
- ♦ Mother, Diane, played basketball and lacrosse at Russell Sage College in Troy, New York.

14-15 GAME-BY-GAME

OPPONENT	Min.	FG	3FG	FT	O-D-R	PF	A	TO	B	S	Pts
TOWSON	26	5-7	0-0	1-2	2-9-11	2	0	0	0	1	11
ALBANY	19	1-4	0-0	4-4	2-7-9	4	2	4	4	1	6
SETON HALL	23	1-4	0-1	0-0	3-4-7	4	2	1	3	2	2
ST. BONA	29	2-4	0-0	0-0	1-5-6	3	1	2	3	0	4
vs. Liberty											
vs. Georgia State/Samford											
at Syracuse											
WAGNER											
at Hartford											
RIDER											
USF											
at Iowa											
at Michigan											
ILLINOIS											
at Wisconsin											
RUTGERS											
at Nebraska											
at Ohio State											
INDIANA											
NORTHWESTERN											
at Minnesota											
at Rutgers											
MARYLAND											
at Purdue											
MICHIGAN ST.											
MINNESOTA											
at Maryland											
OHIO STATE											
WISCONSIN											

WALDNER'S CAREER/SEASON HIGHS

	SEASON HIGHS	CAREER HIGHS
Points	11 vs. Towson (11/14/14)	14 vs. Northwestern (2/20/14)
Rebs.	11 vs. Towson (11/14/14)	11 vs. Towson (11/14/14)
		11 vs. Texas A&M (12/15/13)
Assists	2 vs. Seton Hall (11/22/14)	5 vs. Illinois State (11/30/13)
	2 vs. Albany (11/16/14)	
Steals	2 vs. Seton Hall (11/22/14)	3 vs. Michigan State (2/10/13)
Blocks	4 vs. Albany (11/16/14)	5 vs. Northwestern (2/20/14)
		5 vs. Minnesota (1/24/13)
Minutes	29 vs. St. Bonaventure (11/25/14)	33 vs. Texas A&M (12/15/13)
FGM	5 vs. Towson (11/14/14)	6 vs. Northwestern (2/20/14)
FGA	7 vs. Towson (11/14/14)	13 vs. Wisconsin (2/16/14)
3FGM	n/a	1 vs. Connecticut (11/17/13)
3FGA	n/a	2 vs. Connecticut (11/17/13)
FTM	4 vs. Albany (11/16/14)	6 vs. Howard (11/11/12)
FTA	4 vs. Albany (11/16/14)	6 vs. Howard (11/11/12)

WALDNER'S MISCELLANEOUS STATS

Category	Season	Career	Last Time
Double Figure Scoring	1	7	11 vs. Towson (11/14/14)
20-point games	n/a	n/a	
Double Figure Rebounds	1	5	11 vs. Towson (11/14/14)
5-plus Rebounds	3	32	6 vs. St. Bonaventure (11/25/14)
5-plus Assists	n/a	1	5 vs. Illinois State (11/30/13)
3-plus Steals	n/a	1	3 vs. Michigan State (2/10/13)
5-plus Blocks	n/a	2	5 vs. Northwestern (2/20/14)
Double-Doubles	1	1	11 p, 11 r vs. Towson (11/14/14)

WALDNER'S CAREER STATS

Year	GP-GS	MIN	FG-A	PCT	3FG-A	PCT	FT-A	PCT	REB	AVG	PF-O	A	TO	B	S	PTS	AVG
2011-12	31-0	272	25-56	.446	0-1	.000	13-23	.565	13-54-67	2.2	50-0	15	24	18	16	63	2.0
2012-13	30-0	275	19-59	.322	0-1	.000	10-13	.769	31-54-85	2.8	47-0	8	22	32	11	48	1.6
2013-14	32-32	677	67-159	.421	1-3	.333	20-33	.606	48-131-179	5.6	83-1	32	39	39	16	155	4.8
2014-15	4-2	112	9-19	.474	0-1	.000	5-6	.833	8-25-33	8.3	13-0	5	7	10	4	23	5.8
TOTAL	97-34	1336	120-293	.410	1-6	.167	48-75	.640	100-264-364	3.8	193-1	60	92	99	47	289	3.0



Penn State 75, Indiana (Pa.) 71

Exhibition Game * Nov. 2, 2014 * University Park, Pa.

IUP 71 • 0-0

#	Player	Total			3-Ptr			Rebounds			PF	TP	A	TO	Blk	Stl	Min
		FG	FGA	FT	FTA	Off	Def	Off	Def	Tot							
00	STONER, Ashley	* 4-9	0-0	0-0	3	2	5	4	8	0	3	0	0	0	0	26	
03	STAMP, Lindsay	* 0-6	0-3	3-6	1	3	4	2	3	2	1	0	0	0	22		
05	MATHE, Marita	* 4-13	4-9	0-1	0	3	4	2	12	5	3	0	0	0	35		
12	STAPLETON, Leslie	* 2-10	1-7	0-0	0	0	0	0	2	0	2	0	0	1	29		
24	FAIRMAN, Amy	* 8-13	6-8	4-6	1	3	4	4	26	6	1	0	2	30			
10	WAREHAM, Marina	1-1	1-1	0-0	0	0	0	0	3	1	2	0	0	5			
11	GRAHAM, Amy	0-0	0-0	0-0	1	0	1	0	0	0	0	1	0	2			
13	BURNS, Monica	0-0	0-0	0-0	0	0	0	0	0	0	0	0	0	2			
14	AIKEN, Alexis	0-0	0-0	0-0	0	0	0	0	0	0	0	0	0	3			
15	BROOKS, Zhane	* 2-5	0-0	4-6	2	3	5	4	8	2	0	1	2	25			
20	LIVINGSTON, Mackenzie	0-0	0-0	0-0	0	0	0	0	0	0	0	0	0	1			
23	DENMAN, Halle	0-1	0-0	0-0	1	0	1	0	0	0	0	0	0	2			
42	SMITH, Megan	2-6	2-4	0-0	1	0	1	0	6	1	1	0	0	18			
	Team				2	1	3										
	Totals	23-64	14-32	11-19	12	15	27	16	71	20	12	2	5	200			

FG % 1st Half: 10-36 27.8% 2nd half: 13-28 46.4% Game: 23-64 35.9%
 3FG % 1st Half: 7-18 38.9% 2nd half: 7-14 50.0% Game: 14-32 43.8%
 FT % 1st Half: 6-12 50.0% 2nd half: 5-7 71.4% Game: 11-19 57.9%

Penn State 75 • 0-0

#	Player	Total			3-Ptr			Rebounds			PF	TP	A	TO	Blk	Stl	Min
		FG	FGA	FT	FTA	Off	Def	Off	Def	Tot							
05	Moore, Sierra	* 8-13	0-0	2-3	4	3	7	4	18	0	4	0	0	0	27		
12	Spann, Lindsey	* 5-12	0-3	4-4	1	2	3	2	14	4	2	0	0	0	37		
15	Mitchell, Kaliyah	* 5-10	0-2	2-2	3	6	9	4	12	2	3	0	0	3	36		
25	Whitted, Peyton	* 4-7	0-0	0-0	4	6	10	3	8	5	2	1	0	24			
44	Waldner, Tori	* 2-10	0-0	0-0	3	2	5	3	4	1	4	2	0	21			
10	Sevillian, Keke	2-4	0-1	0-0	1	3	4	3	4	3	1	0	3	19			
14	Brooks, Dominique	2-4	0-0	0-0	0	1	1	1	4	0	2	1	0	12			
41	DeGraaf, Jenny	4-5	2-3	1-2	0	4	4	1	11	0	2	0	0	24			
	Team				2	3	5										
	Totals	32-65	2-9	9-11	18	30	48	24	75	15	20	4	6	200			

FG % 1st Half: 17-32 53.1% 2nd half: 15-33 45.5% Game: 32-65 49.2%
 3FG % 1st Half: 1-3 33.3% 2nd half: 1-6 16.7% Game: 2-9 22.2%
 FT % 1st Half: 2-4 50.0% 2nd half: 7-7 100.0% Game: 9-11 81.8%

Officials: Frank Steratore, Kevin Pethell, Shannon Feck
 Technical fouls: IUP-None. Penn State-None.
 Attendance: 3327

Score by periods	1st	2nd	Total
IUP	33	38	71
Penn State	37	38	75

Notable

- With the Crimson Hawks leading, sophomore **Sierra Moore** led the Penn State rally with 15 of her team-best 18 points over the final 11:44 of the contest.
- Sophomore **Jenny DeGraaf** had a solid outing, connecting on 4-of-5 shots from the field, including 2-of-3 from three point range, for 11 points.

Albany 54, Penn State 53

Game #2 * Nov. 16, 2014 * University Park, Pa.

Albany 54 • 2-0

#	Player	Total			3-Ptr			Rebounds			PF	TP	A	TO	Blk	Stl	Min
		FG	FGA	FT	FTA	Off	Def	Off	Def	Tot							
03	ROSARIO, Margarita	* 2-9	2-8	0-0	0	3	3	2	6	2	0	0	1	26			
04	ROYALS, Sarah	* 0-8	0-0	7-12	1	0	1	2	7	5	4	0	1	40			
23	SAUNDERS, Zakiya	* 1-4	0-0	0-0	0	0	0	3	2	2	0	1	13				
25	RICHARDS, Shereesha	* 10-16	0-1	7-10	6	8	14	4	27	3	7	1	3	40			
44	EDWARDS, Cassandra	* 0-1	0-0	0-0	1	0	1	1	0	0	1	0	0	6			
01	COUGHLIN, Erin	0-1	0-1	0-0	0	0	0	0	0	0	1	0	0	9			
12	TATE, Imani	2-10	0-0	2-2	6	9	15	3	6	1	6	0	3	32			
33	CARTER, Tiana-Jo	3-8	0-0	0-0	3	8	11	3	6	0	3	2	0	34			
	Team				3	1	4										
	Totals	18-57	2-15	16-24	20	29	49	18	54	13	24	3	9	200			

FG % 1st Half: 8-28 28.6% 2nd half: 10-29 34.5% Game: 18-57 31.6%
 3FG % 1st Half: 1-5 20.0% 2nd half: 1-10 10.0% Game: 2-15 13.3%
 FT % 1st Half: 11-17 64.7% 2nd half: 5-7 71.4% Game: 16-24 66.7%

Penn State 53 • 1-1

#	Player	Total			3-Ptr			Rebounds			PF	TP	A	TO	Blk	Stl	Min
		FG	FGA	FT	FTA	Off	Def	Off	Def	Tot							
05	Moore, Sierra	* 4-8	0-0	0-1	2	1	3	4	8	3	4	1	1	30			
12	Spann, Lindsey	* 6-12	1-3	1-2	0	1	1	3	14	4	3	0	0	31			
15	Mitchell, Kaliyah	* 2-7	1-2	4-5	1	5	6	4	9	0	5	0	4	30			
25	Whitted, Peyton	* 1-4	0-1	0-1	1	3	4	4	2	1	3	0	1	19			
44	Waldner, Tori	* 1-4	0-0	4-4	2	7	9	4	6	2	4	4	1	34			
01	Agee, Candice	1-6	0-0	0-0	1	4	5	4	2	2	1	3	2	19			
10	Sevillian, Keke	0-5	0-3	0-0	0	0	0	4	0	1	1	0	2	13			
14	Brooks, Dominique	0-0	0-0	0-0	0	0	0	1	0	0	1	0	0	2			
41	DeGraaf, Jenny	4-4	4-4	0-0	0	0	0	1	12	0	1	0	0	22			
	Team				0	3	3										
	Totals	19-51	6-13	9-13	7	24	31	29	53	13	23	8	11	200			

FG % 1st Half: 9-25 36.0% 2nd half: 10-26 38.5% Game: 19-51 37.3%
 3FG % 1st Half: 4-8 50.0% 2nd half: 2-5 40.0% Game: 6-13 46.2%
 FT % 1st Half: 6-8 75.0% 2nd half: 3-5 60.0% Game: 9-13 69.2%

Officials: An-Jamilah Gregory, Ron Leads, Althea Buford
 Technical fouls: Albany-TATE, Imani. Penn State-Agee, Candice.
 Attendance: 8607
 WNIT Second Round

Score by periods	1st	2nd	Total
Albany	28	26	54
Penn State	28	25	53

Last FG - ALBANY 2nd-01:49, PSU 2nd-01:28.
 Largest lead - ALBANY by 4 2nd-11:47, PSU by 7 1st-17:12.
 ALBANY led for 14:05. PSU led for 18:50. Game was tied for 06:55.

Notable

- Senior **Tori Waldner** passed Bethany Collins (1985-88) for 10th on the Penn State career blocks list with four blocks vs. Albany to bring her career total to 93.
- Freshman **Lindsey Spann** led the Lady Lions in scoring for the second straight game, marking the first time a freshman has been the team's leading scorer in two straight games since Maggie Lucas did so vs. Minnesota (1/13/11) and vs. Illinois (1/16/11).

Penn State 71, Towson 64

Game #1 * Nov. 14, 2014 * University Park, Pa.

Towson 64 • 0-1

#	Player	Total			3-Ptr			Rebounds			PF	TP	A	TO	Blk	Stl	Min
		FG	FGA	FT	FTA	Off	Def	Off	Def	Tot							
00	Hines-Allen, LaTorri	* 5-10	0-0	2-5	1	5	6	2	12	1	0	1	1	25			
01	Johnson, Dominique	* 12-30	6-16	2-2	0	1	1	3	32	1	2	0	3	36			
02	Hughey, Breonn	* 2-15	2-7	2-2	2	4	6	2	8	7	3	0	1	40			
13	Alberston, Camille	* 1-5	1-4	0-0	0	4	4	3	3	2	2	0	1	33			
20	Smith, Markell	* 1-3	0-0	0-0	2	3	5	2	0	1	0	0	0	24			
03	Webb, Clara	* 1-3	0-2	0-0	1	1	0	0	2	1	1	2	0	16			
05	Smith, Jordyn	0-0	0-0	3-4	5	4	9	1	3	0	1	0	0	8			
14	Bush, Brianna	0-0	0-0	0-0	1	0	1	0	0	0	1	0	0	3			
32	Butler, Shanea	0-1	0-1	0-0	0	0	0	0	0	0	1	0	0	3			
33	Thomas, Daijha	0-2	0-0	2-4	1	3	4	2	2	0	0	1	0	12			
	Team				0	1	1										
	Totals	22-69	9-30	11-17	12	26	38	18	64	12	13	4	6	200			

FG % 1st Half: 9-37 24.3% 2nd half: 13-32 40.6% Game: 22-69 31.9%
 3FG % 1st Half: 4-15 26.7% 2nd half: 5-15 33.3% Game: 9-30 30.0%
 FT % 1st Half: 7-10 70.0% 2nd half: 4-7 57.1% Game: 11-17 64.7%

Penn State 71 • 1-0

#	Player	Total			3-Ptr			Rebounds			PF	TP	A	TO	Blk	Stl	Min
		FG	FGA	FT	FTA	Off	Def	Off	Def	Tot							
05	Moore, Sierra	* 5-12	1-1	1-3	1	4	5	0	12	4	4	2	1	39			
12	Spann, Lindsey	* 7-14	0-2	3-4	0	5	5	2	17	4	4	0	0	32			
15	Mitchell, Kaliyah	* 3-8	0-2	4-6	1	2	3	4	10	0	3	0	3	25			
25	Whitted, Peyton	* 2-5	0-0	0-0	3	6	9	3	4	2	3	0	1	23			
44	Waldner, Tori	* 5-7	0-0	1-2	2	9	11	2	11	0	0	0	1	26			
01	Agee, Candice	3-6	0-0	3-6	4	5	9	1	9	0	0	0	0	18			
10	Sevillian, Keke	2-6	2-5	0-1	0	1	1	2	6	5	0	0	0	19			
14	Brooks, Dominique	0-0	0-0	2-2	0	0	0	1	2	0	0	0	0	3			
41	DeGraaf, Jenny	0-2	0-2	0-0	0	3	3	1	0	0	0	0	1	15			
	Team				1	2											

St. Bonaventure 56, Penn State 54

Game #4 * Nov. 25, 2014 * University Park, Pa.

St. Bonaventure 56 • 3-2

#	Player	Total			3-Ptr			Rebounds			PF	TP	A	TO	Blk	Stl	Min
		FG-FGA	FG-FGA	FT-FTA	FG-FGA	FG-FGA	FT-FTA	Off	Def	Tot							
11	LITTLE, Hannah	2-6	0-0	5-8	3	2	5	1	9	2	4	1	1	35			
14	RICHMOND, Gabby	3-8	0-0	2-4	4	2	6	5	8	0	3	0	0	19			
21	RUETER, Nyla	4-11	3-7	2-2	1	3	4	1	13	3	1	0	3	36			
33	MICHAEL, Emily	4-5	3-4	0-0	0	5	5	1	11	1	2	0	0	33			
42	HEALY, Katie	4-10	0-0	4-6	1	10	11	4	12	3	3	1	2	28			
02	RUFF, Mariah	0-2	0-2	0-0	1	0	1	2	0	0	4	0	1	12			
12	ZAHN, Ashley	0-3	0-2	0-0	0	3	3	1	0	0	0	0	0	11			
22	OUTLAW, Imani	0-2	0-0	0-0	0	1	1	0	0	0	1	0	0	8			
23	BRITVAR, Matea	1-4	0-1	1-2	0	2	2	1	3	0	0	2	0	18			
	Team				1	2	3			1							
	Totals	18-51	6-16	14-22	11	30	41	16	56	9	19	4	7	200			

FG % 1st Half: 6-27 22.2% 2nd half: 12-24 50.0% Game: 18-51 35.3% Deadball Rebounds 4.1
 3FG % 1st Half: 4-9 44.4% 2nd half: 2-7 28.6% Game: 6-16 37.5%
 FT % 1st Half: 7-13 53.8% 2nd half: 7-9 77.8% Game: 14-22 63.6%

Penn State 54 • 1-3

#	Player	Total			3-Ptr			Rebounds			PF	TP	A	TO	Blk	Stl	Min
		FG-FGA	FG-FGA	FT-FTA	FG-FGA	FG-FGA	FT-FTA	Off	Def	Tot							
01	Agee, Candice	4-8	0-0	0-0	1	3	4	3	8	2	3	2	1	24			
05	Moore, Sierra	6-12	0-0	3-6	1	4	5	3	15	3	3	0	0	37			
12	Spann, Lindsey	4-14	2-6	3-4	1	1	2	3	13	5	1	0	2	34			
15	Mitchell, Kaliyah	1-7	0-1	0-1	1	8	9	3	2	1	3	0	4	29			
25	Whitted, Peyton	2-3	0-1	0-0	1	0	1	2	4	0	0	0	1	9			
10	Sevillian, Keke	0-4	0-0	0-0	0	0	0	0	0	1	1	0	1	10			
14	Brooks, Dominique	0-0	0-0	0-0	0	0	0	0	0	0	1	0	0	1			
41	DeGraaf, Jenny	4-7	0-2	0-0	0	4	4	1	8	0	0	0	0	27			
44	Waldner, Tori	2-4	0-0	0-0	1	5	6	3	4	1	2	3	0	29			
	Team				2	1	3										
	Totals	23-59	2-10	6-11	8	26	34	18	54	13	14	5	9	200			

FG % 1st Half: 11-27 40.7% 2nd half: 12-32 37.5% Game: 23-59 39.0% Deadball Rebounds 2
 3FG % 1st Half: 2-6 33.3% 2nd half: 0-4 0.0% Game: 2-10 20.0%
 FT % 1st Half: 0-1 0.0% 2nd half: 6-10 60.0% Game: 6-11 54.5%

Officials: Frank Statoro, Kevin Pethtel, Shannon Feck
 Technical fouls: St. Bonaventure-None, Penn State-None.
 Attendance: 6703

Score by periods	1st	2nd	Total
St. Bonaventure	23	33	56
Penn State	24	30	54

	In	Off	2nd	Fast	Bench
	Paint	T/O	Chance	Break	
SBU	20	7	9	0	3
PSU	28	14	6	6	12

Last FG - SBU 2nd-00:02, PSU 2nd-07:08. Score tied - 6 times.
 Largest lead - SBU by 3 2nd-13:38, PSU by 9 2nd-07:08. Lead changed - 9 times.
 SBU led for 04:24, PSU led for 31:03. Game was tied for 04:32.

Notable

- Penn State dropped to 1-3 to start a season for the first time since 2005-06, when the Lady Lions also started 1-3.
- Freshman **Lindsey Spann** posted 13 points, her team-best fourth double-digit scoring game of the season.
- **Sierra Moore** had a career-high 15 points and surpassed the 100-point plateau for her collegiate career.



**2014-15 Penn State Lady Lion Basketball
Penn State Combined Team Statistics (as of Nov 25, 2014)
All games**

RECORD:	OVERALL	HOME	AWAY	NEUTRAL
ALL GAMES	1-3	1-3	0-0	0-0
CONFERENCE	0-0	0-0	0-0	0-0
NON-CONFERENCE	1-3	1-3	0-0	0-0

#	Player	gp-gs	min	avg	Total		3-Point		F-Throw		Rebounds				pf	dq	a	to	blk	stl	pts	avg
					fg-fga	fg%	3fg-fga	3fg%	ft-fga	ft%	off	def	tot	avg								
12	Spann, Lindsey	4-4	124	31.0	21-50	.420	5-15	.333	9-12	.750	1	9	10	2.5	13	1	14	13	0	5	56	14.0
05	Moore, Sierra	4-4	143	35.8	20-44	.455	1-1	1.000	8-16	.500	11	12	23	5.8	8	0	15	14	4	2	49	12.3
01	Agee, Candice	4-2	78	19.5	17-35	.486	0-0	.000	6-12	.500	9	14	23	5.8	12	0	5	5	7	5	40	10.0
15	Mitchell, Kaliyah	4-4	116	29.0	8-31	.258	1-6	.167	12-18	.667	6	22	28	7.0	13	0	1	12	1	11	29	7.3
41	DeGraaf, Jenny	4-0	88	22.0	11-18	.611	4-8	.500	0-0	.000	2	10	12	3.0	4	0	1	2	1	2	26	6.5
44	Waldner, Tori	4-2	112	28.0	9-19	.474	0-1	.000	5-6	.833	8	25	33	8.3	13	0	5	7	10	4	23	5.8
25	Whitted, Peyton	4-3	74	18.5	7-19	.368	0-5	.000	2-7	.286	6	15	21	5.3	12	0	5	10	1	4	16	4.0
10	Sevillian, Keke	4-1	56	14.0	2-20	.100	2-10	.200	1-3	.333	0	1	1	0.3	8	0	8	4	0	4	7	1.8
14	Brooks, Dominique	4-0	9	2.3	0-0	.000	0-0	.000	2-2	1.000	0	0	0	0.0	4	0	0	2	0	0	2	0.5
Team											5	8	13				1					
Total.....		4	800		95-236	.403	13-46	.283	45-76	.592	48	116	164	41.0	87	1	54	70	24	37	248	62.0
Opponents.....		4	800		79-233	.339	23-76	.303	68-100	.680	56	112	168	42.0	77	-	48	73	15	34	249	62.2

TEAM STATISTICS	PSU	OPP	Date	Opponent	Score	Att.
SCORING	248	249	11/14/14	TOWSON	W 71-64	3123
Points per game	62.0	62.2	11/16/14	ALBANY	L 53-54	8607
Scoring margin	-0.2	-	11/22/14	SETON HALL	L 70-75	3114
FIELD GOALS-ATT	95-236	79-233	11/25/14	ST. BONAVENTURE	L 54-56	6703
Field goal pct	.403	.339	* - Conference game			
3 POINT FG-ATT	13-46	23-76				
3-point FG pct	.283	.303				
3-pt FG made per game	3.3	5.8				
FREE THROWS-ATT	45-76	68-100				
Free throw pct	.592	.680				
F-Throws made per game	11.3	17.0				
REBOUNDS	164	168				
Rebounds per game	41.0	42.0				
Rebounding margin	-1.0	-				
ASSISTS	54	48				
Assists per game	13.5	12.0				
TURNOVERS	70	73				
Turnovers per game	17.5	18.3				
Turnover margin	+0.8	-				
Assist/turnover ratio	0.8	0.7				
STEALS	37	34				
Steals per game	9.3	8.5				
BLOCKS	24	15				
Blocks per game	6.0	3.8				
ATTENDANCE	21547	0				
Home games-Avg/Game	4-5387	0-0				
Neutral site-Avg/Game	-	0-0				

Score by Periods	1st	2nd	Totals
Penn State	112	136	248
Opponents	117	132	249

10-Time Big Ten Champions • Two-Time Big Ten Tournament Champions • 2000 NCAA Final Four • 25 NCAA Tournament Appearances



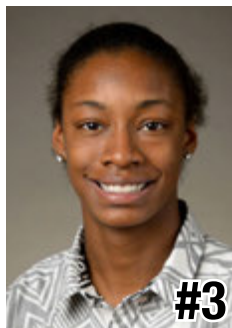
2014-15 RADIO/TV CHART



#1

Candice Agee

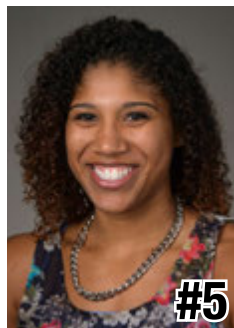
6-6 * Jr./Jr. * C
Victorville, Calif.
Silverado



#3

Brianna Banks

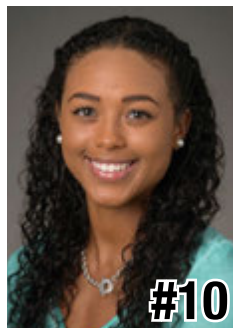
5-9 * Sr./-- * G
Newnan, Ga.
Fayette County
(Connecticut)



#5

Sierra Moore

5-11 * Jr./So. * G
Hanover, Pa.
Delone Catholic
(Duke)



#10

Keke Sevillian

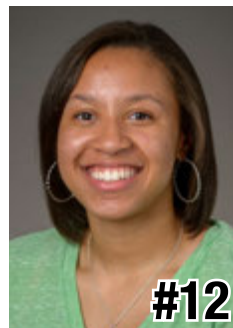
5-7 * So./So. * G
Goodrich, Mich.
Goodrich



#11

Alex Harris

6-3 * So./So. * F
Lorain, Ohio
Lorain



#12

Lindsey Spann

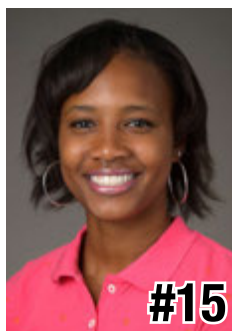
5-6 * So./Fr. * G
Laurel, Md.
Good Counsel



#14

Dominique Brooks

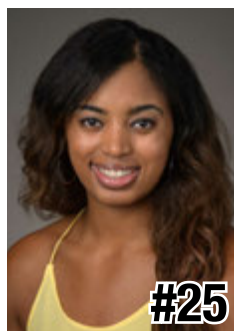
6-4 * Jr./Jr. * C
Lansing, Ill.
T.F. South
(Trinity Valley C.C.)



#15

Kaliyah Mitchell

6-2 * So./So. * F
Stone Mountain, Ga.
Stephenson



#25

Peyton Whitted

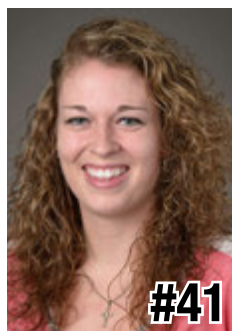
6-3 * So./So. * F
Suwanee, Ga.
North Gwinnett



#34

Molly Dincher

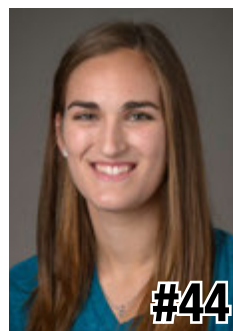
6-0 * Sr./Sr. * G/F
Williamsport, Pa.
Williamsport Area
(PSU Wilkes-Barre)



#41

Jenny DeGraaf

6-1 * So./So. * F
Springboro, Ohio
Springboro



#44

Tori Waldner

6-5 * Sr./Sr. * F/C
Milton, Ga.
Milton



HC

Coquese Washington

Head Coach
Notre Dame '92
Eighth Season



AC

Ito Coleman

Assistant Coach
Clemson '00
First Season
Fourth Overall



AC

Kia Damon

Assistant Coach
Millersville '97
Eighth Season



AC

Jocelyn Wyatt

Assistant Coach
Appalachian State '06
First Season



DO

Ethan Gelfand

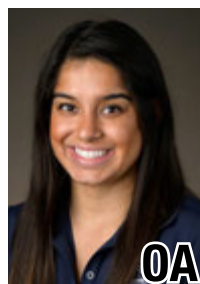
Director of Operations
Wake Forest '06
Fourth Season



VO

Mike Miller

Director of Video &
Technology Ops
High Point '02
10th Season



OA

Jennifer Montoya

Operations Assistant
Penn State '14
First Season

