

PENN STATE

WOMEN'S SOCCER



2013

GoPSUsports.com // ONE TEAM

AUGUST		
23	WEST VIRGINIA ¹	7:30 p.m.
25	HOFSTRA ¹	Noon
30	at No. 10 Virginia	7:00 p.m.
SEPTEMBER		
1	LA SALLE	1:00 p.m.
6	BOSTON UNIVERSITY	7:00 p.m.
10	at Bucknell	7:00 p.m.
13	at Oklahoma State	8:00 p.m.
15	at Tulsa	3:00 p.m.
20	NORTHWESTERN*	7:00 p.m.
26	PURDUE*	7:00 p.m.
29	INDIANA*	12:00 p.m.
OCTOBER		
4	at Wisconsin*	8:00 p.m.
6	at Minnesota*	2:00 p.m.
13	MICHIGAN*	1:00 p.m.
17	OHIO STATE*	3:00 p.m.
20	ILLINOIS	12:00 p.m.
25	at Iowa*	8:00 p.m.
27	at Nebraska*	2:00 p.m.
NOVEMBER		
1	at Michigan State*	3:00 p.m.
6	Big Ten Quarterfinals ²	TBA
8	Big Ten Semifinals ²	TBA
10	Big Ten Championship ²	TBA
15-17	NCAA First Round	TBA
22	NCAA Second Round	TBA
24	NCAA Third Round	TBA
29-30	NCAA Quarterfinals	TBA
DECEMBER		
1	NCAA Quarterfinals	TBA
6	College Cup Semifinals	TBA
8	College Cup Championship	TBA

* – Big Ten match
 1-Penn State Invitational, University Park, Pa.
 2 - Big Ten Tournament, Champaign, Ill.
 Home matches in **CAPS** at Jeffrey Field
 All times Eastern

Contact: **Kellie O'Brien** • kbo2@psu.edu
 O: (814) 863-1377 • C: (814) 321-5119



PSUWomensSoccer



@PennStateWSOC

#4 PENN STATE NITTANY LIONS

(0-0)



WEST VIRGINIA MOUNTAINEERS

(0-0)

Match 1: Aug. 23, 2013 • 7:30 p.m. • Jeffrey Field • University Park, Pa.

MATCH DAY (WEST VIRGINIA)

VENUE	Jeffrey Field (5,000)
ONLINE COVERAGE	GameTracker
SERIES RECORD	Tied, 5-5
LAST MEETING	August 31, 2012 (PSU Won, 2-1 OT)

#4 PENN STATE NITTANY LIONS

(0-0)



HOFSTRA PRIDE

(0-0)

Match 2: Aug. 25, 2013 • Noon • Jeffrey Field • University Park, Pa.

MATCH DAY (HOFSTRA)

VENUE	Jeffrey Field (5,000)
ONLINE COVERAGE	GameTracker
SERIES RECORD	PSU Leads, 2-0
LAST MEETING	August 31, 2008 (PSU Won, 4-1)

WEEKEND STORIES

- Penn State hosts West Virginia, Syracuse and Hofstra in this weekend's Penn State Invitational
- The Nittany Lions open the 2013 campaign against WVU on Friday at 7:30 p.m.
- PSU has won its last three contests against the Mountaineers
- The Lions match up against Hofstra on Sunday at noon
- Penn State is 2-0 against The Pride all-time
- PSU defeated Navy, 5-2, in an exhibition game last Friday
- Hayes and Church named to MAC Hermann Watch List
- Nittany Lions travel to No. 8 Virginia for their first road match next Friday at 7 p.m.

2012 STAT LEADERS

POINTS		ASSISTS	
Christine Nairn	46	Christine Nairn	12
Maya Hayes	38	Raquel Rodriguez	10
Mallory Weber	30	Emily Hurd	8
GOALS		GAME-WINNING GOALS	
Christine Nairn	17	Christine Nairn	6
Maya Hayes	16	Mallory Weber	5
Mallory Weber	13	Maya Hayes	4
		SAVES	
		Erin McNulty	94



GAMEDAY CENTRAL

SCOUTING THE MOUNTAINEERS

Friday's contest will be the season opener for West Virginia. The Mountaineers return nine starters last season's Big 12 Champion squad. They are led by first team All-Big 12 selection Kate Schwindel, second team honoree Frances Silva and Big 12 All-Newcomer team selections Leah Eamus, Kara Blosser and Kelsie Maloney. Senior goalkeeper Sara Keane also returns for WVU, having posted 17 shutouts in the past two seasons.

SERIES HISTORY vs. WEST VIRGINIA

Penn State and West Virginia are tied at 5-5 all-time with the Nittany Lions earning wins in the last three match-ups between the two teams. Last year, PSU used goals from Costa and former Lion Christine Nairn to edge the Mountaineers in a 2-1 overtime battle.

SCOUTING THE PRIDE

Hofstra opens the 2013 campaign against Syracuse on Friday in the Penn State Invitational. The Pride returns 10-of-11 starters from a team that captured the Colonial Athletic Association title, including all of its top-10 scorers. Hofstra's offense is led by 2012 CAA Rookie of the Year Leah Galton, All-CAA first team selection Jill Mulholland and juniors Lulu Echeverry and Sam Sclarici. Senior Emily Morphis returns in goal for Hofstra after receiving Most Outstanding Player honors for her efforts in the CAA Championship.

SERIES HISTORY vs. HOFSTRA

Penn State leads Hofstra 2-0-0 all-time in a series that dates back to 2007. The teams last met in 2008 in a match that ended in a 4-1 decision.

ON THE PITCH

The No. 4 Penn State women's soccer team will begin its quest for a second consecutive NCAA College Cup appearance this weekend as the Nittany Lions open regular season play at Jeffrey Field in the Penn State Invitational. PSU will host non-conference rival West Virginia on Friday at 7:30 p.m. before matching up against Hofstra on Sunday at noon. Penn State welcomes WVU, Hofstra and Syracuse for the four-team tournament. Friday's events are slated to begin at 5:00 p.m. with a contest between Syracuse and Hofstra. Penn State and Hofstra will kick off Sunday's schedule in a 12:00 p.m. match-up, followed by a meeting between Syracuse and WVU at 2:30 p.m.

PRESEASON PROWESS

The Nittany Lions opened the 2013-14 Penn State Athletics Campaign with a 5-2 exhibition win over Navy last Friday at Jeffrey Field. The two squads played three 30 minute periods. Penn State dominated the match, tallying 21 shots versus Navy's seven. Senior Maya Hayes (West Orange, N.J.) and sophomore Mallory Weber (Novi, Mich.) netted two goals apiece while senior Tani Costa (Honolulu, Hawaii) notched one. The Lions were dangerous from the start, putting up three goals in the first period while holding the Midshipmen scoreless. PSU put two more in the net in the second period and Navy got on the board in the 52nd minute with a goal from Lexi Ricketts. Navy notched the final point of the contest in the 76th minute to put the score at 5-2.

LIONS PICKED TO WIN BIG TEN

The 15-time defending Big Ten Champion Nittany Lions were selected by conference coaches to win yet another Big Ten title. The Michigan Wolverines were tabbed to finish second while Illinois rounded out the top three.

PENN STATE NO. 4 IN NSCAA POLL

The Penn State women's soccer team will begin the 2013 campaign ranked fourth overall according to the NSCAA preseason rankings. The No. 4 preseason ranking is the highest for PSU since 2006, when the Lions entered the polls at No. 3. A total of three PSU opponents in 2013 are featured on the poll, including non-conference rival Virginia (8th). Big Ten opponents Michigan (19th) and Ohio State (23rd) also cracked into the preseason poll while Illinois and non-conference foe West Virginia received votes.

THE SCHEDULE

Penn State holds a record of 211-34-15 all-time against its 2013 opponents for a .840 winning percentage. Additionally, PSU is 180-27-14 (.846) against Big Ten foes, which includes last year's 11-1-1 mark when the Big Ten Tournament is factored in. The Lions boast a winning or tied record against each of their 2013 adversaries. The Nittany Lions will face seven teams that made it to the NCAA Tournament in 2012 - Illinois, LaSalle, Michigan, Ohio State, Virginia, West Virginia and Wisconsin.

BACK FOR MORE

The Nittany Lions return 8-of-11 starters and 21 letterwinners from last season's national runner-up squad, including two-time NSCAA first team All-American Maya Hayes, Big Ten Defender of the Year Whitney Church (Ashburn, Va.), Big Ten Freshman of the Year Raquel Rodriguez (San Jose, Costa Rica), Emily Hurd (Sammamish, Wash.), Taylor Schram (Canonsburg, Pa.), Bri Hovington

(Lothian, Md.), Kori Chapic (Novelty, Ohio) and Mallory Weber. Senior Tani Costa and sophomore Mallory Peterson (Clinton Corner, N.Y.) join Hayes, Rodriguez, Hurd, Schram and Weber as returning members of the Nittany Lion offensive attack that tallied 48 goals and 36 assists (132 points) in 2012.

FRESH FACES

Fans can expect to see several new faces on the field this season as Penn State has added 10 newcomers to the roster for the 2013 campaign, including graduate student Emily Carrollo who transferred from Virginia. Nine freshmen fill out the rest of the roster, adding depth for the Nittany Lions.

NEW COMPETITION

The Lions will face three new opponents in 2013, going up against LaSalle on Sept. 1, Oklahoma State on Sept. 13 and Tulsa on Sept. 15. The three new additions will bring Penn State's all-time opponent list to 80 teams since the program's inception in 1994.

HAYES, CHURCH NAMED TO MAC HERMANN WATCH LIST

Penn State women's soccer senior forward Maya Hayes and junior defender Whitney Church have been named to the Missouri Athletic Club's Hermann Trophy Watch List for the 2013 season. The MAC Hermann Trophy is collegiate soccer's most prestigious award presented annually to one male and one female athlete. The winners will be announced Friday, Jan. 10, 2014 at the trophy presentation banquet at the Missouri Athletic Club in St. Louis. Christie Welsh is the only Penn State athlete to win the award (2001). This is Hayes' second consecutive year on the watch list and Church's first appearance. Hayes was a finalist for the award in 2011 and a semifinalist in 2012. Hayes and Church are joined by Illinois' Vanessa DiBernardo as Big Ten honorees for the award. Hayes is a two-time NSCAA first team All-America selection and has earned back-to-back Big Ten Forward of the Year honors. She finished second on the team in goals (16) and points (38) in 2012, despite missing the first seven games of the season while participating in the U20 World Cup with the U.S. U20 National Team. Church received NSCAA first team All-Great Lakes recognition and Big Ten Defender of the Year honors in 2012. She led the Nittany Lion defensive attack, starting all 27 contests and logging over 2,000 minutes.

HAYES SELECTED AS SENIOR CLASS AWARD CANDIDATE

Penn State senior forward Maya Hayes has been selected as one of thirty candidates for the 2013 Senior CLASS Award in collegiate soccer. The Senior CLASS (Celebrating Loyalty and Achievement for Staying in School) Award is presented yearly to a Division I senior student-athlete who has notable achievements in four areas of excellence - community, classroom, character and competition. Hayes has excelled both on and off the field, earning several academic awards during her time at Penn State. The kinesiology major was a 2011 CoSIDA/Captial One third-team Academic All-America selection and CoSIDA/Capital One first team All-District selection. Hayes was included on the Dean's List for the spring 2013 semester and was inducted into Penn State's Athletic Honor Society, Spiritus Leoninus. She is also a two-time Academic All-Big Ten selection. The 30-member candidate pool will be narrowed to 10 finalists midway



through the regular season, and those 10 finalists will be placed on the official ballot. Ballots will be distributed through a nationwide voting system to media, coaches and fans, who will select the female candidate who best exemplifies excellence in community, classroom, character and competition. The Senior CLASS Award winner will be announced during the 2013 NCAA Women's College Cup in Cary, N.C. in December.

BEST XI

Senior forward Maya Hayes, junior defender Whitney Church and freshman defender Brittany Basinger (Fairfax, Va.) were named to the 2013 preseason TopDrawerSoccer Best XI teams. Hayes made the first team while Church was named to the second and Basinger was selected to the all-freshman team.

TOP 100

Penn State had five players named to the TopDrawerSoccer preseason women's top 100 player rankings. Senior forward Maya Hayes leads the way for the Nittany Lions with a No. 6 ranking. Junior Whitney Church sits at No. 13, sophomore Mallory Weber ranks 58th, senior Taylor Schram comes in at No. 77 and sophomore Raquel Rodriguez was tabbed No. 86.

HOME FIELD DOMINANCE

The Lions are a force to be reckoned with when playing at Jeffrey Field, having amassed a home record of 182-21-10 (.878). At 91-3-4 (.949), the Nittany Lions have the best Big Ten home record in the conference. In 2012, a PSU-record 5,117

INDIVIDUAL HONORS & AWARDS

Brittany Basinger

TopDrawerSoccer Best XI all-freshman team

Whitney Church

MAC Hermann Trophy Watch List
TopDrawerSoccer Best XI second team
Big Ten Player to Watch

Maya Hayes

MAC Hermann Trophy Watch List
Senior CLASS Award Candidate
Soccer America Preseason All-American
TopDrawerSoccer Best XI first team
Big Ten Player to Watch

Raquel Rodriguez

Big Ten Player to Watch

fans packed the stands to watch Penn State play then-No. 1 Stanford. The Lions are currently riding a five-game unbeaten streak at Jeffrey.

LIONS ON THE BTN

Penn State's 15-time Big Ten Champion women's soccer team will be featured on the BTN at least twice this season. The Nittany Lions' home contests against Ohio State on Thursday, Oct. 17 at 3 p.m. and Illinois on Sunday, Oct. 20 at 12 p.m. will air on the BTN. Additionally, both Big Ten Tournament semifinal matches and the championship game will be aired live on the BTN.

SOCIAL MEDIA

For complete coverage of Penn State women's soccer, please visit <http://www.GoPSUsports.com/sports/w-soccer>. Follow Penn State women's soccer on Twitter: @PennStateWSOC. Penn State women's soccer is also on Facebook: www.facebook.com/PSUWomensSoccer.

2013 PENN STATE WOMEN'S SOCCER ROSTER

No.	Name	Pos.	Elig.	Ht.	Hometown	High School	Pronunciation
0	Meghan Kaminski	GK	So.	6-1	Doylestown, Pa.	Central Bucks South	
00	Lexi Golestani	GK	Fr.	5-6	Montgomery, N.J.	The Hun School of Princeton	GOAL-es-tawn-EE
1	Brittany Basinger	D	Fr.	5-7	Fairfax, Va.	Woodgrove	BAY-singer
2	Megan Ritchey	M	So.	5-3	State College, Pa.	State College Area	
3	Emily Hurd	M	R-Jr.	5-7	Sammamish, Wash.	Eastlake	
4	Lexi Marton	D	R-Sr.	5-11	Aurora, Ontario	The Country Day School	
5	Maya Hayes	F	Sr.	5-7	West Orange, N.J.	Newark Academy	
6	Anna Witte	D	Fr.	5-4	Morrisville, N.C.	Cary	witt-EE
7	Corey Persson	M	So.	5-3	Danvers, Mass.	Danvers	
8	Jenna Kalwa	D/M	So.	5-5	Pennington, N.J.	Hopewell Valley Central	
9	Andrea Gunderson	D	Fr.	5-6	West Chester, Pa.	WC Rustin	
11	Raquel Rodriguez	F/M	So.	5-6	San Jose, Costa Rica	International Christian	
12	Kindrah Kohne	M	Jr.	5-5	Homer, N.Y.	Homer	KO-nee
14	Kori Chapic	F/M	Jr.	5-7	Noely, Ohio	West Geauga	CHAP-ick
15	Erin Kehoe	D	Sr.	5-4	Crystal Lake, Ill.	Prairie Ridge	
16	Mallory Weber	F	So.	5-6	Novi, Mich.	Northville	
17	Whitney Church	D	Jr.	5-5	Ashburn, Va.	Broad Run	
18	Angela Widlacki	D	Fr.	5-5	Naperville, Ill.	Naperville North	
19	Taylor Schram	F/M	Sr.	5-5	Canonsburg, Pa.	Canon-McMillan	SHRAM
20	Salina Williford	MF/D	Fr.	5-4	Wayne, Pa.	Conestoga	
21	Teddy Chase	D	So.	5-7	Wayne, Pa.	The Shipley School	
22	Tani Costa	F	R-Sr.	5-8	Honolulu, Hawaii	Kalani	TAH-nee
23	Bri Hovington	D	Sr.	5-4	Lothian, Md.	Southern	
24	Liv Brandy	D	Fr.	5-4	Gibsonia, Pa.	Home Schooled	
25	Mallory Peterson	F/M	So.	5-5	Clinton Corner, N.Y.	Millbrook	
26	Emily Carrollo	D	Fr.	5-5	Sussex, N.J.	Pope John Regional	KA-roll-oh
27	Maggie Chapman	MF	Fr.	5-4	Dumfries, Va.	Forest Park	
28	Britt Eckerstrom	GK	R-So.	5-10	Germantown, Md.	Northwest	
30	Chloe Buehler	GK	Fr.	5-7	Perrysburg, Ohio	Perrysburg	BYOO-lur

Head Coach: Erica Walsh (Seventh year)

Assistant Coaches: Ann Cook (Seventh year), Tim Wassell (Fourth year)

Director of Operations: Kara Lowery (First year)

Volunteer Assistant: Mike Eckberg (First Year)



THE LAST TIME

PENN STATE...

Scored 3 goals	10/2/12	vs. Bucknell (3-1)
Scored 4 goals	11/10/12	vs. LIU Brooklyn (4-0)
Scored 5 goals	11/16/12	vs. Boston College (5-2)
Scored 6 goals	10/31/10	at Purdue (6-1)
Scored 7 goals	9/1/02	vs. Pittsburgh (7-2)
Scored 8 goals	10/9/05	vs. Iowa (8-0)
Scored 9 goals	9/25/01	vs. Bucknell (9-2)
Allowed 0 goals	11/23/12	vs. #19 Duke (1-0)
Allowed 1 goal	11/30/12	vs. #7 Florida State (2-1)
Allowed 2 goals	11/16/12	vs. Boston College (5-2)
Allowed 3 goals	9/30/12	vs. Minnesota (4-3)
Allowed 4 goals	12/2/12	vs. #13 North Carolina (1-4)
Allowed 5+ goals	11/15/09	vs. Virginia (2-6)
Won in overtime	11/30/12	vs. #7 Florida State (2-1)
Lost in overtime	11/6/11	vs. #18 Illinois (1-2)
Won in double overtime	8/31/13	at West Virginia (2-1)
Lost in double overtime	9/9/11	vs. Central Florida (1-2)
Tied in double overtime	11/18/12	vs. Michigan (1-1)
Was ranked in the NSCAA Top 25	8/13/13	4th
Was ranked in the NSCAA Top 10	8/13/13	4th
Played a NSCAA Top 10 Team	11/30/12	vs. #7 Florida State (2-1)
Played a NSCAA Top 25 Team	11/30/12	vs. #7 Florida State (2-1)
Defeated a NSCAA Top 10 Team	11/30/12	vs. #7 Florida State (2-1)
Defeated a NSCAA Top 25 Team	11/23/12	vs. #19 Duke (1-0)
Attempted less than 10 shots	11/30/12	vs. #7 Florida State (2-1)
Attempted 10-19 shots	12/2/12	12 vs. #13 North Carolina (1-4)
Attempted 20-29 shots	11/10/12	21 vs. LIU Brooklyn (4-0)
Attempted 30-39 shots	10/31/12	33 vs. Iowa (2-0)
Attempted 40+ shots	11/7/10	42 vs. Michigan (1-0)
Allowed 4 or less shots	11/10/12	3 vs. LIU Brooklyn (4-0)
Allowed 5-9 shots	10/21/12	9 vs. #17 Michigan (1-1)
Allowed 10-15 shots	11/30/12	14 vs. #7 Florida State (2-1)
Allowed 16+ shots	12/2/12	24 vs. #13 North Carolina (1-4)
Scored 15-24 points	10/7/12	15 vs. Indiana (5-2)
Scored 25+ points	9/25/01	26 vs. Bucknell (9-2)
Made 10-14 saves	10/31/12	14 vs. Iowa (2-0)
Made 15+ saves	9/2/95	17 vs. James Madison (4-2)
Had 10+ corner kicks	11/10/12	11 vs. LIU Brooklyn (4-0)
Allowed 10+ corner kicks	9/12/10	10 at #4 Portland (2-4)
Tallied 5-7 assists	10/7/12	5 vs. Indiana (5-2)
Tallied 9+ assists	8/26/11	9 vs. #17 West Virginia (5-0)
Won an NCAA Tourney game	11/30/12	vs. #7 Florida State (2-1)
Lost an NCAA Tourney game	12/2/12	vs. #13 North Carolina (1-4)
Won a road NCAA Tourney game	11/30/02	at Connecticut (2-1)
Won a neutral NCAA Tourney game	11/30/12	vs. #7 Florida State (2-1)
Won penalty kick shootout	11/18/12	vs. Michigan (1-1, 3-2 PKs)
Lost penalty kick shootout	11/9/07	vs. Ohio State (2-2, 4-5 PKs)

A PENN STATE PLAYER...

Scored 2 goals	10/14/12	Taylor Schram vs. Iowa (2-1)
Scored 3 goals	9/4/11	Maya Hayes at Pittsburgh (3-0)
Scored 4 goals	10/7/01	Christie Welsh vs. Michigan (6-2)
Had 2 assists	10/7/12	Hurd/Nairn vs. Indiana (5-2)
Had 3 assists	9/29/11	Maya Hayes vs. Ohio State (3-1)
Had 4 assists	9/17/03	Ali Krieger vs. Bucknell (6-0)
Had 5-9 points	9/21/12	Nairn/Hayes 5 at Northwestern (4-1)
Had 10+ points	10/7/01	10, Christie Welsh vs. Michigan (6-2)
Attempted 10+ shots	11/11/11	10, Christine Nairn vs. Army (1-0)
Made 10-14 saves	10/31/12	14, Erin McNulty vs. Iowa (2-0)
Made 15+ saves	9/3/94	15, Robin Van Praag at Minnesota (3-2)
Scored in the Big Ten Tournament	10/31/12	Maddy Evans vs. Iowa (2-0)
Had a Big Ten Tourney shutout	10/31/12	McNulty vs. Iowa (2-0)
Scored in an NCAA game	12/2/12	Taylor Schram vs. #13 North Carolina (1-4)
Had an NCAA game shutout	11/23/12	Erin McNulty vs. #19 Duke (1-0)

MISCELLANEOUS STATISTICS

PENN STATE is...

182-21-10 All-time at Jeffrey Field
 91-3-4 All-time vs. Big Ten at Jeffrey Field

In 2013...

0-0-0	at home
0-0-0	on the road
0-0-0	at neutral site
0-0-0	in overtime
0-0-0	when wearing white
0-0-0	when wearing blue
0-0-0	when leading at halftime
0-0-0	when trailing at halftime
0-0-1	when tied at halftime
0-0-0	when scoring first goal
0-0-0	when opponent scores first goal
0-0-0	when out-shooting opponent
0-0-0	when out-shot by opponent
0-0-0	when shooting the same # of shots
0-0-0	when taking more corner kicks
0-0-0	when allowing more corner kicks
0-0-0	when taking the same corner kicks
0-0-0	against ranked opponents
0-0-0	against unranked opponents
0-0-0	against higher-ranked opponents
0-0-0	against lower-ranked opponents
0-0-0	when scoring 0 goals
0-0-0	when scoring 1 goal
0-0-0	when scoring 2 goals
0-0-0	when scoring 3+ goals
0-0-0	when allowing 0 goals
0-0-0	when allowing 1 goal
0-0-0	when allowing 2 goals
0-0-0	when allowing 3+ goals
0-0-0	on Tuesday
0-0-0	on Wednesday
0-0-0	on Thursday
0-0-0	on Friday
0-0-0	on Saturday
0-0-0	on Sunday
0-0-0	on grass
0-0-0	on turf
0-0-0	at night
0-0-0	during the day
0-0-0	vs. Atlantic 10
0-0-0	vs. ACC
0-0-0	vs. Big East
0-0-0	vs. Big Ten
0-0-0	vs. Big 12
0-0-0	vs. Conference USA
0-0-0	vs. Mountain West
0-0-0	vs. Pac-12
0-0-0	vs. Patriot League
0-0-0	vs. WAC
0-0-0	vs. MAC
0-0-0	vs. NEC
0-0-0	when a freshman scores
0-0-0	in one-goal games



NSCAA COACHES POLL

(as of Aug. 13)

#	Team	Record	Last
1	North Carolina	0-0	
2	Stanford	0-0	
3	Florida State	0-0	
4	Penn State	0-0	
5	UCLA	0-0	
6	BYU	0-0	
7	Duke	0-0	
8	Virginia	0-0	
9	Florida	0-0	
10	Notre Dame	0-0	
11	San Diego State	0-0	
12	Texas A&M	0-0	
13	Baylor	0-0	
14	Marquette	0-0	
15	Wake Forest	0-0	
16	Santa Clara	0-0	
17	Maryland	0-0	
18	Georgetown	0-0	
19	Michigan	0-0	
20	California	0-0	
21	UCF	0-0	
22	Portland	0-0	
23	Ohio State	0-0	
24	Texas Tech	0-0	
25	Denver	0-0	

Also receiving votes: *Tennessee-48, Pepperdine-37, Illinois-31, West Virginia-29, Boston College-28, USC-15, Auburn-15, Virginia Tech-10, Miami (Ohio)-8, Missouri-2, Stephen F. Austin-1, Kentucky-1, LSU-1, Dartmouth-1, Arizona State-1*

PENN STATE CAREER LEADERS

SHOTS

1.	431	Christie Welsh	97 gms.	1999-02
2.	381	Katie Schoepfer	92 gms.	2006-09
3.	356	Tiffany Weimer	97 gms.	2002-05
4.	347	Joanna Lohman	101 gms.	2000-03
5.	317	Rachel Hoffman	87 gms.	1994-97
6.	314	Christine Nairn	94 gms.	2009-12
7.	283	Heidi Drummond	98 gms.	2000-03
8.	253	Danielle Toney	99 gms.	2007-10
9.	230	Kelly Convey	93 gms.	1996-99
10.	214	Carole Dutchka	87 gms.	1995-98

GOALS

1.	91	Tiffany Weimer	97 gms.	2002-05
2.	82	Christie Welsh	97 gms.	1999-02
3.	58	Rachel Hoffman	87 gms.	1994-97
4.	56	Heidi Drummond	98 gms.	2000-03
5.	52	Maya Hayes	67 gms.	2010-
6.	48	Katie Schoepfer	92 gms.	2006-09
7.	44	Carole Dutchka	87 gms.	1995-98
8.	41	Joanna Lohman	101 gms.	2000-03
9.	38	Danielle Toney	99 gms.	2007-10
10.	34	Christine Nairn	93 gms.	2009-

GAME-WINNING GOALS

1.	27	Christie Welsh	97 gms.	1999-02
	27	Tiffany Weimer	97 gms.	2002-05
3.	19	Heidi Drummond	98 gms.	2000-03
4.	18	Katie Schoepfer	92 gms.	2006-09
	18	Rachel Hoffman	87 gms.	1994-97
6.	17	Carole Dutchka	87 gms.	1995-98
7.	15	Joanna Lohman	101 gms.	2000-03
8	13	Maya Hayes	67 gms.	2010-
9.	12	Danielle Toney	99 gms.	2007-10
10.	12	Christine Nairn	93 gms.	2009-

ASSISTS

1.	52	Christie Welsh	97 gms.	1999-02
2.	41	Christine Nairn	94 gms.	2009-12
3.	37	Joanna Lohman	101 gms.	2000-03
4.	32	Tiffany Weimer	97 gms.	2002-05
5.	31	Rachel Hoffman	87 gms.	1994-97
6.	29	Stephanie Smith	101 gms.	2000-03
7.	26	Katie Schoepfer	92 gms.	2006-09
		Heidi Drummond	98 gms.	2000-03
		Kelly Convey	93 gms.	1996-99
10.	26	Liz Villamil	87 gms.	1994-97

POINTS

1.	216	Christie Welsh	97 gms.	1999-02
2.	214	Tiffany Weimer	97 gms.	2002-05
3.	147	Rachel Hoffman	87 gms.	1994-97
4.	138	Heidi Drummond	98 gms.	2000-03
5.	122	Katie Schoepfer	92 gms.	2006-09
6.	119	Joanna Lohman	101 gms.	2000-03
7.	119	Maya Hayes	67 gms.	2010-
8.	108	Carole Dutchka	87 gms.	1995-98
	109	Christine Nairn	94 gms.	2009-12
10.	96	Danielle Toney	99 gms.	2007-10

GAMES PLAYED

1.	104	Bonnie Young		1997-01
2.	103	Megan Mills		1998-01
3.	101	Joanna Lohman		2000-03
	101	Stephanie Smith		2000-03
5.	100	Emily Oleksiuk		1998-01
6.	99	Danielle Toney		2007-10
7.	97	Luanne Strom		1997-00
	97	Tiffany Weimer		2002-05
	97	Christie Welsh		1999-02
10.	96	Courtney Lawson		1996-99

GAMES STARTED

1.	103	Megan Mills		1997-01
	103	Bonnie Young		1997-01
3.	101	Joanna Lohman		2000-03
	101	Stephanie Smith		2000-03
5.	100	Emily Oleksiuk		1998-01



ERICA WALSH

Head Coach • Seventh Year
WILLIAM & MARY '97

PSU RECORD: 100-36-7 (.724)
Overall Record: 140-64-10 (.678)

2012 NSCAA NATIONAL COACH OF THE YEAR TWO-TIME BIG TEN COACH OF THE YEAR (2009, 2012)

Head coach Erica Walsh enters her seventh season at the helm of the Penn State women's soccer program in 2013. Walsh's 2012 Nittany Lions were the most successful team in program history after advancing to their first-ever national title game. The Nittany Lions won 21 of 27 games and were unbeaten in Big Ten action with a 10-0-1 record. The Lions registered their 15th consecutive Big Ten title and 18th-straight NCAA Tournament appearance. The 15-title mark stands as the most consecutive Big Ten Championships by a women's program, along with the present Northwestern tennis team.

WALSH'S COLLEGIATE RÉSUMÉ

Head Coach

PENN STATE 2007-present
2012 NSCAA National Coach of the Year
2012 Big Ten Coach of the Year
2009 Big Ten Coach of the Year

Harvard 2006
Dartmouth 2000-02

Assistant Coach

Florida State 2005-06
Dartmouth 1998-99

Graduate Assistant

Lehigh 2003-04
Dartmouth 1997

Student-Athlete

William & Mary 1993-97
William & Mary Hall of Fame Inductee

WALSH'S NATIONAL RÉSUMÉ

Head Coach

U.S. Women's Under-17 2004-07

Assistant Coach

U.S. Women's National Team
2008-present
2008 Olympic Gold Medalists
2011 World Cup Silver Medalists
U.S. Women's Under-19 2004

for the first time since 2007.

With Walsh's guidance, sophomore Maya Hayes became the nation's most prolific scorer in soccer in 2011. Hayes was a finalist for the M.A.C. Hermann Trophy. Hayes led the nation with 31 goals and 70 points. The sophomore phenom broke single-season record at Penn State for goals and points.

During the 2011 summer, Walsh had an extraordinary experience of being one of the top assistants to Pia Sundhage and the 2011 United State women's national team at the FIFA World Cup in

Germany. The U.S. made a sparkling run through knockout play to the final, falling to eventual champions Japan.

During the 2010 season, Walsh's young club made a remarkable turnaround mid-season, overcoming a two-game deficit in the league standings over the final weeks to capture a share of a record-breaking 13th straight Big Ten title.

After a tough 2-4 start to the 2009 season, Walsh led the Nittany Lions to a remarkable turnaround, going 10-1-2 in the last 13 games of the regular season, earning her the 2009 Big Ten Coach of the Year Award for her efforts. In March of 2010, Walsh's alma mater, William & Mary, honored her by inducting her into the W&M Athletics Hall of Fame.

With the impressive end to the season, Walsh and her charges captured the program's 12th-straight Big Ten Championship, tying a record for most consecutive women's Big Ten titles won held by the Michigan swimming & diving program. By winning the Big Ten, the Nittany Lions continued their string of NCAA Tournament berths, making their 15th-straight appearance in the 64-team field in 2009. For the second time in three years, Penn State hosted the first and second rounds of tournament play.

Walsh also orchestrated one of the finest awards seasons in Penn State history when Katie Schoepfer, Alyssa Naeher and Christine Nairn swept the year-end Big Ten Player of the Year awards. Schoepfer was named the Offensive Player of the Year, Naeher the Defensive Player of the Year and Nairn the Freshman of the Year. Danielle Toney was named to the All-Big Ten First Team, while Lexi Marton garnered Second Team mention. Walsh has now coached two players of the year to three awards as Naeher was also the 2007 recipient of the Defensive Player of the Year honors in Walsh's first year in Happy Valley.

Walsh continued her success from the 2007 campaign into a 16-8-0 record that saw Penn State capture its 11th-straight Big Ten Championship and the 2008 Big Ten Tournament crown.

Her transition to Penn State was quite smooth as the 2007 team finished 18-4-2, including a 9-1-0 mark in conference play, and was ranked 12th in the final NSCAA poll of the season.

When she came to Penn State, Walsh brought with her a wealth of experience at both the international and collegiate levels. She already has coached at six different universities, including three stints as head coach as well as serving as an assistant for the U.S. U-19 team in 2004. Walsh served as head coach of the U-17 team from December 2004 until her hire at Penn State in February of 2007.

As of January 2009, Walsh was appointed as a member of the Panel of Instructors and Lecturers for FIFA Courses. In addition, she was appointed as the Chairman of the Women's Technical Committee for the period of January 1, 2009 to June 30, 2011.

In January of 2008, Walsh was named as the assistant coach by Pia Sundhage for the U.S. National Team. With Walsh's help and guidance the U.S. team completed its historic run with a gold medal at the 2008 Olympic Games in Beijing, China. Even sweeter was that Walsh's main responsibility was the U.S. Team's defense, which held fellow world power Brazil scoreless in the gold medal game.

The head coach at Harvard University as well as the U.S. Under-17 team prior to her hiring at Penn State, Walsh has consistently been active among the coaching ranks both at the Division I level and the U.S. Youth National Team program for nearly a decade. Prior to her time with the Crimson, she was part of a Florida State staff that led the Seminoles to one of its most successful year to date. FSU joined Penn State in the 2005 Women's Soccer College Cup, with both programs reaching the national semifinals.

Walsh's coaching path began in 1997 as a graduate assistant with Bucknell University. In 1998, she accepted a position at Dartmouth, where she was an assistant coach for two seasons. After helping the team to a final NSCAA ranking of No. 8 at the conclusion of the team's 1998 NCAA quarterfinal run as well as an



Ivy League championship in 1999, Walsh assumed head coaching duties before the 2000 season.

As head coach, Walsh led the Big Green to back-to-back Ivy League co-championships in 2000 and 2001. Her squad was ranked in the NSCAA's top 25 each year, rising as high as No. 13 in 2001. In her three seasons as head coach, Dartmouth was invited to the NCAA Tournament each season and reached the round of 16 twice. All three of her teams earned the NSCAA's Academic Team Award.

Walsh left Dartmouth to earn her Master's in business administration at Lehigh University where she served as a graduate assistant from 2003-04.

Beginning in the spring of 2004, Walsh joined the United States Under-19 team as an assistant coach where she helped with preparations for the Under-19 World Cup. The U.S. finished with the bronze medal in Thailand after defeating Brazil in the third place match. After the World Cup, Walsh was appointed the U.S. National Team's U-17 head coach, a position which she held for three years.

As a player, Walsh was an NSCAA All-Region selection at William & Mary. A two-time first team All-CAA pick, she propelled her team to four NCAA Tournament appearances as well as two CAA regular season and two CAA league championships.

A high school All-American at Lower Moreland, she was also a member of the U.S. Under-17 National Team.

Walsh earned her Bachelor of Science degree with a concentration in biology from William & Mary in 1997 and resides in State College, Pa.

WALSH'S ACCOLADES

10 YEARS OF COLLEGE HEAD COACHING EXPERIENCE

1 COLLEGE CUP APPEARANCE

1 NATIONAL CHAMPIONSHIP APPEARANCE

13 NCAA TOURNAMENT WINS

9 NCAA TOURNAMENT APPEARANCES

10 ALL-AMERICA HONORS

6 BIG TEN CHAMPIONSHIPS

1 OLYMPIC GOLD MEDAL

1 NATIONAL COACH OF THE YEAR AWARD

2 BIG TEN COACH OF THE YEAR AWARDS

WALSH'S CAREER AT PENN STATE

Season	Overall	Pct.	Big Ten	Pct.	Finish	NCAA
2007	18-4-2	.792	9-1-0	.900	1st	Third Round
2008	16-8-0	.667	8-2-0	.800	T-1st	First Round
2009	13-6-2	.667	8-1-1	.850	1st	Second Round
2010	11-9-1	.548	8-2-0	.800	T-1st	Second Round
2011	21-5-0	.808	10-1-0	.909	1st	Third Round
2012	21-4-2	.815	10-0-1	.955	1st	Second Place
Penn State	100-36-7	.724	53-7-2	.871		6 NCAAAs (10-6)
Career	140-64-10	.678				9 NCAAAs (13-9)



2012 SEASON STATS

RECORD:	OVERALL	HOME	AWAY	NEUTRAL
ALL GAMES	21-4-2	10-1-2	8-1	3-2
CONFERENCE	10-0-1	4-0-1	6-0	0-0
NON-CONFERENCE	11-4-1	6-1-1	2-1	3-2

Date	Opponent	Score	Att.	#	Player	gp	g	a	pts	sh	sh%	sog	sog%	gw	pk-att	
Aug 17	at #7 Virginia	w	3-1	1130	10	Nairn, Christine	27	17	12	46	97	.175	44	.454	6	3-4
Aug 19	ST. JOHN'S	w	5-0	709	5	Hayes, Maya	20	16	6	38	80	.200	39	.488	4	0-1
Aug 24	#1 STANFORD	L	2-3	5117	16	Weber, Mallory	26	13	4	30	39	.333	28	.718	5	0-0
Aug 26	CENTRAL MICHIGAN	w	5-0	843	22	Costa, Tani	25	6	6	18	50	.120	26	.520	2	0-0
Aug 31	at #24 West Virginia	wo2	2-1	2057	11	Rodriguez, Raquel	25	4	10	18	46	.087	23	.500	0	1-1
Sep 02	vs Pitt	w	3-0	702	18	Evans, Maddy	27	5	3	13	38	.132	12	.316	1	1-1
Sep 08	at #24 BYU	L	1-3	4922	3	Hurd, Emily	27	2	8	12	21	.095	10	.476	1	0-0
* Sep 16	#13 WISCONSIN	w	2-1	1680	19	Schram, Taylor	16	5	1	11	40	.125	18	.450	1	0-0
* Sep 21	at Northwestern	w	4-1	196	17	Church, Whitney	27	3	1	7	10	.300	4	.400	1	0-0
* Sep 23	at Illinois	w	4-0	0	25	Peterson, Mallory	19	2	1	5	4	.500	3	.750	0	0-0
* Sep 27	at Ohio State	w	3-0	419	15	Kehoe, Erin	24	1	2	4	2	.500	2	1.000	0	0-0
* Sep 30	MINNESOTA	w	4-3	1257	8	Kalwa, Jenna	8	1	2	4	1	1.000	1	1.000	0	0-0
Oct 02	BUCKNELL	w	3-1	623	14	Chapic, Kori	21	1	1	3	13	.077	5	.385	0	0-0
* Oct 07	INDIANA	w	5-2	919	7	Persson, Corey	27	0	2	2	3	.000	2	.667	0	0-0
* Oct 12	at Nebraska	w	4-0	322	12	Kohne, Kindrah	19	0	1	1	10	.000	5	.500	0	0-0
* Oct 14	at Iowa	w	2-1	250	9	Garcia, Bri	18	0	1	1	6	.000	3	.500	0	0-0
* Oct 19	MICHIGAN STATE	w	5-1	2606	21	Chase, Teddy	8	0	1	1	0	.000	0	.000	0	0-0
* Oct 21	#17 MICHIGAN	To2	1-1	2606	23	Hovington, Bri	23	0	0	0	2	.000	0	.000	0	0-0
* Oct 26	at Purdue	w	2-0	332	2	Ritchey, Megan	8	0	0	0	2	.000	0	.000	0	0-0
Oct 31	vs Iowa	w	2-0	0	20	Kaminski, Meghan	2	0	0	0	1	.000	0	.000	0	0-0
Nov 02	vs Illinois	L	0-1	0	28	Eckerstrom, Britt	11	0	0	0	0	.000	0	.000	0	0-0
Nov 10	LIU BROOKLYN	w	4-0	1438	24	Dotten, Amanda	6	0	0	0	0	.000	0	.000	0	0-0
Nov 16	BOSTON COLLEGE	w	5-2	1258	1	Barr, Tara	1	0	0	0	0	.000	0	.000	0	0-0
Nov 18	MICHIGAN	To2	1-1	647	00	McNulty, Erin	23	0	0	0	0	.000	0	.000	0	0-0
Nov 23	#19 DUKE	w	1-0	1794		Total	27	76	62	214	465	.163	225	.484	21	5-7
Nov 30	vs Florida State	Wot	2-1	0		Opponents	27	28	23	79	402	.070	150	.373	4	2-2
Dec 02	vs North Carolina	L	1-4	6930												

TEAM STATISTICS	PSU	OPP
SHOT STATISTICS		
Goals-Shot attempts	76-465	28-402
Goals scored per game	2.81	1.04
Shot pct.	.163	.070
Shots on goal-Attempts	225-465	150-402
SOG pct.	.484	.373
Shots/Game	17.2	14.9
CORNER KICKS	158	120
PENALTY KICKS	5-7	2-2
OFFSIDES	43	59
PENALTIES		
Yellow cards	10	8
Red cards	0	1
ATTENDANCE		
Total	21497	9628
Dates/Avg Per Date	13/1654	9/1070
Neutral Site #/Avg	5/1526	

#	Goalie	GP	Min.	GA	GAAvg	Saves	Pct	W-L-T	Sho
28	Eckerstrom, Britt	11	508:24	5	0.89	27	.844	4-0-0	1/2
00	McNulty, Erin	23	1991:36	23	1.04	94	.803	17-4-2	6/2
	Total	27	2500:00	28	1.01	122	.813	21-4-2	10
	Opponents	27	2500:00	76	2.74	149	.662	4-21-2	1

Goals by Period	1st	2nd	OT	OT2	Total
Penn State	40	34	1	1	76
Opponents	9	19	0	0	28

Shots by Period	1st	2nd	OT	OT2	Total
Penn State	231	217	8	9	465
Opponents	186	209	4	3	402

Saves by Period	1st	2nd	OT	OT2	Total
Penn State	64	55	2	1	122
Opponents	73	71	3	2	149

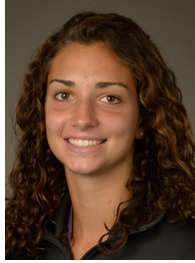
Corners by Period	1st	2nd	OT	OT2	Total
Penn State	74	81	2	1	158
Opponents	50	68	1	1	120

Fouls by Period	1st	2nd	OT	OT2	Total
Penn State	91	117	2	3	213
Opponents	110	77	3	5	195

2013 PENN STATE WOMEN'S SOCCER



LEXI GOLESTANI
Freshman • GK
Montgomery, N.J.



MEGHAN KAMINSKI
Sophomore • GK
Doylestown, Pa.



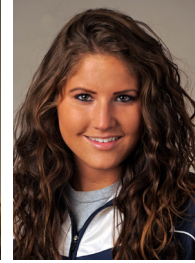
BRITTANY BASINGER
Freshman • D
Fairfax, Va.



MEGHAN RITCHEY
Sophomore • M
State College, Pa.



EMILY HURD
R - Junior • M
Sammamish, Wash.



LEXI MARTON
R - Senior • D
Aurora, Ontario



MAYA HAYES
Senior • F
West Orange, N.J.



ANNA WITTE
Freshman • D
Morrisville, N.C.



COREY PERSSON
Freshman • M
Danvers, Mass.



JENNA KALWA
Sophomore • M/D
Pennington, N.J.



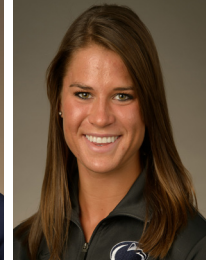
ANDREA GUNDERSON
Freshman • D
West Chester, Pa.



RAQUEL RODRIGUEZ
Sophomore • F/M
San Jose, Costa Rica



KINDRAH KOHNE
Junior • D
Homer, N.Y.



KORI CHAPIC
Sophomore • D
Homer, N.Y.



ERIN KEHOE
Senior • M
Crystal, Ill.



MALLORY WEBER
Sophomore • F
Novi, Mich.



WHITNEY CHURCH
Junior • D
Ashburn, Va.



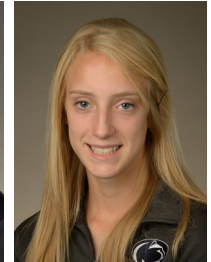
ANGELA WIDLACKI
Freshman • D
Naperville, Ill.



TAYLOR SCHRAM
Senior • F
Canonsburg, Pa.



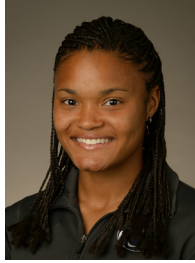
SALINA WILLIFORD
Freshman • M/D
Wayne, Pa.



TEDDY CHASE
Sophomore • D
Wayne, Pa.



TANI COSTA
R - Senior • F
Honolulu, Hawaii



BRI HOVINGTON
Senior • D
Lothian, Md.



LIV BRANDY
Freshman • D
Gibsonia, Pa.



MALLORY PETERSON
Sophomore • F/M
Clinton Corners, N.Y.



EMILY CORROLLO
Freshman • D
Sussex, N.J.



MAGGIE CHAPMAN
Freshman • M
Dumfries, Va.



BRITT ECKERSTROM
R - Sophomore • GK
Germantown, Md.



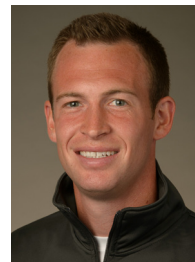
CHLOE BUEHLER
Freshman • GK
Perrysburg, Ohio



ERICA WALSH
Head Coach • 7th Year
William & Mary '97



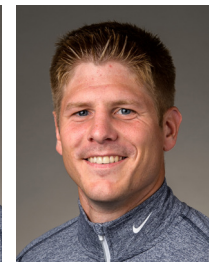
ANN COOK
Assistant Coach • 7th Year
William & Mary '97



TIM WASSELL
Assistant Coach • 4th Year
PSU Altoona '06



KARA LOWERY
Director of Ops. • 1st Year
Southern Nazarene '97



MIKE ECKBERG
Volunteer Asst. • 1st Year
Luther College '07