



PENN STATE WOMEN'S HOCKEY

2012-13 NITTANY LIONS

GoPSUsports.com // @PennStateWHKY // Facebook.com/PennStateWomensHockey
 Contact: **Jeremy Fallis** // jeremy.fallis@psu.edu // O: (814) 865-3613 // C: (814) 206-6544

2012-13 SCHEDULE

Overall: 2-4-0 // Home: 0-2-0 // Away: 2-4-0
 CHA: 0-2-0 // Home: 0-2-0 // Away: 0-0-0

Date	Opponent	W	L	T	Time
Oct. 6	at Vermont	W			5-3
Oct. 7	at Vermont	L			1-3
Oct. 13	* SYRACUSE	L			0-4
Oct. 14	* SYRACUSE	L			0-6
Oct. 19	at Sacred Heart	L			1-2
Oct. 20	at Sacred Heart	W			6-1
Oct. 25	* RIT				7:00 p.m.
Oct. 26	* RIT				7:30 p.m.
Nov. 2	SACRED HEART				7:30 p.m.
Nov. 3	SACRED HEART				2:00 p.m.
Nov. 10	* ROBERT MORRIS				2:00 p.m.
Nov. 11	* ROBERT MORRIS				2:00 p.m.
Nov. 16	* at Lindenwood				8:00 p.m.
Nov. 17	* at Lindenwood				3:00 p.m.
Nov. 30	* at #5 Mercyhurst				7:00 p.m.
Dec. 1	* at #5 Mercyhurst				2:00 p.m.
Dec. 7	at St. Lawrence				7:00 p.m.
Dec. 8	at St. Lawrence				2:00 p.m.
Jan. 4	CHATHAM				7:30 p.m.
Jan. 5	CHATHAM				7:00 p.m.
Jan. 11	at Union				7:00 p.m.
Jan. 12	at Union				4:00 p.m.
Jan. 25	* at Syracuse				7:00 p.m.
Jan. 26	* at Syracuse				2:00 p.m.
Jan. 29	PRINCETON				7:00 p.m.
Feb. 1	* #5 MERCYHURST				2:00 p.m.
Feb. 2	* #5 MERCYHURST				2:00 p.m.
Feb. 8	* LINDENWOOD				2:00 p.m.
Feb. 9	* LINDENWOOD				2:00 p.m.
Feb. 15	* at RIT				7:00 p.m.
Feb. 16	* at RIT				7:00 p.m.
Feb. 22	* at Robert Morris				7:00 p.m.
Feb. 23	* at Robert Morris				3:00 p.m.
2013 CHA TOURNAMENT					
Mar. 1	^ First Round - Game 1				TBA
Mar. 2	^ First Round - Game 2				TBA
Mar. 3	^ First Round - Game 3 (if necessary)				TBA
Mar. 8	% Semifinals				TBA
Mar. 9	% Final				TBA

All Times Eastern

Home games in **CAPS** at Greenberg Ice Pavilion

* - College Hockey America games

^ - CHA First Round at higher seed

% - CHA Semifinals & Final hosted by No. 1 seed

Rankings based on USA Today/USA Hockey poll



PENN STATE NITTANY LIONS

(2-4-0, 0-2-0 CHA)



RIT TIGERS

(3-3-0, 0-2-0 CHA)

Games 7-8: October 25-26, 2012 • 7 p.m. // 7:30 p.m. • Greenberg Ice Pavilion • University Park, Pa.

GAME DAY

VENUE
 STREAMING COVERAGE
 SERIES RECORD
 LAST MEETING
 NEXT SERIES

Greenberg Ice Pavilion (1,300)
 AmericaOneSports.com Video
 0-0-0
 First Meeting, 10/25
 11/2-3 vs. Sacred Heart

GAME NOTES

- Penn State hosts to RIT for two-game set on Thursday and Friday
- This is the first varsity meeting between the Lions and RIT
- Both teams looking for their first CHA victory in their inaugural D-I seasons
- Penn State split its games at Sacred Heart (2-1 loss, 6-1 win)
- Shannon Yoxheimer earned CHA Offensive Player of the Week on Monday
- Six different Lions scored against Sacred Heart in Saturday's 6-1 win
- RIT split its home weekend against Princeton (2-1 loss) and Yale (3-0 win)
- The Tigers won the 2012 NCAA Division III championship

ON THE INSIDE

Page 2: **CHA Standings and Team Comparison**

Page 5: \$90 million **Pegula Ice Arena** is on target for a Sept. 2013 opening

Page 6: **2012-13 Penn State Women's Hockey Stats**

Pages 7-8: **The Nittany Lion Roster & TV/Radio Roster**

SEASON STATISTICAL LEADERS

OFFENSE	GP	G	A	PTS	SH	+/-	GWG
40 Shannon Yoxheimer	6	4	1	5	43	+1	2
24 Taylor Gross	6	1	4	5	12	+3	0
23 Birdie Shaw	5	2	2	4	15	0	0
15 Jess Desorcie	6	1	3	4	12	+2	0
10 Micayla Catanzariti	6	2	1	3	10	-1	0
20 Emily Laurenzi	6	0	2	2	7	+3	0
22 Jenna Welch	6	0	2	2	10	0	0
DEFENSE	GP	G	A	PTS	SH	+/-	BLK
33 Madison Smiddy	4	0	3	3	3	+3	1
2 Jeanette Bateman	6	1	0	1	6	-2	7
4 Jordin Pardoski	6	1	0	1	4	+1	2
8 Taylor McGee	6	0	1	1	4	0	5
17 Paige Jahnke	6	0	0	0	7	-1	6
GOALTENDER	GP-GS	Record	MIN	GA	GAA	SV	SV%
37 Nicole Paniccia	4-4	2-2-0	239:03	10	2.51	135	.931
30 Celine Whitlinger	2-2	0-2-0	118:40	9	4.55	78	.897



@PennStateWHKY



PennStateWomensHockey



GoPSUTV



NITTANY LION WOMEN'S HOCKEY

GAME NOTES VS. RIT (OCT. 25-26)

SCOUTING THE TIGERS

RIT (3-3-0, 0-2-0 CHA) split last weekend's home games against Princeton (2-1 loss) and Yale (3-0 win). The Yale victory was RIT's second shutout in four games. After dropping its opening two games to Mercyhurst (6-2, 7-0), the Tigers are 3-1, while outscoring Sacred Heart and Yale 18-2 in the three victories.

Leading the way offensively is Kim Schlattman with four goals and Celeste Brown with three tallies. The Tigers have had well-rounded scoring all year with 11 different players tallying a goal. At the top of the point list (5) are Ellesha Fortuna, Ariane Yokoyama and Schlattman.

In net, a rotation of Ali Binnington (2-1-0) and Laura Chamberlain (1-2-0) has emerged. Binnington has seen the majority of the minutes (231:21), sporting a 2.59 goals against average with a .896 save percentage. Chamberlain (126:55) has a 3.31 GAA and a .879 save percentage.

On the penalty front, the Tigers have committed 35 minors this season, but killing off 27 of 32 penalties. On the power play, RIT has the identical number as its opponents, scoring on 5 of 32 opportunities. The Tigers have been especially impressive on faceoffs with a .527 winning percentage.

LAST TIME OUT

The Nittany Lions (2-4-0, 0-2-0 CHA) split a weekend series at Sacred Heart, falling in the opener 2-1 and winning the finale 6-1. Penn State was led by freshman forward **Shannon Yoxheimer** with two goals and an assist.

In the opener, the Pioneers opened a 2-0 lead through two periods and didn't allow the Nittany Lions on the board until Yoxheimer slammed home a scramble in front of the net with 2:31 left in the game and an extra skater on the ice. **Taylor Gross** and **Birdie Shaw** were credited with assists as junior goaltender **Nicole Paniccia** made 26 saves in the loss.

The following day Penn State came out firing, scoring on three straight power-plays en route to a 6-1 rout. Gross, Yoxheimer and **Jeanette Bateman** tallied each of the power play goals for a 3-1 lead through two periods. **Jess Desorcie**, **Hannah Hoenshell** and **Jordin Pardoski** added a trio of third-period goals as Penn State featured six different goal scorers. **Jenna Welch**, **Madison Smiddy**, Gross and Yoxheimer had multi-point days. Paniccia had 25 saves for a 51-save weekend.

YOXHEIMER NAMED CHA OFFENSIVE PLAYER OF THE WEEK

For her efforts against Sacred Heart, **Shannon Yoxheimer** was named CHA Offensive Player of the Week for a three-point weekend and a game-winning goal over the Pioneers. Yoxheimer leads the team with four goals and is tied with Taylor

Gross for points with five. Yoxheimer is the first Nittany Lion to receive CHA Offensive Player of the Weeks honors and joins fellow classmate **Micayla Catanzariti** (Rookie of the Week, Oct. 8) on the honor roll.

ANOTHER WEEKEND OF FIRSTS

The second road trip in Penn State women's hockey history resulted in another split result, but it was not without some firsts. The Nittany Lions tallied six goals in Saturday's victory, the most in the short history of the program and the largest margin of victory (5). Additionally, the Lions tallied eight assists, which matched the inaugural game.

Individually, **Jeanette Bateman**, **Jordin Pardoski** and **Hannah Hoenshell** scored their first collegiate goals on Saturday. **Jess Desorcie** tallied her first Penn State varsity goal, while **Lindsay Reihl** and **Jenna Welch** recorded their first Penn State points on assists. Welch had a two-helper game as did **Madison Smiddy**, who notched her first multi-point game. **Cara Mendelson** and **Hoenshell** hit the ice for the first time, bringing the total number of Nittany Lions to see ice time to 23.

This weekend features Penn State's fourth first-time opponent in RIT. The Tigers reclassified to Division I this season and accepted an invitation to the CHA in the off-season. RIT won the NCAA Division III national title in 2011-12. Next week, Sacred Heart visits Greenberg Ice Pavilion, representing the first repeat opponent of the program.

HISTORIC FIRST WIN

Penn State women's hockey made history on Saturday, Oct. 6 at Vermont's Gutterson Fieldhouse by winning its inaugural game, 5-3. The Nittany

GAMEDAY COMPARISON

TEAM STATS	PSU	RIT
Overall record	2-4-0	3-3-0
Conference record	0-2-0	0-2-0
Goals scored	13	21
Goals scored per game	2.2	3.5
Goals allowed	19	17
Goals allowed per game	3.2	2.8
First period goals	4	7
Second period goals	3	7
Third period goals	6	7
Shots	164	208
Shots per game	27.3	34.7
Shot pct.	.079	.101
Assists	20	30
Penalties per game	4.0	5.8
Power plays	3-23	5-32
Power-play pct.	.130	.156
Penalty kills	7-24	5-32
Penalty-kill pct.	.708	.884
Saves	213	137
Shutouts	0	2

LEADERS	PSU	RIT
Points	Two with 5	Three with 5
Goals	Yoxheimer (4)	Schlattman (4)
Assists	Gross (4)	Two with 4
Shots	Yoxheimer (43)	Zach (26)
Shot Pct.	Two at .250	Kunichika (.667)
+/-	Two at +3	Kunichika (+8)
Faceoff Pct.	Yoxheimer (.542)	Payrl (.909)
Saves	Paniccia (135)	Binnington (86)
Save Pct.	Paniccia (.931)	Binnington (.896)
GAA	Paniccia (2.51)	Binnington (2.59)
Record	Paniccia (2-2-0)	Binnington (2-1-0)

2012-13 COLLEGE HOCKEY AMERICA STANDINGS

(as of Oct. 23, 2012)

	Pts.	CHA	GF	GA	Overall	GF	GA	Last 10
Mercyhurst (5/5)	4	2-0-0	13	2	6-1-1	36	18	6-1-1
Syracuse	4	2-0-0	10	0	3-3-0	21	12	3-3-0
Robert Morris	0	0-0-0	-	-	1-1-0	5	6	1-1-0
Lindenwood	0	0-0-0	-	-	0-6-0	6	34	0-6-0
PENN STATE	0	0-2-0	0	10	2-4-0	13	19	2-4-0
RIT	0	0-2-0	2	13	4-4-0	21	17	2-4-0

UPCOMING SCHEDULE

Thursday, Oct. 25
RIT at PENN STATE, 7 p.m.

Friday, Oct. 26
Minnesota State at Mercyhurst, 6 p.m.
Robert Morris at Northeastern, 7 p.m.
Syracuse at Connecticut, 7 p.m.
RIT at PENN STATE, 7:30 p.m.

Saturday, Oct. 27
Minnesota State at Mercyhurst, 1 p.m.
Robert Morris at Boston Univ., 2 p.m.
Syracuse at Connecticut, 4 p.m.

NITTANY LION WOMEN'S HOCKEY



Lions scored five goals from three freshmen making their respective debuts as junior goaltender **Nicole Paniccia** made 31 saves in her PSU opener. **Shannon Yoxheimer** and **Micayla Catanzariti** each scored twice for the Nittany Lions.

Down 2-1, Penn State was not to be deterred, reeling off three straight goals to take a 4-2 lead midway through the third period. Despite a Vermont goal with 6:34 left in the third, **Birdie Shaw** scored an empty-net goal to seal the Nittany Lion victory. Junior captain **Taylor Gross** made her Penn State debut known with two assists and was named the first star of the game, Yoxheimer was second.

FIRST TIME FOR EVERYTHING

Penn State had a varsity team debut for the first time since 1994 (women's soccer) when the women's hockey team defeated Vermont, 5-3 on Oct. 6. The successful debut was the first since 1977 when the men's volleyball team defeated East Stroudsburg.

Game: Oct. 6, 2012 at Vermont, 2:00 p.m.

Win: Nicole Paniccia, Oct. 6 at Vermont, 5-3

Goal: Shannon Yoxheimer

2012-13 WOMEN'S HOCKEY POLLS (as of Oct. 23, 2012)

USA Today/USA Hockey Poll

1	Minnesota	8-0-0	1
2	Cornell	1-1-0	2
3	Boston University	5-1-0	3
4	Clarkson	5-1-0	5
5	Mercyhurst	6-1-1	8
6	Boston College	1-2-0	4
7	Northeastern	4-1-0	9
8	North Dakota	4-2-0	10
9	Harvard	0-0-0	RV
10	Ohio State	5-3-0	7

Others: Wisconsin, Minnesota State, Bemidji State, Minnesota Duluth, Providence

USCHO.com Poll

1	Minnesota	8-0-0	1
2	Cornell	1-1-0	2
3	Boston University	5-1-0	3
4	Clarkson	5-1-0	7
5	Mercyhurst	6-1-1	9
6	Boston College	1-2-0	5
7	Northeastern	4-1-0	8
8	North Dakota	4-2-0	6
9	Harvard	0-0-0	RV
10	Minnesota State	4-2-2	NR

Others: Ohio State, Wisconsin, Dartmouth, Minnesota Duluth, Providence, St. Lawrence

Bold indicates 2012-13 opponent

Multi-Goal Game: Micayla Catanzariti
Game-Winning Goal: Shannon Yoxheimer
Assists: Taylor Gross, Emily Laurenzi
Multi-Assist Game: Jess Desorcie
Faceoff: Emily Laurenzi
Faceoff win: Emily Laurenzi
Shot: Katie Zinn
Save: Nicole Paniccia
Empty-Net Goal: Birdie Shaw

CATANZARITI HONORED

Freshman forward **Micayla Catanzariti** was named College Hockey America's Rookie of the Week on Oct. 8. Catanzariti led the Nittany Lions to a win in their inaugural opener on Saturday with two goals and an assist at Vermont. Catanzariti was also named Highmark's Penn State Women's Student-Athlete of the Week.

PUCK STOPPERS

Penn State has relied on steady goaltending all season in the form of **Nicole Paniccia** and **Ce-**

2012-13 MEDIA INFORMATION

Penn State Athletic Communications

Primary Contact: Jeremy Fallis
 Email: jeremy.fallis@psu.edu
 Secondary Contact: Brian Hoerst
 Email: bjh33@psu.edu
 Office: 814-865-1757

Interviews

Penn State student-athletes and coaches are available for interviews after practice each day. Please contact Jeremy Fallis in advance.

Credentials

Contact Jeremy Fallis for home game credentials at Greenberg Ice Pavilion.

Postgame

Head coach Josh Brandwene and requested student-athletes are available to the media following each game, outside the locker room. Please alert Jeremy Fallis or Brian Hoerst during the game of any requests.

Yearbook

The 2012-13 Penn State women's hockey yearbook will be made available to media members at the first home game on Oct. 13. The public may purchase copies for \$6.

GoPSUsports.com

[Facebook.com/PennStateWomensHockey](https://www.facebook.com/PennStateWomensHockey)

[@PennStateWHKY](https://twitter.com/PennStateWHKY)

PENN STATE'S RECORD IS...

0-2-0at home
2-2-0 on the road
0-0-0 in overtime
1-1-0 when scoring first
1-3-0 when opponent scores first
1-0-0when leading after the 1st period
1-2-0 when trailing after the 1st period
0-2-0when tied after the 1st period
2-0-0 when leading after the 2nd period
0-3-0when trailing after the 2nd period
0-1-0 when tied after the 2nd period
1-1-0 when out-shooting opponent
1-3-0 when out-shot by opponent
0-0-0 when taking same # of shots
2-1-0when winning more faceoffs
0-3-0 when losing more faceoffs
0-0-0when tied in faceoffs
0-2-0 when taking more penalties
1-2-0 when taking fewer penalties
1-0-0 when taking the same # of penalties
1-0-0 when scoring a power play goal
1-4-0when not scoring a power play goal
2-3-0 when allowing a power play goal
0-1-0 when not allowing a power play goal
0-2-0 when scoring 0 goals
0-2-0 when scoring 1 goal
0-0-0 when scoring 2 goals
0-0-0 when scoring 3 goals
2-0-0 when scoring 4+ goals
0-0-0 when allowing 0 goals
1-0-0 when allowing 1 goal
0-1-0 when allowing 2 goals
1-1-0 when allowing 3 goals
0-2-0 when allowing 4+ goals
2-4-0 in October
0-0-0 in November
0-0-0 in December
0-0-0 in January
0-0-0 in February
0-0-0 in March
0-0-0 on Tuesday
0-0-0 on Thursday
0-1-0 on Friday
2-1-0 on Saturday
0-2-0 on Sunday
2-2-0during the day
0-2-0 at night
1-1-0 vs. Hockey East
0-2-0vs. College Hockey America
0-0-0 vs. ECAC Hockey
1-1-0 vs. D-I Independents
0-0-0 vs. ranked opponents
2-4-0 vs. unranked opponents
2-1-0 when Shannon Yoxheimer scores



NITTANY LION WOMEN'S HOCKEY

line Whitlinger. The duo saw 77 shots and made 71 saves (.922), paced by Whitlinger's 40 stops at Vermont. Paniccia picked up the first win in school history on Oct. 6. Against Syracuse, Paniccia made a school-record and career-high 53 saves against Syracuse while Whitlinger made 38 stops in Sunday's loss. Paniccia was the only netminder to see time last weekend at Sacred Heart, stopping 51 shots and allowing only three goals.

SCORING STREAKS

Penn State opened its varsity account in scoring fashion, scoring in the first four periods. The Nittany Lions tallied one goal in the opening frame, then two in each of the next two periods before scoring once in the opening period of game two. Vermont held the Nittany Lions scoreless over the final 50:12 of Sunday's game. After a scoreless weekend against Syracuse, Penn State was shut out for the first 57:29 against Sacred Heart, bringing the scoreless streak to 227:41. Nevertheless, Penn State scored seven times over the final 62:31 at Sacred Heart.

FIRST HEAD COACH

A 1991 graduate of Penn State, head coach **Josh Brandwene** is the first to lead the Nittany Lions. A four-year hockey player at PSU, Brandwene brings 20 years of coaching experience to Happy Valley. Brandwene picked up his first win in the team's debut on Saturday, Oct. 6 at Vermont.

CAPTAIN, OUR CAPTAIN

Junior forward **Taylor Gross** leads Penn State as its first captain. The University of Connecticut transfer appeared in 48 games for the Huskies before joining Penn State's club side in January 2012. In September, the team voted fellow UConn transfer **Jenna Welch** and senior defender **Lindsay Reihl** as assistant captains.

YOUTH MOVEMENT

As is expected with a brand new varsity program, there are many freshmen on the team—17 in all. Thus far, 14 freshman have made an appearance on the ice.

	GP	G	A	Pts.
Jeanette Bateman	6	1	0	1
Micayla Catanzariti	6	2	1	3
Hannah Hoenshell	1	1	0	1
Jill Holdcroft	6	0	0	0
Paige Jahnke	6	0	0	0
Darby Kern	-	-	-	-
Emily Laurenzi	6	0	2	2
Taylor McGee	4	0	1	1
Jordin Pardoski	6	1	0	1
Kendra Rasmussen	5	0	0	0
Birdie Shaw	5	2	2	4
Stephanie Walkom	-	-	-	-
Sarah Wilkie	4	0	0	0
Shannon Yoxheimer	6	4	1	5
Katie Zinn	5	0	0	0
	GP	GAA	SV	Pct.
Brooke Meyer	-	-	-	-
Celine Whitlinger	2	4.55	78	.897

CONTINUING PENN STATE HOCKEY

Eight members of the current varsity team played for the women's club team at some point. Seniors **Lindsay Reihl** and **Kate Christoffersen** and sophomores **Cara Mendelson**, **Katie Murphy**, **Madison Smiddy** and **Tess Weaver** played all of last season for head coach **Josh Brandwene** in Penn State's last year at the club level. Reihl and Christoffersen played three years for the PSU club team as well. **Taylor Gross** and **Jess Desorcie** joined the six players midway through the season in preparation of the 2012-13 season.

ON SCHEDULE

Pegula Ice Arena, a \$90 million state-of-the-art facility, will serve as the home of the Penn State hockey programs in 2012-13. As of Oct. 1, 2012, almost all the steel has been put in place for the project. Construction is set to conclude in time for the 2012-13 season.

For more information on Pegula Ice Arena, visit page 5 of the game notes.

NEXT TIME OUT

The Nittany Lions continue their six-game home stand by welcoming Sacred Heart to Greenberg Pavilion on Friday-Saturday, Nov. 2-3. Friday's opener is set for a 7:30 p.m. faceoff before Saturday's 2 p.m. puck drop. Both games will have live streaming through **AmericaOneSports.com**, live stats on **GoPSUsports.com GameTracker** and updates through Twitter (@PennStateWHKY).

HONORS & AWARDS

Micayla Catanzariti

CHA Rookie of the Week (10/8)

Shannon Yoxheimer

CHA Offensive Player of the Week (10/22)

OVER THE AIR

This Week

Penn State will air both games vs. RIT through AmericaOneSports.com. Ryan Smith and Jared Abbott will provide the play-by-play and color commentary, respectively.

The CHA on AmericaOneSports.com

All Penn State games during CHA play will be streamed live on AmericaOneSports.com. Subscribers can purchase 30-day packages for \$30 or a season pass for \$125.

Non-Conference Home Action

Penn State's non-conference home games will be shown on a game-to-game basis.

NITTANY LION WOMEN'S HOCKEY



PEGULA ICE ARENA FUTURE HOME OF PENN STATE HOCKEY

FACTS

Construction Groundbreaking: February 2012
Ceremonial Groundbreaking: April 20, 2012
Projected Opening: September 2013
Capacity: 6,000 (Arena rink); 300 (Community rink)
Size: 200,000 square feet

AMENITIES

Two NHL-sized (200' x 85') ice surfaces

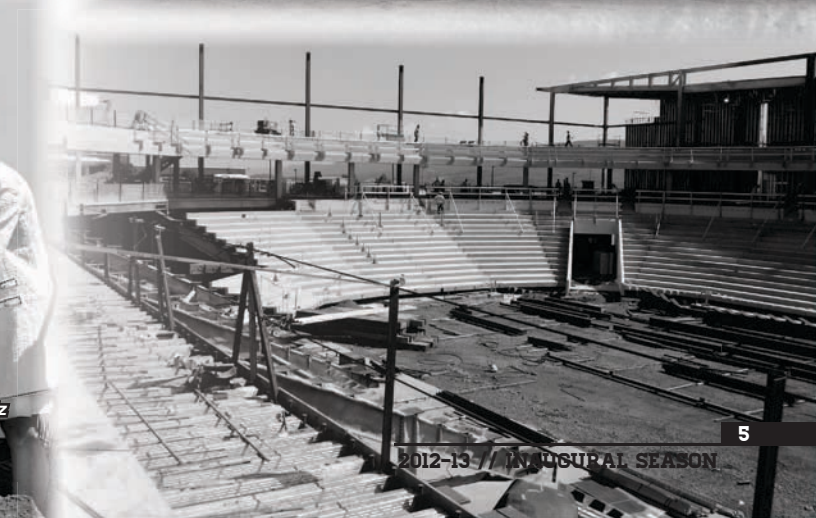
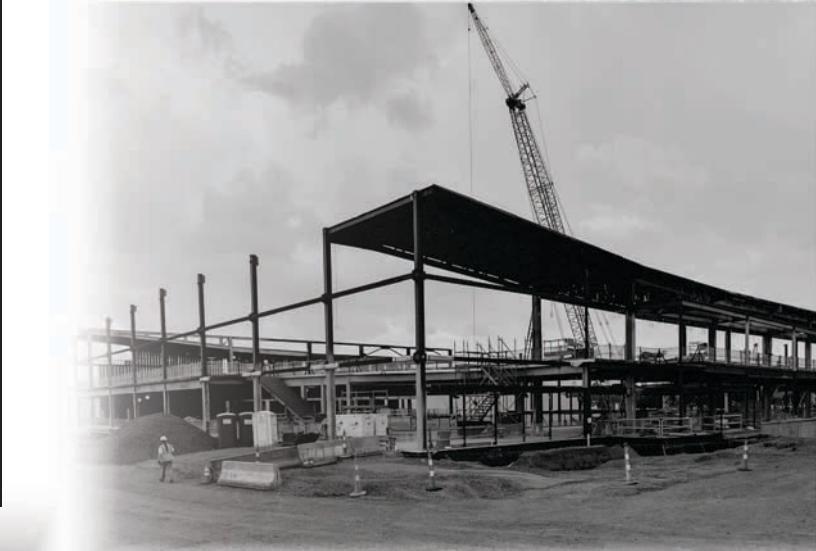
Arena rink will offer:

- 6,000-seat overall capacity
- 1,000-seat student section
- First-rate varsity locker rooms
- Team lounges and dry changing room
- Strength and conditioning center
- Shooting gallery
- Suites, loge boxes and club seats
- State-of-the-art television and radio broadcasting facilities
- Press box and media center
- Concession stands with café
- Videoboard

Community rink will offer:

- 300-seat capacity
- Eight locker rooms
- Skate rental center

Pegula Ice Arena will have the ability to host National Hockey League and American Hockey League games, as well as professional ice shows, local hockey and figure skating programs.



Left to Right: Kim and Terry Pegula, Dr. Rodney Erickson, The Nittany Lion, Joe Battista and Karen Peetz at the Pegula Ice Arena ceremonial groundbreaking.



NITTANY LION WOMEN'S HOCKEY



2012-13 Penn State Women's Hockey Penn State Combined Team Statistics (as of Oct 23, 2012) All games

Date	Opponent	Score	Att.
Oct 06	at Vermont	w 5-3	785
Oct 07	at Vermont	L 1-3	326
* Oct 13	SYRACUSE	L 0-4	408
* Oct 14	SYRACUSE	L 0-6	285
Oct 19	at Sacred Heart	L 1-2	123
Oct 20	at Sacred Heart	w 6-1	213

Record:	Overall	Home	Away	Neutral
ALL GAMES	2-4-0	0-2-0	2-2-0	0-0-0
CONFERENCE	0-2-0	0-2-0	0-0-0	0-0-0
NON-CONFERENCE	2-2-0	0-0-0	2-2-0	0-0-0

	PSU	OPP
TEAM STATISTICS		
SHOT STATISTICS		
Goals-Shot attempts	13-164	19-232
Shot pct.	.079	.082
Goals/Game	2.2	3.2
Shots/Game	27.3	38.7
POWER PLAYS		
Goals-Power Plays	3-23	7-24
Conversion Percent	.130	.292
GOAL BREAKDOWN		
Power Play	3	7
Short-handed	0	0
Empty net	1	0
Penalty	0	0
Unassisted	2	2
Overtime	0	0
PENALTIES		
Number	24	24
Minutes	48	48
Penalties/Game	4.0	4.0
Pen minutes/Game	8.0	8.0
FACEOFFS (W-L)	167-198	198-167
Faceoff W-L Pct.	.458	.542

#	Player	gp	g	a	pts	sh	sh%	pen-min	pp	sh
40	Yoxheimer, Shannon	6	4	1	5	43	.093	1-2	1	0
24	Gross, Taylor	6	1	4	5	12	.083	1-2	1	0
23	Shaw, Birdie	5	2	2	4	15	.133	2-4	0	0
15	Desorcie, Jess	6	1	3	4	12	.083	1-2	0	0
10	Catanzariti, Micayla	6	2	1	3	10	.200	4-8	0	0
33	Smiddy, Madison	4	0	3	3	3	.000	1-2	0	0
20	Laurenzi, Emily	6	0	2	2	7	.000	1-2	0	0
22	Welch, Jenna	6	0	2	2	10	.000	3-6	0	0
2	Bateman, Jeanette	6	1	0	1	6	.167	1-2	1	0
16	Hoenshell, Hannah	2	1	0	1	4	.250	0-0	0	0
4	Pardoski, Jordin	6	1	0	1	4	.250	0-0	0	0
8	McGee, Taylor	4	0	1	1	4	.000	2-4	0	0
6	Reihl, Lindsay	6	0	1	1	3	.000	1-2	0	0
19	Holdcroft, Jill	6	0	0	0	9	.000	1-2	0	0
17	Jahnke, Paige	6	0	0	0	7	.000	3-6	0	0
3	Mendelson, Cara	1	0	0	0	0	.000	0-0	0	0
25	Murphy, Katie	4	0	0	0	0	.000	0-0	0	0
13	Rasmussen, Kendra	5	0	0	0	3	.000	0-0	0	0
36	Weaver, Tess	4	0	0	0	5	.000	1-2	0	0
21	Wilkie, Sarah	4	0	0	0	3	.000	0-0	0	0
11	Zinn, Katie	5	0	0	0	4	.000	0-0	0	0
TM	TEAM	2	0	0	0	0	.000	1-2	0	0
	Total	6	13	20	33	164	.079	24-48	3	0
	Opponents	6	19	31	50	232	.082	24-48	7	0

#	Goalie	gp	min	ga	gaavg	saves	save%	w-l-t
37	Paniccia, Nicole	4	239:03	10	2.51	135	.931	2-2-0
30	Whitlinger, Celine	2	117:57	9	4.58	78	.897	0-2-0
TM	EMPTY NET	2	2:17	0	-	0	.000	0-0-0
	Total	6	359:17	19	3.17	213	.918	2-4-0
	Opponents	6	359:17	13	2.17	151	.921	4-2-0

Attendance Summary	PSU	Opponent
Total	693	1447
Dates/Avg Per Date	2/346	4/362
Neutral Site #/Avg	0/0	

Goals by Period	1st	2nd	3rd	Total
Penn State	4	3	6	13
Opponents	5	5	9	19

Saves by Period	1st	2nd	3rd	Total
Penn State	84	68	61	213
Opponents	37	68	46	151

NITTANY LION WOMEN'S HOCKEY



2012-13 PENN STATE WOMEN'S HOCKEY NUMERICAL ROSTER

No.	Name	Yr.	Pos.	Ht.	S/C	Hometown	Last Team
2	Jeanette Bateman	Fr.	F/D	5-6	R	Greeley, Colo.	Colorado Select
3	Cara Mendelson	So.	F/D	5-6	R	Pittsburgh, Pa.	Steel City Selects
4	Jordin Pardoski	Fr.	D	5-5	R	Rochester Hills, Mich.	Detroit Honeybaked
5	Stephanie Walkom	Fr.	D	5-7	R	Moon Township, Pa.	Pittsburgh Penguins Elite
6	Lindsay Reihl	Sr.	D	5-4	R	Cheshire, Conn.	Connecticut Polar Bears
8	Taylor McGee	Fr.	D	5-3	R	Pearl River, N.Y.	Taft School (Conn.)
10	Micayla Catanzariti	Fr.	F	5-4	R	Rancho Santa Margarita, Calif.	Gilmour Academy (Ohio)
11	Katie Zinn	Fr.	F	5-7	R	Coquitlam, B.C.	Gilmour Academy (Ohio)
12	Kate Christoffersen	Sr.	F	5-3	R	Trumbull, Conn.	Connecticut Polar Bears
13	Kendra Rasmussen	Fr.	F	5-5	L	Sartell, Minn.	Sartell/Sauk Rapids HS
14	Darby Kern	Fr.	F	5-11	R	Venetia, Pa.	Pittsburgh Penguins Elite
15	Jess Desorcie	So.	F	5-4	L	Westford, Vt.	Connecticut College
16	Hannah Hoenshell	Fr.	F	5-3	R	Plano, Texas	Texas Alliance
17	Paige Jahnke	Fr.	D	5-6	R	Oakdale, Minn.	Roseville HS/Minnesota Jr. Whitecaps
19	Jill Holdcroft	Fr.	F	5-1	R	Pennsylvania Furnace, Pa.	Pittsburgh Penguins Elite
20	Emily Laurenzi	Fr.	F	5-2	R	Townsend, Del.	National Sports Academy (N.Y.)
21	Sarah Wilkie	Fr.	D	5-6	R	Ashby, Mass.	Williston Northampton School
22	Jenna Welch	Jr.	F	5-8	R	Austin, Texas	Connecticut
23	Birdie Shaw	Fr.	F	5-2	L	Troy, Mich.	Detroit Honeybaked
24	Taylor Gross	Jr.	F	5-1	R	Colorado Springs, Colo.	Connecticut
25	Katie Murphy	So.	F	5-4	L	Novi, Mich.	Detroit Honeybaked
30	Celine Whitlinger	Fr.	G	5-8	L	Garden Grove, Calif.	Gilmour Academy (Ohio)
31	Brooke Meyer	Fr.	G	5-7	L	Naperville, Ill.	Chicago Huskies
33	Madison Smiddy	So.	D	5-7	L	Grand Rapids, Mich.	Detroit Honeybaked
36	Tess Weaver	So.	F	5-5	R	Windber, Pa.	Pittsburgh Penguins Elite
37	Nicole Paniccia	Jr.	G	5-5	L	Oakville, Ont.	Connecticut
40	Shannon Yoxheimer	Fr.	F	5-7	L	Jackson, Mich.	North American Hockey Academy (Vt.)

Head Coach: Josh Brandwene (First Year)

Assistant Coaches: Gina Kearns (First Year), Casey McCullion (First Year); **Director of Operations/Video Coach:** Mo Stroemel (First Year)

Captain: Taylor Gross; **Assistant Captains:** Lindsay Reihl, Jenna Welch

ALPHABETICAL ROSTER		PRONUNCIATION GUIDE		LIONS BY STATE		LIONS BY POSITION	
No.	Name	Brandwene	BRAND-ween	California (2):	Catanzariti, Whitlinger	Forward (17):	Bateman*, Catanzariti
2	Jeanette Bateman	Catanzariti	Cah-TAN-zah-REE-tee	Colorado (2):	Bateman, Gross		Christoffersen, Desorcie, Gross,
10	Micayla Catanzariti	Jahnke	YAWN-kee	Connecticut (2):	Christoffersen, Reihl		Hoenshell, Holdcroft, Kern, Laurenzi,
12	Kate Christoffersen	Jeanette	Jeh-NETT	Delaware (1):	Laurenzi		Mendelson, Murphy, Rasmussen,
15	Jess Desorcie	Kearns	KERNS	Illinois (1):	Meyer		Shaw, Weaver, Welch, Yoxheimer,
24	Taylor Gross	McCullion	Mick-CULL-yon	Massachusetts (1):	Wilkie		Zinn
16	Hannah Hoenshell	Paniccia	Pah-NEE-cha	Michigan (5):	Murphy, Pardoski, Shaw, Smiddy, Yoxheimer	Defense (9):	Bateman, Jahnke,
19	Jill Holdcroft	Reihl	RILE	Minnesota (2):	Jahnke, Rasmussen		McGee, Mendelson*, Pardoski, Reihl,
17	Paige Jahnke	Stroemel	STRAW-mull	New York (1):	McGee		Smiddy, Walkom, Wilkie
14	Darby Kern	LIONS BY ELIGIBILITY		Pennsylvania (5):	Holdcroft, Kern, Mendelson, Walkom, Weaver	Goalie (3):	Meyer, Paniccia, Whitlinger
20	Emily Laurenzi	Seniors (2):		Texas (2):	Hoenshell, Welch		
8	Taylor McGee	Juniors (3):		Vermont (1):	Desorcie		
3	Cara Mendelson	Sophomores (5):		LIONS BY PROVINCE			
31	Brooke Meyer	Mendelson, Murphy, Smiddy, Weaver		British Columbia (1):	Zinn		
25	Katie Murphy	Freshmen (17):		Ontario (1):	Paniccia		
37	Nicole Paniccia	Bateman, Catanzariti, Hoenshell, Holdcroft, Jahnke, Kern, Laurenzi, McGee, Meyer, Pardoski, Rasmussen, Shaw, Walkom, Whitlinger, Wilkie, Yoxheimer, Zinn					
4	Jordin Pardoski						
13	Kendra Rasmussen						
6	Lindsay Reihl						
23	Birdie Shaw						
33	Madison Smiddy						
5	Stephanie Walkom						
36	Tess Weaver						
22	Jenna Welch						
30	Celine Whitlinger						
21	Sara Wilkie						
40	Shannon Yoxheimer						
11	Katie Zinn						





NITTANY LION WOMEN'S HOCKEY



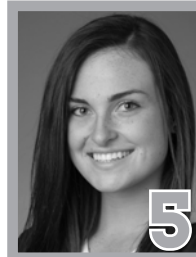
2
JEANNETTE BATEMAN
Freshman • F/D
Greeley, Colo.



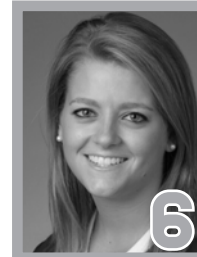
3
CARA MENDELSON
Sophomore • F/D
Pittsburgh, Pa.



4
JORDIN PARDOSKI
Freshman • D
Rochester Hills, Mich.



5
STEPHANIE WALKOM
Freshman • D
Moon Township, Pa.



6 **A**
LINDSAY REIHL
Senior • D
Cheshire, Conn.



8
TAYLOR MCGEE
Freshman • D
Pearl River, N.Y.



10
MICAYLA CATANARITTI
Freshman • F
Rancho Santa Margarita, Calif.



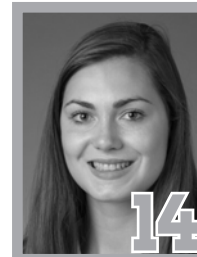
11
KATIE ZINN
Freshman • F
Coquitlam, B.C.



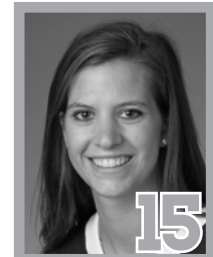
12
KATE CHRISTOFFERSEN
Senior • F
Trumbull, Conn.



13
KENDRA RASMUSSEN
Freshman • F
Sartell, Minn.



14
DARBY KERN
Freshman • F
Venetia, Pa.



15
JESS DESORCIE
Sophomore • F
Westford, Vt.



16
HANNAH HOENSHELL
Freshman • F
Plano, Texas



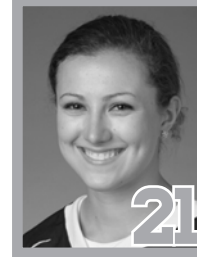
17
PAIGE JAHNKE
Freshman • D
Oakdale, Minn.



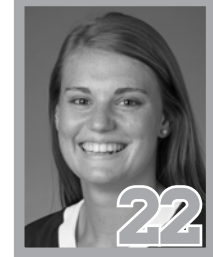
19
JILL HOLDCROFT
Freshman • F
Pennsylvania Furnace, Pa.



20
EMILY LAURENZI
Freshman • F
Townsend, Del.



21
SARAH WILKIE
Freshman • D
Ashby, Mass.



22 **A**
JENNA WELCH
Junior • F
Austin, Texas



23
BIRDIE SHAW
Freshman • F
Troy, Mich.



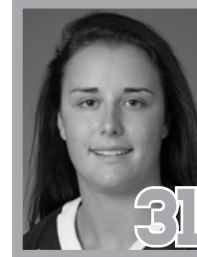
24 **C**
TAYLOR GROSS
Junior • F
Colorado Springs, Colo.



25
KATIE MURPHY
Sophomore • F
Novi, Mich.



30
CELINE WHITLINGER
Freshman • G
Garden Grove, Calif.



31
BROOKE MEYER
Freshman • G
Naperville, Ill.



33
MADISON SMIDDY
Sophomore • D
Grand Rapids, Mich.



36
TESS WEAVER
Sophomore • F
Windber, Pa.



37
NICOLE PANICCIA
Junior • G
Oakville, Ont.



40
SHANNON YOXHEIMER
Freshman • F
Jackson, Mich.