

2014 MICHIGAN STATE VOLLEYBALL SCHEDULE

AUGUST

at Alabama-Birmingham/Samford Challenge

Fri. 29 vs. Southeastern Louisiana (at UAB) W, 3-0
at Alabama-Birmingham..... W, 3-0
Sat. 30 vs. Jacksonville State (at Samford) . W, 3-0
at Samford..... W, 3-1

SEPTEMBER

Fri. 5 No. 20 NORTH CAROLINA L, 0-3
Sat. 6 No. 19 DUKE L, 2-3
Fri. 12 at No. 18 Oregon..... L, 1-3
Sat. 13 at Oregon State (RV)..... W, 3-1

Auto-Owners Insurance Spartan Invitational

Fri. 19 LIU-BROOKLYN..... L, 2-3
WESTERN KENTUCKY (RV)..... W, 3-0
Sat. 20 UW-MILWAUKEE..... W, 3-0
Fri. 26 at Indiana * W, 3-1
Sat. 27 at No. 15 Purdue * L, 1-3
Tues.30 at Michigan * L, 1-3

OCTOBER

Fri. 3 MICHIGAN * W, 3-1
Fri. 10 No. 8 NEBRASKA * L, 1-3
Sat. 11 IOWA * W, 3-0
Fri. 17 at Maryland * W, 3-0
Sat. 18 at Rutgers * W, 3-0
Fri. 24 at Ohio State * 7 p.m.
Sat. 25 at Penn State * 5:30 p.m.
Fri. 31 ILLINOIS * 6:30 p.m.

NOVEMBER

Sat. 1 NORTHWESTERN * 6:30 p.m.
Fri. 7 MINNESOTA * 6:30 p.m.
Sun. 9 WISCONSIN * 1 p.m.
Wed. 12 at Nebraska * 8 p.m.
Sat. 15 INDIANA * 7 p.m.
Wed. 19 at Northwestern * 8 p.m.
Sat. 22 RUTGERS * TBA
Wed. 26 PURDUE * 6:30 p.m.
Sat. 29 at Iowa * 8:30 p.m.

DECEMBER

NCAA Tournament

Thu.-Sat. 4-6 First & Second Rounds (Campus Sites)
Fri.-Sat.12-13 Regionals
Seattle, Wash.; Ames, Iowa;
Louisville, Ky., Minneapolis, Minn.
Thu. 18 Semifinals (Oklahoma City, Okla.)
Sat. 20 National Championship (Oklahoma City, Okla.)

* - Big Ten Conference Game

All times eastern; times subject to change.

MICHIGAN STATE

2014 SPARTAN VOLLEYBALL MEDIA NOTES



MICHIGAN STATE SPARTANS (12-7, 5-3 BIG TEN)



NO. 20 OHIO STATE

Overall Record: 14-6 (5-3 Big Ten)
Friday, Oct. 24; 7 p.m.
Columbus, Ohio; St. John Arena (13,276)

Live Stats: www.msuspartans.com
Radio: Spartan Sports Network
Online Webstream: BTN+

OSU Media Relations Contact: **Kyle Kuhlman**
Phone: (614) 292-0088 • e-mail: kuhlman.137@osu.edu
www.ohiostatebuckeyes.com



NO. 7 PENN STATE

Overall Record: 18-3 (6-2 Big Ten)
Saturday, Oct. 25; 5:30 p.m.
University Park, Pennsylvania; Rec Hall (6,502)

Live Stats: www.msuspartans.com
Radio: Spartan Sports Network
Online Webstream: none

PSU Media Relations Contact: **Arielle Sargent**
Phone: (814) 865-8139 • e-mail: ans26@psu.edu
www.gopsports.com

A FULL ROTATION . . . WHAT YOU NEED TO KNOW ABOUT THE SPARTANS

• MSU completes a four-game road swing with a visit to No. 20 Ohio State and No. 7 Penn State. The Spartans split each of their first three Big Ten weekends before sweeping Maryland and Rutgers last weekend.

• MSU has won three straight Big Ten matches, all by 3-0 scores. MSU sits in a tie for fourth place in the BIG standings at 5-3, behind 7-1 Wisconsin and Purdue and 6-2 Penn State and Illinois. The OSU and PSU matches conclude the first half of the Big Ten schedule - in the first half, the Spartans will have played seven of its 10 games on the road, hosting just Michigan, Nebraska, and Iowa at Jenison Field House.

• MSU averages 2.56 blocks per set, good for fourth in the Big Ten and 32nd nationally. MSU is behind Minnesota (2.89 blocks/set) and Nebraska (2.85) in the Big Ten. Overall, MSU's 176.5 team blocks is third in the BIG.

• Setter **Rachel Minarick** was named the Big Ten Freshman of the Week on Monday. She posted 33 assists in each match on the road against Maryland and Rutgers. and added a pair of blocks, eight kills, and hit .500 on the weekend. On the season, she is seventh in the BIG in assists per set (10.02), and is 12th in service aces per set (0.27). She is averaging 1.08 kills per set while hitting .415, as well as averaging 2.22 digs, and 0.44 blocks per set.

• **Chloe Reinig** has averaged double-digit kills since Big Ten play began, and has just six matches overall-where she was held with nine kills or fewer. She ranks fourth overall in the Big Ten with 3.74 kills/s, and in BIG play alone, her 4.52 K/s is second.

• **Kori Moster** averages 4.45 digs per set, which ranks third in the Big Ten overall. Her 1,975 career digs ranks eighth all-time in the Big Ten annals.

MSU POSSIBLE LINEUP

	K/s	D/s	B/s	Misc.
L Kori Moster (Sr., Cincinnati, Ohio)	-	4.45	-	Third in BIG with 4.45 D/s; 8th in Big Ten in career digs
DS Kristen Muir (RSo., Canton, Mich.)	-	2.15	-	10 digs vs. Maryland
OPP Allyssah Fitterer (So., Barrie, Ontario)	2.78	0.78	0.93	Double-digit kills in 14 of 18 matches
OH Taylor Galloway (Sr., Portage, Mich.)	1.71	1.81	0.26	Team-best 11 digs at Maryland
OH Chloe Reinig (So., South Lyon, Mich.)	3.74	0.79	0.62	Fourth in BIG (3.74 K/s)
S Rachel Minarick (Fr., Naperville, Ill.)	1.08	2.22	0.44	BIG Freshman of the Week; 7th in BIG in Assists (10.02/s)
MB Jazmine White (Sr., Oshawa, Ontario)	1.35	0.37	1.16	Seventh in BIG in Blk/s;
MB Alyssa Garvelink (Fr., Holland, Mich.)	1.94	0.20	0.95	10 K vs. Rutgers, Iowa

KEY RESERVES

DS Abby Monson (Fr., Lakeville, Minn.)	-	1.05	-	three aces vs. Michigan
DS Ryian Hubbard (Sr., Battle Creek, Mich.)	-	1.24	-	29 A, 14 D, 2 aces vs. LIU-Brooklyn
MB Megan Tompkins (R-Fr., Petoskey, Mich.)	1.73	0.27	0.95	5K, 2 Blk vs. Rutgers
OH Holly Toliver (Fr., Berrien Springs, Mich.)	2.31	0.62	0.38	limited action since returning from injury

SPARTANS AT A GLANCE ... 2014 MICHIGAN STATE SPARTANS

Location East Lansing, Mich.
 Founded 1855
 Enrollment 47,163
 President **Dr. Lou Anna K. Simon**
 Athletics Director **Mark Hollis**
 SWA/Volleyball Administrator **Shelley Appelbaum**
 Conference Big Ten
 Athletic Affiliation NCAA Division I
 Nickname Spartans
 Colors Green (PMS 567) and White
 Arena: Jenison Field House (5,017)

First Season of Varsity Volleyball 1972
 All-Time Record (Years) 746-661-18 (.529, 41 seasons)
 Big Ten Record (Years) 253-369 (32 seasons)

Head Coach **Cathy George** (10th season, 28th overall)
 Alma Mater Illinois State '85
 Career Record (Years) 546-357 (.603, 27 seasons)
 Record at Michigan State (Years) 180-133
 (.573, nine seasons)
 Big Ten Record 80-108

Associate Head Coach **Russ Carney** (10th season)
 Assistant Coach **Mike Gawlik** (10th season)
 Volunteer Assistant Coach **Jim Stone** (first season)
 Athletic Trainer **Lianna Hadden**
 Director of Volleyball Operations **Brittany Holbrook**
 Volleyball Office Phone (517) 353-1756

FOLLOWING THE SPARTANS

The Spartans had 15 regular-season games on the docket for television in the 2014 season. One match will air on the Pac12 Networks, four more on the Big Ten Network, and seven more will be streamed online through BTN Plus. ESPN will carry much of the NCAA Tournament when it begins in December.

In addition, all Big Ten regular-season games will have a live radio broadcast on the Spartan Sports Network, with Keaton Gillogly bringing fans all the action.

Tentative Broadcast Schedule:

Sept. 5 NORTH CAROLINA BTN
 Sept. 12 at Oregon Pac12 Networks
 Sept. 26 at Indiana BTN
 Sept. 27 at Purdue BTN Plus, SSN
 Sept. 30 at Michigan BTN, SSN
 Oct. 3 MICHIGAN BTN Plus, SSN
 Oct. 10 NEBRASKA BTN, SSN
 Oct. 11 IOWA SSN
 Oct. 17 at Maryland BTN Plus, SSN
 Oct. 18 at Rutgers SSN
 Oct. 24 at Ohio State BTN Plus, SSN
 Oct. 25 at Penn State BTN Plus, SSN
 Oct. 31 ILLINOIS BTN, SSN
 Nov. 1 NORTHWESTERN BTN Plus, SSN
 Nov. 7 MINNESOTA SSN
 Nov. 9 WISCONSIN SSN
 Nov. 12 at Nebraska HuskerVision, SSN
 Nov. 15 INDIANA BTN Plus, SSN
 Nov. 19 at Northwestern BTN Plus, SSN
 Nov. 22 RUTGERS SSN
 Nov. 26 PURDUE SSN
 Nov. 29 at Iowa BTN Plus, SSN



ATHLETIC COMMUNICATIONS

Director/Volleyball Contact:
Jamie Baldwin
 Cell: 517-243-3187
 email: jweir@ath.msu.edu
 www.msuspartans.com

No.	Name	Pos.	Ht.	Yr.	Hometown/Last School	Club Team
1	Kori Moster	L	5-4	Sr.	Cincinnati, Ohio/Ursuline Academy	Team Z
2	Kristen Muir	DS	5-7	R-So.	Plymouth, Mich./Canton	Legacy
3	Autumn Christenson	MB	6-4	So.	Whitehall, Mich./Whitehall	Dead Frog/Far Out
4	Halle Peterson	S	5-10	Jr.	Rockford, Mich./Rockford	Dead Frog/Far Out
5	Megan Tompkins	MB	6-3	R-Fr.	Petoskey, Mich./Petoskey	Dead Frog/Far Out
6	Allyssah Fitterer	MB	6-2	So.	Georgetown, Ontario/Assumption Catholic Secondary	Defensa
7	Ryian Hubbard	DS	5-6	Sr.	Battle Creek, Mich./St. Philip Catholic Central	Dead Frog/Far Out
8	Ebony Scott	OH	5-11	R-So.	Powhatan, Va./Powhatan	U-Turn Sports Performance
9	Taylor Galloway	OH	6-1	Sr.	Portage, Mich./Portage Central	Dead Frog/Far Out
10	Abby Monson	DS	5-5	Fr.	Lakeville, Minn./Lakeville North	Northern Lights
11	Chloe Reinig	OH	6-4	So.	South Lyon, Mich./South Lyon	Michigan Elite
12	Rachel Minarick	S	6-2	Fr.	Naperville, Ill./Waubonsie Valley	Sports Performance
13	Brooke Kranda	MB/OPP	6-6	R-Fr.	Westfield, Ind./Westfield	Munciana Samaurai
14	Jazmine White	MB/OH	6-1	Sr.	Oshawa, Ontario/R.S. McLaughlin Institute	Element
15	Marissa Ratzemberger	DS	5-5	Fr.	Rochester Hills, Mich./Rochester Adams	Michigan Elite
16	Maggie Halloran	MB/OH	6-3	Jr.	Ann Arbor, Mich./Ann Arbor Skyline	Premiere
17	Alyssa Garvelink	MB	6-3	Fr.	Holland, Mich./Holland Christian	Michigan Volleyball Academy
18	Holly Toliver	OH	6-2	Fr.	Berrien Springs, Mich./Berrien Springs	Dead Frog/Far Out

PRONUNCIATION GUIDE

Allyssah Fitterer FIT-er-rer
 Mike Gawlik GAHW-lick
 Alyssa Garvelink GAR-vel-ink
 Taylor Galloway GAL-oh-way
 Maggie Halloran HAL-lor-run
 Ryian Hubbard RY-in
 Rachel Minarick mih-NAHR-rick
 Kori Moster MAH-stir
 Halle Peterson HAY-lee
 Chloe Reinig RYE-nig
 Holly Toliver TAHL-la-vur

2014 MICHIGAN STATE STATISTICS

#	Player	Attack					Set		Serve			Dig			Blocking					points		
		sp	k	k/s	e	ta	pct	a	a/s	sa	se	sa/s	re	dig	dig/s	bs	ba	total	blk/s		be	bhe
11	Reinig, Chloe	68	254	3.74	96	612	.258	3	0.04	1	2	0.01	1	54	0.79	9	33	42	0.62	6	1	280.5
6	Fitterer, Allyssah	67	186	2.78	76	456	.241	10	0.15	9	22	0.13	0	52	0.78	7	55	62	0.93	7	1	229.5
17	Garvelink, Alyssa	65	126	1.94	69	323	.176	4	0.06	0	1	0.00	1	13	0.20	7	55	62	0.95	6	1	160.5
9	Galloway, Taylor	69	118	1.71	72	403	.114	17	0.25	11	16	0.16	23	125	1.81	1	17	18	0.26	4	1	138.5
14	White, Jazmine	51	69	1.35	31	178	.213	3	0.06	11	7	0.22	0	19	0.37	4	55	59	1.16	4	0	111.5
12	Minarick, Rachel	63	68	1.08	12	135	.415	631	10.02	17	24	0.27	0	140	2.22	4	24	28	0.44	7	5	101.0
18	Toliver, Holly	26	60	2.31	40	176	.114	0	0.00	3	8	0.12	1	16	0.62	1	9	10	0.38	3	0	68.5
5	Tompkins, Megan	22	38	1.73	17	89	.236	0	0.00	1	3	0.05	0	6	0.27	2	19	21	0.95	2	0	50.5
3	Christenson, Autumn	17	20	1.18	5	43	.349	0	0.00	0	1	0.00	0	2	0.12	1	13	14	0.82	7	0	27.5
16	Halloran, Maggie	3	3	1.00	2	7	.143	0	0.00	0	0	0.00	0	0	0.00	0	0	0	0.00	0	0	3.0
4	Peterson, Halle	9	2	0.22	0	4	.500	40	4.44	1	2	0.11	0	5	0.56	0	1	1	0.11	4	1	3.5
8	Scott, Ebony	4	1	0.25	2	4	-.250	0	0.00	0	0	0.00	0	0	0.00	0	0	0	0.00	0	0	1.0
1	Moster, Kori	69	1	0.01	0	2	.500	74	1.07	17	12	0.25	10	307	4.45	0	0	0	0.00	0	1	18.0
10	Monson, Abby	39	0	0.00	0	1	.000	20	0.51	6	6	0.15	5	41	1.05	0	0	0	0.00	0	0	6.0
7	Hubbard, Ryian	41	0	0.00	0	1	.000	33	0.80	6	4	0.15	4	51	1.24	0	0	0	0.00	1	1	6.0
2	Muir, Kristen	61	0	0.00	0	0	.000	15	0.25	14	15	0.23	6	131	2.15	0	0	0	0.00	0	1	14.0
15	Ratzemberger Marissa	3	0	0.00	0	0	.000	0	0.00	1	1	0.33	1	4	1.33	0	0	0	0.00	0	0	1.0
13	Kranda, Brooke	1	0	0.00	1	2	-.500	0	0.00	0	0	0.00	0	0	0.00	0	0	0	0.00	0	0	0.0
MICHIGAN STATE		69	946	13.71	423	2436	.215	850	12.32	98	124	1.42	60	966	14.00	36	281	176.5	2.56	51	13	1220.5

SCOUTING REPORTS

PENN STATE

Head Coach: **Russ Rose** (36th season)



Top Athletes:

Nia Grant; .479 Hit%, 2.62 K/s
Ali Frantti; 3.22 K/s, .302 Hit%,
Aiyana Whitney; .359 Hit %, 2.70 K/s, 0.97 Blk/s
Micha Hancock; 1.07 SA/s, 11.39 A/s
Dominique Gonzales, 3.58 D/s

OHIO STATE

Head Coach: **Geoff Carlston** (seventh season)



Top Athletes:

Kylie Randall; 1.98 K/s, .245 Hit%
Valeria Leon; 3.53 D/s
Taylor Sandbothe; 1.17 B/s, 2.86 K/s, .338 Hit%
Taylor Sherwin, 9.40 A/s
Erin Sekinger; 3.22 K/s, .225 Hit%

Penn State	TALE OF THE TAPE	Michigan State
18-3, 6-2 B1G (3rd)	Record	12-7, 5-3 B1G (7th)
1042 (14.68), 2nd B1G	Kills (per set)	946 (13.71), 6th B1G
.346, 1st B1G	Attack Percentage	.215, 10th B1G
939 (13.23), 3rd B1G	Assists (per set)	850 (12.32), 11th B1G
140 (1.97), 1st B1G	Aces (per set)	98 (1.42), 3rd B1G
878 (12.37), 13th B1G	Digs (per set)	966 (14.00), 7th B1G
164 (2.32), 6th B1G	Blocks (per set)	176 (2.56), 4th B1G

Ohio State	TALE OF THE TAPE	Michigan State
14-6, 5-3 B1G (T-5th)	Record	12-7, 5-3 B1G (T-5th)
1106 (13.82), 5th B1G	Kills (per set)	946 (13.71), 6th B1G
.237, 8th B1G	Attack Percentage	.215, 10th B1G
1038 (12.98), 5th B1G	Assists (per set)	850 (12.32), 11th B1G
94 (1.17), 9th B1G	Aces (per set)	98 (1.42), 3rd B1G
1113 (13.91), 8th B1G	Digs (per set)	966 (14.00), 7th B1G
182 (2.28), 9th B1G	Blocks (per set)	176 (2.56), 4th B1G

No. 7 Penn State enters the weekend with an overall record of 18-3, and is 6-2 in Big Ten play - matching the total number of losses for the Nittany Lions in B1G play in the 2012 and 2013 seasons combined. PSU lost three All-Americans to graduation after last season's national title, but returned four starters and brought in the top-ranked recruiting class in the country for 2014.

Nia Grant leads the Big Ten with a .479 hitting percentage, and she averages 2.62 kills/s Freshman **Ali Frantti** is the team leader with 3.22 kills per set, hitting .302, and **Aiyana Whitney** hits .359, averages 2.7 k.s, and is the team's block leader at 0.97 per set.. Senior setter **Micha Hancock** ranks second in the league in assists (11.39), and continues to be one of the most effective servers in the country, averaging 1.07 aces per set.

MSU vs. Penn State

Series Record: MSU trails, 7-39

H: 4-18; A: 3-20; N: 0-1

Series Note: MSU upset top-ranked Penn State in the Big Ten opening weekend last season, MSU's first victory in State College since November of 2001. The teams met three times last season - in the Big Ten round robin, and in the Sweet 16 of the NCAA Tournament.

All-Time Series Meetings:

9/13/85	L, 0-3	A	11/9/96	L, 1-3	A	11/1/02	W, 3-2	H	11/7/08	L, 0-3	H
10/12/91	L, 0-3	A	10/25/97	L, 0-3	A	9/26/03	L, 2-3	H	10/17/09	L, 0-3	H
11/8/91	L, 0-3	H	11/28/97	L, 0-3	H	11/15/03	L, 2-3	A	11/27/09	L, 0-3	A
10/9/92	L, 0-3	A	10/17/98	L, 0-3	A	10/16/04	L, 1-3	A	10/1/10	L, 0-3	A
11/7/92	L, 0-3	H	11/20/98	L, 0-3	H	11/27/04	L, 0-3	H	11/6/10	L, 1-3	H
10/22/93	L, 0-3	H	9/24/99	L, 2-3	H	10/15/05	L, 0-3	A	11/26/11	L, 1-3	H
11/20/93	L, 0-3	A	11/13/99	L, 0-3	A	11/25/06	L, 0-3	H	11/24/12	L, 0-3	A
10/7/94	L, 1-3	A	10/6/00	L, 1-3	H	10/21/06	L, 0-3	A	9/27/13	W, 3-0	A
11/5/94	W, 3-2	H	10/28/00	L, 0-3	A	11/17/06	L, 0-3	H	11/2/13	L, 1-3	H
10/21/95	W, 3-2	A	10/19/01	L, 0-3	H	9/21/07	L, 0-3	A	12/13/13	L, 1-3	N
11/17/95	W, 3-0	H	11/17/01	W, 3-1	A	11/10/07	L, 0-3	H			
10/11/96	W, 3-2	H	10/12/02	L, 0-3	A	10/4/08	L, 0-3	A			

After a 10th-place finish in the Big Ten a season ago, the Buckeyes have gotten off to a 14-6 start to the 2014 campaign and 5-3 record in Conference play, tied with MSU for fourth place through four weekends. The Buckeyes are also back in the national polls, sitting at No. 20 this week after beginning the season unranked.

Sophomore **Tyler Sandbothe** is 11th in the Big Ten in hitting percentage, (.338), while averaging 2.86 kills per set and averaging 1.17 blocks, good for 7th in the Conference. **Erin Sekinger** averages 3.22 kills per set, while **Katie Mitchell** chips in 2.75. Setter **Taylor Sherwin** is eighth in the Big Ten with 9.40 assists per set, and libero **Valeria Leon**, the only buckeye to appear in all 80 sets this season, averages 3.53 digs.

The Friday match brings **Jim Stone** back to Columbus. Stone previously led the Ohio State women's volleyball program for 26 years and compiled a 531-294 overall record with the Buckeyes, including a 297-177 record in Big Ten competition. Stone led the Buckeyes to three Big Ten titles and 15 NCAA tournaments, advancing to the NCAA semifinals in 1991 and 1994. Overall, Stone's teams finished the season ranked nationally 16 times, including a No.4-ranking in 1994. Stone earned AVCA Regional Coach of the Year and Big Ten Coach of the Year honors four times, coached 19 AVCA All-Americans, including two AVCA Players of the Year. Seventeen of his student-athletes combined for 31 AVCA All-Region honors, while 26 student-athletes totaled 60 All-Big Ten accolades.

MSU vs. Ohio State

Series Record: MSU trails, 29-44

H: 16-19; A: 9-23; N: 4-2

Series Note: MSU snapped a six-match losing streak to the Buckeyes, sweeping both matches last season by 3-0 margins. It was MSU's first win at St. John Arena since 2008.

All-Time Series Meetings:

10/11/74	W, 2-0	H	10/10/86	L, 2-3	A	11/18/95	W, 3-0	H	10/14/05	L, 1-3	A
10/2/76	W, 2-0	N	11/8/86	W, 3-0	H	10/12/96	W, 3-1	H	11/26/05	L, 2-3	H
10/15/76	W, 2-0	N	9/25/87	L, 1-3	H	11/8/96	L, 1-3	A	10/20/06	L, 0-3	A
10/22/76	W, 2-0	H	11/28/87	L, 2-3	A	10/11/97	L, 1-3	A	11/18/06	L, 0-3	H
10/30/76	W, 2-0	A	9/30/88	L, 1-3	H	11/7/97	L, 0-3	H	9/23/07	L, 0-3	A
11/20/76	W, 2-0	N	10/29/88	L, 1-3	A	10/16/98	W, 3-1	A	11/9/07	W, 3-0	H
9/23/77	L, 0-2	N	10/6/89	W, 3-2	H	11/22/98	W, 3-0	H	9/26/08	W, 3-1	H
10/27/78	W, 2-1	N	11/4/89	L, 0-3	A	9/25/99	W, 3-1	H	11/15/08	W, 3-1	A
10/27/79	L, 0-3	H	9/28/90	L, 0-3	H	11/12/99	W*, 2-3	A	10/16/09	L, 1-3	H
10/24/80	L, 0-2	N	10/27/90	L, 0-3	A	9/22/00	W*, 1-3	A	11/28/09	L, 0-3	A
11/8/80	W, 3-0	H	10/5/91	L, 0-3	H	11/1/00	W, 3-1	H	10/2/10	L, 0-3	A
9/21/82	L, 0-3	A	11/1/91	L, 0-3	A	10/20/01	L, 1-3	H	11/5/10	L, 0-3	H
10/15/82	L, 0-3	H	10/11/92	L, 0-3	A	11/16/01	W, 3-1	A	10/22/11	L, 1-3	A
9/17/83	L, 1-3	A	11/6/92	L, 0-3	H	10/4/02	W, 3-2	H	10/20/12	L, 1-3	H
10/21/83	W, 3-2	H	10/23/93	L, 0-3	H	11/9/02	L, 1-3	A	9/29/13	W, 3-0	A
9/28/84	L, 0-3	H	11/19/93	L, 0-3	A	9/27/03	W, 3-1	H	11/1/13	W, 3-0	H
10/13/84	L, 1-3	A	10/9/94	L, 1-3	A	11/14/03	W, 3-1	A			
9/27/85	L, 0-3	A	11/4/94	L, 0-3	H	10/15/04	L, 0-3	A			
11/30/85	L, 2-3	H	10/20/95	W, 3-1	A	11/27/04	L, 0-3	H			

*MSU awarded win by forfeit

TEAM NOTES

• MSU completes a four-game road swing with a visit to No. 20 Ohio State and No. 7 Penn State.

• Both matches will have a web broadcast on BTN+. In addition, Friday and Saturday's games will have a radio broadcast on SpartanSportsNetwork.com, with play-by-play man **Keaton Gillogly** on the call.

• MSU has won three straight Big Ten matches, all by 3-0 scores. MSU sits in a tie for fourth place in the B1G standings at 5-3, behind 7-1 Wisconsin and Purdue and 6-2 Penn State and Illinois. The OSU and PSU matches conclude the first half of the Big Ten schedule.

• Including the OSU and PSU matches, MSU will have played seven of its first 10 Big Ten games away from Jenison Field House. The Spartans opened with three straight road games in Big Ten play for the first time since 1996, when MSU played at Indiana, Purdue, and Northwestern. The Spartans then played three straight at home in eight days, hosting Michigan, Nebraska, and Iowa, winning two of three. MSU is 3-2 on the road in Big Ten play thus far.

• Ohio State and Penn State are both among the six "one-plays" to appear on MSU's schedule this season. In the scheduling format employed beginning in 2014, each team plays seven teams twice and six teams just once. The Spartans will not get a return game in East Lansing from Penn State, Ohio State, or Maryland; MSU's three home "one plays" are Illinois, Minnesota, and Wisconsin.

• The first RPI for women's Division I volleyball was announced on Monday, Oct. 6, and the Spartans are 38th in this week's ranking.

• MSU averages 2.56 blocks per set, good for fourth in the Big Ten and 32nd nationally. MSU is behind Minnesota (2.89 blocks/set) and Nebraska (2.85) in the B1G. Overall, MSU's 176.5 team blocks is third in the B1G.

• After recording double-digit blocks in its first four Big Ten games, MSU was limited to single-digit block totals in its last four (against Nebraska, Iowa, Maryland, and Rutgers). MSU's four blocks vs. the Scarlet Knights was its fewest in Big Ten play, and the second-fewest in a match this season - the Spartans had just three team blocks in a 3-0 loss to North Carolina back in the second week of the season.

• The Spartans took just 92 swings against Iowa on Oct. 11, its lowest number since having 91 in the season opener against Southeast Louisiana. MSU's .348 hitting percentage was also its best since the opening tournament of the year, when it hit .385, .392, and .364 in its first three matches.

• MSU has limited its opponents to a .157 hitting percentage, good for second in the Big Ten and 31st nationally.

• While MSU ranks sixth in the Big Ten in kills per set (13.71), that total is 46th among Division I programs. UCLA is the national leader at 15.33, and Wisconsin is the B1G pacesetter at 14.74.

• This season, MSU has won the first set in 16 of 19 matches - its only first-set losses came to North Carolina on Sept. 5. (a 3-0 Tar Heel sweep) at Purdue (Sept. 27), and at Michigan (Sept. 30) MSU is 10-3 when winning the first set.

• For the second straight year, **Cathy George** and her staff have brought in a top-seven recruiting class. The 2013 class was ranked No. 7 by PrepVolleyball.com, and the 2014 edition is No. 6.

• The Spartans went 7-4 in non-conference action, but also played the perhaps the toughest pre-Conference schedule in Cathy George's tenure.

• In all, eight of MSU's 11 non-conference opponents won 18 games or more in 2013, and combined for a 63.1% winning percentage.

• While MSU's four pre-Big Ten losses is the most in the Cathy George era, the 1997 team was the last to lose four non-conference games - but like the current team, also played three squads in the top 20 of the AVCA poll that season.

• MSU's final seven non-conference opponents (UNC, Duke, Oregon, Oregon State, Western Kentucky, LIU-Brooklyn, and Milwaukee) went a combined 61-21 (.743) in the non-conference portion the season. Three of those teams (No. 20 North Carolina, No. 19 Duke, and No. 18 Oregon) were in the top 25 when they played MSU, and two others (Oregon State and Western Kentucky) were receiving votes.

• Among other Big Ten teams, only Illinois also played five games against non-conference teams which appeared in the top-25 or are receiving votes. Wisconsin, Michigan, and Nebraska are the teams which also played three top-25 teams in their non-conference schedule.

• MSU went 6-9 against ranked teams in 2013, with four of the losses coming to NCAA finalists Penn State and Wisconsin. MSU is 0-4 this season vs. ranked opponents.

• Michigan State's strong schedule was an effort to acclimate a young team to the rigors of Big Ten play. The Spartans have a seven-member freshman class, and have 12 freshmen and sophomores on an 18-player roster. MSU regularly has six freshmen or sophomores (and a senior libero) on the floor.

• Michigan State fell out of American Volleyball Coaches Association (AVCA) national poll on Sept. 22. The Spartans debuted at No. 16, and now after eight weeks MSU is no longer receiving votes.

• In a streak which was halted Sept. 22, MSU was in the AVCA top 25 for 21 consecutive weeks, the longest streak since appearing for 43 straight weeks from 1995-97.

• Wisconsin (No. 5) overtook Penn State (No. 7) as the highest-ranked Big Ten team in the poll. Illinois (No. 10), Purdue (No. 13), Nebraska (No. 14), Ohio State (No. 20) and Minnesota (No. 25) make it seven teams in the top 25 for the Big Ten, while Michigan is receiving votes.

2014 AVCA COACHES POLL

Rank	School (Votes)	Points	2014 Record	Last Week
1	Stanford (55)	1495	18-0	1
2	Texas (4)	1428	14-0	2
3	Washington (1)	1390	19-0	3
4	Florida State	1317	19-0	4
5	Wisconsin	1253	16-2	5
6	Colorado State	1163	20-1	6
7	Penn State	1158	18-3	7
8	Florida	1084	14-3	8
9	North Carolina	981	15-2	11
10	Illinois	904	14-5	15
11	Oregon	833	15-3	10
12	BYU	821	16-3	9
13	Purdue	788	17-3	14
14	Nebraska	723	11-6	13
15	Arizona	647	16-4	16
16	Kentucky	637	17-3	12
17	UCLA	570	14-5	19
18	Arizona State	480	14-6	17
19	Southern California	402	11-7	18
20	Ohio State	341	14-6	22
21	Duke	273	15-4	21
22	Kansas State	156	17-3	25
23	Long Beach State	138	16-4	NR
24	Texas A&M	129	12-6	20
25	Minnesota	98	13-6	23

Others Receiving Votes and appearing on two or more ballots: Colorado 78; Loyola Marymount 62; Oklahoma 45; San Diego 26; Hawaii 16; UCF 16; Michigan 10; Marquette 8; Santa Clara 8; Pittsburgh 4; Western Kentucky 2

2014 WEEK-BY-WEEK RANKING

	AVCA
Pre-season	16
Sept. 1	14
Sept. 8	23
Sept. 15	25
Sept 22	RV
Sept. 29	-
Oct. 6	-
Oct. 13	-
Oct. 20	-
Oct. 27	-
Nov. 3	-
Nov. 10	-
Nov. 17	-
Nov. 24	-
Dec. 1	-

• MSU lost 55.9% of its kills from its 2013 team to graduation (fourth nationally), 56% of its blocks (third), and 53.9% of its assists (13th).

• The Spartans rank 10th nationally in average attendance, (2,753), as 22,025 fans have taken in a volleyball match at Jenison Field House this season, the 10th highest total among Division I programs.

• MSU shattered its home attendance record in 2013, with 43,368 fans over 15 home matches. MSU brought nearly 10,000 more fans to Jenison Field House last year than it had in 2012. The 43,368 was 11th nationally in 2013; its average of 2,891 per game was also 11th.

PLAYER NOTES

• **Chloe Reinig** has averaged double-digit kills since Big Ten play began, and has just six matches overall this season where she was held with nine kills or fewer. She ranks fourth overall in the Big Ten with 3.74 kills/s, and in B1G play alone, her 4.52 K/s is second.

• **Reinig** has gone for 20+ kills four times this season, including in back-to-back matches vs. Michigan.

• **Reinig** ranks fifth in points (4.12/s). In conference games only, she is averaging 4.86 points, good for second behind Illinois' Joscelyn Birks.

• **Rachel Minarick** was named the Big Ten Freshman of the Week on Monday, Oct. 20, her first such honor of the season. She averaged 11 assists per set in two matches against Maryland and Rutgers last week, helping the Spartans to their first weekend sweep of the season.

• **Minarick** leads the team with five double-doubles this season. Her most recent came against Nebraska (Oct. 10), with 41 assists and 13 digs. She had 39 assists, three service aces, and hit .714 (5-0-7) in the match against Iowa the next night.

• **Minarick** missed the first game of the Spartan Invitational with injury, but averaged 10.5 assists, 1.5 kills, 2.17 digs, and 0.50 blocks per set in the final two matches of the tournament. In her four career Big Ten games, she has averaged 10.74 assists (fourth in the B1G), 1.78 digs, 0.48 blocks, and hit .434 (25-2-53).

• **Minarick** ranks seventh in the Big Ten overall in assists per set (10.02), and second among B1G freshmen in that category. She is also 12th in the league in service aces per set (0.27).

• In Big Ten matches only, **Minarick** is fourth in the league in assists (10.79/set), behind a trio of seniors: Penn State's Micha Hancock (11.52/s), Michigan's Lexi Dannemiller (11.23/s) and Ohio State's Taylor Sherwin (10.91). She is also the top-ranked freshman in the league in service aces (0.34, fifth).

• **Kori Moster** averages 4.45 digs per set, which ranks third in the Big Ten overall and her 4.38 in B1G matches ranks fourth.

• **Moster's** 1,975 career digs ranks eighth all-time in the Big Ten annals, and is eighth among active Division I players. She has held the school record since her junior season. She is seventh among active players in career matches played (123), and 16th in sets played (445).

• **Moster** needs 25 digs to reach the 2,000 plateau, and 33 to move up in the Big Ten standings. 2013 Iowa Graduate Bethany Yeager is Moster's next target in seventh place, with 2,007.

• **Moster** has posted double-digit digs in 16 of the 19 Spartan matches this season; In 123 career matches, Moster has been held with less than 10 digs only 18 times; six of those occasions were her first six collegiate matches.

• **Moster** had nine digs at Rutgers, which was still the team best and a quarter of MSU's total (36). She also added five assists, matching her Big Ten high this season.

• **Moster** is one of the 30 candidates for the Senior CLASS Award. To be eligible for the award, a student-athlete must be classified as an NCAA Division I senior and have notable achievements in four areas of excellence – community, classroom, character and competition. She is also an Academic All-America nominee, boasting a 3.65 GPA as an advertising major.

• **Moster** is the only player in program history to be named the Big Ten Defensive Player of the Year, and she has now done it in back-to-back seasons. She led the Big Ten in 2013 in digs per set (4.70), her career-best average and good for third in the MSU single-season recordbook.

• Senior **Jazmine White** tied her career best with eight blocks at Michigan, and is averaging 1.16 overall (eighth in the Conference) and 1.12 in B1G games, (12th).

• Freshman **Alyssa Garvelink** has been evolving into a steady force for the Spartan front row. She had four kills and four blocks at Maryland last Friday, and then came back on Saturday with 10 kills against Rutgers.

• **Allyssah Fitterer** has double-digit kills in 13 of MSU's 19 matches this season. She had nine in MSU's match against Maryland, but played just one set vs. Rutgers, as the Spartans tested several new lineup combinations throughout the match.

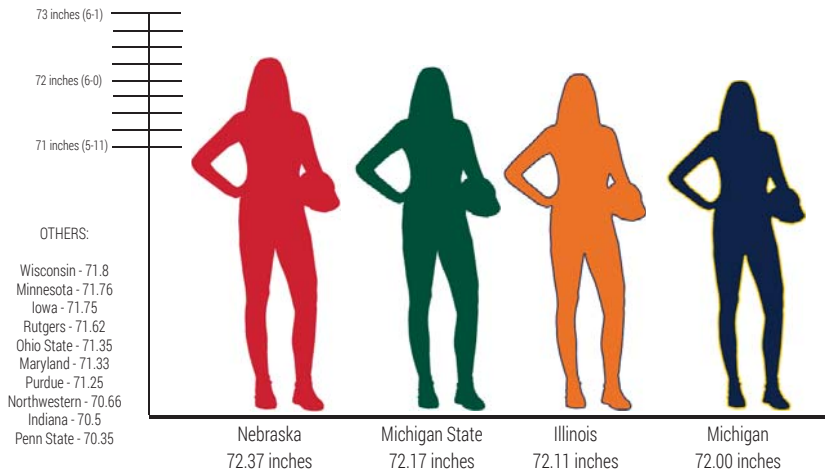
• Freshman DS **Marissa Ratzenberger** made her collegiate debut against Rutgers, and recorded four digs.

• **Moster** and **White** will serve as team captains in the 2014 season. Moster is the third three-time captain in program history, along with **Nikki Colson** (2001-03) and **Katie Johnson** (2005-07).

• Freshman **Holly Toliver**, who is third on the team in kills (2.31), missed eight matches with injury, and played sparingly since being cleared for action. Junior setter **Halle Peterson** was injured in the Oregon match (Sept. 19), and has not yet been cleared to return.

• MSU welcomed four newcomers, a freshman class ranked No. 6 in the country by PrepVolleyball.com. **Alyssa Garvelink**, **Rachel Minarick**, **Abby Monson**, and **Holly Toliver** form the incoming class; Minarick, a two-time AVCA All-American, is the No. 21 Senior Ace by PrepVolleyball.com and last summer was the MVP at club nationals where she led Sports Performance to a National Championship. **Minarick** (No. 22), **Garvelink** (No. 26), and **Toliver** (No. 31) appeared in the rankings by PrepVolleyball.com of the nation's top seniors, while **Monson** was an Honorable Mention.

BIG TEN TEAMS BY AVERAGE HEIGHT





HEAD COACH CATHY GEORGE

Before arriving at Michigan State, Cathy George had already established herself as one of the more well-respected coaches in the sport. Her nine-year tenure on the Spartan sideline has seen the Spartans ascend to one of the elite programs in the country. With consecutive NCAA Regional Semifinal appearances under her belt, arguably the best defensive player in the country on her back line, and back-to-back top-10 recruiting classes dotting her current roster, George is positioning MSU for another strong run in 2014.

George currently boasts a career record of 541-354, and is 176-130 while at MSU. She ranks 29th among active coaches for total wins in NCAA Division I volleyball, and ranks among the top 80 coaches all-time with a career .603 winning percentage.

George has continued the tradition of excellence in the classroom at Michigan State as she has boasted 46 Academic All-Big Ten selections and 10 Big Ten Distinguished Scholars during her time.

The 2013 season was a banner one for the Spartans, who advanced to the Sweet 16 for the second consecutive season and boasted three All-America selections. MSU went 11-1 in the pre-Big Ten portion of its schedule, capturing the Spartan Invitational and Butler Invitational Tournament titles and defeating the NCAA runner-up in 2012, No. 12 Oregon. The team then started the Big Ten season 6-0 and was ranked as high as fifth in the country; the Spartans opened the conference slate with an upset of No. 1 Penn State (3-1) on its home court, and capped its 6-0 start with a 3-1 home win over then-no. 9 Nebraska. In the NCAA Tournament, MSU downed Ohio and host No. 17 Kentucky in the first weekend, drawing No. 2 Penn State in the round of 16; MSU won the first set, but fell to the eventual National Champion Nittany Lions by a 3-1 score.

A 1985 graduate of Illinois State, George helped the Red-birds win three consecutive Missouri Valley Conference titles and NCAA Tournament appearances. A team captain and crafty outside attacker, she was a three-time All-MVC selection and earned all-region honors.

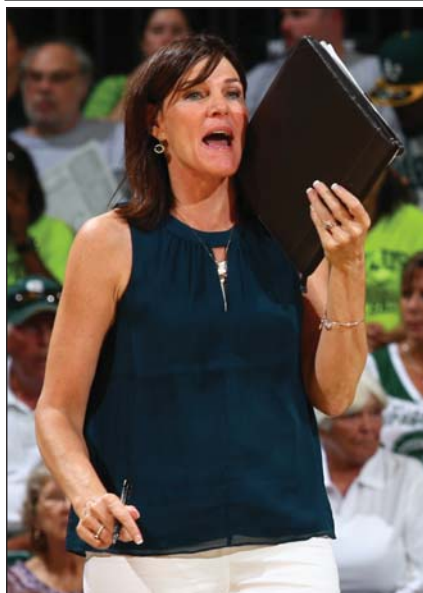
George earned her master's degree in education from Central Michigan in 1987. She and her husband Jerry reside in Okemos with their sons, T.J., 21, and Conner, 17.

THE CATHY GEORGE FILE

- First woman to coach in the NCAA Division I Final Four (1989)
- Enters the season 29th among active coaches (and third in the BIG) with 534 wins
- 46 Academic All-Big Ten honorees
- 11 NCAA Championship appearances
- 16 AVCA All-America recipients
- 14 All-Big Ten selections
- 10 Big Ten Distinguished Scholars
- Four Big Ten All-Freshman selections
- 2000 Mid-American Conference Coach of the Year
- Three-time Southland Conference Coach of the Year (1989, 1990, 1992)
- 1988 NCAA Division II National Coach of the Year
- 1987, 1988 North Central Conference Coach of the Year

GEORGE YEAR-BY-YEAR COACHING RECORD

Year, School	Overall		Conf.		Finish	Conf. Tourn.	NCAA Tourn.
	Record	Pct.	Record	Pct.			
1987, North Dakota State	44-8	.846					1-1
1988, North Dakota State	43-3	.935					2-1
Totals	87-11	.888					3-2
1989, Texas-Arlington	31-4	.886					3-1
1990, Texas-Arlington	18-19	.486					0-1
1991, Texas-Arlington	13-18	.419					
1992, Texas-Arlington	20-14	.588					
1993, Texas-Arlington	11-19	.367					
Totals	93-74	.557					3-2
1994, Western Michigan	10-16	.385	6-11	.353	T-7th	DNQ	
1995, Western Michigan	8-20	.286	5-12	.294	8th	DNQ	
1996, Western Michigan	20-8	.714	10-7	.588	T-3rd	DNQ	
1997, Western Michigan	13-15	.464	9-7	.563	3rd (West)	0-1	
1998, Western Michigan	19-13	.594	11-7	.611	3rd (West)	0-1	
1999, Western Michigan	25-7	.781	15-3	.833	2nd (West)	2-1	
2000, Western Michigan	25-6	.806	17-1	.944	1st (West)	3-0	0-1
2001, Western Michigan	15-11	.577	10-8	.556	T-4th (West)	0-1	
2002, Western Michigan	14-18	.438	8-10	.444	T-3rd (West)	0-1	
2003, Western Michigan	17-14	.548	8-8	.500	T-3rd (West)	1-1	
2004, Western Michigan	19-11	.633	11-5	.688	2nd (West)	2-1	
Totals	185-139	.571	110-79	.582		8-7	0-1
2005, Michigan State	12-18	.400	5-15	.250	9th		
2006, Michigan State	19-12	.612	10-10	.500	6th		0-1
2007, Michigan State	21-14	.600	10-10	.500	5th		2-1
2008, Michigan State	15-16	.483	7-13	.350	T-7th		
2009, Michigan State	17-16	.515	5-15	.250	T-10th		0-1
2010, Michigan State	15-16	.484	7-13	.350	9th		
2011, Michigan State	22-12	.647	10-10	.500	6th		1-1
2012, Michigan State	25-10	.714	11-9	.550	6th		2-1
2013, Michigan State	23-12	.657	10-10	.500	7th		2-1
Totals	169-126	.554	75-105	.417			7-6
Totals (27 seasons)	534-350	.604				8-7	13-11



2014 BIG TEN WEEKLY HONORS

- Sept. 1 P: Liz McMahon, Sr., ILL
D: Taylor Morey, Jr., WIS
S: Val Nichol, Sr., PUR
F: Ali Frantti, PSU
- Sept. 8 P: Courtney Thomas, Sr., WIS
D: Taylor Sandbothe, Sr., OSU
D: Taylor Morey, Jr., WIS
S: Lauren Carlini, So., WIS
F: Ali Frantti, PSU
- Sept. 15 P: Nia Grant, Sr. PSU
D: Caroline Niedospial, Jr., NU
S: Micha Hancock, Sr., PSU
F: Symone Abbott, NU
- Sept. 22 P: Sarah Wilhite, So., MINN
D: Paige Tapp, So., MINN
S: Micha Hancock, Sr., PSU
S: Lauren Carlini, So., WIS
F: Brandi Donnelly, ILL
- Sept. 29 P: Jocelynn Birks, Jr., ILL
D: Dominique Gonzalez, Sr., PSU
S: Micha Hancock, Sr., PSU
F: Taylor Tashima, NU
- Oct. 6 P: Elizabeth Campbell, Jr., OSU
D: Awele Nwaeze, Jr., IND
S: Taylor Sherwin, Sr., OSU
F: Brandi Donnelly, ILL
F: Symone Abbott, NU
- Oct. 13 P: Abby Cole, So., MICH
D: Valeria Leon, So., OSU
S: Lexi Dannemiller, Sr., MICH
F: Adeja Lambert, MICH
- Oct. 20 P: Abby Cole, So., MICH
D: Katie Stadick, So., ILL
D: Taylor Morey, Jr., WIS
S: Alexis Viliunas, Jr., ILL
F: Rachel Minarick, MSU



THIS WEEK IN THE BIG TEN

2014 BIG TEN STANDINGS

	OVERALL	BIG
Wisconsin	16-2 .889	7-1 .875
Purdue	17-3 .850	7-1 .875
Penn State	18-3 .857	6-2 .750
Illinois	14-5 .737	6-2 .750
Ohio State	14-6 .700	5-3 .625
Nebraska	11-6 .647	5-3 .625
Michigan State	12-7 .632	5-3 .625
Michigan	10-8 .556	5-3 .625
Minnesota	13-6 .684	3-5 .375
Northwestern	13-6 .684	3-5 .375
Indiana	12-8 .600	3-5 .375
Iowa	9-10 .474	1-7 .125
Maryland	7-12 .368	0-8 .000
Rutgers	7-14 .333	0-8 .000

THIS WEEK'S SCHEDULE

- Tuesday, Oct. 21
Rutgers at Maryland
- Wednesday, Oct. 22
Iowa at Wisconsin
Nebraska at Minnesota
- Friday, Oct. 24
Michigan State at Ohio State
Michigan at Penn State
Indiana at Illinois
Purdue at Northwestern
- Saturday, Oct. 25
Michigan State at Penn State
Maryland at Rutgers
Michigan at Ohio State
Purdue at Illinois
Indiana at Northwestern
Iowa at Minnesota
- Sunday, Oct. 26
Nebraska at Wisconsin

BIG TEN OVERALL STATISTICAL RANKINGS

(INCLUDES GAMES OF OCT. 18)

	Team	Rank	Total
Aces Per Set:	MSU	3	1.42
<i>Big Ten Leader:</i>	<i>Penn State</i>		<i>1.97</i>
Assists Per Set:	MSU	11	12.32
<i>Big Ten Leader:</i>	<i>Wisconsin</i>		<i>13.64</i>
Blocks Per Set:	MSU	4	2.56
<i>Big Ten Leader:</i>	<i>Minnesota</i>		<i>2.95</i>
Digs Per Set:	MSU	7	14.00
<i>Big Ten Leader:</i>	<i>Wisconsin</i>		<i>16.64</i>
Hitting Percentage:	MSU	10	.215
<i>Big Ten Leader:</i>	<i>Penn State</i>		<i>.346</i>
Kills Per Set:	MSU	6	13.71
<i>Big Ten Leader:</i>	<i>Wisconsin</i>		<i>14.72</i>
Opponent Hitting Pct.:	MSU	2	.157
<i>Big Ten Leader:</i>	<i>Penn State</i>		<i>.153</i>

BIG TEN CONFERENCE STATISTICAL RANKINGS

(INCLUDES GAMES OF OCT 18 - BIG TEN CONTESTS ONLY)

	Team	Rank	Total
Aces Per Set:	MSU	3	1.31
<i>Big Ten Leader:</i>	<i>Penn State</i>		<i>1.79</i>
Assists Per Set:	MSU	7	12.69
<i>Big Ten Leader:</i>	<i>Illinois</i>		<i>13.97</i>
Blocks Per Set:	MSU	6	2.60
<i>Big Ten Leader:</i>	<i>Minnesota</i>		<i>2.91</i>
Digs Per Set:	MSU	7	13.72
<i>Big Ten Leader:</i>	<i>Wisconsin</i>		<i>17.00</i>
Hitting Percentage:	MSU	9	.186
<i>Big Ten Leader:</i>	<i>Penn State</i>		<i>.288</i>
Kills Per Set:	MSU	7	13.76
<i>Big Ten Leader:</i>	<i>Illinois</i>		<i>14.65</i>
Opponent Hitting Pct.:	MSU	2	.152
<i>Big Ten Leader:</i>	<i>Wisconsin</i>		<i>.146</i>

Individual (Overall)	Player	Rank	Total
Aces Per Set:	Rachel Minarick	12	0.27
<i>Big Ten Leader:</i>	<i>Micha Hancock, Penn State</i>		<i>1.07</i>
Blocks Per Set:	Jazmine White	8	1.16
<i>Big Ten Leader:</i>	<i>Katie Stadick, Illinois</i>		<i>1.40</i>
Digs Per Set:	Kori Moster	3	4.45
<i>Big Ten Leader:</i>	<i>Taylor Morey, Wisconsin</i>		<i>5.43</i>
Hitting Percentage:	Chloe Reinig	--	.258
<i>Big Ten Leader:</i>	<i>Nia Grant, Penn State</i>		<i>.479</i>
Kills Per Set:	Chloe Reinig	4	3.74
<i>Big Ten Leader:</i>	<i>Annie Drews, Purdue</i>		<i>4.21</i>
Assists:	Rachel Minarick	7	10.02
<i>Big Ten Leader:</i>	<i>Lauren Carlini, Wisconsin</i>		<i>11.43</i>

Individual (Overall)	Player	Rank	Total
Aces Per Set:	Rachel Minarick	5	0.34
<i>Big Ten Leader:</i>	<i>Micha Hancock, Penn State</i>		<i>0.93</i>
Blocks Per Set:	Jazmine White	12	1.12
<i>Big Ten Leader:</i>	<i>Katie Stadick, Illinois</i>		<i>1.64</i>
Digs Per Set:	Kori Moster	4	4.38
<i>Big Ten Leader:</i>	<i>Taylor Morey, Wisconsin</i>		<i>5.24</i>
Hitting Percentage:	Alyssah Fitterer	--	.264
<i>Big Ten Leader:</i>	<i>Abby Cole, Michigan</i>		<i>.440</i>
Kills Per Set:	Chloe Reinig	2	4.52
<i>Big Ten Leader:</i>	<i>Jocelynn, Illinois</i>		<i>4.58</i>
Assists:	Rachel Minarick	4	10.79
<i>Big Ten Leader:</i>	<i>Micha Hancock, Penn State</i>		<i>11.52</i>



1 KORI MOSTER
MAH-stir
Sr., L, 5-4
Cincinnati, Ohio



2 KRISTEN MUIR
R-So., DS, 5-7
Plymouth, Mich.



3 AUTUMN CHRISTENSON
So., MB, 6-4
Whitehall, Mich.



4 HALLE PETERSON
HAY-lee
Jr., S, 5-10
Rockford, Mich.



5 MEGAN TOMPKINS
R-Fr., MB, 6-3
Petoskey, Mich.



6 ALLYSSAH FITTERER
FIT-er-rer
So., MB/OPP, 6-2
Georgetown, Ontario



7 RYLAN HUBBARD
RYAN
Sr., DS, 5-6
Battle Creek, Mich.



8 EBONY SCOTT
R-So., OH, 5-11
Powhatan, Va.



9 TAYLOR GALLOWAY
GAL-oh-way
Sr., OH, 6-1
Portage, Mich.



10 ABBY MONSON
Fr., DS, 5-5
Lakeville, Minn.



11 CHLOE REINIG
RYE-nig
So., OH, 6-4
South Lyon, Mich.



12 RACHEL MINARICK
mih-NAR-ick
Fr., S, 6-2
Naperville, Ill.



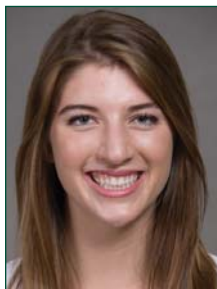
13 BROOKE KRANDA
CRAN-dah
R-Fr., OPP, 6-6
Westfield, Ind.



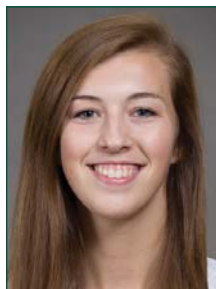
14 JAZMINE WHITE
Sr, MB/OH, 6-1
Oshawa, Ontario



15 MARISSA RATZENBERGER
Fr., DS, 5-5
Rochester, Mich.



16 MAGGIE HALLORAN
HAL-lah-run
Jr., MB/OH, 6-3
Ann Arbor, Mich.



17 ALYSSA GARVELINK
GAR-vel-link
Fr., MB, 6-3
Holland, Mich.



18 HOLLY TOLIVER
TAHL-la-vur
Fr., OH, 6-3
Berrien Springs, Mich.



CATHY GEORGE
Head Coach
Tenth season at MSU



RUSS CARNEY
Associate Head Coach
Tenth season at MSU



MIKE GAWLIK
Assistant Coach
Tenth season at MSU



JIM STONE
Volunteer Assistant Coach
First season at MSU



LIANNA HADDEN
Athletic Trainer

2014 MICHIGAN STATE VOLLEYBALL STATISTICS

Overall record: 12-7 Conf: 5-3 Home: 4-4 Away: 6-3 Neutral: 2-0

#	Player	sp	Attack				pct	Set		Serve			re	Dig		Blocking					points	
			k	k/s	e	ta		a	a/s	sa	se	sa/s		dig	dig/s	bs	ba	total	blk/s	be		bhe
11	Reinig, Chloe	68	254	3.74	96	612	.258	3	0.04	1	2	0.01	1	54	0.79	9	33	42	0.62	6	1	280.5
6	Fitterer, Allyssah	67	186	2.78	76	456	.241	10	0.15	9	22	0.13	0	52	0.78	7	55	62	0.93	7	1	229.5
17	Garvelink, Alyssa	65	126	1.94	69	323	.176	4	0.06	0	1	0.00	1	13	0.20	7	55	62	0.95	6	1	160.5
9	Galloway, Taylor	69	118	1.71	72	403	.114	17	0.25	11	16	0.16	23	125	1.81	1	17	18	0.26	4	1	138.5
14	White, Jazmine	51	69	1.35	31	178	.213	3	0.06	11	7	0.22	0	19	0.37	4	55	59	1.16	4	0	111.5
12	Minarick, Rachel	63	68	1.08	12	135	.415	631	10.02	17	24	0.27	0	140	2.22	4	24	28	0.44	7	5	101.0
18	Toliver, Holly	26	60	2.31	40	176	.114	0	0.00	3	8	0.12	1	16	0.62	1	9	10	0.38	3	0	68.5
5	Tompkins, Megan	22	38	1.73	17	89	.236	0	0.00	1	3	0.05	0	6	0.27	2	19	21	0.95	2	0	50.5
3	Christenson, Autumn	17	20	1.18	5	43	.349	0	0.00	0	1	0.00	0	2	0.12	1	13	14	0.82	7	0	27.5
16	Halloran, Maggie	3	3	1.00	2	7	.143	0	0.00	0	0	0.00	0	0	0.00	0	0	0	0.00	0	0	3.0
4	Peterson, Halle	9	2	0.22	0	4	.500	40	4.44	1	2	0.11	0	5	0.56	0	1	1	0.11	4	1	3.5
8	Scott, Ebony	4	1	0.25	2	4	-.250	0	0.00	0	0	0.00	0	0	0.00	0	0	0	0.00	0	0	1.0
1	Moster, Kori	69	1	0.01	0	2	.500	74	1.07	17	12	0.25	10	307	4.45	0	0	0	0.00	0	1	18.0
10	Monson, Abby	39	0	0.00	0	1	.000	20	0.51	6	6	0.15	5	41	1.05	0	0	0	0.00	0	0	6.0
7	Hubbard, Ryian	41	0	0.00	0	1	.000	33	0.80	6	4	0.15	4	51	1.24	0	0	0	0.00	1	1	6.0
2	Muir, Kristen	61	0	0.00	0	0	.000	15	0.25	14	15	0.23	6	131	2.15	0	0	0	0.00	0	1	14.0
15	Ratzenberger Marissa	3	0	0.00	0	0	.000	0	0.00	1	1	0.33	1	4	1.33	0	0	0	0.00	0	0	1.0
13	Kranda, Brooke	1	0	0.00	1	2	-.500	0	0.00	0	0	0.00	0	0	0.00	0	0	0	0.00	0	0	0.0
MICHIGAN STATE		69	946	13.71	423	2436	.215	850	12.32	98	124	1.42	60	966	14.00	36	281	176.5	2.56	51	13	1220.5
Opponents		69	774	11.22	412	2308	.157	745	10.80	60	117	0.87	98	929	13.46	35	190	130.0	1.88	26	19	964.0

Team Statistics	MSU	OPP
ATTACK		
Kills	946	774
Errors	423	412
Total Attacks	2436	2308
Attack Pct	.215	.157
Kills/Set	13.7	11.2
SET		
Assists	850	745
Attempts	2364	2353
Assist Pct	.360	.317
Assists/Set	12.3	10.8
SERVE		
Aces	98	60
Errors	124	117
Attempts	1606	1422
Serve Pct	.923	.918
Aces/Set	1.4	0.9
SERVE RECEPTIONS		
Errors	60	98
Errors/Set	0.9	1.4
Attempts	1303	1477
Reception Pct	.954	.934
DEFENSE		
Digs	966	929
Digs/Set	14.0	13.5
BLOCKING		
Block Solo	36	35
Block Assist	281	190
Total Blocks	176.5	130.0
Blocks/Set	2.6	1.9
Block Errors	51	26
Ball handling errors	13	19
ATTENDANCE		
Total	22025	12608
Dates/Avg Per Date	8/2753	9/1401
Neutral site #/Avg	2/168	-
Current win streak	3	-
Home win streak	1	-

Date	Opponent	Score	Score by set	Att.
&Aug 29	vs Southeastern La.	w 3-0	25-8,25-11,25-21	87
&Aug 29	at UAB	w 3-0	25-20,25-10,25-19	322
&Aug 30	vs Jacksonville State	w 3-0	25-15,25-14,25-10	250
&Aug 30	at Samford	w 3-1	25-12,25-12,31-33,25-19	812
Sep 05	#20 NORTH CAROLINA	L 0-3	17-25,20-25,22-25	2307
Sep 06	#19 DUKE	L 2-3	25-12,22-25,25-23,23-25,10-15	2396
Sep 12	at #18 Oregon	L 1-3	25-22,13-25,15-25,12-25	1357
Sep 13	at Oregon State	w 3-1	26-24,24-26,25-23,25-21	933
#Sep 19	LIU-BROOKLYN	L 2-3	25-22,21-25,20-25,26-24,13-15	2327
#Sep 19	WESTERN KENTUCKY	w 3-0	25-11,25-21,25-16	2008
#Sep 20	UW-MILWAUKEE	w 3-0	25-19,25-8,25-16	1469
*Sep 26	at Indiana	w 3-1	25-17,25-18,22-25,25-21	868
*Sep 27	at Purdue	L 1-3	22-25,22-25,28-26,23-25	2800
*Sep 30	at Michigan	L 1-3	20-25,25-22,24-26,23-25	1137
*Oct 03	MICHIGAN	w 3-1	25-21,29-31,25-23,26-24	6218
*Oct 10	#8 NEBRASKA	L 1-3	20-25,18-25,25-22,23-25	2778
*Oct 11	IOWA	w 3-0	25-15,25-17,25-18	2522
*Oct 17	at Maryland	w 3-0	25-23,25-14,25-21	4173
*Oct 18	at Rutgers	w 3-0	25-16,25-21,25-21	206

& - UAB/Samford Invitational (Birmingham, AL)

- Auto-Owners Insurance Spartan Invitational (East Lansing, MI)

Record in 3-set matches:8-1 • Record in 4-set matches:4-4 • Record in 5-set matches:0-2

2014 MICHIGAN STATE VOLLEYBALL MATCH-BY-MATCH RESULTS

Date	Opponent	Result	High Kills	High Hitting % (min. 6 K)	High Assists	High Digs	High Blocks
Aug. 29	SE Louisiana	W, 3-0 (25-8, 25-11, 25-21)	Toliver - 14 #	Fitterer (.562, 10-1-16) #	Minarick - 23	Moster - 17	Four with - 2
Aug. 29	UAB	W, 3-0 (25-20, 25-10, 25-19)	Toliver, Fitterer - 10	Minarick (.667, 5-1-6) #	Minarick - 37	Moster - 11	Garvelink - 4
Aug. 30	Jacksonville State	W, 3-0 (25-15, 25-14, 25-10)	Fitterer-10	Christenson (.600, 7-1-10) #	Minarick - 28	Minarick - 12	Christenson- 5#
Aug. 30	Samford	W, 3-1 (25-12, 25-12, 13-33, 25-19)	Fitterer- 16	Fitterer (.462, 16-4-26)	Minarick- 35	Moster - 16	Garvelink - 7#
Sept. 5	No. 20 NORTH CAROLINA	L, 0-3 (17-25, 20-25, 22-25)	Reinig - 9	Reinig (.294, 9-4-17)	Minarick - 21	Moster - 6	Fitterer - 2
Sept. 6	No. 19 DUKE	L, 2-3 (25-12, 22-25, 25-23, 23-25, 10-15)	Fitterer - 14	Garvelink (.455, 6-1-11)	Minarick - 42	Moster - 24	Tompkins - 6#
Sept. 12	at No. 18 Oregon	L, 1-3 (25-22, 13-25, 15-25, 13-25)	Galloway - 9	Minarick (.462, 6-0-13)	Peterson - 16	Moster - 25	Tompkins - 4
Sept. 13	at Oregon State (RV)	W, 3-1 (26-24, 24-26, 25-23, 25-21)	Reinig - 20	White (.286, 7-3-14)	Minarick- 55 #	Moster - 27	Reinig - 5
Sept. 19	LIU-BROOKLYN	L, 2-3 (25-22, 21-25, 20-25, 26-24, 13-15)	Reinig - 24	Fitterer (.250, 12-4-32)	Hubbard - 29 #	Moster - 21	White - 8 #
	WESTERN KENTUCKY (RV)	W, 3-0 (25-11, 25-21, 25-16)	Reinig- 12	Reinig (.632, 12-0-19) #	Minarick-34	Moster - 11	Fitterer - 5
Sept. 20	MILWAUKEE	W, 3-0 (25-19, 25-8, 25-16)	Fitterer - 11	Fitterer (.381, 11-3-21)	Minarick- 29	Moster - 15	White- 6
Sept. 26	at Indiana *	W, 3-1 (25-17, 25-18, 22-25, 25-21)	Fitterer, Reinig - 13	Fitterer (.417, 13-3-24)	Minarick - 38	Moster - 14	Garvelink - 7 #
Sept. 27	at No. 15 Purdue *	L, 1-3 (22-25, 22-25, 28-26, 23-25)	Reinig - 15	White (.357, 6-1-14)	Minarick - 42	Moster - 23	White - 7
Sept. 30	at Michgian *	L, 1-3 (20-25, 25-22, 24-26, 23-25)	Reinig - 23	Reinig (.296, 23-7-54)	Minarik - 43	Moster - 22	White - 8 #
Oct. 3	MICHIGAN *	W, 3-1 (25-21, 29-31, 25-23, 26-24)	Reinig - 26 #	Minarick (.636, 7-0-11)	Minarick - 44	Moster - 17	Garvelink - 6
Oct. 10	No. 8 NEBRASKA *	L, 1-3 (20-25, 18-25, 25-22, 23-25)	Reinig - 15	Fitterer (.200, 10-5-25)	Minarick - 41	Moster - 19	Fitterer- 4
Oct. 11	IOWA *	W, 3-0 (25-15, 25-17, 25-18)	Reinig - 11	Reinig (.474, 11-2-19)	Minarick - 39	Moster - 13	Garvelink - 3
Oct. 17	at Maryland *	W, 3-0 (25-23, 25-14, 25-21)	Reinig - 16	Fitterer (.300, 9-3-20)	Minarick - 33	Galloway - 11	Garvelink - 4
Oct. 18	at Rutgers *	W, 3-0 (25-16, 25-21, 25-21)	Reinig-12	Reinig (.171,12-6-35)	Minarick - 33	Moster - 9	Tompkins - 2
Oct. 24	at Ohio State *						
Oct. 25	at Penn State *						
Oct. 31	ILLINOIS *						
Nov. 1	NORTHWESTERN *						
Nov. 7	MINNESOTA *						
Nov. 9	WISCONSIN *						
Nov. 12	at Nebraska *						
Nov. 15	INDIANA *						
Nov. 19	at Northwestern *						
Nov. 22	RUTGERS *						
Nov. 26	PURDUE *						
Nov. 29	at Iowa *						

- player career high

THE LAST TIME MSU ...

Won a match at Rutgers, 10/18/14
 Lost a match vs. No. 8 Nebraska, 10/10/14
 Won at home vs. Iowa, 10/11/14
 Lost at home vs. No. 8 Nebraska, 10/10/14
 Won on the road at Rutgers, 10/18/14
 Lost on the road at Michigan, 9/30/14
 Won 3-0 at Rutgers, 10/18/14
 Lost 3-0 vs. No. 20 North Carolina, 9/5/14
 Won 3-0 at home vs. Iowa, 10/11/14
 Lost 3-0 at home vs. No. 20 North Carolina, 9/5/14
 Won 3-0 on the road at Rutgers, 10/18/14
 Lost 3-0 on the road at No. 9 Nebraska, 11/15/13

Won in four sets vs. Michigan, 10/3/14
 Lost in four sets vs. No. 8 Nebraska, 10/10/14
 Won in five sets at No. 1 Penn State, 9/27/13
 Lost in five sets vs. LIU-Brooklyn, 9/19/14
 Beat a BIG team at Rutgers, 10/18/14
 Lost to a BIG team vs. No. 8 Nebraska, 10/10/14
 Beat a BIG team 3-0 at Rutgers, 10/18/14
 Lost to a BIG team 3-0 at No. 9 Nebraska, 11/15/13
 Beat a BIG team at home vs. Iowa, 10/11/14
 Lost to a BIG team at home vs. No. 8 Nebraska, 10/10/14
 Beat a BIG team on the road at Rutgers, 10/18/14
 Lost to a BIG team on the road at Michigan, 9/30/13

Beat a non-conference team vs. Milwaukee, 9/20/14
 Lost to a non-conference team vs. LIU-Brooklyn, 9/19/14
 Beat a non-conference team 3-0 vs. Milwaukee, 9/20/14
 Lost to a non-conference team 3-0 vs. Pacific, 8/31/13
 Beat a non-conference team at home vs. Milwaukee, 9/20/14
 Lost to a non-conference team at home vs. LIU-Brooklyn, 9/19/14
 Beat a non-conference team on the road at Oregon State, 9/13/14
 Lost to a non-conference team on the road at No. 18 Oregon, 9/12/14
 Beat a ranked team at No. 17 Kentucky, 12/8/13
 Lost to a ranked team vs. No. 8 Nebraska, 10/10/14
 Beat an unranked team at Rutgers, 10/18/14
 Lost to an unranked team at Michigan, 9/30/14

2014 DOUBLE-DOUBLES

Galloway, Taylor	17 kills, 12 digs; at Oregon State, Sep 13, 2014
Galloway, Taylor	13 kills, 12 digs; LIU-BROOKLYN, Sep 19, 2014
Hubbard, Ryan	29 assists, 14 digs; LIU-BROOKLYN, Sep 19, 2014
Minarick, Rachel	28 assists, 12 digs; vs Jacksonville State, Aug 30, 2014
Minarick, Rachel	14 assists, 13 digs; at Oregon, Sep 12, 2014
Minarick, Rachel	55 assists, 19 digs; at Oregon State, Sep 13, 2014
Minarick, Rachel	43 assists, 11 digs; at Michigan, Sep 30, 2014
Minarick, Rachel	41 assists, 13 digs; NEBRASKA, Oct 10, 2014
Monson, Abby	17 assists, 13 digs; LIU-BROOKLYN, Sep 19, 2014

CAREER DOUBLE-DOUBLES:

Galloway (9), Peterson (4), Minarick (5), Hubbard (2), Monson (1)

2014 SPARTAN HONOR ROLL

Team Honors
 Preseason No. 6 - Big Ten Coaches Poll
 Preseason No. 16 - AVCA National Poll
 UAB/Samford Invitational Champions

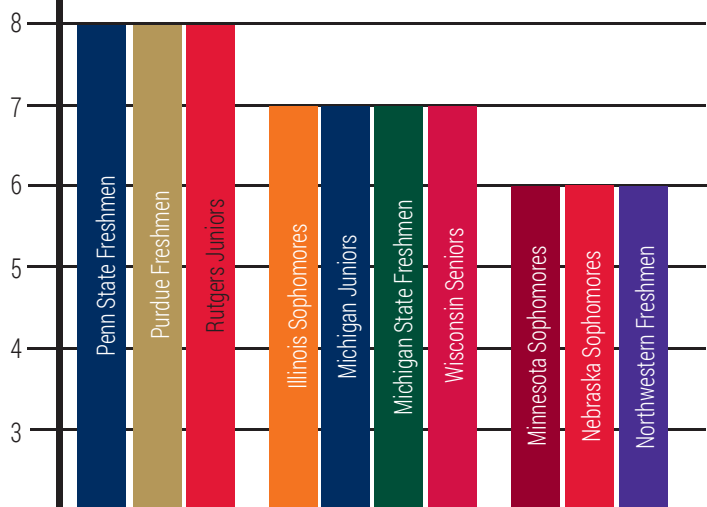
Allyssah Fitterer
 UAB/Samford Invitational Most Valuable Player
 Spartan Invitational All-Tournament Team

Rachel Minarick
 Big Ten Freshman of the Week (Oct. 20)

Kori Moster
 USA Volleyball Collegiate National Team
 Senior CLASS Award Nominee
 Unanimous Preseason All-Big Ten
 UAB/Samford Invitational All-Tournament Team

Chloe Reinig
 UAB/Samford Invitational All-Tournament Team
 Spartan Invitational All-Tournament Team

LARGEST CLASSES IN THE BIG TEN



FRESHMEN	SOPHOMORES	JUNIORS	SENIORS
8 Penn State	7 Illinois	8 Rutgers	7 Wisconsin
8 Purdue	6 Minnesota	7 Michigan	5 Iowa
7 Michigan State	5 Nebraska	5 Illinois	4 Maryland
6 Northwestern	5 Indiana	5 Indiana	Michigan State
	Maryland	Maryland	Northwestern
	Michigan State		Ohio State
	Northwestern		Penn State

2014 SITUATIONAL RECORDS

Category.....	Record
Overall.....	12-7
At Jenison Field House.....	4-4
At Opponent.....	6-3
At a Neutral Site.....	2-0
On Television.....	1-4
While Ranked in Top 25.....	7-4
While Not Ranked in Top 25.....	3-3
Against Top-5 Teams.....	0-0
Against Top-10 Teams.....	0-1
Against Top-25 Teams.....	0-4
Against Teams Receiving Votes in AVCA Poll.....	2-0
Against Unranked Teams.....	11-2
After a Win.....	8-3
After a Loss.....	4-3
By Date...	
On Tuesday.....	0-1
On Wednesday.....	0-0
On Friday.....	6-4
On Saturday.....	6-2
On Sunday.....	0-0
In August.....	4-0
In September.....	4-6
In October.....	4-1
In November.....	0-0
In December.....	0-0
Big Ten Matches.....	5-3
Non-Conference Matches.....	7-4
After Winning Thursday/Friday Match.....	3-1
After Losing Thursday/Friday Match.....	2-1
By Sets...	
In Three Sets.....	8-1
In Four Sets.....	4-4
In Five Sets.....	0-2
Winning the First Set.....	12-3
Losing the First Set.....	0-4
Winning the First Two Sets.....	9-0
Losing the First Two Sets.....	0-2
Tied After Two Sets.....	3-4
Leading After Three Sets.....	4-1
Trailing After Three Sets.....	0-5
Sets Over 25 Points.....	4-4
Fifth Sets Over 15 Points.....	0-0
By Hitting Percentage...	
Leads In Hit Percentage.....	12-1
Trails In Hit Percentage.....	0-6
Tied In Hit Percentage.....	0-0
When MSU Hits .400 and Above.....	0-0
When MSU Hits .300 - .399.....	5-0
When MSU Hits .200 - .299.....	2-0
When MSU Hits .100 - .199.....	3-3
When MSU Hits .099 and below.....	0-1
By Opponents' Hitting Percentage	
When Opp. Hits .400 and Above.....	0-1
When Opp. Hits .300 - .399.....	0-1
When Opp. Hits .200 - .299.....	0-0
When Opp. Hits .100 - .199.....	6-5
When Opp. Hits .099 and below.....	6-0
By Kills...	
Leading In Kills.....	12-3
Trailing In Kills.....	0-3
Tied In Kills.....	0-1
By Blocks...	
Leading in Blocks.....	9-4
Trailing in Blocks.....	2-3
Tied in Blocks.....	1-0
By Digs...	
Leading in Digs.....	10-2
Trailing in Digs.....	2-5
Tied in Digs.....	0-0
By Service Aces...	
Leading in Service Aces.....	10-2
Trailing in Service Aces.....	3-5
Tied in Service Aces.....	0-0

Sophomore: (2014): Had seven kills, a career-best five blocks against Jacksonville State during the UAB/Samford Invitational (8/29-30), hitting a career-best .600 (7-1-10) ... Finished off the UAB/Samford Invite with two kills on three swings in a four-set win over Samford ... Had a season-best 16 attempts against LIU-Brooklyn (9/19), recording five kills ... Also had four blocks against the Blackbirds ... Came in off the bench at Indiana to have a kill and a pair of blocks (9/26) ... Hit .750 with three kills and a solo block in a win at Rutgers (10/18) ...

3 AUTUMN CHRISTENSON



Sophomore
Middle Blocker • 6-4
Whitehall, Mich. / Whitehall
Club: Dead Frog/Far Out
 @AutumnChriste14

CHRISTENSON 2014 MATCH-BY-MATCH STATISTICS

Date	Opponent	sp	attack				set			serve			recept			blocking				team hit%	score				
			k	e	ta	pct	a	ta	pct	sa	se	ta	pct	re	ta	pct	dig	bs	ba			be	total		
Aug 29, 2014	vs Southeastern La.	1	0	1	1	-1.000	0	0	.000	0	0	0	.000	0	0	.000	0	0	2	1	2.0	0	1.0	.385	3-0
Aug 30, 2014	vs Jacksonville State	2	7	1	10	.600	0	0	.000	0	0	0	.000	0	0	.000	0	0	5	1	5.0	0	9.5	.364	3-0
Aug 30, 2014	at Samford	1	2	0	3	.667	0	0	.000	0	1	2	.500	0	0	.000	0	0	0	2	0.0	0	2.0	.264	3-1
Sep 05, 2014	NORTH CAROLINA	1	1	0	2	.500	0	3	.000	0	0	0	.000	0	0	.000	0	0	0	1	0.0	0	1.0	.172	0-3
Sep 12, 2014	at Oregon	1	0	0	0	.000	0	0	.000	0	0	0	.000	0	0	.000	0	0	0	0	0.0	0	0.0	.090	1-3
Sep 19, 2014	LIU-BROOKLYN	5	5	2	16	.188	0	0	.000	0	0	0	.000	0	0	.000	0	0	4	1	4.0	0	7.0	.162	2-3
Sep 20, 2014	UW-MILWAUKEE	1	1	0	2	.500	0	0	.000	0	0	0	.000	0	0	.000	0	0	0	0	0.0	0	1.0	.266	3-0
Sep 26, 2014	at Indiana	2	1	0	3	.333	0	1	.000	0	0	0	.000	0	0	.000	0	0	2	0	2.0	0	2.0	.180	3-1
Sep 30, 2014	at Michigan	1	0	1	2	-.500	0	0	.000	0	0	0	.000	0	0	.000	1	0	0	0	0.0	0	0.0	.143	1-3
Oct 18, 2014	at RUTGERS	2	3	0	4	.750	0	0	.000	0	0	0	.000	0	0	.000	1	1	0	1	1.0	0	4.0	.210	3-0
Totals		17	20	5	43	.349	0	4	.000	0	1	2	.500	0	0	.000	2	1	13	7	14.0	0	27.5		

Sets played: 17
 Kills per set: 1.18

Digs per set: 0.12
 Blocks per set: 0.82

Points per set: 1.62

CHRISTENSON CAREER STATISTICS

Season	sp-mp	k	k/s	e	ta	pct	a	a/s	sa	sa/s	se	dig	d/s	re	bs	ba	tb	b/s	be	bhe	pts
2013	54-21	70	1.30	48	195	.113	2	0.04	1	0.02	5	17	0.31	0	1	34	35	0.65	7	0	89.0
2014	17-10	20	1.18	5	43	.349	0	0.00	0	0.00	1	2	0.12	0	1	13	14	0.82	7	0	27.5
TOTAL	71-31	90	1.27	53	238	.155	2	0.03	1	0.01	6	19	0.27	0	2	47	49	0.69	14	0	116.5

CAREER HIGHS

Kills: 8, vs Pacific, Aug 31, 2013; vs Illinois State, Sep 14, 2013
 Attacks: 25, at Virginia Tech, Aug 31, 2013
 Attack pct: .227, vs Illinois State, Sep 14, 2013 (8-3-22)
 Assists: 1, at Virginia Tech, Aug 31, 2013; IOWA, Oct 11, 2013
 Serve aces: 1, at Virginia Tech, Aug 31, 2013
 Digs: 4, at Virginia Tech, Aug 31, 2013; vs Pacific, Aug 31, 2013
 Blocks: 5, vs Jacksonville State, Aug 30, 2014
 Block solo: 1, at RUTGERS, Oct 18, 2014; Oregon State, Sep 07, 2013
 Block assist: 5, vs Jacksonville State, Aug 30, 2014

2014 SEASON HIGHS

Kills: 7 vs. Jacksonville State, Aug. 30
 Attacks: 16, vs. LIU-Brooklyn, Sept 19
 Attack pct: .600 vs. Jacksonville State, Aug. 30 (7-1-10)
 Assists:
 Serve aces:
 Digs: 1, at Rutgers, Oct. 18
 Blocks: 5, vs. Jacksonville State, Aug. 30
 Block solo: 1 at Rutgers, Oct. 18
 Block assist: 5, vs. Jacksonville State, Aug. 30

Sophomore: (2014): MVP of the UAB/Samford Invitational (8/29-30)... Hit .417 and averaged 3.54 kills per set; she also had four service aces, 15 digs and nine blocks ... Opened the season hitting a career-best .562 vs. South-eastern Louisiana with a career-high six digs to go with 10 kills, two blocks, and an ace ... Had 10 kills, an assist, and two blocks vs. UAB ... Tied her career best with three service aces vs. Jacksonville State, also contributing 10 kills, four digs, and two blocks ... Had 16 kills - two off her career best - while hitting .462 (16-4-25) vs. Samford, contributing three blocks (one solo) and tied her career-high with two assists ... Led all players with 14 kills vs. Duke (9/6), with 12 of her 14 kills coming in the final three sets of a five-set match ... Contributed six kills and three blocks at Oregon (9/12) ... Had 11 kills, five digs, and a pair of blocks in a four-set win at Oregon State (9/13) ... Had 12 kills, six blocks, and three digs in a five-set battle with LIU-Brooklyn (9/19) ... Had 11 kills and five blocks (one solo) later the same day against Western Kentucky (9/19) ... Wrapped the Spartan Invitational by hitting .381 (11-3-21) and contributing five blocks, earning a spot on the All-Tournament Team ... Shared 13 the team lead with 13 kills, and also contributed six blocks and an ace at Indiana (9/26) ... Had 13 kills and six blocks (one solo) in a four-setter at Purdue (9/27), adding four digs and an ace ... Had a streak of six straight games with double-digit kills snapped at Michigan (9/30) ... Had seven kills, two digs, and five blocks in a home win over Michigan (10/3) ... Contributed 10 kills and four blocks, along with an ace and two digs, in a home loss to Nebraska (10/10) ... Had 10 kills, hit .471, had three aces, three digs and a pair of blocks in a home sweep of Iowa (10/11) ... Had nine kills and three blocks (one solo) in a win over Big Ten newcomer Maryland (10/17) ...

6

ALLYSSAH FITTERER



Sophomore
Middle Blocker / Opposite • 6-2
Georgetown, Ontario /
Assumption Catholic Secondary
Club: Defensa
 @lyssfitterer

2014 Honors
 UAB/Samford Invitational MVP
 Spartan Invitational All-Tournament Team

FITTERER 2014 MATCH-BY-MATCH STATISTICS

Date	Opponent	sp	attack			set			serve			recept			dig	blocking			team							
			k	e	ta	pct	a	ta	pct	sa	se	ta	pct	re		ta	pct	bs	ba	tb	bhe	points	hit%	score		
Aug 29, 2014	vs Southeastern La.	*3	10	1	16	.562	0	1	1.000	1	1	11	909	0	0	0.000	6	0	2	0	2.0	0	12.0	.385	3-0	
Aug 29, 2014	at UAB	-3	10	2	18	.444	1	1	1.000	0	1	5	800	0	0	0.000	1	0	2	0	2.0	0	11.0	.392	3-0	
Aug 30, 2014	vs Jacksonville State	*3	10	4	24	.250	0	3	0.000	3	1	8	875	0	0	0.000	4	0	2	0	2.0	0	14.0	.364	3-0	
Aug 30, 2014	at Samford	*4	16	4	26	.462	2	3	.667	0	2	7	714	0	0	0.000	4	1	2	0	3.0	0	18.0	.264	3-1	
Sep 05, 2014	NORTH CAROLINA	*3	6	2	16	.250	0	2	0.000	0	2	3	333	0	0	0.000	1	1	1	1	2.0	0	7.5	.172	0-3	
Sep 06, 2014	DUKE	*5	14	9	43	.116	0	2	0.000	0	1	16	938	0	0	0.000	7	0	2	2	2.0	1	15.0	.190	2-3	
Sep 12, 2014	at Oregon	*4	6	10	27	-.148	0	0	0.000	0	0	1	1.000	0	1	1.000	1	0	3	0	3.0	0	7.5	.090	1-3	
Sep 13, 2014	at Oregon State	*4	11	9	43	.047	0	1	0.000	0	0	8	1.000	0	1	1.000	5	0	2	0	2.0	0	12.0	.180	3-1	
Sep 19, 2014	LIU-BROOKLYN	*5	12	4	32	.250	0	2	0.000	0	0	0	0.000	0	0	0.000	3	0	6	2	6.0	0	15.0	.162	2-3	
Sep 19, 2014	WESTERN KENTUCKY	*3	11	2	27	.333	2	3	.667	0	1	10	900	0	0	0.000	6	1	4	0	5.0	0	14.0	.346	3-0	
Sep 20, 2014	UW-MILWAUKEE	*3	11	3	21	.381	0	0	0.000	1	1	5	800	0	0	0.000	1	0	5	1	5.0	0	14.5	.266	3-0	
Sep 26, 2014	at Indiana	*4	13	3	24	.417	0	1	0.000	1	3	11	727	0	1	1.000	1	0	6	0	6.0	0	17.0	.180	3-1	
Sep 27, 2014	at Purdue	*4	13	4	32	.281	1	1	1.000	1	0	16	1.000	0	0	0.000	4	1	5	1	6.0	0	17.5	.160	1-3	
Sep 30, 2014	at Michigan	*4	5	7	19	-.105	0	0	0.000	0	1	12	917	0	0	0.000	1	0	2	0	2.0	0	6.0	.143	1-3	
Oct 03, 2014	MICHIGAN	*4	7	2	22	.227	1	1	1.000	0	3	13	769	0	0	0.000	2	1	4	0	5.0	0	10.0	.177	3-1	
Oct 10, 2014	NEBRASKA	*4	10	5	25	.200	0	0	0.000	1	3	11	727	0	0	0.000	2	1	3	0	4.0	0	13.5	.152	1-3	
Oct 11, 2014	IOWA	*3	10	2	17	.471	3	4	.750	1	2	9	778	0	0	0.000	3	0	2	0	2.0	0	12.0	.348	3-0	
Oct 17, 2014	at Maryland	*3	9	3	20	.300	0	0	0.000	0	0	0	0.000	0	0	0.000	0	1	2	0	3.0	0	11.0	.198	3-0	
Oct 18, 2014	at RUTGERS	*1	2	0	4	.500	0	0	0.000	0	0	0	0.000	0	0	0.000	0	0	0	0	0.0	0	2.0	.210	3-0	
			67	186	76	456	.241	10	25	.400	9	22	146	.849	0	3	1.000	52	7	55	7	62.0	1	229.5		

Sets played: 67
 Kills per set: 2.78
 Assists per set: 0.15

Service aces per set: 0.13
 Digs per set: 0.78
 Blocks per set: 0.93

Points per set: 3.43

FITTERER CAREER STATISTICS

Season	sp-mp	k	k/s	e	ta	pct	a	a/s	sa	sa/s	se	dig	d/s	re	bs	ba	tb	b/s	bel	bhel	pts
2013	120-35	225	1.88	79	525	.278	8	0.07	19	0.16	54	57	0.47	0	6	82	88	0.73	7	2	291.0
2014	67-19	186	2.78	76	456	.241	10	0.15	9	0.13	22	52	0.78	0	7	55	62	0.93	7	1	229.5
TOTAL	187-54	411	2.20	155	981	.261	18	0.10	28	0.15	76	109	0.58	0	13	137	150	0.80	14	3	520.5

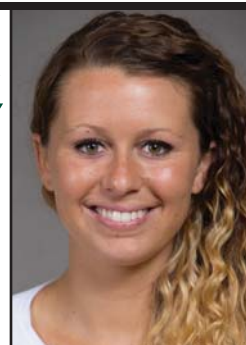
CAREER HIGHS

Kills: 18, vs Penn State, Dec 13, 2013
 Attacks: 43, Duke, Sep 06, 2014; at Oregon State, Sep 13, 2014
 Attack pct: .562, vs. Southeastern Louisiana, Aug. 29 (10-1-16)
 Assists: 3, Iowa, Oct 11, 2014
 Serve aces: 3, vs Jacksonville State, Aug 30, 2014; at Ohio State, Sep 29, 2013
 Digs: 7, Duke, Sep 06, 2014
 Blocks: 9 [1-5th], at Virginia Tech, Aug 31, 2013
 Block solo: 2, vs Illinois State, Sep 14, 2013
 Block assist: 8, at Virginia Tech, Aug 31, 2013

2014 SEASON HIGHS

Kills: 16 vs. Samford, Aug. 30
 Attacks: 43, twice; MR at Oregon State, Sept. 13
 Attack pct: .562, vs. Southeastern Louisiana, Aug. 29 (10-1-16)
 Assists: 2, twice; MR vs. Western Kentucky, Sept. 19
 Serve aces: 3, vs. Jacksonville State, Aug. 30
 Digs: 7, vs. Duke, Sept. 6
 Blocks: 6, twice; MR at Indiana, Sept. 26
 Block solo: 1, three times; MR vs. Purdue, Sept. 27
 Block assist: 6, twice; MR at Indiana, Sept. 26

TAYLOR GALLOWAY



Senior: (2014): Opened her season with an eight-dig performance vs. Southeastern Louisiana (8/29) ... Had four kills, four assists, two aces, and six digs vs. UAB (8/29) ... Six digs, a kill, an assist, and two aces vs. Jacksonville State (8/30) ... Had four kills and four digs in a four-set win over Samford (8/30) ... Had a pair of assists in each of the games against No. 20 UNC and No. 19 Duke (9/5-6) ... Had nine digs vs. the Blue Devils as well ... Led the team with nine kills at Oregon (9/12), on a then-season-high 39 swings ... Had 17 kills, a career best, on a career-high 51 swings at Oregon State ... Also had a season-best 12 digs against the Beavers (9/13) ... Had 13 kills on a career-high 61 swings against LIU-Brooklyn, while contributing four blocks and digging a season-best 12 for the second straight game ... Had 10 kills, an assist, four digs, and a pair of blocks in a straight-set win over Western Kentucky (9/19) ... Closed the Spartan Invitational with seven kills and five digs vs. Milwaukee (9/20) ... Seven kills and a block, along with an ace, in a four-set win at Indiana (9/26) ... Seven kills, eight digs, and a pair of blocks at Michigan (9/30) ... Had eight digs and eight kills, along with a season-best five blocks, in a home win over Michigan (10/3) ... Had nine kills and a pair of assists in a loss to Nebraska (10/10) ... Had four kills, three aces, and an assist in a sweep of Iowa at home (10/11) ... Had a team-best 11 digs, along with four kills, in a win at Maryland (10/17) ... Four digs and two kills in a win at Rutgers (10/18) ...

9

Senior

2014 Honors

Outside Hitter • 6-1

Portage, Mich./Portage Central

Club: Dead Frog/Far Out

@_IceTayTayFish

GALLOWAY 2014 MATCH-BY-MATCH STATISTICS

Date	Opponent	sp	attack			set			serve			receipt			dig	blocking			team					
			k	e	ta	pct	a	ta	pct	sa	se	ta	pct	re		ta	pct	bs	ba	be	bhe	pts	score	
Aug 29, 2014	vs Southeastern La.	*3	0	0	0	.000	0	2	.000	0	0	11	1.000	3	13	.769	8	0	0	0	0	0.0	.385	3-0
Aug 29, 2014	at UAB	*3	4	1	8	.375	4	5	.800	2	1	14	.929	1	27	.963	6	0	0	0.0	0	6.0	.392	3-0
Aug 30, 2014	vs Jacksonville State	*3	1	0	2	.500	1	7	.143	2	1	12	.917	0	11	1.000	6	0	0	0.0	0	3.0	.364	3-0
Aug 30, 2014	at Samford	*4	4	3	14	.071	0	11	.000	0	2	9	.778	0	18	1.000	4	0	0	1.0	0	4.0	.264	3-1
Sep 05, 2014	NORTH CAROLINA	*3	0	2	2	-1.000	2	3	.667	0	0	3	1.000	3	25	.880	4	0	0	0.0	0	2.0	.172	0-3
Sep 06, 2014	DUKE	5	1	1	2	.000	2	4	.500	1	1	10	.900	1	23	.957	9	0	0	0.0	0	2.0	.190	2-3
Sep 12, 2014	at Oregon	*4	9	8	39	.026	1	1	1.000	0	1	8	.875	1	41	.976	1	0	1	1.0	0	9.5	.090	1-3
Sep 13, 2014	at Oregon State	*4	17	7	51	.196	0	4	.000	0	0	20	1.000	2	37	.946	12	0	0	1.0	0	17.0	.180	3-1
Sep 19, 2014	LIU-BROOKLYN	*5	13	9	61	.066	2	4	.500	1	3	16	.812	3	58	.948	12	0	4	1.0	0	16.0	.162	2-3
Sep 19, 2014	WESTERN KENTUCKY	*3	10	5	26	.192	1	3	.333	0	3	18	.833	1	19	.947	4	0	2	1.0	0	11.0	.346	3-0
Sep 20, 2014	UW-MILWAUKEE	*3	7	4	17	.176	0	2	.000	0	0	11	1.000	0	13	1.000	5	0	1	0.0	0	7.5	.266	3-0
Sep 26, 2014	at Indiana	*4	7	10	23	-.130	0	3	.000	1	1	18	.944	4	30	.867	7	0	1	1.0	0	8.5	.180	3-1
Sep 27, 2014	at Purdue	*4	11	3	41	.195	0	5	.000	0	2	20	.900	2	63	.968	4	0	0	0.0	0	11.0	.160	1-3
Sep 30, 2014	at Michigan	*4	7	4	30	.100	0	13	.000	0	1	16	.938	0	13	1.000	8	0	2	2.0	1	8.0	.143	1-3
Oct 03, 2014	MICHIGAN	*4	8	6	26	.077	0	1	.000	1	0	14	1.000	0	10	1.000	8	1	4	0.0	0	12.0	.177	3-1
Oct 10, 2014	NEBRASKA	*4	9	6	34	.088	2	5	.400	0	0	12	1.000	0	15	1.000	8	0	1	0.0	0	9.5	.152	1-3
Oct 11, 2014	IOWA	*3	4	2	10	.200	1	2	.500	3	0	13	1.000	0	17	1.000	4	0	0	0.0	0	7.0	.348	3-0
Oct 17, 2014	at Maryland	*3	4	1	12	.250	1	2	.500	0	0	9	1.000	2	4	.500	11	0	0	0.0	0	4.0	.198	3-0
Oct 18, 2014	at RUTGERS	*3	2	0	5	.400	0	2	.000	0	0	6	1.000	0	10	1.000	4	0	1	1.0	0	2.5	.210	3-0
		69	118	72	403	.114	17	79	.215	11	16	240	.933	23	447	.949	125	1	17	4	18.0	1	138.5	

Sets played: 69
Kills per set: 1.71
Assists per set: 0.25

Service aces per set: 0.16
Digs per set: 1.81
Blocks per set: 0.26

Points per set: 2.01

GALLOWAY CAREER STATISTICS

Season	sp-mp	k	k/s	e	ta	pct	a	a/s	sa	sa/s	se	dig	d/s	re	bs	ba	tb	b/s	bel	bhe	pts	pt
2011	15-9	14	0.93	17	57	-.053	1	0.07	0	0.00	1	25	1.67	3	0	3	3	0.20	4	0	15.5	1.
2012	128-35	289	2.26	145	927	.155	37	0.29	6	0.05	21	295	2.30	24	5	45	50	0.39	16	3	322.5	2.
2013	115-34	192	1.67	98	642	.146	31	0.27	15	0.13	23	262	2.28	30	5	43	48	0.42	11	3	233.5	2.
2014	69-19	118	1.71	72	403	.114	17	0.25	11	0.16	16	125	1.81	23	1	17	18	0.26	4	1	138.5	2.
TOTAL	327-97	613	1.87	332	2029	.138	86	0.26	32	0.10	61	707	2.16	80	11	108	119	0.36	35	7	710.0	2.

CAREER HIGHS

Kills: 17, at Oregon State, Sep 13, 2014
Attacks: 61 [5in], LIU-Brooklyn, Sep 19, 2014
Attack pct: .478, at Butler, Sep 14, 2013 (11-0-23)
Assists: 4, at UAB, Aug 29, 2014
Serve aces: 3, Iowa, Oct 11, 2014
Digs: 15, vs Penn State, Dec 13, 2013; Purdue, Sep 21, 2012
Blocks: 5, Michigan, Oct 03, 2014; at Minnesota, Oct 06, 2012; at Minnesota, Oct 17, 2013
Block solo: 1, 11 times
Block assist: 5, at Minnesota, Oct 06, 2012

2014 SEASON HIGHS

Kills: 17, at Oregon State, Sep 13
Attacks: 61, vs. LIU-Brooklyn, Sep 19
Attack pct: .375 vs. UAB, Aug 29 (4-1-8)
Assists: 4, at UAB, Aug 29
Serve aces: 2, twice; MR vs. Jacksonville State, Aug 30
Digs: 12, twice; MR vs. LIU-Brooklyn, Sep 19
Blocks: 5, vs. Michigan, Oct 3
Block solo: 1, vs. Michigan, Oct 3
Block assist: 4, twice; MR vs. Michigan, Oct 3

Freshman: (2014): Made her collegiate debut vs. South-eastern Louisiana at the UAB/Samford Invitational, hitting .556 (5-0-9) and recording one block (8/29) ... Had eight kills and four blocks in the nightcap against UAB (8/29) ... Had three kills and three blocks - two solo - in a three-set sweep of Jacksonville State (8/30) ... Had six kills and seven blocks along with a pair of digs against Samford (8/30), helping MSU to the tournament title ... Contributed six kills (6-1-11, .455) with five blocks in a five-setter vs. No. 19 Duke (9/6) ... Had a service ace in each of the games of the Big Ten/ACC Challenge (9/5-6) ... Contributed seven kills and a solo block at Oregon (9/12), then five kills and a pair of blocks at Oregon State (9/13) ... Played three of five sets against LIU-Brooklyn, with six kills and a block (9/19) ... Had five kills and four blocks against Western Kentucky (9/19) ... Hit .500 (5-1-8) against Milwaukee in the Spartan Invitational finale, adding three blocks ... Contributed a season-best nine kills and tied her career best with seven blocks at Indiana (9/26) ... Recorded four each kills and blocks at Purdue (9/27) ... Contributed a career-best 12 kills and added four blocks in a four-set loss at Michigan (9/30) ... Led all players with six blocks and also added eight kills in a win at home against Michigan (10/3) ... Had nine kills, two digs, and two blocks in a home loss to Nebraska (10/10) ... Had 10 kills and hit .273, along with adding three blocks, in a sweep of Iowa (10/11) ... Had a team-best four blocks (one solo) and also had four kills in a win at Maryland (10/17) ... Had 10 kills in a 3-0 sweep at Rutgers (10/18) ...

17 ALYSSA GARVELINK



Freshman
Middle Blocker • 6-2
Holland, Mich.
Holland Christian
Club: Michigan Volleyball Academy
 @lyssagarvelink

2014 Honors

GARVELINK 2014 MATCH-BY-MATCH STATISTICS

Date	Opponent	sp	attack				set		serve				recept			dig	blocking				team				
			k	e	ta	pct	a	ta	pct	sa	se	ta	pct	re	ta		pct	bs	ba	be	total	bhe	points	hit%	score
Aug 29, 2014	vs Southeastern La.	*2	5	0	9	.556	0	0	0	0	0	0	0	0	0	0	0	1	0	0	1.0	0	5.5	.385	3-0
Aug 29, 2014	at UAB	*3	8	2	14	.429	0	1	0	0	0	0	0	0	0	0	4	0	0	4.0	0	10.0	.392	3-0	
Aug 30, 2014	vs Jacksonville State	*2	3	2	7	.143	0	0	0	0	1	4	.750	0	0	0	2	2	1	0	3.0	0	5.5	.364	3-0
Aug 30, 2014	at Samford	*4	6	2	15	.267	0	2	0	0	0	0	0	0	0	0	2	1	6	0	7.0	0	10.0	.264	3-1
Sep 05, 2014	NORTH CAROLINA	*3	4	2	12	.167	1	1	1	0	0	3	1.000	0	0	0	0	1	0	1.0	0	4.5	.172	0-3	
Sep 06, 2014	DUKE	*5	6	1	11	.455	1	2	5	0	0	0	0	0	0	0	0	5	0	5.0	0	8.5	.190	2-3	
Sep 12, 2014	at Oregon	*4	7	5	21	.095	0	0	0	0	0	0	0	0	0	0	1	0	1	1.0	0	8.0	.090	1-3	
Sep 13, 2014	at Oregon State	*4	5	1	16	.250	0	0	0	0	0	0	0	0	1	1	0	0	2.0	0	6.0	.180	3-1		
Sep 19, 2014	LIU-BROOKLYN	*3	6	5	19	.053	0	1	0	0	0	0	0	0	0	0	2	0	1	1	1.0	0	6.5	.162	2-3
Sep 19, 2014	WESTERN KENTUCKY	*3	5	2	9	.333	0	0	0	0	0	0	0	0	0	0	0	4	1	4.0	0	7.0	.346	3-0	
Sep 20, 2014	UW-MILWAUKEE	*3	5	1	8	.500	0	0	0	0	0	0	0	0	1	1	0	3	0	3.0	0	6.5	.266	3-0	
Sep 26, 2014	at Indiana	*4	9	5	24	.167	0	2	0	0	0	0	0	0	0	0	1	1	6	0	7.0	0	13.0	.180	3-1
Sep 27, 2014	at Purdue	*4	4	6	18	.111	0	1	0	0	0	0	0	0	0	0	2	0	4	0	4.0	0	6.0	.160	1-3
Sep 30, 2014	at Michigan	*4	12	5	33	.212	0	0	0	0	0	0	0	0	0	0	0	4	0	4.0	0	14.0	.143	1-3	
Oct 03, 2014	MICHIGAN	*4	8	9	28	-.036	1	3	333	0	0	0	0	0	0	0	1	5	1	6.0	0	11.5	.177	3-1	
Oct 10, 2014	NEBRASKA	*4	9	6	26	.115	0	0	0	0	0	0	0	1	3	667	2	0	2	1	2.0	0	10.0	.152	1-3
Oct 11, 2014	IOWA	*3	10	4	22	.273	0	1	0	0	0	0	0	0	0	0	0	3	1	3.0	1	11.5	.348	3-0	
Oct 17, 2014	at Maryland	*3	4	4	12	.000	0	0	0	0	0	0	0	0	0	0	1	1	3	0	4.0	0	6.5	.198	3-0
Oct 18, 2014	at RUTGERS	*3	10	7	19	.158	1	1	1	0	0	0	0	0	0	0	1	0	0	0	0.0	0	10.0	.210	3-0
		65	126	69	323	.176	4	15	267	0	1	7	.857	1	8	.875	13	7	55	6	62.0	1	160.5	2.4	

Sets played: 65
 Kills per set: 1.94
 Assists per set: 0.06

Digs per set: 0.20
 Blocks per set: 0.95

Points per set: 2.47

GARVELINK CAREER STATISTICS

Season	sp-mp	k	k/s	e	ta	pct	a	a/s	sa	sa/s	se	dig	d/s	re	bs	ba	tb	b/s	be	bhe	pts	pts
2014	65-19	126	1.94	69	323	.176	4	0.06	0	0.00	1	13	0.20	1	7	55	62	0.95	6	1	160.5	2.4
TOTAL	65-19	126	1.94	69	323	.176	4	0.06	0	0.00	1	13	0.20	1	7	55	62	0.95	6	1	160.5	2.4

2014 SEASON HIGHS

Kills: 12, at Michigan, Sep 30, 2014
 Attacks: 33, at Michigan, Sep 30, 2014
 Attack pct: .273, Iowa, Oct 11, 2014 (10-4-22)
 Assists: 1, 4 times
 Digs: 2, 5 times
 Blocks: 7, at Samford, Aug 30, 2014; at Indiana, Sep 26, 2014
 Block solo: 2, vs Jacksonville State, Aug 30, 2014
 Block assist: 6, at Samford, Aug 30, 2014; at Indiana, Sep 26, 2014

Junior: (2014): Made her season debut vs. Jacksonville State (8/30), recording three kills on four swings and tying her career best in kills ... Had a three attempts against Milwaukee (9/20) ...

16 MAGGIE HALLORAN



Junior
 Middle Blocker/Outside Hitter • 6-3
 Ann Arbor, Mich./ Ann Arbor Skyline
 Club: Premier
 @magghal

2014 Honors

HALLORAN 2014 MATCH-BY-MATCH STATISTICS

Date	Opponent	sp	attack				set			serve			recept			blocking				team					
			k	e	ta	pct	a	ta	pct	sa	se	ta	pct	re	ta	pct	dig	bs	ba	be	total	bhe	points	hit%	score
Aug 30, 2014	vs Jacksonville State	2	3	0	4	.750	0	0	.000	0	0	0	.000	0	0	.000	0	0	0	0	0	0	3.0	.364	3-0
Sep 20, 2014	UW-MILWAUKEE	1	0	2	3	-.667	0	0	.000	0	0	0	.000	0	0	.000	0	0	0	0	0	0	0.0	.266	3-0
Totals		3	3	2	7	.143	0	0	.000	0	0	0	.000	0	0	.000	0	0	0	0	0	0	3.0		

Sets played: 3
 Kills per set: 1.00

Points per set: 1.00

HALLORAN CAREER STATISTICS

Season	sp-mp	k	k/s	e	ta	pct	a	a/s	sa	sa/s	se	dig	d/s	re	bs	ba	tb	b/s	be	bhe	pts
2012	14-11	15	1.07	5	32	.312	0	0.00	0	0.00	0	0	0.00	0	0	3	3	0.21	0	0	16.5
2013	5-5	3	0.60	3	14	.000	0	0.00	0	0.00	0	0	0.00	0	0	2	2	0.40	3	0	4.0
2014	3-2	3	1.00	2	7	.143	0	0.00	0	0.00	0	0	0.00	0	0	0	0	0.00	0	0	3.0
TOTAL	22-18	21	0.95	10	53	.208	0	0.00	0	0.00	0	0	0.00	0	0	5	5	0.23	3	0	23.5

CAREER HIGHS

Kills: 3, vs Jacksonville State, Aug 30, 2014; vs Fairfield, Aug 31, 2012; vs Dartmouth, Sep 01, 2012
 Attacks: 8, Iowa, Nov 02, 2012
 Blocks: 2, vs Fairfield, Aug 31, 2012
 Block assist: 2, vs Fairfield, Aug 31, 2012

2014 SEASON HIGHS

Kills: 3, vs. Jacksonville State, Aug. 30
 Attacks: vs. Jacksonville State, Aug. 30
 Attack pct: .775 vs. Jacksonville State, Aug. 30 (3-0-4)
 Blocks:
 Block solo:
 Block assist:

Senior: (2014): Appeared in all four matches at the UAB/Samford Invitational ... Had six digs in a sweep of UAB (8/29) ... Had three digs against Jacksonville State, and added four digs and an assist in the nightcap vs. Samford (8/30) ... Started the match against LIU-Brooklyn (9/19), pressed into setting duties. Had 29 assists, a pair of aces, and 14 digs for her second career double-double ... Had eight digs and an ace in the Big Ten-opening win at Indiana (9/26) ... Three digs in a home sweep of Iowa (10/11) ...

7

RYIAN HUBBARD



Senior
 Defensive Specialist • 5-6
 Battle Creek, Mich.
 St. Philip Catholic Central
 Club: Dead Frog/Far Out
 @hubbbby

HUBBARD 2014 MATCH-BY-MATCH STATISTICS

Date	Opponent	sp	attack			set		serve			recept		dig	blocking			bhe	points	team hit%	score					
			k	e	ta	pct	a	la	sa	se	ta	pct		re	la	pct					bs	ba	be	total	
Aug 29, 2014	vs Southeastern La.	1	0	0	0	.000	0	0	.000	0	0	2	1.000	0	0	.000	1	0	0	0	0.0	0.0	.385	3-0	
Aug 29, 2014	at UAB	1	0	0	1	.000	0	1	.000	0	1	5	.800	0	2	1.000	6	0	0	0	0.0	0.0	.392	3-0	
Aug 30, 2014	vs Jacksonville State	1	0	0	0	.000	0	3	.000	0	0	2	1.000	0	1	1.000	3	0	0	0	0.0	0.0	.364	3-0	
Aug 30, 2014	at Samford	2	0	0	0	.000	1	6	.167	0	1	4	.750	0	1	1.000	4	0	0	0	0.0	0.0	.264	3-1	
Sep 05, 2014	NORTH CAROLINA	2	0	0	0	.000	0	0	.000	1	0	4	1.000	1	4	.750	3	0	0	0	0.0	1.0	.192	2-3	
Sep 06, 2014	DUKE	3	0	0	0	.000	1	1	1.000	1	0	6	1.000	0	0	.000	1	0	0	0	0.0	1.0	.190	2-3	
Sep 12, 2014	at Oregon	2	0	0	0	.000	1	1	1.000	0	0	3	1.000	0	0	.000	0	0	0	1	0.0	0.0	.090	1-3	
Sep 13, 2014	at Oregon State	3	0	0	0	.000	0	0	.000	0	0	10	1.000	0	0	.000	3	0	0	0	0.0	0.0	.180	3-1	
Sep 19, 2014	LIU-BROOKLYN	5	0	0	0	.000	29	87	.333	2	1	19	.947	0	0	.000	14	0	0	0	0.0	1	2.0	.162	2-3
Sep 20, 2014	UW-MILWAUKEE	1	0	0	0	.000	0	0	.000	0	0	2	1.000	0	0	.000	0	0	0	0	0.0	0.0	.266	3-0	
Sep 26, 2014	at Indiana	4	0	0	0	.000	0	2	.000	1	0	13	1.000	1	12	.917	8	0	0	0	0.0	1.0	.180	3-1	
Sep 27, 2014	at Purdue	4	0	0	0	.000	0	1	.000	0	0	11	1.000	1	9	.889	2	0	0	0	0.0	0.0	.160	1-3	
Sep 30, 2014	at Michigan	2	0	0	0	.000	0	0	.000	0	1	2	.500	0	0	.000	0	0	0	0	0.0	0.0	.143	1-3	
Oct 03, 2014	MICHIGAN	2	0	0	0	.000	0	0	.000	0	0	2	1.000	0	0	.000	0	0	0	0	0.0	0.0	.177	3-1	
Oct 10, 2014	NEBRASKA	1	0	0	0	.000	0	1	.000	0	0	5	1.000	0	1	1.000	1	0	0	0	0.0	0.0	.152	1-3	
Oct 11, 2014	IOWA	3	0	0	0	.000	0	0	.000	0	0	8	1.000	1	6	.833	3	0	0	0	0.0	0.0	.348	3-0	
Oct 17, 2014	at Maryland	3	0	0	0	.000	1	1	1.000	0	0	5	1.000	0	1	1.000	2	0	0	0	0.0	0.0	.198	3-0	
Oct 18, 2014	at RUTGERS	1	0	0	0	.000	0	1	.000	1	0	2	1.000	0	0	.000	0	0	0	0	0.0	1.0	.210	3-0	
Totals		41	0	0	1	.000	33	105	.314	6	4	105	.962	4	37	.892	51	0	0	1	0.0	1	6.0		

Sets played: 41
 Kills per set: 0.00
 Assists per set: 0.80
 Service aces per set: 0.15
 Digs per set: 1.24
 Blocks per set: 0.00
 Points per set: 0.15

HUBBARD CAREER STATISTICS

Season	sp-mp	k	k/s	e	ta	pct	a	a/s	sa	sa/s	se	dig	d/s	re	bs	ba	tb	b/s	be	bhe	pts	
2011	29-15	0	0.00	0	0	.000	2	0.07	1	0.03	3	17	0.59	3	0	0	0	0	0.00	1	0	1.0
2012	39-23	1	0.03	0	2	.500	1	0.03	2	0.05	5	10	0.26	0	0	0	0	0.00	1	0	3.0	
2013	84-31	1	0.01	1	2	.000	109	1.30	19	0.23	15	63	0.75	3	0	0	0	0.00	0	5	20.0	
2014	41-18	0	0.00	0	1	.000	33	0.80	6	0.15	4	51	1.24	4	0	0	0	0.00	1	1	6.0	
TOTAL	193-87	2	0.01	1	5	.200	145	0.75	28	0.15	27	141	0.73	10	0	0	0	0.00	3	6	30.0	

CAREER HIGHS

Kills: 1, vs IPFW, Sep 13, 2013; at Iowa, Sep 29, 2012
 Attacks: 1, 5 times
 Assists: 29, LIU-Brooklyn, Sep 19, 2014
 Serve aces: 4, Oregon, Sep 06, 2013
 Digs: 14, LIU-Brooklyn, Sep 19, 2014

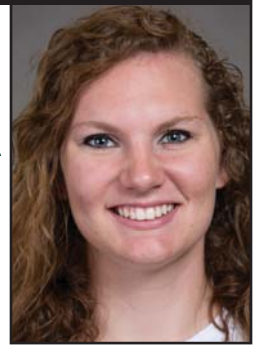
2014 SEASON HIGHS

Kills:
 Attacks: 1, vs. UAB, Aug. 29
 Attack pct:
 Assists: 29, vs. LIU-Brooklyn, Sept. 19
 Serve aces: 2, vs. LIU-Brooklyn, Sept. 19
 Digs: 14, vs. LIU-Brooklyn, Sept. 19

Redshirt Freshman: (2014): Made her career debut during the Spartan Invitational against Milwaukee (9/20) ...

13

BROOKE KRANDA



Redshirt Freshman
 Middle Blocker/Opposite • 6-6
 Westfield, Ind./Westfield
 Club: Munciana Samurai
 @brooklynkranda

KRANDA 2014 MATCH-BY-MATCH STATISTICS

Date	Opponent	sp	attack				set			serve			receipt			blocking				team				
			k	e	ta	pct	a	ta	pct	sa	se	ta	pct	re	ta	pct	dig	bs	ba	be	total	bhe	points	hit%
Sep 20, 2014	UW-MILWAUKEE	1	0	1	2	-.500	0	0	.000	0	0	0	.000	0	0	.000	0	0	0	0.0	0	0.0	.266	3-0
		1	0	1	2	-.500	0	0	.000	0	0	0	.000	0	0	.000	0	0	0	0.0	0	0.0	0.0	

Sets played: 1
 Kills per set: 0.00

Points per set: 0.00

KRANDA CAREER STATISTICS

Season	sp-mp	k	k/s	e	ta	pct	a	a/s	sa	sa/s	se	dig	d/s	re	bs	ba	tb	b/s	be	bhe	pts	pts/s
2013	0-0	0	0.00	0	0	.000	0	0.00	0	0.00	0	0	0.00	0	0	0	0	0.00	0	0	0.0	0.00
2014	1-1	0	0.00	1	2	-.500	0	0.00	0	0.00	0	0	0.00	0	0	0	0	0.00	0	0	0.0	0.00
TOTAL	1-1	0	0.00	1	2	-.500	0	0.00	0	0.00	0	0	0.00	0	0	0	0	0.00	0	0	0.0	0.00

SINGLE-MATCH HIGHS [all-time ranking]:
 Attacks: 2, UW-Milwaukee, Sep 20, 2014

Freshman: (2014): Made her collegiate debut vs. Southeastern Louisiana (8/29), and played the first two sets; had four digs, 23 assists, and a pair of kills on three swings ... Recorded 37 assists and six digs against UAB (8/29), hitting .667 (5-2-6) and adding a pair of blocks ... Contributed 28 assists and a team-best 12 digs in a three-set sweep of Jacksonville State (8/30) ... Wrapped up the UAB/Samford Invitational with a 35-assist, eight-dig, three-block, two-kill performance, including a solo block, against Samford (8/30) ... Had 21 assists and four kills in a straight-set loss to No. 20 North Carolina (9/5) ... Had 42 assists, a career best, to go with four kills, an ace, and five blocks in a five-set loss to Duke (9/6) ... Hit a team-best .462 (6-0-13) with 14 assists and 13 digs at Oregon (9/12) ... Had 55 assists and 19 digs for her second straight double-double as MSU knocked off previously-unbeaten Oregon State (9/13) ... Missed the LIU-Brooklyn match with injury (9/13) ... Had 34 assists, four kills, seven digs, and three blocks when she returned to the lineup against Western Kentucky (9/19) ... Had 29 assists while hitting .625 (5-0-8) in the Spartan Invitational finale vs. Milwaukee (9/20) ... Had 38 assists in her Big Ten debut, a four-set win at Indiana (9/26), where she also chipped in three kills, three aces, three digs, and three blocks ... Had 42 assists at Purdue in a four-setter (9/27), while adding four blocks and three kills, along with nine digs to just miss a double-double ... Recorded her fourth double-double of the season with 43 assists, four kills, and 11 digs at Michigan (9/30) ... Had 44 assists, a season-best seven kills, four digs, and a block in a home win over Michigan (10/3), and two of her three service aces were the final two points of the deciding fourth set ... Had her fifth double-double of the season against Nebraska (10/10), with 41 assists and 13 digs against the Huskers ... Hit a career-best .714 (5-0-7) while putting up 39 assists and three aces in a home sweep of Iowa (10/11) ... Netted 33 assists in a win at Maryland, (10/17), and also had five digs and five kills ... In MSU's first-ever game at Rutgers (10/18), had 33 assists, three kills, and six digs ... Named Big Ten Freshman of the Week (Oct. 20) for her performance against the Terps and Scarlet Knights ...

12

RACHEL MINARICK



Freshman
Setter • 6-2
Naperville, Ill./Waubonsie Valley
Club: Sports Performance
@rachelminarick

2014 Honors
Big Ten Freshman of the Week (Oct. 20)

Minarick 2014 Match-by-Match Statistics

Date	Opponent	sp	attack			set			serve			recept			dig	blocking			bhe	points	team hit%	score			
			k	e	ta	a	ta	pct	sa	se	ta	re	ta	pct		bs	ba	be							
Aug 29, 2014	vs Southeastern La.	*2	2	0	3	667	23	36	639	1	0	13	1.000	0	0	0.000	4	0	0	0.0	1	3.0	.385	3-0	
Aug 29, 2014	at UAB	*3	5	1	6	667	37	75	493	0	0	12	1.000	0	0	0.000	6	0	2	0.2	0	6.0	.392	3-0	
Aug 30, 2014	vs Jacksonville State	*3	1	0	2	500	28	32	875	0	0	9	1.000	0	0	0.000	12	1	0	0.1	0	2.0	.364	3-0	
Aug 30, 2014	at Samford	*4	2	0	7	286	35	41	854	0	3	19	842	0	0	0.000	8	1	2	0.3	1	4.0	.264	3-1	
Sep 05, 2014	NORTH CAROLINA	*3	4	3	7	143	21	56	375	0	0	9	1.000	0	0	0.000	4	0	0	2.0	0	4.0	.172	0-3	
Sep 06, 2014	DUKE	*5	4	1	7	429	42	131	321	1	2	13	846	0	0	0.000	9	1	4	0.5	0	8.0	.190	2-3	
Sep 12, 2014	at Oregon	*4	6	0	13	462	14	70	200	0	0	8	1.000	0	1	1.000	13	0	0	2.0	0	6.0	.090	1-3	
Sep 13, 2014	at Oregon State	*4	2	1	5	200	55	149	369	1	0	24	1.000	0	0	0.000	19	0	1	0.1	0	3.5	.180	3-1	
Sep 19, 2014	WESTERN KENTUCKY	*3	4	2	12	167	34	77	442	1	1	13	923	0	0	0.000	7	0	3	0.3	0	6.5	.346	3-0	
Sep 20, 2014	UW-MILWAUKEE	*3	5	0	8	625	29	73	397	3	2	14	857	0	0	0.000	6	0	0	0.0	0	8.0	.266	3-0	
Sep 26, 2014	at Indiana	*4	3	0	8	375	38	102	373	3	3	18	833	0	0	0.000	3	0	3	0.3	0	7.5	.180	3-1	
Sep 27, 2014	at Purdue	*4	3	0	10	300	42	133	316	0	2	16	875	0	0	0.000	9	0	4	1.4	0	5.0	.160	1-3	
Sep 30, 2014	at Michigan	*4	4	0	10	400	43	52	827	1	3	17	824	0	0	0.000	11	0	2	0.2	0	6.0	.143	1-3	
Oct 03, 2014	MICHIGAN	*4	7	0	11	636	44	138	319	3	1	23	957	0	0	0.000	4	0	1	0.1	1	10.5	.177	3-1	
Oct 10, 2014	NEBRASKA	*4	3	2	7	143	41	127	323	0	3	14	786	0	0	0.000	13	0	1	2.1	0	3.5	.152	1-3	
Oct 11, 2014	IOWA	*3	5	0	7	714	39	81	481	3	0	14	1.000	0	0	0.000	1	0	0	0.0	0	8.0	.348	3-0	
Oct 17, 2014	at Maryland	*3	5	1	8	500	33	88	375	0	3	11	727	0	0	0.000	5	1	0	0.1	0	6.0	.198	3-0	
Oct 18, 2014	at RUTGERS	*3	3	1	4	500	33	80	412	0	1	9	889	0	0	0.000	6	0	1	0.1	2	3.5	.210	3-0	
Totals			63	68	12	135	.415	631	1541	409	17	24	256	906	0	1	1.000	140	4	24	7	28.0	5	101.0	

Sets played: 63
 Kills per set: 1.08
 Assists per set: 10.02

Service aces per set: 0.27
 Digs per set: 2.22
 Blocks per set: 0.44

Points per set: 1.60

MINARICK CAREER STATISTICS

Season	sp-mp	k	k/s	e	ta	pct	a	a/s	sa	sa/s	sel	dig	d/s	re	bs	ba	tb	b/s	bej	bhej	pts
2014	63-18	68	1.08	12	135	.415	631	10.02	17	0.27	24	140	2.22	0	4	24	28	0.44	7	5	101.0
TOTAL	63-18	68	1.08	12	135	.415	631	10.02	17	0.27	24	140	2.22	0	4	24	28	0.44	7	5	101.0

2014 SEASON HIGHS

Kills: 7, Michigan, Oct 03, 2014
 Attacks: 13, at Oregon, Sep 12, 2014
 Assists: 55 [1st], at Oregon State, Sep 13, 2014
 Serve aces: 3, 4 times
 Digs: 19, at Oregon State, Sep 13, 2014
 Blocks: 5, Duke, Sep 06, 2014
 Block solo: 1, 4 times
 Block assist: 4, Duke, Sep 06, 2014; at Purdue, Sep 27, 2014

Freshman: (2014): Made her collegiate debut at the UAB/Samford Invitational (8/29-30) ... Recorded her first career service ace vs. Jacksonville State (8/30) ... Saw action in all five sets in a tough loss to Duke (9/6) ... Earned her first career start against Oregon State (9/13), and had five digs ... Pressed into setting duties against LIU-Brooklyn (9/19), had 17 assists and 13 digs along with a pair of service aces for her first career double-double ... Had seven digs, the third highest total on the team, in just two of four sets vs. Purdue (9/27) ... Came in off the bench and recorded five digs and a season-best three service aces in a home win over Michigan (10/3) ... Contributed a pair of digs and a service ace in a loss to Nebraska (10/10) ...

10

ABBY MONSON



Freshman
Defensive Specialist • 5-5
 Lakeville, Minn. / Lakeville North
 Club: Northern Lights
 @abbmonson6

MONSON 2014 MATCH-BY-MATCH STATISTICS

Date	Opponent	sp	attack			set			serve			recept			dig	blocking			bhe	points	team	score		
			k	e	ta	pct	a	ta	pct	sa	se	ta	pct	re		ta	pct	bs					ba	be
Aug 29, 2014	vs Southeastern La	1	0	0	0	.000	0	0	.000	0	0	1	1.000	0	0	.000	0	0	0	0.0	0	0.0	.395	3-0
Aug 30, 2014	vs Jacksonville State	1	0	0	0	.000	0	0	.000	1	1	5	.800	0	0	.000	0	0	0	0.0	0	1.0	.364	3-0
Aug 30, 2014	at Samford	2	0	0	0	.000	0	1	.000	0	0	3	1.000	0	0	.000	1	0	0	0.0	0	0.0	.264	3-1
Sep 06, 2014	DUKE	5	0	0	0	.000	0	3	.000	0	0	6	1.000	0	14	1.000	1	0	0	0.0	0	0.0	.190	2-3
Sep 12, 2014	at Oregon	4	0	0	0	.000	0	2	.000	0	1	14	.929	1	34	.971	3	0	0	0.0	0	0.0	.090	1-3
Sep 13, 2014	at Oregon State	*2	0	0	0	.000	0	1	.000	0	0	3	1.000	1	5	.800	5	0	0	0.0	0	0.0	.180	3-1
Sep 19, 2014	LIU-BROOKLYN	5	0	0	0	.000	17	70	.243	2	1	15	.933	0	0	.000	13	0	0	0.0	0	2.0	.162	2-3
Sep 26, 2014	at Indiana	1	0	0	0	.000	1	1	1.000	0	0	2	1.000	0	0	.000	0	0	0	0.0	0	0.0	.180	3-1
Sep 27, 2014	at Purdue	2	0	0	0	.000	0	1	.000	0	0	9	1.000	0	5	1.000	7	0	0	0.0	0	0.0	.160	1-3
Sep 30, 2014	at Michigan	4	0	0	0	.000	0	11	.000	0	1	15	.933	0	11	1.000	4	0	0	0.0	0	0.0	.143	1-3
Oct 03, 2014	MICHIGAN	4	0	0	0	.000	1	1	1.000	3	1	17	.941	0	7	1.000	5	0	0	0.0	0	3.0	.177	3-1
Oct 10, 2014	NEBRASKA	4	0	0	1	.000	1	1	1.000	0	1	10	.900	3	6	.500	2	0	0	0.0	0	0.0	.152	1-3
Oct 11, 2014	IOWA	2	0	0	0	.000	0	0	.000	0	0	5	1.000	0	0	.000	0	0	0	0.0	0	0.0	.348	3-0
Oct 17, 2014	at Maryland	1	0	0	0	.000	0	0	.000	0	0	2	1.000	0	0	.000	0	0	0	0.0	0	0.0	.198	3-0
Oct 18, 2014	at RUTGERS	1	0	0	0	.000	0	0	.000	0	0	0	.000	0	2	1.000	0	0	0	0.0	0	0.0	.210	3-0
		39	0	0	1	.000	20	92	.217	6	6	107	.944	5	84	.940	41	0	0	0.0	0	6.0		

Sets played: 39
 Kills per set: 0.00
 Assists per set: 0.51

Service aces per set: 0.15
 Digs per set: 1.05
 Blocks per set: 0.00

Points per set: 0.15

MONSON CAREER STATISTICS

Season	sp-mp	k	k/s	e	ta	pct	a	a/s	sa	sa/s	se	dig	d/s	re	bs	ba	tb	b/s	be	bhe	pts
2014	39-15	0	0.00	0	1	.000	20	0.51	6	0.15	6	41	1.05	5	0	0	0	0.00	0	0	6.0
TOTAL	39-15	0	0.00	0	1	.000	20	0.51	6	0.15	6	41	1.05	5	0	0	0	0.00	0	0	6.0

2014 SEASON HIGHS

Attacks: 1, Nebraska, Oct 10, 2014
 Assists: 17, LIU-Brooklyn, Sep 19, 2014
 Serve aces: 3, Michigan, Oct 03, 2014
 Digs: 13, LIU-Brooklyn, Sep 19, 2014

Redshirt Sophomore (2014): Played in all four games at the UAB/Samford Invitational ... Had eight digs against both UAB (Aug. 29) and Jacksonville State (Aug. 30), bettering the five she had against Duquesne as a freshman (9/21/13) ... Also had a career-best three aces against Samford (Aug. 30) and two assists vs. Jacksonville State, after a career-best one in each category last year ... Is riding a four-game streak with at least one service ace, including three in the two-match weekend against North Carolina and Duke (9/5-6) ... Earned her first career start vs. Duke (9/6) ... Tied her career best with two assists and also contributed 17 digs, another career high, at Oregon State (9/13) ... Five digs in a win at Indiana (9/26) ... Ten digs, four assists, and an ace at Michigan (9/30) ... Recorded 15 digs, two off her career best, and a career-high three assists in a home win over Michigan (10/3) ... Contributed nine digs and a pair of service aces against Nebraska (10/10) ... Had six digs in a sweep of Iowa (10/11) ... Had 10 digs in a first-ever BIG meeting with Maryland (10/17) ...

2

KRISTEN MUIR



Redshirt Sophomore
Defensive Specialist • 5-7
Plymouth, Mich. / Canton

2014 Honors

Club: Legacy
 @kristenmuir4

MUIR 2014 MATCH-BY-MATCH STATISTICS

Date	Opponent	sp	attack				set			serve			recept			dig	blocking				team				
			k	e	ta	pct	a	ta	pct	sa	se	la	re	ta	pct		bs	ba	be	total	bhe	points	hit%	score	
Aug 29, 2014	vs Southeastern La.	2	0	0	0	.000	0	1	.000	0	0	5	1.000	0	3	1.000	1	0	0	0	0.0	0	0.0	.385	3-0
Aug 29, 2014	at UAB	3	0	0	0	.000	0	2	.000	0	1	10	.900	0	10	1.000	8	0	0	0	0.0	0	0.0	.392	3-0
Aug 30, 2014	vs Jacksonville State	3	0	0	0	.000	2	16	.125	2	1	13	.923	0	10	1.000	8	0	0	0	0.0	0	2.0	.364	3-0
Aug 30, 2014	at Samford	4	0	0	0	.000	0	16	.000	3	0	19	1.000	0	17	1.000	4	0	0	0	0.0	0	3.0	.264	3-1
Sep 05, 2014	NORTH CAROLINA	3	0	0	0	.000	0	4	.000	1	0	11	1.000	0	13	1.000	4	0	0	0	0.0	0	1.0	.172	0-3
Sep 06, 2014	DUKE	*3	0	0	0	.000	0	1	.000	2	1	14	.929	2	17	.882	5	0	0	0	0.0	0	2.0	.190	2-3
Sep 12, 2014	at Oregon	2	0	0	0	.000	1	1	1.000	0	0	2	1.000	0	1	1.000	0	0	0	0	0.0	0	0.0	.090	1-3
Sep 13, 2014	at Oregon State	4	0	0	0	.000	2	5	.400	0	1	7	.857	1	22	.955	17	0	0	0	0.0	0	0.0	.180	3-1
Sep 19, 2014	LIU-BROOKLYN	5	0	0	0	.000	0	0	.000	1	1	16	.938	1	13	.923	12	0	0	0	0.0	0	1.0	.162	2-3
Sep 19, 2014	WESTERN KENTUCKY	*3	0	0	0	.000	0	3	.000	1	2	12	.833	0	10	1.000	6	0	0	0	0.0	0	1.0	.346	3-0
Sep 20, 2014	UW-MILWAUKEE	*3	0	0	0	.000	1	3	.333	1	0	9	1.000	0	11	1.000	7	0	0	0	0.0	0	1.0	.266	3-0
Sep 26, 2014	at Indiana	*4	0	0	0	.000	1	3	.333	0	1	14	.929	0	15	1.000	5	0	0	0	0.0	0	0.0	.180	3-1
Sep 27, 2014	at Purdue	*3	0	0	0	.000	1	1	1.000	0	0	10	1.000	0	2	1.000	3	0	0	0	0.0	0	0.0	.160	1-3
Sep 30, 2014	at Michigan	*4	0	0	0	.000	4	14	.286	1	2	12	.833	0	8	1.000	10	0	0	0	0.0	0	1.0	.143	1-3
Oct 03, 2014	MICHIGAN	4	0	0	0	.000	3	10	.300	0	3	17	.824	0	11	1.000	15	0	0	0	0.0	0	0.0	.177	3-1
Oct 10, 2014	NEBRASKA	4	0	0	0	.000	0	1	.000	2	0	18	1.000	1	16	.938	9	0	0	0	0.0	0	2.0	.152	1-3
Oct 11, 2014	IOWA	*3	0	0	0	.000	0	4	.000	0	1	8	.875	0	8	1.000	6	0	0	0	0.0	0	0.0	.348	3-0
Oct 17, 2014	at Maryland	*3	0	0	0	.000	0	1	.000	0	1	12	.917	1	1	1.000	10	0	0	0	0.0	1	0.0	.198	3-0
Oct 18, 2014	at RUTGERS	1	0	0	0	.000	0	0	.000	0	0	0	0.000	0	0	0.000	1	0	0	0	0.0	0	0.0	.210	3-0
		61	0	0	0	.000	15	86	.174	14	15	209	.928	6	188	.968	131	0	0	0	0.0	1	14.0		

Sets played: 61
Assists per set: 0.25

Service aces per set: 0.23
Digs per set: 2.15
Blocks per set: 0.00

Points per set: 0.23

MUIR CAREER STATISTICS

Season	sp-mp	k	k/s	e	ta	pct	a	a/s	sa	sa/s	se	dig	d/s	re	bs	ba	tb	b/s	be	bhe	pts
2013	22-13	0	0.00	0	0	.000	1	0.05	1	0.05	1	13	0.59	0	0	0	0	0.00	0	0	1.0
2014	61-19	0	0.00	0	0	.000	15	0.25	14	0.23	15	131	2.15	6	0	0	0	0.00	0	1	14.0
TOTAL	83-32	0	0.00	0	0	.000	16	0.19	15	0.18	16	144	1.73	6	0	0	0	0.00	0	1	15.0

CAREER HIGHS

Assists: 4, at Michigan, Sep 30, 2014
Serve aces: 3, at Samford, Aug 30, 2014
Digs: 17, at Oregon State, Sep 13, 2014

2014 SEASON HIGHS

Assists: 3, vs. Michigan, Oct. 3
Serve aces: 3 at Samford, Aug. 30
Digs: 17, at Oregon State, Sept. 13

Junior: (2014): Had 10 assists against both Southeastern Louisiana (8/29) and Jacksonville State (8/30) the UAB/Samford Invitational... Had a team-best 16 assists a kill, an ace, and two digs at Oregon (9/12) before leaving the match with an injury ...

4

HALLE PETERSON



Junior
Setter • 5-10
Rockford, Mich / Rockford
Club: Dead Frog/Far Out
 @hallerose12

2014 Honors

PETERSON 2014 MATCH-BY-MATCH STATISTICS

Date	Opponent	attack				set			serve				recept			dig	blocking				team				
		sp	k	e	ta	pct	a	ta	pct	sa	se	ta	pct	re	ta		pct	bs	ba	be	total	bhe	points	hit%	score
Aug 29, 2014	vs Southeastern La.	1	0	0	1	.000	10	30	.333	0	1	5	.800	0	0	.000	1	0	0	0	0.0	0	0.0	.385	3-4
Aug 30, 2014	vs Jacksonville State	1	0	0	0	.000	10	13	.769	0	0	3	1.000	0	0	.000	2	0	1	2	1.0	1	0.5	.364	3-4
Sep 05, 2014	NORTH CAROLINA	1	1	0	1	1.000	4	13	.308	0	1	1	1.000	0	0	.000	0	0	0	2	0.0	0	1.0	.172	0-5
Sep 06, 2014	DUKE	2	0	0	0	.000	0	1	.000	0	0	0	.000	0	0	.000	0	0	0	0	0.0	0	0.0	.190	2-5
Sep 12, 2014	at Oregon	4	1	0	2	.500	16	49	.327	1	0	14	1.000	0	0	.000	2	0	0	0	0.0	0	2.0	.090	1-5
		9	2	0	4	.500	40	106	.377	1	2	23	.913	0	0	.000	5	0	1	4	1.0	1	3.5		

Sets played: 9
 Kills per set: 0.22
 Assists per set: 4.44

Service aces per set: 0.11
 Digs per set: 0.56
 Blocks per set: 0.11

Points per set: 0.39

PETERSON CAREER STATISTICS

Season	sp-mp	k	k/s	e	ta	pct	a	a/s	sa	sa/s	se	dig	d/s	re	bs	ba	tb	b/s	be	bhe	pts
2012	125-35	10	0.08	4	24	.250	596	4.77	20	0.16	41	161	1.29	0	0	0	0	0.00	1	4	30.0
2013	93-26	7	0.08	3	22	.182	470	5.05	12	0.13	53	101	1.09	0	0	1	1	0.01	3	4	19.5
2014	9-5	2	0.22	0	4	.500	40	4.44	1	0.11	2	5	0.56	0	0	1	1	0.11	4	1	3.5
TOTAL	227-66	19	0.08	7	50	.240	1106	4.87	33	0.15	96	267	1.18	0	0	2	2	0.01	8	9	53.0

CAREER HIGHS


Kills: 2, at Michigan, Oct 17, 2012
 Attacks: 2, 12 times
 Assists: 27, at Purdue, Nov 30, 2013; IPFW, Sep 07, 2012
 Serve aces: 2, 6 times
 Digs: 12, Minnesota, Nov 09, 2012; IPFW, Sep 07, 2012
 Blocks: 1, vs Jacksonville State, Aug 30, 2014; Northwestern, Oct 05, 2013
 Block assist: 1, vs Jacksonville State, Aug 30, 2014; Northwestern, Oct 05, 2013

2014 SEASON HIGHS

Kills:
 Attacks: 1, vs. Southeastern Louisiana, Aug. 29
 Assists: 16 at Oregon, Sept. 12
 Serve aces: 1, at Oregon, Sept. 12
 Digs: 2, twice: MR at Oregon, Sept. 12
 Blocks: 1 vs. Jacksonville State, Aug. 30
 Block assist: 1 vs. Jacksonville State, Aug. 30

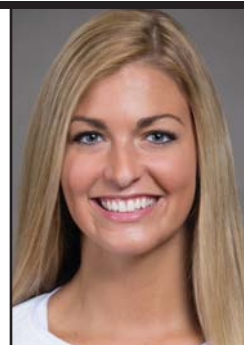
Sophomore: (2014): All-Tournament Team at the UAB/Samford Invitational ... Made her season debut with nine kills on 19 swings (.421) with a pair of blocks and a dig against Southeastern Louisiana (8/29) ... Later that day, hit .545 vs. UAB (7-1-11) ... Had seven kills and three blocks in a sweep of Jacksonville State (8/30) ... Had 11 kills, an assist, a dig, and four blocks in a four-set win over Samford in the tournament finale (8/30) ... Led the Spartans with nine kills against North Carolina (9/5) ... Had 12 kills and five blocks - including three solo stuffs - against Duke (9/6) ... Had six kills and three digs in a four-set loss at Oregon (9/12) ... Had 20 kills on 46 swings while adding an assist, four digs, and tying her season best with five blocks at Oregon State (9/13) ... Put a career-best 24 kills on 55 swings on the stat sheet in the five-set battle with LIU-Brooklyn (9/19), while putting up three blocks (one solo) ... Had 12 kills and no errors on 19 swings (.632, her career best) and a pair of blocks in a sweep of Western Kentucky (9/19) ... Rounded out the Spartan Invitational with a six-kill performance in a sweep of Milwaukee, and was named to the All-Tournament Team (9/20) ... Had 13 kills, sharing the team lead in that category, in the Big Ten opener at Indiana (9/26), and also had four blocks ... Led MSU with 15 kills at No. 16 Purdue (9/27), and added three digs and four blocks ... Exploded for 23 kills, hitting .296 at Michigan (9/30), adding a pair of blocks ... Established a new career bests of 26 kills and 60 attempts in a win at home over Michigan (10/3), and also had a solo block and tied her career best with seven digs ... Led MSU with 15 kills and added three digs in a loss to Nebraska (10/10) ... Had a team-high 11 kills and added two blocks (one solo) in a sweep of Iowa (10/11) ... Contributed a match-best 16 kills and hit .273 in MSU's first-ever BIG match at Maryland (10/17), and just missed a double-double with nine digs ... Recorded a team-high 12 kills against Rutgers (10/18) and added six digs and a block ...

11

Sophomore
Outside Hitter • 6-4
South Lyon, Mich. / South Lyon
Club: Michigan Elite
 **@Chloe_Reinig**

CHLOE REINIG

2014 Honors
 UAB/Samford All-Tournament Team
 Spartan Invitational All-Tournament Team



REINIG 2014 MATCH-BY-MATCH STATISTICS

Date	Opponent	sp	attack				set			serve				receipt			blocking				team				
			k	e	ta	pct	a	ta	pct	sa	se	la	pct	re	ta	pct	dig	bs	ba	be	total	bhe	points	hit%	score
Aug 29, 2014	vs Southeastern La.	3	9	1	19	.421	0	1	.000	0	0	0	0	0	1	1.000	1	0	2	0	2.0	0	10.0	.385	3-0
Aug 29, 2014	at UAB	2	7	1	11	.545	0	0	.000	0	0	0	0	0	0.000	0	0	0	0	0.0	0	7.0	.392	3-0	
Aug 30, 2014	vs Jacksonville State	3	7	2	19	.263	0	1	.000	0	0	0	0	5	1.000	0	0	3	0	3.0	0	8.5	.364	3-0	
Aug 30, 2014	at Samford	4	11	4	29	.241	1	2	.500	0	0	2	1.000	0	1	1.000	1	0	4	0	4.0	0	13.0	.264	3-1
Sep 05, 2014	NORTH CAROLINA	3	9	4	17	.294	0	0	.000	0	0	0	0	2	1.000	0	0	1	0	1.0	0	9.5	.172	0-3	
Sep 06, 2014	DUKE	5	12	4	37	.216	0	1	.000	0	0	0	0	1	5.800	2	3	2	0	5.0	0	16.0	.190	2-3	
Sep 12, 2014	at Oregon	4	6	4	18	.111	0	1	.000	0	0	0	0	0	3.1000	3	0	0	0	0.0	0	6.0	.090	1-3	
Sep 13, 2014	at Oregon State	4	20	7	46	.283	1	1	1.000	0	0	0	0	0	0.000	4	2	3	0	5.0	0	23.5	.180	3-1	
Sep 19, 2014	LIU-BROOKLYN	5	24	12	55	.218	0	0	.000	0	0	0	0	8	1.000	7	1	2	2	3.0	0	26.0	.162	2-3	
Sep 19, 2014	WESTERN KENTUCKY	3	12	0	19	.632	0	2	.000	0	0	0	0	0	1.1000	0	1	1	1	2.0	0	13.5	.346	3-0	
Sep 20, 2014	UW-MILWAUKEE	3	6	1	19	.263	0	0	.000	0	0	0	0	0	0.000	2	0	1	1	1.0	0	6.5	.266	3-0	
Sep 26, 2014	at Indiana	4	13	5	35	.229	0	0	.000	0	0	0	0	0	0.000	1	0	4	0	4.0	0	15.0	.180	3-1	
Sep 27, 2014	at Purdue	4	15	12	46	.065	0	0	.000	0	0	0	0	0	0.000	3	0	4	0	4.0	0	17.0	.160	1-3	
Sep 30, 2014	at Michigan	4	23	7	54	.296	0	2	.000	0	0	0	0	0	1.1000	2	0	2	1	2.0	0	27.0	.143	1-3	
Oct 03, 2014	MICHIGAN	4	26	10	60	.267	1	4	.250	0	0	0	0	0	0.000	7	1	0	0	1.0	0	27.0	.177	3-1	
Oct 10, 2014	NEBRASKA	4	15	7	41	.195	0	3	.000	0	0	0	0	0	1.1000	3	0	1	0	1.0	1	15.5	.152	1-3	
Oct 11, 2014	IOWA	3	11	2	19	.474	0	0	.000	0	0	0	0	0	0.000	3	1	1	0	2.0	0	12.5	.348	3-0	
Oct 17, 2014	at Maryland	3	16	7	33	.273	0	0	.000	0	1	7	.857	0	0	0.000	9	0	1	0	1.0	0	16.5	.198	3-0
Oct 18, 2014	at RUTGERS	3	12	6	35	.171	0	1	.000	1	1	10	.900	0	2	1.000	6	0	1	1	1.0	0	13.5	.210	3-0
		68	254	96	612	.258	3	19	.158	1	2	19	.895	1	30	.967	54	9	33	6	42.0	1	280.5		

Sets played: 68
 Kills per set: 3.74
 Assists per set: 0.04

Service aces per set: 0.01
 Digs per set: 0.79
 Blocks per set: 0.62

Points per set: 4.12

REINIG CAREER STATISTICS

Season	sp-mp	k	k/s	e	ta	pct	a	a/s	sa	sa/s	se	dig	d/s	re	bs	ba	tb	b/s	be	bhe	pts
2013	90-25	234	2.60	112	594	.205	1	0.01	0	0.00	0	14	0.16	1	4	58	62	0.69	7	0	267.0
2014	68-19	254	3.74	96	612	.258	3	0.04	1	0.01	2	54	0.79	1	9	33	42	0.62	6	1	280.5
TOTAL	158-44	488	3.09	208	1206	.232	4	0.03	1	0.01	2	68	0.43	2	13	91	104	0.66	13	1	547.5

CAREER HIGHS

Kills: 26 [1-3rd], Michigan, Oct 03, 2014
 Attacks: 60, Michigan, Oct 03, 2014
 Attack pct: .632 vs. Western Kentucky, Sept. 19 (12-0-19)
 Assists: 1, 4 times
 Serve aces: 1, at RUTGERS, Oct 18, 2014
 Digs: 9, at Maryland, Oct 17, 2014
 Blocks: 7, Michigan, Oct 23, 2013
 Block solo: 3 [1-1st], Duke, Sep 06, 2014
 Block assist: 6, Michigan, Oct 23, 2013

2014 SEASON HIGHS

Kills: 26, vs. Michigan, Oct. 3
 Attacks: 60, vs. Michigan, Oct. 3
 Attack pct: .632 vs. Western Kentucky, Sept. 19 (12-0-19)
 Assists: 1, three times; MR at Michigan, Sept. 29
 Digs: 7, twice; MR vs. Michigan, Oct. 3
 Blocks: 5, twice; MR at Oregon State Sept. 13
 Block solo: 3, vs. Duke, Sept. 6
 Block assist: 4, at Samford, Aug. 30

Redshirt Sophomore: (2014): Made her season debut against Jacksonville State at the UAB/Samford Invitational (8/30) ... Saw time in a three-set sweep of Milwaukee (9/20) ...

8

EBONY SCOTT



Redshirt Sophomore
 Outside Hitter • 5-11
 Powhatan, Va./ Powhatan
 U-Turn Sports Performance
 @EbonyChristinaa

2014 Honors

SCOTT 2014 MATCH-BY-MATCH STATISTICS

Date	Opponent	sp	attack				set			serve			recept			blocking				team						
			k	e	ta	pct	a	ta	pct	sa	se	ta	pct	re	ta	pct	dig	bs	ba		be	total	bhe	points	hit%	score
Aug 30, 2014	vs Jacksonville State	1	1	0	2	.500	0	0	.000	0	0	0	.000	0	0	.000	0	0	0	0	0	0	0	1.0	.364	3-0
Sep 05, 2014	NORTH CAROLINA	1	0	0	0	.000	0	0	.000	0	0	0	.000	0	0	.000	0	0	0	0	0	0	0	0.0	.172	0-3
Sep 20, 2014	UW-MILWAUKEE	1	0	2	2	-1.000	0	0	.000	0	0	0	.000	0	0	.000	0	0	0	0	0	0	0	0.0	.266	3-0
		3	1	2	4	-.250	0	0	.000	0	0	0	.000	0	0	.000	0	0	0	0	0	0	0	1.0		

Sets played: 3
 Kills per set: 0.33

Points per set: 0.33

SCOTT CAREER STATISTICS

Season	sp-mp	k	k/s	e	ta	pct	a	a/s	sa	sa/s	se	dig	d/s	re	bs	ba	tb	b/s	be	bhe	pts
2012	0-0	0	0.00	0	0	.000	0	0.00	0	0.00	0	0	0.00	0	0	0	0	0.00	0	0	0.0
2013	8-8	4	0.50	5	15	-.067	0	0.00	0	0.00	0	0	0.00	0	1	2	3	0.38	1	0	6.0
2014	3-3	1	0.33	2	4	-.250	0	0.00	0	0.00	0	0	0.00	0	0	0	0	0.00	0	0	1.0
TOTAL	11-11	5	0.45	7	19	-.105	0	0.00	0	0.00	0	0	0.00	0	1	2	3	0.27	1	0	7.0

CAREER HIGHS

Kills: 2, vs IPFW, Sep 13, 2013
 Attacks: 4, vs Towson, Aug 30, 2013; Northwestern, Oct 05, 2013
 Blocks: 1, vs Saint Francis, Aug 30, 2013; Oregon State, Sep 07, 2013; vs IPFW, Sep 13, 2013
 Block solo: 1, vs IPFW, Sep 13, 2013
 Block assist: 1, vs Saint Francis, Aug 30, 2013; Oregon State, Sep 07, 2013

2014 SEASON HIGHS

Kills: 1, vs. Jacksonville State, Aug. 30
 Attacks: 2, vs. Jacksonville State, Aug. 30
 Attack pct:

Freshman: (2014): Had an impressive collegiate debut vs. Southeastern Louisiana at the UAB/Samford Invitational (8/29), recording a team-best 14 kills and hitting .400 (14-4-25) and contributing a block and pair of digs ... Had 10 digs and four blocks (one solo) against UAB (8/29) ... Had eight kills and a block against Jacksonville State (8/30) ... Had eight kills and her first career service ace in a tough loss to North Carolina (9/5) ... Contributed 11 kills and three blocks against Duke (9/6) ... Missed seven games, starting with the Oregon/Oregon State weekend, with injury ... Played two of three sets against Maryland (10/17), her first significant action since her injury, and had four kills and a block, along with a service ace ... Had a kill and two digs in one set against Rutgers (10/18) ...

18

HOLLY TOLIVER



Freshman
Outside Hitter • 6-2
Berrien Springs, Mich.
Berrien Springs
Club: Dead Frog/Far Out
 @hollytoliver

2014 Honors

TOLIVER 2014 MATCH-BY-MATCH STATISTICS

Date	Opponent	sp	attack			set		serve			recept		dig	blocking			team								
			k	e	ta	a	ta	sa	se	ta	re	ta		bs	ba	be	bhe	points	hit%	score					
Aug 29, 2014	vs Southeastern La.	*3	14	4	25	.400	0	1	0.000	0	1	3	.667	0	5	1.000	2	0	1	0	1.0	0	14.5	.395	3-0
Aug 29, 2014	at UAB	*3	10	4	25	.240	0	0	0.000	0	2	2	1.000	0	1	1.000	2	1	3	0	4.0	0	12.5	.392	3-0
Aug 30, 2014	vs Jacksonville State	*3	8	2	17	.353	0	0	0.000	0	0	0	0.000	0	2	1.000	2	0	1	0	1.0	0	8.5	.364	3-0
Aug 30, 2014	at Samford	*3	4	2	19	.105	0	3	0.000	0	0	0	0.000	0	2	1.000	5	0	0	0	0.0	0	4.0	.264	3-1
Sep 05, 2014	NORTH CAROLINA	*3	8	7	25	.040	0	0	0.000	1	2	5	.600	1	6	.833	0	0	0	0	0.0	0	9.0	.172	0-3
Sep 06, 2014	DUKE	*5	11	9	39	.051	0	0	0.000	1	2	13	.846	0	13	1.000	2	0	3	2	3.0	0	13.5	.190	2-3
Oct 03, 2014	MICHIGAN	1	0	2	2	-1.000	0	0	0.000	0	0	0	0.000	0	0	0.000	0	0	0	0	0.0	0	0.0	.177	3-1
Oct 10, 2014	NEBRASKA	1	0	0	2	.000	0	0	0.000	0	1	1	1.000	0	0	0.000	1	0	0	0	0.0	0	0.0	.152	1-3
Oct 11, 2014	IOWA	1	0	2	3	-.667	0	0	0.000	0	0	1	1.000	0	0	0.000	0	0	0	0	0.0	0	0.0	.348	3-0
Oct 17, 2014	at Maryland	*2	4	5	12	-.083	0	0	0.000	1	0	5	1.000	0	0	0.000	0	0	1	0	1.0	0	5.5	.198	3-0
Oct 18, 2014	at RUTGERS	1	1	3	7	-.286	0	0	0.000	0	0	2	1.000	0	1	1.000	2	0	0	1	0.0	0	1.0	.210	3-0
			26	60	40	.176	.114	0	4	0.000	3	8	.750	1	30	.967	16	1	9	3	10.0	0	68.5		

Sets played: 26
 Kills per set: 2.31

Service aces per set: 0.12
 Digs per set: 0.62
 Blocks per set: 0.38

Points per set: 2.63

TOLIVER CAREER STATISTICS

Season	sp-mp	k	k/s	e	ta	pct	a	a/s	sa	sa/s	se	dig	d/s	re	bs	ba	tb	b/s	be	bhe	pts
2014	26-11	60	2.31	40	176	.114	0	0.00	3	0.12	8	16	0.62	1	1	9	10	0.38	3	0	68.5
TOTAL	26-11	60	2.31	40	176	.114	0	0.00	3	0.12	8	16	0.62	1	1	9	10	0.38	3	0	68.5

2014 SEASON HIGHS

Kills: 14, vs Southeastern La., Aug 29, 2014
 Attacks: 39, Duke, Sep 06, 2014
 Attack pct: .400, vs Southeastern La., Aug 29, 2014 (14-4-25)
 Serve aces: 1, at Maryland, Oct 17, 2014; North Carolina, Sep 05, 2014; Duke, Sep 06, 2014
 Digs: 5, at Samford, Aug 30, 2014
 Blocks: 4, at UAB, Aug 29, 2014
 Block solo: 1, at UAB, Aug 29, 2014
 Block assist: 3, at UAB, Aug 29, 2014; Duke, Sep 06, 2014

Redshirt Freshman: (2014): Made her collegiate debut vs. Southeastern Louisiana, recording a pair of kills (8/29) ... Had three kills on six swings (.333), a service ace, and a solo block vs. Jacksonville State (8/30) ... Made her first career start and played her most significant amount of time against Duke (9/6), and had nine kills, hit .368, and led the team with six blocks ... Had four kills in each match at Oregon and Oregon State (9/12-13), and also put up four blocks against the Ducks ... In two sets against Michigan, (10/3), contributed four kills and three blocks ... Came off the bench to contribute three kills and two blocks in the third set against Iowa (10/11) ... Had five kills, hitting .333, and also had a pair of blocks in a 3-0 sweep of Rutgers (10/18) ...

5

MEGAN TOMPKINS



Redshirt Freshman
Middle Blocker • 6-3
Petoskey, Mich. / Petoskey
Club: Dead Frog/Far Out
 @mtompkins88

2014 Honors

TOMPKINS 2014 MATCH-BY-MATCH STATISTICS

Date	Opponent	sp	attack			set			serve			receipt			dig	blocking			team						
			k	e	ta	pct	a	ta	pct	sa	se	la	pct	re		ta	pct	bs	ba	be	bhe	points	hit%	score	
Aug 29, 2014	vs Southeastern La.	1	2	3	8	-.125	0	0	0.000	0	0	1	1.000	0	0	0.000	0	0	0	0.0	0	2.0	.385	3-0	
Aug 30, 2014	vs Jacksonville State	1	3	1	6	.333	0	1	1.000	1	1	7	.857	0	1	1.000	1	1	0	1.0	0	5.0	.364	3-0	
Sep 05, 2014	NORTH CAROLINA	1	3	0	3	1.000	0	0	0.000	0	1	4	.750	0	0	0.000	0	0	1	1.0	0	3.5	.172	0-3	
Sep 06, 2014	DUKE	*5	9	2	19	.368	0	0	0.000	0	0	9	1.000	0	1	1.000	1	0	6	6.0	0	12.0	.190	2-3	
Sep 12, 2014	at Oregon	*4	4	1	12	.250	0	2	0.000	0	1	5	.800	0	0	0.000	2	0	4	1	4.0	0	6.0	.090	1-3
Sep 13, 2014	at Oregon State	*3	4	5	13	-.077	0	0	0.000	0	0	8	1.000	0	0	0.000	1	0	1	0	1.0	0	4.5	.180	3-1
Sep 19, 2014	LIU-BROOKLYN	2	1	0	2	.500	0	0	0.000	0	0	0	0.000	0	0	0.000	0	0	1	0	1.0	0	1.5	.162	2-3
Oct 03, 2014	MICHIGAN	2	4	1	9	.333	0	1	1.000	0	0	0	0.000	0	1	1.000	0	0	3	1	3.0	0	5.5	.177	3-1
Oct 11, 2014	IOWA	1	3	2	8	.125	0	0	0.000	0	0	0	0.000	0	0	0.000	1	1	1	0	2.0	0	4.5	.348	3-0
Oct 18, 2014	at RUTGERS	2	5	2	9	.333	0	0	0.000	0	0	0	0.000	0	1	1.000	0	0	2	0	2.0	0	6.0	.210	3-0
Totals		22	38	17	89	.236	0	4	0.00	1	3	34	.912	0	4	1.000	6	2	19	2	21.0	0	50.5		

Sets played: 22
 Kills per set: 1.73

Service aces per set: 0.05
 Digs per set: 0.27
 Blocks per set: 0.95

Points per set: 2.30

TOMPKINS CAREER STATISTICS

Season	sp-mp	k	k/s	e	ta	pct	a	a/s	sa	sa/s	se	dig	d/s	re	bs	ba	tb	b/s	be	bhe	pts
2013	0-0	0	0.00	0	0	.000	0	0.00	0	0.00	0	0	0.00	0	0	0	0	0.00	0	0	0.0
2014	22-10	38	1.73	17	89	.236	0	0.00	1	0.05	3	6	0.27	0	2	19	21	0.95	2	0	50.5
TOTAL	22-10	38	1.73	17	89	.236	0	0.00	1	0.05	3	6	0.27	0	2	19	21	0.95	2	0	50.5

2014 SEASON HIGHS

Kills: 9, Duke, Sep 06, 2014
 Attacks: 19, Duke, Sep 06, 2014
 Serve aces: 1, vs Jacksonville State, Aug 30, 2014
 Digs: 2, at Oregon, Sep 12, 2014
 Blocks: 6, Duke, Sep 06, 2014
 Block solo: 1, vs Jacksonville State, Aug 30, 2014; Iowa, Oct 11, 2014

Senior: (2014): Started all four matches at the UAB/Samford Invitational (8/29-30) ... Had three kills, a pair of aces, and a dig against Southeastern Louisiana ... Contributed a career-best eight kills and three blocks in a straight-set win over UAB ... Had four kills on six swings (4-0-6), hitting .667 with one block in limited action against Jacksonville State, a match in which all 16 traveling players got into the game ... Wrapped up the tournament with a three-kill, one-assist, three-ace, three-block performance against Samford as the Spartans clinched the tournament title ... Tied her career best with eight blocks vs. LIU-Brooklyn in the opener of the Spartan Invitational (9/19) ... Had six kills and four blocks, while hitting a season-best .455 (6-1-11) in a three-set sweep of Western Kentucky (9/19) ... Had six kills, a pair of aces, and six blocks - two solo - in the Spartan Invitational sweep of Milwaukee (9/20) ... Contributed three kills and five blocks in the Big Ten opener at Indiana (9/26) ... Matched her career high with eight blocks against Michigan (9/30) ... Recorded five kills and a pair of blocks against Nebraska (10/10) ... Had four kills and two blocks, including one solo, in a sweep of Iowa (10/11) ... Had three blocks, two kills, and a dig against Maryland (10/17) ... Five kills, three aces, and pair of digs in the Spartan sweep of Rutgers (10/18) ...

14

JAZMINE WHITE



Senior • Captain
 Middle Blocker /Outside Hitter • 6-1
 Oshawa, Ontario
 R.S. McLaughlin Institute
 Club: Element
 @jazzwhite

2014 Honors
 Team Captain

WHITE 2014 MATCH-BY-MATCH STATISTICS

Date	Opponent	sp	attack			set			serve			recept			dig	blocking				team					
			k	e	ta	pct	a	ta	pct	sa	se	ta	pct	re		ta	pct	bs	ba	tb	b/s	bbe	pts	scor	
Aug 29, 2014	vs Southeastern La.	*2	3	0	9	.333	0	0	.000	2	0	7	1.000	0	1	1.000	1	0	2	0	2.0	0	6.0	.385	3-4
Aug 29, 2014	at UAB	*3	8	3	14	.357	0	0	.000	0	0	12	1.000	0	0	.000	1	0	3	0	3.0	0	9.5	.392	3-4
Aug 30, 2014	vs Jacksonville State	*1	4	0	6	.667	0	0	.000	0	1	2	.500	0	1	1.000	0	0	1	0	1.0	0	4.5	.364	3-4
Aug 30, 2014	at Samford	*3	3	1	8	.250	1	1	1.000	3	0	18	1.000	0	0	.000	1	1	2	0	3.0	0	8.0	.264	3-1
Sep 05, 2014	NORTH CAROLINA	*1	0	1	2	.500	0	0	.000	0	0	1	1.000	0	0	.000	0	0	0	0	0.0	0	1.0	.172	0-1
Sep 12, 2014	at Oregon	1	1	0	2	.500	0	0	.000	0	0	0	.000	0	0	.000	0	0	0	0	0.0	0	1.0	.090	1-1
Sep 13, 2014	at Oregon State	3	7	3	14	.286	0	1	.000	0	1	6	.833	0	0	.000	0	0	3	0	3.0	0	8.5	.180	3-1
Sep 19, 2014	LIU-BROOKLYN	*5	4	1	13	.231	0	4	.000	0	0	22	1.000	0	5	1.000	5	0	8	1	8.0	0	8.0	.162	2-1
Sep 19, 2014	WESTERN KENTUCKY	*3	6	1	11	.455	0	0	.000	1	0	11	1.000	0	2	1.000	1	0	4	0	4.0	0	9.0	.346	3-1
Sep 20, 2014	UW-MILWAUKEE	*3	6	2	12	.333	1	2	.500	2	1	14	.929	0	5	1.000	2	2	4	0	6.0	0	12.0	.266	3-1
Sep 26, 2014	at Indiana	*4	3	3	11	.000	0	0	.000	0	0	0	.000	0	2	1.000	0	0	5	1	5.0	0	5.5	.180	3-1
Sep 27, 2014	at Purdue	*4	6	1	14	.357	0	1	.000	0	0	0	.000	0	0	.000	3	0	7	1	7.0	0	9.5	.160	1-1
Sep 30, 2014	at Michigan	*4	1	5	13	-.308	0	1	.000	0	1	1	.000	0	0	.000	1	0	8	0	8.0	0	5.0	.143	1-1
Oct 03, 2014	MICHIGAN	*2	1	2	6	-.167	0	0	.000	0	0	0	.000	0	2	1.000	0	0	1	0	1.0	0	1.5	.177	3-1
Oct 10, 2014	NEBRASKA	*4	5	2	15	.200	1	2	.500	0	0	0	.000	0	3	1.000	1	0	2	0	2.0	0	6.0	.152	1-1
Oct 11, 2014	IOWA	*2	4	1	6	.500	0	0	.000	0	0	0	.000	0	1	1.000	0	1	1	0	2.0	0	5.5	.348	3-4
Oct 17, 2014	at Maryland	*3	2	2	9	.000	0	1	.000	0	1	9	.899	0	0	.000	1	0	3	0	3.0	0	3.5	.198	3-4
Oct 18, 2014	at RUTGERS	*3	5	3	13	.154	0	0	.000	3	2	12	.833	0	0	.000	2	0	1	1	1.0	0	8.5	.210	3-4
Totals			51	69	31	178	.213	3	13	.231	11	7	115	.939	0	22	1.000	19	4	55	4	59.0	0	111.5	

Sets played: 51
 Kills per set: 1.35
 Assists per set: 0.06

Service aces per set: 0.22
 Digs per set: 0.37
 Blocks per set: 1.16

Points per set: 2.19

WHITE CAREER STATISTICS

Season	sp-mp	k	k/s	e	ta	pct	a	a/s	sa	sa/s	se	dig	d/s	re	bs	ba	tb	b/s	bbe	pts	
2011	70-22	64	0.91	18	170	.271	2	0.03	14	0.20	25	33	0.47	1	4	62	66	0.94	6	0	113.0
2012	127-35	133	1.05	46	318	.274	4	0.03	21	0.17	23	56	0.44	2	3	96	99	0.78	10	0	205.0
2013	37-22	30	0.81	10	86	.233	1	0.03	8	0.22	5	10	0.27	0	3	18	21	0.57	2	0	50.0
2014	51-18	69	1.35	31	178	.213	3	0.06	11	0.22	7	19	0.37	0	4	55	59	1.16	4	0	111.5
TOTAL	285-97	296	1.04	105	752	.254	10	0.04	54	0.19	60	118	0.41	3	14	231	245	0.86	22	0	479.5

CAREER HIGHS

Kills: 10, at Minnesota, Oct 06, 2012
 Attacks: 20, Purdue, Sep 21, 2012
 Attack pct: .455 vs. Western Kentucky (6-1-11), Sept. 19
 Assists: 1, 10 times
 Serve aces: 5 (1-2nd), at Minnesota, Oct 06, 2012
 Digs: 6, Purdue, Sep 21, 2012
 Blocks: 8, 6 times MR vs. Michigan, Sept. 30
 Block solo: 2, UW-Milwaukee, Sep 20, 2014
 Block assist: 8, four times; MR vs. Michigan, Sept. 30

2014 SEASON HIGHS

Kills: 8 at UAB, Aug. 29
 Attacks: 14, twice; MR at Oregon State, Sept. 13
 Attack pct: .455 vs. Western Kentucky (6-1-11), Sept. 19
 Serve aces: 3, at Samford, Aug. 30
 Digs: 5, vs. LIU-Brooklyn, Sept. 19
 Blocks: 8, twice; MR vs. Michigan, Sept. 30
 Block solo: 2, vs. Milwaukee, Sept. 20
 Block assist: 8, twice; MR vs. Michigan, Sept. 30