

PENN STATE

WOMEN'S LACROSSE

2012 SCHEDULE

February

15	at Bucknell	W, 19-3
19	No. 2 MARYLAND	L, 16-6
22	DUQUESNE	W, 16-5
25	at Lafayette	W, 14-10

March

4	No. 6 VIRGINIA	W, 14-7
7	No. 17 LOYOLA	L, 12-10 (OT)
10	at Delaware	W, 12-6
14	at Hofstra	W, 11-9
18	at No. 8 Vanderbilt*	W, 12-11 (OT)
25	WILLIAM & MARY	W, 9-7

April

1	at No. 4 Florida*	L, 20-11
6	No. 1 NORTHWESTERN*	L, 14-7
11	at Lehigh	W, 15-3
15	at No. 10 Ohio State*	W, 15-12
21	No. 18 JOHNS HOPKINS*	W, 12-9
28	No. 17 PRINCETON	L, 13-12 (OT)

May

3	vs. No. 19 Johns Hopkins (1)	L, 13-12
12	at No. 16 Towson (2)	W, 15-8
19	at No. 1 Florida (3)	12:30 p.m.

*ALC games

- (1) 2012 ALC Championship First Round, Gainesville, Fla.
 (2) 2012 NCAA Championship, First Round, Towson, Md.
 (3) 2012 NCAA Championship, Quarterfinals, Gainesville, Fla.

TEAM INFORMATION

Head Coach	Missy Doherty (Second year)
Penn State Record	22-14
Career Record	101-60
Assistant Coach	Tara Hohenshelt (13th year)
Assistant Coach	Amy Altig (Second year)
2012 Overall Record	12-6
2012 ALC Record (Finish)	3-2 (3rd)
2012 Team Captains	Dana Cahill Theresa Zichelli
All-Time Record	456-221-5
All-Time ALC Record	30-26
NCAA Postseason Appearances	18
National Championships	5
All-Americans	98

ATHLETIC COMMUNICATIONS

Women's lacrosse contact	John Regenfuss
Office phone	814-865-1757
Cell phone	814-876-0824
Office fax	814-863-3165
Email	jmr49@psu.edu
Twitter	@GoPSUWLaxr



PENN STATE NITTANY LIONS

At-large
12-6

FLORIDA GATORS

No. 1 seed
18-2

Quarterfinals | Saturday, May 19 | 12:30 p.m. | Dizney Stadium | Gainesville, Fla.

SETTING THE SCENE

- The Nittany Lion women's lacrosse team will continue its NCAA Championship journey on Saturday afternoon in a familiar place against a well-known foe.
- Penn State, the lone at-large team remaining in the 2012 field, will travel to Gainesville for the third time this season to face American Lacrosse Conference champion and No. 1 seed Florida (18-2) in a 12:30 p.m. quarterfinal match-up at the Gators' Donald R. Dizney Stadium.

STORYLINES

- Penn State (12-6) faced Florida in an ALC contest in Gainesville earlier this season and visited there again just two weeks ago when the Gators hosted the 2012 ALC Championship, playing Johns Hopkins.
- The Nittany Lions have been exceptional on the road in 2012, posting an 8-1 record, with its lone loss coming to UF in the teams' April 1 regular season meeting.
- The eight road wins are the most by a Penn State team since the national championship season of 1989 but the Nittany Lions are 0-3 all-time at Dizney Stadium.

CHAMPIONSHIP COVERAGE

- Fans can follow all of the action of the Penn State-Florida contest with live stats from GameTracker or receive game updates through the official Twitter account of the Penn State women's lacrosse team, @GoPSUWLax.
- The NCAA Championship quarterfinal battle will also be streamed live online for free.
- Find links on the front page (click on Schedule/Results) of the official website of Nittany Lion athletics, www.GoPSUsports.com, and on the women's lacrosse schedule page.

LAST TIME OUT

- Last weekend, Penn State made a triumphant return to the NCAA postseason, advancing to the elite eight with a convincing 15-8 first round win over No. 8 seed Towson at the Tigers' Johnny Unitas Stadium.
- The Nittany Lions used a dominating second half performance, outscoring Towson, 9-3, to secure a win in the program's first NCAA

appearance since 2005.

- The victory, the program's first in NCAA Championship play since 1999, upped Penn State's overall postseason record to 30-17.
- Baltimore native junior Molly Fernandez scored a game-high four goals while the freshmen duo of Maggie McCormick (1 goal, 3 assists) and Haley Ford (3 goals) combined for seven points.
- Senior goalkeeper Dana Cahill starred on defense in her hometown return, recording six saves, including four key stops in the decisive second half.
- Sophomore defender Lizzy Carney held the Tigers' leading scorer, who entered the game with 66 points, to just two and netted her fourth goal of the season.

PREVIEWING PENN STATE

- After her four-goal effort versus Towson, Molly Fernandez has taken over the team lead with 35 for the season but is followed closely in the rankings by sophomore Mackenzie Cyr and freshman Tatum Coffey, who each have scored 34.
- Coffey leads the Nittany Lions in free position goals with eight and draw controls with 52.
- Maggie McCormick tops Penn State with 59 points, the most by a Nittany Lion in a decade, and her 30 assists are the highest total since 2000.
- Senior Theresa Zichelli (22 goals, 4 assists) and freshmen Kelly Lechner (20 goals, 5 assists) and Haley Ford (14 goals, 3 assists) have also made significant contributions throughout the season on the offensive end.
- Two-time ALC Goalkeeper of the Year Dana Cahill and First Team All-ALC selection Lizzy Carney headline the No. 24 Penn State defense.
- Cahill is ranked fourth nationally in saves (167), 10th in save percentage (.488), and No. 25 in goals against average (9.82).
- Senior Colleen Shea and junior Katie Guy, who is second on the team with 29 draw controls, are also key to Penn State's defensive efforts.

2012 PENN STATE ROSTER

No.	Name	Pos.	Yr.	Ht.	Hometown/High School	Notes
1	Avery Curley	A	So.	5-5	Berwyn, Pa./Episcopal Academy	Played in 4 games, scored 2 goals
2	Shannon Lechner	A/M	So.	5-5	Silver Spring, Md./Our Lady of Good Counsel	Towson transfer, played in 10 games
3	Haley Ford	M	Fr.	5-7	White Hall, Md./North Harford	Ranks 7th on team with 14 goals, 17 points
5	Lizzy Carney	D	So.	5-5	West Chester, Pa./Unionville	Top 1-v-1 defender, started all 18 games
6	Elaine Welch	A	Sr.	5-10	Bernardsville, N.J./Kent Place	Made 3 starts, scored 8 goals
7	Tatum Coffey	M	Fr.	5-6	Toms River, N.J./Toms River	Scored 34 goals, team leader in draws (52)
8	Brittaney Chamberlain	D	Sr.	5-3	Finksburg, Md./Westminster	Started all 8 games in which she played
9	Katie Guy	D	Jr.	5-8	Whitby, Ontario/Anderson C.V.I.	18-game starter on defense; also takes draws
10	Lauren Purvis	M	So.	5-7	Maple Glen, Pa./Hatboro-Horsham	Played in 17 games, scored 4 goals
12	Molly Fernandez	A	Jr.	5-2	Baltimore, Md./McDonogh School	Team leader in goals (35), shots (78)
14	Ali Foulsham	D	So.	5-6	Madison, N.J./Madison	Played in 2 games, twin sister of Evan
15	Mackenzie Cyr	A	So.	5-6	Westminster, Md./Winters Mill	Ranks 2nd in goals (34), assists (22), points (56)
16	Kelsey Hughes	D	Sr./Jr.	5-7	Severna Park, Md./Severn School	Played in 5 games
17	Erin McAfee	D	Fr.	5-8	Moorestown, N.J./Moorestown	Played in 9 games
18	Cat Layne	D	Fr.	5-4	Downingtown, Pa./Villa Maria Academy	Started 9 games, including last 7 on defense
19	Carly Bitzer	D	So.	5-8	Doylestown, Pa./Central Bucks East	Played in 4 games
20	Evan Foulsham	M	So.	5-6	Madison, N.J./Madison	Played in 15 games with 8 starts
21	Kelly Lechner	M	Fr.	5-6	Silver Spring, Md./Our Lady of Good Counsel	Started 15 games; totaled 20 goals, 5 assists
23	Theresa Zichelli	M	Sr.	5-6	Severna Park, Md./Severna Park	26 points (22g, 4a), 26 gb, 26 dc, 13 ct
24	Maggie McCormick	A	Fr.	5-10	Eldersburg, Md./Liberty	Team leader with 30 assists, 59 points
28	Aly Adams	M	Sr.	5-6	Springfield, Pa./Springfield	Made 10 starts, scored 6 goals
30	Colleen Shea	D	Sr.	5-4	Baltimore, Md./Seton Keough	Started all 18 games on back line
32	Kristin Brent	A	Fr.	5-9	Rockville Centre, N.Y./Sacred Heart Academy	Played in 3 games
33	Melissa Lloyd	GK	So.	5-0	West Chester, Pa./Unionville	Back-up GK, played in 1 game
34	Dana Cahill	GK	Sr.	5-7	Towson, Md./Mercy	Tewaaraton nominee, 2-time ALC GK of Year

Head Coach: Missy Doherty (Second Year at Penn State, Ninth Career)
Assistant Coaches: Tara Hohenshelt (13th Year), Amy Altig (Second Year)
Captains: Dana Cahill, Theresa Zichelli

SCOUTING FLORIDA

- Florida, which moved into the No. 1 spot in the national rankings following its ALC Championship win over Northwestern, defeated Albany, 6-4, in Gainesville in the first round to advance to the NCAA quarterfinals.
- Powering the Gators to the championship's top seed is the nation's No. 1 defense and third-ranked offense.
- Junior goalkeeper Mikey Meagher, who leads the NCAA in goals against average and save percentage, anchors a UF defense that is allowing an average of just 6.40 goals per game.
- The Gators offense is balanced and prolific, featuring three players with 60 or more points and six players with 36 or more goals.
- Kitty Cullen leads the team with 65 points while Gabi Wiegand (45) and Brittany Dashiell (23) top Florida in goals and assists, respectively.
- Freshman Nora Barry, the ALC Rookie of the Year, ranks first on the team in ground balls (45) and draw controls (44) and has totaled 43 points (36 goals, 7 assists).

PENN STATE-FLORIDA SERIES

- Penn State owns an 0-3 series record versus Florida, including this season's 20-11 road loss to the Gators.
- The Nittany Lions played that game without top offensive weapon, Mackenzie Cyr, who was out with an injury, and lost their best match-up defender, Lizzy Carney, early on after she was issued two quick yellow cards.
- The 20 goals Penn State allowed were a season high and the 11 goals scored by the Lions were the second most surrendered by Florida's defense in 2012.

WHAT'S AT STAKE

- Should Penn State advance, the Nittany Lions will face the winner of the North Carolina-Syracuse game in the semifinals of the 2012 NCAA Women's Lacrosse Championship.
- Hosted by Stony Brook University, the game will take place on Friday, May 25 at either 5:30 or 8 p.m. at Kenneth P. LaValle Stadium in Stony Brook, N.Y and will be broadcast live on ESPN3.

PRONUNCIATION GUIDE

Amy ALTIG	ALL-tig
Dana CAHILL	CAY-hill
Mackenzie CYR	SEAR
Ali/Evan FOULSHAM	FOAL-shum
Tara HOHENSHELT	HOE-in-shelt
Shannon/Kelly LECHNER	LECK-nur
Erin MCAFFEE	MACK-ah-fee
Theresa ZICHELLI	Zih-KELLY

DOHERTY COLLECTS 100TH WIN

- Head coach Missy Doherty earned her 100th career win on April 21 when the Nittany Lions defeated Johns Hopkins, 12-9, at Penn State Lacrosse Field.
- Doherty, in her second year at the helm of the program, owns a 101-60 (.627) career record, including a 22-14 mark in Happy Valley.
- The milestone win for Doherty was also significant in that it pushed Penn State past the 10-win plateau for the first time since 2005, the last year it earned a berth to the NCAA Championship, and clinched a second consecutive winning conference record for the Nittany Lions.
- Prior to taking over the reins at Penn State, Doherty served as the head coach at Towson for seven years, where she compiled a 79-46 record and led the Tigers to the program's first ever at-large berth in the NCAA postseason.

ROAD WARRIORS

- Penn State has excelled away from home in 2012, posting a 8-1 record.
- The eight road victories are the most by a Nittany Lion team since 1989, the year of the program's last national championship, when it also won eight.
- The Penn State record is nine wins, set in 1987 by another national championship team.

CAHILL NAMED TEWAARATON NOMINEE

- Senior goalkeeper Dana Cahill was named a nominee for the 2012 Tewaaron Award, an honor presented to the nation's top female collegiate lacrosse player.
- The veteran anchor of the Nittany Lions' 25th-ranked defense, Cahill has played an instrumental role in Penn State posting its most wins since 2005, including three against top 10 opponents, and earning as high as a No. 8 team national ranking.
- A starter of all 18 games in 2012 and 36 straight overall, she is highly ranked nationally in saves, save percentage, and goals against average.
- Cahill has recorded double digit saves in a total of nine games this game, including five of the last eight.
- She earned ALC Defensive Player of the Week honors on March 5 for her standout play in Penn State's 14-7 upset win over No. 6 Virginia.
- In 2011, Cahill established herself as one of the nation's top goalkeepers, earning First Team All-West/Midwest Region and All-ALC honors in addition to being named ALC Goalkeeper of the Year.

FRESHMEN IMPACT

- The Penn State freshman class has made an immediate impact on the program and has had a major influence on the fortunes of the 2012 Nittany Lions.
- Maggie McCormick and Tatum Coffey, who have each started every game this season, are receiving mention for national rookie of the year honors.
- McCormick, a three-time ALC Rookie of the Week and Second Team All-ALC honoree, is the team's quarterback behind the net on the attacking end.
- She tops Penn State with 30 assists and 59 points.
- McCormick's 59 points are the most by a Nittany Lion since Colleen O'Hara equaled that total in 2002.
- McCormick's 30 assists are the most by a Nittany Lion since Julie Tice tallied 33 in 2000.
- Coffey has quickly established herself as a force in the midfield.
- She ranks second on the team with 34 goals and leads PSU in draw controls (52) and caused turnovers (17).
- Kelly Lechner (20 goals, 5 assists) and Haley Ford (14 goals, 3 assists) have also been key offensive contributors.
- On defense, Cat Layne has emerged as a

dependable part of the back line, starting the last seven games and nine overall.

SOPHOMORE SUCCESS

- Penn State's stellar freshman class is not the only component of the program's youth movement.
- The play of sophomores Mackenzie Cyr and Lizzy Carney is another main reason for the Nittany Lions' success in 2012.
- Cyr is second on the team in 34 goals and 56 points, despite missing time with an injury.
- Carney, who often draws the assignment of getting matched up with opponents' primary offensive weapon, has quickly developed into a top defensive stopper.
- She ranks second on the team in ground balls (35) and caused turnovers (16) and has also scored four goals.

2012 AWARDS

- Dana Cahill**
- Tewaaron Award nominee
 - ALC Goalkeeper of the Year
 - First Team All-ALC
 - ALC Defensive Player of the Week (March 5)
- Lizzy Carney**
- First Team All-ALC
 - ALC Championship All-Tournament Team

Maggie McCormick

- Second Team All-ALC
- ALC Rookie of the Week (March 5, April 16, April 30)
- SynapseSports.com National Rookie of the Week (March 6, April 17)
- WomensLax.com National Rookie of the Week (April 17)

Tatum Coffey

- Second Team All-ALC
- ALC Offensive Player of the Week (March 19)
- ALC Rookie of the Week (February 27)
- Nike Player of the Week (March 19)
- SynapseSports.com National Offensive Player of the Week
- WomensLax.com National Rookie of the Week

Theresa Zichelli

- Second Team All-ALC

IWLCA DIVISION I POLL

May 7, 2012

1. Florida	17-2 (400)
2. Northwestern	17-2 (378)
3. Maryland	17-3 (356)
4. Syracuse	16-3 (338)
5. North Carolina	14-3 (325)
6. Duke	11-6 (284)
7. Loyola	13-5 (276)
8. Notre Dame	13-4 (257)
9. Dartmouth	12-4 (231)
10. Virginia	11-7 (219)
11. Penn	9-7 (210)
12. Cornell	11-5 (154)
13. PENN STATE	11-6 (133)
13. Ohio State	11-6 (133)
15. Massachusetts	19-1 (120)
16. Towson	16-3 (103)
17. Georgetown	9-8 (84)
18. Johns Hopkins	9-9 (63)
19. Princeton	8-7 (56)
20. Boston College	10-8 (28)

deBEER/ILWOMEN.COM MEDIA POLL

May 7, 2012

1. Florida	198
2. Northwestern	192
3. Maryland	184
4. Syracuse	174
5. North Carolina	161
6. Loyola	145
7. Duke	126
8. Notre Dame	125
9. Dartmouth	116
10. Massachusetts	110
11. Virginia	86
12. PENN STATE	80
12. Penn	80
14. Cornell	76
15. Towson	65
16. Ohio State	62
17. Johns Hopkins	59
18. Georgetown	44
19. Navy	26
20. Boston College	19

USWLA/AIAW/NCAA POSTSEASON HISTORY

- 1978 National Champions**
USWLA at James Madison
W, 18-0 vs. Rutgers (quarterfinals)
W, 9-3 vs. Massachusetts (semifinals)
W, 9-3 vs. Maryland (championship)
- 1979 National Champions**
USWLA at Penn State
W, 23-2 vs. Brown (quarterfinals)
W, 9-2 vs. Yale (semifinals)
W, 8-5 vs. Massachusetts (championship)
- 1980 National Champions**
USWLA at Princeton
W, 12-6 vs. Harvard (quarterfinals)
W, 8-3 vs. Massachusetts (semifinals)
W, 3-1 vs. Maryland (championship)
- 1981 Fifth Place**
AIAW at Penn State
L, 12-8 vs. Maryland (first round)
W, 16-3 vs. James Madison (consolations)
W, 14-8 vs. Massachusetts (5th place)
- 1982 Third Place**
AIAW Regionals at Maryland
L, 7-6 vs. Pennsylvania
W, 9-2 vs. Maryland (3rd place)
AIAW at West Chester
W, 29-7 vs. Ohio (quarterfinals)
L, 6-5 (OT) vs. Temple (semifinals)
W, 4-3 vs. Pennsylvania (3rd place)
- 1983 Third Place**
NCAA First Round at Penn State
W, 12-2 vs. Pennsylvania
NCAA at Pennsylvania
L, 7-5 vs. Delaware (semifinals)
W, 7-6 (OT) vs. Massachusetts (3rd place)
- 1984 Quarterfinal Round**
NCAA at Penn State
L, 10-9 vs. Delaware
- 1985 Third Place**
NCAA at Maryland
L, 12-11 (3OT) vs. Maryland
- 1986 Second Place**
NCAA at Temple
W, 8-6 vs. Temple (semifinals)
NCAA at Maryland
L, 11-0 vs. Maryland (championship)
- 1987 National Champions**
NCAA at Penn State
W, 14-9 vs. Virginia (semifinals)
NCAA at Maryland
W, 7-6 vs. Temple (championship)
- 1988 Second Place**
NCAA at Penn State
W, 12-6 vs. Northwestern (quarterfinals)
NCAA at Lafayette
W, 8-6 vs. Lafayette (semifinals)
NCAA at Haverford
L, 15-7 vs. Temple (championship)
- 1989 National Champions**
NCAA at West Chester
W, 9-3 vs. Temple (semifinals)
W, 7-6 vs. Harvard (championship)
- 1990 Quarterfinal Round**
NCAA at Temple
L, 9-4 vs. Temple (quarterfinals)
- 1991 Semifinal Round**
NCAA at Lafayette
W, 11-9 vs. Lafayette (quarterfinals)
NCAA at Trenton State
L, 10-5 vs. Virginia (semifinals)
- 1992 Quarterfinal Round**
NCAA at Virginia
L, 11-5 vs. Virginia (quarterfinals)
- 1993 Quarterfinal Round**
NCAA at Princeton
L, 11-7 vs. Princeton (quarterfinals)
- 1995 Semifinal Round**
NCAA at Penn State
W, 11-7 vs. James Madison
NCAA at Trenton State
L, 12-7 vs. Maryland (semifinals)
- 1996 Quarterfinal Round**
NCAA at Princeton
L, 13-9 vs. Princeton (quarterfinals)
- 1997 First Round**
NCAA at Maryland
L, 6-2 vs. Maryland
- 1998 ECAC Champions**
ECAC at Penn State
W, 14-13 vs. Massachusetts (semifinals)
W, 14-9 Rutgers (champions)
- 1999 Semifinal Round**
NCAA at Penn State
W, 23-7 vs. West Chester (first round)
NCAA at Princeton
W, 9-7 (OT) vs. Princeton (quarterfinals)
NCAA at Johns Hopkins
L, 17-13 vs. Maryland (semifinals)
- 2001 First Round**
NCAA at Dartmouth
L, 9-7 vs. Dartmouth (first round)
- 2005 First Round**
NCAA at Penn State
L, 7-6 (3OT) vs. North Carolina (first round)
- 2012 Quarterfinal Round**
NCAA at Towson
W, 15-8 vs. Towson (first round)
NCAA at Florida
- Overall postseason record: 30-17**

**2012 Penn State Women's Lacrosse
Penn State Overall Individual Statistics
All games (as of May 13, 2012)**

Overall: 12-6 Conf: 3-2 Home: 4-4 Away: 8-1 Neut: 0-1

##	Player	gp-gs	g	a	pts	sh	sh%	sog	sog%	fpg-fps	gb	dc	t/o	ct
24	McCormick, Maggie	18-18	29	30	59	60	.483	47	.783	2-4	10	9	31	2
15	Cyr, Mackenzie	17-16	34	22	56	64	.531	50	.781	6-10	12	7	21	10
7	Coffey, Tatum	18-18	34	6	40	73	.466	56	.767	8-15	23	52	22	17
12	Fernandez, Molly	17-16	35	4	39	78	.449	58	.744	7-12	12	15	19	1
23	Zichelli, Theresa	18-18	22	4	26	59	.373	39	.661	4-10	26	26	19	13
21	Lechner, Kelly	17-15	20	5	25	43	.465	34	.791	6-10	23	19	20	3
3	Ford, Haley	12-5	14	3	17	23	.609	20	.870	1-3	11	5	6	5
6	Welch, Elaine	14-3	8	0	8	22	.364	14	.636	1-5	4	3	8	1
28	Adams, Aly	15-10	6	0	6	15	.400	10	.667	3-6	9	10	12	3
9	Guy, Katie	18-18	5	1	6	11	.455	7	.636	2-3	23	29	13	13
10	Purvis, Lauren	17-0	4	0	4	10	.400	9	.900	3-6	8	2	10	2
5	Carney, Lizzy	18-18	4	0	4	9	.444	8	.889	0-2	35	8	12	16
20	Foulsham, Evan	15-8	3	0	3	8	.375	6	.750	1-2	4	6	7	2
2	Lechner, Shannon	10-0	2	1	3	6	.333	3	.500	-	2	1	11	2
1	Curley, Avery	4-0	2	0	2	4	.500	4	1.000	-	2	0	2	1
22	Semones, Alyssa	3-0	0	1	1	3	.000	3	1.000	-	1	1	1	0
30	Shea, Colleen	18-18	0	1	1	0	.000	0	.000	-	26	8	4	16
32	Brent, Kristin	3-0	0	0	0	1	.000	1	1.000	0-1	2	0	0	1
34	Cahill, Dana	18-18	0	0	0	0	.000	0	.000	-	38	0	6	9
33	Lloyd, Melissa	1-0	0	0	0	0	.000	0	.000	-	0	0	0	0
31	Halus, Ayla	1-0	0	0	0	0	.000	0	.000	-	1	0	0	0
19	Bitzer, Carly	4-0	0	0	0	0	.000	0	.000	-	0	0	0	0
18	Layne, Cat	14-9	0	0	0	0	.000	0	.000	-	10	1	2	2
17	McAfee, Erin	9-0	0	0	0	0	.000	0	.000	-	0	0	0	1
16	Hughes, Kelsey	5-0	0	0	0	0	.000	0	.000	-	2	0	0	1
14	Foulsham, Ali	2-0	0	0	0	0	.000	0	.000	-	0	0	1	0
8	Chamberlain, Brittan	8-8	0	0	0	0	.000	0	.000	-	5	1	1	3
Total		18	222	78	300	489	.454	369	.755	44-89	289	203	228	124
Opponents		18	178	62	240	443	.402	347	.783	35-90	267	235	248	125

##	Goalie	gp-gs	min	ga	gaavg	saves	pct	w	l	t	shots faced
31	Halus, Ayla	1-0	21:33	2	5.57	1	.333	0	0	0	5
33	Lloyd, Melissa	1-0	7:37	1	7.88	1	.500	0	0	0	2
34	Cahill, Dana	18-18	1068:50	175	9.82	167	.488	12	6	0	436
Total		18	1098:00	178	9.73	169	.487	12	6	0	443
Opponents		18	1098:00	222	12.13	147	.398	6	12	0	489

Goals by Period	1st	2nd	OT	Total
Penn State	119	101	2	222
Opponents	93	81	4	178

Saves by Period	1st	2nd	OT	Total
Penn State	88	79	2	169
Opponents	77	68	2	147

Shots by Period	1st	2nd	OT	Total
Penn State	263	220	6	489
Opponents	234	202	7	443

Attendance Summary	PSU	Opponent
Total	2671	3731
Dates/Avg Per Date	8/334	9/415
Neutral Site #/Avg	1/0	

Shots on Goal	1st	2nd	OT	Total
Penn State	196	169	4	369
Opponents	181	160	6	347

**2012 Penn State Women's Lacrosse
Penn State Overall Individual Statistics
All games (as of May 13, 2012)**

Overall: 12-6 Conf: 3-2 Home: 4-4 Away: 8-1 Neut: 0-1

##	Player	gp-gs	g	a	pts	sh	sh%	sog	sog%	fpg-fps	gb	dc	t/o	ct
24	McCormick, Maggie	18-18	29	30	59	60	.483	47	.783	2-4	10	9	31	2
15	Cyr, Mackenzie	17-16	34	22	56	64	.531	50	.781	6-10	12	7	21	10
7	Coffey, Tatum	18-18	34	6	40	73	.466	56	.767	8-15	23	52	22	17
12	Fernandez, Molly	17-16	35	4	39	78	.449	58	.744	7-12	12	15	19	1
23	Zichelli, Theresa	18-18	22	4	26	59	.373	39	.661	4-10	26	26	19	13
21	Lechner, Kelly	17-15	20	5	25	43	.465	34	.791	6-10	23	19	20	3
3	Ford, Haley	12-5	14	3	17	23	.609	20	.870	1-3	11	5	6	5
6	Welch, Elaine	14-3	8	0	8	22	.364	14	.636	1-5	4	3	8	1
28	Adams, Aly	15-10	6	0	6	15	.400	10	.667	3-6	9	10	12	3
9	Guy, Katie	18-18	5	1	6	11	.455	7	.636	2-3	23	29	13	13
10	Purvis, Lauren	17-0	4	0	4	10	.400	9	.900	3-6	8	2	10	2
5	Carney, Lizzy	18-18	4	0	4	9	.444	8	.889	0-2	35	8	12	16
20	Foulsham, Evan	15-8	3	0	3	8	.375	6	.750	1-2	4	6	7	2
2	Lechner, Shannon	10-0	2	1	3	6	.333	3	.500	-	2	1	11	2
1	Curley, Avery	4-0	2	0	2	4	.500	4	1.000	-	2	0	2	1
22	Semones, Alyssa	3-0	0	1	1	3	.000	3	1.000	-	1	1	1	0
30	Shea, Colleen	18-18	0	1	1	0	.000	0	.000	-	26	8	4	16
32	Brent, Kristin	3-0	0	0	0	1	.000	1	1.000	0-1	2	0	0	1
34	Cahill, Dana	18-18	0	0	0	0	.000	0	.000	-	38	0	6	9
33	Lloyd, Melissa	1-0	0	0	0	0	.000	0	.000	-	0	0	0	0
31	Halus, Ayla	1-0	0	0	0	0	.000	0	.000	-	1	0	0	0
19	Bitzer, Carly	4-0	0	0	0	0	.000	0	.000	-	0	0	0	0
18	Layne, Cat	14-9	0	0	0	0	.000	0	.000	-	10	1	2	2
17	McAfee, Erin	9-0	0	0	0	0	.000	0	.000	-	0	0	0	1
16	Hughes, Kelsey	5-0	0	0	0	0	.000	0	.000	-	2	0	0	1
14	Foulsham, Ali	2-0	0	0	0	0	.000	0	.000	-	0	0	1	0
8	Chamberlain, Brittan	8-8	0	0	0	0	.000	0	.000	-	5	1	1	3
Total		18	222	78	300	489	.454	369	.755	44-89	289	203	228	124
Opponents		18	178	62	240	443	.402	347	.783	35-90	267	235	248	125

##	Goalie	gp-gs	min	ga	gaavg	saves	pct	w	l	t	shots faced
31	Halus, Ayla	1-0	21:33	2	5.57	1	.333	0	0	0	5
33	Lloyd, Melissa	1-0	7:37	1	7.88	1	.500	0	0	0	2
34	Cahill, Dana	18-18	1068:50	175	9.82	167	.488	12	6	0	436
Total		18	1098:00	178	9.73	169	.487	12	6	0	443
Opponents		18	1098:00	222	12.13	147	.398	6	12	0	489

Goals by Period	1st	2nd	OT	Total
Penn State	119	101	2	222
Opponents	93	81	4	178

Saves by Period	1st	2nd	OT	Total
Penn State	88	79	2	169
Opponents	77	68	2	147

Shots by Period	1st	2nd	OT	Total
Penn State	263	220	6	489
Opponents	234	202	7	443

Attendance Summary	PSU	Opponent
Total	2671	3731
Dates/Avg Per Date	8/334	9/415
Neutral Site #/Avg	1/0	

Shots on Goal	1st	2nd	OT	Total
Penn State	196	169	4	369
Opponents	181	160	6	347

**2012 Penn State Women's Lacrosse
Penn State Category Leaders
All games (as of May 13, 2012)**

##	Points	GP	G	A	Pts	Shots
24	McCormick, Maggie	18	29	30	59	60
15	Cyr, Mackenzie	17	34	22	56	64
7	Coffey, Tatum	18	34	6	40	73
12	Fernandez, Molly	17	35	4	39	78
23	Zichelli, Theresa	18	22	4	26	59

##	Shots	GP	G	A	Shots	Shot%
12	Fernandez, Molly	17	35	4	78	.449
7	Coffey, Tatum	18	34	6	73	.466
15	Cyr, Mackenzie	17	34	22	64	.531
24	McCormick, Maggie	18	29	30	60	.483
23	Zichelli, Theresa	18	22	4	59	.373

##	Goals	GP	G	A	Pts	Shots
12	Fernandez, Molly	17	35	4	39	78
15	Cyr, Mackenzie	17	34	22	56	64
7	Coffey, Tatum	18	34	6	40	73
24	McCormick, Maggie	18	29	30	59	60
23	Zichelli, Theresa	18	22	4	26	59

##	Shot Pct.	GP	G	A	Shots	Shot%
3	Ford, Haley	12	14	3	23	.609
15	Cyr, Mackenzie	17	34	22	64	.531
1	Curley, Avery	4	2	0	4	.500
24	McCormick, Maggie	18	29	30	60	.483
7	Coffey, Tatum	18	34	6	73	.466

##	Assists	GP	G	A	Pts	Shots
24	McCormick, Maggie	18	29	30	59	60
15	Cyr, Mackenzie	17	34	22	56	64
7	Coffey, Tatum	18	34	6	40	73
21	Lechner, Kelly	17	20	5	25	43
12	Fernandez, Molly	17	35	4	39	78

##	Shots on Goal	GP	G	A	Shots	SOG	SOG%
12	Fernandez, Molly	17	35	4	78	58	.744
7	Coffey, Tatum	18	34	6	73	56	.767
15	Cyr, Mackenzie	17	34	22	64	50	.781
24	McCormick, Maggie	18	29	30	60	47	.783
23	Zichelli, Theresa	18	22	4	59	39	.661

##	Ground Balls	GP	No.
34	Cahill, Dana	18	38
5	Carney, Lizzy	18	35
30	Shea, Colleen	18	26
23	Zichelli, Theresa	18	26
7	Coffey, Tatum	18	23

##	Shots on Goal Pct.	GP	G	A	Shots	SOG	SOG%
1	Curley, Avery	4	2	0	4	4	1.000
22	Semones, Alyssa	3	0	1	3	3	1.000
32	Brent, Kristin	3	0	0	1	1	1.000
10	Purvis, Lauren	17	4	0	10	9	.900
5	Carney, Lizzy	18	4	0	9	8	.889

##	Draw Controls	GP	No.
7	Coffey, Tatum	18	52
9	Guy, Katie	18	29
23	Zichelli, Theresa	18	26
21	Lechner, Kelly	17	19
12	Fernandez, Molly	17	15

##	Caused Turnovers	GP	No.
7	Coffey, Tatum	18	17
5	Carney, Lizzy	18	16
30	Shea, Colleen	18	16
23	Zichelli, Theresa	18	13
9	Guy, Katie	18	13

##	Free-position Goals	GP	No.
7	Coffey, Tatum	18	8
12	Fernandez, Molly	17	7
15	Cyr, Mackenzie	17	6
21	Lechner, Kelly	17	6
23	Zichelli, Theresa	18	4

**2012 Penn State Women's Lacrosse
Penn State Game Results
All games (as of May 13, 2012)**

Date	Opponent	Score	Overall	Conf	Site	Att.	Goalie
Feb 15	at Bucknell	W 19-3	1-0-0	0-0-0	Lewisburg, Pa.	140	Cahill, Dana (1-0)
Feb 19	#2 MARYLAND	L 6-16	1-1-0	0-0-0	University Park, Pa.	438	Cahill, Dana (1-1)
Feb 22	DUQUESNE	W 16-5	2-1-0	0-0-0	University Park, Pa.	223	Cahill, Dana (2-1)
Feb 25	at Lafayette	W 14-10	3-1-0	0-0-0	Easton, Pa.	185	Cahill, Dana (3-1)
Mar 04	#6 VIRGINIA	W 14-7	4-1-0	0-0-0	University Park, Pa.	157	Cahill, Dana (4-1)
Mar 07	#17 LOYOLA	LOT 10-12	4-2-0	0-0-0	University Park, Pa.	288	Cahill, Dana (4-2)
Mar 10	at Delaware	W 12-6	5-2-0	0-0-0	Newark, Del.	527	Cahill, Dana (5-2)
Mar 14	at Hofstra	W 11-9	6-2-0	0-0-0	Hempstead, New York	222	Cahill, Dana (6-2)
* Mar 18	at #8 Vanderbilt	WOT 12-11	7-2-0	1-0-0	Nashville, Tenn.	204	Cahill, Dana (7-2)
Mar 25	WILLIAM & MARY	W 9-7	8-2-0	1-0-0	University Park, Pa.	294	Cahill, Dana (8-2)
* Apr 01	at #4 Florida	L 11-20	8-3-0	1-1-0	Gainesville, Fla.	840	Cahill, Dana (8-3)
* Apr 06	#1 NORTHWESTERN	L 7-14	8-4-0	1-2-0	University Park, Pa.	393	Cahill, Dana (8-4)
Apr 11	at Lehigh	W 15-3	9-4-0	1-2-0	Bethlehem, Pa.	222	Cahill, Dana (9-4)
* Apr 15	at #10 Ohio State	W 15-12	10-4-0	2-2-0	Columbus, Ohio	443	Cahill, Dana (10-4)
* Apr 21	#18 JOHNS HOPKINS	W 12-9	11-4-0	3-2-0	University Park, Pa.	389	Cahill, Dana (11-4)
Apr 28	#17 PRINCETON	LOT 12-13	11-5-0	3-2-0	University Park, Pa.	489	Cahill, Dana (11-5)
@ May 3	vs #19 Johns Hopkins	L 12-13	11-6-0	3-2-0	Gainesville, Fla.		Cahill, Dana (11-6)
May 12	at #16 Towson	W 15-8	12-6-0	3-2-0	Towson, Md.	948	Cahill, Dana (12-6)

Team Record	W-L-T	Attendance	Dates	Total	Average
Overall:	12-6	Total:	18	6402	356
Conference:	3-2	Home:	8	2671	334
Home:	4-4	Away:	9	3731	415
Away:	8-1	Neutral:	1	0	0
Neutral:	0-1				
Overtime:	1-2				



1
Avery Curley
So./Fr. | A | Berwyn, Pa.



2
Shannon Lechner
So. | A/M | Silver Spring, Md.



3
Haley Ford
Fr. | A | White Hall, Md.



5
Lizzy Carney
So. | D | West Chester, Pa.



6
Elaine Welch
Sr. | A | Bernardsville, N.J.



7
Tatum Coffey
Fr. | M | Toms River, N.J.



8
Brittanny Chamberlain
Sr. | D | Finksburg, Md.



9
Katie Guy
Jr. | D | Whitby, Ont.



10
Lauren Purvis
So. | M | Maple Glen, Pa.



12
Molly Fernandez
Jr. | A | Baltimore, Md.



14
Ali Foulsham
So. | D | Madison, N.J.



15
Mackenzie Cyr
So. | A | Westminster, Md.



16
Kelsey Hughes
Sr. | D | Severna Park, Md.



17
Erin McAfee
Fr. | D | Moorestown, N.J.



18
Cat Layne
Fr. | D | Downingtown, Pa.



19
Carly Bitzer
So. | D | Doylestown, Pa.



20
Evan Foulsham
So. | M | Madison, N.J.



21
Kelly Lechner
Fr. | M | Silver Spring, Md.



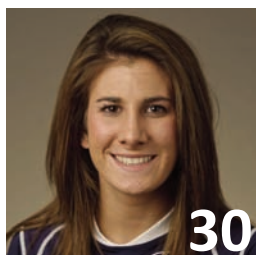
23
Theresa Zichelli
Sr. | M | Severna Park, Md.



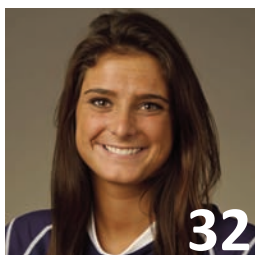
24
Maggie McCormick
Fr. | A | Eldersburg, Md.



28
Aly Adams
Sr. | M | Springfield, Pa.



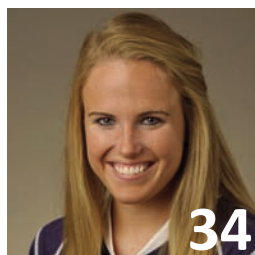
30
Colleen Shea
Sr. | D | Baltimore, Md.



32
Kristin Brent
Fr. | A | Rockville Centre, N.Y.



33
Melissa Lloyd
So. | GK | West Chester, Pa.



34
Dana Cahill
Sr. | GK | Towson, Md.



HC
Missy Doherty
Second year



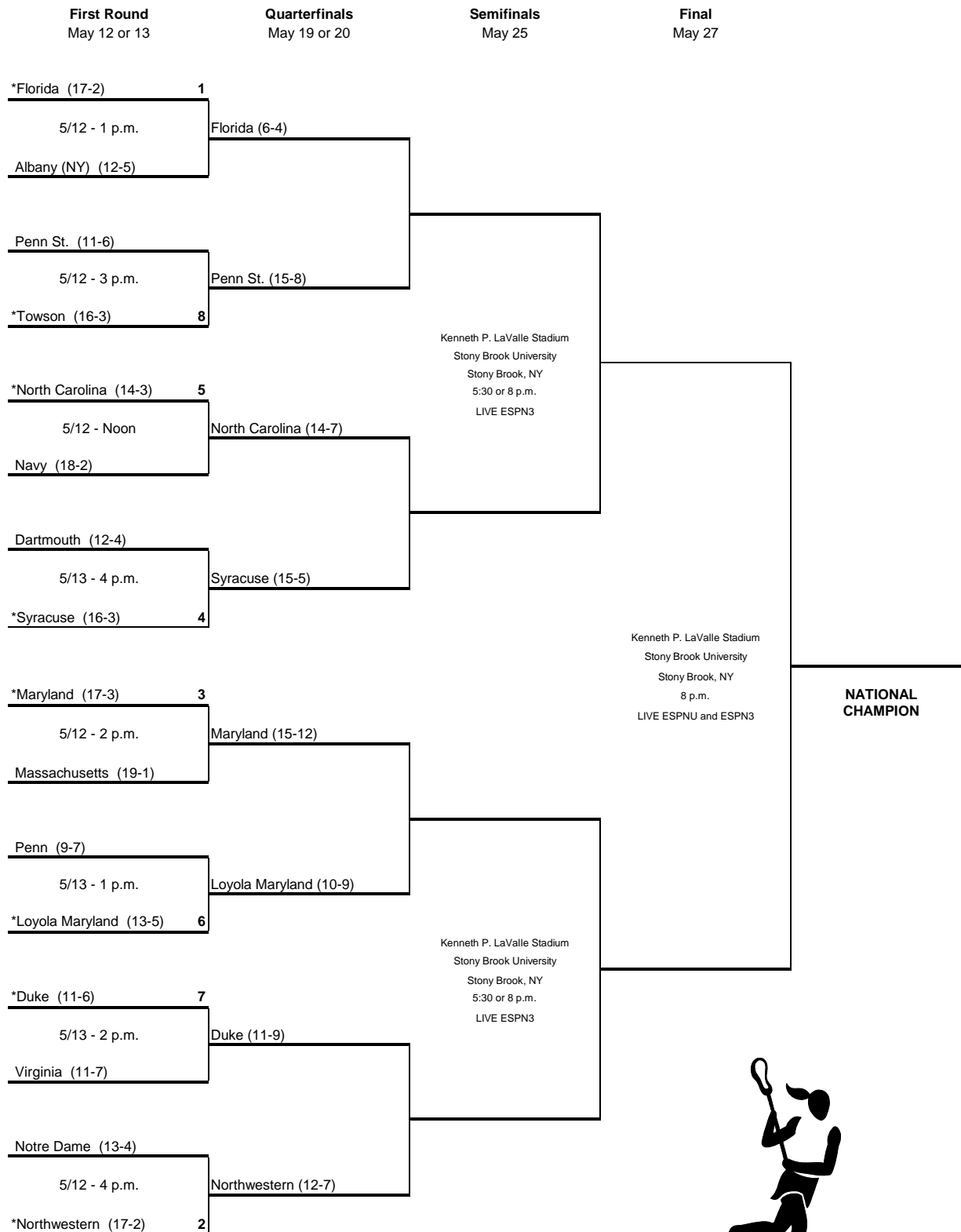
AC
Tara Hohenshelt
13th year



AC
Amy Altig
Second year



2012 NCAA Division I Women's LACROSSE CHAMPIONSHIP



* - Host Institution for Preliminary-Round Games
 All Times are Eastern time
 Semifinal #1 - 5:30 p.m.
 Semifinal #2 - 37-39 minutes after the conclusion of Semifinal #1

