



2011-12 PENN STATE LADY LION BASKETBALL

WOMEN'S BASKETBALL CONTACT:
 Kristina Petersen
 Twitter: @ladylionsid
 Website: www.GoPSUSports.com
 Email: kap18@psu.edu
 Cell: 814-883-4581
 Office: 814-865-1757

Penn State Athletic Communications: 101D Bryce Jordan Center, University Park, PA 16802 ♦ Office: 814-865-1757 ♦ Fax: 814-863-3165

SCHEDULE/RESULTS

NOVEMBER	
Sat. 5	BLOOMSBURG (exh.)..... W, 101-81 Lady Lion Classic (University Park, Pa.)
Fri. 11	WASHINGTON STATE..... W, 72-60
Sun. 13	MIDDLE TENN. (BTN.com)..W, 65-49
Thurs. 17	at Delaware7 p.m.
Sun. 20	at South Carolina (SportSouth)...3 p.m. John Ascuaga's Nugget Classic (Reno, Nev.)
Fri. 25	vs. Iowa State.....7 p.m.
Sat. 26	vs. Butler/Nevada.....8/10 p.m.

Big Ten/ACC Challenge

Wed. 30	NORTH CAROLINA (BTN) ..6:30 p.m.
---------	----------------------------------

DECEMBER

Big 12/Big Ten Challenge

Sat. 3	at Texas Tech3 p.m.
Tues. 6	VIRGINIA TECH (BTN.com).....7 p.m.
Sun. 11	UMES (BTN.com)2 p.m.
Sun. 18	WAGNER (BTN.com)1 p.m.
Wed. 21	at Bucknell.....7 p.m.
Fri. 30	NEBRASKA * (BTN.com)7 p.m.

JANUARY

Mon. 2	at Wisconsin * (BTN-WC) 1/3 p.m.
Sat. 7	MICHIGAN STATE * (CBS).....2 p.m.
Thurs. 12	MICHIGAN * (BTN)6 p.m.
Sun. 15	at Nebraska * (BTN.com)..... 3:05 p.m.
Thurs. 19	at Illinois * (BTN.com)8 p.m.
Sun. 22	IOWA * (ESPN2).....3 p.m.
Thurs. 26	at Michigan * (BTN.com).....7 p.m.
Sun. 29	at Michigan State * (ESPN2).....3 p.m.

FEBRUARY

Thurs. 2	INDIANA * (BTN.com)7 p.m.
Sun. 5	at Minnesota * (BTN.com).....3 p.m.
Thurs. 9	WISCONSIN * (BTN.com)7 p.m.
Sun. 12	at Northwestern * (BTN)1 p.m.
Thurs. 16	at Purdue * (BTN).....6 p.m.
Mon. 20	OHIO STATE * (ESPN2).....7 p.m.

WBCA Pink Zone at Penn State

Sun. 26	MINNESOTA * (BTN-WC) ...12/2/4 p.m.
---------	-------------------------------------

MARCH

Thur.-Sun. 1-4	Big Ten Tournament (Indianapolis)
Sat.-Tues. 17-20	NCAA Tourn. 1st & 2nd Round
Sat.-Tues. 24-27	NCAA Tournament Regionals

APRIL

Sun./Tues. 1/3	NCAA Final Four (Denver, Colo.)
----------------	---------------------------------

BOLD CAPS indicates home game.

* - indicates Big Ten game.

All times are Eastern Time.

BTN - Big Ten Network



BTN.com - BigTenNetwork.com

Schedule subject to change. Please visit www.GoPSUsports.com

for up-to-date tip times.

Games #3: #11/12 Penn State at Delaware

Thurs., Nov. 17 ▶ 7 p.m. ▶ Bob Carpenter Center ▶ Newark, Del.

		SETTING THE SCENE
Penn State Lady Lions	Delaware Blue Hens	The Delaware Game
Record: 2-0, 0-0 Big Ten	Record: 1-0, 0-0 CAA	Series: Penn State leads, 6-1
Last Game: PSU 65, MTSU 49 (11/13)	Last Game: Delaware 89, URI 53 (11/11)	Last Meeting: PSU 64, UD 55 (12/19/10)
Head Coach: Coquese Washington	Head Coach: Tina Martin	Streak: Penn State - 5 wins
Career Record: 68-60 (5th yr.)	Career Record: 279-175 (16th yr.)	Television: None
Record at PSU: 68-60 (5th yr.)	Record at UD: 279-175 (16th yr.)	Radio: The game is on the Penn State Sports Network and on ESPN 1450 locally with Jerry Fisher calling the action. The audio feed is available at www.GoPSUsports.com .
Statistical Leaders	Statistical Leaders	Webstream: None
Points Maggie Lucas (18.0)	Points E. Delle Donne (33.0)	Live Stats: GoPSUsports.com
Rebounds Nikki Greene (11.0)	Rebounds Two with 6.0	
Assists Alex Bentley (4.0)	Assists Kayla Miller (6.0)	

GAME DAY INFORMATION

SCOUTING DELAWARE

The Blue Hens picked up an 89-53 win over Rhode Island Friday. Elena Delle Donne scored 33 points and pulled in six rebounds to lead Delaware. Trumae Lucas added 14 points and two assists in the win.

ALL-TIME VS. THE BLUE HENS

The Lady Lions are 6-1 all-time against the Blue Hens, including a 64-55 win last season. Penn State has been victorious in its two previous meetings in Newark. This will be the Lady Lions' first game at Delaware since Feb. 15, 1980, a 90-72 victory.

LAST TIME VS. UD

Maggie Lucas drained two key three-pointers in the final 4:09 to lead the Lions to a 64-55 win on Dec. 19, 2010. She finished the game with 16 points on 6-of-13 shooting. Alex Bentley scored 10 of her 13 points after the break. She also added six assists, four rebounds and two steals. Nikki Greene had 11 points and five rebounds, while Julia Trogele chipped in seven points and a game-high 12 rebounds.

STORYLINES

- ✓ The Lady Lions picked up their fifth consecutive season-opening win under Coquese Washington.
- ✓ The Lady Lions earned their 27th regular-season title with victories over Washington State (72-60) and Middle Tennessee State (65-49) in the Lady Lion Classic last weekend.
- ✓ Junior Alex Bentley surpassed the 900-point mark for her career with eight tallies against the Blue Raiders Sunday.
- ✓ Bentley became the 14th player in school history to reach 300 career assists with four helpers versus WSU.
- ✓ Penn State is 11th in Associated Press poll, its highest ranking since the 2003-04 final poll.
- ✓ The Lady Lions moved up to 12th in the ESPN/USA Today Coaches Poll, their highest ranking since the 2003-04 final poll.
- ✓ The Lady Lions were picked to finish first in the Big Ten in a vote of the league's coaches and media.
- ✓ Bentley was selected as the Big Ten Preseason Player of the Year in a vote of the league's coaches and media.

UP NEXT

The Lady Lions continue their four-game road trip at South Carolina before traveling to Reno for the Nugget Classic over Thanksgiving. Last season, Penn State posted 78-48 win over the Gamecocks, led by 19 points from Julia Trogele and 14 tallies each by Maggie Lucas and Zhaque Gray.



2011-12 ROSTER

PENN STATE LADY LIONS

No.	Name	Pos.	Cl./Elg.	Ht.	Hometown/High School (Previous School)
2	Dara Taylor	G	Jr./Jr.#	5-8	Wilmington, Del./Caravel Academy (Maryland)
5	Talia East *	F/C	So./So.	6-3	Philadelphia, Pa./Friends' Central School
12	Zhaque Gray ***	G	Sr./Sr.	5-8	Chicago, Ill./Prep John Hope
15	Renee Womack ***	G	Sr./Sr.	5-10	Lansdale, Pa./Methacton
20	Alex Bentley **	G	Jr./Jr.	5-7	Indianapolis, Ind./Ben Davis
23	Ariel Edwards *	F	So./So.	6-2	Elmont, N.Y./Christ the King
24	Mia Nickson *	F	Sr./Jr.	6-2	Ashburn, Va./Notre Dame Acad. (Boston College)
25	Gizelle Studevent **	G	Jr./Jr.	5-11	La Jolla, Calif./The Bishop's School
33	Maggie Lucas *	G	So./So.	5-10	Narberth, Pa./Germantown Academy
40	Marisa Wolfe **	F	Jr./Jr.	6-2	Ford City, Pa./Ford City
44	Tori Waldner	F	Fr./Fr.	6-5	Milton, Ga./Milton
54	Nikki Greene **	F/C	Jr./Jr.	6-4	Diboll, Texas/Diboll

Head Coach: Coquese Washington (Notre Dame '92)

Assistant Coaches: Fred Chmiel, Kia Damon, Maren Walseth

Captains: Mia Nickson, Marisa Wolfe

* Indicates letters earned # - Taylor will sit out the 2011-12 season due to NCAA transfer rules.

DELAWARE BLUE HENS

No.	Name	Pos.	Cl.	Ht.	Hometown/High School (Previous School)
1	Vanessa Kabongo	G	Sr.	5-10	Toronto, Ontario/Eastern Commerce
2	Jocelyn Bailey	G	Sr.	6-0	Kensington, Md./The Bullis School
3	Jaquetta May	G	Jr.	5-9	Wilmington, Del./Delcastle
4	Meghan McLean	G	Sr.	5-9	Pittsburgh, Pa./Upper St. Clair
5	Nina Déal	G	Fr.	6-0	Corcelles en Beaujolais, France/Alain Fournier
10	Kayla Miller	G	Jr.	5-8	Wilmington, Del./Ursuline Acad. (George Wash.)
11	Elena Delle Donne	F/G	Jr.	6-5	Wilmington, Del./Ursuline Academy
12	Danielle Parker	F	Jr.	6-2	Phoenix, Md./Dulaney
13	Kelsey Buchanan	C	So.	6-3	South Riding, Va./Freedom
15	Akeema Richards	G	R-So.	5-7	Baltimore, Md./Western (West Virginia)
21	Trumae Lucas	G	R-Jr.	5-8	Greensboro, N.C./Grimley (Florida)
22	Lauren Carra	G	Jr.	5-9	Dunmore, Pa./Dunmore
33	Stephanie Leon	C	Fr.	6-4	Northport, N.Y./Northport
45	Chelsea Craig	F	So.	6-2	Rockville, Md./Wootton
51	Sarah Acker	C	Sr.	6-3	Nanticoke, Pa./Greater Nanticoke (St. Joseph's)

Head Coach: Tina Martin

Associate Head Coach: Jeanine Radice

Assistant Coaches: Tiara Malcom, Tom Lochner

TEAM COMPARISON

PENN STATE		DELAWARE
Lucas (18.0)	Scoring Leader	Delle Donne (33.0)
Greene (11.0)	Rebounding Leader	Two with 6.0
Bentley (4.0)	Assist Leader	Miller (6.0)
Bentley (2.5)	Steals Leader	Parker (3.0)
Greene (1.5)	Blocks Leader	Delle Donne (1.0)
68.5	Scoring Offense	89.0
54.5	Scoring Defense	53.0
+14.0	Scoring Margin	+36.0
51.0	Rebounds Per Game	45.0
+7.0	Rebound Margin	+16.0
11.0	Assists Per Game	15.0
9.0	Steals Per Game	12.0
.352	Field Goal Pct.	.471
.297	FG Defense Pct.	.364
.314	3-pt. FG Pct.	.350
.240	3-pt. FG Pct. Def.	.625
.717	Free Throw Pct.	.857
0.6	Assist/Turnover	1.5
Won 2	W/L Streak	Won 1

SERIES HISTORY

Overall:	PSU leads 6-1
Last meeting:	12/19/10
Last result:	PSU, 64-55
Current streak:	PSU - 5 wins
Last 10:	PSU, 6-1
Last 10 meetings:	
3/12/76	N W, 68-56
3/1/77	H L, 64-66
2/18/78	A W, 76-65
2/16/79	H W, 107-57
2/15/80	A W, 90-72
11/29/91	N W, 97-53
12/19/10	H W, 64-55

QUICK FACTS

THE UNIVERSITY

Location: University Park, Pa.
 Founded: 1855
 Enrollment: 42,294
 Colors: Blue & White
 Nickname: Lady Lions
 Conference: Big Ten
 President: Dr. Rodney Erickson
 Director of Athletics: Tim Curley
 Acting Director of Athletics: Dave Joyner
 Senior Woman Administrator: Charmelle Green
 Facility (cap.): Bryce Jordan Center (15,261)
 All-Time Record at BJC: 177-47 (16 seasons)

ATHLETIC COMMUNICATIONS

WBB Contact: Kristina Petersen
 Phone/Fax: (814) 865-1757/(814) 863-3165
 E-mail: kap18@psu.edu
 Address: 101-D Bryce Jordan Center
 University Park, Pa. 16802
 Press Row Phone: 814-863-3294
 Website: www.GoPSUsports.com
 Twitter: @ladylionsid

TEAM INFORMATION

2011-12 Record: 2-0
 Home: 2-0 Away: 0-0 Neutral: 0-0
 Big Ten Record: 0-0
 Home: 0-0 Away: 0-0
 Letterwinners Returning/Lost: 10/1
 Starters Returning/Lost: 4/1
 Big Ten Tournament: Runner-up
 Postseason: NCAA Second Round

THE HISTORY

First Year of Women's Basketball: 1965
 All-Time Record: 807-373 (47 seasons)
 All-Time Big Ten Rec.: 204-110 (19 seasons)
 NCAA Tournament Appearances: 22
 NCAA Tournament Record: 27-22

WOMEN'S BASKETBALL

Head Coach: Coquese Washington
 Alma Mater: Notre Dame '92
 Overall Record: 68-60 (fifth season)
 School Record: 68-60 (fifth season)
 Basketball Office Phone: 814-863-2672
 Best Time To Reach Coach: Through SID
 Assistant Coaches (Alma Mater):
 Fred Chmiel (Excelsior College)
 Kia Damon (Millersville '97)
 Maren Walseth (Penn State '02)
 Twitter: @pennstatewbb
 facebook.com/pennstateladylions

PRONUNCIATIONS

Coquese ko-KWEES
 Chmiel shuh-MEAL
 Maren Walseth MARR-en WALL-seth
 Zhaque Jacque-QWAY
 Gizelle Studevent juh-ZELL STEW-duh-vent
 Talia tah-LEE-uh
 Ariel AIR-e-I
 Dara DAR-uh



BIG

STANDINGS (thru games of 11/15)

Team	Big Ten			Overall		
	W	L	Pct.	W	L	Pct.
Nebraska	0	0	.000	2	0	1.000
Michigan	0	0	.000	2	0	1.000
Northwestern	0	0	.000	2	0	1.000
PENN STATE	0	0	.000	2	0	1.000
Ohio State	0	0	.000	1	0	1.000
Purdue	0	0	.000	1	0	1.000
Michigan State	0	0	.000	2	1	.667
Illinois	0	0	.000	2	1	.667
Iowa	0	0	.000	1	1	.500
Indiana	0	0	.000	1	1	.500
Wisconsin	0	0	.000	1	2	.333
Minnesota	0	0	.000	1	2	.333

BIG TEN SCHEDULE

NOVEMBER 14

at Indiana 70, Murray State 67
at Michigan 73, Florida Atlantic 51

NOVEMBER 15

at Illinois 62, Memphis 54
at Michigan State 62, IPFW 56
at Nebraska 99, Mississippi Valley St. 53
at Northwestern 71, W. Kentucky 57
at Marquette 54, Wisconsin 52

NOVEMBER 16

Albany at Iowa 8 p.m.

NOVEMBER 17

Utah at Michigan 6 p.m.
Western Michigan at Michigan State 7 p.m.
Illinois State at Northwestern 8 p.m.
Penn State at Delaware 7 p.m.
Purdue at Bowling Green 7 p.m.

NOVEMBER 18

Illinois at Oregon 10 p.m.
Indiana at Belmont 6 p.m.
USC at Nebraska 8 p.m.
Temple at Ohio State 6 p.m.
Washington State at Wisconsin 8 p.m.

NOVEMBER 19

Michigan State at FGCU 7 p.m.
Binghamton at Minnesota 2 p.m.

NOVEMBER 20

Illinois at California 5 p.m.
Iowa at Northern Iowa TBA
Michigan at Seton Hall 2 p.m.
TBA at Minnesota TBA
Penn State at South Carolina 3 p.m.
Tennessee-Martin at Purdue 2 p.m.

All times are Eastern.

PROJECTED STARTERS



12 ZHAQUE GRAY G
Sr., 5-8, Chicago, Ill.
11.0 pts., 5.0 rebs., 1.5 assts.

Notes: Named to Lady Lion Classic All-Tournament Team ... 13th player in school history with 100 career three-pointers (101) ... Ninth on Penn State's single-season three-pointers list with 63 triples a year ago.



20 ALEX BENTLEY G
Jr., 5-7, Indianapolis, Ind.
15.0 ppg, 4.0 apg, 2.5 spg, .391 FG%

Notes: Lady Lion Classic All-Tournament Team ... Surpassed 900-point mark vs. MTSU ... Reached 300 assists vs. WSU ... Big Ten Preseason POY ... Wade Trophy and Wooden Award preseason lists.



33 MAGGIE LUCAS G
So., 5-10, Narberth, Pa.
18.0 ppg, 5.5 rpg, .375 3FG%, .824 FT%

Notes: Tied for 8th in three-pointers in school history ... Big Ten Freshman of the Year ... Broke Kelly Mazzante's PSU freshman scoring record (552) ... Participated in USA Basketball Trials.



24 MIA NICKSON F
Jr., 6-2, Ashburn, Va.
4.5 ppg, 8.5 rpg, 1.0 spg

Notes: Second in the Big Ten in field goal percentage (.521) last year ... Six double-doubles ... Third on the team in scoring (10.5) ... Among Big Ten leaders in rebounding and field goal percentage a year ago.



54 NIKKI GREENE C
Jr., 6-4, Diboll, Texas
4.5 ppg, 11.0 rpg, 1.5 bpg, 2.0 spg

Notes: Narrowly missed a double-double with 9 pts., 10 rebs. vs. MTSU ... All-Big Ten honorable mention selection ... Big Ten All-Defensive team ... Seventh on Penn State's blocked shots list (133).

SCOUTING DELAWARE: The Blue Hens picked up an 89-53 win over Rhode Island Friday. Elena Delle Donne scored 33 points and pulled in six rebounds to lead Delaware. Trumae Lucas added 14 points and two assists in the win.

ALL-TIME VS. THE BLUE HENS: The Lady Lions are 6-1 all-time against the Blue Hens, including a 64-55 win last season. Penn State has been victorious in its two previous meetings in Newark. This will be the Lady Lions' first game at Delaware since Feb. 15, 1980, a 90-72 victory.

LAST TIME VS. UD: Maggie Lucas drained two key three-pointers in the final 4:09 to lead the Lions to a 64-55 win on Dec. 19, 2010. She finished the game with 16 points on 6-of-13 shooting. Alex Bentley scored 10 of her 13 points after the break. She also added six assists, four rebounds and two steals. Nikki Greene had 11 points and five rebounds, while Julia Trogele chipped in seven points and a game-high 12 rebounds.

LADY LION CLASSIC CROWN: Penn State picked up its 27th regular-season title with wins over Washington State (72-60) and Middle Tennessee (65-49) in the Lady Lion Classic. It is the third regular-season title acquired under Coquese Washington (2006 WBCA Classic, 2009 Dead River Company Classic and 2011 Lady Lion Classic).

WHAT'S AT STAKE

A Penn State Win Would:

- Make Penn State 3-0 on the season.
- Improve the Lady Lions to 7-1 all-time vs. Delaware.
- PSU's first win in the state of Delaware since Feb. 15, 1980.
- Be the fifth-straight 3-0 start to a season under Coquese Washington.

LUCAS TABBED TOURNEY MVP: Sophomore guard Maggie Lucas was selected as the Lady Lion Classic Tournament MVP after averaging 18.0 points, 5.5 rebounds and 3.5 assists in two games. Additionally senior guard Zhaque Gray and junior guard Alex Bentley were named to the Lady Lion Classic All-Tournament team.

BENTLEY REACHES MILESTONES: Junior guard Alex Bentley reached the 900-point plateau with eight tallies against Middle Tennessee Nov. 13. Additionally, Bentley became the 14th player in school history with 300 assists as she dished out four helpers against Washington State Nov. 11.

LAST TIME VS. DELAWARE DEC. 19, 2010 • UNIVERSITY PARK, PA.

Delaware 55 • 6-2																			
#	Player	Total			3-Ptr			Rebounds			PF	TP	A TO Bk	Stl	Min				
		FG	FGA	FT	FTA	FG	FGA	FT	FTA	OR						DR	Total		
10	Bakley, Jocelyn	25	0-0	0-0	1	2	3	3	4	0	2	0	1	23					
11	Delle Donne, Elena	33	4-6	3-3	1	4	3	3	2	2	3	0	0	37					
12	Parker, Danielle	14	0-0	3-4	2	1	3	1	5	0	1	0	1	27					
22	Carra, Lauren	1-8	0-4	2-2	0	9	9	3	4	2	5	0	1	38					
23	Abel, Sarah	3-4	0-0	0-0	2	4	6	1	6	3	3	0	2	30					
24	May, Jaquetta	2-3	0-0	0-0	2	1	3	1	4	0	1	0	2	9					
25	Katzong, Vanessa	1-3	0-0	0-0	0	0	0	2	0	1	0	0	13						
27	Riddick, Eva	1-1	0-0	3-7	2	2	4	3	5	0	1	0	0	23					
Team		0 1 1																	
Totals		20-51	4-12	11-16	10	24	34	15	55	7	17	0	7	200					
FG % 1st half		9-31	29%	2nd half	11-30	55%	Game	20-51	39%	Detailed									
3FG % 1st half		2-9	33%	2nd half	2-6	33%	Game	4-12	33%	Rebounds									
FT % 1st half		5-8	63%	2nd half	6-10	60%	Game	11-16	69%	2									
Penn State 64 • 10-2																			
#	Player	Total			3-Ptr			Rebounds			PF	TP	A TO Bk	Stl	Min				
		FG	FGA	FT	FTA	FG	FGA	FT	FTA	OR						DR	Total		
11	Trogele, Julia	3-5	1-1	0-1	3	9	12	4	7	2	2	1	2	33					
12	Gray, Zhaque	1-11	0-7	0-0	1	3	4	0	2	3	1	0	0	28					
20	Bentley, Alex	5-15	0-2	3-4	2	2	4	0	13	8	1	1	2	31					
24	Nickson, Mia	3-6	0-0	2-2	3	3	6	2	8	0	1	0	0	29					
14	Greene, Nikki	4-8	0-0	3-4	2	3	5	4	11	0	1	1	2	24					
15	Womack, Renae	0-0	0-0	0-0	0	0	0	2	0	1	0	0	2						
23	Edwards, Arnel	2-4	0-0	1-2	2	0	2	0	5	1	1	0	1	13					
28	Lucas, Maggie	6-13	4-7	0-0	0	4	4	1	16	1	2	0	2	31					
21	Wells, Marina	1-1	0-0	0-0	0	0	0	2	2	0	1	0	0	6					
Team		3 0 3																	
Totals		25-63	5-17	9-13	16	24	40	15	64	13	11	3	9	200					
FG % 1st half		9-29	31%	2nd half	16-34	47%	Game	25-63	39%	Detailed									
3FG % 1st half		3-10	30%	2nd half	3-7	28%	Game	5-17	29%	Rebounds									
FT % 1st half		3-7	43%	2nd half	6-6	100%	Game	9-13	69%	2									
Officials:		Teresa Dabson, Bruce Morris, Shannon Face																	
Technical fouls:		Delaware None, Penn State None																	
Attendance:		3079																	
Score by periods		1st		2nd		Total		Points		In		Out		2nd		Fast		Bench	
Delaware		25		39		64		DELARA		14		4		9		0		11	
Penn State		24		40		64		PSU		22		17		5		23			
Last FG - DELAWARE 2nd 09:43, PSU 2nd 01:15		Largest lead - DELAWARE by 3 1st 10:17, PSU by 13 2nd 01:10		Score tied - 3 times		Lead changed - 10 times													



LUCAS INTO 8TH ON 3S LIST: Sophomore guard **Maggie Lucas** moved into a tie for eight place on Penn State's career three-pointers list with three triples against Middle Tennessee Nov. 13. She is tied with Tanya Garner (1988-91) with 118 career triples. She needs three triples to pass Brianne O'Rourke (120) on the chart.

Career Three-Point Field Goals Made

1. 357 Kelly Mazzante (133 games), 2001-04
2. 230 Lisa Shepherd (128 games), 1998-01
3. 191 Jess Strom (133 games), 2002-05
4. 179 Tyra Grant (122 games), 2007-10
5. 175 Tiffany Longworth (122 games), 1994-97
6. 124 Tina Nicholson (124 games), 1993-96
7. 120 Brianne O'Rourke (120 games), 2006-09
8. **118 Maggie Lucas (35 games), 2011-pres.**
- 118 Tanya Garner (114 games), 1988-91

EAST'S CAREER NIGHT: Sophomore center **Talia East** turned in a career performance in the season-opening win over Washington State. She was a perfect 3-for-3 from the field on the way to a career-high six points. She also hauled in a personal-best eight rebounds against the Cougars.

ANOTHER SEASON-OPENING WIN: The Lady Lions collected their fifth-straight season-opening win under head coach Coquese Washington with a 72-60 come-from-behind win over Washington State Nov. 11. Penn State has started each of Washington's four seasons with at least three wins.

AGEE SIGNS NLI: ESPN/HoopGurlz 34th-ranked recruit **Candice Agee** signed a National Letter of Intent (NLI) to play of the Lady Lions beginning in the 2012-13 season. The signing of Agee and addition of transfer **Dara Taylor**, the Lady Lions have the 18th-ranked recruiting class by Dan Olson's Collegiate Girls Basketball Report. Agee is the first commit in the Lady Lions' 2012 recruiting class, averaged 17.0 points, 10.9 rebounds, 7.3 blocks and 2.7 steals per game for the Hawks as a junior. The native of Victorville, Calif. is a highly touted recruit, ranking 34th by ESPN/HoopGurlz, 38th by Collegiate Girls Report, 17th by Blue Star Basketball and 40th by All-Star Girls Report and Peach State. The Hawks finished the season with a 22-6 record with a perfect conference record en route to the Desert Sky title.

PSU 11TH IN AP POLL: The Penn State Lady Lions moved up one spot to 11th in the Nov. 14 Associated Press poll. It is the highest ranking in the AP poll for the Lady Lion since they were fifth in the final 2004 poll. Additionally, Penn State made its first appearance in the preseason AP poll since the 2003-04 campaign.

LIONS RANKED 12TH IN COACHES POLL: The Lady Lions moved up two spots in the Nov. 15 ESPN/USA Today coaches poll after a pair of wins to open the season. It is the highest ranking in the ESPN/USA Today Coaches' Poll for the Lady Lion since they were seventh in the final 2004 poll. Additionally, Penn State appeared in the preseason coaches' poll since starting the 2003-04 campaign eighth.

PENN STATE BIG TEN FAVORITES: With 10 returning letterwinners from a team that posted a second place regular-season finish and a runner-up effort in the Big Ten Tournament, the Lady Lions were selected to finish first in the Big Ten Conference in a vote of the league's coaches and media. PSU finished ahead of Purdue and Iowa in the coaches' vote and Purdue and Michigan State in the media poll.

BENTLEY BIG TEN PRESEASON POY: Junior point guard **Alex Bentley** was selected as the conference's Preseason Player of the Year by both the coaches and the media. She shared the coaches' Preseason Player of the Year with Ohio State's Samantha Prahalis.

VETERANS RETURN: The Lady Lions return 10 letterwinners and four starters, including All-Big Ten first team selection **Alex Bentley**, Big Ten Freshman of the Year and Sixth Player of the Year **Maggie Lucas** and Big Ten All-Defensive choice **Nikki Greene**.

LADY LIONS 12TH IN SPORTING NEWS PRESEASON POLL: The Lady Lions are ranked 12th in the "Sporting News" preseason poll and sophomore guard **Maggie Lucas** is a preseason third team All-American, according to the magazine. Penn State is the highest ranked of the three Big Ten teams (Purdue, Michigan State) in the preseason Top 25.

BENTLEY NAMED TO PAIR OF WATCH LISTS: Junior point guard **Alex Bentley** as been named to a pair of preseason watch lists for National Player of the Year. Bentley is one of 25 players on the WBCA's Wade Trophy Watch List and is among the 30 players on the Wooden Award preseason chart. Bentley was instrumental in helping the Lady Lions return NCAA Tournament for the first time since 2005 with a 25-10 record. She became the 11th different Lady Lion to garner All-Big Ten first team honors last season after finishing in the Top 15 in the Big Ten in scoring (12th/14.4), assists (2nd/5.0), field goal percentage (14th/.446), free throw percentage (11th/.798) and assist-to-turnover ratio (4th/1.7). Bentley was named to the Big Ten All-Tournament team after averaging 15.3 points, 3.3 assists and 3.0 steals in three tourney contests. Bentley, who participated in USA Basketball World University Games trials in Colorado this summer, is 14th in school history with 299 career assists. Her 174 helpers last year are 17th on Penn State's single-season charts.

LIONS ARE 16TH IN ATHLON PRESEASON POLL: In addition to their #12 ranking in the "Sporting News" preseason poll, the Lady Lions are 16th in the "Athlon" preseason rankings. Penn State is the highest ranked of the two Big Ten teams (Ohio State) in the preseason Top 25.

BENTLEY AND LUCAS PARTICIPATE IN USA BASKETBALL TRIALS: Guards **Alex Bentley** and **Maggie Lucas** participated in the 2011 USA Basketball World University Game Trials this past spring. The pair were part of the group of 35 of the nation's top collegiate players that accepted invitations to attend the 2011 USA Basketball Women's World University Games Team Trials. Former Lady Lion standouts Terri Williams-Flournoy and Suzie McConnell-Serio were assistant coaches for the World University Games team.

PENN STATE'S OVERALL/BIG TEN YEAR-BY-YEAR REVIEW

Year	Overall	Big Ten	Home	BT Home	Road	BT Road	Neutral
1992-93	22-6	14-4	12-2	9-0	9-4	5-4	0-0
1993-94	28-3	16-2	14-0	9-0	11-2	7-2	3-1
1994-95	26-5	13-3	14-2	8-0	9-3	5-3	3-0
1995-96*	27-7	13-3	14-2	8-0	8-4	5-3	5-1
1996-97	15-12	8-8	9-3	5-3	5-6	3-5	1-3
1997-98	21-13	8-8	10-5	4-4	6-6	4-4	5-2
1998-99	22-8	12-4	9-2	6-2	9-4	6-2	4-2
1999-00	30-5	15-1	14-0	8-0	9-2	7-1	7-3
2000-01	19-10	11-5	11-2	7-1	6-5	4-4	2-3
2001-02	23-12	11-5	10-4	6-2	9-5	5-3	4-3
2002-03	26-9	13-3	16-0	8-0	7-7	5-3	2-2
2003-04	28-6	15-1	12-1	8-0	9-3	7-1	6-2
2004-05	19-11	13-3	12-0	8-0	6-9	5-3	1-2
2005-06	13-16	6-10	8-6	5-3	3-8	1-7	2-2
2006-07	15-16	7-9	12-1	7-1	2-12	0-7	1-3
2007-08	13-18	4-14	10-6	3-6	3-11	1-8	0-1
2008-09	11-18	6-12	8-6	4-5	2-9	2-7	1-3
2009-10	17-14	8-10	9-6	5-4	5-7	3-6	3-1
2010-11	25-10	11-5	14-4	6-2	7-4	5-3	4-2
2011-12	2-0	0-0	2-0	0-0	0-0	0-0	0-0

* First season at the Bryce Jordan Center



PENN STATE'S RECORD WHEN...

Playing at home	2-0
Playing on the road	0-0
Playing at a neutral site	0-0
vs. Top 10 teams	0-0
vs. Top 25 teams	0-0
Games decided by 3 points or less	0-0
Games decided by 4-10 points	0-0
Games decided by 11-19 points	2-0
Games decided by 20 points or more	0-0
Leading at the half	0-0
Tied at the half	0-0
Trailing at the half	2-0
Leading with 5:00 remaining	2-0
Trailing with 5:00 remaining	0-0
Tied with 5:00 remaining	0-0
In overtime	0-0
PSU scores 40-49 points	0-0
PSU scores 50-59 points	0-0
PSU scores 60-69 points	1-0
PSU scores 70-79 points	1-0
PSU scores 80 points or more	0-0
PSU shoots 45% or better	0-0
PSU shoots less than 45%	2-0
PSU shoots better than opponent	2-0
Opponent shoots better than PSU	0-0
Opponent scores less than 39 points	0-0
Opponent scores 40-49 points	1-0
Opponent scores 50-59 points	0-0
Opponent scores 60-69 points	1-0
Opponent scores more than 70 points	0-0
Opponent shoots better than 45%	0-0
Opponent shoots less than 45%	2-0
PSU outrebounds opponent	2-0
Opponent outrebounds PSU or tied	0-0
PSU commits 14 or less turnovers	1-0
PSU commits 15 or more turnovers	1-0
PSU makes at least 5 3-pointers	2-0
PSU makes four 3-pointers or less	0-0
Recording 7 or more steals	2-0
Recording 6 or less steals	0-0
Wearing white uniforms	2-0
Wearing blue uniforms	0-0
Wearing gray uniforms	0-0
Wearing pink uniforms	0-0
Penn State wins the tip	1-0
Penn State loses the tip	1-0
Penn State scores first	1-0
Opponent scores first	1-0
Playing during the day (before 5 p.m.)	0-0
Playing at night	2-0
On Monday	0-0
On Tuesday	0-0
On Wednesday	0-0
On Thursday	0-0
On Friday	1-0
On Saturday	0-0
On Sunday	1-0
In November	2-0
In December	0-0
In January	0-0
In February	0-0
In March	0-0

TEAM CAPTAINS: Junior **Mia Nickson** and **Marisa Wolfe** have been selected as the team captains for the 2011-12 Lady Lions. Nickson, who is a team captain for the second consecutive year, accounted for 10.5 points and 6.7 rebounds per game. She was ninth in the Big Ten in rebounding and 14th in free throw percentage (.795). Nickson finished second in the league in field goal percentage with a .521 effort on the year and was third in offensive rebounds (3.2). Wolfe earned her first eight collegiate starts last season and finished the year averaging 2.6 points and 2.4 rebounds per game. The junior was outstanding from the free throw line, going 17-for-20 (.850). Wolfe also tallied a career-best eight assists, 12 steals and five blocked shots.

TAYLOR TRANSFERS TO PSU: The Lady Lions added 5-7 transfer **Dara Taylor** to the roster during the summer. Taylor, who will sit out the 2011-12 season due to NCAA transfer rules, will have two years of eligibility remaining when she begins competing for the Lady Lions in 2012-13. Taylor comes to Penn State after playing the first two years of her collegiate career at Maryland. As a freshman, she accounted for 5.5 points and 5.0 assists per game. Taylor, who broke the Maryland freshman season record for assists with 171 helpers, finished third in the ACC in assists and sixth in assist-to-turnover ratio (1.2) as a rookie. Last season, Taylor appeared in 32 games and tallied 1.7 points and 2.2 assists per game.

WALDNER LONE FRESHMAN: The lone freshman of the Lady Lions' roster this season is rookie post player **Tori Waldner** from Milton, Ga. Waldner earned All-Region 6AAAAA first team honors as a senior at Milton High School and was a 2011 McDonald's All-American nominee. She chipped in 12.0 points and 8.0 rebounds as a senior to lead the Eagles to a 22-5 record and the Elite 8 in the State Championship playoffs in 2011.

2012 WBCA PINK ZONE: The 2012 WBCA Pink Zone at Penn State will take place on Sunday, Feb. 26 as the Lady Lions take on Minnesota in the Bryce Jordan Center. Last year, the Lady Lions donated nearly \$200,000 for breast cancer causes. This year's fundraising efforts will benefit the Mount Nittany Medical Center, Penn State Hershey Cancer Institute, Pennsylvania Breast Cancer Coalition, the Kay Yow Cancer Fund, J.C. Blair Memorial Hospital and Lewistown Hospital. For more information on the Pink Zone at Penn State, visit the official Pink Zone website at www.gopsusports.com/pinkzone. The WBCA Pink Zone at Penn State is also on Facebook at www.facebook.com/pinkzoneatpennstate.

LADY LIONS ON TWITTER & FACEBOOK: The Lady Lions are on Twitter. Follow the Lady Lions and assistant coaches (@pennstatewbb) and sports information contact Kris Petersen (@ladylionsid) to get the inside scoop. The Lady Lions are also on Facebook at www.facebook.com/pennstateladylions.

LIONS IN THE BIG TEN STATS

A breakdown of where Penn State ranks in the Big Ten's statistical categories. Through games of Nov. 15.

TEAM	
Scoring Offense.....	8th (68.5)
Scoring Defense.....	4th (54.5)
Scoring Margin.....	5th (+14.0)
Free Throw Percentage.....	6th (.717)
FG Percentage.....	11th (.352)
FG Percentage Defense.....	3rd (.297)
3-point FG Percentage.....	6th (.314)
3-point FG Pct. Defense.....	3rd (.240)
3-point FG Made.....	6th (5.5)
Rebounding Offense.....	1st (51.0)
Rebounding Defense.....	T-11th (44.0)
Rebounding Margin.....	T-7th (+7.0)
Offensive Rebounds.....	T-4th (16.5)
Defensive Rebounds.....	1st (34.5)
Blocked Shots.....	T-7th (3.5)
Assists.....	10th (11.0)
Steals.....	8th (9.0)
Turnover Margin.....	8th (-0.5)
Assist to Turnover Ratio.....	8th (0.6)

INDIVIDUAL	
Scoring.....	T-4th - Maggie Lucas (18.0)
.....	T-12th - Alex Bentley (15.0)
.....	T-25th - Zhaque Gray (11.0)
Rebounding.....	2nd - Nikki Greene (11.0)
.....	T-8th - Mia Nickson (8.5)
.....	T-15th - Talia East (7.0)
Assists.....	T-5th - Alex Bentley (4.0)
.....	T-11th - Maggie Lucas (3.5)
FT Percentage.....	T-1st - Alex Bentley (1.000)
.....	14th - Maggie Lucas (.824)
Steals.....	T-7th - Alex Bentley (2.5)
.....	T-12th - Nikki Greene (2.0)
3FG Percentage.....	T-14th - Alex Bentley (.400)
3FG Made.....	T-2nd - Maggie Lucas (3.0)
.....	T-15th - Zhaque Gray (1.5)
Blocked Shots.....	T-8th - Talia East (1.5)
.....	T-8th - Nikki Greene (1.5)
Off. Reb.....	T-3rd - Nikki Greene (4.0)
.....	T-8th - Mia Nickson (3.5)
.....	T-12th - Talia East (3.0)
Def. Reb.....	T-4th - Nikki Greene (7.0)
.....	T-10th - Mia Nickson (5.0)
Minutes.....	2nd - Maggie Lucas (36.5)
.....	6th - Alex Bentley (35.5)



MILESTONE WATCH

Milestone Watch

Milestone	Player	Current Total
1,000 points	Alex Bentley	900
600 points	Maggie Lucas	588
	Zhaque Gray	586
	Nikki Greene	528
500 points	Mia Nickson (career)	422
400 points	Mia Nickson (PSU)	377
200 points	Renee Womack	164
	Marisa Wolfe	163
	Ariel Edwards	111
100 points	Gizelle Studevent	82
500 rebounds	Nikki Greene	486
400 rebounds	Mia Nickson (career)	308
300 rebounds	Mia Nickson (PSU)	251
200 rebounds	Alex Bentley	186
	Renee Womack	174
	Marisa Wolfe	155
	Zhaque Gray	154
	Maggie Lucas	119
100 rebounds	Ariel Edwards	65
400 assists	Alex Bentley	307
100 assists	Zhaque Gray	92
	Maggie Lucas	53
150 steals	Alex Bentley	123
100 steals	Maggie Lucas	59
150 blocks	Nikki Greene	133
150 3-pointers	Maggie Lucas	118
	Zhaque Gray	104

Milestone Reached

Milestone	Player	Reached
900 points	Alex Bentley	11/13/11
400 rebounds	Mia Nickson (career)	11/13/11
300 assists	Alex Bentley	11/11/11
100 points	Ariel Edwards	11/11/11

LADY LIONS ON THE TUBE & WEB: The Lady Lions will have at least eight games broadcast nationally on CBS, ESPN2 and the Big Ten Network. Additionally, Penn State will have 11 games streamed on www.btn.com, many of which will be rebroadcast on the Big Ten Network as "Student U" productions. Penn State will appear on CBS against Michigan State (Sat., Jan. 7), on ESPN2 versus Iowa (Sun., Jan. 22), at Michigan State (Jan. 29) and as part of Big Monday against Ohio State (Mon., Feb. 20). The Lions will also appear on the Big Ten Network against North Carolina (Wed., Nov. 30), Michigan (Thurs., Jan. 12), at Northwestern (Sun., Feb. 12) and at Purdue (Thurs., Feb. 16). Penn State also has a chance to be part of the Big Ten Network Wildcard games against Wisconsin (Mon., Jan. 2) and Minnesota (Sun., Feb. 26). Additionally, Penn State will appear on SportSouth when it travels to South Carolina (Sun., Nov. 20).

LADYLIONS.COM: LadyLions.com is a website dedicated exclusively to women's basketball at Penn State. The website gives the Lady Lions a chance to showcase the Penn State women's basketball program to potential recruits and fans. The site has been recently enhanced with the addition of a team blog, live chats and an "Ask Coach Quese" mailbag. The team blog has been up and running since August. The blog is regularly updated with entries from Lady Lion basketball players, coaches and staff members. The Lady Lions and the coaching staff interact with fans during a weekly live chat on Mondays from 12:15-1:15. The final new feature on LadyLions.com for this season is the Ask Coach Quese mailbag. Coach Quese will answer fan questions each Tuesday throughout the season. Questions can be submitted to Coach Quese by emailing them to askcoachquese@gmail.com. Be sure to include your name and hometown when submitting a question.

OFFICIAL PINK ZONE T-SHIRTS: The Official 2012 WBCA Pink Zone at Penn State t-shirt is available at all Penn State Bookstore location. This year, there is an official adult shirt that is \$15 with \$5 of every shirt going to the Pink Zone fundraising efforts, as well as an official youth shirt that is \$10 with \$2 of every shirt going to Pink Zone.

COQUESE'S DRIVE A SUCCESS: The fourth annual Coquese's Drive for the Women's Resource Center golf tournament was another great fundraising event. The tournament, held on August 26, 2011, had 118 golfers participate and raised a record \$26,549.25 for the Centre County Women's Resource Center (CCWRC). The record-breaking day also featured a hole in one on #14 by Kim Filkins on her very first swing of the tournament.

2010-11 SEASON AT A GLANCE: There are several highlights for the Lady Lions to look back on following the 2010-11 season, a return to the NCAA Tournament and the most wins since the 2004-05 season. Let's take a look back at the 2010-11 campaign.

TROGELE WRAPS SOLID CAREER: Julia Trogele closed out an unsung career with a stellar senior season as she averaged personal bests of 9.3 points, 6.9 rebounds, 2.6 assists and 1.9 steals in 2010-11. She ranked seventh in the Big Ten in rebounding, field goal percentage and free throw percentage on the way to All-Big Ten honorable mention accolades. Trogele, who finished her career with 803 points and 690 rebounds, is fifth on the Lady Lions' all-time free throw shooting chart with an .817 effort from the charity stripe in four seasons. She is also 14th in rebounding average in program history with a 6.1 mark.

LUCAS FROSH ALL-AMERICAN: Maggie Lucas capped a outstanding freshman campaign by being named to the *Full Court Press* Freshman All-American second team. She is one of 15 players selected to the Freshman All-American squad and one of only two Big Ten players to earn the honor (Purdue's Courtney Moses – third team).

PRESS CONFERENCES

Coquese Washington will hold a weekly press conference and the Lady Lions will have media availability on a weekly basis throughout the season. All press conferences will begin at 2:45 p.m. (unless otherwise noted) and go for approximately 15-20 minutes, followed by an open media session prior to practice from 3-3:20 p.m. Press conference will be held in the Media Room at the Bryce Jordan Center (unless otherwise noted).

Press Conference Dates

Tuesday, Nov. 29 (Coquese - 2:25 p.m.; players - 2:40-3 p.m.)
 Wednesday, Dec. 7 or Thursday, Dec. 8
 Wednesday, Dec. 14
 Tuesday, Dec. 20
 Thursday, Dec. 29
 Wednesday, Jan. 4
 Wednesday, Jan. 11
 Wednesday, Jan. 18
 Wednesday, Jan. 25
 Wednesday, Feb. 1 (location TBA)
 Wednesday, Feb. 8 (location TBA)
 Wednesday, Feb. 15
 Wednesday, Feb. 22
 Wednesday, Feb. 29 (time TBA)

TEAM TRIPLES RECORDS FALL: Penn State's brilliant season from downtown led to a pair of school records last season. The Lady Lions broke the single-season school record for three-point field goal percentage (.4153), previously held by the 1986-87 team (.4146). Additionally, with 228 threes last year, the Lady Lions tied the single-season record for three-pointers made, equalling the mark set by the 2002-03 squad. The 228 triples are tied for the fourth-most in Big Ten history.

22ND NCAA TOURNAMENT BERTH: The Lady Lions made their 22nd overall NCAA Tournament appearance and first since dropping a first round decision to Liberty in the 2005 tourney. Penn State is one of only 12 teams to earn 22 or more NCAA Tournament berths. The Lady Lions posted a first round win over Dayton before falling to nationally-ranked and third-seeded DePaul in a thrilling second round contest.

LEADING THE NATION FROM DEEP: The Lady Lions led the NCAA in three-point field goal percentage (.415). It is the first time in school history that Penn State has led the country in three-point field goal percentage. It is also the first team statistics title for PSU since leading the NCAA in winning percentage, scoring margin and free throw percentage in 1991.



THE LAST TIME PENN STATE...

SCORING

Player scored 20 points: vs. Washington State (22, Alex Bentley; 22, Maggie Lucas), 11/11/11
Player scored 25 points: vs. Dayton (25, Alex Bentley), 3/19/11
Player scored 30 points: vs. Iowa (32, Tyra Grant), 3/5/10
Player scored 35 points: vs. Wisconsin (35, Kelly Mazzante), 3/2/03
Player scored 40 points: vs. Minnesota (49, Kelly Mazzante), 12/28/01
Two players scored 20 points: vs. Washington State (22, Alex Bentley & 22, Maggie Lucas), 11/11/11
Three players scored 20 pts.: at Dayton (26, Alex Bentley; 27, Zhaque Gray; 20, Nikki Greene), 11/12/10
Two players scored 25 points: at Boston College (28, Alex Bentley; 28, Maggie Lucas), 12/2/10
Player scored 25 points/3 consecutive games: Kelly Mazzante (31, vs. Baylor, 12/9/03; 31, vs. Pittsburgh, 12/14/03; 29, Louisiana Tech, 12/21/03)
Five in double figures: at Michigan (11, Alex Bentley; 11, Zhaque Gray; 14, Nikki Greene; 23, Maggie Lucas; 10, Julia Trogele), 2/3/11
Six in double figures: at Oakland (15, Alex Bentley; 16, Ariel Edwards; 16, Zhaque Gray; 13, Maggie Lucas; 10, Mia Nickson; 10, Gizelle Studevent; 10, Julia Trogele), 11/18/10
Seven in double figures: at Oakland (15, Alex Bentley; 16, Ariel Edwards; 16, Zhaque Gray; 13, Maggie Lucas; 10, Mia Nickson; 10, Gizelle Studevent; 10, Julia Trogele), 11/18/10
PSU scored 50 points in a half: at Boston College (55 points, second half), 12/2/10
PSU scored 55 points in a half: at Boston College (55 points, second half), 12/2/10
PSU scored 60 points in a half: vs. Northwestern (65 points, first half), 1/2/00
PSU scored 100 points: at Boston College (Lot, 113-104), 12/2/10
PSU scored 100 points in Big Ten game: vs. Illinois (W, 101-80), 2/15/01
PSU scored 100 points in a home game: vs. Maryland (W, 101-74), 12/4/02
PSU scored fewer than 15 points in a half: vs. Wisconsin (13, first half), 2/25/10
PSU scored fewer than 20 points in a half: vs. Michigan State (18, first half), 2/10/11
PSU scored fewer than 40 points in a game: vs. Wisconsin (L, 39-71), 2/25/10
PSU scored fewer than 50 points in a game: vs. Purdue (L, 49-60), 2/24/11
PSU scored fewer than 50 points in a Big Ten game: vs. Purdue (L, 49-60), 2/24/11
OPP scored 50 points in a half: vs. Duke (50, second half), 11/18/05
OPP scored 100 points: at Boston College (Lot, 113-104), 12/2/10
OPP scored fewer than 20 points in a game: at Dickinson (W, 57-16), 3/6/71
OPP scored fewer than 30 points in a game: vs. Rider (W, 95-21), 11/14/10
OPP scored fewer than 40 points in a game: vs. Rider (W, 95-21), 11/14/10
OPP scored fewer than 50 points in a game: vs. Middle Tennessee State (W, 65-49), 11/13/11
OPP scored fewer than 50 points in a Big Ten game: at Wisconsin (W, 54-43), 1/21/10

FIELD GOAL SHOOTING

Player made every shot from the field (min. 7): vs. Michigan St. (Amanda Brown, 8-8), 1/25/07
PSU shot 55% in a game: at Michigan (.565), 2/3/11
PSU shot 55% in consecutive games: vs. Northwestern (.682), 3/2/96; vs. Ohio St. (.585), 3/3/96
PSU shot 60% in a game: vs. Michigan State (.608), 2/23/96
PSU shot below 25% in a game: at Alabama (.230), 12/19/96
PSU shot below 30% in a game: vs. Wisconsin (.273), 2/25/10
PSU shot below 35% in a game and won: vs. Indiana (.321), 1/10/10
PSU shot 55% in a half: vs. DePaul (.567, First Half), 3/21/11
PSU shot 60% in a half: at Indiana (.606, Second Half), 2/13/11
PSU shot 65% in a half: at Michigan (.679, Second Half), 2/3/11
PSU shot 70% in a half: vs. Ohio State (.704, Second Half), 3/4/07
PSU shot 55% in both halves: vs. Iowa (.552, First Half; .565, Second Half), 1/26/06
PSU shot below 20% in a half: at Indiana (.231, First Half), 2/28/10
PSU shot below 25% in a half: at Pittsburgh (.188, First Half), 11/24/08

THREE-POINT SHOOTING

Player made every shot from the field (min. 4): at Clemson (Jessica Brungo, 5-5), 12/7/02
Player made 4 three-pointers in a half: vs. Minnesota (Maggie Lucas, 4), 1/13/11
Player made 5 three-pointers in a half: vs. Bucknell (Maggie Lucas, 6), 12/28/10
Player made 6 three-pointers in a half: vs. Bucknell (Maggie Lucas, 6), 12/28/10
Player made 5 three-pointers in a game: vs. Illinois (Maggie Lucas, 5), 3/5/11
Player made 6 three-pointers in a game: at Indiana (Maggie Lucas, 6), 2/13/11
Player made 7 three-pointers in a game: vs. Hartford (Maggie Lucas, 7), 11/27/10
Player made 8 three-pointers in a game: at Minnesota (Kelly Mazzante, 8), 12/28/01
Player attempted 10 three-pointers in a game: at Indiana (Maggie Lucas, 10), 2/13/11
PSU made 10 three-pointers: at Indiana (11), 2/13/11
PSU did not make a three-pointer: at Michigan (0-7), 1/7/07
PSU attempted 20 three-pointers: vs. Illinois (20), 1/16/11
PSU shot 60% 3FG (min. 5 att.): vs. Illinois (12-20, .600), 1/16/11

FREE THROW SHOOTING

Player made every shot from FT line (min. 10): vs. Illinois (Julia Trogele, 12-12), 3/5/11
PSU shot 90% (min. 10 att.): at Purdue (10-11, .909), 1/20/11
PSU shot below 50% (min. 10 att.): vs. Holy Cross (9-20, .450), 11/28/09
PSU made 30 free throws: vs. Pittsburgh (34), 11/11/07
PSU made fewer than five FTs: at Michigan (3), 2/3/11
PSU attempted 40 free throws: vs. Pittsburgh (41), 11/11/07
PSU attempted fewer than 5 FTs: at Michigan (4), 2/3/11

REBOUNDS

Player had 15 rebounds: at Iowa (15, Mia Nickson), 2/6/11
Player had 20 rebounds: vs. Indiana (20, Nikki Greene), 1/23/11
Two players with double-digit rebs.: vs. Middle Tennessee St. (10, Nikki Greene; 10, Mia Nickson), 11/13/11
Three players had double-digit rebounds: at Indiana (11, Nikki Greene; 10, Meredith Monroe; 11, Julia Trogele), 1/10/10
PSU had 60 rebounds: vs. Indiana (61), 1/23/11
PSU had 50 rebounds: vs. Middle Tennessee State (50), 11/13/11
PSU had 20 or fewer rebounds: vs. Michigan State (20), 1/19/03
OPP had 20 or fewer rebounds: at Indiana (20), 2/13/11
PSU had 20 offensive rebounds: vs. Middle Tennessee State (21), 11/13/11
PSU had 25 offensive rebounds: vs. Indiana (33), 1/23/11

ASSISTS

Player had 10 assists: at Indiana (11, Julia Trogele), 2/13/11
Player had 10 assists/consecutive games: Helen Darling, three games (12 at LaSalle, 12/8/99; 11 vs. Auburn, 12/11/99; 10 vs. Clemson, 12/19/99)
Player had 15 assists: vs. Wisconsin (15, Helen Darling), 1/29/99
PSU had 30 assists: vs. St. Francis (Pa.) (32), 12/2/99
PSU had fewer than 10 assists: vs. Washington State (9), 11/11/11
PSU had fewer than 5 assists: at Michigan State (4), 2/4/10

BLOCKED SHOTS

Player blocked 5 shots: vs. Indiana (Nikki Greene, 5), 1/23/11
Player blocked 6 shots: vs. Purdue (Nikki Greene, 7), 1/28/10
PSU blocked 10 shots: vs. Purdue (11), 1/28/10
PSU blocked 0 shots: vs. Purdue, 2/19/09

STEALS

Player had 7 steals: vs. Michigan (Brienne O'Rourke, 7), 2/2/06
Player had 8 steals: vs. Fairfield (Kelly Mazzante, 8), 12/2/01
PSU had 20 steals: vs. Bucknell (21), 12/28/10

TURNOVERS

PSU committed 25 or more: at Ohio State (27), 2/17/11
PSU committed 25 or more and won: vs. Minnesota (26), 1/13/11
PSU committed 10 or fewer: vs. Ohio State (9), 3/6/11
PSU committed 10 or fewer in consecutive games: vs. Minnesota (9), 1/22/04; at Ohio St. (9), 1/25/04
OPP committed 25 or more: Maine (26), 12/12/10

DOUBLE-DOUBLES

Points & rebounds: vs. DePaul (Julia Trogele; 14 points, 11 rebounds), 3/21/11
Points & rebounds/consecutive games: Nikki Greene (12 points, 10 rebounds vs. Ohio State, 1/30/11; 16 points, 14 rebounds at Illinois, 1/27/11)
Points & rebounds/3 consecutive games: Amanda Brown (19 pts., 17 rebs. at Northwestern, 2/11/07; 14 pts., 10 rebs. vs. Minnesota, 2/15/07; 14 pts., 11 rebs. at Iowa, 2/18/07)
Points & rebounds/4 consecutive games: Angie Potthoff (vs. Northwestern, 1/31/97; at Illinois, 2/2/97; vs. Michigan, 2/7/97; vs. Indiana, 2/9/97; vs. Iowa, 2/16/97; vs. Michigan State, 2/21/97)
Points & rebounds/5 consecutive games: Angie Potthoff (vs. Northwestern, 1/31/97; at Illinois, 2/2/97; vs. Michigan, 2/7/97; vs. Indiana, 2/9/97; vs. Iowa, 2/16/97; vs. Michigan State, 2/21/97)
Points & assists: at Indiana (Julia Trogele; 15 points, 11 assists), 2/13/11
Points & assists/consecutive games: Helen Darling (12 points, 12 assists at La Salle, 12/8/99; 10 points, 11 assists vs. Auburn, 12/11/99)
Two players had double-doubles: at Illinois (Nikki Greene, 16 pts., 14 rebs.; Julia Trogele, 19 pts., 11 rebs.), 1/27/11
Three players had double-doubles: vs. Coppin State (Brienne O'Rourke, 12 points, 13 assists; Julia Trogele, 12 points, 13 rebounds; Janessa Wolff, 15 points, 10 rebounds), 11/29/08
15 points and 15 rebounds: vs. Indiana (Mia Nickson; 25 points, 17 rebounds), 1/23/11
20 points and 10 rebounds: vs. Indiana (Mia Nickson; 25 points, 17 rebounds), 1/23/11

MARGIN OF VICTORY
PSU won by 20-30 points: vs. Illinois (21), 1/16/11
PSU won by 20-30 points in a Big Ten game: vs. Illinois (21), 1/16/11
PSU won by 31-40 points: vs. Bucknell (37), 12/9/08
PSU won by 41-50 points: vs. Bucknell (48), 12/28/10
PSU won by 51+ points: vs. Rider (74), 11/14/10
PSU lost by 20-30 points: at Ohio State (22), 2/17/11
PSU lost by 20-30 points in a Big Ten game: at Ohio State (22), 2/17/11
PSU lost by 31+ points: vs. Wisconsin (32), 2/25/10

MISCELLANEOUS

Led PSU in points/rebounds/assists: Tyra Grant vs. Michigan (25 pts., 9 rebs., 4 asst.), 2/18/10
Hit "final seconds" (under 10 seconds) game-winning shot: Julia Trogele at Illinois (9 sec.), 1/27/11
Hit "final minute" game-winning shot: Nikki Greene vs. Indiana (40 seconds remaining), 2/13/11
Played every minute: at Illinois (Tyra Grant), 12/31/09
Played more than 40 minutes: at Dayton (Alex Bentley, 46; Zhaque Gray, 44; Mia Nickson, 41), 11/12/10
PSU rallied from a 10-point deficit to win: vs. Middle Tenn. St. (down 10 15:38 2nd half, won 65-49), 11/13/11
PSU rallied from a 15-point deficit to win: at Indiana (down by 16 at 10:02 in 1st half, won 80-77), 2/13/11
PSU had a 5-game winning streak: 5 games, 1/23/11 – 2/6/11
PSU had a 5-game losing streak: 6 games, 1/28/10 – 2/14/10
PSU went undefeated at home: 2004-05 season
PSU sold out the BJC: Purdue, 2/29/04

OVERTIME

PSU played an OT game: at Boston College (L, 113-104), 12/2/10
PSU won an OT game: at Oakland (96-89), 11/18/10
PSU lost an OT game: at Boston College (L, 113-104), 12/2/10
PSU played two or more OT games in a season: 2010-11 season (three)
PSU won two or more OT games in a season: 2010-11 season (two)

RANKINGS

Ranked the No. 1 team in the AP poll: vs. Connecticut (L, 77-63), 12/14/08
Played the No. 1 team in the Coaches poll: vs. Connecticut (L, 77-63), 12/14/08
Defeated the No. 1 team in the AP poll: at Virginia (73-71), 1/3/91
Defeated Top 10 opponent: vs. #11/10 Duke (86-84), 12/2/07
Defeated Top 10 opponent on the road: at #7 Purdue (47-42), 1/2/04
Defeated Top 10 opponent by double digits: vs. #10 Minnesota (81-68), 1/30/05
Played consecutive Top 10 teams: at #2/3 Texas 11/14/04, at #6/6 Duke 11/19/04
Defeated Top 25 opponent: vs. #14/13 Iowa (68-59), 12/30/10
Defeated Top 25 opponent on the road: at No. 20/22 Iowa (82-75), 2/6/11
Defeated Top 25 opponent by double digits: vs. #21 Michigan State (69-58), 1/25/07



2011-12 GAME-BY-GAME STARTING LINEUPS

Date	Opponent	Pt Guard	Guard	Guard	Forward	Center
11/5	BLOOMSBURG	Bentley	Gray	Lucas	Nickson	Greene
11/11	WASHINGTON ST.	Bentley	Gray	Lucas	Nickson	Greene
11/13	MIDDLE TENNESSEE	Bentley	Gray	Lucas	Nickson	Greene

ALL-BIG TEN HONORS: After posting its best Big Ten campaign since 2003-04, the Lady Lions were rewarded by having four different players be honored with Big Ten postseason awards. Guard **Maggie Lucas** led the selections after winning both the Big Ten Freshman of the Year and Big Ten Sixth Player of the Year. Additionally, sophomore guard **Alex Bentley** garnered first team All-Big Ten honors for the first time in her career, while Lucas was an All-Big Ten choice (second – media; third – coaches) Senior guard/forward **Julia Trogele** and sophomore center **Nikki Greene** were honorable mention choices. Greene was also named to the Big Ten All-Defensive team.

LUCAS IN NCAA SINGLE-SEASON 3s CHART:

With 112 three-pointers on the season, freshman guard **Maggie Lucas** finished the year 12th on the NCAA's single-season three-pointers chart. She is tied with James Madison's Dawn Evans for the slot.

BENTLEY EARNS FIRST TEAM HONORS:

Sophomore guard **Alex Bentley** became the 11th player in school history to claim first team All-Big Ten accolades from the coaches, joining the likes of Mazzante, Helen Darling and Tanisha Wright. She was also named to the All-Big Ten third team by the media. Bentley was in the Top 15 in the Big Ten in scoring (12th - 14.4), assists (2nd - 5.0), free throw percentage (11th - .798), steals (6th - 2.0) and assist-to-turnover ratio (4th - 1.7). She also ranks 14th in school history with 299 assists. The sophomore guard has had five 20-point games, including a career-high 28 points on 11-of-21 shooting that featured a game-tying scoop shot with 0.5 seconds remaining in regulation at Boston College Dec. 2.

LUCAS TABBED FRESHMAN OF THE YEAR:

Maggie Lucas became just the second Lady Lion to win Big Ten Freshman of the Year honors, joining Kelly Mazzante, who won the award in 2001. She is also the first Penn State player to claim Sixth Player of the Year accolades. In addition to her major awards, Lucas was named to the All-Big Ten second team by the media and the third team by the coaches. Lucas made an immediate impact for the Lady Lions, as she was seventh in the Big Ten in scoring at a 15.8 per game rate. Lucas, who took home a conference-record eight Big Ten Freshman of the Week honors, leads the league and is second in the NCAA in three-pointers per game (3.2). The Narberth, Pa. native is also second in the Big Ten and in the Top 10 nationally in three-point field goal percentage (.426). Lucas' 13 games with 20 or more points this season are the most since Mazzante tallied 10 20-point outings as a rookie.

LUCAS BREAKS ROOKIE SCORING RECORD:

With eight points against Ohio State in the Big Ten Championship game March 6, rookie guard **Maggie Lucas** broke the Penn State freshman season scoring record, previously held by Kelly Mazzante. Lucas' 552 tallies surpass Mazzante's 529-point rookie campaign in 2000-01.

LUCAS BREAKS BIG TEN THREES MARK:

With five three-pointers against Illinois in the Big Ten semifinal game March 5, freshman guard **Maggie Lucas** broke the Big Ten single-season three-pointers record. Lucas had 112 triples on the season, passing Ohio State's Caitly Matter (106) for first place on the Big Ten list. Additionally, Lucas tied with Kelly Mazzante for second place with 53 three-pointers in Big Ten play last year.

2012 RECRUITING CLASS

ESPN/HoopGurlz 34th-ranked recruit Candice Agee signed a National Letter of Intent (NLI) to play of the Lady Lions beginning in the 2012-13 season. The 6-6 center from Silverado High School in Victorville, Calif. signed her NLI in November in a ceremony at her high school. The signing of Agee and addition of transfer Dara Taylor, the Lady Lions have the 18th-ranked recruiting class by Dan Olson's Collegiate Girls Basketball Report.

"We are so excited to have Candice join the Penn State family," Washington said. "She is a very talented player and will complement our current post players in a lot of ways. She adds size, skill and athleticism to our front line, and she has a competitive streak that you love to see. She will definitely be an impact player for us on the court. In addition, she comes from a delightful family and her mom, dad and younger brother will also be wonderful additions to Lady Lion basketball."

Agee is the first commit in the Lady Lions' 2012 recruiting class, averaged 17.0 points, 10.9 rebounds, 7.3 blocks and 2.7 steals per game for the Hawks as a junior. The native of Victorville, Calif. is a highly touted recruit, ranking 34th by ESPN/HoopGurlz, 38th by Collegiate Girls Report, 17th by Blue Star Basketball and 40th by All-Star Girls Report and Peach State. The Hawks finished the season with a 22-6 record with a perfect conference record en route to the Desert Sky title.

Agee is a three-time Desert Sky League first team selection and was the league's Most Valuable Player as a junior. Additionally, she was the Daily Press Girls' Athlete of the Year. Agee begins her senior season with 991 career points, 649 rebounds and 390 blocks. was named to the All-Region first team as a junior. The center plays her AAU ball with West Coast Premier. Agee also plays volleyball at Silverado High School. Agee chose Penn State over Kansas State, Miami, UNLV, UCLA, USC, Tennessee, Vanderbilt, North Carolina, Georgetown, Georgia, Oregon, Oregon State, Washington and Washington State.

LADY LIONS SEASON BESTS

Player	Points	Rebounds	Assists	Blocks	Steals
Alex Bentley	22 (Wash. St.)	4 (Wash. St.)	4 (2X)	-	3 (Mid. Tenn.)
Talia East	6 (Wash. St.)	8 (Wash. St.)	-	2 (Wash. St.)	1 (Mid. Tenn.)
Ariel Edwards	10 (Mid. Tenn.)	2 (Wash. St.)	1 (2X)	-	2 (Mid. Tenn.)
Zhaque Gray	15 (Mid. Tenn.)	6 (Mid. Tenn.)	2 (Mid. Tenn.)	-	1 (Wash. St.)
Nikki Greene	9 (Mid. Tenn.)	12 (Wash. St.)	1 (Wash. St.)	2 (Wash. St.)	3 (Wash. St.)
Maggie Lucas	22 (Wash. St.)	9 (Wash. St.)	5 (Mid. Tenn.)	1 (Wash. St.)	2 (Mid. Tenn.)
Mia Nickson	6 (Wash. St.)	10 (Mid. Tenn.)	-	-	1 (2X)
Gizelle Studevent	4 (Mid. Tenn.)	3 (Mid. Tenn.)	1 (Mid. Tenn.)	-	-
Tori Waldner	-	-	-	-	-
Marisa Wolfe	-	-	-	-	-
Renee Womack	-	-	-	-	-

PSU IN THE POLLS

	AP	Coaches
Preseason	12	14
Nov. 14/15	11	12



NATIONAL POLLS

ASSOCIATED PRESS (NOV. 14)

No.	Team (1st)	Rec.	Pts.	LW
1.	Baylor (35)	2-0	993	1
2.	Notre Dame (4)	2-0	935	2
3.	Tennessee	1-0	910	3
4.	Connecticut	1-0	874	4
5.	Stanford	2-0	851	5
6.	Texas A&M (1)	1-0	789	6
7.	Miami (Fla.)	1-0	764	7
8.	Duke	1-0	687	8
9.	Louisville	1-0	681	9
10.	Maryland	2-0	652	11
11.	PENN STATE	2-0	557	12
12.	Georgia	1-0	507	13
13.	Oklahoma	1-0	419	15
14.	Georgetown	1-1	401	10
15.	Rutgers	1-0	366	16
16.	Purdue	1-0	354	17
17.	Kentucky	2-0	323	18
18.	DePaul	2-0	314	19
19.	North Carolina	2-0	297	20
20.	LSU	1-0	244	21
21.	Florida State	2-1	213	14
22.	UCLA	2-0	204	22
23.	USC	1-0	194	23
24.	Ohio State	1-0	110	NR
25.	Texas Tech	1-0	69	NR

Others receiving votes: Texas 61; UW-Green Bay 44; Gonzaga 39; **Michigan State 24**; Georgia Tech 22; Kansas State 16; Xavier 15; St. John's 15; **Iowa 12**; Iowa State 9; Marist 7; Temple 7; Vanderbilt 6; Arkansas 6; California 3; Dayton 3; **Delaware 2**; UNLV 1.

ESPN/USA TODAY TOP 25 (NOV. 15)

No.	Team (1st)	Rec.	Pts.	LW
1.	Baylor (26)	2-0	766	1
2.	Notre Dame (2)	2-0	734	2
3.	Tennessee (1)	1-0	693	3
4.	Connecticut (2)	1-0	680	4
5.	Stanford	2-0	676	5
6.	Texas A&M	1-0	628	6
7.	Miami (Fla.)	1-0	570	7
8.	Duke	1-0	541	8
9.	Maryland	2-0	511	10
10.	Louisville	1-0	507	9
11.	Georgia	1-0	456	12
12.	PENN STATE	2-0	425	14
13.	Kentucky	1-0	367	15
14.	Oklahoma	1-0	324	16
15.	Rutgers	1-0	323	17
16.	Georgetown	1-1	261	11
17.	North Carolina	2-0	252	19
18.	DePaul	2-0	249	18
19.	Florida State	2-1	200	13
20.	Purdue	1-0	182	21
21.	LSU	1-0	152	22
22.	USC	1-0	127	23
23.	UW-Green Bay	1-0	100	24
24.	Texas	1-1	83	20
25.	Ohio State	1-0	51	NR

Others receiving votes: UCLA 41; Gonzaga 35; Georgia Tech 28; Vanderbilt 27; Marist 24; Iowa State 14; Temple 14; Villanova 7; **Michigan State 4**; St. John's 4; Syracuse 4; **Texas Tech 4**; California 3; **Middle Tennessee 3**; South Dakota State 3; **Iowa 1**; Marquette 1.

*Bold type indicates 2011-12 Penn State opponent.

STATISTICAL LEADERS

Check here throughout the season for a breakdown of how many times a player leads Penn State in the following statistical categories. (First number is solo, the second is shared.)

Points	Lucas (-/1), Bentley (-/1), Gray (1)
Rebounds	Greene (1/1), Nickson (-/1)
Assists	Bentley (1), Lucas (1)
Steals	Bentley (1), Greene (1)
Blocks	Greene (-/2), East (-/2)
FG % (min. 4 attempts)	Bentley (1), Gray (1)
FT % (min 4 attempts)	Bentley (2)
3FG % (min. 2 att.)	Bentley (1), Lucas (1)

PENN STATE VS. THE BIG TEN

Illinois	Overall	27-14	Nebraska	Overall	2-0
	Big Ten Games	20-11		Big Ten Games	0-0
	Big Ten Tournament	4-2		Big Ten Tournament	0-0
	Home	15-2		Home	1-0
	Away	8-10		Away	0-0
	Neutral	4-2		Neutral	1-0
Indiana	Overall	27-9	Northwestern	Overall	29-7
	Big Ten Games	22-8		Big Ten Games	26-6
	Big Ten Tournament	3-1		Big Ten Tournament	2-0
	Home	15-2		Home	16-1
	Away	9-6		Away	11-5
	Neutral	3-1		Neutral	2-1
Iowa	Overall	23-17	Ohio State	Overall	31-21
	Big Ten Games	18-14		Big Ten Games	18-14
	Big Ten Tournament	2-1		Big Ten Tournament	4-5
	Home	13-5		Home	16-6
	Away	7-11		Away	11-9
	Neutral	3-1		Neutral	4-6
Michigan	Overall	26-9	Purdue	Overall	15-25
	Big Ten Games	24-7		Big Ten Games	13-19
	Big Ten Tournament	1-2		Big Ten Tournament	2-3
	Home	13-2		Home	9-8
	Away	12-5		Away	4-14
	Neutral	1-2		Neutral	2-3
Michigan State	Overall	24-11	Wisconsin	Overall	25-10
	Big Ten Games	21-10		Big Ten Games	22-10
	Big Ten Tournament	2-1		Big Ten Tournament	2-0
	Home	14-3		Home	15-2
	Away	8-7		Away	8-8
	Neutral	2-1		Neutral	2-0
Minnesota	Overall	22-11			
	Big Ten Games	20-11			
	Big Ten Tournament	1-0			
	Home	13-3			
	Away	8-8			
	Neutral	1-0			





COQUESE WASHINGTON

Head Coach 5th Season

PENN STATE LADY LION BASKETBALL

Coquese Washington, who helped lead Notre Dame to the 2001 NCAA Championship, was introduced as the fifth head coach of the Penn State women's basketball program on April 23, 2007. Washington is the first female African-American head coach in Penn State history.

The Lady Lions returned to the national stage in Washington's fourth year with a second-place finish in the Big Ten regular season standings, a runner-up finish in the Big Ten Tournament and a berth in the NCAA Tournament. Penn State tallied its most victories since the 2003-04 campaign and 23rd 20-win season with a 25-10 overall record and an 11-5 mark in conference play. The Lady Lions worked their way back to the "Big Dance" for the first time since 2004-05 and advanced to the second round for the first time in seven years with a win over Dayton in the first round in front of a raucous Bryce Jordan Center crowd. After a remarkable season in the books and steps toward returning the Lady Lions to national prominence, Washington was selected as the 2011 BCA Female Coach of the Year.

Penn State was a dominating force from the perimeter as the Lady Lions tied the school record with 228 three-pointers and led NCAA Division I from deep with a .415 three-point field goal percentage. Pacing the Lady Lions from downtown was Maggie Lucas, who broke the Big Ten three-pointers record with 112 triples to go along with a .426 shooting percentage. For her efforts, Lucas was selected as the Big Ten Freshman of the Year and Big Ten Sixth Player of the Year while breaking the Penn State freshman season scoring record (552 pts.). Additionally with Washington's guidance, Alex Bentley became the 11th different player in school history to take home first team All-Big Ten accolades after finishing second in the conference in assists. After outstanding seasons, both Lucas and Bentley were invited to the USA Basketball World University Games Trials.

Washington's third season saw the Lady Lions return to the postseason for the first time since 2004-05 with a WNIT berth. The Lions earned their most overall wins (17) and conference wins (8) since the 2004-05 campaign en route to a sixth-place finish in the Big Ten.

Washington led Tyra Grant to back-to-back first team All-Big Ten honors and *Associated Press* Honorable Mention All-America accolades in her senior season. Grant capped off her career by being selected by the Phoenix Mercury in the second round of the WNBA Draft. The four-time all-conference pick left Penn State third in school history in

scoring with 2,044 points. Washington also guided Bentley to third team All-Big Ten honors, as well as a unanimous selection to the Big Ten All-Freshman team.

That year, Washington and the Lady Lions garnered one of the top recruiting classes in the country, finishing 22nd on the ESPN/HoopGurlz recruiting chart. The class included just the second McDonald's High School All-American in Penn State history in Lucas, WBCA High School All-American Ariel Edwards and All-State selection Talia East.

In Washington's second season, the Lady Lions moved up three positions in the Big Ten standings, finishing in a tie for seventh place. Under Washington's guidance in 2008-09, Grant became the 10th different player in school history to earn first team All-Big Ten honors.

The Coquese Washington era started in style as the Lady Lions won their first three games of the season, including a win over #20/21 Pittsburgh, to claim the WBCA Classic title. Just three weeks later, Washington guided the Lady Lions to their first ever win over perennial contender and 10th-ranked Duke in the inaugural Big Ten/ACC Challenge, a game that was televised on ESPN2.

Washington came to Happy Valley after eight seasons as an associate head coach and assistant coach under Muffet McGraw at Notre Dame, her alma mater. During Washington's eight years on the bench, Notre Dame amassed a 188-69 record with eight NCAA Tournament appearances, including four Sweet Sixteen runs and a National Championship in 2001.

Washington was a four-year starting point guard for Notre Dame under McGraw and was the team captain on Notre Dame's first-ever NCAA Tournament team. She was a two-time All-Midwestern Collegiate Conference (MCC) selection and led Notre Dame to three MCC Tournament titles.

The epitome of a student-athlete, Washington graduated from Notre Dame in 1992, a full year ahead of schedule, with a bachelor's degree in history. She went on to attain "Double Domer" status in 1997 after earning her Juris Doctorate from the Notre Dame Law School.

In addition to assisting with the efforts of the WBCA Pink Zone at Penn State to raise money and awareness for breast cancer, Washington created Coquese's Drive for the Women's Resource Center. The first four Coquese's Drives raised more than \$56,869 for the Centre County Women's Resource Center to aid in the fight against domestic violence.

Washington's Coaching Record vs. Opponents

Arizona 1-0	Dayton 2-1	Hartford 1-0	Michigan State 2-5	Ohio State 1-6	Syracuse 0-1
Army 1-0	Delaware 1-0	Hofstra 0-1	Middle Tennessee 1-0	Old Dominion 0-1	Texas A&M 0-1
Boston College 0-1	DePaul 0-1	Holy Cross 1-0	Minnesota 2-6	Pittsburgh 2-1	Texas Tech 1-0
Bucknell 4-0	Drexel 2-1	Illinois 7-3	Mississippi 1-0	Prairie View A&M 1-0	Utah 1-0
Buffalo 1-0	Duke 1-0	Indiana 3-4	Monmouth 1-0	Purdue 1-7	Washington State 1-0
Charlotte 1-0	Florida State 0-1	Iowa 4-5	NJIT 1-0	Rider 1-0	Wisconsin 2-5
Connecticut 0-1	Georgetown 1-0	Maine 1-0	Northwestern 5-1	South Carolina 3-1	UW-Green Bay 0-1
Coppin State 1-0	Georgia Tech 0-1	Michigan 5-3	Oakland 2-0	Stony Brook 1-0	Xavier 0-1

THE WASHINGTON FILE

COACHING RESUME

2007-pres. - Head Coach, Penn State University
 2011-pres. - President, NCAA Women's Basketball Issues Committee
 2010-pres. - Treasurer, WBCA Executive Committee
 2008-pres. - Member, WBCA Board of Directors
 2009-pres. - Member, USA Basketball Women's Junior National Committee
 2005-07 - Assoc. Head Coach, Univ. of Notre Dame
 1999-05 - Assistant Coach, Univ. of Notre Dame

PLAYING EXPERIENCE

2002-03 - WNBA's Indiana Fever
 2000-02 - WNBA's Houston Comets
 1998-99 - WNBA's New York Liberty
 1997-98 - ABL's Portland Power
 1989-93 - University of Notre Dame

EDUCATION

Notre Dame '92, B.A. History
 Notre Dame Law School '97, Juris Doctorate

NOTABLE

- ❖ 2011 BCA Female Coach of the Year.
- ❖ Helped guide Notre Dame to the 2001 NCAA Championship.
- ❖ Eight consecutive recruiting classes at Notre Dame ranked in the Top 25 nationally.
- ❖ Notre Dame had four Sweet Sixteen appearances and eight NCAA Tournament berths during Washington's tenure.
- ❖ Point guard for the 2000 WNBA Champion Houston Comets.
- ❖ Founding President, WNBA Players Association, 1999-01.
- ❖ Actively negotiated first two collective bargaining agreements for the WNBPA.
- ❖ Inducted into the Greater Flint Area Sports Hall of Fame in Dec. 2009.

FAMILY

Husband: Raynell Brown
 Children: Quenton (6), Rhaiyna (2)

Washington is currently serving on the 29-member WBCA Board of Directors, where she is the Treasurer of the Executive Committee. Washington is also a member of the USA Basketball Women's Junior National Team Selection Committee and the president of the NCAA Women's Basketball Issues Committee.

A native of Flint, Mich., Washington and her husband, Raynell Brown, have a son, Quenton (6), and a daughter, Rhaiyna (2). They reside in Port Matilda, Pa.





#2 Dara Taylor

Jr. * G * 5-8 * Wilmington, Del./Caraval Acad. (Maryland)

2011-12 Season Notes:

Will sit out the 2011-12 season due to NCAA Transfer policy.

2010-11 (at Maryland):

Had two points, two steals and four assists in the NCAA Tournament game against Georgetown (3/22) ... Registered six points, four steals and four assists in the win over Saint Joseph's (1/2)

... Dished out four assists against La Salle (12/28) ... Notched five dimes against Delaware State (12/19) ... Was 3-for-4 from the field and finished with seven points and three assists in the win over UMBC (12/10) ... Accounted for four assists and four steals at Purdue (12/2) ... Tallied six points, five assists, four rebounds and a steal in the win over East Carolina (11/26) ... Recorded five points and five assists in the victory over Towson (11/18).

2009-10 (at Maryland)

Broke Maryland's freshman season assists record with 171 helpers Recorded more than six assists in 15 of 27 starts ... Finished third in the ACC in assists and sixth in assist-to-turnover ratio (1.2) ... Grabbed career-high eight rebounds in WNIT Second Round win over East Carolina (3/21) ... Contributed 10 points in ACC Tournament win over North Carolina (3/4) ... Netted a career-high 17 points on 7-of-12 shooting against Clemson (2/14) ... Made 7-of-10 free throws to help clinch the win over Wake Forest (2/11) ... Finished the game with nine points and two steals against the Demon Deacons

... Accounted for nine assists at Virginia Tech (1/28) ... Had six points, eight assists and seven rebounds versus Boston College (1/14) ... Notched first career double-double with 10 points and career-high 11 assists at No. 19/21 Virginia (1/11) ... Dished out eight assists versus Saint Joseph's (1/3) ... Notched nine points, eight assists and four rebounds versus UNC-Wilmington (12/29) ... Accounted for 11 points with seven assists in a win over Samford (11/24) ... Chipped in six points, nine assists and five rebounds against Old Dominion (11/19) ... Had 10 points with five assists in win against New Hampshire (11/16).

CAREER HIGHS

Points	17 vs. Clemson (2/14/10)
Rebs.	8 vs. East Carolina (3/21/10)
Assists	11 at American (12/20/09)
	11 at Virginia (1/11/10)
Steals	6 vs. N.C. Central (11/14/09)
Blocks	1 (3x) last at St. Joseph's 1/2/11
Minutes	38 at American (12/20/09)
FGM	7 vs. Clemson (2/14/10)
FGA	14 at N.C. State (1/7/10)
FG%	1.000 (3x)
	last vs. N.C. State (2-2) (2/6/11)
3FGM	2 vs. Samford (1/24/09)
	2 vs. Clemson (2/14/10)
3FGA	5 at Mississippi State (11/22/09)
3PT %	1.000 (1-1) at Longwood (1/31/10)
	1.000 (1-1) vs. Providence (3/25/10)
FTM	7 at Wake Forest (2/11/10)
FTA	10 at Wake Forest (2/11/10)
	10 vs. North Carolina (3/4/10)
FT %	1.000 (7x)
	last vs. Georgetown (2-2) (3/22/11)
Career Double-Doubles	1

HIGH SCHOOL

McDonald's High School All-American ... 52nd-ranked player by ESPN/HoopGurlz out of Caravel Academy ... 2009 Delaware Gatorade Player of the Year ... Two-time All-State selection with a first team berth as a senior and a second team nod as a junior ... 1,192 career points at Caravel Academy ... Averaged 17.8 points, 5.5 assists, 5.0 rebounds and 5.0 steals per game as a senior ... Selected to the Delaware's Finest third team All-Decade (2000-09) team ... Played AAU for the Philly Belles alongside Lady Lion teammate Maggie Lucas.



#5 Talia East

So. * F/C * 6-3 * Philadelphia, Pa./The Friends School

2011-12 Highlights:

- Had a career night in the season-opening win over Washington State (11/11) with personal bests of six points via a 3-for-3 shooting effort and eight rebounds.

2011-12 Season Notes:

- Notched two points, six rebounds and a blocked shot in the Lady Lion Classic Championship game win over Middle Tennessee (11/13).
- Tallied four points, five rebounds and two steals in the exhibition win over Bloomsburg (11/5).

CAREER HIGHS

Points	6 vs. Washington State (11/11/11)
Rebs.	8 vs. Washington State (11/11/11)
Assists	n/a
Steals	1 (4x)
	last vs. Middle Tennessee (11/13/11)
Blocks	2 (2x)
	last vs. Washington State (11/11/11)
Minutes	19 (2x)
	last vs. Middle Tennessee (11/13/11)
FGM	3 vs. Washington State (11/11/11)
FGA	4 vs. Bucknell (12/28/10)
FG%	1.000 (5x)
	last vs. Washington State (3-3) (11/11/11)
3FGM	n/a
3FGA	n/a
3PT %	n/a
FTM	1 vs. Purdue (3/4/11)
	1 vs. Bucknell (12/28/10)
FTA	2 vs. Purdue (3/4/11)
	2 vs. Bucknell (12/28/10)
FT %	500 (1-2) vs. Purdue (3/4/11)
	500 (1-2) vs. Bucknell (12/28/10)
Career Double-Doubles	n/a





#12 Zhaque Gray

Sr. * G * 5-8 * Chicago, Ill./Prep John Hope

2011-12 Highlights:

- Named to Lady Lion Classic All-Tournament team after averaging 11.0 points, 5.0 rebounds in two games.

2011-12 Season Notes:

- Had a team-best 15 points to go along with six rebounds and two assists in the Lady Lion Classic title game win over Middle Tennessee (11/13).
- Registered seven points and four rebounds against Washington State (11/11).

CAREER HIGHS

Points	27 at Dayton (11/12/10)
Rebs.	6 at South Carolina (11/22/09)
	6 vs. NJIT (11/15/09)
Assists	5 (3x) last vs. Iowa (12/30/10)
Steals	3 vs. Bucknell (12/28/10)
	3 vs. Michigan State (12/21/08)
Blocks	1 at Iowa (2/6/11)
Minutes	44 at Dayton (11/12/10)
FGM	10 at Dayton (11/12/10)
FGA	17 at Dayton (11/12/10)
FG%	1.000 (3-3) at Indiana (2/13/11)
	1.000 (4-4) at Michigan (2/9/09)
3FGM	7 at Dayton (11/12/10)
3FGA	11 at Dayton (11/12/10)
3PT%	1.000 (4x)
	last at Indiana (2-2) (2/13/11)
FTM	5 at Ohio State (2/17/11)
FTA	6 at Ohio State (2/17/11)
FT%	1.000 (17x)
	last vs. Middle Tennessee (1-1) (11/13/11)
Career Double-Doubles	n/a



#15 Renee Womack

Sr. * G * 5-10 * Lansdale, Pa./Methacton

CAREER HIGHS

Points	10 at Wisconsin (1/2/11)
Rebs.	8 (2x) last vs. Iowa (12/28/09)
Assists	4 vs. Iowa (12/28/09)
Steals	4 vs. Bucknell (12/28/10)
Blocks	3 vs. Iowa (12/28/09)
Minutes	30 vs. Iowa (12/28/09)
FGM	4 at Wisconsin (1/2/11)
	4 vs. Stony Brook (11/19/08)
FGA	8 vs. Army (12/8/10)
	8 vs. Stony Brook (11/19/08)
FG%	1.000 (8x)
	last vs. Illinois (2-2) (3/5/11)
3FGM	1 (7x) last at Indiana (2/13/11)
3FGA	2 (4x) last at Indiana (2/13/11)
3PT%	1.000 (3x)
	last vs. Illinois (2-2) (1/16/11)
FTM	3 at Dayton (11/12/10)
FTA	4 at Ohio State (2/17/11)
	4 at Dayton (11/12/10)
FT%	1.000 (4x)
	last at Iowa (2-2) (2/6/11)
Career Double-Doubles	n/a





#20 Alex Bentley

Jr. * G * 5-7 * Indianapolis, Ind./Ben Davis

2011-12 Highlights:

- On Wade Trophy and Wooden Award preseason watch lists.
- Big Ten Preseason Player of the Year (coaches and media).
- Named to Lady Lion Classic All-Tournament team after averaging 15.0 points, 3.0 rebounds, 4.0 assists and 2.5 steals in two games.

2011-12 Season Notes:

- Surpassed the 900-point mark for her career with eight tallies in the win over Middle Tennessee (11/13).
- Accounted for 22 points, four rebounds, four assists and a pair of steals in the win over Washington State (11/11).
- Became the 14th player in school history to record 300 career assists against the Cougars.

CAREER HIGHS

Points 28 at Boston College (12/2/10)
Rebs 7 vs. Iowa (12/28/09)
Assists 9 (3x)
..... last vs. UW-Green Bay (11/26/10)
Steals 4 (6x)
..... last vs. Purdue (3/4/11)
Blocks 2 (3X) last vs. Drexel (12/21/10)
Minutes 46 at Dayton (11/12/10)
FGM 12 vs. Dayton (3/19/11)
FGA 28 vs. Dayton (3/19/11)
FG% 833 (5-6) at Illinois (12/31/09)
3FGM 4 at Purdue (2/14/10)
3FGA 6 (3x) last at Purdue (2/14/10)
3PT% 1.000 (6x)
..... last vs. Washington State (2-2) (11/11/11)
FTM 10 at Northwestern (1/6/11)
FTA 12 at Northwestern (1/6/11)
FT% 1.000 (20x)
..... last vs. Middle Tennessee (4-4) (11/13/11)
Career Double-Doubles n/a



#23 Ariel Edwards

So. * G/F * 6-2 * Elmont, N.Y./Christ the King

2011-12 Highlights:

- Scored five of her 10 points in a key Lady Lion run that gave Penn State its first lead of the game against Middle Tennessee (11/13). Also notched a pair of steals against the Blue Raiders.

2011-12 Season Notes:

- Tallied four points and two rebounds in the season-opening win over Washington State (11/11).

CAREER HIGHS

Points 16 at Oakland (11/18/10)
Rebs 8 vs. Hartford (11/27/10)
Assists 2 (3X)
..... last vs. DePaul (3/21/11)
Steals 2 (3X)
..... last vs. Middle Tennessee (11/13/11)
Blocks 2 at Oakland (11/18/10)
Minutes 33 at Oakland (11/18/10)
FGM 4 (3X)
..... last vs. Middle Tennessee (11/13/11)
FGA 10 vs. Middle Tennessee (11/13/11)
FG% 1.000 (3X)
..... last vs. DePaul (1-1) (3/21/11)
3FGM 2 vs. Army (12/8/10)
..... 2 vs. Hartford (11/27/10)
3FGA 4 vs. Army (12/8/10)
..... 4 vs. Hartford (11/27/10)
3PT % 1.000 (2X)
..... last vs. DePaul (1-1) (3/21/11)
FTM 7 at Oakland (11/18/10)
FTA 8 at Oakland (11/18/10)
FT % 1.000 (5x)
..... last vs. Illinois (2-2) (3/5/11)
Career Double-Doubles n/a





#24 Mia Nickson

RS-Jr. * F * 6-2 * Ashburn, Va./Notre Dame Acad. (BC)

2011-12 Highlights:

- ♦ Hauled in 10 rebounds, including five on the offensive glass against Middle Tennessee (11/13).

2011-12 Season Notes:

- ♦ Had six points and seven rebounds in the win over Washington State (11/13) in the opening round of the Lady Lion Classic.

CAREER HIGHS

Points.....	26 vs. Texas Tech (12/5/10)
Rebs.....	17 vs. Indiana (1/23/11)
Assists.....	4 vs. Maine (12/12/10)
Steals.....	6 vs. Indiana (1/23/11)
.....	6 vs. Bucknell (12/28/10)
Blocks.....	1 (3x) last at Purdue (1/20/11)
Minutes.....	41 at Dayton (11/12/10)
FGM.....	9 vs. Indiana (1/23/11)
FGA.....	16 vs. Indiana (1/23/11)
FG%.....	1.000 (4X)
.....	last vs. Minnesota (5-5) (1/13/11)
3FGM.....	n/a
3FGA.....	n/a
3PT %.....	n/a
FTM.....	10 vs. Michigan State (2/10/11)
.....	10 vs. Texas Tech (12/5/10)
FTA.....	11 vs. Michigan State (2/10/11)
.....	11 vs. Texas Tech (12/5/10)
FT %.....	1.000 (12X)
.....	last vs. Dayton (6-6) (3/19/11)
Career Double-Doubles.....	6



#25 Gizelle Studevent

Jr. * G * 5-11 * La Jolla, Calif./The Bishop's School

2011-12 Highlights:

- ♦ Hit a pair of key jumpers en route to four points and three rebounds against Middle Tennessee (11/13).

2011-12 Season Notes:

- ♦ Notched two points and a rebound against Washington State (11/11).
- ♦ Had four points and two rebounds in the exhibition win over Bloomsburg (11/5).

CAREER HIGHS

Points.....	10 at Oakland (11/18/10)
Rebs.....	3 (5x)
.....	last vs. Middle Tennessee (11/13/11)
Assists.....	2 at Northwestern (1/6/11)
Steals.....	2 vs. Rider (11/14/10)
Blocks...1	(2x) last vs. Minnesota (2/11/10)
Minutes....	20 (2x) last vs. Hofstra (3/18/10)
FGM.....	3 (2X) last at Oakland (11/18/10)
FGA.....	8 vs. Monmouth (12/9/09)
FG%.....	1.000 (3x)
.....	last at Ohio State (1-1) (2/17/11)
3FGM....	1 (4x) last vs. Minnesota (1/13/11)
3FGA.....	3 vs. Monmouth (12/9/09)
3PT%.....	1.000 (4x)
.....	last vs. Minnesota (1-1) (1/13/11)
FTM.....	3 vs. Maine (12/12/10)
.....	3 at Oakland (11/18/10)
FTA.....	4 vs. Maine (12/12/10)
.....	4 at Oakland (11/18/10)
FT%.....	1.000 (3x)
.....	last vs. Army (2-2) (12/8/10)
Career Double-Doubles.....	n/a





#33 Maggie Lucas

So. * G * 5-10 * Narberth, Pa./Germantown Academy

2011-12 Highlights:

- ♦ Tied for eighth on Penn State's career three-pointers list (118).
- ♦ Selected as Lady Lion Classic MVP after averaging 18.0 points, 5.5 rebounds, 3.5 assists and 1.0 steals in a pair of wins.

2011-12 Season Notes:

- ♦ Connected on a trio of three-pointers en route to 14 points and a career-high five assists in the victory over Middle Tennessee (11/13).
- ♦ Tied for team scoring honors with 22 points, including an 11-for-13 effort from the free throw line, in the season-opening win over Washington State (11/11).
- ♦ Pulled in a personal-best nine rebounds in the win over the Cougars.

CAREER HIGHS

Points 28 at Boston College (12/2/10)
Rebs. 9 vs. Washington State (11/11/11)
Assists 5 vs. Middle Tennessee (11/13/11)
Steals 4 (3x) last vs. Iowa (12/30/10)
Blocks 2 vs. Purdue (2/24/11)
Minutes 39 at Boston College (12/2/10)
FGM 9 (3x) last at Michigan (2/3/11)
FGA 18 at Boston College (12/2/10)
FG%714 (5-7) at Northwestern (1/6/11)
3FGM 7 vs. Hartford (11/27/10)
3FGA 16 at Boston College (12/2/10)
3PT %833 (5-6) at Northwestern (1/6/11)
FTM 11 vs. Washington State (11/11/11)
FTA 13 vs. Washington State (11/11/11)
FT % 1.000 (16x)
..... last vs. Ohio State (6-6) (3/6/11)	
Career Double-Doubles n/a



#40 Marisa Wolfe

Jr. * F * 6-2 * Ford City, Pa./Ford City

CAREER HIGHS

Points 13 vs. Michigan (2/18/10)
Rebs. 7 vs. Green Bay (11/26/10)
Assists 1 (9x)
..... last vs. Ohio State (3/6/11)	
Steals 3 at Northwestern (1/3/10)
Blocks 2 (4x)
..... last at Northwestern (1/6/11)	
Minutes 30 vs. Green Bay (11/26/10)
FGM 5 vs. Michigan (2/18/10)
..... 5 at Northwestern (1/3/10)	
FGA 7 vs. Michigan (2/18/10)
FG% 1.000 (7x)
..... last at Iowa (1-1) (2/6/11)	
3FGM 2 vs. Illinois (1/24/10)
3FGA 3 vs. Illinois (1/24/10)
3PT%667 (2-3) vs. Illinois (1/24/10)
FTM 4 vs. South Carolina (11/21/10)
FTA 4 (3x)
..... last vs. Green Bay (11/26/10)	
FT% 1.000 (11x)
..... last vs. Purdue (2-2) (3/4/11)	
Career Double-Doubles n/a





#44 Tori Waldner

Fr. * F/C * 6-5 * Milton, Ga./Milton

2011-12 Season Notes:

- Had three points and a rebound in four minutes of action in the exhibition win over Bloomsburg (11/5).

CAREER HIGHS

Points	n/a
Rebs.	n/a
Assists	n/a
Steals	n/a
Blocks	n/a
Minutes	n/a
FGM	n/a
FGA	n/a
FG%	n/a
3FGM	n/a
3FGA	n/a
3PT %	n/a
FTM	n/a
FTA	n/a
FT %	n/a
Career Double-Doubles	n/a



#54 Nikki Greene

Jr. * C * 6-4 * Diboll, Texas/Diboll

2011-12 Highlights:

- Seventh on Penn State's career blocks list with 133 rejections.
- Needs 14 rebounds to become the 27th member of the Lady Lions' 500-rebound club.

2011-12 Season Notes:

- Narrowly missed a double-double with nine points, 10 rebounds and a blocked shot in the Lady Lion Classic Championship game win over Middle Tennessee (11/13).
- Snared a team-best 12 rebounds to go along with three points, two blocks and three steals against Washington State (11/11).

CAREER HIGHS

Points	24 vs. Utah (11/25/10)
Rebs.	20 vs. Indiana (1/23/11)
Assists	2 (2x) last vs. Purdue (1/28/10)
Steals	4 vs. Maine (12/12/10)
	4 vs. Hofstra (3/18/10)
Blocks	7 vs. Purdue (1/28/10)
Minutes	32 vs. Purdue (1/28/10)
FGM	9 vs. Utah (11/25/10)
	9 at Dayton (11/12/10)
FGA	17 at Dayton (11/12/10)
FG%	1.000 (1-1) at Minnesota (12/6/09)
3FGM	n/a
3FGA	n/a
3PT%	n/a
FTM	8 vs. Pittsburgh (12/12/09)
FTA	13 vs. Monmouth (12/9/09)
FT%	1.000 (6x)
	last at Illinois (2-2) (1/27/11)
Career Double-Doubles	7



No. 12/14 Penn State 101, Bloomsburg 81

Exhibition Game * Nov. 5, 2011 * University Park, Pa.

Bloomsburg 81

#	Player	Total			3-Ptr			Rebounds			PF	TP	A	TO	Blk	Stl	Min
		FG-FGA	FG-FGA	FT-FTA	FG-FGA	FG-FGA	FT-FTA	Off	Def	Tot							
03	GALLAGHER, Kelsey	* 8-15	4-5	2-2	1	3	4	1	22	1	4	1	1	1	25		
20	FLANAGAN, Alyssa	* 0-2	0-1	2-4	1	3	4	2	2	6	4	2	1	28			
22	OXENRIDER, Kayla	* 4-11	1-3	5-6	0	3	3	2	14	2	7	1	2	33			
34	ELLIS, Lauren	* 1-2	0-0	0-0	2	7	9	4	2	3	0	0	0	32			
04	WIELLE, Dana	* 5-10	3-5	3-4	1	3	4	5	16	0	4	0	0	23			
35	DUDECK, Brianna	* 0-3	0-0	0-0	1	0	1	0	0	0	1	0	0	6			
10	NYCE, Courtney	* 0-3	0-2	0-0	0	1	1	2	0	0	2	0	0	5			
15	NOACK, Catherine	* 6-8	5-6	2-2	2	2	4	0	19	1	2	0	0	26			
30	SIMMONS, Marla	* 2-4	0-1	2-2	1	3	4	1	6	1	2	0	0	11			
32	BORSKI, Maggie	* 0-0	0-0	0-0	0	0	0	0	0	1	0	0	0	11			
	Team				1	0	1										
	Totals	26-58	13-23	16-20	10	25	35	17	81	15	26	4	4	200			

FG % 1st Half: 11-26 42.3% 2nd half: 15-32 46.9% Game: 26-58 44.8% Deadball Rebounds 3
 3FG % 1st Half: 7-10 70.0% 2nd half: 6-13 46.2% Game: 13-23 56.5%
 FT % 1st Half: 6-9 66.7% 2nd half: 10-11 90.9% Game: 16-20 80.0%

Penn State 101

#	Player	Total			3-Ptr			Rebounds			PF	TP	A	TO	Blk	Stl	Min
		FG-FGA	FG-FGA	FT-FTA	FG-FGA	FG-FGA	FT-FTA	Off	Def	Tot							
12	Gray, Zhaque	* 4-12	1-4	0-0	0	1	1	4	9	0	1	0	2	30			
20	Bentley, Alex	* 7-12	0-2	2-2	2	6	8	2	16	9	2	0	7	30			
24	Nickson, Mia	* 5-9	0-0	4-4	3	1	4	3	14	0	0	1	1	22			
33	Lucas, Maggie	* 10-15	7-8	8-9	0	3	3	2	35	1	1	0	1	35			
04	Greene, Nikki	* 6-8	0-0	0-2	4	3	7	3	12	0	2	0	0	16			
05	East, Talia	* 2-3	0-0	0-0	2	3	5	2	4	0	1	0	2	13			
23	Edwards, Ariel	* 1-10	0-1	2-3	3	3	6	3	4	0	2	0	1	30			
25	Studevent, Gizelle	* 2-8	0-1	0-0	1	1	2	1	4	0	2	0	0	20			
44	Waldner, Tori	* 1-1	0-0	1-1	0	1	1	0	3	0	0	0	0	4			
	Team				2	1	3			1							
	Totals	38-78	8-16	17-21	17	23	40	20	101	10	12	1	14	200			

FG % 1st Half: 18-41 43.9% 2nd half: 20-37 54.1% Game: 38-78 48.7% Deadball Rebounds 2
 3FG % 1st Half: 4-11 36.4% 2nd half: 4-5 80.0% Game: 8-16 50.0%
 FT % 1st Half: 7-9 77.8% 2nd half: 10-12 83.3% Game: 17-21 81.0%

Officials: Kevin Pethel, Kathy Ridilla, Shannon Feck
 Technical fouls: Bloomsburg-None. Penn State-None.
 Attendance: 7742

Score by periods	1st	2nd	Total
Bloomsburg	35	46	81
Penn State	47	54	101

Last FG - BLOOM 2nd-01:25, PSU 11:2 2nd-01:08.
 Largest lead - BLOOM by 5 1st-16:42, PSU 11:12 by 20 2nd-11:10.

	In	Off	2nd	Fast	Bench
Points	20	20	18	3	25
Paint	52	33	23	16	15
PSU 11:12					

Score tied - 4 times.
 Lead changed - 3 times.

Notable

- Sophomore guard **Maggie Lucas** led the Lady Lions' offensive outburst with 35 points, including a 7-for-8 effort from three-point range.
- Alex Bentley** had an all-around performance with 16 points, eight rebounds, nine assists and seven steals.
- Junior forward **Mia Nickson** also reached double figures with 14 points and four rebounds.

No. 12/14 Penn State 65, Middle Tennessee State 49

Game #2 * Nov. 13, 2011 * University Park, Pa.

Middle Tennessee 49 • 1-1

#	Player	Total			3-Ptr			Rebounds			PF	TP	A	TO	Blk	Stl	Min
		FG-FGA	FG-FGA	FT-FTA	FG-FGA	FG-FGA	FT-FTA	Off	Def	Tot							
01	Brinkley, Janay	* 0-8	0-3	0-0	1	3	4	1	0	3	0	0	2	24			
13	Ellie, Icelyn	* 5-10	1-4	2-2	3	7	10	5	13	0	1	0	3	37			
21	Rowe, Ebony	* 4-12	0-0	4-6	5	8	13	1	12	2	3	1	0	40			
24	Jones, Kortni	* 4-14	3-10	2-2	0	4	4	0	13	3	4	0	0	40			
02	Stewart, KeKe	* 2-7	2-6	1-2	0	3	3	4	7	2	2	3	0	28			
05	Cason, Shanice	* 0-3	0-3	2-2	1	1	2	3	2	1	5	0	1	19			
11	Ajanaku, Jamila	* 1-2	0-1	0-0	1	0	1	1	2	0	1	0	0	5			
23	March, Lauren	* 0-0	0-0	0-0	0	0	0	0	0	0	0	0	0	2			
52	Leonard, Laken	* 0-0	0-0	0-0	0	0	0	2	0	1	0	0	0	5			
	Team				1	2	3			2							
	Totals	16-56	6-27	11-14	12	28	40	17	49	12	18	4	6	200			

FG % 1st Half: 10-30 33.3% 2nd half: 6-26 23.1% Game: 16-56 28.6% Deadball Rebounds 2
 3FG % 1st Half: 3-17 17.6% 2nd half: 3-10 30.0% Game: 6-27 22.2%
 FT % 1st Half: 9-10 90.0% 2nd half: 2-4 50.0% Game: 11-14 78.6%

Penn State 65 • 2-0

#	Player	Total			3-Ptr			Rebounds			PF	TP	A	TO	Blk	Stl	Min
		FG-FGA	FG-FGA	FT-FTA	FG-FGA	FG-FGA	FT-FTA	Off	Def	Tot							
12	Gray, Zhaque	* 6-13	2-7	1-1	2	4	6	0	15	2	3	0	0	29			
20	Bentley, Alex	* 2-10	0-3	4-4	1	1	2	2	8	4	3	0	3	35			
24	Nickson, Mia	* 1-6	0-0	1-2	5	5	10	2	3	0	0	0	1	30			
33	Lucas, Maggie	* 4-12	3-9	3-4	1	1	2	2	14	5	3	0	2	35			
04	Greene, Nikki	* 4-9	0-0	1-3	5	5	10	4	9	0	2	1	1	19			
05	East, Talia	* 1-4	0-0	0-1	2	4	6	3	2	0	0	1	1	19			
23	Edwards, Ariel	* 4-10	0-2	2-3	0	1	1	1	10	1	1	0	2	22			
25	Studevent, Gizelle	* 2-5	0-0	0-0	0	3	3	0	4	1	0	0	0	11			
	Team				5	5	10										
	Totals	24-69	5-21	12-18	21	29	50	14	65	13	12	2	10	200			

FG % 1st Half: 9-33 27.3% 2nd half: 15-36 41.7% Game: 24-69 34.8% Deadball Rebounds 2
 3FG % 1st Half: 0-10 0.0% 2nd half: 5-11 45.5% Game: 5-21 23.8%
 FT % 1st Half: 8-11 72.7% 2nd half: 4-7 57.1% Game: 12-18 66.7%

Officials: Mark Zentz, Jennifer Rezac, Kathy Ridilla
 Technical fouls: Middle Tennessee-None. Penn State-None.
 Attendance: 3238

Score by periods	1st	2nd	Total
Middle Tennessee	32	17	49
Penn State	26	39	65

Last FG - MT 2nd-08:29, PSU 2nd-00:29.
 Largest lead - MT by 10 1st-16:57, PSU by 16 2nd-00:29.

	In	Off	2nd	Fast	Bench
Points	18	6	11	0	4
Paint	28	22	21	15	16
PSU					

Score tied - 3 times.
 Lead changed - 3 times.

Notable

- The Lady Lions used a 30-6 run, including a 19-0 spurt in the final seven minutes to erase a 10-point second-half deficit.
- The Lady Lions win their 27th regular-season tournament title and third under head coach **Coquese Washington**.
- Junior guard **Alex Bentley** surpassed the 900-point mark for her career with eight points.

No. 12/14 Penn State 72, Washington 60

Game #1 * Nov. 11, 2011 * University Park, Pa.

Washington State 60 • 0-1

#	Player	Total			3-Ptr			Rebounds			PF	TP	A	TO	Blk	Stl	Min
		FG-FGA	FG-FGA	FT-FTA	FG-FGA	FG-FGA	FT-FTA	Off	Def	Tot							
01	Cook, April	* 1-5	0-1	0-0	0	3	3	3	2	1	1	1	1	18			
03	Adzasu, Rosetta	* 2-6	0-0	0-0	1	2	3	3	4	5	4	1	1	22			
11	Perkins, Jazmine	* 4-17	1-5	0-1	4	9	13	2	9	2	1	0	4	28			
21	Tarnowski, Rosie	* 3-8	1-4	3-3	1	2	3	3	10	0	0	0	1	18			
33	Noyes, Carly	* 3-6	0-0	0-0	3	1	4	4	6	3	2	0	0	27			
02	Amojo, Ireti	* 3-15	2-7	1-2	0	1	1	1	9	1	2	0	0	25			
10	Presley, Tia	* 1-5	0-2	0-0	0	0	0	1	2	4	2	0	0	14			
22	Romberg, Sage	* 5-8	2-2	0-0	2	5	7	4	12	0	1	0	1	15			
23	Dheensaw, Shalie	* 0-1	0-0	0-0	0	2	2	0	0	0	0	0	0	5			
24	Thomas, Brandi	* 1-4	0-2	0-0	3	2	5	1	2	0	2	0	0	13			
42	Potter, Hana	* 2-7	0-0	0-1	3	1	4	4	4	0	2	0	1	15			
	Team				2	1	3										
	Totals	25-82	6-23	4-7	19	29	48	26	60	16	17	2	9	200			

FG % 1st Half: 17-39 43.6% 2nd half: 8-43 18.6% Game: 25-82 30.5% Deadball Rebounds 1
 3FG % 1st Half: 1-8 12.5% 2nd half: 5-15 33.3% Game: 6-23 26.1%
 FT % 1st Half: 3-4 75.0% 2nd half: 1-3 33.3% Game: 4-7 57.1%

Penn State 72 • 1-0

#	Player	Total			3-Ptr			Rebounds			PF	TP	A	TO	Blk	Stl	Min
		FG-FGA	FG-FGA	FT-FTA	FG-FGA	FG-FGA	FT-FTA	Off	Def	Tot							
12	Gray, Zhaque	* 3-11	1-4	0-1	0	4	4	4	7	1	2	0	1	28			
20	Bentley, Alex	* 7-13	2-2	6-6	0	4	4	3	22	4	8	0	2	36			
24	Nickson, Mia	* 1-7	0-0	4-7	2	5	7	4	6	0	2	0	1	32			
33	Lucas, Maggie	* 4-10	3-7	11-13	2	7	9	1	22	2	3	1	0	38			
04	Greene, Nikki	* 0-5	0-0	3-4	3	9	12	4	3	1	4	2	3	22			
05	East, Talia	* 3-3	0-0	0-0	4	4	8	1	6								

2011-12 RADIO/TV CHART



#2

Dara Taylor
5-8 * Jr./Jr. * G
Wilmington, Del.
Caravel Academy
(Maryland)



#5

Talia East
6-3 * So./So.* F/C
Philadelphia, Pa.
Friends' Central School



#12

Zhaque Gray
5-8 * Sr./Sr.* G
Chicago, Ill.
Prep John Hope



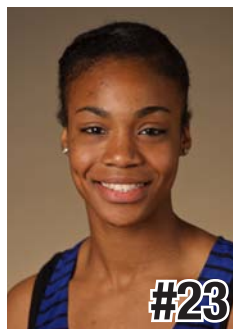
#15

Renee Womack
5-10 * Sr./Sr. * G
Lansdale, Pa.
Methacton



#20

Alex Bentley
5-7 * Jr./Jr. * G
Indianapolis, Ind.
Ben Davis



#23

Ariel Edwards
6-2 * So./So. * F
Elmont, N.Y.
Christ the King



#24

Mia Nickson
6-2 * Sr./Jr. * F
Ashburn, Va.
Notre Dame Academy
(Boston College)



#25

Gizelle Studevent
5-11 * Jr./Jr. * G
La Jolla, Calif.
The Bishop's School



#33

Maggie Lucas
5-10 * So./So. * G
Narberth, Pa.
Germantown Academy



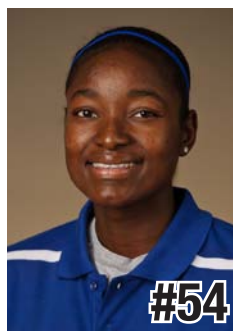
#40

Marisa Wolfe
6-2 * Jr./Jr. * F
Ford City, Pa.
Ford City



#44

Tori Waldner
6-5 * Fr./Fr. * F/C
Milton, Ga.
Milton



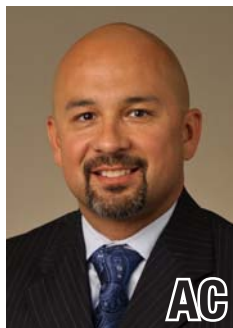
#54

Nikki Greene
6-4 * Jr./Jr. * F/C
Diboll, Texas
Diboll



HC

Coquese Washington
Head Coach
Notre Dame '92
Fifth Season



AC

Fred Chmiel
Assistant Coach
Excelsior College
Second Season



AC

Kia Damon
Assistant Coach
Millersville '97
Fifth Season



AC

Maren Walseth
Assistant Coach
Penn State '02
Fifth Season



DO

Ethan Gelfand
Director of Basketball
Operations
First Season



VO

Mike Miller
Director of Video &
Technology Operations
Seventh Season





**2010-11 Penn State Lady Lions
Penn State Combined Team Statistics (as of Nov 14, 2011)
All games**



RECORD:	OVERALL	HOME	AWAY	NEUTRAL
ALL GAMES	2-0	2-0	0-0	0-0
CONFERENCE	0-0	0-0	0-0	0-0
NON-CONFERENCE	2-0	2-0	0-0	0-0

##	Player	gp-gs	min	avg	Total		3-Point		F-Throw		Rebounds			pf	dq	a	to	blk	stl	pts	avg			
					fg-fga	fg%	3fg-fga	3fg%	ft-fta	ft%	off	def	tot									avg		
33	Lucas, Maggie	2-2	73	36.5	8-22	.364	6-16	.375	14-17	.824	3	8	11	5.5	3	0	7	6	1	2	36	18.0		
20	Bentley, Alex	2-2	71	35.5	9-23	.391	2-5	.400	10-10	1.000	1	5	6	3.0	5	0	8	11	0	5	30	15.0		
12	Gray, Zhaque	2-2	57	28.5	9-24	.375	3-11	.273	1-2	.500	2	8	10	5.0	4	0	3	5	0	1	22	11.0		
23	Edwards, Ariel	2-0	41	20.5	5-15	.333	0-3	.000	4-7	.571	0	3	3	1.5	3	0	2	3	0	3	14	7.0		
54	Greene, Nikki	2-2	41	20.5	4-14	.286	0-0	.000	4-7	.571	8	14	22	11.0	8	0	1	6	3	4	12	6.0		
24	Nickson, Mia	2-2	62	31.0	2-13	.154	0-0	.000	5-9	.556	7	10	17	8.5	6	0	0	2	0	2	9	4.5		
05	East, Talia	2-0	38	19.0	4-7	.571	0-0	.000	0-1	.000	6	8	14	7.0	4	0	0	2	3	1	8	4.0		
25	Studevent, Gizelle	2-0	17	8.5	3-7	.429	0-0	.000	0-0	.000	1	3	4	2.0	0	0	1	1	0	0	6	3.0		
Team											5	10	15											
Total.....		2	400		44-125	.352	11-35	.314	38-53	.717	33	69	102	51.0	33	0	22	36	7	18	137	68.5		
Opponents.....		2	400		41-138	.297	12-50	.240	15-21	.714	31	57	88	44.0	43	1	28	35	6	15	109	54.5		

TEAM STATISTICS	PSU	OPP	Date	Opponent	Score	Att.
SCORING	137	109	11/11/11	WASHINGTON STATE	w 72-60	3807
Points per game	68.5	54.5	11/13/11	MIDDLE TENNESSEE	w 65-49	3238
Scoring margin	+14.0	-	* - Conference game			
FIELD GOALS-ATT	44-125	41-138				
Field goal pct	.352	.297				
3 POINT FG-ATT	11-35	12-50				
3-point FG pct	.314	.240				
3-pt FG made per game	5.5	6.0				
FREE THROWS-ATT	38-53	15-21				
Free throw pct	.717	.714				
F-Throws made per game	19.0	7.5				
REBOUNDS	102	88				
Rebounds per game	51.0	44.0				
Rebounding margin	+7.0	-				
ASSISTS	22	28				
Assists per game	11.0	14.0				
TURNOVERS	36	35				
Turnovers per game	18.0	17.5				
Turnover margin	-0.5	-				
Assist/turnover ratio	0.6	0.8				
STEALS	18	15				
Steals per game	9.0	7.5				
BLOCKS	7	6				
Blocks per game	3.5	3.0				
ATTENDANCE	7045	0				
Home games-Avg/Game	2-3522	0-0				
Neutral site-Avg/Game	-	0-0				

Score by Periods	1st	2nd	Totals
Penn State	61	76	137
Opponents	70	39	109



**2010-11 Penn State Lady Lions
Penn State Category Leaders (as of Nov 13, 2011)
All games**



Points	G	Pts	Pts/G
Lucas, Maggie	2	36	18.0
Bentley, Alex	2	30	15.0
Gray, Zhaque	2	22	11.0
Edwards, Ariel	2	14	7.0
Greene, Nikki	2	12	6.0
Nickson, Mia	2	9	4.5
East, Talia	2	8	4.0
Studevent, Gizelle	2	6	3.0

FG Percentage	FG	Att	Pct
East, Talia	4	7	.571
Studevent, Gizelle	3	7	.429
Bentley, Alex	9	23	.391
Gray, Zhaque	9	24	.375
Lucas, Maggie	8	22	.364
Edwards, Ariel	5	15	.333
Greene, Nikki	4	14	.286
Nickson, Mia	2	13	.154

3-Point Percentage	3FG	Att	Pct
Bentley, Alex	2	5	.400
Lucas, Maggie	6	16	.375
Gray, Zhaque	3	11	.273
Edwards, Ariel	0	3	.000

Free Throw Percent	FG	Att	Pct
Bentley, Alex	10	10	1.000
Lucas, Maggie	14	17	.824
Edwards, Ariel	4	7	.571
Greene, Nikki	4	7	.571
Nickson, Mia	5	9	.556
Gray, Zhaque	1	2	.500
East, Talia	0	1	.000

Scoring Average	G	Pts	Avg/G
Lucas, Maggie	2	36	18.0
Bentley, Alex	2	30	15.0
Gray, Zhaque	2	22	11.0
Edwards, Ariel	2	14	7.0
Greene, Nikki	2	12	6.0
Nickson, Mia	2	9	4.5
East, Talia	2	8	4.0
Studevent, Gizelle	2	6	3.0

Field Goal Attempts	G	Att	Att/G
Gray, Zhaque	2	24	12.0
Bentley, Alex	2	23	11.5
Lucas, Maggie	2	22	11.0
Edwards, Ariel	2	15	7.5
Greene, Nikki	2	14	7.0

Field Goals Made	G	Made	Made/G
Bentley, Alex	2	9	4.5
Gray, Zhaque	2	9	4.5
Lucas, Maggie	2	8	4.0
Edwards, Ariel	2	5	2.5
East, Talia	2	4	2.0
Greene, Nikki	2	4	2.0

3-Point FG Attempts	G	Att	Att/G
Lucas, Maggie	2	16	8.0
Gray, Zhaque	2	11	5.5
Bentley, Alex	2	5	2.5
Edwards, Ariel	2	3	1.5

3-Point FG Made	G	Made	Made/G
Lucas, Maggie	2	6	3.0
Gray, Zhaque	2	3	1.5
Bentley, Alex	2	2	1.0

Free Throw Attempts	G	Att	Att/G
Lucas, Maggie	2	17	8.5
Bentley, Alex	2	10	5.0
Nickson, Mia	2	9	4.5
Edwards, Ariel	2	7	3.5
Greene, Nikki	2	7	3.5

Free Throws Made	G	Made	Made/G
Lucas, Maggie	2	14	7.0
Bentley, Alex	2	10	5.0
Nickson, Mia	2	5	2.5
Edwards, Ariel	2	4	2.0
Greene, Nikki	2	4	2.0



**2010-11 Penn State Lady Lions
Penn State Category Leaders (as of Nov 13, 2011)
All games**



Rebounds	G	Reb	Reb/G
Greene, Nikki	2	22	11.0
Nickson, Mia	2	17	8.5
East, Talia	2	14	7.0
Lucas, Maggie	2	11	5.5
Gray, Zhaque	2	10	5.0

Rebound Average	G	Reb	Avg/G
Greene, Nikki	2	22	11.0
Nickson, Mia	2	17	8.5
East, Talia	2	14	7.0
Lucas, Maggie	2	11	5.5
Gray, Zhaque	2	10	5.0

Offensive Rebounds	G	No.	Avg/G
Greene, Nikki	2	8	4.0
Nickson, Mia	2	7	3.5
East, Talia	2	6	3.0
Lucas, Maggie	2	3	1.5
Gray, Zhaque	2	2	1.0

Defensive Rebounds	G	No.	Avg/G
Greene, Nikki	2	14	7.0
Nickson, Mia	2	10	5.0
Gray, Zhaque	2	8	4.0
East, Talia	2	8	4.0
Lucas, Maggie	2	8	4.0

Fouls	G	No.	Per/G
Greene, Nikki	2	8	4.0
Nickson, Mia	2	6	3.0
Bentley, Alex	2	5	2.5
Gray, Zhaque	2	4	2.0
East, Talia	2	4	2.0

Foulsouts	G	No.
------------------	----------	------------

Assists	G	No.	Ast/G
Bentley, Alex	2	8	4.0
Lucas, Maggie	2	7	3.5
Gray, Zhaque	2	3	1.5
Edwards, Ariel	2	2	1.0
Studevent, Gizelle	2	1	0.5
Greene, Nikki	2	1	0.5

Steals	G	No.	Stl/G
Bentley, Alex	2	5	2.5
Greene, Nikki	2	4	2.0
Edwards, Ariel	2	3	1.5
Nickson, Mia	2	2	1.0
Lucas, Maggie	2	2	1.0

Blocked Shots	G	No.	Blk/G
Greene, Nikki	2	3	1.5
East, Talia	2	3	1.5
Lucas, Maggie	2	1	0.5

Minutes	G	No.	Min/G
Lucas, Maggie	2	73	36.5
Bentley, Alex	2	71	35.5
Nickson, Mia	2	62	31.0
Gray, Zhaque	2	57	28.5
Edwards, Ariel	2	41	20.5
Greene, Nikki	2	41	20.5

Turnovers	G	No.	TO/G
Bentley, Alex	2	11	5.5
Greene, Nikki	2	6	3.0
Lucas, Maggie	2	6	3.0
Gray, Zhaque	2	5	2.5
Edwards, Ariel	2	3	1.5