



PENN STATE WOMEN'S HOCKEY

2013-14 NITTANY LIONS

GoPSUsports.com • Twitter & Instagram: **PennStateWHKY** • Facebook.com/PennStateWomensHockey
 Contact: **Jeremy Fallis** • jeremy.fallis@psu.edu • O: (814) 863-1388 • C: (814) 206-6544

2013-14 SCHEDULE

Overall: 4-17-2 • Home: 2-8-1 • Away: 2-9-1
 CHA: 1-9-0 • Home: 0-4-0 • Away: 1-5-0

Date	Opponent	Result/Time
Oct. 4	at Vermont	T (OT) 3-3
Oct. 5	at Vermont	W 4-2
Oct. 11	at Quinnipiac	L 1-5
Oct. 12	at Quinnipiac	L 0-4
Oct. 18	UNION	L 1-2
Oct. 19	UNION	W 2-1
Oct. 26	NEW HAMPSHIRE	L 5-8
Oct. 27	NEW HAMPSHIRE	L 1-3
Oct. 31	* ROBERT MORRIS	L 0-4
Nov. 1	* ROBERT MORRIS	L 0-6
Nov. 9	* SYRACUSE	L 1-2
Nov. 10	* SYRACUSE	L (OT) 3-4
Nov. 15	* at RIT	L 1-2
Nov. 16	* at RIT	L 2-3
Nov. 22	* at Lindenwood	L 1-2
Nov. 23	* at Lindenwood	W 4-1
Nov. 30	MAINE	T (OT) 1-1
Dec. 6	* at Mercyhurst	L 0-7
Dec. 7	* at Mercyhurst	L 0-8
Jan. 3	at Ohio State	L 0-8
Jan. 4	at Ohio State	L 0-4
Jan. 10	COLGATE	L (OT) 2-3
Jan. 11	COLGATE	W (OT) 2-1
Jan. 24	* at Syracuse	7:00 p.m.
Jan. 25	* at Syracuse	2:00 p.m.
Jan. 28	at Princeton	7:00 p.m.
Jan. 31	* RIT	7:00 p.m.
Feb. 1	* RIT	2:00 p.m.
Feb. 8	* LINDENWOOD	Noon
Feb. 9	* LINDENWOOD	Noon
Feb. 15	* MERCYHURST	8:00 p.m.
Feb. 16	* MERCYHURST	1:00 p.m.
Feb. 21	* at #8 Robert Morris	3:00 p.m.
Feb. 22	* at #8 Robert Morris	3:00 p.m.
2014 CHA TOURNAMENT		
Feb. 28	^ CHA First Round - Game 1	TBA
March 1	^ CHA First Round - Game 2	TBA
March 2	^ CHA First Round - Game 3	TBA
March 7	% CHA Semifinals	TBA
March 8	% CHA Final	TBA

All Times Eastern

Home games in **CAPS** at Pegula Ice Arena

* - College Hockey America games

^ - CHA First Round at higher seed

% - CHA Semifinals & Final hosted by No. 1 seed

Rankings based on USA Today/USA Hockey poll

Streaming on AmericaOneSports.com; live stream



PENN STATE NITTANY LIONS

(4-17-2, 1-9-0 CHA)

SYRACUSE ORANGE
 (12-9-2, 4-4-2 CHA)
 PRINCETON TIGERS
 (9-8-3, 6-6-2 ECAC Hockey)

Games 24-25: Jan. 24-25, 2014 • Tenny Ice Pavilion • Syracuse, N.Y.

Game 26: Jan. 28, 2014 • Hobey Baker Rink • Princeton, N.J.

GAME DAY AT SYRACUSE

VENUE Tenny Ice Pavilion (1,000)
 STREAMING COVERAGE AmericaOneSports.com (\$) 0-6-0
 SERIES RECORD
 LAST MEETING Nov. 10, 2013; SU 4-3 (OT) at PSU

GAME DAY AT PRINCETON

VENUE Hobey Baker Rink (2,093)
 STREAMING COVERAGE IvyLeagueDigitalNetwork.com (\$) 0-1-0
 SERIES RECORD
 LAST MEETING Jan. 29, 2013; PRIN 3-0 at PSU
 NEXT TIME OUT Jan. 31-**Feb. 1** vs. RIT at Pegula Ice Arena

GAME NOTES

- Penn State hits the road for a three-game road trip to Syracuse and Princeton
- The Nittany Lions have failed to defeat Syracuse in six tries, played PU once last year
- **Hanna Hoenshell** (Player), **Nicole Paniccia** (Goalie) earned CHA weekly awards Jan. 13
- Nittany Lions defeated Colgate Jan. 11 in OT following an OT loss to the Raiders Jan. 10
- Penn State freshmen & sophomores have tallied 66 of team's 82 points
- Syracuse has won five of its past six games overall
- Princeton is 0-2-1 in its past three games following a four-game winning streak

STATISTICAL LEADERS

FORWARDS		GP	G	A	PTS	SH	+/-	GWG
40	Shannon Yoxheimer	23	5	7	12	122	-5	0
24	Taylor Gross	23	7	4	11	58	-7	1
16	Hannah Hoenshell	23	3	8	11	55	-11	2
18	Laura Bowman	23	6	2	8	57	-11	1
9	Amy Petersen	23	1	7	8	29	-10	0
19	Jill Holdcroft	23	4	2	6	36	-12	0
12	Sarah Nielsen	23	1	5	6	19	-8	0
20	Emily Laurenzi	23	0	3	3	14	-13	0
15	Jess Desorcie	23	1	1	2	27	-12	0
DEFENSE		GP	G	A	PTS	SH	+/-	BLK
4	Jordin Pardoski	23	2	4	6	16	-11	32
27	Kelly Seward	23	3	0	3	16	-1	41
2	Jeanette Bateman	22	0	1	1	9	-22	27
17	Paige Jahnke	21	0	1	1	7	-17	24
6	Lindsay Reihl	23	0	1	1	3	-4	40
33	Madison Smiddy	5	0	1	1	0	-4	0
GOALTENDER		GP-GS	Record	MIN	GA	GAA	SV	SV%
30	Celine Whitlinger	11-11	3-8-0	661:51	42	3.81	422	.909
37	Nicole Paniccia	12-12	1-9-2	727:04	41	3.38	431	.913



@PennStateWHKY



PennStateWomensHockey



GoPSUTV





NITTANY LION WOMEN'S HOCKEY

GAME NOTES AT SYRACUSE (JAN. 24-25), AT PRINCETON (JAN. 28)

SCOUTING THE ORANGE

After returning from its month-long break knocking off Vermont in two straight games, Syracuse (12-9-2, 4-4-2 CHA) split two games with RIT (4-3 loss on the road and a 5-4 victory at home) winning a game against Colgate in between the two. The two-game split allows RIT to stay a point ahead of the Orange in the CHA standings with Syracuse playing their next four games at home. The power play has been key to Syracuse winning four of their past five games having scored on six of 22 power play opportunities during that stretch. The defense and goaltending have been solid for Syracuse with both goaltenders giving up just over two goals a game on average on the season.

SERIES HISTORY vs. SYRACUSE

All-Time Series	SU leads 6-0-0
PSU Streak	6 losses
First Meeting	10/13/12, SU 4-0
Last Meeting	11/10/13, SU 4-3 OT
Last PSU Win	n/a
Last SU Win	11/10/13, 4-3 OT
Largest PSU Win	n/a
Largest SU Win	6-0, 10/14/12

LAST FOUR MEETINGS vs. SU

11/10/13	L	3-4 OT	H
11/9/13	L	1-2	H
1/26/13	L	1-4	A
1/25/13	L	0-1	A

SCOUTING THE TIGERS

After a four-game win streak including their first two matchups of 2014, the Tigers (9-8-3, 6-6-2 ECAC Hockey) host the Nittany Lions looking to end their three-game winless skid. The Tigers find themselves at fifth place in the ECAC, only seven points behind conference-leading Harvard who are ranked fifth in the nation. The Tigers are led by Denna Laing who has totaled 15 points on the season thus far. Princeton has had problems with their power plays and penalty kills recording goals on only 10% of their player advantages while giving up goals on 23% of their penalty kills. Despite being greatly outscored (42-21) in the first two periods of their games, Princeton's ability to score late in games (26 goals in the third period and overtime) has allowed them to stay over .500 on the season.

SERIES HISTORY vs. PRINCETON

All-Time Series	PU leads 1-0-0
PSU Streak	1 loss
First Meeting	1/29/13, PU 3-0
Last Meeting	1/29/13, PU 3-0
Last PSU Win	n/a
Last PU Win	1/29/13, PU 3-0
Largest PSU Win	n/a
Largest PU Win	1/29/13, PU 3-0

GAMEDAY COMPARISON

TEAM STATS	SYRACUSE	PRINCETON
Overall record	4-17-2	12-9-2
Conference record	1-9-0	4-4-2
Goals scored	34	61
Goals scored per game	1.5	2.7
Goals allowed	84	53
Goals allowed per game	3.7	2.3
First period goals	11	13
Second period goals	14	26
Third period goals	8	20
Overtime goals	1	2
Shots	536	734
Shots per game	23.3	31.9
Shot pct.	.063	.083
Assists	48	99
Penalties per game	3.6	5.3
Power plays	9-79	24-125
Power-play pct.	.114	.192
Penalty kills	22-79	18-114
Penalty-kill pct.	.722	.842
Saves	853	605
Shutouts	0	1

LEADERS

Points	Yoxheimer (12)	Sibley (18)
Goals	Gross (7)	Two with 9
Assists	Hoenshell (8)	Renault (14)
Shots	Yoxheimer (122)	Sibley (102)
Shot Pct.	Seward (.188)	Ferrara (.137)
+/-	Seward (-1)	Roach (+8)
Faceoff Pct.	Yoxheimer (.603)	n/a
Saves	Paniccia (431)	Billadeau (376)
Save Pct.	Paniccia (.913)	Billadeau (.933)
GAA	Paniccia (3.38)	Billadeau (2.12)
Record	Whitlinger (3-8-0)	Drinkwater (8-2-0)

GAMEDAY COMPARISON

TEAM STATS	SYRACUSE	PRINCETON
Overall record	4-17-2	9-8-3
Conference record	1-9-0	6-6-2
Goals scored	34	47
Goals scored per game	1.5	2.3
Goals allowed	84	58
Goals allowed per game	3.7	2.9
First period goals	11	8
Second period goals	14	13
Third period goals	8	25
Overtime goals	1	1
Shots	536	536
Shots per game	23.3	266.8
Shot pct.	.063	.088
Assists	48	71
Penalties per game	3.6	4.1
Power plays	9-79	8-79
Power-play pct.	.114	.101
Penalty kills	22-79	17-74
Penalty-kill pct.	.722	.770
Saves	853	535
Shutouts	0	1

LEADERS

Points	Yoxheimer (12)	Sibley (18)
Goals	Gross (7)	Two with 9
Assists	Hoenshell (8)	Renault (14)
Shots	Yoxheimer (122)	Sibley (102)
Shot Pct.	Seward (.188)	Ferrara (.137)
+/-	Seward (-1)	Roach (+8)
Faceoff Pct.	Yoxheimer (.603)	n/a
Saves	Paniccia (431)	Billadeau (376)
Save Pct.	Paniccia (.913)	Billadeau (.933)
GAA	Paniccia (3.38)	Billadeau (2.12)
Record	Whitlinger (3-8-0)	Drinkwater (8-2-0)

2013-14 COLLEGE HOCKEY AMERICA STANDINGS

(as of Jan. 19, 2013)

	Pts.	CHA	GF	GA	Overall	GF	GA	Last 10
Robert Morris (8/8)	17	8-1-1	28	12	19-3-2	70	37	8-0-2
Mercyhurst (rv/rv)	15	7-2-1	42	15	14-6-3	81	44	7-2-1
RIT	11	5-4-1	24	22	10-12-2	54	71	2-7-1
Syracuse	10	4-4-2	27	26	12-9-2	61	53	6-4-0
Lindenwood	5	2-7-1	12	31	2-18-2	23	80	2-8-0
PENN STATE	2	1-9-0	12	39	4-17-2	34	84	2-7-1

PAST RESULTS & UPCOMING SCHEDULE

Friday, Jan. 17 Robert Morris 1, Quinnipiac* 1 (OT) Syracuse* 5, RIT 4 (OT)	Friday, Jan. 24 PENN STATE at Syracuse, 7 PM Robert Morris at Mercyhurst, 7 PM Lindenwood at RIT, 7 PM	Friday, Jan. 31 RIT at PENN STATE, 7 PM Mercyhurst at Syracuse, 7 PM Robert Morris at Lindenwood, 8 PM
Saturday, Jan. 18 Robert Morris 5 Quinnipiac* 1	Saturday, Jan. 25 PENN STATE at Syracuse, 2 PM Robert Morris at Mercyhurst, 2 PM Lindenwood at RIT, 2 PM	Saturday, Feb. 1 RIT at PENN STATE, 2 PM Mercyhurst at Syracuse, 2 PM Robert Morris at Lindenwood, 3 PM
	Tuesday, Jan. 28 PENN STATE at Princeton, 7 PM	* home team





NITTANY LION WOMEN'S HOCKEY

PANICCIA, HOENSHHELL COLLECT CHA WEEKLY LAURELS

Senior goaltender **Nicole Paniccia** and sophomore forward **Hannah Hoenshell** were named College Hockey America's Goaltender and Player of the Week, respectively, Monday (Jan. 13) afternoon.

Paniccia had her best showing of the season on Saturday in a 2-1 overtime win over Colgate, stopping 39 of 40 attempts as Penn State broke a five-game losing streak. For Paniccia, she posted a .975 save percentage and won her first game of the season, snapping a 21-game winless drought. Paniccia posted double-digit save totals for the first three periods (13, 14 and 10), while stopping two more in OT. The award is the first for Paniccia in her collegiate career.

The hero in overtime was Hoenshell with her game-winning goal following an assist on the game-tying goal in the second period, which forced the extra frame. Hoenshell's pass across to **Laura Bowman** tied the game with 1:55 remaining in the second period before her tremendous stick handling gave PSU its first OT win in program history. Hoenshell

posted a plus-two rating in the victory, which snapped a five-game skid for the Nittany Lions. The night before, Hoenshell tallied four shots and blocked two shots in a tough 3-2 overtime loss to the Raiders.

NITTANY LIONS SPLIT WITH THE RAIDERS

Following a tough 3-2 overtime loss Friday, Jan. 10, Penn State flipped the script to take a 2-1 game on Saturday, Jan. 11 over Colgate. In Friday's game, **Jill Holdcroft** and **Taylor Gross** scored second-period goals to give PSU a 2-1 lead, which broke a scoreless drought of 292 minutes. Despite **Celine Whitlinger's** 29 saves, the Raiders come back to force overtime and score a power-play goal in the extra frame for the win.

The next day was the **Hannah Hoenshell** and **Nicole Paniccia** show. Paniccia stopped 39 shots before **Laura Bowman** tied the game on a Hoenshell cross-ice pass in the second period. In OT, Hoenshell dazzled her way around the Raider defense for PSU's first overtime winner in program history, a 2-1 win.

PENN STATE'S RECORD IS...

2-8-1 at home
2-9-1 on the road
1-2-2 in overtime
2-5-2 when scoring first
2-12-0 when opponent scores first
3-3-0 when leading after the 1st period
0-9-0 when trailing after the 1st period
1-5-2 when tied after the 1st period
2-3-0 when leading after the 2nd period
0-10-0 when trailing after the 2nd period
2-4-2 when tied after the 2nd period
1-0-0 when out-shooting opponent
3-16-2 when out-shot by opponent
0-1-0 when taking same # of shots
3-4-1 when winning more faceoffs
1-13-1 when losing more faceoffs
0-0-0 when tied in faceoffs
1-6-1 when taking more penalties
3-5-1 when taking fewer penalties
0-6-0 when taking the same # of penalties
2-5-1 when scoring a power play goal
2-12-1 when not scoring a power play goal
1-12-1 when allowing a power play goal
3-5-1 when not allowing a power play goal
0-7-0 when scoring 0 goals
0-6-1 when scoring 1 goal
2-2-0 when scoring 2 goals
0-1-1 when scoring 3 goals
2-1-0 when scoring 4+ goals
0-0-0 when allowing 0 goals
3-0-1 when allowing 1 goal
1-4-0 when allowing 2 goals
0-3-1 when allowing 3 goals
0-10-0 when allowing 4+ goals
2-6-1 in October
1-6-1 in November
0-2-0 in December
1-3-0 in January
0-0-0 in February
0-0-0 in March
0-0-0 on Tuesday
0-1-0 on Thursday
0-8-1 on Friday
4-7-1 on Saturday
0-2-0 on Sunday
4-9-1 during the day
0-8-1 at night
1-2-2 vs. Hockey East
1-9-0 vs. College Hockey America
2-4-0 vs. ECAC Hockey
0-2-0 vs. WCHA
0-0-0 vs. ranked opponents
4-17-2 vs. unranked opponents
1-2-2 when Shannon Yoxheimer scores
3-8-0 when Celine Whitlinger starts
4-2-1 when a freshman scores
2-6-2 games decided by a goal or less

2013-14 WOMEN'S HOCKEY POLLS

USA Today/USA Hockey (Jan. 21, 2014)

1	Minnesota	22-1-1	1
2	Wisconsin	19-3-2	2
3	Cornell	14-2-3	3
4	North Dakota	15-5-2	4
5	Harvard	14-2-2	5
6	Clarkson	17-4-3	6
7	Robert Morris	19-3-2	8
8	Boston College	16-4-3	7
9	Boston University	16-6-1	9
10	Quinnipiac	16-4-6	10

Others: *Mercyhurst*

USCHO.com (Jan. 20, 2014)

1	Minnesota	22-1-1	1
2	Wisconsin	19-3-2	2
3	North Dakota	15-5-2	4
4	Cornell	14-2-3	3
5	Harvard	14-2-2	6
6	Clarkson	17-4-3	5
7	Boston College	16-4-3	7
8	Robert Morris	19-3-2	8
9	Quinnipiac	16-4-6	10
10	Boston University	16-6-1	9

Others: *Mercyhurst*

Bold indicates 2013-14 opponent

2013-14 MEDIA INFORMATION

Penn State Athletic Communications

Primary Contact: Jeremy Fallis
 Email: jeremy.fallis@psu.edu
 Office: 814-865-1757

Interviews

Penn State student-athletes and coaches are available for interviews after practice each day. Please contact Jeremy Fallis in advance.

Credentials

Contact Jeremy Fallis for home game credentials at Pegula Ice Arena.

Postgame

Head coach Josh Brandwene and requested student-athletes are available to the media following each game in the studio rink. Please alert Jeremy Fallis during the game of any requests.

Yearbook

A complimentary copy of the 2013-14 Penn State women's hockey yearbook will be made available to members of the media. The public may purchase copies for \$6 online.

GoPSUsports.com

[Facebook.com/PennStateWomensHockey](https://www.facebook.com/PennStateWomensHockey)

[@PennStateWHKY](https://twitter.com/PennStateWHKY)





NITTANY LION WOMEN'S HOCKEY

YOUTH SUPPLIES THE OFFENSE

The addition of four freshmen: **Laura Bowman**, **Amy Petersen**, **Sarah Nielsen** and **Kelly Seward** have injected an instant bump in scoring production with 23 of the team's 82 points. To prove the youth of the team, 66 of the team's 82 points (80.5%) have been collectively tallied by freshmen and sophomores. Nine of the team's top 10 point scorers are underclassmen.

PICK YOUR POISON

Penn State has had the fortune of multiple contributors on the offensive end. Eleven Nittany Lions have scored a goal this season, while 17 have registered a point. **Shannon Yoxheimer** leads the team with 12 points, while **Taylor Gross** and **Hannah Hoenshell** each have 11 points. **Laura Bowman** and **Amy Petersen** have nine points each.

IN THE THICK OF THINGS

Penn State's record of 7-26-2 last season is a little deceiving when considering how close the Nittany Lions were in many of their losses. In fact, 12 of the 26 losses were decided by two goals or less. This year, seven of 17 losses are by a goal and Penn State is 2-7-2 in games decided by one goal or less. PSU is 3-13-3 all-time in games decided by less than a goal.

THE NEXT NITTANY LIONS

Nittany Lion head coach **Josh Brandwene** officially announced a signing class of six student-athletes for the 2014-15 season on Tuesday, Nov. 19. Penn State welcomes **Hannah Ehresmann** (Minnetonka, Minn.), **Irene Kiroplis** (Georgetown, Ont.), **Remi Martin** (Littleton, Colo.), **Caitlin Reilly** (Chanhassen, Minn.), **Bella Sutton** (Shoreview, Minn.) and **Christi Vetter** (Lakeville, Minn.).

Included in the class are three forwards, a true defender and a goaltender, while Kiroplis can play at forward or defense. The class sees four Minnesotans join the squad to bring the projected total for 2014-15 to nine, which would be the highest representation from any state or province.

HOENSHHELL, SEWARD EARN CHA AWARDS

Penn State forward **Hannah Hoenshell** and defender **Kelly Seward** were named College Hockey America's Player and Rookie of the Week, respectively, on Monday, Oct. 7.

A crafty forward with incredible stick skills, Hoenshell propelled Penn State to an undefeated weekend at Vermont, supplying three points and a game-high plus-four rating in Saturday's 4-2 win. Hoenshell was involved in three of Penn State's four goals, tallying a goal and two assists. Her goal was her second ca-

reer game-winning goal.

Seward was fantastic on both sides of the ice this weekend as she tallied two goals, which ties for the team high after two games. Seward posted a plus-two rating and seven blocked shots for the weekend as well. In both games, Seward scored Penn State's first goal. On Friday it was a power-play tally and Saturday it was a game-tying goal in the first period.

BRING 'EM BACK

Penn State brings back 24 of its 27 members from last year's team. In those 24 student-athletes, Penn State returns its top 14 scorers and almost 99 percent of its offense along with every member of its stout goaltending corps.

YOXHEIMER MAKES HER MARK

Leading the team in scoring last season was **Shannon Yoxheimer**, a left-handed forward. Yoxheimer buried 14 goals with 17 assists for a grand total of 31 points, all team highs. She led College Hockey America in shots (169) and put away three power play goals as well as a team-high three game-winning goals. Yoxheimer's numbers ranked her in the top 10 nationally in goals, points and assists for rookies. The CHA coaches named Yoxheimer to the All-Rookie team.

THE PANICCIA WALL

Senior goaltender **Nicole Paniccia** excelled between the pipes for the Blue and White last year, stopping 1,028 shots with a 92.8 save percentage. Paniccia's save tally was second in all of NCAA Division I, topped only by fellow CHA upstart Lindenwood's Nicole Hensley. Paniccia was in net for six of PSU's seven victories last year as well as both of Penn State's ties.

POWER-PLAY HOLDCROFT

Sophomore forward **Jill Holdcroft** was lethal on the power play last season, scoring six of her 10 goals last year on the advantage. Despite missing the CHA playoffs at RIT, Holdcroft still ranked second on the team in scoring (10 goals) and added two assists for good measure.

CAPTAINS' CORNER

Senior forward **Taylor Gross** once again leads Penn State as its first captain following her first year with the letter in 2012-13. Gross was second on the team in points (22) and assists (15) last season with 34 appearances. The University of Connecticut transfer appeared in 48 games for the Huskies before joining Penn State's club side in January 2012. Senior forward **Jenna Welch** and **Lindsay Reihl**, a graduate student defender, reprise their roles as assistant captains this year. Joining the veteran trio is **Jordin Pardoski**, a vocal sopho-

more defender who is a first-year assistant captain.

NEW NITTANY LIONS

Four freshmen join the Nittany Lions for the 2013-14 campaign. Minnesota forwards **Laura Bowman**, **Amy Petersen** and **Sarah Nielsen** provide an instant dose of goal scoring from their high school success. Defender **Kelly Seward** of New York is the tallest Nittany Lion blueliner.

FIRST HEAD COACH

A 1991 graduate of Penn State, head coach **Josh Brandwene** is the first to lead the Nittany Lions. Brandwene compiled a 7-26-2 record last season with 17 freshmen on the team. A four-year hockey player at PSU, Brandwene brings 20 years of coaching experience to Happy Valley.

CONTINUING PENN STATE HOCKEY

Seven members of the current varsity team played for the women's club team at some point. Graduate student **Lindsay Reihl** along with juniors **Cara Mendelson**, **Katie Murphy**, **Madison Smiddy** and **Tess Weaver** played all of the 2011-12 season for head coach **Josh Brandwene** in Penn State's last year at the

2013-14 HONORS & AWARDS

Hannah Hoenshell
CHA Player of the Week (10/7, 1/13)

Kelly Seward
CHA Goaltender of the Week (1/13)
Penn State Student-Athlete of the Week (1/14)

Kelly Seward
CHA Rookie of the Week (10/7)

OVER THE AIR

Both games this weekend vs. Syracuse will be featured on AmericaOneSports.com. Tuesday's contest at Princeton will be streamed on IvyLeagueDigitalNetwork.com. All three games require subscriptions.

The CHA on AmericaOneSports.com

Penn State home & away games during CHA play will be streamed live on AmericaOneSports.com. Subscribers can purchase a 1-day package for \$8, 30-day packages for \$30 or a season pass for \$125.





NITTANY LION WOMEN'S HOCKEY

club level. **Taylor Gross** and **Jess Desorcie** joined the five aforementioned players midway through the season in preparation of the 2012-13 season.

NEXT TIME OUT

Penn State returns home where they'll begin a three-week home stand with two games against RIT. The two-game series against RIT will give the Nittany Lions a chance to earn two wins against the Tigers who took both games in Rochester by one goal each. The first game is scheduled for Friday, January 31 at 7 p.m. with the second game at 2 p.m. the next day.

SKATE FOR THE CURE GAME

Penn State's Feb. 1 game against RIT will be the second annual Skate for the Cure. The event where fans are encouraged to wear pink to the rink will feature auctions and donations to benefit Pink Zone and THON. The Nittany Lions have been raising money throughout the year with online auctions of its pink jerseys to be worn against RIT. A second set of jerseys are available through Feb. 3 with more items available at Pegula Ice Arena. Following the game, fans are invited to join the Nittany Lions on the ice for a free skate.

THE LAST TIME

PENN STATE...

Scored 0 goals	1/4/14at Ohio State (0-4)
Scored 3 goals	11/10/13 vs. Syracuse (3-4)
Scored 4 goals	11/23/13 at Lindenwood (4-1)
Scored 5 goals	10/26/13 vs. New Hampshire (5-8)
Scored 6 goals	11/2/12vs. Sacred Heart (6-0)
Scored 7 goals	Never	
Scored 8 goals	11/3/12vs. Sacred Heart (8-2)
Scored 9 goals	Never	
Scored 10 goals	1/4/13 vs. Chatham (10-0)
Allowed 0 goals	1/5/13 vs. Chatham (4-0)
Allowed 1 goal	1/11/14 vs. Colgate (2-1)
Allowed 2 goals	11/22/13 at Lindenwood (1-2)
Allowed 3 goals	1/10/14 vs. Colgate (2-3)
Allowed 4 goals	1/4/14 at Ohio State (0-4)
Allowed 5 goals	10/11/13 at Quinnipiac (1-5)
Allowed 6+ goals	1/3/14 at Ohio State (0-8)
Won in overtime	1/11/14 vs. Colgate (2-1)
Lost in overtime	1/10/14 vs. Colgate (2-3)
Tied in overtime	11/30/13 vs. Maine (1-1)
Played a ranked team	2/2/13 vs. #7 Mercyhurst (1-4)
Attempted 10-19 shots	1/11/14 17 vs. Colgate (2-1)
Attempted 20-29 shots	11/22/13 23 at Lindenwood (1-2)
Attempted 30-39 shots	1/10/14 32 vs. Colgate (2-3)
Attempted 40-49 shots	1/4/13 48 vs. Chatham (10-0)
Attempted 50-59 shots	Never	
Attempted 60-69 shots	11/3/12 64 vs. Sacred Heart (8-2)
Attempted 70+ shots	1/5/13 71 vs. Chatham (4-0)
Allowed 10-19 shots	1/5/13 16 vs. Chatham (4-0)
Allowed 20-29 shots	10/19/13 21 vs. Union (2-1)
Allowed 30-39 shots	1/10/14 32 vs. Colgate (2-3)
Allowed 40-49 shots	1/11/14 40 vs. Colgate (2-1)
Allowed 50-59 shots	1/3/14 56 at Ohio State (0-8)
Allowed 60-69 shots	2/22/13 63 at Robert Morris (1-4)
Allowed 70+ shots	12/1/12 71 at #4 Mercyhurst (1-7)
Tallied 5-9 assists	11/23/13 5 at Lindenwood (4-1)
Tallied 10-15 assists	11/3/12 12 vs. Sacred Heart (8-2)
Tallied 15+ assists	1/4/13 17 vs. Chatham (10-0)
Scored 10-19 points	10/26/13 13 vs. New Hampshire (5-8)
Scored 20+ points	1/4/13 27 vs. Chatham (10-0)
Scored 2 power-play goals	10/26/13 vs. New Hampshire (5-8)
Scored 3 power-play goals	10/20/12 at Sacred Heart (6-1)
Allowed 0 power-play goals	1/11/14 vs. Colgate (2-1)
Allowed 2 power-play goals	1/3/14 at Ohio State (0-8)
Had 5 different goal scorers	10/26/13 vs. New Hampshire (5-8)
Had 6 different goal scorers	10/20/12 at Sacred Heart (6-1)
Had 7 different goal scorers	1/4/13 vs. Chatham (10-0)
Had 8 different goal scorers	11/3/12vs. Sacred Heart (8-2)

A PENN STATE PLAYER...

Scored 2 goals	11/16/13 J. Holdcroft at RIT (2-3)
Scored 3 goals	11/2/12 H. Hoenshell vs. Sacred Heart (6-0)
Scored 4 goals	Never	
Had 3 assists	1/4/13J. Bateman vs. Chatham (10-0)
Had 5 points	Never	
Had 10+ shots	1/5/13 12, T. Weaver vs. Chatham (4-0)
Saved 40-49 shots	1/3/14 48, C. Whitlinger at Ohio State (0-8)
Saved 50-59 shots	11/10/13 51, C. Whitlinger vs. Syracuse (3-4)
Saved 60+ shots	12/1/12 64, N. Paniccia at #4 Mercyhurst (1-7)
Had a shutout	1/5/13 C. Whitlinger/B. Meyer vs. Chatham (4-0)
Scored an empty-net goal	10/6/12 B. Shaw at Vermont (5-3)
Scored a short-handed goal	11/16/13 J. Holdcroft at RIT (2-3)





NITTANY LION WOMEN'S HOCKEY

2013-14 PENN STATE WOMEN'S HOCKEY NUMERICAL ROSTER

No.	Name	Yr.	Pos.	Ht.	S/C	Hometown	Last Team
2	Jeanette Bateman	So.	D	5-6	R	Greeley, Colo.	Colorado Select
3	Cara Mendelson	Jr.	F	5-6	R	Pittsburgh, Pa.	Steel City Selects
4	Jordin Pardoski	So.	D	5-5	R	Rochester Hills, Mich.	Detroit Honeybaked
5	Stephanie Walkom	So.	D	5-7	R	Moon Township, Pa.	Pittsburgh Penguins Elite
6	Lindsay Reihl	Gr.	D	5-4	R	Cheshire, Conn.	Connecticut Polar Bears
9	Amy Petersen	Fr.	F	5-4	R	Minnetonka, Minn.	Minnetonka HS
10	Micayla Catanzariti	So.	F	5-4	R	Rancho Santa Margarita, Calif.	Gilmour Academy (Ohio)
12	Sarah Nielsen	Fr.	F	5-6	L	Edina, Minn.	Edina HS
13	Kendra Rasmussen	So.	F	5-5	L	Sartell, Minn.	Sartell/Sauk Rapids HS
14	Darby Kern	So.	F	5-11	R	Venetia, Pa.	Pittsburgh Penguins Elite
15	Jess Desorcie	Jr.	F	5-4	L	Westford, Vt.	Connecticut College
16	Hannah Hoenshell	So.	F	5-3	R	Plano, Texas	Texas Alliance
17	Paige Jahnke	So.	D	5-6	R	Oakdale, Minn.	Roseville HS / Minnesota Jr. Whitecaps
18	Laura Bowman	Fr.	F	5-7	R	Minnetonka, Minn.	Minnetonka HS
19	Jill Holdcroft	So.	F	5-1	R	Pennsylvania Furnace, Pa.	Pittsburgh Penguins Elite
20	Emily Laurenzi	So.	F	5-2	R	Townsend, Del.	National Sports Academy (N.Y.)
21	Sarah Wilkie	So.	D	5-6	R	Ashby, Mass.	Williston Northampton School
22	Jenna Welch	Sr.	F	5-8	R	Austin, Texas	Connecticut
23	Birdie Shaw	So.	F	5-2	L	Troy, Mich.	Detroit Honeybaked
24	Taylor Gross	Sr.	F	5-1	R	Colorado Springs, Colo.	Connecticut
25	Katie Murphy	Jr.	F	5-4	L	Novi, Mich.	Detroit Honeybaked
27	Kelly Seward	Fr.	D	5-9	L	Williamsville, N.Y.	Nichols School / Buffalo Bisons
30	Celine Whitlinger	So.	G	5-8	L	Garden Grove, Calif.	Gilmour Academy (Ohio)
31	Brooke Meyer	So.	G	5-7	L	Naperville, Ill.	Chicago Huskies
33	Madison Smiddy	Jr.	D	5-7	L	Grand Rapids, Mich.	Detroit Honeybaked
36	Tess Weaver	Jr.	F	5-5	R	Windber, Pa.	Pittsburgh Penguins Elite
37	Nicole Paniccia	Sr.	G	5-5	L	Oakville, Ont.	Connecticut
40	Shannon Yoxheimer	So.	F	5-7	L	Jackson, Mich.	North American Hockey Academy (Vt.)

Head Coach: Josh Brandwene (Second Year)

Assistant Coaches: Gina Kearns (Second Year), Casey McCullion (Second Year); **Director of Operations** Alex Dawes (First Year)

Captain: Taylor Gross; **Assistant Captains:** Jordin Pardoski, Lindsay Reihl, Jenna Welch

ALPHABETICAL ROSTER		PRONUNCIATION GUIDE		LIONS BY STATE		LIONS BY POSITION	
No.	Name	Brandwene	BRAND-ween	California (2):	Catanzariti, Whitlinger	Forward (17):	Bowman, Catanzariti, Desorcie, Gross, Hoenshell, Holdcroft, Kern, Laurenzi, Mendelson, Murphy, Nielsen, Petersen, Rasmussen, Shaw, Weaver, Welch, Yoxheimer
2	Jeanette Bateman	Catanzariti	Cah-TAN-zah-REE-tee	Colorado (2):	Bateman, Gross	Defense (8):	Bateman, Jahnke, Pardoski, Reihl, Seward, Smiddy, Walkom, Wilkie
18	Laura Bowman	Desorcie	Deh-SORE-see	Connecticut (1):	Reihl	Goalie (3):	Meyer, Paniccia, Whitlinger
10	Micayla Catanzariti	Jahnke	YAWN-kee	Delaware (1):	Laurenzi		
15	Jess Desorcie	Jeanette	Jeh-NETT	Illinois (1):	Meyer		
24	Taylor Gross	Kearns	KERNS	Massachusetts (1):	Wilkie		
16	Hannah Hoenshell	McCullion	Mick-CULL-yon	Michigan (5):	Murphy, Pardoski, Shaw, Smiddy, Yoxheimer		
19	Jill Holdcroft	Paniccia	Pah-NEE-cha	Minnesota (5):	Bowman, Jahnke, Nielsen, Petersen, Rasmussen		
17	Paige Jahnke	Reihl	RILE	New York (1):	Seward		
14	Darby Kern			Pennsylvania (5):	Holdcroft, Kern, Mendelson, Walkom, Weaver		
20	Emily Laurenzi			Texas (2):	Hoenshell, Welch		
3	Cara Mendelson			Vermont (1):	Desorcie		
31	Brooke Meyer						
25	Katie Murphy						
12	Sarah Nielsen						
37	Nicole Paniccia						
4	Jordin Pardoski						
9	Amy Petersen						
13	Kendra Rasmussen						
6	Lindsay Reihl						
27	Kelly Seward						
23	Birdie Shaw						
33	Madison Smiddy						
5	Stephanie Walkom						
36	Tess Weaver						
22	Jenna Welch						
30	Celine Whitlinger						
21	Sarah Wilkie						
40	Shannon Yoxheimer						





NITTANY LION WOMEN'S HOCKEY

OCT. 18, 2013: UNION 5, PENN STATE 1

Union (3-3-0) vs. Penn State (1-3-1)
Date: Oct 18, 2013 • Location: University Park, Pa. • Arena: Pegula Ice Arena
Attendance: 1424 • Start time: 7:00 pm • End time: 8:52 pm • Total time: 1:52

Prd Time Team Scored by Assists Vis. on ice Home on ice Goals by Period

TEAM SUMMARY

Power Play Goals-Att (Sh) Penalties-Minutes by Prd

GOALTENDERS

PENALTY SUMMARY

Prd Player Team MinOffense Time

Win-Lundberg, Shenae (3-3-0). Loss-Paniccia, Nicole (0-2-1).

OCT. 26, 2013: NEW HAMPSHIRE 8, PENN STATE 5

New Hampshire (4-2-1, 1-0-1 WHEA) vs. Penn State (2-4-1, 0-0-0 CHA)
Date: Oct 26, 2013 • Location: University Park, Pa. • Arena: Pegula Ice Arena
Attendance: 493 • Start time: 7:00 pm • End time: 9:01 pm • Total time: 2:01

Prd Time Team Scored by Assists Vis. on ice Home on ice Goals by Period

TEAM SUMMARY

Power Play Goals-Att (Sh) Penalties-Minutes by Prd

GOALTENDERS

PENALTY SUMMARY

Prd Player Team MinOffense Time

Win-Vaattovaara, Vilma (4-0-1). Loss-Paniccia, Nicole (0-3-1).

OCT. 19, 2013: PENN STATE 2, UNION 1

Union (3-4-0) vs. Penn State (2-3-1)
Date: Oct 19, 2013 • Location: University Park, Pa. • Arena: Pegula Ice Arena
Attendance: 814 • Start time: 2:00 pm • End time: 3:59 • Total time: 1:59

Prd Time Team Scored by Assists Vis. on ice Home on ice Goals by Period

TEAM SUMMARY

Power Play Goals-Att (Sh) Penalties-Minutes by Prd

GOALTENDERS

PENALTY SUMMARY

Win-Whitlinger, Celine (2-1-0). Loss-Lundberg, Shenae (3-4-0).

OCT. 27, 2013: NEW HAMPSHIRE 3, PENN STATE 1

New Hampshire (5-2-1, 1-0-1 WHEA) vs. Penn State (2-5-1, 0-0-0 CHA)
Date: Oct 27, 2013 • Location: University Park, Pa. • Arena: Pegula Ice Arena
Attendance: 552 • Start time: 2:00 pm • End time: 4:00 pm • Total time: 2:00

Prd Time Team Scored by Assists Vis. on ice Home on ice Goals by Period

TEAM SUMMARY

Power Play Goals-Att (Sh) Penalties-Minutes by Prd

GOALTENDERS

PENALTY SUMMARY

Win-Wilkes, Ashley (1-0-0). Loss-Whitlinger, Celine (2-2-0).
Penn State TO at 17:39 of 3rd period



NITTANY LION WOMEN'S HOCKEY



2013-14 Penn State Women's Hockey Penn State Combined Team Statistics (as of Jan 23, 2014)

All games

Date	Opponent	Score	Att.	Record:	Overall	Home	Away	Neutral
Oct 04	at Vermont	Tot 3-3	435	ALL GAMES	4-17-2	2-8-1	2-9-1	0-0-0
Oct 05	at Vermont	W 4-2	760	CONFERENCE	1-9-0	0-4-0	1-5-0	0-0-0
Oct 11	at Quinnipiac	L 1-5	505	NON-CONFERENCE	3-8-2	2-4-1	1-4-1	0-0-0
Oct 12	at Quinnipiac	L 0-4	213					
Oct 18	UNION	L 1-2	1424					
Oct 19	UNION	W 2-1	814					
Oct 26	NEW HAMPSHIRE	L 5-8	493					
Oct 27	NEW HAMPSHIRE	L 1-3	552					
* Oct 31	ROBERT MORRIS	L 0-4	513					
* Nov 01	ROBERT MORRIS	L 0-6	771					
* Nov 09	SYRACUSE	L 1-2	691					
* Nov 10	SYRACUSE	Lot 3-4	516					
* Nov 15	at RIT	L 1-2	1170					
* Nov 16	at RIT	L 2-3	588					
* Nov 22	at Lindenwood	L 1-2	102					
* Nov 23	at Lindenwood	W 4-1	85					
Nov 30	MAINE	Tot 1-1	510					
* Dec 06	at Mercyhurst	L 0-7	237					
* Dec 07	at Mercyhurst	L 0-8	537					
Jan 03	at Ohio State	L 0-8	249					
Jan 04	at Ohio State	L 0-4	292					
Jan 10	COLGATE	Lot 2-3	474					
Jan 11	COLGATE	Wot 2-1	754					

TEAM STATISTICS	PSU	OPP
SHOT STATISTICS		
Goals-Shot attempts	34-536	84-937
Shot pct.	.063	.090
Goals/Game	1.5	3.7
Shots/Game	23.3	40.7
POWER PLAYS		
Goals-Power Plays	9-79	22-79
Conversion Percent	.114	.278
GOAL BREAKDOWN		
Power Play	9	22
Short-handed	1	1
Empty net	0	1
Penalty	0	0
Unassisted	4	5
Overtime	1	2
PENALTIES		
Number	82	81
Minutes	164	162
Penalties/Game	3.6	3.5
Pen minutes/Game	7.1	7.0
FACEOFFS (W-L)	636-663	663-636
Faceoff W-L Pct.	.490	.510

Record:	Overall	Home	Away	Neutral
ALL GAMES	4-17-2	2-8-1	2-9-1	0-0-0
CONFERENCE	1-9-0	0-4-0	1-5-0	0-0-0
NON-CONFERENCE	3-8-2	2-4-1	1-4-1	0-0-0

#	Player	gp	g	a	pts	sh	sh%	pen-min	pp	sh
40	Yoxheimer, Shannon	23	5	7	12	122	.041	4-8	1	0
24	Gross, Taylor	23	7	4	11	58	.121	0-0	2	0
16	Hoenshell, Hannah	23	3	8	11	55	.055	2-4	0	0
18	Bowman, Laura	23	6	2	8	57	.105	6-12	1	0
9	Petersen, Amy	23	1	7	8	29	.034	0-0	1	0
19	Holdcroft, Jill	23	4	2	6	36	.111	5-10	1	1
4	Pardoski, Jordin	23	2	4	6	16	.125	7-14	1	0
12	Nielsen, Sarah	23	1	5	6	19	.053	7-14	0	0
27	Seward, Kelly	23	3	0	3	16	.188	6-12	2	0
20	Laurenzi, Emily	23	0	3	3	14	.000	7-14	0	0
15	Desorcie, Jess	23	1	1	2	27	.037	3-6	0	0
13	Rasmussen, Kendra	17	1	0	1	11	.091	0-0	0	0
2	Bateman, Jeanette	22	0	1	1	9	.000	2-4	0	0
17	Jahnke, Paige	21	0	1	1	7	.000	8-16	0	0
6	Reihl, Lindsay	23	0	1	1	3	.000	2-4	0	0
23	Shaw, Birdie	18	0	1	1	4	.000	6-12	0	0
33	Smiddy, Madison	5	0	1	1	0	.000	1-2	0	0
10	Catanzariti, Micayla	6	0	0	0	1	.000	1-2	0	0
5	Walkom, Stephanie	2	0	0	0	0	.000	0-0	0	0
36	Weaver, Tess	3	0	0	0	1	.000	1-2	0	0
22	Welch, Jenna	23	0	0	0	34	.000	7-14	0	0
21	Wilkie, Sarah	19	0	0	0	17	.000	3-6	0	0
TM	TEAM	9	0	0	0	0	.000	4-8	0	0
	Total	23	34	48	82	536	.063	82-164	9	1
	Opponents	23	84	137	221	937	.090	81-162	22	1

#	Goalie	gp	min	ga	gaavg	saves	save%	w-l-t
37	Paniccia, Nicole	12	727:04	41	3.38	431	.913	1-9-2
30	Whitlinger, Celine	11	661:51	42	3.81	422	.909	3-8-0
TM	EMPTY NET	9	9:11	1	-	0	.000	0-0-0
	Total	23	1398:06	84	3.60	853	.910	4-17-2
	Opponents	23	1398:06	34	1.46	502	.937	17-4-2

Attendance Summary	PSU	Opponent
Total	7512	5173
Dates/Avg Per Date	11/683	12/431
Neutral Site #/Avg	0/0	

Goals by Period	1st	2nd	3rd	OT	Total
Penn State	11	14	8	1	34
Opponents	22	30	30	2	84

Saves by Period	1st	2nd	3rd	OT	Total
Penn State	286	288	261	18	853
Opponents	149	160	189	4	502





NITTANY LION WOMEN'S HOCKEY



JEANNETTE BATEMAN
Sophomore • D
Greeley, Colo.



CARA MENDELSON
Junior • F
Pittsburgh, Pa.



JORDYN PARDOSKI
Sophomore • D
Rochester Hills, Mich.



STEPHANIE WALKOM
Sophomore • D
Moon Township, Pa.



LINDSAY REIHL **A**
Grad Student • D
Cheshire, Conn.



AMY PETERSEN
Freshman • F
Minnetonka, Minn.



MICAYLA CATANZARITI
Sophomore • F
Rancho Santa Margarita, Calif.



SARAH NIELSEN
Freshman • F
Edina, Minn.



KENDRA RASMUSSEN
Sophomore • F
Sartell, Minn.



DARBY KERN
Sophomore • F
Venetia, Pa.



JESS DESORCIE
Junior • F
Westford, Vt.



HANNAH HOENSHELL
Sophomore • F
Plano, Texas



PAIGE JAHNKE
Sophomore • D
Oakdale, Minn.



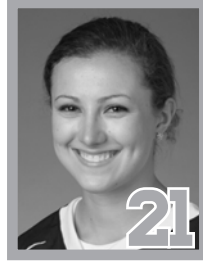
LAURA BOWMAN
Freshman • F
Minnetonka, Minn.



JILL HOLDCROFT
Sophomore • F
Pennsylvania Furnace, Pa.



EMILY LAURENZI
Sophomore • F
Townsend, Del.



SARAH WILKIE
Sophomore • D
Ashby, Mass.



JENNA WELCH **A**
Senior • F
Austin, Texas



BIRDIE SHAW
Sophomore • F
Troy, Mich.



TAYLOR GROSS **C**
Senior • F
Colorado Springs, Colo.



KATIE MURPHY
Junior • F
Novi, Mich.



KELLY SEWARD
Freshman • D
Williamsville, N.Y.



CELINE WHITLINGER
Sophomore • G
Garden Grove, Calif.



BROOKE MEYER
Sophomore • G
Naperville, Ill.



MADISON SMIDDY
Junior • D
Grand Rapids, Mich.



TESS WEAVER
Junior • F
Windber, Pa.



NICOLE PANICCIA
Senior • G
Oakville, Ont.



SHANNON YOXHEIMER
Sophomore • F
Jackson, Mich.

