



PENN STATE WOMEN'S HOCKEY

2013-14 NITTANY LIONS

GoPSUsports.com • Twitter & Instagram: [PennStateWHKY](#) • Facebook.com/PennStateWomensHockey
 Contact: **Jeremy Fallis** • jeremy.fallis@psu.edu • O: (814) 863-1388 • C: (814) 206-6544

2013-14 SCHEDULE

Overall: 2-3-1 • Home: 1-1-0 • Away: 1-2-1
 CHA: 0-0-0 • Home: 0-0-0 • Away: 0-0-0

Date	Opponent	Result/Time
Oct. 4	at Vermont	T (OT) 3-3
Oct. 5	at Vermont	W 4-2
Oct. 11	at Quinnipiac	L 1-5
Oct. 12	at Quinnipiac	L 0-4
Oct. 18	UNION	L 1-2
Oct. 19	UNION	W 2-1
Oct. 26	NEW HAMPSHIRE	7:00 p.m.
Oct. 27	NEW HAMPSHIRE	2:00 p.m.
Oct. 31	* ROBERT MORRIS	7:00 p.m.
Nov. 1	* ROBERT MORRIS	4:00 p.m.
Nov. 9	* SYRACUSE	2:00 p.m.
Nov. 10	* SYRACUSE	2:00 p.m.
Nov. 15	* at RIT	7:00 p.m.
Nov. 16	* at RIT	3:00 p.m.
Nov. 22	* at Lindenwood	8:00 p.m.
Nov. 23	* at Lindenwood	3:00 p.m.
Nov. 30	MAINE	2:00 p.m.
Dec. 6	* at #9 Mercyhurst	3:00 p.m.
Dec. 7	* at #9 Mercyhurst	2:00 p.m.
Jan. 3	at #10 Ohio State	7:07 p.m.
Jan. 4	at #10 Ohio State	4:07 p.m.
Jan. 10	COLGATE	7:00 p.m.
Jan. 11	COLGATE	2:00 p.m.
Jan. 24	* at Syracuse	7:00 p.m.
Jan. 25	* at Syracuse	2:00 p.m.
Jan. 28	at Princeton	7:00 p.m.
Jan. 31	* RIT	7:00 p.m.
Feb. 1	* RIT	2:00 p.m.
Feb. 8	* LINDENWOOD	Noon
Feb. 9	* LINDENWOOD	Noon
Feb. 15	* #9 MERCYHURST	8:00 p.m.
Feb. 16	* #9 MERCYHURST	1:00 p.m.
Feb. 21	* at Robert Morris	3:00 p.m.
Feb. 22	* at Robert Morris	3:00 p.m.

2014 CHA TOURNAMENT

Feb. 28	^ CHA First Round - Game 1	TBA
March 1	^ CHA First Round - Game 2	TBA
March 2	^ CHA First Round - Game 3	TBA
March 7	% CHA Semifinals	TBA
March 8	% CHA Final	TBA

All Times Eastern

Home games in **CAPS** at Pegula Ice Arena

* - College Hockey America games

^ - CHA First Round at higher seed

% - CHA Semifinals & Final hosted by No. 1 seed

Rankings based on USA Today/USA Hockey poll

Streaming on AmericaOneSports.com; live stream



PENN STATE NITTANY LIONS
 (2-3-1, 0-0-0 CHA)

NEW HAMPSHIRE WILDCATS
 (3-2-1, 1-0-1 Hockey East)

Games 7-8: Oct. 26-27, 2013 • Pegula Ice Arena • University Park, Pa.

GAME DAY

VENUE

Pegula Ice Arena (5,782)

STREAMING COVERAGE

AmericaOneSports.com (\$)

SERIES RECORD

0-0-0

LAST MEETING

n/a

NEXT TIME OUT

Oct. 31-Nov. 1 vs. Robert Morris at Pegula Ice Arena

GAME NOTES

- Penn State hosts New Hampshire as teams meet for first time in women's hockey
- Nittany Lions split their Pegula Ice Arena opening series with Union last week
- **Shannon Yoxheimer**, **Jill Holdcroft** & **Laura Bowman** tallied goals vs. Union
- Goaltender **Celine Whitlinger** earned second win this season against Dutchwomen
- Penn State's freshmen and sophomores have tallied 24 of team's 29 points
- New Hampshire coming off 10-day layoff after beating No. 2 Boston College
- UNH represents second Hockey East foe of the season for Penn State

ON THE INSIDE

Page 2: **CHA Standings and Team Comparison**

Page 7: **The Nittany Lion Roster & Pronunciation Guide**

Page 8: **2013-14 Penn State Box Scores**

Page 9: **2013-14 Penn State Women's Hockey Stats**

Page 10: **The Nittany Lion TV/Radio Roster**

STATISTICAL LEADERS

FORWARDS		GP	G	A	PTS	SH	+/-	GWG
40	Shannon Yoxheimer	6	3	2	5	28	+3	0
24	Taylor Gross	6	1	3	4	19	+1	0
12	Sarah Nielsen	6	0	4	4	8	+4	0
18	Laura Bowman	6	3	0	3	17	0	1
16	Hannah Hoenshell	6	1	2	3	12	+2	1
9	Amy Petersen	6	0	3	3	4	0	0

DEFENSE		GP	G	A	PTS	SH	+/-	BLK
27	Kelly Seward	6	2	0	2	7	+2	14
4	Jordin Pardoski	6	0	2	2	4	0	8
6	Lindsay Reihl	6	0	1	1	0	0	10
2	Jeanette Bateman	6	0	1	1	4	-4	9
17	Paige Jahnke	6	0	0	0	3	-1	10

GOALTENDER		GP-GS	Record	MIN	GA	GAA	SV	SV%
30	Celine Whitlinger	3-3	2-1-0	180:00	7	2.33	112	.941
37	Nicole Paniccia	3-3	0-2-1	184:13	10	3.26	107	.915



@PennStateWHKY



PennStateWomensHockey



GoPSUTV





NITTANY LION WOMEN'S HOCKEY

GAME NOTES VS. NEW HAMPSHIRE (OCT. 26-27)

SCOUTING THE WILDCATS

New Hampshire (3-2-1, 1-0-1 Hockey East) enters this weekend's series at Pegula Ice Arena well rested having played its last game Oct. 16 at then-No. 2 Boston College. The Wildcats took home a 3-1 win on the back of Vilma Vaattavaara's 36-save performance and Nicole Gifford's two-point game. UNH is 2-0-1 in its last three games as well.

Gifford leads the team with seven points on three goals and four assists, while teammates Sara Carlson (1g, 3a) and Heather Kashman (2g, 2a) each have four points. Nine different UNH players have bagged goals this season including Alexis Crossley (2) and Cassandra Vilgrain (2) who are multi-goal scorers.

In net, Vaattavaara has played the majority of the minutes, going 3-0-1 in four starts with a 1.47 goals-against average and a .952 save percentage. Teammate Marie-Eve Jean is 0-2-0 in 118 minutes of play, saving just 86 percent and posting a goals-against average of 3.55.

LIONS OPEN PEGULA WITH SPLIT

The Nittany Lions used a late third-period goal from freshman **Laura Bowman** to defeat a stingy Union squad Saturday afternoon (Oct. 19) at Pegula Ice Arena. The win secured a split in the home opening series. **Celine Whitlinger** stopped 20 shots and **Jill Holdcroft** scored her first goal in of the season in the first period to pace Penn State. Whitlinger improved to 2-1-0 between the pipes.

With the game tied at one with 5:30 left in the third period, **Amy Petersen** sent the puck down low to Bowman. She slid a pass in front of net that got past **Sara Nielsen**. The puck bounced off the boards to **Jeanette Bateman** who rifled a shot off the pad of Lundberg where Bowman was able to clean up the game-winner. The assist for Petersen was her third of the year and Bateman notched her first point of the season.

On Friday, the largest crowd to see a Penn State women's hockey game saw a hard-fought contest that went the way of the Union Dutchwomen, 2-1, in front of 1,424 fans. Union scored on a pair of power plays to earn their first win in four games, while Penn State found the net on a **Shannon Yoxheimer** rocket in the second period assisted by **Taylor Gross** and **Jordin Pardoski**.

RECORD SETTING PERIOD

The Nittany Lions' opening period on Saturday was one of the best played this season. For the second time this season, Penn State took a lead into intermission on **Jill Holdcroft's** goal.

Defensively, the Nittany Lions were nearly perfect, holding the Dutchwomen to a single shot on net, a new low for a PSU opponent, as Penn State held a 12-1 margin.

PICK YOUR POISON

Penn State has had the fortune of multiple contributors on the offensive end. Eight Nittany Lions have tallied at least two points and six have scored a goal this season. **Shannon Yoxheimer** leads the team with five points, while linemates **Taylor Gross** and **Sarah Nielsen** have each registered four. The Minnetonka connection of **Laura Bowman** and **Amy Petersen** have combined for three goals (Bowman) and three assists (Petersen). **Hannah Hoenshell** also has three points, all of which came in a 4-2 in over Vermont.

WHITLINGER STANDS TALL

Celine Whitlinger, a 5-9 Californian goaltender, has been outstanding in net for Penn State. Whitlinger (2-1-0) has already surpassed her win total from a year ago and has stopped 94.1 percent of the shots she's seen. In 13 appearances for Penn State, Whitlinger has a career .939 save percentage and a 3-8-0 record.

YOUTH SUPPLIES THE OFFENSE

The four additions of freshmen **Laura Bowman**, **Amy Petersen**, **Sarah Nielsen** and **Kelly Seward** have injected an instant bump in scoring production with 12 of the team's 29 points. Bowman has tallied two goals, Seward has notched two goals, while Nielsen (4 assists) and Petersen (3) combined for seven assists.

GAMEDAY COMPARISON

TEAM STATS	PSU	UNH
Overall record	2-3-1	3-2-1
Conference record	0-0-0	1-0-1
Goals scored	11	14
Goals scored per game	1.8	2.3
Goals allowed	17	13
Goals allowed per game	2.8	2.1
First period goals	3	3
Second period goals	5	7
Third period goals	3	4
Overtime goals	0	0
Shots	140	189
Shots per game	23.3	31.5
Shot pct.	.079	.074
Assists	18	20
Penalties per game	4.3	4.4
Power plays	2-19	6-28
Power-play pct.	.105	.214
Penalty kills	7-24	5-37
Penalty-kill pct.	.708	.865
Saves	219	161
Shutouts	0	0

LEADERS

Points	Yoxheimer (5)	Gifford (7)
Goals	Two with 3	Gifford (3)
Assists	Nielsen (4)	Gifford (4)
Shots	Yoxheimer (28)	Gifford (25)
Shot Pct.	Seward (.286)	Kashman (.400)
+/-	Nielsen (+4)	Lascelle (+4)
Faceoff Pct.	Nielsen (.529)	n/a
Saves	Whitlinger (112)	Vaattavaara (142)
Save Pct.	Whitlinger (.941)	Vaattavaara (.952)
GAA	Whitlinger (2.33)	Vaattavaara (1.47)
Record	Whitlinger (2-1-0)	Vaattavaara (3-0-1)

2013-14 COLLEGE HOCKEY AMERICA STANDINGS

(as of Oct. 20, 2013)

	Pts.	CHA	GF	GA	Overall	GF	GA	Last 10
Robert Morris	0	0-0-0	0	0	4-2-0	13	11	4-2-0
Mercyhurst (9/8)	0	0-0-0	0	0	3-3-1	18	14	3-3-0
RIT	0	0-0-0	0	0	3-4-0	19	26	3-4-0
PENN STATE	0	0-0-0	0	0	2-3-1	11	17	2-3-1
Syracuse	0	0-0-0	0	0	2-4-0	12	13	2-4-0
Lindenwood	0	0-0-0	0	0	0-7-1	8	34	0-7-1

PAST RESULTS & UPCOMING SCHEDULE

Friday, Oct. 18

Mercyhurst 2, Clarkson* 0
Bemidji State* 5, Lindenwood 0
RIT 2, Colgate* 0

Union 2, PENN STATE* 1

Boston University 5, Robert Morris* 2
Providence* 2, Syracuse 1

Saturday, Oct. 19

Robert Morris* 3, Boston University 0

PENN STATE* 2, Union 1

Clarkson* 1, Mercyhurst 1 (OT)
Bemidji State* 4, Lindenwood 1
Syracuse 4, Providence* 1
Colgate 2, RIT* 1 (OT)

Friday, Oct. 25

Maine at Mercyhurst, 7 p.m.
Vermont at Robert Morris, 7 p.m.
Boston College at Syracuse 7 p.m.
Brown at RIT, 7 p.m.
Lindenwood at Wisconsin, 8:07 p.m.

Saturday, Oct. 26

Union at Syracuse, 2 p.m.
Maine at Mercyhurst, 3 p.m.
Brown at RIT, 3 p.m.
Vermont at Robert Morris, 3 p.m.
Lindenwood at Wisconsin, 3:07 p.m.
New Hampshire at PENN STATE, 7 p.m.

Sunday, Oct. 27

New Hampshire at PENN STATE, 2 p.m.

* home team





NITTANY LION WOMEN'S HOCKEY

To prove the youth of the team, 24 of the team's 29 points (82.8%) were collectively tallied by freshmen and sophomores.

BRIEF HISTORY AGAINST HOCKEY EAST

Penn State has played just one Hockey East team in its short varsity history: Vermont. The Nittany Lions are 2-1-1 against the Catamounts in two season-opening series. This season, the Lions face three Hockey East foes including Maine on Nov. 30 at Pegula Ice Arena.

PENN STATE HAS A #NEWDEN

The Nittany Lions opened its new \$90 million home, Pegula Ice Arena, on Oct. 18 against Union in a 2-1 loss. The next day, PSU would earn a 2-1 victory for the program's first win at Pegula. In all, Penn State will host 17 games in the state-of-the-art arena that seats 5,782. The team's first season at PIA begins with an eight-game home stand over 23 days.

HOENSHHELL, SEWARD EARN CHA AWARDS

Penn State forward **Hannah Hoenshell** and defender **Kelly Seward** were named College Hockey America's Player and Rookie of the Week, respectively, on Monday, Oct. 7.

A crafty forward with incredible stick skills, Hoenshell propelled Penn State to an undefeated weekend at Vermont, supplying three points and a game-high plus-four rating in Saturday's 4-2 win. Hoenshell was involved in three of Penn State's four goals, tallying a goal and two assists. Her goal was her second career game-winning goal.

Seward was fantastic on both sides of the ice this weekend as she tallied two goals, which ties for the team high after two games. Seward posted a plus-two rating and seven blocked shots for the weekend as well. In both games, Seward scored Penn State's first goal. On Friday it was a power-play tally and Saturday it was a game-tying goal in the first period.

BRING 'EM BACK

Penn State brings back 24 of its 27 members from last year's team. In those 24 student-athletes, Penn State returns its top 14 scorers and almost 99 percent of its offense along with

PENN STATE'S RECORD IS...

1-1-0 at home
1-2-1 on the road
0-0-1 in overtime
1-0-1 when scoring first
1-3-0 when opponent scores first
2-0-0 when leading after the 1st period
0-2-0 when trailing after the 1st period
0-1-1 when tied after the 1st period
1-0-0 when leading after the 2nd period
0-2-0 when trailing after the 2nd period
1-1-1 when tied after the 2nd period
1-0-0 when out-shooting opponent
1-3-1 when out-shot by opponent
0-0-0 when taking same # of shots
1-1-0 when winning more faceoffs
1-2-1 when losing more faceoffs
0-0-0 when tied in faceoffs
1-2-1 when taking more penalties
1-1-0 when taking fewer penalties
0-0-0 when taking the same # of penalties
1-0-1 when scoring a power play goal
1-3-0 when not scoring a power play goal
1-3-1 when allowing a power play goal
1-0-0 when not allowing a power play goal
0-1-0 when scoring 0 goals
0-2-0 when scoring 1 goal
1-0-0 when scoring 2 goals
0-0-1 when scoring 3 goals
1-0-0 when scoring 4+ goals
0-0-0 when allowing 0 goals
1-0-0 when allowing 1 goal
1-1-0 when allowing 2 goals
0-0-1 when allowing 3 goals
0-2-0 when allowing 4+ goals
2-3-1 in October
0-0-0 in November
0-0-0 in December
0-0-0 in January
0-0-0 in February
0-0-0 in March
0-0-0 on Tuesday
0-0-0 on Thursday
0-2-1 on Friday
2-1-0 on Saturday
0-0-0 on Sunday
2-1-0 during the day
0-2-1 at night
1-0-1 vs. Hockey East
0-0-0 vs. College Hockey America
1-3-0 vs. ECAC Hockey
0-0-0 vs. WCHA
0-0-0 vs. ranked opponents
2-3-1 vs. unranked opponents
0-2-1 when Shannon Yoxheimer scores
0-2-1 when Nicole Paniccia starts
2-0-1 when a freshman scores
1-0-1 games decided by a goal or less

2013-14 MEDIA INFORMATION

Penn State Athletic Communications

Primary Contact: Jeremy Fallis
 Email: jeremy.fallis@psu.edu
 Office: 814-865-1757

Interviews

Penn State student-athletes and coaches are available for interviews after practice each day. Please contact Jeremy Fallis in advance.

Credentials

Contact Jeremy Fallis for home game credentials at Pegula Ice Arena.

Postgame

Head coach Josh Brandwene and requested student-athletes are available to the media following each game in the studio rink. Please alert Jeremy Fallis during the game of any requests.

Yearbook

A complimentary copy of the 2013-14 Penn State women's hockey yearbook will be made available to members of the media. The public may purchase copies for \$6 online.

GoPSUsports.com

[Facebook.com/PennStateWomensHockey](https://www.facebook.com/PennStateWomensHockey)

[@PennStateWHKY](https://twitter.com/PennStateWHKY)

2013-14 WOMEN'S HOCKEY POLLS

USA Today/USA Hockey (Oct. 22, 2013)

1	Minnesota	6-0-0	1
2	Wisconsin	4-2-0	6
3	Boston College	5-1-0	2
4	Cornell	2-0-0	5
5	Clarkson	5-1-1	3
6	North Dakota	4-1-1	4
7	Harvard	0-0-0	7
8	Quinnipiac	5-0-1	10
9	Mercyhurst	3-3-1	10
10	Ohio State	3-1-1	RV

Others: Minnesota-Duluth, Boston U., New Hampshire

USCHO.com (Oct. 21, 2013)

1	Minnesota	6-0-0	1
2	Wisconsin	4-2-0	4
3	Cornell	2-0-0	5
4	Boston College	5-1-0	2
5	Clarkson	5-1-1	3
6	North Dakota	4-1-1	5
7	Harvard	0-0-0	9
8	Mercyhurst	3-3-1	RV
9	Quinnipiac	5-0-1	10
10	Ohio State	3-1-1	RV

Others: Minnesota-Duluth, Boston U., New Hampshire

Bold indicates 2013-14 opponent





NITTANY LION WOMEN'S HOCKEY

every member of its stout goaltending corps.

YOXHEIMER MAKES HER MARK

Leading the team in scoring last season was **Shannon Yoxheimer**, a left-handed forward. Yoxheimer buried 14 goals with 17 assists for a grand total of 31 points, all team highs. She led College Hockey America in shots (169) and put away three power play goals as well as a team-high three game-winning goals. Yoxheimer's numbers ranked her in the top 10 nationally in goals, points and assists for rookies. The CHA coaches named Yoxheimer to the All-Rookie team.

THE PANICCIA WALL

Senior goaltender **Nicole Paniccia** excelled between the pipes for the Blue and White last year, stopping 1,028 shots with a 92.8 save percentage. Paniccia's save tally was second in all of NCAA Division I, topped only by fellow CHA upstart Lindenwood's Nicole Hensley. Paniccia was in net for six of PSU's seven victories last year as well as both of Penn State's ties.

POWER-PLAY HOLDCROFT

Sophomore forward **Jill Holdcroft** was lethal on the power play last season, scoring six of her 10 goals last year on the advantage. Despite missing the CHA playoffs at RIT, Holdcroft still ranked second on the team in scoring (10 goals) and added two assists for good measure.

IN THE THICK OF THINGS

Penn State's record of 7-26-2 last season is a little deceiving when considering how close the Nittany Lions were in many of their losses. In fact, 12 of the 26 losses were decided by two goals or less. This year, the Nittany Lions look to change their fortunes in spite of a 1-6-2 record games decided by less than a goal.

CAPTAINS' CORNER

Senior forward **Taylor Gross** once again leads Penn State as its first captain following her first year with the letter in 2012-13. Gross was second on the team in points (22) and assists (15) last season with 34 appearances. The University of Connecticut transfer appeared in 48 games for the Huskies before joining Penn State's club side in January 2012. Senior forward **Jenna Welch** and **Lindsay Reihl**, a graduate student defender, reprise their roles as assistant captains this year. Joining the veteran trio is **Jordin Pardoski**, a vocal sophomore defender who is a first-year assistant captain.

NEW NITTANY LIONS

Four freshmen join the Nittany Lions for the 2013-14 campaign. Minnesota forwards **Laura Bowman**, **Amy Petersen** and **Sarah Nielsen** provide an instant dose of goal scoring from their high school success. Defender **Kelly Seward** of New York is the tallest Nittany Lion blueliner.

FIRST HEAD COACH

A 1991 graduate of Penn State, head coach **Josh Brandwene** is the first to lead the Nittany Lions. Brandwene compiled a 7-26-2 record last season with 17 freshmen on the team. A four-year hockey player at PSU, Brandwene brings 20 years of coaching experience to Happy Valley.

CONTINUING PENN STATE HOCKEY

Seven members of the current varsity team played for the women's club team at some point. Graduate student **Lindsay Reihl** along with juniors **Cara Mendelson**, **Katie Murphy**, **Madison Smiddy** and **Tess Weaver** played all of the 2011-12 season for head coach **Josh Brandwene** in Penn State's last year at the club level. **Taylor Gross** and **Jess Desorcie** joined the five aforementioned players midway through the season in preparation of the 2012-13 season.

NEXT TIME OUT

Penn State continues its eight-game home stand when it hosts Robert Morris next week for the first conference games at Pegula Ice Arena. The series begins on Thursday, Oct. 31 at 7 p.m. and concludes Friday, Nov. 1 at 4 p.m. Penn State is in search of its first point against the Colonials.

2012-13 HONORS & AWARDS

Hannah Hoenshell

CHA Player of the Week (10/7)

Kelly Seward

CHA Rookie of the Week (10/7)

OVER THE AIR

Both games this weekend against New Hampshire will be featured on AmericaOneSports.com.

The CHA on AmericaOneSports.com

Penn State home & away games during CHA play will be streamed live on AmericaOneSports.com. Subscribers can purchase a 1-day package for \$8, 30-day packages for \$30 or a season pass for \$125.



NITTANY LION WOMEN'S HOCKEY



NCAA TEAM RANKS

(As of Oct. 22, 2013)

Goals Per Game	T-23rd
Goals Against Per Game	T-18th
Scoring Margin	T-21st
Most Penalty Minutes Per Game	T-25th
Power-Play Percentage	20th
Penalty-Kill Percentage	29th
Combined Special Teams	25th
Winning Percentage	T-19th

NCAA INDIVIDUAL RANKS

(Top 100 as of Oct. 22, 2013)

Laura Bowman

Goals per game	T-30th
Power play goals	T-26th
Game-winning goals	T-9th
Points per game (Rookies)	T-24th

Taylor Gross

Points per game	T-90th
Assists per game	T-65th

Hannah Hoenshell

Game-winning goals	T-90th
--------------------	--------

Sarah Nielsen

Points per game	T-90th
Assists per game	T-43rd
Points per game (Rookies)	T-18th

Nicole Paniccia

Goals-against average	26th
Save percentage	T-21st

Amy Petersen

Assists per game	T-65th
Points per game (Rookies)	T-24th

Kelly Seward

Goals per game	T-65th
Power-play goals	T-26th
Points per game (Defense)	T-29th
Points per game (Rookies)	T-38th

Celine Whitlinger

Goals-against average	16th
Save percentage	9th
Winning percentage	11th

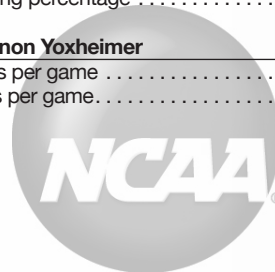
Shannon Yoxheimer

Points per game	T-65th
Goals per game	T-30th

CHA TEAM RANKS

Goals	n/a
Assists	n/a
Goals Per Game	n/a
Goals Against	n/a
Goals-Against Average	n/a
Saves	n/a
Save Percentage	n/a
Shots on Goal	n/a
Least Penalty Minutes	n/a
Power-Play Goals	n/a
Power-Play Percentage	n/a
Power-Play Goals Against	n/a
Penalty-Kill Percentage	n/a

CHA INDIVIDUAL RANKS





NITTANY LION WOMEN'S HOCKEY

PREVIOUS RECAPS

PENN STATE TRIPPED UP BY QUINNIPIAC

The Nittany Lions' first trip to Hamden, Conn., home of the 2014 Women's Frozen Four, ended in a pair of defeats to Quinnipiac on Oct. 11-12. The Bobcats pulled away from PSU late for a 5-1 win on Friday and shutout the Nittany Lions 4-0 the next day. **Nicole Paniccia** made 48 saves in the opener, which saw PSU down one midway through the second period following **Shannon Yoxheimer's** second goal of the season. Goaltender **Celine Whitlinger** did everything possible in Saturday's game, but her 55 saves weren't enough.

LIONS POST UNDEFEATED WEEKEND

The Nittany Lions opened their second season in impressive fashion with a 1-0-1 weekend at Vermont. **Shannon Yoxheimer** notched three points and the Nittany Lions played to a 3-3 tie with Vermont at Gutterson Fieldhouse on Friday night (Oct. 4). Twice Penn State trailed and each time PSU responded with a tying goal. Freshman **Kelly Seward** scored the game's opening goal and **Taylor Gross** tied things up at two in the third period. Senior goaltender **Nicole Paniccia** was spectacular in net making 35 saves to keep the dangerous Catamounts in check.

Penn State scored three of the game's final four goals to defeat Vermont, 4-2, on Saturday afternoon (Oct. 5) at Gutterson Fieldhouse. **Hannah Hoenshell** tallied a game-high three points on a goal and two excellent assists, while freshman **Laura Bowman** scored her first two collegiate goals. Hoenshell was a game-high plus-four, while Bowman and fellow linemate **Amy Petersen** carded plus-three ratings. Sophomore goaltender **Celine Whitlinger** saved 37 Catamount shots as Penn State went 1-0-1 in its season-opening series. The Nittany Lions improved to 2-1-1 all-time against Vermont.

THE LAST TIME

PENN STATE...

Scored 0 goals
Scored 3 goals
Scored 4 goals
Scored 5 goals
Scored 6 goals
Scored 7 goals
Scored 8 goals
Scored 9 goals
Scored 10 goals
Allowed 0 goals
Allowed 1 goal
Allowed 2 goals
Allowed 3 goals
Allowed 4 goals
Allowed 5 goals
Allowed 6+ goals
Won in overtime
Lost in overtime
Tied in overtime
Played a ranked team
Attempted 10-19 shots
Attempted 20-29 shots
Attempted 30-39 shots
Attempted 40-49 shots
Attempted 50-59 shots
Attempted 60-69 shots
Attempted 70+ shots
Allowed 10-19 shots
Allowed 20-29 shots
Allowed 30-39 shots
Allowed 40-49 shots
Allowed 50-59 shots
Allowed 60-69 shots
Allowed 70+ shots
Tallied 5-9 assists
Tallied 10-15 assists
Tallied 15+ assists
Scored 10-19 points
Scored 20+ points
Scored 2 power-play goals
Scored 3 power-play goals
Allowed 0 power-play goals
Allowed 2 power-play goals
Had 5 different goal scorers
Had 6 different goal scorers
Had 7 different goal scorers
Had 8 different goal scorers

10/12/13 at Quinnipiac (0-4)
10/4/13 at Vermont (3-3)
10/5/13 at Vermont (4-2)
10/6/12 at Vermont (5-3)
11/2/12 vs. Sacred Heart (6-0)
Never
11/3/12 vs. Sacred Heart (8-2)
Never
1/4/13 vs. Chatham (10-0)
1/5/13 vs. Chatham (4-0)
10/19/13 vs. Union (2-1)
10/18/13 vs. Union (1-2)
10/4/13 at Vermont (3-3)
10/12/13 at Quinnipiac (0-4)
10/11/13 at Quinnipiac (1-5)
12/1/12 at #4 Mercyhurst (1-7)
Never
3/2/13 at RIT (2-3)
10/4/13 at Vermont (3-3)
2/2/13 vs. #7 Mercyhurst (1-4)
10/12/13 14 at Quinnipiac (0-4)
10/19/13 24 vs. Union (2-1)
10/19/13 34 vs. Union (2-1)
1/4/13 48 vs. Chatham (10-0)
Never
11/3/12 64 vs. Sacred Heart (8-2)
1/5/13 71 vs. Chatham (4-0)
1/5/13 16 vs. Chatham (4-0)
10/19/13 21 vs. Union (2-1)
10/5/13 39 at Vermont (4-2)
2/16/13 45 at RIT (0-4)
10/12/13 59 at Quinnipiac (0-4)
2/22/13 63 at Robert Morris (1-4)
12/1/12 71 at #4 Mercyhurst (1-7)
10/5/13 6 at Vermont (4-2)
11/3/12 12 vs. Sacred Heart (8-2)
1/4/13 17 vs. Chatham (10-0)
10/5/13 10 at Vermont (4-2)
1/4/13 27 vs. Chatham (10-0)
11/17/12 at Lindenwood (3-2)
10/20/12 at Sacred Heart (6-1)
10/5/13 at Vermont (4-2)
10/18/13 vs. Union (1-2)
Never
10/20/12 at Sacred Heart (6-1)
1/4/13 vs. Chatham (10-0)
11/3/12 vs. Sacred Heart (8-2)

A PENN STATE PLAYER...

Scored 2 goals
Scored 3 goals
Scored 4 goals
Had 3 assists
Had 5 points
Had 10+ shots
Saved 40-49 shots
Saved 50-59 shots
Saved 60+ shots
Had a shutout
Scored an empty-net goal
Scored a short-handed goal

10/5/13 L. Bowman at Vermont (4-2)
11/2/12 H. Hoenshell vs. Sacred Heart (6-0)
Never
1/4/13 J. Bateman vs. Chatham (10-0)
Never
1/5/13 12, T. Weaver vs. Chatham (4-0)
10/11/13 48, N. Paniccia at Quinnipiac (1-5)
10/12/13 55, C. Whitlinger at Quinnipiac (0-4)
12/1/12 64, N. Paniccia at #4 Mercyhurst (1-7)
1/5/13 C. Whitlinger/B. Meyer vs. Chatham (4-0)
10/6/12 B. Shaw at Vermont (5-3)
Never



NITTANY LION WOMEN'S HOCKEY



2013-14 PENN STATE WOMEN'S HOCKEY NUMERICAL ROSTER

No.	Name	Yr.	Pos.	Ht.	S/C	Hometown	Last Team
2	Jeanette Bateman	So.	D	5-6	R	Greeley, Colo.	Colorado Select
3	Cara Mendelson	Jr.	F	5-6	R	Pittsburgh, Pa.	Steel City Selects
4	Jordin Pardoski	So.	D	5-5	R	Rochester Hills, Mich.	Detroit Honeybaked
5	Stephanie Walkom	So.	D	5-7	R	Moon Township, Pa.	Pittsburgh Penguins Elite
6	Lindsay Reihl	Gr.	D	5-4	R	Cheshire, Conn.	Connecticut Polar Bears
9	Amy Petersen	Fr.	F	5-4	R	Minnetonka, Minn.	Minnetonka HS
10	Micayla Catanzariti	So.	F	5-4	R	Rancho Santa Margarita, Calif.	Gilmour Academy (Ohio)
12	Sarah Nielsen	Fr.	F	5-6	L	Edina, Minn.	Edina HS
13	Kendra Rasmussen	So.	F	5-5	L	Sartell, Minn.	Sartell/Sauk Rapids HS
14	Darby Kern	So.	F	5-11	R	Venetia, Pa.	Pittsburgh Penguins Elite
15	Jess Desorcie	Jr.	F	5-4	L	Westford, Vt.	Connecticut College
16	Hannah Hoenshell	So.	F	5-3	R	Plano, Texas	Texas Alliance
17	Paige Jahnke	So.	D	5-6	R	Oakdale, Minn.	Roseville HS / Minnesota Jr. Whitecaps
18	Laura Bowman	Fr.	F	5-7	R	Minnetonka, Minn.	Minnetonka HS
19	Jill Holdcroft	So.	F	5-1	R	Pennsylvania Furnace, Pa.	Pittsburgh Penguins Elite
20	Emily Laurenzi	So.	F	5-2	R	Townsend, Del.	National Sports Academy (N.Y.)
21	Sarah Wilkie	So.	D	5-6	R	Ashby, Mass.	Williston Northampton School
22	Jenna Welch	Sr.	F	5-8	R	Austin, Texas	Connecticut
23	Birdie Shaw	So.	F	5-2	L	Troy, Mich.	Detroit Honeybaked
24	Taylor Gross	Sr.	F	5-1	R	Colorado Springs, Colo.	Connecticut
25	Katie Murphy	Jr.	F	5-4	L	Novi, Mich.	Detroit Honeybaked
27	Kelly Seward	Fr.	D	5-9	L	Williamsville, N.Y.	Nichols School / Buffalo Bisons
30	Celine Whitlinger	So.	G	5-8	L	Garden Grove, Calif.	Gilmour Academy (Ohio)
31	Brooke Meyer	So.	G	5-7	L	Naperville, Ill.	Chicago Huskies
33	Madison Smiddy	Jr.	D	5-7	L	Grand Rapids, Mich.	Detroit Honeybaked
36	Tess Weaver	Jr.	F	5-5	R	Windber, Pa.	Pittsburgh Penguins Elite
37	Nicole Paniccia	Sr.	G	5-5	L	Oakville, Ont.	Connecticut
40	Shannon Yoxheimer	So.	F	5-7	L	Jackson, Mich.	North American Hockey Academy (Vt.)

Head Coach: Josh Brandwene (Second Year)

Assistant Coaches: Gina Kearns (Second Year), Casey McCullion (Second Year); **Director of Operations** Alex Dawes (First Year)

Captain: Taylor Gross; **Assistant Captains:** Jordin Pardoski, Lindsay Reihl, Jenna Welch

ALPHABETICAL ROSTER		PRONUNCIATION GUIDE		LIONS BY STATE		LIONS BY POSITION	
No.	Name	Brandwene	BRAND-ween	California (2):	Catanzariti, Whitlinger	Forward (17):	Bowman, Catanzariti, Desorcie, Gross, Hoenshell, Holdcroft, Kern, Laurenzi, Mendelson, Murphy, Nielsen, Petersen, Rasmussen, Shaw, Weaver, Welch, Yoxheimer
2	Jeanette Bateman	Catanzariti	Cah-TAN-zah-REE-tee	Colorado (2):	Bateman, Gross	Defense (8):	Bateman, Jahnke, Pardoski, Reihl, Seward, Smiddy, Walkom, Wilkie
18	Laura Bowman	Desorcie	Deh-SORE-see	Connecticut (1):	Reihl	Goalie (3):	Meyer, Paniccia, Whitlinger
10	Micayla Catanzariti	Jahnke	YAWN-kee	Delaware (1):	Laurenzi		
15	Jess Desorcie	Jeanette	Jeh-NETT	Illinois (1):	Meyer		
24	Taylor Gross	Kearns	KERNs	Massachusetts (1):	Wilkie		
16	Hannah Hoenshell	McCullion	Mick-CULL-yon	Michigan (5):	Murphy, Pardoski, Shaw, Smiddy, Yoxheimer		
19	Jill Holdcroft	Paniccia	Pah-NEE-cha	Minnesota (5):	Bowman, Jahnke, Nielsen, Petersen, Rasmussen		
17	Paige Jahnke	Reihl	RILE	New York (1):	Seward		
14	Darby Kern			Pennsylvania (5):	Holdcroft, Kern, Mendelson, Walkom, Weaver		
20	Emily Laurenzi			Texas (2):	Hoenshell, Welch		
3	Cara Mendelson			Vermont (1):	Desorcie		
31	Brooke Meyer						
25	Katie Murphy						
12	Sarah Nielsen						
37	Nicole Paniccia						
4	Jordin Pardoski						
9	Amy Petersen						
13	Kendra Rasmussen						
6	Lindsay Reihl						
27	Kelly Seward						
23	Birdie Shaw						
33	Madison Smiddy						
5	Stephanie Walkom						
36	Tess Weaver						
22	Jenna Welch						
30	Celine Whitlinger						
21	Sarah Wilkie						
40	Shannon Yoxheimer						





NITTANY LION WOMEN'S HOCKEY

OCT. 6, 2013: PENN STATE 3, VERMONT 3 (OT)

Penn State (0-0-1, 0-0-0 CHA) vs. Vermont (0-0-1, 0-0-0 WHEA)
Date: Oct 04, 2013 • Location: Burlington, Vt. • Arena: Gutterson Fieldhouse
Attendance: 435 • Start time: 7:00 pm • End time: 9:15 pm • Total time: 2:15

Prd	Time	Team	Scored by	Assists	Vis. on ice	Home on ice	Goals by Period
1	2nd 13:32	PSU	PP Seward, Kelly/1	Pardoski, Jordin/1 Yoxheimer, Shannon	27,44,16,24 11,16,21,26		Team 1 2 3 OT Tot PSU 0 1 2 0 3 UMV 0 1 2 0 3
2	2nd 19:25	UMV	EV Andrekos, Victoria/1	Zuback, Brittany/1 Salerno, Ashley/1	2,6,9,12,24 44,19,11,21,26		Shots by Period Team 1 2 3 OT Tot PSU 6 5 8 2 21 UMV 12 11 11 4 38
3	3rd 02:39	UMV	EV Pelkey, Amanda/1	Repaci, Gina/1 Andrekos, Victoria/ Yoxheimer, Shann/2	2,16,17,18,19 24,40,12,4,21	21,19,44,11,13 5,13,16,22,25	Power Play Goals-Att (Sh) Prd PSU UVM 2nd 1-2 (2) 0-5 (8) 3rd 0-3 (2) 1-1 (2) OT 0-0 (0) 0-0 (0) Total 1-6 (6) 1-8 (15)
4	3rd 04:50	PSU	EV Gross, Taylor/1	Pelkey, Amanda/1 Andrekos, Victoria/ Nielsen, Sarah/2	4,19,20,21 40,12,4,6,27	19,21,44,11,13	Penalties-Minutes by Prd Prd Prd PSU UVM TST 2-4 1-2 2nd 5-10 2-4 3rd 1-2 3-6 OT 0-0 0-0 Total 8-16 6-12
5	3rd 15:56	UMV	PP Zuback, Brittany/1	Andrekos, Victoria/ Nielsen, Sarah/2	4,19,20,21 40,12,4,6,27	15,19,44,11,13	Three stars: 1. Pelkey, Amanda 2. Yoxheimer, Shannon 3. Zuback, Brittany
6	3rd 16:23	PSU	EV Yoxheimer, Shannon/1	Gross, Taylor/1			Officials: Referee: Katie Guay Referee: Wayne Silva Linesman: Larry Legault Linesman: Jeremy Letourneau

TEAM SUMMARY

#	Penn State	G	A	PI	Sh +/-	BI	#	Vermont	G	A	PI	Sh +/-	BI			
2	Bateman, Jeanet	0	0	0	0	-2	4	Vogl, Greer	0	0	0	1	0	0		
4	Pardoski, Jordin	0	1	2	3	+1	5	Leveillee, Casey	0	0	0	0	2	-1	0	
6	Reihl, Lindsay	0	0	2	0	0	7	Ade, Rachael	0	0	0	1	0	1	0	
9	Petersen, Amy	0	0	0	0	-1	9	Rancourt, Daniel	0	0	0	2	0	1	0	
10	Catanzari, Mica	0	0	2	0	0	11	Salerno, Ashley	0	1	0	4	+1	0	0	
12	Nielsen, Sarah	0	2	2	2	+1	13	Repaci, Gina	0	1	0	4	-1	1	0	
15	Desorcie, Jess	0	0	0	1	0	15	Dineen, Kellie	0	0	0	0	-1	0	0	
16	Hoenshell, Hann	0	0	0	1	-1	16	Baker, Bridget	0	0	4	2	-1	0	0	
17	Jahnke, Paige	0	0	2	0	-1	17	McNally, Della	0	0	0	3	0	1	0	
18	Bowman, Laura	0	0	2	2	-1	18	Campeau, Cassi	0	0	0	0	0	0	0	
19	Holdcroft, Jill	0	0	0	1	-1	19	Zuback, Brittany	1	1	2	4	+1	2	0	
20	Laurenzi, Emily	0	0	0	0	0	21	Pelkey, Amanda	1	1	0	7	+2	0	0	
23	Wilkie, Sarah	0	0	0	0	0	22	Kelly, Sarah	0	0	4	1	-1	0	0	
22	Welch, Jenna	0	0	0	0	0	25	Dalbec, Megan	0	0	0	0	-1	0	0	
23	Shaw, Birdie	0	0	0	1	0	26	Campbell, Sarah	0	0	4	+1	2	0	0	
24	Gross, Taylor	1	1	0	4	+1	44	Andrekos, Victo	1	2	0	3	+1	0	0	
27	Seward, Kelly	1	0	2	2	+1	T	TEAM	0	0	2	0	0	0	0	
40	Yoxheimer, Shan	1	2	0	4	+2	30	Litchfield, Madis	dnp							
T	TEAM	0	0	2	0	0	T	TOTALS	3	6	12	38	0	7		
31	Meyer, Brooke	dnp														
TOTALS		3	6	16	21	0	18									

GOALTENDERS

#	Penn State	Dec	Min	GA	1	2	3	OT	Saves	#	Vermont	Dec	Min	GA	1	2	3	OT	Saves
37	Paniccia, Nicole	L	65:00	3	12	10	9	4	35	34	Douville, Roxanne	T	64:28	3	6	4	6	2	18

PENALTY SUMMARY

Prd	Player	Team	Min/Offense	Time	Prd	Player	Team	Min/Offense	Time
1st	TEAM	PSU	2:Too Many Players On 03:51 PP		2nd	Kelly, Sarah	UMV	2:Hooking 13:23 PP	
1st	Baker, Bridget	UMV	2:Interference 05:05 PP		2nd	Pardoski, Jordin	PSU	2:Checking 15:43 PP	
1st	Bowman, Laura	PSU	2:Interference 12:39 PP		2nd	Seward, Kelly	PSU	2:Checking 17:09 PP	
1st	Reihl, Lindsay	PSU	2:Tripping 01:49 PP		3rd	TEAM	UMV	2:Too Many Players On 06:46 PP	
2nd	Kelly, Sarah	UMV	2:Diving 04:45 PP		3rd	Baker, Bridget	UMV	2:Interference 13:23 PP	
2nd	Nielsen, Sarah	PSU	2:Elbowing 07:56 PP		3rd	Jahnke, Paige	PSU	2:Interference 14:51 PP	
2nd	Catanzari, Micyla	PSU	2:Tripping 10:42 PP		3rd	Zuback, Brittany	UMV	2:Interference 16:53 PP	

Penn State-Paniccia, Nicole (0-0-1). Vermont-Douville, Roxanne (0-0-1).

OCT. 7, 2013: PENN STATE 4, VERMONT 2

Penn State (1-0-1, 0-0-0 CHA) vs. Vermont (0-1-1, 0-0-0 WHEA)
Date: Oct 05, 2013 • Location: Burlington, Vt. • Arena: Gutterson Fieldhouse
Attendance: 760 • Start time: 2:30 pm • End time: 4:25 pm • Total time: 1:55

Prd	Time	Team	Scored by	Assists	Vis. on ice	Home on ice	Goals by Period
1	1st 06:51	UMV	EV Repaci, Gina/1	McNally, Della/1 Baker, Bridget/1	6,10,22,23,27 13,17,16,9,11		Team 1 2 3 OT Tot PSU 2 2 0 4 UMV 1 1 0 2
2	1st 11:49	PSU	EV Seward, Kelly/2	Petersen, Amy/1 Hoenshell, Hannah/1	27,9,6,16,18 9,11,13,15,17		Shots by Period Team 1 2 3 OT Tot PSU 11 6 5 22 UMV 13 10 16 39
3	1st 12:01	PSU	EV Bowman, Laura/1	Reihl, Lindsay/1 Zuback, Brittany/2	18,16,6,9,27 5,6,7,15,18		Power Play Goals-Att (Sh) Prd PSU UVM 1st 0-1 (1) 0-1 (5) 2nd 0-1 (0) 0-1 (5) 3rd 0-3 (2) 0-2 (10) Total 0-3 (2) 0-2 (10)
4	2nd 03:48	UMV	EV Colang, Dayna/1	Zuback, Brittany/2 Pelkey, Amanda/2	2,17,40,24 6,19,21,7		Penalties-Minutes by Prd Prd Prd PSU UVM TST 1-2 1-2 2nd 1-2 2-4 3rd 1-2 1-2 Total 3-6 4-8
5	2nd 03:54	PSU	EV Hoenshell, Hannah/1	Nielsen, Sarah/3 Hoenshell, Hannah/2	16,12,2,17 18,16,9,17,21	6,7,19,21 5,13,15,22,26	Three stars: 1. Bowman, Laura 2. Repaci, Gina 3. Whittlinger, Celine
6	2nd 17:22	PSU	EV Bowman, Laura/2	Hoenshell, Hannah/2 Petersen, Amy/2	18,16,9,17,21 5,13,15,22,26		Officials: Referee: Katie Guay Referee: Wayne Silva Linesman: Larry Legault Linesman: Tom Nichols

TEAM SUMMARY

#	Penn State	G	A	PI	Sh +/-	BI	#	Vermont	G	A	PI	Sh +/-	BI			
2	Bateman, Jeanet	0	0	0	0	0	4	Vogl, Greer	0	0	0	0	0	0		
4	Pardoski, Jordin	0	0	0	0	0	5	Leveillee, Casey	0	0	0	0	-2	0		
6	Reihl, Lindsay	0	1	2	0	+1	6	Colang, Dayna	1	0	0	2	-1	2		
9	Petersen, Amy	0	2	0	2	+3	7	Ade, Rachael	0	0	0	2	-1	1		
10	Catanzari, Mica	0	0	0	0	-1	9	Rancourt, Daniel	0	0	0	4	0	1		
12	Nielsen, Sarah	0	1	0	2	+1	11	Salerno, Ashley	0	0	0	1	0	0		
15	Desorcie, Jess	0	0	0	1	0	13	Repaci, Gina	1	0	2	7	-1	2		
16	Hoenshell, Hann	1	2	2	1	+4	15	Dineen, Kellie	0	0	2	0	-3	1		
17	Jahnke, Paige	0	0	0	1	+1	16	Baker, Bridget	0	1	0	0	+1	0		
18	Bowman, Laura	2	0	4	3	+0	17	McNally, Della	0	0	0	0	-1	0		
19	Holdcroft, Jill	0	0	0	1	0	18	Campeau, Cassi	0	0	0	0	-1	0		
20	Laurenzi, Emily	0	0	0	1	0	19	Zuback, Brittany	0	1	0	6	0	0		
21	Wilkie, Sarah	0	0	0	1	+1	21	Pelkey, Amanda	0	1	0	7	0	0		
22	Welch, Jenna	0	0	2	0	-1	22	Kelly, Sarah	0	0	2	1	-1	0		
23	Shaw, Birdie	0	0	0	0	-1	25	Dalbec, Megan	0	0	0	0	0	0		
24	Gross, Taylor	0	0	0	3	-1	26	Campbell, Sarah	0	0	0	5	-1	1		
27	Seward, Kelly	1	0	0	1	+3	44	Andrekos, Victo	0	0	2	1	0	0		
40	Yoxheimer, Shan	0	0	0	4	-1	30	Litchfield, Madis	dnp							
31	Meyer, Brooke	dnp					T	TEAM	0	0	2	0	0	0	0	
37	Paniccia, Nicole	dnp					T	TOTALS	4	6	22	41	17			
TOTALS		4	6	22	41	17										

GOALTENDERS

#	Penn State	Dec	Min	GA	1	2	3	Saves	#	Vermont	Dec	Min	GA	1	2	3	Saves
30	Whittlinger, Celine	W	60:00	2	12	9	16	37	34	Douville, Roxanne	L	58:03	4	9	4	5	18

PENALTY SUMMARY

Prd	Player	Team	Min/Offense	Time	Prd	Player	Team	Min/Offense	Time
1st	Reihl, Lindsay	PSU	2:Tripping 12:28 PP		2nd	Andrekos, Victoria	UMV	2:Checking 07:16 PP	
1st	Dineen, Kellie	UMV	2:Checking 16:16 PP		3rd	Hoenshell, Hannah	PSU	2:Tripping 13:17 PP	
2nd	Welch, Jenna	PSU	2:Hooking 03:24		3rd	Repaci, Gina	UMV	2:Delay Of Game 16:49 PP	
2nd	Kelly, Sarah	UMV	2:Elbowing 03:24						

Win-Whittlinger, Celine (1-0-0). Loss-Douville, Roxanne (0-1-1).

OCT. 11, 2013: QUINNIPIAC 5, PENN STATE 1

Penn State (1-1-1, 0-0-0 CHA) vs. Quinnipiac (2-0-1, 0-0-0 ECAC)
Date: Oct 11, 2013 • Location: Hamden, Conn. • Arena: High Point Solutions
Attendance: 505 • Start time: 7:00 pm • End time: 8:47 pm • Total time: 1:47

Prd	Time	Team	Scored by	Assists	Vis. on ice	Home on ice	Goals by Period
1	1st 15:29	QU	PP BABSTOCK, Kelly/1	BROWN, Nicole/1 WOODS, Emma/1	22,12,2,17 8,18,17,22,10		Team 1 2 3 OT Tot PSU 0 1 0 1 0 QU 1 2 2 5
2	2nd 04:12	QU	PP DARKANGELO, Shiann	TURNER, Meghan/1 FRITZ-WARD, Morga	4,18,21,20 40,12,4,6,27	22,6,11,17,15	Shots by Period Team 1 2 3 OT Tot PSU 7 9 9 25 QU 21 17 15 53
3	2nd 08:43	PSU	EV Yoxheimer, Shannon/2	Nielsen, Sarah/4 Gross, Taylor/2	40,12,4,6,27 2,19,4,15,20	8,21,10,27,24	Power Play Goals-Att (Sh) Prd PSU UVM 2nd 1-2 (2) 0-5 (8) 3rd 0-3 (2) 1-1 (2) OT 0-0 (0) 0-0 (0) Total 1-6 (6) 1-8 (15)
4	2nd 18:45	QU	EV FRITZ-WARD, Morgan	ROESLER, Cydney/1 BORGFELDT, Anna/1	21,19,4,15,20 15,20,24,17,2	11,21,6,28,10 20,22,6,16,15	Penalties-Minutes by Prd Prd Prd PSU UVM TST 2-4 1-2 2nd 5-10 2-4 3rd 1-2 3-6 OT 0-0 0-0 Total 8-16 6-12
5	3rd 15:14	QU	EV DARKANGELO, Shiann	WOODS, Emma/1 GREGO, Emma/1	15,20,24,17,2 20,22,6,16,15	6,0,0,1	Three stars: 1. Pelkey, Amanda 2. Yoxheimer, Shannon 3. Zuback, Brittany
6	3rd 16:48	QU	EV TURNER, Meghan/1	ROESLER, Cydney/2 WOODS, Emma/2	23,36,27,6,22	6,11,21,28,15	Officials: Referee: Katie Guay Referee: Wayne Silva Linesman: Larry Legault Linesman: Jeremy Letourneau

TEAM SUMMARY

#	Penn State	G	A	PI	Sh +/-	BI	#	Quinnipiac	G	A	PI	Sh +/-	BI		
2	Bateman, Jeanet	0	0	0	0	-1	4	WIGNALL, Shelb	0	0	0	1	0	1	
4	Pardoski, Jordin	0	0	0	0	-1	6	TURNER, Megha	1	1	0	4	+3	0	
6	Reihl, Lindsay	0	0	0	0	0	8	BABSTOCK, Kell	1	0	2	9	-1	0	
9	Petersen, Amy	0	0	0	0	0	10	BAUMGARDT, Ta	0	0	0	2	0	1	
12	Nielsen, Sarah	0	0	0	0	+1	11	FRITZ-WARD, M	1	1	0	4	+2	0	
15	Desorcie, Jess	0	0	0	1	-2	12	MARMER, Daniel	0	0	0	0	0	0	
16	Hoenshell, Hann	0	0	2	1	0	15	TAMBERG, Kriste	0	0	0	2	+2	0	
17	Jahnke, Paige	0	0	2	1	-1	16	WEST, Lindsey	0	0	0	1	+1	0	
18	Bowman, Laura	0	0	0	1	0	17	BROWN, Nicole	0	0	0	1	0	0	
19	Holdcroft, Jill	0	0	0	0	-1	18	WOODS, Emma	0	1	0	1	0	0	
20	Laurenzi, Emily	0	0	0	1	-2	1	20	BORGFELDT, An	0	1	0	2	+1	0
21	Wilkie, Sarah	0	0	2	1	-5	21	ROESLER, Cydne	2	2	0	2	+1	1	
22	Welch, Jenna	0	0	0	3	-1	22	DARKANGELO, S	2	0	0	4	+1	0	
23	Shaw, Birdie	0	0	0	0	-1	24	CONNERY, Nicol	0	0	0	7	-1	0	



NITTANY LION WOMEN'S HOCKEY

OCT. 18, 2013: UNION 5, PENN STATE 1

Union (3-3-0) vs. Penn State (1-3-1)
 Date: Oct 18, 2013 • Location: University Park, Pa. • Arena: Pegula Ice Arena
 Attendance: 1424 • Start time: 7:00 pm • End time: 8:52 pm • Total time: 1:52

Prd	Time	Team	Scored by	Assists	Vis. on ice	Home on ice
1	1st 14:48	UNIO	PP Turner, Courtney/3	Norton, Maddy/3	13,3,20,21,27	20,19,17,2
2	2nd 03:57	PSU	EV Yoxheimer, Shannon/3	Panchuk, Bryanne/3	Gross, Taylor/3	9,13,11,24,22
3	3rd 04:17	UNIO	PP Thomson, Stefanie/1	Pardoski, Jordin/1	Johnston, Ashley/2	26,10,8,7,15
				Valente, Christine/1		9,18,21,4

Goals by Period			
Prd	UNION	PSU	Tot
1	1	0	1
2	0	1	1
3	4	0	4
Tot	5	1	6

Shots by Period			
Prd	UNION	PSU	Tot
1	8	7	15
2	11	6	17
3	24	26	50
Tot	43	39	82

TEAM SUMMARY

#	Union	G	A	PI	Sh +/-	BI	#	Penn State	G	A	PI	Sh +/-	BI	
3	Turner, Courtney	1	0	0	3	0	2	Bateman, Jeanet	0	0	0	2	0	
7	Kaminsky, Jessic	0	0	0	0	3	4	Pardoski, Jordin	0	1	0	1	+1	
8	Tancrill-Fontain	0	0	2	3	0	1	6	Reihl, Lindsay	0	0	0	0	1
9	Devins, Allie	0	0	0	0	-1	0	9	Petersen, Amy	0	0	0	1	0
10	Johnston, Ashley	0	1	2	0	0	0	12	Nielsen, Sarah	0	0	0	0	+1
11	McGrath, Kelly	0	0	0	1	-1	2	15	Desorcie, Jess	0	0	0	0	1
13	Norton, Maddy	0	1	0	3	-1	3	16	Hoenshell, Hann	0	0	0	4	0
14	Welch, Haley	0	0	0	2	0	2	17	Jahnke, Paige	0	0	2	0	0
15	Valente, Christin	0	1	0	1	0	2	18	Bowman, Laura	0	0	2	2	0
17	Smith, Jamie	0	0	2	0	0	0	19	Holdcroft, Jill	0	0	0	1	0
18	Purvis, Mac	0	0	0	0	0	0	20	Laurenzi, Emily	0	0	0	2	0
19	Babiak, Rebecca	0	0	0	1	0	1	21	Wikie, Sarah	0	0	0	1	+1
20	Davis, Kathryn	0	0	0	0	1	1	22	Welch, Jenna	0	0	0	1	0
21	Panchuk, Bryann	0	1	0	6	0	0	23	Shaw, Birdie	0	0	0	0	0
22	Erickson, Emily	0	0	0	0	-1	2	24	Gross, Taylor	0	1	0	2	+1
24	Bruestle, Elsa	0	0	0	0	-1	0	27	Seward, Kelly	0	0	0	0	0
26	Thomson, Stefan	0	1	0	2	0	2	36	Weaver, Tess	0	0	0	0	0
27	Tomaselli, Kathr	0	0	0	2	0	0	40	Yoxheimer, Shan	1	0	0	7	+1
33	Dahl, Madeleine	dnp						30	Whitlinger, Celin	dnp				
35	Pincott, Emma	dnp						31	Meyer, Brooke	dnp				
Totals		2	4	6	26	-5	19	Totals	1	2	4	24	+5	

Power Play Goals-Att (SH)			
Prd	UNION	PSU	Tot
1st	1-1 (1)	0-0 (1)	
2nd	0-0 (0)	0-2 (2)	
3rd	1-1 (1)	0-1 (0)	
Total	2-2 (2)	0-3 (3)	

Penalties-Minutes by Prd			
Prd	UNION	PSU	Tot
1st	1-2	1-2	
2nd	2-4	0-0	
3rd	0-0	1-2	
Total	3-6	2-4	

Three stars:
 1. Lundberg, Shenae
 2. Yoxheimer, Shannon
 3. Thomson, Stefanie

Officials:
 Referee: Timothy Holtz
 Referee: Brian Starsky
 Linesman: John Quigley
 Linesman: Rob Sauda
 Game timekeeper: Tom Stroemel
 Scorer: Jeremy Fallis

GOALTENDERS

#	Union	Dec	Min	GA	1	2	3	Saves	#	Penn State	Dec	Min	GA	1	2	3	Saves
1	Lundberg, Shenae	W	60:00	1	7	10	6	23	37	Paniccia, Nicole	L	59:13	2	7	7	10	24
										EMPTY NET		0:47	0	0	0	0	0

PENALTY SUMMARY

Prd	Player	Team	Min	Offense	Time	Prd	Player	Team	Min	Offense	Time
1st	Bowman, Laura	PSU	2	Checking	14:31 PP	2nd	Tancrill-Fontaine, A	UNIO	2	Cross-Checking	19:17 PP
1st	Thomson, Stefanie	UNIO	2	Checking	19:00 PP	3rd	Jahnke, Paige	PSU	2	Tipping	04:05 PP
2nd	Johnston, Ashley	UNIO	2	Hooking	05:30 PP						

Win-Lundberg, Shenae (3-3-0). Loss-Paniccia, Nicole (0-2-1).

OCT. 19, 2013: PENN STATE 2, UNION 1

Union (3-4-0) vs. Penn State (2-3-1)
 Date: Oct 19, 2013 • Location: University Park, Pa. • Arena: Pegula Ice Arena
 Attendance: 814 • Start time: 2:00 pm • End time: 3:59 • Total time: 1:59

Prd	Time	Team	Scored by	Assists	Vis. on ice	Home on ice
1	1st 12:28	PSU	EV Holdcroft, Jill/1	-	5,9,10,22,24	19,16,20,17,27
2	2nd 17:18	UNIO	PP Turner, Courtney/4	Panchuk, Bryanne/4	3,21,13,10,27	19,21,6,20
3	3rd 14:31	PSU	PP Bowman, Laura/3	Norton, Maddy/4	Bateman, Jeanett/1	8,10,15,26
				Petersen, Amy/3		18,2,9,17,12

Goals by Period			
Prd	UNION	PSU	Tot
1	0	1	1
2	1	0	1
3	0	1	1
Tot	1	2	3

Shots by Period			
Prd	UNION	PSU	Tot
1	11	9	21
2	11	9	21
3	12	10	22
Tot	34	28	62

TEAM SUMMARY

#	Union	G	A	PI	Sh +/-	BI	#	Penn State	G	A	PI	Sh +/-	BI	
3	Turner, Courtney	1	0	0	1	0	0	2	Bateman, Jeanet	0	1	0	1	0
5	Otten, Elizabeth	0	0	0	-1	0	0	4	Pardoski, Jordin	0	0	0	0	1
7	Kaminsky, Jessic	0	0	0	3	0	2	6	Reihl, Lindsay	0	0	0	0	1
8	Tancrill-Fontain	0	0	0	0	0	0	9	Petersen, Amy	0	1	0	1	0
9	Devins, Allie	0	0	0	0	-1	0	10	Catanzariti, Mica	0	0	0	1	0
10	Johnston, Ashley	0	0	0	3	-1	0	12	Nielsen, Sarah	0	0	2	3	0
11	McGrath, Kelly	0	0	2	0	4	4	15	Desorcie, Jess	0	0	0	1	0
13	Norton, Maddy	0	1	0	5	2	2	16	Hoenshell, Hann	0	0	4	+1	0
14	Welch, Haley	0	0	0	0	1	1	17	Jahnke, Paige	0	0	0	1	+1
15	Valente, Christin	0	0	0	2	0	1	18	Bowman, Laura	1	0	2	7	0
17	Smith, Jamie	0	0	2	0	0	0	19	Holdcroft, Jill	1	0	0	1	+1
18	Purvis, Mac	0	0	4	0	0	0	20	Laurenzi, Emily	0	0	0	1	+1
19	Babiak, Rebecca	0	0	0	0	0	0	21	Wikie, Sarah	0	0	0	1	0
21	Panchuk, Bryann	0	1	0	2	0	0	22	Welch, Jenna	0	0	4	1	0
22	Erickson, Emily	0	0	0	1	-1	0	23	Shaw, Birdie	0	0	0	1	0
24	Bruestle, Elsa	0	0	0	0	-1	0	24	Gross, Taylor	0	0	0	3	0
26	Thomson, Stefan	0	0	0	2	0	1	27	Seward, Kelly	0	0	0	2	+1
27	Tomaselli, Kathr	0	0	0	2	0	0	40	Yoxheimer, Shan	0	0	2	5	0
33	Dahl, Madeleine	dnp						31	Meyer, Brooke	dnp				
35	Pincott, Emma	dnp						37	Paniccia, Nicole	dnp				
Totals		1	2	8	21	-5	11	Totals	2	2	10	34	+5	

Power Play Goals-Att (SH)			
Prd	UNION	PSU	Tot
1st	0-1 (0)	0-1 (5)	
2nd	1-2 (5)	0-1 (2)	
3rd	0-1 (2)	1-1 (3)	
Total	1-4 (7)	1-3 (10)	

Penalties-Minutes by Prd			
Prd	UNION	PSU	Tot
1st	2-4	1-2	
2nd	1-2	3-6	
3rd	1-2	1-2	
Total	4-8	5-10	

Three stars:
 1. Bowman, Laura
 2. Whitlinger, Celine
 3. Lundberg, Shenae

Officials:
 Referee: Timothy Holtz
 Referee: Brian Skursky
 Linesman: John Quigley
 Linesman: Rob Sauda
 Game timekeeper: Tom Stroemel
 Scorer: Jeremy Fallis

GOALTENDERS

#	Union	Dec	Min	GA	1	2	3	Saves	#	Penn State	Dec	Min	GA	1	2	3	Saves
1	Lundberg, Shenae	L	58:40	2	11	10	11	32	30	Whitlinger, Celine	W	60:00	1	1	10	9	20
										EMPTY NET		1:20	0	0	0	0	0

PENALTY SUMMARY

Prd	Player	Team	Min	Offense	Time	Prd	Player	Team	Min	Offense	Time
1st	Smith, Jamie	UNIO	2	Hooking	06:36 PP	2nd	Welch, Jenna	PSU	2	Cross-Checking	16:15
1st	Nielsen, Sarah	PSU	2	Hooking	08:04	2nd	Welch, Jenna	PSU	2	Unsportsmanlike Co	16:15 PP
1st	Purvis, Mac	UNIO	2	Interference	18:57 PP	3rd	Yoxheimer, Shannon	PSU	2	Cross-Checking	10:02 PP
2nd	Bowman, Laura	PSU	2	Interference	03:34 PP	3rd	McGrath, Kelly	UNIO	2	Elbowing	12:34 PP
2nd	Purvis, Mac	UNIO	2	Roughing	16:15						

Win-Whitlinger, Celine (2-1-0). Loss-Lundberg, Shenae (3-4-0).





NITTANY LION WOMEN'S HOCKEY



2013-14 Penn State Women's Hockey Penn State Combined Team Statistics (as of Oct 22, 2013) All games

Date	Opponent	Score	Att.
Oct 04	at Vermont	Tot 3-3	435
Oct 05	at Vermont	w 4-2	760
Oct 11	at Quinnipiac	L 1-5	505
Oct 12	at Quinnipiac	L 0-4	213
Oct 18	UNION	L 1-2	1424
Oct 19	UNION	w 2-1	814

TEAM STATISTICS	PSU	OPP
SHOT STATISTICS		
Goals-Shot attempts	11-140	17-236
Shot pct.	.079	.072
Goals/Game	1.8	2.8
Shots/Game	23.3	39.3
POWER PLAYS		
Goals-Power Plays	2-19	7-24
Conversion Percent	.105	.292
GOAL BREAKDOWN		
Power Play	2	7
Short-handed	0	0
Empty net	0	0
Penalty	0	0
Unassisted	1	0
Overtime	0	0
PENALTIES		
Number	26	21
Minutes	52	42
Penalties/Game	4.3	3.5
Pen minutes/Game	8.7	7.0
FACEOFFS (W-L)	151-178	178-151
Faceoff W-L Pct.	.459	.541

Record:	Overall	Home	Away	Neutral
ALL GAMES	2-3-1	1-1-0	1-2-1	0-0-0
CONFERENCE	0-0-0	0-0-0	0-0-0	0-0-0
NON-CONFERENCE	2-3-1	1-1-0	1-2-1	0-0-0

##	Player	gp	g	a	pts	sh	sh%	pen-min	pp	sh
40	Yoxheimer, Shannon	6	3	2	5	28	.107	1-2	0	0
24	Gross, Taylor	6	1	3	4	19	.053	0-0	0	0
12	Nielsen, Sarah	6	0	4	4	8	.000	2-4	0	0
18	Bowman, Laura	6	3	0	3	17	.176	3-6	1	0
16	Hoenshell, Hannah	6	1	2	3	12	.083	2-4	0	0
9	Petersen, Amy	6	0	3	3	4	.000	0-0	0	0
27	Seward, Kelly	6	2	0	2	7	.286	1-2	1	0
4	Pardoski, Jordin	6	0	2	2	4	.000	2-4	0	0
19	Holdcroft, Jill	6	1	0	1	5	.200	1-2	0	0
2	Bateman, Jeanette	6	0	1	1	4	.000	0-0	0	0
6	Reihl, Lindsay	6	0	1	1	0	.000	2-4	0	0
10	Catanzariti, Micayla	3	0	0	0	1	.000	1-2	0	0
15	Desorcie, Jess	6	0	0	0	5	.000	1-2	0	0
17	Jahnke, Paige	6	0	0	0	3	.000	5-10	0	0
20	Laurenzi, Emily	6	0	0	0	7	.000	0-0	0	0
13	Rasmussen, Kendra	1	0	0	0	0	.000	0-0	0	0
23	Shaw, Birdie	5	0	0	0	2	.000	0-0	0	0
36	Weaver, Tess	3	0	0	0	1	.000	1-2	0	0
22	Welch, Jenna	6	0	0	0	8	.000	3-6	0	0
21	Wilkie, Sarah	6	0	0	0	5	.000	0-0	0	0
TM	TEAM	1	0	0	0	0	.000	1-2	0	0
Total		6	11	18	29	140	.079	26-52	2	0
Opponents		6	17	31	48	236	.072	21-42	7	0

##	Goalie	gp	min	ga	gaavg	saves	save%	w-l-t
30	Whitlinger, Celine	3	180:00	7	2.33	112	.941	2-1-0
37	Paniccia, Nicole	3	184:13	10	3.26	107	.915	0-2-1
TM	EMPTY NET	1	0:47	0	-	0	.000	0-0-0
Total		6	365:00	17	2.79	219	.928	2-3-1
Opponents		6	365:00	11	1.81	129	.921	3-2-1

Attendance Summary	PSU	Opponent
Total	2238	1913
Dates/Avg Per Date	2/1119	4/478
Neutral Site #/Avg	0/0	

Goals by Period	1st	2nd	3rd	Total
Penn State	3	5	3	11
Opponents	3	6	8	17

Saves by Period	1st	2nd	3rd	Total
Penn State	74	74	67	219
Opponents	43	42	42	129



NITTANY LION WOMEN'S HOCKEY



2
JEANNETTE BATEMAN
Sophomore • D
Greeley, Colo.



3
CARA MENDELSON
Junior • F
Pittsburgh, Pa.



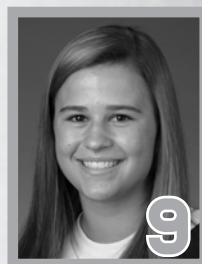
4
JORDIN PARDOSKI^A
Sophomore • D
Rochester Hills, Mich.



5
STEPHANIE WALKOM
Sophomore • D
Moon Township, Pa.



6
LINDSAY REIHL^A
Grad Student • D
Cheshire, Conn.



9
AMY PETERSEN
Freshman • F
Minnetonka, Minn.



10
MICAYLA CATANZARITI
Sophomore • F
Rancho Santa Margarita, Calif.



12
SARAH NIELSEN
Freshman • F
Edina, Minn.



13
KENDRA RASMUSSEN
Sophomore • F
Sartell, Minn.



14
DARBY KERN
Sophomore • F
Venetia, Pa.



15
JESS DESORCIE
Junior • F
Westford, Vt.



16
HANNAH HOENSHELL
Sophomore • F
Plano, Texas



17
PAIGE JAHNKE
Sophomore • D
Oakdale, Minn.



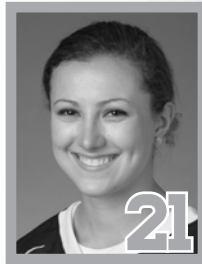
18
LAURA BOWMAN
Freshman • F
Minnetonka, Minn.



19
JILL HOLDCROFT
Sophomore • F
Pennsylvania Furnace, Pa.



20
EMILY LAURENZI
Sophomore • F
Townsend, Del.



21
SARAH WILKIE
Sophomore • D
Ashby, Mass.



22
JENNA WELCH^A
Senior • F
Austin, Texas



23
BIRDIE SHAW
Sophomore • F
Troy, Mich.



24
TAYLOR GROSS^C
Senior • F
Colorado Springs, Colo.



25
KATIE MURPHY
Junior • F
Novi, Mich.



27
KELLY SEWARD
Freshman • D
Williamsville, N.Y.



30
CELINE WHITLINGER
Sophomore • G
Garden Grove, Calif.



31
BROOKE MEYER
Sophomore • G
Naperville, Ill.



33
MADISON SMIDDY
Junior • D
Grand Rapids, Mich.



36
TESS WEAVER
Junior • F
Windber, Pa.



37
NICOLE PANICCIA
Senior • G
Oakville, Ont.



40
SHANNON YOXHEIMER
Sophomore • F
Jackson, Mich.





NITTANY LION WOMEN'S HOCKEY

