



PENN STATE WOMEN'S HOCKEY

2013-14 NITTANY LIONS

GoPSUsports.com • Twitter & Instagram: [PennStateWHKY](#) • Facebook.com/PennStateWomensHockey
 Contact: **Jeremy Fallis** • jeremy.fallis@psu.edu • O: (814) 863-1388 • C: (814) 206-6544

2013-14 SCHEDULE

Overall: 3-12-1 • Home: 1-7-0 • Away: 2-5-1
 CHA: 1-7-0 • Home: 0-4-0 • Away: 1-3-0

Date	Opponent	Result/Time
Oct. 4	at Vermont	T (OT) 3-3
Oct. 5	at Vermont	W 4-2
Oct. 11	at Quinnipiac	L 1-5
Oct. 12	at Quinnipiac	L 0-4
Oct. 18	UNION	L 1-2
Oct. 19	UNION	W 2-1
Oct. 26	NEW HAMPSHIRE	L 5-8
Oct. 27	NEW HAMPSHIRE	L 1-3
Oct. 31	* ROBERT MORRIS	L 0-4
Nov. 1	* ROBERT MORRIS	L 0-6
Nov. 9	* SYRACUSE	L 1-2
Nov. 10	* SYRACUSE	L (OT) 3-4
Nov. 15	* at RIT	L 1-2
Nov. 16	* at RIT	L 2-3
Nov. 22	* at Lindenwood	L 1-2
Nov. 23	* at Lindenwood	W 4-1

Nov. 30	MAINE	2:00 p.m.
Dec. 6	* at #9 Mercyhurst	3:00 p.m.
Dec. 7	* at #9 Mercyhurst	2:00 p.m.
Jan. 3	at Ohio State	7:07 p.m.
Jan. 4	at Ohio State	4:07 p.m.
Jan. 10	COLGATE	7:00 p.m.
Jan. 11	COLGATE	2:00 p.m.
Jan. 24	* at Syracuse	7:00 p.m.
Jan. 25	* at Syracuse	2:00 p.m.
Jan. 28	at Princeton	7:00 p.m.
Jan. 31	* RIT	7:00 p.m.
Feb. 1	* RIT	2:00 p.m.
Feb. 8	* LINDENWOOD	Noon
Feb. 9	* LINDENWOOD	Noon
Feb. 15	* #9 MERCYHURST	8:00 p.m.
Feb. 16	* #9 MERCYHURST	1:00 p.m.
Feb. 21	* at Robert Morris	3:00 p.m.
Feb. 22	* at Robert Morris	3:00 p.m.

2014 CHA TOURNAMENT

Feb. 28	^ CHA First Round - Game 1	TBA
March 1	^ CHA First Round - Game 2	TBA
March 2	^ CHA First Round - Game 3	TBA
March 7	% CHA Semifinals	TBA
March 8	% CHA Final	TBA

All Times Eastern

Home games in **CAPS** at Pegula Ice Arena

* - College Hockey America games

^ - CHA First Round at higher seed

% - CHA Semifinals & Final hosted by No. 1 seed

Rankings based on USA Today/USA Hockey poll

Streaming on AmericaOneSports.com; live stream



PENN STATE NITTANY LIONS
 (3-12-1, 1-7-0 CHA)

MAINE BLACK BEARS
 (0-11-3, 0-7-3 Hockey East)

Game 17: Nov. 30, 2013 • Pegula Ice Arena • University Park, Pa.

GAME DAY

VENUE
 STREAMING COVERAGE
 SERIES RECORD
 LAST MEETING
 NEXT TIME OUT

Pegula Ice Arena (5,782)
 AmericaOneSports.com (\$) 0-0-0
 n/a, first meeting Nov. 30
 Dec. 6-7 at Mercyhurst

GAME NOTES

- Penn State welcomes Maine for Saturday contest at Pegula Ice Arena
- Nittany Lions snapped an nine-game skid at Lindenwood on Sunday
- Five different goal scorers contributed in series split at Lindenwood
- **Shannon Yoxheimer, Hannah Hoenshell & Emily Laurenzi** each tallied two points
- **Celine Whitlinger** picked up her third win of the year with 36 saves vs. LU
- Nittany Lion freshmen & sophomores have tallied 56 of team's 71 points
- Balanced Penn State offense touts 11 different goal scorers this season
- Maine is winless to start the season and has dropped the last six games

ON THE INSIDE

Page 2: **CHA Standings and Team Comparison**
 Page 6: **The Nittany Lion Roster & Pronunciation Guide**
 Page 7-12: **2013-14 Penn State Box Scores**
 Page 13: **2013-14 Penn State Women's Hockey Stats**
 Page 12: **The Nittany Lion TV/Radio Roster**

STATISTICAL LEADERS

FORWARDS		GP	G	A	PTS	SH	+/-	GWG
24	Taylor Gross	16	6	4	10	48	-3	1
40	Shannon Yoxheimer	16	4	6	10	83	-1	0
16	Hannah Hoenshell	16	2	6	8	34	-6	1
18	Laura Bowman	16	5	2	7	39	-3	1
12	Sarah Nielsen	16	1	5	6	12	-3	0
9	Amy Petersen	16	1	5	6	17	-2	0
19	Jill Holdcroft	16	3	2	5	25	-4	0
20	Emily Laurenzi	16	0	3	3	12	-6	0
12	Kendra Rasmussen	10	1	0	1	4	0	0
DEFENSE		GP	G	A	PTS	SH	+/-	BLK
4	Jordin Pardoski	16	2	3	5	13	-4	20
27	Kelly Seward	16	3	0	3	14	+1	33
6	Lindsay Reihl	16	0	1	1	3	0	27
17	Paige Jahnke	14	0	1	1	5	-9	19
2	Jeanette Bateman	15	0	1	1	8	-12	21
21	Sarah Wilkie	13	0	0	0	10	-1	15
GOALTENDER		GP-GS	Record	MIN	GA	GAA	SV	SV%
30	Celine Whitlinger	8-8	3-5-0	477:56	24	3.01	311	.928
37	Nicole Paniccia	8-8	0-7-1	479:23	27	3.38	275	.911



@PennStateWHKY



PennStateWomensHockey



GoPSUTV





NITTANY LION WOMEN'S HOCKEY

GAME NOTES VS. MAINE (NOV. 30)

LIONS EARN SPLIT AT LINDENWOOD

Jordin Pardoski staked Penn State an early 1-0 lead but the Lions fell 2-1 in the series opener at Lindenwood on Friday, Nov. 22. Nevertheless, Penn State bounced back the following day in a 4-1 win to salvage a series split and earn the team's first win in CHA play this season. **Celine Whitlinger** allowed just one goal and saved 36 shots, while **Hannah Hoenshell** and **Shannon Yoxheimer** each tallied a goal and an assist. **Taylor Gross** and **Laura Bowman** accounted for the remaining goals as Penn State moved to 2-3-1 all-time against Lindenwood. **Emily Laurenzi** tallied two assists during the weekend.

YOUTH SUPPLIES THE OFFENSE

The addition of four freshmen: **Laura Bowman**, **Amy Petersen**, **Sarah Nielsen** and **Kelly Seward** have injected an instant bump in scoring production with 20 of the team's 71 points. To prove the youth of the team, 56 of the team's 71 points (78.9%) were collectively tallied by freshmen and sophomores. Eight of the team's top nine point scorers are underclassmen.

WHITLINGER STANDS TALL

Celine Whitlinger, a 5-8 Californian goaltender, has been outstanding in net for Penn State. Whitlinger (3-5-0) has already surpassed her win total from a year ago and has stopped 92.8 percent of the shots she's seen. In 18 appearances for Penn State, Whitlinger has a career .934 save percentage, while averaging 38.2 saves per game.

PANICCIA BOUNCING BACK

Senior netminder **Nicole Paniccia** is returning to her stellar form following a pair of tough efforts. In the last three games against Syracuse, RIT and Lindenwood, Paniccia has a goals-against average of 2.04 with 107 saves and a .947 save percentage. In her previous two outings against New Hampshire and Robert Morris, Paniccia had a goals-against average of 5.58 with 61 saves and an .847 save percentage.

PICK YOUR POISON

Penn State has had the fortune of multiple contributors on the offensive end. Eleven Nittany Lions have scored a goal this season, while 17 have registered a point. **Taylor Gross** and **Shannon Yoxheimer** lead the team with 10 points apiece, while **Hannah Hoenshell** and **Laura Bowman** have eight and seven points, respectively.

IN THE THICK OF THINGS

Penn State's record of 7-26-2 last season is a little deceiving when considering how close the Nittany Lions were in many of their losses. In fact, 12 of the 26 losses were decided by two goals or less. This year, six of 12 losses are by a goal and Penn State is 1-6-1 in games decided by one goal or less, including the past five losses against Syracuse, RIT and Lindenwood. PSU is 2-12-2 all-time in games decided by less than a goal.

PSU'S POWERFUL PENALTY KILLING

The Nittany Lions have been efficient in their penalty killing of late, shutting out their opponents in three of the past four games. RIT and Lindenwood went a combined 2-for-15 (13.3%) on the power play. Prior to the RIT series, opponents went 15-for-47 (31.9%)

SCOUTING MAINE

Maine (0-11-3, 0-7-3) has struggled early in the season, still searching for its first game heading into a road weekend at Robert Morris and Penn State. The Black Bears and Colonials face off Friday evening at RMU. Maine is currently on a six-game losing streak, giving up an average of five goals per game during the skid. Kelly McDonald and Jennifer Moore lead the team with five points apiece, while Audra Richards leads the team with four goals. Kayla Kaluzny and Brianne Kilgour each have four points for the Bears. In net, Meghann Treacy has been in the net for all but one game as she has a .897 save percentage and a 3.88 goals-against average.

GAMEDAY COMPARISON

TEAM STATS	PSU	MAINE
Overall record	3-12-1	0-12-2
Conference record	1-7-0	0-3-1
Goals scored	29	14
Goals scored per game	1.8	1.0
Goals allowed	52	53
Goals allowed per game	3.2	3.8
First period goals	11	4
Second period goals	10	6
Third period goals	8	0
Overtime goals	0	0
Shots	366	281
Shots per game	22.9	20.1
Shot pct.	.079	.050
Assists	42	17
Penalties per game	4.1	5.1
Power plays	9-58	7-68
Power-play pct.	.155	.103
Penalty kills	17-62	18-61
Penalty-kill pct.	.726	.705
Saves	586	532
Shutouts	0	0

LEADERS

Points	Two with 10	Two with 5
Goals	Gross (6)	Richards (4)
Assists	Two with 6	Kaluzny (4)
Shots	Yoxheimer (83)	Kilgour (31)
Shot Pct.	Rasmussen (.250)	n/a
+/-	Seward (+1)	Two at -1
Faceoff Pct.	Yoxheimer (.718)	n/a
Saves	Whitlinger (311)	Treacy (402)
Save Pct.	Whitlinger (.928)	Treacy (.897)
GAA	Whitlinger (3.01)	Treacy (3.88)
Record	Whitlinger (3-5-0)	Treacy (0-10-3)

2013-14 COLLEGE HOCKEY AMERICA STANDINGS

(as of Nov. 28, 2013)

	Pts.	CHA	GF	GA	Overall	GF	GA	Last 10
Robert Morris (10/10)	13	6-1-1	22	9	13-3-1	47	28	8-1-1
RIT	9	4-1-1	13	8	8-6-1	35	37	6-3-1
Mercyhurst (rv/rv)	7	3-2-1	16	13	10-5-2	47	32	7-2-1
Syracuse	6	2-2-2	14	15	7-6-2	37	32	6-2-2
Lindenwood	3	1-4-1	7	15	1-13-2	17	58	1-8-1
PENN STATE	2	1-7-0	12	24	3-12-1	29	52	1-9-0

PAST RESULTS & UPCOMING SCHEDULE

Friday, Nov. 22
RIT* 2, Mercyhurst 1
Robert Morris 1, Syracuse* (OT)
Lindenwood* 2, PENN STATE 1

Saturday, Nov. 23
Robert Morris 2, Syracuse* 1
Mercyhurst 3, RIT* 2
PENN STATE 4, Lindenwood* 1

Tuesday, Nov. 26
Mercyhurst* 3, St. Lawrence 2
Syracuse* 2, Colgate 1
Robert Morris 2, Ohio State* 1

Wednesday, Nov. 27
Mercyhurst* 3, St. Lawrence 2

Friday, Nov. 29
Maine at Robert Morris, 2 p.m.
RIT at Quinnipiac, 4 p.m.

Saturday, Nov. 30
Maine at PENN STATE, 2 p.m.
RIT vs. UConn or Yale (at QU), 1 or 4 p.m.

* home team





NITTANY LION WOMEN'S HOCKEY

COMMON ENEMIES

Penn State and Maine have three common opponents thus far in the season. The Nittany Lions are 1-3-1 against Vermont, New Hampshire and Quinnipiac, while Maine is 0-4-1.

	PSU	MAINE
Vermont	T, 3-3; W, 4-2	L, 1-4; L, 5-1
UNH	L, 5-8; L, 1-3	T 2-2
Quinnipiac	L, 1-5; L, 0-4	L, 0-4; L, 2-5

PENN STATE HAS A #NEWDEN

The Nittany Lions opened its new \$90 million home, Pegula Ice Arena, on Oct. 18 against Union in a 2-1 loss. The next day, PSU would earn a 2-1 victory for the program's first win at Pegula. In all, Penn State will host 17 games in the state-of-the-art arena that seats 5,782. The team's first season at PIA began with an eight-game home stand over 23 days. The Maine contest is the first game at PIA for the Nittany Lions since Nov. 9 against Syracuse.

HOENSHHELL, SEWARD EARN CHA AWARDS

Penn State forward **Hannah Hoenshell** and defender **Kelly Seward** were named College Hockey America's Player and Rookie of the Week, respectively, on Monday, Oct. 7.

A crafty forward with incredible stick skills, Hoenshell propelled Penn State to an undefeated weekend at Vermont, supplying three points and a game-high plus-four rating in Saturday's 4-2 win. Hoenshell was involved in three of Penn State's four goals, tallying a goal and two assists. Her goal was her second career game-winning goal.

Seward was fantastic on both sides of the ice this weekend as she tallied two goals, which ties for the team high after two games. Seward posted a plus-two rating and seven blocked shots for the weekend as well. In both games, Seward scored Penn State's first goal. On Friday it was a power-play tally and Saturday it was a game-tying goal in the first period.

BRING 'EM BACK

Penn State brings back 24 of its 27 members from last year's team. In those 24 student-athletes, Penn State returns its top 14 scorers and almost 99 percent of its offense along with every member of its stout goaltending corps.

PENN STATE'S RECORD IS...

1-7-0 at home
2-5-1 on the road
0-1-1 in overtime
2-5-1 when scoring first
1-7-0 when opponent scores first
3-3-0when leading after the 1st period
0-5-0 when trailing after the 1st period
0-4-1 when tied after the 1st period
2-2-0 when leading after the 2nd period
0-6-0when trailing after the 2nd period
1-4-1 when tied after the 2nd period
1-0-0when out-shooting opponent
2-12-1when out-shot by opponent
0-0-0 when taking same # of shots
2-3-0when winning more faceoffs
1-9-1 when losing more faceoffs
0-0-0 when tied in faceoffs
1-4-1 when taking more penalties
2-3-0when taking fewer penalties
0-5-0	... when taking the same # of penalties
2-5-1 when scoring a power play goal
1-7-0	... when not scoring a power play goal
1-9-1when allowing a power play goal
2-3-0	...when not allowing a power play goal
0-3-0 when scoring 0 goals
0-6-0 when scoring 1 goal
1-1-0 when scoring 2 goals
0-1-1 when scoring 3 goals
2-1-0 when scoring 4+ goals
0-0-0 when allowing 0 goals
2-0-0when allowing 1 goal
1-4-0 when allowing 2 goals
0-2-1 when allowing 3 goals
0-6-0 when allowing 4+ goals
2-6-1 in October
1-6-0 in November
0-0-0 in December
0-0-0 in January
0-0-0in February
0-0-0 in March
0-0-0 on Tuesday
0-1-0on Thursday
0-5-1 on Friday
3-5-0 on Saturday
0-2-0 on Sunday
3-6-0 during the day
0-6-1 at night
1-2-1vs. Hockey East
1-7-0vs. College Hockey America
1-3-0 vs. ECAC Hockey
0-0-0 vs. WCHA
0-0-0 vs. ranked opponents
3-12-1 vs. unranked opponents
1-2-1 when Shannon Yoxheimer scores
3-5-0 when Celine Whitlinger starts
3-2-1when a freshman scores
1-5-1 games decided by a goal or less

2013-14 WOMEN'S HOCKEY POLLS

USA Today/USA Hockey (Nov. 25, 2013)

1	Minnesota	15-1-0	1
2	Wisconsin	11-2-1	2
3	Cornell	8-0-2	3
4	North Dakota	9-3-2	4
5	Harvard	7-1-1	5
6	Clarkson	12-3-2	8
7	Quinnipiac	10-2-4	6
8	Boston College	11-3-1	7
9	Boston University	11-3-1	9
10	Robert Morris	12-3-1	RV

Others: *Minnesota Duluth, Mercyhurst, Princeton, St. Lawrence*

USCHO.com (Nov. 26, 2013)

1	Minnesota	15-1-0	1
2	Wisconsin	11-2-1	2
3	Cornell	8-0-2	3
4	North Dakota	9-3-2	4
5	Harvard	7-1-1	6
6	Clarkson	12-3-2	8
7	Boston College	11-3-1	7
8	Quinnipiac	10-2-4	5
9	Boston University	11-3-1	9
10	Robert Morris	12-3-1	RV

Others: *Mercyhurst, Minnesota Duluth*

Bold indicates 2013-14 opponent

2013-14 MEDIA INFORMATION

Penn State Athletic Communications

Primary Contact: Jeremy Fallis
 Email: jeremy.fallis@psu.edu
 Office: 814-865-1757

Interviews

Penn State student-athletes and coaches are available for interviews after practice each day. Please contact Jeremy Fallis in advance.

Credentials

Contact Jeremy Fallis for home game credentials at Pegula Ice Arena.

Postgame

Head coach Josh Brandwene and requested student-athletes are available to the media following each game in the studio rink. Please alert Jeremy Fallis during the game of any requests.

Yearbook

A complimentary copy of the 2013-14 Penn State women's hockey yearbook will be made available to members of the media. The public may purchase copies for \$6 online.

GoPSUsports.com

[Facebook.com/PennStateWomensHockey](https://www.facebook.com/PennStateWomensHockey)

[@PennStateWHKY](https://twitter.com/PennStateWHKY)





NITTANY LION WOMEN'S HOCKEY

YOXHEIMER MAKES HER MARK

Leading the team in scoring last season was **Shannon Yoxheimer**, a left-handed forward. Yoxheimer buried 14 goals with 17 assists for a grand total of 31 points, all team highs. She led College Hockey America in shots (169) and put away three power play goals as well as a team-high three game-winning goals. Yoxheimer's numbers ranked her in the top 10 nationally in goals, points and assists for rookies. The CHA coaches named Yoxheimer to the All-Rookie team.

THE PANICCIA WALL

Senior goaltender **Nicole Paniccia** excelled between the pipes for the Blue and White last year, stopping 1,028 shots with a 92.8 save percentage. Paniccia's save tally was second in all of NCAA Division I, topped only by fellow CHA upstart Lindenwood's Nicole Hensley. Paniccia was in net for six of PSU's seven victories last year as well as both of Penn State's ties.

POWER-PLAY HOLDCROFT

Sophomore forward **Jill Holdcroft** was lethal on the power play last season, scoring six of her 10 goals last year on the advantage. Despite missing the CHA playoffs at RIT, Holdcroft still ranked second on the team in scoring (10 goals) and added two assists for good measure.

CAPTAINS' CORNER

Senior forward **Taylor Gross** once again leads Penn State as its first captain following her first year with the letter in 2012-13. Gross was second on the team in points (22) and assists (15) last season with 34 appearances. The University of Connecticut transfer appeared in 48 games for the Huskies before joining Penn State's club side in January 2012. Senior forward **Jenna Welch** and **Lindsay Reihl**, a graduate student defender, reprise their roles as assistant captains this year. Joining the veteran trio is **Jordin Pardoski**, a vocal sophomore defender who is a first-year assistant captain.

NEW NITTANY LIONS

Four freshmen join the Nittany Lions for the 2013-14 campaign. Minnesota forwards **Laura Bowman**, **Amy Petersen** and **Sarah Nielsen** provide an instant dose of goal scoring from their high school success. Defender **Kelly Seward** of New York is the tallest Nittany Lion blueliner.

FIRST HEAD COACH

A 1991 graduate of Penn State, head coach **Josh Brandwene** is the first to lead the Nittany Lions. Brandwene compiled a 7-26-2 record last season with 17 freshmen on the team. A four-year hockey player at PSU, Brandwene brings 20 years of coaching experience to Happy Valley.

CONTINUING PENN STATE HOCKEY

Seven members of the current varsity team played for the women's club team at some point. Graduate student **Lindsay Reihl** along with juniors **Cara Mendelson**, **Katie Murphy**, **Madison Smiddy** and **Tess Weaver** played all of the 2011-12 season for head coach **Josh Brandwene** in Penn State's last year at the club level. **Taylor Gross** and **Jess Desorcic** joined the five aforementioned players midway through the season in preparation of the 2012-13 season.

NEXT TIME OUT

Penn State will return to action with a two-game series at Mercyhurst on Dec. 6-7. The games are the final ones of the fall semester. Penn State's second half of the season starts Jan. 3-4 at Ohio State.

2013-14 HONORS & AWARDS

Hannah Hoenshell

CHA Player of the Week (10/7)

Kelly Seward

CHA Rookie of the Week (10/7)

OVER THE AIR

Both games this weekend at Lindenwood will be featured on AmericaOneSports.com.

The CHA on AmericaOneSports.com

Penn State home & away games during CHA play will be streamed live on AmericaOneSports.com. Subscribers can purchase a 1-day package for \$8, 30-day packages for \$30 or a season pass for \$125.



NITTANY LION WOMEN'S HOCKEY



THE LAST TIME

PENN STATE...

Scored 0 goals
 Scored 3 goals
 Scored 4 goals
 Scored 5 goals
 Scored 6 goals
 Scored 7 goals
 Scored 8 goals
 Scored 9 goals
 Scored 10 goals
 Allowed 0 goals
 Allowed 1 goal
 Allowed 2 goals
 Allowed 3 goals
 Allowed 4 goals
 Allowed 5 goals
 Allowed 6+ goals
 Won in overtime
 Lost in overtime
 Tied in overtime
 Played a ranked team
 Attempted 10-19 shots
 Attempted 20-29 shots
 Attempted 30-39 shots
 Attempted 40-49 shots
 Attempted 50-59 shots
 Attempted 60-69 shots
 Attempted 70+ shots
 Allowed 10-19 shots
 Allowed 20-29 shots
 Allowed 30-39 shots
 Allowed 40-49 shots
 Allowed 50-59 shots
 Allowed 60-69 shots
 Allowed 70+ shots
 Tallied 5-9 assists
 Tallied 10-15 assists
 Tallied 15+ assists
 Scored 10-19 points
 Scored 20+ points
 Scored 2 power-play goals
 Scored 3 power-play goals
 Allowed 0 power-play goals
 Allowed 2 power-play goals
 Had 5 different goal scorers
 Had 6 different goal scorers
 Had 7 different goal scorers
 Had 8 different goal scorers

11/1/13 vs. Robert Morris (0-6)
 11/10/13 vs. Syracuse (3-4)
 11/23/13 at Lindenwood (4-1)
 10/26/13 vs. New Hampshire (5-8)
 11/2/12 vs. Sacred Heart (6-0)
 Never
 11/3/12 vs. Sacred Heart (8-2)
 Never
 1/4/13 vs. Chatham (10-0)
 1/5/13 vs. Chatham (4-0)
 11/23/13 at Lindenwood (4-1)
 11/22/13 at Lindenwood (1-2)
 11/16/13 at RIT (2-3)
 11/10/13 vs. Syracuse (3-4)
 10/11/13 at Quinnipiac (1-5)
 11/1/13 vs. Robert Morris (0-6)
 Never
 11/10/13 vs. Syracuse (3-4)
 10/4/13 at Vermont (3-3)
 2/2/13 vs. #7 Mercyhurst (1-4)
 11/9/13 18 vs. Syracuse (1-2)
 11/22/13 23 at Lindenwood (1-2)
 11/23/13 31 at Lindenwood (4-1)
 1/4/13 48 vs. Chatham (10-0)
 Never
 11/3/12 64 vs. Sacred Heart (8-2)
 1/5/13 71 vs. Chatham (4-0)
 1/5/13 16 vs. Chatham (4-0)
 10/19/13 21 vs. Union (2-1)
 11/23/13 37 at Lindenwood (4-1)
 11/16/13 40 vs. RIT (2-3)
 11/10/13 55 vs. Syracuse (3-4)
 2/22/13 63 at Robert Morris (1-4)
 12/1/12 71 at #4 Mercyhurst (1-7)
 11/23/13 5 at Lindenwood (4-1)
 11/3/12 12 vs. Sacred Heart (8-2)
 1/4/13 17 vs. Chatham (10-0)
 10/26/13 13 vs. New Hampshire (5-8)
 1/4/13 27 vs. Chatham (10-0)
 10/26/13 vs. New Hampshire (5-8)
 10/20/12 at Sacred Heart (6-1)
 11/23/13 at Lindenwood (4-1)
 11/16/13 at RIT (2-3)
 10/26/13 vs. New Hampshire (5-8)
 10/20/12 at Sacred Heart (6-1)
 1/4/13 vs. Chatham (10-0)
 11/3/12 vs. Sacred Heart (8-2)

A PENN STATE PLAYER...

Scored 2 goals
 Scored 3 goals
 Scored 4 goals
 Had 3 assists
 Had 5 points
 Had 10+ shots
 Saved 40-49 shots
 Saved 50-59 shots
 Saved 60+ shots
 Had a shutout
 Scored an empty-net goal
 Scored a short-handed goal

11/16/13 J. Holdcroft at RIT (2-3)
 11/2/12 H. Hoenshell vs. Sacred Heart (6-0)
 Never
 1/4/13 J. Bateman vs. Chatham (10-0)
 Never
 1/5/13 12, T. Weaver vs. Chatham (4-0)
 11/1/13 43, C. Whitlinger vs. Robert Morris (0-6)
 11/10/13 51, C. Whitlinger vs. Syracuse (3-4)
 12/1/12 64, N. Paniccia at #4 Mercyhurst (1-7)
 1/5/13 C. Whitlinger/B. Meyer vs. Chatham (4-0)
 10/6/12 B. Shaw at Vermont (5-3)
 11/16/13 J. Holdcroft at RIT (2-3)





NITTANY LION WOMEN'S HOCKEY

2013-14 PENN STATE WOMEN'S HOCKEY NUMERICAL ROSTER

No.	Name	Yr.	Pos.	Ht.	S/C	Hometown	Last Team
2	Jeanette Bateman	So.	D	5-6	R	Greeley, Colo.	Colorado Select
3	Cara Mendelson	Jr.	F	5-6	R	Pittsburgh, Pa.	Steel City Selects
4	Jordin Pardoski	So.	D	5-5	R	Rochester Hills, Mich.	Detroit Honeybaked
5	Stephanie Walkom	So.	D	5-7	R	Moon Township, Pa.	Pittsburgh Penguins Elite
6	Lindsay Reihl	Gr.	D	5-4	R	Cheshire, Conn.	Connecticut Polar Bears
9	Amy Petersen	Fr.	F	5-4	R	Minnetonka, Minn.	Minnetonka HS
10	Micayla Catanzariti	So.	F	5-4	R	Rancho Santa Margarita, Calif.	Gilmour Academy (Ohio)
12	Sarah Nielsen	Fr.	F	5-6	L	Edina, Minn.	Edina HS
13	Kendra Rasmussen	So.	F	5-5	L	Sartell, Minn.	Sartell/Sauk Rapids HS
14	Darby Kern	So.	F	5-11	R	Venetia, Pa.	Pittsburgh Penguins Elite
15	Jess Desorcie	Jr.	F	5-4	L	Westford, Vt.	Connecticut College
16	Hannah Hoenshell	So.	F	5-3	R	Plano, Texas	Texas Alliance
17	Paige Jahnke	So.	D	5-6	R	Oakdale, Minn.	Roseville HS / Minnesota Jr. Whitecaps
18	Laura Bowman	Fr.	F	5-7	R	Minnetonka, Minn.	Minnetonka HS
19	Jill Holdcroft	So.	F	5-1	R	Pennsylvania Furnace, Pa.	Pittsburgh Penguins Elite
20	Emily Laurenzi	So.	F	5-2	R	Townsend, Del.	National Sports Academy (N.Y.)
21	Sarah Wilkie	So.	D	5-6	R	Ashby, Mass.	Williston Northampton School
22	Jenna Welch	Sr.	F	5-8	R	Austin, Texas	Connecticut
23	Birdie Shaw	So.	F	5-2	L	Troy, Mich.	Detroit Honeybaked
24	Taylor Gross	Sr.	F	5-1	R	Colorado Springs, Colo.	Connecticut
25	Katie Murphy	Jr.	F	5-4	L	Novi, Mich.	Detroit Honeybaked
27	Kelly Seward	Fr.	D	5-9	L	Williamsville, N.Y.	Nichols School / Buffalo Bisons
30	Celine Whitlinger	So.	G	5-8	L	Garden Grove, Calif.	Gilmour Academy (Ohio)
31	Brooke Meyer	So.	G	5-7	L	Naperville, Ill.	Chicago Huskies
33	Madison Smiddy	Jr.	D	5-7	L	Grand Rapids, Mich.	Detroit Honeybaked
36	Tess Weaver	Jr.	F	5-5	R	Windber, Pa.	Pittsburgh Penguins Elite
37	Nicole Paniccia	Sr.	G	5-5	L	Oakville, Ont.	Connecticut
40	Shannon Yoxheimer	So.	F	5-7	L	Jackson, Mich.	North American Hockey Academy (Vt.)

Head Coach: Josh Brandwene (Second Year)

Assistant Coaches: Gina Kearns (Second Year), Casey McCullion (Second Year); **Director of Operations** Alex Dawes (First Year)

Captain: Taylor Gross; **Assistant Captains:** Jordin Pardoski, Lindsay Reihl, Jenna Welch

ALPHABETICAL ROSTER

No.	Name
2	Jeanette Bateman
18	Laura Bowman
10	Micayla Catanzariti
15	Jess Desorcie
24	Taylor Gross
16	Hannah Hoenshell
19	Jill Holdcroft
17	Paige Jahnke
14	Darby Kern
20	Emily Laurenzi
3	Cara Mendelson
31	Brooke Meyer
25	Katie Murphy
12	Sarah Nielsen
37	Nicole Paniccia
4	Jordin Pardoski
9	Amy Petersen
13	Kendra Rasmussen
6	Lindsay Reihl
27	Kelly Seward
23	Birdie Shaw
33	Madison Smiddy
5	Stephanie Walkom
36	Tess Weaver
22	Jenna Welch
30	Celine Whitlinger
21	Sarah Wilkie
40	Shannon Yoxheimer

PRONUNCIATION GUIDE

Brandwene	BRAND-ween
Catanzariti	Cah-TAN-zah-REE-tee
Desorcie	Deh-SORE-see
Jahnke	YAWN-kee
Jeanette	Jeh-NETT
Kearns	KERNS
McCullion	Mick-CULL-yon
Paniccia	Pah-NEE-cha
Reihl	RILE

LIONS BY ELIGIBILITY

Graduate Student (1): Reihl
Seniors (3): Gross, Paniccia, Welch
Juniors (5): Desorcie, Mendelson, Murphy, Smiddy, Weaver
Sophomores (15): Bateman, Catanzariti, Hoenshell, Holdcroft, Jahnke, Kern, Laurenzi, Meyer, Pardoski, Rasmussen, Shaw, Walkom, Whitlinger, Wilkie, Yoxheimer
Freshmen (4): Bowman, Nielsen, Petersen, Seward

LIONS BY STATE

California (2): Catanzariti, Whitlinger
Colorado (2): Bateman, Gross
Connecticut (1): Reihl
Delaware (1): Laurenzi
Illinois (1): Meyer
Massachusetts (1): Wilkie
Michigan (5): Murphy, Pardoski, Shaw, Smiddy, Yoxheimer
Minnesota (5): Bowman, Jahnke, Nielsen, Petersen, Rasmussen
New York (1): Seward
Pennsylvania (5): Holdcroft, Kern, Mendelson, Walkom, Weaver
Texas (2): Hoenshell, Welch
Vermont (1): Desorcie
LIONS BY PROVINCE
Ontario (1): Paniccia

LIONS BY POSITION

Forward (17): Bowman, Catanzariti, Desorcie, Gross, Hoenshell, Holdcroft, Kern, Laurenzi, Mendelson, Murphy, Nielsen, Petersen, Rasmussen, Shaw, Weaver, Welch, Yoxheimer
Defense (8): Bateman, Jahnke, Pardoski, Reihl, Seward, Smiddy, Walkom, Wilkie
Goalie (3): Meyer, Paniccia, Whitlinger



NITTANY LION WOMEN'S HOCKEY



2013-14 Penn State Women's Hockey Penn State Combined Team Statistics (as of Nov 28, 2013) All games

Date	Opponent	Score	Att.
Oct 04	at Vermont	Tot 3-3	435
Oct 05	at Vermont	W 4-2	760
Oct 11	at Quinnipiac	L 1-5	505
Oct 12	at Quinnipiac	L 0-4	213
Oct 18	UNION	L 1-2	1424
Oct 19	UNION	W 2-1	814
Oct 26	NEW HAMPSHIRE	L 5-8	493
Oct 27	NEW HAMPSHIRE	L 1-3	552
* Oct 31	ROBERT MORRIS	L 0-4	513
* Nov 01	ROBERT MORRIS	L 0-6	771
* Nov 09	SYRACUSE	L 1-2	691
* Nov 10	SYRACUSE	Lot 3-4	516
* Nov 15	at RIT	L 1-2	1170
* Nov 16	at RIT	L 2-3	588
* Nov 22	at Lindenwood	L 1-2	102
* Nov 23	at Lindenwood	W 4-1	85

	PSU	OPP
TEAM STATISTICS		
SHOT STATISTICS		
Goals-Shot attempts	29-366	52-638
Shot pct.	.079	.082
Goals/Game	1.8	3.2
Shots/Game	22.9	39.9
POWER PLAYS		
Goals-Power Plays	9-58	17-62
Conversion Percent	.155	.274
GOAL BREAKDOWN		
Power Play	9	17
Short-handed	1	0
Empty net	0	1
Penalty	0	0
Unassisted	3	4
Overtime	0	1
PENALTIES		
Number	65	60
Minutes	130	120
Penalties/Game	4.1	3.8
Pen minutes/Game	8.1	7.5
FACEOFFS (W-L)	428-470	470-428
Faceoff W-L Pct.	.477	.523

Record:	Overall	Home	Away	Neutral
ALL GAMES	3-12-1	1-7-0	2-5-1	0-0-0
CONFERENCE	1-7-0	0-4-0	1-3-0	0-0-0
NON-CONFERENCE	2-5-1	1-3-0	1-2-1	0-0-0

#	Player	gp	g	a	pts	sh	sh%	pen-min	pp	sh
24	Gross, Taylor	16	6	4	10	48	.125	0-0	2	0
40	Yoxheimer, Shannon	16	4	6	10	83	.048	3-6	1	0
16	Hoenshell, Hannah	16	2	6	8	34	.059	2-4	0	0
18	Bowman, Laura	16	5	2	7	39	.128	6-12	1	0
12	Nielsen, Sarah	16	1	5	6	12	.083	6-12	0	0
9	Petersen, Amy	16	1	5	6	17	.059	0-0	1	0
19	Holdcroft, Jill	16	3	2	5	25	.120	3-6	1	1
4	Pardoski, Jordin	16	2	3	5	13	.154	4-8	1	0
27	Seward, Kelly	16	3	0	3	14	.214	2-4	2	0
20	Laurenzi, Emily	16	0	3	3	12	.000	5-10	0	0
15	Desorcie, Jess	16	1	1	2	16	.062	3-6	0	0
13	Rasmussen, Kendra	10	1	0	1	4	.250	0-0	0	0
2	Bateman, Jeanette	15	0	1	1	8	.000	2-4	0	0
17	Jahnke, Paige	14	0	1	1	5	.000	8-16	0	0
6	Reihl, Lindsay	16	0	1	1	3	.000	2-4	0	0
23	Shaw, Birdie	15	0	1	1	3	.000	4-8	0	0
33	Smiddy, Madison	5	0	1	1	0	.000	1-2	0	0
10	Catanzariti, Micayla	4	0	0	0	1	.000	1-2	0	0
5	Walkom, Stephanie	1	0	0	0	0	.000	0-0	0	0
36	Weaver, Tess	3	0	0	0	1	.000	1-2	0	0
22	Welch, Jenna	16	0	0	0	18	.000	6-12	0	0
21	Wilkie, Sarah	13	0	0	0	10	.000	2-4	0	0
TM	TEAM	8	0	0	0	0	.000	4-8	0	0
Total		16	29	42	71	366	.079	65-130	9	1
Opponents		16	52	84	136	638	.082	60-120	17	0

#	Goalie	gp	min	ga	gaavg	saves	save%	w-l-t
30	Whitlinger, Celine	8	477:56	24	3.01	311	.928	3-5-0
37	Paniccia, Nicole	8	479:23	27	3.38	275	.911	0-7-1
TM	EMPTY NET	8	9:08	1	-	0	.000	0-0-0
Total		16	966:27	52	3.23	586	.918	3-12-1
Opponents		16	966:27	29	1.80	337	.921	12-3-1

Attendance Summary	PSU	Opponent
Total	5774	3858
Dates/Avg Per Date	8/722	8/482
Neutral Site #/Avg	0/0	

Goals by Period	1st	2nd	3rd	OT	Total
Penn State	11	10	8	0	29
Opponents	9	19	23	1	52

Saves by Period	1st	2nd	3rd	OT	Total
Penn State	195	203	182	6	586
Opponents	105	104	126	2	337





NITTANY LION WOMEN'S HOCKEY



JEANNETTE BATEMAN
Sophomore • D
Greeley, Colo.



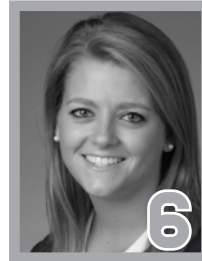
CARA MENDELSON
Junior • F
Pittsburgh, Pa.



JORDIN PARDOSKA
Sophomore • D
Rochester Hills, Mich.



STEPHANIE WALKOM
Sophomore • D
Moon Township, Pa.



LINDSAY REIHL **A**
Grad Student • D
Cheshire, Conn.



AMY PETERSEN
Freshman • F
Minnetonka, Minn.



MICAYLA CATANZARITI
Sophomore • F
Rancho Santa Margarita, Calif.



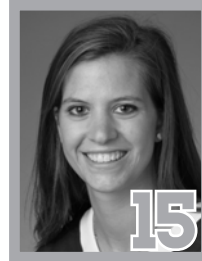
SARAH NIELSEN
Freshman • F
Edina, Minn.



KENDRA RASMUSSEN
Sophomore • F
Sartell, Minn.



DARBY KERN
Sophomore • F
Venetia, Pa.



JESS DESORCIE
Junior • F
Westford, Vt.



HANNAH HOENSHELL
Sophomore • F
Plano, Texas



PAIGE JAHNKE
Sophomore • D
Oakdale, Minn.



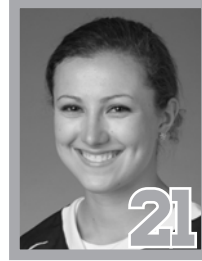
LAURA BOWMAN
Freshman • F
Minnetonka, Minn.



JILL HOLDCROFT
Sophomore • F
Pennsylvania Furnace, Pa.



EMILY LAURENZI
Sophomore • F
Townsend, Del.



SARAH WILKIE
Sophomore • D
Ashby, Mass.



JENNA WELCH **A**
Senior • F
Austin, Texas



BIRDIE SHAW
Sophomore • F
Troy, Mich.



TAYLOR GROSS **C**
Senior • F
Colorado Springs, Colo.



KATIE MURPHY
Junior • F
Novi, Mich.



KELLY SEWARD
Freshman • D
Williamsville, N.Y.



CELINE WHITLINGER
Sophomore • G
Garden Grove, Calif.



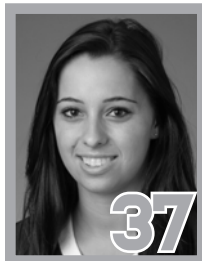
BROOKE MEYER
Sophomore • G
Naperville, Ill.



MADISON SMIDDY
Junior • D
Grand Rapids, Mich.



TESS WEAVER
Junior • F
Windber, Pa.



NICOLE PANICCIA
Senior • G
Oakville, Ont.



SHANNON YOKHEIMER
Sophomore • F
Jackson, Mich.

