

# PENN STATE

## WOMEN'S SOCCER



2013

GoPSUsports.com | ONE TEAM

### AUGUST

23	WEST VIRGINIA*	T, 2-2 (2OT)
25	HOFSTRA <sup>1</sup>	W, 2-1
30	at No. 5 Virginia	L, 5-1

### SEPTEMBER

1	LA SALLE	W, 5-1
6	BOSTON UNIVERSITY	W, 1-0
10	at Bucknell	W, 6-0
13	at Oklahoma State	W, 4-2
15	at Tulsa	W, 3-2
20	NORTHWESTERN*	W, 3-2(2OT)
26	PURDUE*	W, 6-1
29	INDIANA*	W, 4-1

### OCTOBER

4	at No. 18 Wisconsin*	W, 2-1
6	at Minnesota*	L, 1-0
13	No. 19 MICHIGAN*	1:00 p.m.
17	OHIO STATE*	3:00 p.m.
20	ILLINOIS	12:00 p.m.
25	at Iowa*	8:00 p.m.
27	at Nebraska*	2:00 p.m.

### NOVEMBER

1	at Michigan State*	3:00 p.m.
6	Big Ten Quarterfinals <sup>2</sup>	TBA
8	Big Ten Semifinals <sup>2</sup>	TBA
10	Big Ten Championship <sup>2</sup>	TBA
15-17	NCAA First Round	TBA
22	NCAA Second Round	TBA
24	NCAA Third Round	TBA
29-30	NCAA Quarterfinals	TBA

### DECEMBER

1	NCAA Quarterfinals	TBA
6	College Cup Semifinals	TBA
8	College Cup Championship	TBA

\* - Big Ten match

1-Penn State Invitational, University Park, Pa.

2 - Big Ten Tournament, Champaign, Ill.

Home matches in **CAPS** at Jeffrey Field  
All times Eastern

**#11 PENN STATE NITTANY LIONS**  
(10-2-1, 4-1-0 Big Ten)

**#19 MICHIGAN WOLVERINES**  
(9-2-1, 3-1-1 Big Ten)



Oct. 13, 2013 • 1 p.m. • Jeffrey Field • University Park, Pa.

### MATCH DAY (vs. MICHIGAN)

VENUE

Jeffrey Field (Grass - 5,000)

ONLINE COVERAGE

GameTracker

SERIES RECORD

Penn State leads 17-3-7

LAST MEETING

Nov. 18, 2012 (T 1-1 - Advanced on PK's)

### THE SUNDAY NEWS

- Penn State hosts Michigan during Homecoming weekend
- The Nittany Lions are 17-3-7 against Michigan all-time
- The Blue and White are tied for first place in the B1G
- PSU leads the conference in five categories
- The Lions have won nine of their last 10 matches
- Hayes leads the league in four categories

### ON THE PITCH

The No. 11 Penn State women's soccer team is set to host No. 19 Michigan on Sunday at 1:00 p.m. during Homecoming weekend. The Nittany Lions are 17-3-7 against the Wolverines all-time, most recently defeating them in penalty kicks last season during the NCAA Tournament.

### PENN STATE NO. 11 IN NSCAA POLL

After seven weeks of action, the Penn State women's soccer team ranks 11th overall according to the NSCAA rankings. Michigan (19), Wisconsin (20) and Nebraska (24) also represent the Big Ten in the poll while Ohio State is just outside of the Top 25, receiving votes.

### LEADING THE LEAGUE

The Blue and White currently lead the conference in five different categories. They are No. 1 in goals (39), goals per game (3.00), assists (38), assists per game (2.92) and points (116). Penn State is also in the top five in the nation in assists (3rd), points (4th) and scoring offense (5th).

Contact: Kellie O'Brien • kbo2@psu.edu  
O: (814) 863-1377 • C: (814) 321-5119



PSUWomensSoccer



@PennStateWSOC



### 2013 STAT LEADERS

POINTS		GAME-WINNING GOALS	
Maya Hayes	31	Maya Hayes	3
Tani Costa	15	Mallory Weber	2
Mallory Weber	14		
GOALS		ASSISTS	
Maya Hayes	13	Raquel Rodriguez	7
Mallory Weber	5	Tani Costa	5
Tani Costa	5	Emily Hurd	5
		Maya Hayes	5
		Taylor Schram	5
		SAVES	
		Britt Eckerstrom	53



## GAMEDAY CENTRAL

### SCOUTING THE WOLVERINES

Michigan enters Sunday's match at 9-2-1 overall and 3-1-1 in Big Ten play. The Wolverines most recently defeated then-No. 23 Nebraska, 2-1, on Sunday and are currently third in the B1G standings.

U-M is led by senior Nkem Ezurike and freshman Madisson Lewis. Ezurike leads the team in goals and assist with seven and six, respectively, while Lewis has notched four goals and five assists. Keeper Taylor Bucklin has been a strong force for the Wolverines in goal, allowing just 0.58 goals per game.

### SERIES HISTORY vs. MICHIGAN

Historically, the Nittany Lions have dominated the series, holding a 17-3-7 record over the Wolverines all-time. Recently, however, the match-up has been very even, producing two draws in 2012.

The two squads left the field at an even 1-1 last year in the regular season and PSU outlasted U-M in penalty kicks, 3-2, during the NCAA Tournament to advance to the Elite Eight.

### LAST TIME OUT

The No. 7 Penn State women's soccer team registered its first Big Ten loss of the season last Sunday afternoon, falling to Minnesota 1-0 at Elizabeth Lyle Robbie Stadium. The Lions outshot the Gophers 20-6 and notched seven shots on goal but could not get past Minnesota keeper Tara Hobbs, who collected seven saves.

Haley Helverson scored the lone goal in the 17th minute of action. The sophomore received the ball right in front of the goal on a cross from Steph Brandt and knocked it into the net from point blank range to put Minnesota up 1-0.

### THE BLUE AND WHITE BURY THE BADGERS

The No. 7 Penn State women's soccer team collected its first Big Ten road win last Friday night, edging No. 18 Wisconsin, 2-1, at the McClimon Soccer Complex. The Nittany Lions used goals from seniors Tani Costa and Maya Hayes to earn their ninth-straight victory.

The Lions put three shots on goal early on in the first half before netting one at the 30:59 mark. Hayes beat a Badger defender and sent a through ball to Costa, who found the back of the net from just outside the box to give Penn State a 1-0 advantage.

The Lions extended their lead to 2-0 just five minutes later as Hayes buried one in the back of the net. The senior received the ball on a beautiful cross from Mallory Weber (Novi, Mich.) and headed it in from 10 yards out.

Rose Lavelle gave the Badgers their first and only goal of the match in the 66th minute. McNicoll took a shot from just outside the box, which was blocked by Eckerstrom but Lavelle found the rebound, knocking the ball in from 10 yards out.

Raquel Rodriguez made the final attempt of the match in the 87th minute. The midfielder was awarded a free kick and sent the ball flying straight for the net but Richard was prepared, yet again, making a diving save to leave the final score at 2-1.

### FRONTRUNNER

Senior Maya Hayes ranks No. 1 in the B1G in points (31) and points per game (2.38) and is tied for first in goals (13) and goals per game (1.00). The forward is also third in the nation in points, tied for third in goals and fifth in points per game.

Hayes has found the back of the net in all but two matches this season.

### IN THE BOOKS

Forward Maya Hayes solidified her place in the Penn State record books after notching the second most goals (31) and most points (70) in a single season during her sophomore campaign but she is not stopping there. The senior is now No. 3 on the career goals ledger after netting 13 so far this season, bringing her total to 65 in just 78 games.

All-American Tiffany Weimer (2002-05) and MAC Hermann Trophy winner Christie Welsh (1999-02) are atop the standings with an impressive 91 and 82 goals, respectively.

Hayes is also third on the career points record list with 150. Welsh leads the category with a remarkable 216 points and Weimer follows closely with 214.

### HOME FIELD DOMINANCE

The Lions are a force to be reckoned with when playing at Jeffrey Field, having amassed a home record of 188-21-11 (.880). At 94-3-4 (.950), the Nittany Lions have the best Big Ten home record in the conference.

In 2012, a PSU-record 5,117 fans packed the stands to watch Penn State play then-No. 1 Stanford. The Lions are currently riding an 18-game unbeaten streak at Jeffrey.

### SEPTEMBER SWEEPS

The Nittany Lions completed their perfect September record (8-0-0) on Sunday, Sept. 29 with a 4-1 win over Indiana. They now own a 124-31-13 (.777) record in the month of September all-time.

PSU defeated Purdue, 6-1, on Sept. 26 night and opened up conference play with a 3-2 double overtime win against Northwestern on Sept. 20.

The Blue and White have also posted consecutive wins over Tulsa (9/15), Oklahoma State (9/13), Bucknell (9/10), Boston University (9/6) and LaSalle (9/1).

### LIONS HANDLE HOOSIERS

The then-No. 8 Penn State women's soccer team completed its perfect September record (8-0-0) on Sunday afternoon as it overpowered Indiana, 4-1, at Jeffrey Field. Raquel Rodriguez, Tani Costa, Emily Hurd and Maya Hayes each netted goals for the Nittany Lions.

Rodriguez started things off for the Nittany Lions for the second-straight match, netting her third goal of the year in the seventh minute. Kori Chapic played a ball to Hurd and Hurd crossed it to Rodriguez, who was able to head it in to give PSU a 1-0 lead.

IU tied it up at the 25:01 mark as Monica Melink notched her second goal of the season. The midfielder received the ball on a cross from Rebecca Candler and put it in from the far corner of the box.

The Nittany Lions came out firing on all cylinders in the second half, posting four shots in the first seven minutes. Costa found success on the fourth shot, burying the ball in the net from 12 yards ahead on a beautiful cross from Hurd.

Hurd added a goal of her own in the 60th minute. The redshirt junior blasted one in from the far corner of the 18 yard box to give the Lions a 3-1 lead.

Britt Eckerstrom collected a big save in the 62nd minute to keep the score at 3-1, stopping a Melink attempt that came on goal. The Hoosiers had two more clean looks in the game but Eckerstrom was up to the task, picking up saves on both. The redshirt sophomore finished the match with eight saves.

Hayes posted her 12th goal of the year and capped the scoring with seven minutes remaining in the game. Taylor Schram dropped the ball to Hayes and the senior dribbled past an Indiana defender before firing the ball in from 12 yards deep.

### LIONS STEAM BOILERMAKERS

The then-No. 8 Penn State women's soccer team used six goals from five different players en route to a dominant 6-1 victory over Purdue on Sept. 26 as it honored the life and legacy of Mack Brady. Raquel Rodriguez, Kori Chapic, Maya Hayes, Tani Costa and Kindrah Kohne each scored for the Nittany Lions.

Penn State's offense was not the only impressive part of the match as the defensive unit held the Boilermakers (5-4-1, 0-2-0) to just one shot for the entire game.

Rodriguez put the Nittany Lions on the board early, tallying her second goal of the season in the seventh minute of action. Hayes dribbled the ball to beat a defender and crossed it to Rodriguez, who put it in from eight yards out.

The Boilermakers evened the score in the 16th minute as forward Maddy Williams tallied her seventh goal of the year. Juliana Hairston played a cross to Jordan Pawlik and Pawlick flicked it to Williams, who was able to finish from 10 yards out.

With the goal, Williams became the first Purdue player to score on Jeffrey Field since 2005.

The Blue and White were awarded a corner kick in the 37th minute and came up with their second goal of the match. Chapic headed the ball in off a fantastic corner from Rodriguez to give Penn State a 2-1 lead.



## 2013 BIG TEN PRESEASON POLL

### 1. Penn State

2. Michigan
3. Illinois
4. Ohio State
5. Wisconsin
6. Iowa
7. Minnesota
8. Northwestern
9. Nebraska
10. Michigan State
11. Purdue
12. Indiana

## 2013 BIG TEN STANDINGS

Team	Big Ten	Pts.	Overall
1. Nebraska	5-1-0	15	10-3-1
<b>2. Penn State</b>	<b>4-1-0</b>	<b>12</b>	<b>10-2-1</b>
3. Michigan	3-1-1	10	9-2-1
4. Wisconsin	3-1-1	10	8-2-2
5. Indiana	3-2-0	9	10-2-1
6. Purdue	3-3-0	9	8-5-1
7. Minnesota	2-2-1	7	9-3-1
8. Iowa	2-3-0	6	10-3-0
9. Ohio State	1-2-2	5	7-3-3
10. Illinois	1-3-1	4	6-5-2
11. Michigan State	1-4-0	3	7-4-2
12. Northwestern	0-5-0	0	2-9-2

The Lions' next tally came right before the half as Purdue sent an own goal into the net. Costa crossed the ball towards the goal and it deflected off of Boilermaker defender Kim Love as she was attempting to clear it, putting PSU up 3-1.

Penn State didn't waste much time before extending their lead to 4-1 as Costa posted her third goal of the season in the 53rd minute. Emily Hurd crossed the ball to Costa and the senior buried the ball in the back of the net from point blank range.

Hayes was the next to score for the Lions, registering her 11th goal of the year at the 62:00 mark. The forward beat a defender at the edge of the box and slid one past Kridler, giving the Blue and White a 5-1 advantage.

Kohne capped the scoring and posted her first Penn State goal in the 77th minute of play. The junior midfielder intercepted a pass from Purdue and hammered the ball in from 20 yards deep to leave the score at 6-1.

### PSU RALLIES PAST NORTHWESTERN

Junior defender Whitney Church (Ashburn, Va.) posted two crucial goals on Sept. 20 to lift the then-ninth-ranked Penn State women's soccer team over Big Ten foe Northwestern, 3-2, in a double overtime thriller at Jeffrey Field. Maya Hayes also came up big for the Lions, netting the game-tying goal in the conference opener for both squads.

NU senior Kate Allen put the Wildcats on the board early, netting the first goal of the match in the fourth minute of action. Sami Schrakamp crossed the ball to Allen, who then fired it into the top of the net over Eckerstrom to give NU a 1-0 lead.

Allen netted her second goal of the game in the 78th minute, stretching NU's lead to 2-0. Georgia Waddle dropped the ball to Allen and the forward fired one past Eckerstrom to give the Wildcats a two goal advantage with 12 minutes remaining in regulation.

The second Northwestern goal seemed to motivate the Nittany Lions as they fired back with their first goal of the game just two minutes later. The Blue and White were awarded another corner kick and this time they made it count. Rodriguez sent the ball to Church, who headed it in from six yards out to bring the score to 2-1.

Hayes added another goal for PSU in the 84th minute. Hayes got the ball on a long pass from Chapic and then went on to beat Hascher one-on-one, tapping the ball into the net to tie the game at 2-2 and send the match into overtime.

Church sealed the deal for the Blue and White with 3:35 remaining in the game. The defender got the ball after it bounced off of several PSU and NU players and drilled it into the far corner of the net from 20 yards out to leave the final score at 3-2.

## 2013 PENN STATE WOMEN'S SOCCER ROSTER

No.	Name	Pos.	Elig.	Ht.	Hometown	High School	Pronunciation
0	Meghan Kaminski	GK	So.	6-1	Doylestown, Pa.	Central Bucks South	
00	Lexi Golestani	GK	Fr.	5-6	Montgomery, N.J.	The Hun School of Princeton	GOAL-es-tawn-EE
1	Brittany Basinger	D	Fr.	5-7	Fairfax, Va.	Woodgrove	BAY-singer
2	Megan Ritchey	M	So.	5-3	State College, Pa.	State College Area	
3	Emily Hurd	M	R-Jr.	5-7	Sammamish, Wash.	Eastlake	
4	Lexi Marton	D	R-Sr.	5-11	Aurora, Ontario	The Country Day School	
5	Maya Hayes	F	Sr.	5-7	West Orange, N.J.	Newark Academy	
6	Anna Witte	D	Fr.	5-4	Morrisville, N.C.	Cary	witt-EE
7	Corey Persson	M	So.	5-3	Danvers, Mass.	Danvers	
8	Jenna Kalwa	D/M	So.	5-5	Pennington, N.J.	Hopewell Valley Central	
9	Andrea Gunderson	D	Fr.	5-6	West Chester, Pa.	WC Rustin	
11	Raquel Rodriguez	F/M	So.	5-6	San Jose, Costa Rica	International Christian	
12	Kindrah Kohne	M	Jr.	5-5	Homer, N.Y.	Homer	KO-nee
14	Kori Chapic	F/M	Jr.	5-7	Novelty, Ohio	West Geauga	CHAP-ick
15	Erin Kehoe	D	Sr.	5-4	Crystal Lake, Ill.	Prairie Ridge	
16	Mallory Weber	F	So.	5-6	Novi, Mich.	Northville	
17	Whitney Church	D	Jr.	5-5	Ashburn, Va.	Broad Run	
18	Angela Widlacki	D	Fr.	5-5	Naperville, Ill.	Naperville North	
19	Taylor Schram	F/M	Sr.	5-5	Canonsburg, Pa.	Canon-McMillan	SHRAM
20	Salina Williford	M/D	Fr.	5-4	Wayne, Pa.	Conestoga	
21	Teddy Chase	D	So.	5-7	Wayne, Pa.	The Shipley School	
22	Tani Costa	F	R-Sr.	5-8	Honolulu, Hawaii	Kalani	TAH-nee
23	Bri Hovington	D	Sr.	5-4	Lothian, Md.	Southern	
24	Liv Brandy	D	Fr.	5-4	Gibsonia, Pa.	Home Schooled	
25	Mallory Peterson	F/M	So.	5-5	Clinton Corner, N.Y.	Millbrook	
26	Emily Carrollo	F/M	GS	5-5	Sussex, N.J.	Pope John Regional	KA-roll-oh
27	Maggie Chapman	M	Fr.	5-4	Dumfries, Va.	Forest Park	
28	Britt Eckerstrom	GK	R-So.	5-10	Germantown, Md.	Northwest	
30	Chloe Buehler	GK	Fr.	5-7	Perrysburg, Ohio	Perrysburg	BYOO-lur

**Head Coach:** Erica Walsh (Seventh year)

**Assistant Coaches:** Ann Cook (Seventh year), Tim Wassell (Fourth year)

**Director of Operations:** Kara Lowery (First year)

**Volunteer Assistant:** Mike Eckberg (First Year)





## PENN STATE EDGES TULSA

Penn State finished out its non-conference slate with an exciting 3-2 victory over Tulsa on Sept. 15. Maya Hayes came up big for the Nittany Lions, scoring the game-winning goal in the 89th minute. Sophomore Mallory Weber and senior Tani Costa also netted goals for PSU.

Weber notched the first goal of the match, putting the ball into the net in the 22nd minute. The sophomore got the ball on a high arcing cross from Emily Hurd and headed it in from four yards out to give Penn State a 1-0 advantage.

Claire Nicholson got the Golden Hurricane on the board in the 57th minute of action after Tulsa was awarded a penalty kick. Eckerstrom went left and Nicholson chose right, sending the ball into the back of the net and tying the game at 1-1.

The Nittany Lions pulled ahead at the 73:42 mark with Costa tallying her second goal of the season. Hurd dropped the ball to Costa, who then beat the keeper and tapped the ball in from seven yards out to give the Blue and White a 2-1 lead.

Leading by one with just over four minutes remaining, it looked as though Penn State had the game won but the Golden Hurricane thought otherwise. Kirsch dropped the ball to Kajal Parmar and Parmar crossed it to Pelley, who scored the equalizer on a sliding kick from seven yards out.

Pelley's efforts were not enough to send the game into overtime, however, as Hayes responded with the game-winner with 20 seconds remaining. The senior ripped one into the top of the net from 15 yards out on an assist from Schram, putting the final score at 3-2 in Penn State's favor.

## LIONS LASSO COWGIRLS

After trailing 2-0 early in the first half, the then-No. 13 Penn State women's soccer team rallied to defeat Oklahoma State 4-2 on Friday, Sept. 13 at Cowgirl Stadium. Senior Maya Hayes led the Lions with two goals while junior Kori Chapic and sophomore Mallory Weber netted one apiece.

Tani Costa also came up big for the Blue and White, tallying assists on three of Penn State's four goals.

Oklahoma State's Allie Stephenson got the Cowgirls on the board early. The sophomore fired the ball in from 20 yards out in the sixth minute on an assist by Joanna Robertson.

The Cowgirls extended their lead to 2-0 eight minutes later as Krissy Killon made a great play to beat Eckerstrom, scoring from eight yards out.

Chapic netted her first goal of the season to get Penn State on the board in the 24th minute. The Junior drilled the ball in off of the far post from 30 yards out, putting the score at 2-1.

The Lions picked up the pace towards the end of the second half, netting two goals in a two minute span. Weber notched the equalizer at the 35:34 mark, flicking the ball into the net from five yards out on a cross from Costa. Hayes tallied the third goal of the match, blasting the ball over Medina's head from 20 yards out to give Penn State its first lead of the evening at 3-2.

Hayes earned her second goal of the game with just six minutes remaining. The senior received the ball on a long pass from Costa before breaking away from a Cowgirl defender and beating Medina in a one on one situation to cap the scoring at 4-2.

## THE BLUE AND WHITE BLANK THE BISON

The then-No. 13 Penn State women's soccer team used six goals from five different players en route to a 6-0 victory over Bucknell on Sept. 10. Sophomore Mallory Weber led the way with two goals while Emily Hurd, Maya Hayes, Corey Persson and Liv Brandy each netted one.

Sophomore Raquel Rodriguez also had a stellar performance, tallying a personal-best three assists in just 25 minutes of action. It was the first time a Nittany Lion has notched three helpers in a single game since Hayes achieved the feat against Ohio State on Sept. 29, 2011.

The Lions' match against the Bison also marked the first time that the Nittany Lions have scored six goals since they upended Purdue, 6-1, on Oct. 31, 2010.

## LIONS SILENCE TERRIERS

Senior Taylor Schram netted her third goal of the season to lead the then-No. 14 Penn State women's soccer team to a 1-0 victory over Boston University on Sept. 6 at Jeffrey Field. Friday's shutout was the first of the 2013 campaign for the Nittany Lions.

The match was one delegated by defense as Penn State allowed just nine shots from BU and the Terriers held the Nittany Lions to just three shots on goal.

Schram got the Blue and White on the board in the 53rd minute, drilling the ball in from six yards out. The goal originated when Raquel Rodriguez dropped the ball to Mallory Weber, who then passed it to Schram.

The Penn State defensive unit of Kori Chapic, Whitney Church, Brittany Basinger and Salina Williford was superb in the second half as the Lions allowed just three shots, none of which were on goal. Eckerstrom tallied three saves in the second shutout of her career.

## PENN STATE CAREER RECORDS

### SHOTS

1.	431	Christie Welsh	97 gms.	1999-02
2.	381	Katie Schoepfer	92 gms.	2006-09
3.	356	Tiffany Weimer	97 gms.	2002-05
4.	347	Joanna Lohman	101 gms.	2000-03
5.	317	Rachel Hoffman	87 gms.	1994-97
6.	314	Christine Nairn	94 gms.	2009-12
7.	283	Heidi Drummond	98 gms.	2000-03
8.	256	<b>Maya Hayes</b>	<b>78 gms.</b>	<b>2010-</b>
9.	253	Danielle Toney	99 gms.	2007-10
10.	230	Kelly Convey	93 gms.	1996-99

### GOALS

1.	91	Tiffany Weimer	97 gms.	2002-05
2.	82	Christie Welsh	97 gms.	1999-02
3.	65	<b>Maya Hayes</b>	<b>78 gms.</b>	<b>2010-</b>
4.	58	Rachel Hoffman	87 gms.	1994-97
5.	56	Heidi Drummond	98 gms.	2000-03
6.	48	Katie Schoepfer	92 gms.	2006-09
7.	44	Carole Dutchka	87 gms.	1995-98
8.	41	Joanna Lohman	101 gms.	2000-03
9.	38	Danielle Toney	99 gms.	2007-10
10.	34	Christine Nairn	93 gms.	2009-12

### GAME-WINNING GOALS

1.	27	Christie Welsh	97 gms.	1999-02
	27	Tiffany Weimer	97 gms.	2002-05
3.	19	Heidi Drummond	98 gms.	2000-03
4.	18	Katie Schoepfer	92 gms.	2006-09
	18	Rachel Hoffman	87 gms.	1994-97
6.	17	Carole Dutchka	87 gms.	1995-98
7.	16	<b>Maya Hayes</b>	<b>78 gms.</b>	<b>2010-</b>
8.	15	Joanna Lohman	101 gms.	2000-03
9.	12	Danielle Toney	99 gms.	2007-10
10.	12	Christine Nairn	93 gms.	2009-12

### ASSISTS

1.	52	Christie Welsh	97 gms.	1999-02
2.	41	Christine Nairn	94 gms.	2009-12
3.	37	Joanna Lohman	101 gms.	2000-03
4.	32	Tiffany Weimer	97 gms.	2002-05
5.	31	Rachel Hoffman	87 gms.	1994-97
6.	29	Stephanie Smith	101 gms.	2000-03
7.	26	Katie Schoepfer	92 gms.	2006-09
		Heidi Drummond	98 gms.	2000-03
		Kelly Convey	93 gms.	1996-99
10.	25	Liz Villamil	87 gms.	1994-97

### POINTS

1.	216	Christie Welsh	97 gms.	1999-02
2.	214	Tiffany Weimer	97 gms.	2002-05
3.	150	<b>Maya Hayes</b>	<b>78 gms.</b>	<b>2010-</b>
4.	147	Rachel Hoffman	87 gms.	1994-97
5.	138	Heidi Drummond	98 gms.	2000-03
6.	122	Katie Schoepfer	92 gms.	2006-09
7.	119	Joanna Lohman	101 gms.	2000-03
8.	108	Carole Dutchka	87 gms.	1995-98
	109	Christine Nairn	94 gms.	2009-12
10.	96	Danielle Toney	99 gms.	2007-10

### GAMES PLAYED

1.	104	Bonnie Young		1997-01
2.	103	Megan Mills		1998-01
3.	101	Joanna Lohman		2000-03
	101	Stephanie Smith		2000-03
5.	100	Emily Oleksiuk		1998-01
6.	99	Danielle Toney		2007-10
7.	97	Luanne Strom		1997-00
	97	Tiffany Weimer		2002-05
	97	Christie Welsh		1999-02
10.	96	Courtney Lawson		1996-99

### GAMES STARTED

1.	103	Megan Mills		1997-01
	103	Bonnie Young		1997-01
3.	101	Joanna Lohman		2000-03
	101	Stephanie Smith		2000-03
5.	100	Emily Oleksiuk		1998-01

## LIONS ROAR PAST LA SALLE

The Penn State women's soccer team earned its second victory of the season with a 5-1 win over La Salle on Sept. 1 at Jeffrey Field.

Senior forward Maya Hayes netted two goals for the Nittany Lions while seniors Taylor Schram and Tani Costa and sophomore Raquel Rodriguez posted one apiece.

Hayes got things started for the Nittany Lions in the 34th minute, finding the ball after a free kick was deflected and drilling it into the back of the net to give Penn State a 1-0 advantage.

The Lions extended their lead to 2-0 just five minutes later as Rodriguez made a quick move around a La Salle defender and put one in from the edge of the box.

A goal by Kelsey Haycock got the Explorers on the board at the 58:48 mark. The junior knocked the ball into the net on a cross from teammate Maryam Huseini to bring the score to 2-1 in PSU's favor.

Costa gave the Lions their third goal of the game at the 70:31 mark. The forward got the ball from Hayes, who stole it from a defender, and fired it past La Salle keeper Katie Getzinger to give Penn State a 3-1 lead.

The Blue and White were awarded a corner kick just three minutes later and were able to capitalize as Hayes scored off a Kori Chapic header from a Rodriguez cross, putting the score at 4-1.

Penn State capped the scoring in the 84th minute as Schram stole the ball and hammered it into the back of the net, bringing the score to 5-1.

## CAVALIERS DOWN PSU

Penn State dropped its first road match of the season to No. 5 Virginia, 5-1, on Friday, Aug. 30 at Klöckner Stadium. The Nittany Lions led 1-0 early on before UVA took control, netting three goals in the first half and two in the second.

Maya Hayes notched the lone goal for PSU, tapping one in on a cross from sophomore Mallory Weber in the sixth minute to give the Blue and White a 1-0 lead.

UVA responded seven minutes later as Morgan Brian drilled one in from 18 yards out on an assist from Makenzy Doniak to tie the match up at 1-1.

UVA controlled the momentum for the rest of the half, taking a 2-1 lead in the 18th minute on a goal by Doniak, assisted by Gloria Douglas and Danielle Colaprico. Senior Kate Norbo extended the Wahoons' lead to 3-1 in the 21st minute, netting one from 15 yards out on a breakaway.

Virginia showed no signs of letting up in the second half as senior Shasta Fisher knocked one in at the far post from 15 yards out just two minutes in, giving the Cavaliers a 4-1 advantage.

Keeper Britt Eckerstrom came up with two nice saves in the 72nd and 73rd minutes before Cavalier sophomore Brittany Ratcliffe nudged one past her on an assist from Kailie Torres in the 77th minute to cap the scoring at 5-1.

## LIONS CLAW THE PRIDE

The Penn State women's soccer team posted its first win of the 2013 campaign with a 2-1 victory over Hofstra on Sunday, Aug. 25 in the Penn State Invitational. Senior forward Maya Hayes and sophomore forward Mallory Weber led the way for the Nittany Lions with both netting goals in the first half of the contest.

Hayes took the initiative early in the match, sending the ball in to the back of the net in the 11th minute on a low cross from Emily Carroll to give PSU an early 1-0 lead. Weber extended the Lions' lead to 2-0 in the 19th minute, stealing the ball off a goal kick and putting it into the top of the net.

Hofstra didn't waste any time in the second half as Leah Galton netted an unassisted goal from 12 yards out in the 51st minute to bring the Pride within one. Hofstra registered three more shots on goal in the second half but could not get by Eckerstrom, who totaled six saves in the match.

## MISCELLANEOUS STATISTICS

### PENN STATE is...

188-21-11 . . . . . All-time at Jeffrey Field  
94-3-4 . . . . . All-time vs. Big Ten at Jeffrey Field

### In 2013...

6-0-1 . . . . . at home  
4-2-0 . . . . . on the road  
0-0-0 . . . . . at neutral site  
1-0-1 . . . . . in overtime  
6-1-1 . . . . . when wearing white  
4-1-0 . . . . . when wearing blue  
8-0-0 . . . . . when leading at halftime  
1-2-1 . . . . . when trailing at halftime  
2-0-0 . . . . . when tied at halftime  
9-1-0 . . . . . when scoring first goal  
1-1-1 . . . . . when opponent scores first goal  
10-1-1 . . . . . when out-shooting opponent  
0-1-0 . . . . . when out-shot by opponent  
0-0-0 . . . . . when shooting the same # of shots  
7-1-1 . . . . . when taking more corner kicks  
3-1-0 . . . . . when allowing more corner kicks  
0-0-0 . . . . . when taking the same corner kicks  
1-1-0 . . . . . against ranked opponents  
9-1-1 . . . . . against unranked opponents  
0-1-0 . . . . . against higher-ranked opponents  
1-0-0 . . . . . against lower-ranked opponents  
0-0-0 . . . . . when scoring 0 goals  
1-1-0 . . . . . when scoring 1 goal  
2-0-1 . . . . . when scoring 2 goals  
7-0-0 . . . . . when scoring 3+ goals  
2-0-0 . . . . . when allowing 0 goals  
5-1-0 . . . . . when allowing 1 goal  
3-0-1 . . . . . when allowing 2 goals  
0-1-0 . . . . . when allowing 3+ goals  
1-0-0 . . . . . on Tuesday  
0-0-0 . . . . . on Wednesday  
1-0-0 . . . . . on Thursday  
4-1-1 . . . . . on Friday  
0-0-0 . . . . . on Saturday  
4-1-0 . . . . . on Sunday  
10-2-1 . . . . . on grass  
0-0-0 . . . . . on turf  
6-1-1 . . . . . at night  
4-1-0 . . . . . during the day  
1-0-0 . . . . . vs. Atlantic 10  
0-1-0 . . . . . vs. ACC  
0-0-0 . . . . . vs. Big East  
4-1-0 . . . . . vs. Big Ten  
1-0-1 . . . . . vs. Big 12  
1-0-0 . . . . . vs. Conference USA  
0-0-0 . . . . . vs. Mountain West  
0-0-0 . . . . . vs. Pac-12  
2-0-0 . . . . . vs. Patriot League  
0-0-0 . . . . . vs. WAC  
0-0-0 . . . . . vs. MAC  
0-0-0 . . . . . vs. NEC  
1-0-0 . . . . . when a freshman scores  
1-1-0 . . . . . in one-goal games

## INDIVIDUAL HONORS & AWARDS

### Brittany Basinger

TDS Preseason Best XI all-freshman team

### Whitney Church

TDS National Team of the Week (9/24)  
Big Ten Offensive POW (9/23)  
Philly Soccer News POW (9/23)  
MAC Hermann Trophy Watch List  
TDS Preseason Best XI second team  
Big Ten Player to Watch

### Maya Hayes

Disney Soccer/NSCAA National POW (9/17)  
Big Ten Offensive POW (9/16)  
Philly Soccer News POW (9/16)  
MAC Hermann Trophy Watch List  
Senior CLASS Award Candidate  
Soccer America Preseason All-American  
TDS Preseason Best XI first team  
Big Ten Player to Watch

### Raquel Rodriguez

TopDrawerSoccer National Team of the Week (10/1)  
Big Ten Offensive POW (9/30)  
Philly Soccer News POW (9/30)  
Big Ten Player to Watch



## PSU DRAWS WITH MOUNTAINEERS

The Penn State women's soccer team kicked off the 2013-14 PSU Athletics campaign with a 2-2 tie against non-conference foe West Virginia on Friday, Aug. 23 in the Penn State Invitational. Despite being down 0-2 late in the contest, seniors Taylor Schram and Maya Hayes rallied to tie it up with 10 minutes to go in regulation.

West Virginia came out hot, netting a goal in the fourth minute. WVU senior Frances Silva put one in on a cross from sophomore Kelsie Maloney.

With 20 minutes remaining in regulation, Maloney extended the Mountaineers lead, heading one in to put WVU up 2-0. Penn State responded 10 minutes later when Schram ripped one into the back corner of the net on an assist from Hayes, putting the score at 2-1 in West Virginia's favor.

Just over a minute later Hayes added another goal for the Nittany Lions, scoring on a cross from Weber to even the score at 2-2.

PSU and WVU registered three shots each in overtime but neither were able to capitalize, leaving the score at an even 2-2.

## LIONS PICKED TO WIN BIG TEN

The 15-time defending Big Ten Champion Nittany Lions were selected by conference coaches to win yet another Big Ten title. The Michigan Wolverines were tabbed to finish second and Illinois rounded out the top three.

## THE SCHEDULE

Penn State holds a record of 221-36-16 all-time against its 2013 opponents for an .839 winning percentage. Additionally, PSU is 184-28-14 (.845) against Big Ten foes, which includes last year's 11-1-1 mark when the Big Ten Tournament is factored in.

## TWO NAMED TO HERMANN WATCH LIST

Penn State women's soccer senior forward Maya Hayes and junior defender Whitney Church have been named to the Missouri Athletic Club's Hermann Trophy Watch List for the 2013 season.

The MAC Hermann Trophy is collegiate soccer's most prestigious award presented annually to one male and one female athlete. The winners will be announced Friday, Jan. 10, 2014 at the trophy presentation banquet at the Missouri Athletic Club in St. Louis. Christie Welsh is the only Penn State athlete to win the award (2001).

This is Hayes' second consecutive year on the watch list and Church's first appearance. Hayes was a finalist for the award in 2011 and a semifinalist in 2012. Hayes and Church are joined by Illinois' Vanessa DiBernardo as Big Ten honorees for the award.

Hayes is a two-time NSCAA first team All-America selection and has earned back-to-back Big Ten Forward of the Year honors. She finished second on the team in goals (16) and points (38) in 2012, despite missing the first seven games of the season while participating in the U20 World Cup with the U.S. U20 National Team.

Church received NSCAA first team All-Great Lakes recognition and Big Ten Defender of the Year honors in 2012. She led the Nittany Lion defensive attack, starting all 27 contests and logging over 2,000 minutes.

## THE LAST TIME

### PENN STATE...

- Scored 3 goals
- Scored 4 goals
- Scored 5 goals
- Scored 6 goals
- Scored 7 goals
- Scored 8 goals
- Scored 9 goals
- Allowed 0 goals
- Allowed 1 goal
- Allowed 2 goals
- Allowed 3 goals
- Allowed 4 goals
- Allowed 5+ goals
- Won in overtime
- Lost in overtime
- Won in double overtime
- Lost in double overtime
- Tied in double overtime
- Was ranked in the NSCAA Top 25
- Was ranked in the NSCAA Top 10
- Played a NSCAA Top 10 Team
- Played a NSCAA Top 25 Team
- Defeated a NSCAA Top 10 Team
- Defeated a NSCAA Top 25 Team
- Attempted less than 10 shots
- Attempted 10-19 shots
- Attempted 20-29 shots
- Attempted 30-39 shots
- Attempted 40+ shots
- Allowed 4 or less shots
- Allowed 5-9 shots
- Allowed 10-15 shots
- Allowed 16+ shots
- Scored 15-24 points
- Scored 25+ points
- Made 10-14 saves
- Made 15+ saves
- Had 10+ corner kicks
- Allowed 10+ corner kicks
- Tallied 5-7 assists
- Tallied 8+ assists
- Won an NCAA Tourney game
- Lost an NCAA Tourney game
- Won a road NCAA Tourney game
- Won a neutral NCAA Tourney game
- Won penalty kick shootout
- Lost penalty kick shootout

### A PENN STATE PLAYER...

- Scored 2 goals
- Scored 3 goals
- Scored 4 goals
- Had 2 assists
- Had 3 assists
- Had 4 assists
- Had 5-9 points
- Had 10+ points
- Attempted 10+ shots
- Made 10-14 saves
- Made 15+ saves
- Scored in the Big Ten Tournament
- Had a Big Ten Tourney shootout
- Scored in an NCAA game
- Had an NCAA game shootout

- 9/20/13. . . . . vs. Northwestern (3-2, 2OT)
- 9/29/13. . . . . vs. Indiana (4-1)
- 9/1/13. . . . . vs. La Salle (5-1)
- 9/26/13. . . . . vs. Purdue (6-1)
- 9/1/02. . . . . vs. Pittsburgh (7-2)
- 10/9/05. . . . . vs. Iowa (8-0)
- 9/25/01. . . . . vs. Bucknell (9-2)
- 9/10/13. . . . . at Bucknell (6-0)
- 10/6/13. . . . . at Minnesota (0-1)
- 9/20/13. . . . . vs. Northwestern (3-2, 2OT)
- 9/30/12. . . . . vs. Minnesota (4-3)
- 12/2/12. . . . . vs. #13 North Carolina (1-4)
- 8/30/13. . . . . vs. Virginia (1-5)
- 11/30/12. . . . . vs. #7 Florida State (2-1)
- 11/6/11. . . . . vs. #18 Illinois (1-2)
- 9/20/13. . . . . vs. Northwestern (3-2)
- 9/9/11. . . . . vs. Central Florida (1-2)
- 8/23/12. . . . . vs. West Virginia (2-2, 2OT)
- 10/8/13. . . . . 11th
- 10/1/13. . . . . 7th
- 8/30/13. . . . . vs. #5 Virginia (1-5)
- 10/6/13. . . . . at #18 Wisconsin (2-1)
- 11/30/12. . . . . vs. #7 Florida State (2-1)
- 10/6/13. . . . . at #18 Wisconsin (2-1)
- 8/30/13. . . . . vs. #5 Virginia (1-5)
- 10/4/13. . . . . 16 at #18 Wisconsin (2-1)
- 10/6/13. . . . . 20 at Minnesota (0-1)
- 9/10/13. . . . . 30 at Bucknell (6-0)
- 11/7/10. . . . . 42 vs. Michigan (1-0)
- 9/26/13. . . . . 1 vs. Purdue (6-1)
- 10/6/13. . . . . 6 at Minnesota (0-1)
- 10/4/13. . . . . 15 at #18 Wisconsin (2-1)
- 9/29/13. . . . . 16 vs. Indiana (4-1)
- 9/26/13. . . . . 15 vs. Purdue (6-1)
- 9/25/01. . . . . 26 vs. Bucknell (9-2)
- 10/31/12. . . . . 14 vs. Iowa (2-0)
- 9/2/95. . . . . 17 vs. James Madison (4-2)
- 10/6/13. . . . . 14 at Minnesota (0-1)
- 9/12/10. . . . . 10 at #4 Portland (2-4)
- 10/7/12. . . . . 5 vs. Indiana (5-2)
- 9/10/13. . . . . 8 at Bucknell (6-0)
- 11/30/12. . . . . vs. #7 Florida State (2-1)
- 12/2/12. . . . . vs. #13 North Carolina (1-4)
- 11/30/02. . . . . at Connecticut (2-1)
- 11/30/12. . . . . vs. #7 Florida State (2-1)
- 11/18/12. . . . . vs. Michigan (1-1, 3-2 PKs)
- 11/9/07. . . . . vs. Ohio State (2-2, 4-5 PKs)





## HAYES A SENIOR CLASS AWARD CANDIDATE

Penn State senior forward Maya Hayes has been selected as one of thirty candidates for the 2013 Senior CLASS Award in collegiate soccer.

The Senior CLASS (Celebrating Loyalty and Achievement for Staying in School) Award is presented yearly to a Division I senior student-athlete who has notable achievements in four areas of excellence - community, classroom, character and competition.

Hayes has excelled both on and off the field, earning several academic awards during her time at Penn State. The kinesiology major was a 2011 CoSIDA/Capital One third-team Academic All-America selection and CoSIDA/Capital One first team All-District selection. Hayes was included on the Dean's List for the spring 2013 semester and was inducted into Penn State's Athletic Honor Society, Spiritus Leoninus. She is also a two-time Academic All-Big Ten selection.

The 30-member candidate pool will be narrowed to 10 finalists midway through the regular season, and those 10 finalists will be placed on the official ballot. Ballots will be distributed through a nationwide voting system to media, coaches and fans, who will select the female candidate who best exemplifies excellence in community, classroom, character and competition.

The Senior CLASS Award winner will be announced during the 2013 NCAA Women's College Cup in Cary, N.C. in December.

## LIONS ON THE BTN

Penn State's 15-time Big Ten Champion women's soccer team will be featured on the BTN at least twice this season. The Nittany Lions' home contests against Ohio State on Thursday, Oct. 17 at 3 p.m. and Illinois on Sunday, Oct. 20 at 12 p.m. will air on the BTN. Additionally, both Big Ten Tournament semifinal matches and the championship game will be aired live on the BTN.

## SOCIAL MEDIA

For complete coverage of Penn State women's soccer, please visit <http://www.GoPSUsports.com/sports/w-soccer>. Follow PSU women's soccer on Twitter and Instagram: @PennStateWSOC. Penn State women's soccer is also on Facebook: [www.facebook.com/PSUWomensSoccer](http://www.facebook.com/PSUWomensSoccer).

## PENN STATE SEASON RECORDS

### SHOTS

124	Tiffany Weimer	23 gms.	2004
123	Christie Welsh	26 gms.	2001
115	Joanna Lohman	25 gms.	2003
114	Christie Welsh	24 gms.	2002
104	Katie Schoepfer	24 gms.	2008
104	Katie Schoepfer	24 gms.	2007

### GOALS

32	Tiffany Weimer	25 gms.	2005
<b>31</b>	<b>Maya Hayes</b>	<b>26 gms.</b>	<b>2011</b>
27	Christie Welsh	26 gms.	1999
26	Tiffany Weimer	23 gms.	2004
25	Christie Welsh	26 gms.	2001
21	Tiffany Weimer	25 gms.	2003

### ASSISTS

18	Christie Welsh	26 gms.	2001
14	Joanna Lohman	26 gms.	2001
13	Christine Nairn	25 gms.	2011
13	Christie Welsh	26 gms.	1999
12	Christine Nairn	27 gms.	2012
<b>12</b>	<b>Taylor Schram</b>	<b>24 gms.</b>	<b>2011</b>
12	Tiffany Weimer	23 gms.	2004
12	Stephanie Smith	26 gms.	2000

### POINTS

<b>70</b>	<b>Maya Hayes</b>	<b>26 gms.</b>	<b>2011</b>
69	Tiffany Weimer	25 gms.	2005
68	Christie Welsh	26 gms.	2001
67	Christie Welsh	26 gms.	1999
64	Tiffany Weimer	23 gms.	2004
51	Tiffany Weimer	25 gms.	2003
46	Christine Nairn	27 gms.	2012

### GAME-WINNING GOALS

13	Tiffany Weimer	25 gms.	2005
<b>9</b>	<b>Maya Hayes</b>	<b>26 gms.</b>	<b>2011</b>
9	Christie Welsh	26 gms.	1999
8	Joanna Lohman	25 gms.	2003
7	Katie Schoepfer	24 gms.	2007
7	Christie Welsh	21 gms.	2000
7	Carole Dutchka	26 gms.	1998

### SAVES

132	Emily Oleksiuk	25 gms.	1998
115	Emily Oleksiuk	26 gms.	1999
115	Emily Oleksiuk	24 gms.	2000

### SHUTOUTS

15.4	Emily Oleksiuk	24 gms.	2000
11	Erin McLeod	21 gms.	2004
10	Amanda Brown	23 gms.	2003
9.85	Emily Oleksiuk	26 gms.	1999
9	Erin McLeod	24 gms.	2005

### WINS

22	Erin McLeod	24 gms.	2005
21	Erin McNulty	26 gms.	2011
21	Emily Oleksiuk	25 gms.	1999
20	Emily Oleksiuk	26 gms.	2001
20	Emily Oleksiuk	26 gms.	2000

### GOALS AGAINST AVG.

0.41	Emily Oleksiuk	2222:40	10 GA	2000
0.43	Erin McLeod	1885:59	9 GA	2004
0.62	Alyssa Naehler	2176:18	15 GA	2007
0.75	Emily Oleksiuk	2168:52	18 GA	2001



## WEEKLY RANKINGS

	PS	1	2	3	4	5	6	7	8	9	10	11	F
NCAA	4	9	14	13	9	8	7	11					
NCAA RPI	NA	NA	NA	NA	NA	7	3	2					
TopDrawerSoccer	5	9	9	9	7	7	7	8					
Soccer America	2	7	16	15	11	9	8	10					

## NATIONAL POLLS

### NCAA TOP 25 (as of Oct. 8)

#	Team	Record	Last
1	Virginia	11-0-0	1
2	UCLA	10-1-0	3
3	Florida State	10-0-3	5
4	North Carolina	10-2-0	4
5	Stanford	9-1-1	2
6	Georgetown	11-0-2	9
7	Portland	9-1-1	10
8	California	9-0-3	11
9	Notre Dame	9-2-1	4
10	Virginia Tech	10-1-2	12
11	Penn State	10-2-1	7
12	Florida	9-3-1	8
13	South Carolina	11-1-1	19
14	Wake Forest	8-2-2	13
15	Texas Tech	12-1-1	14
16	West Virginia	9-2-2	15
17	Denver	10-1-1	16
18	Santa Clara	6-3-1	17
19	Michigan	9-2-1	21
20	Wisconsin	8-2-2	18
21	UCF	10-2-1	24
22	BYU	6-3-1	22
23	Baylor	8-2-2	20
24	Nebraska	9-3-1	23
25	Kentucky	10-2-1	RV

#### Also Receiving Votes:

Mississippi (30), Texas A&M (28), Arizona State (28), Marquette (17), Washington State (14), Louisville (4), Minnesota (3), La Salle (2), Colorado (2)

### NCAA RPI (as of Oct. 7)

#	Team	Record
1	North Carolina	10-2-0
<b>2 Penn State</b>	<b>10-2-1</b>	
3	Virginia	12-0-0
4	Georgetown	11-0-2
5	UCLA	10-1-0
6	Stanford	9-1-1
7	Florida State	10-0-3
8	South Carolina	11-1-1
9	Wake Forest	8-2-2
10	Virginia Tech	10-1-2
11	Marquette	11-3-0
12	UCF	10-2-1
13	Denver	10-1-1
14	Michigan	9-2-1
15	Minnesota	9-3-1
16	Santa Clara	6-3-1
17	California	9-0-3
18	Nebraska	9-3-1
19	William & Mary	6-1-4
20	Notre Dame	9-2-1
21	Maryland	7-6-0
22	Boston College	7-6-0
23	BYU	6-3-1
24	Colorado Col.	9-3-0
25	Colorado	10-2-0

### SOCCER AMERICA TOP 25 (as of Oct. 8)

#	Team	Record	Last
1	Virginia	11-0-0	1
2	UCLA	10-1-0	4
3	Florida State	10-0-3	5
4	Stanford	9-1-1	2
5	Notre Dame	9-2-1	3
6	North Carolina	10-2-0	6
7	Portland	9-1-1	7
8	Georgetown	11-0-2	9
9	West Virginia	9-2-2	8
<b>10 Penn State</b>	<b>10-2-1</b>	<b>8</b>	
11	Wake Forest	8-2-2	11
12	Virginia Tech	10-1-2	14
13	California	9-0-3	15
14	Texas Tech	12-1-1	16
15	South Carolina	11-1-1	17
16	Kentucky	10-2-1	19
17	Santa Clara	6-3-1	18
18	Marquette	11-3-0	21
19	UCF	10-2-1	22
20	Florida	9-3-1	12
21	Michigan	9-2-1	25
22	Baylor	8-2-2	13
23	Nebraska	9-3-1	23
24	Denver	10-1-1	24
25	BYU	6-3-1	NR

### TOP DRAWER SOCCER TOP 25 (as of Oct. 7)

#	Team	Record
1	Virginia	11-0-0
2	UCLA	10-1-1
3	Florida State	10-0-3
4	North Carolina	10-2-0
5	Stanford	9-1-1
6	Notre Dame	9-2-1
7	Georgetown	11-0-2
<b>8 Penn State</b>	<b>10-2-1</b>	
9	Portland	9-1-1
10	Wake Forest	8-2-2
11	Texas Tech	12-1-1
12	California	9-0-3
13	Florida	9-3-1
14	Denver	10-1-1
15	Virginia Tech	10-1-2
16	South Carolina	11-1-1
17	Michigan	9-2-1
18	BYU	6-3-1
19	Baylor	8-2-2
20	Texas A&M	9-3-1
21	Santa Clara	6-3-1
22	West Virginia	9-2-2
23	UCF	10-2-1
24	Wisconsin	8-2-2
25	Kentucky	10-2-1

**Others Considered:** Louisville, Marquette, Mississippi, Nebraska, Minnesota





**ERICA WALSH**

Head Coach • Seventh Year  
WILLIAM & MARY '97

**PSU RECORD:** 110-38-8 (.731)  
Overall Record: 149-66-11 (.684)

**2012 NSCAA NATIONAL COACH OF THE YEAR  
TWO-TIME BIG TEN COACH OF THE YEAR (2009, 2012)**

Head coach Erica Walsh enters her seventh season at the helm of the Penn State women's soccer program in 2013. Walsh's 2012 Nittany Lions were the most successful team in program history after advancing to their first-ever national title game. The Nittany Lions won 21 of 27 games and were unbeaten in Big Ten action with a 10-0-1 record. The Lions registered their 15th consecutive Big Ten title and 18th-straight NCAA Tournament appearance. The 15-title mark stands as the most consecutive Big Ten Championships by a women's program, along with the present Northwestern tennis team.

<b>WALSH'S COLLEGIATE RÉSUMÉ</b>	
<b>Head Coach</b>	
PENN STATE	2007-present
<i>2012 NSCAA National Coach of the Year</i>	
<i>2012 Big Ten Coach of the Year</i>	
<i>2009 Big Ten Coach of the Year</i>	
Harvard	2006
Dartmouth	2000-02
<b>Assistant Coach</b>	
Florida State	2005-06
Dartmouth	1998-99
<b>Graduate Assistant</b>	
Lehigh	2003-04
Dartmouth	1997
<b>Student-Athlete</b>	
William & Mary	1993-97
<i>William &amp; Mary Hall of Fame Inductee</i>	
<b>WALSH'S NATIONAL RÉSUMÉ</b>	
<b>Head Coach</b>	
U.S. Women's Under-17	2004-07
<b>Assistant Coach</b>	
U.S. Women's National Team	2008-present
<i>2008 Olympic Gold Medalists</i>	
<i>2011 World Cup Silver Medalists</i>	
U.S Women's Under-19	2004

Senior Christine Nairn became just the seventh Nittany Lion to finish as a finalist for the prestigious Missouri Athletic Club's Hermann Trophy in 2012 under Walsh's tutelage while junior Maya Hayes was named a semifinalist for the award.

Walsh's success was recognized at the conference and national level as she earned Big Ten Coach of the Year and NSCAA Coach of the Year honors.

Her 2011 team was a dominant force, winning 21 of 26 matches, while out-scoring opponents 70-24. The Nittany Lions were 10-1-0 in Big Ten action and posted the seventh undefeated season at Jeffrey Field (9-0). Walsh helped guide the Lions to their 14th-straight Big Ten title and a spot to the NCAA Sweet Sixteen

for the first time since 2007.

With Walsh's guidance, sophomore Maya Hayes became the nation's most prolific scorer in soccer in 2011. Hayes was a finalist for the M.A.C. Hermann Trophy. Hayes led the nation with 31 goals and 70 points. The sophomore phenom broke single-season record at Penn State for goals and points.

During the 2011 summer, Walsh had an extraordinary experience of being one of the top assistants to Pia Sundhage and the 2011 United State women's national team at the FIFA World Cup in

Germany. The U.S. made a sparkling run through knockout play to the final, falling to eventual champions Japan.

During the 2010 season, Walsh's young club made a remarkable turnaround mid-season, overcoming a two-game deficit in the league standings over the final weeks to capture a share of a record-breaking 13th straight Big Ten title.

After a tough 2-4 start to the 2009 season, Walsh led the Nittany Lions to a remarkable turnaround, going 10-1-2 in the last 13 games of the regular season, earning her the 2009 Big Ten Coach of the Year Award for her efforts. In March of 2010, Walsh's alma mater, William & Mary, honored her by inducting her into the W&M Athletics Hall of Fame.

With the impressive end to the season, Walsh and her charges captured the program's 12th-straight Big Ten Championship, tying a record for most consecutive women's Big Ten titles won held by the Michigan swimming & diving program. By winning the Big Ten, the Nittany Lions continued their string of NCAA Tournament berths, making their 15th-straight appearance in the 64-team field in 2009. For the second time in three years, Penn State hosted the first and second rounds of tournament play.

Walsh also orchestrated one of the finest awards seasons in Penn State history when Katie Schoepfer, Alyssa Naeher and Christine Nairn swept the year-end Big Ten Player of the Year awards. Schoepfer was named the Offensive Player of the Year, Naeher the Defensive Player of the Year and Nairn the Freshman of the Year. Danielle Toney was named to the All-Big Ten First Team, while Lexi Marton garnered Second Team mention. Walsh has now coached two players of the year to three awards as Naeher was also the 2007 recipient of the Defensive Player of the Year honors in Walsh's first year in Happy Valley.

Walsh continued her success from the 2007 campaign into a 16-8-0 record that saw Penn State capture its 11th-straight Big Ten Championship and the 2008 Big Ten Tournament crown.

Her transition to Penn State was quite smooth as the 2007 team finished 18-4-2, including a 9-1-0 mark in conference play, and was ranked 12th in the final NSCAA poll of the season.

When she came to Penn State, Walsh brought with her a wealth of experience at both the international and collegiate levels. She already has coached at six different universities, including three stints as head coach as well as serving as an assistant for the U.S. U-19 team in 2004. Walsh served as head coach of the U-17 team from December 2004 until her hire at Penn State in February of 2007.

As of January 2009, Walsh was appointed as a member of the Panel of Instructors and Lecturers for FIFA Courses. In addition, she was appointed as the Chairman of the Women's Technical Committee for the period of January 1, 2009 to June 30, 2011.

In January of 2008, Walsh was named as the assistant coach by Pia Sundhage for the U.S. National Team. With Walsh's help and guidance the U.S. team completed its historic run with a gold medal at the 2008 Olympic Games in Beijing, China. Even sweeter was that Walsh's main responsibility was the U.S. Team's defense, which held fellow world power Brazil scoreless in the gold medal game.

The head coach at Harvard University as well as the U.S. Under-17 team prior to her hiring at Penn State, Walsh has consistently been active among the coaching ranks both at the Division I level and the U.S. Youth National Team program for nearly a decade. Prior to her time with the Crimson, she was part of a Florida State staff that led the Seminoles to one of its most successful year to date. FSU joined Penn State in the 2005 Women's Soccer College Cup, with both programs reaching the national semifinals.

Walsh's coaching path began in 1997 as a graduate assistant with Bucknell University. In 1998, she accepted a position at Dartmouth, where she was an assistant coach for two seasons. After helping the team to a final NSCAA ranking of No. 8 at the conclusion of the team's 1998 NCAA quarterfinal run as well as an



Ivy League championship in 1999, Walsh assumed head coaching duties before the 2000 season.

As head coach, Walsh led the Big Green to back-to-back Ivy League co-championships in 2000 and 2001. Her squad was ranked in the NSCAA's top 25 each year, rising as high as No. 13 in 2001. In her three seasons as head coach, Dartmouth was invited to the NCAA Tournament each season and reached the round of 16 twice. All three of her teams earned the NSCAA's Academic Team Award.

Walsh left Dartmouth to earn her Master's in business administration at Lehigh University where she served as a graduate assistant from 2003-04.

Beginning in the spring of 2004, Walsh joined the United States Under-19 team as an assistant coach where she helped with preparations for the Under-19 World Cup. The U.S. finished with the bronze medal in Thailand after defeating Brazil in the third place match. After the World Cup, Walsh was appointed the U.S. National Team's U-17 head coach, a position which she held for three years.

As a player, Walsh was an NSCAA All-Region selection at William & Mary. A two-time first team All-CAA pick, she propelled her team to four NCAA Tournament appearances as well as two CAA regular season and two CAA league championships.

A high school All-American at Lower Moreland, she was also a member of the U.S. Under-17 National Team.

Walsh earned her Bachelor of Science degree with a concentration in biology from William & Mary in 1997 and resides in State College, Pa.

## WALSH'S ACCOLADES

**10 YEARS** OF COLLEGE HEAD COACHING EXPERIENCE

**1** COLLEGE CUP **APPEARANCE**

**1** NATIONAL CHAMPIONSHIP **APPEARANCE**

**13** NCAA TOURNAMENT **WINS**

**9** NCAA TOURNAMENT **APPEARANCES**

**10** ALL-AMERICA **HONORS**

**6** BIG TEN **CHAMPIONSHIPS**

**1** OLYMPIC **GOLD MEDAL**

**1** NATIONAL COACH OF THE YEAR **AWARD**

**2** BIG TEN COACH OF THE YEAR **AWARDS**

### WALSH'S CAREER AT PENN STATE

Season	Overall	Pct.	Big Ten	Pct.	Finish	NCAA
2007	18-4-2	.792	9-1-0	.900	1st	Third Round
2008	16-8-0	.667	8-2-0	.800	T-1st	First Round
2009	13-6-2	.667	8-1-1	.850	1st	Second Round
2010	11-9-1	.548	8-2-0	.800	T-1st	Second Round
2011	21-5-0	.808	10-1-0	.909	1st	Third Round
2012	21-4-2	.815	10-0-1	.955	1st	Second Place
2013	10-2-1	.808	4-1-0	.800	--	--
<b>Penn State</b>	<b>110-38-8</b>	<b>.731</b>	<b>57-8-2</b>	<b>.866</b>		<b>6 NCAAAs (10-6)</b>
<b>Career</b>	<b>149-66-11</b>	<b>.684</b>				<b>9 NCAAAs (13-9)</b>

## 2013 Penn State Women's Soccer Penn State Combined Team Statistics (as of Oct 08, 2013) All games

RECORD:	OVERALL	HOME	AWAY	NEUTRAL
ALL GAMES	10-2-1	6-0-1	4-2	0-0
CONFERENCE	4-1	3-0	1-1	0-0
NON-CONFERENCE	6-1-1	3-0-1	3-1	0-0

Date	Opponent	Score	Att.	#	Player	gp	g	a	pts	sh	sh%	sog	sog%	gw	pk-att
Aug 23	WVU	To2 2-2	3742	5	Hayes, Maya	13	13	5	31	44	.295	24	.545	3	0-0
Aug 25	HOFSTRA	w 2-1	732	19	Schram, Taylor	13	3	5	11	34	.088	11	.324	1	0-0
Aug 30	at #6 Virginia	L 1-5	2609	22	Costa, Tani	12	5	5	15	30	.167	14	.467	1	0-0
Sep 01	LASALLE	w 5-1	1012	11	Rodriguez, Raquel	13	3	7	13	28	.107	13	.464	1	0-0
Sep 06	BOSTON UNIVERSITY	w 1-0	1556	16	Weber, Mallory	13	5	4	14	23	.217	11	.478	2	0-0
Sep 10	at Bucknell	w 6-0	1390	3	Hurd, Emily	13	2	5	9	22	.091	14	.636	0	0-0
Sep 13	at Oklahoma State	w 4-2	1316	14	Chapic, Kori	13	2	3	7	18	.111	7	.389	1	0-0
9/15/2013	at Tulsa	w 3-2	252	17	Church, Whitney	13	2	1	5	9	.222	4	.444	1	0-0
* Sep 20	NORTHWESTERN	wo2 3-2	3118	26	Carollo, Emily	12	0	1	1	6	.000	4	.667	0	0-0
* Sep 26	PURDUE	w 6-1	851	12	Kohne, Kindrah	12	1	0	2	6	.167	1	.167	0	0-0
* Sep 29	INDIANA	w 4-1	1582	20	Williford, Salina	13	0	0	0	6	.000	1	.167	0	0-0
* Oct 04	at #18 Wisconsin	w 2-1	453	25	Peterson, Mallory	10	0	1	1	5	.000	1	.200	0	0-0
* Oct 06	at Minnesota	L 0-1	796	1	Basinger, Brittany	13	0	0	0	4	.000	2	.500	0	0-0

TEAM STATISTICS	PSU	OPP
<b>SHOT STATISTICS</b>		
Goals-Shot attempts	39-249	19-152
Goals scored per game	3.00	1.46
Shot pct.	.157	.125
Shots on goal-Attempts	114-249	74-152
SOG pct.	.458	.487
Shots/Game	19.2	11.7
CORNER KICKS	83	50
PENALTY KICKS	0-0	1-1
<b>PENALTIES</b>		
Yellow cards	5	4
Red cards	0	0
<b>ATTENDANCE</b>		
Total	12593	6816
Dates/Avg Per Date	7/1799	6/1136
Neutral Site #/Avg	0/0	

24	Brandy, Liv	2	1	0	2	4	.250	1	.250	0	0-0
15	Kehoe, Erin	8	0	1	1	3	.000	1	.333	0	0-0
23	Hovington, Bri	13	0	0	0	2	.000	1	.500	0	0-0
21	Chase, Teddy	4	0	0	0	2	.000	1	.500	0	0-0
8	Kalwa, Jenna	3	0	0	0	2	.000	1	.500	0	0-0
7	Persson, Corey	12	1	0	2	1	1.000	1	1.000	0	0-0
6	Witte, Anna	3	0	0	0	0	.000	0	.000	0	0-0
4	Marton, Lexi	5	0	0	0	0	.000	0	.000	0	0-0
2	Ritchey, Megan	2	0	0	0	0	.000	0	.000	0	0-0
<b>Total</b>		13	39	38	116	249	.157	114	.458	10	0-0
<b>Opponents</b>		13	19	21	59	152	.125	74	.487	2	1-1

#	Goalie	GP	Min.	GA	GAAvg	Saves	Pct	W-L-T	Sho
0	Kaminski, Meghan	2	49:29	0	0.00	1	1.000	0-0-0	0/1
00	Golestani, Lexi	1	7:13	0	0.00	1	1.000	0-0-0	0/1
28	Eckerstrom, Britt	13	1149:43	19	1.49	53	.736	10-1-1	1/1
<b>Total</b>		13	1206:25	19	1.42	55	.743	10-1-1	2
<b>Opponents</b>		13	1206:25	39	2.91	75	.658	1-10-1	1

Goals by Period	1st	2nd	OT	OT2	Total
Penn State	20	18	0	1	39
Opponents	10	9	0	0	19

Shots by Period	1st	2nd	OT	OT2	Total
Penn State	122	117	5	5	249
Opponents	72	76	2	2	152

Saves by Period	1st	2nd	OT	OT2	Total
Penn State	29	23	1	2	55
Opponents	40	32	2	1	75

Corners by Period	1st	2nd	OT	OT2	Total
Penn State	33	49	1	0	83
Opponents	20	28	2	0	50

Fouls by Period	1st	2nd	OT	OT2	Total
Penn State	42	49	2	1	94
Opponents	50	51	2	4	107

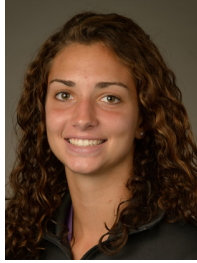




# 2013 PENN STATE WOMEN'S SOCCER



**LEXI GOLESTANI**  
Freshman • GK  
Montgomery, N.J.



**MEGHAN KAMINSKI**  
Sophomore • GK  
Doylestown, Pa.



**BRITTANY BASINGER**  
Freshman • D  
Fairfax, Va.



**MEGHAN RITCHEY**  
Sophomore • M  
State College, Pa.



**EMILY HURD**  
R - Junior • M  
Sammamish, Wash.



**LEXI MARTON**  
R - Senior • D  
Aurora, Ontario



**MAYA HAYES**  
Senior • F  
West Orange, N.J.



**ANNA WITTE**  
Freshman • D  
Morrisville, N.C.



**COREY PERSSON**  
Freshman • M  
Danvers, Mass.



**JENNA KALWA**  
Sophomore • M/D  
Pennington, N.J.



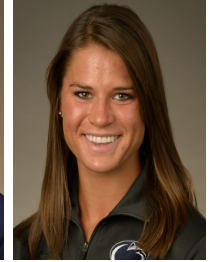
**ANDREA GUNDERSON**  
Freshman • D  
West Chester, Pa.



**RAQUEL RODRIGUEZ**  
Sophomore • F/M  
San Jose, Costa Rica



**KINDRAH KOHNE**  
Junior • D  
Homer, N.Y.



**KORI CHAPIC**  
Sophomore • D  
Homer, N.Y.



**ERIN KEHOE**  
Senior • M  
Crystal, Ill.



**MALLORY WEBER**  
Sophomore • F  
Novi, Mich.



**WHITNEY CHURCH**  
Junior • D  
Ashburn, Va.



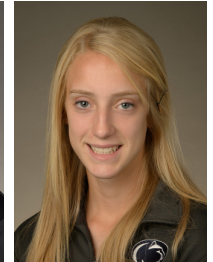
**ANGELA WIDLACKI**  
Freshman • D  
Naperville, Ill.



**TAYLOR SCHRAM**  
Senior • F  
Canonsburg, Pa.



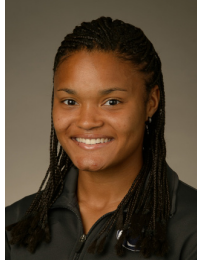
**SALINA WILLIFORD**  
Freshman • M/D  
Wayne, Pa.



**TEDDY CHASE**  
Sophomore • D  
Wayne, Pa.



**TANI COSTA**  
R - Senior • F  
Honolulu, Hawaii



**BRI HOVINGTON**  
Senior • D  
Lothian, Md.



**LIV BRANDY**  
Freshman • D  
Gibsonia, Pa.



**MALLORY PETERSON**  
Sophomore • F/M  
Clinton Corners, N.Y.



**EMILY CORROLLO**  
Grad. Student • F/M  
Sussex, N.J.



**MAGGIE CHAPMAN**  
Freshman • M  
Dumfries, Va.



**BRITT ECKERSTROM**  
R - Sophomore • GK  
Germantown, Md.



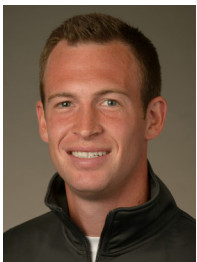
**CHLOE BUEHLER**  
Freshman • GK  
Perrysburg, Ohio



**ERICA WALSH**  
Head Coach • 7th Year  
William & Mary '97



**ANN COOK**  
Assistant Coach • 7th Year  
William & Mary '97



**TIM WASSELL**  
Assistant Coach • 4th Year  
PSU Altoona '06



**KARA LOWERY**  
Director of Ops. • 1st Year  
Southern Nazarene '97



**MIKE ECKBERG**  
Volunteer Asst. • 1st Year  
Luther College '07