

M 2021-22 MICHIGAN WOMEN'S BASKETBALL

ATHLETIC COMMUNICATIONS • 1000 SOUTH STATE STREET • ANN ARBOR, MICHIGAN • MGOBLUE.COM

Women's Basketball Contact: Sarah VanMetre • vanmetre@umich.edu • Direct (734) 604-4606

2021-22 SCHEDULE & RESULTS

NOV. 4	GRAND VALLEY (EXH.)	W, 80-57
NOV. 9	IUPUI	W, 67-62 (OT)
NOV. 13	ST. FRANCIS BROOKLYN	W, 82-46
NOV. 16	UMASS LOWELL	W, 73-54
Nov. 20	at Central Michigan	W, 69-45
NOV. 22	OAKLAND	W, 69-58
Nov. 26	vs. #16 Oregon State#	W, 61-52
Nov. 27	vs. Mississippi State#	W, 64-48
Dec. 2	at #10 Louisville%	L, 70-48
DEC. 5	AKRON	W, 93-54
Dec. 9	at Wisconsin*	W, 93-81
DEC. 12	MINNESOTA*	W, 73-61
Dec. 19	vs. #5 Baylor\$	W, 74-68 (OT)
DEC. 22	EASTERN MICHIGAN	CANCELED
DEC. 31	#25 OHIO STATE*	W, 90-71
Jan. 4	at Nebraska*	L, 79-58
JAN. 9	RUTGERS*	W, 76-47
Jan. 13	at Penn State*	8 p.m.
Jan. 16	at #8 Maryland*	5 p.m.
JAN. 20	WISCONSIN*	7 P.M.
JAN. 24	PURDUE*	6 P.M.
Jan. 27	at Ohio State*	6 p.m.
JAN. 30	INDIANA*	7 P.M.
Feb. 3	at Illinois*	7 p.m. CT
FEB. 6	IOWA*	2/7:30 p.m.
Feb. 10	at Michigan State*	6:30 p.m.
Feb. 13	at Northwestern*	TBA
FEB. 20	MARYLAND*	3 P.M.
FEB. 24	MICHIGAN STATE*	6 P.M.
Feb. 27	at Iowa*	4 p.m. CT

BIG TEN TOURNAMENT

March 2-6 at Big Ten Tournament

* Big Ten games
Daytona Beach Invitational
\$ Basketball Hall of Fame Women's Showcase
% Big Ten/ACC Challenge
All times are site times
Home games in **BOLD CAPS**

#11 MICHIGAN HEADS TO PENN STATE FOR THE FIRST OF TWO STRAIGHT ROAD GAMES



#11 Michigan Wolverines
(13-2, 4-1 B1G)

#11 MICHIGAN AT PENN STATE

JANUARY 13 -- STATE COLLEGE, PA. (BRYCE JORDAN CENTER), 8 P.M.

TV: Big Ten Network -- Chris Vosters (play-by-play), Christy Winters Scott (analyst)

Radio: WTKA 1050 AM -- Matt Park (play-by-play)

Internet: Live stats/audio -- MGoBlue.com



Penn State Lady Lions
(7-6, 1-2 B1G)

TOP STORYLINES

► No. 11 Michigan hits the road for the first of two straight away from Crisler Center, heading to Penn State to face the Lady Lions in the lone game between the schools this season.

► Michigan and Penn State have not faced each other since February 27, 2020, the second game of a home-and-home series during the 2019-20 season. The teams did not play last year, with their lone scheduled contest canceled.

► U-M swept the season series from Penn State during the 2019-20 season and has won eight of the last nine in the series.

► Michigan is coming off a 76-47 win at Crisler over Rutgers (Jan. 9), becoming just the third team this season to outrebound the Scarlet Knights in a contest (35-25). U-M is second in the conference in rebounding margin at +8.1.

► The game will feature two of the top four scorers in the Big Ten in **Naz Hillmon** (20.0 ppg) and Penn State's Makenna Marisa (21.7 ppg). They are two of four players in the Big Ten averaging at least 20.0 points per game.

► Michigan has a trio of double-figure scorers in **Naz Hillmon** (20.0 ppg, 8.8 rpg), **Leigha Brown** (15.3 ppg) and **Emily Kiser** (10.5 ppg, 7.8 rpg). In addition, three Wolverines are averaging at least 6.0 points per game in **Maddie Nolan** (8.1 ppg), **Laila Phelia** (7.6 ppg) and **Danielle Rauch** (6.0 ppg).

Series History

Penn State

Penn State leads 32-17

Streak: Michigan has won five

Home: Penn State leads 14-9

Away: Penn State leads 17-5

Neutral: Michigan leads 3-1

Last 10 meetings

Date	Location	Result
3/1/14	A	L, 77-62
1/1/15	H	W, 89-53
1/17/16	A	W, 91-87
2/20/16	H	W, 78-73
2/26/17	A	L, 76-75
12/28/17	H	W, 89-69
3/1/18	N	W, 77-48
2/10/19	A	W, 66-62
12/31/19	H	W, 82-48
2/27/20	A	W, 80-66

2021-22 WOLVERINES

#	POS	YR	PLAYER	PPG	RPG	FG%	WORTH NOTING
00	F	Sr.	Naz Hillmon	20.0	8.8	.559	Scored in double figures in all 14 games played
32	G	Sr.	Leigha Brown	15.3	3.3	.484	Leads U-M with 39 assists
23	G	Sr.	Danielle Rauch	6.0	3.0	.371	Second on the team with 16 three-pointers
1	G	Sr.	Amy Dilk	3.0	1.0	.286	6 points, 4 assists against Rutgers (1/9)
3	G	Jr.	Maddie Nolan	8.1	3.8	.461	Team leader w/29 triples on 45.3% shooting
33	F	Sr.	Emily Kiser	10.5	7.8	.437	Two double-doubles on the season
44	F	So.	Cameron Williams	3.3	1.6	.731	Averaging 7.8 minutes per game off bench
24	G	Jr.	Michelle Sidor	1.8	0.9	.333	Appeared in all 15 games
25	F	So.	Whitney Sollom	1.4	1.0	.500	Played in seven games
30	G/F	So.	Elise Stuck	1.7	2.5	.545	Five defensive rebounds vs. Rutgers (1/9)
34	F/C	Jr.	Izabel Varejão	2.5	1.0	.545	Seen action in 11 games off the bench
5	G	Fr.	Laila Phelia	7.6	3.0	.371	USBWA National Freshman of the Week (12/21)
10	G	Fr.	Jordan Hobbs	1.8	0.5	.286	Has a pair of three-pointers on the season
12	G	Fr.	Ari Wiggins	0.6	0.9	.125	Played in 14 games off the bench
15	F	Fr.	Taylor Gibson	1.0	0.0	.500	Scored first career basket against Akron (Dec. 5)

MGOBLUE.COM



ON INSTAGRAM ...
@UMICHWBBALL



ON FACEBOOK ...
"MICHIGAN WOMEN'S BASKETBALL"

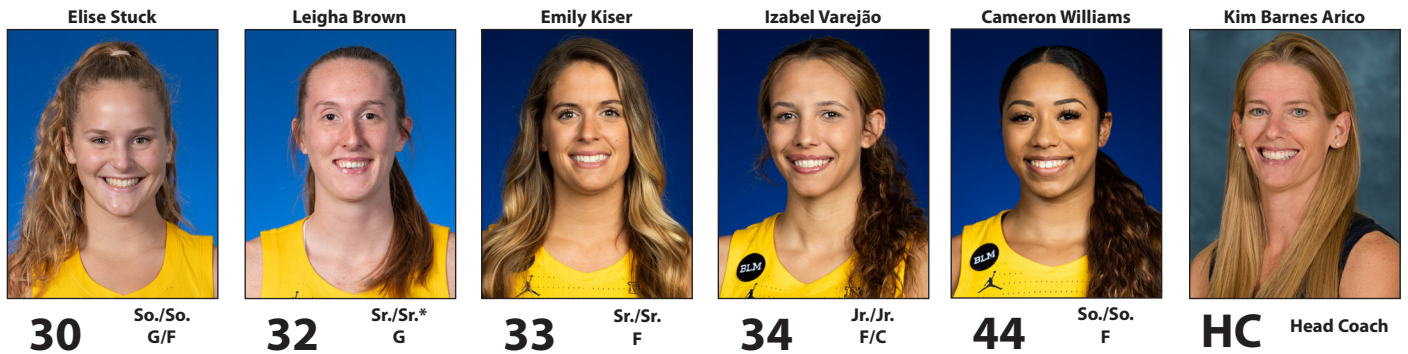
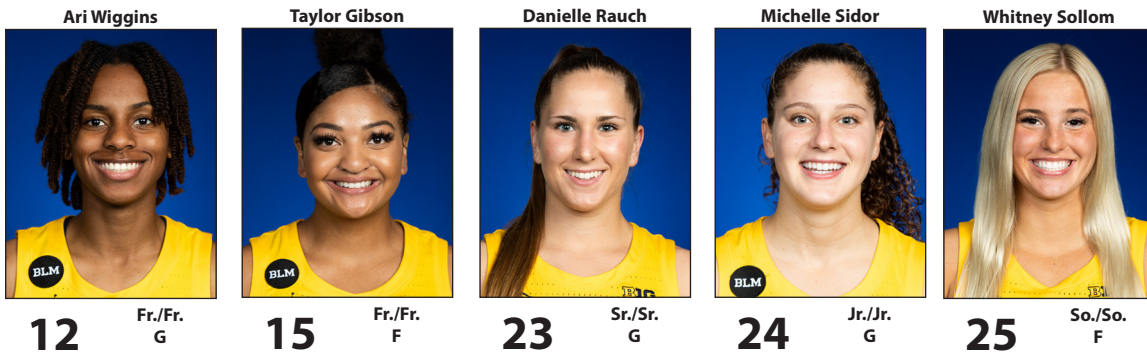
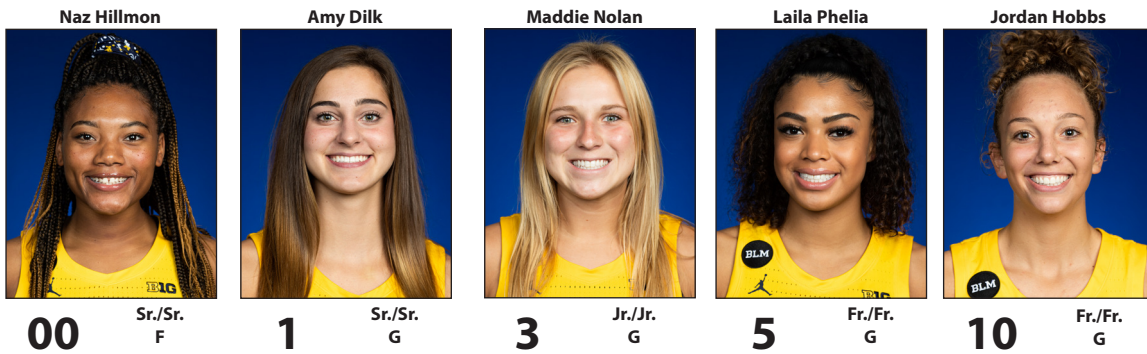


ON TWITTER ...
@UMICHWBBALL

TALE OF THE TAPE

TEAM	GAMES	FG-FGA	PCT.	3F-3PA	PCT.	FT-FTA	PCT.	O-D	TOT	AVG.	FOUL	DQ	AST	AVG	TO	BLK	STL	PTS	AVG
Michigan	15	402-888	.453	70-223	.314	216-290	.745	188-405	593	39.5	230	3	193	12.9	236	39	105	1090	72.7
Penn State	13	377-837	.450	93-294	.316	103-148	.696	133-305	438	33.7	200	1	207	15.9	202	52	127	950	73.1

2021-22 WOLVERINES



No.	Name	Pos.	Ht.	Yr./Elig.	Hometown/High School (Previous School)
00	Naz Hillmon	F	6-2	Sr./Sr.	Cleveland, Ohio/Gilmour Academy
1	Amy Dilk	G	6-0	Sr./Sr.	Carmel, Ind./Carmel
3	Maddie Nolan	G	5-11	Jr./Jr.	Zionsville, Ind./Zionsville
5	Laila Phelia	G	6-0	Fr./Fr.	Cincinnati, Ohio/Mount Notre Dame
10	Jordan Hobbs	G	6-3	Fr./Fr.	Springboro, Ohio/Springboro
12	Ari Wiggins	G	5-8	Fr./Fr.	Indianapolis, Ind./Heritage Christian
15	Taylor Gibson	F	6-2	Fr./Fr.	Upper Marlboro, Md./Bishop McNamara
23	Danielle Rauch	G	5-8	Sr./Sr.	Syracuse, N.Y./Bishop Ludden
24	Michelle Sidor	G	5-8	Jr./Jr.	Upper Saddle River, N.J./Saddle River Day
25	Whitney Sollom	F	6-4	So./So.	Hartland, Mich./Hartland
30	Elise Stuck	G/F	6-1	So./So.	Charlevoix, Mich./Charlevoix
32	Leigha Brown	G	6-1	Sr./Sr.*	Auburn, Ind./DeKalb (Nebraska)
33	Emily Kiser	F	6-3	Sr./Sr.	Noblesville, Ind./Noblesville
34	Izabel Varejão	F/C	6-4	Jr./Jr.	Vitoria-Espirito Santo, Brazil/Neuse Christian Academy (Raleigh, N.C.)
44	Cameron Williams	F	6-3	So./So.	Chicago, Ill./Whitney Young

*will use a fifth year of eligibility in 2022-23 at Michigan

Head Coach: Kim Barnes Arico (10th season)
Assistant Coaches: Carrie Moore, Val Nainima, Harry Rafferty
Director of Basketball Operations: Amy Mulligan
Director of Player Personnel: Christina Marquette
Video Coordinator: PJ Bellantoni
Graduate Manager: Reyna Frost
Athletic Trainer: Christina Fanning
Strength and Conditioning Coach: Jamie Preiss

Roster Breakdown

By Class
Senior (5): Brown*, Dilk, Hillmon, Kiser, Rauch
Juniors (3): Nolan, Sidor, Varejão
Sophomores (3): Sollom, Stuck, Williams
Freshmen (4): Gibson, Hobbs, Phelia, Wiggins

Pronunciation
 Kim Barnes Arico -- a-REE-co
 Val Nainima - nye-NEE-ma
 Naz Hillmon - NAHZ
 Michelle Sidor - SEE-door
 Whitney Sollom - SOE-lum
 Izabel Varejão - VAIR-uh-zhow
 Laila Phelia - FEEL-ya

PLAYER & TEAM NOTES

THE NATIONAL POLLS

AP Poll

Rank	Team	Record	Points	Pr.
1	S. Carolina (26)	15-1	745	1
2	Stanford	11-3	703	2
3	Louisville (4)	13-1	698	3
4	NC State	14-2	655	5
5	Tennessee	15-1	613	7
6	Indiana	12-2	606	6
7	Arizona	11-1	561	4
8	Maryland	12-4	511	10
9	Iowa State	14-1	489	12
10	Connecticut	7-3	476	11
11	Michigan	13-2	455	8
12	LSU	15-2	403	13
13	Texas	11-2	394	9
14	Baylor	10-3	364	14
15	Georgia Tech	11-3	324	16
16	Duke	11-2	275	17
17	Georgia	13-3	243	15
18	BYU	12-1	203	18
19	Kentucky	8-4	156	21
20	Notre Dame	11-3	148	20
21	North Carolina	14-1	147	19
22	Colorado	13-0	118	NR
23	Oklahoma	13-2	109	23
24	South Florida	11-4	92	24
25	Kansas State	13-2	83	NR

Others receiving votes: Florida Gulf Coast 52, Iowa 38, Ohio State 31, Missouri State 15, DePaul 12, Missouri 12, Nebraska 10, Virginia Tech 3

USA Today Coaches Poll

Rank	Team	Record	Points	Pr.
1	South Carolina	(15-1)	790	1
2	Louisville	(13-1)	765	2
3	Stanford	(11-3)	739	3
4	NC State	(14-2)	703	4
5	Indiana	(12-2)	650	6
6	Tennessee	(15-1)	629	8
7	Arizona	(11-1)	585	5
8	Maryland	(12-4)	552	9
9	Iowa State	(14-1)	519	12
10	Michigan	(13-2)	513	7
11	Connecticut	(7-3)	505	11
12	Texas	(11-2)	414	10
13	Baylor	(10-3)	393	13
14	LSU	(15-2)	337	16
15	Georgia	(13-3)	302	14
16	Georgia Tech	(11-3)	300	17
17	Brigham Young	(12-1)	286	18
18	North Carolina	(14-1)	281	15
19	Notre Dame	(11-3)	208	19
20	Kentucky	(8-4)	202	20
21	Duke	(11-2)	148	22
22	Colorado	(13-0)	110	NR
23	Florida Gulf Coast	(13-1)	100	NR
24	South Florida	(11-4)	98	24
25	Oklahoma	(13-2)	76	25

Others receiving votes: Iowa (8-4) 75; Ohio State (11-3) 30; Nebraska (13-2) 25; Kansas State (13-2) 23; Texas A&M (10-5) 16; Central Florida (10-2) 12; Missouri State (11-2) 6; Massachusetts (12-2) 3; Mississippi State (11-4) 2; Mississippi (13-2) 2; Oregon State (7-3) 1.

Last Time Out

The No. 8-ranked University of Michigan women's basketball team used a 17-2 run in the first quarter after falling behind 4-0 to take control of the game, knocking off Rutgers 76-47 on Sunday afternoon (Jan. 9) at Crisler Center.

Michigan had a trio of double-figure scorers in Naz Hillmon (19 points, six rebounds, four assists), Leigha Brown (19 points, three boards, two assists) and Maddie Nolan (14 points). Nolan was a perfect 4-for-4 from deep as Michigan shot 60.0 percent (9-for-14) from three-point range. The Wolverines shot 56.3 percent from the field (27-for-48) on the game and handed out 13 assists, led by four each from Hillmon and Amy Dilk.

Michigan was in an early 4-0 hole before scoring 17 of the next 19 points for a 17-6 lead after 10 minutes. Back-to-back triples from Dilk and Brown capped a 12-0 spurt to end the first quarter.

Rutgers scored first in the second quarter, but Hillmon found Nolan for her second triple of the day to jumpstart an 8-0 run for the Wolverines to extend the lead to 25-8 with 7:51 on the clock.

The Scarlet Knights closed within 10, 27-17, before Nolan's third triple ignited a 10-0 run that was capped by a Hillmon layup with 3:16 on the second-quarter clock as Michigan's lead grew to 20.

U-M hit the break with a 44-29 lead on the strength of 8-for-10 shooting from distance, paced by Nolan's 4-for-4 effort. Michigan shot 61.9 percent (13-for-21) in the first 20 minutes while holding Rutgers to 39.3 percent shooting (11-for-28). In addition to Nolan's 12 points, Brown had 16 first-half points.

Michigan kept its foot on the gas in the third quarter, leading by as many as 31 in the frame behind seven points from Hillmon and six from Cameron Williams. Michigan made 10 of its 16 shots in the third quarter, with Rutgers converting on just three of its 11 attempts.

The Maize and Blue scored seven straight on a Dilk free throw and three consecutive layups from Hillmon, forcing a Rutgers timeout with 5:41 remaining and the home team in front 75-41.

Michigan stayed in control the rest of the way, winning 76-47 over Rutgers.

Been a Minute

Michigan and Penn State are playing for the first time since playing a home-and-home series during the 2019-20 season, with U-M sweeping the season series. U-M took an 82-48 win at Crisler on Dec. 31, 2019, before recording an 80-66 win at Penn State on Feb. 27, 2020. The lone scheduled contest between the teams was not played last season. This is the second straight game in which the Wolverines are facing a Big Ten opponent they did not play last year.

Hitting the Glass

Michigan is second in the Big Ten in rebounding margin at +8.1 boards per game, going 11-0 when winning the battle on the glass. U-M is third in rebounding offense, grabbing 39.5 caroms per contest. On the flip side, the Wolverines are second in rebounding defense, allowing just 31.4 rebounds per game to their opponents. U-M is 2-2 this season when getting outrebounded. Michigan has two of the top eight rebounders in the Big Ten in **Naz Hillmon** (4th, 8.8 rpg) and **Emily Kiser** (8th, 7.8 rpg).

Welcome Back, No. 1!

Senior guard **Amy Dilk** is back in action after missing 12 games following a knee injury in the opening minute of the first game. She has played in the last two games, averaging 4.0 points and 2.0 assists per game in those games. She played 20 minutes against Rutgers (Jan. 9), going for six points, four assists and two boards.

Getting it Done Defensively

Michigan allowed just 47 points to Rutgers last time out (Jan. 9), marking the fourth time this season U-M has held its opponent under 50 points. U-M is one of five Big Ten schools to be yielding fewer than 60 points per game, ranking fifth in scoring defense at 59.7 points per game.

Maddie Dials It Up From Distance

Junior **Maddie Nolan** leads the Wolverines in three-point shooting this season, hitting 29 triples at a 45.3 percent clip after going 4-for-4 from deep against Rutgers (Jan. 9). She set a new career high with six triples on 6-for-7 shooting from deep against UMass Lowell (Nov. 16). It was the second game of her career with at least five three-pointers after she made five at Wisconsin last season (Jan. 14). Nolan is the eighth different Wolverine to hit at least six triples in a game and the first since Hailey Brown made six at Penn State on Feb. 10, 2019. On the season, she has made at least one triple in 13 games and has nine games with at least two three-pointers.

In the Rankings

Michigan came in at No. 11 in this week's Associated Press poll and No. 10 in the USA Today/Coaches Poll.

Ranked Wins Under KBA

Michigan has 18 wins against ranked opponents since head coach **Kim Barnes Arico** took over in Ann Arbor before the 2012-13 season after getting a 90-71 win over No. 25 Ohio State (Dec. 31). Her 18 wins account for 41.9 percent of Michigan's all-time wins (43) over top-25 teams. U-M is 3-1 this season against teams in the AP top 25, highlighted by the program's first-ever win over a top-five team (No. 5 Baylor).

B1G Strong Start

Michigan got off to a 3-0 start in Big Ten action for the second straight season after getting a 19-point win over Ohio State on Dec. 31. It was just the third time in school history Michigan has started 3-0 in conference action - all coming under 10th-year head coach **Kim Barnes Arico**. U-M started 4-0 in 2012-13, 5-0 in 2020-21 and now 3-0 in 2021-22.

Hillmon Still Making her Mark

Senior **Naz Hillmon** played in her 100th career game in Michigan's win over Ohio State (Dec. 31), becoming the 44th Wolverine to appear in at least 100 games. She also recorded her sixth double-double of the season with 29 points and 15 boards in the contest, pushing her career total to 40. She is four double-doubles away from tying Trish Andrew's record of 44. Hillmon has a chance to become the first player in program history to record 2,000 points and 1,000 rebounds in a career. She is currently fourth all-time at Michigan in scoring (1,811) and has moved into second all-time in rebounding (888). Andrew holds the career record with 928 rebounds.

Playing Power 5 Teams

Michigan has faced opponents from all five of the power five conferences with the conclusion of non-conference play. U-M has played teams from the PAC-12 (Or-



U-M's RECORD WHEN...

At Home.....	8-0
On the Road.....	2-2
At Neutral Site.....	3-0
U-M Scores First.....	6-1
Opponent Scores First.....	7-1
Winning the tip.....	10-2
Opponent wins the tip.....	3-0
Scoring 80+.....	4-0
Scoring 70-79.....	4-0
Scoring 60-69.....	5-0
Scoring fewer than 60.....	0-2
Opponent scores 80+.....	1-0
Opponent scores 70-79.....	1-2
Opponent scores 60-69.....	3-0
Opponent scores less than 60.....	8-0
Out-rebounding opponent.....	11-0
Out-rebounded by opponent.....	2-2
Rebounds even.....	0-0
Shooting 50% or better.....	5-0
Shooting 40%-50%.....	5-0
Shooting less than 40%.....	3-2
Opponent shoots at least 50%.....	1-1
Opponent shoots 40%-50%.....	1-1
Opponent shoots less than 40%.....	11-0
Making 7 or more three-pointers.....	3-0
Making 6 or less three-pointers.....	10-2
Opponent makes 7 threes or more.....	4-2
Opponent makes less than 7 threes.....	9-0
Leading at halftime.....	12-0
Trailing at halftime.....	1-2
Tied at halftime.....	0-0
Game goes into overtime.....	2-0
Leading with 5:00 to play.....	12-0
Trailing with 5:00 to play.....	1-2
Tied with 5:00 to play.....	0-0
Leading with 1:00 to play.....	11-0
Trailing with 1:00 to play.....	1-2
Tied with 1:00 to play.....	1-0
No players score in double figures.....	0-0
2 players score in double figures.....	3-1
3 players score in double figures.....	7-0
4 players score in double figures.....	1-1
5+ players score in double figures.....	2-0
Forcing 15 or more turnovers.....	10-2
Forcing less than 15 turnovers.....	2-1
Committing 15 or more turnovers.....	8-2
Committing less than 15 turnovers.....	5-0

U-M's RECORD ON:

Monday.....	1-0
Tuesday.....	2-1
Wednesday.....	0-0
Thursday.....	1-1
Friday.....	2-0
Saturday.....	3-0
Sunday.....	4-0

U-M's RECORD IN:

November.....	7-0
December.....	5-1
January.....	1-1
February.....	0-0
March.....	0-0
Maize.....	5-1
Blue.....	3-1
White.....	5-0
Pink.....	0-0

PLAYER & TEAM NOTES

gon State), SEC (Mississippi State), Big Ten, ACC (Louisville) and Big 12 (Baylor).

Kiser Waits Her Turn, Finds Success

Senior **Emily Kiser** has found herself in the starting lineup as a senior and she is taking advantage of the opportunity. She has a pair of double-doubles on the season after going for 18 points and a career-best 15 rebounds against No. 25 Ohio State (Dec. 31). Kiser is third on the team in scoring at 10.5 points per game and second in rebounding at 7.8 boards per contest. Her 157 points scored this season is more than in any other season, topping the 88 points scored during her sophomore season. Kiser, one of two Wolverines to start all 15 games, is also averaging a career-high 30.6 minutes per game. She is one of the most improved scorers in the Big Ten, increasing her scoring average from 2.4 points per game last season to her 10.5 points per game this season - an increase of 8.1 points per contest.

Mixing It Up

Through 15 games, Michigan has already used six different starting lineups, with **Emily Kiser** and **Danielle Rauch** the only Wolverines to start all 15 games. This season, Kiser, **Elise Stuck**, **Michelle Sidor** and **Laila Phelia** have each started their first career game. Rauch, Kiser and Sidor are the only Wolverines to appear in all 15 games.

- Rauch-Dilk-Nolan-Hillmon-Kiser - 1-0
- Rauch-Nolan-Brown-Hillmon-Kiser - 3-2
- Rauch-Sidor-Nolan-Hillmon-Kiser - 3-0
- Rauch-Sidor-Nolan-Stuck-Kiser - 2-0
- Rauch-Sidor-Phelia-Hillmon-Kiser - 1-0
- Rauch-Brown-Phelia-Hillmon-Kiser - 3-0

Balanced Scoring

Through 15 games, Michigan has a trio of double-figure scorers and another three players averaging at least 6.3 points per game. **Naz Hillmon** leads the way for Michigan, averaging 20.0 points per game and scoring at least 10 points in all 13 games she has played. **Leigha Brown** is putting up 15.3 points per game on the strength of 10 double-figure scoring contests, highlighted by a 25-point effort against No. 5 Baylor (Dec. 19) and **Emily Kiser** is averaging a career-best 10.5 points per game. **Maddie Nolan** (8.1 ppg), **Laila Phelia** (7.6 ppg) and **Danielle Rauch** (6.0 ppg) are each scoring at least six points per game.

Phelia Named Big Ten, USBWA Frosh of the Week

Guard **Laila Phelia** earned the conference and national nod after Michigan recorded its first top-five victory in program history in a 74-68 overtime win over No. 5 Baylor on Sunday (Dec. 19). Phelia recorded her fourth double-figure scoring effort of her freshman campaign, tying her career high with 12 points against the Bears. She also hit a pair of triples to double her season total, while also recording five boards and two steals.

Brown Named to B1G Honor Roll

Leigha Brown was named the MVP of the game against Baylor, going for a game-high 25 points. She also had five boards, four assists and two steals in the contest, with 12 of her 25 points coming in the fourth quarter and overtime.

Rauch Running the Show

Senior **Danielle Rauch** has picked up where she left in last season's NCAA Tournament. Rauch has started all 15 games at point guard and is averaging 6.0 points, 3.6 rebounds and 2.2 assists in 33.0 minutes per game. Rauch, who never reached double figures in scoring until this season, has scored at least 10 points in five games after pouring in a career-best 18 points at Wisconsin (Dec. 9).

Welcome to 200, KBA!

With a pair of wins at the Daytona Beach Invitational over No. 16 Oregon State (Nov. 26) and Mississippi State (Nov. 27), head coach **Kim Barnes Arico** became the first women's basketball coach in school history to win 200 games at Michigan. She is now 206-104 (.664) on the sidelines in Ann Arbor as she is in her 10th year. She is the program's all-time winningest coach and has the highest winning percentage. She is just the third basketball coach at Michigan - men's or women's - to reach 200 wins, joining John Beilein (278 from 2007-19) and Johnny Orr (209 from 1968-80).

Strong Start

U-M started out with a 7-0 record for the second consecutive year after starting last season with a program-best 10-0 mark. U-M also started 7-0 in 1999-2000, 2011-12 and 2015-16, with three of the 7-0 starts (2015-16, 2020-21, 2021-22) coming under 10th-year head coach **Kim Barnes Arico**. It was also the second straight season that Michigan has won 12 of its first 13 games.

Welcome Back, LB!

After missing several games with an injury, senior **Leigha Brown** returned to the Michigan lineup in a pair of wins over Thanksgiving weekend. In U-M's win over No. 16 Oregon State (Nov. 26), Brown scored 10 of her 14 points in the fourth quarter as U-M outscored the Beavers, 21-12, in the final 10 minutes for the win. She followed that up with a 23-point effort in just 25 minutes against Mississippi State (Nov. 27). For her efforts, she was named to the Daytona Beach Invitational all-tournament team. On the season, LB is averaging 15.3 points per game on 48.4 percent shooting.

Kiser Named to Big Ten Honor Roll

Senior forward **Emily Kiser** was named to the Big Ten Player of the Week Honor Roll on Nov. 22 after helping Michigan to a 2-0 week with wins over UMass Lowell (Nov. 16) and Central Michigan (Nov. 20). Kiser recorded the first double-double of her career in the win over the River Hawks, going for 13 points and 11 rebounds in 30 minutes of action. She also drew three charges, dished out three assists and blocked three shots. Kiser followed that up with a career day at CMU, leading a short-handed Wolverine squad to a 24-point victory with 16 points, eight boards, three assists, two blocks and a drawn charge in 32 minutes.

Phelia Turning Some Heads

Freshman **Laila Phelia** turned in the first double-figure scoring game of her career with 11 points on 5-for-9 shooting against St. Francis Brooklyn (Nov. 13) before coming through with a 12-point, six-rebound performance at Central Michigan (Nov. 20) and an 11-point showing in her first career start against Akron (Dec. 5). In 12 games played, she is averaging 7.6 points and 3.0 boards



PLAYER & TEAM NOTES

in 21.8 minutes per game. She became the first Michigan freshman to score in double figures since **Izabel Varejao** scored 12 against Nebraska in the 2020 Big Ten Tournament (March 5, 2020).

Scouting Penn State

The Lady Lions (7-6, 1-2 B1G) have had a week off since dropping a 106-78 game to Maryland last Thursday (Jan. 6). PSU is averaging 73.1 points per game on 45.0 percent shooting while allowing 71.5 points per game on 41.9 percent shooting to its opponents. Penn State has a pair of double-figure scorers in Makenna Marisa (21.7 ppg) and Ali Brigham (12.3 ppg). Michigan has won five straight and eight of the last nine against the Lady Lions.

Making a Splash

Three Wolverines made their career debuts in Michigan's overtime win over IU-PUI (Nov. 9) in **Ari Wiggins**, **Laila Phelia** and **Jordan Hobbs**. All three found the scoring column, with Phelia turning in four points, Hobbs three and Wiggins two on a steal-and-score.

Dilk Named to Lieberman Award Watch List

For the second consecutive year, senior **Amy Dilk** was named to the watch list for the Nancy Lieberman Award. The award recognizes the top point guard in women's NCAA Division I college basketball, named after the 1996 Hall of Famer. Dilk is coming off a junior season where she appeared in 19 games with 18 starts, averaging 7.7 points, 4.8 rebounds and 3.9 assists in 28.1 minutes per contest. Dilk scored in double figures seven times throughout the season and had 11 games with at least four assists. The list will be narrowed down to 10 in mid-February and then five finalists will be selected in March to be presented to Lieberman and the selection committee.

Brown Named Preseason All-Big Ten

Leigha Brown grabbed the preseason All-Big Ten nod for the first time in her career after appearing in 18 contests last season for the Maize and Blue. She was named to the All-Big Ten second team by both the coaches and media, along with earning a Player of the Week honor (Jan. 4) during the 2020-21 campaign. In her first season in Ann Arbor, Brown averaged 18.2 points and 4.5 rebounds in 33.5 minutes per game. She scored in double figures in all but one game with nine 20-point performances. She racked up three 20-point games during Michigan's NCAA Tournament run, highlighted by a 28-point showing against Florida Gulf Coast, averaging 24.7 points per game over the three tourney contests. Brown, who is listed a senior, will use her extra year of eligibility (NCAA Covid year) in Ann Arbor next season.

Rauch, Hillmon Named Captains

Seniors **Danielle Rauch** and **Naz Hillmon** will serve as captains this season.

Michigan in the Preseason Rankings

A year after being listed in both the Associated Press and USA/Today Coaches Polls for the entirety of the season, U-M began the 2021-22 season ranked No. 11 by the AP and No. 10 by the coaches. The No. 11 AP ranking ties the highest ranking in program history in that poll, with the No. 10 ranking from the coaches representing the first time the Wolverines have been in the top 10 in any poll. Michigan has garnered a preseason ranking from the AP in each of the last three seasons.

Varejão Back in the States

Junior **Izabel Varejão** is back for her junior season after not appearing for the Wolverines during the 2020-21 season. She was unable to get back to the U.S. after going home to Brazil in March 2020. She returned to Ann Arbor in early February but did not see game action. As a freshman in 2019-20, she appeared in 32 games, starting once, averaging 5.4 points and 3.7 rebounds in 14.2 minutes per game. She has appeared in 11 games off the bench for the Wolverines this season.

New Faces

Michigan has three new assistant coaches on the sidelines in Michigan native **Carrie Moore**, **Val Nainima** and former graduate manager **Harry Rafferty**. Moore, who has coached at North Carolina, Princeton and Creighton, led the nation in scoring as a senior at Western Michigan in 2006-07. Nainima joined the Wolverines after spending the last seven seasons at Fordham and played collegiately for Dawn Staley at South Carolina and internationally for Fiji. Rafferty spent the last two seasons on staff in Ann Arbor, coming to U-M after playing collegiately at Wesleyan and in the NBA G-League.

A Game for the Ages

Junior **Naz Hillmon** turned in quite the individual performance at No. 17 Ohio State (Jan. 24, 2021), going for a career-best 50 points on 20-for-30 shooting from the floor and grabbing 16 rebounds for her eighth double-double of the season. She broke the previous program record for points in a game (45), held by Diane Dietz (Feb. 27, 1982).

Hillmon also outscored men's basketball greats Cazzie Russell and Rudy Tomjanovich, breaking the U-M basketball scoring record of 48 points and recording the first 50-point game in Michigan basketball history. Hillmon's 50-point performance was the first in Big Ten play since Rachel Banham of Minnesota put up 52 points at Michigan State on Feb. 21, 2016.

Her 20 made field goals is a Michigan program record and the most ever by a Big Ten player in a conference game. It was the first 50-point game by a player in the NCAA this year and just the third in Big Ten history.

According to ESPN Stats and Info, she was the second Division I player over the last 20 seasons with 50 points and 15 rebounds in a game, joining South Carolina's Jocelyn Penn in 2003 against Stetson.

Naz Doubling Up

Naz Hillmon has recorded six double-doubles this season, pushing her career total to 40 as she has moved into second place all-time at Michigan.

Name	Total	Years
Trish Andrew	44	1990-93
Naz Hillmon	40	2019-pres.
Pollyanna Johns	37	1995-98

Simple Enough...Just Score

U-M is 81-6 under head coach **Kim Barnes Arico** when scoring at least 80 points. U-M is 4-0 in such games this season.

KBA Keeps Winning

Head coach **Kim Barnes Arico** picked her up 400th career win in 2017-18, becoming the seventh active Big Ten head coach to reach 400. KBA is Michigan's all-time wins leader with 206 and is still the winningest coach at St. John's with 176 victories. Her .664 winning percentage is tops in program history.

Wolverines Ink No. 22-ranked Recruiting Class

Michigan signed three to National Letters of Intent in the early signing period, getting commitments from **Kate Clarke** (Carmel, Ind.), **Alyssa Crockett** (Westfield, Ind.) and **Chyra Evans** (Newcastle, New South Wales, Australia). The group is the No. 22-ranked recruiting class by ESPN.

THE LAST TIME...

IN THE LAST SECOND

Michigan played in overtime	December 19, 2021 vs. No. 5 Baylor: Michigan won, 74-68
Michigan won an overtime game	December 19, 2021 vs. No. 5 Baylor: Michigan won, 74-68
Michigan lost an overtime game	March 27, 2021 vs. Baylor (NCAA Tournament): Michigan lost, 78-75
Michigan won on a buzzer beater	December 16, 2006, Dartmouth: Melinda Queen three-pointer from right wing as time expired

TEAM SCORING

Michigan scored 80-89 or more points	November 13, 2021 vs. St. Francis Brooklyn: Michigan won, 82-46
Michigan scored 90-99 points	December 31, 2021 vs. No. 25 Ohio State: Michigan won, 90-71
Michigan scored 100 or more points	December 21, 2017 vs. Delaware State: Michigan won 105-36
Michigan scored fewer than 50 points	December 2, 2021 at No. 10 Louisville: Michigan lost, 70-48
An opponent scored 100 or more points	March 12, 1994 vs. Purdue: Michigan lost 110-51
An opponent scored fewer than 50 points	January 9, 2022 vs. Rutgers: Michigan won, 76-47

INDIVIDUAL SCORING

A player had 20-29 points	December 31, 2021 vs. No. 25 Ohio State: Naz Hillmon (29), Leigha Brown (24)
A player had 30-39 points	November 9, 2021 vs. IUPUI: Naz Hillmon (30)
A player had 40 or more points	January 21, 2021 at No. 17 Ohio State: Naz Hillmon (50)
An opponent had 20-29 points	January 4, 2022 at Nebraska: Alexis Markowski (20)
An opponent had 30-39 points	February 16, 2021 vs. Michigan State: Nia Clouden (34)
An opponent had 40 or more points	February 17, 2002 vs. Purdue: Shareka Wright (40)

MULTIPLE DOUBLE-DIGIT SCORING

Michigan had three double-digit scorers	January 9, 2022 vs. Rutgers: Hillmon (19), Brown (19), Nolan (14)
Michigan had four double-digit scorers	January 4, 2022 at Nebraska: Kiser (13), Nolan (11), Brown (10), Hillmon (10)
Michigan had five double-digit scorers	December 9, 2021 at Wisconsin: Hillmon (21), Rauch (18), Kiser (17), Brown (13), Nolan (11)
Michigan had six double-digit scorers	November 13, 2016 vs. Niagara: Flaherty (14), Brozoski (13), Backman (13), Robbins (12), Thome (12), Gondrezick (12)

INDIVIDUAL REBOUNDING

A player had 10 or more rebounds	December 31, 2021 vs. No. 25 Ohio State: Naz Hillmon (15), Emily Kiser (15)
A player had 20 or more rebounds	January 7, 2021 vs. Nebraska: Naz Hillmon (22)
Michigan had 40 or more rebounds	December 31, 2021 vs. No. 25 Ohio State: (48)
Michigan had 50 or more rebounds	December 19, 2021 vs. No. 5 Baylor: (50)
Michigan had 25 or fewer rebounds	February 17, 2016 at #6 Maryland: (24)

DOUBLE-DOUBLES

A player had a double-double (points-rebounds)	December 31, 2021 vs. No. 25 Ohio State: Naz Hillmon (29 pts, 15 rebs), Emily Kiser (18 pts, 15 rebs)
A player had a double-double (points-assists)	December 9, 2016 at San Diego State: Siera Thompson (11 pts, 11 asts)
Michigan had two players with a double-double	December 31, 2021 vs. No. 25 Ohio State: Naz Hillmon (29 pts, 15 rebs), Emily Kiser (18 pts, 15 rebs)

ASSISTS

A player had five or more assists	December 31, 2021 vs. No. 25 Ohio State: Leigha Brown (7)
A player had double-digit assists	March 9, 2019 vs. #8 Maryland (BTT): Amy Dilk (11)
Michigan had 20 or more assists	December 31, 2021 vs. No. 25 Ohio State: (20)
Michigan had 30 or more assists	November 18, 2016 vs. Howard: (32)

BLOCKS

A player had five or more blocks	January 24, 2019 at Indiana: Hallie Thome (5)
A player had 10 or more blocks	December 30, 1992, vs. Old Dominion: Trish Andrew (10)
Michigan had five or more blocks	March 11, 2021 vs. Northwestern (BTT): (5)
Michigan had 10 or more blocks	November 12, 2012 at Xavier: (10)

STEALS

A player had five or more steals	February 25, 2021 at Iowa: Leigha Brown (6)
A player had 10 or more steals	February 27, 2000 vs. Northwestern: Stacey Thomas (10)
Michigan had 10 or more steals	January 4, 2022 at Nebraska: Michigan (10)
Michigan had fewer than five steals	December 31, 2021 vs. No. 25 Ohio State: Michigan (4)

FIELD GOALS MADE

Michigan had fewer than 20 field goals made	December 2, 2021 at No. 10 Louisville: (17)
Michigan had 20-29 field goals made	January 9, 2022 vs. Rutgers: (27)
Michigan had 30-39 field goals made	December 31, 2021 vs. No. 25 Ohio State: (33)
Michigan had 40-49 field goals made	November 19, 2018 vs. Detroit Mercy: (41)

FIELD GOAL ATTEMPTS

Michigan had 50-59 field goal attempts	December 31, 2021 vs. No. 25 Ohio State: (59)
Michigan had 60-69 field goal attempts	January 4, 2022 at Nebraska: (60)
Michigan had 70-79 field goal attempts	January 21, 2021 at No. 17 Ohio State: (70)
Michigan had more than 79 field goal attempts	January 15, 2017 vs. Minnesota: (81)
Michigan had fewer than 40 field goal attempts	March 24, 2008 vs Virginia Commonwealth (WNIT Second Round): (37)

THE LAST TIME...

FIELD GOAL PERCENTAGE

Michigan shot at least 50 percent from the field	January 9, 2022 vs. Rutgers: 56.3 percent (27-for-48)
Michigan shot at least 60 percent from the field	December 5, 2021 vs. Akron: 64.7 percent (33-for-51)

3-POINT FIELD GOALS MADE

Michigan had 10 or more 3-point field goals	November 10, 2019 vs. Bradley: (11)
Michigan had 15 or more 3-point field goals	Has yet to happen

3-POINT FIELD GOAL ATTEMPTS

Michigan had 20 or more 3-point field goal attempts	November 13, 2021 vs. St. Francis Brooklyn: (24)
Michigan had fewer than 10 3-point field goal attempts	November 25, 2020 vs. Central Michigan: (9)

3-POINT FIELD GOAL PERCENTAGE

Michigan shot at least 40 percent on 3-pointers	January 9, 2022 vs. Rutgers: 60.0 percent (9-for-15)
Michigan shot at least 50 percent on 3-pointers	January 9, 2022 vs. Rutgers: 60.0 percent (9-for-15)

FREE THROWS MADE

Michigan had 20 or more free throws made	December 31, 2021 vs. No. 25 Ohio State: (20)
Michigan had 30 or more free throws made	November 12, 2005 vs. Saint Francis (Pa.): (30)
Michigan had fewer than 10 free throws made	November 13, 2021 vs. St. Francis Brooklyn: (8)

FREE THROW ATTEMPTS

Michigan had 20 or more free throw attempts	December 31, 2021 vs. No. 25 Ohio State: (26)
Michigan had 30 or more free throw attempts	February 23, 2020 at Michigan State: (39)
Michigan had fewer than 10 free throw attempts	February 27, 2020 at Penn State: (9)

FREE THROW PERCENTAGE

Michigan shot 70-79 percent on free throws	December 31, 2021 vs. No. 25 Ohio State: 76.9 percent (20-for-26)
Michigan shot 80-89 percent on free throws	January 9, 2022 vs. Rutgers: 81.3 percent (13-for-16)
Michigan shot 90+ percent on free throws	January 16, 2020 at Wisconsin: 93.8 percent (15-for-16)
Michigan shot less than 50 percent on free throws	November 27, 2019 at Eastern Michigan: 36.4 percent (8-for-22)

FOULS

Michigan had 20 or more fouls	December 9, 2021 at Wisconsin: (20)
Michigan had fewer than 10 fouls	January 12, 2020 vs. #17 Maryland: (9)

TURNOVERS

Michigan had 20 or more turnovers	December 31, 2021 vs. No. 25 Ohio State: (21)
Michigan had fewer than 10 turnovers	December 9, 2021 at Wisconsin: (7)

AT CRISLER CENTER

Michigan had a sellout crowd at Crisler Center	January 27, 2019 vs. #23 Michigan State: 12,707
Michigan had a crowd of 5,000 or more at Crisler Center	December 31, 2021 vs. No. 25 Ohio State: 7,904
Michigan had a crowd of 4,000 or more at Crisler Center	December 31, 2021 vs. No. 25 Ohio State: 7,904
Michigan had a crowd of 2,500 or more at Crisler Center	December 31, 2021 vs. No. 25 Ohio State: 7,904

IN THE RANKINGS

Michigan was ranked	January 10, 2022: No. 11 Associated Press
Michigan defeated a ranked opponent	December 31, 2021 vs. No. 25 Ohio State: 90-71
Michigan lost to a ranked opponent	December 2, 2021 at No. 10 Louisville: 70-48
Michigan defeated a ranked opponent at home	December 31, 2021 vs. No. 25 Ohio State: 90-71
Michigan defeated a ranked opponent on the road	January 3, 2021 at #15 Northwestern: 84-63
Michigan faced a No. 1 ranked team	February 7, 1988 vs. Iowa: lost 54-89
Michigan defeated a No. 1 ranked team	Has yet to happen

BOLD indicates during the 2021-22 season

INSIDE THE NUMBERS

DOUBLE-DIGIT SCORING					
	2018-19	2019-20	2020-21	2021-22	CAREER
Naz Hillmon	19	28	21	14	83
Amy Dilk	7	21	7		35
Michelle Sidor	-	2	2	1	5
Leigha Brown	11*	23*	17	10	61
Izabel Varejão	-	4	-		4
Emily Kiser	-	1	-	8	9
Maddie Nolan	-	3	1	5	9
Laila Phelia	-	-	-	4	4
Danielle Rauch	-	-	-	5	5

20+ POINT GAMES					
	2018-19	2019-20	2020-21	2021-22	CAREER
Naz Hillmon	8	14	15	6	43
Amy Dilk	-	4	-		4
Leigha Brown	2*	8*	9	3	22
Maddie Nolan	-	-	1		1

30+ POINT GAMES					
	2018-19	2019-20	2020-21	2021-22	CAREER
Naz Hillmon	-	1	4	1	6
Leigha Brown	1*	-			1

7+ REBOUND GAMES					
	2018-19	2019-20	2020-21	2021-22	CAREER
Naz Hillmon	20	23	22	9	74
Amy Dilk	4	6	6		16
Izabel Varejão	-	3			3
Maddie Nolan	-	3	1	2	6
Leigha Brown	-	1*	4		5
Emily Kiser	-	1	2	9	12
Cameron Williams	-	-	1		1
Elise Stuck	-	-	-	1	1
Danielle Rauch	-	-	-	1	1

10+ REBOUND GAMES					
	2018-19	2019-20	2020-21	2021-22	CAREER
Naz Hillmon	8	12	19	6	45
Amy Dilk	-	1			1
Leigha Brown	-	-	1		1
Emily Kiser	-	-	-	3	3

5+ ASSIST GAMES					
	2018-19	2019-20	2020-21	2021-22	CAREER
Amy Dilk	14	16	6		36
Naz Hillmon	-	4	2	2	8
Leigha Brown	1*	2*	4	3	10
Maddie Nolan	-	2	1	1	4
Emily Kiser	-	-	1		1
Danielle Rauch	-	-	1	1	2

3+ STEAL GAMES					
	2018-19	2019-20	2020-21	2021-22	CAREER
Naz Hillmon	2	2	1	1	6
Amy Dilk	4	3	3		10
Leigha Brown	-	-	4	2	6
Izabel Varejão	-	1			1
Maddie Nolan	-	1	2	2	5
Danielle Rauch	-	-	1		1

5+ STEAL GAMES					
	2018-19	2019-20	2020-21	2021-22	CAREER
Naz Hillmon	1				1
Amy Dilk	-	1			1
Leigha Brown	-	-	1		1
Danielle Rauch	-	-	1		1

3+ BLOCK GAMES					
	2018-19	2019-20	2020-21	2021-22	CAREER
Izabel Varejão	-	5			5
Emily Kiser	-	1		1	2
Maddie Nolan	-	1			1

* at Nebraska

TIME ON THE COURT (AT MICHIGAN)				
PLAYER	CAREER GAMES	CAREER STARTS	CONSEC GAMES	CONSEC STARTS
Naz Hillmon	102	67	11	10
Amy Dilk	85	80	2	0
Danielle Rauch	80	23	20	18
Emily Kiser	79	15	32	15
Maddie Nolan	61	26	30	3
Michelle Sidor	59	6	15	0
Izabel Varejão	43	1	2	0
Leigha Brown	30	26	10	6
Cameron Williams	25	0	5	0
Elise Stuck	22	2	1	0
Whitney Sollom	17	0	1	0
Ari Wiggins	14	0	3	0
Laila Phelia	12	4	0	0
Jordan Hobbs	10	0	1	0
Taylor Gibson	2	0	0	0

LED MICHIGAN IN ... SCORING					
	2018-19	2019-20	2020-21	2021-22	CAREER
Naz Hillmon	15	14	16	10	54
Amy Dilk	2	7			9
Izabel Varejão	-	1			1
Michelle Sidor	-	1			1
Leigha Brown	-	-	5	3	8
Maddie Nolan	-	-	1		1
Emily Kiser	-	-	-	3	3

LED MICHIGAN IN ... REBOUNDING					
	2018-19	2019-20	2020-21	2021-22	CAREER
Naz Hillmon	16	21	18	9	64
Amy Dilk	4	3	1		8
Maddie Nolan	-	1	1		2
Leigha Brown	-	-	1		1
Emily Kiser	-	-	-	7	7

LED MICHIGAN IN ... ASSISTS					
	2018-19	2019-20	2020-21	2021-22	CAREER
Danielle Rauch	1	-	2	5	8
Amy Dilk	20	26	11	1	58
Naz Hillmon	1	9	2	4	16
Izabel Varejão	-	2			2
Leigha Brown	-	-	6	5	11
Emily Kiser	-	1	1	2	4
Maddie Nolan	-	1	2	4	7

LED MICHIGAN IN ... STEALS					
	2018-19	2019-20	2020-21	2021-22	CAREER
Naz Hillmon	5	6	3	5	19
Danielle Rauch	2	1	3	4	10
Amy Dilk	11	11	6		28
Izabel Varejão	-	4			4
Leigha Brown	-	-	6	5	11
Emily Kiser	-	1	-	4	5
Maddie Nolan	-	2	8	4	14
Jordan Hobbs	-	-	-	1	1
Ari Wiggins	-	-	-	2	2
Michelle Sidor	-	-	-	1	1
Laila Phelia	-	-	-	4	4
Cameron Williams	-	-	-	1	1

LED MICHIGAN IN ... BLOCKS					
	2018-19	2019-20	2020-21	2021-22	CAREER
Emily Kiser	3	7	2	6	18
Naz Hillmon	2	5	5	4	16
Amy Dilk	1	4	2	1	8
Izabel Varejão	-	12		3	15
Maddie Nolan	-	3	4	1	8
Danielle Rauch	-	2			2
Michelle Sidor	-	-	1	1	2
Whitney Sollom	-	-	1	1	2
Leigha Brown	-	-	3	4	7



2021-22 MICHIGAN OVERALL STATS



2021-22 Michigan Women's Basketball
Combined Team Statistics
All games

Game Records

Record	Overall	Home	Away	Neutral
ALL GAMES	13-2	8-0	2-2	3-0
CONFERENCE	4-1	3-0	1-1	0-0
NON-CONFERENCE	9-1	5-0	1-1	3-0

Score by Periods

Team	1st	2nd	3rd	4th	OT	TOT
Michigan	269	268	276	253	24	1090
Opponents	187	211	221	264	13	896

Team Box Score

No.	Player	Total			3-Point			F-Throw		Rebounds				PF	DQ	A	TO	BLK	STL	PTS	AVG	
		GP-GS	MIN	AVG	FG-FGA	FG%	3FG-3FGA	3FG%	FT-FTA	FT%	OFF	DEF	TOT									AVG
00	HILLMON, Naz	14-13	460:24	32.9	109-195	.559	0-4	.000	62-84	.738	53	70	123	8.8	34	2	33	48	5	13	280	20.0
32	BROWN, Leigha	12-8	337:28	28.1	62-128	.484	10-29	.345	50-66	.758	7	33	40	3.3	22	0	39	27	7	16	184	15.3
33	KISER, Emily	15-15	458:57	30.6	59-135	.437	5-28	.179	34-44	.773	36	81	117	7.8	37	1	24	33	13	12	157	10.5
3	NOLAN, Maddie	15-11	405:33	27.0	41-89	.461	29-64	.453	11-14	.786	8	49	57	3.8	33	0	30	17	2	19	122	8.1
5	PHELIA, Laila	12-4	262:03	21.8	33-89	.371	4-15	.267	21-23	.913	13	23	36	3.0	15	0	3	12	1	10	91	7.6
23	RAUCH, Danielle	15-15	489:36	32.6	33-95	.347	16-46	.348	8-12	.667	9	45	54	3.6	22	0	33	30	2	16	90	6.0
44	WILLIAMS, Cameron	13-0	100:54	7.8	19-26	.731	0-0	.000	5-7	.714	11	10	21	1.6	17	0	1	9	1	1	43	3.3
1	DILK, Amy	3-1	36:33	12.2	2-7	.286	1-3	.333	4-6	.667	0	3	3	1.0	3	0	4	2	1	1	9	3.0
34	VAREJÃO, Izabel	11-0	50:02	4.5	12-22	.545	0-1	.000	4-8	.500	4	7	11	1.0	7	0	1	6	3	1	28	2.5
10	HOBBS, Jordan	10-0	68:33	6.9	6-21	.286	2-11	.182	4-5	.800	0	5	5	0.5	5	0	0	2	0	3	18	1.8
24	SIDOR, Michelle	15-6	141:37	9.4	12-36	.333	3-17	.176	0-1	.000	2	12	14	0.9	8	0	12	7	2	3	27	1.8
30	STUCK, Elise	12-2	93:52	7.8	6-11	.545	0-1	.000	8-9	.889	8	22	30	2.5	12	0	5	13	0	1	20	1.7
25	SOLLON, Whitney	7-0	28:55	4.1	4-8	.500	0-0	.000	2-6	.333	6	1	7	1.0	1	0	1	0	1	1	10	1.4
15	GIBSON, Taylor	2-0	02:25	1.2	1-2	.500	0-1	.000	0-0	.000	0	0	0	0.0	0	0	0	0	0	0	2	1.0
12	WIGGINS, Ari	14-0	113:07	8.1	3-24	.125	0-3	.000	3-5	.600	1	11	12	0.9	14	0	7	21	1	8	9	0.6
Team											30	33	63					9				
Total		15	3050		402-888	.453	70-223	.314	216-290	.745	188	405	593	39.5	230	3	193	236	39	105	1090	72.7
Opponents		15	3050		339-871	.389	92-289	.318	126-184	.685	145	326	471	31.4	289	13	159	263	52	126	896	59.7

Team Statistics

	MICH	OPP
Scoring	1090	896
Points per game	72.7	59.7
Scoring margin	+12.9	-
Field goals-att	402-888	339-871
Field goal pct	.453	.389
3 point fg-att	70-223	92-289
3-point FG pct	.314	.318
3-pt FG made per game	4.7	6.1
Free throws-att	216-290	126-184
Free throw pct	.745	.685
F-Throws made per game	14.4	8.4
Rebounds	593	471
Rebounds per game	39.5	31.4
Rebounding margin	+8.1	-
Assists	193	159
Assists per game	12.9	10.6
Turnovers	236	263
Turnovers per game	15.7	17.5
Turnover margin	+1.8	-
Assist/turnover ratio	0.8	0.6
Steals	105	126
Steals per game	7.0	8.4
Blocks	39	52
Blocks per game	2.6	3.5
Winning streak	1	-
Home win streak	8	-
Attendance	23051	16223
Home games-Avg/Game	8-2881	4-4056
Neutral site-Avg/Game	-	3-2968

Team Results

Date	Opponent	Score	Att.
11/09/2021	IUPUI	Wot	67-62 1948
11/13/2021	St. Francis Brooklyn	W	82-46 2363
11/16/2021	UMass Lowell	W	73-54 1957
11/20/2021	at Central Mich.	W	69-45 2654
11/22/2021	Oakland	W	69-58 1967
11/26/2021	vs Oregon St.	W	61-52 350
11/27/2021	vs Mississippi St.	W	64-48 350
12/02/2021	at Louisville	L	48-70 7309
12/05/2021	Akron	W	93-54 2274
12/09/2021	at Wisconsin	W	93-81 2669
12/12/2021	Minnesota	W	73-61 2484
12/19/2021	vs Baylor	Wot	74-68 8204
12/31/2021	Ohio St.	W	90-71 7904
01/04/2022	at Nebraska	L	58-79 3591
01/09/2022	Rutgers	W	76-47 2154

2021-22 MICHIGAN BIG TEN STATS



2021-22 Michigan Women's Basketball
Combined Team Statistics
In Conference games

Game Records

Record	Overall	Home	Away	Neutral
ALL GAMES	4-1	3-0	1-1	0-0
CONFERENCE	4-1	3-0	1-1	0-0
NON-CONFERENCE	0-0	0-0	0-0	0-0

Score by Periods

Team	1st	2nd	3rd	4th	OT	TOT
Michigan	85	97	109	99	0	390
Opponents	66	88	81	104	0	339

Team Box Score

No.	Player	Total			3-Point		F-Throw		Rebounds				Other Stats									
		GP-GS	MIN	AVG	FG-FGA	FG%	3FG-3FGA	3FG%	FT-FTA	FT%	OFF	DEF	TOT	AVG	PF	DQ	A	TO	BLK	STL	PTS	AVG
00	HILLMON, Naz	5-5	172:01	34.4	39-70	.557	0-1	.000	26-32	.813	21	21	42	8.4	14	1	17	15	1	1	104	20.8
32	BROWN, Leigha	5-5	164:17	32.9	32-60	.533	6-14	.429	15-25	.600	3	18	21	4.2	8	0	23	11	4	10	85	17.0
33	KISER, Emily	5-5	154:46	31.0	24-46	.522	1-4	.250	12-16	.750	15	25	40	8.0	17	1	5	11	1	3	61	12.2
3	NOLAN, Maddie	5-3	131:03	26.2	18-32	.563	12-23	.522	2-3	.667	2	11	13	2.6	11	0	6	7	0	4	50	10.0
5	PHELIA, Laila	2-2	47:54	24.0	6-13	.462	0-1	.000	3-3	1.000	2	6	8	4.0	4	0	1	2	0	3	15	7.5
34	VAREJÃO, Izabel	4-0	25:17	6.3	9-11	.818	0-0	.000	3-6	.500	2	3	5	1.3	4	0	1	1	1	0	21	5.3
1	DILK, Amy	2-0	35:51	17.9	2-7	.286	1-3	.333	4-6	.667	0	3	3	1.5	3	0	4	2	1	1	9	4.5
23	RAUCH, Danielle	5-5	160:10	32.0	7-29	.241	3-18	.167	5-6	.833	4	12	16	3.2	4	0	10	9	1	8	22	4.4
44	WILLIAMS, Cameron	4-0	25:33	6.4	7-8	.875	0-0	.000	1-2	.500	1	2	3	0.8	5	0	0	2	1	0	15	3.8
30	STUCK, Elise	4-0	18:23	4.6	2-3	.667	0-0	.000	1-1	1.000	1	6	7	1.8	4	0	1	3	0	0	5	1.3
10	HOBBS, Jordan	3-0	17:38	5.9	1-5	.200	0-2	.000	0-0	.000	0	1	1	0.3	3	0	0	1	0	0	2	0.7
25	SOLLOM, Whitney	2-0	04:11	2.1	0-1	.000	0-0	.000	1-2	.500	1	0	1	0.5	0	0	0	0	0	0	1	0.5
12	WIGGINS, Ari	5-0	19:19	3.9	0-1	.000	0-0	.000	0-0	.000	0	2	2	0.4	2	0	3	4	1	1	0	0.0
24	SIDOR, Michelle	5-0	23:35	4.7	0-4	.000	0-3	.000	0-0	.000	0	1	1	0.2	1	0	1	1	1	0	0	0.0
Team											7	9	16				3					
Total		5	1000		147-290	.507	23-69	.333	73-102	.716	59	120	179	35.8	80	2	72	72	12	31	390	78.0
Opponents		5	1000		126-288	.438	35-92	.380	52-75	.693	51	96	147	29.4	100	6	52	80	15	47	339	67.8

Team Statistics

	MICH	OPP
Scoring	390	339
Points per game	78.0	67.8
Scoring margin	+10.2	-
Field goals-att	147-290	126-288
Field goal pct	.507	.438
3 point fg-att	23-69	35-92
3-point FG pct	.333	.380
3-pt FG made per game	4.6	7.0
Free throws-att	73-102	52-75
Free throw pct	.716	.693
F-Throws made per game	14.6	10.4
Rebounds	179	147
Rebounds per game	35.8	29.4
Rebounding margin	+6.4	-
Assists	72	52
Assists per game	14.4	10.4
Turnovers	72	80
Turnovers per game	14.4	16.0
Turnover margin	+1.6	-
Assist/turnover ratio	1.0	0.7
Steals	31	47
Steals per game	6.2	9.4
Blocks	12	15
Blocks per game	2.4	3.0
Winning streak	1	-
Home win streak	3	-
Attendance	12542	6260
Home games-Avg/Game	3-4181	2-3130
Neutral site-Avg/Game	-	0-0

Team Results

Date	Opponent		Score	Att.
12/09/2021	at Wisconsin	W	93-81	2669
12/12/2021	Minnesota	W	73-61	2484
12/31/2021	Ohio St.	W	90-71	7904
01/04/2022	at Nebraska	L	58-79	3591
01/09/2022	Rutgers	W	76-47	2154

2021-22 MICHIGAN GAME-BY-GAME STATS



**2021-22 Michigan Women's Basketball
Team Game-by-Game
All games**

Page 1/1
as of Jan 11, 2022

Opponent	Date	Score		Total		3-Pointers		Free throws		Rebounds				PF	A	TO	BLK	STL	PTS	AVG
				FG-FGA	PCT	3FG-3FGA	PCT	FT-FTA	PCT	OFF	DEF	TOT	AVG							
IUPUI	11/09/2021	67-62	Wot	24-59	.407	3-20	.150	16-20	.800	9	36	45	45.0	12	10	16	4	4	67	67.0
St. Francis Brooklyn	11/13/2021	82-46	W	34-69	.493	6-24	.250	8-11	.727	14	33	47	46.0	13	16	16	3	9	82	74.5
UMass Lowell	11/16/2021	73-54	W	26-63	.413	8-17	.471	13-19	.684	14	25	39	43.7	13	18	14	4	6	73	74.0
at Central Mich.	11/20/2021	69-45	W	27-65	.415	4-15	.267	11-16	.688	15	30	45	44.0	11	9	11	3	9	69	72.8
Oakland	11/22/2021	69-58	W	26-58	.448	4-13	.308	13-18	.722	17	26	43	43.8	14	13	21	2	6	69	72.0
vs Oregon St.	11/26/2021	61-52	W	19-58	.328	5-13	.385	18-24	.750	12	25	37	42.7	18	4	15	2	12	61	70.2
vs Mississippi St.	11/27/2021	64-48	W	24-61	.393	5-13	.385	11-14	.786	15	32	47	43.3	19	13	14	0	5	64	69.3
at Louisville	12/02/2021	48-70	L	17-46	.370	2-15	.133	12-16	.750	6	20	26	41.1	15	7	24	3	6	48	66.6
Akron	12/05/2021	93-54	W	33-51	.647	6-10	.600	21-26	.808	9	26	35	40.4	16	22	17	3	9	93	69.6
at Wisconsin	12/09/2021	93-81	W	35-67	.522	7-17	.412	16-22	.727	12	19	31	39.5	20	18	7	4	7	93	71.9
Minnesota	12/12/2021	73-61	W	30-56	.536	2-11	.182	11-16	.688	11	20	31	38.7	13	12	15	1	5	73	72.0
vs Baylor	12/19/2021	74-68	Wot	25-68	.368	4-14	.286	20-24	.833	18	32	50	39.7	19	9	16	3	8	74	72.2
Ohio St.	12/31/2021	90-71	W	33-59	.559	4-14	.286	20-26	.769	14	34	48	40.3	12	20	21	4	4	90	73.5
at Nebraska	01/04/2022	58-79	L	22-60	.367	1-12	.083	13-22	.591	13	21	34	39.9	18	9	15	3	10	58	72.4
Rutgers	01/09/2022	76-47	W	27-48	.563	9-15	.600	13-16	.813	9	26	35	39.5	17	13	14	0	5	76	72.7
Total		1090		402-888	.453	70-223	.314	216-290	.745	188	405	593	39.5	230	193	236	39	105	1090	72.7
Opponents		896		339-871	.389	92-289	.318	126-184	.685	145	326	471	31.4	289	159	263	52	126	896	59.7

Michigan Averages

Games Played	Points/game	FG Pct	3FG Pct	FT Pct	Rebounds/game	Assists/game	Turnovers/game	Assist/Turnover ratio	Steals/game	Blocks/game
15	72.7	45.3	31.4	74.5	39.5	12.9	15.7	0.8	7.0	2.6

HIGHS AND LOWS

MICHIGAN HIGHS		
Michigan - Game Highs		
POINTS	93	at Wisconsin (12/09/2021)
	93	Akron (12/05/2021)
	90	Ohio St. (12/31/2021)
	82	St. Francis Brooklyn (11/13/2021)
	76	Rutgers (01/09/2022)
FIELD GOALS MADE	35	at Wisconsin (12/09/2021)
	34	St. Francis Brooklyn (11/13/2021)
FIELD GOAL ATTEMPTS	69	St. Francis Brooklyn (11/13/2021)
	68	vs Baylor (N) (12/19/2021)
FIELD GOAL PERCENTAGE	.647 (33-51)	Akron (12/05/2021)
	.563 (27-48)	Rutgers (01/09/2022)
3 PT FG MADE	9	Rutgers (01/09/2022)
	8	UMass Lowell (11/16/2021)
3 PT FG ATTEMPTS	24	St. Francis Brooklyn (11/13/2021)
	20	IUPUI (11/09/2021)
3 PT FG PERCENTAGE	.600 (9-15)	Rutgers (01/09/2022)
	.600 (6-10)	Akron (12/05/2021)
FREE THROWS MADE	21	Akron (12/05/2021)
	20	Ohio St. (12/31/2021)
	20	vs Baylor (N) (12/19/2021)
FREE THROW ATTEMPTS	26	Ohio St. (12/31/2021)
	26	Akron (12/05/2021)
FREE THROW PERCENTAGE	.833 (20-24)	vs Baylor (N) (12/19/2021)
	.813 (13-16)	Rutgers (01/09/2022)
REBOUNDS	50	vs Baylor (N) (12/19/2021)
	48	Ohio St. (12/31/2021)
ASSISTS	22	Akron (12/05/2021)
	20	Ohio St. (12/31/2021)
STEALS	12	vs Oregon St. (N) (11/26/2021)
	10	at Nebraska (01/04/2022)
BLOCKED SHOTS	4	Ohio St. (12/31/2021)
	4	at Wisconsin (12/09/2021)
	4	UMass Lowell (11/16/2021)
	4	IUPUI (11/09/2021)
TURNOVERS	24	at Louisville (12/02/2021)
	21	Ohio St. (12/31/2021)
	21	Oakland (11/22/2021)
FOULS	20	at Wisconsin (12/09/2021)
	19	vs Baylor (N) (12/19/2021)
	19	vs Mississippi St. (N) (11/27/2021)

MICHIGAN LOWS		
Michigan - Game Lows		
POINTS	48	at Louisville (12/02/2021)
	58	at Nebraska (01/04/2022)
	61	vs Oregon St. (N) (11/26/2021)
	64	vs Mississippi St. (N) (11/27/2021)
	67	IUPUI (11/09/2021)
FIELD GOALS MADE	17	at Louisville (12/02/2021)
	19	vs Oregon St. (N) (11/26/2021)
FIELD GOAL ATTEMPTS	46	at Louisville (12/02/2021)
	48	Rutgers (01/09/2022)
FIELD GOAL PERCENTAGE	.328 (19-58)	vs Oregon St. (N) (11/26/2021)
	.367 (22-60)	at Nebraska (01/04/2022)
3 PT FG MADE	1	at Nebraska (01/04/2022)
	2	Minnesota (12/12/2021)
	2	at Louisville (12/02/2021)
3 PT FG ATTEMPTS	10	Akron (12/05/2021)
	11	Minnesota (12/12/2021)
3 PT FG PERCENTAGE	.083 (1-12)	at Nebraska (01/04/2022)
	.133 (2-15)	at Louisville (12/02/2021)
FREE THROWS MADE	8	St. Francis Brooklyn (11/13/2021)
	11	Minnesota (12/12/2021)
	11	vs Mississippi St. (N) (11/27/2021)
	11	at Central Mich. (11/20/2021)
FREE THROW ATTEMPTS	11	St. Francis Brooklyn (11/13/2021)
	14	vs Mississippi St. (N) (11/27/2021)
FREE THROW PERCENTAGE	.591 (13-22)	at Nebraska (01/04/2022)
	.684 (13-19)	UMass Lowell (11/16/2021)
REBOUNDS	26	at Louisville (12/02/2021)
	31	Minnesota (12/12/2021)
	31	at Wisconsin (12/09/2021)
ASSISTS	4	vs Oregon St. (N) (11/26/2021)
	7	at Louisville (12/02/2021)
STEALS	4	Ohio St. (12/31/2021)
	4	IUPUI (11/09/2021)
BLOCKED SHOTS	0	Rutgers (01/09/2022)
	0	vs Mississippi St. (N) (11/27/2021)
TURNOVERS	7	at Wisconsin (12/09/2021)
	11	at Central Mich. (11/20/2021)
FOULS	11	at Central Mich. (11/20/2021)
	12	Ohio St. (12/31/2021)
	12	IUPUI (11/09/2021)

OPPONENT HIGHS		
Opponent - Game Highs		
POINTS	81	at Wisconsin (12/09/2021)
	79	at Nebraska (01/04/2022)
	71	Ohio St. (12/31/2021)
	70	at Louisville (12/02/2021)
	68	vs Baylor (N) (12/19/2021)
FIELD GOALS MADE	30	at Nebraska (01/04/2022)
	29	at Wisconsin (12/09/2021)
	29	at Louisville (12/02/2021)
FIELD GOAL ATTEMPTS	73	Ohio St. (12/31/2021)
	64	at Louisville (12/02/2021)
FIELD GOAL PERCENTAGE	.517 (30-58)	at Nebraska (01/04/2022)
	.500 (29-58)	at Wisconsin (12/09/2021)
3 PT FG MADE	10	IUPUI (11/09/2021)
	9	Ohio St. (12/31/2021)
	9	at Louisville (12/02/2021)
3 PT FG ATTEMPTS	27	Ohio St. (12/31/2021)
	27	IUPUI (11/09/2021)
3 PT FG PERCENTAGE	.450 (9-20)	at Louisville (12/02/2021)
	.438 (7-16)	Minnesota (12/12/2021)
FREE THROWS MADE	16	vs Baylor (N) (12/19/2021)
	16	at Wisconsin (12/09/2021)
FREE THROW ATTEMPTS	22	at Wisconsin (12/09/2021)
	20	vs Baylor (N) (12/19/2021)
FREE THROW PERCENTAGE	.875 (7-8)	UMass Lowell (11/16/2021)
	.857 (6-7)	Ohio St. (12/31/2021)
REBOUNDS	42	at Nebraska (01/04/2022)
	42	vs Oregon St. (N) (11/26/2021)
ASSISTS	16	at Wisconsin (12/09/2021)
	14	at Nebraska (01/04/2022)
	14	Akron (12/05/2021)
STEALS	15	at Louisville (12/02/2021)
	14	Ohio St. (12/31/2021)
BLOCKED SHOTS	8	vs Oregon St. (N) (11/26/2021)
	6	vs Mississippi St. (N) (11/27/2021)
TURNOVERS	23	vs Oregon St. (N) (11/26/2021)
	22	St. Francis Brooklyn (11/13/2021)
FOULS	27	Ohio St. (12/31/2021)
	24	vs Oregon St. (N) (11/26/2021)

OPPONENT LOWS		
Opponent - Game Lows		
POINTS	45	at Central Mich. (11/20/2021)
	46	St. Francis Brooklyn (11/13/2021)
	47	Rutgers (01/09/2022)
	48	vs Mississippi St. (N) (11/27/2021)
	52	vs Oregon St. (N) (11/26/2021)
FIELD GOALS MADE	16	Rutgers (01/09/2022)
	18	vs Oregon St. (N) (11/26/2021)
	18	St. Francis Brooklyn (11/13/2021)
FIELD GOAL ATTEMPTS	49	Minnesota (12/12/2021)
	50	Rutgers (01/09/2022)
FIELD GOAL PERCENTAGE	.316 (18-57)	St. Francis Brooklyn (11/13/2021)
	.320 (16-50)	Rutgers (01/09/2022)
3 PT FG MADE	3	vs Mississippi St. (N) (11/27/2021)
	3	at Central Mich. (11/20/2021)
3 PT FG ATTEMPTS	11	Rutgers (01/09/2022)
	12	vs Mississippi St. (N) (11/27/2021)
3 PT FG PERCENTAGE	.130 (3-23)	at Central Mich. (11/20/2021)
	.217 (5-23)	St. Francis Brooklyn (11/13/2021)
FREE THROWS MADE	3	at Louisville (12/02/2021)
	4	at Central Mich. (11/20/2021)
FREE THROW ATTEMPTS	5	at Louisville (12/02/2021)
	5	at Central Mich. (11/20/2021)
FREE THROW PERCENTAGE	.500 (7-14)	vs Mississippi St. (N) (11/27/2021)
	.556 (10-18)	vs Oregon St. (N) (11/26/2021)
REBOUNDS	17	Akron (12/05/2021)
	20	Minnesota (12/12/2021)
ASSISTS	4	Minnesota (12/12/2021)
	6	vs Mississippi St. (N) (11/27/2021)
STEALS	2	at Wisconsin (12/09/2021)
	4	at Central Mich. (11/20/2021)
BLOCKED SHOTS	1	St. Francis Brooklyn (11/13/2021)
	2	Rutgers (01/09/2022)
	2	Ohio St. (12/31/2021)
	2	Akron (12/05/2021)
	2	Oakland (11/22/2021)
	2	at Central Mich. (11/20/2021)
TURNOVERS	11	Ohio St. (12/31/2021)
	12	Rutgers (01/09/2022)
	12	vs Mississippi St. (N) (11/27/2021)
FOULS	11	St. Francis Brooklyn (11/13/2021)
	15	Rutgers (01/09/2022)



MICHIGAN BOX SCORES

#11 MICHIGAN 67, IUPUI 62 (OT)

IUPUI (0-1,0-0 Horizon) -vs- Michigan (1-0,0-0 Big Ten)
11/09/21 at Crisler Center, Ann Arbor, MI

Date: 11/09/21
Time: 7:00 PM
Attendance: 1,948
Site: Crisler Center, Ann Arbor, MI
Referees: Kalei Enterline, Kelsey Reynolds, Bruce Morris

Score By Period	1	2	3	4	OT 1	Total
IUPUI	15	9	19	15	4	62
Michigan	14	18	17	9	9	67

IUPUI 62

#	Player	GS	MIN	FG	3PT	FT	ORB-DRB	REB	PF	A	TO	BLK	STL	PTS
14	McLimore,Rachel	*	39	8-14	3-4	2-3	1-2	3	1	4	1	0	0	21
50	Williams,Maree	*	42	7-13	1-3	2-3	1-6	7	3	3	5	2	4	17
21	Mortag,Anna	*	25	4-10	2-5	0-0	1-4	5	1	0	1	0	1	10
22	Kent,Rachel	*	39	2-14	2-7	2-4	0-6	6	1	1	6	0	1	8
01	Perkins,Destiny	*	38	1-6	1-4	0-0	0-2	2	2	5	2	0	1	3
10	Berg,Ali	*	4	1-1	1-1	0-0	0-0	0	0	0	0	0	0	3
24	Andersen,Natalie	*	25	0-5	0-3	0-0	1-4	5	5	0	0	0	2	0
30	Allen,Morgan	*	9	0-0	0-0	0-0	0-0	0	3	0	0	0	0	0
00	Duckworth,Trinity	*	4	0-0	0-0	0-0	0-0	0	0	0	0	0	0	0
TM	TEAM		0	0-0	0-0	0-0	1-3	4	0	0	1	0	0	0
Totals			225	23-63	10-27	6-10	5-27	32	16	13	15	3	8	62

Team Summary	FG	3PT	FT
1st Quarter	6-13 46.15%	3-5 60.00%	0-0 0.00%
2nd Quarter	2-16 12.50%	1-8 12.50%	4-6 66.67%
3rd Quarter	8-16 50.00%	3-8 37.50%	0-2 0.00%
4th Quarter	5-12 41.67%	3-5 60.00%	2-2 100.00%
OT 1	2-6 33.33%	0-1 0.00%	0-0 0.00%
Total	23-63 36.5%	10-27 37.0%	6-10 60.0%

Technical Fouls: none
Lead Changed: 11 times(s)
Second Chance Points: 1
Points off Turnovers: 20
Scores Tied: 8 times(s)
Bench Points: 3
Points in the Paint: 22
Largest Lead: 0 0
Fast Break Points: 0

Michigan 67

#	Player	GS	MIN	FG	3PT	FT	ORB-DRB	REB	PF	A	TO	BLK	STL	PTS
00	Hillmon,Naz	*	42	12-22	0-1	6-8	4-11	15	0	1	3	0	1	30
33	Kiser,Emily	*	32	2-6	2-5	0-0	0-9	9	4	1	2	0	0	6
03	Nolan,Maddie	*	35	1-4	0-3	0-0	0-5	5	2	1	1	0	0	2
23	Rauch,Danielle	*	27	1-4	0-1	0-0	1-1	2	2	2	4	0	0	2
01	Dilk,Amy	*	1	0-0	0-0	0-0	0-0	0	0	0	0	0	0	0
32	Brown,Leigha	*	39	5-12	1-4	7-9	0-2	2	0	4	3	1	1	18
05	Phelia,Laila	*	23	1-5	0-2	2-2	0-4	4	0	0	0	0	0	4
10	Hobbs,Jordan	*	8	1-4	0-3	1-1	0-0	0	1	0	0	0	1	3
12	Wiggins,Ari	*	13	1-1	0-0	0-0	0-1	1	1	1	3	0	1	2
24	Sidor,Michelle	*	4	0-1	0-1	0-0	0-0	0	1	0	1	1	0	0
44	Williams,Cameron	*	1	0-0	0-0	0-0	0-0	0	1	0	0	0	0	0
TM	TEAM		0	0-0	0-0	0-0	4-3	7	0	0	0	0	0	0
Totals			225	24-59	3-20	16-20	9-36	45	12	10	16	4	4	67

Team Summary	FG	3PT	FT
1st Quarter	6-15 40.00%	2-8 25.00%	0-0 0.00%
2nd Quarter	6-13 46.15%	1-5 20.00%	5-5 100.00%
3rd Quarter	6-15 40.00%	0-5 0.00%	5-5 100.00%
4th Quarter	3-11 27.27%	0-2 0.00%	3-4 75.00%
OT 1	3-5 60.00%	0-0 0.00%	3-6 50.00%
Total	24-59 40.7%	3-20 15.0%	16-20 80.0%

Technical Fouls: none
Lead Changed: 11 times(s)
Second Chance Points: 7
Points off Turnovers: 20
Bench Points: 27
Scores Tied: 8 times(s)
Largest Lead: 0 0
Fast Break Points: 6

#13 MICHIGAN 73, UMASS LOWELL 54

UMass Lowell (1-2,0-0 America East) -vs- Michigan (3-0,0-0 Big Ten)
11/16/21 at Crisler Center, Ann Arbor, MI

Date: 11/16/21
Time: 6:00 PM
Attendance: 1,957
Site: Crisler Center, Ann Arbor, MI
Referees: Adrienne Gilmore, Tom Hallead, Michael McConnell

Score By Period	1	2	3	4	Total
UMass Lowell	17	9	7	21	54
Michigan	23	16	25	9	73

UMass Lowell 54

#	Player	GS	MIN	FG	3PT	FT	ORB-DRB	REB	PF	A	TO	BLK	STL	PTS
03	Sanchez,Jalena	*	27	3-8	1-2	2-2	0-2	2	1	4	3	0	0	9
00	Valda,Laura	*	13	3-3	0-0	0-0	2-2	4	5	1	5	0	0	6
05	Idom,Kharis	*	23	2-8	1-3	0-0	2-1	3	0	1	3	0	0	5
25	Solis,Denise	*	21	2-3	0-0	0-0	0-1	5	3	0	2	2	0	4
22	Price,Shamyha	*	20	1-8	1-3	0-0	1-2	3	1	0	2	0	0	3
23	Finley,Ivory	*	17	2-7	0-4	4-4	2-2	4	4	0	0	0	2	8
13	Banwareesingh,Kaylen	*	25	3-6	1-3	0-0	1-2	3	5	2	0	2	2	7
21	Edmonds,Jaini	*	22	2-5	1-2	1-2	0-2	2	0	2	1	0	1	6
20	Coombs,Sydney	*	15	2-6	0-0	0-0	1-1	1	1	0	2	1	0	4
11	Rodriguez,Leilani	*	11	1-1	0-0	0-0	0-1	1	0	2	1	0	0	2
14	Lofaro,Erin	*	6	0-1	0-0	0-0	0-1	1	0	1	0	0	0	0
TM	TEAM		0	0-0	0-0	0-0	1-5	6	0	0	1	0	0	0
Totals			200	21-56	5-17	7-8	9-26	35	20	13	20	5	5	54

Team Summary	FG	3PT	FT
1st Quarter	7-11 63.64%	3-4 75.00%	0-0 0.00%
2nd Quarter	4-15 26.67%	1-6 16.67%	0-0 0.00%
3rd Quarter	2-14 14.29%	0-2 0.00%	3-4 75.00%
4th Quarter	8-16 50.00%	1-5 20.00%	4-4 100.00%
Total	21-56 37.5%	5-17 29.4%	7-8 87.5%

Technical Fouls: none
Lead Changed: 2 times(s)
Second Chance Points: 8
Points off Turnovers: 12
Bench Points: 27
Scores Tied: 1 times(s)
Largest Lead: 0 0
Fast Break Points: 8

Michigan 73

#	Player	GS	MIN	FG	3PT	FT	ORB-DRB	REB	PF	A	TO	BLK	STL	PTS
00	Hillmon,Naz	*	26	8-12	0-0	3-4	3-3	6	2	1	3	0	0	19
03	Nolan,Maddie	*	33	6-7	6-7	0-0	0-3	3	2	4	0	0	0	18
33	Kiser,Emily	*	30	4-16	0-4	5-6	4-7	11	0	3	2	3	0	13
23	Rauch,Danielle	*	32	4-8	1-2	1-2	1-5	6	1	6	0	1	1	10
24	Sidor,Michelle	*	20	3-6	1-2	0-0	0-1	1	1	2	2	0	0	7
30	Stuck,Elise	*	17	0-1	0-0	3-4	1-5	6	2	2	1	0	0	3
12	Wiggins,Ari	*	9	1-4	0-0	0-1	0-0	0	2	0	3	0	2	2
10	Hobbs,Jordan	*	9	0-2	0-1	1-2	0-0	0	0	0	0	0	1	1
05	Phelia,Laila	*	17	0-5	0-1	0-0	2-0	2	1	0	2	0	0	0
44	Williams,Cameron	*	4	0-0	0-0	0-0	0-0	0	1	0	0	0	0	0
34	Varej7o,Izabel	*	3	0-2	0-0	0-0	1-0	1	1	0	1	0	0	0
TM	TEAM		0	0-0	0-0	0-0	2-1	3	0	0	0	0	0	0
Totals			200	26-63	8-17	13-19	14-25	39	13	18	14	4	6	73

Team Summary	FG	3PT	FT
1st Quarter	9-18 50.00%	4-6 66.67%	1-2 50.00%
2nd Quarter	6-17 35.29%	0-3 0.00%	4-6 66.67%
3rd Quarter	9-17 52.94%	3-5 60.00%	4-5 80.00%
4th Quarter	7-11 63.64%	1-3 33.33%	4-4 100.00%
Total	26-63 41.3%	8-17 47.1%	13-19 68.4%

Technical Fouls: none
Lead Changed: 2 times(s)
Second Chance Points: 14
Points off Turnovers: 20
Bench Points: 6
Scores Tied: 1 times(s)
Largest Lead: 0 0
Fast Break Points: 4

#11 MICHIGAN 82, ST. FRANCIS BROOKLYN 46

St. Francis Brooklyn (0-2,0-0 NEC) -vs- Michigan (2-0,0-0 Big Ten)
11/13/21 at Crisler Center, Ann Arbor, MI

Date: 11/13/21
Time: 2:00 PM
Attendance: 2,363
Site: Crisler Center, Ann Arbor, MI

Score By Period	1	2	3	4	Total
St. Francis Brooklyn	7	9	15	15	46
Michigan	25	24	17	16	82

St. Francis Brooklyn 46

#	Player	GS	MIN	FG	3PT	FT	ORB-DRB	REB	PF	A	TO	BLK	STL	PTS
04	Posset,Isabella	*	31	2-8	0-3	0-0	1-7	8	2	4	5	0	0	4
03	Fisher,Alyssa	*	20	1-6	1-6	1-2	0-0	0	2	0	1	0	0	4
01	Dimitrijevic,Nevena	*	17	1-8	1-4	0-0	0-2	2	0	0	2	0	0	3
05	Edwards,Khaleah	*	27	1-5	0-2	0-0	0-2	2	0	0	1	0	1	2
31	Lassen,Ally	*	17	1-6	0-0	0-0	1-4	5	0	0	3	0	0	2
23	Horvath,Fruzina	*	21	6-9	2-4	4-4	2-1	3	3	2	3	0	2	18
02	Lee,Jaila	*	29	2-7	1-3	0-0	3-0	3	1	1	1	1	3	5
33	Bardanos,Sarah	*	9	2-3	0-0	0-2	0-0	0	2	0	0	0	0	4
11	Varga,Eszter	*	14	1-2	0-0	0-0	0-2	2	1	3	4	0	2	2
13	McMillan,Jada	*	5	1-2	0-0	0-0	0-0	0	0	0	0	0		

MICHIGAN BOX SCORES

#12 MICHIGAN 69, OAKLAND 58

Oakland (2-3,1-1 Horizon) -vs- Michigan (5-0,0-0 Big Ten)
11/22/21 at Crisler Center, Ann Arbor, MI

Date: 11/22/21
Time: 7:00 PM
Attendance: 1,967
Site: Crisler Center, Ann Arbor, MI
Referees: Bryan Entinane, Natasha Camy, Beverly Roberts

Score By Period	1	2	3	4	Total
Oakland	6	15	16	21	58
Michigan	19	14	17	19	69

Oakland 58

#	Player	GS	MIN	FG	3PT	FT	ORB-DRB	REB	PF	A	TO	BLK	STL	PTS
21	Dean,Kahlajah	*	20	4-10	2-5	5-6	1-3	4	5	0	3	0	2	15
24	Breedy,Brianna	*	31	5-9	1-1	0-0	0-0	0	2	1	1	0	1	11
33	Simms,Olivia	*	22	4-8	2-4	0-0	1-2	3	0	1	1	0	1	10
00	Perry,Breanna	*	26	1-7	0-3	1-2	2-1	3	2	1	2	0	2	3
10	Beatty,Breanne	*	25	1-6	0-2	0-0	2-0	2	3	1	3	0	1	2
02	Williams,Lamariyee	*	28	2-6	1-1	4-4	0-3	3	2	3	1	1	0	9
32	Luchenbach,Kayla	18	2-3	0-1	0-0	0-1	1	4	0	2	0	0	0	4
30	Blackwell,Alona	19	1-4	0-2	0-0	0-3	3	1	0	3	0	0	0	2
03	Gouard,Sydney	11	1-4	0-0	0-0	2-2	4	1	0	1	1	0	2	2
13	Staley,Helen	0+	0-0	0-0	0-0	0-0	0	0	0	0	0	0	0	0
TM	TEAM		0	0-0	0-0	0-0	1-0	1	0	0	0	0	0	0
Totals			200	21-57	6-19	10-12	9-15	24	20	7	17	2	7	58

Team Summary	FG	3PT	FT
1st Quarter	1-9 11.1%		0-1 0.0%
2nd Quarter	5-18 27.8%		1-6 16.7%
3rd Quarter	7-12 58.3%		1-4 25.0%
4th Quarter	8-18 44.4%		4-8 50.0%
Total	21-57 36.8%	6-19 31.6%	10-12 83.3%

Technical Fouls: none Second Chance Points: 5 Scores Tied: 1 time(s) Points in the Paint: 18 Fast Break Points: 4
Lead Changed: 1 time(s) Points off Turnovers: 22 Bench Points: 17 Largest Lead: 0 0

Michigan 69

#	Player	GS	MIN	FG	3PT	FT	ORB-DRB	REB	PF	A	TO	BLK	STL	PTS
33	Kiser,Emily	*	33	4-8	1-2	2-2	3-5	8	2	2	6	1	2	11
23	Rauch,Danielle	*	38	4-9	1-2	1-1	0-4	4	1	4	1	0	0	10
03	Nolan,Maddie	*	36	2-9	2-7	0-0	2-6	8	4	3	2	1	1	6
30	Stuck,Elise	*	13	1-1	0-0	2-2	2-2	4	0	1	2	0	0	4
24	Sidor,Michelle	*	14	0-2	0-1	0-0	0-2	2	0	2	0	0	0	0
00	Hillmon,Naz	24	11-13	0-0	3-6	6-5	11	3	0	3	0	0	25	
05	Phelia,Laila	22	2-12	0-1	4-6	2-0	2	2	0	2	0	2	8	
44	Williams,Cameron	9	2-3	0-0	1-1	1-0	1	0	1	2	0	0	5	
10	Hobbs,Jordan	5	0-1	0-0	0-0	0-0	0	0	0	0	0	0	1	
12	Wiggins,Ari	5	0-0	0-0	0-0	0-0	0	1	0	2	0	0	0	
25	Sollom,Whitney	1	0-0	0-0	0-0	0-0	0	1	0	0	0	0	0	
34	Varejzo,Izabel	0+	0-0	0-0	0-0	0-0	0	0	0	0	0	0	0	
TM	TEAM		0	0-0	0-0	0-0	1-2	3	0	0	1	0	0	0
Totals			200	26-58	4-13	13-18	17-26	43	14	13	21	2	6	69

Team Summary	FG	3PT	FT
1st Quarter	7-17 41.1%		2-5 40.0%
2nd Quarter	6-13 46.15%		1-4 25.00%
3rd Quarter	5-13 38.46%		0-2 0.00%
4th Quarter	8-15 53.33%		1-2 50.00%
Total	26-58 44.8%	4-13 30.8%	13-18 72.2%

Technical Fouls: none Second Chance Points: 17 Scores Tied: 1 time(s) Points in the Paint: 42 Fast Break Points: 2
Lead Changed: 1 time(s) Points off Turnovers: 17 Bench Points: 38 Largest Lead: 0 0

#12 MICHIGAN 64, MISSISSIPPI STATE 48

Mississippi St. (5-1) -vs- Michigan (7-0)
11/27/21 at Ocean Center/Daytona Beach, Fla.

Date: 11/27/21
Time: 4:30 PM
Site: Ocean Center/Daytona Beach, Fla.
Referees: Tiara Cruise, Eric Koch, Rachael Rayford

Score By Period	1	2	3	4	Total
Mississippi St.	15	13	10	10	48
Michigan	17	14	18	15	64

Mississippi St. 48

#	Player	GS	MIN	FG	3PT	FT	ORB-DRB	REB	PF	A	TO	BLK	STL	PTS
02	Jordan,Jerkaila	*	28	7-16	2-6	2-4	0-8	8	4	0	0	3	2	18
05	Jackson,Riceca	*	30	5-16	1-4	2-2	2-5	7	3	0	2	2	1	13
00	Hayes,Anastasia	*	37	3-13	0-0	3-6	0-4	4	3	0	4	0	2	9
44	Farley,Raven	*	21	2-4	0-0	0-0	3-2	5	2	0	2	0	0	4
01	Taylor,Myah	*	28	1-4	0-1	0-2	0-3	3	2	3	1	0	2	2
25	Carter,Denae	20	1-4	0-0	0-0	0-0	3-1	4	4	1	0	1	0	2
10	Hayes,Aislynn	13	0-1	0-1	0-0	0-0	0	1	1	1	1	0	0	0
23	Thompson,Caterion	7	0-0	0-0	0-0	0-0	0	0	1	0	0	0	0	0
22	Kohl,Charlotte	6	0-0	0-0	0-0	0-0	0	1	0	0	0	0	0	0
TM	TEAM		0	0-0	0-0	0-0	2-0	2	0	0	2	0	0	0
Totals			200	19-58	3-12	7-14	10-23	33	20	6	12	6	8	48

Team Summary	FG	3PT	FT
1st Quarter	7-19 36.84%		1-3 33.33%
2nd Quarter	5-13 38.46%		1-3 33.33%
3rd Quarter	3-14 21.43%		1-4 25.00%
4th Quarter	4-12 33.33%		0-2 0.00%
Total	19-58 32.8%	3-12 25.0%	7-14 50.0%

Technical Fouls: none Second Chance Points: 4 Scores Tied: 1 time(s) Points in the Paint: 28 Fast Break Points: 4
Lead Changed: 3 time(s) Points off Turnovers: 13 Bench Points: 2 Largest Lead: 0 1st-08:46

Michigan 64

#	Player	GS	MIN	FG	3PT	FT	ORB-DRB	REB	PF	A	TO	BLK	STL	PTS
00	Hillmon,Naz	*	37	6-15	0-1	6-8	4-6	10	3	2	3	0	1	18
03	Nolan,Maddie	*	27	2-6	2-4	0-0	0-3	3	3	3	1	0	1	6
33	Kiser,Emily	*	30	2-6	0-2	0-0	1-5	6	3	0	2	0	0	4
23	Rauch,Danielle	*	37	1-7	1-1	0-0	1-1	3	1	3	2	0	1	3
24	Sidor,Michelle	*	12	0-2	0-1	0-0	2-4	5	1	2	0	0	0	0
32	Brown,Leigha	*	25	9-18	2-4	3-4	1-4	5	4	3	2	0	0	23
05	Phelia,Laila	11	2-5	0-0	2-2	0-0	0	0	0	1	0	1	6	
44	Williams,Cameron	10	2-2	0-0	0-0	1-1	2	2	0	1	0	1	4	
12	Wiggins,Ari	6	0-0	0-0	0-0	0-2	2	2	0	1	0	0	0	
34	Varejzo,Izabel	2	0-0	0-0	0-0	0-1	1	0	0	0	0	0	0	
10	Hobbs,Jordan	1	0-0	0-0	0-0	0-0	0	0	0	0	0	0	0	
25	Sollom,Whitney	1	0-0	0-0	0-0	0-0	0	0	0	0	0	0	0	
30	Stuck,Elise	1	0-0	0-0	0-0	0-1	1	0	0	0	0	0	0	
TM	TEAM		0	0-0	0-0	0-0	5-4	9	4	0	1	0	0	0
Totals			200	24-61	5-13	11-14	15-32	47	19	13	14	0	5	64

Team Summary	FG	3PT	FT
1st Quarter	6-20 30.0%		2-6 33.33%
2nd Quarter	4-11 36.36%		0-2 0.00%
3rd Quarter	8-16 50.00%		2-2 100.00%
4th Quarter	6-14 42.86%		1-3 33.33%
Total	24-61 39.3%	5-13 38.5%	11-14 78.6%

Technical Fouls: none Second Chance Points: 17 Scores Tied: 4 time(s) Points in the Paint: 30 Fast Break Points: 0
Lead Changed: 5 time(s) Points off Turnovers: 12 Bench Points: 33 Largest Lead: 16 4th-00:29

#12 MICHIGAN 61, OREGON STATE 52

Michigan (6-0) -vs- Oregon State (3-1)
11/26/21 at Ocean Center/Daytona Beach, Fla.

Date: 11/26/21
Time: 7:30 PM
Site: Ocean Center/Daytona Beach, Fla.
Referees: Eric Brewton, Marla Gearhart, Rachael Rayford

Score By Period	1	2	3	4	Total
Michigan	17	14	9	21	61
Oregon State	12	11	17	12	52

Michigan 61

#	Player	GS	MIN	FG	3PT	FT	ORB-DRB	REB	PF	A	TO	BLK	STL	PTS
00	Hillmon,Naz	*	36	6-16	0-0	8-10	4-9	13	1	2	7	1	4	20
23	Rauch,Danielle	*	39	4-10	3-5	0-2	0-1	1	2	0	0	0	2	11
03	Nolan,Maddie	*	28	1-5	1-4	3-4	1-4	5	2	0	1	0	2	6
33	Kiser,Emily	*	36	1-7	0-2	2-2	2-4	6	3	1	2	0	1	4
24	Sidor,Michelle	*	10	1-3	0-0	0-1	1-0	1	0	0	0	0	1	2
32	Brown,Leigha	22	4-11	1-2	5-5	2-1	3	3	0	3	1	2	14	
05	Phelia,Laila	15	2-4	0-0	0-0	0-3	3	2	0	1	0	0	4	
12	Wiggins,Ari	6	0-0	0-0	0-0	0-1	1	3	1	1	0	0	0	
30	Stuck,Elise	4	0-0	0-0	0-0	0-0	0	0	0	0	0	0	0	
44	Williams,Cameron	4	0-0	0-0	0-0	0-1	1	2	0	0	0	0	0	
TM	TEAM		0	0-0	0-0	0-0	2-1	3	0	0	0	0	0	
Totals			200	19-58										

MICHIGAN BOX SCORES

#12 MICHIGAN 93, AKRON 54

Akron (3-3,0-0 MAC) -vs- Michigan (8-1,0-0 Big Ten)
12/05/21 at Crisler Center, Ann Arbor, MI

Date: 12/05/21
Time: 2:00 PM
Attendance: 2,274
Site: Crisler Center, Ann Arbor, MI
Referees: Jamie Broderick, Nykesha Thompson, Mark Zentz

Score By Period	1	2	3	4	Total
Akron	4	17	7	26	54
Michigan	25	30	19	19	93

Akron 54

#	Player	GS	MIN	FG	3PT	FT	ORB-DRB	REB	PF	A	TO	BLK	STL	PTS
30	Ferrell,Layne	*	24	5-11	1-4	2-3	0-0	0	2	0	2	0	1	13
13	Brewer,Lonasia	*	23	3-6	0-1	0-0	0-1	1	2	2	0	0	1	6
34	Bass,Reagan	*	20	1-6	0-1	2-2	3-1	4	2	0	2	0	2	4
25	Dawson,Jordyn	*	17	1-6	0-1	0-0	0-1	1	3	1	4	0	1	2
00	Corcoran,Annika	*	15	0-1	0-1	0-0	0-0	0	2	0	1	0	0	0
01	Miller,Kendall		19	3-4	0-0	1-2	1-1	2	0	1	0	0	0	7
21	Neitzel,Molly		8	3-6	0-0	0-0	0-1	1	2	1	3	0	0	6
14	Martindale,Rachel		18	1-3	1-3	1-2	0-0	0	0	1	3	0	0	4
23	Rasheed,Zakia		19	1-3	1-3	0-0	0-1	1	0	2	2	0	2	3
03	Tecca,Emma		15	1-3	1-3	0-0	0-0	0	4	1	0	0	0	3
33	Neitzel,Coleen		12	1-3	1-2	0-0	0-4	4	3	3	0	2	0	3
10	Stewart,Alexis		4	1-2	1-1	0-0	0-0	0	0	0	0	0	0	3
20	Brown-Mitchell,Gabrielle		6	0-0	0-0	0-0	0-0	0	0	2	1	0	0	0
TM TEAM			0	0-0	0-0	0-0	2-1	3	0	0	3	0	0	0
Totals			200	21-54	6-20	6-9	6-11	17	20	14	21	2	7	54

Team Summary	FG	3PT	FT
1st Quarter	1-9 11.11%		0-6 0.00%
2nd Quarter	8-14 57.14%		1-3 33.33%
3rd Quarter	2-13 15.38%		0-3 0.00%
4th Quarter	10-18 55.56%		5-8 62.50%
Total	21-54 38.9%	6-20 30.0%	6-9 66.7%

Technical Fouls: none
Lead Changed: 0 times(s)
Second Chance Points: 8
Points of Turnovers: 8
Scores Tied: 0 times(s)
Bench Points: 29
Points in the Paint: 26
Largest Lead: 0 0
Fast Break Points: 0

Michigan 93

#	Player	GS	MIN	FG	3PT	FT	ORB-DRB	REB	PF	A	TO	BLK	STL	PTS
33	Kiser,Emily	*	24	8-12	0-1	3-3	3-5	8	2	4	3	1	2	19
00	Hillmon,Naz	*	28	7-9	0-0	4-5	1-2	3	3	5	2	0	1	18
24	Sidor,Michelle	*	23	5-8	2-4	0-0	0-1	1	3	3	1	0	0	12
05	Phelia,Laila	*	23	4-7	1-1	2-2	1-0	1	1	1	0	0	0	11
23	Rauch,Danielle	*	26	1-2	1-2	0-0	0-4	4	1	0	2	0	1	3
32	Brown,Leigha		13	2-2	0-0	6-6	1-2	3	2	2	2	1	1	10
03	Nolan,Maddie		19	2-2	2-2	2-2	2-5	7	0	7	0	0	3	8
25	Sollom,Whitney		7	1-1	0-0	1-4	1-0	1	0	0	0	0	0	3
10	Hobbs,Jordan		11	0-0	0-0	2-2	0-1	1	0	0	1	0	0	2
30	Stuck,Elise		8	1-2	0-0	0-0	0-1	1	4	0	1	0	0	2
34	Varej?o,Izabel		5	1-2	0-0	0-0	0-1	1	0	0	2	1	0	2
15	Gilson,Taylor		1	1-1	0-0	0-0	0-0	0	0	0	0	0	0	2
12	Wiggins,Ari		12	0-3	0-0	1-2	0-2	2	0	0	1	0	1	1
TM TEAM			0	0-0	0-0	0-2	2	0	0	1	0	0	0	0
Totals			200	33-51	6-10	21-26	9-26	35	16	22	17	3	9	93

Team Summary	FG	3PT	FT
1st Quarter	11-14 78.57%		3-5 60.00%
2nd Quarter	9-12 75.00%		2-2 100.00%
3rd Quarter	7-14 50.00%		1-2 50.00%
4th Quarter	6-11 54.55%		0-1 0.00%
Total			7-11 63.64%

Technical Fouls: none
Lead Changed: 0 times(s)
Second Chance Points: 6
Points of Turnovers: 5
Scores Tied: 0 times(s)
Bench Points: 24
Points in the Paint: 34
Largest Lead: 0 0
Fast Break Points: 7

#13 MICHIGAN 73, MINNESOTA 61

Minnesota (6-6,0-2 Big Ten) -vs- Michigan (10-1,2-0 Big Ten)
12/12/21 at Crisler Center, Ann Arbor, MI

Date: 12/12/21
Time: 2:00 PM
Attendance: 2,484
Site: Crisler Center, Ann Arbor, MI
Referees: Tiara Cruise, Brad Maxey, Frank Steratore

Score By Period	1	2	3	4	Total
Minnesota	11	22	9	19	61
Michigan	17	12	17	27	73

Minnesota 61

#	Player	GS	MIN	FG	3PT	FT	ORB-DRB	REB	PF	A	TO	BLK	STL	PTS
04	Powell,Jasmine	*	33	7-14	2-4	3-4	3-5	8	1	2	5	1	0	19
14	Scalia,Sara	*	30	4-13	3-6	2-2	1-3	4	3	2	1	0	0	13
54	Micheaux,Alanna	*	24	4-6	0-0	0-0	2-0	2	2	0	3	1	2	8
03	Winters,Deja	*	22	3-8	1-5	0-0	0-0	0	4	0	2	1	3	7
30	Sissoko,Kadiatou	*	27	1-4	0-0	1-2	0-1	1	4	0	5	0	2	3
01	Smith,Alexia		19	2-2	0-0	1-2	0-0	0	0	0	1	0	1	5
13	Hubbard,Gadiva		16	1-1	1-1	0-0	0-1	1	1	0	2	0	0	3
35	Helgren,Bailey		12	1-1	0-0	0-0	0-2	2	4	0	1	1	1	2
15	Mershon,Kayla		17	0-0	0-0	1-2	0-0	0	1	0	0	0	2	1
TM TEAM			0	0-0	0-0	0-0	1-1	2	0	0	1	0	0	0
Totals			200	23-49	7-16	8-12	7-13	20	20	4	21	4	11	61

Team Summary	FG	3PT	FT
1st Quarter	4-12 33.33%		1-6 16.67%
2nd Quarter	7-13 53.85%		2-3 66.67%
3rd Quarter	4-11 36.36%		1-1 100.00%
4th Quarter	8-13 61.54%		3-6 50.00%
Total	23-49 46.9%	7-16 43.8%	8-12 66.7%

Technical Fouls: none
Lead Changed: 6 times(s)
Second Chance Points: 12
Points of Turnovers: 17
Scores Tied: 1 times(s)
Bench Points: 11
Points in the Paint: 24
Largest Lead: 0 0
Fast Break Points: 0

Michigan 73

#	Player	GS	MIN	FG	3PT	FT	ORB-DRB	REB	PF	A	TO	BLK	STL	PTS
00	Hillmon,Naz	*	39	11-18	0-1	3-5	5-3	8	2	3	3	0	0	25
32	Brown,Leigha	*	35	8-14	0-3	3-4	0-2	2	2	5	2	0	0	19
05	Phelia,Laila	*	29	3-6	0-0	3-3	1-2	3	1	1	2	0	2	9
33	Kiser,Emily	*	30	3-4	0-0	0-0	3-6	9	4	1	2	0	2	6
23	Rauch,Danielle	*	29	0-3	0-3	0-0	0-2	2	1	2	2	0	1	0
34	Varej?o,Izabel		7	3-5	0-0	1-2	1-2	3	0	0	0	1	0	7
03	Nolan,Maddie		21	2-5	2-4	0-0	0-1	1	2	0	1	0	0	6
44	Williams,Cameron		1	0-0	0-0	1-2	0-0	0	1	0	0	0	0	1
24	Sidor,Michelle		4	0-0	0-0	0-0	0-0	0	0	0	1	0	0	0
12	Wiggins,Ari		3	0-0	0-0	0-0	0-0	0	0	0	1	0	0	0
30	Stuck,Elise		2	0-1	0-0	0-0	0-0	0	0	0	0	0	0	0
TM TEAM			0	0-0	0-0	0-0	1-2	3	0	0	1	0	0	0
Totals			200	30-56	2-11	11-16	11-20	31	13	12	15	1	5	73

Team Summary	FG	3PT	FT
1st Quarter	6-14 42.86%		0-3 0.00%
2nd Quarter	5-8 62.50%		0-2 0.00%
3rd Quarter	7-17 41.18%		0-2 0.00%
4th Quarter	12-17 70.59%		2-4 50.00%
Total	30-56 53.6%	2-11 18.2%	11-16 68.8%

Technical Fouls: none
Lead Changed: 6 times(s)
Second Chance Points: 12
Points of Turnovers: 29
Scores Tied: 1 times(s)
Bench Points: 14
Points in the Paint: 48
Largest Lead: 0 0
Fast Break Points: 2

#13 MICHIGAN 93, WISCONSIN 81

Michigan (9-1,1-0 Big Ten) -vs- Wisconsin (2-8,0-2 Big Ten)
12/09/21 at Kohl Center, Madison, WI

Date: 12/09/21
Time: 8:00 PM
Attendance: 2,669
Site: Kohl Center, Madison, WI
Referees: Angelica Suffren, Felicia Grinter, Gina Cross

Score By Period	1	2	3	4	Total
Michigan	22	21	28	22	93
Wisconsin	13	18	21	29	81

Michigan 93

#	Player	GS	MIN	FG	3PT	FT	ORB-DRB	REB	PF	A	TO	BLK	STL	PTS
00	Hillmon,Naz	*	35	8-15	0-0	5-6	5-1	6	5	3	0	0	0	21
23	Rauch,Danielle	*	36	5-10	3-6	5-6	0-2	2	1	3	0	1	1	18
33	Kiser,Emily	*	36	6-12	0-0	5-6	4-4	8	3	0	2	0	0	17
32	Brown,Leigha	*	29	6-11	1-3	0-2	0-6	6	1	5	1	2	4	13
05	Phelia,Laila	*	19	3-7	0-1	0-0	1-4	5	3	0	0	0	1	6
03	Nolan,Maddie	*	25	4-7	3-6	0-0	1-1	2	4	3	0	0	1	11
34	Varej?o,Izabel		7	3-3	0-0	1-2	3-0	1	1	1	0	0	0	7
12	Wiggins,Ari		4	0-0	0-0	0-0	0-0	0	0	0	1	0	0	0
24	Sidor,Michelle		4											

MICHIGAN BOX SCORES

#9 MICHIGAN 90, #25 OHIO STATE 71

Ohio St. (9-3,1-2 Big Ten) -vs- Michigan (12-1,3-0 Big Ten)
12/31/21 at Crisler Center, Ann Arbor, MI

Date: 12/31/21
Time: 12:00 PM
Attendance: 7,904
Site: Crisler Center, Ann Arbor, MI
Referees: Michael McConnell, Gina Cross, Beverly Roberts

Score By Period	1	2	3	4	Total
Ohio St.	17	14	22	18	71
Michigan	21	24	22	23	90

Ohio St. 71

#	Player	GS	MIN	FG	3PT	FT	ORB-DRB	REB	PF	A	TO	BLK	STL	PTS
04	Sheldon,Jacy	*	34	11-23	3-7	1-1	2-0	2	4	5	2	0	3	26
24	Mikesell,Taylor	*	40	8-20	4-11	5-6	2-2	4	0	0	0	1	25	
01	Harris,Rikki	*	35	3-7	2-3	0-0	2-3	5	5	2	1	0	1	8
05	Poole,Kateri	*	23	4-9	0-2	0-0	0-2	2	4	2	5	0	2	8
23	Mikulaskova,Rebeka	*	16	0-5	0-1	0-0	2-1	3	5	0	0	0	0	0
14	Thierry,Taylor	23	2-5	0-1	0-0	2-1	3	4	0	0	2	3	4	
02	Hutcherson,Gabby	16	0-3	0-2	0-0	0-3	3	0	0	1	0	1	0	
35	Beacham,Tanaya	12	0-1	0-1	0-0	0-3	3	5	1	2	0	3	0	
20	Costner,Kaitlyn	1	0-0	0-0	0-0	0-0	0	0	0	0	0	0	0	
TM	TEAM	0	0-0	0-0	0-0	1-1	2	0	0	0	0	0	0	
Totals			200	28-73	9-27	6-7	11-16	27	27	10	11	2	14	71

Team Summary	FG	3PT	FT
1st Quarter	6-17 35.29 %	3-6 50.00 %	2-3 66.67 %
2nd Quarter	6-16 37.50 %	2-6 33.33 %	0-0 0.00 %
3rd Quarter	10-20 50.00 %	2-5 40.00 %	0-0 0.00 %
4th Quarter	6-20 30.00 %	2-10 20.00 %	4-4 100.00 %
Total	28-73 38.4 %	9-27 33.3 %	6-7 85.7 %

Technical Fouls: none Second Chance Points: 9 Scores Tied: 0 times(s) Points in the Paint: 36 Fast Break Points: 2
Lead Changed: 0 times(s) Points off Turnovers: 21 Bench Points: 4 Largest Lead: 0 0

Michigan 90

#	Player	GS	MIN	FG	3PT	FT	ORB-DRB	REB	PF	A	TO	BLK	STL	PTS
00	Hillmon,Naz	*	34	9-14	0-0	11-12	7-8	15	2	2	2	0	0	29
32	Brown,Leigha	*	35	9-12	2-2	4-9	0-5	5	1	7	2	2	2	24
33	Kiser,Emily	*	31	7-11	0-0	4-4	4-11	15	1	2	2	1	0	18
03	Nolan,Maddie	*	32	3-7	2-6	0-0	0-3	3	2	3	4	0	0	8
23	Rauch,Danielle	*	33	0-6	0-3	0-0	0-4	4	1	2	4	0	2	0
44	Williams,Cameron	11	3-3	0-0	0-0	0-2	2	1	0	1	1	0	6	
30	Stuck,Elise	4	1-1	0-0	1-1	1-0	1	1	1	1	0	0	3	
10	Hobbs,Jordan	5	1-2	0-1	0-0	0-0	0	1	0	0	0	0	2	
24	Sidor,Michelle	8	0-2	0-2	0-0	0-0	0	0	1	0	0	0	0	
12	Wiggins,Ari	6	0-1	0-0	0-0	0-1	1	2	2	3	0	0	0	
25	Sollom,Whitney	1	0-0	0-0	0-0	0-0	0	0	0	0	0	0	0	
TM	TEAM	0	0-0	0-0	0-0	2-0	2	0	0	2	0	0	0	
Totals			200	33-59	4-14	20-26	14-34	48	12	20	21	4	4	90

Team Summary	FG	3PT	FT
1st Quarter	8-17 47.06 %	0-3 0.00 %	5-8 62.50 %
2nd Quarter	9-17 52.94 %	2-6 33.33 %	4-4 100.00 %
3rd Quarter	8-10 80.00 %	1-2 50.00 %	5-7 71.43 %
4th Quarter	8-15 53.33 %	1-3 33.33 %	6-7 85.71 %
Total	33-59 55.9 %	4-14 28.6 %	20-26 76.9 %

Technical Fouls: none Second Chance Points: 17 Scores Tied: 0 times(s) Points in the Paint: 50 Fast Break Points: 5
Lead Changed: 0 times(s) Points off Turnovers: 9 Bench Points: 11 Largest Lead: 0 0

#8 MICHIGAN 76, Rutgers 47

Rutgers (7-10,0-5 Big Ten) -vs- Michigan (13-2,4-1 Big Ten)
01/09/22 at Crisler Center, Ann Arbor, MI

Date: 01/09/22
Time: 12:00 PM
Attendance: 2,154
Site: Crisler Center, Ann Arbor, MI
Referees: Doug Knight, Jesse Dickerson, Felicia Grinter

Score By Period	1	2	3	4	Total
Rutgers	6	19	10	12	47
Michigan	17	27	22	10	76

Rutgers 47

#	Player	GS	MIN	FG	3PT	FT	ORB-DRB	REB	PF	A	TO	BLK	STL	PTS
00	Petree,Lasha	*	30	5-13	2-4	6-6	0-0	0	0	0	1	1	1	18
03	Dickson,Shug	*	31	5-14	2-3	2-2	1-1	2	1	4	3	0	4	14
22	Singleton,Tyia	*	26	2-4	0-0	1-2	4-1	5	4	2	2	1	0	5
32	Brown,Osh	*	19	1-2	0-0	2-6	2-1	3	2	0	1	0	0	4
35	Lassiter,Sayawni	*	12	0-0	0-0	0-0	0-0	0	0	0	0	0	2	0
15	Sidibe,Awa	16	1-4	0-1	0-0	0-1	1	0	0	0	0	2	2	
20	Maddox,Joia	10	1-3	0-2	0-0	0-1	1	1	0	1	0	0	2	
12	Walker,Sakima	8	1-2	0-0	0-2	2-2	4	0	0	0	0	0	2	
05	Morris,Victoria	21	0-3	0-1	0-0	0-0	0	1	2	0	0	0	0	
14	Mason,Jalynn	13	0-1	0-0	0-0	0-2	2	1	0	0	0	0	0	
54	Cornwell,Chyna	6	0-3	0-0	0-0	1-2	3	1	0	2	0	0	0	
01	Marshall,Destiny	5	0-1	0-0	0-0	0-1	1	3	0	2	0	0	0	
02	Martino,Liz	3	0-0	0-0	0-0	0-1	1	1	0	0	0	0	0	
TM	TEAM	0	0-0	0-0	0-0	1-1	2	0	0	1	0	0	0	
Totals			200	16-50	4-11	11-18	11-14	25	15	8	12	2	9	47

Team Summary	FG	3PT	FT
1st Quarter	3-15 20.00 %	0-2 0.00 %	0-0 0.00 %
2nd Quarter	8-13 61.54 %	3-4 75.00 %	0-0 0.00 %
3rd Quarter	3-11 27.27 %	0-2 0.00 %	4-8 50.00 %
4th Quarter	2-11 18.18 %	1-3 33.33 %	7-10 70.00 %
Total	16-50 32.0 %	4-11 36.4 %	11-18 61.1 %

Technical Fouls: none Second Chance Points: 7 Scores Tied: 1 times(s) Points in the Paint: 20 Fast Break Points: 0
Lead Changed: 3 times(s) Points off Turnovers: 14 Bench Points: 6 Largest Lead: 0 0

Michigan 76

#	Player	GS	MIN	FG	3PT	FT	ORB-DRB	REB	PF	A	TO	BLK	STL	PTS
00	Hillmon,Naz	*	28	7-9	0-0	5-5	2-4	6	2	4	1	0	1	19
32	Brown,Leigha	*	28	6-10	3-4	4-4	1-2	3	2	2	0	0	0	19
03	Nolan,Maddie	*	26	5-6	4-4	0-1	0-3	3	1	0	2	0	1	14
33	Kiser,Emily	*	28	3-8	1-3	0-0	1-1	2	4	2	4	0	1	7
23	Rauch,Danielle	*	27	1-3	0-1	0-0	1-2	3	1	1	3	0	2	2
01	Dilk,Amy	19	1-4	1-2	3-4	0-2	2	1	4	1	4	0	0	6
44	Williams,Cameron	6	3-3	0-0	0-0	1-0	1	1	0	0	0	0	6	
30	Stuck,Elise	12	1-1	0-0	0-0	0-5	5	2	0	1	0	0	2	
25	Sollom,Whitney	3	0-1	0-0	1-2	1-0	1	0	0	0	0	0	1	
10	Hobbs,Jordan	11	0-3	0-1	0-0	0-1	1	1	0	1	0	0	0	
24	Sidor,Michelle	6	0-0	0-0	0-0	0-1	1	1	0	0	0	0	0	
12	Wiggins,Ari	3	0-0	0-0	0-0	0-1	1	0	0	0	0	0	0	
34	Varejo,Izabel	3	0-0	0-0	0-0	0-0	0	1	0	1	0	0	0	
TM	TEAM	0	0-0	0-0	0-0	2-4	6	0	0	0	0	0	0	
Totals			200	27-48	9-15	13-16	9-26	35	17	13	14	0	5	76

Team Summary	FG	3PT	FT
1st Quarter	4-10 40.00 %	3-4 75.00 %	6-6 100.00 %
2nd Quarter	9-11 81.82 %	5-6 83.33 %	4-4 100.00 %
3rd Quarter	10-16 62.50 %	1-4 25.00 %	1-1 100.00 %
4th Quarter	4-11 36.36 %	0-1 0.00 %	2-5 40.00 %

NEBRASKA 79, #8 MICHIGAN 58

Michigan (12-2,3-1 Big Ten) -vs- Nebraska (13-1,2-1 Big Ten)
01/04/22 at Pinnacle Bank Arena, Lincoln, NE

Date: 01/04/22
Time: 8:00 PM
Attendance: 3,591
Site: Pinnacle Bank Arena, Lincoln, NE
Referees: Brian Garland, Tiara Cruse, Brian Hall

Score By Period	1	2	3	4	Total
Michigan	8	13	20	17	58
Nebraska	19	15	19	26	79

Michigan 58

#	Player	GS	MIN	FG	3PT	FT	ORB-DRB	REB	PF	A	TO	BLK	STL	PTS
33	Kiser,Emily	*	28	5-11	0-1	3-6	3-3	6	5	0	1	0	0	13
03	Nolan,Maddie	*	29	4-7	1-3	2-2	1-3	4	2	0	0	0	2	11
00	Hillmon,Naz	**	37	4-14	0-0	2-4	2-5	7	3	3	6	1	0	10
32	Brown,Leigha	**	37	3-13	0-2	4-6	2-3	5	2	4	6	0	4	10
23	Rauch,Danielle	*	34	1-7	0-5	0-0	3-2	5	0	2	0	0	2	2
34	Varejo,Izabel	7	3-3	0-0	1-2	0-1	1	2	0	0	0	0	0	7
01	Dilk,Amy	15	1-3	0-1	1-2	0-1	1	2	0	1	1	1	1	
44	Williams,Cameron	7	1-2	0-0	0-0	0-0	0	2	0	1	0	0	2	
12	Wiggins,Ari	3	0-0	0-0	0-0	0-0	0	0	0	0	0	0	1	
24	Sidor,Michelle	3	0-0	0-0	0-0	0-0								



Head Coach Kim Barnes Arico
Ninth Year
Montclair State, '93
Career W-L: 476-310
Michigan W-L: 206-104



Kim Barnes Arico finished her ninth season as the head coach in 2020-21, guiding the Wolverines to at least 20 wins in eight of her nine seasons, four NCAA Tournament appearances, an NCAA Sweet 16 appearance (2021) and the 2017 WNIT Championship. She was announced as the ninth head coach in the history of the program on April 20, 2012.

Barnes Arico is the winningest coach in program history, amassing 193 wins through nine seasons. The only coach in program history to have eight 20-win seasons, she is first all-time in winning percentage (.654) with a 193-102 record in Ann Arbor. Barnes Arico holds a 118-32 (.787) record at Crisler Center during her tenure after a 9-1 record in 2020-21. Barnes Arico also eclipsed 400 wins for her career during the 2017-18 season, making her the seventh active Big Ten coach to reach the mark. She enters the 2021-22 season poised to become the first coach in program history to win 200 games at Michigan.

Barnes Arico was named the 2017 Big Ten Coach of the Year by the coaches and media, becoming the first consensus winner in school history. She has coached 13 players to 24 All-Big Ten citations, highlighted by U-M's first All-American and Big Ten Player of the Year, Naz Hillmon, along with all-time leading scorer and three-time All-Big Ten first-teamer, Katelynn Flaherty. Hillmon was named the 2021 Big Ten Player of the Year, making her just the second Big Ten player in conference history to earn Player, Freshman and Sixth Player of the Year honors during a career. She also earned All-America honors from the WBCA, USBWA, Associated Press, The Athletic, Sports Illustrated and was a finalist for both the Wade Trophy and Honda Award following the 2020-21 season. The 2017-18 Michigan Female Athlete of the Year, Flaherty also earned three consecutive WBCA All-America honorable mentions (2016, 2017, 2018) as the only player in school history with three honors. Nicole Elmbald also earned back-to-back Academic All-America honors (2014, 2015) and was the recipient of the 2015 Big Ten Medal of Honor.

Barnes Arico also completed a two-year stint with USA Basketball (2014-15), serving as an assistant coach alongside Dawn Staley (South Carolina) and Jeff Walz (Louisville) for the U18 (2014) and U19 (2015) teams. She won a pair of gold medals at the FIBA U19 World Championships in 2015 and at the FIBA U18 America's Championship in 2014.

Michigan has made the postseason in eight of Barnes Arico's nine seasons, only missing the 2019-20 postseason due to the COVID-19 pandemic. U-M has advanced to the NCAA Tournament second round three times (2013, 2018, 2019) and to the 2021 NCAA Sweet 16 for the first time in program history after wins over Florida Gulf Coast and Tennessee. U-M has found itself back in the national spotlight as well during KBA's tenure, returning to the Associated Press poll in January 2013 for the first time in 10 years. U-M spent the entire 2020-21 season ranked in both polls throughout the year, garnering a program-best ranking of No. 11 in both the coaches and AP polls. Prior to the 2020-21 season, Michigan had been ranked 21 times in the AP poll and 19 times in the coaches' poll over the first eight years of the Barnes Arico era.

U-M rewrote the record books during the pandemic-shortened 2020-21 season, going 16-6 and reaching the NCAA Sweet 16 for the first time in program history. The Wolverines spent the entire season ranked in both the Associated Press and coaches polls, peaking at No. 11 in both following a program-best 10-0 start. Michigan earned its highest NCAA Tournament seed ever, grabbing a No. 6 seed following a fourth-place finish (9-4) in the Big Ten. The Wolverines knocked off No. 11-seed and No. 24-ranked Florida Gulf Coast in the first round, 87-66, before defeating No. 3-seed and No. 13-ranked Tennessee, 70-55, in the second round. U-M pushed defending champion Baylor to overtime in the round of 16 before falling, 78-75, to end its tournament run. Hillmon cleaned up with multiple All-America and conference citations during the season, while also setting a Michigan record - man or woman - when she scored 50 points with 16 rebounds against Ohio State. Leigha Brown also earned All-Big Ten honors, grabbing a spot on the second team, while Akienreh Johnson was named to the All-Big Ten Defensive Team by the coaches. In addition, nine Wolverines earned Academic All-Big Ten honors, with every eligible player earning the distinction.

Michigan was poised for its third-straight NCAA Tournament appearance in 2019-

20 before the season was halted. U-M finished the season with a 22-11 record, making its second consecutive appearance in the semifinals of the Big Ten Tournament. The Wolverines won a pair of games at the conference tournament for the first time in program history, highlighted by knocking off No. 11 Northwestern (67-59) on March 6. Hillmon earned All-Big Ten first-team honors unanimously by both the coaches and the media, while also earning WBCA All-Region and All-America honorable mention. Classmate Amy Dilk was a second-team selection by the Big Ten coaches to round out Michigan's conference honorees.

The Wolverines made their second consecutive NCAA Tournament appearance in 2018-19, advancing to the second round after an 84-54 win over Kansas State in the first round. Hillmon racked up the postseason honors, earning Big Ten Freshman of the Year (media), Big Ten Sixth Player of the Year and was a consensus All-Big Ten first teamer, while Hallie Thome grabbed her third straight All-Big Ten first-team nod. With the Wolverines sitting at 12-9 and 10th in the Big Ten at 3-6 on Jan. 27, Michigan ripped off seven straight games in the month of February to vault into a fourth-place finish in the conference (11-7). Michigan reached the semifinals of the Big Ten Tournament for the first time since 2001 en route to wrapping up an NCAA Tournament bid.

The 2017-18 season saw U-M return to the NCAA Tournament for the first time since the 2012-13 season, where the Wolverines picked up a win in the first round. Michigan compiled a 23-10 record during the season, the second-most wins in a season in school history. Flaherty set a new Michigan record by hitting 118 three-pointers on the season en route to earning her third straight consensus Big Ten honor. Thome was a first-teamer for the second straight season and Jillian Dunston was named to the Big Ten All-Defensive Team. U-M spent the majority of the season ranked in both polls, peaking at No. 13 in the Associated Press poll at the beginning of February.

Barnes Arico led Michigan to its first postseason championship in 2016-2017, as the Wolverines captured the WNIT Championship after being left out of the NCAA Tournament despite a third-place finish in the Big Ten. Michigan went 11-5 in conference play to finish alone in third place, its highest finish since 2011 and the second-most Big Ten wins in program history. Flaherty and Thome each earned All-Big Ten first-team honors to mark the first time U-M had multiple first teamers. The Wolverines regrouped during the WNIT, reeling off six straight wins for the title. U-M held off Georgia Tech in three overtimes in the championship game to hang its first banner in Crisler.

During KBA's first five seasons in the Maize and Blue, the Wolverines racked up at least 20 wins in each year and advanced to the postseason each time. In 2013-14, U-M weathered losing 88 percent of its scoring from the season before to still reach 20 wins and the third round of the WNIT with four new starters.

Prior to joining the Maize and Blue, she spent 10 seasons at the helm of the St. John's women's hoops program, building the Red Storm into a national power. She guided St. John's to four NCAA Tournament appearances, with the Red Storm advancing to the Sweet 16 in 2012.

Barnes Arico compiled a 176-133 overall record and five 20-win campaigns at St. John's. She was twice named Big East Coach of the Year (2006, 2012) and had 11 of her players earn All-Big East honors and six receive all-rookie team selection.

In 2011-12, St. John's posted a 24-10 overall record and finished second (13-3) in the Big East standings. Barnes Arico was named the 2012 Big East Coach of the Year and was a finalist for the USBWA National Coach of the Year award. St. John's finished No. 15 in the final USA Today Coaches poll and reached its highest-ever ranking of No. 13 by the Associated Press.

The highlight of the 2011-12 season was when Barnes Arico and her Red Storm ended Connecticut's 99-game home winning streak with a 57-56 win on Feb. 19, 2012, at Gampel Pavilion. It was also the UConn's first home loss to an unranked opponent in nearly 19 years.

Prior to accepting her position at St. John's, Barnes Arico was extremely successful at NCAA Division II Adelphi (1999-2002). She led the Panthers to three consecutive

postseason appearances, posting a 65-24 overall record and a 51-13 league mark. She was inducted into the Adelphi Hall of Fame in 2014.

In 2001-02, Adelphi won its first New York Collegiate Athletic Conference (NYCAC) championship and advanced to the Sweet 16 of the NCAA Tournament. The Panthers finished with a 28-3 record and earned the school's first national ranking in school history, finishing No. 12. Barnes Arico was named the NYCAC, NIT/Metropolitan Basketball Writers Division II and Nassau County Sports Commission Outstanding Female Coach of the Year.

Barnes Arico started her head coaching career at Fairleigh Dickinson-Madison, a Division III university in New Jersey. She led the Devils to a 13-11 record during the 1996-97 season before accepting the head coaching post at New Jersey Institute of Technology for two seasons (1997-99). Helping the program transition from Division III to Division II, Barnes Arico was named the New Jersey Coach of the Year after taking the program from the five-win total in her first season to 11 victories in year two.

A native of Mastic Beach, N.Y., Barnes Arico helped lead Stony Brook University to the 1989 NCAA Division III Tournament as a freshman. She spent her final three seasons at Montclair State University, serving as captain during her junior and senior seasons. Barnes Arico led the team to back-to-back ECAC Tournament appearances in 1991 and 1992 and was the team's leading scorer both seasons. A scholar-athlete award recipient, Barnes Arico graduated from Montclair State in 1993 with a bachelor's degree in physical education and health.

Barnes Arico went into teaching after graduation, accepting a position as a physical education and health teacher at the Academy of Saint Aloysius in Jersey City, N.J., during the 1993-94 academic year. She left Saint Aloysius and moved into an identical position at Chatham High School from 1994-96 in Chatham, N.J.

Barnes Arico and her husband, Larry Arico, are the parents of a son, Trevor, and daughters Emma and Cecelia.

Barnes Arico Through the Years

Season	School	Overall	Conference	Postseason
1996-97	Fairleigh Dickinson-Madison	13-11		
1997-98	New Jersey Institute of Technology	5-21	3-17 (NYCAC)	First Year Division II
1998-99	New Jersey Institute of Technology	11-16	9-12 (NYCAC)	NYCAC, First Round
1999-2000	Adelphi	18-10	16-6 (ECC)	
2000-01	Adelphi	19-11	15-5 (ECC)	
2001-02	Adelphi	28-3	20-2 (ECC)	NCAA II, 2nd Round
2002-03	St. John's	8-19	2-14 (Big East)	
2003-04	St. John's	10-18	4-12 (Big East)	
2004-05	St. John's	20-11	7-9 (Big East)	WNIT, 2nd Round
2005-06	St. John's	22-8	11-5 (Big East)	NCAA, 2nd Round
2006-07	St. John's	8-20	4-12 (Big East)	
2007-08	St. John's	18-15	7-9 (Big East)	WNIT, Quarterfinal
2008-09	St. John's	19-15	4-12 (Big East)	WNIT, 3rd Round
2009-10	St. John's	25-7	12-4 (Big East)	NCAA, 2nd Round
2010-11	St. John's	22-11	9-7 (Big East)	NCAA, 2nd Round
2011-12	St. John's	24-10	13-3 (Big East)	NCAA, Sweet 16
2012-13	Michigan	22-11	9-7 (Big Ten)	NCAA, 2nd Round
2013-14	Michigan	20-14	8-8 (Big Ten)	WNIT, 3rd Round
2014-15	Michigan	20-15	8-10 (Big Ten)	WNIT, Semifinals
2015-16	Michigan	21-14	9-9 (Big Ten)	WNIT, Semifinals
2016-17	Michigan	28-9	11-5 (Big Ten)	WNIT, Champions
2017-18	Michigan	23-10	10-6 (Big Ten)	NCAA, 2nd Round
2018-19	Michigan	22-12	11-7 (Big Ten)	NCAA, 2nd Round
2019-20	Michigan	21-11	10-8 (Big Ten)	No Tournament held
2020-21	Michigan	16-6	9-4 (Big Ten)	NCAA, Sweet 16
2021-22	Michigan	13-2	4-1 (Big Ten)	

TOTALS (26 Seasons)

476-310 221-193

Coaching Highlights

- 2017 Big Ten Coach of the Year (coaches and media)
- Named to the coaching staff of the USA Basketball U18 team (2014) and U19 team (2015)
- Big East Coach of the Year (2006 & 2012)
- Finalist for the USBWA National Coach of the Year (2012)
- MBWA Coach of the Year (2006)
- Basketball Coaches Association of New York Statewide Coach of the Year (2005, 2010, 2011)
- NYCAC Coach of the Year (2000 & 2002)
- NIT/Metro Writers Coach of the Year (2002)
- Nassau County Sports Commission Outstanding Female Coach of the Year (2002)
- Inducted in the William Floyd High School Athletic Hall of Fame (2007)
- Inducted in the Adelphi University Athletic Hall of Fame (2014)
- Inducted in the Suffolk Sports Hall of Fame (2020)

Career Highlights

- Led Michigan to 2017 WNIT Championship and most wins in school history (28)
- Only coach in Michigan history with eight 20-win seasons
- Coached Michigan's first and only All-American (Naz Hillmon)
- Coached three-time consensus All-Big Ten first-teamer and WBCA All-Region honoree (Katelynn Flaherty)
- Coached 24 All-Big Ten selections and four All-Freshman picks
- Coached 2015 Michigan Big Ten Medal of Honor winner (Nicole Elmlblad)
- Winningest Head Coach in Michigan (193) and St. John's History (176 wins)
- Eight NCAA Tournament appearances (2006, '10, '11, '12, '13, '18, '19, '21)
- Reached the NCAA Sweet 16 with Michigan (2021) and St. John's (2012)
- Highest seed in St. John's (No. 3, 2012) and Michigan (No. 6, 2021) history
- Seven WNIT appearances (2005, '08, '09, '14, '15, '16, '17)
- Nine consecutive appearances in Big East Tournament (2004-12)



2021-22 WOLVERINES



#00 Naz Hillmon
Senior
Forward
Cleveland, Ohio
Gilmour Academy

At Michigan

- First player in program history to earn All-America honors
- Finalist for the 2021 Wade Trophy
- 2021 WBCA All-America, 2021 USBWA All-America (first team), 2021 Associated Press All-America (second team), 2021 Sports Illustrated All-America (first team), 2021 The Athletic All-America (first team)
- 2021 Big Ten Player of the Year (consensus)
- 2021 Michigan Female Athlete of the Year
- Three-time All-Big Ten first team (consensus)
- Two-time Academic All-Big Ten
- Two-time finalist for the Katrina McClain Award (2020, 2021)
- Two-time WBCA All-Region (2020, 2021)
- 2019 Big Ten Freshman and Sixth Player of the Year
- Three-time team MVP
- First player in program history to wear 00

Senior (2021-22)

- Named to Watch Lists for the Wooden Award, Wade Trophy, Naismith Trophy and McClain Award
- Named Big Ten Player of the Week twice (Nov. 29, Jan. 3) and the MVP of the Daytona Beach Invitational
- Appeared in 14 games, starting 13 times and scoring in double figures in all
- Has six double-doubles on the year
- Went for 30 points and 15 rebounds in U-M's win over IUPUI (Nov. 9)

Junior (2020-21)

- Started all 22 games, averaging 23.9 points and 11.4 rebounds in 33.8 minutes per game while shooting 62.3 percent from the field
- Compiled 15 double-doubles on the season, ranking 11th nationally
- Scored in double figures in all but one game, with three 30-point games and 15 20-point games
- Set a Michigan record (men and women) for points scored in a game with 50 points and 16 rebounds at No. 17 Ohio State (Jan. 21), becoming the first player in the NCAA this season with a 50-point game
- Recorded the nation's second 30-20 game of the 2020-21 season with 35 points and a career-best 22 rebounds against Nebraska (Jan. 7)

Sophomore (2019-20)

- Started all 32 games, scoring in double figures 28 times with 11 double-doubles
- Ranked in the top five in Big Ten scoring (17.4 ppg), rebounding (8.7 rpg) and field-goal percentage (.567).
- Topped the 20-point mark 14 times, highlighted by a 30-point, 10-rebound performance against No. 18 Iowa (Feb. 2)
- Finished the season with 558 points (9th), 277 rebounds (7th) and shot 56.7 percent (7th) to rank in the top 10 of Michigan season records

Freshman (2018-19)

- Big Ten Freshman of the Year (media), Big Ten Sixth Player of the Year, All-Big Ten first team (consensus), Big Ten All-Freshman Team
- Six-time Big Ten Freshman of the week
- Appeared in all 34 games off the bench, averaging team-highs in points per game (13.1) rebounds per game (7.0) and field goal percentage (.628)
- Finished sixth nationally in field goal percentage, the only freshman in the top 50
- Recorded a team-high eight double-doubles on the season
- Reached double-figures 20 times, highlighted by eight 20-point games
- Had 27 points on 11-for-13 shooting to go with 11 rebounds at Michigan State (Feb. 24)
- Scored game-winning basket in Michigan's come-from-behind win over Ohio State (Jan. 20), finishing with 20 points and eight rebounds

USA Basketball

- Has three gold medals with USA Basketball
- Played for the USA Basketball AmeriCup team in 2021, helping USA win gold in her first senior team assignment
- Started all six games at the AmeriCup, averaging 11.8 points and 7.8 rebounds in 21.3 minutes per game
- Served as captain of the USA Basketball U19 team, which earned the gold medal at the 2019 FIBA World Championship
- Started all seven games of the 2019 tournament, averaging 7.4 ppg and a team-high 7.6 rpg
- Won a gold medal with the USA Basketball U18 at the 2018 FIBA Americas Championship
- Averaged 10.3 ppg, 5.7 rpg and shot 67 percent in 18.2 minutes per game

- Gilmour Academy (2018)
- Two-time Associated Press Division II Player of the Year (2017, 2018)
- Named to the 2018 All-USA Ohio first team by USA Today
- Averaged 21 points, 14 rebounds, 2.7 and 2.0 steals per game as a senior
- Helped Gilmour to the 2017 Ohio state championship, recording 24 points and 17 rebounds in the title game
- Two-time finalist for Ohio Ms. Basketball
- Graduated as Gilmour's all-time leading scorer and rebounder
- Named to the 2018 USA Basketball U18 Team
- Ranked No. 58 and a four-star recruit by ESPN HoopGurlz
- Nominated for McDonald's All-America game
- Played AAU for Sports City U

Personal

- Full name: Nazahrah Ansaria Hillmon
- Daughter of Victor and NaSheema Anderson
- Mother, NaSheema, played basketball at Vanderbilt and in the American Basketball League (ABL) for the Nashville Noise
- Enrolled in the College of Literature, Science and the Arts - majoring in communications and media

2021-22 GAME-BY-GAME

#00 HILLMON, Naz

Opponent	Date	GS	MIN	Total			3-Pointers		Free throws		Rebounds			PF	A	TO	BLK	STL	PTS	AVG
				FG-FGA	PCT	3FG-3FGA	PCT	FT-FTA	PCT	OFF	DEF	TOT	AVG							
IUPUI	11/09/2021	*	42:42	12-22	.545	0-1	.000	6-8	.750	4	11	15	15.0	0	1	3	0	1	30	30.0
St. Francis Brooklyn	11/13/2021	*	26:11	9-10	.900	0-1	.000	1-2	.500	2	3	5	10.0	1	3	2	1	1	19	24.5
UMass Lowell	11/16/2021	*	26:02	8-12	.667	0-0	.000	3-4	.750	3	3	6	8.7	2	1	3	0	0	19	22.7
Oakland	11/22/2021	*	24:34	11-13	.846	0-0	.000	3-6	.500	6	5	11	9.3	3	0	3	0	0	25	23.3
vs Oregon St.	11/26/2021	*	36:00	6-16	.375	0-0	.000	8-10	.800	4	9	13	10.0	1	2	7	1	4	20	22.6
vs Mississippi St.	11/27/2021	*	37:00	6-15	.400	0-1	.000	6-8	.750	4	6	10	10.0	3	2	3	0	1	18	21.8
at Louisville	12/02/2021	*	35:55	5-9	.556	0-0	.000	2-4	.500	2	6	8	9.7	2	1	5	2	2	12	20.4
Akron	12/05/2021	*	27:25	7-9	.778	0-0	.000	4-5	.800	1	2	3	8.9	3	5	2	0	1	18	20.1
at Wisconsin	12/09/2021	*	34:36	8-15	.533	0-0	.000	5-6	.833	5	1	6	8.6	5	5	3	0	0	21	20.2
Minnesota	12/12/2021	*	38:40	11-18	.611	0-1	.000	3-5	.600	5	3	8	8.5	2	3	3	0	0	25	20.7
vs Baylor	12/19/2021	*	32:34	6-19	.316	0-0	.000	3-5	.600	6	4	10	8.6	5	1	5	0	2	15	20.2
Ohio St.	12/31/2021	*	33:39	9-14	.643	0-0	.000	11-12	.917	7	8	15	9.2	2	2	2	0	0	29	20.9
at Nebraska	01/04/2022	*	36:46	4-14	.286	0-0	.000	2-4	.500	2	5	7	9.0	3	3	6	1	0	10	20.1
Rutgers	01/09/2022	*	28:20	7-9	.778	0-0	.000	5-5	1.000	2	4	6	8.8	2	4	1	0	1	19	20.0
Totals		13	460:24	109-195	.559	0-4	.000	62-84	.738	53	70	123	8.8	34	33	48	5	13	280	20.0

Player Averages

Games Played	Minutes/game	Points/game	FG Pct	3FG Pct	FT Pct	Rebounds/game	Assists/game	Turnovers/game	Assist/Turnover ratio	Steals/game	Blocks/game
14	32.9	20.0	55.9	0.0	73.8	8.8	2.4	3.4	0.7	0.9	0.4

CAREER STATS

HILLMON, Naz

SEASON TEAM	GP-GS	MIN/AVG	Field Goals			3-Point		F-Throws		Rebounds			PF-FO	A	TO	BLK	STL	PTS	AVG
			FG-FGA	FG%	3FG-3FGA	3FG%	FT-FTA	FT%	OFF	DEF	TOT	AVG							
2018-19 Mich	34-0	791/23.3	184-293	.628	0-0	.000	79-125	.632	123	114	237	7.0	82-1	36	69	8	35	447	13.1
2019-20 Mich	32-32	1064/33.3	221-390	.567	0-1	.000	116-180	.644	137	140	277	8.7	69-1	77	101	8	25	558	17.4
2020-21 Mich	22-22	743/33.8	197-316	.623	0-0	.000	132-175	.754	106	145	251	11.4	55-0	29	58	10	14	526	23.9
2021-22 Mich	14-13	460/32.9	109-195	.559	0-4	.000	62-84	.738	53	70	123	8.8	34-2	33	48	5	13	280	20.0
TOTAL	102-67	3060/30.0	711-1194	.595	0-5	.000	389-564	.690	419	469	888	8.7	240-4	175	276	31	87	1811	17.8

Single Game Highs

Statistic	Value
Points	50 at Ohio St. 01/21/21
Rebounds	22 vs Nebraska 01/07/21
Assists	7 at Wisconsin 01/14/21
Steals	6 at Michigan St. 02/24/19
Blocks	3 at Notre Dame 12/03/20
FG Made	20 at Ohio St. 01/21/21
FG Attempts	30 at Ohio St. 01/21/21
3FG Attempts	1 5 times
FT Made	12 at Notre Dame 12/03/20
FT Attempts	14 at Northwestern 01/30/20, at Ohio St. 01/21/21

2021-22 WOLVERINES



#1 Amy Dilk
Senior
Guard
Carmel, Ind.
Carmel

Senior (2021-22)

- Named to Lieberman Award Watch List for the second straight season
- Started the first game of the season before suffering a knee injury less than a minute in
- Went for six points and four assists against Rutgers (Jan. 9)
- Returned to action on Jan. 4 at Nebraska, scoring three points with one rebound and one steal in 16 minutes

Junior (2020-21)

- Academic All-Big Ten
- Named to the Nancy Lieberman Award watch list
- Appeared in 19 games, starting 18 times
- Averaged 7.7 points, 4.8 rebounds and 3.9 assists in 28.1 minutes per game
- Scored in double figures seven times
- Hit a career-best three triples en route to 12 points against Northwestern (March 6)
- Had 13 points, six boards and six assists against Ohio State (Feb. 21)
- Went for 15 points, seven boards and four assists against Wisconsin (Dec. 31)

Sophomore (2019-20)

- Named to the All-Big Ten second team by the coaches
- Named to the Big Ten Player of the Week Honor Roll twice (Nov. 11, Jan. 6)
- Academic All-Big Ten
- Started all 32 games, scoring in double figures 21 times
- Averaged 11.6 points, 4.8 rebounds and 4.5 assists in 34.7 minutes per game
- Finished fifth in the Big Ten in assists per game
- Recorded four 20-point games, highlighted by scoring a career-best 26 points on 10-for-12 shooting with six rebounds against Florida State (Dec. 22)
- Had first double-double of her career, going for 12 points and a career-best 11 rebounds against Western Michigan (Nov. 8)
- Was on triple-double watch with 15 points, nine rebounds and seven assists at Penn State (Feb. 27)

Freshman (2018-19)

- Appeared in 31 games, starting 29 times
- Scored in double figures seven times
- Sixth freshman in school history to tally 100 assists (137)
- Dished out a career-best 11 assists against No. 8 Maryland (March 9)
- Went for 13 points and five rebounds against Michigan State (Jan. 27)
- Handed out 10 assists against Ohio State (Jan. 17)
- Had 16 points on 7-for-10 shooting and six assists at Purdue (Jan. 5)
- Flirted with a triple-double against Washington (Nov. 25), going for 19 points, nine rebounds and seven assists

High School

- Carmel (2018)
- Scholar-Athlete
- Indiana Miss Basketball and member of 2018 All-Star Team
- Named Indiana Gatorade Player of the Year by USA Today
- 2017-18 Associated Press All-State first team
- IBCA/Subway Senior All-State Supreme 15
- Averaged 17.8 points, 6.7 assists, 5.6 rebounds and 3.8 steals per game as a senior, helping Carmel to a 24-3 record and a sectional title
- Finished her career with 1,404 points, 552 rebounds, 548 assists and 344 steals
- Averaged 14.8 points, 6.6 rebounds, 6.4 assists and 3.2 steals per game as a junior, earning a spot on the 2017 Supreme 15 for underclassmen by the Indiana Basketball Coaches Association
- Recorded a triple-double as a junior, going for 10 points, 12 rebounds and 12 assists
- Core member of the 2017 Indiana Junior All-Stars
- Ranked No. 40 and a five-star recruit by ESPN HoopGurlz
- Played AAU for Indiana Flight Thunder

Personal

- Full name: Amy Elizabeth Dilk
- Birthday: September 2, 1999
- Daughter of Phil and Ginny Dilk
- Enrolled in the School of Kinesiology, majoring in sport management

2021-22 GAME-BY-GAME

#1 DILK, Amy

Opponent	Date	GS	MIN	Total		3-Pointers		Free throws		Rebounds				PF	A	TO	BLK	STL	PTS	AVG
				FG-FGA	PCT	3FG-3FGA	PCT	FT-FTA	PCT	OFF	DEF	TOT	AVG							
IUPUI	11/09/2021	*	00:42	0-0	.000	0-0	.000	0-0	.000	0	0	0	0.0	0	0	0	0	0	0	0.0
at Nebraska	01/04/2022		15:54	1-3	.333	0-1	.000	1-2	.500	0	1	1	0.5	2	0	1	1	1	3	1.5
Rutgers	01/09/2022		19:57	1-4	.250	1-2	.500	3-4	.750	0	2	2	1.0	1	4	1	0	0	6	3.0
Totals		1	36:33	2-7	.286	1-3	.333	4-6	.667	0	3	3	1.0	3	4	2	1	1	9	3.0

Player Averages

Games Played	Minutes/game	Points/game	FG Pct	3FG Pct	FT Pct	Rebounds/game	Assists/game	Turnovers/game	Assist/Turnover ratio	Steals/game	Blocks/game
3	12.2	3.0	28.6	33.3	66.7	1.0	1.3	0.7	2.0	0.3	0.3

CAREER STATS

DILK, Amy

SEASON	TEAM	GP-GS	MIN	AVG	Field Goals		3-Point		F-Throws		Rebounds				PF-FO		A	TO	BLK	STL	Scoring	
					FG-FGA	FG%	3FG-3FGA	3FG%	FT-FTA	FT%	OFF	DEF	TOT	AVG	PF	FO					PTS	AVG
2018-19	Mich	31-29	938	30.3	93-236	.394	8-24	.333	30-45	.667	32	83	115	3.7	60-1	137	105	4	38	224	7.2	
2019-20	Mich	32-32	1109	34.7	135-323	.418	19-52	.365	81-126	.643	22	130	152	4.8	75-1	145	113	8	41	370	11.6	
2020-21	Mich	19-18	534	28.1	48-151	.318	12-42	.286	39-53	.736	27	65	92	4.8	46-2	75	52	2	19	147	7.7	
2021-22	Mich	3-1	37	12.2	2-7	.286	1-3	.333	4-6	.667	0	3	3	1.0	3-0	4	2	1	1	9	3.0	
TOTAL		85-80	2618	30.8	278-717	.388	40-121	.331	154-230	.670	81	281	362	4.3	184-4	361	272	15	99	750	8.8	

Single Game Highs

Statistic	Value	
Points	26	vs Florida St. 12/22/19
Rebounds	11	vs Western Mich. 11/08/19
Assists	11	vs Maryland 03/09/19
Steals	5	vs Notre Dame 11/23/19
Blocks	2	vs Maryland 01/12/20
FG Made	10	vs Florida St. 12/22/19, vs Michigan St. 01/05/20
FG Attempts	17	at Maryland 01/12/19, at Penn St. 02/27/20, at Maryland 12/28/19
3FG Made	3	vs Northwestern 03/06/21
3FG Attempts	6	vs Western Mich. 11/08/19
FT Made	11	at Michigan St. 02/23/20
FT Attempts	14	at Michigan St. 02/23/20



2021-22 WOLVERINES



#3 Maddie Nolan
Junior
Guard
Zionsville, Ind.
Zionsville

Junior (2021-22)

- Appeared in all 15 games, starting 11 times with five double-figure scoring games
- Had 14 points, going 4-for-4 from three-point range, against Rutgers (Jan. 9)
- Had 11 points, two boards, three assists and a steal at Wisconsin (Dec. 9)
- Became the eighth different Wolverine to hit at least six triples in a game, going 6-for-7 from long range for 18 points against UMass Lowell (Nov. 16)
- Went for 10 points, hitting two three-pointers, five boards and three assists against St. Francis Brooklyn (Nov. 13)

Sophomore (2020-21)

- Appeared in 20 games, starting four times
- Academic All-Big Ten
- Hit a pair of threes in the NCAA Tournament game against Florida Gulf Coast (March 21)
- Went for eight points, including a pair of triples, and five boards against Michigan State (Feb. 16)
- Had the first 20-point game of her career in her second start of the season, going for 21 points at Wisconsin (Jan. 14)
- Made five triples in the game at Wisconsin, becoming the 21st Wolverine in school history to hit at least five in a game
- Grabbed a career-high nine rebounds in 20 minutes at Oakland (Nov. 27)

Freshman (2019-20)

- Appeared in 26 games, starting the final 11 games of the season
- Over the final five games of the season, averaged 10.2 points and 5.0 rebounds in 35.8 minutes per game
- Recorded three double-figure scoring games, highlighted by scoring a career-best 13 points twice
- Went for 13 points and eight rebounds - both career highs - in Michigan's win over No. 11 Northwestern in the Big Ten Tournament (March 6)
- Started first game of her career against Purdue (Feb. 6), going for two points, six rebounds and four blocks

Prep

- Zionsville (2019)
- Indiana All-Star
- Averaged 21.5 points, 5.8 rebounds and 3.7 assists per game as a junior
- Helped Zionsville to the state championship game in 2018, earning a spot on the Junior All-Star team as a core member
- 2018 All-State
- Played in five games a senior after coming back from a knee injury, averaging 13.6 points, 3.8 rebounds and 3.0 assists per game
- Graduates as Zionsville's all-time leading scorer (1,361), breaking her mother's record

Personal

- Daughter of Henry and Kris Nolan
- Mother, Kris (Veatch), played basketball at New Mexico State (1984-88) and graduated as the program's all-time leading scorer (1,768)
- Enrolled in the School of Kinesiology, majoring in sport management

2021-22 GAME-BY-GAME

#3 NOLAN, Maddie

Opponent	Date	GS	MIN	Total		3-Pointers		Free throws		Rebounds			PF	A	TO	BLK	STL	PTS	AVG	
				FG-FGA	PCT	3FG-3FGA	PCT	FT-FTA	PCT	OFF	DEF	TOT								AVG
IUPUI	11/09/2021	*	35:11	1-4	.250	0-3	.000	0-0	.000	0	5	5	5.0	2	1	1	0	0	2	2.0
St. Francis Brooklyn	11/13/2021	*	22:55	4-7	.571	2-5	.400	0-0	.000	1	4	5	5.0	2	3	1	0	1	10	6.0
UMass Lowell	11/16/2021	*	33:53	6-7	.857	6-7	.857	0-0	.000	0	3	3	4.3	2	4	0	0	0	18	10.0
at Central Mich.	11/20/2021	*	29:30	2-8	.250	0-2	.000	1-1	1.000	0	2	2	3.8	2	2	1	4	5	8.8	
Oakland	11/22/2021	*	35:59	2-9	.222	2-7	.286	0-0	.000	2	6	8	4.6	4	3	2	1	1	6	8.2
vs Oregon St.	11/26/2021	*	28:00	1-5	.200	1-4	.250	3-4	.750	1	4	5	4.7	2	0	1	0	2	6	7.8
vs Mississippi St.	11/27/2021	*	27:00	2-6	.333	2-4	.500	0-0	.000	0	3	3	4.4	3	3	1	0	1	6	7.6
at Louisville	12/02/2021	*	26:20	2-6	.333	1-5	.200	1-2	.500	0	2	2	4.1	1	1	1	0	2	6	7.4
Akron	12/05/2021	*	18:54	2-2	1.000	2-2	1.000	2-2	1.000	2	5	7	4.4	0	7	0	0	3	8	7.4
at Wisconsin	12/09/2021	*	25:14	4-7	.571	3-6	.500	0-0	.000	1	1	2	4.2	4	3	0	0	1	11	7.8
Minnesota	12/12/2021	*	19:14	2-5	.400	2-4	.500	0-0	.000	0	1	1	3.9	2	0	1	0	0	6	7.6
vs Baylor	12/19/2021	*	16:48	1-3	.333	1-2	.500	2-2	1.000	0	4	4	3.9	4	0	1	0	1	5	7.4
Ohio St.	12/31/2021	*	32:45	3-7	.429	2-6	.333	0-0	.000	0	3	3	3.8	2	3	4	0	0	8	7.5
at Nebraska	01/04/2022	*	28:30	4-7	.571	1-3	.333	2-2	1.000	1	3	4	3.9	2	0	0	0	2	11	7.7
Rutgers	01/09/2022	*	25:20	5-6	.833	4-4	1.000	0-1	.000	0	3	3	3.8	1	0	2	0	1	14	8.1
Totals		11	405:33	41-89	.461	29-64	.453	11-14	.786	8	49	57	3.8	33	30	17	2	19	122	8.1

Player Averages

Games Played	Minutes/game	Points/game	FG Pct	3FG Pct	FT Pct	Rebounds/game	Assists/game	Turnovers/game	Assist/Turnover ratio	Steals/game	Blocks/game
15	27.0	8.1	46.1	45.3	78.6	3.8	2.0	1.1	1.8	1.3	0.1

CAREER STATS

NOLAN, Maddie

SEASON TEAM	GP-GS	MIN	Field Goals		3-Point		F-Throws		Rebounds			Scoring								
			FG-FGA	FG%	3FG-3FGA	3FG%	FT-FTA	FT%	OFF	DEF	TOT	AVG	PF-FO	A	TO	BLK	STL	PTS	AVG	
2019-20 Mich	26-11	491	18.9	33-76	.434	13-41	.317	12-18	.667	12	51	63	2.4	40-1	26	23	6	15	91	3.5
2020-21 Mich	20-4	429	21.5	32-86	.372	21-57	.368	4-5	.800	20	45	65	3.3	45-0	29	21	6	21	89	4.5
2021-22 Mich	15-11	406	27.0	41-89	.461	29-64	.453	11-14	.786	8	49	57	3.8	33-0	30	17	2	19	122	8.1
TOTAL	61-26	1326	21.7	106-251	.422	63-162	.389	27-37	.730	40	145	185	3.0	118-1	85	61	14	55	302	5.0

Single Game Highs

Statistic	Value
Points	21 at Wisconsin 01/14/21
Rebounds	9 at Oakland 11/27/20
Assists	7 vs Akron 12/05/21
Steals	4 vs Nebraska 03/05/20, at Purdue 02/11/21, at Central Mich. 11/20/21
Blocks	4 vs Purdue 02/06/20
FG Made	7 at Wisconsin 01/14/21
FG Attempts	13 at Wisconsin 01/14/21
3FG Made	6 vs UMass Lowell 11/16/21
3FG Attempts	11 at Wisconsin 01/14/21
FT Made	3 vs Morgan St. 12/01/19, vs Oregon St. 11/26/21
FT Attempts	4 vs Morgan St. 12/01/19, vs Oregon St. 11/26/21

2021-22 WOLVERINES



#5 Laila Phelia
Freshman
Guard
Cincinnati, Ohio
Mount Notre Dame

Freshman (2021-22)

- Appeared in 12 games, starting four times
- Tied a career high with 12 points to go with five boards and two steals against No. 5 Baylor (Dec. 19)
- In her first career start, had 11 points, one rebound and one assist against Akron (Dec. 5)
- Went for eight points and three rebounds at Louisville (Dec. 2)
- Scored a career-best 12 points with six boards, two steals and an assist at Central Michigan (Nov. 20)
- Recorded first double-figure scoring game of her career, going for 11 points in 23 minutes against St. Francis Brooklyn (Nov. 13)
- Made career debut against IUPUI (Nov. 9), recording two points and four rebounds in 23 minutes

Prep

- Mount Notre Dame (2021)
- Won a pair of state titles at Mount Notre Dame (2019, 2021), ending her high school career on a 72-game winning streak
- As a senior, averaged 16.4 points, 3.1 rebounds and 1.8 steals per game
- As a junior, helped Mount Notre Dame to a perfect 28-0 record, regional championship and a No. 3 national ranking from ESPN before the season was cut short
- Four-time Girls Greater Catholic League first-team selection
- In the 2019 state championship game, nearly turned in a double-double with 10 points and seven rebounds as the Cougars won their seventh state title in program history
- Ranked No. 28 by ESPN, No. 31 from Blue Star, No. 54 by ASGR and No. 57 by Prospects Nation
- McDonald's All-America Game nominee
- Played AAU for the Cincinnati Angels

2021-22 GAME-BY-GAME

#5 PHELIA, Laila

Opponent	Date	GS	MIN	Total		3-Pointers		Free throws		Rebounds				PF							
				FG-FGA	PCT	3FG-3FGA	PCT	FT-FTA	PCT	OFF	DEF	TOT	AVG	PF	A	TO	BLK	STL	PTS	AVG	
IUPUI	11/09/2021		23:00	1-5	.200	0-2	.000	2-2	1.000	0	4	4	4.0	0	0	0	0	4	4.0		
St. Francis Brooklyn	11/13/2021		23:01	5-9	.556	1-3	.333	0-0	.000	1	1	2	3.0	1	1	0	0	11	7.5		
UMass Lowell	11/16/2021		16:26	0-5	.000	0-1	.000	0-0	.000	2	0	2	2.7	1	0	2	0	0	5.0		
at Central Mich.	11/20/2021		27:20	4-11	.364	0-2	.000	4-4	1.000	2	4	6	3.5	1	1	0	2	12	6.8		
Oakland	11/22/2021		21:48	2-12	.167	0-1	.000	4-6	.667	2	0	2	3.2	2	0	2	0	2	8	7.0	
vs Oregon St.	11/26/2021		15:00	2-4	.500	0-0	.000	0-0	.000	0	3	3	3.2	2	0	1	0	0	4	6.5	
vs Mississippi St.	11/27/2021		11:00	2-5	.400	0-0	.000	2-2	1.000	0	0	0	2.7	0	0	1	0	1	6	6.4	
at Louisville	12/02/2021		20:46	2-6	.333	0-0	.000	4-4	1.000	0	3	3	2.8	1	0	1	0	0	8	6.6	
Akron	12/05/2021	*	23:55	4-7	.571	1-1	1.000	2-2	1.000	1	0	1	2.6	1	1	0	0	11	7.1		
at Wisconsin	12/09/2021	*	19:21	3-7	.429	0-1	.000	0-0	.000	1	4	5	2.8	3	0	0	0	1	6	7.0	
Minnesota	12/12/2021	*	28:33	3-6	.500	0-0	.000	3-3	1.000	1	2	3	2.8	1	1	2	0	2	9	7.2	
vs Baylor	12/19/2021	*	31:53	5-12	.417	2-4	.500	0-0	.000	3	2	5	3.0	2	0	0	1	2	12	7.6	
Totals			4	262:03	33-89	.371	4-15	.267	21-23	.913	13	23	36	3.0	15	3	12	1	10	91	7.6

Player Averages

Games Played	Minutes/game	Points/game	FG Pct	3FG Pct	FT Pct	Rebounds/game	Assists/game	Turnovers/game	Assist/Turnover ratio	Steals/game	Blocks/game
12	21.8	7.6	37.1	26.7	91.3	3.0	0.3	1.0	0.3	0.8	0.1

CAREER STATS

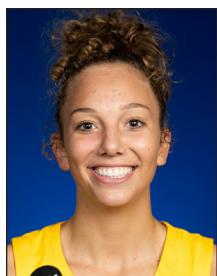
PHELIA, Laila

SEASON	TEAM	GP-GS	MIN/AVG	Field Goals		3-Point		F-Throws		Rebounds				Scoring						
				FG-FGA	FG%	3FG-3FGA	3FG%	FT-FTA	FT%	OFF	DEF	TOT	AVG	PF-FO	A	TO	BLK	STL	PTS	AVG
2021-22	Mich	12-4	262/21.8	33-89	.371	4-15	.267	21-23	.913	13	23	36	3.0	15-0	3	12	1	10	91	7.6
TOTAL		12-4	262/21.8	33-89	.371	4-15	.267	21-23	.913	13	23	36	3.0	15-0	3	12	1	10	91	7.6

Single Game Highs

Statistic	Value
Points	12 at Central Mich. 11/20/21, vs Baylor 12/19/21
Rebounds	6 at Central Mich. 11/20/21
Assists	1 at Central Mich. 11/20/21, vs Akron 12/05/21, vs Minnesota 12/12/21
Steals	2 4 times
Blocks	1 vs Baylor 12/19/21
FG Made	5 vs St. Francis Brooklyn 11/13/21, vs Baylor 12/19/21
FG Attempts	12 vs Oakland 11/22/21, vs Baylor 12/19/21
3FG Made	2 vs Baylor 12/19/21
3FG Attempts	4 vs Baylor 12/19/21
FT Made	4 at Central Mich. 11/20/21, vs Oakland 11/22/21, at Louisville 12/02/21
FT Attempts	6 vs Oakland 11/22/21

2021-22 WOLVERINES



#10 Jordan Hobbs
Freshman
Guard
Springboro, Ohio
Springboro

Freshman (2021-22)

- Appeared in 10 games off the bench
- Scored two points against No. 25 Ohio State (Dec. 31)
- Scored seven points on 3-for-6 shooting against St. Francis Brooklyn (Nov. 13)
- Made career debut against IUPUI (Nov. 9), scoring three points in eight minutes with one steal

Prep

- Springboro (2021)
- Honor Roll
- Academic All-Ohio
- Averaged 17.6 points, 7.0 rebounds and 3.0 assists per game as a senior to help Springboro to a district championship
- Shot 42.3 percent from three-point range
- Recorded a game-high 26 points on 10-for-17 shooting with 11 boards in the 2021 district championship game
- Two-time all-state second-team selection
- Two-time first-team All-Southwest Ohio
- Averaged 14.1 points and 5.9 rebounds per game as a junior en route to second-team all-state honors
- Played AAU for the Cincinnati Angels

Personal

- Daughter of Randy and Roni Hobbs
- Birthday is September 8, 2003
- Enrolled in the College of Literature, Science and the Arts

2021-22 GAME-BY-GAME

#10 HOBBS, Jordan

Opponent	Date	GS	MIN	Total		3-Pointers		Free throws		Rebounds				PF	A	TO	BLK	STL	PTS	AVG
				FG-FGA	PCT	3FG-3FGA	PCT	FT-FTA	PCT	OFF	DEF	TOT	AVG							
IUPUI	11/09/2021		08:05	1-4	.250	0-3	.000	1-1	1.000	0	0	0	0	1	0	0	0	1	3	3.0
St. Francis Brooklyn	11/13/2021		14:23	3-6	.500	1-3	.333	0-0	.000	0	3	3	1.5	0	0	0	0	7	5.0	
UMass Lowell	11/16/2021		09:05	0-2	.000	0-1	.000	1-2	.500	0	0	0	1.0	0	0	0	1	1	3.7	
at Central Mich.	11/20/2021		02:43	1-3	.333	1-2	.500	0-0	.000	0	0	0	0.8	1	0	0	0	3	3.5	
Oakland	11/22/2021		05:02	0-1	.000	0-0	.000	0-0	.000	0	0	0	0.6	0	0	0	1	0	2.8	
vs Mississippi St.	11/27/2021		01:00	0-0	.000	0-0	.000	0-0	.000	0	0	0	0.5	0	0	0	0	0	2.3	
Akron	12/05/2021		10:37	0-0	.000	0-0	.000	2-2	1.000	0	1	1	0.6	0	1	0	0	2	2.3	
at Wisconsin	12/09/2021		02:29	0-0	.000	0-0	.000	0-0	.000	0	0	0	0.5	1	0	0	0	0	2.0	
Ohio St.	12/31/2021		04:44	1-2	.500	0-1	.000	0-0	.000	0	0	0	0.4	1	0	0	0	2	2.0	
Rutgers	01/09/2022		10:25	0-3	.000	0-1	.000	0-0	.000	0	1	1	0.5	1	0	1	0	0	1.8	
Totals		0	68:33	6-21	.286	2-11	.182	4-5	.800	0	5	5	0.5	5	0	2	0	3	18	1.8

Player Averages

Games Played	Minutes/game	Points/game	FG Pct	3FG Pct	FT Pct	Rebounds/game	Assists/game	Turnovers/game	Assist/Turnover ratio	Steals/game	Blocks/game
10	6.9	1.8	28.6	18.2	80.0	0.5	0.0	0.2	0.0	0.3	0.0

CAREER STATS

HOBBS, Jordan

SEASON	TEAM	GP-GS	MIN/AVG	Field Goals		3-Point		F-Throws		Rebounds				Scoring						
				FG-FGA	FG%	3FG-3FGA	3FG%	FT-FTA	FT%	OFF	DEF	TOT	AVG	PF-FO	A	TO	BLK	STL	PTS	AVG
2021-22	Mich	10-0	69/6.9	6-21	.286	2-11	.182	4-5	.800	0	5	5	0.5	5-0	0	2	0	3	18	1.8
TOTAL		10-0	69/6.9	6-21	.286	2-11	.182	4-5	.800	0	5	5	0.5	5-0	0	2	0	3	18	1.8

Single Game Highs

Statistic	Value
Points	7 vs St. Francis Brooklyn 11/13/21
Rebounds	3 vs St. Francis Brooklyn 11/13/21
Steals	1 vs IUPUI 11/09/21, vs UMass Lowell 11/16/21, vs Oakland 11/22/21
FG Made	3 vs St. Francis Brooklyn 11/13/21
FG Attempts	6 vs St. Francis Brooklyn 11/13/21
3FG Made	1 vs St. Francis Brooklyn 11/13/21, at Central Mich. 11/20/21
3FG Attempts	3 vs IUPUI 11/09/21, vs St. Francis Brooklyn 11/13/21
FT Made	2 vs Akron 12/05/21
FT Attempts	2 vs UMass Lowell 11/16/21, vs Akron 12/05/21

2021-22 WOLVERINES



#12 Ari Wiggins
Freshman
Guard
Indianapolis, Ind.
Heritage Christian

Freshman (2021-22)

- Appeared in 14 games off the bench
- Made career debut against IUPUI (Nov. 9), going for two points, one assist, one steal and one rebound in 13 minutes

Prep

- Heritage Christian (2021)
- High Honor Roll
- Runner-up for 2021 Indiana Miss Basketball
- Member of the Indiana All-Star team
- Three-time Top 15 Supreme Team
- Four-time all-state, all-city and all-conference selection
- Two-time Indiana Gatorade Player of the Year nominee (2018-19, 2020-21)
- Three-time team MVP
- Indiana Junior All-Star core 6 selection
- Finished her high school career with 1,689 points, 362 rebounds, 247 assists and 274 steals
- Her 1,689 points rank third in school history
- Averaged 27.6 points, 5.6 rebounds, 3.9 assists and 3.4 steals per game as a senior
- Ranked No. 25 by Prospects Nation, No. 35 by the All-Star Girls Report, No. 38 by Blue Star and No. 68 by ESPN
- McDonald's All-America Game nominee
- Played AAU for the Indy Gym Rats

Personal

- Daughter of Eric and Camille Wiggins
- Birthday is December 31, 2002
- Enrolled in the College of Literature, Science and the Arts

2021-22 GAME-BY-GAME

#12 WIGGINS, Ari

Opponent	Date	GS	MIN	Total		3-Pointers		Free throws		Rebounds			PF	A	TO	BLK	STL	PTS	AVG		
				FG-FGA	PCT	3FG-3FGA	PCT	FT-FTA	PCT	OFF	DEF	TOT								AVG	
IUPUI	11/09/2021		13:20	1-1	1.000	0-0	.000	0-0	.000	0	1	1	1.0	1	1	3	0	1	2	2.0	
St. Francis Brooklyn	11/13/2021		16:42	0-7	.000	0-3	.000	2-2	1.000	0	2	2	1.5	0	0	3	0	1	2	2.0	
UMass Lowell	11/16/2021		10:09	1-4	.250	0-0	.000	0-1	.000	0	0	0	1.0	2	0	3	0	2	2	2.0	
at Central Mich.	11/20/2021		15:43	1-5	.200	0-0	.000	0-0	.000	1	0	1	1.0	2	1	0	0	2	2	2.0	
Oakland	11/22/2021		05:02	0-0	.000	0-0	.000	0-0	.000	0	0	0	0.8	1	0	2	0	0	0	1.6	
vs Oregon St.	11/26/2021		06:00	0-2	.000	0-0	.000	0-0	.000	0	1	1	0.8	3	1	1	0	0	0	1.3	
vs Mississippi St.	11/27/2021		06:00	0-0	.000	0-0	.000	0-0	.000	0	2	2	1.0	2	0	1	0	0	0	1.1	
at Louisville	12/02/2021		08:58	0-1	.000	0-0	.000	0-0	.000	0	1	1	1.0	1	1	3	0	0	0	1.0	
Akron	12/05/2021		11:54	0-3	.000	0-0	.000	1-2	.500	0	2	2	1.1	0	0	1	0	1	1	1.0	
at Wisconsin	12/09/2021		04:24	0-0	.000	0-0	.000	0-0	.000	0	0	0	1.0	0	1	0	1	0	0	0.9	
Minnesota	12/12/2021		03:44	0-0	.000	0-0	.000	0-0	.000	0	0	0	0.9	0	0	1	0	0	0	0.8	
Ohio St.	12/31/2021		05:19	0-1	.000	0-0	.000	0-0	.000	0	1	1	0.9	2	2	3	0	0	0	0.8	
at Nebraska	01/04/2022		02:36	0-0	.000	0-0	.000	0-0	.000	0	0	0	0.8	0	0	0	0	1	0	0.7	
Rutgers	01/09/2022		03:16	0-0	.000	0-0	.000	0-0	.000	0	1	1	0.9	0	0	0	0	0	0	0.6	
Totals			0	113:07	3-24	.125	0-3	.000	3-5	.600	1	11	12	0.9	14	7	21	1	8	9	0.6

Player Averages

Games Played	Minutes/game	Points/game	FG Pct	3FG Pct	FT Pct	Rebounds/game	Assists/game	Turnovers/game	Assist/Turnover ratio	Steals/game	Blocks/game
14	8.1	0.6	12.5	0.0	60.0	0.9	0.5	1.5	0.3	0.6	0.1

CAREER STATS

WIGGINS, Ari

SEASON	TEAM	GP-GS	MIN	AVG	Field Goals		3-Point		F-Throws		Rebounds			PF-FO	A	TO	BLK	STL	Scoring	
					FG-FGA	FG%	3FG-3FGA	3FG%	FT-FTA	FT%	OFF	DEF	TOT						AVG	PTS
2021-22	Mich	14-0	113/8.1	3-24	.125	0-3	.000	3-5	.600	1	11	12	0.9	14-0	7	21	1	8	9	0.6
TOTAL		14-0	113/8.1	3-24	.125	0-3	.000	3-5	.600	1	11	12	0.9	14-0	7	21	1	8	9	0.6

Single Game Highs

Statistic	Value
Points	2 4 times
Rebounds	2 vs St. Francis Brooklyn 11/13/21, vs Mississippi St. 11/27/21, vs Akron 12/05/21
Assists	2 vs Ohio St. 12/31/21
Steals	2 vs UMass Lowell 11/16/21, at Central Mich. 11/20/21
Blocks	1 at Wisconsin 12/09/21
FG Made	1 vs IUPUI 11/09/21, vs UMass Lowell 11/16/21, at Central Mich. 11/20/21
FG Attempts	7 vs St. Francis Brooklyn 11/13/21
3FG Attempts	3 vs St. Francis Brooklyn 11/13/21
FT Made	2 vs St. Francis Brooklyn 11/13/21
FT Attempts	2 vs St. Francis Brooklyn 11/13/21, vs Akron 12/05/21

2021-22 WOLVERINES



#15 Taylor Gibson
Freshman
Forward
Upper Marlboro, Md.
Bishop McNamara

Freshman (2021-22)

- Appeared in two games off the bench
- Scored first career points against Akron (Dec. 5)
- Made career debut against St. Francis Brooklyn (Nov. 13)

Prep

- Bishop McNamara (2021)
- National Honor Society
- Science Honors Society
- Graduated Summa Cum Laude
- Played a limited senior season as Bishop McNamara played just five games
- As a junior, helped Bishop McNamara to a 27-5 overall record and its first Washington Catholic Athletic Conference championship since 2008
- As a junior starter, she averaged nearly 10 points and seven rebounds per game for the Mustangs
- Earned all-conference honorable mention as a junior in 2019-20
- In 2019-20, had highs of 21 points and 13 rebounds last season as Bishop McNamara earned a No. 1 final ranking from the Washington Post, while ranking seventh nationally by MaxPreps and ESPN
- McDonald's All-America game nominee
- Played AAU for Boo Williams

Personal

- Daughter of Rick and Tyanne Gibson
- Birthday is November 13, 2002
- Born in Redford, Michigan
- Enrolled in the College of Literature, Science and the Arts

2021-22 GAME-BY-GAME

#15 GIBSON, Taylor

Opponent	Date	GS	MIN	Total		3-Pointers		Free throws		Rebounds				PF		A		BLK	STL	PTS	AVG
				FG-FGA	PCT	3FG-3FGA	PCT	FT-FTA	PCT	OFF	DEF	TOT	AVG	A	TO						
St. Francis Brooklyn	11/13/2021		01:22	0-1	.000	0-1	.000	0-0	.000	0	0	0	0.0	0	0	0	0	0	0	0	0.0
Akron	12/05/2021		01:03	1-1	1.000	0-0	.000	0-0	.000	0	0	0	0.0	0	0	0	0	0	2	1.0	
Totals		0	02:25	1-2	.500	0-1	.000	0-0	.000	0	0	0	0.0	0	0	0	0	0	2	1.0	

Player Averages

Games Played	Minutes/game	Points/game	FG Pct	3FG Pct	FT Pct	Rebounds/game	Assists/game	Turnovers/game	Assist/Turnover ratio	Steals/game	Blocks/game
2	1.2	1.0	50.0	0.0	0.0	0.0	0.0	0.0	0.0	0.0	0.0

CAREER STATS

GIBSON, Taylor

		Field Goals		3-Point		F-Throws		Rebounds				Scoring								
SEASON	TEAM	GP-GS	MIN/AVG	FG-FGA	FG%	3FG-3FGA	3FG%	FT-FTA	FT%	OFF	DEF	TOT	AVG	PF-FO	A	TO	BLK	STL	PTS	AVG
2021-22	Mich	2-0	2/1.2	1-2	.500	0-1	.000	0-0	.000	0	0	0	0.0	0-0	0	0	0	0	2	1.0
TOTAL		2-0	2/1.2	1-2	.500	0-1	.000	0-0	.000	0	0	0	0.0	0-0	0	0	0	0	2	1.0

Single Game Highs

Statistic	Value
Points	2 vs Akron 12/05/21
FG Made	1 vs Akron 12/05/21
FG Attempts	1 vs St. Francis Brooklyn 11/13/21, vs Akron 12/05/21
3FG Attempts	1 vs St. Francis Brooklyn 11/13/21

2021-22 WOLVERINES



#23 Danielle Rauch
Senior
Guard
Syracuse, N.Y.
Bishop Ludden

Senior (2021-22)

- Started all 15 games, scoring in double figures five times
- Scored a career-best 18 points with two boards, three assists, a block and a steal in 36 minutes at Wisconsin (Dec. 9)
- Tallied her fourth straight double-figure scoring game with 11 points and two steals against No. 16 Oregon State (Nov. 26)
- Had 10 points, four boards and four assists in 38 minutes against Oakland (Nov. 22)
- Had 10 points, six boards and six assists against UMass Lowell (Nov. 16)
- Went for eight points, three boards, two assists and two steals against St. Francis Brooklyn (Nov. 16)

Junior (2020-21)

- Academic All-Big Ten
- Named a Big Ten Distinguished Scholar
- Appeared in 19 games, starting five times
- Averaged 2.3 points, 1.7 rebounds and 1.5 assists in 16.3 minutes per game
- Started all three of Michigan's NCAA Tournament games
- Had nine points to go with five boards in the NCAA Tournament against Baylor (March 27)
- Recorded a career-best five steals to go with five points, six rebounds and three assists against Tennessee (March 23)
- Turned in eight points with a pair of triples in the first-round win over Florida Gulf Coast (March 21)

Sophomore (2019-20)

- Academic All-Big Ten
- Appeared in 24 games, averaging 1.4 points and 1.0 rebounds in 11.4 minutes per game
- Started three games before suffering a hand injury on Feb. 5 and missing four weeks of action
- Returned in the Big Ten Tournament, seeing minutes in all three of Michigan's games
- Scored eight points against Iowa (Feb. 2)
- In her second career start, had five points, one rebound and three assists at Northwestern (Jan. 30)

Freshman (2018-19)

- Appeared in 22 contests off the bench
- Made collegiate debut against Mount St. Mary's (Nov. 9), handing out four assists and grabbing two steals

High School

- Bishop Ludden (2018)
- 2018 National Honor Society Chapter Leadership Award
- 2018 Bishop Ludden Spirit Award
- Three-time recipient of Principle's Trophy
- Named 2018 Class B Player of the Year by the New York State Sports Writers Association
- Two-time All-Central New York Player of the Year (small school)
- Averaged 14.2 points, 7.1 rebounds, 9.3 assists and 4.5 steals per game as a senior
- Finished her career as Bishop Ludden's all-time leading scorer with 1,811 points
- Also finished her career with 746 steals, 746 rebounds, 437 assists and 159 three-pointers
- Recorded a quadruple-double in Bishop Ludden's season opener, going for 15 points, 10 rebounds, 11 assists and 11 steals
- Two-time Section III Class B Tournament MVP
- Recipient of Syracuse Sports Corporation's Believe to Achieve Award
- Helped Ludden to back-to-back Section III Class B championships
- Three-star recruit by ESPN HoopGurlz
- Played AAU for I-90 Elite

Personal

- Full name: Danielle Marie Rauch
- Birthday: March 26, 2000
- Father, Len, played for former Michigan men's basketball head coach John Beilein at Le Moyne
- Mother, Joanne, played volleyball at Le Moyne
- Brother, Jack, played basketball at Florida Southern College
- Enrolled in the School of Kinesiology

2021-22 GAME-BY-GAME

#23 RAUCH, Danielle

Opponent	Date	GS	MIN	Total		3-Pointers		Free throws		Rebounds			PF	A	TO	BLK	STL	PTS	AVG		
				FG-FGA	PCT	3FG-3FGA	PCT	FT-FTA	PCT	OFF	DEF	TOT								AVG	
IUPUI	11/09/2021	*	27:18	1-4	.250	0-1	.000	0-0	.000	1	1	2	2.0	2	2	4	0	0	2	2.0	
St. Francis Brooklyn	11/13/2021	*	24:44	3-5	.600	2-4	.500	0-0	.000	0	3	3	2.5	2	2	2	0	2	8	5.0	
UMass Lowell	11/16/2021	*	31:02	4-8	.500	1-2	.500	1-2	.500	1	5	6	3.7	1	6	0	1	1	10	6.7	
at Central Mich.	11/20/2021	*	32:36	5-9	.556	2-3	.667	1-1	1.000	1	3	4	3.8	2	1	2	0	0	13	8.3	
Oakland	11/22/2021	*	37:44	4-9	.444	1-2	.500	1-1	1.000	0	4	4	3.8	1	4	1	0	0	10	8.6	
vs Oregon St.	11/26/2021	*	39:00	4-10	.400	3-5	.600	0-2	.000	0	1	1	3.3	2	0	0	0	2	11	9.0	
vs Mississippi St.	11/27/2021	*	37:00	1-7	.143	1-1	1.000	0-0	.000	2	1	3	3.3	1	3	2	0	1	3	8.1	
at Louisville	12/02/2021	*	30:35	1-5	.200	1-4	.250	0-0	.000	0	4	4	3.4	4	2	5	0	0	3	7.5	
Akron	12/05/2021	*	25:52	1-2	.500	1-2	.500	0-0	.000	0	4	4	3.4	1	0	2	0	1	3	7.0	
at Wisconsin	12/09/2021	*	35:53	5-10	.500	3-6	.500	5-6	.833	0	2	2	3.3	1	3	0	1	1	18	8.1	
Minnesota	12/12/2021	*	30:37	0-3	.000	0-3	.000	0-0	.000	0	2	2	3.2	1	2	2	0	1	0	7.4	
vs Baylor	12/19/2021	*	43:35	2-7	.286	1-4	.250	0-0	.000	0	7	7	3.5	2	3	3	0	1	5	7.2	
Ohio St.	12/31/2021	*	33:26	0-6	.000	0-3	.000	0-0	.000	0	4	4	3.5	1	2	4	0	2	0	6.6	
at Nebraska	01/04/2022	*	33:33	1-7	.143	0-5	.000	0-0	.000	3	2	5	3.6	0	2	0	0	2	2	6.3	
Rutgers	01/09/2022	*	26:42	1-3	.333	0-1	.000	0-0	.000	1	2	3	3.6	1	1	3	0	2	2	6.0	
Totals			15	489:36	33-95	.347	16-46	.348	8-12	.667	9	45	54	3.6	22	33	30	2	16	90	6.0

Player Averages

Games Played	Minutes/game	Points/game	FG Pct	3FG Pct	FT Pct	Rebounds/game	Assists/game	Turnovers/game	Assist/Turnover ratio	Steals/game	Blocks/game
15	32.6	6.0	34.7	34.8	66.7	3.6	2.2	2.0	1.1	1.1	0.1

CAREER STATS

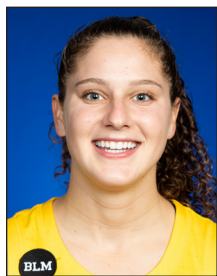
RAUCH, Danielle

SEASON	TEAM	GP-GS	MIN/AVG	Field Goals		3-Point		F-Throws		Rebounds			PF-FO	A	TO	BLK	STL	Scoring		
				FG-FGA	FG%	3FG-3FGA	3FG%	FT-FTA	FT%	OFF	DEF	TOT						AVG	PTS	AVG
2018-19	Mich	22-0	102/4.6	3-13	.231	1-6	.167	2-2	1.000	3	4	7	0.3	6-0	14	9	1	9	9	0.4
2019-20	Mich	24-3	273/11.4	12-31	.387	7-20	.350	3-6	.500	5	19	24	1.0	16-0	19	19	3	9	34	1.4
2020-21	Mich	19-5	309/16.3	13-43	.302	9-32	.281	8-11	.727	4	28	32	1.7	22-0	29	19	0	13	43	2.3
2021-22	Mich	15-15	490/32.6	33-95	.347	16-46	.348	8-12	.667	9	45	54	3.6	22-0	33	30	2	16	90	6.0
TOTAL		80-23	1174/14.7	61-182	.335	33-104	.317	21-31	.677	21	96	117	1.5	66-0	95	77	6	47	176	2.2

Single Game Highs

Statistic	Value
Points	18 at Wisconsin 12/09/21
Rebounds	7 vs Baylor 12/19/21
Assists	6 vs UMass Lowell 11/16/21
Steals	5 vs Tennessee 03/23/21
Blocks	1 6 times
FG Made	5 at Central Mich. 11/20/21, at Wisconsin 12/09/21
FG Attempts	10 vs Oregon St. 11/26/21, at Wisconsin 12/09/21
3FG Made	3 vs Oregon St. 11/26/21, at Wisconsin 12/09/21
3FG Attempts	6 vs Baylor 03/27/21, at Wisconsin 12/09/21
FT Made	5 at Wisconsin 12/09/21
FT Attempts	6 at Wisconsin 12/09/21

2021-22 WOLVERINES



#24 Michelle Sidor
Junior
Guard
Upper Saddle River, N.J.
Saddle River Day

Junior (2021-22)

- Appeared in all 15 games, starting six times
- Had first double-figure scoring game of the season with 12 points and three assists against Akron (Dec. 5)
- Went for seven points, two assists, two steals and one rebound against UMass Lowell (Nov. 16)
- Had four points, on rebound and on assist against St. Francis Brooklyn (Nov. 13)

Sophomore (2020-21)

- Appeared in 15 games off the bench
- Tied a career high with 16 points, including four three-pointers, against Butler (Dec. 9)
- Went for 11 points, hitting three triples, at Oakland (Nov. 27)
- Recorded her first career block against Wright State (Dec. 6)

Freshman (2019-20)

- Appeared in 29 games off the bench
- Made a pair of triples against Iowa (Feb. 2)
- Hit three three-pointers against Penn State (Dec. 31), finishing with nine points off the bench
- Went for a career-best 16 points against Morgan State (Dec. 1), hitting 4-for-5 from three-point range
- Scored 11 points against Bradley (Nov. 10) that included three three-pointers
- Recorded five points, two steals, and two rebounds in her collegiate debut against Western Michigan (Nov. 8)

Prep

- Saddle River Day School (2019)
- Second all-time in New Jersey history with 3,268 points
- Holds Bergen County scoring record, breaking Anne Donovan's record
- Fourth player in New Jersey history to reach 3,000 points
- Averaged 26.6 points per game as a senior, helping Saddle River Day to the Tournament of Champions finals
- Averaged at least 26.0 points per game in each of her four seasons: 27.4 as a freshman, 27.8 as a sophomore and 26.8 as a junior
- Led Saddle River Day to four straight Bergen County championships
- Named to the 2019 Naismith High School girls watch list for the nation's best high school player
- 2019 NorthJersey.com Girls Basketball Sports Award winner
- Three-time USA Today All-New Jersey first team (2017, 2018, 2019)
- Scored in double figures in all 121 of her high school games throughout her four-year career
- McDonald's All-America game nominee
- Four-star recruit by ESPN, coming in at No. 67 in the class of 2019
- Played AAU for the New Jersey Sparks on the EYBL circuit

Personal

- Daughter of Eugene and Laura Sidor
- Birthday is July 22, 2000
- Enrolled in the Ross School of Business, majoring in business administration

2021-22 GAME-BY-GAME

#24 SIDOR, Michelle

Opponent	Date	GS	MIN	Total		3-Pointers		Free throws		Rebounds				PF	A	TO	BLK	STL	PTS	AVG	
				FG-FGA	PCT	3FG-3FGA	PCT	FT-FTA	PCT	OFF	DEF	TOT	AVG								
IUPUI	11/09/2021		03:40	0-1	.000	0-1	.000	0-0	.000	0	0	0	0	1	0	1	1	0	0	0.0	
St. Francis Brooklyn	11/13/2021		16:03	2-7	.286	0-3	.000	0-0	.000	0	1	1	0.5	1	1	1	0	0	4	2.0	
UMass Lowell	11/16/2021	*	19:25	3-6	.500	1-2	.500	0-0	.000	0	1	1	0.7	1	2	2	0	2	7	3.7	
at Central Mich.	11/20/2021	*	12:08	0-2	.000	0-2	.000	0-0	.000	0	2	2	1.0	0	1	0	0	0	0	2.8	
Oakland	11/22/2021	*	14:25	0-2	.000	0-1	.000	0-0	.000	0	2	2	1.2	0	2	0	0	0	0	2.2	
vs Oregon St.	11/26/2021	*	10:00	1-3	.333	0-0	.000	0-1	.000	1	0	1	1.2	0	0	0	0	1	2	2.2	
vs Mississippi St.	11/27/2021	*	12:00	0-2	.000	0-1	.000	0-0	.000	1	4	5	1.7	1	2	0	0	0	0	1.9	
at Louisville	12/02/2021		06:28	1-1	1.000	0-0	.000	0-0	.000	0	0	0	1.5	0	1	0	0	0	2	1.9	
Akron	12/05/2021	*	22:45	5-8	.625	2-4	.500	0-0	.000	0	1	1	1.4	3	3	1	0	0	12	3.0	
at Wisconsin	12/09/2021		04:12	0-2	.000	0-1	.000	0-0	.000	0	0	0	1.3	0	0	0	0	0	0	2.7	
Minnesota	12/12/2021		03:30	0-0	.000	0-0	.000	0-0	.000	0	0	0	1.2	0	1	0	0	0	0	2.5	
vs Baylor	12/19/2021		01:08	0-0	.000	0-0	.000	0-0	.000	0	0	0	1.1	0	0	0	0	0	0	2.3	
Ohio St.	12/31/2021		07:37	0-2	.000	0-2	.000	0-0	.000	0	0	0	1.0	0	1	0	0	0	0	2.1	
at Nebraska	01/04/2022		02:35	0-0	.000	0-0	.000	0-0	.000	0	0	0	0.9	0	0	0	0	1	0	1.9	
Rutgers	01/09/2022		05:41	0-0	.000	0-0	.000	0-0	.000	0	1	1	0.9	1	0	0	0	0	0	1.8	
Totals			6	141:37	12-36	.333	3-17	.176	0-1	.000	2	12	14	0.9	8	12	7	2	3	27	1.8

Player Averages

Games Played	Minutes/game	Points/game	FG Pct	3FG Pct	FT Pct	Rebounds/game	Assists/game	Turnovers/game	Assist/Turnover ratio	Steals/game	Blocks/game
15	9.4	1.8	33.3	17.6	0.0	0.9	0.8	0.5	1.7	0.2	0.1

CAREER STATS

SIDOR, Michelle

SEASON	TEAM	GP-GS	MIN/AVG	Field Goals		3-Point		F-Throws		Rebounds				Scoring						
				FG-FGA	FG%	3FG-3FGA	3FG%	FT-FTA	FT%	OFF	DEF	TOT	AVG	PF-FO	A	TO	BLK	STL	PTS	AVG
2019-20	Mich	31-0	353/11.4	39-114	.342	22-72	.306	5-6	.833	6	19	25	0.8	11-0	9	12	0	11	105	3.4
2020-21	Mich	15-0	106/7.1	13-41	.317	8-29	.276	0-1	.000	1	14	15	1.0	5-0	8	5	1	0	34	2.3
2021-22	Mich	15-6	142/9.4	12-36	.333	3-17	.176	0-1	.000	2	12	14	0.9	8-0	12	7	2	3	27	1.8
TOTAL		61-6	600/9.8	64-191	.335	33-118	.280	5-8	.625	9	45	54	0.9	24-0	29	24	3	14	166	2.7

Single Game Highs

Statistic	Value
Points	16 vs Morgan St. 12/01/19, vs Butler 12/09/20
Rebounds	5 at Rutgers 02/16/20, vs Mississippi St. 11/27/21
Assists	3 vs Akron 12/05/21
Steals	2 vs Western Mich. 11/08/19, vs UMass Lowell 11/16/21
Blocks	1 vs Wright St. 12/06/20, vs IUPUI 11/09/21, at Nebraska 01/04/22
FG Made	6 vs Morgan St. 12/01/19, vs Butler 12/09/20
FG Attempts	10 vs Butler 12/09/20
3FG Made	4 vs Morgan St. 12/01/19, vs Butler 12/09/20
3FG Attempts	8 vs Butler 12/09/20
FT Made	2 vs Syracuse 12/05/19, vs Appalachian St. 12/14/19
FT Attempts	2 vs Kent St. 11/15/19, vs Syracuse 12/05/19, vs Appalachian St. 12/14/19

2021-22 WOLVERINES



#25 Whitney Sollom
Sophomore
Forward
Hartland, Mich.
Hartland

Sophomore (2021-22)

- Seen action in seven games off the bench
- Had three points and a rebound in seven minutes against Akron (Dec. 5)
- Made season debut against St. Francis Brooklyn (Nov. 13), recording four points, three rebounds, one block and one steal in 12 minutes

Freshman (2020-21)

- Appeared in 10 games off the bench
- Scored two points at Iowa (Feb. 25)
- Scored a career-best five points to go with a rebound against Illinois (Jan. 10)
- Went for four points and five rebounds with a block at Oakland (Nov. 27)

Prep

- Hartland (2020)
- One of three finalists for Michigan Miss Basketball
- Named to Associated Press all-state first team as a senior (2020)
- Member of the 2020 Michigan Dream Team
- McDonald's All-America game nominee
- Two-time Livingston County Player of the Year (2019, 2020)
- Four-time All-Livingston County first team
- Helped Hartland to 12 championships over four years
- Recorded two triple-doubles (points, rebounds, blocks) during her high school career
- Named to 2020 Honor Roll at Hartland
- Averaged 10.5 ppg and 10.9 rpg as a senior, leading Hartland (23-1) to the regional final game before the remainder of the tournament was canceled
- Reached the 1,000-point mark as a senior, scoring a season-high 18 points in a semifinal win over Linden
- Averaged 10.9 ppg and 8.8 rpg as a junior while recording 67 blocks as a junior
- Four-star recruit and ranked No. 77 in her class by Prospects Nation
- Three-star recruit from ESPN
- Played AAU for the Michigan Mystics

Personal

- Daughter of Ken and Dianne Sollom
- Father, Ken, played football at Michigan and mother, Dianne, played basketball at Michigan State
- Birthday is July 9, 2001

2021-22 GAME-BY-GAME

#25 SOLLUM, Whitney

Opponent	Date	GS	MIN	Total		3-Pointers		Free throws		Rebounds			PF	A	TO	BLK	STL	PTS	AVG	
				FG	FGA	PCT	3FG	3FGA	PCT	FT	FTA	PCT								OFF
St. Francis Brooklyn	11/13/2021		12:22	2-4	.500	0-0	.000	0-0	.000	2	1	3	3.0	0	1	0	1	1	4	4.0
at Central Mich.	11/20/2021		03:30	1-2	.500	0-0	.000	0-0	.000	2	0	2	2.5	0	0	0	0	0	2	3.0
Oakland	11/22/2021		01:03	0-0	.000	0-0	.000	0-0	.000	0	0	0	1.7	1	0	0	0	0	0	2.0
vs Mississippi St.	11/27/2021		01:00	0-0	.000	0-0	.000	0-0	.000	0	0	0	1.3	0	0	0	0	0	0	1.5
Akron	12/05/2021		06:49	1-1	1.000	0-0	.000	1-4	.250	1	0	1	1.2	0	0	0	0	0	3	1.8
Ohio St.	12/31/2021		00:55	0-0	.000	0-0	.000	0-0	.000	0	0	0	1.0	0	0	0	0	0	0	1.5
Rutgers	01/09/2022		03:16	0-1	.000	0-0	.000	1-2	.500	1	0	1	1.0	0	0	0	0	0	1	1.4
Totals			0 28:55	4-8	.500	0-0	.000	2-6	.333	6	1	7	1.0	1	1	0	1	1	10	1.4

Player Averages

Games Played	Minutes/ game	Points/ game	FG Pct	3FG Pct	FT Pct	Rebounds/ game	Assists/ game	Turnovers/ game	Assist/Turnover ratio	Steals/ game	Blocks/ game
7	4.1	1.4	50.0	0.0	33.3	1.0	0.1	0.0	1.0	0.1	0.1

CAREER STATS

SOLLUM, Whitney

SEASON	TEAM	GP-GS	MIN/AVG	Field Goals		3-Point		F-Throws		Rebounds			Scoring							
				FG	FGA	FG%	3FG	3FGA	3FG%	FT	FTA	FT%	OFF	DEF	TOT	AVG	PF	FO	A	TO
2020-21	Mich	10-0	35/3.5	6-9	.667	0-0	.000	1-1	1.000	5	9	14	1.4	6-0	2	6	3	0	13	1.3
2021-22	Mich	7-0	29/4.1	4-8	.500	0-0	.000	2-6	.333	6	1	7	1.0	1-0	1	0	1	1	10	1.4
TOTAL		17-0	64/3.8	10-17	.588	0-0	.000	3-7	.429	11	10	21	1.2	7-0	3	6	4	1	23	1.4

Single Game Highs

Statistic	Value
Points	5 vs Illinois 01/10/21
Rebounds	5 at Oakland 11/27/20
Assists	1 at Oakland 11/27/20, vs Illinois 01/10/21, vs St. Francis Brooklyn 11/13/21
Steals	1 vs St. Francis Brooklyn 11/13/21
Blocks	2 vs Butler 12/09/20
FG Made	2 at Oakland 11/27/20, vs Illinois 01/10/21, vs St. Francis Brooklyn 11/13/21
FG Attempts	4 vs St. Francis Brooklyn 11/13/21
FT Made	1 vs Illinois 01/10/21, vs Akron 12/05/21, vs Rutgers 01/09/22
FT Attempts	4 vs Akron 12/05/21

2021-22 WOLVERINES



#30 Elise Stuck
Sophomore
Guard/Forward
Charlevoix, Mich.
Charlevoix

Sophomore (2021-22)

- Played in 12 games, starting twice
- Converted a three-point play against No. 25 Ohio State (Dec. 31), finishing with three points, one rebound and one assist
- Tied a career high with four points while grabbing a career-best seven boards in her first career start at Central Michigan (Nov. 20)
- Grabbed six rebounds while scoring three points against UMass Lowell (Nov. 16)
- Made season debut against St. Francis Brooklyn (Nov. 13), scoring two points with four rebounds

Freshman (2020-21)

- Appeared in 10 games off the bench
- Hit her second triple of the season at Wisconsin (Jan. 14)
- Grabbed a career-high four boards in nine minutes against Nebraska (Jan. 7)
- Had a career-best four points against Wright State (Dec. 6)
- Scored first career points with a left-wing triple at Oakland (Nov. 27)

Prep

- Charlevoix (2020)
- Member of National Honor Society
- Missed majority of her senior season with a knee injury before returning for the final five games where she averaged 12.6 ppg and 6.2 rpg
- All-time leading scorer in Charlevoix history, scoring 1,584 points
- Set a school record by scoring 43 points in a game
- Finished her career with 1,584 points and 823 rebounds
- Averaged 21.3 ppg 10.2 rpg and 3.0 bpg as a junior, her last full season of competition
- Nominated for McDonald's All-America Game
- Named to all-state first team, all-conference first and all-district first team three times (2017, 2018, 2019)
- Three-time member of the Detroit Free Press All-State first team (2017, 2018, 2019)
- Named one of BCAM's Best for three straight seasons
- Recipient of the BCAM Team First Award in 2020
- Four-time Academic All-State
- Played AAU for the Michigan Mystics

Personal

- Daughter of Matt and Erica Stuck
- Father, Matt, played basketball at Oakland and twin brother, Luke, is playing football at Hope College
- Birthday is Dec. 31, 2001
- Enrolled in the School of Kinesiology

2021-22 GAME-BY-GAME

#30 STUCK, Elise

Opponent	Date	GS	MIN	Total		3-Pointers		Free throws		Rebounds			PF	A	TO	BLK	STL	PTS	AVG		
				FG-FGA	PCT	3FG-3FGA	PCT	FT-FTA	PCT	OFF	DEF	TOT								AVG	
St. Francis Brooklyn	11/13/2021		09:26	0-1	.000	0-0	.000	2-2	1.000	1	3	4	4.0	2	1	5	0	1	2	2.0	
UMass Lowell	11/16/2021		17:29	0-1	.000	0-0	.000	3-4	.750	1	5	6	5.0	2	2	1	0	0	3	2.5	
at Central Mich.	11/20/2021	*	20:34	2-3	.667	0-1	.000	0-0	.000	3	4	7	5.7	0	0	1	0	0	4	3.0	
Oakland	11/22/2021	*	12:38	1-1	1.000	0-0	.000	2-2	1.000	2	2	4	5.3	0	1	2	0	0	4	3.3	
vs Oregon St.	11/26/2021		04:00	0-0	.000	0-0	.000	0-0	.000	0	0	0	4.2	0	0	0	0	0	0	2.6	
vs Mississippi St.	11/27/2021		01:00	0-0	.000	0-0	.000	0-0	.000	0	1	1	3.7	0	0	0	0	0	0	2.2	
at Louisville	12/02/2021		02:11	0-0	.000	0-0	.000	0-0	.000	0	0	0	3.1	0	0	0	0	0	0	1.9	
Akron	12/05/2021		08:11	1-2	.500	0-0	.000	0-0	.000	0	1	1	2.9	4	0	1	0	0	2	1.9	
at Wisconsin	12/09/2021		01:41	0-0	.000	0-0	.000	0-0	.000	0	1	1	2.7	1	0	1	0	0	0	1.7	
Minnesota	12/12/2021		01:50	0-1	.000	0-0	.000	0-0	.000	0	0	0	2.4	0	0	0	0	0	0	1.5	
Ohio St.	12/31/2021		03:38	1-1	1.000	0-0	.000	1-1	1.000	1	0	1	2.3	1	1	1	0	0	3	1.6	
Rutgers	01/09/2022		11:14	1-1	1.000	0-0	.000	0-0	.000	0	5	5	2.5	2	0	1	0	0	2	1.7	
Totals			2	93:52	6-11	.545	0-1	.000	8-9	.889	8	22	30	2.5	12	5	13	0	1	20	1.7

Player Averages

Games Played	Minutes/ game	Points/ game	FG Pct	3FG Pct	FT Pct	Rebounds/ game	Assists/ game	Turnovers/ game	Assist/Turnover ratio	Steals/ game	Blocks/ game
12	7.8	1.7	54.5	0.0	88.9	2.5	0.4	1.1	0.4	0.1	0.0

CAREER STATS

STUCK, Elise

SEASON	TEAM	GP-GS	MIN	Field Goals		3-Point		F-Throws		Rebounds			PF-FO			TO			Scoring		
				FG-FGA	FG%	3FG-3FGA	3FG%	FT-FTA	FT%	OFF	DEF	TOT	AVG	A	TO	BLK	STL	PTS	AVG		
2020-21	Mich	10-0	67	6.7	3-9	.333	2-4	.500	3-4	.750	2	8	10	1.0	2-0	3	4	1	2	11	1.1
2021-22	Mich	12-2	94	7.8	6-11	.545	0-1	.000	8-9	.889	8	22	30	2.5	12-0	5	13	0	1	20	1.7
TOTAL	22-2	161	7.3	9-20	.450	2-5	.400	11-13	.846	10	30	40	1.8	14-0	8	17	1	3	31	1.4	

Single Game Highs

Statistic	Value
Points	4 vs Wright St. 12/06/20, at Central Mich. 11/20/21, vs Oakland 11/22/21
Rebounds	7 at Central Mich. 11/20/21
Assists	2 vs Butler 12/09/20, vs UMass Lowell 11/16/21
Steals	1 vs Butler 12/09/20, at Wisconsin 01/14/21, vs St. Francis Brooklyn 11/13/21
Blocks	1 vs Central Mich. 11/25/20
FG Made	2 at Central Mich. 11/20/21
FG Attempts	3 at Oakland 11/27/20, at Central Mich. 11/20/21
3FG Made	1 at Oakland 11/27/20, at Wisconsin 01/14/21
3FG Attempts	2 at Oakland 11/27/20
FT Made	3 vs UMass Lowell 11/16/21
FT Attempts	4 vs UMass Lowell 11/16/21



2021-22 WOLVERINES



#32 Leigha Brown
Senior*
Guard
Auburn, Ind.
DeKalb

**Will use a fifth year of eligibility in 2022-23 at Michigan (COVID year)*

Senior (2021-22)

- Appeared in 12 games, starting eight times with 10 double-figure scoring games
- Named to Preseason All-Big Ten team, to all-tournament team at the Daytona Beach Invitational and MVP of the BHOF Women's Showcase
- Finished with 24 points on 9-for-12 shooting with five boards, a career-best seven assists, two steals and two blocks against No. 25 Ohio State (Dec. 31)
- Had a season-best 25 points with five rebounds and four assists against No. 5 Baylor (Dec. 19)
- Recorded 13 points, six rebounds, five assists, four steals and two blocks at Wisconsin (Dec. 12)
- Scored 23 points with five rebounds and three assists in just 25 minutes off the bench against Mississippi State (Nov. 27)
- Scored 18 points in 39 minutes of action against IUPUI (Nov. 9)

Junior (2020-21)

- Named to the All-Big Ten second team by both the coaches and media
- Named Big Ten Player of the Week (Jan. 4) for the first time in her career
- Appeared and started in 18 games, averaging 18.2 points and 4.5 rebounds in 33.5 minutes per game
- Scored in double figures in all but one game with nine 20-point performances
- Racked up three 20-point games during Michigan's NCAA Tournament run, highlighted by a 28-point performance against Florida Gulf Coast (March 21)
- Averaged 24.7 points per game during the NCAA Tournament
- Reached the 1,000-point mark for her career during Michigan's win over FGCU (March 21)
- Went for 22 points on 8-for-10 shooting, including 4-for-5 from three-point range and six assists at No. 15 Northwestern
- Had a season-high 26 points on 9-for-14 shooting with three boards and three assists against Wisconsin
- Went for a team-high 24 points on 9-for-11 shooting with a career-best seven boards and two assists against Wright State (Dec. 6)
- Had 22 points, four rebounds, five assists and three steals in her Michigan debut against Central Michigan (Nov. 25)

At Nebraska

Sophomore (2019-20)

- Big Ten Sixth Player of the Year, named All-Big Ten honorable mention
- Academic All-Big Ten
- Led Nebraska in scoring at 14.4 ppg, while also going for 3.3 rpg and 2.1 apg
- Appeared in all 30 games off the bench for the Huskers
- Scored in double figures 23 times, recording eight 20-point games
- Went for a season-high 25 points against Manhattan (Dec. 22)

Freshman (2018-19)

- Named Big Ten Freshman of the Week (Jan. 7)
- Appeared in all 30 games, starting the final six games of the season
- Averaged 9.6 ppg, 2.6 rpg and 1.5 apg
- Recorded 11 double-figure performances, highlighted by a career-high 30 points in just 25 minutes against Purdue (Feb. 10)

Prep

- DeKalb (2018)
- Averaged 28.0 ppg, 11.5 rpg, 5.0 apg, 1.7 spg and 1.4 bpg as a senior
- Named to the Indiana All-Star team, finishing in the top five in voting for Indiana Miss Basketball
- Finished her high school career with 1,798 points, 810 rebounds, 325 assists, 161 steals and 86 blocks
- Recorded a triple-double during her senior season, going for 34 points, 20 rebounds and 10 assists
- Scored a career-high 53 points with 24 rebounds against Lakeland (Nov. 3, 2017)
- Earned IBCA Supreme 15 Underclass All-State honors as a junior
- Played AAU for Always 100

Personal

- Daughter of Nate and Jenese Brown
- Enrolled in the College of Literature, Science and the Arts, majoring in general studies
- Birthday is July 14, 2000

2021-22 GAME-BY-GAME

#32 BROWN, Leigha

Opponent	Date	GS	MIN	Total		3-Pointers		Free throws		Rebounds			PF	A	TO	BLK	STL	PTS	AVG		
				FG-FGA	PCT	3FG-3FGA	PCT	FT-FTA	PCT	OFF	DEF	TOT								AVG	
IUPUI	11/09/2021	*	39:03	5-12	.417	1-4	.250	7-9	.778	0	2	2	2.0	0	4	3	1	1	18	18.0	
St. Francis Brooklyn	11/13/2021	*	02:12	1-1	1.000	0-0	.000	0-1	.000	0	0	0	1.0	0	2	0	0	0	2	10.0	
vs Oregon St.	11/26/2021	*	22:00	4-11	.364	1-2	.500	5-5	1.000	2	1	3	1.7	3	0	3	1	2	14	11.3	
vs Mississippi St.	11/27/2021	*	25:00	9-18	.500	2-4	.500	3-4	.750	1	4	5	2.5	4	3	2	0	0	23	14.3	
at Louisville	12/02/2021	*	29:27	2-8	.250	0-2	.000	3-3	1.000	0	1	1	2.2	3	1	4	0	0	7	12.8	
Akron	12/05/2021	*	13:52	2-2	1.000	0-0	.000	6-6	1.000	1	2	3	2.3	2	2	1	1	1	10	12.3	
at Wisconsin	12/09/2021	*	28:49	6-11	.545	1-3	.333	0-2	.000	0	6	6	2.9	1	5	1	2	4	13	12.4	
Minnesota	12/12/2021	*	34:22	8-14	.571	0-3	.000	3-4	.750	0	2	2	2.8	2	5	2	0	0	19	13.3	
vs Baylor	12/19/2021	*	41:36	7-16	.438	0-3	.000	11-13	.846	0	5	5	3.0	2	4	2	0	2	25	14.6	
Ohio St.	12/31/2021	*	35:35	9-12	.750	2-2	1.000	4-9	.444	0	5	5	3.2	1	7	2	2	2	24	15.5	
at Nebraska	01/04/2022	*	36:52	3-13	.231	0-2	.000	4-6	.667	2	3	5	3.4	2	4	6	0	4	10	15.0	
Rutgers	01/09/2022	*	28:39	6-10	.600	3-4	.750	4-4	1.000	1	2	3	3.3	2	2	0	0	0	19	15.3	
Totals			8	337:28	62-128	.484	10-29	.345	50-66	.758	7	33	40	3.3	22	39	27	7	16	184	15.3

Player Averages

Games Played	Minutes/game	Points/game	FG Pct	3FG Pct	FT Pct	Rebounds/game	Assists/game	Turnovers/game	Assist/Turnover ratio	Steals/game	Blocks/game
12	28.1	15.3	48.4	34.5	75.8	3.3	3.3	2.3	1.4	1.3	0.6

CAREER STATS

BROWN, Leigha

SEASON	TEAM	GP-GS	MIN/AVG	Field Goals		3-Point		F-Throws		Rebounds			Scoring							
				FG-FGA	FG%	3FG-3FGA	3FG%	FT-FTA	FT%	OFF	DEF	TOT	AVG	PF-FO	A	TO	BLK	STL	PTS	AVG
2018-19	Nebr	30-6	574/19.1	94-223	.422	32-89	.360	69-94	.734	24	55	79	2.6	48-0	45	30	3	21	289	9.6
2019-20	Nebr	30-0	775/25.8	143-328	.436	31-91	.341	116-152	.763	27	75	102	3.4	56-0	62	50	3	16	433	14.4
2020-21	Mich	18-18	604/33.5	114-218	.523	16-52	.308	83-110	.755	22	59	81	4.5	42-0	56	56	7	23	327	18.2
2021-22	Mich	12-8	337/28.1	62-128	.484	10-29	.345	50-66	.758	7	33	40	3.3	22-0	39	27	7	16	184	15.3
TOTAL FOR Mich		30-26	941/31.4	176-346	.509	26-81	.321	133-176	.756	29	92	121	4.0	64-0	95	83	14	39	511	17.0
TOTAL		90-32	2290/25.4	413-897	.460	89-261	.341	318-422	.754	80	222	302	3.4	168-0	202	163	20	76	1233	13.7

Single Game Highs

Statistic	Value
Points	30 vs Purdue 02/10/19
Rebounds	10 vs Northwestern 03/11/21
Assists	7 vs Ohio St. 12/31/21
Steals	6 at Iowa 02/25/21
Blocks	2 5 times
FG Made	12 vs FGCU 03/21/21
FG Attempts	18 vs Mississippi St. 11/27/21
3FG Made	4 5 times
3FG Attempts	7 vs Illinois 02/22/20, vs Manhattan 12/22/19
FT Made	11 at Purdue 02/11/21, vs Tennessee 03/23/21, vs Baylor 12/19/21
FT Attempts	14 at Purdue 02/11/21

2021-22 WOLVERINES



#33 Emily Kiser
Senior
Forward
Noblesville, Ind.
Noblesville

Senior (2021-22)

- Named to the Big Ten Honor Roll (Nov. 22)
- Started all 15 games, scoring in double figures eight times
- Had second double-double of the season with 18 points and a career-best 15 rebounds against No. 25 Ohio State (Dec. 31)
- Scored a career-high 19 points with eight rebounds, four assists, two steals and a block against Akron (Dec. 5)
- Scored 16 points with eight boards and three assists at Central Michigan (Nov. 20)
- Recorded the first double-double of her career with 13 points to go with 11 rebounds, three assists and three blocks
- Just missed a double-double with nine points and 12 boards against St. Francis Brooklyn (Nov. 13)

Junior (2020-21)

- Made season debut against Wisconsin (Dec. 31) after missing the first five games with an ankle injury
- Appeared in 17 games off the bench
- Recorded a career-best five assists against Northwestern (March 6)
- Had two points and seven boards at Indiana (Feb. 18)
- Had three points with three boards in seven minutes against Michigan State (Feb. 16)
- Went for eight points and a rebound at Wisconsin (Jan. 14)
- Had eight points and a career-high eight rebounds against Wisconsin (Dec. 31)

Sophomore (2019-20)

- Academic All-Big Ten
- Appeared in 29 games off the bench
- Had 10 points and seven rebounds against App State (Dec. 14)
- Scored nine points three times, coming against Western Michigan (Nov. 8) and Kent State (Nov. 15) and Eastern Michigan (Nov. 27)

Freshman (2018-19)

- Appeared in 18 games off the bench
- Went for six points and three rebounds in 12 minutes against LIU Brooklyn (Dec. 6)
- Scored six points with six rebounds in 11 minutes against Detroit Mercy (Nov. 19)
- Made collegiate debut against Mount St. Mary's, going for four points and three rebounds

High School

- Noblesville (2018)
- National Honor Society member
- Academic All-State in both basketball and volleyball
- Named to Indiana All-Star Team
- Earned the John Wooden MCL Restaurant All-Star Citizenship Award
- 2017-18 Associated Press All-State first team
- IBCA/Subway Senior All-State Supreme 15
- Averaged 21 points and 13.4 rebounds per game as a senior
- Had a pair of 20-point, 20-rebound games
- Also recorded a triple-double of 18 points, 13 rebounds and 10 assists against New Palestine
- Finished her career with 1,328 points and 927 rebounds, setting the Noblesville record for career rebounds
- Three-time Hoosier Crossroads All-Conference Team
- Member of the Indiana Junior All-Stars (2017)
- Ranked No. 78 and a four-star recruit by ESPN HoopGurlz
- Played AAU for Indiana Flight Thunder
- Also played volleyball at Noblesville, helping the Millers to a regional final

Personal

- Full name: Emily Katherine Kiser
- Birthday: February 10, 2000
- Daughter of Brian and Christina Kiser
- Father, Brian, participated in track and field at Purdue; Brother, John, plays basketball at Valparaiso; Sister, Jessica, played basketball at Purdue Northwest
- Majoring in communication and media

2021-22 GAME-BY-GAME

#33 KISER, Emily

Opponent	Date	GS	MIN	Total		3-Pointers		Free throws		Rebounds			PF	A	TO	BLK	STL	PTS	AVG		
				FG-FGA	PCT	3FG-3FGA	PCT	FT-FTA	PCT	OFF	DEF	TOT								AVG	
IUPUI	11/09/2021	*	31:16	2-6	.333	2-5	.400	0-0	.000	0	9	9	9.0	4	1	1	2	0	6	6.0	
St. Francis Brooklyn	11/13/2021	*	16:52	3-6	.500	0-1	.000	3-4	.750	4	8	12	10.5	1	3	0	0	2	9	7.5	
UMass Lowell	11/16/2021	*	29:34	4-16	.250	0-4	.000	5-6	.833	4	7	11	10.7	0	3	2	3	0	13	9.3	
at Central Mich.	11/20/2021	*	31:56	6-12	.500	1-2	.500	3-6	.500	1	7	8	10.0	0	3	3	2	0	16	11.0	
Oakland	11/22/2021	*	33:17	4-8	.500	1-2	.500	2-2	1.000	3	5	8	9.6	2	2	6	1	2	11	11.0	
vs Oregon St.	11/26/2021	*	36:00	1-7	.143	0-2	.000	2-2	1.000	2	4	6	9.0	3	1	2	0	1	4	9.8	
vs Mississippi St.	11/27/2021	*	30:00	2-6	.333	0-2	.000	0-0	.000	1	5	6	8.6	3	0	2	0	0	4	9.0	
at Louisville	12/02/2021	*	31:42	4-10	.400	0-4	.000	2-3	.667	3	1	4	8.0	2	1	1	1	2	10	9.1	
Akron	12/05/2021	*	24:02	8-12	.667	0-1	.000	3-3	1.000	3	5	8	8.0	2	4	3	1	2	19	10.2	
at Wisconsin	12/09/2021	*	35:36	6-12	.500	0-0	.000	5-6	.833	4	4	8	8.0	3	0	2	0	0	17	10.9	
Minnesota	12/12/2021	*	31:07	3-4	.750	0-0	.000	0-0	.000	3	6	9	8.1	4	1	2	0	2	6	10.5	
vs Baylor	12/19/2021	*	39:31	1-6	.167	0-1	.000	2-2	1.000	0	5	5	7.8	3	1	2	2	0	4	9.9	
Ohio St.	12/31/2021	*	31:40	7-11	.636	0-0	.000	4-4	1.000	4	11	15	8.4	1	2	2	1	0	18	10.5	
at Nebraska	01/04/2022	*	28:37	5-11	.455	0-1	.000	3-6	.500	3	3	6	8.2	5	0	1	0	0	13	10.7	
Rutgers	01/09/2022	*	27:46	3-8	.375	1-3	.333	0-0	.000	1	1	2	7.8	4	2	4	0	1	7	10.5	
Totals			15	458:57	59-135	.437	5-28	.179	34-44	.773	36	81	117	7.8	37	24	33	13	12	157	10.5

Player Averages

Games Played	Minutes/game	Points/game	FG Pct	3FG Pct	FT Pct	Rebounds/game	Assists/game	Turnovers/game	Assist/Turnover ratio	Steals/game	Blocks/game
15	30.6	10.5	43.7	17.9	77.3	7.8	1.6	2.2	0.7	0.8	0.9

CAREER STATS

KISER, Emily

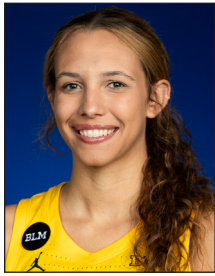
SEASON TEAM	GP-GS	MIN/AVG	Field Goals		3-Point		F-Throws		Rebounds			Scoring							
			FG-FGA	FG%	3FG-3FGA	3FG%	FT-FTA	FT%	OFF	DEF	TOT	AVG	PF-FO	A	TO	BLK	STL	PTS	AVG
2018-19 Mich	18-0	91/5.1	11-25	.440	0-0	.000	12-17	.706	16	13	29	1.6	6-0	6	6	5	2	34	1.9
2019-20 Mich	29-0	246/8.5	33-67	.493	4-11	.364	18-25	.720	13	25	38	1.3	27-0	18	14	11	6	88	3.0
2020-21 Mich	17-0	212/12.5	15-39	.385	2-10	.200	9-12	.750	19	25	44	2.6	25-0	19	6	3	4	41	2.4
2021-22 Mich	15-15	459/30.6	59-135	.437	5-28	.179	34-44	.773	36	81	117	7.8	37-1	24	33	13	12	157	10.5
TOTAL	79-15	1009/12.8	118-266	.444	11-49	.224	73-98	.745	84	144	228	2.9	95-1	67	59	32	24	320	4.1

Single Game Highs

Statistic	Value
Points	19 vs Akron 12/05/21
Rebounds	15 vs Ohio St. 12/31/21
Assists	5 vs Northwestern 03/06/21
Steals	2 6 times
Blocks	3 vs Appalachian St. 12/14/19, vs UMass Lowell 11/16/21
FG Made	8 vs Akron 12/05/21
FG Attempts	16 vs UMass Lowell 11/16/21
3FG Made	2 vs Wisconsin 12/31/20, vs IUPUI 11/09/21
3FG Attempts	5 vs IUPUI 11/09/21
FT Made	5 vs UMass Lowell 11/16/21, at Wisconsin 12/09/21
FT Attempts	6 4 times



2021-22 WOLVERINES



#34 Izabel Varejão
Junior
Center
Vitoria-Espirito Santo, Brazil
Neuse Christian Academy (Raleigh, N.C.)

Junior (2021-22)

- Appeared in 11 games off the bench
- Scored seven points on 3-for-3 shooting at Nebraska (Jan. 4)
- Went for seven points and three rebounds against Minnesota (Dec. 12)
- Had seven points on 3-for-3 shooting with one rebound and an assist at Wisconsin (Dec. 9)
- Made season debut against St. Francis Brooklyn (Nov. 13)

Sophomore (2020-21)

- Arrived back with the team in February after facing travel issues due to COVID-19
- Did not see game action
- Academic All-Big Ten

Freshman (2019-20)

- Earned first varsity letter after appearing in all 32 games, starting once
- Averaged 5.4 points, 3.7 rebounds and 0.8 blocks in 14.2 minutes per game
- Had a career-best 12 points with two rebounds and three assists in the Big Ten Tournament against Nebraska (March 5)
- Had 10 points and seven rebounds against Michigan State (Feb. 23)
- Had six points, six rebounds and three blocks at Minnesota (Feb. 10)
- Scored 11 points on 5-for-6 shooting with four rebounds, two assists and three steals at Northwestern (Jan. 30)
- Recorded 11 points to go with seven rebounds, four assists and three blocks at Eastern Michigan (Nov. 27)

Prep

- Neuse Christian Academy (2019)
- Averaged 14.1 points, 7.6 rebounds and 2.2 blocks per game as a junior
- Helped high school team to the National Christian School Athletic Association Division I championship and a runner-up finish in the 1A N.C. Independent Schools Athletic Association as a sophomore
- Member of U18 Brazilian National Team in 2016
- McDonald's All-America game nominee
- Ranked as No. 12 recruit by All-Star Girls Report (ASGR)

Personal

- Uncle, Anderson Varejão, played in the NBA for 13 seasons

2021-22 GAME-BY-GAME

#34 VAREJÃO, Izabel

Opponent	Date	GS	MIN	Total		3-Pointers		Free throws		Rebounds			PF	A	TO	BLK	STL	PTS	AVG	
				FG-FGA	PCT	3FG-3FGA	PCT	FT-FTA	PCT	OFF	DEF	TOT								AVG
St. Francis Brooklyn	11/13/2021		05:16	0-3	.000	0-0	.000	0-0	.000	0	0	0	0	2	0	1	1	0	0	0.0
UMass Lowell	11/16/2021		02:55	0-2	.000	0-0	.000	0-0	.000	1	0	1	0.5	1	0	1	0	0	0	0.0
at Central Mich.	11/20/2021		05:45	1-2	.500	0-1	.000	1-2	.500	0	0	0	0.3	0	0	0	0	1	3	1.0
Oakland	11/22/2021		00:02	0-0	.000	0-0	.000	0-0	.000	0	0	0	0.3	0	0	0	0	0	0	0.8
vs Mississippi St.	11/27/2021		02:00	0-0	.000	0-0	.000	0-0	.000	0	1	1	0.4	0	0	0	0	0	0	0.6
Akron	12/05/2021		04:41	1-2	.500	0-0	.000	0-0	.000	0	1	1	0.5	0	0	2	1	0	2	0.8
at Wisconsin	12/09/2021		07:44	3-3	1.000	0-0	.000	1-2	.500	1	0	1	0.6	1	1	0	0	0	7	1.7
Minnesota	12/12/2021		06:48	3-5	.600	0-0	.000	1-2	.500	1	2	3	0.9	0	0	0	1	0	7	2.4
vs Baylor	12/19/2021		04:06	1-2	.500	0-0	.000	0-0	.000	1	2	3	1.1	0	0	1	0	0	2	2.3
at Nebraska	01/04/2022		07:29	3-3	1.000	0-0	.000	1-2	.500	0	1	1	1.1	2	0	0	0	0	7	2.8
Rutgers	01/09/2022		03:16	0-0	.000	0-0	.000	0-0	.000	0	0	0	1.0	1	0	1	0	0	0	2.5
Totals			0 50:02	12-22	.545	0-1	.000	4-8	.500	4	7	11	1.0	7	1	6	3	1	28	2.5

Player Averages

Games Played	Minutes/game	Points/game	FG Pct	3FG Pct	FT Pct	Rebounds/game	Assists/game	Turnovers/game	Assist/Turnover ratio	Steals/game	Blocks/game
11	4.5	2.5	54.5	0.0	50.0	1.0	0.1	0.5	0.2	0.1	0.3

CAREER STATS

VAREJÃO, Izabel

SEASON	TEAM	GP-GS	MIN/AVG	Field Goals		3-Point		F-Throws		Rebounds			PF-FO	A	TO	BLK	STL	Scoring		
				FG-FGA	FG%	3FG-3FGA	3FG%	FT-FTA	FT%	OFF	DEF	TOT						AVG	PTS	AVG
2019-20	Mich	32-1	455/14.2	70-146	.479	2-14	.143	30-49	.612	43	76	119	3.7	67-2	34	34	27	16	172	5.4
2021-22	Mich	11-0	50/4.5	12-22	.545	0-1	.000	4-8	.500	4	7	11	1.0	7-0	1	6	3	1	28	2.5
TOTAL		43-1	505/11.8	82-168	.488	2-15	.133	34-57	.596	47	83	130	3.0	74-2	35	40	30	17	200	4.7

Single Game Highs

Statistic	Value
Points	12 vs Nebraska 03/05/20
Rebounds	7 vs Western Mich. 11/08/19, at Michigan St. 02/23/20, at Eastern Mich. 11/27/19
Assists	4 at Eastern Mich. 11/27/19
Steals	3 at Northwestern 01/30/20
Blocks	4 vs Bradley 11/10/19
FG Made	6 vs Nebraska 03/05/20
FG Attempts	9 at Eastern Mich. 11/27/19, vs Nebraska 03/05/20
3FG Made	1 vs Bradley 11/10/19, vs Kent St. 11/15/19
3FG Attempts	3 vs Bradley 11/10/19
FT Made	4 at Michigan St. 02/23/20, vs Rutgers 01/26/20
FT Attempts	5 at Michigan St. 02/23/20, at Eastern Mich. 11/27/19

2021-22 WOLVERINES



#44 Cameron Williams
Sophomore
Forward
Chicago, Ill.
Whitney Young

Sophomore (2021-22)

- Appeared in 13 games off the bench
- Had six points and a rebound in six minutes against Rutgers (Jan. 9)
- Scored six points, including a pair of free throws in overtime, off the bench against No. 5 Baylor (Dec. 19)
- Had four points and two rebounds in 10 minutes against Mississippi State (Nov. 27)
- Tied a career high with nine points and five boards in 18 minutes at Central Michigan (Nov. 20)
- Scored four points with two rebounds against St. Francis Brooklyn (Nov. 13)

Freshman (2020-21)

- Earned first varsity letter
- Appeared in 12 games off the bench, averaging 1.7 points and 1.0 rebounds in 4.2 minutes per game
- Playing in her hometown of Chicago, had three points in seven minutes at No. 15 Northwestern (Jan. 3)
- Scored four points on 2-for-3 shooting against Butler (Dec. 9)
- Scored first career points at Oakland (Nov. 27), going for a career-best nine points and seven rebounds

Prep

- Whitney Young (2020)
- Member of National Honor Society and the Honor Roll
- Five-star recruit from ESPN HoopGurlz, ranked No. 30 in the class
- Won 2019 City Championship en route to MVP honors
- McDonald's All-America game nominee
- Had career bests of 32 points, 17 rebounds and nine blocks during her high school career
- Played AAU for Mac Irvin Fire

Personal

- Daughter of Aaron and Heather Williams
- Father, Aaron, played basketball at Xavier and in the NBA, and mother, Heather, ran track at Illinois-Chicago
- Sister, Danyelle, played volleyball at Northwestern and Tulane
- Enrolled in the School of Kinesiology and plans to study sports management
- Birthday is Nov. 15, 2001

2021-22 GAME-BY-GAME

#44 WILLIAMS, Cameron

Opponent	Date	GS	MIN	Total		3-Pointers		Free throws		Rebounds				Other								
				FG-FGA	PCT	3FG-3FGA	PCT	FT-FTA	PCT	OFF	DEF	TOT	AVG	PF	A	TO	BLK	STL	PTS	AVG		
IUPUI	11/09/2021		00:42	0-0	.000	0-0	.000	0-0	.000	0	0	0	0.0	1	0	0	0	0	0	0	0	0
St. Francis Brooklyn	11/13/2021		08:31	2-2	1.000	0-0	.000	0-0	.000	1	1	2	1.0	1	0	0	0	0	0	4	2.0	
UMass Lowell	11/16/2021		04:00	0-0	.000	0-0	.000	0-0	.000	0	0	0	0.7	1	0	0	0	0	0	0	1.3	
at Central Mich.	11/20/2021		18:15	4-8	.500	0-0	.000	1-2	.500	3	2	5	1.8	3	0	1	0	0	0	9	3.3	
Oakland	11/22/2021		08:26	2-3	.667	0-0	.000	1-1	1.000	1	0	1	1.6	0	1	2	0	0	0	5	3.6	
vs Oregon St.	11/26/2021		04:00	0-0	.000	0-0	.000	0-0	.000	0	1	1	1.5	2	0	0	0	0	0	0	3.0	
vs Mississippi St.	11/27/2021		10:00	2-2	1.000	0-0	.000	0-0	.000	1	1	2	1.6	2	0	1	0	1	4	3.1		
at Louisville	12/02/2021		07:38	0-0	.000	0-0	.000	0-0	.000	0	2	2	1.6	1	0	3	0	0	0	0	2.8	
Minnesota	12/12/2021		01:35	0-0	.000	0-0	.000	1-2	.500	0	0	0	1.4	1	0	0	0	0	1	2.6		
vs Baylor	12/19/2021		13:49	2-3	.667	0-0	.000	2-2	1.000	4	1	5	1.8	1	0	0	0	0	6	2.9		
Ohio St.	12/31/2021		10:42	3-3	1.000	0-0	.000	0-0	.000	0	2	2	1.8	1	0	1	1	0	6	3.2		
at Nebraska	01/04/2022		07:08	1-2	.500	0-0	.000	0-0	.000	0	0	0	1.7	2	0	1	0	0	2	3.1		
Rutgers	01/09/2022		06:08	3-3	1.000	0-0	.000	0-0	.000	1	0	1	1.6	1	0	0	0	0	6	3.3		
Totals			0	100:54	19-26	.731	0-0	.000	5-7	.714	11	10	21	1.6	17	1	9	1	1	43	3.3	

Player Averages

Games Played	Minutes/game	Points/game	FG Pct	3FG Pct	FT Pct	Rebounds/game	Assists/game	Turnovers/game	Assist/Turnover ratio	Steals/game	Blocks/game
13	7.8	3.3	73.1	0.0	71.4	1.6	0.1	0.7	0.1	0.1	0.1

CAREER STATS

WILLIAMS, Cameron

SEASON	TEAM	GP-GS	MIN/AVG	Field Goals		3-Point		F-Throws		Rebounds				Scoring						
				FG-FGA	FG%	3FG-3FGA	3FG%	FT-FTA	FT%	OFF	DEF	TOT	AVG	PF-FO	A	TO	BLK	STL	PTS	AVG
2020-21	Mich	12-0	51/4.2	7-10	.700	0-0	.000	6-9	.667	6	6	12	1.0	13-1	0	9	0	1	20	1.7
2021-22	Mich	13-0	101/7.8	19-26	.731	0-0	.000	5-7	.714	11	10	21	1.6	17-0	1	9	1	1	43	3.3
TOTAL		25-0	152/6.1	26-36	.722	0-0	.000	11-16	.688	17	16	33	1.3	30-1	1	18	1	2	63	2.5

Single Game Highs

Statistic	Value
Points	9 at Oakland 11/27/20, at Central Mich. 11/20/21
Rebounds	7 at Oakland 11/27/20
Assists	1 vs Oakland 11/22/21
Steals	1 vs Wisconsin 12/31/20, vs Mississippi St. 11/27/21
Blocks	1 vs Ohio St. 12/31/21
FG Made	4 at Central Mich. 11/20/21
FG Attempts	8 at Central Mich. 11/20/21
FT Made	5 at Oakland 11/27/20
FT Attempts	5 at Oakland 11/27/20