

PENN STATE LADY LION

BASKETBALL GAME NOTES

2014-2015

Penn State Athletic Communications: 101D Bryce Jordan Center, University Park, PA 16802 Office: 814-865-1757 Fax: 814-863-3165

Women's Basketball Contact: Kristina Petersen Twitter: @ladylionsid Website: www.GoPSUsports.com Email: kap18@psu.edu Cell: 814-883-4581 Office: 814-865-1757

SCHEDULE/RESULTS

NOVEMBER	
Sun. 2	INDIANA (PA.) (exhibition)..... 2 p.m. <i>Preseason WNIT</i>
Fri. 14	TOWSON..... noon
Sun. 16	WNIT Second Round 2 p.m.
Th-Sa 20-22	WNIT Third or Consolation ... 7 p.m.
Sun. 23	WNIT (CBS College Sports) .. 3 p.m.
Tues. 25	ST. BONAVENTURE 5:30 p.m.

Georgia State Thanksgiving Tournament	
Fri. 28	vs. Liberty 2 p.m.
Sun. 30	vs. GSU/Samford 12:30/2:30 p.m.

DECEMBER	
<i>Big Ten/ACC Challenge</i>	
Thurs. 4	at Syracuse 7 p.m.
Sun. 7	WAGNER 2 p.m.
Wed. 10	at Hartford 7 p.m.
Sun. 14	RIDER 2:30 p.m.
Sun. 21	USF 2 p.m.
Sun. 28	at Iowa * (BTN Plus) 3 p.m.

JANUARY	
Thurs. 1	at Michigan * (BTN Plus) 1 p.m.
Sun. 4	ILLINOIS * (BTN Plus) 2 p.m.
Tues. 6	at Wisconsin * (BTN) 9 p.m.
Sat. 10	RUTGERS * (BTN) noon
Thurs. 15	at Nebraska * (BTN) 7 p.m.
Sun. 18	at Ohio State * (BTN Plus) 2 p.m.
Thurs. 22	INDIANA * (BTN Plus) 7 p.m.
Sun. 25	NORTHWESTERN * (BTN Plus) 2 p.m.
Wed. 28	at Minnesota * (BTN Plus) 8 p.m.



FEBRUARY	
Sun. 1	at Rutgers * (BTN) noon
Thurs. 5	MARYLAND * (BTN Plus) 7 p.m.
Sun. 8	at Purdue * (BTN Plus) 2 p.m.
Wed. 11	MICHIGAN ST. * (BTN Plus) ... 7 p.m.
Sun. 15	MINNESOTA * (BTN Plus) 2 p.m.
Mon. 23	at Maryland * (BTN) 7 p.m.
Thurs. 26	OHIO STATE * (BTN Plus) 7 p.m.

MARCH	
<i>Ninth Annual Pink Zone at Penn State</i>	
Sun. 1	WISCONSIN * (BTN/BTN Plus) .1/3/5 p.m.
Wed.-Sun.	4-8 Big Ten Tournament (BTN/ESPN2) Hoffman Estates, Ill.
Sat.-Tues.	20-23.. NCAA Tourn. 1st & 2nd Round
Sat.-Tues.	27-30..... NCAA Tourn. Regionals

APRIL	
Sun./Tues.	5/7 NCAA Final Four (Tampa, Fla.)
BOLD CAPS indicates home game	
* - indicates Big Ten game	
All times are Eastern Time.	
BTN - Big Ten Network BTN Plus - BTN.com	
Schedule subject to change. Please visit www.GoPSUsports.com for up-to-date tip times.	

Exhibition Game: Indiana (Pa.) at Penn State

Sun., Nov. 2 ▶ 2 p.m. ▶ Bryce Jordan Center ▶ University Park, Pa.

		SETTING THE SCENE
Penn State Lady Lions	IUP Crimson Hawks	The IUP Game
2013-14 Record: 24-8, 13-3 Big Ten Last Game: Stanford 82, PSU 57 (3/30/14) Head Coach: Coquese Washington Career Record: 142-81 (8th yr.) Record at PSU: 142-81 (8th yr.)	2013-14 Record: 18-10, 8-8 PSAC Last Game: Edinboro 79, IUP 60 (3/4/14) Head Coach: Tom McConnell WBB Career Record: 18-10 (2nd yr.) Record at IUP: 18-10 (2nd yr.)	Series: Penn State leads 2-0 Last Official Meeting: PSU 88, IUP 41 (2/17/77) Streak: Penn State - 2 wins Television: none Radio: none Webstream: none Live Stats: GoPSUsports.com
Returning Statistical Leaders	Returning Statistical Leaders	
Points Tori Waldner (4.8)	Points Lindsay Stamp (17.8)	
Rebounds Tori Waldner (5.6)	Rebounds Lindsay Stamp (6.3)	
Assists Tori Waldner (1.0)	Assists Martina Mathe (2.9)	

STORYLINES

- ✓ The Lady Lions claimed their third consecutive Big Ten regular season title with a 13-3 record in conference play. It is the first time in program history that the Lady Lions have won three straight titles (Big Ten or Atlantic 10).
- ✓ The Lady Lions made their 25th overall NCAA Tournament appearance. Penn State is one of only 10 teams to earn 25 or more NCAA Tournament bids.
- ✓ The Lions advanced to the Sweet Sixteen for the 13th time with wins over Wichita State and Florida before falling to Stanford in Palo Alto.
- ✓ **Tori Waldner** is the squad's lone returning starter and only senior on the roster. She accounted for 4.8 points and 5.6 rebounds per game a year ago. Her rebounding mark was second on the team. She was 12th in the Big Ten in blocks (1.2).
- ✓ Waldner is tied for 11th in program history with 89 career blocks. She is on pace to become the ninth player in school history with 100 rejections.
- ✓ Sophomore **Kalayah Mitchell** was a solid contributor as a rookie, accounting for 4.5 points and 4.4 rebounds, both of which rank second among returnees.
- ✓ Sophomore **Peyton Whitted** will take on an expanded role for Penn State this season after averaging 2.9 points and 2.8 rebounds per game as a freshman last season.
- ✓ Redshirt-sophomore **Sierra Moore** will return to the court for the Lady Lions after sitting out the 2013-14 season due to NCAA transfer rules. Moore holds the York-Adams Interscholastic Athletic Association record for career scoring with 2,595 points at Delone Catholic High School.
- ✓ Redshirt-freshman **Lindsey Spann** will also make her Lady Lion debut this season after missing last year with a torn ACL. She was the 22nd-ranked player out of high school by the Collegiate Girls Basketball Report.

UP NEXT

Penn State opens its season with a Preseason WNIT first round game against Towson on Friday, Nov. 14 at noon. The Lady Lions will also play on Sunday, Nov. 16 at 2 p.m. when they will raise their 2014 Big Ten Championship banner and give away championship ring keychains to celebrate its three-straight Big Ten titles.

Table of Contents		Big Ten Standings/Schedule..... 3	Radio/TV Chart..... 7
Schedule, Results, Storylines..... 1	Possible Starters 3		
Roster, Quick Facts 2	PSU's Record When 5		
Team Comparison, Series History 2	Coquese Washington 6		



2014-15 ROSTER

PENN STATE LADY LIONS

No.	Name	Pos.	Cl./Elg.	Ht.	Hometown/High School (Previous School)
1	Candice Agee **	C	Jr./Jr.	6-6	Victorville, Calif./Silverado
3	Brianna Banks	G	Sr./Sr. [^]	5-9	Newnan, Ga./Fayette County (Connecticut)
5	Sierra Moore	G	Jr./So.	5-11	Hanover, Pa./Delone Catholic (Duke)
10	Keke Sevillian *	G	So./So.	5-7	Goodrich, Mich./Goodrich
11	Alex Harris *	F	So./So.	6-3	Lorain, Ohio/Lorain
12	Lindsey Spann	G	So./Fr.	5-6	Laurel, Md./Good Counsel
14	Dominique Brooks	C	Jr./Jr.	6-4	Lansing, Ill./T.F. South (Trinity Valley C.C.)
15	Kalayah Mitchell *	F	So./So.	6-2	Stone Mountain, Ga./Stephenson
25	Peyton Whitted *	F	So./So.	6-3	Suwanee, Ga./North Gwinnett
41	Jenny DeGraaf *	F	So./So.	6-1	Springboro, Ohio/Springboro
44	Tori Waldner ***	F/C	Sr./Sr.	6-5	Milton, Ga./Milton

Head Coach: Coquese Washington (Notre Dame '92)

Asst. Coaches: Itoro Coleman, Kia Damon, Jocelyn Wyatt

Captains: Tori Waldner, Sierra Moore, Lindsey Spann

* Indicates letters earned

IUP CRIMSON HAWKS

No.	Name	Pos.	Cl.	Ht.	Hometown/High School (Previous School)
0	Ashley Stoner	Sr.	F	6-1	Pittsburgh, Pa./Thomas Jefferson
3	Lindsay Stamp	Sr.	G/F	5-10	Erie, Pa./Mercyhurst Prep (Mercyhurst)
5	Marita Mathe	Sr.	G	5-7	Indiana, Pa./Indiana
10	Marina Wareham	Jr.	G	5-3	New Wilmington, Pa./Kennedy Catholic
11	Amy Graham	Jr.	F	6-2	Zanesville, Ohio/West Muskingum
12	Leslie Stapleton	R-Jr.	G	5-9	Indiana, Pa./Indiana
13	Monica Burns	Fr.	G	5-6	New Stanton, Pa./Hempfield
14	Alexis Aiken	Jr.	G/F	5-8	Pittsburgh, Pa./North Allegheny
15	Zhané Brooks	Jr.	F	5-10	Erie, Pa./Villa Maria
20	Mackenzie Livingston	So.	G	5-7	Blairsville, Pa./Blairsville
22	Lisa Burton	Sr.	G/F	5-9	Pittsburgh, Pa./Penn Hills
23	Halle Denman	Fr.	G	5-7	Beaver Falls, Pa./Blackhawk
24	Amy Fairman	Sr.	G	5-9	Creekside, Pa./Marion Center
30	Megan Smith	Fr.	G/F	6-0	Blain, Pa./West Perry
32	Courtney Storm	Fr.	G	5-8	Hollidaysburg, Pa./Hollidaysburg

Head Coach: Tom McConnell

Assistant Coaches: Kelly Mazzante, Jaclyn Babe

TEAM COMPARISON

PENN STATE		IUP
Waldner (4.8)	Returning Scoring Leader	Stamp (17.8)
Waldner (5.6)	Returning Rebounding Leader	Stamp (6.3)
Waldner (1.0)	Returning Assist Leader	Mathe (2.9)
Mitchell (0.6)	Returning Steals Leader	Fairman (2.2)
Waldner (1.2)	Returning Blocks Leader	Brooks (0.7)
75.1	Scoring Offense	69.7
66.9	Scoring Defense	61.5
+8.2	Scoring Margin	+8.1
43.9	Rebounds Per Game	38.7
+7.0	Rebound Margin	+5.8
12.8	Assists Per Game	13.9
8.5	Steals Per Game	7.9
.419	Field Goal Pct.	.422
.380	FG Defense Pct.	.395
.318	3-pt. FG Pct.	.382
.316	3-pt. FG Pct. Def.	.318
.773	Free Throw Pct.	.715
0.8	Assist/Turnover	0.9
Lost 1	W/L Streak	Lost 1

SERIES HISTORY

Overall:	PSU leads 2-0
Last meeting:	Feb. 17, 1977
Last result:	PSU, 88-41
Current streak:	PSU - 2 wins
Last 10:	PSU, 2-0
Last 10 meetings:	
1/31/76	A PSU, 74-32
2/17/77	H PSU, 88-41

QUICK FACTS

THE UNIVERSITY

Location: University Park, Pa.
 Founded: 1855
 Enrollment: 48,184 (as of fall 2013)
 Colors: Blue & White
 Nickname: Lady Lions
 Conference: Big Ten
 President: Eric Barron
 Director of Athletics: Sandy Barbour
 Senior Woman Administrator: Charmelle Green
 Asst. Athletic Director: Jenn James
 Facility (cap.): Bryce Jordan Center (15,104)
 All-Time Record at BJC: 215-53 (19 seasons)

ATHLETIC COMMUNICATIONS

WBB Contact: Kristina Petersen
 Phone/Fax: (814) 865-1757/(814) 863-3165
 E-mail: kap18@psu.edu
 Address: 101-D Bryce Jordan Center
 University Park, Pa. 16802
 Press Row Phone: 814-863-3294
 Website: www.GoPSUsports.com
 Twitter: @ladylionsid

TEAM INFORMATION

2013-14 Record: 24-8
 Home: 14-4 Away: 8-3 Neutral: 2-1
 Big Ten Record (finish): 13-3 (1st)
 Home: 6-2 Away: 7-1
 Letterwinners Returning/Lost: 6/5
 Starters Returning/Lost: 1/4
 Big Ten Tournament: Quarterfinals
 Postseason: NCAA Sweet Sixteen

THE HISTORY

First Year of Women's Basketball: 1965
 All-Time Record: 881-394 (50 seasons)
 All-Time Big Ten Rec.: 244-122 (22 seasons)
 NCAA Tournament Appearances: 25
 NCAA Tournament Record: 32-25

WOMEN'S BASKETBALL

Head Coach: Coquese Washington
 Alma Mater: Notre Dame '92
 Overall Record: 142-81 (seven seasons)
 School Record: 142-81 (seven seasons)
 Twitter: @coquesewashing
 Basketball Office Phone: 814-863-2672
 Basketball Office Fax: 814-863-1221
 Best Time To Reach Coach: Through SID
 Assistant Coaches (Alma Mater):
 Itoro Coleman (Clemson '00)
 Kia Damon (Millersville '97)
 Jocelyn Wyatt (Appalachian State '06)
 Twitter/Instagram: @pennstatewbb
 Facebook: facebook.com/pennstateladylions

PRONUNCIATIONS

Coquese	ko-KWEES
Itoro	E-tora
Agee	AYE-gee
DeGraaf	D-graph
Kalayah	kah-LEE-uh
Sevillian	sev-ILL-e-on
Whitted	wit-ED





2013-14 STANDINGS (FINAL)

Team	Big Ten			Overall		
	W	L	Pct.	W	L	Pct.
PENN STATE	13	3	.812	24	8	.750
Michigan State	13	3	.812	23	10	.697
Nebraska	12	4	.750	26	7	.788
Purdue	11	5	.688	22	9	.710
Iowa	11	5	.688	27	9	.750
Minnesota	8	8	.500	22	13	.629
Michigan	8	8	.500	20	14	.588
Ohio State	5	11	.312	17	18	.486
Northwestern	5	11	.312	17	16	.515
Indiana	5	11	.312	21	13	.618
Wisconsin	3	13	.188	10	19	.345
Illinois	2	14	.125	9	21	.300

BIG TEN SCHEDULE

NOVEMBER 14

Mount St. Mary's at Maryland	11 a.m.
Towson at Penn State	12 p.m.
IPFW at Illinois	4 p.m.
USC-Upstate at Iowa	7 p.m.
Detroit Mercy at Michigan	7 p.m.
Ohio State at Virginia	7 p.m.
Purdue at Ball State	7 p.m.
St. Joseph's at Rutgers	7 p.m.
Northwestern at Chicago State	8:05 p.m.
Southeastern Louisiana at Minnesota	9 p.m.

NOVEMBER 15

Gardner Webb at Indiana	2 p.m.
Pepperdine at Nebraska	TBD

NOVEMBER 16

Wagner at Maryland	2 p.m.
Bucknell at Michigan	2 p.m.
Eastern Michigan at Michigan State	2 p.m.
St. Francis at Ohio State	2 p.m.
TBD vs. Penn State	2 p.m.
Robert Morris at Iowa	3 p.m.
Hampton at Northwestern	3 p.m.
Illinois State at Wisconsin	4 p.m.
Alcorn State at Nebraska	6 p.m.

All times are Eastern.

POSSIBLE STARTERS



5 SIERRA MOORE G
RS-So., 5-11, Hanover, Pa.
2.5 ppg, .448 FG% (2012-13 at Duke)

Notes: Sat out 2013-14 season due to NCAA transfer rules after coming to Penn State from Duke ... Broke the YAIAA high school scoring record (boys or girls) ... McDonald's High School All-American in 2012.



12 LINDSEY SPANN G
RS-Fr., 5-6, Laurel, Md.

Notes: Missed 2013-14 season after tearing her right ACL in the first practice of the summer ... 22nd-ranked player by Collegiate Girls Basketball Report out of high school.



15 KALIYAH MITCHELL G
So., 6-2, Stone Mountain, Ga.
4.5 ppg, 4.4 rpg, .735 FT%, 20 steals

Notes: Leads the returnees in steals with 20 ... Second-best scoring average among returning players (4.5) ... Had eight points and seven rebounds in the NCAA 2nd Round game vs. Florida.



25 PEYTON WHITTED F
So., 6-3, Suwanee, Ga.
2.9 ppg, 2.8 rpg, .463 FG%, .696 FT%

Notes: Led the team in field goal percentage as a freshman (.463) ... Averaged 2.9 points and 2.8 rebounds per game last season ... Had a career-high 11 points and six rebounds at Northwestern.



44 TORI WALDNER C
Sr., 6-5, Milton, Ga.
4.8 ppg, 5.6 rpg, 1.2 bpg, .421 FG%

Notes: Ranks 10th on Penn State's all-time blocked shots list (89) ... Third on the team in rebounding (5.6) last season ... President of Penn State's SAAB ... Academic All-Big Ten choice.

SCOUTING IUP

- The Crimson Hawks, who were 18-10 overall and 8-8 in the PSAC a year ago, which was 7-19 overall and 4-18 in PSAC play a year ago, returns its top five scorers from a year ago and has a veteran group on their roster.
- Senior Lindsay Stamp led the team in points (17.8) and rebounds (6.3) while posting a 45.6% field goal percentage with a 41.4% effort from three-point range.
- Redshirt-junior Leslie Stapleton was second on the team in scoring a year ago at an 11.4 clip, while senior Ashley Stoner added 11.1 points and 6.0 rebounds per game.

ALL-TIME VERSUS THE CRIMSON HAWKS

- The Lady Lions have met IUP twice in non-exhibition games with Penn State picking up two wins.
- The last time the teams met in an NCAA game, the Lady Lions earned an 88-41 win on Feb. 17, 1977.
- The teams squared off in an exhibition game in 2009 with Penn State picking up the 67-49 win thanks to a near double-double by Janessa Wolff (11 pts., 9 rebs.).

MAZZANTE RETURNS

- Penn State's and Big Ten's all-time leading scorer, Kelly Mazzante, returns to the Bryce Jordan Center for the first time as an assistant coach.
- Mazzante is in her first season as an assistant with the Crimson Hawks.
- She was a three-time WBCA All-American, two-time Big Ten Player of the Year while playing for Penn State from 2001-04.
- She tallied 2,919 points in her career, which is tops in both school and conference history (men or women).
- After graduating, Mazzante went on to an eight-year professional career in the WNBA and overseas.
- She won two WNBA Championships with the Phoenix Mercury.

ANOTHER IUP-LION CONNECTION

- IUP's head coach Tom McConnell is in his second season with the program and has ties to the Lady Lion program.
- He is the brother of Lady Lion legend and current Pitt head coach Suzie McConnell-Serio.
- McConnell played for the Lady Lions from 1985-88 and owns the Penn State and NCAA record for career assists with 1,307 helpers.

PRESEASON SIGHTINGS

- The Lady Lions were among the teams receiving votes in the preseason Associated Press poll, garnering 43 points to rank third among the teams receiving votes.
- Penn State is also ranked 22nd in the Lindy's preview magazine.
- The Lady Lions are one of six Big Ten teams lists in the magazine's preseason Top 25 (Maryland, Nebraska, Purdue, Michigan State, Iowa).



TORI EXTRA CURRICULAR

- Senior post player **Tori Waldner** has shown that she is more than just a basketball player as she competes in the classroom and gives back tirelessly to the community.
- Waldner is currently the president of the Penn State Student-Athlete Advisory Board (SAAB). As part of her duties as SAAB president, she is involved in the community services efforts and creating programming for Penn State student-athletes on topics of diversity and inclusion.
- She is also involved in Penn State Life Link, a program in which State College Area School District special-needs students between the ages of 18 and 21 are given an opportunity to interact with students of their own age in an environment that is socially and academically conducive to continued growth with the hope of future independent living.
- Waldner regularly meets these students for lunch, swims with the students as a physical activity and provides guidance to help them on their road to independence.
- She is also involved in the "It's on Us" initiative- an awareness campaign to help put an end to sexual assault on college campuses.
- As part of her involvement, Waldner was part of a meeting with other universities at the White House.
- Waldner is also stellar in the classroom, collecting two Academic All-Big Ten honors.

FUN FOUR YEARS

- The Lady Lions have put together quite a four-year run that includes three Big Ten Championships, two NCAA Sweet Sixteen appearances and four NCAA Tournament berths.
- During the last four years, Penn State has also collected 101 wins (25.3 wins per season) and has been ranked for 62 weeks in the Top 25, including 21 weeks in the Top 10.
- Additionally, the Lady Lions have churned out three WNBA Draft Picks, five McDonald's All-Americans, 16 All-Big Ten performers, two Big Ten Players of the Year and one Big Ten Defensive Player of the Year, all while posting a 100% Graduation Rate.

OF NOTE

- Head coach **Coquese Washington** has selected senior **Tori Waldner**, redshirt-sophomore **Sierra Moore** and redshirt-freshman **Lindsey Spann** as team captains for the 2014-15 season.
- Sophomore forward **Peyton Whitted's** father, Kevin, was recently named the head coach of the NBA Developmental League's Westchester Knicks.

2015 PINK ZONE AT PENN STATE

- The Ninth Annual Pink Zone at Penn State will be held Sunday, March 1 in the Bryce Jordan Center when the Lady Lions take on Wisconsin. The time for the game will be determined later in the season.
- Last year, the Lady Lions donated a record \$310,000 to breast cancer causes.
- All totalled, the Lady Lions have donated more than \$1.135 million for breast cancer research and awareness in the first eight years.
- This year's fundraising efforts will benefit the Mount Nittany Medical Center, Penn State Hershey Cancer Institute, Pennsylvania Breast Cancer Coalition, the Kay Yow Cancer Fund, J.C. Blair Memorial Hospital and Lewistown Hospital.
- For more information on the Pink Zone at Penn State, visit the official Pink Zone website at www.pennsylvaniapinkzone.org.

LADY LIONS GET SOCIAL: The Lady Lions are on several social media sites, including Twitter, Instagram and Facebook. Follow the Lady Lions and assistant coaches (@pennstatewbb), head coach Coquese Washington (@coquesewashing) and sports information contact Kris Petersen (@ladylionsid) on Twitter to get the inside scoop. The Lady Lions are also on Instagram (@pennstatewbb) and Facebook at www.facebook.com/pennstateladylions.



GETTING ON THE COURT

- The Lady Lions may not have any true freshmen on the roster, but there will be a pair of Lady Lions that will don a Penn State uniform for the first time this season after sitting out the 2013-14 campaign.
- Redshirt-sophomore **Sierra Moore** returns to the court after missing last season due to NCAA Transfer Rules.
- She excelled in high school at Delone Catholic in York, Pennsylvania, where she broke the York-Adams Interscholastic Athletic Association (YAIAA) scoring record with 2,595 points.
- Redshirt-freshman **Lindsey Spann** hits the hardwood after missing last year with a torn ACL.
- She was the 22nd-ranked player by Collegiate Girls Basketball Report out of high school. She averaged 15.9 points, 5.3 assists and 2.4 steals at Good Counsel her senior year.

TORI'S REJECTING ROLE

- Senior center **Tori Waldner** is tied for 11th in program history with 89 career blocks entering her senior season.
- She needs three rejections to move into a tie with Bethany Collins (92; 1985-88) for a spot in the Top 10.
- Waldner also needs 11 rejections to become the ninth player in program history with 100 blocked shots.
- She would also be the third Lady Lion in the last three years to reach the 100-block mark, joining Nikki Greene (215; 2010-13) and Talia East (102; 2011-14).

PENN STATE'S OVERALL/BIG TEN YEAR-BY-YEAR REVIEW

Year	Overall	Big Ten	Home	BT Home	Road	BT Road	Neutral
1992-93	22-6	14-4	12-2	9-0	9-4	5-4	0-0
1993-94	28-3	16-2	14-0	9-0	11-2	7-2	3-1
1994-95	26-5	13-3	14-2	8-0	9-3	5-3	3-0
1995-96*	27-7	13-3	14-2	8-0	8-4	5-3	5-1
1996-97	15-12	8-8	9-3	5-3	5-6	3-5	1-3
1997-98	21-13	8-8	10-5	4-4	6-6	4-4	5-2
1998-99	22-8	12-4	9-2	6-2	9-4	6-2	4-2
1999-00	30-5	15-1	14-0	8-0	9-2	7-1	7-3
2000-01	19-10	11-5	11-2	7-1	6-5	4-4	2-3
2001-02	23-12	11-5	10-4	6-2	9-5	5-3	4-3
2002-03	26-9	13-3	16-0	8-0	7-7	5-3	2-2
2003-04	28-6	15-1	12-1	8-0	9-3	7-1	6-2
2004-05	19-11	13-3	12-0	8-0	6-9	5-3	1-2
2005-06	13-16	6-10	8-6	5-3	3-8	1-7	2-2
2006-07	15-16	7-9	12-1	7-1	2-12	0-7	1-3
2007-08	13-18	4-14	10-6	3-6	3-11	1-8	0-1
2008-09	11-18	6-12	8-6	4-5	2-9	2-7	1-3
2009-10	17-14	8-10	9-6	5-4	5-7	3-6	3-1
2010-11	25-10	11-5	14-4	6-2	7-4	5-3	4-2
2011-12	26-7	13-3	12-2	6-2	11-3	7-1	3-2
2012-13	26-6	14-2	14-0	8-0	9-5	6-2	3-1
2013-14	24-8	13-3	14-4	6-2	8-3	7-1	2-1

* First season at the Bryce Jordan Center



PENN STATE'S RECORD WHEN...

Playing at home	0-0
Playing on the road	0-0
Playing at a neutral site	0-0
vs. Top 10 teams	0-0
vs. Top 25 teams	0-0
Games decided by 3 points or less	0-0
Games decided by 4-10 points	0-0
Games decided by 11-19 points	0-0
Games decided by 20 points or more	0-0
Leading at the half	0-0
Tied at the half	0-0
Trailing at the half	0-0
Leading with 5:00 remaining	0-0
Trailing with 5:00 remaining	0-0
Tied with 5:00 remaining	0-0
In overtime	0-0
PSU scores 40-49 points	0-0
PSU scores 50-59 points	0-0
PSU scores 60-69 points	0-0
PSU scores 70-79 points	0-0
PSU scores 80 points or more	0-0
PSU shoots 45% or better	0-0
PSU shoots less than 45%	0-0
PSU shoots better than opponent	0-0
Opponent shoots better than PSU or tied	0-0
Opponent scores less than 39 points	0-0
Opponent scores 40-49 points	0-0
Opponent scores 50-59 points	0-0
Opponent scores 60-69 points	0-0
Opponent scores more than 70 points	0-0
Opponent shoots better than 45%	0-0
Opponent shoots less than 45%	0-0
PSU outrebounds opponent	0-0
Opponent outrebounds PSU or tied	0-0
PSU commits 14 or less turnovers	0-0
PSU commits 15 or more turnovers	0-0
PSU makes at least 5 3-pointers	0-0
PSU makes four 3-pointers or less	0-0
Recording 7 or more steals	0-0
Recording 6 or less steals	0-0
Wearing white uniforms	0-0
Wearing blue uniforms	0-0
Wearing white and pink uniforms	0-0
Penn State wins the tip	0-0
Penn State loses the tip	0-0
Penn State scores first	0-0
Opponent scores first	0-0
Playing during the day (before 5 p.m.)	0-0
Playing at night	0-0
On Monday	0-0
On Tuesday	0-0
On Wednesday	0-0
On Thursday	0-0
On Friday	0-0
On Saturday	0-0
On Sunday	0-0
In November	0-0
In December	0-0
In January	0-0
In February	0-0
In March	0-0

FRESH FACES

- The Lady Lions have added a pair of transfers to the roster in junior college transfer **Dominique Brooks** and UConn transfer **Brianna Banks**.
- Brooks comes to the Lady Lions after a two-year career at Trinity Valley Community College.
- She was efficient from the field at TVCC as she connected on 51.1% of her shots to help the Cardinals to back-to-back NJCAA National Championships.
- Banks will have to sit out the 2014-15 season after transferring from Connecticut.
- She will have one year of eligibility remaining after competing for three seasons at UConn where she won a pair of National Championships.

LADY LIONS EXCELLING AT THE NEXT LEVEL

- The Lady Lions have found recent success at the professional level, both in the WNBA and overseas.
- Penn State had four players on WNBA rosters last summer, including 10-year veteran Tanisha Wright, second-year player Alex Bentley and rookies Maggie Lucas and Nikki Greene.
- The Lady Lions also tout eight players (Wright, Bentley, Lucas, Greene, Ariel Edwards, Dara Taylor, Talia East, Brianna O'Rourke) playing overseas this fall in Europe and South America.
- Wright, who is playing for Abdullah Gul University in Turkey, just finished her 10th season with the WNBA's Seattle Storm.
- In her tenure with the Storm, Wright has accrued 2,591 points, 1,008 assists and 903 rebounds.
- She is a four-time WNBA All-Defensive first team honoree and helped Seattle to the 2010 WNBA Championship.
- After completing stellar WNBA season with the Connecticut Sun, Bentley is now playing for Tarbes Gespe Bigorre of the LFB in France.
- Bentley accounted for 12.2 points, 3.7 assists and 1.3 steals while starting 30 of 34 games for the Sun.
- Greene completed her rookie season with the WNBA's LA Sparks and is now playing in Israel for the Ramat Hasharon Electra Basketball Club.
- After playing her rookie season with the WNBA's Indianapolis Fever, Lucas has gone to France to play for Arras Pays D'Artois Basket Feminine.
- Lucas accounted for 3.7 points per game and shot .957 from the free throw line in her rookie season with the Fever.
- Edwards is playing with C.B. Bembibre PDM of the LFB in Spain.
- Taylor inked a contract to play with AZS UMCS Lublin of the Basket Liga Kobiet in Poland.
- O'Rourke is playing for Pallacanestro Torino of the Italy-Serie A2 league.
- Since graduating in 2009, O'Rourke has played in Germany and Slovakia in the last five years.

THREE McDONALD'S ALL-AMERICANS

- The Lady Lions tout three McDonald's High School All-Americans on their roster this season in **Candice Agee**, **Sierra Moore** and **Brianna Banks**.
- Banks played in the 2011, while Agee and Moore were in the 2012 game.
- Prior to **Coquese Washington** taking over the reigns, the Lady Lions only had one McDonald's High School All-American in program history.

BOUNCEBACK-ABILITY

- Penn State has shown that it is resilient after a loss. The Lady Lions have won their last 20 games following a loss, dating back to the 2010-11 season.
- The Lady Lions last lost consecutive games on Feb. 17 and Feb. 24, 2011.
- Senior forward/center **Tori Waldner** has never lost consecutive games in her collegiate career.





COQUESE WASHINGTON

Head Coach
8th Season

PENN STATE LADY LION BASKETBALL

Coquese Washington was introduced as the fifth head coach of the Penn State women's basketball program on April 23, 2007. Washington is the first female African-American head coach in Penn State history.

Washington led the 2013-14 Lady Lion squad to a feat that no other Penn State team has accomplished, winning three consecutive conference regular-season titles with a 13-3 record in Big Ten action. Led by the play of a strong senior class, the Lady Lions advanced to the NCAA Sweet Sixteen for the second time in three years. The graduating class of Maggie Lucas, Ariel Edwards, Dara Taylor and Talia East produced 101 wins, which is the second-highest total by a Lady Lion class.

Along the way to collecting her second Big Ten Player of the Year award, Lucas finished second in school history and fourth in Big Ten history in scoring (2,510) and broke the Penn State and Big Ten records for career three-pointers made (365) and career free throw percentage (.907). She was selected in the second round of the 2014 WNBA Draft by the Phoenix Mercury. Edwards became the 36th member of the 1,000-point club en route to collecting All-Big Ten first team accolades. She

finished seventh in the Big Ten in scoring (15.7) and was 11th in free throw percentage (.814). Edwards signed a free agent contract with the WNBA's Tulsa Shock. Taylor also had a stellar senior campaign and collected the Big Ten Defensive Player of the Year award after leading the conference in steals. East also earned postseason honors as she was named All-Big Ten honorable mention. In addition, Washington was honored with her third consecutive Big Ten Coach of the Year honor.

The Lady Lions continued their run in the national spotlight in 2012-13 as they collected their second-straight Big Ten regular-season title and seventh overall with a 26-6 overall record and 14-2 mark in conference play. In each of Washington's first six years, Penn State improved its Big Ten win total. The Lady Lions posted their third consecutive 25-win season, joining the 1993-94, 1994-95 and 1995-96 squads as the only teams in program history to accomplish the feat. The Lady Lions were consistently ranked in the Top 10 for most of the season and finished eighth in the Associated Press Top 25 and 12th in the USA Today Sports Coaches' Poll.

With another stellar campaign, the accolades continued to roll in for the Lady Lions. Washington was selected as the Big Ten Coach of the Year by the media for the second-straight season and became just the fifth mentor in Big Ten history to win back-to-back Coach of the Year accolades. She was also the WBCA Region 6 Coach of the Year and a finalist for WBCA National Coach of the Year for the second-straight season.

The awards also piled up for Penn State's dynamic backcourt of Lucas and Alex Bentley. Lucas was selected as the Big Ten Player of the Year, was a Wade Trophy Finalist and was an All-America choice by four outlets, including the WBCA (honorable mention), Associated Press (second team), USBWA (first team) and Full Court (second team). She is just the third Lady Lion in program history to win Big Ten Player of the Year honors. Bentley earned her third-straight first team All-Big Ten award and honorable mention All-America bids from the WBCA and Associated Press. She was also selected as the 2013 recipient of the Frances Pomeroy Naismith Award, which is presented to the nation's outstanding female collegian 5-8 and under. Nikki Greene also capped a stellar career for the Lady Lions with third team All-Big Ten accolades. She also became the first player in school history to accumulate 1,000 points, 900 rebounds and 200 blocks.

Both Bentley and Greene heard their names called on WNBA Draft night. Bentley was selected with the 13th overall pick by the Atlanta Dream to become the highest draft pick for the Lady Lions since Tanisha Wright (12th) in 2005. Greene was the 26th overall selection by the Phoenix Mercury.

For her efforts in rebuilding the Penn State program, Washington was honored as the Big Ten Coach of the Year and the WBCA Region 6 Coach of the Year, making her a finalist for WBCA National Coach of the Year. The accolades were not just limited to Washington; all five Lady Lion starters earned All-Big Ten recognition, including first team bids for Bentley and Lucas. Both Bentley and Lucas also garnered honorable mention All-America honors from the WBCA and Associated Press, respectively.

The Lady Lions returned to the national stage in Washington's fourth year with a second-place finish in the Big Ten regular season standings, a runner-up finish in the Big Ten Tournament and a berth in the NCAA Tournament. Penn State tallied its 23rd 20-win season with a 25-10 overall record and an

THE WASHINGTON FILE

COACHING RESUME

2007-pres. - Head Coach, Penn State
2013 - Asst. Coach, USA Basketball World U. Games
2013-pres. - Vice President/President-Elect, WBCA
2012-pres. - Kay Yow Cancer Fund Board of Directors
2011-pres. - NCAA WBB Issues Committee
2010-13 - Treasurer, WBCA Executive Committee
2008-pres. - WBCA Board of Directors
2009-12 - USA Basketball Women's Jr. National Comm.
2005-07 - Associate Head Coach, Notre Dame
1999-05 - Assistant Coach, Notre Dame

PLAYING EXPERIENCE

2002-03 - WNBA's Indiana Fever
2000-02 - WNBA's Houston Comets
1998-99 - WNBA's New York Liberty
1997-98 - ABL's Portland Power
1989-93 - University of Notre Dame

EDUCATION

Notre Dame '92, B.A. History
Notre Dame Law School '97, Juris Doctorate

AWARDS

- ❖ 2012, 2013, 2014 Big Ten Coach of the Year
- ❖ 2012, 2013 WBCA Region 6 Coach of the Year
- ❖ 2012, 2013 WBCA National Coach of the Year Finalist
- ❖ 2011, 2013 BCA Female Coach of the Year
- ❖ 2009 Greater Flint Hall of Fame Inductee
- ❖ 2008 WBCA "Rising Star" Award Winner

FAMILY

Husband: Raynell Brown
Children: Quenton (9), Rhaiyna (5)

11-5 mark in conference play. The Lady Lions worked their way back to the "Big Dance" for the first time since 2004-05.

Washington came to Happy Valley after eight seasons as an associate head coach and assistant coach under Muffet McGraw at Notre Dame, her alma mater. During Washington's eight years on the bench, Notre Dame amassed a 188-69 record with eight NCAA Tournament appearances, including four Sweet Sixteen runs and a National Championship in 2001.

Washington was a four-year starting point guard for Notre Dame under McGraw and was the team captain on Notre Dame's first-ever NCAA Tournament team. She was a two-time All-Midwestern Collegiate Conference (MCC) selection and led Notre Dame to three MCC Tournament titles.

The epitome of a student-athlete, Washington graduated from Notre Dame in 1992, a full year ahead of schedule, with a bachelor's degree in history. She went on to attain "Double Domer" status in 1997 after earning her Juris Doctorate from the Notre Dame Law School.

Washington juggled finishing her law degree with the start of her professional basketball career. She returned to the hardwood as a professional in 1997-98, playing for the ABL's Portland Power before spending a two-year stint with the WNBA's New York Liberty (1998-99). Washington moved to Houston for the 2000 season, where she played an instrumental role in leading the Comets to the WNBA title. Washington guided the Fever to their first-ever playoff berth and became the first player in WNBA history to lead three different teams to the postseason.

In addition to assisting with the efforts of the Pink Zone at Penn State to raise money and awareness for breast cancer, Washington created Coquese's Drive for the Women's Resource Center. Coquese's Drive for the Women's Resource Center has raised more than \$118,000 to aid in the fight against domestic violence.

Washington is currently serving on the 29-member WBCA Board of Directors, where she is the Vice President/President-Elect of the Executive Committee after a three-year stint as Treasurer.

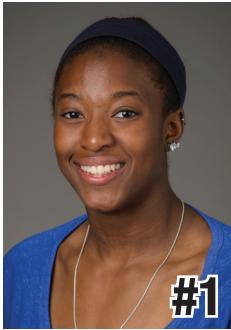
A native of Flint, Mich., Washington and her husband, Raynell Brown, have a son, Quenton (9), and a daughter, Rhaiyna (5). They reside in Port Matilda, Pa.

Washington vs. Opponents

Alcorn State	1-0	Michigan	10-3
Arizona	1-0	Michigan State	5-8
Army	1-0	Middle Tennessee	1-0
Boston College	0-1	Minnesota	7-7
Bucknell	6-0	Mississippi	1-0
Buffalo	1-0	Monmouth	1-0
Cal Poly	1-0	Nebraska	3-2
CS-Northridge	1-0	Nevada	1-0
Charlotte	1-0	NJIT	2-0
Connecticut	0-4	North Carolina	1-0
Coppin State	1-0	Notre Dame	0-1
Dayton	2-1	Northwestern	9-1
Delaware	1-1	Oakland	2-0
DePaul	0-1	Ohio State	6-7
Detroit	1-0	Old Dominion	0-1
Drexel	2-1	Oregon State	1-0
Duke	1-0	Pittsburgh	2-1
Fair Dickinson	1-0	Prairie View A&M	1-0
Florida	1-0	Purdue	4-9
Fordham	1-0	Rider	1-0
Florida State	0-1	St. Francis (Pa.)	1-0
Georgetown	3-0	South Carolina	4-1
Georgia Tech	0-1	South Dakota St.	1-1
Hartford	2-0	Stanford	0-1
Hofstra	0-1	Stony Brook	1-0
Holy Cross	1-0	Syracuse	0-1
Howard	1-0	Texas A&M	2-1
Illinois	10-3	UTEP	1-0
Illinois State	1-0	Texas Tech	1-1
Indiana	7-4	Utah	1-0
Iowa	7-6	Virginia Tech	2-0
Iowa State	1-0	Wagner	1-0
Lafayette	1-0	Washington State	1-0
LSU	1-1	Wichita State	1-0
Maine	1-0	Wisconsin	6-6
UMES	1-0	UW-Green Bay	0-1
Miami (Fla.)	0-1	Xavier	0-1



2014-15 RADIO/TV CHART



#1

Candice Agee

6-6 * Jr./Jr. * C
Victorville, Calif.
Silverado



#3

Brianna Banks

5-9 * Sr./-- * G
Newnan, Ga.
Fayette County
(Connecticut)



#5

Sierra Moore

5-11 * Jr./So. * G
Hanover, Pa.
Delone Catholic
(Duke)



#10

Keke Sevillian

5-7 * So./So. * G
Goodrich, Mich.
Goodrich



#11

Alex Harris

6-3 * So./So. * F
Lorain, Ohio
Lorain



#12

Lindsey Spann

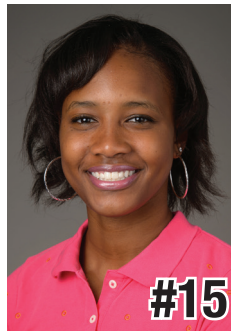
5-6 * So./Fr. * G
Laurel, Md.
Good Counsel



#14

Dominique Brooks

6-4 * Jr./Jr. * C
Lansing, Ill.
T.F. South
(Trinity Valley C.C.)



#15

Kaliyah Mitchell

6-2 * So./So. * F
Stone Mountain, Ga.
Stephenson



#25

Peyton Whitted

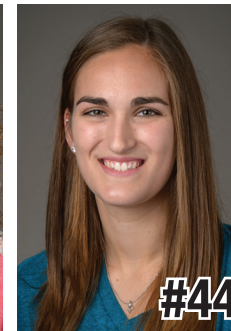
6-3 * So./So. * F
Suwanee, Ga.
North Gwinnett



#41

Jenny DeGraaf

6-1 * So./So. * F
Springboro, Ohio
Springboro



#44

Tori Waldner

6-5 * Sr./Sr. * F/C
Milton, Ga.
Milton



HC

Coquese Washington

Head Coach
Notre Dame '92
Eighth Season



AC

Ito Coleman

Assistant Coach
Clemson '00
First Season
Fourth Overall



AC

Kia Damon

Assistant Coach
Millersville '97
Eighth Season



AC

Jocelyn Wyatt

Assistant Coach
Appalachian State '06
First Season



DO

Ethan Gelfand

Director of Operations
Wake Forest '06
Fourth Season



VO

Mike Miller

Director of Video &
Technology Ops
High Point '02
10th Season



OA

Jennifer Montoya

Operations Assistant
Penn State '14
First Season

10-Time Big Ten Champions • Two-Time Big Ten Tournament Champions • 2000 NCAA Final Four • 25 NCAA Tournament Appearances



2013-14 Penn State Women's Basketball
Penn State Combined Team Statistics (FINAL)
All games

RECORD:	OVERALL	HOME	AWAY	NEUTRAL
ALL GAMES	24-8	14-4	8-3	2-1
CONFERENCE	13-3	6-2	7-1	0-0
NON-CONFERENCE	11-5	8-2	1-2	2-1

##	Player	gp-gs	min	avg	Total		3-Point		F-Throw		Rebounds			pf	dq	a	to	blk	stl	pts	avg			
					fg-fga	fg%	3fg-fga	3fg%	ft-fa	ft%	off	def	tot									avg		
33	Lucas, Maggie	32-32	1120	35.0	207-529	.391	73-205	.356	185-195	.949	15	120	135	4.2	65	1	70	97	2	61	672	21.0		
23	Edwards, Ariel	32-32	1038	32.4	185-409	.452	15-39	.385	118-145	.814	64	119	183	5.7	71	2	73	63	13	34	503	15.7		
02	Taylor, Dara	32-32	1101	34.4	143-363	.394	20-70	.286	69-92	.750	31	70	101	3.2	72	1	154	105	5	87	375	11.7		
05	East, Talia	32-29	779	24.3	98-184	.533	0-0	.000	64-87	.736	80	157	237	7.4	99	1	24	79	45	23	260	8.1		
44	Waldner, Tori	32-32	677	21.2	67-159	.421	1-3	.333	20-33	.606	48	131	179	5.6	83	1	32	39	39	16	155	4.8		
15	Mitchell, Kaliyah	32-0	546	17.1	41-114	.360	1-14	.071	61-83	.735	40	100	140	4.4	64	2	28	26	5	20	144	4.5		
01	Agee, Candice	32-3	330	10.3	34-84	.405	0-0	.000	31-61	.508	31	43	74	2.3	54	1	8	28	21	4	99	3.1		
25	Whitted, Peyton	31-0	344	11.1	37-80	.463	1-17	.059	16-23	.696	35	53	88	2.8	58	0	8	26	5	12	91	2.9		
11	Harris, Alex	29-0	256	8.8	20-50	.400	0-0	.000	17-34	.500	39	57	96	3.3	33	0	5	19	15	6	57	2.0		
10	Sevillian, Keke	22-0	120	5.5	8-28	.286	4-13	.308	11-13	.846	1	11	12	0.5	19	0	5	15	0	8	31	1.4		
41	DeGraaf, Jenny	17-0	76	4.5	7-20	.350	2-7	.286	0-0	.000	3	6	9	0.5	5	0	4	5	0	1	16	0.9		
20	Alston, Infiniti	4-0	13	3.3	0-2	.000	0-0	.000	0-0	.000	0	0	0	0.0	6	0	0	1	0	0	0	0.0		
Team											73	78	151											
Total.....		32	6400		847-2022	.419	117-368	.318	592-766	.773	460	945	1405	43.9	629	9	411	518	150	272	2403	75.1		
Opponents.....		32	6400		745-1958	.380	220-697	.316	432-624	.692	373	807	1180	36.9	668	18	435	542	123	241	2142	66.9		

TEAM STATISTICS	PSU	OPP	Date	Opponent	Score	Att.	
SCORING	2403	2142	11/8/13	ST. FRANCIS (PA.)	w 117-77	3908	
Points per game	75.1	66.9	11/10/13	FORDHAM	w 78-61	3834	
Scoring margin	+8.2	-	11/17/13	CONNECTICUT	L 52-71	8194	
FIELD GOALS-ATT	847-2022	745-1958	11/20/13	BUCKNELL	w 92-49	3646	
Field goal pct	.419	.380	11-29-13	vs Oregon State	w 61-56	0	
3 POINT FG-ATT	117-368	220-697	11-30-13	vs Illinois State	w 72-60	236	
3-point FG pct	.318	.316	12/4/13	NOTRE DAME	L 67-77	5805	
3-pt FG made per game	3.7	6.9	12/08/13	at Georgetown	w 77-68	529	
FREE THROWS-ATT	592-766	432-624	12/11/13	at South Dakota State	L 79-83	1713	
Free throw pct	.773	.692	12/15/13	TEXAS A&M	w 66-58	4777	
F-Throws made per game	18.5	13.5	12/22/13	ALCORN STATE	w 85-62	8284	
REBOUNDS	1405	1180	12/29/13	HARTFORD	w 70-56	4629	
Rebounds per game	43.9	36.9	* 1/5/14	at Iowa	w 87-71	6230	
Rebounding margin	+7.0	-	* 01/09/14	at Illinois	w 82-76	1317	
ASSISTS	411	435	* 1/12/14	PURDUE	L 74-84	4853	
Assists per game	12.8	13.6	* 1/16/14	OHIO STATE	w 66-42	3964	
TURNOVERS	518	542	* 01/19/14	at Michigan State	w 66-54	9232	
Turnovers per game	16.2	16.9	* 1/22/14	INDIANA	w 65-52	4828	
Turnover margin	+0.8	-	* 1/26/14	MINNESOTA	w 83-53	6292	
Assist/turnover ratio	0.8	0.8	* 1/30/14	at Purdue	w 75-72	7785	
STEALS	272	241	* 2/2/14	at Northwestern	w 79-75	1698	
Steals per game	8.5	7.5	* 2/6/14	IOWA	L 70-73	4033	
BLOCKS	150	123	* 02/09/14	at Ohio State	w 74-54	6591	
Blocks per game	4.7	3.8	* 2/13/14	at Indiana	w 71-63	2115	
ATTENDANCE	97511	50602	* 2/16/14	WISCONSIN	w 78-68	12585	
Home games-Avg/Game	18-5417	11-4042	* 2/20/14	NORTHWESTERN	w 82-73	3960	
Neutral site-Avg/Game	-	3-2046	* 02/24/14	at Nebraska	L 74-94	7253	
Score by Periods	1st	2nd	Totals	* 3/1/14	MICHIGAN	w 77-62	6494
Penn State	1154	1249	2403	03/07/14	vs Ohio State	L 82-99	5903
Opponents	1090	1052	2142	3/23/14	WICHITA STATE	w 62-56	3925
				3/25/14	FLORIDA	w 83-61	3500
				3/30/14	at Stanford	L 57-82	0

* - Conference game

2013-14 Penn State Women's Basketball
Penn State Combined Team Statistics (FINAL)
Conference games

RECORD:	OVERALL	HOME	AWAY	NEUTRAL
ALL GAMES	13-3	6-2	7-1	0-0
CONFERENCE	13-3	6-2	7-1	0-0
NON-CONFERENCE	0-0	0-0	0-0	0-0

##	Player	gp-gs	min	avg	Total		3-Point		F-Throw		Rebounds				pf	dq	a	to	blk	stl	pts	avg		
					fg-fga	fg%	3fg-fga	3fg%	ft-fta	ft%	off	def	tot	avg										
33	Lucas, Maggie	16-16	586	36.6	109-264	.413	41-103	.398	89-94	.947	7	60	67	4.2	29	0	39	48	1	29	348	21.8		
23	Edwards, Ariel	16-16	536	33.5	94-217	.433	10-18	.556	54-66	.818	41	67	108	6.8	36	1	38	33	6	14	252	15.8		
02	Taylor, Dara	16-16	580	36.2	71-178	.399	11-35	.314	33-46	.717	15	35	50	3.1	34	0	82	47	2	45	186	11.6		
05	East, Talia	16-16	421	26.3	55-100	.550	0-0	.000	40-53	.755	37	94	131	8.2	51	0	11	41	25	10	150	9.4		
44	Waldner, Tori	16-16	351	21.9	37-87	.425	0-1	.000	11-15	.733	23	61	84	5.3	45	0	17	24	16	10	85	5.3		
15	Mitchell, Kaliyah	16-0	264	16.5	17-54	.315	0-6	.000	30-43	.698	16	58	74	4.6	32	0	19	11	4	8	64	4.0		
25	Whitted, Peyton	16-0	183	11.4	24-46	.522	0-4	.000	9-11	.818	21	32	53	3.3	34	0	3	16	0	4	57	3.6		
01	Agee, Candice	16-0	134	8.4	9-24	.375	0-0	.000	14-31	.452	7	19	26	1.6	20	1	3	13	9	2	32	2.0		
11	Harris, Alex	15-0	88	5.9	6-19	.316	0-0	.000	4-10	.400	15	13	28	1.9	12	0	1	5	5	2	16	1.1		
41	DeGraaf, Jenny	9-0	27	3.0	4-10	.400	1-3	.333	0-0	.000	2	1	3	0.3	1	0	0	2	0	0	9	1.0		
10	Sevillian, Keke	10-0	30	3.0	1-7	.143	1-4	.250	1-3	.333	1	2	3	0.3	1	0	1	2	0	1	4	0.4		
Team											41	37	78											
Total.....		16	3200	427-1006		.424	64-174	.368	285-372	.766	226	479	705	44.1	295	2	214	244	68	125	1203	75.2		
Opponents.....		16	3200	380-976		.389	113-355	.318	193-273	.707	165	403	568	35.5	328	11	224	257	74	117	1066	66.6		

TEAM STATISTICS	PSU	OPP	Date	Opponent	Score	Att.
SCORING	1203	1066	* 1/5/14	at Iowa	w 87-71	6230
Points per game	75.2	66.6	* 01/09/14	at Illinois	w 82-76	1317
Scoring margin	+8.6	-	* 1/12/14	PURDUE	L 74-84	4853
FIELD GOALS-ATT	427-1006	380-976	* 1/16/14	OHIO STATE	w 66-42	3964
Field goal pct	.424	.389	* 01/19/14	at Michigan State	w 66-54	9232
3 POINT FG-ATT	64-174	113-355	* 1/22/14	INDIANA	w 65-52	4828
3-point FG pct	.368	.318	* 1/26/14	MINNESOTA	w 83-53	6292
3-pt FG made per game	4.0	7.1	* 1/30/14	at Purdue	w 75-72	7785
FREE THROWS-ATT	285-372	193-273	* 2/2/14	at Northwestern	w 79-75	1698
Free throw pct	.766	.707	* 2/6/14	IOWA	L 70-73	4033
F-Throws made per game	17.8	12.1	* 02/09/14	at Ohio State	w 74-54	6591
REBOUNDS	705	568	* 2/13/14	at Indiana	w 71-63	2115
Rebounds per game	44.1	35.5	* 2/16/14	WISCONSIN	w 78-68	12585
Rebounding margin	+8.6	-	* 2/20/14	NORTHWESTERN	w 82-73	3960
ASSISTS	214	224	* 02/24/14	at Nebraska	L 74-94	7253
Assists per game	13.4	14.0	* 3/1/14	MICHIGAN	w 77-62	6494
TURNOVERS	244	257	* - Conference game			
Turnovers per game	15.3	16.1				
Turnover margin	+0.8	-				
Assist/turnover ratio	0.9	0.9				
STEALS	125	117				
Steals per game	7.8	7.3				
BLOCKS	68	74				
Blocks per game	4.3	4.6				
ATTENDANCE	47009	42221				
Home games-Avg/Game	8-5876	8-5278				
Neutral site-Avg/Game	-	0-0				

Score by Periods	1st	2nd	Totals
Penn State	577	626	1203
Opponents	530	536	1066