



PENN STATE WOMEN'S VOLLEYBALL

SEVEN-TIME NATIONAL CHAMPIONS

35 NCAA TOURNAMENT APPEARANCES | 16 BIG TEN TITLES

2016 SCHEDULE & RECORD

Overall: 16-3 (Home: 9-1, Away: 5-1, Neutral: 2-1)

Big Ten: 8-0 (Home: 4-0, Away: 4-0)

AUGUST

Penn State Classic

26	vs. WEST VIRGINIA	W, 3-0
27	vs. GEORGIA SOUTHERN	W, 3-0
27	vs. No. 19 NORTH CAROLINA	L, 3-2

SEPTEMBER

Big Ten/Pac-12 Challenge (Boulder, Colo.)

3	at Colorado#	L, 3-2
4	vs. No. 9 Stanford#	L, 3-0

Syracuse Classic (Syracuse, N.Y.)

9	vs. Siena	W, 3-0
10	vs. Hofstra	W, 3-1
10	at Syracuse	W, 3-0

Penn State Invitational

16	vs. RHODE ISLAND	W, 3-0
17	vs. HOWARD	W, 3-0
17	vs. CLEMSON	W, 3-0

21	at Rutgers*	W, 3-0
25	at Northwestern*	W, 3-0
30	vs. No. 18 MICHIGAN STATE*	W, 3-0

OCTOBER

1	vs. No. 22 MICHIGAN*	W, 3-0
5	vs. No. 1 MINNESOTA*#	W, 3-2
8	vs. RUTGERS*	W, 3-0
14	at No. 22 Purdue*#	W, 3-0
15	at Indiana*	W, 3-0
19	vs. No. 19 OHIO STATE*#	8 p.m.
22	at No. 22 Michigan*	7 p.m.
28	at Wisconsin*#	9 p.m.
29	at Minnesota*#	7:30 p.m.

NOVEMBER

4	vs. NEBRASKA*#	7 p.m.
5	vs. IOWA*	7 p.m.
11	at Maryland*	8 p.m.
12	at Ohio State*	8 p.m.
16	at Nebraska*#	7 p.m.
19	vs. PURDUE*	7 p.m.
25	vs. NORTHWESTERN*	7 p.m.
26	vs. ILLINOIS*	8 p.m.

DECEMBER

1-2	NCAA First/Second Rounds	TBA
9-10	NCAA Regionals	TBA
15-17	NCAA Championship	Columbus, Ohio

Home matches played at Rec Hall in CAPS • All times Eastern and subject to change • * Indicates Big Ten match • # Indicates TV match

STRATEGIC COMMUNICATIONS

Women's Volleyball Contact: Steve Sommer
 Email: sfs34@psu.edu
 101-VB Bryce Jordan Center
 University Park, Pa. 16801

WEEK 9: OHIO STATE AND MICHIGAN

Wednesday, Oct. 19, 8 p.m. | University Park, Pa. - Rec Hall

Saturday, Oct. 22, 7 p.m. | Ann Arbor, Mich. - Cliff Keen Arena

#9 PENN STATE VS. WEEK 9 OPPONENTS

PENN STATE

NIITTANY LIONS
 Record: 16-3
 Big Ten: 8-0
 AVCA Poll: #9
 Head Coach: Russ Rose
 Overall Record/Yrs: 1,205-189/38

OHIO STATE

BUCKEYES
 Record: 13-7
 Big Ten: 3-5
 AVCA Poll: #19
 Last Outing: 10/30/15
 Head Coach: Geoff Carlston



MICHIGAN

WOLVERINES
 Record: 16-4
 Big Ten: 5-3
 AVCA Poll: #22
 Last Outing: 10/1/16
 Head Coach: Mark Rosen



MATCH INFORMATION

Stats: GameTracker
 Live Stream: BTN/ BTN Plus (S)
 Radio: GoPSUsports.com
 Series History:
 Ohio State: PSU leads, 46-14
 Michigan: PSU leads, 48-4

FIRST SERVE

* No. 9 Penn State (16-3, 8-0 Big Ten) will play a pair of matches this week beginning with hosting No. 19 Ohio State (13-7, 3-5 Big Ten) in its annual "Dig Pink" match on Wednesday, Oct. 19 at 8 p.m., with the match set to broadcast on the Big Ten Network. Following the showdown with the Buckeyes, Penn State will take to Ann Arbor to face No. 16 Michigan (16-4, 5-3 Big Ten) on Saturday, Oct. 22, at 7 p.m.

* **PROMOTIONAL SPOTLIGHT:** Wednesday's annual Dig Pink match will provide a slew of promotions for its attendees. The night will feature a silent auction in which fans can bid for the pregame Dig Pink warmup shirts up through the second-set break. All who attend will receive pink shakers. The first 200 students in attendance will receive free pizza, Dig Pink shirts, pink wRECKing crew hard hats, and shakers as well. The intercollegiate athletics staff will also take time to recognize survivors and those affected by breast cancer.

* Penn State enters Wednesday night on the nation's third longest win streak after winning its last 14 matches. Most recently, the Nittany Lions swept both No. 22 Purdue (25-18, 25-17, 25-17) and Indiana (25-16, 25-18, 25-18).

* Junior setter Abby Detering led the team to 54 of its kills in the two matches, while adding 10 kills of her own on .500 hitting.

* Washington and Lee both rank among the nation's best in statistical categories. Washington ranks second in the country in hitting percentage (.467), while Simone Lee's 4.11 kills per set rank 40th in NCAA Division I.

* Penn State's ability to limit opponent's offense has been unmatched this season. The Nittany Lions lead the country in limiting opponent's hitting percentage, holding the opposition to a .110 efficiency.

* PSU finds itself among the top 30 in the country in two other statistical categories. The Nittany Lions have hit the ball at a .314 clip in 2016, coming in atop the league and second nationally. Penn State also averages 2.65 blocks per set, coming in sixth in the Big Ten and 26th among Division I programs

* Penn State climbed into the single digits in the latest release of the AVCA Top 25 Coaches Poll, now ranking No. 9 in the country. The Nittany Lions opened the season ranked No. 9 in the Preseason Poll, before moving to No. 13 and No. 10 in last week's release. PSU has 10 opponents represented within the top 25. Including the Nittany Lions, a total of nine Big Ten teams are ranked in the top 25.

* The Nittany Lions face off against Ohio State with a 46-14 edge all-time. Penn State currently holds an 18-match win streak against OSU and is 23-5 all-time when facing the Buckeyes at home.

* Penn State takes on Michigan with a 48-4 edge all-time. Penn State leads the series in Ann Arbor, 21-3, and is on a one-match win streak against the Wolverines.

* Penn State will head to Minnesota and Wisconsin for one of the toughest weekends on the schedule to date. The road weekend begins with the No. 4 Badgers on Friday, Oct. 28 at 9 p.m. Penn State then travels to Minneapolis to face the No. 3 Golden Gophers at 7:30 p.m.

FOLLOW US

@PennStateVBALL PennStateWomensVolleyball PennStateWVB
 GoPSUsports.com 1-800-NITTANY

2016 PENN STATE WOMEN'S VOLLEYBALL

PENN STATE AT A GLANCE

THE UNIVERSITY

Location: University Park, Pa.
 Founded: 1855
 Enrollment: 46,848
 Colors: Blue & White
 Nickname: Nittany Lions
 Conference: Big Ten
 President: Dr. Eric J. Barron
 Director of Athletics: Sandy Barbour
 Senior Woman Administrator: Charmelle Green
 Facility (capacity): Rec Hall (5,812)

COACHES & STAFF

Head Coach: Russ Rose (38th season)
 Alma Mater: George Williams, 1975
 Overall Record (Yrs/Pct): 1,189-186 (37/ .865)
 School Record: same
 Associate Head Coach: Salima Rockwell
 Assistant Coach: Craig Dyer
 Director of Operations: Jon Parry
 Volunteer Assistant: Marcus Dos Santos
 Office Phone: (814) 863-7474
 Office Fax: (814) 865-1746
 Office Address: 235 Rec Hall

TEAM INFORMATION

2015 Record: 28-6
 Home: 15-2
 Away: 9-3
 Neutral: 4-1
 Big Ten record (finish): 15-5 (4th)
 Final AVCA Ranking: No. 9
 Postseason Play: NCAA regional semifinal
 First round: def. Howard, 3-0
 Second round: def. Dayton, 3-1
 Regional semifinal: lost to Hawaii, 3-0
 2016 Letterwinners R/L: 14/4
 2016 Starters R/L: 6/2+libero
 Newcomers: 8

NITTANY LION VOLLEYBALL HISTORY

First Year of Volleyball: 1976
 All-Time Record (Years): 1,240-229-4 (40)
 All-Time Big Ten Record: 448-60
 Years/Win Pct: 25/ .882
 Big Ten Titles: (16) '92, '93, '96, '97, '98, '99,
 '03, '04, '05, '06, '07, '08, '09, 10, 12, 13)
 NCAA Tournament Appearances: 35
 NCAA Tournament Record: 92-28
 NCAA National Championships: 7
 (1999, 2007, 2008, 2009, 2010, 2013, 2014)

2016 ROSTER & QUICK STATS

NO.	NAME	YR.	POS.	HT.	SP	K/S	%	A/S	SA/S	D/S	B/S
2	Emily Sciorra	Fr.	DS	5-5	11	0.00	-.500	0.00	0.18	0.45	0.00
3	Kendall White	Fr.	DS	5-7	64	0.05	.111	0.66	0.08	3.69	0.00
4	Wilma Rivera	So.	S	5-8	18	0.00	.000	0.11	0.22	0.89	0.00
5	Ali Frantti	Jr.	OH	6-2	64	2.17	.205	0.38	0.16	1.86	0.47
6	Nia Reed	RS-So.	OH	6-2	8	0.50	.143	0.00	0.00	0.12	0.12
7	Abby Detering	Jr.	S	6-0	56	1.04	.386	10.55	0.29	2.05	0.48
8	Lainy Pierce	Jr.	DS	5-6	45	0.02	1.00	0.16	0.07	0.71	0.00
9	Emily DeMure	Fr.	OH	6-2	1	0.00	.000	0.00	0.00	0.00	0.00
10	Carley Muller	Sr.	DS	5-8	6	0.00	.000	0.00	0.17	1.00	0.00
11	Tori Gorrell	RS-Fr.	MB	6-2	64	1.77	.373	0.14	0.00	0.14	1.14
12	Keeton Holcomb	So.	DS	5-5	57	0.00	.000	0.32	0.09	1.42	0.00
13	Taylor Krause	Sr.	DS	5-5	13	0.00	.000	0.00	0.00	0.85	0.00
14	Caroline Graham	RS-Fr.	S	5-7	0	0.00	.000	0.00	0.00	0.00	0.00
15	Haleigh Washington	Jr.	MB	6-3	64	2.44	.467	0.06	0.19	0.55	1.08
16	Jelena Novaković	RS-Fr.	OPP	6-2	4	0.75	.111	0.00	0.00	0.25	0.00
17	Kristin Krause	Fr.	DS	5-9	0	0.00	.000	0.00	0.00	0.00	0.00
18	Allison Farrell	Fr.	DS	5-9	5	0.00	.000	0.00	0.20	0.20	0.00
19	Heidi Thelen	Jr.	OPP	6-2	62	1.95	.329	0.03	0.00	0.19	0.76
21	Bryanna Weiskircher	RS-So.	S	6-0	28	0.07	.091	3.21	0.21	0.93	0.18
22	Simone Lee	Jr.	OH	6-0	64	4.11	.294	0.11	0.19	1.45	0.58
23	Clare Powers	RS-So.	OH	6-3	3	0.33	.333	0.00	0.00	0.00	0.00
24	Laura Broerman	RS-So.	DS	5-3	33	0.00	.000	0.06	0.15	0.27	0.00

PENN STATE											
OPPONENTS		64	13.50	.314	12.47	1.28	12.62	2.65			
		64	9.83	.110	9.36	0.86	11.31	1.70			

ALPHABETICAL

NO.	NAME	YR.	POS.	HT.	HOMETOWN/HIGH SCHOOL (COLLEGE)
24	Laura Broerman	RS-So.	DS	5-3	Colorado Springs, Colo./St. Mary's
9	Emily DeMure	Fr.	OH	6-2	Granite Bay, Calif./Granite Bay
7	Abby Detering	Jr.	S	6-0	Mentor, Ohio/Lake Catholic (Florida)
18	Allison Farrell	Fr.	DS	5-9	Lombard, Ill./Glenbard East
5	Ali Frantti	Jr.	OH	6-2	Spring Grove, Ill./Richmond Burton
11	Tori Gorrell	RS-Fr.	MB	6-2	Oakville, Ontario (Canada)/Abbey Park
14	Caroline Graham	RS-Fr.	S	5-7	Port Au Prince, Haiti/Lyceee Alexandre Dumas
12	Keeton Holcomb	So.	DS	5-5	Bellville, Texas/Bellville
17	Kristin Krause	Fr.	DS	5-9	Allentown, Pa./Parkland
13	Taylor Krause	Sr.	DS	5-5	Allentown, Pa./Parkland
22	Simone Lee	Jr.	OH	6-0	Menomonee Falls, Wis./Menomonee
10	Carley Muller	Sr.	DS	5-8	Manhattan Beach, Calif./Mira Costa
16	Jelena Novaković	RS-Fr.	OPP	6-2	Belgrade, Serbia/Tourism High School
8	Lainy Pierce	Jr.	DS	5-6	Eden, N.Y./Eden
23	Clare Powers	RS-So.	OH	6-3	Aptos, Calif./Archbishop Mitty (Saint Mary's)
6	Nia Reed	RS-So.	OH	6-2	Fort Lee, N.J./Immaculate Heart Academy
4	Wilma Rivera	So.	S	5-8	Carolina, Puerto Rico/Saint Francis School
2	Emily Sciorra	Fr.	DS	5-5	Chantilly, Va./Chantilly
19	Heidi Thelen	Jr.	MB	6-2	Edgewood, Ky./Notre Dame Academy
15	Haleigh Washington	Jr.	MB	6-3	Colorado Springs, Colo./Doherty
21	Bryanna Weiskircher	RS-So.	S	6-0	Rockford, Ill./Boylan Catholic
3	Kendall White	Fr.	DS	5-7	Indianapolis, Ind./Cathedral

PRONUNCIATIONS

Detering	DEET-er-ing	Broerman	BRO-er-man
Jelena	Yell-AYE-nuh	Muller	MULL-ler
Novaković	No-VAH-co-vick	Thelen	Th-EE-len
Keeton	KEY-ton	Frantti	Fran-TEE
Holcomb	HOLE-comb	Bryanna	Bree-yah-nuh
Sciorra	SHORE-Uh	Weiskircher	Weis-KIR-ch-er

2016 PENN STATE WOMEN'S VOLLEYBALL

AROUND THE BIG TEN

2016 PRESEASON BIG TEN POLL

1. NEBRASKA
2. Minnesota
3. Wisconsin
4. Penn State
5. Illinois
6. Ohio State
7. Michigan State
8. Michigan
9. Purdue
10. Northwestern
11. Maryland
12. Iowa
13. Indiana
14. Rutgers

CAPS indicates unanimous selection.

2016 BIG TEN STANDINGS

(As of 10/17/16)

Team	Big Ten Record	Pct.	Overall Record	Pct.
Penn State	8-0	1.000	16-3	.842
Nebraska	7-1	.875	16-1	.941
Wisconsin	7-1	.875	15-2	.882
Minnesota	6-2	.750	14-3	.824
Illinois	6-2	.750	13-6	.684
Michigan	5-3	.625	16-4	.800
Michigan State	5-3	.625	16-4	.800
Iowa	5-3	.625	15-5	.750
Ohio State	3-5	.375	13-7	.650
Purdue	2-6	.250	12-7	.632
Indiana	2-6	.250	13-8	.619
Maryland	0-8	.000	8-12	.400
Northwestern	0-8	.000	7-13	.350
Rutgers	0-8	.000	4-17	.190

ALL-TIME RECORDS vs. 2016 OPPONENTS

NON-CONFERENCE

Team	W-L	Last
West Virginia	28-0	PSU, 3-0 (8/26/16)
Georgia Southern	1-0	PSU, 3-0 (8/27/16)
North Carolina	7-1	UNC, 3-2 (8/27/16)
Colorado	6-2	COLO, 3-2 (9/3/16)
Stanford	10-9	STAN, 3-0 (9/4/16)
Siena	3-0	PSU, 3-0 (9/9/16)
Hofstra	8-0	PSU, 3-1 (9/10/16)
Syracuse	8-0	PSU, 3-0 (9/10/16)
Rhode Island	26-1	PSU, 3-0 (9/16/16)
Howard	3-0	PSU, 3-0 (9/17/16)
Clemson	3-0	PSU, 3-0 (9/17/16)

BIG TEN

Team	W-L	Last
Wisconsin	46-7	PSU, 3-0 (9/23/15)
Minnesota	46-9	PSU, 3-2 (10/5/16)
Nebraska	10-16	NEB, 3-0 (11/28/15)
Iowa	49-0	PSU, 3-0 (11/11/15)
Illinois	42-10	PSU, 3-1 (10/9/15)
Northwestern	50-9	PSU, 3-0 (9/25/16)
Purdue	53-6	PSU, 3-0 (10/14/16)
Indiana	50-1	PSU, 3-0 (10/15/16)
Michigan	48-4	PSU, 3-0 (10/1/16)
Michigan St.	42-7	PSU, 3-0 (9/30/16)
Ohio St.	46-14	PSU, 3-1 (10/31/15)
Rutgers	29-9	PSU, 3-0 (10/8/16)
Maryland	22-5	PSU, 3-0 (11/21/15)

NEWS & NOTES

14-STRAIGHT

After opening the season at 2-3, the Nittany Lions have rattled off 14 straight wins, dropping just three sets. The Nittany Lions' 14-match winning streak marks the third longest current streak in the country, coming behind only San Diego (16 straight) and Miami Ohio (15 straight). Penn State's streak outlasts its best from 2015, in which PSU opened the season on a 13-match win streak.

NITTANY LIONS' POTENT DEFENSE LEADS NATION

In the ninth week of play, Penn State has become the toughest defense in the nation for opposing teams to cope with. While 26th nationally in blocks per set, the Nittany Lions have forced opponents to .110 hitting combined, marking the lowest opponent hitting percentage in the country. The next lowest opponent hitting percentage in the Big Ten is .036 points higher, with Nebraska limiting foes to a .146 clip.

PENN STATE OFFENSIVE EFFICIENCY RANKS TOP IN THE LEAGUE

Along with stifling other teams' offense, Penn State has been extremely successful keeping its offense among the top in the country. Following eight weeks of play, the Nittany Lions rank first in the Big Ten and second in Division I in hitting efficiency, attacking a .314 clip. The Nittany Lions trail only Florida, who has a .323 efficiency. Penn State's Haleigh Washington leads the league and ranks second in the country with a .467 clip.

LEE'S OFFENSE GUIDES NITTANY LIONS

With double-figure kills in all but three matches this season, junior Simone Lee's 4.11 kills per set leads the Big Ten standings and 40th nationally. Lee also ranks 37th in points nationally, logging 4.66 per set. Lee posted a record-setting 30 kills against Minnesota before posting 22 in the two sweeps against No. 22 Purdue and Indiana.

DETERING AT THE HELM

Junior transfer Abby Detering (Florida) and redshirt sophomore Bryanna Weiskircher split time early in the non-conference slate at the setting position. Having started the last 15 consecutive matches, Detering has become an anchor at the position. Detering posted a career-high 61 assists and logged 10 digs against Minnesota, leading to her first ever Big Ten Setter of the Week honors. Last week, Detering had 54 assists and 10 kills to guide PSU two sweeps against Purdue and Indiana.

WASHINGTON SECOND NATIONALLY IN EFFICIENCY

Junior Haleigh Washington continues to be one of the most consistent offensive threats in the country in 2016, ranking among the best in the nation in hitting efficiency. Hitting at a .467 clip in all matches this season, the Colorado Springs, Colorado product leads the Big Ten and ranks second in NCAA Division I in hitting percentage.

THELEN SETTLES IN AT RIGHT SIDE

After limited time on the court in her first two seasons, junior Heidi Thelen has found her niche, moving to the right side this season. The move has paid dividends, with Thelen ranking fourth on the team in both hitting percentage (.329) and kills (121). Most recently, Thelen logged six kills and three blocks in the matchup against Indiana.

WHITE LOCKED IN AT LIBERO

With 19 matches of the 2016 season in the books, freshman defensive specialist Kendall White has made a name for herself this season, starting each match at libero. Since the Indianapolis, Indiana product has been exceptional, leading the team with 3.69 digs per set, good for eighth in the conference. The rookie is half a dig per set shy of the conference's top five. Through conference matches, White has charted 95 digs, good for a 3.65 per set average.

AVCA POLL UPDATE: RELEASE 9

Penn State climbed into the single digits in the latest release of the AVCA Top 25 Coaches Poll, now ranking No. 9 in the country. The Nittany Lions opened the season ranked No. 9 in the Preseason Poll, before moving to No. 13 and No. 10 in last week's release. PSU has 10 opponents represented within the top 25. Including the Nittany Lions, a total of nine Big Ten teams are ranked in the top 25. For the first time in 2016, Penn State received a first-place

LEE, DETERING EARN BIG WEEKLY HONORS

After another impressive weekend, Penn State junior Simone Lee was named the Big Ten Player of the Week, while classmate Abby Detering earned the title of Big Ten Setter of the Week, as announced by the league office Monday, Oct. 10.

Lee paced the Nittany Lions in offensively in both its matches, logging her 14th and 15th outings in which she led the team in kills. She posted 30 kills against Minnesota and 11 kills in the match against Rutgers. The Menomonee Falls, Wisconsin, native also added 12 digs and five blocks in the eight sets of play.

Detering earned Big Ten Setter of the Week honors after a weekend in which she led the Nittany Lions

2016 PENN STATE WOMEN'S VOLLEYBALL

AVCA TOP 25 COACHES' POLL

Poll #9 • Oct. 17, 2016

NO.	SCHOOL	PTS.	RECORD	LW
1	<u>Nebraska (62)</u>	1598	16-1	2
2	Texas (1)	1478	14-2	4
3	<u>Minnesota</u>	1446	14-3	3
4	<u>Wisconsin</u>	1431	15-2	1
5	San Diego	1355	17-2	5
6	Kansas	1235	17-2	6
7	Washington	1195	16-2	7
8	<u>North Carolina</u>	1137	16-2	8
9	PENN STATE (1)	1119	16-3	10
10	Florida	1097	17-2	9
11	<u>Michigan State</u>	838	16-4	14
12	Florida State	829	14-3	15
13	Hawai'i	716	14-5	17
14	<u>Stanford</u>	661	11-5	12
15	UCLA	629	14-4	20
T-16	BYU	620	17-3	11
T-16	<u>Michigan</u>	620	16-4	18
18	Washington State	449	15-5	13
19	<u>Ohio State</u>	430	13-7	19
20	Utah	379	14-5	21
21	Kentucky	328	15-4	23
22	<u>Illinois</u>	291	13-6	24
23	Oregon	255	12-5	16
24	<u>Purdue</u>	155	12-7	22
25	Southern California	108	13-6	NR

RECEIVING VOTES: Arizona 104; Western Kentucky 101; Colorado 78; Dayton 46; Creighton 24; Missouri 12; UNLV 8; Kansas State 4

*2016 opponents underlined.

PRESENCE IN THE COACHES' POLL

Aug. 10:	#9
Aug. 29:	#13
Sept. 5:	#17
Sept. 12:	#20
Sept. 19:	#18
Sept. 26:	#16
Oct. 3:	#15
Oct. 10:	#10
Oct. 17:	#9

MORE NEWS & NOTES

to a .346 hitting clip as the team averaged 16.00 kills per set in the wins over No.1 Minnesota and Rutgers. Detering logged 101 assists while adding 15 digs, eight kills, three blocks and three aces. The Mentor, Ohio, native logged her fourth double-double of the season with 61 assists and 10 digs in the upset of Minnesota. She guided four players to log double-figure kills in the match.

LEE NAMED ESPNW PLAYER OF THE WEEK

Following the record-setting performance against Minnesota and earning Big Ten Player of the Week honors, ESPNW also recognized Lee as the nation's top performer for the Week of Oct. 5-11. Lee is just the third Nittany Lion to ever win the award - Dominique Gonzalez and Micha Hancock earned the honor in 2014.

DOWN GOES NO. 1!

Penn State logged its biggest win of the 2016 season to date on Oct. 5, taking down the No. 1 Minnesota Golden Gophers in five, 3-2 (29-27, 21-25, 23-25, 25-14, 15-10). The Nittany Lions took the first set in extra time, trailing by eight, 11-3, early on.

Four players notched double-figure kills, with Simone Lee paving the way, scoring 30. In addition to Lee's outburst, Heidi Thelen and Haleigh Washington scored 14 each. Thelen led the team with five blocks while Washington added three and a service ace. Classmate Ali Frantti logged her second double-double of 2016 with 13 kills and 13 digs. With 80 kills as a team, the Nittany Lions logged the second-most kills in a match during the 25-point rally scoring era - the first was also against Minnesota, when PSU notched 81 on Nov. 27, 2010.

LEE POSTS RECORD DAY IN WIN OVER GOPHERS

Junior Simone Lee had an incredible outing on Oct. 5, leading the offense in the win over No. 1 Minnesota, charting 30 kills in the outing. It marked the first time a Nittany Lion had 30 or more kills in a match since Nicole Fawcett did so against Cal Poly on August 31, 2007. The 30-kill outing also marked a new record for kills in a five-set match during the 25-point rally scoring era.

PENN STATE INVITATIONAL ALL-TOURNAMENT TEAM

After three sweeps of Rhode Island, Howard and Clemson, the Penn State Nittany Lions placed three members of the squad in juniors Haleigh Washington, Abby Detering and Heidi Thelen on the All-Tournament team. Washington was named the most outstanding player after a phenomenal performance, notching 27 kills on .610 hitting and adding a team-high 15 blocks in three sets. Detering guided the team to .354 hitting as a unit, notching 91 assists, 14 digs, seven kills and three aces. Thelen posted 21 kills with a team second-best .447 hitting and added four blocks.

PENN STATE CLASSIC ALL-TOURNAMENT TEAM

Junior Simone Lee and freshman Kendall White were both selected to the Penn State Classic All-Tournament team following their performances in a 2-1 opening week at home. Lee led the team with 3.73 kills per set while White averaged 3.45 digs per frame. White had at least 16 digs in two matches, while Lee posted double figure kills in two of three matches, including 23 kills vs. North Carolina.

PENN STATE RANKED NINTH IN AVCA PRESEASON POLL

Penn State women's volleyball earned the No. 9 ranking in the 2016 AVCA Preseason Coaches' Poll. The Nittany Lions are among seven Big Ten schools to be ranked within the AVCA Top 25 and one of four conference programs to be voted within the top 10.

Nebraska earned the No. 1 overall ranking with 60 of a possible 64 first place votes. Minnesota and Wisconsin are next at three and four, respectively. Outside the top 10, Illinois was ranked 14th and Ohio State was 15th. Purdue rounded out the group at No. 20. Michigan and Michigan State also represented the league in the poll, as both received votes.

NITTANY LIONS PICKED FOURTH IN BIG TEN POLL

Penn State opens the season ranked No. 4 in the Big Ten Preseason Poll, released by the conference early this week. The Big Ten Preseason poll is selected by votes from all 14 conference head coaches.

PRESEASON ALL-BIG TEN NITTANY LIONS

Juniors Haleigh Washington and Ali Frantti have been named to the 2016 Preseason Big Ten Volleyball Team. The pair of Preseason All-Big Ten honors are the second straight for Washington and Frantti, who each earned the honor in 2015. Washington is also among a group of just four honorees to be voted to the team by a unanimous decision.

ROSE ENTERS YEAR 38 ATOP THE NCAA ALL-TIME WINS LIST

With an all-time record of 1205 - 189, few have come close to matching head coach Russ Rose's impressive win total. Rose and Hawaii head coach Dave Shoji went back and forth throughout the year, but Penn State's run to its seventh NCAA national championship in 2014 vaulted Rose 11 wins ahead of Shoji, placing him firmly atop the active division I career standings at the conclusion of the season with 1,161 wins.

2016 PENN STATE WOMEN'S VOLLEYBALL

NCAA RPI TOP 30

Last Release: Oct. 17, 2016

NO.	SCHOOL	CONF.	REC.	RD.	NEU.	HOME
1	Wisconsin	Big Ten	15-2	8-1	2-0	5-1
2	Texas	Big 12	14-2	6-0	1-1	7-1
3	Nebraska	Big Ten	16-1	6-0	3-0	7-1
4	Minnesota	Big Ten	14-3	4-3	4-0	6-0
5	North Carolina	ACC	16-2	8-1	4-0	4-1
6	San Diego	W. Coast	17-2	5-1	2-1	10-0
7	Washington	Pac-12	16-2	7-0	4-0	5-2
8	Florida	SEC	16-2	9-0	3-1	4-1
9	Michigan St.	Big Ten	16-4	3-2	4-0	9-2
10	Michigan	Big Ten	16-4	3-2	4-0	9-2
11	Stanford	Pac-12	11-5	5-1	2-0	4-4
12	Purdue	Big Ten	12-7	2-2	3-0	7-5
13	BYU	W. Coast	17-3	4-2	4-0	9-1
14	UCLA	Pac-12	14-4	8-2	5-0	1-2
15	Kansas St.	Big 12	15-5	4-2	3-1	8-2
16	Utah	Pac-12	14-5	7-1	3-1	4-3
17	UNLV	Mt. West	18-2	6-1	3-0	9-1
18	Kentucky	SEC	15-4	5-1	2-1	8-2
19	PENN ST.	BIG TEN	16-3	5-1	2-1	9-1
20	Western Ky.	C-USA	20-2	7-0	5-1	8-1
21	Washington St.	Pac-12	15-5	5-3	5-0	5-2
22	Missouri	SEC	16-3	7-0	5-1	4-2
23	Florida St.	ACC	14-3	3-1	2-1	9-1
24	Southern Cal.	Pac-12	13-6	5-0	2-0	6-6
25	Oregon	Pac-12	12-5	3-0	0-0	9-5
26	Kansas	Big 12	17-2	4-2	5-0	8-0
27	Creighton	Big East	14-6	6-3	2-2	6-1
28	TCU	Big 12	10-7	2-5	1-0	7-2
29	Ohio St.	Big Ten	13-7	3-5	6-0	4-2
30	Marquette	Big East	17-4	6-2	5-1	6-1

PENN STATE'S RECORD WHEN ...

Playing at home.....	9-1
Playing on the road.....	3-1
Playing at a neutral site.....	2-1
Current streak.....	W12
Big Ten matches.....	6-0
Non-conference matches.....	8-3
In three-set matches.....	12-1
In four-set matches.....	2-0
In five-set matches.....	1-2
When winning the first set.....	14-2
When losing the first set.....	0-1
When winning the second set.....	12-0
When losing the second set.....	2-3
Hitting .300 +.....	12-0
Hitting .200 -299.....	2-2
Out-hitting a team.....	14-0
Out-hit by a team.....	0-3
Playing a ranked team.....	3-2
Playing an unranked team.....	11-1
On TV.....	1-2
In August.....	2-1
In September.....	9-2
In October.....	5-0
In November.....	0-0

Prior to topping the list of DI winningest active coaches by victories, his .865 career winning clip has ranked first on the percentage chart for the last several years. Now at the top of both lists, he's one of just two active NCAA DI coaches to amass more than 1,100 career wins and one of four active coaches across all three divisions to join the 1,000 victories club.

On the list of winningest coaches of all time, Rose's 1,194-189 tally is unmatched at first place. Along with Shoji and former UCLA head coach Andy Banachowski, the three are the only DI coaches in NCAA women's volleyball coaching history to total 1,100 or more victories.

PENN STATE IN SEASON-OPENERS

Penn State is 33-7-1 all-time in season-openers after sweeping past West Virginia at Rec Hall this season. The win against the Mountaineers marks the fourth consecutive season-opening victory.

QUICK SETS

• From Oct. 16, 1996 to Nov. 9, 2001, Penn State won 139 consecutive matches when taking a 2-0 lead. Since joining the Big Ten conference in 1991, Penn State has played in 890 total matches, winning 788. Since 2008, Penn State has earned 220 of its 276 victories in three sets (80%), including 37-of-38 (98%) in 2008 and 32-of-38 in 2009 (84%). In 2015 Penn State won 22 of its 34 total matches by way of a 3-0 sweep.

• Since the 2001 season, the Nittany Lions have only lost 64 matches. And of those 22 teams that defeated Penn State – BYU, Colorado, Florida, Illinois, Indiana, Michigan, Michigan State, Minnesota, Nebraska, North Carolina, Northwestern, Ohio State, Oregon, Oregon State, Purdue, Stanford, Temple, Tennessee, Texas, UCLA, Washington and Wisconsin – only nine of these teams (Nebraska, Stanford, Ohio State, Illinois, Wisconsin, UCLA, Minnesota, Michigan and Michigan State) have been able to beat Penn State three times. Since 2001, Penn State has compiled a 260-61 mark against all 21 teams to have beaten PSU within the stretch.

vs. Michigan	25-3	vs. Michigan St.	23-3
vs. Northwestern	26-3	vs. UCLA	3-3
vs. Wisconsin	25-5	vs. Minnesota	25-5
vs. Florida	3-2	vs. Temple	0-1
vs. Nebraska	5-8	vs. Tennessee	0-1
vs. Illinois	21-6	vs. Indiana	28-1
vs. BYU	3-1	vs. Texas	6-2
vs. Purdue	28-1	vs. Oregon	0-2
vs. Stanford	7-7	vs. Oregon State	0-1
vs. Washington	1-1	vs. Ohio State	25-5
vs. North Carolina	2-1	vs. Colorado	2-1

NITTANY LIONS MONTH - BY- MONTH

• Penn State is 51-6 (.895) during the month of August under the direction of head coach Russ Rose (since 1979), following a 2-1 weekend at home in the Penn State Classic. Defeating the Mountaineers, the Nittany Lions have not dropped a season-opening match since losing to Oregon in 2011 before rebounding with a hard fought 3-2 win against No. 2 USC the next evening. Penn State's first two season-opening losses came during the inaugural NACWAA in 1995 against Nebraska and in the 1999 NACWAA when Florida outlasted Penn State, 3-2, in the opening round.

• With head coach Russ Rose at the helm of the program, Penn State is 380-55 (.874) during the month of September, dating back to 1979. The Lions are 222-21 (.914) during the month of September dating back to the 1995 season and 62-11 (.849) since 2010.

• PSU is 394-45 (.897) during the month of October during Rose's tenure (since 1979). Penn State has posted a 131-18 (.877) mark in October since the 2000 season, and a record of 87-8 (.913) dating back to 2006, without losing a match during the month from 2006 to the end of the 2009 season.

• Penn State is 294-48 (.860) during the month of November since 1979, including a 122-14 (.897) mark since the end of 2000. The Nittany Lions posted a four-year streak from 1996-1999 where they did not lose a match in the month. Since 2010, Penn State is 45-6 (.882), since the end of the 2010 season, having not dropped a match in the month for three straight years from 2012-14.

NITTANY LIONS ON TV

There's no need to worry this year if you can't follow Penn State on the road or make it to every home match. As one of the nation's top volleyball programs, Penn State has earned regional and national exposure. This year, the Nittany Lions will be on television at least nine times between the Big Ten Network and Pac-12 Network. All other matches will be streamed live on GoPSUsports.com or on BTN Plus.

PENN STATE WOMEN'S VOLLEYBALL TV MATCH SCHEDULE

DATE	OPPONENT	TIME	TV/STREAM
Saturday, Sept. 3	at Colorado	9 p.m.	(Pac-12 Network)
Sunday, Sept. 4	vs. Stanford	5 p.m.	(Pac-12 Network)

2016 PENN STATE WOMEN'S VOLLEYBALL

SCOUTING THE OPPONENTS

PENN STATE VS. OHIO STATE

Series: Penn State leads, 46-16

Last Three

Date	Site	Result
10/30/15	H	W, 3-1
10/28/15	A	W, 3-0
10/31/14	A	W, 3-0

By the Numbers

at home.....	PSU leads, 23-5
away.....	20-8
at neutral sites.....	3-1
Current streak.....	PSU, W18

Tale of the Tape

PSU.....	Big Ten Statistics.....	OSU
8-0.....	Record.....	3-5
14.42.....	K/S.....	13.71
.349.....	Hitting %.....	.230
11.69.....	D/S.....	15.00
2.44.....	B/S.....	1.96

PENN STATE VS. MICHIGAN

Series: Penn State leads, 48-4

Last Three

Date	Site	Result
10/1/16	H	W, 3-0
11/18/15	H	L, 3-1
10/21/15	A	W, 3-2

By the Numbers

at home.....	PSU leads, 26-1
away.....	21-3
at neutral sites.....	1-0
Current streak.....	PSU, W1

Tale of the Tape

PSU.....	Big Ten Statistics.....	MICH
8-0.....	Record.....	5-3
14.42.....	K/S.....	13.83
.349.....	Hitting %.....	.247
11.69.....	D/S.....	12.83
2.44.....	B/S.....	2.41

Wednesday, Oct. 5	vs. Minnesota	7 p.m.	(BTN)
Friday, Oct. 14	at Purdue	8 p.m.	(BTN)
Wednesday, Oct. 19	vs. Ohio State	8 p.m.	(BTN)
Friday, Oct. 28	at Wisconsin	9 p.m.	(BTN)
Saturday, Oct. 29	at Minnesota	7:30 p.m.	(BTN)
Friday, Nov. 4	vs. Nebraska	8 p.m.	(BTN)
Wednesday, Nov. 16	at Nebraska	9 p.m.	(BTN)

PENN STATE CONTINUES LIVE AUDIO IN 2016

Continuing in 2016, Penn State fans worldwide will be able to tune into a live audio broadcast. The audio broadcast will be available exclusively on GoPSUSports.com and offered to all fans free of charge. This weekend's matches will feature last year's standout play-by-play commentator Jack Milewski on the call.

2015 HONORS & AWARDS

HALEIGH WASHINGTON

- Unanimous Preseason All-Big Ten
- Penn State Invitational MVP

ALI FRANTTI

- Preseason All-Big Ten

ABBY DETERING

- Penn State Invitational All-Tournament Team
- Big Ten Setter of the Week (10/10)

HEIDI THELEN

- Penn State Invitational All-Tournament Team

SIMONE LEE

- Big Ten Player of the Week (10/10)
- espnW Player of the Week (10/12)
- Penn State Classic All-Tournament Team

KENDALL WHITE

- Penn State Classic All-Tournament Team

2016 DOUBLE-DOUBLES

ABBY DETERING (4 CAREER)

- vs. Hofstra 9/10/16 (41 assists, 10 digs)
- vs. Syracuse 9/10/16 (39 assists, 11 digs)
- vs. Michigan 10/1/16 (35 assists, 11 digs)
- vs. Minnesota 10/5/16 (61 assists, 10 digs)

ALI FRANTTI (3 CAREER)

- vs. North Carolina 8/27/16 (11 kills, 12 digs)
- vs. Minnesota 10/5/16 (13 kills, 13 digs)

SIMONE LEE (1 CAREER)

- vs. North Carolina 8/27/16 (23 kills, 10 digs)

A CLOSER LOOK AT 2016

WHO'S GONE AND WHO'S BACK

Perhaps Penn State's biggest challenge this year will be replacing the offensive power generated from All-American seniors Aiyana Whitney and Megan Courtney. While the offensive gap is just one piece of the puzzle, Penn State does return a few other key pieces in different areas. The Nittany Lions finished the 2015 season ranked third nationally and first in the Big Ten in blocks per set, led by First Team AVCA All-American Haleigh Washington, who led the team with 1.38 blocks per set, which closed out the year ranked third in the conference. A unanimous All-Big Ten selection, Washington also logged 13 double-figure kill performances, finishing the year with .442 hitting efficiency that ranked third nationally and first in the league.

Other key offensive returners include AVCA All-America Honorable Mention Ali Frantti, and Simone Lee, who closed out the year starting 18 of the final 21 matches of the year. The Nittany Lions also received significant contributions from Bryanna Weiskircher, who helped set the team to a .295 hitting percentage in her first season at setter, good for fifth nationally in the final standings.

Despite the graduation of seniors Kendall Pierce and Lara Caraway, the Nittany Lions have the most depth in terms of numbers at defensive specialist. Keeton Holcomb is among a group of five returners at the position with the most experience. Holcomb played in 32 matches during her first season in the Blue and White, making 28 starts. She led the team with 3.05 digs per set, highlighting the season with a pair of 20-dig performance in the same day in wins against Mississippi State and Notre Dame.

TRANSFER TIME

Joining Weiskircher and Rivera at the setting position is Abby Detering and Caroline Graham. Both Detering and Graham transferred to Penn State having previously attended Florida and UCLA, respectively. Detering spent the last two seasons at Florida and enters 2016 as a junior on the Nittany Lion roster.

Graham transferred to Penn State after spending a year at UCLA, but did not play on the volleyball team. Graham attended Lycee Alexandre Dumas, serving as team captain from 2014-16. She played club volleyball with AS Tigresses (Tigers), helping the team to a national championship in 2015 and a second-place finish in 2014 and 2016.

Outside hitter Clare Powers rounds out the transfer group. Powers ranked third on the team in kills per set with 1.93 and finished fourth in digs per set with 2.19 in her first season at Saint Mary's before an injury cut her sophomore season short. She transfers to Penn State as a redshirt sophomore on the roster.

WHO'S NEW

Outside of the trio of transfers, Penn State's true freshman class features five newcomers including Emily DeMure, Allison Farrell, Kristin Krause, Emily Sciorra and Kendall White.

Emily DeMure » A four-year letterwinner at Granite Bay, DeMure helped the Grizzly Bears to a DI state championship during the 2013-14 season, as well as an All-League title in the same year. She also helped Granite Bay to a NorCal All-Section title in 2015, served as team captain. She was selected as team MVP at Granite Bay in 2015 and played club volleyball for Gold Cal Juniors.

Allison Farrell » A four-year letterwinner at Glenbard East, Farrell helped the Rams to a regional title during the 2014-15 season. She also earned Upstate 8 All-Conference and All-Area honors in 2015 and played club volleyball with Sports Performance.

Kristin Krause » Krause joins older sister Taylor on the Nittany Lion roster. A four-year letterwinner at Parkland High, Krause set the Trojans to back-to-back East Penn conference, district and Pennsylvania state championships in 2014-15. Selected as Pennsylvania's volleyball Gatorade State Player of the Year in 2015-16, she played club volleyball with East Coast Power, where she was coached by her father, Mike Krause.

Emily Sciorra » Sciorra was a four-year letterwinner at Chantilly, where she helped the Chargers to a Conference 6A championship in 2013 as the team's libero. Sciorra played club volleyball with Metro Volleyball Club of Washington D.C., helping her team to gold in the Sports Performance National Junior Classic Open.

Kendall White » White was four-year letterwinner at Cathedral, White helped the Irish become the first Indiana 4A team to post an undefeated record (36-0) in 2015 on the way to an Indiana Class 4A state title as the team's libero. Among numerous honors, she was named Indiana's volleyball Gatorade State Player of the Year in 2015-16 and selected as the Indy Star Player of the Year and Cathedral's High School Female Athlete of the Year.

RUSS ROSE AT A GLANCE ...

It's been nearly four decades since Russ Rose arrived on campus. Entering his 38th season, the AVCA Hall of Fame head coaches' record-setting seven NCAA national titles and 16 Big Ten championships speak directly to the confidence and character he's passed along throughout his career.



As each year passes, his list of accomplishments continue to swell, but a quick snapshot of his legendary tenure might read something like this: The leader of a women's volleyball powerhouse who's kept his program among the nation's elite for nearly 40 years, guiding his teams to a record-setting seven NCAA national titles, including an unprecedented four consecutive championships from 2007-10. Along with 16 Big Ten titles, his program is one of only two women's volleyball schools to compete in all 34 NCAA Division I Women's Volleyball National Championship events. He's produced four AVCA National Players of the Year, 13 Big Ten Conference Players of the Year and at least one AVCA All-American in 35 of 36 seasons. His student-athletes excel in the classroom as well, with an outstanding 156 Academic All-Big Ten selections and five Academic All-Americans.

BY THE NUMBERS ...

NO. 1

All-Time Winning Percentage (.864) among active DI coaches

35

Straight NCAA Tournament appearances

16

Big Ten titles in 23 years

168

Academic All-Big Ten selections in 23 years

21

Conference Players of the Year in last 28 years

At least **1** All-American in 35-of-37 seasons

- 2007 AVCA Hall of Fame Inductee
- 2005 USA Volleyball All-Time Great Coach Honoree
- 2000 US Olympic Committee Coach of the Year
- Five-time AVCA Coach of the Year
1997, 1999, 2007, 2008, 2013
- Six-time AVCA Mid-east Region Coach of the Year
1996, 2007, 2008, 2009, 2010, 2012
- Three-time Volleyball Monthly Coach of the Year
1990, 1993, 1999
- Seven-time Mid-east Region Coach of the Year
1990, 1992, 1993, 1994, 2007, 2008, 2012
- 14-time Big Ten Conference Coach of the Year
1992, 1993, 1996, 1997 (co), 1998, 2003 (co),
2005, 2006, 2007, 2008, 2009, 2010, 2012, 2013
- 1996 District II Coach of the Year
- Six-Time Atlantic 10 Coach of the Year
- Five-time Northeast Region Coach of the Year
- National Jewish Sports Hall of Fame
- 2010 USAV Leader in Volleyball

LAST TIME A NITTANY LION ...

Had 30 or more kills.....	30 - Simone Lee vs. Minnesota (10/5/16)
Had 10 or more blocks.....	11 - Haleigh Washington vs. St. John's (9/19/15)
Had eight or more aces.....	8 - Micha Hancock at Maryland (11/22/14)
Had 30 or more digs.....	35 - Alyssa D'Errico at Minnesota (11/27/10)
Had 80 or more assists.....	82 - Samantha Spink vs. Illinois (11/24/95)

THE LAST TIME PENN STATE ...

VS. NON-CONFERENCE OPPONENTS (REGULAR-SEASON MATCHES)

Won a match.....	at Northwestern, 9/25/16 (27-25, 25-17, 25-17)
Lost a match.....	vs. Stanford, 9/4/16 (24-26, 18-25, 22-25)
Won at home.....	vs. Clemson, 9/17/16 (25-14, 25-17, 25-12)
Lost at home.....	vs. North Carolina, 8/27/16 (16-25, 25-22, 21-25, 25-23 15-9)
Won 3-0 at home.....	vs. Clemson, 9/17/16 (25-14, 25-17, 25-12)
Lost 3-0 at home.....	vs. UC-Santa Barbara, 9/18/86 (1-15, 7-15, 13-15)
Won 3-0 on the road.....	at Northwestern, 9/25/16 (27-25, 25-17, 25-17)
Lost 3-0 on the road.....	vs. Stanford, 9/4/16 (24-26, 18-25, 22-25)

VS. BIG TEN OPPONENTS (REGULAR-SEASON MATCHES)

Won a match.....	at Indiana, 10/15/16 (25-16, 25-18, 25-18)
Lost a match.....	at Nebraska, 11/28/15 (18-25, 18-25, 22-25)
Won at home.....	vs. Rutgers, 10/8/16 (25-13, 25-16, 25-10)
Lost at home.....	vs. Michigan, 11/18/15 (25-14, 22-25, 22-25, 22-25)
Won 3-0 at home.....	vs. Rutgers, 10/8/16 (25-13, 25-16, 25-10)
Lost 3-0 at home.....	vs. Minnesota, 10/18/03 (26-30, 18-30, 21-30)
Won 3-0 on the road.....	at Indiana, 10/15/16 (25-16, 25-18, 25-18)
Lost 3-0 on the road.....	at Nebraska, 11/28/15 (18-25, 18-25, 22-25)

ALL MATCHES

Won a match.....	at Indiana, 10/15/16 (25-16, 25-18, 25-18)
Lost a match.....	vs. Stanford, 9/4/16 (24-26, 18-25, 22-25)
Won at home.....	vs. Rutgers, 10/8/16 (25-13, 25-16, 25-10)
Lost at home.....	vs. North Carolina 8/27/16 (16-25, 25-22, 21-25, 25-23 15-9)
Won 3-0 at home.....	vs. Rutgers, 10/8/16 (25-13, 25-16, 25-10)
Lost 3-0 at home.....	vs. Minnesota, 10/18/03 (26-30, 18-30, 21-30)
Won 3-0 on the road.....	at Indiana, 10/15/16 (25-16, 25-18, 25-18)
Lost 3-0 on the road.....	vs. Stanford, 9/4/16 (24-26, 18-25, 22-25)

STREAKING!

Penn State holds the four of the top five winning streaks in Big Ten history. Penn State's most recent record-setting streak of 65 consecutive matches began on Nov. 11, 2006 and ended on Sept. 24, 2010 at Illinois. It is the longest streak in league history. Penn State's other two conference winning streaks were 49 matches and 41. Penn State's 33-match winning streak, dating back to Oct. 17, 2014 was snapped during the 2015 season in a 3-2 loss to then-fourth-ranked Nebraska.

Top Five Big Ten Winning Streaks

- 65 - Penn State (11/11/06 - 9/18/10) - snapped at Illinois (9/24/10)
- 49 - Penn State (11/1/97 - 11/27/99) - snapped at Wisconsin (9/22/00)
- 41 - Penn State (10/22/04 - 10/21/06) - snapped at Wisconsin (10/27/06)
- 40 - Illinois (11/15/85 - 11/20/87) - snapped at Purdue (11/27/87)
- 33 - Penn State (10/17/14 - 10/2/15) - snapped vs. Nebraska (10/2/15)

NITTANY LION ALUMS EARN BRONZE WITH TEAM USA

Penn State women's volleyball All-American alums Alisha Glass and Christa (Harmotto) Dietzen earned a Bronze medal with the United States Women's National Team at the Olympic Games in Rio.

Having played key roles for Team USA throughout the event, Glass and Dietzen helped the United States to a 3-1 (25-23, 25-27, 25-22, 25-19) win against the Netherlands to clinch The Americans' second Bronze medal since the 1992 games in Barcelona, Spain. Team USA went 6-0 through Pool play before a close 3-2 loss to Serbia in the semifinals moved the United States to 6-1 heading into the Bronze medal match.

Penn State women's volleyball now has four Olympic medalists in Nittany Lion program history as Glass earns her first and Dietzen picks up her second consecutive. Having previously earned Silver with the U.S. at the 2012 Games in London, Dietzen is Penn State's first women's volleyball alum to win two Olympic medals as a member of the 12-woman roster.

From Hopewell Township, Pa., Dietzen was a two-time first-team All-American and the 2008 CoSIDA Academic All-American of the Year in women's volleyball. From Leland, Mich., Glass also was a two-time first-team All-American for the Nittany Lions. Glass was a member of the initial three national title squads and Dietzen was a member of the first two squads, playing for Hall of Fame Coach Russ Rose.

2016 PENN STATE WOMEN'S VOLLEYBALL

MILESTONE TRACKER

CAREER KILLS

MILESTONE	NAME	# TO GO
200 Kills	Heidi Thelen	28
	Tori Gorrell	87
600 Kills	Simone Lee	44
700 Kills	Haleigh Washington	34
900 Kills	Ali Frantti	67

CAREER BLOCKS

MILESTONE	NAME	# TO GO
100 Blocks	Bryanna Weiskircher	27
	Tori Gorrell	27
	Abby Detering	67
200 Blocks	Ali Frantti	57
	Heidi Thelen	80
400 Blocks	Simone Lee	84
	Haleigh Washington	76

CAREER DIGS

MILESTONE	NAME	# TO GO
100 Digs	Wilma Rivera	2
	Lainy Piece	30
200 Digs	Simone Lee	40
	Abby Detering	40
	Haleigh Washington	76
300 Digs	Bryanna Weiskircher	17
	Kendall White	64
500 Digs	Ali Frantti	8

PACKING REC HALL ONCE AGAIN

Penn State continues to have one of the best home court advantages in the country. PSU had a season-high 5,312 in attendance for the Nittany Lions' 3-0 sweep of the Rutgers Scarlet Knights. Penn State comes in third in total attendance and fifth in average attendance in the most recent attendance report.

	SCHOOL	TOTAL ATTEN.	AVG. ATTEN.	HOME DATES	SCHOOL	TOTAL ATTEN.	AVG. ATTEN.	HOME DATES	
1	Hawaii	98,047	6,536	15	16	New Mexico	16,614	1,385	12
2	Nebraska	65,336	8,167	8	17	UNI	16,496	2,062	8
3	Penn St.	36,312	3,631	10	18	Duke	16,334	1,485	11
4	Wisconsin	35,652	5,942	6	19	Iowa	15,264	1,696	9
5	Purdue	31,628	2,636	12	20	Colorado	14,854	1,650	9
6	Michigan St.	30,281	2,753	11	21	Missouri	14,823	2,471	6
7	Minnesota	25,051	4,175	6	22	Stanford	14,018	1,752	8
8	Oregon	22,717	1,623	14	23	Michigan	13,784	1,253	11
9	Colorado St.	20,751	2,306	9	24	Ohio	13,725	1,961	7
10	Iowa St.	19,879	2,485	8	25	Wichita St.	13,266	1,895	7
11	Louisville	19,075	2,119	9	26	Washington	13,205	1,886	7
12	Kansas St.	18,799	1,880	10	27	TCU	12,742	1,416	9
13	Illinois	18,594	2,656	7	28	Long Beach St.	12,687	1,153	11
14	BYU	18,519	1,852	10	29	Kentucky	12,412	1,379	9
15	Texas	16,895	2,112	8	30	North Dakota	11,547	1,155	10

BY THE NUMBERS: PENN STATE VOLLEYBALL

- 7 Number of NCAA national championships (1999, 2007, 2008, 2009, 2010, 2013, 2014)
» Penn State's seven titles are the most of any women's volleyball program in history.
- 16 Number of Big Ten titles in 2 seasons in the league
» Penn State has captured Big Ten championships in nine of the last 12 years.
- 21 Number of all-time conference player of the year selections
- 35 Number of NCAA Tournaments PSU has participated in, one of two to play in all 35
- 39 Number of consecutive 20-win seasons
- 40 Seasons of Penn State women's volleyball, which started in 1976 under Tom Tait
- 65 Longest Big Ten winning streak recorded by Penn State from 11/11/06 to 9/24/10
- 88 Number of polls in which Penn State was ranked No. 1
- 94 Number of consecutive home match wins from 9/1/06 to 12/11/10
- 109 Number of consecutive matches wins between 9/21/07 to 9/11/10
- 174 Number of Academic All-Big Ten honorees in 25 years

2016 PENN STATE WOMEN'S VOLLEYBALL

2016 PENN STATE SUPERLATIVES

THREE SETS	INDIVIDUAL	TEAM
Kills:	18 - Simone Lee vs. Syracuse (9/10)	48 - vs. Rutgers (10/8)
Attacks:	41 - Simone Lee vs. Syracuse (9/10)	119 - vs. Stanford (9/4)
Attack Percentage:	786 (11-0-14) - Haleigh Washington vs. Rhode Island (9/16)	479 (40-5-73) - vs. West Virginia (8/26)
Assists:	40 - Abby Detering vs. Rutgers (10/8)	46 - vs. Syracuse (9/10)
Aces:	4, 2x last - Simone Lee at Northwestern (9/25)	10 - at Rutgers (9/21)
Digs:	22 - Kendall White vs. Stanford (9/4)	56 - vs. Syracuse (9/10)
Solo Blocks:	2, 5x last - Ali Frantti at Indiana (10/15)	4, 4x - last at Indiana (10/15)
Block Assists:	7 - Tori Gorrell vs. Stanford (9/4)	22 - vs. Michigan (10/1)
Total Blocks:	8 - Tori Gorrell vs. Stanford (9/4)	11.0, 2x last - vs. Michigan (10/1)

FOUR SETS	INDIVIDUAL	TEAM
Kills:	21 - Simone Lee vs. Hofstra (9/10)	50 - vs. Hofstra (9/10)
Attacks:	42 - Simone Lee vs. Hofstra (9/10)	113 - vs. Hofstra (9/10)
Attack Percentage:	529 (11-2-17) - Haleigh Washington vs. Hofstra (9/10)	336 (50-12-113) - vs. Hofstra (9/10)
Assists:	41 - Abby Detering vs. Hofstra (9/10)	45 - vs. Hofstra (9/10)
Aces:	2, 2x last - S. Lee & L. Pierce vs. Hofstra (9/10)	5 - vs. Hofstra (9/10)
Digs:	10 - Abby Detering vs. Hofstra (9/10)	37 - vs. Hofstra (9/10)
Solo Blocks:	2 - Tori Gorrell vs. Hofstra (9/10)	4 - vs. Hofstra (9/10)
Block Assists:	6 - Tori Gorrell vs. Hofstra (9/10)	18 - vs. Hofstra (9/10)
Total Blocks:	8 - Tori Gorrell vs. Hofstra (9/10)	13.0 - vs. Hofstra (9/10)

FIVE SETS	INDIVIDUAL	TEAM
Kills:	30 - Simone Lee, vs. Minnesota (10/5)	80 - vs. Minnesota (10/5)
Attacks:	63 - Simone Lee vs. Minnesota (10/5)	182 - vs. Minnesota (10/5)
Attack Percentage:	700 (14-0-20) - Haleigh Washington vs. Minnesota (10/5)	308 (80-24-182) - vs. Minnesota (10/5)
Assists:	61 - Abby Detering vs. Minnesota (10/5)	72 - vs. Minnesota (10/5)
Aces:	3 - Abby Detering vs. Minnesota (10/5)	5 - vs. North Carolina (8/27)
Digs:	21 - Kendall White vs. Minnesota (10/5)	70 - vs. North Carolina (8/27)
Solo Blocks:	3 - Haleigh Washington vs. Colorado (9/3)	7 - vs. Colorado (9/3)
Block Assists:	6 - Haleigh Washington vs. Colorado (9/3)	18 - vs. Colorado (9/3)
Total Blocks:	9 - Haleigh Washington vs. Colorado (9/3)	16.0 - vs. Colorado (9/3)

2016 OPPONENT SUPERLATIVES

THREE SETS	INDIVIDUAL	TEAM
Kills:	18 - Payton Caffrey, West Virginia (8/26)	41 - Stanford (9/4)
Attacks:	42 - Symone Abbot, Northwestern (9/25)	112 - Stanford (9/4)
Attack Percentage:	405 (18-3-37) - Payton Caffrey, West Virginia (8/26)	232 (41-15-112) - Stanford (9/4)
Assists:	31, MacKenzi Welsh, Michigan (10/1)	37 - Stanford (9/4)
Aces:	4 - Hayley Hodson, Stanford (9/4)	8 - Stanford (9/4)
Digs:	17 - Sarah Jonhson, Northwestern (9/25)	49 - Stanford (9/4)
Solo Blocks:	2, 2x last - Deyshia Lofton, Indiana (10/15)	3, 2x last- Indiana (10/15)
Block Assists:	5 - Amber Witherspoon, Syracuse (9/10)	14, 2x last - Syracuse (9/10)
Total Blocks:	7 - Amber Witherspoon, Syracuse (9/10)	10.0 - Syracuse (9/10)

FOUR SETS	INDIVIDUAL	TEAM
Kills:	13 - Nanishka Perez, Hofstra (9/10)	44 - Hofstra (9/10)
Attacks:	34 - Veronika Kostova, Hofstra (9/10)	121 - Hofstra (9/10)
Attack Percentage:	300 (10-4-20) - Leticia Valente, Hofstra (9/10)	0.91 (44-33-121) - Hofstra (9/10)
Assists:	25 - Hannah Klemm, Hofstra (9/10)	44 - Hofstra (9/10)
Aces:	3 - Luisa Sydlik, Hofstra (9/10)	6 - Hofstra (9/10)
Digs:	11 - Nanishka Perez, Hofstra (9/10)	44 - Hofstra (9/10)
Solo Blocks:	1, 2x last - L. Masciullo & N. Perez, Hofstra (9/10)	2 - Hofstra (9/10)
Block Assists:	2, 3x last - N. Perez, V. Kostova & M. Rucli, Hofstra (9/10)	7 - Hofstra (9/10)
Total Blocks:	3 - Nanishka Perez, Hofstra (9/10)	5.5 - Hofstra (9/10)

FIVE SETS	INDIVIDUAL	TEAM
Kills:	18 - Taylor Leath, North Carolina (8/27)	62 - Minnesota (10/5)
Attacks:	51 - Taylor Leath, North Carolina (8/27)	160 - Minnesota (10/5)
Attack Percentage:	450 (10-1-20) - Molly Lohman, Minnesota (10/5)	237 (62-24-160) - Minnesota (10/5)
Assists:	50 - S. Seliger-Swenson, Minnesota (10/5)	59 - Minnesota (10/5)
Aces:	3 - Molly Lohman, Minnesota (10/5)	8 - North Carolina (8/27)
Digs:	24 - Cierra Simpson, Colorado (9/3)	68 - Colorado (9/3)
Solo Blocks:	2 - Naghede Abu, Colorado (9/3)	3 - Colorado (9/3)
Block Assists:	7 - Molly Lohman, Minnesota (10/5)	23 - North Carolina (8/27)
Total Blocks:	8, 2x last - Molly Lohman, Minnesota (10/5)	13.5 - North Carolina (8/27)

2016 PENN STATE WOMEN'S VOLLEYBALL

MATCH-BY-MATCH SPECIALTY STATS

INDIVIDUAL MATCH-BY-MATCH LEADERS

DATE	OPP.	KILLS	ATTACKS	ACES	ASSISTS	DIGS	BLOCKS
Aug. 26	WEST VIRGINIA	Lee & Washington - 10	Lee - 20	Frantti, Lee, Rivera - 2	Detering - 29	White - 16	Washington, Gorrell - 3
Aug. 27	GA. SOUTHERN	Lee - 8	Lee - 16	4@-1	Weiskircher - 26	Weiskircher - 8	Washington - 5
Aug. 27	NORTH CAROLINA	Lee - 23	Lee - 50	Lee - 2	Weiskircher - 28	White - 17	Washington - 5
Sept. 3	at Colorado	Lee - 19	Lee - 57	Washington & Lee - 1	Weiskircher - 35	White - 18	Washington - 9
Sept. 4	vs. Stanford	Lee - 12	Lee - 38	-	Detering - 35	White - 22	Gorrell - 8
Sept. 9	vs. Siena	Lee - 14	Lee - 29	Washington - 2	Detering - 28	White - 9	Gorrell - 6
Sept. 10	vs. Hofstra	Lee - 21	Lee - 42	Lee & Pierce - 2	Detering - 41	Detering - 10	Gorrell - 8
Sept. 10	at Syracuse	Lee - 18	Lee - 41	Frantti & Washington - 1	Detering - 39	White - 12	Gorrell - 7
Sept. 16	RHODE ISLAND	Washington - 11	Lee - 26	Sciorra - 2	Detering - 27	White - 10	Washington - 5
Sept. 17	HOWARD	Lee - 12	Lee - 32	4@-1	Detering - 31	White - 10	Washington - 4
Sept. 17	CLEMSON	Lee - 10	Lee - 22	Detering - 1	Detering - 33	White - 15	Washington - 6
Sept. 21	at Rutgers	Lee - 13	Lee - 24	Detering - 4	Detering - 34	White - 13	Washington - 5
Sept. 25	at Northwestern	Lee - 10	Lee - 30	Lee - 4	Detering - 32	White - 10	Thelen, Gorrell - 4
Sept. 30	MICHIGAN STATE	Lee - 12	Lee - 29	Holcomb, Washington - 1	Detering - 34	White - 11	Washington, Gorrell, Lee - 2
Oct. 1	MICHIGAN	Frantti - 11	Frantti - 23	Washington - 3	Detering - 35	Detering - 11	Washington, Gorrell - 5
Oct. 5	MINNESOTA	Lee - 30	Lee - 63	Detering - 3	Detering - 61	White - 21	Thelen, Gorrell - 5
Oct. 8	RUTGERS	Lee & Gorrell - 11	Lee - 21	Broerman - 3	Detering - 40	White - 14	Washington - 5
Oct. 14	at Purdue	Lee - 15	Lee - 32	4@-1	Detering - 29	White - 11	Gorrell - 3
Oct. 15	at Indiana	Lee, Frantti, Gorrell - 7	Lee - 22	5@-1	Detering - 25	White - 9	Thelen - 3

TOTALS (INCLUDING TIES)

Lee - 17	Lee - 18	Washington - 8	Detering - 16	White - 16	Washington - 11
Washington - 2	Frantti - 1	Lee - 7	Weiskircher - 3	Detering - 2	Gorrell - 10
Frantti - 2		Detering - 6		Weiskircher - 1	Thelen - 3
Gorrell - 2		Frantti - 5			Lee - 1
		Weiskircher - 4			
		Holcomb - 3			
		Rivera - 2			
		Broerman - 2			
		Pierce - 1			
		Sciorra - 1			

TEAM MATCH-BY-MATCH STAT COMPARISON *Penn State/Opponent

OPPONENT	SETS	KILLS	ERRORS	TA	HIT%	ASSISTS	SA	SE	RE	DIGS	BS-BA	BE	TOT BLKS
WEST VIRGINIA	3	40/27	5/17	73/84	.479/.119	36/25	6/0	9/10	0/6	35/24	2-8/0-8	1/2	6.0/4.0
GEORGIA SOUTHERN	3	35/18	7/23	66/79	.424/-.063	32/18	4/0	6/9	0/4	34/22	2-12/0-2	3/2	8.0/1.0
NORTH CAROLINA	5	60/56	27/22	162/159	.204/.214	56/56	5/8	10/16	8/5	70/64	3-12/2-23	1/0	9.0/13.5
at Colorado	5	60/55	33/22	175/150	.154/.220	57/53	2/5	12/5	5/2	63/68	7-18/3-20	0/0	16.0/13.0
vs. Stanford	3	43/41	16/15	119/112	.227/.232	42/37	0/8	9/2	8/0	50/49	2-16/1-14	1/0	10.0/8.0
vs. Siena	3	38/20	9/26	82/93	.354/-.065	35/18	4/0	4/5	0/4	36/32	4-14/0-10	3/1	11.0/5.0
vs. Hofstra	4	50/44	12/33	113/121	.336/.091	45/44	5/6	6/5	6/5	37/44	4-18/2-7	1/0	13.0/5.5
at Syracuse	3	47/25	18/16	114/102	.254/.088	46/20	2/0	6/8	0/2	56/38	1-14/3-14	1/3	8.0/10.0
RHODE ISLAND	3	38/20	8/25	80/92	.375/-.054	34/20	4/0	8/6	0/4	40/31	3-10/1-6	0/1	8.0/4.0
HOWARD	3	40/24	10/23	96/91	.312/.011	35/24	4/3	6/5	3/4	41/40	2-10/0-8	0/1	7.0/4.0
CLEMSON	3	38/25	7/26	81/99	.383/-.010	36/25	1/4	6/8	4/1	42/35	4-12/0-2	2/1	10.0/1.0
at Rutgers	3	42/29	5/18	79/86	.468/.128	38/29	10/0	5/5	0/10	31/27	3-10/1-4	0/0	8.0/3.0
at Northwestern	3	37/33	12/23	94/108	.266/.093	37/29	8/3	9/5	3/8	41/41	1-14/0-8	0/2	8.0/4.0
MICHIGAN STATE	3	42/31	10/21	96/97	.333/.103	38/30	2/5	9/9	5/2	36/37	4-4/1-8	3/1	6.0/5.0
MICHIGAN	3	47/34	9/16	88/87	.432/.207	44/34	8/2	9/4	2/8	30/27	0-22/1-6	2/0	11.0/4.0
MINNESOTA	5	80/62	24/24	182/160	.308/.237	72/59	4/6	7/3	6/4	60/65	3-14/1-20	2/5	10.0/11.0
RUTGERS	3	48/19	11/17	87/85	.425/.024	43/18	4/2	7/4	2/4	45/25	1-17/1-6	1/2	9.5/4.0
at Purdue	3	41/34	12/21	90/95	.322/.137	38/32	4/3	3/7	3/4	32/29	0-8/2-4	0/1	4.0/4.0
at Indiana	3	38/32	13/23	83/88	.301/.102	34/28	5/0	7/7	0/5	29/26	4-6/3-4	1/2	7.0/5.0

2016 PENN STATE WOMEN'S VOLLEYBALL

2016 COMBINED STATS

Penn State Combined Team Statistics (as of Oct 15, 2016) All matches

Overall record: 16-3 Conf: 8-0 Home: 9-1 Away: 5-1 Neutral: 2-1

#	Player	sp	Attack				Set		Serve			Dig			Blocking					points		
			k	k/s	e	ta	pct	a	a/s	sa	se	sa/s	re	dig	dig/s	bs	ba	total	blk/s		be	bhe
8	Pierce,Lainy	45	1	0.02	0	1	1.000	7	0.16	3	6	0.07	5	32	0.71	0	0	0	0.00	0	0	-
15	Washington,Haleigh	64	156	2.44	27	276	.467	4	0.06	12	21	0.19	0	35	0.55	11	58	69	1.08	5	0	-
7	Detering,Abby	56	58	1.04	9	127	.386	591	10.55	16	22	0.29	1	115	2.05	0	27	27	0.48	4	7	-
11	Gorrell,Tori	64	113	1.77	37	204	.373	9	0.14	0	0	0.00	0	9	0.14	15	58	73	1.14	9	0	-
23	Powers,Clare	3	1	0.33	0	3	.333	0	0.00	0	0	0.00	0	0	0.00	0	0	0	0.00	0	0	-
19	Thelen,Heidi	62	121	1.95	30	277	.329	2	0.03	0	0	0.00	0	12	0.19	6	41	47	0.76	2	0	-
22	Lee,Simone	64	263	4.11	82	616	.294	7	0.11	12	28	0.19	5	93	1.45	9	28	37	0.58	0	0	-
5	Frantti,Ali	64	139	2.17	55	410	.205	24	0.38	10	10	0.16	23	119	1.86	9	21	30	0.47	1	0	-
6	Reed,Nia	8	4	0.50	2	14	.143	0	0.00	0	0	0.00	0	1	0.12	0	1	1	0.12	0	0	-
16	Novakovic,Jelena	4	3	0.75	2	9	.111	0	0.00	0	0	0.00	0	1	0.25	0	0	0	0.00	0	0	-
3	White,Kendall	64	3	0.05	2	9	.111	42	0.66	5	12	0.08	13	236	3.69	0	0	0	0.00	0	0	-
21	Weiskircher,Bryanna	28	2	0.07	1	11	.091	90	3.21	6	9	0.21	0	26	0.93	0	5	5	0.18	2	0	-
24	Broerman,Laura	33	0	0.00	0	0	.000	2	0.06	5	3	0.15	2	9	0.27	0	0	0	0.00	0	0	-
12	Holcomb,Keeton	57	0	0.00	0	1	.000	18	0.32	5	11	0.09	4	81	1.42	0	0	0	0.00	0	1	-
10	Muller,Carley	6	0	0.00	0	0	.000	0	0.00	1	1	0.17	0	6	1.00	0	0	0	0.00	0	0	-
4	Rivera,Wilma	18	0	0.00	0	0	.000	2	0.11	4	10	0.22	0	16	0.89	0	0	0	0.00	0	0	-
9	DeMure,Emily	1	0	0.00	0	0	.000	0	0.00	0	0	0.00	0	0	0.00	0	0	0	0.00	0	0	-
18	Farrell,Allison	5	0	0.00	0	0	.000	0	0.00	1	0	0.20	0	1	0.20	0	0	0	0.00	0	0	-
13	Krause,Taylor	13	0	0.00	0	0	.000	0	0.00	0	2	0.00	0	11	0.85	0	0	0	0.00	0	0	-
2	Sciorra,Emily	11	0	0.00	1	2	-.500	0	0.00	2	3	0.18	0	5	0.45	0	0	0	0.00	0	0	-
PENN STATE		64	864	13.50	248	1960	.314	798	12.47	82	138	1.28	55	808	12.62	50	239	169.5	2.65	23	8	-
Opponents		64	629	9.83	411	1988	.110	599	9.36	55	123	0.86	82	724	11.31	22	174	109.0	1.70	25	22	-

Team Statistics	PSU	OPP
ATTACK		
Kills	864	629
Errors	248	411
Total Attacks	1960	1988
Attack Pct	.314	.110
Kills/Set	13.5	9.8
SET		
Assists	798	599
Attempts	1909	2063
Assist Pct	.418	.290
Assists/Set	12.5	9.4
SERVE		
Aces	82	55
Errors	138	123
Attempts	1510	1106
Serve Pct	.909	.889
Aces/Set	1.3	0.9
SERVE RECEPTIONS		
Errors	55	82
Errors/Set	0.9	1.3
Attempts	983	1368
Reception Pct	.944	.940
DEFENSE		
Digs	808	724
Digs/Set	12.6	11.3
BLOCKING		
Block Solo	50	22
Block Assist	239	174
Total Blocks	169.5	109.0
Blocks/Set	2.6	1.7
Block Errors	23	25
Ball handling errors	8	22
ATTENDANCE		
Total	36312	9019
Dates/Avg Per Date	10/3631	6/1503
Neutral site #/Avg	3/732	
Current win streak	14	-
Home win streak	7	-

Date	Opponent	Score	Score by set	Att.
Aug 26	WEST VIRGINIA	w 3-0	25-13,25-13,25-17	3231
Aug 27	GEORGIA SOUTHERN	w 3-0	25-13,25-12,25-7	3762
Aug 27	#19 NORTH CAROLINA	L 2-3	25-16,22-25,25-21,23-25,9-15	3762
Sep 3	at Colorado	L 2-3	25-22,20-25,19-25,25-20,3-15	2316
Sep 4	vs #9 Stanford	L 0-3	24-26,18-25,22-25	2022
Sep 09	vs Siena	w 3-0	25-11,25-10,25-12	75
Sep 10	vs HOFSTRA	w 3-1	25-21,22-25,25-12,25-11	100
Sep 10	at Syracuse	w 3-0	25-22,25-17,25-12	1143
Sep 16	RHODE ISLAND	w 3-0	25-6,25-18,25-13	2926
Sep 17	HOWARD	w 3-0	25-16,25-12,25-16	3902
Sep 17	CLEMSON	w 3-0	25-14,25-17,25-12	3902
*Sep 21	at Rutgers	w 3-0	25-17,25-17,25-5	574
*Sep 25	at Northwestern	w 3-0	27-25,25-17,25-17	1436
*Sep 30	#18 MICHIGAN STATE	w 3-0	25-22,25-20,25-13	3524
*Oct 01	#22 MICHIGAN	w 3-0	25-20,25-19,25-15	3242
*Oct 05	#1 MINNESOTA	w 3-2	29-27,21-25,23-25,25-14,15-10	2749
*Oct 08	RUTGERS	w 3-0	25-13,25-16,25-10	5312
*Oct 14	at #22 Purdue	w 3-0	25-18,25-17,25-17	2415
*Oct 15	at Indiana	w 3-0	25-16,25-18,25-18	1135

Record in 3-set matches:14-1 • Record in 4-set matches:1-0 • Record in 5-set matches:1-2

2016 PENN STATE WOMEN'S VOLLEYBALL

2016 BIG TEN COMBINED STATS

Penn State Combined Team Statistics (as of Oct 15, 2016) Conference matches

Overall record: 8-0 Conf: 8-0 Home: 4-0 Away: 4-0 Neutral: 0-0

#	Player	sp	Attack				Set		Serve			Dig		Blocking					points			
			k	k/s	e	ta	pct	a	a/s	sa	se	sa/s	re	dig	dig/s	bs	ba	total		blk/s	be	bhe
8	Pierce,Lainy	19	1	0.05	0	1	1.000	0	0.00	1	3	0.05	1	7	0.37	0	0	0	0.00	0	0	-
15	Washington,Haleigh	26	66	2.54	8	103	.563	1	0.04	6	6	0.23	0	10	0.38	4	21	25	0.96	1	0	-
6	Reed,Nia	2	1	0.50	0	2	.500	0	0.00	0	0	0.00	0	0	0.00	0	1	1	0.50	0	0	-
3	White,Kendall	26	2	0.08	0	4	.500	19	0.73	4	6	0.15	5	95	3.65	0	0	0	0.00	0	0	-
7	Detering,Abby	26	29	1.12	3	58	.448	290	11.15	11	11	0.42	1	57	2.19	0	12	12	0.46	2	1	-
11	Gorrell,Tori	26	50	1.92	17	87	.379	2	0.08	0	0	0.00	0	1	0.04	2	24	26	1.00	5	0	-
19	Thelen,Heidi	26	53	2.04	14	127	.307	1	0.04	0	0	0.00	0	1	0.04	2	20	22	0.85	1	0	-
22	Lee,Simone	26	106	4.08	34	243	.296	3	0.12	4	11	0.15	2	32	1.23	3	13	16	0.62	0	0	-
5	Frantti,Ali	26	67	2.58	20	171	.275	15	0.58	3	4	0.12	9	52	2.00	5	4	9	0.35	1	0	-
4	Rivera,Wilma	2	0	0.00	0	0	.000	0	0.00	0	0	0.00	0	1	0.50	0	0	0	0.00	0	0	-
18	Farrell,Allison	1	0	0.00	0	0	.000	0	0.00	1	0	1.00	0	0	0.00	0	0	0	0.00	0	0	-
21	Weiskircher,Bryanna	16	0	0.00	0	0	.000	1	0.06	4	5	0.25	0	5	0.31	0	0	0	0.00	0	0	-
23	Powers,Clare	2	0	0.00	0	1	.000	0	0.00	0	0	0.00	0	0	0.00	0	0	0	0.00	0	0	-
24	Broerman,Laura	17	0	0.00	0	0	.000	1	0.06	5	2	0.29	0	0	0.00	0	0	0	0.00	0	0	-
13	Krause,Taylor	2	0	0.00	0	0	.000	0	0.00	0	0	0.00	0	0	0.00	0	0	0	0.00	0	0	-
2	Sciorra,Emily	3	0	0.00	0	1	.000	0	0.00	0	1	0.00	0	0	0.00	0	0	0	0.00	0	0	-
12	Holcomb,Keeton	26	0	0.00	0	1	.000	11	0.42	5	7	0.19	3	39	1.50	0	0	0	0.00	0	0	-
10	Muller,Carley	3	0	0.00	0	0	.000	0	0.00	1	0	0.33	0	4	1.33	0	0	0	0.00	0	0	-
PENN STATE		26	375	14.42	96	799	.349	344	13.23	45	56	1.73	21	304	11.69	16	95	63.5	2.44	10	1	-
Opponents		26	274	10.54	163	806	.138	259	9.96	21	44	0.81	45	277	10.65	10	60	40.0	1.54	14	8	-

Team Statistics	PSU	OPP
ATTACK		
Kills	375	274
Errors	96	163
Total Attacks	799	806
Attack Pct	.349	.138
Kills/Set	14.4	10.5
SET		
Assists	344	259
Attempts	770	816
Assist Pct	.447	.317
Assists/Set	13.2	10.0
SERVE		
Aces	45	21
Errors	56	44
Attempts	633	461
Serve Pct	.912	.905
Aces/Set	1.7	0.8
SERVE RECEPTIONS		
Errors	21	45
Errors/Set	0.8	1.7
Attempts	417	573
Reception Pct	.950	.921
DEFENSE		
Digs	304	277
Digs/Set	11.7	10.7
BLOCKING		
Block Solo	16	10
Block Assist	95	60
Total Blocks	63.5	40.0
Blocks/Set	2.4	1.5
Block Errors	10	14
Ball handling errors	1	8
ATTENDANCE		
Total	14827	5560
Dates/Avg Per Date	4/3707	4/1390
Neutral site #/Avg	0/0	-
Current win streak	8	-
Home win streak	4	-

Date	Opponent	Score	Score by set	Att.
*Sep 21	at Rutgers	w 3-0	25-17,25-17,25-5	574
*Sep 25	at Northwestern	w 3-0	27-25,25-17,25-17	1436
*Sep 30	#18 MICHIGAN STATE	w 3-0	25-22,25-20,25-13	3524
*Oct 01	#22 MICHIGAN	w 3-0	25-20,25-19,25-15	3242
*Oct 05	#1 MINNESOTA	w 3-2	29-27,21-25,23-25,25-14,15-10	2749
*Oct 08	RUTGERS	w 3-0	25-13,25-16,25-10	5312
*Oct 14	at #22 Purdue	w 3-0	25-18,25-17,25-17	2415
*Oct 15	at Indiana	w 3-0	25-16,25-18,25-18	1135

Record in 3-set matches:7-0 • Record in 4-set matches:0-0 • Record in 5-set matches:1-0

2016 PENN STATE WOMEN'S VOLLEYBALL



LAURA BROERMAN

#24

Senior | Defensive Specialist
Colorado Springs, Colo.

HIGHLIGHTS & NOTES

2016 (Senior): Played in all three matches during the Penn State Classic ... Logged a career-high five digs against No. 19 North Carolina (8/27) ... Appeared as a serving specialist in all three matches during the Penn State Invitational, notching a pair of digs against Howard (9/17) and Clemson (9/17)... Recorded a career-high three aces against Rutgers (10/8).

2015 (Junior): Missed the 2015 season due to an injury.

PERSONAL

Born Laura Lynn Broerman on January 18, 1995 in Colorado Springs, Colo. ... Has three sisters, Sarah, Rachel and Emily ... Sister, Sarah, played volleyball at UCCS and sister, Rachel, played at Dayton ... Lettered in basketball and track & field ... Majoring in biobehavioral health with an accelerated nursing post-grad track... Names hiking as hobby, Harry Potter as favorite book, Tim McGraw as favorite entertainer, "Rocket Power" as favorite TV show, "Cars 2" as favorite movie, favorite pro sports team as the Broncos, favorite athlete as Carley Muller, favorite actresses as the Kardashians and favorite food as BBQ chicken.

QUOTING COACH ROSE

"Laura is coming off of an injury that prevented her from playing last year. She always plays hard and is quick and aggressive. I feel she has good energy that fires the team up."

2016 MATCH-BY-MATCH

DATE	OPP.	K	E	TA	PCT.	A	SA	D	TB
8/26	West Virginia	0	0	0	.000	1	0	0	0
8/27	Georgia Southern	0	0	0	.000	0	0	0	0
8/27	North Carolina	0	0	0	.000	0	0	5	0
9/3	Colorado	0	0	0	.000	0	0	0	0
9/10	Syracuse	0	0	0	.000	0	0	0	0
9/16	Rhode Island	0	0	0	.000	0	0	0	0
9/17	Howard	0	0	0	.000	0	0	2	0
9/17	Clemson	0	0	0	.000	0	0	2	0
9/21	Rutgers	0	0	0	.000	0	1	0	0
9/25	Northwestern	0	0	0	.000	0	0	0	0
9/30	Michigan State	0	0	0	.000	0	0	0	0
10/1	Michigan	0	0	0	.000	0	0	0	0
10/5	Minnesota	0	0	0	.000	1	0	0	0
10/8	Rutgers	0	0	0	.000	0	3	0	0
10/15	Indiana	0	0	0	.000	0	1	0	0

2016 SEASON HIGHS	CATEGORY	CAREER HIGH
N/A	Kills	N/A
N/A	Attacks	N/A
N/A	Hitting Percentage	N/A
1, 2x last vs. Minnesota (10/5)	Assists	1, 2x last vs. Minnesota (10/5/16)
3, at Rutgers (10/8)	Aces	3 vs. Rutgers (10/8/16)
5 vs. North Carolina (8/27/16)	Digs	5 vs. North Carolina (8/27/16)

BROERMAN'S CAREER STATS

SEASON	SP-MP	K	K/S	E	TA	PCT	A	A/S	SA	SA/S	DIG	D/S	BS	BA	TB	B/S
2013	5-5	0	0.00	0	0	.000	0	0.00	1	0.20	2	0.40	0	0	0	0.00
2014	18-16	0	0.00	0	0	.000	0	0.00	2	0.11	3	0.17	0	0	0	0.00
2015	0-0	0	0.00	0	0	.000	0	0.00	0	0.00	0	0.00	0	0	0	0.00
2016	33-15	0	0.00	0	0	.000	2	0.06	5	0.15	9	0.27	0	0	0	0.00
TOTAL	56-36	0	0.00	0	0	.000	2	0.04	8	0.14	14	0.25	0	0	0	0.00

2016 PENN STATE WOMEN'S VOLLEYBALL



TAYLOR KRAUSE

#13

Senior | Defensive Specialist
Allentown, Pa.

2016 MATCH-BY-MATCH

DATE	OPP.	K	E	TA	PCT.	A	SA	D	TB
8/26	West Virginia	0	0	0	.000	0	0	0	0
8/27	Georgia Southern	0	0	0	.000	0	0	1	0
9/3	Colorado	0	0	0	.000	0	0	3	0
9/4	Stanford	0	0	0	.000	0	0	6	0
9/10	Hofstra	0	0	0	.000	0	0	0	0
9/10	Syracuse	0	0	0	.000	0	0	0	0
9/17	Howard	0	0	0	.000	0	0	1	0
10/5	Minnesota	0	0	0	.000	0	0	0	0
10/8	Rutgers	0	0	0	.000	0	0	0	0

HIGHLIGHTS & NOTES

2016 (Senior): Recorded one dig vs. Ga. Southern (8/27) .. Posted a season-high six digs vs. No 9 Stanford (9/4) .. Notched a dig in one set played against Howard (9/17).

2015 (Junior): Made 25 appearances on the court during the year, playing in 53 sets ... Had five digs and one ace against Stony Brook (8/29) Posted a career-high seven digs against Villanova (8/29) ... Posted four digs and one ace against No. 2 Stanford (9/5) ... Recorded one dig against No. 16 Wisconsin (9/23) ... Logged a career-high 10 digs against No. 21 Minnesota (9/26) ... Had one ace and one dig against Howard (12/4).

PERSONAL

Born Taylor Krause on Aug. 21, 1995 in Allentown, Pa. ... Parents are Michael and Jill Krause ... Has one sister, Kristin, who is a freshman on the team ... Mother, Jill, attended Penn State ... Majoring in elementary education ... Names "Pitch Perfect" as favorite movie, Abby Wambach as favorite athlete, Channing Tatum, Adam Sandler and Nia Reed as favorite entertainers.

QUOTING COACH ROSE

"Taylor is our best leader at this point in time. She's the daughter of a coach, has played a lot of volleyball and knows what the team's needs are even though she might not be in the best position to provide a solution. Over the course of her career, she's had a good serve, competes hard and I would expect her to continue that into her final season."

2016 SEASON HIGHS

2016 SEASON HIGHS	CATEGORY	CAREER HIGH
N/A	Kills	1, vs. American (9/12/14)
N/A	Attacks	1, vs. American (9/12/14)
N/A	Hitting Percentage	N/A
N/A	Assists	1 vs. Stony Brook (8/29/15)
N/A	Aces	1, 4x last vs. Villanova (8/29/15)
6 vs. Stanford (9/4)	Digs	7 vs. Villanova (8/29/15)

KRAUSE'S CAREER STATS

SEASON	SP-MP	K	K/S	E	TA	PCT	A	A/S	SA	SA/S	DIG	D/S	BS	BA	TB	B/S
2013	10-10	0	0.00	0	0	.000	0	0.00	0	0.00	5	0.50	0	0	0	0.00
2014	29-20	1	0.03	0	1	1.000	0	0.00	1	0.03	8	0.28	0	0	0	0.00
2015	53-25	0	0.00	0	0	.000	5	0.09	8	0.15	49	0.92	0	0	0	0.00
2016	13-9	0	0.00	0	0	.000	0	0.00	0	0.00	11	0.85	0	0	0	0.00
TOTAL	105-64	1	0.01	0	1	1.000	5	0.05	9	0.09	73	0.70	0	0	0	0.00

2016 PENN STATE WOMEN'S VOLLEYBALL



CARLEY MULLER

#10

Senior | Defensive Specialist
Manhattan Beach, Calif.

2016 MATCH-BY-MATCH

DATE	OPP.	K	E	TA	PCT.	A	SA	D	TB
8/26	West Virginia	0	0	0	.000	1	0	1	0
8/27	Georgia Southern	0	0	0	.000	0	0	1	0
9/16	Rhode Island	0	0	0	.000	0	0	0	0
9/21	Rutgers	0	0	0	.000	0	1	1	0
10/8	Rutgers	0	0	0	.000	0	0	3	0
10/15	Indiana	0	0	0	.000	0	0	0	0

HIGHLIGHTS & NOTES

2016 (Senior): Had one dig against West Virginia (8/26) and one against Georgia Southern (8/27) ... Posted first ace of the season at Rutgers (9/21)...Notched three digs against Rutgers (10/8).

2015 (Junior): Made her 2015 debut against Stony Brook (8/29) ... Played against No. 21 Colorado (9/4) ... Had a career-high outing against Mississippi State (9/12), leading the team with two aces and logging five digs ... Posted three digs at Notre Dame (9/12) ... Saw action on the court at No. 13 Illinois (10/9) ... Recorded one dig at Maryland (11/5).

PERSONAL

Born Carley Muller on April 7, 1995 in Torrance, Calif. ... Parents are Mike and Kristin Muller ... Has one sister, Ashley, and one brother, Jay ... Majoring in public relations with a business minor ... Names Netflix and going to the beach as hobbies, "The Last Hundred series" as favorite books, "Man in the High Castle" as favorite TV show, the Los Angeles Lakers as favorite professional sports team, "13 Going on 30" or "She's the Man" as favorite movies.

QUOTING COACH ROSE

"Carley is a terrific representative of what the term student-athlete should be. She has incredible grades and great commitment to her academic responsibilities. She's worked really hard to combine her academic and volleyball pursuits. It would be a great senior year if she could continue to make great contributions to our team."

2016 SEASON HIGHS

2016 SEASON HIGHS	CATEGORY	CAREER HIGH
N/A	Kills	N/A
N/A	Attacks	N/A
N/A	Hitting Percentage	N/A
1, vs. West Virginia (8/26)	Assists	1, vs. West Virginia (8/26/16)
1, at Rutgers (9/21)	Aces	1, 2x - last 1, at Rutgers (9/21/16)
3 vs. Rutgers (10/8)	Digs	3 vs. Rutgers (10/8/16)

MULLER'S CAREER STATS

SEASON	SP-MP	K	K/S	E	TA	PCT	A	A/S	SA	SA/S	DIG	D/S	BS	BA	TB	B/S
2013	7-7	0	0.00	0	0	.000	0	0.00	0	0.00	0	0.00	0	0	0	0.00
2014	14-14	0	0.00	0	0	.000	0	0.00	1	0.07	2	0.14	0	0	0	0.00
2015	17-13	0	0.00	0	0	.000	1	0.06	2	0.12	10	0.59	0	0	0	0.00
2016	6-6	0	0.00	0	0	.000	0	0.00	1	0.17	6	1.00	0	0	0	0.00
TOTAL	44-40	0	0.00	0	0	.000	1	0.02	4	0.09	18	0.41	0	0	0	0.00

2016 PENN STATE WOMEN'S VOLLEYBALL



**ALI
FRANTTI**

Junior | Outside Hitter
Spring Grove, Ill.

#5

HIGHLIGHTS & NOTES

2016 (Junior): Served up a career-high two aces in the opener vs. West Virginia (8/26) ... Logged seven kills on .429 hitting against Georgia Southern (8/27) ... Notched a double-double with 11 kills and 12 digs against No. 19 North Carolina (8/27) ... Posted 11 kills and four blocks at Colorado (9/3) ... Had eight digs vs. No. 9 Stanford (9/4) ... Tallied seven digs and a season-high five blocks against Siena (9/9) ... Recorded six kills and eight digs vs. Syracuse (9/10) ... Posted three kills, three digs, two blocks and an ace against Rhode Island (9/16) ... Charted her best attacking performance of the Penn State Invitational against Howard (9/17) with seven kills while adding six digs, two blocks and an ace ... Recorded five kills, four digs and a block against Clemson (9/17) ... Posted a season-best .579 hitting with 11 kills against Rutgers (9/21) ... Had five kills and seven digs at Northwestern (9/25)...Logged 10 kills and four digs vs. No. 18 Michigan State (9/30)...Matched a season-high mark with 11 kills and posted a career-high four assists against No. 22 Michigan (10/1)...Tallied 13 kills and 13 digs marking her second double double of the season against No. 1 Minnesota (10/5) ...Dished out seven digs and put away five kills vs. Rutgers (10/8)...Notched five kills, five digs and served up an ace against No. 22 Purdue (10/14)...Tied to lead the offense posting seven kills to go along with six digs vs. Indiana (10/15).

2015 (Sophomore): AVCA All-America Honorable Mention ... AVCA All-Northeast Region ... Started all 34 matches ... Finished tied for third on the team with 2.63 kills per set ... Led the team with 10 kills against Stony Brook (8/29) ... Posted 12 digs against Villanova (8/29) ... Had a season-high 13 kills against No. 2 Stanford (9/5) ... Led the team with 11 kills and six digs against Mississippi State (9/12) ... Tied for first on the team with 14 kills at Notre Dame (9/12) ... Led the team with 14 kills against No. 16 Wisconsin (9/23), adding six digs ... Posted 13 kills and nine digs against No. 21 Minnesota (9/26) ... Tallied 11 digs and put down seven kills against No. 4 Nebraska (10/2), marking her second double-digit dig performance of the season ... Logged 10 kills and five digs at No. 13 Illinois (10/9) ... Recorded a match-high 11 digs, and a career-high six blocks against No. 18 Purdue (10/17) ... Led the team with 17 digs at No. 23 Michigan (10/21) ... Tallied nine kills and 13 digs at Michigan State (10/24) ... Led the team with 14 kills on .417 hitting, while also adding two aces at No. 11 Ohio State (10/28) ... Recorded seven kills against No. 11 Ohio State (10/30) ... Posted 10 kills on a team-high .643 hitting at Rutgers (11/6) ... Led the team with 11 kills at Iowa (11/11) ... Finished second on the team with 11 kills at No. 4 Minnesota (11/14) ... Posted 10 kills vs. Michigan (11/18) ... Led the team with 13 kills on .500 hitting against Northwestern (11/25) ... Had nine digs and three blocks at No. 4 Nebraska (11/28) ... Recorded 12 kills on .400 hitting in the NCAA first round match against Howard (12/4) ... Matched a season-high mark with 14 kills on .407 hitting in the NCAA second round match against Dayton (12/5), adding seven digs ... Tallied seven kills and six digs in the NCAA regional semifinal match against Hawaii (12/11).

PERSONAL

Born Alexandra Annelise Frantti on March 3, 1996 in Highland Park, Ill. ... Parents are Kelly and Dan Frantti ... Has three brothers, Connor, Peyton and Chase ... Names steak and salmon as favorite foods, "How to Train Like a Champion" as favorite book, playing piano as favorite hobby, Emma Stone and Ryan Reynolds as favorite actress and actor ... Majoring in health policy and administration and minoring in business.

QUOTING COACH ROSE

"We have really high expectations for Ali as a passer-hitter and a six rotation player. She had a terrific freshman season and then had some challenges associated with her sophomore season, which is how life works. So much of where she is this year will be demonstrated by how hard she prepares for the upcoming season. She is a great teammate and explosive as an athlete."

2016 MATCH-BY-MATCH

DATE	OPP.	K	E	TA	PCT.	A	SA	D	TB
8/26	West Virginia	8	1	18	.389	2	2	3	1
8/27	Georgia Southern	7	1	14	.429	1	1	4	2
8/27	North Carolina	11	9	45	.044	0	1	12	1
9/3	Colorado	11	6	34	.147	1	0	7	4
9/4	Stanford	6	3	28	.107	1	0	8	1
9/9	Siena	4	2	14	.143	1	0	7	5
9/10	Hofstra	4	3	18	.056	1	0	5	0
9/10	Syracuse	6	6	23	.000	0	1	8	2
9/16	Rhode Island	3	0	9	.333	1	1	3	2
9/17	Howard	7	2	17	.294	1	1	6	2
9/17	Clemson	5	2	19	.158	0	0	4	1
9/21	Rutgers	11	0	19	.579	1	1	3	2
9/25	Northwestern	5	3	21	.095	1	0	7	1
9/30	Michigan State	10	1	24	.375	1	0	4	0
10/1	Michigan	11	2	23	.391	4	1	7	2
10/5	Minnesota	13	7	40	.150	2	0	13	2
10/8	Rutgers	5	2	15	.200	1	0	7	0
10/14	Purdue	5	2	12	.250	2	1	5	0
10/15	Indiana	7	3	17	.235	3	0	6	2

2016 SEASON HIGHS

13 vs. Minnesota (10/5)
45, vs. North Carolina (8/27)
.579 (11-0-19), at Rutgers (9/21)
4, vs. Michigan (10/1)
2, vs. West Virginia (8/26)
13, vs. Minnesota (10/5)
5, at Syracuse (9/10)

CATEGORY

Kills	22, at Stanford (9/5/14)
Attacks	48, at Purdue (10/17/14)
Hitting Percentage	.647 (11-0-17) vs. Yale (9/13/14)
Assists	4, vs. Michigan (10/1/16)
Aces	3, vs. Illinois (10/11/14)
Digs	17, at Michigan (10/21/15)
Blocks	6, vs. Purdue (10/17/15)

CAREER HIGH

FRANTTI'S CAREER STATS

SEASON	SP-MP	K	K/S	E	TA	PCT	A	A/S	SA	SA/S	DIG	D/S	BS	BA	TB	B/S
2014	122-39	391	3.20	113	898	.310	21	0.17	28	0.23	159	1.30	10	48	58	0.48
2015	115-34	303	2.63	112	799	.239	19	0.17	10	0.09	214	1.86	11	44	55	0.48
2016	64-19	139	2.17	55	410	.205	24	0.38	10	0.16	119	1.86	9	21	30	0.47
TOTAL	301-92	833	2.77	280	2107	.262	64	0.21	48	0.16	492	1.63	30	113	143	0.48

2016 PENN STATE WOMEN'S VOLLEYBALL



**SIMONE
LEE**

#22

Junior | Outside Hitter
Menomonee Falls, Wis.

2016 MATCH-BY-MATCH

DATE	OPP.	K	E	TA	PCT.	A	SA	D	TB
8/26	West Virginia	10	2	20	.400	1	2	4	1
8/27	Georgia Southern	8	2	16	.375	1	0	5	1
8/27	North Carolina	23	5	50	.360	0	2	10	2
9/3	Colorado	19	16	57	.053	1	1	9	2
9/4	Stanford	12	7	38	.132	0	0	0	2
9/9	Siena	14	2	29	.414	0	0	4	3
9/10	Hofstra	21	1	42	.476	0	2	4	3
9/10	Syracuse	18	6	41	.293	1	0	5	1
9/16	Rhode Island	10	4	26	.231	0	0	5	2
9/17	Howard	12	1	32	.344	0	1	8	1
9/17	Clemson	10	2	22	.364	0	0	7	3
9/21	Rutgers	13	2	24	.458	0	0	6	1
9/25	Northwestern	10	3	30	.233	1	4	8	2
9/30	Michigan State	12	2	29	.345	0	0	2	2
10/1	Michigan	8	4	22	.182	0	0	0	4
10/5	Minnesota	30	9	63	.333	0	0	6	2
10/8	Rutgers	11	5	21	.286	0	0	6	3
10/14	Purdue	15	3	32	.375	1	0	2	1
10/15	Indiana	7	6	22	.045	1	0	2	1

HIGHLIGHTS & NOTES

2016 (Junior): Notched 10 kills on .400 hitting with two aces in the opener against West Virginia (8/26) ... Logged a career-high 23 kills against No. 19 North Carolina (8/27), adding 10 digs for her first career double-double ... Led the team with 19 kills at Colorado (9/3) ... Led the team with her third straight double figure kill outing, tallying 12 kills vs. No. 9 Stanford (9/4)...Tallied a match-high 14 kills and season-high three blocks against Siena (9/9)...Posted 21 kills to lead the team on .476 hitting along with three blocks vs. Hofstra (9/10)...Logged 18 kills against Syracuse (9/10) for her sixth consecutive double figure-kill performance ... Posted double-figure kills in all three matches of the Penn State Invitational ... Notched 10 kills, five digs and a pair of blocks against Rhode Island (9/16) ... Recorded 12 kills on .344 hitting and added eight digs, a block and an ace against Howard (9/17) ... Charted 10 kills, seven digs and three blocks against for the third time in 2016 against Clemson (9/17) ... Led team in kills with 13 at Rutgers (9/21) on .458 hitting, along with six digs ... Set a career record with four aces and added 10 kills against Northwestern (9/25)...Tallied a match-high 12 kills along with two blocks vs. No. 18 Michigan State (9/30)...Recorded a season-high four blocks and posted eight kills against No. 22 Michigan (10/1)...Charted a career-high 30 kills against No.1 Minnesota (10/5)...Posted 11 kills and six digs vs. Rutgers (10/8)...Notched 15 kills to lead the team along with two digs and a solo stuff against No. 22 Purdue (10/14).

2015 (Sophomore): Played in 30 matches on the year, making 18 starts ... Totaled 158 kills, averaging 1.84 kills per set on .255 hitting ... Made appearances on the court in all three Penn State Classic matches, posting one kill against Buffalo (8/28) ... Put down three kills on .500 hitting against No. 21 Colorado (9/4) ... Logged two kills, two digs and once against Eastern Kentucky (9/11) ... Came off the bench with four kills on .500 hitting at USF (9/19) ... Recorded a season-high seven kills to go along with three digs and three blocks against No. 4 Nebraska (10/2) ... Matched a season-high mark with seven kills on .353 hitting with three blocks against Iowa (10/3) ... Put away six kills at No. 13 Illinois (10/9) ... Tied for first on the team with a career-high 14 kills at Northwestern (10/10), adding four blocks ... Led the team in kills for the second straight match against Indiana (10/16) posting 10 kills for her second consecutive double figure-kill performance ... Led the team with 12 kills against No. 18 Purdue (10/17) ... Logged 13 kills, three digs and a pair of solo stuffs at No. 23 Michigan (10/21) ... Led the team with 10 kills at Michigan State (10/24) ... Tied for second on the team with nine kills against No. 11 Ohio State (10/30) ... Recorded a career-high five blocks at Maryland (11/5) ... Posted eight kills on .471 hitting at Rutgers (11/6) ... Tallied 10 kills at No. 4 Minnesota (11/14) while tying for first on the team with four blocks ... Served up a career-high three aces against Michigan (11/18) ... Recorded seven kills on 12 perfect swings against Northwestern (11/25) ... Had three kills, one dig and one block in the NCAA first round match against Howard (12/4) ... Posted two kills and one ace in the NCAA second round match against Dayton (12/5) ... Totaled five kills on .300 hitting in the NCAA regional semifinals against Hawaii (12/11).

PERSONAL

Born Simone Alexandra Lee on Oct. 7, 1996 in Milwaukee, Wis. ... Parents are Karen and Arthur Lee ... Mother was a student-athlete at Drake ... Has one sister, who plays volleyball at Eastern Illinois ... Names "Game of Thrones" as her favorite TV show, corn as her favorite food, Viola Davis as favorite actress and reading and listening to music as hobbies ... Majoring in broadcast journalism.

QUOTING COACH ROSE

"I am really hoping Simone will be able to pick up some of the offensive gaps that we have with the graduation of Aiyana Whitney and Megan Courtney. She didn't have a full time role last year, but I thought she had a good spring and she's arguably our strongest athlete. Her energy is great and I'm confident that she'll be able to carry a big load for us this year."

2016 SEASON HIGHS	CATEGORY	CAREER HIGH
30, vs. Minnesota (10/5)	Kills	30, vs. Minnesota (10/5/16)
63 vs. Minnesota (10/5)	Attacks	63 vs. Minnesota (10/5/16)
.476 (21-1-42) vs. Hofstra (9/10)	Hitting Percentage	.476 (21-1-42) vs. Hofstra (9/10/16)
1, 6x last - at Indiana (10/15)	Assists	1, 8x last at Indiana (10/15/16)
4, at Northwestern (9/25)	Aces	4, at Northwestern (9/25/16)
10, vs. North Carolina (8/27)	Digs	10, vs. North Carolina (8/27/16)
4, vs. Michigan (10/1)	Blocks	5, at Rutgers (11/6/15)

LEE'S CAREER STATS

SEASON	SP-MP	K	K/S	E	TA	PCT	A	A/S	SA	SA/S	DIG	D/S	BS	BA	TB	B/S
2014	64-26	135	2.11	53	350	.234	1	0.02	0	0.00	28	0.44	5	20	25	0.39
2015	86-31	158	1.84	60	384	.255	2	0.02	7	0.08	39	0.45	5	49	54	0.63
2016	64-19	263	4.11	82	616	.294	7	0.11	12	0.19	93	1.45	9	28	37	0.58
TOTAL	214-76	556	2.60	195	1350	.267	10	0.05	19	0.09	160	0.75	19	97	116	0.54

2016 PENN STATE WOMEN'S VOLLEYBALL



LAINY PIERCE

#8

Junior | Defensive Specialist
Eden, N.Y.

2016 MATCH-BY-MATCH

DATE	OPP.	K	E	TA	PCT.	A	SA	D	TB
8/26	West Virginia	0	0	0	.000	1	0	3	0
8/27	Georgia Southern	0	0	0	.000	1	0	0	0
8/27	North Carolina	0	0	0	.000	0	0	2	0
9/3	Colorado	0	0	0	.000	0	0	4	0
9/4	Stanford	0	0	0	.000	1	0	0	0
9/9	Siena	0	0	0	.000	2	0	3	0
9/10	Hofstra	0	0	0	.000	1	2	4	0
9/10	Syracuse	0	0	0	.000	1	0	6	0
9/16	Rhode Island	0	0	0	.000	0	0	3	0
9/17	Howard	0	0	0	.000	0	0	0	0
9/17	Clemson	0	0	0	.000	0	0	0	0
9/21	Rutgers	0	0	0	.000	0	0	0	0
9/25	Northwestern	0	0	0	.000	0	0	1	0
9/30	Michigan State	0	0	0	.000	0	0	3	0
10/1	Michigan	1	0	1	1.00	0	1	2	0
10/5	Minnesota	0	0	0	.000	0	0	0	0
10/14	Purdue	0	0	0	.000	0	0	0	0
10/15	Indiana	0	0	0	.000	0	0	1	0

HIGHLIGHTS & NOTES

2016 (Junior): Had three digs in the opener against West Virginia (8/26) ... Posted two digs against No. 19 North Carolina (8/27) ... Recorded four digs at Colorado (9/3)...Registered two service aces vs. Hofstra (9/10) along with four digs ... Logged a career-high six digs against Syracuse (9/10). Charted three digs against Rhode Island (9/16) ... Charted a dig against Northwestern (9/25)... Notched three digs vs. No. 18 Michigan State (9/30)...Logged two digs, one kill and one service ace against No. 22 Michigan (10/1)...Notched a dig against Indiana (10/15)

2015 (Sophomore): Saw action in 21 matches, playing in 48 sets ... Totaled 18 digs and three aces ... Made her 2015 debut against Auburn (9/18), logging one dig ... Had one dig against South Florida (9/19) ... Had one dig against No. 16 Wisconsin (9/23) ... Posted a season-high two digs against No. 4 Nebraska (10/2) ... Matched a season-high mark with a pair of digs at Michigan State (10/24) ... Logged one ace and two digs at No. 11 Ohio State (10/28) ... Recorded a season-high three digs against No. 5 Nebraska (11/28) ... Tallied three digs in the NCAA first round match against Howard (12/4) ... Had one dig in the NCAA second round match against Dayton (12/5) ... Totaled one ace and one dig in the NCAA regional semifinals against Hawaii (12/11).

PERSONAL

Born Lainy Teal Pierce on Oct. 30, 1995 in Buffalo, N.Y. ... Parents are Robert and Kiernan Pierce ... Has one sister, Kendall, and one brother, Declan, who is a freshman on the men's volleyball team at Penn State ... Father, Robert, played volleyball at Penn State from 1985-89 ... Mother, Kiernan, was a member of the Penn State track & field team from 1984-89 ... Sister, Kendall played volleyball and graduated from Penn State in 2015 ... Names "New Girl" as favorite TV show, Sarah Hyland and Jonah Hill as favorite actress and actor and pizza as favorite food ... Majoring in public relations and broadcast journalism.

QUOTING COACH ROSE

"Lainy had a really impactful freshman year and did not really have the same impact in her sophomore year. I think Lainy has picked up on what she has to do. She knows she has to be able to serve and that has always been her strength. Now she needs to be able to pass and defend at the same level. As a daughter of a coach I am confident that she will put in the time."

2016 SEASON HIGHS

1, vs. Michigan (10/1)
1, vs. Michigan (10/1)
100 (1-0-1), vs. Michigan (10/1)
2, vs. Siena (9/9)
2, vs. Hofstra (9/10)
6, at Syracuse (9/10)

CATEGORY

Kills
Attacks
Hitting Percentage
Assists
Aces
Digs

CAREER HIGH

1, vs. Michigan (10/1/16)
1, 3x last - vs. Michigan (10/1/16)
100 (1-0-1), vs. Michigan (10/1/16)
2, vs. Siena (9/9/16)
2, vs. Hofstra (9/10/16)
6, at Syracuse (9/10/16)

PIERCE'S CAREER STATS

SEASON	SP-MP	K	K/S	E	TA	PCT	A	A/S	SA	SA/S	DIG	D/S	BS	BA	TB	B/S
2014	61-30	0	0.00	0	1	.000	4	0.07	11	0.18	19	0.31	0	0	0	0.00
2015	51-22	0	0.00	0	2	.000	0	0.00	4	0.08	19	0.37	0	0	0	0.00
2016	45-18	1	0.02	0	1	1.000	7	0.16	3	0.07	32	0.71	0	0	0	0.00
TOTAL	157-70	1	0.01	0	4	.250	11	0.07	18	0.11	70	0.45	0	0	0	0.00

2016 PENN STATE WOMEN'S VOLLEYBALL



HEIDI THELEN

#19

Junior | Middle Hitter
Edgewood, Ky.

2016 MATCH-BY-MATCH

DATE	OPP.	K	E	TA	PCT.	A	SA	D	TB
8/26	West Virginia	3	2	7	.143	0	0	0	2
8/27	Georgia Southern	6	0	10	.600	0	0	1	3
8/27	North Carolina	11	2	20	.450	0	0	2	3
9/3	Colorado	5	5	24	.000	0	0	3	2
9/4	Stanford	5	1	12	.333	0	0	0	4
9/9	Siena	3	0	8	.375	0	0	0	0
9/10	Hofstra	4	1	14	.214	0	0	1	5
9/10	Syracuse	10	1	16	.562	0	0	2	2
9/16	Rhode Island	6	1	10	.500	0	0	2	1
9/17	Howard	7	2	14	.357	0	0	0	2
9/17	Clemson	8	1	14	.500	1	0	0	1
9/21	Rutgers	5	1	13	.308	0	0	0	1
9/25	Northwestern	9	2	16	.438	0	0	0	4
9/30	Michigan State	2	2	9	.000	0	0	0	1
10/1	Michigan	6	0	9	.667	0	0	0	4
10/5	Minnesota	14	3	30	.367	0	0	0	5
10/8	Rutgers	7	2	19	.263	0	0	1	3
10/14	Purdue	4	2	13	.154	1	0	0	1
10/15	Indiana	6	2	18	.222	0	0	0	3

HIGHLIGHTS & NOTES

2016 (Junior): Totaled six kills on 10 perfect swings against Georgia Southern (8/27), adding three blocks ... One of four in double figures with a career-high 11 kills against No. 19 North Carolina (8/27) ... Registered two solo stuffs at Colorado (9/3)...Logged a season-high five blocks including one solo stuff against Hofstra (9/10) ...Posted 10 kills at Syracuse (9/10) marking her second double figure-kill performance of the season... Named to Penn State Invitational team after a strong weekend ... Logged six kills on .500 hitting and a block against Rhode Island (9/16) ... Notched seven kills and a pair of blocks against Howard (9/17) ... Posted a weekend-best eight kills hitting .500 and tacked on a block against Clemson (9/17) ... Posted five kills and a block at Rutgers (9/21) ... Notched nine kills and four blocks at Northwestern (9/25)...Charted six kills on nine errorless swings hitting .667 along with four blocks against No. 22 Michigan (10/1)...Recorded a career-high 14 kills and posted five blocks against No. 1 Minnesota (10/5)...Tallied seven kills and three blocks vs. Rutgers (10/8)...Logged four kills and one assist vs. No.22 Purdue (10/14)...Posted three blocks to lead the blocking unit along with six kills against Indiana (10/15).

2015 (Sophomore): Totaled 41 kills in 23 matches on the year, while also making 16 starts ... Finished third on the team with 1.05 blocks per set ... Made her 2015 debut against Buffalo (8/28) with seven blocks ... Posted three kills and a career-high nine total blocks against Stony Brook (8/29) ... Recorded two digs and four blocks against Villanova (8/29) ... Had four kills on .800 hitting against No. 21 Colorado (9/4), adding seven blocks ... Recorded three kills and two blocks at Notre Dame (9/12) ... Logged five kills on nine perfect swings against South Florida (9/19), adding five blocks ... Recorded four blocks against No. 21 Minnesota (9/26) ... Matched a career-high mark with nine blocks at No. 23 Michigan (10/21) ... Posted one block against Michigan (11/18)...Recorded a career-high seven kills on .875 hitting in the NCAA second round match against Dayton (12/5).

PERSONAL

Born Heidi Ellen Thelen on Sept. 5, 1996 ... Parents are Ashley and Jon ... Has two brothers, Jake and Nick and two sisters, Hannah and Grace ... Names "Game of Thrones and The Office" as favorite TV show, a good sandwich with avocado as her favorite food, Behati Prinsloo as favorite actress ... Majoring in behavioral health.

QUOTING COACH ROSE

"Heidi has made great strides since she has arrived. She has been able to get stronger every year and has picked up her volleyball IQ. She has always been a very positive, great teammate and an enthusiastic young person. Hopefully she'll be able to do the things we need her to do at the net this year, as she has been working especially hard."

2016 SEASON HIGHS

14, vs. Minnesota (10/5)
30, vs. Minnesota (10/5)
.667 (6-0-9) vs. Michigan (10/1)
1, 2x last at Purdue (10/14)
N/A
3, vs. Colorado (9/3)
5, 2x last vs. Minnesota (10/5)

CATEGORY

Kills
Attacks
Hitting Percentage
Assists
Aces
Digs
Blocks

CAREER HIGH

14 vs. Minnesota (10/5/16)
30, vs. Minnesota (10/5/16)
.667 (6-0-9) vs. Michigan (10/1/16)
1, 3x last at Purdue (10/14/16)
N/A
3, vs. Colorado (9/3/16)
9, 2x last at Michigan (10/21/15)

THELEN'S CAREER STATS

SEASON	SP-MP	K	K/S	E	TA	PCT	A	A/S	SA	SA/S	DIG	D/S	BS	BA	TB	B/S
2014	9-6	10	1.11	2	22	.364	0	0.00	0	0.00	1	0.11	1	6	7	0.78
2015	63-24	41	0.65	14	93	.290	8	0.13	0	0.00	11	0.17	7	59	66	1.05
2016	62-19	121	1.95	30	277	.329	2	0.03	0	0.00	12	0.19	6	41	47	0.76
TOTAL	134-49	172	1.28	46	392	.321	10	0.07	0	0.00	24	0.18	14	106	120	0.90

2016 PENN STATE WOMEN'S VOLLEYBALL



HALEIGH WASHINGTON

#15

Junior | Middle Hitter
Colorado Springs, Colo.

2016 MATCH-BY-MATCH

DATE	OPP.	K	E	TA	PCT.	A	SA	D	TB
8/26	West Virginia	10	0	14	.714	0	0	0	3
8/27	Georgia Southern	7	1	9	.667	1	1	4	5
8/27	North Carolina	11	9	32	.062	0	0	6	5
9/3	Colorado	8	1	21	.333	1	1	5	9
9/4	Stanford	9	2	17	.412	0	0	1	1
9/9	Siena	2	0	7	.286	0	2	0	3
9/10	Hofstra	11	2	17	.529	1	0	2	2
9/10	Syracuse	5	2	15	.200	0	1	1	1
9/16	Rhode Island	11	0	14	.786	0	0	2	5
9/17	Howard	8	1	15	.467	0	1	2	4
9/17	Clemson	8	1	12	.583	0	0	2	6
9/21	Rutgers	5	2	11	.273	0	0	1	5
9/25	Northwestern	6	1	11	.455	0	0	1	2
9/30	Michigan State	9	1	16	.500	0	1	2	2
10/1	Michigan	8	1	12	.583	0	3	0	5
10/5	Minnesota	14	0	20	.700	0	1	1	3
10/8	Rutgers	10	1	12	.750	0	0	2	5
10/14	Purdue	8	1	12	.583	0	0	0	1
10/15	Indiana	6	1	9	.556	1	1	3	2

HIGHLIGHTS & NOTES

2016 (Junior): Tied for first on the team with 10 kills on .714 hitting in the opener against West Virginia (8/26) ... Led the team with five blocks against Georgia Southern (8/27) ... Logged 11 kills, six digs and five blocks against No. 19 North Carolina (8/27)...Posted a season-high nine blocks along with five digs vs. Colorado (9/3) ... Tallied nine kills against No. 9 Stanford (9/4) ... Recorded 11 kills vs. Hofstra (9/10) marking her third double figure-kill performance of the season... Named MVP of the Penn State Invitational after an impressive weekend ... Posted 11 kills on a season-best .786 hitting clip while adding five blocks against Rhode Island (9/16) ... Logged eight kills, four blocks and a pair of digs against Howard (9/17) ... Notched eight kills, six blocks and a pair of digs against Clemson (9/17) ... Posted five kills and five blocks at Rutgers (9/21) ... Charted six kills and a pair of blocks against Northwestern (9/25)...Totaled nine kills, two digs and two blocks vs. No. 18 Michigan State (9/30)...Logged eight kills on .583 hitting and five blocks along with a career-high three service aces against No. 22 Michigan (10/1)...Posted a season-high 14 blocks on .700 hitting vs. No. 1 Minnesota (10/5)...Tallied five blocks and put down 10 kills against Rutgers (10/8)...Finished second on the team with eight kills against No. 22 Purdue (10/14)...Notched six kills, three digs and two blocks including one solo stuff vs. Indiana (10/15).

2015 (Sophomore): AVCA First Team All-American ... AVCA All-Northeast Region ... Unanimous All-Big Ten ... Led the team with a .442 hitting clip during the season ... Posted seven kills and five blocks against Buffalo (8/29) ... Recorded seven kills against Stony Brook (8/29) ... Logged six kills and six blocks against Villanova (8/29) ... Had 12 kills on .526 hitting against No. 2 Stanford (9/5) ... Led the team with nine kills against ECU (9/11) ... Posted a team-high seven blocks against Miss. State (9/12) ... Had 11 kills against Auburn (9/18) ... Logged her first career double figure blocking performance with 11 vs. St. John's (9/19) ... Posted 10 kills at USF (9/19) ... Had 11 kills on .786 hitting against No. 16 Wisconsin (9/23), leading the team with five blocks ... Recorded a season-high 13 kills against No. 21 Minnesota (9/26) ... Led the team with nine blocks and 11 kills against No. 4 Nebraska (10/2) ... Recorded 11 kills against Iowa (10/3) ... Led the team with seven blocks and 11 kills at No. 13 Illinois (10/9) ... Tallied a team-high eight blocks at Northwestern (10/10) ... Logged 10 kills against No. 13 Purdue (10/17), adding nine blocks ... Had a career-high 17 kills on .598 hitting at No. 23 Michigan (10/21), along with eight blocks ... Tallied four blocks at No. 11 Ohio State (10/28) ... Led the team with 13 kills against No. 11 Ohio State (10/30) ... Had a team-high 12 kills and seven blocks at Maryland (11/5) ... Led the team with 12 kills on .714 hitting vs. Michigan (11/18) ... Posted seven kills on .500 hitting to go along with four blocks against Maryland (11/21) ... Logged nine kills, three digs and two blocks at No. 4 Nebraska (11/28) ... Totaled eight kills on .636 hitting in the NCAA first round match against Howard (12/4), adding seven blocks ... Tallied seven kills, five digs and four blocks in the NCAA second round match against Dayton (12/5) ... Finished tied for second on the team with nine kills in the NCAA regional semifinals against Hawaii (12/11), while also leading the team with two blocks.

PERSONAL

Born Haleigh Meridian Washington on Sept. 22, 1995 in Denver, Colo. ... Parents are Danielle and Alecs ... Has one brother, Kaden and one sister, Leilani ... Names "The Office" as favorite TV show, the "Frashington Omelet" as favorite food, Robin Williams as favorite actor, "The Color Purple" as her favorite book and reading, yoga and hiking as hobbies ... Majoring in philosophy.

QUOTING COACH ROSE

"Haleigh had a great freshman season coming off of a preseason injury and I thought she played really well. She had good success early in her sophomore year and then she ran out of gas as the season went along. She has had some physical challenges that have been addressed, so hopefully she'll be healthy. She is an engaging human being who has great energy and is a terrific student. Haleigh has national team potential and has to put in all her energy.

2016 SEASON HIGHS

14 vs. Minnesota (10/5)
32, vs. North Carolina (8/27)
.786 (11-0-14) vs. Rhode Island (9/17)
1, 4x last vs. Indiana (10/15)
3, vs. Michigan (10/1)
6, vs. North Carolina (8/27)
9, at Colorado (9/3)

CATEGORY

Kills	17 at Michigan (10/21/15)
Attacks	32, vs. North Carolina (8/27/16)
Hitting Percentage	.846 (11-0-13) vs. Auburn (9/18/15)
Assists	3 vs. Eastern Illinois (9/19/14)
Aces	3 vs. Michigan (10/1/16)
Digs	6, vs. North Carolina (8/27/16)
Blocks	11 vs. St. John's (9/19/15)

CAREER HIGH

WASHINGTON'S CAREER STATS

SEASON	SP-MP	K	K/S	E	TA	PCT	A	A/S	SA	SA/S	DIG	D/S	BS	BA	TB	B/S
2014	80-27	208	2.60	37	369	.463	5	0.06	0	0.00	23	0.29	17	79	96	1.20
2015	115-34	302	2.63	58	552	.442	4	0.03	26	0.23	66	0.57	24	135	159	1.38
2016	64-19	156	2.44	27	276	.467	4	0.06	12	0.19	35	0.55	11	58	69	1.08
TOTAL	259-80	666	2.57	122	1197	.454	13	0.05	38	0.15	124	0.48	52	272	324	1.25

2016 PENN STATE WOMEN'S VOLLEYBALL



ABBY DETERING

#7

Junior | Setter
Mentor, Ohio

2016 MATCH-BY-MATCH

DATE	OPP.	K	E	TA	PCT.	A	SA	D	TB
8/26	West Virginia	3	0	5	.600	29	0	5	0
8/27	North Carolina	1	1	6	.000	23	0	4	0
9/3	Colorado	1	0	3	.333	15	0	0	0
9/4	Stanford	5	1	11	.364	35	0	9	2
9/9	Siena	5	0	5	1.00	28	0	5	1
9/10	Hofstra	3	2	9	.111	41	1	10	4
9/10	Syracuse	4	1	8	.375	39	0	11	2
9/16	Rhode Island	4	0	8	.500	27	1	5	2
9/17	Howard	1	1	8	.000	31	1	6	1
9/17	Clemson	2	0	6	.333	33	1	3	3
9/21	Rutgers	4	0	6	.667	34	4	6	2
9/25	Northwestern	1	0	5	.200	32	2	6	2
9/30	Michigan State	2	1	5	.375	34	0	6	1
10/1	Michigan	4	0	7	.571	35	0	11	2
10/5	Minnesota	5	1	13	.308	61	3	10	0
10/8	Rutgers	3	0	4	.750	40	0	5	3
10/14	Purdue	5	1	10	.400	29	1	7	2
10/15	Indiana	5	0	8	.625	25	1	6	0

2016 SEASON HIGHS

5, 5x last at Indiana (10/15)
13, vs. Minnesota (10/5)
.667 (4-0-6) at Rutgers (9/21)
61, vs. Minnesota (10/5)
4, at Rutgers (9/21)
11, 2x last vs. Michigan (10/1)
4, vs. Hofstra (9/10)

CATEGORY

Kills..... 5, 5x last at Indiana (10/15/16)
Attacks..... 13, vs. Minnesota (10/5/16)
Hitting Percentage..... .667 (4-0-6) at Rutgers (9/21/16)
Assists..... 61, vs. Minnesota (10/5/16)
Aces..... 4, at Rutgers (9/21/16)
Digs..... 11, 2x last vs. Michigan (10/1/16)
Blocks..... 4, vs. Hofstra (9/10/16)

CAREER HIGH

DETERING'S CAREER STATS

SEASON	SP-MP	K	K/S	E	TA	PCT	A	A/S	SA	SA/S	DIG	D/S	BS	BA	TB	B/S
2014*	10-7	2	0.20	2	8	.000	21	2.10	0	0.00	4	0.40	0	0	0	0.00
2015*	89-29	10	0.11	1	15	.600	58	0.65	25	0.28	41	0.46	0	6	6	0.07
2016	56-18	58	1.04	9	127	.386	591	10.55	16	0.29	115	2.05	0	27	27	0.48
PENN STATE	56-18	58	1.04	9	127	.386	591	10.55	16	0.29	115	2.05	0	27	27	0.48
* ALL	155-54	70	0.45	12	150	.387	670	4.32	41	0.26	160	1.03	0	33	33	0.21

*Played two seasons at Florida.

HIGHLIGHTS & NOTES

2016 (Junior): Set the team to a .479 hitting clip against West Virginia (8/26), tallying 29 assists and five digs ... Dished out 23 assists in one and a half sets against No. 19 North Carolina (8/27) ... Talled 35 assists against No. 9 Stanford (9/4), adding five kills and nine digs ... Posted five kills against Siena (9/9) ... Notched a double-double with a career-high 41 assists and 10 digs against Hofstra (9/10) ... Recorded 39 assists and 11 digs against Syracuse (9/10)...Logged four kills on eight effortless swings along with five digs against Rhode Island (9/16)...Tallied six digs and one service ace vs. Howard (9/17)...Posted three blocks and three digs against Clemson (9/17) ... Tallied a career high four aces while adding 34 assists, four kills, six digs and two blocks at Rutgers (9/21) ... Dished out 32 assists while adding six digs and a pair of aces at Northwestern (9/25)... Passed out 34 assists and six digs vs. No. 18 Michigan State (9/30)...Matched a season-high mark with 11 digs and tallied four kills on seven errorless swings against No. 22 Michigan (10/1)...Passed out 61 assists and tallied 10 digs, marking her fourth double-double of the season against No. 1 Minnesota (10/5)...Charted five digs, three blocks and three kills against Rutgers (10/8)...Matched a season-high mark with five kills and posted seven digs vs. No. 22 Purdue (10/14)...Tallied five kills on eight errorless swings to go along with 25 assists and six digs against Indiana (10/15).

2015 (Sophomore - at Florida): Saw action in 29 matches, playing in 89 sets during her sophomore season at Florida ... Closed out the year averaging 0.65 assists per set ... Posted three blocks, four digs and two aces against San Diego State (9/12) ... Had three kills against St. John's (9/17) ... Dished out a career-high 30 assists to go along with three kills at Arkansas (10/4) ... Logged three aces in back-to-back NCAA Tournament matches against New Hampshire (12/3) and Florida State (12/4).

PERSONAL

Born Abby Patricia Detering, March 21, 1996 ... Parents are Paula and Mike Detering ... Has one brother, Matthew and one sister, Lauren ... Father, Mike, played baseball at Cleveland State ... Names the Cleveland Cavaliers as favorite professional sports team ... "Monsters Inc" as favorite movie ... hiking as favorite hobby and grilled chicken and mustard as favorite food ... Plans to major in communications, arts and sciences.

QUOTING COACH ROSE

"Abby came to Penn State from a successful program at Florida. She was a highly recruited individual out of Ohio and has great enthusiasm. I know the players really enjoy the energy that she brings to practice and competition. I look forward to the contributions that she can make to our team at the setting position this year."

2016 PENN STATE WOMEN'S VOLLEYBALL



BRYANNA WEISKIRCHER

#21

Redshirt Sophomore | Setter
Rockford, Ill.

HIGHLIGHTS & NOTES

2016 (RS Sophomore): Directed the team to a .424 hitting clip in the win against Georgia Southern (8/27), dishing out 26 assists to go along with eight digs and two aces ... Came off the bench and tallied 28 assists against No. 19 North Carolina (8/27) ... Logged 35 assists and nine digs at Colorado (9/3) ... Logged an ace at Rutgers (9/21)...Served up an ace against No. 22 Michigan (10/1)... Registered three service aces vs. Rutgers (10/8)...Recorded one service ace and a dig against both No. 22 Purdue (10/14) and Indiana (10/15).

2015 (RS Freshman): AVCA All-Northeast Region Honorable Mention ... Big Ten Setter of the Week (11/2) ... Directed the team to a .295 hitting efficiency, averaging 10.83 assists per set ... Led the team with 40 aces, averaging 0.35 per set ... Made her collegiate debut against Buffalo (8/28), dishing out 18 assists to go along with three digs ... Had 30 assists and three digs against Stony Brook (8/29) ... Logged her third match with at least one ace against Villanova (8/29), adding 37 assists ... Had four digs and three blocks against No. 21 Colorado ... Paced four of her top attackers to double figure kills in the win against No. 2 Stanford (9/5) with a career-high 41 assists and eight digs ... Paced the team to a .361 hitting percentage in the win against ECU (9/11), dishing out 19 assists to go along with a team-high nine digs ... Had three kills and a career-high five total blocks against Mississippi State (9/12) ... Recorded four kills and 36 assists against Auburn (9/18) ... Posted her first double-double with 32 assists and 15 digs at South Florida (9/19) ... Paced the team to a .376 hitting percentage against No. 16 Wisconsin, dishing out 43 assists ... Logged a season-high 54 assists against No. 21 Minnesota (9/26), adding 12 digs for a double-double ... Dished out 46 assists, posting 11 digs against No. 4 Nebraska (10/2) ... Had 34 assists, 10 digs and a season-high three aces against Iowa (10/3) ... Logged a double-double with 54 assists and 14 digs at No. 13 Illinois (10/9) ... Dished out 43 assists and 17 digs at Northwestern (10/10) marking her sixth double-double of the season ... Posted a career-high six blocks against Indiana (10/16) ... Led the team from the service line with a career-high four aces against No. 13 Purdue (10/17), while also pacing the team to a .315 hitting clip ... Logged a double-double with 53 assists and 12 digs at No. 23 Michigan (10/21) ... Dished out 32 assists to go along with nine digs at Michigan State (10/24) ... Paced the team to a .349 hitting percentage dishing out 35 assists to go along with a team-high 10 digs at No. 11 Ohio State (10/28) ... Passed out 42 assists, adding a career-high five kills, six digs and two aces against No. 11 Ohio State (10/30) ... Dished out 41 assists to go along with a team-high 11 digs while matching a career-high mark with four aces at Maryland (11/5) ... Directed the offense to .374 hitting, passing out 33 assists at Rutgers (11/6) ... Tied for first on the team eight digs at No. 4 Minnesota (11/11) ... Logged a double-double with 38 assists and 12 digs, adding two aces vs. Michigan (11/18) ... Paced the team to a Big Ten season-high .408 hitting clip against Northwestern (11/25), dishing out 41 assists to go along with four kills, two aces and two blocks ... Passed out 46 assists to go along with seven digs and four total blocks against Dayton (12/5).

2016 MATCH-BY-MATCH

DATE	OPP.	K	E	TA	PCT.	A	SA	D	TB
8/27	Georgia Southern	0	0	2	.000	26	2	8	1
8/27	North Carolina	0	0	3	.000	28	1	4	1
9/3	Colorado	2	1	6	.167	35	0	9	3
9/21	Rutgers	0	0	0	.000	0	1	0	0
9/25	Northwestern	0	0	0	.000	0	0	0	0
9/30	Michigan State	0	0	0	.000	0	0	0	0
10/1	Michigan	0	0	0	.000	0	1	0	0
10/5	Minnesota	0	0	0	.000	0	0	2	0
10/8	Rutgers	0	0	0	.000	0	3	0	0
10/14	Purdue	0	0	0	.000	1	1	1	0
10/15	Indiana	0	0	0	.000	0	1	1	0

PERSONAL

Born Bryanna Malia'okalani Weiskircher on May 25, 1996 in Rockford, Ill. ... Parents are Renita and Philip ... Has two brothers, Torey and Trevor and one sister, Natalie ... Names "Criminal Minds" as favorite TV show, steak as favorite food and hanging out with friends and family or watching the Blackhawks and Cubs as hobbies ... Majoring in communications arts and sciences.

QUOTING COACH ROSE

"I thought Bryanna had some flashes last year where she played really well and some matches where I was surprised that she didn't play better. She has a good IQ for the game and a terrific serve. She'll be better in the areas I thought needed to be polished up to make a bigger contribution to our program this year."

2016 SEASON HIGHS

2, vs. Colorado (9/3)	Kills
6, vs. Colorado (9/3)	Attacks
.167 (2-1-6) vs. Colorado (9/3)	Hitting Percentage
35 vs. Colorado (9/3)	Assists
3 vs. Rutgers (10/8)	Aces
9 vs. Colorado (9/3)	Digs
3, vs. Colorado (9/3)	Blocks

CATEGORY

CAREER HIGH

Kills	5 vs. Ohio State (10/30/15)
Attacks	9 vs. Michigan (10/21/15)
Hitting Percentage	.833 (5-0-6) vs. Ohio State (10/30/15)
Assists	54, 2x last vs. Minnesota (9/26/15)
Aces	4 at Maryland (11/5/15)
Digs	17 vs. Northwestern (10/10/15)
Blocks	6 vs. Indiana (10/16/15)

WEISKIRCHER'S CAREER STATS

SEASON	SP-MP	K	K/S	E	TA	PCT	A	A/S	SA	SA/S	DIG	D/S	BS	BA	TB	B/S
2014	REDSHIRT SEASON.															
2015	115-34	68	0.59	24	168	.262	1245	10.83	40	0.35	257	2.23	2	66	68	0.59
2016	28-11	2	0.07	1	11	.091	90	3.21	6	0.21	26	0.93	0	5	5	0.18
TOTAL	143-45	70	0.49	25	179	.251	1335	9.34	46	0.32	283	1.98	2	71	73	0.51

2016 PENN STATE WOMEN'S VOLLEYBALL



KEETON HOLCOMB

#12

Sophomore | Defensive Specialist
Bellville, Texas

HIGHLIGHTS & NOTES

2016 (Sophomore): Played in all three matches of the Penn State Classic, entering as a defensive specialist ... Posted one dig against Georgia Southern (8/27) ... Logged four digs at Colorado (9/3) and against No. 9 Stanford (9/4)...Notched nine digs against Syracuse (9/10)...Tallied six digs against Rhode Island (9/16)...Dished out five digs and one assist vs. Howard (9/17)...Recorded seven digs against Clemson (9/17) ... Posted a pair of assists against Rutgers (9/21) ... Charted eight digs and an assist against Northwestern (9/25)...Logged eight digs and one service ace vs. No. 18 Michigan State (9/30)...Recorded four digs, one assist and one ace against No. 22 Michigan (10/1)...Registered seven digs and three assists against No. 1 Minnesota (10/5)...Charted six digs, one ace and one assist vs. Rutgers (10/8)...Notched five digs along with a pair of assists and one ace against No. 22 Purdue (10/14)...Served up a service ace vs. Indiana (10/15).

2015 (Freshman): Played in 32 matches in her first season in the Blue and White, making 28 starts ... Led the team with 3.05 digs per set ... Made her collegiate debut against Buffalo (8/29), posting a career-high 10 digs ... Earned two starts at the libero position against Stony Brook (8/29) and Villanova (8/29), recording nine digs against the Seawolves ... Logged seven digs against No. 21 Colorado (9/4) and eight digs against No. 2 Stanford (9/5) ... Recorded back-to-back 20-dig performances in the same day, with a team-high mark against Mississippi State (9/12) and Notre Dame (9/12) ... Notched her third consecutive double-digit dig performance with a team-high 17 digs against Auburn (9/18) ... Logged 10 digs at South Florida (9/19) ... Had six digs against No. 16 Wisconsin (9/23) ... Posted a team-high 18 digs against No. 21 Minnesota (9/26) ... Led the team with a career-high 23 digs against No. 4 Nebraska (10/2), marking her seventh double-digit dig performance of the year...Recorded back-to-back double-digit dig performances at No. 13 Illinois (10/9) and Northwestern (10/10), posting 15 against the Wildcats ... Led the defense for the ninth time this season with 15 digs against Indiana (10/16) ... Scooped up nine digs against No. 13 Purdue (10/17) ... Recorded nine digs at No. 23 Michigan (10/21) ... Tallied a match-high 18 digs at Michigan State (10/24) ... Led the team with a match-high 12 digs against No. 11 Ohio State (10/30), adding one ace ... Recorded a team-high 13 digs at Rutgers (11/6) ... Finished second on the team with seven digs at Iowa (11/11) ... Posted 12 digs vs. Michigan (11/18).

PERSONAL

Born Keeton Laurence Holcomb on March 4, 1997 in Bryan, Texas ... Parents are Stacy and Tom Holcomb ... Has two younger siblings, brother Harrison and sister, Jolie ... Names "The Office" as favorite TV show, "Looking for Alaska" as favorite book ... Reading and hiking as hobbies and her grandma's chicken and dumplings as her favorite food ... Undecided on a major.

QUOTING COACH ROSE

"I thought there were matches where Keeton played well and the team responded especially well and there were some matches, especially toward the end of the year, where she was just wore down. The demands of the position and the strength of the conference kind of slowed her down a little bit. Hopefully, she'll take the experiences that she gained last year and combine it with what she brings to the table. She's a confident defender and a really good teammate."

2016 MATCH-BY-MATCH

DATE	OPP.	K	E	TA	PCT.	A	SA	D	TB
8/26	West Virginia	0	0	0	.000	0	0	0	0
8/27	Georgia Southern	0	0	0	.000	0	0	1	0
8/27	North Carolina	0	0	0	.000	0	0	0	0
9/3	Colorado	0	0	0	.000	1	0	4	0
9/4	Stanford	0	0	0	.000	0	0	4	0
9/9	Siena	0	0	0	.000	1	0	3	0
9/10	Hofstra	0	0	0	.000	1	0	3	0
9/10	Syracuse	0	0	0	.000	2	0	9	0
9/16	Rhode Island	0	0	0	.000	0	0	6	0
9/17	Howard	0	0	0	.000	1	0	5	0
9/17	Clemson	0	0	0	.000	0	0	7	0
9/21	Rutgers	0	0	0	.000	2	0	0	0
9/25	Northwestern	0	0	1	.000	1	0	8	0
9/30	Michigan State	0	0	0	.000	0	1	8	0
10/1	Michigan	0	0	0	.000	1	1	4	0
10/5	Minnesota	0	0	0	.000	3	0	7	0
10/8	Rutgers	0	0	0	.000	1	1	6	0
10/14	Purdue	0	0	0	.000	2	1	5	0
10/15	Indiana	0	0	0	.000	1	1	1	0

2016 SEASON HIGHS

2016 SEASON HIGHS	CATEGORY	CAREER HIGH
N/A	Kills	1 vs. Michigan (11/18/15)
N/A	Attacks	1 vs. Michigan (11/18/15)
N/A	Hitting Percentage	N/A
3, vs. Minnesota (10/5)	Assists	6, 2x last at Michigan State (10/24/15)
1, 3x last vs. Rutgers (10/8)	Aces	1, 9x last vs. Rutgers (10/8/16)
9, at Syracuse (9/10)	Digs	23 vs. Nebraska (10/2/15)

HOLCOMB'S CAREER STATS

SEASON	SP-MP	K	K/S	E	TA	PCT	A	A/S	SA	SA/S	DIG	D/S	BS	BA	TB	B/S
2015	102-32	1	0.01	1	3	.000	70	0.69	6	0.06	311	3.05	0	0	0	0.00
2016	57-19	0	0.00	0	1	.000	18	0.32	5	0.09	81	1.42	0	0	0	0.00
TOTAL	159-51	1	0.01	1	4	.000	88	0.55	11	0.07	392	2.47	0	0	0	0.00

2016 PENN STATE WOMEN'S VOLLEYBALL



WILMA RIVERA

Sophomore | Setter
Carolina, Puerto Rico

#4

HIGHLIGHTS & NOTES

2016 (Sophomore): Served up two aces and three digs in the season opener against West Virginia (8/26) ... Logged eight digs against No. 19 North Carolina (8/27).

2015 (Freshman): Played in 20 matches on the year ... Totaled 78 digs, 27 assists and six aces ... Made her collegiate debut against Buffalo ... Had four assists and one dig against No. 21 Colorado (9/4) ... Had a career-high nine digs at South Florida (9/19) ... Made her B1G debut at Illinois (10/9), posting four digs...Finished second on the team with seven digs at Iowa (11/11) ...Tied for first on the team with eight digs at No. 4 Minnesota (11/14) ... Had five digs at No. 5 Nebraska (11/28).

PERSONAL

Born Wilmarie Rivera Roldan on February 14, 1997 in Carolina, Puerto Rico ... Parents are Esmeralda and Wilmar Rivera ... Has two brothers, Wilmar and William, who both play baseball in Puerto Rico ... Majoring in business ... Names rice, beans and chicken as favorite foods and going to the beach with family and friends as her favorite activity outside of volleyball.

QUOTING COACH ROSE

"Of the younger players, I know Wilma has made the biggest jump as far as her level of play. Her serve has become a factor, she's quick and much stronger than when she came in. I think her strength has really picked up and with the strength comes some confidence in playing the game. I expect her to contribute in a variety of ways this campaign."

2016 MATCH-BY-MATCH

DATE	OPP.	K	E	TA	PCT.	A	SA	D	TB
8/26	West Virginia	0	0	0	.000	0	2	3	0
8/27	Georgia Southern	0	0	0	.000	0	1	3	0
8/27	North Carolina	0	0	0	.000	2	1	8	0
9/4	Stanford	0	0	0	.000	0	0	0	0
9/9	Siena	0	0	0	.000	0	0	0	0
9/10	Hofstra	0	0	0	.000	0	0	0	0
9/10	Syracuse	0	0	0	.000	0	0	1	0
9/21	Rutgers	0	0	0	.000	0	0	1	0
9/25	Northwestern	0	0	0	.000	0	0	0	0

2016 SEASON HIGHS

2016 SEASON HIGHS	CATEGORY	CAREER HIGH
N/A	Kills	1 at Michigan (11/18/15)
N/A	Attacks	N/A
N/A	Hitting Percentage	.846 (11-0-13) vs. Auburn (9/18/15)
2, vs. North Carolina (8/27)	Assists	8 vs. Buffalo (8/28/15)
2, vs. West Virginia (8/26)	Aces	2, 2x last vs. West Virginia (8/26/16)
8, vs. North Carolina (8/27)	Digs	9 at South Florida (9/19/15)

RIVERA'S CAREER STATS

SEASON	SP-MP	K	K/S	E	TA	PCT	A	A/S	SA	SA/S	DIG	D/S	BS	BA	TB	B/S
2015	53-21	0	0.00	0	1	.000	27	0.51	6	0.11	82	1.55	0	0	0	0.00
2016	18-9	0	0.00	0	0	.000	2	0.11	4	0.22	16	0.89	0	0	0	0.00
TOTAL	71-30	0	0.00	0	1	.000	29	0.41	10	0.14	98	1.38	0	0	0	0.00

2016 PENN STATE WOMEN'S VOLLEYBALL



**TORI
GORRELL**

#11

Redshirt Freshman | Middle Hitter
Oakville, Ontario

HIGHLIGHTS & NOTES

2016 (Redshirt Freshman): Logged six kills on .667 hitting with three blocks in her collegiate debut against West Virginia (8/26) ... Recorded her first double figure kill outing, posting 14 kills at Colorado (9/3), while also tallying five blocks, including two solo stuffs ... Led the team with a career-high eight total blocks against No. 9 Stanford (9/4) ... Notched eight kills on .545 hitting vs. Siena (9/9)...Matched her season-high record with eight blocks including two solo stuffs against Hofstra (9/10)...Tallied seven digs and four kills against Syracuse (9/11)...Posted five kills and two blocks vs. Howard (9/17)... Charted four kills on .800 hitting with a pair of blocks at Rutgers (9/21) ... Logged eight kills and four blocks at Northwestern (9/25)...Registered six kills, two blocks and one assist vs. No. 18 Michigan State (9/30)...Finished second on the team posting nine kills and five blocks against No. 22 Michigan (10/1)...Posted her second double figure kill outing with 11 kills vs. Rutgers (10/8) to go along with three blocks...Led the blocking unit with three kills and posted four kills and a dig against No.22 Purdue...Tallied seven kills on .667 hitting and posted two blocks vs. Indiana (10/15).

2015 (Freshman): Redshirt season.

PERSONAL

Born Victoria Leigh McGregor Gorrell on March 11, 1997 in Hamilton, Ontario (Canada) ... Parents are Suzanne and Miles Gorrell ... Has one older sister, Veronica ... Majoring in recreation, park and tourism management ... Names "Scooby Doo" as favorite TV show, "The Notebook" as favorite book ... "Titanic" as favorite movie ... Blake Lively as favorite actress ... Calgary styled beef as favorite food and paddle boarding as favorite hobby.

QUOTING COACH ROSE

"Tori is a former camper who we redshirted last year and the expectations are very high for her. She's especially good off of one foot, has a good arm and I think once she gets healthy, she'll be in the mix to help us at the middle blocking position. Tori is the daughter of a professional athlete and I know she understands what it takes to succeed."

2016 MATCH-BY-MATCH

DATE	OPP.	K	E	TA	PCT.	A	SA	D	TB
8/26	West Virginia	6	0	9	.667	0	0	0	3
8/27	Georgia Southern	3	2	6	.167	0	0	1	2
8/27	North Carolina	3	1	6	.333	2	0	0	3
9/3	Colorado	14	4	30	.333	1	0	1	5
9/4	Stanford	6	2	11	.364	0	0	0	8
9/9	Siena	8	2	11	.545	1	0	2	6
9/10	Hofstra	7	3	11	.364	0	0	0	8
9/11	Syracuse	4	1	9	.333	1	0	1	7
9/16	Rhode Island	4	1	8	.375	2	0	1	1
9/17	Howard	5	3	10	.200	0	0	1	2
9/17	Clemson	3	1	6	.333	0	0	1	2
9/21	Rutgers	4	0	5	.800	0	0	0	2
9/25	Northwestern	6	3	10	.300	0	0	0	4
9/30	Michigan State	6	3	12	.250	1	0	0	2
10/1	Michigan	9	2	14	.500	0	0	0	5
10/5	Minnesota	3	4	13	-.077	1	0	0	5
10/8	Rutgers	11	1	14	.714	0	0	0	3
10/14	Purdue	4	3	10	.100	0	0	1	3
10/15	Indiana	7	1	9	.667	0	0	0	2

2016 SEASON HIGHS

14, vs. Colorado (9/3)
30, vs. Colorado (9/3)
.714 (11-1-14) vs. Rutgers (10/8)
2, 2x last vs. Rhode Island (9/16)
N/A
2, vs. Siena (9/9)
8, 2x last vs. Hofstra (9/10)

CATEGORY

Kills
Attacks
Hitting Percentage
Assists
Aces
Digs
Blocks

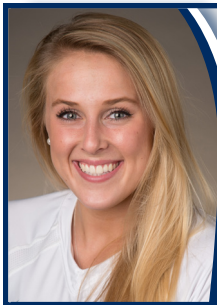
CAREER HIGH

14, vs. Colorado (9/3/16)
30, vs. Colorado (9/3/16)
714 (11-1-14) vs. Rutgers (10/8/16)
2, 2x last vs. Rhode Island (9/16/16)
N/A
2, vs. Siena (9/9/16)
8, 2x last vs. Hofstra (9/10/16)

GORRELL'S CAREER STATS

SEASON	SP-MP	K	K/S	E	TA	PCT	A	A/S	SA	SA/S	DIG	D/S	BS	BA	TB	B/S
2015	REDSHIRT SEASON.															
2016	64-19	113	1.77	37	204	.373	9	0.14	0	0.00	9	0.14	15	58	73	1.14
TOTAL	64-19	113	1.77	37	204	.373	9	0.14	0	0.00	9	0.14	15	58	73	1.14

2016 PENN STATE WOMEN'S VOLLEYBALL



**KENDALL
WHITE**

#3

Freshman | Defensive Specialist
Indianapolis, Ind.

2016 MATCH-BY-MATCH

DATE	OPP.	K	E	TA	PCT.	A	SA	D	TB
8/26	West Virginia	0	0	0	.000	2	0	16	0
8/27	Georgia Southern	0	0	0	.000	2	0	5	0
8/27	North Carolina	0	0	0	.000	0	0	17	0
9/3	Colorado	0	0	0	.000	2	0	18	0
9/4	Stanford	0	0	0	.000	4	0	22	0
9/9	Siena	0	1	1	-1.00	2	1	9	0
9/10	Hofstra	0	0	0	.000	0	0	7	0
9/10	Syracuse	0	0	1	.000	2	0	12	0
9/16	Rhode Island	0	1	1	-1.00	4	0	10	0
9/17	Howard	0	0	0	.000	2	0	10	0
9/17	Clemson	1	0	1	1.00	2	0	15	0
9/21	Rutgers	0	0	0	.000	1	1	13	0
9/25	Northwestern	0	0	0	.000	2	2	10	0
9/30	Michigan State	1	0	1	1.00	2	0	11	0
10/1	Michigan	0	0	0	.000	4	1	6	0
10/5	Minnesota	1	0	2	.500	4	0	21	0
10/8	Rutgers	0	0	0	.000	1	0	14	0
10/14	Purdue	0	0	1	.000	2	0	11	0
10/15	Indiana	0	0	0	.000	3	0	9	0

HIGHLIGHTS & NOTES

2016 (Freshman): Led the team with 16 digs against West Virginia (8/26) in her first appearance in the Blue and White ... Finished first on the team with 17 digs against No. 19 North Carolina (8/27) ... Finished first on the team with 18 digs at Colorado (9/3) ... Posted her first 20-dig performance with a career-high 22 digs against No. 9 Stanford (9/4) ... Registered a service ace to go along with nine digs vs. Siena (9/9)...Tallied 12 digs against Syracuse (9/10)...Matched a career-high four assists and added 10 digs against Rhode Island (9/16)...Logged 15 digs, two assists and one kill vs. Clemson (9/17)... Scored on an ace and added 13 digs against Rutgers (9/21) ... Logged 10 digs, two aces and two assists at Northwestern (9/25)...Led the defense posting 11 digs and one kill vs. No. 18 Michigan State (9/30)...Matched a season-high mark with four assists to go along with six digs against No. 22 Michigan (10/1)...Recorded a match-high 21 digs to go along with four assists and one kill vs. No. 1 Minnesota (10/5)...Tallied 14 digs against Rutgers (10/8)...Dished out 11 digs and two assists against No. 22 Purdue (10/14)...Posted a team-high nine digs to go along with three assists vs. Indiana (10/15).

High School: A four-year letterwinner at Cathedral, White helped the Irish become the first Indiana 4A team to post an undefeated record (36-0) in 2015 on the way to an Indiana Class 4A state title as the team's libero ... Earned Indiana All-State first team honors from 2014-16, as well as second team laurels in 2013 ... Picked up All-City honors from 2013-16 ... Served as team captain at Cathedral in 2015-16, earning team MVP honors in 2016 ... Also selected as the Indy Star Player of the Year and Cathedral's High School Female Athlete of the Year in 2015-16 ... Named Indiana's volleyball Gatorade State Player of the Year in 2015-16 ... Earned 2015 PrepVolleyball.com High School All-America honors ... Selected to the American Family Insurance ALL-USA volleyball team in 2015 ... Played club volleyball with Munciana, earning AAU All-America accolades in 2015-16.

PERSONAL

Born Kendall Avery White, July 7, 1997 in Zionsville, Indiana ... Parents are Stephanie and Brad White ... Father, Brad, played baseball at Indiana ... Has two sisters, Payton and Sloane and one brother, Max ... Names the Indiana Pacers as her favorite professional sports team ... "Bridesmaids" as her favorite movie ... Michael Jordan as her favorite athlete ... Dylan O'Brien as her favorite actor and biscuits and sausage gravy as her favorite food ... Undecided on a major.

QUOTING COACH ROSE

"Kendall has had great success with her club and high school teams. She plays one way and it's really, really hard. I'm a big fan of how Kendall plays and I'm a big fan of people going with their strengths. I know very few players can make a big impact from the back row but I am confident about Kendall's potential."

2016 SEASON HIGHS

2016 SEASON HIGHS	CATEGORY	CAREER HIGH
1, 3x last vs. Minnesota (10/5)	Kills	1, 3x last vs. Minnesota (10/5/16)
2 vs. Minnesota (10/5)	Attacks	2 vs. Minnesota (10/5/16)
1.00 (1-0-1) vs. Michigan State (9/30)	Hitting Percentage	1.00 (1-0-1) vs. Michigan State (9/30/16)
4, 4x last vs. Minnesota (10/5)	Assists	4, 4x last vs. Minnesota(10/5/16)
2, at Northwester (9/25)	Aces	2, at Northwester (9/25/16)
22, vs. Stanford (9/4)	Digs	22, vs. Stanford (9/4/16)

WHITE'S CAREER STATS

SEASON	SP-MP	K	K/S	E	TA	PCT	A	A/S	SA	SA/S	DIG	D/S	BS	BA	TB	B/S
2016	64-19	3	0.05	2	9	.111	42	0.66	5	0.08	236	3.69	0	0	0	0.00
TOTAL	64-19	3	0.05	2	9	.111	42	0.66	5	0.08	236	3.69	0	0	0	0.00

2016 PENN STATE WOMEN'S VOLLEYBALL

Match 19: #10 Penn State 3, Indiana 0

Oct. 15, 2016 - Bloomington, Ind. | University Gym

#	Penn State	Attack				Serve			Block				Pts			
		S	K	E	TA	Pct	Ast	SA	SE	RE	Dig	BS		BA	BE	BH
5	Frantti, Ali	3	7	3	17	.235	3	0	1	0	6	2	0	0	0	9.0
7	Detering, Abby	3	5	0	8	.625	25	1	2	0	6	0	0	1	0	6.0
11	Gorrell, Tori	3	7	1	9	.667	0	0	0	0	0	2	0	0	0	8.0
12	Holcomb, Keeton	3	0	0	0	.000	1	1	1	0	1	0	0	0	0	1.0
15	Washington, Haleigh	3	6	1	9	.556	1	1	1	0	3	1	1	0	0	8.5
22	Lee, Simone	3	7	6	22	.045	1	0	0	0	2	1	0	0	0	8.0
2	Sciorra, Emily	1	0	0	0	.000	0	0	0	0	0	0	0	0	0	0.0
3	White, Kendall	3	0	0	0	.000	3	0	1	0	9	0	0	0	0	0.0
8	Pierce, Lainy	2	0	0	0	.000	0	0	0	0	1	0	0	0	0	0.0
10	Muller, Carley	1	0	0	0	.000	0	0	0	0	0	0	0	0	0	0.0
19	Thelen, Heidi	3	6	2	18	.222	0	0	0	0	0	0	3	0	0	7.5
21	Weiskircher, Bryanna	3	0	0	0	.000	0	1	1	0	1	0	0	0	0	1.0
24	Broerman, Laura	2	0	0	0	.000	0	1	0	0	0	0	0	0	0	1.0
Totals		3	38	13	83	.301	34	5	7	0	29	4	6	1	0	50.0

Team Attack By Set

Set	K	E	TA	Pct
1	10	4	21	.286
2	15	6	34	.265
3	13	3	28	.357

TOTAL TEAM BLOCKS: 7.0

SET SCORES

	1	2	3	Team Records:
Penn State (3)	25	25	25	16-3, 8-0 Big Ten
Indiana (0)	16	18	18	13-8, 2-6 Big Ten

#	Indiana	Attack				Serve			Block				Pts			
		S	K	E	TA	Pct	Ast	SA	SE	RE	Dig	BS		BA	BE	BH
1	Brisack, Victoria	3	1	1	5	.000	27	0	1	0	5	1	1	0	0	2.5
5	McDonald, Jazzmine	3	5	1	6	.667	0	0	0	0	0	0	0	1	0	5.0
11	Hammond, Allison	3	10	9	34	.029	1	0	2	0	5	0	0	0	0	10.0
12	Fogg, Samantha	3	0	0	0	.000	0	0	0	1	2	0	0	0	0	0.0
14	Asdell, Elizabeth	2	1	3	8	-.250	0	0	0	0	0	0	0	0	0	1.0
16	Lofton, Deyshia	3	7	3	14	.286	0	0	2	0	1	2	2	1	0	10.0
6	Lebo, Taylor	3	0	0	0	.000	0	0	2	0	9	0	0	0	0	1.0
8	Koors, Meaghan	3	3	1	4	.500	0	0	0	1	3	0	0	0	0	3.0
15	Waggoner, Mallory	1	2	1	6	.167	0	0	0	0	0	0	1	0	0	2.5
17	Beerman, Kendall	2	2	3	9	-.111	0	0	0	0	1	0	0	0	0	2.0
18	Admire, Jessica	1	1	1	2	.000	0	0	0	0	0	0	0	0	0	1.0
Team										3						
Totals		3	32	23	88	.102	28	0	7	5	26	3	4	2	1	37.0

Team Attack By Set

Set	K	E	TA	Pct
1	9	9	29	.000
2	10	8	31	.065
3	13	6	28	.250

TOTAL TEAM BLOCKS: 5.0

Site: Bloomington, Ind. (University Gym)
Date: Oct 15, 2016 Attend: 1135 Time: 1:27
Referees: Elisabeth McHugh, Tom Joseph

1 2 3 Total

BLOOMINGTON, Ind. – The No. 10 Penn State women's volleyball team (16-3, 8-0 Big Ten) logged its 14th consecutive win on Saturday evening, disposing the Indiana Hoosiers (13-8, 2-6 Big Ten) on Saturday evening, 3-0 (25-16, 25-18, 25-18) inside University Gym.

Penn State hit over .300 once again, as a balanced attack of six players scoring on six or more kills guided the team to victory. Juniors Ali Frantti and Simone Lee along with redshirt freshman Tori Gorrell scored seven each, while juniors Heidi Thelen and Haleigh Washington each had six. Junior setter Abby Detering added five of her own.

The team's blocking also looked strong, with five members of the team getting involved on the defensive end. Thelen had a team best three blocks, while Frantti had two solo stops. Gorrell and Washington each had a pair of blocks as well.

Freshman libero Kendall White led the back line with a match-best nine digs. Frantti and Detering added six each.

Lee notched an early pair of kills in the first, but a solo block from Indiana gave the Hoosiers a four-point lead, as Penn State called for time, trailing 7-3. After another IU point, an error and a block from Thelen and Washington brought PSU within two, 8-6. Washington notched a solo block the next play to cut the lead to one when Indiana called its first timeout of the set. An IU error tied the match at 8-8. Penn State took five of the next seven points with a kill from Washington giving PSU a 13-10 edge. Indiana pulled within one before a big swing from Gorrell scored to make it 15-13, Penn State. The Blue and White scored twice more, forcing a timeout by the Hoosiers at 17-13.

Gorrell notched another kill out of the break, as Penn State grew the lead to six, at 19-13. IU scored twice in a row before another kill from Gorrell made it 20-15. Thelen got involved on a block and a kill before an error from Indiana capped the set with a 25-16 PSU win.

Kills from Washington and Gorrell and a solo stuff by Lee gave PSU an early 4-2 lead in the second frame. Washington aced the Hoosiers before IU erred and called for time as Penn State led, 6-2. The two groups proceeded to traded points when a hammer from junior Ali Frantti gave PSU a 10-6 lead. Frantti, Detering, Lee and Washington manufactured a 4-0 run for a 14-7 advantage. IU went on a 6-1 run before another impressive swing from Detering made it 16-13 for Penn State. A 3-0 Indiana run resulted in Penn State calling for time, still up, 18-16. Lee and Thelen scored on kills for a 20-17, PSU lead. Thelen scored again to force IU to call for time at 21-17. Frantti logged a solo block to start a 3-0 run. After IU fended off set point once, Frantti closed out the set with a kill for the 25-18 victory.

PSU came out of the break hot, with a kill from Gorrell capping a 5-1 Nittany Lion run. Frantti logged a solo block to take an 8-2 Penn State lead when Indiana called for time. Kills from Thelen and Washington pushed the lead to 11-3. The sides swapped points before an ace from redshirt sophomore Bryanna Weiskircher made it 15-6. Indiana didn't go easily, making a 6-2 run when the Nittany Lions used their first timeout of the set with a 17-12 advantage.

Frantti scored on a kill out of the stoppage before a net violation for IU made the score 20-14 in PSU's favor. A kill from Lee made it a 23-16 advantage, before she struck another two points later for set point. IU delayed Penn State for a point before an error gave PSU the third, 25-18.