



PENN STATE WOMEN'S HOCKEY

2012-13 NITTANY LIONS

GoPSUsports.com // @PennStateWHKY // Facebook.com/PennStateWomensHockey
 Contact: **Jeremy Fallis** // jeremy.fallis@psu.edu // O: (814) 865-3613 // C: (814) 206-6544

2012-13 SCHEDULE

Overall: 1-1-0 // Home: 0-0-0 // Away: 1-1-0
 CHA: 0-0-0 // Home: 0-0-0 // Away: 0-0-0

Date	Opponent	Time
Oct. 6	at Vermont	W 5-3
Oct. 7	at Vermont	L 1-3
Oct. 13	* SYRACUSE	7:00 p.m.
Oct. 14	* SYRACUSE	2:00 p.m.
Oct. 19	at Sacred Heart	7:00 p.m.
Oct. 20	at Sacred Heart	2:00 p.m.
Oct. 25	* RIT	7:00 p.m.
Oct. 26	* RIT	7:30 p.m.
Nov. 2	SACRED HEART	7:30 p.m.
Nov. 3	SACRED HEART	2:00 p.m.
Nov. 10	* ROBERT MORRIS	2:00 p.m.
Nov. 11	* ROBERT MORRIS	2:00 p.m.
Nov. 16	* at Lindenwood	8:00 p.m.
Nov. 17	* at Lindenwood	3:00 p.m.
Nov. 30	* at #9 Mercyhurst	7:00 p.m.
Dec. 1	* at #9 Mercyhurst	2:00 p.m.
Dec. 7	at St. Lawrence	7:00 p.m.
Dec. 8	at St. Lawrence	2:00 p.m.
Jan. 4	CHATHAM	7:30 p.m.
Jan. 5	CHATHAM	7:00 p.m.
Jan. 11	at Union	7:00 p.m.
Jan. 12	at Union	4:00 p.m.
Jan. 25	* at Syracuse	7:00 p.m.
Jan. 26	* at Syracuse	2:00 p.m.
Jan. 29	PRINCETON	7:00 p.m.
Feb. 1	* #9 MERCYHURST	2:00 p.m.
Feb. 2	* #9 MERCYHURST	2:00 p.m.
Feb. 8	* LINDENWOOD	2:00 p.m.
Feb. 9	* LINDENWOOD	2:00 p.m.
Feb. 15	* at RIT	7:00 p.m.
Feb. 16	* at RIT	7:00 p.m.
Feb. 22	* at Robert Morris	7:00 p.m.
Feb. 23	* at Robert Morris	3:00 p.m.
2013 CHA TOURNAMENT		
Mar. 1	^ First Round - Game 1	TBA
Mar. 2	^ First Round - Game 2	TBA
Mar. 3	^ First Round - Game 3 (if necessary)	TBA
Mar. 8	% Semifinals	TBA
Mar. 9	% Final	TBA

All Times Eastern

Home games in **CAPS** at Greenberg Ice Pavilion

* - College Hockey America games

^ - CHA First Round at higher seed

% - CHA Semifinals & Final hosted by No. 1 seed

Rankings based on USA Today/USA Hockey poll



PENN STATE NITTANY LIONS

(1-1-0, 0-0-0 CHA)

SYRACUSE ORANGE

(0-2-0, 0-0-0 CHA)

Games 3-4: October 13-14, 2012 • 7 p.m. // 2 p.m. • Greenberg Ice Pavilion • University Park, Pa.

GAME DAY

VENUE	Greenberg Ice Pavilion (1,300)
STREAMING COVERAGE	AmericaOneSports.com
SERIES RECORD	0-0-0
LAST MEETING	First Meeting, 10/13
NEXT SERIES	10/19-20 at Sacred Heart

GAME NOTES

- Penn State hosts its first varsity hockey home games this weekend vs. Syracuse
- Nittany Lions won their inaugural game, 5-3, before falling, 3-1, at Vermont
- Women's hockey became first PSU varsity team to win its opener since 1977
- **Shannon Yoxheimer**, **Micayla Catanzariti** and **Birdie Shaw** tallied two goals each
- **Micayla Catanzariti** was named CHA Rookie of the Week for her three-point day
- Goaltender **Nicole Paniccia** won the opener with a 31-save effort; fellow netminder **Celine Whitlinger** stopped 40 shots in Sunday's loss
- Penn State opened the year by scoring six goals in the first four periods
- Syracuse opened 0-2-0 after losses to New Hampshire (4-3) and Northeastern (5-2)
- Head coach **Josh Brandwene** leads Nittany Lions in first year
- Nittany Lions led by captain **Taylor Gross**, and assistant captains **Lindsay Reihl** and **Jenna Welch**
- Penn State's roster has 17 freshmen of 27 members, eight former club members

ON THE INSIDE

Page 4: **The Penn State Hockey Story** began on Sept. 17, 2010
 Page 5: \$90 million **Pegula Ice Arena** is on target for a Sept. 2013 opening
 Page 4: **2012-13 Penn State Women's Hockey Stats**
 Pages 7-8: **The Nittany Lion Roster & TV/Radio Roster**

SEASON STATISTICAL LEADERS

OFFENSE		GP	G	A	PTS	SH	+/-	GWG
10	Micayla Catanzariti	2	2	1	3	2	+3	0
23	Birdie Shaw	2	2	1	3	7	+2	0
15	Jess Desorcie	2	0	3	3	3	+3	0
40	Shannon Yoxheimer	2	2	0	2	10	+2	1
24	Taylor Gross	2	0	2	2	2	+2	0
DEFENSE		GP	G	A	PTS	SH	+/-	BLK
8	Taylor McGee	2	0	1	1	4	+4	3
33	Madison Smiddy	2	0	1	1	1	+1	1
17	Paige Jahnke	2	0	0	0	1	+4	3
GOALTENDER		GP-GS	Record	MIN	GA	GAA	SV	SV%
37	Nicole Paniccia	1-1	1-0-0	60:00	3	3.00	31	.912
30	Celine Whitlinger	1-1	0-1-0	58:40	3	3.07	40	.930



@PennStateWHKY



PennStateWomensHockey



GoPSUTV



NITTANY LION WOMEN'S HOCKEY

GAME NOTES VS. SYRACUSE (OCT. 13-14)

SCOUTING SYRACUSE

The Orange (0-2-0) opened the season at home last weekend with tough 4-3 and 5-2 losses to New Hampshire and No. 10 Northeastern, respectively. Despite the losses, Syracuse dominated the stat sheet, out-shooting its opponents 75-45 on the weekend.

The Orange failed on special teams, scoring 1-for-11 on the power play, while killing off just five of nine power plays. Holly Carrie-Mattimoe has led the Syracuse scoring with two goals and an assist thus far, but she also missed a crucial penalty shot wide of the net against Northeastern. Carrie-Mattimoe led the team in scoring with 14 goals and 12 assists last season.

In net, Jenesia Drinkwater has been the only goaltender to see time. She's made 36 saves on 45 attempts (.800) this season. Drinkwater posted a 3.01 goals against average and a .900 save percentage last season en route to a 4-9-1 record.

LAST TIME OUT

Penn State women's hockey made history on Saturday, Oct. 6 at Vermont's Gutterson Fieldhouse by winning its inaugural game, 5-3. The Nittany Lions scored five goals from three freshmen making their respective debuts as junior goaltender **Nicole Paniccia** made 31 saves in her PSU opener. **Shannon Yoxheimer** and **Micayla Catanzariti** each scored twice for the Nittany Lions.

Down 2-1, Penn State was not to be deterred, reeling off three straight goals to take a 4-2 lead midway through the third period. Despite a Vermont goal with 6:34 left in the third, **Birdie Shaw** scored an empty-net goal to seal the Nittany Lion victory. Junior captain **Taylor Gross** made her Penn State debut known with two assists and was named the first star of the game, Yoxheimer was second.

On Sunday, Oct. 7, the Nittany Lion offensive outburst continued with a Birdie Shaw goal against the run of play. From there, it was all Vermont as the Catamounts scored three unanswered goals to salvage a split. Penn State's bright spot was freshman goaltender **Celine Whitlinger** who made 40 stops in her collegiate debut. The Catamounts out-shot Penn State 43-19 for the game.

CATANZARITI HONORED

Freshman forward **Micayla Catanzariti** was named College Hockey America's Rookie of the Week on Monday afternoon. Catanzariti led the Nittany Lions to a win in their inaugural opener on Saturday with two goals and an assist at Vermont. Catanzariti was also named Highmark's Penn State Women's Student-Athlete of the Week.

FIRST TIME FOR EVERYTHING

Penn State had a varsity team debut for the first time since 1994 (women's soccer) when the women's hockey team defeated Vermont, 5-3.

The successful debut was the first since 1977 when the men's volleyball team defeated East Stroudsburg.

Game: Oct. 6, 2012 at Vermont, 2:00 p.m.
Win: Nicole Paniccia, Oct. 6 at Vermont, 5-3
Goal: Shannon Yoxheimer
Multi-Goal Game: Micayla Catanzariti
Game-Winning Goal: Shannon Yoxheimer
Assists: Taylor Gross, Emily Laurenzi
Multi-Assist Game: Jess Desorcie
Faceoff: Emily Laurenzi
Faceoff win: Emily Laurenzi
Shot: Katie Zinn
Save: Nicole Paniccia
Empty-Net Goal: Birdie Shaw

SCORING STREAK

Penn State opened its varsity account in scoring fashion, scoring in the first four periods. The Nittany Lions tallied one goal in the opening frame, then two in each of the next two periods before scoring once in the opening period of game two. Vermont held the Nittany Lions scoreless over the final 50:12 of Sunday's game.

STOPPING PUCKS

Penn State relied on steady goaltending all weekend at Vermont in the form of **Nicole Paniccia** and **Celine Whitlinger**. The duo saw 77 shots and made 71 saves (.922), paced by Whitlinger's 40 stops on Sunday. Paniccia picked up the first win in school history on Saturday and improved her overall record to 8-10-3.

FIRST HEAD COACH

A 1991 graduate of Penn State, head coach **Josh Brandwene** is the first to lead the Nittany Lions.

2012-13 WOMEN'S HOCKEY POLLS (as of Oct. 9, 2012)

USA Today/USA Hockey Poll

1	Minnesota	4-0-0	1
2	Cornell	0-0-0	2
4	Wisconsin	3-0-1	3
3	Boston University	1-0-0	6
5	Boston College	0-1-0	4
6	North Dakota	1-1-0	5
7	Clarkson	2-0-0	RV
8	Northeastern	2-0-0	RV
9	Mercyhurst	3-0-1	10
10	Ohio State	4-0-0	RV

Others: Harvard, Minnesota Duluth, Providence, New Hampshire, Minnesota State

USCHO.com Poll

1	Minnesota	4-0-0	1
2	Cornell	0-0-0	2
3	Boston University	1-0-1	6
4	Wisconsin	3-0-1	4
5	Boston College	0-1-0	3
6	North Dakota	1-1-0	5
7	Clarkson	2-0-0	RV
8	Northeastern	2-0-0	10
9	Mercyhurst	3-0-1	9
10	Ohio State	4-0-0	RV

Others: Harvard, St. Lawrence, Providence, Minnesota State, Minnesota Duluth

Bold indicates 2012-13 opponent

2012-13 COLLEGE HOCKEY AMERICA STANDINGS

(as of Oct. 11, 2012)

	Pts.	CHA	GF	GA	Overall	GF	GA	Last 10
Mercyhurst (9/9)	4	2-0-0	13	2	3-0-1	21	9	3-0-1
PENN STATE	0	0-0-0	-	-	1-1-0	6	6	1-1-0
Robert Morris	0	0-0-0	-	-	0-0-0	-	-	-
Syracuse	0	0-0-0	-	-	0-2-0	5	9	0-2-0
Lindenwood	0	0-0-0	-	-	0-4-0	5	27	0-4-0
RIT	0	0-2-0	2	13	2-2-0	17	15	2-2-0

UPCOMING SCHEDULE

Friday, Oct. 12

Providence at Mercyhurst, 7 p.m.
 Lindenwood at Minnesota State, 8 p.m.

Saturday, Oct. 13

Providence at Mercyhurst, 2 p.m.
 Lindenwood at Minnesota State, 4 p.m.
Syracuse at PENN STATE, 7 p.m.
 Cambridge at Robert Morris, 7 p.m. (Exh.)

Sunday, Oct. 14

Syracuse at PENN STATE, 7 p.m.
 Oakville at Robert Morris, 7 p.m. (Exh.)



NITTANY LION WOMEN'S HOCKEY

A four-year hockey player at PSU, Brandwene brings 20 years of coaching experience to Happy Valley. Brandwene picked up his first win in the team's debut on Saturday at Vermont.

CAPTAIN, OUR CAPTAIN

Junior forward **Taylor Gross** will lead Penn State as its first captain. The University of Connecticut transfer appeared in 48 games for the Huskies before joining Penn State's club side in January 2012. In September, the team voted fellow UConn transfer **Jenna Welch** and senior defender **Lindsay Reihl** as assistant captains. Gross tallied two assists in the win over Vermont on Saturday.

HOMECOMING

While Penn State football celebrated its homecoming at Beaver Stadium last week, the Nittany Lion women's hockey program had a homecoming of its own. **Jess Desorcie** (Westford, Vt.) ushered Penn State's inaugural season by playing in front of her hometown friends and family and tallying three assists. Desorcie grew up just 20 miles from Gutterson Fieldhouse and the campus of the University of Vermont.

Desorcie won't be the only one celebrating a

homecoming of sorts throughout the season. Penn State's second road trip of the year to Sacred Heart will bring the Lions to southern Connecticut, the home of senior **Kate Christoffersen** (Trumbull, Conn.) and **Lindsay Reihl** (Cheshire, Conn.).

YOUTH MOVEMENT

As is expected with a brand new varsity program, there are many freshmen on the team—17 in all. Thus far, 12 freshman have made an appearance on the ice.

	GP	G	A	Pts.
Jeanette Bateman	2	0	0	0
Micayla Catanzariti	2	2	1	3
Hannah Hoenshell	-	-	-	-
Jill Holdcroft	2	0	0	0
Paige Jahnke	2	0	0	0
Darby Kern	-	-	-	-
Emily Laurenzi	2	0	1	1
Taylor McGee	2	0	1	1
Jordin Pardoski	2	0	0	0
Kendra Rasmussen	1	0	0	0
Birdie Shaw	2	2	1	3
Stephanie Walkom	-	-	-	-
Sarah Wilkie	-	-	-	-
Shannon Yoxheimer	2	2	0	2
Katie Zinn	2	0	0	0

	GP	GAA	SV	Pct.
Brooke Meyer	-	-	-	-
Celine Whitinger	1	3.07	40	.930

CONTINUING PENN STATE HOCKEY

Eight members of the current varsity team played for the women's club team at some point. Seniors **Lindsay Reihl** and **Kate Christoffersen** and sophomores **Cara Mendelson**, **Katie Murphy**, **Madison Smiddy** and **Tess Weaver** played all of last season for head coach **Josh Brandwene** in Penn State's last year at the club level. Reihl and Christoffersen played three years for the PSU club team as well. **Taylor Gross** and **Jess Desorcie** joined the six players midway through the season in preparation of the 2012-13 season.

ON SCHEDULE

Pegula Ice Arena, a \$90 million state-of-the-art facility, will serve as the home of the Penn State hockey programs in 2012-13. As of Oct. 1, 2012, almost all the steel has been put in place for the project. Construction is set to conclude in time for the 2012-13 season.

For more information on Pegula Ice Arena, visit page 5 of the game notes.

NEXT TIME OUT

The Nittany Lions hit the road again on Friday, Oct. 19 when they travel to Sacred Heart for a 7 p.m. face-off. Penn State and SHU cap the two-game series at 2 p.m. on Saturday, Oct. 20. Last season, Penn State's club team split at Sacred Heart with a 4-3 win and a 3-2 overtime loss.

PENN STATE'S RECORD IS...

0-0-0at home
1-1-0on the road
0-0-0in overtime
0-1-0when scoring first
1-0-0when opponent scores first
0-0-0when leading after the 1st period
1-0-0when trailing after the 1st period
0-1-0when tied after the 1st period
1-0-0when leading after the 2nd period
0-0-0when trailing after the 2nd period
0-1-0when tied after the 2nd period
0-0-0when out-shooting opponent
1-1-0when out-shot by opponent
0-0-0when taking same # of shots
1-0-0when winning more face-offs
0-1-0when losing more face-offs
0-0-0when tied in face-offs
0-0-0when taking more penalties
0-2-0when taking fewer penalties
0-0-0when scoring a power play goal
1-1-0when not scoring a power play goal
1-1-0when allowing a power play goal
0-0-0when not allowing a power play goal
0-0-0when scoring 0 goals
0-1-0when scoring 1 goal
0-0-0when scoring 2 goals
0-0-0when scoring 3 goals
1-0-0when scoring 4+ goals
0-0-0when allowing 0 goals
0-0-0when allowing 1 goal
0-0-0when allowing 2 goals
1-1-0when allowing 3 goals
0-0-0when allowing 4+ goals
0-0-0on Tuesday
0-0-0on Thursday
0-0-0on Friday
1-0-0on Saturday
0-1-0on Sunday
1-1-0during the day
0-0-0at night
1-1-0vs. Hockey East
0-0-0vs. College Hockey America
0-0-0vs. ECAC Hockey
0-0-0vs. D-I Independents

OVER THE AIR

This Week

This weekend's Nittany Lion contests at Vermont will be streamed live through AmericaOneSports.com.

The CHA on AmericaOneSports.com

All Penn State games during CHA play will be streamed live on AmericaOneSports.com. Subscribers can purchase 30-day packages for \$30 or a season pass for \$125.

Non-Conference Home Action

Penn State's non-conference home games will be shown on a game-to-game basis.

2012-13 MEDIA INFORMATION

Penn State Athletic Communications

Primary Contact: Jeremy Fallis
 Email: jeremy.fallis@psu.edu
 Secondary Contact: Brian Hoerst
 Email: bjh33@psu.edu
 Office: 814-865-1757

Interviews

Penn State student-athletes and coaches are available for interviews after practice each day. Please contact Jeremy Fallis in advance.

Credentials

Contact Jeremy Fallis for home game credentials at Greenberg Ice Pavilion.

Postgame

Head coach Josh Brandwene and requested student-athletes are available to the media following each game, outside the locker room. Please alert Jeremy Fallis or Brian Hoerst during the game of any requests.

Yearbook

The 2012-13 Penn State women's hockey yearbook will be made available to media members at the first home game on Oct. 13. The public may purchase copies for \$6.

GoPSUsports.com

Facebook.com/PennStateWomensHockey

@PennStateWHKY



PENN STATE HOCKEY STORY

Leading up to the historic 2010 announcement of Penn State varsity hockey, PSU fielded a club program that participated in the American Collegiate Hockey Association (ACHA) since 1996.

Sept. 17, 2010: Terry and Kim Pegula (pictured below) commit the largest private gift in University history of \$88 million dollars for the formation of a varsity men's hockey team and a state-of-the-art, multi-purpose ice arena. The gift paved the way for the creation of an NCAA Division I women's ice hockey team to begin participation in 2012-13.



Sept. 20, 2010: Longtime Penn State intercollegiate athletics employee Joe Battista assumes position as associate athletic director of ice arena and hockey development.

Feb. 15, 2011: Paul and Nancy Silvis of State College, Pa. pledge \$1 million to the Pegula Ice Arena project. The main lobby of the new facility will be named after the Silvises. The couple will also co-chair the Penn State Ice Campaign Committee, which will help raise an additional funds for scholarship and program endowments.

May 31, 2011: Josh Brandwene is named the first head coach of the Penn State women's varsity ice hockey team. A coach with over 20 years of coaching experience, Brandwene returns to his alma mater (1990) after stints at Delaware, Northfield Mount Hermon School (Mass.) and Kingswood Oxford School (Conn.).



June 21, 2011: Brandwene begins the formation of a coaching staff with the additions of long time women's club head coach Mo Stromel and Boston University standout Gina Kearns.

Sept. 6, 2011: Nearly a year after the announcement of varsity women's ice hockey being added at Penn State, the Nittany Lions find conference allegiance with College Hockey America (CHA). It is announced Penn State will compete in its inaugural season in 2012-13.

Nov. 21, 2011: Penn State women's hockey announces the first signing class in varsity history with 13 future Lions joining the squad for 2012-13 as freshmen.

Apr. 20, 2012: Penn State president Rodney Erickson, acting director of athletics Dave Joyner and the Pegulas ceremonially break ground on Pegula Ice Arena. It is also announced by Terry Pegula that the original \$88 million donation would become \$102 million to further Penn State hockey.

May 31, 2012: Brandwene announces the first varsity roster with 12 additions to the program, including naming Taylor Gross as captain. The UConn transfer is joined by teammates Nicole Paniccia and Jenna Welch from the Hockey

East school. The 25-woman roster is expanded to 27 prior to the puck dropping.

June 4, 2012: Casey McCullion rounds out Brandwene's coaching staff as an assistant. McCullion was a goalie at Holy Cross and former assistant at Kingswood Oxford.

June 7, 2012: Penn State announces its first-ever schedule with 33 games on the slate. Also announced is a new format for the CHA Tournament where all six teams will compete for the conference title.

Sept. 11, 2012: Penn State unveils its first jerseys in front of the media and fans at Beaver Stadium. Taylor Gross and Lindsay Reihl model the jerseys for the assembled media and fans in attendance. The story is picked up by dozens of media outlets around the country.

Sept. 18, 2012: Senior Lindsay Reihl, a three-year defenseman of the year for Penn State's club program, and junior Jenna Welch are named assistant captains.

Sept. 22, 2012: The Nittany Lions participate in their first varsity team practice at Greenberg Ice Pavilion.

Oct. 6, 2012: Penn State and Vermont square off for the program's inaugural game in Burlington, Vt.



NITTANY LION WOMEN'S HOCKEY



PEGULA ICE ARENA FUTURE HOME OF PENN STATE HOCKEY

FACTS

Construction Groundbreaking: February 2012
Ceremonial Groundbreaking: April 20, 2012
Projected Opening: September 2013
Capacity: 6,000 (Arena rink); 300 (Community rink)
Size: 200,000 square feet

AMENITIES

Two NHL-sized (200' x 85') ice surfaces

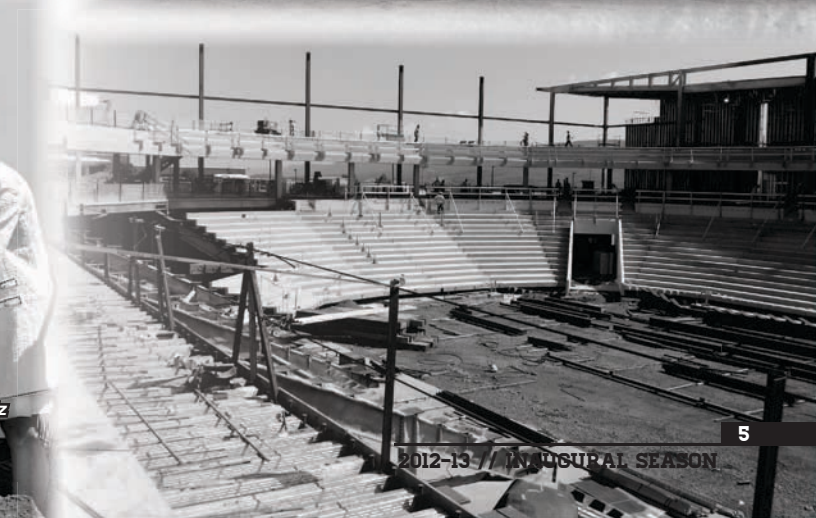
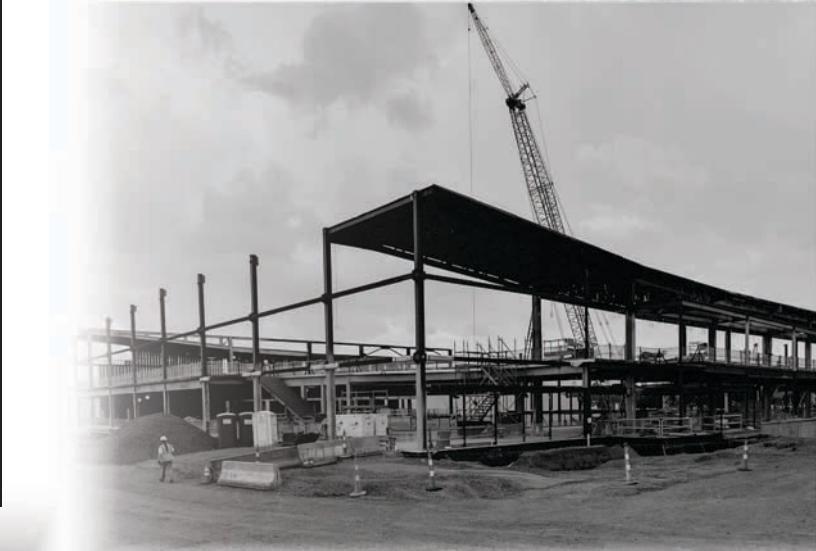
Arena rink will offer:

- 6,000-seat overall capacity
- 1,000-seat student section
- First-rate varsity locker rooms
- Team lounges and dry changing room
- Strength and conditioning center
- Shooting gallery
- Suites, loge boxes and club seats
- State-of-the-art television and radio broadcasting facilities
- Press box and media center
- Concession stands with café
- Videoboard

Community rink will offer:

- 300-seat capacity
- Eight locker rooms
- Skate rental center

Pegula Ice Arena will have the ability to host National Hockey League and American Hockey League games, as well as professional ice shows, local hockey and figure skating programs.



Left to Right: Kim and Terry Pegula, Dr. Rodney Erickson, The Nittany Lion, Joe Battista and Karen Peetz at the Pegula Ice Arena ceremonial groundbreaking.



NITTANY LION WOMEN'S HOCKEY



2012-13 Penn State Women's Hockey Penn State Combined Team Statistics (as of Oct 09, 2012) All games

Date	Opponent	Score	Att.
Oct 06	at Vermont	w 5-3	785
Oct 07	at Vermont	L 1-3	326

Record:	Overall	Home	Away	Neutral
ALL GAMES	1-1-0	0-0-0	1-1-0	0-0-0
CONFERENCE	0-0-0	0-0-0	0-0-0	0-0-0
NON-CONFERENCE	1-1-0	0-0-0	1-1-0	0-0-0

TEAM STATISTICS	PSU	OPP
SHOT STATISTICS		
Goals-Shot attempts	6-43	6-77
Shot pct.	.140	.078
Goals/Game	3.0	3.0
Shots/Game	21.5	38.5
POWER PLAYS		
Goals-Power Plays	0-7	3-5
Conversion Percent	.000	.600
Shot Attempts	7	10
Shot Percent	.000	.300
GOAL BREAKDOWN		
Power Play	0	3
Short-handed	0	0
Empty net	1	0
Penalty	0	0
Unassisted	0	0
Overtime	0	0
PENALTIES		
Number	5	7
Minutes	10	14
Penalties/Game	2.5	3.5
Pen minutes/Game	5.0	7.0

##	Player	gp	g	a	pts	sh	sh%	pen-min	pp	sh
10	Catanzariti, Micayla	2	2	1	3	2	1.000	0-0	0	0
23	Shaw, Birdie	2	2	1	3	7	.286	0-0	0	0
15	Desorcie, Jess	2	0	3	3	3	.000	0-0	0	0
40	Yoxheimer, Shannon	2	2	0	2	10	.200	0-0	0	0
24	Gross, Taylor	2	0	2	2	2	.000	0-0	0	0
20	Laurenzi, Emily	2	0	1	1	3	.000	1-2	0	0
8	McGee, Taylor	2	0	1	1	4	.000	2-4	0	0
33	Smiddy, Madison	2	0	1	1	1	.000	1-2	0	0
2	Bateman, Jeanette	2	0	0	0	0	.000	0-0	0	0
19	Holdcroft, Jill	2	0	0	0	5	.000	0-0	0	0
17	Jahnke, Paige	2	0	0	0	1	.000	0-0	0	0
4	Pardoski, Jordin	2	0	0	0	1	.000	0-0	0	0
13	Rasmussen, Kendra	1	0	0	0	0	.000	0-0	0	0
6	Reihl, Lindsay	2	0	0	0	1	.000	0-0	0	0
22	Welch, Jenna	2	0	0	0	2	.000	0-0	0	0
11	Zinn, Katie	2	0	0	0	1	.000	0-0	0	0
TM	TEAM	1	0	0	0	0	.000	1-2	0	0
Total		2	6	10	16	43	.140	5-10	0	0
Opponents		2	6	11	17	77	.078	7-14	3	0

##	Goalie	gp	min	ga	gaavg	saves	save%	w-l-t
37	Paniccia, Nicole	1	60:00	3	3.00	31	.912	1-0-0
30	Whitlinger, Celine	1	58:40	3	3.07	40	.930	0-1-0
TM	EMPTY NET	1	1:20	0	-	0	.000	0-0-0
Total		2	120:00	6	3.00	71	.922	1-1-0
Opponents		2	120:00	6	3.00	37	.860	1-1-0

Attendance Summary	PSU	Opponent
Total	0	1111
Dates/Avg Per Date	0/0	2/556
Neutral Site #/Avg	0/0	

Goals by Period	1st	2nd	3rd	Total
Penn State	2	2	2	6
Opponents	3	0	3	6

Saves by Period	1st	2nd	3rd	Total
Penn State	24	26	21	71
Opponents	10	15	12	37

NITTANY LION WOMEN'S HOCKEY



2012-13 PENN STATE WOMEN'S HOCKEY NUMERICAL ROSTER

No.	Name	Yr.	Pos.	Ht.	S/C	Hometown	Last Team
2	Jeanette Bateman	Fr.	F/D	5-6	R	Greeley, Colo.	Colorado Select
3	Cara Mendelson	So.	F/D	5-6	R	Pittsburgh, Pa.	Steel City Selects
4	Jordin Pardoski	Fr.	D	5-5	R	Rochester Hills, Mich.	Detroit Honeybaked
5	Stephanie Walkom	Fr.	D	5-7	R	Moon Township, Pa.	Pittsburgh Penguins Elite
6	Lindsay Reihl	Sr.	D	5-4	R	Cheshire, Conn.	Connecticut Polar Bears
8	Taylor McGee	Fr.	D	5-3	R	Pearl River, N.Y.	Taft School (Conn.)
10	Micayla Catanzariti	Fr.	F	5-4	R	Rancho Santa Margarita, Calif.	Gilmour Academy (Ohio)
11	Katie Zinn	Fr.	F	5-7	R	Coquitlam, B.C.	Gilmour Academy (Ohio)
12	Kate Christoffersen	Sr.	F	5-3	R	Trumbull, Conn.	Connecticut Polar Bears
13	Kendra Rasmussen	Fr.	F	5-5	L	Sartell, Minn.	Sartell/Sauk Rapids HS
14	Darby Kern	Fr.	F	5-11	R	Venetia, Pa.	Pittsburgh Penguins Elite
15	Jess Desorcie	So.	F	5-4	L	Westford, Vt.	Connecticut College
16	Hannah Hoenshell	Fr.	F	5-3	R	Plano, Texas	Texas Alliance
17	Paige Jahnke	Fr.	D	5-6	R	Oakdale, Minn.	Roseville HS/Minnesota Jr. Whitecaps
19	Jill Holdcroft	Fr.	F	5-1	R	Pennsylvania Furnace, Pa.	Pittsburgh Penguins Elite
20	Emily Laurenzi	Fr.	F	5-2	R	Townsend, Del.	National Sports Academy (N.Y.)
21	Sarah Wilkie	Fr.	D	5-6	R	Ashby, Mass.	Williston Northampton School
22	Jenna Welch	Jr.	F	5-8	R	Austin, Texas	Connecticut
23	Birdie Shaw	Fr.	F	5-2	L	Troy, Mich.	Detroit Honeybaked
24	Taylor Gross	Jr.	F	5-1	R	Colorado Springs, Colo.	Connecticut
25	Katie Murphy	So.	F	5-4	L	Novi, Mich.	Detroit Honeybaked
30	Celine Whitlinger	Fr.	G	5-8	L	Garden Grove, Calif.	Gilmour Academy (Ohio)
31	Brooke Meyer	Fr.	G	5-7	L	Naperville, Ill.	Chicago Huskies
33	Madison Smiddy	So.	D	5-7	L	Grand Rapids, Mich.	Detroit Honeybaked
36	Tess Weaver	So.	F	5-5	R	Windber, Pa.	Pittsburgh Penguins Elite
37	Nicole Paniccia	Jr.	G	5-5	L	Oakville, Ont.	Connecticut
40	Shannon Yoxheimer	Fr.	F	5-7	L	Jackson, Mich.	North American Hockey Academy (Vt.)

Head Coach: Josh Brandwene (First Year)

Assistant Coaches: Gina Kearns (First Year), Casey McCullion (First Year); **Director of Operations/Video Coach:** Mo Stroemel (First Year)

Captain: Taylor Gross; **Assistant Captains:** Lindsay Reihl, Jenna Welch

ALPHABETICAL ROSTER		PRONUNCIATION GUIDE		LIONS BY STATE		LIONS BY POSITION	
No.	Name	Brandwene	BRAND-ween	California (2):	Catanzariti, Whitlinger	Forward (17):	Bateman*, Catanzariti
2	Jeanette Bateman	Catanzariti	Cah-TAN-zah-REE-tee	Colorado (2):	Bateman, Gross		Christoffersen, Desorcie, Gross,
10	Micayla Catanzariti	Jahnke	YAWN-kee	Connecticut (2):	Christoffersen, Reihl		Hoenshell, Holdcroft, Kern, Laurenzi,
12	Kate Christoffersen	Jeanette	Jeh-NETT	Delaware (1):	Laurenzi		Mendelson, Murphy, Rasmussen,
15	Jess Desorcie	Kearns	KERNS	Illinois (1):	Meyer		Shaw, Weaver, Welch, Yoxheimer,
24	Taylor Gross	McCullion	Mick-CULL-yon	Massachusetts (1):	Wilkie		Zinn
16	Hannah Hoenshell	Paniccia	Pah-NEE-cha	Michigan (5):	Murphy, Pardoski, Shaw, Smiddy, Yoxheimer	Defense (9):	Bateman, Jahnke,
19	Jill Holdcroft	Reihl	RILE	Minnesota (2):	Jahnke, Rasmussen		McGee, Mendelson*, Pardoski, Reihl,
17	Paige Jahnke	Stroemel	STRAW-mull	New York (1):	McGee		Smiddy, Walkom, Wilkie
14	Darby Kern	LIONS BY ELIGIBILITY		Pennsylvania (5):	Holdcroft, Kern, Mendelson, Walkom, Weaver	Goalie (3):	Meyer, Paniccia, Whitlinger
20	Emily Laurenzi	Seniors (2):		Texas (2):	Hoenshell, Welch		
8	Taylor McGee	Juniors (3):		Vermont (1):	Desorcie		
3	Cara Mendelson	Sophomores (5):		LIONS BY PROVINCE			
31	Brooke Meyer	Mendelson, Murphy, Smiddy, Weaver		British Columbia (1):	Zinn		
25	Katie Murphy	Freshmen (17):		Ontario (1):	Paniccia		
37	Nicole Paniccia	Bateman, Catanzariti, Hoenshell, Holdcroft, Jahnke, Kern, Laurenzi, McGee, Meyer, Pardoski, Rasmussen, Shaw, Walkom, Whitlinger, Wilkie, Yoxheimer, Zinn					
4	Jordin Pardoski						
13	Kendra Rasmussen						
6	Lindsay Reihl						
23	Birdie Shaw						
33	Madison Smiddy						
5	Stephanie Walkom						
36	Tess Weaver						
22	Jenna Welch						
30	Celine Whitlinger						
21	Sara Wilkie						
40	Shannon Yoxheimer						
11	Katie Zinn						





NITTANY LION WOMEN'S HOCKEY



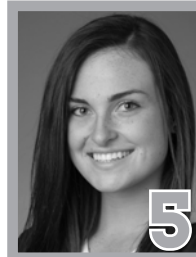
2
JEANNETTE BATEMAN
Freshman • F/D
Greeley, Colo.



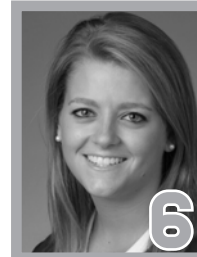
3
CARA MENDELSON
Sophomore • F/D
Pittsburgh, Pa.



4
JORDIN PARDOSKI
Freshman • D
Rochester Hills, Mich.



5
STEPHANIE WALKOM
Freshman • D
Moon Township, Pa.



6 **A**
LINDSAY REIHL
Senior • D
Cheshire, Conn.



8
TAYLOR MCGEE
Freshman • D
Pearl River, N.Y.



10
MICAYLA CATANARITTI
Freshman • F
Rancho Santa Margarita, Calif.



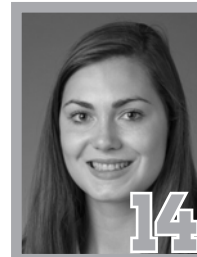
11
KATIE ZINN
Freshman • F
Coquitlam, B.C.



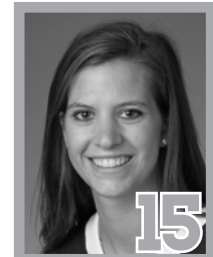
12
KATE CHRISTOFFERSEN
Senior • F
Trumbull, Conn.



13
KENDRA RASMUSSEN
Freshman • F
Sartell, Minn.



14
DARBY KERN
Freshman • F
Venetia, Pa.



15
JESS DESORCIE
Sophomore • F
Westford, Vt.



16
HANNAH HOENSHELL
Freshman • F
Plano, Texas



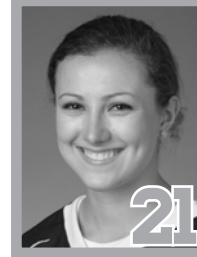
17
PAIGE JAHNKE
Freshman • D
Oakdale, Minn.



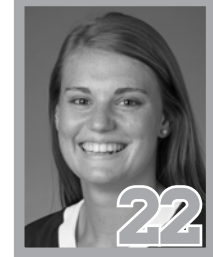
19
JILL HOLDCROFT
Freshman • F
Pennsylvania Furnace, Pa.



20
EMILY LAURENZI
Freshman • F
Townsend, Del.



21
SARAH WILKIE
Freshman • D
Ashby, Mass.



22 **A**
JENNA WELCH
Junior • F
Austin, Texas



23
BIRDIE SHAW
Freshman • F
Troy, Mich.



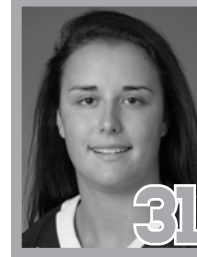
24 **C**
TAYLOR GROSS
Junior • F
Colorado Springs, Colo.



25
KATIE MURPHY
Sophomore • F
Novi, Mich.



30
CELINE WHITLINGER
Freshman • G
Garden Grove, Calif.



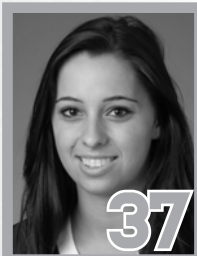
31
BROOKE MEYER
Freshman • G
Naperville, Ill.



33
MADISON SMIDDY
Sophomore • D
Grand Rapids, Mich.



36
TESS WEAVER
Sophomore • F
Windber, Pa.



37
NICOLE PANICCIA
Junior • G
Oakville, Ont.



40
SHANNON YOXHEIMER
Freshman • F
Jackson, Mich.