



2015 PENN STATE WOMEN'S SOCCER COLLEGE CUP NOTES

WakeMed Soccer Park | Cary, N.C.

PENN STATE

WOMEN'S SOCCER



2015

GoPSUsports.com

Twitter: @PennStateWSOC

Instagram: PennStateWSOC

Facebook: PSUWomensSoccer

WSOC Contact: Will Rottler • wdr13@psu.edu O: (814) 865-2498 • C: (814) 441-9130

2015 SCHEDULE

AUGUST

Sat. 15 ARMY WEST POINT (EX.) ---

PENN STATE TOURNAMENT (Aug. 21-23)

Fri. 21	HOFSTRA	University Park, Pa.	W, 2-1
Sun. 23	LOYOLA MARYMOUNT	University Park, Pa.	W, 4-2
Fri. 28	No. 21 DUKE	University Park, Pa.	T, 0-0
Sun. 30	ARKANSAS	University Park, Pa.	W, 4-2

SEPTEMBER

Fri. 4	at No. 12 West Virginia	Morgantown, W.Va.	L, 1-0
Fri. 11	at No. 2 Stanford	Palo Alto, Calif.	W, 2-0
Sun. 13	at Santa Clara	Santa Clara, Calif.	W, 1-0
Thu. 17	WISCONSIN*	University Park, Pa.	W, 4-0
Sun. 20	MINNESOTA*	University Park, Pa.	L, 1-0
Fri. 25	at Nebraska*	Lincoln, Neb.	T, 1-1
Sun. 27	at Iowa*	Iowa City, Iowa	W, 5-1

OCTOBER

Sun. 4	at No. 24 Northwestern*	Bridgeview, Ill.	W, 3-0
Thu. 8	MARYLAND*	University Park, Pa.	W, 1-0
Sun. 11	INDIANA*	University Park, Pa.	W, 4-0
Thu. 15	at Purdue*	West Lafayette, Ind.	W, 2-1
Sun. 18	at No. 25 Rutgers*	Piscataway, N.J.	L, 1-0
Sat. 24	at Ohio State*	Columbus, Ohio	W, 2-1
Wed. 28	MICHIGAN*	University Park, Pa.	W, 3-1

NOVEMBER

BIG TEN TOURNAMENT (Nov. 1-8)

Sun. 1	ILLINOIS	University Park, Pa.	W, 3-1
Fri. 6	MICHIGAN	University Park, Pa.	W, 1-0
Sun. 8	No. 7 RUTGERS	University Park, Pa.	W, 2-0

NCAA TOURNAMENT (Nov. 13-28)

Fri. 13	UALBANY	University Park, Pa.	W, 5-0
Fri. 20	BOSTON UNIVERSITY	University Park, Pa.	W, 6-0
Sun. 22	OHIO STATE	University Park, Pa.	W, 4-0
Sat. 28	No. 4 WEST VIRGINIA	University Park, Pa.	W, 2-0

DECEMBER

NCAA WOMEN'S COLLEGE CUP (Dec. 4-6)

Fri. 4	No. 9 Rutgers	Cary, N.C.	5 p.m.
Sun. 6	College Cup Championship	Cary, N.C.	Noon

* - Big Ten match

Home matches in CAPS at Jeffrey Field
All times Eastern

NITTANY LIONS, SCARLET KNIGHTS BATTLE IN COLLEGE CUP SEMIFINALS

#6 PENN STATE NITTANY LIONS

20-3-2 (8-2-1)

#9 RUTGERS SCARLET KNIGHTS

19-3-3 (7-2-2)



Match 26: Dec. 4, 2015 • 5 p.m. ET • WakeMed Soccer Park • Cary, N.C. • ESPN

MATCH DAY (RUTGERS)

SERIES RECORD

Penn State Leads, 8-5-1

LAST MEETING

Penn State Won, 2-0 (Nov. 8, 2015)

STAT BREAKDOWN

	PENN STATE	RUTGERS
GOALS	61	40
GOALS/GAME	2.44	1.60
SHOTS	421	377
SHOTS/GAME	16.8	15.1
SV%	.829	.910
GA	14	8
GAA	.55	.31
SHUTOUTS	13	19

MATCH STORIES

- The Nittany Lions have a record of 36-6-1 in the NCAA Tournament at Jeffrey Field
- Megan Schafer leads the Big Ten in goals (13) and points (30)
- Penn State captured a share of its 17th Big Ten title and its sixth Big Ten Tournament title
- Nittany Lion underclassmen have accounted for 44 goals this season
- Emily Ogle has started all 49 matches of her Nittany Lion career
- Seventeen Nittany Lions have tallied at least one point in the 2015 season
- Mallory Weber became the 10th Nittany Lion to tally 100 career points
- 2015 marks the fifth College Cup appearance in program history ('99, '02, '05, '12, '15)
- Penn State has a scoring margin of 17-0 in the 2015 NCAA Tournament
- Penn State women's soccer has an all-time record of 397-103-29

2015 STAT LEADERS

POINTS

Megan Schafer	30
Frannie Crouse	27
Mallory Weber	26

GOALS

Megan Schafer	13
Frannie Crouse	10
Mallory Weber	8

ASSISTS

Mallory Weber	10
Frannie Crouse	7
Charlotte Williams	7

SHOTS

Frannie Crouse	74
Raquel Rodriguez	52
Megan Schafer	47

SHOTS ON GOAL

Frannie Crouse	39
Megan Schafer	25
Mallory Weber	21

GAME-WINNING GOALS

Megan Schafer	6
Mallory Weber	4
Frannie Crouse	3



CAREER CHARTS

POINTS

- 9. 108 - Carole Dutchka (44g 20a) - 1995-98
- 10. **100 - Mallory Weber (36g 28a) - 2012-15**
- 11. 96 - Danielle Toney (38g 20a) - 2007-10
- 12. 82 - Bonnie Young (31g 20a) - 1998-01
- 82 - Kelly Convey (28g 26a) - 1996-99

GOALS

- 9. 38 - Danielle Toney - 2007-10
- 10. **36 - Mallory Weber - 2012-15**
- 11. 34 - Christine Nairn - 2009-12
- 12. 32 - Aubrey Aden-Buie - 2003-07

ASSISTS

- 6. 29 - Stephanie Smith - 200-03
- 7. 28 - Emily Hurd - 2010-14
- 28 - Mallory Weber - 2012-15**
- 28 - Raquel Rodriguez - 2012-15**
- 10. 26 - Heidi Drummond - 2000-03
- 26 - Kelly Convey - 1996-99
- 26 - Katie Schoepfer - 2006-09

GAME-WINNING GOALS

- 8. 15 - Joanna Lohman - 2000-03
- 9. **14 - Mallory Weber - 2012-15**
- 10. 12 - Bonnie Young - 1998-01
- 12 - Danielle Toney - 2007-10
- 12 - Christine Nairn - 2009-12
- 12 - Aubrey Aden-Buie - 2003-07

SHOTS ON GOAL

- 5. 126 - Christine Nairn (34 goals) - 2009-12
- 6. **95 - Mallory Weber (36 goals) - 2012-15**
- 7. 87 - Joanna Lohman (41 goals) - 2000-03
- 8. 82 - Aubrey Aden-Buie (32 goals) - 2003-07
- 9. 78 - Tani Costa (25 goals) - 2009-13
- 10. **75 - Raquel Rodriguez (22 goals) - 2012-15**
- 11. 65 - Zoe Bouchelle (13 goals) - 2003-08
- 65 - Frannie Crouse (20 goals) - 2014-15**

WINS

- 1. 81 - Emily Oleksiuk (81-15-4) 1998-2001
- 2. **59 - Britt Eckerstrom (59-14-3) - 2011-15**
- 3. 49 - Alyssa Naehr (49-18-7) - 2006-09

SHUTOUTS

- 3. 26.1 - Dara Christante - 1995-98
- 4. **22.9 - Britt Eckerstrom - 2011-15**
- 22.5 - Robyn Van Praag - 1994-96

MINUTES PLAYED

- 8. 6,958 - Natalie Jacobs - 2002-05
- 9. **6,786 - Britt Eckerstrom - 2011-15**
- 10. **6,649 - Raquel Rodriguez - 2012-15**
- 11. 6,584 - Jessie Davis - 2005-08
- 12. **6,546 - Mallory Weber - 2012-15**
- 13. 6,525 - Maya Hayes - 2010-13

FOLLOW ALONG

The match against Rutgers will be televised on ESPN and fans can follow along with live stats via GoPSUsports.com.

ON THE CALL

Glenn Davis (play-by-play) and Julie Foudy (color analyst) will be on the call for Friday's match against Rutgers.

TICKET INFORMATION

Tickets are now on sale via <http://www.ncaa.com/tickets/soccer-women/d1>.

SCOUTING RUTGERS (19-3-3, 7-2-2)

Rutgers enters the match after advancing past No. 1 Virginia, 7-6, in penalty kicks after playing to a 0-0 draw last week.

Prior to the UVa match, Rutgers topped No. 18 UConn, 4-0, in a rematch of a Sept. 13 match, in which Rutgers won 2-0.

The Rutgers defense has kept opposing offenses in check during the NCAA Tournament, as RU has yet to concede a goal in its four NCAA Tournament matches.

The Scarlet Knight defense has tallied 19 shutouts in 25 matches this season.

Big Ten Goalkeeper of the Year Casey Murphy has played every minute in net this season for Rutgers. She has posted a save percentage of .906, a goals against average of 0.31, made 77 saves and only allowed eight goals; two of those goals came against Penn State in the Big Ten Tournament championship match on Nov. 8.

As a team, Rutgers has outscored the opposition 19-4 in the first 45 minutes of matches and 21-3 in the second half of regulation this season.

Offensively, Colby Ciarrocca leads the charge with 22 points. Her nine goals in 2015 lead the team and she is also tied for the team lead with four assists.

THE FINAL 32

Ten of the teams Penn State played in the regular season advanced to at least the second round of the NCAA Tournament, including four teams in the West Virginia regional.

During the regular season, Penn State played four teams who participated in the NCAA Quarterfinals (Duke, Rutgers, Stanford and West Virginia).

150 WINS WITH PSU

On Nov. 6, Coach Walsh won her 150th match as the head coach of the Penn State women's soccer program.

In her time as the Nittany Lion head coach, Walsh has tallied an overall record of 155-50-10 (.744).

PSWS NCAA TOURNAMENT HISTORY

The Nittany Lions enter the College Cup for the fifth time in program history and the second time since 2012.

In program history, the Nittany Lions have a record of 4-4-1 in neutral NCAA Tournament matches.

Penn State has advanced to the College Cup five times ('99, '02, '05, '12 & '15).

The 17 goals in the 2015 NCAA Tournament by the Nittany Lions ties the program record set by the 2005 team.

The 2015 squad has also opened the NCAA Tournament with four-straight shutouts for the first time in program history.

In 65 NCAA matches, the Nittany Lions have outscored the opposition, 148-70. Overall record - 44-19-2.

Penn State has an overall record of 4-1-0 in home matches in the NCAA quarterfinal round.

According to CollegeSoccer360.com, Penn State is one of 10 teams to advance to the quarterfinal round 10 or more times since 1982 - All 11 appearances for PSU are since 1998.

WEEKLY RANKINGS

	PS	Poll 1	Poll 2	Poll 3	Poll 4	Poll 5	Poll 6	Poll 7	Poll 8	Poll 9	Poll 10	Poll 11	Poll 12
NSCAA	6	6	7	7	4	12	12	11	9	10	10	9	6
NCAA RPI	-	-	-	-	-	4	2	1	2	3	3	2	2
Soccer America	5	4	7	12	7	11	13	11	10	14	12	11	-
TopDrawerSoccer	4	4	5	8	6	8	8	7	5	9	6	5	4

ONE GOAL OR LESS

The Nittany Lions have held their opponents to one or goal less in the last 21 matches.

Penn State has only allowed two goals in a match twice this season, both times Penn State won 4-2.

For the first time since the 2004 season, the Nittany Lions have yet to concede a goal in six-straight matches.

AMONG THE BEST OF THE BIG

Megan Schafer and Mallory Weber have established themselves as two of the top forwards in the Big Ten this season.

In the Big Ten rankings heading into the College Cup, Weber ranks in the top-five in points, assists, assists per game and game-winning goals.

Weber's 10 assists this season leads the Big Ten. She also leads the conference with .40 assists per game.

Schafer leads the conference in points and goals. She has also tallied six game-winning goals, which is tied for first in the Big Ten.

Schafer also ranks third in goals per game (.52) and fourth in points per game (1.20).

As a team, the Nittany Lions lead the Big Ten in points, assists, assists per game, goals, goals per game and shots.

YOUTH MOVEMENT

The Nittany Lion underclassmen have accounted for 44 of the 61 goals scored this season and 41 of the 65 assists.

The Nittany Lion backline, comprised of one redshirt sophomore, one sophomore and two freshmen, have only allowed 14 goals on the season.

REPEATING HISTORY

Last season, Frannie Crouse and Mallory Weber led the team with 22 points apiece.

Heading into the College Cup, Crouse ranks second on the team with 27 points and Weber ranks third on the team with 26 points.

NATIONAL HONORS

Brittany Basinger, Frannie Crouse, Britt Eckerstrom and Kaleigh Riehl were honored for their performances against No. 2 Stanford (9/11) and Santa Clara (9/13).

Basinger was named to the TopDrawerSoccer.com Team of the Week, while Crouse was named the espnW Player of the Week.

Along with the espnW Player of the Week honors, Crouse received honors from the Big Ten.

Also, Eckerstrom was named the Big Ten Co-Defensive Player of the Week and Riehl was named the Big Ten Freshman of the Week.

Following the Northwestern (10/4) victory, Elizabeth Ball was named to the TopDrawerSoccer.com Team of the Week for her defensive efforts.

Ball was also named the Big Ten Defensive Player of the Week following a pair of shutout victories over Maryland (1-0) (10/8) and Indiana (4-0) (10/11).

Marissa Sheva was named the Big Ten Freshman of the Week for netting the game-winning goal in a 2-1 victory over Ohio State on Oct. 24.

After playing 71 minutes and tallying an assist in the regular season finale against Michigan (10/28), Riehl was named the Big Ten Freshman of the Week for the second time in 2015 (9/15).

Ball received TopDrawerSoccer.com Team of the Week honors after a pair of shutout wins over Michigan (1-0) (11/6) and Rutgers (2-0) (11/8).

Ball tallied the game-winning goal against Rutgers and played in all but 13 minutes in between the two matches.

Megan Schafer was named to the TopDrawerSoccer Team of the Week after tallying five-point weekend against BU (11/20) and OSU (11/22).

Following the win over No. 4 West Virginia, Crouse, Emily Ogle and Riehl were named to the TopDrawerSoccer Team of the Week.

NSCAA COACHES POLL

(Final Poll of 2015, Nov. 10)

#	Team	W-L-T	1st Votes
1	Virginia	16-1-2	24
2	Florida State	14-2-4	6
3	Stanford	16-2-1	1
4	West Virginia	16-2-1	0
5	Florida	16-3-1	0
6	Penn State	16-3-2	0
7	Clemson	13-4-1	0
8	North Carolina	14-4-1	0
9	Rutgers	15-3-3	0
10	Notre Dame	13-4-1	0
11	Southern California	13-5-1	0
12	Santa Clara	13-5-2	0
13	Brigham Young	15-2-2	0
14	Virginia Tech	14-3-2	0
15	Texas Tech	13-3-5	0
16	South Carolina	12-4-3	0
17	California	13-5-3	0
18	Connecticut	17-3-0	0
19	Auburn	14-5-1	0
20	Duke	10-5-4	0
21	Texas A&M	15-5-1	0
22	South Florida	16-3-3	0
23	Washington State	14-5-0	0
24	Mississippi	13-5-2	0
25	California State-Fullerton	16-3-1	0

Also receiving votes: South Alabama (30), Arizona (25), St. John's (19), Princeton (19), Michigan (18), North Texas (14), Northwestern (8), Hofstra (5), Louisiana State (4), Minnesota (4), Long Beach State (3), Washington (3), Cincinnati (3), Boston College (1)

RU NOTES

- Rutgers enters the match with a record of 4-1-1 against ranked teams this season - Penn State won 2-0 on 11/8.
- RU is outscoring the opposition, 7-0, in the NCAA Tournament.
- Fifteen members of the Rutgers women's soccer team have scored a goal this season.
- RU has a record of 6-3-2 away from Yurcak Field this year.



PRONUNCIATION GUIDE

Brittany Basinger BAY-singer
 Nickolette Driesse DREE-S
 Alina Ortega-Jurado AH-lean-AH
 OR-TAY-GAH
 HER-RAH-DOH
 Kaleigh Riehl REAL
 Kristin Schnurr SHNURR
 Marissa Sheva SHE-va
 Liisi Vink-Lainas LEE-see Vink-LY-nus
 Anna Witte Witt-ee

LIONS BY ELIGIBILITY

Redshirt Senior (1): Eckerstrom
Seniors (4): Chase, Ritchey, Rodriguez, Weber
Juniors (3): Driesse, Williford, Witte
Redshirt Sophomores (2): Basinger, Widlacki
Sophomores (8): Ball, Clauss, Crouse, Echard, Elliston, Ogle, Schafer, Vink-Lainas
Redshirt Freshman (1): Chandler
Freshmen (8): Campbell-Phipps, Jean, Knaub, Ortega-Jurado, Riehl, Schnurr, Sheva, Williams

LIONS BY POSITION

Goalkeepers (2): Chandler, Eckerstrom
Forwards (7): Crouse, Ortega-Jurado, Rodriguez, Schafer, Schnurr, Weber, Williams
Midfielders (10): Driesse, Echard, Knaub, Ogle, Ortega-Jurado, Ritchey, Rodriguez, Sheva, Vink-Lainas, Williford
Defenders (10): Ball, Basinger, Campbell-Phipps, Chase, Clauss, Elliston, Jean, Riehl, Widlacki, Witte

LIONS BY LOCATION

Connecticut (1): Jean
Costa Rica (1): Rodriguez
Georgia (1): Chandler
Germany (1): Ortega-Jurado
Illinois (1): Widlacki
Maryland (1): Eckerstrom
Michigan (1): Weber
Nebraska (1): Elliston
New Jersey (1): Driesse
New York (2): Vink-Lainas, Williams
North Carolina (1): Witte
Ohio (1): Ogle
Pennsylvania (10): Campbell-Phipps, Chase, Clauss, Crouse, Echard, Knaub, Ritchey, Schafer, Sheva, Williford
Virginia (4): Ball, Basinger, Riehl, Schurr

BALANCED ATTACK

Twelve Nittany Lions have tallied goals in the 2015 campaign, which includes 11 Nittany Lions with multiple goals.

Also, seventeen Nittany Lions have tallied at least one point this season.

FAST START

Against UAlbany, Megan Schafer tallied the fastest goal on the season (5:00). Raquel Rodriguez scored at the 5:25 mark against Indiana on Oct. 11.

POUNGING FIRST

In the 2015 season, the Nittany Lions have out-scored their opponents 31-4 in the first 45 minutes of play and they have out-shot the opposition, 218-74.

THE POLLS

Heading into the NCAA Tournament, the Penn State women's soccer team currently ranked second in the NCAA RPI, fourth in the TopDrawerSoccer Poll, sixth in the NSCAA Coaches' Poll and 11th in the Soccer America Top-25 Poll.

ACTIVE LEADERS

Heading into the NCAA quarterfinals, among active student-athletes in the NCAA, Mallory Weber tied for third in games played (96), tied for 18th in points (100), tied for ninth in assists (28) and is also one of 12 student-athletes to have tallied 30 goals and 20 assists.

Also in the active leaderboards, Raquel Rodriguez is tied for ninth with 28 assists.

49 IN A ROW

With her 25 starts in the 2015 season, sophomore Emily Ogle has started all 49 matches of her Nittany Lion career.

USUAL SUSPECTS

Six Nittany Lions have started all 25 matches this season for the Blue and White.

Out of 2,290 minutes, eight Nittany Lions have played at least 1,676 minutes (73.1 percent).

EXTRA TIME

In the hard fought double overtime match against the No. 21 Duke Blue Devils on Aug. 28, seven Nittany Lions played the full 110 minutes.

SMART LIONS

For their hard work and dedication in the classroom, seniors Britt Eckerstrom and Raquel Rodriguez were named to the CoSIDA Academic All-District Two First Team.

Eckerstrom and Rodriguez are the 16th and 17th Nittany Lions to be named to the CoSIDA Academic All-District First Team since 2000.

SOPHOMORE STANDOUT

In her sophomore season, Megan Schafer has tallied 13 goals in 25 games. She has also added four assists on the year.

Schafer has scored a goal in nine of the past 15 matches. She also has tallied at least one point in 11 of the past 15 matches.

Last season, Schafer scored six goals and tallied five assists in 24 games.

FINAL 2015 BIG TEN STANDINGS

Team	Big Ten	Pct.	Points	Overall	Pct.	Home	Away	Neutral	Last 10
Penn State	8-2-1	.773	25	13-3-2	.778	7-1-1	6-2-1	0-0-0	7-2-1
Wisconsin	8-2-1	.773	25	11-5-3	.658	8-2-0	3-3-3	0-0-0	8-1-1
Rutgers	7-2-2	.727	23	14-2-2	.833	9-0-1	3-2-1	2-0-0	6-2-2
Northwestern	7-3-1	.682	22	13-4-2	.737	6-2-1	6-1-1	1-1-0	6-3-1
Michigan	6-3-2	.636	20	11-6-2	.632	9-1-0	1-5-2	1-0-0	5-3-2
Minnesota	6-4-1	.591	19	11-5-3	.658	5-2-2	5-3-1	1-0-0	5-4-1
Ohio State	5-4-2	.545	17	10-5-3	.639	7-3-1	3-2-2	0-0-0	5-3-2
Illinois	4-4-3	.500	15	10-5-3	.639	7-2-1	3-3-2	0-0-0	4-4-2
Michigan State	4-5-2	.455	14	8-6-4	.556	5-2-3	3-4-1	0-0-0	3-5-2
Nebraska	4-5-2	.455	14	8-7-2	.529	4-4-1	4-3-1	0-0-0	4-4-2
Purdue	4-6-1	.409	13	9-8-1	.528	6-3-1	3-4-0	0-1-0	4-5-1
Indiana	0-7-4	.182	4	3-10-6	.316	0-3-6	0-7-0	3-0-0	0-7-3
Iowa	1-9-1	.136	4	7-10-1	.417	5-6-0	1-4-1	1-0-0	1-8-1
Maryland	1-9-1	.136	4	6-12-1	.342	5-6-0	1-6-1	0-0-0	1-8-1

2015 BIG TEN WEEKLY HONORS

Sept. 15

O: Frannie Crouse
D: Britt Eckerstrom
F: Kaleigh Riehl

Oct. 13

D: Elizabeth Ball

Oct. 27

F: Marissa Sheva

Oct. 29

F: Kaleigh Riehl

2015 ALL-BIG TEN HONORS

ALL-BIG TEN TEAMS

Forward:

Mallory Weber (First Team)
Megan Schafer (Second Team)

Midfield:

Raquel Rodriguez (First Team)
Emily Ogle (Second Team)

Defense:

Kaleigh Riehl (Second Team)

ALL-FRESHMAN TEAM

Forward:

Alina Ortega-Jurado

Midfield:

Charlotte Williams

Defense:

Ellie Jean
Kaleigh Riehl

**SPORTSMANSHIP
AWARD HONOREE**

Teddy Chase

**2015 BIG TEN
ALL-TOURNAMENT TEAM**

Frannie Crouse*
Britt Eckerstrom#
Emily Ogle

*Offensive Player of the Tournament
#Defensive Player of the Tournament

#VOTEWEBER

Senior Mallory Weber was tabbed as a finalist for the 2015 Soccer News Net College Boot award, which recognizes the top female collegiate soccer student-athlete.

Fans from across the nation will be able to vote for the top collegiate women's soccer student-athlete. Voting is now underway and will continue until Dec. 16.

CAPTAIN CLUTCH

After posting a five-point weekend against Hofstra (8/21) and Loyola Marymount (8/23) during the first weekend of the season, senior Mallory Weber followed up her performance with a three-point weekend against Duke (8/28) and Arkansas (8/30).

Weber, held pointless against the No. 21 Duke Blue Devils, notched a goal and an assist in a 4-2 win over Arkansas.

Weber has tallied four game-winning goals this season.

All-time at Penn State, Weber ranks 10th in goals (36), 10th in points (100) and tied for seventh in assists (28).

Weber recorded at least one point a game over a six-game span from Sept. 25-Oct. 15.

She has recorded three matches this season with one goal and one assist.

On Nov. 13, Weber became the 10th Nittany Lion to tally 100 career points.

DEFENSE FOR THE RECORD BOOKS

The Nittany Lion defense has posted a goals against average of 0.55 this season, which ranks third all-time at Penn State.

In 2007, the Blue and White tallied a GAA of 0.61, which ranks fourth at PSU.

The 13 shutouts by the Nittany Lion defense ranks fourth all-time in the single-season Penn State women's soccer record books.

WATCH OUT FOR ROCKY

Senior midfielder Raquel Rodriguez was named as a MAC Hermann Trophy Semifinalist, as announced by the NSCAA on Dec. 1.

The 15 semifinalists will be narrowed down to three finalists and the winner will be announced on Jan. 8, 2016.

HISTORIC OFFENSE

The Nittany Lions are also moving up the charts in the all-time Penn State offensive charts.

The 2015 team ranks seventh all-time in points (187), seventh all-time in goals (61) and third all-time in assists (65).

PRESEASON FAVORITES

According to the 2015 Big Ten Women's Soccer Preseason Coaches' Poll, the Penn State women's soccer team was selected to finish first. The Nittany Lions have sat atop the Big Ten preseason poll every season since the poll began in 2003.

SIXTEEN GOING ON SEVENTEEN

The Nittany Lions captured a share of their 17th Big Ten title in program history in 2015.

Penn State has won 17 of the last 18 Big Ten regular season titles.

The 17 Big Ten titles won by the Penn State women's soccer team is the third-most titles won by any one women's sport program in the Big Ten.

HOME SWEET HOME

Jeffery Field has been a tough place for opponents to play as the Nittany Lions boast an all-time record of 213-24-10 at home.

The 2015 Penn State women's soccer team tied a program-best 14 home wins (2005 & 2006).

In Big Ten play at Jeffrey Field, the Nittany Lions own a record of 96-6-4.

The Nittany Lions have tallied seven undefeated seasons at Jeffrey Field.

The Nittany Lions have a record of 36-6-1 in NCAA Tournament matches at Jeffrey Field.

Penn State has out-scored the opposition 122-31 in 43 matches at home in NCAA play.

PLAYERS TO WATCH

Three players from each Big Ten team were named Big Ten Women's Soccer Preseason Players to Watch, with seniors Britt Eckerstrom, Raquel Rodriguez and Mallory Weber representing the Nittany Lion Blue and White. This is Rodriguez's third-straight appearance on the Preseason Players to Watch list.



SERIES HISTORY VS. RU

All-Time Series: PSU Leads, 8-5-1
PSU Streak: One win
First Meeting: 10/23/94 - PSU, 3-2 (OT)
Last Meeting: 11/8/15 - PSU, 2-0
Last PSU Win: 11/8/15 - 2-0
Last RU Win: 10/18/15 - 1-0
NCAA History: Tied, 1-1
PSU At Home: 5-2-0
PSU At RU: 3-3-1
Neutral Site: 0-0-0

LAST FIVE MEETINGS

11/8/15	W	2-0	H
10/18/15	L	1-0	A
10/11/14	L	1-0	H
9/6/09	L	1-0	H
11/14/08	L	2-1 (2ot)	A

LAST MEETING RECAP - 11/8/15

UNIVERSITY PARK, Pa. - The top-seeded Penn State women's soccer team defeated third-seeded Rutgers, 2-0, Sunday afternoon, en route to its sixth Big Ten Tournament title. The win also marks the third time Penn State has won the Big Ten Tournament at home (1998 and 2006).

The Nittany Lions (16-3-2) scored the first goal of the match in the ninth minute off a corner kick from Nickolette Driesse (Wayne, N.J.).

On the corner kick, Driesse placed the ball into the penalty area, where Raquel Rodriguez (San Jose, Costa Rica) netted the ball on goal from six yards out. With the ball heading towards goal, sophomore defender Elizabeth Ball (Richmond, Va.) redirected the shot over the diving Casey Murphy and into the back of the net for her second goal of the season.

Rutgers (16-3-2) responded with a pair of shot attempts, in the 15th and 18th minute. The first attempt went wide and Cassie Inacio's shot attempt in the 18th minute was corralled by senior keeper Britt Eckerstrom (Germantown, Md.). Inacio's shot attempt was the lone shot on goal for Rutgers on the afternoon.

Crouse's shot, which was blocked by a Rutgers defender, rebounded to the feet of Emily Ogle (Strongsville, Ohio). Ogle moved up the field a few yards before striking the ball past the outstretched Murphy from 22 yards out. Ogle's shot made its way into the left side of the net for the 2-0 Nittany Lion lead in the 26th minute.

The Nittany Lions capitalized on its opportunities during the first 45 minutes of action, as they scored on two of their five shot attempts.

#PACKTHEJEFF

In their season-opening homestand, the Nittany Lions drew two top-10 crowds in program history.

In the season-opener, 3,175 fans made their way to Jeffrey Field to cheer on the Nittany Lions. At the time, that was fourth-largest crowd to attend a women's soccer match at Jeffrey Field.

A week later, against No. 21 Duke, 4,207 fans packed Jeffrey Field for the second-largest crowd in program history.

As of Nov. 23, Penn State ranks 13th in average attendance (1,383) in the NCAA.

For the second time in program history, the Nittany Lions have eclipsed the 20,000 attendance mark (21,856).

On Nov. 28, Penn State set a single-season attendance record of 21,856 fans. The previous mark was held by the 2012 season (20, 811).

BACK-TO-BACK NO. 2 CLASSES

According to TopDrawerSoccer, the Nittany Lions have signed the number two recruiting class in the last two years. The 2014 class featured the 2014 Big Ten Freshman of the Year Emily Ogle and Frannie Crouse, who led the Nittany Lions with 10 goals. The 2015 class features nine newcomers, including eight freshmen and one transfer.

MIDSEASON HONORS

Eight Nittany Lions were named to TopDrawerSoccer's Top-100 midseason lists, with three named among the top-100 freshmen and five named to the top-100 upperclassmen list. The top-100 upperclassmen list is comprised of the top sophomores, juniors and seniors in NCAA women's soccer.

Raquel Rodriguez (San Jose, Costa Rica) leads the Nittany Lion contingent among the TopDrawerSoccer Top-100 midseason upperclassmen list. Rodriguez checks in at sixth, followed by Emily Ogle (Strongsville, Ohio) (26th), Mallory Weber (Novi, Mich.) (34th), Frannie Crouse (Greensburg, Pa.) (60th) and Elizabeth Ball (Richmond, Va.) (76th).

Among TopDrawerSoccer's Midseason Top-100 Freshmen list, Kaleigh Riehl (Fairfax Station, Va.) ranks sixth, Ellie Jean (Coventry, Conn.) checks in at 16th and Alina Ortega-Jurado (Wetzlar, Germany) is 83rd.

HOMETOWN TIES

Senior Megan Ritchey and freshman Taylor Campbell-Phipps didn't have to travel a long distance as they made the transition from high school to college.

Both Ritchey and Campbell-Phipps call State College, Pa., home as they both attended State College Area high school.

#PSWS IN THE #2015WWC

The Penn State women's soccer program was represented by five Nittany Lions representing three countries in the 2015 Women's World Cup.

Former Penn State women's soccer players, Ali Krieger '06 and Alyssa Naehner '09 became the first Nittany Lions to win a World Cup as part of a senior national team as they helped the U.S. to a 5-2 victory over Japan in the 2015 FIFA Women's World Cup final.

Carmelina Moscato '05 and Erin McLeod '05 helped Canada to reach the quarterfinal round before being eliminated by England. The pair helped the host country to advance out of Group A and defeat Switzerland in the Round of 16.

Raquel Rodriguez won't forget about the summer of 2015 for quite some time. During the summer of 2015, Rodriguez represented her home country of Costa Rica in the Women's World Cup.

In Costa Rica's debut at the Women's World Cup, Costa Rican and Penn State women's soccer history was made just 74 seconds after Spain scored its first World Cup goal. In the 14th minute, Rodriguez received a cross in the box from Lixy Rodriguez, and she lobbed in a left footed shot at the right post for the 1-1 equalizer. Rodriguez's goal was her 24th as a member of Costa Rican's Women's National Team, a team-best.

UP NEXT

The winner will advance to the College Cup championship match to play the winner of Duke and Florida State on Dec. 6 at noon on ESPNU.

PENN STATE NCAA TOURNAMENT HISTORY

Date	Round	Seed	Opponent	Result	PSU	OPP
Nov. 11, 1995	First	-	JAMES MADISON	L	1	2
Nov. 17, 1996	First	-	at #19 George Mason	W	2	0
Nov. 24, 1996	Second	-	at #6 Santa Clara	L	1	3
Nov. 16, 1997	First	-	#7 WILLIAM & MARY	L (2OT)	2	3
Nov. 15, 1998	Second	#7	INDIANA	W	2	1
Nov. 21, 1998	Third	-	CLEMSON	W	1	0
Nov. 29, 1998	Quarterfinals	-	at #2 Florida	L	1	3
Nov. 14, 1999	Second	#6	#25 MARYLAND	W	3	2
Nov. 21, 1999	Third	-	#19 SO. METHODIST	W	5	0
Nov. 27, 1999	Quarterfinals	-	HARTFORD	W	2	0
Dec. 3, 1999	Semifinals	-	vs. #2 North Carolina ¹	L	0	2
Nov. 12, 2000	Second	#7	ILLINOIS (OT)	W	1	0
Nov. 17, 2000	Third	-	DARTMOUTH	W	4	0
Nov. 25, 2000	Quarterfinals	-	#12 PORTLAND	L (OT)	0	1
Nov. 16, 2001	First	-	BUCKNELL	W	3	1
Nov. 18, 2001	Second	-	VILLANOVA	W	3	0
Nov. 24, 2001	Third	-	at #13 Connecticut	W	2	0
Nov. 30, 2001	Quarterfinals	-	at #1 North Carolina	L	1	2
Nov. 15, 2002	First	-	vs. Princeton ²	W	2	0
Nov. 17, 2002	Second	-	at #17 Maryland	W	2	1
Nov. 24, 2002	Third	-	#23 VIRGINIA	W	3	0
Nov. 30, 2002	Quarterfinals	-	at #7 Connecticut	W	2	1
Dec. 6, 2002	Semifinals	-	vs. #9 Portland ³	L	0	2
Nov. 14, 2003	First	#5	NAVY	W	5	0
Nov. 16, 2003	Second	-	RUTGERS	W	3	1
Nov. 22, 2003	Third	-	#23 TEXAS A&M	W	3	0
Nov. 28, 2003	Quarterfinals	-	at #2 UCLA	L	0	4
Nov. 12, 2004	First	#2	BINGHAMTON	W	6	1
Nov. 14, 2004	Second	-	MARYLAND	L	0	1
Nov. 11, 2005	First	#1	BUCKNELL	W	6	0
Nov. 13, 2005	Second	-	#21 WEST VIRGINIA	W	5	2
Nov. 19, 2005	Third	-	#9 TEXAS A&M	W	4	1
Nov. 25, 2005	Quarterfinals	-	#8 SANTA CLARA	W	2	1
Dec. 2, 2005	Semifinals	-	vs. #1 Portland ⁴	T (2OT*)	0	0
Nov. 10, 2006	First	#2	NIAGARA	W	3	1
Nov. 12, 2006	Second	-	VILLANOVA	W	2	0
Nov. 17, 2006	Third	-	#13 BOSTON COLLEGE	W	1	0
Nov. 24, 2006	Quarterfinals	-	at #1 Notre Dame	L	0	4
Nov. 16, 2007	First	#1	MONMOUTH	W	4	0
Nov. 18, 2007	Second	-	HOFSTRA	W (OT)	2	1
Nov. 24, 2007	Third	-	#12 WEST VIRGINIA	L	0	1
Nov. 14, 2008	First	-	at Rutgers	L (2OT)	1	2
Nov. 13, 2009	First	#4	COLGATE	W	5	0
Nov. 15, 2009	Second	-	VIRGINIA	L	2	6
Nov. 12, 2010	First	-	vs. Penn ⁵	W	1	0
Nov. 14, 2010	Second	-	at #14 West Virginia	L	1	2
Nov. 11, 2011	First	#4	ARMY	W	1	0
Nov. 18, 2011	Second	-	vs. #12 Marquette ⁶	W	4	1
Nov. 20, 2011	Third	-	at #6 Wake Forest	L	2	4
Nov. 10, 2012	First	#1	LIU BROOKLYN	W	4	0
Nov. 16, 2012	Second	-	BOSTON COLLEGE	W	5	2
Nov. 18, 2012	Third	-	MICHIGAN	T (2OT)**	1	1
Nov. 23, 2012	Quarterfinals	-	DUKE	W	1	0
Nov. 30, 2012	Semifinals	-	vs. Florida State ⁷	W (OT)	2	1
Dec. 2, 2012	Championship	-	vs. North Carolina ⁷	L	1	4
Nov. 15, 2013	First	-	MONMOUTH	W	3	0
Nov. 22, 2013	Second	-	vs. Wake Forest ⁸	L	0	1
Nov. 14, 2014	First	#2	BUFFALO	W	4	1
Nov. 21, 2014	Second	-	UCONN	W	1	0
Nov. 23, 2014	Third	-	VIRGINIA TECH	W	2	1
Nov. 29, 2014	Quarterfinals	-	at #5 Texas A&M	L	1	2
Nov. 13, 2015	First	#1	UALBANY	W	5	0
Nov. 20, 2015	Second	-	BOSTON UNIVERSITY	W	6	0
Nov. 22, 2015	Third	-	OHIO STATE	W	4	0
Nov. 28, 2015	Quarterfinals	-	#4 WEST VIRGINIA	W	2	0
Totals	21 Appearances (65 games)			44-19-2	148	70

Penn State is taking part in its 21st NCAA Tournament, all consecutive appearances since 1995.

The Nittany Lions are 15-3 in first round games (PSU received byes from the first round in 1998, 1999 and 2000). Penn State is in the midst of a seven-game first round win streak.

Penn State is a five-time College Cup participant (1999, 2002, 2005, 2012, 2015), while advancing to the quarterfinals 11 times, posting a 5-6 record.

Penn State has amassed an impressive record of 36-6-1 at Jeffrey Field, out-scoring opponents 122-31 in NCAA Play.

Penn State has hosted the first and second rounds in the pod format 12 of the last 15 years. In those 12 seasons in which PSU hosted, the Nittany Lions went 20-2.

APPEARANCES BY ROUND

NATIONAL CHAMPIONSHIP GAME
2012

COLLEGE CUP
1999, 2002, 2005, 2012, 2015

QUARTERFINALS
1998, 1999, 2000, 2001, 2002, 2003,
2005, 2006, 2012, 2014, 2015

THIRD ROUND
1998, 1999, 2000, 2001, 2002, 2003,
2005, 2006, 2007, 2011, 2012, 2014, 2015

SECOND ROUND
1996, 1998, 1999, 2000, 2001, 2002,
2003, 2004, 2005, 2006, 2007, 2009,
2010, 2011, 2012, 2013, 2014, 2015

NCAA TOURNAMENT RECORD

	Record	GF	GA
Record at Jeffrey Field	36-6-1	122	31
Away Record	4-9-0	16	28
Neutral Record	4-4-1	10	11
Overtime Games	2-3-2	8	9

CAPS indicate home contests
 1 - San Jose, Calif.; 2 - College Park, Md.; 3 - Austin, Texas; 4 - College Station, Texas;
 5 - Morgantown, W.Va.; 6 - Winston-Salem, N.C.; 7 - San Diego, Calif.; 8 - Charlottesville, Va.
 * - Portland advanced on penalty kicks, 4-3
 ** - Penn State advanced on penalty kicks, 3-2
 Note: From 2005-present, the top four teams in each region were seeded 1-4



THE LAST TIME

PENN STATE...

Scored 3 goals	11/1/15	Allowed 10-15 shots	11/28/15
	vs. Illinois (3-1)	10 vs. #4 West Virginia (2-0)	
Scored 4 goals	11/22/15	Allowed 16+ shots	9/11/15
	vs. Ohio State (4-0)	16 at #2 Stanford (2-0)	
Scored 5 goals	11/13/15	Scored 15-24 points	11/20/15
	vs. UAlbany (5-0)	22 vs. Boston U (6-0)	
Scored 6 goals	11/20/15	Scored 25+ points	9/25/01
	vs. Boston U (6-0)	26 vs. Bucknell (9-2)	
Scored 7 goals	9/23/14	Made 10-14 saves	9/5/14
	vs. Bucknell (7-0)	10 vs. #14 UNC (1-0, 2OT)	
Scored 8 goals	10/9/05	Made 15+ saves	9/2/95
	vs. Iowa (8-0)	17 vs. James Madison (4-2)	
Scored 9 goals	9/25/01	Had 10+ corner kicks	10/15/15
	vs. Bucknell (9-2)	12 at Purdue (2-1)	
Allowed 0 goals	11/28/15	Allowed 10+ corner kicks	9/12/10
	vs. #4 West Virginia (2-0)	10 at #4 Portland (2-4)	
Allowed 1 goal	11/1/15	Tallied 5-7 assists	11/13/15
	vs. Illinois (3-1)	5 vs. UAlbany (5-0)	
Allowed 2 goals	8/30/15	Tallied 8+ assists	11/20/15
	vs. Arkansas (4-2)	10 vs. Boston U (6-0)	
Allowed 3 goals	9/7/14	Won NCAA Tourney game	11/28/15
	at Duke (4-3)	vs. #4 West Virginia (2-0)	
Allowed 4 goals	12/2/12	Lost an NCAA Tourney game	11/29/14
	vs. #13 UNC (1-4)	vs. #5 Texas A&M (1-2)	
Allowed 5+ goals	8/30/13	Won road NCAA Tourney game	11/30/02
	vs. Virginia (1-5)	at Connecticut (2-1)	
Won in overtime	11/30/12	Won neutral NCAA Tourney game	11/30/12
	vs. #7 Florida State (2-1)	vs. #7 Florida State (2-1)	
Lost in overtime	11/6/11	Won PK shootout	11/18/12
	vs. #18 Illinois (1-2)	vs. Michigan (1-1, 3-2 PKs)	
Won in double overtime	9/20/13	Lost PK shootout	11/9/07
	vs. Northwestern (3-2)	vs. Ohio State (2-2, 4-5 PKs)	
Lost in double overtime	9/5/14		
	vs. #14 UNC (0-1, 2OT)		
Tied after double overtime	9/25/15		
	vs. Nebraska (1-1)		
Scoreless tie after double overtime	8/28/15		
	vs. #21 Duke (0-0)		
Ranked in the NSCAA Top 25	11/10/15		
	6th		
Ranked in the NSCAA Top 10	11/10/15		
	6th		
Played an NSCAA Top 10 Team	11/28/15		
	vs. #4 West Virginia (2-0)		
Played an NSCAA Top 25 Team	11/28/15		
	vs. #4 West Virginia (2-0)		
Defeated an NSCAA Top 10 Team	11/28/15		
	vs. #4 West Virginia (2-0)		
Defeated an NSCAA Top 25 Team	11/28/15		
	vs. #4 West Virginia (2-0)		
Attempted less than 10 shots	10/18/15		
	9 at #25 Rutgers (0-1)		
Attempted 10-19 shots	11/28/15		
	14 vs. #4 West Virginia (2-0)		
Attempted 20-29 shots	11/22/15		
	24 vs. Ohio State (4-0)		
Attempted 30-39 shots	10/11/15		
	35 vs. Indiana (4-0)		
Attempted 40+ shots	11/7/10		
	42 vs. Michigan (1-0)		
Allowed 4 or less shots	10/15/15		
	3 at Purdue (2-1)		
Allowed 5-9 shots	11/22/15		
	5 vs. Ohio State (4-0)		

MISCELLANEOUS STATISTICS

PENN STATE is...

213-24-10 All-time at Jeffrey Field
96-6-4. Conference Record at Jeffrey Field

In 2015...

14-1-1 at home
6-2-1 on the road
0-0-0 at neutral site
0-0-2 in overtime
16-0-0 when leading at halftime
0-2-1 when trailing at halftime
4-1-1 when tied at halftime
19-0-0 when scoring first goal
1-3-1 when opponent scores first goal
18-0-2 when out-shooting opponent
2-3-0 when out-shot by opponent
0-0-0 when posting the same # of shots
16-2-2 when taking more corner kicks
2-1-0 when allowing more corner kicks
2-0-0 when taking the same corner kicks
16-1-1 against unranked opponents
4-2-1 against ranked opponents
3-0-0 against higher-ranked opponents
1-2-1 against lower-ranked opponents
0-3-1 when scoring 0 goals
3-0-1 when scoring 1 goal
6-0-0 when scoring 2 goals
11-0-0 when scoring 3+ goals
12-0-1 when allowing 0 goals
6-3-1 when allowing 1 goal
2-0-0 when allowing 2 goals
0-0-0 when allowing 3+ goals
1-0-0 on Wednesday
3-0-0 on Thursday
5-1-2 on Friday
2-0-0 on Saturday
9-2-0 on Sunday
13-1-2 at night
7-2-0 during the day
0-0-1 vs. ACC
1-0-0 America East
1-0-0 vs. CAA
1-1-0 vs. Big 12
12-2-1 vs. Big Ten
1-0-0 vs. PAC 12
1-0-0 Patriot League
1-0-0 vs. SEC
2-0-0 vs. WCC
7-0-0 when a freshman scores
6-3-0 in one-goal games

2015 Penn State Women's Soccer Penn State Overall Individual Statistics (as of Nov 29, 2015) All games

Overall: 20-3-2 Conf: 8-2-1 Home: 14-1-1 Away: 6-2-1 Neut: 0-0-0

##	Player	gp-gs	min	g	a	pts	sh	sh%	sog	sog%	gwg	pk-att
4	Schafer, Megan	25-22	1687	13	4	30	47	.277	25	.532	6	0-0
9	Crouse, Frannie	25-23	1627	10	7	27	74	.135	39	.527	3	0-0
16	Weber, Mallory	25-24	1594	8	10	26	46	.174	21	.457	4	0-0
10	Ogle, Emily	25-25	1918	7	5	19	31	.226	17	.548	2	0-0
11	Rodriguez, Raquel	25-25	1882	5	6	16	52	.096	16	.308	2	0-0
23	Driesse, Nickolette	25-18	1306	4	6	14	33	.121	12	.364	0	0-0
12	Williams, Charlotte	25-10	1278	3	7	13	40	.075	17	.425	1	0-0
27	Sheva, Marissa	25-1	950	3	3	9	18	.167	8	.444	1	0-0
7	Ball, Elizabeth	25-25	2138	3	0	6	22	.136	8	.364	1	0-1
1	Basinger, Brittany	25-25	1823	2	2	6	10	.200	5	.500	0	0-0
14	Jean, Ellie	24-21	1676	0	6	6	10	.000	5	.500	0	0-0
17	Ortega-Jurado, Alina	18-1	515	1	3	5	7	.143	4	.571	0	0-0
15	Echard, Haleigh	24-0	644	2	0	4	27	.074	15	.556	0	0-0
3	Riehl, Kaleigh	25-25	2191	0	2	2	1	.000	0	.000	0	0-0
2	Ritchey, Megan	6-0	71	0	2	2	0	.000	0	.000	0	0-0
19	Vink-Lainas, Liisi	2-0	30	0	1	1	2	.000	1	.500	0	0-0
5	Elliston, Maddie	16-5	1014	0	1	1	0	.000	0	.000	0	0-0
21	Chase, Teddy	9-0	198	0	0	0	1	.000	1	1.000	0	0-0
30	Chandler, Rose	5-0	100	0	0	0	0	.000	0	.000	0	0-0
28	Eckerstrom, Britt	25-25	2190	0	0	0	0	.000	0	.000	0	0-0
25	Campbell-Phipps, Tay	9-0	132	0	0	0	0	.000	0	.000	0	0-0
24	Knaub, Cecilia	9-0	175	0	0	0	0	.000	0	.000	0	0-0
22	Clauss, Isabelle	3-0	21	0	0	0	0	.000	0	.000	0	0-0
6	Witte, Anna	1-0	10	0	0	0	0	.000	0	.000	0	0-0
Total		25	-	61	65	187	421	.145	194	.461	20	0-1
Opponents		25	-	14	15	43	200	.070	82	.410	3	1-1

#	Goalie	gp-gs	Goal Average			Saves		Record				Shots faced
			min	ga	gaavg	saves	pct	w	l	t	sho/cbo	
28	Eckerstrom, Britt	25-25	2190:34	12	0.49	64	.842	20	3	2	10/3	186
30	Chandler, Rose	5-0	99:26	2	1.81	3	.600	0	0	0	0/3	12
TM	Team	-	0:00	0	0.00	1	1.000	0	0	0	3/0	0
Total		25	2290:00	14	0.55	68	.829	20	3	2	13	198
Opponents		25	2290:00	61	2.40	133	.686	3	20	2	4	419

Team saves: 1

Goals by Period	1st	2nd	OT	OT2	Total
Penn State	31	30	0	0	61
Opponents	4	10	0	0	14

Corners by Period	1st	2nd	OT	OT2	Total
Penn State	90	64	0	1	155
Opponents	33	49	0	0	82

Shots by Period	1st	2nd	OT	OT2	Total
Penn State	218	192	4	7	421
Opponents	74	124	1	1	200

Fouls by Period	1st	2nd	OT	OT2	Total
Penn State	68	87	1	1	157
Opponents	66	98	3	4	171

Saves by Period	1st	2nd	OT	OT2	Total
Penn State	31	36	1	0	68
Opponents	63	68	1	1	133

Attendance Summary	PSU	Opponent
Total	21078	7670
Dates/Avg Per Date	16/1317	9/852
Neutral Site #/Avg	0/0	



2015 Penn State Women's Soccer Penn State Combined Team Statistics (as of Nov 29, 2015) All games

RECORD:	OVERALL	HOME	AWAY	NEUTRAL
ALL GAMES	20-3-2	14-1-1	6-2-1	0-0
CONFERENCE	8-2-1	4-1	4-1-1	0-0
NON-CONFERENCE	12-1-1	10-0-1	2-1	0-0

Date	Opponent	Score	Att.	#	Player	gp	g	a	pts	sh	sh%	sog	sog%	qw	pk-att	
Aug 21	HOFSTRA	w	2-1	3175	4	Schafer, Megan	25	13	4	30	47	.277	25	.532	6	0-0
Aug 23	LOYOLA MARYMOUNT	w	4-2	1028	9	Crouse, Frannie	25	10	7	27	74	.135	39	.527	3	0-0
Aug 28	#21 DUKE	To2	0-0	4207	16	Weber, Mallory	25	8	10	26	46	.174	21	.457	4	0-0
Aug 30	ARKANSAS	w	4-2	2104	10	Ogle, Emily	25	7	5	19	31	.226	17	.548	2	0-0
Sep 04	at #12 West Virginia	L	0-1	1445	11	Rodriguez, Raquel	25	5	6	16	52	.096	16	.308	2	0-0
Sep 11	at #2 Stanford	w	2-0	1436	23	Driesse, Nickolette	25	4	6	14	33	.121	12	.364	0	0-0
Sep 13	at Santa Clara	w	1-0	250	12	Williams, Charlotte	25	3	7	13	40	.075	17	.425	1	0-0
* Sep 17	WISCONSIN	w	4-0	958	27	Sheva, Marissa	25	3	3	9	18	.167	8	.444	1	0-0
* Sep 20	MINNESOTA	L	0-1	1075	7	Ball, Elizabeth	25	3	0	6	22	.136	8	.364	1	0-1
* Sep 25	at Nebraska	To2	1-1	1486	1	Basinger, Brittany	25	2	2	6	10	.200	5	.500	0	0-0
* Sep 27	at IOWA	w	5-1	531	14	Jean, Ellie	24	0	6	6	10	.000	5	.500	0	0-0
* Oct 04	at #24 Northwestern	w	3-0	291	17	Ortega-Jurado, Alina	18	1	3	5	7	.143	4	.571	0	0-0
* Oct 08	MARYLAND	w	1-0	754	15	Echard, Haleigh	24	2	0	4	27	.074	15	.556	0	0-0
* Oct 11	INDIANA	w	4-0	1652	3	Riehl, Kaleigh	25	0	2	2	1	.000	0	.000	0	0-0
* Oct 15	at Purdue	w	2-1	437	2	Ritchey, Megan	6	0	2	2	0	.000	0	.000	0	0-0
* Oct 18	at #25 Rutgers	L	0-1	1205	19	Vink-Lainas, Liisi	2	0	1	1	2	.000	1	.500	0	0-0
* Oct 24	at Ohio State	w	2-1	589	5	Elliston, Maddie	16	0	1	1	0	.000	0	.000	0	0-0
* Oct 28	MICHIGAN	w	3-1	351	21	Chase, Teddy	9	0	0	0	1	.000	1	1.000	0	0-0
Nov 01	ILLINOIS	w	3-1	821	30	Chandler, Rose	5	0	0	0	0	.000	0	.000	0	0-0
Nov 06	MICHIGAN	w	1-0	0	28	Eckerstrom, Britt	25	0	0	0	0	.000	0	.000	0	0-0
Nov 08	#7 RUTGERS	w	2-0	1230	25	Campbell-Phipps, Tay	9	0	0	0	0	.000	0	.000	0	0-0
Nov 13	ALBANY	w	5-0	622	24	Knaub, Cecilia	9	0	0	0	0	.000	0	.000	0	0-0
Nov 20	BOSTON U	w	6-0	1224	22	Clauss, Isabelle	3	0	0	0	0	.000	0	.000	0	0-0
Nov 22	OHIO STATE	w	4-0	760	6	Witte, Anna	1	0	0	0	0	.000	0	.000	0	0-0
Nov 28	#4 WEST VIRGINIA	w	2-0	1117	Total	25	61	65	187	421	.145	194	.461	20	0-1	
					Opponents	25	14	15	43	200	.070	82	.410	3	1-1	

TEAM STATISTICS	PSU	OPP
SHOT STATISTICS		
Goals-Shot attempts	61-421	14-200
Goals scored per game	2.44	0.56
Shot pct.	.145	.070
Shots on goal-Attempts	194-421	82-200
SOG pct.	.461	.410
Shots/Game	16.8	8.0
CORNER KICKS	155	82
PENALTY KICKS	0-1	1-1
PENALTIES		
Yellow cards	5	9
Red cards	1	0
ATTENDANCE		
Total	21078	7670
Dates/Avg Per Date	16/1317	9/852
Neutral Site #/Avg	0/0	

#	Goalie	GP	Min.	GA	GAAvg	Saves	Pct	W-L-T	Sho
28	Eckerstrom, Britt	25	2190:34	12	0.49	64	.842	20-3-2	10/3
30	Chandler, Rose	5	99:26	2	1.81	3	.600	0-0-0	0/3
	Total	25	2290:00	14	0.55	68	.829	20-3-2	13
	Opponents	25	2290:00	61	2.40	133	.686	3-20-2	4

Goals by Period	1st	2nd	OT	OT2	Total
Penn State	31	30	0	0	61
Opponents	4	10	0	0	14

Shots by Period	1st	2nd	OT	OT2	Total
Penn State	218	192	4	7	421
Opponents	74	124	1	1	200

Saves by Period	1st	2nd	OT	OT2	Total
Penn State	31	36	1	0	68
Opponents	63	68	1	1	133

Corners by Period	1st	2nd	OT	OT2	Total
Penn State	90	64	0	1	155
Opponents	33	49	0	0	82

Fouls by Period	1st	2nd	OT	OT2	Total
Penn State	68	87	1	1	157
Opponents	66	98	3	4	171



ERICA WALSH

Head Coach • Ninth Year
WILLIAM & MARY '97

RECORD AT PSU: 155-50-10 (.744)
Overall Record: 195-78-13 (.704)

2012 NSCAA NATIONAL COACH OF THE YEAR
THREE-TIME BIG TEN COACH OF THE YEAR (2009, 2012, 2014)

Head coach Erica Walsh enters her ninth season at the helm of the Penn State women's soccer program in 2015.

In 2014, Walsh led the Blue and White to its 10th NCAA Tournament semifinal appearance and the seventh 20-win season in program history. Penn State, which had an 11-member freshman class, earned its third outright conference title in four years, maintaining a top-11 national ranking throughout the season and defeating five top-25 opponents.

Under the director of the three-time Big Ten Coach of the Year, Penn State collected three of four Player of the Year awards. Whitney Church, the conference's Defender of the Year, was named a M.A.C. Hermann Trophy semifinalist and an NSCAA All-America first team selection before she became the 30th overall pick in the National Women's Soccer League (NWSL) draft by the Washington Spirit. Also earning individual Big Ten awards were Raquel Rodriguez, who bagged Midfielder of the Year honors and Emily Ogle, the Freshman of the Year.

The Nittany Lions appeared in their 19th-straight NCAA Tournament in 2013, due in part to the success of senior Maya Hayes. The sixth-overall selection in the WPSL draft, Hayes set Penn State's single season record for points (79) and finished her career ranked third in goals scored (71) and points (163), sixth in game-winning goals (17) and seventh in shots (291). Hayes also became the seventh M.A.C. Hermann Award Trophy semifinalist in program history.

Walsh's 2012 Nittany Lions were the most successful team in program history after advancing to their first-ever national title game. The Nittany Lions won 21 of 27 games and were unbeaten in Big Ten action with a 10-0-1 record. The Lions registered their 15th consecutive Big Ten title and 18th-straight NCAA Tournament appearance. The 15-title mark stands as the most consecutive Big Ten Championships by a women's program, along with the present Northwestern tennis team.

Senior Christine Nairn became just the seventh Nittany Lion to finish as a finalist for the prestigious Missour Athletic Club's Hermann Trophy in 2012 under Walsh's tutelage while junior Maya Hayes was named a semifinalist for the award.

Walsh's success was recognized at the conference and national level as she earned Big Ten Coach of the Year and NSCAA National Coach of the Year honors.

Her 2011 team was a dominant force, winning 21 of 26 matches, while out-scoring opponents 70-24. The Nittany Lions were 10-1-0 in Big Ten action and posted the seventh undefeated season at Jeffrey Field (9-0). Walsh helped guide the Lions to their 14th-straight Big Ten title and a spot to the NCAA Sweet Sixteen for the first time since 2007.

With Walsh's guidance, sophomore Maya Hayes became the nation's most prolific scorer in soccer in 2011 and was a finalist for the M.A.C. Hermann Trophy. Hayes led the nation with 31 goals and 70 points, breaking the Penn State single-season record for points.

During the 2011 summer, Walsh had an extraordinary experience of being one of the top assistants to Pia Sundhage and the 2011 United State women's national team at the FIFA World Cup in Germany. The U.S. made a sparkling run through knockout play to the final, falling to eventual champion Japan.

In the 2010 campaign, Walsh's young club made a remarkable turnaround mid-season, overcoming a two-game deficit in the league standings over the final weeks to capture a share of its 13th straight Big Ten title.

After a tough 2-4 start to the 2009 season, Walsh led the Nittany Lions to a remarkable turnaround, going 10-1-2 in the last 13 games of the regular season, earning her the 2009 Big Ten Coach of the Year Award for her efforts.

With the impressive end to the season, Walsh and her charges captured the program's 12th-straight Big Ten Championship. By winning the Big Ten, the Nittany Lions continued their string of NCAA Tournament berths, making their 15th-straight appearance in the 64-team field in 2009. For the second time in three years, Penn State hosted the first and second rounds of tournament play.

Walsh also orchestrated one of the finest awards seasons in Penn State history when Katie Schoepfer, Alyssa Naeher and Christine Nairn swept the year-end Big Ten Player of the Year

WALSH'S COLLEGIATE RÉSUMÉ

Head Coach

Penn State	2007-present <i>2012 NSCAA National Coach of the Year</i> <i>2012 Big Ten Coach of the Year</i> <i>2009 Big Ten Coach of the Year</i>
Harvard	2006
Dartmouth	2000-02

Assistant Coach

Florida State	2005-06
Dartmouth	1998-99

Graduate Assistant

Lehigh	2003-04
Dartmouth	1997

Student-Athlete

William & Mary	1993-97 <i>William & Mary Hall of Fame Inductee</i>
----------------	--

WALSH'S NATIONAL RÉSUMÉ

Head Coach

U.S. Women's Under-17	2004-07
-----------------------	---------

Assistant Coach

U.S. Women's National Team	2008-11 <i>2008 Olympic Gold Medalists</i> <i>2011 World Cup Silver Medalists</i>
U.S. Women's Under-19	2004
U.S. Women's Under-20	2013-Present



WALSH'S ACCOLADES

- 21 NCAA TOURNAMENT WINS**
- 13 YEARS OF COLLEGE HEAD COACHING EXPERIENCE**
- 12 NCAA TOURNAMENT APPEARANCES**
- 11 ALL-AMERICA HONORS**
- 8 BIG TEN CHAMPIONSHIPS**
- 3 BIG TEN COACH OF THE YEAR AWARDS**
- 2 BIG TEN TOURNAMENT TITLES**
- 2 COLLEGE CUP APPEARANCES**
- 1 NATIONAL CHAMPIONSHIP GAME APPEARANCE**
- 1 OLYMPIC GOLD MEDAL**
- 1 NATIONAL COACH OF THE YEAR AWARD**

awards. Schoepfer was named the Offensive Player of the Year, Naeher the Defensive Player of the Year and Nairn the Freshman of the Year. Danielle Toney was named to the All-Big Ten first team, while Lexi Marton garnered second team mention. Walsh has now coached two players of the year to three awards as Naeher was also the 2007 recipient of the Defensive Player of the Year honors in Walsh's first year in Happy Valley.

Walsh continued her success from the 2007 campaign into a 16-8-0 record that saw Penn State capture its 11th-straight Big Ten Championship and the 2008 Big Ten Tournament crown.

Her transition to Penn State was quite smooth as the 2007 team finished 18-4-2, including a 9-1-0 mark in conference play, and was ranked 12th in the final NSCAA poll of the season.

When she came to Penn State, Walsh brought with her a wealth of experience at both the international and collegiate levels. She already has coached at six different universities, including three stints as head coach as well as serving as an assistant for the U.S. U-19 team in 2004. Walsh served as head coach of the U-17 team from December 2004 until her hire at Penn State in February 2007.

As of January 2009, Walsh was appointed as a member of the Panel of Instructors and Lecturers for FIFA Courses. In addition, she was appointed as the Chairman of the Women's Technical Committee for the period of January 1, 2009 to June 30, 2011.

In January of 2008, Walsh was named as the assistant coach by Pia Sundhage for the U.S. National Team. With Walsh's help, the U.S. team completed its historic run with a gold medal at the 2008 Olympic Games in Beijing, China. Even sweeter was that

Walsh's main responsibility was the U.S. Team's defense, which held fellow world power Brazil scoreless in the gold medal game.

The head coach at Harvard University as well as the U.S. Under-17 team prior to her hiring at Penn State, Walsh has consistently been active among the coaching ranks both at the Division I level and the U.S. Youth National Team program for nearly a decade. Prior to her time with the Crimson, she was part of a Florida State staff that led the Seminoles to one of its most successful year to date. FSU joined Penn State in the 2005 Women's Soccer College Cup, with both programs reaching the national semifinals.

Walsh's coaching path began in 1997 as a graduate assistant with Bucknell University. In 1998, she accepted a position at Dartmouth, where she was an assistant coach for two seasons. After helping the team to a final NSCAA ranking of No. 8 at the conclusion of the team's 1998 NCAA quarterfinal run as well as an Ivy League championship in 1999, Walsh assumed head coaching duties before the 2000 season.

As head coach, Walsh led the Big Green to back-to-back Ivy League co-championships in 2000 and 2001. Her squad was ranked in the NSCAA's top 25 each year, rising as high as No. 13 in 2001. In her three seasons as head coach, Dartmouth was invited to the NCAA Tournament each season and reached the round of 16 twice. All three of her teams earned the NSCAA's Academic Team Award.

Beginning in the spring of 2004, Walsh joined the United States Under-19 team as an assistant coach where she helped with preparations for the Under-19 World Cup. The U.S. finished with the bronze medal in Thailand after defeating Brazil in the third place match. After the World Cup, Walsh was appointed the U.S. National Team's U-17 head coach, a position which she held for three years.

As a player, Walsh was an NSCAA All-Region selection at William & Mary. A two-time first team All-CAA pick, she propelled her team to four NCAA Tournament appearances as well as two CAA regular season and two CAA league championships. In March of 2010, Walsh's alma mater, William & Mary, honored her by inducting her into the W&M Athletics Hall of Fame.

A high school All-American at Lower Moreland, she was also a member of the U.S. Under-17 National Team.

Walsh earned her Bachelor of Science degree with a concentration in biology from William & Mary in 1997. The Huntingdon Valley, Pa., native holds an NSCAA Advanced National Degree and a USSF "A" Coaching License.

WALSH'S CAREER AT PENN STATE

Season	Overall	Pct.	Big Ten	Pct.	Finish	NCAA
2007	18-4-2	.792	9-1-0	.900	1st	Third Round
2008	16-8-0	.667	8-2-0	.800	T-1st	First Round
2009	13-6-2	.667	8-1-1	.850	1st	Second Round
2010	11-9-1	.548	8-2-0	.800	T-1st	Second Round
2011	21-5-0	.808	10-1-0	.909	1st	Third Round
2012	21-4-2	.815	10-0-1	.955	1st	Runner-Up
2013	15-7-1	.674	7-4-0	.636	3rd	Second Round
2014	20-4-0	.833	12-1-0	.923	1st	Quarterfinals
2015	20-3-2	.840	8-2-1	.773	T-1st	
Penn State	155-50-10	.744	80-14-3	.840	9 NCAAAs (18-8-1)	
Career	195-78-13	.704			12 NCAAAs (21-11-1)	

2015 PENN STATE WOMEN'S SOCCER

2015 PENN STATE WOMEN'S SOCCER NUMERICAL ROSTER

No.	Name.	Pos.	Elig.	Ht.	Hometown	High School (Last College)
1	Brittany Basinger	D	RS SO	5-7	Purcellville, Va.	Woodgrove
2	Megan Ritchey	M	SR	5-3	State College, Pa.	State College Area
3	Kaleigh Riehl	D	FR	5-8	Fairfax Station, Va.	South County
4	Megan Schafer	F	SO	5-7	Langhorne, Pa.	Neshaminy
5	Maddie Elliston	D	SO	5-3	Omaha, Neb.	Marian
6	Anna Witte	D	JR	5-4	Morrisville, N.C.	Cary
7	Elizabeth Ball	D	SO	5-6	Richmond, Va.	Deep Run
8	Kristin Schnurr	F	FR	5-7	Bristow, Va.	Patriot
9	Frannie Crouse	F	SO	5-7	Greensburg, Pa.	Greensburg Catholic
10	Emily Ogle	M	SO	5-5	Strongsville, Ohio	Strongsville
11	Raquel Rodriguez	F/M	SR	5-6	San Jose, Costa Rica	International Christian
12	Charlotte Williams	F	FR	5-4	Rochester, N.Y.	Brighton
14	Ellie Jean	D	FR	5-6	Coventry, Conn.	Coventry
15	Haleigh Echard	M	SO	5-4	Lebanon, Pa.	Cedar Crest
16	Mallory Weber	F	SR	5-6	Novi, Mich.	Northville
17	Alina Ortega-Jurado	F/M	FR	5-6	Waldgirmes, Germany	
18	Angela Widlacki	D	RS SO	5-5	Naperville, Ill.	Naperville North
19	Liisi Vink-Lainas	M	SO	5-5	Wynantskill, N.Y.	Troy
20	Salina Williford	M	JR	5-4	Wayne, Pa.	Conestoga
21	Teddy Chase	D	SR	5-7	Wayne, Pa.	The Shipley School
22	Isabelle Clauss	D	SO	5-6	Clarks Summit, Pa.	Abington Heights
23	Nickolette Driesse	M	JR	5-5	Wayne, N.J.	Wayne Hills (Florida State)
24	Cecilia Knaub	M	FR	5-10	Phoenixville, Pa.	Phoenixville
25	Taylor Campbell-Phipps	D	FR	5-6	State College, Pa.	State College Area
27	Marissa Sheva	M	FR	5-3	Sellersville, Pa.	Penridge
28	Britt Eckerstrom	GK	RS SR	5-10	Germantown, Md.	Northwest
30	Rose Chandler	GK	RS FR	5-7	Atlanta, Ga.	Atlanta Country Day

2015 PENN STATE WOMEN'S SOCCER ALPHABETICAL ROSTER

No.	Name.	Pos.	Elig.	Ht.	Hometown	High School (Last College)
7	Elizabeth Ball	D	SO	5-6	Richmond, Va.	Deep Run
1	Brittany Basinger	D	RS SO	5-7	Purcellville, Va.	Woodgrove
25	Taylor Campbell-Phipps	D	FR	5-6	State College, Pa.	State College Area
30	Rose Chandler	GK	RS FR	5-7	Atlanta, Ga.	Atlanta Country Day
21	Teddy Chase	D	SR	5-7	Wayne, Pa.	The Shipley School
22	Isabelle Clauss	D	SO	5-6	Clarks Summit, Pa.	Abington Heights
9	Frannie Crouse	F	SO	5-7	Greensburg, Pa.	Greensburg Catholic
23	Nickolette Driesse	M	JR	5-5	Wayne, N.J.	Wayne Hills (Florida State)
15	Haleigh Echard	M	SO	5-4	Lebanon, Pa.	Cedar Crest
28	Britt Eckerstrom	GK	RS SR	5-10	Germantown, Md.	Northwest
5	Maddie Elliston	D	SO	5-3	Omaha, Neb.	Marian
14	Ellie Jean	D	FR	5-6	Coventry, Conn.	Coventry
24	Cecilia Knaub	M	FR	5-10	Phoenixville, Pa.	Phoenixville
10	Emily Ogle	M	SO	5-5	Strongsville, Ohio	Strongsville
17	Alina Ortega-Jurado	F/M	FR	5-6	Waldgirmes, Germany	
3	Kaleigh Riehl	D	FR	5-8	Fairfax Station, Va.	South County
2	Megan Ritchey	M	SR	5-3	State College, Pa.	State College Area
11	Raquel Rodriguez	F/M	SR	5-6	San Jose, Costa Rica	International Christian
4	Megan Schafer	F	SO	5-7	Langhorne, Pa.	Neshaminy
8	Kristin Schnurr	F	FR	5-7	Bristow, Va.	Patriot
27	Marissa Sheva	M	FR	5-3	Sellersville, Pa.	Penridge
19	Liisi Vink-Lainas	M	SO	5-5	Wynantskill, N.Y.	Troy
16	Mallory Weber	F	SR	5-6	Novi, Mich.	Northville
18	Angela Widlacki	D	RS SO	5-5	Naperville, Ill.	Naperville North
12	Charlotte Williams	F	FR	5-4	Rochester, N.Y.	Brighton
20	Salina Williford	M	JR	5-4	Wayne, Pa.	Conestoga
6	Anna Witte	D	JR	5-4	Morrisville, N.C.	Cary

Head Coach: Erica Walsh (Ninth year)
Associate Head Coach: Ann Cook (Ninth year)
Assistant Coach: Tim Wassell (Sixth year)
Director of Operations: Kara Lowery (Third year)
Volunteer Assistant Coach: Nick Stirrett (First year)



2015 PENN STATE WOMEN'S SOCCER



BRITTANY BASINGER
R- Sophomore • D
Fairfax, Va.



MEGAN RITCHEY
Senior • M
State College, Pa.



KALEIGH RIEHL
Freshman • D
Fairfax Station, Va.



MEGAN SCHAFER
Sophomore • F
Langhorne, Pa.



MADDIE ELLISTON
Sophomore • D
Omaha, Neb.



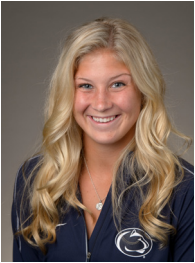
ANNA WITTE
Junior • D
Morrisville, N.C.



ELIZABETH BALL
Sophomore • D
Richmond, Va.



KRISTIN SCHNURR
Freshman • F
Bristow, Va.



FRANNIE CROUSE
Sophomore • F
Greensburg, Pa.



EMILY OGLE
Sophomore • M
Strongsville, Ohio



RAQUEL RODRIGUEZ
Senior • F/M
San Jose, Costa Rica



CHARLOTTE WILLIAMS
Freshman • F
Rochester, N.Y.



ELLIE JEAN
Freshman • D
Coventry, Conn.



HALEIGH ECHARD
Sophomore • M
Lebanon, Pa.



MALLORY WEBER
Senior • F
Novi, Mich.



ALINA ORTEGA-JURADO
Freshman • M
Waldgirmes, Germany



ANGELA WIDLACKI
R - Sophomore • D
Naperville, Ill.



LIISI VINK-LAINAS
Sophomore • M
Wynantskill, N.Y.



SALINA WILLIFORD
Junior • M/D
Wayne, Pa.



TEDDY CHASE
Senior • D
Wayne, Pa.



ISABELLE CLAUSS
Sophomore • D
Clarks Summit, Pa.



NICKOLETTE DRIESSE
Junior • M
Wayne, Pa.



CECILIA KNAUB
Freshman • M
Phoenixville, Pa.



TAYLOR CAMPBELL-PHIPPS
Freshman • D
State College, Pa.



MARISSA SHEVA
Freshman • M
Sellersville, Pa.



BRITT ECKERSTROM
R - Senior • GK
Germantown, Md.



ROSE CHANDLER
R- Freshman • GK
Atlanta, Ga.



ERICA WALSH
Head Coach • 9th Year
William & Mary '97



ANN COOK
Assistant Coach • 9th year
William & Mary '97



TIM WASSELL
Assistant Coach • 6th Year
PSU Altoona '06



KARA LOWERY
Director of Ops. • 3rd Year
Southern Nazarene '97



NICK STIRRETT
Volunteer Assistant Coach • 1st Year
Augustana College '06

2015 PENN STATE WOMEN'S SOCCER



Soccer Box Score (Final) 2015 Penn State Women's Soccer Hofstra vs #6 Penn State (Aug 21, 2015 at University Park, Pa.)

Hofstra (0-1-0) vs.
Penn State (1-0-0)
Date: Aug 21, 2015 • Attendance: 3175
Weather: 70, sunny

Po #	Player	Sh	SO	G	A	Fo	Min
gk	27 Mehring, Friederike	-	-	-	-	-	90
d	2 Anderson, Madeline	-	-	-	-	-	90
d	3 Cleverly, Rhan	-	-	-	-	-	72
m	5 Mulholland, Jill	2	-	-	-	-	83
d	7 Agudelo, Emily	-	-	-	-	-	90
m	8 Dale, Chloe	-	-	-	-	-	90
f	10 Desmond, Kristin	-	-	-	1	-	77
d	11 Hulbert, Emily	1	1	-	-	-	90
m	13 Molleda, Jeannine	-	-	-	-	-	73
d	15 Ullrich, Mallory	-	-	-	-	-	65
f	21 Galton, Leah	3	2	1	-	-	81
-- Substitutes --							
	14 Delaney, Jamie	-	-	-	-	-	35
	16 Buoncore, Jenn	-	-	-	-	-	6
	22 Radwan, Noriana	-	-	-	-	-	17
	26 Gerdes, Katie	-	-	-	-	-	25
	28 Barton, Sabrina	-	-	-	-	-	7
Totals							

#	Goalkeepers	Min	GA	Saves
27	Mehring, Friederike	90:00	2	4

Shots by period	1	2	Total
Hofstra	2	4	6
Penn State	9	9	18

Corner kicks	1	2	Total
Hofstra	1	5	6
Penn State	6	3	9

Scoring summary:

No.	Time	Team	Goal scorer	Assist	Description
1.	16:11	PSU	Weber, Mallory (1)	Jean, Ellie	
2.	64:28	HOFSTRA	Galton, Leah (1)	Desmond, Kristin	bottom right corner
3.	67:43	PSU	Ogle, Emily (1)	(unassisted)	free kick outside the box

Cautions and ejections:

YC-HOFSTRA #28 (41:46); YC-HOFSTRA #7 (80:32)

Win-Eckerstrom, Britt (1-0-0). Loss-Mehring, Friederike (0-1-0).

Stadium: Jeffrey Field
Officials: Referee: Tim Deljanov; Asst. Referee: Kyle Petty; Justin Hess;
Alt. Official: Justin Frear; Scorer: Will Rottler;
Offsides: Hofstra 0, Penn State 0.

Official's signature

Soccer Box Score (Final) 2015 Penn State Women's Soccer Loyola Marymount vs #6 Penn State (Aug 23, 2015 at University Park, Pa.)

Loyola Marymount (0-2-0) vs.
Penn State (2-0-0)
Date: Aug 23, 2015 • Attendance: 1028
Weather: Partly cloudy, 73

Po #	Player	Sh	SO	G	A	Fo	Min
gk	31 Leksan, Sophia	-	-	-	-	-	90
d	2 Farley, Jill	-	-	-	-	-	90
m	8 Lewis, Melissa	-	-	-	-	-	51
m	10 Blankenship, Jocelyn	1	1	1	-	-	90
d	13 Angclone, Raquel	1	1	-	-	-	90
m	17 Andreini, Ally	-	-	-	-	-	76
m	20 Helmann, Madison	-	-	-	-	-	17
f	21 Kent, Shannon	-	-	-	2	-	61
m	24 Tyrnauer, Emma	-	-	-	-	-	90
f	27 Taylor, Callie	-	-	-	-	-	90
f	34 Sanger, Sarah	-	-	-	-	-	70
-- Substitutes --							
	23 Medved, Maddie	-	-	-	-	-	53
	30 Sanfilippo, Gabbie	-	-	-	-	-	73
	33 Bolden, Sarina	3	2	1	-	-	49
Totals							

#	Goalkeepers	Min	GA	Saves
31	Leksan, Sophia	90:00	4	8
TM	TEAM	0:00	0	1

Shots by period	1	2	Total
Loyola Marymount	0	5	5
Penn State	15	12	27

Corner kicks	1	2	Total
Loyola Marymount	0	2	2
Penn State	7	5	12

Scoring summary:

No.	Time	Team	Goal scorer	Assist	Description
1.	14:09	PSU	Weber, Mallory (2)	(unassisted)	in the box top left corner
2.	51:04	PSU	Crouse, Frannie (1)	Weber, Mallory	rebound off the cross bar
3.	51:22	LMU	Bolden, Sarina	Kent, Shannon	
4.	57:15	PSU	Williams, Charlotte (1)	Driesse, Nickolette	
5.	57:34	LMU	Blankenship, Jocelyn	Kent, Shannon	
6.	62:10	PSU	Schafer, Megan (1)	Driesse, Nickolette	one on one with the goalie

Cautions and ejections:

Win-Eckerstrom, Britt (2-0-0). Loss-Leksan, Sophia (0-2-0).

Stadium: Jeffrey Field
Officials: Referee: Paul Wehrman; Asst. Referee: Dave Kopelcheck; Matthew Treven;
Alt. Official: Stan Latta; Scorer: Will Rottler;
Offsides: Loyola Marymount 0, Penn State 3.

Official's signature

Soccer Box Score (Final) 2015 Penn State Women's Soccer #21 Duke vs #6 Penn State (Aug 28, 2015 at University Park, Pa.)

Duke (2-0-1) vs.
Penn State (2-0-1)
Date: Aug 28, 2015 • Attendance: 4207
Weather: 66, clear skies

Po #	Player	Sh	SO	G	A	Fo	Min
gk	30 EJ Proctor	-	-	-	-	-	110
f	3 Imani Dorsey	-	-	-	-	-	79
m	4 Ashton Miller	-	-	-	-	-	104
d	6 Lizzy Raben	-	-	-	-	-	74
m	7 Taylor Racoppi	5	3	-	-	-	98
f	10 Toni Payne	4	-	-	-	-	110
f	11 Cassie Pecht	1	-	-	-	-	83
m	15 Kara Wilson	3	1	-	-	-	85
d	19 Schuyler DeBree	-	-	-	-	-	77
d	24 Morgan Reid	-	-	-	-	-	96
d	31 Christina Gibbons	-	-	-	-	-	110
-- Substitutes --							
	1 Casey Martinez	-	-	-	-	-	21
	2 Chelsea Burns	-	-	-	-	-	14
	5 Rebecca Quinn	-	-	-	-	-	79
	9 Kat McDonald	-	-	-	-	-	25
	12 Kayla McCoy	1	-	-	-	-	35
Totals							

#	Goalkeepers	Min	GA	Saves
30	EJ Proctor	110:00	0	10
TM	TEAM	0:00	0	1

Shots by period	1	2	OT	O2	Total
Duke	3	9	1	1	14
Penn State	10	5	2	4	21

Corner kicks	1	2	OT	O2	Total
Duke	0	3	0	0	3
Penn State	3	2	0	0	5

Scoring summary:

No.	Time	Team	Goal scorer	Assist	Description
1.	26:37	PSU	Weber, Mallory (3)	Rodriguez, Raquel	
2.	32:17	PSU	Crouse, Frannie (2)	Weber, Mallory	
3.	48:12	PSU	Schafer, Megan (2)	Ogle, Emily	
4.	71:25	ARK	Linsley Mayo (1)	Claire Kelley	
5.	84:47	PSU	Schafer, Megan (3)	Ortega-Jurado, Alina	
6.	88:25	ARK	Claire Kelley (3)	(unassisted)	off set piece out of box

Cautions and ejections:

YC-DU #9 (74:46)

Duke-EJ Proctor (2-0-1). Penn State-Eckerstrom, Britt (2-0-1).
Stadium: Jeffrey Field
Officials: Referee: Michael Gorsegnier; Asst. Referee: Adanan Pelja; Adam Morris;
Alt. Official: Michael Matlock; Scorer: Will Rottler;
Offsides: Duke 1, Penn State 2.

Official's signature

Soccer Box Score (Final) 2015 Penn State Women's Soccer Arkansas vs #6 Penn State (Aug 30, 2015 at University Park, Pa.)

Arkansas (3-1-0) vs.
Penn State (3-0-1)
Date: Aug 30, 2015 • Attendance: 2104
Weather: 79, partly cloudy

Po #	Player	Sh	SO	G	A	Fo	Min
gk	0 Jordan Harris	-	-	-	-	-	45
d	4 Erka Miller	-	-	-	1	-	90
d	6 Carly Hoke	-	-	-	-	-	69
f	11 Alexandra Fischer	-	-	-	-	-	16
m	12 Claire Kelley	3	3	1	1	-	82
f	13 Katie Moore	-	-	-	-	-	82
d	15 Jessi Hartzler	-	-	-	-	-	66
m	18 Reece Christopher	-	-	-	-	-	59
f	23 Ashleigh Ellenwood	-	-	-	-	-	73
m	25 Lindsey Mayo	1	1	1	-	-	88
d	29 Hannah Neece	-	-	-	-	-	83
-- Substitutes --							
	1 Cameron Carter	-	-	-	-	-	45
	3 Rachel VanFossen	-	-	-	-	-	2
	5 Sarah Price	-	-	-	-	-	11
	7 Katie Kienstra	-	-	-	-	-	11
	9 Blake Pruitt	-	-	-	-	-	19
	10 Madeline Barnes	-	-	-	-	-	34
	21 Ellie Breden	-	-	-	-	-	8
	22 Rachel Riggs	3	1	-	-	-	34
	32 Qyara Winston	-	-	-	-	-	27
	33 Gabriella DeLeon	-	-	-	-	-	28
	36 Chana Forstall	-	-	-	-	-	17
Totals							

#	Goalkeepers	Min	GA	Saves
0	Jordan Harris	45:00	2	0
1	Cameron Carter	45:00	2	3

Shots by period	1	2	Total
Arkansas	1	6	7
Penn State	5	5	10

Corner kicks	1	2	Total
Arkansas	1	1	2
Penn State	1	2	3

Scoring summary:

No.	Time	Team	Goal scorer	Assist	Description
1.	26:37	PSU	Weber, Mallory (3)	Rodriguez, Raquel	11 TO 16 PASS DEFENSE BEAT KEEPER
2.	32:17	PSU	Crouse, Frannie (2)	Weber, Mallory	PASS FROM 16 ONE ON ONE WITH DEFE IN
3.	48:12	PSU	Schafer, Megan (2)	Ogle, Emily	10 TO 4 header left post
4.	71:25	ARK	Linsley Mayo (1)	Claire Kelley	
5.	84:47	PSU	Schafer, Megan (3)	Ortega-Jurado, Alina	
6.	88:25	ARK	Claire Kelley (3)	(unassisted)	off set piece out of box

Cautions and ejections:

YC-ARK #29 (57:10)

Win-Eckerstrom, Britt (3-0-1). Loss-Cameron Carter (1-1-0).
Stadium: Jeffrey Field
Officials: Referee: Scott Myers; Asst. Referee: Russell Davis; Danny Chan;
Alt. Official: Jeremy Quigley; Scorer: Will Rottler;
Offsides: Arkansas 0, Penn State 1.

Official's signature



2015 PENN STATE WOMEN'S SOCCER

Soccer Box Score (Final) 2015 Penn State Women's Soccer

#7 Penn State vs #12 West Virginia (Sep 04, 2015 at Morgantown, WV)

Penn State (3-1-1) vs.
West Virginia (4-1)
Date: Sep 04, 2015 • Attendance: 1445
Weather: Hot, Thunder, Rain then Muggy; Weather delays

Penn State	Sh	SO	G	A	Fo	Min
gk 28 Eckerstrom, Britt	-	-	-	-	-	90
d 1 Basinger, Brittany	-	-	-	-	-	77
d 3 Riehl, Kaleigh	-	-	-	-	-	90
d 7 Ball, Elizabeth	-	-	-	-	-	90
f 9 Crouse, Frannie	-	-	-	-	-	71
m 10 Ogle, Emily	1	1	-	-	-	90
f 11 Rodriguez, Raquel	1	-	-	-	-	90
f 12 Williams, Charlotte	2	1	-	-	-	74
d 14 Jean, Ellie	-	-	-	-	-	90
f 16 Weber, Mallory	-	-	-	-	-	78
m 23 Driesse, Nickolette	4	-	-	-	-	53
-- Substitutes --						
4 Schafer, Megan	-	-	-	-	-	69
15 Echard, Haleigh	-	-	-	-	-	11
17 Ortega-Jurado, Alina	-	-	-	-	-	10
27 Sheva, Marissa	-	-	-	-	-	8
Totals	8	2	0	0	6	

# Goalkeepers	Min	GA	Saves
28 Eckerstrom, Britt	90:00	1	5

Shots by period	1	2	Total
Penn State	5	3	8
West Virginia	7	7	14

Corner kicks	1	2	Total
Penn State	4	0	4
West Virginia	3	2	5

Scoring summary:					
No.	Time	Team	Goal scorer	Assist	Description
1.	7:08	WVU	Hill, Amanda (1)	St. Georges, Bianca	Header in front of net off corner

Cautions and ejections:
YC-WVU #27 (67:31); YC-PSU #TM (87:34)

Win-Steadman, Hannah (4-1). Loss-Eckerstrom, Britt (3-1-1).
Stadium: Dick Dlesk Stadium
Officials: Referee: Bill Dittmar; Asst. Referee: Danny Thornberry; Paul Deverse;
Alt. Official: Nathan Utz; Timekeeper: Amy Salvatore; Scorer: Shannon McNamara;
Offsides: Penn State 1, West Virginia 3.

Official's signature

Soccer Box Score (Final) 2015 Penn State Women's Soccer

#7 Penn State vs #2 Stanford (Sep 11, 2015 at Stanford, Calif.)

Penn State (4-1-1) vs.
Stanford (4-1)
Date: Sep 11, 2015 • Attendance: 1436
Weather: 75 degrees

Penn State	Sh	SO	G	A	Fo	Min
gk 28 Eckerstrom, Britt	-	-	-	-	-	90
d 1 Basinger, Brittany	1	1	1	-	-	90
d 3 Riehl, Kaleigh	-	-	-	-	-	90
f 4 Schafer, Megan	1	1	-	-	-	90
d 7 Ball, Elizabeth	-	-	-	-	-	90
f 9 Crouse, Frannie	1	1	1	1	-	63
m 10 Ogle, Emily	-	-	-	-	-	90
f 11 Rodriguez, Raquel	1	1	-	-	-	90
d 14 Jean, Ellie	-	-	-	-	-	85
f 16 Weber, Mallory	-	-	-	-	-	87
m 23 Driesse, Nickolette	-	-	-	-	-	76
-- Substitutes --						
12 Williams, Charlotte	-	-	-	-	-	21
15 Echard, Haleigh	-	-	-	-	-	5
17 Ortega-Jurado, Alina	-	-	-	-	-	14
27 Sheva, Marissa	-	-	-	-	-	8
Totals	4	4	2	2	9	

# Goalkeepers	Min	GA	Saves
28 Eckerstrom, Britt	90:00	0	4

Shots by period	1	2	Total
Penn State	2	2	4
Stanford	8	8	16

Corner kicks	1	2	Total
Penn State	3	1	4
Stanford	2	1	3

Scoring summary:					
No.	Time	Team	Goal scorer	Assist	Description
1.	9:52	PSU	Crouse, Frannie (3)	Schafer, Megan	Shot from left top 18, low rt corner
2.	65:40	PSU	Basinger, Brittany (1)	Crouse, Frannie	Cross from 9 on rt, volley by #1

Cautions and ejections:
YC-PSU #16 (71:56)

Win-Eckerstrom, Britt (4-1-1). Loss-Campbell, Jane (4-1-1).
Stadium: Cagan Stadium
Officials: Referee: Vince Apple-Ch.; Asst. Referee: Alex Del Angel; Vince Cortes;
Alt. Official: Andres Lanza; Timekeeper: Brian Casho; Scorer: Greg Marsh;
Offsides: Penn State 2, Stanford 0.

Official's signature

Soccer Box Score (Final) 2015 Penn State Women's Soccer

#7 Penn State vs Santa Clara (Sep 13, 2015 at Santa Clara, Calif.)

Penn State (5-1-1) vs.
Santa Clara (4-3-0)
Date: Sep 13, 2015 • Attendance: 250
Weather: 73 degrees and cloudy

Penn State	Sh	SO	G	A	Fo	Min
gk 28 Eckerstrom, Britt	-	-	-	-	-	90
d 1 Basinger, Brittany	-	-	-	-	-	90
d 3 Riehl, Kaleigh	-	-	-	-	-	90
f 4 Schafer, Megan	1	1	-	-	-	66
d 7 Ball, Elizabeth	-	-	-	-	-	83
f 9 Crouse, Frannie	1	-	-	-	-	53
m 10 Ogle, Emily	-	-	-	-	-	90
f 11 Rodriguez, Raquel	4	2	-	-	-	82
d 14 Jean, Ellie	1	-	-	-	-	90
f 16 Weber, Mallory	5	3	1	-	-	77
m 23 Driesse, Nickolette	-	-	-	-	-	48
-- Substitutes --						
12 Williams, Charlotte	-	-	-	-	-	37
15 Echard, Haleigh	-	-	-	-	-	44
17 Ortega-Jurado, Alina	-	-	-	-	-	23
27 Sheva, Marissa	-	-	-	-	-	28
Totals	12	6	1	0	7	

# Goalkeepers	Min	GA	Saves
28 Eckerstrom, Britt	90:00	0	2

Shots by period	1	2	Total
Penn State	5	7	12
Santa Clara	1	6	7

Corner kicks	1	2	Total
Penn State	3	1	4
Santa Clara	2	5	7

Scoring summary:					
No.	Time	Team	Goal scorer	Assist	Description
1.	62:31	PSU	Weber, Mallory	(unassisted)	upper right corner from edge of box

Cautions and ejections:
YC-SCU #11 (41:39); YC-PSU #7 (84:18)

Win-Eckerstrom, Britt (5-1-1). Loss-Tostanoski, Andi (4-3-0).
Stadium: Steves Stadium
Officials: Referee: Victor Rivas; Asst. Referee: Colin Arblaster; Joel Linn;
Timekeeper: Joey Karp; Scorer: Joey Karp;
Offsides: Penn State 1, Santa Clara 1.

Official's signature

Soccer Box Score (Final) 2015 Penn State Women's Soccer

Wisconsin vs #4 Penn State (Sep 17, 2015 at University Park, Pa.)

Wisconsin (3-4-2, 0-1-0 B1G) vs.
Penn State (6-1-1 1-0-0 BIG)
Date: Sep 17, 2015 • Attendance: 958
Weather: 68, clear

Wisconsin	Sh	SO	G	A	Fo	Min
gk 0 Clem, Caitlyn	-	-	-	-	-	90
m 3 Lavelle, Rose	5	2	-	-	-	53
m 5 Meuer, McKenna	1	-	-	-	-	90
d 6 Stelzer, Brianna	-	-	-	-	-	90
d 7 Heckendorf, Holly	1	1	-	-	-	77
m 10 Laufenberg, Molly	1	-	-	-	-	83
m 11 Pickett, Victoria	1	1	-	-	-	82
m 13 McNicoll, Kinley	1	1	-	-	-	78
m 14 Kresge, Marisa	-	-	-	-	-	49
d 18 Schwarz, Kylie	1	-	-	-	-	90
f 20 Greenhalgh, Nikki	-	-	-	-	-	32
-- Substitutes --						
4 McGinnis, Sydney	-	-	-	-	-	26
9 Taylor, Morgan	-	-	-	-	-	13
12 Powers, Micaela	-	-	-	-	-	44
19 Borgmann, Emily	-	-	-	-	-	41
21 Harrison, Becca	-	-	-	-	-	18
22 Donohue, Jamie	-	-	-	-	-	7
23 Fabry, Steph	-	-	-	-	-	18
26 O'Brien, Malley	-	-	-	-	-	12
Totals	11	5	0	0	10	

# Goalkeepers	Min	GA	Saves
0 Clem, Caitlyn	90:00	4	2

Shots by period	1	2	Total
Wisconsin	4	7	11
Penn State	7	6	13

Corner kicks	1	2	Total
Wisconsin	1	7	8
Penn State	0	1	1

Scoring summary:					
No.	Time	Team	Goal scorer	Assist	Description
1.	27:51	PSU	Weber, Mallory (5)	Jean, Ellie	Jean to Weber in the box, upper left corner
2.	58:29	PSU	Schafer, Megan (4)	Williams, Charlotte	Williams into the box to Schafer
3.	74:46	PSU	Sheva, Marissa (1)	Rodriguez, Raquel	11 from top of box to 27 in the left botto
4.	80:38	PSU	Crouse, Frannie (4)	Williams, Charlotte	12 cross to 9 with a header

Cautions and ejections:
YC-WIS #5 (68:56)

Win-Eckerstrom, Britt (6-1-1). Loss-Clem, Caitlyn (3-4-2).
Stadium: Jeffrey Field
Officials: Referee: Mohammad Samadpour; Asst. Referee: Bruce Shanannan;
Corey Parker; Alt. Official: Justin Frear; Scorer: Will Rottler;
Offsides: Wisconsin 0, Penn State 1.

Official's signature

2015 PENN STATE WOMEN'S SOCCER



Soccer Box Score (Final) 2015 Penn State Women's Soccer Minnesota vs #4 Penn State (Sep 20, 2015 at University Park, Pa.)

Minnesota (7-1-2, 2-0-0 B1G) vs.
Penn State (6-2-1, 1-1-0 B1G)
Date: Sep 20, 2015 • Attendance: 1075
Weather: 70, partly cloudy

Po #	Player	Sh	SO	G	A	Fo	Min
gk 00	Hobbs, Tarah	-	-	-	-	-	90
f 2	Kolander, Simone	3	1	1	-	-	78
d 5	Helverson, Haley	-	-	-	1	-	90
m 6	Fiedler, Molly	1	-	-	-	-	56
m 11	Stiever, Josee	-	-	-	-	-	90
f 13	Stainbrook, Taylor	3	1	-	-	-	58
d 15	Gaffney, Maddie	-	-	-	-	-	90
m 16	McCloskey, Rachel	1	-	-	-	-	90
d 17	Beal, Rashida	-	-	-	-	-	90
f 20	Bockin, April	2	2	-	-	-	55
d 22	Burnett, Tori	-	-	-	-	-	90
-- Substitutes --							
3	McGahn, Kellie	-	-	-	-	-	20
7	Squires, Sydney	2	1	-	1	-	47
10	Heslin, Emily	-	-	-	-	-	34
23	Gernes, Julianna	-	-	-	-	-	12
Totals 12 5 1 2 7							

#	Goalkeepers	Min	GA	Saves
00	Hobbs, Tarah	90:00	0	3

Shots by period	1	2	Total
Minnesota	7	5	12
Penn State	4	6	10

Corner kicks	1	2	Total
Minnesota	3	3	6
Penn State	6	5	11

Scoring summary:

No.	Time	Team	Goal scorer	Assist	Description
1.	31:27	MINN	Kolander, Simone (5)	Squires, Sydney Helverson, Haley	cross into the box, toed into the net

Cautions and ejections:

Win-Hobbs, Tarah (6-1-2). Loss-Eckerstrom, Britt (6-2-1).
Stadium: Jeffrey Field
Officials: Referee: Tori Penso; Asst. Referee: Michael Matlock; Terrence Mull;
Alt. Official: Stan Latta; Scorer: Will Rottler;
Offsides: Minnesota 0, Penn State 1.

Official's signature

Soccer Box Score (Final) 2015 Penn State Women's Soccer #12 Penn State vs Nebraska (Sep 25, 2015 at Lincoln, Neb.)

Penn State (6-2-2, 1-1-1 B1G) vs.
Nebraska (4-3-2, 0-1-2 B1G)
Date: Sep 25, 2015 • Attendance: 1486
Weather: 73 degrees, clear, winds E at 8 mph

Po #	Player	Sh	SO	G	A	Fo	Min
gk 28	Eckerstrom, Britt	-	-	-	-	-	90
d 1	Basinger, Brittany	1	1	-	-	-	72
d 3	Riehl, Kaleigh	-	-	-	-	-	90
f 4	Schafer, Megan	-	-	-	-	-	81
d 7	Ball, Elizabeth	2	1	-	-	-	90
f 9	Crouse, Frannie	1	-	-	-	-	77
m 10	Ogle, Emily	-	-	-	-	-	90
f 11	Rodriguez, Raquel	3	1	-	-	-	76
d 14	Jean, Ellie	-	-	-	-	-	90
f 16	Weber, Mallory	1	-	-	-	-	82
m 23	Driesse, Nickolette	1	-	-	-	-	48
-- Substitutes --							
12	Williams, Charlotte	1	-	-	-	-	55
15	Echard, Haleigh	-	-	-	-	-	9
17	Ortega-Jurado, Alina	-	-	-	-	-	21
27	Sheva, Marissa	-	-	-	-	-	19
Totals 10 3 0 0 3							

#	Goalkeepers	Min	GA	Saves
28	Eckerstrom, Britt	90:00	1	4

Saves by period	1	2	Total
Minnesota	1	2	3
Penn State	3	1	4

Fouls	1	2	Total
Minnesota	2	5	7
Penn State	2	1	3

Scoring summary:

No.	Time	Team	Goal scorer	Assist	Description
1.	5:38	NEB	Flynn, Caroline (2)	(unassisted)	Shot deflected by goalie into net
2.	81:23	PSU	Ogle, Emily (2)	Weber, Mallory Williams, Charlotte	Top left corner off assists from #16

Cautions and ejections:

Stadium: Hibner Stadium
Penn State-Eckerstrom, Britt (6-2-2). Nebraska-Johnson, Erika (4-3-2).
Officials: Referee: Jorge Cuate; Asst. Referee: Eulogio Villalpando; Matthew Seem;
Alt. Official: Lon Saucier; Timekeeper: Juan Rico; Scorer: Connor Stange;
Offsides: Penn State 3, Nebraska 3.

Official's signature

Soccer Box Score (Final) 2015 Penn State Women's Soccer #12 Penn State vs Iowa (Sep 27, 2015 at Iowa City, Iowa)

Penn State (7-2-2, 2-1-1) vs.
Iowa (6-5-0, 0-4-0)
Date: Sep 27, 2015 • Attendance: 531
Weather: 72 and cloudy

Po #	Player	Sh	SO	G	A	Fo	Min
gk 28	Eckerstrom, Britt	-	-	-	-	-	62
1	Basinger, Brittany	-	-	-	-	-	46
3	Riehl, Kaleigh	-	-	-	-	-	63
4	Schafer, Megan	3	2	1	-	-	45
7	Ball, Elizabeth	2	1	-	-	-	90
9	Crouse, Frannie	3	3	2	-	-	48
10	Ogle, Emily	1	-	-	-	-	42
11	Rodriguez, Raquel	2	1	-	-	-	45
12	Williams, Charlotte	3	-	-	-	-	72
14	Jean, Ellie	-	-	-	-	-	78
16	Weber, Mallory	2	1	-	-	-	23
-- Substitutes --							
5	Elliston, Maddie	-	-	-	1	-	44
15	Echard, Haleigh	3	2	-	-	-	49
17	Ortega-Jurado, Alina	-	-	-	2	-	63
21	Chase, Teddy	-	-	-	-	-	27
23	Driesse, Nickolette	4	3	1	-	-	38
24	Knaub, Cecilia	-	-	-	-	-	27
25	Campbell-Phipps, Ta	-	-	-	-	-	36
27	Sheva, Marissa	1	1	1	-	-	63
30	Chandler, Rose	-	-	-	-	-	28
Totals 24 14 5 6 6							

#	Goalkeepers	Min	GA	Saves
28	Eckerstrom, Britt	62:27	1	0
30	Chandler, Rose	27:33	0	1

Shots by period	1	2	Total
Penn State	16	8	24
Iowa	5	3	8

Corner kicks	1	2	Total
Penn State	3	0	3
Iowa	2	0	2

Scoring summary:

No.	Time	Team	Goal scorer	Assist	Description
1.	16:06	PSU	Crouse, Frannie (5)	Weber, Mallory Williams, Charlotte Rodriguez, Raquel	Penalty kick
2.	20:17	PSU	Schafer, Megan (5)	Ortega-Jurado, Alina	Ortega-Jurado, Alina
3.	26:47	IOWA	Toelle, Bri (5)	Penalty kick	Ortega-Jurado, Alina
4.	28:21	PSU	Driesse, Nickolette (1)	Ortega-Jurado, Alina	Ortega-Jurado, Alina
5.	51:27	PSU	Crouse, Frannie (6)	Elliston, Maddie	Ortega-Jurado, Alina
6.	56:52	PSU	Sheva, Marissa (2)	Ortega-Jurado, Alina	Ortega-Jurado, Alina

Cautions and ejections:

Win-Eckerstrom, Britt (7-2-2). Loss-Clark, Hannah (6-5-0).
Stadium: Iowa Soccer Complex
Officials: Referee: Cesar Ibarra; Asst. Referee: Eulogio Vilalpando; Hidajet Tica;
Alt. Official: Eric Woody; Timekeeper: Earlene Erbe; Scorer: Megan Rowley;
Offsides: Penn State 2, Iowa 1.

Official's signature

Soccer Box Score (Final) 2015 Penn State Women's Soccer #12 Penn State vs #24 Northwestern (Oct 04, 2015 at Bridgeview, Ill.)

Penn State (8-2-2, 3-1-1 B1G) vs.
Northwestern (9-2-2, 3-1-1 B1G)
Date: Oct 04, 2015 • Attendance: 291
Weather: 55 CLOUDY

Po #	Player	Sh	SO	G	A	Fo	Min
gk 28	Eckerstrom, Britt	-	-	-	-	-	90
1	Basinger, Brittany	-	-	-	-	-	63
3	Riehl, Kaleigh	-	-	-	-	-	90
4	Schafer, Megan	2	2	-	-	-	66
7	Ball, Elizabeth	1	-	-	-	-	90
9	Crouse, Frannie	2	2	-	-	-	70
10	Ogle, Emily	-	-	-	-	-	57
11	Rodriguez, Raquel	1	1	1	-	-	90
12	Williams, Charlotte	-	-	-	-	-	61
14	Jean, Ellie	-	-	-	-	-	90
16	Weber, Mallory	1	1	1	-	-	30
-- Substitutes --							
5	Elliston, Maddie	-	-	-	-	-	60
15	Echard, Haleigh	-	-	-	-	-	29
17	Ortega-Jurado, Alina	2	1	1	-	-	33
23	Driesse, Nickolette	-	-	-	-	-	33
27	Sheva, Marissa	1	-	-	-	-	38
Totals 10 7 3 1 5							

#	Goalkeepers	Min	GA	Saves
28	Eckerstrom, Britt	90:00	0	2

Shots by period	1	2	Total
Penn State	6	4	10
Northwestern	1	2	3

Corner kicks	1	2	Total
Penn State	0	4	4
Northwestern	3	1	4

Scoring summary:

No.	Time	Team	Goal scorer	Assist	Description
1.	8:51	PSU	Weber, Mallory (6)	Schafer, Megan	shot from eight yards out to the lower far
2.	26:06	PSU	Rodriguez, Raquel (1)	(unassisted)	shot from 25 yards out
3.	88:53	PSU	Ortega-Jurado, Alina (1)	(unassisted)	shot from 20 yards out over keepers head

Cautions and ejections:

Win-Eckerstrom, Britt (8-2-2). Loss-CLEM, LAUREN (9-2-2).
Stadium: Toyota Park
Officials: Referee: BRIAN MILLER; Asst. Referee: RACHEL SMITH; DAWID BAJOREK;
Alt. Official: KERILYN O'DONNELL; Timekeeper: KATIE STANKIEWICZ; Scorer: MALLORY MAJCHER;
Offsides: Penn State 0, Northwestern 0.

Official's signature



2015 PENN STATE WOMEN'S SOCCER

Soccer Box Score (Final) 2015 Penn State Women's Soccer Maryland vs #11 Penn State (Oct 08, 2015 at University Park, Pa.)

Maryland (5-8-0, 0-5-0 B1G) vs.
Penn State (9-2-2, 4-1-1 B1G)
Date: Oct 08, 2015 • Attendance: 754
Weather: 66, clear

Po #	Player	Sh	SO	G	A	Fo	Min
gk 33	Rachelle Beanlands	-	-	-	-	-	90
m 2	Sarah Fichtner	-	-	-	-	-	90
m 10	Riley Barger	1	-	-	-	-	75
d 12	Kayla Shea	-	-	-	-	-	90
m 13	Maisie McCune	-	-	-	-	-	63
f 18	Natasha Ntone-Kouo	-	-	-	-	-	53
f 19	Alex Anthony	-	-	-	-	-	78
m 20	Sarah Molina	-	-	-	-	-	80
d 21	Amunds Gerlitz	-	-	-	-	-	90
m 29	Madison Turner	-	-	-	-	-	60
d 73	Shannon Collins	-	-	-	-	-	90
-- Substitutes --							
6	Katie Waters	-	-	-	-	-	13
17	Gabby Galanti	-	-	-	-	-	41
24	Lisa Bianchini	-	-	-	-	-	40
31	Erika Joab	-	-	-	-	-	37
Totals		1	0	0	0	5	

#	Goalkeepers	Min	GA	Saves
33	Rachelle Beanlands	90:00	1	11

Shots by period	1	2	Total
Maryland	0	1	1
Penn State	14	16	30

Corner kicks	1	2	Total
Maryland	1	1	2
Penn State	2	2	4

Scoring summary:

No.	Time	Team	Goal scorer	Assist	Description
1.	76:13	PSU	Schafer, Megan (6)	Weber, Mallory	shot by #16 saved, #4 with the rebound

Cautions and ejections:

Win-Eckerstrom, Britt (9-2-2). Loss-Rachelle Beanlands (5-7-0).
Stadium: Jeffrey Field
Officials: Referee: Andrew Chapin; Asst. Referee: Mark Gorak; Ian Gut;
Alt. Official: Sergio Gonzalez; Scorer: Will Rottler;
Offsides: Maryland 1, Penn State 1.

Official's signature

Goals by period	1	2	Total
Maryland	0	0	0
Penn State	0	1	1

Penn State	Po #	Player	Sh	SO	G	A	Fo	Min
gk 28	Eckerstrom, Britt	-	-	-	-	-	-	90
d 1	Basinger, Brittany	1	-	-	-	-	-	72
d 3	Riehl, Kaleigh	-	-	-	-	-	-	90
f 4	Schafer, Megan	4	2	1	-	-	-	76
d 7	Ball, Elizabeth	1	1	-	-	-	-	90
f 9	Crouse, Frannie	5	2	-	-	-	-	68
m 10	Ogle, Emily	1	1	-	-	-	-	68
f 11	Rodriguez, Raquel	5	-	-	-	-	-	82
f 12	Williams, Charlotte	3	1	-	-	-	-	44
d 14	Jean, Ellie	2	2	-	-	-	-	64
m 16	Weber, Mallory	4	2	-	-	-	-	61
-- Substitutes --								
5	Elliston, Maddie	-	-	-	-	-	-	60
15	Echard, Haleigh	2	1	-	-	-	-	26
17	Ortega-Jurado, Alina	-	-	-	-	-	-	30
23	Driesse, Nickolette	1	-	-	-	-	-	30
27	Sheva, Marissa	1	-	-	-	-	-	39
Totals		30	12	1	1	5		

#	Goalkeepers	Min	GA	Saves
28	Eckerstrom, Britt	90:00	0	0

Saves by period	1	2	Total
Maryland	5	6	11
Penn State	0	0	0

Fouls	1	2	Total
Maryland	1	4	5
Penn State	2	3	5

Soccer Box Score (Final) 2015 Penn State Women's Soccer Indiana vs #11 Penn State (Oct 11, 2015 at University Park, Pa.)

Indiana (3-7-5, 0-4-3 B1G) vs.
Penn State (10-2-2, 5-1-1 B1G)
Date: Oct 11, 2015 • Attendance: 1652
Weather: 66, sunny

Indiana	Po #	Player	Sh	SO	G	A	Fo	Min
gk 0	STONE, SARAH	-	-	-	-	-	-	90
m 2	BUJOUVES, JESSIE	-	-	-	-	-	-	79
d 5	BORSCHKE, MARISSA	-	-	-	-	-	-	90
m 7	SMITH, KAYLA	-	-	-	-	-	-	90
f 12	JOHNSON, HANNA	-	-	-	-	-	-	63
m 14	FEINSTEIN, KAILEE	-	-	-	-	-	-	75
m 15	ELLIS, VERONICA	-	-	-	-	-	-	77
m 21	STEIGERWALT, KAYLE	-	-	-	-	-	-	25
d 26	BASTEN, EMILY	-	-	-	-	-	-	90
f 28	ROMERO, RACHEL	-	-	-	-	-	-	57
d 29	LYNN, JUSTINE	-	-	-	-	-	-	90
-- Substitutes --								
8	KOWALSKI, ARI	-	-	-	-	-	-	11
9	JORAY, LAUREN	1	-	-	-	-	-	35
13	PIPER, MAYA	-	-	-	-	-	-	15
16	KIRK, KYLIE	-	-	-	-	-	-	18
20	DREHER, CAROLINE	1	1	-	-	-	-	45
23	BLACHA, CASSIDY	-	-	-	-	-	-	42
Totals		2	1	0	0	10		

#	Goalkeepers	Min	GA	Saves
0	STONE, SARAH	90:00	4	12

Shots by period	1	2	Total
Indiana	1	1	2
Penn State	16	19	35

Corner kicks	1	2	Total
Indiana	1	0	1
Penn State	11	6	17

Scoring summary:

No.	Time	Team	Goal scorer	Assist	Description
1.	5:25	PSU	Rodriguez, Raquel (2)	Crouse, Frannie	11 off a rebound save, inside the box
2.	40:54	PSU	Weber, Mallory (7)	Driesse, Nickolette	from 10 yards out, into the bottom left cor
3.	45:47	PSU	Schafer, Megan (7)	Sheva, Marissa	off a set piece, 4 from 10
4.	88:38	PSU	Ball, Elizabeth (1)	Vink-Lainas, Lisi	19 played the ball near midfield, 7 with th six yards out

Cautions and ejections:

Win-Eckerstrom, Britt (10-2-2). Loss-STONE, SARAH (3-7-5).
Stadium: Jeffrey Field
Officials: Referee: Peter Dhina; Asst. Referee: Tim Deljanovan; Alan Robinson;
Alt. Official: Eric Samples; Scorer: Will Rottler;
Offsides: Indiana 0, Penn State 0.

Official's signature

Soccer Box Score (Final) 2015 Penn State Women's Soccer #9 Penn State vs Purdue (Oct 15, 2015 at West Lafayette, Ind.)

Penn State (11-2-2, 6-1-1 B1G) vs.
Purdue (7-7-1, 2-5-1 B1G)
Date: Oct 15, 2015 • Attendance: 437
Weather: Partly cloudy, west winds at 15 mph, 60s

Penn State	Po #	Player	Sh	SO	G	A	Fo	Min
gk 28	Eckerstrom, Britt	-	-	-	-	-	-	90
d 1	Basinger, Brittany	-	-	-	-	-	-	64
d 3	Riehl, Kaleigh	-	-	-	-	-	-	90
f 4	Schafer, Megan	3	2	1	-	-	-	90
d 5	Elliston, Maddie	-	-	-	-	-	-	90
d 7	Ball, Elizabeth	1	-	-	-	-	-	90
f 9	Crouse, Frannie	4	2	-	-	-	-	61
m 10	Ogle, Emily	2	1	-	-	-	-	90
m 11	Rodriguez, Raquel	4	1	-	-	-	-	90
f 12	Williams, Charlotte	1	-	-	-	-	-	54
m 14	Jean, Ellie	2	-	-	-	-	-	61
-- Substitutes --								
15	Echard, Haleigh	-	-	-	-	-	-	14
16	Weber, Mallory	3	1	-	-	-	-	38
23	Driesse, Nickolette	-	-	-	-	-	-	27
27	Sheva, Marissa	-	-	-	-	-	-	40
Totals		20	7	2	3	4		

#	Goalkeepers	Min	GA	Saves
28	Eckerstrom, Britt	90:00	1	0

Shots by period	1	2	Total
Penn State	6	14	20
Purdue	0	3	3

Corner kicks	1	2	Total
Penn State	6	6	12
Purdue	0	1	1

Scoring summary:

No.	Time	Team	Goal scorer	Assist	Description
1.	48:18	PUR	LASKY, Mikayla (1)	PETRINA, Andrea	Header point blank off free kick served in headed left by Love
2.	57:31	PSU	Schafer, Megan (8)	LOVE, Kim	Heart of 18 inside right post after long ser from left flank
3.	79:59	PSU	Rodriguez, Raquel (3)	Ogle, Emily	Free kick to one-touch pass, shot inside t post from mid-box

Cautions and ejections:

Win-Eckerstrom, Britt. Loss-GINTHER, Jordan.
Stadium: Boiler Soccer Complex
Officials: Referee: Khalaf Al-Latayfeh; Asst. Referee: Rachel Smith; Miguel Panduro;
Alt. Official: Steve Brink; Timekeeper: Derek Long; Scorer: Ben Turner;
Offsides: Penn State 1, Purdue 1.

Official's signature

Soccer Box Score (Final) 2015 Penn State Women's Soccer #9 Penn State vs #25 Rutgers (Oct 18, 2015 at Piscataway, N.J.)

Penn State (11-3-2, 6-2-1 B1G) vs.
Rutgers (12-2-2, 5-2-2 B1G)
Date: Oct 18, 2015 • Attendance: 1205
Weather: Clear, 46 degrees

Penn State	Po #	Player	Sh	SO	G	A	Fo	Min
gk 28	Eckerstrom, Britt	-	-	-	-	-	-	90
d 1	Basinger, Brittany	1	-	-	-	-	-	60
d 3	Riehl, Kaleigh	-	-	-	-	-	-	90
f 4	Schafer, Megan	2	1	-	-	-	-	90
d 7	Ball, Elizabeth	-	-	-	-	-	-	45
f 9	Crouse, Frannie	1	-	-	-	-	-	71
m 10	Ogle, Emily	1	-	-	-	-	-	90
m 11	Rodriguez, Raquel	1	-	-	-	-	-	74
f 12	Williams, Charlotte	1	1	-	-	-	-	44
d 14	Jean, Ellie	-	-	-	-	-	-	54
f 16	Weber, Mallory	1	-	-	-	-	-	76
-- Substitutes --								
5	Elliston, Maddie	-	-	-	-	-	-	60
17	Ortega-Jurado, Alina	-	-	-	-	-	-	45
23	Driesse, Nickolette	-	-	-	-	-	-	37
27	Sheva, Marissa	1	1	-	-	-	-	64
Totals		9	3	0	0	8		

#	Goalkeepers	Min	GA	Saves
28	Eckerstrom, Britt	90:00	1	5
TM	Team	0:00	0	1

Shots by period	1	2	Total
Penn State	5	4	9
Rutgers	5	8	13

Corner kicks	1	2	Total
Penn State	4	4	8
Rutgers	2	2	4

Scoring summary:

No.	Time	Team	Goal scorer	Assist	Description
1.	51:43	RU	Ciarrocca, Colby (5)	Tiernan, Madison	Corralled middle-left by #4 from #73, fini right foot

Cautions and ejections:

Win-Murphy, Casey (12-2-2). Loss-Eckerstrom, Britt (11-3-2).
Stadium: Yurcak Field
Officials: Referee: Andrew Chapin; Asst. Referee: David Bork; Ian Bongaardt;
Alt. Official: Ernest Zielinski;
Offsides: Penn State 0, Rutgers 5.

Official's signature

2015 PENN STATE WOMEN'S SOCCER



Soccer Box Score (Final) 2015 Penn State Women's Soccer #10 Penn State vs Ohio State (Oct 24, 2015 at Columbus, Ohio)

Penn State (12-3-2, 7-2-1 B1G) vs.
Ohio State (9-5-3, 4-4-2 B1G)
Date: Oct 24, 2015 • Attendance: 589
Weather: Rainy, windy and 67 degrees

Penn State	Po #	Player	Sh	SO	G	A	Fo	Min
gk	28	Eckerstrom, Britt	-	-	-	-	-	90
d	1	Basinger, Brittany	-	-	-	-	-	57
d	3	Riehl, Kaleigh	-	-	-	-	-	87
f	4	Schafer, Megan	2	1	1	-	-	67
d	7	Ball, Elizabeth	1	-	-	-	-	90
f	9	Crouse, Frannie	4	1	-	-	-	65
m	10	Ogle, Emily	2	2	-	-	-	90
m	11	Rodriguez, Raquel	1	1	-	-	-	75
d	14	Jean, Ellie	1	1	-	-	-	67
f	16	Weber, Mallory	-	-	-	-	-	33
m	23	Driesse, Nickolette	-	-	-	-	-	75
-- Substitutes --								
5	Elliston, Maddie	-	-	-	-	-	-	56
12	Williams, Charlotte	3	2	-	-	-	-	59
15	Echard, Haleigh	-	-	-	-	-	-	27
27	Sheva, Marissa	1	1	1	-	-	-	52
Totals								

# Goalkeepers	Min	GA	Saves
28 Eckerstrom, Britt	90:00	1	1

Shots by period	1	2	Total
Penn State	8	7	15
Ohio State	2	5	7

Corner kicks	1	2	Total
Penn State	0	5	5
Ohio State	1	0	1

Scoring summary:

No.	Time	Team	Goal scorer	Assist	Description
1.	7:26	PSU	Schafer, Megan (9)	Crouse, Frannie	Through ball from 10, finish from 12 yds keeper
2.	38:10	PSU	Sheva, Marissa (3)	(unassisted)	Giveaway in midfield, finish from 15 yards left post
3.	80:29	OSU	Agnew, Lindsay (4)	Knight, Kylie	Long ball from 22, finish past keeper from

Cautions and ejections:

Win-Eckerstrom, Britt (12-3-2). Loss-McVicker, Jillian (6-5-2).
Stadium: Jesse Owens
Officials: Referee: Jorge Cuate; Asst. Referee: Eduardo Nieto; Rizal Milliken;
Alt. Official: Eulogio Villalpando;
Offsides: Penn State 0, Ohio State 2.

Official's signature

Soccer Box Score (Final) 2015 Penn State Women's Soccer Michigan vs #10 Penn State (Oct 28, 2015 at University Park, Pa.)

Michigan (11-6-2, 6-3-2) vs.
Penn State (13-3-2, 8-2-1)
Date: Oct 28, 2015 • Attendance: 351
Weather: 63, rainy

Michigan	Po #	Player	Sh	SO	G	A	Fo	Min
gk	0	Megan Hinz	-	-	-	-	-	45
m	2	Kastroll, Abby	-	-	-	-	-	35
m	3	Murillo, Christina	2	2	-	-	-	90
m	4	Lewis, Madison	-	-	-	-	-	42
d	9	Yekka, Sura	-	-	-	-	-	65
m	17	Soccorsi, Anna	1	1	-	-	-	90
m	20	Heifetz, Jessica	-	-	-	-	-	34
m	21	Sarkisian, Ani	2	1	-	-	-	30
f	25	Waldeck, Nicky	1	1	-	-	-	42
d	30	Ordonez, Christina	-	-	-	-	-	79
m	31	Harris, Corinne	-	-	-	-	-	35
-- Substitutes --								
1	Clarfield, Maddie	-	-	-	-	-	-	14
5	Dillon, Alyssa	-	-	-	-	-	-	48
7	Groffsky, Emma	-	-	-	-	-	-	33
11	Haidar, Lulu	1	1	-	-	-	-	49
12	Martin, Reilly	-	-	-	-	-	-	44
13	Kreutz, Melissa	1	-	-	-	-	-	40
14	Raguse, Sydney	1	1	-	-	-	-	15
16	Collins, Cassie	1	1	1	-	-	-	39
22	Timko, Taylor	-	-	-	-	-	-	63
23	Veerakone, Rubina	2	-	-	-	-	-	37
77	Jackson, Sarah	-	-	-	-	-	-	31
Totals								

# Goalkeepers	Min	GA	Saves
0 Megan Hinz	45:00	3	3
1 Clarfield, Maddie	14:19	0	0
77 Jackson, Sarah	30:41	0	1

Shots by period	1	2	Total
Michigan	6	6	12
Penn State	7	3	10

Corner kicks	1	2	Total
Michigan	2	1	3
Penn State	1	3	4

Scoring summary:

No.	Time	Team	Goal scorer	Assist	Description
1.	32:37	PSU	Rodriguez, Raquel (4)	Driesse, Nickolette	bottom left corner from 24 yards out
2.	33:54	PSU	Schafer, Megan (10)	Weber, Mallory (unassisted)	from 18 yards out, beat the keeper, into t bottom right corner
3.	35:13	PSU	Driesse, Nickolette (2)	Weber, Mallory	from 29 yards out over the keeper near t crossbar
4.	87:39	MICH	Collins, Cassie (1)	Riehl, Kaleigh Haidar, Lulu	rebounced off the save

Cautions and ejections:

Win-Eckerstrom, Britt (13-3-2). Loss-Megan Hinz (9-6-2).
Stadium: Jeffrey Field
Officials: Referee: Lee Suckle; Asst. Referee: Eric Samples; Sergio Gonzalez;
Alt. Official: Justin Frear; Scorer: Will Rottler;
Offsides: Michigan 0, Penn State 0.

Official's signature

Soccer Box Score (Final) 2015 Penn State Women's Soccer Illinois vs #10 Penn State (Nov 01, 2015 at University Park, Pa.)

Illinois (10-6-3, 4-4-3) vs.
Penn State (14-3-2, 8-2-1)
Date: Nov 01, 2015 • Attendance: 821
Weather: 63 and sunny

Illinois	Po #	Player	Sh	SO	G	A	Fo	Min
gk	1	Wheatley, Claire	-	-	-	-	-	90
f	3	Flaws, Jannelle	3	-	-	-	-	90
d	4	Warren, Sarah	-	-	-	-	-	90
d	5	D'Addario, Hope	-	-	-	-	-	90
f	8	Ratz, Caroline	-	-	-	-	-	33
m	10	Stucky, Allison	-	-	-	-	-	90
m	11	Breece, Nicole	1	-	-	-	-	64
d	15	Weykamp, Alina	1	1	-	-	-	90
d	18	Maroney, Morgan	-	-	-	-	-	61
f	20	Marbury, Kara	1	1	-	-	-	82
m	27	Peterson, Taylore	-	-	-	-	-	90
-- Substitutes --								
2	Katherine	-	-	-	-	-	-	32
19	Abu-Douleh, Alia	-	-	-	-	-	-	2
21	George, Patricia	-	-	-	-	-	-	18
25	Dietrich, Darci	1	-	-	-	-	-	0
26	Murray, Katie	2	2	-	-	-	-	67
Totals								

# Goalkeepers	Min	GA	Saves
1 Wheatley, Claire	90:00	3	4

Shots by period	1	2	Total
Illinois	1	8	9
Penn State	15	4	19

Corner kicks	1	2	Total
Illinois	1	5	6
Penn State	5	4	9

Scoring summary:

No.	Time	Team	Goal scorer	Assist	Description
1.	26:48	PSU	Driesse, Nickolette (3)	Schafer, Megan	16 to 4 to 23, 6 yards out, beat the keeper bottom right corner
2.	32:37	PSU	Weber, Mallory (8)	Crouse, Frannie	header off the rebound save
3.	40:06	PSU	Crouse, Frannie (7)	Williams, Charlotte	27 to 12 to 9, from 7 yards out, deflected the keeper
4.	76:28	ILL	Marbury, Kara (7)	Stucky, Allison	cross into the box from near midfield, 20 yards out

Cautions and ejections:

YC-ILL #20 (54:49)
Win-Eckerstrom, Britt (14-3-2). Loss-Wheatley, Claire (10-6-3).
Stadium: Jeffrey Field
Officials: Referee: Tony Russo; Asst. Referee: Amadou Diop; Erik Blackburn;
Alt. Official: Michael Matlock; Scorer: Will Rottler;
Offsides: Illinois 1, Penn State 5.

Official's signature

Soccer Box Score (Final) 2015 Penn State Women's Soccer Michigan vs #9 Penn State (Nov 06, 2015 at University Park, Pa.)

Michigan (12-7-2, 6-3-2) vs.
Penn State (15-3-2, 8-2-1)
Date: Nov 06, 2015 • Attendance: 778
Weather: 63, mostly cloudy

Michigan	Po #	Player	Sh	SO	G	A	Fo	Min
gk	0	Megan Hinz	-	-	-	-	-	90
m	2	Kastroll, Abby	2	1	-	-	-	73
d	4	Lewis, Madison	1	1	-	-	-	90
d	9	Yekka, Sura	-	-	-	-	-	72
d	10	Murillo, Christina	-	-	-	-	-	90
d	17	Soccorsi, Anna	-	-	-	-	-	90
m	20	Heifetz, Jessica	-	-	-	-	-	64
f	21	Sarkisian, Ani	3	-	-	-	-	70
f	25	Waldeck, Nicky	4	3	-	-	-	90
d	30	Ordonez, Christina	-	-	-	-	-	90
m	31	Harris, Corinne	-	-	-	-	-	78
-- Substitutes --								
5	Dillon, Alyssa	-	-	-	-	-	-	18
11	Haidar, Lulu	-	-	-	-	-	-	34
12	Martin, Reilly	1	1	-	-	-	-	5
13	Kreutz, Melissa	-	-	-	-	-	-	1
16	Collins, Cassie	-	-	-	-	-	-	16
22	Timko, Taylor	1	-	-	-	-	-	21
Totals								

# Goalkeepers	Min	GA	Saves
0 Megan Hinz	90:00	1	3

Shots by period	1	2	Total
Michigan	2	10	12
Penn State	8	5	13

Corner kicks	1	2	Total
Michigan	1	0	1
Penn State	1	1	2

Scoring summary:

No.	Time	Team	Goal scorer	Assist	Description
1.	61:30	PSU	Crouse, Frannie (8)	Jean, Ellie	left-footed strike from left side of field, 17 yards out, over keeper

Cautions and ejections:

Win-Eckerstrom, Britt (15-3-2). Loss-Megan Hinz (10-7-2).
Stadium: Jeffrey Field
Officials: Referee: Tori Penso; Asst. Referee: Sergio Gonzalez; Cien Asoera;
Alt. Official: Rebecca Pagan; Scorer: Will Rottler;
Offsides: Michigan 1, Penn State 0.

Official's signature



2015 PENN STATE WOMEN'S SOCCER

Soccer Box Score (Final) 2015 Penn State Women's Soccer

#7 Rutgers vs #9 Penn State (Nov 08, 2015 at University Park, Pa.)

Rutgers (16-3-2, 7-2-2) vs.
Penn State (16-3-2, 8-2-1)
Date: Nov 08, 2015 • Attendance: 1230
Weather: 51 and sunny

Po #	Player	Sh	SO	G	A	Fo	Min
gk 23	Murphy, Casey	-	-	-	-	-	90
d 3	Skroski, Erica	-	-	-	-	-	90
f 4	Ciarrocca, Colby	-	-	-	-	-	79
d 9	Wright, Kenie	-	-	-	-	-	59
m 11	Katkowski, Hayley	-	-	-	-	-	90
d 13	Morash, Maggie	-	-	-	-	-	33
m 14	Valliant, Samantha	1	-	-	-	-	33
d 15	Smith, Erin	-	-	-	-	-	90
f 16	Inacio, Cassie	3	1	-	-	-	46
d 22	Reed, Brianne	1	-	-	-	-	90
f 73	Tiernan, Madison	-	-	-	-	-	85
-- Substitutes --							
5	Cole, Rachel	-	-	-	-	-	5
8	Benintente, Cassidy	-	-	-	-	-	31
17	Andresen, Jennifer	-	-	-	-	-	60
20	Walters, Katelyn	-	-	-	-	-	20
24	Puchalski, Jessica	-	-	-	-	-	26
29	Moneme, Adora	-	-	-	-	-	8
36	Prager, Tori	-	-	-	-	-	55
Totals							
		5	1	0	0	13	

#	Goalkeepers	Min	GA	Saves
23	Murphy, Casey	90:00	2	4

Shots by period	1	2	Total
Rutgers	3	2	5
Penn State	5	5	10

Corner kicks	1	2	Total
Rutgers	1	3	4
Penn State	6	0	6

Scoring summary:

No.	Time	Team	Goal scorer	Assist	Description
1.	8:28	PSU	Ball, Elizabeth (2)	Rodriguez, Raquel	deflected header off corner kick
2.	25:08	PSU	Ogle, Emily (3)	Driesse, Nickolette (unassisted)	shot to left side from 18 yards out

Cautions and ejections:

Win-Eckerstrom, Britt (16-3-2). Loss-Murphy, Casey (16-3-2).
Stadium: Jeffrey Field
Officials: Referee: Rebecca Pagan; Asst. Referee: Mandy Love; Tori Penson;
Alt. Official: Sergio Gonzalez; Scorer: Will Rottler;
Offsides: Rutgers 6, Penn State 1.

Official's signature

Soccer Box Score (Final) 2015 Penn State Women's Soccer

Albany vs #6 Penn State (Nov 13, 2015 at University Park, Pa.)

Albany (11-9-1) vs.
Penn State (17-3-2)
Date: Nov 13, 2015 • Attendance: 622
Weather: 43, partly cloudy, wind 23mph west

Po #	Player	Sh	SO	G	A	Fo	Min
gk 00	OLIVIERI, Alana	-	-	-	-	-	90
d 2	BALF, Celia	-	-	-	-	-	90
m 3	FITZPATRICK, Krista	-	-	-	-	-	90
m 8	SCHNEIDER, Alexa	-	-	-	-	-	68
m 9	KEMPF, Kelly	-	-	-	-	-	57
f 10	RUGAR, Kiana	-	-	-	-	-	68
f 11	VEGA, Vivian	-	-	-	-	-	66
d 12	BLAK, Shelby	1	1	-	-	-	90
d 13	COURTNEY, Savannah	-	-	-	-	-	83
d 19	KOPP, Caroline	-	-	-	-	-	90
m 24	PALTSIOS, Caitlyn	2	1	-	-	-	90
-- Substitutes --							
4	WILLIAMS, Mariah	-	-	-	-	-	23
6	URQUHART, Claire	-	-	-	-	-	7
18	CARHART, Allison	1	-	-	-	-	31
20	WEBB, Bianca	1	-	-	-	-	3
21	LODDER, Morgan	1	-	-	-	-	21
25	MALONE, Meghan	-	-	-	-	-	22
Totals							
		6	2	0	0	6	

#	Goalkeepers	Min	GA	Saves
00	OLIVIERI, Alana	90:00	5	5

Shots by period	1	2	Total
Albany	1	5	6
Penn State	18	7	25

Corner kicks	1	2	Total
Albany	0	2	2
Penn State	4	1	5

Scoring summary:

No.	Time	Team	Goal scorer	Assist	Description
1.	5:00	PSU	Schafer, Megan (11)	(unassisted)	bottom right corner from 6 yards out
2.	15:45	PSU	Basinger, Brittany (2)	Ogle, Emily	from near the endline, left side of the field
3.	19:53	PSU	Ogle, Emily (4)	Rodriguez, Raquel	right post
4.	55:25	PSU	Ogle, Emily (5)	Rodriguez, Raquel	from 30 yards out, middle of the field
5.	87:15	PSU	Williams, Charlotte (2)	Weber, Mallory	Pass inside the box, 6 yards out, right post top of 18, bottom left corner

Cautions and ejections:

Win-Eckerstrom, Britt (17-3-2). Loss-OLIVIERI, Alana (5-2-0).
Stadium: Jeffrey Field
Officials: Referee: Andrew Goldstein; Asst. Referee: Pete Mandell; Thomas Goubeau;
Alt. Official: Ross Kleinstuber; Scorer: Will Rottler;
Offsides: Albany 0, Penn State 2.

Official's signature

Soccer Box Score (Final) 2015 Penn State Women's Soccer

Boston U vs #6 Penn State (Nov 20, 2015 at University Park, Pa)

Boston U (13-6-3) vs.
Penn State (18-3-2)
Date: Nov 20, 2015 • Attendance: 1224
Weather: 43 and clear

Po #	Player	Sh	SO	G	A	Fo	Min
gk 0	Parisi, Alyssa	-	-	-	-	-	90
m 4	Pleuler, Clare	1	1	-	-	-	85
m 5	Blaumer, Rachel	-	-	-	-	-	77
f 7	Wakefield, Christina	-	-	-	-	-	77
m 11	Varley-Barrett, Dorr	1	-	-	-	-	40
f 12	Fisher, Jenna	-	-	-	-	-	87
d 15	Bloznalis, Rachel	1	1	-	-	-	90
d 16	Wimmer, Alivya	-	-	-	-	-	40
m 17	Chen, Juliana	-	-	-	-	-	90
m 20	Cooper, Alexandra	-	-	-	-	-	45
d 23	Hollenbaugh, McKenz	1	-	-	-	-	90
-- Substitutes --							
6	Churchill, Chelsea	-	-	-	-	-	44
9	Neville, Erin	-	-	-	-	-	26
13	Schiobohm, Alex	-	-	-	-	-	3
14	MacLellan, Lauren	1	-	-	-	-	45
18	Doyle, McKenna	1	-	-	-	-	45
19	Sweeney, Pietra	-	-	-	-	-	5
21	Shreck, Jesse	-	-	-	-	-	12
Totals							
		6	2	0	0	4	

#	Goalkeepers	Min	GA	Saves
0	Parisi, Alyssa	90:00	6	1

Shots by period	1	2	Total
Boston U	3	3	6
Penn State	11	11	22

Corner kicks	1	2	Total
Boston U	1	1	2
Penn State	7	1	8

Scoring summary:

No.	Time	Team	Goal scorer	Assist	Description
1.	27:23	PSU	Crouse, Frannie (9)	Schafer, Megan	from 7 yards out, deflected off BU defend
2.	43:28	PSU	Driesse, Nickolette (4)	Riehl, Kaleigh	from just outside the penalty area, into u
3.	54:40	PSU	Schafer, Megan (12)	Basinger, Brittany	right-footed shot from 12 yards out, beat
4.	61:17	PSU	Williams, Charlotte (3)	Crouse, Frannie	left-footed shot from 12 yards out, off a B
5.	83:40	PSU	Ball, Elizabeth (3)	Ritchey, Megan	header off a corner kick
6.	89:52	PSU	Echard, Haleigh (1)	Williams, Charlotte	from 24 yards out, left-footed shot, botto

Cautions and ejections:

Win-Eckerstrom, Britt (18-3-2). Loss-Parisi, Alyssa (13-4-3).
Stadium: Jeffrey Field
Officials: Referee: Rebekah Friedrich; Asst. Referee: Eric Weisbrod; Gregg Day;
Alt. Official: Amadou Dipp; Scorer: Will Rottler;
Offsides: Boston U 0, Penn State 3.

Official's signature

Soccer Box Score (Final) 2015 Penn State Women's Soccer

Ohio State vs #6 Penn State (Nov 22, 2015 at University Park, Pa.)

Ohio State (13-7-3) vs.
Penn State (19-3-2)
Date: Nov 22, 2015 • Attendance: 760
Weather: 37, cloudy, 12 mph wnw

Po #	Player	Sh	SO	G	A	Fo	Min
gk 0	McVicker, Jillian	-	-	-	-	-	90
d 3	Miyashiro, Nicole	-	-	-	-	-	90
m 4	Waltz, Nikki	-	-	-	-	-	90
f 7	Prince, Nichelle	1	-	-	-	-	84
d 9	Paradiso, Michela	1	1	-	-	-	90
m 10	Roberts, Sarah	-	-	-	-	-	90
f 19	Edwards, Sammy	2	-	-	-	-	67
d 20	Agnew, Lindsay	1	1	-	-	-	82
d 22	Knights, Kylie	-	-	-	-	-	90
m 26	Dudrick, Sydney	-	-	-	-	-	68
d 33	Wolcott, Morgan	-	-	-	-	-	90
-- Substitutes --							
5	Holden, Arden	-	-	-	-	-	39
17	Skinner, Bridget	-	-	-	-	-	20
Totals							
		5	2	0	0	7	

#	Goalkeepers	Min	GA	Saves
0	McVicker, Jillian	90:00	4	8

Shots by period	1	2	Total
Ohio State	2	3	5
Penn State	11	13	24

Corner kicks	1	2	Total
Ohio State	2	0	2
Penn State	3	2	5

Scoring summary:

No.	Time	Team	Goal scorer	Assist	Description
1.	42:15	PSU	Schafer, Megan (13)	Jean, Ellie	14 to 4, strike from 12 yards out, past th
2.	45:51	PSU	Rodriguez, Raquel (5)	Ogle, Emily	Header off a set piece, inside the box
3.	50:36	PSU	Ogle, Emily (6)	Williams, Charlotte	shot from 23 yards out, underneath the cr
4.	74:26	PSU	Echard, Haleigh (2)	Driesse, Nickolette	upper left corner of the box, right post

Cautions and ejections:

Win-Eckerstrom, Britt (19-3-2). Loss-McVicker, Jillian (7-6-2).
Stadium: Jeffrey Field
Officials: Referee: Mark Allatin; Asst. Referee: Ian Bongaardt; Mark Garcia;
Alt. Official: Jay Perkins; Scorer: Will Rottler;
Offsides: Ohio State 3, Penn State 0.

Official's signature



Soccer Box Score (Final)
2015 Penn State Women's Soccer
#4 West Virginia vs #6 Penn State (Nov 28, 2015 at University Park, Pa.)

West Virginia (19-3-1) vs.
 Penn State (20-3-2)
 Date: Nov 28, 2015 • Attendance: 1117
 Weather: 50, cloudy, showers

Goals by period	1	2	Total
West Virginia	0	0	0
Penn State	2	0	2

West Virginia							
Po #	Player	Sh	SO	G	A	Fo	Min
gk	30 Steadman, Hannah	-	-	-	-	-	90
f	5 Abam, Michaela	2	-	-	-	-	66
m	9 Lawrence, Ashley	3	-	-	-	-	90
m	10 Portillo, Carla	-	-	-	-	-	46
f	16 Utley, Kailey	1	1	-	-	-	71
d	20 Abraham, Hannah	-	-	-	-	-	90
m	27 Hill, Amanda	-	-	-	-	-	90
d	28 Mayi Kith, Easther	-	-	-	-	-	90
d	31 Beddilion, Maggie	-	-	-	-	-	90
d	88 Buchanan, Kadeisha	1	1	-	-	-	90
f	99 Gordon, Nia	-	-	-	-	-	27
-- Substitutes --							
	3 Emaus, Leah	1	-	-	-	-	44
	6 Kaleiohi, Heather	-	-	-	-	-	18
	7 Maloney, Kelsie	-	-	-	-	-	25
	11 Pierre-Louis, A.	2	1	-	-	-	61
Totals		10	3	0	0	6	

Penn State							
Po #	Player	Sh	SO	G	A	Fo	Min
gk	28 Eckerstrom, Britt	-	-	-	-	-	90
d	1 Basinger, Brittany	-	-	-	-	-	59
d	3 Riehl, Kaleigh	1	-	-	-	-	90
f	4 Schafer, Megan	2	1	-	-	-	73
d	5 Elliston, Maddie	-	-	-	-	-	90
d	7 Ball, Elizabeth	1	-	-	-	-	90
f	9 Crouse, Frannie	5	5	1	-	-	90
m	10 Ogle, Emily	1	1	1	-	-	90
m	11 Rodriguez, Raquel	1	-	-	-	-	90
f	16 Weber, Mallory	1	-	-	-	-	79
m	23 Driesse, Nickolette	2	1	-	-	-	57
-- Substitutes --							
	12 Williams, Charlotte	-	-	-	-	-	33
	14 Jean, Ellie	-	-	-	1	-	31
	15 Echard, Haleigh	-	-	-	-	-	20
	27 Sheva, Marissa	-	-	-	-	-	8
Totals		14	8	2	1	7	

#	Goalkeepers	Min	GA	Saves
30	Steadman, Hannah	90:00	2	6

#	Goalkeepers	Min	GA	Saves
28	Eckerstrom, Britt	90:00	0	3

Shots by period			
	1	2	Total
West Virginia	4	6	10
Penn State	7	7	14

Saves by period			
	1	2	Total
West Virginia	2	4	6
Penn State	1	2	3

Corner kicks			
	1	2	Total
West Virginia	1	3	4
Penn State	3	1	4

Fouls			
	1	2	Total
West Virginia	4	2	6
Penn State	4	3	7

Scoring summary:

No.	Time	Team	Goal scorer	Assist	Description
1.	11:08	PSU	Ogle, Emily (7)	(unassisted)	set piece from 27 yards out, left side of the field, over keeper
2.	38:03	PSU	Crouse, Frannie (10)	Jean, Ellie	Cross into the box, upper-left corner of net

Cautions and ejections:
 RC-PSU #TM (65:58)

Win-Eckerstrom, Britt (20-3-2). Loss-Steadman, Hannah (19-3-1).
 Stadium: Jeffrey Field
 Officials: Referee: Sorin Stocia; Asst. Referee: Jason Cullum; Zachary Rubinich;
 Alt. Official: Amadou Diop; Scorer: Will Rottler;
 Offsides: West Virginia 3, Penn State 4.

 Official's signature



**2015 Penn State Women's Soccer
Penn State High/Low Analysis (as of Nov 29, 2015)
All games**

Penn State - INDIVIDUAL GAME HIGHS

POINTS	5	Ogle, Emily vs Albany (Nov 13)
	4	Crouse, Frannie vs Boston U (Nov 20)
	4	Crouse, Frannie at IOWA (Sep 27)
	4	Schafer, Megan vs Arkansas (Aug 30)
GOALS	2	Ogle, Emily vs Albany (Nov 13)
	2	Crouse, Frannie at IOWA (Sep 27)
ASSISTS	2	Schafer, Megan vs Arkansas (Aug 30)
	2	Crouse, Frannie vs Boston U (Nov 20)
	2	Ritchey, Megan vs Boston U (Nov 20)
	2	Basinger, Brittany vs Boston U (Nov 20)
	2	Rodriguez, Raquel vs Albany (Nov 13)
	2	Weber, Mallory vs Michigan (Oct 28)
	2	Ortega-Jurado, Alina at IOWA (Sep 27)
	2	Williams, Charlotte vs Wisconsin (Sep 17)
	2	Driesse, Nickolette vs Loyola Marymount (Aug 23)
	SHOTS	6
6		Crouse, Frannie vs Illinois (Nov 01)
6		Echard, Haleigh vs Indiana (Oct 11)
6		Williams, Charlotte vs Loyola Marymount (Aug 23)
SHOTS ON GOAL	5	Crouse, Frannie vs West Virginia (Nov 28)
SAVES	4	Williams, Charlotte vs Loyola Marymount (Aug 23)
	7	Eckerstrom, Britt vs Michigan (Oct 28)
	6	Eckerstrom, Britt vs Michigan (Nov 06)

**2015 Penn State Women's Soccer
Penn State High/Low Analysis (as of Nov 29, 2015)
All games**

Penn State - TEAM GAME HIGHS

POINTS	22	vs Boston U (Nov 20)
	16	at IOWA (Sep 27)
GOALS	6	vs Boston U (Nov 20)
	5	vs Albany (Nov 13)
	5	at IOWA (Sep 27)
ASSISTS	10	vs Boston U (Nov 20)
	6	at IOWA (Sep 27)
SHOTS	35	vs Indiana (Oct 11)
	30	vs Maryland (Oct 08)
SHOTS ON GOAL	16	vs Indiana (Oct 11)
	14	at IOWA (Sep 27)
SAVES	7	vs Michigan (Oct 28)
	6	vs Michigan (Nov 06)
	6	at Rutgers (Oct 18)
CORNER KICKS	17	vs Indiana (Oct 11)
	12	at Purdue (Oct 15)
	12	vs Loyola Marymount (Aug 23)
FOULS	12	vs Rutgers (Nov 08)
	10	vs Ohio State (Nov 22)
	10	vs Arkansas (Aug 30)

Opponent - GAME HIGHS

POINTS	6	vs Arkansas (Aug 30)
	6	vs Loyola Marymount (Aug 23)
GOALS	2	vs Arkansas (Aug 30)
	2	vs Loyola Marymount (Aug 23)
ASSISTS	2	at Rutgers (Oct 18)
	2	at Purdue (Oct 15)
	2	vs Minnesota (Sep 20)
	2	vs Arkansas (Aug 30)
	2	vs Loyola Marymount (Aug 23)
SHOTS	16	at Stanford (Sep 11)
	14	at West Virginia (Sep 04)
	14	vs Duke (Aug 28)
SHOTS ON GOAL	8	vs Michigan (Oct 28)
	7	at Rutgers (Oct 18)
SAVES	12	vs Indiana (Oct 11)
	11	vs Maryland (Oct 08)
	11	vs Duke (Aug 28)
CORNER KICKS	8	vs Wisconsin (Sep 17)
	7	at Santa Clara (Sep 13)
FOULS	13	vs Rutgers (Nov 08)
	12	vs Arkansas (Aug 30)



**2015 Penn State Women's Soccer
Penn State High/Low Analysis (as of Nov 29, 2015)
All games**

Penn State - GAME LOWS

POINTS	0	vs Duke (Aug 28)
	0	at West Virginia (Sep 04)
	0	vs Minnesota (Sep 20)
	0	at Rutgers (Oct 18)
GOALS	0	vs Duke (Aug 28)
	0	at West Virginia (Sep 04)
	0	vs Minnesota (Sep 20)
	0	at Rutgers (Oct 18)
ASSISTS	0	vs Duke (Aug 28)
	0	at West Virginia (Sep 04)
	0	at Santa Clara (Sep 13)
	0	vs Minnesota (Sep 20)
	0	at Rutgers (Oct 18)
SHOTS	4	at Stanford (Sep 11)
	8	at West Virginia (Sep 04)
SHOTS ON GOAL	2	at West Virginia (Sep 04)
	3	vs Minnesota (Sep 20)
	3	at Rutgers (Oct 18)
SAVES	0	at Nebraska (Sep 25)
	0	vs Maryland (Oct 08)
	0	at Purdue (Oct 15)
CORNER KICKS	1	vs Wisconsin (Sep 17)
	2	vs Michigan (Nov 06)
FOULS	3	vs Wisconsin (Sep 17)
	3	vs Minnesota (Sep 20)
	3	vs Albany (Nov 13)
	3	vs Boston U (Nov 20)

**2015 Penn State Women's Soccer
Penn State High/Low Analysis (as of Nov 29, 2015)
All games**

Opponent - GAME LOWS

POINTS	0	vs Duke (Aug 28)
	0	at Stanford (Sep 11)
	0	at Santa Clara (Sep 13)
	0	vs Wisconsin (Sep 17)
	0	at Northwestern (Oct 04)
	0	vs Maryland (Oct 08)
	0	vs Indiana (Oct 11)
	0	vs Michigan (Nov 06)
	0	vs Rutgers (Nov 08)
	0	vs Albany (Nov 13)
	0	vs Boston U (Nov 20)
	0	vs Ohio State (Nov 22)
	0	vs West Virginia (Nov 28)
GOALS	0	vs Duke (Aug 28)
	0	at Stanford (Sep 11)
	0	at Santa Clara (Sep 13)
	0	vs Wisconsin (Sep 17)
	0	at Northwestern (Oct 04)
	0	vs Maryland (Oct 08)
	0	vs Indiana (Oct 11)
	0	vs Michigan (Nov 06)
	0	vs Rutgers (Nov 08)
	0	vs Albany (Nov 13)
	0	vs Boston U (Nov 20)
	0	vs Ohio State (Nov 22)
	0	vs West Virginia (Nov 28)
ASSISTS	0	vs Duke (Aug 28)
	0	at Stanford (Sep 11)
	0	at Santa Clara (Sep 13)
	0	vs Wisconsin (Sep 17)
	0	at Nebraska (Sep 25)
	0	at IOWA (Sep 27)
	0	at Northwestern (Oct 04)
	0	vs Maryland (Oct 08)
	0	vs Indiana (Oct 11)
	0	vs Michigan (Nov 06)
	0	vs Rutgers (Nov 08)
	0	vs Albany (Nov 13)
	0	vs Boston U (Nov 20)
	0	vs Ohio State (Nov 22)
	0	vs West Virginia (Nov 28)
SHOTS	1	vs Maryland (Oct 08)
	2	vs Indiana (Oct 11)
SHOTS ON GOAL	0	vs Maryland (Oct 08)
	1	at Nebraska (Sep 25)
	1	vs Indiana (Oct 11)
	1	at Purdue (Oct 15)
	1	vs Rutgers (Nov 08)
SAVES	1	vs Boston U (Nov 20)
	2	at West Virginia (Sep 04)
	2	at Stanford (Sep 11)
	2	vs Wisconsin (Sep 17)
CORNER KICKS	1	at Nebraska (Sep 25)
	1	vs Indiana (Oct 11)
	1	at Purdue (Oct 15)
	1	at Ohio State (Oct 24)



#1 BRITTANY BASINGER - R-SOPHOMORE - DEFENDER - PURCELLVILLE, VA. - WOODGROVE

SINGLE-GAME HIGHS	Year	Min.	GP-GS	G	A	Pts	Shots	SOG	GW	PK-Att
Points: 2, 2x, last vs. Albany -- Nov 13, 2015	2013	1762	23-23	0	2	2	6	4	0	0-0
	2014					DID NOT PLAY				
Goals: 1, 2x, last vs. Albany -- Nov 13, 2015	2015	1823	25-25	2	2	6	10	5	0	0-0
	TOTAL	3585	48-48	2	4	8	16	9	0	0-0

Assists: 2, vs. Boston U.
-- Nov 20, 2015

Shots: 2, vs. Loyola Marymount
-- Aug 23, 2015

Awards: TopDrawerSoccer Team of the Week (9/15)

2015: Named to the TopDrawerSoccer Team of the Week (9/15) ... Started all 25 matches on the Nittany Lion backline ... Tallied a career-high two shots against Loyola Marymount (8/23) ... Played every minute of the first three matches, including a 0-0 draw against No. 21 Duke (8/28) ... Scored her first career goal in a 2-0 win at No. 2 Stanford (9/11) ... Tallied a goal in Penn State's 5-0 victory over UAlbany in the NCAA First Round (11/13) ... Recorded a career-high two assists against Boston University in the NCAA Second Round (11/20) ... A member of the Nittany Lion backline that has posted 13 shutouts on the year.



#2 MEGAN RITCHEY - SENIOR - MIDFIELDER - STATE COLLEGE, PA. - STATE COLLEGE AREA

SINGLE-GAME HIGHS	Year	Min.	GP-GS	G	A	Pts	Shots	SOG	GW	PK-Att
Points: 2, vs. Boston U. -- Nov 20, 2015	2012	117	8-0	0	0	0	2	0	0	0-0
	2013	91	4-0	0	0	0	1	0	0	0-0
	2014	97	6-0	0	0	0	1	1	0	0-0
Assists: 2, vs. Boston U. -- Nov 20, 2015	2015	71	6-0	0	2	2	0	0	0	0-0
	TOTAL	376	24-0	0	2	2	4	1	0	0-0

Shots: 1, 4x, last vs. Buffalo
-- Nov 14, 2014

2015: Played in six matches ... Tallied a season-high 30 minutes against Indiana (10/11) ... Recorded a pair of assists against Boston University in the NCAA Second Round (11/20).



#3 KALEIGH RIEHL - FRESHMAN - DEFENDER - FAIRFAX STATION, VA. - SOUTH COUNTY

SINGLE-GAME HIGHS	Year	Min.	GP-GS	G	A	Pts	Shots	SOG	GW	PK-Att
Points: 1, 2x, last vs. Boston U. -- Nov 20, 2015	2015	2191	25-25	0	2	2	1	0	0	0-0
	TOTAL	2191	25-25	0	2	2	1	0	0	0-0

Assists: 1, 2x, last vs. Boston U.
-- Nov 20, 2015

Shots: 1, vs. West Virginia
-- Nov 28, 2015

Awards: All-Big Ten Second Team (Defense) ... Big Ten All-Freshman Team (Defense) ... Two-time Big Ten Freshman of the Week (9/15 & 10/29) ... TopDrawerSoccer Team of the Week honoree (12/1)

2015: Named to the All-Big Ten Second Team (Defense) ... Big Ten All-Freshman Team (Defense) honoree ... Received TopDrawerSoccer Team of the Week honors (12/1) ... Two-time Big Ten Freshman of the Week (9/15 & 10/29) ... Started all 25 matches on the Nittany Lion backline ... Played the full time in 17 matches, including a 0-0 draw against No. 21 Duke (8/28) ... Netted her first career point on an assist in a 3-1 victory over Michigan (10/28) ... Tallied an assist in the NCAA Second Round match against Boston U (11/20) ... A member of the Nittany Lion backline that has posted 13 shutouts on the year.



#4 MEGAN SCHAFER - SOPHOMORE - FORWARD - LANGHORNE, PA. - NESHAMINY

SINGLE-GAME HIGHS	Year	Min.	GP-GS	G	A	Pts	Shots	SOG	GW	PK-Att
Points: 4, 2x, last vs. Arkansas -- Aug 30, 2015	2014	1300	24-8	6	5	17	27	15	2	0-0
	2015	1687	25-22	13	4	30	47	25	6	0-0
	TOTAL	2987	49-30	19	9	47	74	40	8	0-0

Goals: 2, 2x, last vs. Arkansas
-- Aug 30, 2015

Assists: 1, 9x, last vs. Boston U.
-- Nov. 20, 2015

Shots: 4, 4x, last vs. Ohio State
-- Nov 22, 2015

Awards: All-Big Ten Second Team (Forward) ... TopDrawerSoccer Team of the Week honoree (11/24)

2015: Named to the All-Big Ten Second Team (Forward) ... TopDrawerSoccer Team of the Week honoree (11/24) ... Started 22 of 25 matches ... Scored six game-winning goals ... Over a 15-game stretch, Schafer scored in nine matches ... Also tallied at least one point in 11 matches over a 15-game span ... Leads the team and Big Ten with 13 goals and 30 points ... Dished out four assists ... Scored twice in a 4-2 win over Arkansas (8/30) ... Recorded the fastest Nittany Lion goal in 2015 - 5:00 - against UAlbany (11/13) ... Tallied three-straight matches with a goal twice (10/8-10-15 & 11/13-11/22) ... Tied a career-high four shots against Loyola Marymount (8/23), Maryland (10/8) and Ohio State (11/22) ... Netted a goal and an assist against Boston U (11/20).



#5 MADDIE ELLISTON - SOPHOMORE - DEFENDER - OMAHA, NEB. - MARIAN

SINGLE-GAME HIGHS	Year	Min.	GP-GS	G	A	Pts	Shots	SOG	GW	PK-Att
Points: 1, 3x, last vs. Iowa -- Sept 27, 2015	2014	2085	24-24	0	2	2	2	1	0	0-0
	2015	1014	16-5	0	1	1	0	0	0	0-0
	TOTAL	3099	40-29	0	3	3	2	1	0	0-0

Assists: 1, 3x, last vs. Iowa
-- Sept 27, 2015

Shots: 1, 2x, last at Texas A&M
-- Nov 29, 2014

2015: Missed the early part of the season due to an injury ... Played 47 minutes in her season-debut at Nebraska (9/25) ... Netted an assist in her second game of the season at Iowa (9/27) ... Made five starts on the year ... Played the full 90 minutes against Purdue (10/15), UAlbany (11/13) and No. 4 West Virginia (11/28) ... Played on the Nittany Lion backline in nine shutout victories.



#6 ANNA WITTE - JUNIOR - DEFENDER - MORRISVILLE, N.C. - CARY

SINGLE-GAME HIGHS	Year	Min.	GP-GS	G	A	Pts	Shots	SOG	GW	PK-Att
Points: 2, vs. Bucknell -- Sept 23, 2014	2013	93	4-0	0	0	0	0	0	0	0-0
	2014	100	6-0	1	1	3	2	2	0	0-0
	2015	10	1-0	0	0	0	0	0	0	0-0
	TOTAL	203	11-0	1	1	3	2	2	0	0-0

Goals: 1, vs. Bucknell
-- Sept 23, 2014

Assists: 1, vs. Buffalo
-- Nov 14, 2014

Shots: 1, 2x, last vs. Buffalo
-- Nov 14, 2014

2015: Played against Arkansas for her lone appearance of the season (8/30).



#7 ELIZABETH BALL - SOPHOMORE - DEFENDER - RICHMOND, VA. - DEEP RUN

SINGLE-GAME HIGHS	Year	Min.	GP-GS	G	A	Pts	Shots	SOG	GW	PK-Att
Points: 2, 4x, last vs. Boston U -- Nov 20, 2015	2014	1825	24-23	1	0	2	4	2	1	0-0
Goals: 1, 4x, last vs. Boston U -- Nov 20, 2015	2015	2138	25-25	3	0	6	22	8	1	0-1
Shots: 5, vs. Indiana -- Oct 11, 2015	TOTAL	3963	49-48	4	0	8	26	10	2	0-1

Awards: Big Ten Defensive Player of the Week (10/13) ... Two-time TopDrawerSoccer Team of the Week honoree (10/6 & 11/11)

2015: Big Ten Defensive Player of the Week (10/13) ... Two-time TopDrawerSoccer Team of the Week honoree (10/6 & 11/11) ... Started all 25 matches on the Nittany Lion backline ... Played the full time in 17 matches, including a 0-0 draw against No. 21 Duke (8/28) ... Posted a career-high five shot attempts against Indiana (Oct. 11) ... Netted her first goal of the season in a 4-0 win over Indiana (10/11) ... Scored the game-winning goal over Rutgers in the Big Ten Tournament championship match in the ninth minute (11/8) ... Posted her third goal of the season against Boston U (11/20) ... A member of the Nittany Lion backline that has posted 13 shutouts on the year.



#8 KRISTIN SCHNURR - FRESHMAN - FORWARD - BRISTOW, VA. - PATRIOT

SINGLE-GAME HIGHS	Year	Min.	GP-GS	G	A	Pts	Shots	SOG	GW	PK-Att
	2015									
	TOTAL	0	0	0	0	0	0	0	0	0-0

2015: Did not play.



#9 FRANNIE CROUSE - SOPHOMORE - FORWARD - GREENSBURG, PA. - GREENSBURG CATHOLIC

SINGLE-GAME HIGHS	Year	Min.	GP-GS	G	A	Pts	Shots	SOG	GW	PK-Att
Points: 5, vs. Bucknell -- Sept 23, 2014	2014	1358	24-21	10	2	22	55	26	3	0-0
Goals: 2, 3x, last at Iowa -- Sept. 27, 2015	2015	1627	25-23	10	7	27	74	39	3	0-0
Assists: 2, vs. Boston U. -- Nov 20, 2015	TOTAL	2985	49-44	20	9	49	129	65	6	0-0
Shots: 6, 2x, last vs. Boston U. -- Nov 20, 2015										

Awards: Big Ten Offensive Player of the Week (9/15) ... Named to the Big Ten All-Tournament Team (11/8) ... Named the Offensive Player of the Big Ten Tournament (11/8) ... espnW Player of the Week (9/16) ... TopDrawerSoccer Team of the Week honoree (12/1)

2015: Big Ten Offensive Player of the Week (9/15) ... Named to the Big Ten All-Tournament Team (11/8) ... Named the Offensive Player of the Big Ten Tournament (11/8) ... Received TopDrawerSoccer Team of the Week honors (12/1) ... espnW Player of the Week (9/16) ... Played in all 25 matches, started 23, including 21-straight starts ... Tallied three game-winning goals, including her goal in the 10th minute in Penn State's 2-0 win at No. 2 Stanford (9/11) ... Also netted an assist in the victory at No. 2 Stanford (9/11) ... Recorded 10 goals on the year ... Scored twice in Penn State's 5-1 victory over Iowa (9/27) ... Scored in back-to-back matches in the Big Ten Tournament (Illinois - 11/1 & Michigan - 11/6) ... Tallied seven assists on the year ... Posted a goal and two assists in the Boston U match (11/20) ... Ranks second on the team with 27 points.



#10 EMILY OGLE - SOPHOMORE - MIDFIELDER - STRONGSVILLE, OHIO - STRONGSVILLE

SINGLE-GAME HIGHS	Year	Min.	GP-GS	G	A	Pts	Shots	SOG	GW	PK-Att
Points: 5, vs. Albany -- Nov 13, 2015	2014	1922	24-24	3	6	12	18	8	1	1-1
	2015	1918	25-25	7	5	19	31	17	2	0-0
	TOTAL	3840	49-49	10	11	31	49	25	3	1-1

Goals: 2, vs. Albany
-- Nov 13, 2015

Assists: 2, vs. Iowa
-- Oct 26, 2014

Shots: 5, vs. Albany
-- Nov 13, 2015

Awards: All-Big Ten Second Team (Midfield) ... TopDrawerSoccer Team of the Week honoree (12/1)

2015: Named to the All-Big Ten Second Team (Midfield) ... Received TopDrawerSoccer Team of the Week honors (12/1) ... Started all 25 matches in the Nittany Lion midfield ... Opened the year with a game-winning goal in the 68th minute against Hofstra (8/21) ... Tallied assists in back-to-back matches against Indiana (10/11) and Purdue (10/15) ... Scored four of her seven goals in 2015 in the NCAA Tournament ... Recorded two goals and one assist in the 5-0 win over Albany in the NCAA First Round (11/13) ... Tallied a goal and assist in a 4-0 victory over Ohio State in the NCAA Third Round (11/22) ... Scored her second game-winning goal of the season in the 12th minute of a 2-0 victory over No. 4 West Virginia in the NCAA Quarterfinals (11/28).



#11 RAQUEL RODRIGUEZ - SENIOR - FORWARD - SAN JOSE, COSTA RICA - INTERNATIONAL CHRISTIAN

SINGLE-GAME HIGHS	Year	Min.	GP-GS	G	A	Pts	Shots	SOG	GW	PK-Att
Points: 4, vs. Illinois -- Oct 20, 2013	2012	1913	25-24	4	10	18	46	23	0	1-1
	2013	1576	23-23	6	9	21	48	20	3	1-1
	2014	1278	18-16	7	3	17	37	16	3	0-1
Goals: 2, vs. Illinois -- Oct 20, 2013	2015	1882	25-25	5	6	16	52	16	2	0-0
	TOTAL	6649	91-87	22	28	72	183	75	8	2-3

Assists: 3, vs. Bucknell
-- Sept 10, 2013

Shots: 6, at Purdue
-- Sept 12, 2014

Awards: All-Big Ten First Team (Midfield) ... Named as a MAC Hermann Trophy Semifinalist ... CoSIDA Academic All-District Two First Team

2015: Co-Captain ... Named to the All-Big Ten First Team (Midfield) ... Named as a MAC Hermann Trophy Semifinalist ... CoSIDA Academic All-District Two First Team honoree ... Started all 25 matches for the Nittany Lions in the midfield ... Recorded her first assist of the season against Arkansas (8/30) ... Scored her first goal of the season against Northwestern (10/4) ... Scored back-to-back game-winning goals against Indiana (10/11) and Purdue (10/15) ... Tallied back-to-back matches with at least one assist (Rutgers - 11/8 & Albany 11/13) ... Posted a pair of assists against Albany (11/13) ... Scored her fifth goal of the season in a 4-0 victory over Ohio State in the NCAA Tournament Third Round (11/22) ... Five goals and six assists on the season.



#12 CHARLOTTE WILLIAMS - FRESHMAN - FORWARD - ROCHESTER, N.Y. - BRIGHTON

SINGLE-GAME HIGHS	Year	Min.	GP-GS	G	A	Pts	Shots	SOG	GW	PK-Att
Points: 3, vs. Boston U. -- Nov 20, 2015	2015	1278	25-10	3	7	13	40	17	1	0-0
	TOTAL	1278	25-10	3	7	13	40	17	1	0-0

Goals: 1, 3x, last vs. Boston U.
-- Nov 20, 2015

Assists: 2, vs. Wisconsin
-- Sept 17, 2015

Shots: 6, vs. Loyola Marymount
-- Aug 23, 2015

Awards: All-Big Ten Freshman Team (Midfield)

2015: Named to the All-Big Ten Freshman Team (Midfield) ... Played in all 25 matches, including 10 starts ... Scored her first goal as a Nittany Lion against Loyola Marymount (8/23) ... Tallied a career-high six shots against Loyola Marymount (8/23) ... In the Big Ten opener against Wisconsin, Williams netted her first two career assists (9/17) ... Scored in back-to-back matches against UAlbany (11/13) and Boston U (11/20) in the NCAA Tournament ... Recorded back-to-back matches with at least one assist twice (9/25-9/27 & 11/20-22) ... Tallied a career-high three points against Boston U (11/20) ... Tallied three-straight matches with at least one point (11/13-22).



#14 ELLIE JEAN - FRESHMAN - DEFENDER - COVENTRY, CONN. - COVENTRY

SINGLE-GAME HIGHS

Year	Min.	GP-GS	G	A	Pts	Shots	SOG	GW	PK-Att
2015	1676	24-21	0	6	6	10	5	0	0-0
TOTAL	1676	24-21	0	6	6	10	5	0	0-0

Points: 1, 6x, last vs. West Virginia
-- Nov 28, 2015

Assists: 1, 6x, last vs. West Virginia
-- Nov 28, 2015

Shots: 2, 2x, last vs. Purdue
-- Oct 15, 2015

Awards: All-Big Ten Freshman Team (Defense)

2015: Named to the All-Big Ten Freshman Team (Defense) ... Credited with her first career point on an assist on the first goal of the year against Hofstra (8/21) ... Played every minute of the first three matches, including a 0-0 draw against No. 21 Duke (8/28) ... Tallied assists in back-to-back matches in the NCAA Tournament (Ohio State - 11/22 & No. 4 West Virginia - 11/28) ... Played in 12 Nittany Lion shutouts.



#15 HALEIGH ECHARD - SOPHOMORE - MIDFIELDER - LEBANON, PA. - CEDAR CREST

SINGLE-GAME HIGHS

Year	Min.	GP-GS	G	A	Pts	Shots	SOG	GW	PK-Att
2014	938	24-1	1	4	6	22	11	0	0-0
2015	644	24-0	2	0	4	27	15	0	0-0
TOTAL	1582	48-1	3	4	10	49	26	0	0-0

Points: 2, 3x, last vs. Ohio State
-- Nov 22, 2015

Goals: 1, 3x, last vs. Ohio State
-- Nov 22, 2015

Assists: 1, 4x, last vs. Buffalo
-- Nov 14, 2014

Shots: 6, vs. Indiana
-- Oct 11, 2015

2015: Played in 24 matches ... Scored in back-to-back matches in the NCAA Tournament (Boston U - 11/20 & Ohio State - 11/22) ... Recorded a career-high six shots vs. Indiana (10/11).



#16 MALLORY WEBER - SENIOR - FORWARD - NOVI, MICH. - NORTHVILLE

SINGLE-GAME HIGHS

Year	Min.	GP-GS	G	A	Pts	Shots	SOG	GW	PK-Att
2012	1757	26-26	13	4	30	39	28	5	0-0
2013	1627	23-23	7	8	22	47	21	2	0-0
2014	1568	24-22	8	6	22	50	25	3	0-0
2015	1594	25-24	8	10	26	46	21	4	0-0
TOTAL	6546	97-94	36	28	100	182	95	14	0-0

Points: 4, 6x, last vs. Syracuse
-- Aug 24, 2014

Goals: 2, 5x, last vs. Syracuse
-- Aug 24, 2014

Assists: 2, 2x, last vs. Michigan
-- Oct 28, 2015

Shots: 7, at Virginia
-- Aug 17, 2012

Awards: All-Big Ten First Team (Forward) ... Finalist for the 2015 Soccer News Net College Boot award

2015: Co-Captain ... Named to the All-Big Ten First Team (Forward) ... Named a finalist for the 2015 Soccer News Net College Boot award ... Started 24 of 25 matches for the Nittany Lions ... Scored the first goal of the season at the 16:11 mark in the season-opener vs. Hofstra (8/21) ... Tallied a goal and assist against Loyola Marymount (8/23) ... Posted a goal and an assist against Arkansas (8/30) ... Scored back-to-back game-winning goals against Santa Clara (9/13) and Wisconsin (9/17) ... Tallied a pair of assists against Michigan (10/28) ... Recorded a goal and an assist in the Big Ten Tournament opener against Illinois (11/1) ... Became the 10th Nittany Lion to tally 100 career points with her assist against Albany (11/13) ... Ranks third on the team with 26 points ... Leads the team and Big Ten with 10 assists.



#17 ALINA ORTEGA-JURADO - FRESHMAN - FORWARD - WETZLAR, GERMANY

SINGLE-GAME HIGHS		Year	GP-GS	Min.	G	A	Pts	Shots	SOG	GW	PK-Att
Points: 2, 2x, last at Northwestern -- Oct 4, 2015		2015	18-1	515	1	3	5	7	4	0	0-0
		Total	18-1	515	1	3	5	7	4	0	0-0
Goals: 1, at Northwestern -- Oct 4, 2015											
Assists: 2, at Iowa -- Sept 27, 2015											
Shots: 2, 2x, last vs. UAlbany -- Nov 13, 2015											

Awards: Big Ten All-Freshman Team (Forward)

2015: Named to the Big Ten All-Freshman Team (Forward) ... Appeared in 18 matches and started the season-opener against Hofstra (8/21) ... Netted her first career point on an assist in a 4-2 victory over Arkansas (8/30) ... Tallied back-to-back matches with at least one point (Iowa - 9/27 & Northwestern - 10/4) ... Recorded a career-high two assists in a 5-1 victory over Iowa (9/27) ... Scored her first career goal against Northwestern (10/4).



#18 ANGELA WIDLACKI - R-SOPHOMORE - DEFENDER - NAPERVILLE, ILL. - NAPERVILLE NORTH

SINGLE-GAME HIGHS		Year	GP-GS	Min.	G	A	Pts	Shots	SOG	GW	PK-Att
		2014					DID NOT PLAY				
		2015					DID NOT PLAY				
		Total	0-0	0	0	0	0	0	0	0	0-0

2015: Did not play.



#19 LIISI VINK-LAINAS - SOPHOMORE - MIDFIELDER - WYNANTSKILL, N.Y. - TROY

SINGLE-GAME HIGHS		Year	GP-GS	Min.	G	A	Pts	Shots	SOG	GW	PK-Att
Points: 1, vs. Indiana -- Oct 11, 2015		2014					DID NOT PLAY				
		2015	2-0	30	0	1	1	2	0	0	0-0
		Total	2-0	30	0	1	1	2	0	0	0-0
Assists: 1, vs. Indiana -- Oct 11, 2015											
Shots: 2, vs. Indiana -- Oct 11, 2015											

2015: Made appearances in two matches ... Tallied her first career point on an assist in her Nittany Lion debut against Indiana (10/11) ... Played a career-high 19 minutes against Indiana (10/11).



#20 SALINA WILLIFORD - JUNIOR - MIDFIELDER - WAYNE, PA. - CONESTOGA

SINGLE-GAME HIGHS	Year	GP-GS	Min.	G	A	Pts	Shots	SOG	GW	PK-Att
Points: 3, vs. Northwestern -- Sept 26, 2014	2013	23-17	1534	0	0	0	9	2	0	0-0
Goals: 1, 5x 1, last at Texas A&M -- Nov 29, 2014	2014	24-24	1973	5	5	15	55	24	2	0-0
Assists: 2, vs. Buffalo -- Nov 14, 2014	2015	DID NOT PLAY								
Shots: 6, vs. UConn -- Nov. 21, 2014	Total	47-41	3507	5	5	15	64	26	2	0-0

2015: Redshirted.



#21 TEDDY CHASE - SENIOR - DEFENDER - WAYNE, PA. - THE SHIPLEY SCHOOL

SINGLE-GAME HIGHS	Year	GP-GS	Min.	G	A	Pts	Shots	SOG	GW	PK-Att
Points: 1, vs. St. John's -- Aug 19, 2012	2012	8-0	179	0	1	1	0	0	0	0-0
Assists: 1, vs. St. John's -- Aug 19, 2012	2013	5-0	136	0	0	0	2	1	0	0-0
Shots: 2, vs. Bucknell -- Sept. 10, 2013	2014	5-0	79	0	0	0	0	0	0	0-0
	2015	9-0	198	0	0	0	1	1	0	0-0
	Total	27-0	592	0	1	1	3	2	0	0-0

Awards: Named Penn State's Big Ten Sportsmanship Award honoree

2015: Named Penn State's Big Ten Sportsmanship Award honoree ... Made appearances in nine matches ... Played a season-high 41 minutes against Indiana (10/11).



#22 ISABELLE CLAUSS - SOPHOMORE - DEFENDER - CLARKS SUMMIT, PA. - ABINGTON HEIGHTS

SINGLE-GAME HIGHS	Year	GP-GS	Min.	G	A	Pts	Shots	SOG	GW	PK-Att
	2014	3-0	39	0	0	0	0	0	0	0-0
	2015	3-0	21	0	0	0	0	0	0	0-0
	Total	6-0	60	0	0	0	0	0	0	0-0

2015: Made appearances in three matches ... Played a season-high 11 minutes against Michigan (10/28).



#23 NICKOLETTE DRIESSE - JUNIOR - MIDFIELDER - WAYNE, N.J. - WAYNE HILLS

SINGLE-GAME HIGHS	Year	GP-GS	Min.	G	A	Pts	Shots	SOG	GW	PK-Att
Points: 3, vs. Michigan -- Oct 28, 2015	2015	25-18	1306	4	6	14	33	12	0	0-0
	Total	25-18	1306	4	6	14	33	12	0	0-0

Goals: 1, 4x, last vs. Boston U.
-- Nov 20, 2015

Assists: 2, vs. Loyola Marymount
-- Aug 23, 2015

Shots: 4, 3x, last vs. Rutgers
-- Nov 8, 2015

2015: Played in all 25 matches, including 18 starts ... Tallied four goals and recorded six assists ... Scored in back-to-back matches (Michigan - 10/28 & Illinois - 11/1) ... Recorded a goal and an assist vs. Michigan (10/28) ... Posted a goal against Boston U (11/20) ... Netted an assist against Ohio State (11/22).



#24 CECILIA KNAUB - FRESHMAN - MIDFIELDER - PHOENIXVILLE, PA. - PHOENIXVILLE

SINGLE-GAME HIGHS	Year	GP-GS	Min.	G	A	Pts	Shots	SOG	GW	PK-Att
	2015	9-0	175	0	0	0	0	0	0	0-0
	Total	9-0	175	0	0	0	0	0	0	0-0

2015: Played in nine matches ... Recorded a career-high 27 minutes against Indiana (10/11) and Illinois (11/1).



#25 TAYLOR CAMPBELL-PHIPPS - FRESHMAN - DEFENDER - STATE COLLEGE, PA. - STATE COLLEGE AREA

SINGLE-GAME HIGHS	Year	GP-GS	Min.	G	A	Pts	Shots	SOG	GW	PK-Att
	2015	9-0	132	0	0	0	0	0	0	0-0
	Total	9-0	132	0	0	0	0	0	0	0-0

2015: Played in nine matches ... Recorded a career-high 36 minutes against Indiana (10/11).



#27 MARISSA SHEVA - FRESHMAN - FORWARD - SELLERSVILLE, PA. - PENNRIDGE

SINGLE-GAME HIGHS

Points: 2, 3x, last at Ohio State
-- Oct 24, 2015

Goals: 1, 3x, last at Ohio State
-- Oct 24, 2015

Assists: 1, 3x, last vs. Boston U.
-- Nov 20, 2015

Shots: 4, vs. Loyola Marymount
-- Aug 23, 2015

Year	GP-GS	Min.	G	A	Pts	Shots	SOG	GW	PK-Att
2015	25-1	950	3	3	9	18	8	1	0-0
Total	25-1	950	3	3	9	18	8	1	0-0

Awards: Big Ten Freshman of the Week (10/27)

2015: Named the Big Ten Freshman of the Week (10/27) ... Played in all 25 matches, including a start against Michigan (10/28) ... Tallied a career-high four shot attempts against Loyola Marymount (8/23) ... Scored her first career goal in a 4-0 win over Wisconsin in the Big Ten opener (9/17) ... Scored the game-winning goal in a 2-1 victory at Ohio State (10/24) ... Tallied an assist in the second round of the NCAA Tournament against Boston U (11/20).



#28 BRITT ECKERSTROM - R-SENIOR - GOALKEEPER - GERMANTOWN, MD. - NORTHWEST

SINGLE-GAME HIGHS

Saves: 10, vs. North Carolina
-- Sept 4, 2014

Year	GP-GS	Min.	GA	GAAvg	Saves	Pct.	W	L	T	Sho
2012	11-4	508:24	5	0.89	27	.844	4	0	0	1.2
2013	23-23	2034:15	30	1.33	94	.758	15	7	1	3.3
2014	24-23	2053:27	15	0.66	66	.815	20	4	0	8.1
2015	25-25	2190:34	12	0.49	63	.842	20	3	2	9.3
Total	83-75	6786:40	62	0.82	251	.802	55	14	3	22.9

Awards: Big Ten Co-Defensive Player of the Week (9/15) ... All-Big Ten Tournament Team (11/8) ... Defensive Player of the Big Ten Tournament (11/8) ... CoSIDA Academic All-District Two First Team

2015: Co-Captain ... Named the Big Ten Defensive Player of the Week (9/15) ... Named to the All-Big Ten Tournament Team (11/8) ... Received Defensive Player of the Big Ten Tournament honors (11/8) ... CoSIDA Academic All-District Two First Team honoree ... Posted a four-save performance en route to a 0-0 tie against No. 21 Duke (8/28) ... Made four saves to protect a 2-0 win over No. 2 Stanford (9/11) ... Tallied five saves in 83:29 minutes in net to capture a 4-0 victory over Wisconsin in the Big Ten opener (9/17) ... Became the second Nittany Lion to win 50 matches in net, passing Alyssa Naehner for second all-time in the Penn State record books ... Made a season-high seven saves against Michigan in a 3-1 win (10/28) ... Posted a six-save mark in a 1-0 win over Michigan in the Big Ten Tournament (11/6) ... Tallied a three-save performance against No. 4 West Virginia in a 2-0 victory in the NCAA Quarterfinals (11/28) ... Played in 13 Nittany Lion shutouts on the season.



#30 ROSE CHANDLER - R-FRESHMAN - GOALKEEPER - ATLANTA, GA. - ATLANTA COUNTRY DAY

SINGLE-GAME HIGHS

Saves: 2, vs. Arkansas
-- Aug 30, 2015

Year	GP-GS	Min.	GA	GAAvg	Saves	Pct.	W	L	T	Sho
2015	5-0	100	2	1.81	3	.600	0	0	0	0.3
Total	5-0	100	2	1.81	3	.600	0	0	0	0.3

2015: Played in five matches ... Made a career-high two saves against Arkansas (8/30) ... Helped keep three shutouts intact ... Traveled to Spain to train with the U.S. U-20 team ... Played in two matches with the U.S. U-20 team in Spain in October.