

PENN STATE LADY LION

BASKETBALL GAME NOTES

2014-2015



Penn State Athletic Communications: 101D Bryce Jordan Center, University Park, PA 16802 Office: 814-865-1757 Fax: 814-863-3165
Women's Basketball Contact: Kristina Petersen Twitter: @ladyionsid Website: www.GoPSUsports.com Email: kap18@psu.edu Cell: 814-883-4581 Office: 814-865-1757

SCHEDULE/RESULTS

| NOVEMBER | | |
|---|-------------------------------|--|
| Sun. 2 | INDIANA (PA.) (ex.) | W, 75-71 <i>Preseason WNIT</i> |
| Fri. 14 | TOWSON | W, 71-64 |
| Sun. 16 | ALBANY | L, 53-54 |
| Sat. 22 | SETON HALL | L, 70-75 |
| Tues. 25 | ST. BONAVENTURE (BTN Plus) | L, 54-56 <i>Georgia State Thanksgiving Tournament</i> |
| Fri. 28 | vs. Liberty | L, 68-80 |
| Sun. 30 | vs. Samford | L, 56-59 (OT) |
| DECEMBER | | |
| <i>Big Ten/ACC Challenge</i> | | |
| Thurs. 4 | at #21/22 Syracuse | L, 39-61 |
| Sun. 7 | WAGNER (BTN Plus) | W, 96-66 |
| Wed. 10 | at Hartford | L, 57-62 |
| Sun. 14 | RIDER | W, 85-51 |
| Sun. 21 | USF (BTN Plus) | L, 87-90 (OT) |
| Sun. 28 | at #23/20 Iowa * | L, 52-77 |
| JANUARY | | |
| Thurs. 1 | at Michigan * (BTN Plus) | L, 53-89 |
| Sun. 4 | ILLINOIS * (BTN Plus) | L, 76-91 |
| Tues. 6 | at Wisconsin * (BTN) | L, 46-65 |
| Sat. 10 | #24/23 RUTGERS * (BTN) | noon |
| Thurs. 15 | at Nebraska * (BTN) | 7 p.m. |
| Sun. 18 | at Ohio State * (BTN Plus) | 2 p.m. |
| Thurs. 22 | INDIANA * (BTN Plus) | 7 p.m. |
| Sun. 25 | NORTHWESTERN * (BTN Plus) | 2 p.m. |
| Wed. 28 | at Minnesota * (BTN Plus) | 8 p.m. |
| FEBRUARY | | |
| Sun. 1 | at Rutgers * (BTN) | noon |
| Thurs. 5 | MARYLAND * (BTN Plus) | 7 p.m. |
| Sun. 8 | at Purdue * (BTN Plus) | 2 p.m. |
| Wed. 11 | MICHIGAN ST. * (BTN Plus) | 7 p.m. |
| Sun. 15 | MINNESOTA * (BTN Plus) | 2 p.m. |
| Mon. 23 | at Maryland * (BTN) | 7 p.m. |
| Thurs. 26 | OHIO STATE * (BTN Plus) | 7 p.m. |
| MARCH | | |
| <i>Ninth Annual Pink Zone at Penn State</i> | | |
| Sun. 1 | WISCONSIN * (BTN/BTN +) | 1/3/5 p.m. |
| Wed.-Sun. 4-8 | Big Ten Tour. (BTN/ESPN2) | Hoffman Estates, Ill. |
| Sat.-Tues. 20-23 | NCAA Tour. 1st & 2nd Round | |
| Sat.-Tues. 27-30 | NCAA Tour. Regionals | |
| APRIL | | |
| Sun./Tues. 5/7 | NCAA Final Four (Tampa, Fla.) | |

BOLD CAPS indicates home game
* - indicates Big Ten game
All times are Eastern Time.
BTN - Big Ten Network BTN Plus - BTN.com
Schedule subject to change. Please visit www.GoPSUsports.com for up-to-date tip times.

Game #16: #24/23 Rutgers at Penn State Sat., Jan. 10 ▶ noon ▶ Bryce Jordan Center ▶ University Park, Pa.

| | | |
|---|--|--|
|  |  | SETTING THE SCENE |
| Penn State Lady Lions | Rutgers Scarlet Knights | The Rutgers Game |
| Record: 3-12, 0-4 Big Ten Last Game: Wisconsin 65, PSU 46 (1/6) Head Coach: Coquese Washington Career Record: 145-93 (8th yr.) Record at PSU: 145-93 (8th yr.) | Record: 11-4, 2-2 Big Ten Last Game: RU 81, Michigan 68 (1/7) Head Coach: C. Vivian Stringer Career Record: 940-345 (44th yr.) Record at RU: 420-208 (20th yr.) | Series: Rutgers leads 20-18 Last Meeting: RU 57, PSU 44 (11/24/06) Streak: RU - 1 win TV: BTN - Frank Hanrahan (PBP) & Vera Jones (Analyst) Radio: The game is on the Penn State Sports Network and WRSC 1390 The Fanatic locally with Jerry Fisher and Julia Trogele calling the action. The audio feed is available at www.GoPSUsports.com. Webstream: BTN2GO Live Stats: GoPSUsports.com |
| Statistical Leaders | Statistical Leaders | |
| Points Lindsey Spann (16.1) Rebounds Kaliyah Mitchell (6.3) Assists Sierra Moore (3.7) | Points Tyler Scaife (16.8) Rebounds Betnijah Laney (12.4) Assists Briyona Canty (5.0) | |

SERIES QUICK HITS

- ✓ The Scarlet Knights are ranked 24th in the AP Poll and 23rd in the USA Today Sports Coaches' Poll with an 11-4 record.
- ✓ Tyler Scaife leads the Knights with a 16.8 scoring average to go along with 3.0 assists.
- ✓ Betnijah Laney averages a double-double with 16.0 points and a team-best 12.4 rebounds per outing.
- ✓ The Lions are 18-20 all-time versus Rutgers, but have won five of the last seven meetings.
- ✓ Penn State is 11-3 all-time in home games against the Scarlet Knights, but this will be Rutgers' first time playing the Bryce Jordan Center.
- ✓ The last time the teams met was at the Paradise Jam in the Virgin Islands in 2006 when the Knights picked up the 57-44 win.

STORYLINES

- ✓ Lady Lion head coach **Coquese Washington** has used six different starting lineups.
- ✓ Junior **Candice Agee** surpassed the 300-point and 200-rebound plateau for her career with a nine-point, seven-rebound game at Wisconsin Jan. 6.
- ✓ Guard **Lindsey Spann** posted her fifth 20-point game with 20 tallies against Illinois Jan. 4.
- ✓ Spann was selected as the Dec. 30 Big Ten Freshman of the Week after scoring 22 points in the Big Ten opener at Iowa.
- ✓ Sophomore **Alex Harris** tied her career-high with 11 rebounds at Iowa on Dec. 28.
- ✓ **Sierra Moore** earned her second double-double with 17 points and 10 rebounds versus the Bulls.

UP NEXT

The Lady Lions hit the road for a pair of games at Nebraska on Thursday at 7 p.m. on the Big Ten Network, followed by a game at Ohio State on Sunday, Jan. 18 at 2 p.m. Penn State is back home against Indiana on Thursday, Jan. 22 at 7 p.m. It is Dollar Dog Night and we will honor our fellow athletic teams with the OneTeam Celebration.

| | | |
|---------------------------------------|----------------------------------|------------------------------|
| Table of Contents | PSU's Record When.....5 | Season Highs/Lows.....10 |
| Schedule, Results, Storylines.....1 | Notable Games.....5 | Miscellaneous Stats.....11 |
| Roster, Quick Facts.....2 | Lions in the Big Ten Stats.....6 | Coquese Washington.....12 |
| Team Comparison, Series History.....2 | The Last Time Penn State.....8 | Player Bios.....13-24 |
| What's at Stake.....3 | Record Book.....9 | 2014-15 Box Scores.....25-28 |
| Big Ten Standings/Schedule.....3 | 2015 Signing Class.....9 | 2014-15 Stats.....29-30 |
| Possible Starters.....3 | Milestone Watch.....9 | Radio/TV Chart.....31 |



2014-15 ROSTER

PENN STATE LADY LIONS

| No. | Name | Pos. | Cl./Elg. | Ht. | Hometown/High School (Previous School) |
|-----|--------------------|------|----------------------|------|--|
| 1 | Candice Agee ** | C | Jr./Jr. | 6-6 | Victorville, Calif./Silverado |
| 3 | Brianna Banks | G | Sr./Sr. [^] | 5-9 | Newnan, Ga./Fayette County (Connecticut) |
| 5 | Sierra Moore | G | Jr./So. | 5-11 | Hanover, Pa./Delone Catholic (Duke) |
| 10 | Keke Sevillian * | G | So./So. | 5-7 | Goodrich, Mich./Goodrich |
| 11 | Alex Harris * | F | So./So. | 6-3 | Lorain, Ohio/Lorain |
| 12 | Lindsey Spann | G | So./Fr. | 5-6 | Laurel, Md./Good Counsel |
| 14 | Dominique Brooks | C | Jr./Jr. | 6-4 | Lansing, Ill./T.F. South (Trinity Valley C.C.) |
| 15 | Kalayah Mitchell * | F | So./So. | 6-2 | Stone Mountain, Ga./Stephenson |
| 25 | Peyton Whitted * | F | So./So. | 6-3 | Suwanee, Ga./North Gwinnett |
| 34 | Molly Dincher | G/F | Sr./Sr. | 6-0 | Williamsport, Pa./Williamsport Area (PSU Wilkes Barre) |
| 41 | Jen N.Y. DeGraaf * | F | So./So. | 6-1 | Springboro, Ohio/Springboro |
| 44 | Tori Waldner *** | F/C | Sr./Sr. | 6-5 | Milton, Ga./Milton |

Head Coach: Coquese Washington (Notre Dame '92)

Asst. Coaches: Itoro Coleman, Kia Damon, Jocelyn Wyatt

Captains: Tori Waldner, Sierra Moore, Lindsey Spann

* Indicates letters earned

RUTGERS SCARLET KNIGHTS

| No. | Name | Pos. | Cl. | Ht. | Hometown/High School (Previous School) |
|-----|-------------------|------|--------|------|--|
| 1 | Rachel Hollivay | C | Jr. | 6-4 | Columbus, Miss./Heritage Academy |
| 2 | Kahleah Copper | F/G | Jr. | 6-1 | Philadelphia, Pa./Prep Charter |
| 3 | Tyler Scaife | G | So. | 5-9 | Little Rock, Ark./Hall |
| 4 | Briyona Canty | G | RS-Jr. | 5-9 | Willingboro, N.J./Trenton Catholic |
| 5 | Natalie Parsons | G | Jr. | 5-9 | Bountiful, Utah/Woods Cross (Salt Lake C.C.) |
| 10 | Shrita Parker | G | Fr. | 5-7 | Va. Beach, Va./Ocean Lakes |
| 13 | Cynthia Hernandez | G | Jr. | 5-7 | Ventura, Calif./Buena/Ventura College |
| 15 | Syessence Davis | G | Sr. | 5-7 | Neptune, N.J./Neptune |
| 20 | Christa Evans | C | Sr. | 6-3 | Jackson, N.J./Jackson Memorial |
| 21 | Ashli Jeune | G | Fr. | 5-10 | Westampton, N.J./Life Center Academy |
| 22 | Alexis Burke | F | RS-Sr. | 5-11 | Bainbridge, Ga./Bainbridge (Illinois) |
| 33 | Alex Alfano | G | So. | 5-8 | Atlantic Highlands, N.J./Red Bank Catholic |
| 43 | Ariel Butts | C | Jr. | 6-3 | Columbus, Ga./Carver |
| 44 | Betnijah Laney | F/G | Sr. | 6-0 | Clayton, Del./Smyrna |

Head Coach: C. Vivian Stringer

Assistant Coaches: Tia Jackson, Tasha Pointer, Chelsea Newton

TEAM COMPARISON

| PENN STATE | | RUTGERS | |
|----------------|--------------------|----------------|--|
| Spann (16.1) | Scoring Leader | Scaife (16.8) | |
| Mitchell (6.3) | Rebounding Leader | Laney (12.4) | |
| Moore (3.7) | Assist Leader | Canty (5.0) | |
| Mitchell (1.7) | Steals Leader | Davis (3.1) | |
| Agee (1.8) | Blocks Leader | Hollivay (2.5) | |
| 64.2 | Scoring Offense | 73.2 | |
| 69.3 | Scoring Defense | 60.6 | |
| -5.1 | Scoring Margin | +12.6 | |
| 41.3 | Rebounds Per Game | 42.4 | |
| +0.9 | Rebound Margin | +5.2 | |
| 13.0 | Assists Per Game | 17.3 | |
| 8.3 | Steals Per Game | 10.7 | |
| .402 | Field Goal Pct. | .456 | |
| .385 | FG Defense Pct. | .355 | |
| .234 | 3-pt. FG Pct. | .327 | |
| .339 | 3-pt. FG Pct. Def. | .319 | |
| .627 | Free Throw Pct. | .702 | |
| 0.7 | Assist/Turnover | 1.0 | |
| Lost 5 | W/L Streak | Won 1 | |

SERIES HISTORY

| | |
|-------------------|----------------|
| Overall: | RU leads 20-18 |
| Last meeting: | Nov. 24, 20-6 |
| Last result: | RU, 57-44 |
| Current streak: | RU - 1 win |
| Last 10: | PSU, 6-4 |
| Last 10 meetings: | |
| 1/12/91 | A RU, 84-70 |
| 2/5/91 | H PSU, 78-72 |
| 2/8/92 | A RU, 56-55 |
| 12/5/92 | H PSU, 79-66 |
| 12/11/93 | A PSU, 84-75 |
| 11/27/94 | H PSU, 100-58 |
| 11/25/95 | A RU, 69-67 |
| 11/24/96 | H PSU, 66-48 |
| 11/19/97 | A PSU, 53-43 |
| 11/24/06 | N RU, 57-44 |

QUICK FACTS

THE UNIVERSITY

Location: University Park, Pa.
 Founded: 1855
 Enrollment: 48,184 (as of fall 2013)
 Colors: Blue & White
 Nickname: Lady Lions
 Conference: Big Ten
 President: Eric Barron
 Director of Athletics: Sandy Barbour
 Senior Woman Administrator: Charmelle Green
 Asst. Athletic Director: Jenn James
 Facility (cap.): Bryce Jordan Center (15,104)
 All-Time Record at BJC: 218-58 (19 seasons)

ATHLETIC COMMUNICATIONS

WBB Contact: Kristina Petersen
 Phone/Fax: (814) 865-1757/(814) 863-3165
 E-mail: kap18@psu.edu
 Address: 101-D Bryce Jordan Center
 University Park, Pa. 16802
 Press Row Phone: 814-863-3294
 Website: www.GoPSUsports.com
 Twitter: @ladylionsid

TEAM INFORMATION

2014-15 Record: 3-12
 Home: 3-5 Away: 0-5 Neutral: 0-2
 Big Ten Record: 0-4
 Home: 0-1 Away: 0-3
 Letterwinners Returning/Lost: 6/5
 Starters Returning/Lost: 1/4
 2014 Postseason: NCAA Sweet Sixteen

THE HISTORY

First Year of Women's Basketball: 1965
 All-Time Record: 884-406 (51 seasons)
 All-Time Big Ten Rec.: 244-126 (23 seasons)
 NCAA Tournament Appearances: 25
 NCAA Tournament Record: 32-25

WOMEN'S BASKETBALL

Head Coach: Coquese Washington
 Alma Mater: Notre Dame '92
 Overall Record: 145-93 (eighth season)
 School Record: 145-93 (eighth season)
 Twitter: @coquesewashing
 Basketball Office Phone: 814-863-2672
 Basketball Office Fax: 814-863-1221
 Best Time To Reach Coach: Through SID
 Assistant Coaches (Alma Mater):
 Itoro Coleman (Clemson '00)
 Kia Damon (Millersville '97)
 Jocelyn Wyatt (Appalachian State '06)
 Twitter/Instagram: @pennstateladylions
 Facebook: facebook.com/pennstateladylions

PRONUNCIATIONS

| | |
|-----------|------------|
| Coquese | ko-KWEES |
| Itoro | E-tora |
| Agee | A-gee |
| DeGraaf | D-graph |
| Kalayah | kah-LEE-uh |
| Sevillian | civilian |
| Spann | span |
| Whitted | WIT-tid |





STANDINGS (as of 1/7)

| Team | Big Ten | | | Overall | | |
|-------------------|----------|----------|-------------|----------|-----------|-------------|
| | W | L | Pct. | W | L | Pct. |
| Minnesota | 3 | 0 | 1.000 | 14 | 1 | .933 |
| Iowa | 2 | 0 | 1.000 | 11 | 2 | .846 |
| Maryland | 2 | 0 | 1.000 | 11 | 2 | .846 |
| Northwestern | 2 | 1 | .667 | 12 | 2 | .857 |
| Ohio State | 2 | 1 | .667 | 10 | 5 | .667 |
| Purdue | 2 | 1 | .667 | 9 | 5 | .643 |
| Illinois | 1 | 1 | .500 | 10 | 4 | .714 |
| Michigan | 2 | 2 | .500 | 10 | 5 | .667 |
| Rutgers | 2 | 2 | .500 | 11 | 4 | .733 |
| Wisconsin | 2 | 2 | .500 | 6 | 8 | .429 |
| Indiana | 1 | 2 | .333 | 11 | 3 | .786 |
| Nebraska | 0 | 2 | .000 | 10 | 3 | .769 |
| Michigan State | 0 | 3 | .000 | 8 | 6 | .571 |
| PENN STATE | 0 | 4 | .000 | 3 | 12 | .200 |

BIG TEN SCHEDULE

JANUARY 6

at Wisconsin 65, Penn State 46

JANUARY 7

at Rutgers 81, Michigan 68

JANUARY 8

Purdue at Maryland 6:30 p.m.
Ohio State at Indiana 7 p.m.
Iowa at Illinois 8 p.m.
Nebraska at Michigan State 8:30 p.m.

JANUARY 10

Rutgers at Penn State noon

JANUARY 11

Purdue at Iowa 2 p.m.
Ohio State at Michigan 2 p.m.
Wisconsin at Indiana 2 p.m.
Maryland at Minnesota 3 p.m.
Michigan State at Northwestern 3 p.m.
Nebraska at Illinois 3 p.m.

All times are Eastern.

POSSIBLE STARTERS



1 CANDICE AGEE C
Jr., 6-6, Victorville, Calif.
10.1 ppg, 5.4 rpg, 1.7 bpg, .542 FG%

Notes: Had 9 points, 7 rebounds & 2 blocks at Wisconsin ... Recorded first career double-double (21 p, 11 r) vs. USF ... Registered 19 points, 9 rebounds and a career-high 5 blocks versus Rider.



5 SIERRA MOORE G
RS-So., 5-11, Hanover, Pa.
11.4 ppg, 5.0 rpg, 3.7 apg, 1.4 spg

Notes: Registered 14 pts. with 6 rebs., 5 assists and 2 steals vs. Illinois ... Notched 11 pts. and 2 blocks at Michigan ... Had second double-double (17 p, 10 r) vs. USF) ... Dished out a career-high 7 assists vs. Rider.



10 KEKE SEVILLIAN G
So., 5-7, Goodrich, Mich.
2.5 ppg, 1.7 rpg, 1.3 spg

Notes: Has four career starts, all this season ... Nabbed 3 steals at Wisconsin ... Had 4 points via 2-for-3 shooting effort with 3 rebounds vs. Illinois ... Grabbed a career-high 4 rebounds at Iowa.



12 LINDSEY SPANN G
RS-Fr., 5-6, Laurel, Md.
16.1 ppg, 3.3 rpg, 3.5 apg, 1.5 spg

Notes: Leads team in scoring (16.1) ... Tallied 20 points with 6 rebs. & 4 assists vs. Illinois ... Had 15 points at Michigan ... Registered 22 points and 4 assists at Iowa ... Posted a career-high 28 points vs. USF.



44 TORI WALDNER F
Sr., 6-5, Milton, Ga.
4.7 ppg, 6.2 rpg, 1.3 bpg

Notes: Had nine points and seven rebounds vs. Illinois ... Nominee for the Allstate WBCA Good Works Team ... Ranks eighth on Penn State's career blocks list (109) ... SAAB President.

LAST TIME OUT

- Wisconsin used a 16-0 early in the second half to take control of a nip-and-tuck game and hand the Penn State Lady Lions a 65-46 loss in Madison on Tuesday.
- Freshman guard **Lindsey Spann** lead the Lady Lions for the 11th time in her young career with 13 points.
- She also had four rebounds, three assists and a pair of steals.
- Junior center **Candice Agee** added nine points, seven rebounds, two blocks and two steals, while **Jenny DeGraaf** had seven points off of the bench.

SCOUTING RUTGERS

- The Scarlet Knights are ranked 24th in the AP Poll and 23rd in the USA Today Sports Coaches' Poll with an 11-4 record.
- Rutgers has split its first four conference games with wins over Indiana and Michigan and losses to Ohio State and Iowa.
- Tyler Scaife leads the Knights with a 16.8 scoring average to go along with 3.0 assists and 1.5 steals per game. She had 20 points in Wednesday's win over Michigan.
- Betnijah Laney averages a double-double with 16.0 points and a team-best 12.4 rebounds per outing. She posted a double-double with 20 points and 10 rebounds against the Wolverines Wednesday.
- Kahleah Copper is the third Scarlet Knight averaging double figures with a 14.4 per game mark.

ALL-TIME VERSUS THE SCARLET KNIGHTS

- The Lady Lions are 18-20 all-time against Rutgers, but have won five of the last seven meetings.
- Penn State is 11-3 all-time in home games against the Scarlet Knights, but this will be Rutgers' first time playing the Bryce Jordan Center.
- The last time the teams met was at the Paradise Jam in the Virgin Islands in 2006 when the Knights picked up the 57-44 win.

WHAT'S AT STAKE

A Penn State Win vs. Rutgers Would:

- Make Penn State 19-20 all-time against the Scarlet Knights.
- Make the Lady Lions record at 4-11 on the season.
- Improve PSU to 1-4 in Big Ten play.
- Give Penn State its first win over a ranked opponent since Jan. 30, 2014.

LAST TIME VS. RUTGERS

NOV. 24, 2006 • ST. THOMAS, VIRGIN ISLANDS

Rutgers 57 • 2-2

| # | Player | Total | 3-Ptr | | | Rebounds | | PF | TP | A | To | Blk | Stl | Min. | |
|-----------------|-------------------|-------|-------|-------|-----------|----------|-------|-------|----|-------|-------|----------|-----|------|-----|
| | | | FG | FGA | FG% | Off | Def | | | | | | | | Tot |
| 21 | ZURICH, Heather | r | 2-6 | 1-3 | 0-0 | 1 | 0 | 11 | 4 | 5 | 0 | 0 | 0 | 26 | |
| 24 | MCCURDY, Myia | r | 3-4 | 0-0 | 0-1 | 1 | 0 | 11 | 3 | 6 | 3 | 3 | 0 | 18 | |
| 15 | VAUGHN, Kia | c | 3-6 | 0-0 | 3-5 | 2 | 9 | 11 | 3 | 9 | 0 | 2 | 0 | 1 | 34 |
| 05 | CARSON, Essence | c | 5-12 | 1-1 | 5-10 | 0 | 1 | 11 | 4 | 16 | 4 | 0 | 1 | 1 | 39 |
| 12 | ADAMS, Katie | g | 2-2 | 1-1 | 0-0 | 1 | 0 | 11 | 0 | 5 | 0 | 0 | 0 | 12 | |
| 10 | PRINCE, Epiphanny | g | 2-7 | 0-3 | 9-12 | 1 | 2 | 3 | 3 | 13 | 4 | 4 | 1 | 37 | |
| 35 | RAY, Brittany | g | 1-5 | 1-5 | 0-0 | 0 | 1 | 1 | 4 | 3 | 0 | 1 | 0 | 23 | |
| 43 | JUNALD, Rashidat | g | 0-1 | 0-0 | 0-1 | 1 | 3 | 4 | 1 | 0 | 0 | 1 | 0 | 11 | |
| | Team | | | | | 1 | 2 | 3 | | | | | | | |
| Totals | | | 18-43 | 4-13 | 17-29 | 8 | 18 | 26 | 22 | 57 | 11 | 11 | 2 | 7 | 200 |
| FG % 1st Half: | | | 8-23 | 34.8% | 2nd half: | 10-20 | 50.0% | Game: | | 18-43 | 41.9% | Deadball | | | |
| 3FG % 1st Half: | | | 2-7 | 28.6% | 2nd half: | 2-6 | 33.3% | Game: | | 4-13 | 30.8% | Rebounds | | | 3-2 |
| FT % 1st Half: | | | 6-9 | 66.7% | 2nd half: | 13-20 | 65.0% | Game: | | 17-29 | 58.6% | | | | |

Penn State 44 • 4-2

| # | Player | Total | 3-Ptr | | | Rebounds | | PF | TP | A | To | Blk | Stl | Min. | |
|-----------------|----------------------|-------|-------|-------|-----------|----------|-------|-------|----|-------|-------|----------|-----|------|-----|
| | | | FG | FGA | FG% | Off | Def | | | | | | | | Tot |
| 25 | Gissendanner, Kamela | r | 1-8 | 1-3 | 4-6 | 2 | 2 | 4 | 1 | 7 | 0 | 2 | 0 | 0 | 21 |
| 31 | Kenfro, Charity | r | 3-1 | 0-0 | 0-2 | 2 | 7 | 9 | 4 | 2 | 1 | 0 | 0 | 0 | 37 |
| 15 | Brown, Amanda | c | 0-1 | 0-1 | 0-0 | 5 | 6 | 7 | 9 | 3 | 5 | 1 | 5 | 0 | 30 |
| 03 | O'ROURKE, Brianne | g | 2-4 | 2-2 | 0-3 | 3 | 3 | 5 | 8 | 0 | 5 | 0 | 0 | 0 | 29 |
| 11 | Squire, Adrienne | c | 4-12 | 3-10 | 1-4 | 0 | 3 | 3 | 2 | 12 | 1 | 2 | 0 | 0 | 34 |
| 02 | GRANT, Tyra | g | 1-5 | 0-2 | 4-5 | 0 | 0 | 0 | 3 | 6 | 1 | 3 | 0 | 0 | 21 |
| 05 | WILLIAMS, Mashea | g | 2-4 | 0-0 | 0-0 | 1 | 0 | 1 | 5 | 4 | 0 | 1 | 0 | 0 | 16 |
| 22 | Molinaro, Courtney | g | 0-0 | 0-0 | 0-0 | 1 | 1 | 2 | 3 | 0 | 1 | 1 | 0 | 0 | 9 |
| 24 | Mark, Rashida | g | 0-0 | 0-0 | 0-0 | 0 | 0 | 0 | 1 | 0 | 0 | 1 | 0 | 0 | 3 |
| | Team | | | | | 1 | 0 | 1 | | | | | | | |
| Totals | | | 11-35 | 6-17 | 16-25 | 9 | 23 | 32 | 27 | 44 | 5 | 21 | 0 | 0 | 200 |
| FG % 1st Half: | | | 5-17 | 29.4% | 2nd half: | 6-18 | 33.3% | Game: | | 11-35 | 31.4% | Deadball | | | |
| 3FG % 1st Half: | | | 5-10 | 50.0% | 2nd half: | 1-7 | 14.3% | Game: | | 6-17 | 35.3% | Rebounds | | | 4-3 |
| FT % 1st Half: | | | 6-9 | 66.7% | 2nd half: | 10-16 | 62.5% | Game: | | 16-25 | 64.0% | | | | |

Officials: Sue Blausch, Dee Karter, Bonita Sprance

Technical fouls: Rutgers-None; Penn State-None.

Attendance: 1932
2006 U.S. Virgin Islands Paradise Jam, Presented by Basketball Travelers

| Score by periods | 1st | 2nd | Total |
|------------------|-----|-----|-------|
| Rutgers | 22 | 35 | 57 |
| Penn State | 21 | 23 | 44 |

Last FG - Rutgers 2nd-01:30, PSU 2nd-00:41.
Largest lead - Rutgers by 14 2nd-00:40, PSU None.
Rutgers led for 37:36, PSU led for 00:00. Game was tied for 02:04.



PRESS CONFERENCE SCHEDULE

Coquese Washington will hold a weekly press conference and the Lady Lions will have media availability on a weekly basis throughout the season. All press conferences will begin at 2:30 p.m. (unless otherwise noted) and go for approximately 15-20 minutes, followed by a 15-minute open media session prior to practice. Press conference will be held in the Media Room at the Bryce Jordan Center (unless otherwise noted).

Press Conference Dates

| | |
|---------------------------------|---|
| Wednesday, Jan. 14 | Wednesday, Feb. 18 |
| Wednesday, Jan. 21 | Wednesday, Feb. 25 |
| Tuesday, Jan. 27 | Tuesday, March 3 or Wednesday, March 4 (pending travel plans for BTT) |
| Wednesday, Feb. 4 | |
| Tuesday, Feb. 10 (Practice Gym) | |

LAST TIME VERSUS RU

- The Lady Lions were plagued by turnovers and struggled on offense as Penn State dropped a 57-44 decision to #18/18 Rutgers in the first round of the Paradise Jam in the U.S. Virgin Islands on Nov. 24, 2006.
- Despite the final margin, Penn State only trailed by four points with less than six minutes remaining in the contest.
- Adrienne Squire was the lone Lady Lion in double figures with 12 points, while Brianna O'Rourke accounted for eight points and three rebounds.
- Amanda Brown and Charity Renfro tied for the team rebounding lead with nine boards apiece.

FIRST BIG MEETING

- The Lady Lions welcome former Atlantic 10 foe Rutgers into the Big Ten Conference fold this season.
- The Penn State-Rutgers match-up was always intriguing during the Atlantic 10 days with the likes of Kahadeejah Herbert, Suzie McConnell and Susan Robinson for the Lions meeting Sue Wicks, Tanya Hansen and Lorrie Lawrence for the Scarlet Knights.
- The teams met twice in the Atlantic 10 Tournament Championship game with Penn State take home the title on both occasions in 1983 and 1985.
- Both teams also made it to the 2000 Final Four in Philadelphia, but did not play each other.

MCDONALD'S REUNION

- Saturday's game will reunite six McDonald's High School All-Americans between the two teams.
- Penn State's Brianna Banks was on the West squad in 2011, while Betnijah Laney and Briyona Canty were teammates on the East team.
- The Penn State duo of Candice Agee and Sierra Moore played in the 2012 McDonald's All-American game with Rutgers' Kahleah Copper.
- Agee was on the West team, while Moore and Rutgers played for the East.

CAN CAN BLOCK

- Junior center **Candice Agee** moved into the Penn State Top 20 in career blocks with her two-rejection effort at Wisconsin on Jan. 6.
- Agee is tied with Tanisha Wright (2002-05) for 20th on the all-time list with 61 blocks.
- She needs five blocks to tie Adrie DeVries (66; 1987-90) for 19th, six rejections to tie Janessa Wolff (67; 2008-10) and seven blocks to tie Kelly Mazzante (68; 2001-04) for 17th.
- Agee recorded a career-high five blocks in the win over Rider on Dec. 14.

LADY LIONS GET SOCIAL: The Lady Lions are on several social media sites, including Twitter, Instagram and Facebook. Follow the Lady Lions and assistant coaches (@pennstatewb), head coach Coquese Washington (@coquesewashing) and sports information contact Kris Petersen (@ladylionsid) on Twitter to get the inside scoop. The Lady Lions are also on Instagram (@pennstatewb) and Facebook at www.facebook.com/pennstateladylions.



LOOKING FOR THE RIGHT COMBO

- Lady Lion head coach **Coquese Washington** has used six different starting lineups in the first 14 games.
- She has also used a different starting five in each of the three Big Ten contests.
- Only **Lindsey Spann** and **Sierra Moore** are the only players to have started every game for Penn State this season.

#12 HITS 20 AGAIN

- Freshman guard **Lindsey Spann** hit the 20-point mark for the fifth time this season with a 20-point effort against Illinois on Jan. 4.
- Spann has hit the plateau in five of her last seven games.
- She has the most 20-point outings for a Penn State freshman since Maggie Lucas had 13 in 2010-11. Kelly Mazzante in second in that category with 10 games with 20 or more points as a rookie.

SPANN EARNS FRESHMAN WEEKLY HONORS

- Freshman guard **Lindsey Spann** was selected as the Big Ten Freshman of the Week for the week-ending Dec. 29.
- She is the first Lady Lion to win Freshman of the Week accolades since Maggie Lucas earned the honor on Feb. 28, 2011.
- Spann had a game-high 22 points in Penn State's Big Ten opener at Iowa on Dec. 28.
- She connected on a career-high four three-pointers and six free throws for her fourth 20-point performance in her last five games.
- Spann also pulled in five rebounds and dished out four assists against the Hawkeyes.

PENN STATE'S OVERALL/BIG TEN YEAR-BY-YEAR REVIEW

| Year | Overall | Big Ten | Home | BT Home | Road | BT Road | Neutral |
|----------|---------|---------|------|---------|------|---------|---------|
| 1992-93 | 22-6 | 14-4 | 12-2 | 9-0 | 9-4 | 5-4 | 0-0 |
| 1993-94 | 28-3 | 16-2 | 14-0 | 9-0 | 11-2 | 7-2 | 3-1 |
| 1994-95 | 26-5 | 13-3 | 14-2 | 8-0 | 9-3 | 5-3 | 3-0 |
| 1995-96* | 27-7 | 13-3 | 14-2 | 8-0 | 8-4 | 5-3 | 5-1 |
| 1996-97 | 15-12 | 8-8 | 9-3 | 5-3 | 5-6 | 3-5 | 1-3 |
| 1997-98 | 21-13 | 8-8 | 10-5 | 4-4 | 6-6 | 4-4 | 5-2 |
| 1998-99 | 22-8 | 12-4 | 9-2 | 6-2 | 9-4 | 6-2 | 4-2 |
| 1999-00 | 30-5 | 15-1 | 14-0 | 8-0 | 9-2 | 7-1 | 7-3 |
| 2000-01 | 19-10 | 11-5 | 11-2 | 7-1 | 6-5 | 4-4 | 2-3 |
| 2001-02 | 23-12 | 11-5 | 10-4 | 6-2 | 9-5 | 5-3 | 4-3 |
| 2002-03 | 26-9 | 13-3 | 16-0 | 8-0 | 7-7 | 5-3 | 2-2 |
| 2003-04 | 28-6 | 15-1 | 12-1 | 8-0 | 9-3 | 7-1 | 6-2 |
| 2004-05 | 19-11 | 13-3 | 12-0 | 8-0 | 6-9 | 5-3 | 1-2 |
| 2005-06 | 13-16 | 6-10 | 8-6 | 5-3 | 3-8 | 1-7 | 2-2 |
| 2006-07 | 15-16 | 7-9 | 12-1 | 7-1 | 2-12 | 0-7 | 1-3 |
| 2007-08 | 13-18 | 4-14 | 10-6 | 3-6 | 3-11 | 1-8 | 0-1 |
| 2008-09 | 11-18 | 6-12 | 8-6 | 4-5 | 2-9 | 2-7 | 1-3 |
| 2009-10 | 17-14 | 8-10 | 9-6 | 5-4 | 5-7 | 3-6 | 3-1 |
| 2010-11 | 25-10 | 11-5 | 14-4 | 6-2 | 7-4 | 5-3 | 4-2 |
| 2011-12 | 26-7 | 13-3 | 12-2 | 6-2 | 11-3 | 7-1 | 3-2 |
| 2012-13 | 26-6 | 14-2 | 14-0 | 8-0 | 9-5 | 6-2 | 3-1 |
| 2013-14 | 24-8 | 13-3 | 14-4 | 6-2 | 8-3 | 7-1 | 2-1 |
| 2014-15 | 3-12 | 0-3 | 3-5 | 0-1 | 0-5 | 0-3 | 0-2 |

* First season at the Bryce Jordan Center



PENN STATE-RUTGERS NOTABLE GAMES

Feb. 16, 1987 - Penn State 75, Rutgers 70

The Lady Lions knocked #2 Rutgers from the ranks of the unbeaten. The lone undefeated team left in women's basketball entering the evening, the Lady Knights tied the game at 66 with four minutes to play. However, Lisa Faloon hit a 16-footer to give Penn State a lead and Vicki Link stole the ball and converted on a layup to make it a three-point lead and secure the win. The senior trio of Suzie McConnell, Link and Faloon combined for 57 of PSU's 75 points. Link also pulled in 20 rebounds.

Mar. 9, 1990 - Penn State 75, Rutgers 74

Tanya Garner connected on a three-pointer at the buzzer to give Penn State a thrilling 75-74 win over the No. 2 seed Rutgers in the Atlantic 10 Tournament semifinals. The Knights led 72-67 with just over a minute to play, but Garner hit a three and Susan Robinson scored to even the score. Rutgers' Vicky Picott converted on an open layup attempt with five seconds remaining, but Garner played hero for the Lions with a triple at the buzzer for the one-point win. Penn State would go on to win the Atlantic 10 Championship. Kathy Phillips, who was the Tournament MVP, scored 21 points and grabbed a career-high 19 rebounds, while Garner finished with 20.

Feb. 8, 1992 - Rutgers 56, Penn State 55

Carla Coleman's layup gave Penn State a 51-45 lead with five minutes to play, but the Lady Lions came up empty on three possessions in the final minutes to allow the Knights to pull within one. After forcing Lady Lion point guard Dana Eikenberg into a turnover, Caroline DeRoose hit a three-pointer and was fouled for a four-point play and a 54-51 Rutgers lead with less than two minutes to play. The squads swapped free throws and Penn State's final possession came up empty with a travel by Carla Coleman.

FORCE IN THE POST

- Junior center **Candice Agee** has proven to be a force in the post this season.
- In fact with one swat at Michigan on Jan. 1, Agee now has 27 blocks on the season, surpassing her career-best season total of 21 from 2013-14.
- Agee ranks eighth in the Big Ten in blocked shots with a 1.8 per game average.

OF NOTE

- Sophomore **Alex Harris** earned her first career start at Michigan on Jan. 1.
- Sophomore **Keke Sevillian** scored a career-best nine points on 3-of-3 shooting from the field and 3-of-7 shooting from the free throw line in the win over Rider on Dec. 14. Her previous career-high was eight points vs. St. Francis (Pa.) on Nov. 8, 2013.
- The Lady Lions scored a season-low 39 points Syracuse on Dec. 4, their lowest point total since scoring 39 points in a loss to Wisconsin on Feb. 25, 2010.
- Penn State held Samford 13 points in the first half on Nov. 30, which are the fewest points allowed by PSU in a half since NJIT scored nine points in the first half on Dec. 23, 2012.
- Sophomore **Keke Sevillian** made her first career start and junior **Candice Agee** made her fourth career start against Seton Hall (11/22).
- Sophomore **Kaliyah Mitchell** tied her career high with 10 rebounds against Seton Hall on Nov. 22.
- With the loss to Seton Hall, Penn State dropped to 1-2 to start a season for the first time since 2005-06, when the Lady Lions started 1-3.
- Freshman **Lindsey Spann** and sophomores **Kaliyah Mitchell**, **Sierra Moore** and **Peyton Whitted** all made their first career starts for the Lady Lions against Towson on Nov. 14.
- Junior **Candice Agee** tied her career high with nine rebounds against Towson Nov. 14. She also grabbed nine rebounds vs. Fairleigh Dickinson on Dec. 2, 2012.
- Sophomore **Keke Sevillian** reached a career high in assists with five in the season opener against Towson on Nov. 14.
- With the win over Towson on Nov. 14, **Coquese Washington** improved to a perfect 8-0 in the first game of the season since taking the helm of the Lady Lion program for the 2007-08 season.
- Head coach **Coquese Washington** has selected senior **Tori Waldner**, redshirt-sophomore **Sierra Moore** and redshirt-freshman **Lindsey Spann** as team captains for the 2014-15 season.
- Sophomore forward **Peyton Whitted's** father, Kevin, was recently named the head coach of the NBA Developmental League's Westchester Knicks.

HARRIS PULLING IN THE BOARDS

- Sophomore **Alex Harris** tied her career-high with 11 rebounds in the Big Ten opener at Iowa on Dec. 28.
- Her effort equals the mark set twice last season against Illinois State on Nov. 30, 2013 and versus Bucknell on Nov. 20, 2013.
- In her first two games of the season, Harris has pulled in 19 rebounds for a 9.5 per game average.

PENN STATE'S RECORD WHEN...

| | |
|---|------|
| Playing at home | 3-5 |
| Playing on the road | 0-5 |
| Playing at a neutral site | 0-2 |
| vs. Top 10 teams | 0-0 |
| vs. Top 25 teams | 0-2 |
| Games decided by 3 points or less | 0-4 |
| Games decided by 4-10 points | 1-2 |
| Games decided by 11-19 points | 0-3 |
| Games decided by 20 points or more | 2-3 |
| Leading at the half | 3-4 |
| Tied at the half | 0-2 |
| Trailing at the half | 0-6 |
| Leading with 5:00 remaining | 3-2 |
| Trailing with 5:00 remaining | 0-10 |
| Tied with 5:00 remaining | 0-0 |
| In overtime | 0-0 |
| PSU scores less than 49 points | 0-2 |
| PSU scores 50-59 points | 0-5 |
| PSU scores 60-69 points | 0-2 |
| PSU scores 70-79 points | 1-2 |
| PSU scores 80 points or more | 2-1 |
| PSU shoots 45% or better | 3-1 |
| PSU shoots less than 45% | 0-11 |
| PSU shoots better than opponent | 3-5 |
| Opponent shoots better than PSU or tied | 0-7 |
| Opponent scores less than 39 points | 0-0 |
| Opponent scores 40-49 points | 0-0 |
| Opponent scores 50-59 points | 1-3 |
| Opponent scores 60-69 points | 2-3 |
| Opponent scores more than 70 points | 0-6 |
| Opponent shoots better than 45% | 0-3 |
| Opponent shoots less than 45% | 3-9 |
| PSU outrebounds opponent | 3-4 |
| Opponent outrebounds PSU or tied | 0-8 |
| PSU commits 14 or less turnovers | 2-2 |
| PSU commits 15 or more turnovers | 1-10 |
| PSU makes at least 5 3-pointers | 0-1 |
| PSU makes four 3-pointers or less | 3-11 |
| Recording 7 or more steals | 3-9 |
| Recording 6 or less steals | 0-3 |
| Wearing white uniforms | 3-5 |
| Wearing blue uniforms | 0-7 |
| Wearing white and pink uniforms | 0-0 |
| Penn State wins the tip | 2-9 |
| Penn State loses the tip | 1-3 |
| Penn State scores first | 3-3 |
| Opponent scores first | 0-9 |
| Playing during the day (before 5 p.m.) | 3-7 |
| Playing at night | 0-5 |
| On Monday | 0-0 |
| On Tuesday | 0-2 |
| On Wednesday | 0-1 |
| On Thursday | 0-2 |
| On Friday | 1-1 |
| On Saturday | 0-1 |
| On Sunday | 2-5 |
| In November | 1-5 |
| In December | 2-4 |
| In January | 0-3 |
| In February | 0-0 |
| In March | 0-0 |



LIONS IN THE BIG TEN STATS

A breakdown of where Penn State ranks in the Big Ten's overall statistical categories. Through games of Jan. 7.

| TEAM | |
|-------------------------------|-------------|
| Scoring Offense..... | 13th (64.2) |
| Scoring Defense..... | 13th (69.3) |
| Scoring Margin..... | 14th (-5.1) |
| Free Throw Percentage..... | 14th (.627) |
| FG Percentage..... | 13th (.402) |
| FG Percentage Defense..... | 11th (.385) |
| 3-point FG Percentage..... | 14th (.234) |
| 3-point FG Pct. Defense..... | 13th (.339) |
| 3-point FG Made..... | 13th (2.5) |
| Rebounding Offense..... | 7th (41.3) |
| Rebounding Defense..... | 9th (40.3) |
| Rebounding Margin..... | 9th (+0.9) |
| Offensive Rebounds..... | 5th (13.6) |
| Defensive Rebounds..... | 9th (27.7) |
| Blocked Shots..... | 5th (5.2) |
| Assists..... | 14th (13.0) |
| Steals..... | 9th (8.3) |
| Turnover Margin..... | 12th (-1.2) |
| Assist to Turnover Ratio..... | 14th (0.7) |

| INDIVIDUAL | |
|---------------------|--|
| Scoring..... | 8th - Lindsey Spann (16.1) |
| Rebounding..... | 19th - Kaliyah Mitchell (6.3) 20th - Tori Waldner (6.2) |
| Field Goal Pct..... | 9th - Candice Agee (.542) |
| Assists..... | 14th - Sierra Moore (3.7) |
| Blocked Shots..... | 8th - Candice Agee (1.8) 12th - Tori Waldner (1.3) |
| Def. Reb..... | 14th - Tori Waldner (4.7) |
| Minutes..... | 8th - Lindsey Spann (33.9) 10th - Sierra Moore (33.2) |

2014-15 GAME-BY-GAME STARTING LINEUPS

| Date | Opponent | Pt Guard | Guard | Guard/Forward | Forward | Center |
|-------|---------------------|----------|-------|---------------|----------|---------|
| 11/2 | INDIANA (PA.) (ex.) | Spann | Moore | Mitchell | Whitted | Waldner |
| 11/14 | TOWSON | Spann | Moore | Mitchell | Whitted | Waldner |
| 11/16 | ALBANY | Spann | Moore | Mitchell | Whitted | Waldner |
| 11/22 | SETON HALL | Spann | Moore | Sevillian | Mitchell | Agee |
| 11/25 | ST. BONAVENTURE | Spann | Moore | Mitchell | Whitted | Agee |
| 11/28 | vs. Liberty | Spann | Moore | Mitchell | Waldner | Agee |
| 11/30 | vs. Samford | Spann | Moore | Mitchell | Whitted | Waldner |
| 12/4 | at Syracuse | Spann | Moore | Mitchell | Waldner | Agee |
| 12/7 | WAGNER | Spann | Moore | Mitchell | Waldner | Agee |
| 12/10 | at Hartford | Spann | Moore | Mitchell | Waldner | Agee |
| 12/14 | RIDER | Spann | Moore | Mitchell | Whitted | Agee |
| 12/21 | USF | Spann | Moore | Mitchell | Waldner | Agee |
| 12/28 | at Iowa | Spann | Moore | Mitchell | Whitted | Agee |
| 1/1 | at Michigan | Spann | Moore | Sevillian | Harris | Waldner |
| 1/4 | ILLINOIS | Spann | Moore | Sevillian | Waldner | Agee |
| 1/6 | at Wisconsin | Spann | Moore | Sevillian | Waldner | Agee |

THREE-STRAIGHT 20s FOR SPANN

- Freshman guard **Lindsey Spann** posted her third consecutive game with 20 or more points with a 22-point effort at Iowa to open Big Ten play on Dec. 28.
- It was the fourth 20-point performance of the season for the rookie.
- Spann is the first Lady Lion freshman with three-straight 20-point outings since Maggie Lucas accomplished the feat from Jan. 6 to Jan. 16.
- Spann netted a career-high four three-point field goals and six free throws vs. the Hawkeyes. She also tied her career-best with five rebounds.
- Spann leads the team in double-digit performances and has now earned 11 or more points in 10 of her first 12 career games. She has netted 20 points in four of those contests.

ANOTHER SCORING MARK FOR SPANN

- Freshman **Lindsey Spann** finished with a career-best 28 points against USF on Dec. 21.
- Her performance tops her previous career high of 23 set against Rider on Dec. 14.
- Spann's 28 points vs. USF are the most by a Penn State player since Ariel Edwards netted 29 points vs. Ohio State in the Big Ten Tournament on March 7, 2014.
- The 28 tallies are the most by a Penn State freshman since Maggie Lucas had 28 in the overtime loss at Boston College on Dec. 2, 2010.
- Spann tied her career-high with 11 field goals made and set career-best marks in field goals attempted (22), along with free throws made (5) and attempted (9) against the Bulls.

HARRIS' CAREER DAY

- Playing in her first game this season against USF on Dec. 21, sophomore **Alex Harris** set career-highs in points (9), free throws made (3) and attempted (8), and minutes played (31).
- She also tied her career-best marks in field goals made (3) and attempted (5), assists (2) and blocked shots (3).
- Harris also pulled down eight rebounds to push her career total over the century mark.

DOUBLE DOUBLE-DOUBLES

- Junior **Candice Agee** and sophomore **Sierra Moore** each recorded double-doubles in the overtime loss to USF on Dec. 21.
- Agee posted her first career double-double with 21 points and 11 boards. She is the fifth different Lady Lion to accomplish the feat this season, joining **Tori Waldner**, **Moore**, **Jenny DeGraaf** and **Kaliyah Mitchell**.
- Agee's 21 points equaled her career-high which came against Seton Hall on Nov. 22, and her 11 rebounds are a career best, surpassing her previous high of nine, which she accomplished four times previously.
- Moore earned her second career double-double with a 17-point, 10-rebound performance against the Bulls.
- Her previous double-double came earlier this season vs. Seton Hall (14 pts., 10 rebs.) on Nov. 22.
- Moore moved past the 200-career point plateau with her 17-point effort against USF.
- Moore equaled her career high in boards with 10, the last time she accomplished that feat was Nov. 22 versus Seton Hall.



LINDSEY LIGHTS IT UP AGAIN

- Freshman **Lindsey Spann** recorded her ninth double-digit scoring outing with her second 20-point game of the year with 23 points versus Rider on Dec. 14.
- Her other 20-point performance was a 22-point effort against Wagner on Dec. 7.
- Spann connected on a career-high 11 field goals to account for her 23 points.
- Spann dished out five assists to match her career high and earn her seventh game of the season with four or more assists (third consecutive) versus the Broncs.

K's D-D

- Sophomore forward **Kaliyah Mitchell** earned her first career double-double, tallying 12 points and 10 rebounds against Rider on Dec. 14.
- The 10 rebounds tied her career-high, also accomplished this season vs. Seton Hall (11/22/14) and last season at Michigan State (1/19/14).
- Mitchell is the fourth Lady Lion to post a double-double this season, joining **Tori Waldner**, **Sierra Moore** and **Jenny DeGraaf**.

WALDNER MOVES UP BLOCKS CHART

- Senior center **Tori Waldner** moved into sole possession of eighth place on Penn State's career blocks list with one rejection versus Rider on Dec. 14.
- Waldner has 109 career blocks to break a tie with former teammate Talia East (102; 2011-14) for eighth.
- Next up on the list for Waldner is Tina Henry, who had 140 blocks from 1990-93.
- She became the ninth player in school history to record 100 career blocks with one rejection against Liberty on Nov. 28.
- She is the third Lady Lion in the last three years to reach the 100-block mark, joining Nikki Greene (215; 2010-13) and Talia East (102; 2011-14).

SCORING OUTBURST

- One game after posting its lowest scoring output since 2010, the Lady Lions lit up the scoreboard for 96 points, the highest total since the 2013 season opener, in a 96-66 win over Wagner Dec. 7.
- The 96 points versus the Seahawks are the most points scored by the Lady Lions since scoring a Bryce Jordan Center record 117 points vs. St. Francis (Pa.) in the 2013-14 season opener on Nov. 8, 2013.
- The point total is also tied for 13th in BJC history.
- The Lady Lions set season highs for points (96), points in a half (54), field goals made (34), field goal percentage (.531), free throws made (25) and attempted (33) and assists (19) versus Wagner.
- Penn State also committed a season-low 12 turnovers, which are also the fewest turnover since March 7, 2014 vs. Ohio State (9).
- Additionally, the Lady Lions dished out 19 assists, the highest total since handing out 22 helpers against Purdue on Jan. 30, 2014.
- Penn State shot 53.1 percent versus the Seahawks, marking the first time that the Lions shot better than 50 percent since Michigan (.538) on March 1, 2014.

20 POINTS TIMES THREE

- The Lady Lions had three players reach the 20-point plateau in a 96-66 win over Wagner Dec. 7.
- Freshman **Lindsey Spann** (22) and sophomores **Sierra Moore** (21) and **Kaliyah Mitchell** (20) all reached the mark.
- It was the first time since Nov. 26, 2011 vs. Nevada that three Lady Lions all cracked the 20-point mark in the same game: Maggie Lucas (26), Alex Bentley (23) and Zhaque Gray (21).

SPANN'S SCORING STREAK

- Freshman guard **Lindsey Spann** saw her streak of eight consecutive games with double figures to collegiate career come to an end at Hartford on Dec. 10.
- Spann's streak of eight consecutive double-digit scoring performances to start a career is a feat that was not accomplished by Maggie Lucas nor Kelly Mazzante, Penn State's two all-time leading scorers.
- The only Penn State freshman to score in double figures every game of their freshman season was Susan Robinson, who did so in 28 games in 1988-89.

TORI GOOD WORKS

- Senior **Tori Waldner** is among the nominees for the Allstate WBCA Good Works Team award.
- This prestigious community service award recognizes a distinguished group of student-athletes who have demonstrated a commitment to enriching the lives of others and contributing to the greater good in their communities.
- From the 93 WBCA nominees, a distinguished voting panel will select two 10-member teams comprised of five student-athletes from the NCAA® Division I level and five student-athletes from NCAA Divisions II, III and the NAIA.
- The final roster of 20 award recipients will be unveiled in February.
- Former Lady Lion Gizelle Studevent was a member of the inaugural Allstate WBCA Good Works team in 2013.

| MILESTONE WATCH | | |
|-------------------|-----------------------|---------------|
| Milestone Watch | | |
| Milestone | Player | Current Total |
| 400 points | Candice Agee | 302 |
| 300 points | Tori Waldner | 270 |
| | Kaliyah Mitchell | 263 |
| | Lindsey Spann | 242 |
| | Sierra Moore (career) | 234 |
| 200 points | Sierra Moore (PSU) | 171 |
| | Peyton Whitted | 153 |
| 100 points | Alex Harris | 77 |
| 500 rebounds | Tori Waldner | 424 |
| 300 rebounds | Kaliyah Mitchell | 235 |
| | Candice Agee | 203 |
| 200 rebounds | Peyton Whitted | 145 |
| | Alex Harris | 124 |
| 100 assists | Sierra Moore (career) | 68 |
| | Sierra Moore (PSU) | 56 |
| | Lindsey Spann | 53 |
| 50 assists | Kaliyah Mitchell | 38 |
| 150 blocks | Tori Waldner | 109 |
| 75 blocks | Candice Agee | 61 |
| 75 steals | Tori Waldner | 52 |
| 50 steals | Kaliyah Mitchell | 45 |
| Milestone Reached | | |
| Milestone | Player | Reached |
| 300 points | Candice Agee | 1/6 |
| 200 rebounds | Candice Agee | 1/6 |
| 50 assists | Sierra Moore (PSU) | 1/4 |
| 50 assists | Lindsey Spann | 1/4 |
| 200 points | Lindsey Spann | 1/1 |
| 200 points | Sierra Moore (career) | 12/21 |
| 100 rebounds | Alex Harris | 12/21 |
| 400 rebounds | Tori Waldner | 12/14 |
| 50 blocks | Candice Agee | 12/14 |
| 200 rebounds | Kaliyah Mitchell | 12/10 |
| 100 points | Sierra Moore (PSU) | 12/7 |
| 200 points | Candice Agee | 12/4 |
| 100 blocks | Tori Waldner | 11/28 |
| 100 points | Sierra Moore (career) | 11/25 |
| 100 points | Peyton Whitted | 11/22 |
| 100 rebounds | Peyton Whitted | 11/16 |
| 200 points | Kaliyah Mitchell | 12/7 |
| 100 points | Lindsey Spann | 12/7 |
| 50 steals | Tori Waldner | 12/7 |



THE LAST TIME PENN STATE...

SCORING

Player scored 20 points: vs. Illinois (20, Lindsey Spann), 1/4/15
 Player scored 25 points: vs. USF (28, Lindsey Spann), 12/21/14
 Player scored 30 points: at Indiana (32, Maggie Lucas), 2/13/14
 Player scored 35 points: vs. Georgetown (39, Maggie Lucas), 12/9/12
 Player scored 40 points: vs. Minnesota (49, Kelly Mazzante), 12/28/01
 Two players scored 20 points: vs. USF (28, Lindsey Spann; 21, Candice Agee), 12/21/14
 Three players scored 20 pts.: vs. Wagner (22, Lindsey Spann; 21, Sierra Moore; 20, Kaliyah Mitchell), 12/7/14
 Two players scored 25 points: at Boston College (28, Alex Bentley; 28, Maggie Lucas), 12/2/10
 Player scored 25 points/3 consecutive games: Maggie Lucas (32, at Indiana, 2/13/14; 25 vs. Wisconsin, 2/16/14; 26 vs. Northwestern, 2/20/14)
 Five in double figures: at Northwestern (19, Maggie Lucas; 15, Ariel Edwards; 11, Dara Taylor; 11, Talia East; 11, Peyton Whitted), 2/2/14
 Six in double figures: at Oakland (15, Alex Bentley; 16, Ariel Edwards; 16, Zhaque Gray; 13, Maggie Lucas; 10, Mia Nickson; 10, Gizelle Studevent; 10, Julia Trogele), 11/18/10
 Seven in double figures: at Oakland (15, Alex Bentley; 16, Ariel Edwards; 16, Zhaque Gray; 13, Maggie Lucas; 10, Mia Nickson; 10, Gizelle Studevent; 10, Julia Trogele), 11/18/10
 PSU scored 50 points in a half: vs. Rider (50, first half), 12/14/14
 PSU scored 50 points in both halves: vs. St. Francis (Pa.) (55, first half; 62, second half), 11/8/13
 PSU scored 55 points in a half: vs. St. Francis (Pa.) (55, first half; 62, second half), 11/8/13
 PSU scored 60 points in a half: vs. St. Francis (Pa.) (62, second half), 11/8/13
 PSU scored 100 points: vs. St. Francis (Pa.) (W, 117-77), 11/8/13
 PSU scored 100 points in Big Ten game: vs. Illinois (W, 101-80), 2/15/01
 PSU scored 100 points in a home game: vs. St. Francis (Pa.) (W, 117-77), 11/8/13
 PSU scored fewer than 15 points in a half: vs. Wisconsin (13, first half), 2/25/10
 PSU scored fewer than 20 points in a half: at Hartford (18, first half), 12/10/14
 PSU scored fewer than 40 points in a game: at Syracuse (L, 39-61), 12/4/14
 PSU scored fewer than 50 points in a game: at Wisconsin (L, 46-65), 1/6/15
 PSU scored fewer than 50 points in a Big Ten game: at Wisconsin (L, 46-65), 1/6/15
 OPP scored 50 points in a half: at Michigan (53, first half), 1/1/15
 OPP scored 100 points: at Boston College (Lot, 113-104), 12/2/10
 OPP scored fewer than 20 points in a game: at Dickinson (W, 57-16), 3/6/71
 OPP scored fewer than 30 points in a game: vs. Virginia Tech (W, 66-28), 12/6/11
 OPP scored fewer than 40 points in a game: vs. Wisconsin (W, 84-40), 1/17/13
 OPP scored fewer than 50 points in a game: vs. Ohio State (W, 66-42), 1/16/14
 OPP scored fewer than 50 points in a Big Ten game: vs. Ohio State (W, 66-42), 1/16/14

FIELD GOAL SHOOTING

Player made every shot from the field (min. 7): vs. Michigan St. (Amanda Brown, 8-8), 1/25/07
 PSU shot 55% or better in a game: vs. Illinois (.611), 2/20/13
 PSU shot 55% or better in consecutive games: vs. Northwestern (.682), 3/2/96; vs. Ohio St. (.585), 3/3/96
 PSU shot 60% in a game: vs. Illinois (.611), 2/20/13
 PSU shot below 25% in a game: vs. Michigan State (.224), 3/9/13
 PSU shot below 30% in a game: at Syracuse (.278), 12/4/14
 PSU shot below 35% in a game and won: vs. Michigan State (.333), 1/19/14
 PSU shot below 30% in a game and won: vs. Northwestern (.299), 1/3/13
 PSU shot 55% in a half: vs. Illinois (.595, second half), 1/4/15
 PSU shot 60% in a half: vs. Wagner (.625, second half), 12/7/14
 PSU shot 65% in a half: at Georgetown (.680, second half), 12/8/13
 PSU shot 70% in a half: vs. Virginia Tech (.714, second half), 12/6/11
 PSU shot 55% in both halves: vs. Illinois (.586, first half; .640, second half), 2/20/13
 PSU shot 20% or below in a half: vs. Michigan State (.200, first half), 3/9/13
 PSU shot below 25% in a half: at Wisconsin (.241, second half), 1/6/15

THREE-POINT SHOOTING

Player made every shot from the field (min. 4): vs. Albany (4-4, Jenny DeGraaf), 11/16/14
 Player made 4 three-pointers in a half: vs. Connecticut (4 in the second, Maggie Lucas), 11/17/13
 Player made 5 three-pointers in a half: vs. Michigan State (5 in the second, Maggie Lucas), 3/9/13
 Player made 6 three-pointers in a half: vs. Michigan State (5 in the second, Maggie Lucas), 3/9/13
 Player made 5 three-pointers in a game: vs. Northwestern (5, Maggie Lucas), 2/20/14
 Player made 6 three-pointers in a game: vs. Michigan State (7, Maggie Lucas), 3/9/13
 Player made 7 three-pointers in a game: vs. Michigan State (7, Maggie Lucas), 3/9/13
 Player made 8 three-pointers in a game: at Nebraska (8, Maggie Lucas), 3/3/13
 Player attempted 10 three-pointers in a game: at Illinois (11, Maggie Lucas), 1/9/14
 PSU made 10 three-pointers: vs. North Carolina (14), 11/30/11
 PSU did not make a three-pointer: vs. Hartford (0-8), 12/29/13
 PSU attempted 20 three-pointers: vs. Connecticut (21), 11/17/13
 PSU shot 60% 3FG (min. 5 att.): vs. Illinois (.667; 6-9), 2/20/13

FREE THROW SHOOTING

Player made every shot from FT line (min. 10): at Illinois (10-10, Maggie Lucas), 1/9/14
 PSU shot 90% (min. 10 att.): vs. Michigan (18-19, .947), 3/1/14
 PSU shot below 50% (min. 10 att.): at Purdue (8-21, .381), 1/30/14
 PSU made 30 free throws: vs. St. Francis (Pa.) (37), 11/8/13
 PSU made fewer than five FTs: at Michigan (3), 2/3/11
 PSU attempted 40 free throws: vs. USF (40), 12/21/14
 PSU attempted fewer than five FTs: at Michigan (4), 2/3/11

REBOUNDS

Player had 15 rebounds: at LSU (16, Nikki Greene), 3/26/13
 Player had 20 rebounds: at Cal State Northridge (20, Nikki Greene), 11/24/12
 Two players with double-digit rebs.: vs. USF (11, Candice Agee; 10, Sierra Moore), 12/21/14
 Three players had double-digit rebounds: vs. Ohio State (15, Nikki Greene; 15, Mia Nickson; 10, Maggie Lucas), 2/20/12
 PSU had 60 rebounds: vs. Ohio State (60), 2/20/12
 PSU had 50 rebounds: vs. USF (54), 12/21/14
 PSU had 20 or fewer rebounds: vs. Michigan State (20), 1/19/03
 OPP had 20 or fewer rebounds: at Indiana (20), 2/13/11
 PSU had 20 offensive rebounds: vs. Seton Hall (21), 11/22/14
 PSU had 25 offensive rebounds: vs. Ohio State (29), 2/20/12

ASSISTS

Player had 10 assists: vs. Minnesota (10, Dara Taylor), 1/26/14
 Player had 10 assists/consecutive games: Helen Darling (12 at LaSalle, 12/8/99; 11 vs. Auburn, 12/11/99; 10 vs. Clemson, 12/19/99)
 Player had 15 assists: vs. North Carolina (15, Alex Bentley), 11/30/11
 PSU had 30 assists: vs. St. Francis (Pa.) (32), 12/2/99
 PSU had fewer than 10 assists: at Syracuse (9), 12/4/14
 PSU had fewer than 5 assists: at Michigan State (4), 2/4/10

BLOCKED SHOTS

Player blocked 5 shots: vs. Rider (5, Candice Agee), 12/14/14
 Player blocked 6 shots: vs. Purdue (7, Talia East), 1/12/14
 PSU blocked 10 shots: vs. Purdue (14), 1/12/14
 PSU blocked 0 shots: at Illinois, 1/9/14

STEALS

Player had 7 steals: vs. Alcorn State (7, Dara Taylor), 12/22/13
 Player had 8 steals: vs. NJIT (8, Alex Bentley), 12/23/12
 PSU had 20 steals: vs. Bucknell (21), 12/28/10

TURNOVERS

PSU committed 25 or more: at Illinois (27), 1/9/14
 PSU committed 25 or more and won: at Illinois (27), 1/9/14
 PSU committed 10 or fewer: vs. Ohio State (9), 3/7/14
 PSU committed 10 or fewer in consecutive games: vs. Minnesota (9), 1/22/04; at Ohio St. (9), 1/25/04
 OPP committed 25 or more: vs. Oregon State (26), 11/30/13

DOUBLE-DOUBLES

Points & rebounds: vs. USF (Candice Agee, 21 pts., 11 rebs.; Sierra Moore, 17 pts., 10 rebs.), 12/21/14
 Points & rebounds/consecutive games: Nikki Greene (12 points, 10 rebounds vs. Ohio State, 1/30/11; 16 points, 14 rebounds at Illinois, 1/27/11)
 Points & rebounds/3 consecutive games: Amanda Brown (19 pts., 17 rebs. at Northwestern, 2/11/07; 14 pts., 10 rebs. vs. Minnesota, 2/15/07; 14 pts., 11 rebs. at Iowa, 2/18/07)
 Points & rebounds/4 consecutive games: Angie Potthoff (vs. Northwestern, 1/31/97; at Illinois, 2/2/97; vs. Michigan, 2/7/97; vs. Indiana, 2/9/97; vs. Iowa, 2/16/97; vs. Michigan State, 2/21/97)
 Points & rebounds/5 consecutive games: Angie Potthoff (vs. Northwestern, 1/31/97; at Illinois, 2/2/97; vs. Michigan, 2/7/97; vs. Indiana, 2/9/97; vs. Iowa, 2/16/97; vs. Michigan State, 2/21/97)
 Points & assists: vs. Minnesota (Dara Taylor, 15 points, 10 assists), 1/26/14
 Points & assists/consecutive games: Helen Darling (12 pts., 12 assts. at La Salle, 12/8/99; 10 pts., 11 assts. vs. Auburn, 12/11/99)
 Two players had double-doubles: vs. USF (Candice Agee, 21 pts., 11 rebs.; Sierra Moore, 17 pts., 10 rebs.), 12/21/14
 Three players had double-doubles: vs. Ohio State (Nikki Greene, 25 pts., 15 rebs.; Mia Nickson, 18 pts., 15 rebs.; Maggie Lucas, 12 pts., 10 rebs.), 2/20/12
 15 points & 15 rebounds: at LSU (Nikki Greene, 16 pts., 16 rebs), 3/26/13
 20 points and 10 rebounds: vs. USF (Candice Agee, 21 points, 11 rebounds), 12/21/14

MARGIN OF VICTORY

PSU won by 20-30 points: vs. Rider (34), 12/14/14
 PSU won by 20-30 points in a Big Ten game: at Ohio State (20), 2/9/14
 PSU won consecutive Big Ten games by 20+ pts.: vs. Wisconsin (44), 1/17/13; vs. Nebraska (22), 1/13/13; at Michigan St. (21), 1/6/13
 PSU won by 31-40 points: vs. Rider (34), 12/14/14
 PSU won by 41-50 points: vs. Bucknell (43), 11/20/13
 PSU won by 51+ points: vs. Fairleigh Dickinson (57), 12/2/12
 PSU lost by 20-30 points: at Michigan (36), 1/1/15
 PSU lost by 20-30 points in a Big Ten game: at Michigan (36), 1/1/15
 PSU lost by 31+ points: at Michigan (36), 1/1/15

MISCELLANEOUS

Led PSU in points/rebounds/assists: Dara Taylor vs. Florida (22 pts., 8 rebs., 4 asst.), 3/25/14
 Hit "final seconds" (under 10 seconds) game-winning shot: Julia Trogele at Illinois (9 sec.), 1/27/11
 Hit "final minute" game-winning shot: Alex Bentley at Minnesota (3-ptr. with :38.9 remaining), 2/5/12
 Player played every minute: at Nebraska (Dara Taylor), 2/24/14
 Player played more than 40 min.: vs. USF (Lindsey Spann, 41; Sierra Moore, 41), 12/21/14
 Committed 10 or fewer fouls: vs. Virginia Tech (9), 12/6/11
 Committed 30 or more fouls: vs. USF (30), 12/21/14
 PSU rallied from a 10-pt. deficit to win: vs. Wichita State (down by 11 at 6:39 in 1st, won 62-56), 3/23/14
 PSU rallied from a 15-pt. deficit to win: at CS-Northridge (down by 17 at 5:52 in 1st half, won 85-73), 11/24/12
 PSU had a 5-game winning streak: 6 games, 1/16/14-2/2/14
 PSU had a 10-game winning streak: 11 games, 12/9/12 - 1/27/13
 PSU had a 5-game losing streak: 5 games, 12/21/14-present
 PSU went undefeated at home: 2012-13 season
 PSU sold out the BJC: Purdue, 2/29/04

OVERTIME

PSU played an OT game: vs. USF (L, 90-87), 12/21/14
 PSU won an OT game: at Oakland (96-89), 11/18/10
 PSU lost an OT game: vs. USF (L, 90-87), 12/21/14
 PSU played two or more OT games in a season: 2014-15 season (two)
 PSU won two or more OT games in a season: 2010-11 season (two)

RANKINGS

Played the No. 1 team in the AP poll: vs. Connecticut (L, 71-52), 11/17/13
 Played the No. 1 team in the Coaches poll: vs. Connecticut (L, 71-52), 11/17/13
 Defeated the No. 1 team in the AP poll: at Virginia (73-71), 1/3/91
 Defeated Top 10 opponent: vs. #8/11 Ohio State (84-66), 2/20/12
 Defeated Top 10 opponent on the road: at #7 Purdue (47-42), 1/2/04
 Defeated Top 10 opponent by double digits: vs. #8/11 Ohio State (84-66), 2/20/12
 Played consecutive Top 10 teams: at #2/3 Texas 11/14/04, at #6/6 Duke 11/19/04
 Defeated Top 25 opponent: at #16/19 Purdue (75-72), 1/30/14
 Defeated Top 25 opponent on the road: at #16/19 Purdue (75-72), 1/30/14
 Defeated Top 25 opponent by double digits: at #23/22 Iowa (87-71), 1/5/14



2015 RECRUITING CLASS

LADY LIONS SECURE TOP 10 CLASS

- The four-player class is ranked eighth by Prospect Nation, ninth by All-Star Girls Report, 10th by Blue Star Basketball and 11th by ESPN/HoopGurlz and Collegiate Girls Basketball Report.
- The class features two Top 20 players and three Top 100 signees in both the Blue Star Basketball and Prospect Nation rankings.
- This is believed to be the highest-ranked class in program history.
- This is the third Top 15 class to sign under Washington, joining the 2009 and 2013 classes that were ranked 14th by ESPN/Hoopgurlz.
- It is also the fourth Top 25 recruiting class for Washington (2010 class was 22nd).

AMARI CARTER * 5-8 * Guard * Washington, D.C. * St. John's College

- A 5-7 guard, Carter is ranked as the #31 overall recruit by both ESPN/HoopGurlz and Collegiate Girls Basketball Report.
- She is also rated 19th by Prospect Nation and Blue Star Basketball and 32nd by All Star Girls Report.
- She averaged 17.5 points, 4.0 rebounds, 4.0 assists and 2.0 steals for St. John's College High School in Washington, D.C.
- She led the team to a 25-7 overall record and the 2014 DC State Athletic Association championship.
- Last season, Carter was named to the Washington Post All-Metropolitan first team and All-WCAC first team.
- As a sophomore, Carter helped the Cadets to the 2013 WCAC Championship en route to collecting second team All-WCAC honors and an All-Metropolitan honorable mention selection.
- She is a 2014-15 Sporting News Preseason High School All-America honorable mention choice.
- Carter has participated in USA Basketball U16 (2013) and U17 (2014) Trials.
- She plays her AAU ball with the Maryland Lady Terps.

TENIYA PAGE * 5-7 * Point Guard * Chicago Heights, Ill. * Marian Catholic

- Page, a 5-7 point guard out of Marian Catholic in Chicago, Ill., is the 21st-ranked prospect by both ESPN/HoopGurlz and Collegiate Girls Basketball Report.
- She also comes in ranked 17th by Blue Star Basketball, 20th by Prospect Nation and 26th by All Star Girls Report.
- A 2014-15 Sporting News Preseason High School All-America honorable mention selection, Page has 1,135 career points entering her final season for the Spartans.
- Last season, she accounted for 14.4 points, 4.7 assists, 3.5 rebounds and 1.8 steals per game to help Marian Catholic to a 28-5 overall record, a East Suburban Catholic Conference championship and a third-place finish in the Illinois High School Association Class 4A Basketball Tournament.
- Page was selected first team All-State by the Illinois Basketball Coaches Association, second team All-State by the Associated Press, first team All-State by The Northwest Indiana Times and third team All-State by the Chicago Tribune in 2014.
- As a sophomore, Page guided Marian Catholic to the IHSA 4A State Championship with a 33-1 record on the season.
- Page has participated in USA Basketball U16 (2013) and U17 (2014) Trials.
- She plays AAU basketball for Midwest Elite.

ASHANTI THOMAS * 6-5 * Post * Lexington, Ky. * Lafayette

- Thomas, a 6-2 post player out of Lexington, Ky., is the 87th-ranked recruit by Prospect Nation and is ranked 106th and 109th by All-Star Girls Report and Blue Star Basketball, respectively.
- She is a candidate for Kentucky Miss Basketball entering her senior season.
- As a junior, she led the Generals to a 29-4 overall record with a 9-1 mark in districts en route to a District and Regional championships.
- Thomas averaged 9.2 points and 8.2 rebounds per game last season on the way to All-State third team accolades from KySports.tv.
- During her sophomore campaign, Thomas accounted for 10.3 points and 9.5 rebounds per outing on the way to claiming Fayette County Public Schools All-City first team.
- Thomas plays AAU basketball for Mac Irvin Lady Fire.

JAYLEN WILLIAMS * 6-4 * Post * Braintree, Mass. * Archbishop Williams

- A 6-4 post player, Williams is the ranked 80th by Blue Star Basketball Report after missing her junior campaign at Archbishop Williams due to a knee injury.
- The 2014-15 Sporting News Preseason High School All-America honorable mention honoree accounted for 8.5 points, a team-best 11.6 rebounds, 3.5 blocks and 4.3 assists per game as a sophomore.
- Williams helped the Bishops to the 2013 Massachusetts Interscholastic Athletic Association (MIAA) Division 3 State Championship with a 23-5 record.
- She played her AAU basketball for Lady Rivals AAU select team under the guidance of Scott Hazelton. Williams and the Rivals squad have won two state championships.
- She also has a strong athletic background in her family as her father, Brent, played in the NFL for 11 years with the Jets, Seahawks and Patriots. Her brother, Brennan, has played for the Houston Texans and her other brother, Camren, is a junior linebacker for the Ohio State football team.

RECORD BOOK

CAREER BLOCKS

| | | |
|-----|-----|-----------------------------------|
| 1. | 268 | Kim Calhoun, 1993-96 |
| 2. | 215 | Nikki Greene, 2010-13 |
| 3. | 192 | Mary Donovan, 1977-81 |
| 4. | 189 | Rashana Barnes, 1999-02 |
| 5. | 185 | Andrea Garner, 1997-00 |
| 6. | 172 | Amanda Brown, 2004-07 |
| 7. | 140 | Tina Henry, 1990-93 |
| 8. | 109 | Tori Waldner, 2012-present |
| 9. | 102 | Talia East, 2011-14 |
| 10. | 94 | Jess Brungo, 2001-04 |
| 11. | 92 | Bethany Collins, 1985-88 |
| 12. | 89 | Kathy Phillips, 1989-92 |
| 13. | 87 | Reicina Russell, 2003-04 |
| | 87 | Vicki Link, 1984-87 |
| 15. | 81 | Kahadeejah Herbert, 1982-85 |
| 16. | 75 | Tyra Grant, 2007-10 |
| 17. | 68 | Kelly Mazzante, 2001-04 |
| 18. | 67 | Janessa Wolff, 2008-10 |
| 19. | 66 | Adrie DeVries, 1987-90 |
| 20. | 61 | Candice Agee, 2013-present |
| | 61 | Tanisha Wright, 2002-05 |

as of Jan. 6

LADY LIONS BY THE NUMBERS

DOUBLE FIGURE PERFORMANCES

Lindsey Spann - 14
Sierra Moore - 10
Kaliyah Mitchell - 5
Candice Agee - 4
Jenny DeGraaf - 3
Tori Waldner - 2

20-POINT PERFORMANCES

Lindsey Spann - 5
Candice Agee - 3
Sierra Moore - 1
Kaliyah Mitchell - 1

30-POINT PERFORMANCES

none

DOUBLE-DOUBLE PERFORMANCES

Sierra Moore - 2
Tori Waldner - 1
Candice Agee - 1
Jenny DeGraaf - 1
Kaliyah Mitchell - 1

DOUBLE-DIGIT REBOUNDING PERFORMANCES

Tori Waldner - 2
Sierra Moore - 2
Candice Agee - 1
Jenny DeGraaf - 1
Kaliyah Mitchell - 1
Alex Harris - 1

DOUBLE-DIGIT ASSIST PERFORMANCES

none



2014-15 SINGLE GAME HIGHS & LOWS

Team Superlatives

| Penn State High | Penn State Low | Category | Opponent High | Opponent Low |
|----------------------------------|----------------------------------|------------------------------|------------------------|----------------------------------|
| 96, vs. Wagner (12/7) | 39, at Syracuse (12/4) | Points/Game | 91, Illinois (1/4) | 51, Rider (12/14) |
| 54, vs. Wagner (12/7) | 18, at Hartford (12/10) | Points/Half | 53, Michigan (1/1) | 13, vs. Samford (11/30) |
| 36, vs. Rider (12/14) | 15, at Syracuse (12/4) | Field Goals Made | 35, Michigan (1/1) | 18, twice (MR: St. Bona., 11/25) |
| 71, vs. USF (12/21) | 51, vs. Albany (11/16) | Field Goal Attempts | 80, USF (12/21) | 47, Hartford (12/10) |
| .537, vs. Rider (12/14) | .278, at Syracuse (12/4) | FG Percentage | .500, Illinois (1/4) | .292, Rider (12/14) |
| 6, vs. Albany (11/16) | 1, twice (MR: at Michigan, 1/1) | 3-pt. FG Made | 12, Illinois (1/4) | 2, Albany (11/16) |
| 15, vs. Liberty (11/28) | 5, vs. USF (12/21) | 3-pt. FG Attempts | 40, Syracuse (12/4) | 15, 3x (MR: Rider; 12/14) |
| .462, vs. Albany (11/16) | .091, at Michigan (1/1) | 3-pt. FG Percentage | .478, Hartford (12/10) | .133, Albany (11/16) |
| 25, vs. Wagner (12/7) | 6, twice (MR: at Syracuse, 12/4) | Free Throws Made | 27, Seton Hall (11/22) | 8, twice (MR; Rider; 12/14) |
| 40, vs. USF (12/21) | 11, vs. St. Bonaventure (11/25) | Free Throw Attempts | 38, USF (12/21) | 12, Syracuse (12/4) |
| .762, vs. Samford (11/30) | .471, at Michigan (1/1) | Free Throw Percentage | .833, Syracuse (12/4) | .381, Rider (12/14) |
| 54, vs. USF (12/21) | 31, vs. Albany (11/16) | Rebounds | 56, USF (12/21) | 28, Hartford (12/10) |
| 19, twice (MR: vs. Rider; 12/14) | 9, 3x (MR: at Michigan, 1/1) | Assists | 24, Michigan (1/1) | 7, USF (12/21) |
| 12, vs. Liberty (11/28) | 3, at Syracuse (12/4) | Steals | 14, Syracuse (12/4) | 4, Wagner (12/7) |
| 9, 3x (MR: at Michigan, 1/1) | 1, vs. Illinois (1/4) | Blocked Shots | 14, Wisconsin (1/6) | 2, twice (MR: Michigan, 1/1) |
| 24, twice (MR: at Michigan, 1/1) | 12, vs. Wagner (12/7) | Turnovers | 24, Albany (11/16) | 9, USF (12/21) |
| 30, vs. USF (12/21) | 13, at Syracuse (12/4) | Fouls | 28, USF (12/21) | 13, Syracuse (12/4) |

Individual Superlatives

| | Penn State | Opponent |
|-------------------------------------|--|---|
| Points | 28, Lindsey Spann vs. USF (12/21) | 34, Courtney Williams, USF (12/21) |
| Field Goals Made | 11, twice (MR: Lindsey Spann vs. USF, 12/21) | 12, Dominique Johnson, Towson (11/14) |
| Field Goal Attempts | 22, Lindsey Spann vs. USF (12/21) | 30, Dominique Johnson, Towson (11/14) |
| Field Goal Pct. (min. 5 made) | .800, Candice Agee vs. USF (12/21) | .727, twice (MR: Ivory Crawford, Illinois, 1/4) |
| 3-pt. Field Goals Made | 4, twice (MR: Lindsey Spann at Iowa, 12/28) | 6, 4x (MR: Jacie Gulczynski, Wisconsin, 1/6) |
| 3-pt. Field Goal Attempts | 9, Lindsey Spann at Iowa (12/28) | 19, Brianna Butler, Syracuse (12/4) |
| 3-pt. Field Goal Pct. (min. 2 made) | 1.000, twice (MR: Jenny DeGraaf vs. Albany, 11/16) | .750, twice (MR: Deanna Mayza, Hartford, 12/10) |
| Free Throws Made | 11, Sierra Moore vs. Wagner (12/7) | 11, Alisia Jenkins, USF (12/21) |
| Free Throw Attempts | 12, Sierra Moore vs. Wagner (12/7) | 13, Alisia Jenkins, USF (12/21) |
| Free Throw Percentage (min. 3 made) | 1.000, 7x (MR: Kaliyah Mitchell vs. USF, 12/21) | 1.000, 9x (MR: Jackie Gulczynski, Wisconsin, 1/6) |
| Rebounds | 12, Tori Waldner vs. Samford (11/30) | 21, Alisia Jenkins, USF (12/21) |
| Assists | 7, twice (MR: Sierra Moore vs. Rider; 12/14) | 10, Kyley Simmons, Illinois (1/4) |
| Steals | 5, Kaliyah Mitchell vs. Liberty (11/28) | 3, 14x (MR: Dakota Whyte, Wisconsin, 1/6) |
| Blocked Shots | 5, Candice Agee vs. Rider (12/14) | 7, Cassie Rochel, Wisconsin (1/6) |
| Turnovers | 7, twice (MR: Lindsey Spann at Michigan, 1/1) | 9, Jasmine Nwajei, Wagner, 12/7 |



MISCELLANEOUS STATS

| | | | | | | | | | | | | | | | | | | | | | | | | | | | | | | | | | |
|---|---|--|--|----------------|-----|-------|------------------|-----|-------|-------------|-----|-------|------------------|-----|------|--------------|-------|------|----------------|-----|------|---------------|-------|------|--------------|-----|------|---------------|-----|------|--------------|------|------|
| LEADING SCORER Lindsey Spann 11 Sierra Moore 2 Candice Agee 2 | 20-POINT SCORING GAMES Penn State 10 Opponents 15 Lindsey Spann 5 Candice Agee 3 Sierra Moore 1 Kaliyah Mitchell 1 | BENCH POINTS Penn State 243 (16.2 ppg) Opponents 191 (12.7 ppg) JUMP BALLS CONTROLLED Penn State 11 Opponents 4 | LARGEST WIN 34, vs. Rider (85-51) (12/14) LARGEST DEFEAT 36, at Michigan (89-53) (1/1) | | | | | | | | | | | | | | | | | | | | | | | | | | | | | | |
| LEADING REBOUNDER Tori Waldner 6 Kaliyah Mitchell 4 Candice Agee 3 Sierra Moore 2 Alex Harris 1 | 30-POINT SCORING GAMES Penn State 0 Opponents 1 | FIRST SCORE OF GAME Penn State 6 Opponents 9 | MOST CONSECUTIVE POINTS 14, vs. Rider (6:40 to 1:31 in second half) (12/14) | | | | | | | | | | | | | | | | | | | | | | | | | | | | | | |
| LEADER IN ASSISTS Sierra Moore 8 Lindsey Spann 7 Keke Sevellian 1 Tori Waldner 1 Kaliyah Mitchell 1 | TECHNICAL FOULS Penn State 2 Opponents 1 | RUNS OF 10-0 OR BETTER Penn State 3 Opponents 8 | MOST CONSECUTIVE POINTS BY OPP 16, at Wisconsin (14:56 to 10:10 in second half) (1/6) | | | | | | | | | | | | | | | | | | | | | | | | | | | | | | |
| LEADER IN STEALS Kaliyah Mitchell 5 Sierra Moore 5 Keke Sevellian 3 Lindsey Spann 3 Candice Agee 1 Peyton Whitted 1 | FOUR-POINT PLAYS Penn State 0 Opponents 0 | LARGEST HALFTIME LEAD 17, vs. Rider (50-23) (12/14) | LONGEST WINNING STREAK 1, 3x (MR: 12/14) | | | | | | | | | | | | | | | | | | | | | | | | | | | | | | |
| LEADER IN BLOCKS Tori Waldner 7 Candice Agee 7 Kaliyah Mitchell 3 Sierra Moore 2 Jenny DeGraaf 1 | THREE-POINT PLAYS Penn State 15 Opponents 15 Lindsey Spann 4 Sierra Moore 4 Kaliyah Mitchell 3 Candice Agee 2 Peyton Whitted 1 Alex Harris 1 | LARGEST HALFTIME DEFICIT 20, 3x (MR: vs. Illinois (47-27), 1/4) | LONGEST LOSING STREAK 6, 11/16-12/4 | | | | | | | | | | | | | | | | | | | | | | | | | | | | | | |
| GAMES STARTED Sierra Moore 15 Lindsey Spann 15 Kaliyah Mitchell 12 Candice Agee 11 Tori Waldner 11 Peyton Whitted 6 Keke Sevellian 4 Alex Harris 1 | PSU'S FIRST SUBSTITUTION Keke Sevellian 7 Jenny DeGraaf 3 Tori Waldner 2 Candice Agee 2 Peyton Whitted 2 Kaliyah Mitchell 2 Alex Harris 1 | LARGEST LEAD 40, vs. Rider (12/14) | CLUTCH FREE THROWS (FINAL 5 MIN. & OT) <table border="0" style="width: 100%; font-size: small;"> <tr><td>Peyton Whitted</td><td>2-2</td><td>1.000</td></tr> <tr><td>Dominique Brooks</td><td>1-1</td><td>1.000</td></tr> <tr><td>Alex Harris</td><td>1-1</td><td>1.000</td></tr> <tr><td>Kaliyah Mitchell</td><td>7-8</td><td>.875</td></tr> <tr><td>Sierra Moore</td><td>13-16</td><td>.813</td></tr> <tr><td>Keke Sevellian</td><td>3-4</td><td>.750</td></tr> <tr><td>Lindsey Spann</td><td>15-21</td><td>.714</td></tr> <tr><td>Tori Waldner</td><td>4-6</td><td>.667</td></tr> <tr><td>Jenny DeGraaf</td><td>1-2</td><td>.500</td></tr> <tr><td>Candice Agee</td><td>7-15</td><td>.467</td></tr> </table> | Peyton Whitted | 2-2 | 1.000 | Dominique Brooks | 1-1 | 1.000 | Alex Harris | 1-1 | 1.000 | Kaliyah Mitchell | 7-8 | .875 | Sierra Moore | 13-16 | .813 | Keke Sevellian | 3-4 | .750 | Lindsey Spann | 15-21 | .714 | Tori Waldner | 4-6 | .667 | Jenny DeGraaf | 1-2 | .500 | Candice Agee | 7-15 | .467 |
| Peyton Whitted | 2-2 | 1.000 | | | | | | | | | | | | | | | | | | | | | | | | | | | | | | | |
| Dominique Brooks | 1-1 | 1.000 | | | | | | | | | | | | | | | | | | | | | | | | | | | | | | | |
| Alex Harris | 1-1 | 1.000 | | | | | | | | | | | | | | | | | | | | | | | | | | | | | | | |
| Kaliyah Mitchell | 7-8 | .875 | | | | | | | | | | | | | | | | | | | | | | | | | | | | | | | |
| Sierra Moore | 13-16 | .813 | | | | | | | | | | | | | | | | | | | | | | | | | | | | | | | |
| Keke Sevellian | 3-4 | .750 | | | | | | | | | | | | | | | | | | | | | | | | | | | | | | | |
| Lindsey Spann | 15-21 | .714 | | | | | | | | | | | | | | | | | | | | | | | | | | | | | | | |
| Tori Waldner | 4-6 | .667 | | | | | | | | | | | | | | | | | | | | | | | | | | | | | | | |
| Jenny DeGraaf | 1-2 | .500 | | | | | | | | | | | | | | | | | | | | | | | | | | | | | | | |
| Candice Agee | 7-15 | .467 | | | | | | | | | | | | | | | | | | | | | | | | | | | | | | | |
| | | LARGEST DEFICIT 40, at Michigan (1/1) | NOTE: Totals may not add up to games played due to ties. | | | | | | | | | | | | | | | | | | | | | | | | | | | | | | |
| | | LARGEST DEFICIT OVERCOME TO WIN 8, vs. Towson (12:50 in 2nd half) (11/14) | | | | | | | | | | | | | | | | | | | | | | | | | | | | | | | |
| | | LARGEST LEAD GIVEN UP IN LOSS 16, vs. Samford, 9:59 in second half, 11/30) | | | | | | | | | | | | | | | | | | | | | | | | | | | | | | | |

| SPECIALITY STATS (PSU/OPP) | | | | | | | | | | | |
|----------------------------|-------|--------|-------|--------|-------|-----------|-------|--------|-------|--------|-------|
| | Paint | Off TO | 2nd | FastBr | Bench | | Paint | Off TO | 2nd | FastBr | Bench |
| Towson | 30/14 | 13/16 | 5/9 | 13/4 | 17/7 | USF | 42/40 | 7/13 | 17/26 | 4/12 | 11/15 |
| Albany | 22/30 | 14/17 | 6/12 | 10/4 | 14/12 | Iowa | 22/26 | 6/26 | 20/14 | 7/10 | 19/14 |
| Seton Hall | 40/26 | 18/22 | 22/10 | 8/12 | 14/11 | Michigan | 34/42 | 12/25 | 12/18 | 15/12 | 23/34 |
| St. Bonaventure | 28/20 | 14/7 | 6/9 | 6/0 | 12/3 | Illinois | 38/34 | 13/13 | 15/5 | 16/11 | 25/9 |
| Liberty | 36/26 | 13/21 | 11/13 | 20/6 | 11/16 | Wisconsin | 20/18 | 9/16 | 9/6 | 8/19 | 16/3 |
| Samford | 28/22 | 11/13 | 4/4 | 6/0 | 11/10 | | | | | | |
| Syracuse | 18/24 | 6/16 | 8/10 | 4/14 | 10/13 | | | | | | |
| Wagner | 54/16 | 24/13 | 13/6 | 24/6 | 24/19 | | | | | | |
| Hartford | 30/4 | 23/19 | 12/8 | 6/0 | 13/12 | | | | | | |
| Rider | 56/22 | 13/11 | 14/7 | 19/8 | 19/17 | | | | | | |





COQUESE WASHINGTON

**Head Coach
8th Season**

PENN STATE LADY LION BASKETBALL

Coquese Washington was introduced as the fifth head coach of the Penn State women's basketball program on April 23, 2007. Washington is the first female African-American head coach in Penn State history.

Washington led the 2013-14 Lady Lion squad to a feat that no other Penn State team has accomplished, winning three consecutive conference regular-season titles with a 13-3 record in Big Ten action. Led by the play of a strong senior class, the Lady Lions advanced to the NCAA Sweet Sixteen for the second time in three years. The graduating class of Maggie Lucas, Ariel Edwards, Dara Taylor and Talia East produced 101 wins, which is the second-highest total by a Lady Lion class.

Along the way to collecting her second Big Ten Player of the Year award, Lucas finished second in school history and fourth in Big Ten history in scoring (2,510) and broke the Penn State and Big Ten records for career three-pointers made (365) and career free throw percentage (.907). She was selected in the second round of the 2014 WNBA Draft by the Phoenix Mercury. Edwards became the 36th member of the 1,000-point club en route to collecting All-Big Ten first team accolades. She finished seventh in the Big Ten in scoring (15.7) and was 11th in free throw percentage (.814). Edwards signed a free agent contract with the WNBA's Tulsa Shock. Taylor also had a stellar senior campaign and collected the Big Ten Defensive Player of the Year award after leading the conference in steals. East also earned postseason honors as she was named All-Big Ten honorable mention. In addition, Washington was honored with her third consecutive Big Ten Coach of the Year honor.

The Lady Lions continued their run in the national spotlight in 2012-13 as they collected their second-straight Big Ten regular-season title and seventh overall with a 26-6

overall record and 14-2 mark in conference play. In each of Washington's first six years, Penn State improved its Big Ten win total. The Lady Lions posted their third consecutive 25-win season, joining the 1993-94, 1994-95 and 1995-96 squads as the only teams in program history to accomplish the feat. The Lady Lions were consistently ranked in the Top 10 for most of the season and finished eighth in the Associated Press Top 25 and 12th in the USA Today Sports Coaches' Poll.

With another stellar campaign, the accolades continued to roll in for the Lady Lions. Washington was selected as the Big Ten Coach of the Year by the media for the second-straight season and became just the fifth mentor in Big Ten history to win back-to-back Coach of the Year accolades. She was also the WBCA Region 6 Coach of the Year and a finalist for WBCA National Coach of the Year for the second-straight season.

The awards also piled up for Penn State's dynamic backcourt of Lucas and Alex Bentley. Lucas was selected as the Big Ten Player of the Year, was a Wade Trophy Finalist and was an All-America choice by four outlets, including the WBCA (honorable mention), Associated Press (second team), USBWA (first team) and Full Court (second team). She is just the third Lady Lion in program history to win Big Ten Player of the Year honors. Bentley earned her third-straight first team All-Big Ten award and honorable mention All-America bids from the WBCA and Associated Press. She was also selected as the 2013 recipient of the Frances Pomeroy Naismith Award, which is presented to the nation's outstanding female collegian 5-8 and under. Nikki Greene also capped a stellar career for the Lady Lions with third team All-Big Ten accolades. She also became the first player in school history to accumulate 1,000 points, 900 rebounds and 200 blocks.

Both Bentley and Greene heard their names called on WNBA Draft night. Bentley was selected with the 13th overall pick by the Atlanta Dream to become the highest draft pick for the Lady Lions since Tanisha Wright (12th) in 2005. Greene was the 26th overall selection by the Phoenix Mercury.

For her efforts in rebuilding the Penn State program, Washington was honored as the Big Ten Coach of the Year and the WBCA Region 6 Coach of the Year, making her a finalist for WBCA National Coach of the Year. The accolades were not just limited to Washington; all five Lady Lion starters earned All-Big Ten recognition, including first team bids for Bentley and Lucas. Both Bentley and Lucas also garnered honorable mention All-America honors from the WBCA and Associated Press, respectively.

THE WASHINGTON FILE

COACHING RESUME

2007-pres. - Head Coach, Penn State
 2013 - Asst. Coach, USA Basketball World U. Games
 2013-pres. - Vice President/President-Elect, WBCA
 2012-pres. - Kay Yow Cancer Fund Board of Directors
 2011-pres. - NCAA WBB Issues Committee
 2010-13 - Treasurer, WBCA Executive Committee
 2008-pres. - WBCA Board of Directors
 2009-12 - USA Basketball Women's Jr. National Comm.
 2005-07 - Associate Head Coach, Notre Dame
 1999-05 - Assistant Coach, Notre Dame

PLAYING EXPERIENCE

2002-03 - WNBA's Indiana Fever
 2000-02 - WNBA's Houston Comets
 1998-99 - WNBA's New York Liberty
 1997-98 - ABL's Portland Power
 1989-93 - University of Notre Dame

EDUCATION

Notre Dame '92, B.A. History
 Notre Dame Law School '97, Juris Doctorate

AWARDS

- ❖ 2012, 2013, 2014 Big Ten Coach of the Year
- ❖ 2012, 2013 WBCA Region 6 Coach of the Year
- ❖ 2012, 2013 WBCA National Coach of the Year Finalist
- ❖ 2011, 2013 BCA Female Coach of the Year
- ❖ 2009 Greater Flint Hall of Fame Inductee

FAMILY

Husband: Raynell Brown
 Children: Quenton (9), Rhaiyna (5)

The Lady Lions returned to the national stage in Washington's fourth year with a second-place finish in the Big Ten regular season standings, a runner-up finish in the Big Ten Tournament and a berth in the NCAA Tournament. Penn State tallied its 23rd 20-win season with a 25-10 overall record and an 11-5 mark in conference play. The Lady Lions worked their way back to the "Big Dance" for the first time since 2004-05.

Washington came to Happy Valley after eight seasons as an associate head coach and assistant coach under Muffet McGraw at Notre Dame, her alma mater. During Washington's eight years on the bench, Notre Dame amassed a 188-69 record with eight NCAA Tournament appearances, including four Sweet Sixteen runs and a National Championship in 2001.

Washington was a four-year starting point guard for Notre Dame under McGraw and was the team captain on Notre Dame's first-ever NCAA Tournament team. She was a two-time All-Midwestern Collegiate Conference (MCC) selection and led Notre Dame to three MCC Tournament titles.

The epitome of a student-athlete, Washington graduated from Notre Dame in 1992, a full year ahead of schedule, with a bachelor's degree in history. She went on to attain "Double Domer" status in 1997 after earning her Juris Doctorate from the Notre Dame Law School.

Washington juggled finishing her law degree with the start of her professional basketball career. She returned to the hardwood as a professional in 1997-98, playing for the ABL's Portland Power before spending a two-year stint with the WNBA's New York Liberty (1998-99). Washington moved to Houston for the 2000 season, where she played an instrumental role in leading the Comets to the WNBA title. Washington guided the Fever to their first-ever playoff berth and became the first player in WNBA history to lead three different teams to the postseason.

In addition to assisting with the efforts of the Pink Zone at Penn State to raise money and awareness for breast cancer, Washington created Coquese's Drive for the Women's Resource Center. Coquese's Drive for the Women's Resource Center has raised more than \$118,000 to aid in the fight against domestic violence.

Washington is currently serving on the 29-member WBCA Board of Directors, where she is the Vice President/President-Elect of the Executive Committee.

Washington vs. Opponents

| | | | | | |
|----------------------|-----|-----------------------|------|------------------------|-----|
| Albany..... | 0-1 | Howard..... | 1-0 | Oregon State..... | 1-0 |
| Alcorn State..... | 1-0 | Illinois..... | 10-4 | Pittsburgh..... | 2-1 |
| Arizona..... | 1-0 | Illinois State..... | 1-0 | Prairie View A&M..... | 1-0 |
| Army..... | 1-0 | Indiana..... | 7-4 | Purdue..... | 4-9 |
| Boston College..... | 0-1 | Iowa..... | 7-7 | Rider..... | 2-0 |
| Bucknell..... | 6-0 | Iowa State..... | 1-0 | Samford..... | 0-1 |
| Buffalo..... | 1-0 | Lafayette..... | 1-0 | Seton Hall..... | 0-1 |
| Cal Poly..... | 1-0 | Liberty..... | 0-1 | St. Bonaventure..... | 0-1 |
| CS-Northridge..... | 1-0 | LSU..... | 1-1 | St. Francis (Pa.)..... | 1-0 |
| Charlotte..... | 1-0 | Maine..... | 1-0 | South Carolina..... | 4-1 |
| Connecticut..... | 0-4 | UMES..... | 1-0 | South Dakota St..... | 1-1 |
| Coppin State..... | 1-0 | Miami (Fla.)..... | 0-1 | USF..... | 0-1 |
| Dayton..... | 2-1 | Michigan..... | 10-4 | Stanford..... | 0-1 |
| Delaware..... | 1-1 | Michigan State..... | 5-8 | Stony Brook..... | 1-0 |
| DePaul..... | 0-1 | Middle Tennessee..... | 1-0 | Syracuse..... | 0-2 |
| Detroit..... | 1-0 | Minnesota..... | 7-7 | Texas A&M..... | 2-1 |
| Drexel..... | 2-1 | Mississippi..... | 1-0 | UTEP..... | 1-0 |
| Duke..... | 1-0 | Monmouth..... | 1-0 | Texas Tech..... | 1-1 |
| Fair. Dickinson..... | 1-0 | Nebraska..... | 3-2 | Towson..... | 1-0 |
| Florida..... | 1-0 | Nevada..... | 1-0 | Utah..... | 1-0 |
| Fordham..... | 1-0 | NJIT..... | 2-0 | Virginia Tech..... | 2-0 |
| Florida State..... | 0-1 | North Carolina..... | 1-0 | Wagner..... | 2-0 |
| Georgetown..... | 3-0 | Notre Dame..... | 0-1 | Washington State..... | 1-0 |
| Georgia Tech..... | 0-1 | Northwestern..... | 9-1 | Wichita State..... | 1-0 |
| Hartford..... | 2-1 | Oakland..... | 2-0 | Wisconsin..... | 6-7 |
| Hofstra..... | 0-1 | Ohio State..... | 6-7 | UW-Green Bay..... | 0-1 |
| Holy Cross..... | 1-0 | Old Dominion..... | 0-1 | Xavier..... | 0-1 |





#1 Candice Agee

Jr. * C * 6-6 * Victorville, Calif./Silverado

Highlights:

- Ranks 12th in program history in blocked shots per game (0.8 bpg).
- Ranks tied for 20th in Penn State history in blocked shots (61).
- Made her first start of the season and fourth of her career versus Seton Hall (11/22).
- Reached the 200 career point plateau (at Syracuse; 12/4) and moved past the 300 career point mark (at Wisconsin; 1/6) this season.
- Grabbed her 200th career rebound at Wisconsin on Jan. 6, 2015.
- Posted her first career double-double with a career-high 11 rebounds and a career-best-tying 21 points vs. USF (12/21).

2014-15 Season Notes:

- Grabbed seven rebounds and scored nine points to reach the 200 career rebound and 300 career point marks at Wisconsin (1/6). She also swatted two shots and equaled a career-high with two steals vs. the Badgers.
- Connected on 4-of-5 field goal attempts to tally nine points at Iowa (12/28) in the Big Ten opener.
- Became the fifth Lady Lion to collect their first career double-double vs. USF (12/21) with a career-high-tying 21 points and a personal-best 11 rebounds. She also set new career marks in minutes played (33) and free throws made (5) and attempted (9).
- Contributed 19 points, tied her then-career-high with nine rebounds and blocked career-high five shots vs. Rider (12/14). She also tied her career-high with nine made field goals.
- Logged her second career 20-point game at Hartford (12/10), connecting on 8-of-13 shots from the field, and pulled down eight rebounds.
- Scored eight points on 4-of-8 shooting to reach the 200 career point mark at Syracuse (12/4) in the ACC/Big Ten Challenge. She added nine rebounds and blocked two shots vs. the Orange.
- Notched a then-career-high four blocks to go along with six points and five rebounds vs. Liberty (11/28).
- Had eight points, four rebounds and two blocks against St. Bonaventure (11/25).
- Went 9-for-15 from the field en route to a career-high 21 points with five rebounds, two blocks and two steals in just 17 minutes against Seton Hall (11/22).
- Blocked three shots and had two steals against Albany (11/16).
- Nearly posted a double-double with nine points and nine rebounds, which tied her then-career high, in the season-opening win over Towson (11/14).

Notable:

- 2012 McDonald's High School All-American.
- Competed for the United States in the FIBA U19 World Championship (July 2013) and FIBA Americas U18 Championship (August 2012).

14-15 GAME-BY-GAME

| OPPONENT | Min. | FG | 3FG | FT | O-D-R | PF | A | TO | B | S | Pts |
|---------------|------|------|-----|-----|--------|----|---|----|---|---|-----|
| TOWSON | 18 | 3-6 | 0-0 | 3-6 | 4-5-9 | 1 | 0 | 0 | 0 | 0 | 9 |
| ALBANY | 19 | 1-6 | 0-0 | 0-0 | 1-4-5 | 4 | 2 | 1 | 3 | 2 | 4 |
| SETON HALL | 17 | 9-15 | 0-0 | 3-6 | 3-2-5 | 4 | 1 | 1 | 2 | 2 | 21 |
| ST. BONA | 24 | 4-8 | 0-0 | 0-0 | 1-3-4 | 3 | 2 | 3 | 2 | 1 | 8 |
| vs. Liberty | 22 | 2-4 | 0-0 | 2-4 | 2-3-5 | 1 | 0 | 2 | 4 | 1 | 6 |
| vs. Samford | 2 | 0-1 | 0-0 | 0-0 | 0-0-0 | 0 | 0 | 1 | 0 | 0 | 0 |
| at Syracuse | 28 | 4-8 | 0-0 | 0-0 | 1-8-9 | 2 | 0 | 1 | 2 | 1 | 8 |
| WAGNER | 23 | 4-7 | 0-0 | 1-3 | 2-2-4 | 3 | 1 | 3 | 1 | 1 | 9 |
| at Hartford | 26 | 8-13 | 0-0 | 4-6 | 4-4-8 | 1 | 1 | 5 | 1 | 0 | 20 |
| RIDER | 24 | 9-13 | 0-0 | 1-2 | 6-3-9 | 3 | 1 | 2 | 5 | 1 | 19 |
| USF | 33 | 8-10 | 0-0 | 5-9 | 2-9-11 | 3 | 1 | 1 | 4 | 0 | 21 |
| at Iowa | 9 | 4-5 | 0-0 | 1-2 | 1-0-1 | 2 | 0 | 1 | 0 | 1 | 9 |
| at Michigan | 21 | 3-9 | 0-0 | 1-4 | 3-0-3 | 2 | 1 | 0 | 1 | 0 | 7 |
| ILLINOIS | 13 | 1-2 | 0-0 | 2-4 | 0-1-1 | 0 | 0 | 0 | 0 | 0 | 4 |
| at Wisconsin | 31 | 4-11 | 0-0 | 1-2 | 3-4-7 | 2 | 1 | 4 | 2 | 2 | 9 |
| RUTGERS | | | | | | | | | | | |
| at Nebraska | | | | | | | | | | | |
| at Ohio State | | | | | | | | | | | |
| INDIANA | | | | | | | | | | | |
| NORTHWESTERN | | | | | | | | | | | |
| at Minnesota | | | | | | | | | | | |
| at Rutgers | | | | | | | | | | | |
| MARYLAND | | | | | | | | | | | |
| at Purdue | | | | | | | | | | | |
| MICHIGAN ST. | | | | | | | | | | | |
| MINNESOTA | | | | | | | | | | | |
| at Maryland | | | | | | | | | | | |
| OHIO STATE | | | | | | | | | | | |
| WISCONSIN | | | | | | | | | | | |

AGEE'S CAREER/SEASON HIGHS

| | SEASON HIGHS | CAREER HIGHS |
|---------|---|---|
| Points | 21 vs. USF (12/21/14) 21 vs. Seton Hall (11/22/14) | 21 vs. USF (12/21/14) 21 vs. Seton Hall (11/22/14) |
| Rebs. | 11 vs. USF (12/21/14) | 11 vs. USF (12/21/14) |
| Assists | 2 vs. St. Bonaventure (11/25/14) 2 vs. Albany (11/16/14) | 2 vs. St. Bonaventure (11/25/14) 2 vs. Albany (11/16/14) |
| Steals | 2 (3x) last at Wisconsin (1/6/15) | 2 (4x) last at Wisconsin (1/6/15) |
| Blocks | 5 vs. Rider (12/14/14) | 5 vs. Rider (12/14/14) |
| Minutes | 33 vs. USF (12/21/14) | 33 vs. USF (12/21/14) |
| FGM | 9 vs. Rider (12/14/14) 9 vs. Seton Hall (11/22/14) | 9 vs. Rider (12/14/14) 9 vs. Seton Hall (11/22/14) |
| FGA | 15 vs. Seton Hall (11/22/14) | 15 vs. Seton Hall (11/22/14) |
| 3FGM | n/a | n/a |
| 3FGA | n/a | n/a |
| FTM | 5 vs. USF (12/21/14) | 5 vs. USF (12/21/14) |
| FTA | 9 vs. USF (12/21/14) | 9 vs. USF (12/21/14) |

AGEE'S MISCELLANEOUS STATS

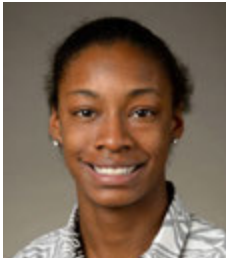
| Category | Season | Career | Last Time |
|------------------------|--------|--------|-------------------------------|
| Double Figure Scoring | 4 | 5 | 21 vs. USF (12/21/14) |
| 20-point games | 3 | 3 | 21 vs. USF (12/21/14) |
| Double Figure Rebounds | 1 | 1 | 11 vs. USF (12/21/14) |
| 5-plus Rebounds | 9 | 16 | 7 at Wisconsin (1/6/15) |
| 5-plus Assists | n/a | n/a | |
| 3-plus Blocks | 4 | 5 | 4 vs. USF (12/21/14) |
| Double-Doubles | 1 | 1 | 21 p, 11 r vs. USF (12/21/14) |

AGEE'S CAREER STATS

| Year | GP-GS | MIN | FG-A | PCT | 3FG-A | PCT | FT-A | PCT | REB | AVG | PF-O | A | TO | B | S | PTS | AVG |
|--------------|--------------|------------|----------------|-------------|------------|-------------|---------------|-------------|-------------------|------------|--------------|-----------|-----------|-----------|-----------|------------|------------|
| 2012-13 | 26-0 | 204 | 20-54 | .370 | 0-0 | .000 | 11-20 | .550 | 17-31-48 | 1.8 | 33-0 | 2 | 13 | 13 | 4 | 51 | 2.0 |
| 2013-14 | 32-3 | 330 | 34-84 | .405 | 0-0 | .000 | 31-61 | .508 | 31-43-74 | 2.3 | 54-1 | 8 | 28 | 21 | 4 | 99 | 3.1 |
| 2014-15 | 15-11 | 310 | 64-118 | .542 | 0-0 | .000 | 24-48 | .500 | 33-48-81 | 5.4 | 31-0 | 11 | 25 | 27 | 12 | 152 | 10.1 |
| TOTAL | 73-14 | 844 | 118-256 | .461 | 0-0 | .000 | 66-129 | .512 | 81-122-203 | 2.8 | 118-1 | 21 | 66 | 61 | 20 | 302 | 4.1 |

10-Time Big Ten Champions • Two-Time Big Ten Tournament Champions • 2000 NCAA Final Four • 25 NCAA Tournament Appearances





#3 Brianna Banks

RS-Sr. * G * 5-9 * Newnan, Ga./Fayette County (Connecticut)

2014-15 Season:

- Will sit out the 2014-15 season due to NCAA Transfer Rules after transferring from Connecticut.
- Has one year of eligibility remaining.

2013-14 Season (at Connecticut):

- Started eight-straight games (November 20 - December 22).
- Dished out five assists to go with four points and three steals against UCF (2/19).
- Notched three steals to compliment four points, three assists and five rebounds at Cincinnati (2/1).
- Registered seven points three assists and three steals at UCF (1/1).
- Connected on three of her four shots from the field en route to eight points, five rebounds, four assists and three steals against UC Davis (12/5).
- Had a season-high 12 points with a career-best seven rebounds in the win over Ohio State (12/1).
- Was 4-for-5 from the field, including 3-for-3 from three-point range, on the way to 12 points against Monmouth (11/23).
- Chipped in with 10 points on 4-6 shooting in a season-high 31-minutes of action against Oregon (11/20).
- Had nine points and three rebounds at #8/7 Maryland (11/15).

2012-13 Season (at Connecticut):

- Finished sixth on the team in scoring (7.3).
- Had 12 points to go along with four rebounds at Marquette (1/12).
- Tallied 18 points on 8-of-13 shooting and pulled in six rebounds against Oakland (12/19).
- Registered 10 points and two steals against #10/10 Penn State (12/6).
- Connected on three of her four three-point attempts en route to 11 points against #9/10 Maryland (12/3).
- Had a career-high 20 points thanks to a 6-for-10 shooting night, including a 4-for-5 effort from beyond the arc, against Colgate (11/28).
- Had a balanced statistical night with 12 points, six assists, two rebounds and a steal with only one turnover in 20 minutes against Wake Forest (11/22).
- Opened the season with a perfect 5-for-5 shooting night for 10 points against Charleston (11/11).

2011-12 Season (at Connecticut):

- Shot 50.5 percent from the field.
- Hit on all three of her shots from the field en route to eight points with four assists and two steals at Marquette (2/25).
- Was 5-for-5 from the field and finished with 12 points, two rebounds and two steals against Fairfield (12/29).
- Collected 17 points via a 7-for-10 shooting effort and 3-for-3 night at the free throw line against Fairleigh Dickinson (11/25).
- Tallied 12 points thanks to a 5-for-7 shooting night against Pacific (11/15).

High School:

- Averaged 16.2 points, 5.5 rebounds, 5.1 assists and 5.0 steals per game in her final season at Fayette County High School, which ended in a State Championship.
- Honored as a 2011 McDonald's All-American and WBCA Honorable Mention All-American in addition to being named "Miss Basketball" in the state of Georgia.
- Honored as the Fayette County Player of the Year by the *Fayette County News* and selected to the All-State first team in 2011.
- Led the West Team with 17 points on 7-of-12 shooting in the 2011 McDonald's All-American Game.
- Was a second team All-State selection and the Coweta County Player of the year during her junior season.
- Rated as the No. 24 overall recruit by ESPN Hoopgurlz and the No. 15 overall prospect by the All-Star Girls Report.
- Tabbed as the No. 11 recruit nationally by Blue Star.
- Honored as a first team All-Metro selection by the *Atlanta Journal-Constitution* in 2009-10.
- Selected as the 2010 Coweta County Player of the Year by the *Times-Herald*.

BANKS' CAREER STATS

| Year | GP-GS | MIN | FG-A | PCT | 3FG-A | PCT | FT-A | PCT | REB | AVG | PF-O | A | TO | B | S | PTS | AVG |
|---------------|-------------|-------------|----------------|-------------|---------------|-------------|--------------|-------------|------------------|------------|-------------|------------|-----------|-----------|-----------|------------|------------|
| 2011-12* | 32-0 | 393 | 46-91 | .505 | 3-24 | .125 | 19-27 | .704 | 5-30-35 | 1.1 | 27-0 | 32 | 31 | 3 | 25 | 114 | 3.6 |
| 2012-13* | 21-0 | 359 | 56-117 | .479 | 18-52 | .346 | 23-33 | .697 | 6-30-36 | 1.7 | 22-0 | 35 | 22 | 4 | 25 | 153 | 7.3 |
| 2013-14* | 37-8 | 527 | 49-103 | .476 | 13-44 | .295 | 19-29 | .655 | 20-37-57 | 1.5 | 42-1 | 45 | 27 | 6 | 34 | 130 | 3.5 |
| CAREER | 90-8 | 1279 | 151-311 | .486 | 34-120 | .283 | 61-89 | .685 | 31-97-128 | 1.4 | 91-1 | 112 | 80 | 13 | 84 | 397 | 4.4 |

* - at Connecticut





#5 Sierra Moore

RS-So. * G * 5-11 * Hanover, Pa./Delone Catholic (Duke)

Highlights:

- ♦ Sat out the 2013-14 season due to NCAA Transfer Rules.
- ♦ Selected as a team tri-captain.
- ♦ Named to the Georgia State Thanksgiving Tournament All-Tournament team.
- ♦ Posted first career double-double with 14 points and a personal-best 10 rebounds against Seton Hall (11/22).
- ♦ Recorded her first career 20-point game vs. Wagner (12/7). Her 21 points helped her eclipse the 100-point mark in her Penn State career.
- ♦ Has three games with at least 14 points, five rebounds and five assists this season.

2014-15 Season Notes:

- ♦ Nabbed a career-high four steals and pulled down nine rebounds to go along with five points and five assists at Wisconsin (1/6). She also added one blocked shot vs. the Badgers.
- ♦ Scored 14 points with six rebounds, five assists and two steals vs. Illinois (1/4). She tied her career-high with six made field goals vs. the Illini.
- ♦ Ranked second on the team with 11 points at Michigan (1/1) and added three rebounds, two steals and tied a career-best with two blocked shots.
- ♦ Posted her second career double-double vs. USF (12/21) with 17 points and a career-high tying 10 rebounds. She also tied her career-bests in steals (2) and field goals made (6) and attempted (19), while playing a career-high 41 minutes vs. the Bulls.
- ♦ Had seven points, four rebounds and tied her career-high with seven assists vs. Rider (12/14).
- ♦ Scored 10 points and handed out a game-high five assists at Hartford (12/10).
- ♦ Eclipsed the 100-point mark for her Penn State career with her first career 20-point effort vs. Wagner (12/7). Her 21 points are a career-high and she added a personal-best seven assists vs. the Seahawks.
- ♦ Poured in a team- and then-career-high 17 points for her fourth straight double-digit scoring effort vs. Samford (11/30), adding three assists and two steals against the Bulldogs.
- ♦ Scored 14 points, grabbed five rebounds and handed out four assists vs. Liberty (11/28).
- ♦ Had a game- and then-career-high 15 points via a 6-for-12 shooting performance versus St. Bonaventure (11/25).
- ♦ Tallied eight points to go along with three rebounds, three assists and a steal versus Albany (11/16).
- ♦ Filled the stats sheet with 12 points, five rebounds, four assists, two blocks and a steal in the win over Towson (11/14).
- ♦ Scored 15 of her team-best 18 points over the final 11:44 of the contest to propel the Lady Lions to an exhibition win over IUP (11/2).

Notable:

- ♦ Appeared in 25 games as a freshman at Duke.
- ♦ Garnered Gatorade Player of the Year and Associated Press Class AA Player of the Year honors in the state of Pennsylvania as a high school senior year.
- ♦ Was a McDonald's High School All-American in 2011-12.
- ♦ Holds the York-Adams Interscholastic Athletic Association (YAIAA) scoring record with 2,595 points at Delone Catholic.
- ♦ Was also a track standout, finishing in the Top 10 in the State Championships in the 200-meters (7th in 2009 and 2010) and 4x100 relay (4th in 2009).

14-15 GAME-BY-GAME

| OPPONENT | Min. | FG | 3FG | FT | O-D-R | PF | A | TO | B | S | Pts | |
|---------------|------|------|-----|-------|-------|----|---|----|---|---|-----|----|
| TOWSON | 39 | 5-12 | 1-1 | 1-3 | 1-4 | 5 | 4 | 4 | 2 | 1 | 12 | |
| ALBANY | 30 | 4-8 | 0-0 | 0-1 | 2-1 | 3 | 4 | 3 | 1 | 1 | 8 | |
| SETON HALL | 37 | 5-12 | 0-0 | 4-6 | 7-3 | 10 | 1 | 5 | 3 | 1 | 14 | |
| ST. BONA | 37 | 6-12 | 0-0 | 3-6 | 1-4 | 5 | 3 | 3 | 0 | 0 | 15 | |
| vs. Liberty | 33 | 5-10 | 0-0 | 4-7 | 2-3 | 5 | 5 | 4 | 3 | 0 | 14 | |
| vs. Samford | 40 | 4-10 | 1-2 | 8-10 | 1-0 | 1 | 5 | 3 | 3 | 0 | 2 | 17 |
| at Syracuse | 37 | 2-11 | 0-0 | 0-0 | 1-4 | 5 | 2 | 2 | 5 | 2 | 1 | 4 |
| WAGNER | 31 | 5-9 | 0-0 | 11-12 | 1-4 | 5 | 0 | 7 | 0 | 0 | 2 | 21 |
| at Hartford | 29 | 4-9 | 0-0 | 2-2 | 0-2 | 2 | 4 | 5 | 4 | 0 | 2 | 10 |
| RIDER | 29 | 3-11 | 0-0 | 1-2 | 0-4 | 4 | 0 | 7 | 1 | 1 | 0 | 7 |
| USF | 41 | 6-19 | 1-1 | 4-6 | 3-7 | 10 | 3 | 3 | 4 | 0 | 2 | 17 |
| at Iowa | 18 | 1-7 | 0-1 | 0-0 | 2-0 | 2 | 1 | 1 | 2 | 0 | 1 | 2 |
| at Michigan | 30 | 5-10 | 0-0 | 1-4 | 1-2 | 3 | 2 | 1 | 5 | 2 | 2 | 11 |
| ILLINOIS | 32 | 6-14 | 0-1 | 2-6 | 3-3 | 6 | 2 | 5 | 4 | 0 | 2 | 14 |
| at Wisconsin | 35 | 2-10 | 0-0 | 1-4 | 1-8 | 9 | 1 | 3 | 5 | 1 | 4 | 5 |
| RUTGERS | | | | | | | | | | | | |
| at Nebraska | | | | | | | | | | | | |
| at Ohio State | | | | | | | | | | | | |
| INDIANA | | | | | | | | | | | | |
| NORTHWESTERN | | | | | | | | | | | | |
| at Minnesota | | | | | | | | | | | | |
| at Rutgers | | | | | | | | | | | | |
| MARYLAND | | | | | | | | | | | | |
| at Purdue | | | | | | | | | | | | |
| MICHIGAN ST. | | | | | | | | | | | | |
| MINNESOTA | | | | | | | | | | | | |
| at Maryland | | | | | | | | | | | | |
| OHIO STATE | | | | | | | | | | | | |
| WISCONSIN | | | | | | | | | | | | |

MOORE'S CAREER/SEASON HIGHS

| | SEASON HIGHS | CAREER HIGHS |
|---------|---|---|
| Points | 21 vs. Wagner (12/7/14) | 21 vs. Wagner (12/7/14) |
| Rebs. | 10 vs. USF (12/21/14) 10 vs. Seton Hall (11/22/14) | 10 vs. USF (12/21/14) 10 vs. Seton Hall (11/22/14) |
| Assists | 7 vs. Rider (12/14/14) 7 vs. Wagner (12/7/14) | 7 vs. Rider (12/14/14) 7 vs. Wagner (12/7/14) |
| Steals | 4 at Wisconsin (1/6/15) | 4 at Wisconsin (1/6/15) |
| Blocks | 2 (3x) last at Michigan (1/1/15) | 2 (3x) last at Michigan (1/1/15) |
| Minutes | 41 vs. USF (12/21/14) | 41 vs. USF (12/21/14) |
| FGM | 6 (3x) last vs. Illinois (1/4/15) | 6 (3x) last vs. Illinois (1/4/15) |
| FGA | 19 vs. USF (12/21/14) | 19 vs. USF (12/21/14) |
| 3FGM | 1 (3x) last vs. USF (12/21/14) | 1 (3x) last vs. USF (12/21/14) |
| 3FGA | 2 vs. Samford (11/30/14) | 2 vs. Samford (11/30/14) |
| FTM | 11 vs. Wagner (12/7/14) | 11 vs. Wagner (12/7/14) |
| FTA | 12 vs. Wagner (12/7/14) | 12 vs. Wagner (12/7/14) |

italics indicate at Duke

MOORE'S MISCELLANEOUS STATS

| Category | Season | Career | Last Time |
|------------------------|--------|--------|-----------------------------|
| Double Figure Scoring | 10 | 11 | 14 vs. Illinois (1/4/15) |
| 20-point games | 1 | 1 | 21 vs. Wagner (12/7/14) |
| Double Figure Rebounds | 2 | 2 | 10 vs. USF (12/21/14) |
| 5-plus Rebounds | 9 | 10 | 9 at Wisconsin (1/6/15) |
| 5-plus Assists | 6 | 6 | 5 at Wisconsin (1/6/15) |
| 3-plus Steals | 1 | 2 | 4 at Wisconsin (1/6/15) |
| Double-Doubles | 2 | 2 | 17p, 10r vs. USF (12/21/14) |

MOORE'S CAREER STATS

| Year | GP-GS | MIN | FG-A | PCT | 3FG-A | PCT | FT-A | PCT | REB | AVG | PF-O | A | TO | B | S | PTS | AVG |
|----------|-------|-----|--------|------|-------|------|-------|------|----------|-----|------|----|----|----|----|-----|------|
| 2012-13* | 25-0 | 194 | 26-58 | .448 | 0-0 | .000 | 11-22 | .500 | 11-13-24 | 1.0 | 21-0 | 12 | 6 | 2 | 11 | 63 | 2.5 |
| 2014-15 | 15-15 | 498 | 63-164 | .384 | 3-6 | .500 | 42-69 | .609 | 26-49-75 | 5.0 | 33-2 | 56 | 50 | 10 | 21 | 171 | 11.4 |
| PSU | 15-15 | 498 | 63-164 | .384 | 3-6 | .500 | 42-69 | .609 | 26-49-75 | 5.0 | 33-2 | 56 | 50 | 10 | 21 | 171 | 11.4 |
| TOTAL | 40-15 | 692 | 89-222 | .401 | 3-6 | .500 | 53-91 | .582 | 37-62-99 | 2.5 | 54-2 | 68 | 56 | 12 | 32 | 234 | 5.9 |

* - at Duke

10-Time Big Ten Champions • Two-Time Big Ten Tournament Champions • 2000 NCAA Final Four • 25 NCAA Tournament Appearances





#10 Keke Sevillian

So. * G * 5-7 * Goodrich, Mich./Goodrich

Highlights:

- Made first career start against Seton Hall (11/22).

2014-15 Season Notes:

- Equaled her season-high with three steals and added one assist, two rebounds and two points at Wisconsin (1/6) in her third straight start.
- Tied her career-high with 36 minutes in her second straight start vs. Illinois (1/4), scoring four points with three rebounds.
- Made her second career start at Michigan (1/1).
- Had four points, four rebounds and two steals in the Big Ten opener at Iowa (12/28).
- Came off the bench to provide two assists, one steal, one blocked shot and two points vs. USF (12/21).
- Tallied a career-high nine points on 3-of-3 shooting from the field and a career-best three free throws made. Also tied her career-best with four rebounds vs. the Broncs.
- Converted her only field goal attempt, a three pointer, at Hartford (12/10).
- Nabbed a season-high three steals in a career-best 27 minutes of action and added four assists and four points vs. Wagner (12/7).
- Blocked her first career shot and grabbed a career-high three rebounds vs. Syracuse (12/4) in the ACC/Big Ten Challenge.
- Knocked down a pair of three-pointers and dished out a career-high five assists in the season-opener against Towson (11/14).
- Tallied four points, four rebounds, three assists and three steals in the exhibition win over IUP (11/2).

Notable:

- Led Goodrich High School in Michigan to its first-ever Class B State Championship in 2011-12 with a perfect 28-0 record.
- Holds the Goodrich High School record in the 300-meter hurdles and 200-meter dash and finished second in the state championships in the 300-meters hurdles her freshman and sophomore seasons.
- Father, Clarence, was a wide receiver for the Vanderbilt football team from 1989-92 and ranks in the school's Top 10 in career receiving yards.
- Aunt, Nicole Hendrix, played basketball at Stanford from 1991-94, winning a National Championship in 1992.

14-15 GAME-BY-GAME

| OPPONENT | Min. | FG | 3FG | FT | O-D-R | PF | A | TO | B | S | Pts |
|---------------|------|-----|-----|-----|-------|----|---|----|---|---|-----|
| TOWSON | 19 | 2-6 | 2-5 | 0-1 | 0-1-1 | 2 | 5 | 0 | 0 | 0 | 6 |
| ALBANY | 13 | 0-5 | 0-3 | 0-0 | 0-0-0 | 4 | 1 | 1 | 0 | 2 | 0 |
| SETON HALL | 14 | 0-5 | 0-2 | 1-2 | 0-0-0 | 2 | 1 | 2 | 0 | 1 | 1 |
| ST. BONA | 10 | 0-4 | 0-0 | 0-0 | 0-0-0 | 0 | 1 | 1 | 0 | 1 | 0 |
| vs. Liberty | 7 | 0-0 | 0-0 | 0-0 | 0-0-0 | 4 | 1 | 0 | 0 | 1 | 0 |
| vs. Samford | 9 | 0-1 | 0-0 | 0-0 | 0-0-0 | 2 | 1 | 2 | 0 | 0 | 0 |
| at Syracuse | 21 | 1-3 | 1-1 | 0-0 | 2-2-4 | 0 | 0 | 1 | 1 | 1 | 3 |
| WAGNER | 27 | 2-6 | 0-2 | 0-2 | 2-1-3 | 1 | 4 | 1 | 0 | 3 | 4 |
| at Hartford | 13 | 1-1 | 1-1 | 0-0 | 1-0-1 | 3 | 0 | 0 | 0 | 0 | 3 |
| RIDER | 27 | 3-3 | 0-0 | 3-7 | 1-3-4 | 2 | 4 | 2 | 0 | 3 | 9 |
| USF | 20 | 1-4 | 0-1 | 0-1 | 1-1-2 | 2 | 2 | 1 | 1 | 1 | 2 |
| at Iowa | 36 | 1-2 | 0-0 | 2-2 | 0-4-4 | 1 | 1 | 1 | 0 | 2 | 4 |
| at Michigan | 22 | 0-1 | 0-1 | 0-0 | 0-2-2 | 4 | 1 | 2 | 0 | 1 | 0 |
| ILLINOIS | 36 | 2-3 | 0-1 | 0-0 | 1-2-3 | 3 | 1 | 2 | 0 | 1 | 4 |
| at Wisconsin | 23 | 1-1 | 0-0 | 0-0 | 1-1-2 | 2 | 0 | 1 | 0 | 3 | 2 |
| RUTGERS | | | | | | | | | | | |
| at Nebraska | | | | | | | | | | | |
| at Ohio State | | | | | | | | | | | |
| INDIANA | | | | | | | | | | | |
| NORTHWESTERN | | | | | | | | | | | |
| at Minnesota | | | | | | | | | | | |
| at Rutgers | | | | | | | | | | | |
| MARYLAND | | | | | | | | | | | |
| at Purdue | | | | | | | | | | | |
| MICHIGAN ST. | | | | | | | | | | | |
| MINNESOTA | | | | | | | | | | | |
| at Maryland | | | | | | | | | | | |
| OHIO STATE | | | | | | | | | | | |
| WISCONSIN | | | | | | | | | | | |

SEVILLIAN'S CAREER/SEASON HIGHS

| | SEASON HIGHS | CAREER HIGHS |
|---------|---|---|
| Points | 9 vs. Rider (12/14/14) | 9 vs. Rider (12/14/14) |
| Rebs. | 4 (3x) last at Iowa (12/28) | 4 (3x) last at Iowa (12/28) |
| Assists | 5 vs. Towson (11/14/14) | 5 vs. Towson (11/14/14) |
| Steals | 3 (3x) last at Wisconsin (1/6/15) | 4 vs. St. Francis (Pa.) (11/8/13) |
| Blocks | 1 vs. USF (12/21/14) 1 at Syracuse (12/4/14) | 1 vs. USF (12/21/14) 1 at Syracuse (12/4/14) |
| Minutes | 36 vs. Illinois (1/4/15) 36 at Iowa (12/28/14) | 36 vs. Illinois (1/4/15) 36 at Iowa (12/28/14) |
| FGM | 3 vs. Rider (12/14/14) | 3 vs. Rider (12/14/14) |
| FGA | 6 vs. Wagner (12/7/14) 6 vs. Towson (11/14/14) | 6 (3x) last vs. Wagner (12/7/14) |
| 3FGM | 2 vs. Towson (11/14/14) | 2 vs. Towson (11/14/14) |
| 3FGA | 5 vs. Towson (11/14/14) | 5 vs. Towson (11/14/14) |
| FTM | 3 vs. Rider (12/14/14) | 4 vs. St. Francis (Pa.) (11/8/13) |
| FTA | 7 vs. Rider (12/14/14) | 7 vs. Rider (12/14/14) |

SEVILLIAN'S MISCELLANEOUS STATS

| Category | Season | Career | Last Time |
|------------------------|--------|--------|-------------------------|
| Double Figure Scoring | n/a | n/a | |
| 20-point games | n/a | n/a | |
| Double Figure Rebounds | n/a | n/a | |
| 5-plus Rebounds | n/a | n/a | |
| 5-plus Assists | 1 | 1 | 5 vs. Towson (11/14) |
| 3-plus Steals | 3 | 4 | 3 at Wisconsin (1/6/15) |
| Double-Doubles | n/a | n/a | |

SEVILLIAN'S CAREER STATS

| Year | GP-GS | MIN | FG-A | PCT | 3FG-A | PCT | FT-A | PCT | REB | AVG | PF-O | A | TO | B | S | PTS | AVG |
|--------------|-------------|------------|--------------|-------------|-------------|-------------|--------------|-------------|-----------------|------------|-------------|-----------|-----------|----------|-----------|-----------|------------|
| 2013-14 | 22-0 | 120 | 8-28 | .286 | 4-13 | .308 | 11-13 | .846 | 1-11-12 | 0.5 | 19-0 | 5 | 15 | 0 | 8 | 31 | 1.4 |
| 2014-15 | 15-4 | 297 | 14-45 | .311 | 4-17 | .235 | 6-15 | .400 | 9-17-26 | 1.7 | 32-0 | 23 | 17 | 2 | 20 | 38 | 2.5 |
| TOTAL | 37-4 | 417 | 22-73 | .301 | 8-30 | .267 | 17-28 | .607 | 10-28-38 | 1.0 | 51-0 | 28 | 32 | 2 | 28 | 69 | 1.9 |





#11 Alex Harris

So. * F * 6-3 * Lorain, Ohio/Lorain

Highlights:

- ♦ Made her first career start at Michigan (1/1).

2014-15 Season Notes:

- ♦ Scored five points on 2-of-2 shooting from the field, going 1-of-1 from the free throw line, with two rebounds in seven minutes vs. Illinois (1/4).
- ♦ Tied her career-high with 11 rebounds in the Big Ten opener at Iowa (12/28) and added four points.
- ♦ Made her season debut vs. USF (12/21), setting career-highs for minutes played (31), points (9) and free throws made (3) and attempted (8). She also tied her career-best marks in blocked shots (3), assists (2) and field goals made (3) and attempted (5).

Notable:

- ♦ Appeared in 29 contests as a freshman.
- ♦ Had three double-digit rebounding performances as a freshman and 10 outings with five or more rebounds.
- ♦ Collegiate Girls Basketball Report and All-Star Girls Report both rated her as the 49th-ranked recruit.
- ♦ Named 2012-13 Division 1 Lorain County Player of the Year.

14-15 GAME-BY-GAME

| OPPONENT | Min. | FG | 3FG | FT | O-D-R | PF | A | TO | B | S | Pts |
|---------------|------|-----|-----|-----|--------|----|---|----|---|---|-----|
| TOWSON | DNP | | | | | | | | | | |
| ALBANY | DNP | | | | | | | | | | |
| SETON HALL | DNP | | | | | | | | | | |
| ST. BONA | DNP | | | | | | | | | | |
| vs. Liberty | DNP | | | | | | | | | | |
| vs. Samford | DNP | | | | | | | | | | |
| at Syracuse | DNP | | | | | | | | | | |
| WAGNER | DNP | | | | | | | | | | |
| at Hartford | DNP | | | | | | | | | | |
| RIDER | DNP | | | | | | | | | | |
| USF | 31 | 3-5 | 0-0 | 3-8 | 5-3-8 | 3 | 2 | 1 | 3 | 0 | 9 |
| at Iowa | 18 | 2-5 | 0-0 | 0-0 | 7-4-11 | 3 | 1 | 5 | 0 | 1 | 4 |
| at Michigan | 12 | 0-0 | 0-0 | 0-0 | 0-0-0 | 0 | 0 | 0 | 2 | 0 | 0 |
| ILLINOIS | 7 | 2-2 | 0-0 | 1-1 | 1-1-2 | 2 | 0 | 0 | 0 | 0 | 5 |
| at Wisconsin | 15 | 1-4 | 0-0 | 0-0 | 5-2-7 | 3 | 1 | 0 | 0 | 0 | 2 |
| RUTGERS | | | | | | | | | | | |
| at Nebraska | | | | | | | | | | | |
| at Ohio State | | | | | | | | | | | |
| INDIANA | | | | | | | | | | | |
| NORTHWESTERN | | | | | | | | | | | |
| at Minnesota | | | | | | | | | | | |
| at Rutgers | | | | | | | | | | | |
| MARYLAND | | | | | | | | | | | |
| at Purdue | | | | | | | | | | | |
| MICHIGAN ST. | | | | | | | | | | | |
| MINNESOTA | | | | | | | | | | | |
| at Maryland | | | | | | | | | | | |
| OHIO STATE | | | | | | | | | | | |
| WISCONSIN | | | | | | | | | | | |

HARRIS' CAREER/SEASON HIGHS

| | SEASON HIGHS | CAREER HIGHS |
|---------|--|---|
| Points | 9 vs. USF (12/21/14) | 9 vs. USF (12/21/14) |
| Rebs. | 11 at Iowa (12/28/14) | 11 (3x) last at Iowa (12/28/14) |
| Assists | 2 vs. USF (12/21/14) | 2 vs. USF (12/21/14) 2 vs. Illinois State (11/30/13) |
| Steals | 1 at Iowa (12/28/14) | 1 (7x) last at Iowa (12/28/14) |
| Blocks | 3 vs. USF (12/21/14) | 3 (3x) last vs. USF (12/21/14) |
| Minutes | 31 vs. USF (12/21/14) | 31 vs. USF (12/21/14) |
| FGM | 3 vs. USF (12/21/14) | 3 vs. USF (12/21/14) 3 vs. Bucknell (11/20/13) |
| FGA | 5 at Iowa (12/28/14) 5 vs. USF (12/21/14) | 5 (4x) last at Iowa (12/28/14) |
| 3FGM | n/a | n/a |
| 3FGA | n/a | n/a |
| FTM | 3 vs. USF (12/21/14) | 3 vs. USF (12/21/14) |
| FTA | 8 vs. USF (12/21/14) | 8 vs. USF (12/21/14) |

HARRIS' MISCELLANEOUS STATS

| Category | Season | Career | Last Time |
|------------------------|--------|--------|----------------------------------|
| Double Figure Scoring | n/a | n/a | |
| 20-point games | n/a | n/a | |
| Double Figure Rebounds | n/a | 3 | 11 vs. Illinois State (11/30/13) |
| 5-plus Rebounds | 2 | 12 | 7 at Wisconsin (1/6/15) |
| 5-plus Blocks | n/a | n/a | |
| 3-plus Blocks | 1 | 2 | 3 vs. USF (12/21/14) |
| Double-Doubles | n/a | n/a | |

HARRIS' CAREER STATS

| Year | GP-GS | MIN | FG-A | PCT | 3FG-A | PCT | FT-A | PCT | REB | AVG | PF-O | A | TO | B | S | PTS | AVG |
|--------------|-------------|------------|--------------|-------------|------------|-------------|--------------|-------------|------------------|------------|-------------|----------|-----------|-----------|----------|-----------|------------|
| 2013-14 | 29-0 | 256 | 20-50 | .400 | 0-0 | .000 | 17-34 | .500 | 39-57-96 | 3.3 | 33-0 | 5 | 19 | 15 | 6 | 57 | 2.0 |
| 2014-15 | 5-1 | 83 | 8-16 | .500 | 0-0 | .000 | 4-9 | .444 | 18-10-28 | 5.6 | 11-0 | 4 | 6 | 5 | 1 | 20 | 4.0 |
| TOTAL | 34-1 | 339 | 28-66 | .424 | 0-0 | .000 | 21-43 | .488 | 57-67-124 | 3.6 | 44-0 | 9 | 25 | 20 | 7 | 77 | 2.3 |

10-Time Big Ten Champions • Two-Time Big Ten Tournament Champions • 2000 NCAA Final Four • 25 NCAA Tournament Appearances





#12 Lindsey Spann

RS-Fr. * G * 5-6 * Laurel, Md./Good Counsel

Highlights:

- Named Dec. 30 Big Ten Freshman of the Week.
- Selected as a team tri-captain.
- Reached double-figure in scoring in each of her first eight career games, a feat not accomplished by Penn State's top two career scoring leaders, Kelly Mazzante and Maggie Lucas.
- Reached the 100 career point plateau in just her eighth career game (Wagner, 12/7) and moved past the 200 career point mark in her 13th career contest (at Michigan; 1/1).

2014-15 Season Notes:

- Scored a team-high 13 points and added four rebounds, three assists and two steals at Wisconsin (1/6).
- Paced the team with 20 points and added four assists and a career-high six rebounds vs. Illinois (1/4).
- Led the team with 15 points at Michigan (1/1), making 6-of-12 shots from the field.
- Notched her third straight 20-point game in the Big Ten opener at Iowa (12/28), and added five rebounds and four assists. She netted a career-high four three pointers and six free throws vs. the Hawkeyes.
- Poured in a career-high 28 points vs. USF (12/14), tying her career-high with 11 made field goals and adding a career-best five made three throws.
- Filled the stat sheet vs. Rider (12/14), posting her second career 20-point game with a then-career-high 23 tallies on a career-best 11 made field goals. Also added five rebounds and five assists.
- Scored five points, snapping her streak of eight straight games in double figure to start her career, and handed out four assists at Hartford (12/10).
- Tallied a then-career-best 22 points for her eighth straight double-figure scoring game vs. Wagner (12/7), pushing her over the 100 career point mark. She set a then-career-best with eight made field goals, while tying her then-personal-high with five rebounds.
- Netted 11 points at Syracuse (12/4) in the ACC/Big Ten Challenge, adding three assists and three rebounds.
- Reached double figures with 10 points vs. Samford (11/30), adding five assists and three steals in 41 minutes of action in the overtime loss.
- Scored a team-best and tied her then-career-high with 17 points and seven field goals vs. Liberty (11/28), to go along with three assists and two steals.
- Reached double figures with 13 points to go along with five assists and two steals against St. Bonaventure (11/25).
- Chipped in 12 points and three steals against Seton Hall (11/22).
- Led the Lady Lions in scoring for the second straight game with 14 points against Albany (11/16), marking the first time a freshman has been the team's leading scorer in two straight games since Maggie Lucas did so vs. Minnesota (1/13/11) and vs. Illinois (1/16/11).
- Went 7-for-14 from the field for a team-high 17 points in her collegiate debut against Towson (11/14). Also tallied five rebounds and four assists against the Tigers.
- Recorded 14 points and dished out four assists in the exhibition win over IUP (11/2).

Notable:

- Missed the 2013-14 season after tearing her right ACL.
- Ranked as the 22nd-best player by Collegiate Girls Basketball Report and 88th-rated player by Blue Star Basketball.
- Guided Good Counsel to a 25-5 overall record and 16-3 mark in league play.
- Participated in USA Basketball's U16 Trials in May 2011.

14-15 GAME-BY-GAME

| OPPONENT | Min. | FG | 3FG | FT | O-D-R | PF | A | TO | B | S | Pts |
|---------------|------|-------|-----|-----|-------|----|---|----|---|---|-----|
| TOWSON | 32 | 7-14 | 0-2 | 3-4 | 0-5-5 | 2 | 4 | 4 | 0 | 0 | 17 |
| ALBANY | 31 | 6-12 | 1-3 | 1-2 | 0-1-1 | 3 | 4 | 3 | 0 | 0 | 14 |
| SETON HALL | 27 | 4-10 | 2-4 | 2-2 | 0-2-2 | 5 | 1 | 5 | 0 | 3 | 12 |
| ST. BONA | 34 | 4-14 | 2-6 | 3-4 | 1-1-2 | 3 | 5 | 1 | 0 | 2 | 13 |
| vs. Liberty | 37 | 7-21 | 0-7 | 3-3 | 0-0-0 | 3 | 3 | 7 | 0 | 2 | 17 |
| vs. Samford | 41 | 3-13 | 0-2 | 4-6 | 1-1-2 | 4 | 5 | 4 | 0 | 3 | 10 |
| at Syracuse | 29 | 4-11 | 1-4 | 2-4 | 0-3-3 | 1 | 3 | 6 | 0 | 0 | 11 |
| WAGNER | 30 | 8-15 | 2-5 | 4-4 | 2-3-5 | 3 | 4 | 2 | 0 | 2 | 22 |
| at Hartford | 31 | 1-6 | 0-1 | 3-4 | 0-4-4 | 3 | 4 | 2 | 0 | 1 | 5 |
| RIDER | 35 | 11-20 | 1-4 | 0-2 | 0-5-5 | 2 | 5 | 2 | 0 | 2 | 23 |
| USF | 41 | 11-22 | 1-3 | 5-9 | 0-3-3 | 5 | 3 | 1 | 0 | 1 | 28 |
| at Iowa | 39 | 6-21 | 4-9 | 6-8 | 1-4-5 | 3 | 4 | 5 | 0 | 1 | 22 |
| at Michigan | 28 | 6-12 | 1-3 | 2-4 | 0-2-2 | 4 | 1 | 7 | 0 | 1 | 15 |
| ILLINOIS | 39 | 8-19 | 2-6 | 2-2 | 1-5-6 | 2 | 4 | 3 | 0 | 2 | 20 |
| at Wisconsin | 35 | 5-16 | 1-5 | 2-2 | 0-4-4 | 2 | 3 | 5 | 0 | 2 | 13 |
| RUTGERS | | | | | | | | | | | |
| at Nebraska | | | | | | | | | | | |
| at Ohio State | | | | | | | | | | | |
| INDIANA | | | | | | | | | | | |
| NORTHWESTERN | | | | | | | | | | | |
| at Minnesota | | | | | | | | | | | |
| at Rutgers | | | | | | | | | | | |
| MARYLAND | | | | | | | | | | | |
| at Purdue | | | | | | | | | | | |
| MICHIGAN ST. | | | | | | | | | | | |
| MINNESOTA | | | | | | | | | | | |
| at Maryland | | | | | | | | | | | |
| OHIO STATE | | | | | | | | | | | |
| WISCONSIN | | | | | | | | | | | |

SPANN'S CAREER/SEASON HIGHS

| | SEASON HIGHS | CAREER HIGHS |
|---------|---|---|
| Points | 28 vs. USF (12/21/14) | 28 vs. USF (12/21/14) |
| Rebs. | 6 vs. Illinois (1/1/15) | 6 vs. Illinois (1/1/15) |
| Assists | 5 (3x) last vs. Rider (12/14/14) | 5 (3x) last vs. Rider (12/14/14) |
| Steals | 3 vs. Samford (11/30/14) 3 vs. Seton Hall (11/22/14) | 3 vs. Samford (11/30/14) 3 vs. Seton Hall (11/22/14) |
| Blocks | n/a | n/a |
| Minutes | 41 vs. USF (12/21/14) 41 vs. Samford (11/30/14) | 41 vs. USF (12/21/14) 41 vs. Samford (11/30/14) |
| FGM | 11 vs. USF (12/21/14) 11 vs. Rider (12/14/14) | 11 vs. USF (12/21/14) 11 vs. Rider (12/14/14) |
| FGA | 22 vs. USF (12/21/14) | 22 vs. USF (12/21/14) |
| 3FGM | 4 at Iowa (12/28/14) | 4 at Iowa (12/28/14) |
| 3FGA | 9 at Iowa (12/28/14) | 9 at Iowa (12/28/14) |
| FTM | 6 at Iowa (12/28/14) | 6 at Iowa (12/28/14) |
| FTA | 9 vs. USF (12/21/14) | 9 vs. USF (12/21/14) |

SPANN'S MISCELLANEOUS STATS

| Category | Season | Career | Last Time |
|------------------------|--------|--------|--------------------------|
| Double Figure Scoring | 14 | 14 | 13 at Wisconsin (1/6/15) |
| 20-point games | 5 | 5 | 20 vs. Illinois (1/1/15) |
| Double Figure Rebounds | n/a | n/a | |
| 5-plus Rebounds | 5 | 5 | 6 vs. Illinois (1/1/15) |
| 5-plus Assists | 3 | 3 | 5 vs. Rider (12/14/14) |
| 3-plus Steals | 2 | 2 | 3 vs. Samford (11/30/14) |
| Double-Doubles | n/a | n/a | |

SPANN'S CAREER STATS

| Year | GP-GS | MIN | FG-A | PCT | 3FG-A | PCT | FT-A | PCT | REB | AVG | PF-O | A | TO | B | S | PTS | AVG |
|--------------|--------------|------------|---------------|-------------|--------------|-------------|--------------|-------------|----------------|------------|-------------|-----------|-----------|----------|-----------|------------|-------------|
| 2014-15 | 15-15 | 509 | 91-226 | .403 | 18-64 | .281 | 42-60 | .700 | 6-43-49 | 3.3 | 45-2 | 53 | 57 | 0 | 22 | 242 | 16.1 |
| TOTAL | 15-15 | 509 | 91-226 | .403 | 18-64 | .281 | 42-60 | .700 | 6-43-49 | 3.3 | 45-2 | 53 | 57 | 0 | 22 | 242 | 16.1 |





#14 Dominique Brooks

Jr. * C * 6-4 * Lansing, Ill./T.F. South (Trinity Valley C.C.)

2014-15 Season Notes:

- ♦ Converted on an old-fashioned three-point play at Michigan (1/1).
- ♦ Made her only field goal attempt vs. Rider (12/14).
- ♦ Scored a career-best four points and recorded her first career blocked shot vs. Wagner (12/7).
- ♦ Pulled down her first rebound as a Lady Lion vs. Syracuse (12/4) in the ACC/Big Ten Challenge.
- ♦ Connected on her lone field goal attempt vs. Liberty (11/28).
- ♦ Hit a pair of free throws in her Penn State debut in the win over Towson (11/14)
- ♦ Had four rebounds and a blocked shot in the exhibition win against IUP (11/2).

Notable:

- ♦ Won two NJCAA National Championships while at Trinity Valley Community College.
- ♦ Participated in USA Basketball U18 Trials in 2012

14-15 GAME-BY-GAME

| OPPONENT | Min. | FG | 3FG | FT | O-D-R | PF | A | TO | B | S | Pts |
|---------------|------|-----|-----|-----|-------|----|---|----|---|---|-----|
| TOWSON | 3 | 0-0 | 0-0 | 2-2 | 0-0-0 | 1 | 0 | 0 | 0 | 0 | 2 |
| ALBANY | 2 | 0-0 | 0-0 | 0-0 | 0-0-0 | 1 | 0 | 1 | 0 | 0 | 0 |
| SETON HALL | 3 | 0-0 | 0-0 | 0-0 | 0-0-0 | 2 | 0 | 0 | 0 | 0 | 0 |
| ST. BONA | 1 | 0-0 | 0-0 | 0-0 | 0-0-0 | 0 | 0 | 1 | 0 | 0 | 0 |
| vs. Liberty | 2 | 1-1 | 0-0 | 0-0 | 0-0-0 | 0 | 0 | 0 | 0 | 0 | 2 |
| vs. Samford | DNP | | | | | | | | | | |
| at Syracuse | 3 | 0-0 | 0-0 | 0-0 | 0-1-1 | 1 | 0 | 1 | 0 | 0 | 0 |
| WAGNER | 9 | 1-3 | 0-0 | 2-2 | 0-0-0 | 1 | 0 | 0 | 1 | 0 | 4 |
| at Hartford | DNP | | | | | | | | | | |
| RIDER | 6 | 1-1 | 0-0 | 0-0 | 0-0-0 | 1 | 0 | 1 | 0 | 0 | 2 |
| USF | DNP | | | | | | | | | | |
| at Iowa | 1 | 0-0 | 0-0 | 0-0 | 0-0-0 | 0 | 0 | 0 | 0 | 0 | 0 |
| at Michigan | 2 | 1-1 | 0-0 | 1-1 | 0-0-0 | 0 | 0 | 0 | 0 | 0 | 3 |
| ILLINOIS | DNP | | | | | | | | | | |
| at Wisconsin | 2 | 0-0 | 0-0 | 0-0 | 0-0-0 | 0 | 0 | 1 | 0 | 0 | 0 |
| RUTGERS | | | | | | | | | | | |
| at Nebraska | | | | | | | | | | | |
| at Ohio State | | | | | | | | | | | |
| INDIANA | | | | | | | | | | | |
| NORTHWESTERN | | | | | | | | | | | |
| at Minnesota | | | | | | | | | | | |
| at Rutgers | | | | | | | | | | | |
| MARYLAND | | | | | | | | | | | |
| at Purdue | | | | | | | | | | | |
| MICHIGAN ST. | | | | | | | | | | | |
| MINNESOTA | | | | | | | | | | | |
| at Maryland | | | | | | | | | | | |
| OHIO STATE | | | | | | | | | | | |
| WISCONSIN | | | | | | | | | | | |

BROOKS' CAREER/SEASON HIGHS

| | SEASON HIGHS | CAREER HIGHS |
|---------|---|---|
| Points | 4 vs. Wagner (12/7/14) | 4 vs. Wagner (12/7/14) |
| Rebs. | 1 at Syracuse (12/4/14) | 1 at Syracuse (12/4/14) |
| Assists | n/a | n/a |
| Steals | n/a | n/a |
| Blocks | 1 vs. Wagner (12/7/14) | 1 vs. Wagner (12/7/14) |
| Minutes | 9 vs. Wagner (12/7/14) | 9 vs. Wagner (12/7/14) |
| FGM | 1 (3x) last vs. Rider (12/14/14) | 1 (3x) last vs. Rider (12/14/14) |
| FGA | 3 vs. Wagner (12/7/14) | 3 vs. Wagner (12/7/14) |
| 3FGM | n/a | n/a |
| 3FGA | n/a | n/a |
| FTM | 2 vs. Wagner (12/7/14) 2 vs. Towson (11/14/14) | 2 vs. Wagner (12/7/14) 2 vs. Towson (11/14/14) |
| FTA | 2 vs. Wagner (12/7/14) 2 vs. Towson (11/14/14) | 2 vs. Wagner (12/7/14) 2 vs. Towson (11/14/14) |

BROOKS' MISCELLANEOUS STATS

| Category | Season | Career | Last Time |
|------------------------|--------|--------|-----------|
| Double Figure Scoring | n/a | n/a | |
| 20-point games | n/a | n/a | |
| Double Figure Rebounds | n/a | n/a | |
| 5-plus Rebounds | n/a | n/a | |
| 5-plus Assists | n/a | n/a | |
| 3-plus Steals | n/a | n/a | |
| Double-Doubles | n/a | n/a | |

BROOKS' CAREER STATS

| Year | GP-GS | MIN | FG-A | PCT | 3FG-A | PCT | FT-A | PCT | REB | AVG | PF-O | A | TO | B | S | PTS | AVG |
|--------------|-------------|-----------|------------|-------------|------------|-------------|------------|--------------|--------------|------------|------------|----------|----------|----------|----------|-----------|------------|
| 2014-15 | 11-0 | 34 | 4-6 | .667 | 0-0 | .000 | 5-5 | 1.000 | 0-1-1 | 0.1 | 7-0 | 0 | 5 | 1 | 0 | 13 | 1.2 |
| TOTAL | 11-0 | 34 | 4-6 | .667 | 0-0 | .000 | 5-5 | 1.000 | 0-1-1 | 0.1 | 7-0 | 0 | 5 | 1 | 0 | 13 | 1.2 |

10-Time Big Ten Champions • Two-Time Big Ten Tournament Champions • 2000 NCAA Final Four • 25 NCAA Tournament Appearances





#15 Kaliyah Mitchell

So. * F * 6-2 * Stone Mountain, Ga./Stephenson

Highlights:

- Second-leading returning scorer and rebounder from 2013-14.
- Eclipsed the 200 career point mark with an early three point basket in the first half vs. Wagner (12/7)
- Posted her first career double-double vs. Rider (12/14) with 12 points and 10 rebounds.

14-15 GAME-BY-GAME

| OPPONENT | Min. | FG | 3FG | FT | O-D-R | PF | A | TO | B | S | Pts |
|---------------|------|------|-----|-----|--------|----|---|----|---|---|-----|
| TOWSON | 25 | 3-8 | 0-2 | 4-6 | 2-3-4 | 4 | 0 | 3 | 0 | 3 | 10 |
| ALBANY | 30 | 2-7 | 1-2 | 4-5 | 1-5-6 | 4 | 0 | 5 | 0 | 4 | 9 |
| SETON HALL | 32 | 2-9 | 0-1 | 4-6 | 3-7-10 | 2 | 0 | 1 | 1 | 0 | 8 |
| ST. BONA | 29 | 1-7 | 0-1 | 0-1 | 1-8-9 | 3 | 1 | 3 | 0 | 4 | 2 |
| vs. Liberty | 27 | 4-12 | 0-3 | 2-3 | 1-4-5 | 4 | 0 | 3 | 0 | 5 | 10 |
| at Samford | 38 | 3-10 | 0-1 | 2-3 | 1-8-9 | 5 | 1 | 2 | 2 | 2 | 8 |
| at Syracuse | 27 | 0-6 | 0-4 | 2-4 | 1-4-5 | 3 | 1 | 1 | 1 | 0 | 2 |
| WAGNER | 28 | 8-11 | 1-2 | 3-4 | 3-4-7 | 1 | 0 | 1 | 0 | 0 | 20 |
| at Hartford | 31 | 2-13 | 1-3 | 4-6 | 4-3-7 | 5 | 0 | 4 | 1 | 0 | 9 |
| RIDER | 29 | 4-7 | 0-1 | 4-6 | 4-6-10 | 3 | 1 | 1 | 1 | 4 | 12 |
| USF | 26 | 1-5 | 0-0 | 4-4 | 4-4-8 | 5 | 1 | 2 | 0 | 1 | 6 |
| at Iowa | 21 | 0-2 | 0-0 | 0-2 | 2-2-4 | 4 | 0 | 2 | 2 | 1 | 0 |
| at Michigan | 28 | 3-7 | 0-2 | 3-4 | 1-5-6 | 1 | 2 | 2 | 0 | 0 | 9 |
| ILLINOIS | 29 | 5-9 | 0-1 | 1-1 | 1-4-5 | 3 | 2 | 2 | 0 | 1 | 11 |
| at Wisconsin | 17 | 0-5 | 0-1 | 3-4 | 0-1-1 | 5 | 1 | 0 | 0 | 0 | 3 |
| RUTGERS | | | | | | | | | | | |
| at Nebraska | | | | | | | | | | | |
| at Ohio State | | | | | | | | | | | |
| INDIANA | | | | | | | | | | | |
| NORTHWESTERN | | | | | | | | | | | |
| at Minnesota | | | | | | | | | | | |
| at Rutgers | | | | | | | | | | | |
| MARYLAND | | | | | | | | | | | |
| at Purdue | | | | | | | | | | | |
| MICHIGAN ST. | | | | | | | | | | | |
| MINNESOTA | | | | | | | | | | | |
| at Maryland | | | | | | | | | | | |
| OHIO STATE | | | | | | | | | | | |
| WISCONSIN | | | | | | | | | | | |

2014-15 Season Notes:

- Scored 11 points - all in the second half - and added five rebounds and a career-high-tying two assists vs. Illinois (1/4) off the bench.
- Came off the bench to score nine points with six rebounds and tied a career-high with two assists at Michigan (1/1).
- Equaled her career-high with two blocked shots in the Big Ten opener at Iowa (12/28), adding four rebounds and one steal.
- Posted her 10th straight game with at least five rebounds vs. USF, pulling down eight caroms. She added six points, one assist and one steal vs. the Bulls.
- Notched her first career double-double vs. Rider (12/14) with 12 points and career-high-tying 10 rebounds. She was an efficient 4-of-7 from the field and 4-of-6 from the free throw line, while adding four steals vs. the Broncs.
- Grabbed seven rebounds with nine points and a blocked shot at Hartford (12/10).
- Eclipsed the 200 career point mark with an early first half three pointer vs. Wagner and tallied her first ever 20-point game. She logged 20 points with a career-high eight made field goals, her third career three pointer and three free throws. She also added seven rebounds.
- Hauled in five rebounds vs. Syracuse (12/4) in the ACC/Big Ten Challenge.
- Narrowly missed a double-double with eight points and nine rebounds vs. Samford (11/30), adding one assist, two steals and a career-high tying two blocks.
- Logged 10 points, five rebounds and a career-high five steals vs. Liberty (11/28).
- Pulled in nine rebounds against St. Bonaventure (11/25).
- Registered eight points and tied her career high with 10 rebounds against Seton Hall (11/22).
- Chipped in nine points, six rebounds and tied her career high with four steals against Albany (11/16).
- Accounted for 10 points and a team-best three steals against Towson (11/14).
- Posted a near double-double with 12 points, nine rebounds and three steals in the exhibition win versus IUP (11/2).

Notable:

- Was the 54th-ranked recruit by Collegiate Girls Basketball Report and 40th-ranked recruit by All-Star Girls Report.
- Brother, Kenny, was an all-conference basketball player at Virginia State University.

MITCHELL'S CAREER/SEASON HIGHS

| | SEASON HIGHS | CAREER HIGHS |
|---------|---|--|
| Points | 20 vs. Wagner (12/7/14) | 20 vs. Wagner (12/7/14) |
| Rebs. | 10 vs. Rider (12/14/14) 10 vs. Seton Hall (11/22/14) | 10 (3x) last vs. Rider (12/14/14) |
| Assists | 2 vs. Illinois (1/4/15) 2 at Michigan (1/1/15) | 2 (8x) last vs. Illinois (1/4/15) |
| Steals | 5 vs. Liberty (11/28/14) | 5 vs. Liberty (11/28/14) |
| Blocks | 2 at Iowa (12/28/14) 2 vs. Samford (11/30/14) | 2 (3x) last at Iowa (12/28/14) |
| Minutes | 38 vs. Samford (11/30/14) | 38 vs. Samford (11/30/14) |
| FGM | 8 vs. Wagner (12/7/14) | 8 vs. Wagner (12/7/14) |
| FGA | 13 at Hartford (12/10/14) | 13 at Hartford (12/10/14) |
| 3FGM | 1 (3x) last at Hartford (12/10/14) | 1 (3x) last at Hartford (12/10/14) |
| 3FGA | 4 at Syracuse (12/4/14) | 4 at Syracuse (12/4/14) |
| FTM | 4 (6x) last vs. USF (12/21/14) | 7 vs. Northwestern (2/20/14) |
| FTA | 6 (3x) last vs. Rider (12/14/14) | 7 (3x) last vs. Northwestern (2/20/14) |

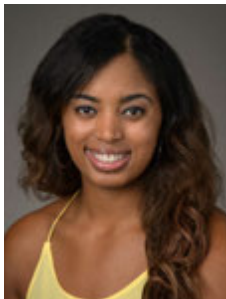
MITCHELL'S MISCELLANEOUS STATS

| Category | Season | Career | Last Time |
|------------------------|--------|--------|--------------------------------------|
| Double Figure Scoring | 5 | 7 | 11 vs. Illinois (1/4/15) |
| 20-point games | 1 | 1 | 20 vs. Wagner (12/7/14) |
| Double Figure Rebounds | 2 | 3 | 10 vs. Rider (12/14/14) |
| 5-plus Rebounds | 12 | 25 | 5 vs. Illinois (1/4/15) |
| 5-plus Assists | n/a | n/a | |
| 3-plus Steals | 5 | 7 | 4 vs. Rider (12/14/14) |
| Double-Doubles | 1 | 1 | 12 pts, 10 reb. vs. Rider (12/14/14) |

MITCHELL'S CAREER STATS

| Year | GP-GS | MIN | FG-A | PCT | 3FG-A | PCT | FT-A | PCT | REB | AVG | PF-O | A | TO | B | S | PTS | AVG |
|--------------|--------------|------------|---------------|-------------|-------------|-------------|----------------|-------------|-------------------|------------|--------------|-----------|-----------|-----------|-----------|------------|------------|
| 2013-14 | 32-0 | 546 | 41-114 | .360 | 1-14 | .071 | 61-83 | .735 | 40-100-140 | 4.4 | 64-2 | 28 | 26 | 5 | 20 | 144 | 4.5 |
| 2014-15 | 15-12 | 417 | 38-118 | .322 | 3-24 | .125 | 40-59 | .678 | 28-67-95 | 6.3 | 52-4 | 10 | 32 | 8 | 25 | 119 | 7.9 |
| TOTAL | 47-12 | 963 | 79-232 | .341 | 4-38 | .105 | 101-142 | .711 | 68-167-235 | 5.0 | 116-6 | 38 | 58 | 13 | 45 | 263 | 5.6 |





#25 Peyton Whitted

So. * F * 6-3 * Suwanee, Ga./North Gwinnett

2014-15 Season Notes:

- ♦ Scored four points and grabbed four boards at Wisconsin (1/6).
- ♦ Added seven points off the bench vs. Illinois (1/4).
- ♦ Collected a career-high three steals with two points and three rebounds at Michigan (1/1).
- ♦ Played a career-high 27 minutes in the Big Ten opener at Iowa (12/28), tying her career-high with two assists.
- ♦ Handed out a career-high-tying two assists, adding four points and three rebounds, vs. USF (12/21).
- ♦ Set a season-high with eight points and grabbed five rebounds at Hartford (12/10).
- ♦ Scored seven points and had five rebounds vs. Liberty (11/28).
- ♦ Tallied six points, seven rebounds and two assists against Seton Hall (11/22).
- ♦ Grabbed nine rebounds with four points and two assists in the win over Towson (11/14).
- ♦ Pulled in 10 rebounds to go along with eight points and five assists in the exhibition win over IUP (11/2).

Notable:

- ♦ Led North Gwinnett to the Georgia State Championship game after averaging 13.7 points, 5.7 rebounds, 1.4 steals and 2.0 assists per game as a senior.
- ♦ Participated in USA Basketball's U16 Trials in May 2011.
- ♦ Father, Kevin, played basketball at Tennessee from 1993-95.
- ♦ Kevin is currently the head coach of the NBA D-League's Westchester Knicks.
- ♦ Kevin broke Michael Jordan's Laney High School scoring record with 1,554 points.

14-15 GAME-BY-GAME

| OPPONENT | Min. | FG | 3FG | FT | O-D-R | PF | A | TO | B | S | Pts |
|---------------|------|-----|-----|-----|-------|----|---|----|---|---|-----|
| TOWSON | 23 | 2-5 | 0-0 | 0-0 | 3-6-9 | 3 | 2 | 3 | 0 | 1 | 4 |
| ALBANY | 19 | 1-5 | 0-1 | 0-1 | 1-3-4 | 4 | 1 | 3 | 0 | 1 | 2 |
| SETON HALL | 23 | 2-6 | 0-3 | 2-6 | 1-6-7 | 3 | 2 | 4 | 1 | 1 | 6 |
| ST. BONA | 9 | 2-3 | 0-1 | 0-0 | 1-0-1 | 2 | 0 | 0 | 0 | 1 | 4 |
| vs. Liberty | 18 | 3-6 | 1-1 | 0-0 | 3-2-5 | 5 | 0 | 2 | 0 | 0 | 7 |
| vs. Samford | 23 | 1-7 | 0-1 | 0-0 | 1-4-5 | 4 | 0 | 1 | 1 | 1 | 2 |
| at Syracuse | 12 | 1-3 | 0-0 | 1-2 | 0-1-1 | 1 | 0 | 3 | 0 | 0 | 3 |
| WAGNER | 16 | 2-4 | 0-0 | 0-0 | 1-1-2 | 2 | 0 | 1 | 0 | 1 | 4 |
| at Hartford | 23 | 3-7 | 0-1 | 2-2 | 2-3-5 | 4 | 0 | 2 | 0 | 0 | 8 |
| RIDER | 14 | 2-4 | 0-0 | 1-2 | 0-2-2 | 3 | 1 | 3 | 0 | 0 | 5 |
| USF | 18 | 1-4 | 0-0 | 2-2 | 1-2-3 | 4 | 2 | 1 | 0 | 0 | 4 |
| at Iowa | 27 | 0-6 | 0-2 | 0-0 | 0-4-4 | 2 | 2 | 2 | 0 | 1 | 0 |
| at Michigan | 24 | 1-6 | 0-2 | 0-0 | 1-2-3 | 1 | 1 | 7 | 0 | 3 | 2 |
| ILLINOIS | 15 | 3-6 | 0-0 | 1-1 | 1-1-2 | 3 | 0 | 1 | 0 | 0 | 7 |
| at Wisconsin | 15 | 2-6 | 0-0 | 0-0 | 3-1-4 | 2 | 0 | 1 | 0 | 0 | 4 |
| RUTGERS | | | | | | | | | | | |
| at Nebraska | | | | | | | | | | | |
| at Ohio State | | | | | | | | | | | |
| INDIANA | | | | | | | | | | | |
| NORTHWESTERN | | | | | | | | | | | |
| at Minnesota | | | | | | | | | | | |
| at Rutgers | | | | | | | | | | | |
| MARYLAND | | | | | | | | | | | |
| at Purdue | | | | | | | | | | | |
| MICHIGAN ST. | | | | | | | | | | | |
| MINNESOTA | | | | | | | | | | | |
| at Maryland | | | | | | | | | | | |
| OHIO STATE | | | | | | | | | | | |
| WISCONSIN | | | | | | | | | | | |

WHITTED'S CAREER/SEASON HIGHS

| | SEASON HIGHS | CAREER HIGHS |
|---------|---|--|
| Points | 8 at Hartford (12/10/14) | 11 at Northwestern (2/2/14) |
| Rebs. | 9 vs. Towson (11/14/14) | 10 at Illinois (1/9/14) |
| Assists | 2 (4x) last at Iowa (12/28/14) | 2 (6x) last at Iowa (12/28/14) |
| Steals | 3 at Michigan (1/1/15) | 3 at Michigan (1/1/15) |
| Blocks | 1 vs. Samford (11/30/14) 1 vs. Seton Hall (11/22/14) | 3 at South Dakota St. (12/11/13) |
| Minutes | 27 at Iowa (12/28/14) | 27 at Iowa (12/28/14) |
| FGM | 3 (3x) last vs. Illinois (1/4/15) | 5 at Northwestern (2/2/14) |
| FGA | 7 at Hartford (12/10/14) 7 vs. Samford (11/30/14) | 7 (3x) last at Hartford (12/10/14) |
| 3FGM | 1 vs. Samford (11/30/14) | 1 vs. Samford (11/30/14) 1 vs. Ohio State (3/7/14) |
| 3FGA | 3 vs. Seton Hall (11/22/14) | 3 vs. Seton Hall (11/22/14) 3 vs. Bucknell (11/20/13) |
| FTM | 2 (3x) last vs. USF (12/21/14) | 5 at Illinois (1/9/14) |
| FTA | 6 vs. Seton Hall (11/22/14) | 6 vs. Seton Hall (11/22/14) |

WHITTED'S MISCELLANEOUS STATS

| Category | Season | Career | Last Time |
|------------------------|--------|--------|-----------------------------|
| Double Figure Scoring | n/a | 1 | 11 at Northwestern (2/2/14) |
| 20-point games | n/a | n/a | |
| Double Figure Rebounds | n/a | 1 | 10 at Illinois (1/9/14) |
| 5-plus Rebounds | 5 | 10 | 5 at Hartford (12/10/14) |
| 5-plus Assists | n/a | n/a | |
| 3-plus Steals | 1 | 1 | 3 at Michigan (1/1/15) |
| Double-Doubles | n/a | n/a | |

WHITTED'S CAREER STATS

| Year | GP-GS | MIN | FG-A | PCT | 3FG-A | PCT | FT-A | PCT | REB | AVG | PF-O | A | TO | B | S | PTS | AVG |
|--------------|-------------|------------|---------------|-------------|-------------|-------------|--------------|-------------|------------------|------------|--------------|-----------|-----------|----------|-----------|------------|------------|
| 2013-14 | 31-0 | 344 | 37-80 | .463 | 1-17 | .059 | 16-23 | .696 | 35-53-88 | 2.8 | 58-0 | 8 | 26 | 5 | 12 | 91 | 2.9 |
| 2014-15 | 15-6 | 279 | 26-78 | .333 | 1-12 | .083 | 9-16 | .563 | 19-38-57 | 3.8 | 43-1 | 11 | 34 | 2 | 10 | 62 | 4.1 |
| TOTAL | 46-6 | 623 | 63-158 | .399 | 2-29 | .069 | 25-39 | .641 | 54-91-145 | 3.2 | 101-1 | 19 | 60 | 7 | 22 | 153 | 3.3 |

10-Time Big Ten Champions • Two-Time Big Ten Tournament Champions • 2000 NCAA Final Four • 25 NCAA Tournament Appearances





#34 Molly Dincher

Sr. * G/F * 6-0 * Williamsport, Pa./Williamsport Area (Penn State Wilkes-Barre)

Highlights:

- Added to the Lady Lion roster as a walk-on on November 14.
- Served as a Lady Lion manager for a year and a half.

14-15 GAME-BY-GAME

| OPPONENT | Min. | FG | 3FG | FT | O-D-R | PF | A | TO | B | S | Pts |
|---------------|------|-----|-----|-----|-------|----|---|----|---|---|-----|
| TOWSON | DNP | | | | | | | | | | |
| ALBANY | DNP | | | | | | | | | | |
| SETON HALL | DNP | | | | | | | | | | |
| ST. BONA | DNP | | | | | | | | | | |
| vs. Liberty | DNP | | | | | | | | | | |
| vs. Samford | DNP | | | | | | | | | | |
| at Syracuse | DNP | | | | | | | | | | |
| WAGNER | 2 | 0-0 | 0-0 | 0-0 | 0-0-0 | 0 | 0 | 0 | 0 | 0 | 0 |
| at Hartford | DNP | | | | | | | | | | |
| RIDER | 3 | 0-0 | 0-0 | 0-0 | 0-0-0 | 0 | 0 | 2 | 0 | 0 | 0 |
| USF | DNP | | | | | | | | | | |
| at Iowa | DNP | | | | | | | | | | |
| at Michigan | DNP | | | | | | | | | | |
| ILLINOIS | DNP | | | | | | | | | | |
| at Wisconsin | DNP | | | | | | | | | | |
| RUTGERS | | | | | | | | | | | |
| at Nebraska | | | | | | | | | | | |
| at Ohio State | | | | | | | | | | | |
| INDIANA | | | | | | | | | | | |
| NORTHWESTERN | | | | | | | | | | | |
| at Minnesota | | | | | | | | | | | |
| at Rutgers | | | | | | | | | | | |
| MARYLAND | | | | | | | | | | | |
| at Purdue | | | | | | | | | | | |
| MICHIGAN ST. | | | | | | | | | | | |
| MINNESOTA | | | | | | | | | | | |
| at Maryland | | | | | | | | | | | |
| OHIO STATE | | | | | | | | | | | |
| WISCONSIN | | | | | | | | | | | |

2014-15 Season Notes:

- Played three minutes vs. Rider (12/14) in the 85-51 victory.
- Made her first appearance for the Lady Lions vs. Wagner (12/7).

Notable:

- Dincher played at Penn State Wilkes-Barre for two seasons where she helped the Mountain Lions to the 2011-12 PSUAC North Division Championship.
- She averaged 7.3 points and 8.6 rebounds that season for Wilkes-Barre, her final season for the Mountain Lions.
- She also rejected 33 shots and had 27 assists in 21 appearances that included 16 starts.
- As a freshman at Wilke-Barre, Dincher finished seventh in the United States Collegiate Athletic Associations USCAA) in blocked shots, averaging 1.5 per game.
- Since coming to University Park, Dincher played for the Penn State women's club basketball team that took second in the National Championships in 2012-13.
- She also served as a manager for the Lady Lions for the last year and a half.
- A three-year letterwinner, Dincher played her high school basketball at Williamsport Area High School. In her final season, the Millionaires were 12-8.

DINCHER'S CAREER/SEASON HIGHS

| | SEASON HIGHS | CAREER HIGHS |
|---------|------------------------|------------------------|
| Points | n/a | n/a |
| Rebs. | n/a | n/a |
| Assists | n/a | n/a |
| Steals | n/a | n/a |
| Blocks | n/a | n/a |
| Minutes | 3 vs. Rider (12/14/14) | 3 vs. Rider (12/14/14) |
| FGM | n/a | n/a |
| FGA | n/a | n/a |
| 3FGM | n/a | n/a |
| 3FGA | n/a | n/a |
| FTM | n/a | n/a |
| FTA | n/a | n/a |

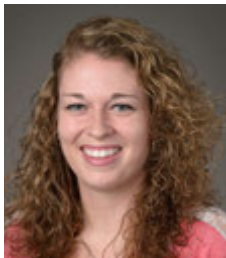
DINCHER'S MISCELLANEOUS STATS

| Category | Season | Career | Last Time |
|------------------------|--------|--------|-----------|
| Double Figure Scoring | n/a | n/a | |
| 20-point games | n/a | n/a | |
| Double Figure Rebounds | n/a | n/a | |
| 5-plus Rebounds | n/a | n/a | |
| 5-plus Assists | n/a | n/a | |
| 3-plus Steals | n/a | n/a | |
| Double-Doubles | n/a | n/a | |

DINCHER'S CAREER STATS

| Year | GP-GS | MIN | FG-A | PCT | 3FG-A | PCT | FT-A | PCT | REB | AVG | PF-O | A | TO | B | S | PTS | AVG |
|--------------|------------|----------|------------|-------------|------------|-------------|------------|-------------|--------------|------------|------------|----------|----------|----------|----------|----------|------------|
| 2014-15 | 2-0 | 5 | 0-0 | .000 | 0-0 | .000 | 0-0 | .000 | 0-0-0 | 0.0 | 1-0 | 0 | 2 | 0 | 0 | 0 | 0.0 |
| TOTAL | 2-0 | 5 | 0-0 | .000 | 0-0 | .000 | 0-0 | .000 | 0-0-0 | 0.0 | 1-0 | 0 | 2 | 0 | 0 | 0 | 0.0 |





#41 Jenny DeGraaf

So. * F * 6-1 * Springboro, Ohio/Springboro

Highlights:

- Posted her first career double-double with 11 points and 11 rebounds vs. Samford (11/30).

2014-15 Season Notes:

- Was 3-of-7 from the field, with one three pointer, to score seven points at Wisconsin (1/6).
- Converted both of her field goal attempts and grabbed one rebound in the Big Ten opener at Iowa (12/28).
- Pulled down seven rebounds and scored four points vs. Rider (12/14).
- Equaled her career-high with 12 points on 4-of-8 shooting, along with a career-best 4-of-4 effort from the free throw line vs. Wagner (12/7).
- Handed out a career-best three assists and made her first career free throw at Syracuse (12/4) in the ACC/Big Ten Challenge.
- Set career-highs with 33 minutes, five field goals made, nine field goals attempted and 10 rebounds vs. Samford (11/30), adding 11 points for her first career double-double.
- Registered eight points on a 4-of-7 effort with four rebounds in a career-high 27 minutes against St. Bonaventure (11/25).
- Posted six points on 3-for-5 shooting and five rebounds against Seton Hall (11/22).
- Connected on all four of her three-point attempts en route to a career-high 12 points in a personal-best 22 minutes against Albany (11/16).
- Hit 4-of-5 shots from the field, including two attempts from long range, en route to 11 points in the exhibition against IUP (11/2).

14-15 GAME-BY-GAME

| OPPONENT | Min. | FG | 3FG | FT | O-D-R | PF | A | TO | B | S | Pts |
|---------------|------|-----|-----|-----|--------|----|---|----|---|---|-----|
| TOWSON | 15 | 0-2 | 0-2 | 0-0 | 0-3-3 | 1 | 0 | 0 | 0 | 1 | 0 |
| ALBANY | 22 | 4-4 | 4-4 | 0-0 | 0-0-0 | 1 | 0 | 1 | 0 | 0 | 12 |
| SETON HALL | 24 | 3-5 | 0-0 | 0-0 | 2-3-5 | 1 | 1 | 1 | 1 | 1 | 6 |
| ST. BONA | 27 | 4-7 | 0-2 | 0-0 | 0-4-4 | 1 | 0 | 0 | 0 | 0 | 8 |
| vs. Liberty | 20 | 1-3 | 0-2 | 0-0 | 1-2-3 | 0 | 1 | 0 | 0 | 1 | 2 |
| vs. Samford | 33 | 5-9 | 1-2 | 0-0 | 1-9-10 | 1 | 1 | 0 | 0 | 0 | 11 |
| at Syracuse | 25 | 1-5 | 1-5 | 1-2 | 1-3-4 | 0 | 3 | 1 | 0 | 0 | 4 |
| WAGNER | 19 | 4-8 | 0-2 | 4-4 | 1-2-3 | 2 | 1 | 0 | 1 | 0 | 12 |
| at Hartford | 24 | 1-6 | 0-3 | 0-0 | 2-0-2 | 1 | 2 | 2 | 0 | 1 | 2 |
| RIDER | 23 | 2-6 | 0-2 | 0-0 | 0-7-7 | 2 | 0 | 2 | 0 | 0 | 4 |
| USF | 5 | 0-1 | 0-0 | 0-0 | 0-0-0 | 0 | 0 | 1 | 0 | 0 | 0 |
| at Iowa | 9 | 2-2 | 0-0 | 0-0 | 0-1-1 | 2 | 0 | 1 | 0 | 0 | 4 |
| at Michigan | 13 | 1-5 | 0-2 | 0-0 | 0-2-2 | 2 | 0 | 1 | 0 | 1 | 2 |
| ILLINOIS | 4 | 1-2 | 0-0 | 0-0 | 0-0-0 | 0 | 0 | 1 | 0 | 1 | 2 |
| at Wisconsin | 16 | 3-7 | 1-3 | 0-0 | 0-0-0 | 0 | 1 | 3 | 0 | 0 | 7 |
| RUTGERS | | | | | | | | | | | |
| at Nebraska | | | | | | | | | | | |
| at Ohio State | | | | | | | | | | | |
| INDIANA | | | | | | | | | | | |
| NORTHWESTERN | | | | | | | | | | | |
| at Minnesota | | | | | | | | | | | |
| at Rutgers | | | | | | | | | | | |
| MARYLAND | | | | | | | | | | | |
| at Purdue | | | | | | | | | | | |
| MICHIGAN ST. | | | | | | | | | | | |
| MINNESOTA | | | | | | | | | | | |
| at Maryland | | | | | | | | | | | |
| OHIO STATE | | | | | | | | | | | |
| WISCONSIN | | | | | | | | | | | |

Notable:

- Set the Springboro High School single-season record for free throws made with 121, including 25 consecutive makes from the charity stripe in 2013.

DeGRAAF'S CAREER/SEASON HIGHS

| | SEASON HIGHS | CAREER HIGHS |
|---------|---|---|
| Points | 12 vs. Wagner (12/7/14) 12 vs. Albany (11/16/14) | 12 vs. Wagner (12/7/14) 12 vs. Albany (11/16/14) |
| Rebs. | 10 vs. Samford (11/30/14) | 10 vs. Samford (11/30/14) |
| Assists | 3 at Syracuse (12/4/14) | 3 at Syracuse (12/4/14) |
| Steals | 1 (4x) last vs. Illinois (1/4/15) | 1 (5x) last vs. Illinois (1/4/15) |
| Blocks | 1 (3x) last at Michigan (1/1/15) | 1 (3x) last at Michigan (1/1/15) |
| Minutes | 33 vs. Samford (11/30/14) | 33 vs. Samford (11/30/14) |
| FGM | 5 vs. Samford (11/30/14) | 5 vs. Samford (11/30/14) |
| FGA | 9 vs. Samford (11/30/14) | 9 vs. Samford (11/30/14) |
| 3FGM | 4 vs. Albany (11/16/14) | 4 vs. Albany (11/16/14) |
| 3FGA | 5 at Syracuse (12/4/14) | 5 at Syracuse (12/4/14) |
| FTM | 4 vs. Wagner (12/7/14) | 4 vs. Wagner (12/7/14) |
| FTA | 4 vs. Wagner (12/7/14) | 4 vs. Wagner (12/7/14) |

DeGRAAF'S MISCELLANEOUS STATS

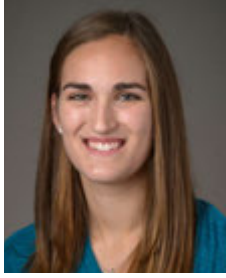
| Category | Season | Career | Last Time |
|------------------------|--------|--------|---------------------------------|
| Double Figure Scoring | 3 | 3 | 12 vs. Wagner (12/7/14) |
| 20-point games | n/a | n/a | |
| Double Figure Rebounds | 1 | 1 | 10 vs. Samford (11/30/14) |
| 5-plus Rebounds | 3 | 3 | 7 vs. Rider (12/14/14) |
| 5-plus Assists | n/a | n/a | |
| 3-plus Steals | n/a | n/a | |
| Double-Doubles | 1 | 1 | 11p, 10r vs. Samford (11/30/14) |

DeGRAAF'S CAREER STATS

| Year | GP-GS | MIN | FG-A | PCT | 3FG-A | PCT | FT-A | PCT | REB | AVG | PF-O | A | TO | B | S | PTS | AVG |
|--------------|-------------|------------|--------------|-------------|-------------|-------------|------------|-------------|-----------------|------------|-------------|-----------|-----------|----------|----------|-----------|------------|
| 2013-14 | 17-0 | 76 | 7-20 | .350 | 2-7 | .286 | 0-0 | .000 | 3-6-9 | 0.5 | 5-0 | 4 | 5 | 0 | 1 | 16 | 0.9 |
| 2014-15 | 15-0 | 279 | 32-72 | .444 | 7-29 | .241 | 5-6 | .833 | 8-36-44 | 2.9 | 14-0 | 10 | 13 | 3 | 5 | 76 | 5.1 |
| TOTAL | 32-0 | 355 | 39-92 | .424 | 9-36 | .250 | 5-6 | .833 | 11-42-53 | 1.7 | 19-0 | 14 | 18 | 3 | 6 | 92 | 2.9 |

10-Time Big Ten Champions • Two-Time Big Ten Tournament Champions • 2000 NCAA Final Four • 25 NCAA Tournament Appearances





#44 Tori Waldner

Sr. * F/C * 6-5 * Milton, Ga./Milton

Highlights:

- Ranks eighth on Penn State's career blocks list (109).
- Nominee for Allstate WBCA Good Works Team.
- Selected as a team tri-captain.

14-15 GAME-BY-GAME

| OPPONENT | Min. | FG | 3FG | FT | O-D-R | PF | A | TO | B | S | Pts |
|---------------|------|-----|-----|-----|---------|----|---|----|---|---|-----|
| TOWSON | 26 | 5-7 | 0-0 | 1-2 | 2-9-11 | 2 | 0 | 0 | 0 | 1 | 11 |
| ALBANY | 19 | 1-4 | 0-0 | 4-4 | 2-7-9 | 4 | 2 | 4 | 4 | 1 | 6 |
| SETON HALL | 23 | 1-4 | 0-1 | 0-0 | 3-4-7 | 4 | 2 | 1 | 3 | 2 | 2 |
| ST. BONA | 29 | 2-4 | 0-0 | 0-0 | 1-5-6 | 3 | 1 | 2 | 3 | 0 | 4 |
| vs. Liberty | 34 | 3-8 | 1-2 | 3-4 | 3-5-8 | 2 | 3 | 1 | 1 | 1 | 10 |
| vs. Samford | 39 | 3-7 | 0-1 | 2-2 | 1-11-12 | 4 | 0 | 3 | 0 | 1 | 8 |
| at Syracuse | 18 | 2-7 | 0-0 | 0-0 | 3-3-6 | 3 | 0 | 1 | 0 | 0 | 4 |
| WAGNER | 15 | 0-1 | 0-0 | 0-2 | 0-5-5 | 3 | 2 | 2 | 1 | 1 | 0 |
| at Hartford | 23 | 0-2 | 0-0 | 0-0 | 0-4-4 | 1 | 2 | 2 | 1 | 0 | 0 |
| RIDER | 10 | 1-2 | 0-0 | 2-2 | 1-1-2 | 4 | 0 | 1 | 1 | 0 | 4 |
| USF | 10 | 0-1 | 0-0 | 0-1 | 0-3-3 | 5 | 1 | 1 | 1 | 0 | 0 |
| at Iowa | 22 | 2-7 | 0-0 | 3-4 | 3-1-4 | 1 | 0 | 4 | 0 | 1 | 7 |
| at Michigan | 20 | 2-4 | 0-1 | 0-0 | 4-3-7 | 2 | 1 | 5 | 2 | 2 | 4 |
| ILLINOIS | 25 | 2-5 | 0-1 | 5-6 | 0-7-7 | 2 | 2 | 3 | 1 | 0 | 9 |
| at Wisconsin | 11 | 0-0 | 0-0 | 1-2 | 0-2-2 | 1 | 0 | 0 | 1 | 0 | 1 |
| RUTGERS | | | | | | | | | | | |
| at Nebraska | | | | | | | | | | | |
| at Ohio State | | | | | | | | | | | |
| INDIANA | | | | | | | | | | | |
| NORTHWESTERN | | | | | | | | | | | |
| at Minnesota | | | | | | | | | | | |
| at Rutgers | | | | | | | | | | | |
| MARYLAND | | | | | | | | | | | |
| at Purdue | | | | | | | | | | | |
| MICHIGAN ST. | | | | | | | | | | | |
| MINNESOTA | | | | | | | | | | | |
| at Maryland | | | | | | | | | | | |
| OHIO STATE | | | | | | | | | | | |
| WISCONSIN | | | | | | | | | | | |

2014-15 Season Notes:

- Pulled down seven rebounds and added nine points vs. Illinois (1/4), including a season-best five free throws made on a career-high-tying six attempts.
- Grabbed seven rebounds, blocked three shots and added two assists at Michigan (1/1).
- Scored seven points and grabbed four rebounds in the Big Ten opener at Iowa (12/28).
- Took over eighth on the Penn State career blocked shots list with one rejection vs. Rider (12/14). It was her 103rd career block and moved her past Talia East (102; 2011-14).
- Blocked one shot and hauled in five rebounds vs. Wagner (12/7).
- Hauled in six rebounds at Syracuse (12/4) in the ACC/Big Ten Challenge.
- Grabbed a career-high 12 rebounds and scored eight points vs. Samford (11/30).
- Had 10 points, including her second career three pointer, eight rebounds and three assists vs. Liberty (11/28).
- Logged four points, six rebounds and three blocks against St. Bonaventure (11/25).
- Tallied seven rebounds, three blocks and a pair of steals versus Seton Hall (11/22).
- Recorded four blocked shots and nine rebounds against Albany (11/16).
- Notched her first career double-double with 11 points on 5-of-7 shooting and 11 rebounds, which tied her then-career high, in the season-opening win over Towson (11/14).
- Had four points and five rebounds in the exhibition against IUP (11/2).

Notable:

- President of the Penn State Student-Athlete Advisory Board (SAAB).
- Was a member of the 2014 Penn State Homecoming Court.
- Participates in LifeLink, which is program in which State College Area School District special-needs students between the ages of 18 and 21 are given an opportunity to interact with students of their own age in an environment that is socially and academically conducive to continued growth with the hope of future independent living.
- Is one of just nine players with 100-plus career blocks and one of just 15 Lady Lions in program history to record 80 or more blocks in a career.
- Had a streak of 12-straight games with at least one block (11/10/13-1/5/14).
- Mother, Diane, played basketball and lacrosse at Russell Sage College in Troy, New York.

WALDNER'S CAREER/SEASON HIGHS

| | SEASON HIGHS | CAREER HIGHS |
|---------|-----------------------------|---|
| Points | 11 vs. Towson (11/14/14) | 14 vs. Northwestern (2/20/14) |
| Rebs. | 12 vs. Samford (11/30/14) | 12 vs. Samford (11/30/14) |
| Assists | 3 vs. Liberty (11/28/14) | 5 vs. Illinois State (11/30/13) |
| Steals | 2 vs. Seton Hall (11/22/14) | 3 vs. Michigan State (2/10/13) |
| Blocks | 4 vs. Albany (11/16/14) | 5 vs. Northwestern (2/20/14) 5 vs. Minnesota (1/24/13) |
| Minutes | 39 vs. Samford (11/30/14) | 39 vs. Samford (11/30/14) |
| FGM | 5 vs. Towson (11/14/14) | 6 vs. Northwestern (2/20/14) |
| FGA | 8 vs. Liberty (11/28/14) | 13 vs. Wisconsin (2/16/14) |
| 3FGM | 1 vs. Liberty (11/28/14) | 1 vs. Liberty (11/28/14) 1 vs. Connecticut (11/17/13) |
| 3FGA | 2 vs. Liberty (11/28/14) | 2 vs. Liberty (11/28/14) 2 vs. Connecticut (11/17/13) |
| FTM | 5 vs. Illinois (1/4/15) | 6 vs. Howard (11/11/12) |
| FTA | 6 vs. Illinois (1/4/15) | 6 vs. Illinois (1/4/15) 6 vs. Howard (11/11/12) |

WALDNER'S MISCELLANEOUS STATS

| Category | Season | Career | Last Time |
|------------------------|--------|--------|----------------------------------|
| Double Figure Scoring | 2 | 8 | 10 vs. Liberty (11/28/14) |
| 20-point games | n/a | n/a | |
| Double Figure Rebounds | 2 | 6 | 12 vs. Samford (11/30/14) |
| 5-plus Rebounds | 9 | 38 | 7 vs. Illinois (1/4/15) |
| 5-plus Assists | n/a | 1 | 5 vs. Illinois State (11/30/13) |
| 3-plus Steals | n/a | 1 | 3 vs. Michigan State (2/10/13) |
| 5-plus Blocks | n/a | 2 | 5 vs. Northwestern (2/20/14) |
| Double-Doubles | 1 | 1 | 11 p, 11 r vs. Towson (11/14/14) |

WALDNER'S CAREER STATS

| Year | GP-GS | MIN | FG-A | PCT | 3FG-A | PCT | FT-A | PCT | REB | AVG | PF-O | A | TO | B | S | PTS | AVG |
|--------------|---------------|-------------|----------------|-------------|-------------|-------------|--------------|-------------|--------------------|------------|--------------|-----------|------------|------------|-----------|------------|------------|
| 2011-12 | 31-0 | 272 | 25-56 | .446 | 0-1 | .000 | 13-23 | .565 | 13-54-67 | 2.2 | 50-0 | 15 | 24 | 18 | 16 | 63 | 2.0 |
| 2012-13 | 30-0 | 275 | 19-59 | .322 | 0-1 | .000 | 10-13 | .769 | 31-54-85 | 2.8 | 47-0 | 8 | 22 | 32 | 11 | 48 | 1.6 |
| 2013-14 | 32-32 | 677 | 67-159 | .421 | 1-3 | .333 | 20-33 | .606 | 48-131-179 | 5.6 | 83-1 | 32 | 39 | 39 | 16 | 155 | 4.8 |
| 2014-15 | 15-11 | 339 | 24-63 | .381 | 1-6 | .167 | 21-29 | .724 | 23-70-93 | 6.2 | 41-1 | 17 | 25 | 20 | 9 | 70 | 4.7 |
| TOTAL | 108-43 | 1563 | 135-337 | .401 | 2-11 | .182 | 64-98 | .653 | 115-309-424 | 3.9 | 221-2 | 72 | 110 | 109 | 52 | 336 | 3.1 |



**2014-15 Penn State Women's Basketball
Penn State Combined Team Statistics (as of Jan 06, 2015)
All games**

| RECORD: | OVERALL | HOME | AWAY | NEUTRAL |
|----------------|----------------|-------------|-------------|----------------|
| ALL GAMES | 3-12 | 3-5 | 0-5 | 0-2 |
| CONFERENCE | 0-4 | 0-1 | 0-3 | 0-0 |
| NON-CONFERENCE | 3-8 | 3-4 | 0-2 | 0-2 |

| # | Player | gp-gs | min | avg | Total | | 3-Point | | F-Throw | | Rebounds | | | | pf | dq | a | to | blk | stl | pts | avg |
|----------------|-------------------|-------|------|------|---------|------|---------|------|---------|-------|----------|-----|-----|------|-----|----|-----|-----|-----|-----|------|------|
| | | | | | fg-fga | fg% | 3fg-fga | 3fg% | ft-fa | ft% | off | def | tot | avg | | | | | | | | |
| 12 | Spann, Lindsey | 15-15 | 509 | 33.9 | 91-226 | .403 | 18-64 | .281 | 42-60 | .700 | 6 | 43 | 49 | 3.3 | 45 | 2 | 53 | 57 | 0 | 22 | 242 | 16.1 |
| 05 | Moore, Sierra | 15-15 | 498 | 33.2 | 63-164 | .384 | 3-6 | .500 | 42-69 | .609 | 26 | 49 | 75 | 5.0 | 33 | 2 | 56 | 50 | 10 | 21 | 171 | 11.4 |
| 01 | Agee, Candice | 15-11 | 310 | 20.7 | 64-118 | .542 | 0-0 | .000 | 24-48 | .500 | 33 | 48 | 81 | 5.4 | 31 | 0 | 11 | 25 | 27 | 12 | 152 | 10.1 |
| 15 | Mitchell, Kaliyah | 15-12 | 417 | 27.8 | 38-118 | .322 | 3-24 | .125 | 40-59 | .678 | 28 | 67 | 95 | 6.3 | 52 | 4 | 10 | 32 | 8 | 25 | 119 | 7.9 |
| 41 | DeGraaf, Jenny | 15-0 | 279 | 18.6 | 32-72 | .444 | 7-29 | .241 | 5-6 | .833 | 8 | 36 | 44 | 2.9 | 14 | 0 | 10 | 13 | 3 | 5 | 76 | 5.1 |
| 44 | Waldner, Tori | 15-11 | 339 | 22.6 | 24-63 | .381 | 1-6 | .167 | 21-29 | .724 | 23 | 70 | 93 | 6.2 | 41 | 1 | 17 | 25 | 20 | 9 | 70 | 4.7 |
| 25 | Whitted, Peyton | 15-6 | 279 | 18.6 | 26-78 | .333 | 1-12 | .083 | 9-16 | .563 | 19 | 38 | 57 | 3.8 | 43 | 1 | 11 | 34 | 2 | 10 | 62 | 4.1 |
| 11 | Harris, Alex | 5-1 | 83 | 16.6 | 8-16 | .500 | 0-0 | .000 | 4-9 | .444 | 18 | 10 | 28 | 5.6 | 11 | 0 | 4 | 6 | 5 | 1 | 20 | 4.0 |
| 10 | Sevillian, Keke | 15-4 | 297 | 19.8 | 14-45 | .311 | 4-17 | .235 | 6-15 | .400 | 9 | 17 | 26 | 1.7 | 32 | 0 | 23 | 17 | 2 | 20 | 38 | 2.5 |
| 14 | Brooks, Dominique | 11-0 | 34 | 3.1 | 4-6 | .667 | 0-0 | .000 | 5-5 | 1.000 | 0 | 1 | 1 | 0.1 | 7 | 0 | 0 | 5 | 1 | 0 | 13 | 1.2 |
| 34 | Dincher, Molly | 2-0 | 5 | 2.5 | 0-0 | .000 | 0-0 | .000 | 0-0 | .000 | 0 | 0 | 0 | 0.0 | 1 | 0 | 0 | 2 | 0 | 0 | 0 | 0.0 |
| Team | | | | | | | | | | | | 34 | 36 | 70 | | | | 7 | | | | |
| Total..... | | 15 | 3050 | | 364-906 | .402 | 37-158 | .234 | 198-316 | .627 | 204 | 415 | 619 | 41.3 | 310 | 10 | 195 | 273 | 78 | 125 | 963 | 64.2 |
| Opponents..... | | 15 | 3050 | | 355-923 | .385 | 111-327 | .339 | 219-328 | .668 | 212 | 393 | 605 | 40.3 | 288 | 5 | 218 | 255 | 74 | 131 | 1040 | 69.3 |

| TEAM STATISTICS | PSU | OPP | Date | Opponent | Score | Att. |
|------------------------|------------|------------|-------------|-----------------|--------------|-------------|
| SCORING | 963 | 1040 | 11/14/14 | TOWSON | W 71-64 | 3123 |
| Points per game | 64.2 | 69.3 | 11/16/14 | ALBANY | L 53-54 | 8607 |
| Scoring margin | -5.1 | - | 11/22/14 | SETON HALL | L 70-75 | 3114 |
| FIELD GOALS-ATT | 364-906 | 355-923 | 11/25/14 | ST. BONAVENTURE | L 54-56 | 6703 |
| Field goal pct | .402 | .385 | 11/28/14 | vs Liberty | L 68-80 | 645 |
| 3 POINT FG-ATT | 37-158 | 111-327 | 11/30/14 | vs Samford | Lot 56-59 | 522 |
| 3-point FG pct | .234 | .339 | 12/04/14 | at Syracuse | L 39-61 | 258 |
| 3-pt FG made per game | 2.5 | 7.4 | 12/7/14 | WAGNER | W 96-66 | 3657 |
| FREE THROWS-ATT | 198-316 | 219-328 | 12/10/14 | at HARTFORD | L 57-62 | 1467 |
| Free throw pct | .627 | .668 | 12/14/14 | RIDER | W 85-51 | 9991 |
| F-Throws made per game | 13.2 | 14.6 | 12/21/14 | USF | Lot 87-90 | 3429 |
| REBOUNDS | 619 | 605 | * 12/28/14 | at Iowa | L 52-77 | 5411 |
| Rebounds per game | 41.3 | 40.3 | * 01/01/15 | at Michigan | L 53-89 | 3034 |
| Rebounding margin | +0.9 | - | * 1/4/15 | ILLINOIS | L 76-91 | 3933 |
| ASSISTS | 195 | 218 | * 01/06/15 | at Wisconsin | L 46-65 | 2822 |
| Assists per game | 13.0 | 14.5 | | | | |
| TURNOVERS | 273 | 255 | | | | |
| Turnovers per game | 18.2 | 17.0 | | | | |
| Turnover margin | -1.2 | - | | | | |
| Assist/turnover ratio | 0.7 | 0.9 | | | | |
| STEALS | 125 | 131 | | | | |
| Steals per game | 8.3 | 8.7 | | | | |
| BLOCKS | 78 | 74 | | | | |
| Blocks per game | 5.2 | 4.9 | | | | |
| ATTENDANCE | 42557 | 14159 | | | | |
| Home games-Avg/Game | 8-5320 | 5-2598 | | | | |
| Neutral site-Avg/Game | - | 2-584 | | | | |

| Score by Periods | 1st | 2nd | OT | Totals |
|-------------------------|------------|------------|-----------|---------------|
| Penn State | 434 | 509 | 20 | 963 |
| Opponents | 484 | 530 | 26 | 1040 |

10-Time Big Ten Champions • Two-Time Big Ten Tournament Champions • 2000 NCAA Final Four • 25 NCAA Tournament Appearances



**2014-15 Penn State Women's Basketball
Penn State Combined Team Statistics (as of Jan 06, 2015)
Conference games**

| RECORD: | OVERALL | HOME | AWAY | NEUTRAL |
|----------------|----------------|-------------|-------------|----------------|
| ALL GAMES | 0-4 | 0-1 | 0-3 | 0-0 |
| CONFERENCE | 0-4 | 0-1 | 0-3 | 0-0 |
| NON-CONFERENCE | 0-0 | 0-0 | 0-0 | 0-0 |

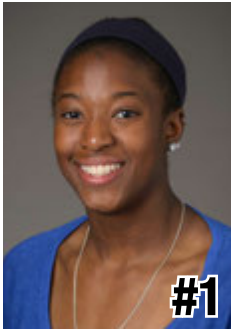
| ## | Player | gp-gs | min | avg | Total | | 3-Point | | F-Throw | | Rebounds | | | | pf | dq | a | to | blk | stl | pts | avg | | |
|----------------|-------------------|-------|-----|------|---------|-------|---------|------|---------|-------|----------|-----|-----|------|----|----|----|----|-----|-----|-----|------|--|--|
| | | | | | fg-fga | fg% | 3fg-fga | 3fg% | ft-fta | ft% | off | def | tot | avg | | | | | | | | | | |
| 12 | Spann, Lindsey | 4-4 | 141 | 35.2 | 25-68 | .368 | 8-23 | .348 | 12-16 | .750 | 2 | 15 | 17 | 4.3 | 11 | 0 | 12 | 20 | 0 | 6 | 70 | 17.5 | | |
| 05 | Moore, Sierra | 4-4 | 115 | 28.8 | 14-41 | .341 | 0-2 | .000 | 4-14 | .286 | 7 | 13 | 20 | 5.0 | 6 | 0 | 10 | 16 | 3 | 9 | 32 | 8.0 | | |
| 01 | Agee, Candice | 4-3 | 74 | 18.5 | 12-27 | .444 | 0-0 | .000 | 5-12 | .417 | 7 | 5 | 12 | 3.0 | 6 | 0 | 2 | 5 | 3 | 3 | 29 | 7.3 | | |
| 15 | Mitchell, Kaliyah | 4-1 | 95 | 23.8 | 8-23 | .348 | 0-4 | .000 | 7-11 | .636 | 4 | 12 | 16 | 4.0 | 13 | 1 | 5 | 6 | 2 | 2 | 23 | 5.8 | | |
| 44 | Waldner, Tori | 4-3 | 78 | 19.5 | 6-16 | .375 | 0-2 | .000 | 9-12 | .750 | 7 | 13 | 20 | 5.0 | 6 | 0 | 4 | 7 | 5 | 2 | 21 | 5.3 | | |
| 41 | DeGraaf, Jenny | 4-0 | 42 | 10.5 | 7-16 | .438 | 1-5 | .200 | 0-0 | .000 | 0 | 3 | 3 | 0.8 | 4 | 0 | 1 | 5 | 1 | 1 | 15 | 3.8 | | |
| 25 | Whitted, Peyton | 4-1 | 81 | 20.3 | 6-24 | .250 | 0-4 | .000 | 1-1 | 1.000 | 5 | 8 | 13 | 3.3 | 8 | 0 | 3 | 11 | 0 | 4 | 13 | 3.3 | | |
| 11 | Harris, Alex | 4-1 | 52 | 13.0 | 5-11 | .455 | 0-0 | .000 | 1-1 | 1.000 | 13 | 7 | 20 | 5.0 | 8 | 0 | 2 | 5 | 2 | 1 | 11 | 2.8 | | |
| 10 | Sevillian, Keke | 4-3 | 117 | 29.3 | 4-7 | .571 | 0-2 | .000 | 2-2 | 1.000 | 2 | 9 | 11 | 2.8 | 10 | 0 | 3 | 6 | 0 | 7 | 10 | 2.5 | | |
| 14 | Brooks, Dominique | 3-0 | 5 | 1.7 | 1-1 | 1.000 | 0-0 | .000 | 1-1 | 1.000 | 0 | 0 | 0 | 0.0 | 0 | 0 | 0 | 1 | 0 | 0 | 3 | 1.0 | | |
| Team | | | | | | | | | | | 12 | 7 | 19 | | | | | | | | | | | |
| Total..... | | 4 | 800 | | 88-234 | .376 | 9-42 | .214 | 42-70 | .600 | 59 | 92 | 151 | 37.8 | 72 | 1 | 42 | 85 | 16 | 35 | 227 | 56.8 | | |
| Opponents..... | | 4 | 800 | | 117-256 | .457 | 35-88 | .398 | 53-75 | .707 | 60 | 98 | 158 | 39.5 | 66 | 0 | 84 | 60 | 27 | 39 | 322 | 80.5 | | |

| TEAM STATISTICS | PSU | OPP | Date | Opponent | Score | Att. |
|------------------------|------------|------------|---------------------|-----------------|--------------|-------------|
| SCORING | 227 | 322 | * 12/28/14 | at Iowa | L 52-77 | 5411 |
| Points per game | 56.8 | 80.5 | * 01/01/15 | at Michigan | L 53-89 | 3034 |
| Scoring margin | -23.7 | - | * 1/4/15 | ILLINOIS | L 76-91 | 3933 |
| FIELD GOALS-ATT | 88-234 | 117-256 | * 01/06/15 | at Wisconsin | L 46-65 | 2822 |
| Field goal pct | .376 | .457 | | | | |
| 3 POINT FG-ATT | 9-42 | 35-88 | * - Conference game | | | |
| 3-point FG pct | .214 | .398 | | | | |
| 3-pt FG made per game | 2.3 | 8.8 | | | | |
| FREE THROWS-ATT | 42-70 | 53-75 | | | | |
| Free throw pct | .600 | .707 | | | | |
| F-Throws made per game | 10.5 | 13.3 | | | | |
| REBOUNDS | 151 | 158 | | | | |
| Rebounds per game | 37.8 | 39.5 | | | | |
| Rebounding margin | -1.7 | - | | | | |
| ASSISTS | 42 | 84 | | | | |
| Assists per game | 10.5 | 21.0 | | | | |
| TURNOVERS | 85 | 60 | | | | |
| Turnovers per game | 21.3 | 15.0 | | | | |
| Turnover margin | -6.2 | - | | | | |
| Assist/turnover ratio | 0.5 | 1.4 | | | | |
| STEALS | 35 | 39 | | | | |
| Steals per game | 8.8 | 9.8 | | | | |
| BLOCKS | 16 | 27 | | | | |
| Blocks per game | 4.0 | 6.8 | | | | |
| ATTENDANCE | 3933 | 11267 | | | | |
| Home games-Avg/Game | 1-3933 | 3-3756 | | | | |
| Neutral site-Avg/Game | - | 0-0 | | | | |

| Score by Periods | 1st | 2nd | Totals |
|-------------------------|------------|------------|---------------|
| Penn State | 100 | 127 | 227 |
| Opponents | 165 | 157 | 322 |

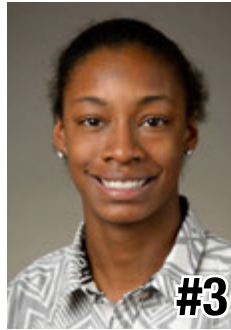


2014-15 RADIO/TV CHART



#1

Candice Agee
6-6 * Jr./Jr. * C
Victorville, Calif.
Silverado



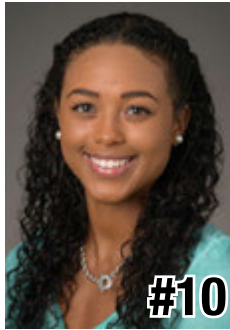
#3

Brianna Banks
5-9 * Sr./-- * G
Newnan, Ga.
Fayette County
(Connecticut)



#5

Sierra Moore
5-11 * Jr./So. * G
Hanover, Pa.
Delone Catholic
(Duke)



#10

Keke Sevillian
5-7 * So./So. * G
Goodrich, Mich.
Goodrich



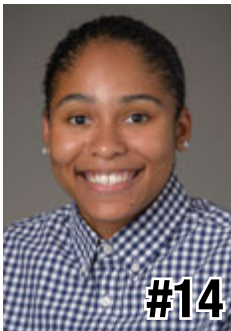
#11

Alex Harris
6-3 * So./So. * F
Lorain, Ohio
Lorain



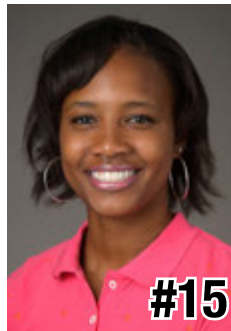
#12

Lindsey Spann
5-6 * So./Fr. * G
Laurel, Md.
Good Counsel



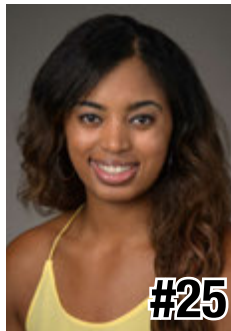
#14

Dominique Brooks
6-4 * Jr./Jr. * C
Lansing, Ill.
T.F. South
(Trinity Valley C.C.)



#15

Kaliyah Mitchell
6-2 * So./So. * F
Stone Mountain, Ga.
Stephenson



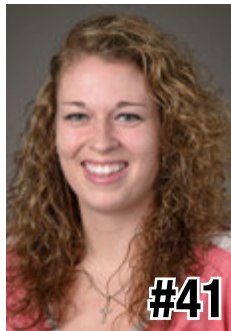
#25

Peyton Whitted
6-3 * So./So. * F
Suwanee, Ga.
North Gwinnett



#34

Molly Dincher
6-0 * Sr./Sr. * G/F
Williamsport, Pa.
Williamsport Area
(PSU Wilkes-Barre)



#41

Jenny DeGraaf
6-1 * So./So. * F
Springboro, Ohio
Springboro



#44

Tori Waldner
6-5 * Sr./Sr. * F/C
Milton, Ga.
Milton



HC

Coquese Washington
Head Coach
Notre Dame '92
Eighth Season



AC

Ito Coleman
Assistant Coach
Clemson '00
First Season
Fourth Overall



AC

Kia Damon
Assistant Coach
Millersville '97
Eighth Season



AC

Jocelyn Wyatt
Assistant Coach
Appalachian State '06
First Season



DO

Ethan Gelfand
Director of Operations
Wake Forest '06
Fourth Season



VO

Mike Miller
Director of Video &
Technology Ops
High Point '02
10th Season



OA

Jennifer Montoya
Operations Assistant
Penn State '14
First Season

10-Time Big Ten Champions • Two-Time Big Ten Tournament Champions • 2000 NCAA Final Four • 25 NCAA Tournament Appearances

