

PENN STATE

WOMEN'S SOCCER



2014

GoPSUsports.com

| Twitter: @PennStateWSOC

Instagram: PennStateWSOC | Facebook: PSUWomensSoccer

AUGUST

PENN STATE INVITATIONAL (Aug. 22-24)

Fri. 22	WEST VIRGINIA	University Park, Pa.	W, 3-1
Sun. 24	SYRACUSE	University Park, Pa.	W, 2-0
Fri. 29	CONNECTICUT	University Park, Pa.	W, 3-1

SEPTEMBER

DUKE NIKE CLASSIC (Sept. 5-7)

Fri. 5	vs. North Carolina	Durham, N.C.	L, 1-0 (2OT)
Sun. 7	at Duke	Durham, N.C.	W, 4-3
Fri. 12	at Purdue*	West Lafayette, Ind.	W, 1-0
Sun. 14	at Indiana*	Bloomington, Ind.	W, 3-0
Fri. 19	OHIO STATE*	University Park, Pa.	W, 5-1
Tue. 23	BUCKNELL	University Park, Pa.	7:00 p.m.
Fri. 26	NORTHWESTERN*	University Park, Pa.	7:00 p.m.
Sun. 28	ILLINOIS*	University Park, Pa.	1:00 p.m.

OCTOBER

Fri. 3	at Minnesota*	Minneapolis, Minn.	8:00 p.m.
Sun. 5	at Wisconsin*	Madison, Wis.	12:00 p.m.
Sat. 11	RUTGERS*	University Park, Pa.	4:30 p.m.
Thu. 16	at Michigan*	Ann Arbor, Mich.	7:00 p.m.
Sun. 19	at Michigan State*	East Lansing, Mich.	1:00 p.m.
Fri. 24	NEBRASKA*	University Park, Pa.	7:00 p.m.
Sun. 26	IOWA*	University Park, Pa.	TBA
Thu. 30	MARYLAND*	University Park, Pa.	7:00 p.m.

NOVEMBER

BIG TEN TOURNAMENT (Nov. 2-9)

Sun. 2	Big Ten Quarterfinals	Campus Sites	TBA
Fri. 7	Big Ten Semifinals	West Lafayette, Ind.	TBA
Sun. 9	Big Ten Championship	West Lafayette, Ind.	TBA

NCAA TOURNAMENT (Nov. 14-30)

Fri.-Sun. 14-16	NCAA First Round	Campus Sites	TBA
Fri. 21	NCAA Second Round	Campus Sites	TBA
Sun. 23	NCAA Third Round	Campus Sites	TBA
Fri.-Sun. 28-30	NCAA Quarterfinals	Campus Sites	TBA

DECEMBER

NCAA WOMEN'S COLLEGE CUP (Dec. 5-7)

Fri. 5	College Cup Semifinals	Ft. Lauderdale, Fla.
Sun. 7	College Cup Championship	Ft. Lauderdale, Fla.

* - Big Ten match; Home matches in **CAPS** at Jeffrey Field;

All times Eastern



Contact: Jen Heisel • jrh67@psu.edu
O: (814) 865-3613-1377 • C: (814) 321-5119

BUCKNELL

VENUE: Jeffrey Field (Grass - 3,700)

COVERAGE: GameTracker, Live Video (GoPSUsports.com)

PROMOTIONS: \$1 Hot Dog Night



OVERALL	BU	PSU
RECORD	5-4	7-1
GOALS	17	21
GOALS/GAME	1.9	2.6
SHOTS	148	114
SHOTS/GAME	16.4	14.3
PENALTY KICKS	1-1	1-2
SV%	.767	.792
GA	11	7
GAA	0.86	1.21
SHUTOUTS	3	3

VS. BUCKNELL

TUES. SEPT. 23 - 7 P.M.

SERIES: Penn State, 17-0-1

LAST MEETING: Sept. 10, 2013
W, 6-0

ON THE PITCH

The No. 8 Penn State women's soccer team (7-1-0, 3-0 Big Ten) host Bucknell on Tues., Sept. 23, with a 7 p.m. start time, the second match in a four-game Nittany Lion homestand.

FEELIN' SO RIGHT ON FRIDAY NIGHT

The Nittany Lions scored a season-high five goals against Ohio State on Fri., Sept. 19 and beat the Buckeyes, 5-1. Penn State lengthened its perfect record to start Big Ten play, thanks to a two-goal game by freshman Frannie Crouse (Greensburg, Pa.) and Salina Williford's (Wayne, Pa.) first career goal, the gamewinner.

GOING THROUGH THE RANKS

The Nittany Lions' 7-1 start has shown that they're one of the best teams in the nation. As of Sept. 22, in three of the four national collegiate women's soccer polls, Penn State is ranked in the top-10: seventh in the Bennett Rank, and eighth in the NSCAA weekly poll and TopDrawerSoccer.com's list.

2014 STAT LEADERS

POINTS		ASSISTS	
Mallory Weber	11	Emily Hurd	3
Raquel Rodriguez	10	Mallory Weber	3
Frannie Crouse	8	Raquel Rodriguez	2
		Megan Schafer	2
GOALS		SAVES	
Mallory Weber	4		
Raquel Rodriguez	4	Britt Eckerstrom	22
Frannie Crouse	4		
GAME-WINNING GOALS		WINS	
Raquel Rodriguez	2	Britt Eckerstrom	7
Four Players	1		
		SHUTOUTS	
		Britt Eckerstrom	3



GAMEDAY CENTRAL

SCOUTING THE BISON

The Bison (5-4, 0-1 Patriot) are coming off of a heartbreaking 2-1 loss to Army after the Black Nights scored an 89th-minute penalty kick, cutting short a four-game Bucknell winning streak. During the run, the Bison outscored its opponents, 11-2. Kendall Ham is leading the team's offensive charge with four goals and 11 shots on goal. Starting goalkeeper Jessie Ashworth is posting a 1.20 goals against average and .783 goals against average with 36 saves.

SERIES HISTORY vs. BUCKNELL

Penn State holds a 17-0-1 all-time unbeaten record against the Bison. Last season, the Nittany Lions beat the Bison, 6-0, thanks to a two-goal game by Mallory Weber (Novi, Mich.) and Raquel Rodriguez's (San Jose, Costa Rica) three assists.

HOME FIELD ADVANTAGE

The Nittany Lions take home field advantage to the next level. The team is 194-22-9 all-time at Jeffrey Field, losing just two matches in the past three seasons and shutting out visitors in 17 of 36 matches.

CROUSE CROWNED BIG TEN FRESHMAN OF THE WEEK

After scoring a pair of goals in a 5-1 win over Ohio State on Sept. 19, Frannie Crouse (Greensburg, Pa.) garnered Big Ten Women's Soccer Freshman of the Week honors. Crouse scored her second two goals of the year and took a team best four shots, all of which were on goal, against the Buckeyes. She found the back of the net just over two minutes in to put the No. 8 Nittany Lions on the board. Her second goal was off of a breakaway at the 64-minute mark.

SHUTTING OUT THE COMPETITION

The 2014 Nittany Lions have proven to be one of the best defensive teams in recent history. They became the first team in program history to shut out opponents in a two-game Big Ten opening weekend. The 2014 team is also the first squad since 2008 to open Big Ten play with consecutive shutouts after its 1-0 and 3-0 wins over Purdue and Indiana.

HOT START HEATS UP RECORD BOOKS

Penn State's 7-1 start is even more impressive when flipping through the program record book. This year's team has begun the season with the best record since 2005, when the Blue and White achieved the program's first and only undefeated season to date (23-0-2), eventually falling in the Women's College Cup to Portland on penalty kicks (4-3).

2014 BIG TEN STANDINGS

Team	Big Ten	Pts.	Overall
1. Penn State	3-0-0	9	7-1-0
T1. Iowa	3-0-0	9	8-1-0
T1. Illinois	3-1-0	9	8-2-0
T1. Michigan	3-1-0	9	7-3-0
5. Wisconsin	2-1-0	6	8-1-0
T5. Rutgers	2-1-0	6	6-1-0
T5. Purdue	2-2-0	6	6-3-1
8. Maryland	1-1-1	4	3-3-2
9. Minnesota	1-2-0	3	4-5-0
T9. Ohio State	1-2-0	3	4-5-0
T9. Indiana	1-3-0	3	5-5-0
T12. Nebraska	0-2-1	1	4-4-1
T12. Michigan State	0-3-1	1	6-3-1
T12. Northwestern	0-3-1	1	4-4-2

SPREADING THE WEALTH

Penn State has threatened opponents throughout the lineup this season. The team's 21 goals have come from 10 different players and eight Nittany Lions have at least one assist. Mallory Weber (Novi, Mich.), Raquel Rodriguez (San Jose, Costa Rica) and Frannie Crouse (Greenburg, Pa.) have each scored a team-best four goals.

ROCKING THE BOAT

Raquel Rodriguez (San Jose, Costa Rica) is riding a four-game goal scoring streak for the team lead. She got the gamewinners against Duke and Purdue and found the back of the net against Indiana to earn an honorable mention for the TopDrawerSoccer.com Women's Team of the Week after the opening Big Ten weekend. Against Ohio State, the junior capped off Penn State's 5-1 win with her fourth goal.

FRESHMEN ON FIRE

The Nittany Lions' freshmen have proven to be major contributors

INDIVIDUAL HONORS

Whitney Church

MAC Hermann Trophy Watch List

Frannie Crouse

Sept. 22 - Big Ten Freshman of the Week

Emily Hurd

Sept. 9 - TopDrawerSoccer.com Women's Team of the Week
Big Ten Player to Watch

Emily Ogle

Aug. 25 - TopDrawerSoccer.com Women's Team of the Week

Raquel Rodriguez

Big Ten Player to Watch

Megan Schafer

Sept. 3 - Big Ten Co-Freshman Player of the Week

Mallory Weber

Big Ten Player to Watch

during the 2014 campaign. Emily Ogle (Strongsville, Ohio), Frannie Crouse (Greensburg, Pa.), Elizabeth Ball (Richmond, Va.) and Maddie Elliston (Omaha, Neb.) have started every game, while Haleigh Echard (Lebanon, Pa.) and Katy Keen (Zionsville, Ind.) have played as reserves every match. Megan Schafer (Langhorne, Pa.), started one match and has come off of the bench in every other game. Big Ten Freshman of the Week (Sept. 22) Crouse is in a three-way tie with four goals scored, and Ogle and Schafer have also garnered weekly honors.

HURD HURTS OPPONENT IN NORTH CAROLINA

Team captain Emily Hurd (Sammamish, Wash.) epitomized leadership in Penn State's 4-3 win over Duke on Sept. 7. The senior notched four points, scoring the Nittany Lions' opening goal of the game and dishing out two assists, one of which was on the game-winner, to match a career-best four points. She was named to the TopDrawerSoccer.com Women's Team of the Week for her performance after being honored on the All-Duke Nike Classic team.

LIONS PICKED TO WIN BIG TEN

Penn State was tabbed to win the Big Ten regular season title, according to the 2014 Big Ten Women's Soccer Preseason Coaches' Poll. Wisconsin and Maryland earned the second- and third-most votes, respectively. The Nittany Lions have sat atop the poll every season since the poll began in 2003.

Three players from each Big Ten team were named Big Ten Women's Soccer Preseason Players to Watch, with senior Emily Hurd (Sammamish, Wash.) and juniors Mallory Weber (Novi, Mich.) and Raquel Rodriguez (San Jose, Costa Rica) representing the Lions.

LIONS ON THE INTERNATIONAL STAGE

Over the summer, sophomore Brittany Basinger (Purcellville, Va.) and freshman Rose Chandler (Atlanta, Ga.) represented the United States at the 2014 FIFA Under-20 Women's World Cup, hosted by Canada. Penn State Head Coach Erica Walsh was also a member of the U.S. U-20 Women's National Team, serving as an assistant coach. The U.S. U-20 team went 2-2 at the tournament, besting China PR and Brazil, and was eliminated after the Group stage after falling 3-1 to Korea DPR. This was Chandler's first appearance as a member of the U-20 team while Basinger was a member of the 2014 CONCACAF Women's U-20 Championship team.

Chandler, Basinger and Walsh won't be the only Lions to don their country's colors in 2014. Junior Raquel Rodriguez (San Jose, Costa Rica) is a member of the Costa Rican Women's National Team and will compete for Costa Rica at the 2014 CONCACAF Women's Championship in October in an attempt to qualify for the 2015 FIFA Women's World Cup.

NSCAA COACHES POLL

(as of Sept. 16)

#	Team	W-L-T	1st Votes
1	UCLA	6-0-1	24
2	Virginia Tech	9-0-0	1
3	Virginia	7-0-0	0
4	Stanford	5-0-1	0
5	Florida State	6-1-0	0
6	Texas Tech	7-0-0	0
7	Florida	5-2-0	0
8	Penn State	6-1-0	0
9	North Carolina	3-1-1	0
10	California	8-1-0	0
11	Texas A&M	6-1-1	0
12	Pepperdine	6-1-1	0
13	Wisconsin	7-1-0	0
14	South Carolina	7-1-0	0
15	Southern California	5-0-2	0
16	Kansas	8-0-0	0
17	Clemson	7-0-1	0
18	Notre Dame	5-2-2	0
19	Oklahoma	5-1-2	0
20	DePaul	7-0-1	0
21	West Virginia	4-2-1	0
22	Illinois	6-2-0	0
23	Long Beach State	3-2-3	0
24	Georgia	5-1-1	0
25	Washington State	5-0-2	0

Also receiving votes: Michigan (35), UConn (32), Auburn (30), Boston College (24), Arizona State (19), Santa Clara (17), Rutgers (17), Central Florida (16), Georgetown (14), George Washington (9), Iowa (6), San Francisco (5), San Diego State (5), Duke (4), Portland (2), Rice (2), Mississippi (2), Arizona (2), George Mason (1), Utah (1), North Texas (1)

COMPLETE WEEKLY RANKINGS

	Preseason	8/25	9/1	9/8	9/15
NSCAA	24	8	7	8	8
Soccer America	9	8	7	11	10
TopDrawerSoccer.com	11	9	8	9	8
Bennett Rank	11	9	7	7	7

SOCIAL MEDIA

For complete coverage of Penn State women's soccer, please visit <http://www.GoPSUsports.com/sports/w-soccer>. Follow PSU women's soccer on Twitter and Instagram: @PennStateWSOC. Penn State women's soccer is also on Facebook: www.facebook.com/PSUWomensSoccer.



THE LAST TIME

PENN STATE...

Scored 3 goals	9/14/14. at Indiana (3-0)	Allowed 16+ shots	9/7/14. 20 at Duke (4-3)
Scored 4 goals	9/7/14. at Duke (4-3)	Scored 15-24 points	9/26/13. 15 vs. Purdue (6-1)
Scored 5 goals	9/19/14. vs. Ohio State (5-1)	Scored 25+ points	9/25/01. 26 vs. Bucknell (9-2)
Scored 6 goals	9/26/13. vs. Purdue (6-1)	Made 10-14 saves	9/5/14 10 vs. North Carolina (1-0, 2OT)
Scored 7 goals	9/1/02. vs. Pittsburgh (7-2)	Made 15+ saves	9/2/95. . . 17 vs. James Madison (4-2)
Scored 8 goals	10/9/05. vs. Iowa (8-0)	Had 10+ corner kicks	11/15/13. 10 vs. Monmouth (3-0)
Scored 9 goals	9/25/01. vs. Bucknell (9-2)	Allowed 10+ corner kicks	9/12/10. 10 at #4 Portland (2-4)
Allowed 0 goals	9/14/14. at Indiana (3-0)	Tallied 5-7 assists	10/7/12. 5 vs. Indiana (5-2)
Allowed 1 goal	9/19/14. vs. Ohio State (5-1)	Tallied 8+ assists	9/10/13. 8 at Bucknell (6-0)
Allowed 2 goals	10/17/13. vs. Ohio State (4-2)	Won an NCAA Tourney game	11/15/13. vs. Monmouth (3-0)
Allowed 3 goals	9/7/14. at Duke (4-3)	Lost an NCAA Tourney game	11/22/13. . . vs. #13 Wake Forest (1-0)
Allowed 4 goals	12/2/12. . . vs. #13 North Carolina (1-4)	Won a road NCAA Tourney game	11/30/02. at Connecticut (2-1)
Allowed 5+ goals	8/30/13. vs. Virginia (1-5)	Won a neutral NCAA Tourney game	11/30/12. . . . vs. #7 Florida State (2-1)
Won in overtime	11/30/12. . . . vs. #7 Florida State (2-1)	Won penalty kick shootout	11/18/12. . . vs. Michigan (1-1, 3-2 PKs)
Lost in overtime	11/6/11. vs. #18 Illinois (1-2)	Lost penalty kick shootout	11/9/07. . . vs. Ohio State (2-2, 4-5 PKs)
Won in double overtime	9/20/13. vs. Northwestern (3-2)	A PENN STATE PLAYER...	
Lost in double overtime	9/5/14. vs. #24 North Carolina (0-1, 2OT)	Scored 2 goals	9/19/14. . . Frannie Crouse vs. Ohio State (5-1)
Tied after double overtime	8/23/12. . . vs. West Virginia (2-2, 2OT)	Scored 3 goals	9/4/11. Maya Hayes at Pittsburgh (3-0)
Was ranked in the NSCAA Top 25	9/16/14. 8th	Scored 4 goals	10/7/01. Christie Welsh vs. Michigan (6-2)
Was ranked in the NSCAA Top 10	9/16/14. 8th	Had 2 assists	9/7/14. Emily Hurd at Duke (4-3)
Played a NSCAA Top 10 Team	8/30/13. vs. #5 Virginia (1-5)	Had 3 assists	9/13/13. Tani Costa at Oklahoma St. (4-2)
Played a NSCAA Top 25 Team	8/22/14 vs. #24 North Carolina (1-0, 2OT)	Had 4 assists	9/17/03. Ali Krieger vs. Bucknell (6-0)
Defeated a NSCAA Top 10 Team	11/30/12. . . . vs. #7 Florida State (2-1)	Had 5-9 points	9/1/13. Maya Hayes 5 vs. La Salle (5-1)
Defeated a NSCAA Top 25 Team	8/22/14. . . vs. #12 West Virginia (3-1)	Had 10+ points	10/7/01. . . 10, Christie Welsh vs. Michigan (6-2)
Attempted less than 10 shots	8/22/14. . 9 vs. # 12 West Virginia (3-1)	Attempted 10+ shots	11/11/11. . . . 10, Christine Nairn vs. Army (1-0)
Attempted 10-19 shots	9/19/14. 14 vs. Ohio State (5-1)	Made 10-14 saves	9/5/14. 10, Britt Eckerstrom vs. North Carolina (1-0, 2OT)
Attempted 20-29 shots	11/15/13. 25 vs. Monmouth (3-0)	Made 15+ saves	9/3/94. . 15, Robin Van Praag at Minnesota (3-2)
Attempted 30-39 shots	9/10/13. 30 at Bucknell (6-0)	Scored in the Big Ten Tourney	11/6/13. Mallory Weber vs. Wisconsin (2-0)
Attempted 40+ shots	11/7/10. 42 vs. Michigan (1-0)	Had a Big Ten Tourney shutout	11/6/13. Britt Eckerstrom vs. Wisconsin (2-0)
Allowed 4 or less shots	9/19/14. 4 vs. Ohio State (5-1)	Scored in an NCAA game	11/15/13. . Whitney Church vs. Monmouth (3-0)
Allowed 5-9 shots	9/7/14. 7 at Indiana (3-0)	Had an NCAA game shutout	11/15/13. . . Britt Eckerstrom vs. Monmouth (3-0)
Allowed 10-15 shots	11/22/13. . . . 14 vs. Wake Forest (1-0)		

2014 Penn State Women's Soccer Penn State Combined Team Statistics (as of Sep 19, 2014) All games

RECORD:	OVERALL	HOME	AWAY	NEUTRAL
ALL GAMES	7-1	4-0	3-0	0-1
CONFERENCE	3-0	1-0	2-0	0-0
NON-CONFERENCE	4-1	3-0	1-0	0-1

Date	Opponent	Score	Att.
Aug 22	#12 WVU	w 3-1	3007
Aug 24	SYRACUSE	w 2-0	1278
Aug 29	UCONN	w 3-1	2013
Sep 05	vs #14/14 N.Carolina	Lo2 0-1	0
^ Sep 07	at #22/-- Duke	w 4-3	1405
* Sep 12	at Purdue	w 1-0	383
* Sep 14	at Indiana	w 3-0	513
* Sep 19	OHIO STATE	w 5-1	2021

TEAM STATISTICS	PSU	OPP
SHOT STATISTICS		
Goals-Shot attempts	21-114	7-71
Goals scored per game	2.62	0.88
Shot pct.	.184	.099
Shots on goal-Attempts	56-114	30-71
SOG pct.	.491	.423
Shots/Game	14.2	8.9
CORNER KICKS		
	36	26
Goals off corners	2	1
PENALTY KICKS		
	1-2	1-1
OFFSIDES		
	7	12
PENALTIES		
Fouls	58	63
Yellow cards	3	3
Red cards	0	0
ATTENDANCE		
Total	8319	2301
Dates/Avg Per Date	4/2080	3/767
Neutral Site #/Avg	1/0	

#	Player	gp	g	a	pts	sh	sh%	sog	sog%	qw	pk-att
16	Weber,Mallory	8	4	3	11	12	.333	6	.500	1	0-0
11	Rodriguez,Raquel	8	4	2	10	19	.211	9	.474	2	0-1
9	Crouse,Frannie	8	4	0	8	16	.250	9	.562	0	0-0
3	Hurd,Emily	8	2	3	7	14	.143	9	.643	1	0-0
4	Schafer,Megan	8	2	2	6	8	.250	5	.625	1	0-0
14	Chapic,Kori	8	1	2	4	4	.250	1	.250	1	0-0
10	Ogle,Emily	8	1	1	3	9	.111	4	.444	0	1-1
20	Williford,Salina	8	1	0	2	17	.059	9	.529	1	0-0
17	Church,Whitney	8	1	0	2	5	.200	2	.400	0	0-0
25	Peterson,Mallory	5	1	0	2	4	.250	2	.500	0	0-0
15	Echard,Haleigh	8	0	2	2	2	.000	0	.000	0	0-0
8	Keen,Katy	8	0	1	1	2	.000	0	.000	0	0-0
12	Kohne,Kindrah	6	0	0	0	2	.000	0	.000	0	0-0
28	Eckerstrom,Britt	8	0	0	0	0	.000	0	.000	0	0-0
24	Holderby,Britne	1	0	0	0	0	.000	0	.000	0	0-0
21	Chase,Teddy	2	0	0	0	0	.000	0	.000	0	0-0
7	Ball,Elizabeth	8	0	0	0	0	.000	0	.000	0	0-0
6	Witte,Anna	3	0	0	0	0	.000	0	.000	0	0-0
5	Elliston,Maddie	8	0	0	0	0	.000	0	.000	0	0-0
2	Ritchey,Megan	3	0	0	0	0	.000	0	.000	0	0-0
0	Kaminski,Meghan	2	0	0	0	0	.000	0	.000	0	0-0
Total		8	21	16	58	114	.184	56	.491	7	1-2
Opponents		8	7	4	18	71	.099	30	.423	1	1-1

#	Goalie	GP	Min.	GA	GAAvg	Saves	Pct	W-L-T	Sho
28	Eckerstrom,Britt	8	692:38	6	0.78	22	.786	7-1-0	3/0
0	Kaminski,Meghan	2	39:29	1	2.28	1	.500	0-0-0	0/0
Total		8	732:07	7	0.86	23	.767	7-1-0	3
Opponents		8	732:07	21	2.58	35	.625	1-7-0	1

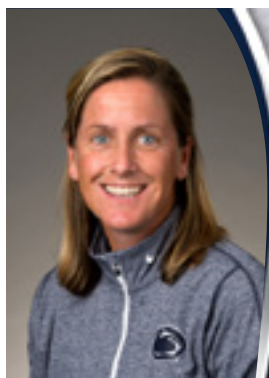
Goals by Period	1st	2nd	OT	OT2	Total
Penn State	11	10	0	0	21
Opponents	1	5	0	1	7

Shots by Period	1st	2nd	OT	OT2	Total
Penn State	53	59	2	0	114
Opponents	31	34	5	1	71

Saves by Period	1st	2nd	OT	OT2	Total
Penn State	11	10	2	0	23
Opponents	20	15	0	0	35

Corners by Period	1st	2nd	OT	OT2	Total
Penn State	16	19	1	0	36
Opponents	12	12	2	0	26

Fouls by Period	1st	2nd	OT	OT2	Total
Penn State	25	32	1	0	58
Opponents	31	31	1	0	63



ERICA WALSH

Head Coach • Eighth Year
WILLIAM & MARY '97

RECORD AT PSU: 115-43-8 (.717)
Overall Record: 155-71-11 (.677)

2012 NSCAA NATIONAL COACH OF THE YEAR TWO-TIME BIG TEN COACH OF THE YEAR (2009, 2012)

Head coach Erica Walsh enters her eighth season at the helm of the Penn State women's soccer program in 2014.

The Nittany Lions appeared in their 19th-straight NCAA Tournament in 2013, due in part to the success of senior Maya Hayes. The sixth-overall selection in the WPSL draft, Hayes set Penn State's single season record for points (79) in 2011 and finished her career ranked third in goals scored (71) and points (163), sixth in game-winning goals (17) and seventh in shots (291). Hayes was a M.A.C. Hermann Award Trophy semifinalist for the second straight year.

Walsh's 2012 Nittany Lions were the most successful team in program history after advancing to their first-ever national title game. The Nittany Lions won 21 of 27 games and were unbeaten in Big Ten action with a 10-0-1 record. The Lions registered their 15th consecutive Big Ten title and 18th-straight NCAA Tournament appearance. The 15-title mark is the second-most consecutive Big Ten Championships by a women's program, behind Northwestern's women's tennis team (16).

Senior Christine Nairn became just the seventh Nittany Lion to finish as a finalist for the prestigious Missouri Athletic Club's Hermann Trophy in 2012 under Walsh's tutelage while junior Maya Hayes was named a semifinalist for the award.

Walsh's success was recognized at the conference and national level as she earned Big Ten Coach of the Year and NSCAA National Coach of the Year honors.

Her 2011 team was a dominant force, winning 21 of 26 matches, while outscoring opponents 70-24. The Nittany Lions were 10-1-0 in Big Ten action and posted the seventh undefeated season at Jeffrey Field (9-0). Walsh helped guide the Lions to their 14th-straight Big Ten title and a spot to the NCAA Sweet Sixteen for the first time since 2007.

With Walsh's guidance, as a sophomore, Hayes became the nation's most prolific scorer in soccer in 2011 and was a finalist for the M.A.C. Hermann Trophy. Hayes led the nation with 31 goals and 70 points, breaking the then-Penn State single-season record for points.

During the 2011 summer, Walsh had an extraordinary experience of being one of the top assistants to Pia Sundhage and the 2011 United State women's national team at the FIFA World Cup in Germany. The U.S. made a sparkling run through knockout play to the final, falling to eventual champion Japan.

The 2010 campaign saw Walsh's young club make a remarkable turnaround mid-season, overcoming a two-game deficit in the league standings over the final weeks to capture a share of its 13th straight Big Ten title.

After a tough 2-4 start to the 2009 season, Walsh led the Nittany Lions to a remarkable turnaround, going 10-1-2 in the last 13 games of the regular season, earning her the 2009 Big Ten Coach of the Year Award for her efforts. With the impressive end to the season, Walsh and her charges captured the program's 12th-straight Big Ten Championship. By winning the Big Ten, the Nittany Lions continued their string of NCAA Tournament berths, making their 15th-straight appearance in the 64-team field in 2009. For the second time in three years, Penn State hosted the first and second rounds of tournament play.

Walsh also orchestrated one of the finest awards seasons in Penn State history when Katie Schoepfer, Alyssa Naeher and Christine Nairn swept the year-end Big Ten Player of the Year awards. Schoepfer was named the Offensive Player

WALSH'S COLLEGIATE RÉSUMÉ

Head Coach	
Penn State	2007-present <i>2012 NSCAA National Coach of the Year</i> <i>2012 Big Ten Coach of the Year</i> <i>2009 Big Ten Coach of the Year</i>
Harvard	2006
Dartmouth	2000-02
Assistant Coach	
Florida State	2005-06
Dartmouth	1998-99
Graduate Assistant	
Lehigh	2003-04
Dartmouth	1997
Student-Athlete	
William & Mary	1993-97 <i>William & Mary Hall of Fame Inductee</i>

WALSH'S NATIONAL RÉSUMÉ

Head Coach	
U.S. Women's Under-17	2004-07
Assistant Coach	
U.S. Women's National Team	2008-11 <i>2008 Olympic Gold Medalists</i> <i>2011 World Cup Silver Medalists</i>
U.S. Women's Under-19	2004
U.S. Women's Under-20	2013-Present

WALSH'S ACCOLADES

- 11 YEARS OF COLLEGE HEAD COACHING EXPERIENCE**
- 1 COLLEGE CUP APPEARANCE**
- 1 NATIONAL CHAMPIONSHIP GAME APPEARANCE**
- 14 NCAA TOURNAMENT WINS**
- 10 NCAA TOURNAMENT APPEARANCES**
- 10 ALL-AMERICA HONORS**
- 6 BIG TEN CHAMPIONSHIPS**
- 1 OLYMPIC GOLD MEDAL**
- 1 NATIONAL COACH OF THE YEAR AWARD**
- 2 BIG TEN COACH OF THE YEAR AWARDS**

of the Year, Naeher the Defensive Player of the Year and Nairn the Freshman of the Year. Danielle Toney was named to the All-Big Ten first team, while Lexi Marton garnered a second team mention.

Walsh continued her success from the 2007 campaign into a 16-8-0 record that saw Penn State capture its 11th-straight Big Ten Championship and the 2008 Big Ten Tournament crown. Her transition to Penn State was quite smooth as the 2007 team finished 18-4-2, including a 9-1-0 mark in conference play, and was ranked 12th in the final NSCAA poll of the season.

When she came to Penn State, Walsh brought with her a wealth of experience at both the international and collegiate levels. She already has coached at six different universities, including three stints as head coach as well as serving as an assistant for the U.S. U-19 team in 2004. Walsh served as head coach of the U-17 team from December 2004 until her hire at Penn State in February 2007.

In January 2009, Walsh was appointed as a member of the Panel of Instructors and Lecturers for FIFA Courses. In addition, she was appointed as the Chairman of the Women's Technical Committee for the period of January 1, 2009 to June 30, 2011.

In January of 2008, Walsh was named as the assistant coach by Pia Sundhage for the U.S. National Team. With Walsh's help and guidance the U.S. team completed its historic run with a gold medal at the 2008 Olympic Games in Beijing, China. Even sweeter was that Walsh's main responsibility was the U.S. Team's defense, which held fellow world power Brazil scoreless in the gold medal game.

The head coach at Harvard University as well as the U.S. U-17 team prior to her hiring at Penn State, Walsh has consistently been active among the coaching ranks both at the Division I level and the U.S. Youth National Team program for nearly a decade. Prior to her time with the Crimson, she was part of a Florida State staff that led the Seminoles to one of its most successful year to date. FSU joined Penn State in the 2005 Women's Soccer College Cup, with both programs reaching the national semifinals.

Walsh's coaching path began in 1997 as a graduate assistant with Bucknell University. In 1998, she accepted a position at Dartmouth, where she was an assistant coach for two seasons. After helping the team to a final NSCAA ranking of No. 8 at the conclusion of the team's 1998 NCAA quarterfinal run as well as an Ivy League championship in 1999, Walsh assumed head coaching duties before the 2000 season.

As head coach, Walsh led the Big Green to back-to-back Ivy League co-championships in 2000 and 2001. Her squad was ranked in the NSCAA's top 25 each year, rising as high as No. 13 in 2001. In her three seasons as head coach, Dartmouth was invited to the NCAA Tournament each season and reached the round of 16 twice. All three of her teams earned the NSCAA's Academic Team Award.

Walsh left Dartmouth to earn her Master's in business administration at Lehigh University where she served as a graduate assistant from 2003-04. Beginning in the spring of 2004, Walsh joined the United States U-19 team as an assistant coach where she helped with preparations for the U-19 World Cup. The U.S. finished with the bronze medal in Thailand after defeating Brazil in the third place match. After the World Cup, Walsh was appointed the U.S. National Team's U-17 head coach, a position which she held for three years.

As a player, Walsh was an NSCAA All-Region selection at William & Mary. A two-time first team All-CAA pick, she propelled her team to four NCAA Tournament appearances as well as two CAA regular season and two CAA league championships. In March of 2010, Walsh's alma mater, William & Mary, honored her by inducting her into the W&M Athletics Hall of Fame.

A high school All-American at Lower Moreland, she was also a member of the U.S. U-17 National Team.

Walsh earned her Bachelor of Science degree with a concentration in biology from William & Mary in 1997. The Huntingdon Valley, Pa., native holds an NSCAA Advanced National Degree and a USSF "A" Coaching License.

WALSH'S CAREER AT PENN STATE

Season	Overall	Pct.	Big Ten	Pct.	Finish	NCAA
2007	18-4-2	.792	9-1-0	.900	1st	Third Round
2008	16-8-0	.667	8-2-0	.800	T-1st	First Round
2009	13-6-2	.667	8-1-1	.850	1st	Second Round
2010	11-9-1	.548	8-2-0	.800	T-1st	Second Round
2011	21-5-0	.808	10-1-0	.909	1st	Third Round
2012	21-4-2	.815	10-0-1	.955	1st	Runner-Up
2013	15-7-1		7-4-0		3rd	Second Round
Penn State	115-43-8	.717	61-11-2	.838	7 NCAAAs (11-7)	
Career	155-71-11	.677			10 NCAAAs (14-10)	



NUMERICAL ROSTER

No.	Name	Pos.	Elig.	Ht.	Hometown	High School	Pronunciation
0	Meghan Kaminski	GK	Jr.	6-1	Doylestown, Pa.	Central Bucks South	
1	Brittany Basinger	D	So.	5-7	Fairfax, Va.	Woodgrove	BAY-singer
2	Megan Ritchey	MF	Jr.	5-3	State College, Pa.	State College Area	
3	Emily Hurd	MF	R-Sr.	5-7	Sammamish, Wash.	Eastlake	
4	Megan Schafer	F	Fr.	5-7	Langhorne, Pa.	Neshaminy	
5	Maddie Elliston	MF/D	Fr.	5-3	Omaha, Neb.	Marian	
6	Anna Witte	D	So.	5-4	Morrisville, N.C.	Cary	WITT-ee
7	Elizabeth Ball	F	Fr.	5-6	Richmond, Va.	Deep Run	
8	Katy Keen	MF	Fr.	5-8	Zionsville, Ind.	Zionsville	
9	Frannie Crouse	F	Fr.	5-7	Greensburg, Pa.	Greensburg Catholic	
10	Emily Ogle	MF	Fr.	5-5	Strongsville, Ohio	Strongsville	OH-gle
11	Raquel Rodriguez	F/MF	Jr.	5-6	San Jose, Costa Rica	International Christian	
12	Kindrah Kohne	M	Sr.	5-5	Homer, N.Y.	Homer	KIN-drah KOH-nee
14	Kori Chapic	F/MF	Sr.	5-7	Russell, Ohio	West Geauga	CHAP-ick
15	Haleigh Echard	MF	Fr.	5-4	Lebanon, Pa.	Cedar Crest	ECK-ard
16	Mallory Weber	F	Jr.	5-6	Novi, Mich.	Northville	WEB-ber
17	Whitney Church	D	Sr.	5-5	Ashburn, Va.	Broad Run	
18	Angela Widlacki	D	So.	5-5	Naperville, Ill.	Naperville North	
19	Liisi Vink-Lainas	MF	Fr.	5-5	Wynantskill, N.Y.	Troy	LEE-see Vink-LYNus
20	Salina Williford	MF/D	So.	5-4	Wayne, Pa.	Conestoga	Suh-LEE-nah
21	Teddy Chase	D	Jr.	5-7	Wayne, Pa.	The Shipley School	
24	Britne Holderby	D	Fr.	5-5	Chelsea, Ala.	Chelsea	BRITT-nee Holder-BEE
25	Mallory Peterson	F/MF	Jr.	5-5	Clinton Corner, N.Y.	Millbrook	
28	Britt Eckerstrom	GK	R-Jr.	5-10	Germantown, Md.	Northwest	
30	Rose Chandler	GK	Fr.	5-7	Atlanta, Ga.	Atlanta Country Day	

ALPHABETICAL ROSTER

No.	Name	Pos.	El.	Ht.	Hometown	High School (Last College)	Pronunciation
7	Elizabeth Ball	F	Fr.	5-6	Richmond, Va.	Deep Run	
1	Brittany Basinger	D	So.	5-7	Fairfax, Va.	Woodgrove	BAY-singer
30	Rose Chandler	GK	Fr.	5-7	Atlanta, Ga.	Atlanta Country Day	
14	Kori Chapic	F/MF	Sr.	5-7	Russell, Ohio	West Geauga	CHAP-ick
21	Teddy Chase	D	Jr.	5-7	Wayne, Pa.	The Shipley School	
17	Whitney Church	D	Sr.	5-5	Ashburn, Va.	Broad Run	
22	Isabelle Clauss	D	Fr.	5-6	Clarks Summit, Pa.	Abington Heights	
9	Frannie Crouse	F	Fr.	5-7	Greensburg, Pa.	Greensburg Catholic	
15	Haleigh Echard	MF	Fr.	5-4	Lebanon, Pa.	Cedar Crest	ECK-ard
28	Britt Eckerstrom	GK	R-Jr.	5-10	Germantown, Md.	Northwest	
5	Maddie Elliston	MF/D	Fr.	5-3	Omaha, Neb.	Marian	
24	Britne Holderby	D	Fr.	5-5	Chelsea, Ala.	Chelsea	BRITT-nee Holder-BEE
3	Emily Hurd	MF	R-Sr.	5-7	Sammamish, Wash.	Eastlake	
0	Meghan Kaminski	GK	Jr.	6-1	Doylestown, Pa.	Central Bucks South	
8	Katy Keen	MF	Fr.	5-8	Zionsville, Ind.	Zionsville	
12	Kindrah Kohne	MF	Sr.	5-5	Homer, N.Y.	Homer	KIN-drah KOH-nee
10	Emily Ogle	MF	Fr.	5-5	Strongsville, Ohio	Strongsville	OH-gle
25	Mallory Peterson	F/MF	Jr.	5-5	Clinton Corners, N.Y.	Millbrook	
2	Megan Ritchey	MF	Jr.	5-3	State College, Pa.	State College Area	
11	Raquel Rodriguez	F/MF	Jr.	5-6	San Jose, Costa Rica	International Christian	
4	Megan Schafer	F	Fr.	5-7	Langhorne, Pa.	Neshaminy	
19	Liisi Vink-Lainas	MF	Fr.	5-5	Wynantskill, N.Y.	Troy	LEE-see Vink-LYE-nuss
16	Mallory Weber	F	Jr.	5-6	Novi, Mich.	Northville	
18	Angela Widlacki	D	R-Fr.	5-5	Naperville, Ill.	Naperville North	
20	Salina Williford	MF/D	So.	5-4	Wayne, Pa.	Conestoga	
6	Anna Witte	D	So.	5-4	Morrisville, N.C.	Cary	WITT-ee

Head Coach: Erica Walsh (Eighth year)
Associate Head Coach: Ann Cook (Seventh year)
Assistant Coach: Tim Wassell (Fifth year)
Director of Operations: Kara Lowery (Second year)



1

**MEGHAN
KAMINSKI**
Doylestown, Pa.
CENTRAL BUCKS SOUTH

Junior • **GOALKEEPER** • 6-1

SEASON STATS

Season	GP-GS	Min.	GA	GAA	Svs	Sv%	W-L-T	Sho
2014	2-0	39	1	2.28	1	.500	0-0-0	0/0



4

**MEGAN
SCHAFFER**
Langhorne, Pa.
NESHAMINY

Freshman • **FORWARD** • 5-7

SEASON STATS

Season	GP-GS	G	A	PTS	GWG	SH
2014	8-1	2	2	6	1	8



2

**MEGAN
RITCHEY**
State College, Pa.
STATE COLLEGE AREA

Junior • **MIDFIELD** • 5-3

SEASON STATS

Season	GP-GS	G	A	PTS	GWG	SH
2014	3-0	0	0	0	0	0



5

**MADDIE
ELLISTON**
Omaha, Neb.
Marian

Freshman • **MIDFIELD/DEFENSE** • 5-3

SEASON STATS

Season	GP-GS	G	A	PTS	GWG	SH
2014	8-8	0	0	0	0	0



3

**EMILY
HURD**
Sammamish, Wash.
EASTLAKE

Redshirt Senior • **MIDFIELD** • 5-7

SEASON STATS

Season	GP-GS	G	A	PTS	GWG	SH
2014	8-8	2	3	7	1	14



6

**ANNA
WITTE**
Morrisville, N.C.
Cary

Sophomore • **DEFENSE** • 5-4

SEASON STATS

Season	GP-GS	G	A	PTS	GWG	SH
2014	3-0	0	0	0	0	0




7

**ELIZABETH
BALL**

Richmond, Va.
DEEP RUN

Freshman • **FORWARD** • 5-6

SEASON STATS

Season	GP-GS	G	A	PTS	GWG	SH
2014	8-8	0	0	0	0	0



10

**EMILY
OGLE**

Strongsville, Ohio
STRONGSVILLE

Freshman • **MIDFIELD** • 5-5

SEASON STATS

Season	GP-GS	G	A	PTS	GWG	SH
2014	8-8	1	1	3	0	9



8

**KATY
KEEN**

Zionsville, Ind.
ZIONSVILLE

Freshman • **MIDFIELD** • 5-8

SEASON STATS

Season	GP-GS	G	A	PTS	GWG	SH
2014	8-0	0	1	1	0	2



11

**RAQUEL
RODRIGUEZ**

San Jose, Costa Rica
INTERNATIONAL CHRISTIAN

Junior • **FORWARD/MIDFIELD** • 5-6

SEASON STATS

Season	GP-GS	G	A	PTS	GWG	SH
2014	8-8	4	2	10	2	19



9

**FRANNIE
CROUSE**

Greensburg, Pa.
GREENSBURG CATHOLIC

Freshman • **FORWARD** • 5-7

SEASON STATS

Season	GP-GS	G	A	PTS	GWG	SH
2014	8-8	4	0	4	0	16



12

**KINDRAH
KOHNE**

Homer, N.Y.
HOMER

Senior • **MIDFIELD** • 5-5

SEASON STATS

Season	GP-GS	G	A	PTS	GWG	SH
2014	6-0	0	0	0	0	2



14

KORI CHAPIC
Russell, Ohio
WEST GEAUGA

Senior • **FORWARD/MIDFIELD** • 5-7

SEASON STATS

Season	GP-GS	G	A	PTS	GWG	SH
2014	8-8	1	2	4	1	4



17

WHITNEY CHURCH
Ashburn, Va.
BROAD RUN

Senior • **DEFENSE** • 5-5

SEASON STATS

Season	GP-GS	G	A	PTS	GWG	SH
2014	8-8	1	0	2	0	5



15

HALEIGH ECHARD
Lebanon, Pa.
CEDAR CREST

Freshman • **FORWARD** • 5-7

SEASON STATS

Season	GP-GS	G	A	PTS	GWG	SH
2014	8-0	0	2	2	0	2



20

SALINA WILLIFORD
Wayne, Pa.
CONESTOGA

Sophomore • **MIDFIELD/DEFENSE** • 5-4

SEASON STATS

Season	GP-GS	G	A	PTS	GWG	SH
2014	8-8	1	0	2	1	17



16

MALLORY WEBER
Novi, Mich.
NORTHVILLE

Junior • **FORWARD** • 5-6

SEASON STATS

Season	GP-GS	G	A	PTS	GWG	SH
2014	8-7	4	3	11	1	12



21

TEDDY CHASE
Wayne, Pa.
THE SHIPLEY SCHOOL

Junior • **DEFENSE** • 5-7

SEASON STATS

Season	GP-GS	G	A	PTS	GWG	SH
2014	2-0	0	0	0	0	0




24

**BRITNE
HOLDERBY**
Chelsea, Ala.
CHELSEA

Freshman • **DEFENSE** • 5-5

SEASON STATS

Season	GP-GS	G	A	PTS	GWG	SH
2014	1-0	0	0	0	0	0



25

**MALLORY
PETERSON**
Clinton Corner, N.Y.
MILLBROOK

Junior • **FORWARD/MIDFIELD** • 5-5

SEASON STATS

Season	GP-GS	G	A	PTS	GWG	SH
2014	5-0	1	0	2	0	4



28

**BRITT
ECKERSTROM**
Germantown, Md.
NORTHWEST

Redshirt Junior • **GOALKEEPER** • 5-10

SEASON STATS

Season	GP-GS	Min.	GA	GAA	Svs	Sv%	W-L-T	Sho
2014	8-8	692	6	0.78	22	.786	7-1-0	3/0

2014 PENN STATE WOMEN'S SOCCER



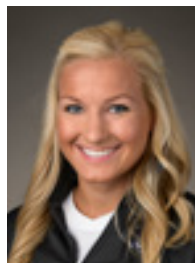
MEGHAN KAMINSKI
Junior • GK
Doylestown, Pa.



BRITTANY BASINGER
Sophomore • D
Fairfax, Va.



MEGHAN RITCHEY
Junior • M
State College, Pa.



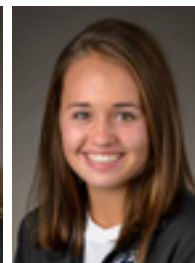
EMILY HURD
R - Senior • M
Sammamish, Wash.



MEGAN SCHAFER
Freshman • F
Langhorne, Pa.



MADDIE ELLISTON
Freshman • MF/D
Omaha, Neb.



ANNA WITTE
Sophomore • D
Morrisville, N.C.



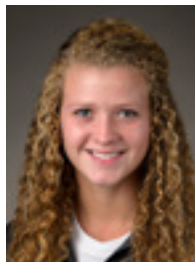
ELIZABETH BALL
Freshman • F
Richmond, Va.



KATY KEEN
Freshman • M
Zionsville, Ind.



FRANNIE CROUSE
Freshman • F
Greensburg, Pa.



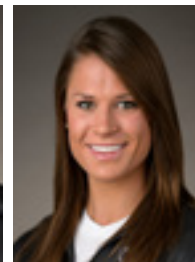
EMILY OGLE
Freshman • MF
Strongsville, Ohio



RAQUEL RODRIGUEZ
Junior • F/M
San Jose, Costa Rica



KINDRAH KOHNE
Senior • D
Homer, N.Y.



KORI CHAPIC
Senior • D
Russell, Ohio



HALEIGH ECHARD
Freshman • M
Lebanon, Pa.



MALLORY WEBER
Junior • F
Novi, Mich.



WHITNEY CHURCH
Senior • D
Ashburn, Va.



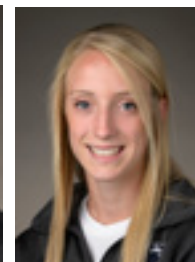
ANGELA WIDLACKI
R - Freshman • D
Naperville, Ill.



LIISI VINK-LAINAS
Freshman • M
Wynantskill, N.Y.



SALINA WILLIFORD
Sophomore • M/D
Wayne, Pa.



TEDDY CHASE
Junior • D
Wayne, Pa.



ISABELLE CLAUSS
Freshman • D
Clarks Summit, Pa.



BRITNE HOLDERBY
Freshman • D
Chelsea, Ala.



MALLORY PETERSON
Junior • F/M
Clinton Corners, N.Y.



BRITT ECKERSTROM
R - Junior • GK
Germantown, Md.



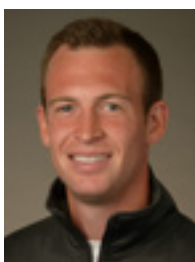
ROSE CHANDLER
Freshman • D
Atlanta, Ga.



ERICA WALSH
Head Coach • 8th Year
William & Mary '97



ANN COOK
Assistant Coach • 8th year
William & Mary '97



TIM WASSELL
Assistant Coach • 5th Year
PSU Altoona '06



KARA LOWERY
Director of Ops. • 2nd Year
Southern Nazarene '97